

Lo Turco, Alessia; Maggioni, Daniela; Picchio, Matteo

Working Paper

Offshoring and job stability: Evidence from Italian manufacturing

IZA Discussion Papers, No. 6514

Provided in Cooperation with:

IZA – Institute of Labor Economics

Suggested Citation: Lo Turco, Alessia; Maggioni, Daniela; Picchio, Matteo (2012) : Offshoring and job stability: Evidence from Italian manufacturing, IZA Discussion Papers, No. 6514, Institute for the Study of Labor (IZA), Bonn,
<https://nbn-resolving.de/urn:nbn:de:101:1-201208096329>

This Version is available at:

<https://hdl.handle.net/10419/58516>

Standard-Nutzungsbedingungen:

Die Dokumente auf EconStor dürfen zu eigenen wissenschaftlichen Zwecken und zum Privatgebrauch gespeichert und kopiert werden.

Sie dürfen die Dokumente nicht für öffentliche oder kommerzielle Zwecke vervielfältigen, öffentlich ausstellen, öffentlich zugänglich machen, vertreiben oder anderweitig nutzen.

Sofern die Verfasser die Dokumente unter Open-Content-Lizenzen (insbesondere CC-Lizenzen) zur Verfügung gestellt haben sollten, gelten abweichend von diesen Nutzungsbedingungen die in der dort genannten Lizenz gewährten Nutzungsrechte.

Terms of use:

Documents in EconStor may be saved and copied for your personal and scholarly purposes.

You are not to copy documents for public or commercial purposes, to exhibit the documents publicly, to make them publicly available on the internet, or to distribute or otherwise use the documents in public.

If the documents have been made available under an Open Content Licence (especially Creative Commons Licences), you may exercise further usage rights as specified in the indicated licence.

IZA DP No. 6514

**Offshoring and Job Stability:
Evidence from Italian Manufacturing**

Alessia Lo Turco
Daniela Maggioni
Matteo Picchio

April 2012

Offshoring and Job Stability: Evidence from Italian Manufacturing

Alessia Lo Turco

Università Politecnica delle Marche

Daniela Maggioni

Università Politecnica delle Marche

Matteo Picchio

*Research Foundation Flanders (FWO); Sherppa, Ghent University;
CentER, Tilburg University; and IZA*

Discussion Paper No. 6514
April 2012

IZA

P.O. Box 7240
53072 Bonn
Germany

Phone: +49-228-3894-0
Fax: +49-228-3894-180
E-mail: iza@iza.org

Any opinions expressed here are those of the author(s) and not those of IZA. Research published in this series may include views on policy, but the institute itself takes no institutional policy positions.

The Institute for the Study of Labor (IZA) in Bonn is a local and virtual international research center and a place of communication between science, politics and business. IZA is an independent nonprofit organization supported by Deutsche Post Foundation. The center is associated with the University of Bonn and offers a stimulating research environment through its international network, workshops and conferences, data service, project support, research visits and doctoral program. IZA engages in (i) original and internationally competitive research in all fields of labor economics, (ii) development of policy concepts, and (iii) dissemination of research results and concepts to the interested public.

IZA Discussion Papers often represent preliminary work and are circulated to encourage discussion. Citation of such a paper should account for its provisional character. A revised version may be available directly from the author.

ABSTRACT

Offshoring and Job Stability: Evidence from Italian Manufacturing*

We study the relationship between offshoring and job stability in Italy in the period 1995–2001 by using an administrative dataset on manufacturing workers. We find that the international fragmentation of production negatively affects job stability. Service offshoring and material purchases from developed countries foster job-to-job transitions within manufacturing of all workers and white collars, respectively. However, the most detrimental effects for job stability come from material offshoring to low income countries which drives blue collar workers out of manufacturing. Therefore, policy interventions should especially focus on this latter category of workers more exposed to fragmentation processes and foreign competition.

JEL Classification: C41, F14, F16, J62

Keywords: offshoring, job stability, manufacturing, duration analysis, proportional hazard

Corresponding author:

Daniela Maggioni
Università Politecnica delle Marche
Department of Economics and Social Sciences
Piazzale Martelli 8
I-60121 Ancona
Italy
E-mail: d.maggioni@univpm.it

* Alessia Lo Turco acknowledges financial support by MIUR through the 2009 Research Project of National Relevance (PRIN) on Structural Change led by Neri Salvadori. Matteo Picchio acknowledges the financial support by the Research Foundation - Flanders (FWO), Belgium. We wish to thank Rosario Crinò and Lucia Tajoli for their useful comments and suggestions. We are also grateful to the participants to the X Brucchi Luchino Labour Economics Workshop (Rome, December 2011) and the Italian Trade Study Group Workshop (Rome, February 2012).

1 Introduction

In the last decades low labour cost countries have gained a growing role in the process of international fragmentation of production. At the same time, the rapid spread of ICTs across the world has favoured the tradability of some service activities. These phenomena have raised concerns about job security, especially of low skill workers and employees performing routinely and simple tasks, as they might be more exposed to the process of international fragmentation of production. As a consequence, a large strand of the theoretical and empirical literature on trade and labour has tried to understand the impact of offshoring of materials and services on the equilibrium employment, the skill upgrading, and the wage differentials between high skill and low skill workers.¹

Although the short run dynamics generated by offshoring might be extremely policy relevant and their analysis might help to dampen the associated adjustment costs, the theoretical literature has not devoted much attention to them. The offshoring of production phases or tasks may result in cost saving, productivity improvements, and expansion of the output and of the relative demand of the factor more intensively used in the offshoring sector (Arndt, 1997; Grossman and Rossi-Hansberg, 2008). However, these productivity gains from offshoring are not always compared to the short run welfare losses generated by the possible rise in unemployment and job transitions. The short run effects, modeled by means of low or no inter-sector mobility in two sector models, highlight the theoretical possibility of increased unemployment from offshoring in the offshoring sector (Mitra and Ranjan, 2007, 2010). It is essentially an empirical matter to ascertain whether and to what extent an increase in offshoring intensity causes an increase in job dismissals and, consequently, a reduced job stability. This is a relatively less researched area consisting of very recent studies providing evidence about the effects of foreign competitive pressures on employees' probability of retaining their jobs (Egger, Pfaffermayr, and Weber, 2007; Geishecker, 2008; Baumgarten, 2009; Munch, 2010; Bachmann and Braun, 2011).

Within this framework, this paper is aimed at empirically exploring the effect of offshoring on job stability. We match sector level measures of offshoring with employees' information on job durations and we test whether offshoring of materials and knowledge intensive business services (KIBS) affects the job stability in Italian manufacturing sectors. Administrative data on job matches are informative about employees' characteristics and destination states in case of job mismatch. We exploit this rich piece of information to understand whether the impact of offshoring is heterogeneous between white and blue collar workers and whether transitions out of manufacturing and transitions to different manufacturing jobs are differently affected by offshoring. This second part of the analysis also sheds light on inter sectoral reallocations of workers. As high adjustment costs are

¹See Feenstra and Hanson (1996, 1999) and Amiti and Wei (2004) for seminal contributions in this field.

often associated with such reallocations, we provide policy advice to design interventions which are effective in cushioning such costs.

A further contribution of our study consists in understanding whether the effect of offshoring on job stability depends on the origin country of intermediates. Whereas offshoring to low labour cost countries may represent a cost saving strategy involving the relocation of the more labour intensive phases of production, offshoring to high income economies may actually hide the search for technology improvements which may turn into an important complement for the domestic labour. Also, the skill intensity of imports increases with the human capital abundance and, thus, with the income level of the origin countries (Fitzgerald and Hallak, 2004; Schott, 2003). As a consequence, a different pattern of substitutability may follow according to the input origin, with white and blue collars being more threatened by imports from high and low income countries respectively.

We find, indeed, that purchases of foreign intermediates from developing countries reduce employees' job stability. However, the effect is heterogeneous and depends on workers' skills and on the origin countries of the offshored inputs. Material offshoring to low income economies raises blue collars' probability of experiencing a transition out of manufacturing. Intermediate purchases from high income countries foster instead white collar workers' job-to-job transitions within manufacturing. Offshoring of KIBS has a similar positive effect on the job-to-job transitions of all workers.

This article is organized as follows. Section 2 reviews the literature dealing with the labour market impact of trade openness and offshoring. Section 3 presents the data, the sample and some descriptive evidence of job exit rates and offshoring in Italian manufacturing. Section 4 describes the econometric model for analysing the impact of offshoring on job stability. The estimation results are presented and commented in Section 5. Section 6 concludes.

2 Literature Review

The theoretical and empirical literature on offshoring and the labour market has mainly focused on the effects of offshoring on the relative wage of high and low skilled workers (Feenstra and Hanson, 1996, 1999; Arndt, 1997; Egger and Falkinger, 2001). However, more attention has been devoted in recent time to the unemployment-trade nexus in models with labour market frictions (Davis and Harrigan, 2007; Egger and Kreickemeier, 2009, 2010; Felbermayr, Prat, and Schmerer, 2008; Helpman and Itskhoki, 2010; Dutt, Mitra, and Ranjan, 2009). In the long run, these models predict that the equilibrium unemployment might be either positively or negatively affected by trade liberalisation. The specific role of offshoring in the short run is taken into account by Mitra and Ranjan

(2007) and [Mitra and Ranjan \(2010\)](#). They predict a positive link between offshoring and unemployment when the labour force is immobile across sectors: offshoring causes cost saving and, thereby, a price reduction in the final good, so that more resources are directed to the relatively more rewarding non offshoring sector and unemployment rises in the offshoring sector. However, it is an empirical issue whether the large productivity improvements and the entrance of new firms induced by competitiveness gains in the offshoring sector are, in the end, able to reduce or increase the probability of workers to exit their job.

As a matter of fact, some empirical works close to our research line exploit employee level databases to understand the relationship between trade and the individual probability of job-mismatch.² For the US the evidence on manufacturing workers suggests that, although trade shocks seem to play a minor role in firing rates, the increase in layoffs and the average duration of joblessness are positively related to the industry import exposure ([Kruse, 1988](#); [Hungerford, 1995](#)). Moreover, employment stability is decreasing in the appreciation of the import exchange rate ([Goldberg, Tracy, and Aaronson, 1999](#)). The specific role of offshoring practices has not been explored by this piece of research.

For Europe, this literature is more recent and made up of few contributions. [Egger, Pfaffermayr, and Weber \(2007\)](#) estimate employment transition probabilities between sectors by means of a dynamic fixed-effects multinomial logit approach. They find that an increase in the import share of intermediate goods negatively affects the probability of Austrian workers to stay in or change into the manufacturing sector, especially for industries with a comparative disadvantage. [Munch \(2010\)](#) finds that in Denmark in the period 1992–2001 offshoring marginally increases the job change hazard rate, the job separation rate, and the unemployment risk of low-skilled workers. Three studies using German data convey somehow conflicting results. [Geishecker \(2008\)](#) estimates a duration model exploiting monthly information on job spells from 1991 until 2000. He finds that offshoring, defined in the narrow sense ([Feenstra and Hanson, 1996](#)), significantly raises the individual risk of leaving employment and is homogeneous across educational attainments. This evidence contrasts with [Bachmann and Braun's \(2011\)](#) findings. Using a different administrative dataset on individual workers' employment histories recorded on a daily basis, they find that in the manufacturing sector the probability of moving to non-employment rises with offshoring only for medium-skilled and older workers. Moreover, their findings corroborate the evidence of a limited impact of offshoring on the overall job stability in

²Some further contributions have instead investigated the consequences of openness on job creation and destruction at the industry or firm-level ([Davis and Haltiwanger, 1999](#); [Kletzer, 2000](#); [Klein, Schuh, and Triest, 2002](#); [Davidson and Matusz, 2005](#); [Nucci and Pozzolo, 2010](#)). Although these analyses provide a general insight into the potential restructuring effects of openness, they do not fully identify the impact of openness on the probability of job-mismatch at employee level. Studies based on employee level data are more reliable for this purpose.

the manufacturing sector and show that offshoring increases job stability in the service sector. Finally, [Baumgarten \(2009\)](#) analyses the relationship between offshoring and job tasks and finds that in the manufacturing sector the adverse effect of offshoring is smaller for non-routine and interactive tasks.

Our study is in line with the latter group of works. We exploit microdata on individual job spells matched with sector level measures of offshoring retrieved from the input-output (IO) tables. We have information on job durations on monthly basis as in [Munch \(2010\)](#) and [Geishecker \(2008\)](#). We focus on both material and service offshoring as in [Baumgarten \(2009\)](#). Nevertheless, differently from the previous works, we will also consider a broad measure of material offshoring. The latter includes all intermediate imports and not only imports from the same manufacturing sector thus allowing for a large scope of material input-labour substitutability. Moreover, as far as service imports are considered, our focus will be on offshoring of KIBS: we explicitly take into account the possible negative impact of imports of high skill intensive services on white collar jobs and, more generally, on the internal organization of firm production.

Finally, an important contribution of our work consists in splitting the material imports by origin country. None of the previous studies took into account that the effect of offshoring on job stability might depend on the origin country of the import flow. Nevertheless, whereas offshoring to low labour cost countries may represent a cost saving strategy involving the relocation of the more labour intensive phases of production, offshoring to high income economies may actually hide the search for technology improvements which may turn into an important complement for the domestic labour. Also, the skill intensity of imports increases with the human capital abundance and, thus, with the income level of the origin countries ([Fitzgerald and Hallak, 2004](#); [Schott, 2003](#)). As a consequence, a different pattern of substitutability may follow according to the input origin, with white and blue collars being more threatened by imports from high and low income countries respectively. Some recent literature dealing with the effects of offshoring on the firm labour demand supports the importance of such distinction in the origin of foreign inputs. [Harrison and McMillan \(2007\)](#) show that imports from foreign affiliates located in low income economies reduce home employment in US multinationals, while imports from affiliates located in high income countries positively affect it. Out of the evidence on multinational firms, [Lo Turco and Maggioni \(2012\)](#), at the firm level for Italy, and [Cadarso, Gomez, Lopez, and Tobarra \(2008\)](#) and [Falk and Wolfmayr \(2008\)](#), at the industry level for Spain and the EU respectively, show a similar finding on imports from low income economies. This evidence motivates our expectations on the possibility of different offshoring effects on the job exit rate stemming from different motivations for imports, i.e. cost saving versus technology search.

3 The Data

3.1 The Data Sources and the Sample

To analyse the impact of offshoring on job security in the Italian labour market, we combine micro data on job durations and workers' characteristics with sector level data on offshoring, import penetration, technological change, efficiency, and regional proxies for the labour market conditions.

Micro data are from a longitudinal dataset provided by the Institute for the Development of Vocational Training (ISFOL) and based on the administrative records collected by the Italian Institute for National Social Security (INPS). INPS collects data on all Italian workers of the private sector through an administrative procedure based on firms' declarations. The durations of all the job spells are collected on a monthly basis. However, due to the administrative nature of the data and its collection design, when individuals exit the dataset, we do not know whether they end into employment in the public sector, into self-employment, into unemployment, or out of the labour force. We think, however, that this lack of information does not represent a limitation for our work, since we focus on the impact of offshoring on job transitions within and out of the manufacturing industry, regardless of the workers' destinations after they exit manufacturing³.

From all the INPS records, ISFOL collects information on every worker born on the 10th of March, June, September and December of each year. Thus, about one worker out of 91 is included in the sample. The whole dataset is composed by more than 2,470,000 observations, which corresponds to about 963,000 job spells for about 310,000 workers in the years 1985–2002.⁴

From this database, we select a sample of fresh job matches which started between January 1995 and December 1998 and we follow them on a monthly basis until the end of 2001. We keep only manufacturing workers aged between 20 and 50. For each worker we retain only the first job spell in the first year the worker appears in the database. Due to the ending of the observation period in December 2001, we treat as right-censored the job spells which are not completed yet by then.⁵

The restriction of our sample to jobs started in the period 1995–1998 is due to two reasons. First, we cannot use older job spells since data on our main explanatory variable, offshoring, are not available before 1995. Second, we prefer not to use job spells started later than 1998, as the Italian labour market went through a series of institutional changes,

³Furthermore, we are not able to distinguish between job spells ended due to the firm/plant closure from those ended for other reasons. Although the data contain variables about the firm starting and ending dates, they contain several missing values and we preferred not to use them.

⁴See [Centra and Rustichelli \(2005\)](#) for a detailed description of the dataset.

⁵Given the small number of observations with a complete spell longer than 60 months, we right-censor observations lasting more than 60 months in order to reduce the computational time in model estimation.

mainly introducing atypical forms of job arrangements. This restriction is, therefore, aimed at avoiding job heterogeneity driven by institutional changes in the labour market.

In our analysis we also use other variables at worker level in modelling job duration distributions: the daily gross wage, the individual age, work experience calculated as the total work experience since 1985 and until sample entry, the number of previous jobs since 1985, and a set of indicators for gender, white collar, nationality, firm size, regional area, and sector.⁶ These variables are time-constant and their value is fixed at the moment of entry into our sample. Table A.2 in Appendix A reports their descriptive statistics.

Concerning the sectoral offshoring, the relative indicators are retrieved from the National import-use IO tables provided by the Italian Institute of Statistics (ISTAT). They can be computed only on a 2-digit NACE Rev. 1 sector and on yearly basis. To measure material offshoring intensity, we use a narrow indicator defined, in line with the previous literature (Feenstra and Hanson, 1996, 1999), as

$$OFF_{narrow\ jt} \equiv \frac{IM_{j\jt}}{TI_{jt}} \times 100 \quad \text{for } j = 1, \dots, m \text{ and } t = 1995, \dots, 2001, \quad (1)$$

where $IM_{j\jt}$ is, for each j manufacturing sector, the cost of intermediate inputs from the foreign sector j at time t and TI_{jt} is the total of domestic and imported non energy inputs used in sector j . In words, this is a measure of within industry intermediate inputs substitution, since it represents the share of intermediate purchases which is shifted to the same industry abroad.

The process of input substitution may however involve intermediates from other industries, previously produced within the boundaries of the firm or purchased from domestic suppliers. We therefore compare the performance of the narrow measure of offshoring to a broader one, which takes into account the degree of both intra and inter-industry substitution:

$$OFF_{broad\ jt} \equiv \frac{\sum_{i=1}^m IM_{j\it}}{TI_{jt}} \times 100 \quad \text{for } j = 1, \dots, m \text{ and } j = i. \quad (2)$$

This indicator captures the role of imports of sector j from all manufacturing sectors.

Finally, in the empirical analysis we will also test the role of the offshoring of KIBS,⁷ which we define as

$$OFF_{Kibs\ jt} \equiv \frac{\sum_{i=m+1}^n IM_{j\it}}{TI_{jt}} \times 100 \quad \text{for } j = 1, \dots, m, \quad (3)$$

⁶Given the administrative nature of the data, information on education, family composition, and family background are not available.

⁷According to the definition of the EU Economic Commission (2009), KIBS are services belonging to NACE Rev. 1 sectors 72, 73, and 74.

where the KIBS sectors are the ones indexed by $m + 1$ to n in the economy.

In order to take into account the different type, quality, and technology level of inputs purchased from different trading partners, we compute the measures of material offshoring by income level of the origin countries. We follow the traditional way to construct offshoring indicators split by origin when the origin of foreign intermediates cannot be detected from the IO tables. Then, we combine IO tables with the intermediate import share by origin country for each sector. The resulting offshoring measures to high and low income countries are defined as

$$OFF_{narrow\ jt}^c \equiv \frac{IM_{jit} * \left(\frac{IM_{it}^c}{IM_{it}}\right)}{TI_{jt}} \times 100 \text{ for } i = j$$

$$OFF_{broad\ jt}^c \equiv \sum_i \left[\frac{IM_{jit} * \left(\frac{IM_{it}^c}{IM_{it}}\right)}{TI_{jt}} \right] \times 100.$$

IM_{ji} comes from the IO tables and measures the imported intermediates from sector i used in sector j . IM_i and IM_{it}^c are instead retrieved from the WITS-COMTRADE database and they respectively measure the total imports of intermediates of sector i and the intermediate imports from country c , with $c = \{High, Low\}$ indexing the income level of the exporting countries.⁸ Unfortunately, we are not able to split KIBS imports by origin, due to the difficulty to retrieve data on imported services out of the IO tables. Nevertheless, it is sensible to presume that the bulk of these imports originates from high income economies.

Our baseline specification includes further controls to account for sector and geographic time-varying heterogeneity that might affect the job exit rate, other than offshoring. At the sector level, we make use of: i) the extent of ICT sector capital deepening,

⁸The definition of high and low income countries directly comes from the WITS database and is based on the World Bank country classification. In order to identify the intermediate imports (total and by country group) of each NACE sector i , we retained the Harmonised System (HS) import flows representing flows of intermediates according to Broad Economic Category (BEC) classification and matched them with NACE sectors by means of the HS/NACE correspondence table available in RAMON Eurostat. The BEC codes identifying intermediates are the following: 121, 122, 22, 42, and 53. An alternative option is to use the total sector i imports (of which imports of intermediates represent only one component), retrieved from WITS-COMTRADE database, in order to compute the offshoring measures split by origin countries (Cadarso, Gomez, Lopez, and Tobarra, 2008; Falk and Wolfmayr, 2008). In this case, we assume that the weight of each country group in imports is the same for intermediates and other goods. The results obtained using these latter measures are available from the authors upon request. Finally, Schott (2004) proposed another approach: within a sector imports, intermediates are those products containing the word “part” or “component” or their abbreviations in their description. We tried to use Schott’s (2004) approach. However, using the 6-digit HS, 8-digit CN, or 5-digit SITC classifications, we ended up with a very small share of goods (less than 8%) identified as intermediates. We preferred therefore not to follow Schott’s (2004) approach.

measured as the logarithm of the sectoral capital stock in office machines, telecommunication apparatus, and software over total output; ii) the sectoral labour productivity, measured as the log of sectoral value added over the total employment; iii) an overall measure of sectoral import penetration calculated as the percentage share of sector imports over the sum of sector output and imports minus sector exports. These variables are gathered from ISTAT National Accounts, apart from trade flows which, together with the definition of high and low income countries, are retrieved from the WITS-COMTRADE database. Finally, we use the annual regional unemployment rate gathered from ISTAT to control for the state of the labour market at regional level: . Table A.2 in Appendix A reports the list of all the variables used in the analysis with their definition. Table A.3 displays summary statistics of the time-varying covariates at the sample entry. Finally, Table A.4 shows the pairwise correlations of variables at sectoral and regional level.

3.2 Descriptive Analysis

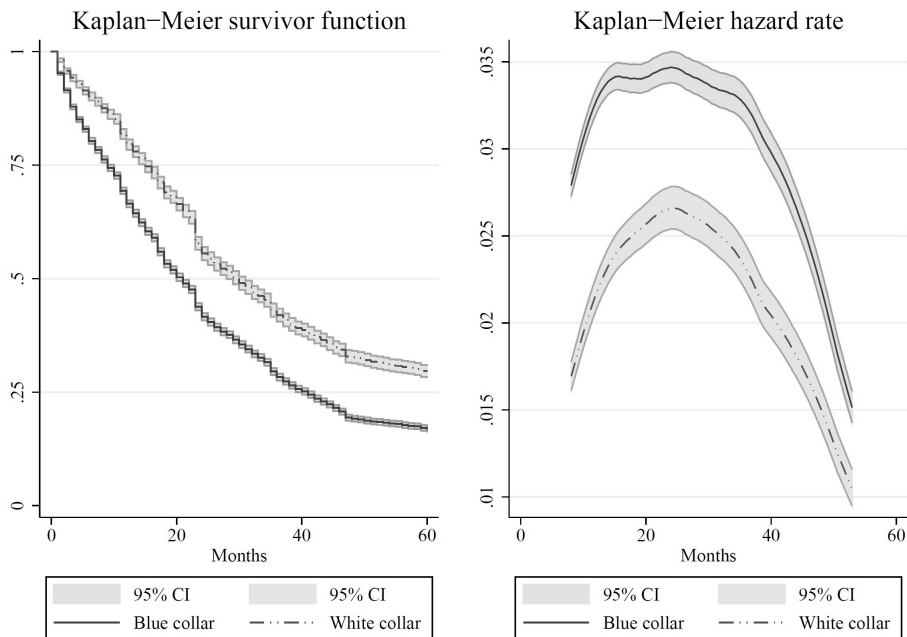
Table 1 displays the transitions out of the current job and the job-to-job transitions by destination sector. Most of the job mismatches in the private sector end with a transition out of employment in the private sector (65% of the total exits). Focusing on the spells ending with a transition into a new job, it is more likely that the worker will be employed in the same 2-digit sector: about 58% of job-to-job transitions are within the same sector of activity. Transitions across sectors might be difficult and require important training costs for workers in order to acquire the abilities and skills which are needed to perform a job in a different sector. Nevertheless, Table 1 also shows that transitions to a different 2-digit sector are not so rare and the involved workers often move across the primary, the secondary, and the tertiary sectors. These transitions may reflect the structural change of an industrial developed economy towards more advanced, skill, and technological intensive activities - especially services - that goes with the industrial growth and international affirmation of emerging countries. This process of tertiarisation of the economy, which could be pushed and speeded up by the internationalisation of production, finds some empirical support in Table 1: when a change occurs in the main sector of activity the most important destination sector is the service sector.

An important source of heterogeneity that may affect the job stability of workers is the skill level of the job, regardless of the sector where the individual is employed. We split the workers between white and blue collars. For manufacturing, representing the focus of our empirical analysis, Figure 1 shows employees' probability of job surviving and job exit rate by occupation. White collar workers are much more likely to preserve their job position than blue collar workers. This is consistent with the idea that low skill intensive workers are more exposed to foreign competition, economic slowdown, technological progress, and other external pressures that may drive individuals out of their occupations.

Table 1: Transitions Out of Employment and Job-to-Job Transitions

Transitions	Absolute frequency	Relative frequency (%)
Out of employment	36,075	65.46
From Primary	4,947	8.97
From Manufacturing	13,365	24.25
From Services	17,763	32.23
To another 2 digit NACE sector	7,935	14.40
From Primary to Manufacturing	520	0.94
From Primary to Services	1,355	2.46
From Manufacturing to Primary	233	0.42
From Manufacturing to Services	1,292	2.34
From Services to Primary	282	0.51
From Services to Manufacturing	1,020	1.85
Within Primary	10	0.02
Within Manufacturing	1,714	3.11
Within Services	1,509	2.74
To the same 2 digit NACE sector	11,101	20.14
Total	55,111	100.00

Figure 1: Kaplan-Meier Survivor and Hazard Functions by Occupation in Manufacturing Sectors



In what follows, our aim is to understand whether the process of production fragmentation across countries has significantly contributed to the above descriptive changes in job stability. In the last decades developing countries have gained a growing role in world trade of the intermediates. There has also been a further integration among developed countries stemming from the deepening of the existing relationships with foreign suppliers and customers and the increased importance of the intra-firm trade flows within multinational groups. As a consequence, Italy has experienced a growth in the shares of imported inputs and our aim is to infer the effect of this expansion in offshoring activities on the evolution of the job stability. As we can see from Figure A.1 in Appendix A, in the period 1995-2004 offshoring of materials increased in most sectors, although not monotonically and with some heterogeneity. For example, in sectors *Paper and paper products* (NACE sector 21) and *Editing and printing* (NACE sector 22) material offshoring has been characterised by alternate phases of growth and drop. Instead, the purchases of intermediates from abroad significantly raised in sectors *Textiles, Apparel and Leather products and footwear* (NACE sectors 17, 18 and 19). The picture is more clearcut if one looks at KIBS. Even in activities where the imports of material intermediates have been declining or stable, the purchase of KIBS from abroad has been expanding. This is strictly related to the worldwide rapid advances and expansion of ICTs, which have fostered the tradability of services, especially of those which are more intensive in knowledge and skills, and have driven to within-firm reorganisations of production processes. However, Figure A.1 shows that material offshoring is still more important than knowledge intensive service offshoring in terms of magnitude of the shares.

Some further insights can be gathered by splitting the material offshoring according to the origin of inputs. Input purchases from developing countries have significantly increased in levels and with respect to the offshoring shares to developed countries. Nonetheless, high income countries are still the main partners of Italy in trade of intermediates, with shares that are greatly larger than the ones of developing countries. Only in some low skill and traditional sectors, especially *Apparel* and *Leather products and footwear*, low income countries are the most important sources of materials (see Figure A.2).

4 Econometric Framework

4.1 Mixed Proportional Hazard Job Separation Rates

In order to detect the impact of offshoring on job separation rates, we estimate mixed proportional hazard (MPH) models with time-varying variables. As we only observe the labour market state occupied at the end of each month, the observed durations are

measured in discrete time. We model the discrete time process as if it was generated by a grouped continuous-time model as in [van den Berg and van der Klaauw \(2001\)](#). By doing so, the parameters do not depend on the time unit of observation ([Flinn and Heckman, 1982](#)).

Job duration is defined as the time until the job is terminated, either because of a transition to another job or because of a transition out of employment. Let \mathbf{x} denote the vector of explanatory variables which are constant over time and \mathbf{z} the set of time-varying covariates. The variable t (with $t \in \mathbb{N}_0$) denotes the job duration as measured from the moment of job inflow, while the variable τ (with $\tau \in \mathbb{N}_0$) denotes calendar time. The job separation rate of a spell started at time τ and after t months is specified in the following MPH form

$$\theta[t|\mathbf{x}, \mathbf{z}(\tau + t), v] = \exp [\alpha(t) + \boldsymbol{\beta}'\mathbf{x} + \boldsymbol{\delta}'\mathbf{z}(\tau + t)]v, \quad (4)$$

where

- $\exp[\alpha(t)]$ is the piecewise constant baseline hazard capturing the duration dependence. The time axis of each job spell is divided into Q intervals $I_q = [h_q, h_{q+1})$ with $q = 1, \dots, Q$, $h_1 < h_2 < \dots < h_Q$, $h_1 = 1$, and $h_Q = \infty$.⁹ The baseline hazard function can be rewritten as

$$\exp [\alpha(t)] = \exp \left[\sum_{q=1}^Q \alpha_q d_q(t) \right], \quad (5)$$

where $d_q(t)$ is a dummy indicator equal to one if the job separation occurs during interval I_q and α_q is the corresponding intensity parameter.¹⁰

- \mathbf{x} is a K dimensional vector of time-invariant covariates controlling for observed heterogeneity.
- $\mathbf{z}(\tau+t)$ is a J dimensional vector of time-variant covariates, among which offshoring indexes and a set of further variables controlling for time-variant heterogeneity at the transition month $(\tau + t)$.
- $\boldsymbol{\beta}$ and $\boldsymbol{\delta}$ are the parameter vectors associated (and conformable) to the time-variant and time-invariant covariates, respectively.
- v is the non-negative time-invariant individual heterogeneity which is assumed to be independent on \mathbf{x} and \mathbf{z} .

In order to avoid strict assumptions on the distribution of the unobserved heterogeneity, we assume that v has a discrete distribution like in [Heckman and Singer \(1984\)](#). We

⁹We split the time axis into 9 intervals at 3, 6, 9, 12, 18, 24, 30, and 36 months.

¹⁰ α_1 is normalized to 0. This normalisation is innocuous as the scale of the job separation rate is captured by v .

choose the number of points of support on the basis of information criteria (Hannan-Quinn and Akaike information criteria), as suggested by [Baker and Melino's \(2000\)](#) and [Gaure, Røed, and Zhang's \(2007\)](#) Monte Carlo simulations. We always end up with choosing the model with one point of support, i.e. there is evidence of no unobserved heterogeneity.¹¹

4.2 The Likelihood Function

In our sample we observe both complete and incomplete job spells and the data duration is measured in discrete time. We assume that the discrete time process is generated by some underlying continuous time process. Since we have monthly data, we do not exactly know when the job exit occurs within two consecutive months. We therefore assume that the job hazard rate is constant within two consecutive months. Under this assumption, it can be shown that the contribution to the likelihood function of a complete job spell started at calendar time τ and terminated after t months takes the following form

$$\begin{aligned}
L(t|\mathbf{x}, \mathbf{z}, v; \Theta) &= \prod_{r=1}^{t-1} \exp \left\{ -\theta[r|\mathbf{x}, \mathbf{z}(\tau + r), v] \right\} \\
&\quad - \prod_{r=1}^t \exp \left\{ -\theta[r|\mathbf{x}, \mathbf{z}(\tau + r), v] \right\} \\
&= \prod_{r=1}^{t-1} \exp \left\{ -\exp [\alpha(r) + \boldsymbol{\beta}'\mathbf{x} + \boldsymbol{\delta}'\mathbf{z}(\tau + r)]v \right\} \\
&\quad - \prod_{r=1}^t \exp \left\{ -\exp [\alpha(r) + \boldsymbol{\beta}'\mathbf{x} + \boldsymbol{\delta}'\mathbf{z}(\tau + r)]v \right\} \\
&\equiv S(t-1|\mathbf{x}, \mathbf{z}, v) - S(t|\mathbf{x}, \mathbf{z}, v), \tag{6}
\end{aligned}$$

where Θ is the set of parameters to be estimated. As we specify the discrete time-process as if it was generated by a grouped continuous-time model, the contribution to the likelihood function of exiting a job spell after t months is given by the difference between the

¹¹We follow [Baker and Melino \(2000\)](#) and [Gaure, Røed, and Zhang \(2007\)](#) in searching for new mass points when moving from the model without unobserved heterogeneity to the model with unobserved heterogeneity. More in detail, in order to choose the starting value of the location of the new support point, we look for potential improvements in the likelihood function by maximising the Gateaux derivative. We limit the search of the starting value of the new support point over the interval $[\exp(-5), \exp(2)]$. Once we find a starting value for the location of the new support point, we set its starting probability mass to 0.0001 and we maximise the likelihood function. If we are able to increase the likelihood no further (i.e. by less than 0.01), we restart several times the full maximization process using random numbers as initial values for all parameters, including the new support point and its probability mass. If the likelihood cannot be increased any further, we stop and use information criteria to choose the number of support points.

probability of job surviving for $t - 1$ months and the probability of surviving for t months.

The contribution to the likelihood function of a job spell started at calendar time τ and incomplete after t months because right censored at the end of the observation period is given by the survivor function evaluated at t months:

$$\begin{aligned}
L^c(t|\mathbf{x}, \mathbf{z}, v; \Theta) &\equiv S(t|\mathbf{x}, \mathbf{z}, v) \\
&= \prod_{r=1}^t \exp \left\{ -\theta[r|\mathbf{x}, \mathbf{z}(\tau + r), v] \right\} \\
&= \prod_{r=1}^t \exp \left\{ -\exp [\alpha(r) + \boldsymbol{\beta}'\mathbf{x} + \boldsymbol{\delta}'\mathbf{z}(\tau + r)]v \right\}. \quad (7)
\end{aligned}$$

Let c_n be an indicator variable equal to one when the job spell of individual n is right censored and 0 if completed. Under the assumption that the distribution of the unobserved heterogeneity is discrete, we can integrate it out when constructing the likelihood function of individual n with job duration t_n :

$$\mathcal{L}_n(t_n|\mathbf{x}_n, \mathbf{z}_n; \Theta) = \sum_{m=1}^M p_m [L_n^c(t_n|\mathbf{x}_n, \mathbf{z}_n, v_m; \Theta)]^{c_n} [L_n(t_n|\mathbf{x}_n, \mathbf{z}_n, v_m; \Theta)]^{(1-c_n)}. \quad (8)$$

The log-likelihood function sums the logarithm of Equation (8) over all the individuals in the sample, i.e. $\mathcal{L} = \sum_{n=1}^N \mathcal{L}_n(t_n|\mathbf{x}_n, \mathbf{z}_n; \Theta)$.

4.3 Identification

In duration models, the failure to control for selectivity issues due to unobserved heterogeneity can lead to substantial biases in the estimation of the structural parameters of the hazard function. We control for the selection on unobservables on the basis of a discrete distribution with an unknown number of points of support, unknown probability masses, and unknown location of the points of support. [Elbers and Ridder \(1982\)](#) showed that under the MPH assumption, exogenous time-invariant regressor variation, and an auxiliary assumption on the first moment of the unobserved heterogeneity distribution, the model components are non-parametrically identified. If exogenous information from time-varying variables is available, like in this study, the MPH assumption is not necessary for identification and the impact of the covariates on the hazard function can be allowed to be heterogeneous over time ([Brinch, 2007](#)).

A further concern in credibly identifying the impact of offshoring on job stability is time-varying heterogeneity. There might indeed be other time-varying determinants of job stability which, if left out of the model specification, could give rise to spurious

effects. In order to address this potential problem, we include in the model specification a rich set of time-varying variables at national, regional, and sectoral levels which might explain the job duration distribution. More in detail, we include: i) time dummies to take into account idiosyncratic changes, like those determined by legislation changes; ii) the regional unemployment rate to control for the state of the labour market; iii) the sectoral ICT over output; iv) the sectoral labour productivity which is a proxy for the efficiency and evolution in the sector; v) the import penetration ratio which captures the competitive pressure from foreign firms in the same sector and may also reflect the general trade openness of the sector.

Finally, the combination of micro data about the duration of individual job spells and sectoral level indicators for offshoring helps in mitigating endogeneity concerns related to reverse causality. It is indeed unlikely that the individual behaviour is able to affect the sectoral performance in terms of foreign intermediate purchases.

5 Estimation Results

Table 2 reports the estimation results of the job hazard function described in the previous section. The first two columns present the analysis for the sample of all employees. Consistently with our expectations, the sectoral purchases of foreign intermediate inputs significantly increase the worker's probability of experiencing a job separation. This positive effect on the job exit rate is robust to the definition of the offshoring measure (narrow or broad).¹² Concerning the magnitude of the effect, we find that a 1 percentage points increase in the narrow (broad) offshoring increases the job exit rate by 3.4% (3.2%). Moreover, the purchases of KIBS abroad has a further negative effect on the job stability in manufacturing.¹³

Hence, the general process of fragmentation of production across countries seems to significantly affect the firm labour saving organization choices. The resulting higher dynamism in the labour market may generate important adjustment costs in terms of increased unemployment and need for workers' re-training. It might nonetheless represent an opportunity for the economic system to undergo structural changes that may improve and strengthen its competitiveness.

As mentioned above, in order to disentangle the true effect of offshoring from the spurious one determined by further time-varying heterogeneity, we included among the covariates a set of time-varying controls at sectoral and geographical level. The sec-

¹²This finding contrasts with [Geishecker \(2008\)](#), who finds no support for a significant effect of the broadly defined offshoring.

¹³A 1 percentage points increase in KIBS increases the job hazard rate of about 62.0%–54.2%, depending on the broad or narrow definition of material offshoring.

Table 2: Estimation Results of the Systematic Part of the Job Hazard Function

	All Employees		White collars		Blue Collars	
	(1)	(2)	(3)	(4)	(5)	(6)
Female	-0.017 [0.020]	-0.017 [0.020]	-0.078** [0.040]	-0.079** [0.040]	0.011 [0.024]	0.011 [0.024]
Age	-0.134*** [0.011]	-0.134*** [0.011]	-0.056** [0.026]	-0.055** [0.026]	-0.152*** [0.012]	-0.152*** [0.012]
WhiteCollar	-0.195*** [0.021]	-0.195*** [0.021]				
Italian	-0.219*** [0.044]	-0.219*** [0.044]	-0.348*** [0.128]	-0.347*** [0.129]	-0.210*** [0.047]	-0.210*** [0.047]
Wage	-0.080*** [0.023]	-0.080*** [0.023]	-0.083* [0.046]	-0.085* [0.046]	-0.108*** [0.027]	-0.107*** [0.027]
WorkExp	-0.417*** [0.051]	-0.417*** [0.051]	-0.439*** [0.092]	-0.437*** [0.093]	-0.421*** [0.061]	-0.419*** [0.061]
PrevJobs	-0.560*** [0.207]	-0.560*** [0.207]	-0.811* [0.428]	-0.831* [0.430]	-0.485** [0.238]	-0.489** [0.239]
Quarter2	0.199*** [0.021]	0.199*** [0.021]	0.197*** [0.046]	0.198*** [0.046]	0.196*** [0.023]	0.196*** [0.023]
Quarter3	0.320*** [0.023]	0.320*** [0.023]	0.366*** [0.052]	0.365*** [0.052]	0.304*** [0.026]	0.304*** [0.026]
Quarter4	0.281*** [0.023]	0.281*** [0.023]	0.300*** [0.049]	0.298*** [0.049]	0.275*** [0.026]	0.275*** [0.026]
Size2	-0.088*** [0.024]	-0.088*** [0.024]	-0.140** [0.059]	-0.139** [0.059]	-0.071*** [0.026]	-0.072*** [0.026]
Size3	-0.096*** [0.023]	-0.096*** [0.023]	-0.127** [0.053]	-0.126** [0.053]	-0.087*** [0.026]	-0.087*** [0.026]
Size4	-0.169*** [0.038]	-0.169*** [0.038]	-0.181** [0.072]	-0.180** [0.072]	-0.170*** [0.046]	-0.170*** [0.046]
Size5	-0.230*** [0.025]	-0.230*** [0.025]	-0.217*** [0.055]	-0.216*** [0.055]	-0.239*** [0.028]	-0.239*** [0.028]
Centre	0.036 [0.023]	0.036 [0.023]	-0.100* [0.054]	-0.101* [0.054]	0.071*** [0.026]	0.071*** [0.026]
South	-0.02 [0.046]	-0.021 [0.046]	-0.191* [0.110]	-0.200* [0.110]	0.014 [0.051]	0.014 [0.051]
OFF _{ser}	0.620*** [0.128]	0.542*** [0.123]	0.691*** [0.213]	0.467** [0.186]	0.351** [0.169]	0.336** [0.171]
OFF _{narrow}	0.034*** [0.012]		0.015 [0.022]		0.042*** [0.014]	
OFF _{broad}		0.032*** [0.009]		0.050*** [0.016]		0.023** [0.011]
ImpPen _j	0.004*** [0.001]	0.004*** [0.001]	0.005*** [0.002]	0.004** [0.002]	0.003*** [0.001]	0.003*** [0.001]
Unemp ^{reg}	1.373*** [0.336]	1.375*** [0.336]	1.535** [0.760]	1.583** [0.761]	1.305*** [0.375]	1.310*** [0.376]
LP _j	-0.216 [0.156]	-0.143 [0.157]	-0.223 [0.268]	-0.116 [0.270]	-0.225 [0.209]	-0.156 [0.210]
ICT _j	0.079 [0.100]	0.071 [0.100]	0.043 [0.205]	0.088 [0.197]	0.148 [0.116]	0.135 [0.116]
ln(<i>v</i>)	-1.941* [1.045]	-2.844*** [1.030]	-2.768 [1.979]	-3.542* [1.831]	-0.769 [1.295]	-1.544 [1.302]
<i>NT</i>	511,919	511,919	146,218	146,218	365,701	365,701
<i>N</i>	19,259	19,259	4,589	4,589	14,670	14,670
Log-likelihood	-66,198.2	-66,196.1	-14,638.6	-14,634.0	-51,458.9	-51,461.2

* Significant at 10% level; ** significant at 5% level; *** significant at 1% level. Standard errors are in brackets. Dummy indicators for geographical areas, years, and sectors are included in all estimations but not reported for the sake of brevity. The reference employee is Italian, male, working in firms smaller than 20 employees in the sector of *Furniture and other manufacturing industries*, entering the sample in the first quarter of the year, and living in the North of Italy.

toral import penetration is aimed at controlling for the growing international integration among countries and the resulting stronger competitive pressures. We find that tougher international competition positively and significantly affects the job hazard rate. Thus, the general process of globalization seems to increase the job instability due both to the fragmentation strategies in which the domestic firms may engage and to the growing flows of foreign goods entering the domestic market. Another relevant phenomenon which may potentially affect the labour market dynamics is technological change. Contrary to some previous evidence (Geishecker, 2008), the advancements in technology, measured by the sectoral ICT capital stock, do not explain the job exit rate. According to expectations, the regional unemployment rate is positively related to the probability of job mismatch.

The estimated coefficients of the time-invariant covariates are broadly in line with those previously found for other industrialized countries. White collar workers and employees with Italian nationality have a significant lower probability of experiencing a job separation. Both the wage and previous working experience are positively associated with job durations. As in Munch (2010), older workers are less likely to exit the job. This contrasts with Geishecker (2008) who instead finds a negative relation between age and job stability. Firm size matters and the larger the firm, the lower the job exit rate. Bigger firms might be less sensitive to the business cycle and shocks in the market. Differently from the results for other countries (Geishecker, 2008; Bachmann and Braun, 2011; Baumgarten, 2009), we find that men and women have the same job exit rate.

So far, we have considered offshoring to have a homogeneous impact on job stability regardless of the type of employees' tasks and activities. This is however a strong assumption since workers with a higher skill level and committed with knowledge and technology intensive tasks may be less substitutable by foreign inputs than workers performing simple and routinely jobs. The increasing international integration might affect more the low skilled than the high skilled because of both their relative scarcity in advanced countries and the growing role of low skilled labour abundant countries in world trade flows. In particular, offshoring practices are often meant more to save on labour intensive fragments of production than to acquire new technologies from abroad (OECD, 2007).

In order to test whether offshoring differently affects the job security of workers according to their skills, we distinguish between blue and white collar workers. Columns (3)–(6) of Table 2 report the estimation results of our single risk model split by skill level. According to both measures of offshoring, the purchases of foreign inputs decrease the job stability of blue and white collar workers.¹⁴ Services purchased abroad significantly increase the job hazard function of both groups of workers and the magnitude of the effect

¹⁴The effect of narrow offshoring of white collar workers' job exit rate is, although positive, not significant at the 5% significance level.

is larger for white collars. This might be due to the fact that KIBS are characterised by very high knowledge requirements and need specific technical abilities. Hence, KIBS are usually performed by high skill workers and their delocalisation affects more the white collar workers' job stability. Even if we split the sample in white and blue collar workers, further heterogeneity might characterize the impact of offshoring on job stability. This is why in the next subsection, we control for another potential source of heterogeneity, that is the origin of the offshored intermediates.

5.1 The Origin of Imports

Emerging and low labour cost countries have experienced a strong expansion during the last decades, both in terms of economic growth and trade flows in intermediates. Their increased role in the global economy has risen worries about the job stability of workers in advanced economies, even if most of the foreign inputs in high income countries are still imported from other developed partners.

There are different reasons why the impact of offshoring on job stability might depend on the origin country of the input flows. As mentioned above, imports from low labour cost countries are likely to hide cost saving reasons, whereas imports from high income economies may stem from the search for a better technology. Moreover, the skill intensity of the two types of imports is found to be different, thus implying a heterogeneous impact on workers according to their skill level (Fitzgerald and Hallak, 2004; Schott, 2003). Aware of this, we take into account the importance of the country where the production is offshored to and, especially, we cross heterogeneous import origins with the different occupation skills. We expect offshoring to low income countries to play the major role on the recent labour market evolution, due to its recent growth in magnitude and to its general labour saving purpose. In what follows, we only display the results for our offshoring measures and other sectoral and regional variables for the sake of brevity.¹⁵

Using both the broad and the narrow measures of offshoring, Table 3 shows that, focusing on the sample of all workers, among the measures of material imports the main negative impact for the job stability is displayed for the process of production fragmentation to developing countries. As a matter of fact, although the impact of input purchases from high income countries on the job hazard rate is positive, the coefficient is smaller and the significance level is lower. Offshoring of KIBS still contributes to reduce the probability of workers to preserve their jobs.

The most interesting insights, however, are delivered when we take simultaneously into account the two heterogeneity sources, worker skills and origin of inputs. Material offshoring to low income countries represents a detrimental factor of the job stability only

¹⁵The full set of estimation results are available from the authors upon request.

of blue collar workers. A 1 percentage points increase in the narrow or broad offshoring share increases the monthly job exit rate of blue collar workers by about 11%. This is in line with previous empirical evidence and also supported by [Lo Turco and Maggioni \(2012\)](#), who find that in Italy offshoring affects the firm labour demand only if it is towards low income countries.¹⁶ In contrast, material offshoring to high income countries increases the probability of white collars of experiencing a job separation only when computed according to the broad definition. If purchases from advanced economies consist of more knowledge intensive goods, then they may well substitute for white collars, especially in the case of material imports not directly related to the core business of the firm. As a matter of fact, taking a vehicle manufacturer as an example, imports of computers may substitute for the work of some of the firm administrative employees, as well as importing advanced technology electronic devices may turn engineers and designers redundant. Both imports are not included in the narrow definition of offshoring, but they belong to the broad one.

5.2 Assessing the Magnitude of the Offshoring Effect

To have a better understanding of the magnitude of the effect of offshoring on the job exit rate, we predict job survivor functions under three different counterfactual scenarios and compare them to the job survivor function predicted using the actual data. The three counterfactual scenarios are characterized by different levels of offshoring: i) we increase the actual level by one standard deviation; ii) we set it to the maximum value recorded in the period under analysis; iii) we set it to zero. When we set the counterfactual offshoring to the maximum value, we mimic what the job exit rate would be if there were an economic wide movement towards the sector with the largest offshoring. When we set offshoring to zero, we instead predict the job exit rate in a sort of autarchic economic system.

We run this exercise on the basis of the estimation results presented in columns (2) and (6) of [Table 3](#) by playing with the offshoring to low income countries (OFF_{broad}^{Low}). The offshoring effect looks indeed stronger for blue collar workers and when the origin countries are low income. [Figure 2](#) reports the predicted job survivor functions under the different scenarios described above, for all the employees ([graph \(a\)](#)) and for blue collar workers ([graph \(b\)](#)). Both graphs suggest that offshoring to low income countries has a sizeable impact on the job survivor probability. If the offshoring to low income countries increases by one standard deviation, the probability that a job match lasts more than 2 years decreases from 49.9% to 45.8%. For blue collar workers the effect is larger

¹⁶The negative effect of offshoring to developing countries on the firm labour demand displayed in [Lo Turco and Maggioni \(2012\)](#) is especially important in traditional sectors, defined as the ones belonging to the group “Supplier-Dominated” sectors according to Pavitt’s taxonomy, where the share of low skilled workers is usually higher.

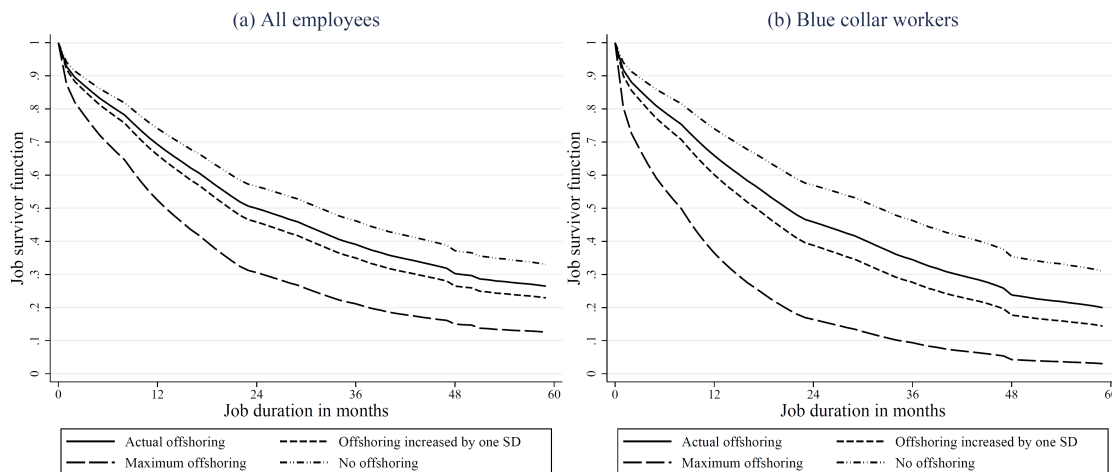
Table 3: Estimation Results of Offshoring by Skill Level and Origin Countries

	All Employees		White collars		Blue Collars	
	(1)	(2)	(3)	(4)	(5)	(6)
OFF _{Kibs}	0.628*** [0.129]	0.548*** [0.124]	0.688*** [0.212]	0.472** [0.184]	0.362** [0.171]	0.351** [0.176]
OFF _{narrow} ^{High}	0.024* [0.013]		0.023 [0.024]		0.024 [0.016]	
OFF _{narrow} ^{Low}	0.079*** [0.030]		-0.034 [0.078]		0.109*** [0.033]	
OFF _{broad} ^{High}		0.024** [0.011]		0.061*** [0.018]		-0.002 [0.014]
OFF _{broad} ^{Low}		0.070** [0.029]		-0.048 [0.076]		0.110*** [0.031]
ImpPen _j	0.004*** [0.001]	0.004*** [0.001]	0.005*** [0.002]	0.004** [0.002]	0.003*** [0.001]	0.003*** [0.001]
Unemp ^{reg}	1.373*** [0.336]	1.375*** [0.336]	1.537** [0.760]	1.582** [0.761]	1.306*** [0.375]	1.314*** [0.375]
LP _j	-0.2 [0.156]	-0.126 [0.157]	-0.237 [0.267]	-0.134 [0.270]	-0.201 [0.209]	-0.101 [0.210]
ICT _j	0.049 [0.102]	0.053 [0.101]	0.071 [0.210]	0.123 [0.198]	0.105 [0.118]	0.088 [0.118]
NT	511,919	511,919	146,218	146,218	365,701	365,701
N	19,259	19,259	4,589	4,589	14,670	14,670
Log-likelihood	-66,197.1	-66,195.3	-14,638.4	-14,633.1	-51,456.8	-51,457.3

* Significant at 10% level; ** significant at 5% level; *** significant at 1% level. Standard errors are in brackets.

in relative and absolute size, moving from 45.8% to 38.8%. If there were an economy wide movement to the sector with the highest offshoring to low income countries, blue collar workers' probability of surviving in a job for 24 months would decrease to 16.4%.¹⁷ Figure 2 suggests therefore that offshoring to low income economies importantly affects the exit rate from a manufacturing job.

Figure 2: Predicted Job Survivor Functions under Different Scenarios



5.3 Competing Risks

So far, we have studied the job stability in a single risk framework, without distinguishing between different destinations in case of job mismatch. In what follows, we re-estimate the duration model in a competing risks framework with two risks of job exit: transition to another job in the manufacturing sector and transition out of the manufacturing sector. We decide to focus on job-to-job transitions within manufacturing and on transitions out of manufacturing since the welfare consequences of these transitions may be very different. Transitions out of manufacturing employment have immediate detrimental effects for the economy in terms of deterioration of sectoral specific human capital and, thereby, higher risk of future unemployment, skill obsolescence, and costs related to re-training programmes. Instead, job-to-job transitions within manufacturing might not represent a real damage, as they might put an end to bad job matches and move employees towards more technology and knowledge intensive firms, which are also less exposed to international competition.

¹⁷We get similar figures if we run this analysis by playing with OFF_{narrow}^{Low} instead of OFF_{broad}^{Low} .

Table 4 displays the estimation results of the competing risks proportional hazard model with the indicator of offshoring split by country groups. The upper and bottom panels display the effects for out of manufacturing transitions and job-to-job transitions, respectively. The input purchases from low income countries only significantly increase the transitions out of manufacturing for the total sample of employees. Offshoring to developed countries displays instead no role. However, when we separately consider white and blue collar workers, the detrimental effect of offshoring to low income countries on the job stability only concerns blue collar workers. A 1 percentage point increase in the narrow (broad) offshoring share increases blue collars' job exit rate out of manufacturing by 18.9% (17.3%). Thus, consistently with our expectations, the process of delocalisation of production towards developing countries throws only blue collars out of manufacturing sector.

Offshoring to developing countries has no effect on job-to-job transitions either for white collars or for blue collars. Only a mild and barely significant impact is found for blue collar workers when the broad measure is used.

Moving on offshoring to high income countries, we find a positive and significant effect on the white collars' probability of experiencing a job change. Consistently with the evidence displayed by the single risk model, this role is detected only by the broad measure of offshoring.

The flows of KIBS from abroad do not contribute to the workers' exits from manufacturing sector. They instead affect the job-to-job transitions of all workers, even if, as in the single risk model, a higher magnitude of their impact is recorded for white collars' transitions. Thus, the process of delocalisation of services seems to contribute to the structural change in the economic system, since it drives workers away from the sectors more exposed to foreign pressures and, possibly, towards higher technology and more knowledge intensive sectors.

Finally, the results concerning the other sectoral and regional variables show that the sectoral import penetration seems to lead to job-to-job transitions and to drive blue collars only out of manufacturing. Therefore blue collar workers are more exposed to the growing international integration across countries. Also, regional unemployment, as expected, increases the probability of workers, regardless of their skill level, to exit the manufacturing sector.

Summing up, the overall analysis shows that it is mainly the purchase of inputs from low labour cost economies to increase the job separations. This effect is however restricted to low skilled workers. Therefore, while blue collars are driven out of manufacturing by the firm delocalisation process to developing countries, white collars experience transitions to another manufacturing job following the expansion of offshoring to high income countries. Thus, the main focus of policy intervention should be on low skilled workers, who are those mostly affected by the process of fragmentation of production

across countries and, more in general, by the deeper and deeper integration of countries, as also shown by the indicator of import penetration.

5.4 Further Sensitivity Checks

We run some sensitivity check to test the robustness of the estimations results presented above. First, we relaxed the imposed proportionality of offshoring variables and tested whether freshly hired workers are differently affected by an increase in offshoring activities than workers with higher job seniority. We find that the offshoring effect displays some heterogeneity according to the worker's tenure. The negative impact of offshoring on job stability is stronger for workers who have been working for more than one year if we use the broad measure of offshoring. When we use the narrow indicator, we get homogeneous effects over the job tenure. Secondly, we tested whether heterogeneous effects could be detected on differently aged workers and, differently from [Bachmann and Braun \(2011\)](#), we find no such evidence. Finally, we substituted output for non energy intermediates in the denominator of our offshoring measures and all the estimation results of interest are very much in line with those presented above. The full set of estimation results of these sensitivity checks are not reported for the sake of brevity, but they are available from the authors upon request.

6 Conclusions

The consequences of offshoring activities in advanced countries depend on the time horizon. The theoretical possibility of increased job exit rates from offshoring in the short run is offset by the long run productivity gains accruing to all the workers involved in manufacturing production. Nevertheless, it may well take a long time before the firm may reap the gains from increased specialization and succeed in increasing its competitiveness. Meanwhile, the adjustment process may produce long-lasting economic and social costs. Regardless of the potential long run benefits of delocalisation, the short run consequences of offshoring are a relevant issue from the policy viewpoint, since any policy intervention should be firstly concerned with restraining the immediate welfare costs and with easing the transition to a new equilibrium. For this reason, the focus of our work is on the impact of offshoring on employees' job stability.

In the empirical analysis, we estimated MPH duration models to understand the impact of offshoring on the job hazard function. Our findings suggest that the process of international fragmentation of production significantly reduces the job stability in the Italian manufacturing sector. The effect of offshoring is however heterogeneous across skill groups and depends on the origin country of inputs. As a matter of fact, imports of

Table 4: Estimation Results of the Competing Risks Models

	All Employees		White collars		Blue Collars	
	(1)	(2)	(3)	(4)	(5)	(6)
Out of manufacturing						
OFF _{Kibs}	0.439*	0.395	0.559	0.449	-0.127	-0.154
	[0.257]	[0.271]	[0.417]	[0.456]	[0.362]	[0.368]
OFF _{narrow} ^{High}	-0.007		-0.033		0.016	
	[0.024]		[0.049]		[0.028]	
OFF _{narrow} ^{Low}	0.167***		0.074		0.189***	
	[0.053]		[0.143]		[0.058]	
OFF _{broad} ^{High}		-0.010		-0.002		-0.015
		[0.018]		[0.031]		[0.025]
OFF _{broad} ^{Low}		0.159***		0.110		0.173***
		[0.051]		[0.136]		[0.056]
ImpPen _j	0.004**	0.004**	0.004	0.004	0.004*	0.004*
	[0.002]	[0.002]	[0.004]	[0.004]	[0.002]	[0.002]
Unemp ^{reg}	3.876***	3.902***	5.731***	5.779***	3.373***	3.389***
	[0.655]	[0.656]	[1.418]	[1.419]	[0.750]	[0.749]
LP _j	1.486	1.366	5.616	5.413	-1.216	-0.951
	[4.009]	[3.932]	[6.890]	[6.599]	[5.131]	[5.089]
ICT _j	1.344	1.590	4.710	5.402*	1.211	1.345
	[1.826]	[1.805]	[3.222]	[3.101]	[2.319]	[2.311]
Job to job within manufacturing						
OFF _{Kibs}	0.705***	0.646***	0.774***	0.503*	0.492**	0.465**
	[0.175]	[0.180]	[0.288]	[0.304]	[0.224]	[0.228]
OFF _{narrow} ^{High}	0.039*		0.057		0.023	
	[0.020]		[0.039]		[0.024]	
OFF _{narrow} ^{Low}	0.043		-0.081		0.068	
	[0.047]		[0.126]		[0.051]	
OFF _{broad} ^{High}		0.036**		0.103***		0.002
		[0.014]		[0.026]		[0.019]
OFF _{broad} ^{Low}		0.037		-0.128		0.082*
		[0.042]		[0.113]		[0.046]
ImpPen _j	0.003***	0.003***	0.003	0.002	0.003**	0.003**
	[0.001]	[0.001]	[0.002]	[0.002]	[0.001]	[0.001]
Unemp ^{reg}	0.413	0.415	-0.459	-0.400	0.564	0.575
	[0.410]	[0.410]	[1.009]	[1.006]	[0.454]	[0.454]
LP _j	-3.682	-3.852	-7.987	-6.577	-1.501	-1.488
	[2.812]	[2.780]	[5.727]	[5.516]	[3.262]	[3.255]
ICT _j	0.363	0.612	-2.224	-1.421	1.536	1.626
	[1.344]	[1.321]	[2.812]	[2.722]	[1.559]	[1.543]
NT	511,919	511,919	146,218	146,218	365,701	365,701
N	19,259	19,259	4,589	4,589	14,670	14,670
Log-likelihood	-74,435.8	-74,433.8	-16,395.6	-16,387.8	-57,898.4	-57,899.4

* Significant at 10% level; ** significant at 5% level; *** significant at 1% level. Standard errors are in brackets.

intermediates from low labour cost countries appear to significantly and more strongly reduce the job stability of workers and the magnitude of this effect is quite large. Offshoring to developed countries, instead, increases the white collars' probability of experiencing a within manufacturing job-to-job transition and offshoring of KIBS favours all the workers' transition to another manufacturing job, the input flows from low income economies push blue collar workers out of manufacturing. Blue collar workers are therefore affected most by offshoring. We provide moreover evidence that the competitive pressure from foreign countries on the domestic markets, measured by the sectoral import penetration, increases the probability of unskilled workers to exit the manufacturing sector. This suggests that the international integration process, captured by both the expansion in offshoring activities and the increased import penetration, is driving the dismantling of manufacturing activities, at least of those activities characterized by less knowledge/technology intensity and by more routinely tasks.

As a consequence, policy makers should especially devote their attention to low skilled workers and should ease their re-training and their skill upgrading, in order to foster their transition to more knowledge intensive jobs, which are less affected by the international competition.

Appendix

A Additional Figures and Tables

Table A.1: Definition of Variables

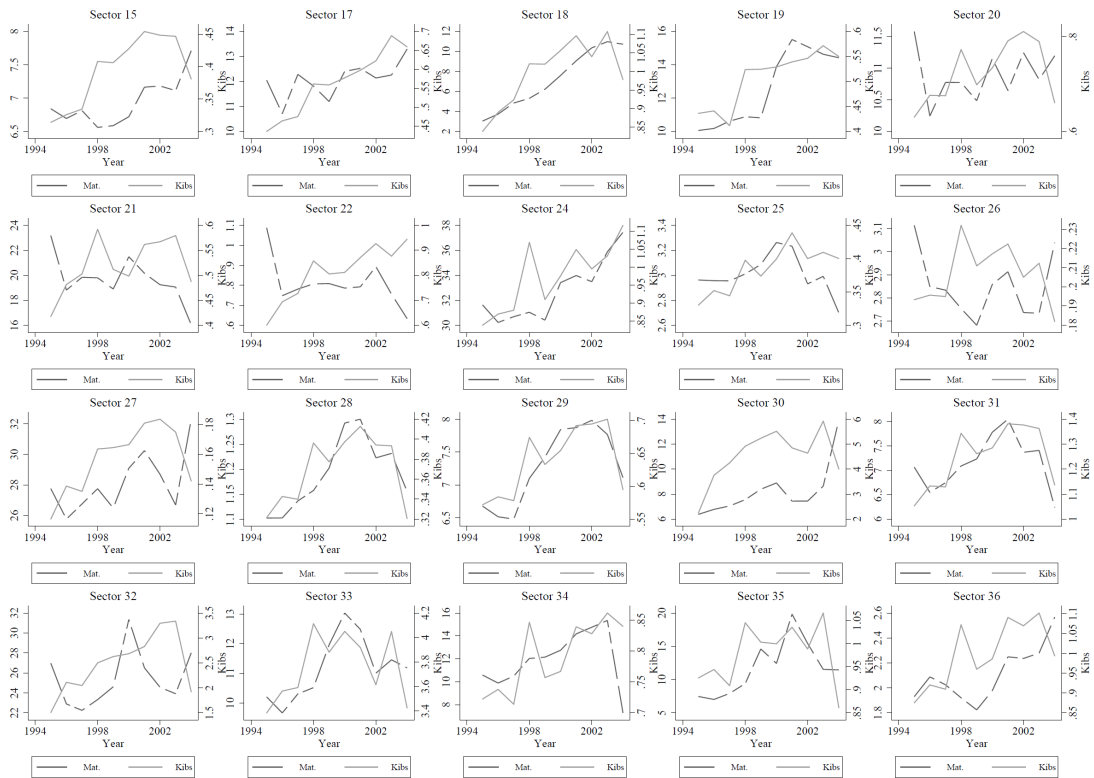
Variable	Description
Female	Dummy for the employees' gender. 1 for Female, 0 for Male. Source: ISFOL database
Age	Age of the employee (in years). Source: ISFOL database
WhiteCollar	Dummy for the skill level of job. 1 for white collar jobs, 0 for Blue Collar jobs. Source: ISFOL database
Italian	Dummy for the employees' nationality. 1 for Italian workers, 0 for migrants. Source: ISFOL database
ln(wage)	Logarithm of the daily gross wage. Source: ISFOL database
WorkExp	Worker experience computed as the number of months the employee has worked till the start of the current job. Source: ISFOL database
PrevJobs	Number of previous jobs of the worker. Source: ISFOL database
Quarter2	Dummy with value 1 for workers hired in the months April-May-June. Source: ISFOL database
Quarter3	Dummy with value 1 for workers hired in the months July-August-September. Source: ISFOL database
Quarter4	Dummy with value 1 for workers hired in the months October-November-December. Source: ISFOL database
FirmSize2	Dummy with value 1 for workers employed in firms with more than 20 employees but less than 50. Source: ISFOL database
FirmSize3	Dummy with value 1 for workers employed in firms with more than 50 employees but less than 250. Source: ISFOL database
FirmSize4	Dummy with value 1 for workers employed in firms with more than 250 employees but less than 550. Source: ISFOL database
FirmSize5	Dummy with value 1 for workers employed in firms with more than 550 employees. Source: ISFOL database
OFF _{Kibs}	Offshoring of KIBS. Source: Istat and WITS-COMTRADE
OFF _{narrow}	Narrow indicator of Offshoring of Material Intermediates. Source: Istat and WITS-COMTRADE
OFF _{narrow^{High}}	Narrow indicator of Offshoring of Material Intermediates to High Income Countries. Source: Istat and WITS-COMTRADE
OFF _{narrow^{Low}}	Narrow indicator of Offshoring of Material Intermediates to Low Income Countries. Source: Istat and WITS-COMTRADE
OFF _{broad}	Broad indicator of Offshoring of Material Intermediates. Source: Istat and WITS-COMTRADE
OFF _{broad^{High}}	Broad indicator of Offshoring of Material Intermediates to High Income Countries. Source: Istat and WITS-COMTRADE
OFF _{broad^{Low}}	Broad indicator of Offshoring of Material Intermediates to Low Income Countries. Source: Istat and WITS-COMTRADE
ImpPen _j	Sectoral Import Penetration Ratio. Source: Istat and WITS-COMTRADE
Unemp ^{reg}	Regional Unemployment Rate. Source: Istat
LP _j	Logarithm of the sectoral labour productivity (Value Added/Employment). Source: Istat
ICT _j	Logarithm of the sectoral capital stock in office machines, telecommunication apparatus and software over the total sectoral output. Source: Istat

Table A.2: Summary Statistics of Time-Constant Covariates Fixed at Job Entry

	Mean	Std. Dev.	Min.	Max.
Female	0.324	0.468	0.000	1.000
Age	31.112	8.359	20.000	50.000
WhiteCollar	0.238	0.426	0.000	1.000
BlueCollar / Apprentice	0.762	0.426	0.000	1.000
Italian	0.965	0.183	0.000	1.000
ln(wage)	4.006	0.444	-3.553	7.759
WorkExp	16.893	31.968	0.000	286.000
PrevJobs	0.466	0.736	0.000	7.000
<i>Quarter of entry in the sample</i>				
January-February-March	0.336	0.472	0.000	1.000
April-May-June	0.241	0.428	0.000	1.000
July-August-September	0.195	0.396	0.000	1.000
October-November-December	0.229	0.420	0.000	1.000
<i>Area</i>				
North	0.677	0.468	0.000	1.000
Centre	0.168	0.374	0.000	1.000
South	0.155	0.362	0.000	1.000
<i>Sector</i>				
15 - Food and beverage	0.095	0.294	0.000	1.000
17 - Textile	0.060	0.238	0.000	1.000
18 - Clothing	0.070	0.255	0.000	1.000
19 - Leather and leather products	0.048	0.214	0.000	1.000
20 - Lumber and wood (no furniture)	0.032	0.177	0.000	1.000
21 - Paper and paper products	0.016	0.124	0.000	1.000
22 - Editing and printing	0.030	0.171	0.000	1.000
24 - Chemicals	0.047	0.211	0.000	1.000
25 - Plastic materials and rubber	0.046	0.210	0.000	1.000
26 - Non-metallic mineral products	0.055	0.228	0.000	1.000
27 - Iron and steel	0.029	0.168	0.000	1.000
28 - Metallic products	0.189	0.392	0.000	1.000
29 - Machines	0.096	0.294	0.000	1.000
30 - Office machines	0.014	0.119	0.000	1.000
31 - Electrical machines	0.051	0.219	0.000	1.000
32 - Broadcasting and communications equipment	0.025	0.155	0.000	1.000
33 - Surgical and medical instruments	0.021	0.144	0.000	1.000
34 - Vehicles	0.024	0.152	0.000	1.000
35 - Other vehicles	0.013	0.114	0.000	1.000
36 - Furniture and other manufacturing industries	0.038	0.190	0.000	1.000
<i>Firm size in number of employees</i>				
(0, 20]	0.362	0.481	0.000	1.000
(20, 49]	0.152	0.359	0.000	1.000
(49, 249]	0.212	0.409	0.000	1.000
(249, 549]	0.061	0.240	0.000	1.000
550 or more	0.213	0.410	0.000	1.000
# of individuals <i>N</i>	19,259			

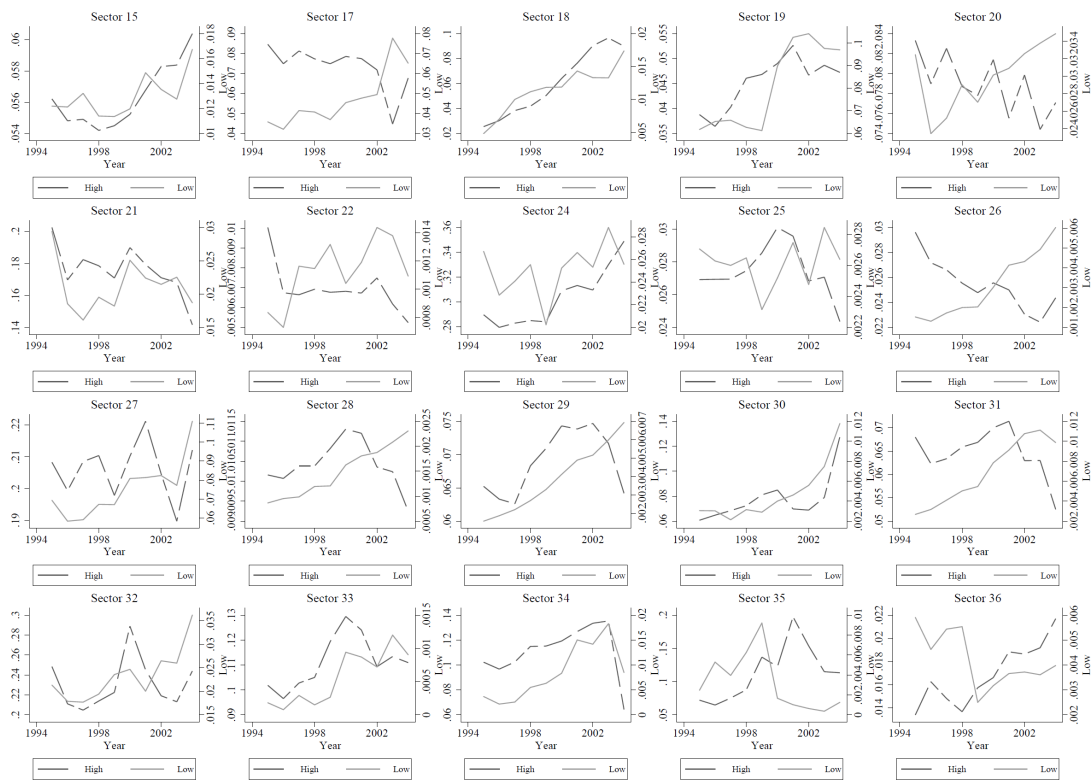
Source: ISFOL database.

Figure A.1: Evolution of Material and Service Offshoring by 2 digit NACE Manufacturing Sector



Notes: The graphs present two scales, the one on the vertical axis on the left for material offshoring and the one on the right for offshoring of KIBS. Sector names are reported in Table A.2.
 Source: WITS-COMTRADE database and ISTAT.

Figure A.2: Offshoring evolution split by origin of material intermediates and 2 digit NACE Manufacturing Sector



Notes: The graphs present two scales, the one on the vertical axis on the left for material offshoring to high income countries and the one on the right for offshoring to low income countries. Sector names are reported in Table A.2.
 Source: WITS-COMTRADE database and ISTAT.

Table A.3: Summary Statistics of Time-Varying Covariates at Sampling Date

	Mean	Std. Dev.	Min.	Max.
OFF _{Kibs}	0.69	0.67	0.12	4.92
OFF _{narrow}	7.91	7.87	0.75	31.63
OFF _{narrow} ^{High}	6.62	6.92	0.66	28.96
OFF _{narrow} ^{Low}	1.29	1.80	0.01	6.93
OFF _{broad}	19.82	9.10	8.88	54.82
OFF _{broad} ^{High}	16.74	8.73	7.48	50.69
OFF _{broad} ^{Low}	3.09	1.71	0.90	7.74
ImpPen _j	22.64	24.56	1.11	129.21
Unemp ^{reg}	0.09	0.05	0.04	0.24
LP _j	3.59	0.28	2.69	4.31
ICT _j	-10.70	0.86	-11.95	-7.47
# of individuals <i>N</i>		19,259		

Source: WITS-COMTRADE database and ISTAT.

Table A.4: Pairwise Correlations

	OFF _{narrow}	OFF _{broad}	OFF _{Kibs}	OFF _{narrow} ^{High}	OFF _{narrow} ^{Low}	OFF _{broad} ^{High}	OFF _{broad} ^{Low}	ImpPen _j	Unemp ^{reg}	LP _j	ICT _j
OFF _{narrow}	1.000										
OFF _{broad}	0.623	1.000									
OFF _{Kibs}	0.170	0.649	1.000								
OFF _{narrow} ^{High}	0.978	0.658	0.230	1.000							
OFF _{narrow} ^{Low}	0.592	0.180	-0.145	0.409	1.000						
OFF _{broad} ^{High}	0.592	0.984	0.674	0.658	0.045	1.000					
OFF _{broad} ^{Low}	0.311	0.313	0.012	0.152	0.770	0.140	1.000				
ImpPen _j	0.105	0.096	0.115	0.159	-0.153	0.143	-0.231	1.000			
Unemp ^{reg}	-0.008	-0.012	0.038	-0.004	-0.021	-0.006	-0.033	-0.065	1.000		
LP _j	0.527	0.392	0.053	0.603	-0.024	0.463	-0.292	0.338	-0.069	1.000	
ICT _j	0.247	0.674	0.827	0.311	-0.119	0.695	0.042	0.026	0.018	0.077	1.000

All correlations are significant at the 1% level.

References

- AMITI, M., AND S. WEI (2004): "Fear of Service Outsourcing: Is It Justified?," NBER Working Papers 10808, National Bureau of Economic Research, Inc.
- ARNDT, S. W. (1997): "Globalization and the Open Economy," *The North American Journal of Economics and Finance*, 8(1), 71–79.
- BACHMANN, R., AND S. BRAUN (2011): "The Impact Of International Outsourcing On Labour Market Dynamics In Germany," *Scottish Journal of Political Economy*, 58(1), 1–28.
- BAKER, M., AND A. MELINO (2000): "Duration Dependence and Nonparametric Heterogeneity: a Monte Carlo study," *Journal of Econometrics*, 96(2), 357–393.
- BAUMGARTEN, D. (2009): "International Outsourcing, the Nature of Tasks, and Occupational Stability. Empirical Evidence for Germany," Ruhr Economic Papers 0108, Rheinisch-Westfälisches Institut für Wirtschaftsforschung, Ruhr-Universität Bochum, Universität Dortmund, Universität Duisburg-Essen.
- BRINCH, C. N. (2007): "Nonparametric Identification of the Mixed Hazards Model with Time-Varying Covariates," *Econometric Theory*, 23(2), 349–354.
- CADARSO, M. A., N. GOMEZ, L. A. LOPEZ, AND M. A. TOBARRA (2008): "The EU Enlargement and the Impact of Outsourcing on Industrial Employment in Spain, 1993–2003," *Structural Change and Economic Dynamics*, 19(1), 95–108.
- CENTRA, M., AND E. RUSTICHELLI (2005): "La Costruzione del Panel Longitudinale ISFOL," *Mono-grafie ISFOL*.
- DAVIDSON, C., AND S. J. MATUSZ (2005): "Trade and Turnover: Theory and Evidence," *Review of International Economics*, 13(5), 861–880.
- DAVIS, D. R., AND J. HARRIGAN (2007): "Good Jobs, Bad Jobs, and Trade Liberalization," NBER Working Papers 13139, National Bureau of Economic Research, Inc.
- DAVIS, S. J., AND J. HALTIWANGER (1999): "Gross Job Flows," in *Handbook of Labor Economics*, ed. by A. O., and D. Card, vol. 3 of *Handbook of Labor Economics*, chap. 41, pp. 2711–2805. Elsevier.
- DUTT, P., D. MITRA, AND P. RANJAN (2009): "International Trade and Unemployment: Theory and Cross-national Evidence," *Journal of International Economics*, 78(1), 32–44.
- EGGER, H., AND J. FALKINGER (2001): "A Complete Characterization of the Distributional Effects of International Outsourcing in the Heckscher-Ohlin Model," CESifo Working Paper Series 573, CESifo Group Munich.
- EGGER, H., AND U. KREICKEMEIER (2009): "Firm Heterogeneity and The Labor Market Effects Of Trade Liberalization," *International Economic Review*, 50(1), 187–216.
- (2010): "Worker-specific Effects of Globalisation," *The World Economy*, 33(8), 987–1005.

- EGGER, P., M. PFAFFERMAYR, AND A. WEBER (2007): "Sectoral Adjustment of Employment to Shifts in Outsourcing and Trade: Evidence from a Dynamic Fixed Effects Multinomial Logit Model," *Journal of Applied Econometrics*, 22(3), 559–580.
- ELBERS, C., AND G. RIDDER (1982): "True and Spurious Duration Dependence: The Identifiability of the Proportional Hazard Model," *Review of Economic Studies*, 49(3), 403–409.
- FALK, M., AND Y. WOLFMAYR (2008): "Services and Materials Outsourcing to Low-wage Countries and Employment: Empirical Evidence from EU Countries," *Structural Change and Economic Dynamics*, 19(1), 38–52.
- FEENSTRA, R. C., AND G. H. HANSON (1996): "Globalization, Outsourcing, and Wage Inequality," *American Economic Review*, 86(2), 240–245.
- (1999): "The Impact Of Outsourcing And High-Technology Capital On Wages: Estimates For The United States, 1979-1990," *Quarterly Journal of Economics*, 114(3), 907–940.
- FELBERMAYR, G., J. PRAT, AND H.-J. SCHMERER (2008): "Globalization and Labor Market Outcomes: Wage Bargaining, Search Frictions, and Firm Heterogeneity," IZA Discussion Papers 3363, Institute for the Study of Labor (IZA).
- FITZGERALD, D., AND J. C. HALLAK (2004): "Specialization, Factor Accumulation and Development," *Journal of International Economics*, 64(2), 277–302.
- FLINN, C., AND J. J. HECKMAN (1982): "Models for the Analysis of Labor Force Dynamics," in *Advances in Econometrics*, ed. by R. Basmann, and G. Rhodes, pp. 35–95. JAI Press, Greenwich.
- GAURE, S., K. RØED, AND T. ZHANG (2007): "Time and Causality: A Monte Carlo Assessment of the Timing-of-events approach," *Journal of Econometrics*, 141(2), 1159–1195.
- GEISHECKER, I. (2008): "The Impact of International Outsourcing on Individual Employment Security: A Micro-level Analysis," *Labour Economics*, pp. 291–314.
- GOLDBERG, L., J. TRACY, AND S. AARONSON (1999): "Exchange Rates and Employment Instability: Evidence from Matched CPS Data," *American Economic Review*, 89(2), 204–210.
- GROSSMAN, G. M., AND E. ROSSI-HANSBERG (2008): "Trading Tasks: A Simple Theory of Offshoring," *American Economic Review*, 98(5), 1978–1997.
- HARRISON, A., AND M. MCMILLAN (2007): "Offshoring Jobs? Multinationals and U.S. Manufacturing Employment.," Discussion Paper 48, IPC Working Paper Series.
- HECKMAN, J. J., AND B. SINGER (1984): "A Method for Minimizing the Impact of Distributional Assumptions in Econometric Models for Duration Data," *Econometrica*, 52(2), 271–320.
- HELPMAN, E., AND O. ITSKHOKI (2010): "Labour Market Rigidities, Trade and Unemployment," *Review of Economic Studies*, 77(3), 1100–1137.
- HUNGERFORD, T. L. (1995): "International Trade, Comparative Advantage and the Incidence of Layoff Unemployment Spells," *Review of Economics and Statistics*, 77(3), 511–21.

- KLEIN, M. W., S. SCHUH, AND R. K. TRIEST (2002): "Job Creation, Job Destruction, and International Competition: A Literature Review," Working Papers 02-7, Federal Reserve Bank of Boston.
- KLETZER, L. G. (2000): "Trade and Job Loss in US Manufacturing, 1979–1994," in *The Impact of International Trade on Wages*, NBER Chapters, pp. 349–396. National Bureau of Economic Research, Inc.
- KRUSE, D. L. (1988): "International Trade and the Labor Market Experience of Displaced Workers," *Industrial and Labor Relations Review*, 41(3), 402–417.
- LO TURCO, A., AND D. MAGGIONI (2012): "Offshoring to High and Low Income Countries and the Labour Demand. Evidence from Italian Firms," *Review of International Economics*, forthcoming.
- MITRA, D., AND P. RANJAN (2007): "Offshoring and Unemployment," NBER Working Papers 13149, National Bureau of Economic Research, Inc.
- (2010): "Offshoring and Unemployment: The Role of Search Frictions Labor Mobility," *Journal of International Economics*, 81(2), 219–229.
- MUNCH, J. R. (2010): "Whose Job Goes Abroad? International Outsourcing and Individual Job Separations," *Scandinavian Journal of Economics*, 112(2), 339–360.
- NUCCI, F., AND A. F. POZZOLO (2010): "The Exchange Rate, Employment and Hours: What Firm-level Data Say," *Journal of International Economics*, 82(2), 112–123.
- OECD (2007): *Offshoring and Employment: Trends and Impacts*. OECD, Paris.
- SCHOTT, P. (2003): "One Size Fits All? Heckscher-Ohlin Specialization in Global Production," *American Economic Review*, 93(3), 686–708.
- SCHOTT, P. K. (2004): "Across-product Versus Within-product Specialization in International Trade," *Quarterly Journal of Economics*, 119(2), 646–677.
- VAN DEN BERG, G. J., AND B. VAN DER KLAUW (2001): "Combining Micro and Macro Unemployment Duration Data," *Journal of Econometrics*, 102(2), 271–309.