

Johansson, Per; Pekkarinen, Tuomas; Verho, Jouko

Working Paper

Cross-border health and productivity effects of alcohol policies

IZA Discussion Papers, No. 6389

Provided in Cooperation with:

IZA – Institute of Labor Economics

Suggested Citation: Johansson, Per; Pekkarinen, Tuomas; Verho, Jouko (2012) : Cross-border health and productivity effects of alcohol policies, IZA Discussion Papers, No. 6389, Institute for the Study of Labor (IZA), Bonn,
<https://nbn-resolving.de/urn:nbn:de:101:1-201206146652>

This Version is available at:

<https://hdl.handle.net/10419/58472>

Standard-Nutzungsbedingungen:

Die Dokumente auf EconStor dürfen zu eigenen wissenschaftlichen Zwecken und zum Privatgebrauch gespeichert und kopiert werden.

Sie dürfen die Dokumente nicht für öffentliche oder kommerzielle Zwecke vervielfältigen, öffentlich ausstellen, öffentlich zugänglich machen, vertreiben oder anderweitig nutzen.

Sofern die Verfasser die Dokumente unter Open-Content-Lizenzen (insbesondere CC-Lizenzen) zur Verfügung gestellt haben sollten, gelten abweichend von diesen Nutzungsbedingungen die in der dort genannten Lizenz gewährten Nutzungsrechte.

Terms of use:

Documents in EconStor may be saved and copied for your personal and scholarly purposes.

You are not to copy documents for public or commercial purposes, to exhibit the documents publicly, to make them publicly available on the internet, or to distribute or otherwise use the documents in public.

If the documents have been made available under an Open Content Licence (especially Creative Commons Licences), you may exercise further usage rights as specified in the indicated licence.

IZA DP No. 6389

Cross-Border Health and Productivity Effects of Alcohol Policies

Per Johansson
Tuomas Pekkarinen
Jouko Verho

February 2012

Cross-Border Health and Productivity Effects of Alcohol Policies

Per Johansson

*IFAU, Uppsala University
and IZA*

Tuomas Pekkarinen

*Aalto University School of Economics
and IZA*

Jouko Verho

Social Insurance Institution of Finland

Discussion Paper No. 6389
February 2012

IZA

P.O. Box 7240
53072 Bonn
Germany

Phone: +49-228-3894-0
Fax: +49-228-3894-180
E-mail: iza@iza.org

Any opinions expressed here are those of the author(s) and not those of IZA. Research published in this series may include views on policy, but the institute itself takes no institutional policy positions.

The Institute for the Study of Labor (IZA) in Bonn is a local and virtual international research center and a place of communication between science, politics and business. IZA is an independent nonprofit organization supported by Deutsche Post Foundation. The center is associated with the University of Bonn and offers a stimulating research environment through its international network, workshops and conferences, data service, project support, research visits and doctoral program. IZA engages in (i) original and internationally competitive research in all fields of labor economics, (ii) development of policy concepts, and (iii) dissemination of research results and concepts to the interested public.

IZA Discussion Papers often represent preliminary work and are circulated to encourage discussion. Citation of such a paper should account for its provisional character. A revised version may be available directly from the author.

ABSTRACT

Cross-Border Health and Productivity Effects of Alcohol Policies*

This paper studies the cross-border health and productivity effects of alcohol taxes. We estimate the effect of a large cut in the Finnish alcohol tax on mortality, alcohol related illnesses and work absenteeism in Sweden. This tax cut led to large differences in the prices of alcoholic beverages between these two countries and to a considerable increase in cross-border shopping. The effect is identified using differences-in-differences strategy where changes in these outcomes in regions near the Finnish border are compared to changes in other parts of northern Sweden. We use register data where micro level data on deaths, hospitalisations and absenteeism is merged to population-wide micro data on demographics and labour market outcomes. Our results on the effect of the Finnish tax cut on mortality and alcohol-related hospitalisations in Sweden are very imprecise. However, we find that workplace absenteeism increased by 5% for males and by 13% for females near the Finnish border as a result of the tax cut.

JEL Classification: H23, H73, I18

Keywords: cross-border shopping, alcohol taxes, health effects of alcohol

Corresponding author:

Tuomas Pekkarinen
Aalto University
School of Economics
Department of Economics
Box 21210
00076 Aalto
Finland
E-mail: tuomas.pekkarinen@aalto.fi

* The Centre for Social Research on Alcohol and Drugs (SORAD) is acknowledged for providing data on alcohol consumption and sales in Sweden and Alko is acknowledged for providing alcohol sales data in Finland. We are grateful for the financial support from the Finnish Foundation for Alcohol Studies.

Contents

1	Introduction	3
2	Previous literature	5
3	Data	8
4	Alcohol sales	10
5	Descriptive statistics	14
6	Model	16
7	Results	19
7.1	Differences-in-differences results	19
7.2	Heterogeneous results	20
7.3	Polynomial distance	21
7.4	Discussion	22
8	Conclusions	23
A	Outcome rates	27

1 Introduction

Excise taxes on alcohol are a widely used tool of alcohol policy. Indeed, most developed countries impose some taxes on alcohol. In the United States alcohol is taxed at the federal, state, and, sometimes even at the local level. In Europe, the member states of the European Union have agreed on a minimum alcohol tax rate but left it to individual member states to determine the final rate of alcohol taxation. Consequently, there is considerable variation in the rate at which alcohol is taxed within the EU with the Nordic countries typically imposing the highest taxes and wine-producing countries of Southern Europe applying the lowest rates.

While the revenue from alcohol taxes is non-trivial, perhaps the main motivation for taxing alcohol is to reduce the consumption of alcohol. Excise taxes on alcohol have been seen as a way of internalising the external costs of alcohol use. Ideally, according to the Pigouvian principle, the tax on alcohol should equal the expected monetary value of the external costs of alcohol consumption. However, the scope for national excise taxes to affect alcohol consumption is limited by the possibility of making purchases from bordering jurisdictions with lower tax rates. In the European Union this is a relatively new problem that has affected the old member states from the creation of the single market in 1994 and some members from as late as 2004 when the transitional restrictions for most recent members were removed. According to Cnossen (2007), some 12 percent of the EU population lives near a border with another member state. The scope for tax avoidance is therefore considerable.

The possibility of cross-border shopping has obvious implications for tax revenues and this has led many high tax countries to re-consider their alcohol taxes. It has been argued that in order to avoid the loss of revenues due to cross-border shopping, excise taxes on alcohol should be cut closer to the levels in neighbouring countries. However, to fully understand the implications of cross-border shopping for the efficiency of excise taxes, one would need to know the externalities caused by cross-border shopping. This cannot be inferred directly from revenue losses, since the responsiveness of the demand for alcohol with respect to foreign prices is likely to be substantially heterogeneous. If the harmful externalities caused by cross-border shopping are minor, there may still be scope to maintain high excise taxes on alcohol despite the revenue losses due to cross-border shopping.

In this paper, we examine cross-border health and productivity effects of national excise taxes on alcohol. More specifically, we study the effects of a reduction in the Finnish alcohol tax on mortality, alcohol-related hospitalisations, and sickness absence in the Swedish regions that are close to the Finnish border. We use inpatient register data that cover all hospitalisations in Sweden. Furthermore these data are linked to a population database that includes information on income and employment as well as basic demographics on the whole Swedish population. We identify the effects of the Finnish tax cut by contrasting the changes in the outcomes near the Finnish border to changes in outcomes in the regions that are further away from the border.

On March 1st, 2004 Finland implemented a large tax cut that led to an average 19 percent decrease in the retail prices of alcoholic beverages. For beverages with high alcohol content, such as spirits, the reduction in price was even larger with an average cut of 36 percent (Lankinen 2005). We focus on the health and productivity effects of this tax cut in the Swedish regions that are adjacent to the Finnish border.

We believe that the Finnish and Swedish border regions provide an exceptionally promising setting for analysing the cross-border health and productivity effects of national alcohol policies. First of all, Finland and Sweden have traditionally pursued very similar alcohol policies with high excise taxes and very strict regulation of the sale of alcohol. In both countries, the retail sale of alcohol is restricted to government monopoly outlets, Systembolaget in Sweden and Alko in Finland, that set homogeneous prices within the country. These common features of the Finnish and Swedish alcohol policies make it easy to estimate the effect of alcohol taxes since they imply that the prices or the supply of alcohol do not vary endogenously within countries. At the same time, exchange rate variation and major tax changes, such as the Finnish tax cut studied here, mean that there is considerable variation in prices between Finland and Sweden over time. Second, Finland and Sweden are both member states of the European Union. Until January 1st, 2004 both countries imposed transitional restrictions on how much alcohol for personal use could be brought in from other member states. However, in January 2004 these restrictions were lifted and the ways in which these countries reacted to this change were very different. Whereas Finland significantly reduced taxes on alcohol in March 2004 as a reaction to having to allow unlimited import of alcohol for personal use from Estonia, which is easily accessible from southern parts of Finland, Sweden left alcohol taxes unaltered. Hence, the Finnish tax cut led to large price dif-

ferences for identical products between Finland and Sweden in a setting where there were no legal restrictions on cross-border shopping for personal consumption.

The results on how these changes in relative prices affected health and productivity in a country that did not implement any policy changes are important for the understanding of cross-border effects of excise taxes within European Union in general. Moreover, focusing on cross-border shopping offers a novel way of evaluating the health and productivity effects of alcohol policies since regions near and far from the border can be used as treatment and control groups respectively. In our opinion this approach yields more credible estimates of the effect of alcohol policies since one is no longer restricted to before-after comparisons that have to be used when studying the effects on nationwide policies within jurisdictions.

The rest of the paper is structured as follows. In the following section, we survey the previous literature and argue that this paper addresses an issue which has not been properly studied in the existing literature. The third section presents the data sets used in the analysis. In the fourth section, we show that the Finnish tax reduction led to substantial declines in alcohol sales in the Swedish outlets near the Finnish border but not in the regions further away from the border. The fifth section presents the health and productivity effects of the Finnish tax cut in Sweden. Our estimates of the effect of the Finnish tax cut on mortality and alcohol-related hospitalisations are very imprecise. However, we find significant effects on absenteeism. Finnish alcohol tax cut lead to increased workplace absenteeism in the Swedish regions near the Finnish border by 5% for males and by 13% for females when compared to those over 100 km away from the border. The sixth section concludes.

2 Previous literature

There is an extensive literature estimating the price elasticity of demand for alcohol. A recent meta-study by Wagenaar et al. (2009), surveying over 100 studies on this issue, found that the average estimates of elasticities varied from -0.46 for beer to -0.80 for spirits. Yet there is also evidence that these average elasticities mask considerable heterogeneity in the responsiveness of demand. According to an influential study by Manning et al. (1995), the consumption of the median drinker is twice as elastic as that of the heavy drinkers. A recent study by Ayyagari et al. (2009) provides evidence that

certain groups of heavy consumers are not responsive to prices at all.

Since the health effects of alcohol consumption are overwhelmingly related to large scale consumption which appears to be less responsive to price, it is not entirely straightforward to draw conclusions on the health effects of alcohol policies from aggregate price elasticities. A potentially more fruitful, reduced form approach is to study the health effects of alcohol policies directly. The amount of papers that attempt to do this is much more limited and they provide somewhat mixed evidence. Many of these studies use state-level data from the United States. Studies that examine the effect of state excise taxes on the cirrhosis mortality come up with mixed evidence (Grossman 1993, Sloan et al. 1994). There is stronger evidence on the effects of state taxes on workplace injuries (Ohsfeldt & Morrissey 1997) and on sexually transmitted diseases (Chesson et al. 2000).

The difficulty with the studies using aggregate state-level data is that it is hard to disentangle the effect of state taxes from state-specific shocks. Using abrupt policy changes and micro data is potentially a more promising way of assessing the health effects of alcohol policies. In this paper, we focus on the Finnish alcohol tax cut of 2004 which was precisely the kind of abrupt policy change that should allow for clean identification. The health effects of this policy change in Finland have been studied by Herttua et al. (2008). In what is essentially a before and after comparison of mortality rates, the authors find that alcohol-related mortality increased sharply (16% for men and 31% for women) after March 2004, when the Finnish alcohol tax rates were cut. The results in Herttua et al. provide support for the externality reducing effects of national excise taxes. However, due to the fact that the identification is essentially limited to time-series variation, it is possible that the results reported in Herttua et al. confound the effects of the tax cut with other changes that took places in Finland at the same time.¹

So far, the literature on cross-border shopping has been limited to studies that attempt to quantify the amount of cross-border shopping in different contexts. These studies typically find cross-border shopping to be substantial in settings where price differences are large and geographic distances small. For instance, according to

¹For example, Estonia joined the European Union in January 2004 allowing unlimited imports of alcohol for personal use. The only study trying to disentangle the effects of the tax cut and Estonia joining the EU is Koski et al. (2007) which also is limited to analysing time-series variation.

Merriman (2010) in the city of Chicago where the dollar amount of total taxes on a pack of cigarettes is nearly four times as large as in some of the neighbouring counties in Illinois, a \$2.65 difference in prices reduces the probability of finding a littered packet of cigarettes with the local Chicago stamp by 60%. This is likely to be an extreme example, but even in cases where individuals have to cross national borders, the extent of cross-country shopping may be substantial. In a study that is closely linked to our paper, Asplund et al. (2007) estimate the elasticity of sales in the Swedish government alcohol retail monopoly with respect to Danish alcohol prices. This elasticity is around 0.3 in the border region and decreases to 0.2 when moving 150 km inland. According to the calculations by Asplund et al. these elasticities may result in substantial revenue losses for the Swedish government.

But the revenue impact does not capture the full implications of cross-border shopping on the social welfare effect of excise taxes. As shown by DeCicca et al. (2010), this requires estimation of the negative externalities that are generated by cross-border shopping. Again, as in the case of the effects of alcohol policies within national borders, it is not straightforward to infer these externalities from the aggregate consumption effects of cross-border shopping. Furthermore, it seems plausible that the price responsiveness of cross-border shopping is even more heterogeneous than that of domestic demand. Cross-border shopping often entails significant transportation costs and how these costs affect individual demand is likely to be highly diverse.²

We argue that our study can contribute to this literature in two ways. First, results on the effects of cross-border shopping on the externalities most commonly related to alcohol will help us to understand the full welfare implications that follow from large cross-border differences in alcohol taxes. After all, it is precisely the extent of these externalities that the governments should assess when deciding whether to respond to lower alcohol taxes in neighbouring countries by cutting taxes. Furthermore, we believe that focusing on the effects of national alcohol taxes across the border provides a novel way of evaluating the effects of alcohol policies on health and productivity outcomes. By analysing the effects of the Finnish tax cut in Sweden we can use the Swedish regions near the Finnish alcohol outlets as a treatment group and areas further

²Indeed, DeCicca et al. (2010) show that, in the case of cigarettes, the socioeconomic factors affect cross-border shopping differently from typical cigarette demand models. For example, cross-border shopping of cigarettes is positively correlated with income and education level, which is not the case with regular cigarette demand.

away from these outlets as a control group. In this way, we can use a differences-in-differences identification strategy to identify the effects of the Finnish tax cut. This strategy would not be available if we used Finnish outcomes as outcome variables.

3 Data

The data used in our analysis are collected from several different sources. First, to study the impact of the reform on demand for alcohol, we obtained outlet level sales data from the state monopolies controlling the retail alcohol sales in Finland and Sweden. The data used in the analysis of the health effects of the Finnish tax cut were constructed by combining several different registers covering years 2000–2007 to the Swedish population database Louise that also contains a wide range of background characteristics for individuals. The mortality data were obtained from the death registers and the inpatient registers were used to define alcohol related hospital spells. Information on work absenteeisms was merged from the sickness absence registers. To fully utilise the individual variation in travelling costs, we linked the individual living locations based on Statistics Sweden’s small area units from the co-ordinate database to the analysis data.

The data on alcohol sales are obtained from Alko and Systembolaget which are the state owned monopolies in Finland and Sweden. Only the outlets of these monopolies have a licence to sell stronger alcoholic beverages for off-premises consumption. The data contain annual sales of pure alcohol in litres for all retail outlets in the northern part of the countries. The sales figures are given separately for the main product categories: beer, mild drinks (including wines) and spirits. As low alcohol content drinks can also be sold in supermarkets, data are only complete for the retail sales of mild drinks and spirits. The data cover the years 2000–2007 for North Finland and 1984–2008 for North Sweden.³

The analysis population for the study of health effects is restricted to individuals living in northern Sweden within 450 km from the nearest town in Finland that has an Alko store. We chose this limit because this area roughly covers the northernmost counties in Sweden and includes all the regions with reasonable driving distances to the Finnish border town of Tornio. This includes the whole Norrbotten county but rules out

³Drinks with alcohol content by volume up to 4.7% weight can be sold in supermarkets in Finland and alcohol content by weight up to 3.5% in Sweden.

the sparsely populated South West part of the Västerbotten county. For each individual, the distance to the closest Finnish alcohol outlet is computed in two steps. First, we utilise the publicly available real driving distance data that gives the distance from each municipality centre to the nearest Finnish town with an Alko store. We then adjust this municipality level distance measure based on the individual distance to the border from the small area units calculated using Euclidean distance measure.

The Louise database contains annual information from different administrative registers. We use age, gender, income and municipality of residence to define different analysis populations. The main analysis population consists of individuals between 15–65 years of age. For the analysis of absenteeism, we further restrict the risk set to employed individuals. We use annual earnings over of 50,000 SEK (in 2005 value) as a proxy for employment. The main data consist of an annual average of 314,000 individuals and the employed sample includes an annual average of 206,000 individuals. Because there are large gender differences in the outcome variables, males and females are analysed separately. Other variables included in the analysis are education (5 levels), occupation (8 categories) and family type that indicates having spouse or children. Each background variable is observed at the end of previous year.

We focus on the effect of the Finnish tax cut on three outcomes: mortality, alcohol related hospitalisations, and work absenteeism. The information on these outcomes is linked to the analysis data using individual identifiers. The indicator for death in a given year is obtained from the death registers. Hospitalisation due to alcohol related illness is defined using the Inpatient Register of the National Board of Health and Welfare. The hospitalisation indicator takes value one for those who have at least one of the directly alcohol related illnesses. The National Board of Health and Welfare has defined list of alcohol related ICD-10 (International Classification of Diseases) codes. The far most common reason for hospitalisation in the data is the mental and behavioural disorders due to use of alcohol (F10). The other main ICD-10 categories are alcoholic liver disease (K70), toxic effect of alcohol (T51) and external causes where alcohol involvement is determined (Y90, Y91). Also several specific alcohol related illnesses are included in the analysis but they are less common.⁴ The sickness absence register

⁴List of specific ICD-10 codes included in analysis: Degeneration of nervous system due to alcohol (G312), Alcoholic polyneuropathy (G621), Alcoholic cardiomyopathy (I426), Alcoholic gastritis (K292), Alcohol-induced chronic pancreatitis (K860).

includes all individuals who have claimed sick leave benefits. The employers cover short sickness absences and a doctor certificate is required after 7 days of absence. The length of the employer covered spell has varied between 2 to 3 weeks in the analysis period. To obtain a uniformly defined outcome, we use the definition of at least one spell of over 21 days.

4 Alcohol sales

In order to illustrate the effect of the Finnish tax cut on alcohol sales in northern Sweden and Finland, we obtained data on alcohol sales in the northern outlets of Systembolaget and Alko. These are the only outlets that have the legal right to sell stronger alcoholic beverages for off-premises consumption. Furthermore, decisions on the openings and closings of outlets are controlled centrally. We therefore have the full data of alcohol sales other than regular beer in both Finland and Sweden.

Figure 1 shows the map of northern Sweden covering roughly municipalities in the counties of Norrbotten and Västerbotten. Basically every Swedish municipality has at least one Systembolaget store. The dots represent the four largest cities of the region on the Baltic Sea coast, and the centres of five Finnish municipalities with Alko outlet by the border between Finland and Sweden. To illustrate the driving distance from the different regions, the grey shades denote distance from each municipality centre to the nearest Alko outlet. The darkest shading denotes 0–100 km category and the lightest 300–450 km category. As is clear from Figure 1, the Finnish Alko stores are located right at the Swedish border so a part of our analysis population lives very close to the Finnish outlets.

Figure 2 plots the percentage change in the sales of spirits (in litres of absolute alcohol) in both Swedish and Finnish alcohol outlets as a function of driving distance to the nearest alcohol outlet across the border between 2003–2004. As is clear from the figure, the Finnish tax cut led to dramatic changes in the sales of spirits at both sides of the border. Although the sales of spirits increased throughout Finland, the growth was much more dramatic within 100 km of the Swedish border. In the Alko of Tornio, the town closest to the border, sales increased well over 150% whereas further away from the border the growth was only around 20%. This regional difference in the level of sales remained roughly stable until 2008. Similarly Swedish sales dropped dramatically

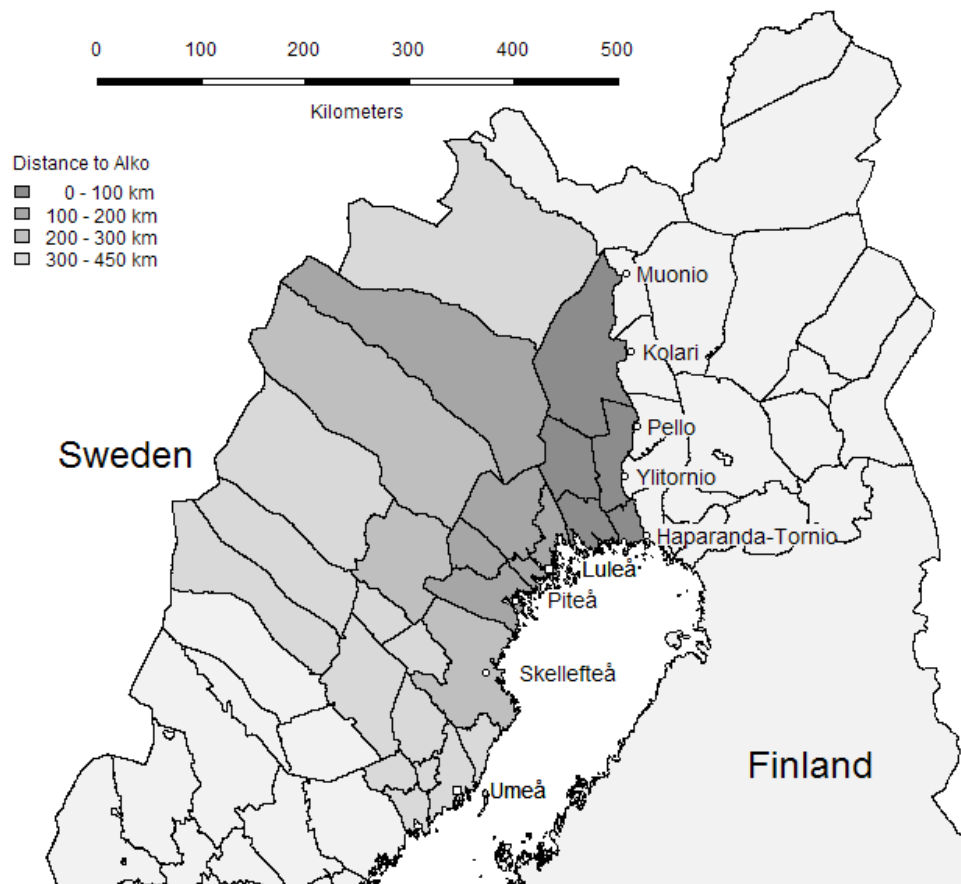


Figure 1: Map of Norrbotten and Västerbotten counties. Gray shading indicates the distance from the municipality centre to the nearest Alko outlet.

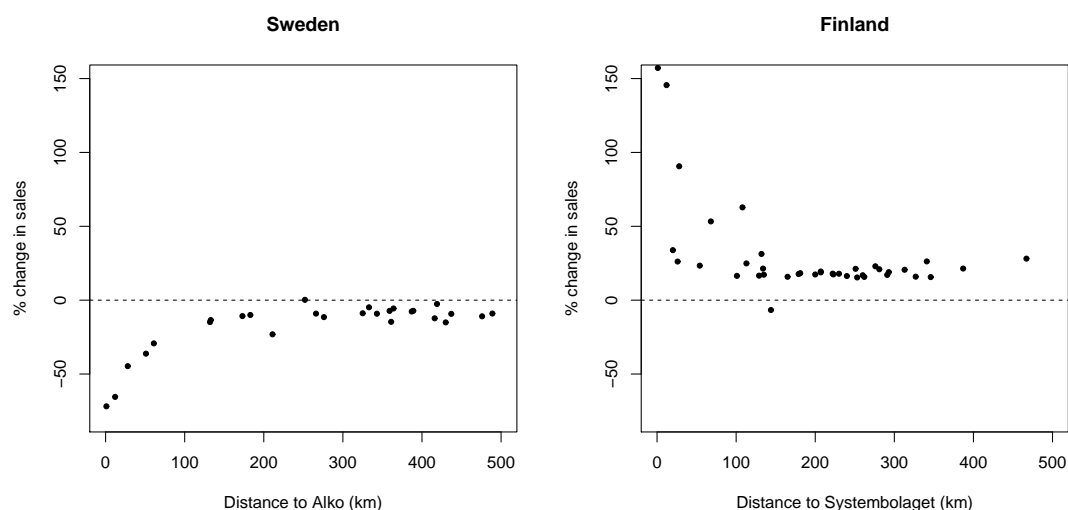


Figure 2: Change in sales of spirits between 2003 and 2004 in northern Finland and Sweden.

near the border with drops of around 80% in Haparanda right at the Finnish border.

The consumption of spirits was on a declining trend in the whole Sweden since the mid-1980's. This is evident from Figure 3, where we plot the time series of spirits and wine sales in northern Sweden between 1985 and 2008. Declining trend in the sales of spirits is clear in the border region and the rest of northern Sweden. Yet, the divergence of these trends is still evident in Figure 3 after the Finnish tax cut in 2004, highlighted by the vertical line in the figure. On the other hand, wine consumption had started to increase at the turn of the millennium. Again, trends are broadly similar in the border region and in the rest of northern Sweden but in this case we do not see any major divergence as a result of the Finnish tax cut in 2004.

That the sales of spirits reacted strongly at the both sides of the border to the Finnish tax cut is not that surprising given the comparisons of prices of spirits between Finland and Sweden. Figure 4 plots the Eurostat price indices of both spirits and wine in Finland Sweden. We follow Asplund et al. (2007) and take the Swedish prices in 1999 as reference values. Horverak & Österberg (2002) provide information on the differences in the levels of prices of identical baskets of alcoholic beverages in January 1999. We use this information to get an estimate of the differences in the prices of spirits and wine between Finland and Sweden in 1999 and use Eurostat price indices and exchange rates

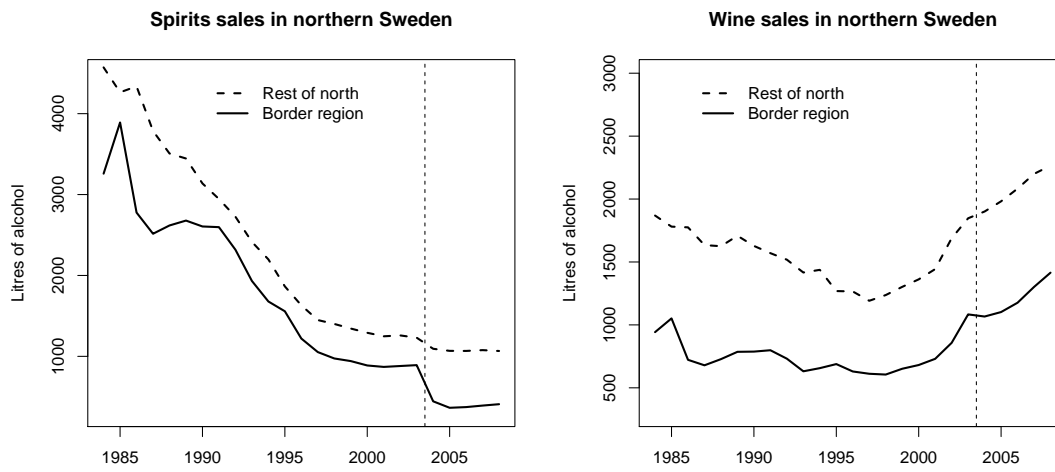


Figure 3: Sales of spirits and wine in northern Sweden. Litres of absolute alcohol sold in the border region and the rest of northern Sweden 1984–2008.

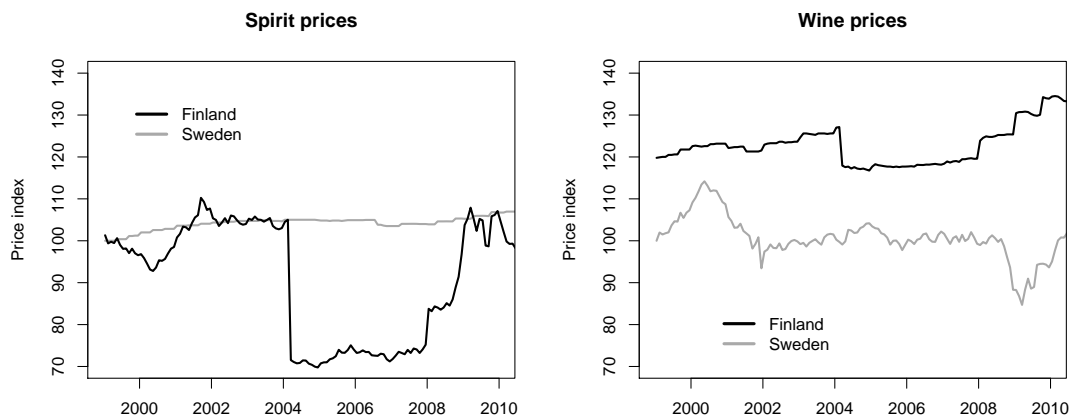


Figure 4: Prices of spirits and wine in Finland and Sweden 1999-2011 (Note: Swedish price in 1999/01 = 100).

to trace out the development of relative prices since then. As is clear from Figure 4, the Finnish tax cut led to a dramatic divergence in the prices of spirits between Finland and Sweden. The Finnish spirits prices were 34 index points lower in Finland after the tax reduction whereas they were approximately at the same level before the cut. On the other hand, in wines the Finnish prices remained higher than in Sweden even after the tax cut in 2004. This is because the tax cut was heavily directed towards stronger drinks. Hence, it is not surprising that we do not see any strong response in the wine sales in Figure 3.

We interpret Figures 2 to 4 as evidence of a substantial increase in cross-border shopping of spirits on behalf of Swedes in Finnish alcohol outlets as a result of the Finnish tax cut. The fact that the alcohol sales increased more in the Finnish outlets close to the Swedish border than in the rest of northern Finland combined with the fact that sales decreased most in the Swedish municipalities that are close to the Finnish border, suggests that Swedes took advantage of the increased price differences in alcohol across these two countries. These changes can be translated into litres of pure alcohol as well. Whereas the excess decline in the sales of spirits in the Swedish border regions corresponds approximately to 1605 litres of pure alcohol, the corresponding excess increase in the Finnish border region is 9923 litres. Hence, if we assume that all the excess increase in sales in the Finnish border regions was due to Swedish cross-border shopping, then the amount of pure alcohol consumed in the Swedish border regions increased by 8313 litres. This amounts to an approximate increase of 0.32 litres of pure alcohol per capita in the border region.

Both Finnish and Swedish sales figures suggest that the relevant distance for the analysis of cross-border shopping is within 100 km of the border. In the analysis that follows we will therefore use the 100 km limit as a way of grouping the Swedish regions to control and treatment groups. Since this definition of the border region is admittedly somewhat ambiguous we will also present results from specifications where we control for the distance to the Finnish alcohol outlets in a more flexible way.

5 Descriptive statistics

Northern Sweden is a relatively sparsely inhabited area where most of the population is clustered in a small number of cities. The regional distribution of the population is

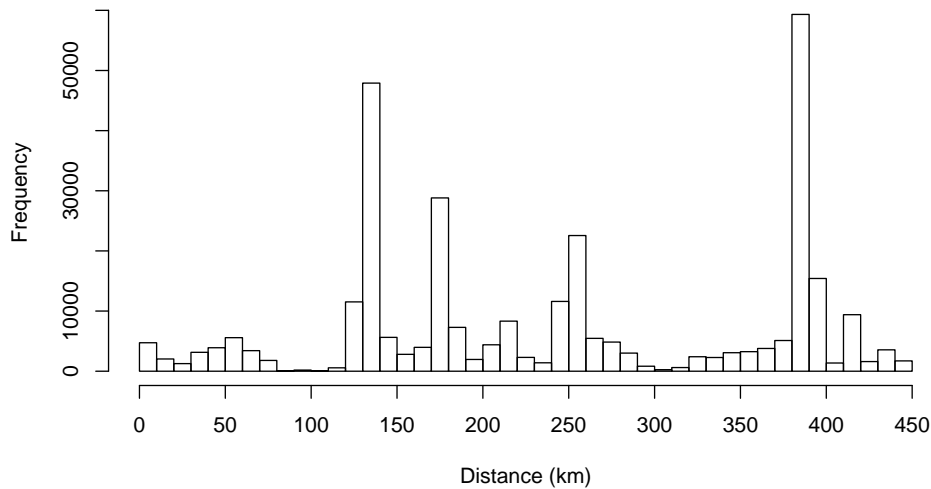


Figure 5: Individual distances to the nearest Alko outlet (2004 analysis population).

important for the purposes of this study as it determines the travelling distances to the Finnish border. For most people in our data the shortest way to Finland is to drive on the European route E4 which runs on the coast of Baltic Sea and passes by the main cities in the region. Figure 5 illustrates how the 2004 analysis population is distributed in terms of distance to the Finnish border. Within 100 km from the border, there are several small municipalities with around 26,000 inhabitants between 15 and 65 years of age. The region between 100 and 200 km is more densely populated and includes larger cities such as Luleå and Piteå. Further away at 250 km is the city of Skellefteå and the largest city in our data is Umeå, at 390 km from the Finnish border.

As is common in micro-level studies of mortality and severe illnesses, all the outcomes that we study are quite rare occurrences. The average annual number of deaths is 725 in the analysis population. Hospitalisations due to alcohol related illnesses are slightly more common with around 960 cases per year. The employed workers have roughly 21,000 over three week long sickness absence spells annually, making them a considerably more common event. Even though work absences of three weeks or more are not necessarily related to severe health problems, they are still relatively severe as an indicator of productivity. The annual outcome rates are presented in the appendix.

When examining the outcome rates, they do not show any systematic increase after the tax cut in 2004 but they do reveal striking gender differences. The male mortality rates are almost twice as high as the female rates and the difference is even larger for alcohol related hospitalisations. The opposite is true for sickness absence as the rates for female workers are nearly double. In addition, the sickness absence rates have a steady declining trend after 2002, especially for women. This is related to the tightening of the benefit rules and monitoring by the Swedish sickness insurance agency in 2003 (see e.g. Hall & Hartman 2010).

Table 1 describes the different analysis samples that we use in the analysis. Our main analysis is based on the comparison of people living near the border region with those living in other parts of northern Sweden. For the analysis of mortality and hospitalisations we include all individuals in the working age population in the risk set while for the analysis of sickness absence we include only those who are defined as employed. As is clear from the descriptive statistics, those living near the border are older, earn less and are less educated than those living in the rest of northern Sweden. The occupational distribution shows that employment rates are lower in the border regions and that the employed individuals are less likely to work in services. These differences are partly related to the fact that the border region does not include larger urban areas. The employed sample is slightly older, better educated and earns more as can be expected. The differences between the regions are less pronounced among employed.

6 Model

The objective of this paper is to estimate how the Finnish alcohol tax cut affected Swedes living close to the Finnish border. We proceed in our analysis by dividing the data into treatment and control groups based on the 100 km distance limit suggested by the sales data in Figure 2. This allows us to estimate a simple differences-in-differences regression:

$$P(event_{it}) = \alpha + \beta X + \gamma year_t + \delta distance_j + \zeta TaxCut \cdot distance_1,$$

where $event_{it}$ is a dummy variable that takes value 1 if the outcome event takes place for individual i in year $t = 2000, \dots, 2007$. X is a set of observable characteristics used

Table 1: Descriptive statistics for the border regions (0–100 km) and the rest of northern Sweden (100–450 km).

		Border region		Rest of north	
		All	Employed	All	Employed
Age	(years)	42.03	42.64	39.95	41.60
Earnings	(100 SEK)	1235	2111	1532	2267
Gender	Male	0.531	0.52	0.514	0.533
	Female	0.469	0.48	0.486	0.467
Education	Basic, lower	0.093	0.04	0.067	0.043
	Basic, higher	0.167	0.09	0.137	0.074
	High school	0.567	0.64	0.502	0.553
	University, lower	0.034	0.039	0.069	0.062
	University, higher	0.139	0.191	0.225	0.269
Family type	Spouse	0.296	0.291	0.25	0.251
	Spouse and children	0.341	0.378	0.339	0.363
	Single parent	0.061	0.053	0.059	0.049
	Single	0.302	0.278	0.351	0.337
Occupation	None	0.262	0.011	0.173	0.009
	Primary production	0.036	0.031	0.033	0.034
	Manufacturing	0.125	0.186	0.124	0.161
	Services (45-63)	0.165	0.207	0.195	0.227
	Services (64-75)	0.121	0.162	0.159	0.191
	Education	0.087	0.129	0.094	0.12
	Health and social care	0.16	0.231	0.175	0.214
	Other	0.045	0.043	0.048	0.044
N obs		160259	91699	1719360	1136894

Note: The occupation category manufacturing includes construction. Services (45-63) refers to respective NACE codes including wholesale and retail trade, transport, hotel and restaurant services and communication. Services (64-75) includes other business services and professional activities.

as control variables observed at the end of year $t - 1$ and $year_t$ indicates year dummies. Variable $distance_j$ captures regional fixed effects for distance categories. These categories $j = 1, \dots, 4$ correspond to following individual distances to the Finnish alcohol outlets: 0–100, 100–200, 200–300 and 300–450 km. Thus, $distance_1$ takes value 1 if individual lives within 100 km from the border. The variable $TaxCut$ takes value 1 after year 2003, and the parameter ζ captures the effect of the Finnish tax cut.

However, the 100 km cut-off is a somewhat arbitrary way to group distances to the Finnish border. It is more likely that the effect of the tax cut diminishes continuously with the distance to the border. To explore this, we extend the model by using a more flexible function for distance which also allows us to exploit the individual distance variation fully:

$$P(event_{it}) = \eta + \theta X + \vartheta year_t + g(\kappa \cdot distance) + g(\lambda \cdot distance) \cdot TaxCut.$$

Our objective is to choose a flexible but parsimonious specification for the function $g(\cdot)$. We use a third level polynomial as our preferred specification:

$$g(\lambda \cdot distance) = \lambda_1 distance + \lambda_2 distance^2 + \lambda_3 distance^3.$$

This extended model is used as a robustness check for the differences-in-differences specification. The results from the extended model show, to what the outcomes responded differently to the Finnish tax cut as a function of the distance to the Finnish alcohol outlets. If the estimated polynomial indicates that the effect of the tax cut vanishes at around 100 km, it gives support to our assumption that sales data are a good proxy for the changes in consumption.

In the main analysis, we focus on the differences-in-differences specification for the ease of interpretation. We estimate the model separately for males and females and we also estimate the model for various subgroups to explore the potential heterogeneity of the reform effect. The same specification is used for the three different outcomes: mortality, hospitalisation due to alcohol related illness, and sickness absence spell lasting over three weeks. We estimate the linear probability models using OLS with heteroscedasticity robust standard errors.

7 Results

In this section, we present the results of the estimation of models described in Section 6. We begin with the simple differences-in-differences estimated by gender. We then explore differences in the effect of the Finnish tax cut in various demographic groups. In order to examine the robustness of our definition control and treatment groups, we also present results from the more flexible specification, where the distance to Finnish border is modelled as a third level polynomial. Finally, we discuss the interpretation of the results.

7.1 Differences-in-differences results

We begin by presenting the results from the differences-in-differences model where we estimate the effect of the tax cut by comparing those living near the border with those living over 100 km away from the border. The estimates in Table 2 show the effect of the alcohol tax cut on the level of the outcomes rates for those near the border. To ease the interpretation we also computed the relative changes in the rates by comparing the estimated effect on the level with the predicted level of the rates in absence of the tax cut near the border in 2004. These implied changes are reported in the first column of Table 2.

As is clear from Table 2, the estimated effects vary in both sign and significance depending on the outcome. For the more severe and rare outcomes of mortality and alcohol related hospitalisation we get small and very imprecise estimates. For sickness absence our estimates show strong and significant increase for females while the effect is smaller for males. Controlling background characteristics changes the estimates slightly but does not change the overall picture.

The point estimates for both female and male mortality rate suggest around 4% increase in the border region after the tax cut while the point estimate for hospitalisations is near zero. However, all these estimates are far from significant and it seems that we would need higher number of events in the treatment group to draw reliable conclusion for these outcomes. Indeed, the confidence intervals for these effects are extremely wide ranging, for example, in the case of male mortality from a reduction of 15% to an increase of 22%.

The estimates for sickness absence are much more precise than for the two other

Table 2: Effect of the reform in the border region.

	Change	Estimate (S.E.)	Change	Estimate (S.E.)
Males				
Mortality	0.040	0.000165 (0.000395)	0.038	0.000158 (0.000394)
Hospitalisation	-0.019	-0.000113 (0.000489)	-0.004	-0.000026 (0.000487)
Sickness absence	0.082	0.005112 (0.002134)	0.053	0.003368 (0.002122)
Females				
Mortality	0.033	0.000066 (0.000299)	0.039	0.000079 (0.000298)
Hospitalisation	-0.017	-0.000035 (0.000303)	0.020	0.000041 (0.000303)
Sickness absence	0.138	0.015895 (0.002898)	0.125	0.014481 (0.002887)
Controls	No		Yes	

Note: The estimated standard errors (S.E.) are robust to heteroscedasticity. Control variables include age, earnings, education, family type and occupation. For sickness absence, the model is estimated using only employed individuals.

outcomes and quite robust to controlling for background characteristics. When the control variables are introduced, estimates become somewhat smaller and the effect on sickness absence show 5.3% increase for males and 12.5% increase for females. We also examined short-term impact of the tax cut by limiting the reform period to years 2004–2005. The short-term effects on sickness absence were slightly larger and significant: 8.2% and 13.8% increases for males and females, respectively. These estimates suggest that the Finnish the tax cut caused a sizable increase in the sickness absence rates among those living near the border and this effect is stronger for females.

7.2 Heterogeneous results

It is very likely that the Finnish alcohol tax cut had heterogeneous effect on different demographic groups. We explore this heterogeneity by estimating the differences-in-differences model for subgroups defined by age, earnings and education. These results are presented in Table 3. We only report the sickness absence results as the results on other outcomes were very imprecise. First we divide the sample to younger and older workers but the effect of the tax cut does not vary much with age. The estimates also do not vary much by the level of education but those with university degree seem to be

Table 3: Heterogeneity of the effect of the tax cut on sickness absence.

	Males		Females	
	Change	Estimate (S.E.)	Change	Estimate (S.E.)
Main result	0.053	0.003368 (0.002122)	0.125	0.014481 (0.002887)
Age \leq 40	0.055	0.002479 (0.002768)	0.109	0.011030 (0.004344)
Age $>$ 40	0.048	0.003718 (0.003102)	0.122	0.015156 (0.003824)
Lower education	0.066	0.004379 (0.002431)	0.129	0.015687 (0.003541)
University education	0.112	0.005204 (0.004242)	0.140	0.013803 (0.004958)
Earnings \leq 220 000 SEK	0.033	0.002299 (0.003286)	0.110	0.013860 (0.003675)
Earnings $>$ 220 000 SEK	0.089	0.005144 (0.002780)	0.173	0.016586 (0.004632)

Note: The estimated standard errors (S.E.) are robust to heteroscedasticity. The model includes all control variables except the variable that defines the analysed subgroup.

more affected than those with less education. When we use the median earnings in the employed sample to define those with high and low earnings, we find that the tax cut had a larger effect on those earning above median.

Although the pattern of these results may seem counter-intuitive – typically one would expect low-income and less educated individuals to be more responsive to prices in their alcohol consumption – they are actually in line with the existing evidence on the patterns between cross-border shopping and education and income. DeCicca et al. (2010) find that in the United States the tendency to purchase cigarettes in a neighbouring state increases with education and income.

7.3 Polynomial distance

Lastly we estimated the model where we allow the effect of the tax cut to vary continuously with the distance. Again we show the results only for sickness absence in Figure 6. The results for the other outcomes are in line with the results from the simpler differences-in-differences specification but they are too imprecise to be informative.

The estimated polynomial effects for sickness absence show that male and female rates decrease with distance up to 100 km and then they remain relatively steady for those living further away from the border. This means that the tax cut increased the

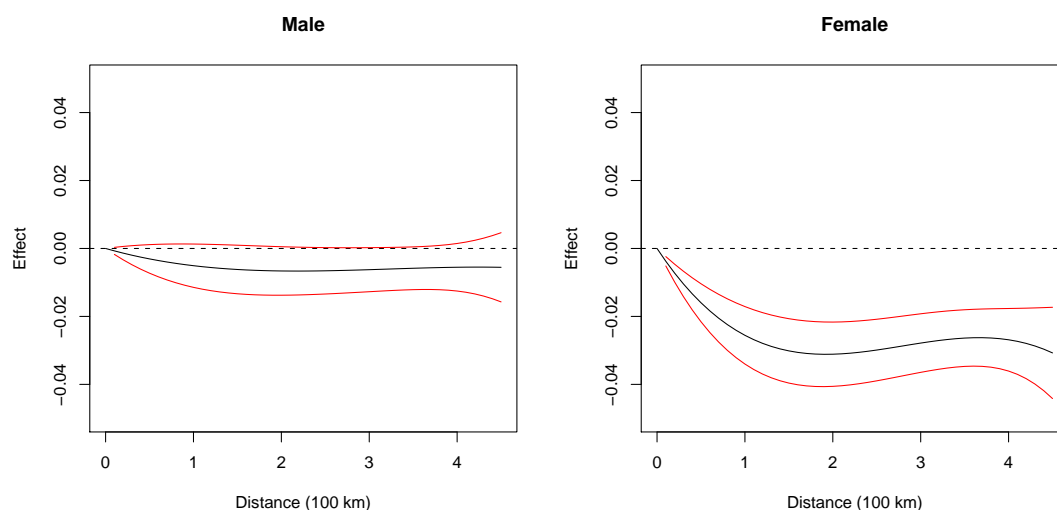


Figure 6: Effect of the tax cut in the polynomial model for sickness absence. The black lines show the estimated effect on rate as a function of distance from the border. The red lines denote 95% confidence bands.

sickness absence rates near the border when compared with other regions. Because the estimated effect is steady after 100 km, it indicates that the tax cut did not affect the sickness absence rates there. This is in line with our results from the sales data and gives support for using these regions as a control group in the differences-in-differences setting.

7.4 Discussion

The results presented in Tables 2 and 3 suggest that Finnish tax cut did indeed have health effects in the Swedish regions near the Finnish border. This is in line with the sales data that suggest that the alcohol consumption must have increased in these parts of Sweden due to increased cross-border shopping. However, unlike the earlier before-after type studies with Finnish data, we fail to find any significant effect on alcohol-related mortality or hospitalisations. There are two potential ways of interpreting this result. First, our results are based on differences-in-differences type approach where we use regions that are further away from the Finnish border as a control group. Hence, it may be possible that the striking mortality results in the studies that use before-after comparisons may be confounding the effect of the tax cut with other changes that took

place at the same time. However, it is also true that alcohol-related mortality and severe illnesses are so rare events that the sparsely populated northern Sweden simply does not provide us with enough data to analyse the effect of the tax cut on these outcomes.

However, the effects on absenteeism are more precisely estimated. To get a grasp on the magnitude of the effect of the Finnish tax cut on absenteeism in Sweden, it is useful to compare them with earlier results on the effects of alcohol policies. There are several studies that examine the relationship between alcohol consumption and sickness absenteeism. A particularly useful study for our purposes is Norström (2006) who uses Swedish time-series data to estimate the relationship between aggregate alcohol consumption and sickness absence in Sweden. According to his results, a one litre increase in total consumption of pure alcohol per capita would lead to a 13% increase in sickness absence among men. If we assume that the excess alcohol bought in the Finnish outlets near the Swedish border was all bought by working-aged Swedes in the border region, our sales results would imply an increase of approximately 0.3 litres of pure alcohol per capita. Hence, the estimated 5% increase in absenteeism for men is in line with the results in Norström (2006).

Moreover, our results on sales and absenteeism are remarkably similar to the forecast made by Andreasson et al. (2006) who estimate that reducing taxes in Sweden to post-2004 Finnish levels would increase alcohol consumption by 0.35 litres per capita and increase sickness absenteeism by 3–5%. Yet, compared to the time-series variation in the Swedish sickness absence rates, the changes implied by our results are small. For example, in the early 1990's sickness absence rates halved from the very high levels in the late 1980's. Previous literature, such as Johansson & Palme (2005), has shown that sickness absence is very sensitive to changes in replacement rates. Compared to the effects of such policies, the effects of cross-border shopping due to changes in alcohol policies are not large.

8 Conclusions

There has been an intense debate on the implications of cross-border shopping for the efficiency of national excise taxes in recent years. While most of this debate has concentrated on the revenue impacts of cross-border shopping, we argue that in order to get a complete understanding of the welfare implications of cross-border shopping,

one has to know the externalities that are caused by cross-border shopping. In the case of alcohol, this requires the direct estimation of cross-border externalities. In this paper, we estimate the effect of a large cut in Finnish alcohol taxes on health outcomes in Sweden.

On March 1st, 2004 Finland implemented a tax cut that led to an average 19% decrease in the retail prices of all alcoholic beverages and to an average cut of 36% in the price of spirits. We focus on the health and productivity effects of this tax cut in the Swedish regions that are adjacent to the Finnish border. The Finnish and Swedish border regions are a promising setting for analysing the cross-border health and productivity effects of national alcohol policies since the sale of alcohol is constrained to state owned monopoly. At the same time, however, there are no restrictions on cross-border shopping.

Our analysis shows that Swedes clearly took advantage of the increased price difference between the countries. Our results on the effect of the Finnish tax cut on mortality or alcohol hospitalisations in Sweden are very imprecise, which is in sharp contrast to the results in papers that find large health effects of excise taxes within national borders. The failure to find such effects in northern Sweden is probably due to the fact that the treatment region is too sparsely populated to allow one to catch effects on such rare occurrences such as mortality due to alcohol. On the other hand, we do find significant effects on absenteeism in northern Sweden. The tax cut led to increased workplace absenteeism in the Swedish regions near the Finnish border by 5% for males and by 13% for females when compared to those over 100 km away from the border. These results are in line with the earlier studies on the relationship between sickness absence and alcohol consumption. Hence, the increased consumption in Sweden due to the Finnish tax cut did have negative externalities in the form of productivity effects.

References

Andreasson, S., Holder, H., Norström, T., Österberg, E. & Rossow, I. (2006), 'Estimates of harm associated with changes in Swedish alcohol policy: results from past and present estimates', *Addiction* **101**(8), 1096–1105.

Asplund, M., Friberg, R. & Wilander, F. (2007), 'Demand and distance: evidence on

- cross-border shopping’, *Journal of public Economics* **91**(1-2), 141–157.
- Ayyagari, P., Deb, P., Fletcher, J., Gallo, B. & Sindelar, J. (2009), ‘Sin Taxes: Do Heterogeneous Responses Undercut Their Value?’, *NBER Working Paper* .
- Chesson, H., Harrison, P. & Kassler, W. (2000), ‘Sex under the influence: The effect of alcohol policy on sexually transmitted disease rates in the United States’, *Journal of Law and Economics* **43**(1), 215–238.
- Cnossen, S. (2007), ‘Alcohol taxation and regulation in the European Union’, *International Tax and Public Finance* **14**(6), 699–732.
- DeCicca, P., Kenkel, D. & Liu, F. (2010), ‘Excise Tax Avoidance: The Case of State Cigarette Taxes’, *NBER Working Paper* .
- Grossman, M. (1993), The economic analysis of addictive behavior, *in* ‘Economics and the prevention of alcohol-related problems’, National Institute on Alcohol Abuse and Alcoholism, Bethesda, MD, pp. 91–123.
- Hall, C. & Hartman, L. (2010), ‘Moral hazard among the sick and unemployed: evidence from a swedish social insurance reform’, *Empirical Economics* **39**, 27–50. 10.1007/s00181-009-0293-7.
- Herttua, K., Makela, P. & Martikainen, P. (2008), ‘Changes in alcohol-related mortality and its socioeconomic differences after a large reduction in alcohol prices: a natural experiment based on register data’, *American Journal of Epidemiology* **168**(10), 1110–1118.
- Horverak, O. & Österberg, E. (2002), ‘Utviklingen i avgifter og priser på alkoholdrikker i norden på 1990-tallet’, *Nordisk Alkohol & Narkotikatidskrift* **19**(2), 91–105.
- Johansson, P. & Palme, M. (2005), ‘Moral hazard and sickness insurance’, *Journal of Public Economics* **89**(9-10), 1879–1890.
- Koski, A., Siren, R., Vuori, E. & Poikolainen, K. (2007), ‘Alcohol Tax Cuts and Increase in Alcohol-Positive Sudden Deaths - A Time-Series Intervention Analysis’, *Addiction* **102**, 362–368.

- Lankinen, H. (2005), 'Alkoholiveron alennuksen hintavaikutuksista', *Kansantaloudellinen aikakauskirja* **101**(1), 81–83.
- Manning, W., Blumberg, L. & Moulton, L. (1995), 'The demand for alcohol: The differential response to price', *Journal of Health Economics* **14**(2), 123–148.
- Merriman, D. (2010), 'The micro-geography of tax avoidance: evidence from littered cigarette packs in Chicago', *American Economic Journal: Economic Policy* **2**(2), 61–84.
- Norström, T. (2006), 'Per capita alcohol consumption and sickness absence', *Addiction* **101**(10), 1421–1427.
- Ohsfeldt, R. & Morrissey, M. (1997), 'Beer taxes, workers' compensation, and industrial injury', *Review of Economics and Statistics* **79**(1), 155–160.
- Sloan, F., Reilly, B. & Schenzler, C. (1994), 'Effects of prices, civil and criminal sanctions, and law enforcement on alcohol-related mortality.', *Journal of Studies on Alcohol* **55**(4), 454.
- Wagenaar, A., Salois, M. & Komro, K. (2009), 'Effects of beverage alcohol price and tax levels on drinking: a meta-analysis of 1003 estimates from 112 studies', *Addiction* **104**(2), 179–190.

A Outcome rates

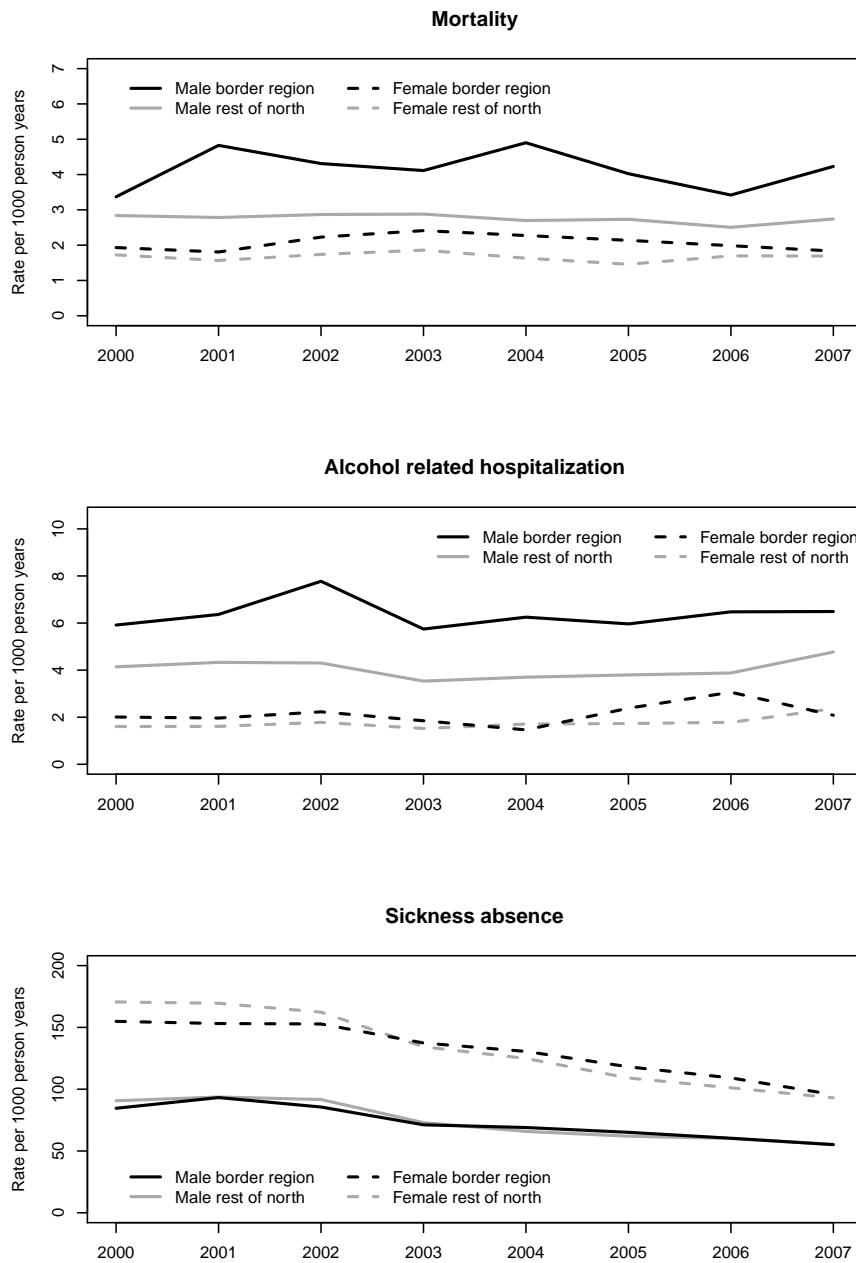


Figure 7: Average outcome rates by gender in the border region (0–100 km) and the rest of the northern Sweden (100–450 km).