

Aldashev, Alisher; Dietz, Barbara

Working Paper

Determinants of internal migration in Kazakhstan

Arbeiten aus dem Osteuropa-Institut Regensburg, No. 301

Provided in Cooperation with:

Leibniz Institute for East and Southeast European Studies (IOS), Regensburg

Suggested Citation: Aldashev, Alisher; Dietz, Barbara (2011) : Determinants of internal migration in Kazakhstan, Arbeiten aus dem Osteuropa-Institut Regensburg, No. 301, Osteuropa-Institut Regensburg, Regensburg

This Version is available at:

<https://hdl.handle.net/10419/57805>

Standard-Nutzungsbedingungen:

Die Dokumente auf EconStor dürfen zu eigenen wissenschaftlichen Zwecken und zum Privatgebrauch gespeichert und kopiert werden.

Sie dürfen die Dokumente nicht für öffentliche oder kommerzielle Zwecke vervielfältigen, öffentlich ausstellen, öffentlich zugänglich machen, vertreiben oder anderweitig nutzen.

Sofern die Verfasser die Dokumente unter Open-Content-Lizenzen (insbesondere CC-Lizenzen) zur Verfügung gestellt haben sollten, gelten abweichend von diesen Nutzungsbedingungen die in der dort genannten Lizenz gewährten Nutzungsrechte.

Terms of use:

Documents in EconStor may be saved and copied for your personal and scholarly purposes.

You are not to copy documents for public or commercial purposes, to exhibit the documents publicly, to make them publicly available on the internet, or to distribute or otherwise use the documents in public.

If the documents have been made available under an Open Content Licence (especially Creative Commons Licences), you may exercise further usage rights as specified in the indicated licence.

Arbeiten aus dem



OSTEUROPA-INSTITUT REGENSBURG

Arbeitsbereich Wirtschaft, Integration und Migration

Working Papers

No. 301 October 2011

Determinants of Internal Migration in Kazakhstan

Alisher Aldashev*

*International School of Economics, Kazakh-British Technical University
of Almaty*

Barbara Dietz**

Osteuropa-Institut, Regensburg and IZA, Bonn

* Alisher Aldashev is assistant professor at the International School of Economics, Almaty.
Address: Kazakh-British Technical University, International School of Economics,
59 Tole bi Str., Almaty 050000, Kazakhstan.

** Barbara Dietz is senior researcher at the Osteuropa-Institut, Regensburg and IZA, Bonn.
Address: Osteuropa-Institut, Regensburg, Landshuter Strasse 4, D-93047 Regensburg,
Germany.



**OSTEUROPA-INSTITUT
REGENSBURG**

Landshuter Str. 4

93047 Regensburg

Telefon: 0941 943 5410

Telefax: 0941 943 9427

E-Mail: oei@osteuropa-institut.de

Internet: www.osteuropa-institut.de

Contents

Abstract.....	v
1 Introduction.....	1
2 Regional economic development and migration in Kazakhstan	3
3 Theoretical arguments and empirical findings	6
4 Data and methodology	8
4.1 Data	8
4.2 Empirical model	9
5 Estimation results.....	11
5.1 Benchmark regressions	11
5.2 Robustness checks.....	13
6 Conclusion	15
References	16
A Appendix.....	19

List of Tables

Table 1:	Descriptive statistics	8
Table 2:	OLS regression	11
Table 3:	Generalized linear model.....	12
Table 4:	Linear model with autocorrelated errors across time and space	13
Table 5:	Linear model (using income deviation from the subsistence level) with autocorrelated errors across time and space	14
Table A.1:	Regional economic indicators of Kazakhstan	19

List of Figures

Figure 1:	Regions of Kazakhstan	4
Figure 2:	Coefficient of variation in GDP per capita and wages	5
Figure 3:	Effect of wage and income differentials on migration	9

Abstract

In this paper we analyze the determinants of interregional migration in Kazakhstan using quarterly panel data on region to region migration in 2008–2010. To the best of our knowledge this is the first study on interregional population flows in Central Asia. We find that migration is determined by economic factors, first of all income: People are more likely to leave regions where incomes are low and more likely to move to regions with a higher income level. Furthermore, mobility is larger between more populated regions. Distance has a strong negative impact on migration, indicating high migration related costs and risks. Assuming that high migration costs are caused by poor infrastructure, investments in public and social infrastructure should facilitate regional income convergence in Kazakhstan and improve living standards in depressed regions.

JEL-Classification: J61, P36, R23

Keywords: Interregional migration, Kazakhstan, Gravity model

Thanks are due to Achim Schmillen and Ksenija Gatskova, Osteuropa-Institute Regensburg for helpful comments and suggestions. The authors gratefully acknowledge financial support from the Volkswagenstiftung in the framework of the project “Migration and Remittances in Central Asia: The case of Kazakhstan and Tajikistan”.

1. Introduction

Since gaining independence in 1991 Kazakhstan experienced new migration dynamics. The huge emigration of citizens that prevailed in the 1990s faded out in later years and turned into a positive migration balance in 2004. Between 1991 and 2004 net migration in Kazakhstan accounted for a population loss of 2.04 million persons or nearly 13 percent of the population. To a considerable part this movement was related to the legacy of the Soviet labor market and nationality policy. The Soviet government had allocated its labor force within its vast territory according to central plans and certain ethnic groups had been forcefully relocated. After the break-up of the Soviet Union the newly introduced freedom of movement allowed people to return to their former homelands. Most persons who left Kazakhstan after independence either had originally gone there for work and job advancement (predominantly Russians) or because they had been forcefully resettled (mainly ethnic Germans).

Compared to the large and highly volatile external migration, interregional movements have been less pronounced and more stable: since independence they have on average involved approximately one percent of the population each year. Due to the alarming size of emigration from Kazakhstan in the early period after independence so far almost all attention has been on external migration and interregional migration has mostly been neglected. The disregard of internal mobility can also be attributed to data problems: time series on region to region migration have only recently been published and micro-data based on registration forms are unavailable for researchers. Accordingly, little is known about the patterns and determinants of interregional movements in Kazakhstan, although its geographical and structural economic conditions point to the crucial role internal labor migration might play in regional adjustment processes.

Kazakhstan spans a vast territory (about 2.7 million sq. km; it is the 9th largest country in the world) which is inhabited by a relatively small population (nearly 16 million inhabitants) and hence is characterized by a low population density. Moreover, regional development has been persistently uneven across regions: on the one hand Astana (Kazakhstan's capital since 1997), Almaty (the country's financial center and old capital), and oil-rich regions at the shores of the Caspian Sea have been developing fast; on the other hand depressed regions exist in the north and south. According to standard economic reasoning, these discrepancies in regional development should provide incentives for substantial internal migration movements. Such movements might also be expected to happen because internal migration barriers which existed throughout the Soviet system were abolished after Kazakhstan had become independent.

In this paper we analyze the determinants of interregional movements in Kazakhstan, based on newly released region to region migration data. For 2008–2010 we study whether standard arguments of spatial economics, such as population size and distance as well as other factors put forward by migration economists, i.e. differences in income and unemployment, explain the regional mobility of people.

The remainder of this paper is structured as follows: Section 2 describes the economic and migration development in Kazakhstan on the regional level. Section 3 presents theoretical arguments and empirical findings on internal migration movements, while Section 4 introduces our data and methods used. Section 5 presents estimation results and Section 6 concludes.

2. Regional economic development and migration in Kazakhstan: Stylized facts

Kazakhstan, which had for 70 years belonged to the Central Asian part of the Soviet Union, emerged as a newly independent country in 1991. After an administrative reform and the relocation of the country's capital from Almaty to Astana in 1997, the state was organized in 14 regions (*oblasts*) and 2 cities (Almaty and Astana). In the 1990s Kazakhstan experienced a severe economic and social crisis, but succeeded in reaching rapid economic growth in 2000–2007. This was the result of a booming energy sector and the implementation of market oriented reforms, such as price and trade liberalization, privatization, promotion of entrepreneurship and creation of the banking system (Wandel and Kazbogarova, 2009). Although Kazakhstan is engaged in diversifying its economy, growth continues to be largely driven by oil. The recent economic and financial crisis has resulted in a slow-down of the economy and revealed serious weaknesses in the banking system. Primarily supported by extractive and related industries, the Kazakh economy has returned to growth since the last quarter of 2009 (EBRD, 2010). Compared to other Central Asian post-Soviet economies, Kazakhstan stands out as a relatively stable and prosperous economy. It is a striking, though, that economic and social disparities between regions in Kazakhstan are high and do not seem to have decrease over time (Anderson and Pomfret, 2004; Dillinger, 2007).

In terms of economic output per capita Kazakhstans richest regions include Atyrau and Mangistau which are located in the West of the country at the shores of the Caspian Sea, where the majority of crude oil is extracted, and the two big commercial and administrative centers, Astana and Almaty (see table A.1 in the Appendix). The poorest regions are located close to Kazakhstan's northern, southern, and eastern borders. They are the most populated and their share of rural population is highest (between 61% and 76%). These regions are industrially underdeveloped and agriculture is the dominant sector of employment. As shown in figure 2 the coefficient of variation in regional per capita GDP, a measurement of regional disparity, ranged from 0.7 to 0.8 in 2003–2010, which is extremely high in comparison to Eastern European and EU-15 countries. In the year 2003, the coefficient of variation in regional per capita GDP in Eastern Europe varied between 0.22 in Poland and 0.54 in Russia (Dillinger, 2007). In EU-15 countries regional economic variations (at the NUTS2 level) amounted to approximately 0.28 in the years between 1996–2004 (Monfort, 2008). The disparity between average nominal wages in Kazakhstan's regions is also considerably high and there is no evidence that it has reduced over time (see figure 2). This indicates that higher wage jobs are regionally concentrated.

Figure 1: Regions of Kazakhstan

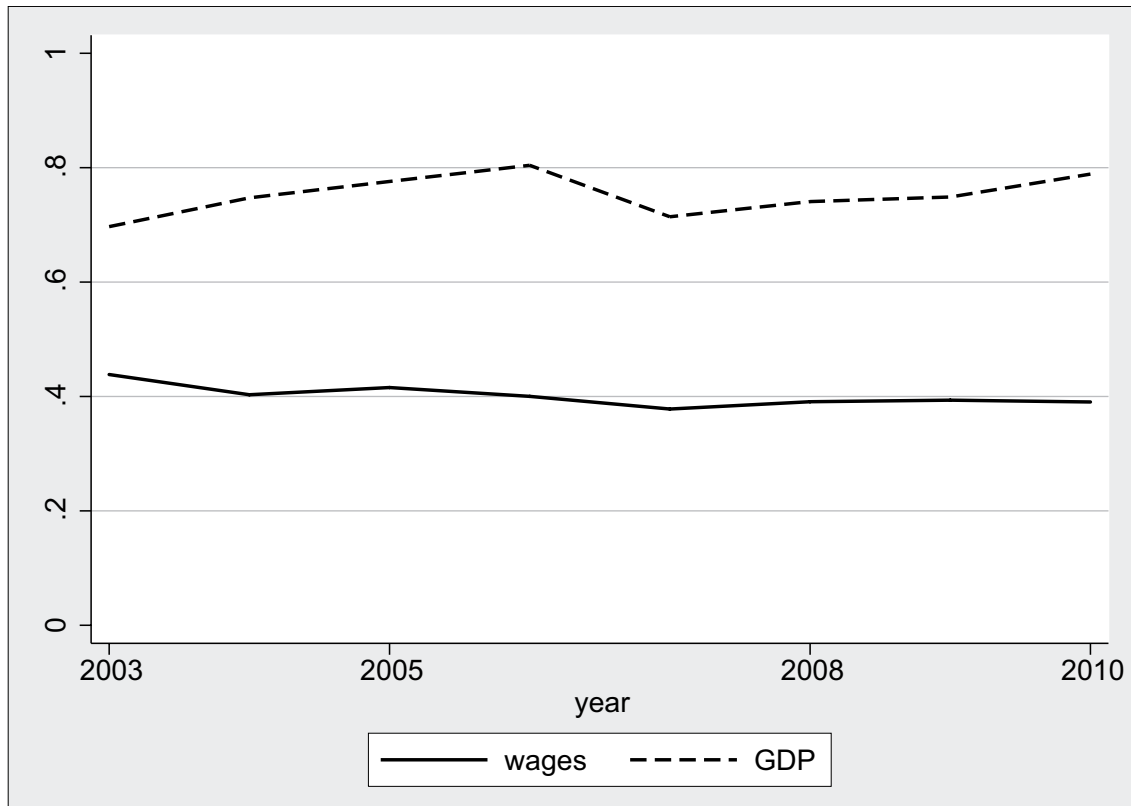


Although Kazakhstan has experienced a remarkable economic growth since independence, poverty remains an acute problem for most of its regions. In this context it is particularly alarming that the two richest regions in terms of GDP per capita—the oil producing regions Mangistau and Atyrau—are characterized by an extraordinary high share of poor people. According to the Statistical Agency in Kazakhstan, the proportion of the population, whose income was below the subsistence minimum level, amounted to 22.6 percent in Mangistau and to 10 percent in Atyrau (see table A.1 in the Appendix). In case of Mangistau this was nearly three times higher than the national average (8.2 percent). Accordingly, oil production has contributed to a high regional GDP but failed to reduce regional poverty.

Unemployment, which had been a considerable problem in the years following independence, has since decreased and reached a level of 6.6 percent in 2009 (compared to 13.5 percent in 1999). In 2009 the unemployment rate varied between 6 percent in the Aktobe oblast and 7.47 percent in Almaty (see table A.1 in the Appendix).¹ Nevertheless, over one-third of the national labor force was still employed in agriculture, producing only 6 percent of the national GDP (Wandel and Kazbogorova, 2009). According to Najman *et al.* (2008) in that year direct employment in the oil sector was under 50,000 people, even including employees working in the refining sector. This is equivalent to less than 1 percent of Kazakhstan's economically active population.

¹The comparatively low interregional differences in unemployment rates are most likely due to measurement errors and under-reporting.

Figure 2: Coefficient of variation in GDP per capita and wages*



* Coefficient of variation is calculated as the ratio of the standard deviation to the mean. Authors' own calculations based on the data of the Statistical Agency of Kazakhstan

Source: Statistical Agency of Kazakhstan, authors' own calculation

In contrast to the period under Soviet rule, where mobility was largely restricted, people in independent Kazakhstan enjoy the freedom of movement.² Thus, the highly diverse regional economic development in the country might be expected to trigger internal labor movements from depressed to more prospering regions. According to official data interregional migration involved 138.750 persons on average per year (0.8 percent of the population) in the period between 2000 and 2010. In balance, the two big cities Almaty and Astana attracted nearly all internal migrants. Astana received people mostly from the comparatively close regions Aqmola, Karaganda, Kostanai, and East Kazakhstan, while Almaty received most of its immigrants from Almaty *oblast*, Zhambyl, South and East Kazakhstan. Furthermore, a considerable exchange of people between the cities Almaty and Astana could be observed. These patterns indicate that distance plays an important role in determining internal movements in Kazakhstan. In terms of magnitude, interregional mobility in Kazakhstan is close to interregional population flows in Russia, but much smaller than in the USA and Canada (Andrienko and Guriev, 2004).

²Certain restrictions still apply. For example, although residence permit is not required to obtain a job at a place outside of one's place of residence, the provision of public goods (public hospitals, kindergartens, schools) is restricted to registered residents of a particular area.

3. Determinants of internal migration movements: Theoretical arguments and empirical findings

According to standard economic reasoning, internal migration movements should be caused by regional differences in economic variables, such as incomes and unemployment. In particular, the neoclassical theory of labor migration explains the movement of people by regional differences in expected incomes (i.e. income differences adjusted by unemployment probabilities) (Harris and Todaro, 1970). Accordingly, migration flows should be directed towards regions with comparatively higher incomes and lower unemployment rates. Extensions of this concept account for differences in other welfare and infrastructure variables, for example basic public services and environmental quality, to account for regional mobility in response to better living conditions (Lall *et al.*, 2006). Additionally, Hatton and Williamson (2005) and Faini and Venturini (1994) point out that migration costs and risks, such as the costs of traveling, information and income losses, as well as the psychological costs of leaving family, friends and neighbors in the home region, are important for understanding internal migration movements in low income regions.

In general, the costs and risks of moving are increasing with distance, an aspect already formulated in the first formal framework analysing migration, the gravity model (Greenwood, 1995; Lee, 1966). Recently, Cushing and Poot (2008) have pointed to the high relevance of distance in explaining internal migration flows. They referred to the strong theoretical rationale of this concept in addition to the numerous empirical studies that showed its importance. Together with distance, the gravity concept refers to population size as a decisive force in shaping the dynamics of population mobility. Regions with large populations are expected to have the potential for sending big numbers of migrants, while they are also considered to attract more migrants because of larger markets. In a recent application of the gravity model to migration movements, Lewer and Van den Berg (2008) show that it provides a constructive framework to capture basic economic, spacial and ethno-cultural influences on population mobility.

The dynamics and the determinants of internal migration movements have repeatedly attracted the interest of economic research. This is related to the question if regional movements have the potential to mitigate regional disparities within economies. A basic finding so far is that internal migration is much higher in the United States and Canada than in Europe (Long, 1991; Bentivogli and Pagano, 1999; Coulombe, 2006). While in the United States internal movements have been identified to play an important role in reducing regional unemployment and wage differentials by shifting people from regions with low-productivity and high-unemployment to economically prospering ones, Fidrmuc (2004) did not find a corresponding pattern in European countries. And even though research on internal migration in Italy indicates that relative per capita GDP and relative unemployment rates were the most important drivers for internal migration in that country between 1970 and 2002 (Piras, 2010), these movements were far too low to act as

an equilibrating mechanism for regional imbalances. Concerning the role of unemployment in channeling interregional migration in Italy empirical results are controversial. In contrast to Piras (2010) who estimated a robust inverse relation between unemployment and the migration rate, Daveri and Faini (1997) did not discover a significant influence of unemployment on mobility, while Fachin (2007) pointed to a weak impact. In Great Britain relative unemployment and wages have been identified to influence regional mobility but the related regional adjustment processes are apparently very slow (Pissarides and McMaster, 1990). A similar nexus has been observed for Germany, where considerable welfare differences between East and West have not been mitigated by internal mobility (Decressin and Fatás, 1995).

The drivers of internal migration and its potential to support regional adjustment processes has also been explored in the context of transition and post-Soviet economies. Internal migration flows are often expected to act as an adaptation mechanism to shocks related to transition. For four East European countries (Poland, Hungary, the Czech Republic and Slovakia), Fidrmuc (2004) analyzed the factors that influenced internal mobility in the aftermath of economic transition, i.e. from 1992 to 1998. His research shows that high wages encouraged and high unemployment discouraged regional inflows as well as outflows, implying that the mobility of people was high in better-off regions while in poorer regions it was low. Accordingly internal movements did not flow from economically unsuccessful to successful regions. Furthermore the impact of wages and unemployment on internal migration flows was very small. Similar observations have been reported for Baltic countries (Hazans, 2003). Studies conducted in Russia provide a further illustration for interregional mobility in a transition context. Although regional disparities in Russia were high between 1992 and 1999, interregional migration flows were rather low. Nevertheless, richer regions with better employment chances and a better endowment of public goods attracted people while depressed regions experienced outflows (Andrienko and Guriev, 2004). This was also confirmed by a later study on region-to-region migration in Russia between 2000–2003 which discovered that well-off Moscow and surrounding regions in addition to resource-mining areas were popular destinations for internal movements (Kumo, 2005). Analyzing the question why regional mobility in Russia only marginally responded to regional welfare differences, Andrienko and Guriev (2004) proposed financial constraints to play a role. In their empirical analysis they found that an increase of incomes in the poorest regions encouraged out-migration, indicating that people had to earn a certain threshold income to be able to afford the move.

For Kazakhstan no research on the determinants of internal migration movements have been conducted. However, in their study on migration between Kazakhstan and Russia Becker *et al.* (2005) show that these movements responded to conventional economic variables and economic shocks such as the 1998 Russian financial crisis and relative exchange rate fluctuations.

4. Data and methodology

4.1. Data

For our analysis we use quarterly regional migration data between 16 administrative districts (*oblasts*) of Kazakhstan for the period 2008–2010. Migration data published by the Statistical Agency of Kazakhstan are collected by the local police authorities and are based on statistical coupons that have to be filled out upon registering or de-registering. Statistical coupons are only completed in case of permanent registration or de-registration (so-called *propiska* and *vypiska*) and thus the official migration statistics do not contain temporary migrants.

In total we have information on migration movements for 2,880 pairs of regions. We also use quarterly data on the average wage, income, unemployment rate, and population size of all 16 administrative districts. Wage is the monthly average nominal wage per employee. Income is defined as quarterly income per person including labor and non-labor income such as transfers and benefits. Incomes and wages are reported in the Kazakh national currency – Tenge.³ The unemployment rate is the share of unemployed in the labor force. Additionally, we calculated the distance between administrative centers (which are also the largest cities) in kilometers as a proxy for the distance between pairs of regions. We also calculated the travel time between administrative centers using the Google route planner. Table 1 presents descriptive statistics for all mentioned variables.

Table 1: **Descriptive statistics**

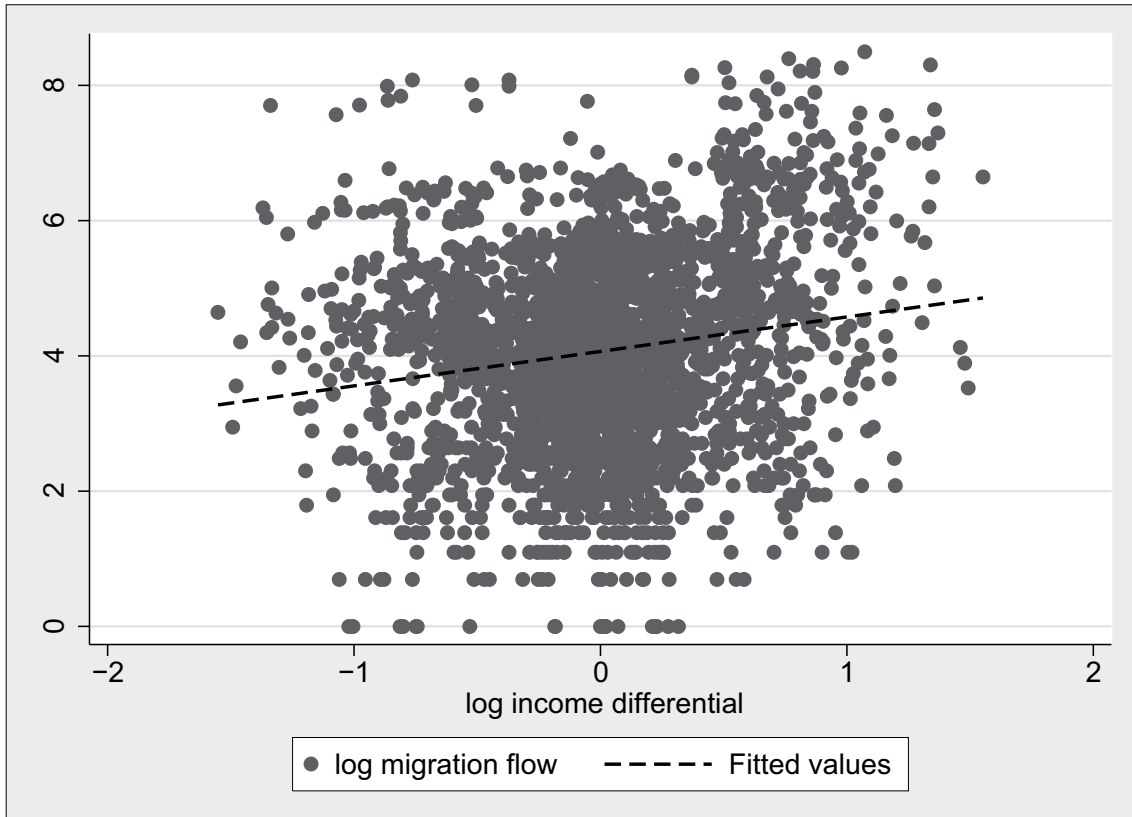
variable	mean	st.dev.	min	max
<i>migration flow</i>	173	394	0	4899
<i>income (Tg)</i>	122,999	110,571	15,498	416,968
<i>wage (Tg)</i>	68,403	27,559	35,132	152,241
<i>population</i>	984,684	506,678	390,531	2,510,395
<i>unemployment rate</i>	6.3	0.6	5.0	8.2
<i>distance (km)</i>	1,543	777	177	3,681
<i>travel time (hours)</i>	20.8	11	2.6	53

Source: Statistical Agency of Kazakhstan, authors' own calculation

It shows that the average population of a region is less than a million, while the average distance between regions is roughly 1,500 km or 21 hours travel time. A large variation in regional wages and especially in incomes can be observed. Although the correlation between migration flows and wage and income differentials is significant, figure 3 reveals that it is not very strong 3.

³Currently 1 USD is worth roughly 147 Tenge

Figure 3: Effect of wage and income differentials on migration



Source: Statistical Agency of Kazakhstan, authors' own calculation

4.2. Empirical model

Our empirical model is based on the so-called gravity model (for example Andrienko and Guriev, 2004; Etzo, 2008; Lall *et al.*, 2006). Using logarithmic transformation the gravity model for migration has the following general form:

$$\log M_{ijt} = Z_{it}\mathbf{B} + Z_{jt}\mathbf{\Gamma} + \alpha D_{ij} + \epsilon_{ijt}, \quad (1)$$

where M_{ijt} is the migration flow from region i to region j at period t , Z_{it} and Z_{jt} include covariates for the sending region and the receiving region, respectively, at period t , D_{ij} is the distance factor between regions i and j , ϵ_{ijt} is the error term, and B , Γ , and α are parameters to be estimated. The model can be generalized to include time and regional fixed effects that capture time invariant differences between regions such as economic resources, geographic and cultural variables.⁴

In a spatial panel one might encounter spatial correlation and autocorrelation, that is contemporaneous correlation across spatial units and autocorrelation over time within each spatial unit. The Driscoll and Kraay (1998) method enables estimation of the covariance matrix which is robust to spatial and time autocorrelation (Hoechle, 2007). Consider

⁴One can of course argue that culture, that is traditions or attitudes, change over time. Nevertheless, given our short time frame we treat them as constant over time.

the linear model:

$$\begin{aligned} y_{it} &= X_{it}\mathbf{B} + \epsilon_{it}, \\ i &= 1, \dots, N, t = 1, \dots, T \end{aligned} \quad (2)$$

The variable X is assumed to be uncorrelated with the error term. Even if the random component may exhibit autocorrelation and cross-sectional dependence, B can be consistently estimated by OLS. As shown by Driscoll and Kraay (1998) the covariance matrix robust to autocorrelation and spatial correlation is given by

$$V(\hat{B}) = (X'X)^{-1}\hat{S}_T(X'X)^{-1}. \quad (3)$$

Here \hat{S}_T is defined as

$$\hat{S}_T = \hat{\Omega}_0 + \sum_{j=1}^{m(T)} w(j, m) [\hat{\Omega}_j + \hat{\Omega}_j'], \quad (4)$$

where $m(T)$ denotes the length of the lag up to which residuals may be autocorrelated and $w(j, m(T)) = 1 - j/(m(T) + 1)$.⁵ Moreover:

$$\begin{aligned} \hat{\Omega}_j &= \sum_{t=j+1}^T h_t(\hat{B})h_{t-j}(\hat{B})', \\ h_t(\hat{B}) &= \sum_{i=1}^{N(t)} h_{it}(\hat{B}), \end{aligned} \quad (5)$$

where $h_{it}(\hat{B})$ are moment conditions. Driscoll and Kraay (1998) showed that this method produces standard errors which are robust to general forms of spatial and time dependence.

⁵See Newey and West (1987).

5. Estimation results

5.1. Benchmark regressions

The estimation results for three different models are presented in table 2. Model 1 does not include fixed effects for origin and destination, models 2 and 3 do. But whereas model 2 contains wages, model 3 contains average income (which includes both labor and non-labor income).

Table 2: OLS regression (dependent variable – log migration flow)

variable	Model 1		Model 2		Model 3	
	coefficient	significance	coefficient	significance	coefficient	significance
<i>log distance</i>	-1.36	***	-1.34	***	-1.34	***
<i>log income destination</i>	—		—		0.16	***
<i>log income origin</i>	—		—		-0.15	**
<i>log population destination</i>	1.33	***	0.86		1.15	**
<i>log population origin</i>	1.23	***	1.43	**	1.31	**
<i>log wage destination</i>	1.84	***	0.86	**	—	
<i>log wage origin</i>	0.89	***	-0.05		—	
<i>u_{destination}</i>	0.67	***	0.07		0.07	
<i>u_{origin}</i>	0.49	***	0.05		0.04	
<i>seasonal effects</i>	Yes		Yes		Yes	
<i>year dummies</i>	Yes		Yes		Yes	
<i>fixed effects origin</i>	No		Yes		Yes	
<i>fixed effects destination</i>	No		Yes		Yes	
<i>R² adjusted</i>	0.64		0.78		0.78	
<i>N</i>	2873		2873		2873	

* significant at 10% level, ** at 5% level, *** at 1% level

Across all three models, the effect of distance is almost identical. An increase in distance by one percent reduces the flow of migrants by roughly 1.3 percent. This elasticity is larger than those found by the literature for other countries such as Russia, the USA, and China which tend to be close to 1 in absolute value (Andrienko and Guriev, 2004).⁶ This might point at high travel costs in Kazakhstan possibly due to poor infrastructure. Another explanation might be that a high diversity in educational attainment and professional experience between more distant regions might preclude the transfer of human capital. Furthermore, internal movements over longer distances may be hampered by psychological costs of leaving family and friends and by high information costs. The effect of population size in both origin and destination is positive and similar to the results obtained for Russia (Andrienko and Guriev, 2004). Hence, one might conclude that migration mostly takes place between larger and nearby regions. A similar result was also found by Kumo (2005) for the case of Russia. However, the effect of the population size in the destination region loses its significance in model 2. This could be due to the low variation of the population size over the three year span (2008–2010); thus the effect

⁶The strong impact of distance on internal migration in contemporary Kazakhstan stands in stark contrast to the comparatively low nexus between distance and population migration in the Soviet Union. As Mitchneck (1991) has pointed out this was the result of the politically motivated placement of people within the USSR.

of the population size might partially be captured by regional fixed effects. In model 1 and 2 the wage in the destination region positively affects internal movements which is in line with the theoretical argumentation put forward by migration economics. At the same time, the effect of the wage in the origin is negligible. The elasticity of migration with respect to income is about 0.15 which is somewhat larger than the one obtained for Russia by Andrienko and Guriev (2004). Surprisingly, the effect of unemployment is positive for both origin and destination in model 1 while it appears to be insignificant in models 2 and 3 in the presence of regional fixed effects. Even without controlling for regional fixed effects the explanatory power of model 1 is substantial ($R^2 = 0.64$). Introducing regional fixed effects in models 2 and 3 increases the explanatory power ($R^2 = 0.78$).

We further estimated the model by controlling for autocorrelation as well as for spatial correlation. The estimates are presented in tables 3 and 4.

Table 3: **Generalized linear model (AR 4 autocorrelation structure)**

variable	Model 4		Model 5		Model 6	
	coefficient	significance	coefficient	significance	coefficient	significance
<i>log distance</i>	—		-1.34	***	-1.34	***
<i>log travel time</i>	-1.31	***	—		—	
<i>log income destination</i>	—		—		0.14	***
<i>log income origin</i>	—		—		-0.12	***
<i>log population destination</i>	0.42		0.42		0.78	*
<i>log population origin</i>	0.72	*	0.73	*	0.60	
<i>log wage destination</i>	1.17	***	1.17	***	—	
<i>log wage origin</i>	-0.34		-0.34		—	
<i>u_{destination}</i>	0.08	**	0.08	**	0.06	*
<i>u_{origin}</i>	0.02		0.02		0.02	
<i>N</i>	2831		2831		2831	
<i>seasonal effects</i>	Yes		Yes		Yes	
<i>year dummies</i>	Yes		Yes		Yes	
<i>fixed effects origin</i>	Yes		Yes		Yes	
<i>fixed effects destination</i>	Yes		Yes		Yes	

* significant at 10% level, ** at 5% level, *** at 1% level

As in the OLS regressions the explanatory power of the model is high. We also find the elasticity of travel time or distance to range at about -1.3 . Furthermore, the effect of the population size in the origin and destination is positive and in most cases statistically significant. This confirms that people are more likely to move between more populated regions. While the income level in the origin has a negative influence on migration, it is positive in the destination region as has already been shown in the OLS regressions. This implies that people tend to leave regions where incomes are low and move to regions with higher income levels. Although the effect of the wage rate in the origin is negligible, the effect of the wage rate in the destination is positive. Consistent with the OLS regressions, unemployment does not seem to determine interregional migration flows.

Table 4: Linear model with autocorrelated errors across time and space (AR 4 autocorrelation structure)

variable	Model 7		Model 8		Model 9	
	coefficient	significance	coefficient	significance	coefficient	significance
<i>log distance</i>	—		-1.34	***	-1.34	***
<i>log travel time</i>	-1.30	***	—		—	
<i>log income destination</i>	—		—		0.16	***
<i>log income origin</i>	—		—		-0.15	***
<i>log population destination</i>	0.86	***	0.86	***	1.15	***
<i>log population origin</i>	1.44	***	1.43	***	1.31	***
<i>log wage destination</i>	0.86	***	0.86	***	—	
<i>log wage origin</i>	-0.05		-0.05		—	
$u_{destination}$	0.07		0.07		0.07	
u_{origin}	0.05		0.05		0.04	
<i>seasonal effects</i>	Yes		Yes		Yes	
<i>year dummies</i>	Yes		Yes		Yes	
<i>fixed effects origin</i>	Yes		Yes		Yes	
<i>fixed effects destination</i>	Yes		Yes		Yes	
R^2	0.77		0.78		0.78	
N	2873		2873		2873	

* significant at 10% level, ** at 5% level, *** at 1% level

5.2. Robustness checks

One might argue that it is not the nominal income or wage as used in our estimation but the real income or wage that potential migrants take into consideration when planning to move as price levels differ across regions. However, some variation in prices over time and across regions is captured in time dummies and regional fixed effects. To account for differences in regional price levels one might in principle also take the CPI to construct real wages or incomes. Although the Statistical Agency of Kazakhstan reports changes in CPI, this index captures price variation over time but not price variation across regions. Nevertheless, we try to overcome this problem by using data on the regional subsistence level reported by the Statistical Agency. The subsistence level varies across regions and over time and is reported on a quarterly basis beginning in 2009. Prior to 2009 it is available on a yearly basis. We therefore defined log income deviations as $\ln(income_{rt}) - \ln(subsist_{rt})$, that is the log deviation of the nominal income from the subsistence level for region r in period t . For the year 2008 we assumed the yearly subsistence level reported by the Statistical Agency to be equal across all quarters. The results are reported in table 5.

Table 5: Linear model (using income deviation from the subsistence level) with autocorrelated errors across time and space (AR 4 autocorrelation structure)

Model 10 ^a		
variable	coefficient	significance
<i>log distance</i>	-1.34	***
<i>log travel time</i>	—	
<i>log income destination</i>	0.17	***
<i>log income origin</i>	-0.15	***
<i>log population destination</i>	1.16	***
<i>log population origin</i>	1.30	***
<i>log wage destination</i>	—	
<i>log wage origin</i>	—	
<i>u_{destination}</i>	0.07	
<i>u_{origin}</i>	0.04	
<i>seasonal effects</i>	Yes	
<i>year dummies</i>	Yes	
<i>fixed effects origin</i>	Yes	
<i>fixed effects destination</i>	Yes	
<i>R</i> ²	0.78	
<i>N</i>	2873	

^a in Model 10 log income is defined as log income deviation from the subsistence level

* significant at 10% level, ** at 5% level, *** at 1% level

One can see that the estimates are virtually identical between models 9 and 10, confirming the results obtained earlier. Moreover, we estimated the model excluding flows from and to Astana as some movements to the new capital city might have been politically motivated. The main results remain however unchanged: people are more likely to move between larger regions and over smaller distances and migrants are attracted by the prospect of earning higher wages or incomes.

6. Conclusion

In this paper we analyzed the determinants of interregional migration in Kazakhstan using a quarterly panel for the years 2008–2010 for 16 administrative regions. We find that interregional movements in Kazakhstan can to a large extent be explained by economic motives.

First of all, we found that migrants are attracted by higher wages or incomes. The elasticity of migration to income is about 0.15. If wages are used instead of incomes to represent earnings in the destination then a 1 percent growth in wages in the destination increases migration by between 0.8 and 1.8 percent. We did not find any significant effect of the unemployment rate on migration. Wages in the origin do not seem to impact population movements either. However, higher incomes in the origin reduce the migration probability. Regions with a larger population are more likely to send and likewise more likely to receive migrants.

The elasticity of migration to distance is about -1.3 . This is larger in absolute value than what has been found for other countries, for example Russia, the USA, and China, and points at higher migration related costs and risks in Kazakhstan. Thus, an equalization of regional disparities or convergence might take long time. This finding has political relevance as one could argue that investment in public and social infrastructure might facilitate regional income convergence and improve living standards in depressed regions.

References

- ANDERSON, K. and POMFRET, R. (2004). *Spatial inequality and development in Central Asia*. Research Paper No. 2004/36, World Institute for Development Economics Research.
- ANDRIENKO, Y. and GURIEV, S. (2004). Determinants of interregional mobility in Russia: Evidence from panel data. *Economics of Transition*, **12** (1), 1–27.
- BECKER, C., MUSABEK, E., SEITENOVA, A. and URZHUMOVA, D. (2005). The migration response to economic shock: Lessons from Kazakhstan. *Journal of Comparative Economics*, **33** (1), 107–132.
- BENTIVOGLI, C. and PAGANO, P. (1999). Regional disparities and labour mobility: the Euro-11 versus the USA. *Labour*, **3** (3), 737–60.
- COULOMBE, S. (2006). Internal migration, asymmetric shocks, and interprovincial economic adjustment in Canada. *International Regional Science Review*, **29** (2), 199–223.
- CUSHING, B. and POOT, J. (2008). Crossing boundaries and borders: Regional science advances in migration modelling. *Papers in Regional Science*, **83**, 317–338.
- DAVERI, F. and FAINI, R. (1997). Where do migrants go? *Oxford Economic Papers*, **51** (4), 595–622.
- DECRESSIN, J. and FATÁS, A. (1995). Regional labour market dynamics in Europe. *European Economic Review*, **39**, 1627–1655.
- DILLINGER, W. (2007). *Poverty and Regional Development in Eastern Europe and Central Asia*. Chief Economist's Regional Working Paper Series Vol. 2, No.1.
- DRISCOLL, J. and KRAAY, A. (1998). Consistent covariance matrix estimation with spatially dependent panel data. *The Review of Economics and Statistics*, **80** (4), 549–560.
- EBRD (2010). Transition report 2010: Recovery and reform, European Bank for Reconstruction and Development. <http://www.ebrd.com/pages/research/publications/flagships/transition.shtml>.
- ETZO, I. (2008). *Internal migration: a review of the literature*. MPRA paper No. 8783, Munich Personal RePEc Archive.
- FACHIN, S. (2007). Long-run trends in internal migrations in Italy: A study in panel cointegration with dependent units. *Journal of Applied Econometrics*, **22**, 401–428.
- FAINI, R. and VENTURINI, A. (1994). *Migration and Growth: The Experience of Southern Europe*. Discussion Paper No. 964, Center for Economic Policy Research.
- FIDRMUC, J. (2004). Migration and regional adjustment to asymmetric shocks in transition economies. *Journal of Comparative Economics*, **32** (2), 230–247.

- GREENWOOD, M. (1995). Human migration: Theory, models and empirical studies. *Journal of Regional Science*, **25**, 521–544.
- HARRIS, J. and TODARO, M. (1970). Migration, unemployment, and development: A two-sector analysis. *American Economic Review*, **60** (1), 126–142.
- HATTON, T. and WILLIAMSON, J. (2005). What fundamentals drive world migration? In G. Borjas and J. Crisp (eds.), *Poverty, International Migration and Asylum*, Palgrave-Macmillan, pp. 15–38.
- HAZANS, M. (2003). *Determinants of Inter-Regional Migration in the Baltic Countries*. Working Paper No. B17-2003, ZEI.
- HOECHLE, D. (2007). Robust standard errors for panel regressions with cross-sectional dependence. *Stata Journal*, **7** (3), 281–312.
- KUMO, K. (2005). Inter-regional population migration in Russia: Using an origin-to-destination matrix. *Post-Communist Economies*, **19** (2), 131–152.
- LALL, S., SELOD, H. and SHALIZI, Z. (2006). *Rural-Urban Migration in Developing Countries: A Survey of Theoretical Predictions and Empirical Findings*. Policy Research Paper No. 3915, World Bank.
- LEE, E. (1966). A theory of migration. *Demography*, **3**, 47–57.
- LEWER, J. and VAN DEN BERG, H. (2008). A gravity model of immigration. *Economic Letters*, **99** (1), 164–167.
- LONG, L. (1991). Residential mobility differences among developed countries. *International Regional Science Review*, **14**, 133–47.
- MITCHNECK, B. (1991). Geographical and economic determinants of interregional migration in the USSR: 1968-1985. *Soviet Geography*, **32** (3), 168–189.
- MONFORT, P. (2008). *Convergence of EU regions. Measures and evolution*. Directorate-General for Regional Policy, Working Papers No. 01.
- NAJMAN, B., POMFRET, R. and RABALLAND, R. (2008). *The Economics and politics of Oil in the Caspian Basin*. *Central Asia Research Forum*. New York: Routledge.
- NEWAY, W. and WEST, K. (1987). A simple, positive semi-definite, heteroskedasticity and autocorrelation consistent covariance matrix. *Econometrica*, **55**, 703–708.
- PIRAS, R. (2010). *Internal Migration Across Italian regions: Macroeconomic Determinants and Accommodating Potential for a Dualistic Economy*. Working Paper 2010.115, Fondazione Eni Enrico Mattei.
- PISSARIDES, C. and MCMASTER, I. (1990). Regional migration, wage and unemployment : empirical evidence and implications for policy. *Oxford Economic Papers*, **42** (4), 812–831.

WANDEL, J. and KAZBOGAROVA, B. (2009). *Kazakhstan: Economic Transformation and Autocratic Power*. Country Brief No. 4, Mercatus Policy Series.

A. Appendix

Table A.1: **Regional economic indicators of Kazakhstan (2009)**

	area (Tsd. sq. km)	population (Tsd.)	regional immigration	regional emigration	GRP per capita	unemploy- ment rate	poverty rate*
Kazakhstan	2724.9	15,925	171,051	171,051	1068.0	6.6	8.2
Aqmola	146.2	740	8,362	14,948	709.3	6.9	5.9
Aktobe	300.6	716	1,357	5,450	1193.1	6.0	6.3
Almaty oblast	224	1,680	22,938	22,437	460.3	6.4	15.5
Atyrau	118.6	508	3,397	3,173	3881.6	6.1	10.0
West Kazakhstan	151.3	622	2,282	3,410	1324.2	6.3	8.2
Zhambyl	144.3	1,038	7,064	14,140	336.3	6.5	4.8
Karaganda	428	1,349	8,710	9,365	1123.5	6.1	3.9
Kostanai	196	888	3,735	6,772	815.3	6.3	6.8
Kyzyl-Orda	226	684	4,729	7,617	937.4	6.6	10.4
Mangistau	165.6	436	6,481	3,225	2542.5	7.1	22.6
South Kazakhstan	117.3	2,405	7,756	21,913	384.8	6.6	11.7
Pavlodar	124.8	750	3,577	4,719	1150.8	6.4	6.2
North Kazakhstan	98	646	3,220	6,711	625.5	6.3	7.3
East Kazakhstan	283.2	1,418	5,756	12,285	693.6	6.4	6.6
Astana city	0.7	662	42,150	9,956	2075.2	6.6	3.9
Almaty city	0.3	1,385	39,537	24,930	2293.1	7.7	3.0

* share of the population with an income below the subsistence minimum level
Source: Statistical Agency of Kazakhstan