

Becker, Anke; Deckers, Thomas; Dohmen, Thomas; Falk, Armin; Kosse, Fabian

Working Paper

The relationship between economic preferences and psychological personality measures

CESifo Working Paper, No. 3785

Provided in Cooperation with:

Ifo Institute – Leibniz Institute for Economic Research at the University of Munich

Suggested Citation: Becker, Anke; Deckers, Thomas; Dohmen, Thomas; Falk, Armin; Kosse, Fabian (2012) : The relationship between economic preferences and psychological personality measures, CESifo Working Paper, No. 3785, Center for Economic Studies and ifo Institute (CESifo), Munich

This Version is available at:

<https://hdl.handle.net/10419/57652>

Standard-Nutzungsbedingungen:

Die Dokumente auf EconStor dürfen zu eigenen wissenschaftlichen Zwecken und zum Privatgebrauch gespeichert und kopiert werden.

Sie dürfen die Dokumente nicht für öffentliche oder kommerzielle Zwecke vervielfältigen, öffentlich ausstellen, öffentlich zugänglich machen, vertreiben oder anderweitig nutzen.

Sofern die Verfasser die Dokumente unter Open-Content-Lizenzen (insbesondere CC-Lizenzen) zur Verfügung gestellt haben sollten, gelten abweichend von diesen Nutzungsbedingungen die in der dort genannten Lizenz gewährten Nutzungsrechte.

Terms of use:

Documents in EconStor may be saved and copied for your personal and scholarly purposes.

You are not to copy documents for public or commercial purposes, to exhibit the documents publicly, to make them publicly available on the internet, or to distribute or otherwise use the documents in public.

If the documents have been made available under an Open Content Licence (especially Creative Commons Licences), you may exercise further usage rights as specified in the indicated licence.

The Relationship between Economic Preferences and Psychological Personality Measures

Anke Becker
Thomas Deckers
Thomas Dohmen
Armin Falk
Fabian Kosse

CESIFO WORKING PAPER NO. 3785

CATEGORY 13: BEHAVIOURAL ECONOMICS

APRIL 2012

An electronic version of the paper may be downloaded

- *from the SSRN website:* www.SSRN.com
- *from the RePEc website:* www.RePEc.org
- *from the CESifo website:* www.CESifo-group.org/wp

The Relationship between Economic Preferences and Psychological Personality Measures

Abstract

Although both economists and psychologists seek to identify determinants of heterogeneity in behavior, they use different concepts to capture them. In this review we first analyze the extent to which economic preferences and psychological concepts of personality - such as the Big Five and locus of control - are related. We analyze data from incentivized laboratory experiments and representative samples and find only low degrees of association between economic preferences and personality. We then regress life outcomes - such as labor market success, health status and life satisfaction - simultaneously on preference and personality measures. The analysis reveals that the two concepts are rather complementary when it comes to explaining heterogeneity in important life outcomes and behavior.

JEL-Code: C910, D010, D800, D900, I000, J300, J620.

Keywords: risk preference, time preference, social preferences, Locus of Control, Big Five.

Anke Becker
University of Bonn
Bonn / Germany

Thomas Deckers
University of Bonn
Bonn / Germany

Thomas Dohmen
Maastricht University
Maastricht / The Netherlands

Armin Falk
University of Bonn
Bonn / Germany
armin.falk@uni-bonn.de

Fabian Kosse
University of Bonn
Bonn / Germany

March 27, 2012

We gratefully acknowledge support by the European Research Council (Starting Grant).

1 Introduction

Both economists and personality psychologists seek to identify determinants of heterogeneity in behavior. Economists typically depict decision problems in a framework of utility maximization. An individual's utility is shaped by preferences such as risk, time, and social preferences.¹ These preferences, in combination with expectations of future events, perceptions, beliefs, strategic consideration, prices and constraints shape behavior. Personality psychology, the branch of psychology studying personality and individual differences, offers several frameworks describing universal traits and individual differences. Personality traits – defined by Roberts (2009, p. 140) as “the relatively enduring patterns of thoughts, feelings, and behaviors that reflect the tendency to respond in certain ways under certain circumstances” – are important determinants of personality (Roberts, 2006) and affect outcomes. There has been a long tradition in personality psychology to measure personality traits. The Big Five or five-factor model is the most widely used taxonomy of personality traits. It originates from the lexical hypothesis of Allport and Odbert (1936), which postulates that individual differences are encoded in language (see Borghans et al. 2008). After years of research in this tradition, psychologists have arrived at a hierarchical organization of personality traits with five traits at the highest level. These Big Five traits, which are commonly labeled as openness to experience, conscientiousness, extraversion, agreeableness, and neuroticism, capture personality traits at the broadest level of abstraction. Each Big Five trait condenses several distinct and more narrowly defined traits. It has been argued that the bulk of items that personality psychologists have used to measure personality

¹In the standard expected utility framework, risk preference is captured by the curvature of the utility function, whereas the degree of risk aversion is represented in the concavity of the utility function (e.g. Gollier, 2001). Time preference describes how an individual trades off utility at different points in time (Samuelson, 1937; Frederick *et al.*, 2002). Social preferences capture the idea that an individual's utility does not depend only on his own material payoff, but that it is also shaped by others' behavior and material payoff. Social preferences include altruism (e.g. Eckel and Grossmann, 1996) and negative and positive reciprocity (e.g. Falk and Fischbacher, 2006). Finally, trust describes an individual's belief about others' trustworthiness combined with a preference to take social risks (e.g. Fehr, 2009). Another important economic preference is the preference for work versus leisure. This preference is difficult to measure in experiments and is therefore not part of our analysis.

can be mapped into the Big Five taxonomy (see, e.g., Costa and McCrae, 1992)).² Another important concept in psychology focusing on individual beliefs and perceptions is the locus of control framework by Rotter (1966). It represents the framework of the social learning theory of personality and refers to the extent people believe they have control over events.

An integration of the different measures and concepts used by economists and personality psychologists promises much potential for amalgamating evidence about the drivers of human behavior which accumulated disjointedly in the fields of economics and psychology (Borghans *et al.*, 2008). Recently, scholars have begun to integrate personality into economic decision making (e.g., Borghans *et al.*, 2008). Almlund *et al.* (2011) enrich theory by incorporating personality traits in a standard economic framework of production, choice, and information. Their model interprets measured personality as a “construct derived from an economic model of preferences, constraints, and information” (Almlund *et al.*, 2011, p. 3). However, empirical knowledge is too limited to judge how personality traits relate to the concepts and parameters economists typically model to predict behavior.

To shed more light on the relationship between economic preferences and psychological measures of personality we therefore study how key economic preferences, such as risk, time and social preferences, are linked to conventional measures of personality, such as the Big Five and locus of control. We analyze this relationship in a coherent framework using two main approaches. The first approach focuses on assessing the magnitude of the correlations between psychological and economic measurement systems in three unique data sets. The second approach departs from the fact that both preference measures and measures of personality traits predict a wide range of important life outcomes. If these two measurement systems are closely linked, they are expected to be substitutes in explaining heterogeneity in behavior. If, however, preferences and personality traits capture different aspects of behavior, the two measurement systems may have complementary predictive power for important life outcomes. We therefore evaluate the individual as well as the joint explanatory power of economic preferences and psychological measures of personality in explaining health, educational and labor market outcomes.

²For a more detailed description of the research on the development of the Big Five, criticism of the approach and alternative measurement systems see Borghans *et al.* (2008).

We use three complementary datasets. First, we look at data from laboratory experiments. Using a student subject pool we conducted choice experiments on key economic preferences, namely risk taking, time discounting, altruism, trust, and positive and negative reciprocity. We incentivized decision-making and obtained multiple behavioral measures for each preference. We assessed the Big Five domains using the 60-item NEO-FFI (NEO Five Factor Inventory) (Costa and McCrae, 1989) and a 15-item subset, the so-called BFI-S (Gerlitz and Schupp, 2005). We also measured the locus of control using 10 items adapted from Rotter (1966). Our second data set comprises very similar incentivized experimental measures with respect to risk taking and time discounting using a representative sample of almost 1000 participants from the German population. We are therefore able to obtain incentivized preference measures for a representative population. Personality was assessed using the BFI-S. The third data set stems from the German Socio-Economic Panel Study (SOEP), comprising preference and personality measures for a representative sample of more than 14.000 individuals. Preference measures were obtained using subjective self-assessment survey items rather than incentivized experiments, and personality was measured by using the BFI-S and the locus of control questionnaire. Using this data set we analyze associations between important life outcomes, such as labor market success, subjective health status or life satisfaction, and individuals' preferences and personalities.

These three data sets allow for a comprehensive analysis. The first data set contains very detailed personality measures in combination with multiple experimental indicators for preferences. This student sample therefore provides a particularly accurate assessment of potential relations between economic preferences and personality. The second data set uses experimental measures for a limited set of preferences and a shorter version of the Big Five but a representative sample. A comparison of results of the two data sets therefore informs us about the generalizability of our findings from the student sample. The third data set additionally allows us to study an even larger sample and to explore the explanatory power of personality and preferences for important life outcomes.

We start by analyzing data on 489 university students. We relate all five factors that capture personality according to the Big Five taxonomy and the measure of Locus of Control to our experimental preference measures. We generally find only small correlations

between personality traits and preferences. In particular, only 11 of the 36 correlations in our student sample exceed 0.1 in absolute value and only one correlation exceeds 0.2 in absolute value. These eleven correlation coefficients are all significant at conventional levels, and eight of them involve correlations between social preferences and personality traits.

Next, we gauge whether the correlation patterns generalize to representative samples. We first turn to the data set that contains very similar experimental measures of risk and time preferences and survey measures of the Big Five approximately 1000 individuals, who were sampled to be representative of the adult population living in Germany (see Dohmen *et al.*, 2010). The correlation structure between personality traits and risk and time preferences turns out to be similar to the one we find for students, with few exceptions.

Finally, we assess whether the empirical associations between preference parameters and personality traits are sensitive to the way in which preferences are measured. We compare correlations between personality traits and measures of preferences derived from the incentivized choice experiments in the student and the representative sample to correlations that are constructed based on the non-incentivized subjective self-assessments in a representative sample of 14,000 individuals from the SOEP. Our result on the pattern of correlations between preference measures and personality measures is again largely confirmed.

We then turn to a different type of analysis in which we assess the power of preferences and personality in explaining life outcomes, including health, life satisfaction, earnings, unemployment and education. Our analysis reveals that both measurement systems have similar explanatory power when used separately as explanatory variables. The explained fraction of variance increases by approximately 60% when life outcomes are regressed on both measurement systems. We therefore conclude that each measurement system captures distinct sources of the heterogeneity in life outcomes. A coherent picture emerges from our analysis. Both approaches strongly suggest that standard measures of preferences and personality are complementary constructs.

So far no clear picture concerning the relations between measures of personality and economic preferences has emerged in the literature (see Almlund *et al.*, 2011). For example,

the study by Daly *et al.* (2009) suggests a negative relationship between conscientiousness and the discount rate, but such a negative correlation is not corroborated by Dohmen *et al.* (2010), who relate experimental measures of willingness to take risk and impatience to survey measures of the Big Five in a representative sample of adults living in Germany, nor by Anderson *et al.* (2011), who relate a measure of delay acceptance to four of the Big Five domains in a sample of 1065 US trainee truckers.³ In fact, Dohmen *et al.* (2010) find no significant relationship between personality traits and preference measures in a regression framework that includes controls for IQ, gender, age, height, education, and household income. Raw correlations between preference and personality measures, which are also reported in Almlund *et al.* (2011), are weak; time preference is significantly correlated only to agreeableness (at the 10 percent level).⁴ This finding is confirmed by the significant correlation between delay acceptance and agreeableness in the truck-driver sample of Anderson *et al.* (2011).

Evidence on the link between risk preferences and the Big Five domains is equally mixed. Raw correlations between a lottery-choice measure of risk preference and personality traits in the data from Dohmen *et al.* (2010) indicate significant relationships between risk preferences and openness to experience (at the 1 percent level) and agreeableness (at the 5 percent level). Anderson *et al.* (2011) do not measure openness to experience. They do not find a significant correlation for risk preference and agreeableness, but report a weak correlation between risk preference and neuroticism (0.05 in absolute value), which is significant at the 10 percent level. This finding is in line with the significant positive association between risk aversion and neuroticism reported by Borghans *et al.* (2009). Other researchers (e.g. Zuckerman, 1994) have related risk preferences to sensation seeking, a facet of extraversion in the Big Five taxonomy, and found mixed evidence. Whereas Bibby and Ferguson (2010) report a significant correlation between a measure of loss aversion and sensation seeking ($r = 0.27$), Eckel and Grossmann (2002) find no evidence of an association between risk preferences and sensation seeking.

Evidence on the link between social preferences and personality is somewhat stronger.

³The effect sizes of the correlations between preference and personality measures are all smaller than 0.1 in absolute value.

⁴We report this data in Table 3.

Dohmen *et al.* (2008) relate survey measures of social preferences to measures of the Big Five using data from the SOEP and find significant associations between trust, as well as positive and negative reciprocity and personality traits. Trust is related positively to agreeableness and openness to experience, and negatively to conscientiousness and neuroticism; while positive reciprocity is positively associated with all five personality factors, negative reciprocity is related negatively to conscientiousness and extraversion, and positively to neuroticism. A link between extraversion and behavior in the dictator game, which can be interpreted as a measure of altruism, has been established by Ben-Ner and Kramer (2010).

This review is structured as follows. Section 2 describes our three data sets. In Section 3 we introduce our research strategy for investigating the link between personality and preferences. Section 4 presents evidence on the correlation between measures of personality and measures of preferences. In addition it contains an assessment of the explanatory power of preferences and personality in explaining important life outcomes. Section 5 concludes.

2 Data and Measures

In this section, we provide a description of the three complementary data sets that we employ for our analysis. Before we present our experimental and survey measures in detail, a few comments on identification are warranted. Economists typically try to infer preferences from choices, the so-called revealed preference approach. For example, one might surmise that a person who does not wear a safety belt and who invests in risky stocks has a preference for taking risks. It is, however, easy to show that the same behavioral pattern is compatible with very different risk preferences if other factors affect the person's decisions. For example, differences in beliefs about how risky driving without a safety-belt or investing in stocks actually is may affect decisions equally strong than underlying risk preferences. The problem is that the decision context is uncontrolled and person specific, rendering precise statements about preference parameters very difficult.⁵ This is why economists

⁵Conceptually identical problems apply to the identification of traits, such as ability, physical strength and personality characteristics from observed performance on tasks, when performance also depends on other unobserved factors such as time, energy and attention devoted to the task. An illuminating discussion

run experiments to infer preferences. In a typical choice experiment subjects make decisions in a well-controlled decision environment. In risk experiments, for example, stakes and probabilities are fixed and the action space is identical for every subject. Observing subjects' decisions in a controlled experimental environment therefore rules out many potentially confounding factors, allowing a more precise identification of preferences. Even in an experiment, however, the identification of preferences is limited (see Manski (2002) for a thorough discussion on the identification of experimental outcomes). The same observed action can reflect different risk attitudes, for example, if the experimental subjects dispose of different wealth levels and the curvature of the utility function is not invariant to wealth levels. Despite these limitations experiments deliver much more precise behavioral outcomes than non-experimental observations. In strategic situations, which are relevant for measuring trust and reciprocity, we are able to elicit not just an action but a complete strategy. With field observations this is impossible. The relevance of eliciting a strategy is obvious: Suppose one observes a second mover who defects in a cooperation context, in response to a non-cooperative act of a first mover. This could reveal selfish preferences as well as reciprocal preferences. Disentangling the two requires knowledge about what the decision maker would have done, had the first mover cooperated. Eliciting a strategy instead of observing only actions does exactly this. Experimental observations have the additional advantage over survey responses that decisions have immediate monetary consequences. This is of obvious importance, for example, for identifying altruism. There is a big difference between simply stating altruistic preferences and revealing them in a costly manner.

2.1 Experimental Data

The first data set consists of decisions from laboratory experiments among university students. We ran a series of simple incentivized choice experiments to elicit preferences concerning risk taking, discounting, positive and negative reciprocity, and trust as well as altruism.⁶ Table 1 presents an overview of the experiments and provides a short description

of the identification problem is provided in section 3 of Almlund et al. (2011).

⁶For a detailed description of the experimental procedures see Falk *et al.* (2011).

of the elicitation methods and the obtained behavioral measures. Four important features about our experimental design are worth noting. First, subjects took part in two very similar experiments each for risk taking, discounting, trust and positive reciprocity. This allows us to average over both outcomes for each subject in order to minimize measurement error. Second, to reduce spillovers between different choices, we ran the experiments not in one single session but in two sessions, which were scheduled one week apart.⁷ Third, to reduce possible income effects with respect to outcomes within a session, we gave feedback about experimental outcomes only at the end of an experimental session. Fourth, the vast majority of subjects in the experiments had never taken part in an experiment before. This eliminates possible confounds in behavior due to previous experiences in similar experiments. In total, 489 students from different majors from the University of Bonn participated.⁸ The experiments were run at the Laboratory for Experimental Economics at the University of Bonn (BonnEconLab). We used zTree (Fischbacher, 2007) as experimental software and recruited subjects using ORSEE (Greiner, 2004). Each session lasted about two hours, and average earnings were 64 Euros.

⁷We reversed the order of the sessions for half of the subjects. Statistical tests reveal no significant order effects.

⁸Out of these 489 students, 80 took part in a pretest of the study. Most of these 80 subjects had taken part in an experiment before. The pretest did not include the experiments on altruism and negative reciprocity.

Table 1: Overview of the experimental measures in data set from laboratory experiments among university students

| Preference | Experiment | Measure |
|----------------------|------------------------------------------------------------------------------------------------------------------|------------------------------------------------------------------------------------------|
| Time | Two lists of choices between an amount of money “today” and an amount of money “in 12 months”. | Average switching point over both lists of choices from the early to the delayed amount. |
| Risk | Two lists of choices between a lottery and varying safe options. | Average switching point over both lists of choices from the lottery to the safe option. |
| Positive Reciprocity | Second-mover behavior in two versions of the trust game (strategy method). | Average amount sent back in both trust games. |
| Negative Reciprocity | Investment into punishment after unilateral defection of the opponent in a prisoner’s dilemma (strategy method). | Amount invested into punishment. |
| Trust | First mover behavior in two versions of the trust game. | Average amount sent as a first mover in both trust games. |
| Altruism | First mover behavior in a dictator game with a charitable organization as recipient. | Size of donation. |

2.1.1 Preference Measures

Risk Preferences To elicit risk attitudes we adapted the design from Dohmen *et al.* (2010). Subjects were shown a list of binary alternatives, a lottery and a (varying) safe option. The lottery was the same for each decision: If they chose the lottery participants could receive either 1000 points or zero points with 50 percent probability each. The safe option increased from row to row, starting from a value of (close to) zero, and increasing up to a value of (close to) the maximum payoff of the lottery. To reduce measurement error subjects participated in two risk experiments. The choice list of the second experiment was simply a perturbed version of the first one. Perturbations were constructed such that

a randomly drawn integer value between -5 and +5 was added to the safe option in every choice, corresponding to perturbations of maximally 5% of the step size of the increase in the safe option. The complete list of choices was shown to subjects on the first screen. Each choice situation was then presented on a separate screen, where subjects entered their respective choice. Subjects were informed that one choice in each list would be selected randomly and paid. Subjects with monotonic preferences should choose the lottery for lower safe options and switch to the safe option when the latter reaches or exceeds the level of their certainty equivalent. Thus switching points inform us about individual risk attitudes. The earlier a subject switches to the safe option the less she is willing to take risks. For our analysis we constructed a risk preference measure using the average of the two switching points from the two experiments.⁹

Time Preferences To measure individuals' time preferences we implemented a procedure very similar to the one for risk attitudes. In the discounting experiments, subjects were given two lists of choices between an earlier amount of money ("today"), which was the same in all choices, and an increasing delayed amount of money ("in 12 months"). In the first row, the early amount was equal to the delayed amount. Delayed amounts increased from row to row by 2.5%. As for risk preferences subjects participated in a very similar second discounting experiment with small perturbations of delayed amounts between +0.5 and -0.5 percentage points. One choice in each of the two lists was randomly selected for payment. Payments resulting from the two experiments were sent to subjects via regular mail. If a subject chose the early amount, the payment was sent out on the day of the experimental session. If a subject chose the delayed amount, the payment was sent out with a delay of 12 months.¹⁰ The switching point from early to delayed payment informs us about a subject's time preference. Subjects who switch later discount the future amount by more (i.e., are less patient) than subjects who switch earlier.¹¹ Our measure

⁹If subjects switched between the lottery and the safe option more than once, we took the average switching row as an estimate of their certainty equivalent. This happened in 16 % of the cases in the first experiment on risk taking, and in 11 % of the cases in the second experiment.

¹⁰Keeping the payoff mode identical over both time horizons rules out credibility concerns.

¹¹For subjects, who switched more than once, we took the average switching row as an estimate of their discount rate. This happened in 5 % of the cases in the first experiment on time discounting, and in 7 %

of individual discounting is the average switching row in both lists. To ease interpretation of the correlations reported below, we recode the measure, such that higher values imply earlier switching rows, i.e., a higher level of patience.

Trust We elicited trust from first-mover behavior in the so-called trust game (Berg *et al.*, 1995). We conducted two versions of the trust game. In one version, the amount sent by the first mover was doubled by the experimenter, whereas in the second version the amount was tripled. Every subject was in the role of the first and of the second mover twice.¹² Both trust games were incentivized, i.e., every (relevant) decision was paid. In the role of a first mover, subjects could choose to send any amount in $\{0, 50, 100, \dots, 500\}$ points to the second mover. All interactions in the trust game as well as in all other social preference experiments were one-shot and anonymous (perfect stranger matching protocol). The average amount sent as a first mover in both trust games constitutes our experimental measure for trust: Subjects who send higher amounts of money are those who display higher levels of trust.

Positive Reciprocity To elicit positive reciprocal inclinations we measure subjects' second-mover behavior in the trust game (see above). We implemented the strategy method (Selten, 1967). This means that for every possible amount sent by the first mover, subjects were asked to indicate how much they wanted to send back. The actual decision of the first mover determined which of these decisions became payoff relevant. The average amount sent back as a second mover in both trust games was taken as individuals' willingness to reciprocate, such that higher values imply a higher willingness to reciprocate.

Negative Reciprocity To measure subjects' willingness to engage in costly punishment of unfair behavior, we conducted a prisoner's dilemma with a subsequent punishment stage.¹³ In the punishment stage, subjects could choose to invest points in order to deduct points from their opponent. Punishment was costly. Again, we implemented the strategy

of the cases in the second experiment.

¹²Overall, we therefore ran four trust games.

¹³The design of the experiment was adapted from Falk *et al.* (2005)

method. Before taking their decisions in the first stage of the experiment (i.e., in the prisoner’s dilemma) subjects were asked to indicate how many points they wanted to deduct from the other player in case he cooperated or defected, for both own cooperation and own defection. Then they played a simultaneous prisoner’s dilemma. The outcome of the first stage determined which choice of the second stage became payoff relevant. The chosen investment into punishment after unilateral defection of the other player served as a measure of an individual’s willingness to reciprocate negatively.

Altruism To measure altruistic behavior we had subjects take part in a modified dictator game in which the recipient was a charitable organization (adapted from Eckel and Grossmann, 1996). Subjects were endowed with 300 points and had to decide how much of this endowment to donate to a charitable organization.¹⁴ This decision serves as our experimental measure of subjects’ altruistic inclination.

2.1.2 Personality Measures

Big Five As part of the study, subjects were given a paper-and-pencil survey, which they were asked to fill out at home and return to us via mail.¹⁵ Of the 489 subjects, 319 completed the survey and sent it back to us. The survey included the NEO-FFI version of the Big Five (Costa and McCrae, 1989). During the experimental sessions, all 489 subjects also answered a shorter version of the NEO-FFI: the BFI-S, a subset consisting of 15 items. The BFI-S has been developed by Gerlitz and Schupp (2005) and was also part of the 2005 and 2009 waves of the SOEP. Correlations between the long version and the short version of the Big Five differ between the five personality dimensions. The lowest correlation is $r = 0.48$ for openness, and the highest is $r = 0.71$ for conscientiousness (all p -values < 0.001). We constructed our Big Five measure in that we use data from the long version whenever available, while for the remaining subjects we refer to the short version. That way, we have measures of the Big Five domains for all 489 subjects.

¹⁴Subjects could choose a charitable organization from a list, or name one themselves.

¹⁵We also handed out stamped envelopes with the address of our research institute, in order to minimize additional costs for returning the survey to us.

Locus of Control The paper-and-pencil survey included 10 items that allows us to construct a measure of the locus of control for the 319 individuals who filled in the survey. These 10 items have been adapted from Rotter (1966) and they have also been implemented in the 2005 wave of the SOEP. The personality construct of locus of control assesses how much people believe they have control over their life outcomes, or how much their lives are determined by forces that are outside of their control, such as luck or faith. We constructed the measure such that higher values represent a more internal locus of control, i.e., the belief that the person can influence their life outcomes. Lower values represent a more external locus of control.

2.2 Representative Experimental Data

The second data set we employ consists of experimental data for a representative sample of the German population.¹⁶ This data set is used to assess whether the findings from the sample of university students can be corroborated in a representative sample. Subjects' risk and time preferences were elicited, and we again have information on participants' personality. The data used here stem from a study conducted in 2005 and contains information on 1012 individuals. For a detailed description of the study and its procedures see Dohmen *et al.* (2010).

Preference Measures The experiments on risk and time preferences were similar to the ones we used in the laboratory experiments. In both experiments subjects had to make multiple decisions in a list of choices. To elicit their risk preferences we had subjects choose between a lottery, which remained the same in all choices, and safe options, which increased in their value. As in the experiments discussed above, the switching point informs us about the individual's willingness to take risks. Similarly, to elicit individuals' time preferences we had all participants make a number of intertemporal choices. They had to decide between an amount "today" and a larger amount "12 months" later. The early amount remained

¹⁶The same data set is used in Dohmen *et al.* (2010).

the same in all choices. The first delayed amount presented to subjects was devised to imply a 2.5% return on the early amount assuming semi-annual compounding. In the subsequent choices the delayed payment was gradually increased and was calculated such that the implied rate of return rose in steps of 2.5 percentage points. Again, the switching points from the early to the delayed option inform us about the subjects' time preferences.

Personality Measures The five personality domains were assessed using the BFI-S (see Section 2.1.2 for a more detailed description).

2.3 Representative Panel Data

The third data set we use stems from the SOEP, a large panel data set that is representative of the adult population living in Germany (see Schupp and Wagner (2002) and Wagner *et al.* (2007) for a detailed description of the SOEP). We use information from eight waves collected in the years between 2003 and 2009. In each of these waves more than 20,000 individuals were interviewed. The SOEP combines extensive sociodemographic information with various measures of attitudes, preferences and psychological traits. In particular, the SOEP includes survey items relating to all personality and preference measures that we discuss in the previous sections.

Personality and economic preference measures were elicited several times between 2003 and 2009. To construct a measure for each individual, we use the maximum available number of observations of a given measure. If several measures of personality and preferences are available, we take the average of the standardized measures of all years in which this measure was elicited. The resulting average is then standardized as well. In case a particular measure was elicited only in one wave (e.g., as it is the case for patience) we just take the standardized measure from that respective year. We restrict the sample to individuals for whom we have information about each personality and preference measure. This results in a sample size of 14,243 individuals.

Preference Measures As a measure for time preference we use answers to the following survey question: "How would you describe yourself: Are you generally an impatient person,

or someone who always shows great patience?”¹⁷ Participants gave an answer on an 11-point scale where zero means “very impatient” and 10 means “very patient”. This survey question was implemented in the SOEP only in 2008. The risk preference question is worded in the same manner: “How do you see yourself: Are you generally a person who is fully prepared to take risks, or do you try to avoid taking risks?” Answers were given on an 11-point scale, where zero means “unwilling to take risks” and 10 means “fully prepared to take risks”. This question was included in the 2004, 2006, 2008 and 2009 waves. The general risk question has been studied in various papers and has been validated using incentivized experiments in representative samples as well as through behavioral evidence in Dohmen *et al.* (2011). In 2005 the SOEP contained six items to measure reciprocal inclinations, three items each on positive and negative reciprocity. Examples for positive and negative reciprocity are as follows: “If someone does me a favor, I am prepared to return it” and “If I suffer a serious wrong, I will take revenge as soon as possible, no matter what the costs”. Participants expressed how well these six statements apply to them on a seven-point Likert scale. For a detailed description see Dohmen *et al.* (2009). Standard trust questions were included in the 2003 and 2008 waves, using three sub-statements about whether “one can trust people”, whether “in these times one can’t rely on anybody else” and whether “when dealing with strangers it is better to be cautious”. Answers were given on a five-point scale ranging from “totally agree” to “totally disagree”. Finally, our survey measure for altruism is the answer to the question of how important it is for the participant “to be there for others”. Answers were given on a four-point scale. The altruism question was asked in the 2004 and 2008 waves.

Personality Measures The 2005 and 2009 waves of the SOEP contained the BFI-S questionnaire, developed by Gerlitz and Schupp (2005). The locus of control was elicited in 2005 using Rotter’s (1966) locus of control scale. Both inventories were also used in our laboratory experimental data (see Section 2.1.2 for more details on the BFI-S and the locus of control scale).

¹⁷The behavioral validity of this question with respect to incentivized experiments is documented in Vischer *et al.* (2011).

3 Research Strategy

To answer the question of whether measures of personality and economic preferences are closely linked we first study the raw correlations between these measures. High correlations would indicate some degree of substitutability. Low correlations, conversely, would suggest that the two measurement systems are complementary concepts in explaining heterogeneity in behavior. Whether a correlation should be interpreted as “high” or “low” is of course always debatable. We therefore first look at statistical significance levels. Statistical significance, however, can also be found for correlations that are low in terms of effect size (Cohen, 1992). Following conventions in the social sciences we interpret effect sizes, i.e., correlations r , as rather “low” if r is between 0.1 and 0.3, as “medium” if r is between 0.3 and 0.5 and as “large” if r is larger than 0.5. Because the analysis of correlations is restricted to linear relations, we also check for potential non-linear associations by conducting non-parametric regressions. In particular, we look at kernel-weighted local linear polynomial regressions.

We then check to see whether measures of personality and preferences are substitutes or complements in terms of their explanatory power for life outcomes. In particular, we conduct linear regressions and assess the explanatory power of the two concepts by reporting levels of adjusted R^2 . In these regressions, measures of personality and preferences are included individually as well as jointly. If the two measurement systems are substitutes, adjusted R^2 in the combined regressions should not be distinctly higher than in regressions that include only one of the two concepts. The opposite should hold for complements. Additionally, we investigate model selection criteria in these regressions. We check for robustness using binary and ordered choice models as well as more comprehensive specifications including square terms and cross-products of all regressors.

4 Results

In this section we discuss our main findings. To ease comparison between data sets and measures, we standardized all experimental as well as all personality measures for the data

analysis.

4.1 Correlation Structure

4.1.1 Experimental Data

Table 2 displays the 36 raw correlations of the personality and economic preference measures obtained from the laboratory experiments. A first inspection of Table 2 reveals that only 11 of these 36 correlations are statistically significant at the 5% or 1% level.¹⁸ All correlation coefficients are smaller than 0.3 in absolute value. Hence there is no correlation with a “medium” effect size or larger. Moreover, of the 36 correlations only 11 exceed 0.1 in absolute value and only 1 slightly exceeds 0.2.¹⁹

Table 2 also shows that among all personality factors agreeableness exhibits the highest and statistically most significant correlations with measures of economic preferences. It is significantly correlated with measures for positive and negative reciprocity, trust and altruism (all p -values < 0.01) as well as with time preference (p -value < 0.05). Correlations with social preferences range between 0.1 and 0.3 in absolute value, indicating a small effect size according to the classification of Cohen (1988). The high frequency of significant correlations of agreeableness with social preferences is not surprising as the former is defined as “the tendency to act in a cooperative, unselfish manner,...” (see Table A.1).

The finding of only moderate correlations between preference and personality measures does not necessarily indicate that these constructs are weakly connected; it indicates only that there are weak linear relations. For example, a perfect U-shaped relation between a personality factor and a preference would result in an insignificant linear correlation. To explore the possibility of non-linear relationships we therefore estimate kernel-weighted local linear polynomial regressions.²⁰ In each regression, we restrict the sample to a range of

¹⁸Five additional correlations are weakly significant, i.e., significant at the 10% significance level.

¹⁹Results qualitatively stay the same when investigating Spearman correlations instead of Pearson correlations (see Table A.2 in the appendix). Moreover, when looking at a potential linear mapping, i.e., linear regressions of either the Big Five on preferences or vice versa, R^2 is always below 10%.

²⁰We use the Epanechnikov kernel and bandwidth is selected via the plugin estimator of the asymptotically optimal constant bandwidth.

Table 2: Pearson correlation structure experimental data set

| | Openness | Conscientiousness | Extraversion | Agreeableness | Neuroticism | LoC |
|------------------|-----------|-------------------|--------------|---------------|-------------|-----------|
| Time | 0.0370 | 0.0057 | -0.0084 | 0.1026** | -0.0518 | 0.0847 |
| Risk | -0.0379 | -0.0611 | 0.0762* | 0.0202 | -0.1201*** | 0.0434 |
| Pos. Reciprocity | 0.1724*** | 0.0140 | 0.0211 | 0.2042*** | 0.0361 | 0.0152 |
| Neg. Reciprocity | -0.0885* | -0.0393 | 0.0943* | -0.1451*** | -0.0136 | -0.1418** |
| Trust | 0.1232*** | -0.1300*** | 0.0004 | 0.1665*** | -0.0134 | -0.0140 |
| Altruism | 0.1242** | -0.0979* | 0.0249 | 0.1911*** | 0.0847* | 0.0480 |

*, **, and *** indicate significance at the 10%, 5%, and 1% level, respectively. Correlations between economic preferences and the Big Five were calculated using 394 - 477 observations. Correlations between economic preferences and locus of control were calculated using between 254 - 315 observations. All measures are standardized.

four standard deviations around the mean of each variable to circumvent an analysis biased by outliers. Therefore, the results are calculated using 70% to 97% of all observations. The predicted regressions are displayed in Figure A.1. Although sometimes there are small deviations from linearity at the boundaries, the overall picture strongly suggests a linear relation in the vast majority of combinations.

Summarizing our analysis of the laboratory experimental data, we find that associations between preference and personality measures are linear and that the degree of association is rather low, suggesting a complementary relationship. We next turn to the question of whether the correlation patterns observed in student samples can be replicated in a sample that is representative of the adult population.

4.1.2 Representative Experimental Data

Table 3: Pearson correlation structure representative experimental data

| | Openness | Conscientiousness | Extraversion | Agreeableness | Neuroticism |
|------|-----------|-------------------|--------------|---------------|-------------|
| Time | -0.0080 | -0.0682 | -0.0655 | -0.0830* | -0.0602 |
| Risk | 0.1356*** | -0.0720 | 0.0757 | -0.0941** | -0.0290 |

*, **, and *** indicate significance at the 10%, 5%, and 1% level, respectively. All measures are standardized.

Table 3 shows the correlations between the outcomes from the risk and time experiments and the personality traits. As above, the measure for time is reversed so that higher values indicate higher patience. In terms of significance the pattern is similar to the one in the laboratory study. Only one correlation is significant at the 1%-level, one is significant at the 5%-level and one is significant at the 10%-level. In terms of effect size, only the coefficient of the association between openness and risk preferences exceeds the 0.1 benchmark to be classified as a small correlation (Cohen, 1988).²¹ Interestingly, the sign is positive, in contrast to our laboratory data. The other two significant coefficients are even smaller. The analysis of representative data therefore confirms that the level of association between preference personality measures is rather small. However, we can draw this conclusion only with respect to time and risk preferences, as we do not have experimental data on trust and social preferences. We next analyze whether these findings also hold when looking at all preference measures in a large representative sample.

4.1.3 Representative Panel Data

In this section, we study whether our findings from the experiments generalize to a large representative sample using survey rather than experimental instruments for measuring economic preferences. Table 4 shows the raw correlations between personality measures and

²¹Results qualitatively stay the same when investigating Spearman correlations instead of Pearson correlations (see Table A.3 in the appendix).

Table 4: Pearson correlation structure between personality measures and economic preferences from SOEP observations

| | Openness | Conscientiousness | Extraversion | Agreeableness | Neuroticism | LoC |
|------------------|------------|-------------------|--------------|---------------|-------------|------------|
| Time | 0.0183** | 0.1122*** | -0.0415*** | 0.3122*** | -0.0584*** | 0.0681*** |
| Risk | 0.2793*** | -0.0400*** | 0.2601*** | -0.1454*** | -0.0996*** | 0.1521*** |
| Pos. Reciprocity | 0.1814*** | 0.2520*** | 0.1473*** | 0.1842*** | 0.0872*** | 0.0954*** |
| Neg. Reciprocity | -0.0522*** | -0.1558*** | -0.0264*** | -0.3756*** | 0.0612*** | -0.2154*** |
| Trust | 0.1272*** | -0.0680*** | 0.0575*** | 0.0945*** | -0.1919*** | 0.2094*** |
| Altruism | 0.1756*** | 0.1495*** | 0.1670*** | 0.2557*** | 0.0908*** | 0.0874*** |

*, **, and *** indicate significance at the 10%, 5%, and 1% level, respectively. Correlations are calculated using 14,243 observations. All measures are standardized.

economic preferences using 14,243 observations from the SOEP. Given the large number of observations it is not surprising to find a large number of significant correlation coefficients (p -values < 0.05 for all correlation coefficients). In terms of effect size, however, only two correlations are of “medium” size, i.e., larger than 0.3. Of the reported 36 correlations, 18 can be classified as “small”, whereas 16 correlations are even below 0.1. This confirms the overall picture that emerged from the analysis of the two experimental data sets.²² A closer comparison of the SOEP survey measures with our experimental measures further reveals large similarities. As reported above, 11 correlations are significant at the 5% level in the experimental data. Ten of these correlations have the same sign and are significant at the 1% level using survey data. Moreover, as it is the case in the laboratory data set, the personality trait agreeableness exhibits the highest correlations with economic preferences, in particular social preferences. Although there are small differences in the results compared with the experimental data set (i.e., seven of the 36 correlation coefficients show a different sign), the general pattern emerging from the SOEP measures is consistent with our previous findings. Of the seven correlation coefficients only two are (weakly) significant in the experimental data set. Nevertheless, the inconsistency of signs brings into question the conjecture that correlations are universally identical (i.e., identical irrespective of age or other person characteristics). We return to this aspect in the final section.

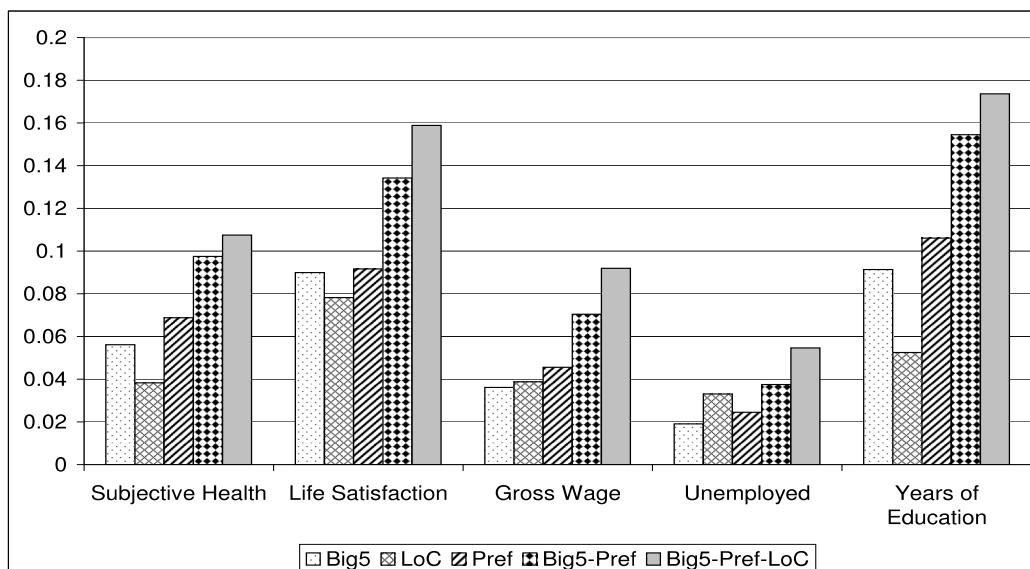
We conclude this section with an analysis of potential non-linearities between our SOEP preference and personality measures. As for the laboratory experimental data, we perform kernel-weighted local linear polynomial regressions restricting the sample in each regression to four standard deviations above and below the mean. The resulting subsamples represent 92% to 97% of the observations of the main sample. The predicted functions presented in Figure A.2 show no particular non-linearities, except for some splines at the left ends of the considered range. Thus, analogous to the experimental data set, it is not

²²Results qualitatively stay the same when investigating Spearman correlations instead of Pearson correlations (see Table A.4 in the appendix). Moreover, when looking at a potential linear mapping, i.e., linear regressions of either the Big Five on preferences or vice versa, R^2 is always around 15% with the exception of agreeableness, where R^2 reaches 28%.

the case that systematic non-linearities bias correlation coefficients.

4.1.4 Explanatory Power for Life Outcomes

Figure 1: Adjusted R^2 for Life Outcomes



Adjusted R^2 's for linear regressions for life outcomes. The number of observations available varies for the different life outcomes: subjective health (14,218), life satisfaction (14,214), gross wage (7,199), unemployed (9,095), and years of education (13,768). Gross wage measures the gross hourly wage.

All reported correlation structures indicate that personality and preference measures are far from perfectly substitutable. To determine whether they actually complement each other, we now analyze their explanatory power with respect to important life outcomes. To that end we again use data from the SOEP. In particular, we consider the following outcomes: subjective health, life satisfaction, gross wage, being unemployed and years of education. For each outcome we estimate linear regression models in which outcomes are regressed on the set of economic preferences, the Big Five and the locus of control, separately as well as jointly.²³ The idea is to assess the explanatory power of each concept in

²³The corresponding regressions are shown in Table A.5 in the appendix.

isolation and in combination. This enables us to check the extent to which explanatory power increases when combining the concepts and thus allows us to reach conclusions regarding the degree of their complementarity. The criterion used to compare differences in explanatory power is adjusted R^2 .

All life outcomes we use come from the 2009 wave of the SOEP. Subjective health was measured on a five-point-scale, from “very good” to “bad”. We reverse the answer scale such that higher values indicate a better subjective health status. Life satisfaction was elicited using the question “How satisfied are you with your life, all things considered?”, which was answered on an 11-point-scale (with higher values indicating higher life satisfaction). Our measure for gross hourly wage is the gross monthly wage divided by monthly working hours.²⁴ Unemployment status is a binary variable equal to one if the person was unemployed at the time of the survey and zero otherwise. The variable years of education is created by adding up years of schooling and additional occupational training (including university).²⁵

Figure 1 shows adjusted R^2 's for the different life outcomes. R^2 values for the three concepts – Big Five, Locus of Control and economic preferences – in isolation range from 1% to 10% and vary both between concepts and outcomes. Thus, they contribute to explaining heterogeneity in important life outcomes.²⁶ More important in light of our research question, however, is that the explanatory power is considerably larger when combining the Big Five, the locus of control and economic preferences compared to using each concept individually. Moreover, explanatory power is always maximized when all three concepts are included in the regression, hereafter referred to as the full model. In this case, resulting adjusted R^2 values reach levels of about 6% to 18%. This clearly indicates the existence of important complementarities among the different concepts.²⁷

²⁴Monthly working hours are calculated as the average weekly working hours multiplied by four.

²⁵For each school degree and occupational training (including university) official standard graduation times in years are used for the calculation.

²⁶In the explanation of life outcomes such as gross wages, unemployment and years of education the preference for work versus leisure would probably play a key role. However, no question related to this preference was included in the survey.

²⁷For an overview over the raw correlations between each preference and personality trait and life outcomes see Figure A.3 and A.4 in the Appendix.

Because the question here is one of model selection, we also employ model selection criteria (in particular the Akaike and Bayesian information criterion) to check whether the full model is also chosen by model selection criteria. As can be seen in Table A.6 in the appendix this is the case for all life outcomes considered, corroborating our previous results. We perform the same analysis using binary and ordered choice models when appropriate. Again, the full model is chosen by the model selection criteria in all cases. As another robustness check we consider more flexible models: Along with including each predictor linearly in our regressions we also include square terms and all possible cross-products (see Table A.7 in the appendix). Again the full model obtains the highest adjusted R^2 measures when using ordinary-least-squares estimation and is also chosen by the information criteria in nearly all cases.²⁸ Results are again robust for employing binary and ordered choice models when appropriate. Moreover, in all models considered the joint hypothesis that all coefficients are equal to zero is always rejected at the 1% level (Tables A.6 and A.7 in the appendix). In summary, sizeable complementarities among the different concepts are corroborated in all robustness checks.

5 Discussion

In this review we examine the relation between economic preferences and personality using three different data sets. We find no indication for a strong linear or a non-linear association between the two. Thus we conclude that the two concepts cannot substitute for each other. In fact, with regard to explaining heterogeneity in life outcomes, we find that the two concepts play complementary roles. Our findings imply that researchers in economics and psychology can benefit greatly from the respective disciplines when looking for potential sources of heterogeneity in life outcomes.

The finding of a rather low association between economic preferences and psychological measures of personality is perhaps not surprising. First, both concepts are constructed in

²⁸Only the Bayesian information criterion chooses a model just including the locus of control when it comes to explaining gross wage and unemployment. However, this is not surprising given the number of regressors included and the tendency of Bayesian information criterion to choose parsimonious models.

very different ways. Whereas preferences are rooted in utility theory, derived in terms of specific functional forms of utility functions, the Big Five personality indicators originate in language analysis. Second, the Big Five measure rather broad aspects of personality. In particular, each dimension of the Big Five is by itself already an aggregation of different attitudes or subfacets. Thus, although our results show low associations between personality and economic preferences, we cannot exclude the possibility that there is a stronger degree of association between economic preferences and subfacets of the five personality traits. The trait extraversion, for example, comprises different attitudes, such as being “relatively outgoing, gregarious, sociable, and openly expressive” (see Table A.1), measured by 12 different questions in the NEO-FFI or three different questions in the BFI-S. In other words, each personality measure is not only comprises multiple items, but more importantly captures distinct aspects of a character trait. Economic preferences, conversely, are defined more narrowly. For example, the concept of time preferences refers to the individual’s willingness to abstain from something in the present in order to benefit from that decision in the future. Although this concept is applicable to different domains (e.g., to health outcomes or financial decision making) the underlying concept remains the same and is measured by standard incentivized experiments or survey items as employed in this study. In this sense, our preference measures might resemble the subordinate aspects of the five personality factors.

Third, the finding of strong complementarities between economic preferences and personality measures may simply reflect conceptual differences in the way economic and psychological models are constructed. The economic model explains heterogeneity in behavior in terms of three distinct components: preferences, beliefs and constraints, such as abilities. In contrast, psychological measures such as the Big Five include notions of preferences as well as beliefs and constraints. In other words, in our analysis we correlate economic preferences at least partly with beliefs and constraints, which by construction should not necessarily be correlated. A good example is conscientiousness. Being able and willing to work hard and being organized comprises aspects of both, preferences and personal abilities. Likewise, emotional instability, which is part of the neuroticism facet, is related to personal inability rather than a preference. Even more extreme is the case of the locus

of control, which is clearly a belief rather than a preference. This does not rule out the possibility that the two concepts are related, for example, because an external locus of control is conducive to the development of impatient behavior: if it does not pay off to invest because life circumstances are predominantly determined by circumstances beyond my control, the willingness to forgo current consumption and wait in order to earn a return in the future makes little sense. Yet, beliefs and preferences are two distinct concepts.

The main focus of this review is the rather weak association and complementary nature of economic and psychological measures of personality. We do not discuss the specific signs of the correlations or ways to integrate personality into the economic model. Important work in this direction has been done by Almlund *et al.*, 2011. Many signs of the correlations reported above are consistent across the three data sets, in particular those that are significant. For example, in all three data sets risk attitudes and extraversion are positively correlated, and risk and neuroticism are negatively correlated. There are important exceptions, however. In the student sample, for example, risk attitudes and openness are negatively correlated, whereas they are positively and significantly negatively correlated in the two representative data sets. These and other inconsistencies raise important questions. One possible reason for finding different signs is the use of different elicitation methods for economic preferences (experiments and survey responses). Another possibility is that the reported correlations vary over the life-cycle. If traits develop with different speed and at different points in life correlations should vary with age. This could explain differences between a relatively young student sample and the representative samples. Not much is known about how economic preferences develop over the life-cycle but at least for risk attitudes there seems to be a robust and large negative age effect on willingness to take risks (Dohmen *et al.*, 2011). Another possibility is that preferences and personality are generically differentially correlated between specific groups of the population (e.g., varying by gender, age, height or education). From an evolutionary perspective the co-evolution of traits may serve different purposes depending on specific life circumstances. It may be “optimal” for one subgroup of the population to develop a positive correlation among particular traits, whereas for another subgroup it is adaptive to form a negative correlation. More work needs to be done to uncover potential group-specific correlations between per-

sonality and preferences.

The approach taken above is agnostic in the sense that we simply correlate existing and important measurement systems as they are. We think this is an important exercise but it can only be a first step. What is needed is the development of a comprehensive framework that combines insights from the approaches taken by economists and psychologists to capture sources of heterogeneity in behavior. It is surprising that the Big Five apparently misses important preferences such as attitudes towards risk and time. Similarly, the economic model is incomplete not only with respect to important preferences, but also with respect to heterogeneity in abilities and beliefs. In the standard economic framework, beliefs are assumed to be endogenous to the strategic situation and formed in a rational way. Perhaps, with the exception of interpersonal trust, beliefs are typically assumed to follow common prior assumptions and rational updating. The role of the locus of control in explaining fundamental life outcomes on top of preferences, however, reveals the importance of enduring and individual specific belief systems. Other examples include optimism, pessimism, religious beliefs and ideological beliefs. The stability of belief heterogeneity is not well understood. It probably originates in different priors inherited from parents, self-selection into peer groups and institutions with reinforcing belief characteristics and boundedly rational belief formation, such as selected perception, non-Bayesian updating and ego utility (Köszegi, 2006). Regardless of the precise channels that support enduring heterogeneous beliefs, economics would largely benefit from measuring and including them in explanations of economic outcomes. In addition, economists have started to model the fact that preferences and beliefs are intimately related and not separable as traditionally assumed. In fact, people often want to believe certain things, for example, in terms of being liked by others or being better than others (overconfidence). Finally, another important extension of the economic model would be the measurement of person-specific abilities. Whereas IQ has become a standard individual-specific characteristic to be included in outcome regressions, little work has acknowledged the importance of other competencies captured by Big Five traits, for example, the role of conscientiousness for educational or labor market outcomes.

References

- Allport GW, Odbert HS. 1936. Traitnames. a psycho-lexical study. *Psychological Monographs* **47**: 171.
- Almlund M, Duckworth A, Heckman J, Kautz T. 2011. Personality Psychology and Economics. *IZA DP No. 5500* .
- Anderson J, Burks S, DeYoung C, Rustichini A. 2011. Toward the Integration of Personality Theory and Decision Theory in the Explanation of Economic Behavior. *mimeo* .
- Ben-Ner A, Kramer A. 2010. Personality and Altruism in the Dictator Game: Relationship to Giving to Kin, Collaborators, Competitors, and Neutrals. *Personality and Individual Differences* **51**: 216–221.
- Berg J, Dickhaut J, McCabe K. 1995. Trust, Reciprocity, and Social History. *Games and Economic Behavior* **10**: 122–142.
- Bibby P, Ferguson E. 2010. The Ability to Process Emotional Information Predicts Loss Aversion. *Personality and Individual Differences* **51**: 263–266.
- Borghans L, Duckworth AL, Heckman JJ, ter Weel B. 2008. The Economics and Psychology of Personality Traits. *Journal of Human Resources* **43**: 972–1059.
- Borghans L, Golsteyn B, Heckman J, Meijers H. 2009. Gender Differences in Risk Aversion and Ambiguity Aversion. *Journal of the European Economic Association* **7**: 649–658.
- Cohen J. 1988. *Statistical power analysis for the social sciences (2nd ed.)*. Hillsdale, NJ: Erlbaum.
- Cohen J. 1992. A Power Primer. *Psychological Bulletin* **112**: 155–159.
- Costa P, McCrae R. 1989. *NEO-PI/FFI manual supplement*. Odessa, FL: Psychological Assessment Resources.
- Costa P, McCrae R. 1992. *Revised NEO Personality Inventory (NEO PI-R) and NEO Five-Factor Inventory (NEO-FFI)*. Odessa, FL, Psychological Assessment Resources.
- Daly M, Delaney L, Harmon C. 2009. Psychological and Biological Foundations of Time Preferences. *Journal of the European Economic Association* **7**: 659–669.
- Dohmen T, Falk A, Huffman D, Sunde U. 2008. Representative Trust and Reciprocity: Prevalence and Determinants. *Economic Inquiry* **46**: 84–90.
- Dohmen T, Falk A, Huffman D, Sunde U. 2009. Homo Reciprocans: Survey Evidence on Behavioral Outcomes. *Economic Journal* **119**: 592–612.
- Dohmen T, Falk A, Huffman D, Sunde U. 2010. Are Risk Aversion and Impatience Related to Cognitive Ability? *American Economic Review* **100**: 1238–1260.
- Dohmen T, Falk A, Huffman D, Sunde U. 2011. Individual Risk Attitudes: Measurement, Determinants, and Behavioral Consequences. *Journal of the European Economic Association* **9**: 522–550.
- Eckel C, Grossmann P. 1996. Altruism in Anonymous Dictator Games. *Games and Economic Behavior* **16**: 181–191.
- Eckel C, Grossmann P. 2002. Sex Differences and Statistical Stereotyping in Attitudes Toward Financial

- Risk. *Evolution and Human Behavior* **23**: 281–295.
- Falk A, Dohmen T, Huffman D, Sunde U, Becker A. 2011. A validated preference module. *mimeo* .
- Falk A, Fehr E, Fischbacher U. 2005. Driving forces behind informal sanctions. *Econometrica* **73**: 2017–2030.
- Falk A, Fischbacher U. 2006. A Theory of Reciprocity. *Games and Economic Behavior* **54**: 293–315.
- Fehr E. 2009. On the Economics and Biology of Trust. *Journal of the European Economic Association* **7**: 235–266.
- Fischbacher U. 2007. ztree: Zurich Toolbox for Ready-made Economic Experiments. *Experimental Economics* **10**: 171–178.
- Frederick S, Loewenstein G, O’Donoghue T. 2002. Time Discounting and Time Preference: A Critical Review. *Journal of Economic Literature* **40**: 351–401.
- Gerlitz JY, Schupp J. 2005. Zur Erhebung der Big-Five-basierten Persönlichkeitsmerkmale im SOEP. *DIW Berlin, Research Notes* .
- Gollier C. 2001. *The Economics of Risk and Time*. Cambridge, MA: MIT Press.
- Greiner B. 2004. An online recruitment system for economic experiments. *Forschung und wissenschaftliches Rechnen* **63**: 79–93.
- Köszegi B. 2006. Ego Utility, Overconfidence, and Task Choice. *Journal of the European Economic Association* **4**: 673–707.
- Manski C. 2002. Identification of decision rules in experiments on simple games of proposal and response. *European Economic Review* **46**: 880–891.
- Roberts BW. 2006. *Personality Development and Organizational Behavior*. In B. M. Staw (Ed.). *Research on Organizational Behavior*. Elsevier Science/JAI Press, pages 1–41.
- Roberts BW. 2009. Back to the Future: Personality and Assessment and Personality Development. *Journal of Research in Personality* **43**: 137–145.
- Rotter J. 1966. Generalized expectancies for internal versus external control of reinforcement. *Psychological Monographs* **80**: 1–28.
- Samuelson P. 1937. A Note on Measurement of Utility. *Review of Economic Studies* **4**: 155–161.
- Schupp J, Wagner GG. 2002. Maintenance of and Innovation in Long-Term Panel Studies The Case of the German Socio-economic panel (GSOEP). *Allgemeines Statistisches Archiv* **86**: 163–175.
- Selten R. 1967. *Die Strategiemethode zur Erforschung des eingeschränkt rationalen Verhaltens im Rahmen eines Oligopol-experiments*. In: *Sauermann, H. (Ed.), Beiträge zur experimentellen Wirtschaftsforschung*. J.C.B. Mohr (Paul Siebeck), Tübingen.
- Vischer T, Dohmen T, Falk A, Huffman D, Schupp J, Sunde U, Wagner G. 2011. Measuring Time Preferences in Representative Samples by Combining Experimental Elicitation and Survey Measures. *mimeo* .
- Wagner GG, Frick JR, Schupp J. 2007. The German Socio-Economic Panel Study (SOEP) - Evolution,

Scope and Enhancements. *SOEPpapers 1, DIW Berlin, The German Socio-Economic Panel (SOEP)* .
Zuckerman M. 1994. *Behavioral Expressions and Biosocial Bases of Sensation Seeking*. New York, Cambridge University Press.

Appendix

Table A.1: Definitions of the Big Five Domains

| Big Five Domain | APA Dictionary Definition |
|------------------------|-------------------------------------------------------------------------------------------------------------------------------------------------------------------------------------------------------------------------------------------|
| Openness | Individual differences in the tendency to be open to new aesthetic, cultural, and intellectual experiences. |
| Conscientiousness | The tendency to be organized, responsible, and hardworking; located at one end of a dimension of individual differences: conscientiousness vs. lack of direction. |
| Extraversion | An orientation of ones interests and energies toward the outer world of people and things rather than the inner world of subjective experience; includes the quality of being more outgoing, gregarious, sociable, and openly expressive. |
| Agreeableness | The tendency to act in a cooperative, unselfish manner; located at one end of a dimension of individual differences: agreeableness vs. disagreeableness. |
| Neuroticism | A chronic level of emotional instability and proneness to psychological distress. |

This table is in parts reproduced from Borghans *et al.* (2008).

Table A.3: Spearman correlation structure representative experimental data

| | Openness | Conscientiousness | Extraversion | Agreeableness | Neuroticism |
|------|----------|-------------------|--------------|---------------|-------------|
| Time | -0.0199 | -0.0737 | -0.0764* | -0.0829* | -0.0598 |
| Risk | 0.1315* | -0.0744 | 0.0661 | -0.0854* | -0.0261 |

*, **, and *** indicate significance at the 10%, 5%, and 1% level. All measures are standardized.

Table A.2: Spearman correlation structure experimental data set

| | Openness | Conscientiousness | Extraversion | Agreeableness | Neuroticism | LoC |
|------------------|-----------|-------------------|--------------|---------------|-------------|-----------|
| Time | 0.0388 | 0.0162 | -0.0114 | 0.1077** | -0.0684 | 0.1063* |
| Risk | 0.0027 | -0.0486 | 0.0786* | 0.0206 | -0.0995** | 0.0485 |
| Pos. Reciprocity | 0.1606*** | 0.0078 | 0.0177 | 0.2029*** | 0.0152 | 0.0441 |
| Neg. Reciprocity | -0.0967* | -0.0221 | 0.0462 | -0.083* | -0.0165 | -0.1376** |
| Trust | 0.1354*** | -0.1198*** | 0.002 | 0.1696*** | -0.002 | -0.0648 |
| Altruism | 0.0969* | -0.0804 | 0.0034 | 0.2000*** | 0.0879* | 0.0418 |

*, **, and *** indicate significance at the 10%, 5%, and 1% level, respectively. Correlations between economic preferences and the Big Five were calculated using 394 - 477 observations. Correlations between economic preferences and Locus of Control were calculated using 254 - 315 observations. All measures are standardized.

Table A.4: Spearman Correlation Structure SOEP

| | Openness | Conscientiousness | Extraversion | Agreeableness | Neuroticism | LoC |
|------------------|----------|-------------------|--------------|---------------|-------------|---------|
| Time | 0.0233 | 0.1192 | -0.0342 | 0.3099 | -0.0643 | 0.0709 |
| Risk | 0.2632 | -0.0500 | 0.2452 | -0.1496 | -0.1049 | 0.1426 |
| Pos. Reciprocity | 0.1835 | 0.2622 | 0.1547 | 0.1947 | 0.0808 | 0.1041 |
| Neg. Reciprocity | -0.0616 | -0.1767 | -0.0426 | -0.3853 | 0.0572 | -0.2257 |
| Trust | 0.1224 | -0.0693 | 0.0523 | 0.0788 | -0.1889 | 0.2012 |
| Altruism | 0.1693 | 0.1501 | 0.1602 | 0.2416 | 0.0860 | 0.0843 |

All correlations are significant at the 1% level and are calculated using 14,243 observations. All measures are standardized.

Figure A.1: Kernel-weighted local linear polynomial regressions using experimental data

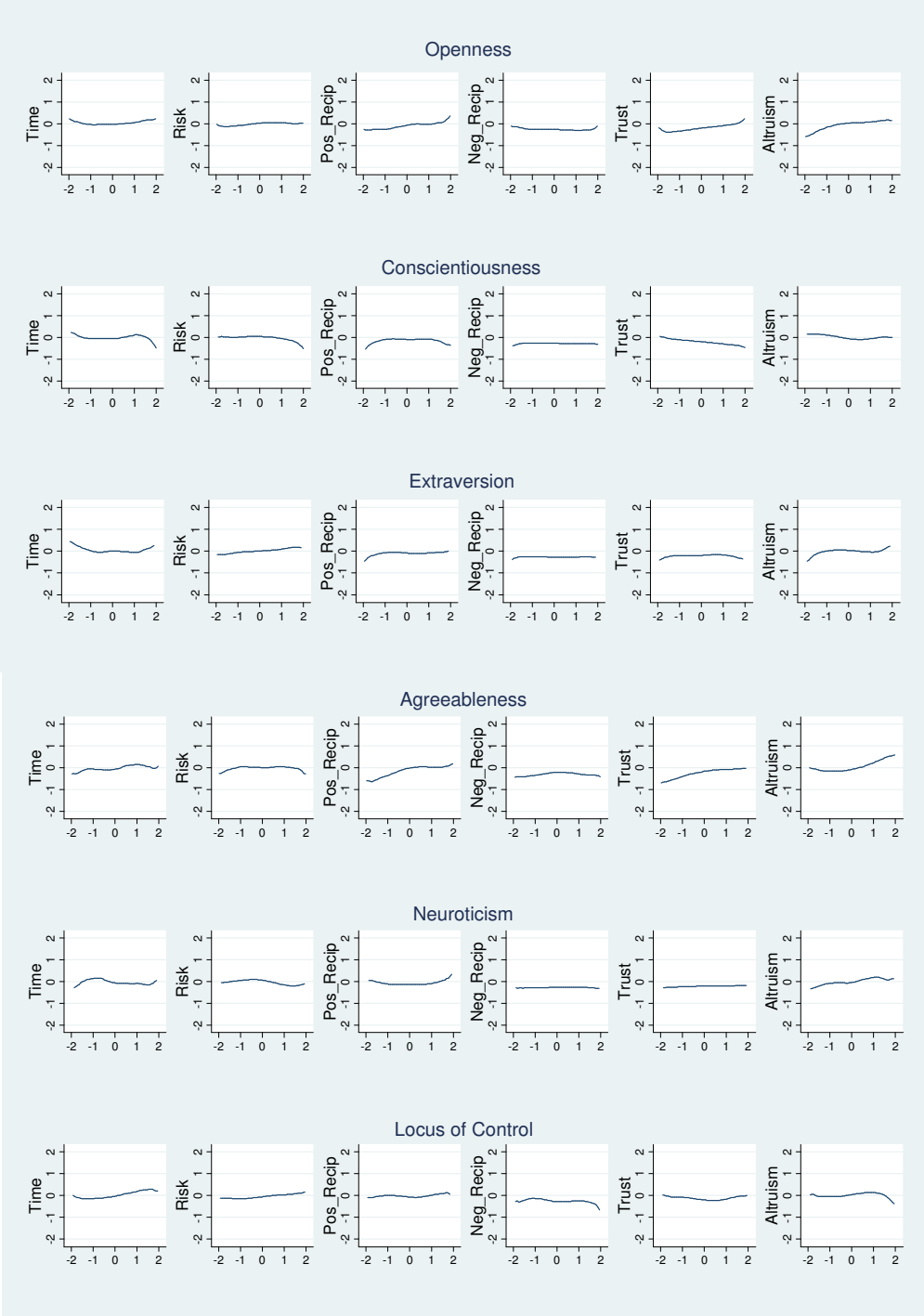


Figure A.2: Kernel-weighted local linear polynomial regressions using SOEP data

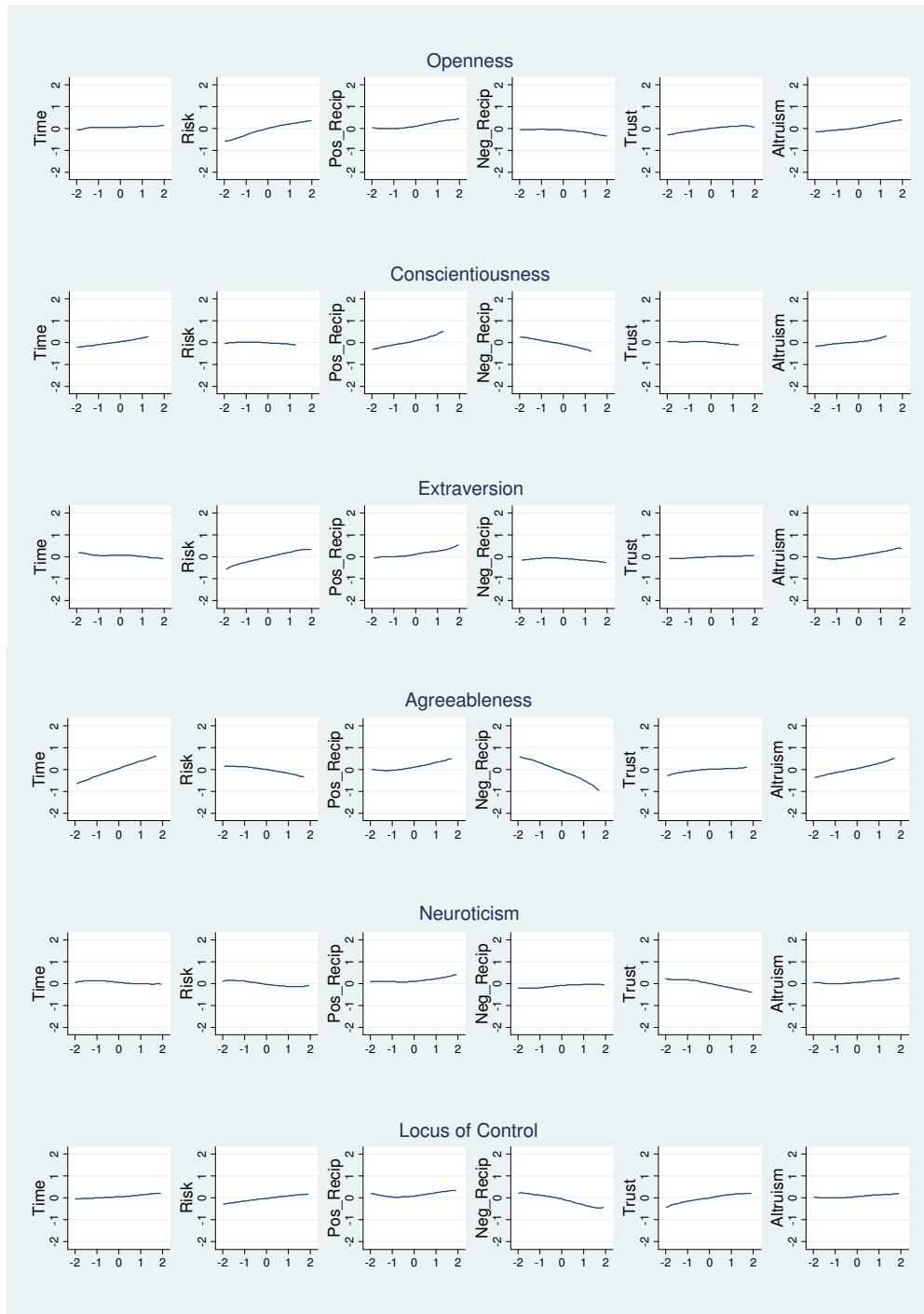
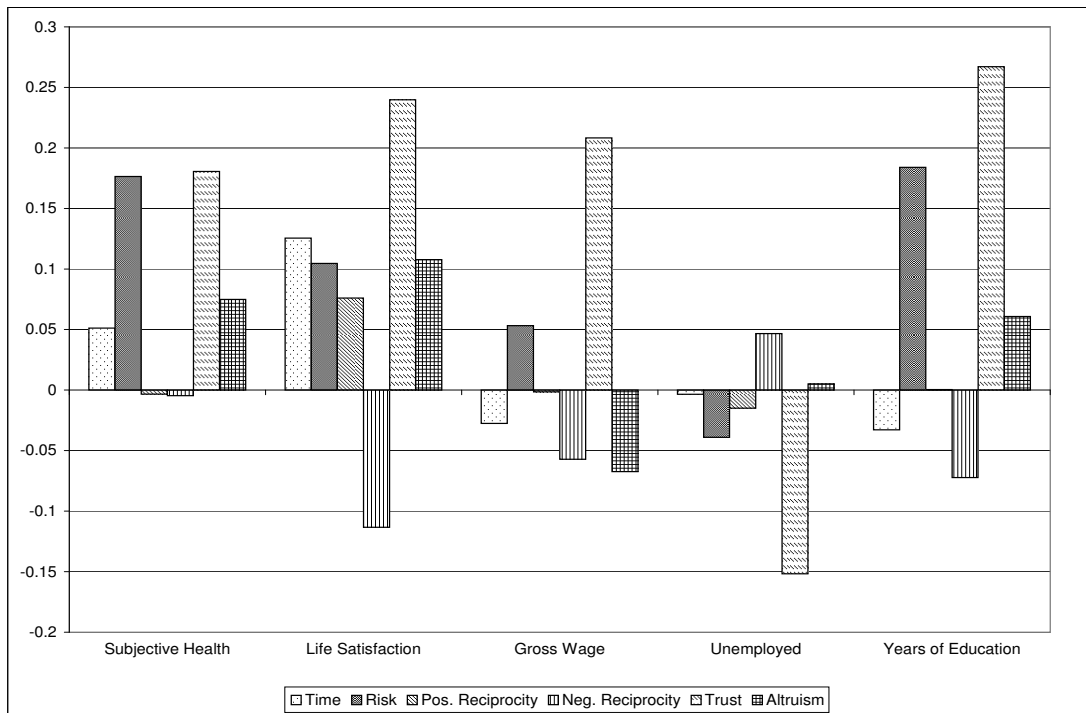


Table A.5: Outcome Regressions: Representative Experimental Data

| | (1) | (2) | (3) | (4) | (5) |
|-----------------|----------------------|----------------------|----------------------|----------------------|----------------------|
| Life Outcomes | Subj. Health | Life Satisf. | Gross Wage | Unemployed | Years of Educ. |
| Openness | 0.043*** (0.009) | 0.123*** (0.017) | 0.989*** (0.162) | -0.018*** (0.004) | 0.667*** (0.027) |
| Conscientiousn. | 0.038*** (0.009) | 0.106*** (0.017) | 0.565*** (0.161) | -0.014*** (0.004) | -0.182*** (0.026) |
| Extraversion | 0.026*** (0.009) | 0.134*** (0.017) | -1.201*** (0.154) | 0.006* (0.004) | -0.309*** (0.026) |
| Agreeableness | 0.033*** (0.010) | 0.139*** (0.018) | -1.288*** (0.165) | 0.023*** (0.004) | -0.146*** (0.028) |
| Neuroticism | -0.140*** (0.009) | -0.186*** (0.016) | -1.009*** (0.158) | 0.018*** (0.004) | -0.272*** (0.026) |
| LoC | 0.105*** (0.008) | 0.307*** (0.015) | 1.899*** (0.145) | -0.043*** (0.003) | 0.421*** (0.024) |
| Patience | 0.024*** (0.008) | 0.129*** (0.015) | -0.343** (0.136) | 0.001 (0.003) | -0.151*** (0.023) |
| Risk | 0.131*** (0.009) | 0.076*** (0.017) | 0.415** (0.166) | 0.003 (0.004) | 0.210*** (0.027) |
| Pos. Recip. | -0.035*** (0.008) | 0.006 (0.015) | 0.388*** (0.140) | -0.002 (0.003) | 0.005 (0.023) |
| Neg. Recip. | 0.064*** (0.008) | 0.039** (0.015) | -0.329** (0.147) | 0.006* (0.003) | -0.137*** (0.024) |
| Trust | 0.122*** (0.009) | 0.308*** (0.015) | 1.763*** (0.145) | -0.035*** (0.003) | 0.587*** (0.024) |
| Altruism | 0.070*** (0.009) | 0.072*** (0.016) | -0.780*** (0.152) | 0.005 (0.003) | 0.084*** (0.025) |
| Constant | 3.300*** (0.007) | 6.852*** (0.014) | 16.100*** (0.131) | 0.099*** (0.003) | 12.346*** (0.021) |
| Observations | 14,218 | 14,214 | 7,199 | 9,095 | 13,768 |
| Adj. R-squared | 0.108 | 0.159 | 0.0919 | 0.0547 | 0.174 |

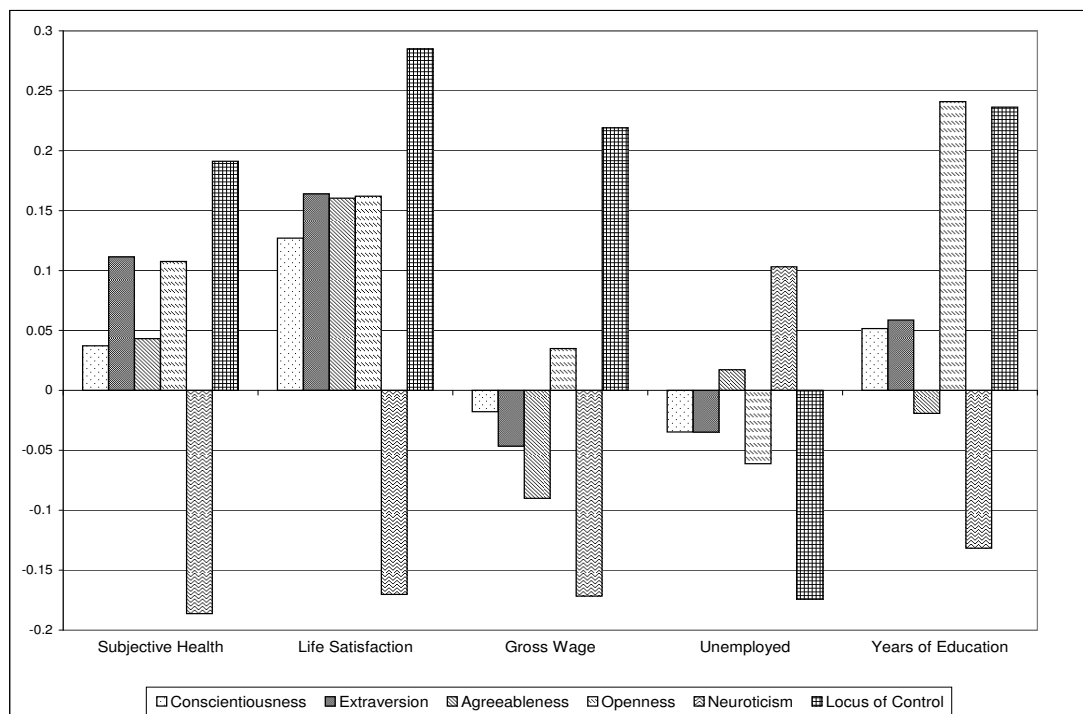
*, **, and *** indicate significance at the 10%, 5%, and 1% level, respectively. All measures are standardized.

Figure A.3: Correlation Coefficients Between Preference Measures and Life Outcomes Using SOEP Data



Pearson correlation coefficients between preference measures and life outcomes using SOEP data. Trust always shows the strongest association with life outcomes. More trust and a higher willingness to take risk are always related to better life outcomes, e.g. better health and greater life satisfaction, whereas negative reciprocity is associated with less life satisfaction and lower wages. The number of observations available varies for the different life outcomes: subjective health (14,218), life satisfaction (14,214), gross wage (7,199), unemployed (9,095), years of education (13,768). Gross wage measures the gross hourly wage.

Figure A.4: Correlation Coefficients Between Personality Measures and Life Outcomes Using SOEP Data



Pearson correlation coefficients between personality measures and life outcomes using SOEP data. The locus of control and neuroticism show the strongest associations with life outcomes. A more internal locus of control is always related to better outcomes (e.g. better health or more life satisfaction), whereas a higher degree of neuroticism is associated with lower wages or a higher probability of being unemployed. The number of observations available varies for the different life outcomes: subjective health (14,218), life satisfaction (14,214), gross wage (7,199), unemployed (9,095), years of education (13,768). Gross wage measures the gross hourly wage.

Table A.6: Linear representation of outcome regressions

| | Subjective Health (OLS) | | | | | Subjective Health (o. probit) | | | | |
|--------------------------|--------------------------|---------|--------|-----------|---------------|--------------------------------|---------|---------|-----------|---------------|
| | Big5 | LoC | Pref | Big5-Pref | Big5-Pref-LoC | Big5 | LoC | Pref | Big5-Pref | Big5-Pref-LoC |
| adj. R^2 /pseudo R^2 | 0.0561 | 0.0383 | 0.0688 | 0.0975 | 0.1075 | 0.0220 | 0.0145 | 0.0268 | 0.0388 | 0.0429 |
| F-Test/LR-Test | 170.04 | 567.35 | 176.01 | 140.59 | 143.72 | 834.99 | 550.62 | 1016.47 | 1471.22 | 1627.11 |
| AIC | 37833 | 38094 | 37641 | 37201 | <u>37043</u> | 37139 | 37415 | 36960 | 36515 | <u>36361</u> |
| BIC | 37878 | 38109 | 37694 | 37292 | <u>37142</u> | 37207 | 37453 | 37035 | 36628 | <u>36482</u> |
| | Life Satisfaction (OLS) | | | | | Life Satisfaction (o. probit) | | | | |
| | Big5 | LoC | Pref | Big5-Pref | Big5-Pref-LoC | Big5 | LoC | Pref | Big5-Pref | Big5-Pref-LoC |
| adj. R^2 /pseudo R^2 | 0.0899 | 0.0782 | 0.0917 | 0.1342 | 0.1588 | 0.0261 | 0.0219 | 0.0256 | 0.0390 | 0.0467 |
| F-Test/LR-Test | 281.88 | 1206.91 | 240.08 | 201.27 | 224.67 | 1406.38 | 1178.16 | 1376.73 | 2098.73 | 2513.61 |
| AIC | 55038 | 55216 | 55012 | 54335 | <u>53926</u> | 52448 | 52668 | 52480 | 51768 | <u>51355</u> |
| BIC | 55083 | 55231 | 55065 | 54426 | <u>54024</u> | 52561 | 52751 | 52601 | 51926 | <u>51521</u> |
| | Gross Wage(OLS) | | | | | | | | | |
| | Big5 | LoC | Pref | Big5-Pref | Big5-Pref-LoC | - | - | - | - | - |
| adj. R^2 /pseudo R^2 | 0.0361 | 0.0388 | 0.0456 | 0.0704 | 0.0919 | - | - | - | - | - |
| F-Test/LR-Test | 54.97 | 291.20 | 58.31 | 50.57 | 61.71 | - | - | - | - | - |
| AIC | 55088 | 55088 | 55042 | 54857 | <u>54690</u> | - | - | - | - | - |
| BIC | 55102 | 55102 | 55090 | 54940 | <u>54779</u> | - | - | - | - | - |
| | Unemployed (OLS) | | | | | Unemployed (probit) | | | | |
| | Big5 | LoC | Pref | Big5-Pref | Big5-Pref-LoC | Big5 | LoC | Pref | Big5-Pref | Big5-Pref-LoC |
| adj. R^2 /pseudo R^2 | 0.0191 | 0.0331 | 0.0245 | 0.0375 | 0.0547 | 0.0322 | 0.0527 | 0.0412 | 0.0648 | 0.0926 |
| F-Test/LR-Test | 36.34 | 312.13 | 39.05 | 33.22 | 44.82 | 180.12 | 294.52 | 230.37 | 361.89 | 517.42 |
| AIC | 3067 | 2932 | 3017 | 2900 | <u>2738</u> | 5420 | 5298 | 5372 | 5250 | <u>5097</u> |
| BIC | 3110 | 2946 | 3067 | 2986 | <u>2830</u> | 5463 | 5312 | 5422 | 5336 | <u>5189</u> |
| | Years of Education (OLS) | | | | | Years of Education (o. probit) | | | | |
| | Big5 | LoC | Pref | Big5-Pref | Big5-Pref-LoC | Big5 | LoC | Pref | Big5-Pref | Big5-Pref-LoC |
| adj. R^2 /pseudo R^2 | 0.0914 | 0.0525 | 0.1061 | 0.1545 | 0.1736 | 0.0209 | 0.0126 | 0.0241 | 0.0359 | 0.0415 |
| F-Test/LR-Test | 277.93 | 763.89 | 273.29 | 229.74 | 242.03 | 1355.80 | 817.10 | 1563.14 | 2329.14 | 2688.38 |
| AIC | 65506 | 66078 | 65282 | 64520 | <u>64206</u> | 63490 | 64021 | 63285 | 62529 | <u>62171</u> |
| BIC | 65551 | 66093 | 65335 | 64610 | <u>64304</u> | 63641 | 64141 | 63443 | 62724 | <u>62375</u> |

For the ordinary-least-squares (OLS) models we calculate R^2 , whereas for the ordinal models we calculate pseudo R^2 . The joint significance of all coefficients is tested using the F-test (OLS) and the LR-test (ordinal models). All F- and LR-tests are significant at the 1% level. With regard to the Akaike information criterion (AIC) and Bayesian information criterion (BIC), the smallest value for each outcome regression is underlined. Note that the full model (including the Big 5, locus of control and preferences) is always chosen by both information criteria. The number of observations available varies for the different life outcomes: subjective health (14,218), life satisfaction (14,214), gross wage (7,199), unemployed (9,095 obs.), and years of education (13,768). Gross wage measures the gross hourly wage.

Table A.7: Outcome Regressions: Flexible Specification

| | Subjective Health (OLS) | | | | | Subjective Health (o. probit) | | | | |
|--------------------------|--------------------------|--------------|-------|-----------|---------------|--------------------------------|-------------|---------|-----------|---------------|
| | Big5 | LoC | Pref | Big5-Pref | Big5-Pref-LoC | Big5 | LoC | Pref | Big5-Pref | Big5-Pref-LoC |
| adj. R^2 /pseudo R^2 | .0632 | .0388 | .0714 | .1054 | .1165 | .0251 | .0146 | .0282 | .0435 | .0483 |
| F-Test/LR-Test | 48.99 | 288.17 | 41.48 | 22.75 | 21.83 | 952.98 | 555.19 | 1068.56 | 1651.38 | 1834.03 |
| AIC | 37740 | 38088 | 37623 | 37142 | <u>36977</u> | 37051 | 37413 | 36949 | 36467 | <u>36310</u> |
| BIC | 37899 | 38110 | 37834 | 37732 | <u>37665</u> | 37232 | 37458 | 37184 | 37079 | <u>37021</u> |
| | Life Satisfaction (OLS) | | | | | Life Satisfaction (o. probit) | | | | |
| | Big5 | LoC | Pref | Big5-Pref | Big5-Pref-LoC | Big5 | LoC | Pref | Big5-Pref | Big5-Pref-LoC |
| adj. R^2 /pseudo R^2 | .0948 | .0783 | .0948 | .1397 | .1659 | .0278 | .0219 | .0273 | .0422 | .0505 |
| F-Test/LR-Test | 75.47 | 605.45 | 56.12 | 30.967 | 32.41 | 1493.78 | 1178.45 | 1470.26 | 2273.51 | 2715.76 |
| AIC | 54976 | 55214 | 54984 | 54311 | <u>53884</u> | 52391 | 52670 | 52428 | 51725 | <u>51309</u> |
| BIC | 55135 | 55237 | 55196 | 54901 | <u>54572</u> | 52617 | 52761 | 52708 | 52383 | <u>52065</u> |
| | Gross Wage(OLS) | | | | | | | | | |
| | Big5 | LoC | Pref | Big5-Pref | Big5-Pref-LoC | - | - | - | - | - |
| adj. R^2 /pseudo R^2 | .0382 | .0387 | .0527 | .0797 | .1039 | - | - | - | - | - |
| F-Test/LR-Test | 15.30 | 145.74 | 15.84 | 9.092 | 10.27 | - | - | - | - | - |
| AIC | 55111 | 55090 | 55009 | 54851 | <u>54672</u> | - | - | - | - | - |
| BIC | 55256 | <u>55111</u> | 55202 | 55388 | 55298 | - | - | - | - | - |
| | Unemployed (OLS) | | | | | Unemployed (probit) | | | | |
| | Big5 | LoC | Pref | Big5-Pref | Big5-Pref-LoC | Big5 | LoC | Pref | Big5-Pref | Big5-Pref-LoC |
| adj. R^2 /pseudo R^2 | .0212 | .0385 | .0291 | .0463 | .0705 | .0357 | .0539 | .0498 | .0852 | .1166 |
| F-Test/LR-Test | 10.87 | 183.13 | 11.11 | 6.73 | 8.66 | 199.54 | 301.02 | 278.38 | 475.96 | 651.83 |
| AIC | 3062 | 2882 | 2995 | 2882 | <u>2662</u> | 5431 | 5294 | 5366 | 5268 | <u>5118</u> |
| BIC | 3211 | <u>2903</u> | 3194 | 3437 | 3309 | 5580 | <u>5314</u> | 5565 | 5823 | 5766 |
| | Years of Education (OLS) | | | | | Years of Education (o. probit) | | | | |
| | Big5 | LoC | Pref | Big5-Pref | Big5-Pref-LoC | Big5 | LoC | Pref | Big5-Pref | Big5-Pref-LoC |
| adj. R^2 /pseudo R^2 | .1043 | .0525 | .1200 | .1771 | .1982 | .0243 | .0126 | .0281 | .0433 | .0497 |
| F-Test/LR-Test | 81.13 | 382.50 | 70.55 | 39.48 | 38.81 | 1575.60 | 817.25 | 1819.82 | 2808.59 | 3223.85 |
| AIC | 65324 | 66079 | 65087 | 64213 | <u>63869</u> | 63300 | 64023 | 63070 | 62181 | <u>61792</u> |
| BIC | 65482 | 66102 | 65297 | 64800 | <u>64554</u> | 63564 | 64151 | 63386 | 62874 | <u>62583</u> |

The outcome variables are regressed on the indicated personality and preference measures. The difference with regard to the linear specification is that the model includes squares of all variables as well as all cross-products. Cross-products are also calculated between concepts in case more than one concept is included, e.g., in the Big 5-preferences case, we also include the cross-term neuroticism*risk. For the ordinary-least-squares (OLS) models we calculate R^2 , whereas for the ordinal models we calculate pseudo- R^2 . The joint significance of all coefficients is tested using the F-test (OLS models) and the LR-test (ordinal models). All F- and LR-tests are significant at the 1% level. With regard to the Akaike information criterion (AIC) and Bayesian information criterion (BIC), the smallest value for each outcome regression is underlined. Note that the full model (including the Big 5, locus of control and preferences) is chosen by both information criteria in nearly all cases; only for gross wage and unemployment does the BIC indicate that the model with only LoC and LoC² included should be used. The number of observations available varies for the different life outcomes: subjective health (14,218), life satisfaction (14,214), gross wage (7,199), unemployed (9,095), and years of education (13,768). Gross wage measures the gross hourly wage.