



NOTA DI LAVORO

79.2009

**“Mitigation, Adaptation,
Suffering”:** In Search of the
Right Mix in the Face of
Climate Change

By **Henry Tulkens**, CORE, Université
catholique de Louvain, Louvain-la-
Neuve

Vincent van Steenberghe, Belgian
Federal Ministry for the Environment,
Brussels

SUSTAINABLE DEVELOPMENT Series

Editor: Carlo Carraro

“Mitigation, Adaptation, Suffering”: In Search of the Right Mix in the Face of Climate Change

By Henry Tulkens, CORE, Université catholique de Louvain, Louvain-la-Neuve

Vincent van Steenberghe, Belgian Federal Ministry for the Environment, Brussels

Summary

The usually assumed two categories of costs involved in climate change policy analysis, namely abatement and damage costs, hide the presence of a third category, namely adaptation costs. This dodges the determination of an appropriate level for them. Including adaptation costs explicitly in the total environmental cost function allows one to characterize the optimal (cost minimizing) balance between the three categories, in statics as well as in dynamics. Implications are derived for cost benefit analysis of adaptation expenditures.

Keywords: Climate Change, Mitigation, Adaptation, Suffering

JEL Classification: Q5, H0

Paper presented at the conference “Challenges in Public Economics” held at Université de Liège in honor of Professor Pierre Pestieau, June 3, 2009. Thanks are due to the participants in an earlier meeting of the CLIMNEG Ateliers de l’environnement held at CORE, Louvain la Neuve for their remarks and especially to Thierry Bréchet and Jean-Pascal van Ypersele for constructive suggestions.

Address for correspondence:

Henry Tulkens
CORE, Université catholique de Louvain
34, Voie du Roman Pays
B-1348 Louvain-la-Neuve
Belgium
E-mail: henry.tulkens@uclouvain.be

**“Mitigation, Adaptation, Suffering” :
In search of the right mix in the face of climate change¹**

Henry Tulkens²

CORE, Université catholique de Louvain, Louvain-la-Neuve

and Vincent van Steenberghe

Belgian Federal Ministry for the Environment, Brussels

June 2009

**ENVIRONMENTAL ECONOMICS AND MANAGEMENT MEMORANDUM n°94
of the Chaire Lhoist Berghmans in Environmental Economics and Management**

**Center for Operations Research and Econometrics (CORE)
Université catholique de Louvain, Louvain-la-Neuve, Belgium**

ABSTRACT

The usually assumed two categories of costs involved in climate change policy analysis, namely abatement and damage costs, hide the presence of a third category, namely adaptation costs. This dodges the determination of an appropriate level for them. Including adaptation costs explicitly in the total environmental cost function allows one to characterize the optimal (cost minimizing) balance between the three categories, in statics as well as in dynamics. Implications are derived for cost benefit analysis of adaptation expenditures.

CONTENTS

1. A classical model
 2. Introducing adaptation
 3. Optimal adaptation
 4. An « optimally adapted » damage cost function
 5. The right mix — Static case
 6. Adaptation over time: investment and the optimal stock of adaptation equipment
 7. Conclusion: implications for integrated assessment modeling and cost-benefit analysis
- References

¹ Paper presented at the conference “Challenges in Public Economics” held at Université de Liège in honor of Professor Pierre Pestieau, June 3, 2009. Thanks are due to the participants in an earlier meeting of the CLIMNEG *Ateliers de l'environnement* held at CORE, Louvain la Neuve for their remarks and especially to Thierry Bréchet and Jean-Pascal van Ypersele for constructive suggestions.

² Corresponding author <henry.tulkens@uclouvain.be>

1 A classical model

The simplest and most standard form of modeling that serves as a basis for the economic theoretic analysis of international environmental agreements on climate change is the following³ :

$$J_i = c_i(e_i) + d_i(\Delta T) \quad \text{where} \quad \Delta T = F(e_1, \dots, e_i, \dots, e_n) \quad i = 1, \dots, n. \quad (1)$$

In this model (called hereafter the “c+d model”),

- the index i denotes all countries of the world,
- the variables $e_i \geq 0$ are the countries’ flows of emissions of CO₂ “greenhouse gas”,
- and ΔT is the resulting world temperature change from some initial date, say 1800;
- the transfer function⁴ $F(\cdot)$ (assumed increasing) describes the highly complex process whereby greenhouse gas emissions induce temperature increases all around the globe,
- $c_i(e_i)$ is a function (assumed decreasing and convex) describing the cost to country i of its abatement decisions, that is, of *reducing* its emissions, also called “mitigation”,
- $d_i(\Delta T)$ is a function (increasing and strictly⁵ convex) that denotes the cost of the damages incurred by country i as a result of temperature change,
- and finally J_i is the *overall environmental cost* borne by country i , adding up abatement and damage costs. All costs are measured in € per unit of time and all functions assumed to be differentiable.

When working with this standard model of *multilateral externality*⁶ due to the phenomenon described by the function $F(\cdot)$, the literature⁷ considers two alternative patterns of behavior of the countries: in the first one, each country behaves so as to minimize its overall environmental cost J_i just defined by choosing in isolation emissions \bar{e}_i , and taking

³ It was formulated first by MÄLER 1989, in a slightly different form because the application was to the acid rains problem.

⁴ While the simplified expression above prevents one to understand the details of that transformation, the stated function is sufficient to evoke the fact of the by now universally recognized influence of anthropogenic CO₂ emissions (and accumulation – more on this below) on temperature change.

⁵ By assuming linear damage cost curves with intercept at zero, STERN 2007 (p459) precludes the analysis developed in this paper.

⁶ Also to be characterized as a “global public good” due to the diffuse (as opposed to directional) nature of the way it occurs

⁷ A non technical presentation of which is offered in EYCKMANS and TULKENS 2005.

as given the emissions \bar{e}_j of the other countries: **a Nash type of behavior**. According to the second pattern, the countries choose jointly emissions e_i^* so as to minimize $\sum_{i=1}^n J_i$, that is, the sum of the countries' overall costs, and thus internalizing at the world level the multilateral externality occurring : **a Paretian behavior**.

In either case, a balance is struck between the costs of mitigation $c_i(e_i)$ and the costs of damages $d_i(\Delta T)$, which is easily obtained from the first order conditions of the maximization problems involved in the two alternative patterns of behavior. In the class-room simplifying case of a linear additive form $\Delta T = \sum_{i=1}^n e_i$ of the transfer function $F(\cdot)$, these conditions look as follows:

— the Nash equilibrium is a vector $(\bar{e}_1, \dots, \bar{e}_n, \Delta \bar{T})$ such that

$$c'_i(\bar{e}_i) = d'_i(\Delta \bar{T}), i=1, \dots, n,$$

or, in words, such that in each country abatement be pushed and damages be incurred up to the point where marginal abatement cost equals the domestic marginal damage cost, while

— Pareto efficiency is a vector $(e_1^*, \dots, e_n^*, \Delta T^*)$ such that

$$c'_i(e_i^*) = \sum_{j=1}^n d'_j(\Delta T^*), i=1, \dots, n,$$

or, in words, such that abatement be pushed and damages be incurred up to the point where in each country marginal abatement cost equals the sum over all countries of their domestic marginal damage costs.

In summary, these conditions identify alternative levels for the mitigation activities, based on the damages they allow to avoid.

2 Introducing adaptation

There is an important difference in nature between the two categories of costs involved: while abatement costs are “out of pocket” expenditures resulting from voluntary decisions to abate, damage costs are rather incurred in terms of lost values, most often undergone involuntarily, and not resulting from expenditure decisions.

In this interpretation, the option of adaptation is not explicitly brought up, and some authors assert that it need not be because adaptation can be considered as implicit in the damage functions $d_i(\cdot)$. These should be seen, they argue, as net of adaptation expenditures. Yet, this eschews the issue of what is an appropriate level of adaptation, an important issue because adaptation activities are not free. Indeed, they entail out of pocket costs of their own, which vary with their size. On the other hand, what is the economic justification for adaptation expenditures? It essentially lies in their contribution to reducing the damages incurred or their cost, either by avoiding the physical damages or by circumventing their effects thanks to protection from their impacts.

Now, these adaptation costs can possibly be higher or lower than the damage cost reductions they are meant to achieve. They would obviously be justified only in the latter case, but to what extent? In this note, we provide an answer to that question, taking account of its effect on the countries’ *overall* environmental costs stated above.

Adaptation is made explicit in the c+d model by:

- (i) Specifying in terms of an aggregate magnitude that we denote by $\alpha_i \geq 0$ the physical⁸ activities whereby a country i seeks to protect itself against the effects of global warming and by having them appear as the argument of an additional cost function $a_i(\alpha_i)$, increasing, that accounts for the adaptation expenditures made in country i .
- (ii) Introducing α_i as an additional argument in the function d_i to make it read $d_i(\Delta T, \alpha_i)$, with the assumed properties that for every ΔT , $\partial d_i / \partial \alpha_i < 0$ and $\frac{\partial^2 d_i}{\partial \Delta T \partial \alpha_i} < 0$ while keeping $\partial d_i / \partial \Delta T > 0$, $\frac{\partial^2 d_i}{\partial \Delta T^2} > 0$. The costs accounted for with this function do *not* include adaptation costs anymore, since these have just been stated separately with $a_i(\alpha_i)$. They are only costs incurred from damages undergone involuntarily as suggested above, for short “suffered damage costs” - see below). The two derivatives with respect to α_i imply respectively that more adaptation reduces not only the total

⁸ This specification excludes what TOL 2005 calls “facilitative adaptation”, the modeling of which requires a more general model of the economy.

suffered costs incurred (graphically in the ϵ - ΔT space, a shift downward of the whole curve) but also the marginal such costs (*i.e.* a reduction in the slope of the curve)⁹.

We then have three sources of costs, and these lead us to modify the usual expression (1) for the *overall environmental cost* of each country into the following function with three terms:

$$J_i = c_i(e_i) + a_i(\alpha_i) + d_i(\Delta T, \alpha_i) \quad \text{where} \quad \Delta T = F(e_1, \dots, e_i, \dots, e_n). \quad (2)$$

These three sources of costs are precisely those that come to the mind of an economist when reading, as in our title: *“Civilization has only three options: mitigation (...), adaptation (...) and suffering (...)”*. With this trilogy John Holdren (2008, p. 430) compactly and beautifully summarizes what *can* be done in the face of climate change.

He pursues with what I read as a direct challenge to economists that we hardly can leave unanswered: *“We are already doing some of each and will do more of all but what the mix will be depends on choices that society will make going forward”*. Within the above framework and with the help of some economic theory we feel we can enlighten these choices in the direction of what *should* be done or, in other terms, what would be the “right” mix. One way to do that in the c+d framework is to abandon the ambiguous “damage cost” terminology used for $d_i(\Delta T)$ in the function (1), split the function instead into the two components of “adaptation cost” $a_i(\alpha_i)$ and “suffered damage cost”¹⁰ $d_i(\Delta T, \alpha_i)$ and approach in those terms the right mix question.

3 Optimal adaptation

Notice first the two opposing roles played by the adaptation variable α_i in the second and third terms of the new overall cost function (2): increasing and decreasing, respectively. This suggests that when we introduce adaptation in the minimization, a balance is also struck between these two aspects of it. More precisely, the first order condition for a minimum of J_i with respect to α_i is that it satisfies

$$da_i / d\alpha_i + \partial d_i(\Delta T, \alpha_i) / \partial \alpha_i = 0. \quad (3)$$

In words:

⁹ The justification of this second property will appear below as a condition for α to be positive at an optimum.

¹⁰ We think this Holdren inspired expression better reflects the reality at stake than the one of “residual” damage cost, used *e.g.* by TOL 2005 as well as STERN 2007 and DE BRUIN, DELLINCK and TOL 2007.

Proposition 1 : *Adaptation is achieved optimally in a country if it is pushed up to a level where the cost to the country of more adaptation becomes equal to the value of the suffered costs thereby avoided.*

Beyond its apparent banality, notice the following properties of the rule so established:

- (i) Condition (3) holds for both Nash and Paretian behaviors, since they both result from some form of global cost minimization.
- (ii) The rule applies to each country separately: the optimality condition is a purely domestic one. There is neither an international externality nor a global public good involved ¹¹.
- (iii) The condition holds true for any level of ΔT .
- (iv) The condition is independent of the abatement policy e_i of country i , but it varies with the state ΔT of the environment.

Of course, properties (i), (iii) and (iv) do not imply that the total amount of optimal adaptation expenditure is the same in the various occurrences where the marginal occurrences hold.

While properties (ii) and (iv) are in agreement with two of TOL's 2005 propositions, our setting does not support his presentation of adaptation and mitigation as "policy substitutes", subject to some kind of "trade-off". This view indeed derives from reasoning *at constant total environmental cost* J_i and keeping ΔT constant. But when ΔT is taken to vary, say to increase, adaptation and mitigation expenditures contribute *together* to the increase in total cost, and especially to its minimization if (3) keeps being satisfied.

Aside from this question of terminology, let us focus our interest on what the rule allows one to say conceptually, and to do in practice, when it is *not* satisfied in one or several countries. We consider first some conceptual developments.

4 An « optimally adapted » damage cost function

Let α_i^* be the amount of adaptation activities that satisfies the minimization condition (3) for some country i . Unless $d_i(\Delta T, \alpha_i)$ is separable, this magnitude is likely to vary as a

¹¹ Unless, of course, an adaptation activity carried out in one country has spillover effects in one of several neighboring ones. This can be accommodated in condition (3) in a fairly straightforward way, but entails amendments in the reasoning that follow.

function of ΔT . It should therefore rather be written as $\alpha_i^*(\Delta T)$. As a result, the second and third terms of (2) may be seen as a function of ΔT only and read together as

$$h_i^*(\Delta T) = a_i(\alpha_i^*(\Delta T)) + d_i(\Delta T, \alpha_i^*(\Delta T)) \quad (4)$$

with the asterisk reminding one that adaptation is optimal at any point along the function. We shall call $h_i^*(\Delta T)$ country i 's "optimally adapted" damage cost function.

Graphically (Figure 1), the function $h_i^*(\Delta T)$ appears as an envelope of a family of suffered damage cost functions $d_i(\Delta T, \alpha_i)$ as defined earlier. In the space $(\epsilon, \Delta T)$, the graphs of these functions differ from one another according to the amount of adaptation expenditure and level of these activities $a_i(\alpha_i)$ chosen by the country. Formally, the difference between these functions results from a difference in costs that are fixed with respect to ΔT . This is similar to differences between alternative short run cost functions enveloped by the long run one in standard microeconomics. This analogy is pursued further by noticing that with every (fixed) adaptation expenditure $a_i(\alpha_i)$ there is logically associated a specific suffered cost function $d_i(\Delta T, \alpha_i)$, variable with ΔT and where α_i is a parameter. Hence, for any given ΔT the optimal adaptation expenditure is the one whose associated suffering cost function is tangent, at the point ΔT , to the envelope of all possible suffering cost functions.

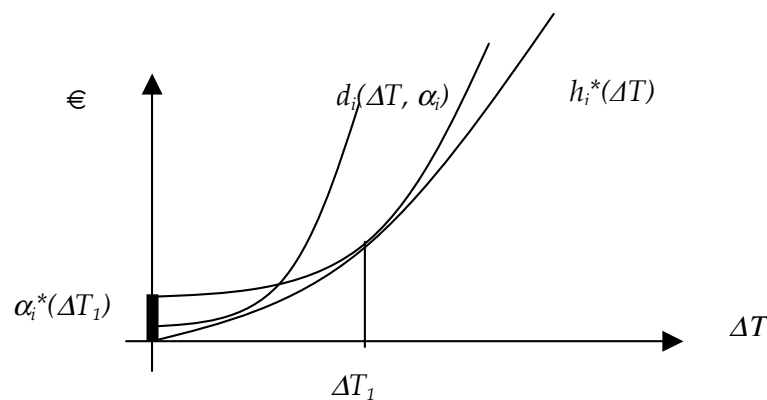


Figure 1 Two suffered damage cost functions "enveloped" by an optimally adapted damage cost function

From the tangency points in this diagram there emerges an interesting property: for any given level of temperature change, say ΔT_1 , the optimal adaptation expenditure $a_i(\alpha_i^*(\Delta T_1))$ is the one for which:

$$\left. \frac{dh_i^*(\Delta T)}{d\Delta T} \right|_{\Delta T = \Delta T_1} = \left. \frac{\partial d_i(\Delta T, \alpha_i^*(\Delta T))}{\partial \Delta T} \right|_{\Delta T = \Delta T_1} \quad (5)$$

In words,

Proposition 2 : The marginal adapted damage cost entailed by temperature change is equal to the marginal suffering costs *only* and does not include costs of adaptation.

This results from taking into account the optimality condition (3) on α in the specification of the marginal *adapted* damage cost which is derived from (4). Indeed, and more explicitly, from this condition one has (dropping momentarily the arguments of the functions, to alleviate, as well as the subscript i which is immaterial here) :

$$\begin{aligned} \frac{dh^*}{d\Delta T} &= \left. \frac{da}{d\alpha} \frac{d\alpha}{d\Delta T} \right|_{\alpha=\alpha^*} + \frac{\partial d}{\partial \Delta T} + \left. \frac{\partial d}{\partial \alpha} \frac{d\alpha}{d\Delta T} \right|_{\alpha=\alpha^*} \\ &= \left. \frac{d\alpha}{d\Delta T} \right|_{\alpha=\alpha^*} \left(\frac{da}{d\alpha} + \frac{\partial d}{\partial \alpha} \right) + \frac{\partial d}{\partial \Delta T} \\ &= \frac{\partial d}{\partial \Delta T} . \end{aligned}$$

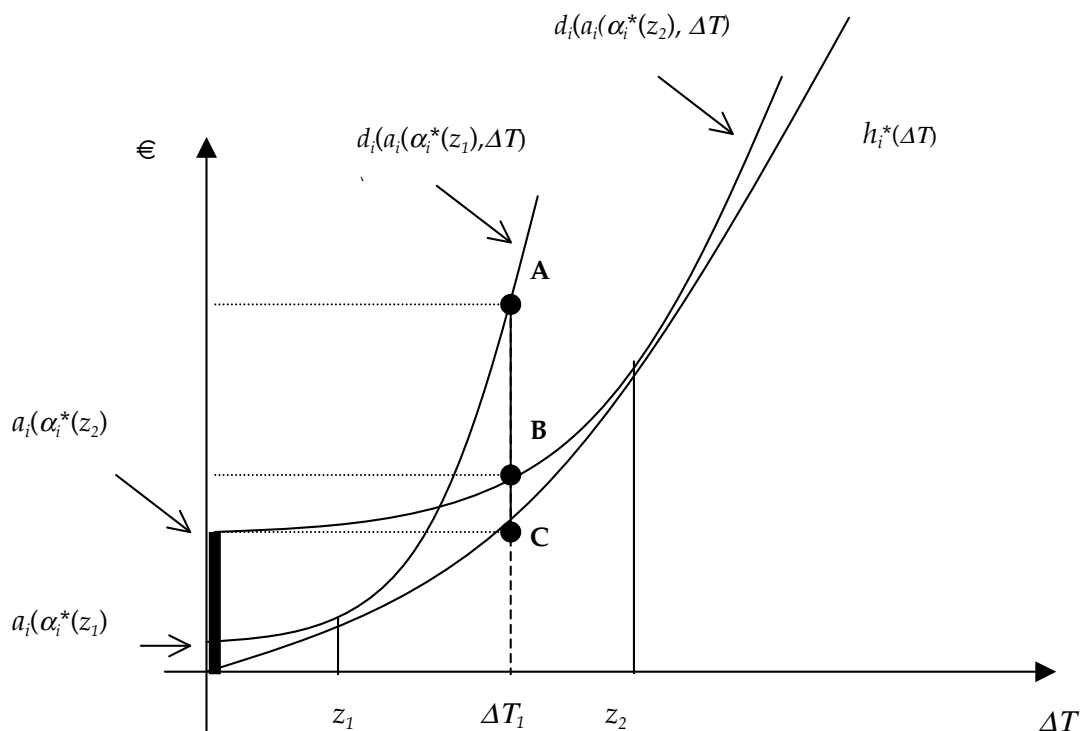


Figure 2 Two suffered damage cost functions $d_i(a_i, \Delta T)$ with non optimal adaptation for target ΔT_1 and damage cost function optimally adapted for all ΔT

In the presentation of Figure 2, non optimal adaptation is illustrated in the following way. Taking ΔT_1 as a target or alternatively as the prevailing situation, that is, as the temperature change to be achieved or actually occurring, if adaptation expenditure a_i is equal to $a_i(\alpha_i^*(z_1))$, then country i adapts too little, the excess cost (of suffering) being AC at the target. A hint of this is given by the fact that at C, whose abscissa is the target, the marginal suffering cost is higher than what it would be if adaptation were larger. Therefore, adapting more costs less than the suffering cost it saves. Alternatively, if a_i is equal to $a_i(\alpha_i^*(z_2))$, country i adapts too much, the excess cost at the target being BC at the target. Here, a sign of excess adaptation is that at the target the additional suffering cost from adapting less is of lower value than the savings made from reducing adaptation activities.

5 The right mix — Static case

Going back now to our initial query of identifying the “right” amounts of mitigation, adaptation and suffering, let us reconsider it in the light of what we have developed so far. Everything is now driven by the newly defined overall environmental cost function (2). With optimal adaptation α_i^* it reads:

$$\begin{aligned} J_i^* &= c_i(e_i) + a_i(\alpha_i^*(\Delta T)) + d_i(\Delta T, \alpha_i^*(\Delta T)) \\ &= c_i(e_i) + h_i^*(\Delta T) \end{aligned}$$

and may be called the *optimally adapted overall environmental cost function*. Its further minimization with respect to mitigation (e_i), and temperature change (ΔT) yields the right mix in the following terms:

— In the case of the Nash equilibrium, a vector $(\bar{e}_1, \dots, \bar{e}_n, \bar{\alpha}_1, \dots, \bar{\alpha}_n, \bar{\Delta T})$ such that for every i ,

$$\begin{aligned} \left. \frac{dc_i(e_i)}{de_i} \right|_{e_i=\bar{e}_i} &= \left. \frac{dh_i^*(\Delta T)}{d\Delta T} \right|_{\Delta T=\bar{\Delta T}}, i=1, \dots, n, \\ &= \left. \frac{\partial d_i}{\partial \Delta T} \right|_{\Delta T=\bar{\Delta T}} \end{aligned}$$

and

$$\left. \frac{da_i}{d\alpha_i} \right|_{\alpha_i = \bar{\alpha}_i} = \left. \frac{\partial d_i(\Delta T, \alpha_i(\Delta T))}{\partial \alpha_i} \right|_{\alpha_i = \bar{\alpha}_i}$$

— In the case of Pareto efficient behaviors, a vector $(e_1^{**}, \dots, e_n^{**}, \alpha_1^{**}, \dots, \alpha_n^{**}, \Delta T^{**})$ such that for every i ,

$$\begin{aligned} \left. \frac{dc_i(e_i)}{de_i} \right|_{e_i = e_i^{**}} &= \sum_{i=1}^n \left. \frac{dh_i^*(\Delta T)}{d\Delta T} \right|_{\Delta T = \Delta T^{**}}, i=1, \dots, n, \\ &= \sum_{i=1}^n \left. \frac{\partial d_i}{\partial \Delta T} \right|_{\Delta T = \Delta T^{**}} \end{aligned}$$

and

$$\left. \frac{da_i}{d\alpha_i} \right|_{\alpha_i = \alpha_i^{**}} = \left. \frac{\partial d_i(\Delta T, \alpha_i(\Delta T))}{\partial \alpha_i} \right|_{\alpha_i = \alpha_i^{**}}.$$

In words, we have

Proposition 3 : *The right mix of mitigation, adaptation and suffering is the one such that in all countries:*

- *marginal emissions abatement cost be equal to marginal suffering cost entailed by temperature change (domestic or global, according to the behavior considered), and*
- *marginal adaptation cost be equal to marginal domestic suffering cost avoided thanks to such adaptation.*

6. Adaptation over time: investment and the optimal stock of adaptation equipment

The preceding analysis is entirely formulated in static terms, which means that all variables represent flows per unit of time. However, most examples of adaptation activities that come to mind imply investments in infrastructural equipments such as, for instance, dikes to protect against sea level rise. It is therefore essential to show whether and how the analysis can be extended to a dynamic context involving investment in protective physical capital of all kinds.

To proceed in this way, let us think in discrete time, with unit periods denoted $t = 1, 2, \dots$. The climatic change ΔT_t that takes place at time t entails at that moment suffered damages for country i whose value is d_{it} , expressed in €/time unit. The adaptation activities, which allow to attenuate these damages can take various forms. Some are “ephemeral” in the

sense that they only reduce d_{it} at time t itself, whereas other ones are durable and exert their protective effects over several time periods. In the first case, the protective activities are flows, and we denote them α_{it} , whereas in the second case, they consist in accumulating in country i ¹² a stock of protective equipments — in fact, a capital — whose amount at time t we denote B_{it} . Its durability over time is expressed by specifying :

$$B_{it} = B_{it-1}(1 - \delta_\beta) + \beta_{it} \quad (6)$$

where β_{it} is the addition made to the stock at time t and δ_β is the depreciation rate of the stock during period t . The value of this last parameter varies of course according to the nature of the equipments involved, as well as with their life time. Here, we limit ourselves to a reasoning in aggregate terms, without ignoring that a disaggregate formulation, in terms of projects, is necessary for making policy relevant proposals. Our last section will go in that direction.

Let us denote by $b_i(\beta_{it})$ the expenditure entailed in country i by the addition β_{it} of protective equipments at time t . As far as the suffered damages are concerned, the existing stock of protective equipment now enters the damage cost function d_i , next to the flow of ephemeral protective activities, as follows:

$$d_{it} = d_i(\Delta T_t, \alpha_{it}, B_{it}), \quad (7)$$

the function being decreasing in its last two arguments.

The above leads us to redefine at each period t the overall environmental cost (2) of country i as

$$J_{it} = c_i(e_{it}) + a_i(\alpha_{it}) + b_i(\beta_{it}) + d_i(\Delta T_t, \alpha_{it}, B_{it}) \quad (8)$$

$$\text{where } B_{it} = B_{it-1}(1 - \delta_\beta) + \beta_{it}$$

$$\text{and } \Delta T_t = G(T_{t-1}, e_{1t}, \dots, e_{it}, \dots, e_{nt}),$$

whose four components represent the four cost categories of mitigation, short term and long run adaptation and suffered damages, respectively¹³.

The variable α_{it} — the ephemeral (short term) actions of adaptation — plays, within each period t , the same opposite two roles as in the preceding static analysis. One can thus similarly define at each t a specific optimally adapted overall environmental cost, that is, a cost including ephemeral adaptation expenditures α_{it}^* that verify :

¹² The qualification mentioned in footnote 7 above applies.

¹³ The schematic temperature transfer function is modified here to account for the essentially dynamic nature of climate models which involve CO₂ accumulation.

$$da_i/d\alpha_{it} + \partial d_i/\partial \alpha_{it} = 0, \quad t=1,2,\dots \quad (9)$$

A parallel role is played by the stock of equipments through the variables involved in durable adaptation, namely the level of the stock B_{it} and the flow of periodic additions to it β_{it} . While the latter increase expenditures at time t , the former reduces the cost of suffered damages: there is thus a tradeoff, like before. However, the formulation of optimality conditions is more complex for two reasons. First, the reduction of damages resulting from each action β_{it} spreads over several future periods: to account completely for the benefit so obtained the analysis must become an intertemporal one, identifying for projects or equipments decided at time t the reduction in suffered damages occurring at each period $\tau=t, t+1, t+2, \dots$ of their life time. This brings about another dimension of the issue under consideration, namely that investments in adaptive protection do not necessarily take place once and for all, but instead can be realized, and in fact are, in terms of programs extending over several time periods. Therefore what is at stake at each t is not just one investment decision β_{it} but rather a sequence of them $\beta_{it}, \beta_{it+1}, \beta_{it+2}, \dots, \beta_{iT}$ — in other words an investment program where T is the horizon planning of the decision maker.

Optimality in durable adaptation equipments is then to be formulated at each time t in terms of an investment program, combined with ephemeral adaptation activities that solves:

$$\text{Min}_{\{\alpha_{it}, \beta_{it}\}_{\tau=t}^T} \sum_{\tau=t}^T \gamma^\tau [a_i(\alpha_{i\tau}) + b_i(\beta_{i\tau}) + d_i(\Delta T_\tau, \alpha_{i\tau}, B_{i\tau})] \quad (10)$$

$$\text{where } B_{i\tau} = B_{i\tau-1}(1-\delta_\beta) + \beta_{i\tau},$$

$$\Delta T_\tau = G(T_{\tau-1}, e_{1\tau}, \dots, e_{i\tau}, \dots, e_{n\tau}),$$

and $\gamma > 0$ is a discount factor. Let $\alpha_{it}^*, \alpha_{it+1}^*, \alpha_{it+2}^*, \dots, \alpha_{iT}^*, \beta_{it}^*, \beta_{it+1}^*, \beta_{it+2}^*, \dots, \beta_{iT}^*$ be the solution to (10). The first order conditions that characterize this solution obviously satisfy (9) and also imply that at each t the adaptation investment β_{it}^* made at that time in country i satisfies

$$db_i/d\beta_{it} + \sum_{\tau=t}^T \gamma^{\tau-t} (1-\delta_\beta)^{\tau-t} \partial d_i/\partial B_{i\tau} = 0. \quad (11)$$

In words, at any point in time t investment in adaptation is optimal only if at the margin its cost is equal to the value discounted at time t of the future suffered damages it will allow to avoid.

After introducing these investment levels in the function (8) as well as the ephemeral activities α_{it}^* satisfying (9), the overall environmental cost of country i at time t , with both short run and long run optimal adaptation, reads:

$$J_{it}^* = c_i(e_{it}) + a_i(\alpha_{it}^*(\Delta T_t)) + b_i(\beta_{it}^*) + d_i(\Delta T_t, \alpha_{it}^*(\Delta T_t), B_{it}^*) \quad (12)$$

$$\text{where } B_{it}^*(\Delta T_t) = B_{it-1}(1 - \delta_\beta) + \beta_{it}^*$$
$$\text{and } \Delta T_t = G(T_{t-1}, e_{1t}, \dots, e_{it}, \dots, e_{nt}).$$

Intuitively, and as it was the case with (2), an envelope property links in (12), at each t , the second and fourth terms of this function. In terms of Figures 1 and 2, the presence of B_{it}^* in the suffered damage function $d_i(\cdot)$ just shifts its graph upwards or downwards.

7 Conclusion: implications for integrated assessment modeling and cost-benefit analysis .

In most static as well as dynamic models, introducing adaptation in the damage cost functions leads to expressions such as J_i^* where adaptation is indeed implicit. I derive from this, and from the above explicitation of this practice, four implications for future policy modeling and decisions.

1°) In all IAMs (Integrated Assessment Models), the optimality condition on *emissions* is always, for each country, the equality of abatement marginal cost with damage marginal cost¹⁴. Is that just damage costs incurred, or does it include adaptation expenditures? Equality (5) teaches us that *if adaptation is optimal*, only undergone suffering costs are to be taken into account, without adding anything from adaptation expenditures. This does not mean that adaptation expenditure are to be ignored in general, but well, instead, that they must be handled “separately”, taking good care of whether their size indeed meets the conditions (3) or (9) — see 3° below.

2°) Therefore, it should always be examined in detail in all Integrated Assessment models whether or not they have included adaptation, as well as whether the amount of expenditure for it is an appropriate one.

3°) Most importantly, condition (3) and intertemporal conditions (9) and (11) for optimal adaptation may be considered as *a reference to guide the evaluation of investment projects in adaptation equipments*, as well as the selection among them when they are numerous.

The method to be followed is essentially the following: for every project under consideration at time t , the expenditure it requires may be assimilated to the first term of the equalities (9) or (11), depending upon the nature of the project – a fairly easy task. By contrast, the

¹⁴ Domestic in the case of “positive” Nash equilibrium, collective in the case of “normative” Pareto efficiency.

numerical evaluation of the right hand sides of these equations, for each individual project, is a major challenge, although an inescapable one if economic rationality is to prevail in the decision to adopt or discard projects. Bundling projects may of course be considered in the same spirit.

The conditions referred to are formulated here in terms of “marginal” magnitudes because they are obtained from functions which are assumed to be differentiable. But of course, each project is a discrete unit. This does not put in question the relevance of applying to such discrete units the optimality conditions stated above, for the following two reasons:

- One is working here at a scale where each project is small with respect to the total investments involved;
 - If one thinks of solving the optimization problem that leads to (3) and (9) - (11) in terms of an algorithm of gradual adjustment of the variables involved towards minimum cost, with the adjustment operating in discrete real time, one can see the various projects as being stages of this algorithm. Each project, when adopted because the benefits it entails (the value of the damages it allows to avoid) are larger than its out of pocket cost, is to be interpreted as a step towards this minimum.
- 4°) Resource transfers between countries are advocated in the literature for moving from Nash equilibria to Pareto efficiency. While most often designed as lump sum transfers, they could instead be earmarked and exclusively devoted to adaptation and mitigation expenditures so as to have (3) and (9)-(11) satisfied. NORDHAUS and YANG 2006 make proposals in that direction.

References

- EYCKMANS, J. and TULKENS, H. 2005, "Optimal and stable international climate agreements", chapter II (pp. 5-20) in B.Willems, J.Eyckmans and S. Proost, eds, *Economic aspects of climate change policy: a European and Belgian perspective*, Acco, Leuven/Voorburg.
- DE BRUIN, K. C., DELLINK, R. B. and TOL, R. S.J. 2007, « AD-DICE: An Implementation of Adaptation in the DICE Model », *FEEM Nota Di Lavoro 51.2007*, Fondazione ENI Enrico Mattei, Milan.
- HOLDREN, J. P 2008, "Science and Technology for Sustainable Well-Being », *Science* 319, 424-43.
- MÄLER, K.-G. 1989, "The Acid Rain Game", chapter 12 (pp. 231-252) in H. Folmer et E. Van Ierland (eds), *Valuation Methods and Policy Making in Environmental Economics*, Elsevier, Amsterdam.
- NORDHAUS, W. and YANG, Z. 2006, "Magnitude and Direction of Technological Transfers for GHG Mitigation," *Energy Economics* 28, 730-741.
- STERN, N. 2007, *The economics of climate change: The Stern review*, Cambridge University Press.
- TOL, R.S.J. 2005, "Adaptation and mitigation: trade-offs in substance and methods", *Environmental Science and Policy* 8, 572-578.

NOTE DI LAVORO DELLA FONDAZIONE ENI ENRICO MATTEI

Fondazione Eni Enrico Mattei Working Paper Series

Our Note di Lavoro are available on the Internet at the following addresses:

<http://www.feem.it/Feem/Pub/Publications/WPapers/default.htm>

<http://www.ssrn.com/link/feem.html>

<http://www.repec.org>

<http://agecon.lib.umn.edu>

<http://www.bepress.com/feem/>

NOTE DI LAVORO PUBLISHED IN 2009

- SD 1.2009 Michael Hoel: [Bush Meets Hotelling: Effects of Improved Renewable Energy Technology on Greenhouse Gas Emissions](#)
- SD 2.2009 Abay Mulatu, Reyer Gerlagh, Dan Rigby and Ada Wossink: [Environmental Regulation and Industry Location](#)
- SD 3.2009 Anna Alberini, Stefania Tonin and Margherita Turvani: [Rates of Time Preferences for Saving Lives in the Hazardous Waste Site Context](#)
- SD 4.2009 Elena Ojea, Paulo A.L.D. Nunes and Maria Loureiro: [Mapping of Forest Biodiversity Values: A Plural Perspective](#)
- SD 5.2009 Xavier Pautrel : [Macroeconomic Implications of Demography for the Environment: A Life-Cycle Perspective](#)
- IM 6.2009 Andrew Ellul, Marco Pagano and Fausto Panunzi: [Inheritance Law and Investment in Family Firms](#)
- IM 7.2009 Luigi Zingales: [The Future of Securities Regulation](#)
- SD 8.2009 Carlo Carraro, Emanuele Massetti and Lea Nicita: [How Does Climate Policy Affect Technical Change? An Analysis of the Direction and Pace of Technical Progress in a Climate-Economy Model](#)
- SD 9.2009 William K. Jaeger: [The Welfare Effects of Environmental Taxation](#)
- SD 10.2009 Aude Pommeret and Fabien Prieur: [Double Irreversibility and Environmental Policy Design](#)
- SD 11.2009 Massimiliano Mazzanti and Anna Montini: [Regional and Sector Environmental Efficiency Empirical Evidence from Structural Shift-share Analysis of NAMEA data](#)
- SD 12.2009 A. Chiabai, C. M. Travisi, H. Ding, A. Markandya and P.A.L.D Nunes: [Economic Valuation of Forest Ecosystem Services: Methodology and Monetary Estimates](#)
- SD 13.2009 Andrea Bigano, Mariaester Cassinelli, Fabio Sfera, Lisa Guarrera, Sohbet Karbuz, Manfred Hafner, Anil Markandya and Ståle Navrud: [The External Cost of European Crude Oil Imports](#)
- SD 14.2009 Valentina Bosetti, Carlo Carraro, Romain Duval, Alessandra Sgobbi and Massimo Tavoni: [The Role of R&D and Technology Diffusion in Climate Change Mitigation: New Perspectives Using the Witch Model](#)
- IM 15.2009 Andrea Beltratti, Marianna Caccavaio and Bernardo Bortolotti: [Stock Prices in a Speculative Market: The Chinese Split-Share Reform](#)
- GC 16.2009 Angelo Antoci, Fabio Sabatini and Mauro Sodini: [The Fragility of Social Capital](#)
- SD 17.2009 Alexander Golub, Sabine Fuss, Jana Szolgayova and Michael Obersteiner: [Effects of Low-cost Offsets on Energy Investment – New Perspectives on REDD –](#)
- SD 18.2009 Enrica De Cian: [Factor-Augmenting Technical Change: An Empirical Assessment](#)
- SD 19.2009 Irene Valsecchi: [Non-Uniqueness of Equilibria in One-Shot Games of Strategic Communication](#)
- SD 20.2009 Dimitra Vouvaki and Anastasios Xeapapadeas: [Total Factor Productivity Growth when Factors of Production Generate Environmental Externalities](#)
- SD 21.2009 Giulia Macagno, Maria Loureiro, Paulo A.L.D. Nunes and Richard Tol: [Assessing the Impact of Biodiversity on Tourism Flows: A model for Tourist Behaviour and its Policy Implications](#)
- IM 22.2009 Bernardo Bortolotti, Veljko Fotak, William Megginson and William Miracky: [Sovereign Wealth Fund Investment Patterns and Performance](#)
- IM 23.2009 Cesare Dosi and Michele Moretto: [Auctioning Monopoly Franchises: Award Criteria and Service Launch Requirements](#)
- SD 24.2009 Andrea Bastianin: [Modelling Asymmetric Dependence Using Copula Functions: An application to Value-at-Risk in the Energy Sector](#)
- IM 25.2009 Shai Bernstein, Josh Lerner and Antoinette Schoar: [The Investment Strategies of Sovereign Wealth Funds](#)
- SD 26.2009 Marc Germain, Henry Tulkens and Alphonse Magnus: [Dynamic Core-Theoretic Cooperation in a Two-Dimensional International Environmental Model](#)
- IM 27.2009 Frank Partnoy: [Overdependence on Credit Ratings Was a Primary Cause of the Crisis](#)
- SD 28.2009 Frank H. Page Jr and Myrna H. Wooders (lxxxv): [Endogenous Network Dynamics](#)
- SD 29.2009 Caterina Calsamiglia, Guillaume Haeringer and Flip Klijn (lxxxv): [Constrained School Choice: An Experimental Study](#)
- SD 30.2009 Gilles Grandjean, Ana Mauleon and Vincent Vannetelbosch (lxxxv): [Connections Among Farsighted Agents](#)
- SD 31.2009 Antonio Nicoló and Carmelo Rodríguez Álvarez (lxxxv): [Feasibility Constraints and Protective Behavior in Efficient Kidney Exchange](#)
- SD 32.2009 Rahmi İlkiliç (lxxxv): [Cournot Competition on a Network of Markets and Firms](#)
- SD 33.2009 Luca Dall'Asta, Paolo Pin and Abolfazl Ramezanzpour (lxxxv): [Optimal Equilibria of the Best Shot Game](#)
- SD 34.2009 Edoardo Gallo (lxxxv): [Small World Networks with Segregation Patterns and Brokers](#)
- SD 35.2009 Benjamin Golub and Matthew O. Jackson (lxxxv): [How Homophily Affects Learning and Diffusion in Networks](#)

SD	36.2009	Markus Kinateder (lxxxv): Team Formation in a Network
SD	37.2009	Constanza Fosco and Friederike Mengel (lxxxv): Cooperation through Imitation and Exclusion in Networks
SD	38.2009	Berno Buechel and Tim Hellmann (lxxxv): Under-connected and Over-connected Networks
SD	39.2009	Alexey Kushnir (lxxxv): Matching Markets with Signals
SD	40.2009	Alessandro Tavoni (lxxxv): Incorporating Fairness Motives into the Impulse Balance Equilibrium and Quantal Response Equilibrium Concepts: An Application to 2x2 Games
SD	41.2009	Steven J. Brams and D. Marc Kilgour (lxxxv): Kingmakers and Leaders in Coalition Formation
SD	42.2009	Dotan Persitz (lxxxv): Power in the Heterogeneous Connections Model: The Emergence of Core-Periphery Networks
SD	43.2009	Fabio Eboli, Ramiro Parrado, Roberto Roson: Climate Change Feedback on Economic Growth: Explorations with a Dynamic General Equilibrium Mode
GC	44.2009	Fabio Sabatini: Does Social Capital Create Trust? Evidence from a Community of Entrepreneurs
SD	45.2009	ZhongXiang Zhang: Is it Fair to Treat China as a Christmas Tree to Hang Everybody's Complaints? Putting its Own Energy Saving into Perspective
SD	46.2009	Eftichios S. Sartzetakis, Anastasios Xepapadeas and Emmanuel Petrakis: The Role of Information Provision as a Policy Instrument to Supplement Environmental Taxes: Empowering Consumers to Choose Optimally
SD	47.2009	Jean-François Caulier, Ana Mauleon and Vincent Vannetelbosch: Contractually Stable Networks
GC	48.2009	Massimiliano Mazzanti, Susanna Mancinelli, Giovanni Ponti and Nora Piva: Education, Reputation or Network? Evidence from Italy on Migrant Workers Employability
SD	49.2009	William Brock and Anastasios Xepapadeas: General Pattern Formation in Recursive Dynamical Systems Models in Economics
SD	50.2009	Giovanni Marin and Massimiliano Mazzanti: Emissions Trends and Labour Productivity Dynamics Sector Analyses of De-coupling/Recoupling on a 1990-2005 Namea
SD	51.2009	Yoshio Kamijo and Ryo Kawasaki (lxxxv): Dynamics, Stability, and Foresight in the Shapley-Scarf Housing Market
IM	52.2009	Laura Poddi and Sergio Vergalli: Does Corporate Social Responsibility Affect the Performance of Firms?
SD	53.2009	Valentina Bosetti, Carlo Carraro and Massimo Tavoni: Climate Change Mitigation Strategies in Fast-Growing Countries: The Benefits of Early Action
GC	54.2009	Alireza Naghavi and Gianmarco I.P. Ottaviano: Firm Heterogeneity, Contract Enforcement, and the Industry Dynamics of Offshoring
IM	55.2009	Giacomo Calzolari and Carlo Scarpa: On Regulation and Competition: Pros and Cons of a Diversified Monopolist
SD	56.2009	Valentina Bosetti, Ruben Lubowski and Alexander Golub and Anil Markandya: Linking Reduced Deforestation and a Global Carbon Market: Impacts on Costs, Financial Flows, and Technological Innovation
IM	57.2009	Emmanuel Farhi and Jean Tirole: Collective Moral Hazard, Maturity Mismatch and Systemic Bailouts
SD	58.2009	Kelly C. de Bruin and Rob B. Dellink: How Harmful are Adaptation Restrictions
SD	59.2009	Rob Dellink, Michel den Elzen, Harry Aiking, Emmy Bergsma, Frans Berkhout, Thijs Dekker, Joyeeta Gupta: Sharing the Burden of Adaptation Financing: An Assessment of the Contributions of Countries
SD	60.2009	Stefania Tonin, Anna Alberini and Margherita Turvani: The Value of Reducing Cancer Risks at Contaminated Sites: Are More Heavily Exposed People Willing to Pay More?
SD	61.2009	Clara Costa Duarte, Maria A. Cunha-e-Sá and Renato Rosa: The Role of Forests as Carbon Sinks: Land-Use and Carbon Accounting
GC	62.2009	Carlo Altomonte and Gabor Békés: Trade Complexity and Productivity
GC	63.2009	Elena Bellini, Gianmarco I.P. Ottaviano, Dino Pinelli and Giovanni Prarolo: Cultural Diversity and Economic Performance: Evidence from European Regions
SD	64.2009	Valentina Bosetti, Carlo Carraro, Enrica De Cian, Romain Duval, Emanuele Massetti and Massimo Tavoni: The Incentives to Participate in, and the Stability of, International Climate Coalitions: A Game-theoretic Analysis Using the Witch Model
IM	65.2009	John Temple Lang: Article 82 EC – The Problems and The Solution
SD	66.2009	P. Dumas and S. Hallegatte: Think Again: Higher Elasticity of Substitution Increases Economic Resilience
SD	67.2009	Ruslana Rachel Palatnik and Roberto Roson: Climate Change Assessment and Agriculture in General Equilibrium Models: Alternative Modeling Strategies
SD	68.2009	Paulo A.L.D. Nunes, Helen Ding and Anil Markandya: The Economic Valuation of Marine Ecosystems
IM	69.2009	Andreas Madestam: Informal Finance: A Theory of Moneylenders
SD	70.2009	Efthymia Kyriakopoulou and Anastasios Xepapadeas: Environmental Policy, Spatial Spillovers and the Emergence of Economic Agglomerations
SD	71.2009	A. Markandya, S. Arnold, M. Cassinelli and T. Taylor: Coastal Zone Management in the Mediterranean: Legal and Economic Perspectives
GC	72.2009	Gianmarco I.P. Ottaviano and Giovanni Prarolo: Cultural Identity and Knowledge Creation in Cosmopolitan Cities
SD	73.2009	Erik Ansink: Self-enforcing Agreements on Water allocation
GC	74.2009	Mario A. Maggioni, Francesca Gambarotto and T. Erika Uberti: Mapping the Evolution of "Clusters": A Meta-analysis
SD	75.2009	Nektarios Aslanidis: Environmental Kuznets Curves for Carbon Emissions: A Critical Survey
SD	76.2009	Joan Canton: Environmentalists' Behaviour and Environmental Policies
SD	77.2009	Christoph M. Rheinberger: Paying for Safety: Preferences for Mortality Risk Reductions on Alpine Roads

- IM 78.2009 Chiara D'Alpaos, Michele Moretto, Paola Valbonesi and Sergio Vergalli: "It Is Never too late": Optimal Penalty for Investment Delay in Public Procurement Contracts
- SD 79.2009 Henry Tulkens and Vincent van Steenberghe: "Mitigation, Adaptation, Suffering": In Search of the Right Mix in the Face of Climate Change

(lxxxv) This paper has been presented at the 14th Coalition Theory Network Workshop held in Maastricht, The Netherlands, on 23-24 January 2009 and organised by the Maastricht University CTN group (Department of Economics, http://www.feem-web.it/ctn/12d_maa.php).