

Caporale, Guglielmo Maria; Amor, Thouraya Hadj; Rault, Christophe

Working Paper

Sources of real exchange rate volatility and international financial integration: A dynamic GMM panel approach

CESifo Working Paper, No. 3645

Provided in Cooperation with:

Ifo Institute – Leibniz Institute for Economic Research at the University of Munich

Suggested Citation: Caporale, Guglielmo Maria; Amor, Thouraya Hadj; Rault, Christophe (2011) : Sources of real exchange rate volatility and international financial integration: A dynamic GMM panel approach, CESifo Working Paper, No. 3645, Center for Economic Studies and ifo Institute (CESifo), Munich

This Version is available at:

<https://hdl.handle.net/10419/52487>

Standard-Nutzungsbedingungen:

Die Dokumente auf EconStor dürfen zu eigenen wissenschaftlichen Zwecken und zum Privatgebrauch gespeichert und kopiert werden.

Sie dürfen die Dokumente nicht für öffentliche oder kommerzielle Zwecke vervielfältigen, öffentlich ausstellen, öffentlich zugänglich machen, vertreiben oder anderweitig nutzen.

Sofern die Verfasser die Dokumente unter Open-Content-Lizenzen (insbesondere CC-Lizenzen) zur Verfügung gestellt haben sollten, gelten abweichend von diesen Nutzungsbedingungen die in der dort genannten Lizenz gewährten Nutzungsrechte.

Terms of use:

Documents in EconStor may be saved and copied for your personal and scholarly purposes.

You are not to copy documents for public or commercial purposes, to exhibit the documents publicly, to make them publicly available on the internet, or to distribute or otherwise use the documents in public.

If the documents have been made available under an Open Content Licence (especially Creative Commons Licences), you may exercise further usage rights as specified in the indicated licence.

Sources of Real Exchange Rate Volatility and
International Financial Integration:
A Dynamic GMM Panel Approach

Guglielmo Maria Caporale
Thouraya Hadj Amor
Christophe Rault

CESIFO WORKING PAPER NO. 3645

CATEGORY 8: TRADE POLICY

NOVEMBER 2011

An electronic version of the paper may be downloaded

- *from the SSRN website:* www.SSRN.com
- *from the RePEc website:* www.RePEc.org
- *from the CESifo website:* www.CESifo-group.org/wp

Sources of Real Exchange Rate Volatility and International Financial Integration: A Dynamic GMM Panel Approach

Abstract

The aim of this paper is to provide some new empirical evidence on the determinants of volatility of real exchange rates in emerging countries, focusing on the role of international financial integration in particular. A reduced-form model is estimated using the GMM method for dynamic panels over the period 1979-2004 for a sample of 39 developing countries grouped into three regions (Latin America, Asia and MENA). Our findings suggest that different types of shocks (external, real and monetary) can account for volatility of real exchange rates in emerging economies, with international financial integration being a major driving force. Therefore, financial liberalisation and integration should be pursued only gradually in emerging countries.

JEL-Code: E310, F000, F310, C150.

Keywords: emerging economies, real exchange rate, volatility, financial integration, GMM method, dynamic panel.

Guglielmo Maria Caporale
Centre for Empirical Finance
Brunel University London
UK – West London, UB8 3PH
Guglielmo-Maria.Caporale@brunel.ac.uk

Thouraya Hadj Amor
University of Monastir
FSEGMA, ESA
Tunisia – Mahdia
hathouraya@yahoo.fr

Christophe Rault
LEO (Laboratoire d'Economie d'Orléans)
CNRS UMR 6221, University of Orléans
Rue de Blois-B.P. 6739
France – 45067 Orléans Cedex 2
chrault@hotmail.com

We are grateful to an anonymous referee for helpful comments and suggestions on an earlier draft of this paper. The usual disclaimer applies. A shorter version of this paper is forthcoming in *The Journal of International Trade and Economic Development*.

1. Introduction

Since the collapse of Bretton Woods in 1973 and the switch to floating exchange rates, the volatility of the real exchange rate (RER) has increased, with significant effects on economic growth, capital movements and international trade (see Baig, 2001, and Hviding, Nowak and Ricci, 2004), especially in the developing countries, where financial liberalisation and the abolition of exchange controls have resulted in large fluctuations of real exchange rates (see, e.g., Reinhart and Smith 2001, and Corden 2002). Other authors, however, believe that financial openness can have a stabilising effect on exchange rate fluctuations (see, for example, Aguirre and Calderon, 2005; 2006), as well as lead to higher growth (see Prasad et al, 2003). Further, countries may be in a better position if they meet the challenges of financial integration, by attracting foreign investors, and hence stimulating domestic investment (see Goldstein and Turner, 2004). International financial integration can also increase liquidity and result in more effective risk diversification (see Le Fort, 2000).

The aim of this paper is to provide some new empirical evidence on the determinants of volatility of real exchange rates in emerging countries, focusing on the role of international financial integration in particular. A reduced-form model is estimated using the GMM method for dynamic panels over the period 1979-2004 for a sample of 39 developing countries grouped into three regions (Latin America, Asia and MENA). Our findings suggest that different types of shocks (external, real and monetary) can account for volatility of real exchange rates in emerging economies, with international financial integration being a major driving force. Therefore, financial liberalisation and integration should be pursued only gradually in emerging countries.

The layout of the paper is the following. Section 2 briefly reviews the literature on financial integration and real exchange rate fluctuations. Section 3 discusses the data and outlines the econometric methodology. Section 4 presents the empirical findings. Section 5 offers some concluding remarks.

2. Financial Integration on Real Exchange Rate Fluctuations

2.1 Theory

The theoretical literature on the effects of capital controls is rather limited. Moreover, only a few papers argue that financial openness reduces real exchange rate fluctuations (see Aguirre

and Calderon, 2005). Prasad et al. (2003) also conclude that financial integration and liberalisation of capital flows reduce volatility as well as increase growth. Goldstein and Turner (2004) point out that financial integration is likely to attract foreign investment and stimulate domestic investment. International financial integration and liberalisation of the capital account can also increase the effectiveness of consumption smoothing and risk diversification, as well as the liquidity of financial markets (see Le Fort, 2000). Thus, as argued by Fischer (2003), emerging countries have liberalised capital flows because of the expected gains from financial globalisation. However, Eatwell and Taylor (2002) emphasise that the net benefits of liberalisation are difficult to identify, because of the costs of higher volatility. Obstfeld (1984) considers the two extreme cases of a closed capital account and of free mobility of capital. He argues that the removal of capital controls leads to an initial period of real appreciation: in the short term, an increase of the stock of net foreign assets, by boosting the demand for non-tradeable goods, generates excess demand for labour in the household goods sector and thus an appreciation of the real exchange rate, external deficits and capital inflows.

However, according to other authors, such as Le Fort (2000), the expected impact of financial integration on RER fluctuations is low, even zero, if the exchange rate system is more flexible. Indeed, the higher volatility of floating exchange rates can be offset by a high degree of capital mobility, which can help to absorb external shocks, even though it is not a guarantee against long-lived misalignments. Frankel et al. (1996) analyse the effects of taxes on capital flows by using a simple monetary model in which capital controls reduce the influence of short-term speculators on the exchange rate. Buch, Döpke and Purdziach (2002) show that introducing the Tobin tax in the Dornbusch (1976) model reduces exchange rates volatility.

The IMF (1998) takes the view that restrictions on capital movements are sometimes necessary to reduce RER volatility⁴. DeGregorio, Eichengreen, Ito and Wyplosz (2000) advocate short-term capital controls to reduce vulnerability to financial crises and contagion. However, Frankel and al. (2001) show that capital controls, in addition to reducing exchange rate volatility, increase the risk premium on domestic assets, thus increasing the domestic interest rate and reducing investment and growth. Reinhart and Smith (2001) and Corden

⁴ See also Prasad et al. (2003), and Eichengreen (1998).

(2002) conclude that, owing to massive capital flows caused in the short run by the opening of the capital account, a RER appreciation is inevitable, regardless of the choice of exchange rate regime. According to Prasard et al. (2003), the transition to capital mobility should be gradual, because a premature opening could result in significant costs (see Andersen and Moreno, 2005). Jongwanich (2006) stresses that monitoring capital flows and their volatility in the short term is useful to avoid a RER appreciation. Egert, Révil and Lommatzsch (2004) show that an improvement in the net external position leads to an appreciation of the real exchange rate. Finally, Edwards and Rigobon (2005) argue that capital controls reduce the vulnerability of the nominal exchange rate to external shocks and lead to a depreciation of the real exchange rate.

2.2 Empirical Evidence

Only a few empirical studies have analysed the effects of financial integration on the dynamics of the short-term RER. Hooper and Morton (1982) found a positive correlation between net foreign assets and the RER. Obstfeld (1984) showed that the liberalisation of capital movements led to a RER appreciation in Latin America. Basurto and Ghosh (2000), using the method of Vahid and Engle (1993), confirmed the existence of a common cycle between the nominal exchange rate and the interest rate differential in the case of the Japanese Yen and Deutsche Mark exchange rates vis-à-vis the U.S. dollar, whilst the relationship was less clear for the Canadian dollar. They explained these results by pointing out that an increase in domestic interest rates leads to capital inflows, and thus an appreciation of the real exchange rate.

Chang and Velasco (2001) focused on the South-East Asia crisis of 1997-98, and the Argentine one of 2002, when panic seized foreign investors and led to bank failures and currency depreciation. Hau (2002) reported instead that, in a sample of 23 OECD countries over the 1980-1998 period, the RER was less volatile in the more open countries with more liberalised financial markets. Calderon (2003) assessed the determinants of real exchange rate volatility for 21 industrialised countries. Using quarterly data, he concluded that trade liberalisation is likely to mitigate RER volatility. Calderon (2004) studied the effect of financial openness and trade on RER volatility in a panel of industrialised and emerging economies over the period 1974-2003. Using the dynamic GMM method, he found that liberalisation reduced RER volatility. Edwards and Rigobon (2005) estimated a structural VAR for Chile and concluded that removing capital controls makes the nominal exchange

rate more vulnerable to external shocks and results in a RER depreciation. Finally, Lane and Milesi-Ferretti (2005) analysed the interaction between financial globalisation and RER, by examining assets and liabilities for a panel of emerging countries. Their results indicate that the decrease in the net external position from 1990 to 1996 led to a depreciation of the real exchange rate.

Given the small number of contributions considering international financial integration as a possible driving source of RER fluctuations, we estimate below a model which enables us to evaluate the relative contribution of various shocks to the RER, including international financial integration, in a panel of emerging countries.

3. Econometric Framework

3.1 Data and Model Specification

We consider four possible types of shocks to the RER:

- i) Domestic real shocks affecting supply, such as productivity shocks;
- ii) Domestic real shocks affecting demand, such as changes in consumption and investment behaviour;
- iii) External real shocks such as changes in the terms of trade;
- iv) Nominal shocks reflecting changes in money supply and in the nominal exchange rate

Compared with the study of Hau (2002), we examine a large sample of *emerging* countries (39 of them) instead of 23 OECD countries, and over a longer time period (1979-2004, instead of 1980-1998). Also, we use panel data rather than time series methods. In comparison to Caldéron (2004), we introduce into the model additional fundamentals, such as technical progress, possibly driving RER. Moreover, we use the recent data on financial integration provided by Lane and Milesi-Ferretti (2006), and the classification of exchange rate regimes of Yeyati and Sturzenegger (2005).

Our sample includes data on the real exchange rate, output, terms of trade, government expenditure, money supply, exchange rate regimes, as well as the commercial and financial openness for a sample of 39 countries, divided into three regions: 20 Latin American countries (Argentina, Bolivia, Brazil, Chile, Colombia, Costa Rica, Dominican Republic, Ecuador, El Salvador, Guatemala, Haiti, Honduras, Mexico, Nicaragua, Panama, Paraguay,

Peru, Trinidad, Uruguay, Venezuela), 10 South East Asian countries (Bangladesh, China, India, Indonesia, Korea, Malaysia, Pakistan, Philippines, Sri Lanka, Thailand) and 9 countries from the MENA region (Algeria, Egypt, Iran, Israel, Jordan, Morocco, Syria, Tunisia, Turkey). The variables are calculated as follows:

* The dependent variable, real exchange rate volatility, is measured as the standard deviation of the *effective* real exchange rate (RER) over a five-year period, where $RER = \frac{P}{EP^*}$,

P= Domestic price index, specifically the consumer price index (including tradable goods with a significant weight)

P^* = Foreign price index, here the US consumer price index (including tradable goods with a significant weight)

E= Nominal exchange rate vis-à-vis the US dollar, where an increase (decrease) of the RER means a real appreciation (depreciation) of the home currency.

We use annual data to construct the real effective exchange rate index for country i in period t, $TCREF_{it}^5$, defined as the nominal exchange rate index multiplied by the relative price of the rest of the world (in US dollars) to the domestic price index:

$$TCREF_{it} = \frac{\frac{P_{it}}{P_{i0}}}{\left(\frac{E_{it}}{E_{i0}}\right) \prod_{k=1}^n \left[\frac{P_{kt}^* E_{k0}}{P_{k0}^* E_{kt}}\right]^{w_k}}, \text{ where}$$

- E_{it} and P_{it} are nominal exchange rate and consumer price index respectively for country i, in period t,
- E_{kt} and P_{kt} are nominal exchange rate and consumer price index respectively for k-commercial partners, in period t. Time 0 is the base period for the index, and
- W_k , the weights, are computed as the ratio of the bilateral trade flows of country i to the trade-flows of its main commercial partners.

* The explanatory variables in the model are:

(i) The volatility of fundamentals, data for which are obtained from the WDI (World Development Indicators, 2006), namely:

- Output volatility, measured by the standard deviation of the growth rate of real GDP. This variable reflects the “Balassa-Samuelson effect”.

These data have also been used by Loayza, Fajnzylber and Calderón (2004);

- Volatility of public spending (PS), calculated as the standard deviation of changes in public

⁵ The effective RER is calculated as a geometric mean.

consumption;

- Volatility of money supply, i.e. the standard deviation of the growth rate of the monetary base.

- Volatility of terms of trade (TT6,) measured by the standard deviation of changes in the terms of trade.

(ii) Economic openness defined as:

- Trade openness, averaged over 5 years, this variable being approximated by the share of imports and exports in total household expenditure;

- International financial integration again averaged over 5 years (from the database of Lane and Milesi-Ferretti, 2006). Three indicators are considered: the sum of stocks of FDI and portfolio investments, relative to GDP (IFI1), total liabilities and assets relative to GDP (IFI2), and the Net Foreign Assets (NFA) position, i.e. the difference between total assets and liabilities (in absolute value), which is another indicator of international financial integration. We also include a capital control variable that takes the value of 1 if there is capital liberalisation, and 0 in the case of capital restrictions. The data are from the IMF's "Exchange Arrangements and Exchange Restrictions" (2006).

iii) The foreign exchange regime, averaged over 5 years, following the classification of exchange regimes of Yeyati and Sturzenegger (2005). Finally, real GDP is taken from the WDI (2006).

Most earlier empirical studies of RER volatility are of a static nature. Only a few recent papers (Calderon, 2004, Aghion, Bacchetta, Ranciere and Rogoff, 2006, Nardis et al., 2008) adopt a dynamic approach, as we also do here. Specifically, we estimate equation (1) below, which regresses RER volatility against the volatility of fundamentals, financial integration, trade liberalisation and exchange rate regimes:

$$Y_{it} = \mu_i + \phi Y_{it-1} + \beta X_{it} + \gamma F_{it} + \delta Z_{it} + \varepsilon_{it} \quad (1)$$

where Y_{it} stands for RER volatility, μ_i for unobserved country-specific effects, X_{it} is a vector including the volatility of fundamentals (the standard deviation of government spending shocks, real GDP, money supply and terms of trade); F_{it} is a measure of international financial

integration (IFI1, IFI2 or NFA), Z_{it} is a matrix of control variables, such as trade openness and the dummy variables taking into account changes in exchange rate regimes.

3.2 Estimation Method

In a dynamic model which includes lags of the dependent variable as explanatory variables standard econometric techniques (OLS, IV, etc.) do not yield efficient estimates of the parameters (Sevestre, 2002). The GMM method provides a solution to the problems of simultaneity bias, reverse causality and omitted variable bias (Kpodar, 2007), as well as yielding estimates of unobserved country-specific effects and dummy coefficients for which the usual methods ("within" or "difference") would be inappropriate given the dynamic nature of the regression (see Calderon et al. 2006).

There are two types of GMM estimators: the first-difference and the system one. In the former case, all variables are first-differenced to eliminate individual and time-specific effects. Variables in levels lagged twice or more are then used as instruments for the explanatory variables, assuming that the errors of the equation in levels are not autocorrelated. However, those lagged variables are weak instruments. That is why Arellano and Bover (1995) and Blundell and Bond (1998) have proposed a system GMM estimator, which is based on assumptions about the initial conditions such that the moment conditions remain valid even for persistent series. This estimator combines the equations in first differences with equations in which the level variables are instrumented by their first differences. Blundell and Bond (1998) have shown using Monte Carlo simulations that the system GMM estimator is indeed more efficient than the first-difference one, the latter yielding biased estimates in finite samples if the instruments are weak⁶.

Two types of tests are usually carried out in this context: the Sargan or Hansen test for over-identifying restrictions to test the validity of the lagged variables as instruments (i.e., whether or not the instruments are exogenous), and the autocorrelation test of Arellano and Bond (1995) where the null hypothesis is no autocorrelation of second order of the errors of the equation in first differences. Appendix 1 provides more details of the GMM method.

⁶ See also Kpodar (2007), p.53.

4. Empirical Results

4.1 Descriptive and Correlation Analysis

We analyse first five-year averages over the period 1979-2004 for each country. Plots of RER volatility (see Figure 1 in Appendix 2) show a noticeable decrease in most countries in the last decade (especially in Asia and some countries in Latin America and MENA), which might reflect monetary policies aimed at reducing currency fluctuations. As for the degree of international financial integration, this appears to increase sharply in the last decade (see Figure 2 in Appendix 2).

Panel correlations between the volatility of the real exchange rate and its fundamentals (including international financial integration) are reported in Table 1:

Table 1. RER Volatility and Financial Integration in Emerging Countries

	Total Panel		Floating		Intermediate		Fixed	
	P. Corr.	P-value	P. Corr.	P-value	P. Corr.	P-value	P. Corr.	P-value
vtt	0.450	(0.00)	0.385	(0.00)	0.442	(0.00)	0.578	(0.00)
vrgdp	0.128	(0.07)	0.243	(0.04)	0.448	(0.00)	0.087	(0.49)
vps	0.247	(0.00)	-0.185	(0.12)	0.206	(0.09)	0.487	(0.00)
vmon	0.307	(0.00)	0.087	(0.27)	0.617	(0.00)	0.373	(0.00)
Open	-0.108	(0.11)	-0.178	(0.14)	-0.380	(0.00)	-0.086	(0.50)
IFI	0.280	(0.00)	0.093	(0.44)	-0.346	(0.00)	0.282	(0.02)
NFA	0.646	(0.00)	0.030	(0.80)	-0.179	(0.11)	0.711	(0.00)
CA	-0.044	(0.54)	0.211	(0.08)	0.094	(0.45)	-0.129	(0.31)

Notes:

a) the period is 1979-2004 (five-year averages).

b) The panel correlation analysis was first performed for the 39 countries (total panel), then by exchange rate regime. To do this, for each country, a dummy variable ER was introduced taking respectively the values 0, 1, 2, if the exchange rate regime is either fixed, intermediate or flexible (following the classification of Yeyati and Sturzenegger, 2005).

c) The correlation is calculated between RER volatility and volatility of each other variable in turn. The variables vtt, vrgdp, vps, vmon, are respectively the volatility of the terms of trade, the growth rate of real GDP, government consumption and monetary base. Open stands for trade openness. The measures of financial integration are IFI2, Net Foreign Assets (NFA) and the opening of the current account (CA).

It appears that RER volatility is positively correlated with the volatility of fundamentals, such as terms of trade, real GDP growth, government consumption and money supply. This suggests that it can be attributed to various types of shocks, in particular external shocks to the terms of trade and domestic real GDP; also monetary shocks are strongly and significantly correlated with the volatility of the real exchange rate, regardless of the exchange rate regime.

Moreover, trade openness is negatively correlated with RER volatility, whilst international financial integration is positively correlated. However, the latter correlation is negative in the case of intermediate exchange rate regimes.

Table 2 presents correlations for countries grouped by region.

Table 2. RER Volatility and Financial Integration in Emerging Countries by Region

	Total of Panel		Floating		Intermediate		Fixed	
	P. Corr.	P-value	P. Corr.	P-value	P. Corr.	P-value	P. Corr.	P-value
Latin America								
vtt	0.577	(0.00)	0.288	(0.09)	0.513	(0.00)	0.647	(0.00)
vrgdp	0.102	(0.31)	0.379	(0.02)	0.410	(0.01)	0.371	(0.04)
vps	0.228	(0.02)	-0.196	(0.26)	0.126	(0.46)	0.510	(0.00)
vmon	0.323	(0.00)	0.157	(0.37)	0.606	(0.00)	0.360	(0.05)
Open	-0.174	(0.26)	-0.315	(0.06)	-0.406	(0.01)	-0.104	(0.58)
IFI	0.288	(0.00)	0.088	(0.61)	-0.441	(0.00)	0.272	(0.14)
NFA	0.698	(0.00)	0.129	(0.46)	0.126	(0.46)	0.740	(0.00)
CA	-0.129	(0.19)	-0.004	(0.97)	-0.147	(0.38)	-0.208	(0.26)
Asia								
vtt	0.010	(0.94)	0.106	(0.68)	0.212	(0.39)	0.491	(0.05)
vrgdp	0.616	(0.00)	0.491	(0.05)	0.704	(0.00)	0.332	(0.16)
vps	-0.001	(0.96)	-0.360	(0.15)	0.243	(0.33)	0.097	(0.71)
vmon	0.095	(0.26)	0.097	(0.71)	0.146	(0.56)	0.106	(0.68)
Open	-0.010	(0.94)	-0.071	(0.78)	-0.053	(0.83)	-0.271	(0.24)
IFI	0.193	(0.15)	0.364	(0.15)	0.369	(0.13)	-0.455	(0.08)
NFA	0.231	(0.10)	0.322	(0.16)	0.580	(0.01)	-0.425	(0.10)
CA	0.341	(0.01)	0.503	(0.03)	0.375	(0.12)	0.108	(0.70)
MENA								
vtt	0.552	(0.00)	0.181	(0.48)	0.597	(0.05)	0.659	(0.00)
vrgdp	0.205	(0.17)	0.003	(0.98)	-0.162	(0.63)	0.267	(0.29)
vps	0.480	(0.00)	0.196	(0.44)	0.250	(0.45)	0.574	(0.01)
vmon	0.415	(0.00)	0.160	(0.53)	0.903	(0.00)	0.748	(0.00)
Open	-0.479	(0.00)	-0.337	(0.18)	-0.548	(0.08)	-0.568	(0.01)
IFI	-0.390	(0.00)	-0.275	(0.28)	-0.614	(0.04)	-0.453	(0.06)
NFA	-0.259	(0.08)	-0.256	(0.31)	-0.442	(0.17)	-0.224	(0.38)
CA	-0.064	(0.67)	0.390	(0.12)	-0.411	(0.20)	-0.312	(0.22)

Notes:

a) the period is 1979-2004 (five-year averages).

b) The panel correlation analysis was first done by region (Latin America, Asia and MENA), then by exchange rate regime within each region. To do this, for each country in a given region, a dummy variable ER was introduced taking respectively the values 0, 1, 2, if the exchange rate regime is either fixed, intermediate or flexible (following the classification of Yeyati and Sturzenegger, 2005).

c) The correlation is calculated between the RER volatility and the volatility of each other variable in turn.

The variables vtt, vrgdp, vps, vmon, are respectively the volatility of the terms of trade, the growth rate of real GDP, government consumption and monetary base. Open stands for trade openness. The measures of financial integration are IFI2, Net Foreign Assets (NFA) and the opening of the current account (CA).

It can be seen that RER volatility in Latin America is significantly and positively correlated with the external shocks to the terms of trade and the money supply. In Asia, instead, it is significantly correlated with domestic shocks to real GDP. Note also the lack of correlation with trade openness for Latin America and Asia. Furthermore, financial integration is negatively correlated with RER volatility under the fixed exchange regime often adopted by Asian countries. Such a regime, as stressed by Ferrari (2000), and Obstfeld, Shambaugh and Taylor (2004), is not compatible with the new financial architecture, mainly characterised by international financial integration, although it might reduce RER volatility (see Figure 1 of Appendix 2). Regarding the MENA countries, we find in all cases a significant negative correlation between financial integration and RER volatility. The other shocks, including external and monetary shocks, also appear to be significantly positively correlated with RER volatility in the MENA.

4.2 GMM Estimation

The panel estimates for equation (1) using the GMM system estimator of Arellano and Bover (1995) are reported in Table 3.

Table 3. RER Volatility and Financial Integration in Emerging Countries

	[I]	[II]
Volatility of RER _{t-1}	1.73 ^{***} (0.00)	1.05 ^{***} (0.00)
Volatility of Terms of Trade	1.54 ^{***} (0.00)	0.85 ^{***} (0.00)
Volatility of real GDP	0.75 [*] (0.10)	1.32 [*] (0.09)
Volatility of Public Expenditure	0.49 (0.14)	0.39 (0.17)
Volatility of Money Supply	0.94 [*] (0.08)	
Trade Opening	-0.16 ^{***} (0.01)	-0.15 ^{***} (0.00)
IFI2	0.06 ^{***} (0.00)	
CA		0.09 ^{***} (0.00)
Number of countries	39	39
Number of obs.	185	185
R ²	0.42	0.51
Specification Tests (p- values)		
- Sargan Test	0.19	0.29
- 2nd Order Autocorrelation	0.12	0.42

Notes:

a) The panel includes 39 countries and five-year averages over the period 1979-2004.

b) Numbers in parentheses are p-values.

c) *, ** and *** correspond to the 10%, 5% and 1% significance levels respectively. Two sets of estimates were produced using IFI2 (or NFA) (see [I]), or the policy measure for international financial integration (see [II]).

The specification tests of Sargan / Hansen and Arellano and Bover (1995) respectively suggest that the model is correctly specified (see bottom of Table 3). External shocks and volatility of real GDP appear to be the main driving forces of RER volatility. A 1% positive shock to the volatility of terms of trade results in a 1.54% or 0.85% increase in the volatility of RER based on the estimation of model (I) and (II) respectively (see Table 3). Real shocks

are also an important source of volatility: a real supply shock in the form of a 1% increase in the volatility of the growth rate of real GDP increases RER volatility by 0.75 or 1.32% based on model (I) and (II) respectively. In addition, an increase in government consumption of the same size increases the volatility of the real exchange rate by 0.49 or 0.39% respectively. The monetary shock also plays a role, being statistically significant at the 10% level (model II), consistently with the correlation analysis. Trade openness has a statistically significant effect at the 1% level, with a 1% increase reducing RER volatility by 0.16 or 0.15 % according to model (I) or (II) respectively. As for international financial integration, a positive 1% shock to FDI and portfolio investment and to the volatility of capital controls increase RER volatility by 0.6% and 0.9% respectively. This finding is consistent with those of some earlier studies (see Reinhart and Smith, 2001; Corden, 2002), and presumably reflects the fact that many emerging countries are moving towards more flexible exchange rate regimes and a higher degree of international financial integration. Finally, it should be noted that, in contrast to what suggested by the correlation analysis, the exchange rate regime has no significant effect (and is therefore not included in Table 3). This might be due to the heterogeneity of the panel in this respect.

To study the sensitivity of the previous results to geographical zones, Table 4 presents estimates of equation (1) by region, using again the GMM system-method.

Table 4. RER Volatility and Financial Integration in emerging countries: classification by regions

	MENA	Asia	Latin America
Constant		-0.98 ^{***} (0.00)	
Volatility of RER _{t-1}	1.09 ^{***} (0.00)	0.75 ^{***} (0.01)	1.76 ^{***} (0.00)
Volatility of Terms of Trade		0.17 (0.19)	2.52 ^{***} (0.00)
Volatility of Real GDP		1.24 ^{***} (0.00)	
Volatility of Public Expenditure	1.37 ^{***} (0.00)	0.27 [*] (0.13)	0.60 (0.17)
Volatility of Money Supply	0.32 (0.15)		0.785 [*] (0.10)
Trade Opening	-0.08 ^{**} (0.03)	-0.05 (0.16)	-0.22 (0.16)
Financial Integration ⁷	-0.05 ^{**} (0.03)	0.10 ^{**} (0.02)	0.09 ^{***} (0.00)
Exchange Rate Regime	2.41 ^{**} (0.02)	1.44 (0.15)	
Number of countries	9	10	20
Number of countries	40	45	90
R ²	0.60	0.39	0.86
Specification Tests (p-values)			
- Sargan Test	0.46	0.74	0.33
- 2 nd Order Autocorrelation	0.83	0.10	0.46

Notes:

a) The panels include in turn twenty Latin American countries, ten Asian and nine MENA countries. The period is 1979-2004 (five-year averages).

b) Numbers in parentheses are p-values.

c) *, ** and *** correspond to the 10%, 5% and 1% significance levels respectively.

⁷ To measure international financial integration we use ANE for Asia, and IFI2 for the MENA region and for Latin America.

Table 4 suggests that external and monetary shocks are the main sources of real exchange rate volatility in Latin America. The importance of the nominal shock is consistent with the "imbalance" approach to exchange rate fluctuations (see Mundell, 1962, Fleming, 1962 and Dornbusch, 1976). Openness increases stability of the real exchange rate, as expected. As for international financial integration, it is clearly an important source of the volatility of the real exchange rate in Latin America.

In Asia, RER volatility is mainly due to domestic real shocks, which confirms the results of the correlation analysis and is consistent with "New Open Macroeconomic" models. The small role of external shocks may reflect the success of exchange rate policies implemented in several Asian countries (e.g. China, Korea, Malaysia and Thailand) to achieve exchange rate stability. Monetary shocks appear to have no effect here, whilst greater openness reduces RER volatility. As for international financial integration, it makes the RER more volatile, notwithstanding the adoption of a fixed exchange rate regime aimed at reducing fluctuations. It would appear that such exchange rate policies are not entirely compatible with the new international financial architecture. Finally, the choice of exchange rate regime seems to have a limited impact on RER volatility.

In the MENA region, monetary shocks and real demand shocks are the main determinants of RER volatility. This region is also subject to external shocks, but not to the terms of trade. Trade openness appears to have a stabilising effect on the real exchange rate, suggesting consistency between trade and exchange rate policies. Moreover, in contrast to other regions, international financial integration reduces RER volatility, consistently with the correlation analysis and other studies (e.g., Aguirre and Calderon, 2006), suggesting that the exchange rate policies adopted in this region are appropriate in the new international context. Finally, the exchange rate regime has a significant effect at the 1% level. This might reflect the monetary policies adopted by the majority of these countries (Egypt, Jordan, Morocco, Tunisia, and Turkey), whose main objective is price stability.

Our results show that, for emerging countries, RER variability is mostly explained by export strategies, Foreign Direct Investment (FDI), external shocks and real domestic shocks, notably changes to government consumption. These variables are also highlighted in many studies as sources of economic growth (Aizenman, J.,1991, Aizenman, and Marion, 1996, Arize, 1996b, Bacchetta and Van Wincoop, 2000, Barro and Lee, 1994, Barro and Sala-i-Martin , 1995, Ben Abdallah, Drine.I and Meddeb. R, 2001, Bénassy-Quéré, Fontagné and Lahrière-Révil, 2001, Chowdhury, 2004, Thouraya H. Amor, 2009).

Our analysis suggests that among external factors driving growth, trade openness reduces RER variability, especially in the case of the MENA region⁸, thus also improving monetary stability. By contrast exchange rate fluctuations are amplified by real GDP shocks in the Asian region, and by the volatility of terms of trade in the Latin American region; in addition, shocks to public expenditure increase RER volatility in both the MENA and Asian regions. As for financial integration, this appears to be conducive to more RER stability in the MENA region, but to increase volatility in the other regions.

Overall, the implication of these findings is that government authorities should take into account the possibly undesirable effects on RER variability of policies aimed at pursuing economic growth; in particular, it might be advisable to follow a sequential strategy of financial integration which is compatible with the exchange rate system.

5. Conclusions

In this paper we have examined the determinants of RER volatility in a panel of 39 emerging countries over the period 1979-2004, paying particular attention to the role of international financial integration. The inclusion of this variable and the adoption of an appropriate econometric method, namely the GMM system-estimator of Arellano and Bover (1995) for dynamic panels enable us to obtain more reliable results and shed new light on this issue. Our findings suggest that emerging countries as a whole are subject to various types of shocks (external, real and monetary) that may explain the variability of the real exchange rate. The analysis by geographical region indicates that monetary and external shocks play a major role in both Latin America and the MENA region, whilst domestic real shocks are the main driving force in South East Asia. Trade openness helps to stabilise the RER in most countries, whereas the choice of exchange rate regime has a significant effect only in the MENA region.

Furthermore, our estimates show that international financial integration is an important source of real exchange rate variability in emerging countries, consistently with some earlier studies (Reinhart and Smith, 2001; Corden, 2002). In the Asian and Latin American countries it amplifies fluctuations of the real exchange rate, even in the presence of a fixed exchange rate regime aimed at reducing them, suggesting that such exchange rate policies are incompatible

⁸ This result is confirmed by a descriptive analysis for some emerging countries (see Appendix 3).

with the new international financial architecture. By contrast, in the MENA region, international financial integration is conducive to stability of the real exchange rate.

Overall, our results provide important evidence that some of the main factors driving economic growth also significantly affect RER variability in emerging countries. Therefore, growth policies should be designed in such a way as to avoid or at least reduce their possibly adverse effects on exchange rate volatility and monetary stability. In particular, a more flexible exchange regime, consistent with international financial integration and the new global economic environment, might be required. Also, a gradual approach to liberalisation might be necessary to reduce the difficulties possibly arising from a sudden switch to openness and flexibility.

References

- Aghion, P., P. Bacchetta, R. Ranciere and K.S. Rogoff (2006): "Exchange Rate Volatility and Productivity Growth: The Role of Financial Development", NBER WP No. 12117.
- Aguirre, A. and Calderón, C, (2006), "Real Exchange Rate Misalignments and Economic Performance," Working Papers Central Bank of Chile 316, Central Bank of Chile.
- Aguirre, A. and Caldéron, C., (2005), "Real exchange rate misalignment and economic performance", *Central Bank of Chile, WP, N°315*, April 2005, pp 4-13.
- Afonso, A. and Rault, C., 2009. Budgetary and external imbalances relationship: a panel data diagnostic, CESifo Working Paper Series No. 2559.
- Afonso, A. and Rault, C., 2009. Bootstrap Panel Granger-Causality between Government Budget and External Deficits for the EU, CESifo Working Paper Series No. 2581.
- Aizenman, J. and Marion, N.P., (1996), "Volatility and the Investment Reponse", NBER Working Paper 5841.
- Aizenman, J., (1991), "Foreign Direct Investment, Productive Capacity and Exchanges Rates Regimes", NBER Working Paper, N° 3767.
- Arize A., C., (1996b.), "The Impact of Exchange Rate Uncertainty on Export Growth: Evidence from Korean Data", *International Economic Journal*, 10, 49-60.
- Alonso-Borrego, C., Arellano, M., (1999). "Symmetrically Normalized Instrumental-Variable Estimation Using Panel Data," *Journal of Business and Economics Statistics* 17, 36-49.
- Andersen, P. and Moreno, R., (2005), « Financial integration: an overview», BIS papers N°23, p 1-8.
- Arellano M. and Bond, S., (1991). "Some Tests of Specification for Panel Data: Monte Carlo Evidence and an Application to Employment Equations," *Review of Economic Studies* 58, 277-297.
- Arellano M. and Bover, O., (1995). "Another Look at the Instrumental-Variable Estimation of Error-Components Models," *Journal of Econometrics* 68, 29-51.
- Avouyi-Dovi S., Loupias C. and Sevestre, P. (2002). "How does monetary policy affect the production of new loans? Some evidences from French bank panel data," 10th International Conference on Panel Data, Berlin, July 5-6, 2002 A4-4, International Conferences on Panel Data.
- Bacchetta, P. and Van Wincoop, E., (2000), "Does exchange rate stability increase trade and

welfare?” *American Economic Review*, 90(5), December, pp. 1093-1109.

Barro, R. and Lee (1994), «Sources of economic growth », Elsevier, Carnegie-Rochester Conference Series on Public Policy, Vol 40, pp1-46.

Barro, R. and Sala-i-Martin X., (1995), “Economic Growth”, New York: McGraw-Hill, pp. 14-88.

Ben Abdallah, M., Drine. I and Meddeb. R (2001), “Interaction entre IDE, régime de change, capital humain et croissance dans les pays émergents”, *Ouverture Economique et Développement*, GDR, Economica, Paris 2001.

Bénassy-Quéré A., Fontagné L. and Lahrière-Révil A., (2001), «Exchange Rate Strategies In the Competition For Attracting Foreign Direct Investment, « *Journal Of Japanese And International Economies*, 15, pp. 178- 198.

Baig T.(2001), « Characterising Exchange Rate Regimes in Post-Crisis East Asia », WP/01/152, October 2001. P 5-28.

Basurto, G. and Ghosh, A. (2000), « The Interest Rate-Exchange Rate Mesurs in Currency Crises, » *IMF Staff Paper*, Vol. 47, pp 99-120.

Blundell, R., and Bond, S, (1998), “Initial Conditions and Moment Restrictions in Dynamic Panel data models,” *Journal of Econometrics* 87(1), 115-143.

Buch, C. M., Döpke J., and Pierdzioch C., (2002), “Financial Openness and Business Cycle Volatility,” Working Paper, Kiel Institute for World Economics.

Calderón, C., (2003). “*What Drives Volatility in Real Exchange Rates? Evidence from Industrial Countries*,” *Central Bank of Chile*, Mimeo

Calderón, C.A, (2004), “Real Exchange Rates in the Long and Short Run: A Panel Co-integration Approach”, *ILADES-Georgetown Review of Economic Analysis* 19(2), 40-83.

Caporale, G.M, Hadj Amor, T. and Rault, C, 2009. International Financial Integration and Real Exchange Rate Long-Run Dynamics in Emerging Countries: Some Panel Evidence, *CESifo Working Paper Series No. 2819*.

Chang, R and Velasco, A., (2001), « A model of financial crises in Emerging Markets », *Quarterly Journal of Economics*, Mai.

Chowdhury, Ibrahim S. (2004), “Sources of Exchange Rate Fluctuations: Empiric from Six Emerging Market Countries”, *Applied Financial Economics*, Vol. 14, No. 10, pp. 697–705.

- Corden, W. M., (2002), *“Too Sensational: on the Choice of Exchange Rate Regimes”*, MIT Press, Cambridge, 2002; 274 p277
- DeGregorio, J., Eichengreen, B., Ito, T. and Wyplosz, C. (2000), *An Independent and Accountable IMF*, CEPR, London.
- Drine, I. and Rault, C., 2004. On the long-run determinants of real exchange rates for developing countries: Evidence from Africa, Latin America and Asia, mimeo, Sorbonne University.
- Drine I., Rault, C. 2008. Purchasing power parity for developing and developed countries. What can we learn from nonstationary panel data models. *Journal of Economic Surveys* 22, 752-773.
- Dornbusch, R., (1976): Expectations and Exchange Rate Dynamics, *The Journal of Political Economy*, Vol. 84, No. 6, pp. 1161-76
- Eatwell, J. and Taylor, L., (2002), *“International Capital Markets: Systems in Transition”*, New York: Oxford University Press.
- Edwards, S. and Rigobon, R., (2005). "Capital Controls, Exchange Rate Volatility and External Vulnerability," NBER Working Papers 11434, National Bureau of Economic Research.
- Égert, B. Lahrière- Révil, A. and Lommatzsch, K. (2004), *“The Stock- Flow Approach To the Real Exchange Rate Of CEE Transition Economies”*, No – 15 November *CEPII, Working Paper No 2004 - 15* Pp 4-28
- Eichengreen, B., Mathieson, D.J. and Bankim C., (1998), *“Hedge Funds and Financial Market Dynamics,”* IMF Occasional Paper No. 166 (Washington: International Monetary Fund).
- Ferrari, J., (2000), *« Economie Financière internationale »*, collection Amphi, Bréal 2000, pp 12-179.
- Fischer, S., (2003), *“Globalization and its Challenges,”* *American Economic Review*, 93, pp.1-30.
- Fleming, J. M., (1962): Domestic Financial Policies under Fixed and Floating Exchange Rates, *International Monetary Fund Staff Papers*, Vol. 9, No. 3, pp. 369- 79
- Frankel, J.A. and Rose, A. K, (1996), *“Currency crashes in emerging markets: An empirical treatment”*, *Journal of International Economics* 41(3-4), 351-366.

Frankel, J., Eduardo F., Sergio L. Schmukler and Servén, L., (2001), “Verifying Exchange Rate Regimes”. *Journal Of Development Economics* 66(2): 351- 86.

Fratzscher, Marcel and Matthieu Bussiere, (2004), “Financial Openness and Growth: Short-Run Gain, Long-Run Pain?” *ECB Working Papers No. 348*.

Goldstein, M. and Turner, P. (2004), “Controlling Currency Mismatches In Emerging Markets”, Institute For International Economics, Washington.

Hadj Amor T. and Sarkar A. (2008), "Financial Integration and Real Exchange Rate Volatility: Evidence from South and South East Asia," *International Journal of Business and Management*, vol 3, issue 1.

Hadj Amor Thouraya (2009), “Exchange Rate distortion and Economic Growth in the new financial architecture: Empirical evidence from MENA countries”, *The Middle East Business and Economic Review*, Vol.21, No.2 (December 2009).

Hau, H., (2002), “Real Exchange Rate Volatility and Economic Openness: Theory and Evidence,” *Journal of Money, Credit and Banking*, Vol. 34, (August), pp. 611– 30.

Holtz-Eakin D., Newey W. et Rosen H.S. (1988), « Estimating Vector Autoregressions with Panel Data », *Econometrica*, 56, p. 1371-1396.

Hooper, P., and J. Morton, (1982), “Fluctuations In the Dollar: A Model Of Nominal And Real Exchange Rate Determination,” *Journal Of International Money And Finance* 1, 39- 56.

Hviding K., Nowak M. and Luca A. Ricci (2004), “Can Higher Reserves Help Reduce Exchange Rate Volatility?”, WP/04/189, October 2004. P 3-15.

International Monetary Fund, (2002), *World Economic Outlook*, September 2002.

IMF (1998), “Capital Account Liberalisation: Theoretical and Practical Aspects”, IMF Occasional Paper 172, Prepared by: Eichengreen and Mussa with Dell’ Ariccia, Detragiache, Milesi-Ferretti and Tweedle, International Monetary Fund, Washington.

Jongwanich, J., (2006), “Exchange rate regimes, capital account opening and real exchange rates: evidence from Thailand“, *Economics, RSPAS, ANU*.

Kpodar, K., (2007), «Manuel d’initiation à Stata”, CERDI, CNRS. Janvier 2005, pp 5-77.

Lane. Philip R and Milesi-Ferretti G.M., (2005), “Financial Globalization and Exchange Rates”, International Monetary Fund, WP/05/3, January 2005, pp4-25

Lane, P. R. and Milesi-Ferretti, G. M. (2006), "The External Wealth of Nations Mark II: Revised and Extended Estimates of Foreign Assets and Liabilities," 1970-2004. *IMF Working Paper* 06/69.

Lane, P. R. and Milesi-Ferretti, G.M., (2006): "The External Wealth of Nations Mark II: Revised and Extended Estimates of Foreign Assets and Liabilities, 1970-2004", IMF Working Paper 06/69. Database is available on <http://www.imf.org/external/pubs/ft/wp/2006/data/wp0669.zip>

Le Fort, G., (2000), "The Chilean Experience in Capital Account Regulation", Conference on Developing Countries and the Global Financial Architecture. Lancaster House, London, June 23, 2000.

Levy-Yeyati, E. and Sturzenegger, F., (2005), « Classifying Exchange Rate Regimes: Deeds vs. Words », *European Economic Review*, 49 (2005), pp 1603 – 1635.

Levy-Yeyati, E. and Sturzenegger, F., (2003), "To Float or to Trail: Evidence on the Impact of Exchange Rate Regimes," *American Economic Review* 93, 1173-1193

Loayza, N., Fajnzylber, P. and Calderón, C., (2004): "Economic Growth In Latin American And the Caribbean". Banco Central De Chile, Documentos De Trabajo No. 265.

Mundell, Robert A., (1962), "The Appropriate Use of Monetary and Fiscal Policy under Fixed

Exchange Rates," *International Monetary Fund Staff Papers*, Vol. 9, pp. 70- 9.

Nardis S., R. De Santis and C. Vicarelli. (2008), "The Single Currency's Effects on Euro-zone Sectoral Trade. Economics DP 2008-1

Obstfeld, M., (1984), "Inflation, Real Interest, and the Determinacy of Equilibrium in an Optimizing Framework," NBER Working Papers 0723, National Bureau of Economic Research, Inc.

Obstfeld, M., Shambaugh, J. and Taylor Alan M., (2004), "The Trilemma in History: Tradeoffs among Exchange Rates, Monetary Policies, and Capital Mobility", revised March 2004, disponible sur <http://www.elsa.berkeley.edu/~obstfeld/ost12.pdf>.

Parent, A., & C. Rault, 2004, The Influences Affecting French Assets Abroad Prior to 1914, *Journal of Economic History* 64(2), 328-62.

Prasad, E., Rogoff, K.S., Wei, S.-J. and Kose, M.A., (2003), "Effects of Financial Globalization on Developing Countries: Some Empirical Evidence," *IMF Occasional Paper 220*, August.

Reinhart Carmen M. and Todd Smith, R., (2001) "Temporary Controls on Capital Inflows," NBER Working Papers 8422, National Bureau of Economic Research, Inc.

Vahid F. and Engel, R., (1993), « Common Trends and Common Cycles, » *Journal of Applied Econometrics*, Vol. 8, pp 341-60.

Statistics: CDROM Chelem (2005), International Financial Statistic (2006) et World Development Indicators (2006)

Appendix 1

The GMM Method

We use the Generalized Method of Moments (GMM) estimator for dynamic panels introduced by Holtz-Eakin, Newey and Rosen (1988), Arellano and Bond (1991), and Arellano and Bover (1995). It is based on, first, differencing the series to control for unobserved effects, and, second, using lagged explanatory and dependent variables as instruments, called “internal” instruments.

After accounting for time-specific effects, the set of explanatory variables X , we rewrite equation (1) (see section 3.1) as follows:

$$\mathbf{Y}_{it} = \alpha \mathbf{Y}_{i,t-1} + \beta' \mathbf{X}_{it} + \eta_i + \varepsilon_{it} \quad (2)$$

In order to eliminate the country- specific effect, we take first-differences of equation (2),

$$(\mathbf{Y}_{it} - \mathbf{Y}_{i,t-1}) = \alpha (\mathbf{Y}_{i,t-1} - \mathbf{Y}_{i,t-2}) + \beta (\mathbf{X}_{it} - \mathbf{X}_{i,t-1}) + (\varepsilon_{it} - \varepsilon_{i,t-1}) \quad (3)$$

The use of instruments is required to deal with the likely endogeneity of the explanatory variables and the fact that, by construction, the new error term, $(\varepsilon_{it} - \varepsilon_{i,t-1})$, is correlated with the lagged dependent variable, $(y_{i,t-1} - y_{i,t-2})$.

Taking advantage of the panel nature of the data set, the instruments consist of previous observations of the explanatory and lagged dependent variables. As it relies on past values as instruments, this method only allows current and future values of the explanatory variables to be affected by the error term. Therefore, while relaxing the common assumption of strict exogeneity, it does not allow the X variables to be fully endogenous.

Under the assumptions that (a) the error term, ε , is not serially correlated, and (b) the explanatory variables, X , are weakly exogenous (i. e., they are uncorrelated with future realisations of the error term), the GMM Dynamic panel estimator uses the following moment conditions:

$$E[Y_{i,t-s} \cdot (\varepsilon_{i,t} - \varepsilon_{i,t-1})] = 0 \quad \text{for } s \geq 2 ; t = s, \dots, t \quad (4)$$

$$E[X_{i,t-s} \cdot (\varepsilon_{i,t} - \varepsilon_{i,t-1})] = 0 \quad \text{for } s \geq 2 ; t = s, \dots, t \quad (5)$$

The GMM estimator based on these conditions is known as the *difference* estimator. Notwithstanding its advantages with respect to simpler panel data estimators, it has statistical shortcomings. Alonso- Borrego and Arellano (1999) and Blundell and Bond (1998) show that when the explanatory variables are persistent over time, lagged levels of these variables are weak instruments for the regression equation in differences. Instrument weakness influences the asymptotic and small sample performance of the difference estimator. Asymptotically, the variance of the coefficients rises in small samples. In addition, the Monte Carlo experiments show that the weakness of the instruments can produce biased coefficients.

To reduce the potential biases and imprecision associated with the usual difference estimator, we use a new estimator that combines in a system the regression in differences with the regression in levels (see Arellano and Bover ,1995, and Blundell and Bond, 1998). The instruments for the regression in differences are the same as above. Those for the regression in levels are the lagged differences of the corresponding variables. These are appropriate instruments under the following additional assumptions: although there may be correlation between the levels of the right- hand side variables and the country- specific effect in equation (3), there is no correlation between the differences of these variables and the country-specific effects. This assumption results from the following stationarity property,

$$E[Y_{i,t+p} \cdot \eta_i] = E[Y_{i,t+q} \cdot \eta_i] \quad (6)$$

$$E[X_{i,t+p} \cdot \eta_i] = E[X_{i,t+q} \cdot \eta_i]$$

The additional moment conditions for the regression in levels are⁹:

$$E[(Y_{i,t-1} - Y_{i,t-2}) \cdot (\eta_i + \varepsilon_{i,t})] = 0 \quad (7)$$

$$E[(X_{i,t-1} - X_{i,t-2}) \cdot (\eta_i + \varepsilon_{i,t})] = 0 \quad (8)$$

⁹ Given that lagged levels are used as instruments in the differences specification, only the most recent difference is used as instrument in the levels specification. Using other lagged differences would result in redundant moment conditions (see Arellano and Bover, 1995).

We use the moment conditions given by equations (4), (5), (7), and (8) and employ a GMM procedure to generate consistent and efficient parameter estimates.

We employ a Generalized Method of Moments (GMM) procedure to generate consistent estimates of the parameters of interest and their asymptotic variance-covariance (Arellano and Bond, 1991; Arellano and Bover, 1995). These are given by the following formulae:

$$\hat{\sigma} = (\bar{X}' Z \hat{\Omega}^{-1} Z' \bar{X})^{-1} \bar{X}' Z \hat{\Omega}^{-1} Z' \bar{Y} \quad (9)$$

$$AVAR(\hat{\sigma}) = (\bar{X}' Z \hat{\Omega}^{-1} Z' \bar{X})^{-1} \quad (10)$$

where θ is the vector of parameters of interest (α, β), y is the dependent variable stacked first in differences and then in levels, X is the explanatory variable matrix including the lagged dependent variable (y_{t-1}, X) stacked first in differences and then in levels, Z is the matrix of instruments derived from the moment conditions, and $\hat{\Omega}$ is a consistent estimate of the variance-covariance matrix of the moment conditions.

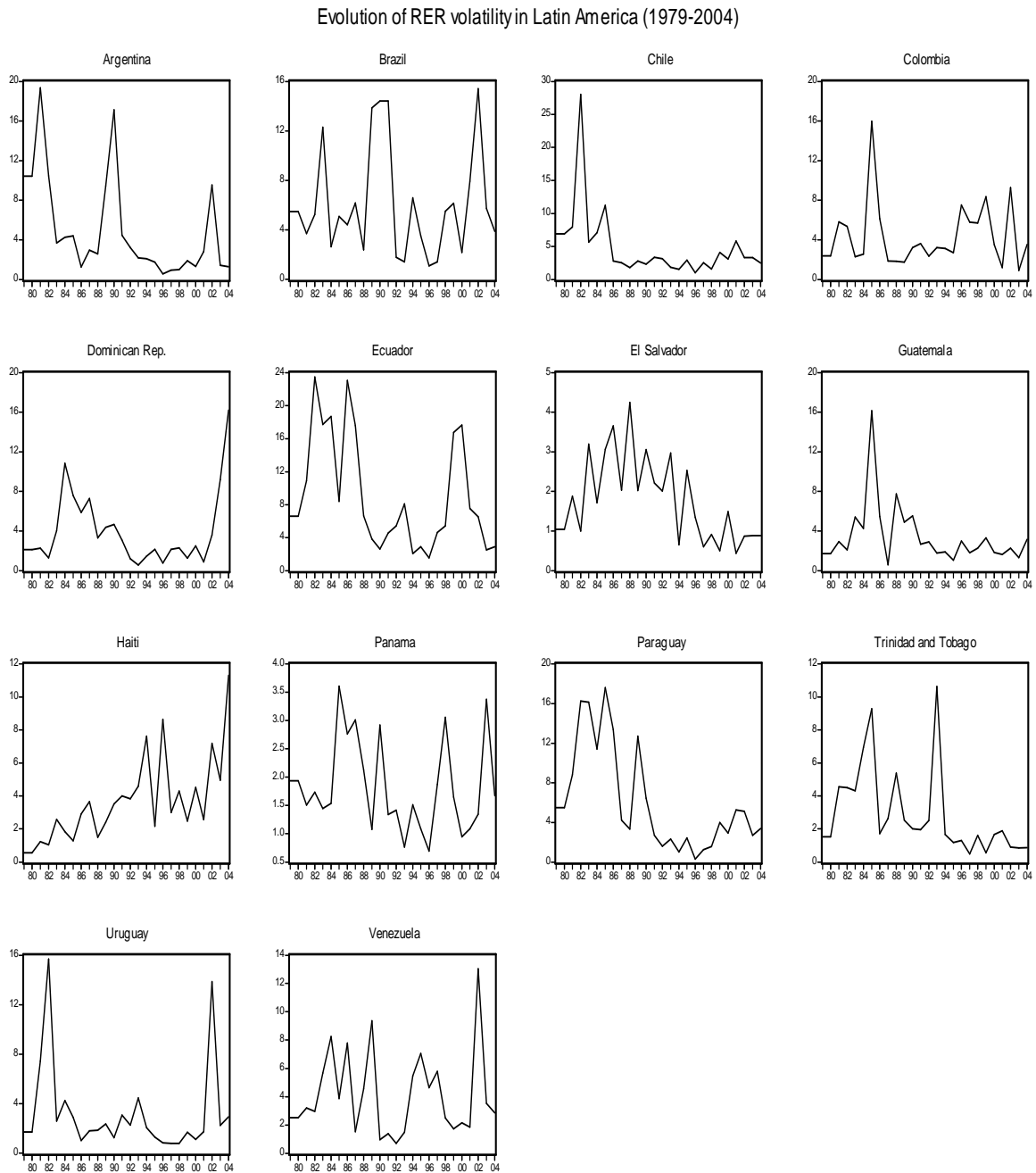
The consistency of the GMM Estimator depends on whether lagged values of the explanatory variables are valid instruments in the regression. We address this issue by considering two specification tests suggested by Arellano and Bond (1991) and Arellano and Bover (1995). The first is the Sargan test of over-identifying restrictions. It tests the overall validity of the instruments by analysing the sample analogue of the moment conditions used in the estimation process. Failure to reject the null hypothesis gives support to the model.

The second test examines the null hypothesis that the error term $\varepsilon_{i,t}$ is not serially correlated. As in the case of the Sargan test, the model specification is supported when the null hypothesis is not rejected. In the system specification, we test whether the differenced error term (that is, the residual of the regression in differences) exhibits second-order serial correlation. First-order serial correlation of the differenced error term is expected even if the original error term (in levels) is uncorrelated, unless the latter follows a random walk. Second-order serial correlation of the differenced residual indicates that the original error term is serially correlated and follows a moving average process at least of order one. This would imply that the proposed instruments are not valid (and that higher-order lags should be used as instruments).

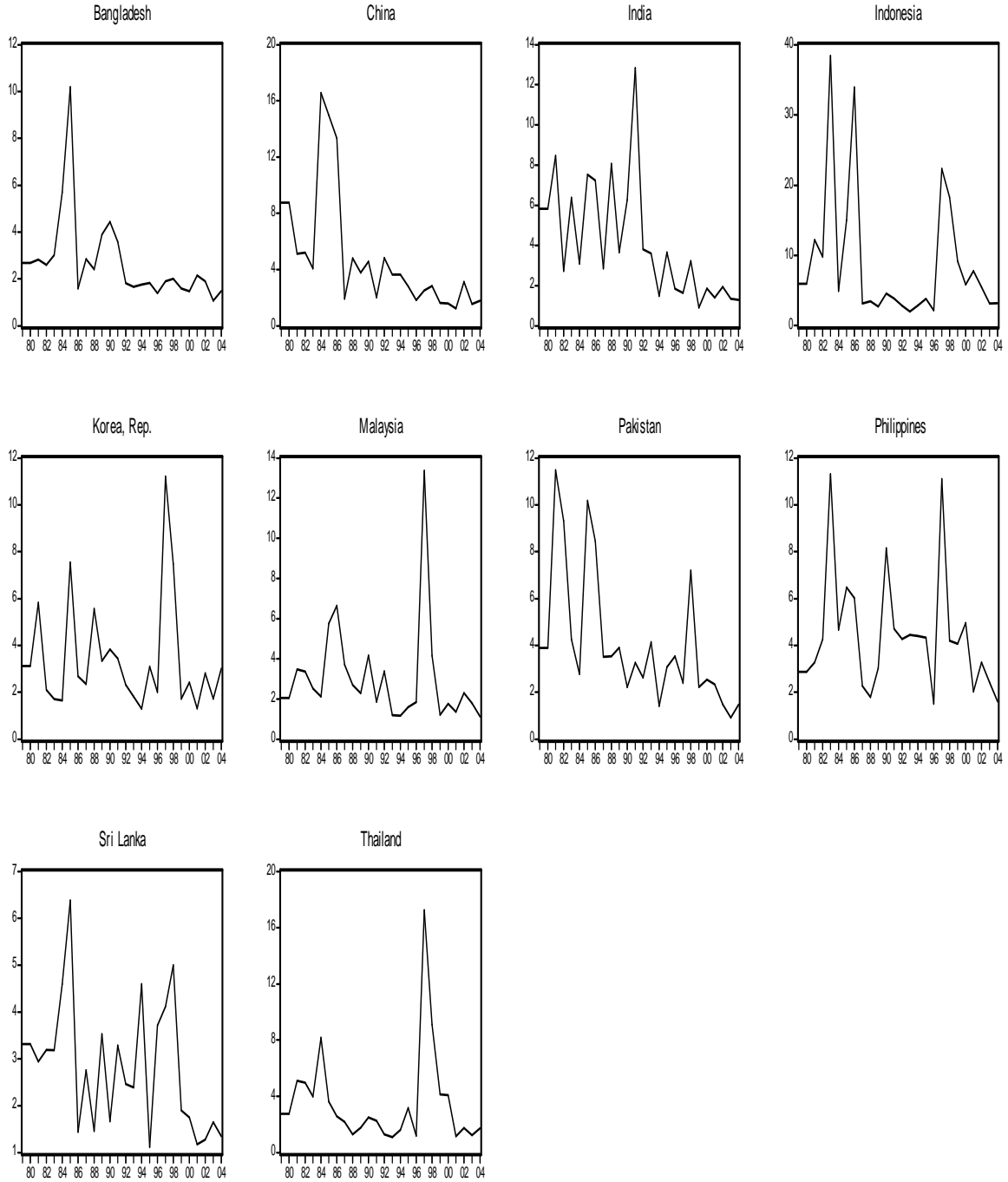
Appendix 2

Evolution of RER Volatility and International Financial Integration in Emerging Countries (1979-2004)

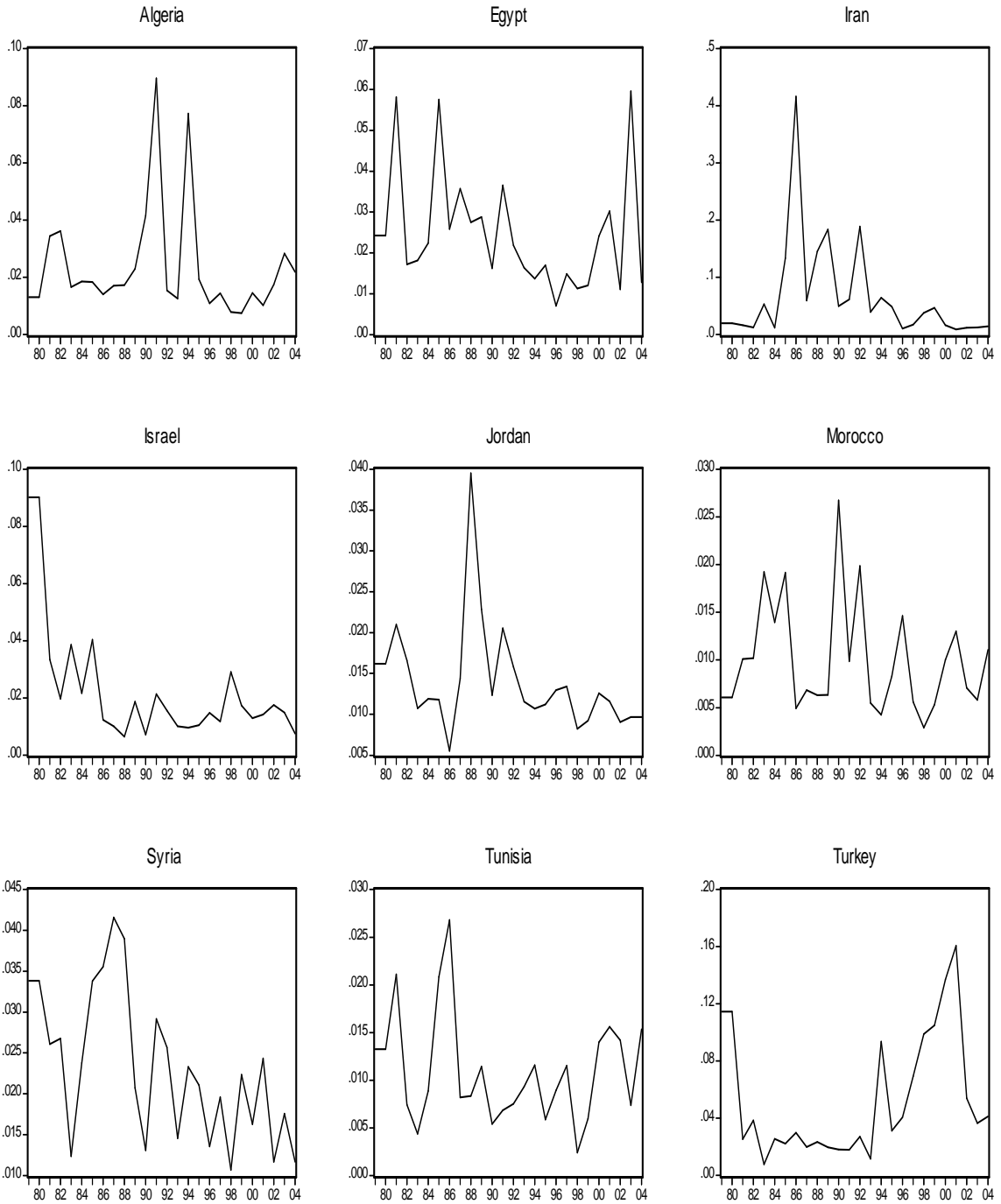
Figure 1. Evolution of RER Volatility in emerging countries, classified by region (1979-2004)



Evolution of RER volatility in Asia (1979-2004)

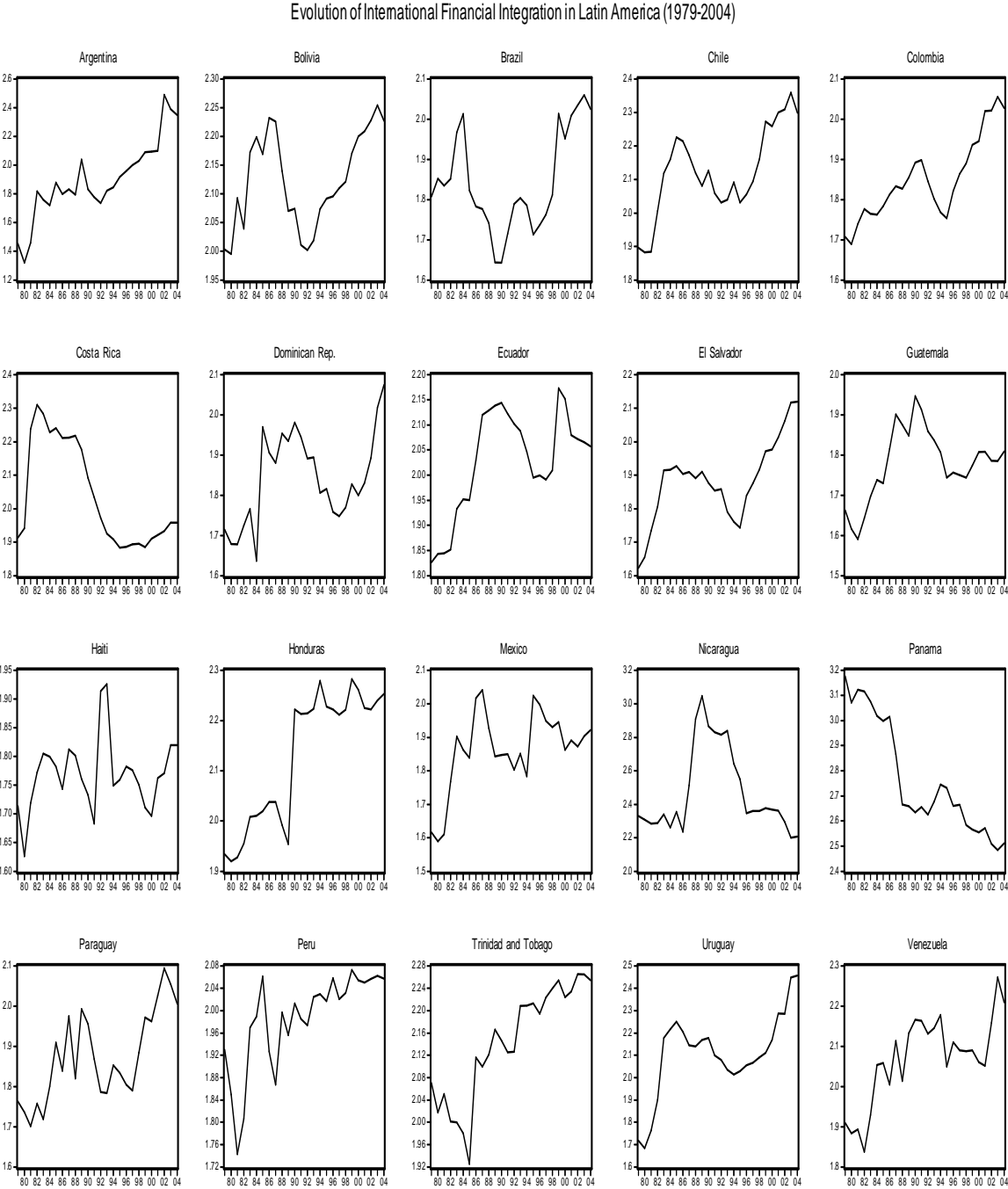


Evolution of RER volatility in MENA region (1979-2004)

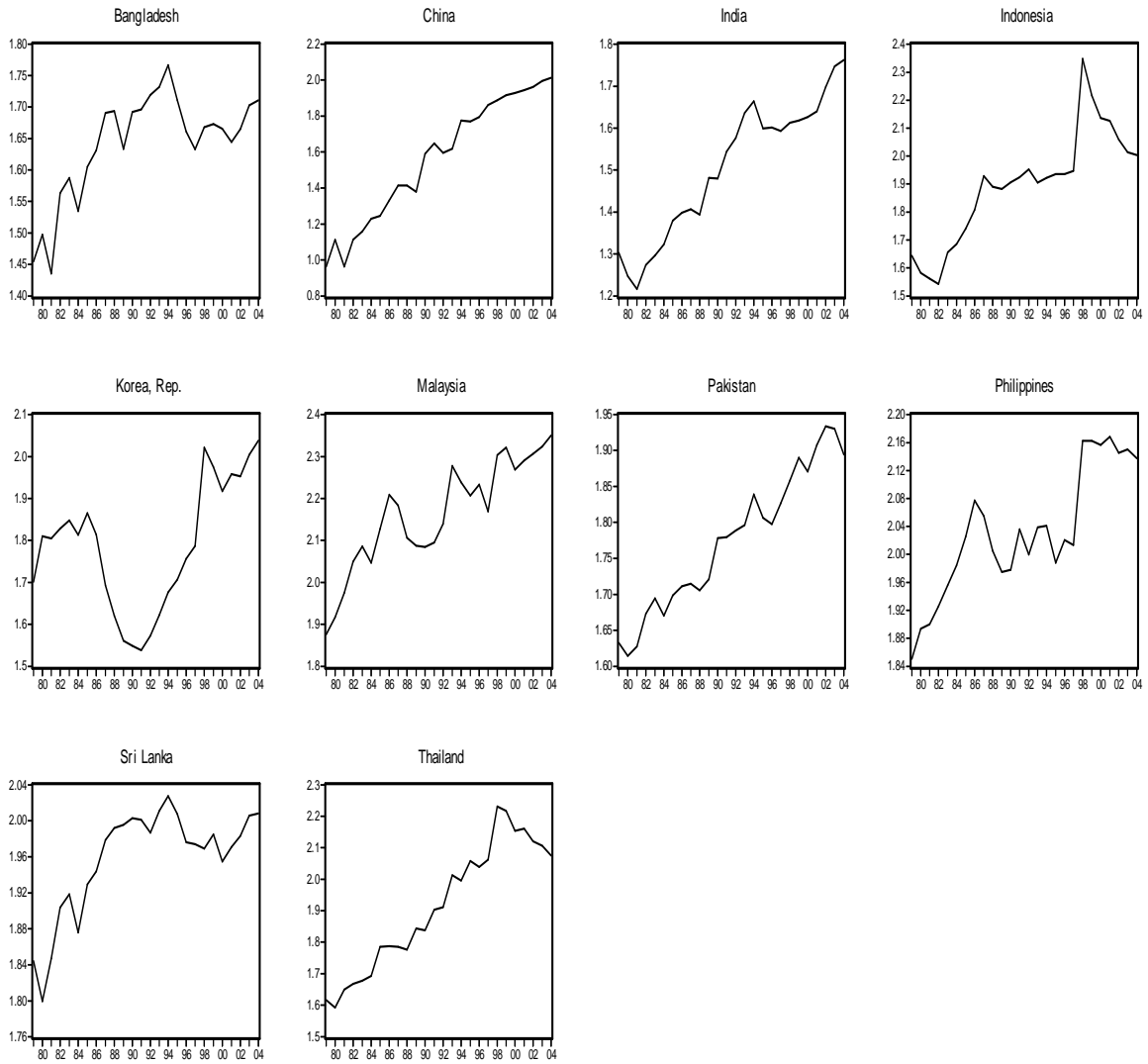


Sources: our calculations using data from the IMF's International Financial Statistics (IFS, 2006), and World Development Indicators (WDI, 2006).

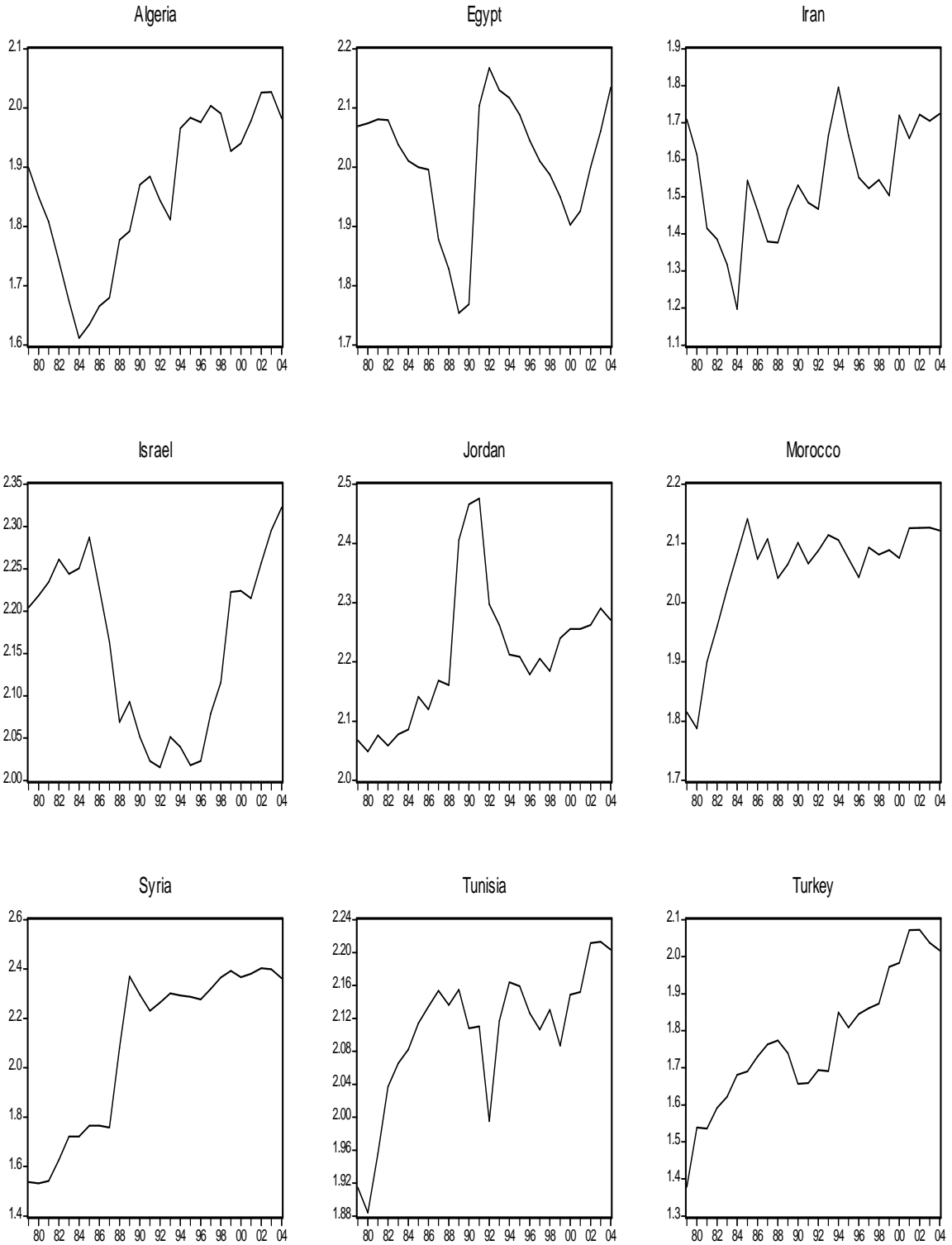
Figure 2. Evolution of International Financial Integration in Emerging Countries, classified by region (1979-2004)



Evolution of International Financial Integration in Asia (1979-2004)



Evolution of International Financial Integration in MENA region (1979-2004)



Sources: our calculations using data from the IMF's International Financial Statistics (IFS, 2006), and World Development Indicators (WDI, 2006)

Appendix 3

Descriptive statistics on for the exchange rate and trade

Figure1.a: Real Effective Exchange Rate versus Terms of Trade in Tunisia, 1980–2009 (Index 2000=100)

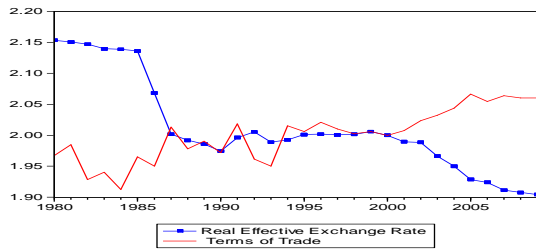


Figure1.b: Real Effective Exchange Rate versus Terms of Trade in Morocco, 1980–2009 (Index 2000=100)

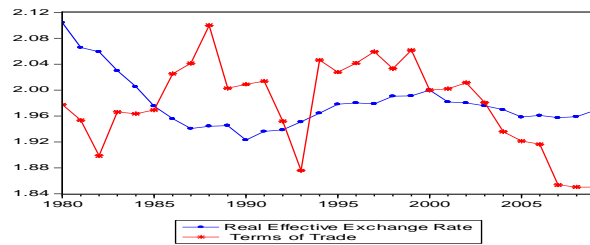


Figure1.c: Real Effective Exchange Rate versus Terms of Trade in Ghana, 1980–2009 (Index 2000=100)

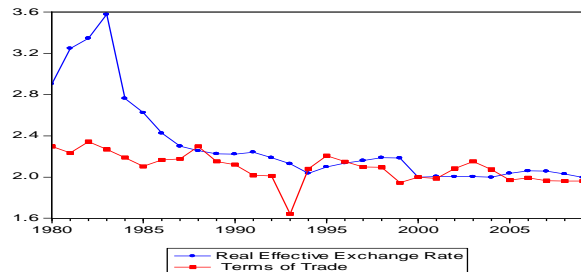


Figure1.d: Real Effective Exchange Rate versus Terms of Trade in Nigeria, 1980–2009 (Index 2000=100)

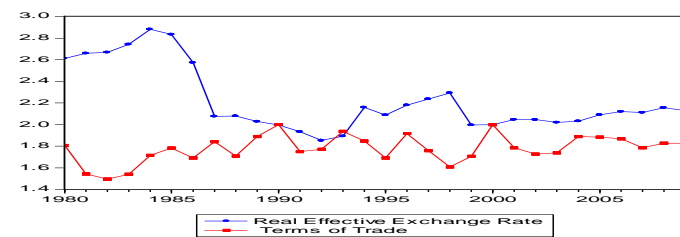


Figure1.e: Real Exchange Rate versus Terms of Trade, 1980–2009, in Senegal (Index 2000=100)

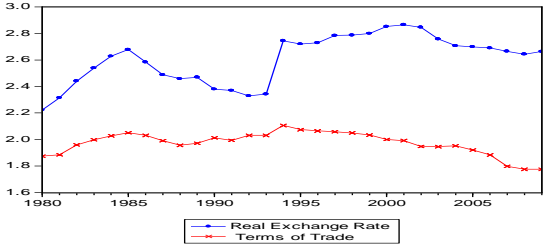
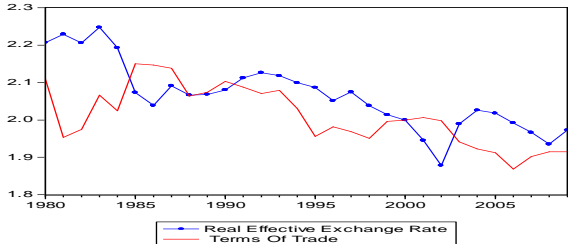


Figure1.f: Real Effective Exchange Rate versus Terms of Trade in South Africa, 1980–2009 (Index 2000=100)



Source: International Financial Statistics (IFS), World Development Indicators (WDI) and World Economic Outlook (WEO) database and authors' estimates

Figure2.a: Real Effective Exchange Rate versus Open Trade in Tunisia, 1980–2009 (Index 2000=100)

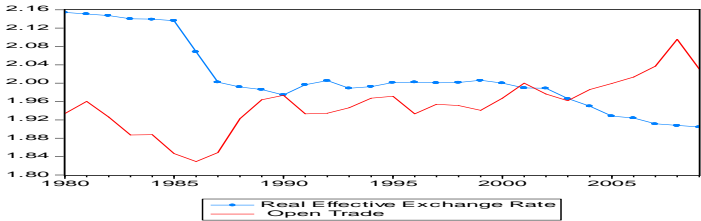


Figure2.b: Real Effective Exchange Rate versus Open Trade in Morocco, 1980–2009 (Index 2000=100)

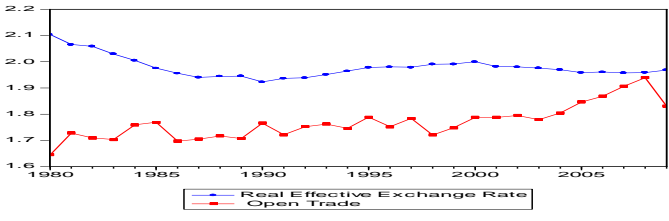


Figure 2.c: Real Effective Exchange Rate versus Open Trade in Ghana, 1980–2009 (Index 2000=100)

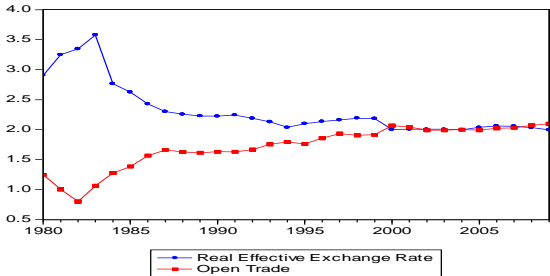


Figure 2.d: Real Effective Exchange Rate versus Open Trade in Nigeria, 1980–2009 (Index 2000=100)

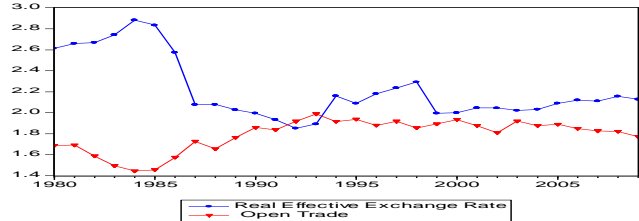


Figure 2.e: Real Exchange Rate versus Open Trade in Senegal, 1980–2009 (Index 2000=100)

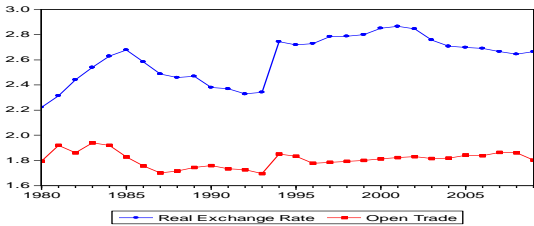
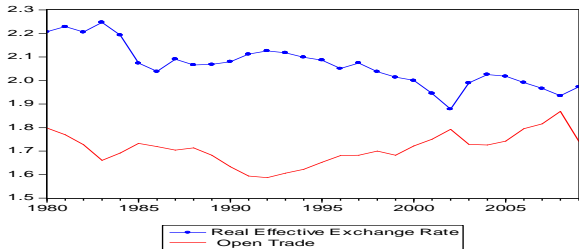


Figure 2.f: Real Effective Exchange Rate versus Open Trade in South Africa, 1980–2009 (Index 2000=100)



Source: *International Financial Statistics (IFS), World Development Indicators (WDI) database and authors' estimates*