

Chong, Alberto; León, Gianmarco

Working Paper
Barriers to exit

Working Paper, No. 572

Provided in Cooperation with:
Inter-American Development Bank (IDB), Washington, DC

Suggested Citation: Chong, Alberto; León, Gianmarco (2006) : Barriers to exit, Working Paper, No. 572, Inter-American Development Bank, Research Department, Washington, DC

This Version is available at:
<https://hdl.handle.net/10419/51449>

Standard-Nutzungsbedingungen:

Die Dokumente auf EconStor dürfen zu eigenen wissenschaftlichen Zwecken und zum Privatgebrauch gespeichert und kopiert werden.

Sie dürfen die Dokumente nicht für öffentliche oder kommerzielle Zwecke vervielfältigen, öffentlich ausstellen, öffentlich zugänglich machen, vertreiben oder anderweitig nutzen.

Sofern die Verfasser die Dokumente unter Open-Content-Lizenzen (insbesondere CC-Lizenzen) zur Verfügung gestellt haben sollten, gelten abweichend von diesen Nutzungsbedingungen die in der dort genannten Lizenz gewährten Nutzungsrechte.

Terms of use:

Documents in EconStor may be saved and copied for your personal and scholarly purposes.

You are not to copy documents for public or commercial purposes, to exhibit the documents publicly, to make them publicly available on the internet, or to distribute or otherwise use the documents in public.

If the documents have been made available under an Open Content Licence (especially Creative Commons Licences), you may exercise further usage rights as specified in the indicated licence.



*INTER-AMERICAN DEVELOPMENT BANK
BANCO INTERAMERICANO DE DESARROLLO (BID)
RESEARCH DEPARTMENT
DEPARTAMENTO DE INVESTIGACIÓN
WORKING PAPER #572*

BARRIERS TO EXIT

BY

**ALBERTO CHONG
GIANMARCO LEÓN**

INTER-AMERICAN DEVELOPMENT BANK

AUGUST 2006

**Cataloging-in-Publication data provided by the
Inter-American Development Bank
Felipe Herrera Library**

Chong, Alberto.

Barriers to exit / by Alberto Chong, Gianmarco León.

p. cm.
(Research Department Working paper series ; 572)
Includes bibliographical references.

1. Emigration and immigration. 2. Passport fees. 3. Brain drain. I. Leon, Gianmarco.
II. Inter-American Development Bank. Research Dept. III. Title. IV. Series.

325 C65-----dc22
JV6035 .C65 2006

©2006
Inter-American Development Bank
1300 New York Avenue, N.W.
Washington, DC 20577

The views and interpretations in this document are those of the authors and should not be attributed to the Inter-American Development Bank, or to any individual acting on its behalf.

This paper may be freely reproduced provided credit is given to the Research Department, Inter-American Development Bank.

The Research Department (RES) produces a quarterly newsletter, *IDEA (Ideas for Development in the Americas)*, as well as working papers and books on diverse economic issues. To obtain a complete list of RES publications, and read or download them please visit our web site at: <http://www.iadb.org/res>.

Abstract¹

Unlike previous empirical studies that focus on barriers to entry in international trade, we focus on barriers to exit as measured by passport costs for a cross-section of countries. We test four common theories on the determinants of such exit barriers and find that macroeconomic and brain-drain explanations do explain high barriers to exit. However, institutional and cultural hypotheses do not appear to be empirically robust explanations of such high barriers. Our findings hold when applying instrumental variables, changes in specification, and changes in cross-country periods.

JEL Classification: O1

Key Words: International Trade, Passport Costs, Barriers to Exit, Development, Labor

¹ We are grateful to Marina Duque, Anna Serrichio, and Luisa Zanforlin for comments and suggestions. The findings and interpretations are those of the authors and do not necessarily represent the views of the Inter-American Development Bank or its executive directors. The standard disclaimer applies. Correspondence: Alberto Chong, Research Department, Inter-American Development Bank, Stop B-0900, 1300 New York Ave, NW, Washington, DC 20577, USA. Fax: (202) 623-2481, Tel: (202) 623-1536. E-mail: albertoch@iadb.org.

1. Introduction

Despite the fact that international trade theory places equal importance on the movement of goods and services and the movement of factors of production, as well as on issues related to barriers of entry and exit, virtually all empirical studies dealing with rigidity issues in international trade focus on goods and services, and almost exclusively on the determinants and impact of barriers to entry. The very scant evidence on issues related to barriers to exit has to do with a lack of data. This paper uses recently collected data on passport costs around the world (McKenzie, 2005) as a proxy for barriers to exit, and focuses on a critical factor of production—labor—to empirically determine the key reasons barriers to exit may be high.

While there are several reasons governments may want to raise barriers to exit, very few theories, if any, have tested the possible determinants empirically and systematically. Some researchers have argued that barriers to exit may be used as a way to reduce brain drain (Miyagiwa, 1991), although others have argued that high unemployment and urbanization (Stahl, 1982) put pressure on governments to lower exit barriers (Hatton, 1995). Still others maintain that high exit barriers may result from inefficient institutions that have little capacity to carry out bureaucratic procedures or are unable to collect revenue through standard procedures (McKenzie, 2005), or from political repression (Tirtosudarmo, 2000). Additionally, while macroeconomic problems and, in particular, fiscal crises, may lead governments to search for alternative sources of revenue, say, through exit fees (Manning, 2001), trade integration may help reduce frictions and thus, lower exit barriers (Krugman and Obstfeld, 2002). Finally, culture may play a role by restricting exit due to, say, gender or religious beliefs (McKenzie, 2005).

2. Data

Our dependent variable is passport costs as a percentage of gross national income because this variable is, in fact, an excellent proxy of barriers to exit. Data on passport costs are from McKenzie (2005) and were obtained in October 2005.² They were collected in local currency,

² Countries included are Albania, Angola, Antigua and Barbuda, Argentina, Armenia, Australia, Austria, Azerbaijan, Bahamas, Bahrain, Bangladesh, Barbados, Belgium, Belize, Benin, Bhutan, Bolivia, Bosnia and Herzegovina, Botswana, Brazil, Bulgaria, Burkina Faso, Burundi, Cameroon, Canada, Central African Republic, Chad, Chile, China, Colombia, Congo Dem. Rep, Congo, Costa Rica, Croatia, Cyprus, Czech Rep., Denmark, Dominica, Ecuador, Egypt, El Salvador, Estonia, Ethiopia, Fiji, Finland, France, Gambia, Germany, Ghana, Guatemala, Guyana, Honduras, Hong Kong, Hungary, Iceland, India, Indonesia, Ireland, Israel, Italy, Jamaica, Japan, Kenya, Korea, Lao PDR, Lebanon, Lesotho, Lithuania, Luxembourg, Malaysia, Malta, Mauritania,

converted to U.S. dollars at the prevailing interbank exchange rate. The standard was determined by collecting the price of a first-time adult passport valid for five years, with the usual number of pages, and obtained via the normal processing period. When the country only issues 10-year passports, this was the price reported. The cost collected takes into account the cost of the passport itself, but not the cost of paying for photographs, birth certificates, or other such documents that are sometimes required when applying for a passport.³ Consistent with the alternative theoretical determinants of exit barriers, we categorize the potential explanations for exit barriers in four categories, which are summarized in the following reduced form:

$$\text{Passport} = \lambda \text{LogInc} + \alpha \text{Labor} + \beta \text{Instit} + \gamma \text{Macro} + \delta \text{Tradit} + \varepsilon \quad (1)$$

where (i) “Labor” represents variables associated with labor-related theories (such as education, unemployment, and urbanization); (ii) “Instit” reflects variables associated with institutional explanations such as bureaucracy and political rights); (iii) “Macro” represents macroeconomic theories (such as economic growth, fiscal deficit, and crises); and (iv) “Tradit” is associated with explanations related to culture (such as religion). Notice that all the regressions are controlled for “LogInc,” which represents the logarithm of gross national income per capita. Finally, the last term in the reduced equation above is the error term.

The explanatory variables employed in this paper are mostly taken from the World Development Indicators of the World Bank (2005), with the exception of the data on institutions (Knack and Keefer, 1995, for ICRG; and Kaufmann et al., 2005, for regulatory quality), political and civil liberties (Gastil, 1990), and labor rigidity, such as social security index and unemployment benefits (Botero et al. 2004). From a methodological perspective, we apply ordinary least squares and instrumental variables in a cross-country approach. The explanatory variables are averaged from 1980 to 2000. In both cases, passport costs as a percentage of income (the dependent variable) are calculated for 2005. Table 1 contains summary statistics of the variables employed in this paper.

Mauritius, Mexico, Micronesia, Morocco, Namibia, Nepal, Netherlands, New Zealand, Nicaragua, Niger, Nigeria, Norway, Oman, Pakistan, Palau, Papua, Peru, Philippines, Poland, Portugal, Romania, Russia, Rwanda, Samoa, Saudi Arabia, Senegal, Seychelles, Singapore, Slovak Rep., Slovenia, South Africa, Spain, Sri Lanka, St. Kitts and Nevis, St. Lucia, St. Vincent, Swaziland, Sweden, Switzerland, Tajikistan, Tanzania, Thailand, Tonga, Trinidad and Tobago, Tunisia, Turkey, Ukraine, United Kingdom, United States, Vanuatu, Venezuela, Vietnam, and Zambia.

³ In many countries there is not a single passport cost. Costs may differ for children and adults, for renewals, for expedited service, and even for duration and number of pages. Also, the justification for not dividing a 10-year passport price in half is that potential migrants must pay the full cost of the passport upfront (McKenzie, 2005).

3. Findings

Table 2 presents the basic findings. We find that the proxies for the macro, brain-drain, and cultural theories are all statistically significant at conventional levels. However, this is not the case for the institutional hypothesis. In particular, we find that average higher rates of growth for the period under study are associated with lower barriers to exit. People have little desire to emigrate from countries that are in solid macroeconomic condition.. Consequently, barriers to exit need not be relatively high.⁴ Similarly, countries with high unemployment rates are associated with lower exit costs because of supply-side forces or as a result of implicit government policies to ease economic pressures, for example. With respect to cultural theories, we find that predominantly Muslim countries tend to have higher barriers to exit for certain groups of the population, such as women.⁵ Finally, we do not find that the institutional quality of a country, as measured by the well-known ICRG index (Knack and Keefer, 1995) places undue barriers to exit.

While we believe it is not of great concern, we control for potential endogeneity in some variables. This is the case for macro variables and institutional variables, and to an even lesser extent, for the brain-drain variables.⁶ We use legal origin and ethnolinguistic fractionalization as instruments since they have been shown to be correlated with our potential endogenous variables (Botero et al., 2004; Knack and Keefer, 1995), but are not correlated with passport costs. The results are very similar; they are shown in Table 2. Furthermore, we repeat our exercise by using averages for 1990-2000 instead of 1980-2000 for both OLS and IV cases, and obtain very similar results. These findings are also shown in Table 2.

Empirical work may be very sensitive to the proxies employed. In Table 3 we use a broader battery of variables that are also associated with the four hypotheses tested. We obtain robust results for the macroeconomic hypothesis (inflation rate, fiscal deficits) and the brain-drain hypothesis (unemployment benefits, social security index, and higher education). We obtain somewhat less robust results in the case of the cultural explanation (former colonies of the

⁴ Alternatively, countries with sound macroeconomic environments, such as those with low fiscal deficits, have little incentive for using passport-issuance revenues as a means to help cover such deficits, as modest as they may be.

⁵ Along these lines, please see the robustness test in Table 3.

⁶ Higher passport costs may increase government revenue, help in macro-stabilization programs, and improve labor conditions, as well as institutional quality. While this may be true in theory, economically speaking none of these reverse channels appears likely. If such effects do exist, and if so, they are probably meaningless, since the marginal collection due to additional passport revenues is extremely low (McKenzie, 2005).

United Kingdom and percentage of women population). And we obtain non-robust results for the additional institutional proxies employed (political and civil liberties and regulatory quality).

Finally, in Table 4 we test whether our findings are robust to the inclusion of additional variables to the benchmark empirical specifications in Table 1, Column 1. Following Sala-i-Martin (1997), we augment the specifications by using a pool of 10 ancillary variables, choosing up to three at a time and performing regressions using all possible combinations.⁷ The variable of interest is strongly correlated or robust with the dependent variables if the weighted $cdf(0)$ is greater than or equal to 0.95. The first column of Table 4 shows the weighted mean. The second column shows the aggregate $cdf(0)$ under the assumption of non-normality. Finally, the third column presents the standard error computed from the weighted variance estimate for all the regressions. According to these results, neither the institutional hypothesis nor the cultural one is robust to changes in specification. However, both the brain-drain explanation and the macroeconomic hypothesis appear to be robust to changes in specification. In fact, this result provides some additional support to our previous findings.

4. Conclusions

Unlike previous empirical studies that focus on barriers to entry in international trade, we focus on barriers to exit for a cross-section of countries, as measured by passport costs. We test four common explanations regarding the determinants of such exit barriers and find that macroeconomic and brain-drain explanations do explain high barriers to exit. However, institutional and cultural hypotheses do not appear to be empirically robust explanations of such high barriers. Our findings hold when applying instrumental variables, changes in specification, and changes in cross-country periods.

⁷ We use 10 ancillary variables: percentage married, percentage of immigrants, percentage of firms whose headquarters are in the United States, percentage of multiethnic families, population, rate of participation, secondary education, literacy, informality, and credit to the private sector (World Bank, 2005).

References

- Botero, J. et al. 2004. "The Regulation of Labor." *Quarterly Journal of Economics* 119(4): 1339-1382.
- Gastil, R.D. 1990. "The Comparative Survey of Freedom: Experiences and Suggestions." *Studies in Comparative International Development* 25(1): 25-50.
- Hatton, T. 1995. "A Model of U.K. Emigration, 1870-1913." *Review of Economics and Statistics* 77(3): 407-415.
- Kaufmann, D., A. Kraay, and M. Mastruzzi. 2005. *Governance Matters IV*, World Bank Working Paper. Washington, D.C: The World Bank.
- Knack, S. and P. Keefer. 1995. "Institutions and Economic Performance: Cross-Country Tests Using Alternative Institutional Measures." *Economics and Politics* 7: 207-27.
- Krugman, P. and M. Obstfeld. 2002. *International Trade*. New York: Prentice Hall.
- Manning, C. 2001. *The East Asian Economic Crisis and Labour Migration: A Set-Back for International Economic Integration?* Australian National University Working Paper. Canberra: Australian National University.
- McKenzie, D. 2005. "Paper Walls are Easier to Tear Down: Passport Costs and Legal Barriers to Emigration." World Bank Working Paper. Washington, D.C.: The World Bank.
- Miyagiwa, K. 1991. "Scale Economies in Education and the Brain Drain Problem." *International Economic Review* 32(3): 743-759.
- Sala-i-Martin, X. 1997. "I Just Ran Two Million Regressions." *American Economic Review Papers and Proceedings*, May.
- Stahl, C. 1982. "Labor Emigration and Economic Development." *International Migration Review* 16(4): 869-899
- Tirtosudarmo, R. 2000. *The Political Dimensions of International Migration: Indonesia and its Neighbouring Countries*. Manuscript, UNESCO.
- World Bank. 2006. World Development Indicators. CD ROM. Washington, DC, United States: World Bank

Table 1. Summary Statistics

Variable	Obs	Mean	Std. Dev.	Min	Max
Passport cost / GNI pc	127	4.933	13.936	0.000	125.000
Log(Initial GDP pc)	127	7.609	1.480	4.638	10.263
ICRG index	92	6.476	2.009	3.184	9.956
Political and civil liberties	126	3.356	1.800	1.000	6.857
Regulatory quality	124	0.281	0.832	-2.603	2.083
% of Muslim pop	109	0.220	0.416	0.000	1.000
GDP growth (annual %)	127	3.062	3.368	-5.892	29.017
Inflation Rate	121	85.473	250.443	0.598	1656.274
Unemployment (% of total labor force)	97	9.144	5.961	0.450	31.100
Unemployment benefits	69	0.514	0.374	0.000	0.940
Social security index	69	1.807	0.628	0.260	2.710

Table 2. Benchmark Specification

	1980-2000		1990-2000	
	Ordinary Least Squares	Instrumental Variables	Ordinary Least Squares	Instrumental Variables
Log (Initial GDP pc)	-1.405 (0.423)***	-2.694 (1.154)**	-1.553 (0.454)***	-3.977 (2.351)*
Institutions (ICRG index)	0.441 (0.278)	1.490 (0.854)*	0.655 (0.348)*	2.837 (2.021)
Cultural (percent Muslim)	1.703 (0.745)**	2.249 (0.904)**	1.715 (0.737)**	2.364 (1.051)**
Macro (GDP growth)	-0.253 (0.098)**	-0.441 (0.182)**	-0.064 (0.062)	-0.110 (0.117)
Brain Drain (Unemployment rate)	-0.139 (0.065)**	-0.136 (0.063)**	-0.145 (0.058)**	-0.120 (0.067)*
Constant	10.854 (2.163)***	14.149 (3.883)***	10.213 (1.784)***	13.715 (4.566)***
Observations	72	72	71	71
R-squared	0.61	0.49	0.63	0.30

All regressions include robust standard errors and the following continental dummies: Latin America, Middle East, and Africa. (*) significant at 10 percent; (**) significant at 5 percent; (***) significant at 1 percent.

Table 3. Robustness to Alternative Proxies

	Proxy	Coefficient	Standard Error
<i>Hypothesis 1:</i>			
Institutional	<i>Benchmark:</i> ICRG index	0.441	0.278
	Political and civil liberties	-0.619	0.604
	Regulatory quality	-0.776	1.384
<i>Hypothesis 2:</i>			
Cultural	<i>Benchmark:</i> percentage Muslim	1.703	0.745
	Colonies from the United Kingdom	-0.984	0.623
	Percentage of women population	1.423	0.843
<i>Hypothesis 3:</i>			
Macroeconomic conditions	<i>Benchmark:</i> GDP growth	-0.253	0.098
	Inflation Rate	0.002	0.001
	Fiscal Deficit	-0.332	0.189
<i>Hypothesis 4:</i>			
Brain Drain	<i>Benchmark:</i> Unemployment rate	-0.139	0.065
	Unemployment benefits	-1.471	0.736
	Social security index	-1.088	0.624
	Tertiary Schooling	-0.623	0.240

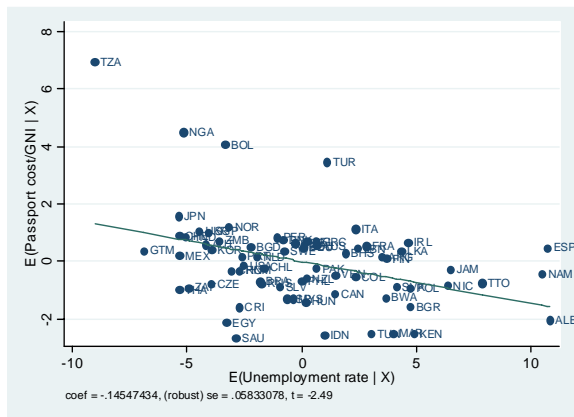
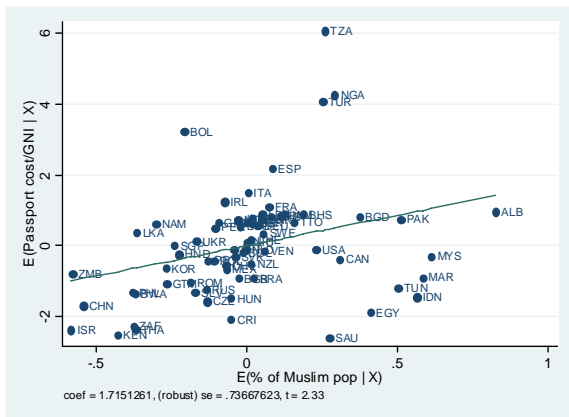
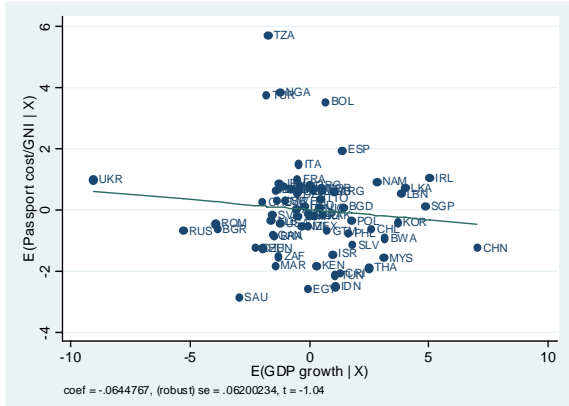
“Benchmark” refers to the proxy employed in Regression 1, Table 1. For each theory we test alternative proxies using the same benchmark specification. The second column indicates the proxy employed, the third column shows the coefficient obtained, and the last column provides the corresponding standard error.

Table 4. Sensitivity to Changes in Specification

Hypothesis	$cdf(0)$	Standard Error	Significance
Institutions	-0.563	-10.621	0.532
Culture	0.368	0.465	0.772
Macroeconomic Conditions	-0.332	-0.425	0.954
Brain Drain	-0.623	-1.136	0.986

The second column presents the standard deviation of the variable of interest, while the first column shows the cumulative distribution function (0). A variable whose weighted $cdf(0)$ is larger than 0.95 is significantly correlated with the dependent variable (i.e. robust) at a 5% significance level. The cdf is computed assuming non-normality of the parameters estimated. Results are similar if we assume normality, instead. The benchmark specification is the one presented in Column 1 in Table 1 (ordinary least squares, 1980-2000). Results are very similar for the IV case.

Appendix 1. Partial Plots from Benchmark Specification



Appendix 2. Correlation Matrix
(p-values below)

	Passport cost / GNI pc	Log(Initial GDP pc)	ICRG index	Political and civil liberties	Regulat. quality	% of Muslim pop	GDP growth (annual %)	Inflation Rate	Unemployment (% of total labor force)	Unemploy ment benefits
Log(Initial GDP pc)	-0.440									
	0.000									
ICRG index	-0.306	0.801								
	0.003	0.000								
Political and civil liberties	0.406	-0.724	-0.711							
	0.000	0.000	0.000							
Regulatory quality	-0.500	0.743	0.738	-0.682						
	0.000	0.000	0.000	0.000						
% of Muslim pop	0.132	-0.379	-0.374	0.511	-0.317					
	0.170	0.000	0.000	0.000	0.001					
GDP growth (annual %)	-0.110	-0.131	0.096	0.090	0.062	0.170				
	0.219	0.143	0.362	0.318	0.492	0.078				
Inflation Rate	0.423	-0.128	-0.325	0.204	-0.359	-0.121	-0.433			
	0.000	0.163	0.002	0.025	0.000	0.223	0.000			
Unemployment (% of total labor force)	-0.122	-0.154	-0.178	-0.036	-0.130	-0.178	0.018	-0.064		
	0.234	0.131	0.123	0.729	0.206	0.100	0.865	0.540		
Unemployment benefits	-0.570	0.659	0.635	-0.558	0.337	-0.481	-0.360	0.026	-0.061	
	0.000	0.000	0.000	0.000	0.005	0.000	0.002	0.836	0.631	
Social security index	-0.609	0.654	0.596	-0.534	0.337	-0.463	-0.276	0.033	-0.168	0.883
	0.000	0.000	0.000	0.000	0.005	0.000	0.022	0.792	0.184	0.000