

Leahy, Eimear; Lyons, Seán; Tol, Richard S. J.

Working Paper

An estimate of the number of vegetarians in the world

ESRI Working Paper, No. 340

Provided in Cooperation with:

The Economic and Social Research Institute (ESRI), Dublin

Suggested Citation: Leahy, Eimear; Lyons, Seán; Tol, Richard S. J. (2010) : An estimate of the number of vegetarians in the world, ESRI Working Paper, No. 340, The Economic and Social Research Institute (ESRI), Dublin

This Version is available at:

<http://hdl.handle.net/10419/50160>

Standard-Nutzungsbedingungen:

Die Dokumente auf EconStor dürfen zu eigenen wissenschaftlichen Zwecken und zum Privatgebrauch gespeichert und kopiert werden.

Sie dürfen die Dokumente nicht für öffentliche oder kommerzielle Zwecke vervielfältigen, öffentlich ausstellen, öffentlich zugänglich machen, vertreiben oder anderweitig nutzen.

Sofern die Verfasser die Dokumente unter Open-Content-Lizenzen (insbesondere CC-Lizenzen) zur Verfügung gestellt haben sollten, gelten abweichend von diesen Nutzungsbedingungen die in der dort genannten Lizenz gewährten Nutzungsrechte.

Terms of use:

Documents in EconStor may be saved and copied for your personal and scholarly purposes.

You are not to copy documents for public or commercial purposes, to exhibit the documents publicly, to make them publicly available on the internet, or to distribute or otherwise use the documents in public.

If the documents have been made available under an Open Content Licence (especially Creative Commons Licences), you may exercise further usage rights as specified in the indicated licence.



Working Paper No. 340

March 2010

An Estimate of the Number of Vegetarians in the World

Eimear Leahy^a, Seán Lyons^a and Richard S.J. Tol^{a,b,c}

Corresponding Author: Richard.Tol@esri.ie

^a Economic and Social Research Institute, Dublin, Ireland

^b Institute for Environmental Studies, Vrije Universiteit, Amsterdam, The Netherlands

^c Department of Spatial Economics, Vrije Universiteit, Amsterdam, The Netherlands

ESRI working papers represent un-refereed work-in-progress by members who are solely responsible for the content and any views expressed therein. Any comments on these papers will be welcome and should be sent to the author(s) by email. Papers may be downloaded for personal use only.

An Estimate of the Number of Vegetarians in the World

Methane is the second-most important anthropogenic greenhouse gas. Ruminant livestock are a major source of emissions. The expansion of pasture is one of the main drivers of deforestation, one of the larger sources of carbon dioxide emissions. An understanding of dietary choice is needed for scenario building and for assessing policy options. This paper focuses on those who eat no meat whatsoever. We estimate that there are one and half billion vegetarians. Only 75 million are vegetarians of choice, a number that will gradually grow with increasing affluence and education. The other 1,450 million are vegetarians of necessity. They will start to eat meat as soon as they can afford it.

The importance of diet and particularly the amount of red meat in diet, for global environmental change has long been acknowledged (1). Pasture land has expanded by 10% between 1961 and 2005 (2). Meat consumption has increased by 250% between 1960 and 2002 (2). The world population has doubled in that time (2), so that average meat consumption per head has grown by three-quarters.

There has been intense study of diets (3-7). It is well-established that the very poor have a limited intake of animal protein (8). Meat consumption, whether measured in calories (9) or expenditures (10), initially goes up as people grow richer. Meat consumption levels off at higher incomes, first when measured in calories and later when measured in expenditures, as consumers become satiated. At middle and high income levels, excessive meat consumption is a health concern (11-15). Given the importance of diet, it is surprising that the global number of vegetarians has not been estimated. Research has focussed on average diets and expenditures and on identifying those with unhealthy eating habits, but no one has counted those that do not eat meat.

Anecdotally, vegetarianism is an increasingly popular life style choice for those concerned about animal welfare, poverty, health, and the environment. There is limited scope for reducing methane from ruminants by technical measures (16). With present technologies, deep emission reduction cuts require a smaller size of the herd, and this

implies a change in diet. An understanding of the trends in the number of vegetarians provides insight into the (in)feasibility of curbing methane emissions from livestock.

We count the number of vegetarians in the following manner. See Methods and Materials for further detail. We use surveys of households' budgets, expenditures, and living standards for 29 countries, which together represent some 54% of the world population. We have surveys covering more than one year for many of these countries, so that we have a total of 139 samples. The average sample size is 5,000. Our database thus contains almost 700,000 observations. The surveys typically record purchases, gifts and subsistence production of food per item over a two week period. We excluded those households that acquired an unusually small amount of food (compared to their peer group) in the sample period. This is particularly prevalent in the USA, where many households appear to buy groceries less than once per fortnight. Given this data, the number of households that do not consume any meat is easily identified. We refer to these as all-vegetarian households.

There are mixed households as well. Using the consumption patterns of one-person households and the estimated economies-of-scale of food consumption, we conditionally predict the share of meat in total food consumption for multi-person households given the number of vegetarians. We then use the observed meat share to test the hypotheses that there are one, two, ... vegetarians in the household. We impute the number of vegetarians from the first rejection. That is, if the hypothesis is rejected that there is (are) one (two, three) vegetarian(s), we impute zero (one, two) vegetarians.

In sample, we find that 18% of people are vegetarian. This amounts to 680 million people in the countries for which we have observations. See Table 1. Figure 1 displays the share of vegetarians and all-vegetarian households against per capita income (corrected for purchasing power). Figure 1 also shows the best quadratic fit. As expected, there are more vegetarians in low income countries. More strikingly, there is enormous variation. In Vietnam, more than 99% of the population eats meat, while in East Timor less than half does. The fraction of vegetarians rapidly falls until average income reaches \$15,000 per person per year.

There are no obvious patterns in the data for low income countries. For instance, more than 80% of the people in India and Nepal are Hindu; 34% of Indians are vegetarian, and 7.4% of Nepalis. Local availability of meat, and the relative price of meat most likely play a role in explaining the differences between countries, but reliable data is not readily available.

At higher incomes, the differences between countries are less pronounced. The fraction of vegetarians slightly increases with income. Figure 2 illustrates this for the United Kingdom, the country for which data are best. In the 1960s, less than 0.5% of the population was a vegetarian. Forty years later, more than 2.0% is.

Figure 3 “validates” our results. As noted above, this is the first estimate of the number of vegetarians using a consistent methodology for a number of countries. However, there are estimates of the number of vegetarians for individual countries. Figure 3 plots our results against such estimates. The results presented here are consistent with earlier estimates, but the match is not perfect.

As a further check on our data and methods, we computed the fraction of households that do not consume any animal products (“vegans”) and those that do not consume either fish or meat (“strict vegetarians”). Figure 4 compares these numbers to the fraction of households that do not consume meat (“vegetarians”). Figure 4 reveals the pattern one would expect: There are fewer vegans than there are strict vegetarians. In turn, there are fewer strict vegetarians than there are vegetarians. This is true in general and for every single country/year in the sample.

Using the quadratic curve in Table 1, we tentatively extrapolate the estimate of the number of vegetarians to the whole world. This rough method suggests that 22% of the world population is a vegetarian. This amounts to one and a half billion people. Of these, 95% lie on the downward sloping part of the curve. We deem these to be vegetarians of necessity. Only 5% are on the upward sloping part of the curve. These we call vegetarians of choice.

The implications of these numbers are profound. As the current poor grow to middle income levels, many more of them will start to eat meat. As the current rich grow richer still, more will become vegetarian. The latter process is much slower, and starts from a

lower base. In the medium term, therefore, one should expect a dramatic drop in the number of vegetarians. Methane emissions will continue to rise and forests will be converted to pasture. Only in the longer term, when affluence becomes more widespread, can we expect these trends to level off.

Table 1: Global number of vegetarians

	Number of countries	Number of people (mln)	Number of vegetarians (mln)	Share of vegetarians
In sample	28	3,707	678	18.3%
Out of sample	176	3,145	813	25.8%
Total	204	6,851	1,490	21.8%

Figure 1. Vegetarianism and income per capita (gross domestic product per person per year in Geary-Khamis dollars)

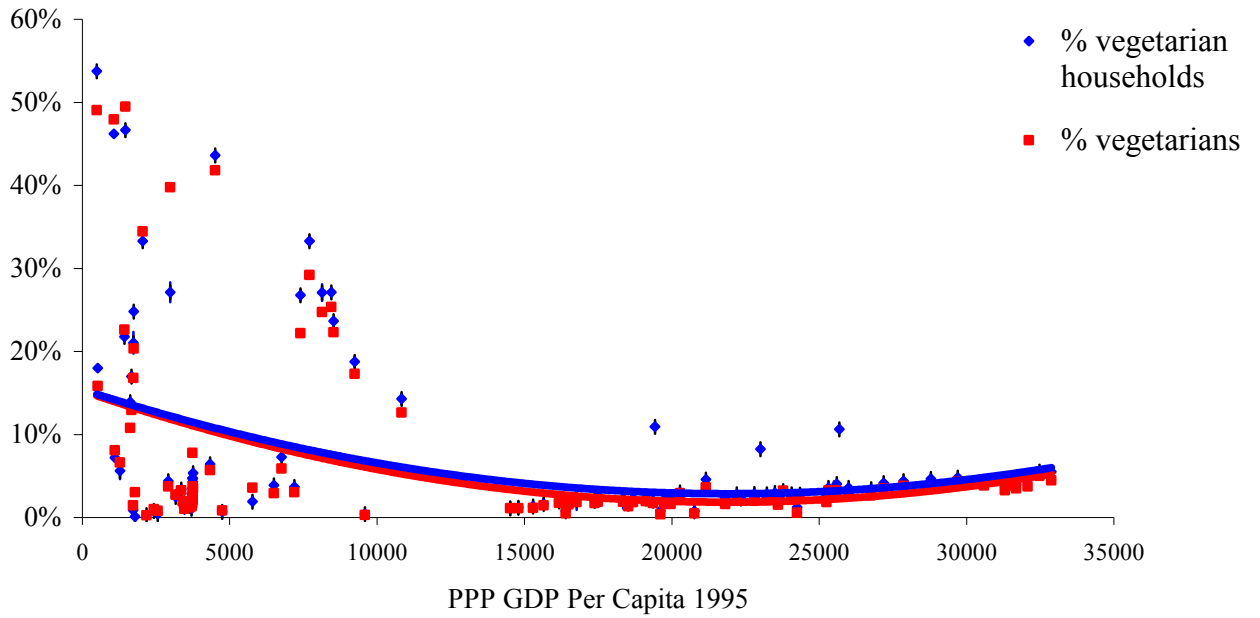


Figure 2. Vegetarianism over time in the United Kingdom

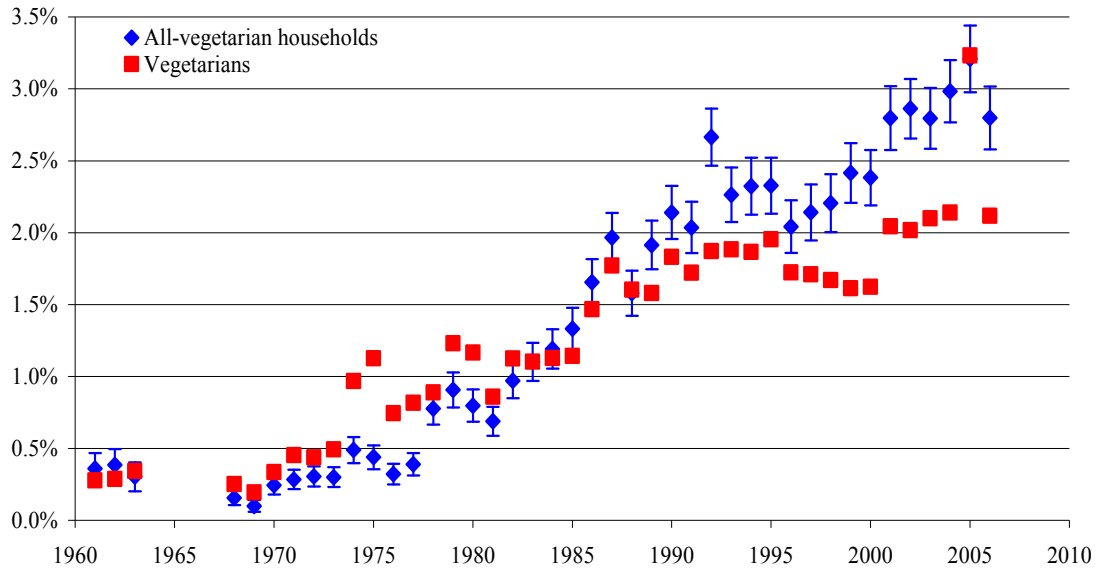


Figure 3. The fraction of vegetarians in the population as estimated here versus earlier estimates

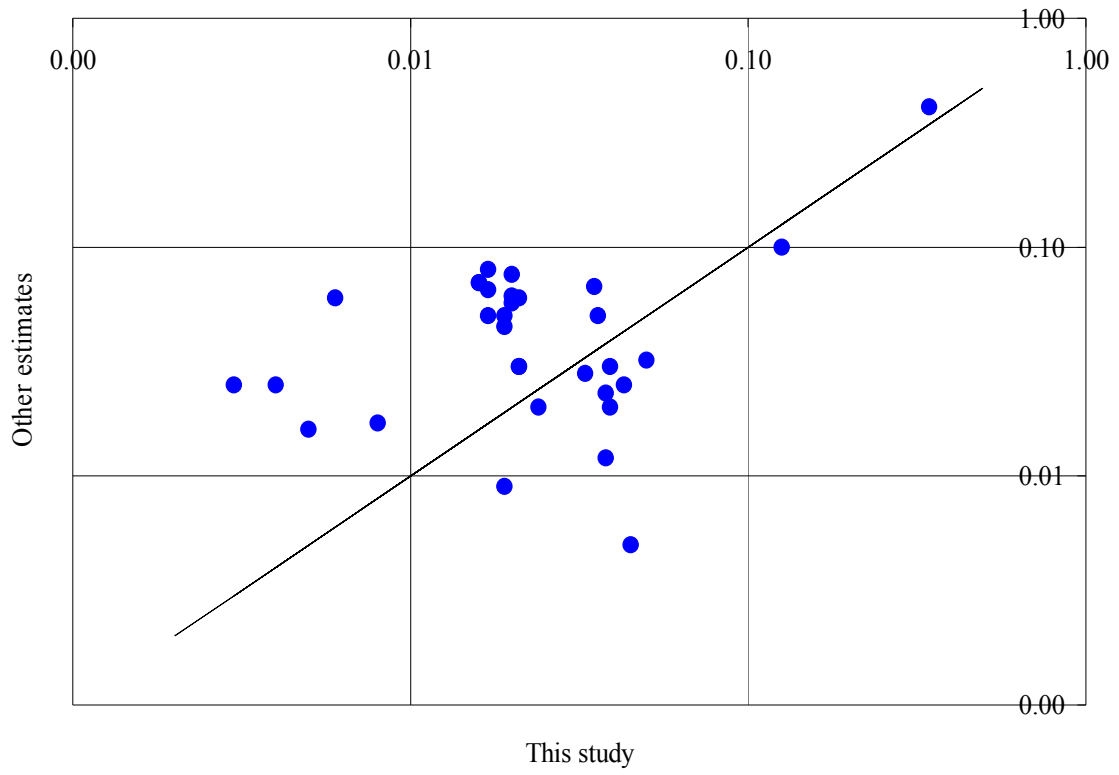
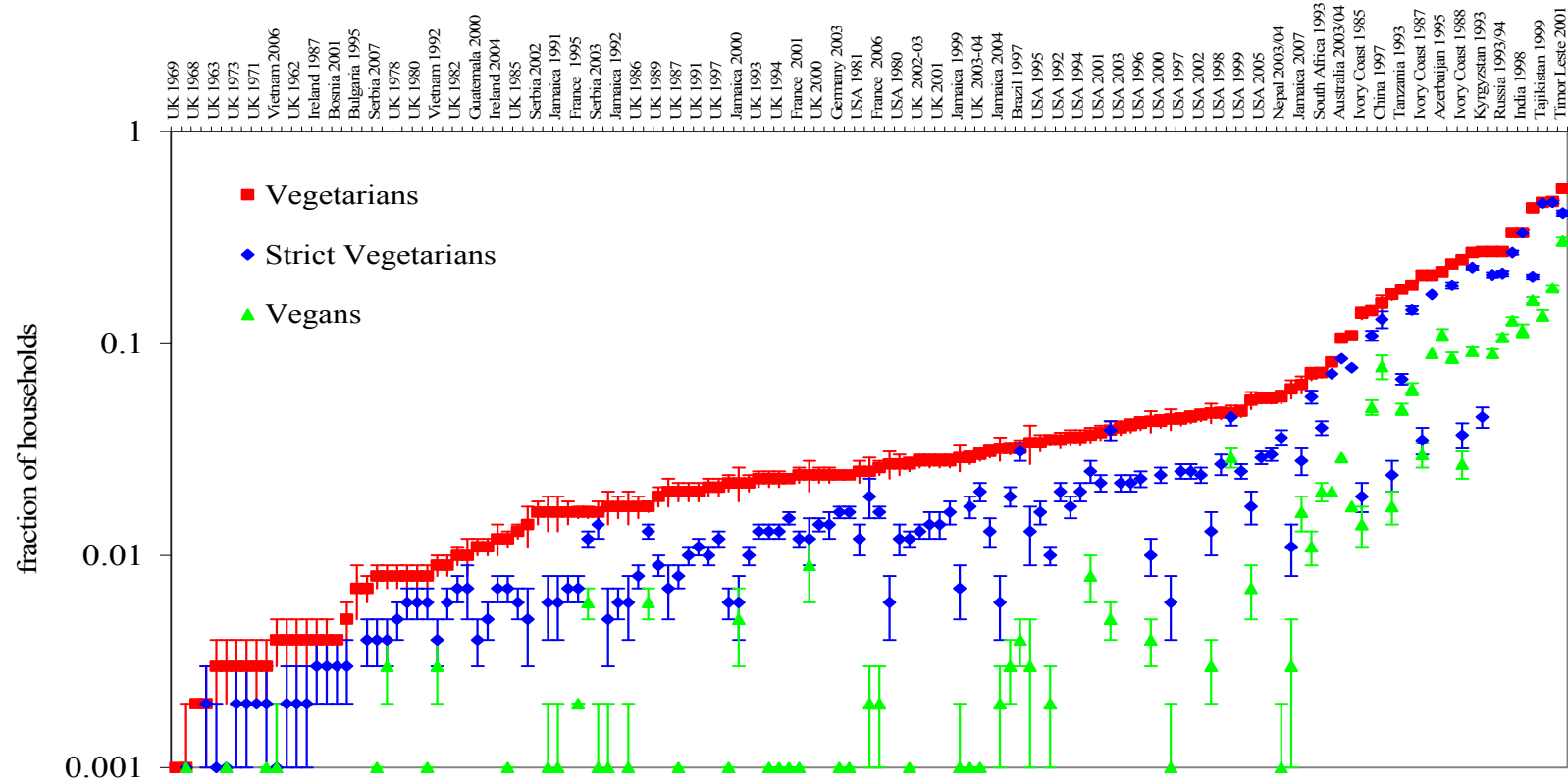


Figure 4. Share of vegetarian, strict vegetarian and vegan households by country



Materials and Methods

Data

Household expenditure surveys provide a detailed account of all of the expenditures incurred by a large sample of individual households over a specified time period. Household expenditure surveys have a similar structure across countries. Often, these datasets also provide information on household income and other socio-economic variables. Most of the datasets used in this paper are from the Living Standard Measurement Studies (LSMS), which are available from the World Bank website (17). We used these data to estimate levels of vegetarianism in Albania, Azerbaijan, Bosnia and Herzegovina, Brazil, Bulgaria, China, Guatemala, India, Ivory Coast, Kosovo, Kyrgyzstan, Papua New Guinea, Peru, Serbia, South Africa, Tajikistan, Tanzania and Timor Leste. The remaining data were obtained from statistical offices in individual countries. Data for the U.S.A (18), Russia (19), Nepal (20), Ireland (21), Vietnam (22), France (23), the UK (24, 25) and Jamaica (26) were obtained in this manner. We did not have direct access to the microdata for Singapore (27), Germany (28) or Australia (29) but the analyses we required (for households) were carried out by the relevant statistical offices to our specifications. In the case of Singapore, analyses were carried out on uncooked meat items only.

Where available, we used data on all meat consumed in the household, be it from purchases, home production, gifts or in-kind payments. For other countries, only data on meat expenditures were available. Table A1 indicates which measure was used in each case. Where possible we used household disposable income. However, on some occasions, net or gross income had to be used. Where available, the value of income received in kind was included in the income variable. For some countries, income was not available or was inconsistent with reported levels of expenditure. In such instances, total household expenditure was used as a proxy for income. Table A1 specifies which income measure was used. In almost all cases the total household food consumption variable was composed of all food bought for home consumption by the household. Food purchases which occurred while eating out, in cafes and restaurants for example, were excluded because we were not able to determine what proportion of this consumption

related to meat products. Purchases of alcohol, cigarettes and tobacco were also excluded but non-alcoholic beverages were included.

Infrequency of purchase

Expenditures are normally recorded in a diary for a specified period. For surveys with a short diary period, individual households’ responses may not always reflect their “normal” purchasing patterns with respect to individual goods or categories of goods. We filter the data to exclude observations where infrequency of purchase is likely to have led to an unrepresentative expenditure pattern in the period surveyed. That is, we exclude from the analysis all those households that appeared to have not purchased enough food, relative to income and household size in the defined period. We do this by estimating food share F , which is the share of food consumption (or expenditure) as a percentage of income (or total expenditure) for every household in the sample:

$$(1) F_j = \frac{C_j / N_j^d}{Y_j^q}$$

where C denotes total food consumption of household j ; N number of people in household j (raised to the power d); and Y income of household j (raised to the power q). We thus control for the number of people in the household as well as for economies of scale in household consumption through the equivalization factor d . Income is also equivalized using the elasticity q . The income elasticity for food varies between 0.2 and 0.4 for the countries in the sample; small changes in q have little impact on results. So, we set $q = 0.3$. We then find the mean and the standard deviation of food share F for each income decile in each country. Any household whose food share is less than the average minus the standard deviation for the relevant income decile is omitted from the analysis.

There is another adjustment required for United States data. The Consumer Expenditure Survey (CES), which is the microdata we use for the USA, is carried out on an annual basis and asks respondents to list all food items purchased over a weekly period. The majority of households stay in the sample for two weeks. We found that the number of zero observations on food expenditures was much higher in the CES than was the case for other countries. We have 19 years of cross sectional data and this pattern appeared

throughout. As a result, we applied another measure to identify those households that did not shop frequently enough for us to include them in the analysis. One of the CES data files had already amalgamated food products into different categories. We further reduced the number of categories to leave nine food groups in total. These are cereal and bakery products, meat products, fish products, eggs, milk and dairy products, processed fruit and vegetables, fresh fruit and vegetables, sweets, non-alcoholic beverages and miscellaneous food and oils. If households reported zero expenditures in six or more of these food groups we omitted them. We also omitted those households that reported expenditures for one week only. The remaining samples for the USA consisted of 5,122 households per annum on average.

Mixed households

Where there are two or more residents and the household reports some level of meat consumption, we estimate the probabilities that there are different numbers of vegetarians in that household. We refer to these as mixed households because they can contain both vegetarians and meat eaters. Since the expenditure data we are using is recorded on a household rather than on an individual basis, we derive expected meat and non-meat consumption based on equalised income and number of members for all possible combinations of vegetarians and non-vegetarians in the household. The predicted share of meat in total food consumption, conditional on the household structure, is then compared to the observed meat share. We then sequentially test the hypotheses that there are 0, 1, 2, ... vegetarians; and impute the lowest number that is not rejected.

Divide total food expenditure C_i for person i into three components: consumption of non-meat items if the person is a vegetarian C_i^{vv} , consumption of non-meat items if the person is a meat-eater C_i^{vm} , and consumption of meat items if the person eats meat C_i^{mm} :

$$(2) \quad C_i \equiv C_i^{vv} + C_i^{vm} + C_i^{mm}$$

Segment the population into two types, vegetarian ($v_i=1$) and non-vegetarian ($v_i=0$).

Now assume that all persons of a given type (vegetarian or non-vegetarian) have homogeneous demand for each component of food. Food demand is a fixed sum per person scaled by the level of household income per capita, using an equalisation factor

that accounts for economies of scale in household consumption. This specifies the following:

$$(3a) \quad C_i^{vv} = W_i \left(\frac{Y_j}{N_j^d} \right)^q \quad i \in j$$

$$(3b) \quad C_i^{vm} = V_i \left(\frac{Y_j}{N_j^d} \right)^r \quad i \in j$$

$$(3c) \quad C_i^{mm} = M_i \left(\frac{Y_j}{N_j^d} \right)^s \quad i \in j$$

where Y is household disposable income of household j and q , r and s are the elasticities of demand with respect to equivalised income for the relevant food types. N is the number of persons in the household and $0 < d \leq 1$ is the equalisation factor. W , V and M are per capita expenditures on the relevant food types by those who consume them.

By restricting the sample of households examined, we can obtain regression equations that allow us to recover the values of the structural parameters d , q , r , s , W , X and Y .

First consider single-person vegetarian households, which would allow one to estimate W and q :

$$(4a) \quad C_i^T = W_i Y_j^q \quad \forall v_i = 1, N_j = 1$$

Taking logs of both sides yields an equation that can be estimated with OLS regression:

$$(4b) \quad \ln C_i^T = \ln W_i + q \ln Y_j \quad \forall v_i = 1, N_j = 1$$

One can get more general results of these parameters (plus an estimate of d) using data on vegetarian households of all sizes:

$$(5a) \quad C_i^T = N_j^d W_i \left(\frac{Y_j}{N_j^d} \right)^q \Leftrightarrow \ln C_i^T = \ln W_i + q \ln Y_j + d(1-q) \ln N_j \quad \forall v_i = 1, N_j \geq 1$$

Equation (5a) is estimated as

$$(5b) \quad \ln C_i^T = a + q \ln Y_j + b \ln N_j \Rightarrow \ln W_i = \hat{a}; \hat{d} = \frac{\hat{b}}{1 - \hat{q}}$$

The standard deviation of d is estimated by developing the first order Taylor approximation around the estimated parameter

$$(6) \quad d = \frac{b}{1-q} \approx \frac{\hat{b}}{1-\hat{q}} + \frac{1}{1-\hat{q}}(b-\hat{b}) + \frac{\hat{b}}{(1-\hat{q})^2}(q-\hat{q})$$

and computing the variance of that

$$(7) \quad \begin{aligned} \sigma_d^2 &\approx \iint_{b,q} \left[\frac{\hat{b}}{1-\hat{q}} + \frac{1}{1-\hat{q}}(b-\hat{b}) + \frac{\hat{b}}{(1-\hat{q})^2}(q-\hat{q}) - \frac{\hat{b}}{1-\hat{q}} \right]^2 f(b,q) db dq \\ &= \frac{1}{(1-\hat{q})^2} \sigma_b^2 + \frac{\hat{b}^2}{(1-\hat{q})^4} \sigma_q^2 + \frac{2\hat{b}}{(1-\hat{q})^3} \sigma_{bq} \end{aligned}$$

The estimates of r , s , V and M are based on data on single person meat-eating households:

$$(8) \quad C_i^{vm} = V_i Y_j^r \Leftrightarrow \ln C_i^{vm} = \ln V_i + r \ln Y_j \quad \forall v_i = 0, N_j = 1$$

$$(9) \quad C_i^{mm} = M_i Y_j^s \Leftrightarrow \ln C_i^{mm} = \ln M_i + s \ln Y_j \quad \forall v_i = 0, N_j = 1$$

Our goal is to estimate the number of vegetarians in a given household. For households that do not buy meat, we declare all members to be vegetarian: $v_i = 1$. For single-person household, there is therefore no uncertainty. For multi-person households, we proceed as follows. We predict the expected share of meat in total food consumption S , conditional on the hypothesized number of vegetarians in the household:

$$(10a) \quad E[S_j | N_j^V] = \frac{N_j^M \hat{C}_i^{mm}}{N_j^M (\hat{C}_i^{mm} + \hat{C}_i^{vm}) + N_j^V \hat{C}_i^{vv}}$$

with

$$(10b) \quad N_j^V := \sum_{i \in j} v_i; N_j^M := N_j - N_j^V$$

Using the standard errors of the regressions (4), (8) and (9) and a second-order Taylor approximation of (10), we find that

$$(11) \quad \begin{aligned} \text{Var}[S_j | N_j^V] &= \frac{N_j^M \hat{C}_i^{vm} + N_j^V \hat{C}_i^{vv} - N_j^M \hat{C}_i^{mm}}{(N_j^M (\hat{C}_i^{mm} + \hat{C}_i^{vm}) + N_j^M \hat{C}_i^{vv})^3} N_j^{M^2} \sigma_{mm}^2 + \\ &\frac{N_j^{M^2} \hat{C}_i^{mm}}{(N_j^M (\hat{C}_i^{mm} + \hat{C}_i^{vm}) + N_j^V \hat{C}_i^{vv})^4} (N_j^{M^2} (\sigma_{mm}^2 + \sigma_{vm}^2) + N_j^{V^2} \sigma_{vv}^2) \end{aligned}$$

Assuming a lognormal distribution, we compute the relative probabilities of the hypotheses $N^V=0, 1, \dots, N_j-1$. We then impute the number of vegetarians \tilde{N} as the smallest \tilde{N} for which $p(\tilde{N}^V > N^V) \geq 0.95$.

Aggregation

The number of households in the sample that report no meat consumption or purchase, is readily estimated. Sample weights are used where available to estimate the fraction of all-vegetarian households. We estimate the total number of vegetarians in a country as the number of vegetarians in each household in our sample, again applying a weight for representativeness where appropriate. For households that report no meat consumption, the number of vegetarians is equal to the number of household members.

Table A1: Share of vegetarians and vegetarian households by country

Country	Year	% vegetarian households	Std. Error vegetarian households	Households	Weight	% vegetarians	Number of people	Household income measure	Consumption measure	Data
Albania	2005	0.047	0.004	3275	✓	0.078	13734	Net income	expenditure	LSMS
Azerbaijan	1995	0.218	0.010	1864	✓	0.226	9281	Total declared income	consumption	LSMS
Brazil	1997	0.019	0.003	2838	✓	0.036	11917	Net income	expenditure	LSMS
Bulgaria	2003	0.037	0.003	3012	✗	0.031	8152	Total declared income	consumption	LSMS
Bulgaria	2001	0.039	0.004	2359	✗	0.029	6618	Total expenditure	consumption	LSMS
Bulgaria	1995	0.007	0.002	2264	✗	0.008	6448	Total expenditure	consumption	LSMS
France	2006	0.026	0.002	8970	✓	0.019	21891	Net income	expenditure	EBF
France	2001	0.024	0.002	8956	✓	0.015	22265	Gross income	expenditure	EBF
France	1995	0.016	0.001	9099	✓	0.009	23462	Total expenditure	consumption	EBF
France	1985	0.017	0.001	9814	✓	0.014	32251	Gross income	expenditure	EBF
France	1979	0.016	0.001	9406	✓	0.010	28413	Total expenditure	expenditure	EBF
Guatemala	2000	0.011	0.001	6078	✓	0.014	31155	Gross income	expenditure	LSMS
India	1998	0.333	0.012	1527	✓	0.344	9903	Total declared income	consumption	LSMS
Ireland	2004	0.012	0.002	5266	✓	0.006	15934	Disposable income	consumption	HBS
Ireland	1999	0.008	0.001	6700	✓	0.004	20918	Disposable income	consumption	HBS
Ireland	1994	0.008	0.001	6958	✓	0.005	22311	Disposable income	consumption	HBS
Ireland	1987	0.004	0.001	6909	✓	0.003	24161	Disposable income	consumption	HBS
Ivory Coast	1988	0.248	0.011	1523	✓	0.203	9266	Total declared income	consumption	LSMS
Ivory Coast	1987	0.210	0.010	1560	✓	0.168	10666	Total declared income	consumption	LSMS
Ivory Coast	1986	0.170	0.010	1546	✓	0.130	11803	Total declared income	consumption	LSMS
Ivory Coast	1985	0.139	0.009	1522	✓	0.108	12124	Total declared	consumption	LSMS

Country	Year	% vegetarian households	Std. Error vegetarian households	Households	Weight	% vegetarians	Number of people	Household income measure	Consumption measure	Data
Jamaica	2007	0.064	0.006	1783	✓	0.057	5787	income Total expenditure	expenditure	JSLC
Jamaica	2006	0.054	0.005	1678	✓	0.035	5268	Total expenditure	expenditure	JSLC
Jamaica	2005	0.047	0.005	1698	✓	0.025	5679	Total expenditure	expenditure	JSLC
Jamaica	2004	0.032	0.004	1755	✓	0.021	6020	Total expenditure	expenditure	JSLC
Jamaica	2003	0.043	0.005	1781	✓	0.037	5930	Total expenditure	expenditure	JSLC
Jamaica	2002	0.035	0.002	6165	✓	0.021	20847	Total expenditure	consumption	JSLC
Jamaica	2001	0.027	0.004	1436	✓	0.017	4727	Total expenditure	consumption	JSLC
Jamaica	2000	0.022	0.004	1570	✓	0.016	5447	Total expenditure	consumption	JSLC
Jamaica	1999	0.029	0.004	1633	✓	0.015	5480	Total expenditure	consumption	JSLC
Jamaica	1998	0.022	0.002	6461	✓	0.014	22409	Total expenditure	consumption	JSLC
Jamaica	1997	0.020	0.003	1743	✓	0.017	6086	Total expenditure	consumption	JSLC
Jamaica	1996	0.017	0.003	1608	✓	0.016	5867	Total expenditure	consumption	JSLC
Jamaica	1995	0.016	0.003	1715	✓	0.012	6191	Total expenditure	consumption	JSLC
Jamaica	1994	0.017	0.003	1708	✓	0.017	5815	Total expenditure	consumption	JSLC
Jamaica	1993	0.014	0.003	1710	✓	0.010	6058	Total expenditure	consumption	JSLC
Jamaica	1992	0.017	0.002	3843	✓	0.016	13679	Total expenditure	consumption	JSLC
Jamaica	1991	0.016	0.003	1576	✓	0.020	5813	Total expenditure	consumption	JSLC
Jamaica	1990	0.034	0.007	703	✓	0.033	2468	Total expenditure	consumption	JSLC
Jamaica	1989	0.025	0.004	1256	✓	0.027	5381	Total expenditure	consumption	JSLC
Jamaica	1988	0.044	0.005	1648	✓	0.037	6225	Total expenditure	consumption	LSMS
Kosovo	2000	0.061	0.006	1373	✓	0.062	8975	Total declared income	consumption	LSMS
Kyrgyzstan	1993	0.271	0.010	1894	✗	0.398	9338	Total declared income	consumption	LSMS
Nepal	2003/04	0.056	0.004	3431	✓	0.066	18174	Total expenditure	expenditure	NLSS
Nepal	1996	0.072	0.005	3014	✓	0.081	17095	Total expenditure	consumption	NLSS
Peru	1985	0.436	0.007	4615	✗	0.418	23470	Total expenditure	consumption	LSMS
Russia	2002	0.143	0.006	2962	✓	0.126	10908	Gross income	expenditure	RLMS
Russia	2001	0.188	0.007	2950	✓	0.173	10504	Gross income	expenditure	RLMS
Russia	2000	0.237	0.008	2843	✓	0.223	9526	Gross income	expenditure	RLMS
Russia	1993/94	0.271	0.006	5224	✗	0.254	13422	Gross income	expenditure	RLMS

Country	Year	% vegetarian households	Std. Error vegetarian households	Households	Weight	% vegetarians	Number of people	Household income measure	Consumption measure	Data
Russia	1993	0.271	0.006	5388	✘	0.247	14260	Gross income	expenditure	RLMS
Russia	1992/93	0.333	0.006	5296	✘	0.292	14556	Gross income	expenditure	RLMS
Russia	1992	0.268	0.006	5946	✘	0.222	15985	Gross income	expenditure	RLMS
Serbia	2007	0.008	0.001	4708	✓	0.004	14657	Net income	consumption	LSMS
Serbia	2002	0.016	0.002	5956	✓	0.010	17914	Net income	consumption	LSMS
South Africa	1993	0.073	0.004	4776	✓	0.059	20517	Net income	consumption	LSMS
Tajikistan	2003	0.467	0.008	3620	✓	0.495	21915	Total declared income	consumption	LSMS
Tajikistan	1999	0.462	0.012	1818	✘	0.480	12265	Total declared income	expenditure	LSMS
Tanzania	1993	0.180	0.006	4844	✓	0.159	26705	Total declared income	consumption	LSMS
Timor Leste	2001	0.538	0.012	1596	✓	0.491	7699	Total expenditure	consumption	LSMS
UK	2006	0.028	0.002	5713	✓	0.021	13547	Disposable income	expenditure	EFS
UK	2005-06	0.028	0.002	5889	✓	0.024	13859	Disposable income	expenditure	EFS
UK	2004-05	0.032	0.002	5759	✓	0.032	13518	Disposable income	expenditure	EFS
UK	2003-04	0.030	0.002	6152	✓	0.021	14628	Disposable income	expenditure	EFS
UK	2002-03	0.028	0.002	6037	✓	0.021	14293	Disposable income	expenditure	EFS
UK	2001-02	0.029	0.002	6520	✓	0.020	15661	Disposable income	expenditure	EFS
UK	2001	0.028	0.002	5537	✓	0.020	12868	Disposable income	expenditure	FES
UK	2000	0.024	0.002	6225	✓	0.016	14589	Disposable income	expenditure	FES
UK	1999	0.024	0.002	5469	✓	0.016	12888	Disposable income	expenditure	FES
UK	1998	0.022	0.002	5315	✓	0.017	12461	Disposable	expenditure	FES

Country	Year	% vegetarian households	Std. Error vegetarian households	Households	Weight	% vegetarians	Number of people	Household income measure	Consumption measure	Data
UK	1997	0.021	0.002	5537	✓	0.017	13515	income Disposable income	expenditure	FES
UK	1996	0.020	0.002	5973	✗	0.017	14560	income Disposable income	expenditure	FES
UK	1995	0.023	0.002	6018	✗	0.020	14529	income Disposable income	expenditure	FES
UK	1994	0.023	0.002	5811	✗	0.019	13881	income Disposable income	expenditure	FES
UK	1993	0.023	0.002	6143	✗	0.019	15180	income Disposable income	expenditure	FES
UK	1992	0.027	0.002	6569	✗	0.019	15916	income Disposable income	expenditure	FES
UK	1991	0.020	0.002	6237	✗	0.017	15041	income Disposable income	expenditure	FES
UK	1990	0.021	0.002	6167	✗	0.018	15226	income Disposable income	expenditure	FES
UK	1989	0.019	0.002	6583	✗	0.016	16399	income Disposable income	expenditure	FES
UK	1988	0.016	0.002	6331	✗	0.016	15897	income Disposable income	expenditure	FES
UK	1987	0.020	0.002	6463	✗	0.018	16420	income Disposable income	expenditure	FES
UK	1986	0.017	0.002	6399	✗	0.015	16348	income Disposable income	expenditure	FES
UK	1985	0.013	0.001	6155	✗	0.011	15853	income Disposable income	expenditure	FES
UK	1984	0.012	0.001	6294	✗	0.011	16385	income Disposable income	expenditure	FES
UK	1983	0.011	0.001	6171	✗	0.011	16414	income Disposable income	expenditure	FES
UK	1982	0.010	0.001	6491	✗	0.011	17435	income Disposable income	expenditure	FES
UK	1981	0.007	0.001	6680	✗	0.009	18172	Net income	expenditure	FES

Country	Year	% vegetarian households	Std. Error vegetarian households	Households	Weight	% vegetarians	Number of people	Household income measure	Consumption measure	Data
UK	1980	0.008	0.001	6141	×	0.012	16706	Net income	expenditure	FES
UK	1979	0.009	0.001	6068	×	0.012	16494	Net income	expenditure	FES
UK	1978	0.008	0.001	6182	×	0.009	16886	Net income	expenditure	FES
UK	1977	0.004	0.001	6428	×	0.008	17890	Net income	expenditure	FES
UK	1976	0.003	0.001	6205	×	0.007	16909	Net income	expenditure	FES
UK	1975	0.004	0.001	6373	×	0.011	17936	Net income	expenditure	FES
UK	1974	0.005	0.001	5935	×	0.010	16827	Net income	expenditure	FES
UK	1973	0.003	0.001	6320	×	0.005	17806	Net income	expenditure	FES
UK	1972	0.003	0.001	6231	×	0.004	18034	Net income	expenditure	FES
UK	1971	0.003	0.001	6328	×	0.005	18109	Net income	expenditure	FES
UK	1970	0.002	0.001	5731	×	0.003	16642	Net income	expenditure	FES
UK	1969	0.001	0.000	5995	×	0.002	17019	Net income	expenditure	FES
UK	1968	0.002	0.000	6408	×	0.003	18746	Net income	expenditure	FES
UK	1963	0.003	0.001	2972	×	0.003	8710	Total expenditure	expenditure	FES
UK	1962	0.004	0.001	3114	×	0.003	9040	Total expenditure	expenditure	FES
UK	1961	0.004	0.001	3057	×	0.003	9027	Total expenditure	expenditure	FES
USA	2006	0.055	0.003	5098	✓	0.045	14610	Net income	expenditure	CES
USA	2005	0.055	0.003	6151	✓	0.050	17758	Net income	expenditure	CES
USA	2004	0.045	0.003	5941	✓	0.038	17043	Net income	expenditure	CES
USA	2003	0.040	0.003	4152	✓	0.035	11762	Net income	expenditure	CES
USA	2002	0.046	0.003	5424	✓	0.038	15678	Net income	expenditure	CES
USA	2001	0.038	0.003	5496	✓	0.033	15942	Net income	expenditure	CES
USA	2000	0.043	0.003	5357	✓	0.039	15608	Net income	expenditure	CES
USA	1999	0.048	0.003	5260	✓	0.043	15193	Net income	expenditure	CES
USA	1998	0.047	0.003	4155	✓	0.039	11994	Net income	expenditure	CES
USA	1997	0.044	0.003	4100	✓	0.038	11952	Net income	expenditure	CES
USA	1996	0.042	0.003	4061	✓	0.035	11764	Net income	expenditure	CES
USA	1995	0.034	0.003	3875	✓	0.026	11260	Net income	expenditure	CES
USA	1994	0.036	0.003	4251	✓	0.028	12374	Net income	expenditure	CES
USA	1993	0.041	0.003	4764	✓	0.032	13738	Net income	expenditure	CES
USA	1992	0.035	0.003	4745	✓	0.033	13814	Net income	expenditure	CES

Country	Year	% vegetarian households	Std. Error vegetarian households	Households	Weight	% vegetarians	Number of people	Household income measure	Consumption measure	Data
USA	1991	0.036	0.003	5112	✓	0.032	14969	Net income	expenditure	CES
USA	1990	0.031	0.002	4830	✓	0.029	14159	Net income	expenditure	CES
USA	1981	0.025	0.003	3794	✗	0.024	11687	Gross income	expenditure	CES
USA	1980	0.027	0.003	4002	✗	0.024	12428	Gross income	expenditure	CES
Vietnam	2006	0.004	0.001	2620	✓	0.008	34006	Total expenditure	consumption	VHLS S
Vietnam	2004	0.008	0.001	8268	✓	0.010	32180	Total expenditure	consumption	VHLS S
Vietnam	2002	0.003	0.000	26589	✓	0.003	113557	Total expenditure	consumption	VHLS S
Vietnam	1998	0.001	0.000	4989	✓	0.030	24192	Total expenditure	consumption	VHLS S
Vietnam	1992	0.009	0.001	4331	✗	0.015	20503	Total expenditure	consumption	VHLS S
Australia	2003/04	0.106	0.001	6957	✓	na	na	na	expenditure	AHES
Australia	1998/99	0.082	0.000	6893	✓	na	na	na	expenditure	AHES
Australia	1993/94	0.109	na	8,389	✓	na	na	na	expenditure	AHES
Bosnia	2004	0.010	0.002	2959	✗	na	na	na	consumption	LSMS
Bosnia	2001	0.004	0.000	5335	✓	na	na	na	consumption	LSMS
China	1997	0.155	0.013	787	✗	na	na	na	expenditure	LSMS
Germany	2003	0.024	0.001	11831	✓	na	na	na	expenditure	EVS
Germany	1998	0.024	0.001	12680	✓	na	na	na	expenditure	EVS
Germany	1993	0.023	0.001	15825	✓	na	na	na	expenditure	EVS
Papua New Guinea	1996	0.024	0.004	1336	✗	na	na	na	consumption	LSMS
Serbia	2003	0.016	0.002	2548	✓	na	na	na	consumption	LSMS
Singapore	2003	0.210	na	6749	✓	na	na	na	expenditure	SHES

Table A2. The share of vegetarians according to this and other studies.

Country	Year	This study	Other studies	Remarks and source
Brazil	1997	3.6%	5%	(Brazilian Vegetarian Society, 2004)
France	2006	1.9%	1.7%	15-75 year olds (Alliance Végétarienne, 1996, 2002)
France	2001	1.5%	0.9%	(International Vegetarian Union)
India	1998	34.4%	40%	(Hindu -CNN-IBN State of the Nation Survey, 2006)
India			42%	Households (National Sample Survey consumption data, 2005-06)
India			20-30%	(United States Department of Agriculture, 2004)
Ireland	2004	0.6%	6%	(Vegetarian Society of Ireland)
Ireland	1999	0.4%	>2.5%	(Irish Times, Oct 8 2004)
Ireland	1994	0.5%	1.6%	(Foley in Hotel and Catering Review, 1998)
Ireland	1987	0.3%	2-3%	(Corbett in The Irish Vegetarian, 1997)
Russia	2002	12.6%	>10%	(Euroasian Vegetarian Society, 2002)
UK	2006	2.1%	3%	Adults (Food Standards Agency, 2009)
UK	2005-06	2.4%	2%	Adults (Food Standards Agency, 2008)
UK	2004-05	3.2%	3%	(Defra survey of attitudes, knowledge and behaviour in relation to the environment, 2007)
UK	2003-04	2.1%	3%	Adults (Food Standards Agency, 2007)
UK	2002-03	2.1%	6%	(Mintel, 2006)
UK	2001-02	2.0%	6.1%	(International Vegetarian Union)
UK	2001	2.0%	7.6%	>15 years of age (BMBR Access Panel Research, 2004)
UK	2000	1.6%	7%	(Vegetarian Society)
UK	1999	1.6%	7%	Adults (Food and Drink Federation, 2003)
UK	1998	1.7%	8%	Students (JMA Marketing & Research Survey for Scolarest, 2003)
UK	1997	1.7%	5%	>19 years of age (National Diet and Nutrition Survey, 2001)
UK	1996	1.7%	6.5%	(TGI Annual Survey, 2001)
UK	1995	2.0%	5.7%	(Mintel, 2001)
UK	1994	1.9%	5%	Adults (Taylor Nelson poll for RSPCA, 2000)
UK	1993	1.9%	4.5%	(Mintel, 1996)
USA	2006	4.5%	0.5%	<17 years of age (Centre for Disease Control and Prevention, 2009)
USA	2005	5.0%	3.2%	Adults (Harris Interactive Service Bureau on behalf of Vegetarian Times, 2008)
USA	2004	3.8%	2.3%	>18 years (Vegetarian Resource Group, 2006)

Country	Year	This study	Other studies	Remarks and source
USA	2003	3.5%	6.7%	>18 years (VRG, 2006)
USA	2002	3.8%	1.4%	Vegan (VRG, 2006)
USA	2001	3.3%	2.8%	>17 years (VRG, 2004)
USA	2000	3.9%	<3%	Adults (American Dietetic Association, 2003)
USA	1999	4.3%	2.5%	>17 years (VRG, 2000)
USA	1998	3.9%	2%	Adults (VRG, 1997)
USA	1997	3.8%	1.2%	Adults (VRG, 1997)

Table A3. Share of vegetarian, strict vegetarian and vegan households by country

Country	Year	Households	Weight	Vegetarians	Std. Error vegetarians	Strict Vegetarians	Std. Error strict vegetarians	Vegans	Std. Error vegans
Albania	2005	3275	✓	0.047	0.004	0.045	0.004	0.029	0.003
Azerbaijan	1995	1864	✓	0.218	0.01	na	na	0.110	0.007
Brazil	1997	2838	✓	0.032	0.003	0.031	0.003	0.004	0.001
Bulgaria	2003	3012	✗	0.037	0.003	0.025	0.003	0.008	0.002
Bulgaria	2001	2359	✗	0.039	0.004	0.039	0.004	0.005	0.001
Bulgaria	1995	2264	✗	0.007	0.002	0.000	0.000	0.000	0.000
France	2006	8970	✓	0.026	0.002	0.016	0.001	0.002	0.001
France	2001	8956	✓	0.024	0.002	0.012	0.001	0.001	0.000
France	1995	9099	✓	0.016	0.001	0.007	0.001	0.002	0.000
France	1985	9814	✓	0.017	0.001	0.013	0.001	0.006	0.001
France	1979	9406	✓	0.016	0.001	0.012	0.001	0.006	0.001
Guatemala	2000	6078	✓	0.011	0.001	0.004	0.001	0.000	0.000
India	1998	1527	✓	0.333	0.012	0.333	0.012	0.115	0.008
Ireland	2004	5266	✓	0.012	0.002	0.007	0.001	0.000	0.000
Ireland	1999	6700	✓	0.008	0.001	0.006	0.001	0.000	0.000
Ireland	1994	6958	✓	0.008	0.001	0.006	0.001	0.001	0.000
Ireland	1987	6909	✓	0.004	0.001	0.003	0.001	0.000	0.000
Ivory Coast	1988	1523	✓	0.248	0.011	0.037	0.005	0.027	0.004
Ivory Coast	1987	1560	✓	0.210	0.010	0.035	0.005	0.030	0.004
Ivory Coast	1986	1546	✓	0.170	0.010	0.024	0.004	0.017	0.003
Ivory Coast	1985	1522	✓	0.139	0.009	0.019	0.003	0.014	0.003
Jamaica	2007	1783	✓	0.064	0.006	0.028	0.004	0.016	0.003
Jamaica	2006	1678	✓	0.054	0.005	0.017	0.003	0.007	0.002
Jamaica	2005	1698	✓	0.047	0.005	0.013	0.003	0.003	0.001
Jamaica	2004	1755	✓	0.032	0.004	0.006	0.002	0.002	0.001
Jamaica	2003	1781	✓	0.043	0.005	0.010	0.002	0.004	0.001
Jamaica	2002	6165	✓	0.035	0.002	0.010	0.001	0.002	0.001
Jamaica	2001	1436	✓	0.027	0.004	0.006	0.002	0.000	0.001
Jamaica	2000	1570	✓	0.022	0.004	0.006	0.002	0.005	0.002
Jamaica	1999	1633	✓	0.029	0.004	0.007	0.002	0.001	0.001
Jamaica	1998	6461	✓	0.022	0.002	0.006	0.001	0.001	0.000

Country	Year	Households	Weight	Vegetarians	Std. Error vegetarians	Strict Vegetarians	Std. Error strict vegetarians	Vegans	Std. Error vegans
Jamaica	1997	1743	✓	0.020	0.003	0.007	0.002	0.000	0.000
Jamaica	1996	1608	✓	0.017	0.003	0.005	0.002	0.001	0.001
Jamaica	1995	1715	✓	0.016	0.003	0.006	0.002	0.001	0.001
Jamaica	1994	1708	✓	0.017	0.003	0.006	0.002	0.001	0.001
Jamaica	1993	1710	✓	0.014	0.003	0.005	0.002	0.000	0.000
Jamaica	1992	3843	✓	0.017	0.002	0.006	0.001	0.000	0.000
Jamaica	1991	1576	✓	0.016	0.003	0.006	0.002	0.001	0.001
Jamaica	1990	703	✓	0.034	0.007	0.013	0.004	0.003	0.002
Jamaica	1989	1256	✓	0.025	0.004	0.019	0.004	0.002	0.001
Jamaica	1988	1648	✓	0.044	0.005	0.006	0.002	0.001	0.001
Kosovo	2000	1373	✓	0.061	0.006	0.011	0.003	0.003	0.002
Kyrgyzstan	1993	1894	✗	0.271	0.010	0.045	0.005	0.000	0.000
Nepal	2003/04	3431	✓	0.056	0.004	0.036	0.003	0.001	0.001
Nepal	1996	3014	✓	0.072	0.005	0.056	0.004	0.011	0.002
Peru	1985	4615	✗	0.436	0.007	0.207	0.005	0.160	0.005
Russia	2002	2962	✓	0.143	0.006	0.109	0.006	0.050	0.004
Russia	2001	2950	✓	0.188	0.007	0.144	0.006	0.061	0.004
Russia	2000	2843	✓	0.237	0.008	0.188	0.007	0.086	0.005
Russia	1993/94	5224	✗	0.271	0.006	0.214	0.006	0.107	0.004
Russia	1993	5388	✗	0.271	0.006	0.211	0.006	0.090	0.004
Russia	1992/93	5296	✗	0.333	0.006	0.268	0.006	0.128	0.005
Russia	1992	5946	✗	0.268	0.006	0.228	0.005	0.092	0.004
Serbia	2007	4708	✓	0.008	0.001	0.004	0.001	0.001	0.000
Serbia	2002	5956	✓	0.016	0.002	0.000	0.000	0.000	0.000
South Africa	1993	4776	✓	0.073	0.004	0.040	0.003	0.020	0.002
Tajikistan	2003	3620	✓	0.467	0.008	0.463	0.008	0.183	0.006
Tajikistan	1999	1818	✗	0.462	0.012	0.459	0.012	0.136	0.008
Tanzania	1993	4844	✓	0.180	0.006	0.068	0.004	0.049	0.003
Timor Leste	2001	1596	✓	0.538	0.012	0.412	0.012	0.304	0.012
UK	2006	5713	✓	0.028	0.002	0.016	0.002	0.000	0.000
UK	2005-06	5889	✓	0.028	0.002	0.014	0.002	0.000	0.000
UK	2004-05	5759	✓	0.032	0.002	0.019	0.002	0.003	0.001
UK	2003-04	6152	✓	0.030	0.002	0.020	0.002	0.001	0.000

Country	Year	Households	Weight	Vegetarians	Std. Error vegetarians	Strict Vegetarians	Std. Error strict vegetarians	Vegans	Std. Error vegans
UK	2002-03	6037	✓	0.028	0.002	0.013	0.001	0.000	0.000
UK	2001-02	6520	✓	0.029	0.002	0.017	0.002	0.001	0.000
UK	2001	5537	✓	0.028	0.002	0.014	0.002	0.000	0.000
UK	2000	6225	✓	0.024	0.002	0.014	0.001	0.000	0.000
UK	1999	5469	✓	0.024	0.002	0.014	0.002	0.000	0.000
UK	1998	5315	✓	0.022	0.002	0.010	0.001	0.000	0.000
UK	1997	5537	✓	0.021	0.002	0.012	0.001	0.000	0.000
UK	1996	5973	✗	0.020	0.002	0.010	0.001	0.000	0.000
UK	1995	6018	✗	0.023	0.002	0.013	0.001	0.001	0.000
UK	1994	5811	✗	0.023	0.002	0.013	0.001	0.001	0.000
UK	1993	6143	✗	0.023	0.002	0.013	0.001	0.000	0.000
UK	1992	6569	✗	0.027	0.002	0.012	0.001	0.001	0.000
UK	1991	6237	✗	0.020	0.002	0.011	0.001	0.000	0.000
UK	1990	6167	✗	0.021	0.002	0.010	0.001	0.000	0.000
UK	1989	6583	✗	0.019	0.002	0.009	0.001	0.000	0.000
UK	1988	6331	✗	0.016	0.002	0.007	0.001	0.000	0.000
UK	1987	6463	✗	0.020	0.002	0.008	0.001	0.001	0.000
UK	1986	6399	✗	0.017	0.002	0.008	0.001	0.000	0.000
UK	1985	6155	✗	0.013	0.001	0.006	0.001	0.000	0.000
UK	1984	6294	✗	0.012	0.001	0.007	0.001	0.001	0.000
UK	1983	6171	✗	0.011	0.001	0.005	0.001	0.000	0.000
UK	1982	6491	✗	0.010	0.001	0.007	0.001	0.000	0.000
UK	1981	6680	✗	0.007	0.001	0.004	0.001	0.000	0.000
UK	1980	6141	✗	0.008	0.001	0.006	0.001	0.000	0.000
UK	1979	6068	✗	0.009	0.001	0.006	0.001	0.000	0.000
UK	1978	6182	✗	0.008	0.001	0.005	0.001	0.000	0.000
UK	1977	6428	✗	0.004	0.001	0.002	0.001	0.000	0.000
UK	1976	6205	✗	0.003	0.001	0.002	0.001	0.001	0.000
UK	1975	6373	✗	0.004	0.001	0.003	0.001	0.000	0.000
UK	1974	5935	✗	0.005	0.001	0.003	0.001	0.000	0.000
UK	1973	6320	✗	0.003	0.001	0.002	0.001	0.000	0.000
UK	1972	6231	✗	0.003	0.001	0.002	0.001	0.000	0.000
UK	1971	6328	✗	0.003	0.001	0.002	0.000	0.000	0.000

Country	Year	Households	Weight	Vegetarians	Std. Error vegetarians	Strict Vegetarians	Std. Error strict vegetarians	Vegans	Std. Error vegans
UK	1970	5731	✖	0.002	0.001	0.002	0.001	0.000	0.000
UK	1969	5995	✖	0.001	0.000	0.000	0.000	0.000	0.000
UK	1968	6408	✖	0.002	0.000	0.000	0.000	0.000	0.000
UK	1963	2972	✖	0.003	0.001	0.001	0.001	0.000	0.000
UK	1962	3114	✖	0.004	0.001	0.002	0.001	0.000	0.000
UK	1961	3057	✖	0.004	0.001	0.002	0.001	0.000	0.000
USA	2006	5098	✓	0.055	0.003	0.030	0.002	0.000	0.000
USA	2005	6151	✓	0.055	0.003	0.029	0.002	0.000	0.000
USA	2004	5941	✓	0.045	0.003	0.025	0.002	0.000	0.000
USA	2003	4152	✓	0.040	0.003	0.022	0.002	0.000	0.000
USA	2002	5424	✓	0.046	0.003	0.024	0.002	0.000	0.000
USA	2001	5496	✓	0.038	0.003	0.022	0.002	0.000	0.000
USA	2000	5357	✓	0.043	0.003	0.024	0.002	0.000	0.000
USA	1999	5260	✓	0.048	0.003	0.025	0.002	0.000	0.000
USA	1998	4155	✓	0.047	0.003	0.027	0.003	0.000	0.000
USA	1997	4100	✓	0.044	0.003	0.025	0.002	0.000	0.000
USA	1996	4061	✓	0.042	0.003	0.023	0.002	0.000	0.000
USA	1995	3875	✓	0.034	0.003	0.016	0.002	0.000	0.000
USA	1994	4251	✓	0.036	0.003	0.020	0.002	0.000	0.000
USA	1993	4764	✓	0.041	0.003	0.022	0.002	0.000	0.000
USA	1992	4745	✓	0.035	0.003	0.020	0.002	0.000	0.000
USA	1991	5112	✓	0.036	0.003	0.017	0.002	0.000	0.000
USA	1990	4830	✓	0.031	0.002	0.013	0.002	0.000	0.000
USA	1981	3794	✖	0.025	0.003	0.012	0.002	0.000	0.000
USA	1980	4002	✖	0.027	0.003	0.012	0.002	0.000	0.000
Vietnam	2006	2620	✓	0.004	0.001	0.001	0.001	0.001	0.001
Vietnam	2004	8268	✓	0.008	0.001	0.004	0.001	0.003	0.001
Vietnam	2002	26589	✓	0.003	0.001	0.001	0.000	0.001	0.000
Vietnam	1998	4989	✓	0.001	0.001	0.001	0.000	0.001	0.000
Vietnam	1992	4331	✖	0.009	0.001	0.004	0.001	0.003	0.001
Australia	2003/04	6957	✓	0.106	na	0.085	na	0.029	na
Australia	1998/99	6893	✓	0.082	na	0.072	na	0.020	na

Country	Year	Households	Weight	Vegetarians	Std. Error vegetarians	Strict Vegetarians	Std. Error strict vegetarians	Vegans	Std. Error vegans
Australia	1993/94	8,389	✓	0.109	na	0.077	na	0.017	na
Bosnia	2004	2959	✗	0.010	0.002	0.007	0.002	0.000	0.000
Bosnia	2001	5335	✓	0.004	0.000	0.003	0.001	0.000	0.000
China	1997	787	✗	0.155	0.013	0.130	0.012	0.078	0.010
Germany	2003	11831	✓	0.024	0.001	0.016	0.001	0.001	0.000
Germany	1998	12680	✓	0.024	0.001	0.016	0.001	0.001	0.000
Germany	1993	15825	✓	0.023	0.001	0.015	0.001	0.001	0.000
Papua New Guinea	1996	1336	✗	0.024	0.004	0.012	0.003	0.009	0.003
Serbia	2003	2548	✓	0.016	0.002	0.014	0.002	0.001	0.001
Singapore	2003	6749	✓	0.210	na	0.170	na	0.090	na

Reference List

1. FAO, "Livestock's Long Shadow: Environmental issues and options" (Food and Agriculture Organization, Rome, 2006).
2. WRI. EarthTrends. <http://earthtrends.wri.org>. 2009. World Resources Institute.
3. W. S. Chern, K. Ishibashi, K. Taniguchi, Y. Tokoyama, "Analysis of the Food Consumption of Japanese Households" (ESA Working Paper 02-06, Food and Agricultural Organization, Rome, 2002).
4. C. Newman, M. Henschion, A. Matthews, *Eur Rev Agric Econ* **28**, 393 (2001).
5. R. M. Nayga, Jr., *Review of Agricultural Economics* **17**, 275 (1995).
6. M. Burton, M. Tomlinson, T. Young, *Journal of Agricultural Economics* **45**, 202 (1994).
7. B. W. Gould, Y. Lee, D. Dong, H. J. Villareal, paper presented at the Annual Meeting of the American Agricultural Economics Association, Long Beach, CA, 28-31 July 2002.
8. O. Mueller, M. Krawinkel, *Canadian Medical Association Journal* **173**, 279 (2005).
9. B. M. Popkin, *Asia Pacific Journal of Clinical Nutrition* **10**, (2001).
10. J. Reimer, T. W. Hertel, *Economic Systems Research* **16**, 347 (2004).
11. E. Giovannucci *et al.*, *Cancer Research* **54**, 2390 (1994).
12. A. Drewnowski, S. E. Specter, *American Journal of Clinical Nutrition* **79**, 6 (2004).
13. F. B. Hu *et al.*, *American Journal of Clinical Nutrition* **72**, 912 (2000).
14. D. P. Rose, A. P. Boyar, E. L. Wynder, *Cancer* **58**, 2363 (1986).
15. W. P. T. James, M. Nelson, A. Ralph, S. Leather, *British Medical Journal* **314**, 1545 (1997).
16. B. J. DeAngelo, F. C. de la Chesnaye, R. H. Beach, A. Sommer, B. C. Murray, *Energy Journal*, 89 (2006).

Dataset Reference List

17. World Bank. Living Standards Measurement Study 1985-2007. <http://go.worldbank.org/PDHZFQZ6L0>
18. U.S. Department of Labor, Bureau of Labor Statistics. Consumer Expenditure Survey, Diary Survey. <http://www.bls.gov/cex/>

19. Carolina Population Centre. Russia Longitudinal Monitoring Survey.
<http://www.cpc.unc.edu/rlms/>
20. Central Bureau of Statistics. Nepal Living Standards Survey.
<http://www.cbs.gov.np/Surveys/NLSSII/NLSS%20II%20Report%20Vol%201.pdf>
21. Central Statistics Office Ireland. Household Budget Survey.
http://www.eirestat.cso.ie/surveysandmethodologies/surveys/housing_households/survey_hbs.htm
22. General Statistics Office of Vietnam. Vietnam Household Living Standards Survey.
http://www.gso.gov.vn/default_en.aspx?tabid=515&idmid=5&ItemID=8183
23. Institut National de la Statistique et des Études Économiques. Enquête budget de famille.
<http://www.insee.fr/fr/publications-et-services/irweb.asp?id=BDF06>
24. Office for National Statistics. Expenditure and Food Survey.
http://www.statistics.gov.uk/ssd/surveys/expenditure_food_survey.asp
25. Office for National Statistics. Family Expenditure Survey - UK.
<http://www.statistics.gov.uk/StatBase/Source.asp?vlnk=1385&More=Y>
26. Statistical Institute of Jamaica. Jamaica Survey of Living Conditions.
<http://www.statinja.com/surveys.htm>
27. Singapore Department of Statistics. Household Expenditure Survey.
<http://www.singstat.gov.sg/stats/themes/people/house.html>
28. Statistisches Bundesamt Deutschland. Einkommens- und Verbrauchsstichprobe.
http://www.destatis.de/jetspeed/portal/cms/Sites/destatis/Internet/DE/Presse/abisz/Einkommens_Verbrauchsstichprobe,templateId=renderPrint.psm
29. Australian Bureau of Statistics. Household Expenditure Survey, Australia.
<http://www.abs.gov.au/Ausstats/ABS@.nsf/12ce1aabe68b47f3ca256982001cc5da/5f1422f1af472d80ca256bd00026aee6!OpenDocument>

Year	Number	Title/Author(s) ESRI Authors/Co-authors <i>Italicised</i>
2010		
	339	International Migration in Ireland, 2009 <i>Philip J O'Connell and Corona Joyce</i>
	338	The Euro Through the Looking-Glass: Perceived Inflation Following the 2002 Currency Changeover <i>Pete Lunn and David Duffy</i>
	337	Returning to the Question of a Wage Premium for Returning Migrants <i>Alan Barrett and Jean Goggin</i>
2009		
	336	What Determines the Location Choice of Multinational Firms in the ICT Sector? <i>Iulia Siedschlag, Xiaoheng Zhang, Donal Smith</i>
	335	Cost-benefit analysis of the introduction of weight- based charges for domestic waste – West Cork's experience <i>Sue Scott and Dorothy Watson</i>
	334	The Likely Economic Impact of Increasing Investment in Wind on the Island of Ireland <i>Conor Devitt, Seán Diffney, John Fitz Gerald, Seán Lyons and Laura Malaguzzi Valeri</i>
	333	Estimating Historical Landfill Quantities to Predict Methane Emissions <i>Seán Lyons, Liam Murphy and Richard S.J. Tol</i>
	332	International Climate Policy and Regional Welfare Weights <i>Daiju Narita, Richard S. J. Tol, and David Anthoff</i>
	331	A Hedonic Analysis of the Value of Parks and Green Spaces in the Dublin Area <i>Karen Mayor, Seán Lyons, David Duffy and Richard S.J. Tol</i>

- 330 Measuring International Technology Spillovers and Progress Towards the European Research Area
Iulia Siedschlag
- 329 Climate Policy and Corporate Behaviour
Nicola Commins, Seán Lyons, Marc Schiffbauer, and Richard S.J. Tol
- 328 The Association Between Income Inequality and Mental Health: Social Cohesion or Social Infrastructure
Richard Layte and Bertrand Maitre
- 327 A Computational Theory of Exchange: Willingness to pay, willingness to accept and the endowment effect
Pete Lunn and Mary Lunn
- 326 Fiscal Policy for Recovery
John Fitz Gerald
- 325 The EU 20/20/2020 Targets: An Overview of the EMF22 Assessment
Christoph Böhringer, Thomas F. Rutherford, and *Richard S.J. Tol*
- 324 Counting Only the Hits? The Risk of Underestimating the Costs of Stringent Climate Policy
Massimo Tavoni, *Richard S.J. Tol*
- 323 International Cooperation on Climate Change Adaptation from an Economic Perspective
Kelly C. de Bruin, Rob B. Dellink and *Richard S.J. Tol*
- 322 What Role for Property Taxes in Ireland?
T. Callan, C. Keane and J.R. Walsh
- 321 The Public-Private Sector Pay Gap in Ireland: What Lies Beneath?
Elish Kelly, Seamus McGuinness, Philip O'Connell
- 320 A Code of Practice for Grocery Goods Undertakings and An Ombudsman: How to Do a Lot of Harm by Trying to Do a Little Good

Paul K Gorecki

- 319 Negative Equity in the Irish Housing Market
David Duffy
- 318 Estimating the Impact of Immigration on Wages in Ireland
Alan Barrett, Adele Bergin and Elish Kelly
- 317 Assessing the Impact of Wage Bargaining and Worker Preferences on the Gender Pay Gap in Ireland Using the National Employment Survey 2003
Seamus McGuinness, Elish Kelly, Philip O'Connell, Tim Callan
- 316 Mismatch in the Graduate Labour Market Among Immigrants and Second-Generation Ethnic Minority Groups
Delma Byrne and Seamus McGuinness
- 315 Managing Housing Bubbles in Regional Economies under EMU: Ireland and Spain
Thomas Conefrey and John Fitz Gerald
- 314 Job Mismatches and Labour Market Outcomes
Kostas Mavromaras, Seamus McGuinness, Nigel O'Leary, Peter Sloane and Yin King Fok
- 313 Immigrants and Employer-provided Training
Alan Barrett, Séamus McGuinness, Martin O'Brien and Philip O'Connell
- 312 Did the Celtic Tiger Decrease Socio-Economic Differentials in Perinatal Mortality in Ireland?
Richard Layte and Barbara Clyne
- 311 Exploring International Differences in Rates of Return to Education: Evidence from EU SILC
Maria A. Davia, Seamus McGuinness and Philip, J. O'Connell
- 310 Car Ownership and Mode of Transport to Work in Ireland

Nicola Commins and Anne Nolan

- 309 Recent Trends in the Caesarean Section Rate in Ireland 1999-2006
Aoife Brick and Richard Layte
- 308 Price Inflation and Income Distribution
Anne Jennings, Seán Lyons and Richard S.J. Tol
- 307 Overskilling Dynamics and Education Pathways
Kostas Mavromaras, *Seamus McGuinness*, Yin King Fok
- 306 What Determines the Attractiveness of the European Union to the Location of R&D Multinational Firms?
Iulia Siedschlag, Donal Smith, Camelia Turcu, Xiaoheng Zhang
- 305 Do Foreign Mergers and Acquisitions Boost Firm Productivity?
Marc Schiffbauer, Iulia Siedschlag, Frances Ruane
- 304 Inclusion or Diversion in Higher Education in the Republic of Ireland?
Delma Byrne
- 303 Welfare Regime and Social Class Variation in Poverty and Economic Vulnerability in Europe: An Analysis of EU-SILC
Christopher T. Whelan and *Bertrand Maitre*
- 302 Understanding the Socio-Economic Distribution and Consequences of Patterns of Multiple Deprivation: An Application of Self-Organising Maps
Christopher T. Whelan, Mario Lucchini, Maurizio Pisati and *Bertrand Maitre*
- 301 Estimating the Impact of Metro North
Edgar Morgenroth
- 300 Explaining Structural Change in Cardiovascular Mortality in Ireland 1995-2005: A Time Series Analysis
Richard Layte, Sinead O'Hara and Kathleen Bennett

- 299 EU Climate Change Policy 2013-2020: Using the Clean Development Mechanism More Effectively
Paul K Gorecki, Seán Lyons and Richard S.J. Tol
- 298 Irish Public Capital Spending in a Recession
Edgar Morgenroth
- 297 Exporting and Ownership Contributions to Irish Manufacturing Productivity Growth
Anne Marie Gleeson, Frances Ruane
- 296 Eligibility for Free Primary Care and Avoidable Hospitalisations in Ireland
Anne Nolan
- 295 Managing Household Waste in Ireland: Behavioural Parameters and Policy Options
John Curtis, Seán Lyons and Abigail O'Callaghan-Platt
- 294 Labour Market Mismatch Among UK Graduates; An Analysis Using REFLEX Data
Seamus McGuinness and Peter J. Sloane
- 293 Towards Regional Environmental Accounts for Ireland
Richard S.J. Tol, Nicola Commins, Niamh Crilly, Sean Lyons and Edgar Morgenroth
- 292 EU Climate Change Policy 2013-2020: Thoughts on Property Rights and Market Choices
Paul K. Gorecki, Sean Lyons and Richard S.J. Tol
- 291 Measuring House Price Change
David Duffy
- 290 Intra-and Extra-Union Flexibility in Meeting the European Union's Emission Reduction Targets
Richard S.J. Tol
- 289 The Determinants and Effects of Training at Work: Bringing the Workplace Back In
Philip J. O'Connell and Delma Byrne
- 288 Climate Feedbacks on the Terrestrial Biosphere and the Economics of Climate Policy: An Application of

FUND

Richard S.J. Tol

- 287 The Behaviour of the Irish Economy: Insights from the HERMES macro-economic model
Adele Bergin, Thomas Conefrey, John FitzGerald and Ide Kearney
- 286 Mapping Patterns of Multiple Deprivation Using Self-Organising Maps: An Application to EU-SILC Data for Ireland
Maurizio Pisati, Christopher T. Whelan, Mario Lucchini and Bertrand Maitre
- 285 The Feasibility of Low Concentration Targets: An Application of FUND
Richard S.J. Tol
- 284 Policy Options to Reduce Ireland's GHG Emissions Instrument choice: the pros and cons of alternative policy instruments
Thomas Legge and Sue Scott
- 283 Accounting for Taste: An Examination of Socioeconomic Gradients in Attendance at Arts Events
Pete Lunn and Elish Kelly
- 282 The Economic Impact of Ocean Acidification on Coral Reefs
Luke M. Brander, Katrin Rehdanz, Richard S.J. Tol, and Pieter J.H. van Beukering
- 281 Assessing the impact of biodiversity on tourism flows: A model for tourist behaviour and its policy implications
Giulia Macagno, Maria Loureiro, Paulo A.L.D. Nunes and Richard S.J. Tol
- 280 Advertising to boost energy efficiency: the Power of One campaign and natural gas consumption
Seán Diffney, Seán Lyons and Laura Malaguzzi Valeri
- 279 International Transmission of Business Cycles Between Ireland and its Trading Partners

Jean Goggin and Iulia Siedschlag

- 278 Optimal Global Dynamic Carbon Taxation
David Anthoff
- 277 Energy Use and Appliance Ownership in Ireland
Eimear Leahy and Seán Lyons
- 276 Discounting for Climate Change
David Anthoff, Richard S.J. Tol and Gary W. Yohe
- 275 Projecting the Future Numbers of Migrant Workers in
the Health and Social Care Sectors in Ireland
Alan Barrett and Anna Rust
- 274 Economic Costs of Extratropical Storms under Climate
Change: An application of FUND
Daiju Narita, Richard S.J. Tol, David Anthoff
- 273 The Macro-Economic Impact of Changing the Rate of
Corporation Tax
Thomas Conefrey and John D. Fitz Gerald
- 272 The Games We Used to Play
An Application of Survival Analysis to the Sporting
Life-course
Pete Lunn
- 2008**
- 271 Exploring the Economic Geography of Ireland
Edgar Morgenroth
- 270 Benchmarking, Social Partnership and Higher
Remuneration: Wage Settling Institutions and the
Public-Private Sector Wage Gap in Ireland
Elish Kelly, Seamus McGuinness, Philip O'Connell
- 269 A Dynamic Analysis of Household Car Ownership in
Ireland
Anne Nolan
- 268 The Determinants of Mode of Transport to Work in
the Greater Dublin Area
Nicola Commins and Anne Nolan

- 267 Resonances from *Economic Development* for Current Economic Policymaking
Frances Ruane
- 266 The Impact of Wage Bargaining Regime on Firm-Level Competitiveness and Wage Inequality: The Case of Ireland
Seamus McGuinness, Elish Kelly and Philip O'Connell
- 265 Poverty in Ireland in Comparative European Perspective
Christopher T. Whelan and Bertrand Maitre
- 264 A Hedonic Analysis of the Value of Rail Transport in the Greater Dublin Area
Karen Mayor, Seán Lyons, David Duffy and Richard S.J. Tol
- 263 Comparing Poverty Indicators in an Enlarged EU
Christopher T. Whelan and Bertrand Maitre
- 262 Fuel Poverty in Ireland: Extent, Affected Groups and Policy Issues
Sue Scott, Seán Lyons, Claire Keane, Donal McCarthy and Richard S.J. Tol
- 261 The Misperception of Inflation by Irish Consumers
David Duffy and Pete Lunn
- 260 The Direct Impact of Climate Change on Regional Labour Productivity
Tord Kjellstrom, R Sari Kovats, Simon J. Lloyd, Tom Holt, *Richard S.J. Tol*
- 259 Damage Costs of Climate Change through Intensification of Tropical Cyclone Activities: An Application of FUND
Daiju Narita, *Richard S. J. Tol* and *David Anthoff*
- 258 Are Over-educated People Insiders or Outsiders? A Case of Job Search Methods and Over-education in UK
Aleksander Kucel, Delma Byrne

- 257 Metrics for Aggregating the Climate Effect of Different Emissions: A Unifying Framework
Richard S.J. Tol, Terje K. Berntsen, Brian C. O'Neill, Jan S. Fuglestedt, Keith P. Shine, Yves Balkanski and Laszlo Makra
- 256 Intra-Union Flexibility of Non-ETS Emission Reduction Obligations in the European Union
Richard S.J. Tol
- 255 The Economic Impact of Climate Change
Richard S.J. Tol
- 254 Measuring International Inequity Aversion
Richard S.J. Tol
- 253 Using a Census to Assess the Reliability of a National Household Survey for Migration Research: The Case of Ireland
Alan Barrett and Elish Kelly
- 252 Risk Aversion, Time Preference, and the Social Cost of Carbon
David Anthoff, Richard S.J. Tol and Gary W. Yohe
- 251 The Impact of a Carbon Tax on Economic Growth and Carbon Dioxide Emissions in Ireland
Thomas Conefrey, John D. Fitz Gerald, Laura Malaguzzi Valeri and Richard S.J. Tol
- 250 The Distributional Implications of a Carbon Tax in Ireland
Tim Callan, Sean Lyons, Susan Scott, Richard S.J. Tol and Stefano Verde
- 249 Measuring Material Deprivation in the Enlarged EU
Christopher T. Whelan, Brian Nolan and Bertrand Maitre
- 248 Marginal Abatement Costs on Carbon-Dioxide Emissions: A Meta-Analysis
Onno Kuik, Luke Brander and Richard S.J. Tol

- 247 Incorporating GHG Emission Costs in the Economic Appraisal of Projects Supported by State Development Agencies
Richard S.J. Tol and Seán Lyons
- 246 A Carton Tax for Ireland
Richard S.J. Tol, Tim Callan, Thomas Conefrey, John D. Fitz Gerald, Seán Lyons, Laura Malaguzzi Valeri and Susan Scott
- 245 Non-cash Benefits and the Distribution of Economic Welfare
Tim Callan and Claire Keane
- 244 Scenarios of Carbon Dioxide Emissions from Aviation
Karen Mayor and Richard S.J. Tol
- 243 The Effect of the Euro on Export Patterns: Empirical Evidence from Industry Data
Gavin Murphy and Iulia Siedschlag
- 242 The Economic Returns to Field of Study and Competencies Among Higher Education Graduates in Ireland
Elish Kelly, Philip O'Connell and Emer Smyth
- 241 European Climate Policy and Aviation Emissions
Karen Mayor and Richard S.J. Tol
- 240 Aviation and the Environment in the Context of the EU-US Open Skies Agreement
Karen Mayor and Richard S.J. Tol
- 239 Yuppie Kvetch? Work-life Conflict and Social Class in Western Europe
Frances McGinnity and Emma Calvert
- 238 Immigrants and Welfare Programmes: Exploring the Interactions between Immigrant Characteristics, Immigrant Welfare Dependence and Welfare Policy
Alan Barrett and Yvonne McCarthy
- 237 How Local is Hospital Treatment? An Exploratory Analysis of Public/Private Variation in Location of Treatment in Irish Acute Public Hospitals

Jacqueline O'Reilly and Miriam M. Wiley

- 236 The Immigrant Earnings Disadvantage Across the Earnings and Skills Distributions: The Case of Immigrants from the EU's New Member States in Ireland
Alan Barrett, Seamus McGuinness and Martin O'Brien
- 235 Europeanisation of Inequality and European Reference Groups
Christopher T. Whelan and Bertrand Maitre
- 234 Managing Capital Flows: Experiences from Central and Eastern Europe
Jürgen von Hagen and *Iulia Siedschlag*
- 233 ICT Diffusion, Innovation Systems, Globalisation and Regional Economic Dynamics: Theory and Empirical Evidence
Charlie Karlsson, Gunther Maier, Michaela Trippl, *Iulia Siedschlag*, Robert Owen and *Gavin Murphy*
- 232 Welfare and Competition Effects of Electricity Interconnection between Great Britain and Ireland
Laura Malaguzzi Valeri
- 231 Is FDI into China Crowding Out the FDI into the European Union?
Laura Resmini and *Iulia Siedschlag*
- 230 Estimating the Economic Cost of Disability in Ireland
John Cullinan, Brenda Gannon and *Seán Lyons*
- 229 Controlling the Cost of Controlling the Climate: The Irish Government's Climate Change Strategy
Colm McCarthy, *Sue Scott*
- 228 The Impact of Climate Change on the Balanced-Growth-Equivalent: An Application of *FUND*
David Anthoff, Richard S.J. Tol
- 227 Changing Returns to Education During a Boom? The Case of Ireland
Seamus McGuinness, Frances McGinnity, Philip

O'Connell

- 226 'New' and 'Old' Social Risks: Life Cycle and Social Class Perspectives on Social Exclusion in Ireland
Christopher T. Whelan and Bertrand Maitre
- 225 The Climate Preferences of Irish Tourists by Purpose of Travel
Seán Lyons, Karen Mayor and Richard S.J. Tol
- 224 A Hirsch Measure for the Quality of Research Supervision, and an Illustration with Trade Economists
Frances P. Ruane and Richard S.J. Tol
- 223 Environmental Accounts for the Republic of Ireland: 1990-2005
Seán Lyons, Karen Mayor and Richard S.J. Tol
- 2007** 222 Assessing Vulnerability of Selected Sectors under Environmental Tax Reform: The issue of pricing power
J. Fitz Gerald, M. Keeney and S. Scott
- 221 Climate Policy Versus Development Aid
Richard S.J. Tol
- 220 Exports and Productivity – Comparable Evidence for 14 Countries
The International Study Group on Exports and Productivity
- 219 Energy-Using Appliances and Energy-Saving Features: Determinants of Ownership in Ireland
Joe O'Doherty, Seán Lyons and Richard S.J. Tol
- 218 The Public/Private Mix in Irish Acute Public Hospitals: Trends and Implications
Jacqueline O'Reilly and Miriam M. Wiley
- 217 Regret About the Timing of First Sexual Intercourse: The Role of Age and Context
Richard Layte, Hannah McGee

- 216 Determinants of Water Connection Type and Ownership of Water-Using Appliances in Ireland
Joe O'Doherty, *Seán Lyons* and *Richard S.J. Tol*
- 215 Unemployment – Stage or Stigma?
Being Unemployed During an Economic Boom
Emer Smyth
- 214 The Value of Lost Load
Richard S.J. Tol
- 213 Adolescents' Educational Attainment and School Experiences in Contemporary Ireland
Merike Darmody, Selina McCoy, Emer Smyth
- 212 Acting Up or Opting Out? Truancy in Irish Secondary Schools
Merike Darmody, Emer Smyth and *Selina McCoy*
- 211 Where do MNEs Expand Production: Location Choices of the Pharmaceutical Industry in Europe after 1992
Frances P. Ruane, Xiaoheng Zhang
- 210 Holiday Destinations: Understanding the Travel Choices of Irish Tourists
Seán Lyons, Karen Mayor and *Richard S.J. Tol*
- 209 The Effectiveness of Competition Policy and the Price-Cost Margin: Evidence from Panel Data
Patrick McCloughan, *Seán Lyons* and William Batt
- 208 Tax Structure and Female Labour Market Participation: Evidence from Ireland
Tim Callan, A. Van Soest, J.R. Walsh