

Tol, Richard S. J.

**Working Paper**

## Measuring international inequality aversion

ESRI Working Paper, No. 254

**Provided in Cooperation with:**

The Economic and Social Research Institute (ESRI), Dublin

*Suggested Citation:* Tol, Richard S. J. (2008) : Measuring international inequality aversion, ESRI Working Paper, No. 254, The Economic and Social Research Institute (ESRI), Dublin

This Version is available at:

<https://hdl.handle.net/10419/50023>

**Standard-Nutzungsbedingungen:**

Die Dokumente auf EconStor dürfen zu eigenen wissenschaftlichen Zwecken und zum Privatgebrauch gespeichert und kopiert werden.

Sie dürfen die Dokumente nicht für öffentliche oder kommerzielle Zwecke vervielfältigen, öffentlich ausstellen, öffentlich zugänglich machen, vertreiben oder anderweitig nutzen.

Sofern die Verfasser die Dokumente unter Open-Content-Lizenzen (insbesondere CC-Lizenzen) zur Verfügung gestellt haben sollten, gelten abweichend von diesen Nutzungsbedingungen die in der dort genannten Lizenz gewährten Nutzungsrechte.

**Terms of use:**

*Documents in EconStor may be saved and copied for your personal and scholarly purposes.*

*You are not to copy documents for public or commercial purposes, to exhibit the documents publicly, to make them publicly available on the internet, or to distribute or otherwise use the documents in public.*

*If the documents have been made available under an Open Content Licence (especially Creative Commons Licences), you may exercise further usage rights as specified in the indicated licence.*



www.esri.ie

Working Paper No. 254

September 2008

## Measuring International Inequality Aversion

**Richard S.J. Tol\***

*Abstract:* I measure the rate of aversion to inequality in consumption as expressed in the development aid given by rich countries to poor ones between 1965 and 2005. Over time, OECD countries have become *less* concerned about international inequity. Even for a fairly leaky bucket, the consumption rate of inequity aversion is less than the rate of risk aversion, which implies that the pure rate of inequity aversion is negative. That is, rich countries would prefer to see greater inequality between rich and poor countries.

*Corresponding Author:* Richard.Tol@esri.ie

*Key words:* Inequity aversion, risk aversion, income distribution, development aid

*JEL Classification:* D31, D63

---

\*Economic and Social Research Institute, Dublin, Ireland  
Institute for Environmental Studies, Vrije Universiteit, Amsterdam, The Netherlands  
Department of Spatial Economics, Vrije Universiteit, Amsterdam, The Netherlands  
Department of Engineering and Public Policy, Carnegie Mellon University, Pittsburgh, PA, USA

ESRI working papers represent un-refereed work-in-progress by members who are solely responsible for the content and any views expressed therein. Any comments on these papers will be welcome and should be sent to the author(s) by email. Papers may be downloaded for personal use only.

# Measuring International Inequality Aversion

## 1. Introduction

As globalisation intensifies, so does the need for evaluating policies from the perspective of a global planner. There is no global planner, but considering what she would do provides a useful yardstick against which to measure more realistic policy interventions. Policy analyses at the global scale are immediately confronted with income differences that are greater than in any individual country, and with income redistribution policies that are less effective. This paper focuses on the effect of income distribution on policy evaluation. While many analysts consider a strictly utilitarian welfare function with risk-averse agents, this implies that uncertainty and inequality are evaluated with a single parameter – even though they are conceptually and numerically different (Carlsson *et al.*, 2005; Saelen *et al.*, 2008). This spells trouble for policies that are both risky and affect the income distribution. A straightforward generalisation of the welfare function introduces a second parameter, so that inequality aversion and risk aversion can assume different numerical values. In this paper, I seek to measure the rate of inequality aversion.

The procedure for this is as follows. I assume that the global planner has the power to redistribute income from the countries of the OECD to the rest of the world, and that this is a measure of inequality aversion at the global scale. As OECD countries voluntarily disburse development aid, the measured inequality aversion is that of “the OECD”, not that of the world.<sup>1</sup> However, a similar model is followed in problems such as climate change, where it is proposed to spend money on reducing greenhouse gas emissions in the OECD, primarily to the benefit of the poor (Schelling, 1995). The measured rate of inequality aversion can be used to evaluate problems in which rich countries are the donors and poor countries the beneficiaries. Applying the measured inequality aversion in other contexts should be done with great care, if at all.

---

<sup>1</sup> Alternatively, this could be interpreted as altruism (cf. Johansson-Stenman, 2005).

The paper proceeds as follows. Section 2 defines inequity aversion, drawing on previous research. Section 3 presents the exact method of measurement, combining the literature in Section 2 with another literature on income redistribution. Section 4 presents the empirical findings. Section 5 concludes.

## 2. Defining inequity aversion

Consider a social welfare function in the sense of Bergson (1938) and Samuelson (1975):

$$(1) \quad W(U_1, U_2, \dots, U_I) = \begin{cases} \sum_{i=1}^I \frac{U_i^{1-\omega}}{1-\omega} & \omega \neq 1 \\ \prod_{i=1}^I U_i & \omega = 1 \end{cases}$$

where  $W$  is social welfare,  $U_i$  is utility of actors  $i=1,2,\dots,I$ , and  $\omega$  is a parameter, that can be interpreted as the pure rate of inequity aversion (see Boadway and Bruce, 1984). At the margin, an increase in utility for a relatively happy actor  $r$  compares to a utility increase for relatively unhappy actor  $p$  ( $U_r > U_p$ ) as

$$(2) \quad \frac{\partial W / \partial U_r}{\partial W / \partial U_p} = \left( \frac{U_p}{U_r} \right)^\omega \begin{cases} > 1 & \omega < 0 \\ = 1 & \text{for } \omega = 0 \\ < 1 & \omega > 0 \end{cases}$$

That is, for  $\omega=0$ , the social planner is indifferent between the actors, regardless of their initial utility. For  $\omega>0$  ( $\omega<0$ ), the social planner prefers an increase in the utility of the relatively unhappy (happy) actor over an increase in the utility of the relatively happy (unhappy) actor. The strength of this preference is larger for a larger absolute value of  $\omega$ , so that  $\omega$  is indeed a measure of aversion against inequity in the distribution of utility. This is underlined if one considers that

$$(3) \quad \lim_{\omega \uparrow \infty} W = \min_i \{U_i\}; \quad \lim_{\omega \downarrow -\infty} W = \max_i \{U_i\}$$

That is, in the limits, the welfare function equals either the Rawlsian maximin welfare function or the Nietzschean maximax welfare function.

Now consider a CRRA utility function

$$(4) \quad U_i = \begin{cases} \frac{C_i^{1-\eta}}{1-\eta} & \eta \neq 1 \\ \ln C_i & \eta = 1 \end{cases}$$

where  $C$  is consumption and  $\eta$  is the rate of risk aversion.

Then the social planner evaluates a relative shift in consumption as

$$(5) \quad \frac{\partial W / \partial C_r}{\partial W / \partial C_p} = \left( \frac{C_p}{C_r} \right)^{\eta + \omega(1-\eta)} \begin{cases} > 1 & \eta + \omega(1-\eta) < 0 \\ = 1 & \text{for } \eta + \omega(1-\eta) = 0 \\ < 1 & \eta + \omega(1-\eta) > 0 \end{cases}$$

Note that (5) introduces the consumption rate of inequity aversion:  $\eta + \omega(1-\eta)$ . For  $\eta = 0$ , the *pure* rate of inequity aversion ( $\omega$ ) equals the *consumption* rate of inequity aversion ( $\eta + \omega(1-\eta)$ ). For  $\omega = 0$ , the (social) consumption rate of inequity aversion equals the (individual) rate of risk aversion. For other values of  $\eta$  and  $\omega$ , pure inequity aversion, consumption inequity aversion, and risk aversion are numerically different.

### 3. Measuring international inequity aversion in the OECD

Okun's (1975) "leaky bucket" is a frequently used method to estimate inequity aversion within countries (e.g., Amiel *et al.*, 1999). The basic thought is that an inequity-averse social planner would take from the rich and give to the poor. If it were costless to redistribute income, then everyone would have the same income (or the social planner would be inequity-neutral). However, if only a fraction of the income taken from the rich reaches the poor, then it is possible to have both an unequal income distribution and an inequity-averse social planner. The metaphor arises because the social planner uses a "leaky bucket" to transfer income. The leakier the bucket, the more unequal is the optimal income distribution given a degree of inequity aversion. Vice versa, the degree of inequity aversion, implied by the assumption that the observed income distribution is optimal, increases as the bucket gets leakier.

I here measure the degree of inequity aversion of countries in the OECD, implied by the official development aid given to developing countries. Note the leap of faith. I assume that the OECD *collectively* acts as a *global planner* when deciding to aid developing countries. I need one additional assumption, namely that the global planner is only interested in distributional issues between countries, but not within countries. Note that there are few data on how aid is distributed across the income distribution in developing countries. Then, the global welfare function becomes:

$$(6) \quad W = \sum_{i=1}^I P_i \frac{(c_i^{1-\eta})^{1-\omega}}{(1-\omega)(1-\eta)^{1-\omega}}$$

where  $c_i$  is average per capita consumption in country  $i$  and  $P_i$  is the number of people in that country. Equation (6) follows from assuming that the global planner considers each individual separately but evaluates each individual in a country at the country average per capita income.

With this assumption, for any level and pattern of aid, for any degree of leakiness, and for any degree of risk aversion, the degree of inequity aversion follows from

(7a)

$$\sum_{i \in OECD} P_i (c_i)^{(1-\eta)(1-\omega)} - P_i (c_i + a_i)^{(1-\eta)(1-\omega)} = \sum_{i \notin OECD} P_i (c_i + a_i)^{(1-\eta)(1-\omega)} - P_i (c_i)^{(1-\eta)(1-\omega)}$$

with

$$(7b) \quad \lambda \sum_{i \in OECD} A_i = \sum_{i \notin OECD} A_i$$

where  $a$  is per capita aid received,  $A$  is total aid received, and  $\lambda$  is the degree of leakiness. Note that  $a$  and  $A$  are negative in donor countries.<sup>2</sup> That is, aid is given up to the point that the welfare loss of the OECD exactly equals the welfare gain of the non-OECD.

#### 4. Results

I solved in Equation (7) for  $\lambda=0.05, 0.1, 0.2, \dots, 0.9, 0.95$ , and consider results for various values of  $\eta$ . I took data on population, GNI, and ODA *received* for 1965-2005 from the World Resources Institute (<http://earthtrends.wri.org/>). I took data for ODA *given* from the OECD Development Assistance Committee (<http://www.oecd.org/dac/stats>). I rescaled aid received per country so that total aid received equals total aid given for each year, time the leakage rate  $\lambda$ .<sup>3</sup>

Figure 1 shows selected results per year. Table A1 has the full results. The top line is the consumption rate of inequity aversion, which equals either parameter if the other

<sup>2</sup> Note that  $(1-\omega)^{-1}$  and  $(1-\eta)^{-(1-\omega)}$  drop out of (6).

<sup>3</sup> Note that GNI is measured in dollars as exchanged on the currency market. Using Geary-Khamis dollars would substantially reduce the number of observations. Furthermore, this would imply  $\lambda > 1$ , which does not match the observations below.

equals zero. In 1965,  $\omega=0.79$  (for  $\eta=0$ ) and it steadily falls by 0.0060 (s.d. 0.0003) per year to  $\omega=0.54$  in 2005. That is, OECD countries have grown less averse to income differences with other countries.

The numerical value of  $1-(1-\eta)(1-\omega)$  is also telling. It is lower than commonly assumed values for  $\eta$  – which is typically set at unity or higher (Evans, 2005). This implies that, for a reasonable choice of  $\eta$ ,  $\omega$  must be negative – that is, OECD countries display equity aversion rather than inequity aversion. This is shown in Figure 1 as well. For  $\eta=1.0$ ,  $\omega<0$ . For  $\eta=0.5$ ,  $\omega>0$ , but only barely so in recent years. Figure 1 also shows the sensitivity to the leakiness of the bucket. The leakier the bucket, the greater the implied rate of inequity aversion.

## **5. Conclusion**

I measure the pure rate of inequity aversion as expressed in development aid flows from the OECD to developing countries, parameterised on the effectiveness of such aid. The consumption rate of inequity aversion is smaller than the rate of risk aversion, even if only a small fraction of aid given reaches its target. This implies that the pure rate of inequity aversion is negative, as result that contrasts with other results based on surveys and experiments (Amiel *et al.* 1999; Saelen *et al.*, 2008). Note, however, that I measure the rate of *global* risk aversion of the *rich* countries. An alternative interpretation is therefore that the people at the top end of the global income distribution consider the gap between rich and poor to be fair or indeed not wide enough.

## **Acknowledgements**

I had useful discussions on this subject with David Anthoff. The CEC DG Research FP7 Climate Cost project provided useful financial support.

## References

- Amiel, Y., J.Creedy, and S.Hurn (1999), 'Measuring attitudes towards inequality', *Scandinavian Journal of Economics*, **101**, (1), pp. 83-96.
- Bergson, A. (1938), 'A Reformulation of Certain Aspects of Welfare Economics', *Quarterly Journal of Economics*, **52**, (2), 310-334.
- Boadway, R. and N.Bruce (1984), *Welfare Economics* Basil Blackwell, Cambridge.
- Carlsson, F., D.Daruvala, and O.Johansson-Stenman (2005), 'Are People Inequality-Averse, or Just Risk-Averse?', *Economica*, **72**, (287), pp. 375-396.
- Evans, D.J. (2005), 'The Elasticity of Marginal Utility of Consumption: Estimates for 20 OECD Countries', *Fiscal Studies*, **26**, (2), 197-224.
- Johansson-Stenman, O. (2005), 'Global environmental problems, efficiency and limited altruism', *Economics Letters*, **86**, (1), pp. 101-106.
- Okun, A.M. (1975), *Equality and Efficiency: The Big Trade-off* Brookings Institution Press, Washington, DC.
- Saelen, H., G.Atkinson, S.Dietz, J.Helgeson, and C.J.Hepburn (2008), *Risk, Inequality and Time in the Welfare Economics of Climate Change: Is the Workhorse Model Underspecified?*, Discussion Paper **400** ,Department of Economics, Oxford University, Oxford.
- Samuelson, P.A. (1975), *Foundations of Economic Analysis (enlarged edition)* Harvard University Press, Cambridge.
- Schelling, T.C. (1995), 'Intergenerational Discounting', *Energy Policy*, **23**, (4/5), 395-401.



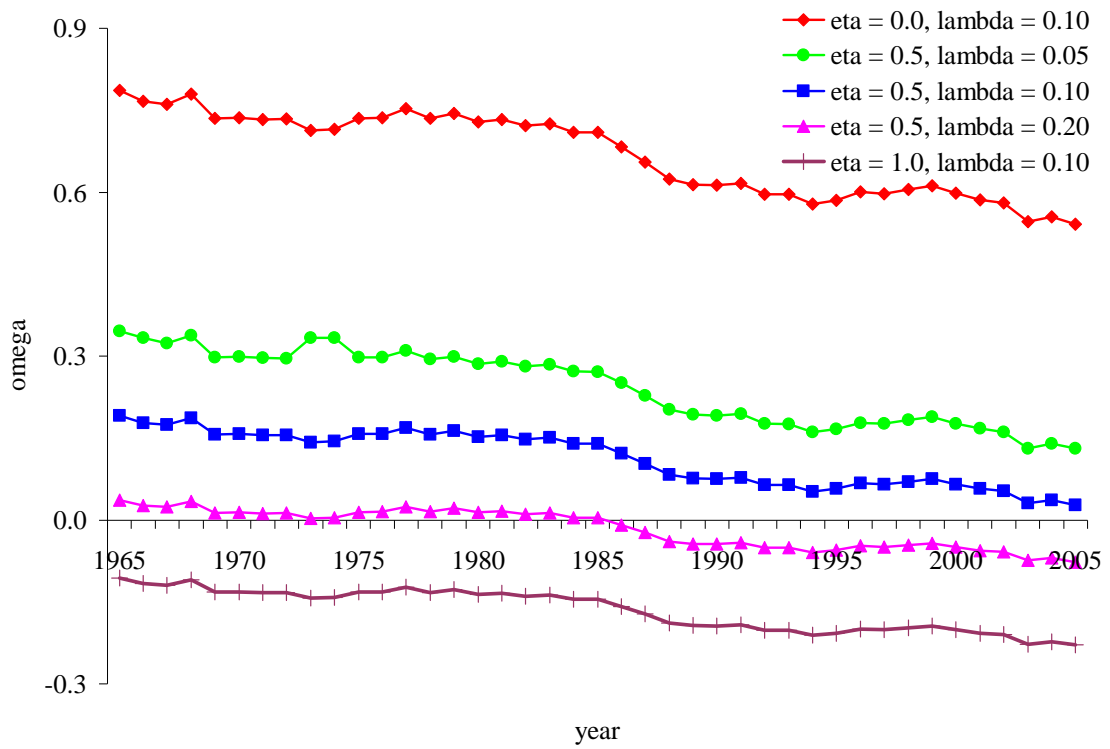


Figure 1. The pure rate of inequity aversion ( $\omega$ ) between 1965 and 2005 for different values of risk aversion ( $\eta$ ) and leakiness ( $\lambda$ ).

Table A1. The value of  $1-(1-\eta)(1-\omega)$  for different leakage rates and different years.

Year\ $\lambda$	1.00	0.95	0.90	0.80	0.70	0.60	0.50	0.40	0.30	0.20	0.10	0.05
1965	1.000	0.982	0.963	0.922	0.875	0.822	0.759	0.682	0.584	0.446	0.213	-0.019
1966	1.000	0.982	0.964	0.924	0.879	0.827	0.766	0.691	0.595	0.461	0.234	0.000
1967	1.000	0.983	0.964	0.925	0.880	0.828	0.767	0.693	0.598	0.465	0.239	0.014
1968	1.000	0.982	0.963	0.922	0.875	0.822	0.759	0.683	0.585	0.449	0.220	-0.007
1969	1.000	0.983	0.965	0.926	0.882	0.832	0.773	0.701	0.609	0.481	0.265	0.053
1970	1.000	0.983	0.965	0.926	0.881	0.831	0.771	0.699	0.607	0.479	0.263	0.052
1971	1.000	0.983	0.965	0.926	0.882	0.832	0.773	0.701	0.610	0.482	0.267	0.056
1972	1.000	0.983	0.965	0.925	0.881	0.831	0.771	0.699	0.608	0.480	0.266	0.057
1973	1.000	0.983	0.966	0.928	0.885	0.836	0.778	0.708	0.619	0.495	0.287	0.000
1974	1.000	0.983	0.966	0.928	0.885	0.836	0.779	0.709	0.619	0.494	0.285	0.000
1975	1.000	0.983	0.964	0.925	0.881	0.830	0.770	0.698	0.606	0.479	0.264	0.054
1976	1.000	0.983	0.964	0.924	0.880	0.829	0.769	0.697	0.605	0.477	0.264	0.054
1977	1.000	0.982	0.963	0.922	0.876	0.823	0.762	0.688	0.594	0.463	0.247	0.035
1978	1.000	0.982	0.964	0.924	0.879	0.828	0.768	0.696	0.604	0.477	0.265	0.059
1979	1.000	0.982	0.963	0.922	0.876	0.823	0.762	0.689	0.596	0.468	0.256	0.051
1980	1.000	0.982	0.964	0.924	0.879	0.827	0.768	0.696	0.605	0.479	0.272	0.071
1981	1.000	0.982	0.964	0.923	0.878	0.827	0.767	0.694	0.603	0.476	0.267	0.065
1982	1.000	0.982	0.964	0.924	0.880	0.829	0.770	0.699	0.609	0.485	0.278	0.079

1983	1.000	0.982	0.964	0.924	0.879	0.828	0.768	0.697	0.606	0.481	0.274	0.073
1984	1.000	0.983	0.965	0.926	0.882	0.832	0.774	0.705	0.616	0.494	0.290	0.092
1985	1.000	0.983	0.965	0.926	0.882	0.832	0.774	0.704	0.616	0.494	0.291	0.093
1986	1.000	0.984	0.966	0.929	0.887	0.840	0.784	0.717	0.632	0.514	0.317	0.124
1987	1.000	0.984	0.968	0.933	0.893	0.848	0.795	0.730	0.649	0.535	0.345	0.159
1988	1.000	0.985	0.970	0.937	0.899	0.856	0.806	0.745	0.667	0.559	0.376	0.198
1989	1.000	0.986	0.970	0.938	0.901	0.859	0.809	0.749	0.672	0.565	0.386	0.210
1990	1.000	0.986	0.971	0.938	0.901	0.859	0.809	0.749	0.672	0.566	0.388	0.213
1991	1.000	0.985	0.970	0.937	0.900	0.857	0.807	0.747	0.670	0.563	0.384	0.209
1992	1.000	0.986	0.971	0.939	0.903	0.861	0.813	0.754	0.680	0.576	0.404	0.236
1993	1.000	0.986	0.971	0.938	0.902	0.861	0.812	0.753	0.679	0.576	0.404	0.236
1994	1.000	0.986	0.972	0.940	0.905	0.865	0.818	0.761	0.689	0.589	0.422	0.260
1995	1.000	0.986	0.971	0.940	0.904	0.863	0.816	0.758	0.685	0.583	0.414	0.250
1996	1.000	0.985	0.970	0.937	0.900	0.858	0.809	0.750	0.675	0.572	0.400	0.233
1997	1.000	0.986	0.971	0.938	0.902	0.860	0.811	0.752	0.678	0.574	0.403	0.236
1998	1.000	0.986	0.970	0.937	0.900	0.858	0.809	0.749	0.673	0.569	0.395	0.226
1999	1.000	0.985	0.970	0.937	0.899	0.857	0.807	0.746	0.670	0.564	0.388	0.217
2000	1.000	0.986	0.971	0.938	0.902	0.860	0.811	0.752	0.677	0.574	0.402	0.236
2001	1.000	0.986	0.972	0.940	0.905	0.864	0.817	0.759	0.686	0.584	0.414	0.249
2002	1.000	0.986	0.972	0.941	0.906	0.865	0.818	0.761	0.688	0.587	0.420	0.258

2003	1.000	0.987	0.974	0.944	0.911	0.873	0.828	0.775	0.706	0.611	0.455	0.303
2004	1.000	0.987	0.973	0.943	0.909	0.871	0.825	0.771	0.701	0.605	0.445	0.291
2005	1.000	0.987	0.974	0.946	0.913	0.876	0.832	0.779	0.711	0.616	0.458	0.304

Year	Number	Title/Author(s) ESRI Authors/Co-authors <i>Italicised</i>
<b>2008</b>		
	253	Using a Census to Assess the Reliability of a National Household Survey for Migration Research: The Case of Ireland <i>Alan Barrett and Elish Kelly</i>
	252	Risk Aversion, Time Preference, and the Social Cost of Carbon David Anthoff, <i>Richard S.J. Tol</i> and Gary W. Yohe
	251	The Impact of a Carbon Tax on Economic Growth and Carbon Dioxide Emissions in Ireland <i>Thomas Conefrey, John D. Fitz Gerald, Laura Malaguzzi Valeri and Richard S.J. Tol</i>
	250	The Distributional Implications of a Carbon Tax in Ireland <i>Tim Callan, Sean Lyons, Susan Scott, Richard S.J. Tol and Stefano Verde</i>
	249	Measuring Material Deprivation in the Enlarged EU <i>Christopher T. Whelan, Brian Nolan and Bertrand Maitre</i>
	248	Marginal Abatement Costs on Carbon-Dioxide Emissions: A Meta-Analysis Onno Kuik, Luke Brander and <i>Richard S.J. Tol</i>
	247	Incorporating GHG Emission Costs in the Economic Appraisal of Projects Supported by State Development Agencies <i>Richard S.J. Tol and Seán Lyons</i>
	246	A Carton Tax for Ireland <i>Richard S.J. Tol, Tim Callan, Thomas Conefrey, John D. Fitz Gerald, Seán Lyons, Laura Malaguzzi Valeri and Susan Scott</i>
	245	Non-cash Benefits and the Distribution of Economic Welfare <i>Tim Callan and Claire Keane</i>
	244	Scenarios of Carbon Dioxide Emissions from Aviation <i>Karen Mayor and Richard S.J. Tol</i>

- 243            The Effect of the Euro on Export Patterns:  
Empirical Evidence from Industry Data  
*Gavin Murphy and Iulia Siedschlag*
- 242            The Economic Returns to Field of Study and  
Competencies Among Higher Education Graduates  
in Ireland  
*Elish Kelly, Philip O'Connell and Emer Smyth*
- 241            European Climate Policy and Aviation Emissions  
*Karen Mayor and Richard S.J. Tol*
- 240            Aviation and the Environment in the Context of the  
EU-US Open Skies Agreement  
*Karen Mayor and Richard S.J. Tol*
- 239            Yuppie Kvetch? Work-life Conflict and Social Class  
in Western Europe  
*Frances McGinnity and Emma Calvert*
- 238            Immigrants and Welfare Programmes: Exploring  
the Interactions between Immigrant  
Characteristics, Immigrant Welfare Dependence  
and Welfare Policy  
*Alan Barrett and Yvonne McCarthy*
- 237            How Local is Hospital Treatment? An Exploratory  
Analysis of Public/Private Variation in Location of  
Treatment in Irish Acute Public Hospitals  
*Jacqueline O'Reilly and Miriam M. Wiley*
- 236            The Immigrant Earnings Disadvantage Across the  
Earnings and Skills Distributions: The Case of  
Immigrants from the EU's New Member States in  
Ireland  
*Alan Barrett, Seamus McGuinness and Martin  
O'Brien*
- 235            Europeanisation of Inequality and European  
Reference Groups  
*Christopher T. Whelan and Bertrand Maitre*
- 234            Managing Capital Flows: Experiences from Central  
and Eastern Europe  
*Jürgen von Hagen and Iulia Siedschlag*

- 233 ICT Diffusion, Innovation Systems, Globalisation and Regional Economic Dynamics: Theory and Empirical Evidence  
Charlie Karlsson, Gunther Maier, Michaela Trippl, *Iulia Siedschlag*, Robert Owen and *Gavin Murphy*
- 232 Welfare and Competition Effects of Electricity Interconnection between Great Britain and Ireland  
*Laura Malaguzzi Valeri*
- 231 Is FDI into China Crowding Out the FDI into the European Union?  
Laura Resmini and *Iulia Siedschlag*
- 230 Estimating the Economic Cost of Disability in Ireland  
John Cullinan, Brenda Gannon and *Seán Lyons*
- 229 Controlling the Cost of Controlling the Climate: The Irish Government's Climate Change Strategy  
Colm McCarthy, *Sue Scott*
- 228 The Impact of Climate Change on the Balanced-Growth-Equivalent: An Application of *FUND*  
David Anthoff, *Richard S.J. Tol*
- 227 Changing Returns to Education During a Boom? The Case of Ireland  
*Seamus McGuinness, Frances McGinnity, Philip O'Connell*
- 226 'New' and 'Old' Social Risks: Life Cycle and Social Class Perspectives on Social Exclusion in Ireland  
*Christopher T. Whelan and Bertrand Maitre*
- 225 The Climate Preferences of Irish Tourists by Purpose of Travel  
*Seán Lyons, Karen Mayor and Richard S.J. Tol*
- 224 A Hirsch Measure for the Quality of Research Supervision, and an Illustration with Trade Economists  
*Frances P. Ruane and Richard S.J. Tol*
- 223 Environmental Accounts for the Republic of Ireland: 1990-2005  
*Seán Lyons, Karen Mayor and Richard S.J. Tol*

<b>2007</b>	222	Assessing Vulnerability of Selected Sectors under Environmental Tax Reform: The issue of pricing power <i>J. Fitz Gerald, M. Keeney and S. Scott</i>
	221	Climate Policy Versus Development Aid <i>Richard S.J. Tol</i>
	220	Exports and Productivity – Comparable Evidence for 14 Countries <i>The International Study Group on Exports and Productivity</i>
	219	Energy-Using Appliances and Energy-Saving Features: Determinants of Ownership in Ireland <i>Joe O'Doherty, Seán Lyons and Richard S.J. Tol</i>
	218	The Public/Private Mix in Irish Acute Public Hospitals: Trends and Implications <i>Jacqueline O'Reilly and Miriam M. Wiley</i>
	217	Regret About the Timing of First Sexual Intercourse: The Role of Age and Context <i>Richard Layte, Hannah McGee</i>
	216	Determinants of Water Connection Type and Ownership of Water-Using Appliances in Ireland <i>Joe O'Doherty, Seán Lyons and Richard S.J. Tol</i>
	215	Unemployment – Stage or Stigma? Being Unemployed During an Economic Boom <i>Emer Smyth</i>
	214	The Value of Lost Load <i>Richard S.J. Tol</i>
	213	Adolescents' Educational Attainment and School Experiences in Contemporary Ireland <i>Merike Darmody, Selina McCoy, Emer Smyth</i>
	212	Acting Up or Opting Out? Truancy in Irish Secondary Schools <i>Merike Darmody, Emer Smyth and Selina McCoy</i>
	211	Where do MNEs Expand Production: Location Choices of the Pharmaceutical Industry in Europe after 1992



*Frances P. Ruane, Xiaoheng Zhang*

- 210 Holiday Destinations: Understanding the Travel Choices of Irish Tourists  
*Seán Lyons, Karen Mayor and Richard S.J. Tol*
- 209 The Effectiveness of Competition Policy and the Price-Cost Margin: Evidence from Panel Data  
Patrick McCloughan, *Seán Lyons* and William Batt
- 208 Tax Structure and Female Labour Market Participation: Evidence from Ireland  
*Tim Callan, A. Van Soest, J.R. Walsh*
- 207 Distributional Effects of Public Education Transfers in Seven European Countries  
*Tim Callan, Tim Smeeding and Panos Tsakloglou*