

Fritsch, Michael; Weyh, Antje

Working Paper

How large are the direct employment effects of new businesses? An empirical investigation

Freiberger Arbeitspapiere, No. 2004/05

Provided in Cooperation with:

TU Bergakademie Freiberg, Faculty of Economics and Business Administration

Suggested Citation: Fritsch, Michael; Weyh, Antje (2004) : How large are the direct employment effects of new businesses? An empirical investigation, Freiberger Arbeitspapiere, No. 2004/05, Technische Universität Bergakademie Freiberg, Fakultät für Wirtschaftswissenschaften, Freiberg

This Version is available at:

<https://hdl.handle.net/10419/48365>

Standard-Nutzungsbedingungen:

Die Dokumente auf EconStor dürfen zu eigenen wissenschaftlichen Zwecken und zum Privatgebrauch gespeichert und kopiert werden.

Sie dürfen die Dokumente nicht für öffentliche oder kommerzielle Zwecke vervielfältigen, öffentlich ausstellen, öffentlich zugänglich machen, vertreiben oder anderweitig nutzen.

Sofern die Verfasser die Dokumente unter Open-Content-Lizenzen (insbesondere CC-Lizenzen) zur Verfügung gestellt haben sollten, gelten abweichend von diesen Nutzungsbedingungen die in der dort genannten Lizenz gewährten Nutzungsrechte.

Terms of use:

Documents in EconStor may be saved and copied for your personal and scholarly purposes.

You are not to copy documents for public or commercial purposes, to exhibit the documents publicly, to make them publicly available on the internet, or to distribute or otherwise use the documents in public.

If the documents have been made available under an Open Content Licence (especially Creative Commons Licences), you may exercise further usage rights as specified in the indicated licence.

TECHNICAL UNIVERSITY BERGAKADEMIE FREIBERG
TECHNISCHE UNIVERSITÄT BERGAKADEMIE FREIBERG

FACULTY OF ECONOMICS AND BUSINESS ADMINISTRATION
FAKULTÄT FÜR WIRTSCHAFTSWISSENSCHAFTEN



Michael Fritsch
Antje Weyh

How Large are the Direct
Employment Effects of New
Businesses?
– An Empirical Investigation –

FREIBERG WORKING PAPERS
FREIBERGER ARBEITSPAPIERE

05
2004

The Faculty of Economics and Business Administration is an institution for teaching and research at the Technische Universität Bergakademie Freiberg (Saxony). For more detailed information about research and educational activities see our homepage in the World Wide Web (WWW): <http://www.wiwi.tu-freiberg.de/index.html>.

Addresses for correspondence:

Prof. Dr. Michael Fritsch
Dipl.-Kauffrau Antje Weyh
Technical University of Freiberg
Faculty of Economics and Business Administration
Lessingstraße 45, 09596 Freiberg (Germany)
Phone: ++49 / 3731 / 39 - 24 39 (Fritsch), - 20 27 (Weyh)
Fax: ++49 / 3731 / 39 36 90
E-mail: michael.fritsch@tu-freiberg.de
antje.weyh@tu-freiberg.de

ISSN 0949-9970

The Freiberg Working Paper is a copyrighted publication. No part of this publication may be reproduced, stored in a retrieval system, or transmitted in any form or by any means, electronic, mechanical, photocopying, recording, translating, or otherwise without prior permission of the publishers.

Coordinator: Prof. Dr. Michael Fritsch

All rights reserved.

Contents

Abstract / Zusammenfassung	II
1. Introduction	1
2. Review of the evidence	2
3. Data and measurement	4
4. New firm formation in West Germany 1984-2002	5
5. Survival and employment growth in start-up cohorts	7
6. The size distribution of new businesses and the concentration of employment	12
7. The contribution of recent start-ups to current employment.....	15
8. Final discussion	17
References	19
Appendix	21

Abstract

We analyze the development of employment in start-up cohorts, which is the direct gross employment effect of the new businesses. The data is for West Germany and covers the 1984-2002 period. While total employment in the cohorts remains above the initial level in manufacturing, we find a pronounced decline of employment below this level in the service sector. Only a small fraction of the firms create a considerable amount of jobs. The contribution that the start-up cohorts of the 1984 - 2002 period made to total employment in 2002 is nearly three times as high in services as in manufacturing.

JEL-classification: D21, L10, L29, M13

Keywords: New firms, employment change, start-up cohorts.

Zusammenfassung

*“Wie groß sind die direkten Beschäftigungseffekte von Gründungen?“
– Eine empirische Untersuchung –*

Der Aufsatz untersucht die Beschäftigungsentwicklung einzelner Gründungskohorten und damit den direkten Beschäftigungseffekt der neuen Betriebe. Die Analyse bezieht sich auf Westdeutschland im Zeitraum 1984-2002. Während im Industriesektor die standardisierte Beschäftigungsentwicklung über den Beobachtungszeitraum von 18 Jahren positiv bleibt, fällt sie im Dienstleistungsbereich bereits ab dem ersten Jahr nach der Gründung fast monoton. Nur ein kleiner Teil der Betriebe schafft in wesentlichem Umfang neue Arbeitsplätze. Der Anteil der Gründungskohorten der Jahre 1984 – 2002 zu den Beschäftigten 2002 ist im Dienstleistungssektor fast dreimal so hoch wie im Industriebereich.

JEL-Klassifikation: D21, L10, L29, M13

Schlagworte: Unternehmensgründungen, Beschäftigungsentwicklung,
Gründungskohorten

1. Introduction

Politicians are apt to believe that new firms make a significant contribution to economic development. If this assertion is correct, then stimulating the emergence of new firms could be a powerful means for creating employment. However, the magnitude of the employment effect of new firm formation is rather unclear. Also, little is known about the nature of the link between new firm formation and employment. What is the relative importance of the employment that is generated in the new businesses as compared to the other effects of entry? There are two categories of such other effects that the setup of new businesses may have on employment (for a more detailed characterization of the different effects see Fritsch and Mueller, 2004). One of these categories is the crowding out of incumbents that leads to decline or closure. The other type of effect is an improvement of the market supply due to increased competition. This paper investigates the evolution of employment in cohorts of newly founded businesses that can be termed the ‘direct gross employment effect’ of new firms. Because we do not account for the crowding-out of employment in incumbent businesses nor for supply-side effects our results tell only a part of the whole story. But this part may have important implications. In the case that we find the newly founded businesses create only a relatively small amount of jobs, this would imply that a great positive impact of new firm formation on employment could only result from the indirect supply-side effects. However, if our analysis would show rapid employment growth in entry cohorts, this would not necessarily prove a strong impact of new firm formation on employment because the gross effect does not account for crowding out of employment in the incumbent businesses.

Compared to earlier studies of the evolution of start-up cohorts, our analysis provides two main advantages that make it unique. First, while many of the available studies are limited to certain industries (Baldwin, 1995; Carroll and Hannan, 2000; Storey and Johnson, 1987; Wagner, 1995) our data covers the private sector industries rather comprehensively. We can therefore investigate for differences between the large sectors, namely manufacturing and services. Secondly, we are able to follow the cohorts over a rather long period of up to 18 years. While some of the available studies have investigated the survival of new organizations in certain industries for much longer periods (Carroll and Hannan, 2000), we know of no other analysis that investigates the development of employment in start-up cohorts over such a long period of time. The paper is organized as follows: After a brief review of the evidence

(section 2) we introduce our data and discuss measurement issues (section 3). Section 4 provides an overview of new firm formation in our data during the period of analysis. Section 5 analyses survival and employment in entry cohorts over time. We then examine the size distribution of the new businesses and the concentration of the new employment (section 6) and assess the contribution of the different entry cohorts to employment in the most recent year in our data-set (section 7). Finally, the main implications of our findings are discussed (section 8). The analysis is based on data for West Germany in the 1983-2002 period.

2. Review of the evidence

The evolution of employment in start-up cohorts is characterized by two main effects. On the one hand, a considerable fraction of the new businesses fail and have to exit the market rather quickly. On the other hand, the surviving new businesses may grow and create jobs. The resulting net-effect depends on the magnitude of these two developments.

Empirical studies have shown that new firms are characterized by a relatively high risk of failure during the first years of their existence.¹ Main reasons for such a *liability of newness* are the problems of setting up an organizational structure and getting the new unit to work efficiently enough to hold pace with competitors. This particularly includes establishing relationships to customers and suppliers as well as acquiring suitable personnel. Another reason for the relatively high vulnerability of entries for closure is that many of the new businesses have to survive a considerable period of time before they are able to achieve their first profit. Because new firms tend to start relatively small, the liability of newness may as well be a *liability of smallness* (Aldrich and Auster, 1986). Such a particular vulnerability of small units for closure could be explained by a rather limited endowment of resources, resulting in a lack of spares that could allow them to survive economic problems. Some authors also assume that older firms are facing a relatively high likelihood of being closed down. The reason for such a *liability of aging* could be sclerotic inflexibility of old established organizations (*liability of senescence*), an erosion of technology, products,

¹ For a review of the evidence see Geroski, Mata and Portugal (2002) and Fritsch, Brixey and Falck (2004).

business concepts and management strategies over time (*liability of obsolescence*) or, particularly in case of owner-managed firms, problems of finding a successor who is willing to take over the business.² The notion of a liability of aging is not necessarily a contradiction to the concept of liability of newness because both phenomena relate to quite different developmental stages of a firm, namely early “youth” and “maturity”. The time span of available data on start-up cohorts is, however, too short for detecting such an ‘old age’ phenomenon.

While there are a number of studies available that investigate the survival chances of newly founded businesses, empirical analyses of the development of employment in start-up cohorts are rare. Storey and Johnson (1987, 116-118, 222-224), in reviewing the studies that were available for the UK until the mid-1980s, emphasized that only a rather small proportion of the new businesses do create considerable amounts of jobs.³ Boeri and Cramer (1992), in an analysis for West Germany, found that the number of employees in a certain cohort first rises but then soon declines and also that employment tends to be below the initial level from the third year on. After a period of about five years employment in the cohort tends to remain fairly constant because employment losses due to exits are more or less counterbalanced by employment gains in surviving firms. This implies that the direct gross employment effect of new firms does not become stronger as the cohort matures. Brixy and Grotz (2004), using the same database as Boeri and Cramer (1992) for a different time period, also showed that employment in entry cohorts first rises but then declines from the second or the third year on. In their analysis, however, employment does not fall significantly below the initial level but remains fairly constant at that level (Brixy and Grotz, 2004, 150). Brixy and Grotz (2004) also show that new businesses which have been set up in East Germany in the early phase of the transformation process of the 1990s had much higher survival rates and greater employment growth than the entries that occurred in later years.

² Agarwal and Gort (1996), Aldrich and Auster (1986), Brüderl and Schüssler (1990), Carroll and Hannan (2000), Jovanovic (2001), Ranger-Moore (1997).

³ „... it is likely that half the manufacturing jobs are created in about 4 per cent of starting manufacturing businesses“ Storey and Johnson (1987, 223); „... in all sectors, half the new jobs in births of firms over a decade were in only 2 per cent of those which have started“ (ibid.).

3. Data and measurement

Our information on the evolution of start-up cohorts and on overall employment is taken from the establishment file of the German Social Insurance Statistics, as described and documented by Fritsch and Brixy (2004). This database provides information about all establishments that have at least one employee who is subject to obligatory social insurance. New entities with more than 20 employees in the first year of their existence are not classified as start-ups.⁴ As a result, a considerable number of new subsidiaries of large firms are not included in the start up-cohorts. A detailed analysis of our database reveals that these data do reflect the new firm formation activity relatively well (Brixy and Fritsch, 2002; Fritsch, et al. 2002). Currently, the information on West Germany is available for the 1984-2002 time period. We analyze survival and evolution of employment in the 18 yearly cohorts of new businesses that have been founded in that time span. We perform the analysis for all private sector industries taken together as well as for manufacturing and services separately.⁵ Because the database records only businesses with at least one employee other than the owner, start-ups without any employees are not included.

Despite the variance in the development of the entry cohorts that exists between years (figures 1 to 3, tables 1 to 3), a general pattern can be identified that holds for all the vintages of our sample. In order to identify the general development patterns of entry cohorts we aggregate the 18 yearly cohorts and calculate average values. We focus on such general development patterns and we will therefore discuss the variation between the yearly cohorts only rather briefly.

A cohort's survival rate s is defined as the share of new businesses that survived up to a certain year after having been set-up. If the 'lifetime' of a start-up is described by t , then the distribution of survival rates is given by $s(t)$ with the density function $f(t)$. The hazard rate h is

⁴ A main reason for excluding new establishments with more than 20 employees is that some of the large new establishments reported in our data are probably a result of the reorganization of larger firms and do not reflect the set-up of new establishments.

⁵ The public sector is always excluded. We do not report results for the other parts of the private sector such as agriculture, fishery, mining, construction etc. separately.

defined as the share of new businesses which have been closed in a year t under the prerequisite that they have survived until $t-1$. It is given by

$$(1) \quad h(t) = \frac{f(t)}{s(t)}.$$

Both the hazard rate and the survival rate describe the same phenomenon in different ways. The close link between the two rates can be described using the cumulative hazard rate $H(t)$, which is the sum of all hazard rates for the periods until t including the hazard rate for t . The cumulative hazard rate gives the probability of failure in the time span between the founding of a new business and the end of the period t . The relationship between the cumulative hazard rate and the survival rate is given by

$$(2) \quad H(t) = -\log(s(t)).$$

Other indicators used for describing the development of entry cohorts are the number of employees at different percentiles of the size distribution and the concentration of employment in the largest businesses of the cohort. To assess the direct gross employment effect of new businesses we calculate the employment share of the different yearly start-up cohorts at total employment at the end of our period of analysis, the year 2002.

4. New firm formation in West Germany 1984-2002

Tables 1 to 3 show the number of start-ups, initial employment, average initial size as well as the share of start-ups with more than one employee in the first year for the yearly cohorts. According to these figures, about 133,000 new establishments had been set up each year. This makes approximately 9.5 percent of all private sector businesses that existed in the respective year. Exit rates tend to be in about the same range so that the change in the number of businesses is relatively small in most industries. Over the years the number of start-ups increased with a relatively distinct rise between 1990 and 1991 and after 1997. The majority of the new businesses, nearly 99,000 per year (74.4 percent of all start-ups), were in the service sector compared to about 14,500 new establishments per year (10.9 percent) in

manufacturing. There was an overall tendency towards an increasing share of start-ups in the service sector and a corresponding decreasing share in manufacturing. The number of start-ups in the other private sector industries for which we do not explicitly report figures here remained about constant.⁶

In nearly all of the cohorts and years, the majority of the new businesses have no more than one employee at the time they are first registered in our database.⁷ For the private sector as a whole the average share of start-ups with more than one employee is 39.43 percent (table 1). In manufacturing this figure is considerably higher (46.72 percent; table 2) than in services (38.33 percent; table 3). In manufacturing, 5 percent of the new businesses have 10 or more employees. In services, the largest 5 percent of the start-ups are smaller than in manufacturing and have at least 6 employees. There is a tendency towards a higher share of start-ups with more than one employee in services, which is also reflected in the figures for all private sectors. However, such a development can not be found for the start-up cohorts in manufacturing. In all three sectoral definitions the average initial size of the new businesses follows a trend towards more employees.

The increasing initial employment of the entry cohorts that can be observed over the years is mainly a result of the rising number of start-ups. A regression model with initial employment as the dependent variable and the number of start-ups as the independent variable yields an R^2 of 0.90 for the private sector as a whole and 0.71 and 0.89 for manufacturing and for services, respectively. An impact of the increasing average size on initial employment of entry cohorts can particularly be found for the entries into manufacturing.⁸ For services and for the private sector as a whole it is not statistically significant at the five percent level.

⁶The other private sector industries that are not explicitly reported here are agriculture and forestry, fishery, energy and water supply, mining and construction.

⁷ Businesses without any employee who is subject to obligatory social insurance are not included in the German Social Insurance Statistic.

⁸ A regression with average initial size as explanatory variable for the number of employees contained in a start-up cohort has an R^2 value of 0.27.

Table 1: Number of start-ups, initial employment and initial size in yearly cohorts 1984-2002 - all private sector industries

Year	Number of start-ups	Initial employment	Average initial size	Share of start-ups with more than one employee (%)
1984	117,519	255,414	2.17	36.74
1985	117,765	255,531	2.17	36.67
1986	116,406	255,127	2.19	37.08
1987	116,173	252,386	2.17	37.20
1988	121,083	266,299	2.20	37.42
1989	119,604	267,220	2.23	38.01
1990	130,801	294,653	2.25	38.68
1991	135,985	309,440	2.28	39.12
1992	136,123	314,253	2.31	39.71
1993	132,521	311,061	2.35	40.42
1994	129,975	316,865	2.44	42.25
1995	128,911	304,708	2.36	40.85
1996	129,942	305,666	2.35	40.36
1997	128,950	308,479	2.39	40.91
1998	137,756	313,039	2.27	41.13
1999	178,098	384,104	2.16	38.69
2000	165,565	374,213	2.26	39.82
2001	142,154	331,965	2.34	41.06
2002	141,097	344,085	2.44	43.08
Average	132,970	303,395	2.28	39.43
Standard deviation	16,148	38,591	0.09	1.91

Table 2: Number of start-ups, initial employment and initial size in yearly cohorts 1984-2002 – manufacturing

Year	Number of start-ups	Initial employment	Average initial size	Share of start-ups with more than one employee (%)
1984	14,015	39,907	2.85	46.41
1985	14,376	40,383	2.81	46.46
1986	14,626	41,244	2.82	46.97
1987	14,061	38,476	2.74	45.64
1988	14,543	40,981	2.82	46.70
1989	14,458	42,435	2.94	47.24
1990	15,354	44,065	2.87	47.67
1991	15,765	46,034	2.92	47.83
1992	15,005	42,949	2.86	46.80
1993	14,243	41,269	2.90	47.02
1994	13,133	41,109	3.13	50.92
1995	13,294	40,177	3.02	49.67
1996	13,552	38,751	2.86	47.00
1997	13,261	39,074	2.95	48.22
1998	14,548	45,387	3.12	47.09
1999	16,652	50,196	3.01	45.81
2000	15,235	47,431	3.11	45.40
2001	14,912	41,470	2.78	41.60
2002	14,748	43,361	2.94	43.22
Average	14,515	42,352	2.92	46.72
Standard deviation	890	3,112	0.12	2.02

Table 3: Number of start-ups, initial employment and initial size in yearly cohorts 1984-2002 – services

Year	Number of start-ups	Initial employment	Average initial size	Share of start-ups with more than one employee (%)
1984	82,388	170,582	2.07	36.92
1985	83,102	170,655	2.05	36.50
1986	83,242	172,554	2.07	36.59
1987	85,232	175,990	2.07	36.58
1988	89,731	185,843	2.07	36.18
1989	88,918	186,527	2.10	36.88
1990	96,841	205,716	2.12	37.30
1991	100,870	217,516	2.16	38.09
1992	100,914	220,489	2.19	38.33
1993	99,804	221,403	2.22	38.95
1994	98,421	225,100	2.29	40.28
1995	96,031	212,287	2.21	38.40
1996	97,214	215,338	2.22	38.40
1997	96,081	218,439	2.27	39.24
1998	102,102	215,742	2.11	39.72
1999	137,675	272,744	1.98	37.20
2000	127,242	270,736	2.13	38.53
2001	107,541	244,832	2.28	41.05
2002	107,343	253,890	2.37	43.08
Average	98,984	213,493	2.16	38.33
Standard deviation	14,207	31,631	0.10	1.79

5. Survival and employment in start-up cohorts

Even if the great majority of new businesses start rather small, a part of the newcomers will grow. Therefore, any assessment of the employment effects of new firm formation has to account for this development in the years that follow the market entry. This evolution of employment in a cohort of new businesses has two main determinants, which are survival and growth. Figure 1 shows the evolution of employment as well as the hazard and the survival rates in the different entry cohorts. The dotted thin lines in figure 1 represent the individual cohorts and the thicker line gives the average value over all those cohorts for which the information for the respective year exists. The thin lines have different lengths according to the diverging extent of the observation period. Thus, the shorter lines represent the more recent entry cohorts and the longest line gives the values for our earliest cohort, the businesses which have been set up in the year 1984. In order to compare the pattern of the employment development between cohorts, the number of employees is expressed as an index with initial

employment, i.e. the number of employees in the year in which the businesses have been set up, being set at 100 percent.

Figure 1 reveals considerable variation between the entry cohorts in terms of employment development. In particular, the start-up cohorts of the 1980s, represented by the longer lines in figure 1, tend to be more successful in terms of employment than the start-up cohorts of later years, given by the shorter lines. There is, however, a quite clear general trend that is well represented by the curve for average employment. Looking at the evolution of average employment in entry cohorts for all private sector industries (figure 1), we find that the number of employees first grows above the initial level. But after having reached a peak after one year, employment soon starts to decline again. After about eight years it falls under the initial level and after 18 years the number of employees is slightly above 80 percent of the figure in the year in which the new businesses had been set up.

If we limit the analysis to the manufacturing sector, the picture of employment development over time is somewhat different (figure 2). The variance of employment development between the yearly cohorts is much more pronounced in manufacturing than in the service sector (figure 3) or in the figures for all private sector industries. As in the analysis for the overall private sector, the start-up cohorts of the 1980s tend to generate more employment than the cohorts of the later years. In all start-up cohorts in manufacturing the number of employees remains above the initial level. The average figure reaches about 120 percent of initial employment in the second year and then tends to remain at that level. The slight increase of the curve for average employment that we find for the last few years should be regarded with caution because the respective figures are based on only relatively few cohorts. The average numbers for the last years are particularly affected by the development of the oldest cohort in our sample which obviously represents a special case that should not be generalized. If we exclude this cohort from the calculation of average employment, this figure declines slightly, starting about five years after the new businesses have been set up. The employment development of entry cohorts in the service sector (figure 3) is quite similar to the results that we found for the private sector as a whole (figure 1), mainly due to the fact that most entries are in services. Average employment declines from the second year on and after about seven years it falls below the amount of jobs created at the time the new

businesses were set up. After 18 years the number of employees makes about 75 percent of the initial level.

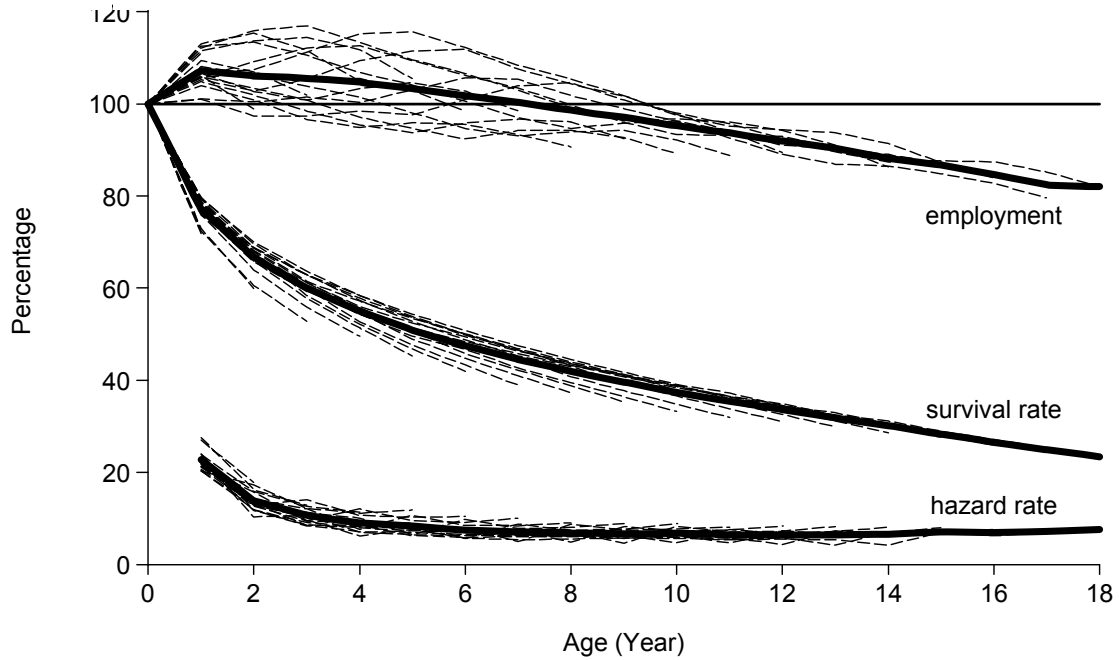


Figure 1: Evolution of employment, survival rates and hazard rates in entry cohorts – all private sector industries

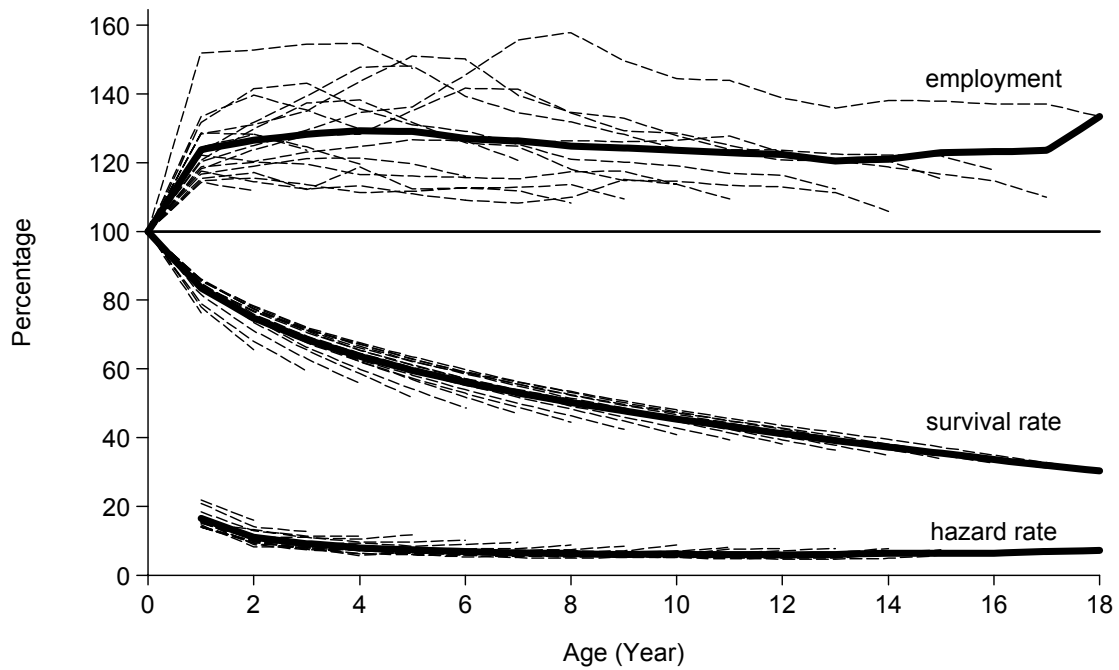


Figure 2: Evolution of employment, survival rates and hazard rates in entry cohorts – manufacturing

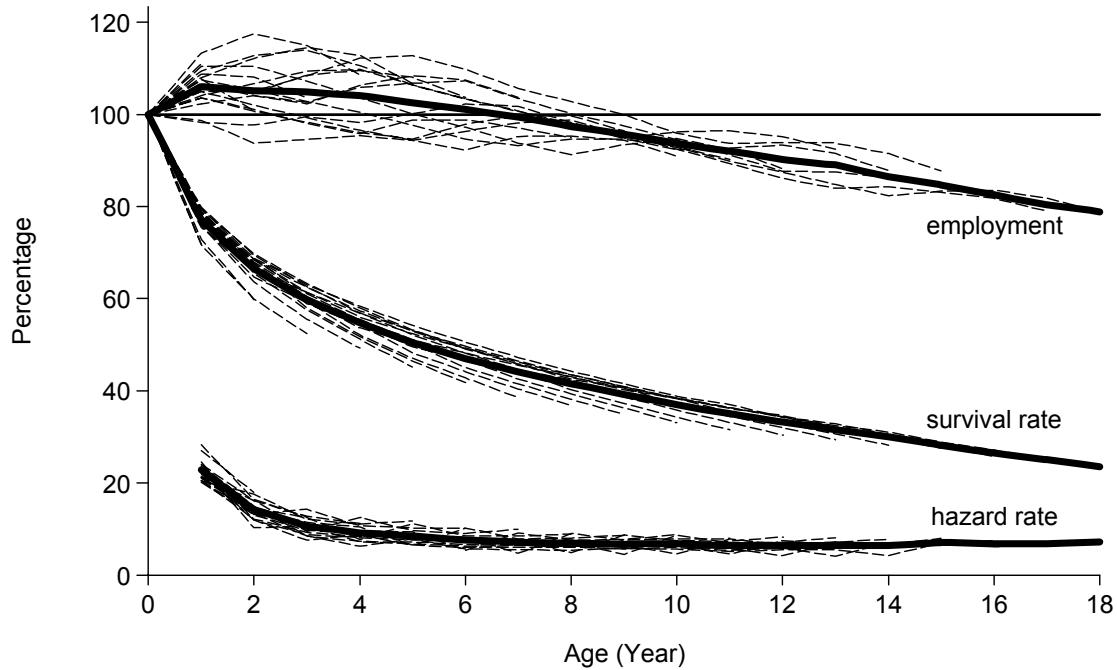


Figure 3: Evolution of employment, survival rates and hazard rates in entry cohorts – service sector

With regard to the hazard rates, the differences between the yearly cohorts (thin dotted lines; the thicker line gives the average hazard rates) are even less pronounced than what we found for survival rates (see also tables A1 - A3 in the Appendix). According to the liability of newness hypothesis we find relatively high hazard rates for the young establishments indicating that the risk of a business closure is particularly high in the first years after it has been founded. Hazard rates decline over the first years and then remain constant. Generally, hazard rates tend to be higher in the service sector than in manufacturing. These differences are particularly pronounced in the early stages of an entry cohort. While the average second year hazard rate for start-ups in services is 15.24 percent, the respective figure for manufacturing is 9.45 percent. In the fifteenth year the hazard rate in services is 5.48 percent and 4.81 percent in manufacturing. For the last year that we are able to observe in our data this difference is even smaller – 5.31 in services and 5.24 in manufacturing –, but these figures are based on only one yearly cohort and can therefore not be generalized. For this same reason the slight increase of the hazard rate in manufacturing during the last years of the period of observation can hardly be regarded as significant and is therefore no confirmation of the liability of aging hypothesis.

6. The size distribution of new businesses and the concentration of employment

Not all of the surviving businesses become large. Figure 4 displays indicators for the size distribution within entry cohorts over their first 18 years. The 95th percentile line gives the number of employees at the lower limit of the largest five percent of the surviving start-ups. Accordingly, the 90th, 75th, 50th, 25th and 10th percentiles depict the number of employees at the lower limit of the respective share of largest businesses in the sample. The 50th percentile is the median.

The fact that the median for initial employment is one means that at least 50 percent of the entries start with only one employee (figure 4). As has already been reported (see section 4 and tables 1 – 3), this holds for the private sector as a whole as well as for the service industries and for manufacturing. Differences between sectors can be found with regard to the larger businesses. While in manufacturing the largest five percent start with about eleven employees, the respective number in services amounts to only seven. Figure 4 shows the development of selected percentiles for the size distribution within start-up cohorts and of the mean of this distribution over time. Note that the curves do not represent the growth of individual firms.⁹ The values of the mean clearly show that on average the surviving start-ups grow over the years. But clearly not all of these businesses do so - a considerable share remains rather small. At the end of our observation period at least 25 percent of the surviving entries in the overall private sector have only one employee. The same holds true for services, while in manufacturing the share of start-ups with only one employee after 18 years is at least 10 percent. In both sectors the median size remains below five employees (four employees in manufacturing and three employees in services). But some start-ups do show considerable growth. After 18 years, the largest five percent of the surviving start-ups in manufacturing have at least 37 employees. In services this number amounts to 22 employees. These figures are remarkably stable over the yearly cohorts. For the 10th, 25th, 50th and 75th percentiles the figures do not vary at all or only by one employee. For the 90th and 95th percentiles the variation can be more than just one employee but values of the yearly cohorts are still rather similar.

⁹ Therefore, the course of the 95th percentile line does not mean only start-ups with large initial size have a chance to grow.

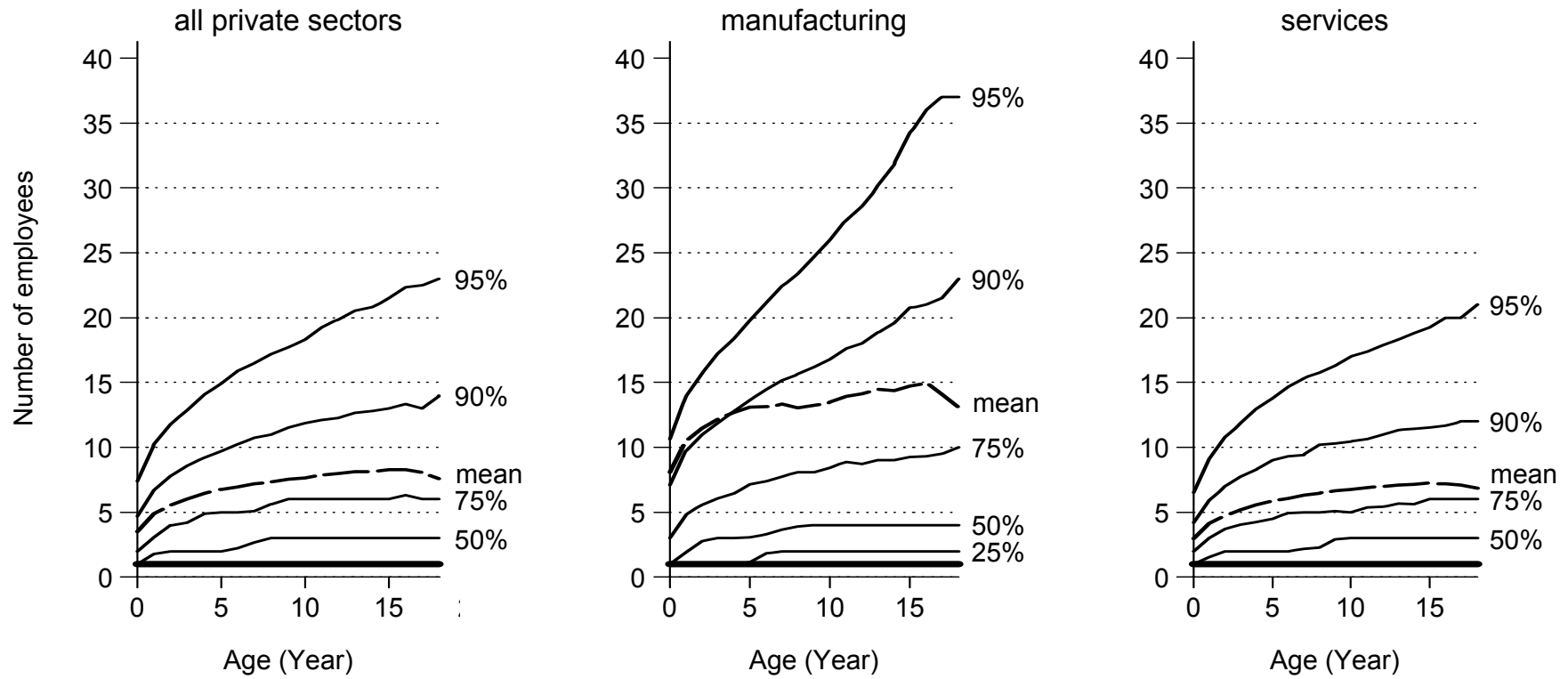


Figure 4: Percentiles of employment in entry cohorts

We have shown that many newly founded businesses fail (section 5) and that only a small proportion of the surviving entities do create a considerable amount of jobs over the first 18 years of their existence. This suggests that, regarding the initial population of start-up cohorts, employment becomes more and more concentrated in only some of these businesses. Due to such a concentration, the direct gross employment effect of new businesses is dominated by a relatively small proportion of the newly founded entities. It would therefore be worthwhile to consider how policy could implement a “pick the winner” strategy and target these surviving, job generating start-ups at an early stage of their development. Alternatively, policy could try to follow a “make more winners” strategy and try to increase the number or the share of new businesses that create a significant amount of jobs.

The fact that the mean value of the numbers of employees is always above the median indicates the presence of some cohort members that have created a relatively large number of jobs. In order to describe the concentration of new jobs within the cohorts we calculated the share of employment that was in the largest one, five, ten and 25 percent of all those units that were initially started. The results for average concentration of employment over the 18 yearly cohorts (figure 5 and table A4 in the Appendix) indeed show an increasing concentration over time. Taking all private sector industries together, after ten years about 38 percent of the jobs in the cohort are in the largest one percent of initial start-ups. More than 65 percent of employment is in the largest five percent and the largest 25 percent have more than 97 percent of cohort employment. After 18 years the largest one percent of initial start-ups account for nearly 44 percent of employment and the largest five percent have nearly three quarter of the new jobs. There is some variation of the concentration measures between the yearly cohorts that tends to be the larger the greater the number of cohorts with information for the respective year (cf. the values of the standard deviation in table A4 in the Appendix). However, the curves in figure 5 describe the basic trends quite well.¹⁰

¹⁰ This becomes quite clear when looking, for example, at the 95 percent confidence intervals for the concentration of employment after ten years. Taking the private sector as a whole this confidence interval for the share of the largest 1, 5, 10 and 25 percent of the start-ups ranges from 35-41, 63-68, 78-83 and 95-99 employees. For manufacturing the respective figures are 38-45, 64-70, 77-82 and 95-97 employees and for services we get 34-41, 61-68, 77-82 and 96-100 employees.



Figure 5: Employment concentration in the largest businesses by age of cohort

For start-ups in manufacturing, the increase of employment concentration with age of the cohort is not as pronounced as in the service sector. While there are some considerable differences of the values of concentration measures between manufacturing and services in the first years, these values converge and are soon within the same range. In the longer-run start-up cohorts in manufacturing and in services are characterized by relatively equal degrees of employment concentration with regard to the initial number of entries.

7. The contribution of recent start-ups to current employment

After having analyzed the evolution of employment in entry cohorts we now investigate the contribution of the different entry cohorts to overall employment. Figure 5 shows the employment share of each of the 18 yearly entry cohorts on total employment in 2002, the final year of our period of analysis. Taking all private sector industries together, the share of the businesses founded in the 18 preceding years on 2002 employment amounts to about 25 percent.

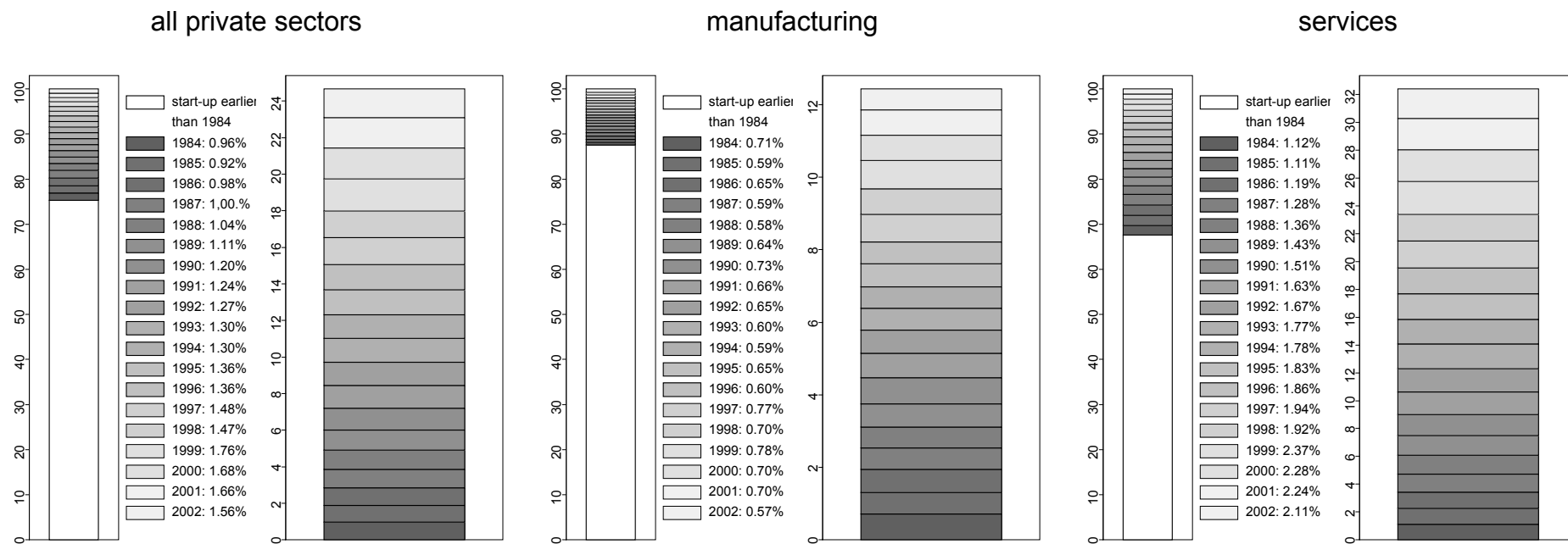


Figure 5: Share of cohort-employment in surviving firms 2002

This share is nearly three times higher in services (32 percent) than in manufacturing (12 percent). This greater employment share of the incumbents indicates that the average age of businesses in manufacturing is substantially higher than in other industries. It may also be seen as an indication that to start a new business in manufacturing is particularly difficult due to relatively high entry barriers.¹¹

While in manufacturing the contributions of the single cohorts on 2002 employment remain about constant over the 18 years of analysis, we find that in the service sector these shares are declining with age. This reflects the decrease of overall employment below the initial level that we found for the entry cohorts in services (figure 3) while the employment of the entry cohorts in manufacturing remained fairly constant. For the overall private sector we find about the same pattern as for services, however, the shares of the single cohorts to overall employment are considerably smaller. In manufacturing the contribution of an individual cohort is about 0.7 percent. In the service sector this share is between slightly more than 2 percent for the more recent cohorts and somewhat above 1 percent for the older vintages. For the private sector as a whole these annual rings have a thickness of between 0.92 and 1.68 percent.

8. Final discussion

Cohorts of newly established businesses tend to start with growing employment. But rather soon, mostly after one or two years, employment in the cohort tends to be stagnant or to decline and it is quite likely that it falls considerably below the initial level after a number of years. In none of the cohorts of our sample could we find a strong and lasting increase of employment above the initial level. We cannot exclude the possibility that such a development may be identified for more narrowly defined economic sectors, regions or industries. But the analysis clearly shows that strong employment growth of start-up cohorts is not at all a general trend. The stagnant or declining employment in start-up cohorts is a result of two developments. First, quite a significant share of the new businesses has to leave the market very quickly. About half of the start-ups do not survive longer than five years. And

¹¹ This assertion must not be a contradiction to our finding of higher survival rates for new businesses in manufacturing. One may assume that there is a self-selection process at work according to which the particular difficulties of entering a manufacturing industry induces relatively high quality of start-ups in this sector.

second, the majority of the new businesses remain rather small. Only a few of them grow and generate a significant number of jobs.

Taking all private industries together, the entries of the 18 year period 1984-2002 contributed about 25 percent to the employment in 2002. This share is much smaller in manufacturing (about 12 percent) than in the service sector (about 32 percent). However, this represents only the gross effect and does not account for the crowding out of incumbents. Depending on the magnitude of such crowding-out effects, the job generating effect that can be attributed to the new businesses is considerably smaller. Over the years and decades, the cohorts may amount to a significant contribution. But this effect becomes relevant mainly in the long run. This is not “rapid growth”. Consequently, if the employment development in cohorts of newly founded businesses is so modest, one may question the relevance and justification of policies that try to increase the level of new firm formation in the economy. As already mentioned in the introduction to this paper, improvements of market supply that result from increased competition due to new firm formation may play an important role. Such supply-side effects comprise issues such as increased efficiency, acceleration of structural change, amplified innovation and greater variety. These effects can be measured only rather indirectly, but there are indications that they are rather significant (cf. Fritsch and Mueller, 2004).

References

- Agarwal, Rajshree and Michael Gort (1996): The Evolution of Markets and Entry, Exit and Survival, *Review of Economics and Statistics*, 78, 489-498.
- Aldrich, Howard E. and Ellen R. Auster (1986): Even Dwarfs Started Small: Liabilities of Size and Age and their Strategic Implications, *Research in Organizational Behavior*, 8, 165-198.
- Audretsch, David B. and Michael Fritsch (2002): Growth Regimes over Time and Space, *Regional Studies*, 36, 113-124.
- Baldwin, John R. (1995): *The Dynamics of Industrial Competition - A North American Perspective*, Cambridge (UK): Cambridge University Press.
- Baumol, William J. (1993): *Entrepreneurship, Management, and the Structure of Payoffs*, Cambridge (MA): MIT-Press.
- Boeri, Tito and Ulrich Cramer (1992): Employment growth, incumbents and entrants – Evidence from Germany, *International Journal of Industrial Organization*, 10, 545-565.
- Brixy, Udo and Michael Fritsch (2002): Die Betriebsdatei der Beschäftigtenstatistik der Bundesanstalt für Arbeit, in Michael Fritsch and Reinhold Grotz (eds.), *Das Gründungsgeschehen in Deutschland - Darstellung und Vergleich der Datenquellen*, Heidelberg: Physica, 55-77.
- Brixy, Udo and Reinhold Grotz (2004): Entry-Rates, the Share of Surviving Businesses and Employment Growth: Differences between Western and Eastern Germany since Unification, in Michael Dowling, Juergen Schmude and Dodo zu Knyphausen-Aufsess (eds.), *Advances in Interdisciplinary European Entrepreneurship Research*, 143-152.
- Brüderl, Josef and Rudolf Schüssler (1990): Organizational Mortality: The Liabilities of Newness and Adolescence, *Administrative Science Quarterly*, 35, 530-547.
- Carroll, Glenn R. and Michael Hannan (2000): *The Demography of Corporations and Industries*, Princeton (NJ): Princeton University Press.
- Fritsch, Michael (1997): New Firms and Regional Employment Change, *Small Business Economics*, 9, 437-448.
- Fritsch, Michael, et al. (2002): Zusammenfassender Vergleich der Datenquellen zum Gründungsgeschehen in Deutschland, in Michael Fritsch and Reinhold Grotz (eds.), *Das Gründungsgeschehen in Deutschland - Darstellung und Vergleich der Datenquellen*, Heidelberg: Physica, 199-214.
- Fritsch, Michael and Udo Brixy (2004): The Establishment File of the German Social Insurance Statistics, *Schmollers Jahrbuch / Journal of Applied Social Science Studies*, 124 (forthcoming).
- Fritsch, Michael and Reinhold Grotz (2004) (eds.): *Empirische Analysen des Gründungsgeschehens in Deutschland* („Empirical analyses of new firm formation in Germany“), Heidelberg: Physica.

- Fritsch, Michael, Udo Brixy and Oliver Falck (2004): The Effect of Industry, Region and Time on New Business Survival – A Multi-Dimensional Analysis, Working Paper 04/2004, Faculty of Economics and Business Administration, Technical University Bergakademie Freiberg.
- Fritsch, Michael and Pamela Mueller (2004): The Effects of New Firm Formation on Regional Development over Time, Working Paper 01/2004, Faculty of Economics and Business Administration, Technical University Bergakademie Freiberg.
- Geroski, Paul A. (1995): What do we know about entry?, *International Journal of Industrial Organization*, 13, 421-440.
- Geroski, Paul A., José Mata and Pedro Portugal (2002): Founding Conditions and the Survival of New Firms, Lisboa, Portugal (mimeo).
- Glenn, Norval D. (1977): Cohort analyses, Newbury Park: Sage Publications.
- Jovanovich, Boyan (2001): Fitness and Age: Review of Carroll and Hannan's Demography of Corporations and Industries, *Journal of Economic Literature*, 39, 105-119.
- Ranger-Moore, James (1997): Bigger May be Better, But is Older Wiser? *American Sociological Review*, 62, 903-920.
- Storey, David J. and Steve Johnson (1987): *Job Generation and Labour Market Change*, Houndmills: MacMillan.
- Van Stel, Andre and David Storey (2002): Entrepreneurial growth in British regions 1980-1998, Paper presented at the annual conference of the European Regional Science Association, Dortmund, August 27th-31th.
- Wagner, Joachim (1994): The Post-Entry Performance of New Small Firms in German Manufacturing Industries, *The Journal of Industrial Economics*, 42, 141-154.
- Wagner, Joachim (1999): The Life History of Cohorts of Exits from German Manufacturing, *Small Business Economics*, 13, 71-79.

Appendix

A1: Survival and hazard rates in all private Sector industries

Year	Survival rate (percent) after					Hazard rate (percent) after				
	two years	five years	ten years	15 years	18 years	two years	five years	ten years	15 years	18 years
1984	61.23	47.55	35.98	27.26	23.11	16.28	8.64	5.71	4.79	5.26
1985	62.82	49.10	36.23	27.35		13.05	5.64	6.12	5.50	
1986	65.45	50.20	36.33	27.03		10.47	6.23	6.34	5.77	
1987	64.34	51.04	36.57	27.30		15.43	6.96	6.56	5.88	
1988	64.79	50.34	35.68			12.57	7.34	6.49		
1989	66.34	50.59	35.51			12.98	7.93	5.86		
1990	65.87	49.36	34.64			14.03	8.23	6.21		
1991	64.54	47.58	33.37			14.13	8.55	6.66		
1992	63.53	46.04	32.59			14.58	9.08	6.48		
1993	64.30	46.22				14.89	8.85			
1994	63.66	45.91				15.65	8.06			
1995	62.33	45.29				17.32	8.51			
1996	62.44	45.07				16.49	9.35			
1997	62.79	44.77				16.10	9.66			
1998	63.11					16.37				
1999	59.80					16.72				
2000	59.64					17.83				
2001										
2002										
Average	63.35	47.79	35.21	27.24		14.99	8.07	6.27	5.49	
Standard deviation	1.91	2.27	1.40	0.14		1.94	1.17	0.32	0.49	

A2: Survival and hazard rates in manufacturing

Year	Survival rate (percent) after					Hazard rate (percent) after				
	two years	five years	ten years	15 years	18 years	two years	five years	ten years	15 years	18 years
1984	71.90	58.08	45.05	35.40	29.93	11.48	7.36	5.31	4.27	5.31
1985	71.71	58.04	44.24	34.24		9.98	5.24	5.25	5.12	
1986	83.74	69.38	52.64	40.81		6.98	4.77	5.22	5.03	
1987	82.91	70.17	52.02	39.72		9.68	5.38	5.95	4.82	
1988	81.89	67.83	50.64			7.15	6.51	5.32		
1989	83.41	67.28	50.90			7.78	7.26	5.12		
1990	82.48	66.57	49.37			8.07	6.24	5.07		
1991	81.06	64.79	48.66			8.94	6.09	5.91		
1992	79.77	64.45	47.85			9.06	6.59	5.94		
1993	79.62	63.87				9.23	6.85			
1994	79.86	63.93				9.85	6.10			
1995	78.59	62.83				9.89	6.26			
1996	78.02	61.48				9.74	8.10			
1997	78.17	60.39				10.35	7.74			
1998	77.83					9.97				
1999	76.95					11.34				
2000	76.19					11.13				
2001										
2002										
Average	79.06	64.22	49.04	37.54		9.45	6.46	5.45	4.81	
Standard deviation	3.56	3.83	2.93	3.21		1.34	0.95	0.37	0.38	

A3: Survival and hazard rates in services

Year	Survival rate (percent) after					Hazard rate (percent) after				
	two years	five years	ten years	15 years	18 years	two years	five years	ten years	15 years	18 years
1984	60.38	47.57	36.02	27.28	23.19	17.38	9.01	5.58	4.79	5.24
1985	62.76	49.38	36.27	27.40		12.97	5.82	6.21	5.46	
1986	65.70	50.09	36.10	26.93		10.41	6.65	6.22	5.71	
1987	64.73	51.10	36.46	27.20		15.56	7.27	6.72	5.94	
1988	64.83	49.91	35.09			12.78	7.75	6.78		
1989	66.47	50.24	34.94			13.16	8.36	5.91		
1990	66.06	49.07	33.99			14.38	8.52	6.43		
1991	65.10	47.45	32.91			14.44	8.75	6.91		
1992	64.45	46.25	32.49			14.73	9.59	6.54		
1993	64.17	45.77				15.37	9.21			
1994	63.81	45.48				15.86	8.54			
1995	62.34	44.97				17.56	8.68			
1996	62.31	44.94				16.89	9.37			
1997	62.82	44.78				16.32	9.73			
1998	62.97					16.54				
1999	59.34					16.77				
2000	59.60					17.98				
2001										
2002										
Average	63.40	47.64	34.92	27.20		15.24	8.38	6.37	5.48	
Standard deviation	2.15	2.28	1.48	0.20		2.04	1.14	0.43	0.50	

A4: Employment concentration in all private sector industries, manufacturing and services

Age (Year)	all private sector industries				manufacturing				services			
	99% percentile	95% percentile	90% percentile	75% percentile	99% percentile	95% percentile	90% percentile	75% percentile	99% percentile	95% percentile	90% percentile	75% percentile
0	29.39 (6.29)	49.68 (6.55)	61.08 (4.95)	80.13 (3.92)	40.56 (9.90)	62.92 (10.12)	72.97 (8.40)	86.26 (4.67)	24.05 (4.81)	44.35 (5.70)	56.55 (5.32)	78.36 (3.79)
1	32.87 (6.96)	54.26 (5.41)	66.99 (4.55)	83.79 (2.15)	41.24 (8.24)	63.98 (8.57)	74.10 (7.39)	88.43 (3.87)	27.64 (4.61)	50.12 (5.36)	62.94 (4.17)	83.76 (3.87)
2	34.23 (7.11)	56.56 (5.16)	69.40 (4.53)	87.43 (2.90)	41.70 (8.04)	64.37 (8.50)	75.06 (6.92)	89.44 (3.38)	29.30 (4.64)	53.11 (5.14)	66.39 (3.41)	88.02 (3.62)
3	34.21 (5.42)	58.00 (4.80)	71.03 (3.99)	89.18 (2.49)	42.08 (7.83)	64.76 (8.18)	75.73 (6.11)	90.80 (3.03)	30.54 (4.49)	55.12 (4.88)	68.22 (4.27)	90.54 (2.72)
4	34.91 (5.26)	59.39 (4.55)	72.69 (3.55)	91.50 (2.70)	42.21 (7.39)	65.01 (7.52)	76.39 (5.71)	91.38 (2.70)	31.63 (4.43)	56.84 (4.50)	70.61 (4.44)	92.67 (2.35)
5	35.64 (5.19)	60.52 (5.13)	74.81 (3.56)	93.88 (2.51)	41.95 (7.42)	65.23 (7.41)	76.69 (5.81)	92.15 (2.39)	32.71 (4.55)	58.13 (5.29)	72.14 (4.64)	93.76 (1.27)
6	36.16 (4.80)	61.62 (4.33)	75.95 (3.21)	95.32 (0.97)	41.65 (6.63)	65.21 (6.43)	76.93 (4.71)	93.15 (2.00)	33.47 (4.55)	59.59 (4.98)	73.50 (3.80)	94.25 (1.05)
7	36.81 (4.91)	62.94 (3.89)	77.54 (2.29)	95.38 (0.94)	41.57 (6.32)	65.88 (5.54)	77.78 (4.49)	93.45 (1.39)	34.54 (4.99)	61.41 (4.68)	76.58 (4.17)	94.62 (0.94)
8	37.16 (4.60)	63.34 (4.32)	77.41 (3.15)	95.34 (1.51)	40.89 (4.58)	65.58 (4.48)	77.88 (3.60)	94.05 (1.60)	35.59 (5.00)	63.03 (4.40)	78.53 (3.36)	94.93 (0.83)
9	38.04 (4.86)	64.51 (3.83)	79.06 (2.67)	95.98 (1.84)	41.32 (4.67)	66.19 (4.43)	78.99 (3.26)	94.95 (1.81)	36.72 (5.50)	64.07 (4.75)	79.24 (3.36)	96.35 (2.56)
10	38.41 (4.44)	65.65 (3.34)	80.39 (3.15)	97.45 (2.65)	41.34 (4.27)	67.02 (3.95)	79.72 (3.18)	96.05 (0.95)	37.15 (4.61)	64.70 (4.57)	79.65 (2.95)	98.36 (2.46)
11	39.32 (4.40)	67.23 (3.99)	82.98 (2.71)	99.51 (1.38)	42.30 (4.35)	68.06 (3.69)	81.00 (2.68)	96.44 (0.67)	37.87 (4.61)	66.05 (4.10)	80.13 (3.02)	100.00 (0.00)
12	40.09 (4.45)	67.88 (4.36)	83.47 (3.19)	99.75 (1.87)	42.59 (4.28)	68.96 (3.90)	82.28 (2.83)	96.51 (0.68)	38.76 (4.56)	66.68 (4.09)	80.46 (3.05)	99.60 (1.06)
13	40.76 (3.93)	68.96 (2.14)	83.28 (2.36)	99.23 (1.20)	43.13 (4.87)	69.93 (4.03)	82.87 (2.99)	97.49 (1.50)	39.78 (4.28)	68.86 (3.27)	83.51 (2.33)	100.00 (0.00)
14	41.65 (3.67)	71.02 (3.08)	84.85 (1.20)	99.72 (0.62)	43.13 (3.06)	70.78 (3.48)	83.91 (1.70)	98.56 (0.26)	40.45 (3.99)	69.55 (3.26)	86.05 (2.20)	100.00 (0.00)
15	42.49 (3.15)	71.25 (2.90)	85.11 (1.72)	99.39 (1.21)	42.48 (3.47)	69.62 (4.47)	82.17 (4.54)	95.73 (5.73)	41.33 (3.23)	69.95 (2.46)	86.36 (1.92)	100.00 (0.00)
16	43.03 (2.21)	71.30 (2.19)	87.93 (1.71)	99.13 (1.51)	45.34 (2.34)	73.00 (2.85)	85.35 (2.19)	98.65 (0.28)	41.38 (1.39)	70.02 (1.11)	86.42 (1.35)	100.00 (0.00)
17	42.55 (0.21)	70.91 (0.76)	86.28 (1.66)	97.61 (3.39)	44.72 (1.23)	72.97 (2.01)	86.76 (0.54)	98.58 (0.19)	41.97 (1.14)	71.99 (2.89)	86.36 (1.28)	100.00 (0.00)
18	43.83 (0.00)	74.53 (0.00)	87.70 (0.00)	100.00 (0.00)	46.92 (0.00)	73.79 (0.00)	86.78 (0.00)	100.00 (0.00)	41.68 (0.00)	70.53 (0.00)	85.90 (0.00)	100.00 (0.00)

**List of Working Papers of the Faculty of Economics and Business Administration,
Technische Universität Bergakademie Freiberg.**

2000

- 00/1 Michael Nippa, Kerstin Petzold, Ökonomische Erklärungs- und Gestaltungsbeiträge des Realoptionen-Ansatzes, Januar.
- 00/2 Dieter Jacob, Aktuelle baubetriebliche Themen – Sommer 1999, Januar.
- 00/3 Egon P. Franck, Gegen die Mythen der Hochschulreformdiskussion – Wie Selektionsorientierung, Nonprofit-Verfassungen und klassische Professorenbeschäftigungsverhältnisse im amerikanischen Hochschulwesen zusammenpassen, erscheint in: *Zeitschrift für Betriebswirtschaft (ZfB)*, 70. (2000).
- 00/4 Jan Körnert, Unternehmensgeschichtliche Aspekte der Krisen des Bankhauses Barings 1890 und 1995, in: *Zeitschrift für Unternehmensgeschichte*, München, 45 (2000), 205 – 224.
- 00/5 Egon P. Franck, Jens Christian Müller, Die Fußball-Aktie: Zwischen strukturellen Problemen und First-Mover-Vorteilen, *Die Bank*, Heft 3/2000, 152 – 157.
- 00/6 Obeng Mireku, Culture and the South African Constitution: An Overview, Februar.
- 00/7 Gerhard Ring, Stephan Oliver Pfaff, CombiCar: Rechtliche Voraussetzungen und rechtliche Ausgestaltung eines entsprechenden Angebots für private und gewerbliche Nutzer, Februar.
- 00/8 Michael Nippa, Kerstin Petzold, Jamina Bartusch, Neugestaltung von Entgeltsystemen, Besondere Fragestellungen von Unternehmen in den Neuen Bundesländern – Ein Beitrag für die Praxis, Februar.
- 00/9 Dieter Welz, Non-Disclosure and Wrongful Birth , Avenues of Liability in Medical Malpractice Law, März.
- 00/10 Jan Körnert, Karl Lohmann, Zinsstrukturbasierte Margenkalkulation, Anwendungen in der Marktzinsmethode und bei der Analyse von Investitionsprojekten, März.
- 00/11 Michael Fritsch, Christian Schwirten, R&D cooperation between public research institutions - magnitude, motives and spatial dimension, in: Ludwig Schätzl und Javier Revilla Diez (eds.), *Technological Change and Regional Development in Europe*, Heidelberg/New York 2002: Physica, 199 – 210.
- 00/12 Diana Grosse, Eine Diskussion der Mitbestimmungsgesetze unter den Aspekten der Effizienz und der Gerechtigkeit, März.
- 00/13 Michael Fritsch, Interregional differences in R&D activities – an empirical investigation, in: *European Planning Studies*, 8 (2000), 409 – 427.
- 00/14 Egon Franck, Christian Opitz, Anreizsysteme für Professoren in den USA und in Deutschland – Konsequenzen für Reputationsbewirtschaftung, Talentallokation und die Aussagekraft akademischer Signale, in: *Zeitschrift Führung + Organisation (zfo)*, 69 (2000), 234 – 240.
- 00/15 Egon Franck, Torsten Pudack, Die Ökonomie der Zertifizierung von Managemententscheidungen durch Unternehmensberatungen, April.
- 00/16 Carola Jungwirth, Inkompatible, aber dennoch verzahnte Märkte: Lichtblicke im angespannten Verhältnis von Organisationswissenschaft und Praxis, Mai.
- 00/17 Horst Brezinski, Der Stand der wirtschaftlichen Transformation zehn Jahre nach der Wende, in: Georg Brunner (Hrsg.), *Politische und ökonomische Transformation in Osteuropa*, 3. Aufl., Berlin 2000, 153 – 180.
- 00/18 Jan Körnert, Die Maximalbelastungstheorie Stützens als Beitrag zur einzelwirtschaftlichen Analyse von Dominoeffekten im Bankensystem, in: Eberhart Ketzler, Stefan Prigge u. Hartmut Schmidt (Hrsg.), *Wolfgang Stützel – Moderne Konzepte für Finanzmärkte, Beschäftigung und Wirtschaftsverfassung*, Verlag J. C. B. Mohr (Paul Siebeck), Tübingen 2001, 81 – 103.
- 00/19 Cornelia Wolf, Probleme unterschiedlicher Organisationskulturen in organisationalen Subsystemen als mögliche Ursache des Konflikts zwischen Ingenieuren und Marketingexperten, Juli.

- 00/20 Egon Franck, Christian Opitz, Internet-Start-ups – Ein neuer Wettbewerber unter den „Filteranlagen“ für Humankapital, erscheint in: *Zeitschrift für Betriebswirtschaft (ZfB)*, 70 (2001).
- 00/21 Egon Franck, Jens Christian Müller, Zur Fernsehvermarktung von Sportligen: Ökonomische Überlegungen am Beispiel der Fußball-Bundesliga, erscheint in: Arnold Hermanns und Florian Riedmüller (Hrsg.), *Management-Handbuch Sportmarketing*, München 2001.
- 00/22 Michael Nippa, Kerstin Petzold, Gestaltungsansätze zur Optimierung der Mitarbeiter-Bindung in der IT-Industrie - eine differenzierende betriebswirtschaftliche Betrachtung -, September.
- 00/23 Egon Franck, Antje Musil, Qualitätsmanagement für ärztliche Dienstleistungen – Vom Fremd- zum Selbstmonitoring, September.
- 00/24 David B. Audretsch, Michael Fritsch, Growth Regimes over Time and Space, *Regional Studies*, 36 (2002), 113 – 124.
- 00/25 Michael Fritsch, Grit Franke, Innovation, Regional Knowledge Spillovers and R&D Cooperation, Oktober.
- 00/26 Dieter Slaby, Kalkulation von Verrechnungspreisen und Betriebsmittelmieten für mobile Technik als Grundlage innerbetrieblicher Leistungs- und Kostenrechnung im Bergbau und in der Bauindustrie, Oktober.
- 00/27 Egon Franck, Warum gibt es Stars? – Drei Erklärungsansätze und ihre Anwendung auf verschiedene Segmente des Unterhaltungsmarktes, *Wirtschaftsdienst – Zeitschrift für Wirtschaftspolitik*, 81 (2001), 59 – 64.
- 00/28 Dieter Jacob, Christop Winter, Aktuelle baubetriebliche Themen – Winter 1999/2000, Oktober.
- 00/29 Michael Nippa, Stefan Dirlich, Global Markets for Resources and Energy – The 1999 Perspective -, Oktober.
- 00/30 Birgit Plewka, Management mobiler Gerätetechnik im Bergbau: Gestaltung von Zeitfondsgliederung und Ableitung von Kennziffern der Auslastung und Verfügbarkeit, Oktober.
- 00/31 Michael Nippa, Jan Hachenberger, Ein informationsökonomisch fundierter Überblick über den Einfluss des Internets auf den Schutz Intellektuellen Eigentums, Oktober.
- 00/32 Egon Franck, The Other Side of the League Organization – Efficiency-Aspects of Basic Organizational Structures in American Pro Team Sports, Oktober.
- 00/33 Jan Körnert, Cornelia Wolf, Branding on the Internet, Umbrella-Brand and Multiple-Brand Strategies of Internet Banks in Britain and Germany, erschienen in Deutsch: *Die Bank*, o. Jg. (2000), 744 – 747.
- 00/34 Andreas Knabe, Karl Lohmann, Ursula Walther, Kryptographie – ein Beispiel für die Anwendung mathematischer Grundlagenforschung in den Wirtschaftswissenschaften, November.
- 00/35 Gunther Wobser, Internetbasierte Kooperation bei der Produktentwicklung, Dezember.
- 00/36 Margit Enke, Anja Geigenmüller, Aktuelle Tendenzen in der Werbung, Dezember.
- 2001**
- 01/1 Michael Nippa, Strategic Decision Making: Nothing Else Than Mere Decision Making? Januar.
- 01/2 Michael Fritsch, Measuring the Quality of Regional Innovation Systems – A Knowledge Production Function Approach, *International Regional Science Review*, 25 (2002), 86-101.
- 01/3 Bruno Schönfelder, Two Lectures on the Legacy of Hayek and the Economics of Transition, Januar.
- 01/4 Michael Fritsch, R&D-Cooperation and the Efficiency of Regional Innovation Activities, Januar.
- 01/5 Jana Eberlein, Ursula Walther, Änderungen der Ausschüttungspolitik von Aktiengesellschaften im Lichte der Unternehmenssteuerreform, *Betriebswirtschaftliche Forschung und Praxis*, 53 (2001), 464 - 475.
- 01/6 Egon Franck, Christian Opitz, Karriereverläufe von Topmanagern in den USA, Frankreich und Deutschland – Elitenbildung und die Filterleistung von Hochschulsystemen, *Schmalenbachs Zeitschrift für betriebswirtschaftliche Forschung (zbf)*, (2002).
- 01/7 Margit Enke, Anja Geigenmüller, Entwicklungstendenzen deutscher Unternehmensberatungen, März.

- 01/8 Jan Körnert, The Barings Crises of 1890 and 1995: Causes, Courses, Consequences and the Danger of Domino Effects, *Journal of International Financial Markets, Institutions & Money*, 13 (2003).
- 01/9 Michael Nippa, David Finegold, Deriving Economic Policies Using the High-Technology Ecosystems Approach: A Study of the Biotech Sector in the United States and Germany, April.
- 01/10 Michael Nippa, Kerstin Petzold, Functions and roles of management consulting firms – an integrative theoretical framework, April.
- 01/11 Horst Brezinski, Zum Zusammenhang zwischen Transformation und Einkommensverteilung, Mai.
- 01/12 Michael Fritsch, Reinhold Grotz, Udo Brixy, Michael Niese, Anne Otto, Gründungen in Deutschland: Datenquellen, Niveau und räumlich-sektorale Struktur, in: Jürgen Schmude und Robert Leiner (Hrsg.), *Unternehmensgründungen - Interdisziplinäre Beiträge zum Entrepreneurship Research*, Heidelberg 2002: Physica, 1 – 31.
- 01/13 Jan Körnert, Oliver Gaschler, Die Bankenkrise in Nordeuropa zu Beginn der 1990er Jahre - Eine Sequenz aus Deregulierung, Krise und Staatseingriff in Norwegen, Schweden und Finnland, *Kredit und Kapital*, 35, 280 – 314.
- 01/14 Bruno Schönfelder, The Underworld Revisited: Looting in Transition Countries, Juli.
- 01/15 Gert Ziener, Die Erdölwirtschaft Russlands: Gegenwärtiger Zustand und Zukunftsaussichten, September.
- 01/16 Margit Enke, Michael J. Schäfer, Die Bedeutung der Determinante Zeit in Kaufentscheidungsprozessen, September.
- 01/17 Horst Brezinski, 10 Years of German Unification – Success or Failure? September.
- 01/18 Diana Grosse, Stand und Entwicklungschancen des Innovationspotentials in Sachsen in 2000/2001, September.
- 2002**
- 02/1 Jan Körnert, Cornelia Wolf, Das Ombudsmannverfahren des Bundesverbandes deutscher Banken im Lichte von Kundenzufriedenheit und Kundenbindung, in: *Bank und Markt*, Verlag Fritz Knapp, Frankfurt a. M., ISSN 1433-5204, Jg. 31, Heft 6, 19 – 22.
- 02/2 Michael Nippa, The Economic Reality of the New Economy – A Fairytale by Illusionists and Opportunists, Januar.
- 02/3 Michael B. Hinner, Tessa Rülke, Intercultural Communication in Business Ventures Illustrated by Two Case Studies, Januar.
- 02/4 Michael Fritsch, Does R&D-Cooperation Behavior Differ between Regions? *Industry and Innovation*, 10 (2003), 25-39.
- 02/5 Michael Fritsch, How and Why does the Efficiency of Regional Innovation Systems Differ? Februar.
- 02/6 Horst Brezinski, Peter Seidelmann, Unternehmen und regionale Entwicklung im ostdeutschen Transformationsprozess: Erkenntnisse aus einer Fallstudie, März.
- 02/7 Diana Grosse, Ansätze zur Lösung von Arbeitskonflikten – das philosophisch und psychologisch fundierte Konzept von Mary Parker Follett, Juni.
- 02/8 Ursula Walther, Das Äquivalenzprinzip der Finanzmathematik, Juli.
- 02/9 Bastian Heinecke, Involvement of Small and Medium Sized Enterprises in the Private Realisation of Public Buildings, Juli.
- 02/10 Fabiana Rossaro, Der Kreditwucher in Italien – Eine ökonomische Analyse der rechtlichen Handhabung, September.
- 02/11 Michael Fritsch, Oliver Falck, New Firm Formation by Industry over Space and Time: A Multi-Level Analysis, Oktober.

- 02/12 Ursula Walther, Strategische Asset Allokation aus Sicht des privaten Kapitalanlegers, September.
- 02/13 Michael B. Hinner, Communication Science: An Integral Part of Business and Business Studies? Dezember.

2003

- 03/1 Bruno Schönfelder, Death or Survival. Post Communist Bankruptcy Law in Action. A Survey, Januar.
- 03/2 Christine Pieper, Kai Handel, Auf der Suche nach der nationalen Innovationskultur Deutschlands – die Etablierung der Verfahrenstechnik in der BRD/DDR seit 1950, März.
- 03/3 Michael Fritsch, Do Regional Systems of Innovation Matter? März.
- 03/4 Michael Fritsch, Zum Zusammenhang zwischen Gründungen und regionaler Entwicklung, April.
- 03/5 Tessa Rülke, Erfolg auf dem amerikanischen Markt
- 03/6 Michael Fritsch, Von der innovationsorientierten Regionalförderung zur regionalisierten Innovationspolitik, erscheint in: Michael Fritsch (Hrsg.): *Marktdynamik und Innovation – Zum Gedenken an Hans-Jürgen Ewers*, Berlin 2004: Duncker & Humblot.
- 03/7 Isabel Opitz, Michael B. Hinner (Editor), Good Internal Communication Increases Productivity, Juli.
- 03/8 Margit Enke, Martin Reimann, Kulturell bedingtes Investorenverhalten – Ausgewählte Probleme des Kommunikations- und Informationsprozesses der Investor Relations, September.
- 03/9 Dieter Jacob, Christoph Winter, Constanze Stuhr, PPP bei Schulbauten – Leitfaden Wirtschaftlichkeitsvergleich, Oktober.
- 03/10 Ulrike Pohl, Das Studium Generale an der Technischen Universität Bergakademie Freiberg im Vergleich zu Hochschulen anderer Bundesländer (Niedersachsen, Mecklenburg-Vorpommern) – Ergebnisse einer vergleichenden Studie, November.

2004

- 04/1 Michael Fritsch, Pamela Müller, The Effects of New Firm Formation on Regional Development over Time, März.
- 04/2 Michael B. Hinner, Mirjam Dreisörner, Antje Felich, Manja Otto, Business and Intercultural Communication Issues – Three Contributions to Various Aspects of Business Communication, Januar.
- 04/3 Michael Fritsch, Andreas Stephan, Measuring Performance Heterogeneity within Groups – A Two-Dimensional Approach, Januar.
- 04/4 Michael Fritsch, Udo Brixy, Oliver Falck, The Effect of Industry, Region and Time on New Business Survival – A Multi-Dimensional Analysis, Januar.