

Xu, Guo

Conference Paper

Long-run consequences of natural disasters: Evidence from Tangshan

Proceedings of the German Development Economics Conference, Berlin 2011, No. 82

Provided in Cooperation with:

Research Committee on Development Economics (AEL), German Economic Association

Suggested Citation: Xu, Guo (2011) : Long-run consequences of natural disasters: Evidence from Tangshan, Proceedings of the German Development Economics Conference, Berlin 2011, No. 82, ZBW - Deutsche Zentralbibliothek für Wirtschaftswissenschaften, Leibniz-Informationszentrum Wirtschaft, Kiel und Hamburg

This Version is available at:

<https://hdl.handle.net/10419/48351>

Standard-Nutzungsbedingungen:

Die Dokumente auf EconStor dürfen zu eigenen wissenschaftlichen Zwecken und zum Privatgebrauch gespeichert und kopiert werden.

Sie dürfen die Dokumente nicht für öffentliche oder kommerzielle Zwecke vervielfältigen, öffentlich ausstellen, öffentlich zugänglich machen, vertreiben oder anderweitig nutzen.

Sofern die Verfasser die Dokumente unter Open-Content-Lizenzen (insbesondere CC-Lizenzen) zur Verfügung gestellt haben sollten, gelten abweichend von diesen Nutzungsbedingungen die in der dort genannten Lizenz gewährten Nutzungsrechte.

Terms of use:

Documents in EconStor may be saved and copied for your personal and scholarly purposes.

You are not to copy documents for public or commercial purposes, to exhibit the documents publicly, to make them publicly available on the internet, or to distribute or otherwise use the documents in public.

If the documents have been made available under an Open Content Licence (especially Creative Commons Licences), you may exercise further usage rights as specified in the indicated licence.

Long-run consequences of natural disasters: Evidence from Tangshan

*By Guo Xu*¹

Abstract

Exploiting Tangshan 1976 - the deadliest earthquake in the 20th century - as a source of exogenous variation, we estimate the cohort-specific effects of a historical shock on contemporary socio-economic outcomes. While cohorts born after the earthquake were considerably larger, the adverse post-disaster conditions did not translate into lasting impacts on schooling and labour market outcomes. Cohorts at schooling age during the earthquake, however, exhibit considerably lower education levels today, particularly among the female. Despite lower education, there is no evidence for adverse labour market outcomes. We conduct extensive robustness checks and argue that the effect is causal.

Keywords: Environmental shock, earthquake, natural disaster, education, fertility

JEL codes: I20, J00 and O18

¹Department of International Economics, DIW Berlin, Mohrenstrasse 58, 10117 Berlin, Germany. Email: guo@guoxu.org. Phone: 0049-151-20473925. Version 04-05-11. Research assistance by Xiaoxi Wang (HU Berlin) is gratefully acknowledged. I am grateful for helpful comments by Carlos Bozzoli, Kati Schindler and Marc Vothknecht. This paper is dedicated to the victims of the Tangshan earthquake.

1 Introduction

This paper examines the demographic consequences of large-scale environmental shocks. In contrast to existing empirical contributions that focused mainly on short-run impacts, we identify long-term effects by exploiting Tangshan 1976 - the deadliest earthquake in the 20th century (EMDAT, 2011) - as a source of exogenous variation. By building a pseudo-panel based on county-level 2000 census data, we then isolate the effect using a standard difference-in-differences (DiD) strategy.

We provide confirmatory evidence for a positive fertility response after the earthquake: Cohorts born after the quake are significantly larger in counties subject to higher levels of destruction: Cohorts in counties exposed to the strongest shock 25 years ago are on average 20% larger today. Cohorts affected during schooling age exhibit school completion rates that are 15% points lower on average, with a sex ratio increased by more than 30% points, indicating a strong male bias. Despite adverse post-disaster conditions and lower schooling, there is no evidence for negative labour market outcomes.

These results are robust and causal: We provide systematic evidence for the exogenous nature of the shock and conduct a wide range of robustness checks to rule out econometric concerns, including placebo tests, test of common trend assumption, accounting for migration and the inclusion of alternative measures for assignment to treatment group. Despite the pseudo-panel, the results remain stable. Taken at face value, these results suggest that the effect of large one-off shocks are much more persistent. If so, disaster relief and related post-shock interventions should depart from a short-run perspective and focus on cohort-specific measures to cushion large and unexpected shocks.

The remaining paper is organized as follows: Section I offers a brief literature review on the demographic impacts of natural disasters, identifying gaps and laying the theoretical framework for this paper. Section II introduces the context of Tangshan 1976 and the empirical strategy employed to identify the long-term effect. Section III presents and discusses the results. Section IV concludes.

1.1 Impacts of natural disasters

The impacts of natural disasters can be decomposed in risk and shock (Baez et al., 2010): On the one hand, natural disasters can increase the baseline risk of the environment, thereby permanently shifting the preferences and behaviour of individuals. In theory, such risk increases the discount rate, thereby rendering activities that generate long-term benefits at short-term costs, such as saving or education, less attractive (Lorentzen et al., 2008). In addition, higher mortality can also exert an "insurance effect" (Rosenzweig and Stark, 1997). In absence of credit markets, children often enable consumption smoothing, where the costs of child-rearing are later compensated by additional labour and income transfers (Foster, 1995; Townsend, 1994).

On the other hand, shocks may also induce behavioural changes *ex post*. As Finlay (2009) argues, large shocks can generate "replacement effects", where additional children are born in response to compensate for the children lost. Large shocks not only coincide with destruction of human capital but also physical capital, thereby possibly pushing vulnerable households into poverty traps (Carter et al., 2007). This shift in capital-labour ratio can change intra-household allocation, thus diminishing returns to education in face of higher marginal productivity of labour and capital (Jensen, 2000).

Two closely related papers are worthwhile discussing in greater detail: Baez and Santos (2007) provide quasi-experimental evidence from Nicaragua. By exploiting the exogenous trajectory of Hurricane Mitch for assignment to treatment group, they estimate the short-run effect of large weather shocks on child well-being. Combining repeated cross-sectional LSMS data with data obtained from the Demographic Health Survey (DHS), they employ a DiD strategy to isolate the weather effect. Their results suggest that children in affected areas were more likely to be undernourished and taken for medical consultation. Even though the labour force participation rates increased among the children, there was no significant effect on school completion.

While Baez and Santos (2007) offer detailed evidence for Nicaragua, natural disasters are heterogeneous and not likely to yield the same overall effect (Cavallo et al., 2010). The work closest to ours is that of Finlay (2009), who examines the fertility response to three earthquakes in Turkey 1999, India 2001 and Pakistan 2005 based on repeated

cross-sectional data from the Demographic Health Survey (DHS). Likewise employing a DiD strategy, she provides evidence for a positive fertility response.

Our findings are in line with Finlay (2009) but differ in several important ways: First, we provide unique evidence from an earthquake in China, a country most affected by natural disasters but in this context only little studied (Cavallo and Noy, 2009). Second, while both papers focus on the immediate effects, we adopt a long-run perspective and estimate the effect of the earthquake quarter a century later, thereby adding value to the literature that explores how extreme conditions in early childhood shape outcomes in later life (Dreze and Sen, 1989; Barker, 1998). Finally, we demonstrate that reliable findings can be estimated based on a single census. Since panels or repeated cross-sections are often unavailable in developing countries, our method is thus applicable to a much greater set of countries.

2 Empirical strategy

2.1 Tangshan 1976

Tangshan, located in the province Hebei, is part of the North China Plain bounded by a mountain range (Yanshan) on the north and by the sea (Bohai) on the southwest. Two major national central cities, the capital Beijing and the port Tianjin, lie in its close vicinity. Several morphological features are evident in the Tangshan region: "To the north, close to the Yanshan mountain range, is a hilly region of elevation less than 500 *m* above sea level. At the bottom of the hills, erosion processes resulted in fan-shaped alluvial plains. The geomorphology has been modified by the flow of Luanhe and several other major rivers which run through the Yanshan mountains and the plain to reach Bohai. The coastal region is relatively flat at about 5 *m* above sea level" (Yong, 1988). This morphological variation is key to our empirical strategy as it generates the crucial variation in earthquake intensity needed to elicit long-run effects.

Officially awarded city status in 1938, Tangshan is a relatively young city. Over the decades and particularly after World War II (WWII), it has grown into an industrial center following developments in the coal, cement and ceramics industry. Tangshan has also been an important junction of the national transportation system as well as the

telecommunication network. At the onset of the earthquake, the total population of city and municipalities had reached about 1 million and 6 million, respectively. Tangshan has also been an important agricultural area, with main agricultural products being wheat, corn, rice, sorghum and soybeans (Yong, 1988). In socio-economic terms, Tangshan is often considered to be an "average" Chinese coastal region (Huixian, 2002).

On 28 July 1976 at 3:42 am, an earthquake of magnitude 7.8 shook Tangshan. The earthquake was felt within an area of of 2,167,000 km^2 covering Beijing, Tianjin and 12 neighboring provinces and the autonomous regions. With the epicentre close to the city, the city centre was essentially reduced to rubble. Overall, the earthquake is estimated to have killed 240,000 people (EMDAT, 2011). In terms of fatalities, this was the deadliest earthquake recorded in the 20th century. Figure 1 and 2 present two historical photographs to illustrate the extent of the overall destruction. Reconstruction began in 1978, with significant assistance by the 14 neighboring provinces and cities (Gere and Shah, 1980). Today, Tangshan's city population again exceeds 1.3 million.

Despite the tragedy and immense suffering the earthquake has brought, Tangshan 1976 is an ideal natural experiment to identify the effect of a large-scale shock: First, the shock was large enough to have had substantial impact on a region with fairly balanced socio-economic indicators. Second, the specific morphological characteristics have generated additional variation to the shock, rendering it even more exogenous. Finally, migration has been fairly limited due to the rigid household registration system (*hukou*), mitigating biases driven by selective inflow or outflow of population. If large and unexpected disasters have any long-run effects, they must be found in Tangshan.

2.2 Identification

In order to identify the effect of the earthquake, we exploit differential earthquake intensity as a source of exogenous variation. The earthquake is exogenous in terms of location and time: With regard to location, the exact epicentre of the main shock² is determined by geographical characteristics. As such, the spatial variation in shock intensity is not causally related to socio-economic variables of interest. With regard to time, the exact timing of the main shock (3:42 am on 28th July 1976) depends on seismic dynamics and

²Located at $39^{\circ}38'N, 118^{\circ}11'E$ (Huixian, 2002)

stochasticity that are independent of time-variant socio-economic variables.

But since the frequency of quakes is correlated with geophysical features, it is possible that households and individuals have included earthquake risk as part of their expectation. Poertner (2008), for example, constructs a measure of baseline risk for Guatemala by drawing upon hurricane data of the past 120 years, finding a significant effect of historical risk on current household behaviour. For earthquakes, regions lying near faults or tectonic boundaries are often subject to regular minor shocks. California, for example, is located on the San Andreas Fault, which forms the tectonic boundary between the Pacific and North American plate. Given the recurrence of quakes, institutional arrangements were set up in response, ranging from earthquake prediction, earthquake-proof housing and construction standards to disaster relief infrastructure and emergency training. But if earthquake risk is indeed correlated with both geographic characteristics and socio-economic indicators, the quake itself will not be exogenous, hence prohibiting identification using differential earthquake intensity.

The Tangshan quake, however, is truly exogenous: In contrast to interplate quakes often occurring on plate boundaries, Tangshan was subject to a rare intraplate earthquake (Stein and Mazzotti, 2007). The exceptional magnitude of 7.8 does not fit into the historical seismicity pattern. According to Yong (1988), the strongest quake occurring in immediate vicinity of Tangshan was "only" 4.75. Given the historically low risk of earthquakes, Tangshan was classified a low earthquake zone, with little consideration given to earthquake resistant building codes. As Lomitz and Castanos (2007) write:

"The Tangshan fault was well known to geologists, but it had been believed to be inactive since the Oligocene times [...] No one foresaw a need to provide increased earthquake protection at the intraplate location."

Coupled with the lack of foreshocks that would have enabled preventive measures, all existing evidence suggests that the Tangshan quake came unexpected and exogenous.

Figure 3 illustrates the spatial distribution of the shock intensity across counties. The measure for intensity is recorded maximum ground acceleration taken from (Huixian, 1986), with intensity VI as the cut-off. Two points are worthwhile re-affirming: First, the magnitude of the shock was large: The 400 km^2 subject to the strongest levels of

intensity X-XI saw nearly 100% destruction of buildings and infrastructure. Counties with intensity IX suffered about 40% destruction, covering about 1800 km^2 . Intensity VIII and VII are associated with about 10-30% destruction, with an area affected as large as 40,000 km^2 . Second, the shock intensity exhibited a great variation: For example, the Liaohe region along the Bohai faced anomalously high intensities (IX), while the neighboring Yutian county survived the quake with low intensity (VI). These differences are driven by exogenous morphological features: Liaohe had a relatively thick sedimentary layer on the top of which were accreted alluvium, favourable conditions to transmit shocks. Yutian, on the other hand, is located in an alluvial fan, with a layer of clay, coarse sand and pebbles with no active faults evident (Yong, 1988). Combined, both features enable a rigorous estimation of the earthquake’s treatment effect.

2.3 Empirical model

The main identification strategy is operationalized using a standard difference-in-differences (DiD) estimation. The empirical model is formulated as:

$$y_{it} = \beta_0 + \beta_1 \times post_t + \beta_2 \times intense_{it} + \beta_3 \times post_t \times intense_{it} + \sum_{k=4} \beta_k \times z_{kit} + \epsilon_{it} \quad (1)$$

where y_{it} denotes the outcome for county i at time t . $post_t$ is an indicator variable assuming the value 1 from 1977 to 1979. We neglect the immediate earthquake year since those born in the second half of 1976 were conceived before the quake and thus will not reflect *ex post* fertility responses. $intense_{it}$ is a measure for the intensity of the earthquake. Unlike existing papers where treatment is binary, we adopt a more differentiated continuous measure. The interaction between $post_t$ and $intense_{it}$, the main effect, picks up the one-off causal effect of the earthquake. Finally, z_{it} denotes a battery of controls. Despite the exogenous shock, both groups are less balanced than it would be in truly randomized controlled trials. By controlling for observable confounds, we hope to isolate most of the differences between treatment and control group. Finally, ϵ_{it} is the disturbance term, capturing measurement error and residual confounds.

2.4 Data

While comparing pre-quake and post-quake variables across treatment and control group is a reliable identification strategy, the lack of panel data complicates a straightforward

application. To address this issue, we derive a synthetic panel based on a single cross-section by exploiting the implicit longitudinal dimension of census data: Essentially, we compare cohorts born in 1977-1979 ($post_t = 1$) to cohorts born 1968-1976 and 1980-1986 ($post_t = 0$). A person aged 23 in the 2000 Chinese Population Census, for example, is born 1977, one year after the earthquake. By comparing cohorts exposed to the shock to cohorts unaffected and interacting the timing with the spatial variation in intensity, it is possible to construct a "pseudo-panel" that allows for a DiD estimation.³

As a crucial assumption, the observed age-cohort size in year 2000 needs to adequately approximate the actual birth-cohort size. The main concern here is that the age-cohort is an underestimate of the birth-cohort size, particularly if mortality is high. But even if this could pose a severe problem for older ages, it is likely to be of little concern for the age groups sampled (age 14-32 years). By the end of the 1970s, Chinese mortality had already declined significantly (Dreze and Sen, 2002), with life expectancy as high as 65 years in 1975-1980 (UNPD, 2008). A more serious issue is a systematic bias induced by the one-off increase in mortality caused by the earthquake fatalities: For example, it is possible that the effect of the earthquake could be upward biased since the pre-1976 age-cohorts are smaller due to the earthquake. While this case cannot be ruled out, it can be controlled for, particularly if the direction of the bias is known.

The 2000 Population Census provides county-level data on a variety of socio-economic variables. Along our research question, we chose age-cohort size, the secondary ("middle school") as well as tertiary completion rate by age and unemployment by age as the main outcome variables. Despite the exogenous nature of the shock, we control for a variety of possible confounds to increase the precision of the estimates: The main concern here is the closeness of the epicentre to the urban centre of Tangshan. If counties most severely hit by the earthquake are located in urban regions, we might partly pick up urban/rural differences instead of the direct earthquake impact. Fortunately, most of these differences are time-invariant, so we can include county area and a rural/urban dummy to capture them. In addition, we also include three types of time-varying controls: First, we control for aggregate demographic volatility using the average provincial

³A similar strategy has been employed by Meng et al. (2010) who study the Chinese Great Famine and approximate famine intensity using age-cohort sizes. More recently, Li et al. (2010) have also adopted this strategy for studying the one-child policy based on 1990 census data.

crude birth rate (CBR) and crude death rate (CDR)⁴. Second, we use annual fixed effects to capture year specific drivers all counties are equally exposed to. Finally, we add a linear and quadratic time trend to account for differences driven by long-run movements such as the demographic transition. Overall, this leaves a final sample of 65 counties, with 45 affected administrative units⁵ in Hebei, 18 units in Tianjin and 2 units in Beijing.

We use two measures for shock intensity: The first measure is ordinal and based on estimates by Huixian (1986) and Mei (1982) who measure the spatial distribution of earthquake intensity using recorded maximum ground acceleration. The recorded levels of intensity range from magnitude VI to XI. The second measure is cruder but continuous, where earthquake intensity is proxied by the distance (*km*) of the county from the earthquake epicentre. As Shiono (1995) illustrates, the distance from epicentre is a relatively precise way to estimate collapse and fatality rate functions. Both measures are negatively correlated, with a linear correlation coefficient of -0.7 . The distance is calculated as the minimum distance (single-linkage).

One often neglected problem of DiD estimates is the high degree of positive serial-correlation: This issue is well illustrated in the Monte Carlo simulations run by Bertrand et al. (2002), where ignoring the serial-correlation leads to overbloated *t*-statistics and large Type I errors. Unlike Finlay (2009) who does not even mention this problem, we address it in two ways: First, we employ a radical solution proposed by Bertrand et al. (2002) and ignore the time dimension by averaging pre and post data, thus generating a panel of length 2. This extreme simplification is possible in this exceptional setting since the earthquake affects all counties at the same time. Second, we cluster at the county level, a specification that generates consistent estimates as long as the number of counties is large enough (Kezdi, 2005).

⁴The data comes from the compendium CSP (1999), "Comprehensive Statistical Data and Materials on 50 Years of New China".

⁵The administrative units are on the same level, county or district.

3 Results

3.1 Descriptive statistics

Table 1 tabulates the pre-shock summary by treatment status. By definition, a county is "treated" if it has been exposed to an earthquake intensity of X-XI. The simple tabulation of means suggests that most variables are unbalanced across treatment and control group: Cohort sizes in treatment groups are significantly smaller, exhibit lower sex ratios, higher secondary completion rates and unemployment rates. Most of these unbalanced characteristics, however, are driven by the proximity of the epicentre to the urban areas of Tangshan: Not only are administrative units in urban regions significantly smaller - urban regions also tend to exhibit smaller cohort sizes, higher secondary completion and unemployment rates. While the treatment and control groups are less balanced than in truly experimental settings, the results of next subsection suggest that the imperfect randomization would have at best downward biased our results.

3.2 Estimation

We proceed as follows: First, we employ the DiD strategy to estimate the effect of the earthquake on subsequent cohort size (Table 2). We then apply the same strategy to estimate the effect on various secondary outcomes and cohort groups (Table 3).

Table 2 reports a detailed regression for cohort size. Along the assumption that quake intensity *intensity* is exogenous, the magnitude of the earthquake in 1976 had no significant effect on the average cohort size between 1968 to 1986. Without interaction effects, the benchmark specification would suggest that the cohorts coinciding and following the earthquake (*quake_lag*) are significantly smaller (Column I). Once including the interaction $intensity \times quake_lag$, however, the overall sign switches.

The main effect is statistically significant, positive and large (Column II): Cohort sizes in counties subject to a large shock in 1976 saw significantly larger increases in 1977-1979. While a county subject to low earthquake intensity VI would exhibit a decrease in cohort size by about -14.6% on average, a county hit by the intensity XI would see a rise by 19.4%. These estimates are robust upon the inclusion of additional controls: Including

county fixed effects to capture unbalanced urban-rural differentials even increases the coefficient size of the main effect (Column III). We also add aggregate CBR and CDR (Column IV), a quadratic cohort trend (Column V) and time fixed effects (Column VI) to address time-variant confounds, but the results remain remarkably stable.

We repeat this exercise for the various secondary outcome variables (Table 3, Panel I), but now only reporting the full specification: Column I uses the cohort sex ratio as the dependent variable. In contrast, the main effect is now insignificant, suggesting that the earthquake had no effect on the sex composition of the affected cohort. In a similar vein, most of the remaining outcome variables (Column II - Column VIII) are either insignificant or only marginally significant, indicating that the shock did not have any long-term impact on those born afterwards except for a larger cohort size.

To test for supply-side shock effects in schooling, Panel II and Panel III estimate the impact of the earthquake on cohorts at schooling age: In Panel II, we focus on the effect of the earthquake on cohorts born 1962-1964 (who are hence aged 12-14 in 1976) as the destruction of school infrastructure should have the largest impact on cohorts in prime age for secondary education. Indeed, the main effect for secondary school completion is now statistically significant and negative: Cohorts and counties directly affected by the supply-side shock exhibit secondary completion rates that are -14.8% points lower on average (Column II). In addition, the quake appears to induce a shift in the sex composition of enrolled students. The sex ratio of those completing secondary school is now significantly shifted towards male students (Column III). On average, the quake is associated with an increase in school completion sex ratio as high as 30.2% points. Finally, cohorts exposed to the earthquake do not exhibit significantly different tertiary completion and unemployment rates. Mirroring the increased male bias (Column III), however, is the statistically significant shift towards a higher share of unemployed male.

Along the same logic, Panel III focuses on cohorts born 1956-1958 (aged 18-20 in 1976) and hence in the prime age for tertiary education. Since these cohorts have already passed secondary schooling age, the quake had no significant impact on secondary completion rates and sex ratio (Column II-Column III). The main effect for tertiary completion rate, however, is statistically significant and negative, albeit economically small:

Cohorts and counties directly affected by the supply-side shock exhibit tertiary completion rates that are 4.4% points lower on average (Column IV). Unlike secondary school, there is no significant shift in sex composition (Column V). While unemployment rates appear highly significant, the effect is economically negligible (Column VI).

3.3 Robustness checks

We conduct a variety of robustness checks to support our results. First, the findings are not driven by our measure for earthquake intensity. Table 4 repeats the regression using distance to epicentre (*km*) as an alternative measure: Since intensity levels decrease with distance from epicentre, the interaction term is now significantly negative but this does not substantially change the previous results apart from interpretation.

Second, a more grave concern is that the observed increase in cohort size does not reflect a fertility response but instead captures the fatalities. Since the earthquake diminished the population born before 1976, it is possible that the increase is an artifact of the discontinuity. If so, this effect should be captured by a shift in the intercept and not affect the slope, as captured by the main effect: To test for an intercept shift, we include *before* - a dummy valued 1 before the earthquake and 0 after - into our full specification (Table 5, Column II). While there is indeed a "jump", controlling for this shift even increases the magnitude of the main effect: As expected, *before* is highly significant and negative, capturing the adverse impact of the earthquake on the pre-1976 population. Accounting for this, the main effect now increases by almost 0.5% points in magnitude.

Third, we conduct several placebo tests to show that the effect is indeed attributable to the earthquake (Table 5): Column III and Column IV report results for cohort size based on placebo earthquakes in 1973 and 1956. In both regressions, the main effect is statistically insignificant. In addition, Column V and Column VI test if the declines in schooling are indeed directly driven by the school supply-shock: In Column V, we test the effect of a placebo earthquake on secondary schooling outcomes for those who have already left secondary schooling age (age group 18-20). Similarly, we test the effect of a placebo earthquake on tertiary schooling outcomes for those who are yet to reach tertiary schooling age (age group 12-14). Again, the regressions are insignificant, suggesting that the earthquake only had a lasting impact on schooling for those cohorts

directly affected it. Combined with the DiD strategy, it is difficult to argue that there could have been any other effect that coincided with the quake in both time and space, thus confounding our estimates: Neither Mao’s death in 1976 nor the one-child policy enacted in the late 1970s Li et al. (2010) could have caused the variation we exploit for causal inference. To corroborate the robustness checks and once more illustrate that the effects transmit via the three affected cohorts (1977-79, 1962-64 and 1956-58), Figure 4 plots the estimated main effect for different placebo quakes on the outcome variables.

Fourth, we address the issue of migration: Since we are using a single cross-section in 2000, it is possible that the apparent long-run effect is spurious and based on migration flows. For example, it could be that heavily destroyed regions were more attractive following the reconstruction, fostering immigration. This, however is not likely the case: First, migration has been largely restricted due to the Chinese *hukou* system until the 1980s (Bao et al., 2009). Second, we provide evidence that migration would have, at best, downward biased our estimates: Using the census, we constructed *migration_rate*, a dependent variable that captures the share people in each cohort who have not been born in the county of current residence. The main effect is highly significant and negative, suggesting that cohorts and counties affected by the earthquake had lower levels of migration (Table 6, Column I-III). This effect, however, is not economically large but rules out immigration as a possible econometric concern.

Fifth, we test for the common trend assumption by comparing the pre-1976 trend of the outcome variables across counties. If the common trend assumption is violated, with treatment counties following a different trend than control countries, we may erroneously attribute the main effect to the treatment. In Table 7 we test for differential trends before the earthquake but cannot reject common trends except for the secondary completion sex ratio. The results, however, suggest that the trend for treated regions was lower: If so, the large effect - an increase of the completion sex ratio by 30% - will even be a lower bound estimate, with the unbiased coefficient likely larger. Finally, Table 8 presents the simplified 2-period DiD we employ to ensure that our results are not driven by serial-correlation. While the remaining main effects remain robust, the effect of the earthquake on schooling sex rates and unemployment rate turns marginally significant. As we lose most of the controls using this method, however, this exercise is deemed to produce slightly different estimates.

4 Discussion

Even though the county-level relationship is robust and causal, our empirical strategy only identifies rough channels through which the earthquake translates into long-run socio-economic outcomes. To embed our results in the body of related literature, we complement our results by discussing the plausibility of each additional mechanism through which individual decisions sum up to an aggregate effect:

First, the positive fertility response is likely to be a combination of replacement effects, shifting preferences for children and household formation: Based on the rich DHS data for three recent earthquakes, Finlay (2009) found that post-earthquake fertility responses were generally in excess of the sole response to child mortality. If the shock increased the baseline risk, even individuals suffering *no* losses could decide for more children to insure against a future shock. This is consistent with results in Poertner (2008), where an increase in the risk of hurricanes is associated with higher fertility for households with land. In addition, the shock could also induce a short-run shift in norms. Rodgers et al. (2005), for example, provide evidence for a fertility increase following a man-made (terrorist) shock, attributing the effect to "the feelings of immediate threat to life" and return to family values. Finally, post-quake re-marriages are likely to play a role, too. According to Yong (1988), about 15,000 households were affected by the death of either spouse. With family rebuilding peaking in the first half of 1977, it is likely that the new household formations were at least partly responsible for the fertility rise.

Second, there are two main channels through which these cohorts could exhibit adverse educational outcomes: First, the earthquake can translate into a supply-side shock, destroying schools and other infrastructure. Akbulut-Yuksel (2009), for example, identifies the destruction of schools as a main channel through which WWII bombing in Germany translated into adverse educational attainment for the affected cohorts in schooling age. Indeed, since the adverse effects on education are strongest for cohorts in the respective schooling period, our results from Table 3 (Panel II and Panel III) suggest that the adverse education outcomes are mainly driven by the destruction of schools. Second, Akbulut-Yuksel (2009) also shows that the shock affected children exhibited lower health outcomes. Unlike cases where adverse conditions in early childhood translate into lower cognitive performance and education attainment (Maccini and Yang, 2009), however,

the results suggest that latter channel is likely of minor importance in Tangshan.

Third, the substantial shift towards a male biased education enrollment ratio suggests that intrahousehold dynamics play a crucial role in Tangshan. Qian (2008), for example, provides evidence that an increase in female income improves survival rates for girls based on a natural experiment in Chinese tea regions. While our study has not found any evidence for differential neglect of girls or female infanticide based on the cohort sex ratio, the increased enrollment of boys suggests that the adverse shock resulted in a diversion of resources away from girls, in line with Hannum et al. (2007).

Finally, it is unclear why lower education attainment has not translated into adverse labour market outcomes, as proxied by higher unemployment rates. Indeed, it is possible that wage earnings are lower for the less educated while the unemployment rates remained the same - but given the lack of data, it is impossible to test this hypothesis. Alternatively, it could as well be that other factors - such as social networks or party affiliation - play a more important role in a transition country. Meng and Gregory (2002), for example, exploit the Cultural Revolution as a natural experiment to identify effects of lower schooling on earning outcomes. Surprisingly, the effect of interrupted education did not yield significant earning differences, consistent with our results.

4.1 Conclusion

Drawing upon county-level census data, this paper established a long-run relationship between a historical earthquake and current socio-economic outcomes: Our evidence suggests that the earthquake has not only induced a large fertility response, but also had adverse impacts on educational outcomes. While there is no evidence for a change in cohort sex-ratio, the results indicate that the earthquake has significantly skewed the sex composition in secondary education. Despite the larger and less educated cohorts, there is no evidence for adverse labour market outcomes.

These findings are not only in line with the existing literature but also provide confirmatory evidence for hypotheses regarding the long-run effect of large environmental shocks. While the positive fertility response and adverse effect on education is a somewhat established stylized fact, we are (to the best of our knowledge) the first to reliably

demonstrate its long-run effect: Even though Tangshan is rebuilt today, cohorts exposed to the earthquake still suffer from an incident that occurred quarter a century ago. While much of the debate on post-disaster relief is focused on the short-run response, interventions should also focus on cushioning long-run and cohort-specific dynamics.

This paper has also shown that it is possible to obtain clean and causal results based on a single cross-section. Despite utmost effort in challenging our findings, the results remained remarkably robust, even improving in some cases. Nonetheless, this paper leaves many questions unanswered. Confined only to the county-level, it has not been possible to offer micro-level evidence for plausible channels through which these effects are transmitted. By drawing upon related studies, we hoped to offer a few hypothesized mechanisms. Given the lack of data, however, our results are as close as one can get.

Finally, the paper has only focused on a narrow set of outcome variables. The literature on complex emergencies, however, suggests that the impacts of disasters are much broader (Keen, 2007). Even today, there is still anecdotal evidence of long-term psychological effects among the survivors of the Tangshan earthquake (Feng, 1992). While exploring all these dimensions would lie beyond the scope of this paper, future work can focus on other indicators of well-being.

References

- AKBULUT-YUKSEL, M. (2009): “Children of War: The Long-Run Effects of Large-Scale Physical Destruction and Warfare on Children,” IZA Discussion Papers 4407, Institute for the Study of Labor (IZA).
- BAEZ, J. AND I. SANTOS (2007): “Children’s Vulnerability to Weather Shocks: A Natural Disaster as a Natural Experiment,” *Mimeo*.
- BAEZ, J. E., A. DE LA FUENTE, AND I. SANTOS (2010): “Do Natural Disasters Affect Human Capital? An Assessment Based on Existing Empirical Evidence,” IZA Discussion Papers 5164, Institute for the Study of Labor (IZA).
- BAO, S., O. B. BODVARSSON, J. W. HOU, AND Y. ZHAO (2009): “The Regulation of Migration in a Transition Economy: China’s Hukou System,” IZA Discussion Papers 4493, Institute for the Study of Labor (IZA).

- BARKER, D. (1998): *Mothers, babies and health in later life*, Churchill Livingstone, 2 ed.
- BERTRAND, M., E. DUFLO, AND S. MULLAINATHAN (2002): “How Much Should We Trust Differences-in-Differences Estimates?” NBER Working Papers 8841, National Bureau of Economic Research, Inc.
- CARTER, M. R., P. D. LITTLE, T. MOGUES, AND W. NEGATU (2007): “Poverty Traps and Natural Disasters in Ethiopia and Honduras,” *World Development*, 35, 835–856.
- CAVALLO, E., S. GALIANI, I. NOY, AND J. PANTANO (2010): “Catastrophic Natural Disasters and Economic Growth,” RES Working Papers 4671, Inter-American Development Bank, Research Department.
- CAVALLO, E. AND I. NOY (2009): “The Economics of Natural Disasters: A Survey,” RES Working Papers 4649, Inter-American Development Bank, Research Department.
- CSP (1999): “Comprehensive Statistical Data and Materials on 50 Years of New China,” *China Statistical Press*.
- DREZE, J. AND A. SEN (1989): *Hunger and public action*, Oxford University Press, 1 ed.
- (2002): *India: Development and Participation*, vol. 1, Oxford University Press, 2 ed.
- EMDAT (2011): “EM-DAT The International Disaster Database,” *Centre for Research on the Epidemiology of Disasters (CRED)*.
- FENG, Z. (1992): “Near-death experiences among survivors of the 1976 Tangshan earthquake,” *Zhonghua Shen Jing Jing Shen Ke Za Zhi (Chinese)*, 24, 222–253.
- FINLAY, J. (2009): “Fertility Response to Natural Disasters: The Case of Three High Mortality Earthquakes,” *SSRN eLibrary*.
- FOSTER, A. D. (1995): “Prices, Credit Markets and Child Growth in Low-Income Rural Areas,” *Economic Journal*, 105, 551–70.
- GERE, J. AND H. SHAH (1980): “Tangshan rebuilds after mammoth earthquake,” *Civil Engineering*, 50, 47–52.

- HANNUM, E., A. PARK, A. D. BRAUW, AND S. ROZELLE (2007): “Returns to Education in Rural China,” Reap papers, Rural Education Action Project at Stanford University.
- HUIXIAN, L. (1986): “The Damage of the Tangshan Earthquake,” 4.
- (2002): *The Great Tangshan Earthquake of 1976*, vol. 1, California Institute of Technology.
- JENSEN, R. (2000): “Agricultural Volatility and Investments in Children,” *American Economic Review*, 90, 399–404.
- KEEN, D. (2007): *Complex emergencies*, Polity Press, 1 ed.
- KEZDI, G. (2005): “Robust Standard Error Estimation in Fixed-Effects Panel Models,” Econometrics 0508018, EconWPA.
- LI, H., J. YI, AND J. ZHANG (2010): “Estimating the Effect of the One-Child Policy on Sex Ratio Imbalance in China: Identification Based on the Difference-in-Differences,” IZA Discussion Papers 5149, Institute for the Study of Labor (IZA).
- LOMITZ, C. AND H. CASTANOS (2007): “Disasters and maximum entropy production,” *Geological Society of America - Special Papers*, 387–396.
- LORENTZEN, P., J. MCMILLAN, AND R. WACZIARG (2008): “Death and development,” *Journal of Economic Growth*, 13, 81–124.
- MACCINI, S. AND D. YANG (2009): “Under the Weather: Health, Schooling, and Economic Consequences of Early-Life Rainfall,” *American Economic Review*, 99, 1006 – 26.
- MEI, S. (1982): “The 1976 Tangshan Earthquake,” .
- MENG, X. AND R. G. GREGORY (2002): “The Impact of Interrupted Education on Subsequent Educational Attainment: A Cost of the Chinese Cultural Revolution,” *Economic Development and Cultural Change*, 50, 935–59.
- MENG, X., N. QIAN, AND P. YARED (2010): “The Institutional Causes of China’s Great Famine, 1959-61,” NBER Working Papers 16361, National Bureau of Economic Research, Inc.

- POERTNER, C. C. (2008): “Gone with the Wind? Hurricane Risk, Fertility and Education,” *SSRN eLibrary*.
- QIAN, N. (2008): “Missing Women and the Price of Tea in China: The Effect of Sex-Specific Earnings on Sex Imbalance,” *The Quarterly Journal of Economics*, 123, 1251–1285.
- RODGERS, J. L., C. A. S. JOHN, AND R. COLEMAN (2005): “Did Fertility Go up after the Oklahoma City Bombing? An Analysis of Births in Metropolitan Counties in Oklahoma, 1990-1999,” *Demography*, 42, pp. 675–692.
- ROSENZWEIG, M. R. AND O. STARK, eds. (1997): *Handbook of Population and Family Economics*, vol. 1 of *Handbook of Population and Family Economics*, Elsevier.
- SHIONO, K. (1995): “Interpretation of published Data of the 1976 Tangshan, China Earthquake for the Determination of a Fatality Rate Function,” *Structural Engineering*, 11, 155–163.
- STEIN, S. AND S. MAZZOTTI, eds. (2007): *Continental Intraplate Earthquakes: Science, Hazard and Policy Issues*, The Geological Society of America.
- TOWNSEND, R. M. (1994): “Risk and Insurance in Village India,” *Econometrica*, 62, 539–91.
- UNPD (2008): “World Population Prospects: The 2008 Revision Population Data,” *United Nations Population Division*.
- YONG, C., ed. (1988): *The Great Tangshan earthquake of 1976: An anatomy of a disaster*, vol. 1, Pergamon Press.

5 Appendix



Figure 1: Tangshan shortly after the earthquake (China Earthquake Administration)

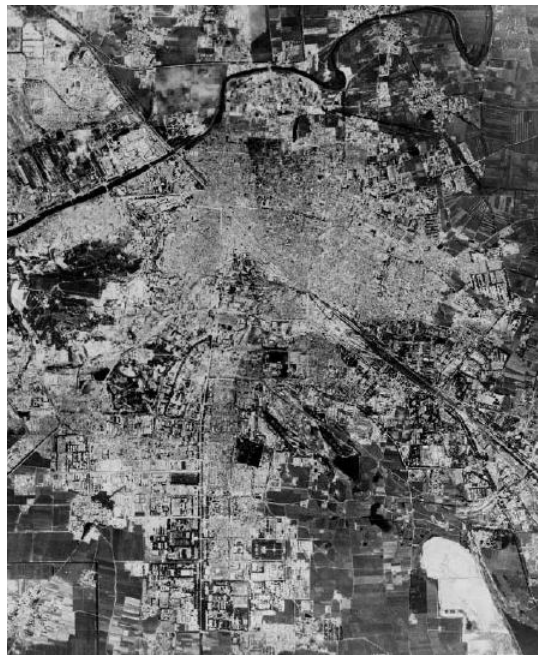


Figure 2: Aerial view of damage in downtown Tangshan (China Earthquake Administration)

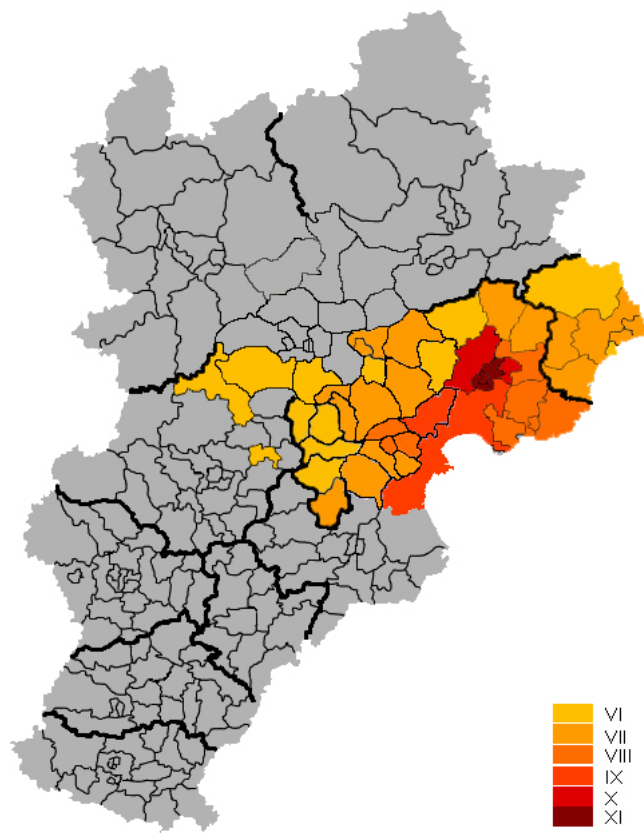


Figure 3: County-level differential earthquake intensity

	Total				Urban				Rural			
	Pooled	Treatment	Control	Diff	Pooled	Treatment	Control	Diff	Pooled	Treatment	Control	Diff
Cohort size	7525.82 (153.49)	6706.64 (456.04)	7609.12 (162.26)	-902.48+ (484.05)	6954.93 (332.63)	7567.68 (636.63)	6860.66 (371.18)	707.02 (736.85)	7697.08 (172.10)	6276.12 (597.50)	7820.64 (178.50)	-1544.52+ (623.59)
N	520	48	472		120	16	104		400	32	368	
Cohort sex ratio	1.033 (0.003)	1.006 (0.010)	1.036 (0.003)	-0.029+ (0.010)	1.034 (0.005)	0.977 (0.012)	1.043 (0.006)	-0.065+ (0.013)	1.033 (0.003)	1.021 (0.013)	1.034 (0.003)	-0.013 (0.014)
N	520	48	472		120	16	104		400	32	368	
County area	1328.02 (79.62)	405.6 (75.35)	1410.38 (85.40)	-1004.78+ (113.89)	146.99 (14.32)	89 (6.196)	155.916 (16.33)	-66.916 (17.473)	1713.14 (97.42)	616.66 (105.76)	1789.64 (102.71)	-1172.97+ (147.43)
N	488	40	448		120	16	104		368	24	344	
Secondary schooling rate	0.732 (0.002)	0.776 (0.005)	0.727 (0.002)	0.048+ (0.006)	0.710 (0.006)	0.748 (0.006)	0.704 (0.006)	0.043+ (0.009)	0.739 (0.002)	0.791 (0.006)	0.734 (0.003)	0.056+ (0.006)
N	520	48	472		120	16	104		400	32	368	
Sec. school. sex ratio	1.118 (0.005)	1.019 (0.010)	1.128 (0.005)	-0.109+ (0.011)	1.050 (0.007)	0.986 (0.017)	1.060 (0.008)	-0.074+ (0.019)	1.138 (0.005)	1.036 (0.012)	1.147 (0.006)	-0.111+ (0.013)
N	520	48	472		120	16	104		400	32	368	
Tertiary schooling rate	0.091 (0.003)	0.112 (0.010)	0.089 (0.003)	0.022** (0.010)	0.205 (0.008)	0.173 (0.016)	0.210 (0.009)	0.037* (0.019)	0.057 (0.001)	0.082 (0.008)	0.055 (0.001)	0.026+ (0.008)
N	520	48	472		120	16	104		400	32	368	
Tert. school. sex ratio	1.075 (0.009)	0.988 (0.018)	1.084 (0.010)	-0.095+ (0.021)	1.017 (0.011)	0.979 (0.027)	1.023 (0.013)	-0.044 (0.030)	1.092 (0.012)	0.992 (0.024)	1.101 (0.013)	-0.108+ (0.027)
N	520	48	472		120	16	104		400	32	368	
Unemployment rate	0.013 (0.0003)	0.014 (0.0006)	0.013 (0.003)	0.001 (0.0007)	0.017 (0.0004)	0.014 (0.0005)	0.018 (0.0004)	-0.003+ (0.0006)	0.012 (0.0003)	0.015 (0.001)	0.012 (0.0003)	0.002** (0.001)
N	520	48	472		120	16	104		400	32	368	
Unemployment sex ratio	0.254 (0.007)	0.274 (0.014)	0.252 (0.008)	0.022 (0.016)	0.408 (0.019)	0.366 (0.018)	0.414 (0.021)	-0.048 (0.028)	0.208 (0.006)	0.229 (0.014)	0.206 (0.006)	0.022 (0.016)
N	520	48	472		120	16	104		400	32	368	

Table 1: Pre-shock summary statistics by treatment status. Means and SEs (in parentheses).

	Dependent variable: <i>log_cohort</i>					
	(I)	(II)	(III)	(IV)	(V)	(VI)
<i>intensity</i>	0.022 (0.05)	0.013 (0.05)	0.106 (0.07)	0.107* (0.06)	0.109* (0.06)	0.111* (0.06)
<i>quake_77</i>	-0.154+ (0.02)	-0.554+ (0.08)	-0.613+ (0.07)	-0.645+ (0.07)	-0.495+ (0.07)	-0.385 (0.35)
<i>int_intensity_quake_77</i>		0.055+ (0.01)	0.063+ (0.01)	0.063+ (0.01)	0.060+ (0.01)	0.056+ (0.01)
<i>log_area</i>			0.133 (0.10)	0.150 (0.10)	0.173* (0.10)	0.216** (0.09)
<i>urban</i>			0.175 (0.34)	0.202 (0.33)	0.239 (0.31)	0.309 (0.29)
<i>prov_cbr</i>				-0.016* (0.01)	-0.050+ (0.01)	-0.113+ (0.02)
<i>prov_cdr</i>				-0.094+ (0.01)	-0.093+ (0.02)	-0.107 (0.07)
<i>year</i>					-0.181+ (0.03)	-0.274 (0.23)
<i>year</i> ²					0.005+ (0.00)	0.007 (0.01)
Annual dummies	No	No	No	No	No	Yes
<i>N</i>	1235	1235	1159	1159	1159	1159
<i>R</i> ²	0.010	0.012	0.080	0.120	0.177	0.316

Table 2: Earthquake intensity on (log) cohort sizes, county-level

Notes: Estimated by OLS. Numbers in parentheses are robust SEs clustered at the county level (61 counties). * $p < 0.1$, ** $p < 0.5$, + $p < 0.01$. Intercept not reported.

Dependent variable: various outcome indicators for cohort born 1977-79							
Panel I	(I)	(II)	(III)	(IV)	(V)	(VI)	(VII)
<i>intensity</i>	-0.002 (0.01)	0.008* (0.00)	-0.012* (0.01)	-0.002 (0.00)	-0.039+ (0.01)	-0.000 (0.00)	-0.000 (0.01)
<i>treat_77</i>	0.043 (0.07)	0.057 (0.04)	-0.057 (0.07)	-0.001 (0.04)	0.006 (0.40)	0.000 (0.00)	-0.121 (0.15)
<i>int_intensity_treat_77</i>	0.005 (0.01)	-0.009 (0.01)	0.012 (0.01)	0.009* (0.01)	0.042* (0.02)	0.000 (0.00)	0.034* (0.02)
<i>N</i>	1159	1159	1159	1159	1051	1159	1098
<i>R</i> ²	0.142	0.532	0.150	0.641	0.141	0.884	0.768
Dependent variable: various outcome indicators for cohort born 1962-64							
Panel II	(I)	(II)	(III)	(IV)	(V)	(VI)	(VII)
<i>intensity</i>	-0.002 (0.00)	0.007 (0.01)	-0.035** (0.02)	-0.002 (0.00)	-0.087** (0.03)	-0.001 (0.00)	0.013 (0.01)
<i>treat_62</i>	0.121+ (0.04)	-0.126** (0.05)	0.173 (0.13)	0.061** (0.02)	1.024+ (0.34)	-0.003* (0.00)	-0.124** (0.05)
<i>int_intensity_treat_62</i>	0.003 (0.00)	-0.009+ (0.00)	0.047+ (0.01)	-0.000 (0.00)	0.004 (0.03)	-0.000 (0.00)	0.015+ (0.01)
<i>N</i>	1159	1159	1159	1159	1159	1159	1159
<i>R</i> ²	0.088	0.661	0.578	0.710	0.497	0.463	0.419
Dependent variable: various outcome indicators for cohort born 1956-58							
Panel III	(I)	(II)	(III)	(IV)	(V)	(VI)	(VII)
<i>intensity</i>	0.001 (0.00)	0.006 (0.01)	-0.044** (0.02)	-0.001 (0.00)	-0.091** (0.04)	-0.000 (0.00)	0.021** (0.01)
<i>treat_56</i>	0.021 (0.02)	0.047* (0.03)	-0.094 (0.11)	-0.000 (0.01)	0.296 (0.42)	0.000 (0.00)	0.033 (0.04)
<i>int_intensity_treat_56</i>	-0.003 (0.00)	0.003 (0.00)	0.006 (0.01)	-0.003+ (0.00)	-0.043 (0.05)	-0.000** (0.00)	-0.002 (0.00)
<i>N</i>	1037	1037	1037	1037	1037	1037	1037
<i>R</i> ²	0.087	0.810	0.560	0.718	0.334	0.563	0.368

Table 3: Earthquake intensity on gender, schooling and labour market variables for cohort born within three years after the disaster (Panel I) and cohorts at schooling age (Panel II and III).

Notes: Estimated by OLS. Numbers in parentheses are robust SEs clustered at the county level (61 counties). Intercept and control variables (Table 2, VI model) not reported. Column I: Cohort sex ratio. Column II: Cohort sec. completion rate. Column III: Cohort sec. completion sex ratio. Column IV: Cohort tert. completion rate. Column V: Cohort tert. completion sex ratio. Column VI: Cohort unemployment rate. Column VII: Cohort unemployment sex ratio. * $p < 0.1$, ** $p < 0.05$, + $p < 0.01$

Dependent variable: <i>log_cohort</i>						
	(I)	(II)	(III)	(IV)	(V)	(VI)
<i>log_epicentre</i>	-0.073 (0.06)	-0.059 (0.06)	-0.082 (0.06)	-0.094 (0.06)	-0.110* (0.06)	-0.141** (0.06)
<i>treat_77</i>	-0.159+ (0.02)	0.238+ (0.05)	0.238+ (0.05)	0.205+ (0.05)	0.363+ (0.06)	0.521 (0.41)
<i>int_log_epicentre_treat_77</i>		-0.089+ (0.01)	-0.089+ (0.01)	-0.091+ (0.01)	-0.096+ (0.01)	-0.105+ (0.01)
<i>log_area</i>			0.091 (0.09)	0.112 (0.09)	0.138 (0.09)	0.190** (0.08)
<i>urban</i>			0.119 (0.35)	0.151 (0.34)	0.193 (0.32)	0.274 (0.29)
<i>prov_cbr</i>				-0.019* (0.01)	-0.055+ (0.02)	-0.124+ (0.03)
<i>prov_cdr</i>				-0.096+ (0.01)	-0.098+ (0.02)	-0.108 (0.08)
<i>age</i>					-0.186+ (0.03)	-0.308 (0.24)
<i>age</i> ²					0.005+ (0.00)	0.008 (0.01)
Annual dummies	No	No	No	No	No	Yes
<i>N</i>	1159	1159	1159	1159	1159	1159
<i>R</i> ²	0.020	0.022	0.048	0.093	0.156	0.312

Table 4: Robustness check: Distance from epicentre on (log) cohort sizes, county-level

Notes: Estimated by OLS. Numbers in parentheses are robust SEs clustered at the county level (61 counties). Intercept not reported. * $p < 0.1$, ** $p < 0.5$, + $p < 0.01$.

Dependent variable: various outcome indicators (see note below)						
	(I)	(II)	(III)	(IV)	(V)	(VI)
<i>intensity</i>	0.111* (0.06)	0.109* (0.06)	0.129** (0.05)	0.141** (0.06)	0.006 (0.01)	-0.002 (0.00)
<i>treat_77</i>	-0.385 (0.35)	-0.808+ (0.09)				
<i>int_intensity_treat_77</i>	0.056+ (0.01)	0.060+ (0.01)				
<i>before</i>		-0.684+ (0.11)				
<i>treat_73</i>			-0.315+ (0.09)			
<i>int_intensity_treat_73</i>			-0.004 (0.01)			
<i>treat_56</i>				-0.095 (0.07)	0.047* (0.03)	
<i>int_intensity_treat_56</i>				0.014 (0.01)	0.003 (0.00)	
<i>treat_62</i>						0.085+ (0.03)
<i>int_intensity_treat_62</i>						-0.000 (0.00)
<i>N</i>	1159	1159	1159	1037	1037	1159
<i>R</i> ²	0.316	0.211	0.355	0.371	0.810	0.710

Table 5: Robustness check: Placebo test using different timing dummies

Notes: Estimated by OLS. Numbers in parentheses are robust SEs clustered at the county level (61 counties). Intercept and control variables (Table 2, VI model) not reported. * $p < 0.1$, ** $p < 0.5$, + $p < 0.01$. Dependent variable in Column I-Column IV is the cohort size and secondary (tertiary) completion rate in Column V (Column VI).

Dependent variables:	<i>migration_rate</i>			<i>migration_sex</i>		
	(I)	(II)	(III)	(IV)	(V)	(VI)
<i>intensity</i>	0.003+	0.001	0.001	-0.004	-0.036*	-0.036*
	(0.00)	(0.00)	(0.00)	(0.02)	(0.02)	(0.02)
<i>treat_77</i>	0.012+	0.011+	0.013+	-0.494+	-0.536+	-0.191
	(0.00)	(0.00)	(0.00)	(0.15)	(0.16)	(0.25)
<i>int_intensity_treat_77</i>	-0.001+	-0.001**	-0.001**	0.040**	0.046**	0.045**
	(0.00)	(0.00)	(0.00)	(0.02)	(0.02)	(0.02)
<i>log_area</i>		-0.002**	-0.001		-0.086**	-0.078*
		(0.00)	(0.00)		(0.04)	(0.04)
<i>urban</i>		0.014+	0.015+		-0.092	-0.080
		(0.00)	(0.00)		(0.10)	(0.11)
<i>prov_cbr</i>			-0.002+			-0.012
			(0.00)			(0.01)
<i>prov_cdr</i>			0.001			-0.003
			(0.00)			(0.03)
<i>age</i>			0.004			-0.372+
			(0.00)			(0.12)
<i>age²</i>			-0.000			0.008+
			(0.00)			(0.00)
<i>N</i>	1235	1159	1159	1233	1157	1157
<i>R²</i>	0.087	0.415	0.659	0.027	0.063	0.243

Table 6: Robustness check: Effect of earthquake on migration

Notes: Estimated by OLS. Numbers in parentheses are robust SEs clustered at the county level (61 counties). Intercept not reported. * $p < 0.1$, ** $p < 0.5$, + $p < 0.01$.

	Dependent variable: various outcome indicators							
	(I)	(II)	(III)	(IV)	(V)	(VI)	(VII)	(VIII)
<i>treat</i>	-0.197	0.022	-0.075	0.269**	0.055	-0.202	0.007	0.132
	(0.79)	(0.14)	(0.09)	(0.13)	(0.15)	(0.20)	(0.01)	(0.26)
<i>int_treat_age</i>	0.008	-0.001	0.004	-0.013+	-0.001	0.003	-0.000	-0.004
	(0.03)	(0.00)	(0.00)	(0.00)	(0.01)	(0.01)	(0.00)	(0.01)
<i>age</i>	0.069+	0.002	-0.009+	0.012+	-0.005**	0.037+	-0.000	0.001
	(0.01)	(0.00)	(0.00)	(0.00)	(0.00)	(0.00)	(0.00)	(0.00)
<i>N</i>	488	488	488	488	488	488	488	488
<i>R²</i>	0.079	0.007	0.134	0.101	0.019	0.155	0.010	0.003

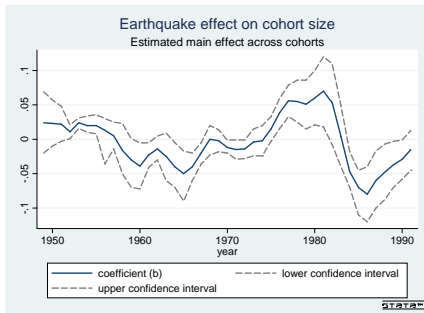
Table 7: Robustness check: Testing the common trend assumption

Notes: Estimated by OLS. Numbers in parentheses are robust SEs clustered at the county level. Intercept not reported. Column I: Cohort size. Column II: Cohort sex ratio. Column III: Cohort sec. completion rate. Column IV: Cohort sec. completion sex ratio. Column V: Cohort tert. completion rate. Column VI: Cohort tert. completion sex ratio. Column VII: Cohort unemployment rate. Column VIII: Cohort unemployment sex ratio. * $p < 0.1$, ** $p < 0.5$, + $p < 0.01$

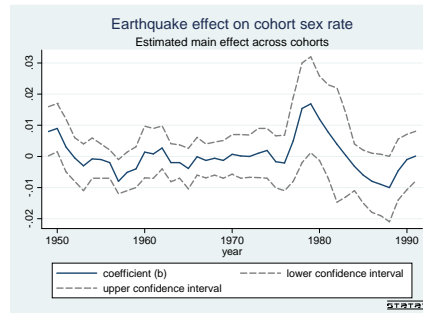
	Dependent variable: various outcome indicators							
	(I)	(II)	(III)	(IV)	(V)	(VI)	(VII)	(VIII)
<i>post</i>	-0.497+	-0.022	0.093**	-0.119**	-0.015	-0.453+	-0.002	0.223**
	(0.11)	(0.05)	(0.04)	(0.05)	(0.03)	(0.15)	(0.00)	(0.09)
<i>intensity</i>	0.058	0.004	0.003	-0.016**	0.019**	-0.041+	0.000	0.040+
	(0.05)	(0.01)	(0.01)	(0.01)	(0.01)	(0.01)	(0.00)	(0.01)
<i>intensity_post</i>	0.054+	0.007	-0.007	0.016**	0.004	0.044**	0.001**	0.011
	(0.01)	(0.01)	(0.01)	(0.01)	(0.00)	(0.02)	(0.00)	(0.01)
<i>N</i>	122	122	122	122	122	122	122	122
<i>R</i> ²	0.050	0.043	0.065	0.027	0.075	0.120	0.176	0.428

Table 8: Robustness check: Simple 2-period DiD

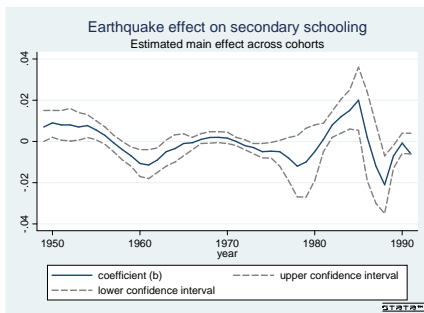
Notes: Estimated by OLS. Numbers in parentheses are robust SEs. Intercept not reported. Column I: Cohort size. Column II: Cohort sex ratio. Column III: Cohort sec. completion rate. Column IV: Cohort sec. completion sex ratio. Column V: Cohort tert. completion rate. Column VI: Cohort tert. sex ratio. Column VII: Cohort unemployment rate. Column VIII: Cohort unemployment sex ratio. * $p < 0.1$, ** $p < 0.05$, + $p < 0.01$



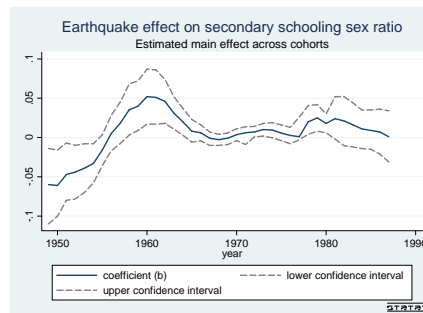
(a) Cohort size



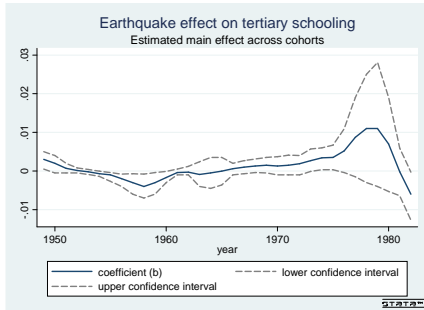
(b) Cohort sex ratio



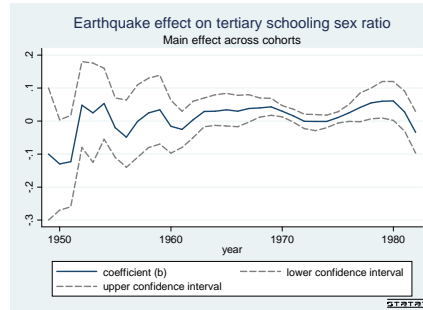
(c) Sec. cohort size



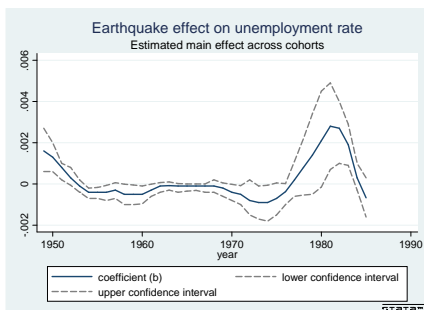
(d) Sec. sex ratio



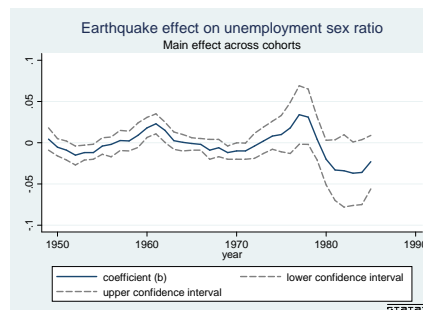
(e) Tertiary cohort size



(f) Tertiary cohort sex ratio



(g) Unemployment rate



(h) Unemployment sex ratio

Figure 4: Plotting the estimated main effect across cohorts