

Brewer, Mike

Working Paper

Welfare reform in the UK: 1997 - 2007

Working Paper, No. 2008:12

Provided in Cooperation with:

IFAU - Institute for Evaluation of Labour Market and Education Policy, Uppsala

Suggested Citation: Brewer, Mike (2008) : Welfare reform in the UK: 1997 - 2007, Working Paper, No. 2008:12, Institute for Labour Market Policy Evaluation (IFAU), Uppsala

This Version is available at:

<https://hdl.handle.net/10419/45770>

Standard-Nutzungsbedingungen:

Die Dokumente auf EconStor dürfen zu eigenen wissenschaftlichen Zwecken und zum Privatgebrauch gespeichert und kopiert werden.

Sie dürfen die Dokumente nicht für öffentliche oder kommerzielle Zwecke vervielfältigen, öffentlich ausstellen, öffentlich zugänglich machen, vertreiben oder anderweitig nutzen.

Sofern die Verfasser die Dokumente unter Open-Content-Lizenzen (insbesondere CC-Lizenzen) zur Verfügung gestellt haben sollten, gelten abweichend von diesen Nutzungsbedingungen die in der dort genannten Lizenz gewährten Nutzungsrechte.

Terms of use:

Documents in EconStor may be saved and copied for your personal and scholarly purposes.

You are not to copy documents for public or commercial purposes, to exhibit the documents publicly, to make them publicly available on the internet, or to distribute or otherwise use the documents in public.

If the documents have been made available under an Open Content Licence (especially Creative Commons Licences), you may exercise further usage rights as specified in the indicated licence.



IFAU – INSTITUTE FOR
LABOUR MARKET POLICY
EVALUATION

Welfare reform in the UK: 1997–2007

Mike Brewer

**With comments by
Peter Fredriksson**

WORKING PAPER 2008:12

The Institute for Labour Market Policy Evaluation (IFAU) is a research institute under the Swedish Ministry of Employment, situated in Uppsala. IFAU's objective is to promote, support and carry out scientific evaluations. The assignment includes: the effects of labour market policies, studies of the functioning of the labour market, the labour market effects of educational policies and the labour market effects of social insurance policies. IFAU shall also disseminate its results so that they become accessible to different interested parties in Sweden and abroad.

IFAU also provides funding for research projects within its areas of interest. The deadline for applications is October 1 each year. Since the researchers at IFAU are mainly economists, researchers from other disciplines are encouraged to apply for funding.

IFAU is run by a Director-General. The institute has a scientific council, consisting of a chairman, the Director-General and five other members. Among other things, the scientific council proposes a decision for the allocation of research grants. A reference group including representatives for employer organizations and trade unions, as well as the ministries and authorities concerned is also connected to the institute.

Postal address: P.O. Box 513, 751 20 Uppsala

Visiting address: Kyrkogårdsgatan 6, Uppsala

Phone: +46 18 471 70 70

Fax: +46 18 471 70 71

ifau@ifau.uu.se

www.ifau.se

Papers published in the Working Paper Series should, according to the IFAU policy, have been discussed at seminars held at IFAU and at least one other academic forum, and have been read by one external and one internal referee. They need not, however, have undergone the standard scrutiny for publication in a scientific journal. The purpose of the Working Paper Series is to provide a factual basis for public policy and the public policy discussion.

ISSN 1651-1166

Welfare reform in the UK: 1997–2007[°]

by

Mike Brewer*

17 May 2008

Abstract

This paper presents a tour of welfare reforms in the UK since the last change of government, summarising the most important changes in active labour market policies (ALMPS), and in measures intended to strengthen financial incentives to work. It argues that developments in the UK's active labour market policies occurred in two broad phases: first, the Government sought to strengthen ALMPs for those individuals deemed to be unemployed, through the New Deal programme. Second, the Government has reformed benefits for individuals traditionally viewed as inactive and thus excused job search activity, such as lone parents, and the sick and disabled. Accompanying these have been changes to direct taxes, tax credits and welfare benefits aiming to strengthen financial work incentives. However, financial work incentives have been strengthened by less than might be expected given the early rhetoric: the expansion in family-based tax credits have weakened the financial work incentives of (potential) second earners in families with children, many more workers now face combined marginal tax and tax credit withdrawal rates in excess of 60 per cent than a decade ago, and a desire to achieve broad reductions in relative child poverty has led the Government to increase substantially income available to non-working families with children. We also summarise evaluations of three important UK welfare-to-work reforms (WFTC, NDYP and Pathways to Work), but without comparing their efficacy.

Keywords: Welfare reform, Tax credits

JEL-codes: I38, H53

[°] Support from the ESRC Centre for the Microeconomic Analysis of Public Policy at the Institute for Fiscal Studies is gratefully acknowledged. The author is very grateful to Richard Blundell for comments and discussions on these issues, and to colleagues at the IFS whose joint work is referred to in this paper. The Labour Force Survey (LFS) and the Family Resources Survey (FRS) are Crown Copyright material, and are reproduced with the permission of the Controller of HMSO and the Queen's Printer for Scotland. The LFS is available from the UK Data Archive, and the FRS was made available by the Department for Work and Pensions, neither of which bears any responsibility for analysis or interpretation in this paper. The paper does not reflect changes to welfare policy announced in late 2007. Reprinted with permission from Swedish Economic Policy Review.

* Mike Brewer is the Programme Director of the Direct Tax and Welfare sector, Institute for Fiscal Studies, London, UK.

Table of contents

1	Main welfare to work reforms – description.....	3
1.1	Active labour market policies.....	3
1.1.1	New Deal for Young People (18 to 24).....	4
1.1.2	New Deal for 25 Plus	4
1.1.3	New Deal for Lone Parents, New Deal for Disabled People, New Deal for 50 plus and New Deal for Partners.....	5
1.1.4	Jobcentre Plus.....	5
1.1.5	Pathways to Work	5
1.1.6	Lone parents	7
1.2	Changes to financial incentives to work.....	7
1.2.1	Minimum wage.....	8
1.2.2	Personal tax changes	9
1.2.3	In-work benefit reform	9
1.2.4	Phase 1: the Working Families Tax Credit	10
1.2.5	Phase 2: the child and working tax credits	11
1.2.6	Welfare benefit changes	13
1.2.7	Work-related childcare	13
1.3	Conclusions	14
2	Outcomes.....	14
2.1	Financial work incentives.....	14
2.2	Indicators of employment and worklessness.....	17
2.3	Relative poverty	20
3	A focus on some specific evaluations	22
3.1	Working Families’ Tax Credit	22
3.2	New Deal for Young People	26
3.3	Pathways to work	27
4	Conclusions	29
	References	32
	Comment by Peter Fredriksson	35
	References	47

This paper gives a partial and brief overview of reforms to welfare to work policies (sometimes shortened to “welfare reforms”) in the UK since 1997, the year that the New Labour party formed the government. The aim has been to describe some of the key policies, discuss the impact of policies on a (small) number of employment-related indicators, but also summarise some of the more thorough econometric evaluations of particular welfare reforms (although with no attempt to compare the policies discussed).

Section 1 gives some details of the main measures: reforms to what can be thought of as active labour market policies (ALMP), and then reforms to taxes and benefits aimed at strengthening financial work incentives. Section 2 shows what happened to financial work incentives and some employment and poverty outcomes that could be thought of as success measures for welfare reforms. Section 3 summarises the results of econometric evaluations of Working Families’ Tax Credit (WFTC), the New Deal for Young People (NDYP), and the new Pathways to Work pilot (for recipients of incapacity benefit), arguably the three most important changes since 1997. Section 4 concludes.

1 Main welfare to work reforms – description

In this section, we give an overview of the various aspects of welfare to work policies, or other policies expected to have a significant impact on groups on welfare.¹

1.1 Active labour market policies

The centrepiece of the Labour Government’s welfare to work reforms in its first few years was the New Deal. In the general policy parlance, the New Deal represents a strengthening of the ALMP applicable to recipients of out-of-work benefits. There are a number of New Deals aimed at different groups on welfare, each with differing eligibility requirements and varying degrees of compulsion. For example, the New Deal for Young People is compulsory for all those under 25 who have been unemployed for 6 months; the New Deals for Lone Parents (NDLP), by contrast, are voluntary

¹ An early exposition of the current Government’s priorities for welfare reform can be found in HM Treasury (1997); a more recent one is Department for Work and Pensions (2006). Reassuringly, the two have much in common.

programmes that offer only advice and support, with no threat of financial sanctions. NDYP, therefore, places significant restrictions on the behaviour of young long-term unemployed as well as offering extra support; NDLP, though, represents only additional support. As we discuss later, this reflects that lone parents are, at the time of writing, excused from having to claim a benefit for the unemployed until their children are all aged 16 or more.

1.1.1 New Deal for Young People (18 to 24)

The New Deal for Young People (NDYP) was introduced across the UK in April 1998; before this time, there was no specific programme for young unemployed people, only for the long-term unemployed. Participation in NDYP is compulsory for all young people aged between 18 and 24 who have been claiming Jobseeker's Allowance (JSA) for at least six months, and involves up to four months of extensive assistance with job search from a personal advisor. If participants have not found employment by the end of this "gateway" period, then they are offered up to four options, all of which seek to improve their employability (these are: subsidised job placement with training, education, voluntary or environmental work). By the end of 2004, there have been almost 1.2 million completed spells on NDYP. 38 per cent of participants left for sustained² unsubsidised jobs, 11 per cent transferred to other benefits, 20 per cent have left for other known reasons, while the remaining 31 per cent for unknown reasons.

1.1.2 New Deal for 25 Plus

The national New Deal 25 Plus programme (ND25+) was originally launched in June 1998 and reformed in April 2001. The programme focuses upon the long-term unemployed with mandatory participation for all individuals who have been claiming JSA for 18 of the last 21 months. The programme now shares common features with the NDYP, beginning with an initial "gateway" period lasting for up to four months, followed by an "Intensive Activity Period" (IAP) typically lasting for no more than 26 weeks. The IAP includes flexible packages of support which can combine work experience/placements, work focused training and help with motivation and soft skills.

² A sustained job is defined as one lasting for more than 13 weeks.

1.1.3 New Deal for Lone Parents, New Deal for Disabled People, New Deal for 50 plus and New Deal for Partners

These are all voluntary programmes open to different groups of the inactive or unemployed (New Deal for Partners is aimed at non-working partners of benefit recipients). Participants in the programme are assigned a personal advisor, who generally assists with a range of job search activities.

1.1.4 Jobcentre Plus

A key operational change introduced by the government was the merger of the two agencies individually responsible for employment services and administration of social security benefits into one body known as Jobcentre Plus (administration of social security benefits for those aged 60 and over has been given to another agency). As well as reducing government's administrative costs and claimants' compliance costs, the aim was to allow the Government to place greater emphasis on getting benefit claimants back to work, even for those receiving a benefit for the inactive (who therefore face no requirement to look for work), such as lone parents and those with ill-health or disabilities.

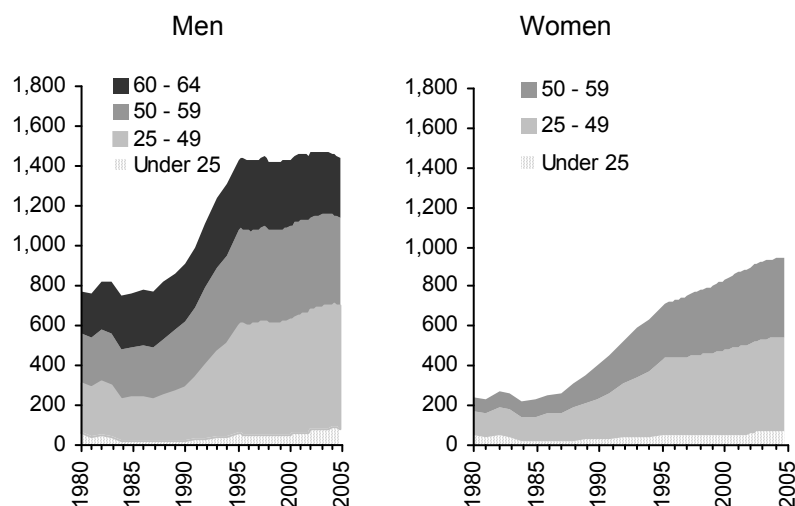
1.1.5 Pathways to Work

In line with the trend for later reforms to focus on those recipients of benefits supposedly designed for the inactive, since October 2003 the Government has been piloting reforms which both provide greater support (financial and non-financial) and impose greater obligations to encourage claimants of incapacity benefits to move into paid work. These are known as the "Pathways to Work" reforms. The Government has already committed to extending the reforms across the UK by 2008, and set a long-term target to reduce the number of individuals claiming incapacity benefits by 1 million within ten years (Department for Work and Pensions 2006).

Like other OECD countries, the numbers of individuals claiming incapacity benefits have risen considerably in recent years, more than trebling in GB over the last quarter of a century. Moreover, as shown in *Figure 1*, despite the replacement in April 1995 of Invalidity Benefit with Incapacity Benefit – which was designed to have a more stringent health test – the number of claimants of these benefits aged under the State

Pension Age has continued to grow over the last ten years, albeit at a slower rate than over the previous ten years, chiefly because of a sharp rise in female claimants.

Figure 1 Number of claimants of Invalidity and Incapacity Benefit aged under the State Pension Age, May 1980 to February 2005 (thousands)



Source: Department for Work and Pensions (taken from Adam *et al* 2006).

Many individuals receiving Incapacity Benefit do so for a long time. As stated in the recent Department of Work and Strategy five year strategy (Department for Work and Pensions 2007), on average those claiming the benefit for more than twelve months end up claiming for eight years (Department for Work and Pensions 2005). The reforms being piloted are motivated by concerns that the current arrangements do not do enough (indeed, do nothing at all) to encourage claimants back into paid work or help them manage their health condition (a detailed discussion can be found in the Green Paper which proposed the pilots: Department for Work and Pensions 2002).

The Pathways to Work package of reforms for new claimants of incapacity benefits includes three aspects: mandatory monthly work-focused interviews during the first six months (those with particularly serious medical conditions are exempted) a set of health-related and labour market programmes, and increased financial support and incentives, with a new Return to Work Credit paying GBP 40 a week for the first year of paid employment after leaving incapacity benefits if gross annual earnings are below GBP 15,000.

1.1.6 Lone parents

The treatment of lone parents within the welfare system deserves particular attention for a number of reasons. First, the UK has internationally high proportions of families with children headed by a lone parent (currently 25 per cent, with longitudinal data suggesting that one third of mothers will spend some time as a lone mother before all her children are aged 18). Second, lone parents tend to have relatively poor skills, and those in work tend to work part-time for relatively low wages, and so whether working or not, they make up a significant proportion of the group likely to be affected by welfare reforms. Third, the UK has very generous (by international standards) rules for lone parents who claim welfare benefits: at the time of writing, lone parents in the UK are excused from all job-search requirements until their youngest child reaches 16. Partly as a consequence of the latter two points, fewer than half of lone parents were in work in 1997, and relative poverty rates for children in lone parent families were much higher than children in couple families.³

Many of the changes to tax credits, minimum wage, and childcare policies (described in Section 1.2) have been of particular help to lone parents. But it is only very recently that the Government has proposed increasing the requirements asked of lone parents on welfare, with a proposal that lone parents should have to engage in job-search as a condition of receiving benefit when their youngest child reaches 7. Previous reforms had the stated aim of making the NDLP more effective and more accessible, requiring lone parents to meet at least annually with a personal adviser (case worker), and had introduced a time-limited in-work bonus.⁴

1.2 Changes to financial incentives to work

This section describes the main ways in which the current UK Government has sought to strengthen financial work incentives for those with low earning power, discussing the minimum wage, personal tax changes and then changes to in-work benefits and tax credits.

³ See Brewer *et al* (2007b).

⁴ This is much like the Return to Work bonus: it pays £40 a week, for up to 12 months duration, to lone parents who have been on welfare for at least a year and then leave welfare to get a job. Early evaluation results, though, show very small impacts on labour market outcomes: Brewer *et al* (2007a).

1.2.1 Minimum wage

In April 1999, a national minimum wage (NMW) was introduced in the UK at a rate of GBP 3.00 per hour for those aged 18-21 (the development rate) and at the higher rate of GBP 3.60 per hour for those aged 22 and over (*Table 1*). In Spring 1998, before the NMW was introduced, the Office for National Statistics estimated that 1.3 million individuals were paid wages below these introductory rates.⁵ By the following year, the number of individuals who were estimated to be paid below these rates had fallen to a little under half a million, and since then the number of individuals paid below the operating national minimum wage rates has been relatively stable, fluctuating slightly between about 230,000 and 340,000.⁶ The value of the minimum wage relative to the economy-wide average hourly wage rate has been increasing: in 1999, the main rate was equivalent to 36.8 per cent (47.0 per cent) of the mean (median) wage in that year, but by 2004 it was worth 39.8 per cent (51.9 per cent) of the respective mean (median) wage.

Table 1 The UK's minimum wage (GBP)

Rates effective from	Main rate	Develop. rate	Median wage	Mean wage
April 1999	3.60	3.00	7.66	9.79
October 2000	3.70	3.20	7.93	10.22
October 2001	4.10	3.50	8.28	10.78
October 2002	4.20	3.60	8.62	11.35
October 2003	4.50	3.80	8.95	11.73
October 2004	4.85	4.10	9.35	12.18
October 2005	5.05	4.25	9.56	12.50
October 2006	5.35	4.45	9.95	13.00
October 2007	5.52	4.60		

Notes: Main rate paid to workers aged 22 years and older. Development rate paid to workers aged 18-21 years inclusive and workers aged 22 years and above who starting a new job with a new employer and doing accredited training. From October 2004 a new rate of GBP 3.00 per hour was introduced. This applies to all 16 year olds who are no longer of compulsory school age, and 17 year olds. Mean and median wages are for all adult employees.

Source: Low Pay Commission website (<http://www.lowpay.gov.uk/>). Mean and Median wages: derived from ASHE and taken from <http://www.statistics.gov.uk/StatBase/Product.asp?vlnk=13101>.

In general, a binding minimum wage should increase the gap between in-work and out-of-work incomes for low-skilled groups, and so induce an increase in labour supply.

⁵ Office for National Statistics (2004a).

It may also, however, reduce the demand for labour if low skilled workers become uneconomic to employ. Dickens and Manning (2002) find that virtually all of the impact of the NMW on the distribution of wages occurred within the first two months of its introduction, and the impact on employment seems to have been small (see, for example, Machin and Wilson 2004, or Stewart 2004). The impact on welfare to work policies may, then, be limited, but the Government now sees the minimum wage as an essential backstop to low wages, particularly to help prevent the incidence of in-work support (see Section 2.2) being entirely on employers.

1.2.2 Personal tax changes

In the current Government's first parliamentary term, a series of changes were made to income tax and social insurance contributions (called National Insurance in the UK) which particularly affected low-paid workers, and which were (correctly) described by the Government as improving financial gains to working for the low-wage. Compared with the changes to financial work incentives arising from the Working Families' Tax Credit, the impact of these changes was much smaller on any individual's financial incentives, but affecting many more workers. To save space, they are not described further here.⁷

1.2.3 In-work benefit reform

Since 1997, there have been two sets of changes to in-work benefits (or tax credits). The first of these (in October 1999; the replacement of a programme called family credit with one called Working Families' Tax Credit) was motivated by concerns to improve the incentives for (some) low-earning parents to be in work. The rationale for the second set of reforms (in April 2003, which introduced the child and working tax credits) is less clear, though, and most domestic attention since 2003 has been devoted to operational issues of implementing a tax credit assessed on combined family income given the constraints of an income tax system that is individually assessed.

⁶ Individuals can be paid less than the minimum wage either through genuine non-compliance, or through errors in the household surveys on which these estimates are based.

⁷ See HM Treasury (1998) for the report recommending some of these change, and Myck (2000) and Gregg *et al* (1999) for analysis. One of these changes, however – a lower rate of income tax (10 per cent) on the first GBP 2,000 of income – has since been removed in favour of a lower basic rate of tax (which was 23 per cent in 1997, and is due to be 20 per cent by 2008): this was announced in the 2007 Budget (HM Treasury 2007).

1.2.4 Phase 1: the Working Families Tax Credit

In October 1999, a programme called family credit was replaced by Working Families' Tax Credit (WFTC). In the jargon, WFTC was a "refundable" tax credit, i.e. payable even if it exceeded the family's income tax liability. To be entitled, at least one adult in a family with children must work at least 16 hours a week. So-called "hours rules" are a pervasive feature in the UK welfare benefit system, and have since spread into in-work tax credits.⁸

There is a basic credit for each family plus additions for each child, and this is withdrawn once earnings exceed a disregard. The phase-out or withdrawal rate in WFTC was 55 per cent, but this applies to earnings *after* income tax and social insurance have been deducted, so the usual overall marginal deduction rate for someone receiving WFTC was 69 per cent.⁹

In operational terms, there was little difference between WFTC and its predecessor, family credit (FC): for example, WFTC was still subject to strict capital rules, like all welfare benefits in the UK. The one high-profile operational difference, though, was that WFTC was administered by the tax authority (not the agency responsible for social security benefits), and, except where couples with children requested it to be paid to a non-working adult, was paid to individuals through employers.

However, the more important difference with FC was that WFTC was substantially more generous, with a higher earnings disregard, a lower withdrawal rate, more generous entitlements, and a subsidy for childcare expenditures.¹⁰ Overall, these changes substantially increased in-work incomes for eligible families, and the number of eligible families, and the WFTC was approximately twice as expensive as its immediate predecessor: *Figure 2* shows that expenditure on employment tax credits almost doubled between 1998-99 and 2000-01, going from GBP 2.68 billion to GBP

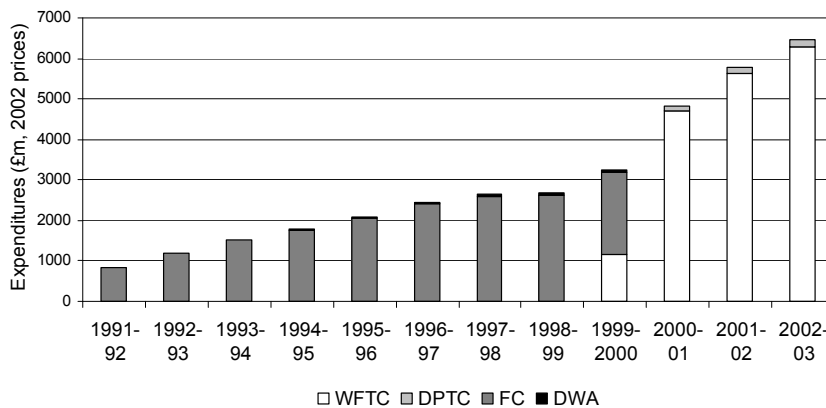
⁸ Theoretically, they allow for a closer targeting on low wages, rather than low earners, but this must be traded off against the increased complexity of design and administration and the need for monitoring/compliance checks.

⁹ In 2000/1, for example, income tax was 22 per cent and employee payroll tax was 10 per cent. Of the 68 per cent of any increase in earnings retained by the employee after these taxes, 55 per cent was lost in foregone WFTC, so the combined withdrawal rate was $0.32 + 0.55 * (1 - 0.32) = 69$ per cent. Families also in receipt of means-tested benefits that help with rents or local taxes (known, respectively, as housing benefit and council tax benefit), would, though, face higher rates than these.

4.81 billion in constant 2002 prices. There was a further substantial increase by 2002, to GBP 6.46 billion.

While reducing the marginal withdrawal rate of those who would have been eligible for Family Credit, this change also increased the numbers of workers who faced a tax credit withdrawal as their earnings rose on top of income tax and social insurance, and so the number of workers facing marginal withdrawal rates in excess of 60 per cent (the top income tax rate in the UK is 40 per cent) has risen accordingly (from 0.8m to 1.7m: this is discussed further in Section 5.1). As we shall see later, the fact that WFTC is assessed on the joint income of a couple means that, as more families with children became entitled to it, so did incentives to work for many potential second (and mostly female) workers weaken.

Figure 2 Expenditure on in-work programmes in Great Britain, 1991/2-2002/3



Note: DPTC – disabled person’s tax credit. DWA – disability working allowance. WFTC replaced FC in October 1999, so there was expenditure on both of them during the 1999-2000 tax year.

Source: Author’s calculations.

1.2.5 Phase 2: the child and working tax credits

Tax credits were further reformed in 2003 with the introduction of child tax credit (CTC) and working tax credit (WTC), in what was the biggest change in support for children since the introduction of child benefit in 1977. The CTC merged together several parts of the tax and benefit system that supported families with children, while

¹⁰ The UK has a mixed-economy provision of childcare; many low-income families with children would be paying for work-related childcare from self-employed (but regulated) childminders, private or not-for-profit day nurseries, or after-school clubs.

WTC extended in-work support to adults without children (for the first time). CTC and WTC, like WFTC, are refundable tax credits.

This reform was not primarily motivated by strengthening work incentives: in fact, there were minimal changes to budget constraints in April 2003. Instead, the reforms entirely overhauled the administration of tax credits, bringing them closer to the income tax system in terms of concepts and definitions (so tax credits now depend upon annual income as defined for income tax purposes) but keeping their administration and payment mechanisms separate from income tax.¹¹

The current set of tax credits probably illustrate the Government's frustration with both the income tax and the welfare system as ways of targeting financial support: the income tax system does not allow sufficiently accurate targeting, and traditional means-tested benefits are seen as unacceptably complicated and stigmatising, and inappropriate for a programme that covers the vast majority of families with children. But tax credits have experienced considerable and widely-reported administrative difficulties ever since computer problems caused substantial delays to payments to many families in the first few months of 2003-04. Because of this, much policy attention since 2003 has been on improving their operation, rather than the inherent work incentives. In fact, as we argue later, the current pattern of changes to entitlements to tax credits is weakening, rather than strengthening, work incentives.

A more significant change economically in 2003 was that, for the first time in the UK, additional support was offered to families without children who were in work but on a low income, through the WTC. This is less generous than it is for families with children: those without children have to be aged 25 or over, to work full-time, and to be on very low wages. Around 320,000 families without children receive the working tax credit, but take-up (programme participation) is extremely low, less than 1 in 5.¹² Given that this take-up rate is so much lower than amongst families with children, the most plausible explanation is that tax credits for working adults without children are still novel, and information and awareness about them still low.

¹¹ See Brewer (2003) for amplification of these points.

¹² HM Revenue and Customs (2007).

1.2.6 Welfare benefit changes

This Government's changes to taxes and benefits affecting families with children have by no means all been to encourage work: a concern to reduce child poverty in broad terms has led the Government to increase substantially the additional amounts payable for children in welfare benefits (before 2003) and amounts payable in the non-work-contingent child tax credit (after 2003). Both these directly weaken incentives to work, as we discuss below.

1.2.7 Work-related childcare

Work-related childcare in the UK is provided by public and private suppliers, but the extent of Government intervention into this mixed market has increased dramatically since 1997, with the aims of expanding labour supply choices, improving work-life balance for parents but also advancing the long-term social and educational outcomes of children.

The main policy for achieving the first of these has been to make substantially more generous parental subsidies for spending on formal childcare (i.e. nurseries, after-school clubs, childminders, but not for informal payments to friends and families) that are directly paid to parents in work, with the current incarnation of this programme known as the childcare tax credit.¹³ In real terms, spending on the childcare tax credit in December 2004 was more than 16 times greater than spending on its equivalent in November 1998. Although this large increase in subsidy presumably encourages parents to use formal childcare rather than informal childcare, the impact on maternal labour supply is less clear. There has been no direct evaluation, and a review of US studies suggests that the elasticity of maternal labour supply to the price of childcare is very low.¹⁴

There have also been changes to the provision of early education, and considerable supply-side interventions to increase the amount of childcare places provided by the non-government sector: these are discussed more in Brewer *et al* (2005).

¹³ See Brewer *et al* (2005) for further details of the topics presented below.

¹⁴ See Brewer and Paull (2004) and studies cited there.

1.3 Conclusions

The intention of this section is to give an overview of the key welfare to work changes since 1997. In the area of ALMPs, the UK Government first expanded the role of ALMPs for those people on benefits traditionally considered to be unemployed through the New Deal; more recent reforms – which are still incomplete – are aiming to get back to work welfare recipients traditionally considered to be inactive, and therefore excused from job search requirements (the sick and disabled, and lone parents). These changes have been complemented with general direct tax reforms to strengthen incentives to work for all low earners, and targeted in-work tax credit programmes, mostly for families with children.

2 Outcomes

This section is designed to review some high-level outcomes, which might be thought of as “success measures”.

Although not strictly an outcome, we first review how tax and benefit changes have altered financial work incentives, particularly for families with children, given that so much of the UK Government’s changes have been to tax credits for families with children. We then review broad changes in employment-related outcomes, and then examine trends in relative poverty.

2.1 Financial work incentives

Given that considerable attention has been focused with the UK Government on strengthening financial work incentives, it is appropriate to consider both how they vary across different family types, but also how they have changed in recent years.

Table 2 and *Table 3* focus more directly on the impact of tax and benefit changes since 1997/8 on financial work incentives: *Table 2* shows the replacement rates of working parents, summarising some of the features of the changing distributions, and *Table 3* shows how the distribution of marginal effective tax rates has changed.¹⁵ Both

¹⁵ The replacement rate is defined as net income if out of work divided by net income in work. The marginal effective tax rate measures what fraction of a small rise in earnings is lost in income tax, employees’ social insurance contributions and foregone benefit and tax credit payments (it ignores employers’ social insurance contributions).

sets of statistics have been calculated by holding constant the characteristics of the population, and considering the real impact of tax and benefit changes on these work incentive measures.

Table 2 The impact of tax and benefit changes from 1997-2004 on the replacement rates of working parents

	Replacement rates (%)		
	April 1997	April 2004	Change (ppt)
Lone parents			
Mean	67.9	65.0	-2.9
Median	71.9	65.9	-6.0
25 th centile	55.8	52.3	-3.5
75 th centile	81.9	80.4	-1.5
<i>Proportion whose rate rises</i>		21.3%	
<i>Proportion whose rate falls</i>		56.7%	
Individuals in couples with children whose partner does not work			
Mean	59.3	61.1	+1.8
Median	62.6	65.5	+2.9
25 th centile	41.3	45.3	+4.0
75 th centile	80.6	79.5	-1.1
<i>Proportion whose rate rises</i>		52.7%	
<i>Proportion whose rate falls</i>		26.6%	
Individuals in couples with children whose partner does work			
Mean	59.2	62.5	+3.3
Median	58.5	62.7	+4.2
25 th centile	45.6	50.4	+4.8
75 th centile	74.3	76.0	+1.7
<i>Proportion whose rate rises</i>		53.8%	
<i>Proportion whose rate falls</i>		6.6%	

Notes: Excludes parents aged over 55 and self-employed. The row marked “25th centile” reports the replacement rate which is higher than 25 per cent of all replacement rates faced by that family type. The row marked “75th centile” reports the replacement rate which is higher than 75 per cent of all replacement rates faced by that family type.

Source: Authors’ calculations from FRS 2002/03 and TAXBEN and taken from Brewer and Shephard (2004).

Table 3 The impact of tax and benefit changes from 1997-2004 (effective marginal rate faced by working parents)

	Effective marginal tax rates (%)		
	April 1997	April 2004	Change (ppt)
Lone parents			
Mean	58.0	58.3	+0.3
Median	72.5	69.0	-3.5
<i>Proportion whose rate rises</i>		31.2%	
<i>Proportion whose rate falls</i>		46.9%	
Individuals in couples with children whose partner not does work			
Mean	43.0	48.2	+5.2
Median	35.7	42.1	+4.4
<i>Proportion whose rate rises</i>		45.4%	
<i>Proportion whose rate falls</i>		21.0%	
Individuals in couples with children whose partner does work			
Mean	32.5	36.8	+6.1
Median	33.0	34.9	+1.9
<i>Proportion whose rate rises</i>		39.4%	
<i>Proportion whose rate falls</i>		10.0%	

Notes: Excludes parents aged over 55 and self-employed. The row marked “25th centile” reports the marginal tax rate which is higher than 25 per cent of all marginal tax rate faced by that family type. The row marked “75th centile” reports the marginal tax rate which is higher than 75 per cent of all marginal tax rates faced by that family type.
Source: Authors’ calculations from FRS 2002/03 and TAXBEN and taken from Brewer and Shephard (2004).

The changes to the tax and benefit system between April 1997 and April 2004 imply that:

- The majority of lone parents now face a stronger reward to work than in 1997.
- The UK Government’s tax and benefit reforms have hardly changed the mean effective marginal tax rate faced by working lone parents, while the median effective marginal tax rate has fallen. More lone parents have experienced a strengthening of their incentive to progress than have experienced a worsening.
- Low-earning lone parents face stronger financial incentives to progress in the labour market, whilst medium- and high-earning lone parents face smaller financial incentives to progress (not shown in tables – see Brewer and Shephard 2004).
- A small number of couples with children face an increased financial reward for having one adult in work, but many more face a smaller financial reward. The same

set of reforms since 1997 has weakened the financial reward to having a second earner. Together with the first effect, this means that a couple with children now faces a relatively stronger incentive, on average, to be a single earner couple, rather than to have two earners or none, than in 1997.

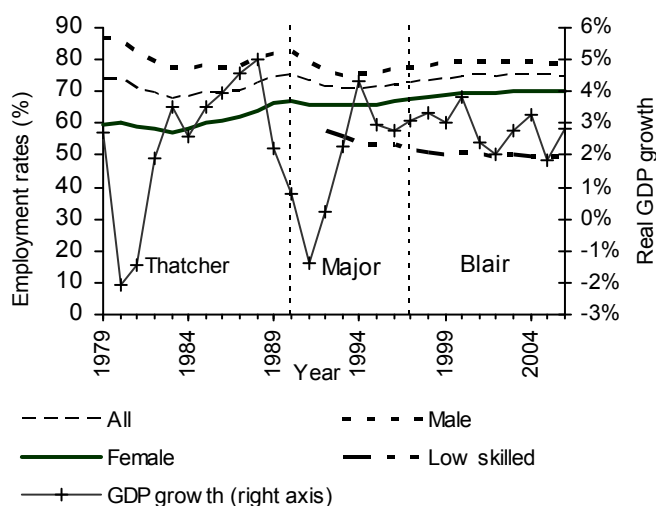
- The financial incentives to progress for the majority of workers in couples with children have worsened, with the mean effective marginal tax rate faced by individuals in couples with children 5 percentage points higher, thanks to the Government's tax and benefit reforms. The increases in the median effective marginal tax rate have not been as large, however.

2.2 Indicators of employment and worklessness

Since 1997 the employment rate of women has increased from 67.2 per cent to 70.2 per cent (in 2006) with the majority of this increase concentrated between 1997 and 2001 (*Figure 3*). Over the same period, the employment rate of men rose from 77.7 per cent to 78.8 per cent. Taken together, these increases imply an increase in the overall employment rate from 72.9 per cent to 74.6 per cent. This rise in the employment rates did not begin with the current Labour government, however: the employment rate has been rising since the recession of the early 1990s. The employment rate of men is still lower than it was in the 1970s, but that of women is substantially higher, and it is this increase that has helped raise the employment rate to its highest level since the 1970s. However, it is notable that the rise in employment has not been experienced amongst the low skilled (defined in this case as the 15 per cent of the working-age population with the least qualifications, usually none), for whom employment has fallen almost continuously since 1992: other groups usually thought of as being disadvantaged in the labour market (older working age individuals, lone parents, those with disabilities, ethnic minorities), by contrast, have seen their employment rates converge with the economy-wide average since 1997.¹⁶

¹⁶ This discussion is based on the DWP's Opportunity for All indicator 19, <http://www.dwp.gov.uk/ofa/indicators/indicator-19.asp>.

Figure 3 Employment rates in Britain, 1979-2006



Notes: Seasonally adjusted. The employment rate is calculated as the proportion of the population of working age (16-59 for women and 16-64 for men) who are in employment (working at least one hour in the reference week or temporarily away from a job). Low skilled defined as the 15 per cent of the working-age population with the lowest qualifications (most of whom have no qualifications).

Source: Department for Work and Pensions (Opportunity for All Indicator 18) based on original data from Office for National Statistics.

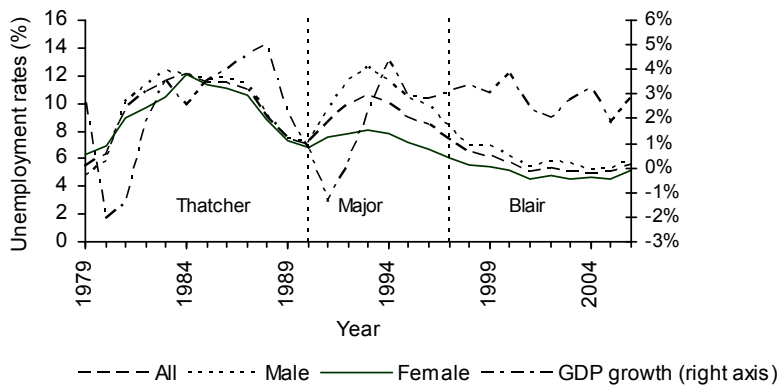
There has been a clear shift in the focus of the Government's welfare to work policies since 1997 from the unemployed to the inactive. This broadly reflects the Government's perceived success in reforming active labour market policies for the unemployed. *Figure 4* and *Figure 5* therefore show unemployment and inactivity rates.

Unemployment (ILO) is very low by historical standards, and the Government claims that its range of New Deals has been instrumental in achieving this. Inactivity rates, though, are broadly unchanged since 1997, with falling inactivity amongst women (mainly mothers) being offset by rising inactivity amongst men (mainly those in poor health). For men, the most common reason for inactivity is long-term sickness, followed by being in education, and those who retired before reaching the state pension age.¹⁷ Since 1997, the slight rise in the inactivity rate amongst men is explained by increases in the number of students, those retiring early, and other factors. For women, the single most important reason for inactivity is if they are looking after family or their home (in

¹⁷ See Office for National Statistics (2005).

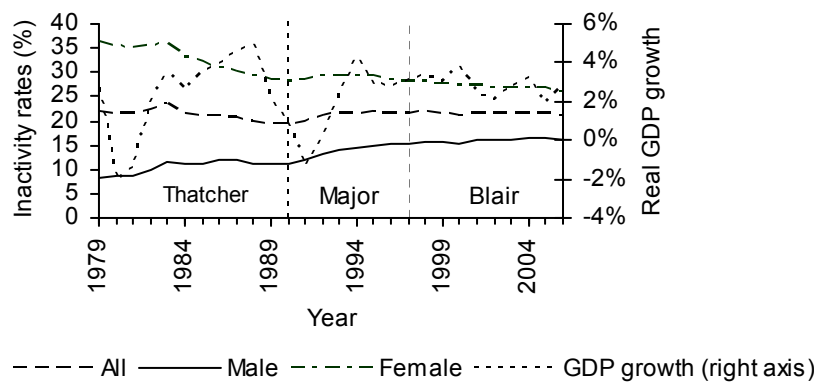
1997 this was cited as the reason by half of all inactive women). While the number of women who are economically inactive either through long-term sickness or because they are studying has increased since 1997, this has been more than offset by a decline in the number of women who care for family and/or their home. For both men and women, the proportion of the economically inactive who says they would like a job has declined since 1997 from 31.4 per cent to 25.5 per cent.

Figure 4 Unemployment rates in Britain, 1979-2006



Notes: Seasonally adjusted. Unemployment is measured according to the ILO definition. This covers people who are: out of work, want a job, have actively sought work in the previous four weeks and are available to start work within the next fortnight; or out of work and have accepted a job that they are waiting to start in the next fortnight.
Source: Office for National Statistics.

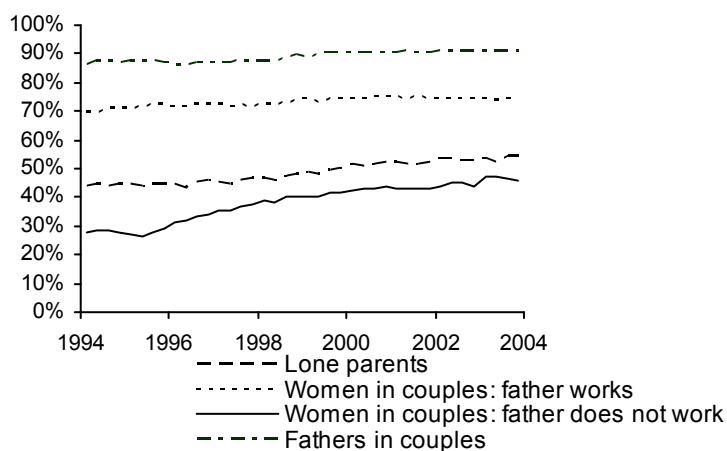
Figure 5 Inactivity rates in Britain, 1979-2006



Notes: Seasonally adjusted. The inactivity rate is calculated as the proportion of the working age population who are neither employed nor unemployed (see figure notes for *Figure 3* and *Figure 4*).
Source: Office for National Statistics.

Some of the Government's most high profile employment policies have been targeted either exclusively or largely at families with children, and *Figure 6* shows that employment rates have risen in four groups of adults in families with dependent children. Men in couples with children and women living in couples with a working partner have relative high rates, and both are higher now than in 1997, although there is a suggestion that the employment rate of mothers with working partners may have plateaued. However, more disadvantaged groups (lone parents and women in couples with a non-working partner) have seen much greater growth in employment. In particular, the employment rate of lone parents rose from 45.5 per cent to 56.5 per cent between 1997 and 2006 (2006 not shown in the graph). This has meant that the proportion of children in workless households – a key target of the labour Government when it came to power – has fallen from 18.5 per cent to 16.1 per cent since 1997 (not shown).

Figure 6 Employment rates of adults in families with dependent children



Source: From Brewer and Shephard (2004), based on quarterly Labour Force Survey data.

2.3 Relative poverty

As discussed above, the UK Government has sought to reduce relative poverty, with tough targets for reductions amongst children (see Waldfogel 2007).

Table 4 shows relative poverty rates (i.e., the proportion of the population living in households with less than 60 per cent of median equivalised income) since 1996/7. Other than a blip upwards in the last year, the trend over the past decade has been for

falls in relative poverty, concentrated amongst children (and their parents) and pensioners. However, relative poverty rates amongst the remaining group – working-age non-parents, is in 2005/6 at its highest ever level.

Table 4 Relative poverty: percentage and number of individuals in households with incomes below 60 per cent of median AHC income

	Children		Pensioners		Working-age parents		Working-age non-parents		All	
	%	Million	%	Million	%	Million	%	Million	%	Million
1996-97 (GB)	34.1	4.3	29.1	2.9	26.6	3.3	17.2	3.5	25.3	14.0
1997-98 (GB)	33.2	4.2	29.1	2.9	25.9	3.2	15.9	3.3	24.4	13.6
1998-99 (GB)	33.9	4.3	28.6	2.9	26.3	3.2	15.5	3.2	24.4	13.6
1999-00 (GB)	32.7	4.2	27.6	2.8	25.5	3.1	16.1	3.4	24.0	13.4
2000-01 (GB)	31.1	3.9	25.9	2.6	24.7	3.0	16.2	3.4	23.1	13.0
2001-02 (GB)	30.8	3.9	25.6	2.6	24.5	3.0	15.6	3.4	22.7	12.8
2002-03 (UK)	29.8	3.9	24.2	2.5	24.1	3.0	16.5	3.7	22.4	13.1
2003-04 (UK)	28.7	3.7	20.6	2.2	23.5	2.9	16.6	3.7	21.5	12.6
2004-05 (UK)	28.4	3.6	17.6	1.9	23.0	2.9	16.1	3.6	20.5	12.1
2005-06 (UK)	29.8	3.8	17.0	1.8	24.8	3.1	17.5	4.0	21.6	12.7
Changes (ppt)										
Total: 1996-97 to 2005-06	-4.3		-12.1		-1.8		(0.3)		-3.6	
Labour I: 1996-97 to 2000-01	-3.0		-3.2		-1.9		-1.0		-2.1	
Labour II: 2000-01 to 2004-05	-2.8		-8.3		-1.6		(-0.1)		-2.6	
Latest year: 2004-05 to 2005-06	(1.4)	(0.2)	(-0.6)	(-0.1)	1.8	0.2	1.4	0.3	1.1	0.7

Notes: Reported changes may not equal the differences between the corresponding numbers due to rounding. Changes in parentheses are not significantly different from zero at the 5 per cent level. Changes in the number of individuals in poverty are only shown where these can be calculated consistently at the UK level. All figures are presented using the modified OECD equivalence scale.

Source: From Brewer *et al* (2007b), based on Family Resources Survey, various years.

Although the UK government has not seemed so concerned with overall inequality, it is instructive to review progress in this area.¹⁸ The Gini coefficient in Great Britain rose from a value of around 0.25 in 1979 and reached a peak in the early 1990s of around 0.34. Since the early 1990s, the changes in income inequality have been less dramatic: after falling slightly over the early to mid-1990s, inequality is effectively unchanged

from its level in the mid 1990s, and remains at historically high levels (not shown here).¹⁹

3 A focus on some specific evaluations

This section provides a closer look at some of the evaluations of the UK Government's policies, describing econometric evaluations of WFTC, NDYP, and Pathways to Work.

3.1 Working Families' Tax Credit

As one of the highest-profile changes to be made early on by the present UK Government, WFTC has been evaluated in a number of studies, and these are summarised in Brewer and Browne (2006). The review compared studies that had treated the introduction of WFTC as a natural experiment with one that used a structural model of labour supply to simulate *ex post* the impact of WFTC compared with its predecessor. In general, the results from both sets of studies are reassuringly similar (this can also be viewed as a validation of the structural model).

Those studies that treated the introduction of WFTC as a natural experiment used difference-in-differences to estimate the impact of WFTC on the employment of families with children, making use of families without children as a control group. The raw data underlying this is shown in *Figure 7*: there is a clear convergence in the employment rate of lone parents with single adults without children which, *prima facie*, would suggest a positive employment effect of WFTC.²⁰

One limitation of the difference-in-differences approach is that it cannot evaluate the impact of WFTC alone on labour market behaviour of families with children, because WFTC was introduced around the same time as other tax and benefit reforms that affected families with children (most of which were referred to in Section 2). Technically, those studies using difference-in-differences are evaluating the impact of

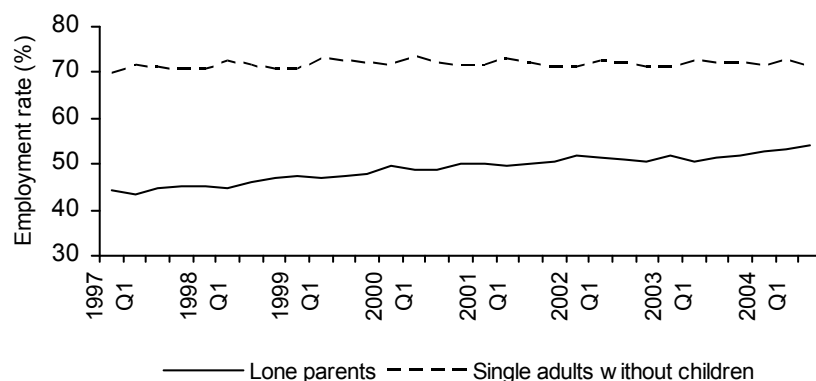
¹⁸ One view is that the concern for relative poverty is a concern about inequality at the bottom, given that the poverty line is a fraction of median income.

¹⁹ For past trends, see Goodman *et al* (1997). Note that other measures of inequality, such as the 90:10 ratio, have fallen since 1997/8: see Brewer *et al* (2007b).

²⁰ In fact, the convergence starts some time before October 1999, and the various studies reviewed by Brewer and Browne (2006) have different ways of accounting for this.

all changes to the economic and policy environment that affected families with children differently from families without children: the most important of these other than WFTC was an increase in welfare benefits for families with children.

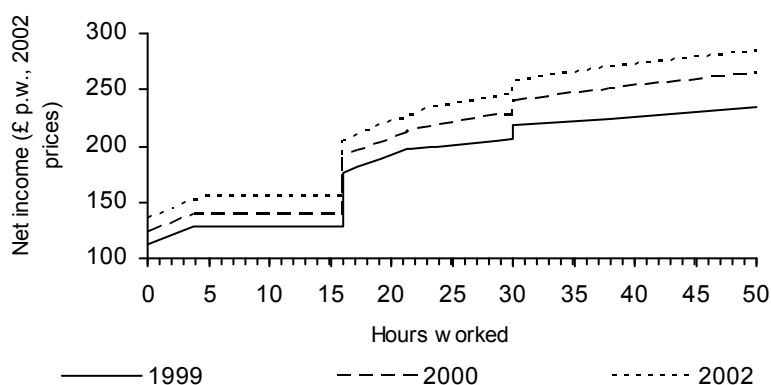
Figure 7 Employment rates of single adults by parental status, 1997-2004



Notes: Not seasonally adjusted. The employment rate is calculated as the percentage of the population of working age (16-59 for women and 16-64 for men) who are in employment (working at least one hour in the reference week or temporarily away from a job).

Source: Brewer and Shephard (2005), based on Labour Force Survey data, various years.

Figure 8 Change in the budget constraint for a lone parent with two children under 5, April 1999 to April 2002

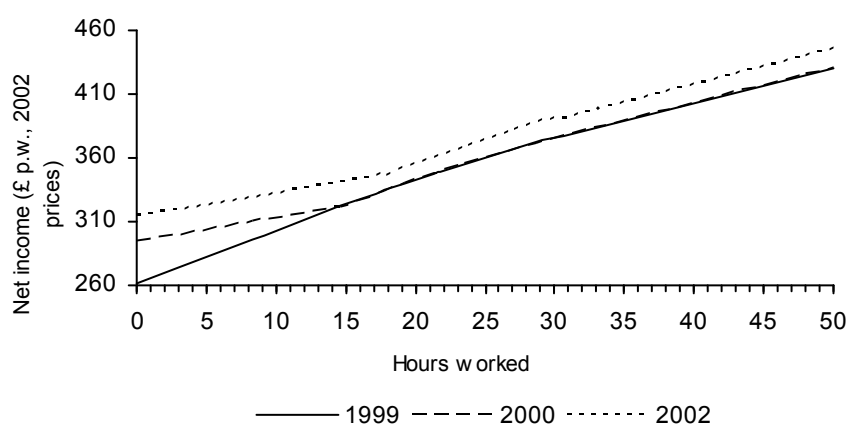


Note: Assumes hourly wage of GBP 4.10, no housing costs or council tax liability, no entitlement to child support and no childcare costs.

Figure 8 and *Figure 9* illustrate this by showing the impact of tax and benefit changes between April 1999 and April 2002 (i.e. just before WFTC was introduced to just before CTC and WTC replaced it) on the budget constraints faced by a lone parent and by a mother in a couple respectively, both with two children aged under 5 and

earning the 2002 minimum wage. *Figure 8* makes clear that the income available to a lone parent who was not working increased substantially over this period, although by slightly less than the income available to a low-earning working lone parent. *Figure 9* shows that the income available to the family when the second earner does not work increased substantially, but the income available to the family when both adults worked increased by much less, consistent with a higher PTR (see Section 3.1).

Figure 9 Change in the budget constraint for mother in couple with two children under 5, April 1999 to April 2002



Notes: Assumes hourly wage of GBP 4.10, no housing costs or council tax liability and no childcare costs. The first earner in the couple is assumed to earn GBP 300 per week in 2002 prices.

A structural model of labour supply tries to relate directly choices of whether and how much to work to the inherent financial incentives. If we remember that WFTC was both more generous and more slowly withdrawn than its predecessor, family credit (FC), (Section 2.2), then economic theory would predict different effects on different groups of parents. In particular, the increase in generosity would:

- for adults in workless families, lead to a stronger incentive to work 16 or more hours per week. We would therefore expect some currently workless families to participate as a result of this reform, and also some parents currently working less than 16 hours per week to move over the threshold.
- lead to a reduction in the number of two-worker families, when two-worker families found they needed to work a little less hard in order to achieve their pre-reform standard of living (an income effect away from work).

The lower withdrawal rate would also have different effects on adults in different families depending on their income:

- For those previously claiming FC, there would be an increase in the returns to an extra hour's work as a result of the lower withdrawal rate, leading to an increase in the number of hours worked (a substitution effect towards work).
- On the other hand, those who previously earned too much to claim FC but who were now eligible for WFTC would experience both an income and a substitution effect away from work.

Table 5 The estimated impact of WFTC on lone mothers' labour supply

		After WFTC			
		Not working	Part-time	Full-time	Total
Before WFTC	Not working	49.6	2.4	2.8	54.7
	Part-time	0.0	22.4	1.1	23.5
	Full-time	0.0	0.4	21.4	21.8
	Total	49.6	25.2	25.2	100.0
Change in employment rate					5.1 (0.68)
Average change in weekly hours (all)					1.78 (0.21)
Average change in weekly hours (workers)					0.75 (0.05)
Average hours before WFTC (all)					12.42 (0.20)
Average hours before WFTC (workers)					27.4 (0.16)

Notes: Based on *Table 4* in Brewer *et al* (2006). Estimated standard deviations given in brackets.

Table 5 below shows the results of the simulations of WFTC alone on lone parents: employment is predicted to rise by 5.1 percentage points (from 45.3 per cent), and mean hours worked increases amongst workers (because the lower withdrawal rate increased incomes the most where the taper previously ended, usually corresponding to full-time work). However, the reforms implemented at the same time as the WFTC acted to reduce employment amongst lone parents, and a simulation of the set of changes actually introduced between 1999 and 2002 (not shown here) suggests that tax and benefit changes increased lone parent employment by 3.7 percentage points.

Estimates of the overall impact on employment are given below: although the impact of WFTC on lone parents' employment is relatively high, the impact on adults in couples with children is broadly neutral, and those reforms implemented at the same

time as WFTC acted to reduce labour supply. The combined effect of 22,000 workers corresponds to less than 0.1 percentage point of the total workforce.

Table 6 The Estimated impact of WFTC on total employment

	Lone mothers	Mothers in couples	Fathers in couples	Total
WFTC	75,000	-21,000	27,000	81,000
WFTC and contemporaneous reforms	55,000	-18,000	-15,000	22,000

Notes: Based on *Table 6* in Brewer *et al* (2006).

Overall then, Brewer and Browne (2006) conclude that:

“WFTC seems to have had the positive impacts on labour market participation from previously workless families that we would expect from economic theory. Furthermore, large negative effects on the labour market participation of second earners do not seem to have materialised.

The increased generosity of the in-work credit system seems to have induced lone mothers to increase their participation in the labour market by around 5 percentage points between 1999 and 2002, and by a little less than this between 1999 and 2000. Much of this shift seems to have been into full-time work, and there also seems to have been a considerable shift among lone mothers from part-time to full-time work.

Among adults in couples with dependent children, there is some evidence that WFTC reduced the proportions of two-earner households and of workless households, just as we would expect from economic theory, but with little overall effect on the proportion of adults in these households who work.”

3.2 New Deal for Young People

Two studies have looked in detail at the NDYP: Blundell *et al* (2004) looked at the programme in its early days, and de Giorgio (2005) examined whether the early impacts were stable over later cohorts.

Blundell *et al* (2004) looked at the job assistance and wage subsidy element of the New Deal by examining flows off unemployed to jobs during the first four months of treatment (the “Gateway” period). They present a number of difference-in-differences estimators making use of two sources of differential eligibility. First, they look at the first areas to pilot the NDYP, where they are able to use young adults in similar areas

not operating NDYP as a control group. Second, they look at a time when the programme ran nationally, and use slightly older (and therefore ineligible) adults as a control group.

They conclude that the outflow rate to jobs has risen by about 20 per cent for young men as a result of the New Deal during its National Roll Out (i.e. five percentage points more men find jobs in the first four months of the New Deal above a pre-program level of twenty five percentage points).²¹ The results are very similar when using regional comparison groups to when older, ineligible adults are used as the control group; this suggests that either equilibrium wage and substitution effects are not very strong or they broadly cancel each other out.

The idea of using older, ineligible, adults as a control group was exploited further in De Giorgi (2005), who estimates a local average treatment effect (LATE) using a non-parametric regression discontinuity. De Giorgi is also able to look at outcomes after a longer period of time (i.e. up to 12 months after starting the gateway, rather than 4 months) and for a series of different cohorts. Reassuringly, the study also finds that the NDYP increases the proportion of unemployed men who move into work by about 6-7 per cent, and that this impact is relatively stable over time.

3.3 Pathways to work

As is common with reforms piloted by the UK Department for Work and Pensions, the Pathways to Work policies were first introduced in a number of areas. As with the pilots of the NDYP, this naturally suggests a difference-in-differences evaluation, using claimants of incapacity benefits in non-pilot areas as a control group.

Figure 10 applies this concept to administrative data, and shows that flows off incapacity benefits in the pilot areas were around 8 percentage points higher in the six months after starting a claim than in other areas, and that this effect occurred for both phases of pilots.

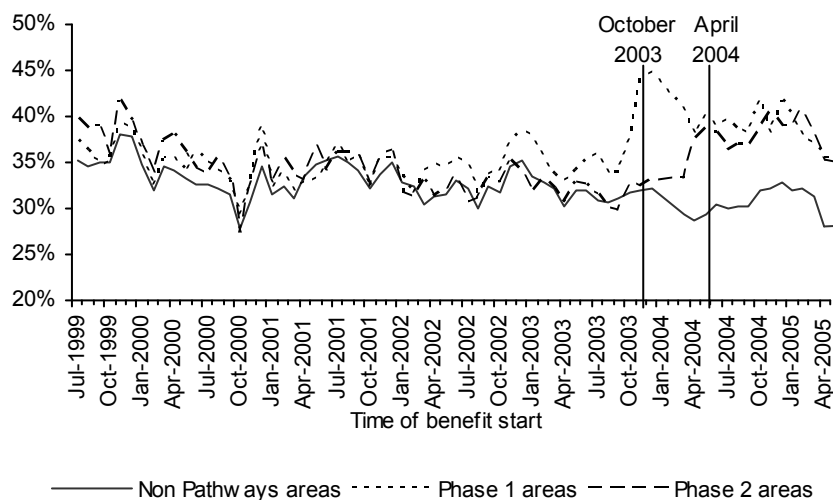
In a more formal evaluation, *Table 7* shows difference-in-differences estimates of the outcomes of interest for those who made an enquiry about claiming incapacity benefits

²¹ Women make up around 1 in 4 participants on NDYP; Blundell *et al* (2004) reports that the estimated impacts on women were smaller, less precisely estimated, and not robust to the choice of control group.

(having taking into account background characteristics, time since the enquiry and broad area of residence).

The first column shows the early impact of the Pathways to Work pilots on the likelihood of being in paid work in the week before to the second wave interview (which is on average around 10½ months after the individual made the initial enquiry about claiming incapacity benefits). It shows that the early impact of the Pathways to Work policy was to increase the percentage of individuals doing paid work at that time by +9.4 percentage points. To place this in context, just under one-third (31.9 per cent) of those in the pilot areas in the period after the pilots had been implemented reported that they had been in paid work in the previous week, so the estimated impact suggests that in the absence of these pilots the employment rate in the last week would have been just 22.5 per cent (i.e. 31.9-9.4).

Figure 10 Six-month off-flow rate from incapacity benefits, by whether or not subject to the Pathways to Work pilots in October 2003 (Phase 1) or April 2004 (Phase 2)



Source: Chart 2, Page 54 of House of Commons Work and Pensions Committee (2006). See also Blyth (2006).

The estimates also suggest that the early effects of the pilots were to increase monthly earnings (by GBP 71.73, or over a quarter of total earnings in the pilot areas), reduce the likelihood that an individual was claiming incapacity benefits by 8 percentage points, and reduce the percentage of respondents reporting that their health limited their daily activities. The pilots seem to have been more successful at helping older workers, and those who did not claim to have mental health problems. However,

the authors stress that these are preliminary results covering a very short period of time, and more evidence on medium-run impacts are needed.

Table 7 Difference-in-differences estimates of the early impact, all who made enquiry about claiming incapacity benefit

	Paid work last week	Monthly earnings	Receives incapacity benefits	Reports that "health affects activities"
	(1)	(2)	(3)	(4)
Estimated treatment effect	9.44*** (2.26)	71.73*** (20.05)	-8.19*** (2.51)	-2.87** (1.40)
Sample size	7,861	7,861	7,861	7,861
Adjusted R ²	14.9%	13.8%	11.0%	34.2%

Note: Unweighted. Standard errors in parentheses. *** denotes that the coefficient is statistically different from zero at the 1 per cent level; ** at the 5 per cent level and * at the 10 per cent level. Other variables controlled for include days since initial enquiry into claiming IB, broad area of residence, and a set of demographic variables, education level and initial health condition.

Source: Derived from tables in chapter 4 of Adam *et al* (2006).

4 Conclusions

This paper has presented a tour of welfare reform in the UK over the past decade since the last change of government. It has presented the most important changes in active labour market policies, and to measures intended to strengthen financial incentives to work, including a minimum wage and parental subsidies for spending on work-related childcare.

We have argued that the developments in the UK's active labour market policies went in two broad phases: first, the Government sought to strengthen ALMPs for those individuals claiming Jobseeker's Allowance, the benefit for those deemed to be unemployed, chiefly through various New Deal programmes. Second, the Government has turned to those individuals claiming benefits because they are not in work, but who traditionally have been viewed as inactive and therefore excused from job search activity: lone parents, and the sick and disabled (those claiming incapacity benefits). For both those groups, we have seen a gradual escalation in the requirements asked of benefit recipients, and in the focus on work, but this has stopped short of requiring job-search (or similar activities) as a condition of receiving benefit.

There have also been two phases of changes to taxes, benefits and financial work incentives. A set of changes in the late 1990s (including the WFTC) aimed to strengthen

financial work incentives. But tax credits for families with children and in-work support for those without children were comprehensively altered in 2003 in a reform whose economic rationale is less clear. UK assessments of the merits of the 2003 reform have ever since been (rightly) dominated by operational concerns, and recent government policy on tax credits and financial work incentives is harder to infer than it was nearly a decade ago, except perhaps for an increased use of targeted and time-limited in-work payments.

Blundell (2002) describes the goals of welfare reform as being to reduce government expenditure, increase the income of the poor (or low skilled) and increase labour supply; what varies across countries and over time is the relative weight given to these often contradictory goals. Where within this triangle can we place the current UK government? We would argue that the reforms to ALMPs are primarily motivated by the desire to reduce spending on welfare benefits, and to increase labour supply and thereby GDP.

However, the aims of the Government's changes to taxes and benefits are less clear cut. Although we have argued that there have been a set of changes to taxes and benefits designed deliberately to strengthen financial work incentives, the story is more complicated than this, for at least two reasons. First, the expansion of the WFTC and the expansion in the generosity of tax credits that followed have generally been weakening the financial work incentives of (potential) second earners in families with children. Second, as well as increasing the generosity of tax credits that are conditional on work, welfare benefits for families with children and (after 2003), the child tax credit (which is not work-contingent, and is means-tested with an extremely generous earnings disregard) have been increased too. In other words, the extent to which financial work incentives have been strengthened has been compromised by the Government's desire to achieve broad reductions in relative child poverty. And it has learnt that, although welfare to work measures can help reduce child poverty, achieving short-run reductions in child poverty is only possible with increases to the generosity of benefits and tax credits available to low-income families with children, and in recent years, this has increasingly meant increases in income-related payments to families with children, with obvious implications for financial work incentives.

We have also summarised independent evaluations of three important UK policies: WFTC, NDYP and the newer Pathways to Work pilots. All have been deemed by the Government to have been “successful”. However, for WFTC and Pathways to Work, this is true only if “success” is defined as “has had a desirable impact on outcomes of interest”; to date only NDYP has been subject to a full cost and benefit analysis.

References

- Adam, S., C. Emmerson, C. Frayne and A. Goodman (2006), “Early quantitative evidence on the impact of the Pathways to Work pilots”, Research Report 354, Department for Work and Pensions, Leeds.
- Blundell, R. (2002), “Welfare-to-work: Which policies work and why?”, *Keynes Lecture in Economics, Proceedings of The British Academy*, vol. 117, pp. 477-524.
- Blundell, R., M. Costa Dias, C. Meghir and J. Van Reenen (2004), “Evaluating the employment impact of a mandatory job search assistance program”, *Journal of the European Economic Association*, vol. 2, pp. 569-606.
- Blyth, B. (2006), “Incapacity benefit reforms – pathways to work pilots performance and analysis”, Working Paper 26, Department for Work and Pensions, Leeds (<http://www.dwp.gov.uk/asd/asd5/wp26.pdf>).
- Brewer, M. (2003), “The new tax credits”, IFS Briefing Note 35, The Institute for Fiscal Studies, London (<http://www.ifs.org.uk/bns/bn35.pdf>).
- Brewer, M. and J. Browne (2006), “The effect of the working families’ tax credit on labour market participation”, IFS Briefing Note 69, The Institute for Fiscal Studies, London (<http://www.ifs.org.uk/bns/bn69.pdf>).
- Brewer, M. and G. Paull (2004), “Reviewing approaches to understanding the link between childcare use and mothers’ employment”, Working Paper 14, Department for Work and Pensions, Leeds (<http://www.dwp.gov.uk/asd/asd5/WP14.pdf>).
- Brewer, M. and A. Shephard (2004), “Has labour made work pay?”, Joseph Rowntree Foundation, York (<http://www.jrf.org.uk/bookshop/eBooks/1859352626.pdf>).
- Brewer, M. and A. Shephard (2005), “Employment and the labour market”, IFS 2005 Election Briefing Note 5, Institute for Fiscal Studies, London (<http://www.ifs.org.uk/bns/05ebn5.pdf>).
- Brewer, M., C. Crawford and L. Dearden (2005), “Reforms to childcare policy”, in Chote, R., C. Emmerson, D. Miles and Z. Oldfield (eds.), *IFS green budget 2005*, Institute for Fiscal Studies, London.

- Brewer, M., J. Browne, C. Crawford and G. Knight (2007a), “The lone parent pilots after 12 to 24 months: An impact assessment of In-Work Credit, Work Search Premium, Extended Schools Childcare, Quarterly Work Focused Interviews and New Deal Plus for Lone Parents”, Research Report 415, Department for Work and Pensions, Leeds.
- Brewer, M., A. Duncan, A. Shephard and M.-J. Suarez (2006), “Did working families’ tax credit work?, The impact of in-work support on labour supply in Great Britain”, *Labour Economics*, vol. 13, pp. 699-720.
- Brewer, M., A. Goodman, A. Muriel and L. Sibieta (2007b), “Poverty and inequality in Britain: 2007”, Briefing Note 73, Institute for Fiscal Studies, London.
- Department for Work and Pensions (2002), “Pathways to work: Helping people into employment”, Cm 5690, Department for Work and Pensions, London, (<http://www.dwp.gov.uk/consultations/consult/2002/pathways/pathways.pdf>).
- Department for Work and Pensions (2005), “Five year strategy: Opportunity and security throughout life”, Cm 6447, Department for Work and Pensions, London (http://www.dwp.gov.uk/publications/dwp/2005/5_yr_strat/pdf/report.pdf).
- Department for Work and Pensions (2006), “A New Deal for welfare: Empowering people to work”, Cm 6730 session 2005/6, TSO, London.
- Department for Work and Pensions (2007), “Households below average income 1994/95-2005/06”, Corporate Document Services, Department for Work and Pensions, Leeds.
- Dickens, R. and A. Manning (2002), “Has the national minimum wage reduced UK wage inequality?”, Centre for Economic Performance, London.
- De Giorgi, G. (2005), “Long-term effects of a mandatory multistage program: the New Deal for young people in the UK”, IFS Working Papers W05/08, Institute for Fiscal Studies, London.
- Goodman, A., J. Johnson and S. Webb (1997), *Inequality in the UK*, Oxford University Press, Oxford.

- Gregg, P., P. Johnson and H. Reed (1999), “Entering work and the tax and benefit system”, Institute for Fiscal Studies, London.
- HM Revenue and Customs (2007), “Child tax credit and working tax credit take-up rates 2004-05” (<http://www.hmrc.gov.uk/stats/personal-tax-credits/takeup-rates2004-05.pdf>).
- HM Treasury (1997), “Employment opportunity in a changing labour market”, in *The modernisation of Britain’s tax and benefit system*, No 1, HM Treasury, London.
- HM Treasury (1998), “Work incentives: A report by Martin Taylor”, in *The modernisation of Britain’s tax and benefit system*, No 2, HM Treasury, London.
- HM Treasury (2007), “Building Britain’s long-term future: Prosperity and fairness for families”, The Stationery Office, London.
- House of Commons Work and Pensions Committee (2006), “Incapacity benefits and pathways to work”, Volume I, HC 616-I (<http://www.publications.parliament.uk/pa/cm200506/cmselect/cmworpen/616/616i.pdf>).
- Machin, S. and J. Wilson (2004), “Minimum wages in a low-wage labour market: Care homes in the UK”, *Economic Journal*, vol. 114, pp. C102-09.
- Myck, M. (2000), “Fiscal reforms since 1997”, Briefing Note 14, Institute for Fiscal Studies, London (<http://www.ifs.org.uk/bns/bn14.pdf>).
- Office for National Statistics (2004a), *Labour Market Trends*, vol. 112, pp. 481-83.
- Office for National Statistics (2004b), “Work and worklessness among households”, July 2004 (<http://www.statistics.gov.uk/pdfdir/work0704.pdf>).
- Office for National Statistics (2005), *Labour Market Trends*, vol. 113, pp. 125-68 (www.statistics.gov.uk/downloads/theme_labour/LMT_April05.pdf).
- Stewart, M. (2004), “The employment effects of the national minimum wage”, *Economic Journal*, vol. 114, pp. C110-16.
- Waldfoegel, J. (2007), “Welfare reforms and child well-being in the US and UK”, *Swedish Economic Policy Review*, vol. 14, pp. 137-168.

Comment by Peter Fredriksson*

This is a good summary of the welfare (related) reforms in the UK during the past 10 years. The paper should be of great interest to the Swedish audience since many of the recent reforms in Sweden, introduced by the current liberal-conservative government, seem to have been inspired by the UK reforms. So if one is interested in projecting what might happen to policy in Sweden in the near future, this is a useful read.

Although I am no expert on particular UK features, it is safe to say that the operations of the Swedish and UK labor market as well as of Swedish and UK welfare policies are very different. Thus, it is legitimate to ask: Should Swedish policy makers be inspired by the UK experience? The purpose of these comments is to try to shed some light on this question. I will try to outline the crucial differences in policy design. I will also outline what I think Swedish policy makers can learn from the UK evaluations that have been conducted.

Since the UK government has been very active in this area, the paper by Brewer presents an extensive list of reforms. The evaluation evidence reported in his paper, however, pertains to three programs: the Working Families Tax Credit; the New Deal for Young People; and the Pathways To Work Program. The target groups for these programs are poor families, unemployed youths, and individuals on incapacity benefits. My comments will focus on these programs, their respective target groups, and similar policy initiatives in Sweden.

Work incentives, youth unemployment, and disability in Sweden and the UK

The design of the welfare systems in the UK and Sweden, respectively, differs considerably. Exaggerating just a little bit, the UK system is characterized by relief to poor families. The systems are typically means-tested and they are functions of household characteristics rather than individual characteristics. For instance, unemployment compensation is essentially an assistance program rather than an insurance program.

* Peter Fredriksson is Professor and Director-General at the Institute for Labour Market Policy Evaluation, Uppsala.

The Swedish (tax and) transfer programs are typically based on individual characteristics. The programs are generally not means-tested. And eligibility for the insurance programs is tied to previous employment. The principal exception from this rule is the social assistance program which has the flavor of UK- and US-style assistance programs.

The incentive problems generated by means-tested assistance programs are imminent. Hence, it should be no surprise that the UK and the US have a comparatively long history of tax credits or negative income taxes. In contrast, tax credits (in cash) in Sweden have virtually been non-existent. Still, one can think of publicly provided (and heavily subsidized) child-care (pre-schools) as a tax credit in kind to currently employed parents; see Kolm (2007).¹

Despite these differences, the UK and Sweden share similar incentive problems, in particular at the low end of the wage distribution. *Table A. 1* reports OECD calculations of the marginal effective tax rates of moving from unemployment or inactivity to employment at 2/3 of the average production worker wage for a single parent with two kids.

Table A. 1 conveys the message that the incentive problems in the UK come from the assistance part of the system (social assistance, housing benefits and family benefits) while in Sweden, they are due to a comparatively generous unemployment insurance. The decompositions of the marginal effective tax rates show that the employment tax credit (the in-work benefit) substantially improves the incentive to move to employment: had it not been for the existence of the tax credit, the marginal effective tax rate would be close to 85 percent in the UK.

¹ This has changed fairly recently. In 2001, the unemployed were also given the right to use public child-care. Moreover, from 2003, all parents of 4 and 5-year olds – independently of employment status – were given the right to a slot in public child-care free of charge. See Lundin *et al* (2007) for a description of these reforms.

Table A. 1 Incentive problems in Sweden and the UK: Marginal Effective Tax Rates (METRs) (Single parent with 2 children in 2002)

		Sweden	UK
	<i>Overall</i>	91.1	58.9
Unemployment→ Employment	Component due to:		
	unemployment benefits	80.0	21.6
	social assistance, housing- and family benefits	4.0	47.3
	in-work benefits	0.0	-24.7
	income tax and social security contributions	7.1	14.8
	<i>Overall</i>	61.0	58.9
Inactivity→ Employment	Component due to:		
	social assistance, housing- and family benefits	32.9	68.8
	in-work benefits	0.0	-24.7
	income tax and social security contributions	28.1	14.8

Note: METRs associated with move from unemployment/inactivity to employment at 2/3 of the average wage of a production worker.

Source: OECD (2006).

What about youth unemployment in the two countries? *Table A. 2* reports the employment status for youths (aged 16-24) and prime-aged individuals (aged 25-54) in Sweden and the UK at two points in time, 1990 and 2006.

Youths in Sweden spend a longer period of time in education than their UK counterparts. This was true already in 1990, i.e., prior to the severe economic crisis that hit Sweden in the early 1990s. Partly as a consequence of this crisis, there was a massive increase in the enrollment rates in upper-secondary and tertiary education in Sweden. This development is readily visible in *Table A. 2*, where the employment rate was reduced by 22 percentage points between 1990 and 2006. There has been a similar, but not as drastic, development in the UK: youth employment rates came down by some 13 percentage points between 1990 and 2006.

Despite the differences in education enrollment rates and the aggregate economic development between 1990 and 2006, the youth-to-prime-aged unemployment differential in the two countries was almost identical in 2006: the prevalence of unemployment is roughly 2.5 times higher among youths than among the prime-aged.

Let us finally turn to the disability rates in the two countries. *Figure A. 1* displays the number of early retirees as a percentage of the population aged 15-64 for Sweden and

the number of claimants of invalidity/incapacity benefits as a percentage of the population aged 15-64 for the UK.

Table A. 2 Employment status by age in Sweden and the UK, percent of population, 1990 and 2006

	(1) Aged 16-24		(2) Aged 25-54		(3) (1) relative to (2)	
	1990	2006	1990	2006	1990	2006
<i>Sweden</i>						
employment/population	66.1	44.0	91.6	84.6	0.72	0.52
unemployment/population	3.2	11.9	1.2	4.7	2.67	2.53
non-participation/population	30.7	44.1	7.2	10.7	4.26	4.12
<i>UK</i>						
employment/population	70.1	57.3	79.1	81.2	0.89	0.71
unemployment/population	7.9	9.3	4.9	3.5	1.61	2.66
non-participation/population	22.0	33.4	16.1	15.3	1.37	2.18

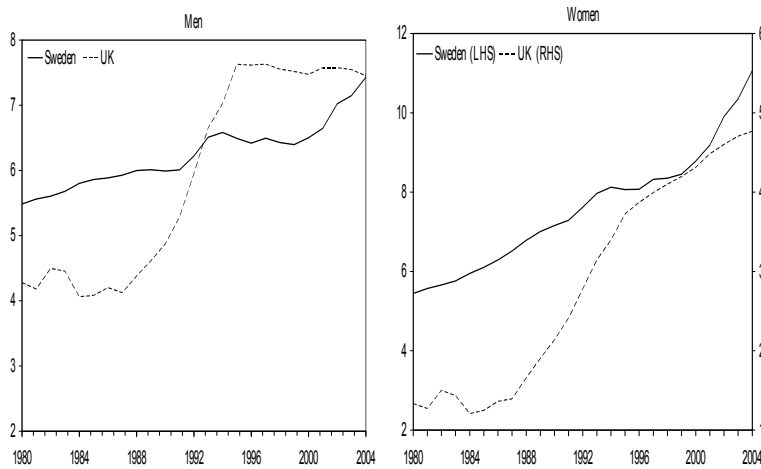
Notes: In so far as is possible, the data have been standardized by the OECD to be comparable over time and conform to ILO guidelines.

Source: OECD (2005, 2007).

As in many other OECD countries, there are trend increases in the share of the population claiming disability/early retirement. In Sweden, the share of men receiving the early retirement benefit increased from 5.5 percent in 1980 to 7.4 percent in 2004. In the UK, the share of men claiming disability rose from 4.3 percent in 1980 to 7.5 percent in 2004. The increases in disability among females are much sharper: in Sweden, the disability rate increased from 5.4 percent (1980) to a staggering 11.1 percent in 2004, while in the UK the increase was from 1.3 percent (1980) to 4.8 percent (2004).

In sum, despite the differences in the design of the welfare system and the organization of the labor market across the two countries, some broad labor market indicators look remarkably similar. Youth unemployment relative to prime-aged unemployment was almost identical in 2006; there have been stark increases in early retirement since 1980 in both countries, particularly among females; and the incentives to move from unemployment/inactivity to (low-wage) employment may be an issue in both countries. These problems are not unique to Sweden and the UK, but the similarities suggest a potential for learning from the recent UK experience.

Figure A. 1 Disability rates in Sweden and the UK, percent of the population aged 15-64, 1980-2004



Note: UK numbers for women refer to the number of claimants under the age of 60.

Sources: Hesselius (2006) for Sweden; Brewer (2007) for the UK; data on the population aged 15-64 come from the OECD labor force statistics.

To what extent are the UK results applicable to the Swedish context?

My next purpose is to discuss to what extent the UK experience can shed some light on recent Swedish policy initiatives. The extent to which the results are transferable of course depends on the similarities between the reforms in the two countries. Ideally, we would also like to have a clear understanding of the effects of the components of the reform packages. Further, we would like to know what the alternatives were: What was the policy like for non-eligible (but comparable) groups? What was the previous policy for eligible groups?

Employment tax credits

The UK has a long history of in-work tax credits. The Working Family Tax Credit (WFTC), introduced in 1999, is a more generous version of the Family Credit introduced in 1988; see Blundell and Hoynes (2004).

In Sweden, by contrast, tax credits in cash were more-or-less unheard of until the introduction of the Employment Tax Deduction (ETD, *Jobbskatteavdraget*) in 2007.² However, there are substantial differences between the systems in the UK and Sweden, as outlined in *Table A. 3*.

Table A. 3 Employment tax credits in Sweden and the UK

	Sweden (ETD)	UK (WFTC)
Eligibility	All employed individuals.	Families with children. Must work at least 16 hours per week.
Phase-out	No phase-out.	Credit phased out when income exceeds a certain threshold.
Policy change	Greater earnings disregard. Reduction of marginal tax rate by 3 percentage points for earnings in the range SEK 110,000-314,000.	Greater earnings disregard. Higher credits. Lower phase-out rate.
Design features	Only income effects for individuals with earnings above SEK 314,000.	Incentives to bunch at hours constraint(s). High marginal tax rates in phase-out region.

Notes: ETD refers to the Employment Tax Deduction (*Jobbskatteavdraget*). The numbers refer to the rules as of 2007. WFTC refers to the Working Family Tax Credit. The policy change is relative to the Family Credit.

The WFTC is aimed at low-income families with children. There is a minimum hours constraint as is customary in UK welfare programs. And the credit is phased out which implies high marginal tax rates in the phase-out region.

The ETD, on the other hand, is individually based and there is no phase-out; thus, there are only (negative) income effects on labor supply for those above the upper earnings limit.

What are the results of the UK evaluations? The positive effects on labor supply can only be found for lone mothers. The extensive margin (participation) is more elastic than the intensive margin (hours worked conditional on working). Of course, basic labor supply theory suggests that the extensive margin should be more elastic, since only the substitution effect (of an increase in the tax credit) is relevant along the extensive

² The ETD was made more generous in 2008. There are some minor predecessors to the ETD. For instance, at some points, employed individuals have been allowed to routinely deduct a fixed (and small) sum from the earnings which are subject to income taxes.

margin. For the intensive margin, there is also an off-setting income effect which lowers the hours response.

What does this tell us regarding the recent Swedish reform? We can be fairly confident (from UK and US evidence) that participation (employment) will increase, i.e., previously non-employed individuals will move into employment to a greater extent. However, in principle, we cannot determine the effect on hours worked for low-wage individuals who were already working (in 2005, roughly 58 percent of the individuals aged 20-64 were in the relevant earnings range where marginal tax rates were reduced). Moreover, the top-earners (24 percent were above the upper earnings limit in 2005) should be expected to reduce labor supply since they get a lump-sum income transfer due to the design of the reform.

Nevertheless, I would project that total labor should supply increase as a result of the Swedish ETD. However, this is an expensive reform since there is no phase-out region. And there is reason to question the efficiency of the reform since highly skilled individuals have the incentive to reduce their labor supply.

Programs for unemployed youths

The New Deal for Young People (NDYP) was piloted prior to its nationwide introduction in 1998. Prior to NDYP, there was no specific program for youths; rather, they had access to the same kind of active labor market policies as older unemployed individuals.³

By contrast, Sweden has a fairly long history of youth programs. Specific programs targeted towards youths were introduced in 1983. Starting in 1998, these have come in the form of an “early intervention program”, where youths were guaranteed treatment, by the local government, within 100 days. Youth programs were recently reformed (as of 1 December, 2007). The responsibility for running the program was transferred to the Labor Market Board and the contents of the program were changed.

Table A. 4 offers the details about youth programs in Sweden and the UK. There are some differences worth noting. Both versions of Swedish youth programs have a shorter

waiting period than in the UK (3 months rather than 6 months). The recent reform has moved the Swedish program closer to the UK program in the sense that there are now two treatment phases with an initial period of intensified job search assistance.

Table A. 4 Youth programs in Sweden and the UK

	Sweden		UK
	Old policy	New policy	NDYP
Eligible group	Aged 18-24	Aged 16-24	Aged 18-24
Waiting period	100 days	3 months	6 months
Mandatory	No	Yes	Yes
Treatment	Education	Job search assistance	Job search assistance
Phase 1	Local gov't jobs On-the-job training	(max 3 months)	(max 4 months)
Treatment	(Same as phase 1)	Education	Education
Phase 2		On-the-job training	Subsidized jobs etc.

Notes: “Old policy” refers to the youth program that existed prior to 1 December, 2007. It is really a combination of two programs: Kommunala ungdomsprogram (18-19 year-olds) and Ungdomsgarantin (20-24 year-olds). There are some differences between these two programs but the essence of them is basically the same. “New policy” refers to the youth program introduced on 1 December 2007.

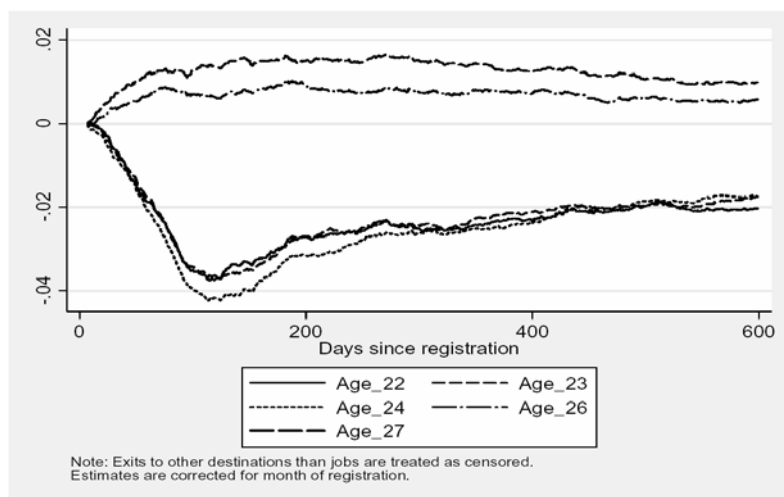
The evaluations of the NDYP have utilized two strategies: first, they have compared (changes in) outcomes for youths in the pilot areas to outcomes for youths in non-pilot areas; second, they have utilized the inherent age discontinuity in the program. Note, also, that the UK evaluations are restricted to the individuals who have entered treatment. Thus, any pre-treatment effects will not be captured by the estimates.

What does the UK evidence tell us? The initial evaluation (Blundell *et al* 2004) focused on treatment phase 1 (i.e. job search assistance) and concluded that the proportion of unemployed finding a job within the first 4 months increased by 5 percentage points. A later evaluation (De Giorgi 2005) has estimated the combined effect of both treatment phases coming up with more or less the same number. This suggests to me that the initial job search assistance phase is key – the second phase, *per se*, does not bring additional employment.

³ Note, though, that active labor market policies are substantially more extensive in Sweden than in the UK; so, even if Sweden were to implement the NDYP, the treatment effects should differ since the alternatives differ across the two countries.

Carling and Larsson (2005) as well as Forslund and Skans (2006) have evaluated the old Swedish policy. *Figure A. 2* comes from Forslund and Skans. They utilize the age discontinuity strategy alluded to above. Individuals aged 22-24 are treated individuals whose outcomes are related to the outcomes of 25-year-olds.

Figure A. 2 Differential survival rates in unemployment by age, difference relative to 25-year-olds



Source: Forslund and Skans (2006).

The figure suggests that individuals aged 24 escape to employment at a faster rate than the comparison group.⁴ Interestingly, this effect is entirely driven by a higher escape rate prior to program entry. Indeed, had the comparison started after 100 days of registration, the conclusion would have been that the program has a negative effect on the employment prospects of the treated.⁵ A possible interpretation of the pre-program effect is that it is due to “deterrence”.⁶

What should one make of the new Swedish policy, given the previous Swedish and UK evidence? It seems to me that the reform is an advance on previous policies, certainly for those actually entering treatment. The new policy emphasizes job search assistance which, according to the UK evidence, is mainly contributing to the positive

⁴ I focus on the 24-year-olds since they are most similar to the 25-year-olds (the comparison group).

⁵ One should be slightly careful here since such an analysis may be biased because of differential selection prior to program entry.

⁶ Some other papers report evidence suggesting that there is a threat effect of active labor market policies; see, e.g., Black *et al* (2003).

employment effect. The main caveat here is that the pre-program effects may be lower if job search assistance is viewed as a more attractive option for unemployed youths than the various types of local government programs that existed prior to the reform.

Initiatives for the disabled and long-term absentees

Starting in the fall of 2003, the UK government has piloted a program called Pathways to Work (PTW). The PTW will be implemented across the UK in 2008.

The Swedish government sketched a set of reforms for individuals on long-term sick leave in the budgetary proposal for 2008. Although the full set of proposals is not known at the time of writing, it seems that there are some commonalities across the two countries. The focus of this reform proposal is to reduce the inflow into disability retirement.

Table A. 5 presents a summary of the reform proposal in Sweden and the UK PTW-program. For both countries, it is hard to assess what is really new. For the UK, the fact that there are regular and mandatory work-focused interviews is new. The previous policy required a one-off work-focused interview; further interviews were voluntary on the part of the claimant. The return to work credit is more generous than previous tax credits, but note that disabled individuals had access to a more generous Working Tax Credit before the introduction of the PTW. Prior to the PTW, individuals on incapacity benefits had access to programs offered within the New Deal for Disabled Persons, so the extent of the real change is not clear. The new rehabilitation programs are supposedly “new”, but I believe that the verdict is still out on the efficacy of these programs.⁷

⁷ This is based on my reading of Department for Work and Pensions (2002). Brewer (2008) gives a somewhat different impression.

Table A. 5 Programs targeted towards long-term absentees/disabled in Sweden and the UK

	Sweden	UK
	Reform proposal	PTW
Target group	Individuals at risk of entering early retirement	New claimants of incapacity benefits
Tests of work capacity	Introduction of specific time points when work-capacity is assessed (3 and 6 months) Stricter medical guidelines for assessing work-capacity	Mandatory monthly work-focused interviews during first 6 months
Financial incentives	Lower replacement rate after 1 year of sick leave Employers' wage costs are subsidized by 50% if they hire an individual who has been on "sick leave" for at least 1 year	Return to work credit
Labor market programs	No change	Easier access to programs for the disabled
Rehabilitation programs	Rehabilitation guarantee. Additional resources for rehabilitation conditional on an agreement between the Social Insurance Board and the county councils	New work-focused rehabilitation programs offered in conjunction with NHS

Notes: The information on the Swedish reform proposal comes from the budgetary proposal for 2008; see prop. 2007/08:1. Some components of the Swedish proposal have been left out; for instance, the proposal opens up for private providers in facilitating the return to work process (something that existed prior to the PTW in the UK).

For Sweden, it seems that many of the proposals involve a structuring of the rehabilitation process. For instance, according to the current rules, the work-capacity of the individuals should be continuously assessed (at least on paper). The new thing in this respect is the introduction of specific time points, prior to which certain actions should be taken. The introduction of financial incentives is to some extent new. The employment subsidy appears to be the main component, where the proposal has doubled the wage subsidy available to those who hire someone on long-term sick leave.⁸ The proposal involves no changes to the specific programs targeted towards the disabled

⁸ Note, though, that individuals continuously on sick leave were not eligible for employment subsidies prior to 2007.

already in place in Sweden. And there appear to be additional resources set aside for rehabilitation.

The UK piloting approach allows for a differences-in-differences strategy. The evidence reported in Brewer refers to the impact some 10 months after the initial claim of incapacity benefits. At this time horizon, rehabilitation initiatives are probably less relevant (if they do have beneficial effects). The estimates suggest that the probability of being in paid work increased by 9 percentage points and that there is a mirroring reduction in the probability of receiving incapacity benefits. There is no way of distinguishing what component of the policy package that drove this effect, although I would suspect that it is mostly due to a combined effect of mandatory work-focused interviews and the return-to-work credit. Since it is not possible to determine what drives the overall effect in the UK example, it is very hard to judge whether the estimates are relevant for the recent reform proposal in Sweden.

Concluding remarks

In these comments, I have made an attempt to judge whether the UK experience is relevant for Sweden. This is an important exercise, since it seems quite likely that the current liberal-conservative Swedish government has looked at the UK experience when designing its reform package.

Of the three areas covered here, I think the evidence on the NDYP is most relevant for Sweden. I am more reluctant to draw inference from the evidence on UK tax credits, both because of the differences in crucial design features across the two countries and because of the fundamental differences in tax and transfer policies in Sweden and the UK. Finally, the UK evidence on programs for the disabled may or may not be relevant – I simply do not have enough information to tell.

Swedish policy makers should learn from the UK habit of piloting new programs. This is very useful as those implementing the programs get the possibility to fine-tune them before they are rolled out nationally. Further, given a suitable choice of pilot areas, piloting provides fruitful avenues for evaluation.

References

- Black, D., J. Smith, M. Berger and B. Noel (2003), “Is the threat of reemployment services more effective than the services themselves? Evidence from random assignment in the UI system”, *American Economic Review*, vol. 93, pp. 1313-27.
- Blundell, R. and H. Hoynes (2004), “Has ‘in-work’ benefit reform helped the labor market”, in Blundell, R., D. Card and R. Freeman (eds.), *Seeking a Premier Economy: The Economic Effects of British Economic Reforms, 1980-2000*, University of Chicago Press, Chicago, IL.
- Blundell, R., M. Costa Dias, C. Meghir and van J. Reenen (2004), “Evaluating the employment impact of a mandatory job search assistance program”, *Journal of European Economic Association*, vol. 2, pp. 569-606.
- Brewer, M. (2007), “Welfare reform in the UK: 1997-2007”, *Swedish Economic Policy Review*, vol. 14, pp. 87-122.
- Carling, K. and L. Larsson (2005), “Does early intervention help the unemployed youth?”, *Labour Economics*, vol. 12, pp. 301-19.
- De Giorgi, G. (2005), “Long-term effects of a mandatory multistage program: The new deal for young people in the UK”, IFS Working Paper W05/08, Institute for Fiscal Studies, London.
- Department for Work and Pensions (2002), *Pathways to Work: Helping People into Employment*, Department for Work and Pensions, Cm 5690.
- Forslund, A. and O.N. Skans (2006), “Swedish youth labour market policies revisited”, *Quarterly Journal of Economic Research*, vol. 75, pp. 168-85.
- Hesselius, P. (2006), “Work absence and social security in Sweden”, Unpublished manuscript, Institute for Labour Market Policy Evaluation, Uppsala.
- Kolm, A.-S. (2007), “Comment on Bruce Meyer: The earned income tax credit – a Swedish perspective”, *Swedish Economic Policy Review*, vol. 14, pp. 81-85.

Lundin, D., E. Mörk and B. Öckert (2007), “Do reduced child care price make parents work more?”, IFAU Working Paper 2007:2, Institute for Labour Market Policy Evaluation, Uppsala.

OECD (2005), *Employment Outlook 2005*, OECD, Paris.

OECD (2006), *Employment Outlook 2006*, OECD, Paris.

OECD (2007), *Employment Outlook 2007*, OECD, Paris

Publication series published by the Institute for Labour Market Policy Evaluation (IFAU) – latest issues

Rapporter/Reports

- 2008:1** de Luna Xavier, Anders Forslund and Linus Liljeberg "Effekter av yrkesinriktad arbetsmarknadsutbildning för deltagare under perioden 2002–04"
- 2008:2** Johansson Per and Sophie Langenskiöld "Ett alternativt program för äldre långtidsarbetslösa – utvärdering av Arbetstorget för erfarna"
- 2008:3** Hallberg Daniel "Hur påverkar konjunktursvängningar förtida tjänstepensionering?"
- 2008:4** Dahlberg Matz and Eva Mörk "Valår och den kommunala politiken"
- 2008:5** Engström Per, Patrik Hesselius, Bertil Holmlund and Patric Tirmén "Hur fungerar arbetsförmedlingens anvisningar av lediga platser?"
- 2008:6** Nilsson J Peter "De långsiktiga konsekvenserna av alkoholkonsumtion under graviditeten"
- 2008:7** Alexius Annika and Bertil Holmlund "Penningpolitiken och den svenska arbetslösheten"
- 2008:8** Anderzén Ingrid, Ingrid Demmelmaier, Ann-Sophie Hansson, Per Johansson, Erica Lindahl and Ulrika Winblad "Samverkan i Resursteam: effekter på organisation, hälsa och sjukskrivning"
- 2008:9** Lundin Daniela and Linus Liljeberg "Arbetsförmedlingens arbete med nystartsjobben"
- 2008:10** Hytti Helka and Laura Hartman "Integration vs kompensation – välfärdsstrategier kring arbetsoförmåga i Sverige och Finland"
- 2008:11** Hesselius Patrik, Per Johansson and Johan Vikström "Påverkas individen av omgivningens sjukfrånvaro?"

Working papers

- 2008:1** Albrecht James, Gerard van den Berg and Susan Vroman "The aggregate labor market effects of the Swedish knowledge lift programme"
- 2008:2** Hallberg Daniel "Economic fluctuations and retirement of older employees"
- 2008:3** Dahlberg Matz and Eva Mörk "Is there an election cycle in public employment? Separating time effects from election year effects"
- 2008:4** Nilsson J Peter "Does a pint a day affect your child's pay? The effect of prenatal alcohol exposure on adult outcomes"
- 2008:5** Alexius Annika and Bertil Holmlund "Monetary policy and Swedish unemployment fluctuations"
- 2008:6** Costa Dias Monica, Hidehiko Ichimura and Gerard van den Berg "The matching method for treatment evaluation with selective participation and ineligibles"
- 2008:7** Richardson Katarina and Gerard J. van den Berg "Duration dependence versus unobserved heterogeneity in treatment effects: Swedish labor market training and the transition rate to employment"

- 2008:8** Hesselius Patrik, Per Johansson and Johan Vikström “Monitoring and norms in sickness insurance: empirical evidence from a natural experiment”
- 2008:9** Verho Jouko, “Scars of recession: the long-term costs of the Finnish economic crisis”
- 2008:10** Andersen Torben M. and Lars Haagen Pedersen “Distribution and labour market incentives in the welfare state – Danish experiences”
- 2008:11** Waldfogel Jane “Welfare reforms and child well-being in the US and UK”
- 2008:12** Brewer Mike “Welfare reform in the UK: 1997–2007”
- 2008:13** Moffitt Robert “Welfare reform: the US experience”
- 2008:14** Meyer Bruce D. “The US earned income tax credit, its effects, and possible reforms”

Dissertation series

- 2007:1** Lundin Martin “The conditions for multi-level governance: implementation, politics and cooperation in Swedish active labor market policy”
- 2007:2** Edmark Karin “Interactions among Swedish local governments”
- 2008:1** Andersson Christian “Teachers and Student outcomes: evidence using Swedish data”