

Martínez-Zarzoso, Inmaculada

Working Paper

The impact of urbanization on CO2 emissions: evidence from developing countries

Nota di Lavoro, No. 2008,50

Provided in Cooperation with:

Fondazione Eni Enrico Mattei (FEEM)

Suggested Citation: Martínez-Zarzoso, Inmaculada (2008) : The impact of urbanization on CO2 emissions: evidence from developing countries, Nota di Lavoro, No. 2008,50, Fondazione Eni Enrico Mattei (FEEM), Milano

This Version is available at:

<https://hdl.handle.net/10419/43594>

Standard-Nutzungsbedingungen:

Die Dokumente auf EconStor dürfen zu eigenen wissenschaftlichen Zwecken und zum Privatgebrauch gespeichert und kopiert werden.

Sie dürfen die Dokumente nicht für öffentliche oder kommerzielle Zwecke vervielfältigen, öffentlich ausstellen, öffentlich zugänglich machen, vertreiben oder anderweitig nutzen.

Sofern die Verfasser die Dokumente unter Open-Content-Lizenzen (insbesondere CC-Lizenzen) zur Verfügung gestellt haben sollten, gelten abweichend von diesen Nutzungsbedingungen die in der dort genannten Lizenz gewährten Nutzungsrechte.

Terms of use:

Documents in EconStor may be saved and copied for your personal and scholarly purposes.

You are not to copy documents for public or commercial purposes, to exhibit the documents publicly, to make them publicly available on the internet, or to distribute or otherwise use the documents in public.

If the documents have been made available under an Open Content Licence (especially Creative Commons Licences), you may exercise further usage rights as specified in the indicated licence.



Fondazione Eni Enrico Mattei

**The Impact of Urbanization on
CO2 Emissions:
Evidence from Developing
Countries**

Inmaculada Martínez-Zarzoso

NOTA DI LAVORO 50.2008

JUNE 2008

CCMP – Climate Change Modelling and Policy

*Inmaculada Martínez-Zarzoso, Ibero America Institute for Economic Research, Universität
Göttingen and Departament d'Economía and Instituto de Economía Internacional,
Universitat Jaume I*

This paper can be downloaded without charge at:

The Fondazione Eni Enrico Mattei Note di Lavoro Series Index:
<http://www.feem.it/Feem/Pub/Publications/WPapers/default.htm>

Social Science Research Network Electronic Paper Collection:
<http://ssrn.com/abstract=1151928>

The opinions expressed in this paper do not necessarily reflect the position of
Fondazione Eni Enrico Mattei
Corso Magenta, 63, 20123 Milano (I), web site: www.feem.it, e-mail: working.papers@feem.it

The Impact of Urbanization on CO2 Emissions: Evidence from Developing Countries

Summary

This paper analyzes the impact of urbanization on CO2 emissions in developing countries. In this study we treat population as a predictor in the model, instead of assuming a unitary elasticity of emissions with respect to population growth. We contribute to the existing literature by examining the effect of urbanization, taking into account the presence of heterogeneity in the sample of countries and testing for the stability of the estimated elasticities over time. The sample covers the period from 1975 through 2005 for different groups of countries, classified according to their income levels. Our results show that, whereas the impact of population growth on emissions is above unity and only slightly different for upper, middle, and low-income countries, additional demographic variables, namely, urbanization, demonstrate a very different impact on emissions for low and lower-middle-income countries and upper-middle income countries. For the first set of countries, the elasticity, emission-urbanization, is higher than unity, whereas in the second group, the elasticity is 0.72, which is in accordance with the higher environmental impact observed in less developed regions. However, in upper-middle income countries and highly developed countries, the elasticity, emission-urbanization, is negative. The heterogeneous impact of urbanization on CO2 emissions should therefore be taken into account in future discussions of climate change policies.

Keywords: CO2 Emissions, Developing Countries, Panel Data, Population Growth, Urbanization

JEL Classification: Q25, Q4, Q54

Financial support from Fundación Caja Castellón-Bancaja and the Ministry of Education is gratefully acknowledged (P1-1B2005-33 and SEJ 2007-67548).

Address for correspondence:

Inmaculada Martínez-Zarzoso
Ibero America Institute for Economic Research
Universität Göttingen
37077 Göttingen
Germany
Phone: +49551399770
E-mail: martinei@eco.uji.es

THE IMPACT OF URBANIZATION ON CO₂ EMISSIONS: EVIDENCE FROM DEVELOPING COUNTRIES

1. Introduction

Climate change, with the attendant need to stabilize contributing global emissions, is one of the most challenging problems of our times and a matter of great concern among policy makers. Some aspects of the projected impact, such as global warming, increasing desertification, rising sea levels and rising average temperatures, might have a disproportionate impact on developing countries, which least contributed to the cause of climate change.

While many factors have been adduced for climate change, energy consumption, as affluence grows, is singled out as having the most adverse impact on the environment. However, this impact is more severe when accompanied by demographic growth, given that population increases lead to increases in energy consumption and, consequently, to greater atmospheric pollution. A number of factors, namely, the increase in life expectancy, reduced child mortality, and improved farming methods, have resulted in rapid and exponential growth of world population over the last 150 years. World population is currently growing by approximately 1.5 percent, or 80 to 85 million per year. But this trend will not continue indefinitely. The latest UN world population projections to 2150 suggest that a slowing down of population growth may already be occurring with a median projection of 9.4 billion by 2050. The population growth is expected to be concentrated in the developing regions of the world, mainly Africa and Asia, while in the developed countries, growth will be very slow.

The main greenhouse gas in terms of quantity is CO₂, which, according to UNEP (1999), accounts for about 82 percent of total anthropogenic greenhouse gas emissions in developed countries. Although the reduction commitments of CO₂ emissions were seen as a task predominantly for developed countries (UNFCCC, 1997), based on the consensus that they

are the largest contributors to global CO₂ emissions, there have been recent calls for the developing countries to play an active role in global emissions reduction (Winkler et al., 2002). The level of CO₂ emissions from developing countries has been rapidly exceeding that of the developed countries, and at present accounts for more than 50 percent of the world's CO₂ emissions (Figure 1). This trend is expected to grow if the current path, in terms of energy consumption, is maintained. Since CO₂ is one of the main contributors to global emissions, it is of great interest to determine which policy measures will be more effective in curbing CO₂ emissions.

In the last two decades, a number of researchers have investigated the determinants of CO₂ emissions within the framework of the Kuznets Curve hypothesis without reaching concluding evidence in favor of the hypothesis (See Perman and Stern, 2003, for a survey). More recent developments use decomposition analysis and efficient frontier methods, taking into account not only affluence, but also energy intensity, technical change, and structural change as explanatory variables. In most cases changes in per-capita CO₂ emissions are explained with changes in income per capita, energy intensity, and structural change in the economy, assuming implicitly that population has a unitary elasticity with respect to emissions. Relatively little effort has been devoted to investigating the impact of demographic factors on the evolution of CO₂ emissions and most of the existing studies assume that this impact is comparable for all countries and constant over time (Cole and Newmayer, 2004). Two exceptions to this general assumption are the studies of Shi (2001), who grouped countries according to income levels, and Martínez-Zarzoso et al. (2007), who studied the impact of population growth for old and new European Union members.

The primary objective of this research is to investigate the differential impact of demographic factors on CO₂ emissions by using an econometric model to decompose emissions data into the scale, composition, and technique effects. The study focuses on different groups of developing countries, and considers the heterogeneity present in the sample in terms of

variability of the estimated coefficients over time and across different groups of countries. We specify a model in which CO₂ emissions are related to the level of income per capita, the population size, the percent of urban versus rural population, the industrial structure, and the energy intensity of each country. The study involves three groups of countries classified by the World Bank as upper, middle, and low-income countries and analyzes the behavior of each group separately. The results show important disparities among groups. For low-income countries the elasticity emission-urbanization is higher than unity, whereas for lower-middle-income the elasticity is 0.72, which is in accordance with the higher environmental impact observed in less developed regions. However, in upper and highly developed countries, the elasticity, emission-urbanization, is negative.

The paper is organized as follows. Section 2 briefly reviews the relevant literature. Section 3 presents the theoretical framework and specifies the model. Section 4 describes the empirical analysis. Section 5 discusses the main results and Section 6 concludes.

2. Literature Review

The first studies that considered demographic factors to explain the sources of air pollution were based on cross-sectional data for only one time period. In this line, Cramer (1998, 2002) and Cramer and Cheney (2000) evaluated the effects of population growth on air pollution in California and found a positive relationship only for some sources of emissions but not for others. Dietz and Rosa (1997) and York, Rosa, and Dietz (2003) studied the impact of population on carbon dioxide emissions and energy use within the framework of the IPAT¹ model. The results from these studies indicate that the elasticity of CO₂ emissions and energy use with respect to population are close to unity. The unity assumption for the population elasticity is embedded in the original IPAT formulation of Ehrlich and Holdren (1971) but not in the stochastic version of the IPAT (STIRPAT) formulated by Dietz and Rosa (1997).

¹ Impact=Population .Affluence.Technology (IPAT).

In a panel data context, Shi (2003) found a direct relationship between population changes and carbon dioxide emissions in 93 countries over the period from 1975 to 1996. He found that the impact of population on emissions varies with the levels of affluence and has been more pronounced in lower-income countries than in higher-income countries. Also using panel data, Cole and Neumayer (2004) considered 86 countries during the period from 1975 to 1998 and found a positive link between CO₂ emissions and a set of explanatory variables including population, urbanization rate, energy intensity, and smaller household sizes. However, the authors assumed that the effect of population and urbanization is equal for all income levels. Previous research also outlined the negative environmental impact caused by demographic pressure (Daily and Ehrlich, 1992; Zaba and Clarke, 1994), but they failed to analyze this impact within an appropriate quantitative framework.

In addition, several studies have discussed and tested the existence of an Environmental Kuznets Curve (EKC) where the relationship between pollution and income is considered to have an inverted U-shape. These models frequently take emissions per capita for different pollutants as an endogenous variable, assuming implicitly that the elasticity, emission-population, is unitary. A few of them considered population density as an additional explanatory variable (e.g., Cole et al., 1997; Panayotou et al., 2000). However, their tests are not based on an underlying theory, and testing variables individually is subject to the problem of omitted-variables bias. The results obtained within this framework are far from homogeneous and their validity has been questioned in recent surveys of the EKC literature (e.g., Stern, 1998 and 2004). Most of the criticisms are related to the use of nonappropriated techniques and the presence of omitted-variables bias. In fact, Perman and Stern (2003) state that when diagnostic statistics and specification tests are taken into account and the proper techniques are used, the results indicate that the EKC does not exist. Borghesi and Vercelli (2003) consider that the studies based on local emissions present acceptable results, whereas

those concerning global emissions do not offer the expected outcomes, and therefore the EKC hypothesis cannot be generally accepted.

There are two new approaches that go beyond the EKC literature. They are based on decomposition analysis and are known as *index number decompositions* and *efficient frontier methods*. The first approach requires detailed sectoral data and does not allow for stochasticity, whereas the second (frontier models) is based on the estimation of econometric models, allows for random errors, and estimates factors common to all countries. Decomposition methods have been applied to an increasing number of pollutants in developed and developing countries (e.g., Hamilton and Turton, 2002; Bruvoll and Medin, 2003; Lise, 2005). Emissions are typically decomposed into scale, composition, and technique effects. Scale effects are measured with income and population variables, composition effects refer to changes in the input or output mix, and technique effects are proxied by energy intensity (the effect of productivity on emissions) and global technical progress. Hamilton and Turton (2002) concluded that income per capita and population growth are the two main factors increasing carbon emissions in OECD countries, whereas the decrease in energy intensity is the main factor reducing them. Bruvoll and Medin (2003) covered 10 pollutants and determined that in all cases, technique effects were dominant in offsetting the increase in scale. The authors concluded that, whereas structural change explains the increase in energy intensity during the period from 1913 through 1970, technical change is the main factor reducing energy intensity after 1970. Shifts in the fuel mix are the main factor explaining carbon emissions per unit of energy used. Stern (2002) used an econometric model to decompose sulphur emissions in 64 countries during the period 1973 to 1990 and found that the contribution of input and output effects on changes in global emissions is very modest, whereas technological change considerably reduces the increase in emissions.

3. Basic Framework of Analysis

Erlich and Holdren (1971) suggested a suitable framework for analyzing the determinants of environmental impact known as the equation, IPAT: $I=PAT$ where I represents environmental impact, P is the population size, A is the level of population affluence, and T denotes the level of environmentally damaging technology. The impact of human activity in the environment is viewed as the product of these three factors. Initially, this formulation was purely conceptual and could not be used directly to test hypotheses on the impact of each one of the above-mentioned factors on emissions.

The IPAT model can be expressed as an identity where A could be defined as consumption per capita and T as pollution per unit of consumption. As stated by MacKellar et al. (1995), the IPAT identity is a suggestive approach that shows how environmental impact is not due to a single factor. However, these authors outline the limitations of testing this identity related to the choice of variables and the interactions between them. They compare households (H) with total population levels, as the demographic unit used to forecast future world CO₂ emissions, and they show how each choice leads to different predictions in all the regions of the world, always increasing the impact on emissions for the $I=HAT$ model, where the term, households, replaces the term, population.

Cole and Neumayer (2004) refer to the utility of the tautological version of the IPAT model for decomposition purposes but also highlight its limitations in estimating population elasticities. For such estimation they used the model proposed by Dietz and Rosa (1997). Starting from Ehrlich and Holdren's (1971) basic foundation, Dietz and Rosa (1997) formulated a stochastic version of the IPAT equation with quantitative variables containing population size (P), affluence per capita (A), and the weight of industry in economic activity as a proxy for the level of environmentally damaging technology (T). These authors designated their model with the term, STIRPAT (Stochastic Impacts by Regression on

Population, Affluence, and Technology). The initial specification is given by the following equation:

$$I_i = \alpha P_i^\beta A_i^\gamma T_i^\delta e_i \quad [1]$$

where I_i , P_i , A_i , and T_i are the variables defined above; α , β , γ , and δ are parameters to be estimated, and e_i is the random error. Their results corroborated the Malthusian thesis in the sense that population growth has a greater-than-proportional impact on CO₂ emissions. On the other hand, the study conducted by Cramer (1998), based on a similar model, showed a contamination-population elasticity less than unity for the five pollutants analyzed in several areas of the USA. This discrepancy could be explained by the exclusion of carbon dioxide among the pollutants considered by this author.

Similar to Cole and Neumayer (2004), we have also taken the STIRPAT model as the reference theoretical and analytical framework. P is measured with total population and with the percentage of urban population. The affluence variable, A , is measured by the gross domestic product per capita and, as a proxy for measuring T , we have considered the percentage of industrial activity with respect to total production and energy efficiency. Our empirical analysis is also in line with the latest emerging approaches based on decomposition methods described in the introduction. We think that the factors driving changes in pollution should be analyzed in a single model and under the appropriate quantitative framework, hence allowing for a more flexible model with variable coefficients across groups with different behavior and over time.

4. Econometric estimation

Following the empirical model formulated by Dietz and Rosa (1997), we have estimated a linear version of the STIRPAT model for a sample of 88 countries during the period from

1975 to 2005. The countries under analysis are classified into three income groups according to data from the World Development Indicators (WDI) 2007. Low-income economies are those in which 2005 GNI per capita was \$875 US or less (54 countries). Lower-middle-income economies are those in which 2005 GNI per capita was between \$876 and \$3,466 (58 countries) and upper-middle-income economies are those in which 2005 GNI per capita was between \$3,466 and \$10,725 (40 countries). Countries in each group are listed in Table A.7 in the appendix. (WDI, World Bank, 2007). The sample of countries is considerably reduced when energy efficiency is included as an explanatory variable since data for this variable are not available. There are also some countries for which income data are missing and transition economies only report data since the early 1990s, when their economies began the opening-up process.

A summary of the data for each group of countries, as well as the simple correlation coefficients between the variables in the model, is shown in Tables A1 to A3 in the appendix. In addition, Figure 2 reports two scatter plots. The first one shows a clear positive linear relationship between population and emissions, whereas the second shows a positive relationship between urbanization and emissions for low urbanization levels and a negative one for higher levels (more than 60 percent of urban population). We proceed now with a more sophisticated analysis to investigate this relationship in depth.

In order to test whether the evolution of the factors considered in the STIRPAT model influences the level of CO₂ emissions through time and across countries, we have derived the empirical model by taking logarithms of Equation 1 as follows:

$$\ln I_{it} = \alpha_i + \beta \ln P_{it} + \gamma \ln A_{it} + \delta_i \ln T_{it} + \phi_t + \epsilon_{it}, \quad [2]$$

where the sub-index i refers to countries and t refers to the different years. I_{it} is the amount of CO₂ emissions in tons, P_{it} is the population, A_{it} is the Gross Domestic Product (GDP) per

capita expressed in constant PPP (purchasing parity prices) (2000 US\$), and T_{it} is proxied with two variables: the percentage of the industrial activity with respect to the total production measured by the GDP (IND) and energy efficiency (EI) measured as GDP at constant PPP prices divided by energy use, where *energy use* refers to apparent consumption (production+imports-exports). Finally, δ_i and ϕ_t capture the country and time effects, respectively, of each country, and e_{it} is the error term. Since the model is specified in natural logarithms, the coefficients of the explanatory variables can be directly interpreted as elasticities. The time effects, ϕ_t , can be considered as a proxy for all the variables that are common across countries but which vary over time. Within the context of decomposition analysis, these effects are sometimes interpreted as the effects of emissions-specific technical progress over time (Stern, 2002).

Equation 2 was first estimated for the whole set of countries under analysis (an unbalanced panel with 1971 observations). Table 1 shows the results obtained by using different estimation methods.

Table 1. Regression results for all countries in the sample (1975-2005)

The model was first estimated using random effects (Model 1) and fixed effects (Model 2). Since the country and time-specific effects are statistically significant (as indicated by the respective LM tests) the OLS results with a common intercept are not reported. The result of the Hausman test indicates that the country effects are correlated with the residuals and therefore only the fixed-effects estimates are consistent. Since the time dimension of the panel is relatively large (31 years), serial correlation is almost certainly present in our data. We confirm this hypothesis by performing the Wooldridge autocorrelation test for panel data. In order to get consistent estimates, feasible generalized least squares (FGLS) techniques can be used. A second problem to be accounted for is the presence of heteroskedasticity, as indicated by the result of the LR test reported in the last row of Table 1. In order to deal with both

problems simultaneously, autocorrelation and heteroskedasticity in the error term, the model is estimated using FGLS assuming heteroskedasticity and panel-specific AR1 correlation (Model 7). To see the effects on the estimated parameters of each problem separately, Models 4 and 5 assume respectively autocorrelation² and heteroskedasticity and Model 6 assumes heteroskedasticity and panel-common AR1. The model that shows a higher log-likelihood is Model 7 and this is going to be utilized to estimate regressions for different income groups.

The results indicate that all of the variables included are statistically significant and show the expected signs. With respect to the estimated elasticities, the population elasticity is slightly higher than one, in line with previous research, and the percentage of urban population also has a positive effect on CO₂ emissions. The estimated coefficient for income per capita indicates a higher-than-proportional effect on emissions, and an increase in energy efficiency decreases emissions proportionally. Finally, the effect of the percentage of industrial activity is positive and small, and the time effects show a negative sign and an increasing magnitude over time; this could be indicative of global technical progress over time that is reducing emissions.

Since the time span is large, another matter of concern is the stationarity of the series. If the series are non-stationary, the results could be showing spurious relationships. Although this problem is greatly reduced with the use of panel data, we consider two possible ways of approaching this issue. The first is to test for unit roots using panel unit root tests and if all the series are non-stationary and integrated of order one, to then search for a long-run equilibrium relationship. The second approach is to estimate the model for a cross-section of countries in each year and see whether the results hold. Since we also wanted to explore the changing role of affluence, increasing population, urbanization, and industrialization along countries'

² We also estimated the model taking first differences of the series as an alternative to account for autocorrelation, and the results were similar.

development paths, the second approach is followed. The yearly regressions are also estimated using feasible generalized least squares, since heteroskedasticity is present in the data. The results are reported in Table 2.

Table 2. Generalized least squares estimation results for all countries with population weights (various years)

The estimated coefficients indicate that population size contributes to emissions at an almost constant rate, whereas income per capita contributes to emissions at an increasing rate over the whole period. Industrialization contributes to CO₂ emissions but at a decreasing rate as income increases and energy efficiency make negative contributions to emissions at a slightly decreasing rate. It is worth noting the fall in the contribution of urbanization over time and the change from a positive to a negative contribution in the Eighties. That lends support to the existence of structural change. To explore further the apparently changing role of the variables explaining emissions, we divided our panel data into three groups of countries: low, lower-middle, and upper-middle income. Table 3 shows the results.

Table 3. Estimation results for each income group. 1975-2005

The main differences between the three sets of results concern urbanization. The elasticity emissions-urbanization, is negative and significant for the upper-middle-income group, whereas for lower-middle and low-income countries, it is positive and significant. It is much higher than unity (2.82) for low-income countries and it has a less-than-proportional effect for lower-middle-income countries. The inclusion of urbanization in the model does not change the estimated coefficients of the other explanatory variables. The model was also estimated without this variable and the only difference was that the Log-Likelihood was lower in magnitude.

The results are also confirmed when we examine the evolution over time of the emissions-urbanization elasticity. We obtained a positive and decreasing elasticity for low-income countries and a negative and increasing elasticity for upper-middle-income countries (See Tables A.4 to A.6 in the appendix).

Concerning population, higher emissions-population elasticity is obtained for low and lower-middle-income countries (1.21 and 1.16, respectively) than for upper-middle-income countries (1.016). The elasticity for high-income countries (not reported, available upon request) was very similar to the one obtained for the upper-middle group (1.014). A great number of studies confirm an overall upward trend in global emissions over the last decades that share two characteristics. First, emissions have grown faster than population, and second, this relationship is more pronounced for developing countries than for developed countries.

Similar to other studies, we find that for developed countries, the emissions-population elasticity presents a lower coefficient. Shi (2003) calculated an elasticity of 1.58 for developing countries and 0.83 for developed ones. Also, MacKellar et al. (1995) found that population growth had more influence regarding energy consumption in less developed regions (2.2 in developing and 0.7 in developed regions). This disparity holds also when considering households instead of individuals.

Figure 3 presents the time effects of four groups of countries. We observe an overall decreasing trend in the magnitude of the estimated coefficients for upper-middle-income and high-income countries over the whole period. However, for low and lower-middle-income countries, this decreasing trend is only observed in the 1980s and from 1995 to 2005. In fact, since 1995 this decreasing trend is much more pronounced for these two groups of countries. Assuming that these effects can represent specific technical progress over time, the results indicate that technical progress has contributed to the decrease in CO₂ emissions, especially in developing countries in the latest years of the sample.

Some differences have also been observed in the other explanatory variables. An increase of 1 percent in the GDP per head causes a 1.17 percent increase in CO₂ emissions of upper-middle-income countries and a 1.88 percent low-income countries. The negative contribution of energy efficiency to emissions is also different: in the first group, the impact is also lower than that obtained for the second (the elasticities are -1.01 and -1.20, respectively). To sum up, the environmental impact caused by population, urbanization, and affluence variables (scale effect) seems to be higher in low-income countries, whereas the contribution of the industrial sector to emissions is similar for all countries.

5. Conclusions

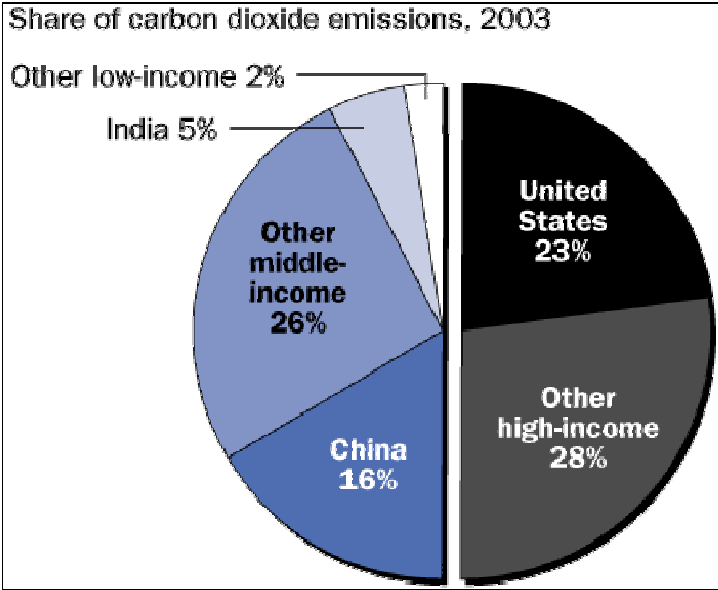
In this paper a multivariate analysis of the determinants of carbon dioxide emissions in developing countries during the period 1975 to 2005 has been conducted. We have taken the Dietz and Rosa (1997) formulation as our theoretical framework. In their model, population is introduced as a predictor, together with affluence per capita and the level of environmentally damaging technology, proxied with the weight of the industrial sector in the GDP and with energy intensity. Affluence was measured by the GDP per capita in PPP. We have added urbanization as a predictor and used several estimation methods in a panel data framework.

The results show different patterns for low-income and lower-middle-income countries and the rest. For the first set of countries, the elasticity emission-urbanization is higher than unity, whereas in the second group, the elasticity is 0.72, which is in accordance with the higher environmental impact observed in less developed regions. However, in upper and highly developed countries, the elasticity, emission-urbanization, is negative.

This result has a very important policy implication: once urbanization reaches a certain level, the effect on emissions turn out to be negative, contributing to reduced environmental damage. This result is also confirmed when we observe the evolution over time of the

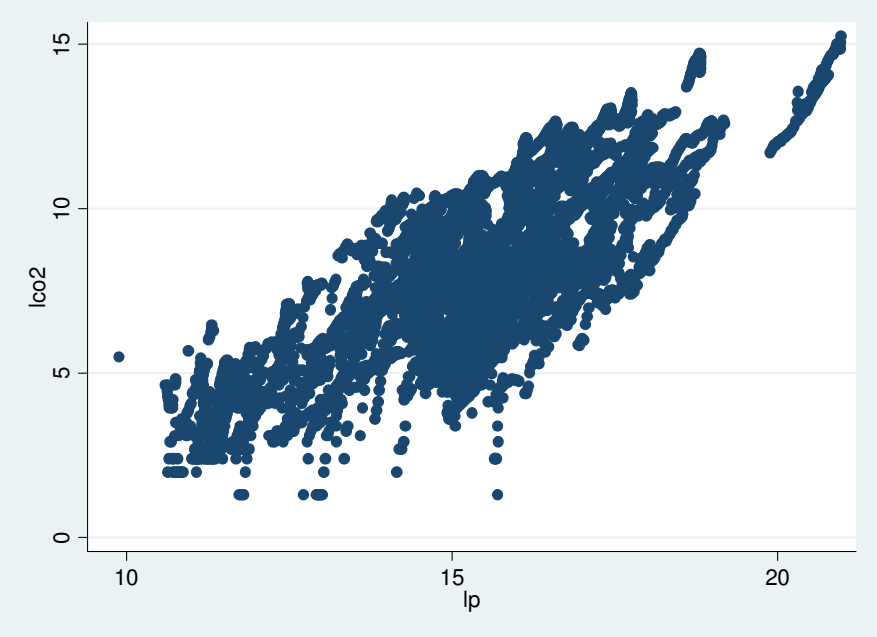
emissions-urbanization elasticity. We obtained a positive and decreasing elasticity for low-income countries and a negative and increasing elasticity for upper-middle-income countries. In 2008 more than half of the world's human population (3.3 billion people) is living in urban areas. By 2030, this is expected to increase to almost 5 billion. Although many of these cities will be poor, no country in the industrial age has ever achieved significant economic growth without urbanization. Cities may concentrate poverty, but they also represent the best hope of escaping it. Although cities embody the environmental damage, namely, increasing emissions due to transportation, energy consumption and other factors, policymakers and experts increasingly recognize the potential value of cities to long-term sustainability. It could be that these potential benefits of urbanization outweigh the disadvantages. This is the main message of this paper.

Figure 1. Carbon dioxide emissions in 2003



Source: World Development Indicators 2007

Figure 2. Scatter plots: CO₂ and population and CO₂ and urbanization



Source: Own elaboration

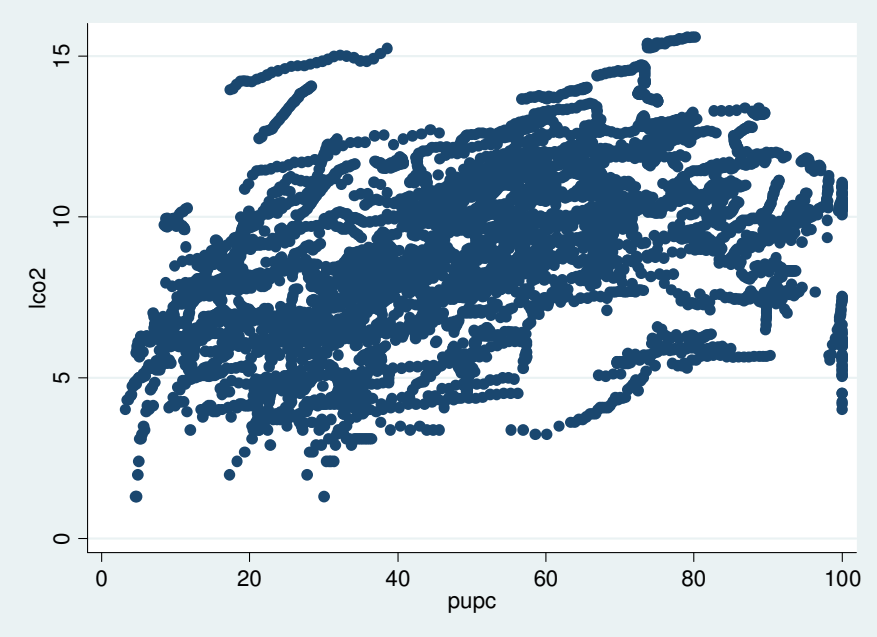
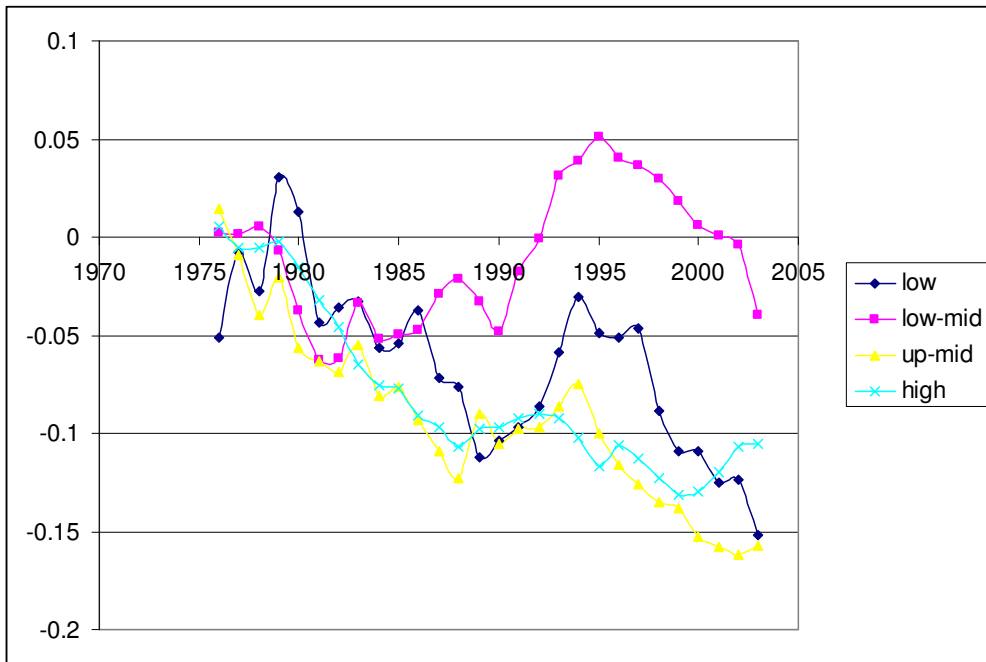


Figure 3. Time effects for different groups of countries



Source: Own elaboration

Table 1. Regression results for all countries in the sample (1975-2005)

Method:	RE	FE	FE AR(1)	GLS ARC	GLS HET	GLS HET ARC	GLS HET ARSP
Model	<u>1</u>	<u>2</u>	<u>3</u>	<u>4</u>	<u>5</u>	<u>6</u>	<u>7</u>
Variables	Coeff.	Coeff.	Coeff.	Coeff.	Coeff.	Coeff.	Coeff.
lyh	2.503*** (11.73)	2.188*** (9.84)	1.233*** (16.11)	1.521*** (71.57)	1.493*** (143.86)	1.358*** (56.23)	1.418*** (62.69)
lp	1.012*** (31.18)	1.123*** (9.37)	1.174 (1.04)	1.053*** (119.16)	1.068*** (244.29)	1.057*** (102.14)	1.069*** (91.48)
pupc	-0.106 (-0.582)	-1.129*** (-4.58)	-0.257 (-0.47)	0.523*** (5.64)	0.321*** (7.27)	0.486*** (4.77)	0.677*** (6.62)
lei1	-0.899*** (-22.64)	-0.788*** (-16.53)	-0.786*** (-12.03)	-0.968*** (-39.09)	-1.012*** (-84.15)	-1.013*** (-44.46)	-1.091*** (-54.68)
lia	0.313*** (7.81)	0.288*** (6.84)	0.144*** (3.44)	0.688*** (17.24)	0.561*** (22.68)	0.146*** (5.45)	0.170*** (7.01)
cons	-8.849*** (-9.68)	-10.64*** (-5.01)	0.790*** -9.95	-6.812*** (-17.75)	-5.849*** (-28.05)	-3.377*** (-8.67)	-3.128*** (-8.65)
Time dummies	Yes	Yes	Yes	Yes	Yes	Yes	Yes
Lm test	4565	Prob=0.00					
Hausman test	548	Prob= 0.00					
N	1971	1971	1883	1971	1971	1971	1971
Adjusted R ²		0.588	0.487				
RMSE	0.278	0.274	0.16				
Log Likl.		-179	791.6	-1616.3	-752.8	1591.4	1864.5
t-statistics in brackets							

p<0.01							
Wooldridge test for autocorrelation				F(1.87)=33.18			
LR test for Heteroskedasticity				Chi(87)=2542			

Note: lyh denotes per- capita income, lp denotes population, pupc is the percentage of urban population over total population, lei1 is energy efficiency, and lia is the percentage of industrial activity over total GDP.

Table 2. Feasible generalized least squares estimation results for all countries with population weights (various years)

Year	1975	1980	1985	1990	1995	2000	2003
Variables	Coeff.	Coeff.	Coeff.	Coeff.	Coeff.	Coeff.	Coeff.
lyh	1.032** (3.47)	1.339*** (6.34)	1.481*** (6.74)	1.637*** (7.97)	1.764*** (7.49)	1.794*** (13.23)	1.810*** (13.92)
lp	1.072*** (24.18)	1.138*** (23.97)	1.162*** (28.42)	1.194*** (25.26)	1.082*** (23.65)	1.050*** (22.71)	1.053*** (26.42)
pupc	0.722 (0.70)	0.0190 (0.02)	-0.576 (-0.55)	-0.639 (-0.66)	-1.088 (-1.30)	-1.083* (-2.06)	-1.201* (-2.17)
lia	0.975*** (4.17)	0.731** (3.37)	0.944** (3.21)	0.775* (2.56)	0.650* (1.99)	0.260 (1.04)	0.193 (1.08)
lei1	-0.952*** (-4.10)	-1.056*** (-6.07)	-1.052*** (-5.98)	-0.916*** (-5.16)	-0.919*** (-6.63)	-0.869*** (-7.93)	-0.834*** (-7.99)
Constant	-5.310 (-1.95)	-6.144* (-2.08)	-8.301** (-2.99)	-11.620*** (-3.98)	-9.942*** (-3.80)	-9.187*** (-4.36)	-9.718*** (-5.01)
Observations	46	51	59	67	87	88	87
Adjusted	0.969	0.972	0.968	0.968	0.970	0.971	0.976
t	statistics	In	parentheses				
*	p<0.05	**	p<0.01	***	p<0.001		

Note: lyh denotes per- capita income, lp denotes population, pupc is the percentage of urban population over total population, lei1 is energy efficiency, and lia is the percentage of industrial activity over total GDP.

Table 3. Estimation results for each income group (1975-2005)

Model Variables	GLS with HET and AR(1) Specific terms		
	Up-Mid	L-Mid	Low
lyh	1.118*** (30.76)	1.316*** (30.49)	1.883*** (24.6)
lp	1.016*** (64.3)	1.106*** (58.07)	1.207*** (49.17)
pupc	-0.246** (-2.53)	0.729*** (3.81)	2.828*** (5.67)
lei1	-1.013*** (-27.97)	-1.137*** (-35.09)	-1.206*** (-17.02)
lia	0.122** (2.86)	0.145*** (3.75)	0.126** (2.51)
cons	-0.232 (-0.35)	-2.437*** (-4.95)	-7.282*** (-7.80)
Time dummies	Yes	Yes	Yes
N countries	25	39	24
Log. Likl	714.9	804.1	387.7

Note: t-statistics are in brackets. *, **, *** denote significance at the 10, 5, and 1% level, respectively. Note: *lyh*

denotes per-capita income, lp denotes population, pupc is the percentage of urban population over total population, lei1 is energy efficiency, and lia is the percentage of industrial activity over total GDP.

References

- Borghesi S, Vercelli A (2003) Sustainable globalisation. *Ecol Economics* 44:77-89
- Bruvoll A, Medin H (2003) Factors behind the Environmental Kuznets Curve: a decomposition of the changes in air pollution. *Env and Res Economics* 24(1): 27-48
- Cole MA, Rayner AJ, Bates J M (1997) The Environmental Kuznets Curve: an empirical analysis. *Env and Dev Economics* 2(4):401-416
- Cole MA, Neumayer E (2004) Examining the impact of demographic factors on air pollution. *Pop and Dev Review* 2(1):5-21
- Cramer C J (2002) Population growth and local air pollution: methods, models and results. In Lutz W, Prkawetz A, Sanderson WC (eds.) *Pop and Env. Suppl to Pop and Dev Review*, vol. 28: Population Council, New York, 53-88
- Cramer CJ (1998) Population growth and air quality in California. *Demography* 35(1): 45-56
- Cramer CJ, Cheney RP (2000) Lost in the ozone: population growth and ozone in California. *Pop and Env* 21(3):315-337
- Daily GC, Ehrlich PR (1992) Population, sustainability and earth's carrying capacity. *Biosciences* 42:761-771
- Dietz T, Rosa EA (1997) Effects of population and affluence on CO₂ emissions. In: *Proceedings of the Natl Acad of Sciences USA* vol 94(1) pp175-179
- Ehrlich PR, Holdren JP (1971) Impact of population growth. *Science* 171:1212-1217
- Galeotti M, Lanza A (1999) Richer and cleaner? A study on carbon dioxide emissions in developing countries. FEEM Working Paper 87
- Hamilton C, Turton H (2002) Determinants of emissions growth in OECD countries. *En Pol* 30:63-71
- Lise W (2005) Decomposition of CO₂ emissions over 1980-2003 in Turkey. FEEM Working Paper No. 24:05

MacKellar L, Lutz W, Prinz C, et al (1995) Population, households and CO₂ emissions. Pop and Dev Review 21(4):849-865

Martínez-Zarzoso I, Bengochea-Morancho A, ~~Morales-Lage, R~~ (2007). ~~The Impact of Population on CO₂ Emissions: Evidence from European Countries.~~ Env and Res Economics 38: 497-512

Formatted: Spanish (Spain-Modern Sort)

Deleted: Name of Article?.

Deleted:

Formatted: English (U.K.)

Deleted: [vol and page information]

Panayotou T, Peterson A, Sachs J (2000) Is the Environmental Kuznets Curve driven by structural change? What extended time series may imply for developing countries?. CAER II Discussion Paper 80

Perman R, Stern DI (2003) Evidence from panel unit root and cointegration tests that the Environmental Kuznets Curve does not exist. Aus J Agr and Res Economics 47:325-347

Roberts JT, Grimes PE (1997) Carbon intensity and economic development 1962-91: a brief exploration of the Environmental Kuznets Curve. World Dev 25(2):191-198

Shafik N, Bandyopadhyay S (1992) Economic growth and environmental quality: time series and cross-country evidence. Background paper for the World Dev Rep 1992, Working Paper No 904, The World Bank, Washington DC

Shi A (2003) The impact of population pressure on global carbon dioxide emissions, 1975-1996: evidence from pooled cross-country data. Ecol Economics 44:29-42

Stern DI (1998) Progress on the environmental Kuznets Curve?. Env and Dev Economics 3:173-196

Stern DI (2002) Explaining changes in global sulphur emissions: an econometric decomposition approach. Ecol Economics 42:201-220

Stern DI (2004) The rise and fall of the Environmental Kuznets Curve. World Dev 32(8):1419-1439

Winkler H, Spalding-Fecher R, Mwakasonda S, Davidson O (2002) Sustainable Development Policies and Measures: Starting From Development to Tackle Climate Change, in Baumert K,

Blanchard O, Llosa S, Perkaus J eds. Building a Climate of Trust: The Kyoto Protocol and Beyond (61-87). Washington D.C.:World Resources Institute.

World Bank (2007), World Development Indicators 2001 CD-ROM, Washington, DC

York R, Rosa EA, Dietz T (2003) STIRPAT, IPAT and ImPACT: analytic tools for unpacking the driving forces of environmental impacts. *Ecol Economics* 46(3):351-365

WRI (1997) Annual carbon dioxide inventory report. <http://www.wri.org/>

Zaba B, Clarke, JI (1994) Introduction: current directions in population-environment research.

In: Zaba B, Clarke JI (eds) Environment and population change. Derouaux Ordina Editions,

Liège

Appendix

A1. Summary statistics and correlations for low-income countries

Least Developed countries

Variable	Obs.	Mean	Std. Dev.	Min.	Max.		
lco2	1512	7.468	2.116	1.298	14.057		
Lyh	1292	6.855	0.498	5.393	8.147		
Lp	1653	15.869	1.576	11.316	20.814		
Pupc	1653	0.260	0.125	0.032	0.616		
lei1	621	14.689	0.641	13.147	16.276		
Lia	1307	2.994	0.404	0.632	4.072		
Correlations	lco2	lyh	lp	pupc	lei1	lia	
lco2	1.000						
Lyh	0.347	1.000					
Lp	0.794	0.076	1.000				
Pupc	0.107	0.441	-0.234	1.000			
lei1	0.026	0.634	0.136	0.104	1.000		
Lia	0.435	0.244	0.140	0.336	-0.146	1.000	

A2. Summary statistics and correlations for lower-middle-income countries

Variable	Obs.	Mean	Std. Dev.	Min.	Max.		
lco2	2330	8.694	2.528	1.298	15.237		
Lyh	1401	7.931	0.580	5.435	9.109		
Lp	2632	15.168	2.086	9.616	20.989		
Pupc	2632	0.433	0.170	0.034	0.861		
lei1	986	15.109	0.582	12.981	16.315		
Lia	1653	3.365	0.409	0.929	4.435		
Correlations	lco2	lyh	lp	pupc	lei1	lia	
lco2	1						
Lyh	0.2535	1					
Lp	0.8526	-0.001	1				
Pupc	0.1067	0.543	-0.173	1			
lei1	-0.173	0.509	0.004	0.118	1		
Lia	0.42	-0.001	0.311	0.062	-0.257	1	

A3. Summary statistics and correlations for upper-middle-income countries

Variable	Obs.	Mean	Std. Dev.	Min.	Max.		
lco2	1590	8.655	3.012	1.991	14.719		
Lyh	916	8.586	0.605	6.538	9.930		
Lp	1668	14.611	2.182	9.888	18.817		
Pupc	1656	0.5278	0.196	0.031	0.934		
lei1	602	15.071	0.520	13.937	16.211		
Lia	1075	3.454	0.414	2.043	4.4878		
Correlations	lco2	lyh	lp	pupc	lei1	lia	
lco2	1						
Lyh	0.2419	1					
Lp	0.8961	0.0407	1				
Pupc	0.2124	0.2426	0.309	1			
lei1	-0.3570	0.2246	-0.0741	0.3082	1		
Lia	0.0200	0.009	-0.1720	-0.1527	-0.3687	1	

Table A.4. Generalized least squares estimation results with population weights (various years/ low-income countries)

YEAR	1975	1980	1985	1990	1995	2000	2004
lyh	-0.388 (-0.40)	-0.202 (-0.20)	-0.133 (-0.29)	1.156*** -3.89	1.402*** -3.9	1.468*** -5.24	1.444*** -4.69
lp	1.159*** (19.7)	1.188*** (22.66)	1.229*** (13.76)	1.159*** (15.68)	1.145*** (17.14)	1.149*** (16.55)	1.148*** (14.29)
pupc	6.277 (1.89)	6.689* (2.50)	7.747*** (5.15)	4.596** (3.12)	3.983* (2.52)	3.198* (2.11)	3.526* (2.63)
lia	0.780 (1.14)	0.934* (2.19)	1.158* (2.22)	1.011** (2.97)	0.670 (1.81)	0.496 (1.44)	0.207 (0.54)
Constant	-12.42* (-2.11)	-14.69* (-2.30)	-16.84*** (-6.87)	-23.29*** (-16.43)	-23.78*** (-13.38)	-23.81*** (-15.65)	-22.96*** (-14.93)
Observations	27	30	35	41	44	46	46
Adjusted	0.953	0.963	0.972	0.964	0.963	0.959	0.956
t	statistics	in	parentheses				
*	p<0.05	**	p<0.01	***	p<0.001		

Note: *lyh* denotes per-capita income, *lp* denotes population, *pupc* is the percentage of urban population over total population, *lei1* is energy efficiency, and *lia* is the percentage of industrial activity over total GDP. t-statistics are in brackets. *, **, *** denote significance at the 10, 5, and 1% level, respectively.

Table A.5. Generalized least squares estimation results with population weights (various years/ lower-middle-income countries)

	1975	1980	1985	1990	1995	2000	2004
	lco2	lco2	lco2	lco2	lco2	lco2	lco2
lyh	-0.323 (-0.99)	-0.209 (-0.49)	-0.067 (-0.12)	0.667 -1.41	0.325 -1.15	1.159*** -4.14	0.921* -2.27
lp	0.882*** 7.78	1.046*** 7.46	1.139*** 8.52	1.145*** 9.34	0.988*** 11.42	0.926*** 23.19	0.861*** 11.55
pupc	2.495 1.75	2.195 1.26	1.055 0.65	-0.227 (-0.15)	0.280?? -0.28	-0.028?? (-0.04)	-0.993 (-1.02)
lia	2.549** 3.70??	1.072 1.13	0.532 0.56	1.500?? 1.48	1.728* 2.39	1.610*** 4.01	1.137** 3.16
Constant	-12.70*** (-5.92)	-10.84** (-2.89)	-11.05* (-2.41)	-19.62*** (-3.66)	-15.05*** (-5.30)	-20.34*** (-9.94)	-32.58*** (-5.05)
Observations	26	30	33	44	49	49	47
Adjusted	0.980	0.958	0.947	0.913	0.941	0.963	0.969
t	statistics	in	parentheses				
*	p<0.05	**	p<0.01	***	p<0.001		

Deleted: ??

Note: lyh denotes per-capita income, lp denotes population, pupc is the percentage of urban population over total population, lei1 is energy efficiency, and lia is the percentage of industrial activity over total GDP. t-statistics are in brackets. *, **, *** denote significance at the 10, 5, and 1% level, respectively.

Table A.6. Generalized least squares estimation results with population weights (various years/ upper-middle-income countries)

	1975	1980	1985	1990	1995	2000	2004
lyh	0.817	0.628	0.796*	1.410***	0.693	0.479	0.585
	1.79	1.66	2.33	9.28	1.82	1.5	1.82
lp	1.066**	1.160***	1.176***	1.230***	1.231***	1.231***	1.271***
	-5.04	13.69	20.45	30.95	18.46	16.19	13.76
pupc	-1.157	-0.393	-1.430*	-1.063*	-0.258	-0.88	-1.760*
	(-0.90)	(-0.74)	(-2.77)	(-2.08)	(-0.39)	(-1.60)	(-2.20)
lia	0.894	1.234*	1.688**	1.387***	2.520***	1.466**	1.289**
	-1.44	2.66	3.16	7.57	4.98	3.46	3.49
Constant	-15.82*	-17.70***	-20.56***	-25.89***	-24.04***	-18.10***	-18.51***
	(-3.63)	(-12.90)	(-12.97)	(-20.57)	(-4.82)	(-4.55)	(-4.54)
Observations	11	21	26	33	34	34	34
Adjusted	0.842	0.946	0.946	0.978	0.942	0.934	0.926
t	statistics	in	parentheses				
*	p<0.05	**	p<0.01	***	p<0.001		

Note: lyh denotes per capita income, lp denotes population, pupc is the percentage of urban population over total population, leil is energy efficiency, and lia is the percentage of industrial activity over total GDP.

A.7. Lists of countries in each group

<u>Low income</u>	<u>Lower-middle income</u>	<u>Upper-middle income</u>
Afghanistan	Albania	American Samoa
Bangladesh	Algeria	Argentina
Benin	Angola	Belize
Burkina Faso	Armenia	Botswana
Burundi	Azerbaijan	Brazil
Cambodia	Belarus	Bulgaria
Central African Republic	Bhutan	Chile
Chad	Bolivia	Costa Rica
Comoros	Bosnia and Herzegovina	Croatia
Congo, Dem. Rep.	Cameroon	Dominica
Côte d'Ivoire	Cape Verde	Equatorial Guinea
Eritrea	China	Gabon
Ethiopia	Colombia	Grenada
Gambia, The	Congo, Rep.	Hungary
Ghana	Cuba	Kazakhstan
Guinea	Djibouti	Latvia
Guinea-Bissau	Dominican Republic	Lebanon
Haiti	Ecuador	Libya
India	Egypt, Arab Rep.	Lithuania
Kenya	El Salvador	Malaysia
Korea, Dem. Rep.	Fiji	Mauritius
Kyrgyz Republic	Georgia	Mayotte
Lao PDR	Guatemala	Mexico
Liberia	Guyana	Montenegro
Madagascar	Honduras	Northern Mariana Islands
Malawi	Indonesia	Oman
Mali	Iran, Islamic Rep.	Palau
Mauritania	Iraq	Panama
Mongolia	Jamaica	Poland
Mozambique	Jordan	Romania
Myanmar	Kiribati	Russian Federation
Nepal	Lesotho	Serbia
Niger	Macedonia, FYR	Seychelles
Nigeria	Maldives	Slovak Republic
Pakistan	Marshall Islands	South Africa
Papua New Guinea	Micronesia, Fed. Sts.	St. Kitts and Nevis
Rwanda	Moldova	St. Lucia
São Tomé and Príncipe	Morocco	St. Vincent and the Grenadines
Senegal	Namibia	Turkey
Sierra Leone	Nicaragua	Uruguay
Solomon Islands	Paraguay	Venezuela, RB
Somalia	Peru	
Sudan	Philippines	
Tajikistan	Samoa	
Tanzania	Sri Lanka	
Timor-Leste	Suriname	
Togo	Swaziland	
Uganda	Syrian Arab Republic	
Uzbekistan	Thailand	
Vietnam	Tonga	
Yemen, Rep.	Tunisia	
Zambia	Turkmenistan	
Zimbabwe	Ukraine	
	Vanuatu	
	West Bank and Gaza	

NOTE DI LAVORO DELLA FONDAZIONE ENI ENRICO MATTEI

Fondazione Eni Enrico Mattei Working Paper Series

Our Note di Lavoro are available on the Internet at the following addresses:

<http://www.feem.it/Feem/Pub/Publications/WPapers/default.htm>

<http://www.ssrn.com/link/feem.html>

<http://www.repec.org>

<http://agecon.lib.umn.edu>

<http://www.bepress.com/feem/>

NOTE DI LAVORO PUBLISHED IN 2008

CCMP	1.2008	<i>Valentina Bosetti, Carlo Carraro and Emanuele Massetti</i> : <u>Banking Permits: Economic Efficiency and Distributional Effects</u>
CCMP	2.2008	<i>Ruslana Palatnik and Mordechai Shechter</i> : <u>Can Climate Change Mitigation Policy Benefit the Israeli Economy? A Computable General Equilibrium Analysis</u>
KTHC	3.2008	<i>Lorenzo Casaburi, Valeria Gattai and G. Alfredo Minerva</i> : <u>Firms' International Status and Heterogeneity in Performance: Evidence From Italy</u>
KTHC	4.2008	<i>Fabio Sabatini</i> : <u>Does Social Capital Mitigate Precariousness?</u>
SIEV	5.2008	<i>Wisdom Akpalu</i> : <u>On the Economics of Rational Self-Medication</u>
CCMP	6.2008	<i>Carlo Carraro and Alessandra Sgobbi</i> : <u>Climate Change Impacts and Adaptation Strategies In Italy. An Economic Assessment</u>
ETA	7.2008	<i>Elodie Rouvière and Raphaël Soubeyran</i> : <u>Collective Reputation, Entry and Minimum Quality Standard</u>
IEM	8.2008	<i>Cristina Cattaneo, Matteo Manera and Elisa Scarpa</i> : <u>Industrial Coal Demand in China: A Provincial Analysis</u>
IEM	9.2008	<i>Massimiliano Serati, Matteo Manera and Michele Plotegher</i> : <u>Econometric Models for Electricity Prices: A Critical Survey</u>
CCMP	10.2008	<i>Bob van der Zwaan and Reyer Gerlagh</i> : <u>The Economics of Geological CO₂ Storage and Leakage</u>
KTHC	11.2008	<i>Maria Francesca Cracolici and Teodora Erika Uberti</i> : <u>Geographical Distribution of Crime in Italian Provinces: A Spatial Econometric Analysis</u>
KTHC	12.2008	<i>Victor Ginsburgh, Shlomo Weber and Sheila Weyers</i> : <u>Economics of Literary Translation. A Simple Theory and Evidence</u>
NRM	13.2008	<i>Carlo Giupponi, Jaroslav Mysiak and Alessandra Sgobbi</i> : <u>Participatory Modelling and Decision Support for Natural Resources Management in Climate Change Research</u>
NRM	14.2008	<i>Yaella Depietri and Carlo Giupponi</i> : <u>Science-Policy Communication for Improved Water Resources Management: Contributions of the Nostrum-DSS Project</u>
CCMP	15.2008	<i>Valentina Bosetti, Alexander Golub, Anil Markandya, Emanuele Massetti and Massimo Tavoni</i> : <u>Abatement Cost Uncertainty and Policy Instrument Selection under a Stringent Climate Policy. A Dynamic Analysis</u>
KTHC	16.2008	<i>Francesco D'Amuri, Gianmarco I.P. Ottaviano and Giovanni Peri</i> : <u>The Labor Market Impact of Immigration in Western Germany in the 1990's</u>
KTHC	17.2008	<i>Jean Gabszewicz, Victor Ginsburgh and Shlomo Weber</i> : <u>Bilingualism and Communicative Benefits</u>
CCMP	18.2008	<i>Benno Torgler, María A.GarcíaValiñas and Alison Macintyre</i> : <u>Differences in Preferences Towards the Environment: The Impact of a Gender, Age and Parental Effect</u>
PRCG	19.2008	<i>Gian Luigi Albano and Berardino Cesi</i> : <u>Past Performance Evaluation in Repeated Procurement: A Simple Model of Handicapping</u>
CTN	20.2008	<i>Pedro Pintassilgo, Michael Finus, Marko Lindroos and Gordon Munro (lxxxiv)</i> : <u>Stability and Success of Regional Fisheries Management Organizations</u>
CTN	21.2008	<i>Hubert Kempf and Leopold von Thadden (lxxxiv)</i> : <u>On Policy Interactions Among Nations: When Do Cooperation and Commitment Matter?</u>
CTN	22.2008	<i>Markus Kinaterer (lxxxiv)</i> : <u>Repeated Games Played in a Network</u>
CTN	23.2008	<i>Taiji Furusawa and Hideo Konishi (lxxxiv)</i> : <u>Contributing or Free-Riding? A Theory of Endogenous Lobby Formation</u>
CTN	24.2008	<i>Paolo Pin, Silvio Franz and Matteo Marsili (lxxxiv)</i> : <u>Opportunity and Choice in Social Networks</u>
CTN	25.2008	<i>Vasileios Zikos (lxxxiv)</i> : <u>R&D Collaboration Networks in Mixed Oligopoly</u>
CTN	26.2008	<i>Hans-Peter Weikard and Rob Dellink (lxxxiv)</i> : <u>Sticks and Carrots for the Design of International Climate Agreements with Renegotiations</u>
CTN	27.2008	<i>Jingang Zhao (lxxxiv)</i> : <u>The Maximal Payoff and Coalition Formation in Coalitional Games</u>
CTN	28.2008	<i>Giacomo Pasini, Paolo Pin and Simon Weidenholzer (lxxxiv)</i> : <u>A Network Model of Price Dispersion</u>
CTN	29.2008	<i>Ana Mauleon, Vincent Vannetelbosch and Wouter Vergote (lxxxiv)</i> : <u>Von Neumann-Morgenstern Farsightedly Stable Sets in Two-Sided Matching</u>
CTN	30.2008	<i>Rahmi İlkiliç (lxxxiv)</i> : <u>Network of Commons</u>
CTN	31.2008	<i>Marco J. van der Leij and I. Sebastian Buhai (lxxxiv)</i> : <u>A Social Network Analysis of Occupational Segregation</u>
CTN	32.2008	<i>Billand Pascal, Frachisse David and Massard Nadine (lxxxiv)</i> : <u>The Sixth Framework Program as an Affiliation Network: Representation and Analysis</u>
CTN	33.2008	<i>Michèle Breton, Lucia Sbragia and Georges Zaccour (lxxxiv)</i> : <u>Dynamic Models for International Environmental Agreements</u>

PRCG	34.2008	<i>Carmine Guerriero: <u>The Political Economy of Incentive Regulation: Theory and Evidence from US States</u></i>
IEM	35.2008	<i>Irene Valsecchi: <u>Learning from Experts</u></i>
PRCG	36.2008	<i>P. A. Ferrari and S. Salini: <u>Measuring Service Quality: The Opinion of Europeans about Utilities</u></i>
ETA	37.2008	<i>Michele Moretto and Gianpaolo Rossini: <u>Vertical Integration and Operational Flexibility</u></i>
CCMP	38.2008	<i>William K. Jaeger and Van Kolpin: <u>The Environmental Kuznets Curve from Multiple Perspectives</u></i>
PRCG	39.2008	<i>Benno Torgler and Bin Dong: <u>Corruption and Political Interest: Empirical Evidence at the Micro Level</u></i>
KTHC	40.2008	<i>Laura Onofri, Paulo A.L.D. Nunes, Jassone Cenoz and Durk Gorter: <u>Language Diversity in Urban Landscapes: An econometric study</u></i>
CTN	41.2008	<i>Michel Le Breton, Valery Makarov, Alexei Savvateev and Shlomo Weber (lxxxiv): <u>Multiple Membership and Federal Structures</u></i>
NRM	42.2008	<i>Gideon Kruseman and Lorenzo Pellegrini: <u>Institutions and Forest Management: A Case Study from Swat, Pakistan</u></i>
SIEV	43.2008	<i>Pietro Caratti and Ludovico Ferraguto: <u>Analysing Regional Sustainability Through a Systemic Approach: The Lombardy Case Study</u></i>
KTHC	44.2008	<i>Barbara Del Corpo, Ugo Gasparino, Elena Bellini and William Malizia: <u>Effects of Tourism Upon the Economy of Small and Medium-Sized European Cities. Cultural Tourists and “The Others”</u></i>
CTN	45.2008	<i>Dinko Dimitrov and Emiliya Lazarova: <u>Coalitional Matchings</u></i>
ETA	46.2008	<i>Joan Canton, Maia David and Bernard Sinclair-Desgagné: <u>Environmental Regulation and Horizontal Mergers in the Eco-industry</u></i>
ETA	47.2008	<i>Stéphane Hallegatte: <u>A Proposal for a New Prescriptive Discounting Scheme: The Intergenerational Discount Rate</u></i>
KTHC	48.2008	<i>Angelo Antoci, Paolo Russu and Elisa Ticci: <u>Structural Change, Environment and Well-being: Interactions Between Production and Consumption Choices of the Rich and the Poor in Developing Countries</u></i>
PRCG	49.2008	<i>Gian Luigi Albano, Federico Dini Roberto Zampino and Marta Fana: <u>The Determinants of Suppliers’ Performance in E-Procurement: Evidence from the Italian Government’s E-Procurement Platform</u></i>
CCMP	50.2008	<i>Inmaculada Martínez-Zarzoso: <u>The Impact of Urbanization on CO2 Emissions: Evidence from Developing Countries</u></i>

(lxxxiv) This paper was presented at the 13th Coalition Theory Network Workshop organised by the Fondazione Eni Enrico Mattei (FEEM), held in Venice, Italy on 24-25 January 2008.

2008 SERIES	
CCMP	<i>Climate Change Modelling and Policy</i> (Editor: Carlo Carraro)
SIEV	<i>Sustainability Indicators and Environmental Valuation</i> (Editor: Anil Markandya)
NRM	<i>Natural Resources Management</i> (Editor: Carlo Giupponi)
KTHC	<i>Knowledge, Technology, Human Capital</i> (Editor: Gianmarco Ottaviano)
IEM	<i>International Energy Markets</i> (Editor: Matteo Manera)
CSRM	<i>Corporate Social Responsibility and Sustainable Management</i> (Editor: Giulio Sapelli)
PRCG	<i>Privatisation Regulation Corporate Governance</i> (Editor: Bernardo Bortolotti)
ETA	<i>Economic Theory and Applications</i> (Editor: Carlo Carraro)
CTN	<i>Coalition Theory Network</i>