

Bühler, Wolfgang; Trapp, Monika

Working Paper

Time-varying credit risk and liquidity premia in bond and CDS markets

CFR working paper, No. 09-13

Provided in Cooperation with:

Centre for Financial Research (CFR), University of Cologne

Suggested Citation: Bühler, Wolfgang; Trapp, Monika (2009) : Time-varying credit risk and liquidity premia in bond and CDS markets, CFR working paper, No. 09-13, University of Cologne, Centre for Financial Research (CFR), Cologne

This Version is available at:

<https://hdl.handle.net/10419/41349>

Standard-Nutzungsbedingungen:

Die Dokumente auf EconStor dürfen zu eigenen wissenschaftlichen Zwecken und zum Privatgebrauch gespeichert und kopiert werden.

Sie dürfen die Dokumente nicht für öffentliche oder kommerzielle Zwecke vervielfältigen, öffentlich ausstellen, öffentlich zugänglich machen, vertreiben oder anderweitig nutzen.

Sofern die Verfasser die Dokumente unter Open-Content-Lizenzen (insbesondere CC-Lizenzen) zur Verfügung gestellt haben sollten, gelten abweichend von diesen Nutzungsbedingungen die in der dort genannten Lizenz gewährten Nutzungsrechte.

Terms of use:

Documents in EconStor may be saved and copied for your personal and scholarly purposes.

You are not to copy documents for public or commercial purposes, to exhibit the documents publicly, to make them publicly available on the internet, or to distribute or otherwise use the documents in public.

If the documents have been made available under an Open Content Licence (especially Creative Commons Licences), you may exercise further usage rights as specified in the indicated licence.

CFR-working paper NO. 09-13

time-varying credit risk
and liquidity premia in
bond and cds markets

w. Bühler • M. Trapp

centre for financial research
Look deeper

Time-Varying Credit Risk and Liquidity Premia in Bond and CDS Markets

Wolfgang Bühler
University of Mannheim
Chair of Finance
D-68131 Mannheim
E-Mail: w.buehler@uni-mannheim.de

Monika Trapp
Department of Finance and Centre for Financial Research
Faculty of Management
University of Cologne
E-Mail: mtrapp@wiso.uni-koeln.de

October 2009

Time-Varying Credit Risk and Liquidity Premia in Bond and CDS Markets

ABSTRACT

We develop a reduced-form model that allows us to decompose bond spreads and CDS premia into a pure credit risk component, a pure liquidity component, and a component measuring the relation between credit risk and liquidity. CDS liquidity has important consequences for the bond credit risk and liquidity components. Besides the credit risk link, we document a liquidity link between the bond and the CDS market. Liquidity in both markets dries up as credit risk increases, and higher bond market liquidity leads to lower CDS market liquidity. Ignoring CDS liquidity results in partly negative liquidity premia, particularly when CDS liquidity is low.

Introduction

Financial crises underscore the vital relation between credit risk and liquidity, and between liquidity in different markets. As investors re-assess the credit risk of many types of securities in their portfolio, trading of these securities dries up, and prices across a broad range of instruments and markets plummet. Quantifying credit risk from these prices is virtually impossible, since the credit risk and liquidity impact are only jointly observable.

However, decomposing corporate bond yield spreads into their credit risk and liquidity components is important for multiple reasons. First, policymakers and banks must approach the external supervision and the internal management of these risks differently. The stochastic properties of the economic factors causing these risks, as well as their price impact, must be specified empirically via a decomposition study. Second, when analyzing the impact of new information regarding an issuer's credit risk on prices of fixed-income instruments, we must know to which extent liquidity changes also affect these prices. Third, if a firm attempts to reduce its cost of debt, it may find it cheaper to improve the liquidity of its traded bonds, compared to reducing its credit risk.

In the last decade, a second market for credit risk has developed through credit default swaps (CDS). This development has facilitated the estimation of the credit risk component in bond spreads. Several studies use the CDS mid premium as a measure of pure credit risk and attribute the residual bond spread to liquidity effects. Hence, these studies assume that CDS markets are perfectly liquid, or that liquidity does not affect CDS mid premia. Contrary to these studies, and in line with typical arguments in market microstructure theory, we argue that the liquidity of CDS contracts affects CDS bid and ask quotes. To the best of our knowledge, our paper is the first to explicitly model bond prices and CDS bid and ask quotes as a function of interest rates, credit risk, and liquidity. This more general view has two important consequences. First, the CDS mid premium does not necessarily coincide with the pure credit risk premium, but may also contain a liquidity component. Second, by deriving directly comparable liquidity premia in bond spreads and CDS premia, we can study liquidity spillovers between the CDS market and the underlying bond market.

Our paper thus ties into the theoretical and empirical literature on the link between asset markets and markets for derivatives written on these assets. Both in an equilibrium context and in the simpler intensity-based reduced-form setting, this link depends on the price impact of common fundamental factors and of market-specific factors. While common factors, such as firm-specific credit risk in our setting, obviously result in joint price changes, it is not clear whether market-specific factors also

generate a relation between the two markets. In our model, we explicitly consider three channels through which bond spreads and CDS premia can be related. First, as the fundamental variable, a pure firm-specific credit risk factor directly affects bond spreads and CDS premia. Second, we allow credit risk to affect instrument-specific liquidity, and vice versa. Finally, we allow for a pure liquidity link between bonds and CDS, which is independent of the credit risk link.

By exploring the idea that bond prices and CDS bid and ask quotes contain information about credit risk and liquidity, we study three basic questions. First, how can credit risk and liquidity effects be modelled parsimoniously for the corporate bond market and the derivative CDS market? Here, we specifically consider possible arbitrage relationships between these two markets and the market for risk-free bonds. Second, how are credit risk and liquidity premia in the bond and the CDS market related? Third, can we document a liquidity-driven relation between the markets in excess of the credit risk connection, which we can consistently explain by investor behavior?

In the theoretical part of our analysis, we propose a reduced-form credit-risk model that differs from the literature by treating liquidity effects in the bond and CDS market differently. Bond illiquidity results in price discounts and yield surcharges, as in Longstaff, Mithal, and Neis (2005). In the CDS market, liquidity has a twofold effect. First, bond-specific liquidity affects CDS premia since a potentially illiquid bond is delivered if default occurs. Hence, CDS premia account for bond liquidity as a source of bond price variation. In addition to this direct liquidity spillover, we include a CDS-specific liquidity with a more intricate effect. We circumvent the question of systematic liquidity premia in CDS mid premia by modeling ask and bid premia instead. From these, we infer a pure credit risk CDS premium. Our measures of pure liquidity, and of the correlation between credit risk and liquidity, arise as the difference between this liquidity-free CDS premium and the mid premium. Our model allows us to consistently interpret the empirical relationship between time-varying bond and CDS liquidity premia via demand relations for credit risk between the bond and the CDS market.

In the empirical part of our analysis, we separate bond spreads and CDS premia into their pure credit risk, pure liquidity, and correlation-induced components. We use Euro-denominated bonds and CDS contracts between mid-2001 and mid-2007 for firms covering a broad range of sectors and rating classes. We then analyze the time-series relation between the credit risk, liquidity, and correlation premia for the two markets.

Our most important empirical findings are threefold. First, adding a CDS-specific liquidity component to the model results in consistently positive credit risk and liquidity premia in corporate bond markets, while neglecting CDS-specific liquidity partly results in negative bond liquidity premia. We

thus find a possible explanation for the puzzling result of Longstaff, Mithal, and Neis (2005), who partly estimate negative non-default components in high-risk corporate bond yields. Overall, we attribute 60% of the bond spread to credit risk, 35% to liquidity, and 5% to the correlation between credit risk and liquidity. These results stand in sharp contrast to Elton, Gruber, Agrawal, and Mann (2001) and Huang and Huang (2003) who report that the non-credit risk component accounts for the largest percentage of the bond spread.

For CDS, the credit risk component constitutes 95% of the observed mid premium, the pure liquidity component 4%, and the correlation component 1%. We interpret these on average positive liquidity premia consistently by a demand pressure for credit protection in the CDS market, a finding that supports the cross-sectional results of Chen, Cheng, and Wu (2005) and Meng and ap Gwilym (2007). However, these studies do not quantify a CDS liquidity premium. Our results indicate a higher CDS liquidity than the regression analyses of Bongaerts, De Jong, and Driessen (2008), who estimate a lower bound at 5 bp and an upper bound at 38 bp for the liquidity premium in expected CDS portfolio returns (compared to a credit risk premium of 42 bp), and Tang and Yan (2007) who obtain a surprisingly high liquidity premium of 13.2 bp (11% of the observed mid quote). This latter value is of a similar magnitude as the Treasury bond liquidity premium reported by Longstaff (2004), and the average non-default bond spread component of Longstaff, Mithal, and Neis (2005). As we use a pure liquidity variable, our result does not depend on the choice of a specific liquidity proxy such as the bid-ask spread, that is likely to be affected by credit risk. We thus believe it to be more plausible.

Second, our model allows us to determine the relation between credit risk and liquidity premia in the bond and the CDS market. We find that bond liquidity dries up as credit risk increases. This empirical result supports the theoretical prediction by Ericsson and Renault (2006) that liquidity shocks to the bond holder are positively correlated with default risk. In the CDS market, the liquidity dynamics imply widening bid-ask spreads as credit risk increases, with the ask quote reacting more sensitively than the bid. This analysis complements the cross-sectional evidence by Dunbar (2008), who calibrates a reduced-form model with credit and liquidity risk factors to CDS premia only, and of Chen, Fabozzi, and Sverdløve (2007), who calibrate a similar reduced-form model to CDS ask quotes or mid quotes only and deduce liquidity premia in bond prices. A delicate result of the latter study are the on average negative bond liquidity premia for all investment grade rating classes when using CDS ask premia.

Third, we substantiate the empirical evidence of Nashikkar, Subrahmanyam, and Mahanti (2007) on the relation between bond and CDS liquidity. Our model allows us to determine directly comparable pure liquidity premia for bonds and CDS. We obtain a significant relationship between these premia.

Specifically, we demonstrate that higher bond liquidity premia lead to decreasing CDS liquidity premia. This finding can be consistently interpreted if investors use CDS primarily to hedge bond exposures.

The remainder of the paper is structured as follows. We introduce our reduced-form model in Section I and derive credit risk, liquidity, and correlation premia in Section II. Section III presents the empirical results of the model calibration, and a detailed analysis of the estimated time-varying premia. Section IV summarizes and concludes.

I. The Credit Risk and Liquidity Model

A. Specification of the Risk Structure

We first specify the underlying risk structure of the model. We assume a standard Duffie and Singleton (1997) framework in which default-free zero coupon bonds, default-risky coupon-bearing bonds and CDS are traded. The liquidity of these instruments can differ, and we choose the default-free zero coupon bonds as “liquidity numéraire” with a liquidity discount factor equal to 1. We thus avoid specifying a perfectly liquid instrument compared to which each illiquid instrument trades at a discount.

The default-free term structure of interest rates is driven by one risk factor, the instantaneous default-free interest rate $r(t)$. The credit risk for a specific bond issuer is characterized by the stochastic default-risk hazard rate $\lambda(t)$, which is reflected in CDS premia and corporate bond prices. The process $\gamma^b(t)$ defines the liquidity intensity in the bond market. It determines the fraction of a bond’s price due to liquidity deviations from the liquidity numéraire. In the CDS market, we use two liquidity intensities $\gamma^{\text{ask}}(t)$ and $\gamma^{\text{bid}}(t)$ to describe the individual liquidity effects for ask and bid premia. Modeling liquidity effects via these intensities captures the intuition that investors are exposed to instrument-specific shocks forcing them to sell the instrument at a possibly unfavorable price.

The risk factors result in the discount factor

$$\tilde{D}(t, \tau) = \exp\left(-\int_t^\tau r(s) ds\right) \quad (1)$$

for interest rates, the risk-neutral survival probability

$$\tilde{P}(t, \tau) = \exp\left(-\int_t^\tau \lambda(s) ds\right), \quad (2)$$

and the liquidity discount factor for bonds ($l = b$) and CDS ($l = \text{ask}, \text{bid}$):

$$\tilde{L}^l(t, \tau) = \exp\left(-\int_t^\tau \gamma^l(s) ds\right). \quad (3)$$

We assume that r evolves independently from the default and liquidity intensities. The model can easily be generalized to capture correlation effects between r and the other risk factors. As credit risk and liquidity may be related, we allow the default and liquidity intensities to be correlated. By orthogonalizing the intensities, we obtain four latent factors x , y^b , y^{ask} , and y^{bid} . These variables capture the *pure* credit risk and the *pure*, instrument-specific liquidity. We model x as a mean-reverting square root process, and y^b , y^{ask} , and y^{bid} as arithmetic Brownian motions. The following four-factor model describes the relation between the intensities and the latent factors:

$$\begin{aligned} \begin{pmatrix} d\lambda(t) \\ d\gamma^b(t) \\ d\gamma^{\text{ask}}(t) \\ d\gamma^{\text{bid}}(t) \end{pmatrix} &= \begin{pmatrix} 1 & g_b & g_{\text{ask}} & g_{\text{bid}} \\ f_b & 1 & \omega_{b,\text{ask}} & \omega_{b,\text{bid}} \\ f_{\text{ask}} & \omega_{b,\text{ask}} & 1 & \omega_{\text{ask},\text{bid}} \\ f_{\text{bid}} & \omega_{b,\text{bid}} & \omega_{\text{ask},\text{bid}} & 1 \end{pmatrix} \begin{pmatrix} dx(t) \\ dy^b(t) \\ dy^{\text{ask}}(t) \\ dy^{\text{bid}}(t) \end{pmatrix} \\ &= \begin{pmatrix} 1 & g_b & g_{\text{ask}} & g_{\text{bid}} \\ f_b & 1 & \omega_{b,\text{ask}} & \omega_{b,\text{bid}} \\ f_{\text{ask}} & \omega_{b,\text{ask}} & 1 & \omega_{\text{ask},\text{bid}} \\ f_{\text{bid}} & \omega_{b,\text{bid}} & \omega_{\text{ask},\text{bid}} & 1 \end{pmatrix} \left(\begin{pmatrix} \alpha - \beta x(t) \\ \mu^b \\ \mu^{\text{ask}} \\ \mu^{\text{bid}} \end{pmatrix} dt + \begin{pmatrix} \sigma \sqrt{x(t)} dW_x(t) \\ \eta^b dW_{y^b}(t) \\ \eta^{\text{ask}} dW_{y^{\text{ask}}}(t) \\ \eta^{\text{bid}} dW_{y^{\text{bid}}}(t) \end{pmatrix} \right), \end{aligned} \quad (4)$$

with parameters α , β , μ^l , f_l , g_l , and with $\sigma > 0$, $\eta^l > 0$. W_x and W_{y^l} are independent Brownian motions, $l \in \{b, \text{ask}, \text{bid}\}$. We assume that the matrix of the factor sensitivities has full rank to ensure parameter identification.

The factor structure in equation (4) enables us to capture the following effects: first, the latent pure credit risk factor x may affect liquidity intensities, and thus liquidity premia, through a non-zero value of f_l . Economically, a positive relation is plausible if investors attach a higher importance to trading securities that are close to a default event. Second, the latent pure bond or CDS liquidity factor affect credit risk premia if $g_l \neq 0$. This effect can prevail if firms with less liquid bonds a higher probability of financial distress, as they may find issuing new debt more difficult. Analogously, lower CDS liquidity may complicate hedging bond exposures, such that bond investors demand higher compensation for bearing default risk.

Third, a non-zero correlation between the liquidity intensities can be caused by two mechanisms. On the one hand, there can be an indirect link through the impact of x via f_l such that correlation is due to joint dependence on the pure credit risk factor. More interestingly, the coefficients $\omega_{l,k}$ imply a direct

link between the liquidity intensities through the latent risk factors y^l and y^k . A correlation between the liquidity intensities not due to x allows us to determine whether liquidity effects are transmitted from one market into the other.

The bond liquidity intensity can be related to the CDS ask and bid liquidity intensities ($\omega_{b,\text{ask}} \neq 0$, $\omega_{b,\text{bid}} \neq 0$) since long (short) credit risk positions can be incurred either by buying (short-selling) a bond or by selling (buying) credit protection in a CDS contract on the ask (bid) side. Liquidity changes in one market result in characteristic liquidity reactions in the other market, depending on whether investors hedge exposures across the two markets, or whether they take on positions alternately in either market. Consider the case where investors mainly use CDS for hedging purposes. Then, a liquidity shock which causes a lower bond transaction volume also leads to a lower transaction volume in the CDS market. To partly offset this decrease, rational CDS traders increase bid quotes, and decrease ask quotes. As a consequence, the CDS bid-ask spread decreases after a liquidity shock in the bond market. Note that this result does not imply that the total transaction volume in the CDS market increases. If investors use bonds and CDS as substitutes by taking on and selling off credit risk exposures alternately, a lower bond transaction volume results in a higher transaction volume in the CDS market. As a reaction, CDS traders increase ask quotes and decrease bid quotes.

B. Bond Market

We represent the value of a default-risky and potentially illiquid coupon-bearing bond as the expectation under the risk-neutral measure. If default occurs at time τ , the bondholder recovers a fixed fraction R of the face value F . Rather than assuming continuous payments, we choose a discrete-time structure that matches the bond's actual payment dates. Default can occur at any time, but recovery takes place on the first trading day following the default event. Hence, the time- t price $CB(t)$ of a coupon-bearing bond with a fixed coupon c paid at times t_1, \dots, t_n , notional F , and recovery at times θ_j ($t \leq \theta_1 < \dots < \theta_N \leq t_n$) is given by

$$\begin{aligned}
 CB(t) &= c \cdot \sum_{i=1}^n D(t, t_i) E_t \left[\tilde{P}(t, t_i) \tilde{L}^b(t, t_i) \right] + F \cdot D(t, t_n) E_t \left[\tilde{P}(t, t_n) \tilde{L}^b(t, t_n) \right] \\
 &\quad + R \cdot F \cdot \sum_{j=1}^N D(t, \theta_j) E_t \left[\Delta \tilde{P}(t, \theta_j) \tilde{L}^b(t, \theta_j) \right]. \tag{6}
 \end{aligned}$$

E_t is the conditional expectation under the risk-neutral measure, and $\theta_0 := t$. Since r is independent of the other risk factors, we can compute $D(t, \tau) := E_t \left[\tilde{D}(t, \tau) \right]$ separately from the joint expectation of the default risk factor and the liquidity factor. $\Delta \tilde{P}(t, \theta_j) := \tilde{P}(t, \theta_{j-1}) - \tilde{P}(t, \theta_j)$ denotes the

probability of surviving from t until θ_{j-1} and then defaulting between θ_{j-1} and θ_j conditional on the current date t . Equation (6) can be interpreted as the expected present value of all future bond cash-flows: the first term gives the expected present value of the coupon payments. The second term equals the expected present value of the principal payment. The last term denotes the expected present value of the recovery rate payment

C. CDS Market

We model the following basic form of a CDS contract. At inception, the protection buyer and seller agree on the CDS premium s . The premia are quoted annualized and in basis points (bp) per unit of face value of the underlying asset. Premium payments are made in arrears on fixed payment dates.¹ In case of a credit event before the maturity of the CDS, the contract automatically terminates. The buyer pays the premium accrued since the last payment date to the seller, delivers the bond on which the CDS contract is written, and obtains the face value.

It is not obvious whether liquidity should be included in a model for CDS premia, and if so, how this should be done. After all, a CDS is a derivative, and thus not exposed to illiquidity effects caused by fixed supply or shorting costs, which result in systematically lower mid bond prices. For the CDS market, both empirical studies and theoretical models, see e.g. Schueler and Galletto (2003) or Longstaff, Mithal, and Neis (2005), generally assume that the mid premium reflects a price free of liquidity risk.² Undoubtedly, however, bid and ask quotes also reflect liquidity aspects of a CDS. We model the ask and bid side of a CDS contract separately, since traders can be exposed to different volumes for the supply than for the demand for credit protection. Hence, liquidity effects can have a different impact on bid and ask quotes.³

The value of the fixed leg of a CDS contract at time t with fixed in-arrear premium payment s^{ask} at times T_1, \dots, T_m , maturity T_m , and stochastic settlement times θ_j ($t \leq \theta_1 < \dots < \theta_M \leq T_m$) in case of a credit event equals

$$CDS_{\text{fix}}(t) = s^{\text{ask}} \left(\sum_{i=1}^m D(t, T_i) E_t \left[\tilde{P}(t, T_{i-1}) \tilde{L}^{\text{ask}}(t, T_i) \right] + \sum_{j=1}^M D(t, \theta_j) \delta_j E_t \left[\Delta \tilde{P}(t, \theta_j) \tilde{L}^{\text{ask}}(t, \theta_j) \right] \right). \quad (7)$$

In the second term of equation (7), δ_j accounts for the premium fraction accrued between the last premium payment and the settlement time θ_j . \tilde{L}^{ask} is defined as \tilde{L}^b with the bond liquidity intensity γ^b replaced by the CDS ask liquidity intensity γ^{ask} . Equation (7) reflects that the payment of all ask premia s^{ask} is discounted for the default probability, as a payment at time T_{i-1} only occurs with

probability $\tilde{P}(t, T_{i-1})$. The CDS-specific liquidity discount factor for the ask premium $\tilde{L}^{\text{ask}}(t, T_i)$ accounts for the possibility that part of the ask premium is due to the fact that the protection seller demands an additional premium because of illiquidity.

The value of the floating leg is given by

$$CDS_{\text{float}}(t) = F \sum_{j=1}^M D(t, \theta_j) E_t \left[\Delta \tilde{P}(t, \theta_j) \right] - RD(t, \theta_j) E_t \left[\Delta \tilde{P}(t, \theta_j) \tilde{L}^b(t, \theta_j) \right]. \quad (8)$$

The first term in equation (8) equals the expected discounted present value of the face value F , the second the expected discounted present value of the defaulted bond that the protection seller obtains on selling the delivered bond.⁴ This second term is identical to the third term in the bond pricing equation (6), and thus also contains the discounting factor for bond liquidity. Bond liquidity directly affects the floating leg of the CDS contract both in the case of physical delivery and cash settlement. A less liquid bond has a lower post-default price, and the CDS premium is higher to compensate the protection seller for this lower value. The effect pertains even if the CDS market is perfectly liquid.

From equation (7) and (8) we obtain

$$s^{\text{ask}}(t) = \frac{F \sum_j D(t, \theta_j) E_t \left[\left(1 - R\tilde{L}^b(t, \theta_j)\right) \Delta \tilde{P}(t, \theta_j) \right]}{\sum_i D(t, T_i) E_t \left[\tilde{P}(t, T_{i-1}) \tilde{L}^{\text{ask}}(t, T_i) \right] + \sum_j \delta_j D(t, \theta_j) E_t \left[\Delta \tilde{P}(t, \theta_j) \tilde{L}^{\text{ask}}(t, \theta_j) \right]}. \quad (9)$$

The closed-form solution for the CDS bid premium is identical to that for the ask premium with the only exception that \tilde{L}^{ask} is replaced by \tilde{L}^{bid} :

$$s^{\text{bid}}(t) = \frac{F \sum_j D(t, \theta_j) E_t \left[\left(1 - R\tilde{L}^b(t, \theta_j)\right) \Delta \tilde{P}(t, \theta_j) \right]}{\sum_i D(t, T_i) E_t \left[\tilde{P}(t, T_{i-1}) \tilde{L}^{\text{bid}}(t, T_i) \right] + \sum_j \delta_j D(t, \theta_j) E_t \left[\Delta \tilde{P}(t, \theta_j) \tilde{L}^{\text{bid}}(t, \theta_j) \right]}. \quad (10)$$

Our model does not necessarily satisfy the no-arbitrage relation derived by Duffie (1999) that a portfolio consisting of a defaultable bond and a CDS on this bond earns the risk-free rate. A violation of this condition does not imply arbitrage in our model, as in addition to credit risk, there is also liquidity risk. Consider first a long position in a five-year corporate bond which is protected against default by a CDS of the same maturity. Even though this position is *default-risk free*, it is not *risk-free* as both the bond and the CDS are subject to liquidity risk. In a “liquidity event”, investors have to unwind either the bond or the CDS position before the maturity of the contracts. Hence, they are exposed to price risk due to a liquidity shock. Therefore, a yield to maturity of this position different

from the risk-free yield does not imply arbitrage. The same argument holds for short-selling the bond and selling protection at the CDS bid quote - the position is not risk-free, and should thus have a different yield than the default-free, reference-liquid bond. A similar argument applies if the CDS bid quote is above the ask quote. Again, positions where investors simultaneously buy and sell credit risk protection only constitute an arbitrage opportunity if these positions can be held until maturity. If, however, a liquidity shock on the long or short credit risk component the position can force investors to unwind one of these components at an uncertain price, the position does not yield a non-negative profit with certainty.⁵

In practice, CDS contracts can be written on multiple reference obligations, include multiple credit events, allow the protection buyer to choose which asset to deliver upon default or to specify an auction process for cash settlement instead of physical delivery, and the payments are subject to counterparty risk. In our setting, we abstract from these features to keep the model tractable. However, the impact of the two most important unmodelled risk factors, counterparty risk and the delivery option, on the bid and ask quotes is straightforward. Since a default of the protection buyer only results in the loss of the CDS premia accrued since the last payment date, CDS traders should only react with small ask quote increases to higher counterparty risk. Bid quotes, on the other hand, should be affected more strongly since the protection seller's default renders the protection worthless. Especially when anticipating a high default correlation of protection seller and underlying reference, CDS traders should set lower bid quotes to reflect this risk. Thus, the mid premium with counterparty risk is lower than if this risk is neglected. The delivery option also ought to affect CDS bid negatively, and ask quotes positively, but to the same extent: As CDS traders have a long position in the delivery option after a bid-induced trade, and a short position in the delivery option after a ask-induced trade, the delivery option results in lower bid and higher ask quotes. We discuss the consequences of these effects on the CDS liquidity premium in Section III.

Due to the factor model structure in equation (4) and the pairwise independence of x and y^l , the expected values of $\tilde{P}(t, \tau_i) \cdot \tilde{L}^l(t, \tau_i)$ and $\tilde{P}(t, \tau_i) \cdot \tilde{L}^l(t, \tau_{i+1})$ in equations (6), (9), and (10) can be represented by analytical functions which result in an affine term-structure model.⁶ Substituting these functions in equations (6), (9), and (10) yields the analytical solutions for the bond price, the CDS ask premium, and for the CDS bid premium.

II. Measures for Credit Risk, Liquidity, and Correlation Premia

The model developed in Section I allows us to disaggregate the full bond spread bs into a pure credit risk component bd , a pure liquidity component bl , and a correlation-induced component bc . By an analogous procedure based on CDS bid and ask quotes, we can compute a pure credit risk component sd , a pure liquidity component sl , and a correlation-induced component sc . The rationale for this decomposition is most obvious for the bond. The pure credit risk premium bd equals the bond spread that applies if credit risk is the only priced factor. In this case, the latent factor y^b is identical to 0, the factor sensitivities f and g become irrelevant, and the credit risk intensity λ and the latent factor x coincide. The liquidity premium bl equals the bond spread that applies if liquidity is also priced, and the correlation premium bc measures the bond spread incurred because the credit risk and liquidity intensities are related.

Assuming a perfectly liquid bond and CDS market, the bond spread is directly comparable to the CDS premium if the maturity of both instruments is identical and the bond price equals its face value. The second condition is important to avoid the issues discussed by Duffie (1999) and Duffie and Liu (2001) who show that yield spreads on non-par fixed-coupon bonds cannot be directly compared to CDS premia.

We proceed in four steps to determine bond credit risk, liquidity, and correlation premia.⁷ Conditionally on a traded CDS contract, we sequentially construct four bonds with the same maturity and payment dates as the CDS. First, we determine the coupon of a default-free liquidity numéraire bond such that it trades at par. This coupon equals its yield to maturity. Second, we consider a par bond which is subject to credit risk, but not to liquidity risk. In this case, only the latent credit risk factor x affects the bond's price. Since it is default-risky, it must have a higher coupon, and thus a higher yield, than the default-free bond, to be priced at par. Its yield spread over the default-free bond is our pure credit risk premium bd . In the third step, we consider a bond which is subject to *independent* credit risk and liquidity such that x and y^b , y^{ask} , and y^{bid} affect its pricing. To be priced at par, it must have a different coupon, and thus a different yield, than the bond subject only to credit risk. The difference between the two bonds' yields defines the pure liquidity premium bl . Since we measure liquidity with regard to the reference-liquid bond, bl can be either positive or negative. Finally, we consider a bond with correlated credit risk and liquidity intensities. Hence, its price additionally must account for the factor sensitivities f and g . The difference between this bond's yield and the yield of the bond in the third step is the correlation premium bc . If the credit risk and liquidity intensities λ and γ^b are *positively* related, bc is positive. If they are negatively related, bc is negative due to a risk reduction

effect. Overall, these three components must sum up to the full bond spread bs of a synthetic par bond with maturity and payment dates identical to the CDS.⁸

We define the credit risk, liquidity, and correlation components of a CDS analogously to those in the bond market. First, we compute the pure credit risk premium sd assuming that CDS liquidity has no impact. Equations (9) and (10) illustrate that in this case, sd is determined by the default-free interest rates, the default probability, and the bond liquidity. Thus, bd and sd differ because of the additional effect of the bond liquidity on the CDS. Since CDS liquidity has no impact, the bid and the ask quote are identical, and sd equals the theoretical mid premium without CDS liquidity. This makes sd directly comparable to bd , which refers to the mid bond price.⁹

In a CDS market whose liquidity differs from the liquidity numéraire, the ask and bid premia differ from the pure credit risk premium sd . In line with the market microstructure literature, it seems apparent to select the size of the bid-ask spread as a measure of illiquidity. This approach is not appropriate in our context for two reasons. First, a comparison of equations (9) and (10) shows that the bid-ask spread is also affected by pure credit risk. Second, the bid-ask spread, even if taken relatively to sd , is not comparable to our liquidity measure bl in the bond market.

We proceed analogously to the bond market and define the CDS liquidity premium sl as the difference between the theoretical mid premium for uncorrelated credit risk and liquidity intensities, and the pure credit risk premium sd . This definition of sl corresponds fully to the definition of the bond liquidity premium bl as the change in the mid bond spread is due to the impact of pure instrument-specific liquidity.

In addition to this formal analogy, sl allows for an inventory-related interpretation: If a trader enters into a number of ask-initiated CDS trades, she move her ask quotes, and possibly her bid quotes, upwards to balance her portfolio. Since the pure credit risk premium sd remains at its initial value while s^{ask} and s^{bid} increase, sl increases as well. An analogous argument holds for bid-initiated trades, where sl decreases. Our measure of CDS liquidity is thus economically consistent with the measure of bond liquidity premia: if more investors want to sell credit risk by selling bonds — which can be interpreted as buying credit protection — the bond liquidity premium increases and vice versa.¹⁰

Finally, the CDS correlation premium sc equals the difference between the mid premium that includes the impact of the factor sensitivities f and g and the theoretical, correlation-free mid premium. The three premium components then sum up to the CDS mid premium. In contrast to the bond for which we determine synthetic, unobservable par bond spreads, this theoretical full CDS mid premium equals the observed CDS mid premium.

III. Empirical Analysis

A. Data

We exclusively focus on Euro-denominated data since more Euro-denominated than US-Dollar denominated CDS contracts are traded in the early phase of our research interval: Between June 1, 2001 and September 30, 2001, we observe CDS ask and bid quotes on 119 Euro-denominated contracts versus 16 US-Dollar denominated contracts. For the current term structure of the default-free interest rates, we use the estimates provided by the Deutsche Bundesbank on a daily basis. These estimates are determined by the Nelson-Siegel-Svensson method from prices of German Government Bonds which represent the benchmark bonds in the Euro area for most maturities. From this term structure of interest rates, we compute prices of default-free zero-coupon bonds which we assume to have the reference liquidity discount factor of 1. The recovery rate is assumed to equal 40%.¹¹

Daily CDS ask and bid closing premia for senior unsecured debt were made available to us by a large US-domiciled international bank. The research period runs from June 1, 2001 to June 30, 2007, covering 1,548 trading days. We restrict ourselves to using Euro-denominated CDS premia with a reference maturity of 5 years to obtain a sample with homogenous CDS liquidity. According to the time conventions in the CDS market, we obtain the true CDS maturities by adding the distance between the quoting day and the next reference date to the quoted 5-year maturity.

Bond data are obtained from Bloomberg. Since historic bond bid and ask quotes are unavailable, we use daily average mid quotes. We collect all mid quotes of Euro-denominated straight bonds for firms which had at least 2 bonds outstanding at some point-in-time during the observation interval. We drop a firm if bond prices and CDS quotes are not available for a period of at least 20 consecutive trading days.

For each remaining firm, we collect a rating history from Bloomberg for the period where we observe bond prices and CDS premia. Both the Standard&Poor's (S&P) rating and the Moody's rating are used and converted to a linear score. If the numerical rating by the two agencies differs, we take the average of the two ratings, and round up if necessary. If no rating can be found for at least 20 consecutive trading days, we drop the firm from our sample.

The above procedure leaves us with a set of 155 firms from 8 industry sectors. A detailed overview is given in Table I.

Insert Table I about here.

Table I shows that the majority of firms has an average investment grade rating; only 9 lie in the subinvestment grade range. The largest industry group are “Financials” with 54 firms, which are also among the top-rated ones. No firm had an average rating below B, albeit some firms were rated CCC for a short period of time. Overall, Table I demonstrates that our sample is skewed towards financial and investment grade firms.

To present the time-series of bond spreads and CDS premia, we compute the average bond spread and CDS mid premium for each rating class at every observation date as follows. First, we identify the rating for a particular firm on each day. We then compute the bond spread for each bond of that particular firm as the difference between its yield and that of a synthetical default-free bond with identical coupon and maturity. Next, we interpolate the resulting bond spreads to match the CDS maturity. We proceed by taking averages of the interpolated bond spreads and the observed CDS mid premia for all firms with an average investment, respectively subinvestment grade rating. The resulting time series for the investment and subinvestment grade are depicted in Figure 1.

Insert Figure 1 about here.

As Figure 1 shows, mean investment grade bond spreads consistently exceed mean CDS mid premia. Overall, the mean investment grade bond spread has a time-series average of 89.4 bp, fluctuating between 33.5 bp and 178.9 bp. Mean investment grade CDS premia fluctuate between 15.9 bp and 143.8 bp with a time-series average of 45.4 bp. The two time series give a first impression of the differences between the bond and the CDS market. Mean subinvestment grade bond spreads fluctuate between 87.6 bp and 1,320.3 bp. Mean subinvestment grade CDS mid premia are partly above and partly below the bond spreads, but the time-series average of 341.3 bp lies below the average of 369.6 bp for the bond spread.

We calibrate the model to the observed data in three steps. For each firm, we choose initial values for the parameters $(\alpha, \beta, \sigma, \mu^b, \eta^b, \mu^{\text{ask}}, \eta^{\text{ask}}, \mu^{\text{bid}}, \eta^{\text{bid}})$ that describe the drift and diffusion of the latent factors, and the factor sensitivities $f = (f_b, f_{\text{ask}}, f_{\text{bid}})$, $g = (g_b, g_{\text{ask}}, g_{\text{bid}})$, and $\omega = (\omega_{b,\text{ask}}, \omega_{b,\text{bid}}, \omega_{\text{ask},\text{bid}})$. In the first step, we estimate the time series of the latent variables by minimizing the sum of squared differences between the model-implied and the observed values. In the second step, we update the factor sensitivities from the time series of the latent variables. In the third step, we iterate across the drift and diffusion parameters of the latent factors. We follow this three-step procedure until convergence is achieved. Across the entire sample, we obtain an almost perfect fit to the CDS ask and bid quotes

with a mean error below 0.01 bp and a mean squared error of 0.01 bp due to our model’s flexibility. For the bonds, we obtain a mean yield spread error of 0.1 bp, and a mean absolute error of 4.5 bp.¹²

B. Credit Risk, Liquidity, and Correlation Premia: Cross-Sectional Results

B.1. Factor Sensitivities

We first present the empirical estimates for the relation between credit risk and liquidity, and between bond and CDS liquidity, via the factor matrix in equation (4).

Insert Table II about here.

As the estimates for the factor sensitivities in Table II show, pure credit risk has an impact on the bond liquidity intensity and the CDS liquidity intensities, but pure liquidity does not affect credit risk. The latent factor x affects the bond liquidity intensity γ^b significantly for 140 out of 155 firms. 138 of these estimates for f_b are positive, and the negative ones are obtained for one utility and one financial firm with AAA, respectively AA, rating. The positive mean factor sensitivity estimate of 0.16 suggests that bond liquidity dries up as credit risk increases; we quantify the impact on the premia components below. The impact of x on the CDS ask intensity γ^{ask} , measured by f_{ask} , is significant for 138 and positive for 137 firms with a mean estimate of 0.37. Increasing pure credit risk thus causes a twofold price increase for buying protection, first because the ask has to compensate the protection seller for a higher pure credit risk, and second because of liquidity. The CDS bid intensity γ^{bid} is significantly affected by x for only 66 firms with a negative estimate for f_{bid} for 37 firms. The mean estimate of -0.07, however, differs significantly from 0 at the 1% level. As equation (10) shows, the negative value implies that higher pure credit risk increases CDS bid quotes less strongly than the pure credit risk premia bd and sd . We conclude that higher credit risk moves both ask and bid quotes away from pure credit risk premia, such that higher credit risk causes higher bid-ask spreads. Bid quotes, however, remain relatively closer to the pure credit risk premia.

The impact of the latent factors y^b , y^{ask} , and y^{bid} on the default intensity λ is negligible. We obtain one significant coefficient estimate for g_b , three for g_{ask} – out of which two are positive – and two for g_{bid} with a positive and a negative one. Hence, liquidity changes hardly affect credit risk premia.

The liquidity spillover between bonds and CDS is captured by $\omega_{b,\text{ask}}$ and $\omega_{b,\text{bid}}$. The coefficient estimate for $\omega_{b,\text{ask}}$ is significant for 123 firms and negative for 118 with a mean value of -0.02. The estimate for the CDS bid liquidity factor sensitivity $\omega_{b,\text{bid}}$ is significant for 85 firms, positive for 80,

and has a mean value of 0.01. These values are consistent with a hedging effect between the bond and the CDS market: Consider a negative bond liquidity shock, i.e. fewer bond trades, and a higher value of y^b such that bond prices decrease. If investors hedge long and short credit risk exposures in the bond, which they now take on to a lesser degree, via positions in the CDS market, the bond liquidity shock also results in fewer transactions for competitive CDS traders. To partly offset this decrease in hedging-initiated transactions, they increase bid quotes, and decrease ask quotes. The estimate for $\omega_{\text{ask,bid}}$ is significant for 131 firms and positive for 116 firms. The negative mean of -0.38 implies that liquidity shocks in the CDS market lead to opposite changes of bid and ask quotes. This finding agrees with an overall decreasing CDS bid-ask spreads as the market matures.

Comparing the results for the investment and the subinvestment grade, we observe a similar result as for the entire sample. Only the absolute value of the coefficient estimates tends to be larger in the subinvestment grade, which points to a stronger relation than between investment grade bond and CDS.

B.2. Premia Components

We now analyze the bond spread and CDS premium components. Table III displays the results.

Insert Table III about here.

Table III demonstrates that credit risk, liquidity, and correlation premia increase as the rating deteriorates. The pure credit risk premium in bond spreads bd has an average of 6.1 bp for the AAA rating class, which approximately doubles for each rating downgrade in the investment grade range. The subinvestment grade sector exhibits values of bd at least five times as large.¹³

Concerning the liquidity premia bl , the increase from investment to subinvestment grade is less strong, although we still obtain strictly positive estimates for bl for each firm. The average correlation premia bc increase in the rating up to the CCC rating class, and are strictly positive except for the AAA rating class. This negative average is driven by the negative estimates of the parameter f_b . On average, bd accounts for 60% of the bond spread, bl for 35%,¹⁴ and bc for 5%. These results are approximately in line with the bond spread proportion due to credit risk by Longstaff, Mithal, and Neis (2005), but stand in sharp contrast to the studies by Elton, Gruber, Agrawal, and Mann (2001) and Huang and Huang (2003) who report that the non-default component accounts for the largest percentage of the bond spread.

The CDS pure credit risk premia sd exceed bd by a relatively small amount. The difference is due to the liquidity price discount for deliverable bonds if default occurs. The minimal difference between bd and sd is attained for the AAA rating class with on average 0.1 bp, and the maximal one for the B class with on average 5.0 bp. This relation is consistent with the increasing average level of the bond pure liquidity premia bl .

The final results of Table III concern the CDS pure liquidity premia sl and the correlation premia sc . As explained in Section II, non-zero values of sl arise because the bid and ask quote have a different distance to the pure credit risk premium. If our estimate of sd is closer to the bid quote, sl has a positive value and vice versa. On average, sl is positive, which we interpret as a sign that transactions in the CDS market are mainly ask-initiated.¹⁵

If the rating deteriorates, the asymmetry between the bid and the ask quote relative to the pure credit risk premium sd increases, and results in higher liquidity premia. Taken relative to pure credit risk premia, however, pure liquidity premia are smaller for the subinvestment grade, and 19.15% of CDS liquidity premia are in effect negative. In section C, we attribute these negative liquidity premia to unusual market events. As for the bond market, relative liquidity premia decrease in a particularly pronounced way for the transition from the investment grade to the subinvestment grade. In contrast to the bond market, however, CDS liquidity premia are much smaller for all rating classes. Their average size across all rating classes equals 1.9 bp compared to 26.4 bp in the bond market.¹⁶

The average correlation premium sc is almost negligible for the investment grade and grows by more than a factor of 10 for the subinvestment grade. This observation suggests that changes in credit risk result in a strong decline of liquidity in the subinvestment grade. The negative minima of sc are due to the fact that for some firms, the sensitivity of the CDS bid liquidity intensity to the latent credit risk factor is larger than that of the CDS ask liquidity intensity. The CDS bid quote can thus increase more strongly than the ask quote. Concerning the decomposition of the full CDS premia, we observe that on average 95% of the observed mid premium is due to pure credit risk, 4% to pure liquidity, and 1% to correlation.

In our estimation, we measure credit risk and liquidity with respect to government bond yields as the benchmark curve. This choice has the advantage that it allows for a plausibility check of our model. As government bonds are usually the most liquid bonds, the liquidity premium bl should be positive for each bond in the sample. As Table III shows, this is the case. Obviously, a different benchmark choice could result in a different decomposition of bond spreads and CDS premia. To determine how robust our results are, we use a second benchmark curve, based on daily EURIBOR rates with maturities

from 1 week to 12 months, and Euro interest rate swap rates from Bloomberg with maturities from 1 year to 10 years. As a result, the average bond spread decreases by 8.9 bp. 63% of the bond spread is now attributed to pure credit risk, 32% to pure liquidity, and 5% to correlation. The corresponding fractions for the CDS market are 91%, 8%, and 1%. We take the relative stability of our results as an indication that the proportions we attribute to the different risk factors appropriately reflect the true values.

C. Credit Risk, Liquidity, and Correlation Premia: Time-Series Results

C.1. Comparison of Bond Spread and CDS Premia Components over Time

The estimated credit risk, liquidity, and correlation premia components are depicted in Figure 2. For ease of presentation, only the averages of the investment and subinvestment grade premia are given.

Insert Figure 2 about here.

Panels A and B of Figure 2 show that the pure credit risk premia bd and sd are almost identical. For the investment grade, there are two distinct spikes in late 2001 and late 2002 at the Enron and WorldCom defaults. The reaction of the subinvestment grade to the Enron default is almost negligible which may be due to the fact that there are only 2 subinvestment grade firms in our sample between June 2001 and February 2002. Overall, we observe the well-known decline of the pure credit risk premia time series. The end of the observation interval coincides with the beginning of the financial crisis.

The bond liquidity premia bl exhibit a different behavior across the investment and subinvestment grade as we observe from Panel A of Figure 2. During high credit risk periods, liquidity premia are volatile and flatten out at a higher level during the latter part of the observation interval for the investment grade. In the subinvestment grade, bl is highest shortly after the high-risk periods and decreases to a lower level towards the end of the observation interval. For CDS liquidity premia, we observe a trend towards 0 as the CDS market matures. Overall, sl is higher in the investment grade when credit risk is high, but becomes mostly negative in the subinvestment grade when credit risk is high. This finding suggests that the ask-initiated transactions are partly replaced by bid-initiated transactions for the subinvestment grade, pointing at a high number of investors who attempt to take on credit risk synthetically in the CDS market.

Due to the insignificant estimates for the sensitivity of the credit risk intensity λ to the liquidity risk factor y , the correlation premia bc and sc are closely associated with credit risk premia. Comparing

bl and bc , Panel A of Figure 2 shows that pure liquidity premia lie below correlation premia during high-risk periods and above during low-risk periods for the investment grade. In the subinvestment grade, we observe a similar result during high risk periods, e.g. at the WorldCom default in 2002. Overall, however, bl tends to be higher than bc in the lower rating classes. We interpret this as an indication that liquidity is reduced disproportionately in high credit risk phases, in particular for the investment grade. This agrees with the flight to quality and the flight to liquidity effects which are theoretically derived by Vayanos (2004) and documented empirically by Beber, Brandt, and Kavajecz (2009). The CDS correlation premia are, in contrast, almost negligible, i.e. CDS liquidity is mostly independent of credit risk.

We conclude this section by two comments. The first refers to a specification test of our model, the second to an extrapolation of our results to the financial crisis. In our specification test, we proceed as follows. First, we compute the changes of the average pure credit risk and the average pure liquidity premia $\Delta\overline{bd}_t$, $\Delta\overline{sd}_t$, $\Delta\overline{bl}_t$, and $\Delta\overline{sl}_t$, for the investment and the subinvestment grade. We perform an augmented Dickey-Fuller test for these four time series, and reject a unit root for all. Second, we perform an OLS regression of the premia changes on the change of the Dow Jones VSTOXX level, and the changes of the European Financial Market Liquidity Indicator (FML), which was made available to us through the European Central Bank. Higher values of FML indicate higher market-wide liquidity. We find that Δbd and Δsd are significantly positively dependent on the VSTOXX change, and independent of the FML change, both for the investment and the subinvestment grade. Δbl and Δsl are independent of the VSTOXX change, and except for Δbl in the subinvestment grade, negatively dependent on the change in FML. These results support the disaggregation obtained through our model.

Our model in principle allows an out-of-sample test for the period of the financial crisis. We refrain from re-calibrating our model for the period after June 2007 as the financial crisis deserves a separate study. Instead, we report some summary statistics and extrapolate our results from the period around the WorldCom default to the period from July 2007 to February 2009. For this period, bond spreads and CDS quotes for 116 firms of our sample are available. The average bond spread increased to 125 bp, or by 30 %, the CDS mid premium to 127 bp, or by 80%. If we identify the WorldCom crisis by the time interval from June to December 2002, bond spreads increased to 136 bp, and average CDS mid premia changed to 111 bp. These values illustrate that the recent crisis affected the CDS market more strongly.

During the WorldCom crisis, the pure credit risk premium bd amounted to 68%, the pure liquidity premium bl to 12%, and the correlation component bc to 20%. Extrapolating these percentage shares to the financial crisis, we obtain average pure credit risk, pure liquidity, and correlation premia of 85 bp, 15 bp, and 25 bp. For CDS mid premia, we find percentages of 92%, 6% and 2% for the pure credit risk, pure liquidity, and correlation premia. These percentages translate into premia of 117 bp, 8 bp, and 2 bp.

These results illustrate two properties of the financial crisis. First, a large fraction of the total bond spread is due to the correlation between credit risk and liquidity. While the pure credit risk premium only doubles, the bond correlation premium increases more than sixfold. Hence, we observe a much higher correlation between credit risk and liquidity during the financial crisis. Second, the fraction of the bond spread due to pure credit risk increases from 60% for the entire observation interval. In the CDS market, we find the reverse relation; the pure credit risk component only constitutes 92% during the crisis, compared to 95% for the entire sample.¹⁷ Even though the above proportions do not suggest that the CDS market is less liquid than the bond market, we can conclude that CDS liquidity dries up more strongly than bond market liquidity during crises. This finding agrees with the model-independent observation that CDS mid premia increase more strongly than bond yield spreads.

C.2. Dynamic Interaction between Bond and CDS Market

To study the dynamic interaction between the bond and the CDS market, we perform a time-series analysis of the premia across the different markets. Since pure credit risk premia and pure liquidity premia are by construction independent of one another, as are correlation premia and pure liquidity premia, we focus on the pairwise relation of these premia across the two markets.

We estimate three standard Johansen vector error correction models (VECM) to study the long-run equilibrium relationship between the premia bd and sd , bl and sl , and bc and sc , across the markets and the reactions of the premia changes to short-run deviations from this relationship. The explanatory variables are the error correction terms ($bd_{t-1} + \beta_d sd_{t-1}$ for the first, $bl_{t-1} + \beta_l sl_{t-1}$ for the second, and $bc_{t-1} + \beta_c sc_{t-1}$ for the third system of equations), and the lagged premium changes. We consider time lags up to 5 trading days to capture a weekly time interval, which we found to be sufficient for all firms via both Akaike's Information criterion and Schwartz's criterion. The results are displayed in Table IV.

Insert Table IV about here.

As Panel A of Table IV indicates, the pure credit risk premia bd and sd are cointegrated with an estimated coefficient of -1 . This value suggests that there is a one-to-one relation between the two credit risk premia, and that the effect of the bond liquidity on sd is almost negligible. The estimates of the error correction terms imply that both bond and CDS pure credit risk premia react to deviations from this one-to-one relation, but that bond premia are much more sensitive.

The positive cointegration coefficient estimate for bl and sl implies that the pure liquidity premia move in opposite directions. This finding is in line with the liquidity spillover discussed in Section B.1. As we argued, a bond liquidity shock results in higher CDS bid quotes and lower CDS ask quotes. In market micro structure terms, this smaller bid-ask spread corresponds to higher CDS liquidity compared to the case if the CDS trader does not adjust bid and ask quotes as a reaction to the bond liquidity shock. Since the CDS ask quote decreases more strongly than the CDS bid quote increases, our measure of the CDS liquidity premium, sl , also decreases. Therefore, the liquidity effect we capture fully corresponds to the market micro structure intuition.

The error correction coefficient estimate for the bond is only significant at the 10% level while the error correction term for the CDS is significant at the 1% level, suggesting that CDS liquidity adjusts to bond liquidity. This result — only CDS liquidity premia react to bond liquidity premia — is also supported by the coefficients of the lagged premium changes: the lagged bond premium change significantly affects the CDS premium change, and due to the lower level of the CDS liquidity premium, the bond's impact is also economically significant. The lagged CDS premium change, on the other hand, has no significant impact on the bond premium change.

The bond and CDS correlation premia bc and sc exhibit a negative estimate of the cointegration coefficient, pointing at a comovement of the credit-risk related part of the liquidity premia in both markets. We partly attribute its large negative value to the relation in the investment grade below. Otherwise, the time-series behavior of correlation premia resembles that of the credit risk premia.

The comovement of the correlation premia has an important implication for the disaggregation of the liquidity premium into the pure liquidity and the credit risk-induced correlation component. If we model credit risk and liquidity intensities independently, correlation premia become subsumed in liquidity premia since the credit risk intensity λ is not affected by the liquidity factors y^b , y^{ask} , and y^{bid} . This matters for the dynamics of the liquidity premia: As Table IV shows, pure liquidity premia move in opposite directions while correlation premia exhibit a high degree of co-movement with a much larger cointegration coefficient. Thus, subsuming the pure liquidity component and the credit risk-induced correlation component would obscure the actual countermovement.

As discussed above, the time-series behavior of the premia components differs between the investment and the subinvestment grade. The results for the investment grade in Panel B of Table IV show that the size of the coefficient estimates and the explanatory power decrease compared to the entire sample. Overall, the investment grade exhibits a lower connection between bonds and CDS. Economically, this finding implies that the premia for investment grade firms may be affected by market-specific conditions in excess of the firm-specific ones.

Panel C of Table IV shows the results for the subinvestment grade. Overall, the coefficient estimates imply that subinvestment grade bond and CDS premia are more closely interconnected than investment grade premia. For credit risk premia, the cointegration coefficient estimate is slightly lower than in the investment grade due to the (now higher) effect of bond liquidity on sd . The error correction terms, on the other hand, are significantly higher than for the investment grade, signifying a stronger relation between the two markets. The cointegration coefficient estimate for liquidity premia increases to 17.29, and the error correction estimate for CDS liquidity premia decreases to -0.26, suggesting that CDS liquidity is more sensitive to bond liquidity.

D. The Effect of Excluding CDS Illiquidity

We find strictly positive bond liquidity premia bl , and interpret this result as ex-post support for our modelling CDS markets as not perfectly liquid. To substantiate this insight, we propose a modification of our model which allows us to check whether neglecting CDS liquidity results in an omitted variables issue. In this version, we assume that there are no liquidity components in the CDS market, i.e. $\gamma^l = \mu^l = \eta^l = 0$, $l = \text{ask, bid}$. As a consequence, the CDS mid quote equals the pure credit risk premium sd , and we calibrate the model to CDS mid quotes.

Table V displays the mean, standard deviation, minimum, and maximum of the re-estimated bond spread components.

Insert Table V about here.

Overall, we find at least one negative value of the bond pure liquidity premium bl for 120 firms. In total, 8,938 bond liquidity intensity estimates (this corresponds to 6.8% of the firm-day observations) are negative.

A comparison of the estimates in Table V to the original estimates in Table III shows several striking results. On average, the pure bond credit risk premia bd is higher by 1.9 bp if CDS liquidity is ignored.

This difference is due to the fact that both sd and bd must now match CDS mid quotes. It thus almost exactly matches the mean CDS liquidity premium in Table III. The bond liquidity premia are on average lower by 1.7 bp. Although the average effect of CDS liquidity on the bond market is small, the individual consequences can be substantial. We find at least one negative value of the bond pure liquidity premium bl for 120 firms. In total, 8,938 bond liquidity intensity estimates (this corresponds to 6.8% of the firm-day observations) are negative. For each rating class, the minimal value of bl is negative with the smallest value of -204.4 bp in the BB rating class.

Our results show that neglecting stochastic CDS liquidity yields overestimates of bond liquidity and results in bond price surcharges instead of discounts. Simultaneously, default risk and default probabilities are overestimated when the bond liquidity premia become negative. Hence, we conclude that liquidity aspects in the CDS market matter for the identification of bond credit risk, liquidity, and correlation. Since neglecting CDS liquidity attributes yield differences between the bond and the CDS market directly to bond liquidity, the effect is especially pronounced when the bond liquidity is high relative to the CDS liquidity.

IV. Summary and Conclusion

We develop a reduced-form model to decompose bond spreads and CDS quotes into three components: a pure credit risk, a pure liquidity, and a correlation component that covers the comovement of credit risk and liquidity. To the best of our knowledge, our paper is the first to use information available in CDS bid and ask quotes about the firm's credit risk and the liquidity of a CDS contract. We combine market microstructure aspects with no-arbitrage pricing principles to study the interaction between credit risk and liquidity, and the liquidity spillover effects between credit derivatives and the underlying bonds.

Our empirical results cover the cross-sectional behavior of credit risk and liquidity, and the dynamic links of these components on the state space and the premia level. Cross-sectionally, we find that CDS liquidity effects can have a large impact on the liquidity component in the bond market. The dynamic analysis of the state variables reveals a liquidity spillover between the bond and the CDS market. The asymmetric consequences of a bond liquidity shock on CDS bid and ask quotes shows that CDS contracts are primarily used to hedge credit risk, and not as a substitute for a bond position. On the premium level, our vector error correction analysis shows that bond liquidity shocks affect the CDS market, but not vice versa.

Our results have several implications for a firm's cost of debt, and the risk management of a bank's trading book. In the investment grade sectors, bond credit risk and liquidity premia have roughly the same size. Measures to reduce the credit premium, such as improving the debt/equity ratio or a smoothing of earnings and cash flows, have possibly larger implicit costs than measures to improve the liquidity of newly issued bonds. Liquidity premia can be reduced by establishing market makers who guarantee a small maximal bid-ask spread. This institution was established in European bond markets some years ago.

We further find that default risk and liquidity are positively, but not perfectly, correlated. Results which are not reported in the paper show that the strength of the liquidity link between the bond and the CDS market depends on whether market-wide credit risk increases or decreases. Hence, hedging bond market credit risk exposures via CDS can increase the exposure to liquidity changes.

References

- Acharya, V. V., and L. H. Pedersen, 2005, Asset pricing with liquidity risk, *Journal of Financial Economics* 77, 375–410.
- Beber, Alessandro, Michael W. Brandt, and Kenneth A. Kavajecz, 2009, Flight-to-Quality or Flight-to-Liquidity? Evidence from the Euro-Area Bond Market, *Review of Financial Studies* 22, 925–957.
- Bongaerts, Dion, Frank De Jong, and Joost Driessen, 2008, Liquidity and liquidity risk premia in the CDS market, Working Paper, University of Amsterdam.
- Brenner, Menachem, Rafi Eldor, and Shmuel Hauser, 2001, The price of options illiquidity, *Journal of Finance* 56, 789–805.
- Chen, Ren-RAW, Xialon Cheng, and Liuren Wu, 2005, Dynamic Interactions Between Interest Rate, Credit, and Liquidity Risks: Theory and Evidence from the Term Structure of Credit Default Swap Spreads, Working Paper, Rutgers Business School.
- Chen, Ren-RAW, Frank Fabozzi, and Ronald Sverdlow, 2007, Corporate Credit Default Swap Liquidity and Its Implications for Corporate Bond Spreads, Working Paper, Long Island University.
- Deuskar, P., A. Gupta, and M. Subrahmanyam, 2008, Liquidity effects in otc options markets: Premium or discount?, forthcoming *Journal of Financial Markets*.
- Duffie, Darrell, 1999, Credit Swap Valuation, *Financial Analysts Journal* January/February, 73–87.
- , and Jun Liu, 2001, Floating-Fixed Credit Spreads, *Financial Analysts Journal* 57, 76–87.
- Duffie, Darrell, and Kenneth J. Singleton, 1997, An Econometric Model of the Term Structure of Interest Rate Swap Yields, *Journal of Finance* 52, 1287–1321.
- Dunbar, Kwamie, 2008, US Corporate Default Swap Valuation: The Market Liquidity Hypothesis and Autonomous Credit Risk, *Quantitative Finance* 8, 321–334.
- Elton, Edwin J., Martin J. Gruber, Deepak Agrawal, and Christopher Mann, 2001, Explaining the Rate Spread on Corporate Bonds, *Journal of Finance* 56, 247–277.
- Ericsson, Jan, and Olivier Renault, 2006, Liquidity and Credit Risk, *The Journal of Finance* 61, 2219–2250.
- Ericsson, Jan, J. Reneby, and H. Wang, 2005, Can structural models price default risk? new evidence from bond and credit derivative markets, Working Paper.
- Huang, Jing-Zhi, and Ming Huang, 2003, How Much of the Corporate-Treasury Yield Spread is Due to Credit Risk?, Working Paper, Graduate School of Business, Stanford University.

- Longstaff, Francis A., 2004, Flight-to-Liquidity and Flight-to-Quality, *Journal of Business* 77, 511–526.
- , Sanjay Mithal, and Eric Neis, 2005, Corporate Yield Spreads: Default Risk or Liquidity? New Evidence from the Credit-Default Swap Market, *Journal of Finance* 60, 2213–2254.
- Meng, Lei, and Owain ap Gwilym, 2007, The Characteristics and Evolution of Credit Default Swap Trading, *Journal of Derivatives and Hedge Funds* 13, 186–198.
- Nashikkar, Amrut, Marti Subrahmanyam, and Sriketan Mahanti, 2007, Latent Liquidity and Corporate Bond Yield Spreads, New York University Stern School of Business Working Paper.
- Schueler, M., and R. Galletto, 2003, Basis Trading, Working Paper, JP Morgan Credit Derivatives Marketing.
- Tang, Dragon Yongjun, and Hong Yan, 2007, Liquidity and Credit Default Swap Spreads, Working Paper.
- Vayanos, Dimitri, 2004, Flight to Quality, Flight to Liquidity, and the Pricing of Risk, NBER Working Paper 10327.

Notes

¹March, June, September, and December 20th have evolved as the standard dates. If a contract is entered into on a non-standard date, the time until the next standard date is added to the quoted maturity of the contract.

²Empirical evidence for other derivatives market is mixed. Brenner, Eldor, and Hauser (2001) observe that prices of exchange-traded currency options strongly exceed those of non-tradable ones. Deuskar, Gupta, and Subrahmanyam (2008), on the other hand, document price *surcharges* instead of discounts for less liquid interest rate options.

³To explore whether the asymmetry in modeling only bond mid quotes versus CDS bid and ask quotes affects the liquidity relations implied by our model, we perform the following analysis. First, we extend the model in equation (4) to two latent bond liquidity factors, one for ask and bid quotes each. Second, we specify two factor matrices, where one implies a bond and CDS liquidity comovement, and the other a countermovement. Third, we simulate a 1-year time series for the latent, independent factors, transform these into the correlated intensity time series, and determine bond and CDS bid and ask quotes. Last, we compute bond mid quotes as the average of the bid and ask, and estimate the implied liquidity relation. We repeat this procedure 100 times, and find that we correctly identify comovement in 98, and countermovement in 97 cases. These results justify our choice of modeling only bond mid quotes as opposed to CDS bid and ask quotes.

⁴Typically, no single bond matches the CDS maturity. As long as one bond matures later than the CDS, we assume that an issuer default triggers the credit event. If the CDS maturity exceeds that of all bonds, there is no deliverable asset after the maturity of the last bond, and the protection becomes worthless. We capture this effect by assuming that a credit event cannot occur if no bond is outstanding.

⁵In the empirical part of our study, Section III, we obtain no estimates that translate into negative bid-ask spreads. To quantify how likely negative bid-ask spreads are, we perform a simulation study. We simulate 10,000 5-year time series for the intensity time series, using the average intensities as starting values. We then compute the implied bid and ask premia for a 5-year CDS contract from inception until maturity, and for a constant 5-year maturity CDS contract. We only obtain only two negative bid-ask spreads for the CDS contract with decreasing maturity immediately before the maturity date.

⁶The explicit analytical representations are available in an online supplement.

⁷The formal definition of the credit risk, liquidity, and correlation premia are available in an online supplement.

⁸Our model does not include an assumption on the position of the pure credit risk premium bd relative to the total bond spread bs . Both bl and bc could theoretically be negative, such that bd exceeds bs . Such a relation implies that the default-risky bond is more liquid than the default-free liquidity numéraire bond, and that credit risk and liquidity are negatively related. In Section III.B.B.2, we show that empirically bd consistently lies below bs .

⁹As for the bond, we make no assumption on the position of sd relative to the observed CDS mid, bid, and ask quote. There is not reasons why sd should be consistently smaller or larger than any of the CDS premia. It can be reasonable that CDS traders increase both bid and ask quotes beyond the unknown pure credit risk premium after a number of ask-induced transactions to rebalance their portfolios. Similarly, sd could exceed the bid and ask quote. Empirically, we show in Section III.B.B.2 that sd on average lies below the CDS mid quote.

¹⁰Our model allows us to further disaggregate the pure liquidity premia bl and sl into a liquidity risk and a liquidity level component. We define the pure liquidity risk component as the theoretical liquidity premium we would observe if the current value of the latent pure liquidity factor y^l were equal to zero, but the drift and diffusion parameters μ^l and η^l differ from zero. The liquidity level component is the difference between the total pure liquidity premium and the liquidity risk component. These definitions reflect the idea that the liquidity risk premium arises from a change of the latent pure liquidity factor from its current value y_t^l .

¹¹It is not obvious whether varying the recovery rate leads to corresponding changes in the default probability, keeping expected loss constant, or whether the liquidity estimates is also affected. We thus also choose recovery rates of 30% and 50%, and find similar proportions of credit risk, liquidity, and correlation premia.

¹²Details on the calibration procedure are available in an online supplement.

¹³It is surprising that bd is smaller for the CCC rating class. However, this finding agrees with the observation that bond yield spreads and mid CDS premia are also lower in the CCC than in the B rating class. Ericsson, Reneby, and Wang (2005) also report that average mid CDS premia for the BB rating class are larger than for the B and CCC rating class.

¹⁴In terms of the pure liquidity level and the pure liquidity risk premium, we find that on average 0.95 bp (4% of bl) are due to liquidity risk. This percentage is lower than the value documented by Acharya and Pedersen (2005), who find that 24% of the liquidity component in annual expected stock returns is due to liquidity risk. As bonds tend to be more illiquid than stocks, we find it reasonable that the bond liquidity risk component constitutes a smaller fraction.

¹⁵This important result cannot be due to our excluding the delivery option and counterparty risk from our model. The delivery option, as we argued in Section I.C, should increase observed ask quotes and decrease observed bid quotes by the same amount, leaving the mid quotes unaffected. This symmetric effect suggests that the delivery option has no impact on the CDS liquidity premium sl , but is subsumed in our estimate of the pure credit risk premium sd . A preliminary study in which we model the delivery option explicitly confirms this argument. With regard to counterparty risk, we argue in three steps that excluding it can only lead to downwards biased estimates of the CDS liquidity premium. First, we consider perfectly liquid CDS contracts without counterparty risk. In this case, the bid, ask, and mid quotes coincide, and are equal to the pure credit risk premium sd . Second, we include counterparty risk. As argued in Section I.C, this additional risk decreases bid quotes and has no impact on ask quotes. As a consequence, the mid quotes decreases, the ask quote still equals sd , and the counterparty risk premium $scr := s^{\text{mid}} - sd$ is negative. Third, assuming that sd and sc are unaffected by counterparty risk, the decomposition of the observed mid quote $s^{\text{mid}} = sd + sc + \hat{sl} + scr$ will result in a larger liquidity premium \hat{sl} as scr is negative.

¹⁶Further separating sl into the liquidity level and the liquidity risk component, we find that on average 12% of sl are due to liquidity risk. As for the bond, the fraction is lower in the investment grade than in the subinvestment grade with on average 6% compared to 89% in the subinvestment grade. In contrast with Bongaerts, De Jong, and Driessen (2008), who find that liquidity risk premia in expected CDS portfolio returns are negligible, these percentages point at a large liquidity risk impact for CDS on reference entities with a low rating.

¹⁷The large absolute difference between bd and sd of 32 bp during the financial crisis and 9 bp during the WorldCom crisis compared to 0.4 bp for the entire sample implies that the value of sd we would obtain if we recalibrated the model would be even smaller.

Figure 1. Average Bond Spreads and CDS Mid Premia Time Series

The figure depicts average bond spreads and CDS mid premia between June 1, 2001 and June 30, 2007. Bond spreads are computed as a bond's yield-to-maturity computed from the mid price less the yield-to-maturity of a bond with identical coupon and maturity. This price is determined using the Nelson-Siegel-Svensson term structure of interest rates for German Government Bonds as provided by the Deutsche Bundesbank. Bond spreads are subsequently interpolated to obtain a synthetic 5-year maturity. Averages are taken across all firms which are rated investment grade or subinvestment grade, respectively, on a given date. Average bond spreads are denoted in black, CDS mid premia in grey. The solid line is used to depict the investment grade, the dashed line to depict the subinvestment grade time series.

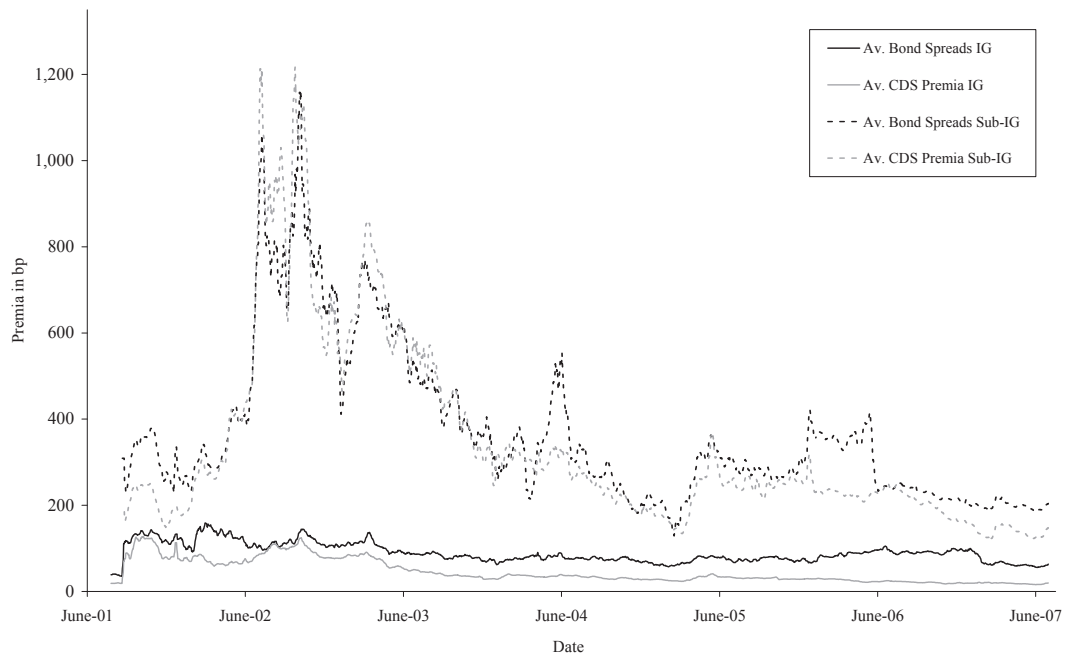
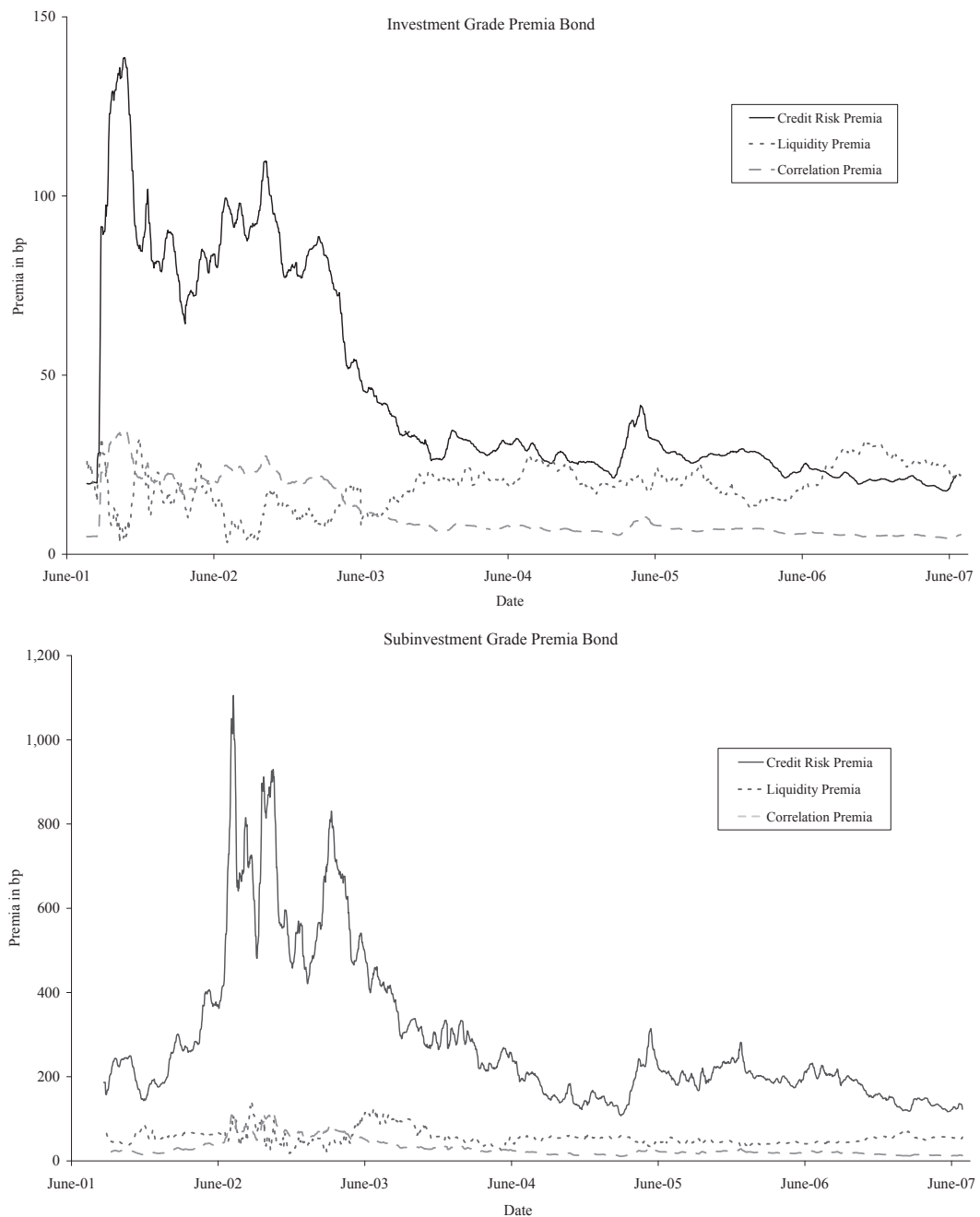


Figure 2. Estimated Credit Risk, Liquidity, and Correlation Premia Time Series

The figure depicts the model-implied premia components for the investment and subinvestment grade between June 1, 2001 and June 30, 2007. Bond premia components refer to a synthetical 5-year par bond, the CDS premia components to a 5-year contract. Credit risk premia (solid black line) reflect the impact of the credit risk factor (and the bond liquidity for the CDS). Liquidity premia (dotted grey line) reflect the impact of the instrument-specific pure liquidity factor. Correlation premia (dashed grey line) reflect the cross-impact of the credit risk factor on the liquidity intensities. Averages are computed across the investment and subinvestment grade on each date. All values are in basis points.

Panel A: Bond Premia



Panel B: CDS Premia

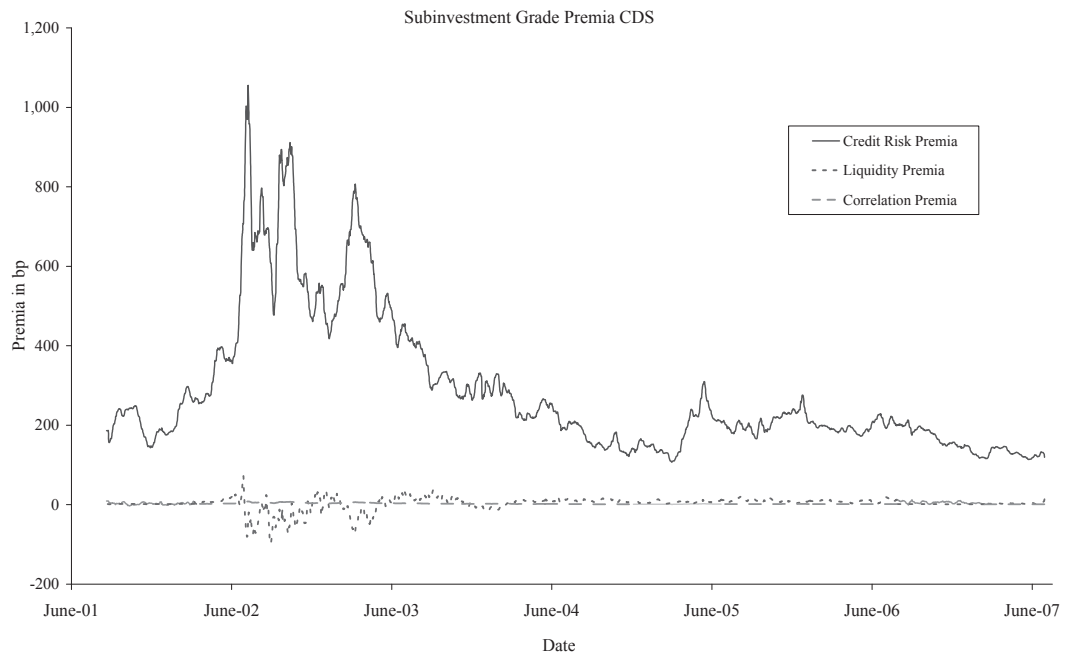
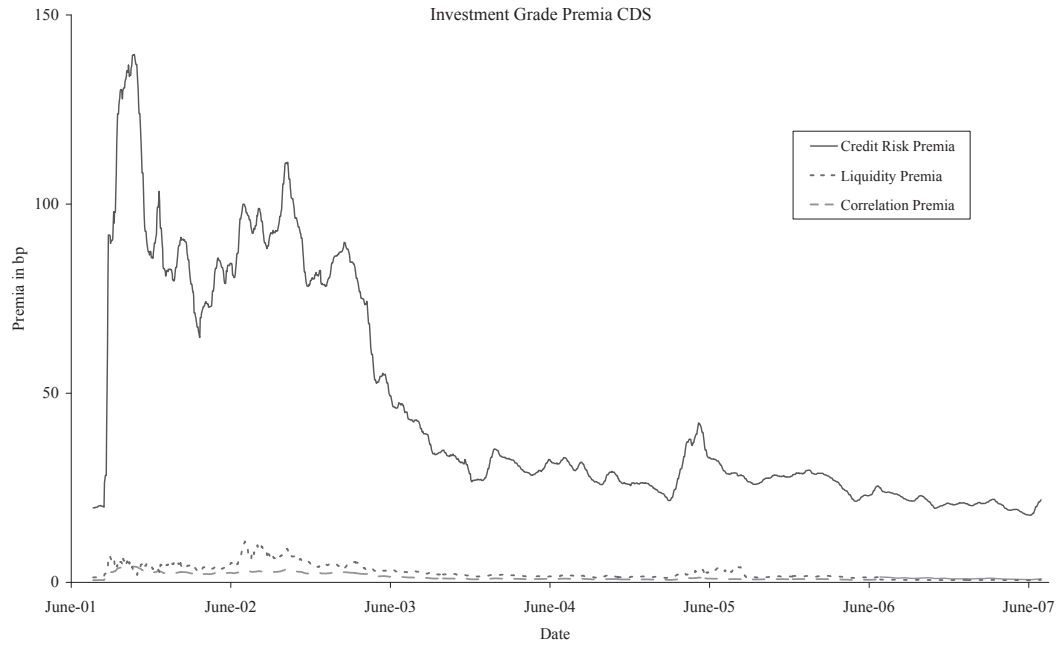


Table I: Firms by Rating Class and Industry Sector

The table presents the number of firms in each rating class and industry group. We first compute a firm's average numerical rating across all days when there are at least two bond price quotes, and a CDS bid and ask quote. We then map the numerical value to the S&P rating and use this as the column heading. "Since the lowest average firm rating is B, the table does not contain a CCC column, even though there are 171 firm-day observations with a CCC-rating." The last columns and rows show the number of mid bond prices and mid CDS premia for each industry group and rating class in our sample between June 1, 2001 and June 30, 2007.

	AAA	AA	A	BBB	BB	B	All	# Obs. Bonds	# Obs. CDS
Basic Materials	-	2	4	7	2	1	16	33,393	13,079
Communication	-	1	7	8	3	-	19	73,211	20,481
Cycl. Cons. Goods	-	2	3	9	2	-	16	47,497	15,634
Noncycl. Cons. Goods	-	-	5	8	1	-	14	40,519	12,319
Diversified	-	-	2	2	-	-	4	6,536	3,096
Financial	-	22	28	4	-	-	54	175,870	38,046
Industrial	-	-	4	5	-	-	9	40,624	9,531
Utility	1	5	13	4	-	-	23	79,604	19,036
All	1	32	66	47	8	1	155	497,254	131,222
# Obs. Bonds	3,552	106,206	116,359	248,343	21,238	1,556	497,254		
# Obs. CDS	1,085	27,015	53,203	41,338	7,842	739	131,222		

Table II
Factor Sensitivities

The table presents the estimates for the factor sensitivities. f_b , f_{ask} , and f_{bid} measure the impact of the latent credit risk factor x on the bond, CDS ask, and CDS bid liquidity intensities γ^b , γ^{ask} , and γ^{bid} . g_b , g_{ask} , and g_{bid} measure the impact of the latent bond, CDS ask, and CDS bid liquidity factors y^b , y^{ask} , and y^{bid} on the default intensity λ . $\omega_{b,ask}$, $\omega_{b,bid}$, and $\omega_{ask,bid}$ measure the cross-impact of the latent bond, CDS ask, and CDS bid liquidity factors on the bond, CDS ask, and CDS bid liquidity intensities γ^b , γ^{ask} , and γ^{bid} . The first row of each panel gives the number of firms for which the sensitivity estimate is significantly different from 0, the second row the number of estimates significantly larger than 0, the third row the number of estimates significantly smaller than 0, where we determine significance via block-bootstrapping with 1,000 resamplings. The fourth and fifth row present the mean estimate and the standard deviation. ***, **, and * denote significance at the 1%, 5%, and 10% level for a standard t-test across firms.

Panel A: All									
	f_b	f_{ask}	f_{bid}	g_b	g_{ask}	g_{bid}	$\omega_{b,ask}$	$\omega_{b,bid}$	$\omega_{ask,bid}$
# Firms	140	138	66	1	3	2	123	85	131
# > 0	138	137	29	1	2	1	5	80	15
# < 0	2	1	37	-	1	1	118	5	116
Mean	0.16***	0.37***	-0.07***	0.01	0.01	0.00	-0.02***	0.01***	-0.38***
Std. Dev.	0.02	0.03	0.04	-	0.01	0.00	0.02	0.02	0.04
Panel B: Investment Grade									
# Firms	134	132	62	1	3	1	116	81	124
# > 0	132	132	25	1	2	-	1	77	13
# < 0	2	-	37	-	1	1	115	4	111
Mean	0.15***	0.37***	-0.06***	0.01	0.01	0.00	-0.02***	0.01***	-0.38***
Std. Dev.	0.02	0.03	0.03	-	0.01	-	0.02	0.02	0.04
Panel B: Subinvestment Grade									
# Firms	6	6	4	-	-	1	7	4	7
# > 0	6	5	-	-	-	1	4	3	2
# < 0	-	1	4	-	-	-	3	1	5
Mean	0.19***	0.46***	-0.07***	-	-	0.00	-0.06***	0.03***	-0.21***
Std. Dev.	0.03	0.03	0.02	-	-	-	0.02	0.01	0.03

Table III
Estimated Credit Risk, Liquidity, and Correlation Premia

The table presents the mean, standard deviation, minimum, and maximum of the model-implied premia components. Contrary to Table I, the column headings denote the actual, not the average, firm-day rating. We thus also report results for the CCC rating class. *bd* gives the pure credit risk, *bl* the pure liquidity, and *bc* the correlation component in the yield spread of a synthetical 5-year par bond. *sd* gives the pure credit risk, *sl* the pure liquidity, and *sc* the correlation component in the mid premium for a 5-year CDS contract. The standard deviation, minimum, and maximum are determined both over time and across observations within the rating class on each date. All values are in basis points.

	AAA	AA	A	BBB	BB	B	CCC	All
Bond Pure Credit Risk Premium (<i>bd</i>)								
Mean	6.11	13.05	28.46	55.18	246.54	345.04	256.62	44.38
Std. Dev.	4.46	10.60	28.35	64.67	237.99	163.16	33.71	83.46
Min.	0.96	1.38	2.96	2.96	33.86	32.60	113.59	0.96
Max	52.21	260.85	352.11	1,214.39	1,807.09	1,126.95	386.33	1,807.09
Bond Pure Liquidity Premium (<i>bl</i>)								
Mean	0.67	12.16	24.92	32.63	50.65	61.85	3.09	26.36
Std. Dev.	3.12	30.12	43.95	55.77	54.77	58.19	3.48	46.20
Min.	0.35	1.41	3.02	3.09	1.51	1.48	1.50	0.35
Max	30.78	567.08	495.96	349.34	451.59	296.79	10.44	567.08
Bond Correlation Premium (<i>bc</i>)								
Mean	-0.02	0.25	2.93	8.25	16.89	19.51	1.96	3.59
Std. Dev.	0.03	4.92	6.44	16.01	44.38	14.17	1.98	12.04
Min.	-1.28	-0.61	1.01	1.08	1.16	0.72	0.38	-1.28
Max	0.54	97.21	120.79	251.51	353.46	133.98	5.09	353.46
CDS Pure Credit Risk Premium (<i>sd</i>)								
Mean	6.18	13.45	28.98	56.33	249.52	349.97	258.83	44.76
Std. Dev.	4.42	12.88	28.35	65.59	242.82	167.45	34.96	82.96
Min.	5.12	4.24	4.65	4.58	34.92	33.97	115.92	4.24
Max	52.91	279.05	356.83	1,281.93	1,948.43	1,175.58	397.29	1,948.43
CDS Pure Liquidity Premium (<i>sl</i>)								
Mean	0.16	1.64	1.79	2.21	4.31	9.00	8.77	1.94
Std. Dev.	0.30	6.47	2.32	8.23	40.46	43.38	12.05	10.74
Min.	-0.61	0.48	0.92	0.82	-153.82	-152.59	-6.86	-153.82
Max	1.69	3.43	8.97	27.66	123.06	194.25	96.38	194.25
CDS Correlation Premium (<i>sc</i>)								
Mean	-0.14	0.46	0.19	0.45	5.41	8.48	5.57	0.41
Std. Dev.	0.34	0.83	0.49	1.49	10.53	7.96	1.30	4.91
Min.	-1.26	-0.89	-6.68	-1.24	-3.19	-1.42	-1.38	-6.68
Max	0.49	4.86	5.35	51.83	98.85	43.77	18.17	98.85

Table IV
The Dynamic Relationship of Credit Risk, Liquidity, and Correlation Premia

The table presents the coefficient estimates for the vector error correction model. *bd* and *sd* are the pure credit risk, *bl* and *sl* the pure liquidity, *bc* and *sc* the correlation premium components for the bond and the CDS. The dependent variables are the premium changes, the explanatory variables are the vector error correction terms and the lagged premia changes. The first row of each panel displays the number of firms for which a) the augmented Dickey-Fuller test cannot reject a unit root in the premia time series at the 10% significance level, b) the augmented Dickey-Fuller test can reject a unit root in the first differences at the 10% level, c) the Johansen test cannot reject cointegration of the time series at the 10% level, d) the augmented Dickey-Fuller can reject a unit root in the residuals of the VECM at the 10% level. The second row displays the average cointegration coefficient across these firms. The third row gives the average error correction coefficient where the bond (column Δbd , Δbl , and Δbc) and the CDS premium change (column Δsd , Δsl , and Δsc) are the dependent variables. The fourth row gives the average coefficient for the five lagged bond premium changes, the fifth row the average coefficient for the five lagged CDS premium changes. ***, **, and * denote significance at the 1%, 5%, and 10% level for a standard t-test across firms. Coefficients are given for premia in basis points, the adjusted R^2 is in percentage points.

	Pure Credit Risk Premia		Pure Liquidity Premia		Correlation Premia	
	Δbd	Δsd	Δbl	Δsl	Δbc	Δsc
Panel A: All						
# Firms	147		143		140	
Coint. Coef.	-1.00***		9.38***		-62.92***	
Error Corr. Coef.	-0.89***	-0.19***	-0.05*	-0.15***	-0.12***	-0.02***
Lagged Δ Bond	-0.77***	0.70***	-0.32***	-0.02***	-0.11***	0.01**
Lagged Δ CDS	0.65***	-0.85***	-0.03	-0.22***	0.31***	-0.40***
Adj. R^2	15.35	13.22	26.65	33.05	10.03	3.12
Panel B: Investment Grade						
# Firms	138		135		135	
Coint. Coef.	-1.00***		8.86***		-70.52***	
Error Corr. Coef.	-0.77***	-0.14***	-0.04*	-0.13***	-0.13***	-0.01***
Lagged Δ Bond	-0.40***	0.08***	-0.33***	-0.01***	-0.15***	0.01**
Lagged Δ CDS	0.32***	-0.41***	-0.06	-0.40***	0.24***	-0.03***
Adj. R^2	8.75	7.68	27.25	37.88	12.28	2.45
Panel C: Subinvestment Grade						
# Firms	9		8		5	
Coint. Coef.	-0.98***		17.29***		-5.96***	
Error Corr. Coef.	-1.35***	-1.03***	-0.16***	-0.26***	-0.10***	0.02***
Lagged Δ Bond	-0.87***	0.76***	-0.26***	-0.02***	0.01***	0.04**
Lagged Δ CDS	0.23***	-0.92***	-0.01	-0.16***	0.02***	-0.07***
Adj. R^2	21.99	19.90	21.74	33.59	5.70	5.54

Table V
Credit Risk, Liquidity, and Correlation Premia Without CDS Liquidity

The table presents the mean, standard deviation, minimum, and maximum of the model-implied premia components for each rating class when stochastic liquidity in the CDS market is ignored. As in Table III, the column headings denote the actual, not the average, firm-day rating. We thus also report results for the CCC rating class. *bd* gives the pure credit risk, *bl* the pure liquidity, and *bc* the correlation component in the yield spread of a synthetical 5-year par bond. *sd* gives the mid premium for a 5-year CDS contract which only reflects credit risk. The standard deviation, minimum, and maximum are determined both over time and across observations within the rating class on each date. All values are in basis points.

	AAA	AA	A	BBB	BB	B	CCC	All
Bond Pure Credit Risk Premium (<i>bd</i>)								
Mean	6.18	13.72	28.05	54.89	249.92	348.59	272.20	46.26
Std. Dev.	4.41	18.30	28.36	64.67	238.09	163.18	33.73	82.61
Min.	4.04	3.38	3.95	4.04	33.60	33.98	209.11	3.38
Max	51.93	255.31	351.75	1,214.12	1,807.87	1,126.66	386.34	1,806.87
Bond Pure Liquidity Premium (<i>bl</i>)								
Mean	0.11	11.82	25.63	31.11	49.12	56.63	1.58	24.65
Std. Dev.	1.70	36.47	52.32	58.23	60.46	63.38	12.05	50.74
Min.	-2.28	-120.48	-18.62	-200.82	-204.39	-150.95	-16.68	-204.39
Max	30.34	109.36	485.57	328.30	452.84	281.89	105.82	485.57
Bond Correlation Premium (<i>bc</i>)								
Mean	-0.31	-0.08	2.62	10.05	15.04	21.20	1.80	4.40
Std. Dev.	0.12	3.86	6.55	15.23	24.31	14.16	0.87	10.05
Min.	-1.35	-1.25	-1.00	-1.10	-1.83	0.00	0.00	-1.83
Max	0.18	25.76	193.46	522.07	325.42	112.67	8.62	522.07
CDS Pure Credit Risk Premium (<i>sd</i>)								
Mean	6.20	15.57	31.04	58.99	259.22	367.48	273.55	47.12
Std. Dev.	4.57	11.13	29.59	68.36	237.40	164.85	30.06	85.87
Min.	4.71	4.18	4.77	4.80	36.71	37.11	211.53	4.18
Max	53.58	256.11	355.75	1,302.80	1,849.63	1,158.31	400.66	1,849.63

cfr working papers are available for download from www.cfr-cologne.de.

hardcopies can be ordered from: centre for financial research (cfr),
 albertus magnus platz, 50923 koeln, germany.

2009

No.	Author(s)	Title
09-13	W. Bühler, M. Trapp	Time-Varying Credit Risk and Liquidity Premia in Bond and CDS Markets
09-12	W. Bühler, M. Trapp	Explaining the Bond-CDS Basis – The Role of Credit Risk and Liquidity
09-11	S. J. Taylor, P. K. Yadav, Y. Zhang	Cross-sectional analysis of risk-neutral skewness
09-10	A. Kempf, C. Merkle, A. Niessen	Low Risk and High Return - How Emotions Shape Expectations on the Stock Market
09-09	V. Fotak, V. Raman, P. K. Yadav	Naked Short Selling: The Emperor's New Clothes ?
09-08	F. Bardong, S.M. Bartram, P.K. Yadav	Informed Trading, Information Asymmetry and Pricing of Information Risk: Empirical Evidence from the NYSE
09-07	S. J. Taylor , P. K. Yadav, Y. Zhang	The information content of implied volatilities and model-free volatility expectations: Evidence from options written on individual stocks
09-06	S. Frey, P. Sandas	The Impact of Iceberg Orders in Limit Order Books
09-05	H. Beltran-Lopez, P. Giot, J. Grammig	Commonalities in the Order Book
09-04	J. Fang, S. Ruenzi	Rapid Trading bei deutschen Aktienfonds: Evidenz aus einer großen deutschen Fondsgesellschaft
09-03	A. Banegas, B. Gillen, A. Timmermann, R. Wermers	The Performance of European Equity Mutual Funds
09-02	J. Grammig, A. Schrimpf, M. Schuppli	Long-Horizon Consumption Risk and the Cross-Section of Returns: New Tests and International Evidence
09-01	O. Korn, P. Koziol	The Term Structure of Currency Hedge Ratios

2008

No.	Author(s)	Title
08-12	U. Bonenkamp, C. Homburg, A. Kempf	Fundamental Information in Technical Trading Strategies
08-11	O. Korn	Risk Management with Default-risky Forwards
08-10	J. Grammig, F.J. Peter	International Price Discovery in the Presence of Market Microstructure Effects
08-09	C. M. Kuhnen, A. Niessen	Is Executive Compensation Shaped by Public Attitudes?

No.	Author(s)	Title
08-08	A. Pütz, S. Ruenzi	Overconfidence among Professional Investors: Evidence from Mutual Fund Managers
08-07	P. Osthoff	What matters to SRI investors?
08-06	A. Betzer, E. Theissen	Sooner Or Later: Delays in Trade Reporting by Corporate Insiders
08-05	P. Linge, E. Theissen	Determinanten der Aktionärspräsenz auf Hauptversammlungen deutscher Aktiengesellschaften
08-04	N. Hautsch, D. Hess, C. Müller	Price Adjustment to News with Uncertain Precision
08-03	D. Hess, H. Huang, A. Niessen	How Do Commodity Futures Respond to Macroeconomic News?
08-02	R. Chakrabarti, W. Megginson, P. Yadav	Corporate Governance in India
08-01	C. Andres, E. Theissen	Setting a Fox to Keep the Geese - Does the Comply-or-Explain Principle Work?

2007

No.	Author(s)	Title
07-16	M. Bär, A. Niessen, S. Ruenzi	The Impact of Work Group Diversity on Performance: Large Sample Evidence from the Mutual Fund Industry
07-15	A. Niessen, S. Ruenzi	Political Connectedness and Firm Performance: Evidence From Germany
07-14	O. Korn	Hedging Price Risk when Payment Dates are Uncertain
07-13	A. Kempf, P. Osthoff	SRI Funds: Nomen est Omen
07-12	J. Grammig, E. Theissen, O. Wuensche	Time and Price Impact of a Trade: A Structural Approach
07-11	V. Agarwal, J. R. Kale	On the Relative Performance of Multi-Strategy and Funds of Hedge Funds
07-10	M. Kasch-Haroutounian, E. Theissen	Competition Between Exchanges: Euronext versus Xetra
07-09	V. Agarwal, N. D. Daniel, N. Y. Naik	Why is Santa so kind to hedge funds? The December return puzzle!
07-08	N. C. Brown, K. D. Wei, R. Wermers	Analyst Recommendations, Mutual Fund Herding, and Overreaction in Stock Prices
07-07	A. Betzer, E. Theissen	Insider Trading and Corporate Governance: The Case of Germany
07-06	V. Agarwal, L. Wang	Transaction Costs and Value Premium
07-05	J. Grammig, A. Schrimpf	Asset Pricing with a Reference Level of Consumption: New Evidence from the Cross-Section of Stock Returns
07-04	V. Agarwal, N.M. Boyson, N.Y. Naik	Hedge Funds for retail investors? An examination of hedged mutual funds
07-03	D. Hess, A. Niessen	The Early News Catches the Attention: On the Relative Price Impact of Similar Economic Indicators
07-02	A. Kempf, S. Ruenzi, T. Thiele	Employment Risk, Compensation Incentives and Managerial Risk Taking - Evidence from the Mutual Fund Industry -
07-01	M. Hagemeister, A. Kempf	CAPM und erwartete Renditen: Eine Untersuchung auf Basis der Erwartung von Marktteilnehmern

2006

No.	Author(s)	Title
06-13	S. Čeljo-Hörhager, A. Niessen	How do Self-fulfilling Prophecies affect Financial Ratings? - An experimental study –
06-12	R. Wermers, Y. Wu, J. Zechner	Portfolio Performance, Discount Dynamics, and the Turnover of Closed-End Fund Managers
06-11	U. v. Lilienfeld-Toal, S. Ruenzi	Why Managers Hold Shares of Their Firm: An Empirical Analysis
06-10	A. Kempf, P. Osthoff	The Effect of Socially Responsible Investing on Portfolio Performance
06-09	R. Wermers, T. Yao, J. Zhao	The Investment Value of Mutual Fund Portfolio Disclosure
06-08	M. Hoffmann, B. Kempa	The Poole Analysis in the New Open Economy Macroeconomic Framework
06-07	K. Drachter, A. Kempf, M. Wagner	Decision Processes in German Mutual Fund Companies: Evidence from a Telephone Survey
06-06	J.P. Krahenen, F.A. Schmid, E. Theissen	Investment Performance and Market Share: A Study of the German Mutual Fund Industry
06-05	S. Ber, S. Ruenzi	On the Usability of Synthetic Measures of Mutual Fund Net-Flows
06-04	A. Kempf, D. Mayston	Liquidity Commonality Beyond Best Prices
06-03	O. Korn, C. Koziol	Bond Portfolio Optimization: A Risk-Return Approach
06-02	O. Scaillet, L. Barras, R. Wermers	False Discoveries in Mutual Fund Performance: Measuring Luck in Estimated Alphas
06-01	A. Niessen, S. Ruenzi	Sex Matters: Gender Differences in a Professional Setting

2005

No.	Author(s)	Title
05-16	E. Theissen	An Analysis of Private Investors' Stock Market Return Forecasts
05-15	T. Foucault, S. Moinas, E. Theissen	Does Anonymity Matter in Electronic Limit Order Markets
05-14	R. Kosowski, A. Timmermann, R. Wermers, H. White	Can Mutual Fund „Stars“ Really Pick Stocks? New Evidence from a Bootstrap Analysis
05-13	D. Avramov, R. Wermers	Investing in Mutual Funds when Returns are Predictable
05-12	K. GRIESE, A. Kempf	Liquiditätsdynamik am deutschen Aktienmarkt
05-11	S. Ber, A. Kempf, S. Ruenzi	Determinanten der Mittelzuflüsse bei deutschen Aktienfonds
05-10	M. Bär, A. Kempf, S. Ruenzi	Is a Team Different From the Sum of Its Parts? Evidence from Mutual Fund Managers
05-09	M. Hoffmann	Saving, Investment and the Net Foreign Asset Position
05-08	S. Ruenzi	Mutual Fund Growth in Standard and Specialist Market Segments
05-07	A. Kempf, S. Ruenzi	Status Quo Bias and the Number of Alternatives - An Empirical Illustration from the Mutual Fund Industry –

No.	Author(s)	Title
05-06	J. Grammig, E. Theissen	Is Best Really Better? Internalization in Xetra Best
05-05	H. Beltran, J. Grammig, A.J. Menkveld	Understanding the Limit Order Book: Conditioning on Trade Informativeness
05-04	M. Hoffmann	Compensating Wages under different Exchange rate Regimes
05-03	M. Hoffmann	Fixed versus Flexible Exchange Rates: Evidence from Developing Countries
05-02	A. Kempf, C. Memmel	On the Estimation of the Global Minimum Variance Portfolio
05-01	S. Frey, J. Grammig	Liquidity supply and adverse selection in a pure limit order book market

2004

No.	Author(s)	Title
04-10	N. Hautsch, D. Hess	Bayesian Learning in Financial Markets – Testing for the Relevance of Information Precision in Price Discovery
04-09	A. Kempf, K. Kreuzberg	Portfolio Disclosure, Portfolio Selection and Mutual Fund Performance Evaluation
04-08	N.F. Carline, S.C. Linn, P.K. Yadav	Operating performance changes associated with corporate mergers and the role of corporate governance
04-07	J.J. Merrick, Jr., N.Y. Naik, P.K. Yadav	Strategic Trading Behavior and Price Distortion in a Manipulated Market: Anatomy of a Squeeze
04-06	N.Y. Naik, P.K. Yadav	Trading Costs of Public Investors with Obligatory and Voluntary Market-Making: Evidence from Market Reforms
04-05	A. Kempf, S. Ruenzi	Family Matters: Rankings Within Fund Families and Fund Inflows
04-04	V. Agarwal, N.D. Daniel, N.Y. Naik	Role of Managerial Incentives and Discretion in Hedge Fund Performance
04-03	V. Agarwal, W.H. Fung, J.C. Loon, N.Y. Naik	Liquidity Provision in the Convertible Bond Market: Analysis of Convertible Arbitrage Hedge Funds
04-02	A. Kempf, S. Ruenzi	Tournaments in Mutual Fund Families
04-01	I. Chowdhury, M. Hoffmann, A. Schabert	Inflation Dynamics and the Cost Channel of Monetary Transmission



centre for financial research
cfr/university of cologne
albertus-magnus-platz
D-50923 cologne
fon +49(0)221-470-6995
fax +49(0)221-470-3992
kempf@cfr-cologne.de
www.cfr-cologne.de