

Kikuchi, Toru; Long, Ngo Van

Working Paper

A simple model of service offshoring with time zone differences

CESifo Working Paper, No. 2990

Provided in Cooperation with:

Ifo Institute – Leibniz Institute for Economic Research at the University of Munich

Suggested Citation: Kikuchi, Toru; Long, Ngo Van (2010) : A simple model of service offshoring with time zone differences, CESifo Working Paper, No. 2990, Center for Economic Studies and Ifo Institute (CESifo), Munich

This Version is available at:

<http://hdl.handle.net/10419/39002>

Standard-Nutzungsbedingungen:

Die Dokumente auf EconStor dürfen zu eigenen wissenschaftlichen Zwecken und zum Privatgebrauch gespeichert und kopiert werden.

Sie dürfen die Dokumente nicht für öffentliche oder kommerzielle Zwecke vervielfältigen, öffentlich ausstellen, öffentlich zugänglich machen, vertreiben oder anderweitig nutzen.

Sofern die Verfasser die Dokumente unter Open-Content-Lizenzen (insbesondere CC-Lizenzen) zur Verfügung gestellt haben sollten, gelten abweichend von diesen Nutzungsbedingungen die in der dort genannten Lizenz gewährten Nutzungsrechte.

Terms of use:

Documents in EconStor may be saved and copied for your personal and scholarly purposes.

You are not to copy documents for public or commercial purposes, to exhibit the documents publicly, to make them publicly available on the internet, or to distribute or otherwise use the documents in public.

If the documents have been made available under an Open Content Licence (especially Creative Commons Licences), you may exercise further usage rights as specified in the indicated licence.

A Simple Model of Service Offshoring with Time Zone Differences

Toru Kikuchi
Ngo Van Long

CESIFO WORKING PAPER NO. 2990
CATEGORY 8: TRADE POLICY
MARCH 2010

An electronic version of the paper may be downloaded

- *from the SSRN website:* www.SSRN.com
- *from the RePEc website:* www.RePEc.org
- *from the CESifo website:* www.CESifo-group.org/wp

A Simple Model of Service Offshoring with Time Zone Differences

Abstract

We propose a two-country monopolistic competition model of business service offshoring that captures the advantage conferred by time zone differences. We emphasize the role of the entrepreneurs, who decide how to produce business services (i.e., domestic service provision or service offshoring). It is shown that the utilization of communication networks induces a dramatic change in industrial structure due to entrepreneurial relocation (i.e., service offshoring) to take advantage of time zone differences. We also show that in the presence of moving costs for entrepreneurs, technological improvements and the resulting increase in service offshoring may reduce a country's welfare.

JEL-Code: F12.

Keywords: service offshoring, time zone differences, technological change, entrepreneurs, communication networks.

Toru Kikuchi
Graduate School of Economics
Kobe University
Kobe 657-8501
Japan
kikuchi@econ.kobe-u.ac.jp

Ngo Van Long
Department of Economics
McGill University
Montreal H3A 2T7
Canada
ngo.long@mcgill.ca

November 13, 2009

We would like to thank for Yuji Matsuoka for excellent research assistance.

1 Introduction

Offshoring of information and communication technology (ICT) services and business process outsourcing (BPO, which includes call centers, data entry firms, and other back-office operations) are revolutionizing international trade in services, which do not require physical shipments of products.¹ The past decade has seen substantial growth in international outsourcing (offshoring) of business services, admittedly from a low baseline (Amiti and Wei, 2005, 2009, Head, Mayer and Ries, 2009). It is well recognized that the utilization of new types of communication network (e.g., the Internet) plays a major role in these trends.² The rise of India’s software industry provides a prime example. The programming problems of some U.S. corporations are e-mailed to India at the end of the U.S. workday. Indian software engineers work on them during their regular office hours and provide solutions.³ By the time the offices reopen in the U.S., the solutions have already arrived, mainly as e-mail attachments. Ireland, pitching to host Europe’s main international call centers, offers another example. Cairncross (1997, p. 219) emphasizes the rise of the call-center service industry in Ireland, which is taking geographical advantage of being between the U.S. and Europe.

These types of business service offshoring require two basic conditions. Firstly, there must be a difference in time zones between the trading partners: having a wide time zone difference makes it possible for a company to operate a 24-hour business day. Second, there must be good connections via communication networks which enable the business service to be “trans-

¹In what follows, for brevity, we will refer to both ICT services and BPO as “business services.” Also, we use the term “offshoring” to denote the outsourcing of business services to foreign locations.

²Freund and Weinhold (2002) found that Internet penetration, as measured by the number of Internet hosts in a country, has a positive and significant effect on service trade. See also Hanley and Ott (2009).

³According to a recent McKinsey report, India contributed about two-thirds of global ICT outsourcing and about a half of global BPO offshoring in 2004 (*The Economist*, June 3-9, 2006).

ported” quickly with little marginal cost. Thanks to the communication revolution, time zone differences can become a primary driving force behind service offshoring. To provide an adequate assessment of the rise of business service offshoring one must not neglect the division of business activities across different time zones.

Relatively few attempts have been made to model the role of time zone differences in business service offshoring. In a pioneering paper, Marjit (2007) examined the role of international time zone differences in a vertically integrated Ricardian framework under perfect competition. He showed that time-difference emerges as an independent driving force of international trade besides taste, technology and endowment.

Pursuing this line of research, we propose a two-country monopolistic competition model of business service offshoring that captures the advantage conferred by time zone differences.⁴ Following Marjit (2007), we consider two countries located in different time zones. Unlike Marjit who assumed perfectly competitive markets, we examine the role of time zone differences under monopolistic competition. This formulation allows us to emphasize the importance of a scarce factor, *entrepreneurs*, who decide whether to produce business services domestically or to offshore them.⁵ The degree of substitutability between domestically provided services and offshored services plays an important role in our analysis. Furthermore, by introducing differentiated business services, we will be able to analyze the impact of technological change on the expansion of offshored service varieties.

⁴The fragmentation of production stages and of service provision has been studied within a trade-theoretic framework by Jones and Kierkowski (1990, 2001), Grossman and Helpman (2005), Long, Riezman and Soubeyran (2005), Do and Long (2008), Mitra and Ranjan (2008). Feenstra and Spencer (2005) dealt with both theory and empirical analysis. Spencer (2005) provided an excellent survey of the literature on outsourcing. Kikuchi and Iwasa (2010) presented a different type of monopolistic competition trade model with time zone differences in which services are assumed to be a final good.

⁵On role of entrepreneurship in international trade, see e.g., Yu (2002). Schmitt and Yu (2001) developed a model with heterogeneous fixed export costs, which can be interpreted as differences in entrepreneurship.

Our main building block is the concept of multi-stage production that takes place in real time. For concreteness, consider a non-traded final good in the home country (H). We posit that the production of this good necessarily involves two stages. The second-stage production, which can only be done in H , takes one whole working day (say 12 hours) and consists of “assembling” business services received at the beginning of the day. The first-stage is the production of various business services, each being provided by a specialised firm. The provision of each business service also takes the whole working date. Thus, to have a unit of the final good ready in H on Tuesday evening, the business services that it embodies must be produced during day time on Monday in H , or in the foreign country (F) on Monday evening (H ’s time), which is day time in F .

We assume the final good producers value the continuity of production activities. If they utilize domestic business services, on top of the price they pay for them, they also incur an inconvenience cost (or “interest cost”) because of the time lag between the provision of those services and their assembling into the final good. On the other hand, if they utilize offshored services there exists no time lag (or only a negligible one) between service provision and the transformation.

In short, domestic delivery bears significant time costs (i.e., discontinuity of production processes). In contrast to this, the utilization of communication networks allows the production of some business services in the foreign country with non-overlapping work hours. This, together with business service transmission via networks, enables a quick delivery: this is a more efficient (i.e., non-disrupted) production process.⁶ Although this cost-saving feature seems at odds with the usual assumption that foreign products are disadvantaged by transport costs, it captures the idea that final-good producers would like to have business services without discontinuity. In fact, a recent empirical study by Head, Mayer, and Ries (2009) found that in OCS (“Other

⁶Harrigan and Venables (2006) and Hummels (2001) also considered the time element in trade and discussed the uncertainty aspect of trade from a distant area.

Commercial Services” in the OECD’s classification) trade, the continuity effect (ability to operate around the clock) dominates the synchronization effect (need to coordinate during business hours).⁷

While offshoring can benefit from the technology-induced time-zone advantage, entrepreneurs that offshore their business services have to incur other costs which we call “moving costs.” This term represents the cost of doing business in a foreign environment. For example, the entrepreneur must learn how to deal with foreign bureaucrats, foreign legal system, and also incur the significant costs of development of interconnected communication networks over vast distances.⁸ Some authors regard such cost as fixed costs of offshoring (Do and Long, 2008, Mitra and Ranjan, 2008). We find it more plausible to treat them as a “leakage” in the profit flow of the offshored business. While the reduction in delivery costs made possible by taking advantage of time zone differences has a positive effect on profit, the moving costs due offshoring have a negative effect. The overall effects of offshoring are determined by the tension between these countervailing effects.

Using a model based on the ideas outlined above, we will show that the utilization of communication networks induces a dramatic change in industrial structure due to entrepreneurial relocation to take advantage of time zone differences. Concerning the welfare effects of service offshoring, there are some interesting results. Given the existence of moving costs for entrepreneurs, we will show that a technological improvement in communication and the resulting increase in service offshoring may reduce a country’s welfare, even though it is individually rational for each entrepreneur to choose to offshore services and to take advantage of time zone differences.

In Section 2 we present the basic model. In Section 3 we deal with the effects of technological change on service offshoring and welfare. Section 4 provides some concluding remarks.

⁷Freeman (2002) and Jones et al. (2005) also emphasized the role of time zone differences as a determinant of efficient worldwide division of labor.

⁸The difficulty of of doing business across borders also suggests the importance of business and social networks. See Rauch (2001) for a survey.

2 The Model

There are two countries, Home and Foreign. They are located in different time zones and there is no overlap in daily working hours: when Home's daytime working hours end, Foreign daytime working hours begin (Figure 1).

In Home, there are E individuals, each owning one unit of labor and N/E units of entrepreneurship. All individuals in Home have the same utility function over two consumption goods: a nontradable Good X (which uses as inputs a number of differentiated business services) and a tradable numeraire Good Y . Good Y is competitively produced under constant-returns-to-scale technology, using labor as the only input. Assume the utility function is

$$u = \log x + y, \tag{1}$$

where x and y denotes the consumption of Good X and Good Y , respectively.

Let P denote the price of Good X , and e denote the Home consumer's total expenditure on Good X . Equation (1) can be written as $u = \log e - \log P + y$. Maximizing this with the budget constraint $e + y \leq I$, where I denotes the individual's income (which is the sum of her labor income and the income from her entrepreneurship), we obtain $e = 1$. That is, each individual spends $e = 1$ on Good X . Thus Home's aggregate expenditure on Good X is equal to the number of individuals, E .

In Home, Good X producers, who are perfectly competitive, buy business services which they combine and transform into the final good. This transformation can only start *after* each business service provision has been completed. The central assumption is that the *continuity* between business service provision and final good production is important: if there exists a lag between those two activities, the values of business services are diminished. Thus the timely delivery of business services is important.

Suppose there are two groups of services: domestically produced services with an aggregator denoted by h , and offshored services which utilize Foreign's daytime work (together with international communication networks)

with an aggregator denoted by f . The production function Good X is

$$X = \left(\alpha_h X_h^{\frac{\varepsilon-1}{\varepsilon}} + \alpha_f X_f^{\frac{\varepsilon-1}{\varepsilon}} \right)^{\frac{\varepsilon}{\varepsilon-1}}, \quad (2)$$

where $\varepsilon > 1$ is the elasticity of substitution between groups, X_i ($i = h, f$) is the quantity index of each group of services, and α_h/α_f measures the relative attractiveness of domestically provided services. The corresponding unit cost function for good X is

$$P = \left(\alpha_h^\varepsilon P_h^{1-\varepsilon} + \alpha_f^\varepsilon P_f^{1-\varepsilon} \right)^{\frac{1}{1-\varepsilon}}, \quad (3)$$

where P_i is the price index for group i services. Since Good- X producers are perfectly competitive, the unit cost function P is exactly equal to the price of Good X . Cost-minimization by final good X producers implies that the relative demand for the two service aggregates is

$$\frac{X_h}{X_f} = \left(\frac{\alpha_h}{\alpha_f} \right)^\varepsilon \left(\frac{P_h}{P_f} \right)^{-\varepsilon}. \quad (4)$$

Recall that Good X is not internationally traded. The value of sectoral output of the non-traded Good X is PX , which must equal the total expenditure on it, E

$$PX = E$$

which is constant and equals the number of individuals in Home.

The quantity index for group i takes the Dixit-Stiglitz (1977) form

$$X_i = \left[\int_0^{n_i} x_i(j)^{\frac{\sigma-1}{\sigma}} dj \right]^{\frac{\sigma}{\sigma-1}}, \quad i = h, f, \quad (5)$$

where $\sigma > 1$ is the elasticity of substitution between any pair of services within the same group, $x_i(j)$ is the quantity of service j in group i , and $[0, n_i]$ represents group i 's range of varieties. The corresponding price index for the group i is:

$$P_i = \left[\int_0^{n_i} p_i(j)^{1-\sigma} dj \right]^{\frac{1}{1-\sigma}}, \quad i = h, f, \quad (6)$$

where $p_i(j)$ is the price of service j in group i .

The demand function for service j in group i satisfies

$$x_i(j) = \left[\frac{p_i(j)}{P_i} \right]^{-\sigma} X_i, \quad i = h, f, \quad (7)$$

In each group, differentiated business services are produced by monopolistically competitive service firms. One of the central assumptions is that each service firm needs to be set up and managed by one unit of *entrepreneurship*. Since each individual provides N/E units of entrepreneurship, there are N units of entrepreneurships in Home.⁹ Each entrepreneur has to decide what type of business service to provide. They have two options: (1) to set up a domestic firm by hiring Home labor at the wage rate w_h and provide a service h for Home Good- X producers; or (2) to set up an intermediary and utilize Foreign's daytime labor at the wage rate w_f and, via communication network, provide service f for Home Good- X producers.¹⁰ Note that the wage rates in both countries are exogenously given by the labor productivity in Good Y sector. It is assumed that Foreign does not have any business service firms of its own, and does not have demand for business services. Any business service variety produced in Foreign is made possible only by Home entrepreneurs that set up intermediaries to take advantage of time zone differences. As in Martin and Ottaviano (1999), the operating profits in Foreign (i.e., the rewards for entrepreneurs who decide to offshore) are assumed to be repatriated to Home.

To produce one unit of service, one unit of labor (with one working day) is required. Given a Dixit-Stiglitz specification with constant elasticity σ , and the wage rate w_i , each service firm in group i ($i = h, f$) sets its "mill price" ρ_i by adding a constant mark-up over marginal cost

$$\rho_i = \frac{\sigma w_i}{\sigma - 1}, \quad i = h, f. \quad (8)$$

⁹In what follows, an "entrepreneur" means "one unit of entrepreneurship."

¹⁰In what follows, we use the terms "service offshoring" and "the utilization of time zone differences via communication networks" interchangeably.

where $\sigma/(\sigma - 1)$ is the mark-up factor. While Home final good- X producers pay ρ_i per unit of service from source i ($i = h, f$), the actual cost to them is greater by a factor t_i because of inconvenience cost arising from the lag between the completion time of the service provider and the time the service is actually utilized as an input in final good production.¹¹ Thus, from the view point of Home Good- X producers, the full cost of a unit of service i is

$$p_i = t_i \rho_i, \quad i = h, f.$$

Bearing in mind the time element of the model, we can interpret $(t_i - 1)/t_i$ as a rate of discount.

Recall that our key assumption is that domestic service production requires one workday and that the second-stage production can only begin the following workday. Thus domestic service delivery bears significant time costs. In comparison, offshored services, as soon as they are completed, are immediately usable due to the utilization of rapid communication networks (Figure 1). In other words, offshored services whose production benefits from time zone differences realize higher value (or lower discount rate) than domestically produced services. Interestingly, this assumption is contrary to the familiar “trade cost” of the standard monopolistic competition model which penalizes firms that ship goods from the periphery to the center. However, it seems only natural that final goods producers would like to have services sooner than later.

We treat the improvement of communication networks as a reduction in delivery costs of offshored services (t_f). Let us denote the delivery cost of offshored services before the technological change by t_f^1 and denote that after the change by t_f^2 . We assume the following condition holds:

$$t_f^1 > t_h > t_f^2 \geq 1. \tag{9}$$

¹¹There is an obvious parallel between this formulation of inconvenience costs and the ice-berg transportation costs in the standard trade model that generates the well-known home market effect. According to the ice-berg formulation, for every t_i ($t_i > 1$) units shipped, only one unit arrives.

Note that this effect comes not from lower production costs in Foreign but from faster delivery. In the next section, we examine the impact of technological improvement in communication technologies, which is captured by a reduction in t_f .

We can obtain the profit level for the service firm in group i :

$$\pi_i = \frac{1}{n_i \sigma} P_i X_i, \quad i = h, f. \quad (10)$$

Then the relative profit is

$$\begin{aligned} \frac{\pi_f}{\pi_h} &= \frac{n_h}{n_f} \left(\frac{P_f}{P_h} \right) \left(\frac{X_f}{X_h} \right) = \frac{n_h}{n_f} \left(\frac{\alpha_f}{\alpha_h} \right)^\varepsilon \left(\frac{P_f}{P_h} \right)^{1-\varepsilon} \\ &= \left(\frac{\alpha_f}{\alpha_h} \right)^\varepsilon \left(\frac{n_f}{n_h} \right)^{\frac{\varepsilon-\sigma}{\sigma-1}} \left(\frac{w_h t_h}{w_f t_f} \right)^{\varepsilon-1}. \end{aligned} \quad (11)$$

Assume $\sigma > \varepsilon$ (i.e., substitutability within a group is greater than between groups). The ratio of profits is thus inversely proportional to the ratio of number of service varieties.¹²

Suppose that to become an offshored business service provider, an entrepreneur must incur *moving cost*. These costs include, for example, the fixed costs of interconnection and of setting up intermediaries, as well as the costs of dealing with foreign bureaucrats.¹³ To represent these additional moving costs, we assume that when an entrepreneur moves from group h to group f , her net earning is only a fraction $1/(1+\delta)$ of the profit in the new sector. The other fraction, $\delta/(1+\delta)$, represents “leakages,” or deadweight losses. The case $\delta = 0$ corresponds to the usual monopolistic competition model (Matsuyama 1995).

To offset these moving costs, profits of service- f provider must be higher compared to service- h provider. Thus, in the long run, the following equilib-

¹²See Matsuyama (1995, p. 714) on this point.

¹³Kikuchi (2003) discusses implications of the interconnection of communication networks. Hanley and Ott (2009) argue that the costs of incomplete contracts, plus monitoring and search costs also constitute a significant part of costs of offshoring.

rium condition must hold:

$$(1 + \delta)\tilde{\pi}_h = \tilde{\pi}_f, \quad (12)$$

where the “tilde” indicates the long-run equilibrium value. In other words, the costs of communicating across national borders are offset by the advantages of quicker delivery. In the long run, the distribution of service firms is determined by the movement of entrepreneurs such that (12) holds.

Figure 2 shows the determination of the relative number of service firms in the long run. The horizontal axis shows the relative number of service firms (n_f/n_h), while the vertical axis shows the relative profit level (π_h/π_f). Given that $\sigma > \varepsilon$, equation (11) is shown as a downward-sloping curve.

Suppose the initial position is at point I . Then some entrepreneurs will move from group h to group f . In the long run, the equilibrium is obtained at point E , the intersection of the curve representing (11) and the line $(1 + \delta)\tilde{\pi}_h = \tilde{\pi}_f$. The long-run relative size of service offshoring (measured in terms of number of business service firms) is

$$\frac{\tilde{n}_f}{\tilde{n}_h} = \frac{N - \tilde{n}_h}{\tilde{n}_h} = \left[\left(\frac{1}{1 + \delta} \right) \left(\frac{\alpha_f}{\alpha_h} \right)^\varepsilon \left(\frac{w_h t_h}{w_f t_f} \right)^{\varepsilon - 1} \right]^{\frac{\sigma - 1}{\sigma - \varepsilon}}. \quad (13)$$

Proposition 1: *In the long run, the share of business service offshoring is positively related to its relative attractiveness (α_f/α_h) and negatively related to both its relative costs (inclusive of delivery costs t_i) and the costs of movement δ .*

This implies that, without sophisticated communication networks, a strong preference in favor of domestically provided services and the existence of significant costs of movement would result in a low long run level of service offshoring.

3 The Impact of a Technological Advance in Communication Networks

3.1 Profits

In this section, we examine the impact of a technological advance in communication technologies, which is captured by a reduction in delivery costs t_f for service f . From (6),

$$P_h = n_h^{\frac{1}{1-\sigma}} (t_h \rho_h),$$

$$P_f = n_f^{\frac{1}{1-\sigma}} (t_f \rho_f).$$

Let r_h denote the cost (to final good producers) of the bundle of domestically produced services relative to that of the offshored ones. Then we obtain

$$r_h \equiv \frac{P_h}{P_f} = \left(\frac{n_h}{n_f} \right)^{\frac{1}{1-\sigma}} \left(\frac{t_h \rho_h}{t_f \rho_f} \right), \quad (14)$$

$$\hat{r}_h = -\frac{1}{\sigma-1} \left(\frac{\hat{n}_h}{n_f} \right) + \left(\frac{t_h \rho_h}{t_f \rho_f} \right). \quad (15)$$

where the hat denotes the percentage rate of change. Hence a reduction in t_f increases the buyer's relative input cost r_h . In order to examine the impact of a technological advance, it is useful to express the profit level of each service firm (π_h and π_f) in terms of the relative price r_h . Using (10), we get

$$\pi_h = \frac{1}{n_h \sigma} P_h X_h = \frac{1}{n_h \sigma} [1 - \mu_f(r_h)] E, \quad (16)$$

$$\pi_f = \frac{1}{n_f \sigma} P_f X_f = \frac{1}{n_f \sigma} \mu_f(r_h) E, \quad (17)$$

where $\mu_f(r_h)$ is the relative expenditure share for group- f services:

$$\mu_f(r_h) \equiv \frac{\alpha_f^\varepsilon P_f^{1-\varepsilon}}{\alpha_h^\varepsilon P_h^{1-\varepsilon} + \alpha_f^\varepsilon P_f^{1-\varepsilon}} = \frac{\alpha_f^\varepsilon}{\alpha_h^\varepsilon (r_h)^{1-\varepsilon} + \alpha_f^\varepsilon}, \quad (18)$$

$$\mu'_f(r_h) = \frac{(\varepsilon - 1)\alpha_h^\varepsilon \alpha_f^\varepsilon (r_h)^{-\varepsilon}}{[\alpha_h^\varepsilon (r_h)^{1-\varepsilon} + \alpha_f^\varepsilon]^2} > 0.$$

In the short run n_f and n_h are fixed, hence the changes in profit levels come only from the change in the relative expenditure share induced by a rise in relative cost r_h of the domestic bundle:

$$\begin{aligned} \frac{\partial \pi_f}{\partial r_h} &= \frac{\mu'_f}{n_f \sigma} E > 0, \\ \frac{\partial \pi_h}{\partial r_h} &= -\frac{\mu'_f}{n_h \sigma} E < 0. \end{aligned}$$

By shifting expenditure away from domestically produced services, a reduction in delivery costs of offshored service t_f increases the profit of group- f firms, while reducing the profit of group- h firms. In Figure 2, this change is shown as an upward shift of the downward-sloping curve (i.e., from point E to point I').

Suppose that before the technological advance, n_f is smaller than n_h because the initial t_f is high. Then we can prove the following result:

Proposition 2: *In the short run, given that $n_f < n_h$, the change in each group- f firm's profit due to technological change is larger (in absolute value) than the change in each group- h firm's profit:*

$$\left| \frac{\partial \pi_f}{\partial t_f} \right| > \left| \frac{\partial \pi_h}{\partial t_f} \right|.$$

In the intermediate run, entrepreneurs respond to the change in relative profit, and gradually move from group h to group f , which results in increased service offshoring. This is shown as a move from point I' to E' in Figure 2. It tends to reduce the profit of group- f firms. Note that the increase in the number of offshored services causes a second-round reduction in the price index P_f . Since the range of offshored services has widened, the bundle of offshored services becomes more attractive to Home final-good producers.

From (14) and (15), the relative cost of group h increases with n_f , and mitigates the negative effect on π_f of an increasing number of service firms in group f . The bigger is the inter-group substitution ϵ , the larger is this effect.

Now let us consider the change in the long-run profit levels. From (10), one obtains

$$\tilde{n}_h \tilde{\pi}_h + \tilde{n}_f \tilde{\pi}_f = \frac{E}{\sigma}. \quad (19)$$

Given that $(1 + \delta)\tilde{\pi}_h = \tilde{\pi}_f$ holds in the long run, we can obtain the profit for each group- h firm as follows:

$$\tilde{\pi}_h = \frac{(E/\sigma)}{(1 + \delta)N - \delta\tilde{n}_h}, \quad \frac{\partial \tilde{\pi}_h}{\partial \tilde{n}_h} > 0. \quad (20)$$

This implies that the long-run profit of each group- h firm is decreasing in the level of group- f 's delivery costs. As t_f falls, it becomes more profitable for entrepreneurs to switch location, and to take advantage of time zone differences. Since offshored service providers earn higher (gross) profits in the long-run equilibrium, this switch tends to reduce the profit of remaining group- h service providers.

Proposition 3: *In the long run, from each group- h firm's viewpoint, the negative effect of technological change is magnified due to entrepreneurs' switching from home services toward offshored services.*

The gradual switching of entrepreneurs results in increased service offshoring: more entrepreneurs utilize time zone differences as a result of improved communication networks.

3.2 Welfare

Now let us examine the welfare effects of a technological change that results in a fall in t_f . Let us begin by examining the short-run effect of the technological change. In the short run, the number of services in each group is constant.

Differentiating (3) with respect to t_f yields, after making use of (14) and (15) with $\widehat{(n_h/n_f)} = 0$,

$$\left(\frac{t_f}{P}\right) \left(\frac{dP}{dt_f}\right) = (\alpha_f)^\epsilon (r_h)^{1-\epsilon} > 0. \quad (21)$$

Equation (21) shows that the price of Good X immediately becomes lower after the technological change.

Next let us consider the aggregate net profit for Home entrepreneurs. Using (16) and (17),

$$\Pi \equiv n_h \pi_h + \frac{1}{1 + \delta} n_f \pi_f \quad (22)$$

$$= \frac{E}{\sigma} \left(1 - \frac{\delta \mu_f}{1 + \delta}\right). \quad (23)$$

Thus, differentiating (23) with respect to t_f yields, we obtain the short-run effect on net aggregate profit¹⁴

$$\left(\frac{t_f}{\Pi}\right) \left(\frac{d\Pi}{dt_f}\right) = \frac{\delta \mu'_f r_h}{1 + \delta(1 - \mu_f)} > 0. \quad (24)$$

Equations (21) and (24) show that in the short run, there are two conflicting effects on welfare. On the one hand, lower delivery costs leads to lower final good price, increasing consumers' welfare. On the other hand, increasing the group- f firms' gross profits leads to reduced aggregate net profit when the leakage of offshore profits is positive ($\delta > 0$). The larger the leakage parameter δ , the greater the negative impact of technological change on total profits.

¹⁴Note that the following conditions hold:

$$\begin{aligned} \left(\frac{t_f}{n_h \pi_h}\right) \left[\frac{d(n_h \pi_h)}{dt_f}\right] &= \frac{\mu'_f r_h}{1 - \mu_f} > 0, \\ \left(\frac{t_f}{n_f \pi_f}\right) \left[\frac{d(n_f \pi_f)}{dt_f}\right] &= \frac{\mu'_f r_h}{\mu_f} < 0. \end{aligned}$$

Next, let us consider the long-run impact of the technological change, after the relocation of entrepreneurs has taken place to equalize the net returns to entrepreneurship. Since some group- h firms switch to group- f status, the number of offshored services increases. This induces a further reduction in the price P (see (15)): with an enlarged range of offshored services, the price of Good X becomes lower still, which increases the welfare gains for consumers. At the same time, however, increased switching implies greater aggregate moving costs, hence a negative impact on total net profits (and hence consumers' income). Thus, if moving costs are sufficiently high, the technological change and the resulting increase in service offshoring may actually cause welfare to fall because the efficiency effect of lower delivery costs is dominated by the increased waste due to moving costs. Hence, the successful movement of some entrepreneurs, while a profit-maximizing move from their viewpoint, is not Pareto-improving from the viewpoint of the country as a whole.

Let us examine the change in consumers' utility level. From (1), the indirect utility function of each individual is given as follows:¹⁵

$$\begin{aligned} u &= \log e - \log P + \left[w_h + \left(\frac{N}{E} \right) \left(\frac{\Pi}{N} \right) - e \right] \\ &= -\log P + \frac{1}{\sigma} \left(1 - \frac{\delta \mu_f(r_h)}{1 + \delta} \right). \end{aligned} \quad (25)$$

The plot of u with respect to $1/t_f$ (i.e., the degree of technological change) is shown in Figure 3.¹⁶ This curve is inverted U shaped for a wide range of reasonable parameter values.

Proposition 4: *In the presence of moving costs for entrepreneurs, a country may suffer a welfare loss as a result of an increase in service offshoring induced by a technological advance in communication networks.*

¹⁵Note that $e = 1$. Furthermore, to simplify the mathematical expressions, we set $w_h = 1$ without loss of generality.

¹⁶Parameter values for Figure 3 are as follows: $w_h = w_f = 1$, $t_h = 1$, $\alpha_f = \alpha_h = 1$, $\epsilon = 2$, $\sigma = 1.5$, $N = 1$.

The intuition behind this result is as follows. If the initial level of delivery costs t_f is high, then the share of offshored services is relatively small (see (13)) and hence the negative impact of moving costs is relatively small. In this case, the efficiency effect dominates and the technological change increases welfare. If the level of delivery costs is sufficiently lower, however, the share of offshored service becomes larger and an increase in wasteful use of resources (i.e., moving costs) dominates the other favorable effects. As a result, a technological advance in the form of lowering delivery costs of offshored services and the resulting increased service offshoring can be harmful. Figure 3 also displays several cases with different values of δ . As δ becomes larger, the curve representing the utility will shift down. This confirms the intuition that a greater leakage δ implies a larger negative effect of increased wastes.¹⁷

Our result on welfare is in sharp contrast to popular discussions about the winners of service offshoring. Many people would think that the winners of service offshoring are owners of firms (i.e., entrepreneurs) that offshore services. Given the existence of moving costs, however, service offshoring by Home entrepreneurs may worsen the welfare of Home and reduce the net profits of all entrepreneurs, even though it is individually rational for entrepreneurs to choose to offshore in order to take advantage of international time zone differences.

4 Concluding Remarks

In this study, by constructing a simple model of service offshoring under monopolistic competition, we have examined how a technological change that results in a decline in delivery costs of offshored services affect domestic en-

¹⁷It may be worth noting that there is a parallel between the present model and the “reciprocal dumping” trade model of Brander and Krugman (1983) which also emphasizes both the positive pro-competitive effect of trade liberalization and negative effect associated with increased aggregate transport cost.

trepreneurs' offshoring decisions to take advantage of international time zone differences. We have demonstrated that, as the delivery costs of offshored services become lower, more entrepreneurs choose to utilize communication networks and provide offshored services. Also, in the presence of costs of movements, the impact of technological change on profit levels becomes larger as more entrepreneurs switch to become offshored service providers.

Furthermore, we have shown that there are conflicting effects of a technological change on welfare. While efficient utilization of offshored services (taking advantage of time zone differences) has a direct positive impact on welfare, the increased waste in entrepreneurs' movement has a negative impact. Our analysis indicates that a technological advance which leads to increased service offshoring may actually reduce welfare because the efficiency effect is dominated by the increased waste due to moving costs. Service offshoring with time zone differences is not necessarily profit-enhancing in equilibrium, even though it is individually rational for each entrepreneur to take advantage of time zone differences.

The present analysis must be regarded as very tentative. Hopefully it provides a stimulus for studying how a technological advance (or trade liberalization) affects both the degree of service offshoring and welfare.

References

- [1] Amiti, M., and S.-J. Wei (2005) "Fear of Service Outsourcing: Is it Justified?" *Economic Policy*, Vol. 20, pp. 307–339.
- [2] Amiti, M., and S.-J. Wei (2009) "Service Offshoring and Productivity: Evidence from the US," *World Economy*, Vol. 32, pp. 203–220.
- [3] Brander, J., and P. Krugman (1983) "A 'Reciprocal Dumping' Model of International Trade," *Journal of International Economics*, Vol. 15, pp. 313–321.

- [4] Cairncross, F. (1997) *The Death of Distance*, Boston, Mass.: Harvard Business School Press.
- [5] Dixit, A. K., and J. Stiglitz (1977) “Monopolistic Competition and Optimum Product Diversity,” *American Economic Review*, Vol. 67, pp. 297–308.
- [6] Do, V., and N.-V. Long (2008) “International Outsourcing under Monopolistic Competition: Winners and Losers,” in S. Marjit and E. S. H. Yu, eds, *Contemporary and Emerging Issues in Trade Theory and Policy*, Bingley UK: Emerald Group, pp. 345–366.
- [7] Feenstra, R., and B. J. Spencer (2005) “Contractual versus Generic Outsourcing: The Role of Proximity,” *NBER Working Paper* no. 11885.
- [8] Freeman, R. B. (2002) “The Labour Market in the New Information Economy,” *Oxford Review of Economic Policy*, Vol. 18, pp. 288–305.
- [9] Freund, C. and D. Weinhold (2002) “The Internet and International Trade in Services,” *American Economic Review*, Vol. 92, pp. 236–240.
- [10] Grossman, G., and E. Helpman (2005) “Outsourcing in a Global Economy,” *Review of Economic Studies*, Vol. 72, pp. 135–159.
- [11] Hanley, A., and I. Ott (2009) “Web Use and Offshoring,” Kiel Working Papers, No. 1537.
- [12] Harrigan, J., and A. J. Venables (2006) “Timeliness and Agglomeration,” *Journal of Urban Economics*, Vol. 59, pp. 300–316.
- [13] Head, K., T. Mayer, and J. Ries (2009) “How Remote Is the Offshoring Threat?” *European Economic Review*, Vol. 53, pp. 429–444.
- [14] Hummels, D. (2001) “Time as a Trade Barrier,” Mimeo, Purdue University.

- [15] Jones, R. W. and H. Kierzkowski (1990) “The Role of Services in Production and International Trade: A Theoretical Framework,” in R. W. Jones and A. Krueger (eds.) *The Political Economy of International Trade*, Oxford: Blackwell, pp. 31–48.
- [16] Jones, R. W. and H. Kierzkowski (2001) “A Framework for Fragmentation,” in S. Arndt and H. Kierzkowski (eds.) *Fragmentation: New Production Patterns in the World Economy*, Oxford: Oxford University Press, pp. 17–34.
- [17] Jones, R. W., H. Kierzkowski, and C. Lurong (2005) “What Does Evidence Tell Us about Fragmentation and Outsourcing?” *International Review of Economics and Finance*, Vol. 14, pp. 305–316.
- [18] Kikuchi, T. (2003) “Interconnectivity of Communications Networks and International Trade,” *Canadian Journal of Economics*, Vol. 36, pp. 155–167
- [19] Kikuchi, T., and K. Iwasa (2010) “A Simple Model of Service Trade with Time Zone Differences,” *International Review of Economics and Finance*, Vol. 19, pp. 75–85.
- [20] Long, N.-V., R. Riezman, and A. Soubeyran (2005) “Fragmentation and Services,” *North American Journal of Economics and Finance*, Vol. 16, pp. 137–152.
- [21] Marjit, S. (2007) “Trade Theory and the Role of Time Zones,” *International Review of Economics and Finance*, Vol. 16, pp. 153–160.
- [22] Martin, P., and G. Ottaviano (1999) “Growing Locations: Industry Location in a Model of Endogenous Growth,” *European Economic Review*, Vol. 43, pp. 281–302.
- [23] Matsuyama, K. (1995) “Complementarities and Cumulative Processes in Models of Monopolistic Competition,” *Journal of Economic Literature*, Vol. 33, pp. 701–729.

- [24] Mitra, D., and P. Ranjan (2008) “Temporary Shocks and Offshoring: The Role of External Economies and Firm Heterogeneity,” *Journal of Development Economics*, Vol. 87, pp. 76–84.
- [25] Rauch, J. E. “Business and Social Networks in International Trade,” *Journal of Economic Literature*, Vol. 39, pp. 1177–1203.
- [26] Schmitt, N., and Z. Yu (2001) “Economies of Scale and the Volume of Intra-Industry Trade,” *Economics Letters*, Vol. 74, pp. 127–132.
- [27] Spencer, B. (2005) “International Outsourcing and Incomplete Contracts,” *Canadian Journal of Economics*, Vol. 38, pp. 1107–1135.
- [28] Yu, Z. (2002) “Entrepreneurship and Intra-Industry Trade,” *Review of World Economics*, Vol. 138, pp. 277–290.

Figure 1

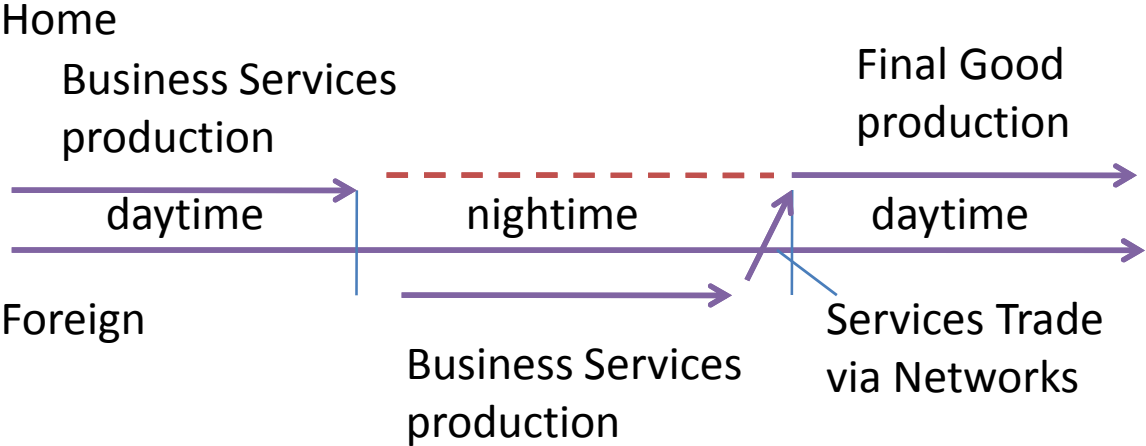
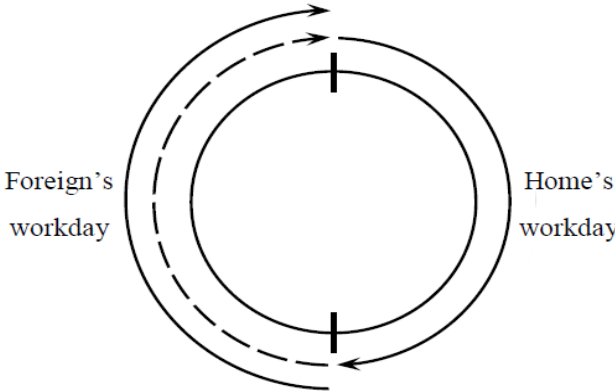


Figure 2

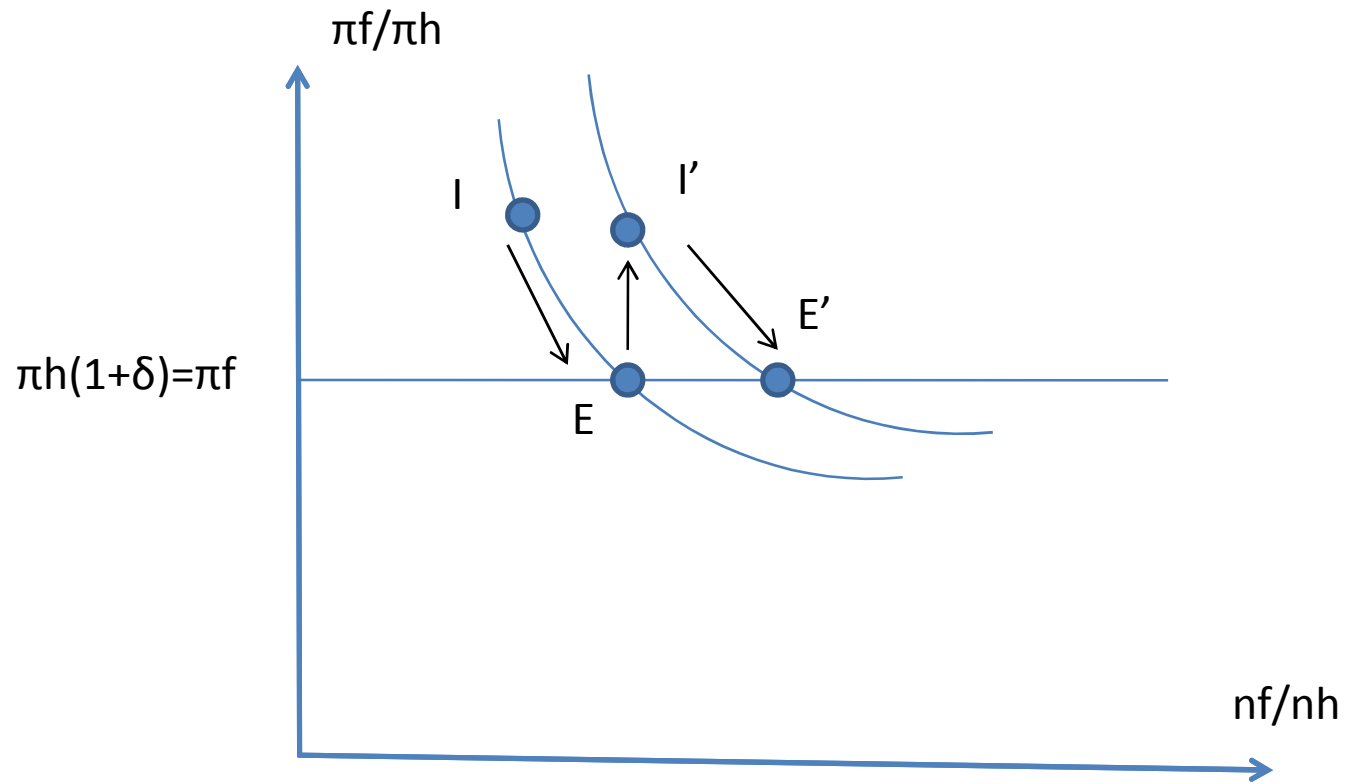
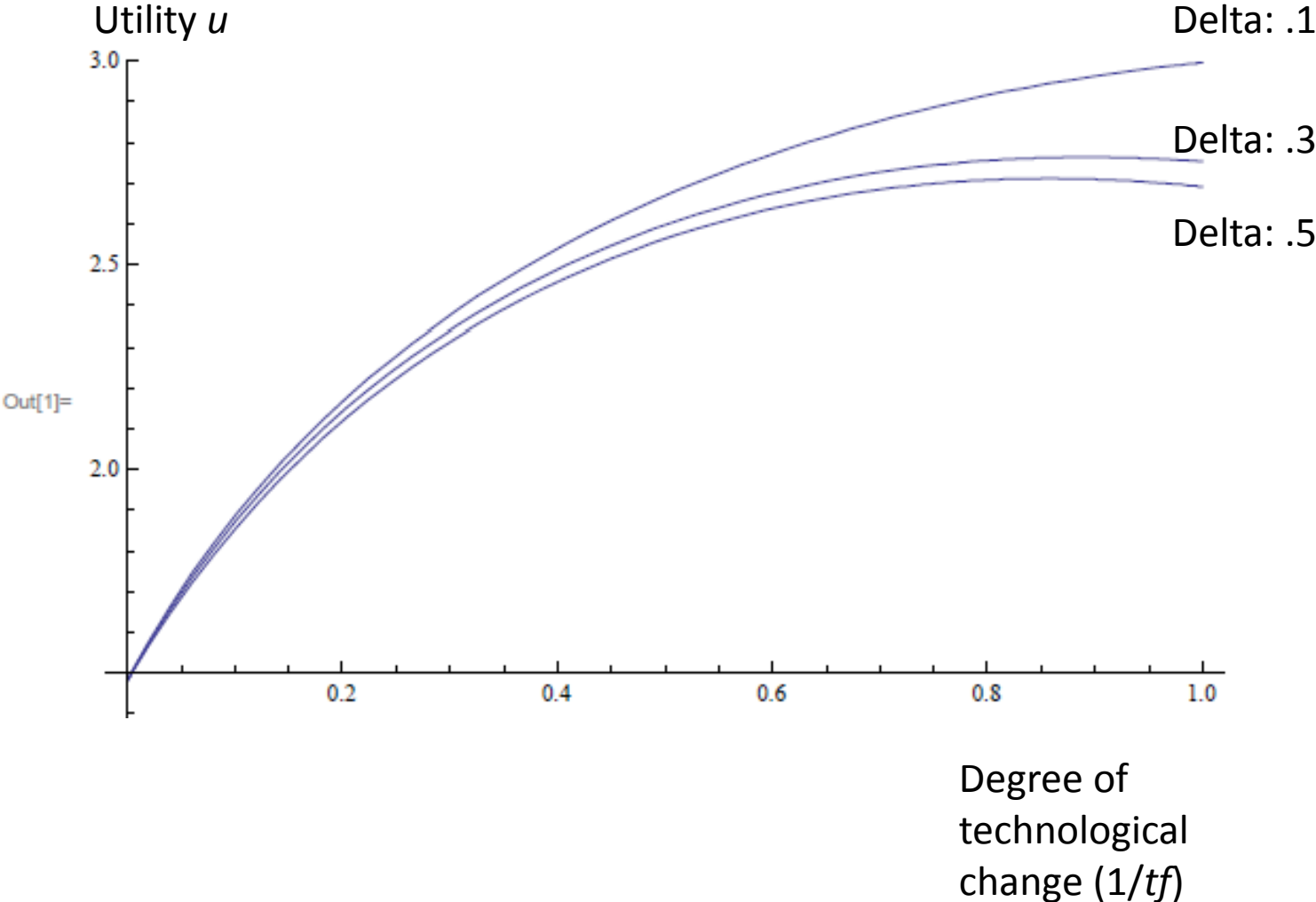


Figure 3



CESifo Working Paper Series

for full list see www.cesifo-group.org/wp

(address: Poschingerstr. 5, 81679 Munich, Germany, office@cesifo.de)

- 2929 J. Trent Alexander, Michael Davern and Betsey Stevenson, Inaccurate Age and Sex Data in the Census PUMS Files: Evidence and Implications, January 2010
- 2930 Stefan Krasa and Mattias K. Polborn, Competition between Specialized Candidates, January 2010
- 2931 Yin-Wong Cheung and Xingwang Qian, Capital Flight: China's Experience, January 2010
- 2932 Thomas Hemmelgarn and Gaetan Nicodeme, The 2008 Financial Crisis and Taxation Policy, January 2010
- 2933 Marco Faravelli, Oliver Kirchkamp and Helmut Rainer, Social Welfare versus Inequality Concerns in an Incomplete Contract Experiment, January 2010
- 2934 Mohamed El Hedi Aroui and Christophe Rault, Oil Prices and Stock Markets: What Drives what in the Gulf Corporation Council Countries?, January 2010
- 2935 Wolfgang Lechthaler, Christian Merkl and Dennis J. Snower, Monetary Persistence and the Labor Market: A New Perspective, January 2010
- 2936 Klaus Abberger and Wolfgang Nierhaus, Markov-Switching and the Ifo Business Climate: The Ifo Business Cycle Traffic Lights, January 2010
- 2937 Mark Armstrong and Steffen Huck, Behavioral Economics as Applied to Firms: A Primer, February 2010
- 2938 Guglielmo Maria Caporale and Alessandro Girardi, Price Formation on the EuroMTS Platform, February 2010
- 2939 Hans Gersbach, Democratic Provision of Divisible Public Goods, February 2010
- 2940 Adam Isen and Betsey Stevenson, Women's Education and Family Behavior: Trends in Marriage, Divorce and Fertility, February 2010
- 2941 Peter Debaere, Holger Görg and Horst Raff, Greasing the Wheels of International Commerce: How Services Facilitate Firms' International Sourcing, February 2010
- 2942 Emanuele Forlani, Competition in the Service Sector and the Performances of Manufacturing Firms: Does Liberalization Matter?, February 2010
- 2943 James M. Malcomson, Do Managers with Limited Liability Take More Risky Decisions? An Information Acquisition Model, February 2010

- 2944 Florian Englmaier and Steve Leider, Gift Exchange in the Lab – It is not (only) how much you give ..., February 2010
- 2945 Andrea Bassanini and Giorgio Brunello, Barriers to Entry, Deregulation and Workplace Training: A Theoretical Model with Evidence from Europe, February 2010
- 2946 Jan-Emmanuel De Neve, James H. Fowler and Bruno S. Frey, Genes, Economics, and Happiness, February 2010
- 2947 Camille Cornand and Frank Heinemann, Measuring Agents' Reaction to Private and Public Information in Games with Strategic Complementarities, February 2010
- 2948 Roel Beetsma and Massimo Giuliodori, Discretionary Fiscal Policy: Review and Estimates for the EU, February 2010
- 2949 Agnieszka Markiewicz, Monetary Policy, Model Uncertainty and Exchange Rate Volatility, February 2010
- 2950 Hans Dewachter and Leonardo Iania, An Extended Macro-Finance Model with Financial Factors, February 2010
- 2951 Helmuth Cremer, Philippe De Donder and Pierre Pestieau, Education and Social Mobility, February 2010
- 2952 Zuzana Brixiová and Balázs Égert, Modeling Institutions, Start-Ups and Productivity during Transition, February 2010
- 2953 Roland Strausz, The Political Economy of Regulatory Risk, February 2010
- 2954 Sanjay Jain, Sumon Majumdar and Sharun W. Mukand, Workers without Borders? Culture, Migration and the Political Limits to Globalization, February 2010
- 2955 Andreas Irmen, Steady-State Growth and the Elasticity of Substitution, February 2010
- 2956 Bengt-Arne Wickström, The Optimal Babel – An Economic Framework for the Analysis of Dynamic Language Rights, February 2010
- 2957 Stefan Bauernschuster and Helmut Rainer, From Politics to the Family: How Sex-Role Attitudes Keep on Diverging in Reunified Germany, February 2010
- 2958 Patricia Funk and Christina Gathmann, How do Electoral Systems Affect Fiscal Policy? Evidence from State and Local Governments, 1890 to 2005, February 2010
- 2959 Betsey Stevenson, Beyond the Classroom: Using Title IX to Measure the Return to High School Sports, February 2010
- 2960 R. Quentin Grafton, Tom Kompas and Ngo Van Long, Biofuels Subsidies and the Green Paradox, February 2010

- 2961 Oliver Falck, Stephan Heblich, Alfred Lameli and Jens Suedekum, Dialects, Cultural Identity, and Economic Exchange, February 2010
- 2962 Bård Harstad, The Dynamics of Climate Agreements, February 2010
- 2963 Frederick van der Ploeg and Cees Withagen, Is There Really a Green Paradox?, February 2010
- 2964 Ingo Vogelsang, Incentive Regulation, Investments and Technological Change, February 2010
- 2965 Jan C. van Ours and Lenny Stoeldraijer, Age, Wage and Productivity, February 2010
- 2966 Michael Hoel, Climate Change and Carbon Tax Expectations, February 2010
- 2967 Tommaso Nannicini and Roberto Ricciuti, Autocratic Transitions and Growth, February 2010
- 2968 Sebastian Brauer and Frank Westermann, A Note on the Time Series Measure of Conservatism, February 2010
- 2969 Wolfram F. Richter, Efficient Education Policy – A Second-Order Elasticity Rule, February 2010
- 2970 Tomer Blumkin, Yoram Margalioth and Efraim Sadka, Taxing Children: The Redistributive Role of Child Benefits – Revisited, February 2010
- 2971 Chang Woon Nam and Georg Wamser, Application of Regionally Varying Additionality Degrees in the Practice of EU Cohesion Policy, February 2010
- 2972 Ali Bayar, Frédéric Dramais, Cristina Mohora, Masudi Opese and Bram Smeets, Modeling Russia for Climate Change Issues, February 2010
- 2973 Magnus Söderberg, Informal Benchmarks as a Source of Regulatory Threat in Unregulated Utility Sectors, March 2010
- 2974 Piotr Wdowiński and Marta Malecka, Asymmetry in Volatility: A Comparison of Developed and Transition Stock Markets, March 2010
- 2975 Frans van Winden, Michal Krawczyk and Astrid Hopfensitz, Investment, Resolution of Risk, and the Role of Affect, March 2010
- 2976 Hyun-Ju Koh and Nadine Riedel, Do Governments Tax Agglomeration Rents?, March 2010
- 2977 Johann K. Brunner and Susanne Pech, Optimum Taxation of Bequests in a Model with Initial Wealth, March 2010
- 2978 Guglielmo Maria Caporale and Nicola Spagnolo, Stock Market Integration between three CEECs, Russia and the UK, March 2010

- 2979 Florian Englmaier, Ales Filipi and Ravi Singh, Incentives, Reputation and the Allocation of Authority, March 2010
- 2980 Konstantinos Angelopoulos, George Economides and Apostolis Philippopoulos, What is the Best Environmental Policy? Taxes, Permits and Rules under Economic and Environmental Uncertainty, March 2010
- 2981 Frederick van der Ploeg, Rapacious Resource Depletion, Excessive Investment and Insecure Property Rights, March 2010
- 2982 Wolfram F. Richter and Christoph Braun, Efficient Subsidization of Human Capital Accumulation with Overlapping Generations and Endogenous Growth, March 2010
- 2983 Francesco Cinnirella, Marc Piopiunik and Joachim Winter, Why Does Height Matter for Educational Attainment? Evidence from German Pre-Teen Children, March 2010
- 2984 Bernard Van Praag, Well-being Inequality and Reference Groups – An Agenda for New Research, March 2010
- 2985 Francesca Barion, Raffaele Miniaci, Paolo M. Panteghini and Maria Laura Parisi, Profit Shifting by Debt Financing in Europe, March 2010
- 2986 Alexander Haupt and Magdalena Stajek, The Choice of Environmental Policy Instruments: Energy Efficiency and Redistribution, March 2010
- 2987 John Komlos and Marek Brabec, The Trend of BMI Values among US Adults, March 2010
- 2988 Emanuele Massetti and Lea Nicita, The Optimal Climate Policy Portfolio when Knowledge Spills across Sectors, March 2010
- 2989 Helmut Rainer and Thomas Siedler, Family Location and Caregiving Patterns from an International Perspective, March 2010
- 2990 Toru Kikuchi and Ngo Van Long, A Simple Model of Service Offshoring with Time Zone Differences, March 2010