

Arezki, Rabah; van der Ploeg, Frederick

**Working Paper**

## Do natural resources depress income per capita?

CESifo Working Paper, No. 3056

**Provided in Cooperation with:**

Ifo Institute – Leibniz Institute for Economic Research at the University of Munich

*Suggested Citation:* Arezki, Rabah; van der Ploeg, Frederick (2010) : Do natural resources depress income per capita?, CESifo Working Paper, No. 3056, Center for Economic Studies and ifo Institute (CESifo), Munich

This Version is available at:

<https://hdl.handle.net/10419/38904>

**Standard-Nutzungsbedingungen:**

Die Dokumente auf EconStor dürfen zu eigenen wissenschaftlichen Zwecken und zum Privatgebrauch gespeichert und kopiert werden.

Sie dürfen die Dokumente nicht für öffentliche oder kommerzielle Zwecke vervielfältigen, öffentlich ausstellen, öffentlich zugänglich machen, vertreiben oder anderweitig nutzen.

Sofern die Verfasser die Dokumente unter Open-Content-Lizenzen (insbesondere CC-Lizenzen) zur Verfügung gestellt haben sollten, gelten abweichend von diesen Nutzungsbedingungen die in der dort genannten Lizenz gewährten Nutzungsrechte.

**Terms of use:**

*Documents in EconStor may be saved and copied for your personal and scholarly purposes.*

*You are not to copy documents for public or commercial purposes, to exhibit the documents publicly, to make them publicly available on the internet, or to distribute or otherwise use the documents in public.*

*If the documents have been made available under an Open Content Licence (especially Creative Commons Licences), you may exercise further usage rights as specified in the indicated licence.*

# Do Natural Resources Depress Income Per Capita?

Rabah Arezki  
Frederick van der Ploeg

CESIFO WORKING PAPER NO. 3056  
CATEGORY 6: FISCAL POLICY, MACROECONOMICS AND GROWTH  
MAY 2010

*An electronic version of the paper may be downloaded*

- *from the SSRN website:* [www.SSRN.com](http://www.SSRN.com)
- *from the RePEc website:* [www.RePEc.org](http://www.RePEc.org)
- *from the CESifo website:* [www.CESifo-group.org/wp](http://www.CESifo-group.org/wp)

# Do Natural Resources Depress Income Per Capita?

## Abstract

Most evidence for the resource curse comes from cross-country growth regressions suffers from a bias originating from the high and ever-evolving volatility in commodity prices. This paper addresses these issues by providing new cross-country empirical evidence for the effect of resources in income per capita. Natural resource dependence (resource exports) has a significant negative effect on income per capita, especially in countries with bad rule of law or bad policies, but these results weaken substantially once we allow for endogeneity. However, the more exogenous measure of resource abundance (stock of natural capital) has a significant negative effect on income per capita even after controlling for geography, rule of law and *de facto* or *de jure* trade openness. Furthermore, this effect is more severe for countries that have little *de jure* trade openness. These results are robust to using alternative measures of institutional quality (expropriation and corruption instead of rule of law).

JEL-Code: C21, C82, O11, O41, Q30.

Keywords: resource curse, institutions, trade policies, income per capita.

*Rabah Arezki*  
*International Monetary Fund*  
*rarezki@imf.org*

*Frederick van der Ploeg*  
*University of Oxford*  
*Manor Road Building*  
*Manor Road*  
*UK – Oxford OX1 3UQ*  
*rick.vanderploeg@economics.ox.ac.uk*

Revised April 2010

Support from the BP funded Oxford Centre for the Analysis of Resource Rich Economies is gratefully acknowledged.

## I. INTRODUCTION

Resource-rich countries such as Congo, Nigeria, Bolivia, Sierra Leone, and Venezuela often fall victim to a ‘resource curse’. They have fared much worse than resource-poor countries like the Asian Tigers. Countries with a large share of natural resource exports typically have a relatively low income per capita, but there are notable exceptions such as Norway or Botswana. Countries with large exports of natural resources have worse growth performance than those with little or no natural resources (Sachs and Warner, 1997), especially if they are point-source resources (Isham et al., 2005). This curse can be turned into a blessing in countries with institutions that are of sufficiently high quality (Mehlum et al., 2006; Boschini, et al., 2007). Using growth regressions to investigate the impact of resources on growth can be misleading. Depending on whether the beginning and end year period is a peak or trough can bias the estimate of the effect of resources on growth. If volatility changes over time due to say boom-bust cycles as has been the case during the last decade, this can further bias this estimate. Furthermore, the cited evidence typically uses the ratio of exports of natural resources to GDP evaluated at the beginning of the sample period to explain growth during the following three decades. But this is a measure of resource dependence, not abundance (Brunnschweiler and Bulte, 2008)<sup>2</sup>. Resource dependence is problematic, because it is associated with little economic diversification and thus high dependence is associated with worse economic performance. Given the inherent volatility of commodity prices, valuation effects can bias estimation of the effect of resources on growth depending on the choice of the start and end date of the sample period. We therefore depart from the literature by using a stock measure of resource *abundance* (natural capital) rather than dependence (resource exports) to explain cross-country differences in *income* rather than growth. This ensures that both measures are valued at the same stage of the commodity price cycle. The prevailing literature on the resource curse suffers from some other shortcomings as well.

First, the implied Dutch disease story is that resource exports induce appreciation of the real exchange rate and decline of the traded sector. Growth falls if learning by doing externalities occur mainly in the traded sector. But political economy explanations of the resource curse (via worsening of institutions and rapacious rent seeking) may be relevant as well, since governments are involved in the natural resource sector through taxation, sale of licenses to foreign companies, state companies, thus inviting rent seeking. Others highlight that resources erode the critical faculties of politicians and keeps bad policies (a too generous welfare state, import substitution, restrictive trade policy, excessive borrowing, etc.) in place. The empirical resource curse literature makes no serious attempt to disentangle whether the adverse effect of resources on growth is due to loss of learning by doing, worsening institutions, or keeping bad policies in place. It is also unclear whether resources are the cause of bad institutions and bad policies or whether they aggravate the adverse effects of bad institutions and bad policies on growth.

---

<sup>2</sup> Examples of resource-scarce but resource-dependent countries are most Sub-Saharan African countries. Resource-abundant and non-dependent-resource countries include Australia, Canada.

Second, the empirical evidence for the resource curse is flawed as often no allowance is made for endogeneity of, say, quality of institutions or degree of trade openness.<sup>3</sup> In contrast, the literature on explaining cross-country differences in income per capita stresses the search for good instruments to disentangle direction of causation and correct for endogeneity. For example, the instruments colonial origins and settler mortality rates affect institutional quality but not differences in income per capital directly (Acemoglu et al., 2001). A much larger sample is possible if institutions are instrumented by the fraction of the population speaking English or Western European languages as first language (Hall and Jones, 1999). Gravity equations for bilateral trade flows give instruments for international trade (Frankel and Romer, 1999). Using this diverse set of instruments, a ‘horse race’ finds that institutions trump geography/climate and openness in explaining cross-country variations in income per capita, but geography/climate may affect income per capita indirectly through the quality of institutions (Rodrik et al., 2004).<sup>4</sup> Although some deal with endogeneity of natural resource export revenues (Ding and Field, 2005; Brunnschweiler and Bulte, 2008), much of the empirical literature on the resource curse does not use instruments for investment, institutions and trade and thus ends up with biased estimates. Furthermore, apart from Mehlum et al. (2006) and Boschini et al. (2007), this literature does not distinguish between the effect of resource dependence on institutional quality and the interaction effect of resource dependence and institutional quality. Also, there is no attempt to identify the channel by which substantial natural resources might affect cross-country differences in growth.

Third, empirical evidence for the resource curse may not be robust. Natural resource endowment (measured by, respectively the World Bank (2006b) data on natural wealth and hydrocarbon deposits) has a *positive* effect while resource dependence (measured by natural resource exports) has a *negative* or even no effect on growth performance (Ding and Field, 2005; Alexeev and Conrad, 2005; Brunnschweiler and Bulte, 2008).

Finally, cross-country regressions suffer from omitted variable bias as they do not allow for correlation between initial level of productivity and past income (Islam, 2005). If this correlation is positive, the coefficient on lagged income is overestimated.. One way out is to drop lagged income per capita and focus on explaining income per capita.

Since the estimated effects of resources on growth fail to disentangle the various transmission channels, often ignore endogeneity issues, suffer from omitted variable bias, and lead to results that are not robust, we prefer to explain cross-country variations in income

---

<sup>3</sup> Lederman and Maloney (2006) allow for endogeneity and different time periods and cannot reproduce Sachs and Warner (1997). They find that resource dependence has a *positive* effect on growth, whereas export concentration hampers growth, even after controlling for physical and human capital accumulation variables.

<sup>4</sup> Sachs (2003) disagrees and demonstrates that malaria transmission, strongly affected by ecological conditions, directly affects the level of income per capita after controlling for the quality of institutions. Malaria risk is instrumented by an index of malaria ecology (based on temperature, species abundance, etc.), which predicts malaria risk well.

rather than in growth in income per capita. The income-per-capita literature has a much richer tradition in allowing for endogeneity and instruments for institutions and trade openness. Our objective is to econometrically test whether there is *robust* evidence for a resource curse for income per capita, and to test whether such a curse if it exists is especially severe in countries with poor institutions and lack of openness to international trade.

We find limited support for the hypothesis that resource endowments have a *negative* effect on *income per capita*, and find that this curse is more severe in countries with little trade openness. Once we allow for endogeneity of the explanatory variables in our income-per-capita regressions, we find that empirical support for a curse of resources on income per capita is weak. Cross-country variations in economic growth are unlikely to be explained by resource stocks as natural resource stocks under the ground change very little over time (except in the rare case of large discoveries) compared to economic growth. This is why we offer resource curse results for income rather than growth in income per capita.

Section 2 takes as starting point the literature that explains cross-country variations in income per capita in terms of institutions, openness, and geography. Adding natural resource exports as an additional explanatory variable, we find a significant negative effect of resource exports on income per capita. We also find evidence of interaction terms suggesting that the natural resource curse particularly harms income per capita in countries with bad institutions or bad policies. When we estimate with instrumental variables techniques (IV) rather than OLS, we find that the results do not stand up very well as the estimates are less precisely determined and support for the curse is much weaker. Section 3 replaces the traditional *flow* measure of resource dependence (i.e., share of exports of natural resources in GNI) by the World Bank's recent *stock* estimates of natural capital (World Bank, 2006b). This allows one to study the effects of resource *abundance* rather than *dependence*. We find that resource abundance depresses income per capita, but less severely for countries that are *de jure* relatively open.<sup>5</sup> Appendix B demonstrates the robustness of our income per capita regressions to alternative measures of institutional quality (namely, expropriation and corruption). Section 4 concludes.

## II. INCOME PER CAPITA AND NATURAL RESOURCE DEPENDENCE

The empirical evidence for the negative effect of natural resource exports on growth performance is mixed (Arezki and van der Ploeg, 2009). The OLS regressions suggest that growth is higher in countries that have good institutions, invest a lot, are open to international trade, and have a low initial level of income per capita. Furthermore, OLS estimates suggest that growth is lower in countries that are rich in natural resources, especially if they restrict international trade and the quality of institutions is poor. Unfortunately, these results do not

---

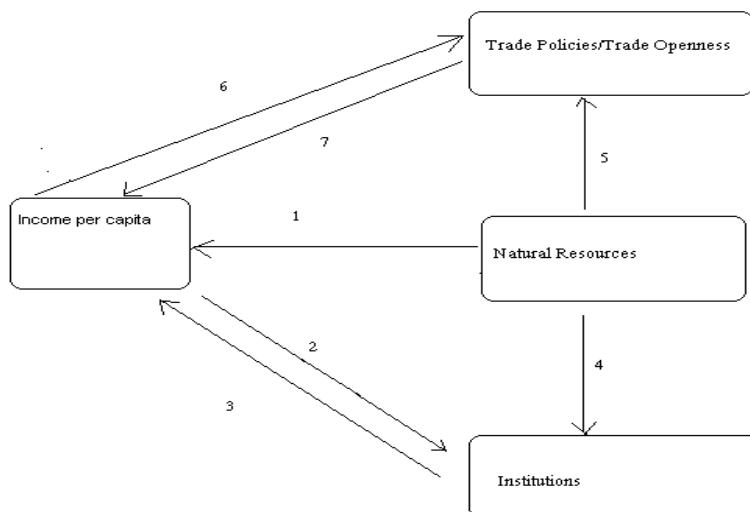
<sup>5</sup> We also estimated using the ratio of natural capital over produced capital and the ratio of natural capital to total wealth. Our results are qualitatively similar when using those alternative measures.

really stand up if institutional quality is instrumented by the logarithm of colonial settler mortality, legal origin, and the fraction of the population speaking English. Furthermore, the estimates suggest an implausibly slow speed of conditional convergence. To remedy this latter problem, it would help to estimate a dynamic panel. However, it is hard to identify valid instruments for endogenous variables that vary both across time and space. We therefore attempt to assess whether there is evidence that natural resources have additional explanatory power in addition to geography, openness, and institutional quality in explaining cross-country variations in the *level* rather than the *growth* of income per capita, using instruments available from the literature to address endogeneity issues.

Figure 1 indicates that there are various direct and indirect ways by which resource dependence can make a country poorer. The first one (arrow 1) is that natural resources through government involvement in the resource sector provide an open invitation to rapacious rent seeking. Unleashing rent seeking behavior is likely to lead to unproductive government spending, largely benefiting political elites. The resulting voracity effect lowers income per capita. It is an important reason why natural resources should be an important explanatory variable in any explanation of income per capita.

The second one (arrows 4 and 3) is that natural resources erode the quality of institutions (e.g., the rule of law) and via this channel lower income per capita. Indeed, political elites have no incentive to reinforce institutions such as the implementation of checks and balances and thus pave the way to “grabber friendly” institutions; talented individuals as a result engage in activities that are socially unproductive such as rent seeking (Mehlum, et al., 2006). Hence, resource-rich countries perform poorly compared to resource-poor countries.

**Figure 1: Direct and Indirect Effects of Natural Resources on Income Per Capita**



The third one (arrows 5 and 7) argues that the appreciation of the real exchange rate and the decline of the non-resource exposed sectors may induce a lobby for more restrictive trade policies (import substitution, subsidies for pet manufacturing companies, etc.) and in this way lower income per capita. Indeed, in countries that have adopted import substitution policies, entrepreneurs have little incentive to seek productivity gains. Also, import substitution has led to misallocation of factors in the form of the emergence of capital-intensive industries despite capital scarcity in those countries. All these inefficiencies have in turn led to low economic performance in those countries. Empirical evidence suggests that country with policies tilted towards more open trade regimes are less distortive and achieve a higher level of income per capita (Dollar, 1992; Sachs and Warner, 1995). One of the explanations put forward to explain such results is that adopting more outer-oriented trade regime prevents the government's temptation to put in place counterproductive policies such as import substitution policies. Of course, just like geography, trade policies/trade openness and the quality of institutions also have a direct effect on income per capita (arrows 7 and 3). Most prominently, North (1990) highlighted the the role institutions play in shaping economic performance by enabling private investment to thrive. Rodrik, et al. (2004) provide more systematic evidence for the role of institutions. However, income per capita might also affect trade openness and institutional quality (arrows 6 and 2). Indeed, richer countries would also certainly be in a better position to trade with other countries through the more sophisticated products they have to offer and achieve a better quality of institution through the availability of resources to the public brought about by higher income. From a statistical standpoint, it is thus important to look for good instruments (including natural resource dependence) to correct for the endogenous nature of these explanatory variables.

### A. OLS Estimates

Before we do that, Table 1 presents OLS regressions that explain cross-country variations in income per capita in the year 2003 (i.e.,  $\ln\text{GDP}/\text{cap}03$  in Appendix A). Regression (2) confirms the empirical results of a large number of empirical studies. Cross-country variations in income per capita are well explained by geography, institutions, and *de facto* openness. If a country is close to the equator, has limited rule of law, and is not much exposed to international trade, it is more likely to have low income per capita. In line with the horse race conducted by Rodrik, Subramanian, and Trebbi (2004) we find that institutional quality is the most important explanation of income per capita. However, regression (3) indicates that, even once we control for geography, institutions, and openness, natural resource exports in 1970 have a strong additional negative impact on income per capita. This gives empirical support for a significant natural resource curse effect at the 5 percent significance level.

Regressions (4) and (5) suggest that there is no evidence of significant interaction terms of natural resources with rule of law or openness.<sup>6</sup> To avoid problems arising from collinearity

---

<sup>6</sup> When the non-resource exports openness indicator is used, it leads to qualitatively similar results. However, the variance of the coefficient associated with the non-resource trade openness indicator is now smaller,

(continued...)



of openness and institutional quality, regressions (6) and (7) try them one at a time. Regression (6) indicates that there is no evidence for a significant interaction term of the rule of law with natural resource dependence. If we drop the rule of law as an explanatory variable, regression (7) suggests that there is still no evidence of a significant interaction term of openness with natural resource dependence. Our preferred regression of Table 1 is thus (3). If the Liberia and Zambia had the same degree of resource dependence as Japan, they would suffer less from a resource curse.<sup>7</sup> In that case, regression (3) implies that their income per capita would, respectively, be 387 percent and 427 percent higher, everything else being equal.

**Table 1: OLS Regressions for Income Per Capita 2003 with Log of Natural Resource Exports**

	(1)	(2)	(3)	(4)	(5)	(6)	(7)
disteq	0.014*** [0.004]	0.016*** [0.004]	0.007 [0.006]	0.007 [0.006]	0.006 [0.006]	0.008 [0.006]	0.027*** [0.006]
rl01	0.906*** [0.066]	0.581*** [0.087]	0.652*** [0.118]	0.711*** [0.216]	0.576** [0.247]	1.065*** [0.190]	
lnopen		0.413*** [0.088]	0.417*** [0.107]	0.427*** [0.112]	0.716** [0.283]		1.012*** [0.287]
lnsxpr			-0.216*** [0.078]	-0.228** [0.087]	-0.088 [0.153]	-0.054 [0.076]	-0.187 [0.132]
interactrl01				0.025 [0.078]	-0.032 [0.093]	0.036 [0.071]	
interactlnopen					0.105 [0.095]		0.091 [0.091]
Constant	8.253*** [0.110]	8.686*** [0.163]	8.402*** [0.207]	8.398*** [0.209]	8.778*** [0.400]	8.272*** [0.189]	8.524*** [0.397]
Observations	162	130	96	96	96	109	97
R-squared	0.679	0.734	0.774	0.774	0.777	0.747	0.701

Standard errors in brackets

\*\*\* p<0.01, \*\* p<0.05, \* p<0.1

## B. IV Estimates

Rule of law and *de facto* openness suffer from endogeneity bias. Hence, we instrument rule of law with combinations of United Kingdom legal origin, log of settler mortality and fraction of population speaking English. We employ the colonial settler mortality data used by Acemoglu et al. (2001) as instrument for institutional quality. Colonial empires robbed states of their natural resources in which indigenous diseases were rife and survival prospects

reflecting the reduced colinearity with the natural resource indicator. Despite the variance associated with the interaction term between the corrected openness indicator and the natural resource indicator being smaller, it remains statistically insignificant.

<sup>7</sup> In the sample of 96 countries used in regression (5) in Table 1, Japan has the lowest share of exports of primary products in GNP in 1970.

were poor, and thus did not invest in good institutions. We separately use data on the fraction of the population speaking English or Western European languages as a first language used by Hall and Jones (1999) to instrument institutional quality. This has the advantage that it permits a much larger sample. We use an instrument based on a gravity model suggested by Frankel and Romer (1999) to instrument openness to international trade.

The IV approach requires that the instruments be valid, but it is hard to come up with truly exogenous instruments that satisfy the exclusion restriction (i.e., that do not affect the dependent variable directly, but only through the explanatory variables they are being used to instrument). Since there are few potential instruments, one may end up with just-identified specifications so that only a limited number of issues can be resolved. For example, there may be problems in using the two instruments for institutions and openness simultaneously. The reason is that the predicted values of the explanatory variables are typically very collinear, so that inference is unreliable. Also, these instruments for institutions and openness are strongly correlated with geography/climate and human capital variables, so that it is unclear what is being identified and there is thus plenty of room for disagreement about interpretation. For example, on the basis of Sachs (2003) one may argue that settler mortality rates capture the historical impact of geography/climate rather than of institutional quality installed by colonial settlers. Alternatively, Glaeser and others (2004) argue that settler mortality captures the human capital of European settlers rather than institutional quality. Similarly, the gravity instruments for international trade may simply capture the effects of geography on income per capita. Finally, it is difficult to resolve the issue of reverse causality. An instrument that strongly predicts the determinants of income per capita but has no correlation with income per capita itself is hard to find.<sup>8</sup>

Explanatory variables that do not suffer from endogeneity bias are also included in the set of instruments. Hence, natural resource exports are also an instrument for openness and rule of law.<sup>9</sup> This is important for obtaining consistent estimates, since Figure 2 suggests that rule of law and the ratio of natural resource exports (or natural capital) to national income are highly negatively correlated.

---

<sup>8</sup> Rigobon and Rodrick (2004) split their sample into two sub-samples (colonies versus non-colonies and continents aligned along an East-West axis versus those aligned on a North-South axis) and exploit the differences in structural variance in these sub-samples to identify parameters. They find that democracy and especially the rule of law boost income per capita, but openness negatively affects income per capita and democracy and positively affects the rule of law.

<sup>9</sup> During the colonial era, resource-rich countries have been encouraged to export cheap natural resources (the “plunder” effect) but were not encouraged to set up democratic institutions since democratization could weaken the ability of colonial powers to plunder those natural resources. Thus, openness can have a negative effect on per capita income both because of a direct “plunder” effect and indirectly by its effect on the quality of institutions.

Figure 2: Correlation Between Rule of Law and Natural Resource Exports

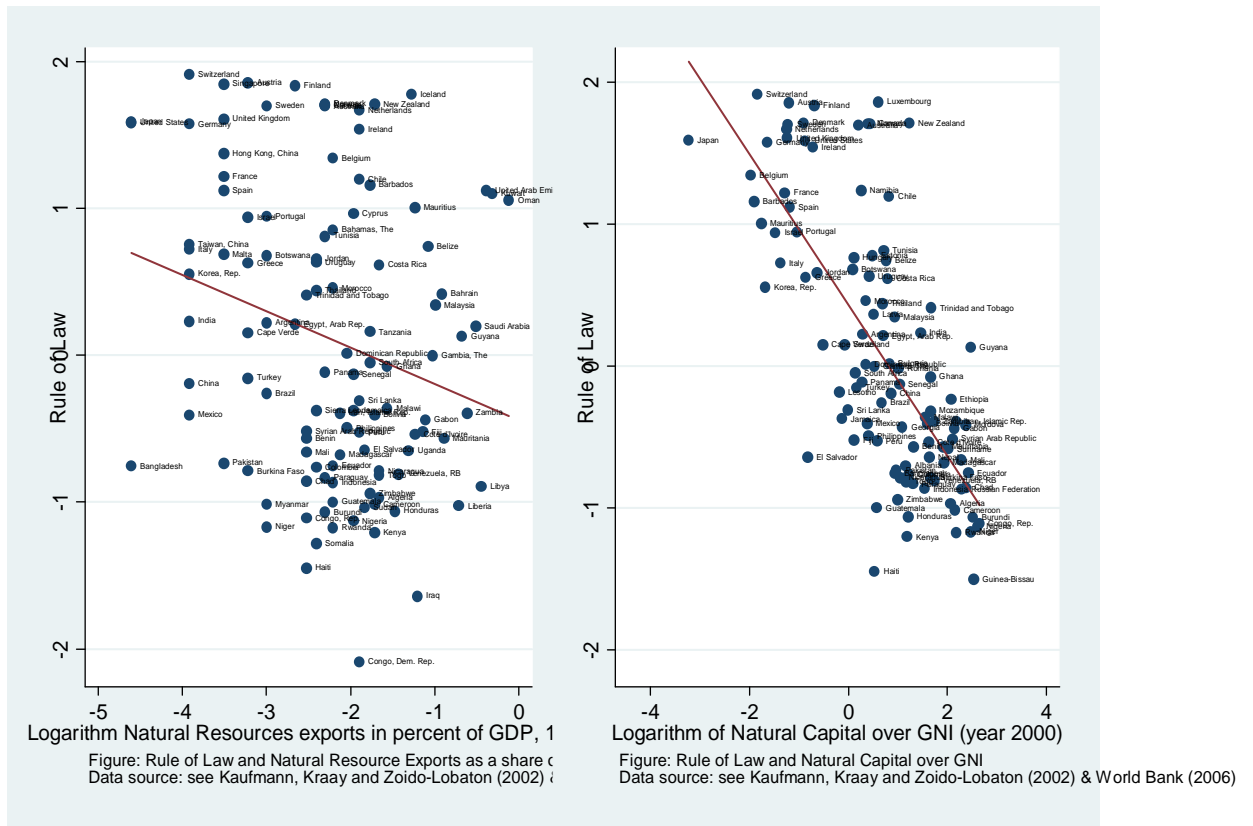


Table 2 presents the IV regressions for cross-country variations in income per capita in 2003 (i.e.,  $\ln\text{GDP}/\text{cap}03$ ). Although the core regression that explains cross-country variations in income by geography, institutions, and openness survives in the IV estimates, there appears to be a significant additional negative effect of natural resource exports in regressions (2) and (3) at the 5 percent level. However, rule of law is no longer statistically significant at the 5 percent level, while openness is at least significant in regression (2) and distance to the equator is of the right sign albeit statistically insignificant. Also, when using more instruments than endogenous variables, the over-identification tests suggest that we cannot rely on regressions (2) or (3). Regression (1) suggests that cross-country variations in income are explained by distance to the equator and a resource curse. Regressions (4)-(6) indicate that there is no evidence for interactive effects of natural resource exports with *de facto* openness, but there is some evidence of interactive effect with institutional quality, despite the over-identification tests suggesting that over-identifying restrictions are not valid.

Table 2: IV Income Per Capita 2003 Regressions Using Log of Natural Resource Exports

	(1)	(2)	(3)	(4)	(5)	(6)
rl01	0.337 [0.367]	0.391 [0.363]	0.656** [0.267]	0.980** [0.442]	0.485 [0.306]	0.488 [0.302]
interactrl01				0.177 [0.128]	0.235** [0.107]	0.214* [0.112]
Inopen	0.325 [0.306]	1.316*** [0.440]	0.407 [0.265]	0.470 [0.515]	0.718** [0.290]	0.528 [0.387]
interactInopen						0.096 [0.099]
disteq	0.024* [0.014]	0.010 [0.015]	0.007 [0.009]	-0.016 [0.018]	0.001 [0.010]	0.003 [0.011]
Insxpr	-0.187* [0.100]	-0.512** [0.250]	-0.213** [0.093]	-0.326 [0.250]	-0.406*** [0.142]	-0.331* [0.178]
Constant	8.003*** [0.405]	8.990*** [0.312]	8.393*** [0.289]	8.936*** [0.272]	8.702*** [0.271]	8.731*** [0.266]
Instruments for:1/						
rl01	legor_uk	logsetmort, legor_uk, engfrac	legor_uk, engfrac	logsetmort, legor_uk, engfrac	legor_uk, engfrac	legor_uk, engfrac
Inopen	Infrinstex	Infrinstex	Infrinstex	Infrinstex	Infrinstex	Infrinstex
Observations	96	63	96	58	89	89
R-squared	0.736	0.506	0.774	0.611	0.748	0.76
overid pvalue	...	0.002	0.009	0.01	0.034	0.042

Robust standard errors in brackets

\*\*\* p&lt;0.01, \*\* p&lt;0.05, \* p&lt;0.1

1/ Interactive variables are instrumented using Insxpr time the instruments used for the individual variables

### III. NATURAL CAPITAL AS EXPLANATORY VARIABLE

Our IV estimates indicate a negative effect of natural resource exports on income per capita. Here we use the estimates of natural capital for 2000 developed by the World Bank (2006b) to explain income per capita in 2003. Natural capital effectively corresponds to an estimate of the total stock of sub-soil assets, timber, non-timber forest resources, protected areas, cropland, and pastureland corrected for the renewable nature of resources when relevant. One might argue that natural capital over gross national income (GNI) better captures natural resource abundance than natural resource exports as a share of GNI, which may suffer from endogeneity bias. Brunnschweiler and Bulte (2008) argue that natural resource exports indicators often used in the resource curse literature capture resource *dependence* rather than resource *abundance*. A *stock* variable like natural capital may be more appropriate for explaining income per capita than a *flow* variable like natural resource exports, since it can capture forward-looking expectations of government and the private sector about future natural resource revenues. Indeed, if demand is iso-elastic and marginal extraction costs are zero, the Hotelling rule implies that resource prices grow at the market rate of interest and natural capital is then exactly equal to the discounted stream of resource revenues. More generally, one might expect natural capital to be closely related to the discounted value of natural resource rents. We thus wish to test the hypothesis that the discounted stream of all future resource rents proxied by natural capital rather than simply the current natural resource exports invites voracious rent seeking and thus harms income per capita. Using natural

capital as an explanatory variable also has the advantage that it is available for a larger number of countries.<sup>10</sup>

### A. OLS Regressions with *De Facto* Openness

Table 3 first presents the results from the OLS regressions. Interestingly, the log of natural capital always has a negative impact on income per capita and is significant at the 5 percent level in all regressions except (5).<sup>11</sup> Regressions (1) and especially (2) are again the core regression results that confirm that institutions, openness, and geography determine cross-country variations in income. Regression (3) indicates that the log of natural capital depresses income per capita even after allowing for the effects of distance to the equator, rule of law, and *de facto* openness. Regression (4) shows that there is no evidence of an interaction effect of natural capital with rule of law and regression (6) indicates that this is the case even if openness is dropped. This suggests that the disastrous consequences of rapacious rent seeking on growth are mainly elicited through natural resource export revenues rather than by how much oil, gas, or other resources are underground. However, regression (5) shows that the interaction term of natural capital with openness is significant at the 5 percent level. To avoid collinearity of rule of law and *de facto* openness, regression (7) drops the rule of law as an explanatory variable and now finds that at the 5 percent level natural capital has a significant negative effect and its interaction term with openness is now significant at 1 percent. The results thus suggest that income per capita is high for countries that are far from the equator and relatively open. There is evidence for a resource curse in the sense that natural resource abundance harms income per capita. Furthermore, this resource curse is less severe for more open economies. However, even for the most open countries in our sample, openness does not turn resource abundance into a blessing.

---

<sup>10</sup> Stijns (2005) uses the reserves of oil, gas, coal, minerals, and land to test for the adverse effect of resource abundance on growth. He finds this is only the case for land, which correlates (in contrast to oil, gas, and minerals) with bad institutions and bad policies. He also stresses that the ability to turn the curse into a blessing depends on the nature of the learning process. Unfortunately, Stijns (2005) does not control for investment rates or the initial level of GDP per capita.

<sup>11</sup> This is in contrast to Brunnschweiler and Bulte (2008), who find a direct *positive* effect of resource *abundance* and an indirect *negative* effect of resource *dependence* (through worsening of institutional quality) on growth performance. It is also in contrast to earlier evidence using natural wealth data for a resource blessing for growth performance by Ding and Field (2005) and Alexeev and Conrad (2005).

Table 3: OLS Income Per Capita 2003 Regressions Using Log of Natural Capital

	(1)	(2)	(3)	(4)	(5)	(6)	(7)
disteq	0.014*** [0.004]	0.016*** [0.004]	0.013*** [0.005]	0.014*** [0.005]	0.014*** [0.004]	0.012*** [0.005]	0.026*** [0.004]
rl01	0.906*** [0.066]	0.581*** [0.087]	0.523*** [0.114]	0.480*** [0.118]	0.552*** [0.120]	0.624*** [0.115]	
Inopen		0.413*** [0.088]	0.254*** [0.095]	0.257*** [0.095]	0.101 [0.114]		0.291*** [0.102]
Innatcapitalovergni			-0.174** [0.067]	-0.198*** [0.069]	0.019 [0.114]	-0.213*** [0.071]	-0.168** [0.071]
interactrl01				0.068 [0.051]	-0.021 [0.063]	0.057 [0.054]	
interactInopen					0.187** [0.079]		0.157*** [0.059]
Constant	8.253*** [0.110]	8.686*** [0.163]	8.701*** [0.173]	8.768*** [0.179]	8.603*** [0.189]	8.492*** [0.148]	8.671*** [0.162]
Observations	162	130	106	106	106	107	112
R-squared	0.679	0.734	0.755	0.759	0.772	0.728	0.714

Standard errors in brackets

\*\*\* p&lt;0.01, \*\* p&lt;0.05, \* p&lt;0.1

Table 4: IV Income Per Capita Regressions 2003 Using Log of Natural Capital

	(1)	(2)	(3)	(4)	(5)	(6)	(7)
rl01	0.098 [0.594]	0.241 [0.654]	1.566*** [0.543]	1.123*** [0.347]	1.365*** [0.332]	1.293*** [0.295]	
Inopen		-0.433 [0.550]	-0.364 [0.554]	0.245 [0.382]			-0.442 [0.542]
interactrl01			0.044 [0.141]	-0.445 [0.328]	0.055 [0.134]	0.100 [0.119]	
interactInopen				0.662* [0.389]			0.077 [0.164]
disteq	0.025* [0.014]	0.027 [0.018]	-0.025 [0.023]	0.003 [0.009]	-0.019 [0.015]	-0.018 [0.014]	0.033*** [0.008]
Innatcapitalovergni	-0.413* [0.236]	-0.497 [0.342]	-0.081 [0.141]	0.910 [0.576]	-0.034 [0.136]	-0.041 [0.126]	-0.487 [0.328]
Constant	8.307*** [0.214]	7.763*** [0.796]	8.683*** [0.576]	8.752*** [0.491]	9.037*** [0.294]	9.047*** [0.286]	7.721*** [0.818]
Instruments for:1/							
rl01	legor_uk	legor_uk	logsetmort, legor_uk, engfrac	legor_uk, engfrac	logsetmort, legor_uk, engfrac	logsetmort, engfrac	...
Inopen	...	Infrinstex	Infrinstex	Infrinstex	...		Infrinstex
Observations	107	106	60	106	61	61	112
R-squared	0.656	0.548	0.387	0.513	0.502	0.514	0.503
overid pvalue	...	...	0.349	0.424	0.250	0.0885	...

Robust standard errors in brackets

\*\*\* p&lt;0.01, \*\* p&lt;0.05, \* p&lt;0.1

1/ Interactive variables are instrumented using lnsxpr time the instruments used for the individual variables

## B. IV Regressions with *De Facto* Openness

In order to make inferences about the causality of the relationship between natural capital and income per capita, Table 4 corrects for the endogeneity of *de facto* openness and institutional quality and presents the resulting IV estimates. Apart from regression (4), the log of natural

capital has a negative impact on income per capita. This individual impact is significant in regression (1). There is no evidence of an interaction effect of natural capital with institutional quality. Furthermore, the interaction effect of natural capital with *de facto* openness has the right sign in regressions (4) and (7). It is significant at the 10 percent level in regressions (4) and the over-identification test suggests that the overidentification restrictions are valid.

### C. Natural Capital and *De Jure* Trade Openness

To enable comparison with Sachs and Warner (1997), we check the robustness of our results when using *de jure* openness (number of years that a country is rated open to trade) rather than *de facto* openness (sum of exports and imports as fraction of GD) as explanatory variable. The advantage of this measure is that it is more exogenous. Table 5 presents the resulting OLS regressions. All regressions show evidence of a significant negative effect at the 1 percent level of the log of the ratio of natural capital to GNI on income per capita. Income per capita clearly rises with distance from the equator, the rule of law, and *de jure* openness, but regression (3) shows that there is in addition a strong and significant resource curse effect at the 5 percent level even after controlling for these standard explanations of income per capita. Regression (4) gives evidence at the 5 percent level for a significant interaction effect of natural capital with rule of law, which suggests that the resource curse is less severe for countries with good institutions. Both institutional quality and trade policy indicators may reflect the willingness of the government to adopt good policies toward domestic and foreign investors and trade partners. Indeed, to avoid issues of multi-collinearity, regression (7) drops the rule of law and its interaction with natural capital. There is then evidence of a significant interaction term of natural capital with *de jure* openness. Hence, if a country abandons trade restrictions, the resource curse seems to be less severe.<sup>12</sup>

To correct for the possible endogenous character of *de jure* openness and rule of law, Table 6 presents some IV regressions. There is almost always a negative individual effect of the log of the ratio of natural capital to national income, but it is only significant at the 10 percent level in regressions (1). Regressions in Table 6 indicate that there is no evidence of a significant interaction term of natural capital with institutional quality. Furthermore, in regressions (3)-(6) this term has the wrong sign. However, there is evidence of a significant interaction term of natural capital with *de jure* openness in regressions (3) and (4) where the interaction term is significant at the 10 percent level. The over-identification tests in regressions (3) and (4) also suggest that the overidentifying restrictions are valid. Trade policies directed toward more exposure to foreign competition and transfer of technology and

---

<sup>12</sup> Indeed regression (7) in Table 5 indicates that the resource curse is attenuated by a higher degree of *de jure* openness. However, according to that regression, the curse can not be turned into a blessing.

managerial skills can thus weaken the resource curse and even transform it into a blessing for those countries with a sufficiently high degree of *de jure* openness.<sup>13</sup>

**Table 5: OLS Income Per Capita Regressions with Natural Capital and *De Jure* Openness**

	(1)	(2)	(3)	(4)	(5)	(6)	(7)
disteq	0.029*** [0.004]	0.012** [0.005]	0.015*** [0.005]	0.017*** [0.005]	0.017*** [0.005]	0.012*** [0.005]	0.027*** [0.004]
Innatcapitalovergni	-0.425*** [0.053]	-0.193*** [0.069]	-0.169** [0.074]	-0.199*** [0.073]	-0.312*** [0.110]	-0.213*** [0.071]	-0.474*** [0.094]
rl01		0.658*** [0.110]	0.533*** [0.128]	0.392*** [0.140]	0.454*** [0.147]	0.624*** [0.115]	
open6590			0.375* [0.220]	0.583** [0.235]	0.414 [0.265]		0.730*** [0.204]
interactrl01				0.127** [0.058]	0.032 [0.091]	0.057 [0.054]	
interactopen6590					0.281 [0.205]		0.417*** [0.137]
Constant	8.208*** [0.138]	8.439*** [0.139]	8.219*** [0.177]	8.256*** [0.174]	8.332*** [0.182]	8.492*** [0.148]	8.109*** [0.179]
Observations	114	107	100	100	100	107	100
R-squared	0.621	0.725	0.755	0.767	0.771	0.728	0.735

Standard errors in brackets

\*\*\* p<0.01, \*\* p<0.05, \* p<0.1

**Table 6: IV Income Per Capita Regressions with Natural Capital and *De Jure* Openness**

	(1)	(2)	(3)	(4)	(5)	(6)	(7)
rl01	0.098 [0.594]	0.694 [0.763]	3.148* [1.720]	2.561 [2.486]	2.270 [1.963]	1.365*** [0.332]	
open6590		1.706 [1.361]	-2.598 [2.675]	-1.930 [3.644]	-1.013 [3.452]		2.402 [5.144]
interactrl01		0.286 [0.197]	-1.059 [0.843]	-0.988 [0.875]	-0.649 [0.916]	0.055 [0.134]	
interactopen6590			2.793* [1.642]	2.813* [1.635]	2.214 [1.646]		2.762 [3.353]
disteq	0.025* [0.014]	-0.003 [0.024]	-0.045 [0.042]	-0.029 [0.066]	-0.029 [0.045]	-0.019 [0.015]	0.027** [0.013]
Innatcapitalovergni	-0.413* [0.236]	0.083 [0.174]	-1.021 [0.637]	-1.101 [0.659]	-0.766 [0.708]	-0.034 [0.136]	-1.084 [0.873]
Constant	8.307*** [0.214]	8.290*** [0.725]	10.454*** [1.477]	10.042*** [2.041]	9.723*** [1.778]	9.037*** [0.294]	8.356*** [1.357]
Instruments for:1/		logsetmort, legor_uk, engfrac	logsetmort, legor_uk, engfrac	logsetmort, legor_uk	logsetmort, engfrac	logsetmort, legor_uk, engfrac	
rl01	legor_uk						
Inopen		Infrinstex	Infrinstex	Infrinstex	Infrinstex		Infrinstex
Observations	107	57	57	57	57	61	100
R-squared	0.656	0.525	0.096	0.229	0.244	0.502	-0.372
overid pvalue	...	0.390	0.877	0.502	0.542	0.250	...

Robust standard errors in brackets

\*\*\* p<0.01, \*\* p<0.05, \* p<0.1

1/ Interactive variables are instrumented using Insxpr time the instruments used for the individual variables

<sup>13</sup> In fact, regressions (3) and (4) of Table 6 imply that the resource curse is turned into a blessing thanks to a high degree of *de jure* openness for the following countries: Australia, Bolivia, Barbados, Canada, Chile, Ecuador, Indonesia, Mauritius, Malaysia, and the United States.



#### IV. CONCLUDING REMARKS

We show that there is a direct negative effect of natural resources on income per capita. Support for such a curse is found regardless of whether we use resource abundance (natural resource stocks) or resource dependence (resource exports) as an explanatory variable. Given that natural capital is more exogenous than natural resource exports, there may be a casual negative relationship between resource abundance and economic performance. We also find strong evidence that *de facto* trade openness (the sum of exports and imports as fraction of GDP) attenuates this curse. We also find that the more exogenous measure of *de jure* openness (the number of years that a country is rated open to international trade) weakens this curse provided that institutional quality is removed as determinant of income per capita (which is likely to be collinear with trade policies). Those results offer a different perspective on the natural resource curse literature, which has hitherto focused on the effect of resources on growth in income per capita rather than on income per capita.

In future work it is important to distinguish between *point-source* and *diffuse* natural resources. The former are typically associated with capital-intensive extraction and concentrated ownership while rents associated with the latter are more widely dispersed, hence point-source resources are more prone to rapacious rent seeking and lead to a more severe curse (Isham et al., 2005; Sala-i-Martin and Subramanian, 2003; Lay and Mahmoud, 2004; Bosschini et al., 2007). Building on cross-country evidence that volatility harms growth provided by Ramey and Ramey (1995), it is important to investigate whether and through which channels the notorious *volatility* of natural resource prices induces real exchange rate volatility and harms economic performance.

#### Acknowledgement

We thank Andrea Barone, Fuad Hasanov, Arnaud Lefranc, Ahsan Mansur, Alessandro Maravalle, Steven Poelhekke and Ahmed Tritah for helpful comments and suggestions. We thank Luisa LaFleur and Sheila Tomilloso Igcasenza for excellent editorial assistance. We are also very grateful to the Editor Hossein Farzin for his incisive comments that have helped us to substantially improve an earlier version of the paper.

#### References

- Acemoglu, D., S. Johnson, and J.A. Robinson (2001) The colonial origins of comparative development: an empirical investigation, *American Economic Review*, 91, 1369–1401.
- Alexeev, M. and R. Conrad (2005) The elusive curse of oil, Working Paper SAN05-07, Terry Sanford Institute of Public Policy, Duke University, Durham.

- Arezki, R. and F. van der Ploeg (2009) Trade policies, institutions and the natural resource curse, *Applied Economics Letters*, to appear.
- Barro, R.J. and J.-W. Lee (1999) International comparisons of educational attainment,” *Journal of Monetary Economics*, 32, 363–94.
- Boschini, A.D., J. Petterson and J. Roine (2007) Resource curse or not: a question of appropriability, *Scandinavian Journal of Economics*, 109, 3, 593-617.
- Brunnschweiler, C., N. and E.H. Bulte (2008) The natural resource curse revised and revisited: A tale of paradoxes and red herrings, *Journal of Environmental Economics and Management*, 55 (3), 248-264.
- Ding, N. and B.C. Field (2005), Natural resource abundance and economic growth, *Land Economics*, 81, 3, 496-502.
- Dollar, D. (1992) Outward-oriented developing economies really do grow more rapidly: evidence from 95 LDCs, 1976-1985. *Economic Development and Cultural Change*, 40: 523-544.
- Dollar, D. and A. Kraay (2002) Growth is good for the poor, *Journal of Economic Growth*, 7 (3), 119–225.
- Frankel, J. and D. Romer (1999) Does trade cause growth?, *American Economic Review*, 89, 379–399.
- Glaeser, E.L., R. La Porta, F. Lopez-De-Silanes, and A. Schleifer (2004) Do institutions cause growth?, *Journal of Economic Growth*, 9, 3, 271–303.
- Hall, R. and C.I. Jones (1999) Why do some countries produce so much more output per worker than others?, *Quarterly Journal of Economics*, 114, 83–116.
- Heston, A., R. Summers, and B. Aten, 2002, Penn World Table Version 6.1, Centre for International Comparisons, University of Pennsylvania, Philadelphia.
- Isham, J., L. Pritchett, M. Woolcock, and G. Busby (2005) The varieties of the resource experience: Natural resource export structures and the political economy of economic growth, *World Economy*, 19 (2), 141-174.
- Islam, N. (1995) Growth empirics: a panel data approach, *Quarterly Journal of Economics*, 110, 4, 1127–1170.
- Kaufmann, D., A. Kraay, and P. Zoido-Lobaton (2002) Governance matters II: updated indicators for 2000/01, Policy Research Department, World Bank, Washington.
- Knack, S. and P. Keefer (1995) Institutions and economic performance: cross-country tests using alternative institutional measures, *Economics and Politics*, 7, 207–227.

- LaPorta, R., F. Lopez-de-Silanes, A. Schleifer, and R.W. Vishny (1999) The quality of government, *Journal of Law, Economics and Organization*, 15, 222–279.
- LaPorta R., F. Lopez-de-Silanes, C. Pop-Eleches, and A. Schleifer (2004) The guarantees of freedom, *Working Paper*, Yale School of Management, New Haven.
- Lay, J. and T.O. Mahmoud (2004) Bananas, oil and development: examining the resource curse and its transmission channels by resource type, *Kiel Institute for World Economics, Working Paper* No. 1218.
- Lederman, D. and W. Maloney (2006), *Natural Resources. Neither Curse Nor Destiny*, The World Bank and Stanford University Press, Washington, D.C. and Palo Alto, CA.
- Mehlum, H., K. Moene, and R. Torvik (2006) Institutions and the resource curse, *Economic Journal*, 116, 1–20.
- North, D.C. (1990) *Institutions, Institutional Change and Economic Performance*, Cambridge University Press, New York.
- Ramey, G. and V.A. Ramey (1995) Cross-country evidence on the link between volatility and growth, *American Economic Review*, 85, 1138–1151.
- Rigobon, R. and D. Rodrik (2004) Rule of law, democracy, openness, and income: estimating the interrelationships, *Working Paper* 10750, NBER, Cambridge, Mass.
- Rodrick, D., A. Subramanian, and F. Trebbi (2004) Institutions rule: the primacy of institutions over geography and integration in economic development, *Journal of Economic Growth*, 9, 2, 131–165.
- Sachs, J.D. (2003) Institutions don't rule: direct effects of geography on per capita income, *Working Paper* 9490, NBER, Cambridge, Mass.
- Sachs, J.D. and A.M. Warner (1997) Natural resource abundance and economic growth, in *Leading Issues in Economic Development* (Ed.) G. Meier and J. Rauch, Oxford University Press, Oxford.
- Stijns, J.-C. (2005) Natural resource abundance and economic growth," mimeo, Northeastern University, Boston.
- World Bank (2006a) *World Development Indicators*, International Bank for Reconstruction and Development/World Bank, Washington.
- World Bank (2006b) *Where is the Wealth of Nations? Measuring Capital for the 21<sup>st</sup> Century*, International Bank for Reconstruction and Development/World Bank, Washington.

## Appendix A: Data

Category	Variable	Mnemonic	Source
Initial income	log of real gross domestic product per capita (international \$ in current prices) in 2003.	lnGDP/cap03	Heston Summers and Aten PWT 6.2 (2006)
Openness	fraction of years during 1965–90 in which country is rated open ( <i>de jure</i> measure).	open6590	Sachs and Warner (1997)
	Log of average (exports+imports)/GDP, measured in constant 1985 US dollars.	lnopen	Dollar and Kraay (2002)
	log of extended version of Frankel and Romer (1999) instrument ( <i>de facto</i> measure).	lnfrinstex	Dollar and Kraay (2002)
Resource dependence	share of exports of primary products in GNP in 1970.	lnsxpr	Sachs and Warner (1997)
Resource abundance	natural logarithm of natural capital 2000, in thousand of US \$ over GNI (in current US\$ 2000).	lnnatcapitalovergni	World Bank (2006)
Institutions	rule of law 2000/01.	rl01	Kaufmann, Kraay, and Zoido-Lobaton (2002)
	log settler mortality.	logsetmort	La Porta et al. (2004)
	expropriation risk.	exproprisk	La Porta et al. (2004)
	corruption index (ICRG).	corrupt	La Porta et al. (1999)
	fraction of population speaking English.	engfrac	Hall and Jones (1999).
Geography	legal origin—British.	legor_uk	La Porta et al. (1999)
	distance from equator, measured as absolute value of latitude of capital city.	disteq	Sachs and Warner (1997)

## Appendix B: Robustness

Tables 7 and 8 present the IV regressions that explain income per capita in terms of distance to the equator, *de facto* trade openness, and expropriation risk or corruption (both obtained from the International Country Risk Guide) as alternative measures of institutional quality to rule of law.<sup>14</sup> Interestingly, the results also suggest a natural resource curse as there is a negative effect of the log of the ratio of natural capital over gross national income on income per capita even after controlling for the effects of geography and these alternative measures of institutional quality. However, this results is significant at the 5 percent level in regressions in Tables 7 and 8. However, Figure 3 displays a strong correlation between expropriation risk/corruption and natural capital. This suggests that natural resources have an adverse effect on income per capita through a worsening of institutional quality as illustrated by arrow 4 combined with arrow 3 in Figure 1. Furthermore, we find weak evidence of

<sup>14</sup> Knack and Keefer (1995) also use a variety of alternative measures of institutional quality to empirically examine the relationship between institutions and growth using cross-country data.

cross-country correlation between natural resource abundance and inflation.<sup>15</sup> One reason might be that averaging over a long period might smooth out the variation. Thus, further investigation of the empirical relationship between inflation and resource abundance using time series variation is needed. However, the high correlation (in absolute terms) between institutional quality and resource abundance suggests that resource abundance affects income per capita directly (affecting directly a nation's incentives to improve economic performance) and through damaging institutions and not necessarily through the so-called Dutch disease channel. Regressions Tables 7 and 8 again provide no evidence of an interaction effect of natural resources with expropriation risk or corruption. However, there is again evidence for an interaction effect of natural capital with openness in regression (4) in Tables 7 and 8.

**Table 7: IV Income Per Capita Regressions Using Expropriation Risk Index**

	(1)	(2)	(3)	(4)	(5)	(6)	(7)	(8)
exprop risk	0.085 [0.328]	0.634*** [0.174]	0.157 [0.383]	0.575*** [0.160]	0.360*** [0.132]	0.556*** [0.176]	0.415*** [0.126]	
interactexprop risk					0.088 [0.089]	0.037 [0.081]	0.055 [0.088]	
lnopen			-0.432 [0.567]	0.390 [0.360]	0.682* [0.380]	-0.487 [0.453]		-0.442 [0.542]
interactlnopen						0.722* [0.396]		0.077 [0.164]
disteq	0.025 [0.016]	0.003 [0.010]	0.026 [0.021]	0.009 [0.007]	0.017** [0.008]	0.011 [0.008]	0.011 [0.009]	0.033*** [0.008]
lnnatcapitalovergni	-0.355** [0.172]	-0.203 [0.175]	-0.462 [0.307]	-0.177 [0.178]	-0.719 [0.519]	0.641 [0.916]	-0.618 [0.517]	-0.487 [0.328]
Constant	7.712*** [2.089]	4.337*** [1.265]	6.672*** [2.394]	5.145*** [1.320]	6.859*** [1.014]	4.055** [1.815]	5.751*** [0.914]	7.721*** [0.818]
Instruments for:1/								
ri01	legor_uk	logsetmort, legor_uk, engfrac	legor_uk	logsetmort, legor_uk, engfrac	logsetmort, legor_uk, engfrac	logsetmort, engfrac	logsetmort, legor_uk	...
lnopen	...	lnfrinstex	lnfrinstex	lnfrinstex	lnfrinstex	lnfrinstex	...	lnfrinstex
Observations	90	52	89	51	51	51	52	112
R-squared	0.655	0.508	0.534	0.607	0.619	0.622	0.572	0.503
overid_pvalue	...	0.138	...	0.306	0.327	0.235	0.198	...

Robust standard errors in bracket  
\*\*\* p<0.01, \*\* p<0.05, \* p<0.1

<sup>15</sup> The cross-correlations between inflation over the period 1970 to 1990 and the logarithm of natural resource exports over GNP in 1970 or the logarithm of natural capital over GNI in 2000 equal 6 percent and 9 percent, respectively. In future work we will investigate the empirical relationship between volatility in the real exchange rate and resource abundance.

Table 8: IV Income Per Capita Regressions Using Corruption Index

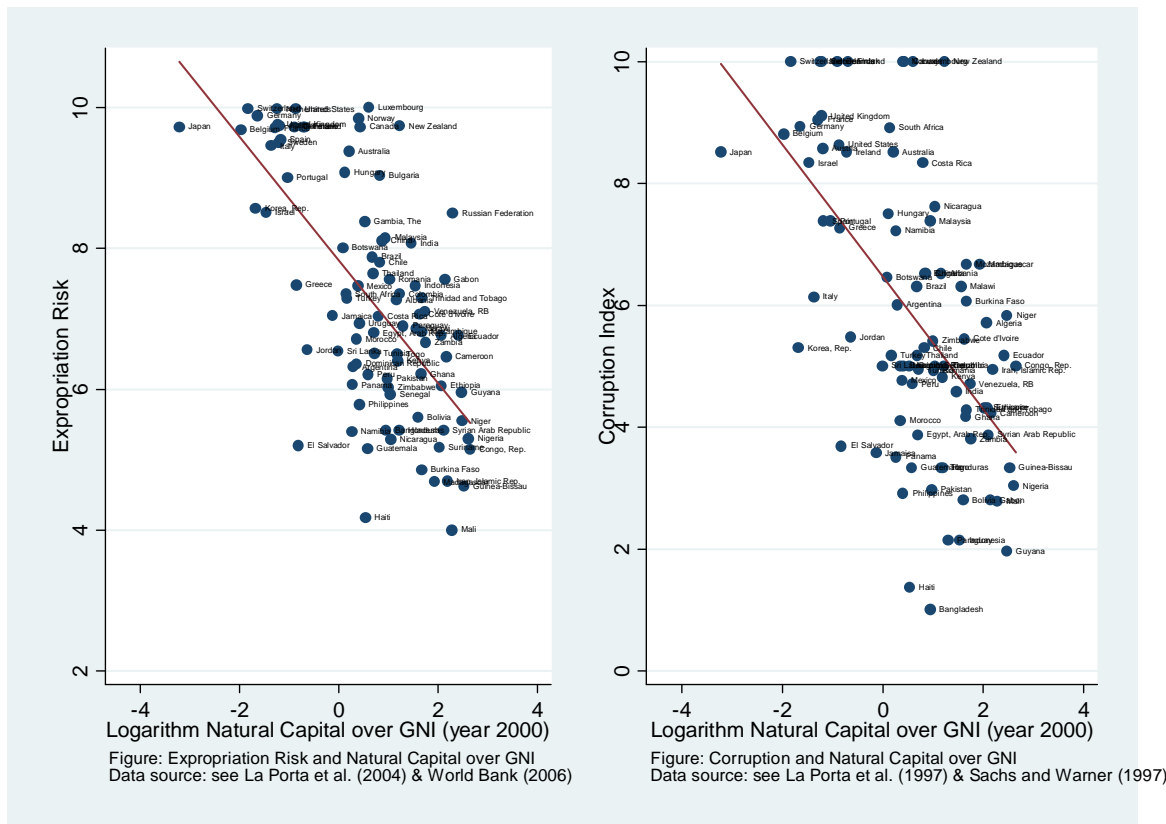
	(1)	(2)	(3)	(4)	(5)	(6)
corrupt	0.088 [0.320]	0.153 [0.336]	0.433*** [0.134]	0.411 [0.305]	0.458** [0.191]	
Inopen		-0.361 [0.567]	-1.940 [1.825]	0.326 [0.391]		-0.442 [0.542]
interactcorrupt			0.183 [0.212]	-0.126 [0.221]	0.256 [0.274]	
interactInopen			1.578 [1.657]	0.677** [0.319]		0.077 [0.164]
disteq	0.021 [0.024]	0.021 [0.028]	0.002 [0.016]	0.007 [0.019]	-0.006 [0.019]	0.033*** [0.008]
Innatcapitalovergni	-0.375** [0.153]	-0.470 [0.292]	1.078 [2.397]	1.541 [1.774]	-1.501 [1.319]	-0.487 [0.328]
Constant	7.915*** [1.375]	7.161*** [1.358]	3.977 [2.666]	6.741*** [1.972]	6.567*** [0.991]	7.721*** [0.818]
Instruments for:1/						
rl01	legor_uk	legor_uk	logsetmort, legor_uk	legor_uk, engfrac	logsetmort, legor_uk	...
Inopen	...	Infrinstex	Infrinstex	Infrinstex	Infrinstex	Infrinstex
Observations	89	88	51	88	52	112
R-squared	0.649	0.552	-0.216	0.477	-0.652	0.503
overid pvalue	...	...	0.564	0.333	0.289	...

Robust standard errors in brackets

\*\*\* p<0.01, \*\* p<0.05, \* p<0.1

1/ Interactive variables are instrumented using lnsxpr time the instruments used for the individual variables

Figure 3: Corruption/Expropriation Risk and Log of Natural Capital



# CESifo Working Paper Series

for full list see [www.cesifo-group.org/wp](http://www.cesifo-group.org/wp)

(address: Poschingerstr. 5, 81679 Munich, Germany, [office@cesifo.de](mailto:office@cesifo.de))

---

- 2993 Axel Dreher, Stephan Klasen, James Raymond Vreeland and Eric Werker, The Costs of Favoritism: Is Politically-driven Aid less Effective?, March 2010
- 2994 Sven Neelsen and Thomas Stratmann, Effects of Prenatal and Early Life Malnutrition: Evidence from the Greek Famine, March 2010
- 2995 Claude Hillinger and Bernd Süßmuth, The Quantity Theory of Money: An Assessment of its Real Linchpin Prediction, March 2010
- 2996 Matthew M. Chingos and Martin R. West, Do More Effective Teachers Earn More Outside of the Classroom?, March 2010
- 2997 Laurence Jacquet and Dirk Van de gaer, A Comparison of Optimal Tax Policies when Compensation or Responsibility Matter, March 2010
- 2998 Valentina Bosetti, Carlo Carraro, Romain Duval and Massimo Tavoni, What Should we Expect from Innovation? A Model-Based Assessment of the Environmental and Mitigation Cost Implications of Climate-Related R&D, March 2010
- 2999 Scott Alan Carson, Nineteenth Century Stature and Family Size: Binding Constraint or Productive Labor Force?, March 2010
- 3000 Jukka Pirttilä and Ilpo Suoniemi, Public Provision, Commodity Demand and Hours of Work: An Empirical Analysis, March 2010
- 3001 Bertrand Candelon and Franz C. Palm, Banking and Debt Crises in Europe: The Dangerous Liaisons?, March 2010
- 3002 Joan Costa-i-Font and Marin Gemmill-Toyama, Does Cost Sharing really Reduce Inappropriate Prescriptions?, March 2010
- 3003 Scott Barrett, Climate Treaties and Backstop Technologies, March 2010
- 3004 Hans Jarle Kind, Tore Nilssen and Lars Sørgard, Price Coordination in Two-Sided Markets: Competition in the TV Industry, March 2010
- 3005 Jay Pil Choi and Heiko Gerlach, Global Cartels, Leniency Programs and International Antitrust Cooperation, March 2010
- 3006 Aneta Hryckiewicz and Oskar Kowalewski, Why do Foreign Banks Withdraw from other Countries? A Panel Data Analysis, March 2010
- 3007 Eric A. Hanushek and Ludger Woessmann, Sample Selectivity and the Validity of International Student Achievement Tests in Economic Research, March 2010

- 3008 Dennis Novy, International Trade and Monopolistic Competition without CES: Estimating Translog Gravity, April 2010
- 3009 Yin-Wong Cheung, Guonan Ma and Robert N. McCauley, Renminbising China's Foreign Assets, April 2010
- 3010 Michel Beine and Sara Salomone, Migration and Networks: Does Education Matter more than Gender?, April 2010
- 3011 Friedrich Schneider, Tilman Brück and Daniel Meierrieks, The Economics of Terrorism and Counter-Terrorism: A Survey (Part I), April 2010
- 3012 Friedrich Schneider, Tilman Brück and Daniel Meierrieks, The Economics of Terrorism and Counter-Terrorism: A Survey (Part II), April 2010
- 3013 Frederick van der Ploeg and Steven Poelhekke, The Pungent Smell of "Red Herrings": Subsoil Assets, Rents, Volatility and the Resource Curse, April 2010
- 3014 Vjollca Sadiraj, Jan Tuinstra and Frans van Winden, Identification of Voters with Interest Groups Improves the Electoral Chances of the Challenger, April 2010
- 3015 Guglielmo Maria Caporale, Davide Ciferri and Alessandro Girardi, Time-Varying Spot and Futures Oil Price Dynamics, April 2010
- 3016 Scott Alan Carson, Racial Differences in Body-Mass Indices for Men Imprisoned in 19<sup>th</sup> Century US Prisons: A Multinomial Approach, April 2010
- 3017 Alessandro Fedele, Paolo M. Panteghini and Sergio Vergalli, Optimal Investment and Financial Strategies under Tax Rate Uncertainty, April 2010
- 3018 Laurence Jacquet, Take it or Leave it: Take-up, Optimal Transfer Programs, and Monitoring, April 2010
- 3019 Wilhelm Kohler and Jens Wrona, Offshoring Tasks, yet Creating Jobs?, April 2010
- 3020 Paul De Grauwe, Top-Down versus Bottom-Up Macroeconomics, April 2010
- 3021 Karl Ove Aarbu, Demand Patterns for Treatment Insurance in Norway, April 2010
- 3022 Toke S. Aidt and Jayasri Dutta, Fiscal Federalism and Electoral Accountability, April 2010
- 3023 Bahram Pesaran and M. Hashem Pesaran, Conditional Volatility and Correlations of Weekly Returns and the VaR Analysis of 2008 Stock Market Crash, April 2010
- 3024 Stefan Buehler and Dennis L. Gärtner, Making Sense of Non-Binding Retail-Price Recommendations, April 2010
- 3025 Leonid V. Azarnert, Immigration, Fertility, and Human Capital: A Model of Economic Decline of the West, April 2010



- 3026 Christian Bayer and Klaus Wälde, Matching and Saving in Continuous Time: Theory and 3026-A Matching and Saving in Continuous Time: Proofs, April 2010
- 3027 Coen N. Teulings and Nick Zubanov, Is Economic Recovery a Myth? Robust Estimation of Impulse Responses, April 2010
- 3028 Clara Graziano and Annalisa Luporini, Optimal Delegation when the Large Shareholder has Multiple Tasks, April 2010
- 3029 Erik Snowberg and Justin Wolfers, Explaining the Favorite-Longshot Bias: Is it Risk-Love or Misperceptions?, April 2010
- 3030 Doina Radulescu, The Effects of a Bonus Tax on Manager Compensation and Welfare, April 2010
- 3031 Helmut Lütkepohl, Forecasting Nonlinear Aggregates and Aggregates with Time-varying Weights, April 2010
- 3032 Silvia Rocha-Akis and Ronnie Schöb, Welfare Policy in the Presence of Unionised Labour and Internationally Mobile Firms, April 2010
- 3033 Steven Brakman, Robert Inklaar and Charles van Marrewijk, Structural Change in OECD Comparative Advantage, April 2010
- 3034 Dirk Schindler and Guttorm Schjelderup, Multinationals, Minority Ownership and Tax-Efficient Financing Structures, April 2010
- 3035 Christian Lessmann and Gunther Markwardt, Decentralization and Foreign Aid Effectiveness: Do Aid Modality and Federal Design Matter in Poverty Alleviation?, April 2010
- 3036 Eva Deuchert and Conny Wunsch, Evaluating Nationwide Health Interventions when Standard Before-After Doesn't Work: Malawi's ITN Distribution Program, April 2010
- 3037 Eric A. Hanushek and Ludger Woessmann, The Economics of International Differences in Educational Achievement, April 2010
- 3038 Frederick van der Ploeg, Aggressive Oil Extraction and Precautionary Saving: Coping with Volatility, April 2010
- 3039 Ainura Uzagalieva, Evžen Kočenda and Antonio Menezes, Technological Imitation and Innovation in New European Union Markets, April 2010
- 3040 Nicolas Sauter, Jan Walliser and Joachim Winter, Tax Incentives, Bequest Motives, and the Demand for Life Insurance: Evidence from two Natural Experiments in Germany, April 2010
- 3041 Matthias Wrede, Multinational Capital Structure and Tax Competition, April 2010

- 3042 Burkhard Heer and Alfred Maussner, A Note on the Computation of the Equity Premium and the Market Value of Firm Equity, April 2010
- 3043 Kristiina Huttunen, Jukka Pirttilä and Roope Uusitalo, The Employment Effects of Low-Wage Subsidies, May 2010
- 3044 Matthias Kalkuhl and Ottmar Edenhofer, Prices vs. Quantities and the Intertemporal Dynamics of the Climate Rent, May 2010
- 3045 Bruno S. Frey and Lasse Steiner, Pay as you Go: A New Proposal for Museum Pricing, May 2010
- 3046 Henning Bohn and Charles Stuart, Population under a Cap on Greenhouse Gas Emissions, May 2010
- 3047 Balázs Égert and Rafal Kierzenkowski, Exports and Property Prices in France: Are they Connected?, May 2010
- 3048 Thomas Eichner and Thorsten Upmann, Tax-Competition with Involuntary Unemployment, May 2010
- 3049 Taiji Furusawa, Kazumi Hori and Ian Wooton, A Race beyond the Bottom: The Nature of Bidding for a Firm, May 2010
- 3050 Xavier Vives, Competition and Stability in Banking, May 2010
- 3051 Thomas Aronsson and Erkki Koskela, Redistributive Income Taxation under Outsourcing and Foreign Direct Investment, May 2010
- 3052 Michael Melvin and Duncan Shand, Active Currency Investing and Performance Benchmarks, May 2010
- 3053 Sören Blomquist and Laurent Simula, Marginal Deadweight Loss when the Income Tax is Nonlinear, May 2010
- 3054 Lukas Menkhoff, Carol L. Osler and Maik Schmeling, Limit-Order Submission Strategies under Asymmetric Information, May 2010
- 3055 M. Hashem Pesaran and Alexander Chudik, Econometric Analysis of High Dimensional VARs Featuring a Dominant Unit, May 2010
- 3056 Rabah Arezki and Frederick van der Ploeg, Do Natural Resources Depress Income Per Capita?, May 2010