

Heckman, James Joseph; Humphries, John Eric; Mader, Nicholas S.

**Working Paper**  
**The GED**

IZA Discussion Papers, No. 4975

**Provided in Cooperation with:**  
IZA – Institute of Labor Economics

*Suggested Citation:* Heckman, James Joseph; Humphries, John Eric; Mader, Nicholas S. (2010) : The GED, IZA Discussion Papers, No. 4975, Institute for the Study of Labor (IZA), Bonn

This Version is available at:  
<https://hdl.handle.net/10419/36948>

**Standard-Nutzungsbedingungen:**

Die Dokumente auf EconStor dürfen zu eigenen wissenschaftlichen Zwecken und zum Privatgebrauch gespeichert und kopiert werden.

Sie dürfen die Dokumente nicht für öffentliche oder kommerzielle Zwecke vervielfältigen, öffentlich ausstellen, öffentlich zugänglich machen, vertreiben oder anderweitig nutzen.

Sofern die Verfasser die Dokumente unter Open-Content-Lizenzen (insbesondere CC-Lizenzen) zur Verfügung gestellt haben sollten, gelten abweichend von diesen Nutzungsbedingungen die in der dort genannten Lizenz gewährten Nutzungsrechte.

**Terms of use:**

*Documents in EconStor may be saved and copied for your personal and scholarly purposes.*

*You are not to copy documents for public or commercial purposes, to exhibit the documents publicly, to make them publicly available on the internet, or to distribute or otherwise use the documents in public.*

*If the documents have been made available under an Open Content Licence (especially Creative Commons Licences), you may exercise further usage rights as specified in the indicated licence.*

IZA DP No. 4975

## **The GED**

James J. Heckman  
John Eric Humphries  
Nicholas S. Mader

May 2010

# The GED

**James J. Heckman**

*University of Chicago, American Bar Foundation,  
Geary Institute, University College Dublin,  
Cowles Foundation, Yale University and IZA*

**John Eric Humphries**

*University of Chicago*

**Nicholas S. Mader**

*University of Chicago*

Discussion Paper No. 4975

May 2010

IZA

P.O. Box 7240  
53072 Bonn  
Germany

Phone: +49-228-3894-0  
Fax: +49-228-3894-180  
E-mail: [iza@iza.org](mailto:iza@iza.org)

Any opinions expressed here are those of the author(s) and not those of IZA. Research published in this series may include views on policy, but the institute itself takes no institutional policy positions.

The Institute for the Study of Labor (IZA) in Bonn is a local and virtual international research center and a place of communication between science, politics and business. IZA is an independent nonprofit organization supported by Deutsche Post Foundation. The center is associated with the University of Bonn and offers a stimulating research environment through its international network, workshops and conferences, data service, project support, research visits and doctoral program. IZA engages in (i) original and internationally competitive research in all fields of labor economics, (ii) development of policy concepts, and (iii) dissemination of research results and concepts to the interested public.

IZA Discussion Papers often represent preliminary work and are circulated to encourage discussion. Citation of such a paper should account for its provisional character. A revised version may be available directly from the author.

## ABSTRACT

### The GED<sup>\*</sup>

The General Educational Development (GED) credential is issued on the basis of an eight hour subject-based test. The test claims to establish equivalence between dropouts and traditional high school graduates, opening the door to college and positions in the labor market. In 2008 alone, almost 500,000 dropouts passed the test, amounting to 12% of all high school credentials issued in that year. This chapter reviews the academic literature on the GED, which finds minimal value of the certificate in terms of labor market outcomes and that only a few individuals successfully use it as a path to obtain post-secondary credentials. Although the GED establishes cognitive equivalence on one measure of scholastic aptitude, recipients still face limited opportunity due to deficits in noncognitive skills such as persistence, motivation and reliability. The literature finds that the GED testing program distorts social statistics on high school completion rates, minority graduation gaps, and sources of wage growth. Recent work demonstrates that, through its availability and low cost, the GED also induces some students to drop out of school. The GED program is unique to the United States and Canada, but provides policy insight relevant to any nation's educational context.

JEL Classification: I21, J24, J31

Keywords: returns to education, GED, dropouts, graduation rate, noncognitive skills

Corresponding author:

James J. Heckman  
Department of Economics  
University of Chicago  
1126 E. 59th Street  
Chicago, IL 60637  
USA  
E-mail: [jjh@uchicago.edu](mailto:jjh@uchicago.edu)

---

<sup>\*</sup> This research was supported by NIH R01-HD054702, the American Bar Foundation, The California Endowment, The Commonwealth Foundation, The Nemours Foundation, the Buffett Early Childhood Fund, the Spencer Foundation, an anonymous funder, and the J.B. and M.K. Pritzker Foundation. We are grateful to the helpful comments of the Handbook authors present at the CESifo Munich conference. We also received research assistance from Alejandro Alvarez and Joel Han. The views expressed in this paper are those of the authors and not necessarily those of the funders or other parties listed here.

# Contents

<b>1</b>	<b>Introduction</b>	<b>4</b>
<b>2</b>	<b>Institutional Background and Functions of the GED</b>	<b>6</b>
2.1	The GED Test . . . . .	6
<b>3</b>	<b>The Effects of GED Certification</b>	<b>13</b>
3.1	The Direct Benefit of GED Certification . . . . .	13
3.1.1	Average Labor Market Outcomes . . . . .	13
3.1.2	Heterogeneous Labor Market Returns . . . . .	20
3.1.3	Cognitive and Noncognitive Ability . . . . .	28
3.2	Educational Attainment . . . . .	36
<b>4</b>	<b>Changes and Growth in the GED Test Taking Population</b>	<b>40</b>
4.1	Government Education and Training Programs . . . . .	40
4.2	Changes in the Costs and Benefits to Education . . . . .	44
4.3	Growth in High School-Age Test Takers . . . . .	49
<b>5</b>	<b>Adverse Consequences of the GED</b>	<b>53</b>
5.1	The GED Induces Would-Be High School Graduates to Drop Out . . . . .	55
5.2	The GED Inflates High School Graduation Statistics . . . . .	56
5.3	The GED Obscures the Actual Returns to Education . . . . .	59
<b>6</b>	<b>Conclusion</b>	<b>61</b>

# 1 Introduction

The General Educational Development (GED) program has become a major factor in American education.<sup>1</sup> Dropouts from high school can take an eight hour battery of tests to obtain a GED credential. GEDs are widely held to be equivalent to individuals who receive a traditional high school diploma by taking courses and acquiring credit hours. Indeed, capturing this sentiment, many erroneously term the GED certificate as a “General Equivalency Degree”. The GED program is quantitatively significant. Figure 1 shows that currently 12% of all high school credentials issued are GEDs,<sup>2</sup> and that there has been substantial growth overtime in the number of GED certificates issued.

This chapter reviews a body of literature, starting with Cameron and Heckman [1993], that shows that GEDs are *not* equivalent to ordinary high school graduates. They have higher achievement test scores than dropouts in part because they complete more years of high school. Controlling for their greater scholastic ability, GEDs are equivalent to uncredentialed dropouts in terms of their labor market outcomes and their general performance in society. On average, obtaining a GED does not increase the wages of dropouts. While GEDs go to college at higher rates than dropouts, few finish more than one semester. The same traits that lead them to drop out of school also lead them to leave from jobs early, to divorce more frequently, and to fail in the military.<sup>3</sup>

Given the preponderance of evidence against beneficial effects of GED certification for the average GED recipient, it is surprising that the GED program has grown so dramatically in the past 50 years. We examine explanations for its growth. A primary cause is the growth of government programs that promote the GED as a quick fix for addressing the high school dropout problem. Adult Education programs and programs designed to promote convict rehabilitation are major contributors, the latter being especially important for African-American males. We present evidence that high schools are increasingly promoting the use of the GED.

None of this would matter if the GED were harmless, like wearing a broken watch and knowing that it is broken. But the GED is not harmless. Treating it as equivalent to a high school degree distorts social statistics and gives false signals that America is making progress when it is not. A substantial part of the measured convergence of black and white high school attainment is fueled by prison-issued GEDs. Counting GEDs as dropouts, the African-American

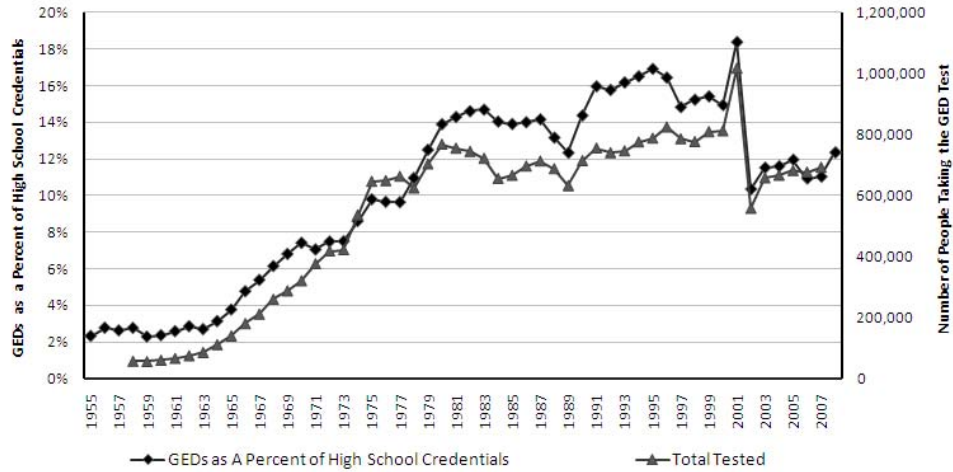
---

<sup>1</sup>The GED program is unique to the United States and Canada, but provides policy insight relevant to any nation's educational context.

<sup>2</sup>Henceforth, “GED” refers either to the certificate itself or to an individual who has received a GED certificate, depending on context. “GEDs” refer to individuals who choose to certify by the GED, “GED program” is used to refer to the entire program, and “GED test” refers to the test itself.

<sup>3</sup>See Heckman and Rubinstein [2001] and Laurence [2008].

Figure 1: Growth in the GED - Percent of High School Credentials and Number of Takers



Sources: National Center for Education Statistics [Various], and GED Testing Service [Various Years]. Notes: The spike and fall in 2001-2002 is from a change in test series combined with an increase in passing standards. The “percent of high school credentials” statistic is calculated by dividing the number of GEDs issued divided by the sum of diplomas and GEDs issued that year.

male high school graduation rate in 2000 is at the same level as it was in 1960. Improperly counting GEDs as high school graduates also overestimates the returns to college. We document how American social statistics are distorted by assuming that GEDs are equivalent to ordinary high school graduates. We also show how the GED *creates* problems. It induces students to drop out of school and lose the benefits of a high school degree.

There are larger lessons from a study of the GED program. GEDs are as smart as ordinary high school graduates as measured by a scholastic achievement test. Yet, as a group, GEDs fail to perform at the level of high school graduates. We show that noncognitive deficits – such as lack of persistence, low self-esteem, low self-efficacy, and high propensity for risky behavior – explain the lack of success for many GEDs. Deficits of what are sometimes called “soft” skills are often not taken into account in public policy discussions involving economic opportunity. A study of the GED shows the influence of personality traits on success in life and the need for public policies that address both cognitive and personality deficits.

This paper is organized as follows: Section 2 provides a short introduction to the GED, its structure, and a brief history. Section 3 looks at differences among dropouts, GEDs, and high school graduates, and discusses the evidence on labor market performance and educational attainment of GEDs. Section 4 presents evidence on the sources of growth of the GED program, and the changes over time in demographic groups it serves. Section 5 reviews the

adverse consequences of the GED. Section 6 concludes.

## 2 Institutional Background and Functions of the GED

There are substantial consequences of being a high school dropout. Wage premia for education have increased over the last three decades. Using Census PUMs data, Goldin and Katz [2008] report that the wage differential between high school graduates and dropouts grew from 16.7% in 1970, to 21% in 1990, to 25.5% in 2000. Figure 2, reproduced from Autor, Katz, and Kearney [2008], shows that real wages by educational level have diverged across time for both males and females. At the same time that real wages for those with college are steadily increasing, real wages for male dropouts are currently below their 1963 levels, and real wages for female dropouts are effectively unchanged since 1970.

Figure 3 shows that across cohorts, college attendance and college completion have both increased.<sup>4</sup> The rate of college attendance conditional on finishing high school, and the rate of college graduation conditional on attendance have both trended upward. The outlier is the high school graduation rate, which has trended *downward* starting with the 1950 birth cohort. The growth in people seeking alternative certification through the GED is a major contributor to this trend. Figure 4 shows that dropout rates since 1968 have decreased if GEDs are counted as high school graduates, but increased if they are counted as dropouts.

### 2.1 The GED Test

The GED was introduced by the American Council on Education (ACE) in 1942 as a credential for returning World War II veterans who entered the armed services before completing high school.<sup>5</sup> The test was used to certify veterans' knowledge of subject matter in order to certify them as cognitively equivalent to high school graduates for the purposes of work or college. It was implicitly assumed that other skills such as self-discipline and maturity, skills thought to be gained from attending high school, were fully developed by those who served in the military. Most veterans had served at least two years in the military.

States began to offer the test to civilians in the late 1940s and, by 1957, civilian GED test takers outnumbered veteran GED recipients. Relative to its very targeted beginning, the GED program has expanded to serve dropouts

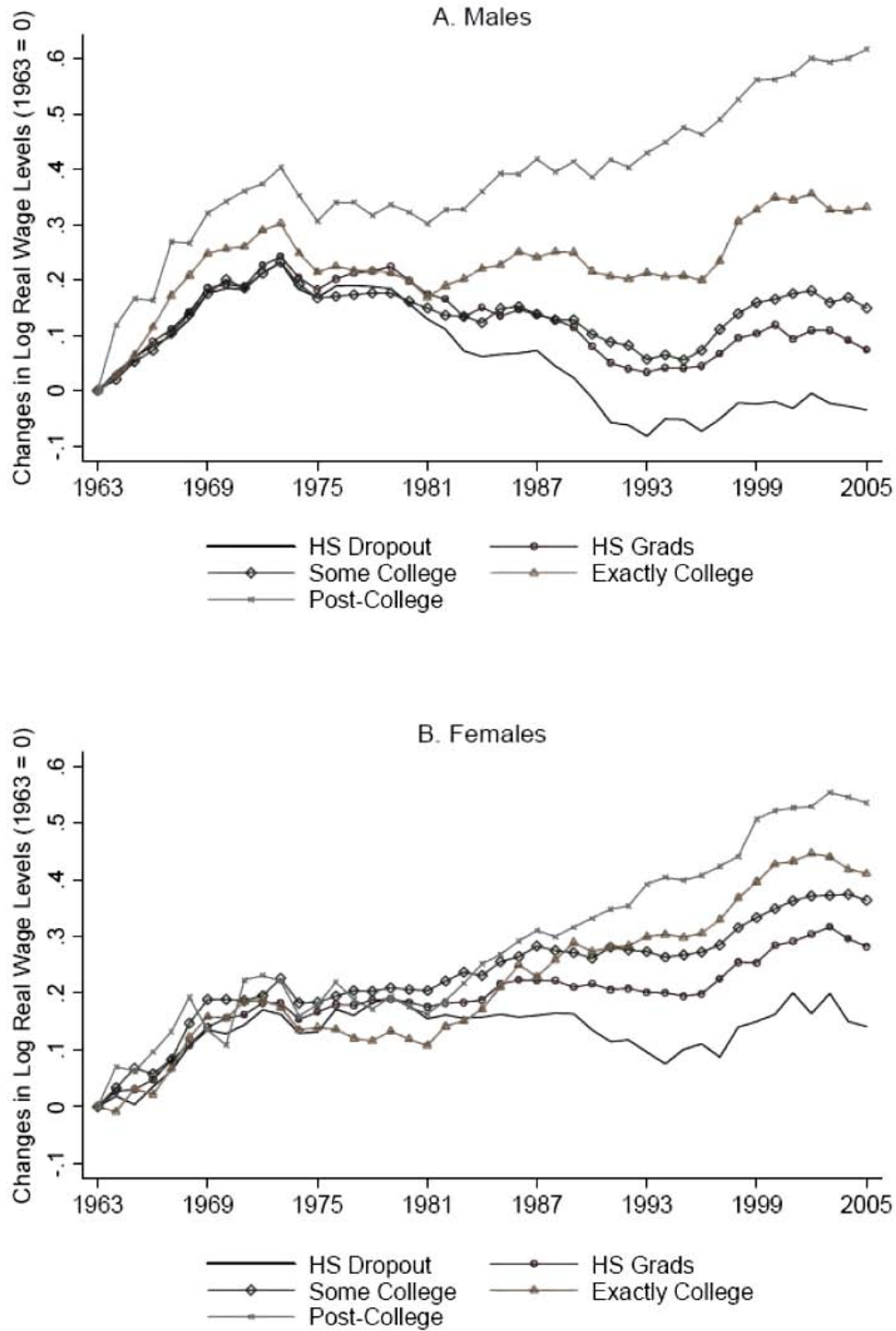
---

<sup>4</sup>Figure 3 does not count GEDs as high school graduates.

<sup>5</sup>See Quinn [2008] for a detailed exposition of the GED's history.

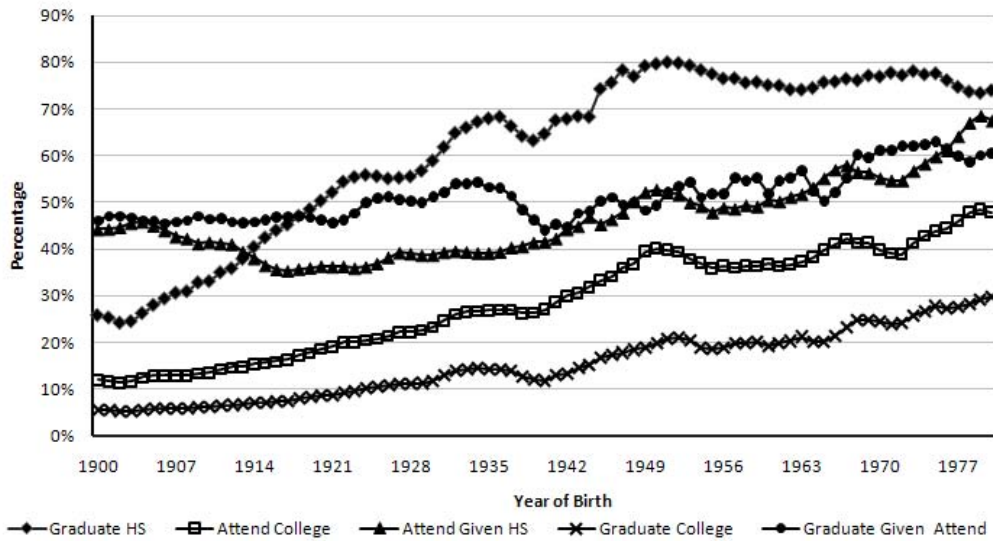


Figure 2: Log Wage Levels By Education



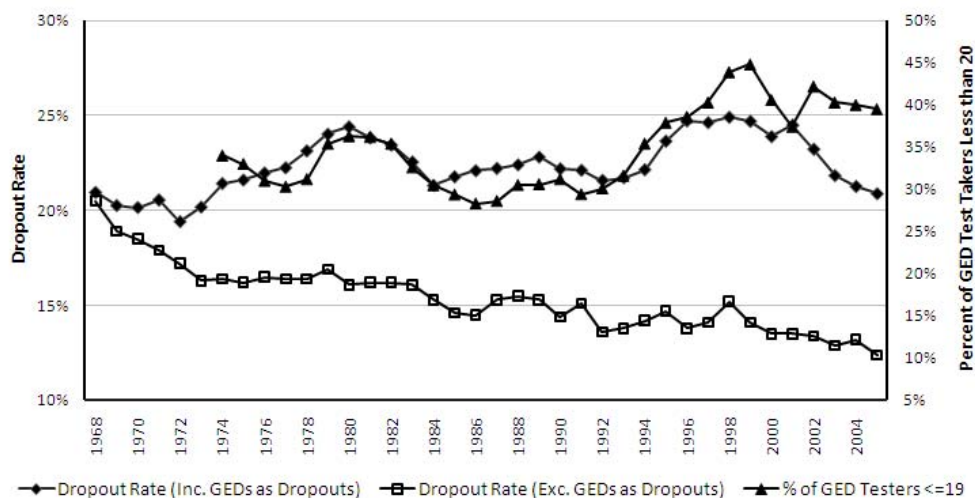
Source: Reproduced from Autor et al. [2008], Figure 5.

Figure 3: Trends in Educational Attainment



Source: Reproduced from Heckman and LaFontaine [2010] Figure XIII. Notes: 3-year moving averages based on CPS October, Census, CPS March and NCES data. HS graduates are those who obtained a regular public or private HS diploma (excluding GEDs) from the NCES. "Graduate HS" is the fraction of 8th grade enrollments for a given cohort who report a regular HS diploma. "Attend Given HS" is the fraction of recent HS graduates who report being enrolled the fall of the year following graduation. "Attend College" is college enrollments of recent HS graduates as a fraction of 18 year old cohort size. College graduates are those who report a BA or higher by age 25. "Graduate Given Attend" is those who obtained a four year degree as a fraction of the college enrollment total for that cohort. Two-year degrees are not included. "Graduate College" is the number of college graduates as a fraction of the 18 year old cohort size. Population estimates are from the Census P-20 reports. HS diplomas issued by sex are estimated from CPS October data after 1982.

Figure 4: Inclusion/Exclusion of GEDs in Dropout Rates



Source: National Center for Education Statistics: Common Core Data, GED Testing Service [Various Years], and CPS October Supplement [1968-2005]. Notes: The dropout rate counting GEDs as dropouts is calculated using NCES CCD data as the fraction of public and private school 8th graders who never obtain a high school diploma from a regular day school. The dropout rate not counting GEDs as dropouts is one minus the status high school completion rate computed using CPS data. The Status completion rate is the fraction of 18-to-24-year-olds who are not enrolled in high school and who have a high school credential. These include both high school diplomas and GED certificates. The percent of GED test takers below the age of 18 are from various years of the GED Statistical Report.

Figure 5: GED Sample Questions

#### Mathematics

Easy Sample Question	<p>If <math>8x + 16 = 32</math>, what is <math>x</math>?</p> <p>A) 8 B) 2 C) 4 D) 3 E) 7</p>
Difficult Sample Question	<p>Alex has a job working for Adam's Apple Orchard. Two hundred new apple trees just arrived, which Mr. Adams would like Alex to plant. Alex can plant an average of 15 trees per workday. At this rate, approximately how many workdays will it take Alex to plant the 200 trees?</p> <p>A) between 7 and 9 B) between 9 and 11 C) between 11 and 13 D) between 13 and 15 E) between 15 and 17</p>

Source: Reproduced from Bobrow [2002]. Notes: The source is a preparation guide for the most recent 2002 series of the GED test.

across a wide population. The GED currently targets a large and diverse audience, many of whom are unqualified to join the military [Laurence, 2008].<sup>6</sup>

**The GED Test:** The GED exam has been a battery of five tests since its introduction. Its content has been updated three times with the introduction of new “series” designed to keep the test relevant to job skills and educational requirements [GED Testing Service, 2009]. The current version of the GED test takes 8 hours to complete and focuses on interpretation and analysis of information rather than on factual recall. The reading section has changed from being a general reading comprehension test to a test of reading “real life” work materials or newspaper articles. The math content now demands more analysis and synthesis than factual recall. Examples of an easy and hard math problem are shown in Figure 5. The GED test introduced a short essay or writing sample starting in 1988, and the use of a calculator for part of the math subsection was introduced on the 2002 test series [GED Testing Service, Various Years].

It is estimated that the original test could be passed by 80% of graduation-bound high school seniors on their first try, including a high probability of passing due to chance [Quinn, 2008]. After three increases in the difficulty of the test, only 60% of current graduation-bound high school seniors are now estimated to be able to pass the entire test on their first try [GED Testing Service, 2009].

Key changes to the GED test are displayed in Table 1, which also documents the expansion of the test. In 1947, New York was the first state to offer the test to civilian dropouts. In 1974, California was the last state to offer a recognized GED certificate for passing the GED test. The table covers the three changes in test series as well as the three changes in test difficulty. For more details on the GED’s history, content, standards, norming, and scoring procedures see Section A of the Web Appendix (<http://jenni.uchicago.edu/GEDHandbookChapter/>).

**GED Preparation and Means of Benefit:** The data on preparation times suggest that study for the GED is likely to lead to little or no human capital formation. Boesel et al. [1998] report that, in 1980, the median test-taker had studied for 20 hours and, in 1989, had invested 30 hours of preparation.<sup>7</sup> However, there is also a sizable number of individuals who study more than 100 hours, growing from 11.8% to 24.2% of takers in that same period. This indicates that certain populations may benefit somewhat from their preparation for the GED. To put this

---

<sup>6</sup>Section 3 demonstrates that the value of the GED depends on characteristics of the test taker, and Section 4 demonstrates that changes in the demographic groups served by the GED have led to differences in composition away from the motivated, disciplined group of individuals to whom it was initially targeted.

<sup>7</sup>This amount applies only to test takers not qualifying as exceptions to the minimum age requirement.

Table 1: Key Changes to the GED

Year	Changes to the GED Testing Program
1942	GED test introduced for veterans. 80% of graduate bound high school seniors said to be able to pass all five batteries
1947	New York offers GED test to high school dropouts
1959	More civilians taking the GED test than veterans
1974	California becomes last state to introduce GED test for dropouts
1978	New series of GED test introduced. Shorter six hour time frame.
1981	Time limit extended to 6.75 hours. National Minimum age for testing abolished
1982	Test standards made more difficult, 75% of graduate bound high school seniors said to be able to pass the entire test
1988	Third series of GED test introduced. First series to include a writing sample. Time extended to 7.5 hours for taking the test
1992	National minimum age for GED test taking of 16 implemented
1997	Passing standards made more difficult, 67% of graduate bound high school seniors said to be able to pass the entire test
2002	Current Series of the GED test introduced. Calculator allowed for first time on parts of the math test. Passing standards made more difficult, 60% of graduate bound high school seniors said to be able to pass the entire test. Test time of approximately eight hours.

Sources: GED Testing Service [2009], Quinn [2008], and GED Testing Service [Various Years].

statistic into perspective, an average high school student spends approximately 1,080 hours in class a year [Carroll, 1990]. More recently, Zhang et al. [2009] find that, in 2006, the median study time for those who reported studying was 25 hours.

At the same time, the availability of the GED may induce a decrease in the effort spent on schooling. The academic literature often compares outcomes for GEDs to those for dropouts. However, for many individuals, the relevant counterfactual comparison is between the GED and high school graduation. As passing the GED requires substantially less effort than completing high school, its availability induces many students who would otherwise complete school to leave (Heckman et al. 2008, Humphries 2010). This evidence is corroborated by a 2002 survey by the National Center for Education Statistics [2006] which found that 40.5% of surveyed high school dropouts listed “would be easier to get the GED” as among their reasons for leaving school. Behind “Missed too many school days”, this was the second most frequently cited reason for leaving.

With the possible exception of individuals in the right-hand tail of the preparation time distribution, it seems unlikely that GED test takers are producing valuable human capital that will directly increase their wages. However, as a widely-recognized credential that tests for certain types of ability, it may serve as a signal to employers, the military, and post-secondary institutions that the individual is more capable than the average uncredentialed dropout.<sup>8</sup> A key caveat to the signaling argument is that the signaling value of a GED will reflect all associations due to sorting, such as through disproportionate receipt by the incarcerated or unmotivated takers who are able to complete high school but choose not to. The quality of the signal has changed over time due to shifts in the attributes of the GED-certified population.

**GED Acceptance:** The extent to which employers and colleges treat the GED as equivalent to a high school diploma is uncertain. A poll reported by the Society for Human Resource Management [2002] finds that 96% of U.S. employers and training programs respond affirmatively to the question “Does your company accept applications with a GED credential for jobs requiring a high school degree?” [GED Testing Service, 2009]. A positive response suggests that a GED is an acceptable prerequisite for consideration, but does not indicate what relative weight employers give to the GED.

The GED’s wide acceptance as a valid prerequisite for admission to post-secondary institutions suggests that the GED might facilitate human capital development. A poll by the The College Board [2007] finds that 98% of colleges

---

<sup>8</sup>Spence [1973] is the classic reference on signaling.

respond positively to the prompt that “High school diploma is required and GED is accepted”. Again, it is unclear if GEDs get equal consideration for admission relative to high school graduates.

## 3 The Effects of GED Certification

Section 3.1 reviews the literature on the value of the GED credential in labor markets. Section 3.2 focuses on the question of whether, and for whom, the GED leads to enrollment and completion of post-secondary education.

### 3.1 The Direct Benefit of GED Certification

This section demonstrates that preexisting differences in traits causally unrelated to the effect of the GED are responsible for the different labor market outcomes experienced by dropouts and GEDs. The early literature on the topic found that GED certification has little or no effect on labor market outcomes for the average test taker. Subsequent work has attempted to identify different populations, mechanisms, and skill margins for which it might hold more value.

#### 3.1.1 Average Labor Market Outcomes

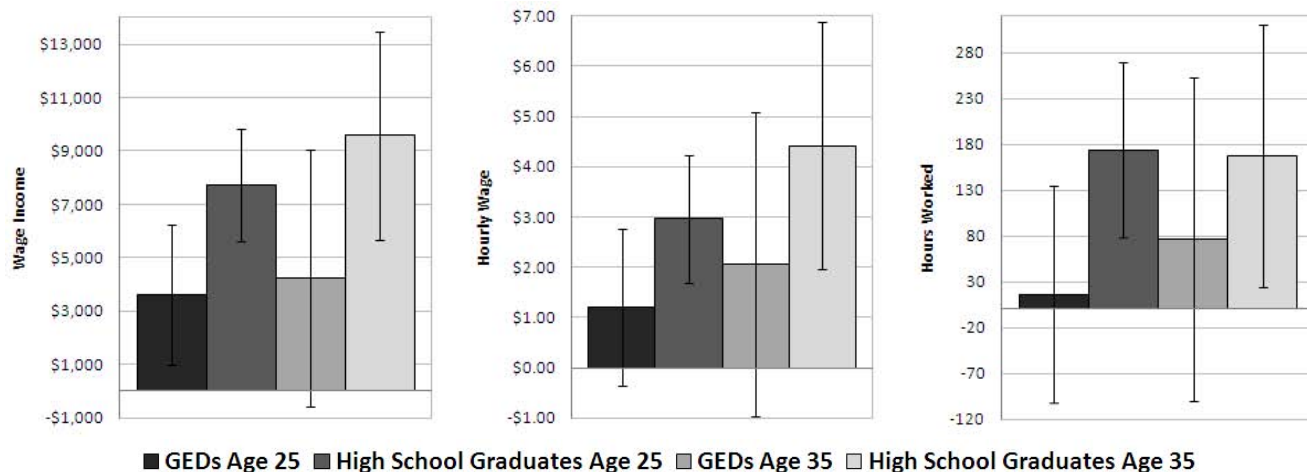
Raw comparisons of earnings and wages based on the National Longitudinal Study of Youth 1979 (NLSY79) data are displayed in Figure 6.<sup>9</sup> This figure shows the gap in wage income, hourly wages, and hours worked for terminal GEDs and terminal high school graduates over uncredentialed dropouts. There is a clear ordering among dropouts, GEDs, and traditional high school graduates in each measure. These differences persist across the life cycle, with the wage and hours premia for higher credentials increasing between ages 25 and 35.

**Background Differences Among Dropouts, GEDs, and High School Graduates:** The differences in labor market outcomes between these three groups can be largely explained by preexisting characteristics that may generate economic returns, creating a non-causal association among education levels and wages. Tables 2 and 3

---

<sup>9</sup>The NLSY79 is a survey starting in 1979 following a nationally representative cohort of individuals age 14 to 21 with follow up interviews at least every two years on a wide range of social, educational, and economic variables. For more details on the NLSY79, see Section B.1 of the Web Appendix (<http://jenni.uchicago.edu/GEDHandbookChapter/>).

Figure 6: Average Economic Benefits over Dropouts



Source: National Longitudinal Survey of Youth 1979 (NLSY79). Notes: Regressions control for an urban residence at age 14 Southern residence at age 14 dummy, year of birth dummies, and race and sex dummies. The regressions use the cross-sectional subsample of NLSY79, restricted to individuals who never attend college and who have not yet been incarcerated. Regressions for hourly wage and hours worked are restricted to those reporting more than one dollar an hour and less than 500 dollars an hour and individuals working less than 4,000 hours. Wage income regressions are restricted to individuals reporting wage incomes between \$1,000 and \$250,000. All regressions use Eicker-White robust standard errors.

show comparisons of early life characteristics by final level of education for white males in the NLSY79 and in the National Longitudinal Survey of Youth 1997 (NLSY97) data sets.<sup>10,11</sup>

These tables show a clear ordering across final levels of education—notably highest grade completed, magazine subscriptions and home environment indices, family income, and poverty rates. Terminal GEDs (i.e. those that do not continue to college) generally fall between dropouts and terminal high school graduates. There are some exceptions. In the NLSY97, the parents of GED recipients are more educated than parents of high school graduates, and GEDs are as likely or more likely to come from a broken household than are dropouts.<sup>12</sup> The differences in these measures demonstrate the potential importance of controlling for preexisting heterogeneity among educational groups.

Dropouts, terminal GEDs, and terminal high school graduates also differ in their performance on academic tests, which are strongly predictive of earnings. The Armed Forces Qualifying Test (AFQT) was administered in the

<sup>10</sup>The NLSY97 is a survey starting in 1997 following a nationally representative cohort of individuals age 12 to 16 with follow up interviews every year on a wide range of social, educational, and economic variables. For more details on the NLSY97, see Section B.2 of the Web Appendix (<http://jenni.uchicago.edu/GEDHandbookChapter/>).

<sup>11</sup>These statistics are reported for other races and gender groups in Section C.1 of the Web Appendix (<http://jenni.uchicago.edu/GEDHandbookChapter/>).

<sup>12</sup>In Section C.1 of the Web Appendix (<http://jenni.uchicago.edu/GEDHandbookChapter/>) we show that minority GEDs have higher delinquency rates and higher home risk indices than dropouts.



Table 2: Comparison of Key Characteristics by Educational Level - White Males - NLSY79

	Drop Out	GED No College	High School No College	Some College	Associate Degree	Bachelor Degree or More
Highest Grade Comp. 2006	<b>9.44</b> (1.34)	<b>10.70</b> (1.24)	<b>11.90</b> (0.82)	<b>13.50</b> (0.75)	<b>14.10</b> (0.91)	<b>17.00</b> (1.51)
South Age 14	<b>0.39</b> (0.49)	<b>0.36</b> (0.48)	<b>0.23</b> (0.42)	<b>0.26</b> (0.44)	<b>0.26</b> (0.44)	<b>0.25</b> (0.43)
Urban Age 14	<b>1.38</b> (0.62)	<b>1.31</b> (0.59)	<b>1.37</b> (0.62)	<b>1.26</b> (0.55)	<b>1.31</b> (0.55)	<b>1.21</b> (0.50)
Mother Worked Age 14	<b>0.49</b> (0.50)	<b>0.52</b> (0.50)	<b>0.49</b> (0.50)	<b>0.50</b> (0.50)	<b>0.50</b> (0.50)	<b>0.52</b> (0.50)
Father Worked Age 14	<b>0.89</b> (0.32)	<b>0.93</b> (0.26)	<b>0.95</b> (0.21)	<b>0.97</b> (0.18)	<b>0.97</b> (0.16)	<b>0.98</b> (0.14)
Magazines Age 14	<b>0.42</b> (0.49)	<b>0.61</b> (0.49)	<b>0.68</b> (0.47)	<b>0.75</b> (0.43)	<b>0.79</b> (0.41)	<b>0.88</b> (0.33)
Newspaper Age 14	<b>0.71</b> (0.46)	<b>0.85</b> (0.36)	<b>0.89</b> (0.31)	<b>0.91</b> (0.29)	<b>0.91</b> (0.28)	<b>0.94</b> (0.24)
Library Card Age 14	<b>0.55</b> (0.50)	<b>0.72</b> (0.45)	<b>0.70</b> (0.46)	<b>0.83</b> (0.38)	<b>0.80</b> (0.40)	<b>0.87</b> (0.34)
Mother's Highest Grade Comp.	<b>10.30</b> (2.45)	<b>10.70</b> (2.31)	<b>11.50</b> (2.11)	<b>12.20</b> (2.20)	<b>12.10</b> (1.92)	<b>13.30</b> (2.39)
Father's Highest Grade Comp.	<b>9.57</b> (3.41)	<b>10.50</b> (2.92)	<b>11.50</b> (2.76)	<b>12.80</b> (3.15)	<b>12.60</b> (2.94)	<b>14.30</b> (3.27)
Net Family Income 1979	<b>15,001</b> (12,215)	<b>19,162</b> (14,879)	<b>23,060</b> (14,454)	<b>23,072</b> (16,196)	<b>25,781</b> (14,605)	<b>28,598</b> (18,515)
Family Poverty Status 1979	<b>0.24</b> (0.43)	<b>0.15</b> (0.35)	<b>0.06</b> (0.24)	<b>0.08</b> (0.28)	<b>0.06</b> (0.24)	<b>0.07</b> (0.25)
Family Size	<b>4.25</b> (1.90)	<b>4.05</b> (1.89)	<b>4.19</b> (1.81)	<b>3.88</b> (1.84)	<b>4.27</b> (1.75)	<b>4.15</b> (1.76)

Source: National Longitudinal Survey of Youth 1979 (NLSY79). Notes: All results are from 1979 using nationally representative weights. Notes: Family size includes both parents and children.

Table 3: Comparison of Key Characteristics by Educational Level - White Males - NLSY97

	Drop Out	GED No College	High School No College	Some College	Associate Degree	Bachelor Degree or More
Highest Grade Comp. Age 22	<b>9.60</b> (1.21)	<b>9.94</b> (1.00)	<b>12.00</b> (0.00)	<b>13.00</b> (0.00)	<b>14.60</b> (0.49)	<b>16.00</b> (0.21)
South Age 12	<b>0.30</b> (0.46)	<b>0.36</b> (0.48)	<b>0.27</b> (0.44)	<b>0.27</b> (0.45)	<b>0.24</b> (0.43)	<b>0.24</b> (0.42)
Urban Age 12	<b>0.77</b> (0.42)	<b>0.79</b> (0.41)	<b>0.72</b> (0.45)	<b>0.86</b> (0.35)	<b>0.85</b> (0.36)	<b>0.88</b> (0.32)
Inner City Age 12	<b>0.21</b> (0.41)	<b>0.19</b> (0.39)	<b>0.17</b> (0.38)	<b>0.19</b> (0.39)	<b>0.20</b> (0.40)	<b>0.14</b> (0.35)
Household Size Age 12	<b>4.31</b> (1.41)	<b>4.41</b> (1.45)	<b>4.43</b> (1.32)	<b>4.32</b> (1.20)	<b>4.39</b> (1.21)	<b>4.37</b> (1.07)
Broken Household Age 12	<b>0.60</b> (0.49)	<b>0.60</b> (0.49)	<b>0.35</b> (0.48)	<b>0.32</b> (0.47)	<b>0.26</b> (0.44)	<b>0.16</b> (0.36)
Mother's Highest Grade Comp.	<b>11.70</b> (2.02)	<b>13.10</b> (7.24)	<b>12.70</b> (2.13)	<b>13.60</b> (2.40)	<b>14.30</b> (2.43)	<b>14.60</b> (2.55)
Father's Highest Grade Comp.	<b>11.50</b> (2.38)	<b>12.70</b> (7.82)	<b>12.70</b> (4.22)	<b>13.50</b> (2.59)	<b>14.60</b> (2.88)	<b>15.30</b> (2.82)
Family Routine Index 1997	<b>-0.19</b> (0.96)	<b>-0.20</b> (0.84)	<b>-0.09</b> (0.95)	<b>0.07</b> (0.86)	<b>0.13</b> (0.84)	<b>0.06</b> (0.79)
Home Risk Index 1997	<b>0.49</b> (1.08)	<b>0.30</b> (1.11)	<b>-0.05</b> (0.95)	<b>-0.29</b> (0.87)	<b>-0.59</b> (0.66)	<b>-0.68</b> (0.54)
Physical Environment Index 1997	<b>0.35</b> (0.97)	<b>0.10</b> (0.91)	<b>-0.11</b> (0.82)	<b>-0.27</b> (0.78)	<b>-0.47</b> (0.75)	<b>-0.70</b> (0.45)
Enriching Environment Index 1997	<b>-0.38</b> (0.93)	<b>-0.20</b> (0.93)	<b>-0.03</b> (0.88)	<b>0.31</b> (0.88)	<b>0.49</b> (0.87)	<b>0.69</b> (0.83)
Delinquency Index 1997	<b>0.91</b> (1.38)	<b>0.86</b> (1.31)	<b>0.34</b> (1.14)	<b>0.31</b> (1.16)	<b>-0.09</b> (0.83)	<b>-0.21</b> (0.67)

Source: National Longitudinal Survey of Youth 1997 (NLSY97). Notes: All results are from 1997 using nationally representative weights. All index scores are standardized mean zero, standard deviation one. See Section B.2.2 of the Web Appendix (<http://jenni.uchicago.edu/GEDHandbookChapter/>) for detail on the construction of the family routine, home risk, physical environment, enriching environment, and delinquency indices.

NLSY79 and in the NLSY97, and is a commonly used measure of academic, or cognitive, ability.<sup>13,14</sup> When the AFQT was administered, the surveyed individuals were of different ages and had acquired different levels of schooling. These differences affect their measured performance. In order to make comparisons of academic ability, we adjust individual scores to account for the level of schooling at the time of the test. The adjustment conditions on final years of completed schooling and high school exit type (dropout, GED, or diploma) to control for the endogeneity of schooling. We can then estimate “pre-8th grade” and “post-schooling” test scores.<sup>15</sup> The pre-8th-grade score measures academic ability before dropout decisions are made. The post-schooling score measures the academic ability of individuals as they enter the labor market.

The comparisons in Figure 7 show that, before high school, individuals who eventually sort into GED certification have higher cognitive ability than dropouts, and are very similar to terminal high school graduates. Figure 8 compares the levels of cognitive ability that are observed (or predicted) as individuals exit high school. By this stage in the life cycle, individual academic achievement separates further due to different levels of educational attainment and different returns to common levels of attainment. Again, terminal GEDs are observed to be between dropouts and high school graduates, but are more similar to terminal high school graduates. This separation validates the signaling function of the GED but also highlights the need to control for academic ability earned through school attendance that should not be credited to receipt of a GED.

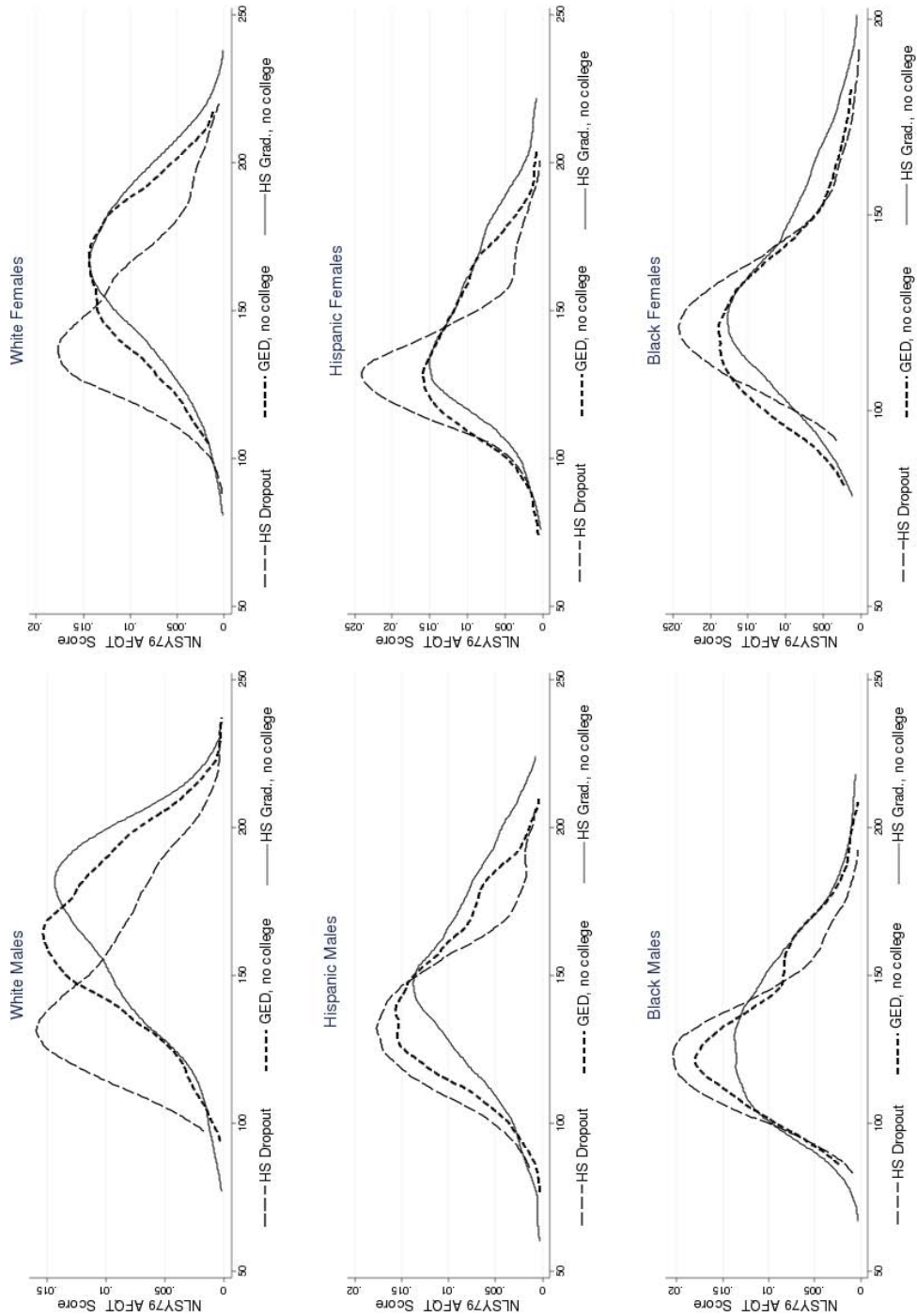
**Accounting for Cognitive Ability:** Cameron and Heckman [1993] find that the GED provides on average no benefit to male test takers after controlling for either years of completed schooling or AFQT scores. While their study follows the NLSY79 sample through age 28, subsequent analysis replicates this finding through later ages. Heckman and LaFontaine [2006] use later waves of the NLSY79 and find that the GED has no benefit on average log

<sup>13</sup>The Armed Forces Qualifying Test is an achievement test measuring numerical operations, arithmetic reasoning, paragraph completion, and word knowledge. The AFQT was administered to individuals in the NLSY79 in 1979 when they were aged 14 to 22, and to individuals in the NLSY97 in 1999 when they were aged 14 to 18. The AFQT tests administered to each sample represented the same content, but differed in format and scoring procedure. See Section B.1.1 of the Web Appendix (<http://jenni.uchicago.edu/GEDHandbookChapter/>) for more details.

<sup>14</sup>Borghans, Golsteyn, Heckman, and Humphries [2010] show that the AFQT is predicted by both cognitive and noncognitive traits.

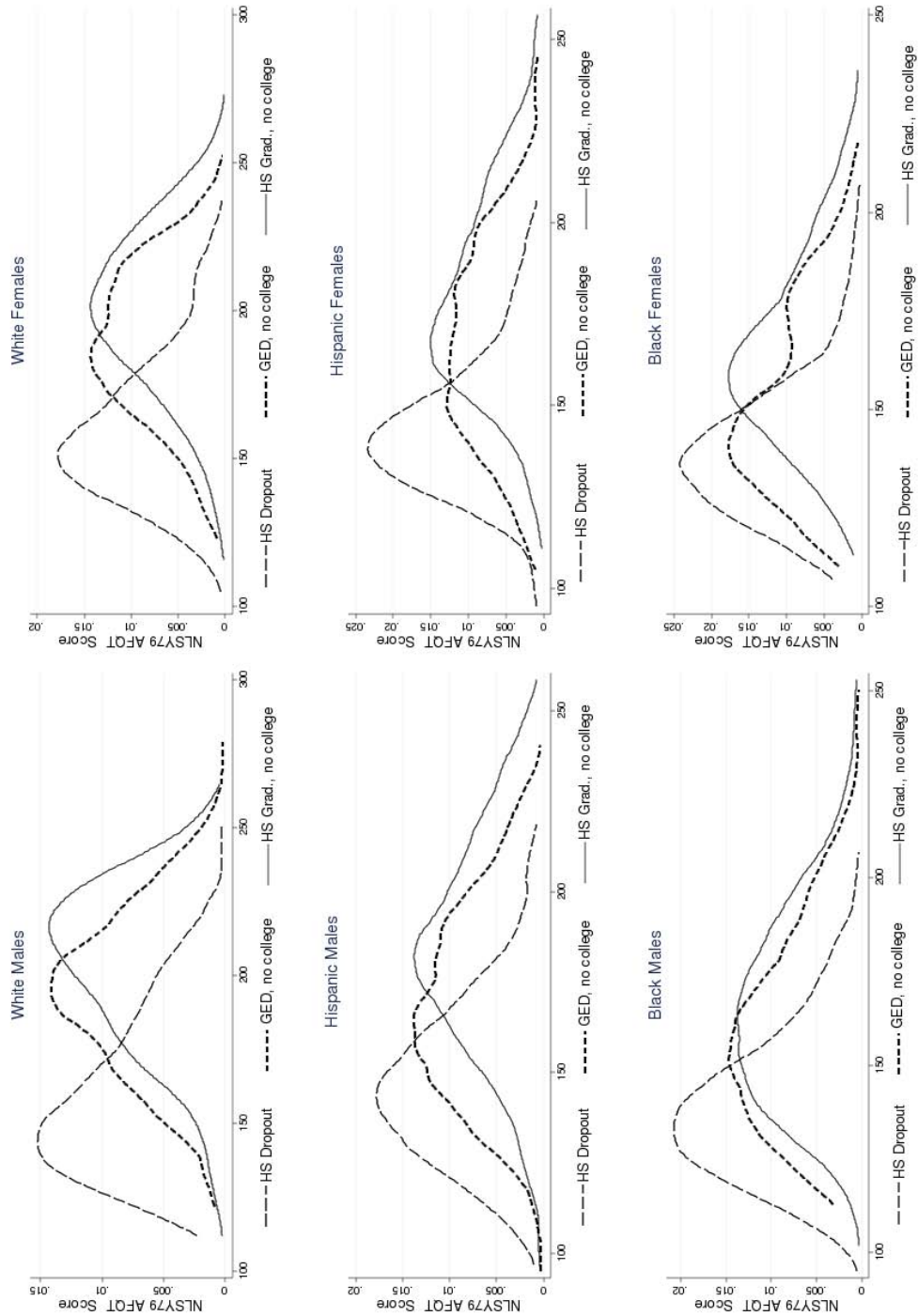
<sup>15</sup>This estimation procedure assumes that, conditional on final years of schooling, the year of schooling at the time of test is mean independent of latent ability. It removes the mean *causal* effect of extra schooling beyond baseline levels and assures that the distributions around the means are the same at each schooling level. The pre-8th grade schooling adjustment takes an individual's test score and subtracts the *difference* between their expected test score conditional on final years of schooling, and the expected test score of 7th graders conditional on the same final years of schooling. Consider an individual with test score  $T(S_t = s_t, S_F = s_F)$ , where the individual is administered the test at schooling level  $s_t$  and has a final level of schooling  $s_F$ . We can then estimate his prior-to-schooling test score as  $T(S_t = s_0, S_F = s_F) = T(S_t = s_t, S_F = s_F) - [\mathbb{E}(T | S_t = s_t, S_F = s_F) - \mathbb{E}(T | S_t = s_0, S_F = s_F)]$ . Our post-schooling adjustment is calculated as,  $T(S_t = s_F, S_F = s_F) = T(S_t = s_t, S_F = s_F) - [\mathbb{E}(T | S_t = s_F, S_F = s_F) - \mathbb{E}(T | S_t = s_t, S_F = s_F)]$ . This is the difference between the expected test score of an individual who takes the test upon completing  $s_F$  years of school and the expected test score of an individual who takes the test in grade  $s_t$  but goes on to complete  $s_F$  years of schooling. See Section D of the Web Appendix for a detailed explanation of this procedure. See Hansen et al. [2004] for a more general test score adjustment.

Figure 7: Estimates of Pre-8th Grade AFQT Distributions by Final Education Level



Source: National Longitudinal Survey of Youth 1979 (NLSY79). Notes: Distributions are for individuals with no completed college by 2006. The adjustment method is discussed in detail in Section D of the Web Appendix (<http://jenni.uchicago.edu/GEDHandbookChapter/>).

Figure 8: AFQT Score Distributions After Completed Schooling



Source: National Longitudinal Survey of Youth 1979 (NLSY79). Notes: Distributions are for individuals with no completed college by 2006. The adjustment method is discussed in detail in Section D of the Web Appendix (<http://jenni.uchicago.edu/GEDHandbookChapter/>).

hourly wages after controlling for AFQT. They find high school graduation is still associated with a positive wage premium. Once Heckman and LaFontaine correct for selection and control for AFQT scores, male GEDs earn on average 1% less per hour than dropouts while terminal high school graduates make 3.6% more per hour on average than dropouts. Similarly they find that female GEDs earn 1.7% more per hour than dropouts while high school graduates with no college earn 10.6% more per hour. They also show that the GED has little or no benefit after controlling for reported test scores using the National Adult Literacy Survey (NALS) data.

Figure 9 shows that, relative to the differences shown in Figure 6, the economic benefits associated with the GED are reduced and become statistically insignificant once estimated 7th grade AFQT scores are controlled for. When including estimated post-high school AFQT scores, the benefit of the GED is further reduced for all three economic outcomes. For terminal high school graduates, however, economic benefits persist after controlling for pre-8th grade or post-schooling AFQT scores. This suggests a causal effect of high school graduation. That high school still has value after controlling for post-schooling AFQT suggests high school graduates possess a valued trait not captured by an achievement test. Section 3.1.3 extends consideration of skill heterogeneity to encompass both cognitive and noncognitive ability. The next section follows the development of the literature in trying to identify specific populations that benefit from the GED.

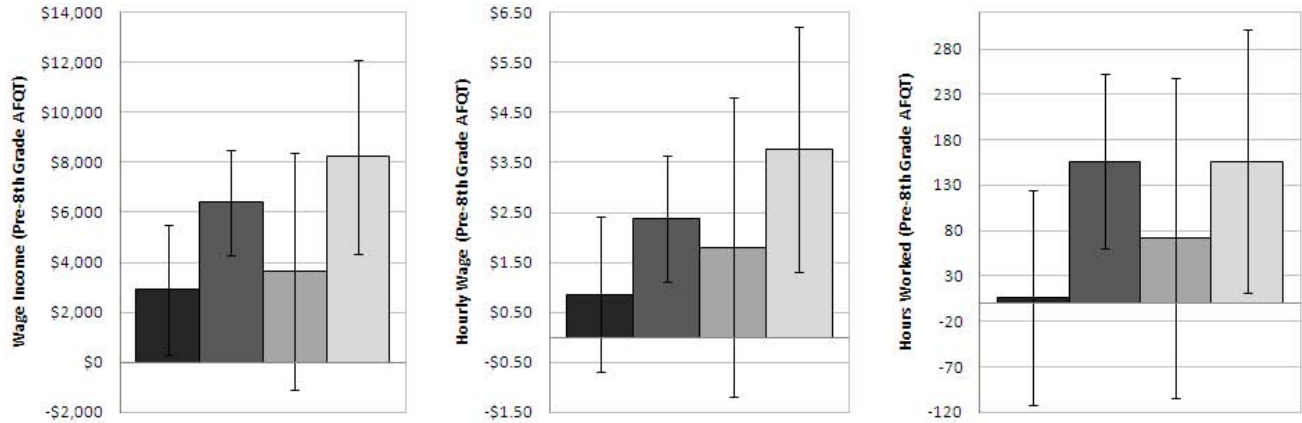
### 3.1.2 Heterogeneous Labor Market Returns

Recent work on the GED has sought to identify groups of test takers for which individual traits or circumstances contribute to a stronger signal or increased human capital development. This section focuses on several different potential margins of benefit, discusses hypotheses and reviews the related literature.

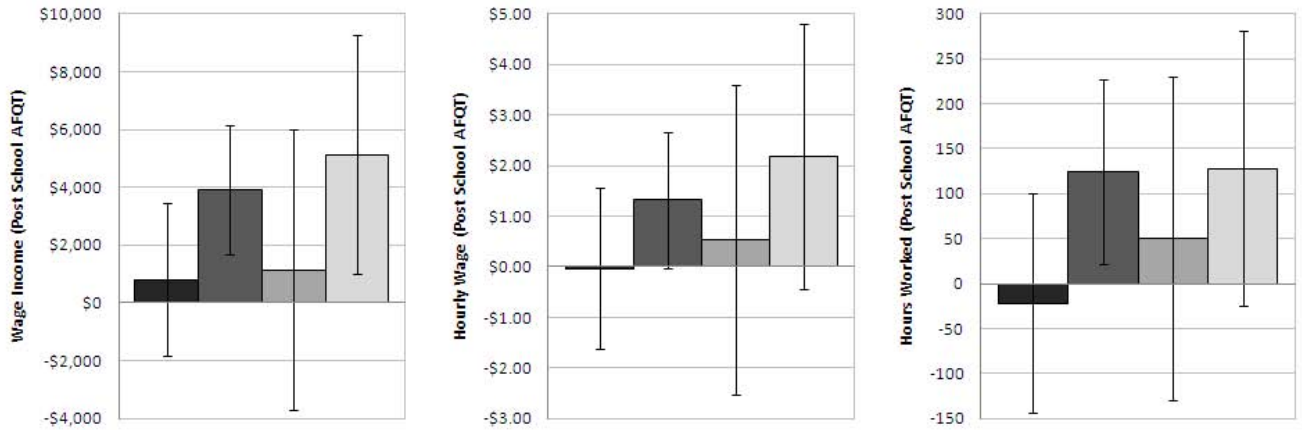
**Wage Growth for GEDs with Experience:** It is argued that, similar to the pattern of returns to college, the benefits to a GED would increase with time in the labor market. Clark and Jaeger [2006] show evidence from the CPS that is apparently consistent with the hypothesis that the wage premium to GED certification for males is increasing with age. Given the cross-sectional nature of the CPS data, this finding may be attributed to either experience effects or cohort effects. Using white males and females in the NLSY79 sample, Heckman and LaFontaine [2006] show that this higher premium to older cohorts is explained by their greater ability. When not controlling for ability, the NLSY79 sample shows a wage premium to GED receipt that is comparable to the sample of individuals in the CPS data from the same birth cohorts. Once one controls for AFQT scores for the NLSY79 sample, GED

Figure 9: Economic Gaps Relative to Dropouts Adjusted For Pre-8th Grade AFQT Scores (A) and Post-Schooling AFQT Scores (B)

(A)



(B)



■ GEDs Age 25 ■ High School Graduates Age 25 ■ GEDs Age 35 ■ High School Graduates Age 35

Source: National Longitudinal Survey of Youth 1979 (NLSY79). Notes: Regressions control for an urban residence at age 14 Southern residence at age 14 dummy, year of birth dummies, and race and sex dummies. The regressions use the cross-sectional subsample of NLSY79, restricted to individuals who never attend college and who have not yet been incarcerated. Regressions for hourly wage and hours worked are restricted to those reporting more than one dollar an hour and less than 500 dollars an hour and individuals working less than 4,000 hours. Wage income regressions are restricted to individuals reporting wage incomes between \$1,000 and \$250,000. All regressions use Eicker-White robust standard errors.

certification is associated with statistically insignificant benefits for all ages.

Using longitudinal data on earnings in the NLSY79, Murnane et al. [1995] argue that the value of the GED increases with experience as recipients use the degree's signal for promotion, better job placement in the future, and on-the-job training. Consistent with Cameron and Heckman [1993], they find no treatment effect of the GED on mean wage levels at age 28, but they report a statistically significant 2.4% wage increase for every year of experience after receiving a GED. Murnane, Willett, and Boudett [1999] add controls for cognitive ability or individual fixed effects in different model specifications. They find that the complementarity of GED and years of experience is statistically significant only for individuals with low ability.

Murnane, Willett and Boudett pool person-year observations in their regressions. They infer increasing returns to the GED from variables interacting GED receipt with years of experience. In contrast to this approach, Heckman and LaFontaine [2006] estimate separate regressions for earnings at different ages, allowing separate estimates of returns to ability and experience by age. They find that there is no statistically significant effect to GED certification at any age for both white males and white females.

**Males vs. Females:** Males and females might derive different value from the GED through having different motivations for dropping out of school. Using data from the NLSY79 Market Experience survey, Rumberger [1983] displays differences in self-reported reasons for dropping out for males and females.<sup>16</sup> Males were 65% more likely than females to report school related issues, indicating dislike of school, being expelled, and poor performance as their primary reason for leaving school. Among other explanations, males were more likely to leave school due to economic reasons while a third of all women left due to pregnancy or marriage. If these different motivations for leaving have different correlations with later-life motivations to work and seek higher education, there could be differential value of the GED for men and women.

Cao, Stromsdorfer, and Weeks [1996] test for the GED's direct effect on economic outcomes for women using data from the NLSY79 and from Washington State. Given their focus on women who may have custody of children and be eligible for public transfer programs, they attempt to eliminate selection bias related to both the decision to participate in the labor force and to not enroll in welfare. They find no statistically significant differences between the labor supplies of women of different education levels. The positive association of GED certification with hourly wage is eliminated by controlling for the number of years of schooling completed.

---

<sup>16</sup>This table is reproduced in Section C.2 of the Web Appendix (<http://jenni.uchicago.edu/GEDHandbookChapter/>).



Table 4: Literature Summary - Labor Market Effects - Males vs. Females

Study	Data	Population	Method/Identification	GED Effect	Findings
Cameron and Heckman (1993)	NLSY79 (1979-1987)	White Males	Control for Cog, Bivar. Select'n Correction	1/0 GED <sup>1</sup>	Income: No Effect Wage: No Effect
Murnane, Willett and Boudett (1995)	NLSY79 (1979-1991)	Males	1/0 if ever got GED	(1/0 GED) x Exp	Income: No Effect Wage: (+,**)
Cao, Stromsdorfer and Weeks (1996)	NLSY79 (1979-1991), Washington State Family Income Study	Females	Bivar. Select'n Correction	1/0 GED	Hours Worked: No Effect Wage: No Effect
Heckman and LaFontaine (2006)	NLSY79 (1979-2001)	Males and Females	Control for Cog, Bivar. Select'n Correction	1/0 GED	Wage: No Effect

Notes: [1] "1/0" refers to a binary indicator of the associated variable. For example, under GED Mechanism "1/0 GED" refers to 1 = receives GED, 0 = does not, indicating a simple binary treatment effect.

The study samples are statistically representative of the US unless otherwise indicated in the "Population" field. The "Findings" field codes no statistically significant effect as "No Effect", and otherwise shows (<indicator of a positive or negative findings>, <level of significance>) where \* =  $p < .10$ , \*\* =  $p < .05$ , and \*\*\* =  $p < .01$ .

See the Web Appendix for tables with more detail on each paper's outcomes examined, lists of regressors, and point estimates for each regression specification.

Table 4 shows a comparison of qualitative findings for males and females from selected papers in the literature and information on which data sets and cohorts are studied. Both Murnane et al. [2000] and Tyler et al. [2003] use the High School and Beyond (HSB) data set and respectively find positive effects of GED certification on the earnings of low-ability males and on the hours worked by low-ability females.<sup>17</sup> Because neither study can identify the sources of selection of each gender into drop out status—or selection into educational status and work in general—it is difficult to interpret these findings.

Using evidence from the NLSY79, CPS, and National Adult Literacy Survey, Heckman and LaFontaine [2006] establish that both male and female GEDs have higher wages than dropouts and that, for both genders, the explanation is sorting by ability and not a causal effect of the GED. They consistently find a small but statistically significant benefit for females of 1-2% on hourly wage which is not present or slightly negative for males. This finding is consistent with the hypothesis that females are more likely to drop out of high school for reasons unrelated to intrinsic labor market motivation such as pregnancy. Similarly, they find much larger benefits from high school graduation for females than for males.

**Native vs. Foreign Born:** While much has been written about the education and labor market performance of immigrants,<sup>18</sup> little attention has been paid to the value they receive from earning a GED. Clark and Jaeger [2006] argue that the GED might provide a signal of ability that is more familiar to employers than educational credentials earned outside the country, or may signal language ability and cultural assimilation. Clark and Jaeger use earnings data in the CPS and find that only foreign-born GEDs with no domestic credentials have a statistically significantly higher wage than native-born dropouts.

<sup>17</sup>See Section B.5 of the Web Appendix (<http://jenni.uchicago.edu/GEDHandbookChapter/>) for more details on the High School and Beyond data set.

<sup>18</sup>See the edited volume Borjas [2000] and Betts and Lofstrom [2000] in particular.

Table 5: Literature Summary - Labor Market Effects - Native vs. Foreign Born

Study	Data	Population	Method/Identification	GED Effect	Findings
Clark and Jaeger (2006)	CPS	Foreign Born, Males and Females	OLS	(1/0 GED <sup>1</sup> ) x (Foreign Born)	Wage: (+, ***)
Heckman and LaFontaine (2006)	CPS, excluding wage imputation	Males and Females	Individual Fixed Effects	1/0 GED	Wage: No Effect
	NALS (1992)	Foreign Born, Males and Females	Control for Cog, Bivar. Select'n Correction	(1/0 GED) x (Foreign Born)	Wage: No Effect

Notes: [1] "1/0" refers to a binary indicator of the associated variable. For example, under GED Mechanism "1/0 GED" refers to 1 = receives GED, 0 = does not, indicating a simple binary treatment effect.

The study samples are statistically representative of the US unless otherwise indicated in the "Population" field. The "Findings" field codes no statistically significant effect as "No Effect", and otherwise shows (<indicator of a positive or negative findings>, <level of significance>) where \* =  $p < .10$ , \*\* =  $p < .05$ , and \*\*\* =  $p < .01$ .

See the Web Appendix for tables with more detail on each paper's outcomes examined, lists of regressors, and point estimates for each regression specification.

Heckman and LaFontaine [2006] examine the Clark and Jaeger [2006] analysis and find that their results are produced by data artifacts and limitations. One source of bias in the Clark and Jaeger [2006] analysis is that the CPS imputes values of missing wages for GEDs by sampling earnings of high school graduates, a process that contaminates comparisons of the outcome differences between those two groups and dropouts. A second source of bias is the reliance on cross-sectional variation of wages. By making longitudinal comparisons with the CPS data, Heckman and LaFontaine [2006] find that receipt of a GED has no effect on earnings and explain Clark and Jaeger's findings as due to sorting along characteristics unmeasured in the CPS. Heckman and LaFontaine also analyze the NALS which also identifies the foreign born. They demonstrate no earnings premium to GED receipt for any group once selection and cognitive ability are controlled for.

**Signaling:** Tyler et al. [2000] use a difference-in-differences approach to examine the returns to the GED for individuals at the cusp of passing the test. Using variation in test score thresholds across states, they contend that focusing on individuals who would pass the GED under one regime but not under the other will identify the signaling effect of the GED. Using data from the GED Testing Service and Social Security Administration, they separate individuals into groups by performance on the GED exam and state of residence. Variation in the passing standards enforced by different states arguably creates a natural experiment where individuals with the same score do or do not pass the GED based on their state of residence.

Table 6: Treatment Classifications of Individuals in Tyler et al. [2000]

	Low GED Score ("LS")	High GED Score ("HS")
State of Residence has Low Passing Standard ("LP")	$Y_{LS,LP}$ (GED)	$Y_{HS,LP}$ (GED)
State of Residence has High Passing Standard ("HP")	$Y_{LS,HP}$ (no GED)	$Y_{HS,HP}$ (GED)

Their difference-in-differences estimator (DID) is:

$$DID = (\bar{Y}_{LS,LP} - \bar{Y}_{LS,HP}) - (\bar{Y}_{HS,LP} - \bar{Y}_{HS,HP}), \quad (1)$$

where these terms are defined in Table 6 and “-” denotes means. In the notation of that table,  $\bar{Y}_{A,B}$  represents the mean wage of individuals with score  $A$  in a state with passing standard  $B$ , where  $A$  is either low score ( $LS$ ) or high score ( $HS$ ), and  $B$  is either low passing standard ( $LP$ ) or high passing standard ( $HP$ ). Because their analysis includes only individuals measured in the neighborhood of GED passing standards, none of the individuals studied are high scoring in an absolute sense.

The first term in equation (1) takes the difference in average earnings between individuals who have the same ability but different credential status. The second term is used to adjust for the possibility that wages in the two states in the first difference are unequal. The second difference is an estimate of the baseline wage difference across those states for individuals with the same credential at the same low ability margin (in absolute terms).<sup>19</sup>

Tyler et al. find a 10-19% earnings benefit to GED certification at the margin for whites.<sup>20</sup> They argue that these estimates are consistent with earlier findings, e.g. Cameron and Heckman [1993], for the average test taker. They claim that for the particular margin they investigate—that of low-skilled takers—there are high signaling benefits to certification that are absent for the general population of test takers.

To defend the assumption of exogeneity of state passing standards with respect to individual earnings, they perform robustness checks considering selective mobility, differential access to post-secondary training, differences in state labor markets, selective taking of the GED, and selective effort in studying across states. Rubinstein [2003] discusses their paper, claiming that the endogeneity of studying effort would lead to upwardly-biased estimates. His model predicts that, at the margin, low-ability individuals will exert more effort than high-ability individuals when passing thresholds are higher. If these efforts have little or no effect on long-term productivity,<sup>21</sup> both  $\bar{Y}_{LS,HP}$  and  $\bar{Y}_{HS,HP}$  will include individuals whose true productivity is overstated, but abilities in  $\bar{Y}_{LS,HP}$  will be overstated to a greater degree relative to  $\bar{Y}_{LS,LP}$  than for  $\bar{Y}_{HS,HP}$  relative to  $\bar{Y}_{HS,LP}$ . Greater downward bias in  $\bar{Y}_{LS,HP}$  than in  $\bar{Y}_{HS,HP}$  leads to upward bias in the DID estimate. He presents no direct empirical evidence on this bias. It is also possible

<sup>19</sup>Tyler et al. [2000] implement this estimation in a linear regression to pool all states together and control for mean gender differences in earnings. See their paper for details.

<sup>20</sup>They suggest that their lack of significant finding for non-whites may be due to an institutional effect where both disproportionate representation of minorities in prison and the growth of GED programs for the incarcerated lead to negative associations with the test, thus decreasing its signaling value. See Section 4 below for evidence of these demographic trends in prison-based GED receipt. The separate estimation of the GED effect is rare in the literature, which typically includes regression controls for race but does not treat it as a mediating variable. See Section E.1 of the Web Appendix (<http://jenni.uchicago.edu/GEDHandbookChapter/>) for a full account of study samples, treatment of race, and mediating influences of GED receipt.

<sup>21</sup>Rubinstein assumes that these studying efforts represent “cramming”, and do not represent durable investments in human capital.

that the higher passing standard discourages low ability persons from taking the test so that his conclusion is reversed.

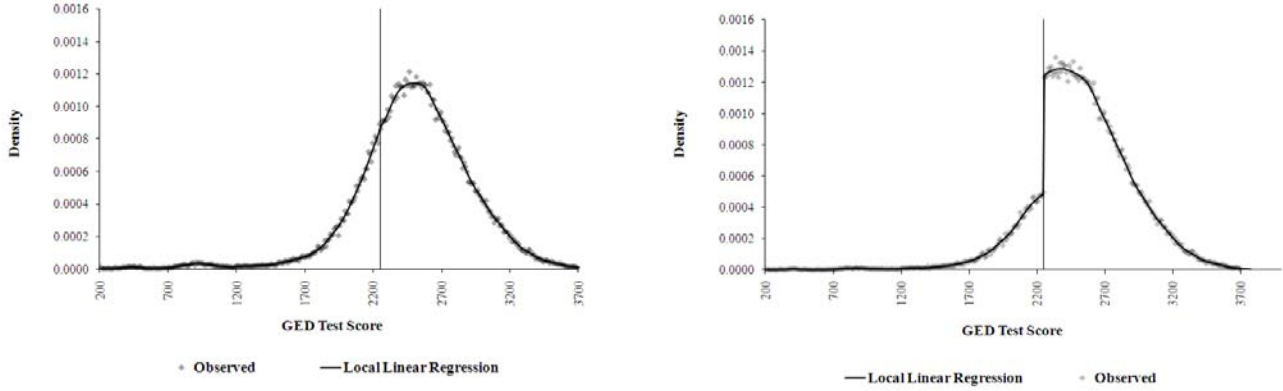
Jepsen et al. [2010] show evidence of endogeneity of test taking effort in a single state with one passing standard. GED policy in Missouri permits individuals to pass the GED if their maximum scores on individual tests across retakes of the GED exam meet the passing standard.<sup>22</sup> Figure 10 shows the distribution of scores from the first administration of the test in its first panel, and the distribution of maximum scores across all administrations of the GED exam that each individual opted to take in its second panel, where a clear discontinuity arises at the passing standard of 2,250. This behavior introduces several possible sources of bias in the comparisons between GED certifiers and dropouts. Selective retaking will lead to low ability individuals being improperly counted in higher score groups. If changes in scores across retakes are due to unproductive cramming (as conjectured by Rubinstein, 2003) coupled with luck, this misclassification will lead to over-representation of low ability persons among GEDs producing a downward bias in comparisons of successful GED test takers with those who fail. On the other hand, if the choice to retake the test is associated with a trait of persistence that is productive in the workplace, these persons who become GEDs have high noncognitive skills that will moderate the downward bias due to their low ability. Jepsen et al. [2010] use Missouri administrative data on first test scores and final GED outcomes to implement a Fuzzy Regression Discontinuity (FRD) estimation of the effects of the GED.<sup>23</sup> They find no effects of GED receipt on earnings or employment for individuals at the margin of passing on their first attempt, but find a statistically significant increase in post-secondary schooling attendance of 10%. Their procedure appears to eliminate both the downward bias and the positive causal effect due to noncognitive skills.

---

<sup>22</sup>Thus top scores on the various subtests across retakes of the test are aggregated.

<sup>23</sup>See Imbens and Lemieux [2008] for discussion of the FRD method.

Figure 10: Distribution of First Test Scores and Final Test Scores After Retakes Missouri



Source: Reproduced from Jepsen et al. [2010] using Missouri administrative records from 1995-2006. Notes: The first figure is the distribution of individual GED scores on the first test. The second figure represents the distribution of GED test score outcomes reflecting the maximum scores across all attempts of the GED that each individual elected to take. Passing the GED in Missouri requires a minimum score requirement on each subtest and a total score of 2,250.

**Dropouts with Low Initial Endowments:** Tyler et al. [2000] focus on a low ability margin, and argue that low ability GEDs command higher wages relative to dropouts of comparable ability than high ability GEDs command relative to their non-GED counterparts. Murnane et al. [1999], Murnane et al. [2000], and Tyler et al. [2003] suggest a human capital explanation for large effects at a low ability margin where, in order to meet a uniform passing bar, GED recipients with the lowest academic ability when leaving school must have made the largest human capital investments in order to pass. That is, individuals with low initial ability may disproportionately comprise the sizable right tail in the distribution of preparation hours discussed in Section 2.1, and may thus generate a nontrivial amount of human capital. While no data sets combine information on GED preparation times, schooling at the time of dropping out, cognitive ability, and wages, the findings of these latter three papers are consistent with this hypothesis. As previously noted, the low ability GEDs who try repeatedly to pass and do so may have higher noncognitive traits than their low ability non-GED counterparts and this might explain their findings. The samples and qualitative findings of each paper are summarized in Table 7.

All of these papers find positive returns to the GED associated with low levels of academic ability. Murnane et al. [1999] control for individual heterogeneity using a long panel of earnings data from the NLSY79 sample to control for individual fixed effects. The wage returns are limited, with Murnane et al. [1999]’s analysis suggesting a statistically significant 6% hourly wage premium five years after GED certification. It would be instructive to compare the noncognitive skills of the low ability GEDs with those of dropouts who do not certify. To the best of

Table 7: Literature Summary - Labor Market Effects by Ability

Study	Data	Population	Method/Identification	GED Effect	Findings
Murnane, Willett and Boudett (1999)	NLSY79 (1979-1991)	Males, Includes Low-Income Sample	Individual Fixed Effects	Exp Post GED x (1/0 Low Cog) <sup>1</sup>	Income: No Effect Wage: (+, ***) if Low Cog
Murnane, Willett and Tyler (2000)	HSB (1980-1991)	Males	Control for Cog Quartile, OLS	(1/0 GED) x (1/0 Low Cog)	Income: (+, **)
Tyler, Murnane and Willett (2003)	HSB (1980-1991)	Females	Control for Highest Grade Completed, OLS and Logit	(1/0 GED) x (1/0 Low Cog)	Income: No Effect Pr(Hrs>0): (+, **) Years Exp.: (+, ***)
Heckman, Urzua and Veramendi (2010)	NLSY79 (1979-2006)	White Males	Dynamic Decision Framework, Latent Factor Analysis	(1/0 GED) x (Cog, NonCog)	Wage: (+) <sup>2</sup> if High Cog and NonCog

Notes: [1] "1/0" refers to a binary indicator of the associated variable. For example, under GED Mechanism "1/0 GED" refers to 1 = receives GED, 0 = does not, indicating a simple binary treatment effect.

[2] Heckman, Urzua and Veramendi (2010) is a working paper that uses simulations to identify heterogeneous treatment effects. The most recent draft has distributions of treatments but has not yet bootstrapped the relevant standard errors.

The study samples are statistically representative of the US unless otherwise indicated in the "Population" field. The "Findings" field codes no statistically significant effect as "No Effect", and otherwise shows (<indicator of a positive or negative findings>, <level of significance>) where \* =  $p < .10$ , \*\* =  $p < .05$ , and \*\*\* =  $p < .01$ .

See the Web Appendix for tables with more detail on each paper's outcomes examined, lists of regressors, and point estimates for each regression specification.

our knowledge, this has not been done.

Murnane et al. [2000] use the High School and Beyond (HSB) data to examine growth in scores on subject tests that are administered with the initial wave when participants are in 10th grade, and tests that are administered in the next wave that is sampled two years later. Net of controlling for completion of 10th and 11th grade and baseline test scores, GEDs make larger test score gains than do dropouts. They note that while this finding may be due to differential returns to education or other unobserved heterogeneity, this pattern is consistent with the hypothesis that studying for the GED examination did increase the math skills of dropouts.

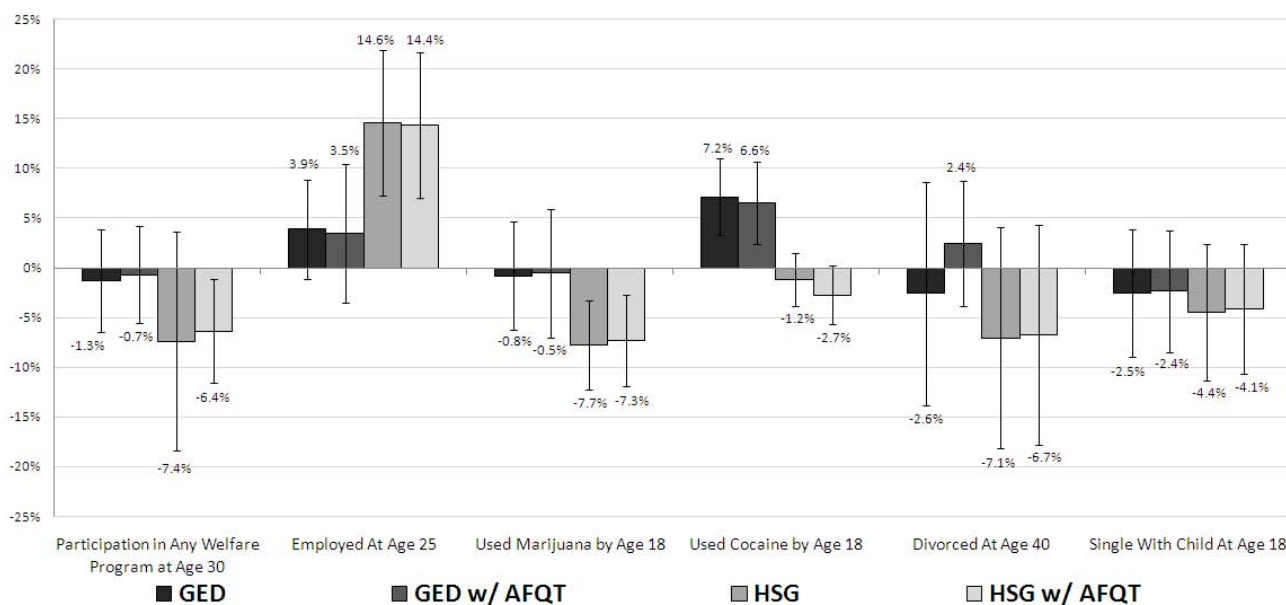
### 3.1.3 Cognitive and Noncognitive Ability

Just as cognitive ability is commonly a confounding factor in explaining the labor market returns to education, Heckman and Rubinstein [2001] demonstrate that dropping out is associated with negative social traits such as criminal behavior, divorce, risky social behaviors, and job turnover that are not controlled for in statistical studies. As a test of cognitive ability, the GED does not measure these negative social traits or induce sorting along the lines of positive traits. Heckman and Rubinstein introduce the idea that this association of the GED with negative social traits makes it a "mixed signal".

While Section 3.1.1 demonstrates that GEDs lie between dropouts and high school graduates in academic outcomes and home background, Figures 11 and 12 show that GEDs are similar to, or worse than dropouts in terms of social outcomes.<sup>24</sup> This suggests that underlying behavioral characteristics can explain in part why GED recipients do not receive the benefit that high school graduates do from their credentials.

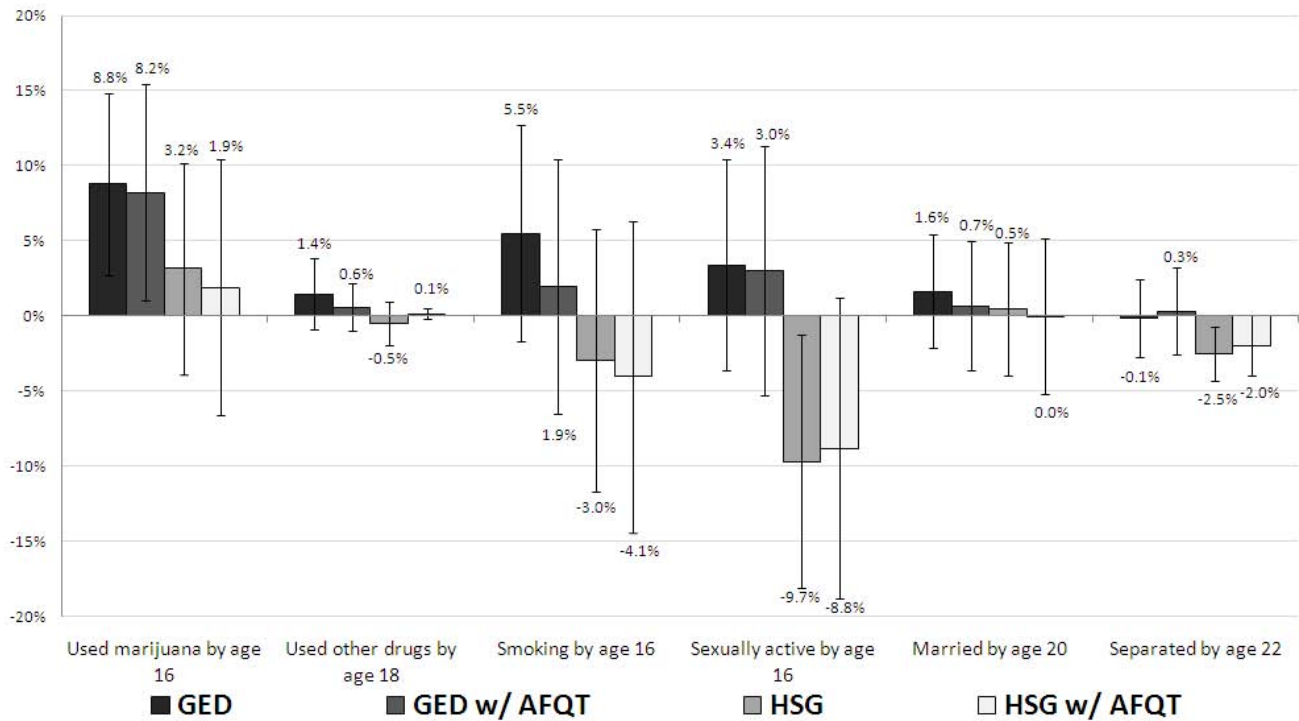
<sup>24</sup>These figures display different social outcomes due to the fact that the same measures are not surveyed in the NLSY79 and NLSY97.

Figure 11: Gaps in the Probability of Various Social Outcomes Compared to High School Dropouts with and without a control for scholastic ability (NLSY79)



Source: National Longitudinal Survey of Youth 1979 (NLSY79). Notes: This analysis is restricted to the cross-sectional sample of NLSY79 reporting no completed years of college, having never been incarcerated, and having valid AFQT scores. “Single With Child at Age 18” includes only females. All regressions control for race, gender, southern status at age 14, and urban status at age 14. Regressions with controls for ability use “pre-8th grade” estimates of AFQT scores. Marginal effects reported.

Figure 12: Gaps in the Probability of Various Social Outcomes Compared to High School Dropouts with and without a control for scholastic ability (NLSY97)



Source: National Longitudinal Survey of Youth 1997. Notes: This analysis is restricted to the cross-sectional sample of NLSY97 reporting no completed years of college at age 22, having valid AFQT scores. “Separated by 22” indicates that the individual is divorced or separated from one’s spouse by age 22. All regressions include highest grade completed at 22, urban and rural status at age 12, and race and gender dummies. Regressions with controls for ability use “pre-8th grade” estimates of AFQT scores. Marginal effects reported.



Table 8: Coefficients from Log Wage Regression on Cognitive and Noncognitive Factors

Schooling Level	Males		Females	
	Cognitive	Noncognitive	Cognitive	Noncognitive
High school dropout	.113 (.076)	.424 (.092)	.322 (.125)	.208 (.103)
GED	.175 (.107)	.357 (.117)	.020 (.137)	.242 (.153)
High school graduate	.259 (.041)	.360 (.059)	.341 (.049)	.564 (.056)
Some college, no degree	.069 (.086)	.401 (.110)	.093 (.084)	.569 (.116)
2-year-college degree	.039 (.138)	.368 (.209)	.206 (.096)	.279 (.145)
4-year-college degree	.296 (.075)	-.060 (.175)	.290 (.066)	.379 (.103)

NOTE.—Standard errors are in parentheses. Sample from NLSY79 males and females at age 30. We exclude the oversample of blacks, Hispanics, and poor whites, the military sample, and those currently enrolled in college. The cognitive measure represents the standardized average over the raw ASVAB scores (arithmetic reasoning, word knowledge, paragraph comprehension, math knowledge, and coding speed). The noncognitive measure is computed as a (standardized) average of the Rosenberg Self-Esteem Scale and Rotter Internal-External Locus of Control Scale. The model also includes a set of cohort dummies, local labor market conditions (unemployment rate), and the region of residence.

Source: Reproduced from Heckman, Stixrud, and Urzua [2006] Table 4.

Heckman, Stixrud, and Urzua [2006] test for the influence of cognitive and noncognitive skills on choices of schooling and the wage returns to schooling. They use the Rosenberg Self-Esteem Scale and Rotter Locus of Control<sup>25</sup>, both administered early in the NLSY79 panel to measure noncognitive skill.<sup>26</sup> Figures 13 and 14 show distributions of each characteristic by gender and race. There is a noticeable ordering in Rosenberg and Rotter measures among levels of education.

Table 8, reproduced from Heckman, Stixrud, and Urzua [2006], shows that both cognitive and noncognitive<sup>27</sup> skills are valued in the labor market for individuals of all educational levels. The table reports the coefficients for the cognitive and noncognitive factors (which are standardized to mean zero, standard deviation 1) on log hourly wages by educational attainment. While the value of cognitive and noncognitive ability varies by education status and sex, noncognitive skills are of equal or greater importance at many educational levels.

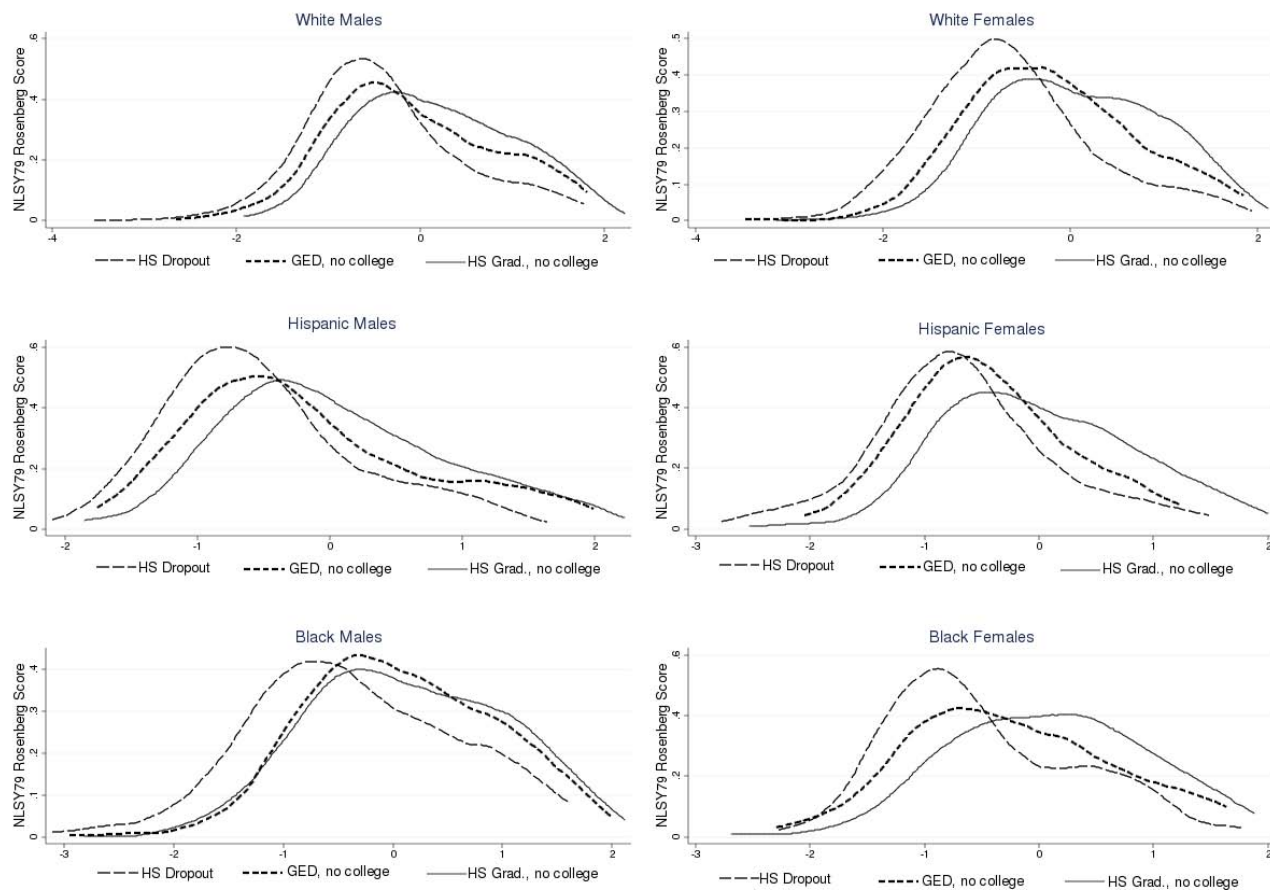
Heckman, Stixrud, and Urzua [2006] and Heckman, Urzua, and Veramendi [2010] study the effect of education and noncognitive skills on earnings and other outcomes. Both papers use factor models to generate estimates of cognitive and noncognitive ability from multiple measures of those traits, and both choices of education levels and

<sup>25</sup>The Rosenberg Self-Esteem Scale is a series of 10 yes or no questions to evaluate the self-esteem. The Rotter Locus of Control is a set of four paired statements used to measure self-efficacy. The taker must indicate which she believes to be more true, then indicates if they believe this to be “somewhat true” or “very true”.

<sup>26</sup>See Section B of the Web Appendix (<http://jenni.uchicago.edu/GEDHandbookChapter/>) for detailed descriptions of each measure.

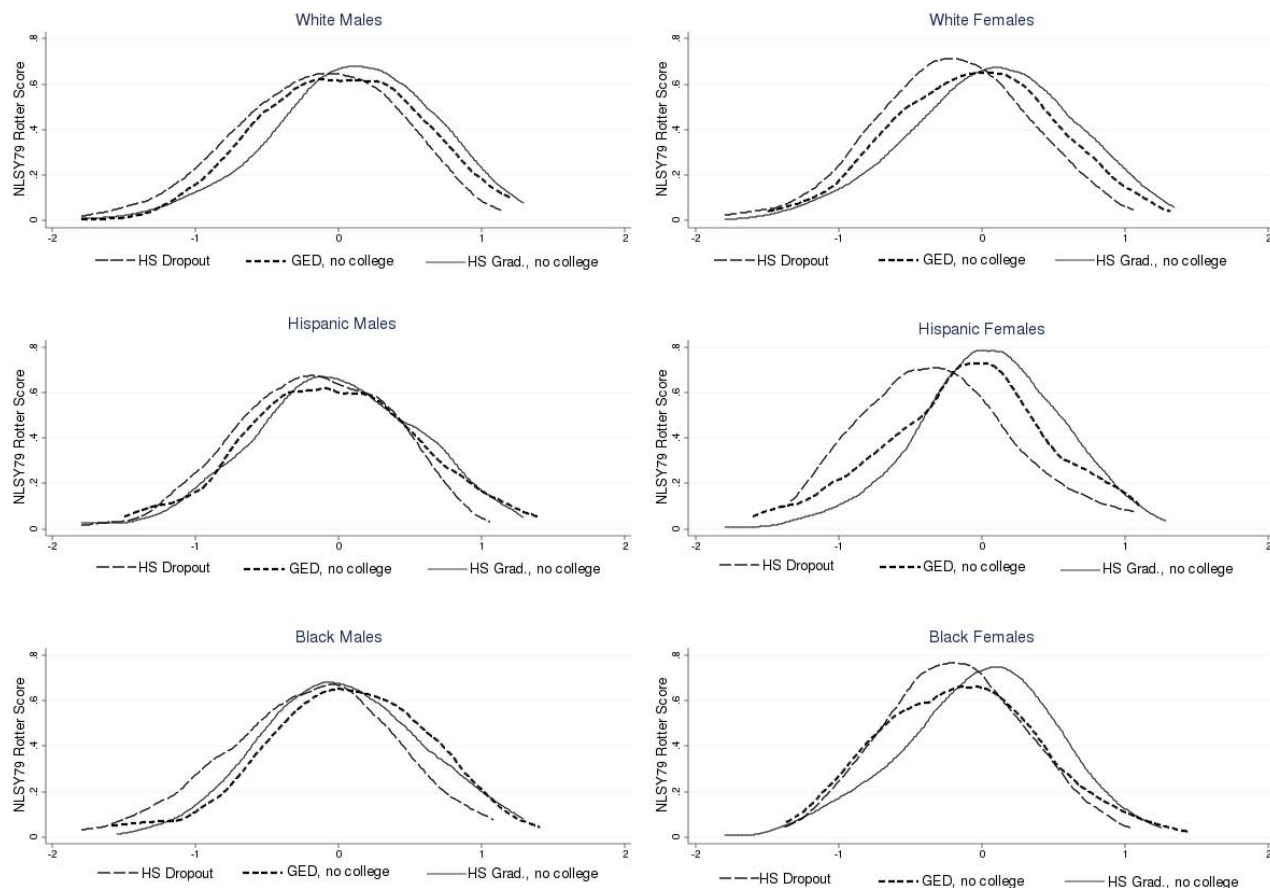
<sup>27</sup>Cognitive skill is measured by the Armed Services Vocational Aptitude Battery (ASVAB) which is used to construct the AFQT. Noncognitive skill is measured by the Rosenberg and Rotter scales.

Figure 13: Estimates of Post-Schooling Rosenberg Scores Distributions by Final Education Level



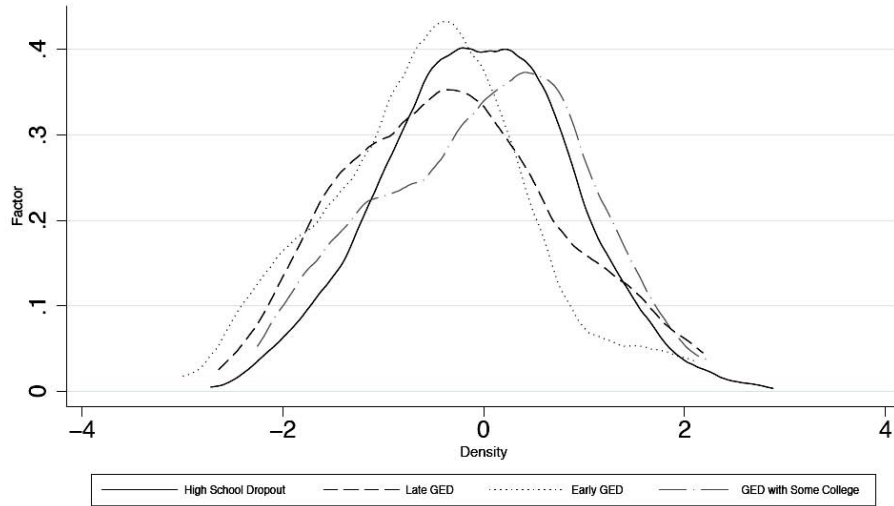
Source: National Longitudinal Survey of Youth 1979. Notes: Distributions are for individuals with no completed college in 2006. Notes: The Rosenberg Self-Esteem Scale is a series of 10 questions to measure self-esteem. Post-School Rosenberg scores are those estimated for individuals at the time that they leave school, or equal their observed Rosenberg score if they were surveyed after they had completed school. The adjustment method is discussed in detail in Section D of the Web Appendix (<http://jenni.uchicago.edu/GEDHandbookChapter/>).

Figure 14: Estimates of Post-Schooling Rotter Scores Distributions by Final Education Level



Source: National Longitudinal Survey of Youth 1979. Notes: Distributions are for individuals with no completed college in 2006. The Rotter locus of control is a series of two part questions used to measure self-efficacy. Post-School Rotter scores are those estimated for individuals at the time that they leave school, or equal their observed Rotter score if they were surveyed after they had completed school. The adjustment method is discussed in detail in Section D of the Web Appendix (<http://jenni.uchicago.edu/GEDHandbookChapter/>).

Figure 15: Distribution of Noncognitive Factor For GEDs and Dropouts

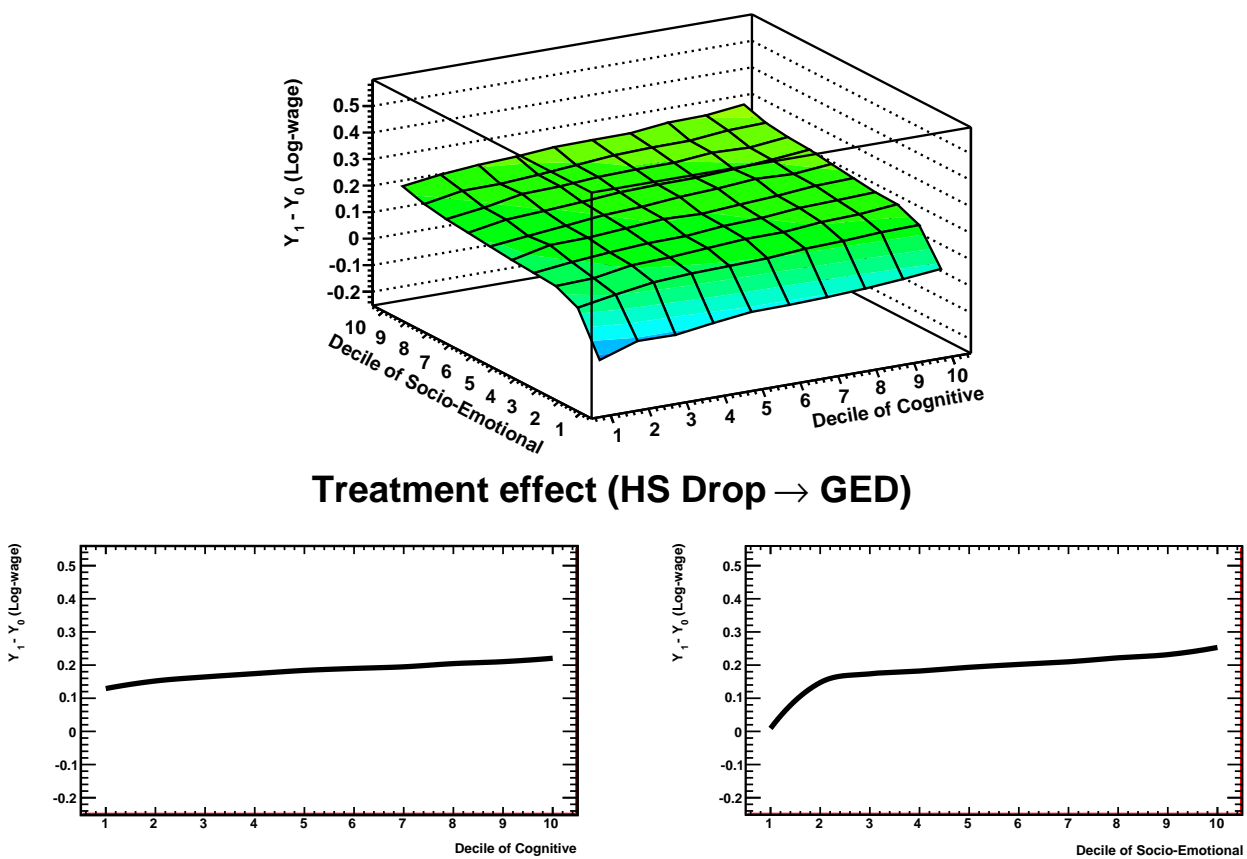


Source: Reproduced from Heckman and Urzua [2010].

earnings outcomes as functions of those skills. Both papers use a generalized Roy model to control for selection into schooling and to estimate labor market returns to educational attainment that vary by levels of cognitive and noncognitive skill. While both papers measure cognitive ability from AFQT scores, Heckman et al. [2006] measure noncognitive factors using Rosenberg and Rotter scales in conjunction with educational choices. Heckman et al. [2010] construct noncognitive factors from measures of teenage behavior, specifically participation in minor and major illegal activity, smoking, drinking, drug use, involvement in after-school clubs, and sexual intercourse by the age of 15.

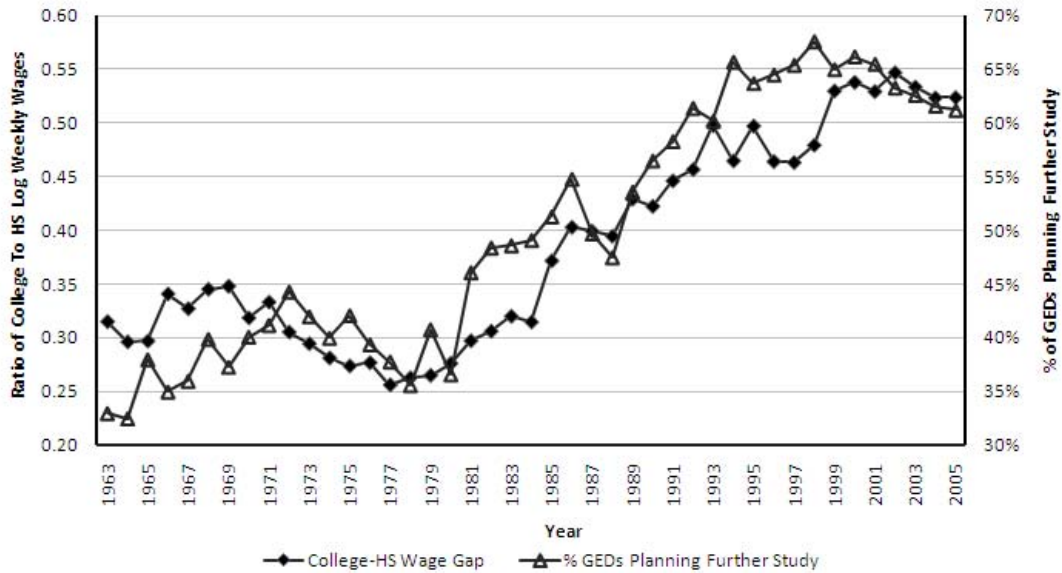
Figure 15 shows the estimated distributions of noncognitive ability for dropouts and different types of GED recipients from Heckman and Urzua [2010]. Consistent with differences displayed in Figures 11 and 12, it shows that all GEDs, except those with some college, are *below* uncredentialed dropouts in noncognitive ability. Figure 16, reproduced from Heckman et al. [2010], shows how the effect of GED certification on wages varies by levels of individual skill type. It shows that the marginal benefit of increasing noncognitive ability for GEDs, especially in the bottom two deciles, is greater than the marginal benefit of increasing cognitive ability. This analysis confirms the findings of Heckman et al. [2006] that there are positive returns to both noncognitive and cognitive ability in low skill labor markets. The gradient of the GED's treatment effect is steeper with respect to noncognitive ability than to cognitive ability.

Figure 16: Log Wage Effects of GED Receipt as a Function of Cognitive and Noncognitive Skills



Source: Reproduced from Heckman et al. [2010].

Figure 17: Returns to College and GED Test Takers Seeking Further Education



Source: GED Testing Service [Various Years] and Consumer Population Survey Data.

A key observation is that GEDs are typically far down in the distribution of noncognitive ability, meaning that development or certification of those skills is likely to be an important margin for promoting economic opportunity through the test. As discussed in the next section, noncognitive ability is also a key characteristic for predicting which individuals will successfully use the GED to obtain post-secondary training.

### 3.2 Educational Attainment

**Patterns of Post-Secondary Enrollment and Persistence:** As noted above, the GED is widely accepted as a prerequisite for admission to post-secondary education. Thus it serves as an intermediate step to obtaining more valuable credentials. In 2008, 60% of GED test takers self-reported further education as a reason for taking the test. Of this 60%, 20% planned on enrolling in four year college, 28% in two year college, and 22% in a technical or trade program [GED Testing Service, Various Years]. Figure 17 presents time trends in the motivation to use the GED for post-secondary education, showing an awareness of the increasing returns to college. As the college-high school wage gap has grown, so has the percentage of GED recipients planning further education.

The limitation of this path to economic improvement is that few GEDs follow through with these plans. A recent study by the GED Testing Service [Patterson et al., 2009] followed 1,000 randomly selected individuals who passed

Table 9: Literature Summary - Educational Attainment Outcomes

Study	Data	Population	Method/Identification	GED Effect	Findings
Cameron and Heckman (1993)	NLSY79 (1979-1987)	White Males	Bivar. Select'n Correction	1/0 GED <sup>1</sup>	Pr(College): No Effect Pr(Training): (+,***) if F
Murnane, Willett and Boudett (1997)	NLSY79 (1979-1991)	Males and Females	Probit	1/0 GED, (1/0 GED) x Post-Exp	Pr(Training): No Effect if M Pr(College): (+,***) for F & M
Heckman and Urzua (2010)	NLSY79 (1979-2006)	White Males	Dynamic Decision Framework, Latent Factor Analysis	(1/0 GED) x (Cog, NonCog)	Ed. Option Value: increasing in Cog & NonCog

Notes: [1] "1/0" refers to a binary indicator of the associated variable. For example, under GED Mechanism "1/0 GED" refers to 1 = receives GED, 0 = does not, indicating a simple binary treatment effect.

The study samples are statistically representative of the US unless otherwise indicated in the "Population" field. The "Findings" field codes no statistically significant effect as "No Effect", and otherwise shows (<indicator of a positive or negative findings>, <level of significance>) where \* =  $p < .10$ , \*\* =  $p < .05$ , and \*\*\* =  $p < .01$ .

See the Web Appendix for tables with more detail on each paper's outcomes examined, lists of regressors, and point estimates for each regression specification.

the GED test after the increase in test difficulty in 2002. It found that 31% ever enrolled in a post-secondary institution of any kind, and that 77% of those who ever enrolled did so for only a single semester.

Figure 18 shows rates of enrollment and completion of various types of post-secondary education, comparing GEDs with high school graduates among the NLSY79 with NLSY97 cohorts at age 22.<sup>28,29</sup> As documented in the Patterson et al. [2009] report, many GEDs enrolled in college by age 22 but very few went on to ever earn degrees or complete a meaningful amount of post-secondary education. In contrast to the trend of self-reported plans in Figure 17, fewer GED recipients had enrolled by age 22 in NLSY97 than in NLSY79.<sup>30</sup> Figure 19 demonstrates that by 2006, when the NLSY79 sample is in their 40s, very few GEDs managed to earn four year credentials although more earn associates degrees. As we discuss below, this trend may also be due to changes in the composition of GED test takers which is increasingly younger and more likely to attempt the GED through institutional requirements.

**Causal Analysis of the GED as a Route to Post-Secondary Education:** GED recipients receive tangible benefits on labor market outcomes upon successful completion of post-secondary education. A summary of the qualitative findings and approaches of selected papers in this literature is presented in table 9.

Cameron and Heckman [1993] calculate the expected benefit of GED receipt through a wide array of types of post-secondary training—on- and off-the-job training, military service, and two and four year college—as the benefit to each type of training times the expected amount of training obtained.<sup>31</sup> They find that the wage benefit associated

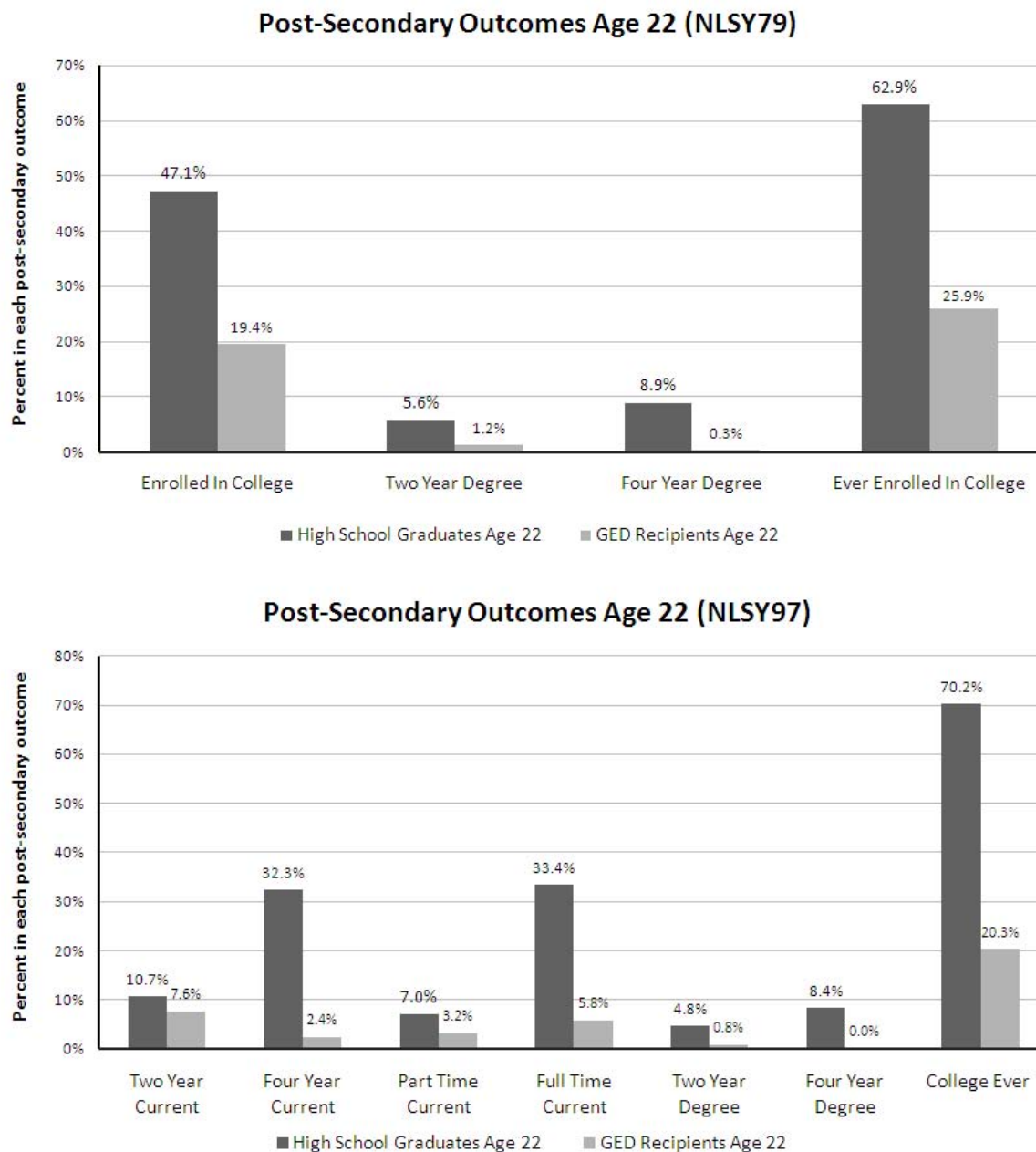
<sup>28</sup>We compare NLSY79 and NLSY97 at age 22 as it is the oldest age reached by the entire NLSY97 sample. The low rates of earned bachelor's/four year college degrees is explained by the fact that many students are still working towards their degrees, given their relatively young age and the number of individuals reporting current enrollment in four year college in the NLSY97 survey.

<sup>29</sup>Murnane et al. [1997] contains a table that displays participation rates by degrees of participation in post-secondary activities including on-the-job training, off-the-job training, college and military. These figures are divided by level of final educational attainment and by gender. Their table is reproduced in Section C.3 of the Web Appendix (<http://jenni.uchicago.edu/GEDHandbookChapter/>).

<sup>30</sup>Sampling variation may explain this trend across NLSY79 and NLSY97 samples given the relatively few GEDs that attempt post-secondary training. Another possible factor, discussed below, is that the composition of GED test takers has changed for the worse.

<sup>31</sup>Grubb [2002] surveys work that compares the wage and earnings returns to study in two year and four year colleges in terms of both completed degrees and individual credits earned at each type of institution. Whereas the value of a completed four year (Bachelor's)

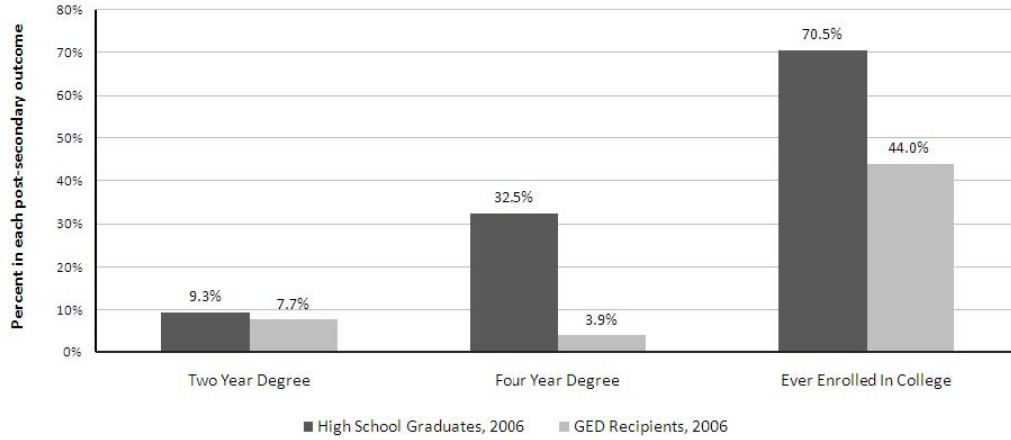
Figure 18: Post-Secondary Educational Attainment at Age 22 by High School Certification Type



Sources: National Longitudinal Survey of Youth 1979 (NLSY79) and National Longitudinal Survey of Youth 1997 (NLSY97). Notes: Calculations are based on the cross-sectional subsamples of each survey. Population weights are not used in either set of calculations because they are constructed specific to year of the sample and not for individual age, as is controlled for here. The cross-sectional samples are drawn to be representative of the full population. “Ever Enrolled” in College and “College Ever” are if the individual *ever* reports enrolling in college and is not dependent on successfully completing any amount of post-secondary education.



Figure 19: Post-Secondary Educational Attainment in 2006 for the NLSY79 Sample by High School Certification Type



Source: National Longitudinal Survey of Youth 1979 (NLSY79). Notes: Calculations are based on the cross-sectional subsample of the NLSY79 and use population weights. “Ever Enrolled” is defined for the case that the individual *ever* reports enrolling in college.

with further education is much larger than the direct effect of GED receipt. Murnane et al. [1999] find strongly significant hourly wage and income premiums conditional on receiving these types of training, but note that few GEDs receive them. Murnane et al. [1997] use the same NLSY79 data as both of these studies and confirm that, net of controls, GEDs pursue more of these types of post-secondary education than dropouts, but that the predicted rates of completion are very low.

Heckman, Stixrud, and Urzua [2006], Heckman, Urzua, and Veramendi [2010], and Heckman and Urzua [2010] study the probability of selecting higher levels of educational attainment as a function of cognitive and noncognitive skills.<sup>32</sup> They find that both cognitive and noncognitive skills predict which individuals will drop out and use the GED for higher levels of education. Each approach studies the net present value (NPV) of income for individuals of a given skill set and choice of education level. Heckman and Urzua [2010] use a dynamic discrete choice framework where individuals make a sequence of decisions based on their expected income returns and psychological costs and payoffs (i.e. non-pecuniary factors that influence individual decisions beyond just income returns). Heckman and Urzua [2010] estimate “option values”, which are the benefits conferred by completing one stage of education in terms of access to the returns of later stages of education. The option value associated with an educational choice at a given level of education is defined as the NPV of future educational decisions that choice opens up, net of the degree is decisively higher than that for a complete two year (Associate’s) degree, there is no consensus on which type of college is associated with higher returns to earned credits that are not associated with degree completion.

<sup>32</sup>Like Heckman et al. [2006], Heckman and Urzua [2010] use the Rosenberg and Rotter scores to measure noncognitive ability.

NPV of staying at the same level of education. For an individual with a given set of cognitive and noncognitive skills, the option value of the GED equals the returns that individual would receive from post-secondary education multiplied by the probability that they would choose and successfully complete that education.

Figure 20 shows the respective probabilities of being a terminal dropout and of obtaining a GED based on population deciles of cognitive and noncognitive ability. “1” represents the lowest decile and “10” represents the highest. The first panel (A) shows that the probability of being a terminal dropout is primarily associated with low cognitive ability. The second panel (B) shows that, relative to the probability of dropping out, the probability of obtaining a GED is higher for higher levels of cognitive ability, and is higher for *lower* levels of noncognitive ability.

Figure 21 shows the estimated option values of the GED as a function of cognitive and noncognitive ability. The option value increases sharply in both cognitive and noncognitive ability dimensions. The axes of this graph represent population deciles. Very few dropouts are in the upper deciles of cognitive or noncognitive ability. As is evident from Figure 20(B), few individuals have the skills related to high option value of GED certification.

## 4 Changes and Growth in the GED Test Taking Population

Given the low returns to GED certification for the majority of GED test takers, the question remains why GED certification has reached such a large scale and continues to grow. As shown in Figure 1, the GED program grew from 50,000 takers in 1960 to over one million in 2001. A recent increase in the test’s difficulty paired with the introduction of a new test series led to a decrease in takers in 2002, but growth resumed afterward with 700,000 people taking the test in 2008. In this section we review several explanations for the growth of the GED testing program over time. We show the significant role of government programs which both directly and indirectly subsidize the cost of GED certification. Much of the recent growth has occurred in populations such as younger teenagers and the incarcerated, populations that the literature shows have low expected benefit to GED certification.

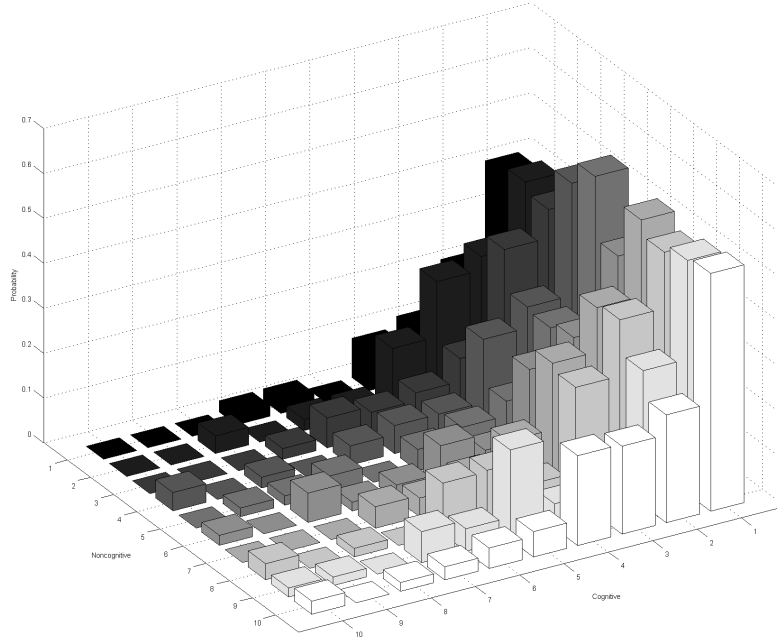
### 4.1 Government Education and Training Programs

Many government educational and job training programs have adopted the GED as a second chance program. These include government programs such as Job Corps, state anti-poverty programs,<sup>33</sup> and Adult Education. The

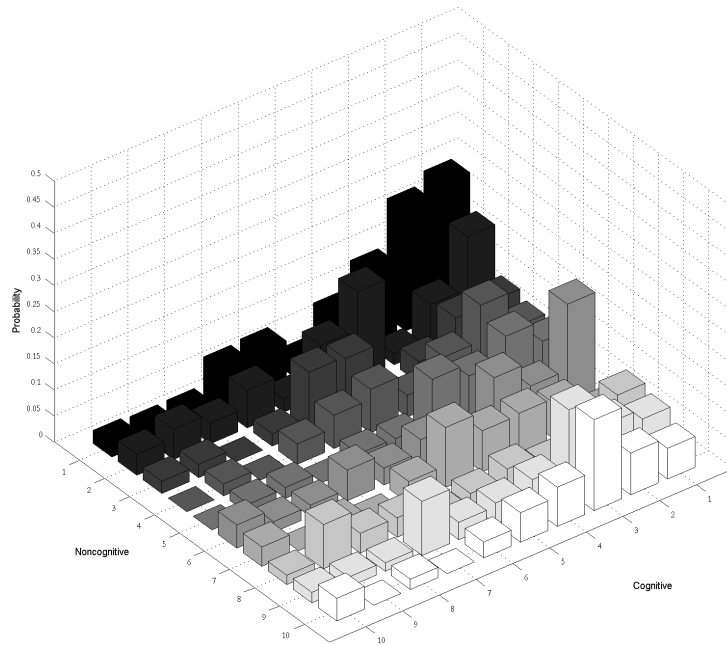
---

<sup>33</sup>One example, documented in Quinn [2008], is of welfare reform initiatives in Ohio which paid mothers for sending their teenagers to attend GED classes.

Figure 20: Distribution of Probability of Dropping Out (A) and GED Receipt (B) by Cognitive and Noncognitive Ability  
(A)

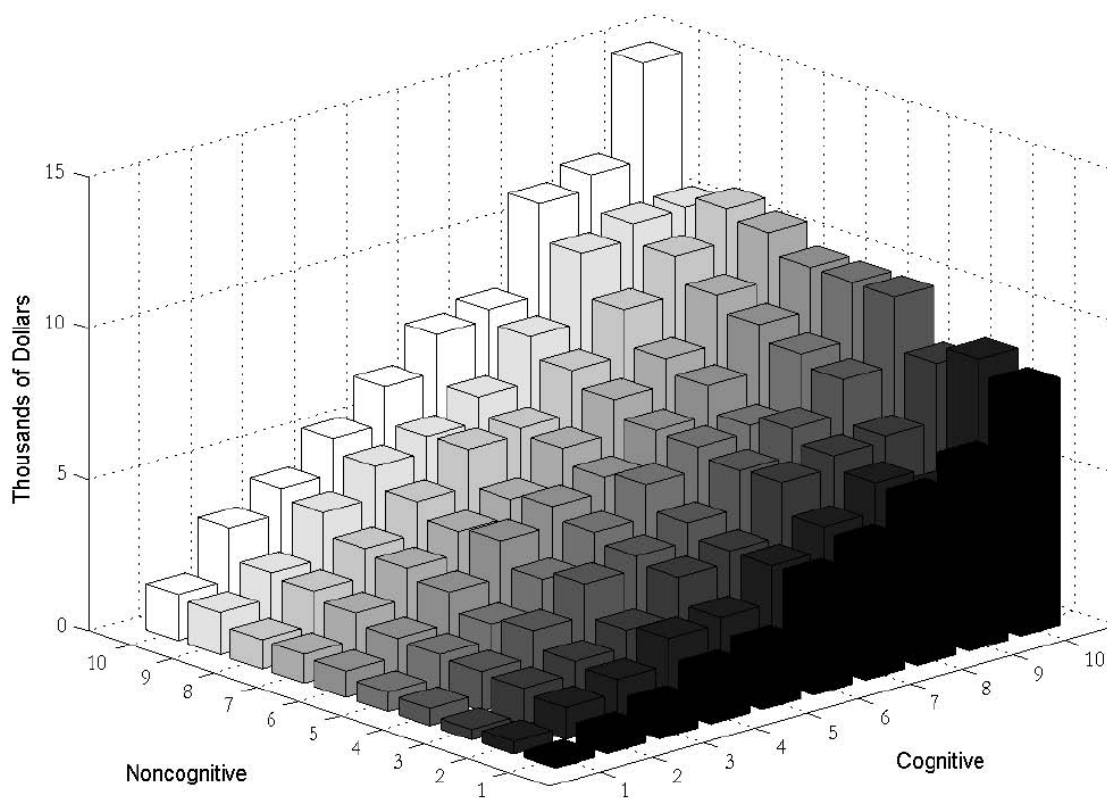


(B)



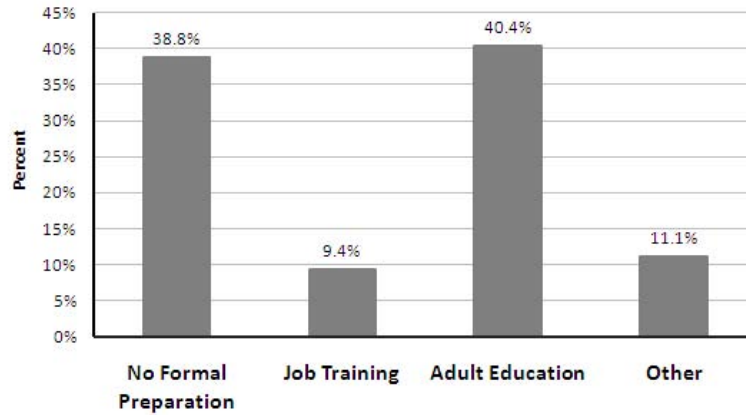
Source: Reproduced from Heckman and Urzua [2010]. Notes: x and y axes represent deciles of cognitive and noncognitive factors as defined in this section. “1” represents the lowest decile and “10” represents the highest decile.

Figure 21: Distribution of GED Option Values by Cognitive and Noncognitive Ability Deciles



Source: Reproduced from Heckman and Urzua [2010]. Notes: Option value of GED certification for 17-year-old high school dropouts. x and y axes represent deciles of cognitive and noncognitive factors as defined in this section. “1” represents the lowest decile and “10” represents the highest decile.

Figure 22: Route to GED Certification Taken by NLSY97 GED Recipients



Source: National Longitudinal Survey of Youth 1997 (NLSY97). Notes: Statistics include all individuals who earn a GED by 2007.

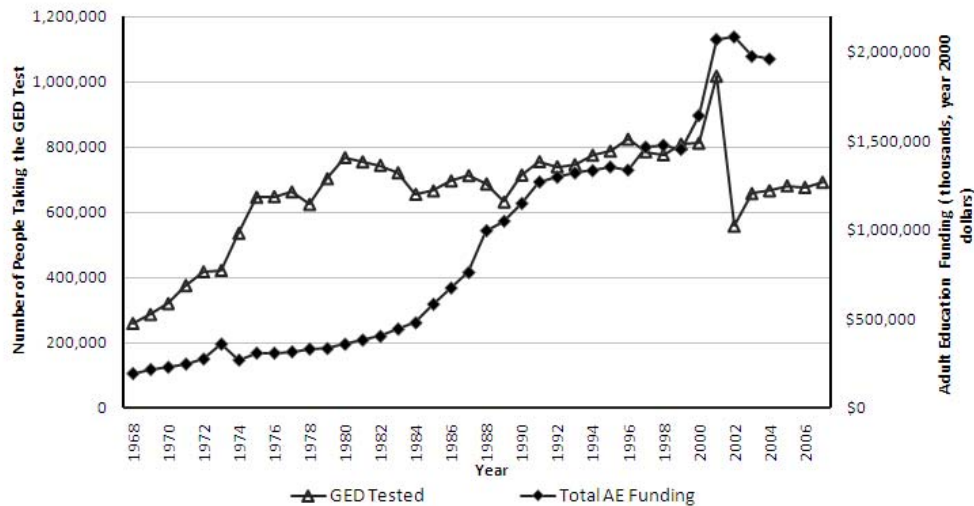
GED test is used as a standardized, external measure of success for programs providing education. Figure 22 shows that 50% of individuals in the NLSY97 report obtaining the GED through either Adult Education or another job training program, demonstrating the role these government programs play in promoting the GED.

Adult Education is the largest government program promoting and subsidizing GED preparation and certification. The Adult Basic Education Act was signed into law in 1964. It was intended to provide funding for educating people aged 18 and older who lacked basic skills such as reading and basic arithmetic [National Advisory Council on Adult Education, 1980]. The program expanded in 1970 to include Adult Secondary Education (ASE), which focused on high school-level learning [Rose, 1991].<sup>34</sup> The GED was quickly adopted by ASE programs as both a goal and a metric of program success. Adult Education programs are not homogeneous. They tend to be preexisting programs that apply for Adult Education funding. They range from stand-alone GED classes to programs bundling job and vocational training with GED preparation.

Adult Education is a significant producer of GED certificates. In 1975, 26% of GED credentials were issued through Adult Education, increasing to 40% by 1980 and 50% in 1990 [U.S. Department of Education, Various Years]. In 1995, six times as many people achieved a GED as a traditional high school diploma through Adult Education [National Advisory Council on Adult Education, Various Years]. McLaughlin et al. [2009] examine the preparation methods for 90,000 GED test takers, and find that 46% of the sample took the GED through an Adult Education

<sup>34</sup>With the introduction of ASE, the age requirement was decreased to 16. Adult Education was extended to incarcerated populations in 1981, though total expenditures on incarcerated education programs was capped at 20% of total Adult Education funding.

Figure 23: Adult Education Funding and GED Test Taking



Source: GED Testing Service [Various Years], U.S. Department of Education [Various Years], and National Advisory Council on Adult Education [Various Years].

program.<sup>35</sup> Figure 23 shows Adult Education funding (both state and Federal, in year 2000 dollars) graphed against the number of GED test takers. Expansion of Adult Basic Education promoted the growth of the GED.

## 4.2 Changes in the Costs and Benefits to Education

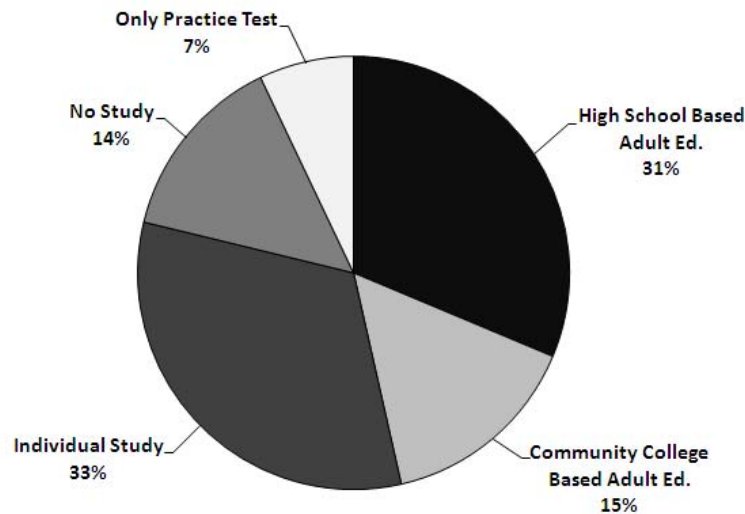
The costs and benefits of being a dropout, of GED certification, and of college completion have changed over time. These shifts play key roles in determining who selects into GED certification. As shown in Section 2, the wage premium associated with getting any level of education above that of dropping out has been stable or increasing for both males and females in the last 25 years.

At the same time, both the financial and effort costs to education have changed. The difficulty of high school completion has increased in terms of class hours needed to graduate (measured in Carnegie Units<sup>36</sup>) and through implementation of “exit exams” that must be passed in order to graduate. The late 1980s saw growth in the number of Carnegie Units required for graduation increasing from an average of 13.5 in 1985 to 17.4 in 1990. Only one state required an exit exam to earn a high school diploma in 1980, increasing to twenty-two states by 2008. Warren et al. [2006] show that completion rates decrease, and 16-to-19-year-old GED testing rates increase when high school exit

<sup>35</sup>These 90,000 were chosen from a larger sample, removing individuals facing institutional influences on testing such as those in states requiring a practice test or being in prison.

<sup>36</sup>Carnegie Units are standard measures of class hours. One Carnegie Unit is equivalent to one year long high school class.

Figure 24: GED Test Takers by Study Type



Source: Constructed from McLaughlin et al. [2009]. Notes: Of 90,000 test takers fitting into these categories without other restrictions on test taking such as being required to take a pre-test in one's state of residence or being incarcerated.

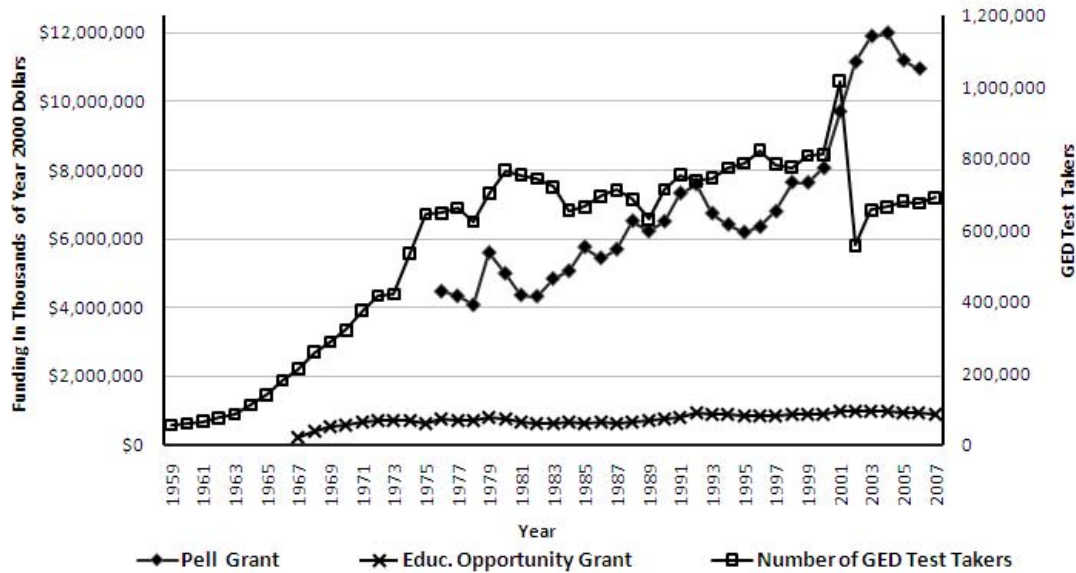
exams are introduced. The increasing difficulty of high school may induce more students to dropout or to GED certify thinking that they can then go straight to college.

The monetary costs of college have also grown in the last three decades. From 1985 to 2005 the real cost of public and private four year colleges respectively grew by 95% and 83%[National Center for Education Statistics, Various Years]. On the other hand, Federal assistance may have lowered the cost for some individuals.<sup>37</sup> The establishment of Pell grants in 1972 decreased the costs of post-secondary education for individuals with high school-level credentials, including the GED. Figure 25 displays Pell grant funding and GED test-taking rates across time. The spike in the average age of GED test takers in 1972, shown in Figure 28, is due to a number of older dropouts seeking the GED to become eligible for Pell grants when they first became available. This demonstrates the responsiveness of GED test taking to incentives to participate in complementary programs.

Monetary costs of GED certification have always been nominal. Testing fees for taking the GED range from \$0 to \$100, and enrollment in programs such as Adult Education often leads to reduced-fee or free testing [GED Testing Service, Various Years]. On the other hand, the difficulty of passing the GED test has increased over time. National minimum difficulty has increased three times, but many states have consistently required higher passing standards. Figure 26 displays the population-weighted average GED difficulty, measured by the percentage of graduation-bound

<sup>37</sup>See Section C of the Web Appendix (<http://jenni.uchicago.edu/GEDHandbookChapter/>) for the full trends of Carnegie Units, high school exit exams, and tuition costs of college.

Figure 25: Federal Aid For Post-Secondary Education and GED Test Takers



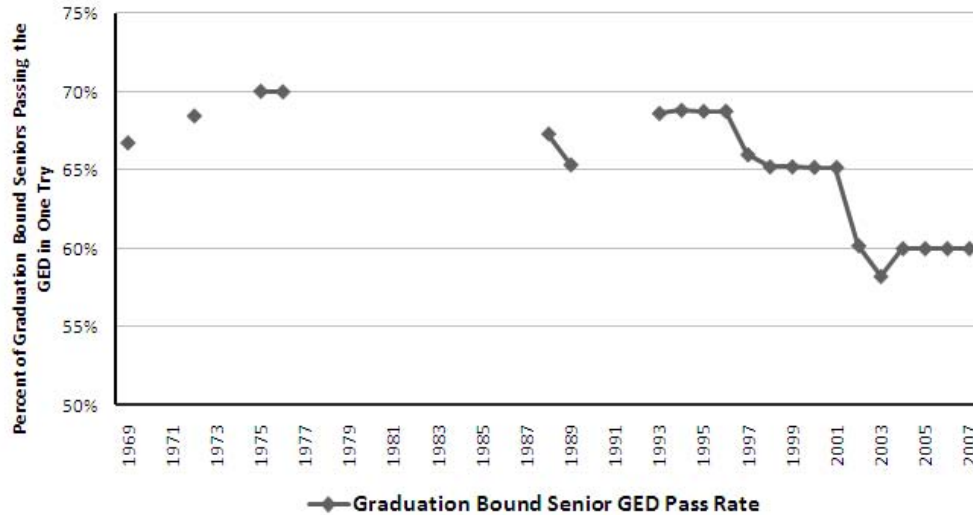
Source: “2000 Status Report on the Pell Grant Program”, Federal Campus-Based Programs Data Book [1998, 1999, 2000, 2001], U.S. Census Bureau, and GED Testing Service [Various Years].

high school seniors estimated to be able to pass the GED in a single try. The effect of an increase in the difficulty of the test is seen in the dramatic decline in 2001 shown in Figure 25.

**Incarceration and Prison Education** The number of incarcerated individuals in the United States has grown rapidly since the mid 1970s. Figure 27 plots the total incarceration rate from 1926 to 2005, adding racial breakdowns starting in 1981. Growth occurs across all race groups, with a disproportionate amount coming from blacks. Faced with a growing population of the incarcerated, prison educational programs have been promoted on the basis of the belief that education will decrease recidivism. The GED has quickly become a key ingredient in prison education programs [United States Sentencing Commission, 2009]. In Federal prisons, inmates without a secondary degree are required to complete 240 hours of class work, or to GED certify [United States Sentencing Commission, 2009]. Incarcerated individuals can qualify for monetary compensation for earning a GED as well as earning credits towards early release. (Ekstrand 2001,U.S. Department of Justice 2008) Furthermore, in 1995, the incarcerated made up 9% of all Adult Education participants [National Advisory Council on Adult Education, Various Years]. A Bureau of Justice Statistics (BJS) special report states that in 1997, 26% of all prison inmates earned a GED in prison

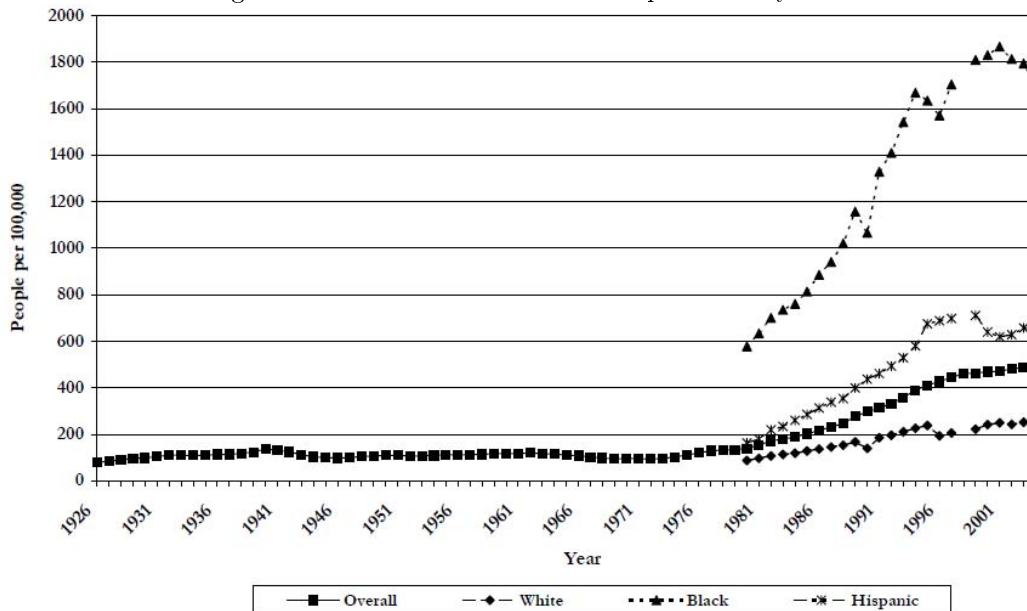


Figure 26: Estimated Percent of Graduation Bound High School Seniors Able to Pass the GED In First Try



Source: GED Testing Service [2009], GED Testing Service [Various Years], and GED Testing Service [Various]. Notes: Numbers are population weighted averages of State Requirements. Only years with 40 or more states reporting the passing requirement are displayed. Gaps are due to missing data.

Figure 27: Growth in Incarcerated Populations by Race



Reproduced from Heckman and LaFontaine [2010]. Source: Bureau of Justice Statistics and the U.S. Census Bureau. Based on the U.S. Census Bureau estimated resident population, as of December 31. Includes all persons under jurisdiction of federal and state authorities rather than those in the custody of such authorities. Represents inmates sentenced to minimum term of more than a year.

Table 10: Percentage of GEDs Obtained in Prison Across Time

Year	Coverage	State Prisons	Federal Prisons	Total
1994	57.1%	6.7%	1.4%	8.1%
1995	71.9%	8.6%	1.2%	9.8%
1996	72.5%	9.2%	1.2%	10.4%
1997	73.1%	9.4%	1.4%	10.8%
1998	76.2%	9.6%	1.4%	11.0%
1999	75.4%	9.8%	1.5%	11.3%
2000	79.5%	9.8%	1.6%	11.4%
2001	55.9%	7.9%	1.6%	9.5%
2002	58.0%	11.3%	1.7%	13.0%
2003	58.4%	10.2%	1.6%	11.8%
2004	67.3%	11.0%	1.8%	12.8%
2005	60.5%	11.8%	1.8%	13.6%

reproduced from Heckman and LaFontaine [2010]. Sources: Various state Departments of Corrections and GED offices. Data for federal prisoners from GED Testing Service “Who took the GED?” various years. Note: State coverage represents the total number of GED credentials issued in those states with information available as a percentage of total GED credentials in the US. Total percentage of GED credentials issued in state prisons represent credentials issued in correctional institutions of those states that have prison information for a given year as a percentage of total GED credentials issued in those states. The percentage of GED credentials issued in federal prisons is calculated on total credentials issued in the US (including federal prisons). Credentials issued in insular areas, freely associated states, Canada, overseas locations and military bases are excluded.

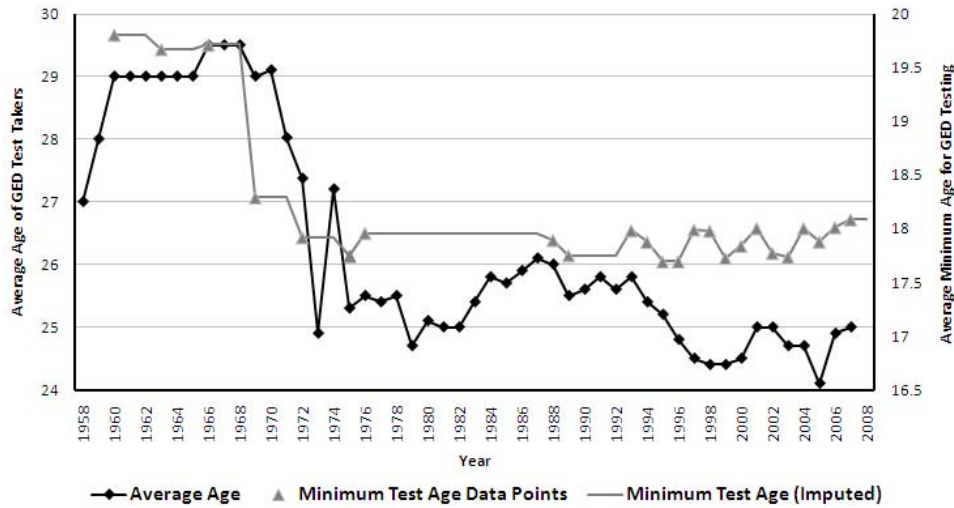
[Harlow, 2003].<sup>38</sup> Figure 10 shows the percent of GEDs produced in prison which has grown consistently from 1994 to 2005. Overall, the GED has become a near-mandatory component of the prison education system. The growth of prison GEDs weakens its overall signaling value by its association with criminality.

Tyler and Kling [2007] study the post-release earnings of individuals who studied for the GED in prison. They use longitudinal data from the Florida Department of Corrections and other Florida state agencies to compare pre- and post-incarceration earnings for those who study for and receive GEDs. They find that GED preparation and receipt are associated with an increase in earnings for the first three years after release, but fade thereafter. The positive initial impact might be explained by non-random institutional sorting of individuals and by self-selection. To net out self-selection, the authors also compare earnings of those obtaining a GED with those that take GED preparation classes but do not earn a credential. They find no effect. Because both of these populations undertook some amount of study, this finding rules out a signaling effect of the GED.

There is a substantial literature that studies the impact of prison-based educational systems with a focus on recidivism, but this work faces significant challenges in addressing the endogeneity of educational attainment and the lack of baseline data on prior to imprisonment. Gaes [2009] surveys this literature and highlights the effect

<sup>38</sup>The BJS brief does not explain their methodology and there may be survey bias (people in prison longer are more likely to get GED and surveyed) or other statistical concerns.

Figure 28: Minimum Age Requirement and Average GED Testing Age



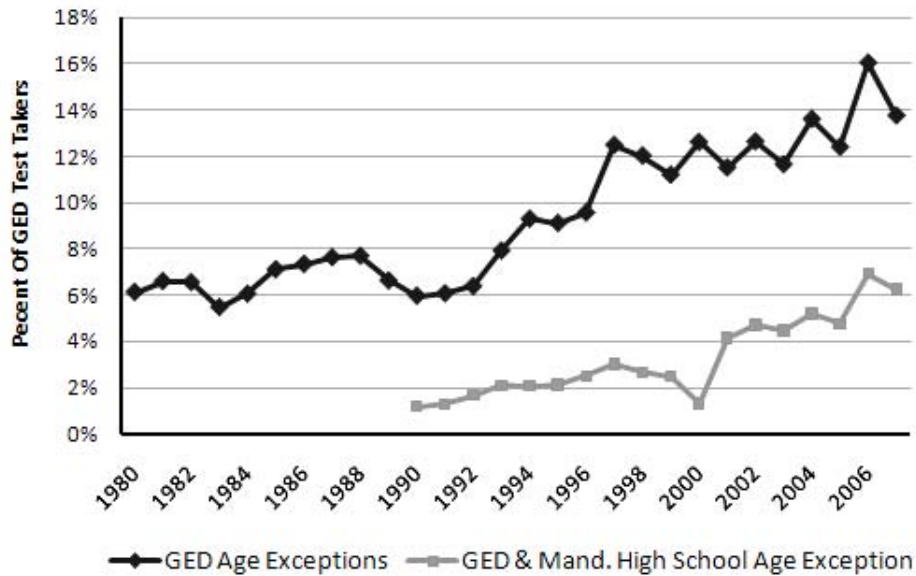
Source: GED Testing Service [Various Years]. Notes: The population-weighted average minimum age is calculated by weighting the states' age requirements by the state's total population. The national age requirement is assigned to states with requirements below the national age requirement.

of GED receipt, as well as vocational training and Adult Basic Education training, on post-release wages and recidivism. Results from studies that he identifies as “methodologically sound” are generally mixed with effects that are either modest or statistically insignificant.

### 4.3 Growth in High School-Age Test Takers

In 1955, as more states began offering the GED to civilians, the American Council of Education implemented a minimum age of 20 for taking the GED test to prevent teen-aged students from seeking the GED as a replacement for high school [Quinn, 2008]. In 1970, the national age requirement was lowered to 18. Following a period between 1981 and 1992 where there was no national age requirement, the national minimum has been set at 16. Many states set age requirements above the national minimum. Figure 28 shows the population-weighted average national age requirement for taking the GED and the average age of GED test takers over time. The sharp fall in both age requirement and average age in the early 1970s represents the expansion of the population eligible to take the GED. Originally, states granted exceptions to age requirements in specific cases, such as teenage pregnancy. The number of exceptions to age restrictions has greatly increased over time, leading to growth in the number of 16-to-17-year-olds attempting the GED. The two relevant age restrictions for taking the GED are the statutory age requirement and,

Figure 29: GED Test Takers Qualifying as Exceptions to Age Requirements



Reproduced from Humphries [2010]. Source: GED Testing Service [Various Years]. Notes: National Center for Educational Statistics Data. “GED Age Exceptions” are individuals taking the GED at ages below the minimum GED testing age. “GED & Mand. High School Age Exceptions” are individuals from GED Age Exceptions that are also below the compulsory schooling age in their state, making them double exceptions.

indirectly, the minimum age that students can drop out of high school. Figure 29 plots the percentage of GED test takers qualifying as age exceptions to the minimum testing age, and the percentage of GED test takers qualifying as both an exception to the minimum testing age and the minimum age for compulsory high school attendance. Both series are increasing with GED age exceptions growing from 6% in 1980 to nearly 14% in 2007, and dual exceptions growing from 1% in 1990 to over 6% in 2007 Humphries [2010].

Trends in the age composition of GED takers reflect these changes in eligibility and institutional allowances. Figure 30 shows the number of test takers by age. The first panel shows that growth since the early 1980s is almost completely attributable to growth in 16-to-19-year-old takers. Test taking rates were distinguished between 16-to-17-year-old and 18-to-19-year-old takers in 1980. The second panel shows that 16-to-17-year-olds are responsible for virtually all growth in GED test taking within the 16-to-19 age group. Because these individuals are still of high school age, their growth as a group raises the question of whether the GED is serving as a true second chance opportunity or as a substitute for a more valuable high school degree. Of particular concern is the possibility that teenagers with the lowest levels of noncognitive skills are the most likely to opt out of high school in order to receive

the GED and least likely to benefit from doing so.

The decision-making process of teens may lead them to make choices that restrict their educational paths and earnings in a way that they later regret.<sup>39</sup> Given questionable teen decision-making, several institutional practices may increase the rate of ill-advised dropping out. Many state-issued GED certificates have names such as “Kansas State High School Diploma” or “Maryland High School Diploma” which mislead students into false expectations of equivalence with traditional high school [GED Testing Service, Various Years].

The GED Option Programs represent another institutional path to GED certification for high school students. In some states, the American Council on Education has approved programs which directly target at-risk students in high school and guide them toward GED certification. While states set their own determination of “at-risk”, this commonly means students at risk of not graduating with their class.<sup>40</sup> Each state has its own set of requirements on what structure the GED Option Program takes and who is eligible. This introduces a range in the rigor of preparation across the 11 participating states. States vary in the hours of preparation required per week, requirements of complementary career-based training, practice-test policies, and in the study hours elicited from participants.<sup>41</sup> These programs have not been evaluated for their effect on labor market outcomes, but represent an institutional shift toward younger populations.

## Summing up the Sources of Growth of GEDs

Since its introduction, the GED has grown rapidly. This rapid growth contrasts with the GED’s low average returns. The growth of the GED can be credited to the adoption of the GED by government and non-profit entities, as well as the expansion of the GED into new populations. Figure 31 shows the number of total credentials issued each year, as well as the number of credentials contributed by Adult Education, prison populations, 16-to-17-year-old GED test takers and 18-to-19-year-old GED test takers. These four categories each account for a large percentage of the credentials issued. Unfortunately, the promotion of the GED has pushed it further from subpopulations that

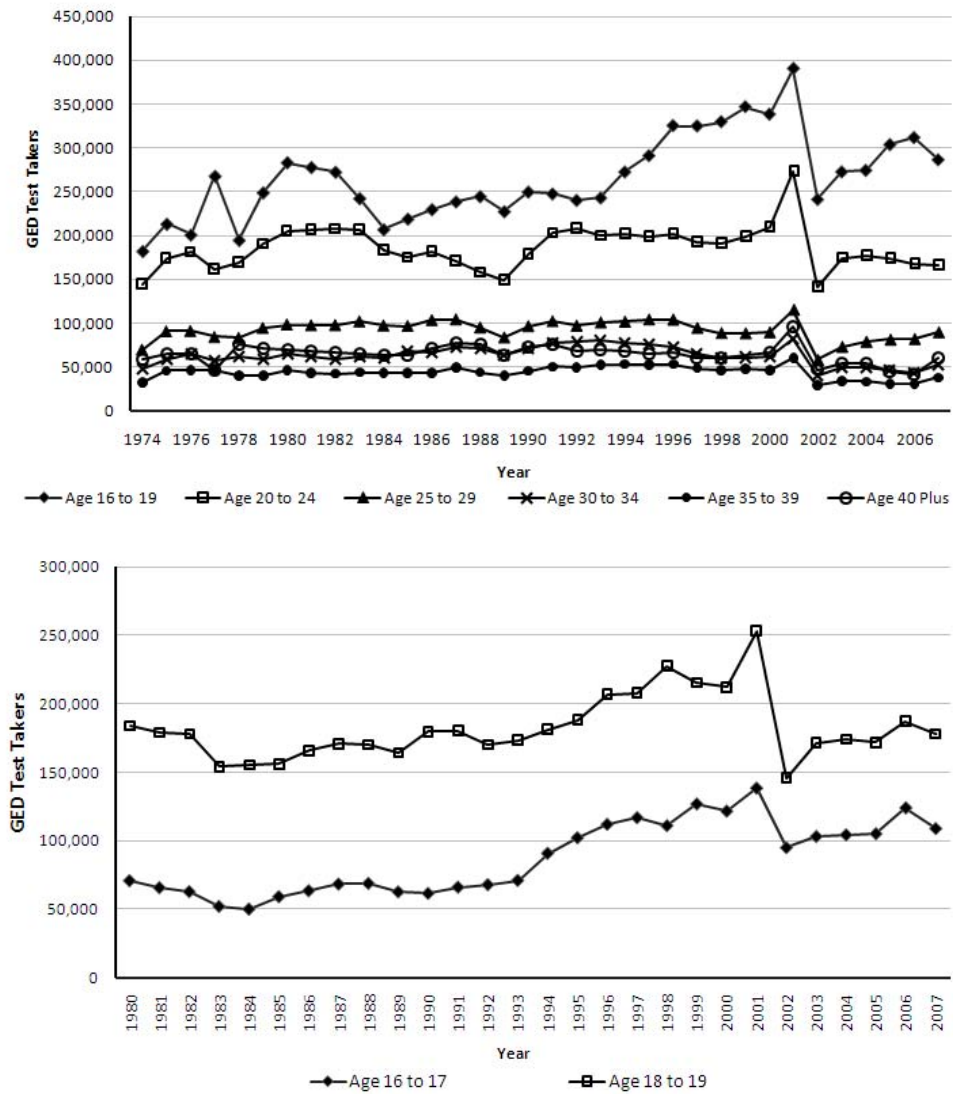
---

<sup>39</sup>The literature in psychology formally recognizes this as time-inconsistent preferences, where teens may discount future outcomes at a higher rate than they would at full maturity. Recent work in neuroscience gives concrete support to the common notion that teens in late adolescence—the period when the decision to drop out is made—make decisions that are inconsistent with their adult preferences. See Steinberg [2007] and Steinberg [2008].

<sup>40</sup>See the GED Option Statistical Report [GED Testing Service, 2008] for more detail on these programs.

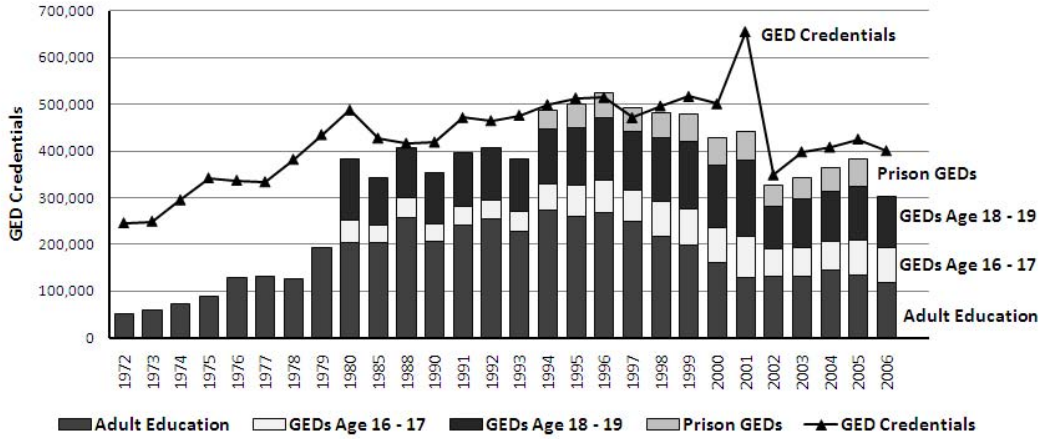
<sup>41</sup>Virginia for example has a demanding Option Program requiring 15 hours of academic preparation per week, work- or career-based training for 10 hours a week, and scores of 450 on each subsection of the official practice test (higher than the 410 minimum 450 average state passing requirement for the GED) before GED certification is allowed. On the other hand, Oregon allows the requirements to be set to a much higher degree by the institution allowing much more flexibility including self-study, and technology-assisted study as a means of GED preparation. Similarly, the hours of studying and days enrolled in the option program also vary greatly. For example, Oregon’s GED Option participants reported studying for a median of 20 hours with few explicit requirements. Louisiana, on the other hand, reported a mean of 150 hours and require 15 hours of academic preparation per week and 10 hours a week of job training.

Figure 30: Test Taking Populations By Age



Source: GED Testing Service [Various Years]. 1974 is the year that test taking rates by age were first reported. Starting in 1980 the 16-to-19 age category is divided into 16-to-17 and 18-to-19-year-olds.

Figure 31: Decomposing Growth in GED Credentials.



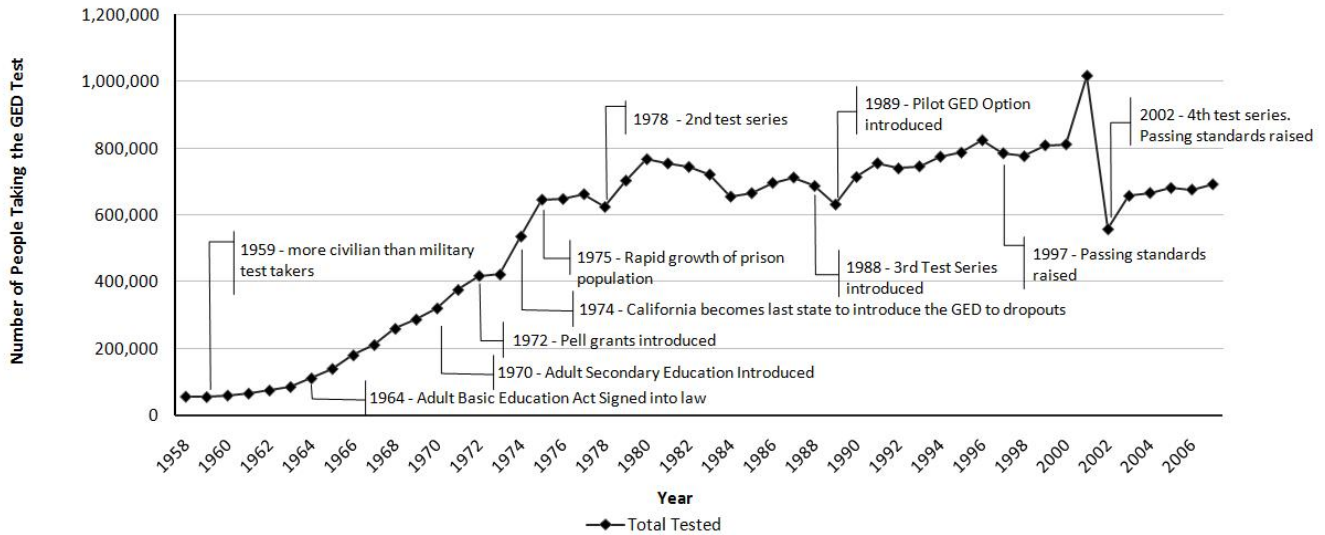
Sources: GED Testing Service [Various Years], National Advisory Council on Adult Education [Various Years], National Center for Education Statistics [Various], U.S. Department of Education [Various Years], and Heckman and LaFontaine [2010]. Notes: The Categories of GED credentials are not mutually exclusive; an individual may be counted in multiple categories. Years missing specific categories are due to missing data. Specific years have been excluded from the graph due to highly incomplete data. Prior to 1990, the age categories are imputed from the percent of GED test *takers* in the specific age category times the number of *credentials*. Adult Education Statistics did not separate between GEDs and high school diplomas after 1996. From 1997 to 2006 the numbers are imputed by multiplying the total number of GEDs and high school diplomas issued by the average ratio of GEDs to GEDs plus high school diplomas from 1991 to 1996.

might potentially benefit from it. The test has expanded to younger populations which provides adverse incentives to high school age individuals discussed in more detail below. Figure 32 and 33 provide a time line of key events in the growth of the GED.

## 5 Adverse Consequences of the GED

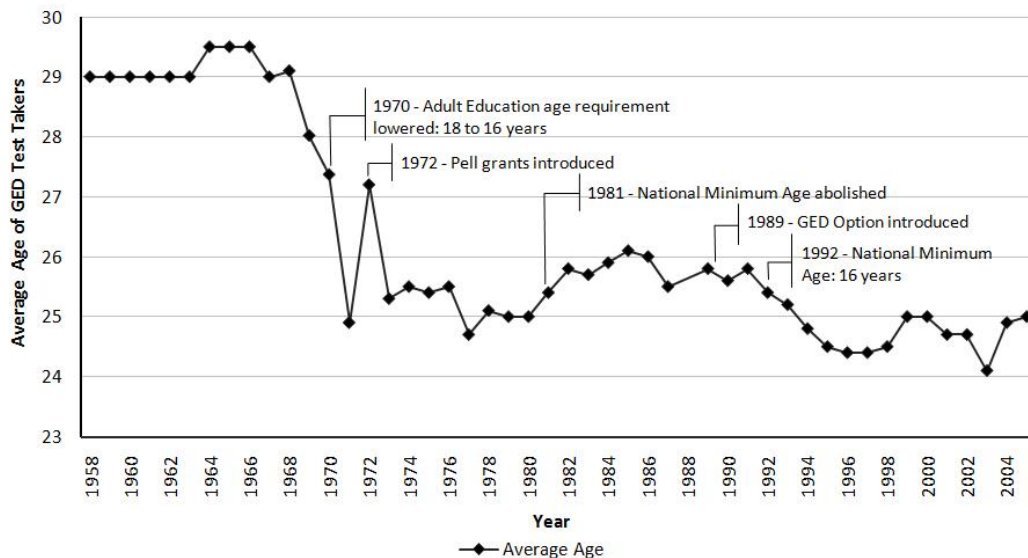
The GED's low returns may be unfortunate, but one might argue that its low costs and low returns balance and may not do much harm. In this section we show that its availability and scale does cause harm. One concern is that the availability of the GED as an easier-to-obtain secondary credential induces many individuals to drop out of high school. The alternative to GED receipt for these individuals is high school completion and not dropping out. An additional harm arises from counting GEDs in graduation statistics. This practice hides declines in traditional high school graduation rates and thus has disguised educational problems. Finally, the practice of improperly counting the GED as a high school diploma generates biased estimates of the returns to education.

Figure 32: Key Dates and the Number of GED Test Takers



Sources: GED Testing Service [Various Years], Quinn [2008], Rose [1991], GED Testing Service [2008], Heckman and LaFontaine [2010], and Boesel et al. [1998]

Figure 33: The Average Age of GED Test Takers and Key Changes in Age Policies



Sources: GED Testing Service [Various Years], Quinn [2008], Rose [1991], GED Testing Service [2008], Heckman and LaFontaine [2010], and Boesel et al. [1998]



## 5.1 The GED Induces Would-Be High School Graduates to Drop Out

The availability of the test induces some students to drop out and seek a GED rather than persist in high school. Several papers in the literature demonstrate that changes in the relative costs of the GED certification and high school completion induce substitutions of one degree for the other at different margins. Lillard and DeCicca [2001] demonstrates that the number of students who drop out of high school (including GEDs) increases when the number of credits needed to graduate increases. They estimate that a standard deviation increase in the course graduation requirements in the US would cause 26,000 to 65,000 individuals to drop out of high school. Chaplin [1999] provides descriptive evidence that high school-aged students are dropping out to take the GED and that requiring parental consent helps curb this practice. Humphries [2010] demonstrate that 16-to-17-year-old GED test taking rates respond to high school credit requirements, minimum high school dropout age, and the difficulty of the GED test. He finds a minimum dropout age of 18 leads to a 0.217% decrease in the percent of the 16-to-17-year-old population taking the GED. He also finds that increasing the difficulty of the GED so that 10% fewer graduation bound high school seniors could pass the test would lead to a .143% decrease in the percent of the 16-to-17-year-old population taking the GED. Warren et al. [2006] demonstrate that 16-to-19-year-old GED test taking rates respond to the presence of high school exit exams and other state high school policies. They report that a high school exit exam leads to 0.12% increase in the percent of the 16-to-19-year-old population taking the GED.

Heckman et al. [2008] analyze two large natural experiments to study the effect of introducing the GED on inducing dropouts. The national minimum difficulty for passing the GED increased in 1997 which forced only a subset of states to increase their passing standards to be compliant. The increase raised the difficulty of the test so that only 60% rather than 66% of graduation bound high school seniors would be able to pass the test on a single try. The study also looks at the effect of California's introduction of a GED credential in 1974. Difference-in-difference estimates show that these two policy changes resulted in a 1.3% decrease in dropout rates for states where the passing standard increased, and 3.1% fall in high school graduation rates when the GED became available.<sup>42</sup>

Humphries [2010] examines the effect of introducing GED Option Programs at the school district level using data from Oregon.<sup>43</sup> Using school district-level panel data from Oregon with fixed year and district effects, Humphries finds that introduction of these programs at the district level or in traditional high schools led to a fall of more than 5% in four year high school completion rates. Interestingly, in districts where the Option Program was only

---

<sup>42</sup>See Section E of the Web Appendix (<http://jenni.uchicago.edu/GEDHandbookChapter/>) for more in depth description of these results.

<sup>43</sup>A full list of states implementing GED Option Programs can be found in GED Testing Service [2008].

Table 11: Simulated Response of Educational Attainment to Elimination of the GED

Schooling Level	Simulated with GED (1)	No GED (2)	Change in Rate (2)-(1)	% Change ((2)/(1)-1)%
Four Year College	25.5%	26.0%	0.5%	2.1%
Some Four Year College	7.0%	7.1%	0.1%	1.3%
Two Year College	7.2%	7.8%	0.6%	8.0%
Some Two Year College	10.2%	10.7%	0.6%	5.5%
Some College GED	2.5%	-		
High School Graduates	31.9%	34.0%	2.1%	6.5%
GEDs	3.7%	-		
High School Dropouts	12.0%	14.3%	2.4%	19.6%

Note: The numbers in columns (1) and (2) are computed as fractions of the overall population

Source: Reproduced from Heckman and Urzua [2010].

introduced in alternative institutions, such as community colleges or charter schools, the effect was a fall of only 1.8%.<sup>44</sup>

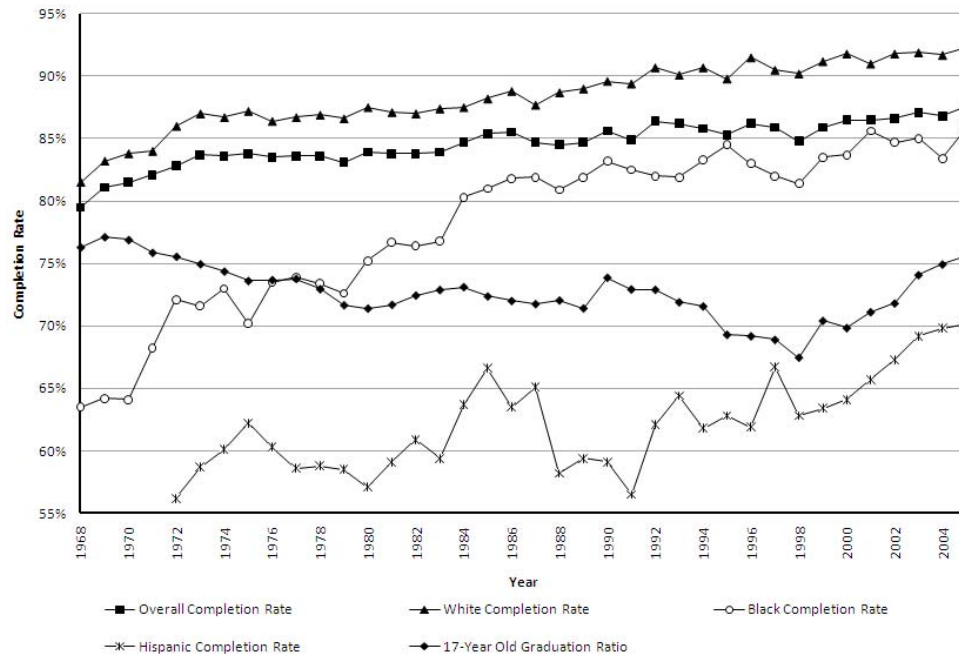
Heckman et al. [2008] and Humphries [2010] demonstrate that the GED induces some would-be high school graduates into dropping out, but we do not know which individuals drop out or how successful they would have been if they had stayed in high school. The dynamic model of Heckman and Urzua [2010] can be used to simulate counterfactuals. Table 11 contrasts the actual patterns of educational attainment of white males in the NLSY79 sample with predicted values if the GED were abolished. Not all GEDs persist as dropouts. Of the 3.7% of the sample that obtains a terminal GED or some college through the GED, only 2.3% remain as dropouts in the counterfactual state, whereas the rest either finish high school or complete higher levels of post-secondary education. While this line of structural research is still being refined, it has the promise of generating the consequences for educational attainment arising from enforced age limits or increased test difficulty. The magnitudes in Table 11 are broadly consistent with the estimates reported from natural experiments in Heckman et al. [2008].

## 5.2 The GED Inflates High School Graduation Statistics

The high school graduation rate is a barometer of the health of American society and the skill level of its future workforce. Historically, the U.S. graduation rate continued to climb as schooling became increasingly important. This trend, however, counts GEDs as high school graduates. When GEDs are counted separately, the traditional high school graduation rate was falling until 2000.

<sup>44</sup>For further results see Section E of the Web Appendix (<http://jenni.uchicago.edu/GEDHandbookChapter/>).

Figure 34: Trends in Commonly-Reported Measures of High School Graduation Rates



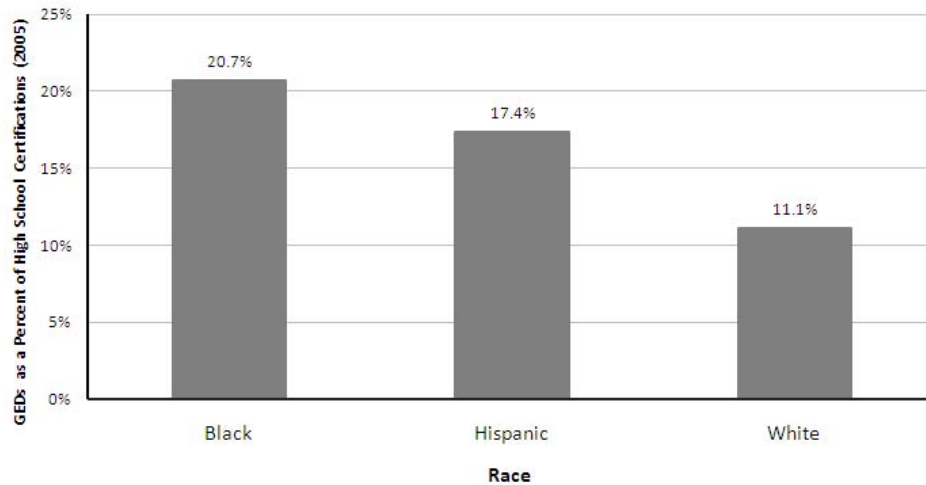
Reproduced from Heckman and LaFontaine [2010]. Source: Reproduced in part from the National Center for Educational Statistics (NCES) publication “Dropout Rates in the United States: 2005” (Laird et al. [2007]). Rates prior to 1972 are based on author’s calculations using CPS data. The status completion rate is the percentage of 18-to-24-year-olds not enrolled in secondary school who have a high school credential. High school credentials include regular diplomas and alternative credentials such as GED certificates. Hispanic ethnicity is not available before 1972. The 17-year-old graduation ratio is from the Digest of Education Statistics. HS graduates for the graduation ratio include both public and private school diplomas and exclude GED recipients and other certificates. October 17-year-old population estimates are obtained from Census Bureau P-20 reports.

Two commonly-used measures of the high school graduation rate are reported by the National Center of Education Statistics (NCES). The first is the “high school status completion rate” which counts the number of 18-to-24-year-olds possessing a high school credential and divides it by the population aged 18 to 24. The second is the “17-year-old graduation ratio”, which is the number of diplomas issued in any given state divided by their 17-year-old population in a given year. The former includes the GED as a high school credential; the latter does not.

Figure 34 shows the time path of both measures, including the completion rate by race. The overall completion rate and 17 year-old graduation ratio were relatively similar in 1968 but diverged afterward. High school graduation was falling from the 1970s through about year 2000, The US graduation rate has only recently returned to where it was forty years ago.

The differences between status completion rates and the graduation ratio has previously been noted. Most of the

Figure 35: GEDs as a Percent of HS Credentials by Race, 2005



Source: GED Testing Service [Various Years].

gap comes from “alternative certifications” which are predominantly GEDs [Finn, 1987]. Once the nonequivalence of GEDs to high school graduates was demonstrated, the growing gap in the status completion rate and graduation ratio became a much greater concern. Rather than an 88% graduation rate in the recent decade, estimates were reported as low as 66% as several researchers made efforts to construct correct high school graduation rates not counting GEDs as high school graduates (Greene [2001], Swanson [2004], Miao and Haney [2004], Warren [2005]). These corrected estimates varied depending on the data set and methodology used, leading to further confusion over which number was the “real” graduation rate.

Heckman and LaFontaine [2010] systematically examine each data set used in this debate and consider sources of bias in each data set in order to construct measures that are consistent across data sets.<sup>45</sup> They find that using year 2000 Census data, removing GEDs lowers overall graduation rates by 7.4%. Because of differential rates of alternative credentialing, graduation rates fall by different amounts for different groups: 8.1% for males, 6.6% for females, 10.3% for black males, and 8.7% for black females.

While the completion rates by race shown in Figure 34 shows a decreasing white-black and white-Hispanic high school certification rate over time, those trends are fully explained by increasing rates of alternative certification. Figure 35 shows GED credentials as a percent of high school credentials issued broken down by race in 2005. GEDs

<sup>45</sup>For bias extending beyond the GED across the Census, the Current Population Survey (CPS), and Common Core Data (CCD) see Heckman and LaFontaine [2010] directly.

account for 20% of black high school credentials, but only 11% of white credentials.<sup>46</sup> Rather than a convergence in minority education attainment, over the last 40 years the minority education gap has been constant.

### 5.3 The GED Obscures the Actual Returns to Education

The misclassification of GEDs also affects estimates of the returns to education. While the dropout-to-high school and high school-to-college wage gaps have indeed been increasing, the GED misclassification is responsible for a sizable amount of this gap. Using the traditional CPS method of treating GED recipients and high school graduates as equivalent, Cameron and Heckman [1993] estimate a 21% return to four year college completion. When classifying GEDs and high school graduates separately, the high school-to-college gap falls to 19.6%.

Heckman and LaFontaine [2006] discovered that the imputation method used by the CPS generates biased wages across educational levels. The CPS imputes missing wages by matching on socioeconomic data using other observations in the same educational categories: 1) high school dropouts; 2) high school graduates with up to, but not including, a bachelor's degree; and 3) bachelor's degree or above. This procedure allocates missing GED wages with data drawn from high school graduates (including individuals with some college), and fills in missing high school graduate wages with data drawn from GEDs. Heckman and LaFontaine find that estimated returns to GED certification were overstated by 35% when CPS allocated wages are included for native-born males, and 25% for native-born females. Similarly, they find that excluding allocated earners lowers the returns to high school graduation for the full sample of males by 5% and the returns to college by 12%. The fact that the CPS increasingly reports missing values, coupled with the misallocation error of GED and high school wages, has lead to increasingly biased estimates of the returns to education over time.

Table 12 displays evidence from three birth cohorts within the NLSY79 sample to compare how high school-to-college and dropout-to-high school wage differentials vary depending on how GED recipients are classified. Because the number of GED recipients grows from 9% of high school credentials to 20% across these birth cohorts, the bias the GED generates in returns to educational categories also increases over time. For the 1957-1958 birth cohort, GED misclassification accounts for 6.1% of the college-high school wage gap in log annual earnings. By the 1962-1964 birth cohort, GED misclassification grew to 9.5% of the college-high school wage gap in log annual earnings and 5.6% of the dropout-college wage gap.

---

<sup>46</sup>See Section E of the Web Appendix (<http://jenni.uchicago.edu/GEDHandbookChapter/>) for tables demonstrating the effect on the differential effect on graduation rates for different races and genders of removing prisoners, immigrants, and military servicemen from calculations of the graduation rate.

Table 12: The Role of the GED in Explaining Rising Educational Wage Gaps

<b>A. Prevalence of GED as a</b>	<b>1957-1958 Birth Cohort</b>	<b>1959-1961 Birth Cohort</b>	<b>1962- 1964 Birth</b>
% of GED+HS Category	9.16%	13.82%	20.34%
% of GED+Dropout Category	38.29%	46.08%	60.14%
<b>B. College-HS Wage Gap*</b>			
Log Annual Earnings	.338	.411	.469
Log Weekly Wage	.297	.358	.418
Log Hourly Wage	.270	.311	.376
<b>C. Bias in College-HS Gap from Counting GEDs as HS Graduates**</b>			
Log Annual Earnings	.021	.030	.045
Log Weekly Wage	.010	.016	.025
Log Hourly Wage	.007	.010	.022
<b>D. % of Current College-HS Gap Explained by GED</b>			
Log Annual Earnings	6.1%	7.4%	9.5%
Log Weekly Wage	3.3%	4.5%	6.0%
Log Hourly Wage	2.6%	3.3%	5.9%
<b>E. College-Dropout Wage Gap</b>			
Log Annual Earnings	.635	.724	.747
Log Weekly Wage	.512	.593	.610
Log Hourly Wage	.474	.521	.555
<b>F. Bias in College-Dropout Gap from Counting GEDs as HS Graduates†</b>			
Log Annual Earnings	.029	.039	.056
Log Weekly Wage	.041	.051	.054
Log Hourly Wage	.044	.056	.049
<b>G. % of Current College-Dropout Gap Explained by GED</b>			
Log Annual Earnings	2.9%	3.9%	5.6%
Log Weekly Wage	4.1%	5.1%	5.4%
Log Hourly Wage	4.4%	5.6%	4.9%
<b>Percentage of Overall Change Explained by GED Misclassification from 1957 to 1964</b>			
	<b>Annual Earnings</b>	<b>Weekly Wage</b>	<b>Hourly Wage</b>
<b>Growth in College-HS Gap</b>	<b>18.4%</b>	<b>12.8%</b>	<b>14.4%</b>
<b>Growth in College-Dropout Gap</b>	<b>23.7%</b>	<b>13.6%</b>	<b>5.5%</b>

Source: Reproduced from Heckman and LaFontaine [2010] who use NLSY79 data on males and females aged 25-29. Notes: The college category includes those with a four year degree or higher. Those with some college and no two or four year degree are included in the GED and HS categories, respectively, depending on their credential. Two year degree holders are estimated separately. All education dummies are mutually exclusive. Estimated wage gaps are based on the following 3 OLS specifications; Model 1: GEDs are included as HS graduates; Model 2: GEDs treated separately; and Model 3: GEDs treated as dropouts. Persons enrolled in school at each age are deleted as are those who are not working or self-employed. Those making less than \$ 2 or more than \$ 100 per hour are deleted as are those making less than \$ 100 or more than \$ 4,000 weekly. In addition, those making less than \$ 2,000 or more than 200,000 are dropped. Region dummies are included in all regressions but are not shown. Percentages of GEDs are calculated using sampling weights. Weekly wage estimates are weighted by weeks worked last year. Hourly wage estimates are weighted by hours worked last year. Huber-white robust standard errors clustered by individual are reported.

\*Based on Model 1: Counting GEDs as HS graduates

\*\*Computed as the difference in the college-HS log wage gap in Model 1 vs. Model 2

†Computed as the difference in the college-dropout wage premium in Model 1 vs. Model 3

## 6 Conclusion

This chapter reviews the scholarly literature on the General Educational Development certificate. The consensus in the literature is that the GED testing program does little good for the substantial majority of its takers in generating economic opportunity directly and in opening the door to post-secondary education. This finding is especially troubling given the size and rate of growth of the GED. Growth in the GED appears to be largely fueled by various government policies. Until recently, misclassification of the GED as a high school equivalent credential has hidden decreases in the high school graduation rate and minority graduation convergence. The study of the GED sheds considerable light on the value of noncognitive skills and the danger of relying solely on tests of scholastic aptitude to monitor the success of American educational policy.

## References

- David H. Autor, Lawrence F. Katz, and Melissa S. Kearney. Trends in U.S. wage inequality: Revising the revisionists. *Review of Economics and Statistics*, 90(2):300–323, 2008.
- Julian R. Betts and Magnus Lofstrom. The Educational Attainment of Immigrants: Trends and Implications. In George J. Borjas, editor, *Issues in the Economics of Immigration*, chapter 2, pages 51–116. University of Chicago Press, 2000.
- Jerry Bobrow. *GED (General Educational Development)*. Cliffs Notes, Indianapolis, IN, 1 edition, 2002.
- David Boesel, Nabeel Alsalam, and Thomas M. Smith. *Educational and Labor Market Performance of GED Recipients*. U.S. Dept. of Education, Office of Educational Research and Improvement, National Library of Education, Washington D.C., 1998.
- Lex Borghans, Bart H. H. Golsteyn, James J. Heckman, and John Eric Humphries. IQ, Achievement, and Personality. Unpublished manuscript, University of Maastricht and University of Chicago (revised from the 2009 version), 2010.
- George J. Borjas, editor. *Issues in the Economics of Immigration*. University of Chicago Press, Chicago, IL, 2000.
- Stephen V. Cameron and James J. Heckman. The Nonequivalence of High School Equivalents. *Journal of Labor Economics*, 11(1, Part 1):1–47, January 1993.

- Jian Cao, Ernst W. Stromsdorfer, and Gregory Weeks. The Human Capital Effect of General Education Development Certificates on Low Income Women. *Journal of Human Resources*, 31(1):206–228, Winter 1996.
- Joseph M. Carroll. The Copernican Plan: Restructuring the American High School. *Phi Delta Kappan*, 71(5): 358–365, 1990.
- Duncan Chaplin. GEDs for Teenagers: Are There Unintended Consequences? Technical report, The Urban Institute, November 1999.
- Melissa A. Clark and David A. Jaeger. Natives, the Foreign-Born, and High School Equivalents: New Evidence on the Returns to the GED. *Journal of Population Economics*, 19(4):769–793, October 2006. doi: 10.1007/s00148-005-0037-8.
- Laurie E. Ekstrand. Reintegration of Offenders into Communities. Technical Report GAO-01-966T, United States General Accounting Office, Washington, DC, 2001. Testimony Before the Subcommittee on the District of Columbia, Committee on Government Reform, House of Representatives.
- Chester E. Finn, Jr. The High School Dropout Puzzle. *Public Interest*, 87(2):3–22, 1987.
- Gerald G. Gaes. The Impact of Prison Education Programs on Post-Release Outcomes. Unpublished Manuscript. Presented at the Reentry Roundtable on Education, March 31 and April 1, 2008. John Jay College of Criminal Justice, New York City., November 2009.
- GED Testing Service. *The GED Option Program Statistical Report*. GED Testing Service, Washington, DC, 2008.
- GED Testing Service. *Technical Manual: 2002 Series GED Tests*. GED Testing Service, Washington, DC, March 2009.
- GED Testing Service. *Examiner’s Manual Tests of General Educational Development*. GED Testing Service, Washington, DC, Various.
- GED Testing Service. *Who Took the GED?: GED Statistical Report*. American Council on Higher Education, Washington, DC, Various Years.
- Claudia Goldin and Lawrence F. Katz. *The Race between Education and Technology*. Belknap Press of Harvard University Press, Cambridge, MA, 2008.



- Jay P. Greene. High School Graduation Rates in the United States. Civic Report 31, Center for Civic Innovation at the Manhattan Institute with Black Alliance for Educational Options, 2001.
- W. Norton Grubb. Learning and Earning in the Middle, Part I: National Studies of Pre-Baccalaureate Education. *Economics of Education Review*, 21(4):299–321, 2002.
- Karsten T. Hansen, James J. Heckman, and Kathleen J. Mullen. The Effect of Schooling and Ability on Achievement Test Scores. *Journal of Econometrics*, 121(1-2):39–98, July–August 2004.
- Caroline Wolf Harlow. Education and Correctional Populations. Bureau of Justice Statistics Special Report NCJ 195670, Bureau of Justice Statistics, Washington, DC, 2003.
- James J. Heckman and Paul A. LaFontaine. Bias Corrected Estimates of GED Returns. *Journal of Labor Economics*, 24(3):661–700, July 2006.
- James J. Heckman and Paul A. LaFontaine. The American High School Graduation Rate: Trends and Levels. *Review of Economics and Statistics*, 2010. In press,.
- James J. Heckman and Yona Rubinstein. The Importance of Noncognitive Skills: Lessons from the GED Testing Program. *American Economic Review*, 91(2):145–149, May 2001.
- James J. Heckman and Sergio Urzua. The Option Value and Rate of Return to Educational Choices. Unpublished Manuscript, Northwestern University, 2010.
- James J. Heckman, Jora Stixrud, and Sergio Urzua. The Effects of Cognitive and Noncognitive Abilities on Labor Market Outcomes and Social Behavior. *Journal of Labor Economics*, 24(3):411–482, July 2006.
- James J. Heckman, Paul A. LaFontaine, and Pedro L. Rodríguez. Taking the Easy Way Out: How the GED Testing Program Induces Students to Drop Out. Unpublished manuscript, University of Chicago, Department of Economics, 2008.
- James J. Heckman, Sergio Urzua, and Gregory Veramendi. The Effects of Schooling on Labor Market and Health Outcomes. Unpublished Manuscript, Northwestern University, 2010.
- John Eric Humphries. Young GEDs: The Growth and Change in GED Test Takers. Unpublished Manuscript. University of Chicago, 2010.

- Guido Imbens and Thomas Lemieux. Regression Discontinuity Designs: A Guide to Practice. *Journal of Econometrics*, 142(2):615–635, 2008.
- Christopher Jepsen, Peter Mueser, and Kenneth Troske. Labor Market Returns to the GED Using Regression Discontinuity Analysis. Presented at the EALE - SOLE 2010 Third World Conference . June 17-19, 2010 at University College London., April 2010.
- Jennifer Laird, Gregory Keinzl, Matthew DeBell, and Chris Chapman. Dropout Rates in the United States: 2005. Compendium Report NCES 2007-059, National Center for Education Statistics, June 2007.
- Janice H. Laurence. The Military Performance of Dropouts and GED Holders. Unpublished Manuscript, Human Resources Research Organization, Alexandria, VA., 2008.
- Dean R. Lillard and Philip DeCicca. Higher Standards, More Dropouts? Evidence Within and Across Time. *Economics of Education Review*, 20(5):459–473, 2001.
- Joseph W. McLaughlin, Gary Skaggs, and Margaret Becker Patterson. Preparation for and Performance on the GED Test. Research Studies 2009-2, American Council on Education: GED Testing Service, Washington, DC, August 2009.
- Jing Miao and Walt Haney. High School Graduation Rates: Alternative Methods and Implications. *Education Policy Analysis Archives*, 12:1–68, 2004.
- Richard J. Murnane, John B. Willett, and Kathryn Parker Boudett. Do High School Dropouts Benefit from Obtaining a GED? *Educational Evaluation and Policy Analysis*, 17(2):133–147, Summer 1995.
- Richard J. Murnane, John B. Willett, and Kathryn P. Boudett. Does Acquisition of a GED Lead to More Training, Post-Secondary Education, and Military Service for School Dropouts? *Industrial Relations Review*, 51:100–116, 1997.
- Richard J. Murnane, John B. Willett, and Kathryn Parker Boudett. Do Male Dropouts Benefit from Obtaining a GED, Postsecondary Education, and Training? *Evaluation Review*, 22(5):475–502, October 1999.
- Richard J. Murnane, John B. Willett, and John H. Tyler. Who Benefits from Obtaining a GED? Evidence from High School and Beyond. *Review of Economics and Statistics*, 82(1):23–37, February 2000.

- National Advisory Council on Adult Education. *A History of the Adult Education Act*. National Advisory Council on Adult Education, Washington, DC, 1980.
- National Advisory Council on Adult Education. *Annual Report to the President of the United States*. National Advisory Council on Adult Education, Washington, DC, Various Years.
- National Center for Education Statistics. *Education Longitudinal Study of 2002 (ELS:2004/04), First Follow-up, Student Survey*. National Center for Education Statistics, Washington, DC, 2006.
- National Center for Education Statistics. *Digest of Education Statistics*. National Center for Education Statistics, Washington, DC, Various.
- National Center for Education Statistics. *Digest of Educational Statistics*. National Center for Education Statistics, Washington, DC, Various Years.
- Margaret Becker Patterson, Wei Song, and Jizhi Zhang. GED Candidates and Their Postsecondary Educational Outcomes: A Pilot Study. Research Studies 2009-5, GED Testing Service, Washington, DC, December 2009.
- Lois M. Quinn. An Institutional History of the GED. Unpublished manuscript, 2008.
- Amy D. Rose. Ends or Means: An Overview of the History of the Adult Education Act. Information Series 346, ERIC Clearinghouse on Adult, Career, and Vocational Education, Center on Education and Training for Employment, Ohio State University, Columbus, OH, 1991.
- Yona Rubinstein. The Use of Inter-States Variation in GED Passing Standards for Estimating the Effect of a GED Degree on Labor Market Outcomes of High School Dropouts - A Critique. Unpublished Manuscript, Brown University, Department of Economics, August 2003.
- Russell W. Rumberger. Dropping Out of High School: The Influence of Race, Sex, and Family Background. *American Educational Research Journal*, 20(2):199–220, 1983.
- Society for Human Resource Management. Does your company accept applicants with a GED credential for jobs requiring a high school degree? Online Poll, Retrieved January 25, 2008 from [www.shrm.org/poll/results.asp?question=67](http://www.shrm.org/poll/results.asp?question=67)., 2002.
- A. Michael Spence. Job Market Signaling. *Quarterly Journal of Economics*, 87(3):355–374, August 1973.

- Laurence Steinberg. Risk Taking in Adolescence - New Perspectives from Brain and Behavioral Science. *Current Directions in Psychological Science*, 16(2):55–59, 2007.
- Laurence Steinberg. A Social Neuroscience Perspective on Adolescent Risk-Taking. *Developmental Review*, 28(1):78–106, 2008.
- Christopher B. Swanson. Who Graduates? Who Doesn’t? a Statistical Portrait of Public High School Graduation, Class of 2001. Technical report, The Urban Institute Education Policy Center, 2004. <http://www.urban.org/url.cfm?ID=410934>, Last accessed April 26, 2010.
- The College Board. *Annual Survey of Colleges*. The College Board, New York, NY, 2007. Data file.
- John H. Tyler and Jeffrey R. Kling. Prison-Based Education and Re-entry into the Mainstream Labor Market. In Shawn Bushway, Michael Stoll, and David Weiman, editors, *Barriers to Reentry? The Labor Market for Released Prisoners in Post-Industrial America*. Russell Sage Foundation Press, New York, NY, 2007.
- John H. Tyler, Richard J. Murnane, and John B. Willett. Estimating the Labor Market Signaling Value of the GED. *Quarterly Journal of Economics*, 115(2):431–468, May 2000.
- John H. Tyler, Richard J. Murnane, and John B. Willett. Who Benefits from a GED? Evidence for Females from High School and Beyond. *Economics of Education Review*, 22(3):237–247, June 2003.
- Austin Texas United States Sentencing Commission, Western District of Texas. Regional Hearing On the State of Federal Sentencing. Testimony of Harley G. Lappin, March 18 2009.
- U.S. Department of Education. *Division of Adult Education and Literacy*. Washington, DC, Various Years. Unpublished Data. Office of Vocational and Adult Education.
- U.S. Department of Justice. Inmate Work and Performance Pay. Technical report, U.S. Department of Justice, Federal Bureau of Prisons, Washington, DC, 2008.
- John Robert Warren. State-Level High School Completion Rates: Concepts, Measures, and Trends. *Education Policy Analysis Archives*, 13:1–34, 2005.
- John Robert Warren, Krista N. Jenkins, and Rachael B. Kulick. High School Exit Examinations and State-Level Completion and GED Rates: 1975 through 2002. *Educational Evaluation and Policy Analysis*, 28(2):131–152, Summer 2006.

Jizhi Zhang, Mee Young Han, and Margaret Becker Patterson. Young GED Examinees and Their Performance on the GED Tests. Research Studies 2009-1, GED Testing Service, 2009.