

Card, David Edward; Dahl, Gordon B.

Working Paper

Family violence and football: The effect of unexpected emotional cues on violent behavior

IZA Discussion Papers, No. 4869

Provided in Cooperation with:

IZA – Institute of Labor Economics

Suggested Citation: Card, David Edward; Dahl, Gordon B. (2010) : Family violence and football: The effect of unexpected emotional cues on violent behavior, IZA Discussion Papers, No. 4869, Institute for the Study of Labor (IZA), Bonn

This Version is available at:

<https://hdl.handle.net/10419/36851>

Standard-Nutzungsbedingungen:

Die Dokumente auf EconStor dürfen zu eigenen wissenschaftlichen Zwecken und zum Privatgebrauch gespeichert und kopiert werden.

Sie dürfen die Dokumente nicht für öffentliche oder kommerzielle Zwecke vervielfältigen, öffentlich ausstellen, öffentlich zugänglich machen, vertreiben oder anderweitig nutzen.

Sofern die Verfasser die Dokumente unter Open-Content-Lizenzen (insbesondere CC-Lizenzen) zur Verfügung gestellt haben sollten, gelten abweichend von diesen Nutzungsbedingungen die in der dort genannten Lizenz gewährten Nutzungsrechte.

Terms of use:

Documents in EconStor may be saved and copied for your personal and scholarly purposes.

You are not to copy documents for public or commercial purposes, to exhibit the documents publicly, to make them publicly available on the internet, or to distribute or otherwise use the documents in public.

If the documents have been made available under an Open Content Licence (especially Creative Commons Licences), you may exercise further usage rights as specified in the indicated licence.

IZA DP No. 4869

Family Violence and Football: The Effect of Unexpected Emotional Cues on Violent Behavior

David Card
Gordon B. Dahl

April 2010

Family Violence and Football: The Effect of Unexpected Emotional Cues on Violent Behavior

David Card

*University of California, Berkeley
and IZA*

Gordon B. Dahl

*University of California, San Diego
and IZA*

Discussion Paper No. 4869

April 2010

IZA

P.O. Box 7240
53072 Bonn
Germany

Phone: +49-228-3894-0

Fax: +49-228-3894-180

E-mail: iza@iza.org

Any opinions expressed here are those of the author(s) and not those of IZA. Research published in this series may include views on policy, but the institute itself takes no institutional policy positions.

The Institute for the Study of Labor (IZA) in Bonn is a local and virtual international research center and a place of communication between science, politics and business. IZA is an independent nonprofit organization supported by Deutsche Post Foundation. The center is associated with the University of Bonn and offers a stimulating research environment through its international network, workshops and conferences, data service, project support, research visits and doctoral program. IZA engages in (i) original and internationally competitive research in all fields of labor economics, (ii) development of policy concepts, and (iii) dissemination of research results and concepts to the interested public.

IZA Discussion Papers often represent preliminary work and are circulated to encourage discussion. Citation of such a paper should account for its provisional character. A revised version may be available directly from the author.

ABSTRACT

Family Violence and Football: The Effect of Unexpected Emotional Cues on Violent Behavior*

We study the link between family violence and the emotional cues associated with wins and losses by local professional football teams. We hypothesize that the risk of violence is affected by the 'gain-loss' utility of game outcomes around a rationally expected reference point. Our empirical analysis uses police reports of violent incidents on Sundays during the professional football season. Controlling for the pre-game point spread and the size of the local viewing audience, we find that upset losses (defeats when the home team was predicted to win by 4 or more points) lead to a 10 percent increase in the rate of at-home violence by men against their wives and girlfriends. In contrast, losses when the game was expected to be close have small and insignificant effects. Upset wins (when the home team was predicted to lose) also have little impact on violence, consistent with asymmetry in the gain-loss utility function. The rise in violence after an upset loss is concentrated in a narrow time window near the end of the game, and is larger for more important games. We find no evidence for reference point updating based on the halftime score.

JEL Classification: D03, J12

Keywords: reference dependence, gain-loss utility, intimate partner violence

Corresponding author:

Gordon B. Dahl
Economics Department
University of California, San Diego
9500 Gilman Dr. #0508
La Jolla, CA 92093-0508
USA
E-mail: gdahl@ucsd.edu

* This research was supported by a grant from the National Institute of Child Health and Human Development (1R01HD056206-01A1). We are grateful to the editor and four anonymous referees for many helpful comments and suggestions. Rachana Bhatt, Graton Gathright, and Yoonsoo Lee provided outstanding research assistance. We also thank Vincent Crawford, Botund Koszegi, Matthew Rabin and especially Stefano DellaVigna for valuable advice on an earlier draft, and seminar participants at Claremont McKenna, the Saint Louis Federal Reserve, SITE, UC Berkeley, UC Irvine, UC Santa Barbara, UC San Diego, and the University of Stavanger Norway for comments and suggestions.

I. Introduction

Violence by men against members of their own family is one of the most common yet perplexing forms of criminal behavior.¹ One interpretation is that intra-family violence is instrumental behavior that is used by domineering men to control their partners and children (e.g., Dobash and Dobash, 1979).² An alternative view is that family violence is expressive behavior that either provides positive utility to some men (e.g., Tauchen et al., 1991; Aizer, 2010), or arises unintentionally when an argument escalates out of control (e.g., Straus, Gelles, and Steinmetz, 1980; Johnson, 2009).

An expressive interpretation of family violence suggests a potentially important role for emotional cues (or “visceral factors”) in precipitating violence.³ In this paper we study the effects of the emotional cues associated with wins and losses by local professional football teams, using police reports of family violence during the regular season of the National Football League (NFL). Specifically, we hypothesize the risk of violence is affected by the ‘gain-loss’ utility associated with game outcomes around a rationally expected reference point (Koszegi and Rabin, 2006).

Our focus on professional football is motivated by three considerations. First, NFL fans are strongly attached to their local teams. Home games on Sunday afternoons typically attract 25% or more of the local television audience.⁴ Second, the existence of a

¹ There are 2.5 to 4.5 million physical assaults inflicted on adult women by their intimate partner per year (Rand and Rennison, 2005). About one-third of female homicide victims in the U.S. were killed by their husband or partner (Fox and Zawitz, 2007).

² Chwe (1990) shows that painful punishment can arise in an agency model when the agent has low outside opportunities, even if punishment is costly for the principal. Bloch and Rao (2002) propose a model in which husbands use violence to signal the quality of their marriage to their wives’ families.

³ See Loewenstein (2000) for a general discussion and Laibson (2001) and Bernheim and Rangel (2004) for models of the effect of external cues on decision-making.

⁴ In 2008, NFL Sunday football games were the highest-rated local programs in 88% of the market-weeks. Nationally, the top 10 television programs for 18-49 year old men in 2008 were all NFL football games (NFL and Nielsen Media Research, cited in *Ground Report*, January 7, 2009).

well-organized betting market allows us to infer the expected outcome of each game, and use this as a reference point for gain-loss utility.⁵ Conditioning on the pre-game point spread also allows us to interpret any differential effect of a win versus a loss as a causal effect of the game outcome. Third, the structure of NFL competition and the availability of detailed game statistics make it easy to identify more or less salient games, and to measure the updated probability of a win by the home team midway through the game.

Two other recent studies have explored the link between football and violence. Gantz, Wang, and Bradley (2006) relate police reports of family violence to the occurrence of NFL games involving the local team, and find that game-days are associated with higher rates of violence. Rees and Schnepel (2009) document the effects of college football home games on rates of assault, vandalism, and alcohol-related offenses.⁶ We go beyond these studies by examining the effects of wins and losses relative to pre-game expectations, by controlling for the size of the local viewing audience, by studying the inter-day timing of violent incidents, by comparing the effects of more and less salient games, and by testing for potential updating of the reference point for game outcomes using the score at half-time.

Our analysis incorporates family violence data for over 750 city and county police agencies in the National Incident Based Reporting System, merged with information on Sunday NFL games played by 6 teams over a 12-year period. Controlling for the pre-game point spread and the size of the local television viewing audience, we find that “upset losses” by the home team (losses when the team was predicted to win by 4 points

⁵ As discussed in Levitt (2004) for example, football betting uses a point spread to clear the market. See Wolfers and Zitzewitz (2007) on the information-aggregating properties of betting markets.

⁶ Rees and Schnepel (2009) show that games that involve the upset of a team ranked in the top 25 by the Associated Press (AP) poll have much higher rates of violence. Their definition of “upsets” is substantially different than ours, since a game can only be an upset if a nationally-ranked team is playing.

or more) lead to a roughly 10% increase in the number of police reports of at-home male-on-female intimate partner violence. Consistent with reference point behavior, losses when the game was expected to be close have no significant effect on family violence. Upset wins (i.e., victories when the home team was expected to lose) also have no significant impact on the rate of violence, suggesting an important asymmetry in the reaction to unanticipated losses and gains.

The increases in violence after an upset loss are concentrated in a narrow time window around the end of the game, as might be expected if the violence is due to transitory emotional shocks. We also find that upset losses in more salient games (those involving a traditional rival, or when the team is still in playoff contention) have a bigger effect on the rate of violence. Finally, we test whether the reference point for emotional cues is revised during the first half of the game, but find no evidence of updating.

Taken together our findings suggest that emotional cues based on the outcomes of professional football games exert a relatively strong effect on the occurrence of family violence. The estimated impact of an upset loss, for example, is about one-third as large as the jump in violence on a major holiday like the Fourth of July. More broadly, our research contributes to a growing body of work on the importance of reference point behavior, and provides field-based empirical support for Koszegi and Rabin's (2006) prediction that individuals frame gains and losses around a rationally-expected reference point, with stronger reactions to losses than gains.

II. Modeling the Effect of Emotional Cues and Family Violence

This section presents a simplified model of the impact of NFL game outcomes on the occurrence of family violence, and describes our empirical framework for measuring the effects of these cues. Our key hypothesis is that wins and losses generate emotional cues that reflect ‘gain-loss’ utility around a rational reference point. We consider two alternative mechanisms through which cues affect violence. The first builds on the family conflict paradigm in sociology (Straus, Gelles, and Steinmetz, 1980) and research on loss of control (e.g., Baumeister and Heatherton, 1996; Bernheim and Rangel, 2004; Loewenstein and O’Donoghue, 2007) and treats violence as an unintended outcome of interactions in conflict-prone families. We assume that men are more likely to lose control when they have been exposed to a negative emotional shock. The second is a family bargaining model in which women endure violence in exchange for inter-family transfers, and men’s demand for violence rises after a negative cue.

a. Loss-of-Control Model

Consider a couple that each period has some risk of a conflictual interaction (i.e., a heated disagreement or argument). With some probability $h \geq 0$ the interaction escalates to violence (i.e., the husband “loses control”).⁷ The likelihood of losing control is influenced by the emotional cues associated with the outcome y of a professional football game, where $y=1$ indicates a home-team victory and $y=0$ indicates a loss.

Letting $p=E[y]$ we assume that:

$$(1) \quad h = h^0 - \mu (y-p) ,$$

⁷ Strictly speaking our model focuses on the risk of violent *interactions* between partners: the outcome could involve injuries to both partners. In our data about 80% of the victims of intimate partner violence are women, so we assume a male perpetrator.

where μ is the gain-loss utility associated with the game outcome (Koszegi and Rabin, 2006). For simplicity we assume that μ is piece-wise linear, with

$$\begin{aligned}\mu(y-p) &= \alpha(y-p), \quad y-p < 0 \\ &= \beta(y-p), \quad y-p > 0,\end{aligned}$$

for positive constants α and β . Loss aversion implies that $\alpha > \beta$, i.e., that the marginal effect of a positive cue is smaller than the marginal effect of a negative cue.

Recognizing that y is binary, the implied probabilities of a loss of control are

$$(2) \quad \begin{aligned}h^L(p) &= h^0 + \alpha p && \text{if } y=0 \text{ (a loss)} \\ h^W(p) &= h^0 - \beta(1-p) && \text{if } y=1 \text{ (a win)}.\end{aligned}$$

The upper line in Figure 1 represents $h^L(p)$. When $p=0$ a home-team loss is fully anticipated and there is no emotional cue, so $h^L = h^0$. When $p>0$ a loss is “bad news”, with a stronger negative cue the higher is p : thus h^L is increasing in p . The lower line in the figure represents $h^W(p)$. A win when $p=0$ is the “best possible” news, leading to the lowest probability of loss of control, $h^0 - \beta$. For higher values of p a win is less of positive shock, so h^W is also increasing in p .

Assuming that the probability of a conflictual interaction is $q \geq 0$, the probability of a violent incident, conditional on watching the game, is qh . If the husband always watches, the probability of violence is therefore $(h^0 + \alpha p)q$ in the event of a loss and $(h^0 - \beta(1-p))q$ in the event of a win. The differential effect of a loss versus a win on the probability of violence is:

$$(3) \quad \Delta(\text{risk} | p) = [\beta + (\alpha - \beta)p] q,$$

which is positive and increasing in p , assuming that $\alpha > \beta$.

In Card and Dahl (2009) we present a forward-looking model in which husbands decide in advance whether to watch a game or not, taking into account the pleasure of watching a win versus a loss, and the risk of exposure to the emotional cue if they watch. In this case the differential effect of a loss versus a win on the probability of violence can be written as:

$$(4) \quad \Delta(\text{risk} | p) = [\beta + (\alpha - \beta)p] \times E[q | \text{watch}, p] \times \text{Prob}[\text{watch} | p].$$

A comparison of (4) to (3) shows that discretionary viewing behavior will reinforce the effect of an increase in p on the differential effect of a loss versus a win if more people watch a game when p is higher, and/or if the composition of the viewing audience shifts toward more conflict-prone men when p is higher.

b. An Alternative Model

A simple loss-of-control model is broadly consistent with the literature on situational family violence (e.g., Straus, Gelles, and Steinmetz, 1980; Gelles and Straus, 1988; Johnson, 1995), and with recent economic models of addiction (Bernheim and Rangel, 2004) and failure of self control (Loewenstein and O'Donoghue, 2007). In terms of predictions linking emotional cues to violence, however, it is indistinguishable from a family bargaining model in which men value the expression of violence and their preferences are affected by emotional cues from a gain-loss function like $\mu(y-p)$ in equation (1).⁸ A potentially important distinction between these models is in the victim's

⁸ Tauchen et al. (1991), Farmer and Tiefenthaler (1997), Bowlus and Seitz (2006), and Aizer (2010) all assume that men value violence and their partners tolerate it in return for higher transfers. An efficient bargain with unrestricted transfers maximizes $E[U(y-c_w, v, h)]$ subject to $E[V(c_w, v)] \geq V^0$, where y =family income, c_w =consumption of wife, v =violence, h =cue, U is the male's utility and V is the female's. The optimal choices for v and c_w equate the husband's marginal willingness to pay for violence with his partner's marginal supply price. Assuming that negative cues increase the willingness to pay for violence, the level of violence demanded by the husband (and supplied by the wife) will respond as in equation (3).

reaction to violence. In a bargaining model the victim is compensated for her injuries, and the optimal choice of violence equates the husband's willingness to pay for violence with his partner's marginal cost. Given that, victims have no incentive to call the police or take other protective action (and in fact outside intervention is inefficient). Protective behavior is more easily interpreted in a loss-of-control model in which neither party benefits from violence. Nevertheless, both models imply a similar link between emotional cues and the probability of family violence.

c. Evaluating the Effect of Emotional Cues

We test for the predicted effects of positive and negative emotional cues using a Poisson count model for the number of police-reported episodes of family violence in cities and counties in states with a "home" NFL team. As discussed below we classify games based on the Las Vegas point spread into three categories: home team likely to win, opposing team likely to win, or game expected to be close. We then fit models that include a full set of interactions between the ex-ante classification and whether the game was a won or lost by the home team ($3 \times 2 = 6$ categories), treating non-game days (i.e., Sundays when the home team has a bye week or is playing on another day of the week) as the base case. As a robustness check, we also fit a model with a polynomial in the point spread, interacted with the game outcome.

Our key identifying assumption is that the outcome of an NFL game is random, conditional on the Las Vegas spread. Conditioning on the pre-game spread we can therefore interpret any difference between the rate of family violence following a win or

Our reading of the extensive family violence literature outside of economics is that no one thinks a marginal condition like this is true – in other words, the cost of violence to the partner in the "high cue" condition is often far beyond the "price" that is paid by the perpetrator.

loss as a causal effect of the outcome of the game. We test for reference point behavior by testing whether the impact of a loss is greater when the home team was expected to win than when the game was expected to be close, or the team was expected to lose. We also test for asymmetric reactions to good and bad news by comparing the magnitude of the effects of upset losses and upset wins.

III. Data Sources and Sample Construction

a. Measuring Family Violence: NIBRS Data on Police-Reported Violence

Our empirical analysis is based on police reports of family violence in the National Incident-Based Reporting System (NIBRS). NIBRS includes reports of crime to individual police agencies: the reports are not necessarily associated with an arrest.⁹ Each report includes information on the characteristics of the victim (age, gender, etc.), the offender (gender, relationship to the victim), and the incident (date, time of day, location, injuries).

NIBRS has two main advantages for our study. First, it includes all the family violence incidents recorded by a given agency. Since family violence is relatively rare, a complete count is needed to measure responses to NFL game outcomes on specific days in specific locations. Second, NIBRS includes real-time information on the date and time of day of the incident. Other sources of information on family violence (such as the National Crime Victimization Survey) are based on recall over a multiple-month period and cannot be used to measure occurrences by exact day and time.

⁹ About half of family assaults in the NIBRS result in an arrest (Durose et al., 2005; Hirschel, 2008). Direct arrests by police officers with no intervening report of a crime are also included in NIBRS. Information on the NIBRS data set is available at the National Archive of Criminal Justice Data, <http://www.icpsr.umich.edu/NACJD/NIBRS/>.

One limitation of NIBRS is that it only includes police-reported family violence.¹⁰ A comparison of the implied rate of violence experienced by women age 18-54 in NIBRS to the rate in the 1995 National Violence Against Women Survey (NVAWS) suggests that NIBRS captures a relatively high fraction of serious violence (i.e., episodes that would be classified as assault or intimidation). Specifically, we estimate that the annual risk of IPV is approximately 1.6% per year in the 2000 NIBRS, versus 1.3% per year in the NVAWS (1995-96).¹¹ A second limitation is that participation by police agencies in NIBRS is voluntary, and is relatively low. The total fraction of the U.S. population covered by NIBRS was only 4% in 1995, but had risen to 25% by 2006.

As has been noted in other studies (e.g., Vazquez, Stohr and Purkiss, 2005; Gantz, Wang, and Bradley, 2006) the rate of family violence varies substantially across the days of the week, with much higher rates on weekends than weekdays. In view of these patterns, and the small number of NFL games on days other than Sunday, we have elected to simplify our analysis by limiting our sample to the 17 Sundays during the regular NFL season. We define intimate partner violence (IPV) as an incident of simple assault, aggravated assault, or intimidation by a spouse, partner, or boyfriend/girlfriend. Our primary focus is on male-on-female IPV occurring at home between noon and midnight Eastern Time.

Table 1 provides summary statistics for IPV for our estimation sample (Sundays during the regular football season) for the set of NIBRS agencies used in our analysis (all

¹⁰ Only about one-half of adult women in the National Crime Victimization Survey who were assaulted by their spouse or partner reported the incident to police (Durose et al., 2005).

¹¹ To construct a national incidence rate from the NIBRS we assume that information on the family relationship of the perpetrator is missing at random, and inflated the incident rates for the agencies in NIBRS to the national level using relative populations as of 2000.

reporting police agencies in the set of states that we match to NFL teams, as described in the next section).¹² In our estimation sample, the overall rate of IPV is 1.28 per 100,000 individuals per day.¹³ Panel A shows how the rate of intimate partner violence varies by location and victim-offender relationship. Most of the victims of IPV are women (81%), and most are victimized at home (82%), leading to our focus on at-home male-on-female incidents.¹⁴ Within this class, violence by husbands against their wives and violence by men against unmarried partners account for roughly equal shares.

Panel B narrows the focus to male-on-female violence occurring at home. To crudely characterize the severity of an incident, we classified aggravated assaults and other incidents involving physical injury as “serious assaults,” and the remaining forms of IPV as “minor assaults”.¹⁵ Using this classification just over one-half of male-on-female at-home IPV incidents are serious assaults.

Alcohol use is widely believed to contribute to family violence (Klostermann and Fals-Steward, 2006) and may amplify the effects of emotional cues (Exum, 2002).

Unfortunately, alcohol use information in NIBRS is limited to a single variable indicating

¹² We include incidents reported by city and county agencies but exclude state police, college police, and special agencies. We limit the sample to agencies which report data on any crime (not just IPV) for at least 13 out of 17 Sundays in a season. Copies of the programs that we used to process the publicly available NIBRS data are available in the online appendix.

¹³ We refer to the hours between noon and midnight ET as a day; these hours account for roughly 60% of at-home male-on-female IPV. Ideally the rate of intimate partner violence would be expressed relative to the number of intimate partner couples. In 2000 there were approximately 21 intimate partnerships per 100 people in the U.S. population; thus the rate per couple is approximately 4.8 times the rate per person. Our models include agency fixed effects and therefore control flexibly for most of the variation in the size of the at-risk population.

¹⁴ The relative fraction of female victims of intimate partner violence is controversial because some data sources (in particular, behavioral checklists that collect incidents of slapping and pushing as well as more serious violence) find that men and women are equally likely to be victimized (e.g., Straus, Gelles, and Steinmetz, 1980). Police reports and victimization surveys suggest that women are more likely to be the victims of relatively serious violence (see Hamby, 2005, Table I).

¹⁵ NIBRS uses the FBI’s definition of aggravated assault, which is an unlawful attack where the offender wields a weapon or the victim suffers obvious severe or aggravated injury. Simple assault is also an unlawful attack, but does not involve a weapon or obvious severe or aggravated bodily injury. Intimidation is the act of placing a person in reasonable fear of bodily harm without a weapon or physical attack.

whether the offender was suspected of using alcohol (or drugs) during or shortly before the offense. Overall, about 20% of at-home male-on-female incidents of IPV list alcohol or drugs as a contributing factor.

b. Matching NFL Team Data to NIBRS Violence Data

We link the NIBRS data to the team records for “local” NFL franchises. Since NIBRS data are unavailable for many larger cities, relatively few NFL teams can be matched to crime rates in the city (or county) that hosts their home stadium. As an alternative, we focus on cities and counties in states where there is a single NFL team (or nearby team), assigning all jurisdictions within a state to that team. Using this approach, and requiring that at least 4 years of crime data are available for a given team, we were able to match six NFL teams to 763 NIBRS agencies.

Table 2 shows the six football teams in our sample, with the associated NIBRS states listed in parentheses.¹⁶ For each team we also show the win-loss record in the sample years for which NIBRS data are available, and the number of reporting agencies in the state in that year. Three teams (the Carolina Panthers, Detroit Lions, and New England Patriots) have NIBRS data available for all 12 years, starting in 1995 and continuing to 2006. The three remaining teams (the Denver Broncos, Kansas City Chiefs, and Tennessee Titans) enter the NIBRS sample in later years. Within a state the number of reporting agencies in NIBRS tends to rise over time, though there are some downward fluctuations as certain agencies leave the program.

The win-loss records reported in Table 2 display wide variation across teams.

¹⁶ Kansas City is in Missouri, but we assume fans in Kansas also follow the team. NIBRS has no data for Missouri agencies until 2006, the last year of our sample period.

Detroit had a weak record over most of the sample period, while Denver and New England were relatively successful. Even for a given team, however, there are swings from year to year. Denver, for example, had a 14-2 win-loss record in the 1998 season (and won the Superbowl), but had a losing season in 1999. Since predicted game outcomes tend to be based on recent past performance, these patterns hint at the prevalence of both upset losses (e.g., during the Denver Bronco's 1999 season) and upset wins (e.g., during the Kansas City Chief's 2003 season). We characterize upset losses and upset wins more formally using the Las Vegas point spread in the next subsection.

In all, the 6 teams in our sample can be matched to 993 regular season football games and 53 playoff games. The characteristics of these games are shown in the upper panel of Table 3. The vast majority (87%) of the regular season games were played on Sundays. As noted earlier, given the seasonal and intra-week variation in family violence rates, we elected to simplify our empirical design by focusing on regular-season Sunday games. The characteristics of these games and their associated local television market are summarized in panels B and C of Table 3.

c. Expected Outcomes from Betting Markets

Betting on NFL game outcomes is organized through Las Vegas bookmakers, who equilibrate the market using a point spread. If the point spread is -3 for one team against another, the team must win by more than 3 points for a bet on that team to pay off. The market assessment of the outcome of a game is contained in the closing value of the point spread (the so-called "closing line").

Previous research has suggested that the point spread is an unbiased predictor of game outcomes in the NFL (e.g., Pankoff 1968; Gandar et al., 1988). To verify this conclusion, we collected data on point spreads and final scores for all 3,725 NFL football games played during the 1995-2006 seasons. Figure 2 shows the relationship between the actual and predicted point spread in each game. The actual spread is “noisier” than the predicted spread, but the two are highly correlated. In fact, a regression of the actual on the predicted spread yields a coefficient of 1.01 (standard error = 0.03). Thus, there is no evidence against the null hypothesis of an efficient prediction. Moreover, the R-squared of the relationship is relatively strong (0.20) suggesting that the closing line is an informative predictor of game outcomes.

The vertical lines in Figure 2 divide the predicted spreads into three regions, depending on whether the home team is predicted to win by at least 4 points, predicted to lose by at least 4 points, or predicted to have a close game. About 45% of games are expected to be close: the remaining games are equally divided in the two tails. In our empirical analysis we use these three categories to classify games as “predicted wins”, “predicted close games”, and “predicted losses” for the home team.

Our model is written in terms of the ex-ante probability of a home-team win, rather than the point spread. The mapping between the two is shown in Figure 3. To derive this relationship we regressed the probability of a victory by the home team on a third order polynomial in the spread. The fitted relationship follows the expected “inverse S-curve” shape, and is symmetric. For spreads of ± 14 points (a range that includes 98% of games) the probability of a win is very close to linear, with each one-point increase in the spread translating into a 3% decrease in the probability of a win. For

games with a spread of -4 points or less (“predicted wins”) the probability of a home team victory is 63% or greater. For “predicted losses” (spread ≥ 4) the probability of a win is 37% or less.

Panel B of Table 3 summarizes the predicted outcomes of the 866 regular-season Sunday games in our IPV analysis sample. Of these games, 283 (33%) were predicted wins for the home team, 206 (24%) were predicted losses, and 377 (44%) were predicted close games. The greater number of predicted wins than losses in our sample reflects the inclusion of two relatively successful teams (Denver and New England). We also report the actual outcomes of the games: the home team lost relatively few (28%) of the games they were favored to win by 4 or more points, and won relatively few (32%) of the games they were predicted to lose by 4 or more points. Among predicted close games the home team victory rate was approximately 50%.

As discussed in Section Vd, below, we present some analyses of game outcomes relative to the point spread at halftime (which we call the “halftime spread”). Like the final score, the halftime spread is more variable than the pre-game spread: by the midpoint of the game only 28% of games are closer than 4 points, while 44% are within the same range using the pre-game spread. The halftime spread is also a better predictor of the final game outcome. For example, among games where the home team led by 4 points or more at halftime, the fraction of losses was 18% (versus 28% using the same classification of the pre-game spread).

Panel B also shows two other important characteristics of NFL games that we explore in later analyses: the starting time, and the likely emotional salience of a game. The largest share of games (68%) in our sample had a 1:00 PM starting time. Most of the

others (26%) had a 4:00 PM start time, while only 6% were night games. We consider three measures of emotional salience: whether the home team was still in playoff contention; whether the game was played against a traditional “rival” team; and whether the game involved an unusually high number of sacks, turnovers, or penalty yards.¹⁷ Most regular season games (68%) are played when the team is still in playoff contention, while about one-fifth are played against a traditional rival, and about 40% involve a high number of sacks, turnovers, or penalty yards. We define “highly salient” games as those in which the home team was still in playoff contention and either played against a traditional rival or had an unusual number of sacks, turnovers, or penalty yards. These games represent 37% of our sample.

d. Measures of Viewership

We purchased data from Nielsen Media Research (“Nielsen”) for the six television markets corresponding to the teams in our matched NIBRS-NFL sample. Nielsen uses information from metering devices installed in a sample of homes to estimate the fraction of all “television households” that are watching a given program at a given time. Panel C of Table 3 shows the Nielsen ratings for the regular season Sunday football games in our estimation sample (each Nielsen point represents 1 percent of local television households). On average, 24% of all households watch their local team play on a typical Sunday. In contrast, the Sunday afternoon television audience when the local team is not playing is only one-fourth as large.

¹⁷ We classify a team as out of contention once the predicted probability of making the playoffs (based on the historical record for teams with a similar win-loss record at the same point in the season) is under 10%. We identified traditional rivalries using information from “Rivalries in the National Football League” on *Wikipedia*. A list of the rival team pairs we use is available on request.

Figure 4 plots the fraction of households watching a game (deviated from the average viewership in the same media market on Sunday game-days) against the pre-game spread. The estimated regression line in the graph shows that the expected audience falls by about 1 percentage point as the spread rises from -4 (a predicted win by the home team) to +4 (a predicted loss). This is not a large effect, and we infer that any differential reaction to the outcomes of predicted wins versus predicted losses is unlikely to be attributable to changes in viewership.

IV. Econometric Model and Main Estimation Results

a. Econometric Model

Given the incident-based nature of NIBRS data, we specify a Poisson regression model for the number of incidents of intimate partner violence reported by a given police agency on a given Sunday of the regular NFL season. Specifically we assume that

$$(5) \quad \log(\mu_{jt}) = \theta_j + X_{jt}\gamma + f(p_{jt}, y_{jt}; \lambda),$$

where μ_{jt} represents the expected number of incidents of IPV reported by agency j in time period t , θ_j represents a fixed effect for the agency (which controls for the size and overall characteristics of the population served by the agency), X_{jt} represents a set of time-varying controls (e.g., controls for season and weather), and $f(p_{jt}, y_{jt}; \lambda)$ is a general function of p_{jt} , the probability of a victory by the home team for a game played on date t , and y_{jt} , the actual game outcome, with parameters λ . We assume that $p_{jt} = p(S_{jt})$ where S_{jt} is the observed pre-game point spread, allowing us to write

$$(5') \quad \log(\mu_{jt}) = \theta_j + X_{jt}\gamma + g(S_{jt}, y_{jt}; \lambda).$$

Our primary interest is in the effect of a loss or win by the home team, controlling for the spread. Assuming that the Las Vegas betting market provides efficient forecasts of NFL game outcomes, the actual outcome of a game is “as good as random” when we control for the spread, and a specification like (5') yields unbiased estimates of the causal effect of a loss relative to a win.¹⁸

An advantage of a Poisson specification is that fixed effects can be included without creating an incidental parameters problem (see Cameron and Trivedi, 1998). This is potentially important in the NIBRS context because there are many small police agencies with relatively low counts of family violence incidents. A second useful property of a Poisson specification is that consistency of the maximum likelihood estimates of the parameters associated with the time-varying covariates (and in particular, the parameters λ) only requires that we have correctly specified the conditional mean for $\log(\mu_{jt})$ (Cameron and Trivedi, 1986). Consistency does not require that the arrival process for IPV incidents is actually Poisson.

b. Baseline Empirical Results

Table 4 presents results for our baseline Poisson regressions for at-home male-on-female intimate partner violence occurring between the hours of 12 pm and 12 am on Sundays of the NFL regular season. In these models we assume that

$$\begin{aligned}
 g(S_{jt}, y_{jt}, \lambda) = & \lambda_1 \cdot 1(S_{jt} \leq -4) + \lambda_2 \cdot 1(S_{jt} \leq -4) 1(y_{jt} = 0) \\
 & + \lambda_3 \cdot 1(-4 < S_{jt} < 4) + \lambda_4 \cdot 1(-4 < S_{jt} < 4) 1(y_{jt} = 0) \\
 & + \lambda_5 \cdot 1(S_{jt} \geq 4) + \lambda_6 \cdot 1(S_{jt} \geq 4) 1(y_{jt} = 1),
 \end{aligned}$$

¹⁸ Formally, for a binary random variable y with mean p , $E[y | p, Z] = E[y | p]$ for any Z , so conditioning on p , y is independent of Z . Assuming the mapping $p(S)$ from the spread to p is invertible and does not depend on Z , $E[y | S, Z] = E[y | p, Z] = E[y | p]$, so y is independent of Z conditioning on S .

i.e., we include dummies for three ranges of the spread, and interactions of these dummies with a game outcome indicator. The main coefficients of interest are λ_2 , λ_4 , and λ_6 , which measure the effects of an upset loss, a close loss, and an upset win, respectively. The coefficients associated with the range of the spread (λ_1 , λ_3 , λ_5) are also potentially interesting, but less easily interpreted, since variation in S may be correlated with other factors that affect the likelihood of IPV.

The basic model in column (1) of Table 4 includes the spread indicators and the interactions with the win or loss variables, as well as a set of agency fixed effects. Columns 2-5 add in three sets of time-varying covariates: season, week of season, and holiday dummies; local weather conditions on the day of the game; and the Nielsen Rating for the local NFL game broadcast. The Nielsen data are only available for the 90% of the game days in our sample that occur in 1997 or later. To check the sensitivity of our results to the sample, column 4 presents a specification identical to the one in column 3 (with agency fixed effects and date and weather controls) but fit to the subsample with Nielsen data.

Focusing on the coefficients associated with the game outcome (in the first three rows of the table) notice that the estimates are quite stable across specifications, as would be anticipated if the game outcome is orthogonal to the other covariates, conditional on the spread.¹⁹ The estimates show that an upset loss leads to an approximately 10% increase in the rate of male-on-female at-home IPV. In contrast, the estimated effects of a loss when the game was predicted to be close are only about one-fourth to one-third as large in magnitude, and are never significant. The difference provides direct support for

¹⁹ Estimates of the complete set of coefficients for the baseline model in column 3 of Table 4 are presented in Appendix Table 5 of the online appendix.

reference-point behavior of fans. Even more surprising, perhaps, is that upset wins appear to have little or no protective effect. Indeed, the estimated effects of an upset win are all positive, rather than negative as would be expected if the reaction to wins and losses is symmetric. Formal tests for symmetry (comparing the effect of an upset loss to the negative of the effect for an upset win) are shown in the third-last row of the table and indicate substantial evidence of loss aversion.²⁰

In column 5 we explore the effect of controlling for the number of households tuned in to watch a local game. The Nielsen audience ratings are a significant factor in game day violence ($t=2.2$), with intimate partner violence rising by about 0.3% for each percentage point increase in the number of households watching the game. Importantly, however, the addition of this proxy for the number of couples at home together during a game has no effect on the estimated effects of the game outcomes. This suggests that the asymmetric reaction to upset losses and upset wins cannot be attributed to the lower number of viewers for expected losses.

V. Extensions and Robustness Checks

a. Intra-day Timing of Violence Reports

Our baseline specifications examine the effect of NFL game outcomes on incidents of IPV in the twelve hour period starting at noon. Using NIBRS information on the timing of incident reports (which is coded to the hour of the day) we can refine these models and check whether the pattern is consistent with a causal effect of the game

²⁰ As a robustness check, we explored whether violence is not due to upset losses per se but to game outcomes where the home team failed to “beat the spread.” Specifically, we added a dummy equal to 1 if the actual point spread was less than the Las Vegas spread. In a model like the one in Table 4, column 3, the estimated effect is relatively small and insignificantly different from zero (estimate = -.013, s.e. = .020).

outcome. Specifically, we fit separate models for incidents in various 3 hour time windows, allowing separate coefficients for games starting at 1 PM (68% of Sunday games) and 4 PM (26% of Sunday games).²¹ The models – presented in Table 5 – include the Nielsen rating for the number of households watching a game, although the key coefficients are very similar when this variable is excluded.

Each column of Table 5 shows the effects of game outcomes on violence in a different time window. For the 12 PM to 3 PM window (column 1) there is no significant effect of any game outcomes. Since the final outcomes of the 1 PM and 4 PM games are still unknown at 3 PM, this is consistent with the assumption that it is the game outcome that matters. By comparison, for the 3 PM – 6 PM window (column 2) there is a significant upset loss effect for 1 PM games, but no significant effect for the 4 PM games. The 1 PM games end in this interval, while the 4 PM games are still going on, so again the pattern is consistent with a causal effect of the game outcome. Between 6 and 9 PM (column 3) there is no significant effect of an upset loss for the 1 PM games, but a sizeable effect (a significant 31% increase in violence) for the 4 PM games. Finally, during the 9 PM to midnight interval (column 4), neither of the two upset loss coefficients is statistically significant. In sum, while the standard errors are fairly large, especially for the less-numerous 4 PM games (which include only 16 upset losses and 13 upset wins), the data suggest that the spike in violence after an upset loss is concentrated in a narrow time window surrounding the end of the game.

²¹ We do not try to fit separate coefficients for games starting at 8 PM, since there are very few of these games (6% of the sample), and until 2006 they were only shown on cable or satellite.

b. Emotionally Salient Games

Assuming that the link between NFL game outcomes and violence arises through emotional cues, one might expect more “emotionally salient” games to have larger effects. The models in Table 6 explore the relative effects of game outcomes for more salient games (upper panel) and less salient games (lower panel) using the salience classifications introduced in Table 3.²² In column 1, we define salience by whether the home team is still in playoff contention (based on having at least a 10% chance of making the playoffs). Among such games the effect of an upset loss rises to 13%, while the effect of a close loss rises to 5% and is marginally significant ($t=1.8$). In contrast, when the home team is no longer in playoff contention the effect of an upset loss is small and statistically insignificant. The effects of upset losses in the two types of games are statistically different from each other at the 11% level (third-last row of the table).

Column 2 looks at games against a traditional rival team. The effect of an upset loss is about twice as large for a rivalry game compared to a non-rivalry game (20% versus 8%, p -value for test of equality = 0.01). There is also a marginally significant *increase* in violence following an upset win against a rival ($t=2.0$), a pattern that is inconsistent with our simple emotional cueing model.

Upset losses in games that are particularly frustrating for fans could also generate a larger emotional response. In column 3 we look at the effects of three potentially frustrating occurrences: 4 or more sacks, 4 or more turnovers, or 80 or more penalty yards. At least one of these events happens in about 40% of the games in our sample. For frustrating games defined in this manner, the estimated effect of an upset loss is 15%,

²² We fit the models in each column with a full set of interactions between the salience indicator and the 6 dummies representing the pre-game spread and its interaction with the game outcome.

compared with an estimated 7% increase in violence for upset losses in non-frustrating games.

In the final column of Table 6, we narrow the focus to the 37% of games where the home team is still in playoff contention and is either playing a traditional rival or the game involved an unusual number of sacks, turnovers, or penalties. The effect of an upset loss is now a 17% increase in IPV, compared to a 13% increase for all playoff-contention games in column 1. Moreover, the effect of an upset loss is very close to zero for games which do not fit these criteria. (In fact none of the spread or outcome interaction coefficients are large or significant for these games). These patterns suggest that the overall rise in IPV following an upset loss is driven entirely by losses in games that “matter” the most to fans.²³

c. Alternative Parameterization

The models in Tables 4-6 all control for the pre-game point spread using a simple set of indicators for 3 ranges of the spread. As an alternative, we fit a set of models with a second order polynomial in the point spread, and an interaction between the polynomial and a dummy for a home team loss. Consistent with our baseline specifications, the results show that the effect of a home team loss on intimate partner violence is large and positive when the home team is expected to win, and declines steady as the expected likelihood of a home team victory increases. This pattern is also present when we limit attention to “highly salient” games, defined as in column 4 of Table 6. Figure 5 shows the estimated interaction effects for highly salient games, along with the associated

²³ It is also possible that conditional on the point spread, more violent men are more likely to watch pivotal games (although the amount of selection would have to be sizeable).

(point-wise) 95% confidence intervals. For highly salient games with pre-game point spreads less than -2 or so, the effect of a loss is positive and significantly different from zero. For predicted close games and predicted losses, the effects of a loss are insignificantly different from zero.

d. Updating of the Reference Point for Game Outcomes

So far we have assumed that family violence is related to the gap between actual game outcomes and fans' pre-game expectations. Over the roughly 3 hours that a game actually occurs, however, fans receive new information about the likelihood of final victory, and it is interesting to ask whether the reference point for the emotional cue of the final outcome adjusts accordingly. Some stickiness would seem to be required to generate the pattern of effects in Table 5, which shows little or no reaction while a game is in progress, but a rise in violence following an upset loss. Since many of these losses would be predictable midway through the game, if fans actually updated their reference point the final score would *not* be a surprise. To address the question more formally, we use information on the score at halftime to form an updated spread, and ask whether the rise in violence following a loss is better explained by pre-game expectations, or those as of halftime.

To proceed, let p_0 denote the probability of a home team victory based on the pre-game spread, and let p_1 denote the point spread at half-time. Assume that the emotional cue generated by the game outcome (y) is based on the deviation from an updated reference point:

$$p^* = \delta p_1 + (1 - \delta) p_0 .$$

With fully rational updating δ would be equal to the coefficient of the halftime spread in a regression of the probability of ultimate victory on the pre-game and halftime spreads (which is approximately 0.6), while with rigid expectations $\delta=0$.²⁴ Substituting this expression into equation (3), the predicted difference in the risk of violence after a loss versus a win becomes

$$(3') \quad \Delta(\text{risk} | p) = [\beta + (\alpha - \beta) \delta p_1 + (\alpha - \beta) (1 - \delta) p_0] q .$$

Consideration of this expression suggests that we extend our basic model by including a second set of indicators for upset loss, upset win, etc., based on the halftime spread.

Estimation results from two alternative variants of this extended specification are presented in Table 7. Because of perfect co-linearity, we cannot simply replicate our baseline models by adding dummies for the 3 ranges of the halftime spread, and a full set of interactions with a loss or win dummy.²⁵ One estimable specification, which drops the main effects for the range of the half-time spread, is presented in the first column of the table. In this specification the estimated interactions with the predicted outcomes based on the pre-game spread are all very similar to the estimates from our baseline model, whereas the interactions with the predicted outcomes based on the halftime spread are all small and insignificant (individually and jointly). Results from an alternative, and more parsimonious specification are presented in columns 2 and 3. Here, we include a linear control for the spread and a dummy for non-game days, rather than dummies for the

²⁴ Appendix Table 1 presents a series of models that relate the probability of a home team win to the pre-game spread and the halftime spread. Both are highly significant predictors: the relative magnitude of the halftime spread compared to the pre-game spread is approximately 0.6. We also fit models that divide the pre-game and halftime spread into 3 ranges (with cutoffs at -4 and 4 points). In these models the relative magnitudes of the halftime dummies are also about 60 percent of the combined magnitude.

²⁵ Our baseline model includes dummies for three ranges of the pre-game spread (S_1, S_2, S_3), and interactions of these with a loss dummy (L), treating non-game days as the base case. Call the additional indicators for the halftime spread (H_1, H_2, H_3). Since $S_1 + S_2 + S_3 = H_1 + H_2 + H_3 = 1$, the set of 12 variables ($S_1, S_2, S_3, H_1, H_2, H_3, S_1 \times L, S_2 \times L, S_3 \times L, H_1 \times L, H_2 \times L, H_3 \times L$) has only 9 degrees of freedom.

range of the spread. As a check on the validity of this simpler specification, the model in column 2 excludes all the halftime variables. As in our baseline models, this simple specification shows a roughly 10% effect of upset losses, and small and insignificant effects of upset wins and close losses. Column 3 extends this model by adding dummies for upset win, upset loss, and close loss, based on predictions using the halftime spread. As in column 1, the halftime variables are jointly insignificant ($p=0.50$) though the point estimates are somewhat larger in magnitude. Based on the results from these two specifications, we conclude that fans' emotional reactions to game outcomes appear to be driven by the game outcome relative to expectations *at the start of the game*, with little or no updating using information as of halftime.

e. Other Forms of Family Violence, Alcohol and Drug Use, Severity of Violence

As noted in Table 1, the most common family violence incidents are those committed at home by men against their wives and girlfriends. While our main results concern these types of incidents, we also examined the effects of NFL game outcomes on family violence committed in different places, and involving different combinations of victims and offenders. The results are summarized in Appendix Table 2 (available in the online appendix). We find that upset losses have no significant effect on away-from-home violence. As a result, the effect on total male-on-female violence (combining at-home and away-from-home) is somewhat smaller than the effect on at-home violence (around 7%). We also find that NFL game outcomes have no large or significant effect on the rate of intimate partner violence committed by women. On the other hand, violence by men against wives and girlfriends both respond about equally to upset losses.

Rates of violence against family members other than an intimate partner (e.g., a child, sibling, or parent) also show no significant relationship with the outcomes of local NFL games, while there is some indication of an effect on rates of violence at home against friends.

To gain some insights into the kinds of incidents that are most affected by the emotional cues of NFL game outcomes, we fit separate Poisson models for incidents with alcohol and/or drugs involved, and for serious versus minor assaults.²⁶ The results, summarized in Appendix Table 3 of the online appendix, suggest that all forms of IPV rise following an upset loss, with no significant difference in the rise in alcohol-related and non-alcohol-related offenses. We also looked at incidents occurring in larger and smaller places (populations over and under 50,000 as of the year 2000) and incidents committed by younger and older offenders (less than age 30 versus 30 or older), and found insignificantly different effects of upset losses.

f. Other Robustness Tests

Finally, we have conducted a number of additional specification checks to judge the robustness of our main results. These are summarized in Appendix Table 4 of the online appendix. The specification checks include the use of a Negative Binomial model instead of a Poisson, estimation of models with date fixed effects, and inclusion of separate linear time trends for each of the individual teams in our sample. None of these changes has much impact on our main results. We also investigated different ways of dealing with the presence of days with no reported crime in the NIBRS data.

²⁶ Recall that in about 20% of incidents the reporting officer notes that alcohol or drugs were a contributing factor in the incident – these are the incidents with “alcohol involved”. Serious assaults include aggravated assaults and all other incidents in which the victim was physically injured.

Reassuringly, our main results are very similar, regardless of whether we treat these “no crime” days as missing or true zeros.

VI. Discussion

Our empirical results show a roughly 10% effect of an upset loss by the local NFL team on the rate of male-on-female at-home intimate partner violence. To provide some context for the magnitude of this effect we estimated a set of Poisson models for the rate of IPV on all days of the year for the 6 states of our estimation sample. These models included agency fixed effects, an expanded set of holiday dummies, dummies for the day of the week, the month, and the sample year, and the same set of weather controls included in our main models.²⁷ The resulting estimates show large and precisely estimated effects of major holidays on the rate of IPV: for example, Christmas day +18%, Thanksgiving +20%, Memorial Day +30%, New Year’s Day +31%, New Year’s Eve +22%, and July 4th +29%. They also show a significant positive effect of hotter weather: relative to a day with a maximum temperature less than 80 degrees, IPV is 8% higher when the maximum temperature is over 80. Thus, an upset loss is comparable to the effect of a hot day, or about one-third of the effect of a holiday like Memorial Day or the Fourth of July. We view the magnitude of the cueing effect attributable to an upset loss as rather large, considering that only a fraction of the population are serious football fans, and that our sample largely excludes the cities in which the NFL teams are located.

Our findings add to the literature on the impact of media on violence and the well-being of women. Television has been shown to influence a variety of behaviors and

²⁷ These models, like our main results in Table 4, were fit using data on male-on-female at-home incidents from noon to midnight only.

attitudes, including fertility choices, women's status, and the acceptability of intimate partner violence (La Ferrara et al., 2008; Jensen and Oster, 2009). As emphasized by Dahl and DellaVigna (2009), media (in particular, violent movies) affects behavior not only via content, but also because it changes time spent in alternative activities. In our case, NFL football games are likely to bring couples together, and the emotional cues associated with televised games place women at an elevated risk of abuse.

From a broader perspective, our analysis contributes to the growing literature on the importance of reference points in observed behavior (see DellaVigna, 2009 for a review; Crawford and Meng, 2009 for a recent empirical contribution; and Abeler et al. 2009 for a recent laboratory experiment). A key advantage of our setting is that the “rational” reference points for NFL game outcomes are readily observable, and vary widely across games. Our finding that upset losses have a large effect on family violence, whereas losses in games that were expected to be close have small and insignificant effects, provides confirmation of rational reference point formation. In comparison to the large and systematic effects of upset losses we also find very small effects from upset wins, suggesting that gains and losses have asymmetric behavioral effects.

References

- Abeler, Johannes, Armin Falk, Lorenz Gotte, and David Huffman (2009). "Reference Points and Effort Provision." IZA Discussion Paper No. 3939.
- Aizer, Anna (2010). "The Gender Wage Gap and Domestic Violence." *American Economic Review*, forthcoming.
- Ariely, Dan and George Loewenstein (2005). "In the Heat of the Moment: The Effect of Sexual Arousal on Sexual Decision Making," *Journal of Behavioral Decision Making* 18(1), pp. 1-12.
- Baumeister, Roy F. and Todd F. Heatherton (1996). "Self Regulation Failure: An Overview." *Psychological Inquiry* 7 (1), pp. 1-15.
- Bernheim, B. Douglas and Antonio Rangel (2004). "Addiction and Cue-Triggered Decision Responses." *American Economic Review* 94 (December), pp. 1558-1590.
- Bloch, Francis and Vijayendra Rao (2002) "Terror as a Bargaining Instrument: A Case Study of Dowry Violence in Rural India." *American Economic Review* 92 (September), pp. 1029-1043.
- Bowlus, Audra and Shannon Seitz (2006). "Domestic Violence, Employment and Divorce." *International Economic Review* 47 (November), pp. 1113-1149.
- Cameron, A. Colin and Pravin K. Trivedi (1986). "Econometric Models Based on Count Data: Comparisons and Applications of Some Estimators and Tests." *Journal of Applied Econometrics* 1 (January), pp. 29-53.
- Cameron, A. Colin and Pravin K. Trivedi. *Regression Analysis of Count Data*. Cambridge University Press, 1998.
- Card, David and Gordon B. Dahl (2009). "Family Violence and Football: The Effects of Unexpected Emotional Cues on Violent Behavior." National Bureau of Economic Research Working Paper No. 15497.
- Chwe, Michael (1990). "Why Were Workers Whipped? Pain in a Principal-Agent Model." *Economic Journal* 100 (December), pp. 1109-1121.
- Crawford, Vincent and Juanjuan Meng (2009). "New York City Cabdrivers' Labor Supply Revisited: Reference-Dependent Utility with Targets for Hours and Income." UC San Diego Department of Economics Unpublished Working Paper.
- Dahl, Gordon and Stefano DellaVigna (2009). "Does Movie Violence Increase Violent Crime?" *Quarterly Journal of Economics* 124 (May), pp. 677-734.

DellaVigna, Stefano (2009). "Psychology and Economics: Evidence from The Field." *Journal of Economic Literature* 47 (June), pp. 315-372.

Dobash, Russell E. and Rebecca Dobash (1979). *Violence Against Wives*. New York: Free Press.

Durose, Matthew R., Harlow, Caroline Wolf, Langan, Patrick A., Motivans, Mark, Rantalal, Ramona R., and Erica L. Smith (2005). Family Violence Statistics. U.S. Department of Justice Office of Justice Programs Report No. NCJ 207846. Washington D.C.: USGPO, June.

Exum, M. Lyn (2002). "The Application and Robustness of the Rational Choice Perspective in the Study of Intoxicated and Angry Intentions to Aggress." *Criminology* 40 (4), pp. 933-966.

Farmer, Amy and Jill Tiefenthaler, (1997). "An Economic Analysis of Domestic Violence," *Review of Social Economy* 55(3), pp. 337-358.

Fox, James Alan and Marianne W. Zawitz (2007). "Homicide Trends in the United States." United States Department of Justice Bureau of Justice Statistics. Washington D.C.: National Archive of Criminal Justice Statistics.

Gandar, John, Richard Zuber, Thomas O'Brien and Ben Russo (1988) "Testing Rationality in the Point Spread Betting Market", *Journal of Finance* 43(4) 995-1008.

Gantz, Walter, Samuel D. Bradley and Zheng Wang (2006). "Televised NFL Games, the Family, and Domestic Violence." In Arthur A. Raney and Jennings Bryant, editors, *Handbook of Sports and Media*. Mahwah, NJ: Lawrence Erlbaum Associates, pp. 365-382.

Gelles, Richard J. and Murray A. Straus (1986). "Societal Change and Change in Family Violence from 1975 to 1986 as Revealed by Two National Studies." *Journal of Marriage and the Family* 48, pp. 465-479.

Hamby, Sherry L. (2005). "Measuring Gender Differences in Partner Violence: Implications from Research on Other Forms of Violent and Socially Undesirable Behavior." *Sex Roles* 52 (June), pp. 725-742.

Hirschel, David (2008). "Domestic Violence Cases: What Research Shows About Arrest and Dual Arrest Rates." National Institute of Justice Research Report.

Jensen, Robert and Emily Oster (2009). "The Power of TV: Cable Television and Women's Status in India." *Quarterly Journal of Economics* 124 (August) pp. 1057-11094.

- Johnson, Michael P. (1995). "Patriarchal Terrorism and Common Couple Violence: Two Forms of Violence Against Women". *Journal of Marriage and the Family* 57 (2), pp. 283-294.
- Johnson, Michael P. (2009). "Differentiating Among Types of Domestic Violence: Implications for Healthy Marriages." In H. Elizabeth Peters and Clarie M. Kamp Dush, editors, *Marriage and Family: Perspectives and Complexities*. New York: Columbia University Press, 2009.
- Klosterman, Keith C. and William Fals-Stewart (2006). "Intimate Partner Violence and Alcohol Use: Exploring the Role of Drinking in Partner Violence and its Implications for Intervention." *Aggression and Violent Behavior* 11 (6), pp. 587-597.
- Koszegi, Botond and Matthew Rabin (2006). "A Model of Reference-Dependent Preferences." *Quarterly Journal of Economics* 121 (November), pp. 1133-1165.
- Laibson, David (2001). "A Cue-Theory of Consumption." *Quarterly Journal of Economics* 116 (February), pp. 81-119.
- La Ferrara, Eliana, Alberto Chong, and Suzanne Duryea (2008) "Soap Operas and Fertility: Evidence from Brazil." BREAD Working Paper No. 172.
- Levitt, Steven (2004). "Why are Gambling Markets Organized So Differently From Financial Markets?" *Economic Journal* 114 (April), pp. 223-246.
- Loewenstein, George (2000). "Emotions in Economic Theory and Economic Behavior." *American Economic Review* 90 (May), pp. 426-432.
- Loewenstein, George and Ted O'Donoghue (2007). "The Heat of the Moment: Modeling Interactions Between Affect and Deliberation." Carnegie Mellon University Department of Social and Decisions Sciences Unpublished Working Paper. March.
- Lutmer, Erzo (2005). "Neighbors as Negatives: Relative Earnings and Well-Being." *Quarterly Journal of Economics* 120 (August), pp. 963-1002.
- Pankoff, Lyn D (1968). "Market Efficiency and Football Betting." *Journal of Business* 41 (April), pp. 103-114.
- Rand, Michael R. and Callie Marie Rennison (2005). "Bigger is Not Necessarily Better: An Analysis of Violence Against Women Estimates from the National Crime Victimization Survey and the National Violence Against Women Survey." *Journal of Quantitative Criminology* 21 (September), pp. 267-291.
- Rees, Daniel I. and Kevin T. Schnepel (2009). "College Football Games and Crime." *Journal of Sports Economics*, Vol. 10, pp. 68-86.

Straus, Murray A., Gelles, Richard J., and Susan K. Steinmetz (1980). *Behind Closed Doors: Violence in the American Family*. Garden City, N.Y.: Anchor/Doubleday.

Tauchen, Helen V., Anne Dryden Witte and Sharon K. Long (1991). "Domestic Violence: A Non-random Affair." *International Economic Review* 32 (), pp. 491-511.

Thaler, Richard H. and H. M. Shefrin (1981). "An Economic Theory of Self Control." *Journal of Political Economy* 89 (May), pp. 392-406.

Vazquez, Salvador, Mary K. Stohr, and Marcus Purkiss (2005). "Intimate Partner Violence Incidence and Characteristics: Idaho NIBRS 1995-2001 Data." *Criminal Justice Policy Review* 16 (March), pp. 99-114.

Wilt, Susan, and Sarah Olson (1996). "Prevalence of Domestic Violence in the United States." *Journal of the American Medical Women's Association* 51 (May/June): 77-82.

Wolfers, Justin and Eric Zitzewitz (2007). "Interpreting Prediction Markets as Probabilities." University of Pennsylvania Wharton School, Unpublished Working Paper (January).

Table 1. Summary Statistics for Intimate Partner Violence, NIBRS data, 1995-2006.

| Intimate Partner Violence | Daily Rate for the hours of 12 PM to 11:59 PM Per 100,000 Population | Fraction in Category or Subcategory |
|---|--|--|
| <i>A. Sundays During Regular Football Season</i> | | |
| <u>Location and Victim-Offender Relationship</u> | | |
| All Intimate Partner Violence | 1.28 | 1.00 |
| Male on Female | 1.04 | .81 |
| Occurring at Home | .85 | .82 |
| Against Wife | .46 | .54 |
| Against Girlfriend | .39 | .46 |
| Occurring Away from Home | .19 | .18 |
| Female on Male | .24 | .19 |
| Occurring at Home | .19 | .79 |
| Occurring Away from Home | .05 | .21 |
| <i>B. Sundays During Regular Football Season, Male on Female, Occurring at Home</i> | | |
| <u>Time of Day (all times Eastern Time)</u> | | |
| 12 PM to 2:59 PM | .16 | .19 |
| 3 PM to 5:59 PM | .18 | .22 |
| 6 PM to 8:59 PM | .25 | .29 |
| 9 PM to 11:59 PM | .25 | .30 |
| <u>Alcohol Use and Assault Severity</u> | | |
| Alcohol Involved | .17 | .20 |
| Minor Assault | .41 | .48 |
| Serious Assault | .44 | .52 |
| <u>Agency Size</u> | | |
| Smaller Cities or Counties (pop<50K) | .89 | .47 |
| Larger Cities or Counties (pop≥50K) | .73 | .53 |
| <u>Age</u> | | |
| Younger Offenders (age<30) | .32 | .38 |
| Older Offenders (age≥30) | .52 | .61 |

Notes: Data are reports of intimate partner violence to local police agencies in the National Incident-Based Reporting System (NIBRS) for the states and years listed in Table 2. Intimate partner is defined as a spouse (including common law and ex-spouse) or a boyfriend/girlfriend. Violence is defined as aggravated assault, simple assault, or intimidation. Alcohol involved indicates the reporting officer noted that either alcohol or drugs were a contributing factor. Minor assault is simple assault or intimidation without injury; serious assault is aggravated assault or any assault with a physical injury. Category fractions for agency size are weighted by the average population in smaller versus larger cities and counties.

Table 2. NFL Football Teams Matched to NIBRS Agencies.

| | Season | | | | | | | | | | | |
|--|--------|-------|-------|-------|-------|-------|-------|-------|-------|-------|-------|-------|
| | 1995 | 1996 | 1997 | 1998 | 1999 | 2000 | 2001 | 2002 | 2003 | 2004 | 2005 | 2006 |
| Carolina Panthers (SC) | | | | | | | | | | | | |
| Regular Season W-L Record | 7-9 | 12-4* | 7-9 | 4-12 | 8-8 | 7-9 | 1-15 | 7-9 | 11-5* | 7-9 | 11-5* | 8-8 |
| # of Reporting Agencies | 22 | 64 | 75 | 73 | 76 | 82 | 65 | 76 | 80 | 74 | 80 | 84 |
| Pop. Coverage (thousands) | 795 | 2,174 | 2,614 | 2,740 | 2,559 | 2,588 | 2,436 | 2,847 | 3,051 | 2,861 | 2,726 | 2,776 |
| Denver Broncos (CO) | | | | | | | | | | | | |
| Regular Season W-L Record | | | 12-4* | 14-2* | 6-10 | 11-5* | 8-8 | 9-7 | 10-6* | 10-6* | 13-3* | 9-7 |
| # of Reporting Agencies | | | 28 | 29 | 25 | 27 | 25 | 28 | 33 | 30 | 38 | 41 |
| Pop. Coverage (thousands) | | | 1,626 | 1,733 | 1,502 | 1,642 | 1,435 | 1,699 | 1,776 | 1,935 | 2,757 | 3,052 |
| Detroit Lions (MI) | | | | | | | | | | | | |
| Regular Season W-L Record | 10-6* | 5-11 | 9-7* | 5-11 | 8-8* | 9-7 | 2-14 | 3-13 | 5-11 | 6-10 | 5-11 | 3-13 |
| # of Reporting Agencies | 63 | 108 | 141 | 141 | 145 | 159 | 158 | 168 | 168 | 164 | 173 | 180 |
| Pop. Coverage (thousands) | 1,799 | 3,142 | 4,451 | 4,606 | 4,951 | 5,895 | 5,872 | 6,211 | 6,370 | 6,611 | 7,801 | 7,883 |
| Kansas City Chiefs (KS) | | | | | | | | | | | | |
| Regular Season W-L Record | | | | | | 7-9 | 6-10 | 8-8 | 13-3* | 7-9 | 10-6 | 9-7* |
| # of Reporting Agencies | | | | | | 39 | 43 | 47 | 44 | 41 | 38 | 45 |
| Pop. Coverage (thousands) | | | | | | 794 | 791 | 1,291 | 1,225 | 1,140 | 1,149 | 1,246 |
| New England Patriots (MA, NH, VT) | | | | | | | | | | | | |
| Regular Season W-L Record | 6-10 | 11-5* | 10-6* | 9-7* | 8-8 | 5-11 | 11-5* | 9-7 | 14-2* | 14-2* | 10-6* | 12-4* |
| # of Reporting Agencies | 32 | 32 | 37 | 55 | 58 | 70 | 81 | 94 | 105 | 112 | 127 | 124 |
| Pop. Coverage (thousands) | 768 | 986 | 1,068 | 1,387 | 1,491 | 1,960 | 2,162 | 2,643 | 2,954 | 3,416 | 3,861 | 3,846 |
| Tennessee Titans (TN) | | | | | | | | | | | | |
| Regular Season W-L Record | | | | 8-8 | 13-3* | 13-3* | 7-9 | 11-5* | 12-4* | 5-11 | 4-12 | 8-8 |
| # of Reporting Agencies | | | | 45 | 112 | 134 | 131 | 140 | 135 | 137 | 147 | 149 |
| Pop. Coverage (thousands) | | | | 922 | 2,748 | 4,882 | 4,835 | 5,039 | 5,017 | 5,133 | 5,288 | 5,313 |

Notes: A * next to a regular season record indicates that the team played in the postseason. Reporting agencies can be either cities or counties within the state indicated in parentheses.

Table 3. Summary Statistics for NFL Football Games and Nielsen Television Ratings.

| | Number of Games | Fraction in Category or Subcategory |
|--|--------------------|--|
| <i>A. All NFL Football Games, 1995-2006</i> | | |
| <u>Day of Week and Season/Postseason</u> | | |
| Regular Season Games | 993 | .95 |
| Sunday Games | 866 | .87 |
| Monday Night Football | 68 | .07 |
| Thursday, Friday, or Saturday Games | 59 | .06 |
| Postseason Games (36 on Sunday, 17 on Saturday) | 53 | .05 |
| <i>B. Sunday Regular Season NFL Games, 1995-2006</i> | | |
| <u>Outcome</u> | | |
| Loss | 414 | .48 |
| Win | 452 | .52 |
| <u>Predicted and Actual Outcomes Based on Pre-Game Point Spread</u> | | |
| Predicted Win: Point Spread ≤ 4 | 283 | .33 |
| Actual Loss (<i>Upset Loss</i>) | 79 | .28 |
| Predicted Close: $-4 < \text{Point Spread} < 4$ | 377 | .44 |
| Actual Loss (<i>Close Loss</i>) | 194 | .49 |
| Predicted Loss: Point Spread ≥ 4 | 206 | .24 |
| Actual Win (<i>Upset Win</i>) | 65 | .32 |
| <u>Predicted and Actual Outcomes Based on Halftime Point Spread</u> | | |
| Predicted Win: Halftime Point Spread ≤ 4 | 338 | .39 |
| Actual Loss (<i>Halftime Upset Loss</i>) | 61 | .18 |
| Predicted Close: $-4 < \text{Halftime Point Spread} < 4$ | 240 | .28 |
| Actual Loss (<i>Halftime Close Loss</i>) | 126 | .53 |
| Predicted Loss: Halftime Point Spread ≥ 4 | 288 | .33 |
| Actual Win (<i>Halftime Upset Win</i>) | 61 | .21 |
| <u>No Sunday Game</u> | | |
| Played on Another Day of the Week | 127 | .67 |
| “Bye” Week | 62 | .33 |
| <u>By Time of Day</u> | | |
| 1 PM ET Start Time | 587 | .68 |
| 4 PM ET Start Time | 224 | .26 |
| 8 PM ET Start Time | 55 | .06 |
| <u>Salient Games</u> | | |
| (a) Still in Playoff Contention | 589 | .68 |
| (b) Against a Traditional Rival | 201 | .23 |
| (c) Sacks ≥ 4 , Turnovers ≥ 4 , or Penalties > 80 yds | 341 | .39 |
| (d) Highly Salient: (a) and [(b) or (c)] | 321 | .37 |
| <i>C. Nielsen Media Research Local Television Ratings, 1997-2006</i> | | |
| <u>Percent of Local TV Households Watching Game</u> | <u>Average (%)</u> | <u>Max (%)</u> |
| Local Team Playing | 24.3 | 47.9 |
| 1 PM Game | | |
| Local Team Playing | 23.1 | 47.2 |
| Local Team not Playing that Sunday | 8.1 | 17.7 |
| 4 PM Game | | |
| Local Team Playing | 29.4 | 47.9 |
| Local Team not Playing that Sunday | 12.3 | 22.2 |
| 8 PM Game (ESPN/TNT games only) | | |
| Local Team Playing | 10.1 | 19.0 |
| Local Team not Playing that Sunday | 8.3 | 21.4 |

Notes: Sample covers the teams and years listed in Table 2. Starting times of games are approximate. See notes to Table 6 for definitions of salient games. Nielsen ratings begin in 1997 for Carolina, Denver, Detroit, and New England; 1998 for Tennessee; and 2000 for Kansas. Ratings for the 8 PM games do not include the 2006 season, as the broadcasts switched from cable/satellite (ESPN/TNT) to an over the air network (NBC) in 2006. Average ratings for 8 PM games in 2006 are 33.9% and 9.1% when the local team is playing and not playing, respectively.

Table 4. Unexpected Emotional Shocks from Football Games and Male-on-Female Intimate Partner Violence Occurring at Home.

| | Poisson Regression | | | | |
|--|---|-----------------|-----------------|-----------------|-----------------|
| | Intimate Partner Violence, Male on Female, at Home | | | | |
| | Baseline Model | | | | |
| | (1) | (2) | (3) | (4) | (5) |
| (a) Loss × Predicted Win (<i>Upset Loss</i>) | .112 (.034) | .099 (.032) | .100 (.032) | .096 (.031) | .100 (.031) |
| Loss × Predicted Close (<i>Close Loss</i>) | .031 (.026) | .030 (.024) | .032 (.024) | .025 (.024) | .026 (.024) |
| (b) Win × Predicted Loss (<i>Upset Win</i>) | .001 (.037) | .007 (.027) | .016 (.027) | .010 (.029) | .007 (.029) |
| Predicted Win | -.014 (.028) | -.019 (.025) | -.018 (.025) | -.009 (.024) | -.081 (.035) |
| Predicted Close | -.022 (.025) | -.012 (.030) | -.013 (.028) | -.010 (.030) | -.080 (.043) |
| Predicted Loss | -.016 (.023) | -.007 (.021) | -.016 (.021) | .006 (.021) | -.071 (.039) |
| Non-game Day | --- | --- | --- | --- | --- |
| Nielsen Rating | | | | | .003 (.001) |
| Agency Fixed Effects | X | X | X | X | X |
| Season, Week of Season, & Holiday Variables | | X | X | X | X |
| Weather Variables | | | X | X | X |
| Nielsen Data Sub-sample | | | | X | X |
| Loss Aversion Test: | | | | | |
| p-value for row (a) = - row (b) | .02 | .01 | .00 | .01 | .01 |
| Number of Agencies | 764 | 764 | 764 | 747 | 747 |
| Observations | 79,386 | 79,386 | 79,386 | 73,522 | 73,522 |

Notes: Standard errors in parentheses, clustered by team×season (62 groups). Predicted win indicates a point spread of -4 or less (negative spreads indicate the number of points a team is expected to win by); predicted close indicates a point spread between -4 and +4 exclusive; predicted loss indicates a spread of +4 or more. Sample is limited to Sundays during the regular NFL football season. Agencies are NIBRS law enforcement units reporting crime for a city or county; agencies are matched to the corresponding local NFL team for their state. The unit of observation is an agency-day (where a day runs from 12:00 PM to 11:59 PM ET). There are 12 football seasons included in the sample and 17 weeks in each season. The holiday variables include indicators for Christmas Eve, Christmas Day, New Year's Eve, New Year's Day, Halloween, as well as Thanksgiving, Labor, Columbus, and Veterans Day weekends. Weather variables include indicators for hot, high heat index, cold, windy, rainy, and snowy days. The Nielsen data subsample is limited to observations with available television ratings; for earlier seasons, not all local markets were tracked by Nielsen Media Research (see note to Table 3).

Table 5. Timing of Shocks and Violence.

| Poisson Regression | | | | |
|---|-----------------|-----------------|-----------------|-----------------|
| Intimate Partner Violence, Male on Female, at Home | | | | |
| <u>Assaults Occurring between (Eastern Time):</u> | | | | |
| | 12 PM to 3 PM | 3 PM to 6 PM | 6 PM to 9 PM | 9 PM to 12 AM |
| | (1) | (2) | (3) | (4) |
| <u>Games starting at 1 PM</u> | | | | |
| Loss × Predicted Win (<i>Upset Loss</i>) | .075 (.075) | .200 (.057) | .036 (.071) | .075 (.073) |
| Loss × Predicted Close (<i>Close Loss</i>) | .012 (.058) | -.002 (.065) | -.013 (.056) | .077 (.050) |
| Win × Predicted Loss (<i>Upset Win</i>) | .017 (.073) | -.071 (.067) | -.006 (.057) | .036 (.050) |
| Predicted Win | -.007 (.105) | -.140 (.103) | .070 (.090) | -.191 (.095) |
| Predicted Close | .024 (.097) | -.075 (.097) | .049 (.083) | -.154 (.097) |
| Predicted Loss | -.075 (.087) | -.039 (.099) | .029 (.079) | -.117 (.085) |
| Nielsen Rating | .001 (.004) | .005 (.004) | -.002 (.003) | .006 (.003) |
| <u>Games starting at 4 PM</u> | | | | |
| Loss × Predicted Win (<i>Upset Loss</i>) | .033 (.182) | .235 (.216) | .307 (.167) | .137 (.170) |
| Loss × Predicted Close (<i>Close Loss</i>) | .064 (.113) | .211 (.110) | .016 (.091) | -.042 (.103) |
| Win × Predicted Loss (<i>Upset Win</i>) | .115 (.203) | .121 (.157) | -.282 (.124) | .024 (.121) |
| Predicted Win | -.188 (.240) | .035 (.177) | -.100 (.160) | -.040 (.160) |
| Predicted Close | -.263 (.213) | -.117 (.154) | -.124 (.129) | -.083 (.126) |
| Predicted Loss | -.073 (.206) | -.022 (.133) | -.096 (.123) | -.101 (.128) |
| Nielsen Rating | .006 (.007) | -.002 (.006) | .006 (.005) | .004 (.005) |
| Non-game Day | --- | --- | --- | --- |
| Number of Agencies | 563 | 591 | 619 | 620 |
| Observations | 63,875 | 65,285 | 67,426 | 67,308 |

Notes: Standard errors in parentheses, clustered by team×season. Regressions include agency fixed effects, season dummies, week of season dummies, and the holiday and weather variables described in the note to Table 4. Estimated models are comparable to the baseline model in column 3 of Table 4. See notes to Table 4 for details. Each column is a single regression for a given three-hour period and allows for separate coefficients for games starting at 1 PM versus 4 PM.

Table 6. Shocks from Emotionally Salient Games.

| Poisson Regression | | | | |
|---|---|--------------------------------------|--|---|
| Intimate Partner Violence, Male on Female, at Home | | | | |
| | Game Type = Still in Playoff Contention | Game Type = Traditional Rivals | Game Type = Sacks \geq 4, Turnovers \geq 4, or Penalties $>$ 80 yds | Game Type = Highly Salient: (1) & [(2) or (3)] |
| | (1) | (2) | (3) | (4) |
| <u>More Salient Games (Game Type = 1)</u> | | | | |
| (a) Loss \times Predicted Win (<i>Upset Loss</i>) | .126 (.034) | .197 (.046) | .151 (.048) | .172 (.045) |
| Loss \times Predicted Close (<i>Close Loss</i>) | .054 (.031) | .011 (.053) | .027 (.038) | .082 (.046) |
| Win \times Predicted Loss (<i>Upset Win</i>) | .027 (.048) | .156 (.080) | .083 (.040) | .063 (.059) |
| Predicted Win | -.021 (.028) | -.042 (.036) | -.055 (.035) | -.042 (.029) |
| Predicted Close | -.040 (.034) | -.021 (.051) | .019 (.038) | -.068 (.044) |
| Predicted Loss | -.023 (.033) | -.042 (.055) | -.024 (.026) | .010 (.038) |
| <u>Less Salient Games (Game Type = 0)</u> | | | | |
| (b) Loss \times Predicted Win (<i>Upset Loss</i>) | -.016 (.080) | .080 (.034) | .070 (.037) | .028 (.041) |
| Loss \times Predicted Close (<i>Close Loss</i>) | -.003 (.030) | .035 (.026) | .042 (.034) | .018 (.028) |
| Win \times Predicted Loss (<i>Upset Win</i>) | .002 (.039) | -.011 (.030) | -.024 (.033) | -.004 (.027) |
| Predicted Win | -.013 (.055) | -.014 (.027) | -.009 (.028) | -.010 (.030) |
| Predicted Close | .032 (.032) | -.012 (.029) | -.012 (.032) | .004 (.029) |
| Predicted Loss | -.008 (.028) | -.012 (.020) | .006 (.027) | -.023 (.021) |
| Non-game Day | --- | --- | --- | --- |
| Saliency Test: p-value for row (a) = row (b) | .11 | .01 | .17 | .01 |
| Number of Agencies | 764 | 764 | 764 | 764 |
| Observations | 79,386 | 79,386 | 79,386 | 79,386 |

Notes: Standard errors in parentheses, clustered by team \times season. Regressions include agency fixed effects, season dummies, week of season dummies, and the holiday and weather variables described in the note to Table 4. Estimated models are comparable to the baseline model in column 3 of Table 4. See notes to Table 4 for details. Each column is a single regression which allows for separate coefficients by game type. Still in playoff contention indicates that a team has a greater than 10% chance of making the playoffs given their current win-loss record, based on the probability that any NFL team made the playoffs with such a win-loss record between 1995 and 2006. Traditional rivals indicates a game between traditional rivals, as defined by “Rivalries in the National Football League” on *Wikipedia*.

Table 7. Updating Based on the Halftime Score Differential.

| | Poisson Regression | | |
|--|---|----------------|-----------------|
| | Intimate Partner Violence, Male on Female, at Home | | |
| | (1) | (2) | (3) |
| Loss × Predicted Win (<i>Upset Loss</i>) | .116 (.033) | .105 (.028) | .142 (.033) |
| Loss × Predicted Close (<i>Close Loss</i>) | .046 (.024) | .035 (.020) | .059 (.026) |
| Win × Predicted Loss (<i>Upset Win</i>) | .006 (.029) | .007 (.025) | -.015 (.030) |
| Loss × Halftime Predicted Win (<i>Halftime Upset Loss</i>) | -.010 (.031) | | -.030 (.035) |
| Loss × Halftime Predicted Close (<i>Halftime Close Loss</i>) | -.036 (.021) | | -.047 (.026) |
| Win × Halftime Predicted Loss (<i>Halftime Upset Win</i>) | .004 (.037) | | .023 (.042) |
| Predicted Win | -.018 (.026) | | |
| Predicted Close | -.014 (.028) | | |
| Predicted Loss | -.006 (.022) | | |
| Spread | | .001 (.002) | .003 (.002) |
| Halftime Spread | | | -.001 (.001) |
| Non-game Day | | .016 (.019) | .015 (.020) |
| Joint Significance of Halftime Variables p-value | .36 | | .50 |
| Number of Agencies | 764 | 764 | 764 |
| Observations | 79,386 | 79,386 | 79,386 |

Notes: Standard errors in parentheses, clustered by team×season. Regressions include agency fixed effects, season dummies, week of season dummies, and the holiday and weather variables described in the note to Table 4. Estimated models are comparable to the baseline model in column 3 of Table 4. See notes to Table 4 for details. Predicted win, predicted close, and predicted loss are based on the pre-game point spread (negative spreads indicate the number of points a team is expected to win by). Predicted win indicates a point spread of -4 or less; predicted close indicates a point spread between -4 and +4 exclusive; predicted loss indicates a spread of +4 or more. Halftime predicted win, halftime predicted close, and halftime predicted loss are based on the halftime “point spread” (where a negative halftime spread indicates the number of points a team is winning by at halftime). Predicted halftime win indicates a halftime spread of -4 or less; predicted halftime close indicates a halftime spread between -4 and +4 exclusive; predicted halftime loss indicates a halftime spread of +4 or more. For an analysis of the relative predictive power of these measures, see the online Appendix Table 1.

Figure 1: Risk of Violence Following Loss or Win

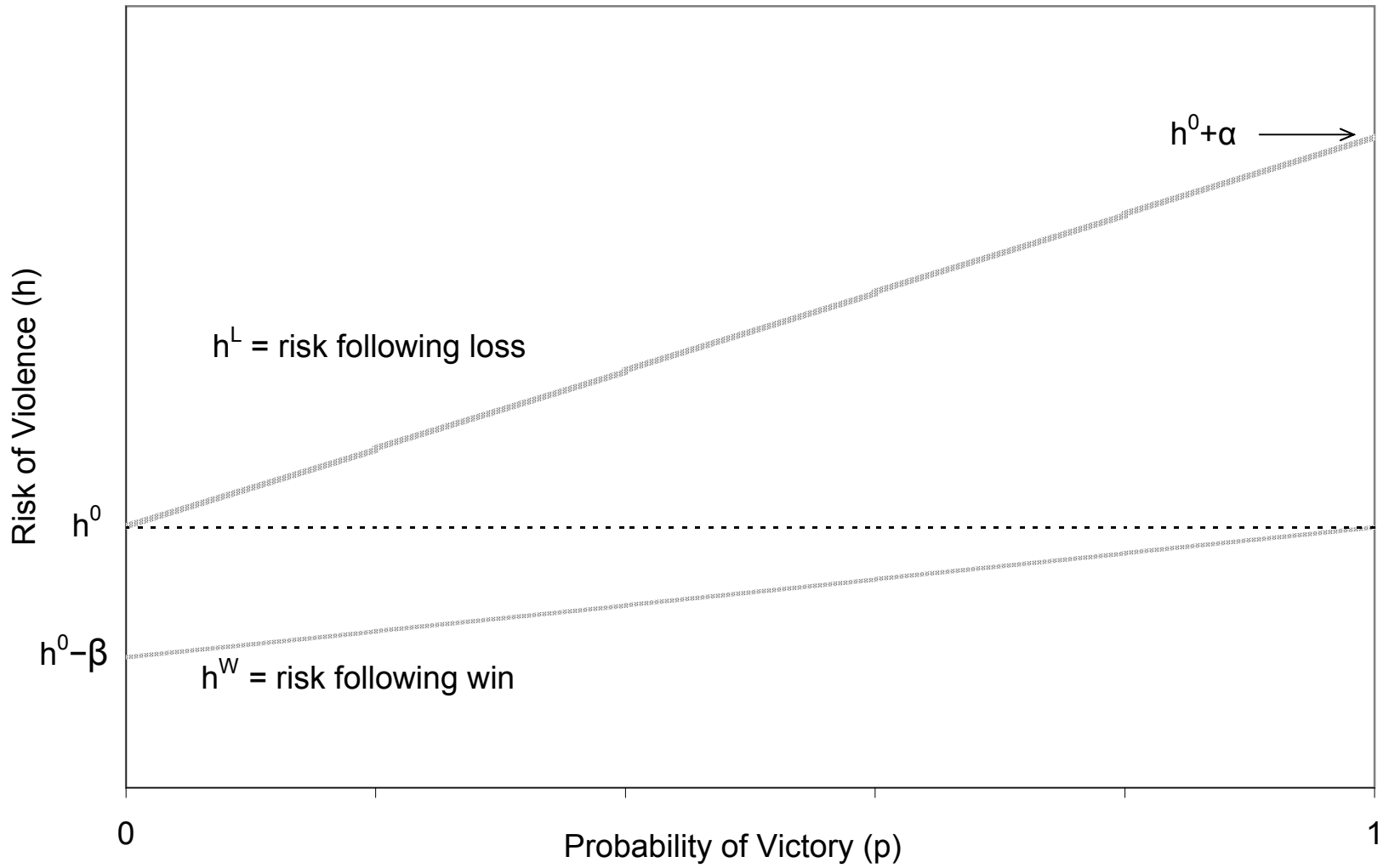
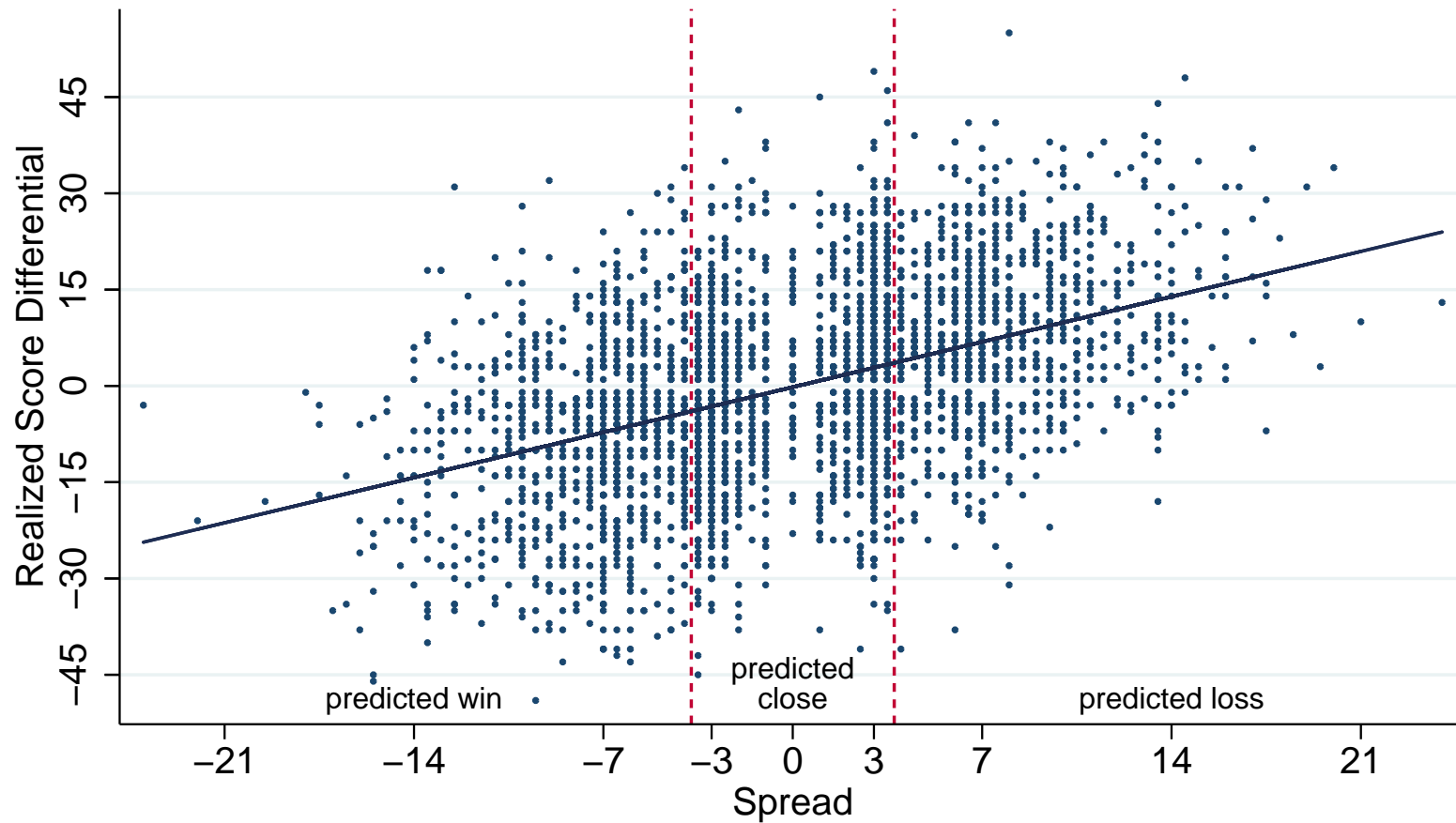
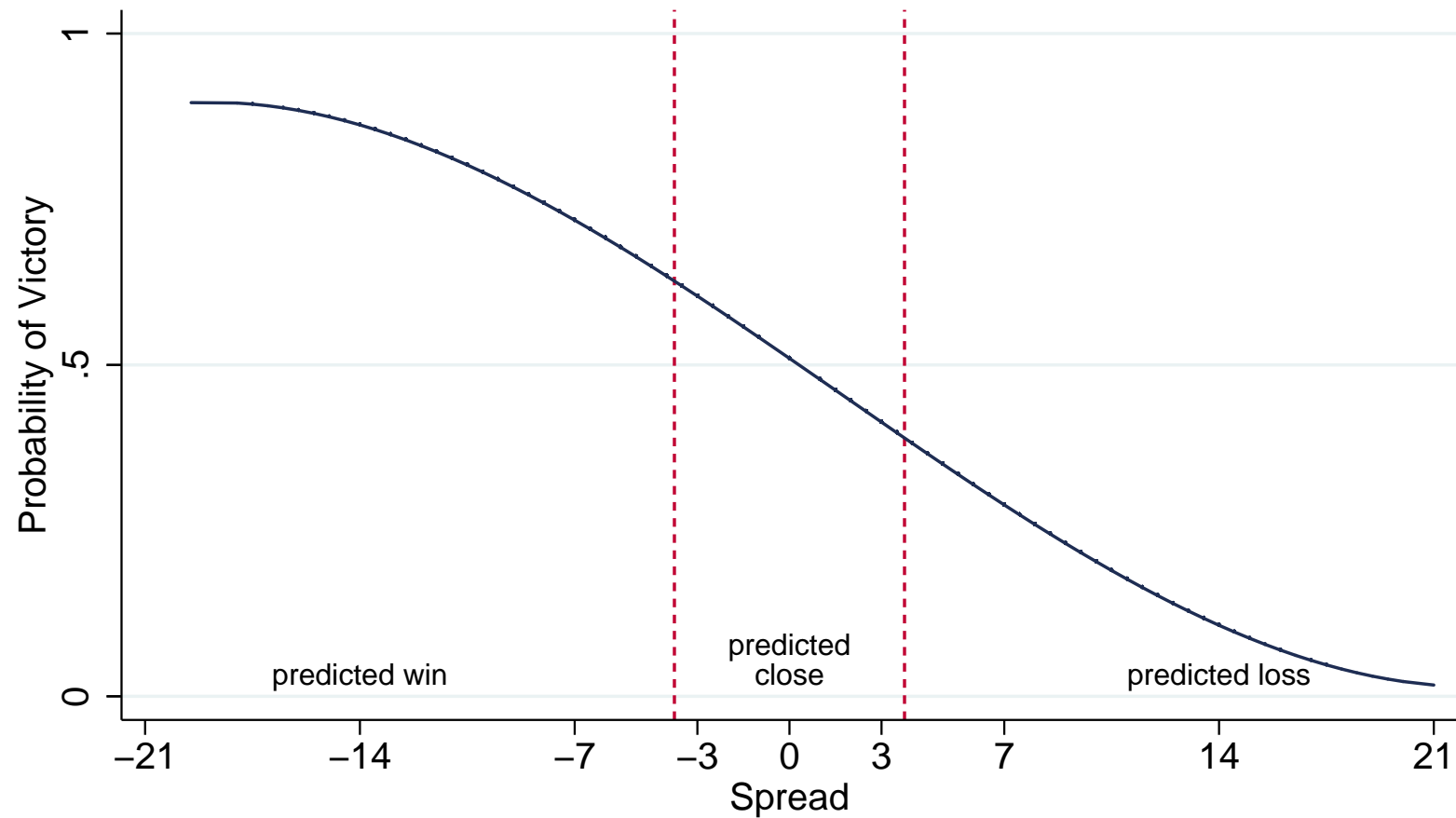


Figure 2: Final Score Differential versus the pre-Game Point Spread



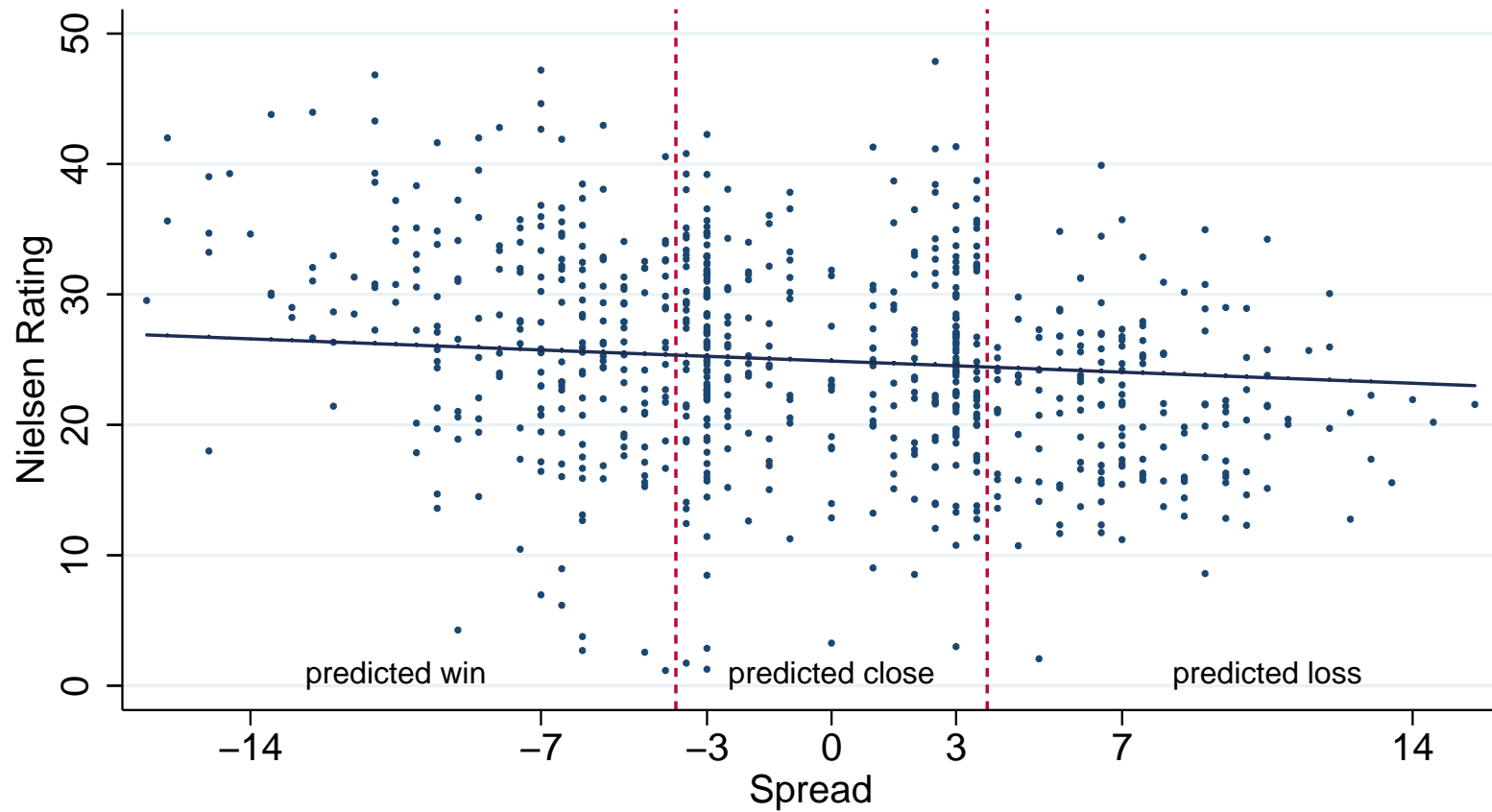
Notes: Realized score differential is opponent's minus local team's final score. The plotted regression line has an intercept of -0.17 (s.e.=.21) and a slope of 1.01 (s.e.=.03).

Figure 3: Probability of Victory as a Function of the Spread



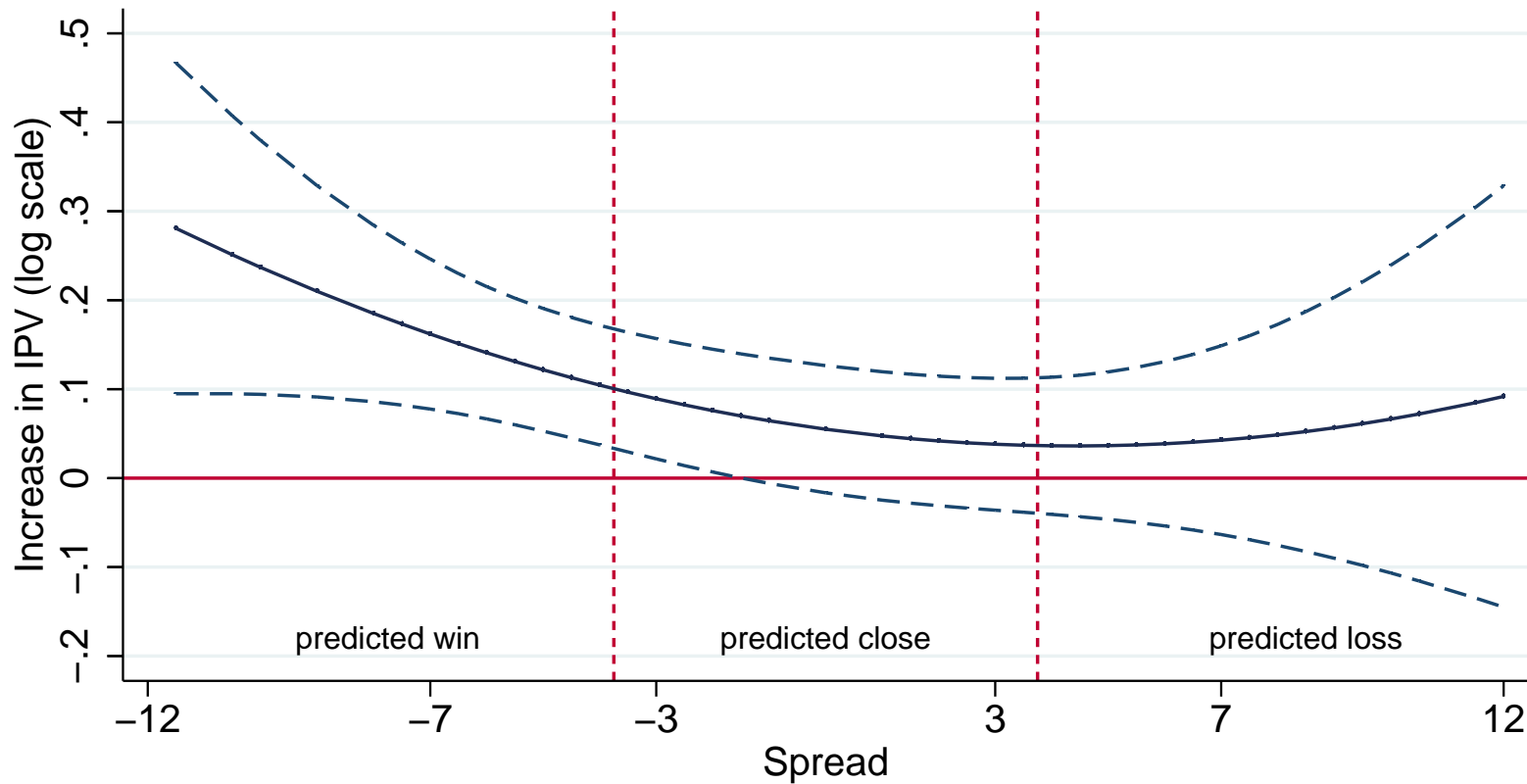
Note: Curve is fit from a regression of the probability of victory for the local team on a third order polynomial in the spread.

Figure 4: Television Audience for Local Games and the Spread



Note: Each rating point equals 1% of the total number of television households in the local market. The plotted regression line controls for team fixed effects and has an intercept of 24.89 (s.e.=.20) and a slope of $-.12$ (s.e.=.03).

Figure 5: Differential Increase in Violence for a Loss versus a Win, as a Function of the Spread, For Highly Salient Games



Notes: Dashed lines are pointwise 95% confidence intervals. Highly salient games include games in which the local team is still in playoff contention and also is playing against a traditional rival or has an unusually large number of sacks, turnovers, or penalties (see Table 6).

Appendix Table 1. Predictive Power of the Pre-Game Point Spread versus the Halftime Point Spread.

| | Probit Regression | | | | | |
|-------------------------|---------------------------------|----------------------------|----------------------------|----------------------------|----------------------------|----------------------------|
| | Dependent Variable = Win | | | | | |
| | (1) | (2) | (3) | (4) | (5) | (6) |
| Spread | -.081 (.004) [-.033] | | -.057 (.004) [-.023] | | | |
| Halftime Spread | | -.092 (.003) [-.037] | -.086 (.003) [-.034] | | | |
| Predicted Win | | | | .580 (.052) [.226] | | .448 (.057) [.176] |
| Predicted Loss | | | | -.667 (.052) [-.259] | | -.485 (.057) [-.191] |
| Halftime Predicted Win | | | | | .840 (.056) [.323] | .790 (.058) [.306] |
| Halftime Predicted Loss | | | | | -.953 (.056) [-.364] | -.864 (.058) [-.332] |
| Pseudo R-squared | .11 | .28 | .32 | .09 | .23 | .27 |
| Observations | 3,725 | 3,725 | 3,725 | 3,725 | 3,725 | 3,725 |

Notes: Standard errors in parentheses; marginal effects in brackets. Sample is all regular season NFL football games played during the 1995 to 2006 seasons. Predicted win and predicted loss are based on the pre-game point spread (negative spreads indicate the number of points a team is expected to win by). Predicted win indicates a point spread of -4 or less; predicted loss indicates a spread of +4 or more. Halftime predicted win and halftime predicted loss are based on the halftime “point spread” (where a negative halftime spread indicates the number of points a team is winning by at halftime). Predicted halftime win indicates a halftime spread of -4 or less; predicted halftime loss indicates a halftime spread of +4 or more.

Appendix Table 2. Location and Victim-Offender Relationship.

| | Poisson Regression | | | | | | | |
|---|---|-------------------------------------|----------------------|---|---------------------------------|---------------------------------------|--|--|
| | At Home, Male on Female (M-F) (1) | Away from Home, M-F (2) | Total, M-F (3) | At Home, Female on Male (F-M) (4) | Wife, at Home, M-F (5) | Girlfriend, at Home, M-F (6) | Non-IP Family Violence at Home (7) | Non-IP Friend Violence at Home (8) |
| Loss × Predicted Win <i>(Upset Loss)</i> | .100 (.032) | -.106 (.092) | .067 (.028) | .020 (.063) | .091 (.040) | .103 (.050) | .010 (.038) | .079 (.038) |
| Loss × Predicted Close <i>(Close Loss)</i> | .032 (.024) | -.056 (.049) | .019 (.023) | -.025 (.050) | .032 (.028) | .030 (.036) | -.004 (.030) | .029 (.027) |
| Win × Predicted Loss <i>(Upset Win)</i> | .016 (.027) | -.014 (.085) | .011 (.028) | -.167 (.069) | -.009 (.039) | .046 (.051) | .016 (.034) | -.033 (.046) |
| Predicted Win | -.018 (.025) | .046 (.061) | -.007 (.022) | -.001 (.064) | -.009 (.031) | -.024 (.039) | .014 (.031) | -.010 (.029) |
| Predicted Close | -.013 (.028) | -.006 (.058) | -.012 (.025) | -.000 (.055) | -.008 (.035) | -.020 (.039) | .053 (.036) | -.020 (.028) |
| Predicted Loss | -.016 (.021) | .038 (.052) | .007 (.020) | .014 (.052) | -.006 (.030) | -.033 (.034) | .043 (.024) | .015 (.023) |
| Non-game Day | --- | --- | --- | --- | --- | --- | --- | --- |
| Number of Agencies | 764 | 572 | 764 | 603 | 713 | 668 | 698 | 680 |
| Observations | 79,386 | 69,539 | 79,386 | 71,609 | 77,361 | 75,385 | 77,017 | 76,261 |

Notes: Standard errors in parentheses, clustered by team×season. Regressions include agency fixed effects, season dummies, week of season dummies, and the holiday and weather variables described in the note to Table 4. Estimated models are comparable to the baseline model in column 3 of Table 4. See notes to Table 4 for details. At home indicates the incident occurred at a residence/home; away indicates all other locations. Wife is defined as the victim being a current wife, a common-law wife, or an ex-wife. Non-IP family violence is defined as violence committed against any family member except an intimate partner (for example, a child, sibling, parent, or in-law). Non-IP friend violence is violence against a friend, acquaintance, neighbor, or otherwise known victim who is not a family member or intimate partner.

Appendix Table 3. Additional Results.

| Poisson Regression | | | | | | | |
|---|---------------------|------------------|--------------------|----------------------------------|---------------------------------|----------------------------------|--------------------------------|
| Intimate Partner Violence, Male on Female, at Home | | | | | | | |
| | Alcohol Involved | Minor Assault | Serious Assault | Smaller Agencies (pop<50K) | Larger Agencies (pop≥50K) | Younger Offenders (age<30) | Older Offenders (age≥30) |
| | (1) | (2) | (3) | (4) | (5) | (6) | (7) |
| Loss × Predicted Win <i>(Upset Loss)</i> | .140 (.068) | .124 (.037) | .077 (.047) | .128 (.051) | .081 (.037) | .090 (.043) | .112 (.039) |
| Loss × Predicted Close <i>(Close Loss)</i> | .047 (.066) | -.035 (.034) | .095 (.029) | .039 (.027) | .027 (.031) | .035 (.039) | .029 (.030) |
| Win × Predicted Loss <i>(Upset Win)</i> | .033 (.061) | -.061 (.037) | .080 (.039) | -.008 (.054) | .031 (.032) | .078 (.041) | -.026 (.034) |
| Predicted Win | -.006 (.053) | -.013 (.033) | -.023 (.036) | .010 (.034) | -.035 (.033) | -.001 (.037) | -.032 (.030) |
| Predicted Close | .001 (.058) | .036 (.036) | -.060 (.041) | -.014 (.037) | .011 (.034) | .017 (.040) | -.024 (.031) |
| Predicted Loss | -.030 (.048) | -.023 (.033) | -.007 (.034) | .013 (.038) | -.032 (.028) | -.012 (.034) | -.013 (.024) |
| Non-game Day | --- | --- | --- | --- | --- | --- | --- |
| Number of Agencies | 545 | 673 | 702 | 650 | 134 | 651 | 724 |
| Observations | 64,286 | 74,576 | 76,580 | 62,526 | 16,842 | 74,178 | 77,957 |

Notes: Standard errors in parentheses, clustered by team×season. Regressions include agency fixed effects, season dummies, week of season dummies, and the holiday and weather variables described in the note to Table 4. Estimated models are comparable to the baseline model in column 3 of Table 4. See notes to Table 4 for details. Alcohol involved indicates the reporting officer noted that either alcohol or drugs were a contributing factor. Minor assault is simple assault or intimidation without injury; serious assault is aggravated assault or any assault with a physical injury.

Appendix Table 4. Robustness Checks.

| | Intimate Partner Violence, Male on Female, at Home | | | | |
|---|---|-----------------------------------|--------------------------------------|-----------------------------|-----------------------------------|
| | Negative Binomial (1) | Treat Missings as Zeros (2) | Subsample with No Missings (3) | Date Fixed Effect (4) | Team×season Interaction (5) |
| Loss × Predicted Win <i>(Upset Loss)</i> | .109 (.032) | .096 (.032) | .091 (.035) | .099 (.034) | .084 (.029) |
| Loss × Predicted Close <i>(Close Loss)</i> | .034 (.025) | .038 (.027) | .025 (.030) | .029 (.028) | .031 (.023) |
| Win × Predicted Loss <i>(Upset Win)</i> | .014 (.028) | .022 (.029) | .022 (.029) | -.000 (.031) | .010 (.029) |
| Predicted Win | -.020 (.025) | -.018 (.025) | -.025 (.030) | -.030 (.025) | -.006 (.025) |
| Predicted Close | -.017 (.029) | -.023 (.030) | -.009 (.031) | -.022 (.027) | -.012 (.028) |
| Predicted Loss | -.016 (.021) | -.019 (.021) | -.019 (.022) | -.022 (.024) | -.020 (.023) |
| Non-game Day | --- | --- | --- | --- | --- |
| Number of Agencies | 764 | 764 | 447 | 764 | 764 |
| Observations | 79,386 | 90,450 | 41,111 | 79,386 | 79,386 |

Notes: Standard errors in parentheses, clustered by team×season. Regressions include agency fixed effects, season dummies, week of season dummies, and the holiday and weather variables described in the note to Table 4. Estimated models are comparable to the baseline model in column 3 of Table 4. See notes to Table 4 for details. All columns except for column 1 use Poisson regression. In the baseline model appearing in Table 4, if there is a 24-hour day with no crime of any type (not just IPV) reported to NIBRS within our sample, that day is dropped and treated as missing at random. Column 2 alternatively treats these missing days as days with zero IPV. Column 3 only includes an agency in a given season if the agency reports incident data for all 17 Sundays of the regular football season. Column 4 includes dummies for the different Sundays included in our sample (204 Sundays). Column 5 includes team-specific linear season trends.

Appendix Table 5. Stata Output for Baseline Model.

```
. poisson ipmfhometot $basevars ww* yy* $smallhh $weather oo* if insamp, difficult
iterate(25) cluster(teamseason)
note: ww17 omitted because of collinearity
note: yy12 omitted because of collinearity
note: oo764 omitted because of collinearity
```

```
Iteration 0: log pseudolikelihood = -832585.7 (not concave)
Iteration 1: log pseudolikelihood = -500980.89
Iteration 2: log pseudolikelihood = -388779.09 (backed up)
Iteration 3: log pseudolikelihood = -312996.3 (backed up)
Iteration 4: log pseudolikelihood = -232056.89 (backed up)
Iteration 5: log pseudolikelihood = -203536.46 (backed up)
Iteration 6: log pseudolikelihood = -175822.63 (backed up)
Iteration 7: log pseudolikelihood = -149445.89
Iteration 8: log pseudolikelihood = -55009.811
Iteration 9: log pseudolikelihood = -45116.918
Iteration 10: log pseudolikelihood = -44436.296
Iteration 11: log pseudolikelihood = -44395.334
Iteration 12: log pseudolikelihood = -44394.427
Iteration 13: log pseudolikelihood = -44394.412
Iteration 14: log pseudolikelihood = -44394.412
```

```
Poisson regression                               Number of obs   =       79386
                                                Wald chi2(64)   =           .
Log pseudolikelihood = -44394.412              Prob > chi2     =           .
```

(Std. Err. adjusted for 62 clusters in teamseason)

| ipmfhometot | Coef. | Robust Std. Err. | z | P> z | [95% Conf. Interval] | |
|--------------|-----------|------------------|-------|-------|----------------------|-----------|
| upsetlossb~e | .0997021 | .0316786 | 3.15 | 0.002 | .0376131 | .161791 |
| closelossb~e | .0322801 | .0240812 | 1.34 | 0.180 | -.0149181 | .0794783 |
| upsetwinbase | .0156303 | .0267482 | 0.58 | 0.559 | -.0367953 | .0680559 |
| predwinbase | -.0182454 | .024885 | -0.73 | 0.463 | -.0670192 | .0305283 |
| predcloseb~e | -.013471 | .0283995 | -0.47 | 0.635 | -.0691329 | .042191 |
| predlossbase | -.015603 | .0210993 | -0.74 | 0.460 | -.0569569 | .0257509 |
| ww1 | .0323798 | .0632384 | 0.51 | 0.609 | -.0915652 | .1563248 |
| ww2 | -.0324955 | .0567684 | -0.57 | 0.567 | -.1437594 | .0787685 |
| ww3 | .0424042 | .0521468 | 0.81 | 0.416 | -.0598017 | .1446101 |
| ww4 | -.0109752 | .0537437 | -0.20 | 0.838 | -.116311 | .0943606 |
| ww5 | -.0666128 | .0572189 | -1.16 | 0.244 | -.1787597 | .0455342 |
| ww6 | -.1247546 | .0483948 | -2.58 | 0.010 | -.2196066 | -.0299025 |
| ww7 | -.0893211 | .0520962 | -1.71 | 0.086 | -.1914279 | .0127856 |
| ww8 | -.0492017 | .0543815 | -0.90 | 0.366 | -.1557876 | .0573841 |
| ww9 | .0322628 | .047417 | 0.68 | 0.496 | -.0606728 | .1251984 |
| ww10 | -.0319723 | .042584 | -0.75 | 0.453 | -.1154354 | .0514909 |
| ww11 | -.0604387 | .0397569 | -1.52 | 0.128 | -.1383608 | .0174835 |
| ww12 | -.0636182 | .0407344 | -1.56 | 0.118 | -.1434562 | .0162198 |
| ww13 | .0064496 | .0432304 | 0.15 | 0.881 | -.0782804 | .0911795 |
| ww14 | -.077592 | .0409749 | -1.89 | 0.058 | -.1579013 | .0027174 |
| ww15 | -.032098 | .0438526 | -0.73 | 0.464 | -.1180476 | .0538516 |
| ww16 | -.0518324 | .0473532 | -1.09 | 0.274 | -.144643 | .0409782 |
| ww17 | (omitted) | | | | | |
| yy1 | .2797007 | .0866698 | 3.23 | 0.001 | .1098309 | .4495704 |
| yy2 | .2083029 | .0904594 | 2.30 | 0.021 | .0310057 | .3856 |
| yy3 | .177718 | .0449321 | 3.96 | 0.000 | .0896528 | .2657832 |
| yy4 | .1793304 | .0518489 | 3.46 | 0.001 | .0777085 | .2809523 |
| yy5 | .1258505 | .0615124 | 2.05 | 0.041 | .0052884 | .2464125 |

| | | | | | | |
|------------|-----------|----------|-------|-------|-----------|-----------|
| yy6 | .1068725 | .0514965 | 2.08 | 0.038 | .0059411 | .2078038 |
| yy7 | .0785671 | .0526854 | 1.49 | 0.136 | -.0246944 | .1818286 |
| yy8 | .0061141 | .0648259 | 0.09 | 0.925 | -.1209424 | .1331706 |
| yy9 | .0764421 | .0428954 | 1.78 | 0.075 | -.0076314 | .1605156 |
| yy10 | .0059727 | .0474751 | 0.13 | 0.900 | -.0870767 | .0990222 |
| yy11 | .0604593 | .054256 | 1.11 | 0.265 | -.0458805 | .166799 |
| yy12 | (omitted) | | | | | |
| christeve | -.0777492 | .0558428 | -1.39 | 0.164 | -.1871991 | .0317007 |
| christday | -.0585899 | .0531494 | -1.10 | 0.270 | -.1627607 | .0455809 |
| newyeareve | -.0791087 | .0762438 | -1.04 | 0.299 | -.2285438 | .0703264 |
| newyearday | .0220847 | .0832541 | 0.27 | 0.791 | -.1410903 | .1852596 |
| halloween | .1045813 | .0951078 | 1.10 | 0.272 | -.0818264 | .2909891 |
| thankswkd | -.0336233 | .0329101 | -1.02 | 0.307 | -.0981259 | .0308793 |
| laborwkd | -.0686772 | .0755504 | -0.91 | 0.363 | -.2167532 | .0793988 |
| columwkd | .0251814 | .0322175 | 0.78 | 0.434 | -.0379637 | .0883265 |
| vetwkd | -.0171233 | .049332 | -0.35 | 0.729 | -.1138122 | .0795656 |
| hot | .0477193 | .0288922 | 1.65 | 0.099 | -.0089084 | .104347 |
| hiheatindx | -.0269151 | .0750599 | -0.36 | 0.720 | -.1740298 | .1201995 |
| cold | -.0607541 | .0188002 | -3.23 | 0.001 | -.0976019 | -.0239064 |
| windy | -.1177301 | .0742282 | -1.59 | 0.113 | -.2632148 | .0277546 |
| anyrain | .0075308 | .0210958 | 0.36 | 0.721 | -.0338163 | .0488779 |
| anysnow | .0161207 | .0307161 | 0.52 | 0.600 | -.0440818 | .0763231 |

(note: 762 agency indicator variables omitted for brevity)

Notes: This output matches Table 4, column 3. While 762 agency indicator variables are included in the regression, they are omitted for brevity. The variables *ww1-ww17* are indicators for weeks 1 through 17 of an NFL football season. The variables *yy1-yy12* are indicators for each NFL season from 1995 to 2006. There are self-explanatory holiday dummies for Christmas Eve, Christmas Day, New Year's Eve, New Year's Day, and Halloween as well as Thanksgiving, Labor, Columbus, and Veterans Day weekends. The source for the weather variables is the "Global Surface Summary of Day Data" produced by the National Climatic Data Center and available from <ftp://ftp.ncdc.noaa.gov/pub/data/g sod>. Weather information is collected for the capital of each state in our sample and assigned to all cities or counties within that state. The dummy variable *hot* indicates a maximum daily temperature greater than 80 degrees Fahrenheit; the dummy variable *cold* indicates a minimum daily temperature less than or equal to 32 degrees. The variable *hiheatindx* is a dummy for the heat index (a measure incorporating both humidity and temperature) being over 100. The variable *windy* is a dummy for a maximum daily wind speed of greater than 17 knots. The variables *anyrain* and *anysnow* are indicators for any rainfall and any snowfall.