

Nicodemo, Catia; Waldmann, Robert

**Working Paper**

## Child-care and participation in the labor market for married women in mediterranean countries

IZA Discussion Papers, No. 3983

**Provided in Cooperation with:**

IZA – Institute of Labor Economics

*Suggested Citation:* Nicodemo, Catia; Waldmann, Robert (2009) : Child-care and participation in the labor market for married women in mediterranean countries, IZA Discussion Papers, No. 3983, Institute for the Study of Labor (IZA), Bonn, <https://nbn-resolving.de/urn:nbn:de:101:1-2009021676>

This Version is available at:

<https://hdl.handle.net/10419/35447>

**Standard-Nutzungsbedingungen:**

Die Dokumente auf EconStor dürfen zu eigenen wissenschaftlichen Zwecken und zum Privatgebrauch gespeichert und kopiert werden.

Sie dürfen die Dokumente nicht für öffentliche oder kommerzielle Zwecke vervielfältigen, öffentlich ausstellen, öffentlich zugänglich machen, vertreiben oder anderweitig nutzen.

Sofern die Verfasser die Dokumente unter Open-Content-Lizenzen (insbesondere CC-Lizenzen) zur Verfügung gestellt haben sollten, gelten abweichend von diesen Nutzungsbedingungen die in der dort genannten Lizenz gewährten Nutzungsrechte.

**Terms of use:**

*Documents in EconStor may be saved and copied for your personal and scholarly purposes.*

*You are not to copy documents for public or commercial purposes, to exhibit the documents publicly, to make them publicly available on the internet, or to distribute or otherwise use the documents in public.*

*If the documents have been made available under an Open Content Licence (especially Creative Commons Licences), you may exercise further usage rights as specified in the indicated licence.*

IZA DP No. 3983

## Child-Care and Participation in the Labor Market for Married Women in Mediterranean Countries

Catia Nicodemo  
Robert Waldmann

January 2009

# **Child-Care and Participation in the Labor Market for Married Women in Mediterranean Countries**

**Catia Nicodemo**

*Universitat Autònoma de Barcelona  
and IZA*

**Robert Waldmann**

*University of Tor Vergata*

Discussion Paper No. 3983  
January 2009

IZA

P.O. Box 7240  
53072 Bonn  
Germany

Phone: +49-228-3894-0  
Fax: +49-228-3894-180  
E-mail: [iza@iza.org](mailto:iza@iza.org)

Any opinions expressed here are those of the author(s) and not those of IZA. Research published in this series may include views on policy, but the institute itself takes no institutional policy positions.

The Institute for the Study of Labor (IZA) in Bonn is a local and virtual international research center and a place of communication between science, politics and business. IZA is an independent nonprofit organization supported by Deutsche Post Foundation. The center is associated with the University of Bonn and offers a stimulating research environment through its international network, workshops and conferences, data service, project support, research visits and doctoral program. IZA engages in (i) original and internationally competitive research in all fields of labor economics, (ii) development of policy concepts, and (iii) dissemination of research results and concepts to the interested public.

IZA Discussion Papers often represent preliminary work and are circulated to encourage discussion. Citation of such a paper should account for its provisional character. A revised version may be available directly from the author.

## **ABSTRACT**

### **Child-Care and Participation in the Labor Market for Married Women in Mediterranean Countries**

Parents in the labor force have balance their work and home life, including the choice of the type of care to provide for their children while they work. In this paper we study the connection between the married women's labor force participation, child care arrangements and the time that husbands and wives spent to take care of children in Mediterranean countries. As more women now are in the labor force the interest in the use child care and housework of husband have grown. We use the new database from the EU-SILC (European Survey on Income and Living Conditions) in 2006 and data from the ECHP (European Community Household Panel)in 2001, because these two data-set give us different information about child care and housework. The traditional role of mothers in child care activities is highly valued by many families, especially in Southern European countries. The results show that while Mediterranean countries have advanced in the incorporation of women into the labor market, most of them still have to assume total responsibility for housework and the care of the children. Child care arrangements is an important instrument for women to enter in paid employment.

JEL Classification: J13, J21, C1, C3

Keywords: unpaid work, child care arrangements, labor supply

Corresponding author:

Catia Nicodemo  
Universitat Autònoma de Barcelona  
Department of Applied Economics  
Campus Bellaterra  
08193 Bellaterra (Cerdanyola)  
Spain  
E-mail: [catia.nicodemo@upf.edu](mailto:catia.nicodemo@upf.edu)

# 1 Introduction

Family structure and employment patterns have changed in Europe in the last thirty years, so welfare states policies have also changed. European countries have implemented new family policies with a strong effect on parental employment patterns aiming to achieve different objectives such as increasing the participation of mothers in the labour market and the fertility rate, to create the possibility for women to access the labour market on the same footing with men and promoting the equal division of unpaid labour between men and women.

The different work-family arrangements across the member states are based on historical and cultural differences among countries. Esping-Andersen (1990) distinguishes three standard welfare regimens:

1. *social-democratic*
2. *conservative-corporatists*
3. *liberal*

The relationship between the labour market, the family and the welfare state varies among countries.

Mediterranean countries were classified by Esping-Andersen in the second type of welfare-state regimes. Women were primarily responsible for unpaid work at home and the traditional family was central in this regime. Child care and other unpaid work were unequally shared among partners, even when mothers were employed on a full time basis in the labour market. We focus our attention on these countries and study if there is a change in this regime as for the welfare state in family policies, unpaid work at home (including child care) and the labour market participation of married women or there is still a conservative regime. Countries analyzed in this work are: France, Italy, Spain, Portugal and Greece.

The increase of the participation rate of women in the labour market has implied one change in the traditional family. Their members have to decide how the housework is to be distributed and who is to take care of children, because the structure of the household where the wife does the housework and takes care of the children, and the husband works outside to earn the household income changed, even if partially.

The increased number of women in the labour force has made possible not only an egalitarian distribution of the household work within the household but the interest in the use of non-parental child care has grown. The intervention of governments that have subsidized child care programs in the form of pre and after school programs, or the help of an informal arrangements such as grandparents and professional child-minders, have enabled women to participate in paid employment, because child care represents a potential cost for the family. Decisions concerning the use of non-parental child care depend on many economic and demographic factors, and the process by which these decisions are made has implications for the effectiveness of social policy concerning child care. Efforts to increase the supply of child care must take into account the factors that parents demonstrate as important in their choices of what child care to use.

In table 1 we present the maternal employment rate in 2005 with respect to age and number of children in Europe. We can see that most mothers are in paid work especially when they children go to school.

A large number of papers in the past years have studied the link between women employment, child care cost and husbands' housework time. Bianchi et al. (2000) studied how the propensity to do housework has increased during 1965 and 1995. Coverman (1995) found that husband housework time is correlated with wives' employment status. Alvarez-Miles (2006) investigated the Spanish data to analyze the decision of women to enter in paid employment.

The literature on and labour supply has focused on the effect of child care costs. Heckman (1974), Blau and Robins (1988), Connelly (1992) among

Table 1: Maternal employment rates, women age 15-64

Country	by age of youngest child				by number of children under 15		
	0-16	< 2	3-5	6-16	1 child	2 children	3 children
Belgium	59.9	63.8	63.3	56.9	58.3	58.5	39.4
Canada	70.5	58.7	68.1	71.1	70.1	73.2	66.3
Czech Republic	52.8	19.9	50.9	67.6	57.4	52.5	34.4
Denmark	76.5	71.4	77.8	77.5	..	..	..
Finland	76.0	52.1	80.7	84.2	71.2	70.9	60.1
France	59.9	53.7	63.8	61.7	62.2	57.6	38.1
Germany	54.9	36.1	54.8	62.7	58.4	51.8	36.0
Greece	50.9	49.5	53.6	50.4	48.4	44.4	37.4
Hungary	45.7	13.9	49.9	58.3	53.7	48.3	24.6
Iceland	84.8	83.6	86.5	86.5	88.5	82.3	..
Ireland	57.5	55.0	59.9	59.9	55.4	52.5	42.3
Italy	48.1	47.3	50.6	47.5	48.3	41.0	27.4
Japan	52.4	28.5	47.8	68.1	..	..	..
Luxembourg	55.4	58.3	58.7	52.7	56.0	49.8	33.8
Netherlands	69.2	69.4	68.3	69.4	70.1	70.6	59.9
New Zealand	64.6	45.1	60.6	75.3	64.1	64.5	56.7
Poland	46.4	..	..	..	42.7	35.6	28.5
Portugal	67.8	69.1	71.8	65.4	63.5	59.2	46.1
Slovak Republic	48.4	23.1	46.6	60.4	56.4	49.4	31.5
Spain	52.0	52.6	54.2	50.9	51.1	44.7	38.5
Sweden	82.5	71.9	81.3	76.1	80.6	84.7	75.6
Switzerland	69.7	58.3	61.7	77.0	69.5	65.4	58.0
United Kingdom	61.7	52.6	58.3	67.7	67.1	62.4	42.3
United States	66.7	54.2	62.8	73.2	..	..	..
EU-19	<b>59.5</b>	<b>51.1</b>	<b>58.2</b>	<b>63.2</b>	<b>59.4</b>	<b>55.2</b>	<b>41.2</b>
OECD average	<b>61.5</b>	<b>51.7</b>	<b>61.2</b>	<b>66.1</b>	<b>60.2</b>	<b>56.9</b>	<b>43.8</b>

Data source: Eurostat, 2005

others found that female labour participation is significantly influenced by child-care policies in the U.S and UK.

A very limited number of works have investigated which effect have child care arrangements and husbands' housework on employment of wives in particular for Mediterranean countries where family traditions have changed dramatically in this last decade.

It once was difficult to find data on arrangements in Europe, but with the new data set of EU-SILC (European Income and Living Conditions) we have this information. To do the cross-section analysis we use the 2001 wave from the European Community Household Panel (ECHP) and the EU-SILC in 2006.

In this contest the objectives of the paper are threefold. First, to study the household model in Southern European countries, how the members of a family share the housework and how they take care of children, has changed something in these countries or continue to be a conservative welfare regime. Second, how non-parental arrangements are used by the household. We distinguish two types of arrangements: paid care (day centre care, professional child-minders and centre-based services) and unpaid care (grandparents and

others household members). Finally, we investigate how child care arrangements affect the participation equation of married women in the labour market. Mediterranean labour and child care market are very rigidity and inflexible where take the decision for the mothers to enter in the labour market and to use child care is very complicated.

The paper is organized as follows: in section I we present summery statistics and analysis of child care arrangement and hours spent in take care of children. In section II we estimate a probit model to carry out the characteristics that determine the time dedicated to caring for children, and in section III we estimate the impact of child care arrangements on employment status of married female and conclusions.

## 2 Sample Characteristics and Data

The data set used is drawn from the European Community Household Panel (ECHP) and EU-SILC (European Income and Living Conditions).

The ECHP data set is a multi-country annual longitudinal survey of collected data since 1994<sup>1</sup> in 15 European Union Member States under Eurostat (Statistical Office of the European Communities) coordination.

The data set covers approximately 130,000 individuals from 60,000 households in the fifteen countries which were EU members in 2000, reflecting population changes over time through a continuous evolution of the sample. The panel data cover a wide range of subjects such as demographics, labour force behavior, income, health, education and training, housing, poverty and social exclusion, etc.

The ECHP is being progressively replaced with data collection under the EU-SILC regulations (no.1177/2003 Community Statistics on collection under the EU-SILC regulations on Income and Living Conditions). Seven countries launched a preliminary version of the EU-SILC in 2003. The project was formally launched in 2004 and EU25 coverage is expected with

---

<sup>1</sup>Belgium, Germany, the Netherlands, the U.K., Denmark, France, Greece, Ireland, Portugal, Italy and Spain started in 1994 (wave 1), Austria joined in 1995 (wave 2), Finland joined in 1996 (wave 3).



effect from 2005 <sup>2</sup>. The regulations will be fully applicable from 2007. EU-SILC is expected to become the reference source of statistics on income and social exclusion in the European Union.

The European Union Statistics on Income and Living Conditions (EU-SILC) aims to collect timely and comparable cross-sectional and longitudinal multidimensional microdata on income, poverty, social exclusion and living conditions.

The EU-SILC aims to provide two types of data:

- Cross-sectional data pertaining to a given time or a certain time period with variables on income, poverty, social exclusion and other living conditions .

- Longitudinal data pertaining to individual-level changes over time, observed periodically over, typically, a four year period.

Social exclusion and housing condition information is collected at household level while labour, education and health information is obtained for people aged 16 and over. The core of the study, income at a very detailed component level, is mainly collected at personal level but a few components are included in the household part of SILC.

The sample has been constructed by matching the couple of wives with their respective husbands. We have selected all t wives who are in working age and we have excluded self employed women. The size of the sample varies across countries and across years.

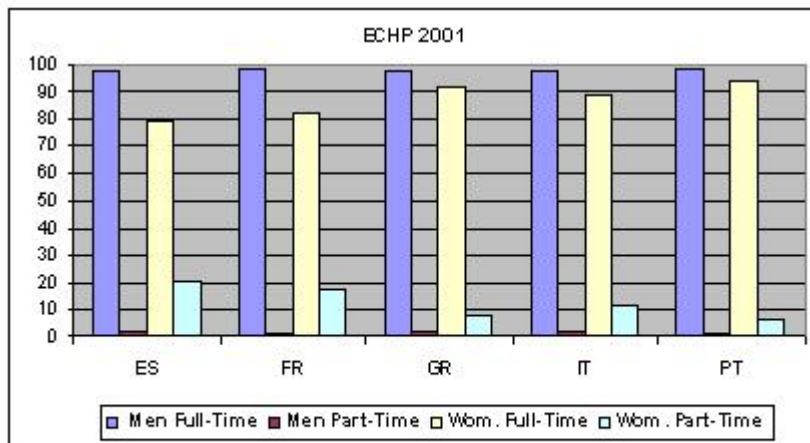
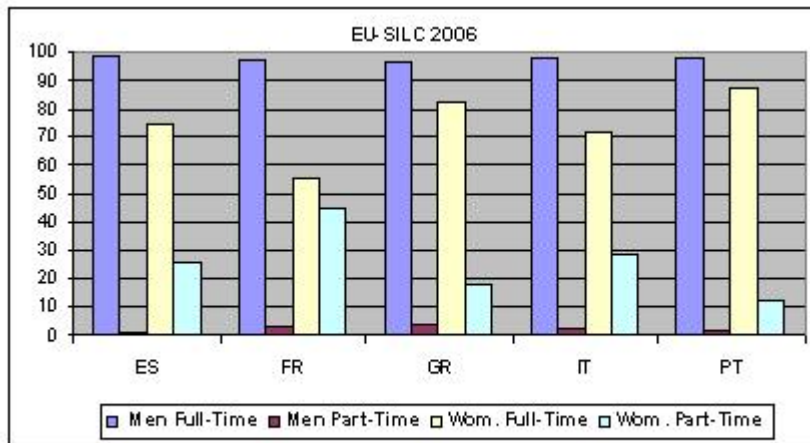
First, we look at the percentage of households by reference to the spouses' relationships with the labour market. Figure 1 relates to the employment patterns of husbands and wives in 2001 and 2006 elaborated respectively with ECHP and EU-SILC data. We can see how the part-time employment is very low for husbands in these years, while for wives it has increased and France is the country with a major number of women in a part-time job.

In table 3 and 4 we report for each country the husbands' and wives' relationships with the labour market in 2006 estimated with the EU-SILC

---

<sup>2</sup>The EU-SILC was launched in 2004 in 13 Member States :BE, DK, EE, EL, ES, FR, IE, IT, LU, AT, PT, FI and SE and in NO and IS

Figure 1: Employment patterns by full-time and part-time for husbands and wives



data set and in 2001 estimated with the ECHP data.

Regarding husbands that work at home, the data show that it is very rare to find men at home, just Italy and Spain have a few husbands in this situation in the EU-SILC data while in Greece and Portugal we continue to find no husbands who spent time in this job in 2006.

Women's housework decreased in 2006 with respect to 2001 around 10% in all countries and about 20% in Greece. The unemployment rate affects women more than men and it decrease in general, while the employment rate increased in 2006 and we find a difference between husbands and wives, with a difference of 40% of participation in the labour market for Greece, Italy and Spain and about 20% for Portugal and France. These tables show that the family behavior has changed, but the results are more clear in tables 5 and figures 2 to 4 where we look at the time spent by wives and husbands taking care of children in 2001 with ECHP data and the time that children spent in non parental when they are (pre-after) school hours outside with EU-SILC data in 2006. <sup>3</sup>.

In table 5 we present data on how husband and wife shared the time that dedicated to care of the children and the time that they spent on child care in 2001. We can first note that such care is distributed between both spouses unequally in all countries. 70% of wives spend time on this task in Mediterranean countries and 50% of husbands, but when the wives do not take care of children only 0.50%–1% of their partners do. Women dedicated much more time to child care, we find that 88% of women in Spain spent more than 28 hours for children while only 45% of men spent 28 hours. We don't find striking differences across countries except for France where a higher percentage of husbands take care of children although the time spent with children is less for both spouses.

---

<sup>3</sup>In the data set EU-SILC, we don't have the variable that indicate the number of hours that the members of the household spent taking care of children, but the number of hours that the children spent outside the home such as in care organised/controlled by a structure (public, private), direct arrangements between the carer and the parents, unpaid care (free or informal arrangements such as exchange of services) as grand-parents, others household members (outside parents) and centre-based services outside (pre-)school hours

We show the results of the EU-SILC data in figure 2, 3 and 4 and table 2 where we report the weekly hours that children with age between 0 and 13 spent in arrangements such as institutions, with professional babysitters or using informal care and the distribution of child care arrangements for each Mediterranean country. Preschoolers and grade school-aged children required different types of care.

The child care system is organized differently across countries, in table 2 we report the average of hours that children spent in a week in different types of care. We have *Child care at centre-based services*, that concerns only the children who are at pre-school or at school if the child care reference time is outside (pre-)school hours. *Child care at day-care centre* includes all kinds of care organised/controlled by a structure (public or private). *Child care by a professional child-minders* where the arrangements are direct between the care provider and the parents: parents are often employers and pay the care provider directly. *Unpaid care* are free or informal arrangements such as exchange of services (neighbor, friends, grandparents etc.) Unpaid care is used in all countries. Greece and Italy are the countries where the percentage of the children in the unpaid care is highest (73.25% and 54.91%) and where the children spent by average 20 hours per week in Greece and 15 hours in Italy. France and Portugal have a high number of children in day-centre care, where children spend time during pre and after school hours, while Spain and Greece do not use this type of child care a lot. Professional child-minders are an option that parents use and where children stay a long time except in Portugal and Italy where the hours are around 8 per week.

If we look at graphs 2-4 we find that the distribution of the age of children with respect to hours spent in non parental child care arrangements varies across countries and decreases with age. We can see that the period between 0 and 6 years is a critical age, since children require more hours of care. When children are older than 10 the number of hours spent in child care is less. In Italy and Spain non parental child care arrangements used less than in other countries in each age cohort, while in Portugal we find that a great

percentage of the children in the middle, 3–10 years old, receive care away from their parents.

We can conclude that the time that children spent without parents is not very high especially for Italy and Spain and in particular when children are in grade school.

In the following figure 5, we present the child care arrangements by mother's working status. Grandparents play an important role as primary child care especially when the mother is employed. In Portugal and France almost 90% of women work outside the home while in the rest of countries surprisingly a 10% of women work at home and use child care. Children are care by the day-centre care or by the centre-based services while women work at home or are unemployed in Italy, Greece and Spain. The percentage of women who have a paid job is very high when they use the professional child-minders services , maybe because this kind of arrangements is very expensive and located in large cities where people's living standard is high and so the mother often has a high salary.

This effect is confirmed if we look at graph 6 where we take in consideration the households income by child care arrangements. The mean income of household using professional child-minders is high in all countries, while is low when parents use unpaid care, except for Portugal which has the same distribution of household income across different types of child care.

For many families, however, there are additional arrangements made for child care. We have calculated the number of types of non parental child care used by parents in Mediterranean countries and the results are reported in graph 7. In Spain, Portugal and Greece a 90% of households only use one kind of non parental child care while France and Italy more than 25% use also another second kind of non parental child care.

Figure 2: Distribution of the number of hours spent in a week in child care arrangements: EU-SILC 2006

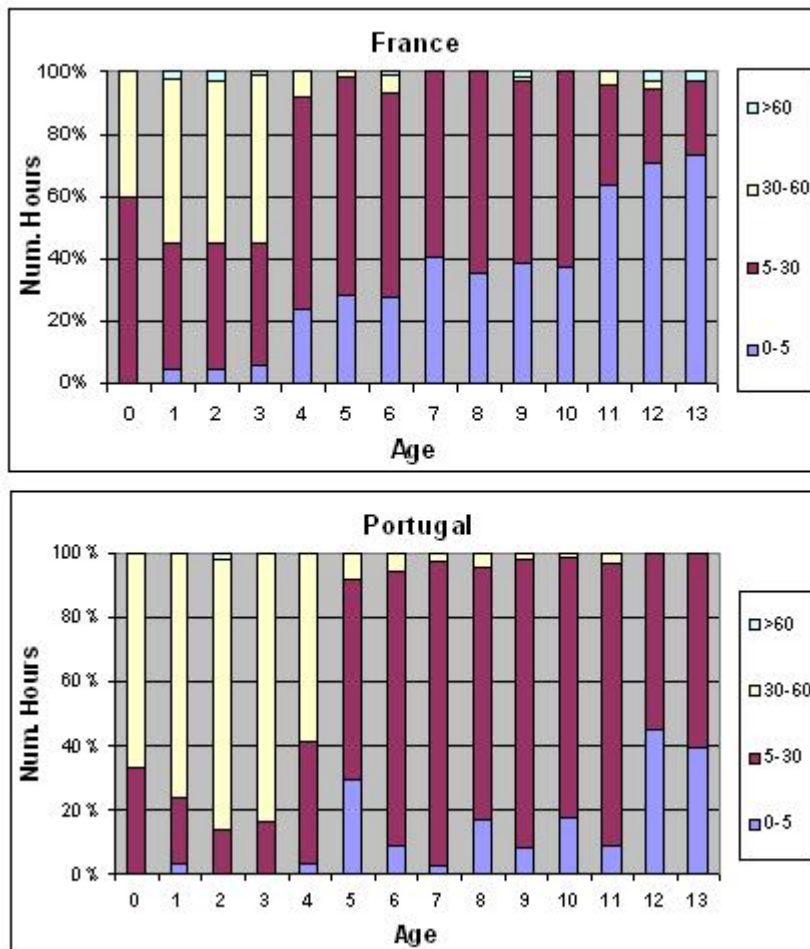


Figure 3: Distribution of the number of hours spent in a week in child care arrangements: EU-SILC 2006

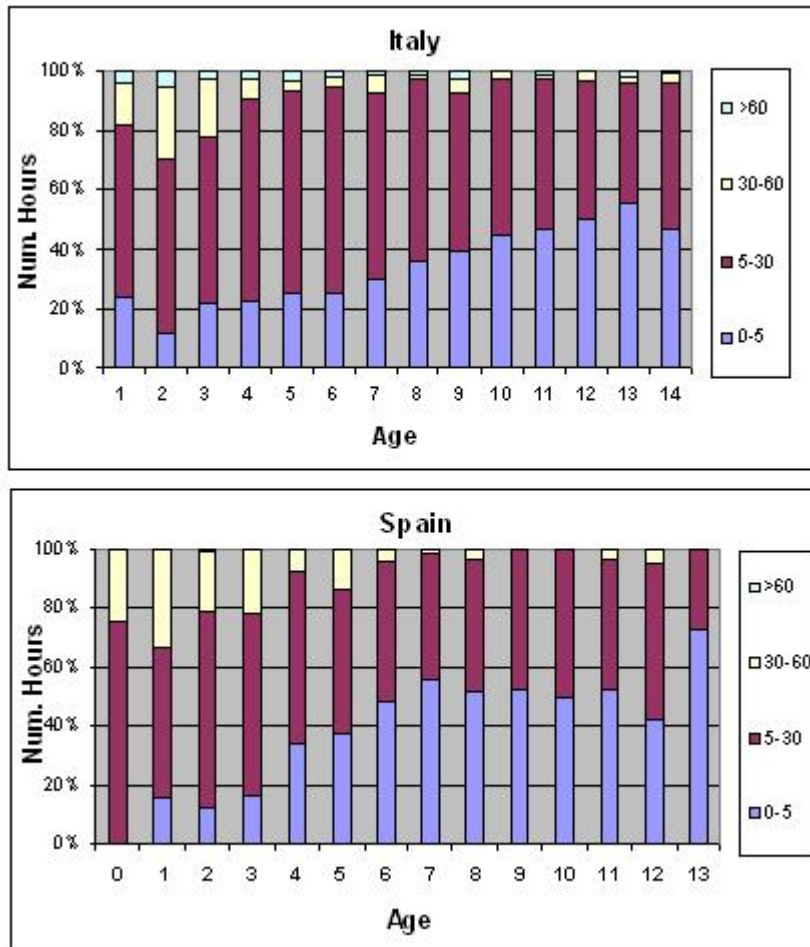


Table 2: **Distribution of Child care Arrangements: EU-SILC 2006**

Country	Centre-based services	Day-centre care	Professionals child-minders	Unpaid care
<b>Spain</b>	5.21 <i>30.24</i>	14.89 <i>9.41</i>	18.26 <i>15.12</i>	16.21 <i>45.24</i>
<b>France</b>	5.68 <i>27.75</i>	21.44 <i>24.49</i>	18.43 <i>17.18</i>	12.18 <i>30.57</i>
<b>Greece</b>	11.39 <i>17.74</i>	12.33 <i>0.43</i>	25.21 <i>8.58</i>	24.49 <i>73.25</i>
<b>Italy</b>	5.81 <i>21.56</i>	4.28 <i>16.86</i>	10.02 <i>6.65</i>	14.43 <i>54.91</i>
<b>Portugal</b>	12.01 <i>41.52</i>	36.5 <i>14.84</i>	24.44 <i>7.95</i>	21.14 <i>35.69</i>

Figure 4: **Distribution of the number of hours spent in a week in child care arrangements: EU-SILC 2006**

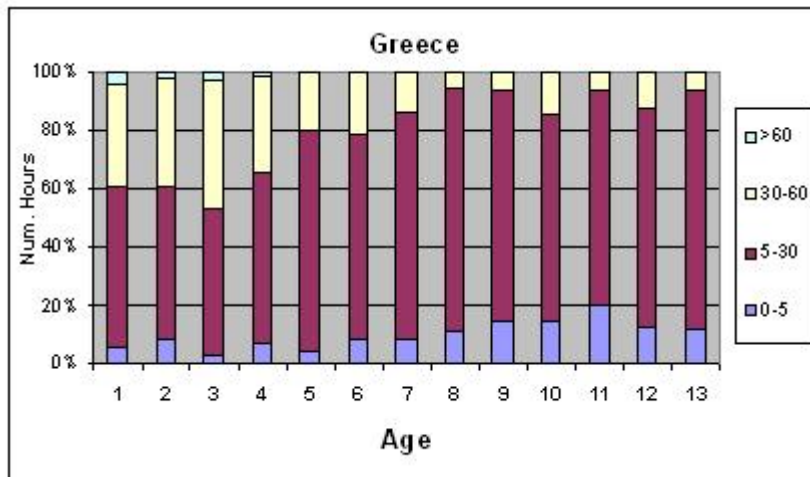




Figure 5: Child care Arrangements by Mother's Working Status

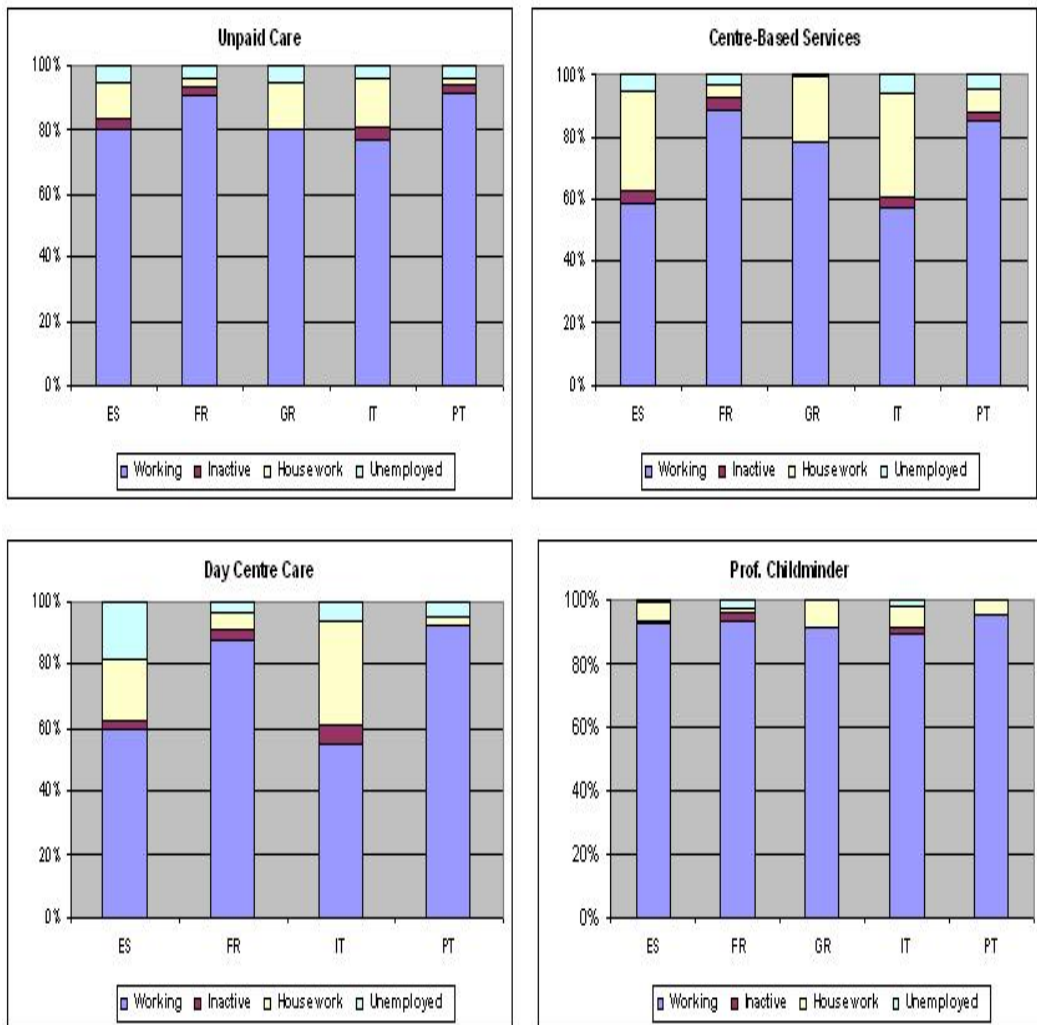


Figure 6: Household Income by Child care Arrangements

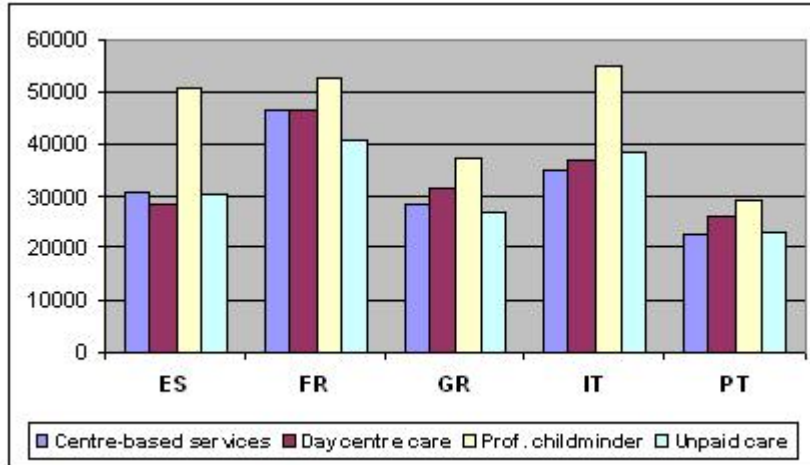
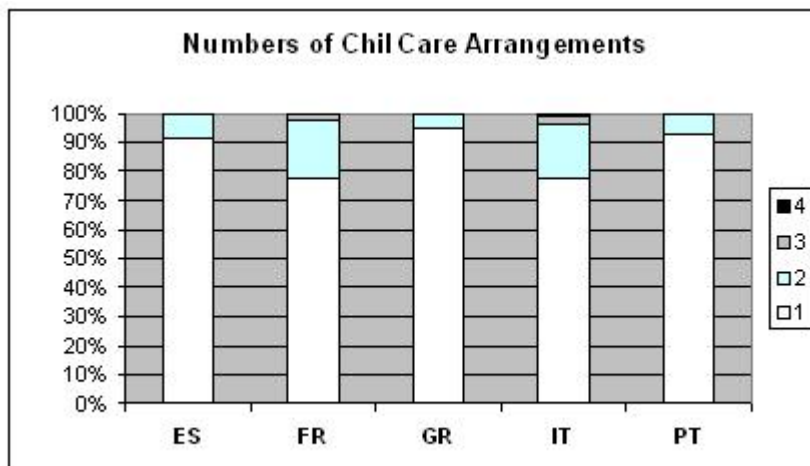


Figure 7: Number of Child care Arrangements Used: EU-SILC 2006



### 3 Theoretical Model of Employment Decision and Child Care

Our propose is to study the impact of child care on women's employment decision. We focus our attention on the maximization of utility function that mothers do when they decide to enter in the labour market. We do not present a formal theoretical model of child care and employment but follow a simple microeconomic model of time allocation. The total time ( $K$ ) that mothers have is fixed and limited and is allocated in two uses: work ( $H$ ), that is repay at a fixed wage  $w$  and leisure ( $L$ ).

$$K = L + H$$

Hours of labor are chosen to maximize an utility function that depends on leisure and consumption,  $C$ , subject to a budget constraint that is composed by no labor income  $W$  and wage rate  $w$ . A part of the mother's leisure is used to take care of children if they are present in a family. The children could also receive care from market(paid) and no-market (unpaid) systems. Hours that children spend in paid care are denoted as  $F$  and hours spend in unpaid care are denoted as  $I$ . Let  $\alpha_L, \alpha_F, \alpha_I$  represent the productivities of maternal care, market care and no-market care respectively. The total care that the child  $i$  receive can be expressed as:

$$Q_i = \alpha_T L_i + \alpha_F F + \alpha_I I$$

Paid child care has a price ( $p$ ) measured as a percentage of consumption goods ( $C$ ) and it also has to be incorporated into budget constraint. In our data we do not know this price  $p$ , but only the hours that children are cared away from their parents. The budget constraint in a family is given by:

$$C = W + wH - pF$$

We don't know this  $p$  and the price of unpaid care is equal to zero. The income of other components of the family is included in  $W$  and considered as exogenous, so we can rewrite the budget as:

$$C = W + wH$$

The household utility function can be maximized as:

$$\max_{(H,F,I)} U = U(\alpha_L K - H + \alpha_F F + \alpha_I I, K - H)$$

The solution of this maximization problems conduct to first order conditions that resume the relationship among the choice variable :  $H$ ,  $F$  and  $I$  are given by these reduced form solutions:

1.

$$H = (W, X, \epsilon)$$

2.

$$F = f(W, X, \gamma)$$

3.

$$I = i(W, X, \eta)$$

Where  $W$  is the wage,  $X$  is a vector of observed characteristics, and  $\epsilon$ ,  $\gamma$ , and  $\eta$  represent unobserved terms normally distributed. As we have commented before, we do not take in consideration the cost of child care because we do not have this information in our data-set, of course the family utility depends also on the price of paid child care but we must omit this part.

The decisions to enter the labour force  $H$  and use child care ( $F$ ,  $I$ ) are interrelated. Our approach models child care decision as conditional on the women's labour force participation using a multivariate selection model,

where we estimate jointly the choices of child care and labor supply with the following model:

$$\begin{aligned}
y_1 &= 1(\alpha_{y_2} + x_1\beta_1 + \varepsilon_1 > 0) \\
y_2 &= 1(x_2\beta_2 + \varepsilon_2 > 0), \\
y_3 &= 1(x_3\beta_3 + \varepsilon_3 > 0), \\
(\varepsilon_1, \varepsilon_2, \varepsilon_3 \mid x_1, x_2, x_3) &\sim N(0, 1, \rho),
\end{aligned} \tag{1}$$

where  $1(\cdot)$  is the indicator function taking the value one if the statement between brackets is true and zero otherwise.  $\beta_1$  and  $\beta_2$  are regression coefficients, and indicate the standard bivariate normal distribution with correlation coefficients. When  $\rho$  is zero, the model for  $y_1$  reduce to the standard probit model. Consistent and asymptotically efficient parameter estimates are obtained by maximum likelihood estimation of multi-equation, conditional recursive mixed process estimators. "Mixed process" means that different equations can have different kinds of dependent variables. This is based on a likelihood function consisting of a product of individual contributions of the type:

$$\begin{aligned}
L_i(\alpha, \beta_1, \beta_2, \beta_3 \mid y_{1i}, y_{2i}, y_{3i}, x_{1i}, x_{2i}, x_{3i}) &= \\
&= P(y_{1i}, y_{2i}, y_{3i} \mid x_{1i}, x_{2i}, x_{3i})
\end{aligned} \tag{2}$$

The participation equation is estimated with a probit model and can be written as:

$$H^* = \beta W + \beta X_{it} + \epsilon \tag{3}$$

$$H = 1 \quad \text{if} \quad H^* > 0 \tag{4}$$

where  $H$ , is a dummy variable that takes 1 if the woman participates in the labour market (working or seeking work) and 0 if she doesn't. We excluded self-employed married women. The decision to participate depends on a vector of explanatory variables  $X_{it}$  such as age, education level, hourly

wage, household income without wife's earnings, household size, education of husbands, if the husband are unemployed or not, urbanization of area, having or not children with different level of age and type of child care: paid and unpaid. Wages of mothers are observed only if they are in the job market.

The equation of paid child care ( $F$ ) depends on the age of children, utilization of unpaid care, hourly wages, family income, while the equation of unpaid child care ( $I$ ) is estimated on the age of children, wages, family income and utilization of paid care.

Conditional on the mother's employment (working or not), the two equations of child care (paid and unpaid) are estimated as a joint Tobit model. In total, the model contains five states. First we have the state where women decide not to enter in the labour market, and after other four states if they decide to enter. The four combinations are: -1- utilize both paid and unpaid care, -2,3- utilize only one of type of care (paid or unpaid) and -4- utilize no care.

## 4 Time Dedicated to Taking Care of Children and the Type of non Parental Child Care Arrangements Used

First, we estimate the probability for husbands and wives to take care of children with a probit model on the data set from the ECHP in the year 2001. Second using the wave of 2006 of the EU-SILC data we calculate with a multinomial logit the probability of using one type of child care arrangement with respect to the others.

In the probit model we calculate  $P_{it}$ , which denotes the probability that an individual  $i$  takes care of children in the period  $t$ .

$$y_{it}^* = \beta' x_{it} + \varepsilon_i \quad (5)$$

In practice,  $y_{it}^*$  is unobservable if :

$$y_i = 1 \quad \text{if} \quad y_{it}^* > 0 \quad \text{and} \quad y_i = 0 \quad \text{if} \quad y_i^* \leq 0 \quad (6)$$

$$\varepsilon_i(0,1)$$

where  $x_t$  is a vector of individual characteristics at age  $t$ , and  $\beta$  is a row vector of coefficients. For the probit model we assume  $\varepsilon_i$  follows a standard normal distribution. The corresponding density and distribution function of the normal are given by:

$$f(w) = \phi(w) \tag{7}$$

$$P(w < w^*) = F(w^*) = \Phi(w^*) \tag{8}$$

where this last equation is the cumulative value of the normal distribution. We utilize a simple specification of the labour supply function focusing on demographic characteristics. The probit model is estimated for husbands and wives using the ECHP data. The vector of individual characteristics  $x_{ti}$  at time  $t$  contains the following variables: age in three different age cohorts; dummy variables for three different level of education: primary school, secondary school and tertiary school; the status of employment (at work, unemployed and housework or inactive) and variables for the spouse: level of education and employment status. Finally we used variables at the level of the household such as the logarithm of the household income without the partner's earnings and the household size.

In table 6 we report the marginal effects of the probit estimation of positive time dedicated to taking care of children using the ECHP survey in 2001 for the selected countries.

We can note that husbands and wives's decision is influenced by age in all countries. We find that the probability to take care of children decreases with age, although husbands and wives presented an inverted U-shape in France and Spain, the probability first increases with the age then in a middle age decreases. This probability increases also when the education level of women decreases and the education level of men increases except for French wives. If we look at the employment status, the results suggest that the probability of taking care of children increases if the wife or the husband

work at home and decreases when spouses are at home. Of course we find a correlation between taking care of children and employment status, but in this case we only want to describe the pattern and not address causality. Income has a positive effect for husbands in Italy, Portugal and for French and Portuguese wives, while for the rest of countries the effect is negative. The household size has a positive and significant effect on the time spent with children for both partners. So we noted that wives who dedicate a lower number of hours in the labour market are able to dedicate more time to taking care of children. These results are in accordance with other papers dedicated to this topic, for example in Spain with Garcia - Molina (1998) and in Italy with Del Boca (2002).

With the EU-SILC data in the year 2006 we first calculated the probability for children to use a kind of non parental child care arrangement. To calculate this probability we use a multinomial logit model.

The multinomial logit model is a logistic regression where the response variables are more than two categories, it is a multiequation model where the individual  $i$  choose alternative  $j$  to maximize the utility function:

$$U_{ij} = \max(U_{i1}, U_{i2}, \dots, U_{ij})$$

where the utility depends on some individual characteristics  $X_i$ :

$$U_{ij} = \beta_j X_i + \varepsilon_{ij}$$

and the probability is:

$$Pr(\text{alternative } j) = Pr(U_{ij} > U_{ik} \quad \forall j \neq k)$$

The results are showed in table 7, where the dependent variable takes four values corresponding to the types of child care. We have selected unpaid child care as the base category, that is, the comparison group. As explanatory variables we use the characteristics of the father and mother such as: education and age, the income of the family, the age of children and the grade of urbanization.



The age of children decreases the probability to use professional child-minders in all countries except in Italy where the value is not statically significant, and increases the probability to choose centre-based services. The education level of mothers and fathers and household income increases the probability to chose professional child-minders while the probability to choose the center-based services and day-centre care decreases, except in France for the day-centre care. The degree of urbanization allows that parents choose day-centre care and based-service with respect to informal care.

This analysis also reflects the quality of child care that is offered on the market and the level of trust that parents have in these types of child care arrangements. More income and more level of education encourage parents to use professional child care more than informal care.

## 5 Results

In this part of the paper we estimate the effects of non parental child care on the employment status of women (and vice versa) and the opportunity cost of the time dedicated by the household to taking care of children. The participation equation is expressed as a probit while the hours of paid and unpaid care utilization are estimated with a Tobit model. All three equations are estimated simultaneously using a method of maximum likelihood. We present two results of the join of employment status and care utilization. The first model is an estimation of the probit participation of women joint with child care arrangements, paid and unpaid. In the second model results take in consideration also the hourly wage. We report only results for Italy<sup>4</sup>.

Table 8 contains the joint estimation of the three equation models. The first column reports the estimation of the participation of married women in the labour market. Age of women and their education tend to increase the probability to work, as well as the education of the husband. These results also indicate that if wives have children they are not able to work, especially when children are less than 6 years old. Income has a positive effect on this

---

<sup>4</sup>Other countries results are available on request to the author.

probability such as if the husband does not work and the metropolitan area.

The second column in table 8 show the coefficients of hours that children spent in paid child care. The age of mothers and the education of both parents have a positive and significant effect on the utilization of this kind of child care arrangement.

The age of children has a negative effect, especially when children are very young. This could depend on various factors: the scarce presence of child care system in Italy for children with age less than three, children with 0-3 years are more likely to be cared from informal care and another factor may be the high level of tradition in families present in this country. Husbands that stay at home because are unemployed, reduce number of hours of paid care utilization.

The last column is the estimation of the utilization of unpaid care. Age and education of mother and education of fathers increase the number of hours that children spend in child care . Young children are estimated to have a positive and strong effect on unpaid care. The utilization of unpaid care decreases when children are more independent. Numerous family discourage the utilization of unpaid care such as an husband with an unemployment status.

In Table 9 we insert in the simultaneous equations model the prediction of hourly wage. The mother's wage is observed only for those who work, so we need to correct the selection bias, estimating first the participation equation to calculate the inverse Mill's ratio ( $\lambda$ ) and after calculating the prediction of the correct wage equation using the  $\lambda$  (see Heckman 1973). The wage has a positive effect in the use of child care arrangement and in the participation to the job market.

The age is positive and significant in all three equations, while its square is negative. The level of education increases, which makes women more likely to work and to use paid and unpaid child care. The presence of children increases the probability to use unpaid child care with respect to paid child care and at the same time it reduces the probability of working. Also the

house size decreases this probability. The positive sign of no labor income is associated with an increment of the probability to enter in the job market for women, while paid and unpaid child care are considered as normal goods. The hourly wage of husband in one side decreases the probability for women to enter in the job market and in the other side increases hours utilization of child care arrangements.

## 6 Conclusion

In this paper we have studied the relationship between women's employment status and child care arrangements, and the time that parents spend with children in Mediterranean countries. The results show that while Mediterranean countries have advanced in the incorporation of women into the labour market, most of them continue to assume total responsibility for housework and most responsibility for the care of the children.

We observe how the probability to take care of children increases with the age and if one of partner is unemployed, and decreases with the age of children and parents level of education. Normally in the house women are responsible for this task.

To have a child care arrangement and in particular grandparents who help taking care of children is correlated with having more time to participate in the labour market, but in countries such as Italy, Spain and Greece children spent few hours in paid child care. A surprisingly high percentage of women in these countries stay at home and use non-parental child care arrangements. We have two opposite conclusions concerning these countries: on one hand women are discouraged to use child care in these countries maybe due to a strong family tradition where the woman is the milestone in the house and on the other hand women do not want to enter in the labour market not because children are an obstruction but because other reasons prevail.

Women's labour supply and child care arrangements are influenced by a change in the wage rate. The results indicate that hourly wages have

a strong effect on the decision to work and to use paid and unpaid child care. Policies that increase the effective wage rate, such as benefits for poor families or less penalization in terms of taxation for married women are likely to have a significant effect on employment status.

The rate of married women that work at home is very high in Mediterranean countries. New solutions to involve women in the labour market are needed.

## 7 References

Addabbo, T., Olivier, F., 2002, Offerta di Lavoro e Servizi all'Infanzia in Italia - l'effetto dell'introduzione dell'ISE, WP. 381, Modena, Centro di Analisi delle Politiche Pubbliche.

Angrist, J.D. and Evans, W., 1998, Children and their parents labour supply: evidence from exogenous variation in family size, *The American Economic Review* 88(3): 450-477.

Alvarez B., Miles D. Husbands Housework Time: Does Wives Paid Employment Make a Difference? *Investigaciones Economicas*. vol. XXX (1), 2006, 5-31  
Becker, G., 1981, *A Treatise on the Family*, Harvard University Press.

Blau, D. M., 1991, *The Economics of Child Care*, Russel Sage New York.  
[7] Blau, D., P. Robins, 1988, Child Care Costs and Family Labour Supply, *Review of Economics and Statistics*, Vol. 70, n. 3, pp. 374-81.

Blau, D., P. Robins, 1998, A Dynamic Analysis of Turnover in Employment and Child Care, *Demography*, 35(1) 83-96.

Bianchi, S.M., M.A. Milkie, L.C. Sayer and J.P. Robinson (2000): Is anyone doing the housework? Trends in the gender division of household labour, *Social Forces* 79, pp. 191-228.

Bratti M, Del Bono E., and Vuri D., 2003, Work Attachment of New Mothers: the Role of Human Capital, Employment Stability and Job Protection in Italy

Carrasco C, Rodriguez A (2000): Women, Families, and Work in Spain: Structural Changes and New Demands. *Feminist Economics* 6(1):4557

Del Boca, D., (2002), The Effect of Child care and Part Time Opportunities on Participation and Fertility Decisions in Italy, Discussion Paper No. 427, IZA.

Del Boca, D. Viuri D., (2002), The mismatch between employment and childcare in Italy: the impact of rationing, *Journal of Population of Economics* 2007.

Di Tommaso, M.L., (1999), A Trivariate Model of Participation, Fertility and Wages: The Italian Case, *Cambridge Journal of Economics*, 23, 5: 623-40.

Esping-Andersen 1990. *The Three Worlds of Welfare Capitalism*, Princeton, NJ: Princeton University Press.

Eurostat (2002): Women and men reconciling work and family life,, *Statistics in Focus, Population and Social Conditions*, Theme 3-9/2002.

European Commission (1998), Equal opportunities for women and men in Europe? Eurobarometer 44.3-Results of an opinion survey, Luxembourg.

Shelton, B.A. (1990): The distribution of housework tasks: Does wives employment status make a difference?, *Journal of Family Issues* 11, pp. 115-135.

South and Spitze (1994): Housework in marital and nonmarital households, *American Journal of Sociology* 93, pp. 659-687.

Ribar D. (1991): Child Care and the Labor Supply of married Women, *Journal Of Human Resources* XXVII

Van der Lippe, T. and J.J. Siegers (1994): Division of household and paid labour between partners: Effects of relative wage rates and social norms, *Kyklos* 47, pp. 109-136.

Windmeijer, F.A.G. and J.M.C. Santos Silva (1997): Endogeneity in count data models: An application to demand for health care, *Journal of Applied Econometrics* 12, pp. 281-294.

Table 3: Percentage distribution of households by labour market: EU-SILC 2006

		Italy			Spain			France			Portugal							
		Husbands			Husbands			Husbands			Husbands							
		Wives	Inactive	Housework	Unemployed	Total	Wives	Working	Inactive	Housework	Unemployed	Total	Wives	Working	Inactive	Housework	Unemployed	Total
	Working	45.99	3.47	0.24	1.48	51.18	Working	47.02	2.41	0.08	2.27	51.78	Working	63.77	3.28	2.5	69.55	
	Inactive	3.71	0.78	0.06	0.12	4.68	Inactive	5.69	0.65	0	0.24	6.59	Inactive	8.06	1.04	0.49	9.59	
	Housework	32.8	3.67	0.29	1.5	38.26	Housework	28.67	2.76	0	1.77	33.2	Housework	12.03	1.57	1.57	15.17	
	Unemployed	4.77	0.3	0.01	0.8	5.88	Unemployed	6.95	0.64	0	0.84	8.43	Unemployed	4.74	0.35	0.6	5.69	
	Total	87.28	8.22	0.6	3.9	100	Total	88.32	6.48	0.08	5.12	100	Total	88.61	6.24	5.16	100	
		Greece			France			Portugal			Greece							
		Husbands			Husbands			Husbands			Husbands							
	Working	48.69	3.11	0.99	52.79	52.79	Working	63.77	3.28	2.5	69.55		Working	63.77	3.28	2.5	69.55	
	Inactive	2.11	0.51	0.18	2.8	2.8	Inactive	8.06	1.04	0.49	9.59		Inactive	8.06	1.04	0.49	9.59	
	Housework	32.76	3.92	1.15	37.82	37.82	Housework	12.03	1.57	1.57	15.17		Housework	12.03	1.57	1.57	15.17	
	Unemployed	5.75	0.43	0.41	6.59	6.59	Unemployed	4.74	0.35	0.6	5.69		Unemployed	4.74	0.35	0.6	5.69	
	Total	89.31	7.97	2.72	100	100	Total	88.61	6.24	5.16	100		Total	88.61	6.24	5.16	100	
		Portugal			Greece			Portugal			Greece							
		Husbands			Husbands			Husbands			Husbands							
	Working	62.78	2.93	3.82	69.52	69.52	Working	63.77	3.28	2.5	69.55		Working	63.77	3.28	2.5	69.55	
	Inactive	2.82	0.68	0.18	3.68	3.68	Inactive	8.06	1.04	0.49	9.59		Inactive	8.06	1.04	0.49	9.59	
	Housework	17.45	1.64	1.36	20.45	20.45	Housework	12.03	1.57	1.57	15.17		Housework	12.03	1.57	1.57	15.17	
	Unemployed	5.42	0.43	0.5	6.35	6.35	Unemployed	4.74	0.35	0.6	5.69		Unemployed	4.74	0.35	0.6	5.69	
	Total	88.47	5.67	5.85	100	100	Total	88.61	6.24	5.16	100		Total	88.61	6.24	5.16	100	



Table 4: Percentage distribution of households by labour market: ECHP 2001

Italy		Husbands		Spain		Husbands			
	Working	Inactive	Unemployed	Total	Wives	Working	Inactive	Unemployed	Total
Working	38.55	4.27	1.17	43.99	Working	41.34	2.11	1.8	45.25
Inactive	2.08	1.55	0.11	3.74	Inactive	0.81	0.37	0.12	1.3
Housework	36.63	7.21	2.19	46.02	Housework	39.35	3.66	2.55	45.56
Unemployed	4.43	0.27	1.55	6.25	Unemployed	5.65	0.62	1.61	7.88
Total	81.69	13.29	5.02	100	Total	87.15	6.77	6.08	100

Greece		Husbands		Portugal		Husbands			
	Working	Inactive	Unemployed	Total	Wives	Working	Inactive	Unemployed	Total
Working	37.53	2.77	0.69	40.99	Working	63.73	3.02	2.09	68.83
Inactive	1.96	0.92	0	2.89	Inactive	2.86	0.93	0.08	3.87
Housework	40.18	10.39	1.15	51.73	Housework	17.25	3.09	0.46	20.8
Unemployed	3.46	0.58	0.35	4.39	Unemployed	6.03	0.31	0.15	6.5
Total	83.14	14.67	2.19	100	Total	89.87	7.35	2.78	100

France		Husbands		Husbands				
	Working	Inactive	Unemployed	Total	Wives	Housework	Unemployed	Total
Working	61.87	2.37	0.92	67.78	Working	2.62	0	0.97
Inactive	0.68	0.24	0.05	0.97	Inactive	1.07	1.41	21.37
Housework	17.73	1.89	0.68	21.37	Housework	1.41	9.88	9.88
Unemployed	7.85	0.44	0.19	8.48	Unemployed	5.09	100	100
Total	88.13	4.94	1.84	100	Total	5.09	100	100

Table 5: Distribution between couple of the numbers of hours and is they take care of the children: ECHP 2001

Greece					Husbands				Wives			
Wives	< 14	14-28	> 28	Total	Husbands	Yes	No	Total				
< 14	2.02	0.51	0	2.53	Yes	41.11	0.58	41.7				
14-28	11.62	6.57	0	18.18	No	35.89	22.42	58.3				
> 28	17.68	45.96	15.66	79.29	Total	77	23	100				
Total	31.31	53.03	15.66	100								

Spain					Husbands				Wives			
Wives	< 14	14-28	> 28	Total	Husbands	Yes	No	Total				
< 14	2.71	1.08	0.27	4.07	Yes	50.34	0.75	51.09				
14-28	2.98	2.98	1.36	7.32	No	25.7	23.21	48.91				
> 28	11.65	33.88	43.09	88.62	Total	76.04	23.96	100				
Total	17.34	37.94	44.72	100								

Italy					Husbands				Wives			
Wives	< 14	14-28	> 28	Total	Husbands	Yes	No	Total				
< 14	3.75	0.34	0.17	4.26	Yes	37.16	1.98	39.14				
14-28	12.1	7.67	0.51	20.27	No	32.3	28.56	60.86				
> 28	19.25	35.95	20.27	75.47	Total	69.46	30.54	100				
Total	35.09	43.95	20.95	100								

France					Husbands				Wives			
Wives	< 14	14-28	> 28	Total	Husbands	Yes	No	Total				
< 14	6.59	0.6	0.6	7.78	Yes	63.96	1.16	65.12				
14-28	13.77	11.98	0	25.75	No	14.4	20.48	34.88				
> 28	16.17	26.95	23.35	66.47	Total	78.36	21.64	100				
Total	36.53	39.52	23.95	100								

Portugal					Husbands				Wives			
Wives	< 14	14-28	> 28	Total	Husbands	Yes	No	Total				
< 14	6.59	0.6	0.6	7.78	Yes	59.15	0.54	59.69				
14-28	13.77	11.98	0	25.75	No	27.1	13.2	40.31				
> 28	16.17	26.95	23.35	66.47	Total	86.25	13.75	100				
Total	36.53	39.52	23.95	100								

Table 6: Probit of positive time dedicated to taking care of the children: ECHP 2001

	Italy		France		Portugal		Greece		Spain	
	Husband	Wife	Husband	Wife	Husband	Wife	Husband	Wife	Husband	Wife
<b>Age &lt; 30</b>	0.210	-0.30*	0.30**	0.110**	0.030	0.28*	0.220***	0.330	0.050***	0.30**
	-0.150	-0.120	-0.110	-0.100	-0.140	-0.120	-0.240	-0.180	-0.130	-0.110
<b>Age 30-35</b>	0.34*	0.260	0.120	-0.29**	-0.170**	-0.46***	-0.020	-0.110	0.110***	0.020
	-0.160	-0.130	-0.120	-0.110	-0.160	-0.130	-0.250	-0.180	-0.140	-0.130
<b>Age 35-45</b>	0.130	-0.31*	-0.46***	-0.89***	-0.55**	-1.18***	-0.090**	-0.76***	-0.34*	-0.71***
	-0.160	-0.130	-0.130	-0.120	-0.170	-0.140	-0.250	-0.180	-0.150	-0.140
<b>Age &gt; 45</b>	-0.55***	-0.67***	-0.86***	-1.28***	-1.56***	-1.87***	-0.81***	-1.07***	-1.53***	-1.84***
	-0.160	-0.120	-0.120	-0.110	-0.220	-0.150	-0.240	-0.170	-0.170	-0.140
<b>Secondary School</b>	0.110	0.130*	-0.020***	-0.010*	0.140***	0.230	0.120***	0.240	0.29**	0.170
	-0.080	-0.080	-0.120	-0.100	-0.150	-0.120	-0.140	-0.130	-0.100	-0.100
<b>Tertiary School</b>	0.230	0.270***	0.030*	0.050***	0.250***	0.150	0.220*	0.49*	0.31**	0.130
	-0.120	-0.140	-0.090	-0.080	-0.200	-0.150	-0.180	-0.190	-0.110	-0.110
<b>Active</b>	0.190	-0.060**	-0.250***	-0.050***	0.93*	-0.260	-0.410***	-0.080	-0.160***	-0.28*
	-0.190	-0.150	-0.150	-0.110	-0.470	-0.160	-0.360	-0.250	-0.170	-0.140
<b>House work</b>	0.360	0.05***	-0.170***	0.43***	1.18*	0.070	-0.400***	-0.020	-0.210	0.050
	-0.210	-0.150	-0.230	-0.120	-0.560	-0.180	-0.400	-0.250	-0.260	-0.140
<b>Household size</b>	0.30***	0.61***	0.35***	0.41***	0.31***	0.54***	0.36***	0.60***	0.46***	0.71***
	-0.040	-0.040	-0.040	-0.030	-0.050	-0.050	-0.060	-0.060	-0.050	-0.050
<b>Logincome</b>	0.002	-0.020	-0.060	0.140	0.020	0.050	-0.010	-0.050	-0.040	-0.090
	-0.040	-0.040	-0.070	-0.070	-0.090	-0.060	-0.040	-0.040	-0.050	-0.050
<i>Spouse variables</i>										
<b>Secondary School</b>	0.24**	0.050	0.200	0.100	0.270***	-0.100	0.260	-0.090	0.150***	0.140
	-0.080	-0.080	-0.110	-0.110	-0.140	-0.130	-0.140	-0.130	-0.100	-0.100
<b>Tertiary School</b>	0.180	0.220***	0.20*	0.050***	0.35*	-0.130	0.52**	0.020	0.26*	0.090
	-0.130	-0.130	-0.090	-0.090	-0.17	-0.180	-0.190	-0.170	-0.11	-0.100
<b>Active</b>	0.46**	0.54**	0.19	0.07	0.04	0.62*	-	0.680	0.21	0.230
	-0.150	-0.17	-0.12	-0.15	-0.19	-0.270	-	-0.350	-0.15	-0.170
<b>House work</b>	0.150	0.39*	-0.09	0.13	-0.80**	0.180	-0.27	0.650	0.08	0.020
	-0.150	-0.19	-0.14	-0.21	-0.25	-0.350	-0.24	-0.370	-0.15	-0.220
<b>Constant</b>	-2.08***	-1.95***	-1.11	-3.16***	-3.06*	-2.61**	-1.32	-1.33*	-1.53*	-0.890
	-0.400	-0.38	-0.8	-0.79	-1.28	-0.870	-0.7	-0.670	-0.76	-0.710

Note: p .01 - \*\*\*; .05 - \*\*; .1 - \*;

Table 7: Multinomial Logit estimation by type of child care: EU-SILC 2006

France	Centre-based services			Day-Centre care			Profess. child-minder		
	Centre-based services	Day-Centre care	Profess. child-minder	Spain	Centre-based services	Day-Centre care	Profess. child-minder		
Children Age	0.187***	-0.414***	-0.272***	Children Age	0.308***	0.061	-0.054		
Logincome	0.332	0.860***	0.980***	Logincome	0.089	-0.155	0.715***		
Moth.Second School	0.050	0.565	-0.097	Moth.Second School	0.080	-0.390	0.794*		
Moth. Tert. School	-0.235	0.627	0.162	Moth. Tert. School	-0.151	-0.444	1.246***		
Fath. Second. School	0.047	0.243	0.403	Fath. Second. School	0.301	-0.107	0.300		
Fath Tert. School	0.023	0.492	0.984	Fath Tert. School	0.117	0.065	1.105***		
Mother's Age	0.029	0.045	0.068*	Mother's Age	0.065*	-0.015	0.127***		
Father's Age	0.008	-0.055	-0.002	Father's Age	-0.001	-0.008	-0.009		
Urbanization	-0.240	-0.249	0.195	Urbanization	0.120	0.303*	-0.090		
Portugal	Centre-based services			Day-Centre care			Profess. child-minder		
Portugal	Centre-based services	Day-Centre care	Profess. child-minder	Italy	Centre-based services	Day-Centre care	Profess. child-minder		
Children Age	0.235***	-0.577***	-0.146**	Children Age	0.271***	0.280***	0.012		
Logincome	0.011	0.412	-0.086	Logincome	0.037	0.071	0.613***		
Moth.Second School	-0.001	0.270	-2.089**	Moth.Second School	-0.211	-0.301**	0.365		
Moth. Tert. School	0.195	-0.996*	-0.549	Moth. Tert. School	-0.324**	-0.437**	0.928***		
Fath. Second. School	0.015	0.807	1.158**	Fath. Second. School	-0.121	0.155	0.603**		
Fath Tert. School	-0.668	0.259	0.979	Fath Tert. School	-0.149	0.055	0.796***		
Mother's Age	0.062*	0.073	0.049	Mother's Age	0.017	0.054***	0.036		
Father's Age	0.000	0.042	-0.002	Father's Age	-0.001	-0.028*	0.038*		
Urbanization	-0.226	0.233	-0.078	Urbanization	0.152**	0.028	-0.242**		

Note: p .01 - \*\*\*; .05 - \*\*; .1 - \*; Unpaid child care as take as reference. Greece has excluded, results could send by author on request

Table 8: **Joint Estimation of Child Care and Participation of Women: Italy, EU-SILC 2006**

	Mother's Employment Status	Hours of Paid Child care	Hours of Unpaid Child care
Age	0.10***	4.37***	6.65***
	-0.02	-0.45	-0.67
Age squared	-0.01***	-0.63***	-1.07***
	0	-0.06	-0.09
Second. Edu.	0.07*	1.97***	1.96*
	-0.03	-0.56	-0.91
Tertiary Edu.	0.12**	3.49***	4.18***
	-0.04	-0.7	-1.13
Second Edu. Husban.	0.45***	1.51**	5.67***
	-0.03	-0.57	-0.94
Tertiary Edu. Husban.	1.01***	4.92***	10.60***
	-0.04	-0.68	-1.13
Income	0.05**	0.6	1.07
	-0.02	-0.37	-0.6
Child. Age 0-3	0.03	-7.86***	9.05***
	-0.05	-0.97	-1.2
Child. Age 4-6	0.06	-0.36	8.93***
	-0.04	-0.67	-1.04
Unemp of Husband	0.30***	-0.2	-4.68*
	-0.07	-1.35	-2.38
House Size	-0.15***	-0.49	-1.51***
	-0.01	-0.26	-0.43
Metropolitan Area	0.12***	0.25	0.62
	-0.02	-0.3	-0.5
$\sigma$	2.66***		
	-0.02		
$\rho_{12}$	0.13***		
	-0.02		
$\rho_{13}$	0.40***		
	-0.02		
$\rho_{23}$	0.30***		
	-0.02		

Note: p .01 - \*\*\*; .05 - \*\*; .1 - \*;

Table 9: **Joint Estimation of Child Care and Participation of Women: Italy, EU-SILC 2006**

	Mother's Employ. Status	Hours of Paid Child care	Hours of Unpaid Child care
Age	0.55*	3.71***	5.79***
	0.24	-0.52	-0.73
Age squared	-0.06*	-0.57***	-1.02***
	-0.03	-0.07	-0.1
Hourly wage	0.14***	0.14***	0.46***
	-0.02	-0.03	-0.05
Second. Edu.	-0.6	2.38***	0.85
	-0.33	-0.63	-0.91
Tertiary Edu.	-0.16**	3.65***	3.15**
	-0.41	-0.78	-1.12
Second Edu. Husban.	-0.53***	-2.84**	-6.80***
	-0.59	-1.05	-1.58
Tertiary Edu. Husban.	-0.13***	-3	-15.52***
	-0.97	-1.73	-2.65
Income	1.39***	0.02	0.66
	-0.26	-0.5	-0.75
Child. Age 0-3	-0.1	-7.69***	7.90***
	-0.54	-1.04	-1.18
Child. Age 4-6	-0.53	-0.18	7.29***
	-0.45	-0.74	-1.03
Hourly wage Husban.	-0.01***	0.01	0.02
	0	0	-0.01
House Size	-0.86***	0.08	-0.64
	-0.17	-0.3	-0.44
Metropolitan Area	0.16	-0.52	-0.97
	-0.18	-0.35	-0.51
$\sigma$	2.70***		
	-0.03		
$\rho_{12}$	0.12		
	-0.09		
$\rho_{13}$	0.28***		
	-0.08		
$\rho_{23}$	0.22***		
	-0.03		

Note: p .01 - \*\*\*; .05 - \*\*; .1 - \*;