

Martins, Pedro Silva; Walker, Ian

Working Paper

Student achievement and university classes: effects of attendance, size, peers, and teachers

IZA Discussion Papers, No. 2490

Provided in Cooperation with:

IZA – Institute of Labor Economics

Suggested Citation: Martins, Pedro Silva; Walker, Ian (2006) : Student achievement and university classes: effects of attendance, size, peers, and teachers, IZA Discussion Papers, No. 2490, Institute for the Study of Labor (IZA), Bonn, <https://nbn-resolving.de/urn:nbn:de:101:1-20080509243>

This Version is available at:

<https://hdl.handle.net/10419/33972>

Standard-Nutzungsbedingungen:

Die Dokumente auf EconStor dürfen zu eigenen wissenschaftlichen Zwecken und zum Privatgebrauch gespeichert und kopiert werden.

Sie dürfen die Dokumente nicht für öffentliche oder kommerzielle Zwecke vervielfältigen, öffentlich ausstellen, öffentlich zugänglich machen, vertreiben oder anderweitig nutzen.

Sofern die Verfasser die Dokumente unter Open-Content-Lizenzen (insbesondere CC-Lizenzen) zur Verfügung gestellt haben sollten, gelten abweichend von diesen Nutzungsbedingungen die in der dort genannten Lizenz gewährten Nutzungsrechte.

Terms of use:

Documents in EconStor may be saved and copied for your personal and scholarly purposes.

You are not to copy documents for public or commercial purposes, to exhibit the documents publicly, to make them publicly available on the internet, or to distribute or otherwise use the documents in public.

If the documents have been made available under an Open Content Licence (especially Creative Commons Licences), you may exercise further usage rights as specified in the indicated licence.

IZA DP No. 2490

**Student Achievement and University Classes:
Effects of Attendance, Size, Peers, and Teachers**

Pedro Martins
Ian Walker

December 2006

Student Achievement and University Classes: Effects of Attendance, Size, Peers, and Teachers

Pedro Martins

*Queen Mary, University of London,
CEG-IST Lisbon and IZA Bonn*

Ian Walker

*University of Warwick, Princeton University
and IZA Bonn*

Discussion Paper No. 2490
December 2006

IZA

P.O. Box 7240
53072 Bonn
Germany

Phone: +49-228-3894-0
Fax: +49-228-3894-180
E-mail: iza@iza.org

Any opinions expressed here are those of the author(s) and not those of the institute. Research disseminated by IZA may include views on policy, but the institute itself takes no institutional policy positions.

The Institute for the Study of Labor (IZA) in Bonn is a local and virtual international research center and a place of communication between science, politics and business. IZA is an independent nonprofit company supported by Deutsche Post World Net. The center is associated with the University of Bonn and offers a stimulating research environment through its research networks, research support, and visitors and doctoral programs. IZA engages in (i) original and internationally competitive research in all fields of labor economics, (ii) development of policy concepts, and (iii) dissemination of research results and concepts to the interested public.

IZA Discussion Papers often represent preliminary work and are circulated to encourage discussion. Citation of such a paper should account for its provisional character. A revised version may be available directly from the author.

ABSTRACT

Student Achievement and University Classes: Effects of Attendance, Size, Peers, and Teachers^{*}

We examine the empirical determinants of student achievement in higher education, focusing our attention on its small-group teaching component (classes or seminars) and on the role of attendance, number of students per class, peers, and tutors. The empirical analysis is based on longitudinal administrative data from a major undergraduate program where students are allocated to class groups in a systematic way, but one which is plausibly uncorrelated with ability. Although, in simple specifications, we find positive returns to attendance and sizeable differences in the effectiveness of teaching assistants, most effects are not significant in specifications that include student fixed effects. We conclude that unobserved heterogeneity amongst students, even in an institution that imposes rigorous admission criteria and so has little observable heterogeneity, is apparently much more important than observable variation in inputs in explaining student outcomes.

JEL Classification: I2, J2

Keywords: education production functions, attendance, class size, peer effects

Corresponding author:

Pedro S. Martins
School of Business and Management
Queen Mary, University of London
Mile End Road
London E1 4NS
United Kingdom
E-mail: p.martins@qmul.ac.uk

^{*} Financial support from the University of Warwick Teaching Development Fund is gratefully acknowledged. Ian Walker is indebted to the Education Research Section at Princeton University for providing a Visiting Fellowship that facilitated the completion of this paper. We also grateful for the feedback from colleagues at the University of Warwick for their comments and Eric Hanushek, Steve Machin, Steve Pischke, Vincent Vanderberghe and conference participants at Universidade Nova de Lisboa, ZEW in Mannheim, the American Economic Association Annual Meetings (Boston), and the University of Lund for their feedback. All the remaining errors are ours.

1. Introduction

Teaching in small groups of students is widely regarded as an important contribution to an undergraduate university education, at least in US and UK institutions. While in lectures students are traditionally passive absorbers of the course material, in classes, by solving exercises or discussing topics, students may not only test their understanding of the topic but may also acquire a deeper knowledge of the material.

However, as far as we know, there is no empirical evidence to support this view. In fact, our ignorance of the nature of the higher education (HE) production function, particularly compared to that at lower educational levels, is quite remarkable¹. Important references in the case of primary or secondary schooling, each one examining separately the role of class size, peers, teachers or attendance, include Evans *et al* (1992), Burke and Sass (2004), Romer (1993), Hanushek *et al* (2003), Bingley *et al* (2006), Hoxby (2001), and Vigdor and Nechyba (2004a and 2004b). Notable contributions in the context of HE are Arcidiacono *et al* (2005), and Arcidiacono and Nicholson (2005) that build on the earlier important contribution by Sacerdote (2001). The relative paucity of empirical evidence about the higher education production function is a serious deficiency in the literature. Indeed, as higher education is becoming an increasingly competitive and global industry, we would have expected that universities would find it more important to understand the determinants of the quality of their teaching. The need for research regarding the determinants of learning is particularly pressing since large increases in tuition fees have occurred in many countries in recent years which has put the spotlight on the efficiency of the HE sector.

This paper seeks to contribute to the empirical study of teaching and learning quality by assessing the impact of different aspects of undergraduate classes on students' performance. The dimensions of university classes considered here are: attendance, size, peer effects, and the role of teaching assistants. As far as we are aware, this paper is the first that considers simultaneously these four components of the education production function. Moreover, at least some of our findings can be interpreted as causal effects and not merely statistical associations. These interpretations are driven by our use of longitudinal

¹ See Todd and Wolpin (2003) and Krueger (1999) for research on education production in the context of schools.

administrative data, allowing one to control for different types of heterogeneity through fixed effects, including student fixed effects, and the fact that our students are allocated to classes in a manner which is plausibly uncorrelated with ability – and it is this that allows us to investigate the causal impacts of peers and other variables.

It should also be mentioned that the standard identification issues that arise in the firm/worker fixed effects literature (see Abowd *et al* (1999)) do not arise in terms of the separate identification of tutor and student (and module) fixed effects. While in the former literature, the simultaneous estimation of both types of fixed effects relies on the strong assumption of random mobility (conditional on workers and firms observable characteristics), in the case of the present paper the mechanics of university education are such that students have necessarily to be taught by different tutors, so no assumptions about mobility are required in order to disentangle student and tutor effects. .

We start, in Section 2, by describing the data used in the paper, while Section 3 presents the main results, and the final section concludes with recommendations for further research. Regarding our results, we find strong evidence of the relevance of student heterogeneity. Students' observable and unobservable characteristics seem to play a more important role in explaining student outcomes than our alternative explanatory variables based on university inputs. In other words, we find that most effects (class attendance, size, peers and teaching assistants) generally lose their significance (and become smaller) in the specifications that include student fixed effects.

2. Data

Our data are derived from records of student attendance in class meetings of all 1st and 2nd year undergraduate modules² offered in Economics at a major UK university over the academic years of 2001/02, 2002/03 and 2003/04³. Admission to UK universities is

² By *module* we mean a specific individual component of study in a degree *course*. Introductory Microeconomics or Econometric Theory are examples of modules. A *class* is a meeting of a relatively small number of students (typically ranging between 5 and 15 students per class) with a class tutor, lasting usually 50 minutes. Finally, a *degree* is made of different modules, typically taken over a period of three years, after which the student is awarded the corresponding diploma.

³ We do not use data from final year of undergraduate studies, as there are no compulsory 3rd year modules and classes are given by academic staff and not graduate students.

competitive, based largely on school performance, and the institution that has provided the data is extremely popular and can impose very high admission standards. Consequently their UK-based undergraduates are extremely homogeneous in terms of their observable characteristics. All will have the highest scores from their secondary schooling and all will have studied Mathematics at an advanced level; many will have also studied Economics⁴. Students take modules in five subjects each year. First year performance has to be at a minimum level to progress to second year. Results at second year and in the final year contribute to a final degree classification. These modules are the main components of the three-year economics degrees offered by the Economics Department and are attended by all Economics students, plus some students enrolled in related degrees (e.g. Mathematics or Business)⁵. The purpose of class meetings is to discuss the lecture material, to solve exercises and/or to have students deliver short presentations.

An important source of information is the class attendance records that are kept by each class tutor. These tutors are, in most classes, teaching assistants, who are usually also PhD students. In some rare cases some classes for some modules are led by the lecturer in charge of the module. Class attendance is regarded as compulsory and poor attendance can give rise to reprimands. As the department emphasizes the importance of class attendance, class tutors are required to make sure all absences are recorded. Any student that misses more than two classes is contacted by his or her tutor to ask for an explanation for his or her absence. These requirements lead us to believe that our data is significantly more reliable than information based on surveys of attendance, which may be affected by recall bias⁶. We then merged the individual attendance records with additional information obtained from administrative records, namely students' backgrounds – in particular, their home or overseas

⁴ Foreign-based students are also admitted and here there is inevitably more heterogeneity here. Many non-EU foreign students will have “English” school qualifications because they have been to schools that focus on sending children to UK universities. UK universities have an incentive to discriminate in favor of non-EU-based students because they are charged much higher tuition fees. Most EU students will have an “international Baccalaureate” qualification from their school. Although this offers a broader curriculum than that of UK schools, there is considerable familiarity with this qualification and it seems likely that, on average, the marginal EU student is equivalent quality to the marginal UK student.

⁵ We do not include non-economics students in our analysis of attendance and peer effects but we consider them when examining class size effects, i.e. our measures of class size consider the presence of these students although we do not study the role of class attendance or peer effects for these non-economics students.

⁶ Tutor fixed effects are in many of our specifications which ought to sweep out differential reporting errors.

status. For each (student-year-module) observation we also have available the student's final results, as a percentage mark, which we take as our measure of achievement or performance. At present, we have been able to merge data concerning about 1,700 complete student-module observations.

Although the data are for a single subject in just one institution, the homogeneity of our data allows us to focus on quite specific issues than has been typical in other studies that have focused on larger populations. In particular, we are able to follow students over a period of up to two years, as they choose different modules and attend different class groups. In these classes, students are likely to exhibit different attendance rates, to be allocated to classes of different sizes, and/or to interact with different peers. This within-student variability in inputs across their classes is an important component of the identification strategy we pursue. Another important aspect in our identification strategy is that the allocation of students to classes is conducted alphabetically. This means that students enrolled in each module are first ordered alphabetically, by their surname, and only then sequentially distributed to different class groups⁷. To this extent, and assuming no ethnic effects related to surnames, one's class time and tutor are exogenous, and one's peers are a random sample of the entire student population. It is this randomness that we seek to exploit in order to avoid serious endogeneity issues that trouble most research about peer effects⁸.

Figure 1 presents a summary description of the data, in terms of the students' entry year cohort and their academic year of study when their observations were collected. It can be seen in the Figure that most observations correspond to 1st year students starting their degree at the 2003/04 academic year (this group of students corresponds to 832 student-module observations). The second most important entry-year/academic-year cell is the second year students that entered in 2002/03 (270 observations).

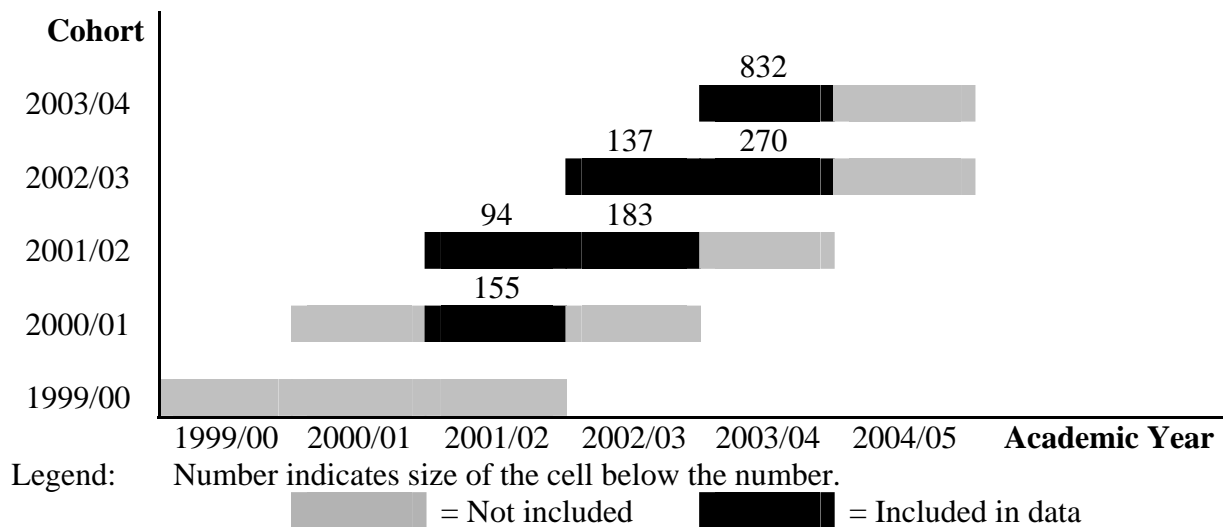
Table 1 presents some descriptive statistics, including the students grades (a mean grade of 63%), their academic year (the most frequent being 2003/04), their year of study

⁷ Students can move to different groups only when they can prove they have a timetable clash.

⁸ There is limited support in the literature for there being an alphabetic correlation with academic performance. In any case, we find that our results are robust to the exclusion of the most obvious surname initial letters for Asians, the largest ethnic group in our data.

(63% being first year students) and the modules for which their class attendance and related variables have been recorded (the most frequent being Microeconomics 2, covering 13.6% of student-observations). There is also information about attendance levels (an average of 7.4 classes attended per student observation), corresponding to 80% of the maximum number of class meeting per class group. Moreover, class size, when averaged by student-observation, exhibits a mean of 12.9. This also implies that, when we take into account attendance, the effective class size is lower, at 8.3. Finally, we also present information about the student characteristic for which we have information: the home (i.e. UK) or overseas status of the student. We find that, in our sample, about 29% of student observations correspond to students who lived outside the UK⁹.

Figure 1 – Cohorts/Academic Years Included in Sample Used



Finally, Figures 2 to 5 display the data in terms of the combinations of variables that we study in the paper: attendance and grades (Figure 2), class size and grades (Figures 3 and 4), and current grade and colleagues lagged grade (Figure 5). Figure 2, for instance, underlines the large amount of heterogeneity present in the data: not only do attendance levels vary considerably (although large number of students have a 100% attendance record), but also there is a large amount of variability in grades for each level of attendance. Figures 3 and 4 also suggest large amounts of dispersion in the data, as class sizes vary considerably. It should

⁹ About one quarter of these 29% of observations are from the (pre-enlargement definition) EU (slightly more if we include members of the European Economic Area – Norway and Switzerland). The average scores in the raw data by origin are: UK 63.0%, EU 64.4% and overseas non-EU 64.7%.

also be pointed out that the degree of effective dispersion in class sizes, after taking into account attendance rates, is much smaller. This result is consistent with the administrative procedures followed when deciding on class size (e.g. bigger groups when attendance is expected to be lower). Figure 5 again presents evidence of some heterogeneity but in this case there seems to be evidence of positive correlation between students' current grades and lagged grades of their peers. Our analysis will examine the statistical significance of this.

Table 1 Descriptive Statistics, Student-Level Data

Variable	Obs	Mean	St. Dev.	Min	Max
Grade	1,694	63.45	13.11	0	97
Academic Year 2001/02	1,694	0.147	0.354	0	1
Academic Year 2002/03	1,694	0.203	0.402	0	1
Academic Year 2003/04	1,694	0.650	0.477	0	1
1st year	1,694	0.628	0.484	0	1
2nd year	1,694	0.358	0.480	0	1
3rd year	1,694	0.014	0.118	0	1
World Economy (code=104)	1,694	0.057	0.232	0	1
Economics 1	1,694	0.038	0.191	0	1
Macroeconomics 1	1,694	0.057	0.231	0	1
Microeconomics 1	1,694	0.123	0.328	0	1
Industrial Economy	1,694	0.021	0.144	0	1
Mathematics	1,694	0.017	0.130	0	1
Mathematical Techniques A	1,694	0.016	0.125	0	1
Statistical Techniques A	1,694	0.011	0.103	0	1
Mathematical Techniques B	1,694	0.088	0.283	0	1
Statistical Techniques B	1,694	0.090	0.286	0	1
Computing and Data Analysis	1,694	0.110	0.313	0	1
Macroeconomics 2	1,694	0.084	0.278	0	1
Microeconomics 2	1,694	0.136	0.343	0	1
Statistics and Econometrics	1,694	0.038	0.192	0	1
Economics 2	1,694	0.004	0.064	0	1
Mathematical Economics	1,694	0.035	0.183	0	1
Econometrics	1,694	0.075	0.263	0	1
Attendance	1,694	7.361	3.833	0	20
Absence	1,694	1.939	2.292	0	18
Attendance (% of total classes)	1,694	0.795	0.220	0	1
Overseas (non UK) Student	1,694	0.285	0.451	0	1
Class Size	1,507	12.891	4.648	2	38
Effective Class Size	1,498	8.306	2.885	1.33	16.42

Notes: *Grade* is our dependent variable, measuring the final result of each student in each module. The following variables are dummy variables for academic years, years of study, and modules. *Attendance* (*Absence*) indicates the number of classes attended (not attended) by each student-module-year observation. *Overseas* is a dummy variable taking value one for students that did not live in the UK before starting their degree. *Class Size* is the number of students per class and *Effective Class Size* is the same number but corrected for non-attendance.

Figure 2 Attendance and Grades

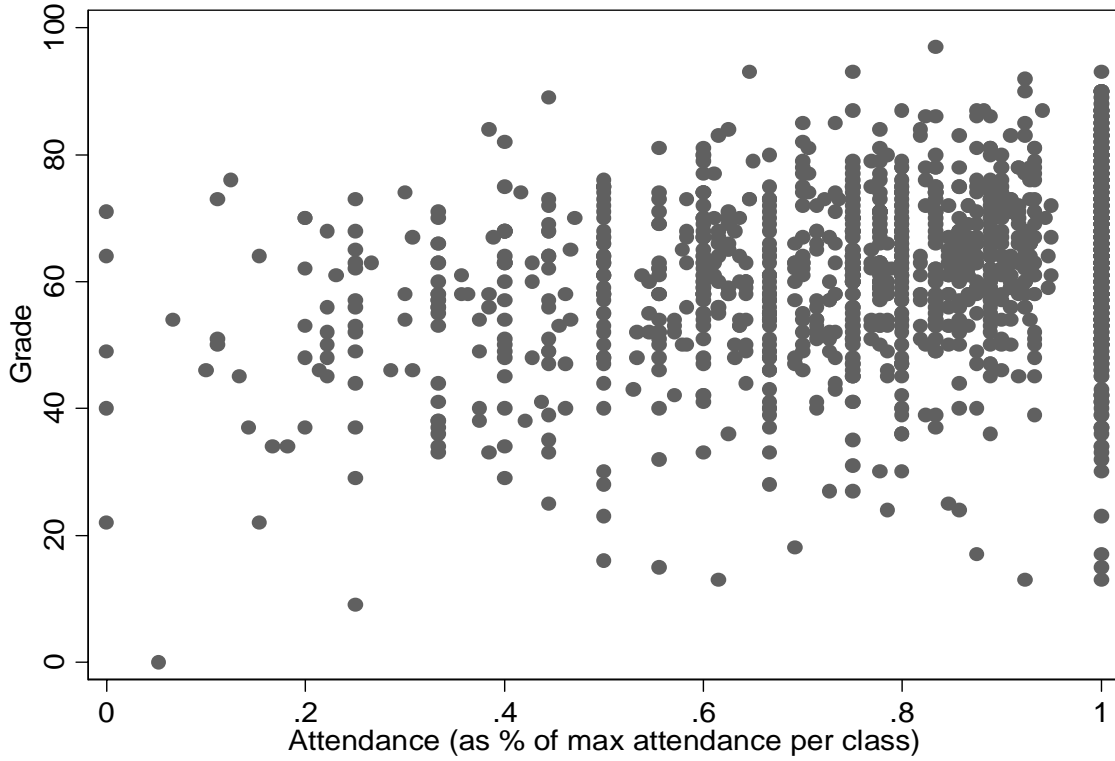


Figure 3 Class Size and Median Grades

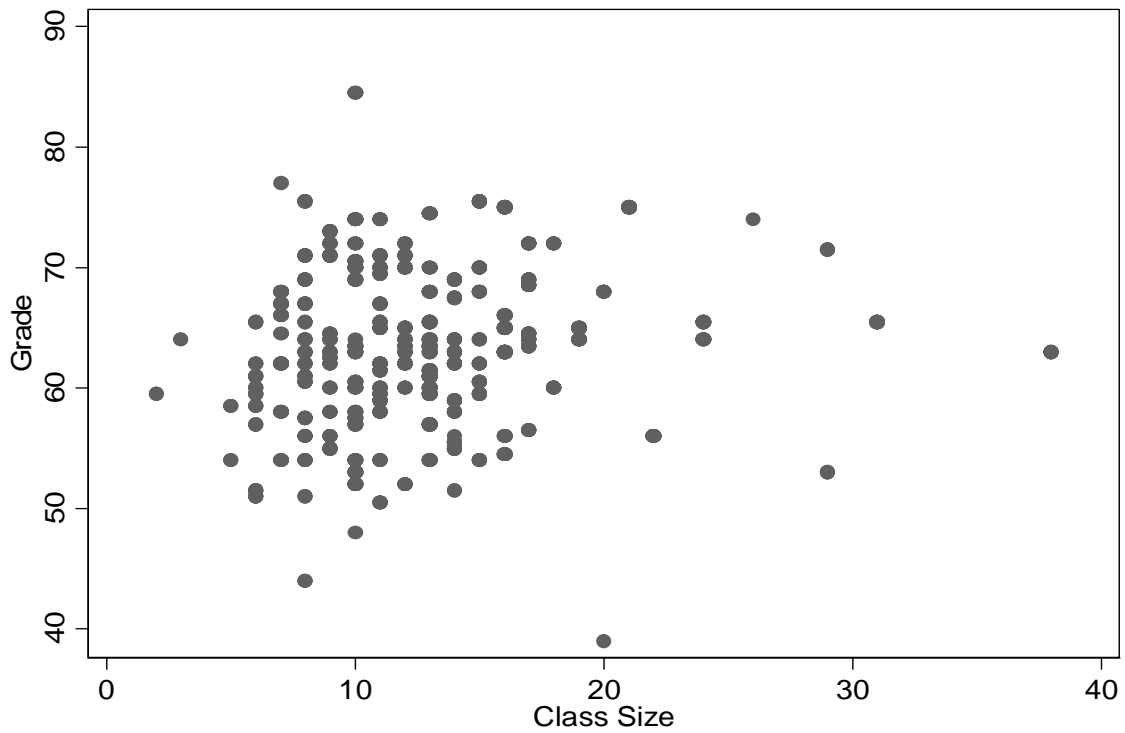


Figure 4 *Effective Class Size and Median Grades*

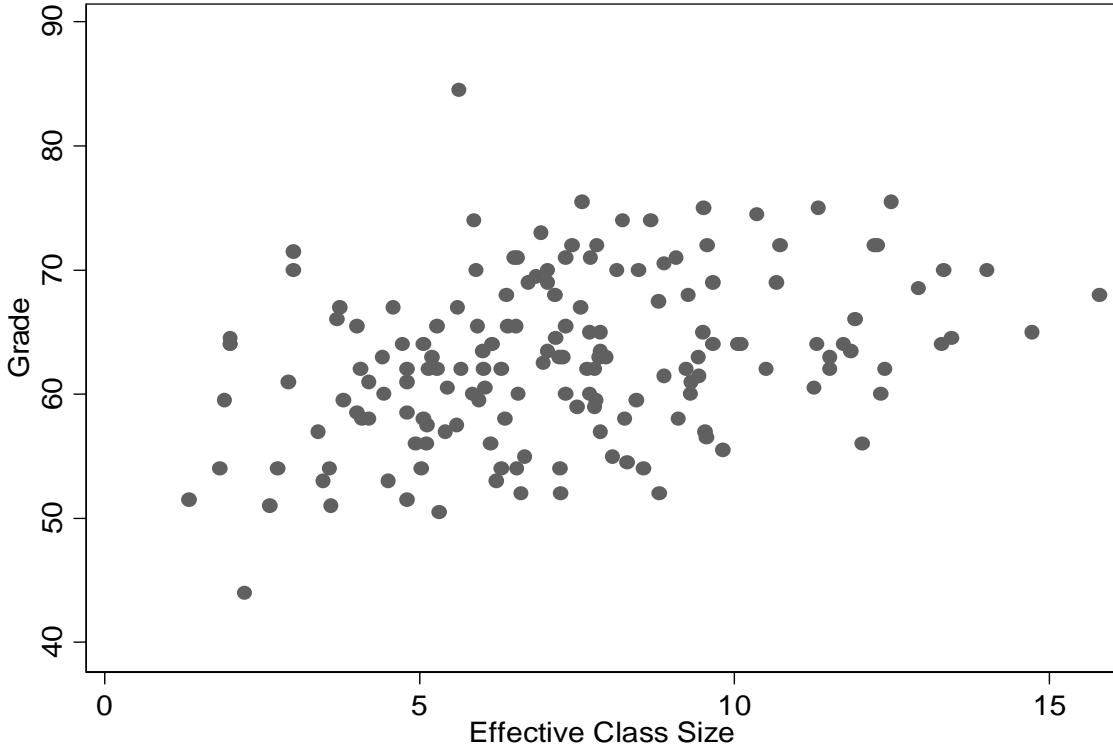
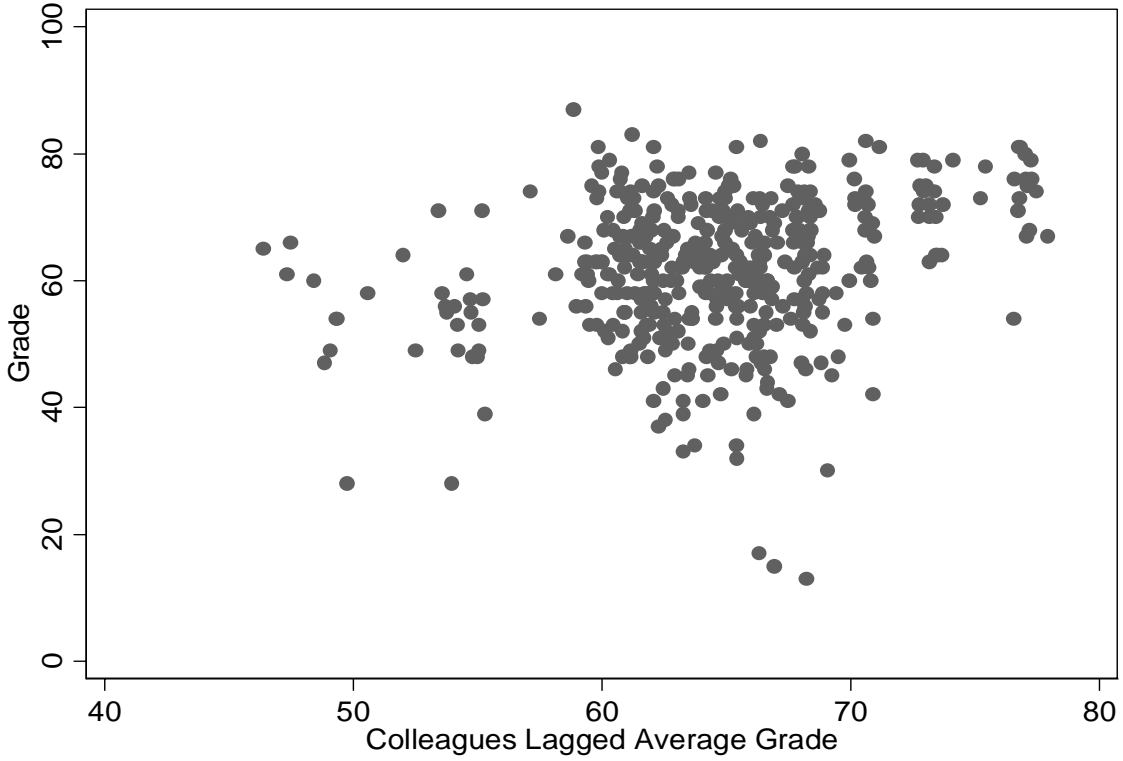


Figure 5 *Own Grade and Colleagues Lagged Average Grades*



3. Results

Most of the empirical results in this paper are based on different versions of the following specification of a grade equation:

$$(1) \quad y_{itma} = \beta_1 att_{itm} + \beta_2 size_{itm} + \beta_3 peers_{itm} + \alpha_t + \alpha_a + \alpha_m + \alpha_i + \varepsilon_{itma}$$

The α 's are fixed effects for academic year (α_t) – to allow for grade inflation/deflation; for modules (α_m) – to allow for different levels of difficulty across different subjects; for class tutors/teaching assistants (α_a) – to allow for the possibly different contributions of each tutor; and for students (α_i) – to allow for the possible correlation between some explanatory variables and the students characteristics that we have not been able to control for.

Partialling out the effects of these variables (students, modules, academic years and teaching assistants) is likely to be important for the identification of the impacts of attendance, size and peers, as these latter variables are likely to be endogenous. For instance, students who are more motivated or more dedicated may simultaneously attend more classes and also do better in examinations, regardless of their attendance levels. In this case, specifications without fixed effects would generate upward biased estimates of the impact of attendance. Class size may also vary endogenously: as mentioned before, smaller classes may be designed for more challenging modules, in which students may benefit more from class discussions.

In the most thorough specifications, we deal with these and other possible sources of bias by imposing student fixed effects. This implies that our estimates in the student fixed effect specifications are based on a comparison of module grade results (our measure of achievement or performance) for each student across different modules. To the extent that other determinants of student performance besides the one being considered (e.g. attendance) are student-invariant (i.e. each student puts roughly the same commitment or dedication into each module), then these other performance determinants will be implicitly controlled for in these specifications.

In some specifications, we also use fixed effects for each specific class group (i.e. the combination of academic year, module and teaching assistant):

$$(2) \quad y_{itma} = \beta_1 att_{itm} + \beta_2 size_{itm} + \beta_3 peers_{itm} + \alpha_{itma} + \alpha_i + \varepsilon_{itma}$$

The results from this specification are derived from differences within specific classes. For instance, in the case without the student fixed effect ($\alpha_i=0$), the question addressed is: do students that attend a given class group more often do better in that module than students who attend fewer meetings of that same class group? If an individual fixed effect is also included, then the analysis would address the question: do students do better in classes that they attend relatively more frequently than their colleagues when compared to classes that they attend relatively less frequently?

Although models such as that of specification (2) are very general, they have the drawback that they do not allow for the identification of class group invariant variables, such as size. In our analysis, for the benefit of robustness, we will present results based on different specifications.

3.1 Class Attendance

The first topic we address concerns the relevance of class attendance for students' learning. The motivation underpinning this specific analysis is, in part, due to the question of whether or not class attendance should be made compulsory. More fundamentally, our study is concerned with the contribution of small group teaching to students learning, with a view to the informing the optimal allocation of scarce teaching funds across different alternatives.

As mentioned before, an important issue to acknowledge here is that attendance may pick up the effect of other variables not controlled for (e.g. motivation), which would lead to the overestimation of the role of attendance. In an earlier study, Romer (1993), using about 200 observations from a single module, deals with the endogeneity of class attendance by controlling for students' grades in earlier modules or by focusing on the "more motivated" students that submit all the required assessments¹⁰. As indicated before, our approach is primarily based on conducting within-student estimations (see Stanca, 2006, for a recent contribution using a similar methodology).

Our evidence in Tables 2a and 2b indicates, at first, that the returns to class attendance are significant and of a relatively important magnitude. Each additional class attended is related to an increase of between 0.6 and 1.8 percentage points in a student final grade

¹⁰ Durden and Ellis (1995) is another early contribution to the HE literature.

(specifications A to E, Table 2a – and similar results for Table 2b, based on attendance as a percentage of maximum attendance in the class group). However, these effects appear to be smaller in size, unstable with respect to sign, and less well determined when we allow student unobserved heterogeneity to be correlated with attendance levels. In other words, while there are significant returns in all specifications that do not include student fixed effects, all specifications including student fixed effects result in insignificant impacts. This pattern generally also holds when one allows for decreasing returns to class attendance by including a squared term in the specification (results not presented but available upon request).

It should also be mentioned that the return to attendance remains significant when controlling for class effects (column E) – this is when the return is derived from variation within class (i.e. whether students that attend more frequently a given class also do better in the module). This specification is important also because it allows us to control for measurement error problems across class groups (e.g. for some groups there is data only for one term, even if the module runs for two terms)¹¹. The most important result is probably that the attendance coefficient remains insignificant when one controls simultaneously for student and class effects. In this case, estimation is driven by grade and attendance variation relative to the student's and her class group's means (i.e. if the student does better in a module whose classes she attends relatively more often than her colleagues that attend the same class, with respect to other modules). This therefore controls for differences across groups in terms of how many classes students are supposed to attend and also for unobserved individual factors that simultaneously influence attendance and results and that are invariant across modules. Taken at face value, the results of specification H (an insignificant coefficient of -0.12) suggest that class attendance has no causal impact upon students' results.

One word of caution is that the attendance coefficient of specification H becomes positive and bigger (although still insignificant, but less so) when the sample is restricted to students that are present in the data more often (i.e. in more groups). The attendance point

¹¹ This data issue can also explain why the specification with student fixed effects (column F) produces insignificant results: this specification compares attendance and marks across modules for each student but, while marks are comparable, attendance levels are not necessarily so (not only because of measurement error but also because some modules have different total numbers of classes over the module, ranging from 4 to 20). In specification G, differences in module structure are controlled for but not, for instance, the specific type of measurement error related to attendance sheets being available only for one term.

estimate also increases (although the coefficient again remains insignificant) when the sample is restricted to students who have higher mean absence rates or higher standard deviations of absence rates.

These two results may suggest that the insignificant results for the entire sample are at least partially driven by the little variability left in the data when one controls for group and student effects. In any case, it must also be acknowledged that the within-student variation across groups may not be random: maybe students devote relatively more time (including by attending more classes) to those modules which they find more challenging or in which they predict they will do worse. Alternatively, students may do the opposite because, for instance, they derive more enjoyment from the modules in which they do better. In the first case, the attendance coefficient would be biased downward, as may be the case in our results, while in the second case it would be biased upwards. Other possible biases should also be acknowledged: for instance, class attendance may be correlated with lecture attendance and the latter may vary by student and by module.

We have attempted to deal with some of the biases that may remain, even after adopting an individual fixed effects specification. In this extension, our approach was based on the fact that attendance changes markedly at different days and at different times of the day (see Figures 7a and 7b). In particular, Mondays and Fridays and early mornings (up to 10.00) and late afternoons (from 16.00) typically display poorer attendance levels. Assuming, possibly too strongly, that day of the week / time of the day interactions do not have a direct impact upon student performance, we used the day and time interactions of the class meeting as an instrument for attendance rates. Although we found the expected signs in the first stage, the results regarding the impact of attendance were still insignificant (results are available upon request).

Table 2a - Returns to Attendance, Different Specifications

	(A)	(B)	(C)	(D)	(E)	(F)	(G)	(H)
Attendance	0.57	1.252	0.961	1.509	1.801	-0.066	0.059	-0.119
	[0.092]**	[0.108]**	[0.099]**	[0.126]**	[0.146]**	[0.089]	[0.156]	[0.193]
Observations	1694	1694	1694	1694	1694	1694	1694	1694
R-squared	0.02	0.21	0.2	0.24	0.32	0.57	0.71	0.74
Fixed effects:								
Academic year	x			x			x	
Tutor		x		x			x	
Module			x	x			x	
Class					x			x
Student						x	x	x

Notes: Robust standard errors in brackets. * significant at 5%; ** significant at 1%

Table 2b - Returns to Attendance (%), Different Specifications

	(A)	(B)	(C)	(D)	(E)	(F)	(G)	(H)
Attendance (%)	16.078	16.875	16.203	16.525	16.778	0.696	-0.229	-0.805
	[1.393]**	[1.317]**	[1.294]**	[1.307]**	[1.390]**	[1.773]	[1.570]	[1.732]
Observations	1694	1694	1694	1694	1694	1694	1694	1694
R-squared	0.08	0.22	0.23	0.25	0.32	0.57	0.71	0.74
Fixed effects:								
Academic year	x			x			x	
Tutor		x		x			x	
Module			x	x			x	
Class					x			x
Student						x	x	x

Notes: Robust standard errors in brackets. * significant at 5%; ** significant at 1%

Figure 7a Mean Grades and Class Times

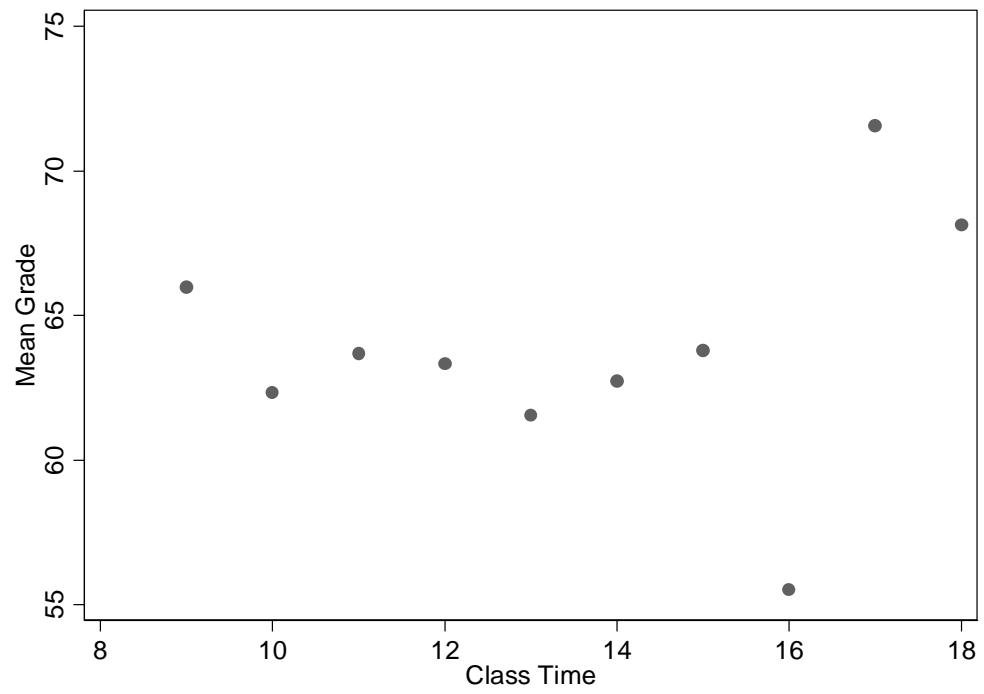
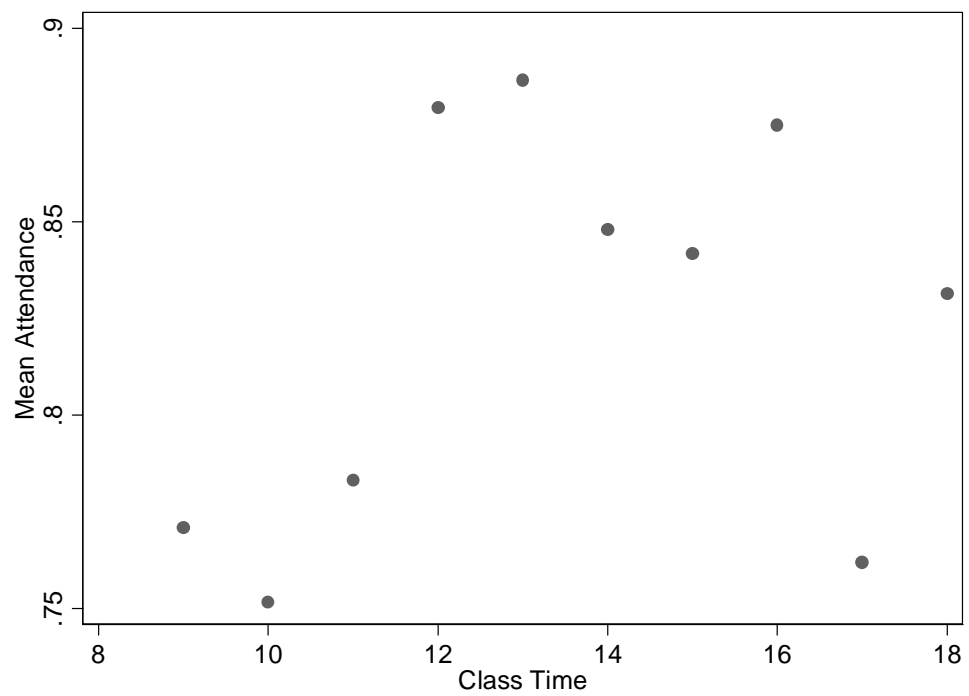


Figure 7b Mean Attendance and Class Times



3.2 Class Size

The second topic we address concerns the impact of class size on students' learning – again an issue of great policy relevance but which has received little attention in the context of higher education, unlike in primary or secondary education. In this subsection we set out to assess whether students results improve with smaller class sizes. Our results for the first two specifications (Tables 3a and 3b), including only academic year or tutor fixed effects, indicate significantly positive class size coefficients (i.e. bigger classes are correlated with better grades). This apparently puzzling result is consistent with Lazear (2001), in the sense that “easier” modules can accommodate larger class groups, as students will not need the same amount of attention as in more difficult modules.¹²

In any case, in the specifications that control for student fixed effects the point estimates become negative, although insignificant. Similarly insignificant results are derived when we use a measure of class size that takes into account the attendance rates of students (Table 3b): for instance, when attendance is poor, a measure of class size that does not consider that low attendance may mismeasure its true impact. Moreover, this variable has the additional advantage of generating greater within-module class size variation, helping the identification of the effect.

It may not be very surprising to find that size is insignificant since attendance also does not seem to have a significant impact upon performance. On the other hand, given the bias that arises due to the deliberate assignment of bigger classes to easier modules, even an insignificant but negative estimate may suggest, although only tentatively, that class size does have the expected negative impact upon student performance.

¹² Indeed, this Lazear framework is consistent with local practices, as indicated from our discussions with the persons responsible for administering class teaching. Another possibility is that bigger classes may make it more likely that there will be at least one bright student whose comments would generate positive spillovers to his or her colleagues.

Table 3a - Returns to Class Size, Different Specifications

	(A)	(B)	(C)	(D)	(E)	(F)	(G)	(H)
Class Size	0.272	0.285	0.14	0.16		-0.048	-0.056	
	[0.073]**	[0.092]**	[0.091]	[0.097]		[0.071]	[0.091]	
Observations	1507	1507	1507	1507		1507	1507	
R-squared	0.01	0.1	0.12	0.14		0.62	0.72	
Fixed effects:								
Academic year	x			x			x	
Tutor		x		x			x	
Module			x	x			x	
Class					x			x
Student						x	x	x

Notes: Standard errors in brackets. * significant at 5%; ** significant at 1%

Table 3b - Returns to Effective Class Size, Different Specifications

	(A)	(B)	(C)	(D)	(E)	(F)	(G)	(H)
Eff. Class Size	0.698	0.359	0.306	0.27	-15.992	0.24	-0.139	0.12
	[0.118]**	[0.140]*	[0.131]*	[0.143]	[1.386]**	[0.112]*	[0.128]	[1.765]
Observations	1498	1498	1498	1498	1498	1498	1498	1498
R-squared	0.03	0.1	0.12	0.14	0.29	0.62	0.72	0.76
Fixed effects:								
Academic year	x			x			x	
Tutor		x		x			x	
Module			x	x			x	
Class					x			x
Student						x	x	x

Notes: Robust standard errors in brackets. * significant at 5%; ** significant at 1%

3.3 Joint Analysis and Tutor Effects

Table 4 presents estimates from specifications that simultaneously consider the role of attendance and class size. We find results similar to those described before, when analyzing each variable in separate equations. Namely, those specifications without student fixed effects tend to present significantly positive coefficients, both for attendance and for class size. When controlling for student effects, both coefficients become insignificant, although the point estimate of class size is negative (as before) while the point estimate of attendance is positive (unlike before). Similarly insignificant results are found in Table 5b, where we have added peer effects to the analysis of attendance and class size. No coefficient in the most detailed equation (column G) is significant.

From the specifications in Table 4, we conduct the third component of our analysis - that of the role of teachers. Again, this is an aspect that has received considerable attention in the literature but, as far as we know, never in the context of HE. Here we consider the class tutor point estimates obtained in specifications that consider simultaneously size and attendance effects and study their dispersion. Figure 6 displays these results. We find evidence of considerable levels of dispersion in the marginal effects that can be attributed to class tutors, even if we have already partialled out for a number of additional variables. Our estimates of these marginal effects range from almost 15% to almost -10%. However, once again, most estimates happen to be statistically insignificant. Moreover, the F test that all coefficients are equal to zero cannot be rejected at standard significance levels.

Figure 6 Teaching Assistant Fixed Effects (Point Estimates)

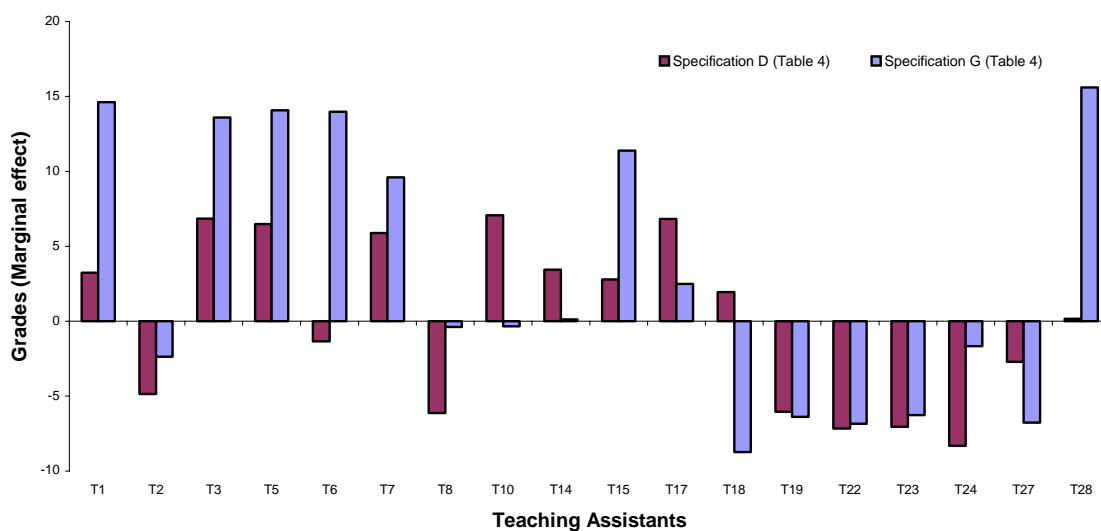


Table 4 - Returns to Attendance and Class Size, Different Specifications

	(A)	(B)	(C)	(D)	(E)	(F)	(G)	(H)
Attendance	0.935 [0.094]**	1.238 [0.110]**	0.951 [0.102]**	1.486 [0.130]**		0.308 [0.096]**	0.099 [0.161]	
Class Size	0.404 [0.072]**	0.32 [0.088]**	0.214 [0.089]*	0.194 [0.094]*		0.027 [0.075]	-0.054 [0.091]	
Observations	1507	1507	1507	1507		1507	1507	
R-squared	0.07	0.17	0.17	0.21		0.62	0.72	
Fixed effects:								
Academic year	x			x			x	
Tutor		x		x			x	
Module			x	x			x	
Class					x			x
Student						x	x	x

Notes: Robust standard errors in brackets. * significant at 5%; ** significant at 1%

3.4 Class Peer-Effects

The last aspect addressed in the paper concerns class peer-group effects. This is a topic which has received a considerable amount of interest recently, in particular in the context of the economics of education literature. Some recent evidence by Zimmerman (2003) and Zimmerman and Whinston (2003), for US institutions, suggests that good students are not negatively affected from interacting with students that do poorly, while the latter benefit from interacting with the former. In other words, the peer effects are nonlinear, so that the mix of students is important to the average outcome. These results indicate that heterogeneous groups (based on students of different abilities) would lead to overall better outcomes.

Our approach involved first computing an average of student grades in the first year and taking that as a proxy of student ability. We then calculated, for each student in each second year class, the mean of their colleagues' first year grades and their standard deviation. We finally considered equations in which we control for the same combinations of fixed effects used before, plus the students own first year grade, the mean first year grades of his or her colleagues, and the standard deviation of those grades.

These results are presented in Table 5a. The first specifications without student fixed effects indicate a very strong degree of autocorrelation of grades, in the sense that current second-year grades are very significantly predicted by own first-year grades. However, all variables capturing peer effects fail to come out significant. The coefficients for the two first moments of the colleagues grades are generally positive which suggests, leaving aside issues of statistical significance, that students, on average, do better when mixed with better students and/or when assigned to less uniform groups (in terms of their ability).

Table 6 presents some supplementary evidence about peer effects - in this case based on *endogenous* peer effects. Here we examine the relationship between current grades and the current grades of each student's peer. Although these results need to be interpreted with care (see Manski (1993) and Moffitt (2001)) it is interesting to notice that, when considering student effects, there is evidence of a statistically significant relationship between own and peer grades (i.e. students do relatively better when paired with colleagues that also do relatively better), which is consistent with the presence of a Manski *reflection* effect. On the other hand, when we add controls for the class characteristics, the relationship between own and peer grades becomes significantly negative.

Table 5a - Exogenous Peer Effects, Different Specifications (2nd year students only)

	(A)	(B)	(C)	(D)	(E)	(F)	(G)	(H)
Own grade (1st year)	0.705 [0.046]**	0.709 [0.044]**	0.709 [0.044]**	0.703 [0.045]**	0.604 [0.085]**			
Mean 1st-year classmates' grade	0.033 [0.092]	0.06 [0.097]	0.059 [0.090]	0.013 [0.107]	-0.7 [0.531]	0.092 [0.111]	0.007 [0.149]	0.577 [1.540]
Std Dev 1st-year classmates' grade	-0.145 [0.133]	-0.076 [0.145]	-0.031 [0.138]	-0.065 [0.146]	-1.156 [0.719]	-0.113 [0.166]	0.019 [0.190]	0.853 [0.570]
Observations	441	441	441	441	441	441	441	441
R-squared	0.4	0.47	0.46	0.47	0.51	0.79	0.81	0.85
Fixed effects:								
Academic year	x			x			x	
Tutor		x		x			x	
Module			x	x			x	
Class					x			x
Student						x	x	x

Notes: Robust standard errors in brackets. * significant at 5%; ** significant at 1%

Table 5b – Attendance, Size and Peer Effects, Different Specifications (2nd year students only)

	(A)	(B)	(C)	(D)	(E)	(F)	(G)	(H)
Attendance	0.36 [0.169]*	0.441 [0.214]*	0.486 [0.151]**	0.413 [0.223]		-0.165 [0.216]	-0.507 [0.326]	
Class Size	0.305 [0.081]**	-0.029 [0.117]	-0.052 [0.114]	-0.026 [0.117]		0.071 [0.106]	-0.049 [0.135]	
Own grade (1st year)	0.672 [0.047]**	0.67 [0.048]**	0.67 [0.045]**	0.67 [0.048]**				
Mean 1st-year classmates' grade	0.028 [0.094]	0.063 [0.098]	0.092 [0.090]	0.04 [0.109]		0.04 [0.117]	-0.02 [0.157]	
Std Dev 1st-year classmates' grade	-0.191 [0.132]	-0.037 [0.146]	-0.045 [0.137]	-0.035 [0.146]		-0.133 [0.167]	-0.022 [0.196]	
Observations	441	441	441	441		441	441	
R-squared	0.42	0.48	0.47	0.48		0.79	0.81	
Fixed effects:								
Academic year	x			x			x	
Tutor		x		x			x	
Module			x	x			x	
Class					x			x
Student						x	x	x

Notes: Robust standard errors in brackets; * significant at 5%; ** significant at 1%

Table 6 - Endogenous Peer Effects, Different Specifications

	(A)	(B)	(C)	(D)	(E)	(F)	(G)	(H)
Mean grade	0.487	0.093	-0.154	-0.335	-5.781	0.489	-0.424	-5.439
(classmates)	[0.053]**	[0.069]	[0.076]*	[0.082]**	[0.097]**	[0.047]**	[0.083]**	[0.141]**
Std Dev grade	-0.118	-0.381	-0.606	-0.683	-3.947	0.233	-0.474	-16.898
(classmates)	[0.072]	[0.100]**	[0.102]**	[0.111]**	[0.234]**	[0.068]**	[0.106]**	[0.483]**
Observations	1498	1498	1498	1498	1498	1498	1498	1498
R-squared	0.07	0.11	0.14	0.16	0.79	0.66	0.73	0.92
Fixed effects:								
Academic year	x			x			x	
Tutor		x		x			x	
Module			x	x			x	
Class					x			x
Student						x	x	x

Notes: Robust standard errors in brackets. * significant at 5%; ** significant at 1%

4. Conclusions

Our paper contributes to the understanding of the higher education production function. This is a topic that we feel has received less attention than it should. One reason why HE is expensive is because of its lower class sizes, leading many institutions to make extensive use of PhD students as teaching assistants to reduce the cost. Thus, in practice the marginal costs of classes can be quite low and the question we ask here is - what is their marginal benefit? We therefore focus on the role of several dimensions of small group teaching (class size, attendance, peers and tutors) in terms of students' performance, as measured by their examinations.

We exploited rich data from a large department of a leading UK university - namely the availability of multiple observations for each student and the plausibly random allocation of students to classes. The research framework that we use here can, and should, be easily exported to other universities and departments, where our study can be replicated and extended.

Two main results emerge from the present analysis. The first suggests that there are no significant effects from class attendance. The second indicates that smaller classes do not translate into gains in achievement. Other results include the lack of significant peer effects and evidence of variability in teaching effects, which is, however, also not significant.

These findings need to be interpreted carefully. For instance, the result of no attendance effects may not necessarily indicate that attendance does not matter *per se*: on the contrary, it can instead be the case that attendance does matter but that the students in our data choose optimally how many classes to attend, so that marginal variation around that attendance level does not translate into any gains in terms of achievement.

The result about class size also does not necessarily allow one to extrapolate to other universities where class size may be larger. However, these results do seem to suggest that class sizes at present are too small as students would not have their learning negatively affected by marginally bigger classes – while those saved resources could be employed in other teaching dimensions which would hopefully have significant effects.

Finally, we should point out that an important shortcoming of our analysis is that we cannot address the way in which students respond to the shocks that occur to their classes in terms of peer mix, class size and inability to attend for exogenous reasons. For example, if we found that students who missed class compensated by working harder themselves then we

could argue that students do as well as they want and institutions can pass on, at the margin at least, some of the burden of achieving this target. On the other hand, if students do not compensate, then one might conclude that students do as badly as institutions allow them to. This issue is left for further work.

References

- Abowd, J., F. Kramarz and D. Margolis (1999), "High Wage Workers and High Wage Firms", Econometrica, 67, 251-334.
- Arcidiacono, P., G. Foster, N. Goodpaster and J. Kinsler (2005), "Estimating Spillovers in the Classroom with Panel Data", Duke University, mimeo.
- Arcidiacono, P. and S. Nicholson (2005), "Peer Effects in Medical School", Journal of Public Economics, 89, 327-350.
- Bingley, P., Myrup Jensen, V., and I. Walker (2005), "The Effects of School Resources on Participation in Post-Compulsory Education in Denmark", Aarhus University, mimeo.
- Burke, M. and T. Sass (2004), "Classroom Peer Effects and Student Achievement", Florida State University, mimeo.
- Durden, G., and L. Ellis (1995), "The Effects of Attendance on Student Learning in Principles of Economics", American Economic Review (Papers and Proceedings), 85, 343-346.
- Evans, W., W. Oates, and R. Schwab (1992), "Measuring Peer Group Effects: A Study of Teenage Behaviour", Journal of Political Economy, 100, 966-991.
- Hanushek, E., J. Kain, J. Markman and S. Rivkin (2003), "Does Peer Ability Affect Student Achievement?", Journal of Applied Econometrics, 18, 527-544.
- Hoxby, C. (2001), "Peer Effects in the Classroom: Learning from Gender and Race Variation," NBER Working Paper No. 7867.
- Krueger, A. (1999), "Experimental Estimates of Education Production Functions", Quarterly Journal of Economics, 114, 497-532.
- Lazear, E. (2001), "Educational Production", Quarterly Journal of Economics, 116, 777-803.
- Manski, C. (1993), "Identification of Endogenous Social Effects: The Reflection Problem", Review of Economic Studies, 60, 531-542.
- Moffitt, R. (2001), "Policy Interventions, Low-Level Equilibria, and Social Interactions", in S. Durlauf and H.P. Young (eds.), Social Dynamics, Cambridge: MIT
- Romer, D. (1993), "Do Students Go To Classes? Should They?" Journal of Economic Perspectives, 7, 167-174.
- Sacerdote, B. (2001), "Peer Effects with Random Assignment: Results for Dartmouth Roommates", Quarterly Journal of Economics, 116, 681-704.
- Stanca, L. (2006), "The Effects of Attendance on Academic Performance: Panel Data Evidence for Introductory Microeconomics", Journal of Economic Education, 37, 251-266.
- Todd, P. and K. Wolpin (2003), "On the Specification and Estimation of the Production Function for Cognitive Achievement", Economic Journal, 113, 3-33.
- Vigdor, J. and T. Nechyba (2004a), "Peer Effects in North Carolina Public Schools", Duke University, mimeo.
- Vigdor, J. and T. Nechyba (2004b), "Peer Effects in Elementary School: Learning from 'Apparent' Random Assignment", Duke University, mimeo.

Zimmerman, D. and G. Winston (2003), “Peer Effects in Higher Education”, in C. Hoxby, (ed.), College Decisions: How Students Actually Make Them and How they Could, University of Chicago Press.

Zimmerman, D. (2003,) “Peer Effects in Higher Education: Evidence from a Natural Experiment”, Review of Economics and Statistics, 85, 9-23.