

The SOEP Team

**Article**

## SOEP Annual Report 2024

**Provided in Cooperation with:**

German Institute for Economic Research (DIW Berlin)

*Suggested Citation:* The SOEP Team (2025) : SOEP Annual Report 2024, SOEP – The Socio-Economic Panel at DIW Berlin, Berlin

This Version is available at:

<https://hdl.handle.net/10419/331797>

**Standard-Nutzungsbedingungen:**

Die Dokumente auf EconStor dürfen zu eigenen wissenschaftlichen Zwecken und zum Privatgebrauch gespeichert und kopiert werden.

Sie dürfen die Dokumente nicht für öffentliche oder kommerzielle Zwecke vervielfältigen, öffentlich ausstellen, öffentlich zugänglich machen, vertreiben oder anderweitig nutzen.

Sofern die Verfasser die Dokumente unter Open-Content-Lizenzen (insbesondere CC-Lizenzen) zur Verfügung gestellt haben sollten, gelten abweichend von diesen Nutzungsbedingungen die in der dort genannten Lizenz gewährten Nutzungsrechte.

**Terms of use:**

*Documents in EconStor may be saved and copied for your personal and scholarly purposes.*

*You are not to copy documents for public or commercial purposes, to exhibit the documents publicly, to make them publicly available on the internet, or to distribute or otherwise use the documents in public.*

*If the documents have been made available under an Open Content Licence (especially Creative Commons Licences), you may exercise further usage rights as specified in the indicated licence.*

# 2024

**SOEP  
Annual  
Report**



2024

SOEP  
Annual  
Report

The SOEP Team

The graphic features a background of several overlapping triangles in various shades of red and one bright yellow triangle. The text '40 Years!' is prominently displayed in the center, with the '40' in a large, bold, white sans-serif font and 'Years!' in a smaller, white serif font. Below this, the years '1984-2024' are written in a white serif font.

40 Years!

1984-2024

# CONTENTS

## Letter from the Executive Board of DIW Berlin

## Editorial

In Memory of Hans-Jürgen Krupp	8
In Memory of Gert G. Wagner	9

## PART 1 The Year in Review

Celebrating 40 Years of SOEP!	12
15 <sup>th</sup> International SOEP User Conference	13
Highlights 2024	14
New Research Grants   Prizes & Awards	
Staff News   Data News   Knowledge Transfer	
The Year in Numbers	22
Top Publications 2024	24
SOEP in the Media	26

## PART 2 SOEP Structure

SOEP Mission	30
SOEP Structure and Governance	31
SOEP Organizational Chart	32
SOEP Survey Committee	33
SOEP Directorate	34
Survey Methodology and Management	35
Data Operation and Research Data Center	35
Applied Panel Analysis	35
Knowledge Transfer	36
Research Group “Life Course and Inequality”	36

## PART 3 Research by SOEP Staff

Key Research Areas	38
Spotlight on IAB-SOEP and IAB-BAMF-SOEP-Based	
Research on Migration	39
Selected SOEP Third-Party Funded Projects	41
Worldwide Research Collaborations	46
Completed Dissertations	48

## PART 4 SOEP Data and Services

The Portfolio of SOEP Studies	50
Survey Modes	52
SOEP-Core Samples (A–S)	53
The IAB-SOEP Migration and	
IAB-BAMF-SOEP Refugee Samples	55
The SOEP Innovation Sample (SOEP-IS)	56
New Data Users 2024	57
SOEP Users Around the World in 2024	58
The SOEP Service Portfolio	60
Results of the 2024 SOEP User Survey	62

## Appendix

### SOEP Staff at DIW Berlin

SOEP Directorate	64
Survey Methodology and Management	65
Data Operation and Research Data Center	67
Applied Panel Analysis	69
Knowledge Transfer	71
Research Group “Life Course and Inequality”	72
DIW Research Fellows at SOEP	73

### Scientific Output

SOEP-Based Web of Science™ Publications:	
SOEP Staff and User Community	74
SOEP Staff	75
SOEP User Community	81
Other Publications	
SOEP-Based Articles in DIW Weekly Reports	90
DIW Aktuell	91
SOEPpapers	92
SOEP Survey Papers	93

Expert Reports and Appointments	98
List of Abbreviations and Acronyms	99

Imprint	102
---------	-----



From left to right: Alexander S. Kritikos, Marcel Fratzscher, and Denise Rüttiger

# LETTER FROM THE EXECUTIVE BOARD OF DIW BERLIN

The Editorial of the SOEP Annual Report is a welcome opportunity to reflect on recent achievements and developments of the Socio-Economic Panel (SOEP) at DIW Berlin. In 2024, SOEP celebrated its 40<sup>th</sup> anniversary with a festive event that illustrated the importance of the panel itself alongside its related multi- and interdisciplinary research and knowledge transfer activities. Although it is impossible to detail each individual achievement of 2024, we would like to highlight some of the most important ones – and thank the members of the SOEP for their enthusiasm and work for the panel.

In 2024, during times of transformation, SOEP data continued to allow scholars from different disciplinary backgrounds to analyze developments and rapid changes in our society. Our panel data allows them to investigate a variety of research questions, such as individual household CO<sub>2</sub> emissions, remittances, and work-from-home options after the COVID pandemic. The new research group on “Life Course and Inequality,” headed by Philipp Lersch, will analyze those factors impacting the distribution of wealth over an individual’s lifetime. We are proud that Philipp Lersch’s research is funded by a European Research Council (ERC) Consolidator Grant.

2024 was overshadowed by the death of two former presidents and heads of the SOEP, Gert Wagner and Hans-Jürgen Krupp. It was their work, their ideas, and their dedication that brought the panel forward as a whole, making it the success story that it is today.

As we look to the future, 2025 will be of particular importance for both SOEP and DIW Berlin. This is due to the evaluation of an application for additional special funding for the SOEP through the *großer Sondertatbestand* (gSTB) grant. Additionally, we are already preparing for our regular Leibniz evaluation in 2026. We are looking forward to these two events, as these not only offer us the opportunity to present our achievements but also provide us with valuable input on our future plans.

We hope that you enjoy reading this year’s SOEP annual report, which gives excellent and detailed insights into the panel data as well as the projects of this division at DIW Berlin.



Marcel Fratzscher



Alexander S. Kritikos



Denise Rüttinger





From left to right: Carsten Schröder, Sabine Zinn, and Jan Goebel

# EDITORIAL

2024 marked an important milestone for the SOEP: 40 years ago, in 1984, the survey started with 6,000 West German households. Today, more than 20,000 households participate. Over the course of the past decades, the study has developed into Germany's largest and longest running study on social change.

On July 3, 2024, to celebrate the anniversary, we invited 120 colleagues, alumni, partners, and friends to join us at the Berlin-Brandenburg Academy of Sciences and Humanities in Berlin. Keynote speakers included Martina Brockmeier, President of the Leibniz Association, and Jutta Mata, Chair of the SOEP Survey Committee. Both emphasized the SOEP's successes, its relevance and impact on society, politics, and the media. In the light of growing anti-science sentiments and current political crises, they see a growing importance of SOEP's unique panel study for both the present and the future (see page 12).

The anniversary week continued with the biennial SOEP User Conference, which, significantly, focused on "Individual and collective responses to a changing world." Around 100 researchers presented their SOEP-based findings and exchanged ideas (see page 13).

In 2024, the SOEP not only stabilized but expanded its sample size. Two new subsamples were added: A random sample of private households with an intended number of 5,000 households and a random sample of adult EU citizens living in Germany with a target size of 2,000 households. In addition, an experiment was conducted across all participating households, focusing on carbon footprints and responses to various information treatments.

The year also saw some organizational changes. The establishment of the Acting Director position ensured continued stability of our processes during the ongoing vacancy of the Director position. In addition, a new research group titled "Life Course and Inequality," led by Philipp Lersch, was established to analyze social inequalities across life courses of individuals in different and changing social contexts.

Sadly, we mourn the passing of Hans-Jürgen Krupp, the SOEP's founding father, and Gert G. Wagner, its long-time director. Both were instrumental in shaping the SOEP and remained valuable advisors long after they retired.

This SOEP Annual Report offers an overview of our wide-ranging activities in 2024. Chapter 1 highlights achievements and new projects of the SOEP team as well as a selection of the many media reports published on SOEP results. Chapter 2 introduces the SOEP's mission and structure, along with our advisory bodies. Chapter 3 outlines the cornerstones of the SOEP team's research activities, including new research output based on SOEP's migration and refugee samples. In Chapter 4, you will find reports on fieldwork (conducted by infas Institut für angewandte Sozialwissenschaft GmbH) and our in-house user services. Finally, the appendix contains a list of staff members and the complete scientific output (SOEP researchers and user community).

Thank you for your interest in the SOEP!



Carsten Schröder



Sabine Zinn



Jan Goebel

## IN MEMORY OF **HANS-JÜRGEN KRUPP**



The esteemed founder of SOEP passed away on July 29, 2024, at the age of 91. Hans-Jürgen Krupp was appointed Professor of Economic and Social Policy at Johann Wolfgang Goethe University Frankfurt am Main in 1969 and served as university president from 1975 to 1979. In 1979, Krupp was appointed President of DIW Berlin. As the applicant and head of sub-project B-5, “The Socio-Economic Panel,” he played a key role in launching this long-term study in 1984. Originally funded for five years, SOEP is now in its 41<sup>st</sup> year.

In 1988, the SOEP founder moved to Hamburg, where he became the State Minister of Economics and later the State Minister of Finance. He also became President of the Landeszentralbank Hamburg, Schleswig-Holstein and Mecklenburg-Vorpommern, and a member of the Deutsche Bundesbank’s Central Bank Council. Despite these new roles and his retirement, Krupp always remained associated with SOEP, regularly sharing with us the original motives and convictions that formed his idea of a panel study. He was a valued advisor to the SOEP’s directors and a regular guest of honor at various SOEP conferences and events. The SOEP has lost its far-sighted founding father, a formative leadership figure, and a long-time companion and supporter. We are deeply saddened, and our thoughts are with his family. We will honor his memory.

Find the complete obituary on our [website](#).

## IN MEMORY OF

---

## GERT G. WAGNER

---



Prof. Dr. Gert G. Wagner, the long-time director of the SOEP, passed away unexpectedly on January 28, 2024. Alongside Hans-Jürgen Krupp, Gert G. Wagner was a key figure for the SOEP's development for decades.

The central stages of his professional career include the positions of research associate and later director of the DFG Collaborative Research Center 3 “Microanalytical Foundations of Social Policy” at the Universities of Frankfurt am Main and Mannheim (1979 to 1988). In 1989, he became the head of the SOEP at DIW Berlin and later, in 2011, chairman of the DIW Executive Board (President).

The most important milestones of his work at the SOEP include the institutionalization of SOEP as a department at DIW Berlin and expanding the data infrastructure. He added an additional sample of households in the GDR, creating a unique basis to describe the transformation process in East Germany. In 1994, the first migration sample was surveyed, which made the SOEP a central data source for research into integration processes. Under Wagner's leadership, SOEP's sample size was doubled (in 2000), and SOEP was awarded a specific budget that facilitated the expansion of data collection. With the Innovation Sample, SOEP became a scientific beacon, providing an outstanding data infrastructure for social and economic research.

In addition to his work at DIW Berlin, Wagner held professorships at Ruhr University Bochum, the European University Viadrina in Frankfurt/Oder, and Technische Universität Berlin until his retirement in 2018.

Gert G. Wagner was awarded the Officer's Cross of the Order of Merit of the Federal Republic of Germany for his role in bridging scientific expertise with politics and society. Wagner can certainly be described as a social science polymath. His work extends far beyond his longtime work for the SOEP, which is also reflected in his many contacts in politics. Until the passing, he was a constant source of inspiration with concrete suggestions for improvement. The SOEP has lost an intellectual pioneer and one of its most important figures. We mourn his loss deeply, and our thoughts are with his family. We will honor his memory.

Find the complete obituary on our [website](#).



Part 1

# THE YEAR IN REVIEW

1



# CELEBRATING 40 YEARS OF SOEP!

Berlin-Brandenburg Academy  
of Sciences and Humanities, Berlin  
*July 3, 2024*



SOEP team at the anniversary celebration



From left to right: Jürgen Schupp, Jutta Mata, Jan Goebel, Carsten Schröder, Sabine Zinn

Many of the 120 guests attending the Berlin-Brandenburg Academy of Sciences and Humanities on July 3 have actively participated in the 40-year success story that is the SOEP. They all came to pay tribute to one of the world's most important and longest-running multidisciplinary panel studies.

## Cutting edge treasure trove of data

Alongside the Berlin team, SOEP welcomed its funders as well as representatives of the SOEP founding generation, the DIW Berlin Executive Board, the DIW Board of Trustees, and members of infas, our partner survey institute. The speakers emphasized the outstanding importance of SOEP for gaining knowledge about German society, for evidence-based policy advice, and for knowledge transfer. Martina Brockmeier, President of the

Leibniz Association, stressed that the SOEP's "treasure trove of data" has become "ever more valuable" over the years. Sigrid Nikutta (Chairperson of the DIW Board of Trustees) saw a clear "mandate for the future" for the SOEP. In times of social and political upheaval, its role will only become especially more important. Other speakers praised SOEP's innovative strength and its striving to always remain "at the cutting edge," as Prof. Dr. Jutta Mata (head of SOEP Survey Committee) and others put it.

## A thank you

We are proud of the high relevance SOEP has achieved in society, politics, and media. Without the relentless work of the SOEP team as well as the continuing participation of the survey's respondents, this success would never have been possible.



# 15<sup>TH</sup> INTERNATIONAL SOEP USER CONFERENCE

Berlin-Brandenburg Academy  
of Sciences and Humanities, Berlin

July 4–5, 2024



Denis Gerstorf

From left to right: Markus M. Grabka, Sabine Zinn, Jan Goebel, Carsten Schröder

It was the crowning glory of the 40<sup>th</sup> anniversary celebrations: The two-day User Conference took place for the 15<sup>th</sup> time, this year entitled “The individual and collective responses to a changing world.” Researchers from across the disciplines (e.g., economics, demography, geography, political science, public health, psychology, and sociology) were invited. With 15 sessions and 64 presentations, the conference impressively demonstrated the wide range of topics that SOEP data can address: What impact does the minimum wage have on regional inequalities? Are employees who internally distance themselves from their work generally more dissatisfied with their lives? Do people worry less about the environment and climate after having a child? These are just some of the many topics presented by participating users.

## Praise for SOEP as a data source and career booster

One of the keynote speakers at the conference, economist Simon Jäger from MIT (Massachusetts Institute of Technology) in Boston, described SOEP as a “dataset we all know, adore, and love.” This year’s Felix Büchel Award winner, Denis Gerstorf (Professor of Developmental Psychology at Humboldt-Universität zu Berlin), spoke of how the SOEP has influenced him as an “eye opener” and “stepping stone.” Gerstorf has spent a large part of his successful career researching with SOEP data.

## Exciting input from five international panel studies

One particular highlight of the conference was the presentation of panel studies from other countries that, like the SOEP, participate in the Cross-National Equivalent File (CNEF). The project harmonizes extensive data from currently nine panel studies worldwide and makes it available to researchers. Representatives of partner studies from Australia, Japan, Spain, Switzerland, and the USA provided exciting insights into the data sets of their home countries.



# HIGHLIGHTS 2024

## NEW RESEARCH GRANTS



### Start of Leibniz Lab "Pandemic Preparedness: One Health, One Future"

SOEP is participating in an innovative "Leibniz Lab" funded by the Leibniz Association. Building on interdisciplinary cooperation between 41 Leibniz institutes, "**Pandemic Preparedness**" strives to generate data and evidence-based policy advice on pandemics.



### Successful renewal of "SOEP RegioHub"

How do regional social and economic opportunities influence social cohesion? After one initial funding period, **SOEP RegioHub** will continue investigating related research questions for four more years. The second phase of the "Leibniz ScienceCampus" will, among other topics, shed light on the role of local media in shaping public opinion. The project builds on a fruitful cooperation between SOEP and Bielefeld University.



### Launch of new SOEP Research Group "Life Course and Inequality"

After his successful acquisition of one of the prestigious ERC Consolidator Grants in 2023, Philipp Lersch starts his own **research group** working at the intersection of sociology, demography, and economics. Lersch and his colleagues will focus on economic wealth and labor market inequalities using longitudinal and administrative data.



## NEW RESEARCH GRANTS

**DFG** Deutsche  
Forschungsgemeinschaft



### DFG awards grant for SOEP project "Surveying Panel Participants' Network Members: Integration of Egocentric Data Collection and Respondent-Driven Sampling"

The aim of this project is to explore the opportunities of new data collection strategies. To this end, existing strategies are supplemented by Respondent-Driven Sampling (RDS). RDS is a network sampling strategy in which survey participants act as "seeds" who recruit their network members to participate in the survey.



### Project kick-off for "DECIPHE" (Demographic Change and the Intergenerational Persistence in Homeownership in Europe)

Funded by the Volkswagen Foundation, this project studies how demographic change is affecting homeownership in Europe using longitudinal data. The study will particularly focus on four countries – Germany, Hungary, Spain, and the UK.



VolkswagenStiftung



### New perspectives for survey design: Start of DFG project on video interviewing

The survey landscape is rapidly changing: social reality, digitalization, and varying respondent behavior call for new survey modes. To this end, the project explores the feasibility of CALVI interviews for SOEP and strives to develop a survey strategy to maximize response rates.

**DFG** Deutsche  
Forschungsgemeinschaft

## NEW RESEARCH GRANTS

### Inheritance and wealth: new project funded by the Fritz Thyssen Foundation

The project “The Role of Inheritances and Parental Background for the Structure of the Wealth Distribution and Top Wealth” wins a grant from the Fritz Thyssen Foundation. It uses a unique SOEP sample of high wealth individuals in Germany (over 1,100 net euro millionaires). Researchers investigate how wealth accumulates and reproduces, especially at the top end of wealth distribution.



### Official start of ERC grant “WEALTHTRAJECT: Understanding Trajectories of Wealth Accumulation and Their Variability”

For the next five years, Philipp Lersch and his colleagues will produce innovative research in the field of wealth. The European Research Council (ERC) Consolidator Grant is endowed with two million euros.



European Research Council  
Established by the European Commission

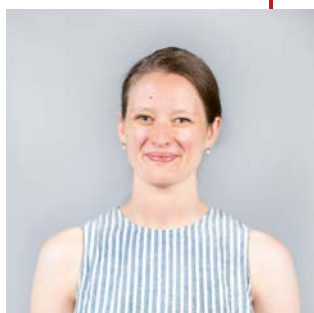
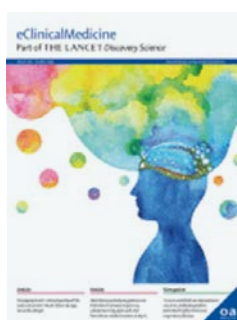


## PRIZES AND AWARDS



### Congratulations to Julian B. Axenfeld (Head of Social Cohesion Panel)

Axenfeld (second from right) wins the prestigious Best PhD Award 2024 at the 26<sup>th</sup> General Online Research Conference (**GOR24**) in Cologne. He presented the results of his PhD dissertation “Imputation of missing data from split questionnaire designs in social surveys” on February 23, 2024.



### Paper Award for Louise Biddle

We congratulate SOEP researcher Louise Biddle to a publication award from DIW Berlin: Her article, “**Context, Health and Migration: A Systematic Review of Natural Experiments,**” is published in *eClinicalMedicine* with co-authors Maren Hintermeier, Diogo Costa, Zahia Wasko, and Kayvan Bozorgmehr.

### Philipp Lersch one of 100 “most important minds” in Berlin research



Every year, Der Tagesspiegel selects the 100 “most important minds” of the Berlin research landscape. This year, SOEP Research Group Leader Philipp Lersch is one of them. The corresponding Tagesspiegel [article](#) is available to subscribers.



## PRIZES AND AWARDS

### SOEP congratulates Emilija Meier-Faust

The Leibniz Institute for Educational Trajectories (LifBi) in Bamberg awards the SOEP researcher its **NEPS Publication Award 2024** for her paper “Perceiver Effects and Socioeconomic Background: Contrasting Parent-Reports against Teacher-Reports of Elementary School Students’ Personality” (co-authored with Prof. Dr. Rainer Watermann from Freie Universität Berlin).

### Gender research prize for Laura Buchinger

SOEP PhD candidate Laura Buchinger is one out of six recipients of the **Gender Research Prize 2024** awarded by Freie Universität Berlin. Her dissertation “Life Goals Across Adulthood and Old Age: Associations With Personality and Well-Being” wins a prize in the gender equality category.



### Best presentation: Edwin von Böventer Prize for Barbara Stacherl

The German section of the Regional Science Association awards SOEP PhD candidate Barbara Stacherl a **prize** for her presentation on “Where does it hurt? Local general practitioner reductions and hospital utilization.”

## STAFF NEWS



### New Appointments

Sabine Zinn is appointed Acting Director of SOEP by the Board of Trustees for four years.  
Charlotte Bartels starts her Professorship of Finance at Leipzig University on April 1, 2025. She already holds an interim Professorship as of October 2024.

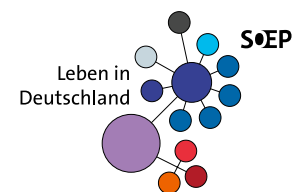


UNIVERSITÄT  
LEIPZIG

## DATA NEWS

### Start of three new subsamples

2024 marks the start of the new subsample M10 with 2,050 randomly selected migrant households (migrants who have immigrated to Germany from EU countries). Additionally, the refreshment sample M8d is conducted to help evaluate the Skilled Immigration Act (Fachkräfteeinwanderungsgesetz), which came into effect March 1, 2020. The IAB provides the random sample of 328 migrant households. For the first time, a new subsample S was surveyed – a random sample of the general resident population (5,120 households).



### Testing a new survey strategy

SOEP aims to explore the possibility of quarterly surveys and their implications for data management and availability. To this end, the SOEP Research Data Center starts an initial pilot round in 2024.

### CO<sub>2</sub> footprint: New experiment

Does information on the CO<sub>2</sub> footprint affect people's own behavior to reduce CO<sub>2</sub>? SOEP researchers have designed an experiment using information treatment material for survey respondents. The treatment is included in selected SOEP-CORE surveys this year.

## KNOW- LEDGE TRANSFER

### "Sozialbericht 2024" published

This comprehensive publication contains numerous analyses of living conditions in Germany, compiled by experts in official statistics and social research. Many results are based on SOEP data. The report is published by the Federal Statistical Office (Destatis), the Social Science Research Center Berlin (WZB), and the Federal Institute for Population Research (BiB). It covers a wide range of topics, from education, the labor market and income, to health, values, and attitudes. SOEP researchers contributed articles on income, poverty, loneliness, life satisfaction, and refugees, among others.



## WZB

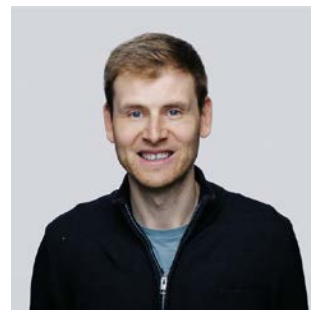
Wissenschaftszentrum Berlin  
für Sozialforschung



**DESTATIS**  
Statistisches Bundesamt

### SOEP at the "Long Night of the Sciences" in Berlin

SOEP is part of DIW Berlin's representation at the annual event, in 2024 held on May 22. Survey manager Florian Griesse presents a poster on "The evaluation of the Federal Parental Allowance and Parental Leave Act (BEEG)," which is met with great interest.



**N<sup>8</sup>** | Lange Nacht der  
Wissenschaften





## SOEP researchers co-write DIW's most clicked Weekly Reports

Mattis Beckmannshagen's article in **DIW Weekly Report 16/2024** (8,835 clicks on landing page/pdf) addresses working hours and work volume in Germany – mass media attention followed.

In **DIW Weekly Report 5/2024** (8,159 clicks on landings page/pdf), **Markus M. Grabka** analyzes the development of wages and inequality in Germany.

In **DIW Weekly Report 17/2024** (7,165 clicks on landing page/pdf), **Jürgen Schupp** and his co-authors investigate the effects of the newly introduced "Bürgergeld" in selected job centers.



**KNOW-  
LEDGE  
TRANSFER**



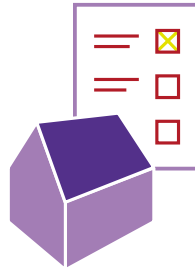
# THE YEAR IN NUMBERS

## THE SURVEY



41<sup>th</sup>

wave of SOEP data  
in the field



23,659

SOEP Core

2,706

SOEP IS

successfully  
interviewed households

## SOEP RESEARCH OUTPUT



49

research projects  
at the SOEP



~11 million

euros in outside project funding



38

papers by SOEP staff in  
Web of Science™  
Core Collection Publications



343

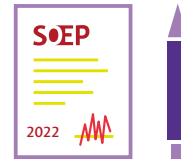
papers published worldwide  
using SOEP data

## WORLDWIDE USERS



17,173

registered SOEP data users  
from 60 countries



1,289

new SOEP data users

## SOEP TEAM @ DIW BERLIN



13

doctoral  
candidates



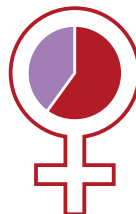
3

completed  
dissertations



77

members of  
the SOEP team



>60%

female postdocs  
on the SOEP team



132

guest  
researchers

## WEBSITE TRAFFIC



288,678

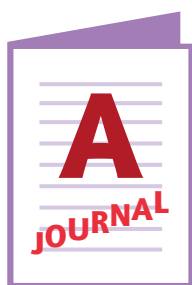
visits RDC website

226,036

visits DIW/SOEP website

# TOP PUBLICATIONS 2024

Journal Publications by SOEP Team Members  
in A-Journals



## THE ECONOMIC JOURNAL

**Bartels, Charlotte, Simon Jäger, Natalie Obergruber.** 2024. Long-Term Effects of Equal Sharing: Evidence from Inheritance Rules for Land. *The Economic Journal* 134, 664, 3137-3172.  
<https://doi.org/10.1093/ej/ueae040>

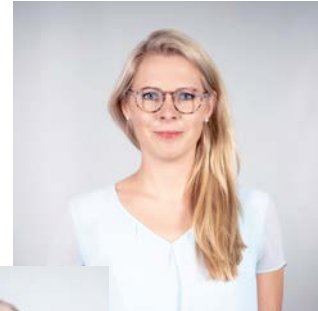
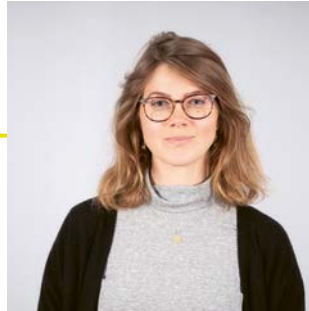


**Fossen, Frank M. and Levent Neyse.** 2024. Entrepreneurship, Management, and Cognitive Reflection: A Preregistered Replication Study with Extensions. *Entrepreneurship Theory and Practice* 48 (4), 1082-1109.  
<https://doi.org/10.1177/10422587231211005>



## Journal of Personality and Social Psychology

Buchinger, Laura, Theresa M. Entringer, David Richter, Gert G. Wagner, Denis Gerstorf, et al. 2024. Codevelopment of life goals and the Big Five personality traits across adulthood and old age. *Journal of Personality and Social Psychology* 126 (2), 346–368.  
<http://doi.org/10.1037/pspp0000477>



## POPULATION AND DEVELOPMENT REVIEW

Solaz, Anne, Lidia Panico, Alexandra Sheridan, Thorsten Schneider, Jascha Dräger, et al. 2024. Does Family Structure Account for Child Achievement Gaps by Parental Education? Findings for England, France, Germany and the United States. *Population and Development Review* 50 (2), 461–512.  
<http://doi.org/10.1111/padr.12623>

# SOEP IN THE MEDIA

Selected Media Coverage 2024

## Süddeutsche Zeitung

July 25, 2024

*Bastian Brinkmann*

### Plattformökonomie: Wenn die App der Chef ist

Pling, hier kommt der nächste Auftrag: Immer mehr Menschen sagt eine Online-Plattform, was sie als Nächstes zu tun haben. Die Jobs sind oft prekär.

## Handelsblatt

August 5, 2024

*Tobias Gürtler*

### So viel Gehalt macht zufrieden

Aus dem Handelsblatt-Archiv: Martin Schröder hat statistisch untersucht, was Menschen zu Frieden macht – und welche Rolle die Höhe des Gehalts und die Arbeit dabei spielen. Die Ergebnisse des Soziologen erstaunen.

## Frankfurter Rundschau

July 5, 2024

*Joachim Wille*

### Reiche verursachen doppelt so viele Emissionen wie arme Haushalte

Fliegen hat dabei einen großen Einfluss, zeigt eine Studie. Doch beim Wohnen gibt es eine Überraschung.



Deutschlandfunk

August 21, 2024

*Niklas Ottersbach (audio)*

### Erbe im Osten – Eine Vermögensmauer teilt Deutschland

Eigentum ist in Deutschland ungleich verteilt. Der Vermögensaufbau in Ostdeutschland hinkt dem im Westen hinterher – erst DDR-Planwirtschaft, dann Arbeitslosigkeit und Lohnunterschiede. Der Ruf nach einer Reform der Erbschaftsteuer wird lauter.

## t-online.

August 5, 2024

*Christine Holthoff*

### Abschaffung der Mütterrente: So viel weniger hätten Rentnerinnen

Noch immer ringt die Ampel um den Haushalt. Erhebliches Sparpotenzial steckt bei der Mütterrente. Doch eine Abschaffung hätte schwere Folgen.

## MEDICAL TRIBUNE

July 5, 2024

*Alexandra Simbrich*

### Im Süden wird man älter. Lebenserwartung in Deutschland mit großen regionalen Unterschieden

Gesund zu altern, wünschen sich viele. Doch ob das klappt, hängt teilweise von der Region und dem Geschlecht ab.

## SPIEGEL ONLINE

June 13, 2024

*Nina Weber*

### Gesundheit von Müttern verschlechtert sich nach der Geburt

Laut einer Untersuchung aus Deutschland steigen in den ersten vier Jahren der Mutterschaft die Verschreibungen für Schmerzmittel und Antidepressiva. Schlafmangel ist dafür nur eine mögliche Ursache.

## DIE ZEIT

January 30, 2024

*Tina Groll*

### Mindestlohn: Dumpinglöhne gibt's nicht mehr

Deutschland hatte einst den größten Niedriglohnsektor Europas. Exklusive Daten zeigen: Der Mindestlohn hat diesen Sektor verkleinert – und die Reallöhne steigen lassen.

## ZEIT MAGAZIN

May 30, 2024

*Wenke Husmann*

### Nur ein Follower, kein Freund

In einer vernetzten Gesellschaft haben immer mehr Menschen das Gefühl, nicht dabei zu sein. Sie sind nicht einsam, sie fühlen sich einsam. Ein ernst zu nehmender Irrtum.

## Frankfurter Allgemeine

April 17, 2024

*Patrick Welter*

### Die Deutschen arbeiten so wenig und so viel wie noch nie

Deutsche Arbeitnehmer arbeiten immer weniger. Doch weil immer mehr Menschen in den Arbeitsmarkt hineingezogen werden, arbeiten die Beschäftigten in der Summe so viel wie noch nie. Vor allem Frauen möchten mehr arbeiten.

## monitor

August 1, 2024

*Lisa Seemann,  
Andreas Spinrath (TV)*

### Markus M. Grabka in der Reportage „Reichtum verpflichtet? Die Verantwortung der Superreichen“

Sparzwang, Rezession, Unsicherheit und Bildungs-  
krise. Deutschland erstarrt in Krisenstimmung.  
Leben Wohlhabende davon unberührt? MONITOR  
blickt in die sonst oft verschlossene Welt der  
Millionäre und Milliardäre. Sie genießen zahlreiche  
Privilegien – nicht nur im Steuerrecht.  
Aber werden sie ihrer gesellschaftlichen Verant-  
wortung gerade in Krisenzeiten gerecht? Und  
warum werden sie von der Politik nicht stärker in  
die Pflicht genommen?

## DER TAGESSPIEGEL

March 20, 2024

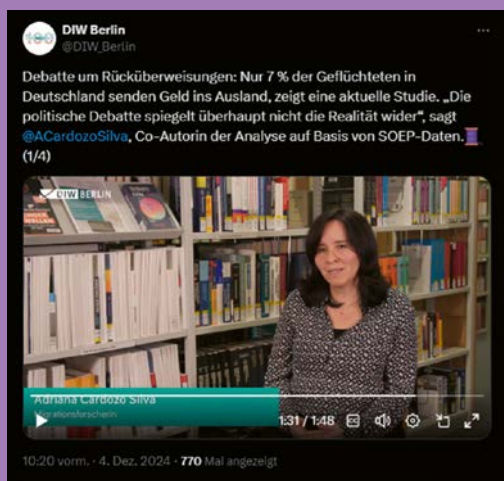
*Jonas Huggins*

### Wohnen in der Stadt: Wie eng ist zu eng?

Immer mehr Menschen leben in überbelegten  
Wohnungen. In einem Forschungsprojekt  
untersuchen Wirtschaftswissenschaftler und  
Soziologen ihre Situation.

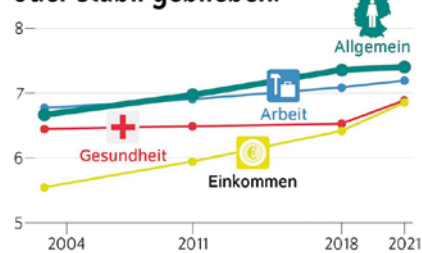


December 4, 2024



August 21, 2024

Insgesamt ist die Zufriedenheit in vielen Bereichen gestiegen oder stabil geblieben.



diw\_berlin Tolle Neuigkeiten: In den letzten 20 Jahren ist die Zufriedenheit der Deutschen in den Lebensbereichen Einkommen, Arbeit und Gesundheit gestiegen oder zumindest stabil geblieben.

Das zeigt eine aktuelle DIW Berlin Studie auf Basis von Daten des Sozio-oekonomischen Panels (SOEP) der Jahre 2004 bis 2021.



November 7, 2024



October 23, 2024

Zufriedenheit steigt mit Homeoffice in allen Bereichen



DIW Berlin - German Institute for Economic Research

22.885 Followerinnen

4 Monate · 1

Homeoffice bleibt auch nach Ende der Corona-Pandemie fester Bestandteil der Arbeitswelt

Während der Corona-Pandemie wurde das Homeoffice für viele Arbeitnehmer\*innen zur Normalität – und wird auch danach häufiger genutzt als zuvor. Heute arbeiten vor allem höher Qualifizierte in größeren Unternehmen von zu Hause aus. Das geht aus einer neuen DIW-Studie zur Homeoffice-Nutzung in Deutschland hervor, die auf Daten des Sozio-oekonomischen Panels ([#SOEP](#)) basiert und in Kooperation mit Forschenden des [Institut für Arbeitsmarkt- und Berufsforschung](#) erstellt wurde.

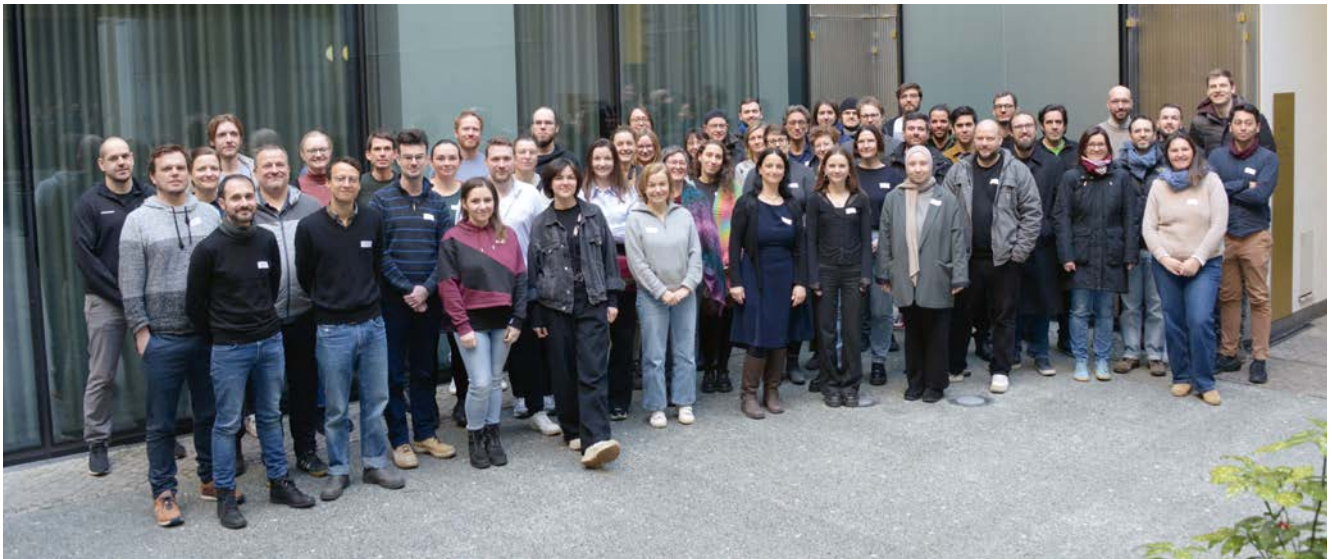
Part 2

# SOEP STRUCTURE

2



# SOEP MISSION



SOEP team at DIW Berlin

The German Socio-Economic Panel (SOEP) is an independent, non-partisan, research-driven infrastructure unit that serves the international scientific community by providing nationally representative longitudinal data (the SOEP study) and related datasets (SOEP-Related Studies) on private households in Germany.

The SOEP team is recognized internationally for its high-level scientific research on survey methodological and theoretical as well as applied and policy-oriented topics. The SOEP works to communicate research findings to the broader public in an easily understandable way, thus contributing to knowledge transfer from research to society.

The SOEP study is designed from a multidisciplinary perspective to provide data for basic, applied, and policy-relevant research that will improve our understanding of human behavior, economic decisions, mechanisms of social change, and the impacts of political decisions. It takes the household context, the neighborhood, and different institutional settings and policy regimes into

account, while also making use of data from external sources. Boost samples are added regularly to keep pace with societal change. SOEP datasets are linked to data from other sources in line with data protection regulations to expand the potential for scientific analysis. The SOEP's partnerships with studies worldwide promote the use of SOEP data in international comparative research.

Research questions and survey contents are solely determined by scientific criteria.

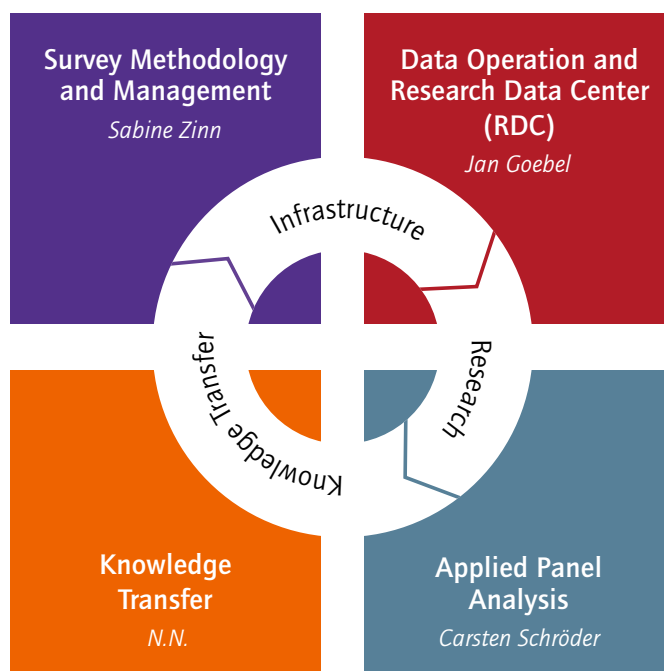
The complete [mission statement](#) can be found on our website.

The SOEP is one of Germany's most important research data infrastructures in the social, behavioral, and economic sciences and is proud to be part of the National Research Data Infrastructure (NFDI). As part of the Leibniz Association, the SOEP receives funding from the Federal Ministry of Education and Research (BMBF) and Germany's state governments.

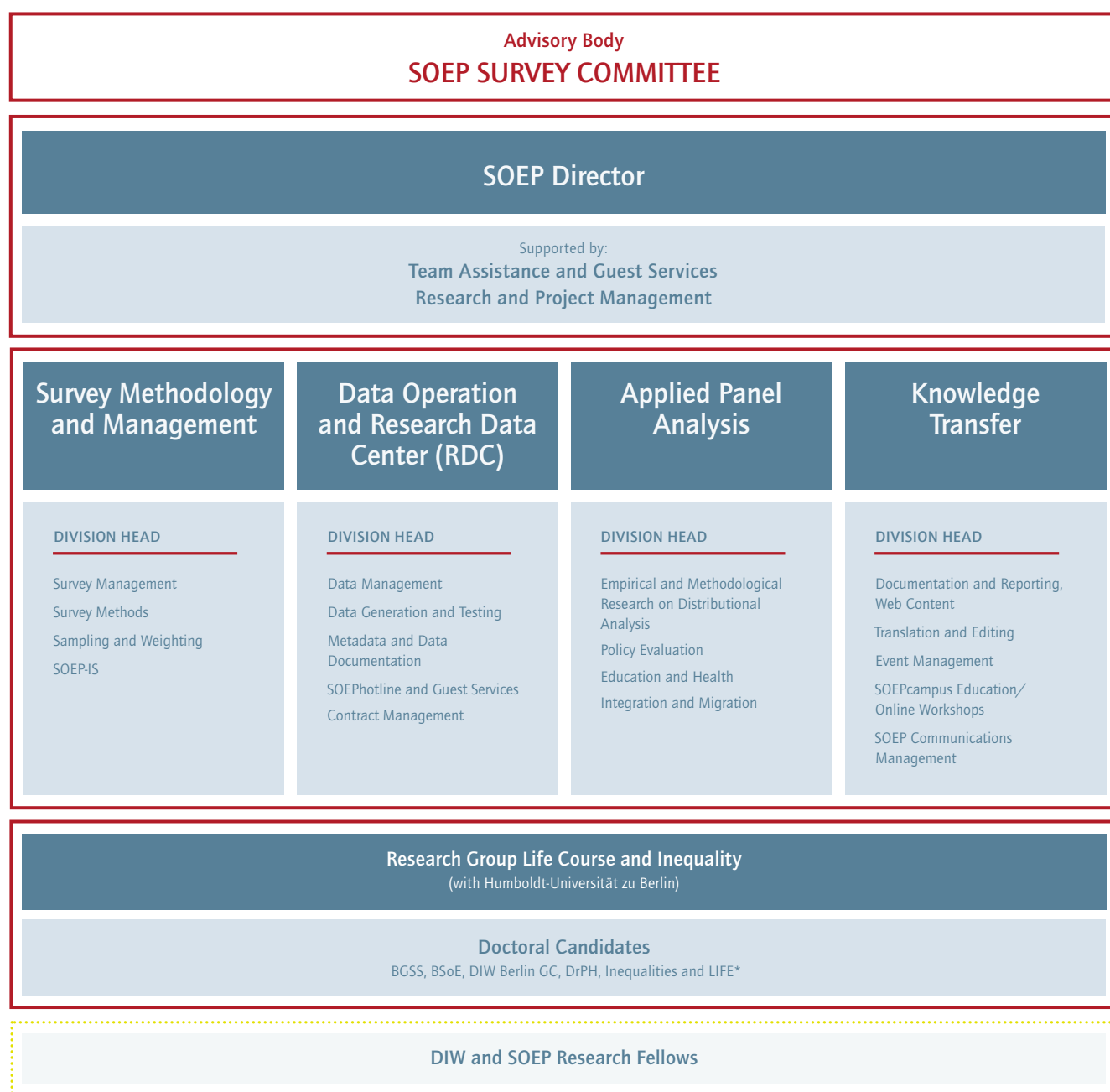
# SOEP STRUCTURE AND GOVERNANCE

The independent, research-driven, SOEP infrastructure comprises four divisions, each carrying out a wide range of tasks to ensure the high quality of its infrastructure, research, and transfer. Besides conceptualizing studies and samples (**Survey Methodology and Management**), SOEP staff prepare data for user-friendly analysis and distribute them to researchers (**Data Operation and Research Data Center**). **Applied Panel Analysis** analyzes the data while **Knowledge Transfer** provides training for SOEP data users and disseminates SOEP-based research findings throughout society – to both survey respondents and the general public.

The SOEP infrastructure is managed by the SOEP Director, who is also a member of the DIW Executive Board. Each of the four divisions is managed by a head. The SOEP Survey Committee, which comprises up to ten highly recognized researchers appointed by the DIW Board of Trustees, serves as a scientific advisory board to the SOEP.



# SOEP ORGANIZATIONAL CHART



Based at the SOEP but not part of its organizational structure

\* BGSS: Berlin Graduate School of Social Sciences at Humboldt-Universität zu Berlin

\* BSoE: Berlin School of Economics

\* DIW Berlin GC: DIW Berlin Graduate Center of Economic and Social Research

\* DrPH: Doctoral Program for Public Health of the Faculty of Health Sciences at Bielefeld University

\* Inequalities: Public Economics & Inequality – Doctoral Program at Freie Universität Berlin

\* LIFE: International Max Planck Research School on the Life Course

## SOEP SURVEY COMMITTEE

The **SOEP Survey Committee** is appointed by the DIW Berlin Board of Trustees. The members shown represent the appointment period for 2024. They provide advice on the further development of the SOEP survey and SOEP user services and

meet at least once a year with the SOEP team. We are very grateful to this impressive group of researchers for their commitment to work with us in building and enhancing the SOEP.

### Members of the SOEP Survey Committee



**Prof. Dr. Jutta Mata (Chair)**  
Chair of Health Psychology at  
*University of Mannheim*



**Prof. Conchita D'Ambrosio, Ph.D.**  
Professor of Economics at  
*University of Luxembourg*



**PD Dr. habil. Christina Boll**  
Head of the "Family and  
Family Policy" Department at  
*German Youth Institute (DJJ)*



**Prof. Dr. Frank Kalter**  
Professor of General Sociology  
at *University of Mannheim*



**PD Dr. Oliver Lipps**  
Head of the FORS *Methodological  
Research Unit* and Private Docent  
at the *Institute of Sociology,  
University of Berne*



**Prof. Dr. Căzilia Loibl, CFP**  
Professor and Chair of Consumer  
Sciences at *Ohio State University,  
Columbus*



**Annette Scherpenzeel, Ph.D.**  
Senior Researcher at *Netherlands Institute for Health Service Research, Utrecht*



**Dr. Tobias Schmidt**  
Senior Researcher in the *Research Centre of Deutsche Bundesbank, Frankfurt am Main*



**Prof. Dr. Joachim Winter**  
Chair of Empirical Economic Research at *LMU Munich*



**Prof. Dr. Philippe Van Kerm**  
Professor of Social Inequality and Social Policy at *University of Luxembourg* on a joint appointment with *Luxembourg Institute of Socio-Economic Research (LISER)*



**N.N.**  
SOEP Director

**Prof. Dr. Sabine Zinn**  
Acting Director of SOEP

## SOEP DIRECTORATE

In 2024, the SOEP director and their administration team are responsible for around 80 staff members, as well as trainees, doctoral researchers, grant holders, and about 30 student assistants. The director's team provides a wide range of research and administrative support services as well as research and project management to the entire SOEP team.

Administrative support activities include liaising with the SOEP Survey Committee as well as coordinating and facilitating administrative processes between the SOEP unit and DIW Berlin's financial and human resources units.

The SOEP infrastructure is managed by the Director (who is also a member of the DIW Executive Board) with the help of four divisions: Survey Methodology and Management, Data Operations and Research Data Center, Applied Panel Analysis, and Knowledge Transfer. The Research Group "Life Course and Inequality" is assigned to the director to deepen the research portfolio of the SOEP in the field of inequality research. The director sets the direction for the diverse activities of the SOEP, ranging from independent research to infrastructure provision and defining strategic goals for the future development of the SOEP.

## SURVEY METHODOLOGY AND MANAGEMENT

The Survey Methodology and Management division team is responsible for all aspects of data collection, ranging from sampling and survey design as well as questionnaire development to research on selectiveness in the data. Experts from the team work closely with the other SOEP divisions, the SOEP Survey Committee, and with the institute that conducts the fieldwork for the SOEP survey.

The team is also responsible for the SOEP refugee and migration samples and the Innovation Sample. The latter provides a framework for testing new and innovative concepts, questions, and survey instruments for potential inclusion in the main SOEP-Core study. A further area of the team's work is non-response analyses, weighting, and data documentation.



**Prof. Dr. Sabine Zinn**  
Division Head

## DATA OPERATION AND RESEARCH DATA CENTER

Experts from the Research Data Center of the SOEP (RDC) prepare the survey data for both longitudinal and cross-sectional scientific analysis. They generate numerous user-friendly variables and impute missing data. They also provide access to small-scale regional codes through a variety of secure data channels. The team provides SOEP data to researchers worldwide in the form of scientific use files, based on a data use contract. Researchers can analyze datasets that are subject to stricter data protection regulations either through remote data access or at a secure guest workstation at the SOEP. Comprehensive documentation on all SOEP data is published online either as downloadable PDF files or on [paneldata.org](https://paneldata.org), the open-source documentation system developed by the SOEP staff. An overview of the SOEP-Core data can be found in the [SOEPcompanion](#).



**Dr. Jan Goebel**  
Division Head

## APPLIED PANEL ANALYSIS

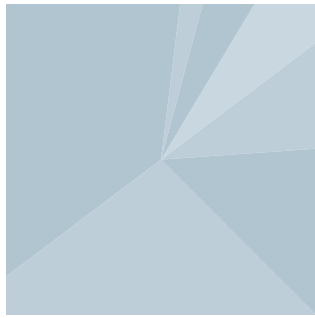
The Applied Panel Analysis division is made up of senior researchers as well as doctoral candidates from a variety of graduate programs. Key research areas of the team include distributional analyses, labor economics, education and health, (subjective) well-being, as well as integration and migration. The team's research is based primarily on SOEP data but also on other international datasets such as the Cross-National Equivalent File (CNEF), to which the team contributes.

The ongoing research with these datasets ensures that the quality of the data is monitored regularly, systematically, and meticulously – from the questionnaire modules to the survey data. The team works closely with colleagues from across DIW.



**Prof. Dr. Carsten Schröder**  
Division Head





**N.N.**  
Division Head

## KNOWLEDGE TRANSFER

The Knowledge Transfer division provides a wide variety of services to three main target groups: survey respondents, the general public, and (potential) data users. Communication with survey respondents is managed through the study website, information materials, and interviewer briefings.

Research results are disseminated to the general public (including politics, media, and civil society) through publications in international journals and (policy) reports. Examples include the DIW Berlin Weekly Report and the “Social Report.” SOEP analyses also flow into various official government reports. Other channels include DIW social media, high-profile public events, the annual report, and press conferences.

Within academia, (potential) data users are the most important target group. [SOEPcampus workshops](#) and [SOEPtutorials](#) offer young researchers an introduction to the SOEP data. A wide range of information and documentation materials are made available, including online resources, to assist researchers in their work with SOEP data (e.g., SOEP Survey Papers, [paneldata.org](#), SOEP website).



**Prof. Dr. Philipp Lersch**  
Research Group Leader

## RESEARCH GROUP “LIFE COURSE AND INEQUALITY”

The “Life Course and Inequality” research group investigates how social inequalities develop across and between the life courses of individuals within diverse and changing societal contexts. Working at the intersection of sociology, demography, and economics, the group primarily focuses on economic wealth and labor market inequalities. The group predominantly utilizes international longitudinal data from household surveys and public registers, analyzing these data with a theory-driven approach and employing modern quantitative methods. The project [WEALTHTRAJECT](#), funded by the European Research Council, focuses on the diverse trajectories of wealth accumulation, emphasizing the variability in wealth patterns over individuals’ lives. [DECIPHE](#), funded by the Volkswagen Foundation, examines how demographic changes impact the intergenerational persistence of homeownership in Europe with partners in Hungary, Spain, and the UK.

Part 3

# RESEARCH BY SOEP STAFF

3



# KEY RESEARCH AREAS

In this chapter, we present the cornerstones of the research carried out by SOEP researchers on site in Berlin as well as relevant developments in 2024. For the list of publications by SOEP staff, please see the appendix.

The researchers working at SOEP engage in conceptually advanced and methodologically sophisticated scientific research in economics, sociology,

psychology, other fields in the social sciences, and survey methodology. Their research focuses on important topics and issues in modern societies, all founded on an empirical and analytical understanding of scientific research.

The SOEP primarily works on the following four research topic areas and exemplary questions.

## 1 SOCIAL INEQUALITIES AND DISTRIBUTION

This research area deals with the question of how equally or unequally societal resources such as income and wealth are distributed, and how differences in access to education and the labor market create risks and opportunities.

## 2 SUBJECTIVE WELL-BEING, PERSONALITY, AND HEALTH

Researchers examine how living conditions affect health and well-being and what role personality plays across the life course.

## 3 MIGRATION AND INTEGRATION

This research area investigates the migration history, living situation, and integration of migrants (Migration and Social Transformation).

## 4 SURVEY METHODOLOGY AND DATA SCIENCE

Experts in survey methodology and data science are working to develop and further improve the SOEP study.

# SPOTLIGHT ON IAB-SOEP AND IAB-BAMF-SOEP-BASED RESEARCH ON MIGRATION

## SUCCESSES AND CHALLENGES OF INTEGRATION

Since 1984, the SOEP has been able to describe and analyze processes of migration including the integration of migrants and their descendants. Through cooperation with the Institute for Employment Research (IAB) and the Research Center of the Federal Office for Migration and Refugees (BAMF) since the 2000s, the possibilities for analyzing migration-specific issues have been significantly improved by repeatedly drawing new specific migration samples. As a result of this collaborative effort, two integrated studies, the IAB-SOEP Migration Sample and the IAB-BAMF-SOEP Survey of Refugees, provide unique microdata for research on voluntary and forced migrants' life course trajectories. In the following, we highlight how this data contributed to some of the key migration and integration insights published in 2024.



Bundesamt  
für Migration  
und Flüchtlinge

### Do naturalization intentions rise when legal hurdles are lowered?

The possibility of dual citizenship is the strongest factor in encouraging naturalization intentions. Reducing the waiting period from 8 to 4 years, however, renders only modest results. This is the main result of a paper by Yuliya Kosyakova (Head of the Research Department Migration and International Labour Studies at IAB) and her co-author. Generally, naturalization intentions are highest among refugees (88 percent), followed by non-EU citizens (45 percent) and EU citizens (22 percent). The latter have reduced propensity of opting for naturalization since they already benefit from citizen rights in a different EU country. Refugees, on the other hand, often come from economically disadvantaged, politically unstable countries, thus having stronger needs for security and access in the host country.

**Kosyakova, Yuliya, Andreas Damelang.**

2024. The causal effect of liberalizing legal requirements on naturalization intentions. *Social Forces*, 1-23.

[DOI:10.1093/sf/soae170](https://doi.org/10.1093/sf/soae170)



## Regional attitudes toward refugees influence asylum recognition rates

Drawing on data from the IAB-BAMF-SOEP Survey of Refugees in Germany, Lidwina Gundacker and co-authors analyze regional disparities in asylum chances and the role of the residents' attitudes toward refugees. They find that asylum applications have lower chances in regions with more immigration-averse residents. In fact, a ten percentage points higher share of residents with concerns about immigration decreases the approval probability by one percentage point.

The researchers also investigate whether asylum decisions are affected by a high workload and the resulting time pressure on decision-makers. They found no proof that these factors systematically lower asylum chances. Even in regions with already high concerns about refugees, approval rates do not decrease further due to high workload and stress.

These results shed light on the influence of regional political contexts on asylum processes: they suggest that caseworkers may be consciously or unconsciously influenced by the immigration attitudes of their regional peers.

**Gundacker, Lidwina, Yuliya Kosyakova, Gerald Schneider.**

2024. How regional attitudes towards immigration shape the chance to obtain asylum: Evidence from Germany. *Migration Studies* 13.

[DOI:10.1093/migration/mnae002](https://doi.org/10.1093/migration/mnae002)



## Refugees send remittances abroad less often than other migrants

In DIW Weekly Report 49/2024, SOEP Acting Director Sabine Zinn and SOEP researcher Adriana Cardozo Silva focus on remittances (i.e., money transfers abroad) sent by refugees and other migrants. The topic is widely debated: One critical assumption frequently voiced is that most of the money received via state subsidies is subsequently transferred abroad, especially by refugees, and that the easy transferring process ultimately attracts more asylum seekers.

According to the authors, the debate does not reflect reality. Their results show that refugees send remittances abroad more rarely than migrants without a refugee background. In fact, the share of non-refugee migrants sending remittances has been increasing in the past ten years while the share of refugees has declined. In 2021, roughly 12 percent of migrants and seven percent of refugees sent remittances abroad.

Ultimately, remittances make an important contribution to the migrants' home countries and can be an important instrument in achieving sustainable development goals.

**Adriana Cardozo Silva, Sabine Zinn.**

2024. Refugees send remittances abroad less often than other migrants.

*DIW Weekly Report 49/2024.*

# SELECTED THIRD-PARTY FUNDED PROJECTS

In 2024, SOEP researchers were actively involved in almost 50 third-party funded research projects, most of which include cooperations with universities and/or other research institutes. They are financed with about eleven million euros in funding by the German Research Foundation, various federal ministries, or the Leibniz Association. Due to the wide variety of projects, the following overview highlights a selection of funded projects in 2024, while the remaining are provided in list format. More details can be found on our website ([Research Projects](#)).



## FOCUS: Social Inequalities and Distribution

### WEALTHTRAJECT: Understanding Trajectories of Wealth Accumulation and Their Variability

As part of the ERC Consolidator Grant WEALTHTRAJECT, this project will break new ground in wealth research and further expand the range of high-quality data collection by SOEP. WEALTHTRAJECT is the first project to comprehensively and systematically investigate diversity in long-term wealth trajectories within and between social groups.

**Project Management:** Philipp Lersch

**Project Period:** December 1, 2024 – November 30, 2029

**Funded by:** European Research Council under the European Union's Horizon Europe program

**In Cooperation with:** Alexandra Killewald (University of Michigan), Tatjana Meschede (Brandeis University), Emanuela Struffolino (University of Milan), Øyvind Wiborg (University of Oslo)

### Other projects within the focus are:

- Wealth-Holders at the Top (WATT): An Interdisciplinary Research Network
- Perceptions of Inequalities and Justice in Europe (PIJE)
- Life-course Income Dynamics (LINDY)
- The intergenerational reproduction of wealth inequality and its socio-demographic conditions in Germany (InterVerm)
- Employment Risks and the Quality of Work in the Digital Transformation: Using the SOEP for Empirical Analysis of AI, Platform Work, and Digital Work
- Groups put at Particular Risk by COVID 19 (GaPRisk)
- Wealth Accumulation in Germany: Current Trends and Drivers
- Inequality, Taxation and Redistribution: Insights from a German/French Perspective (EQUITAX)
- DECIPHE – Demographic Change and the Intergenerational Persistence in Homeownership in Europe (three subprojects)
- Studying Regional Development Dynamics and their Political Consequences: SOEP RegioHub at Bielefeld University
- The role of inherited wealth for wealth inequality in Germany
- German Social Cohesion Panel (SCP) of the Research Institute for Social Cohesion (RISC)
- Basic Income Pilot Project

### GDR-Past and Mental Health: Risk and Protection Factors (DDR-PSYCH)

This project sheds light on the impact of the East German past on personality traits and mental health within the German population and thereby fills an important research gap. While the former German Democratic Republic (GDR), often known in English as “East Germany,” and its socio-political system have remained a point of reference for the analysis of societal, social, and individual processes in Germany, little is known about how GDR-specific circumstances have shaped personality and mental health. The interdisciplinary research group DDR-PSYCH is lead by researchers of the University Medical Center in Mainz.

**Project Management:** Theresa Entringer

**Project Period:** April 1, 2019–July 31, 2025

**Funded by:** BMBF

**In Cooperation with:** Johannes Gutenberg University Mainz and Mainz University Medical Center, University of Greifswald and University Medicine, Robert Koch Institute

## FOCUS: Subjective Well-Being, Personality, and Health

### Other projects within the focus are:

- Rationality and Competition: The Economic Performance of Individuals and Firms
- Dynamics of Mental Health of Migrants (DMHM)
- The economic and social impact of COVID-19 mitigation policies: A cross-country analysis of macro events
- Second Nationwide Antibody Study "Living in Germany - Corona Monitoring" (RKI-SOEP-2)
- Vaccine hesitancy: Exploring the role of temporal and cross-country variation in COVID
- Populism and Narratives of Social Mobility

## FOCUS: Migration and Integration

### Longitudinal Study of Ukrainian Refugees in Germany (SUARE)

The refugee migration from Ukraine after the start of the war in 2022 differs from previous waves of refugee migration. In the context of this DFG-funded project, researchers pursue the following two goals: (1) establish and further develop a longitudinal

data infrastructure on the socio-economic situation of Ukrainian refugees in Germany. As a part of the IAB-BAMF-SOEP Survey of Refugees, the sample of 2,500 households of Ukrainian refugees will be integrated into the main SOEP data (SOEP-Core); and (2) use the data from this project to investigate the specific institutional, economic, and social framework conditions of refugee migration from Ukraine to Germany in order to analyze their significance for issues of health and discrimination through comparison with (a) refugees in Germany from other cultural, political, and socio-economic contexts; (b) non-refugee immigrants in Germany; and (c) the native population.

**Project Management:** Herbert Brücker and Yuliya Kosyakova (IAB), Sabine Zinn, Stefan Liebig (FU Berlin)

**Project Period:** June 1, 2023 – May 31, 2026

**Funded by:** DFG

**In Cooperation with:** IAB, BAMF-FZ

### Other projects within the focus are:

- Longitudinal Aspects of the Interaction between Health and Integration of Refugees in Germany (LARGE)
- IAB-BAMF-SOEP Survey of Refugees in Germany
- IAB-SOEP Migration Sample

## FOCUS: Survey Methodology and Data Science

### Expansion of the social and spatial research data infrastructure SoRa: FAIR, intelligent, integrative (SoRa+)

The interdisciplinary linking of data from different sources from different disciplines through linked (research) data infrastructure services has become more and more important. As part of the pioneering project “Social and Spatial Research Data Infrastructure (SoRa),” a technical and organizational infrastructure was developed to ensure the prototypical linking of the research data infrastructures of GESIS, SOEP, and the Monitor of Settlement and Open Space Development (IÖR-Monitor) via interoperable and open interfaces. SoRa+ is the continuation project which aims to expand the infrastructure for permanent operational use and to demonstrate its functionality using case studies.

**Project Management:** Jan Goebel

**Project Period:** May 1, 2023 – April 30, 2026

**Funded by:** DFG

**In Cooperation with:** GESIS, IÖR

### Other projects within the focus are:

- Personality and social relationship dynamics: Short- and medium-term processes in daily life (DIPS)
- SOEP-Transfer: Research Data for Journalists and Contemporary Historians
- KonsortSWD
- Bremen Initiative to Foster Early Childhood Development (BRISE)
- The Linked Employer-Employee Study of the Socio-Economic Panel, Vers. 2 (SOEP-LEE2)
- Simulation of educational trajectories, taking latent decision-making processes into account – in the framework of the research group “Multi-sectoral Regional Microsimulation Model” (MikroSim)
- Video-interviewing as part of a targeted multi-mode design in household panel surveys (CALVI)
- ENTAILab – Research Infrastructure and Innovation Lab
- Surveying Panel Participants' Network Members: Integration of Egocentric Data Collection and Respondent-Driven Sampling

Main funding partnerships include:





# WORLDWIDE RESEARCH COLLABORATIONS



Deutsches Institut für  
Erwachsenenbildung  
Leibniz-Zentrum für  
Lebenslanges Lernen



DIPF  
Leibniz Institute for Research and  
Information in Education



fli  
Leibniz-Institut  
für Altersforschung -  
Fritz-Lipmann-Institut e.V.



GESIS Leibniz-Institut  
für Sozialwissenschaften



LEIBNIZ-INSTITUT  
FÜR ARBEITSFORSCHUNG  
AN DER TU DORTMUND



ifo



ifw  
KIEL INSTITUT FÜR  
WELTWIRTSCHAFT



IPN  
Leibniz-Institut für die Pädagogik der  
Naturwissenschaften und Mathematik



Leibniz-Institut für  
Wirtschaftsforschung Halle



LEIBNIZ-INSTITUT FÜR  
BILDUNGSVERLÄUFE



Leibniz-Institut  
für Virologie



Leibniz lab  
Pandemic Preparedness



LSB



Leibniz-Institut  
für ökologische  
Raumentwicklung



Leibniz-Institut für  
Resilienzforschung



Leibniz Institute for  
Economic Research



Leibniz ScienceCampus  
SoEP RegioHub  
at Bielefeld University



Wissenschaftszentrum Berlin  
für Sozialforschung



Leibniz-Informationsszentrum  
Wirtschaft  
Leibniz Information Centre  
for Economics



Zentrum für Europäische  
Wirtschaftsforschung



Bundesamt  
für Migration  
und Flüchtlinge



Deutsche  
Rentenversicherung



FRIEDRICH-ALEXANDER  
UNIVERSITÄT  
ERLANGEN-NÜRNBERG



FREIE  
UNIVERSITÄT  
BERLIN



HUMBOLDT-UNIVERSITÄT  
ZU BERLIN



LMU  
LUDWIG-MAXIMILIANS-  
UNIVERSITÄT  
MÜNCHEN



nfdi



DI STATIS  
Statistisches Bundesamt

COLLABORATIONS WITH LEIBNIZ INSTITUTIONS

The SOEP has a large number of longstanding and formal, often contractually secured collaborations with Leibniz institutions, universities, and non-university research institutions. Through these national and international collaborations, SOEP is able to form an excellent research network that pools expertise and fosters interdisciplinary synergies.



# COMPLETED DISSERTATIONS



## Ellen Heidinger

**"The social support system of refugees:  
Barriers and bridges to support"**

Humboldt-Universität zu Berlin, November 22, 2024

Supervisors: Sabine Zinn, Zerrin Salikutluk

Structured PhD program: International Max Planck Research School  
LIFE



## David Kasprowski

**"'Queering' Social Class. On the connection between  
sexual orientation, gender identity and social class"**

Humboldt-Universität zu Berlin, April 10, 2024

Supervisors: Anette Eva Fasang, Mirjam Fischer

Structured PhD program: BGSS



## Johannes Seebauer

**"Shocks and the Labor Market: Five Empirical Essays  
in Economics"**

Freie Universität Berlin, November 19, 2024

Supervisors: Carsten Schröder, Alexander S. Kritikos

Structured PhD program: DIW Graduate Center

Part 4

# SOEP DATA AND SERVICES

# 4

# THE PORTFOLIO OF SOEP STUDIES

## SOEP-CORE

The term **SOEP-Core** refers to the main Socio-Economic Panel, a wide-ranging representative longitudinal study of private households in Germany launched in 1984 as part of a collaborative research center of the German Research Foundation. Since the SOEP began, it has repeatedly added new subsamples, such as those with a special focus on migrants, refugees, families, and the wealthy. SOEP now surveys around 20,000 households and 30,000 individuals every year. Some of the many topics of SOEP-Core include household composition, education, occupational biographies, employment, earnings, health, and life satisfaction.

## SOEP INNOVATION SAMPLE (SOEP-IS)

The longitudinal **SOEP Innovation Sample (SOEP-IS)** was launched in 2011 for the study of innovative research questions as well as innovative survey methods. SOEP-IS publishes a call every year inviting researchers worldwide to propose their own questions or modules for inclusion in SOEP-IS. Examples include economic behavioral experiments, implicit association tests (IAT), and complex procedures for measuring time use (day reconstruction method, DRM).





## SOEP-CROSS COUNTRIES (SOEP-XC)

The SOEP team also links and harmonizes SOEP data with data from other countries. This enables the use of the SOEP data in **cross-national comparative analysis**:

First, the **Cross-National Equivalent File (CNEF)** provides harmonized information on education, employment, income, health, and life satisfaction from nine different international household panel studies. In addition to the German SOEP data, these include data from the United States, the United Kingdom, Canada, Russia, South Korea, Switzerland, Japan, and Australia.

Second, the **Luxembourg Income Study (LIS)** is a database of harmonized microdata from over 50 countries including income, employment, and demographic data.

Third, the **Luxembourg Wealth Study (LWS)** database contains comparable wealth data for 19 countries.

## SOEP-RELATED STUDIES (SOEP-RS)

**SOEP-Related Studies (SOEP-RS)** are designed and implemented in close cooperation with the SOEP team and structured similarly to the SOEP. They typically incorporate questions from the SOEP questionnaire to validate their results. Some examples of SOEP-RS include BASE-II (Berlin Aging Study II), FiD (Families in Germany), SOEP-ECEC Quality (Early Childhood Education and Care Quality in the SOEP), SOEP-LEE 1&2 (SOEP Linked Employer-Employee Survey), BIP (Bonn Intervention Panel), BRISE (Bremen Initiative to Foster Early Childhood Development), ZHP-FGZ (Cohesion Panel of the Research Institute for Social Cohesion), and IAB-BiB/FReDA-BAMF-SOEP Survey of Refugees from Ukraine.

# SURVEY MODES

Jennifer Weitz, Michael Ruland, Thomas Weiß

All surveys are carried out by infas Institute for Applied Social Science GmbH. The SOEP uses a mixed-mode approach to offer respondents a survey mode that suits them best, with the aim of maximizing their willingness to participate. The following survey modes are used; however, most households are initially contacted in CAPI mode due to the design.

In 2024, all subsamples include the following instruments, which are offered in the modes shown according to their design: household questionnaire, individual questionnaire and biography questionnaire. Depending on the sub-sample, the following instruments are also available: child and/or youth questionnaire, deceased persons, competence test “Lust auf DJ”, and the so-called “screening questionnaire” (designed to differentiate between non-migrant, migrant, and refugee background).



Computer-Assisted  
Personal Interview



Computer-Assisted  
Self-Administered  
Interview



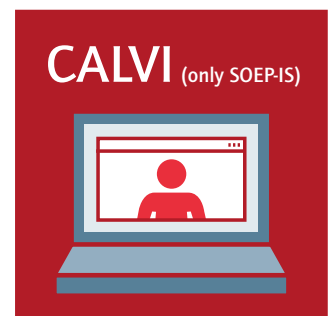
Computer-Assisted  
Web Interview



Computer-Assisted  
Telephone Interview



Paper-and-Pencil  
Interview



Computer-Assisted  
Live Video Interview

# SOEP-CORE SAMPLES (A-S)

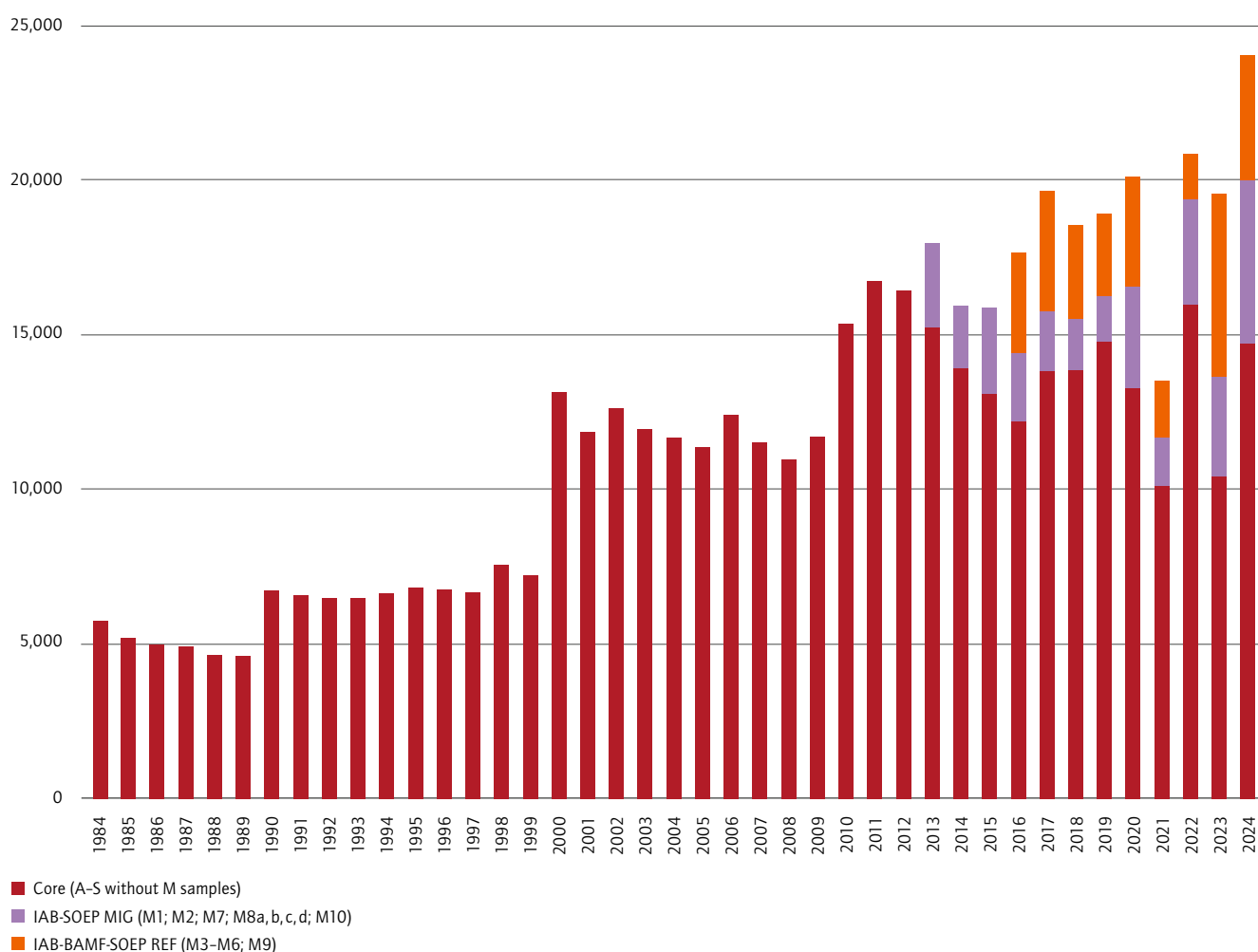
Katharina Sandbrink, Lennard Liebich, Paula Lingg

SOEP's main sample was surveyed between the end of February and December 2024. The Core survey includes samples A–R and, as of 2024, the refreshment Sample S (see below). On the household level, a response rate of 60.7 percent was

achieved for A–R, with 10,337 interviews. Additionally, 13,745 individuals were interviewed, the response rate equaling 42.4 percent. For more detailed information, please consult figure 1.

Figure 1

## Sample Sizes (households aggregated)





## New refresher sample S

Sample S is a residents' registration office sample drawn from the general population aged 18 and over. This sample was surveyed for the first time in 2024 and included in SOEP-Core. During the field phase between the beginning of March and end of December 2024, the mixed mode design of Core was used, excluding PAPI. The survey of the S sample recruited a total of 5,786 households for the panel.

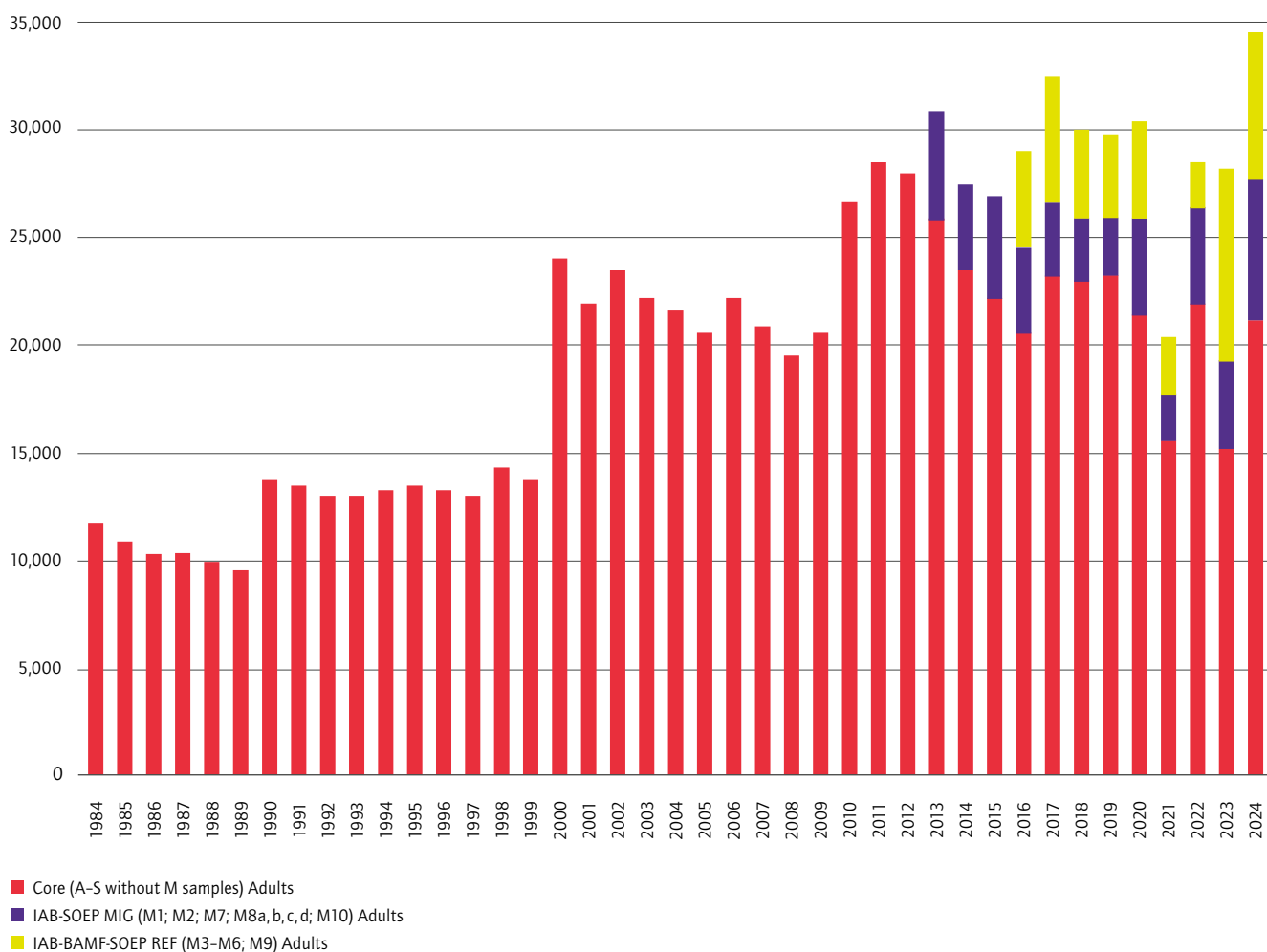
## Topics and newly introduced instruments

A central focus in 2024 was the topic of wealth. Within this module, individuals were asked to provide information on their wealth portfolio and the shares held therein. In addition, a test of cognitive competence was conducted on all adults.

All salaried employees received an additional short questionnaire on the topic of working hours. It was included on behalf of the office of the Minimum Wage Commission, with the goal of gaining a better understanding of compliance with the minimum wage in Germany. This year, the focus at household level was on collecting information on the living environment.

Figure 2

### Sample Sizes (adults aggregated)



# THE IAB-SOEP MIGRATION AND IAB-BAMF-SOEP REFUGEE SAMPLES

Chaima Ballamkadem, Michael Ruland, Theresa Büchner

Samples of the migrant population are marked by an “M”. In 2024, the subsamples M1, M2, M7, and M8a–c were surveyed. Additionally, IAB and SOEP introduced refresher samples M8d and M10 (see details below).

## IAB-SOEP Migration samples M1, M2, M7, M8a–c

These samples were surveyed between February and December 2024. With 2,818 interviews, this wave yielded a response rate of 50.6 percent on the household level. On the individual level, the response rate mounted to 33.8 percent, which led to 3,442 interviews.

## IAB-SOEP Refreshment samples M8d and M10

M8d is a refresher sample drawn to help evaluate the Skilled Immigration Act (Fachkräfteinwanderungsgesetz) which came into effect March 1, 2020. The IAB provided information to draw a random sample of this population. 6.9 percent of households took part (515 interviews). Sample M10 adds to the existing samples of adults with a non-German EU citizenship. Surveying reached a response rate of 7.5 percent (2,505 households interviewed).

## The IAB-BAMF-SOEP Refugee Samples & SUARE-Samples (M3–6, M9)

The field phase for the refugee and SUARE samples ran from beginning of May until mid-November 2024. Surveying included CAPI, CASI, and CAWI modes. For the first time, CAPI households were also given the opportunity to take part in the survey completely online following the CAPI contact. The survey was conducted in German, English, Arabic, Farsi, Turkish, Russian, and Ukrainian.

On the household level, an overall response rate of 58.5 percent was achieved (4,371 interviews). Response rates were highest in sample M9, in particular among Ukrainian refugees (79.4 percent).

# THE SOEP INNOVATION SAMPLE (SOEP-IS)

Jonas Kemmerling, Maximilian Ponert, Thomas Weiß

The 2024 SOEP-IS field phase was carried out between the end of October 2024 and May 2025. Since surveying extended into 2025, final data were not yet available at the time of printing of this report.

The survey generally follows a mixed-mode design. In the 2024–2025 survey wave the modes were CAPI, CAWI and CALVI. In 2024, after a pre-test, the CALVI mode was integrated into the SOEP-IS survey for the first time. Among existing respondents of the last survey wave, 50 percent were assigned to the CALVI mode. In the 2023 refreshment sample, while the remaining cases were offered CAWI. 25 percent started with CALVI. The rest had been offered the mode used in the last survey wave, which was CAPI and CAWI. In total, 1,800 households, as well as all individuals in the household, were asked to be interviewed using the CALVI mode. Besides this, around 1,200 households started in CAPI and around 1,600 households in CAWI.

## Introducing the CALVI mode

Facing declining response rates, increasing survey costs, and diverging respondent preferences, the SOEP must regularly innovate its survey methodology in order to remain relevant, accessible, and appealing to respondents. Given the growing prevalence of videoconferencing in many people's

lives, CALVI can act as a new alternative survey mode. It offers a potentially less expensive and more flexible option to Computer-Assisted Personal Interviewing (CAPI) while still providing the interviewer support, which is not available in Computer-Assisted Web Interviewing (CAWI).

The CALVI project is funded by the German Research Foundation under its Infrastructure Priority Program (InfSPP) and initially runs from June 2024 to May 2027. Based on the results from the 2024–25 wave, in the 2025–2026 wave, SOEP-IS households will be experimentally assigned to CAPI, CALVI, or CAWI conditions.

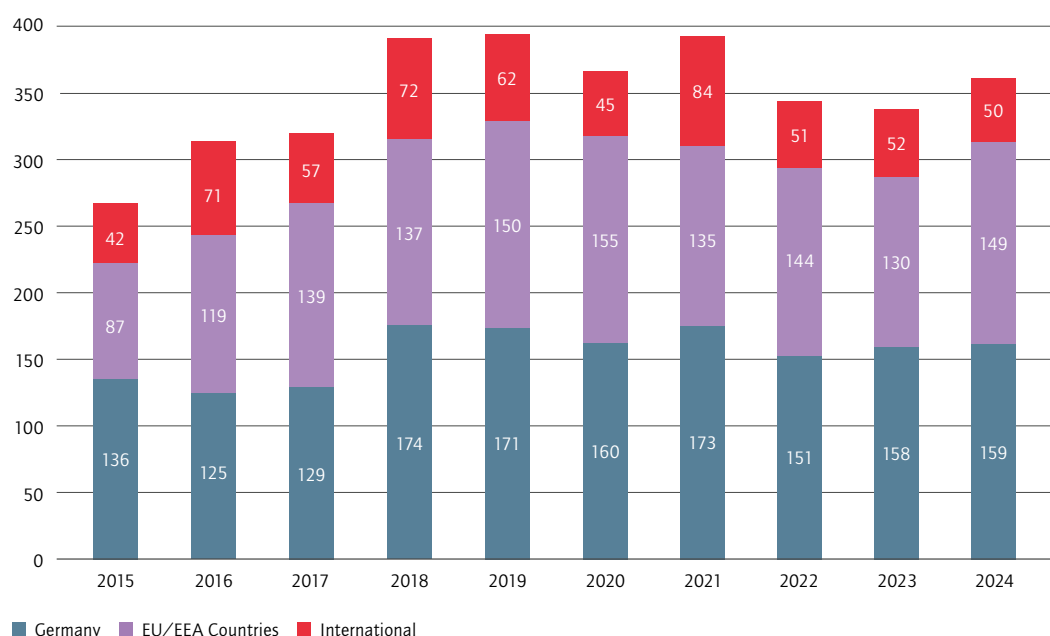
## Innovative modules

In the survey year 2024, SOEP-IS introduced 10 innovative modules, covering various topics such as work life, family, migration, or climate change. Effects of Major Work, for example, investigates long-term changes in keeping boundaries between work and non-work life in response to major life events. In the childfree module, respondents are asked whether they have children or would like to have children – with the goal of gathering information on childfree, reproductive status and its potential concealment.

# NEW DATA USERS 2024

Figure 3

Number of New Data Distribution Contracts 2015–2024



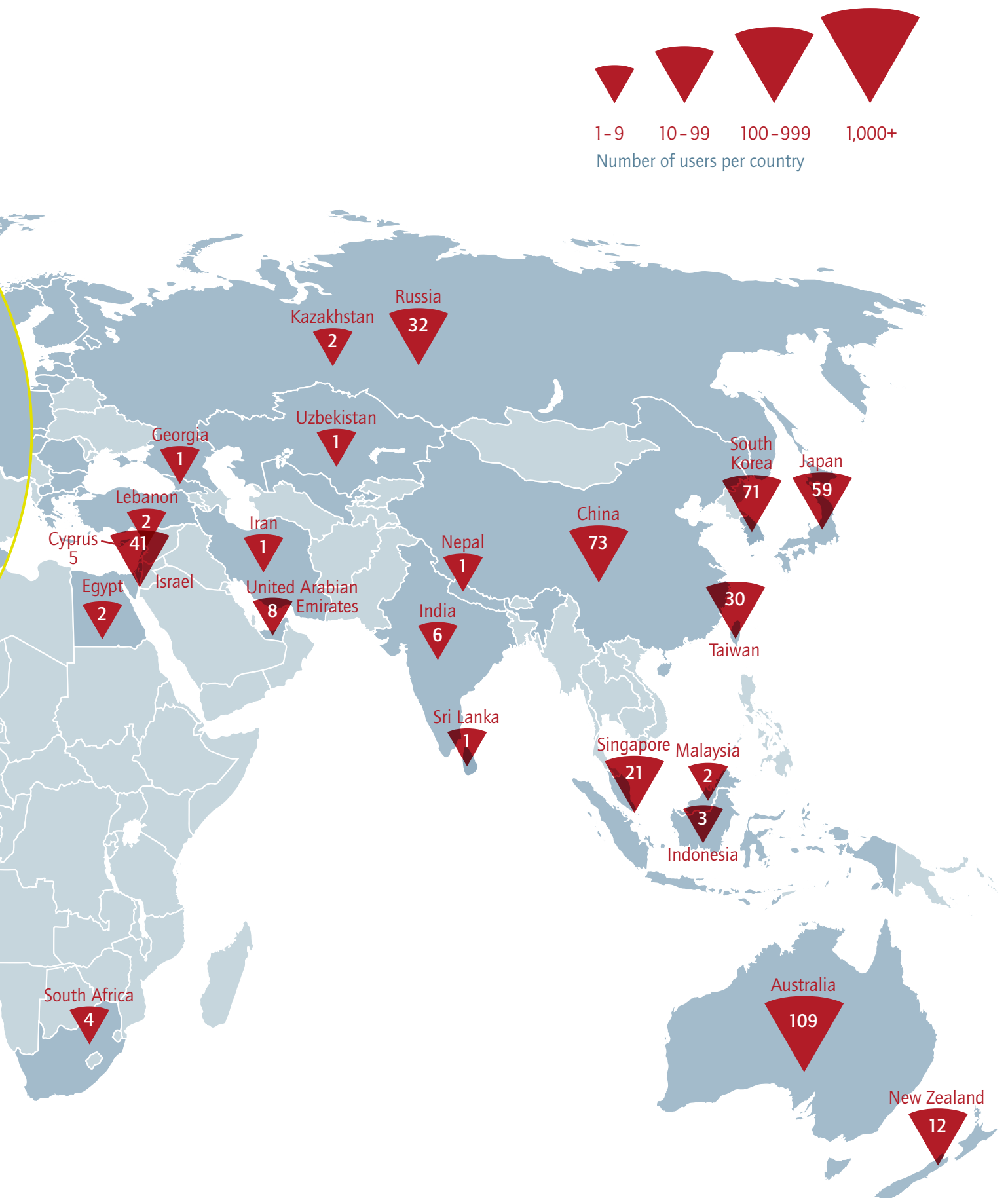
The RDC SOEP, which is accredited by the German Data Forum ([RatSWD](#)), provides the international research community with access to anonymous microdata. **Figure 3** presents an overview of the number of data distribution contracts signed each year since 2015. A single data contract usually covers a number of researchers, if not an entire research team.

In 2024, a total of 358 data distribution contracts were signed, and more than 1,289 individual researchers received access to the SOEP data.

# SOEP USERS AROUND THE WORLD IN 2024

Total number of users: 17,173





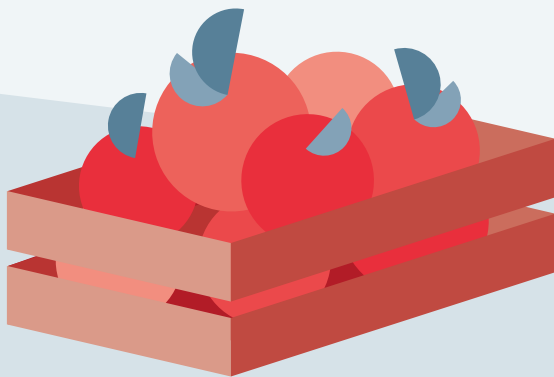
# THE SOEP SERVICE PORTFOLIO

## Services per Target Group

SOEP follows the Leibniz Transfer Policy. Research findings are communicated to different target groups inside and outside of academia. Mutual exchange is ensured via documentation and information as well as the dialogue with external stakeholders (e.g., feedback by data users).

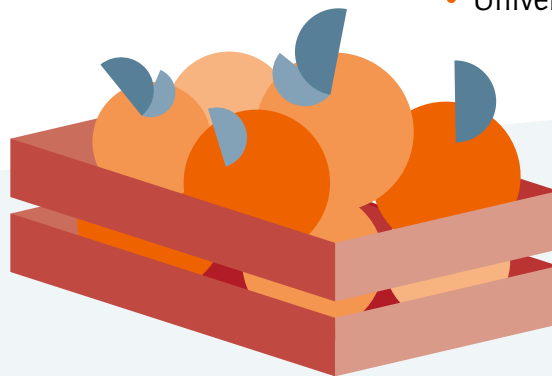
### SURVEY RESPONDENTS

- Website [www.leben-in-deutschland.de](http://www.leben-in-deutschland.de)
- Flyer for each survey wave
- Social Report
- Interviewer trainings by infas
- SOEP Annual Report



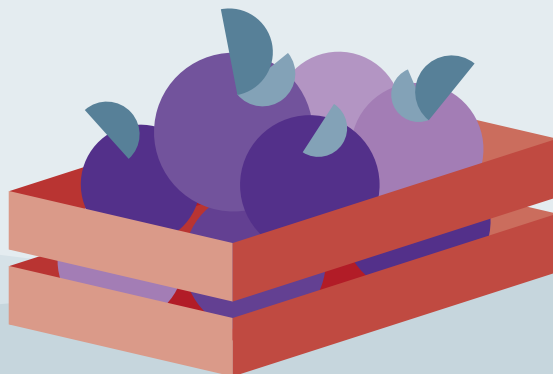
## GENERAL PUBLIC

- DIW Weekly Report
- DIW Focus
- DIW Roundup
- Policy Advice Compact
- SOEP Annual Report
- Social Media channels of DIW Berlin
- Social Report
- Quarterly Journal of Economic Research
- Long Night of the Sciences
- SOEPstats
- Dialogue format „Leibniz im Bundestag“
- External expert groups/committees
- University teaching, talks



## (POTENTIAL) DATA USERS

- SOEP homepage
- SOEP Companion
- SOEP-IS Companion
- paneldata.org platform
- SOEP Survey Papers
- SOEPpapers
- SOEP Community Management
- SOEPlit database
- SOEPnewsletter
- International SOEP User Conference
- ad hoc workshops
- SOEP-in-Residence guest program
- SOEPcampus
- SOEPhelp
- SOEP Brown Bag Seminar
- Soep tutorials/Youtube
- Cluster Seminar Public Finances and Living Conditions





# RESULTS OF THE 2024 SOEP USER SURVEY

## High satisfaction rates

The annual User Survey is an important tool for the SOEP, since our goal is to continuously improve our service quality. We use the survey to collect information on user demand and to gain feedback and suggestions for improvement.

In 2024, the overall satisfaction remains at a high level: users rate their satisfaction at 7.7 out of 10 points – almost unchanged compared to the year before. As in recent years, high satisfaction rates were measured for certain quality features, such as sample size (7.9/10), reliability (8.9/10), and comparability (8.1/10). The user survey further revealed that two thirds of our users consider SOEP to be their primary data source for their research.

## Support services in high demand

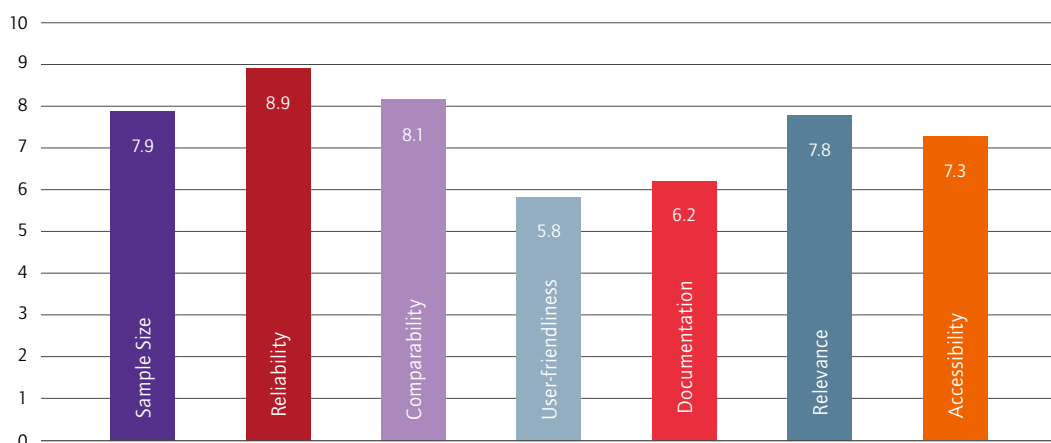
Another positive trend is the increased use of our various support formats, such as the websites [paneldata.org](https://paneldata.org), which was used by 84 percent of our users in 2024, and [SOEPcompanion](#) (73 percent). 80 percent of those who used these websites would recommend them to others. Alongside [SOEPhelp](#) and [SOEPtutorials](#), these tools facilitate the use of SOEP data for research, especially for data users without prior experience with the SOEP. We therefore encourage all data users to employ these valuable tools.

For detailed statistics and more information, visit the User Survey [website](#). We sincerely thank all participants for their valuable feedback, which is essential in ensuring and enhancing the SOEP's role as a key data resource on social change in Germany.

Figure 4

### Satisfaction with Aspects of SOEP Data Quality (Mean)

n=469, rating scale from 0 (completely dissatisfied) to 10 (completely satisfied)



The background is an abstract composition of several triangles in two shades of red and one shade of yellow. A large yellow triangle points towards the top right corner. Other red triangles of various sizes fill the remaining space, creating a dynamic, geometric pattern.

# **APPENDIX**

# SOEP STAFF AT DIW BERLIN



**N.N.**  
SOEP Director

**Prof. Dr. Sabine Zinn**  
Acting Director



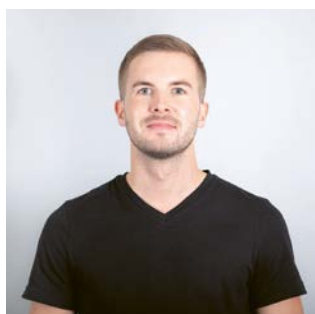
**Patricia Axt**  
Team Assistant



**Daniela Centemero**  
Research Manager



**Simon Kleineweber**  
Research Manager



**Maximilian Müller**  
Team Assistant

## SURVEY METHODOLOGY AND MANAGEMENT



**Prof. Dr. Sabine Zinn**  
Head of Division Survey  
Methodology and Management



**Dr. Julian B. Axenfeld**  
Research Associate



**Dr. Louise Biddle**  
Research Associate



**Dr. Adriana Cardozo Silva**  
Research Associate



**Dr. Carina Cornesse**  
Research Associate



**Miriam Gauer**  
Doctoral Candidate, BAGGS



**Martin Gerike**  
Survey Data Scientist



**Florian Griesse**  
Survey Manager



**Dr. Angelina Hammon**  
Research Associate



**Valeriia Heidemann**  
Doctoral Candidate, BGSS



**Dr. Ellen Heidinger**  
Doctoral Candidate, BGSS



**Felix von Heusinger**  
Doctoral Candidate



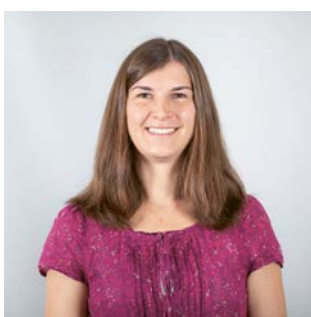
**Char Hilgers**  
Doctoral Candidate, BGSS



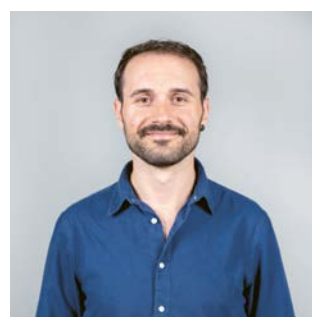
**Dr. David Kasprowski**  
Research Associate



**Prof. Dr. Cornelia Kristen**  
Research Associate, Expert in  
Migration and Integration



**Dr. Elisabeth Liebau**  
Survey Manager



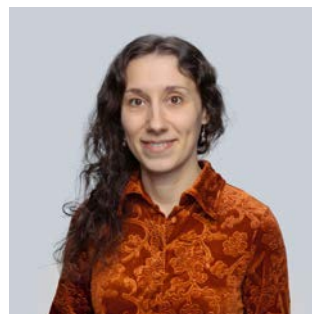
**Andrea Marchitto**  
Research Associate



**Dr. Mariel McKone Leonard**  
Interim Head of SOEP Innovation  
Sample



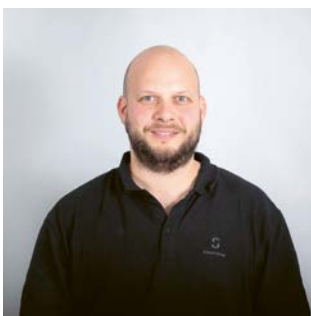
**Anna-Tabea Müller**  
Specialist in Market and Social  
Research



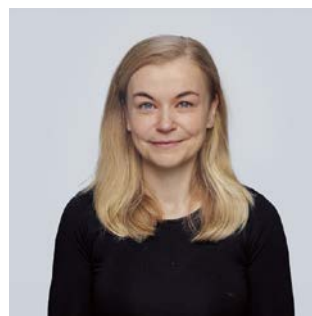
**Dr. Rebecca Scheffauer**  
Research Associate



**Johannes Schütt**  
Survey Data Scientist



**Rainer Siegers**  
Survey Data Scientist, Expert  
in Sampling/Weighting



**Dr. Elena Sommer**  
Survey Manager



**Dr. Hans Walter Steinhauer**  
Research Associate, Expert in  
Sampling/Weighting/Imputation



**Felix Süttmann**  
Doctoral Candidate, BGSS



**Alina Zainullina**  
Specialist in Market and  
Social Research



**Julia Witton**  
Doctoral Candidate, BGSS



**Dr. Jan Goebel**  
Head of Division Data Operation  
and Research Data Center



**Philippa Cumming**  
Research Associate



**Dr. Jascha Dräger**  
Research Associate



**Andreas Franken**  
Doctoral Candidate @ Leibniz  
Science Campus SOEP RegioHub



**Xiaoyao Han**  
Research Associate





**Dominique Hansen**  
Survey Data Scientist, Metadata  
and Data Documentation



**Tom Hartl**  
Research Associate



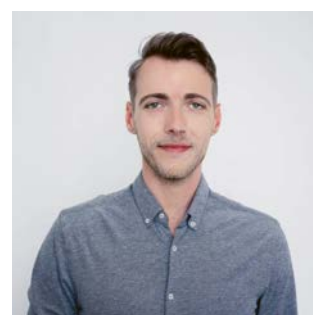
**Alexander Jung**  
Research Associate



**Philipp Kaminsky**  
Community Manager



**Antonia Meier**  
Community Manager



**Neil Murray**  
Doctoral Candidate



**Jana Nebelin**  
Survey Data Scientist,  
Data Generation and Testing



**Kenny Pedrique**  
Research Associate



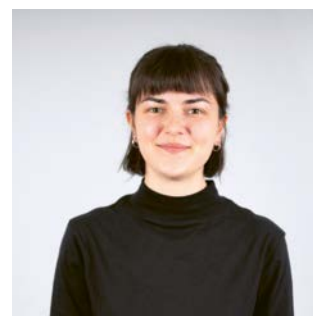
**Marvin Petrenz**  
Survey Data Scientist,  
Data Generation and Testing



**Denise Rolle**  
Trainee for Specialist for  
Market and Social Research



**Claudia Saalbach**  
Survey Data Scientist,  
Data Generation and Testing



**Sarah Satilmis**  
Survey Data Scientist, Data  
Generation and Management



**Ingo Sieber**  
Survey Data Scientist, Metadata  
and Data Documentation



**Knut Wenzig**  
Survey Data Scientist,  
(Meta)Data Management



**Mario Wolf**  
Doctoral Candidate



**Prof. Dr. Carsten Schröder**  
Head of Division Applied Panel  
Analysis



**Dr. Charlotte Bartels**  
Research Associate



**Dr. Mattis Beckmannshagen**  
Research Associate



**Dr. Laura Buchinger**  
Research Associate



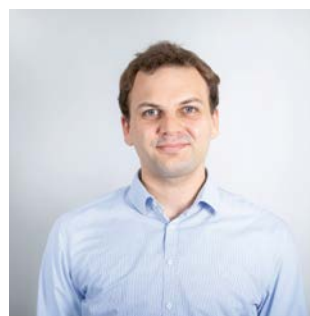
**Dr. Theresa Entringer**  
Research Associate



**Rayisa Gitina**  
Data Scientist



**Dr. Daniel Graeber**  
Research Associate



**Dr. Christoph Halbmeier**  
Research Associate





**Viola Hilbert**  
Doctoral Candidate BSE/DIW GC



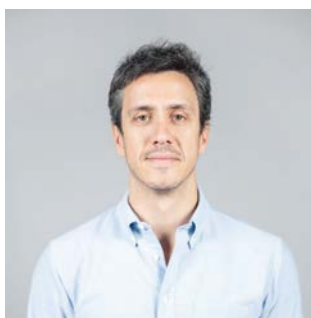
**Blanka Imre, Ph.D.**  
Research Associate



**Dr. Johannes König**  
Research Associate



**Daniel Labarca Pinto**  
Research Associate



**Gedeão Locks, Ph.D.**  
Research Associate



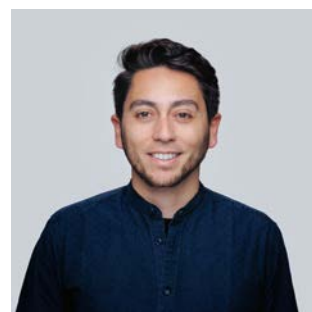
**Lotte Maaßen**  
Doctoral Candidate DIW GC



**Dr. Emilija Meier-Faust**  
Research Associate



**Lorenz Meister**  
Doctoral Candidate DIW GC



**Cristóbal Moya**  
Research Associate



**Dr. Levent Neyse**  
Research Associate



**Rebecca Olthaus**  
Doctoral Candidate DIW GC



**Isabella Retter**  
Research Associate



**Thomas Rieger**  
Doctoral Candidate DIW GC



**Dr. Johannes Seebauer**  
Research Associate



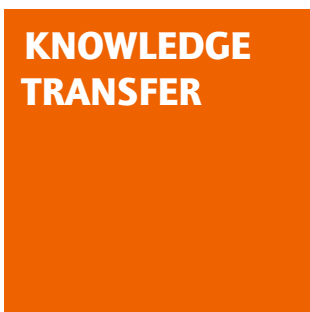
**Barbara Stacherl**  
Doctoral Candidate @ Leibniz  
Science Campus SOEP RegioHub



**Yogam Tchokni**  
Doctoral Candidate DIW GC



**Francesca Verga**  
Doctoral Candidate DIW GC



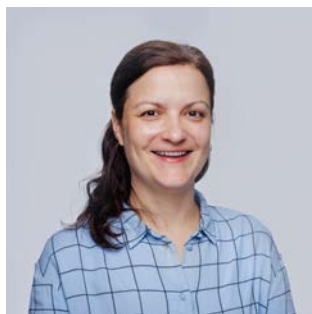
**N.N.**  
Head of Division Knowledge  
Transfer



**Dr. Sandra Bohmann**  
Research Associate



**Deborah Anne Bowen**  
Academic Translator and Editor



**Janina Britzke**  
Event Manager and Information  
Specialist



**Isabel Gebhardt**  
Research Associate



**Elisa Grabas**  
Webmaster and Information  
Specialist



**Dr. Markus M. Grabka**  
Research Associate



**Selin Kara**  
Webmaster and Information  
Specialist



**Verena Neumann**  
Communications Officer



**Prof. Dr. Philipp M. Lersch**  
Research Group Leader

## DIW RESEARCH FELLOWS

---

### AT SOEP

---

Prof. Conchita D'Ambrosio, Ph.D., *University of Luxembourg*  
 Dr. Annette Brose, *Humboldt-Universität zu Berlin*  
 Prof. Dr. John P. de New, *University of Melbourne*  
 Prof. Dr. Marcel Erlinghagen, *University of Duisburg-Essen*  
 Prof. Nicola Fuchs-Schündeln, Ph.D., *Goethe University Frankfurt and President of WZB*  
 Prof. Dr. Jürgen Gerhards, *Freie Universität Berlin*  
 Prof. Dr. Denis Gerstorf, *Humboldt-Universität zu Berlin*  
 Prof. Dr. Johannes Giesecke, *Humboldt-Universität zu Berlin*  
 Dr. Marco Giesselmann, *University of Zurich*  
 Prof. Dr. Karsten Hank, *University of Cologne*  
 Prof. Jennifer Hunt, Ph.D., *Rutgers University*  
 Prof. Guillermina Jasso, Ph.D., *New York University*  
 Prof. Dr. Monika Jungbauer-Gans, *Leibniz University Hanover and DZHW*  
 Prof. Dr. Michaela Kreyenfeld, *Hertie School*  
 Prof. Dr. Simone Kühn, *University Clinic Hamburg-Eppendorf*  
 Prof. Richard E. Lucas, Ph.D., *Michigan State University*  
 Prof. Dr. Maike Luhmann, *Ruhr-Universität Bochum*  
 Prof. Dr. Wenzel Matiaske, *Helmut-Schmidt-University Hamburg*  
 Prof. Fabian T. Pfeffer, Ph.D., *Ludwig-Maximilians-Universität München*  
 Prof. Dr. Katrin Rehdanz, *University of Hamburg*  
 Prof. Regina T. Riphahn, Ph.D., *Friedrich-Alexander-Universität Erlangen-Nürnberg*  
 Prof. Dr. Christian von Scheve, *Freie Universität Berlin*  
 Prof. Dr. Jörg-Peter Schräpler, *Ruhr-Universität Bochum*  
 Prof. Dr. Jürgen Schupp, *SOEP/DIW Berlin and Freie Universität Berlin*  
 Eva Sierminska, Ph.D., *Luxembourg Institute of Socio-Economic Research: LISER*  
 Dr. Arne Uhlenдорff, *Center for Research in Economics and Statistics: CREST*  
 Prof. Mark Wooden, *University of Melbourne*

# SCIENTIFIC OUTPUT

## SOEP-BASED WEB OF SCIENCE™ PUBLICATIONS: SOEP STAFF AND USER COMMUNITY

### Overview of SOEP-Based Web of Science™ Core Collection Publications over the Last Decade

Figure 6

SOEP-Based Web of Science™ Core Collection Publications 2014-2024

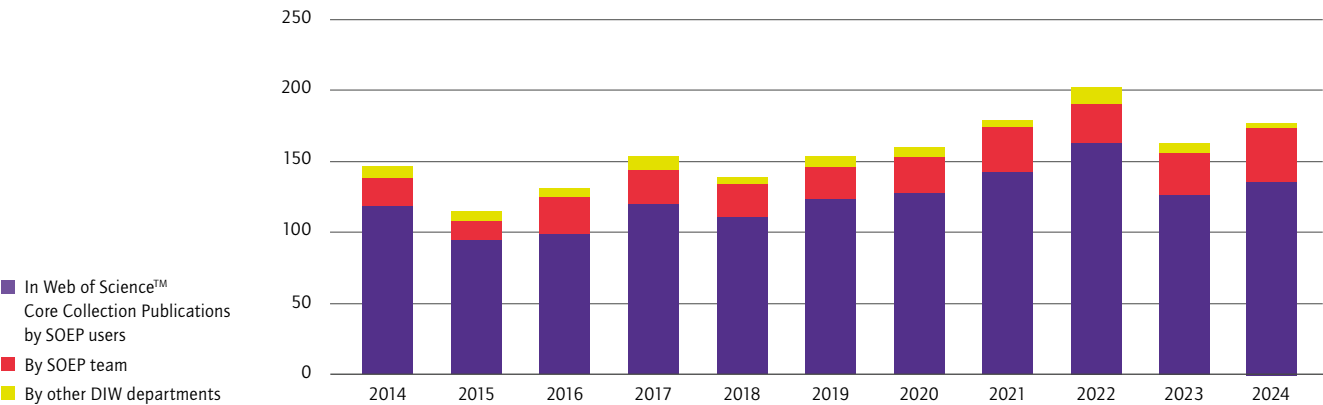
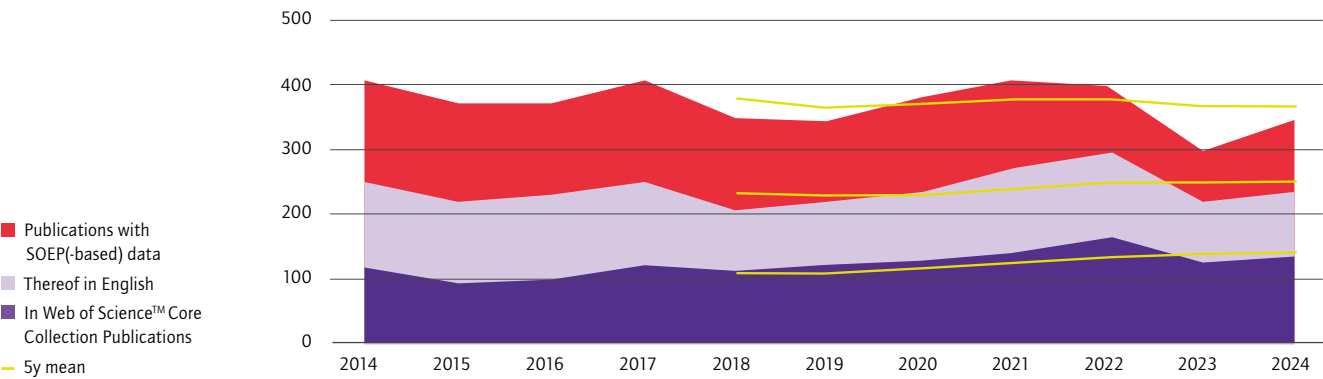


Figure 7

SOEP-Based Publications by the SOEP User Community 2014-2024



## SOEP Staff: List of Web of Science™ Core Collection Publications

In addition,  
please find the  
top publications  
of 2024 on  
page 26–27.

### A

**Adriaans, Jule, Carsten Sauer, and Katharina Wrohlich.** 2024. The gender gap in fair earnings increases with age due to higher age premium for men. *The British Journal of Sociology* (online first). (<http://doi.org/10.1111/1468-4446.13149>)

**Albers, Thilo, Charlotte Bartels, and Felix Schaff.** 2024. Measuring Historical Inequality in Germany. *German Economic Review* 25 (4), 275–299. (<http://doi.org/10.1515/ger-2024-0060>)

**Axenfeld, Julian B., Christian Bruch, Christof Wolf, and Annelies G. Blom.** 2024. The Performance of Multiple Imputation in Social Surveys with Missing Data from Planned Missingness and Item Nonresponse. *Survey Research Methods* 18 (2), 137–151. (<http://doi.org/10.18148/srm/2024.v18i2.8158>)

### B

**Bach, Ruben L., Carina Cornesse, and Jessica Daikeler.** 2024. Equipping the Offline Population with Internet Access in an Online Panel: Does It Make a Difference? *Journal of Survey Statistics and Methodology* 12 (1), 80–93. (<http://doi.org/10.1093/jssam/smad003>)

**Bartels, Charlotte, Simon Jäger, and Natalie Obergruber.** 2024. Long-Term Effects of Equal Sharing: Evidence from Inheritance Rules for Land. *The Economic Journal* 134 (664), 3137–3172. (<http://doi.org/10.1093/ej/ueae040>)

**Bartels, Charlotte, Eva Sierminska, and Carsten Schröder.** 2024. Wealth Creators or Inheritors? Unpacking the Gender Wealth Gap from Bottom to Top and Young to Old. *Economics Letters* (online first). (<http://doi.org/10.1016/j.econlet.2024.111997>)

**Baumann, Nicole, Falk Voit, Dieter Wolke, Hayley Trower, Daniel D. Schnitzlein, et al.** 2024. Preschool Mathematics and Literacy Skills and Educational Attainment in Adolescents Born Preterm and Full Term. *The Journal of Pediatrics* 264. (<http://doi.org/10.1016/j.jpeds.2023.113731>)

**Beckmannshagen, Mattis and Rick Glaubitz.** 2024. Is there a desired added worker effect? Evidence from involuntary job losses. *Review of Economics of the Household* (online first). (<http://doi.org/10.1007/s11150-024-09742-5>)

**Beese, Florian, Benjamin Wachtler, Markus M. Grabka, Miriam Blume, Christina Kersjes, et al.** 2024. Socioeconomic inequalities in pandemic-induced psychosocial stress in different life domains among the working-age population. *BMC Public Health* 24 (1), 1421. (<http://doi.org/10.1186/s12889-024-18874-3>)

**Berazneva, Julia, Daniel Graeber, Michelle McCauley, Sabine Zinn, and Peter Hans Matthews.** 2024. Moral bandwidth and environmental concerns during a public health crisis: Evidence from Germany. *Journal of Economic Behavior & Organization* 228. (<http://doi.org/10.1016/j.jebo.2024.106753>)

**Biddle, Louise and Kayvan Bozorgmehr.** 2024. Effect of area-level socioeconomic deprivation on mental and physical health: A longitudinal natural experiment among refugees in Germany. *SSM – Population Health* 25 (2024). (<http://doi.org/10.1016/j.ssmph.2023.101596>)

**Bilgin, Ayten, Dieter Wolke, Hayley Trower, Nicole Baumann, Daniel Schnitzlein, et al.** 2024. Emotional problems and peer victimization in adolescents born very preterm and full-term: Role of self-control skills in childhood. *Development and Psychopathology* 36 (1), 302–311. (<http://doi.org/10.1017/S0954579422001201>)

**Bilgin, Ayten, Dieter Wolke, Hayley Trower, Nicole Baumann, Daniel Schnitzlein, et al.** 2024. Problems in peer relationships and low engagement in romantic relationships in preterm born adolescents: effects of maternal warmth in early childhood. *European Child & Adolescent Psychiatry* 33 (10), 3495–3502. (<http://doi.org/10.1007/s00787-024-02399-6>)



**Bleidorn, Wiebke, Madeline R. Lenhausen, David Richter, and Christopher J. Hopwood.** 2024. Personality and Cultural Income Differences Shape the Life Satisfaction Gap Between Aging Immigrants and Natives in Europe. *Social Psychological and Personality Science* (online first). (<http://doi.org/10.1177/19485506241237293>)

**Buchinger, Laura, Iris V. Währing, Nilam Ram, Christiane A. Hoppmann, Jutta Heckhausen, et al.** 2024. Kids or no kids? Life goals in one's 20s predict midlife trajectories of well-being. *Psychology and Aging* 39 (8), 897–914. (<http://doi.org/10.1037/pag0000862>)

## D

**Dräger, Jascha, Markus Klein, and Edward Sosu.** 2024. The long-term consequences of early school absences for educational attainment and labour market outcomes. *British Educational Research Journal* 50 (4), 1636–1654. (<http://doi.org/10.1002/berj.3992>)

**Dräger, Jascha, Elizabeth Washbrook, Thorsten Schneider, Hideo Akabayashi, Renske Keizer, et al.** 2024. Cross-national Differences in Socioeconomic Achievement Inequality in Early Primary School: The Role of Parental Education and Income in Six Countries. *AERA Open* 10 (1), 1–18. (<http://doi.org/10.1177/23328584241299794>)

**Dräger, Jascha, Markus Klein, and Edward M. Sosu.** 2024. Trajectories of school absences across compulsory schooling and their impact on children's academic achievement: An analysis based on linked longitudinal survey and school administrative data. *PLOS ONE* 19 (8), e0306716. (<http://doi.org/10.1371/journal.pone.0306716>)

## E

**Eisnecker, Philipp Simon and Jule Adriaans.** 2024. How do my earnings compare? Pay referents and just earnings. *European Sociological Review* 40 (1), 129–142. (<http://doi.org/10.1093/esr/jcad002>)

**Entringer, Theresa M., Madeline R. Lenhausen, Christopher J. Hopwood, and Wiebke Bleidorn.** 2024. No Evidence for Transactional Effects Between Religiosity and Self-Esteem in a Secular Country. *Social Psychological and Personality Science* 15 (3), 360–369. (<http://doi.org/10.1177/19485506231169811>)

**Entringer, Theresa M. and Barbara Stacherl.** 2024. Einsamkeit in Deutschland – Prävalenz, Entwicklung über die Zeit und regionale Unterschiede. *Bundesgesundheitsblatt – Gesundheitsforschung – Gesundheitsschutz* 67, 1103–1112. (<http://doi.org/10.1007/s00103-024-03937-y>)

## F

**Fischbacher, Urs, Levent Neyse, David Richter, and Carsten Schröder.** 2024. Adding household surveys to the behavioral economics toolbox: insights from the SOEP Innovation Sample. *Journal of the Economic Science Association* 10, 136–151. (<http://doi.org/10.1007/s40881-023-00150-6>)

**Fossen, Frank M., Johannes König, and Carsten Schröder.** 2024. Risk Preference and Entrepreneurial Investment at the Top of the Wealth Distribution. *Empirical Economics* 66, 735–761. (<http://doi.org/10.1007/s00181-023-02475-x>)

**Fossen, Frank M., Levent Neyse, and Carsten Schröder.** 2024. Does Cognitive Reflection Relate to Preferences and Socio-Economic Outcomes? *Journal of Political Economy – Microeconomics* (online first). (<http://doi.org/10.1086/732653>)

**Frohnweiler, Sarah, Bernd Beber, and Cara Ebert.** 2024. Information frictions, belief updating and internal migration: Evidence from Ghana and Uganda. *Journal of Development Economics* 171, 103311. (<http://doi.org/10.1016/j.jdeveco.2024.103311>)

**Frohnweiler, Sarah, Esther Heesemann, Marcello Perez-Alvarez, Manuel Santos Silva, and Sebastian Vollmer.** 2024. Hospital construction and emergency waiting time: evidence from Nicaragua. *Journal of Development Effectiveness* (online first), 1–17. (<http://doi.org/10.1080/19439342.2024.2414029>)

## G

**Giesselmann, Marco, David Brady, and Tabea Naujoks.** 2024. The Increase in Refugees to Germany and Exclusionary Beliefs and Behaviors. *American Journal of Sociology* 130 (3), 725–763. (<http://doi.org/10.1086/731833>)

**Graeber, Daniel, Lorenz Meister, and Panu Poutvaara.** 2024. Restrictions to Civil Liberties in a Pandemic and Satisfaction with Democracy. *European Journal of Political Economy* 85 (December 2024). (<http://doi.org/10.1016/j.ejpolco.2024.102593>)

**Grätz, Michael and Øyvind N. Wiborg.** 2024. Parental ages and the intergenerational transmission of education: evidence from Germany, Norway, and the United States. *European Societies* 26 (5), 1444–1471. (<http://doi.org/10.1080/14616696.2024.2310011>)

## H

**Halbmeier, Christoph and Carsten Schröder.** 2024. The Long-Term Implications of Destruction During the Second World War on Private Wealth in Germany. *Journal of Economic Growth* (online first). (<http://doi.org/10.1007/s10887-024-09242-2>)

**Hammon, Angelina and Sabine Zinn.** 2024. Validating an Index of Selection Bias for Proportions in Non-Probability Samples. *International Statistical Review* (online first). (<http://doi.org/10.1111/insr.12590>)

**Heidinger, Ellen.** 2024. Bridging distance: Transnational and local family ties in refugees' social support networks. *Journal of Refugee Studies* 37 (3), 645–666. (<http://doi.org/10.1093/jrs/feae043>)

**Helland, Håvard, Øyvind Wiborg, and Karl Ingar Kittelsen Røberg.** 2024. Who chooses fast-track programs in mathematics? The role of class origin, ethnicity, and gender among Norwegian lower-secondary students. *European Societies* 26 (1), 91–116. (<http://doi.org/10.1080/14616696.2023.2197988>)

**Hommelhoff, Sabine, David Richter, and Susanne Scheibe.** 2024. Sexual jokes and conversations at the workplace and their relation to employee well-being: Results from a longitudinal study. *Journal of Occupational and Organizational Psychology* 97 (3), 767–775. (<http://doi.org/10.1111/joop.12492>)

**Huebener, Mathias, Astrid Pape, Natalia Danzer, C. Katharina Spiess, Nico A. Siegel, et al.** 2024. Cracking under Pressure? Gender Role Attitudes toward Maternal Employment during COVID-19. *Feminist Economics* 30 (3), 217–254. (<http://doi.org/10.1080/13545701.2024.2349295>)

## J

**Jäckle, Annette, Carina Cornesse, Alexander Wenz, and Mick P. Couper.** 2024. Measuring Expenditure with a Mobile App: Do Probability-Based and Nonprobability Panels Differ? *Journal of Survey Statistics and Methodology* 12 (5), 1224–1253. (<http://doi.org/10.1093/jssam/smae026>)

## K

**Krämer, Michael D., Yannick Roos, Ramona Schoedel, Cornelia Wrzus, and David Richter.** 2024. Social dynamics and affect: Investigating within-person associations in daily life using experience sampling and mobile sensing. *Emotion* 24 (3), 878–893. (<http://doi.org/10.1037/emo0001309>)

**Kraus, Markus, Barbara Stacherl, Thomas Czepionka, and Susanne Mayer.** 2024. Equal waiting times for all? Empirical evidence for elective surgeries in the Austrian public health-care system. *Public Health* 236, 216–223. (<http://doi.org/10.1016/j.puhe.2024.08.007>)

**Krause, Peter.** 2024. Peter Krause: A Pioneer in Household Panel Surveys and Quality of Life Applications. *Applied Research in Quality of Life* 19, 2147–2150. (<http://doi.org/10.1007/s11482-024-10320-1>)

## L

**Lam, Anastasia, Katherine Keenan, Geneviève Cézard, Hill Kulu, and Mikko Myrskylä.** 2024. Inequalities in Disability-Free and Disabling Multimorbid Life Expectancy in Costa Rica, Mexico, and the United States. *The Journals of Gerontology: Series B* 79, 8. (<http://doi.org/10.1093/geronb/gbae093>)

**Lam, Anastasia, Katherine Keenan, Mikko Myrskylä, and Hill Kulu.** 2024. Multimorbid life expectancy across race, socio-economic status, and sex in South Africa. *Population Studies* 16, 1–26. (<http://doi.org/10.1080/00324728.2024.2331447>)

**Laurence, James and Jan Goebel.** 2024. Immigration, segregation, and attitudes toward immigrants: a longitudinal multiscalar analysis across egohoods. *European Sociological Review* (online first), jcae045. (<http://doi.org/10.1093/esr/jcae045>)



**Lejarraga, Tomás, Daniel D. Schnitzlein, Sarah C. Dahmann, and Ralph Hertwig.** 2024. Birth-order effects on risk taking are limited to the family environment. *Annals of the New York Academy of Sciences* 1531 (1), 60–68. (<http://doi.org/10.1111/nyas.15085>)

**Liebig, Stefan.** 2024. Soziologische Aufklärung. *KZfSS Kölner Zeitschrift für Soziologie und Sozialpsychologie* 76 (2), 199–205. (<http://doi.org/10.1007/s11577-024-00963-1>)

**Locks, Gedeao.** 2024. Mortality inequality in Chile. *Fiscal Studies* (online first). (<http://doi.org/10.1111/1475-5890.12387>)

**Longmuir, Maximilian and Markus M. Grabka.** 2024. How Many Brackets Should We Ask for to Derive Adequate Metric Information for Income and Wealth? *Survey Research Methods* 18 (3), 251–261. (<http://doi.org/10.18148/srm/2024.v18i3.8187>)

**Lorenz, Georg, Irena Kogan, Sarah Gentrup, and Cornelia Kristen.** 2024. Non-native Accents among School Beginners and Teacher Expectations for Future Student Achievements. *Sociology of Education* 97 (1), 76–96. (<http://doi.org/10.1177/00380407231202978>)

**Lücke, Anna J., Oliver K. Schilling, Ute Kunzmann, Denis Gerstorff, Gert G. Wagner, et al.** 2024. Neuroticism, emotional stress reactivity and recovery in daily life: Examining extraversion and openness as moderators. *Journal of Research in Personality* 109. (<http://doi.org/10.1016/j.jrp.2024.104474>)

## M

**Matiaske, Wenzel, Torben D. Schmidt, Christoph Halbmeier, Martina Maas, Doris Holtmann, et al.** 2024. SOEP-LEE2: Linking Surveys on Employees to Employers in Germany. *Jahrbücher für Nationalökonomie und Statistik* 244 (5–6), 671–684. (<http://doi.org/10.1515/jbnst-2023-0031>)

**Moya, Cristóbal and Jule Adriaans.** 2024. Assessing the Measurement Quality of Justice Evaluations of Earnings in Europe. *Social Justice Research* 37 (4), 335–365. (<http://doi.org/10.1007/s11211-024-00441-1>)

**Moya, Cristóbal, Sebastian Sattler, Shannon Taflinger, and Carsten Sauer.** 2024. Examining double standards in layoff preferences and expectations for gender, age, and ethnicity when violating the social norm of vaccination. *Scientific Reports* 14 (1), 39. (<http://doi.org/10.1038/s41598-023-48829-4>)

## R

**Rast, Eilin, Maren Hintermeier, Kayvan Bozorgmehr, and Louise Biddle.** 2024. Housing and health: A multidimensional, qualitative analysis of the experiences of asylum seekers and refugees living in German reception centres. *SSM – Qualitative Research in Health* 5 (June 2024). (<http://doi.org/10.1016/j.ssmqr.2024.100407>)

**Reis, Marvin, Niels Michalski, Susanne Bartig, Elisa Wulkotte, Daniel Graeber, et al.** 2024. Reconsidering inequalities in COVID-19 vaccine uptake in Germany: a spatiotemporal analysis combining individual educational level and area-level socioeconomic deprivation. *Scientific Reports* 14 (1), 23904. (<http://doi.org/10.1038/s41598-024-75273-9>)

## S

**Schmidt, Katja, Jannes Jacobsen, and Theresa Iglaue.** 2024. Proximity to refugee accommodations does not affect locals' attitudes toward refugees: evidence from Germany. *European Sociological Review* 40 (4), 615–638. (<http://doi.org/10.1093/esr/jcad028>)

**Schulte-Mecklenbeck, Michael, Gert G. Wagner, and Ralph Hertwig.** 2024. How personal experiences shaped risk judgments during COVID-19. *Journal of Risk Research* 27 (3), 438–457. (<http://doi.org/10.1080/13669877.2024.2350712>)

Schulz, Jeremy, Øyvind Wiborg, and Laura Robinson. 2024. Zooming Versus Slacking: Videoconferencing, Instant Messaging, and Work-from-Home Intentions in the Early Pandemic. *American Behavioral Scientist* 68 (8), 1074–1097. (<http://doi.org/10.1177/00027642231155364>)

Senik, Claudia, Andrew E. Clark, Conchita D'Ambrosio, Anthony Lepinteur, and Carsten Schröder. 2024. Teleworking and Life Satisfaction during COVID-19: The Importance of Family Structure. *Journal of Population Economics* 37, 8. (<http://doi.org/10.1007/s00148-024-00979-z>)

Sierminska, Eva, Daniela Piazzalunga, and Markus Grabka. 2024. Women's Labour Market Attachment and the Gender Wealth Gap. *B.E. Journal of Economic Analysis & Policy* 24 (4), 1045–1071. (<http://doi.org/10.1515/bejeap-2023-0259>)

Spörlein, Christoph, Cornelia Kristen, and Regine Schmidt. 2024. The intergenerational transmission of risk and trust attitudes: Replicating and extending "Dohmen, Falk, Huffman and Sunde 2012" using genetically informed twin data. *Social Science Research* 119. (<http://doi.org/10.1016/j.ssresearch.2024.102982>)

Stacherl, Barbara and Theresa M Entringer. 2024. From feeling depressed to getting diagnosed: Determinants of a diagnosis of depression after experiencing symptoms. *International Journal of Social Psychiatry* (online first). (<http://doi.org/10.1177/00207640241303038>)

Stacherl, Barbara and Odile Sauzet. 2024. Chronic disease onset and wellbeing development: longitudinal analysis and the role of healthcare access. *European Journal of Public Health* 34 (1), 29–34. (<http://doi.org/10.1093/eurpub/ckad167>)

Steinmann, Jan-Philip, Hannes Kröger, Jörg Hartmann, and Theresa M. Entringer. 2024. Did Religious Well-Being Benefits Converge or Diverge During the Early Stages of the COVID-19 Pandemic in Germany? *Journal of Happiness Studies* 25 (7), 103. (<http://doi.org/10.1007/s10902-024-00818-8>)

Stoetzer, Lukas F., Martin Kroh, and Leonard Dasey. 2024. The backlash against free movement: Does EU-internal migration fuel public concerns about immigration? *European Journal of Political Research* 63 (4), 1578–1600. (<http://doi.org/10.1111/1475-6765.12666>)

Strømme, Thea Bertnes and Øyvind Nicolay Wiborg. 2024. Social origins and educational attainment: The unique contributions of parental education, class, and financial resources over time. *The British Journal of Sociology* 75 (4), 400–419. (<http://doi.org/10.1111/1468-4446.13091>)

## T

Taniguchi, Yu, Tomoko Ikeuchi, Markus M. Grabka, and Jongsay Yong. 2024. Investigation of dog ownership and physical activity on weekdays and weekends using longitudinal data from the SOEP Cohort. *Scientific Reports* 14 (1). (<http://doi.org/10.1038/s41598-024-77231-x>)

Targa, Matteo and Li Yang. 2024. The impact of Communist Party membership on wealth distribution and accumulation in urban China. *World Development* 181. (<http://doi.org/10.1016/j.worlddev.2024.106660>)

Tetzner, Julia, Johanna Drewelies, Sandra Duezel, Ilja Demuth, Gert G. Wagner, et al. 2024. Stability and change of optimism and pessimism in late midlife and old age across three independent studies. *Psychology and Aging* 39 (1), 14–30. (<http://doi.org/10.1037/pag0000789>)

## V

Vetter, Valentin Max, Johanna Drewelies, Sandra Düzel, Jan Homann, Gert G. Wagner, et al. 2024. Change in body weight of older adults before and during the COVID-19 pandemic: longitudinal results from the Berlin Aging Study II. *The Journal of nutrition, health and aging* 28 (4). (<http://doi.org/10.1016/j.jnha.2024.100206>)

Vries, Lisa de, Mirjam Fischer, and David Kasproski. 2024. „männlich“, „weiblich“, „divers“ – Eine kritische Auseinandersetzung mit der Erhebung von Geschlecht in der quantitativ-empirischen Sozialforschung. *Zeitschrift für Soziologie* 53 (4), 364–386. (<http://doi.org/10.1515/zfsoz-2024-2029>)

## W

Wachtler, Benjamin, Florian Beese, Ibrahim Demirer, Sebastian Haller, Markus M. Grabka, et al. 2024. Education and pandemic SARS-CoV-2 infections in the German working population – the mediating role of working from home. *Scandinavian Journal of Work, Environment & Health* 50 (3), 168–177. (<http://doi.org/10.5271/sjweh.4144>)

Wagner, Michael, Matthias Koenig, and Cornelia Kristen. 2024. Editorial. *KZfSS Kölner Zeitschrift für Soziologie und Sozialpsychologie* 76 (2), 115–117. (<http://doi.org/10.1007/s11577-024-00968-w>)

Willems, Y. E., A. deSteiguer, P. T. Tanksley, L. Vinnik, Gert G. Wagner, et al. 2024. Self-control is associated with health-relevant disparities in buccal DNA-methylation measures of biological aging in older adults. *Clinical Epigenetics* 16 (1), 22. (<http://doi.org/10.1186/s13148-024-01637-7>)

Wrzus, Cornelia, Yannick Roos, Michael D. Krämer, and David Richter. 2024. Individual differences in short-term social dynamics: Theoretical perspective and empirical development of the social dynamics scale. *Current Psychology* 43 (24), 20899–20919. (<http://doi.org/10.1007/s12144-024-05868-y>)

Wunder, Johannes, Maximilian Priem, Gert G. Wagner, and Oliver Stoll. 2024. Does the German sports system recruit coaches with a functional personality? Attempting an answer by comparing German basketball coaches with teachers and managers. *German Journal of Exercise and Sport Research* 54, 354–365. (<http://doi.org/10.1007/s12662-024-00963-5>)

## SOEP User Community: List of Web of Science™ Core Collection Publications

### A

Anger, Silke, Bernhard Christoph, Agata Galkiewicz, Shushanik Margaryan, Frauke Peter, et al. 2024. War, international spillovers, and adolescents: Evidence from Russia's invasion of Ukraine in 2022. *Journal of Economic Behavior & Organization* 224, 181–193. (<http://doi.org/10.1016/j.jebo.2024.03.009>)

Arntz, Melanie, Căcilia Lipowski, Guido Neidhöfer, and Ulrich Zierahn-Weilage. 2024. Computers as Stepping Stones? Technological Change and Equality of Labor Market Opportunities. *Journal of Labor Economics* (online first). (<http://doi.org/10.1086/727490>)

Asselmann, Eva and Jule Specht. 2024. Working life as a double-edged sword: Opposing changes in subjective well-being surrounding the transition to work and retirement. *Emotion* 24 (3), 551–561. (<http://doi.org/10.1037/emo0001290>)

Azmat, Ghazala, and Katja Maria Kaufmann. 2024. Formation of College Plans: Expected Returns, Preferences and Adjustment Process. *Journal of the European Economic Association* 22 (2), 669–711. (<http://doi.org/10.1093/jeaa/jvad042>)

### B

Babin, J. Jobu and Haritima S. Chauhan. 2024. Replication: Erat and Gneezy's white lies paradigm. *Journal of Economic Psychology* 102. (<http://doi.org/10.1016/j.joep.2024.102704>)

Bacon, Philomena M., Anna Conte, and Peter G. Moffatt. 2024. Gender and Gambling Preference. *Applied Economics* 56 (4), 426–439. (<http://doi.org/10.1080/00036846.2023.2168609>)

Baron, Daniel and Walter Bartl. 2024. The Coal Phase-Out in Germany and Its Regional Impact on Economic Worries. *Social Sciences* 13 (7), 339. (<http://doi.org/10.3390/socsci13070339>)

Bering, Henriette and Wiebke Schulz. 2024. Can sports and music level the playing field? Adolescents' extracurricular activities and the reproduction of social inequalities in cognitive skills. *Research in Social Stratification and Mobility* 90 (April 2024). (<http://doi.org/10.1016/j.rssm.2024.100895>)

Binder, Martin. 2024. Entrepreneurial worries: Self-employment and potential loss of well-being. *Journal of Economic Psychology* 105. (<http://doi.org/10.1016/j.joep.2024.102773>)

Bitzer, Jürgen, Erkan Gören, and Heinz Welsch. 2024. How the wellbeing function varies with age: the importance of income, health and social relations over the lifecycle. *Economica* 91 (363), 809–836. (<http://doi.org/10.1111/ecca.12528>)

Bönnen, Carina and Tobias Kuhnimhof. 2024. Working from home and commuter travel in Germany – panel data analysis of long-term effects. *Transportation Research Part A: Policy and Practice* 190 (December 2024). (<http://doi.org/10.1016/j.tra.2024.104257>)

Bohr, Jeanette and Andrea Lengerer. 2024. Partnership Dynamics of LGB People and Heterosexuals: Patterns of First Partnership Formation and First Cohabitation. *European Journal of Population* 40 (1), 11. (<http://doi.org/10.1007/s10680-024-09697-4>)

Borah, Melanie, Daniel Fackler, Jens Stegmaier, and Eva Weigt. 2024. Employer calling: Incidence and worker-level effects of on-call work in Germany. *German Journal of Human Resource Management* 38 (1), 3–24. (<http://doi.org/10.1177/23970022231181142>)

Brehm, Johannes and Henri Gruhl. 2024. Increase in concerns about climate change following climate strikes and civil disobedience in Germany. *Nature Communications* 15 (1), 2916. (<http://doi.org/10.1038/s41467-024-46477-4>)

**Brehm, Uta and Nadja Milewski.** 2024. Is part-time employment a temporary 'stepping stone' or a lasting 'mommy track'? Legislation and mothers' transition to full-time employment in Germany. *Journal of European Social Policy* 34 (3), 354–369. (<http://doi.org/10.1177/09589287231224607>)

**Bühler, Janina Larissa, Marcus Mund, Franz J. Neyer, and Cornelia Wrzus.** 2024. A developmental perspective on personality–relationship transactions: Evidence from three nationally representative samples. *Journal of Personality* 92 (1), 202–221. (<http://doi.org/10.1111/jopy.12757>)

**Büttner, Christiane M., Fanny Lalot, Selma C. Rudert, and Rainer Greifeneder.** 2024. Ostracism Experiences Are Associated With More Frequent Doctor Visits Over Time. *European Journal of Health Psychology* (online first). (<http://doi.org/10.1027/2512-8442/a000161>)

**Büttner, Christiane M., Selma C. Rudert, and Sven Kachel.** 2024. Ostracism Experiences of Sexual Minorities: Investigating Targets' Experiences and Perceptions by Others. *Personality and Social Psychology Bulletin* (online first). (<http://doi.org/10.1177/01461672241240675>)

**Brettner, Johannes, Constantin Wiegel, Veronika Reisig, Renate Übe, Wolfgang H. Caselmann, et al.** 2024. Einsamkeit in Bayern vor und während der COVID-19-Pandemie. *Bundesgesundheitsblatt – Gesundheitsforschung – Gesundheitsschutz* 67, 1113–1120. (<http://doi.org/10.1007/s00103-024-03931-4>)

## C

**Caliendo, Marco, Deborah A. Cobb-Clark, Harald Pfeifer, Arne Uhlendorff, and Caroline Wehner.** 2024. Managers' Risk Preferences and Firm Training Investments. *European Economic Review* 161 (January 2024). (<https://doi.org/10.1016/j.eurocorev.2023.104616>)

**Chevalier, Arnaud and Olivier Marie.** 2024. Risky Moms, Risky Kids? Fertility and Crime after the Fall of the Wall. *Journal of Public Economics* 230 (February 2024). (<http://doi.org/10.1016/j.jpubeco.2023.105048>)

**Collischon, Matthias, Andreas Eberl, and Tobias Wolbring.** 2024. Parental well-being when children move out: A panel study on short- and long-term effects. *Advances in Life Course Research* 62. (<http://doi.org/10.1016/j.alcr.2024.100643>)

## D

**Damdinsuren, Erdenebulgan, Mariya V. Mitkova, and Anna Zaharieva.** 2024. Parental Networks, Wage Expectations, and the Intergenerational Educational Mobility. *Journal of Economic Behavior & Organization* 218 (February 2024), 146–175. (<http://doi.org/10.1016/j.jebo.2023.12.004>)

**de Vries, Lisa and Stephanie Steinmetz.** 2024. Sexual Orientation, Workplace Authority and Occupational Segregation: Evidence from Germany. *Work, Employment and Society* 38 (3), 852–870. (<http://doi.org/10.1177/09500170231158513>)

**Décieux, Jean Philippe and Tobias Altmann.** 2024. The relationship between migration and the Big Five personality traits: Evidence from probability-based samples. *Population, Space and Place* 30 (7), e2782. (<http://doi.org/10.1002/psp.2782>)

**Detilleux, Céline and Nick Deschacht.** 2024. The gender gap in the wage sensitivity of job transitions: a decomposition analysis. *Journal for Labour Market Research* 58, 26. (<http://doi.org/10.1186/s12651-024-00387-6>)

**Dieckhoff, Martina and Johannes Giesecke.** 2024. Growing or declining penalties? A cross-temporal analysis of unemployment scars in the German labor market. *Social Science Research* 121. (<http://doi.org/10.1016/j.ssresearch.2023.102960>)

**Dochow-Sanderhaus, Stephan.** 2024. Hunkering Down or Catching Up? No Long-Term Effect of Ethnic Minority Share on Neighborhood Contacts. *sociological science* 11, 965–988. (<http://doi.org/10.15195/v11.a35>)

## E

**Emmerich, Olivia Lucia Marie, Birgit Wagner, Nina Heinrichs, and Betteke Maria van Noort.** 2024. Lifetime victimization experiences, depressiveness, suicidality, and feelings of loneliness in youth in care. *Child Abuse & Neglect* 154 (August 2024). (<http://doi.org/10.1016/j.chiabu.2024.106870>)

**Erhart, Michael, Doreen Müller, Paul Gellert, and Julie L. O'Sullivan.** 2024. Mapping intersectional sociodemographic inequalities in measurement and prevalence of depressive symptoms: a intersectional multilevel analysis of individual heterogeneity and discriminatory accuracy using data from a population-based nationwide survey in Germany. *Journal of Clinical Epidemiology* 173. (<http://doi.org/10.1016/j.jclinepi.2024.111446>)

**Esche, Frederike and Petra Böhnke.** 2024. The employment expectations of adolescents: Examining the role of social origin, parental support, and personality traits. *Advances in Life Course Research* 61. (<http://doi.org/10.1016/j.alcr.2024.100629>)

**Ezdi, Sehar, Elina Kilpi-Jakonen, Heta Pöyliö, and Jani Erola.** 2024. Childbearing under different family policy schemes. *Jfr-Journal of Family Research* 36, 305–326. (<http://doi.org/10.20377/jfr-987>)

## F

**Fan, Wen.** 2024. Becoming a parent: Trajectories of family division of labor in Germany and the United States. *Advances in Life Course Research* 60. (<http://doi.org/10.1016/j.alcr.2024.100611>)

**Fehr, Dietmar, Johanna Mollerstrom, and Ricardo Perez-Truglia.** 2024. Listen to her: Gender differences in information diffusion within the household. *Journal of Public Economics* 239. (<http://doi.org/10.1016/j.jpubeco.2024.105213>)

**Ferrara, Alessandro, Carla Grindel, and Claudia Brunori.** 2024. A longitudinal perspective to migrant health: Unpacking the immigrant health paradox in Germany. *Social Science & Medicine* 351 (June 2024). (<http://doi.org/10.1016/j.socscimed.2024.116976>)

**Fitzgerald, Jennifer and Pavel Bacovsky.** 2024. Young Citizens' Party Support: The "When" and "Who" of Political Influence within Families. *Political Studies* 72 (2), 634–651. (<http://doi.org/10.1177/00323217221133643>)

**Frank, Emily and Anton Nivorozhkin.** 2024. Legal status and refugees' perceptions of institutional justice: The role of communication quality. *Public Administration Review* (online first). (<http://doi.org/10.1111/puar.13898>)

**Freitas-Monteiro, Teresa.** 2024. Migration motivation and ethnic identity of migrant couples: tied versus lead movers. *Review of Economics of the Household* (online first). (<http://doi.org/10.1007/s11150-024-09708-7>)

**Frenkel, Michael and Ngoc Tuyet Ngo.** 2024. Service offshoring and its impacts on wages: An occupation-oriented analysis of Germany. *The World Economy* 47 (4), 1615–1641. (<http://doi.org/10.1111/twec.13495>)

**Friehe, Tim and Christian Pfeifer.** 2024. A family member's death increases religious activity: Evidence from Germany. *Kyklos* 77 (2), 458–468. (<http://doi.org/10.1111/kykl.12372>)

**Friehe, Tim and Christian Pfeifer.** 2024. Predicting satisfaction with democracy in Germany using local economic conditions, social capital, and individual characteristics. *Economics of Governance* 25 (3), 335–377. (<http://doi.org/10.1007/s10101-024-00315-x>)

## G

**Gambaro, Ludovica, Clara Schäper, and C. Katharina Spiess.** 2024. Crowded-out? Changes in informal childcare during the expansion of formal services in Germany. *Social Policy & Administration* (online first). (<http://doi.org/10.1111/spol.13067>)

**García-Morán, Eva, Ming-Jin Jiang, and Heiko Rachinger.** 2024. Minimum Wage Effects on Job Attachment: A Gender Perspective. *Jahrbücher für Nationalökonomie und Statistik* 244 (1–2), 83–112. (<http://doi.org/10.1515/jbnst-2022-0012>)

**Giangregorio, Luca and Davide Villani.** 2024. Functional distribution, personal income inequality, and top shares of income: do social classes still matter? *The Journal of Economic Inequality* (online first). (<http://doi.org/10.1007/s10888-024-09633-w>)

**Glaubitz, Rick, Astrid Harnack-Eber, and Miriam Wetter.** 2024. The gender gap in lifetime earnings: A microsimulation approach. *LABOUR* 38, 425–474. (<http://doi.org/10.1111/labr.12274>)



**Goerke, Laszlo and Markus Pannenberg.** 2024. Wage Determination in the Shadow of the Law: The Case of Works Councilors in Germany. *Economic and Industrial Democracy* 45 (1), 83–115. (<http://doi.org/10.1177/0143831X221139331>)

**Golovina, Kateryna and Markus Jokela.** 2024. Personal and Social Worries Associated with the Likelihood of Having Children. *Population and Development Review* 50 (4), 1239–1266. (<http://doi.org/10.1111/padr.12646>)

**Grevenbrock, Nils Alexander Ludwig, and Nawid Siassi.** 2024. Homeownership rates, housing policies, and co-residence decisions. *Macroeconomic Dynamics* 28 (5), 1073–1096. (<http://doi.org/10.1017/S136510052300038X>)

**Grochtdreis, Thomas, Hans-Helmut König, and Judith Dams.** 2024. Flight-related determinants of health-related quality of life of asylum seekers and refugees in Germany: a longitudinal study based on the German Socio-Economic Panel (SOEP). *BMC Public Health* 24 (1), 1965. (<http://doi.org/10.1186/s12889-024-19489-4>)

**Grochtdreis, Thomas, Hans-Helmut König, and Judith Dams.** 2024. Migration-related determinants of health-care service utilization among persons with a direct migration background in Germany: an exploratory study based on the German Socio-Economic Panel (SOEP). *The European Journal of Health Economics* (online first). (<http://doi.org/10.1007/s10198-024-01708-9>)

**Guenther, Benno, Matteo M. Galizzi, and Jet G. Sanders.** 2024. PDOSPRT: A New Scale to Predict Domain-Specific Risk-Taking Behaviors in Times of a Pandemic. *Journal of Behavioral Decision Making* 37 (4), e2413. (<http://doi.org/10.1002/bdm.2413>)

**Gundacker, Lidwina, Sekou Keita, and Simon A. Ruhnke.** 2024. Unequal access to protection? Selection patterns over arrival cohorts of Syrians seeking refuge in Lebanon, Turkey, and Germany. *Frontiers in Human Dynamics* 5. (<http://doi.org/10.3389/fhumd.2023.1171885>)

**Gundacker, Lidwina, Yuliya Kosyakova, and Gerald Schneider.** 2024. How regional attitudes towards immigration shape the chance to obtain asylum: Evidence from Germany. *Migration Studies* (online first). (<http://doi.org/10.1093/migration/mnae002>)



**Haan, Peter and Victoria Prowse.** 2024. The Heterogeneous Effects of Social Assistance and Unemployment Insurance: Evidence from a Life-Cycle Model of Family Labor Supply and Savings. *American Economic Journal: Macroeconomics* 16 (2), 127–181. (<http://doi.org/10.1257/mac.20200217>)

**Habel, Johannes, Selma Kadić-Maglajlić, Nathaniel N. Hartmann, Ad de Jong, Nicolas A. Zacharias, et al.** 2024. Neuroticism and the sales profession. *Organizational Behavior and Human Decision Processes* 184. (<http://doi.org/10.1016/j.obhdp.2024.104353>)

**Hagge, Kyra and Diana Schacht.** 2024. Variations in Access to Social Support: the Effects of Residential Mobility and Spatial Proximity to Kin and Family. *Social Indicators Research* 172 (1), 99–120. (<http://doi.org/10.1007/s11205-023-03280-w>)

**Hajji, Rahim and Paula Stolle.** 2024. Die Resilienz von Geflüchteten in Deutschland. *Prävention und Gesundheitsförderung* (online first). (<http://doi.org/10.1007/s11553-024-01144-w>)

**Hartmann, Jörg and Peter Preisendörfer.** 2024. Vegetarians in Germany. *Soziale Welt* 75 (1), 143–161. (<http://doi.org/10.5771/0038-6073-2024-1-143>)

**Hartmann, Jörg.** 2024. Gleiche Teilhabe oder dauerhafte Nachteile? Die Chancen von Ostdeutschen auf Führungspositionen. *Zeitschrift für Soziologie* 53 (1), 25–42. (<http://doi.org/10.1515/zfsoz-2024-2004>)

**Heil, Carolin, Florian Beese, Yong Du, Claudia Hövener, and Niels Michalski.** 2024. Subjektive Gesundheit in der Frühphase der COVID-19-Pandemie – ein Vergleich von soziodemografischen Gruppen und pandemiebezogenen Risikofaktoren. *Bundesgesundheitsblatt – Gesundheitsforschung – Gesundheitsschutz* 67 (7), 843–853. (<http://doi.org/10.1007/s00103-024-03889-3>)

**Henning, Georg, Graciela Muniz-Terrera, Andreas Stenling, and Martin Hyde.** 2024. Job satisfaction declines before retirement in Germany. *European Journal of Ageing* 21 (1), 33. (<http://doi.org/10.1007/s10433-024-00830-0>)

**Herwartz, Helmut and Christoph Strumann.** 2024. Too many cooks could spoil the broth: choice overload and the provision of ambulatory health care. *International Journal of Health Economics and Management* 24 (3), 357–373. (<http://doi.org/10.1007/s10754-024-09379-y>)

**Hofmann, Elias and Sandra Krapf.** 2024. "Like two peas in a pod?" Homogamous personalities, education, and union dissolution. *Genus* 80 (1), 19. (<http://doi.org/10.1186/s41118-024-00229-w>)

**Hooghe, Liesbet, Gary Marks, and Jonne Kamphorst.** 2024. Field of Education and Political Behavior: Predicting GAL/TAN Voting. *American Political Science Review* (online first), 1–18. (<http://doi.org/10.1017/S0003055424000583>)

## I

**Isaksson, Zeth.** 2024. Behind the wall: the lack of interaction between east and west and the rise of the radical right. *Acta Politica* (online first). (<http://doi.org/10.1057/s41269-024-00354-6>)

**Israel, Karl-Friedrich and Gunther Schnabl.** 2024. Alternative measures of price inflation and the perception of real income in Germany. *The World Economy* 47 (2), 618–636. (<http://doi.org/10.1111/twec.13431>)

## J

**Jacobsen, Jannes and Manuel Siegert.** 2024. Establishing a Panel Study of Refugees in Germany: First Wave Response and Panel Attrition from a Comparative Perspective. *Field Methods* 36 (3), 229–248. (<http://doi.org/10.1177/1525822x231204817>)

**Jäger, Simon, Christopher Roth, Nina Roussille, and Benjamin Schoefer.** 2024. Worker Beliefs About Outside Options. *Quarterly Journal of Economics* 139 (3), 1505–1556. (<http://doi.org/10.1093/qje/qjae001>)

**Jessen, Jonas, Sophia Schmitz, and Felix Weinhardt.** 2024. Immigration, Female Labour Supply and Local Cultural Norms. *The Economic Journal* 134 (659), 1146–1172. (<http://doi.org/10.1093/ej/uead097>)

**Jirjahn, Uwe and Thi Xuan T. Le.** 2024. Political Spillovers of Workplace Democracy in Germany. *Annals of Public and Cooperative Economics* 95, 5–31. (<http://doi.org/10.1111/apce.12451>)

**Jung, Benjamin and Timo Walter.** 2024. Progressive Taxation and Social Welfare: Quantifying the Effects of the "German Tax-Reform 2000". *German Economic Review* 25 (3), 209–239. (<http://doi.org/10.1515/ger-2023-0100>)

## K

**Kayran, Elif Naz.** 2024. Attitudes towards immigration and unemployment risk cleavages: Untangling the economically rooted group conflict framework. *Migration Studies* (online first). (<http://doi.org/10.1093/migration/mnae003>)

**Keita, Sekou, Thomas Renault, and Jérôme Valette.** 2024. The Usual Suspects: Offender Origin, Media Reporting and Natives' Attitudes Towards Immigration. *Economic Journal* 134 (657), 322–362. (<http://doi.org/10.1093/ej/uead059>)

**Kelle, Nadiya and Ulrike Ehrlich.** 2024. Family care in Germany and its gender(un)specific patterns: an analysis using novel data from the German Socio-Economic Panel Innovation Sample. *International Journal of Care and Caring* (online first), 1–17. (<http://doi.org/10.1332/23978821y2024d0000000084>)

**Kellermann, Kim Leonie.** 2024. Trust we lost: The impact of the Treuhand experience on political alienation in East Germany. *Journal of Comparative Economics* 52 (1), 54–75. (<http://doi.org/10.1016/j.jce.2023.10.001>)

**Keskintuerk, Turgut.** 2024. Life-Course Transitions and Political Orientations. *Sociological Science* 11, 907–933. (<http://doi.org/10.15195/v11.a33>)

**Kleinjans, Kristin J.** 2024. Socio-economic Circumstances at Birth and Early Motherhood: The Case of the "Daughters of the Wall". *Jahrbücher für Nationalökonomie und Statistik* 244 (1–2), 113–129. (<http://doi.org/10.1515/jbnst-2022-0017>)

**Klöcker, Julian Alexander, Malte Schurade, and Frank Daumann.** 2024. Über sozioökonomische Einflüsse und Sportausübung von Jugendlichen. *German Journal of Exercise and Sport Research* (online first). (<http://doi.org/10.1007/s12662-024-00986-y>)



**Klug, Katharina, Claudia Bernhard-Oettel, and Magnus Sverke.** 2024. The Paradox of Job Retention Schemes: A Latent Growth Curve Modeling Approach to Immediate and Prolonged Effects of Short-Time Work on Job Insecurity and Employee Well-Being. *Journal of Happiness Studies* 25 (6), 72. (<http://doi.org/10.1007/s10902-024-00787-y>)

**Kosyakova, Yuliya and Andreas Damelang.** 2024. The causal effect of liberalizing legal requirements on naturalization intentions. *Social Forces* (online first), soae170. (<http://doi.org/10.1093/sf/soae170>)

**Kosyakova, Yuliya and Marie-Christine Laible.** 2024. Importance of Personality Traits for Destination-Language Acquisition: Evidence for Refugees in Germany. *International Migration Review* 58 (1), 347–385. (<http://doi.org/10.1177/01979183221132538>)

**Kratz, Fabian.** 2024. A liberalizing effect of happiness? The impact of improvements and deteriorations in different dimensions of subjective well-being on concerns about immigration. *European Sociological Review* 40 (4), 686–703. (<http://doi.org/10.1093/esr/jcad059>)

**Künn, Steffen and Juan Palacios.** 2024. Health implications of housing retrofits: Evidence from a population-wide weatherization program. *Journal of Health Economics* 98. (<http://doi.org/10.1016/j.jhealeco.2024.102936>)

**Kutzker, Tim, Nadja Klein, and Dominik Wied.** 2024. Flexible Specification Testing in Quantile Regression Models. *Scandinavian Journal of Statistics* 51, 355–383. (<http://doi.org/10.1111/sjos.12671>)

## L

**Laß, Inga, Thomas Skora, Heiko Rüger, Mark Wooden, and Martin Bujard.** 2024. Does temporary employment increase length of commuting? Longitudinal evidence from Australia and Germany. *Transportation* 51 (1), 1467–1491. (<http://doi.org/10.1007/s11116-023-10374-4>)

**Leopold, Thomas and Matthijs Kalmijn.** 2024. Reassessing Chronic Strain: A Research Note on Women's Income Dynamics After Divorce and Separation. *DEMOGRAPHY* 61 (3), 597–613. (<http://doi.org/10.1215/00703370-11372303>)

**Lindemann, Kristina.** 2024. Family structure transitions and educational outcomes: Explaining heterogeneity by parental education in Germany. *Advances in Life Course Research* 60. (<http://doi.org/10.1016/j.alcr.2024.100610>)

**Loichinger, Elke, Thomas Skora, Markus Sauerberg, and Pavel Grigoriev.** 2024. Regionale Unterschiede und Trends in gesunder Lebenserwartung in Deutschland. *Bundesgesundheitsblatt – Gesundheitsforschung – Gesundheitsschutz* 67 (5), 546–554. (<http://doi.org/10.1007/s00103-024-03864-y>)

**Lucas, Richard E. and Julia M. Rohrer.** 2024. On the robustness of reciprocal associations between personality and religiosity in a German sample. *Journal of Personality* 92 (6), 1649–1667. (<http://doi.org/10.1111/jopy.12964>)

## M

**Markefke, Theresa and Rebekka Müller-Rehm.** 2024. Labor market regulation and the cyclicalities of involuntary part-time work. *Journal for Labour Market Research* 58 (1), 5. (<http://doi.org/10.1186/s12651-024-00363-0>)

**Mazzeo, Flavia, Christine Schwartz, Stefani Scherer, and Agnese Vitali.** 2024. Trends in Women's Educational Advantage and Divorce in East and West Germany. *Comparative Population Studies* 49 (Oct. 2024). (<http://doi.org/10.12765/CPoS-2024-13>)

**Mendola, Daria, Anna Maria Parroco, and Paolo Li Donni.** 2024. We made it to Germany... and now? Interdependent risks of vulnerability for refugees in a high-income country. *Journal of Ethnic and Migration Studies* 50 (4), 1059–1079. (<http://doi.org/10.1080/1369183X.2023.2206009>)

**Merkl, Christian and Timo Sauerbier.** 2024. Public Employment Agency Reform, Matching Efficiency, and German Unemployment. *IMF Economic Review* 72, 393–440. (<http://doi.org/10.1057/s41308-023-00201-2>)

**Moghadam, Hamed Markazi, Patrick A. Puhani, and Joanna Tyrowicz.** 2024. Pension reforms and couples' labour supply decisions. *Labour Economics* 91. (<http://doi.org/10.1016/j.labeco.2024.102627>)

**Moreno, Almudena, Lourdes Lostao, Stefanie Sperlich, Johannes Beller, Elena Ronda, et al.** 2024. Socioeconomic Patterns in the Frequency of Doctor Visits in Germany and Spain in Subjects With and Without Chronic Diseases. *International Journal of Social Determinants of Health and Health Services* 54 (2), 121–130. (<http://doi.org/10.1177/27551938231224708>)

## O

**Olbrich, Lukas, Yuliya Kosyakova, Joseph W. Sakshaug, and Silvia Schwanhäuser.** 2024. Detecting Interviewer Fraud Using Multilevel Models. *Journal of Survey Statistics and Methodology* 12 (1), 14–35. (<http://doi.org/10.1093/jssam/smac036>)

## P

**Pagan, Ricardo.** 2024. Personality traits and participation in holiday trips for people without and with moderate and severe disabilities. *Current Issues in Tourism* (online first), 1–25. (<http://doi.org/10.1080/13683500.2024.2403132>)

**Palmisano, Flaviana.** 2024. Compassion and envy in distributional comparisons. *Theory and Decision* 96., 153–184. (<http://doi.org/10.1007/s11238-023-09944-w>)

**Panunzi, Fausto, Nicola Pavoni, and Guido Tabellini.** 2024. Economic Shocks and Populism. *The Economic Journal* 134 (663), 3047–3061. (<http://doi.org/10.1093/ej/ueae042>)

**Platts, Loretta G. and Karen Glaser.** 2024. Returns to work following retirement in Germany, Russia, and the United Kingdom. *Work, Aging and Retirement* (online first). (<http://doi.org/10.1093/workar/waee005>)

**Poier, Stefan, and Anna Maria Nikodemaska-Wołowik.** 2024. Germany under the Tinfoil Hat? The associations of the big five personality traits and coronavirus conspiracy beliefs with the intention to get vaccinated. *Journal of Infection and Public Health* 17 (9). (<http://doi.org/10.1016/j.jiph.2024.102519>)

**Pusch, Toralf.** 2024. Effects of the German Minimum Wage on Wages and Household Income. *Jahrbücher für Nationalökonomie und Statistik* (online first). (<http://doi.org/10.1515/jbnst-2023-0024>)

## R

**Radoš, Sonja, Maria K. Pavlova, Klaus Rothermund, and Rainer K. Silbereisen.** 2024. Perceived expectations for active aging: the role of motivational and personality factors. *Aging & Mental Health* 28 (11), 1559–1566. (<http://doi.org/10.1080/13607863.2024.2385450>)

**Ravid, Oded.** 2024. The Determinants of Countercyclical Job Satisfaction in the Public Sector. *Journal of Happiness Studies* 25 (6), 70. (<http://doi.org/10.1007/s10902-024-00786-z>)

**Rebaudo, Mara, Lena Calahorrano, and Kathrin Hausmann.** 2024. Willingness to Care-Financial Incentives and Caregiving Decisions. *Health Economics* (online first). (<http://doi.org/10.1002/hec.4918>)

**Reher, Leonie, Petrik Runst, and Jörg Thomä.** 2024. Personality and regional innovativeness: An empirical analysis of German patent data. *Research Policy* 53 (6). (<http://doi.org/10.1016/j.respol.2024.105006>)

**Rehm, Moritz, Martin Schröder, and Georg Wenzelburger.** 2024. Border Regions as Nuclei of European Integration? Evidence From Germany. *JCMS: Journal of Common Market Studies* (online first). (<http://doi.org/10.1111/jcms.13607>)

**Reich, Ricarda.** 2024. Work hour mismatches and sickness absence and the moderating role of human resource practices: Evidence from Germany. *German Journal of Human Resource Management* 38 (1), 25–58. (<http://doi.org/10.1177/23970022231193085>)

**Riphahn, Regina T. and Jennifer Feichtmayer.** 2024. Intergenerational Transmission of Welfare Benefit Receipt: Evidence from Germany. *Review of Income and Wealth* 70 (4), 1226–1251. (<http://doi.org/10.1111/roiw.12680>)

**Riphahn, Regina T. and Irakli Sauer.** 2024. Earnings assimilation of post-reunification East German migrants in West Germany. *LABOUR* 38 (4), 475–510. (<http://doi.org/10.1111/labr.12279>)

**Rüdel, Julia and Jan-Philip Steinmann.** 2024. 'With a little help from my educated friends': revisiting the role of social capital for immigrants' labour market integration in Germany. *Comparative Migration Studies* 12 (1), 7. (<http://doi.org/10.1186/s40878-024-00366-3>)

## S

**Sadowski, Ireneusz.** 2024. A post-individualistic turn? Intergenerational change in self-orientation in Poland and Germany. *International Journal of Comparative Sociology* 65 (5), 614–635. (<http://doi.org/10.1177/00207152231205599>)

**Sallam, Hend.** 2024. Holding the Door Slightly Open: Germany's Migrants' Return Intentions and Realizations. *International Migration* 62 (3), 73–99. (<http://doi.org/10.1111/imig.13264>)

**Sauer, Lenore and Elisabeth K. Kraus.** 2024. Personal Social Networks of Recent Refugees in Germany: Does Family Matter? *Journal of Immigrant & Refugee Studies* 22 (1), 134–148. (<http://doi.org/10.1080/15562948.2021.2017096>)

**Sauerwein, Markus N. and Gunther Graßhoff.** 2024. Trend Effects of Being in Care, from Early to Late Adulthood: A Comparative Look at Adults Who Were in Residential or Foster Care As Children and Those Who Did Not Experience Out-Of-Home Care. *Residential Treatment For Children & Youth* (online first), 1–25. (<http://doi.org/10.1080/0886571X.2024.2333757>)

**Schechtl, Manuel and Nicole Kapelle.** 2024. The male marital earnings premium contextualized: Longitudinal evidence from the United States, Germany, and the United Kingdom. *Journal of Marriage and Family* 86 (1), 176–198. (<http://doi.org/10.1111/jomf.12937>)

**Schilling, Pia and Steven Stillman.** 2024. The impact of natives' attitudes on refugee integration. *Labour Economics* 87 (April 2024). (<http://doi.org/10.1016/j.labeco.2023.102465>)

**Schmidt, Torben Dall and Timo Mitze.** 2024. Epidemic–economic complexity of COVID-19 policies across skill groups and geographies. *Regional Studies* 58 (2), 322–335. (<http://doi.org/10.1080/00343404.2023.2183945>)

**Schobin, Janosch, Martin Gibson-Kunze, and Céline Arriagada.** 2024. Einsamkeitsbarometer 2024: Methodik und ausgewählte Ergebnisse. *Bundesgesundheitsblatt – Gesundheitsforschung – Gesundheitsschutz* 67, 1152–1160. (<http://doi.org/10.1007/s00103-024-03946-x>)

**Schöll, Nikolas and Thomas Kurer.** 2024. How technological change affects regional voting patterns. *Political Science Research and Methods* 12 (1), 94–112. (<http://doi.org/10.1017/psrm.2022.62>)

**Schwitzer, Nicole and Ulf Liebe.** 2024. Using Natural Experiments to Uncover Effects of Anti-Refugee Riots on Attitudes of Refugees. *Sociology* 58 (1), 253–262. (<http://doi.org/10.1177/00380385231206072>)

**Seifert, Ingo S., Julia M. Rohrer, and Stefan C. Schmukle.** 2024. Using within-person change in three large panel studies to estimate personality age trajectories. *Journal of Personality and Social Psychology* 126 (1), 150–174. (<http://doi.org/10.1037/pspp0000482>)

**Skora, Thomas, Heiko Rüger, and Knut Petzold.** 2024. Migration, daily commuting, or second residence? The role of location-specific capital and distance to workplace in regional mobility decisions. *Demographic Research* 50 (33), 967–1004. (<http://doi.org/10.4054/DemRes.2024.50.33>)

**Sprengholz, Maximilian and Maik Hamjediers.** 2024. Intersections and Commonalities: Using Matching to Decompose Wage Gaps by Gender and Nativity in Germany. *Work and Occupations* 51 (2), 249–286. (<http://doi.org/10.1177/07308884221141100>)

**Stavrova, Olga, Daniel Ehlebracht, and Dongning Ren.** 2024. Cynical people desire power but rarely acquire it: Exploring the role of cynicism in leadership attainment. *British Journal of Psychology* 115 (2), 226–252. (<http://doi.org/10.1111/bjop.12685>)

**Stöcker, Anna-Katharina, Iris Katharina Gauglitz, and Astrid Schütz.** 2024. Managers' Traditional Gender Role Attitudes. *Journal of Personnel Psychology* (online first). (<http://doi.org/10.1027/1866-5888/a000348>)

**Sytkina, Kateryna.** 2024. Zooming into the first year after parental death: Loss and recovery in adult mental health. *SSM – Mental Health* 5. (<http://doi.org/10.1016/j.ssmmh.2024.100317>)

**T**

**Trinh, Nhat An.** 2024. The Effect of Social Benefit Reform on Educational Inequality. *Journal of Social Policy* 53 (4), 1073–1094. (<http://doi.org/10.1017/S0047279422000848>)

**Turek, Konrad, Kene Henkens, and Matthijs Kalmijn.** 2024. Gender and Educational Inequalities in Extending Working Lives: Late-Life Employment Trajectories Across Three Decades in Seven Countries. *Work, Aging and Retirement* 10 (2), 100–122. (<http://doi.org/10.1093/workar/waac021>)

**U**

**Urzay-Gómez, Sergi.** 2024. Wage patterns in West Berlin: a synthetic control approach after the fall of the wall. *Applied Economics Letters* (online first), 1–4. (<http://doi.org/10.1080/13504851.2024.2386145>)

**V**

**van den Berg, Lonneke and Ellen Verbakel.** 2024. The link between singlehood in young adulthood and effects of romantic separation. *Journal of Marriage and Family* 86 (2), 350–368. (<http://doi.org/10.1111/jomf.12954>)

**van Ditmars, Mathilde M. and Rosalind Shorrock.** 2024. Social Change and Women's Left Vote. The Role of Employment, Education, and Marriage in the Gender Vote Gap. *Comparative Political Studies* (online first). (<http://doi.org/10.1177/00104140241271123>)

**W**

**Wied, Dominik.** 2024. Semiparametric distribution regression with instruments and monotonicity. *Labour Economics* 90. (<http://doi.org/10.1016/j.labeco.2024.102565>)

**Wiedner, Jonas and Merlin Schaeffer.** 2024. Spatial overlap: trade-offs in refugees' residential choices. *Journal of Ethnic and Migration Studies* (online first), 1–23. (<http://doi.org/10.1080/1369183X.2024.2425213>)

**Wright, Amanda J. and Joshua J. Jackson.** 2024. Longitudinal Within-Person Variability Around Personality Trajectories. *Journal of Personality and Social Psychology* (online first). (<http://doi.org/10.1037/pspp0000507>)

**Z**

**Ziblatt, Daniel, Hanno Hilbig, and Daniel Bischof.** 2024. Wealth of Tongues: Why Peripheral Regions Vote for the Radical Right in Germany. *American Political Science Review* 118 (3), 1480–1496. (<http://doi.org/10.1017/S0003055423000862>)

**Ziegler, Paula, Rahim Hajji, and Gunnar Voß.** 2024. Die Lebenszufriedenheit von Geflüchteten in Deutschland – auch eine Frage von Aufnahme-landbedingungen, Assimilation und Zugehörigkeit? *Prävention und Gesundheitsförderung* 19, 189–197. (<http://doi.org/10.1007/s11553-023-01049-0>)

**Zindel, Zaza and Lisa de Vries.** 2024. Career sacrifice for an LGBTQ\*-friendly work environment? a choice experiment to investigate the job preferences of LGBTQ\* people. *PLOS ONE* 19 (6). (<http://doi.org/10.1371/journal.pone.0296419>)

## OTHER PUBLICATIONS

---

### SOEP-Based Articles in DIW Weekly Reports



**5 – Niedriglohnsektor in Deutschland schrumpft seit 2017**  
(*Low-Wage Sector in Germany Has Been Shrinking since 2017*)

Markus M. Grabka



**12 – Geflüchtete kommen auf gefährlichen Wegen nach Deutschland**  
(*Refugees Arrive in Germany Via Dangerous Routes*)

Cornelia Kristen, Jana Nebelin



**12 – Bedarf an und Inanspruchnahme von Unterstützung bei Geflüchteten ungleich verteilt**  
(*Unequal Distribution of Need for and Use of Support Among Refugees*)

Ellen Heidinger



**12 – Verlängerte Leistungseinschränkungen für Geflüchtete: Negative Konsequenzen für Gesundheit – erhoffte Einsparungen dürften ausbleiben**  
(*Extended restrictions to health care entitlements for refugees: negative health consequences without the anticipated savings*)

Louise Biddle



**16 – Durchschnittliche Arbeitszeiten in Deutschland sinken, Gesamtarbeitsvolumen auf Rekordhoch**  
(*Average Working Hours in Germany Fall, Total Volume of Work at Record High*)

Mattis Beckmannshagen, Annika Sperling



**17 – Erfahrungsbilanz Bürgergeld: Jobcenterbeschäftigte sehen kaum Verbesserungen**  
(*Experience with Citizen's Income: Job Center Employees See Hardly Any Improvements*)

Fabian Beckmann, Rolf G. Heinze, Dominik Schad, Jürgen Schupp



**27 – Einkommensstarke Haushalte verursachen mehr Treibhausgasemissionen – vor allem wegen ihres Mobilitätsverhaltens**  
*(High-income households emit more greenhouse gases, primarily due to transport behavior)*

Sandra Bohmann, Merve Küçük



**34 – Zufriedenheit mit Einkommen, Arbeit und Gesundheit unterscheidet sich nach Haushaltseinkommen, Alter und Elternschaft**  
*(32/33/34 – Income, work, and health satisfaction differ primarily by household income, age, and parental status)*

Laura Buchinger, Theresa Entringer, Daniel Graeber



**39 – Historische Erbschaftsregeln für Land prägen noch heute die Wirtschaft**  
*(Historical Inheritance Rules for Land Still Shape the Economy Today)*

Charlotte Bartels, Simon Jäger, Natalie Obergruber



**43 – Homeoffice auch nach Ende der Pandemiemaßnahmen weit verbreitet**  
*(Home Office Widespread, Even After the End of the Pandemic Measures)*

Sarah Satilmis, Jan Goebel



**49 – Geflüchtete senden seltener Geld ins Ausland als andere Migrant\*innen**  
*(Refugees Send Remittances Abroad Less Often than Other Migrants)*

Adriana Cardozo Silva, Sabine Zinn

## DIW Aktuell



**99 – Psychische Gesundheit jüngerer Menschen sinkt: Corona-Pandemie verschärft Abwärtstrend**

Mattis Beckmannshagen, Daniel Graeber

## SOEPpapers

[http://www.diw.de/soeppapers\\_en](http://www.diw.de/soeppapers_en)

1204

**Michael D. Krämer, Julia M. Rohrer, Richard E. Lucas, David Richter**

Life Events and Life Satisfaction: Estimating Effects of Multiple Life Events in Combined Models

1205

**Verena Löffler**

The cost of fair pay: How child care work wages affect formal child care hours, informal child care hours, and employment hours

1206

**Deborah A. Cobb-Clark, Sarah C. Dahmann, Daniel A. Kamhöfer, Hannah Schildberg-Hörisch**  
Schooling and Self-Control

1207

**Ronald Bachmann, Myrielle Gonschor**

Technological Progress, Occupational Structure, and Gender Gaps in the German Labour Market

1208

**Marina Krauß, Niklas Rott**

Early Childcare Expansion and Maternal Health

1209

**Laura Buchinger, Theresa M. Entringer, David Richter, Gert G. Wagner, Denis Gerstorf, Wiebke Bleidorn**

Codevelopment of Life Goals and the Big Five Personality Traits Across Adulthood and Old Age

1210

**Jascha Dräger, Nora Müller, Klaus Pforr**

The Keys to the House – How Wealth Transfers Stratify Homeownership Opportunities

1211

**Martina Metzger, Hans Walter Steinhauer, Jennifer Pédussel Wu**

Mitigating adverse social and health impacts of COVID-19 with applied arts

1212

**Charlotte Bartels, Eva Sierminska, Carsten Schröder**

Wealth creators or inheritors? Unpacking the gender wealth gap from bottom to top and young to old

1213

**Edoardo Ciscato, Marion Goussé**

Matching on Gender and Sexual Orientation

1214

**Michael D. Krämer, Wiebke Bleidorn**

The Well-Being Costs of Informal Caregiving

1215

**Marc Kaufmann, Joël Machado, Bertrand Verheyden**

Why do migrants stay unexpectedly? Misperceptions and implications for integration

1216

**Henning Hermes, Marina Krauß, Philipp**

**Lergetporer, Frauke Peter, Simon Wiederhold**

The Causal Impact of Gender Norms on Mothers' Employment Attitudes and Expectations

The full texts of the SOEPpapers can be downloaded free of charge from the publication database EconStor:  
[www.econstor.eu/handle/10419/56390](http://www.econstor.eu/handle/10419/56390)

## SOEP Survey Papers

[http://www.diw.de/soepsurveyspapers\\_en](http://www.diw.de/soepsurveyspapers_en)

### Series A

#### Survey Instruments

**1315**

IAB-BiB/FReDA-BAMF-SOEP-Befragung  
„Geflüchtete aus der Ukraine in Deutschland“ –  
2022: Person

**1316**

IAB-BiB/FReDA-BAMF-SOEP-Befragung  
„Geflüchtete aus der Ukraine in Deutschland“ –  
2023: Person

**1321**

IAB-BiB/FReDA-BAMF-SOEP Survey  
„Refugees from Ukraine in Germany“ –  
2022: Individual (Field Version)

**1322**

IAB-BiB/FReDA-BAMF-SOEP Survey  
„Refugees from Ukraine in Germany“ –  
2023: Individual (Field Version)

**1326**

SOEP-IS 2022 – Fragebogen für die  
SOEP-Innovations-Stichprobe

**1327**

SOEP-IS 2022 – Questionnaire for the  
SOEP Innovation Sample

**1330**

SOEP-Core – 2022: Childhood  
(0–11-year-olds, IAB-BAMF-SOEP-M3–M6,  
with Reference to Variables)

**1335**

SOEP-Core – 2021: Betriebsbefragung  
(SOEP-LEE2, mit Verweis auf Variablen)

**1336**

SOEP-Core – 2021: Betriebsbefragung  
(SOEP-LEE2, PAPI)

**1367**

SOEP-Core – 2022: Haushalt  
(PAPI, mit Verweis auf Variablen)

**1368**

SOEP-Core – 2022: Verstorbene Person  
(PAPI, mit Verweis auf Variablen)

**1369**

SOEP-Core – 2022: Verstorbene Person  
(techn., mit Verweis auf Variablen)

**1370**

SOEP-Core – 2022: Pre-Teen  
11–12 Jahre, techn. mit Verweis auf Variablen)

**1371**

SOEP-Core – 2022: Frühe Jugend  
(13–14 Jahre, techn., mit Verweis auf Variablen)

**1372**

SOEP-Core – 2022: Nachbefragung Person  
(PAPI, mit Verweis auf Variablen)

**1373**

SOEP-Core – 2022: Nachbefragung Person  
(techn., mit Verweis auf Variablen)

**1374**

SOEP-Core – 2022: Jugend  
(16–17 Jahre, techn., mit Verweis auf Variablen)

**1375**

SOEP-Core – 2022: Person  
(PAPI, mit Verweis auf Variablen)

**1376**

SOEP-Core – 2022: Person  
(techn., mit Verweis auf Variablen)

**1377**

SOEP-Core – 2022: Haushalt  
(techn., mit Verweis auf Variablen)

**1378**

SOEP-Core – 2022: Biografie  
(PAPI, mit Verweis auf Variablen)

**1379**

SOEP-Core – 2022: Biografie  
(techn., mit Verweis auf Variablen)



**1380**

SOEP-Core – 2022: Selbstständige  
(mit Verweis auf Variablen)

**1381**

SOEP-Core – 2022: Person  
(IAB-BAMF-SOEP-M3-M6, Nicht-Geflüchtete,  
mit Verweis auf Variablen)

**1382**

SOEP-Core – 2022: Person  
(IAB-BAMF-SOEP-M3-M6, Geflüchtete,  
mit Verweis auf Variablen)

**1383**

SOEP-Core – 2022: Biografie  
(IAB-BAMF-SOEP-M3-M6, mit Verweis auf  
Variablen)

**1384**

SOEP-Core – 2022: Jugend  
(11–17 Jahre, IAB-BAMF-SOEP-M3-M6,  
mit Verweis auf Variablen)

**1385**

SOEP-Core – 2022: Haushalt  
(IAB-BAMF-SOEP-M3-M6, mit Verweis  
auf Variablen)

**1386**

SOEP-Core – 2022: Kontextfragen zum  
Interview (mit Verweis auf Variablen)

**1387**

SOEP-Core – 2022: Wohnumfeld  
(mit Verweis auf Variablen)

**1388**

SOEP-Core – 2022: Kindheit  
(0–11 Jahre, mit Verweis auf Variablen)

**1389**

SOEP-Core – 2022: Kindheit  
(0–11 Jahre, IAB-BAMF-SOEP-M3-M6,  
mit Verweis auf Variablen)

**1390**

SOEP-LEE2-Compare – 2022: Fragebogen  
der Betriebsbefragung (mit Verweis auf  
Variablen)

**1391**

SOEP-LEE2-Compare – 2022: Questionnaire  
of the Establishment Survey (with Reference  
to Variables)

**1394**

SOEP-Core – 2022: Childhood  
(0–11-year-olds, with Reference to Variables)

**1395**

SOEP-Core – 2022: Residential Environment  
(with Reference to Variables)

**1396**

SOEP-Core – 2022: Context Questions About  
the Interview (with Reference to Variables)

**1397**

SOEP-Core – 2022: Household  
(IAB-BAMF-SOEP-M3-M6, with Reference  
to Variables)

**1398**

SOEP-Core – 2022: Youth  
(11–17-year-olds, IAB-BAMF-SOEP-M3-M6,  
with Reference to Variables)

**1399**

SOEP-Core – 2022: Biography  
(IAB-BAMF-SOEP-M3-M6, with Reference  
to Variables)

**1400**

SOEP-Core – 2022: Individual  
(IAB-BAMF-SOEP-M3-M6, Refugees,  
with Reference to Variables)

**1401**

SOEP-Core – 2022: Individual  
(IAB-BAMF-SOEP-M3-M6, Non-Refugees,  
with Reference to Variables)

**1402**

SOEP-Core – 2022: Self-employed Persons  
(with Reference to Variables)

**1403**

SOEP-Core – 2022: Biography  
(techn., with Reference to Variables)

**404**

SOEP-Core – 2022: Biography  
(PAPI, with Reference to Variables)

**1405**

SOEP-Core – 2022: Household  
(techn., with Reference to Variables)

**1406**

SOEP-Core – 2022: Individual  
(techn., with Reference to Variables)

**1407**

SOEP-Core – 2022: Individual  
(PAPI, with Reference to Variables)

**1408**

SOEP-Core – 2022: Youth  
(16–17-year-olds, techn., with Reference  
to Variables)

**1409**

SOEP-Core – 2022: Catch-up Individual  
(techn., with Reference to Variables)

**1410**

SOEP-Core – 2022: Catch-up Individual  
(PAPI, with Reference to Variables)

**1411**

SOEP-Core – 2022: Early Youth  
(13–14-year-olds, techn., with Reference  
to Variables)

**1412**

SOEP-Core – 2022: Pre-teen (11–12-year-olds,  
techn., with Reference to Variables)

**1413**

SOEP-Core – 2022: Deceased Individual  
(techn., with Reference to Variables)

**1414**

SOEP-Core – 2022: Deceased Individual  
(PAPI, with Reference to Variables)

**1415**

SOEP-Core – 2022: Household  
(PAPI, with Reference to Variables)

## Series C

### Data Documentations

**1328**

Documentation of the causal effect of liberalizing  
legal requirements on naturalization intentions

**1332**

A guide to using the SOEP for research on indi-  
viduals of immigrant origin. Samples and contents  
of the SOEP-Core, including the IAB-SOEP Migration  
Samples and the IAB-BAMF-SOEP Survey of  
Refugees, through a migration and immigrant  
integration lens

**1334**

Data quality control in the 6<sup>th</sup> wave of  
the IAB-BAMF-SOEP Survey of Refugees,  
samples M3–M6

## Series D

### Variable Descriptions and Coding

**1305**

SOEP-Core v38.1 – BIOBIRTH

**1306**

SOEP-Core v38.1 – HBRUTTO:  
Household-Related Gross File

**1307**

SOEP-Core v38.1 – PBRUTTO:  
Person-Related Gross File

**1309**

SOEP-Core v38.1 – HGEN: Household-Related  
Status and Generated Variables

**1310**

SOEP-Core v38.1 – HPATHL: Household-Related  
Meta-Dataset

**1311**

SOEP-Core v38.1 – INSTRUMENTATION:  
Information on the Utilization of Questionnaires

**1312**

SOEP-Core v38.1 – COGDJ

**1313**

SOEP-Core v38.1 – PGEN: Person-Related Status and Generated Variables

**1314**

SOEP-Core v38.1 – PPATHL: Person-Related Meta-Dataset

**1317**

IAB-BiB/FReDA-BAMF-SOEP-Befragung  
„Geflüchtete aus der Ukraine in Deutschland“  
vukr: UKR-DURATION

**1318**

IAB-BiB/FReDA-BAMF-SOEP-Befragung  
„Geflüchtete aus der Ukraine in Deutschland“  
vukr: UKR-INSTRUMENTATION

**1319**

IAB-BiB/FReDA-BAMF-SOEP-Befragung  
„Geflüchtete aus der Ukraine in Deutschland“  
vukr: UKR-PL

**1323**

IAB-BiB/FReDA-BAMF-SOEP-Befragung  
„Geflüchtete aus der Ukraine in Deutschland“  
vukr.1: UKR-DURATION

**1324**

IAB-BiB/FReDA-BAMF-SOEP-Befragung  
„Geflüchtete aus der Ukraine in Deutschland“  
vukr.1: UKR-PL

**1325**

IAB-BiB/FReDA-BAMF-SOEP-Befragung  
„Geflüchtete aus der Ukraine in Deutschland“  
vukr.1: UKR-PBRUTTO

**1329**

SOEP-Core v39 – INTERVIEWER

**1331**

IAB-BiB/FReDA-BAMF-SOEP-Befragung  
„Geflüchtete aus der Ukraine in Deutschland“  
vukr.1: UKR-INSTRUMENTATION

**1333**

SOEP-Core v38 – Codebook for the \$PEQUIV File  
1984–2020: CNEF Variables with Extended  
Income Information for the SOEP

**1337**

SOEP-Core v38.1 – BIOIMMIG:  
Generated Information on Immigration History

**1338**

SOEP-Core v39 – Codebook for the \$PEQUIV File  
1984–2022: CNEF Variables with Extended  
Income Information for the SOEP

**1339**

SOEP-IS 2022 – BIOL: Variables from the  
Life Course Question Module

**1340**

SOEP-IS 2022 – BIOAGE:  
Variables from the Modules of Questions  
on Children

**1341**

SOEP-IS 2022 – BIOBIRTH:  
Birth Biography of Female and Male  
Respondents

**1342**

SOEP-IS 2022 – BIOPAREN:  
Biography Information on the Parents

**1343**

SOEP-IS 2022 – COGNIT:  
Cognitive Achievement Potentials

**1344**

SOEP-IS 2022 – FGZ: FGZ exclusive Variables

**1345**

SOEP-IS 2022 – HL: Variables from the  
Household Question Module

**1346**

SOEP-IS 2022 – HPATH:  
Household-Related Meta-Dataset

**1347**

SOEP-IS 2022 – HPATHL:  
Household-Related Meta-Dataset (long)

**1348**

SOEP-IS 2022 – HBRUTTO:  
Household-Related Gross File

**1349**

SOEP-IS 2022 – HGEN:  
Household-Related Status and Generated  
Variables

**1350**

SOEP-IS 2022 – IBIP\_PARENT:  
Variables from Bonn Intervention Panel  
(Parents)

**1351**

SOEP-IS 2022 – IBIP\_PUPIL:  
Variables from Bonn Intervention Panel  
(Children)

**1352**

SOEP-IS 2022 – IDRM: Person-Related Data  
from Innovative DRM Module

**1353**

SOEP-IS 2022 – IDRM\_ESM: Person-Related  
DRM Data from Innovative ESM Module

**1354**

SOEP-IS 2022 – IESM: Person-Related ESM  
Data from Innovative ESM Module

**1355**

SOEP-IS 2022 – ILANGUAGE: Variables from  
Innovative Language Modules

**1356**

SOEP-IS 2022 – ILOTTERY: Variables from an  
Innovative Lottery Experiment in 2016

**1357**

SOEP-IS 2022 – INNO: Variables from the  
Innovation Modules

**1358**

SOEP-IS 2022 – INNO\_H: Household-Variables  
from the Innovation Modules

**1359**

SOEP-IS 2022 – INTV: Variables about the  
Interviewers

**1360**

SOEP-IS 2022 – IRISK: Decision from  
Description vs. Decision from Experience

**1361**

SOEP-IS 2022 – KIDLONG: Pooled Dataset  
on Children

**1362**

SOEP-IS 2022 – PL: Variables from the Individual  
Question Module

**1363**

SOEP-IS 2022 – PBRUTTO: Person-Related  
Gross File

**1364**

SOEP-IS 2022 – PGEN: Person-Related Status  
and Generated Variables

**1365**

SOEP-IS 2022 – PPATH: Person-Related  
Meta-Dataset

**1366**

SOEP-IS 2022 – PPATHL: Person-Related  
Meta-Dataset (Long)

**1392**

SOEP-LEE2-Compare v39 – ESTAB2022:  
Codebook for the 2022 Establishment Survey

**1393**

SOEP-LEE2-Compare v39 – BRUTTO2022:  
Codebook for the 2022 Establishment Survey  
Fieldwork Data

**1416**

SOEP-Core v39 – BIOBIRTH: Biological Parent/Child  
Connections

## Series G

### General Issues and Teaching Materials

**1308**

Persistent Identifier (PIDs) für Variablen in SOEP-Core

**1320**

40 Jahre SOEP und DIW Berlin – Ein Blick zurück

The full texts of the SOEP Survey Papers  
can be downloaded free of charge from  
the publication database EconStor:  
[www.econstor.eu/handle/10419/61517](http://www.econstor.eu/handle/10419/61517)

# EXPERT REPORTS AND APPOINTMENTS

## EXPERT REPORTS

### Jürgen Schupp

- In collaboration with members of the Bundestag (party: Bündnis 90/Die Grünen):  
Statement on the DIFIS brown bag round "Structural reform of basic income support"

## APPOINTMENTS

### Carina Cornesse

- "Health in Germany" (Robert Koch Institute Panel), member of the Methodological Advisory Board

### Jan Goebel

- Research Data Centre of the Leibniz Institute of Ecological Urban and Regional Development (IOER-FDZ), member of the Advisory Board

### Levent Neyse

- Open Science Framework (OSF), Ambassador

### Sabine Zinn

- Austrian Socio-Economic Panel (ASEP), member of the Scientific Advisory Board
- European Commission, appointed expert on modeling, simulation, and forecasting of migration flows in Europe
- "Health in Germany" (Robert Koch Institute Panel), member of the Methodological Advisory Board
- Federal Statistical Office, member of the Statistical Advisory Council

# LIST OF ABBREVIATIONS AND ACRONYMS

<b>BAMF</b>	Federal Office for Migration and Refugees
<b>BAMF-FZ</b>	Research Center of the Federal Office for Migration and Refugees
<b>BMAS</b>	Federal Ministry of Labour and Social Affairs
<b>BMBF</b>	Federal Ministry of Education and Research
<b>BCSS</b>	Berlin Graduate School of Social Sciences
<b>bpb</b>	Federal Agency for Civic Education
<b>BRISE</b>	Bremen initiative to strengthen early childhood development
<b>CALVI</b>	Computer-Assisted Live Video Interviewing
<b>CAPI</b>	Computer-Assisted Personal Interview
<b>CASI</b>	Computer-Assisted Self-administered Interview
<b>CATI</b>	Computer-Assisted Telephone Interview
<b>CAWI</b>	Computer-Assisted Web Interview
<b>CNEF</b>	Cross-National Equivalent File
<b>Covid-19</b>	Coronavirus disease 2019/SARS-2
<b>DDR-Psych</b>	GDR past and mental health: risk and protective factors
<b>DECIPHE</b>	Demographic Change and the Intergenerational Persistence in Homeownership in Europe
<b>Destatis</b>	Federal Statistical Office of Germany
<b>DFG</b>	German Research Foundation
<b>DIPS</b>	Dynamic interactions between personality traits and social relationships: Short- and medium-term processes in everyday life, including other individual characteristics and factors of the social context
<b>DIW Berlin</b>	German Institute for Economic Research
<b>DIW GC</b>	DIW Graduate Center
<b>DMHM</b>	Dynamics of Mental Health of Migrants
<b>ENTAILab</b>	Research Infrastructure and Innovation Lab
<b>EQUITAX</b>	Inequality, Taxation and Redistribution: Insights from a German/French Perspective
<b>ERC</b>	European Research Council
<b>EU</b>	European Union
<b>FAIR</b>	Findable, Accessible, Interoperable, Reusable
<b>FU Berlin</b>	Freie Universität Berlin
<b>GaPRisk</b>	Groups put at Particular Risk by COVID-19

<b>GDR</b>	German Democratic Republic
<b>GESIS</b>	Leibniz Institute for the Social Science
<b>IAB</b>	Institute for Employment Research
<b>infas</b>	infas Institute for Applied Social Science GmbH
<b>InfSPP</b>	Infrastructure Priority Program
<b>InterVerm</b>	The intergenerational reproduction of wealth inequality and its socio-demographic conditions in Germany
<b>IOER/IÖR</b>	The Leibniz Institute of Ecological Urban and Regional Development
<b>KonsortSWD</b>	Consortium for the Social, Behavioural, Educational and Economic Sciences in the National Research Data Infrastructure (NFDI)
<b>LARGE</b>	Longitudinal Aspects of the Interaction between Health and Integration of Refugees in Germany
<b>LifBi</b>	The Leibniz Institute for Educational Trajectories
<b>LIFE</b>	International Max Planck Research School on the Life Course
<b>LINDY</b>	Life-course Income Dynamics
<b>LIS</b>	Luxembourg Income Study
<b>LWS</b>	Luxembourg Wealth Study
<b>MikroSim</b>	Project within the research group "Multi-sectoral Regional Microsimulation Model"
<b>NEPS</b>	National Educational Panel Study
<b>PAPI</b>	Paper-and-Pencil Interview
<b>Ph.D.</b>	Doctor of Philosophy
<b>PIJE</b>	Perceptions of Inequalities and Justice in Europe
<b>RatSWD</b>	German Data Forum
<b>RDC</b>	Research Data Center
<b>RDS</b>	Respondent-Driven Sampling
<b>RISC</b>	Research Institute for Social Cohesion
<b>RKI-SOEP-2</b>	Second Nationwide Antibody Study "Living in Germany – Corona Monitoring"
<b>SCP</b>	Social Cohesion Panel
<b>SOEP</b>	Socio-Economic Panel
<b>SOEP-IS</b>	SOEP Innovation Sample
<b>SOEP-LEE2</b>	The Linked Employer-Employee Study of the Socio-Economic Panel, Vers. 2
<b>SOEP RegioHub</b>	Leibniz ScienceCampus SOEP RegioHub at Bielefeld University
<b>SOEP-RS</b>	SOEP Related Studies
<b>SOEP-XC</b>	SOEP Cross Countries
<b>SORA+</b>	Expansion of the Social-Spatial Science Research Data Infrastructure (SoRa): FAIR, intelligent, integrative
<b>SUARE</b>	Longitudinal Study of Ukrainian Refugees
<b>WATT</b>	Wealth-Holders at the Top: An interdisciplinary Research Network
<b>WEALTHTRAJECT</b>	Understanding Trajectories of Wealth Accumulation and Their Variability
<b>WZB</b>	Berlin Social Science Center





# IMPRINT

---

## SOEP

### The Socio-Economic Panel at DIW Berlin

German Institute for Economic Research (DIW Berlin)  
Mohrenstrasse 58 | 10117 Berlin | Germany

### SOEP Community Management

Phone +49-30-897 89-292  
E-Mail: [soepmail@diw.de](mailto:soepmail@diw.de)  
Internet: [www.diw.de/soep\\_en](http://www.diw.de/soep_en)

### Concept and Developmental Editing

Janina Britzke, Markus M. Grabka, Verena Neumann

### Project Management

Janina Britzke

### Translation and Line Editing

Adam Lederer

### Photos

pp. 4, 14, 15, 19, 25, 35, 20, 40 Photothek/DIW Berlin | p. 8 Stephan Röhl/DIW Berlin | p. 9 DIW Berlin | pp. 12/13 Bernhard Ludewig | pp. 14, 15, 16, 17, 18, 19, 21, 24, 25, 35, 48, 76, 77, 78, 79, 80, 81 Florian Schuh/DIW Berlin | pp. 14, 17, 36, 72 Lisa Beller | p. 17 DGOF | p. 18 LIfBi | p. 18 Gisela Romain/FU Berlin | p. 30 Anne Tilkorn/DIW Berlin | pp. 33/34, 77 private photos | pp. 33/34 Anna Logue, Stefan Obermeier, Kelly Moseley, Felix Imhof, Alex Habermehl, Bongaloo.nl, Michel Brumat, Tobias Hase | p. 39 Pixabay photo by webandi (20.11.2015) | p. 40 Pixabay photo by fsHH (02.03.2016) and Pexels photo by Tima Miroshnichenko (18.12.2020) | pp. 64–72 Florian Schuh/DIW Berlin and Photothek/DIW Berlin

### Design

Ann Katrin Siedenburg | [www.bureau-versal.de](http://www.bureau-versal.de)

### Printing

Torsten Tews, DIW Berlin

ISSN 219226 (print)

ISSN 186131 (online)

Berlin, June 2025

Editorial deadline: May 1, 2025



The Socio-Economic Panel (SOEP) is the largest and longest-running multidisciplinary longitudinal study in Germany. The SOEP is an integral part of Germany's scientific research infrastructure and is funded by the Federal Ministry for Education and Research (BMBF) and state governments within the framework of the Leibniz Association (WGL). The SOEP is based at DIW Berlin.



SOEP  
The Socio-Economic Panel  
at DIW Berlin

[www.diw.de/soep](http://www.diw.de/soep)  
[www.diw.de/soep-rdc](http://www.diw.de/soep-rdc)  
[www.facebook.com/SOEPnet.de](https://www.facebook.com/SOEPnet.de)  
[www.youtube.com/user/SOEPstudie](https://www.youtube.com/user/SOEPstudie)

DIW Berlin – German Institute  
for Economic Research

Mohrenstraße 58 | 10117 Berlin  
[www.diw.de](http://www.diw.de)