

Honlonkou, Albert N.; Bassongui, Nassibou; Daraté, Corinne B.

Article

Effects of COVID-19 on catastrophic health expenditures and inequality in Benin: A microsimulation approach

Economies

Provided in Cooperation with:

MDPI – Multidisciplinary Digital Publishing Institute, Basel

Suggested Citation: Honlonkou, Albert N.; Bassongui, Nassibou; Daraté, Corinne B. (2025) : Effects of COVID-19 on catastrophic health expenditures and inequality in Benin: A microsimulation approach, *Economies*, ISSN 2227-7099, MDPI, Basel, Vol. 13, Iss. 8, pp. 1-27, <https://doi.org/10.3390/economies13080222>

This Version is available at:

<https://hdl.handle.net/10419/329502>

Standard-Nutzungsbedingungen:

Die Dokumente auf EconStor dürfen zu eigenen wissenschaftlichen Zwecken und zum Privatgebrauch gespeichert und kopiert werden.

Sie dürfen die Dokumente nicht für öffentliche oder kommerzielle Zwecke vervielfältigen, öffentlich ausstellen, öffentlich zugänglich machen, vertreiben oder anderweitig nutzen.

Sofern die Verfasser die Dokumente unter Open-Content-Lizenzen (insbesondere CC-Lizenzen) zur Verfügung gestellt haben sollten, gelten abweichend von diesen Nutzungsbedingungen die in der dort genannten Lizenz gewährten Nutzungsrechte.

Terms of use:

Documents in EconStor may be saved and copied for your personal and scholarly purposes.

You are not to copy documents for public or commercial purposes, to exhibit the documents publicly, to make them publicly available on the internet, or to distribute or otherwise use the documents in public.

If the documents have been made available under an Open Content Licence (especially Creative Commons Licences), you may exercise further usage rights as specified in the indicated licence.



<https://creativecommons.org/licenses/by/4.0/>

Article

Effects of COVID-19 on Catastrophic Health Expenditures and Inequality in Benin: A Microsimulation Approach

Albert N. Honlonkou *, Nassibou Bassongui  and Corinne B. Daraté

National School of Applied Economics and Management (ENEAM), University of Abomey-Calavi, Cotonou BP 358, Benin; bionassib@gmail.com (N.B.); daratebangami@yahoo.fr (C.B.D.)

* Correspondence: meintoh@yahoo.fr

Abstract

This study assesses the effects of the COVID-19 pandemic on catastrophic health expenditures and income inequality in Benin. A microsimulation was calibrated to estimate the impact of the pandemic under three different shock scenarios: low, moderate, and severe. The analysis relies on secondary data from household living condition surveys. The results indicate that the COVID-19 crisis would lead to a significant average income loss of up to 20% and income inequality, while the number of households with catastrophic health expenditures would increase by 4%. More importantly, the findings reveal heterogeneous impacts across households, with urban residents, younger individuals, more educated households, and male-headed households experiencing the greatest income decline. These findings underscore the need for targeted health coverage and employment policies to better protect vulnerable populations in Benin in the face of future shocks.

Keywords: health expenditures; inequalities; microsimulation; COVID-19

JEL Classification: C53; D31; I18; I31



Academic Editor: Fabio Clementi

Received: 22 February 2025

Revised: 6 July 2025

Accepted: 9 July 2025

Published: 29 July 2025

Citation: Honlonkou, A. N., Bassongui, N., & Daraté, C. B. (2025). Effects of COVID-19 on Catastrophic Health Expenditures and Inequality in Benin: A Microsimulation Approach. *Economics*, 13(8), 222. <https://doi.org/10.3390/economics13080222>

Copyright: © 2025 by the authors. Licensee MDPI, Basel, Switzerland. This article is an open access article distributed under the terms and conditions of the Creative Commons Attribution (CC BY) license (<https://creativecommons.org/licenses/by/4.0/>).

1. Introduction

In 2019, the world experienced an unprecedented health shock, that of the COVID-19 pandemic. This deadly infectious disease caused by severe acute respiratory disorders of coronavirus syndrome was declared a global pandemic by the World Health Organisation (WHO) on 11 March 2020 (WHO, 2020). The magnitude of the pandemic was estimated to be nearly half a billion people infected by 11 March 2022, and more than 6.5 million deaths worldwide, and 12 million people infected and 254 thousand deaths in Africa (WHO, 2022a). Thus, the number of people infected by the COVID-19 pandemic alone represents more than 71 times the number of people infected by the five largest epidemics the world has experienced in the last two decades, namely Zika in 2016, Ebola virus in 2014, Middle East Respiratory Syndrome Coronavirus (MERS-CoV) in 2012, H1N1 virus in 2009, and Severe Acute Respiratory Syndrome (SARS) in 2003 (Loungani et al., 2021).

Benin recorded the first confirmed case of COVID-19 on 16 March 2020, and the second case on 17 March 2020. The first death was recorded on 6 April 2020. These first events marked the beginning of the COVID-19 crisis in Benin. Figures 1 and 2 highlight that the crisis was characterised by two waves. The first wave indicates that the pandemic grew rapidly during the period from May to September 2020 before slowing down. The second wave spanned the period from June to August 2021, where both the number of new cases and the number of deaths increased more than in the first wave.

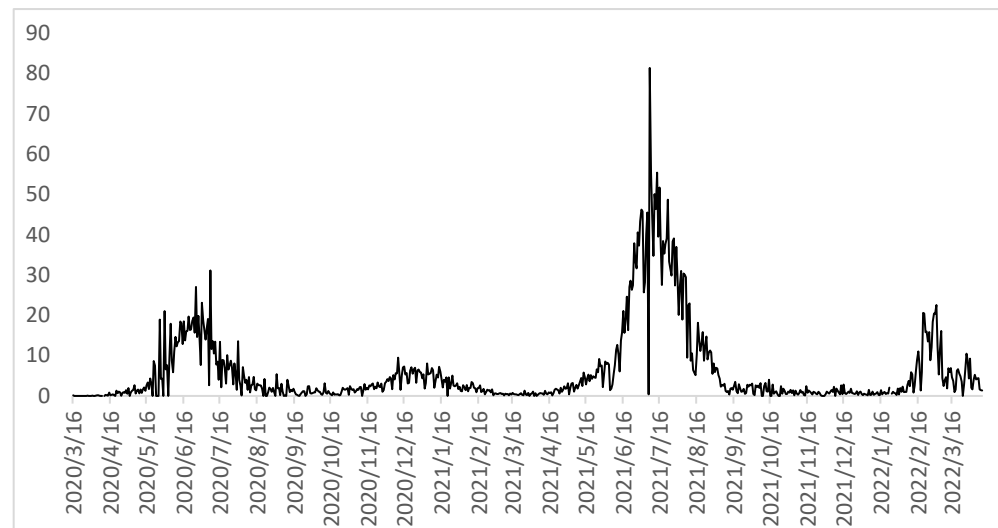


Figure 1. New confirmed COVID-19 cases per million in Benin. Source: Authors, using Johns Hopkins University CSSE COVID-19 data, 2022.

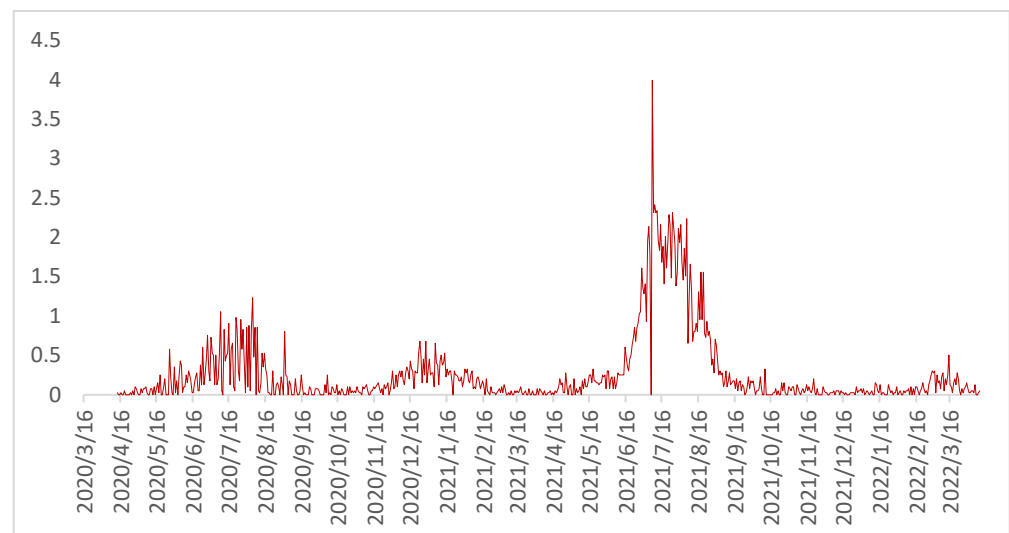


Figure 2. Deaths per million of the population in Benin. Source: Authors, using Johns Hopkins University CSSE COVID-19 data, 2022.

Following confirmation of the first cases of COVID-19, the Beninese authorities took measures including the closure of land borders, systematic quarantine of all travelers entering by air, school closures, prohibition of public gatherings, restrictions on public transportation, the closure of certain commercial centers such as restaurants and bars, and of course the systematic wearing of masks, hand disinfection and the strict respect of social distancing. On 13 September 2021, the Benin government made COVID-19 testing convenient for USD 45 and later decided that COVID-19 testing or vaccination would be mandatory for access to all public services, including decentralised services, in the country. On 1 April 2020, the government's first social measures for the population were adopted through the sale of masks at a government-subsidised price of USD 0.36, implying a subsidy rate of 60% in twelve high-risk districts in Benin ([Gouvernement Benin, 2022](#)). On 20 April 2020, social measures continued with the government-subsidised sale of 250 mg chloroquine tablets for the treatment and prevention of COVID-19 at a subsidised price of USD 0.9 and a subsidy rate of 64%.

All of these measures to contain the pandemic had many economic and social implications. At the macro-level, COVID-19 led to a decline in economic growth of 1.9% in 2020 in the Sub-Saharan Africa region (AfDB, 2022). In terms of fiscal policy, public spending on health care, private sector subsidy programmes, and tax cuts led to an increase in the budget deficit of 8.4 percent of GDP in 2020, double its 2019 level of 4.6 percent of GDP. Beyond these macroeconomic implications, existing studies have relied on multiple regression and simulation approaches to show that the pandemic increased the poverty rate by 22.7% to 38.5% in a sample of 13 Latin American countries (Bracco et al., 2024). In comparison, it was around 60% in Ghana (Abu & Issahaku, 2020), 22% in Ethiopia (Yimer & Alemayehu, 2021), 9% in Nigeria (Andam et al., 2020), and 4% in Burkina Faso (Ouoba & Sawadogo, 2022). Other studies have focused on health expenditure; for example, Rajalakshmi et al. (2023) showed that the pandemic led to a 26% increase in health expenditures in South India. Similarly, Ayanore et al. (2024) demonstrated that 52% of households in Ghana spent more than 5% of their total expenditures on COVID-19-related health costs. These findings demonstrate the drastic impact of COVID-19 across the globe. However, the magnitude of the impact also varies drastically, raising the issue of country-specific characteristics. Moreover, the underlying mechanisms through which the pandemic increased poverty, as well as the gender aspects of the impacts, are of crucial importance for formulating policy-relevant recommendations. Though the COVID-19 pandemic has passed, our findings remain relevant for better management of future pandemics.

The main question underlying this study is whether and to what extent the COVID-19 pandemic affected households' health expenditures and poverty in Benin. The objectives of the study are threefold: (i) to estimate the effect of COVID-19 on household income; (ii) to estimate the effect of COVID-19 on household health expenditures; and (iii) to evaluate the distributional effects of COVID-19. For the sake of having an in-depth understanding of the social implications of COVID-19 on household welfare, we analysed the effects of COVID-19 on the share of health expenditures in relation to households' income to determine whether the pandemic led to catastrophic health expenditures. Health expenditures are qualified as catastrophic when the out-of-pocket payments spent by households for health care negatively affect the households' capacity to satisfy their basic needs (WHO, 2001). Though there is no consensus on the threshold share of health expenditures for catastrophic characterisation, most of the definitions are based on threshold values ranging from 10% to 40% of a household's income or non-food expenditures (Kockaya et al., 2021; WHO, 2001; Xu, 2005).

The rest of the paper develops as follows. The literature review is presented in Section 2. The conceptual framework is presented in Section 3. In Section 4, we present the empirical strategy and data used. The main findings are presented and discussed in Section 5. Lastly, the concluding remarks are presented in Section 6.

2. Literature Review

Empirical studies widely agree on the detrimental effects of the COVID-19 pandemic on welfare and poverty, but they differ significantly in methodology, focus, and explanatory power. One dominant strand of the literature adopts quantitative approaches (regressions and microsimulations), revealing that the pandemic has worsened income inequality, increased household vulnerability, and intensified multidimensional poverty.

Bracco et al. (2024), using harmonised microdata from 13 Latin American countries, employed microsimulations to show that the COVID-19 crisis caused a poverty increase ranging from 22.7% to 38.5%, and they advocated for strong compensatory measures to mitigate long-term impacts. Similarly, Kang et al. (2023) analysed the impact of COVID-19 on household income using nationally representative surveys in Chad from 2020 and 2021.

Based on multivariate regression, they found that two-thirds of households, both rural and urban, reported income reductions, with urban areas hit harder in 2020 and rural areas in 2021.

In the health domain, multiple studies report rising catastrophic health expenditures during the pandemic. [Haakenstad et al. \(2023\)](#), using OLS regressions on microdata from Mexico and Peru, estimated 5.6% and 13.5% increases in such expenditures, respectively. Similarly, [Rajalakshmi et al. \(2023\)](#) showed that, in South India, 26% of households experienced catastrophic health spending. [Ayanore et al. \(2024\)](#) reported that, in Ghana, 52.2% of households spent more than 5% of their total expenditures on COVID-19-related health costs, and 4.2% exceeded the 40% threshold, highlighting inequality in the financial burden of the pandemic.

Beyond developing countries, many studies have also confirmed the detrimental impact of COVID-19 on households. [Militaru et al. \(2024\)](#) used the EUROMOD tax-benefit microsimulation model to study income changes during the COVID-19 period (2019–2021) and the subsequent inflation crisis (2021–2023) in Romania. They found that although disposable income rose initially, the poorest benefited the least, and later inflation disproportionately impacted lower-income groups. However, their findings revealed that overall income inequality declined, emphasising the need for targeted policy support to protect vulnerable households. [Kalar et al. \(2023\)](#) relied on the same methodology to investigate the impact of COVID-19 on income in the European Union. This study finds that COVID-19 containment and mitigation measures had a regressive impact on income distribution, benefiting lower-income groups more, while their effectiveness varied by country context, with old democracies generally achieving better outcomes than new democracies, highlighting the need for tailored policy mixes. [Alfani et al. \(2024\)](#) relied on Recentered Influence Function regression to show that COVID-19 increased income inequality in the US and Brazil. Moreover, they highlighted that the disparities were persistent over time. Furthermore, [Shen and Zhong \(2023\)](#) focused on both human and animals and showed that the COVID-19 pandemic negatively affected both household income as well as animal food consumption in China.

Despite the robustness of these quantitative findings, a key limitation is their limited attention to causal mechanisms. These studies document income loss, increased food insecurity, or reduced health access, but often do not explain their mechanisms. Moreover, the effects vary widely across and within countries, pointing to the importance of contextual and institutional factors that are not sufficiently unpacked in these analyses.

Complementing this research is a second strand of studies that rely primarily on qualitative methods, offering a more nuanced view of the pandemic's impact on lived experiences, though often at the expense of generalisability. [Musoke et al. \(2024\)](#) use focus group discussions, key informant interviews, and household narratives to analyse the social and economic effects of the COVID-19 lockdown in Uganda. Their findings reveal family breakdowns, increased gender-based violence, rising child labour, and food insecurity, along with deteriorated educational outcomes due to school closures. Similarly, [Kerschbaumer et al. \(2024\)](#) employed qualitative methods with 151 participants in Austria to document heightened poverty, social exclusion, and psychological distress during the pandemic. In Indonesia, [Mafruhath et al. \(2025\)](#) used a non-random sample of 100 households across 30 districts to explore both material and spiritual poverty, finding that the pandemic has deepened both. In Spain, [Ortega-Martin and Alvarez-Galvez \(2025\)](#) conducted semi-structured interviews with 23 participants to highlight how COVID-19's effects extended beyond physical health to include economic stress, legal uncertainty, and weakened social cohesion. Finally, [Karunaratne et al. \(2025\)](#), using 22 years of panel data from 20 low-income countries, estimated the long-running impact of the pandemic on life

expectancy, concluding that it has significantly reduced life expectancy, particularly in countries with fragile health systems.

Together, these qualitative and mixed-method studies offer crucial insight into the social, psychological, and gendered dimensions of COVID-19's impact on welfare. However, their methodological limitations, including their small, non-representative samples and the lack of causal inference, limit the external validity and policy applicability of their findings.

In sum, while the existing literature convincingly demonstrates the negative impact of COVID-19 on poverty and welfare, two major gaps persist. First, the importance of the impacts from quantitative studies widely varies, and these studies fail to identify the mechanisms through which these effects unfold, especially across different social groups or policy environments. Second, qualitative studies, while rich in context, suffer from limited quantification and generalisability, preventing broader policy conclusions.

3. Conceptual Framework

COVID-19 affected household income and health expenditures through labour markets (demand and supply), moderated by government measures (transfers and barrier measures), and preventive and curative health expenditures by households. Figure 3 describes the channels.

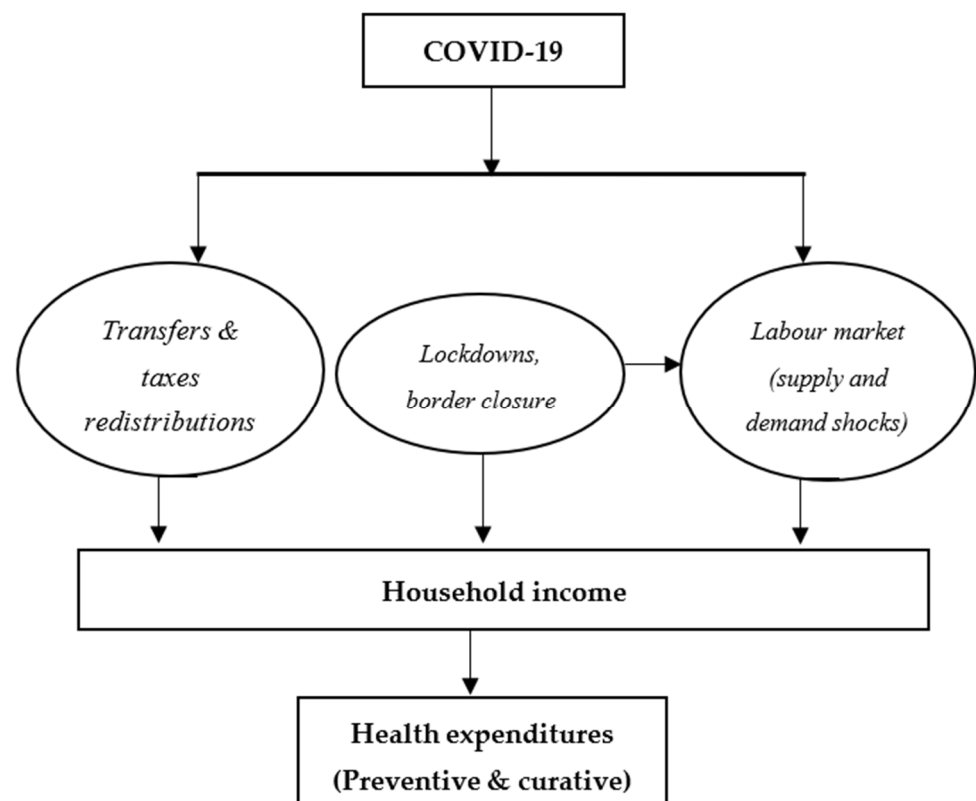


Figure 3. Effect of COVID-19 on household health expenditures. Source: authors.

The population affected by the COVID-19 outbreak can be classified into two groups, namely the infected and the susceptible, with the possibility of having both groups of people within the same household. On the one hand, those infected are drawn out of the labour market, increasing unemployment by reducing the labour supply and leading to a decrease in household income. The government intervenes to temper the decrease in income by cash transfers and tax redistribution. The treatment expenses increase directly with health expenditure (curative and preventive). However, since household income decreases, health expenditures may decrease as a consequence. On the other hand, the

susceptible population takes prevention measures that increase health expenses while simultaneously experiencing income losses. Moreover, to prevent contamination, the government takes barrier measures (e.g., lockdowns, internal and external border closures, and bans on public gatherings) that slow down economic activities and cause a recession that affects the labour markets through unemployment due to the decrease in labour demand. These governmental measures lead to a decrease in income and ultimately to a decrease in health expenditures at the household level. The channels through which COVID-19 affects income and health expenditures are instrumental to the evaluation of the effects of the pandemic.

4. Empirical Strategy

The best strategy for evaluating the effect of COVID-19 on household health expenditures is to use experimental—or by default quasi-experimental—impact assessment methods. These methods assume the existence of both control and treatment groups. The use of these methodologies is not feasible in the case of COVID-19 because no one could be excluded from exposure to the epidemic, resulting in the absence of an appropriate control group. Also, the lack of household and individual data before and after COVID-19 precludes the use of quasi-experimental impact assessment methods. In the face of these empirical constraints, we use a microsimulation approach to assess the effect of COVID-19. This approach is based on the behavioral function of individuals through which their reactions to a shock or policy are evaluated in terms of averages and distributional effects, considering the entire distribution (especially the tails) of the shock or policy effects. Unlike Computable General Equilibrium (CGE) models, which are criticised for aggregating economic phenomena (Hansen & Heckman, 1996), microsimulation models have the advantage of analysing in detail the effect of a shock or policy at the individual level.

Microsimulation models have been widely used in recent decades for the ex ante evaluation of poverty reduction policies and exogenous shocks, including the effects of COVID-19 (Andam et al., 2020; O'Donoghue et al., 2021; Ouoba & Sawadogo, 2022; Yimer & Alemayehu, 2021) and mostly for social programs and fiscal policies (Benczúr et al., 2018; Bover et al., 2017; Maskaeva et al., 2019, 2021). Our estimation strategy of the short-term effect of COVID-19 follows that of Aran et al. (2021). Our microsimulation strategy entails four steps as stated below.

4.1. Calculating the Effects of COVID-19

4.1.1. Calculating COVID-19 Household Income and Health Expenditure

We compute the monthly household health expenditures and monthly household income before the COVID-19 pandemic using the Harmonized Survey on Living Conditions of Households (EHCVM) dataset.

Concerning household income, our income generation process follows Sologon et al.'s (2021) approach. The total income is given by Equation (1):

$$y = y^L + y^K + y^O + y^B \quad (1)$$

where y is the household monthly income, y^L refers to the labour income, y^K measures the capital income, y^O is other household income, and y^B is public benefits (transfers). Contrary to Sologon et al. (2021), who used household disposable income, we used gross income. This choice is motivated by the fact that the tax information and public benefits are not available in our dataset. However, the consequences of this oversight of taxes are likely to be negligible, because, in developing countries like Benin, labour income is lightly taxed and the tax cost is probably balanced by public transfers.

The labour income y^L in a household equals the sum of individuals employed and self-employed within the household, aggregated as follows:

$$y^L = \sum_{i=1}^n \left(I_i^{\text{employed}} * y_i^{\text{employed}} + I_i^{\text{self-employed}} * y_i^{\text{self-employed}} \right) \quad (2)$$

where i refers to the individual member of the household and n the size of the household. Individual i is employed ($I_i^{\text{employed}} = 1$) and ($I_i^{\text{employed}} = 0$), with an income equal to y_i^{employed} . $I_i^{\text{self-employed}}$ and $y_i^{\text{self-employed}}$ are similarly defined. This aggregate formula also addresses the situation of individuals who combine salaried work and self-employment.

Household capital income comes from investment income and property income, most notably rental income. Capital income is then modelled as follows:

$$y^K = \sum_{i=1}^n \left(I_i^{\text{investment}} y_i^{\text{investment}} + I_i^{\text{property}} y_i^{\text{property}} \right) \quad (3)$$

Apart from labour and capital income, households may benefit from other incomes, such as private pensions and transfers received from relatives and nonrelatives. Such sources of income are computed as follows:

$$y^O = \sum_{i=1}^n \left(I_i^{\text{private.pension}} y_i^{\text{private.pension}} + I_i^{\text{transfers.relatives}} y_i^{\text{transfers.relatives}} + I_i^{\text{transfers.non-relatives}} y_i^{\text{transfers.non-relatives}} \right) \quad (4)$$

Finally, household income comes from public benefits (if available), both at the individual level (pensions, sickness or disability, unemployment insurance) and at the household level such as social security programs (food distribution, cash transfers, free healthcare for children and pregnant women). The aggregated income from public benefits at the household level is computed as follows:

$$y^B = y^{\text{social.security}} + \sum_i^n \left(I_i^{\text{pensions}} y_i^{\text{pensions}} \right) \quad (5)$$

The World Health Organisation defines health expenditures based on healthcare functions as out-of-pocket money spent by households in satisfying their core healthcare needs. Those healthcare functions included core items such as curative care, rehabilitative care, inpatient care, outpatient care, day care, long-term care, home-based care, ancillary services, pharmaceutical goods, therapeutic appliances, and preventive care (WHO, 2022b). Following this definition, we modelled the household health expenditure equation into three components, namely curative expenditures e^C , preventive expenditures e^P , and nonmedical expenditures e^O , as follows:

$$e = \sum_{i=1}^n \sum_j e_i^j, \text{ with } i = 1, 2, \dots, n \text{ and } j = C, P, O \quad (6)$$

where e is the aggregated household monthly health expenditures for all the household members. All three components of health expenditures take into consideration both modern and traditional medicine. Curative health expenditures are composed of doctor consultation fees e^{cons} , medicines e^{med} , diagnostic testing e^{diagn} , and bed charges for hospitalisation e^{bed} as follows:

$$e^C = e^{\text{cons}} + e^{\text{med}} + e^{\text{diagn1}} + e^{\text{bed}} \quad (7)$$

Preventive health expenditures equal the sum of preventative diagnostic testing e^{diagn2} , vaccines e^{vac} , and other nonmedical goods e^{other} such as face masks.

$$e^P = e^{\text{diagn2}} + e^{\text{vac}} + e^{\text{other}} \quad (8)$$

Finally, household health expenditures encompass other nonmedical expenditures e^o , notably transport e^{trans} and communication fees e^{com} as follows:

$$e^O = e^{trans} + e^{com} \quad (9)$$

It is worth noting that the measure of health expenditures used in this study refers exclusively to out-of-pocket payments reported by households. It does not include health spending covered by government subsidies, public insurance schemes, or donor-funded programmes. Data on these variables were not available.

4.1.2. Calculating the COVID-19 Job Loss Index After the Outbreak

The COVID-19 job loss index is calculated by multiplying the risk of job loss conditional to the sector of activity, gender, and residence as follows¹:

$$\text{Job loss index}_{t=1} = \text{Risk}(\text{job loss}|\text{sector}_k) * \text{Risk}(\text{job loss}|\text{gender}_i) * \text{Risk}(\text{job loss}|\text{residence}_j) \quad (10)$$

where $t = 1$ refers to the COVID-19 period. The risk of job loss conditional to sector of activities and residence is calculated using the results of the rapid evaluation conducted during the COVID-19 pandemic (March–July 2020) by the National Institute of Statistics and Economic Analysis (INSAE BENIN, 2020). This study reported that 80%, 77% and 74% of Cotonou city residents, other urban residents, and rural residents, respectively, did not work during the period considered. Equally, the risk of job loss in the wholesale and retail trade was the highest (37.29%), while it was 0% in the agriculture sector. The full job loss probabilities according to the sector of activities, are reported in Table A1 in Appendix A. Furthermore, this report indicated that 50% of households lost their job during the period, which accounts for 87.5% of men and 13% of women. Hence, we calculated the probabilities of job loss based on gender as follows²:

$$\text{Pr}(\text{job loss}|\text{gender}_i) = \frac{\text{Pr}(\text{job loss} \cap \text{gender}_i)}{\text{Pr}(\text{gender}_i)} \quad (11)$$

The results from Equation (11) indicated probabilities of job loss of 0.55 and 0.30, respectively, for men and women. Then, we calculated the risk of job loss conditional to gender and residence using a multiplier as follows:

$$\text{Risk}(\text{job loss}|\text{gender}_i) = \frac{2\text{Pr}(\text{job loss}|\text{gender}_i)}{\sum_{i=1}^2 2\text{Pr}(\text{job loss}|\text{gender}_j)} \quad (12)$$

and

$$\text{Risk}(\text{job loss}|\text{residence}_k) = \frac{3\text{Pr}(\text{job loss}|\text{residence}_k)}{\sum_{i=1}^3 2\text{Pr}(\text{job loss}|\text{residence}_l)}$$

The risk of job loss coefficients by gender and residence are reported in Table A2 in the Appendix A. This risk factors are not probabilities, but multipliers addressing the fact that certain individuals are more susceptible to job loss than some others depending on their characteristics (gender or place of residence).

We considered the job loss indices calculated in Equation (12) as the mean shocks, so they are set as the baseline assumptions (moderate shock). The low and severe assumptions are set by considering that low shock is 0.5 times the baseline and severe is twice the baseline assumption. The job loss indices in the low, moderate, and severe assumptions are reported in Table 1.

Table 1. Job loss indices by severity of shock.

| Income Loss | Obs | Mean | Std. Dev. | Min | Max |
|----------------|-----|-------|-----------|-------|-------|
| Low shock | 899 | 0.058 | 0.042 | 0.000 | 0.316 |
| Moderate shock | 899 | 0.116 | 0.083 | 0.000 | 0.631 |
| Severe shock | 899 | 0.201 | 0.101 | 0.035 | 0.947 |

Source: authors.

4.1.3. Calculating Incomes After COVID-19

We compute income loss during the COVID-19 pandemic by adjusting the pre-COVID-19 income for the after-COVID-19 job loss index. The post-COVID-19 income³ loss is specified as follows:

$$Income\ loss_{t=1} = Income_{t=0} * job\ loss\ index_{t=1} \quad (13)$$

Finally, the after COVID-19 income is calculated as follows:

$$Income_{t=1} = Income_{t=0} \times (1 - job\ loss\ index_{t=1}) \quad (14)$$

4.1.4. Calculating After COVID-19 Health Expenditures

We estimate the effect of COVID-19 on health expenditures. COVID-19 affects household health expenditures through an increase in preventive (purchase of face masks, vaccination, and hand sanitisers) and curative health expenditures (drugs and hospitalisation), *ceteris paribus*. Following Olasehinde and Olaniyan (2017), household health expenditures in developing countries depend on income and household sociodemographic characteristics as follows:

$$\begin{aligned} \ln(\text{health Expenditures}_{t=0}) &= \varphi_0 + \varphi_1 \ln(\text{Income}_{t=0}) + \varphi_2 \text{household size} + \varphi_3 \text{Educ} \\ &+ \varphi_4 \text{illness} + \varphi_5 \text{Gender} + \varphi_6 \text{Insurance} + \varphi_7 \text{Residence} + \psi_i \end{aligned} \quad (15)$$

φ_i are coefficients to be estimated. Specifically, φ_1 denotes the income elasticity of health expenditures. The hierarchical structure of the data indicates there is no independent individual-level observations. This absence of independence arises because individuals are nested within households. To address this concern, we use multilevel mixed-effects linear regression in estimating the health expenditure equation. This allows us to consider the variability in health expenditures as either fixed at the household level or random at the individual level (Gelman & Hill, 2006; Baayen et al., 2008). We then calculated the health expenditures after the COVID-19 pandemic as follows:

$$\text{Health expenditures}_{t=1} = (1 - \varphi_1 \times (\text{income loss coefficient})) \times \text{health expenditures}_{t=0} \quad (16)$$

The catastrophic health expenditures (CHEs) indicator is computed by the ratio of health expenditures to household income.

4.2. Data

This study uses secondary data from the first edition of the Harmonized Survey on Living Conditions of Households (EHCVM) in Benin (INSAE BENIN, 2019). This survey was conducted in the eight countries of the West African Economic and Monetary Union (UEMOA) between 2018 and 2019 with joint funding from the World Bank and the UEMOA Commission and carried out by the Institut National de la Statistique et de l'Analyse Economique du Bénin (INSAE). The EHCVM was based on a nationally representative sample of 7956 households containing 21,922 individuals distributed in 670 clusters across the 12 departments of Benin. The sample was selected randomly using the household sampling frame from the 2013 General Census of Population and Housing of

Benin (RGPH 4). The EHCVM has two modules. The first is the household–individual module, which provides information on sociodemographic characteristics (age, gender, place of residence, household size, education, health) and economic characteristics (sector of activity, employment status, income, consumer spending, asset ownership). The second module, entitled community, provides information on the characteristics of the household environment. The second source of data used comes from Benin government official releases and the official statistics of Benin institutions, such as the National Institute of Statistics, the Ministry of Economics and Finance, the Ministry of Health, the Ministry of Agriculture, and the Ministry of Industry. These data sources provide information on government measures and the reaction of economic sectors to COVID-19. This information is important in setting out our simulation hypotheses.

The dataset contains many missing data. For example, most of the households did not report their income. Overall, 5967 households that declared having a job did not report their income or health expenditures. To limit the biases that can arise when imputing missing data, we simply dropped observations with missing data regarding income and health expenditures, leaving a sample of 899 households. Indeed, we further checked the missing data patterns using the covariate-dependent missingness (CDM) test (Little, 1988). The result strongly rejected the null hypothesis that income and health expenditures are jointly CDM given the households' sociodemographic covariates⁴, meaning that the missing data are not completely random.

5. Empirical Results

This section presents the descriptive statistics of the study variables, the regression results, and the microsimulation outputs. Given the complex survey design of the EHCVM, which includes stratification, clustering, and unequal sampling probabilities, survey design features were incorporated into the analysis to ensure unbiased and efficient estimates, including the summary statistics. Specifically, sampling weights were applied to correct for unequal probabilities of selection, and standard errors were adjusted to account for clustering at the primary sampling unit (PSU) level. All analyses were performed using survey-adjusted regression techniques (the svy suite in Stata), which allow for correct inference under complex sampling designs.

5.1. Summary Statistics

This section presents some key statistics drawn from the dataset used. The Benin's Harmonised Households Living Conditions Survey dataset classified household activities into 18 branches, as presented in Table 2. The results presented are based on the main type of activity of the head of household. This table indicates that the agriculture, fishing and forestry sector was the most important type of household activity, accounting for 47.5% of households, followed by the trade sector (28.6%) and the manufacturing sector (14.6%). The rest of sectors represent less than 5% of household employment. These results reflect the economic structure of the majority of SSA countries, where the agricultural sector is the sector with the most employment, supplying an important share of government export revenue.

Table 3 outlines the summary statistics for household socioeconomic and demographic characteristics, such as income, health expenditures, age, gender, place of residence, and household size. All the statistics are calculated at the household level, meaning they are based on information from the head of household (gender, age, employment status, residence, and education) or information that does not vary across a household's members (access to clean water, electricity, health coverage). However, we considered that a household suffered from one of the diseases considered when at least one member of the

household was sick. For quantitative variables such as income and health expenditures, we aggregated the values at the individual level within the household and then calculated the mean at the household level.

Table 2. Type of activities.

| Activity | Percent |
|--|---------|
| 1. Agriculture, fishing, and forestry | 47.49 |
| 2. Mining | 0.52 |
| 3. Manufacturing | 14.57 |
| 4. Water, electricity, and gas | 0.04 |
| 5. Construction | 1.12 |
| 6. Wholesale and retail trade, repair of motor vehicles, and other motors. | 28.58 |
| 7. Hotels and restaurants | 0.52 |
| 8. Transport and communication | 1.61 |
| 9. Financial activities | 0.07 |
| 10. Real estate, leasing, and business services | 0.30 |
| 11. Public administration services | 0.52 |
| 12. Education | 1.57 |
| 13. Health and social work activities | 0.19 |
| 14. Associative activities | 0.15 |
| 15. Arts, entertainment, and recreation | 0.19 |
| 16. Personal service activities | 2.36 |
| 17. Housework and other home services | 0.19 |
| Total | 100.00 |

Source: authors.

Table 3. Households' characteristics.

| (a) Household Characteristics | | |
|---|------------------------|--------------|
| Variable | Number of Observations | Mean/Percent |
| Access to clean water (1 if access to clean; 0 otherwise) | 7956 | 0.095 |
| Access to electricity (1 if yes; 0 otherwise) | 7956 | 0.31 |
| Health insurance (1 if yes; 0 otherwise) | 7956 | 0.06 |
| Job status (1 if has a job; 0 otherwise) | 5967 | 0.97 |
| Gender (1 if male; 0 if female) | 7956 | 0.49 |
| <i>Diseases</i> | | |
| Malaria | 4533 | 56.97 |
| Accident | 920 | 11.56 |
| Cough | 1401 | 17.61 |
| Blood pressure and diabetes | 1103 | 13.86 |
| Total | 7956 | 100 |
| <i>Residence</i> | | |
| Cotonou | 570 | 7.16 |
| Urban | 3175 | 39.91 |
| Rural | 4211 | 52.93 |
| Total | 7956 | 100 |
| <i>Category of employee</i> | | |
| Higher manager | 345 | 4.34 |
| Medium manager | 1141 | 14.34 |
| Unskilled worker | 5134 | 64.53 |
| Paid intern | 420 | 5.28 |
| House worker | 128 | 1.61 |
| Independent | 787 | 9.89 |
| Total | 7956 | 100 |
| <i>Education</i> | | |
| Primary | 2274 | 28.58 |
| Secondary | 4044 | 50.83 |
| Higher | 1638 | 20.59 |
| Total | 7956 | 100 |

Table 3. Cont.

| (b) Household characteristics (F CFA) | | | | | |
|---------------------------------------|------------------------|--------|-----------|-----|-----------|
| Variable | Number of Observations | Mean | Std. Dev. | Min | Max |
| Household Income (CFA) | 899 | 91,882 | 205,002 | 0 | 3,000,000 |
| Household Health Expenditures | 899 | 2159 | 4655 | 0 | 50,250 |

Source: authors.

5.2. Effect of COVID-19 on Household Income

Table 4 presents the effect of COVID-19 on household income and per capita income, respectively. The results indicate that COVID-19 led to a decline in household income. The average income would move from 91,882 before the COVID-19 pandemic to 86,545 after a low COVID-19 shock and 70,565 after a severe shock. A similar pattern of income decline is observed in the per capita income, as outlined in Table 4b. More specifically, Table 5 shows that the magnitude of income loss is proportional to the degree of shock. Notably, the scenario of a low COVID-19 shock would lead to a shrinkage in income by 5.8%, while the scenarios of moderate and severe shock would shrink household income by 11.6% and 20.1%, respectively. Furthermore, households would lose up to 94.7% of their income after a severe shock. Our findings align with those found by existing studies in SSA countries. For instance, [Andam et al. \(2020\)](#) studied the effect of COVID-19 on food security and poverty in Nigeria. Using the SAM multiplier approach, they found that the COVID-19 pandemic reduced households' income by 22.6% on average. Similarly, [Diao et al. \(2020\)](#) investigated the effect of COVID-19 on households' income and poverty in Rwanda based on microsimulation modelling. They concluded that the COVID-19 crisis led to a household income loss of 33% on average.

Table 4. Before and after COVID-19 incomes.

| (a) Before and after COVID-19 incomes (F CFA) | | | | | |
|---|-----|--------|-----------|-----|-----------|
| Variable | Obs | Mean | Std. Dev. | Min | Max |
| Before COVID-19 | 899 | 91,882 | 205,002 | 0 | 3,000,000 |
| After low shock | 899 | 86,545 | 193,570 | 0 | 2,835,360 |
| After moderate shock | 899 | 81,209 | 182,268 | 0 | 2,670,720 |
| After severe shock | 899 | 70,565 | 160,143 | 0 | 2,341,441 |

| (b) Before and after COVID-19 per capita incomes (F CFA) | | | | | |
|--|-----|--------|-----------|-----|-----------|
| Variable | Obs | Mean | Std. Dev. | Min | Max |
| Before COVID-19 | 899 | 39,424 | 101,279 | 0 | 1,500,000 |
| After low shock | 899 | 37,038 | 95,488 | 0 | 1,417,680 |
| After moderate shock | 899 | 34,652 | 89,773 | 0 | 1,335,360 |
| After severe shock | 899 | 29,909 | 78,619 | 0 | 1,170,720 |

Table 5. Share of lost income after COVID-19 (%).

| Income Loss Coefficient (%) | Obs | Mean | Std. Dev. | Min | Max |
|-----------------------------|-----|-------|-----------|------|--------|
| Low shock | 899 | 5.79 | 4.15 | 0.00 | 31.56 |
| Moderate shock | 899 | 11.58 | 8.30 | 0.00 | 63.11 |
| Severe shock | 899 | 23.14 | 16.45 | 0.00 | 100.00 |

Source: authors.

More importantly, the distributional analysis of the effect of COVID-19 on income revealed that there was a heterogeneous shrinkage in household income. As depicted in

Figure 4, low- and middle-income households were the most vulnerable to COVID-19. Indeed, it can be seen that the gap between the before-COVID-19 curve and that of the after-COVID-19 decreases from lower-income to higher-income. Our results confirmed those of [Diao et al. \(2021\)](#) in Rwanda. These authors concluded from microsimulation modelling that COVID-19 had a heterogeneous effect on household income. Notably, middle- and high-income quintile households experienced the highest decline in income (35%), whereas income declined by 28% on average in low-income quintile households. [Andam et al. \(2020\)](#) also studied the effect of COVID-19 on poverty in Nigeria and found that the first two quintiles of income groups recorded a decline in their income by 15% on average, while the third, fourth, and fifth income quintiles experienced an income shrinkage of 24% on average during six weeks of lockdown in Nigeria. Furthermore, they concluded that urban household residents were the most affected by the COVID-19 pandemic, which lowered their income by 27% on average, whereas rural residents lost an average of 18%.

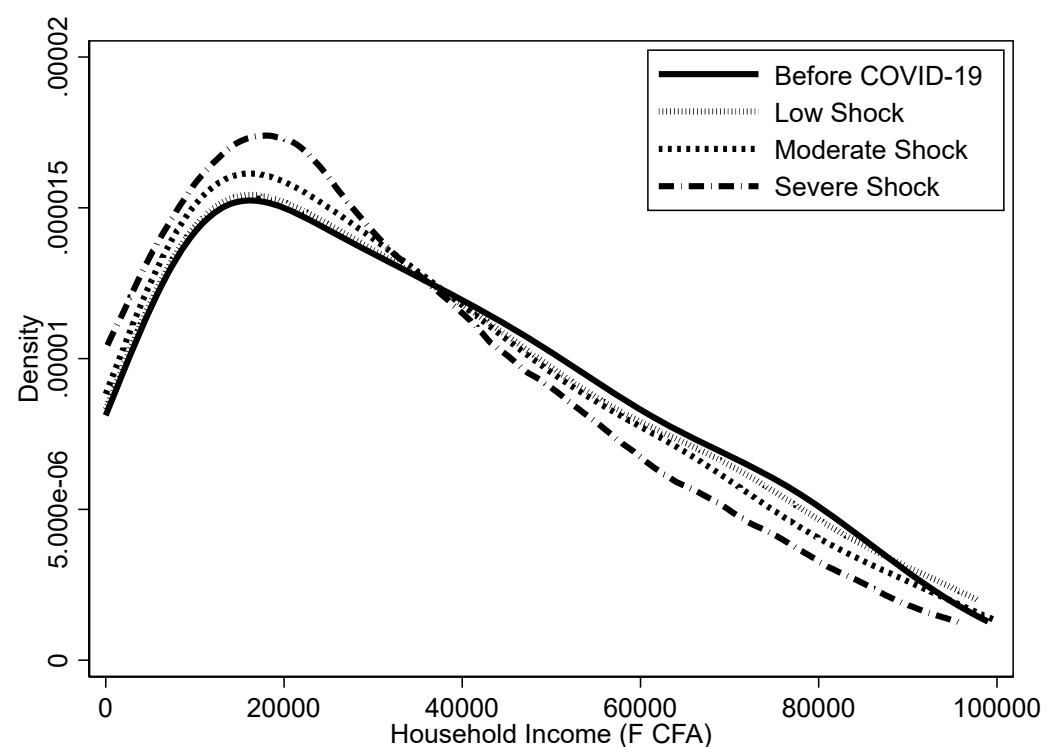


Figure 4. Before and after COVID-19 income⁵. Source: authors.

In addition to vulnerability based on economic status, our results reveal that the severity of the impact of COVID-19 varies according to the age, educational level, and gender of the household head, as well as the place of residence. Table 6 indicates that households headed by younger individuals are the most affected, followed by those headed by adults. Secondly, gender-based analysis shows that male-headed households experience the greatest income losses, regardless of the scenario considered. For instance, under a moderate COVID-19 shock, income fell by 14.74% for male-headed households, compared to an 8.23% decline for those headed by females. Thirdly, households headed by individuals with higher education are the most affected, followed by those with secondary education. Finally, the place of residence also matters: households residing in the capital city, Cotonou, are the most affected, followed by those in other urban areas. Under a moderate COVID-19 shock scenario, households in Cotonou and other urban areas would experience income declines of 15.6% and 11.8%, respectively, compared to 9.7% among rural households.

Table 6. Share of lost income by age, education, gender, and residence.

| Age Group | Low Shock | Moderate Shock | Severe Shock |
|-----------------------------|-----------|----------------|--------------|
| Young (0–17) | | | |
| Mean | 7.52% | 15.04% | 29.90% |
| Standard error | 5.31% | 10.63% | 20.55% |
| Minimum | 0.00% | 0.00% | 0.00% |
| Maximum | 31.56% | 63.11% | 100.00% |
| Adult (18–66) | | | |
| Mean | 6.57% | 13.13% | 26.27% |
| Standard error | 3.19% | 6.39% | 12.78% |
| Minimum | 0.00% | 0.00% | 0.00% |
| Maximum | 12.67% | 25.34% | 50.67% |
| Elderly (>66) | | | |
| Mean | 5.28% | 10.55% | 21.10% |
| Standard error | 3.85% | 7.71% | 15.42% |
| Minimum | 0.00% | 0.00% | 0.00% |
| Maximum | 24.11% | 48.22% | 96.43% |
| Head of household gender | Low shock | Moderate shock | Severe shock |
| Female | | | |
| Mean | 4.12% | 8.23% | 16.46% |
| Standard error | 2.73% | 5.46% | 10.92% |
| Minimum | 0.00% | 0.00% | 0.00% |
| Maximum | 17.26% | 34.51% | 69.02% |
| Male | | | |
| Mean | 7.37% | 14.74% | 29.43% |
| Standard error | 4.62% | 9.24% | 18.22% |
| Minimum | 0.00% | 0.00% | 0.00% |
| Maximum | 31.56% | 63.11% | 100.00% |
| Head of household education | Low shock | Moderate shock | Severe shock |
| Primary or below | | | |
| Mean | 5.62% | 11.24% | 22.48% |
| Standard error | 3.51% | 7.02% | 14.04% |
| Minimum | 0.00% | 0.00% | 0.00% |
| Maximum | 11.58% | 23.16% | 46.32% |
| Secondary | | | |
| Mean | 7.27% | 14.54% | 29.08% |
| Standard error | 4.18% | 8.35% | 16.71% |
| Minimum | 0.00% | 0.00% | 0.00% |
| Maximum | 24.11% | 48.22% | 96.43% |
| Higher | | | |
| Mean | 9.29% | 18.59% | 36.46% |
| Standard error | 5.84% | 11.68% | 20.84% |
| Minimum | 0.00% | 0.00% | 0.00% |
| Maximum | 31.56% | 63.11% | 100.00% |
| Place of residence | Low shock | Moderate shock | Severe shock |
| Cotonou | | | |
| Mean | 7.80% | 15.59% | 31.01% |
| Standard error | 3.59% | 7.17% | 13.25% |
| Minimum | 0.00% | 0.00% | 0.00% |
| Maximum | 31.56% | 63.11% | 100.00% |
| Urban | | | |
| Mean | 5.89% | 11.77% | 23.55% |
| Standard error | 4.33% | 8.66% | 17.32% |
| Minimum | 0.00% | 0.00% | 0.00% |
| Maximum | 24.11% | 48.22% | 96.43% |
| Rural | | | |
| Mean | 4.87% | 9.74% | 19.49% |
| Standard error | 3.86% | 7.72% | 15.44% |
| Minimum | 0.00% | 0.00% | 0.00% |
| Maximum | 23.17% | 46.34% | 92.67% |

Source: authors.

5.3. Effect of COVID-19 on Income Inequality

To assess whether the effects of COVID-19 are significantly heterogeneous, we calculated the Gini index. The results reported in Table 7 indicate that COVID-19 would increase income inequality in Benin by 0.1 percentage point. Moreover, the increase in inequality is more pronounced among men, younger individuals, and those with higher levels of education, who appear to be the most affected groups, as outlined in Table 8. These findings are consistent with the magnitude of the income decline observed within these subgroups, as discussed in the previous section.

Table 7. Gini index by age and severity of shock.

| GINI Index | BEFORE | LOW | MODERATE | SEVERE |
|------------|--------|-------|----------|--------|
| Overall | 0.622 | 0.623 | 0.624 | 0.628 |
| Young | 0.577 | 0.579 | 0.583 | 0.598 |
| Adult | 0.550 | 0.548 | 0.546 | 0.544 |
| Elderly | 0.640 | 0.640 | 0.641 | 0.647 |

Table 8. Gini index by gender and severity of shock.

| (a) Gini index by gender and severity of shock. | | | | |
|---|--------|-------|----------|--------|
| GINI index | BEFORE | LOW | MODERATE | SEVERE |
| Overall | 0.622 | 0.623 | 0.624 | 0.628 |
| Women | 0.672 | 0.672 | 0.672 | 0.673 |
| Men | 0.562 | 0.562 | 0.563 | 0.571 |
| (b) Gini index by education level and severity of shock. | | | | |
| GINI index | BEFORE | LOW | MODERATE | SEVERE |
| Overall | 0.622 | 0.623 | 0.624 | 0.628 |
| Primary and below | 0.490 | 0.488 | 0.487 | 0.485 |
| Secondary | 0.573 | 0.574 | 0.577 | 0.586 |
| Higher | 0.377 | 0.383 | 0.393 | 0.405 |
| (c) Gini index by place of residence and severity of shock. | | | | |
| GINI index | BEFORE | LOW | MODERATE | SEVERE |
| Overall | 0.622 | 0.623 | 0.624 | 0.628 |
| Cotonou | 0.695 | 0.698 | 0.703 | 0.715 |
| Urban | 0.559 | 0.561 | 0.563 | 0.575 |
| Rural | 0.599 | 0.599 | 0.600 | 0.606 |

Source: authors.

5.4. Effect of COVID-19 on Household Health Expenditures

As depicted in our conceptual framework, it is argued that the COVID-19 crisis has affected (increased) household health expenditures through direct and indirect channels. Indeed, the health expenditures of households increase with exposure to COVID-19 contamination risk. Thus, the expenditures for averting measures (hand sanitiser, face masks, vaccine, COVID-19 tests, etc.) and money spent out-of-pocket on medical visits and medicine directly increase household health expenditures. The effects of COVID-19 on health expenditure were examined by estimating the health expenditure equation in (14).

The drivers of health expenditure were estimated using multilevel mixed-effects linear regression (Table 9). The validation parameters of the model show that the random intercept at the household level significantly varies, as indicated by a variance coefficient equal to

1.38 with a standard error coefficient equal to 0.40. This result indicates that ignoring the random effect by estimating only the fixed effect would lead to biased estimates. Moreover, the likelihood ratio (LR) test strongly supports that the mixed-effects model better fits our data than the ordinary least squares (OLS) model, as confirmed by the p -value of 0.000. Thus, the results of the fixed-effects components revealed in Table 9 indicate that income, age, and risk of diseases such as cough, high blood pressure, malaria, and road accidents have positive and significant effects on health expenditure. Notably, a 10% income improvement increases health expenditure by 3%, confirming previous findings in Africa. Indeed, [Olasehinde and Olaniyan \(2017\)](#) relied on the ordinary least squares technique to estimate the determinants of household health expenditure in Nigeria. They found that a 1% increase in household income increases health expenditures by 0.57%. [Ampaw et al. \(2019\)](#) used a nationally representative sample of 16,772 households to analyse the effect of income on health expenditure in Ghana. Their findings from ordinary least squares regression confirmed a positive and significant effect of household total income on health expenditure. Equally, [Houeninvo and Assouto \(2023\)](#) recently used a sample of 20 low-income African countries over 1995–2018 to calculate income elasticities. Based on panel-pooled mean group estimates, they concluded that a 1% improvement in per capita income increases private health expenditure by 0.54% in the long run. Furthermore, our findings revealed that households residing in rural and urban areas are less likely to have higher health expenditures than those in the capital city of Cotonou. Our results further confirmed the nonlinear relationship between age and health expenditure, as found in previous studies such as those of [Ampaw et al. \(2019\)](#) in Ghana and [Olasehinde and Olaniyan \(2017\)](#) in Nigeria.

Table 9. Multilevel mixed-effects linear regression model of household health expenditure.

| Log (Health Expenditure) | Coef. | St. Err. | [95% Conf | Interval] |
|---|------------|----------|-----------|-----------|
| Log (income) | 0.292 *** | 0.089 | 0.117 | 0.466 |
| Gender head household (ref = female) | | | | |
| Male | −0.191 | 0.181 | −0.546 | 0.165 |
| Log (Age) | 0.035 ** | 0.017 | 0.002 | 0.067 |
| Log (Age square) | −0.001 ** | 0.000 | −0.001 | 0.000 |
| Education of head household (ref = primary) | | | | |
| Secondary | −0.124 | 0.231 | −0.576 | 0.328 |
| Higher | −0.221 | 0.309 | −0.825 | 0.384 |
| Health coverage (ref = no) | −0.362 | 0.435 | −1.215 | 0.490 |
| Residence (ref = Cotonou) | | | | |
| Urban | −0.523 ** | 0.252 | −1.017 | −0.029 |
| Rural | −0.731 *** | 0.274 | −1.268 | −0.194 |
| Cough last 3 months (ref = no) | 1.817 *** | 0.414 | 1.004 | 2.629 |
| High blood pressure (ref = no) | 2.729 *** | 0.679 | 1.397 | 4.060 |
| Malaria last 3 months (ref = no) | 0.637 *** | 0.269 | 0.110 | 1.164 |
| Road accident last 3 months (ref = no) | 3.292 *** | 0.958 | 1.414 | 5.170 |
| Constant | 3.579 *** | 0.994 | 1.631 | 5.527 |
| <i>Random-effects parameters</i> | | | | |
| Intercept at household level | 1.383 | 0.405 | 0.779 | 2.456 |
| Residual variance | 2.281 | 0.387 | 1.635 | 3.181 |
| Mean dependent var | | | 2.078 | |
| Number of obs | | | 78.188 | |
| Prob > chi2 | | | 1761.402 | |

Note: Any statistically significant estimates are denoted with asterisks: * $p < 0.10$, ** $p < 0.05$, *** $p < 0.01$.

We now simulate the effects of COVID-19 on health expenditure. The results presented in Figure 5 indicate that households experienced an increase in health expenditures after the COVID-19 shock, with heterogeneous effects. Indeed, a decrease in household income, *ceteris paribus*, will lead to a decrease in household health expenditures. Before COVID-19, the pre-COVID-19 shock curve, as shown in Figure 5, was above the post-COVID-19 one. In addition, the results show that the effect of COVID-19 on health expenditures is heterogeneous, meaning that households with low health expenditures were the most affected by the COVID-19 pandemic. The gap between the before-COVID-19 curve and the after-COVID-19 curves decreases from low health expenditures to high health expenditures.

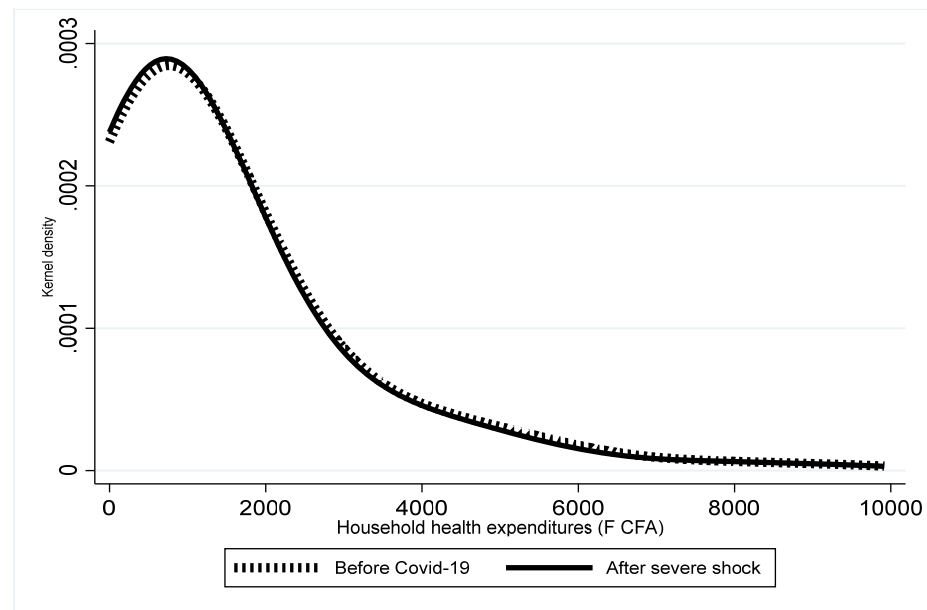


Figure 5. Household health expenditures⁶. Source: authors.

These results can be explained by the fact that households with low health expenditures are generally characterised by low income. This result confirms our early findings, indicating that the low-income groups of households were the most affected by COVID-19. More importantly, our summary statistics reported that less than 1% of Benin's households do not have health coverage. Indeed, though COVID-19 decreased both household income and health expenditure, the increase in health expenditures indicates that the decline in income was greater than that of health expenditures.

Figure 6 depicts the effects of the COVID-19 crisis on households' catastrophic health expenditures. Two main conclusions can be drawn from these results. First, the COVID-19 crisis pushed a significant share of households into catastrophic health expenditures, with a greater effect when the magnitude of the shock increased. Notably, the share of households with catastrophic health expenditures at the 10% threshold increased from 16% before the COVID-19 period to 20% after a severe shock. Second, these findings are robust when moving from a 10% to a 40% threshold of catastrophic health expenditures.

A gender analysis of the catastrophic health expenditures of the COVID-19 crisis revealed that men were the most affected (Figure 7). Although the share of women with catastrophic health expenditures was greater than that of men before the pandemic, it is worth noting that the share of men with catastrophic health expenditures after the COVID-19 pandemic increased more than that observed among women. Furthermore, the regional analysis also supports the evidence of heterogeneous effects of the COVID-19 pandemic on household health expenditures. More specifically, the results from simulations indicated that urban residents experienced the greatest burden in terms of an increase in

health expenditures, though Cotonou residents were the most vulnerable before COVID-19 (Figure 8).

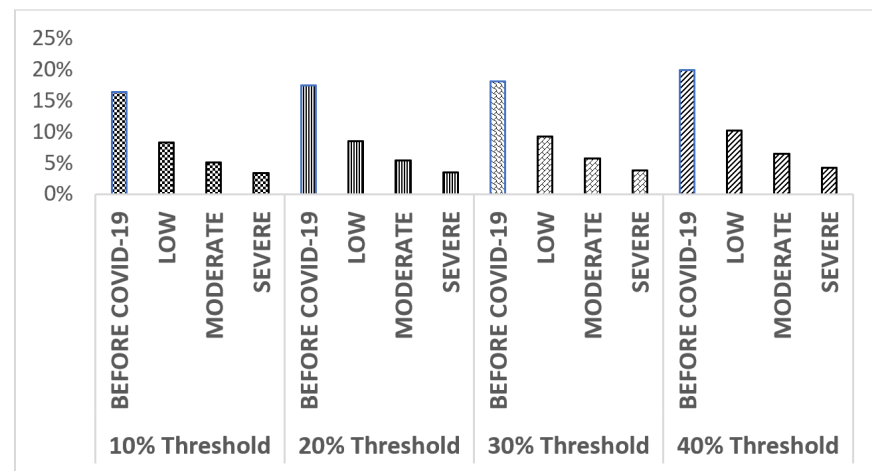


Figure 6. Share of households with CHE⁷. Source: authors.

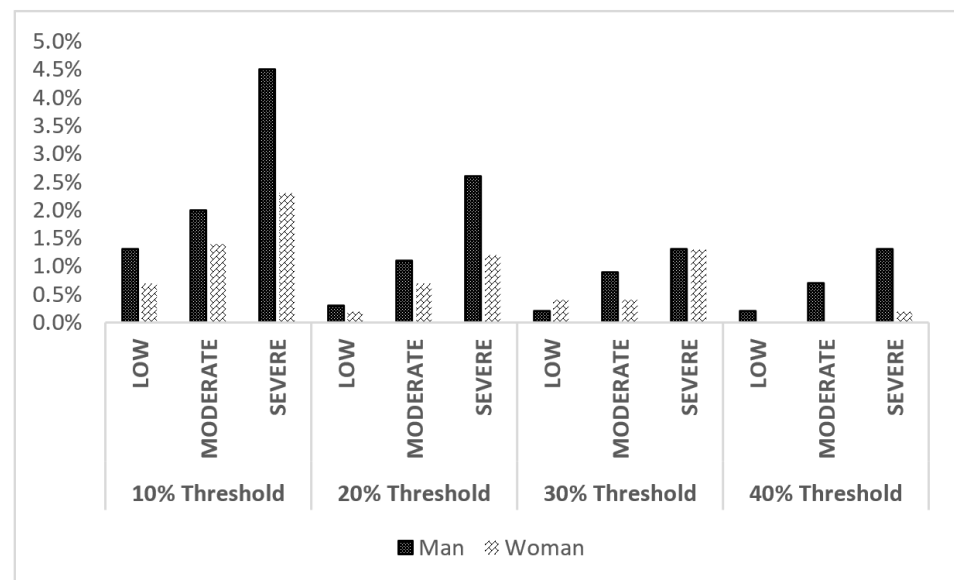


Figure 7. Change in the share of households with CHE by gender (percentage points)⁸. Source: authors.

5.5. Discussion

Our findings revealed that, regardless of the considered scenario (low, moderate, and severe COVID-19 shock), households in urban areas saw their income decline faster than those in rural areas. Equally, low-income households and men were the most vulnerable to COVID-19. This can be explained by the fact that, in urban areas, the commercial sector, representative of the most employed section of urban residents, was strongly affected by COVID-19. Indeed, the public health measures undertaken by the government to contain the spread of the pandemic, such as limitations on public gatherings, border closures, and the restriction imposed on public transportation, drastically limited households' day-to-day activities. Equally, low-income households are generally those with low skills, meaning that they cannot work remotely as skilled workers. These findings align with those of [Laborde et al. \(2021\)](#) and [Andam et al. \(2020\)](#), who found that the incomes of urban households were the most affected by the COVID-19 pandemic compared to rural households, who lost an average of 18% of their income.

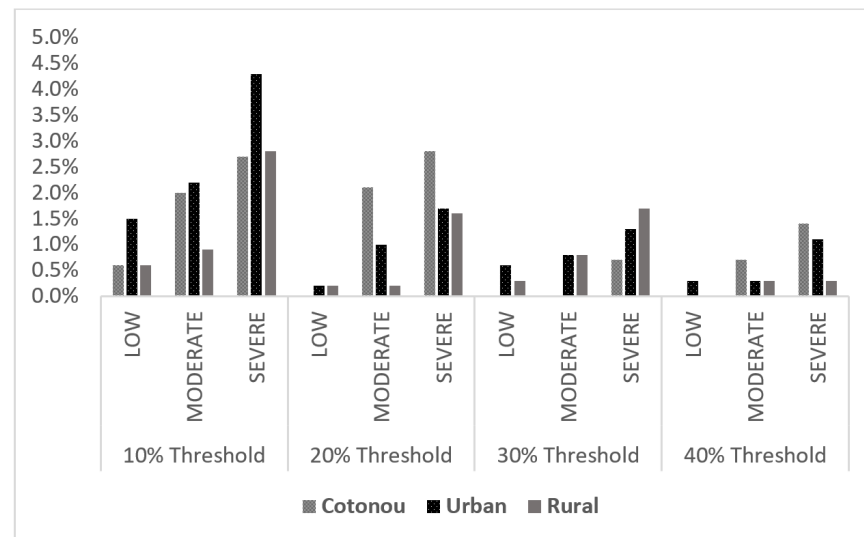


Figure 8. Change in CHE by place of residence (percentage points)⁹. Source: authors.

We found that the share of household health expenditures between the before COVID-19 and after COVID-19 periods is increasing with regard to the magnitude of the shock. This result can be explained by the decline in household income on the one hand and the increase in preventive and curative health expenditures on the other. Thus, based on 10% and 20% thresholds, the simulations showed that the share of households with catastrophic health expenditures increased with the magnitude of COVID-19 shock. More importantly, the heterogeneous effects on health expenditures revealed that households with a higher share of health expenditures before the pandemic experienced a greater increase in health expenditures. Before the COVID-19 pandemic, the proportion of households in rural areas with catastrophic health expenditures was higher than that of urban households, including Cotonou. Similarly, the proportion of households with catastrophic health expenditures considering different shock scenarios (low, moderate, and severe) was high in urban areas, especially in Cotonou, compared to households in rural areas. These results are in line with those of [Rajalakshmi et al. \(2023\)](#), who showed that during the COVID-19 pandemic, catastrophic household health expenditure increased. We explain this result by the fact that the established cordon sanitaire limited the movement of humans and goods between rural and urban areas as much as possible, which made it possible to reduce the risks of infection in rural areas and therefore limit medical expenses.

Our findings reveal that the negative impact of the COVID-19 pandemic on household income was more pronounced among male-headed households, more educated ones, young headed-households, and urban residents, with a simultaneous rise in catastrophic health expenditures. These results can be explained by the socioeconomic structure of Benin. Households headed by younger individuals appear more affected by COVID-19-related income shocks because they are more likely to be engaged in informal, unstable, or entry-level jobs, such as petty trade or apprenticeships, that were severely disrupted during lockdowns. In contrast, older household heads may benefit from more stable occupations or accumulated resources. Male-headed households experienced greater income losses, which reflects their higher concentration in sectors heavily impacted by the crisis, such as transportation, construction, and large-scale trade. Female-headed households, although often more economically vulnerable overall, are more likely to be involved in small-scale, community-based commerce, which proved relatively resilient. Interestingly, households with more educated heads suffered larger income declines. This may be due to their higher dependence on formal sector employment, which was more exposed to wage cuts, layoffs, and contract suspensions during the pandemic. Finally, urban households,

particularly those in Cotonou, were the most affected, due to their greater exposure to mobility restrictions, market disruptions, and the informal urban economy's vulnerability to shocks. In contrast, rural households, while generally poorer, tend to rely more on subsistence agriculture and informal mutual support systems, which offered a relative buffer against income losses. These findings highlight the differentiated impact of COVID-19 and suggest that recovery policies should be sensitive to age, gender, education level, and place of residence.

Furthermore, the increased catastrophic health expenditure suggests a heightened vulnerability to out-of-pocket health costs during the pandemic, possibly due to limited access to subsidised care or increased reliance on private health providers in emergency contexts. Furthermore, the disproportionate effect on urban households may reflect the concentration of COVID-19 cases, the stricter enforcement of containment measures, and the higher cost of living in urban areas compared to rural ones. Urban residents also tend to depend more on cash-based, non-agricultural livelihoods that were acutely sensitive to lockdowns and economic disruptions. While 39.5% of households already live in poverty (INSAE BENIN, 2019), these findings underscore the importance of tailoring social protection responses to account for gender dynamics and spatial inequalities, particularly in the design of post-crisis recovery and health financing policies.

It is worth noting that this study is subject to several limitations, and as such, the findings should be interpreted with caution. A key limitation concerns the use of self-reported data. The survey datasets rely on household-reported information related to health and income, which may be subject to reporting biases, notably recall bias or social desirability bias. In addition, due to the absence of tax-related information in the datasets, gross income was used as a proxy for household welfare instead of disposable income. This empirical choice may lead to an underestimation of the impact of COVID-19 on the ratio of health expenditures to income, suggesting that post-COVID-19 health-related spending may have been even more catastrophic than indicated by the findings of this study.

6. Conclusions and Policy Implications

In this study, we investigated the socioeconomic implications of the COVID-19 pandemic in Benin. To this end, a nationally representative dataset from the Benin household living conditions survey and a rapid survey after the COVID-19 outbreak were used for empirical estimations. We adopted static microsimulation modelling to estimate the short-term effect of COVID-19 on household income and health expenditures under different scenarios of COVID-19 shock. The results showed that the COVID-19 pandemic had a huge negative effect on household income, on the one hand, due to the closure of borders, which limited trade between Benin and its neighbouring countries, and on the other hand, because of the sanitary cordon that limited trade between urban towns and rural areas. Similarly, COVID-19 increased household health expenditures with heterogeneous effects across income levels, place of residence and gender. Due to the absence of tax information in our dataset, we used gross income instead of disposable income as a measure of welfare. This empirical strategy may lead to the undervaluation of the effects of COVID-19 on the health expenditures–income ratio, meaning that the post-COVID-19 health expenditures may be more catastrophic than the results of this study have shown. These findings have implications for health financing in Benin. Targeted health coverage policies, along with social policies aimed at reducing employment vulnerability and targeted cash transfers, are necessary to address the vulnerability of households to health crises in Benin.

The government needs to target the poorest households led by men and urban residents for health coverage programmes to address the vulnerability of households to health crises, as highlighted by the COVID-19 pandemic. Though Benin's government, with the

support of organisations like the WHO, has been working towards expanding health coverage and implementing measures to improve access to healthcare for the most vulnerable populations¹⁰, it is crucial to focus on both the supply and demand sides when formulating health policies. According to the 2018 demographic and health surveys report, only 1.2% of the population in Benin had access to health coverage, while 38.5% lived below the monetary poverty line. These data emphasise that even in the absence of health pandemics, a significant portion of the population faces difficulties in accessing health due to financial constraints. United Nations organisations such as the World Health Organisation (WHO), civil society, and local and foreign private sectors could play a core role in supporting governments to design and mobilise sustainable financing.

The Benin government should design social policies aimed at reducing employment vulnerability among the population, notably for urban residents and the poorest households led by men. The private sector could be the core partner in improving the conditions of job vulnerability. The COVID-19 pandemic has led to income loss, disproportionately affecting lower-income quintiles. While the Benin National Institute of Statistics and Demography reported an unemployment rate of about 2% in 2018, with a high rate of vulnerable employment at 84.1%, it is worth noting that the government addresses the issue of under-employment, especially during periods of crises. In addition to targeted health coverage policies and reducing employment vulnerability, it is essential to design targeted cash transfer programs to reduce the vulnerability of the poorest households when pandemics occur.

Author Contributions: Conceptualization, A.N.H. and N.B.; methodology, A.N.H. and N.B.; software, N.B.; validation, A.N.H.; formal analysis, A.N.H. and N.B.; investigation, A.N.H. and N.B., C.B.D.; resources, A.N.H. and N.B., C.B.D.; data curation, NB and C.B.D.; writing—original draft preparation, A.N.H. and N.B.; writing—review and editing, A.N.H. and N.B., C.B.D.; visualization, N.B.; supervision, A.N.H.; project administration, A.N.H.; funding acquisition, A.N.H. and N.B., C.B.D. All authors have read and agreed to the published version of the manuscript.

Funding: African Economic Research Consortium (AERC): RC225/6.

Institutional Review Board Statement: Not applicable.

Informed Consent Statement: Not applicable.

Data Availability Statement: The raw data supporting the conclusions of this article will be made available by the authors on request.

Conflicts of Interest: The authors declare no conflicts of interest.

Appendix A

Table A1. Sectoral job vulnerability coefficients.

| Type of Activity | Percent |
|--|---------|
| 1. Agriculture, fishing, and forestry | 0.00 |
| 2. Manufacturing and mining | 16.95 |
| 3. Construction | 18.64 |
| 4. Wholesale and retail trade, repair of motor vehicles, and other motors. | 37.29 |
| 5. Hotels and restaurants | 3.39 |
| 6. Transport and communication | 5.08 |
| 7. Education and public administration | 0.00 |
| 8. Health and social work activities | 6.78 |
| 9. Other services | 11.86 |

Table A2. Risk of job loss coefficients by gender and residence.

| | Gender | | Residence | | |
|-------------------|--------|--------|-----------|-------|-------|
| | Male | Female | Cotonou | Urban | Rural |
| Risk coefficients | 1.29 | 0.71 | 1.04 | 1.00 | 0.96 |

Table A3. Health expenditures before and after COVID-19.

| Household Health Expenditures | Obs | Mean | Std. Dev. | Min | Max |
|-------------------------------|-----|------------|------------|-----|-------------|
| Before COVID-19 | 899 | 2158.64 | 4655.426 | 0 | 50,250 |
| Low shock | 899 | 86,545.321 | 193,570.45 | 0 | 2,835,360 |
| Moderate shock | 899 | 81,208.87 | 182,267.61 | 0 | 2,670,720.3 |
| Severe shock | 899 | 73,968.176 | 169,792.54 | 0 | 2,506,080.3 |

Table A4. Summary statistics for catastrophic health expenditures.

| Threshold | Obs | Mean | Std. Dev. | Min | Max |
|--|-----|-------|-----------|-----|-----|
| Catastrophic health expenditures (Before COVID-19) | | | | | |
| 10% | 899 | 0.165 | 0.371 | 0 | 1 |
| 20% | 899 | 0.083 | 0.277 | 0 | 1 |
| 30% | 899 | 0.051 | 0.22 | 0 | 1 |
| 40% | 899 | 0.034 | 0.183 | 0 | 1 |
| Catastrophic health expenditures (After COVID-19-low shock) | | | | | |
| 10% | 899 | 0.175 | 0.38 | 0 | 1 |
| 20% | 899 | 0.086 | 0.28 | 0 | 1 |
| 30% | 899 | 0.055 | 0.227 | 0 | 1 |
| 40% | 899 | 0.036 | 0.185 | 0 | 1 |
| Catastrophic health expenditures (After COVID-19-moderate shock) | | | | | |
| 10% | 899 | 0.181 | 0.385 | 0 | 1 |
| 20% | 899 | 0.092 | 0.29 | 0 | 1 |
| 30% | 899 | 0.058 | 0.234 | 0 | 1 |
| 40% | 899 | 0.038 | 0.191 | 0 | 1 |
| Catastrophic health expenditures (After COVID-19-severe shock) | | | | | |
| 10% | 899 | 0.199 | 0.4 | 0 | 1 |
| 20% | 899 | 0.102 | 0.303 | 0 | 1 |
| 30% | 899 | 0.065 | 0.246 | 0 | 1 |
| 40% | 899 | 0.042 | 0.201 | 0 | 1 |

Table A5. Summary statistics for health expenditure by gender.

| Threshold | Scenario | Man | Woman |
|-----------|-----------------|-------|-------|
| 10% | Before COVID-19 | 0.136 | 0.195 |
| | Low | 0.149 | 0.202 |
| | Moderate | 0.156 | 0.209 |
| | Severe | 0.181 | 0.218 |

Table A5. *Cont.*

| Threshold | Scenario | Man | Woman |
|-----------|-----------------|-------|-------|
| 20% | Before COVID-19 | 0.073 | 0.094 |
| | Low | 0.076 | 0.096 |
| | Moderate | 0.084 | 0.101 |
| | Severe | 0.099 | 0.106 |
| 30% | Before COVID-19 | 0.043 | 0.06 |
| | Low | 0.045 | 0.064 |
| | Moderate | 0.052 | 0.064 |
| | Severe | 0.056 | 0.073 |
| 40% | Before COVID-19 | 0.03 | 0.039 |
| | Low | 0.032 | 0.039 |
| | Moderate | 0.037 | 0.039 |
| | Severe | 0.043 | 0.041 |

Table A6. Summary statistics for health expenditures by residence.

| Threshold | | Cotonou | Urbain | Rural |
|-----------|-----------------|---------|--------|-------|
| 10% | Before COVID-19 | 0.188 | 0.155 | 0.166 |
| | Low | 0.194 | 0.17 | 0.172 |
| | Moderate | 0.208 | 0.177 | 0.175 |
| | Severe | 0.215 | 0.198 | 0.194 |
| 20% | Before COVID-19 | 0.076 | 0.085 | 0.085 |
| | Low | 0.076 | 0.087 | 0.087 |
| | Moderate | 0.097 | 0.095 | 0.087 |
| | Severe | 0.104 | 0.102 | 0.101 |
| 30% | Before COVID-19 | 0.056 | 0.052 | 0.048 |
| | Low | 0.056 | 0.058 | 0.051 |
| | Moderate | 0.056 | 0.06 | 0.056 |
| | Severe | 0.063 | 0.065 | 0.065 |
| 40% | Before COVID-19 | 0.035 | 0.037 | 0.031 |
| | Low | 0.035 | 0.04 | 0.031 |
| | Moderate | 0.042 | 0.04 | 0.034 |
| | Severe | 0.049 | 0.048 | 0.034 |

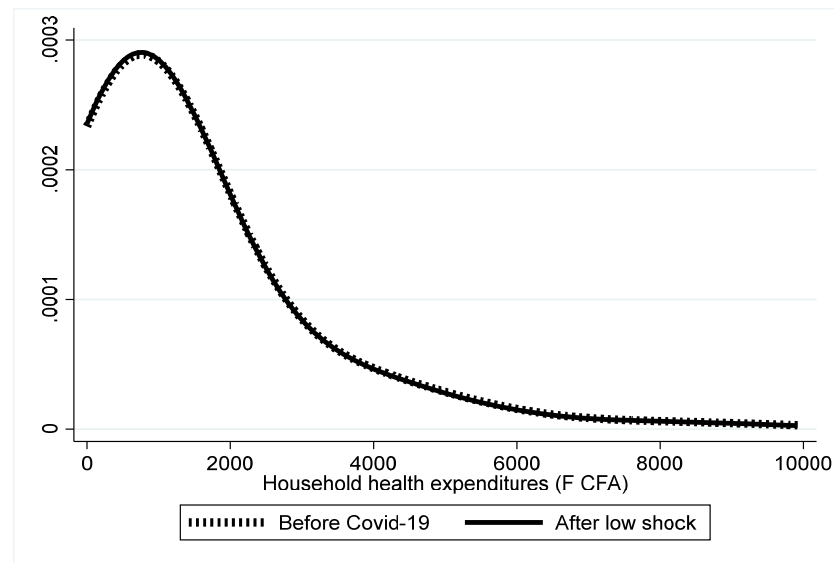


Figure A1. Health expenditures after a low shock.

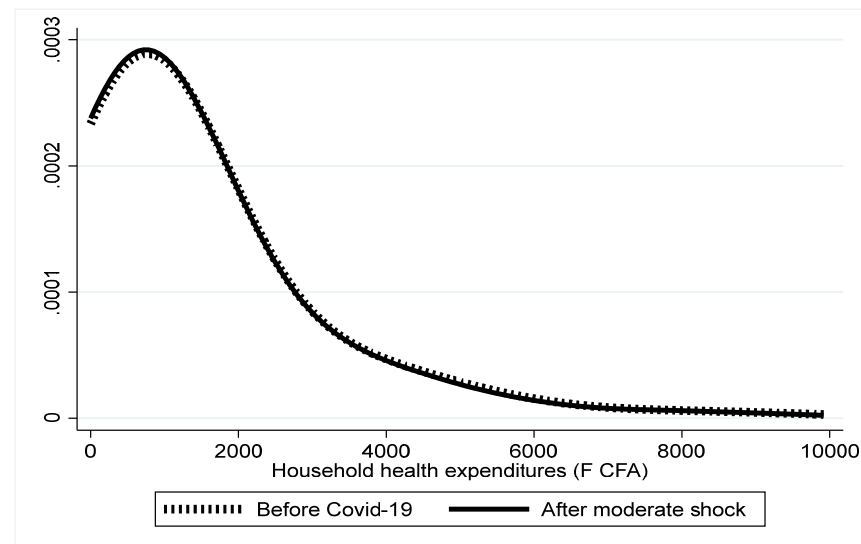


Figure A2. Health expenditures after a moderate shock.

Notes

- ¹ Note that in the absence of information on job loss by gender and residence within the sector of activities, we assume independence between the sector of activity, gender, and residence. With the absence of job status of individuals who have lost their job, we assume a random selection of job loss within each sector, each gender, and each residence. Hence, we assume that the percentage of job loss equals the percentage of income loss.
- ² In the absence of information on the gender composition of the [INSAE BENIN \(2020\)](#) study, we assume that this study is nationally representative, so we used the gender composition of the Harmonised Survey on Living Conditions of Households in Benin ([INSAE BENIN, 2019](#)). These data indicated that 78.55% and 21.45% of heads of households were men and women, respectively.
- ³ Recall that within the same household, members can have different branches of activity, places of residence, and genders. To take into consideration the composition of households, we calculated the income loss coefficient at the individual level and then aggregated it at the household level.
- ⁴ The Chi-2 distance of the CDM test was 27.63, and the p -value equaled 0.016.
- ⁵ For a better visualisation of the plot, we limited the upper value of the distribution of income to 100,000 F CFA. Full descriptive statistics are reported in Table 4.
- ⁶ For a better visualisation of the plot, we limited the upper value of the distribution of health expenditures to 10,000 F CFA. Plots for low and moderate shocks are reported in Figures A1 and A2 in Appendix A. Full descriptive statistics are reported in Table A3 in Appendix A.

- 7 The full descriptive statistics are reported in Table A4 in Appendix A.
- 8 The full descriptive statistics are reported in Table A5 in Appendix A.
- 9 The full descriptive statistics are reported in Table A6 in Appendix A.
- 10 Benin's government has taken steps towards expanding health coverage and addressing the challenges faced by the poorest populations. The establishment of the Assurance pour le renforcement du capital humain (ARCH) in 2019 aimed to provide a holistic approach to social insurance, including health insurance. Through this programme, individuals from the poorest strata have been identified and enrolled, benefiting from free treatment in public health facilities.

References

- Abu, B., & Issahaku, H. (2020). *COVID-19 in Ghana: Consequences for poverty, and fiscal implications* (pp. 1–26). African Economic Research Consortium. Available online: https://aercafrica.org/wp-content/uploads/2020/12/02_Ghana-Covid-19-Nov-29.pdf (accessed on 6 July 2025).
- AfDB. (2022). *African economic outlook 2022*. Available online: <https://www.afdb.org/en/documents-publications-african-economic-outlook-2023-previous-african-economic-outlook/african-economic-outlook-2022> (accessed on 6 July 2025).
- Alfani, F., Clementi, F., Fabiani, M., Molini, V., & Schettino, F. (2024). Underestimating the pandemic: The impact of COVID-19 on income distribution in the U.S. and Brazil. *Economies*, 12(9), 235. [CrossRef]
- Ampaw, S., Nketiah-Amponsah, E., Owoo, N. S., & Senadza, B. (2019). Nonfarm enterprise participation and healthcare expenditure among farm households in rural Ghana. *International Journal of Social Economics*, 46(1), 18–30. [CrossRef]
- Andam, K., Edeh, H., Oboh, V., Pauw, K., & Thurlow, J. (2020). Impacts of COVID-19 on food systems and poverty in Nigeria. In *Advances in food security and sustainability* (Vol. 5). Elsevier. [CrossRef]
- Aran, M. A., Aktakke, N., Kibar, Z. S., & Üçkardeşler, E. (2021). How to assess the child poverty and distributional impact of COVID-19 using household budget surveys: An application using Turkish data. *European Journal of Development Research*, 34, 1997–2037. [CrossRef]
- Ayanore, M., Avenyo, E., & Osei, D. (2024). *Catastrophic effects of COVID-19 health expenditure shocks and multidimensional poverty in Ghana: What financing mechanisms mattered?* (African Economic Research Consortium Working Papers). Available online: <https://publication.aercafricallibrary.org/handle/123456789/3696> (accessed on 6 July 2025).
- Baayen, R. H., Davidson, D. J., & Bates, D. M. (2008). Mixed-effects modeling with crossed random effects for subjects and items. *Journal of Memory and Language*, 59(4), 390–412. [CrossRef]
- Benczúr, P., Kátay, G., & Kiss, Á. (2018). Assessing the economic and social impact of tax and benefit reforms: A general-equilibrium microsimulation approach applied to Hungary. *Economic Modelling*, 75, 441–457. [CrossRef]
- Bover, O., Casado, J. M., Garcca-Miralles, E., Labeaga Azcona, J. M., & Ramos Magdaleno, R. (2017). *Microsimulation tools for the evaluation of fiscal policy reforms at the Banco De España* (pp. 1–43). Banco de España Occasional Paper No. 1707. Available online: <https://ssrn.com/abstract=3048727> (accessed on 17 July 2022).
- Bracco, J., Ciaschi, M., Gasparini, L., Marchionni, M., & Neidhöfer, G. (2024). The impact of COVID-19 on education in Latin America: Long-run implications for poverty and inequality. *Review of Income and Wealth*, 71(1), e12687. [CrossRef]
- Diao, X., Aung, N., Lwin, W. Y., Zone, P. P., Nyunt, K. M., & Thurlow, J. (2020, May 17). *Assessing the impacts of COVID-19 on Myanmar's economy: A social accounting matrix (SAM) multiplier approach* (pp. 1–24). Myanmar SSP Policy Notes 5. International Food Policy Research Institute (IFPRI). [CrossRef]
- Diao, X., Rosenbach, G., Spielman, D. J., & Arague, E. (2021). *Assessing the impacts of COVID-19 on household incomes and poverty in Rwanda: A microsimulation approach*. Rwanda SSP Working Paper 2. International Food Policy Research Institute (IFPRI).
- Gelman, A., & Hill, J. (2006). *Data analysis using regression and multilevel/hierarchical models*. Cambridge University Press.
- Gouvernement Benin. (2022). *Flash infos—COVID-19*. Available online: <https://www.gouv.bj/coronavirus/flashinfos/#:~:text=Pour%20entrer%20au%20B%C3%A9nin%2C%20vous,dans%20votre%20pays%20de%20provenance.&text=Les%20sites%20de%20d'Ã©pistage%20de,d'Ã©cembre%202021%20Ã%2014%20heures> (accessed on 22 May 2022).
- Haakenstad, A., Bintz, C., Knight, M., Bienhoff, K., Chacon-Torrico, H., Curioso, W. H., Dieleman, J. L., Gage, A., Gakidou, E., Hay, S. I., Henry, N. J., Hernández-Vásquez, A., Méndez Méndez, J. S., Villarreal, H. J., & Lozano, R. (2023). Catastrophic health expenditure during the COVID-19 pandemic in five countries: A time-series analysis. *The Lancet Global Health*, 11(10), e1629–e1639. [CrossRef] [PubMed]
- Hansen, L. P., & Heckman, J. J. (1996). The empirical foundations of calibration. *Journal of Economic Perspectives*, 10(1), 87–104. [CrossRef]
- Houeninvo, G. H., & Assouto, A. B. (2023). Exploring the relationship between healthcare expenditure, income, medical technology, and aging: Apooled mean group analysis of African countries. *Asian Journal of Economic Modelling*, 11(2), 56–74. [CrossRef]
- INSAE BENIN. (2019). *Enquête harmonisée sur les conditions de vie des ménages* (EHCVM-2018–2019). INSAE BENIN.
- INSAE BENIN. (2020). *COVID-19 suivi de l'impact*. INSAE. Available online: https://instad.bj/images/docs/ActualitÃ's/Rapport_Impact_Covid_BÃ©nin.pdf (accessed on 6 July 2025).

- Kalar, B., Primc, K., & Kump, N. (2023). Differences in COVID-19 policies and income distribution: A cross-country comparison. *Sustainability*, 15(6), 4916. [CrossRef]
- Kang, Y., Wabyona, E., Udahehuka, F. R., Traore, A., & Doocy, S. (2023). Economic impact of COVID 19 on income and use of livelihoods related coping mechanisms in Chad. *Frontiers in Sustainable Food Systems*, 7, 1150242. [CrossRef]
- Karunaratne, M., Buddhika, P., Priyamantha, A., Mayogya, P., Jayathilaka, R., & Dayapathirana, N. (2025). Restoring life expectancy in low-income countries: The combined impact of COVID-19, health expenditure, GDP, and child mortality. *BMC Public Health*, 25, 894. [CrossRef]
- Kerschbaumer, L., Crossett, L., Holaus, M., & Costa, U. (2024). COVID-19 and health inequalities: The impact of social determinants of health on individuals affected by poverty. *Health Policy and Technology*, 13(1), 100803. [CrossRef]
- Kockaya, G., Oguzhan, G., & Çalşkan, Z. (2021). Changes in catastrophic health expenditures depending on health policies in Turkey. *Frontiers in Public Health*, 8, 614449. [CrossRef] [PubMed]
- Laborde, D., Martin, W., & Vos, R. (2021). Impacts of COVID-19 on global poverty, food security and diets: Insights from global model scenario analysis. *Agricultural Economics*, 52, 1–16. [CrossRef] [PubMed]
- Little, R. J. A. (1988). A test of missing completely at random for multivariate data with missing values. *Journal of the American Statistical Association*, 83(404), 1198–1202. [CrossRef]
- Loungani, P., Ostry, J., Furceri, D., Emmerling, J., Libano Monteiro, F., Pizzuto, P., & Tavoni, M. (2021). *Will the economic impact of COVID-19 persist? Prognosis from 21st century pandemics* (Vol. 2021). IMF Working Papers. IMF. [CrossRef]
- Mafruhah, A. Y., Alfadhilah, F. H., Fadhilah, N. A. Z., Wildani, W. N., Haviz, M., & Noviani, N. (2025). Analysis of the impact of COVID-19 on poverty in Bandung-Indonesia: Sociology-religion-Islamic perspective concept approach. *Jurnal Ilmiah Ilmu-Ilmu Finansial (JIIF)*, 25(1), 26–43. [CrossRef]
- Maskaeva, A., Bochkaeva, Z., Mmasa, J., & Msafiri, M. (2021). The impact of indirect tax on income distribution and poverty in Tanzania. *Annals of Public and Cooperative Economics*, 93(1), 103–128. [CrossRef]
- Maskaeva, A., Bochkaeva, Z., Mmasa, J., Msafiri, M., & Iramba, E. (2019). *Microsimulation analysis of the impact of indirect tax benefits on income distribution and poverty alleviation in Tanzania: An application of TAZMOD* (pp. 1–20). WIDER Working Papers, wp-2019/16. World Institute for Development Economic Research (UNU-WIDER).
- Militaru, E., Cristescu, A., Vasilescu, M. D., & Stanila, L. (2024). Microsimulation analysis of COVID-19 and inflation effects on Romanian household income dynamics. *Economics*, 12(12), 344. [CrossRef]
- Musoke, D., Nalinya, S., Lubega, G. B., Deane, K., Ekirapa-Kiracho, E., & McCoy, D. (2024). The impact of the COVID-19 lockdown on social and economic welfare in Uganda. *Archives of Public Health*, 82, 117. [CrossRef]
- O'Donoghue, C., Sologon, D. M., Kyzyma, I., & McHale, J. (2021). A microsimulation analysis of the distributional Impact over the three waves of the COVID-19 crisis in Ireland. *International Journal of Microsimulation*, 14(2), 81–105. [CrossRef]
- Olasehinde, N., & Olaniyan, O. (2017). Determinants of household health expenditure in Nigeria. *International Journal of Social Economics*, 44(12), 1694–1709. [CrossRef]
- Ortega-Martin, E., & Alvarez-Galvez, J. (2025). Living with long COVID: Everyday experiences, health information barriers and patients' quality of life. *Health Expectations*, 28(3), e70290. [CrossRef]
- Ouoba, Y., & Sawadogo, N. (2022). Food security, poverty and household resilience to COVID-19 in Burkina Faso: Evidence from urban small traders' households. *World Development Perspectives*, 25, 100387. [CrossRef] [PubMed]
- Rajalakshmi, E., Sasidharan, A., Bagepally, B. S., Kumar, M. S., Manickam, P., Vinayagam, T. S. S., Sampath, P., & Parthipan, K. (2023). Household catastrophic health expenditure for COVID-19 during March–August 2021, in South India: A cross-sectional study. *BMC Public Health*, 23, 47. [CrossRef] [PubMed]
- Shen, Q., & Zhong, T. (2023). Did household income loss have an immediate impact on animal-source foods consumption during the early stage of the COVID-19 pandemic? *Foods*, 12(7), 1424. [CrossRef]
- Sologon, D. M., Van Kerm, P., Li, J., & O'Donoghue, C. (2021). Accounting for differences in income inequality across countries: Tax-benefit policy, labour market structure, returns and demographics. *Journal of Economic Inequality*, 19(1), 13–43. [CrossRef]
- WHO. (2001). Overview of The world health report 2000 health systems: Improving performance. *Journal Medical Libanais*, 49(1), 22–24.
- WHO. (2020). *Coronavirus disease (COVID-19) pandemic*. Available online: <https://www.who.int/emergencies/diseases/novel-coronavirus-2019> (accessed on 19 June 2022).
- WHO. (2022a). *Coronavirus (COVID-19) dashboard*. Available online: <https://covid19.who.int> (accessed on 31 September 2022).
- WHO. (2022b). *Methodology for the update of the global health expenditure database, 2000–2020. Technical note*. Available online: https://search.library.uq.edu.au/discovery/fulldisplay?docid=alma991014612641303131&context=L&vid=61UQ_INST:61UQ&lang=en&adaptor=Local%20Search%20Engine&tab=61UQ_All&query=sub,exact,%20Medical%20economics%20,AND&mode=advanced&offset=0 (accessed on 31 September 2022).

- Xu, K. (2005). *Distribution of health payments and catastrophic expenditures methodology* (FER/EIP Discussion Paper, no. 2). World Health Organization.
- Yimer, F., & Alemayehu, M. (2021). *The short-run impact of the COVID-19 crisis on poverty in Ethiopia*. African Economic Research Consortium.

Disclaimer/Publisher's Note: The statements, opinions and data contained in all publications are solely those of the individual author(s) and contributor(s) and not of MDPI and/or the editor(s). MDPI and/or the editor(s) disclaim responsibility for any injury to people or property resulting from any ideas, methods, instructions or products referred to in the content.