

Huang, Jiayan; Baležentis, Tomas; Shen, Shaowei; Štreimikienė, Dalia

Article

Human capital mismatch and innovation performance in high-technology enterprises: An analysis based on the micro-level perspective

Journal of Innovation & Knowledge (JIK)

Provided in Cooperation with:

Elsevier

Suggested Citation: Huang, Jiayan; Baležentis, Tomas; Shen, Shaowei; Štreimikienė, Dalia (2023) : Human capital mismatch and innovation performance in high-technology enterprises: An analysis based on the micro-level perspective, Journal of Innovation & Knowledge (JIK), ISSN 2444-569X, Elsevier, Amsterdam, Vol. 8, Iss. 4, pp. 1-13, <https://doi.org/10.1016/j.jik.2023.100452>

This Version is available at:

<https://hdl.handle.net/10419/327358>

Standard-Nutzungsbedingungen:

Die Dokumente auf EconStor dürfen zu eigenen wissenschaftlichen Zwecken und zum Privatgebrauch gespeichert und kopiert werden.

Sie dürfen die Dokumente nicht für öffentliche oder kommerzielle Zwecke vervielfältigen, öffentlich ausstellen, öffentlich zugänglich machen, vertreiben oder anderweitig nutzen.

Sofern die Verfasser die Dokumente unter Open-Content-Lizenzen (insbesondere CC-Lizenzen) zur Verfügung gestellt haben sollten, gelten abweichend von diesen Nutzungsbedingungen die in der dort genannten Lizenz gewährten Nutzungsrechte.

Terms of use:

Documents in EconStor may be saved and copied for your personal and scholarly purposes.

You are not to copy documents for public or commercial purposes, to exhibit the documents publicly, to make them publicly available on the internet, or to distribute or otherwise use the documents in public.

If the documents have been made available under an Open Content Licence (especially Creative Commons Licences), you may exercise further usage rights as specified in the indicated licence.



<https://creativecommons.org/licenses/by-nc-nd/4.0/>

Human capital mismatch and innovation performance in high-technology enterprises: An analysis based on the micro-level perspective



Jiayan Huang^a, Tomas Balezentis^b, Shaowei Shen^{c,*}, Dalia Streimikiene^b

^a School of Science, Ningbo University of Technology, Ningbo, China

^b Vilnius University, Vilnius, Lithuania

^c School of Statistics and Mathematics, Zhejiang Gongshang University, Hangzhou, China

ARTICLE INFO

Article History:

Received 18 January 2022

Accepted 16 November 2023

Available online 23 November 2023

Keywords:

High-tech enterprises
Human capital mismatch
Innovation performance
Moderating mechanism

ABSTRACT

Micro-level analysis of innovation performance has become increasingly crucial to innovative policy in the context of innovation-driven economies. A micro-influence mechanism of human capital mismatch is presented in this paper and analysed. This research utilises a sample of 2510 high-tech enterprises in Zhejiang Province, China, for 2020. The research reveals that high-tech enterprises' limited human capital is still severely mismatched, which significantly impedes innovation. The conclusion remains valid even after accounting for omitted variable bias and reverse causality. Considering the moderating effect of mismatch and innovation, the results of the study indicate that R&D investment, domestic and foreign talent are detrimental to innovation in the presence of human capital mismatch. Finally, the article concludes by pointing out that correcting human capital mismatch, clarifying relationships among factor structure, price mechanism, and innovation performance, as well as accumulating human capital, is crucial for stimulating the innovation vitality of high-tech enterprises.

© 2023 The Authors. Published by Elsevier España, S.L.U. on behalf of Journal of Innovation & Knowledge. This is an open access article under the CC BY-NC-ND license (<http://creativecommons.org/licenses/by-nc-nd/4.0/>)

Introduction

Joseph Schumpeter used the term “innovation” for the first time in his “Theory of Economic Development,” stating that enterprise innovation refers to the introduction of a new or significantly improved production method (Carlsson, 2007). As a result of this study, five scenarios were developed: product development, technology introduction, the creation of a new market, resource acquisition, and organisational formation (Johannessen et al., 2001). Bernardin and Beatty (1984) provided an introduction to innovation from three angles: outcomes, innovation behaviour and innovation ability.

Innovation can be viewed from a narrow or broad perspective. In a narrow sense, it refers to the extent to which innovations are introduced within an enterprise. In a broad sense, innovation refers to the performance achieved through the process of generating innovative concepts and launching products to market (Ven & Poole, 1995). Due to its multiple senses, it is challenging to define innovation uniformly. Different perceptions of innovation require different metrics for measuring them.

The literature on innovation involves multiple innovation performance indicators that represent different concepts. Innovation

performance indicators include the input, intermediate, and output indicators. Beneito (2006) defined innovation as the production of knowledge which can be proxied with such indicators as R&D investment, R&D workers (Du et al., 2019; Huang, 2023) or external technology acquisition (Brunswick & Vanhaverbeke, 2015; Hervás-Oliver et al., 2021). Benito (2006) defined intermediate innovation, which can be measured by patents (Dang & Motohashi, 2015; Hegde et al., 2023) or trademarks (Flikkema et al., 2014; Block et al., 2022) obtained. Morris (2008) defined innovation as innovation-related outcomes with standard indicators, such as new products sales or the number of new products (Luzzini et al., 2015; Ramadani et al., 2019; Lianto et al., 2022). Carayannis et al. (2018) and Nuvolari et al. (2021) proposed composite indicators as a measure of innovation since there is no “one-fits-all” indicator. Overall, measuring innovation is a challenging task.

Furthermore, the influencing factors on innovation are an important area of research. The influencing factors of innovation performance can be summarised into four major categories: environmental, individual, structural, and organisational factors (Cole & Wayland, 1997; Li et al., 2017). Environmental factors refer to the macro-environment in which the enterprise operates, such as market-based development, government macro policy, and others (Wang et al., 2019; Yin et al., 2022). Individual factors consist primarily of the characteristics of enterprise executives,

* Corresponding author.

E-mail address: zjsusw@163.com (S. Shen).

including their educational attainment, work experience, gender, etc. (Laguir & Den Besten, 2016; Afsar & Umrani, 2020; Yang et al., 2023). Structural factors refer to the introduction of technology or talent, which indicates the interaction between enterprises and external organisations (Veland et al., 2017; Xu et al., 2022). Organisational factors are the internal characteristics of the enterprise, such as its size, capital, or human resources, etc. (Garcia Martinez et al., 2019; Ramírez et al., 2020).

According to the literature, structural and organisational factors are more important than environmental and individual factors in exploring innovation performance. The relevant research has also gradually shifted from single-factor to multi-factor analysis, such as the cross-cutting study of human capital and R&D investment (Hsu et al., 2020; Chen & Kim, 2023), human capital and technology acquisition (Jimenez & Valle, 2020; Pradana et al., 2020).

In both the New-Kaldor Facts and the endogenous growth theory, human capital is recognised as a specific factor of production. Human capital is a combination of knowledge, technology, ability, and creativity that exhibits features of increasing returns to scale (Acemoglu, 1996). Therefore, human capital can promote innovation directly or indirectly by increasing consumption and output (Li et al., 2015; Vixathep et al., 2019; Timothy, 2022; Selivanovskikh, 2023).

According to the principle of marginal remuneration, Hsieh and Klenow (2009) argued that factors of comparative advantage are allocated inefficiently, preventing innovation from succeeding. Especially in the “New Kaldor Facts”, the mismatch between human capital and sustainable development becomes more pronounced (Gabardo et al., 2017; Ruggeri, Yu, 2023).

Human capital mismatch occurs when advanced human capital is treated as simple labour. Basically, it describes the involvement of human capital in the final goods sector with low skills in production activities (Marchante & Ortega, 2012; Marchiori & Franco, 2020). Human capital mismatch reflects labour allocation in enterprises. In addition, unemployment and job vacancies are external manifestations of human capital mismatch (Ruggeri & Yu, 2023).

Most research on human capital mismatch focuses on its internal mechanisms, typical forms, and effects. Economic development models and structural imbalances in the workforce are considered to be the primary mechanisms responsible for human capital mismatch (Anaduaka, 2014; Kuzminov et al., 2019; Wang et al., 2022).

Furthermore, the typical forms of human capital mismatch can be characterised in three ways. First, there may be a mismatch between different ownership systems, such as the government, competition, and monopoly sectors (Li & Yin, 2017; Mocetti & Orlando, 2019; Liu et al., 2023). Second, one may face a mismatch between different industries, primarily productive and non-productive (Yian, 2019; Liu et al., 2023). Third, a mismatch between different departments, particularly technology-intensive and end-product departments, may occur (Ge & Li, 2019).

The existing literature on the impact of human capital mismatch generally analyses from a macro perspective, such as industrial structure, economic growth, technological innovation etc. (Teixeira & Queirós, 2016; McGowan & Andrews, 2017; Burroni et al., 2019), whereas those with the latest analyses focus on enterprises from a micro perspective (Li et al., 2021; Jibir et al., 2023; Braunerhjelm & Lippi, 2023).

The research on the adjustment of human capital quality needs to be furthered as the questions related to the allocation of human capital remain important. Knowledge transfer and innovation are highly related to these issues. In particular, high-tech enterprises require explanation and motivation for actions surrounding human capital adjustment (Kim & Choi, 2018; Li et al., 2021, 2023).

Such emerging economies as China further stress the need for analysis of human capital quality and allocation. The Chinese government has put forward innovation-driven development strategies to increase enterprises' self-innovation capacity, especially in high-end equipment production and novel metal development. However,

innovation at companies, especially high-tech companies, remains unsatisfactory. It is well known that patent bubbles and innovation illusions are common phenomena that prevent innovation at companies from supporting sustained economic growth and upgrading the real economy in a sustainable manner (Staub et al., 2016; Sun & Li, 2022; Zhang et al., 2023a,b).

Against this backdrop, this research aims to identify the effects of human capital mismatch on innovation performance and to identify which approaches towards promoting innovation performance are most effective based on the cross-perspective of human capital mismatch and company innovation. This research is conducted from the following perspectives: first, Huzhou high-tech companies from 2019 to 2020 are taken as an example to investigate the link between human capital mismatch and innovation performance; second, based on Hsieh and Klenow (2009), this study introduces the concept of labour quality into a framework of the production function, as well as relaxing the assumption of constant returns to scale. Human capital mismatch can be calculated by determining the difference between the optimal and actual level of human capital. Third, the role of human capital mismatch as a mediator through which enterprise innovation is affected by domestic and foreign talents, R&D expenses and R&D personnel is analysed. These mechanisms prove that human capital mismatch inhibits enterprise innovation and development in the long run and can be used to identify more effective methods for improving this situation.

This paper offers several contributions to the analysis of the human capital–innovation nexus. First, this study introduces the concept of labour quality into a framework of the production function, as well as relaxes the assumption of constant returns to scale, thus providing an improved framework for the measurement of human capital mismatch. Second, the explanatory variables covered (R&D investment, R&D personnel, domestic talents and foreign talents) allow for a more comprehensive modelling of the innovation performance. Such a setting allows inferences to be made on the mediating role of the human capital mismatch in a more comprehensive manner.

The rest of this paper is organised as follows: Section 2 describes the theoretical framework of human capital mismatch and the regulation mechanism of human capital mismatch on innovation performance in high-tech enterprises. Section 3 analyses data from Huzhou City, Zhejiang Province and measures the mismatch degree of human capital. The actual impact of human capital mismatch on the innovation performance of high-tech enterprises is discussed in Section 4. Section 5 conducts a study on the moderating mechanism of human capital mismatch. The conclusions and implications of this paper are shown in Section 6.

Theoretical framework and mechanism analysis

Theoretical framework of human capital mismatch

The literature on measuring human capital mismatch has received substantial interest with increasing interest on economic growth. However, there is no harmonised framework and methodology for measuring human capital mismatch. The measurement of factor allocation distortions can be categorised into direct and indirect methods (Restuccia & Rogerson, 2017). Among them, the direct measurement of the mismatch is in terms of the amount of subsidies or tax with multiple inputs from productive factors, while the indirect measurement of the mismatch is the efficiency gap between the optimal allocation and actual allocation of productive factors under profit-maximising conditions (Hsieh & Klenow, 2009; Restuccia & Rogerson, 2017). As a result of the obvious limitations of direct measurement, the most commonly used method of measuring human capital mismatch in the existing literature relies on improvements of the indirect method of Hsieh and Klenow (Yian, 2019; Yang et al., 2022; Hendricks & Schoellman, 2023).

Human resources flow freely amongst enterprises in a perfectly competitive labour market, while factor constraints can lead to distortions. Hence, some enterprises have excess human capital, and others face a lack of human capital (Neffke et al., 2017). This mismatch causes a deviation between the actual and optimal configuration of the firm in production and results in non-optimal final output (Fanti et al., 2021).

Traditional production systems consist of two main elements: capital and labour. Due to the difficulty of acquiring human capital in traditional producing firms, it is commonly regarded as homogeneous labour. However, the production function in high-tech firms should incorporate the integration of human capital, which includes both simple labour and labour quality (Li et al., 2015). Labour quality is defined broadly as education level, work skills, and work experience. Of these, education level is the most important variable and easy to measure (Van Tran et al., 2019; Hendricks & Schoellman, 2023).

This paper incorporates labour quality into a measurement framework of the production function based on a theoretical model by Hsieh and Klenow (2009). This approach relaxes the assumption of constant returns to scale. The difference between the optimal and actual scale of enterprises is further used to estimate a mismatch in human capital at the micro-enterprise level.

Based on the conventional Cobb-Douglas production function, the extended production function, which includes labour quality, is defined as:

$$Y_{si} = A_{si} K_{si}^{\alpha_s} L_{si}^{\beta_s} E_{si}^{\gamma_s} \quad (1)$$

where α_s represents the capital elasticity of industry s , β_s represents labour elasticity, γ_s represents labour quality elasticity, and A_{si} represents the total factor productivity of enterprise i .

The product market is characterised by monopolistic competition, while the factor market is characterised by perfect competition, which results in distortions in factor price. In this paper, $\tau_{K_{si}}$ represents capital distortion, $\tau_{L_{si}}$ represents labour distortion, and $\tau_{E_{si}}$ represents labour quality distortion. The profit function for monopolistic enterprises is:

$$\pi_{si} = P_{si} Y_{si} - (1 + \tau_{K_{si}}) R K_{si} - (1 + \tau_{L_{si}}) \omega L_{si} - (1 + \tau_{E_{si}}) \mu E_{si}, \quad (2)$$

where R represents the capital price, ω represents the labour price, and μ represents the labour quality price.

The demand function based on the enterprise-specific variables is governed by the equality between the marginal cost and the marginal revenue, that is $\frac{Y_{si}}{Y_s} = \left(\frac{P_{si}}{P_s}\right)^{-\sigma}$, where σ is the elasticity of substitution between products in monopoly scenarios. According to the property of the constant elasticity of substitution, the price is: $P_s = (\sum P_{si}^{1-\sigma})^{\frac{1}{1-\sigma}}$. Combining the demand function and assumption of profit maximisation, the monopolistic price of products is given as:

$$P_{si} = \frac{\sigma}{\sigma - 1} \left(\frac{(1 + \tau_{K_{si}}) R}{\alpha_s} \right)^{\frac{\alpha_s}{\alpha_s + \beta_s + \gamma_s}} \left(\frac{(1 + \tau_{L_{si}}) \omega}{\beta_s} \right)^{\frac{\beta_s}{\alpha_s + \beta_s + \gamma_s}} \left(\frac{(1 + \tau_{E_{si}}) \mu}{\gamma_s} \right)^{\frac{\gamma_s}{\alpha_s + \beta_s + \gamma_s}} \quad (3)$$

$$(Y_{si})^{\frac{\alpha_s + \beta_s + \gamma_s - 1}{\alpha_s + \beta_s + \gamma_s}} (A_{si})^{\frac{1}{\alpha_s + \beta_s + \gamma_s}},$$

Given the profit function and price data, the marginal revenue of production factors is:

$$\begin{aligned} MRP_{K_{si}} &= \alpha_s \frac{\sigma - 1}{\sigma} \frac{P_{si} Y_{si}}{K_{si}}, \\ MRP_{L_{si}} &= \beta_s \frac{\sigma - 1}{\sigma} \frac{P_{si} Y_{si}}{L_{si}}, \\ MRP_{E_{si}} &= \gamma_s \frac{\sigma - 1}{\sigma} \frac{P_{si} Y_{si}}{E_{si}}. \end{aligned} \quad (4)$$

Assuming profit maximisation, the marginal revenue of production factors is equal to the marginal factor cost:

$$\begin{aligned} \alpha_s \frac{\sigma - 1}{\sigma} \frac{P_{si} Y_{si}}{K_{si}} &= (1 + \tau_{K_{si}}) R, \\ \beta_s \frac{\sigma - 1}{\sigma} \frac{P_{si} Y_{si}}{L_{si}} &= (1 + \tau_{L_{si}}) \omega, \\ \gamma_s \frac{\sigma - 1}{\sigma} \frac{P_{si} Y_{si}}{E_{si}} &= (1 + \tau_{E_{si}}) \mu. \end{aligned} \quad (5)$$

The neoclassical economic theory implies that in the absence of trade barriers and frictions, each sector's marginal revenue and marginal cost are equal and equal to market prices. At this point, the factors should have been allocated under the Pareto optimality principle of the economic system (Leverero, 2014). In the event that various distortion factors are considered, the marginal revenue and marginal cost of factors may deviate and thus cannot ensure optimal allocation. In accordance with Eq. (5), we can obtain the degree of distortion of capital, labour, and labour quality as follows:

$$\begin{aligned} \tau_{K_{si}} &= \alpha_s \frac{\sigma - 1}{\sigma} \frac{P_{si} Y_{si}}{R K_{si}} - 1, \\ \tau_{L_{si}} &= \beta_s \frac{\sigma - 1}{\sigma} \frac{P_{si} Y_{si}}{\omega L_{si}} - 1, \\ \tau_{E_{si}} &= \gamma_s \frac{\sigma - 1}{\sigma} \frac{P_{si} Y_{si}}{\mu E_{si}} - 1. \end{aligned} \quad (6)$$

Thus, the relationship between the actual output with distortion and the optimal output can be obtained as:

$$Y_{si}^* = Y_{si} (1 + \tau_{K_{si}})^{\frac{\alpha_s \sigma}{\alpha_s + \beta_s + \gamma_s}} (1 + \tau_{L_{si}})^{\frac{\beta_s \sigma}{\alpha_s + \beta_s + \gamma_s}} (1 + \tau_{E_{si}})^{\frac{\gamma_s \sigma}{\alpha_s + \beta_s + \gamma_s}}, \quad (7)$$

The human capital mismatch of enterprises is based on the difference between their actual scale and the optimal scale as represented by Eq. (7):

$$M = \frac{Y_{si}^*}{Y_{si}} - 1 = (1 + \tau_{L_{si}})^{\frac{\beta_s \sigma}{\alpha_s + \beta_s + \gamma_s}} (1 + \tau_{E_{si}})^{\frac{\gamma_s \sigma}{\alpha_s + \beta_s + \gamma_s}} - 1, \quad (8)$$

Eq. (8) describes the degree of deviation between the enterprise's actual and optimal scale as a result of human capital mismatch. Mismatches are more serious the greater the degree of deviation.

The total factor productivity of enterprises can be calculated by substituting Eq. (8) into Eq. (3) as follows:

$$A_{si} = H^{\frac{\alpha_s + \beta_s + \gamma_s}{2\sigma - (\sigma + 1)(\alpha_s + \beta_s + \gamma_s)}} (M + 1)^{\frac{\alpha_s + \beta_s + \gamma_s}{2\sigma - (\sigma + 1)(\alpha_s + \beta_s + \gamma_s)}}, \quad (9)$$

$$\text{where } H = Y_s P_s^{\sigma} \left(\frac{\sigma}{1 - \sigma} \right)^{-\sigma} (K_{si}^{\alpha_s} L_{si}^{\beta_s} E_{si}^{\gamma_s})^{\frac{\sigma - (\sigma + 1)(\alpha_s + \beta_s + \gamma_s)}{\alpha_s + \beta_s + \gamma_s}} \left(\frac{(1 + \tau_{K_{si}}) R}{\alpha_s} \right)^{\frac{-\alpha_s \sigma}{\alpha_s + \beta_s + \gamma_s}}$$

$$\left(\frac{\omega}{\beta_s} \right)^{\frac{-\beta_s \sigma}{\alpha_s + \beta_s + \gamma_s}} \left(\frac{\mu}{\gamma_s} \right)^{\frac{-\gamma_s \sigma}{\alpha_s + \beta_s + \gamma_s}}$$

To examine the mechanism of human capital mismatch on enterprise innovation, one may use the derivative of Eq. (9) with respect to human capital mismatch:

$$\frac{\partial A_{si}}{\partial M} = \frac{\alpha_s + \beta_s + \gamma_s}{2\sigma - (\sigma + 1)(\alpha_s + \beta_s + \gamma_s)} \frac{A_{si}}{(M + 1)}, \quad (10)$$

Given the expression in Eq. (10), we propose Hypothesis 1 which links the mismatch of human capital and total factor productivity:

H1. $\frac{\partial A_{si}}{\partial M} < 0$, i.e., high-tech enterprises are less likely to innovate if there is a high degree of human capital mismatch.

Mechanism analysis

Numerous studies have analysed the impact of human capital on innovation performance (Buenechea-Elberdin et al., 2017; Fonseca et

al., 2019; Hanifah et al., 2022; Ali et al., 2023). Nevertheless, very few empirical studies have examined the relationship between human capital mismatch and innovation performance, particularly in high-tech firms. The intrinsic mechanism and moderating role of human capital mismatch on firms' innovation performance have not been adequately explored. Moreover, Prokop and Stejskal (2019) noted that very few studies have considered such factors as ownership types, forms of cooperation in innovation activities, and investments into innovation in the light of innovation performance.

Human capital mismatch and R&D

In the resource-centred theory, human capital is the most valuable resource for ensuring competitiveness of firms (Zahra et al., 2006). It is also necessary for promoting innovative activities within firms (Wright & Snell, 2001). In high-tech firms, innovation is an essential operation activity due to the emerging market and aggressive competition. Therefore, the importance attached to human capital in making innovation-related decisions may differ. One can distinguish between the human capital of the executives and specialists. As for the executives, their human capital determines the overall planning of the processes (including those related innovations) within a company. With regard to the human capital of the specialists, it may be more or less successfully used for implementing the guidelines set by executives. Human capital can be expressed as a function:

$$E = E(hc^1, hc^2), \quad (11)$$

where hc^1 represents the top management's human capital measure, hc^2 represents the technicians' or researchers' human capital measure, function $E(\cdot)$ defines a certain rule for combining the aforementioned two types of human capital. However, the inclusion of all the variables discussed in Eq. (11) may be cumbersome due to data availability. Thus, we restrict the focus to the executives' human capital.

One can assume that participating in innovative projects improves technical expertise and risk management qualities (Zhang et al., 2019; Shaikh & Randhawa, 2022). Possessing such traits may trigger further innovative activities (Trzeciak et al., 2022). Further, exposure to frontier technology can help develop open mindsets amongst top management. As a result, top management is able to absorb new information and accumulate knowledge reserves through scientific and technological exchange, knowledge service flow sharing, and spillover of knowledge in order to effectively promote enterprises to achieve innovation success (Scuotto et al., 2017; Deranek et al., 2019; Dahiyat et al., 2023).

The literature suggests that Chinese high-tech enterprises have not achieved industrial and technological progress in this manner because they have not reached the level of human capital required to take advantage of their R&D investments (Huang & Chen, 2020). Human capital mismatch is the most critical factor. History of career may also impact innovation performance. For instance, executives coming from less challenging positions involving repetitive tasks may also opt for risk avoidance when deciding on innovative activities and the associated investments (Goodall et al., 2004; Li, 2020; Li & Zhang, 2022).

Also, top managers may place technicians or researchers in low-producing and non-innovation-oriented departments. Thus, R&D investment is not effectively used, or even if sufficient R&D investments are made, they do not appear to achieve optimal efficiency, which cannot be externalised to a company's innovation. A recent study by Zhu et al. (2020) has shown that if R&D investment and structure deviate from the optimal scale of R&D subjects, even increasing R&D investments and R&D personnel will not increase the efficiency of enterprise innovation. This phenomenon is more common in high-tech enterprises (Zhao et al., 2019; Qi, 2020; Wan et al., 2023).

Based on the considerations above, this paper invokes an interaction term between human capital mismatch and R&D and proposes the following hypotheses.

H2. Under the moderating effect of human capital mismatch, the positive impact of R&D investment on the innovation performance of high-tech enterprises will be weakened or even turned into a negative effect.

H3. Under the moderating effect of human capital mismatch, the positive impact of R&D personnel on the innovation performance of high-tech enterprises will be weakened or even turned into a negative effect.

Human capital mismatch and talent introduction

It follows from the knowledge-based approach to the functioning of a firm (Kogut & Zander, 1992) that proper use of knowledge in the underlying processes comprises the major means of achieving sustainable innovation. Indeed, human capital growth is mostly related to successful spread of knowledge. Therefore, human capital is usually defined as the accumulation of knowledge and its flow among managers and employees within a firm (Becker, 1962). Human capital, however, is not acquired or owned by organisations in the same manner as other types of capital, such as physical and technological. Human capital can be acquired with the introduction of talent (Marin-Garcia et al., 2011; Van den Broek et al., 2018).

The OECD indicated that there are two main types of talent mobility: external and internal. The first can be divided into geographical mobility (regional, national and foreign) and mobility from labour turnover. Internal mobility refers to movements within a company or occupation changes (Mahroum, 1999). This paper aims to examine only the first of these, namely, the geographical mobility of talent. With regards to the source of talents, human capital can be modelled as the function:

$$E = E(hc^3, hc^4), \quad (12)$$

where hc^3 represents domestic talent introduction, and hc^4 represents foreign talent introduction. The literature highlights the importance of talent as a key component of firm innovation performance (Van den Broek et al., 2018; Huang et al., 2023; Liu et al., 2023). This is especially important when the know-how related to enterprise processes is prioritised against purely looking at the academic credentials.

According to Subramaniam and Youndt (2005), a talent with proper knowledge may provide a competitive innovation advantage. Bornay-Barrachina et al. (2012) and Kianto et al. (2017) also pointed out that human capital's work experience and technical knowledge can bring innovative thinking and cutting-edge knowledge reserves to enterprises. Talent introduction is not a one-time transfer, but a complete enterprise knowledge structure, which can produce clear knowledge spillover effects and strengthen enterprise innovation.

Under the influence of human capital mismatch, however, imported talent cannot be rationally and scientifically allocated, and enterprises do not pay attention to their development and growth. Over time, the introduced talent will be restricted to the conception and implementation of enterprise innovation and, eventually, merge into the mediocre stream of enterprises or move to other enterprises to follow their dreams, thus, innovative creativity can be weakened by the departure of talent (Alves et al., 2019; Gu et al., 2022).

Accordingly, this paper considers the interaction between human capital mismatch and talent introduction and proposes the following hypotheses.

H4. Under the moderating effect of human capital mismatch, the positive impact of domestic talent introduction on the innovation performance of high-tech enterprises will be weakened or even turned into a negative effect.

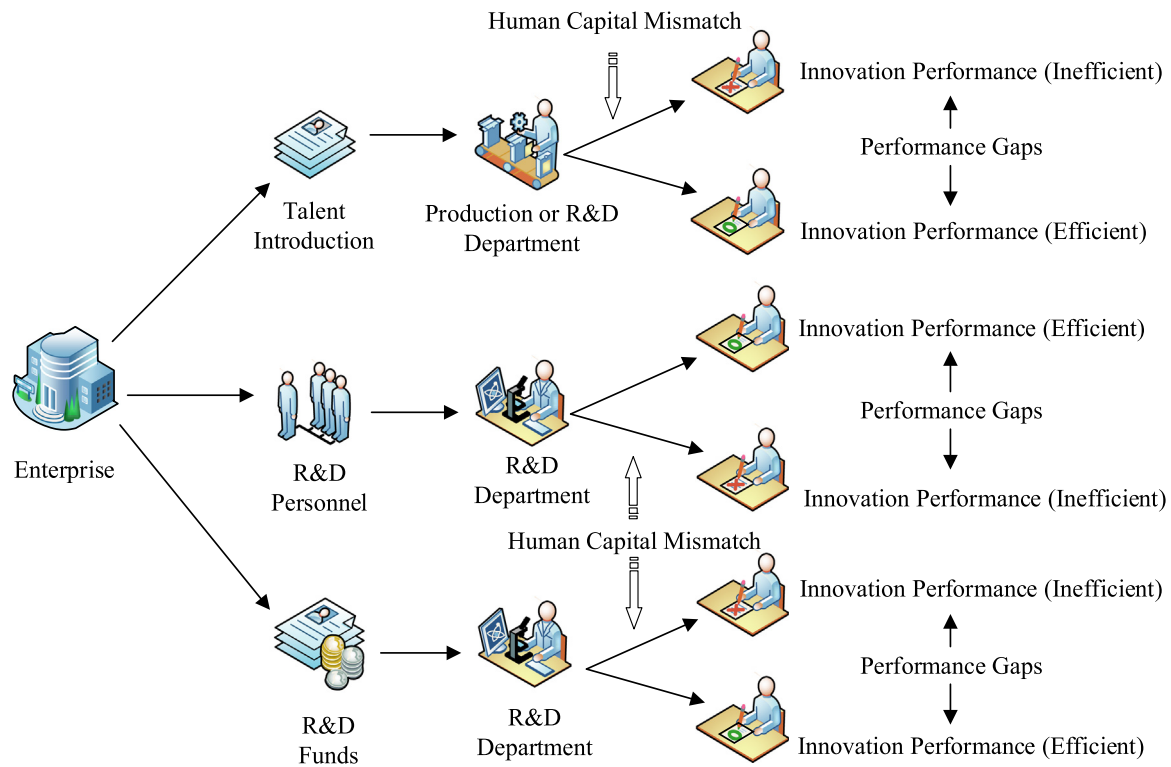


Fig. 1. Moderating effect of human capital mismatch.

H5. Under the moderating effect of human capital mismatch, the positive impact of foreign talent introduction on the innovation performance of high-tech enterprises will be weakened or even turned into a negative effect.

The theoretical assumptions underpinning this paper can be summarised within the mechanism through which human capital mismatch may affect innovation performance (Fig. 1).

Data description and model setting

Data description

The certified high-tech enterprises in Zhejiang Province, China, were surveyed for the basic information, R&D investment, economic benefits, technical benefits and talent acquisition. The data were collected in 2020. According to a proportional stratified sampling, 2769 high-tech companies were surveyed. The sample is considered as a representative one as the sectors represented correspond to the overall distribution.

A total of 2510 enterprises complied with the data requirements, with a data efficiency rate of 91 %. In addition, the observations with negative values of key variables such as output value, operating income, profit and tax, and average monthly salary of staff were deleted. The outliers were identified as the 1 % highest and lowest values for the quantitative variables (for the patent data, the lower threshold was ignored).

The variables involved in the measurement of human capital mismatch include enterprise output, capital stock, labour input, employee salary and average education level of labour force. Enterprise output is measured as the output value of enterprise, labour input is the total number of staff and employee wages are measured as the average monthly salary. For the average number of years of education of the labour force, the proportion of employees with different educational backgrounds is multiplied by the relevant number of years of educational background.

In addition, in order to measure the mismatch degree of human capital, additional parameters are needed. The elasticity coefficient of substitution between products, according to Broda and Weinstein (2006), is within the range of 3–10. This paper refers to the setting of Hsieh and Klenow (2009) and uses $\sigma = 3$. Cost of capital, according to Wen (2019), is set to 10 %. The output elasticities α_s , β_s and γ_s are obtained via the Akerberg et al. (2015) approach with intermediate inputs taken as the proxy variable.

Variables' selection

The key question of this research is the nature of the linkage between human capital mismatch and enterprise innovation performance. Company-level data are used. The variables used were selected given the literature analysis and data availability.

The dependent variable is the innovation performance of high-tech enterprises. The two main approaches are used to obtain proxies for the innovation performance viz., research output and innovation efficiency. Research output is defined as the results of scientific research, including patent applications, patent authorisations, and the value of new products. The ratio of the innovation output to R&D investment is used to measure the innovation efficiency (Hirshleifer et al., 2013). This study measures the innovation performance via the number of patent authorisations.

Human capital mismatch is one of the explanatory variables that may be used to test the research hypotheses. Other explanatory variables include R&D investment, R&D personnel, and foreign and domestic talent introduction. These factors will likely affect the performance of enterprise innovation.

The model includes control variables. It was necessary to account for firm characteristics when analysing the impact of human capital mismatch on firms' innovation performance. According to Rafique Hashmi (2013), the most important characteristics are size, capital intensity, and profitability. Thus, we selected firm size, ownership type, industry type, profitability, capital intensity, and executive staff

Table 1
Variable definitions and descriptive statistics.

Variable	Definition	Mean	Std	Min	Max
Innovation performance (INN)	Number of patent authorisations	6.65	22.04	0	250
Human capital mismatch (HCM)	—	21.42	29.30	−0.98	167.65
Enterprise ownership (NAT)	State-owned enterprise = 1; Otherwise = 0	0.02	0.13	0	1
	Private enterprise = 1; otherwise = 0	0.91	0.29	0	1
	Jointly operated enterprise = 1; Otherwise = 0	0.00	0.07	0	1
	Foreign-funded enterprises = 1; Otherwise = 0	0.01	0.11	0	1
	Enterprises above-designated size = 1; otherwise = 0	0.45	0.50	0	1
Enterprise size (SIZE)	Enterprises above-designated size = 1; otherwise = 0	0.33	0.47	0	1
High-tech industry (HT)	High-tech enterprise = 1; otherwise = 0	0.04	0.53	−6.28	2
Profit margins (PRO)	Operating profit / revenue	0.57	2.31	−4.98	10.53
Capital intensity (CAP)	Fixed assets / total staff	0.15	0.33	0	3
Proportion of executives (SEN)	Operations managers / total staff	5.20	2.34	−1.43	14.41
R&D investment (RDI)	Logarithm of R&D investment	1.78	10.21	0	123
R&D personnel (RDP)	R&D personnel	6.26	20.27	0	200
Domestic talent introduction (DT)	Number of domestic college students introduced	1.85	20.42	0	287
Foreign talent introduction (AT)	Number of foreign students introduced				

Note: Explanatory variables with zero values are not logged.

ratio as controlled variables. Table 1 presents the relevant definitions and descriptive statistics.

Model setting

This paper constructs an econometric model to analyse the impact of human capital mismatch on high-tech enterprises' innovation performance. Considering that the number of patent authorisations (INN) is a discrete variable that does not meet OLS assumptions, we adopt an enumeration model. According to the empirical distribution of the INN, the share of observations with zero value stands at 69 %. According to Fig. 2, there is a significant skewness in the distribution of INN due to the high proportion of zero values. Several reasons may account for this phenomenon. First, a number of enterprises have not applied for any patent authorisations and the corresponding value is actually zero. Second, the failed applications also contribute to zero values. Lastly, lack of accuracy in data may also render some zero-cases. According to Table 1, the mean value of the number of patent authorisations in the sample is 6.65, and the standard

deviation is 22, i.e., the standard deviation is about three times the mean. It indicates that the distribution is over-dispersed and a potentially non-normal one. To ensure the credibility of empirical analysis, logistic zero-inflated models for both Poisson and binomial distributions are selected to minimise the estimation bias caused by the zero values in the sample.

In the zero-inflated count model, the mixed probability distribution is determined based on the probability of obtaining zero and non-zero values (Lemonte et al., 2020):

$$y_i = \begin{cases} 0, p_i \\ g(y_i), 1 - p_i \end{cases} \quad (13)$$

where y_i is the number of patent authorisations of high-tech enterprises, p_i represents the probability of zero events arising, subject to the Bernoulli distribution. In this process, the number of enterprise patent authorisations can only be zero, which explains the large number of zeros in the data, and $g(y_i)$ represents the probability of occurrence of events subject to Poisson or negative binomial distributions. As a result of this process, the number of enterprise patent authorisations may either be zero or positive.

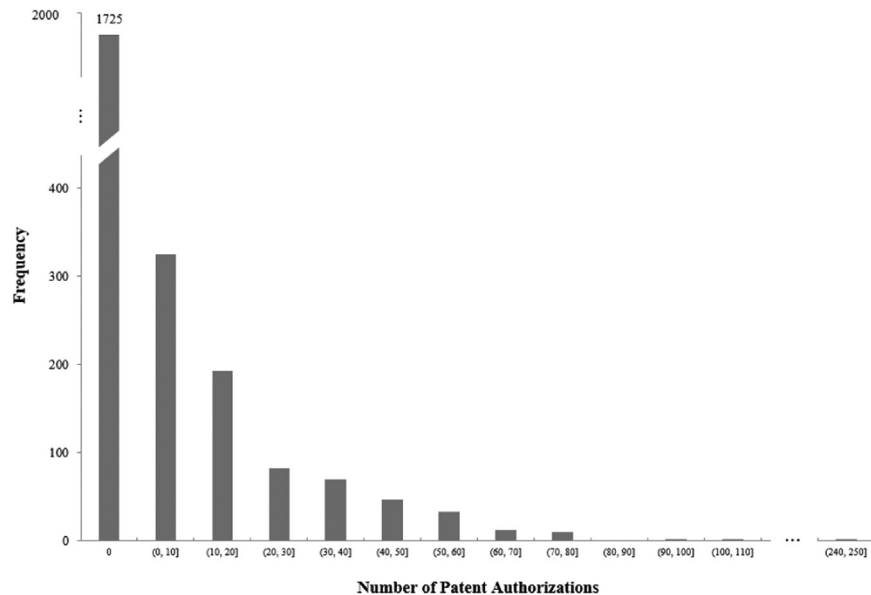


Fig. 2. The number of patent authorisations for high-tech enterprises in Zhejiang province, China.

Thus, the zero patent authorisations come from enterprises that have not applied for patent authorisation, with probability p_i and, with probability $1 - p_i$, from enterprises that have applied but have not been granted authorisation. Therefore, the probability density function of $Y = y_i$ is as follows:

$$P(Y = y_i) = \begin{cases} P(0|x_i) = p_i + (1 - p_i)g(0), & y_i = 0, \\ P(y_i|x_i) = (1 - p_i)g(y_i), & y_i > 0, \end{cases} \quad (14)$$

where $g(0)$ denotes the probability of zero value in case any other outcome can be expected (i.e., patent authorisation was applied for). If the value of p_i is affected by the independent variables, we have $p_i = F(X_i\gamma)$, $F(\cdot)$ is a zero-inflation connection function, logit and probit models mostly preferred, X_i is a vector of the independent variables, and γ is a vector of the associated parameters.

The zero-inflation link function is designed as the logit model:

$$\ln \frac{p_i}{1 - p_i} = \alpha_0 + \gamma X_i, \quad (15)$$

Using the zero-inflation connection function, we can transform Eq. (14) as follows:

$$INN_i = f(\alpha_0 + \beta_1 HCM_i + b_2 Z_i + \varepsilon_i) \quad (16)$$

where the dependent variable INN_i represents the number of patent authorisations of a high-tech enterprise, and the value is zero or a natural number; α_0 is a constant term, HCM_i is the core explanatory variable, β are the regression coefficients, Z_i are the control variables, including size, ownership type, and ε_i is the random error term.

Empirical results

Baseline model

To analyse the impact of human capital mismatch on the innovation performance of high-tech firms, an occurrence ratio—the change in the dependent variable due to a one-unit change in the independent variable when the other variables are held constant—is calculated based on the regression coefficients. In Table 2, we present the results of the baseline models.

The zero-inflated Poisson model to estimate innovation performance when a human capital mismatch exists is presented in Column 1 of Table 2. It has been estimated that the coefficient is significantly negative at the level of significance of 5 %. With a one-unit increase in human capital mismatch, enterprise innovation performance was

reduced by 1 %. The zero-inflated negative binomial model, which supports the finding that a mismatch between human capital and enterprise innovation performance is adverse, is presented in Column 2. These results support Hypothesis H1. Human capital mismatch significantly inhibits enterprise innovation performance.

The introduction of domestic or foreign talent has a significant positive impact on the innovation performance of high-tech enterprises at the 1 % level of significance in terms of innovation measures. The effect on innovation of foreign talent introduction is 6 %, slightly higher than that of domestic talent introduction (1 % in Column 1 and 2 % in Column 2). As R&D personnel increases, innovation performance declines in enterprises, which is significant at 5 % and 1 % significance levels. With a one-unit increase in R&D personnel, innovation performance was reduced by 3 % to 5 %. In the context of a mismatch in human capital, improper allocation of R&D personnel is inevitable. Accordingly, blindly increasing R&D personnel not only fails to improve enterprises' technical level but also increases R&D expenditures and reduces R&D efficiencies (Evangelista & Savona, 2003).

As for ownership types, state-owned and privately owned enterprises have the greatest impact on innovation performance (regression coefficients are 3.593 and 2.349, respectively). The reason is that compared with other ownership types, government subsidies can effectively stimulate state-owned enterprises' innovation performance. While private enterprises are oriented towards profit maximisation, they have better flexibility and the input-output efficiency of innovation is higher. Furthermore, high-tech enterprises are highly knowledge-intensive, and R&D activities are their main source of sustainable development. As a result, these types of enterprises can play a significant role in innovation. Further, it is also imperative to remember that innovation performance will also be affected in highly knowledge-intensive enterprises, where there are a high proportion of top managers.

Enterprise size, capital intensity, and profitability have little impact on innovation performance. Note that these variables are insignificant in our case but may significantly affect innovation in other environments. In addition, the absence of complete data on capital intensity and profitability may also result in this variable failing the significance test.

Addressing endogeneity

There is a possibility that the basic regression results of human capital mismatch on innovation performance of high-tech enterprises may be subject to endogeneity problems. Despite the fact that control variables reduce the endogeneity of enterprise heterogeneity to some extent, estimation errors cannot be avoided entirely due to their combined effects. It is also possible that there is a reverse causal relationship between a mismatch in human capital and enterprise innovation performance. Therefore, this is addressed by (i) adding possible omitted variables and (ii) using instrumental variables.

Adding possibly omitted variables

Employer learning theory, proposed by Murphy (1986), suggests that the productivity of top managers is largely dependent on their management skills. An effective allocation of managers and capital can promote enterprises' technological innovation and maximise the enterprise's value. Accordingly, Column 1 of Table 3 incorporates the labour productivity of higher education (HLP). Following the inclusion of HLP, the coefficient of human capital mismatch is not significantly different from the basic regression coefficient. A significant negative impact has been observed on the labour productivity of higher education, showing that enterprise executives' production efficiency is not able to positively impact the innovation performance of enterprises at present but rather needs to be allocated in an

Table 2
Baseline models of human capital mismatch and enterprise innovation performance.

Variable	1 - Zero-inflated Poisson			2 - Zero-inflated negative binomial		
	Coefficient	P-value	Odds	Coefficient	P-value	Odds
HCM	−0.009**	0.019	0.99	−0.008**	0.031	0.99
RDI	0.0001**	0.035	1.00	0.0005	0.151	1.00
RDP	−0.026**	0.029	0.97	−0.048***	0.003	0.95
DT	0.012***	0.005	1.01	0.022***	0.002	1.02
AT	0.056***	0.000	1.06	0.058***	0.000	1.06
NAT1	3.593***	0.001	36.33	3.053***	0.009	21.19
NAT2	2.349***	0.000	10.47	2.125***	0.001	8.37
NAT3	0.795	0.504	2.21	2.113	0.152	8.27
NAT4	0.603	0.500	1.83	0.701	0.363	2.01
SIZE	−0.147	0.585	0.86	−0.094	0.740	0.91
HT	1.019***	0.001	2.77	1.640***	0.000	5.15
PRO	0.136	0.879	1.15	1.353	0.297	3.26
CAP	0.057	0.356	1.06	0.011	0.878	1.01
SEN	2.114***	0.000	8.28	1.700***	0.000	5.47
_cons	−4.221***	0.000	0.01	−4.339***	0.000	0.01

Note: NAT1, NAT2, NAT3 and NAT4 represent state-owned enterprises, private enterprises, jointly operated enterprises and foreign-funded enterprises, respectively; *, **, *** represent 10 %, 5 %, 1 % significance levels, respectively; the logit link is used.

Table 3
Regression estimates after adding possibly omitted variables (negative binomial model).

Variable	1			2			3		
	Coefficient	P-Value	Odds	Coefficient	P-Value	Odds	Coefficient	P-Value	Odds
HCM	−0.008**	0.022	0.99	−0.008**	0.020	0.99	−0.012***	0.010	0.98
HLP	−0.270**	0.016	0.76				−0.249**	0.022	0.78
EDI				0.0003***	0.005	1.00	0.0003***	0.000	1.00
RDI	0.0002	0.132	1.00	0.0003	0.257	1.00	0.0002	0.221	1.00
RDP	−0.060***	0.000	0.94	−0.051***	0.003	0.95	−0.065***	0.000	0.94
DT	0.028***	0.000	1.03	0.023***	0.002	1.02	0.030***	0.000	1.03
AT	0.065***	0.000	1.07	0.061***	0.000	1.06	0.068***	0.000	1.07

efficient manner. This is in accordance with the conclusions reached by [Murphy \(1986\)](#).

For enterprises to become more competitive, it is essential that they educate and train a more significant number of top managers. It is possible, for instance, to improve the innovation skills and management level of enterprise employees through systematic training ([Dhi-man & Arora, 2020](#)). Compared with R&D investment to promote technological progress, this approach belongs to a broader sense of technological advancement. Column 2 of [Table 3](#) provides information on employee education input (EDI), which indicates the level of training and education an employee has received. A positive correlation exists between employee education input and enterprise innovation performance at the 1 % significance level.

When the variables of higher education labour productivity and employee education input are added to Column 3, the enterprise innovation performance caused by human capital mismatch decreases by about 2 % compared with the baseline model, indicating that this part of the effect, which should be explained by higher education labour productivity and employee education input, is actually explained by human capital mismatch. Due to the missing variables, the estimated coefficient of a human capital mismatch for high-tech firms is biased upward.

Instrumental variables

Suppose the traditional instrumental variable method is used to find an exogenous variable that affects human capital mismatch but does not affect high-tech firms' innovation performance. In that case, it is challenging to find such an exogenous variable. Based on [Erickson's \(2001\)](#) internal instrumental variable method, we establish a square of the mean difference between human capital mismatch in enterprises and industrial human capital mismatch as the instrumental variable. The paper adopts [Hilbe's \(2008\)](#) two-step approach to deal with endogeneity. The first step uses instrumental variables and other control variables to conduct OLS regression on the endogenous explanatory variables (human capital mismatch) and determine the residual; in the second step, zero-inflation negative binomial regression is performed using endogenous variables, residuals estimated in the first step, and other control variables (excluding instrumental variables). The results are displayed in column 2 of [Table 4](#).

An analysis of the first stage regression indicates that instrumental variables are significantly positively correlated with human capital mismatch. The quadratic of the mean difference between enterprise and industry human capital mismatch is the appropriate instrumental variable (IV), and the weak instrumental variable problem does not exist. As a result of the second stage of regression, we estimate that the coefficient of human capital mismatch is −0.014, which is different from zero at a significance level of 1 %. According to the regression results, unit human capital mismatch leads to approximately a 3 % reduction in enterprise innovation performance. Compared to the basic model, endogeneity overestimates the impact of human capital mismatch on firm innovation. In column 1, the instrumental variable is added to the baseline model as an explanatory variable, but the estimated coefficient does not pass the significance test. As a result, the instrumental variable is unlikely to directly affect high-tech enterprise innovation performance, except through the endogenous variable (human capital mismatch), further supporting the exogenous nature of the instrumental variable.

Robustness test

This study re-examined the effect of human capital mismatch on enterprise innovation performance by replacing the core explanatory variable and explained variable. First, it is necessary to replace the index used by high-tech companies to evaluate their innovation performance. The number of patent authorisations calculated through the unit R&D investment transformation in this paper is used to represent innovation efficiency, according to [Hirshleifer et al. \(2013\)](#). It is evident from column 1 of [Table 5](#) that the estimated coefficient of human capital mismatch has a negative effect when the number of patent authorisations are replaced by the number of patent authorisations transformed by R&D investment. As a result, it remains valid to conclude that human capital mismatch negatively impacts enterprise innovation performance. Unlike the basic regression, the effect of R&D personnel changes from negative to non-significantly positive.

The second step is to replace the index for the enterprise's human capital mismatch. This paper investigates the human capital mismatch, which includes a comprehensive mismatch in the simple

Table 4
Instrumental variables regression.

Variable	1			2				
	IV estimation			First stage		IV estimation		
	Coefficient	P-Value	Odds	Coefficient	P-Value	Coefficient	P-Value	Odds
HCM	−0.009***	0.001	0.99			−0.014***	0.000	0.98
IV	0.230	0.142	1.28	2.73***	0.000	0.250***	0.000	1.28
RDI	0.074***	0.000	1.08			0.003***	0.000	1.00
RDP	0.035***	0.000	1.04			0.110***	0.000	1.11
DT	0.074***	0.000	1.08			0.060***	0.000	1.06
AT	0.719**	0.028	2.09			0.050***	0.000	1.05

Table 5
Robustness test of indicator substitution.

1				2			
Variable	Coefficient	P-Value	Odds	Variable	Coefficient	P-Value	Odds
HCM	−0.009***	0.009	0.99	LM	−0.391***	0.000	0.68
RDI	0.0006***	0.000	1.00	RDI	0.0004*	0.069	1.00
RDP	0.047	0.165	1.05	RDP	−0.065***	0.000	0.94
DT	0.010**	0.046	1.01	DT	0.034***	0.000	1.03
AT	0.005**	0.034	1.00	AT	0.065***	0.000	1.07

labour force and labour quality. However, an enterprise's innovation performance is more affected by a labour quality mismatch than by a simple labour mismatch (Li et al., 2015). Accordingly, this study replaces human capital mismatch with labour quality mismatch (LM) for analysis, as shown in column 2 of Table 5.

By contrast with the baseline model, the mismatch of unit labour quality can reduce the enterprise's innovation performance by nearly 32 %, which is evidently greater than the change in innovation performance caused by human capital mismatch. Nonetheless, both cases show a negative impact on enterprise innovation.

Regulation mechanism analysis

Regulatory effect based on R&D

An increase in R&D investment and R&D personnel will positively impact high-technology enterprises' innovation performance to a certain extent, as indicated by the above mechanism analysis. However, because of a mismatch in human capital, R&D investment, R&D personnel, and other related R&D indicators cannot effectively serve as catalysts. Therefore, it is necessary to explore whether human capital mismatch negatively moderates the process of R&D to promote the innovation performance of high-tech firms. According to the analysis of the moderating effect, an interaction term between human capital mismatch and R&D investment is included in the model. Test results are in Table 6.

Based on the estimated effect in column 1 of Table 6, after adding the interaction term of R&D investment and human capital mismatch, it has been determined that human capital mismatch, R&D indicators, and the interaction term are all significant at a 95 % confidence level. The result indicates a significant moderating effect of human capital mismatch. Considering the direction of action, R&D investment shows a positive coefficient, while the interaction term shows a negative coefficient. The mismatch between human capital and R&D investment impedes innovation.

Note that the significance test results of the interaction term coefficients do not reflect the whole process of interaction effect testing but rather just a tiny part of it. As an important addition to interaction effect tests, the marginal effect graph can identify the moderating effects accurately. Based on Bowen's (2012) proposal, the regulatory effect diagram is used (see Fig. 3). In Fig. 3, the x-axis represents

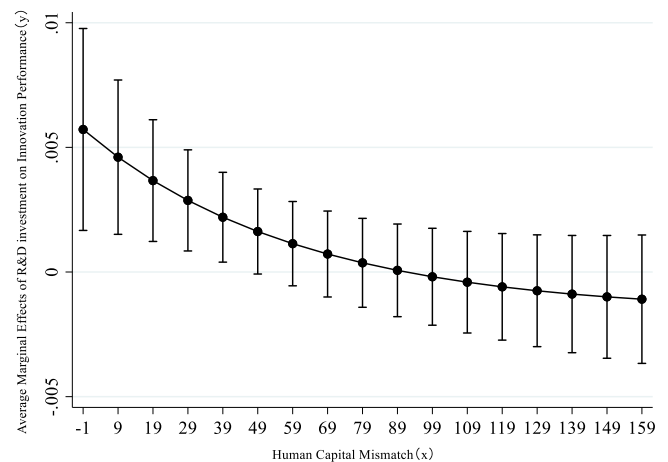


Fig. 3. Average marginal effects of human capital mismatch and R&D investment on Innovation Performance.

human capital mismatch, and the y-axis represents the average marginal effects of R&D investment on innovation performance. The response curve is established between 25 and 75 quantiles of the moderator variable. According to the figure, the average marginal effect of R&D investment on the innovation performance of high-tech enterprises decreases with increasing degrees of human capital mismatch. As soon as the value of human capital mismatch exceeds 99, the marginal effect of R&D investment becomes negative, which confirms hypothesis H2.

In column 2 of Table 6, the interaction term between R&D personnel and human capital mismatch is introduced, and the results show that both are significant at 1 % but that the interaction term is not significant. It appears that despite the human capital mismatch, the R&D personnel of high-tech companies will not negatively affect innovation performance. Thus, Hypothesis H3 cannot be validated.

Regulatory effect based on talent introduction

Based on enterprise knowledge reserves, the research mechanism indicates that talent introduction can generate apparent knowledge spillovers that promote enterprise innovation. However, talent introduction does not achieve a rational allocation under human capital mismatch. Therefore, talent cannot play an innovative role for long periods. As a result, it is necessary to study how human capital mismatch affects the process of introducing talented individuals to high-tech firms in order to improve their innovation capabilities.

Based on the analysis structure of the moderating effect, this study constructs an interaction term between human capital mismatch and talent introduction to evaluate the validity of the moderating effect of mismatch. Test results are given in Table 7. Column 1 of Table 7 introduces the interaction term between domestic talent and human capital mismatch, while column 2 of Table 7 introduces

Table 6
The impact of human capital mismatch and R&D on innovation performance.

	1		2	
	Coefficient	P-Value	Coefficient	P-Value
HCM	−0.009**	0.021	−0.009***	0.010
RDI	0.0003***	0.001	0.0002	0.177
RDP	−0.061***	0.003	−0.054***	0.004
HCM ## RDI	−0.0003**	0.048		
HCM ## RDP			−0.001	0.212
Control variable	Controlled		Controlled	

Table 7
The impact of human capital mismatches and talent introduction on innovation performance.

Variable	1		2	
	Coefficient	P-Value	Coefficient	P-Value
HCM	−0.008**	0.041	−0.006**	0.032
DT	0.048***	0.000	0.037***	0.000
AT	0.056***	0.000	0.076***	0.000
HCM ## DT	−0.0004***	0.007		
HCM ## AT			−0.011**	0.037
Control variable	Controlled		Controlled	

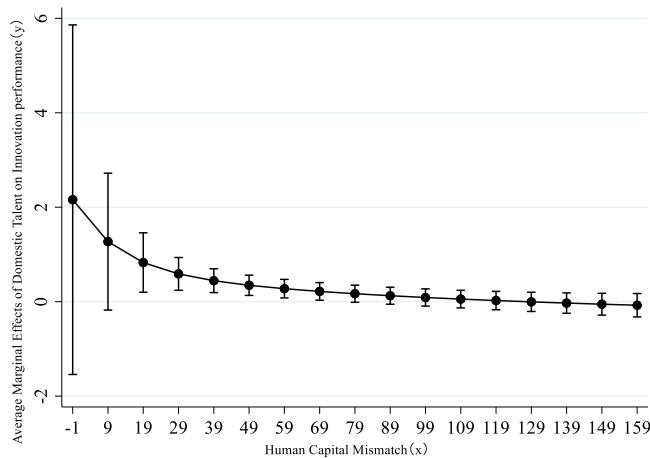


Fig. 4. Average marginal effects of the interaction of human capital mismatch and domestic talent introduction on innovation performance.

the interaction term between foreign talent and human capital mismatch. At a significance level of 1 %, both variables of talent introduction are positively related to enterprise innovation, while interaction terms are significantly negative. Therefore, human capital mismatch weakens the positive impact of talent introduction on enterprise innovation.

Figs. 4 and 5 illustrate the moderating effects of domestic and foreign talent introduction, respectively. In Figs. 4 and 5, the x-axis represents human capital mismatch, and the y-axis represents the average marginal effects of talent introduction on innovation performance. With the increase in human capital mismatch, the average marginal effect of the two types of talent introduction on innovation performance is gradually weakening. Preliminarily, this result confirms Hypotheses H3 and H4.

However, foreign talent is more vulnerable to human capital mismatch than domestic talent. In the case of a human capital mismatch index exceeding 129, the marginal effect of domestic talent introduction becomes negative. The human capital mismatch index is only 9 when foreign talent introduction has a negative marginal effect.

Discussion and implications

Discussion of results

This study has demonstrated that enterprises, particularly high-tech enterprises, suffer from human capital mismatch. The

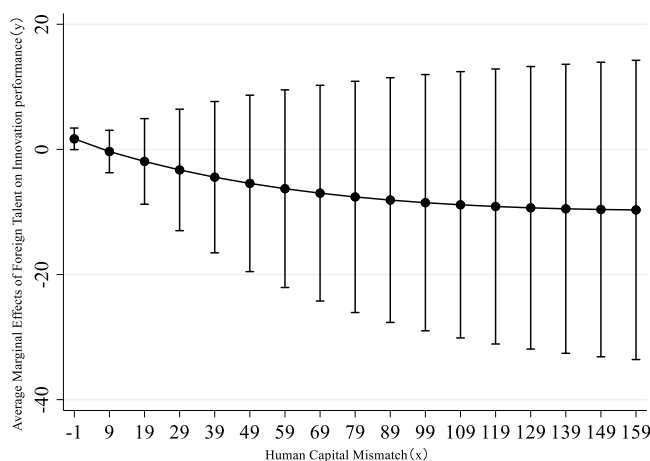


Fig. 5. Average marginal effects of the interaction of human capital mismatch and foreign talent introduction on innovation performance.

results of this study are consistent with those of Zhang et al. (2023a,b). A unique contribution to this study is the inclusion of labour quality (i.e., the education levels of labour) as a factor in measuring human capital mismatch. McGowan and Andrews (2017) and Zhang et al. (2023a,b) argue that companies should invest in a variety of forms of human capital, including highly educated employees and experienced managers. It is therefore necessary to take this indicator into account when measuring human capital mismatch.

Hypothesis H1, which states that human capital mismatch negatively impacts enterprise innovation performance, is supported by this research. A similar conclusion has also been reached by Capozza and Divella (2019), Li et al. (2021) and Su et al. (2023), who have found that human capital mismatch can result in an enterprise's "Crowding-Out Effect" and reduce the probability of innovation. Furthermore, Al-jinini et al. (2019) also illustrate the importance of intellectual property and know-how as core components of innovation systems for enterprise innovation.

According to Hypotheses H2 and H3, R&D is critical to enterprise innovation, but a moderating mechanism framework based on a mismatch in human capital suggests that R&D negatively or insignificantly impacts enterprise innovation. In Hypotheses H2 and H3, R&D is defined primarily by two subdimensions, R&D investment and R&D personnel, under the job characteristics of top management. Zhu et al. (2020) and Li and Zhang (2022) both support this conclusion. As in previous studies, such as Afcha and Lucena (2022), human capital, as defined by education and skill, is believed to affect the innovation impacts of R&D subsidies or investments. Human capital mismatch, however, leads to a lower return on R&D investment than companies' normal level, which affects the innovation performance of companies (Igna & Venturini, 2019), as demonstrated by the support of Hypothesis H2.

It is proposed in Hypotheses H4 and H5 that human capital at the knowledge level of an enterprise consists of both domestic and foreign talent. According to Munjal and Kundu (2017), as well as Wei et al. (2020), talent plays a critical role in enabling innovation. A study conducted by Kohnová et al. (2020) emphasises the importance of talent-job fit for organisational effectiveness and demonstrates that mismatches in talent and job skills fundamentally reduce workforce participation and skill levels, resulting in a disincentive for firms to innovate.

Research contributions

Based on the results of this research, it can be concluded that human capital mismatch negatively impacts innovation performance. There are several important theoretical contributions to this study.

The first contribution is that it introduces labour quality to the production function framework, and it relaxes the assumption of constant returns to scale in order to provide a more effective framework for measuring human capital mismatch. The second contribution is that this study enriches the literature on enterprise innovation by providing an analysis of how human capital mismatch influences enterprise innovation. As a third contribution, through the exploration of R&D investment, R&D personnel, domestic talent and foreign talent introduction, four types of innovation elements have been identified as the key implementation paths for enterprise innovation in practice. Additionally, our empirical results provide important theoretical insights into the negative impact of human capital mismatch on innovation performance, as well as its negative moderating effect on R&D investment and foreign and domestic talent. In the existing literature, similar findings have been reported (Li et al., 2021; Afcha & Lucena, 2022).

Implications for policy-makers

The following policy suggestions are offered in light of the above conclusions. First, a market-oriented reform of the factor markets needs to be actively promoted, industry monopolies should be broken, and the market slowed to determine the flow and price of human capital. Meanwhile, government intervention should be reduced, and a market economic system established and improved to ensure that human capital flows to more efficient departments through the price and competition mechanism. Second, a mismatch in human capital should be minimised so that sound employment guidance can be provided. Human capital can be increased by encouraging households to invest more in it. Employment guidance services may reduce the asymmetry of information within the talent market. Third, companies should seek new ways of growing and improving their production efficiency and profit margins to relieve the pressure caused by excessive labour costs. Furthermore, enterprises should estimate production costs and recruit employees based on job requirements to ensure that human capital can be optimized (including reasonable allocations).

Conclusion

Since factor resources are limited in their flow, human capital mismatch is inevitable in the current economic climate. It is very important to examine how imperfect factor markets affect enterprise innovation. Microscopically, human capital is closely related to enterprise development. It is crucial that enterprises allocate human capital in an efficient manner in order to improve their innovation capacity, and, ultimately, to ensure sustainable development.

Studying high-tech enterprises in Zhejiang Province, this study measured human capital mismatch at the micro-level as a means of interpreting innovation performance. As a result of the study, it was found that the majority of high-tech firms failed to allocate their human capital rationally and displayed a serious mismatch in human capital. High-tech firms are considerably hindered by a mismatch in human capital. Research has found that the more mismatches in human capital, the lower the innovation performance of a company. However, the conclusion remains robust even when endogenous variables as well as reverse causality are taken into account. Human capital mismatch adversely affects the process of R&D investment and the introduction of domestic and foreign talent to promote high-tech enterprises' innovation, which weakens the average marginal effect of R&D investment and the introduction of domestic and foreign talent on enterprise innovation. It identifies the micro-mechanistic by which human capital mismatch hinders enterprise innovation.

This paper provides evidence that human capital mismatch impacts high-tech enterprises' innovation performance using an econometric model and interaction term test, but certain limitations remain in the theoretical analysis. In this paper, we present a framework that incorporates human capital mismatch and which does not assume that returns to scale are constant but assumes that the production function of different enterprises is one and the same. Nevertheless, this is somewhat different from reality, and further studies may relax these assumptions. Furthermore, there are some design defects in the mechanism that regulates the impact of human capital mismatch on innovation performance in high-tech firms. This study focuses only on the adjustment mechanisms of R&D investments and the introduction of talent during the process of R&D. Aside from this, we need to take into account the moderating mechanisms between human capital mismatch and internal or external knowledge capital structures, as well as the substitution of production factors in the process.

Acknowledgement

This work was supported by the National Social Science Foundation of China (Nos. 19ZDA122, 20CTJ016, 21ATJ010).

References

- Acemoglu, D. (1996). A microfoundation for social increasing returns in human capital accumulation. *The Quarterly Journal of Economics*, 111(3), 779–804.
- Akerberg, D. A., Caves, K., & Frazer, G. (2015). Identification properties of recent production function estimators. *Econometrica*, 83(6), 2411–2451.
- Alcha, S., & Lucena, A. (2022). R&D subsidies and firm innovation: Does human capital matter? *Industry and Innovation*, 29(10), 1171–1201.
- Afsar, B., & Umrani, W. A. (2020). Transformational leadership and innovative work behavior: The role of motivation to learn, task complexity and innovation climate. *European Journal of Innovation Management*, 23(3), 402–428.
- Ali, M. A., Hussin, N., Playyih, H. H., Haddad, H., Al-Ramahi, N. M., Almubaydeen, T. H., & Hasan Abunaila, A. S. (2023). A multidimensional view of intellectual capital and dynamic innovative performance. *Journal of Risk and Financial Management*, 16(3), 139.
- Al-jinini, D. K., Dahiyat, S. E., & Bontis, N. (2019). Intellectual capital, entrepreneurial orientation, and technical innovation in small and medium-sized enterprises. *Knowledge and Process Management*, 26(2), 69–85.
- Alves, D., Diegues, T., & Conceição, O. (2019). Retaining talents: Impact on innovation. *ECMLG 2019 15th European conference on management, leadership and governance* (p. 36).
- Anaduaka, U. S. (2014). Human capital development and economic growth: The Nigeria experience. *International Journal of Academic Research in Business and Social Sciences*, 4(4), 25.
- Becker, G. S. (1962). Investment in human capital: A theoretical analysis. *Journal of Political Economy*, 70(5, Part 2), 9–49.
- Beneito, P. (2006). The innovative performance of in-house and contracted R&D in terms of patents and utility models. *Research Policy*, 35(4), 502–517.
- Bernardin, H. J., & Beatty, R. W. (1984). *Performance appraisal: Assessing human behavior at work*. Boston: Kent.
- Block, J., Fisch, C., Ikeuchi, K., & Kato, M. (2022). Trademarks as an indicator of regional innovation: Evidence from Japanese prefectures. *Regional Studies*, 56(2), 190–209.
- Bornay-Barrachina, M., Rosa-Navarro, D. D. L., López-Cabrales, A., & Valle-Cabrera, R. (2012). Employment relationships and firm innovation: The double role of human capital. *British Journal of Management*, 23(2), 223–240.
- Bowen, H. P. (2012). Testing moderating hypotheses in limited dependent variable and other nonlinear models: Secondary versus total interactions. *Journal of Management*, 38(3), 860–889.
- Braunerhjelm, P., & Lippi, E. (2023). Employees' entrepreneurial human capital and firm performance. *Research Policy*, 52(2), 104703.
- Broda, C., & Weinstein, D. E. (2006). Globalization and the gains from variety. *Quarterly Journal of Economics*, 121(2), 541–585.
- Brunswick, S., & Vanhaverbeke, W. (2015). Open innovation in small and medium-sized enterprises (SMEs): External knowledge sourcing strategies and internal organizational facilitators. *Journal of Small Business Management*, 53(4), 1241–1263.
- Buenechea-Elberdin, M., Sáenz, J., & Kianto, A. (2017). Exploring the role of human capital, renewal capital and entrepreneurial capital in innovation performance in high-tech and low-tech firms. *Knowledge Management Research and Practice*, 15(3), 369–379.
- Burroni, L., Gherardini, A., & Scalise, G. (2019). Policy failure in the triangle of growth: Labour market, human capital, and innovation in Spain and Italy. *South European Society and Politics*, 24(1), 29–52.
- Capozza, C., & Divella, M. (2019). Human capital and firms' innovation: Evidence from emerging economies. *Economics of Innovation and New Technology*, 28(7), 741–757.
- Carayannis, E. G., Goletsis, Y., & Grigoroudis, E. (2018). Composite innovation metrics: MCDA and the quadruple innovation helix framework. *Technological Forecasting and Social Change*, 131, 4–17.
- Carlsson, B. (2007). 53 Innovation systems: A survey of the literature from a Schumpeterian perspective. *Elgar Companion to Neo-Schumpeterian Economics* (p. 857). UK: Edward Elgar Publishing Limited.
- Chen, P., & Kim, S. (2023). The impact of digital transformation on innovation performance: The mediating role of innovation factors. *Heliyon*, 9(3), e13916.
- Cole, P. M., & Wayland, R. E. (1997). *Customer connections: New strategies for growth*. Boston, MA: Harvard Business School Press.
- Dahiyat, S. E., Khasawneh, S. M., Bontis, N., & Al-Dahiyat, M. (2023). Intellectual capital stocks and flows: Examining the mediating roles of social capital and knowledge transfer. *VINE Journal of Information and Knowledge Management Systems*, 53(1), 11–42.
- Dang, J., & Motohashi, K. (2015). Patent statistics: A good indicator for innovation in China? Patent subsidy program impacts on patent quality. *China Economic Review*, 35, 137–155.
- Deranek, K., McLeod, A., & Schmidt, E. (2019). ERP simulation effects on knowledge and attitudes of experienced users. *Journal of Computer Information Systems*, 59(4), 373–383.
- Dhiman, P., & Arora, S. (2020). A conceptual framework for identifying key employee branding dimensions: A study of hospitality industry. *Journal of Innovation and Knowledge*, 5(3), 199–208.

- Du, J. L., Liu, Y., & Diao, W. X. (2019). Assessing regional differences in green innovation efficiency of industrial enterprises in China. *International Journal of Environmental Research and Public Health*, 16(6), 940.
- Erickson, T. (2001). Constructing instruments for regressions with measurement error when no additional data are available: Comment. *Econometrica*, 69(1), 221–222.
- Evangelista, R., & Savona, M. (2003). Innovation, employment and skills in services. Firm and sectoral evidence. *Structural Change and Economic Dynamics*, 14(4), 449–461.
- Fanti, L., Guarascio, D., & Tubiana, M. (2021). Skill mismatch and the dynamics of Italian companies' productivity. *Applied Economics*, 53(59), 6790–6803.
- Flikkema, M., De Man, A. P., & Castaldi, C. (2014). Are trademark counts a valid indicator of innovation? Results of an in-depth study of new Benelux trademarks filed by SMEs. *Industry and Innovation*, 21(4), 310–331.
- Fonseca, T., de Faria, P., & Lima, F. (2019). Human capital and innovation: The importance of the optimal organizational task structure. *Research Policy*, 48(3), 616–627.
- Gabardo, F. A., Pereira, J. B., & Einloft, P. (2017). The incorporation of structural change into growth theory: A historical appraisal. *Economia*, 18(3), 392–410.
- Garcia Martinez, M., Zouaghi, F., & Sanchez Garcia, M. (2019). Casting a wide net for innovation: Mediating effect of R&D human and social capital to unlock the value from alliance portfolio diversity. *British Journal of Management*, 30(4), 769–790.
- Ge, J., & Li, Y. (2019). Human capital mismatches: Causes and explanations from the perspective of administrative monopoly. *Journal of Zhongnan University of Economics and Law*, 5, 43–52 +159.
- Goodall, K., Warner, M., & Lang, V. (2004). HRD in the People's Republic: The MBA 'with Chinese characteristics'? *Journal of World Business*, 39(4), 311–323.
- Gu, Y., Kaviani, M., Li, L. Y., Maleki, H., & Mao, C. X. (2022). Political ideology, inventor mobility, and corporate innovation. *Inventor Mobility, and Corporate Innovation* 331–327.
- Hanifah, H., Abd Halim, N., Vafaei-Zadeh, A., & Nawaser, K. (2022). Effect of intellectual capital and entrepreneurial orientation on innovation performance of manufacturing SMEs: Mediating role of knowledge sharing. *Journal of Intellectual Capital*, 23(6), 1175–1198.
- Hegde, D., Herkenhoff, K., & Zhu, C. (2023). Patent publication and innovation. *Journal of Political Economy*, 131(7), 1845–1903.
- Hendricks, L., & Schoellman, T. (2023). Skilled labor productivity and cross-country income differences. *American Economic Journal: Macroeconomics*, 15(1), 240–268.
- Hervás-Oliver, J. L., Parrilli, M. D., Rodríguez-Pose, A., & Sempere-Ripoll, F. (2021). The drivers of SME innovation in the regions of the EU. *Research Policy*, 50(9), 104316.
- Hilbe, J. M. (2008). Negative binomial regression. *Journal of the Royal Statistical Society*, 171(3), 758–759.
- Hirshleifer, D., Hsu, P.-H., & Li, D. (2013). Innovative efficiency and stock returns. *Journal of Financial Economics*, 107(3), 632–654.
- Hsieh, C. T., & Klenow, P. J. (2009). Misallocation and manufacturing TFP in China and India. *Quarterly Journal of Economics*, 124, 1403–1448.
- Hsu, W. T., Chen, H. L., & Ho, M. H. C. (2020). CEO tenure and R&D investment: Founders vs. agents and the role of independent directors. *Technology Analysis and Strategic Management*, 32(10), 1209–1222.
- Huang, J., & Chen, X. (2020). Domestic R&D activities, technology absorption ability, and energy intensity in China. *Energy Policy*, 138, 1–11.
- Huang, X. (2023). The roles of competition on innovation efficiency and firm performance: Evidence from the Chinese manufacturing industry. *European Research on Management and Business Economics*, 29(1), 100201.
- Huang, X., Zhang, S., Zhang, J., & Yang, K. (2023). Research on the impact of digital economy on regional green technology innovation: Moderating effect of digital talent aggregation. *Environmental Science and Pollution Research*, 30(29), 74409–74425.
- Ignà, I. A., & Venturini, F. (2019). The impact of educational mismatch on returns to R&D: Evidence from manufacturing in OECD countries. *Economics of Innovation and New Technology*, 28(5), 435–464.
- Jibir, A., Abdu, M., & Buba, A. (2023). Does human capital influence labor productivity? Evidence from Nigerian manufacturing and service firms. *Journal of the Knowledge Economy*, 14(2), 805–830.
- Jimenez, D., & Valle, R. S. (2020). Studying the relationships among human capital, technological capabilities, and innovation in Spanish manufacturing firms. *International Journal of Technology Management*, 82(3/4), 227–238.
- Johannessen, J. A., Olsen, B., & Lumpkin, G. T. (2001). Innovation as newness: What is new, how new, and new to whom? *European Journal of Innovation Management*, 4(1), 21–31.
- Kianto, A., Sáenz, J., & Aramburu, N. (2017). Knowledge-based human resource management practices, intellectual capital and innovation. *Journal of Business Research*, 81, 11–20.
- Kim, S. J., & Choi, S. O. (2018). The effects of job mismatch on pay, job satisfaction, and performance. *Journal of Open Innovation: Technology, Market, and Complexity*, 4(4), 49.
- Kogut, B., & Zander, U. (1992). Knowledge of the firm, combinative capabilities, and the replication of technology. *Organization Science*, 3(3), 383–397.
- Kohnová, L., Papula, J., Papulová, Z., Stachová, K., & Stacho, Z. (2020). Job mismatch: The phenomenon of overskilled employees as a result of poor managerial competences. *Entrepreneurship and Sustainability Issues*, 8(1), 83.
- Kuzminov, Y., Sorokin, P., & Froumin, I. (2019). Generic and specific skills as components of human capital: New challenges for education theory and practice. *Формат*, 13(2), 19–41.
- Laguir, I., & Den Besten, M. (2016). The influence of entrepreneur's personal characteristics on MSEs growth through innovation. *Applied Economics*, 48(44), 4183–4200.
- Lemonte, A. J., Moreno-Arenas, G., & Castellares, F. (2020). Zero-inflated Bell regression models for count data. *Journal of Applied Statistics*, 47(2), 265–286.
- Leverero, E. S. (2014). Garegnani's "theoretical enterprise" and the theory of distribution. *Review of Keynesian Economics*, 2(4), 464–482.
- Li, J., Nan, Y., & Liu, X. H. (2017). The problem of China's steady economic growth: the mismatch of human capital and its solutions. *Economic Research*, 52(3), 18–31.
- Li, S. G., & Yin, H. (2017). Government-enterprise talent allocation and economic growth: An empirical study based on data from prefecture-level cities in China. *Economic Research*, 52(4), 78–91.
- Li, T., Shi, Z., Han, D., & Zeng, J. (2023). Agglomeration of the new energy industry and green innovation efficiency: Does the spatial mismatch of R&D resources matter? *Journal of Cleaner Production*, 383, 135453.
- Li, X. (2020). The effectiveness of internal control and innovation performance: An intermediary effect based on corporate social responsibility. *PLoS One*, 15(6), e0234506.
- Li, X., Guo, Y., Hou, J., & Liu, J. (2021). Human capital allocation and enterprise innovation performance: An example of China's knowledge-intensive service industry. *Research in International Business and Finance*, 58, 101429.
- Li, X., Qin, X., Jiang, K., Zhang, S., & Gao, F. Y. (2015). Human resource practices and firm performance in China: The moderating roles of regional human capital quality and firm innovation strategy. *Management and Organization Review*, 11(2), 237–261.
- Li, Z., & Zhang, Y. (2022). CEO overconfidence and corporate innovation outcomes: Evidence from China. *Frontiers in Psychology*, 13, 760102.
- Lianto, B., Dachyar, M., & Soemardi, T. P. (2022). A holistic model for measuring continuous innovation capability of manufacturing industry: A case study. *International Journal of Productivity and Performance Management*, 71(6), 2061–2086.
- Liu, L., Si, S., & Li, J. (2023). Research on the effect of regional talent allocation on high-quality economic development—Based on the perspective of innovation-driven growth. *Sustainability*, 15(7), 6315.
- Luzzini, D., Amann, M., Caniato, F., Essig, M., & Ronchi, S. (2015). The path of innovation: Purchasing and supplier involvement into new product development. *Industrial Marketing Management*, 47, 109–120.
- Mahroum, S. (1999). Highly skilled globetrotters: The international migration of human capital. In *Proceedings of the OECD workshop on science and technology labour markets* (pp. 168–185).
- Marchante, A. J., & Ortega, B. (2012). Human capital and labor productivity: A study for the hotel industry. *Cornell Hospitality Quarterly*, 53(1), 20–30.
- Marchiori, D., & Franco, M. (2020). Knowledge transfer in the context of inter-organizational networks: Foundations and intellectual structures. *Journal of Innovation and Knowledge*, 5(2), 130–139.
- Marin-Garcia, J. A., Aznar-Mas, L. E., & González-Ladrón-de-Guevara, F. (2011). Innovation types and talent management for innovation. *WPOM-Working Papers on Operations Management*, 2(2), 25–31.
- McGowan, M. A., & Andrews, D. (2017). Labor market mismatch and labor productivity: Evidence from PIAAC data. *Skill Mismatch in Labor Markets*: 45 (pp. 199–241). England: Emerald Publishing Limited.
- Mocetti, S., & Orlando, T. (2019). Corruption, workforce selection and mismatch in the public sector. *European Journal of Political Economy*, 60, 101809.
- Morris, L. (2008). Innovation metrics: The innovation process and how to measure it. *An innovationlabs white paper*. InnovationLab. LLC.
- Munjal, S., & Kundu, S. (2017). Exploring the connection between human capital and innovation in the globalising world. *Human Capital and Innovation: Examining the Role of Globalization* (pp. 1–11). UK: Palgrave Macmillan.
- Murphy, K. J. (1986). Incentives, learning, and compensation: A theoretical and empirical investigation of managerial labor contracts. *Rand Journal of Economics*, 17, 59–76.
- Neffke, F. M. H., Otto, A., & Weyh, A. (2017). Inter-industry labor flows. *Journal of Economic Behavior and Organization*, 142, 275–292.
- Nuvolari, A., Tartari, V., & Tranchero, M. (2021). Patterns of innovation during the Industrial Revolution: A reappraisal using a composite indicator of patent quality. *Explorations in Economic History*, 82, 101419.
- Pradana, M., Pérez-Luño, A., & Fuentes-Blasco, M. (2020). Innovation as the key to gain performance from absorptive capacity and human capital. *Technology Analysis and Strategic Management*, 32(7), 822–834.
- Prokop, V., & Stejskal, J. (2019). Different influence of cooperation and public funding on innovation activities within German industries. *Journal of Business Economics and Management*, 20(2), 384–397.
- Qi, R. (2020). Does the cumulative effect of R&D investment exist in high-tech enterprises?—Empirical evidence from China A-share listed companies. *Open Journal of Business and Management*, 8(03), 1122.
- Rafique Hashmi, A. (2013). Competition and innovation: The inverted-u relationship revisited. *Review of Economics and Statistics*, 95(5), 1653–1668.
- Ramadani, V., Hisrich, R. D., Abazi-Alili, H., Dana, L. P., Panthi, L., & Abazi-Bexheti, L. (2019). Product innovation and firm performance in transition economies: A multi-stage estimation approach. *Technological Forecasting and Social Change*, 140, 271–280.
- Ramírez, S., Gallego, J., & Tamayo, M. (2020). Human capital, innovation and productivity in Colombian enterprises: A structural approach using instrumental variables. *Economics of Innovation and New Technology*, 29(6), 625–642.
- Restuccia, D., & Rogerson, R. (2017). The causes and costs of misallocation. *Journal of Economic Perspectives*, 31(3), 151–174.
- Ruggeri, G. C., & Yu, W. (2023). *On the dimensions of human capital: An analytic framework*. Canada: The University of New Brunswick on Fredericton.
- Scuotto, V., Santoro, G., Bresciani, S., & Del Giudice, M. (2017). Shifting intra- and inter-organizational innovation processes towards digital business: An empirical analysis of SMEs. *Creativity and Innovation Management*, 26(3), 247–255.
- Selivanovskikh, L. (2023). Exploring firm innovation capability as the 'black box' between human capital and performance in Russian SMEs. *Journal of Developmental Entrepreneurship*, 28(1), 2350007.

- Shaikh, I., & Randhawa, K. (2022). Managing the risks and motivations of technology managers in open innovation: Bringing stakeholder-centric corporate governance into focus. *Technovation*, 114, 102437.
- Staub, S., Kaynak, R., & Gok, T. (2016). What affects sustainability and innovation—Hard or soft corporate identity? *Technological Forecasting and Social Change*, 102, 72–79.
- Subramaniam, M., & Youndt, M. A. (2005). The influence of intellectual capital on the types of innovative capabilities. *Academy of Management Journal*, 48(3), 450–463.
- Sun, A., & Li, R. (2022). Can patent quality alleviates information asymmetry in Chinese intellectual property market: Evidence from auditing field. *IEEE Access*, 10, 79335–79347.
- Teixeira, A. A., & Queirós, A. S. (2016). Economic growth, human capital and structural change: A dynamic panel data analysis. *Research Policy*, 45(8), 1636–1648.
- Su, W., Wang, Z., Zhang, C., & Balezentis, T. (2023). Determinants of the innovation efficiency of strategic emerging enterprises: Evidence from the robust frontiers. *Economic Change and Restructuring*, 56(3), 1433–1465.
- Timothy, V. L. (2022). The effect of top managers' human capital on SME productivity: The mediating role of innovation. *Heliyon*, 8(4), e09330.
- Trzeciak, M., Kopec, T. P., & Kwilinski, A. (2022). Constructs of project programme management supporting open innovation at the strategic level of the organisation. *Journal of Open Innovation: Technology, Market, and Complexity*, 8(1), 58.
- Van den Broek, J., Boselie, P., & Paauwe, J. (2018). Cooperative innovation through a talent management pool: A qualitative study on cooptation in healthcare. *European Management Journal*, 36(1), 135–144.
- Van Tran, N., Alauddin, M., & Van Tran, Q. (2019). Labour quality and benefits reaped from global economic integration: An application of dynamic panel SGMM estimators. *Economic Analysis and Policy*, 63, 92–106.
- Veland, R., Hyrije, A. A., Léo-paul, D., Gadaf, R., & Sadudin, I. (2017). The impact of knowledge spillovers and innovation on firm-performance: Findings from the Balkans countries. *International Entrepreneurship and Management Journal*, 13(1), 1–27.
- Ven, V. D., & Poole, M. S. (1995). Explaining development and change in organizations. *Academy of Management Review*, 20(3), 510–540.
- Vixathap, S., Luong, V. K., & Matsunaga, N. (2019). Entrepreneurial human capital, innovation and productivity in small and medium manufacturing enterprises in Vietnam. *Innovation in Developing Countries* (pp. 53–76). Singapore: Springer.
- Wan, Q., Yuan, L., Yao, Z., & Zeng, L. (2023). The impact of R & D elements flow and government intervention on China's hi-tech industry innovation ability. *Technology Analysis and Strategic Management*, 35(7), 857–874.
- Wang, S., Lin, X., Xiao, H., Bu, N., & Li, Y. (2022). Empirical study on human capital, economic growth and sustainable development: Taking Shandong province as an example. *Sustainability*, 14(12), 7221.
- Wang, X., Zou, H., Zheng, Y., & Jiang, Z. (2019). How will different types of industry policies and their mixes affect the innovation performance of wind power enterprises? Based on dual perspectives of regional innovation environment and enterprise ownership. *Journal of Environmental Management*, 251, 1–13.
- Wei, H., Yuan, R., & Zhao, L. (2020). International talent inflow and R&D investment: Firm-level evidence from China. *Economic Modelling*, 89, 32–42.
- Wen, D. W. (2019). Resource misallocation, total factor productivity and the growth potential of China's manufacturing sector. *Economics (Quarterly)*, 18(2), 617–638.
- Wright, P. M., & Snell, S. A. (2001). Human resources and the resource based view of the firm. *Journal of Management*, 27(6), 701–721.
- Xu, Y., Li, X., Tao, C., & Zhou, X. (2022). Connected knowledge spillovers, technological cluster innovation and efficient industrial structure. *Journal of Innovation and Knowledge*, 7(3) 100195.
- Yang, H., Peng, C., Du, G., Xie, B., & Cheng, J. S. (2023). How does ambidextrous leadership influence technological innovation performance? An empirical study based on high-tech enterprises. *Technology Analysis and Strategic Management*, 35(6), 737–751.
- Yang, Y., Wu, D., Xu, M., Yang, M., & Zou, W. (2022). Capital misallocation, technological innovation, and green development efficiency: Empirical analysis based on China provincial panel data. *Environmental Science and Pollution Research*, 29(43), 65535–65548.
- Yian, C. (2019). Misallocation of human capital and productivity: Evidence from China. *Economic Research-Ekonomska Istraživanja*, 32(1), 3342–3359.
- Yin, H. T., Chang, C. P., & Wang, H. (2022). The impact of monetary policy on green innovation: Global evidence. *Technological and Economic Development of Economy*, 28(6), 1933–1953.
- Zahra, S. A., Sapienza, H. J., & Davidsson, P. (2006). Entrepreneurship and dynamic capabilities: A review, model and research agenda. *Journal of Management Studies*, 43(4), 917–955.
- Zhang, C., Ji, J., Li, R., Zhang, D., & Streimikiene, D. (2023a). Determinants and spatial spillover of inter-provincial carbon leakage in China: The perspective of economic cycles. *Technological Forecasting and Social Change*, 194, 122678.
- Zhang, S., Li, X., Zhang, C., Luo, J., Cheng, C., & Ge, W. (2023b). Measurement of factor mismatch in industrial enterprises with labor skills heterogeneity. *Journal of Business Research*, 158, 113643.
- Zhang, Y., Khan, U., Lee, S., & Salik, M. (2019). The influence of management innovation and technological innovation on organization performance. A mediating role of sustainability. *Sustainability*, 11(2), 495.
- Zhao, C., Qu, X., & Luo, S. (2019). Impact of the InnoCom program on corporate innovation performance in China: Evidence from Shanghai. *Technological Forecasting and Social Change*, 146, 103–118.
- Zhu, H., Zhao, S., & Abbas, A. (2020). Relationship between R&D grants, R&D investment, and innovation performance: The moderating effect of absorptive capacity. *Journal of Public Affairs*, 20(1), e1973.