

Festa, Adriano; Göttlich, Simone; Ricciardi, Michele

Article — Published Version

Forward-Forward Mean Field Games in Mathematical Modeling with Application to Opinion Formation and Voting Models

Dynamic Games and Applications

Provided in Cooperation with:

Springer Nature

Suggested Citation: Festa, Adriano; Göttlich, Simone; Ricciardi, Michele (2024) : Forward-Forward Mean Field Games in Mathematical Modeling with Application to Opinion Formation and Voting Models, Dynamic Games and Applications, ISSN 2153-0793, Springer US, New York, NY, Vol. 15, Iss. 2, pp. 664-692,
<https://doi.org/10.1007/s13235-024-00578-3>

This Version is available at:

<https://hdl.handle.net/10419/323665>

Standard-Nutzungsbedingungen:

Die Dokumente auf EconStor dürfen zu eigenen wissenschaftlichen Zwecken und zum Privatgebrauch gespeichert und kopiert werden.

Sie dürfen die Dokumente nicht für öffentliche oder kommerzielle Zwecke vervielfältigen, öffentlich ausstellen, öffentlich zugänglich machen, vertreiben oder anderweitig nutzen.

Sofern die Verfasser die Dokumente unter Open-Content-Lizenzen (insbesondere CC-Lizenzen) zur Verfügung gestellt haben sollten, gelten abweichend von diesen Nutzungsbedingungen die in der dort genannten Lizenz gewährten Nutzungsrechte.

Terms of use:

Documents in EconStor may be saved and copied for your personal and scholarly purposes.

You are not to copy documents for public or commercial purposes, to exhibit the documents publicly, to make them publicly available on the internet, or to distribute or otherwise use the documents in public.

If the documents have been made available under an Open Content Licence (especially Creative Commons Licences), you may exercise further usage rights as specified in the indicated licence.



<http://creativecommons.org/licenses/by/4.0/>



Forward-Forward Mean Field Games in Mathematical Modeling with Application to Opinion Formation and Voting Models

Adriano Festa¹ · Simone Göttlich² · Michele Ricciardi³

Accepted: 10 July 2024 / Published online: 17 July 2024
© The Author(s) 2024

Abstract

While the general theory for the terminal-initial value problem in mean-field games is widely used in many models of applied mathematics, the modeling potential of the corresponding forward-forward version is still under-considered. In this work, we discuss some features of the problem in a quite general setting and explain how it may be appropriate to model a system of players that have a complete knowledge of the past states of the system and are adapting to new information without any knowledge about the future. Then we show how forward-forward mean field games can be effectively used in mathematical models for opinion formation and other social phenomena.

Keywords Mean-Field Games · Hamilton-Jacobi equations · Fokker-Planck equations · Social mathematical models

1 Introduction

Mean Field Games (MFGs) are models for large populations of competing rational agents who seek to optimize an individual objective function. They were introduced for the first

S. Göttlich, M. Ricciardi: These authors contributed equally to this work.

✉ Adriano Festa
adriano.festa@polito.it

Simone Göttlich
goettlich@uni-mannheim.de

Michele Ricciardi
ricciardim@luiss.it

¹ Dipartimento di Scienze Matematiche “Giuseppe Luigi Lagrange”, Politecnico di Torino, Corso Duca degli Abruzzi, 24, Torino 10129, Italy

² Department of Mathematics, University of Mannheim, A5-6, Mannheim 68131, Germany

³ Dipartimento di Economia e Finanza, Università Luiss Guido Carli, Viale Romania, 32, Roma 00197, Italy

time in 2006 in [29]. The most investigated form has a *forward-backward* structure that can be sketched by the following system of partial differential equations:

$$\begin{cases} -u_t(t, x) - \text{tr}(A(x)D^2u(t, x)) + H(t, x, \nabla u(t, x)) = F(t, x, m(t)), \\ m_t(t, x) - \sum_{ij} \partial_{ij}^2 (A_{ij}(x)m(t, x)) - \text{div}(H_p(t, x, \nabla u(t, x))m(t, x)) = 0. \end{cases} \quad (1.1)$$

Here, a density of individuals m moves in the direction determined by the potential function u . In the system above, A is a diffusion matrix, D^2 is the Hessian, ∇ is the usual space gradient and H_p is the gradient w.r.t. the variable p of the Hamiltonian operator $H(t, x, p)$. The notation ∂_{ij}^2 stands for the second-order derivatives with respect to the space coordinates x_i, x_j , finally, in F the density $m(t) := m(t, \cdot)$, i.e. the coupling may be nonlocal.

To give a hint of the idea behind the model, the Hamilton-Jacobi equation (HJ) contained in the first line of the system solves, backward in time, an optimal control problem relative to the strategic choice of any individual. This information is used, forward in time, to move the density m accordingly to the second equation of (1.1).

The existence and uniqueness of equilibrium solutions of (1.1) can be found, for example, in [7, 22]. Other researches on this subject are [25], where strong solutions for parabolic problems were considered, or [37], for weak solutions of parabolic problems with Dirichlet and Neumann boundary conditions. In [8] the authors discuss the existence of weak solutions for first-order MFGs. The stationary case was also investigated in detail and it was first considered in [29]. Generally, the uniqueness of solution is obtained (both for stationary and time-dependent MFGs) via a monotonicity argument introduced in [29].

Another model closely related to our discussion is Hughes' model [10, 27]. In this model, the optimization process of each player relies solely on information about the current state of the system, without any anticipation of future states. Consequently, the density evolution is associated with a stationary HJ that incorporates only the present configuration of the density. This model has been demonstrated to be suitable for effectively simulating scenarios in which agents may change their strategy due to unforeseen events. Notably, they are prone to changing their strategy instantaneously, with no consideration given to their past behavior. This modeling approach is particularly useful for simulating large crowd fluxes of pedestrians.

A model that shares with the Hughes' model the same kind of information used by the agents (i.e. at any instant the actual state of the system) are Quasi-stationary Mean-Field Games. The model has the advantage of being more analytically treatable than Hughes' and it has been proposed in [34] and successively reprised in [6]. Quasi-stationary Mean-Field Games share the same kind of features with Hughes': the agents may change instantaneously behaviour or oscillating between

A version of a MFG system, in a forward-forward form, has been proposed in [2], as effective way to approximate the stationary state of the system, and in [23, 24], in its one-dimensional form, mostly with the purpose of studying the qualitative properties of the system.

Our paper aims to investigate forward-forward Mean Field Games (FF-MFGs) from a modeling perspective. We seek to demonstrate that FF-MFGs are not merely effective tools for approximating stationary problems or theoretical curiosities; rather, they represent a potent and, in some cases, more suitable model for simulating collective processes. In this framework, agents are influenced by past states of the system, as they lack access to information about the future. Instead, their current strategic choices are significantly shaped by the collective past configurations. These distinctive features can be leveraged effectively to model collective motion phenomena, where factors such as tradition and stubbornness play a crucial role. Examples include opinion formation and voters' tendencies.

We present a concise overview of the paper's content: In Sect. 2, we formally derive a class of FF-MFGs, providing a stochastic interpretation in terms of optimal control for stochastic differential equations. Section 3 contains general results on existence and uniqueness, demonstrating their broad applicability. We emphasize the generality of these findings, showcasing proofs for solutions in the Cauchy problem and cases involving Dirichlet and Neumann boundary conditions.

While we do not explore periodic solutions in this work, specifically when the state space $\Omega = \mathbb{T}^d$, it can be demonstrated more straightforwardly compared to other cases. In Sect. 4, we introduce and discuss two FF-MFG models for social processes, accompanied by various numerical simulations that practically illustrate their features. The numerical tools employed throughout the paper are briefly outlined in Appendix A.

2 Derivation and Interpretation of the Evolution Process

Let us denote by $X_s \in \mathbb{R}^n$ the quantity of interest (e.g. opinion, ideological position on a political spectrum, etc.) at time s , which follows the stochastic differential equation (SDE)

$$\begin{cases} dX_s = \beta(s, X_s)ds + \sqrt{2}\sigma(X_s)dB_s, & s \in (t, T), \\ X_t = x, \end{cases} \quad (2.1)$$

for some $x \in \mathbb{R}^n$. Here, $\sigma(X_s)$ is a $n \times n$ matrix, and B_s is a standard n -dimensional Brownian motion. We define the quantity m as the probability density of players moving accordingly to the SDE (2.1) and initial distribution $m(0, x) = m_0(x) \in \mathcal{P}(\mathbb{R}^n)$. Classical arguments in diffusion theory imply that the measures m of the initial distribution m_0 will be characterized by the dynamics given by the Fokker-Planck (FP) equation

$$\begin{cases} m_t(t, x) - \sum_{ij} \partial_{ij}^2 (A_{ij}(x)m(t, x)) + \operatorname{div}(\beta(t, x)m(t, x)) = 0, \\ m(0, x) = m_0(x) \end{cases} \quad (2.2)$$

with $A(x) := \sigma(x)\sigma^\top(x)$. Without regularity assumptions on the coefficients and the data, the latter has to be understood in the weak sense, see [7]. However, in the subsequent section, we will adopt more robust regularity assumptions, ensuring the existence of classical solutions.

At the heart of the model lies in the selection of the drift, represented by β . We operate under the assumption that the players remain uninformed about the future states of the system ($m(t, x)$ for $t \in [t, T]$). However, they hold the belief that certain trends from the past might resurface in the future. Consequently, the agents neither anticipate future distributions nor factor in the temporal fluctuations of their own running costs. This unique characteristic grants us the opportunity to model highly irrational strategic decisions, wherein individuals are drawn towards past favorable outcomes, embodying the traits of a 'stubborn' player.

While this inclination might present clear drawbacks in certain contexts, it finds relevance in domains such as political opinions or voting intentions. Here, fluctuations around specific poles of attraction, prevalent in the past, often resurface. Recent past events tend to exert a more significant influence on individual choices, while distant past occurrences hold a comparatively limited impact.

With the latter in mind, we fix $\bar{t} \in (0, T]$ and we define the optimal control problem which gives rise to the forward-forward MFG system. Given the running cost function $F : \mathbb{R} \times \mathbb{R}^n \times \mathcal{P}(\mathbb{R}^n)$ and the Hamiltonian $H : \mathbb{R} \times \mathbb{R}^n \times \mathbb{R}^n$ as in (1.1), we define \tilde{F} and \tilde{H} as

$$\tilde{H}(t, x, p) := H(2\bar{t} - t, x, p), \quad \tilde{F}(t, x, r) := F(2\bar{t} - t, x, r). \quad (2.3)$$

Observe that \tilde{H} and \tilde{F} depend on \bar{t} . Hence, the notations $\tilde{H}(t, x, p; \bar{t})$ and $\tilde{F}(t, x, p; \bar{t})$ would have been more precise, but we decide not to write the dependence on \bar{t} to avoid too heavy notations.

Assume that H , and \tilde{H} as consequence, are convex and differentiable in the last variable (all the assumptions on the data for a thorough study of the system will be given in the next section). We consider the convex conjugate \tilde{H}^* with respect to the last variable, defined as

$$\tilde{H}^*(t, x, \eta) := \sup_{p \in \mathbb{R}^n} \{p \cdot \eta - \tilde{H}(t, x, p)\},$$

and then the function ℓ defined as $\ell : \mathbb{R} \times \mathbb{R}^n \times \mathbb{R}^n$ defined as $\ell(t, x, \eta) := \tilde{H}^*(t, x, -\eta)$.

We consider the following optimal control problem, with value function defined as

$$v(\tau, x) = \inf_{\alpha} \left\{ \mathbb{E} \left[\int_{\tau}^{2\bar{t}} e^{-\lambda(s-\tau)} [\ell(s, Y^{x,\tau}[\alpha](s), \alpha(s, Y^{x,\tau}[\alpha](s))) + \tilde{F}(s, Y^{x,\tau}[\alpha](s), m(2\bar{t}-s))] ds + e^{-\lambda(2\bar{t}-\tau)} u_0(Y^{x,\tau}[\alpha](2\bar{t})) \right] \right\}, \quad (2.4)$$

where $Y^{x,\tau}[\alpha](s) := Y_s$ with $s \in [\tau, 2\bar{t}]$ is assumed to be the unique strong solution to

$$\begin{cases} dY_s = \alpha(s, Y_s) ds + \sqrt{2}\sigma(Y_s) dB_s, & s \in (\tau, 2\bar{t}), \\ Y_{\tau} = x \end{cases} \quad (2.5)$$

and $\lambda \in [0, +\infty)$ is a time discount factor. The function ℓ previously defined represents here the Lagrangian cost for the control. Because of the hypotheses on H and the properties of the convex conjugate, we have $(\tilde{H}^*)^* = \tilde{H}$ and then

$$\tilde{H}(\tau, x, p) = \max_{\eta \in \mathbb{R}^n} \{-\eta \cdot p - \ell(\tau, x, \eta)\}. \quad (2.6)$$

The optimal solution of the optimization problem in (2.4) is given in feedback form by $\alpha(\tau, x) = -\tilde{H}_p(\tau, x, \nabla v(\tau, x))$. Moreover, a classic Dynamic Programming Principle (see [3]) applies to the value function $v(s, x)$ in (2.4) bringing us a differential representation formula for $v(s, x)$ in HJ form as

$$-v_{\tau}(\tau, x) - \text{tr}(A(x)D^2v(\tau, x)) + \tilde{H}(\tau, x, \nabla v(\tau, x)) + \lambda v(\tau, x) = \tilde{F}(\tau, x, m(2\bar{t} - \tau)),$$

for $\tau \in [\bar{t}, 2\bar{t}]$, provided with the terminal condition $v(2\bar{t}, x) = u_0(x)$.

We can interpret the function $v(\tau, x)$ as the value function for an agent who engages in an optimal control problem at every instant $\bar{t} \in [0, T]$ within the time interval $[\bar{t}, 2\bar{t}]$. In the absence of knowledge about the future states of the system, the agent replaces them by mirroring the past states of the time interval $[0, \bar{t}]$, which are assumed to be known. The discount coefficient λ gauges the significance of the past in this decision-making process. Therefore, we anticipate that as λ approaches $+\infty$, the models will converge towards an instantaneous response of the system, where trajectory optimization is not performed.

Observe that, if we imagine a time dependence for the running and Lagrangian cost functions, it is natural to imagine a dependence on \bar{t} for the functions \tilde{F} and \tilde{H} .

Considering the special nature of the coupling between v and m it is convenient to reverse the time evolution: if we define $v(\tau, x) = u(2\bar{t} - \tau, x)$ and we move the time interval in $[0, \bar{t}]$ (with the substitution $t = 2\bar{t} - \tau$) we obtain

$$\begin{cases} u_t(t, x) - \text{tr}(A(x)D^2u(t, x)) + H(t, x, \nabla u(t, x)) + \lambda u(t, x) = F(t, x, m(t)), & t \in (0, \bar{t}) \\ u(0, x) = u_0(x), \end{cases}$$

which holds for any $\bar{t} \in [0, T]$ and therefore in particular for $\bar{t} = T$. Observe that we have also used (2.3) to come back to the functions H and F .

We then set $\beta(t, x) = -H_p(t, x, \nabla u(t, x))$: the latter equation, coupled with (2.2), gives a Forward-Forward MFG system.

Since the optimal control map do not take into account the actual motion of the density, they do not follow the same trajectories. Therefore, similar to the Hughes' model, this framework cannot be accurately labeled as a *game*. This is a critical aspect that enables our model to describe potential changes in strategy and less rational behaviors among the players, as in the case of high stubbornness and ideological bias. However, we maintain the term FF-MFGs for consistency with the existing literature.

The model can be defined in a bounded open subset of \mathbb{R}^n ; in such cases, additional boundary conditions are necessary. A stochastic interpretation can be provided for Dirichlet and Neumann boundary conditions: for Dirichlet boundary conditions, the player's trajectory must be halted upon reaching the boundary. In the case of Neumann boundary conditions, a reflecting process at the boundary is incorporated into the stochastic differential equation (2.1), as detailed in [30]. However, we do not delve into these interpretations here, as they involve a readaptation of the backward-forward MFG developed in [16, 38].

3 Some Results About Forward-Forward Mean Field Games

The forward-forward model was introduced in [2] to approximate stationary MFGs. The key insight is that the parabolicity in (3.1) should imply the long-time convergence to a stationary solution.

In this section, we want to prove existence and uniqueness of classical solutions for the forward-forward MFGs. In particular we discuss the existence and the uniqueness of the FF-MFG general framework which includes the models that we are going to discuss in the rest of the paper. We consider the *forward-forward MFG* problem described by the system

$$\begin{cases} u_t - \operatorname{tr}(A(x)D^2u) + H(t, x, \nabla u) + \lambda u = F(t, x, m), & (t, x) \in (0, T) \times \Omega \\ m_t - \sum_{ij} \partial_{ij}^2 (A_{ij}(x)m) - \operatorname{div}(mH_p(t, x, \nabla u)) = 0, & (t, x) \in (0, T) \times \Omega \\ u(0, x) = u_0(x), \quad m(0, x) = m_0(x), & x \in \Omega. \end{cases} \quad (3.1)$$

Here, $\Omega \subseteq \mathbb{R}^n$ is an open domain. Note that in this section we consider the case $\lambda \geq 0$. This is done just to simplify the presentation. The presence of a negative smoothing term is not a problem and the same results hold, since the function $z(t, x) := e^{(|\lambda|-\lambda)t}u(t, x)$ solves the same Hamilton-Jacobi equation with λ replaced by $|\lambda|$. We distinguish between three cases, giving rise to three different kind of problems. Namely, either

$$\Omega = \mathbb{R}^n, \text{ no boundary conditions prescribed,} \quad (\text{C})$$

which is known as *Cauchy problem*, or we require Ω to be a bounded domain (the regularity of such domain is stated in the hypotheses) complementing the system with homogeneous *Dirichlet* or *Neumann* boundary conditions, i.e.

$$u(t, x)|_{x \in \partial\Omega} = 0, \quad m(t, x)|_{x \in \partial\Omega} = 0, \quad (\text{D})$$

or, for $x \in \partial\Omega$,

$$A(x)\nabla u(t, x) \cdot \nu(x) = 0, \quad \left[\left(\sum_j \partial_j (A_{ij}(x)m) \right)_i + mH_p(t, x, \nabla u) \right] \cdot \nu|_{\partial\Omega} = 0. \quad (\text{N})$$

Recall that in (2.6) we have $H(t, x, p) = \max_{\alpha \in \mathbb{R}^n} \{-\alpha \cdot p - \ell(2T - t, x, \alpha)\}$. Nevertheless, the results given in this section are more general and may include other kind of Hamiltonian.

The existence and the long-time convergence of the forward-forward model have not been addressed, except in a few cases, see [25] and [26]. In [26], the forward-forward problem was examined in the context of eductive stability of stationary MFGs with a logarithmic coupling. In [25], the existence and regularity of solutions for the forward-forward, uniformly parabolic MFGs with subquadratic Hamiltonians was proven.

Other existence and regularity results were given in the periodic case [22, 23, 25]. In the first two papers, the results are focused on the one-dimensional case, and are extended to the congestion case, where the Hamiltonian H can depend also on the density of the population m . This dependence appears in particular in the applications with traffic model. In the last paper, the results include also the higher dimensional case, but with a dimension depending also on the growth of the Hamiltonian. The proof method strongly relies on Sobolev estimates for solutions of the Hamilton-Jacobi equation, obtained with Gagliardo-Nirenberg interpolations.

In our paper we do not include the congestion case, but, as already said, we consider more general domains with Neumann and Dirichlet boundary conditions. Moreover, our result applies for a generic dimension of the state space, requiring more regularity on the cost functions. Unlike [25], our method uses the Schauder's fixed point Theorem.

A general result for existence and uniqueness of solutions for systems of parabolic equations was given, just with Dirichlet boundary conditions, in [28, Theorem VII.7.1]. Hence, the results provided in this section can be considered as a generalization of that (since we include also the cases (N) and (C)) of that. Moreover, the proof was not given there, but the techniques used (fixed-point method) are the same we use in this paper.

Except for these cases, the question of existence and regularity is open in all other regimes. In the case of forward-forward MFGs without viscosity, these questions are particularly challenging. Moreover, the long-time convergence has not been established even in the parabolic case. Nevertheless, numerical results in [1] indicate that convergence holds and that the forward-forward model approximates well stationary solutions.

Let $\mathcal{P}(\Omega)$ (resp. $\mathcal{P}^{sub}(\Omega)$) be the set of probability measures (resp. sub-probability measures) on Ω with finite first moments. Then, $\mathcal{P}(\Omega)$ is a topological space endowed with the weak*-convergence and metrizable with respect to the *Wasserstein distance*, which is defined as the distance between two probability measures $m_1, m_2 \in \mathcal{P}(\Omega)$ as

$$\mathbf{d}_1(m_1, m_2) = \inf_{(X, Y) \in \Pi(m_1, m_2)} \mathbb{E}[|X - Y|]$$

Here $\Pi(m_1, m_2)$ is the set of all joint probability distributions (X, Y) with $\mathcal{L}(X_1) = m_1$, $\mathcal{L}(X_2) = m_2$. An equivalent definition is the following one:

$$\mathbf{d}_1(m_1, m_2) := \sup_{g \in Lip_1(\Omega)} \left\{ \int_{\Omega} g(x) d(m_1 - m_2)(x) \right\},$$

where with $Lip_1(\Omega)$ we mean the space of Lipschitz continuous functions with Lipschitz constant equal to one. The equivalence of the two definitions was given in [7].

The same definition applies in case of (D), with $\mathcal{P}(\Omega)$ replaced by $\mathcal{P}^{sub}(\Omega)$ and test function g with $Lip(g) \leq 1$ and $\|g\|_{\infty} \leq 1$, see [35]. This is called *generalized Wasserstein distance*.

We observe that, in case of (N) and (C), we can restrict to test functions g with $g(x_0) = 0$, for a fixed $x_0 \in \Omega$. In particular, in case of Neumann condition we have $\|g\|_{\infty} \leq C$, where $C = \text{diam}(\Omega)$, and in case of the Cauchy problem we have $|g(x)| \leq |x|$.

Henceforth, when there is no possibility of mistake, we use the notation \mathbf{d}_1 to refer to both Wasserstein distance and generalized Wasserstein distance.

We start giving the basic assumptions that we need for an existence and uniqueness result.

Hypotheses:

Let $\gamma \in (0, 1)$ and $C > 0$. We assume that, in the cases (D) and (N), Ω is a bounded domain with $C^{2+\gamma}$ boundary. Moreover, we suppose that

- (H0) $u_0 \in C^{2+\gamma}(\Omega)$, $m_0 \in \mathcal{P}(\Omega)$, or $\mathcal{P}^{sub}(\Omega)$ in the case (D), with a $C^{2+\gamma}$ density, called also m_0 . Moreover $A(\cdot) \in C^2(\overline{\Omega})$, $A = \sigma \sigma^T$ with $\sigma \in Lip(\Omega; \mathbb{R}^{n \times n})$ and for certain $\mu_2 > \mu_1 > 0$ independent of x

$$\mu_1 |\xi|^2 \leq \langle A(x)\xi, \xi \rangle \leq \mu_2 |\xi|^2 \quad \forall \xi \in \mathbb{R}^n;$$

- (H1) $H : [0, T] \times \Omega \times \mathbb{R}^n \rightarrow \mathbb{R}$, $F : [0, T] \times \Omega \times \mathcal{P}(\Omega) \rightarrow \mathbb{R}$ (or $F : [0, T] \times \Omega \times \mathcal{P}^{sub}(\Omega) \rightarrow \mathbb{R}$ in the case (D)) are continuous functions and $C^{\frac{\gamma}{2}, \gamma}$ in (t, x) variable, uniformly in the last variable. Moreover, H is differentiable and convex in the last variable, and $H(\cdot, \cdot, 0)$ is globally bounded. Finally, the growth of H is at most quadratic:

$$|H(t, x, p)| \leq C(1 + |p|^2), \quad |H_p(t, x, p)| \leq C(1 + |p|), \quad |H_{pp}(t, x, p)| \leq C;$$

- (H2) For $\mu_1, \mu_2 \in \mathcal{P}(\Omega)$ or $\mathcal{P}^{sub}(\Omega)$, the following condition hold:

$$|F(t, x, \mu_1) - F(t, x, \mu_2)| \leq C \mathbf{d}_1(\mu_1, \mu_2);$$

- (H3) In case of boundary conditions, we require compatibility conditions for the initial data: namely, in the setting (D), we require

$$u_0(x)|_{x \in \partial\Omega} = 0, \quad m_0(x)|_{x \in \partial\Omega} = 0,$$

whereas in the setting (N)

$$A(x) \nabla u_0(x) \cdot \nu(x)|_{x \in \partial\Omega} = 0, \quad [A(x) \nabla m_0 + m_0 H_p(0, x, \nabla u_0)] \cdot \nu(x) = 0.$$

In the setting (C), we require instead a finite first order moment for m_0 , namely

$$\int_{\mathbb{R}^n} |x| m_0(dx) \leq C.$$

From now on, C indicates a non-negative constant, that can change from line to line.

Theorem 3.1 *Let Hypotheses (H1) – (H3) hold true. Then there exists a unique solution $(u, m) \in C^{1+\frac{\gamma}{2}, 2+\gamma}([0, T] \times \overline{\Omega}) \times C^{1+\frac{\gamma}{2}, 2+\gamma}([0, T] \times \overline{\Omega})$ for the FF-MFG system (3.1).*

Proof The proof relies on the application of Schauder's fixed point Theorem.

Step 1: Definition of the map. For $M > 0$ which will be chosen later, we consider the following set:

$$X = \left\{ \mu \in \mathcal{C}([0, T]; V) \mid d_V(\mu(t), \mu(s)) \leq M |t - s|^{\frac{1}{2}} \right\},$$

where in case of (C) or (N), $V = \mathcal{P}(\Omega)$ and $d_V = \mathbf{d}_1$, otherwise in case of (D) V is the dual of $\{\phi \in C^1(\overline{\Omega}) \mid \phi|_{x \in \partial\Omega} = 0\}$, with d_V the classical distance induced by the duality norm:

$$d_V(\mu, \theta) = \|\mu - \theta\|_V = \sup_{\substack{\|\phi\|_{C^1} \leq 1 \\ \phi|_{\partial\Omega} = 0}} \langle \mu - \theta, \phi \rangle.$$

Note that X is closed and convex in the topology inherited by $\mathcal{C}([0, T]; V)$. In order to apply Schauder's Theorem, we define a functional $\Phi : X \rightarrow X$ in the following way: for $\mu \in X$, we take $u = u_\mu$ as the solution of

$$\begin{cases} u_t - \operatorname{tr}(A(x)D^2u) + H(t, x, \nabla u) + \lambda u = F(t, x, \mu(t)), \\ u(0) = u_0, \end{cases} \quad (3.2)$$

with conditions (C), (D) or (N).

Then we choose $\Phi(\mu) = m$, where $m = m_\mu$ is a solution, in the distributional sense, of the FP equation

$$\begin{cases} m_t - \sum_{ij} \partial_{ij}^2 (A_{ij}(x)m) - \operatorname{div}(m H_p(t, x, \nabla u)) = 0, \\ m(0) = m_0(x), \end{cases} \quad (3.3)$$

with conditions (C), (D) or (N).

Step 2: estimates on u . In all the three cases, a solution u of (3.2) is unique and regular. However, we need a uniform bound with respect to μ for u in order to apply Schauder's Theorem.

- In case of boundary conditions (D) and (N), from the comparison principle we have $\|u\|_\infty$ uniformly bounded. Then from *Theorem V.4.1* and *Lemma VI.3.1* (resp. *Theorem V.7.2*) of [28], we have u globally Lipschitz in the space variable x . Hence, we can linearize the problem of u , which turns out to be the solution of

$$\begin{cases} u_t - \operatorname{tr}(A(x)D^2u) + V(t, x) \cdot \nabla u + \lambda u = F(t, x, \mu(t)) + H(t, x, 0), \\ u(0) = u_0, \end{cases}$$

with conditions (D) or (N), and with

$$V(t, x) := \int_0^1 H_p(t, x, s \nabla u(t, x)) ds. \quad (3.4)$$

Then we can apply the Corollary of *Theorem IV.9.1* of [28] to obtain

$$\|u\|_{\frac{1+\gamma}{2}, 1+\gamma} \leq C \left(\|F\|_\infty + \|H(\cdot, \cdot, 0)\|_\infty + \|u_0\|_2 \right),$$

where C depends on the L^∞ norm of V . Since u is globally Lipschitz, ∇u is globally bounded, hence the constant C can be chosen independently from u .

- For the Cauchy problem (C), we can apply *Theorem V.8.1* of [28] and obtain $u \in \mathcal{C}_{loc}^{1+\frac{\gamma}{2}, 2+\gamma}([0, T] \times \mathbb{R}^n)$. Hence, we can consider the same linearization of the previous case: u satisfies again

$$\begin{cases} u_t - \operatorname{tr}(A(x)D^2u) + V(t, x) \cdot \nabla u + \lambda u = F(t, x, \mu(t)) + H(t, x, 0), \\ u(0) = u_0, \end{cases}$$

with V defined in (3.4). Since $V \in L_{loc}^\infty([0, T] \times \mathbb{R}^n)$, we can apply once again *Theorem IV.9.1* of [28] to get

$$\|u\|_{\frac{1+\gamma}{2}, 1+\gamma} \leq C \left(\|F\|_\infty + \|H(\cdot, \cdot, 0)\|_\infty + \|u_0\|_2 \right),$$

where the constant C depends on the L_{loc}^∞ norm of V . Observe that we get a global bound on u , even if V is locally bounded.

Now we prove that this bound is independent on μ . Since $\|F\|_\infty$, $\|H(\cdot, \cdot, 0)\|_\infty$ and $\|u_0\|_2$ do not depend on μ , we have to prove that V is bounded in L^∞_{loc} uniformly in μ . Exploiting the proof of *Theorem V.8.1* of [28] we observe that “*The solution of the Cauchy problem can be obtained as the limit of a sequence of solutions of the first boundary value problem*”. More precisely, we consider an increasing sequence Ω^N of smooth bounded domains, with $\Omega^N \rightarrow \mathbb{R}^n$ for $N \rightarrow +\infty$. The function u turns out to be the limit of the solutions u^N of the problems

$$\begin{cases} u_t^N - \operatorname{tr}(A(x)D^2u^N) + H(t, x, \nabla u^N) + \lambda u^N = F(t, x, \mu(t)), \\ u^N(0, x) = u_0(x), \\ u^N(x)|_{x \in \partial\Omega^N} = u_0(x)|_{x \in \partial\Omega^N}, \end{cases}$$

and the convergence $u^N \rightarrow u$ holds, together with their derivatives, locally uniformly in x . Since u^N solves a HJB equation with Dirichlet boundary conditions, we can apply again the results used in the case (D) (all the results hold also in case of non-homogeneous boundary conditions). This implies, for all compact sets K and for all $N > N_0$, with $K \subset \Omega^{N_0}$,

$$\|\nabla u^N\|_{L^\infty(K)} \leq C,$$

where C does not depend on μ for what said in the case (D). Passing to the limit for $N \rightarrow +\infty$, we get $\|\nabla u\|_{L^\infty(K)} \leq C$, which implies $\|V\|_{L^\infty(K)} \leq C$ with C not depending on μ and gives the L^∞_{loc} bound of V uniformly in μ . Finally, u solves

$$\begin{cases} u_t - \operatorname{tr}(A(x)D^2u) = G(t, x), \\ u(0) = u_0, \end{cases}$$

with $G(t, x) = F(t, x, \mu(t)) - H(t, x, \nabla u) - \lambda u \in C^{0,\gamma}([0, T] \times \mathbb{R}^n)$. Observe that, since F is Hölder in x uniformly in μ since uniformly in μ for hypothesis (H1) and $\|u\|_{\frac{1+\alpha}{2}, 1+\alpha}$ does not depend on μ for what proved before, we have $\|G\|_{0,\gamma}$ bounded uniformly in μ . Hence, from *Theorem 5.1.9* of [32] we get

$$\|u\|_{1,2+\gamma} \leq C (\|u_0\|_{2+\gamma} + \|G\|_{0,\gamma}) \leq C, \quad (3.5)$$

where C does not depend on μ .

Step 3. Estimates on m and well-posedness of Φ . For the distributional formulation of (3.3), m satisfies, for all $0 < s < t < T$,

$$\int_{\Omega} m(t, x) \psi(x) dx + \int_s^t \int_{\Omega} m(r, x) f(r, x) dx dr = \int_{\Omega} m(s, x) \phi(s, x) dx,$$

for all $f \in L^\infty$ and for all $\phi \in L^\infty$, where ϕ satisfy

$$\begin{cases} -\phi_t - \operatorname{tr}(A(x)D^2\phi) + H_p(s, x, \nabla u) \cdot \nabla \phi = f, \\ \phi(t) = \psi, \end{cases} \quad (3.6)$$

with conditions (C), (D) or (N). We note that the results obtained for the HJ equation can be applied also for the backward equation (3.6), with the change of variable $(t, x) \rightarrow (T - t, x)$.

We take $f = 0$ and the related ϕ which satisfies (3.6) with $f = 0$. Rearranging, we find

$$\int_{\Omega} (m(t, x) - m(s, x)) \psi(x) dx = \int_{\Omega} m(s, x) (\phi(s, x) - \phi(t, x)) dx$$

- In case of conditions (C) or (N), we choose $Lip(\psi) = 1$.
 - As already said, for (N) we can also take $\psi \in W^{1,\infty}$ and thanks to Lemma 3.2 of [39] we have

$$|\phi(t, x) - \phi(s, x)| \leq C|t - s|^{\frac{1}{2}}, \quad (3.7)$$

which implies, for a C not depending on μ ,

$$\mathbf{d}_1(m(t), m(s)) \leq C|t - s|^{\frac{1}{2}}. \quad (3.8)$$

- We argue in a similar way for the case (C). Here, we have $\nabla\phi$ uniformly bounded in L^∞ . Hence, ϕ solves

$$\begin{cases} -\phi_t - \text{tr}(A(x)D^2\phi) = f - H_p(s, x, \nabla u) \cdot \nabla\phi \in L^\infty, \\ \phi(t) = \psi, \end{cases}$$

and applying again Theorem 5.1.2 of [32], (3.7) remains true, which implies once again (3.8).

- As regards Dirichlet boundary conditions (D), we take $\psi \in C^1(\Omega)$ with $\psi|_{x \in \partial\Omega} = 0$ and $\|\psi\|_1 \leq 1$. From Lemma 4 of [16] we get

$$\|\phi\|_{\frac{1}{2}, 1} \leq C \|\psi\|_1 \implies d_V(m(t), m(s)) \leq C|t - s|^{\frac{1}{2}}.$$

Hence, if we choose M sufficiently large, we have in all cases $m \in X$, and $\Phi : X \rightarrow X$ is well-defined.

Step 4. Applications of Schauder's Theorem, existence result. To apply Schauder's theorem, we have to check that $\Phi(X)$ is relatively compact in $\mathcal{C}([0, T]; V)$ and continuous.

For the relatively compactness, let $\{\mu^k\}_k \subset X$, and let u^k and m^k be the solutions of the HJ and the FP equation related to μ^k .

- For boundary conditions (D) or (N), as already seen, we have $\|u^k\|_{\frac{1+\gamma}{2}, 1+\gamma} \leq C$, where C does not depend on k . Hence, up to subsequences, we can apply Ascoli-Arzelà's Theorem and, for a certain $u \in \mathcal{C}^{\frac{1+\gamma}{2}, 1+\gamma}$,

$$u^k \rightarrow u \quad \text{in } \mathcal{C}^{0,1}([0, T] \times \Omega),$$

In those cases, we take ϕ^k and ϕ the solution of (3.6) related to u^k and u , with $\psi \in W^{1,\infty}$, satisfying $\psi|_{x \in \partial\Omega} = 0$ in case of (D). Then, arguing as before, ϕ^k is uniformly bounded in $\mathcal{C}^{\frac{1+\gamma}{2}, 1+\gamma}$ and, up to subsequences, $\phi^k \rightarrow \phi$ in $\mathcal{C}([0, T] \times \Omega)$. Then, subtracting the distributional formulations of m^k and m with test functions ϕ^k and ϕ we get

$$\int_{\Omega} \psi(x)(m^k(t, x) - m(t, x)) dx = \int_{\Omega} (\phi^k(0, x) - \phi(0, x)) m_0(dx) \rightarrow 0,$$

which implies $m^k \rightarrow m$ in $\mathcal{C}([0, T]; V)$.

- In case of boundary conditions (C), thanks to (3.5) we have $\|u^k\|_{1, 2+\gamma} \leq C$. Since the domain is unbounded, the convergence of u^k towards u is true only in $\mathcal{C}_{loc}^{0,2}([0, T] \times \Omega)$, with $u \in \mathcal{C}^{1, 2+\gamma}([0, T] \times \Omega)$. In this case we note that m^k is the density of the following process

$$\begin{cases} dX_t^k = b^k(t, X_t^k) dt + \sqrt{2}\sigma(X_t^k) dB_t, \\ X_0^k = X_0, \end{cases}$$

where X_0 is any fixed process with $\mathcal{L}(X_0) = m_0$, and

$$b^k(t, x) = -H_p(t, x, Du^k(t, x)), \quad \sigma(x)\sigma^\top(x) = A(x).$$

In the same way we define the drift b and the process X_t related to m , solution of the FP equation (3.3). Then, we have

$$\begin{aligned} \mathbb{E} \left[|X_t^k - X_t|^2 \right] &\leq 2 \mathbb{E} \left[\int_0^t \left| b^k(s, X_s^k) - b(s, X_s) \right|^2 ds \right] \\ &\quad + 4 \mathbb{E} \left[\left| \int_0^t (\sigma(X_s^k) - \sigma(X_s)) dB_s \right|^2 \right]. \end{aligned}$$

The second integral is bounded using the Itô isometry and the Lipschitz bound on σ :

$$\mathbb{E} \left[\left| \int_0^t (\sigma(X_s^k) - \sigma(X_s)) dB_s \right|^2 \right] \leq C \mathbb{E} \left[\int_0^t |X_s^k - X_s|^2 ds \right].$$

For the first term we get

$$\begin{aligned} \mathbb{E} \left[\int_0^t \left| b^k(s, X_s^k) - b(s, X_s) \right|^2 ds \right] &\leq C \mathbb{E} \left[\int_0^t |X_s^k - X_s|^2 ds \right] \\ &\quad + C \mathbb{E} \left[\int_0^t \left| H_p(s, X_s^k, \nabla u^k(s, X_s^k)) - H_p(s, X_s, \nabla u(s, X_s)) \right|^2 ds \right]. \end{aligned}$$

For the last integral we use the following strategy:

$$\begin{aligned} &\mathbb{E} \left[\int_0^t \left| H_p(s, X_s^k, \nabla u^k(s, X_s^k)) - H_p(s, X_s, \nabla u(s, X_s)) \right|^2 ds \right] \\ &\leq 2 \mathbb{E} \left[\int_0^t \left| H_p(s, X_s^k, \nabla u^k(s, X_s^k)) - H_p(s, X_s^k, \nabla u(s, X_s^k)) \right|^2 ds \right] \\ &\quad + 2 \mathbb{E} \left[\int_0^t \left| H_p(s, X_s^k, \nabla u(s, X_s^k)) - H_p(s, X_s, \nabla u(s, X_s)) \right|^2 ds \right] \\ &\leq C \int_0^t \int_{\mathbb{R}^n} |\nabla(u^k - u)|^2 m^k(s, x) dx ds + C \mathbb{E} \left[\int_0^t |X_s^k - X_s|^2 ds \right]. \end{aligned}$$

This means

$$\begin{aligned} \mathbb{E} \left[|X_t^k - X_t|^2 \right] &\leq C \int_0^t \int_{\mathbb{R}^n} |\nabla(u^k - u)|^2 m^k(s, x) dx ds \\ &\quad + C \mathbb{E} \left[\int_0^t |X_s^k - X_s|^2 ds \right]. \end{aligned} \tag{3.9}$$

The space-time integral is handled in the following way: for a compact $E \subset \mathbb{R}^n$, we have

$$\begin{aligned} \int_0^t \int_{\mathbb{R}^n} |\nabla(u^k - u)|^2 m^k dx ds &= \int_0^t \int_E |\nabla(u^k - u)|^2 m^k dx ds \\ &\quad + \int_0^t \int_{E^c} |\nabla(u^k - u)|^2 m^k dx ds \\ &\leq \|u^k - u\|_{C^{0,1}([0,T] \times E)}^2 + C \|m^k\|_{L^1([0,T] \times E^c)}. \end{aligned}$$

The first term goes to 0 for each compact $E \subset \mathbb{R}^n$. For the second term, we note that m^k has finite first order moments, uniformly bounded in k . Actually, if we take the solution ϕ of (3.6) with $f = 0$ and $\psi = |x|$, from standard regularity results (see [36]) we have

$$\|\phi\|_{\infty} \leq C(1 + |x|).$$

Using hypothesis (H3), we obtain in the weak formulation of m^k

$$\int_{\mathbb{R}^d} |x| m^k(t, x) dx = \int_{\mathbb{R}^d} \phi(0, x) m_0(dx) \leq C \left(1 + \int_{\mathbb{R}^d} |x| m_0(dx) \right) \leq C.$$

This implies that $\|m^k\|_{L^1([0, T] \times E^c)}$ can be chosen arbitrarily small, if we take E sufficiently large. This implies that

$$\int_0^t \int_{\mathbb{R}^n} |\nabla(u^k - u)|^2 m^k dx ds = \omega(k), \quad \text{where } \lim_{k \rightarrow +\infty} \omega(k) = 0.$$

Coming back to (3.9) and using Gronwall's inequality, we finally obtain

$$\begin{aligned} \mathbb{E} \left[|X_t^k - X_t|^2 \right] &\leq C \mathbb{E} \left[\int_0^t |X_s^k - X_s|^2 ds \right] + \omega(k) \implies \\ \mathbb{E} \left[|X_t^k - X_t|^2 \right] &\leq e^{Ct} \omega(k) \rightarrow 0. \end{aligned}$$

Since

$$\mathbf{d}_1(m^k(t), m(t)) = \sup_{Lip(\phi)=1} \mathbb{E} \left[\phi(X_t^k) - \phi(X_t) \right] \leq C \sqrt{\mathbb{E}[|X_t^k - X_t|^2]},$$

we have proved that $m^k \rightarrow m$ in $\mathcal{C}([0, T]; V)$ (up to subsequences) for all the boundary conditions (C), (D) or (N).

The continuity argument can be proven in the same way of the compactness. This concludes the existence result.

Observe that, since u is smooth, we can split the divergence term in (3.3), obtaining for m the equation

$$\begin{cases} m_t - \sum_{ij} \partial_{ij}^2 (A_{ij}(x)m) - \operatorname{div}(H_p(t, x, \nabla u))m - H_p(t, x, \nabla u) \nabla m, \\ m(0) = m_0, \end{cases}$$

with conditions (C), (D) or (N). This implies, arguing as in the HJ equation, $m \in C^{1+\frac{\gamma}{2}, 2+\gamma}$.

Step 5. Uniqueness. For the uniqueness, let (u_1, m_1) and (u_2, m_2) be two solutions of (3.1), and set $(z, \mu) := (u_1 - u_2, m_1 - m_2)$. Then, called

$$V(t, x) := \int_0^1 H_p(t, x, s \nabla u_1(t, x) + (1-s) \nabla u_2(t, x)) ds,$$

the couple (z, μ) solves the following system:

$$\begin{cases} z_t - \operatorname{tr}(A(x)D^2 z) + V(t, x) \cdot \nabla z + \lambda z = F(t, x, m_1(t)) - F(t, x, m_2(t)), \\ \mu_t - \sum_{ij} \partial_{ij}^2 (A_{ij}(x)\mu) - \operatorname{div}(\mu H_p(t, x, \nabla u_1)) = \operatorname{div}(m_2(H_p(t, x, \nabla u_1) - H_p(t, x, \nabla u_2))), \\ z(0) = 0, \quad \mu(0) = 0, \end{cases}$$

coupled, in the case of Dirichlet boundary conditions, with conditions (D) for (z, μ) . In the case of Neumann boundary conditions, we have for the couple (u, m) and for $x \in \partial\Omega$ the conditions

$$A(x)\nabla z(t, x) \cdot \nu(x) = 0$$

$$\left[\left(\sum_j \partial_j (A_{ij}(x)\mu) \right)_i + \mu H_p(t, x, \nabla u_1) + m_2 (H_p(t, x, \nabla u_2) - H_p(t, x, \nabla u_1)) \right] \cdot \nu|_{\partial\Omega} = 0.$$

- We start with the two cases (D) and (N). Multiplying by μ the Fokker-Planck equation of μ , we obtain

$$\begin{aligned} & \frac{1}{2} \int_{\Omega} \mu(t)^2 dx + \frac{\mu_1}{2} \int_0^t \int_{\Omega} |\nabla \mu|^2 dx ds + \int_0^t \int_{\Omega} \mu H_p(t, x, \nabla u_1) \nabla \mu dx ds \\ & \leq \int_0^t \int_{\Omega} m_2 (H_p(t, x, \nabla u_2) - H_p(t, x, \nabla u_1)) \nabla \mu dx ds. \end{aligned}$$

Since $\|\nabla u_1\|_{\infty} \leq C$, we get from Young's inequality

$$\int_0^t \int_{\Omega} \mu H_p(t, x, \nabla u_1) \nabla \mu dx ds \geq -\frac{\mu_1}{4} \int_0^t \int_{\Omega} |\nabla \mu|^2 dx ds - C \int_0^t \int_{\Omega} \mu^2 dx ds.$$

In the same way, since $\|m_2\|_{\infty} \leq C$ and H_p is Lipschitz in the last variable, we get

$$\begin{aligned} & \int_0^t \int_{\Omega} m_2 (H_p(t, x, \nabla u_2) - H_p(t, x, \nabla u_1)) \nabla \mu dx ds \\ & \leq \frac{\mu_1}{8} \int_0^t \int_{\Omega} |\nabla \mu|^2 dx ds + C \int_0^t \int_{\Omega} |\nabla z|^2 m_2 dx ds. \end{aligned}$$

This means

$$\begin{aligned} & \frac{1}{2} \int_{\Omega} \mu(t)^2 dx + \frac{\mu_1}{8} \int_0^t \int_{\Omega} |\nabla \mu|^2 dx ds \\ & \leq C \int_0^t \int_{\Omega} \mu^2 dx ds + C \int_0^t \|\nabla z\|_{L^{\infty}([0,s] \times \Omega)}^2 ds, \end{aligned} \quad (3.10)$$

which implies, up to changing $2C$ with C ,

$$\int_{\Omega} \mu(t)^2 dx \leq C \int_0^t \int_{\Omega} \mu^2 dx ds + C \int_0^t \|\nabla z\|_{L^{\infty}([0,s] \times \Omega)}^2 ds.$$

Applying Gronwall's Lemma, we get

$$\int_{\Omega} \mu(t)^2 dx \leq C e^{Ct} \int_0^t \|\nabla z\|_{L^{\infty}([0,s] \times \Omega)}^2 ds,$$

which implies

$$\sup_{s \in [0,t]} \int_{\Omega} \mu(s)^2 dx \leq C e^{CT} \int_0^t \|\nabla z\|_{L^{\infty}([0,s] \times \Omega)}^2 ds. \quad (3.11)$$

Coming back to (3.10), we get

$$\frac{\mu_1}{8} \int_0^t \int_{\Omega} |\nabla \mu|^2 dx ds \leq C(1 + T e^{CT}) \int_0^t \|\nabla z\|_{L^{\infty}([0,s] \times \Omega)}^2 ds, \quad (3.12)$$

Putting together (3.11) and (3.12), we finally get

$$\sup_{s \in [0, t]} \int_{\Omega} \mu(s)^2 dx + \int_0^t \int_{\Omega} |\nabla \mu|^2 dx ds \leq C \int_0^t \|\nabla z\|_{L^\infty([0, s] \times \Omega)}^2 ds, \quad (3.13)$$

up to changing, once again, $C(1 + e^{CT} + Te^{CT})$ with C .

To estimate the last integral, we study the equation of z . Since $V \in L^\infty$ and, for all $s \in [0, T]$,

$$\|F(t, x, m_1(t)) - F(t, x, m_2(t))\|_{L^\infty([0, s] \times \Omega)} \leq C \sup_{r \in [0, s]} \mathbf{d}_1(m_1(r), m_2(r)),$$

we have from the Corollary of *Theorem IV.9.1* of [28],

$$\|\nabla z\|_{L^\infty([0, s] \times \Omega)}^2 \leq C \left[\sup_{r \in [0, s]} \mathbf{d}_1(m_1(r), m_2(r)) \right]^2. \quad (3.14)$$

Since in case of (D) and (N) the domain Ω is bounded and the test functions for \mathbf{d}_1 are bounded, we have

$$\begin{aligned} \left[\sup_{r \in [0, s]} \mathbf{d}_1(m_1(r), m_2(r)) \right]^2 &\leq \left[\sup_{r \in [0, s]} \sup_{\substack{\text{Lip}(\phi) \leq 1 \\ \|\phi\|_\infty \leq C}} \int_{\Omega} \phi(x) \mu(r) dx \right]^2 \\ &\leq C \sup_{r \in [0, s]} \int_{\Omega} \mu(r)^2 dx. \end{aligned}$$

Coming back to (3.13), we have

$$\sup_{s \in [0, t]} \int_{\Omega} \mu(s)^2 dx + \int_0^t \int_{\Omega} |\nabla \mu|^2 dx ds \leq C \int_0^t \sup_{r \in [0, s]} \int_{\Omega} \mu(r)^2 dx ds,$$

which implies, thanks to Gronwall's Lemma, $\mu \equiv 0$, and so $z \equiv 0$.

- For the Cauchy problem (C), we consider two processes $(X_t^1)_t$ and $(X_t^2)_t$ with $\mathcal{L}(X_t^1) = m_1(t)$, $\mathcal{L}(X_t^2) = m_2(t)$ and $X_0^1 = X_0^2$. Arguing as in (3.9), we have

$$\mathbb{E}[|X_t^1 - X_t^2|^2] \leq C \int_0^t \int_{\mathbb{R}^n} |\nabla(u_1 - u_2)|^2 m_1(s, x) dx ds + C \mathbb{E} \left[\int_0^t |X_s^1 - X_s^2|^2 ds \right].$$

Applying Gronwall's Lemma, we have

$$\begin{aligned} \sup_{s \in [0, t]} \mathbf{d}_1(m_1(s), m_2(s))^2 &\leq \mathbb{E}[|X_t^1 - X_t^2|^2] \leq C \int_0^t \int_{\mathbb{R}^n} |\nabla z|^2 m_1 dx ds \\ &\leq C \int_0^t \|\nabla z\|_{L^\infty([0, s] \times \Omega)}^2 ds. \end{aligned}$$

Using once again (3.14), we get

$$\sup_{s \in [0, t]} \mathbf{d}_1(m_1(s), m_2(s))^2 \leq C \int_0^t \sup_{r \in [0, s]} \mathbf{d}_1(m_1(r), m_2(r))^2 ds,$$

which implies $\mu \equiv 0$, and so $z \equiv 0$.

This concludes the uniqueness result and the proof. \square

4 A Forward-Forward Model for Opinion Formation and Dynamic Voting

In this section we introduce a model which have the structure of a FF-MFG. The framework is appropriate when we want to model a continuity of agents which are dynamically retrieving information from the past environmental scenarios. We focus on an opinion formation model set in a 1D space and a 2D voting model which share the same formal structure.

In recent years, the process of opinion formation, along with other sociological and economic phenomena, has garnered considerable attention from physicists and mathematicians. It has been observed that certain tools employed in statistical mechanics can be effectively applied to model these phenomena. Notable works in this area include [15, 20, 44] and others. Within this context, two active fields have swiftly emerged, commonly referred to as socio-physics or, within the mathematical community, behavioral social systems. These fields are dedicated to describing these phenomena from the perspective of physicists. For an overview and up-to-date references, we recommend the monographs [4, 12, 21, 41]. Additionally, for works with a more mathematical focus, consider [5], where the authors discuss the use of partial differential equations in modeling for the social sciences, and [19], where the authors employ Fokker-Planck equations to model socio-economic phenomena.

In the work [42], the authors propose an opinion dynamic model that describes the evolution of an opinion in a population consisting of two groups: pliant and stubborn agents, where the latter act as leaders. The model adopts the structure of a multi-population backward-forward Mean Field Game. Drawing inspiration from [42], we adopt standard notation and concepts, considering a population of homogeneous agents. Each agent is characterized by the opinion $X(t) \in \Omega = \mathbb{R}^d$ at time $t \in [0, T]$, where $[0, T]$ represents the time horizon window. We also consider the presence of some advertised opinions, as clarified further below. Notably, in the case of a Forward-Forward Mean Field Game (FF-MFG), there is no modeling or theoretical necessity to bound T , unless for the numerical tools that are required for approximating the solution.

We assume that the opinion $X(t)$ is a solution of (2.1), where the dynamics are driven by the control variable α . The presence of the stochastic term in (2.1) is motivated by the effect of uncertainty in the opinion evolution. We consider a probability density function $m : \Omega \times [0, T] \rightarrow \mathbb{R}$ representing the percentage of agents in state x at time t , satisfying

$$\int_{\Omega} m(t, x) dx = 1, \quad \text{for any } t \in [0, T].$$

The fundamental principle underlying our model is that each agent adjusts his opinion based on the average opinion of their surroundings. Specifically, an agent is more sensitive to and attracted by opinions with high density that are close to their own, while they give less consideration to opinions that are too distant. This reflects a typical crowd-seeking behavior, previously studied in its non-local variation in [42] and justified by a kinetic framework in [45]. We consider a fixed probability distribution function $g(x)$ (for example, g could be the density of a normally distributed random variable). For any fixed $t \in [0, T]$, we define the local average opinion as

$$\bar{m}(t, x) := C(t, x) \int_{\Omega} y m(t, y) g(y - x) dy,$$

where $C(t, x)$ is a normalization variable, i.e., $C(t, x) = 1 / \int_{\Omega} m(t, y) g(y - x) dy$.

We model the running cost terms in (2.4) to penalize the distance from the average opinion of the surroundings, determined by the shape of the distribution g . Thus,

$$F(x, m) = a_1 \|\bar{m}(t, x) - x\|_2. \quad (4.1)$$

Simultaneously, we assume the existence of a collection of points $\{\bar{x}_i\}_{i=1,\dots,N}$ that represent special opinions where advertising is spent. These points serve as special points of attraction, and their strength depends on the parameters k_i . Therefore,

$$\ell(x, \alpha) = \frac{1}{2} \left[a_2 \|\alpha\|_2^2 + a_3 \min_{i=1,\dots,N} k_i \|\bar{x}_i - x\|_2^2 \right]. \quad (4.2)$$

It's worth noting that we also penalize the control, implying that the agents are stubborn and prefer to change their opinion as little as possible. The parameters $a_1, a_2, a_3 \geq 0$ balance the influence of these various principles guiding the evolution of the agents' choices.

We observe that using the standard Legendre-Fenchel transform, the control depending part of the hamiltonian is

$$H(x, p) = \max_{\alpha \in \mathbb{R}^d} \{ \alpha \cdot p - a_2 \|\alpha\|_2^2 / 2 \} = \frac{1}{a_2} \frac{\|p\|_2^2}{2}.$$

The final FF-MFG model that we obtain is, for $(t, x) \in [0, T] \times \mathbb{R}$

$$\begin{cases} u_t(t, x) + \lambda u(t, x) + \max_{\alpha \in \mathbb{R}^d} \{ \alpha \cdot \nabla u(t, x) - \ell(x, \alpha) \} = F(x, m(t)) + \operatorname{div}(A(x) \nabla u(t, x)), \\ m_t(t, x) - \operatorname{div} \left(\frac{\nabla u(t, x)}{a_2} m(t, x) \right) = \operatorname{div}(A(x) \nabla m(t, x)), \\ m(0, x) = m_0(x), \quad u(0, x) = u_0(x) \end{cases} \quad (4.3)$$

Remark 4.1 In the tests ahead, we notice that not all the assumptions (H0-H3) hold true. Mainly, we simplify things by testing in squared areas without smooth boundaries and sometimes with initial conditions less regular than what required previously. We also play around with different costs for the agents at different times to see how the model reacts. Despite that, we consistently find that our approximations remain stable and converge well. This suggests that there might be equilibrium points even under more general conditions, but we won't investigate further this issue. Instead, our focus in the next section will be on describing the model's behavior in simpler terms.

It is noteworthy that the model bears closer resemblance to [45] and other kinetic-based frameworks than to [42]. This is due to our assumption that agents lack access to any information about future states or changes in the dynamics of the system. Nevertheless, the model has a steady-state formulation that adopts the typical stationary MFG form. Hence, we anticipate that after a certain time, the solutions (u, m) will converge to (\bar{u}, \bar{m}) , which are solutions of the system:

$$\begin{cases} \rho + \lambda \bar{u}(x) + \max_{\alpha \in \mathbb{R}^d} \{ \alpha \cdot \bar{\nabla} u(x) - \ell(x, \alpha) \} = F(x, \bar{m}) + \operatorname{div}(A(x) \nabla u(x)), \\ \operatorname{div}(A(x) \nabla \bar{m}(x)) + \operatorname{div} \left(\frac{\nabla \bar{u}(x)}{a_2} \bar{m}(x) \right) = 0, \end{cases} \quad (4.4)$$

where $\rho \in \mathbb{R}$ is a constant of compatibility between the two systems to be defined. Proving the long-time convergence of this class of problems remains an open issue (cf. [1]).

4.1 A 1D Opinion Formation Model: Tests

In this section, we highlight some of the features of the proposed model in the case $d = 1$. The primary objective of the following tests is to emphasize the distinctions from the corresponding forward-backward system and to illustrate the qualitative characteristics of the model. The simulations presented are obtained using semi-Lagrangian schemes (refer to A and the cited references for details).

Test 1. A Forward-Backward/Forward-Forward comparison.

The objective of our first test is to compare our opinion formation model with its corresponding forward-backward counterpart. It is essential to note that in the latter case, agents forecast all future states of the system and optimize their policy based on those predictions. In contrast, in our case, each agent determines their policy based on past states of the system. The forward-backward coupling introduces additional computational challenges. Due to the nature of its evolution, we cannot employ an explicit numerical scheme for both equations simultaneously. To address this, we adopt a solution strategy similar to [10], utilizing a fixed-point argument until convergence to the equilibrium of the discrete system.

We consider the opinion domain $\Omega = \mathbb{R}$, and the initial values of the potential and density functions are given by

$$u_0(x) = \min_{i=1,2} k_i ((\bar{x}_i - x)^2)$$

with $(\bar{x}_1, k_1) = (0.8, 1)$ and $(\bar{x}_2, k_2) = (0.2, 3)$,

$$m_0(x) = \begin{cases} 1 & \text{if } x \in [0, 1] \\ 0 & \text{otherwise} \end{cases}.$$

In other words, initially, the opinion is uniformly distributed, but agents are aware of two polarizing opinions $\{0.2, 0.8\}$ for which some prior advertisement may have been spent. Specifically, the parameter of the pole $\bar{x}_2 = 0.2$ is set to $k_2 = 3$, while the pole $\bar{x}_1 = 0.8$ has a lower value parameter $k_1 = 1$. The same parameters appear in the running cost $\ell(x, \alpha)$. The strength of this factor is tuned by the weight $a_3 = 2$, while the penalization of the control, i.e., the resistance to change an opinion, is set to $a_2 = 1$.

The distribution $g(x)$ is set to $g(x) = \frac{1}{\sqrt{0.2\pi}} e^{-\frac{x^2}{0.2}}$, modeling the influence on every agent of their surroundings. The weight of this tendency to conform to the local mean is tuned by $a_1 = 1$.

Finally, the diffusion is set to $A(x) \equiv 0.01$, and the discount parameter is $\lambda = 0$.

In Fig. 1, we present the results of this initial test implemented with discretization parameters $\Delta x = 0.04$ and $\Delta t = 0.02$, covering approximately $\Omega \approx [-4, 4]$ with homogeneous Neumann boundary conditions. We observe that the density distribution of the agents, initially constant in $[0, 1]$ and null elsewhere, splits into two clusters under the influence of the initial choice of u_0 . During the initial phase, the right-hand-side cluster progressively acquires a greater attraction capacity and tends to absorb the second cluster. Around $t = 10$, this process concludes, and only one cluster is present, although it is still not centered on the advertised pole \bar{x}_2 . This occurs during the final phase of the system's evolution, where the cluster slowly moves toward \bar{x}_2 , becoming the center of its distribution.

Notably, there is no formation of Dirac's deltas due to the presence of a strictly positive diffusion parameter A . Figure 1 also displays the evolution of the control map determined by the potential function $u(t, x)$ and the mean opinion of the agents, i.e., $\int_{\Omega} x m(t, x) dx$, since $\int_{\Omega} m(t, x) dx = 1$. We observe the crowd reaching consensus around the pole \bar{x}_2 .

Forward-Forward Model

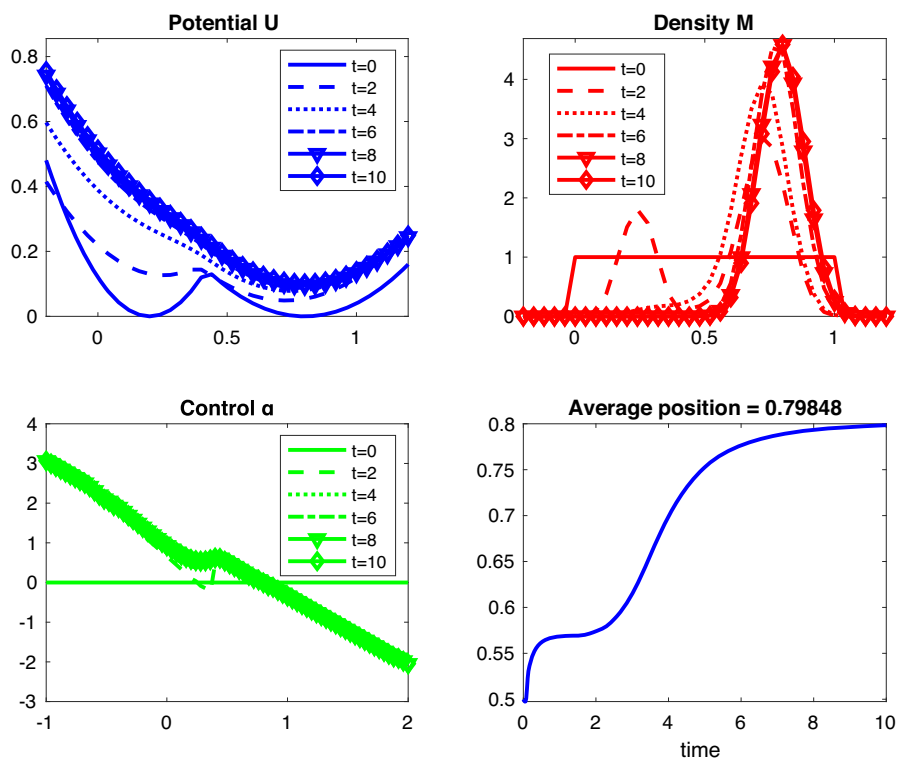


Fig. 1 Test 1. Forward-Forward model: evolution of the potential function u and density distribution m (top), control map $-\nabla u/a_2$ and mean opinion $\int_{\Omega} xm(t, x)dx$

Let us compare this with the forward-backward counterpart model. We maintain all the parameters of the system unchanged, only inverting the evolution of the potential equation. The results are presented in Fig. 2. We observe that the evolution of the system is markedly different. Firstly, there is no formation of two competing clusters since the agents are aware of all the future states of the system; therefore, only one attraction point emerges. Also in this case, the 'winner' of the competition is the pole \bar{x}_2 , and the average opinion of the agents monotonically aligns with this final state. A more evident comparison is also reported in Fig. 3, where the evolution of the density of opinions is shown side by side.

Test 2. The effect of the discount variable λ .

In our second test, we aim to show the effect of the discount variable λ on the model. While it makes sense to limit the influence of the past in the optimization process (clearly, the paradigm of a player assuming that past scenarios will repeat in the future is potentially flawed), adopting a larger λ tends to trivialize the model, transforming it into a simple relaxation around the average. This effect is illustrated in Fig. 4, where, for the same parameters as Test 1, the potential u and the density distribution m are shown for various choices of λ . Notably, for $\lambda \geq 7$, both u and m quickly move, in the early instants of the process, to a stable configuration around the poles. This dynamic, less interesting and varied than for lower

Forward-Backward Model

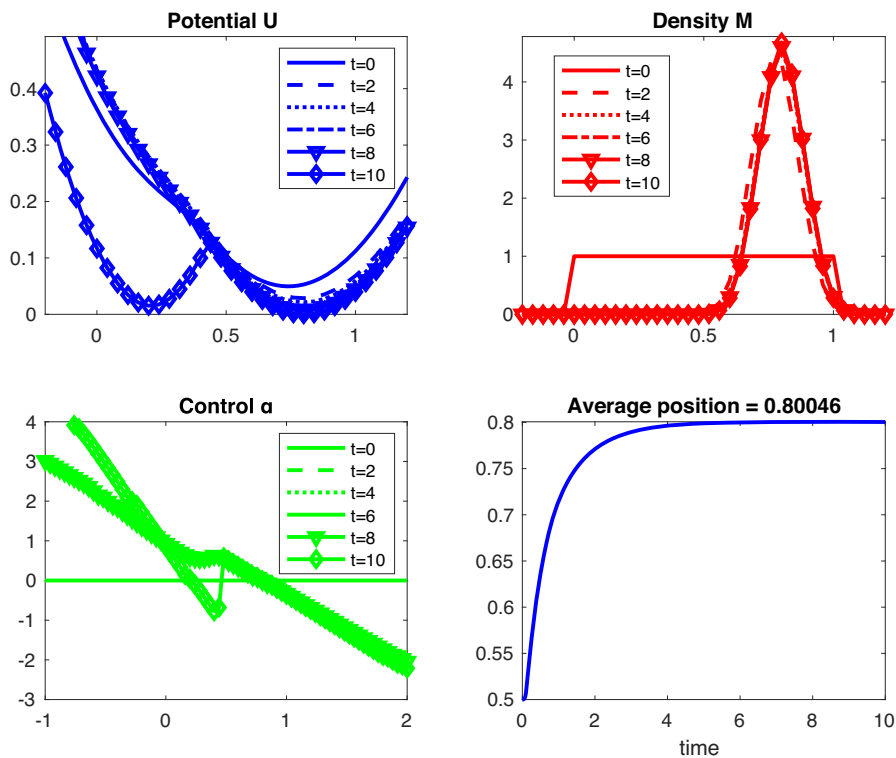
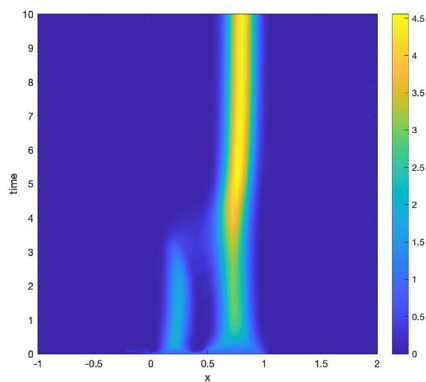
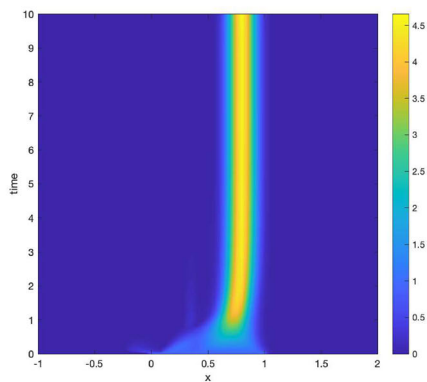


Fig. 2 Test 1. Forward-Backward model: evolution of the potential function u and density distribution m (top), control map $-\nabla u/a_2$ and mean opinion $\int_{\Omega} x m(t, x) dx$



Forward-Forward Model



Forward-Backward Model

Fig. 3 Test 1. Evolution of the density of opinion in the FF and FB model

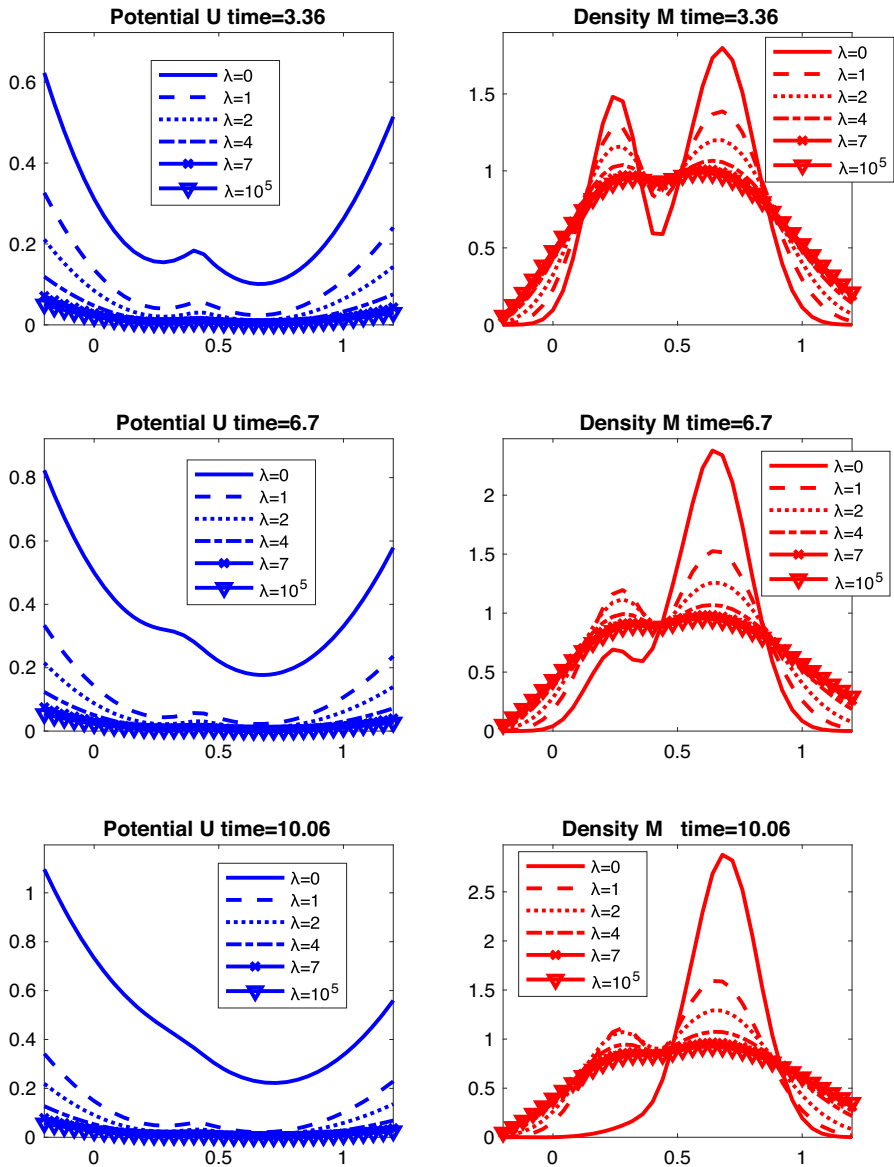
Forward-Forward Model with various λ 

Fig. 4 Test 2. Forward-Forward model: evolution of the potential function u (left) and density distribution m (top) with various values of the discount coefficient λ

Forward-Forward Model

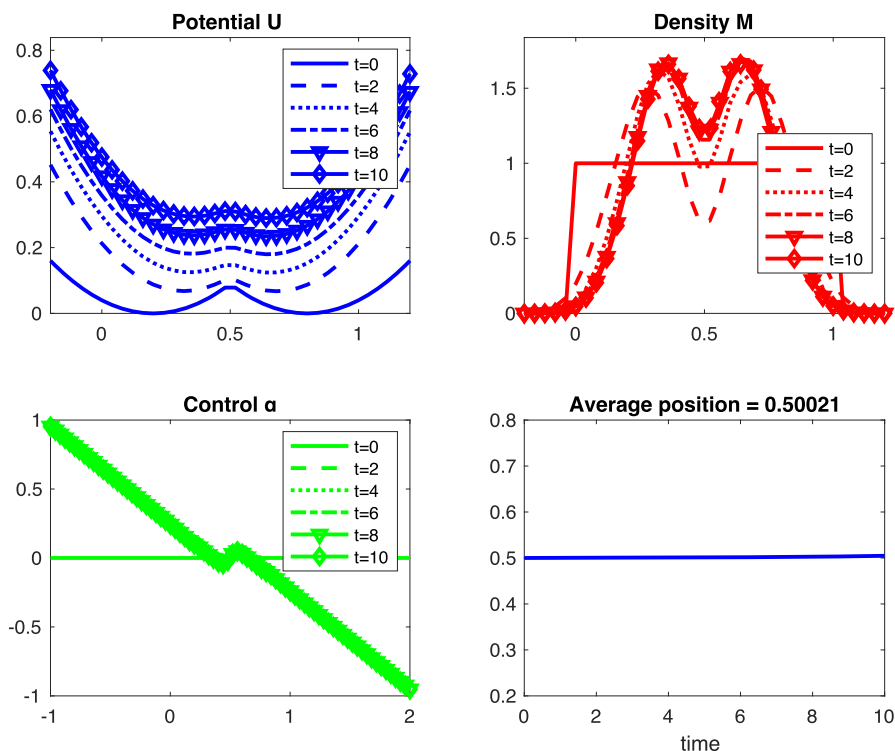


Fig. 5 Test 3. Forward-Forward model: evolution of the potential function u and density distribution m (top), control map $-\nabla u/a_2$ and mean opinion $\int_{\Omega} x m(t, x) dx$

values of λ , led us to restrict the remaining tests to the case $\lambda = 0$. For intermediate values of λ (e.g., $\lambda \in (0, 7)$), we expect to observe essentially the same type of behavior as for $\lambda = 0$, albeit mitigated and relatively smoothed down around the attraction points of the model.

Test 3. Cluster formation and strategic advertisement.

In our third test, we aim to illustrate two distinct features of our opinion model. In the first one, we demonstrate how our model can generate clusters over time. To achieve this, we consider the same setting as the previous test, with the only exception of the parameters $a_1 = 1$, $a_2 = 4$, and $a_3 = 1$. In practice, we penalize the possibility to change opinions, fostering the ‘stubbornness’ of our density of agents. The two attraction poles are again 0.2 and 0.8 with equal attraction capacities, i.e., $(\bar{x}_1, k_1) = (0.8, 1)$ and $(\bar{x}_2, k_2) = (0.2, 1)$.

The test results, depicted in Fig. 5, reveal a symmetric pattern around two attraction points. Initially, the agents are uniformly distributed in density, but they quickly aggregate around the two advertised poles. The problem’s inherent symmetry ensures that the average opinion of all agents remains stable, with minor numerical oscillations, at the midpoint between the two clusters, denoted as $x = 0.5$. Notably, in this scenario, the two clusters are interconnected, indicating that the intersection of their support is not empty. By varying the distance or making

FF Model with 'strategic advertisement'

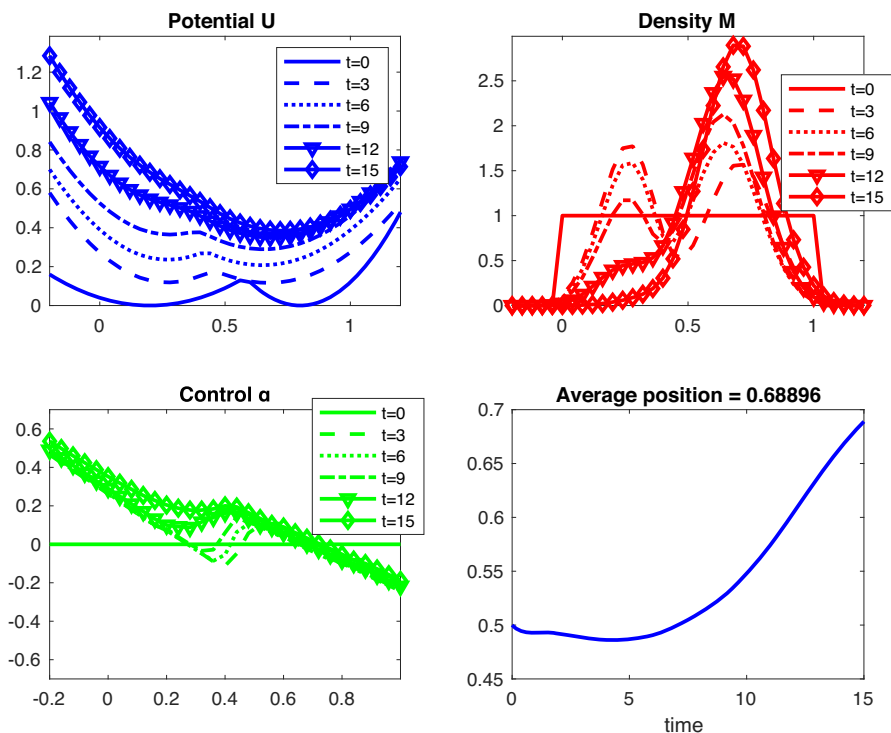


Fig. 6 Test 3. FF model with 'strategic advertisement': evolution of the potential function u and density distribution m (top), control map $-\nabla u/a_2$ and mean opinion $\int_{\Omega} xm(t, x)dx$

a different choice for the function g (as demonstrated in subsequent tests), it's possible to achieve two or more separated clusters.

We delve into the question of the best advertising strategy in a relatively stable situation like the latter. Particularly, considering a limited advertising budget, is it more advantageous to be the first one to advertise at one pole, or is it better to have the ability to advertise for a longer duration? To address this question, we conduct the same test as before, setting

$$\begin{aligned} \text{for } t \in [0, 0.5], \quad (\bar{x}_1, k_1) &= (0.8, 3), \quad (\bar{x}_2, k_2) = (0.2, 1); \\ \text{then } t \in (0.5, 10], \quad (\bar{x}_1, k_1) &= (0.8, 1), \quad (\bar{x}_2, k_2) = (0.2, 3). \end{aligned}$$

All the other parameters of the test are left as in the previous case. We call this case of "strategic advertisement".

In this scenario, the agent interested in advertising position 0.8 acts *before* and *for a shorter duration*, while its competitor has a much longer advertising span but is less responsive at the beginning of the simulation. Notably, the advertisement parameters k_1 and k_2 switch their roles at $t = 0.5$, representing 5% of the total evolution of the system.

The results of this simulation are presented in Figs. 6 and 7. We observe that in the long run, the position advertised with more anticipation, 0.8, becomes predominant, even though at $t = 0.5$, when its advertising advantage ends, it is actually in a minority position if we

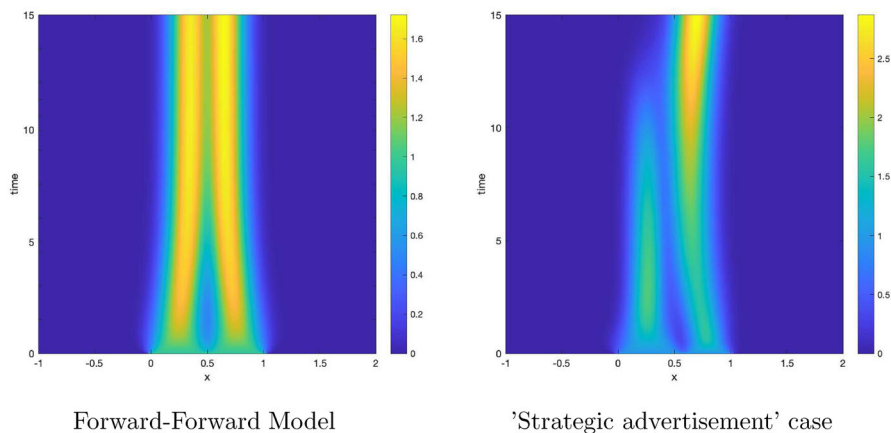


Fig. 7 Test 3. Evolution of the density of opinion in the standard and 'strategic advertisement' case

consider the average opinion of the agents. Therefore, we can assert, at least experimentally, that in our model, advertisement in the initial evolution moments of the system is much more relevant, essentially when the first split into clusters occurs. These initial moments lead to non-trivial long-term effects of polarization, as observed in the literature [31].

4.2 A Dynamic 2D Vote Model

In this section, we extend the previously introduced opinion formation model to a 2D political spectrum setting $d = 2$. A 2D model is often utilized to provide a more detailed ideological categorization of voters. An illustrative example of such 2D representations is the Nolan Chart [43], where the axes represent personal freedom and economic freedom.

The distribution $g(x)$ is chosen as the isotropic multivariate normal distribution

$$g(x) = g(x_1, x_2) = \frac{1}{\sqrt{\mu\pi}} e^{-\frac{x_1^2 + x_2^2}{\mu}}. \quad (4.5)$$

More complex choices for modeling the influence of the surrounding on each voter are possible.

As initial scenarios, we consider a uniform initial distribution of opinions $m_0(x)$ and a constant initial cost $u_0(x)$, i.e.,

$$m_0(x) = \frac{1}{4} \chi_{[-1,1]^2}(x), \quad u_0(x) = 0,$$

where $\chi_B(x)$ is the indicator function of the set B .

4.3 FF-dynamic Vote Model: Tests

We present simulations conducted using the same schemes outlined in A, focusing on a 2D opinion of voting scenario with 2 candidates. The primary objective of these tests is to demonstrate the effectiveness of the proposed model in simulating complex phenomena such as cluster formation or the adoption of classic strategies to enhance the electoral performance of a candidate.

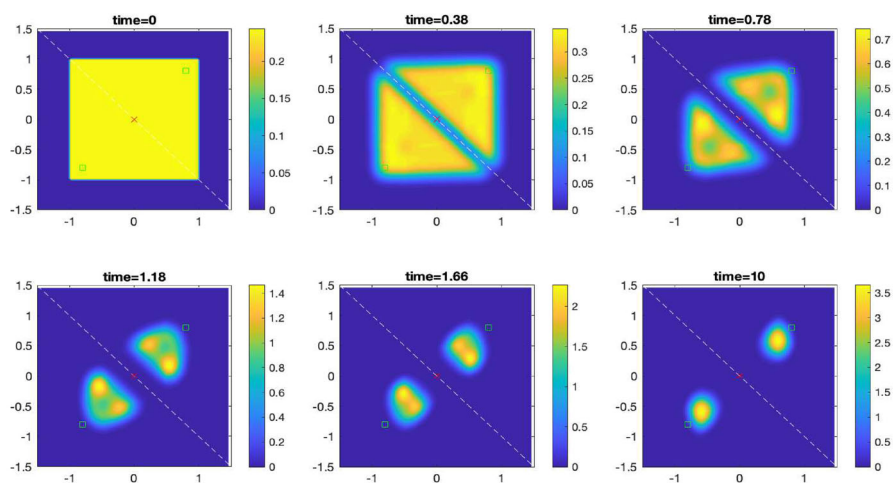


Fig. 8 Test 4. Evolution of the density of voters at $t = 0, 0.38, 0.78, 1.18, 1.66, 10$. The green squares are the position of the two candidates, the red cross is the median voter position and the dotted white line is the separation between the victory region of each candidate

Test 4: Stable Cluster Formation between Two Candidates

In this 2D setting, we showcase a fundamental cluster formation where voters polarize between two candidates. It is essential to note that our model, relying on attraction poles, naturally tends towards the formation of clusters over the long run. For this test and the following one, model parameters a_1 , a_2 , and a_3 are all set to one. The constant μ in (4.5), representing the size of the area related to the conformism tendency of a voter, is set to 0.2, while the diffusion parameter A is set to 0.01. We assume the presence of two candidates, C_1 and C_2 , positioned at $(0.8, 0.8)$ and $(-0.8, -0.8)$, respectively. Both candidates conduct a political campaign with constant strength and efficiency, setting $k_1 = k_2 = 1$.

Since voters are initially evenly distributed across the entire political spectrum $[-1, 1]^2$, and the potential u_0 is initially constant, no prior knowledge of the candidates' positions is assumed. Following the median voter theorem [40], victory of one candidate over its opponent is achieved when the average of all voters' positions (i.e., the median voter) falls within the respective victory regions, which are denoted as follows:

$$\Omega_1 := \{x = (x_1, x_2) \in \mathbb{R}^2 \mid x_2 > -x_1\}$$

$$\text{and } \Omega_2 := \{x = (x_1, x_2) \in \mathbb{R}^2 \mid x_2 < -x_1\}.$$

We approximate the solution using semi-Lagrangian schemes with $\Delta x = 0.04$ and $\Delta t = 0.02$. The problem is solved on a grid constructed in $[-3/2, 3/2]^2$ with Neumann boundary conditions. In Fig. 8, the outcomes are presented. Several interesting features of the model are observed: firstly, even starting with no prior knowledge of the candidates' positions and no previous advertisements, the initial moments of system evolution ($t \in (0, 1)$) significantly influence the final results. The density of voters quickly splits equally between the two candidates due to the symmetry of the data. Additionally, the conformism tendency generates multiple clusters that progressively migrate toward the advertised positions of the candidates. During this migration, multiple clusters may merge. In this scenario, we assume infinite advertisement strength from each candidate (constant in time), and as $t \gg 0$, the density distribution of voters cannot differ from one (or more) clusters at the advertised positions

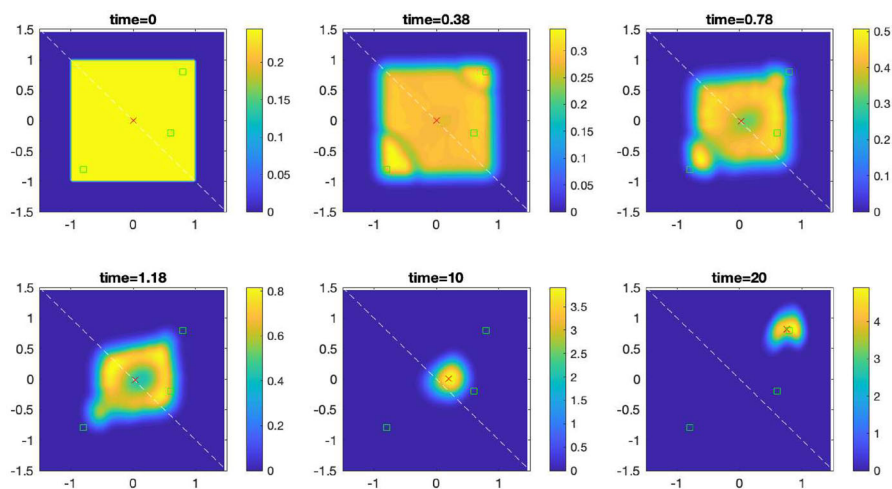


Fig. 9 Test 5.a. ‘Having a moderate ally’ strategy: Evolution of the voter density at $t = 0, 0.38, 0.78, 1.18, 10, 20$. The green squares depict the positions of the three candidates, the red cross indicates the median voter position, and the dotted white line represents the boundary between the victory regions of each major candidate

of the candidates. In this case, there is a perfect balance between the two candidates, and as evident from the position of the median voter (the red cross in Fig. 8), neither candidate prevails over the opponent.

Test 5. Overcoming the impasse via different political strategies.

We explore the possibility of emulating typical electoral strategies in our model to overcome the impasse caused by the symmetric setting in the previous test. One potential strategy involves creating an electoral alliance to break the deadlock. How does the introduction of a third candidate C_3 , positioned at $(0.6, -0.2)$, influence the system’s evolution? For this third candidate, we assume a very limited attraction strength by setting $k_3 = 0.2$.

The results are presented in Fig. 9. The presence of the additional candidate C_3 plays a crucial role in the evolution of the voters. It facilitates the formation of a large central cluster, which leans slightly more towards the victory region Ω_1 , where both C_1 and C_3 are positioned. Although this central cluster initially has a limited impact on the position of the median voter, it gradually attracts voters who initially leaned towards C_2 . Subsequently, the cluster moves, passing through the position of candidate C_3 before eventually reaching, over an extended time horizon ($t = 20$), the more extreme position of candidate C_1 .

We explore another potential strategy: What if a candidate advertises a position that is not its final goal? In this deliberately illustrative example, we assume that the position of candidate C_1 initially lies at the point $(0.2, 0.2)$ but switches to $(0.4, 0.4)$ at $t = 2$, to $(0.6, 0.6)$ at $t = 4$, and finally to $(0.8, 0.8)$ (the candidate’s ultimate goal) at $t = 6$. Figure 10 visually demonstrates how this strategy immediately influences the position of the median voter, effectively guiding the crowd of voters toward the final goal of C_1 . This occurs even with a minor cluster formation before reaching the candidate C_1 ’s final position. The tendency of politicians to gravitate toward the position occupied by the median voter, or more generally, toward the position favored by the electoral system, is sometimes referred to as Hotelling’s law [13]. This test can also be viewed as a continuous version of the McKelvey-Schofield

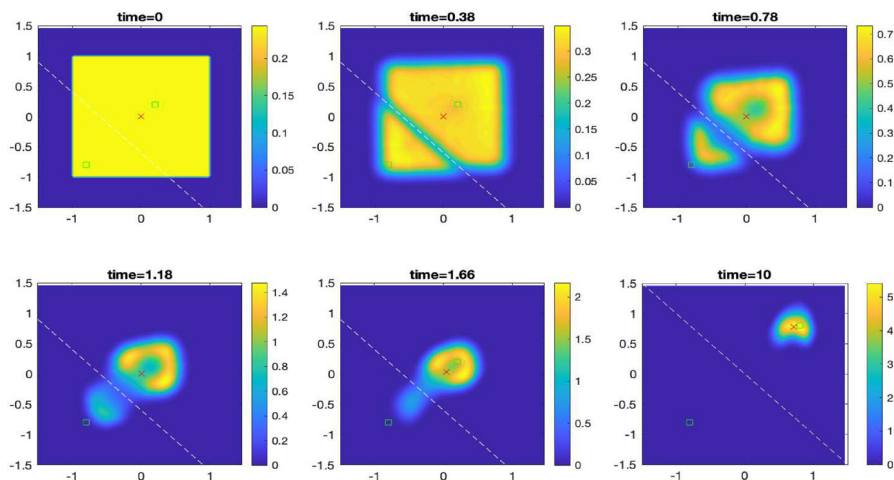


Fig. 10 Test 5.b. 'Advertising a more moderate position' strategy. Evolution of the density of voters at $t = 0, 0.38, 0.78, 1.18, 1.66, 10$. The green squares are the advertised position of the two candidates (we note that one candidate changes progressively its position), the red cross is the median voter position and the dotted white line is the separation between the victory region of each candidate

theorem [33], where the authors observe that any position on a multidimensional political spectrum can be reached by a sequence of majority votes.

5 Conclusions

In this work, we discuss the fundamental features of a general FF-MFG, illustrating how such a framework can be utilized to formulate mathematical models in scenarios where a large population of rational individuals is influenced by their past position and control. This framework is particularly suitable for social mathematical models, allowing the inclusion of non-local interaction terms, diffusion effects, complex strategic behaviors, agent stubbornness, and more.

A A Semi-lagrangian Scheme for FF-MFG

In this appendix we provide more details about the numerical schemes that we used for approximating the FF-MFG system. To simplify a bit the presentation we consider the case where $\Omega \subset \mathbb{R}^2$, $A(x)$ is a constant, i.e. $A(x) \equiv \varepsilon$ and the Hamiltonian has the form (2.6). The general case is straightforward and does not change the treatment of the non-linear part of the equations.

Our numerical approach relies on the relation between the HJ framework and the corresponding adjoint FP equation. Given a semi-discrete (discrete in space) numerical scheme for the HJ part of (3.1), the same scheme can be used to construct a consistent approximation for the FP equation.

Before proceeding, we define additional notation. Let $\Omega_{\Delta x}$ be an uniform grid on Ω with constant discretization parameter $\Delta x > 0$. Let $x_{i,j}$ denote a generic point in $\Omega_{\Delta x}$. The space

of grid functions defined on $\Omega_{\Delta x}$ is denoted by $\mathcal{G}(\Omega_{\Delta x})$, and the functions U and M in $\mathcal{G}(\Omega_{\Delta x})$ (approximations of respectively u and m) are called $U_{i,j}$ and $M_{i,j}$, when evaluated at $x_{i,j}$.

We utilize a semi-discrete numerical scheme $N(x, p) : \Omega_{\Delta x} \times \mathbb{R}^d \rightarrow \mathbb{R}$ monotone and consistent to approximate the term $-\max_{\alpha \in \mathbb{R}^d} \{\alpha \cdot \nabla u(t, x) - \ell(x, \alpha)\} + \operatorname{div}(A(x) \nabla u(t, x)) + F(x, m(t))$ in (4.3). U is the solution of the ODE

$$U_t = -\lambda U + N(x, \mathcal{D}U, M), \quad (\text{A.1})$$

where $\mathcal{D}U$ is a discretization of the gradient operator on U . We use the adjoint structure of the problem to approximate the FP part. The discrete approximation, M , is the solution of the following system of ODE

$$M_t = K(x, \mathcal{D}U, M), \quad (\text{A.2})$$

where $K(x, x, \mathcal{D}U, M)$ is the adjoint of N . We note that this operator depends on the monotone approximation scheme used to discretize the HJ equation, and can be directly computed. We stress that the features of positivity and mass conservation are still holding also at the discrete level. Finally, the discretization in time can be performed with a standard numerical scheme of our choice (we used just Explicit Euler).

Semi-Lagrangian scheme.

To describe a semi-Lagrangian scheme appropriate to approximate (3.1), we introduce the operator

$$\mathcal{D}U_{i,j} := \max_{\alpha \in \mathbb{R}^2} \frac{\mathcal{I}[U](x_{i,j}, \alpha) - U(x_{i,j})}{h} - \ell(x_{i,j}, \alpha), \quad (\text{A.3})$$

where h a parameter of the same order of Δx and

$$\begin{aligned} \mathcal{I}[U](x_{i,j}, \alpha) = & \frac{1}{4} \sum_{\ell=1}^2 \left(\mathbb{I}[U](x_{i,j} + \alpha h + e_\ell \sqrt{2\varepsilon h}) \right. \\ & \left. + \mathbb{I}[U](x_{i,j} + \alpha h - e_\ell \sqrt{2\varepsilon h}) \right). \end{aligned} \quad (\text{A.4})$$

Here, $\mathbb{I}[U](x)$ is an interpolation operator on the matrix U , and e_i is the i unitary vector of an orthonormal basis of the space. The term $N(x, p)$ is therefore

$$N(x, \mathcal{D}U_{i,j}, M) = -\mathcal{D}U_{i,j} + F(t, x_{i,j}, M).$$

We take the adjoint of N as described in [9], and we use it into (A.2):

$$K(x_{i,j}, \mathcal{D}U_{i,j}, M_{i,j}) = \frac{1}{4} \sum_{\ell=1}^2 \sum_{k,s} \left(\beta_{k,s} [\Phi_{i,j}^{\ell,+}(\arg\max_{\alpha} \mathcal{D}U_{i,j})] + \beta_{k,s} [\Phi_{i,j}^{\ell,-}(\arg\max_{\alpha} \mathcal{D}U_{i,j})] \right)$$

here, the $\beta_{k,s}$ are the basis of the polynomial approximation used in the interpolation operator $\mathbb{I}[U](x)$ introduced above and

$$\Phi_{i,j}^{\ell,\pm}(b) = x_{i,j} + hb \pm e_\ell \sqrt{2\varepsilon h}.$$

For the implementation of the homogeneous Neumann boundary conditions we used a symmetrized Euler scheme, as described in [10]. Another work that discusses more general boundary conditions with similar tools is [11].

Author Contributions All authors contributed to the study conception and design. All authors read and approved the final manuscript.

Funding Open access funding provided by Politecnico di Torino within the CRUI-CARE Agreement. AF is a member of the 'Gruppo Nazionale per il Calcolo Scientifico' INdAM and he was partially supported by PRIN project 2022 funds 2022238YY5 "Optimal control problems: analysis, approximation".

Data Availability No data associated in the manuscript.

Declarations

Conflict of interest The authors have no relevant financial or non-financial interests to disclose.

Human rights and animal rights participants The research does not involve human participants or animals.

Open Access This article is licensed under a Creative Commons Attribution 4.0 International License, which permits use, sharing, adaptation, distribution and reproduction in any medium or format, as long as you give appropriate credit to the original author(s) and the source, provide a link to the Creative Commons licence, and indicate if changes were made. The images or other third party material in this article are included in the article's Creative Commons licence, unless indicated otherwise in a credit line to the material. If material is not included in the article's Creative Commons licence and your intended use is not permitted by statutory regulation or exceeds the permitted use, you will need to obtain permission directly from the copyright holder. To view a copy of this licence, visit <http://creativecommons.org/licenses/by/4.0/>.

References

1. Achdou Y, Bardi M, Cirant M (2017) Mean field games models of segregation. *Math. Meth. Appl. Sci.* 27:75–113
2. Achdou Y, Capuzzo-Dolcetta I (2010) Mean field games: numerical methods. *SIAM J Numer Anal* 48:1136–1162
3. Bardi M, Capuzzo-Dolcetta I (2008) Optimal control and viscosity solutions of Hamilton-Jacobi-Bellman equations. Springer Science & Business Media
4. Bellomo N, Brezzi F, Pulvirenti M (2017) Modeling behavioral social systems. *Math. Meth. Appl. Sci.* 27:1–11
5. Burger M, Caffarelli L, Markowich P (2014) Partial differential equation models in the socio-economic sciences. *Philos. Trans. Roy. Soc. A* **372**, Paper No. 20130406
6. Camilli F, Marchi C (2023) On quasi-stationary mean field games of controls. *Appl Math Optim* 87(3):47
7. Cardaliaguet P (2013) Notes on Mean Field Games: from P.-L. Lions' lectures at Collège de France
8. Cardaliaguet P (2015) Weak solutions for first order mean field games with local coupling. In: *Analysis and geometry in control theory and its applications*, 111–158
9. Carlini E, Silva FJ (2018) On the Discretization of Some Nonlinear Fokker-Planck-Kolmogorov Equations and Applications. *SIAM J Numer Anal* 56(4):2148–2177
10. Carlini E, Festa A, Silva FJ, Wolfram M-T (2016) A semi-lagrangian scheme for a modified version of the Hughes' model for pedestrian flow. *Dyn. Games Appl.*, 1–23
11. Calzola E, Carlini E, Dupuis X, Silva FJ (2023) A semi-Lagrangian scheme for Hamilton-Jacobi-Bellman equations with oblique derivatives boundary conditions. *Num. Math.* 153(1):49–84
12. Chakrabarti BK, Chakraborti A, Chatterjee A (2007) *Econophysics and sociophysics: trends and perspectives*. John Wiley & Sons
13. Chakraborty A, Ghosh P, Roy J (2020) Expert-captured democracies. *Am. Econ. Rev.* 110:1713–1751
14. Crandall MG, Lions P-L (1983) Viscosity solutions of Hamilton-Jacobi equations. *Trans Am Math Soc* 277:1–42
15. Deffuant G, Amblard F, Weisbuch G, Faure T (2002) How can extremism prevail? a study based on the relative agreement interaction model. *J. Artif. Soc. Soc. Simul.*, **5**
16. Di Persio L, Garbelli M, Ricciardi M The master equation in a bounded domain with absorption. *Arxiv*, [arxiv:2203.15583](https://arxiv.org/abs/2203.15583)
17. Falcone M, Ferretti R (2013) Semi-Lagrangian Approximation Schemes for Linear and Hamilton-Jacobi Equations. *SIAM Philadelphia*

18. Festa A, Gomes DA, Velho RM (2018) An Adjoint-Based Approach for a Class of Nonlinear Fokker-Planck Equations and Related Systems Springer INdAM Series 28:73–92
19. Furioli G, Pulvirenti A, Terraneo E, Toscani G (2017) Fokker-Planck equation in the modeling of socio-economic phenomena. *Math Models Methods Appl Sci* 27:115–158
20. Galam S (2005) Heterogeneous beliefs, segregation, and extremism in the making of public opinions. *Phys Rev E* 71:046123
21. Galam S (2012) Sociophysics: a physicist's modeling of psycho-political phenomena. Springer Science & Business Media
22. Gomes D, Saúde J (2014) Mean field games models—a brief survey. *Dyn. Games Appl.* 4:110–154
23. Gomes D, Sedjro M (2018) One-dimensional, forward-forward mean-field games with congestion. *Discrete Cont. Dyn.-S* 11:901–914
24. Gomes DA, Nurbekyan L, Sedjro M (2016) One-dimensional forward-forward mean-field games. *Appl Math Optim* 74:619–642
25. Gomes DA, Pimentel EA (2015) Regularity for mean-field games systems with initial-initial boundary conditions: the subquadratic case. In: *Dynamics, Games and Science*, 291–304. Springer
26. Guéant O, Lasry J-M, Lions P-L (2011) Mean field games and applications. In: *Paris-Princeton lectures on mathematical finance 2010*, pp 205–266. Springer
27. Hughes R (2000) The flow of large crowds of pedestrians. *Math Comput Simul* 53(4):367–370
28. Ladyzenskaja O-A, Solonnikov V-A, Uralceva N-N (1968) Linear and quasilinear equations of parabolic type. American Mathematical Society
29. Lasry J-M, Lions P-L (2007) Mean field games. *Jpn J Math* 2:229–260
30. Lions P-L, Sznitman AS (1984) Stochastic differential equations with reflecting boundary conditions. *Commun Pure Appl Math* 27:511–537
31. Lorenz J (2007) Continuous opinion dynamics under bounded confidence: A survey. *Int J Mod Phys C* 18:1819–1838
32. Lunardi A (2012) Analytic Semigroups and Optimal Regularity in Parabolic Problems. Modern Birkhäuser Classics
33. McKelvey RD (1976) Intransitivities in multidimensional voting models and some implications for agenda control. *J. Econ. Theory* 12:472–482
34. Mouzouni C (2020) On quasi-stationary mean field games models. *Appl Math Optim* 81(3):655–684
35. Piccoli B, Rossi F (2016) On properties of the generalized Wasserstein distance. *Arch Ration Mech Anal* 222:1339–1365
36. Porretta A, Priola E (2013) Global Lipschitz regularizing effects for linear and nonlinear parabolic equations. *J. Math. Pures Appl.* 100:633–686
37. Porretta A (2015) Weak solutions to Fokker-Planck equations and mean field games. *Arch Ration Mech Anal* 216:1–62
38. Ricciardi M (2023) The convergence problem in mean field games with Neumann boundary conditions *SIAM. J. Math. Anal.* 55:3316–3343
39. Ricciardi M (2022) The master equation in a bounded domain with Neumann conditions. *Commun. Partial. Differ. Equ.* 47:912–947
40. Rowley CK (1984) The relevance of the median voter theorem. *J Inst Theor Econ* 1:104–126
41. Sen P, Chakrabarti BK (2014) Sociophysics: an introduction. Oxford University Press
42. Stella L, Bagagiolo F, Bauso D, Como G (2013) Opinion dynamics and stubbornness through mean-field games. In: *Decision and Control (CDC), 2013 IEEE 52nd Annual Conference on*, pp 2519–2524. IEEE
43. Sznajd-Weron K, Sznajd J (2005) Who is left, who is right? *Phys. A: Stat. Mech.* 351:593–604
44. Sznajd-Weron K, Sznajd J (2000) Opinion evolution in closed community. *Int J Mod Phys C* 11:1157–1165
45. Toscani G (2006) Kinetic models of opinion formation. *Comm. Math. Sci.* 4:481–496