

Athiphat Muthitacharoen; Archawa Paweenawat; Krislert Samphantharak

Working Paper

The double-edged sword: Unintended consequences of small and medium-sized enterprise promotion policy

ADB Economics Working Paper Series, No. 778

Provided in Cooperation with:

Asian Development Bank (ADB), Manila

Suggested Citation: Athiphat Muthitacharoen; Archawa Paweenawat; Krislert Samphantharak (2025) : The double-edged sword: Unintended consequences of small and medium-sized enterprise promotion policy, ADB Economics Working Paper Series, No. 778, Asian Development Bank (ADB), Manila,
<https://doi.org/10.22617/WPS250164-2>

This Version is available at:

<https://hdl.handle.net/10419/322364>

Standard-Nutzungsbedingungen:

Die Dokumente auf EconStor dürfen zu eigenen wissenschaftlichen Zwecken und zum Privatgebrauch gespeichert und kopiert werden.

Sie dürfen die Dokumente nicht für öffentliche oder kommerzielle Zwecke vervielfältigen, öffentlich ausstellen, öffentlich zugänglich machen, vertreiben oder anderweitig nutzen.

Sofern die Verfasser die Dokumente unter Open-Content-Lizenzen (insbesondere CC-Lizenzen) zur Verfügung gestellt haben sollten, gelten abweichend von diesen Nutzungsbedingungen die in der dort genannten Lizenz gewährten Nutzungsrechte.

Terms of use:

Documents in EconStor may be saved and copied for your personal and scholarly purposes.

You are not to copy documents for public or commercial purposes, to exhibit the documents publicly, to make them publicly available on the internet, or to distribute or otherwise use the documents in public.

If the documents have been made available under an Open Content Licence (especially Creative Commons Licences), you may exercise further usage rights as specified in the indicated licence.



<https://creativecommons.org/licenses/by/3.0/igo/>

THE DOUBLE-EDGED SWORD

UNINTENDED CONSEQUENCES OF SMALL AND MEDIUM-SIZED ENTERPRISE PROMOTION POLICY

Athiphat Muthitacharoen, Archawa Paweenawat, and Krislert Samphantharak

NO. 778

May 2025

ADB ECONOMICS WORKING PAPER SERIES

ADB Economics Working Paper Series

The Double-Edged Sword: Unintended Consequences of Small and Medium-Sized Enterprise Promotion Policy

Athiphat Muthitacharoen, Archawa Paweenawat,
and Krislert Samphantharak

No. 778 | May 2025

The *ADB Economics Working Paper Series* presents research in progress to elicit comments and encourage debate on development issues in Asia and the Pacific. The views expressed are those of the authors and do not necessarily reflect the views and policies of ADB or its Board of Governors or the governments they represent.

Athiphat Muthitacharoen (athiphat@gmail.com) is an associate professor of economics at Chulalongkorn University. Archawa Paweenawat (archawap@bot.or.th) is a section head of Puey Ungphakorn Institute for Economic Research, Bank of Thailand. Krislert Samphantharak (krislert@ucsd.edu) is a professor of economics and public policy at the School of Global Policy and Strategy, University of California San Diego.



Creative Commons Attribution 3.0 IGO license (CC BY 3.0 IGO)

© 2025 Asian Development Bank
6 ADB Avenue, Mandaluyong City, 1550 Metro Manila, Philippines
Tel +63 2 8632 4444; Fax +63 2 8636 2444
www.adb.org

Some rights reserved. Published in 2025.

ISSN 2313-6537 (print), 2313-6545 (PDF)
Publication Stock No. WPS250164-2
DOI: <http://dx.doi.org/10.22617/WPS250164-2>

The views expressed in this publication are those of the authors and do not necessarily reflect the views and policies of the Asian Development Bank (ADB) or its Board of Governors or the governments they represent.

ADB does not guarantee the accuracy of the data included in this publication and accepts no responsibility for any consequence of their use. The mention of specific companies or products of manufacturers does not imply that they are endorsed or recommended by ADB in preference to others of a similar nature that are not mentioned.

By making any designation of or reference to a particular territory or geographic area in this document, ADB does not intend to make any judgments as to the legal or other status of any territory or area.

This publication is available under the Creative Commons Attribution 3.0 IGO license (CC BY 3.0 IGO) <https://creativecommons.org/licenses/by/3.0/igo/>. By using the content of this publication, you agree to be bound by the terms of this license. For attribution, translations, adaptations, and permissions, please read the provisions and terms of use at <https://www.adb.org/terms-use#openaccess>.

This CC license does not apply to non-ADB copyright materials in this publication. If the material is attributed to another source, please contact the copyright owner or publisher of that source for permission to reproduce it. ADB cannot be held liable for any claims that arise as a result of your use of the material.

Please contact pubsmarketing@adb.org if you have questions or comments with respect to content, or if you wish to obtain copyright permission for your intended use that does not fall within these terms, or for permission to use the ADB logo.

Corrigenda to ADB publications may be found at <http://www.adb.org/publications/corrigenda>.

Note:

In this publication, “B” refers to Thailand baht and “\$” refers to United States dollars.

ABSTRACT

This paper investigates the unintended consequences of size-dependent regulations in small and medium-sized enterprise (SME) promotion policies. We use data from all registered Thai firms to analyze the effects of introducing a revenue cap in the SME tax incentive program qualification. Our study shows a marked bunching of firms just below the cap, illustrating tax salience. We provide evidence suggesting that the bunching is due to real operation responses. A difference-in-differences analysis indicates that eligible firms just under the threshold exhibit a significant decline in revenue growth compared to those just above it. This adverse effect is more pronounced among firms with lower pre-policy profitability. We also document substantial negative effects on investment and profitability but find no significant impact on firm survival—challenging the assertion that government support enhances SME survival. Our findings also indicate a marked reduction in the presence of large firms, suggesting broader implications on firm size distribution in the economy. We highlight the double-edged nature of size-based SME policies: while intended to help smaller businesses, the measures may inadvertently suppress growth for firms near the threshold and potentially create resource misallocation. This study underscores the need for a careful policy design that supports SMEs without impeding their potential for growth.

Keywords: size-dependent policy, SMEs, bunching, tax incentives, corporate tax

JEL codes: G3, H2, K3, L2, L5

We thank Ben Olken for his valuable suggestions. The paper also benefits from comments from participants at the 2020 Econometric Society World Congress, the ADBI Conference on SME Performance Under Uncertainty, the 80th Annual Congress of the International Institute of Public Finance, and the seminars at the University of Tokyo and ADB. The opinions expressed in this study are those of the authors and should not be attributed to Puey Ungphakorn Institute for Economic Research or the Bank of Thailand. This paper was previously circulated for comments under the title “Tax Incentives to Appear Small: Evidence from Thai Firms and Corporate Groups.”

1. INTRODUCTION

Governments around the world recognize the vital role that small and medium-sized enterprises (SMEs) play in economic growth, job creation, and innovation. There is a concerted effort to implement supportive policies that bolster the vitality and sustainability of SMEs. However, the practical execution of these policies presents a complex challenge, primarily due to the necessity of defining what constitutes an SME (Bergner et al., 2017). This definition, while seemingly straightforward, is crucial as it influences eligibility for support programs but is also inherently ad hoc. It introduces incentives that may not only shape firms' behavior in unexpected ways (Benedek et al., 2017; Tsuruta, 2020; Hosono, Hotei, and Miyakawa, 2023) but also potentially impact the distribution of firms across the economy and lead to resource misallocation, as suggested by Hsieh and Olken (2014) and Bachas et al. (2019).

Crafting SME criteria requires a delicate balancing act. On the one hand, the criteria must be sufficiently inclusive to ensure broad access to the intended support, making sure assistance is not overly burdensome to obtain. On the other hand, they must be specific enough to ensure that the assistance genuinely benefits small businesses, targeting the support to firms that need it most. Achieving this balance is fundamental to fostering an environment conducive to SME growth without inadvertently prompting adverse behavioral changes.

This study examines the implications of Thailand's implementation of a revenue-based threshold for SME tax incentives. We use administrative data containing annual financial statements from 2004 to 2017 encompassing the universe of registered firms in Thailand. Our analysis focuses on the introduction of the B30-million revenue cap as a criterion for the SME tax scheme in 2011.¹ This policy's distinct requirement—that firms must not have exceeded this revenue threshold in the past—along with its unanticipated nature, provides an exogenous policy

¹ The threshold is around \$900,000 using the average exchange rate during 2004–2017 (\$1 = B34.30). Note that the exchange rate for the baht ranged between B26.80 and B41.60 per dollar during that time.

shift. It facilitates the identification of the impacts of size-based regulation on SME growth and explores its broader implications on firm size distribution within the economy.

We first employ the bunching method developed by Kleven and Waseem (2013) to examine the salience of the tax regulation. We then utilize the difference-in-differences (DID) approach to investigate its effects on growth, investment, profitability, and survival. In addition, we examine the broader influence of the SME tax incentive on the presence of large firms.

For the DID analysis of the growth implications, the treatment group consists of firms slightly below the threshold in the year preceding the policy announcement (2010), specifically those with revenues of between B25 million and B30 million. In contrast, the control group includes firms just above this range, with revenues of between B30 million and B35 million. To ensure comparability between the treatment and the control groups, we focus only on firms whose revenues remained under the B30-million threshold in all preceding years (2004–2009). The key distinction between the two groups is their revenue position relative to the threshold in the year prior to the policy announcement, despite having similar past revenue.

It is crucial to underscore that the categorization of firms into treatment and control groups in our analysis is exogenous, based on whether a firm's revenue was above or below the threshold in the year before the policy was announced. To support our identification strategy, we conduct an event study estimation around the cap introduction. The results indicate that the estimated effects are much larger than the pre-trend coefficients and lie outside their 95% confidence intervals, supporting our identification strategy. Additionally, we include firm, year, and sector-year fixed effects to account for any unobserved factors that might influence the outcome variables.

We document three sets of empirical findings. First, we find that the cap introduction created a salient tax notch for SMEs. Specifically, we identify a strong response to the revenue cap, as indicated by a significant bunching just below the threshold that did not exist before the cap introduction. This bunching is mainly driven by firms with positive earnings before interest

and taxes (EBIT). In contrast, there is no bunching among firms with negative or zero EBIT, which have a weaker incentive to bunch. We also note the smooth distribution of the revenue-variable cost ratio around the notch and the persistence of significant bunching even when excluding firms reporting revenue in multiples of B1,000. This strongly suggests that a significant part of the observed effect is attributed to real operational response.

Second, our DID analysis reveals that although the SME tax incentive alleviates the tax burden, the associated revenue cap significantly hampers growth, investment, and profitability. The adverse effect on growth is more pronounced among firms with limited growth potential, suggesting that these firms might prefer retaining tax incentives for SMEs over pursuing expansion. We find no significant effect of the tax incentive on firm survival. This implies that the prevailing belief that government support for SMEs enhances their survival may not consistently hold true (OECD, 2021).

Finally, we illustrate the broader implications of the SME tax incentive. Our sector-province analysis indicates a marked reduction in the presence of large firms after the policy introduction. This suggests that the SME tax incentive may hinder the progression of SMEs into larger enterprises and significantly affect the economy's firm size distribution.

Overall, our findings highlight the critical need for a careful design of policies that intend to support SMEs. With the inherent challenges these entities face in competing with larger firms, government interventions may be necessary to establish a level playing field for fair competition. However, SME promotion policies can bring unintended consequences. Our research highlights the double-edged nature of such measures: while they provide short-term financial relief, they concurrently restrict business expansion and curtail longer-term potential. These policies may also cause a meaningful distortion in the structural composition of firms in the economy.

The remainder of this paper is organized as follows. Section 2 discusses related studies. Section 3 provides an institutional background of the policy. We describe the data used in the analysis of this study in Section 4. Sections 5, 6, and 7 discuss the empirical strategy and the

results for each of the bunching and difference-in-differences analyses. Section 8 concludes and discusses policy implications.

2. RELATED STUDIES

This study is directly related to literature that examines how size-dependent regulations influence firm size. Key theoretical contributions in this area include Keen and Mintz (2004), Gourio and Roys (2014), and Garicano et al. (2016). For instance, Garicano et al. (2016) show that France's size-dependent labor regulations have significant effects on productivity distribution.

Empirically, much focus has been on firm responses to thresholds or notches created by tax systems. Examples include bunching or other behavioral changes to avoid complying with value-added tax regulations (Onji, 2009; Harju et al., 2019; Liu et al., 2021; Muthitacharoen et al., 2021), to benefit from lower tax rates in the corporate income tax system (Bachas and Soto, 2021), and to stay below the enforcement radar (Almunia and Lopez-Rodriguez, 2018). Within this domain, studies pertinent to our work include Tsuruta (2020) and Hosono et al. (2023), both investigating responses to changes in Japan's capital-based threshold for SMEs. Tsuruta (2020) investigates how Japanese firms increase capital in response to relaxed capital-based SME thresholds. The study is significant for its finding that firms tend to restrain their capital increase—a strategic decision to maintain their SME status. In a similar Japanese context, Hosono et al. (2023) examine firms downsizing to benefit from tax exemptions under specific thresholds. The findings provide pivotal insights, indicating that size-dependent tax policies can significantly influence firm growth, not only through direct incentives to preserve SME status but also via the financial constraint channel.

While these studies provide valuable insights, there remains a significant gap in understanding the effects of SME promotion policies, especially those based on revenue or turnover—a regulation commonly observed in European Union and Organisation for Economic Co-operation and Development (OECD) countries (OECD, 2015; Bergner et al., 2017). There are

at least two reasons why firms may react to a turnover-based SME policy in a different manner from the capital-based thresholds considered in Tsuruta (2020) and Hosono et al. (2023). First, adjustments in capital stock are typically associated with strategic planning and structural changes, whereas revenue responses are more immediate. Turnover-based SME regulations might prompt more pronounced responses than those influenced by capital-based criteria. Second, under turnover-based thresholds, particularly those accounting for historical revenue, firms face the challenge of balancing growth aspirations with the risk of permanently losing SME benefits. This complex scenario calls for a focus on long-term sustainability and careful progression rather than immediate reactions to policy shifts. The goal of this paper is to address this gap in the literature by studying the impacts of a turnover-based SME policy on firms' growth.

We extend this body of literature in two ways. First, our analysis provides clear identification strategies that indicate the impact of introducing a turnover-based cap on growth and investment. Our study demonstrates that turnover-based thresholds, while seemingly straightforward, can have profound implications on both growth and investment. To provide context, Tsuruta (2020) finds that relaxing capital stock criteria for SMEs led to a 0.15% increase in asset growth, against the average asset growth of 1.9% during their study period. In contrast, our findings indicate that introducing a revenue cap triggers a 6.0 percentage point reduction in fixed asset growth, representing 73.4% of the treated pre-policy mean. This stark divergence underscores the profound effects that turnover-based thresholds can have on firm behavior.

Second, our study expands upon the insights of Hsieh and Olken (2014), who observed that size-dependent regulations in India, Indonesia, and Mexico did not lead to economically meaningful bunching around thresholds, while acknowledging that the impact might vary across firms. We contribute to this discourse by illustrating that, in Thailand, the size-dependent tax regulation profoundly affects firm growth, especially for those with lower growth potential. This consequently influences the presence of large firms in the economy. Our findings underscore the

potential of a size-dependent tax policy to significantly shape the structural composition of the business landscape and to cause resource misallocation (Bachas et al., 2019).

3. POLICY BACKGROUND

All registered Thai firms are subject to corporate income taxation, generally levied as a flat-rate tax on net profit. In 2008, the government initiated a preferential tax scheme targeted at SMEs. To be eligible, a firm's registered capital must not exceed B5 million. This scheme, aimed at alleviating financial strains and enhancing survival and competitiveness, provides SMEs with reduced tax rates on their taxable income. The structure of this preferential tax scheme is progressive, with tax rates starting at 0% and gradually increasing as a function of net profit.

In 2011, the SME tax scheme underwent a significant revision in its qualification criteria. The government introduced an annual revenue cap of B30 million, coupled with the requirement that a firm's revenue must not have exceeded this limit in any previous year. This created an important tax notch within the corporate income tax system. It marks a departure from the earlier criteria based solely on registered capital levels, which were relatively easier to fulfill. Announced in 2011 and set to take effect in 2012, the policy change might have prompted some firms to adjust their behavior immediately following the announcement in 2011.

To demonstrate the magnitude of the tax incentive for SMEs, consider the tax liabilities for a hypothetical firm whose profit matches the mean of the baseline sample (B1.8 million). Prior to the policy change, from 2008 to 2010, this firm consistently faced an annual tax liability of B327,500. However, following the 2011 policy change, the firm's tax burden averaged approximately B240,000, during the 2012-2018 period.²

² Table A1 in the appendix provides the details about the SME tax incentive scheme and the tax burden for the hypothetical firm.

From the government's perspective, including both current and historical revenue considerations in the revised policy enables it to more accurately target beneficiaries and ensure that benefits are directed towards firms that genuinely need them. For SMEs, this policy shift compels them to strike a critical balance between growth potential and the risk of permanently losing the benefits of their SME status. This poses significant challenges and potentially contradicts the government's initial intentions.

4. DATA

This study analyzes corporate profile and financial statements (CPFS) data of the universe of registered Thai firms from 2004 to 2017. Every registered firm in Thailand is legally required to submit its annual financial statements to the Department of Business Development. The CPFS database has various financial information, including assets, liabilities, revenues, and expenses. It also contains additional firm information such as registration year, registration type, operation status, and primary industry. We exclude holding companies from our analysis as they do not directly engage in production activities.³

Table 1 shows summary statistics for each analysis performed later in this study: the main bunching analysis (Panel A), and the difference-in-differences analyses for revenue growth, fixed assets growth, profitability, survival likelihood, tax burden, and presence of large firms (Panels B–G).

³ For more details, see Banerghansa et al. (2019).

Table 1. Descriptive Statistics

Variables	N	Mean	Median	Standard Deviation
<i>Panel A: Bunching Analysis</i>				
Revenue	599,627	26,160,208	24,442,722	8,322,355
<i>Panel B: Difference-in-differences Analysis for Revenue Growth</i>				
Revenue growth	74,321	0.035	0.013	1.059
Treat (0/1)	74,321	0.412	0.000	0.492
Post (0/1)	74,321	0.679	1.000	0.467
Age	74,321	14.101	12.000	9.122
<i>Panel C: Difference-in-differences Analysis for Fixed Assets Growth</i>				
Fixed assets growth	71,440	-0.037	-0.076	1.295
Treat (0/1)	71,440	0.408	0.000	0.491
Post (0/1)	71,440	0.686	1.000	0.464
Age	71,440	14.306	12.000	9.117
<i>Panel D: Difference-in-differences Analysis for Profitability</i>				
Return on assets	65,592	0.081	0.067	0.243
Treat (0/1)	65,592	0.409	0.000	0.492
Post (0/1)	65,592	0.663	1.000	0.473
Age	65,592	13.850	12.000	9.146
<i>Panel E: Difference-in-differences Analysis for Tax Burden</i>				
Tax burden	72,303	0.024	0.010	0.131
Treat (0/1)	72,303	0.414	0.000	0.492
Post (0/1)	72,303	0.667	1.000	0.471
Age	72,303	14.132	12.000	9.142
<i>Panel F: Difference-in-differences Analysis for Survival</i>				
Survival	76,726	0.886	1.000	0.318
Treat (0/1)	76,726	0.413	0.000	0.492
Post (0/1)	76,726	0.679	1.000	0.467
Age	76,726	14.013	12.000	9.174
<i>Panel G: Difference-in-differences Analysis for Presence of Large Firms</i>				
# firms > B35 million (log)	17,540	1.723	1.386	1.571
# firms > B40 million (log)	16,950	1.703	1.386	1.558
# firms > B45 million (log)	16,441	1.684	1.386	1.547
# firms > B50 million (log)	15,942	1.671	1.386	1.536
Exposure	18,174	0.830	1.000	0.251
Post (0/1)	18,174	0.691	1.000	0.462

Note: The table describes summary statistics of data used in the analyses. Profitability is defined as EBIT divided by lagged total assets and is winsorized at 1%. Tax burden is defined as tax liability divided by lagged total assets.

Source: Authors' calculations.

5. BUNCHING ANALYSIS

5.1 Measuring Bunching

Following Kleven and Waseem (2013), we measure bunching at the SME tax notch by comparing the actual distribution to the counterfactual distribution in the absence of the tax notch. This can be written as

$$b = \frac{\sum_{j=y_L}^{y^*} (c_j - \hat{c}_j)}{\frac{\sum_{j=y_L}^{y^*} \hat{c}_j}{N_j}}, \quad (1)$$

where y^* is the SME threshold, y_L is the lower limit of the excluded region, c_j is the actual number of firms in each revenue bin j (width of B100,000), \hat{c}_j is the counterfactual number in each revenue bin in the absence of the tax notch, and N_j is the number of bins within the interval $[y_L, y^*]$. The bunching parameter b reflects the size of excess bunching relative to the average height of the counterfactual distribution to the left of the notch.

The counterfactual distribution of reported revenue is estimated by fitting a 5th degree polynomial equation and excluding the areas around the notch where bunching occurs.⁴ The equation can be written as

$$c_j = \sum_{i=0}^p \beta_i (z_j)^i + \sum_{i=z_L}^{z_U} \gamma_i \mathbf{1}[z_j = i] + v_j, \quad (2)$$

where c_j denotes the number of firms in bin j , z_j denotes the revenue level of bin j , p denotes the polynomial order, $[z_L, z_U]$ denotes the excluded region, and v_j denotes the error term. The predicted value (\hat{c}_j) from this equation represents the counterfactual distribution that is used in equation (1). Note that the lower limit of the excluded region (y_L) is set where the bunching begins, and the upper limit is estimated in an iterative procedure to ensure that the excess mass below the notch equals the missing mass above.

⁴ We also estimate the polynomial equations of the 4th, 6th, and 7th degree. The results are consistent and available upon request.

5.2 Bunching at the Tax Notch

To determine whether firms responded to the SME tax notch, Panels A–B of Figure 1 show histograms of revenue around the SME threshold with a bin width of B100,000. There is a sharp bunching just below the B30-million threshold during the post-policy period (2012–2017), which did not exist before the introduction of the tax incentive in 2012. These findings suggest that firms responded strongly to the SME tax incentives.

Bunching estimates and their corresponding standard errors for all sectors and each major sector are available in the appendix (Table A2). The overall bunching estimate is 2.62, i.e., the total excess bunching mass is approximately 2.62 times the average height of the counterfactual over the excluded range. While the bunching is large and statistically significant across all major sectors, it appears to be most pronounced in retail. One explanation is that the self-enforcement mechanism in the value-added tax system becomes less effective at the retail stage, providing a chance to manipulate reported sales.⁵

We also find that the bunching response is mainly driven by firms with positive EBIT, as shown in Panels C–D of Figure 1. There is no bunching among firms with negative or zero EBIT, which have no incentive to bunch. This result suggests that the response is consistent with the financial incentive for firms to respond to the new tax scheme.

Our analysis suggests that a significant portion of the observed bunching could be attributed to real operational responses rather than mere underreporting. We base this conclusion on two key observations.

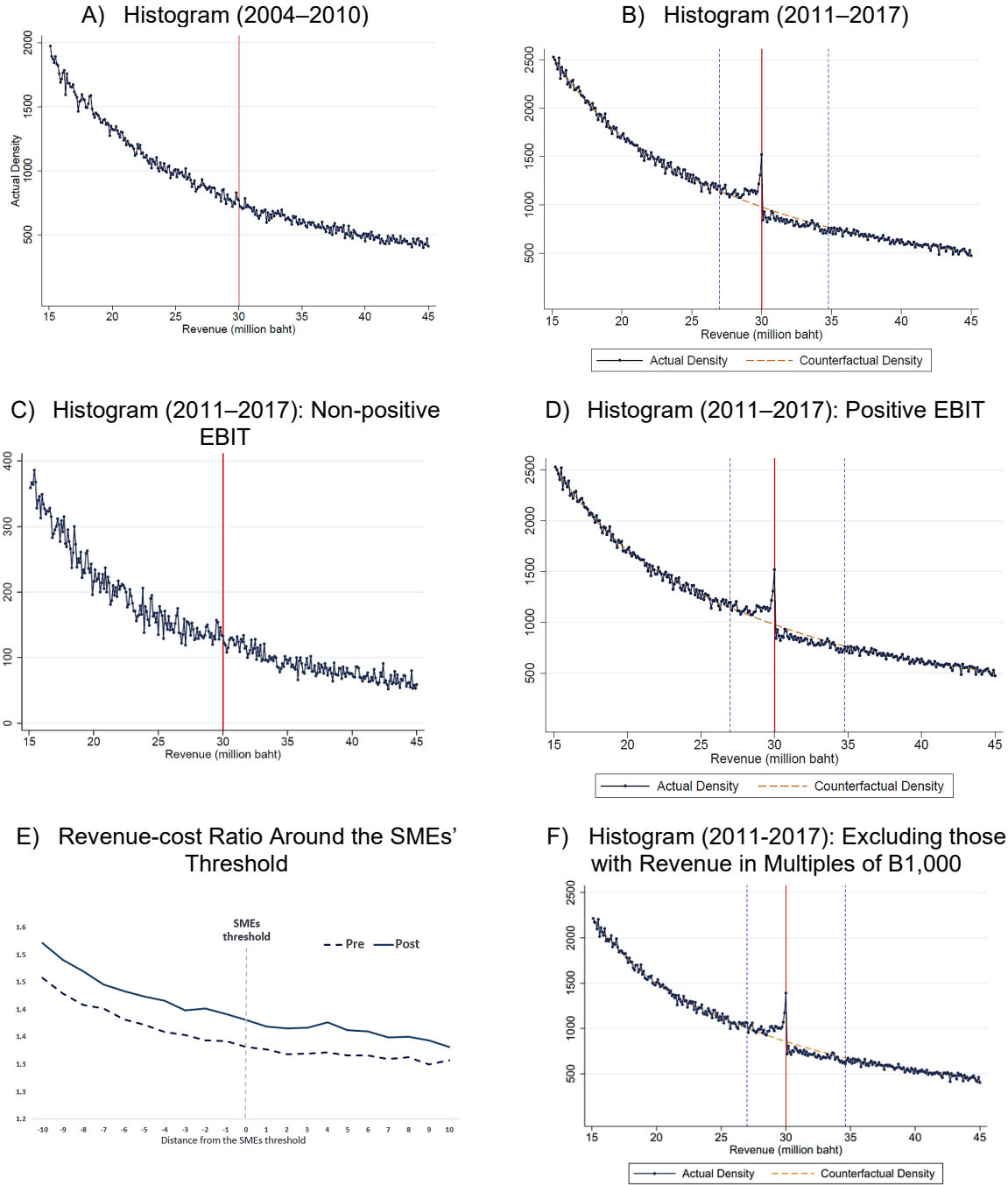
First, to address potential concerns about tax evasion through rounded revenue reporting (Aghion et al., 2024), we specifically exclude firms reporting revenue as exact multiples of B1,000. As shown in Panel F of Figure 1, the significant bunching below the threshold persists (estimate of 2.84, standard error 0.02). This reinforces the presence of genuine operational responses.

⁵ See, for example, Pomeranz (2015) and Naritomi (2019).

Second, we examine the revenue-cost ratio, defined as total revenue divided by cost of goods and services sold. Such cost includes salary expense which is relatively difficult to misreport due to withholding taxes. If the bunching were due to real operation response, we would expect firms to lower their variable inputs proportionally, leading to a smooth distribution of the revenue-cost ratio around the SME tax notch. Conversely, if the bunching resulted from non-operational factors, such as underreporting revenue without corresponding adjustments in reported costs, the revenue-cost ratio would likely show discrepancies near the notch, as firms might reduce revenue reporting without reducing deductible input costs. Panel E of Figure 1 illustrates the average revenue-cost ratio of SMEs in bins of B2 million on both sides of the threshold. Although some firms may still proportionally reduce reported costs to underreport revenue, the smooth distribution of the revenue-cost ratio around the notch suggests that a substantial portion of the observed effect stems from real operational responses.

While these findings provide compelling evidence for real operational responses, we acknowledge that they are not conclusive. Some firms may underreport revenue while avoiding the use of rounded figures or proportionally reducing reported costs to match their underreported revenue. Nonetheless, our analysis strongly suggests that real operational changes significantly contribute to the observed bunching behavior. This aligns with our DID findings in the next section, which show that the policy change resulted in reduced investment in fixed assets.

Figure 1: Bunching and Persistence Around the SME Threshold



Note: Panels A and B show the histograms of firms' revenues by pooling data of all firms from 2004 to 2010 and from 2011 to 2017, respectively. Panels C and D focus on the 2011–2017 period and segment firms by profitability. For Panels A–D, the bin width is B100,000. The red vertical line denotes the SME threshold of B30 million. The blue vertical dashed line denotes the lower bound and the upper bound of the excluded region (B27 million–B34.8 million). The orange dashed line is the counterfactual density fitted by excluding bins around the SME notch. Panel E shows the average revenue-input ratio of SMEs in bins of B2 million on both sides of the threshold before and after the revenue cap introduction. The revenue-input ratio is defined as total revenue divided by cost of all goods and services. Panel F shows the histograms of firms' revenue by pooling data from 2011 to 2017 when excluding those reporting revenue in multiples of B1,000.

Source: Authors' calculations.

6. IMPLICATIONS ON GROWTH

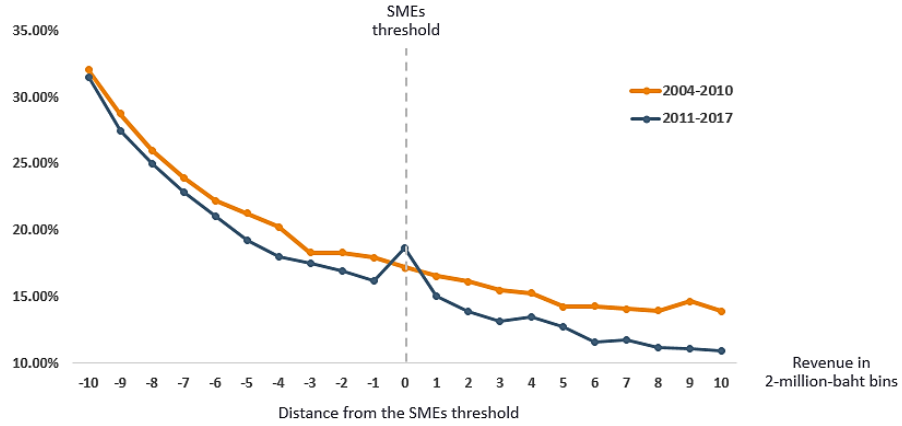
Having established the salience of the SME tax incentive and its potential real response, we further analyze how the size-dependent policy has affected firm growth. This section first illustrates the persistence of firm behavior around the threshold. It then uses a more robust framework to demonstrate the effects of the SME promotion policy on revenue growth, investment, profitability, and survival.

6.1 Persistence

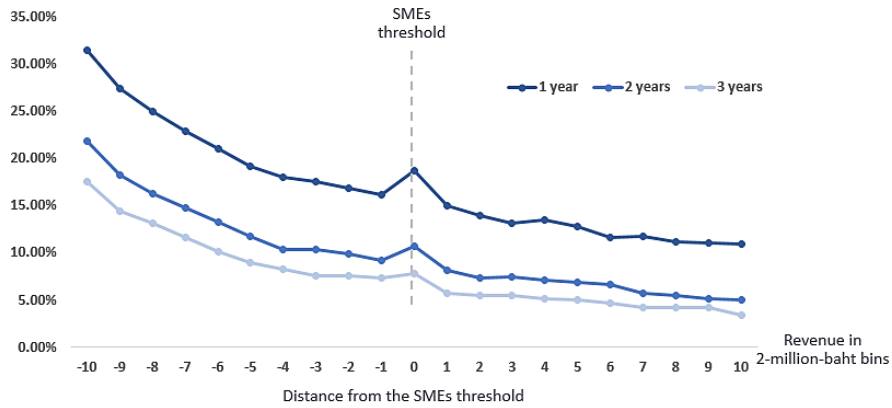
Panel A of Figure 2 shows the one-year persistence rates of firm size on both sides of the threshold, comparing before and after the revenue cap introduction. The persistence rate is defined as the proportion of firms that remain in the same revenue bin from one year to the next, where the width of each bin is B2 million. During 2012–2017, the persistence rate in the bin just below the threshold (B28 million–B30 million) is noticeably larger than that in the other bins around the threshold. This pattern is not observed before the SME tax incentive introduction. We also find that this pattern of persistence rate remains even after a few years, as shown in Panel B of Figure 2. This finding implies that firms attempted to stay below the tax notch for multiple years.

Figure 2: Growth Implications of the Size-dependent SME Promotion Policy

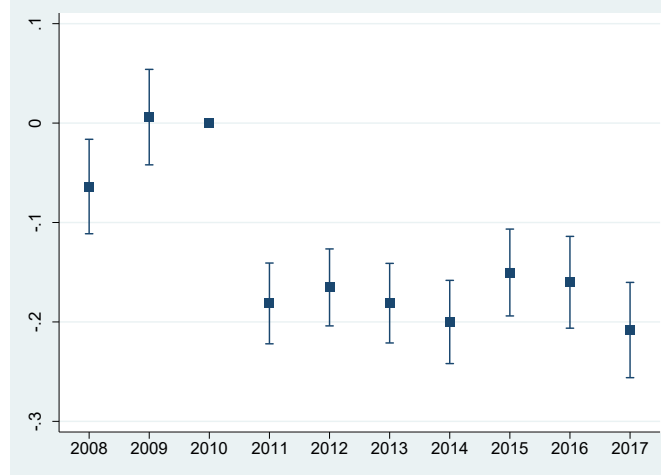
A) Persistence Rate at the Threshold: 1 Year (2004–2010 vs. 2011–2017)



B) Persistence Rate at the Threshold: 1, 2, and 3 Years (2012–2017)



C) Event Study Estimation for the Effects of the Size-dependent SME Promotion Policy on Revenue Growth



Note: Panels A and B illustrate the persistence rate, defined as the probability that a firm remains in the same B2-million revenue bin from one year to another. Panel C shows the event study estimation for the effects of the size-dependent SME promotion policy on revenue growth. The year immediately before the policy change (2010) is omitted to serve as the base year. Error bars indicate 95% confidence intervals.

Source: Authors' calculations.

6.2 Revenue Growth, Investment, Profitability, Survival, and Tax Burden

Next, we employ the difference-in-differences framework to evaluate the impacts of the size-dependent promotion policy on firms' revenue growth. Given that the tax incentive was initially implemented in 2008, and the revenue requirement was announced in 2011, we designate 2008–2010 as the pre-policy period and 2011–2017 as the post-policy period. We categorize firms into treatment and control groups based on their revenue proximity to the threshold in 2010, the year preceding the policy announcement. Specifically, in our baseline analysis, the treatment group includes firms with revenues of B25 million–B30 million in 2010, while the control group comprises those with revenues of B30 million–B35 million. To enhance comparability between these two groups, we confine our analysis to firms that 1) existed throughout the entire pre-policy period and 2) consistently reported revenues not exceeding the B30-million threshold during all observed years prior to 2010 (2004–2009). We also conduct sensitivity analyses by adjusting the revenue range to B20 million–B40 million and B27 million–B33 million, examining the effects within the wider and narrower bands, respectively.⁶

The estimation equation can be written as:

$$y_{it} = \alpha_0 + \alpha_1 Post_t + \alpha_2 Post_t \cdot Treat_i + \alpha_3 Age_{it} \\ + FirmFE + YearFE + Sector \times YearFE + \varepsilon_{it}, \quad (3)$$

where y_{it} denotes revenue growth defined as $\log(Revenue_{it}) - \log(Revenue_{i,t-1})$, $Post_t$ denotes a dummy variable that equals one for the years including and after 2011 and equals zero otherwise, $Treat_i$ denotes a dummy variable that equals one for treated firms and zero for control firms, and Age_{it} denotes firm age. We use robust standard errors clustered at the firm level. Under the identification assumption that unobserved determinants of revenue growth (ε_{it}) do not change differentially on average across the treatment and control groups around the reform, the

⁶ Note that we do not set criteria based on registered capital as this information is only available for 2017. Nonetheless, in that year, over 90% of firms with revenue of B30 million or less had registered capital of B5 million or less.

coefficient α_2 represents the causal effect of the SME revenue cap on the revenue growth. The estimation period ranges from 2008 to 2017.

It is crucial to emphasize that our treatment and control group assignments are exogenous, determined by whether a firm's revenue was above or below the threshold in the year preceding the threshold policy announcement. To support our identification strategy, we conduct an event study estimation for the effects of the revenue cap introduction (Panel C of Figure 2) on revenue growth. The year immediately before the policy change (2010) is omitted to serve as the base year. Notably, the pre-trend coefficient for 2009 is not significantly different from zero. Although the 2008 pre-trend coefficient is statistically significant, its magnitude is relatively modest. Crucially, all estimated effects are much larger than the pre-trend coefficients and fall outside the 95% confidence intervals of these pre-trends. This supports our identification strategy, suggesting that any potential bias from pre-trends is likely small (de Chaisemartin and D'Haultfoeuille, 2023).

Our difference-in-differences analyses illustrate that the revenue cap adversely affected firm growth. As shown in Table 2, following the cap introduction, revenue growth for treated firms declined by 20.2 percentage points relative to control firms (Column 1 of Table 2). From an economic standpoint, this decrease is noteworthy: it represents 47.1% of the treatment's pre-policy growth rate. Our findings are generally robust to alternative model specifications. The coefficient for the interaction term, $Post_t \cdot Treat_i$, is negative and statistically significant throughout the model specifications where we progressively add firm fixed effects, year fixed effects, and sector-year fixed effects to the model (Table A3 in the appendix).

The growth impact may differ across firms, depending on their business potential. Firms with limited potential might rely heavily on the SME tax incentives to survive, which could in turn limit their ambition for growth as they would like to remain eligible for the tax benefit. Conversely, firms with potential to grow far beyond the threshold are less likely to constrain their growth as the benefit from the incentive is less than the opportunity cost of not growing.

We investigate this hypothesis by categorizing firms into two groups based on their pre-policy pre-tax return on assets (ROA). Specifically, we compute the average pre-tax ROA during the pre-policy period (2008–2010), defined as the ratio of earnings before interest and tax (EBIT) to total assets. We then classify firms into low and high ROA groups based on the industry median value of the average pre-tax ROA.

Our findings indicate that the detrimental growth effects associated with the SME promotion policy are more pronounced among firms within the low ROA category. The revenue growth of low ROA firms in the treatment group declines by 30.0 percentage points compared to their counterparts in the control group (Columns 2–3 of Table 2). This effect is substantially smaller, at 14.2 percentage points, for high ROA firms. Relative to the pre-policy growth rate of the treatment group, these declines correspond to 66.9% and 39.8%, respectively.

Our analysis suggests broader implications of the policy beyond merely curtailing revenue growth. After the 2011 policy introduction, we find a decline in the growth rate of fixed assets by 8.5 percentage points for firms in the treatment group, compared to those in the control group (Column 4 of Table 2). This reduction corresponds to 82.4% of the treatment group's pre-policy growth rate. The adverse impact on investment aligns with the real operation response discussed earlier.

In addition to the effects on growth, we apply the same difference-in-differences framework and explore the impact of the revenue cap on profitability, firm survival, and tax burden. We define profitability as earnings before tax and interest divided by lagged total assets. Our finding indicates that, after the introduction of the policy, profitability for treated firms declined 1.4 percentage points relative to those in the control group (Column 5 of Table 2). This effect is significant at the 1% level. This decline represents 10.8% of the treatment group's pre-policy profitability.

We also examine the ratio of tax burden to lagged total asset. The results show that the revenue cap leads to a decrease in the tax burden for treated firms by 0.6 percentage points relative to the control group (Column 6 of Table 2). The effect is statistically significant and represents 16.2% of the treatment group's pre-policy tax burden. However, we find no significant effect on survival, measured as the likelihood of continuing operation into the subsequent year (Column 7 of Table 2). This finding is noteworthy as it challenges the common argument that government support for SMEs enhances their survival. Our results provide no evidence to substantiate this claim.

Table 2. Effects of the Size-Dependent Small and Medium-Sized Enterprise Promotion Policy on Revenue Growth, Investment, Profitability, Survival, and Tax Burden

	(1)	(2)	(3)	(4)	(5)	(6)	(7)
	Dep Var: Revenue Growth			Dep Var: Fixed Assets Growth	Dep Var: EBIT (Divided by Lagged Assets)	Dep Var: Tax (Divided by Lagged Assets)	Dep Var: Next-year Survival Likelihood
	Baseline	Low Return on Assets	High Return on Assets				
$Post_t$	-1.043 (1.446)	-4.005* (2.069)	-0.582 (1.003)	0.414 (1.186)	-0.206 (0.198)	0.064 (0.107)	7.506*** (0.470)
$Post_t \cdot Treat_i$	-0.202*** (0.018)	-0.300*** (0.043)	-0.142*** (0.021)	-0.085*** (0.022)	-0.014*** (0.005)	-0.006*** (0.002)	-0.002 (0.003)
Age_{it}	0.006 (0.155)	0.162 (0.175)	0.030 (0.115)	0.028 (0.101)	0.029 (0.026)	-0.006 (0.012)	-0.948*** (0.052)
Observations	74,321	17,537	40,123	71,440	65,592	72,303	76,726
R-squared	0.058	0.094	0.065	0.016	0.041	0.021	0.734
Number of firms	8,207	1,913	4,361	7,973	8,213	8,212	8,215
Firm fixed effect	YES	YES	YES	YES	YES	YES	YES
Year fixed effect	YES	YES	YES	YES	YES	YES	YES
Sector-year fixed effect	YES	YES	YES	YES	YES	YES	YES

EBIT = earnings before interest and tax.

Note: This table presents the estimated impacts of the size-dependent SME promotion policy. Sample includes firms that 1) had revenue within the range of B25 million–B30 million in 2010, 2) existed throughout the entire pre-policy period, and 3) consistently reported revenues not exceeding the B30-million threshold during all observed years prior to 2010 (2004–2009). $Post_t$ is a dummy variable that equals one for 2011–2017, and zero for 2008–2010. $Treat_i$ is a dummy variable that equals one for firms with revenues within the range of B25 million–B30 million in 2010, and zero for those with revenues within the range of B30 million–B35 million in 2010. $Post_t \cdot Treat_i$ is the interaction variable between $Post_t$ and $Treat_i$. Columns 1–3 present the impacts on revenue growth. Columns 4–7 present the estimated impacts on fixed assets growth, profitability, tax burden, and survival, respectively. Standard errors are heteroscedasticity-robust and clustered at firm level. Numbers in parentheses indicate standard error. ***, **, and * denote significance at 1%, 5%, and 10%, respectively.

Source: Authors' calculations.

Finally, we illustrate the robustness of our findings against variations in the threshold proximity. Columns 1–5 of Table 3 display the regression result where the treatment group comprises firms with 2010 revenues of B20 million–B30 million, while the control group consists of those with revenues of B30 million–B40 million. The results generally align with our baseline results. Following the revenue cap introduction, the treatment group shows a significant decline in revenue growth, investment, and profitability relative to the control group. The effect on survival is small, while the effect on the tax burden is not significant. This consistency also generally holds when we tighten the range around the threshold to B27 million–B33 million, as shown in Columns 6–10 in Table 3.

These findings altogether demonstrate that while the tax incentive may alleviate the tax burden, the accompanying revenue cap effectively encourages firms to maintain their SME status. This, in turn, significantly influences their economic behaviors. SMEs restrict their revenue growth to adhere to the cap, which leads to decreased investment and profitability. This tax incentive has minimal impact on their survival probability. This underscores the dual nature of such policies—they provide short-term financial relief but also constrain business expansion and limit longer-term potential.

Table 3. Effects of the Size-Dependent Tax Policy for Small and Medium-Sized Enterprises: Robustness Test (Different Assumptions About the Distance Proximity to the Threshold)

	(1)	(2)	(3)	(4)	(5)	(6)	(7)	(8)	(9)	(10)
	Wider Revenue Range: B20 million–B40 million					Narrower Revenue Range: B27 million–B33 million				
Dep. Var.	Revenue Growth	Fixed Assets Growth	EBIT (Divided by Lagged Assets)	Tax Burden (Divided by Lagged Assets)	Survival Probability	Revenue Growth	Fixed Assets Growth	EBIT (Divided by Lagged Assets)	Tax Burden (Divided by Lagged Assets)	Survival Probability
$Post_t$	-0.413 (0.685)	0.013 (0.665)	-0.017 (0.112)	0.159 (0.125)	6.744*** (0.433)	-1.397 (2.233)	1.634 (1.870)	0.030 (0.207)	0.076 (0.157)	-0.227 (1,598.636)
$Post_t \cdot Treat_i$	-0.159*** (0.012)	-0.060*** (0.015)	-0.011*** (0.003)	-0.032 (0.021)	-0.003* (0.002)	-0.233*** (0.025)	-0.101*** (0.029)	-0.010 (0.007)	-0.005** (0.003)	-0.002 (0.004)
Age_{it}	-0.014 (0.079)	-0.007 (0.070)	0.013 (0.013)	-0.015 (0.013)	-0.864*** (0.047)	-0.047 (0.236)	-0.017 (0.083)	-0.001 (0.028)	-0.006 (0.018)	-0.091 (179.269)
Observations	161,689	155,032	142,849	157,308	166,836	42,615	41,011	37,624	41,480	44,021
R-squared	0.050	0.011	0.034	0.003	0.731	0.070	0.022	0.057	0.034	0.736
Number of firms	17,846	17,319	17,856	17,853	17,858	4,716	4,587	4,719	4,719	4,721
Firm fixed effects	YES	YES	YES	YES	YES	YES	YES	YES	YES	YES
Year fixed effects	YES	YES	YES	YES	YES	YES	YES	YES	YES	YES
Sector-year fixed effects	YES	YES	YES	YES	YES	YES	YES	YES	YES	YES

EBIT= earnings before interest and taxes.

Note: This table presents the robustness test on different assumptions about the distance proximity to the threshold. Sample includes firms that 1) had revenue within the range of B25 million–30 million in 2010, 2) existed throughout the entire pre-policy period, and 3) consistently reported revenues not exceeding the B30-million threshold during all observed years prior to 2010 (2004–2009). $Post_t$ is a dummy variable that equals one for 2011–2017, and zero for 2008–2010. For columns 1–5, $Treat_i$ is a dummy variable that equals one for firms with revenues within the range of B20 million–B30 million in 2010, and zero for those with revenues within the range of B30 million–B40 million in 2010. For columns 6–10, $Treat_i$ is a dummy variable that equals one for firms with revenues within the range of B27 million–B30 million in 2010 and equals zero for those with revenues within the range of B30 million–B33 million in 2010. $Post_t \cdot Treat_i$ is the interaction variable between $Post_t$ and $Treat_i$. Standard errors are heteroscedasticity-robust and clustered at firm level. Numbers in parentheses indicate standard error. ***, **, and * denote significance at 1%, 5%, and 10%, respectively.

Source: Authors' calculations.

7. IMPLICATIONS FOR THE PRESENCE OF LARGE FIRMS

A crucial aspect of the SME tax regulation is its potential effect on the distribution of firm sizes in the economy. Our investigation extends to examining whether this regulation acts as a deterrent against the presence of large firms. We conduct our analysis at the ISIC2-province level. Our identification is based on the policy exposure, defined as the revenue share of firms that were eligible for the SME scheme in the year preceding the policy announcement (2010). We consider four outcome variables: (log of) number of firms larger than B35 million, B40 million, B45 million, and B50 million. The equation can be written as:

$$y_{it} = \alpha_0 + \alpha_1 Post_t + \alpha_2 Exposure_i + \alpha_3 Post_t \cdot Exposure_i + UnitFE + YearFE + Sector \times YearFE + \varepsilon_{it}, \quad (4)$$

where y_{it} denotes the outcome variable defined above at the ISIC2-province level, $Post_t$ denotes a dummy variable that equals one for the years including and after 2011 and equals zero otherwise, and $Exposure_i$ denotes the policy exposure variable computed in the year prior to the policy announcement. The estimation period ranges from 2004 to 2017. We incorporate fixed effects for ISIC2-province units, years, and sector-year interactions.

Our findings indicate a pronounced negative effect of the SME policy on the proliferation of large firms. Specifically, a one-percentage point increase in the pre-policy SME share results in a 13.1% decline in the number of firms exceeding B35 million in revenue (Column 1 of Table 4). This effect amplifies for higher revenue levels (B40 million, B45 million, and B50 million), suggesting a consistent and monotonically increasing impact (Columns 2–4 of Table 4). This pattern of findings persists across both the manufacturing and service sectors (Columns 5–6 of Table 4) and is also observed when analyzing the share of the number of firms with revenues exceeding B50 million compared to all firms above B10 million (Column 7 of Table 4). These results underscore the unintended consequence of the SME policy potentially reshaping firm size distribution and, by extension, the structural composition of firms in the economy.

Table 4. Effects of the Size-Dependent Small and Medium-Sized Enterprise Promotion Policy on Revenue Growth on the Presence of Large Firms

Dep. Var. = Firm	(1)	(2)	(3)	(4)	(5)	(6)	(7)
Numbers (log)	Above B35 million	Above B40 million	Above B45 million	Above B50 million	Above B50 million (Manuf.)	Above B50 million (Service)	Share of Firms Above B50 million
$Post_t$	0.456*** (0.112)	0.438*** (0.122)	0.436*** (0.128)	0.391*** (0.112)	0.391*** (0.113)	0.505*** (0.104)	0.003 (0.055)
$Post_t \cdot Exposure_i$	-0.131*** (0.033)	-0.149*** (0.034)	-0.170*** (0.034)	-0.174*** (0.033)	-0.174*** (0.040)	-0.192** (0.084)	-0.042** (0.019)
Observations	17,540	16,950	16,441	15,942	9,013	4,862	23,237
R-squared	0.268	0.267	0.272	0.273	0.236	0.316	0.056
Unit fixed effect	YES	YES	YES	YES	YES	YES	YES
Year fixed effect	YES	YES	YES	YES	YES	YES	YES
Sector-year fixed effect	YES	YES	YES	YES	YES	YES	YES

Note: This table presents the estimated impacts of the size-dependent SME promotion policy on the presence of large firms. The analysis is at sector-province level. $Post_t$ is a dummy variable that equals one for 2011–2017 and equals zero for 2008–2010. $Exposure_i$ is the policy exposure variable computed in the year prior to the policy introduction.

$Post_t \cdot Exposure_i$ is the interaction variable between $Post_t$ and $Exposure_i$. Standard errors are heteroscedasticity-robust and clustered at the unit level (sector-province). Numbers in parentheses indicate standard error. ***, **, and * denote significance at 1%, 5%, and 10%, respectively.

Source: Authors' calculations.

8. CONCLUSION

This study examines the implications of size-dependent government regulation, focusing on Thailand's introduction of a B30-million revenue cap for SMEs in 2011. We illustrated how this policy, while designed to support SMEs, has led to unintended outcomes with broader implications on growth and firm size distribution. Our first key findings highlight the pronounced responses of firms to the revenue cap. We find a significant bunching of firms just below the threshold, primarily driven by those with positive EBIT. This suggests that the cap serves as a salient regulation, leading firms to adjust their behaviors accordingly. The impact is also persistent and remains for multiple years. Second, the regulation considerably impedes the growth and investment of firms positioned just below the threshold, with more pronounced effects on those with lower growth potential. It is important to note that this effect appears to primarily affect firms near the threshold, as our analysis does not extend to smaller firms below the cap. Finally, our findings suggest that the SME tax incentive may have reshaped firm size distribution within the Thai economy, particularly by diminishing the emergence of large enterprises after the policy's introduction. Altogether, our research sheds light on the critical implications of turnover-based SME regulations. It underscores the necessity of crafting policies that not only provide critical support to SMEs but also carefully avoid creating growth disincentives.

APPENDIX TABLES

Table A1. Small and Medium-Sized Enterprise Tax Incentive Scheme

Year	General Tax Rate (%)	SME Scheme		
		Registered Capital Requirement (B5 million)	Revenue Requirement (B30 million)	Illustrative Tax Liability for a Hypothetical Firm with Sample-mean Profit (Baht)
2004	30	-	-	540,000
2005	30	-	-	540,000
2006	30	-	-	540,000
2007	30	-	-	540,000
2008	30	Yes	No	327,500
2009	30	Yes	No	327,500
2010	30	Yes	No	327,500
2011	30	Yes	No (announced)	327,500
2012	23	Yes	Yes	311,500
2013	20	Yes	Yes	265,000
2014	20	Yes	Yes	265,000
2015	20	Yes	Yes	150,000
2016	20	Yes	Yes	150,000
2017	20	Yes	Yes	225,000
2018	20	Yes	Yes	225,000

SME = small and medium-sized enterprise.

Note: This table describes the SME tax incentive scheme from 2004 to 2018. During 2008–2011, firms were considered SMEs and qualified for the reduced tax rates if their registered capital did not exceed B5 million. Since 2012, SMEs must have registered capital of below B5 million and revenue not exceeding B30 million. The introduction of the B30-million revenue requirement was announced in 2011. The sample-mean profit is around B1.8 million.

Source: Authors' calculations.

Table A2. Bunching Estimates by Major Sectors (2011–2017)

	N	Bunching Estimate	Standard Error
All sectors	340,837	2.622	0.015
Manufacturing	108,139	2.747	0.032
Services	89,802	2.102	0.021
Wholesale	87,765	2.363	0.029
Retail	54,988	3.669	0.076

Note: This table shows the bunching estimates around the SME threshold for 2011–2017. The estimation methodology is based on Kleven and Waseem (2013).

Source: Authors' calculations.

Table A3. Effects of the Size-Dependent Small and Medium-Sized Enterprise Promotion Policy on Revenue Growth: Robustness Test (Incremental Inclusion of Fixed Effects)

Dep. Var. = Revenue Growth	(1) Adding Fixed Effects Incrementally	(2)	(3)	(4) Baseline
$Post_t$	-0.306*** (0.008)	-0.369*** (0.015)	-0.542* (0.312)	-0.413 (0.685)
$Post_t \cdot Treat_i$	-0.157*** (0.012)	-0.157*** (0.012)	-0.159*** (0.012)	-0.159*** (0.012)
Age_{it}				-0.014 (0.079)
Observations	161,690	161,690	161,689	161,689
R-squared	0.033	0.036	0.050	0.050
Number of firms	17,846	17,846	17,846	17,846
Firm fixed effect	YES	YES	YES	YES
Year fixed effect	NO	YES	YES	YES
Sector x year fixed effect	NO	NO	YES	YES

Note: This table presents the robustness test about the incremental inclusion of fixed effects. Sample includes firms that 1) had revenue within the range of B25 million-B30 million in 2010, 2) existed throughout the entire pre-policy period, and 3) consistently reported revenues not exceeding the B30-million threshold during all observed years prior to 2010 (2004–2009). $Post_t$ is a dummy variable that equals one for 2011–2017, and zero for 2008–2010. $Treat_i$ is a dummy variable that equals one for firms with revenues within the range of B25 million–B30 million in 2010, and zero for those with revenues within the range of B30 million–B35 million in 2010. $Post_t \cdot Treat_i$ is the interaction variable between $Post_t$ and $Treat_i$. Standard errors are heteroscedasticity-robust and clustered at firm level. Numbers in parentheses indicate standard error. ***, **, * denotes significance at 1%, 5%, and 10%, respectively.

Source: Authors' calculations.

REFERENCES

- Aghion, Philippe, Maxime Gravouelle, Matthieu Lequien, and Stefanie Stantcheva. 2024. Tax Simplicity or Simplicity of Evasion? Evidence from Self-Employment Taxes in France. National Bureau of Economic Research Working Paper No. 24049.
- Almunia, Miguel, and David Lopez-Rodriguez. 2018. Under the Radar: The Effects of Monitoring Firms on Tax Compliance. *American Economic Journal: Economic Policy* 10 (1): 1–38.
- Bachas, Pierre, Roberto N. Fattal Jaef, and Anders Jensen. 2019. Size-dependent tax enforcement and compliance: Global evidence and aggregate implications. *Journal of Development Economics* 140:203–222.
- Bachas, Pierre and Mauricio Soto. 2021. Corporate Taxation under Weak Enforcement. *American Economic Journal: Economic Policy* 13 (4): 36–71.
- Banternghansa, Chanont, Archawa Paweenawat, and Krislert Samphantharak. 2019. Understanding Corporate Thailand I: Finance. PIER Discussion Paper No. 112.
- Benedek, Dora, Nina Budina, Pragyan Deb, Borja Gracia, Sergejs Saksonovs, and Anna Shabunina. 2017. The Right Kind of Help? Tax Incentives for Staying Small. International Monetary Fund Working Paper No. 2017/139.
- Bergner, Sören Martin, Rainer Bräutigam, Maria Theresia Evers, and Christoph Spengel. 2017. The Use of SME Tax Incentives in the European Union. ZEW Discussion Paper No. 17-006.
- de Chaisemartin, Clément and Xavier D'Haultfoeuille. 2023. Difference-in-Differences for Simple and Complex Natural Experiments. Working Paper. Available at SSRN: <https://ssrn.com/abstract=4487202>.
- Garicano, Luis, Claire Lelarge, and John Van Reenen. 2016. Firm Size Distortions and the Productivity Distribution: Evidence from France. *American Economic Review* 106 (11): 3439–3479.

- Gourio, François and Nicolas Roys. 2014. Size-Dependent Regulations, Firm Size Distribution, and Reallocation. *Quantitative Economics* 5 (2): 377–416.
- Harju, Jarkko, Tuomas Matikka, and Timo Rauhanen. 2019. Compliance costs vs. tax incentives: Why do entrepreneurs respond to size-based regulations? *Journal of Public Economics* 173:139–164.
- Hosono, Kaoru, Masaki Hotei, and Daisuke Miyakawa. 2023. The Interaction of a Size-Dependent Tax Policy and Financial Frictions: Evidence from a Tax Reform in Japan. *Small Business Economics*, forthcoming.
- Hsieh, Chang-Tai and Benjamin A. Olken. 2014. The Missing ‘Missing Middle’. *Journal of Economic Perspectives* 28 (3): 89–108.
- Kleven, Henrik J. and Mazhar Waseem. 2013. Using Notches to Uncover Optimization Frictions and Structural Elasticities. *Quarterly Journal of Economics* 128 (2): 669–723.
- Liu, Li, Ben Lockwood, Miguel Almunia, and Eddy H. F. Tam. 2021. VAT Notches, Voluntary Registration, and Bunching: Theory and U.K. Evidence. *Review of Economics and Statistics* 103 (1): 151–164.
- Muthitacharoen, Athiphat, Wonma Wanichthaworn, and Trongwut Burong. 2021. VAT threshold and small business behavior: evidence from Thai tax returns. *International Tax and Public Finance* 28 (5): 1242–1275.
- Naritomi, Joana. 2019. Consumers as Tax Auditors. *American Economic Review* 109 (9): 3031–3072.
- OECD. 2015. *Taxation of SMEs in OECD and G20 Countries*, OECD Tax Policy Studies, No. 23, OECD Publishing, Paris, <https://doi.org/10.1787/9789264243507-en>.
- OECD. 2021. *OECD SME and Entrepreneurship Outlook 2021*, OECD Publishing, Paris, <https://doi.org/10.1787/97a5bbfe-en>.

- Onji, Kazuki. 2009. The response of firms to eligibility thresholds: Evidence from the Japanese value-added tax. *Journal of Public Economics* 93 (5–6): 766–775.
- Pomeranz, Dina. 2015. No Taxation without Information: Deterrence and Self-Enforcement in the Value Added Tax. *American Economic Review* 105 (8): 2539–2569.
- Tsuruta, Daisuke. 2020. SME Policies as a barrier to growth of SMEs. *Small Business Economics* 54 (4): 1067–1106.

The Double-Edged Sword

Unintended Consequences of Small and Medium-Sized Enterprise Promotion Policy

This paper uses data from registered Thai firms to analyze the effects of introducing a revenue cap in small and medium-sized enterprise (SME) tax incentive program qualification. It highlights the double-edged nature of size-based SME policies. While intended to help smaller businesses, this policy measure may inadvertently suppress growth for firms near the threshold and potentially create resource misallocation. It underscores the need for a careful policy design that supports SMEs without impeding their potential for growth.

About the Asian Development Bank

ADB is a leading multilateral development bank supporting inclusive, resilient, and sustainable growth across Asia and the Pacific. Working with its members and partners to solve complex challenges together, ADB harnesses innovative financial tools and strategic partnerships to transform lives, build quality infrastructure, and safeguard our planet. Founded in 1966, ADB is owned by 69 members—50 from the region.



ASIAN DEVELOPMENT BANK

6 ADB Avenue, Mandaluyong City

1550 Metro Manila, Philippines

www.adb.org