

Galaasen, Sigurd; Kostøl, Andreas Ravndal; Monras, Joan; Vogel, Jonathan

Working Paper

The Labor Supply Curve is Upward Sloping: The Labor Market Effects of Immigrant-Induced Demand Shocks

IZA Discussion Papers, No. 17936

Provided in Cooperation with:

IZA – Institute of Labor Economics

Suggested Citation: Galaasen, Sigurd; Kostøl, Andreas Ravndal; Monras, Joan; Vogel, Jonathan (2025) : The Labor Supply Curve is Upward Sloping: The Labor Market Effects of Immigrant-Induced Demand Shocks, IZA Discussion Papers, No. 17936, Institute of Labor Economics (IZA), Bonn

This Version is available at:

<https://hdl.handle.net/10419/320530>

Standard-Nutzungsbedingungen:

Die Dokumente auf EconStor dürfen zu eigenen wissenschaftlichen Zwecken und zum Privatgebrauch gespeichert und kopiert werden.

Sie dürfen die Dokumente nicht für öffentliche oder kommerzielle Zwecke vervielfältigen, öffentlich ausstellen, öffentlich zugänglich machen, vertreiben oder anderweitig nutzen.

Sofern die Verfasser die Dokumente unter Open-Content-Lizenzen (insbesondere CC-Lizenzen) zur Verfügung gestellt haben sollten, gelten abweichend von diesen Nutzungsbedingungen die in der dort genannten Lizenz gewährten Nutzungsrechte.

Terms of use:

Documents in EconStor may be saved and copied for your personal and scholarly purposes.

You are not to copy documents for public or commercial purposes, to exhibit the documents publicly, to make them publicly available on the internet, or to distribute or otherwise use the documents in public.

If the documents have been made available under an Open Content Licence (especially Creative Commons Licences), you may exercise further usage rights as specified in the indicated licence.

DISCUSSION PAPER SERIES

IZA DP No. 17936

**The Labor Supply Curve Is Upward
Sloping:
The Effects of Immigrant-Induced
Demand Shocks**

Sigurd Galaasen
Andreas Kostøl
Joan Monras
Jonathan Vogel

MAY 2025

DISCUSSION PAPER SERIES

IZA DP No. 17936

The Labor Supply Curve Is Upward Sloping: The Effects of Immigrant-Induced Demand Shocks

Sigurd Galaasen

Norges Bank

Andreas Kostøl

BI Norwegian Business School and IZA

Joan Monras

UPF, CREI, BSE, CEPR and IZA

Jonathan Vogel

UCLA and NBER

MAY 2025

Any opinions expressed in this paper are those of the author(s) and not those of IZA. Research published in this series may include views on policy, but IZA takes no institutional policy positions. The IZA research network is committed to the IZA Guiding Principles of Research Integrity.

The IZA Institute of Labor Economics is an independent economic research institute that conducts research in labor economics and offers evidence-based policy advice on labor market issues. Supported by the Deutsche Post Foundation, IZA runs the world's largest network of economists, whose research aims to provide answers to the global labor market challenges of our time. Our key objective is to build bridges between academic research, policymakers and society.

IZA Discussion Papers often represent preliminary work and are circulated to encourage discussion. Citation of such a paper should account for its provisional character. A revised version may be available directly from the author.

ISSN: 2365-9793

IZA – Institute of Labor Economics

Schaumburg-Lippe-Straße 5–9
53113 Bonn, Germany

Phone: +49-228-3894-0
Email: publications@iza.org

www.iza.org

ABSTRACT

The Labor Supply Curve Is Upward Sloping: The Effects of Immigrant-Induced Demand Shocks*

What is the effect of immigration on native labor-market outcomes? An extensive literature identifies the differential impact of immigration on natives employed in jobs that are more exposed to immigrant labor (supply exposure). But immigrants consume in addition to producing output. Despite this, no literature identifies the impact on natives employed in jobs that are more exposed to immigrant consumption (demand exposure). We study native labor-market effects of supply and demand exposures to immigration. Theoretically, we formalize both measures of exposure and solve for their effects on native wages. Empirically, we combine employer-employee data with a newly collected dataset covering electronic payments for the universe of residents in Norway to measure supply and demand exposures of all native workers to immigration induced by EU expansions in 2004 and 2007. We find large, positive, and persistent effects of demand exposure to EU expansion on native worker income.

JEL Classification: J10, F22

Keywords: labor supply, immigration

Corresponding author:

Andreas Ravndal Kostøl
BI Norwegian Business School
Nydalsveien 37
0484 Oslo
Norway
E-mail: andreas.r.kostol@bi.no

* Kostøl acknowledges funding from WE Upjohn Institute for Employment Research's Early Career Research Program and the Norwegian Research Council through grant 315437. Monras acknowledges the Fundación BBVA Beca Leonardo (LEO24-1-12346) and the Spanish Ministry of Economy and Competitiveness, through the Severo Ochoa Programme for Centres of Excellence in R&D (CEX2019-000915-S) for their generous support. Any opinions and conclusions expressed herein are those of the authors and do not necessarily represent the views of Norges Bank. All errors are our own.

1 Introduction

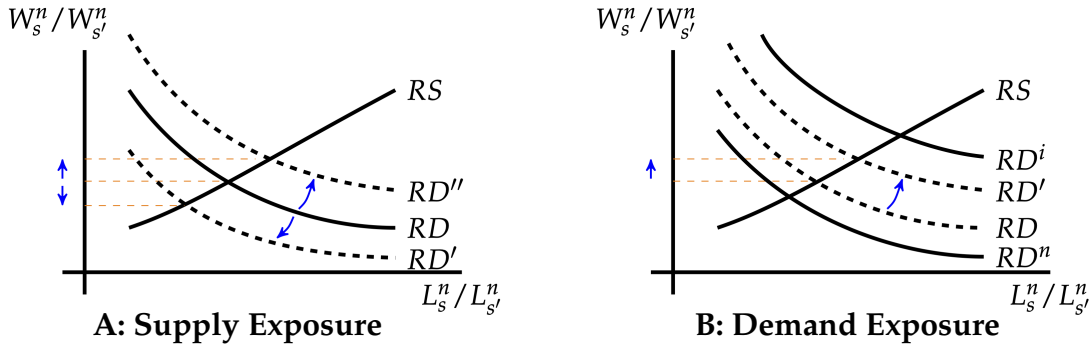
Summary. What is the effect of immigration on the evolution of wage income for native workers? This question motivates a large body of theoretical and empirical work. Much of this literature focuses on the impact of migrants as producers of output, identifying the differential impact of immigration across native workers employed in jobs that are more exposed to immigrant labor (supply exposure). But immigrants not only produce output, they also consume it. Despite this, no equivalent literature identifies the differential impact of immigration across native workers employed in jobs that are more exposed to immigrant consumption (demand exposure).

We study the effects of supply and demand exposures to immigration on native workers' labor-market income. Our key theoretical insight is straightforward. If immigrants' consumption patterns differ from natives', then an immigrant inflow increases demand for some goods more than others. This increases relative demand for native labor in these goods, which increases relative incomes of native workers employed there if labor supply curves are upward sloping. Empirically, we combine employer-employee data with a newly collected dataset covering electronic payments for the universe of residents in Norway to measure supply and demand exposures to immigration across commuting zones and sectors. We study the impact of immigration induced by EU expansions in 2004 and 2007 on the Norwegian labor market. We find that natives employed in jobs with higher demand exposure to immigration experience large and persistent increases in their income relative to otherwise identical natives in less exposed jobs.

Details. In Section 2, we present a theory of a local labor market with two factors (which we refer to as immigrant and native labor), constant returns to scale production functions that may differ across jobs (which we refer to as sectors), homothetic demand that may differ between immigrants and natives, and imperfectly elastic labor supply across sectors. We study how immigration differentially affects native wages across sectors. We argue that two forces are at play, which we refer to as supply and demand exposures. To gain intuition, it is useful to consider two extreme cases that isolate these forces.

If immigrants and natives have common expenditure shares across sectoral output but different employment shares across sectors, then an immigrant inflow will differentially affect native sectoral wages only through supply exposure. In this case, *immigrant intensities of production* (defined as the share of the wage bill paid to immigrants within each sector) shape the impact of immigration on native workers in each sector. We can illustrate this force in a simple diagram that plots the relative demand (RD) and supply

Figure 1: The Effect of Immigration on Relative Native Wages Across Sectors



Notes: Panels A and B display potential impacts of immigration on native wages in sector s relative to s' (denoted by $W_s^n / W_{s'}^n$). In each panel, RS is the relative supply curve of natives (to sector s relative to s'). In panel A, there is a representative consumer, RD is the initial relative demand curve for native labor (for each individual consumer and in the aggregate) and RD' and RD'' are potential relative demand curves for native labor after an inflow of immigrants. In panel B, the immigrant intensity of production is common across sectors, RD^n and RD^i are the relative demand curves for native labor to serve native and immigrant consumption, respectively, and RD and RD' are the aggregate relative demand curves for native labor when total immigrant expenditure is relatively lower and higher, respectively.

(RS) curves for native labor in sector s relative to sector s' .¹ An immigrant inflow leaves the RS curve unchanged but shifts the RD curve. Suppose immigrants have a comparative advantage in sector s . If immigrant and native labor are sufficiently substitutable in production, the relative labor demand curve for native labor shifts inward from RD to RD' , as depicted in panel A of Figure 1; instead, it shifts outward to RD'' if immigrant and native labor are sufficiently complementary. A shift in the RD curve (in either direction) affects the relative native wage in sector s as long as the RS curve is upward sloping. We refer to these differences across sectors in native exposure to immigration—which are shaped by immigrant intensities of production—as supply exposure. Supply exposure is studied extensively in labor and international economics; see, e.g., [Altonji and Card \(1991\)](#), [Borjas \(2003\)](#), and [Burstein et al. \(2020\)](#).

Whereas we incorporate supply exposure, our focus is on differences in immigrant and native consumer demands for sectoral output and how this translates into differential labor demand shifts for native workers across sectors in response to immigration. To gain intuition, suppose that the immigrant intensity of production is common across sectors (so that supply exposure is equalized) but that natives and immigrants have different preferences (so that they have different expenditure shares across sectors). In this case, the relative demand for native labor dedicated to satisfy immigrant consumption (RD^i in panel B of Figure 1) will differ from the relative demand for native labor dedicated

¹ RS is the supply of native labor to sector s relative to s' as a function of the relative native wage in the two sectors. It is not the aggregate supply of native labor relative to immigrant labor.

to satisfy native consumption (RD^n), with the RD curve being a weighted average of the two. If the *immigrant intensity of consumption* (defined as the share of sectoral consumption purchased by immigrants) is higher in sector s , then RD^i is above RD^n , as depicted in panel B of Figure 1. If immigration raises total expenditures of immigrants relative to natives, then it raises the relative weight that RD places on RD^i , and hence shifts the relative demand for native labor from RD to RD' . As a result, the relative wage of natives in s increases if the RS curve is upward sloping. We refer to these differences across sectors in native exposure to immigration—which are shaped by immigrant intensities of consumption—as demand exposure.

Section 2 formalizes this intuition, combines both types of exposure, and provides a theoretically consistent approach to measuring exposures. In a non-parametric environment with two sectors, we show that changes in a sector’s native (log) wage can be expressed as the sum of three terms: (i) a component that is common across sectors within the local labor market, (ii) a supply exposure component, and (iii) a demand exposure component. Supply exposure is the interaction between an immigrant-relative-to-native labor supply shock at the local labor market level and the sector’s immigrant intensity of production within the market. Demand exposure is the interaction between an immigrant-relative-to-native expenditure shock at the local labor market level and the sector’s immigrant intensity of consumption within the market. We show how underlying local elasticities shape the response of native wages to demand and supply exposures. Finally, we show that these non-parametric, two-sector results directly imply equivalent results in a many-sector, semi-parametric model (given typical functional forms). This theory provides the first formalization of the effect of immigration on native labor-market outcomes via preference heterogeneity. It also helps guide our empirical investigation and interpret its results.

In Section 3, we describe our empirical context and specification. We focus on the Norwegian labor market, which experienced an exceptionally large and rapid inflow of immigrants starting in the mid-2000s, with the share of migrants in the labor force growing from less than 8% to more than 14% percent in less than 10 years. This surge mostly resulted from European Union expansion in 2004 and 2007. The share of migrants from these new accession countries in Norway’s labor force rose from less than 0.5% in 2005 to 4% in 2015. Our empirical analysis leverages the Norwegian immigration shock induced by these EU expansions.

Our empirical specification follows our theoretical predictions closely. We regress changes in individual native workers’ incomes between 2004 and each year between 2000 and 2015 on a sector fixed effect, a (local labor) market fixed effect, worker characteristics,

and measures of supply and demand exposures, each constructed at the market-sector level. We instrument for both measures of exposure using a variant of what is often referred to as the Card instrument (Altonji and Card, 1991). Specifically, our instrument predicts local labor market immigrant-induced labor supply shocks based on the distribution of immigrants from the various EU accession countries across local labor markets prior to the shock and aggregate immigrant inflows (excluding local inflows). We then interact these predicted local immigration shocks with initial local immigrant intensities of production (for supply exposure) and consumption (for demand exposure) across sectors.

In Section 4, we introduce the data underlying our analysis and discuss details of measuring exposures. Our empirical contribution rests on the ability to combine individual worker employment histories and tax income data with a newly collected data set covering electronic payments for the universe of Norwegian residents between 2006 and 2018. The electronic payments data are provided by the Norwegian retail clearing institution, Nets Branch Norway, and cover all debit card payments via BankAxept and all online bank wire payments cleared via the Norwegian Interbank Clearing System (NICS). We show that aggregating this data yields measures of quarterly levels and growth rates of consumption that match National Accounts data very well. However, unlike National Accounts data, we observe the sector of expenditure, the location of expenditure, and the nationality of each consumer. Hence, we are able to construct immigrant intensities of consumption for each labor market-sector pair (defining markets as commuting zones) as well as the immigrant-relative-to-native expenditure shock at the market level, the two components of demand exposure. Using the employment history data, we are similarly able to construct supply exposure.

In Section 5 we present our empirical results. Our primary contribution is to present the first evidence on how demand exposure shapes the earnings trajectories of native workers.² Compared to similar individuals, a Norwegian employed in a market-sector with higher demand exposure to new accession immigration experiences a positive and statistically significant increase in wage income between 2004 and each year thereafter. The effect starts small, as the immigrant inflow begins slowly, peaks in 2014, and is relatively stable between 2009 and 2015. Our estimates imply that a worker's annual real earnings in 2015 would be over 6,000 krone higher if employed in 2003 in a market-sector at the 75th percentile of demand exposure than at the 25th percentile, equivalent to 1.3% of annual average real earnings in 2003 of our estimation sample.

These results are robust to a range of potential concerns. First, we find no evidence of pre-existing differential trends. Workers in market-sector pairs that have higher demand

²Throughout, earnings refers to real wage income.

exposure to new accession immigration in the shock period experience neither higher nor lower earnings growth over the pre-shock period. Second, consistent with theory, we document that these effects are substantially larger in more tradable sectors. Third, we show that our results hold across alternative samples.

Finally, we turn our attention to the implications of supply exposure. The empirical literature on the impact of immigration via (what we refer to as) supply exposure omits demand exposure. This omission biases results if predicted supply and demand exposures are correlated, conditional on controls. In our particular setting, we show that this correlation is essentially zero, so omitting demand exposure does not bias estimates of supply exposure.³ We show that supply exposure has small effects that are insignificantly different from zero on the evolution of Norwegian wage income in our baseline sample. However, this null effect averages across positive effects for college-educated natives and negative effects for less-educated natives. This is consistent with our theory if immigrants are better substitutes for less-educated than for more-educated natives.

Relation to the literature. There is an extensive literature studying the impact of immigration on native wage incomes. Early work focuses on regional comparisons, answering the following question: Do native wages rise or fall in regions receiving relatively more immigrants? The canonical paper in this literature is [Card \(1990\)](#); see also [Hunt \(1992\)](#), [Card \(2009\)](#), [Borjas \(2017\)](#), and more recent extensions investigating adjustment mechanisms (e.g., [Burchardi et al., 2019](#); [Edo, 2020](#); [Monras, 2020](#); [Piyapromdee, 2021](#); [Terry et al., Forthcoming](#)).

Much of the literature evolved to compare labor-market outcomes across jobs and across region-job pairs, answering the following question (in our terminology): Do native wages rise or fall in jobs that have relatively higher supply exposures? Canonical papers in this literature include [Altonji and Card \(1991\)](#), [Card \(2001\)](#), and [Friedberg \(2001\)](#), while papers using firm-level data include [Foged and Peri \(2016\)](#), [Doran et al. \(2022\)](#), and [Brinatti and Morales \(2025\)](#).⁴ In this space, our paper is most closely related to [Burstein et al. \(2020\)](#) in its approach and to [Bratsberg et al. \(2023\)](#) in its focus on Norway’s experience following EU expansion.

[Borjas \(2003\)](#) famously argued that immigration—as a labor supply shock—lowers na-

³Of course, this conclusion depends in part on our empirical context—the Norwegian economy in the 2000s—and, more so, on our empirical specification—we focus on exposures at the market-sector level, controlling for market effects and sector effects. At the local labor-market level, for instance, it is very likely that supply and demand exposure would be highly positively correlated.

⁴Some papers in this literature focus on the impact of supply exposure on outcomes distinct from native wages, including goods prices (e.g., [Lach, 2007](#); [Cortes, 2008](#)) and technical change (e.g., [Kerr and Lincoln, 2010](#); [Lewis, 2011](#); [Clemens et al., 2018](#); [Peters, 2022](#)).

tive wages because the labor demand curve is downward sloping.⁵ Here, we note that irrespective of the empirical approach, immigrants are both producers and consumers, and that it is the combination of these two channels that shapes the effects of immigrants on native labor-market outcomes. We show that whereas an increase in immigrant (relative to native) labor may raise or lower the relative wages of natives in jobs that have relatively higher supply exposure (as have others before us), an increase in total immigrant (relative to native) expenditure must raise relative native wages in jobs that have relatively higher demand exposure whenever the native labor supply curve across jobs is upward sloping.

Our contribution relative to these literatures is threefold. First, theoretically we generalize the foundations of supply exposure, dropping functional forms; and we introduce, for the first time, demand exposure. Second, guided by our theory, we propose and implement an empirical research design that allows us to identify the impact of demand exposure on the evolution of native wages. Third we show that omitting demand exposure from our research design, as in the previous papers, does not bias the estimate of supply exposure, at least in our empirical context.⁶

Our contribution centers on variation in demand exposure across jobs, for which we find strong evidence in the data, defining sectors as jobs. There are a handful of papers that have identified immigrants’ distinctive consumption patterns; see McCully et al. (2024). In this space, the papers most related to our work study regional migration shocks (whether international or not) that are associated either with larger local spending impacts than local labor supply impacts, e.g. using retirees as in Badilla Maroto et al. (2024), or the opposite, using remittances as in Olney (2015) and Albert and Monras (2022).⁷ Relative to this literature, we provide a theory for measuring demand and supply exposures and we identify their impacts on native labor-market outcomes.⁸

Finally, our formalization of demand exposure is most directly related to the international trade literature studying how demand differences across countries shape the pattern of trade and its effects on inequality; see, e.g., Costinot and Vogel (2010) and Caron et al. (2014). By emphasizing how changes in supply affect relative demand across goods,

⁵See Ottaviano and Peri (2012) and Llull (2018) for extensions to more general labor demand curves and to native worker adaptation to immigration, respectively.

⁶In this third contribution, our work is related to Dustmann et al. (2016) and Munoz (2023), who use commuters and “posted” workers respectively to identify the effect of supply exposure.

⁷This literature is related to theoretical insights in Borjas (2013), which argues that if immigrants spend a smaller share of their income locally than do natives, then immigration reduces the aggregate native wage by more. Our results relate to the differential impact of immigrants on natives across jobs.

⁸Our paper is also related to the literature studying the impact of tourism on local economic activity (e.g., Faber and Gaubert, 2019; Almagro and Domínguez-lino, 2024; Allen et al., 2023).

our paper is also related to work on the home market effect and directed technical change; see, e.g., [Krugman \(1980\)](#), [Costinot et al. \(Forthcoming\)](#), and [Acemoglu \(2002\)](#).

2 Theory

We are interested in identifying how immigration into a local labor market differentially affects the income of workers initially employed in jobs (which we will refer to as sectors in what follows, given the nature of our empirical analysis) that are differentially exposed to the immigration shock. Our objective is to present a theoretical framework that guides the subsequent empirical exercise and aids in interpreting its results. We first derive our main results in a non-parametric environment with only two sectors. We then show that results with many sectors and strong—but more general than imposed heretofore—parametric restrictions follow as a simple corollary. All derivations are provided in the Theoretical Appendix.

2.1 General environment

We consider a single closed economy populated by agents in two labor groups, indexed by g .⁹ We refer to these groups as natives $g = n$ and immigrants $g = i$ throughout. The aggregate supply of each group g is exogenous and given by L^g . Agents both produce and consume sectoral output, with sectors indexed by $s \in \mathcal{S}$. Agents within group g have common, homothetic preferences over sectoral output; but these preferences may differ across groups. All agents inelastically supply one unit of labor and choose in which sector to work. Output of each sector s , Y_s , is a sector-specific constant returns to scale combination of employment of each group g in its production, denoted by L_s^g .¹⁰ Goods market clearing in the closed economy requires that total output equals total consumption, $Y_s = C_s$, where consumption in sector s is the sum of the consumption of natives and immigrants, $C_s = C_s^n + C_s^i$. Factor markets clear, so that $L^g = \sum_s L_s^g$ for each g . Agents within group g have individual preferences for working in each sector s , which implies that nominal wages for group g workers in each sector s , W_s^g , may vary across sectors. Each group has a balanced budget, with total expenditures, denoted by $X^g \equiv \sum_s P_s C_s^g$ where P_s is the price of sector s , equal to total income, $\sum_s W_s^g L_s^g$.

⁹We apply this model across many local labor markets indexed by m in our empirical analyses; we omit market subscripts here for notational simplicity. We additionally deviate from the closed economy assumption in the empirical analysis.

¹⁰Although we abstract from capital, our results would be similar if the combination of immigrant and native labor represented by Y_s were combined with elastically-supplied capital in a Cobb Douglas production function (without imposing restrictions on the production function combining immigrant and native labor).

Our goal in what follows is to characterize the differential impact of changes in labor supplies of both immigrants and natives, $\ell^g \equiv d \log L^g$ for $g \in \{n, i\}$, on native wages across sectors, $w_s^n \equiv d \log W_s^n$.¹¹ We aim to achieve this characterization in terms of potentially observable variables and primitive elasticities.

Definitions. In the analysis that follows, two equilibrium shares play a central role. We denote by

$$\theta_s^i \equiv \frac{L_s^i W_s^i}{L_s^i W_s^i + L_s^n W_s^n} \quad (1)$$

the share of labor payments (or revenues) in sector s that are paid to immigrants in the initial equilibrium; θ_s^n is defined equivalently for natives. Whereas θ_s^i is often referred to as the immigrant intensity of sector s , we refer to it as the *immigrant intensity of production* in sector s , in order to distinguish it from the following share. We denote by

$$\mu_s^i \equiv \frac{C_s^i}{C_s^i + C_s^n} \quad (2)$$

the share of expenditures (or consumption) in sector s that is spent by immigrants in the initial equilibrium; μ_s^n is defined equivalently for natives. We refer to μ_s^i as the *immigrant intensity of consumption* in sector s .

It is also useful to define two group-specific indices. Denote by

$$p^g \equiv \sum_s (P_s C_s^g / X^g) p_s$$

the change in the price index for group g . This is the average log change in sectoral prices, p_s , weighted by group g 's initial expenditure shares across sectors, $P_s C_s^g / X^g$. Similarly denote by

$$w^g \equiv \sum_s (L_s^g / L^g) w_s^g$$

the change in the wage index for group g . This is the average log change in group g 's wage in each sector, w_s^g , weighted by g 's initial employment shares across sectors, L_s^g / L^g .

2.2 Non-parametric setting with two sectors

Here, we focus on a non-parametric setting in which there are exactly two sectors. In this environment, there are three types of elasticities that play a role in the analysis. We define each of these elasticities locally, around an initial equilibrium.

¹¹We use lower-case variables to denote log changes in upper-case variables: $v = d \log V$ for all variables V .

We denote by ρ_s the local elasticity of labor demand within sector s ,

$$\ell_s^n - \ell_s^i = -\rho_s(w_s^n - w_s^i) \quad (3)$$

where ρ_s shapes firm substitution—for firms in sector s —between immigrant and native labor in response to a change in their wages within s .¹² We denote by η the local elasticity of substitution in consumption across sectors,

$$c_s^g - c_{s'}^g = -\eta(p_s - p_{s'}) \quad (4)$$

where η shapes consumer substitution between sectors in response to a change in sectoral prices. Finally, we denote by κ the local elasticity of substitution in labor supply across sectors,

$$\ell_s^g - \ell_{s'}^g = \kappa(w_s^g - w_{s'}^g) \quad (5)$$

where κ shapes labor reallocation between sectors in response to a change in wages. We impose that κ and η are common across groups, but relax this restriction in the Theoretical Appendix. Given these definitions, we now turn to results, starting from a simple case where intuition is relatively transparent before turning to the general case.

A simple case. To build intuition, suppose first that $\rho_s = \rho$ for both s and that $\eta = 1$. In this case, the log change in the native wage in sector s can be expressed as

$$w_s^n = \alpha_1 + \frac{1}{1 + \kappa} \left\{ \underbrace{\Delta[x] \mu_s^i}_{\text{demand exposure}} + \frac{1 - \rho}{\kappa + \rho} \underbrace{\Delta[\ell - \kappa w] \theta_s^i}_{\text{supply exposure}} \right\} \quad (6)$$

The first term on the right-hand-side of equation (6), α_1 , is the component of the change in native wages that is common across sectors and, therefore, does not affect the difference in native wage changes across sectors.

The second and third terms in equation (6) can be understood in the context of Figure 1. The elasticity of the relative native wage across sectors with respect to a given shift in the relative demand curve for native labor equals the inverse of the sum of the elasticities of the relative demand curve for native labor ($\eta = 1$) and relative supply curve of native labor (κ).¹³ This explains the term $1/(1 + \kappa)$ multiplying the second and third terms. The

¹²There is some debate in the literature about whether immigrants and natives are perfect or imperfect substitutes; see, e.g., [Borjas et al. \(2012\)](#). Our results hold in the limit when ρ_s converges to infinity. Moreover, imperfect substitution at the sector level is consistent with perfect substitution at the task level in a framework in which sectoral output is produced from task output; see, e.g., [Burstein et al. \(2020\)](#).

¹³By assumption, the parameter η is the elasticity of demand across goods. In equilibrium, η is also the

expression in the $\{\cdot\}$ brackets is the elasticity of the shift in the relative demand curve for native labor with respect to the aggregate immigration shock. This has two components. The term labeled “demand exposure” equals the elasticity of the aggregate relative demand curve for native labor in response to immigration via differences between immigrants and natives in sectoral demand (the shift from RD to RD' in panel B of Figure 1). The term labeled “supply exposure” multiplied by $(1 - \rho)/(\kappa + \rho)$ equals the elasticity of the shift in each agent’s relative demand curve for native labor in response to immigration via differences between immigrants and natives in sectoral employment (the shift from RD to either RD' or RD'' in panel A).

We refer to the second term in equation (6) as the differential effect of demand exposure. Here,

$$\Delta[x] \equiv x^i - x^n$$

is the aggregate change in immigrant-relative-to-native expenditure, which is common across sectors and interacts with the immigrant intensity of consumption, μ_s^i , which may vary across sectors. Intuitively, an increase in total immigrant-relative-to-native expenditure increases the share of expenditures in the sector with the higher immigrant intensity of consumption (the higher value of μ_s^i), which increases the relative demand for native labor in that sector. This shift in the relative demand for native labor is displayed in panel B of Figure 1—where s is the sector that is immigrant intensive in consumption—and weakly increases the relative wage of natives in that sector. The elasticity of labor supply, κ , plays a central role in determining the strength of this wage effect. If $\kappa = \infty$, so that the relative supply curve for native labor is flat, then native wages must change equally across sectors. However, if the relative supply curve of native labor is upward sloping, $\kappa < \infty$, then an increase in total immigrant-relative-to-native expenditure will increase the native wage by more in sector s . Whether immigrant inflows increase or decrease the expenditure of immigrants relative to natives depends on whether immigrants and natives are gross complements or substitutes in the aggregate factor demand system. This relationship between changes in immigrant and native populations and changes in immigrant and native expenditures, however, is closely tied to the first stage of our empirical specification.¹⁴

We refer to the third term in equation (6) as the differential effect of supply exposure. Here,

$$\Delta[\ell - \kappa w] \equiv (\ell^i - \kappa w^i) - (\ell^n - \kappa w^n)$$

elasticity of the relative demand curve for native labor.

¹⁴In practice, we find that an (exogenous) inflow of immigrants raises immigrant relative to native expenditures, consistent with gross substitutability.

combines the change in immigrant-relative-to-native populations, $(\ell^i - \ell^n)$, and immigrant-relative-to-native wage indices, $-(w^i - w^n)$. This is common across sectors and interacts with the immigrant intensity of production, θ_s^i , which may vary across sectors. An increase in the population of immigrants relative to natives generates a positive value of $\Delta[\ell - \kappa w]$ both directly (via a positive value of $\ell^i - \ell^n$) and indirectly through wage changes (via a positive value of $-(w^i - w^n)$). Hence, an increase in the relative population of immigrants (weakly) raises native wages in the sector with the higher value of θ_s^i (the higher immigrant intensity of production) if and only if the elasticity of substitution in production, ρ , is lower than the elasticity of substitution in consumption, $\eta = 1$.¹⁵ This result is not new. It is closely related to results in [Altonji and Card \(1991\)](#) and [Burstein et al. \(2020\)](#) in the immigration literature and is an application of the Hicks-Marshall laws of derived demand. Intuitively, the native wage in sector s equals the value marginal product of native labor there. An immigrant inflow disproportionately raises the marginal product of native labor in the high θ_s^i sector, and more so the more complementary are immigrant and native workers within sectors (i.e., the lower is ρ). And an immigrant inflow disproportionately lowers the value per unit of output (the price) in the high θ_s^i sector, and more so the less elastic is consumer demand (i.e., the lower is η). Hence, the value marginal product of labor rises more in the high θ_s^i sector if ρ is low or η is high. As in the case of demand exposure discussed above, the elasticity of the relative supply curve of native labor plays a central role in determining the strength of this wage effect.

The more general result. Now relax the previous restrictions, allowing ρ_s to vary across sectors and η to differ from one. In the general case, the intuition underlying equation (6) is preserved,

$$w_s^n = \alpha + \frac{1}{\eta + \kappa} \left\{ \underbrace{\Delta[x + (\eta - 1)p]}_{\text{demand exposure}} \mu_s^i + \frac{\eta - \rho_s}{\kappa + \rho_s} \underbrace{\Delta[\ell - \kappa w]}_{\text{supply exposure}} \theta_s^i \right\} \quad (7)$$

Relative to equation (6), there are four changes. First,

$$\Delta[x + (\eta - 1)p] \equiv (x^i + (\eta - 1)p^i) - (x^n + (\eta - 1)p^n)$$

in equation (7) replaces $\Delta[x] = x^i - x^n$ in equation (6). Importantly, this shock remains common across sectors (within the local labor market). Second, the role of η becomes

¹⁵Suppose that sector s is immigrant intensive in production compared to s' and there is an inflow of immigrants. Then the inward shift from RD to RD' displayed in panel A of Figure 1 occurs if $\eta < \rho$ whereas the outward shift from RD to RD'' occurs if $\eta > \rho$.

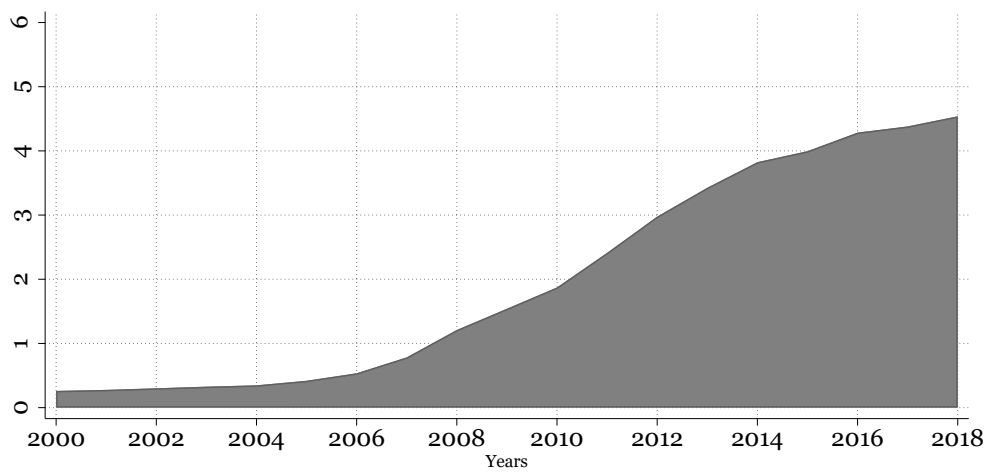
explicit in determining the elasticity of the relative native wage across sectors with respect to a shift in the relative demand curve for native labor (the η in the $\eta + \kappa$ term multiplying both demand and supply exposure). Equation (7) clarifies that a necessary condition for higher demand exposure in sector s than s' to raise the relative wage of s is that the demand curve across sectoral output is downward sloping $\eta < \infty$; this is equivalent to the condition on the relative native supply curve across sectors discussed in the context of equation (6). Third, the role of η becomes explicit in determining whether higher supply exposure induces an outward or inward shift in the relative demand curve for native labor (in the $\eta - \rho_s$ term multiplying supply exposure). Fourth, the impacts of immigration via supply exposure remain heterogeneous across sectors even after interacting the market-specific value of $\Delta[\ell - \kappa w]$ with the market-and-sector-specific immigrant intensity of production θ_s^i . The reason, of course, is that the relevant elasticities that shape the strength of these exposures are now heterogeneous across sectors.

2.3 Semi-parametric setting with many sectors

Consider a setting with arbitrarily many sectors in which consumption aggregators for each group g are constant elasticity of substitution (CES) with elasticity of substitution η and in which idiosyncratic amenity draws (which multiply real consumption in the individual's utility function) for working in each sector s for each individual in group g are distributed Fréchet with shape parameter κ . This is the closed-economy version of the framework introduced by [Burstein et al. \(2020\)](#) and employed in [Brinatti and Guo \(2024\)](#), but instead of imposing CES production functions with common values of ρ_s across s , we continue to impose no restrictions on production functions beyond constant returns to scale; and instead of assuming common preferences across goods for immigrants and natives, we allow for differences across groups.

In this framework, equations (6) and (7) continue to hold. These results follow as direct corollaries of our previous results. The intuition is straightforward. The proofs in the two-sector, non-parametric setting only make use of the two-sector assumption in two places: (i) in deriving the relationship between changes in consumption in a given sector, the price change in that sector, and the group-specific price index and (ii) in deriving the relationship between changes in labor allocation in a given sector, the wage change in that sector, and the group-specific wage index; see equations (15) and (16) in the Theoretical Appendix. The parametric assumptions of CES consumption aggregators and Fréchet distributed amenity draws directly imply these equations in the many-sector, semi-parametric setting.

Figure 2: New Accession Share (in %) of the Norwegian Workforce



Notes: $100 \times$ number of 2004 and 2007 EU accession immigrants in the Norwegian labor force divided by the total number of individuals in the labor force for each year (calculated for all part- or full-time employment relationships measured in November of each year)

3 Empirical context and specification

We aim to identify the differential impact of immigration on native worker incomes depending on workers' supply and, especially, demand exposures. In Section 3.1 we describe the empirical context and immigration shock. In Section 3.2 we describe the empirical specification and identification strategy.

3.1 Empirical context

We focus on the Norwegian experience in the 2000s, which provides an ideal empirical setting for two reasons. First, Norwegian data is exceptional, allowing us to measure immigrant intensities of consumption and production across sectors and commuting zones and allowing us to track individual workers' incomes over time, as we describe in Section 4.

Second, Norway experienced a large and rapid increase in its immigrant population starting in the mid-2000s. The share of immigrants in the workforce rose from less than 8% to over 14% in less than ten years. This immigration boom largely resulted from the European Union's expansion. In January 2004, the EU underwent its largest-ever enlargement, both in terms of the number of countries admitted and the total population added. Ten countries acceded in 2004: Cyprus, the Czech Republic, Estonia, Hungary, Latvia, Lithuania, Malta, Poland, Slovakia, and Slovenia. In January 2007, Bulgaria and Romania also joined. In what follows, we refer to these new entrants to the EU as the *new*

accession countries. Norway, as a member of the European Economic Area—and therefore part of the EU single market—imposed few restrictions on migration from these new member states (Dølvik and Eldring, 2008).

By 2024, two of the new accession countries were among the three largest sources of Norway’s immigrant population: Poland was the largest and Lithuania the third-largest. More broadly, the share of new accession migrants in Norway’s labor force rose from less than 0.5% in 2005 to 4% in 2015, as shown in Figure 2. Our empirical analysis leverages the Norwegian immigration shock induced by the EU expansions of 2004 and 2007.

Additional details on the Norwegian context. Norway’s population is approximately 5.5 million, with the capital, Oslo, accounting for almost 20 percent. The Norwegian labor market is characterized by a combination of a generous unemployment insurance (UI) system and collective bargaining. The UI system compensates for nearly two-thirds of lost earnings and can be extended for up to two years. A majority of workers are covered by agreements negotiated between trade unions and employers. Approximately half of employees in the private sector benefit from tariff agreements under a two-tier bargaining system. Tariff wages are initially negotiated at the industry level and set centrally, after which they are supplemented by local adjustments bargained at the firm level. This local adjustment allows industry-specific wages to vary across markets in response to local demand conditions (and is the core of our theoretical model). This two-tier framework is regarded as a key factor contributing to Norway’s relatively compressed wage structure. See Bhuller et al. (2022) for a detailed discussion.

3.2 Empirical specification

The theory in Section 2 provides a useful guide for our empirical analysis. Our baseline empirical approach will follow equation (6) in most, but not all, respects.

Relative to our theory, our empirical analysis differs in a few respects. First, we simplify the measure of supply exposure. Instead of measuring $\Delta[\ell - \kappa w]$, we will instead focus exclusively on the differential change in employment of immigrants and natives, $\Delta\ell$, omitting the differential change in the wage index.

Second, whereas our theory focused on a single closed economy, our empirical analysis will consider many such geographic markets, indexed by m . These markets will differ both in their market-specific values of Δx_m and $\Delta\ell_m$ and in their market-and-sector-specific initial immigrant intensities of consumption and production, the μ_{ms}^i and θ_{ms}^i terms.¹⁶

¹⁶This is not outside the scope of our theory; it simply introduces market-specific indices. Of course, one

Third, whereas the dependent variable in equation (6) is the change in the native wage within each market-sector pair, in practice measured wages depend on the composition of workers employed there, which changes over time in response to shocks, generating endogeneity. In our empirical analysis, we instead compare the evolution of real incomes of otherwise identical individual native workers, indexed by j , who are initially employed in more and less (demand- and supply-) exposed market-sector pairs. In this, we follow an extensive literature using longitudinal worker data to estimate the effects of shocks on worker-level income; see, e.g., [Jacobson et al. \(1993\)](#), [Autor et al. \(2014\)](#), and [Yagan \(2019\)](#).

We estimate two variants of the following individual-level regression

$$\Delta Income_{jt} = \delta_{mjt} + \delta_{s jt} + \beta_t^D \mu_{mjs_j}^i \Delta x_{m_j} + \beta_t^S \theta_{mjs_j}^i \Delta \ell_{m_j} + \gamma_t' K_j + \varepsilon_{jt} \quad (8)$$

where j indexes native individuals, m geographic markets, s sectors, and t time. In our event-study-style framework, we separately estimate equation (8) for each year t between 2000 and 2015. In this specification, the dependent variable is the change in real wage income for individual j between 2004 and year t ,

$$\Delta Income_{jt} \equiv Income_{jt} - Income_{j2004}$$

In our difference-in-difference framework, we estimate equation (8) for a single t and define the dependent variable as the average of worker j 's real wage income between 2005 and 2015 minus real wage income in 2004,¹⁷

$$\Delta Income_{jt} \equiv \frac{1}{11} \sum_{\tau=2005}^{2015} Income_{j\tau} - Income_{j2004}$$

In all specifications, we fix the market in which worker j resided, m_j , and the sector in which worker j was employed, s_j , in 2003 throughout the analysis. The time-varying market fixed effect, δ_{mjt} , then corresponds to the constant in equation (6). The time-varying sector fixed effect, $\delta_{s jt}$, controls for national shocks to sectoral supply and demand. To understand the roles of these two fixed effects, consider, for example, the impact of world oil prices, given the importance of oil production for the Norwegian economy. In years in which oil prices are high, workers living in local labor markets that specialize in its pro-

might worry about interactions between markets, which are not specifically modeled in Section 2. We address these concerns in Section 5.1.

¹⁷In our difference-in-difference framework, we alternatively consider percent changes, $\Delta Income_{jt} \equiv \left[\frac{1}{11} \sum_{\tau=2005}^{2015} Income_{j\tau} - Income_{j2004} \right] / Income_{j2004}$, and measure income in the pre-shock period using the average of real income between 2000 and 2004, replacing $Income_{j2004}$ with $(1/5) \sum_{\tau=2000}^{2004} Income_{j\tau}$.

duction may experience relative increases in income; and workers employed in industries that intensively use oil as an input may experience relative declines in income. These two effects will be absorbed by our market-time and, separately, sector-time fixed effects in equation (8). Finally, the vector K_j contains a set of observable individual characteristics, defined in 2003, the returns to which may vary over time.

The coefficients of interest are β_t^D and β_t^S , which measure the (time-varying, in the event-study-style specification) effects of immigration on real wage income for natives who are initially employed in market-sector pairs with higher immigrant demand and supply exposures. The immigrant intensities μ_{ms}^i and θ_{ms}^i are the initial immigrant intensities of consumption and production in market m and sector s . And the shocks $\Delta x_{m_j} \equiv x_{m_j}^i - x_{m_j}^n$ and $\Delta \ell_{m_j} \equiv \ell_{m_j}^i - \ell_{m_j}^n$ are the changes over time within market m in new accession immigrant relative to native expenditure Δx_{m_j} and employment $\Delta \ell_{m_j}$.

We turn to how each of these variables is measured, the vector of controls included in K_j , and the estimation sample in Section 4. Throughout the paper, we present robust standard errors clustered by market-sector pair.

Instrumental variable approach. The residual in equation (8) contains demand and supply shocks at the market-sector level that would have occurred in the absence of immigration.¹⁸ Even if the distribution of θ_{ms}^i is independent of the distribution of the residual, estimates of β_t^D and β_t^S could be inconsistent as the number of markets rises—for a given number of sectors—because migration responds to these demand and supply shocks.

Consider, as an example, supply exposure. If large market-sector demand shocks induce local immigration especially when they occur in sectors that are immigrant intensive in production, as seems likely in practice, then supply exposure, $\theta_{ms}^i \Delta \ell_m$, will be correlated with the residual if there is not a very large number of sectors. Similarly, if large local supply shocks in sectors that are immigrant intensive in consumption generate large inflows of immigrants to the market, then demand exposure, $\mu_{ms}^i \Delta x_m$, will be correlated with the residual. We formalize this intuition in Section B.3 in the Empirical Appendix.

To address these concerns, we instrument for both demand and supply exposures, $\mu_{ms}^i \Delta x_m$ and $\theta_{ms}^i \Delta \ell_m$. Our approach is relatively standard. We instrument for demand and supply exposure using $\mu_{ms}^i \Delta \widetilde{Pop}_m^i$ and $\theta_{ms}^i \Delta \widetilde{Pop}_m^i$, where $\Delta \widetilde{Pop}_m^i$ is a measure of the predicted change between 2003 and 2018 in the new accession immigrant population within market m . This predicted change is constructed as in the traditional Card instrument. Index each of the new accession countries by o . For each market m we predict the percent

¹⁸Given the inclusion of market-time effects and sector-time effects in equation (8), these demand and supply shocks are deviations from the average at the sector level across markets and from the average at the market level across sectors.

change in the EU accession population over time as

$$\Delta \widetilde{Pop}_m^i \equiv \frac{\sum_o \frac{Pop_{mo}^i}{Pop_o^i} \Delta Pop_{-mo}^i}{\frac{1}{2} \left(Pop_m^i + \sum_o \frac{Pop_{mo}^i}{Pop_o^i} \Delta Pop_{-mo}^i + Pop_m^i \right)} \quad (9)$$

where Pop_{mo}^i and $Pop_o^i = \sum_m Pop_{mo}^i$ are the initial 2003 populations of immigrants from EU accession origin o within market m and across all of Norway, $Pop_m^i = \sum_o Pop_{mo}^i$ is the initial 2003 population of immigrants within market m summed across all origins o , and ΔPop_{-mo}^i is the change over time, between 2003 and 2018, in the national population of immigrants from origin o excluding market m . The numerator of the right-hand side of equation (9) is the predicted growth of the population from the new EU accession countries within market m between 2003 and 2018. The denominator is the average of the initial 2003 population of the new EU accession countries and the predicted population from these countries within market m in 2018, which is itself the sum of the initial population and its predicted growth.

4 Data, measurement, and estimation sample

4.1 Employment, income, and worker characteristics data

The first key data set contains administrative records on the universe of employment relationships from 2000 to 2018.¹⁹ This data provides us with measures of part-time and full-time employment status and five-digit industry code, from which we define each worker's sector of employment in equation (8) as the sector of his or her primary employment in 2003. We also use this information in measuring native and immigrant employment in constructing supply exposure and its instrument, as described in Section 4.3.

We link this information to tax income data to measure annual wage income, which includes all income from any employer throughout the year, and is typically reported to the Tax Authority by employers. We winsorize income at the 99th percentile within each year and replace negative income (when a worker owes his or her employer money) with zero. We use this measure of income (adjusted for inflation) to define the dependent variable in equation (8). The tax registers also provide information on the residential municipality of an individual. Using this data, we define each worker's market m in equation (8) as the commuting of his or her residence in 2003. There are 46 commuting zones, which are

¹⁹Before 2015, the data include employment relationships that had hours or income above a certain threshold. Thereafter, the data was reported monthly for every type of employment except self-employment.

defined using aggregate statistics linking workers' residential and employers' workplace municipalities, as described in [Bhuller \(2009\)](#).

We also link to population panel data, which allows us to measure background characteristics. Using this data, we define the vector of worker controls, K_j in equation (8), as fixed-over-time indicators for characteristics of each worker as defined in 2003: ten income deciles, four education levels, and each 2003 age. We additionally use country of origin both in defining the estimation sample—which includes only natives—and in measuring both demand and supply exposures.

4.2 Expenditure data

Our empirical contribution rests on the ability to combine employment histories with a newly collected data set covering electronic payments for the universe of Norwegian residents between 2006 and 2018. The electronic payments data are provided by the Norwegian retail clearing institution, Nets Branch Norway (henceforth referred to as Nets) and cover two data sources: (i) all debit card payments via BankAxept (ii) all online bank wire payments cleared via the Norwegian Interbank Clearing System (NICS).²⁰

BankAxept is the national payment system in Norway and is owned by Norwegian banks. Typically, all debit card payments in domestic physical stores are BankAxept. Payments abroad, payments online, and mobile payments are typically paid with credit cards through VISA or Mastercard. NICS is the interbank clearing system for the Norwegian Krone (NOK). It is used by all banks operating in Norway and that take part in the Norwegian banking community's infrastructure for payments.²¹ The data is aggregated for each individual by zip code of expenditure and 27 broad consumption categories. We do not observe the consumption category of credit card expenditures; we allocate credit card payments to expenditures on banking. However, credit card expenditure is low, comprising approximately 10% of consumer expenditures in 2006.

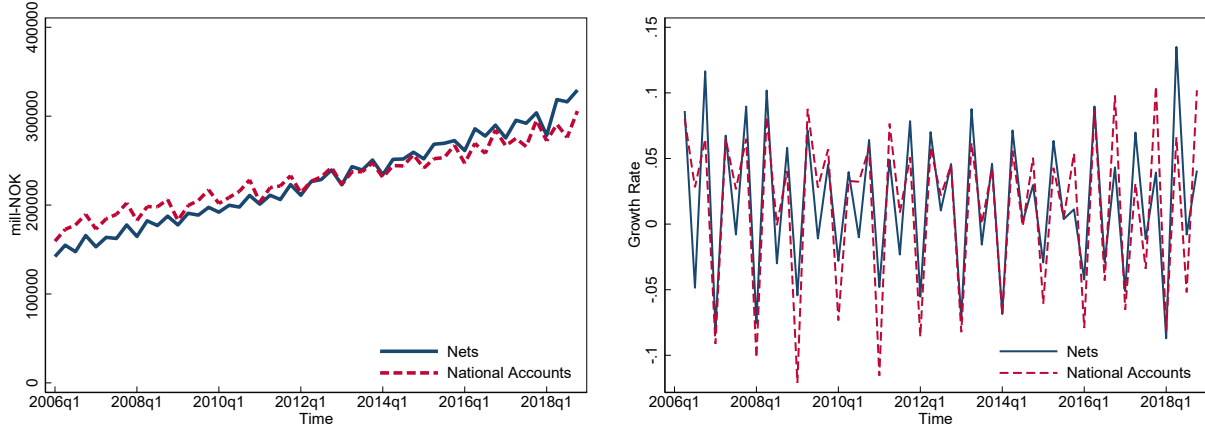
The left panel of Figure 3 shows that our expenditure measure—aggregated across all commuting zones and consumption categories—tracks the quarterly level of consumption from the National Accounts very well. The right panel shows that the quarterly growth rate of our expenditure measure also tracks the quarterly growth rate of consumption from the National Accounts very well.²²

²⁰The data also covers all incoming transfers cleared via NICS, which we do not make use of in this paper.

²¹Transaction via NICS includes all invoices paid using a "KID-number", which includes all invoices paid via "Efaktura" and "Avtale Giro."

²²National Accounts household consumption includes imputed housing consumption, for which there is no corresponding transaction. We subtract imputed housing consumption from the National Accounts. Imputed housing consumption is only available at the annual frequency. We assume that imputed housing

Figure 3: Nets Expenditure Data Compared with National Accounts Data.



Notes: The figures compare the levels (left panel) and quarterly growth rates (right panel) of consumption from our data and the National Accounts (excluding imputed housing consumption) over the period 2006 – 2018.

We link zip codes to commuting zones and use the location of expenditure to allocate expenditures across markets. We aggregate five-digit industry codes from the employment and worker income data to the more aggregated consumer categories in the expenditure data. These broad consumer categories are based on the United Nations' 1999 COICOP system, which classifies consumption expenditures according to their purpose.²³ Card payments are mapped to COICOP based on the Merchant Category Codes (MCC) of the card terminal. Online wire transfers are classified using creditors' five-digit industry codes (NACE). The crosswalks between MCC/NACE and COICOP are manually coded by Norges Bank and provided to Nets prior to aggregation.

Table A1 lists all categories in the raw data. Our categorization includes all 12 top-level COICOP codes, some of which are further divided into second-level COICOP groups. Starting from the 27 categories at the most disaggregated level, we combine a few that are either small or across which it is more difficult to allocate from the disaggregated employment data. We additionally drop three categories, two of which do not fit the context of the theoretical framework (Payments to public institutions and Cash withdrawals) and one of which (Alcoholic beverages, tobacco and narcotics) has an immigrant intensity of consumption measured at the national level that—unlike every other consumption category—is unstable across time. This leaves us with 20 sectors. See Section B.1 of the Empirical Appendix for details.

as a share of total housing-related consumption is fixed within the year to correct the quarterly series.
²³The COICOP classification was revised in 2018.

4.3 Measuring supply and demand exposures

We measure supply exposure, $\theta_{ms}^i \Delta \ell_m$, as follows. The immigrant intensity of production in market m and sector s , θ_{ms}^i , is measured using data on employment from 2003. The numerator is the employment of immigrants who live in market m in 2003 and whose primary employment in 2003 is in sector s . The denominator is the sum of immigrant and native employment, measured in the same way. A person is considered employed if he or she is at least 18 years old and works at least part time in 2003. Given the small number of immigrants from the new accession countries living in Norway in 2003, and given that we construct θ_{ms}^i across the product of 46 commuting zones and 20 sectors, we measure θ_{ms}^i using all immigrants, rather than only those from the new accession countries.

We measure the market-specific immigration shock $\Delta \ell_m$ using the log change in commuting zone m in the ratio of employment of immigrants from the new accession countries relative to employment of natives between 2003 and 2018. In the instrument, $\Delta \widetilde{Pop}_m^i$, is constructed using the population of each of the EU accession origin countries o in each Norwegian commuting zone m in 2003 and the growth in this population at the national level (omitting market m) between 2003 and 2018.

We measure demand exposure, $\mu_{ms}^i \Delta x_m$, similarly. There are two distinctions. First, we measure the location of consumption expenditure at the point of purchase rather than the consumer's residence. Second, since the expenditure data begins in 2006, we use 2006 data to measure the initial immigrant intensity of consumption, μ_{ms}^i , and we use 2006 as the base year in constructing Δx_m . Whereas the measure of demand exposure uses changes in expenditure between 2006 and 2018, the instrument—by using changes in predicted population instead of expenditures—uses changes between 2003 and 2018, so that the start of the shock in the instrument predates EU accession.

Table 1 displays immigrant intensities of consumption and production across the 20 sectors, measured at the national level, where industries are ordered by national immigrant intensity of consumption. There is substantial variation in both measures, although the coefficient of variation across sectors in the national immigrant intensity of production is almost three times greater than in the national immigrant intensity of consumption. The correlation between the two measures is very low; see Figure A2 in the Empirical Appendix. We return to the correlation of demand and supply exposures in Section 5.2 below. Finally, in Section B.2 of the Empirical Appendix we show that immigrant and native expenditure shares across sectors differ primarily because they have different preferences (demand shifters across sectors) rather than because preferences are non-homothetic and they have different incomes. This may result from the fact that the wage distribution is quite compressed in Norway.

Table 1: National Immigrant Consumption and Production Intensities

	Immigrant intensity of	
	A. Consumption	B. Production
1. Education	0.088	0.071
2. Services	0.079	0.068
3. Electronics	0.066	0.067
4. Banks	0.064	0.060
5. Restaurants	0.063	0.215
6. Communication	0.063	0.081
7. Health	0.061	0.087
8. Finance	0.061	0.075
9. Clothing	0.059	0.072
10. Furnishing	0.058	0.059
11. Books, newspapers	0.056	0.065
12. Personal effects	0.054	0.057
13. Personal care	0.051	0.071
14. Insurance	0.050	0.037
15. Grocery stores	0.050	0.072
16. Recreation	0.049	0.085
17. Hotels	0.048	0.181
18. Other transport	0.047	0.059
19. Utilities	0.046	0.066
20. Motor vehicles	0.039	0.039

Notes: Immigrant intensity of consumption in column A uses spending of all residents in 2006. Immigrant intensity of production in column B uses employment in 2003, with shares taken across all employees who work in 5-digit industry codes that map into a spending sector in this table. Statistics are calculated at the national level.

4.4 Baseline estimation sample

Our baseline estimation sample includes native males. We restrict the baseline sample to males because women are more likely to work in the public sector, where wages are generally less flexible and, therefore, less responsive to local demand conditions (such adjustment is central to our theoretical framework). We further restrict the sample to those aged 30 to 50 in 2003, to include individuals who actively participate in the workforce over the full 2000 – 2018 sample period, being at least 27 years old in 2000 and no greater than 65 years old in 2018. We include in our sample only those individuals with at least two years of full-time employment in the five years between 2000 and 2004, where full-time employment is reported by the employer. We additionally restrict the sample to workers who have some employment income in 2003, so that we can assign workers a sector of employment, s_j in equation (8). We drop from the sample native workers who

Table 2: First-Stage Regression Results

	Demand Exposure			Supply Exposure		
	(1)	(2)	(3)	(4)	(5)	(6)
Predicted Demand Exposure	1.147 (0.017)	1.148 (0.017)	1.148 (0.017)		-0.018 (0.017)	-0.018 (0.017)
Predicted Supply Exposure		-0.008 (0.004)	-0.008 (0.004)	0.789 (0.022)	0.789 (0.022)	0.789 (0.022)
SW F stat	4599.2	4767.7	4756.3	1230.9	1267.8	1267.9
Controls	No	No	Yes	No	No	Yes

Notes: Columns 1 – 3 display the first-stage regression predicting demand exposure and 4 – 6 the first-stage regression predicting supply exposure. Demand exposure is $\mu_{ms}^i \Delta x_m$, supply exposure is $\theta_{ms}^i \Delta \ell_m$, and their instruments are $\mu_{ms}^i \Delta \widehat{Pop}_m^i$ and $\theta_{ms}^i \Delta \widehat{Pop}_m^i$. All specifications include controls for sector fixed effects and market fixed effects. Columns 3 and 6 additionally include worker-level controls. Columns 1 and 4 each include only the corresponding instrument. Columns 2, 3, 5, and 6 include both instruments and the SW F stats correspond to the joint first stage. There are 299,649 observations in all specifications. Robust standard errors are clustered by market-sector pair.

die or migrate away from Norway, thereby ensuring a sample that is balanced across our observation window of 2000 – 2018.

We additionally restrict our baseline sample to workers living outside of Oslo in 2003. The Oslo labor market is very large; it will, therefore, receive a very large weight in the worker-level regressions. Moreover, Oslo is a large outlier in terms of immigration, with substantially higher immigrant population shares than the rest of the country, even before the EU enlargement. Finally, we omit workers employed in the education sector in 2003 because wages in the education sector are not particularly responsive to local demand; hence, the model’s mechanisms do not apply there.²⁴

We revisit these choices in sensitivity and robustness exercises. Table A4 in the Empirical Appendix presents summary statistics for our estimation samples.

5 Empirical results

First-stage results. Table 2 displays results from estimating the first stage. Since the sample, controls, measures of exposure, and instruments are all fixed over time, the first stage is common across years. Hence, reported results are invariant to the year t used in

²⁴Wage setting in the education sector is centrally bargained, with two agreements, one for Oslo and one for the rest of the country to account for differences in costs of living. Since 2004, school administrators have some flexibility in adjusting wages to counter offers, by setting the wage within a wage range that is conditional on a job title. These wage ranges are often narrow, and are decided centrally. For details, see Report (2003) and Report (2024).

estimation. Because we have two endogenous variables, we always report first-stage SW F statistics.

In column 1 of Table 2 we regress demand exposure on its instrument, market fixed effects, and sector fixed effects. The demand-exposure instrument strongly and positively predicts demand exposure.²⁵ In column 2 we additionally include the supply-exposure instrument and report the SW F statistic for demand exposure associated with instrumenting for both demand and supply exposures. The demand-exposure instrument continues to strongly and positively predict demand exposure whereas the supply-exposure instrument does not predict demand exposure. In column 3 we additionally include individual fixed effects, the K_j vector in equation (8). This leaves first-stage results unchanged. Columns 4 – 6 replicate this analysis, but display the prediction of supply exposure. Results are broadly similar. The supply-exposure instrument strongly and positively predicts supply exposure, the demand-exposure instrument does not predict supply exposure, and the first-stage SW F statistic for supply exposure is large.

5.1 Demand exposure

In what follows, we present results on the impact of demand exposure on the evolution of native wages. Although regressions include supply exposure, we defer discussing the impact of supply exposure on the evolution of native wages to Section 5.2.

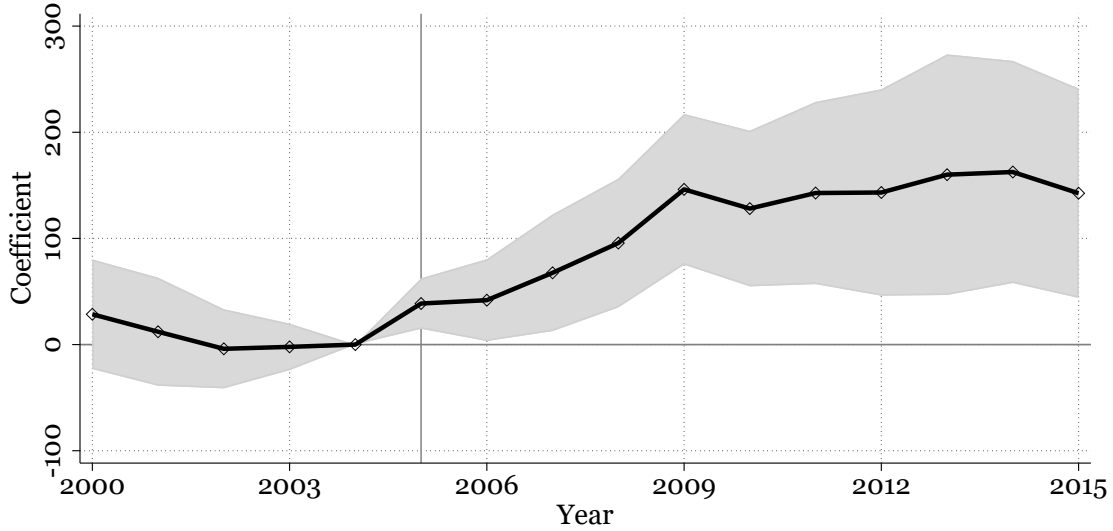
Figure 4 presents our central empirical result. It shows how demand exposure, $\mu_{ms}^i \Delta x_m$, shapes the earnings trajectories of native Norwegian workers. It plots the 2SLS estimate of β_t^D from equation (8) for each t as well as the corresponding 95% confidence interval. Compared to similar individuals, a Norwegian employed in a market-sector with higher demand exposure to new accession immigration experiences a positive and statistically significant increase in wage income between 2004 and 2005. The 2005 effect is relatively small, growing by a factor of over four between 2005 and 2014. This is consistent with the flow of migrants from the new EU accession countries displayed in Figure 2: the effect peaks in 2014—when the inflow from the new accession countries slows—and is relatively stable between 2009 and 2015.²⁶

A natural concern is that markets and sectors with higher initial immigrant intensities

²⁵In columns 1 and 4, the reported first-stage SW F statistic is equivalent to the KP F statistic, because we predict a single endogenous variable in each.

²⁶We show results only through 2015 in all figures because there is a substantial spike in confidence intervals in 2016—which coincides with the highest national unemployment rate in Norway in the pre-Covid 2000s—which makes it harder to see the results in other years. In spite of this, results remain positive and statistically significant throughout the remaining years, and remain similar to those between 2009 and 2015 except for in 2016, where the point estimate is larger.

Figure 4: The Impact of Demand Exposure on the Evolution of Native Earnings



Notes: This figure reports the 2SLS estimates for each t of β_t^D in equation (8)—in which supply and demand exposure are each instrumented—and the corresponding 95% confidence interval estimated in the baseline sample. Robust standard errors are clustered by market-sector pair.

of consumption differ from those with lower initial immigrant intensities of consumption in underlying trends. Figure 4 investigates this possibility and provides no evidence of pre-existing differential trends. Workers in market-sector pairs that have higher demand exposure to new accession immigration in the period 2003 – 2018 experience neither higher nor lower earnings growth over the period 2000 – 2004.

To quantify the implications of demand exposure, we consider the impact of moving a worker from the 25th percentile of demand exposure to the 75th percentile. This interquartile range is 0.044. We evaluate this effect at the 2015 estimate of β_t^D , which is 143. A worker's annual real earnings in 2015 would be 6276 krone higher if employed in 2003 in a market-sector at the 75th percentile of demand exposure than at the 25th percentile (recall that the dependent variable is measured in thousands of krone). This equals about 1.3% of the average of 2003 real earnings of workers in our sample.²⁷ Since estimated effects are similar over the period 2009 – 2015, this entails a similar increase in earnings for all such years.

In Table 3, we instead explore the impact of demand exposure on the difference between average real wage income per year over the post-shock period of 2005–2015 and over the pre-shock period, measuring changes in real wage incomes in levels (in columns 1 and 2) and in percent (in columns 3 and 4). In columns 1 and 3 we measure real income

²⁷The impact of moving a worker from the 10th percentile of demand exposure to the 90th is twice as large, since the 90-10 gap in demand exposure is 0.089.

Table 3: The Impact of Demand Exposure on Average Native Real Wage Income Per Year

	Levels Difference		Percent Difference	
	(1)	(2)	(3)	(4)
Demand Exposure	115.40 (33.15)	108.39 (38.41)	14.58 (6.05)	15.07 (6.05)
Pre-shock 2004	X		X	
Pre-shock 2000-04		X		X
Average	98.3	128.1	22.3	27.3

Notes: This table reports the 2SLS estimate of β^D in equation (8) in which the dependent variable is measured as the change in average earnings per year over the post-shock period 2005–2015 relative to the pre-shock period. The difference in average earnings is measured in levels in columns (1) and (2) in percentage points in columns (3) and (4). The average income across 2005–2015 is compared to 2004 income in columns (1) and (3) and is compared to the average income across 2000–2004 in columns (2) and (4). Average refers to the average of the dependent variable. There are 299,649 observations in each specification. Robust standard errors are clustered by market-sector pair.

in the pre-shock period using 2004 alone whereas in columns 2 and 4 we measure it using average real wage income over the period 2000–2004.²⁸

Across all specifications, we find that a Norwegian employed in a market-sector with higher demand exposure to new accession immigration experiences a positive and statistically significant increase in average real wage income (compared to a less-exposed worker) over the years 2005–2015. Using the column 1 specification, we find that a native worker would have earned 5,080 krone more per year over the period 2005–2015, if employed in 2003 in the market-sector at the 75th percentile of demand exposure than at the 25th percentile. This is approximately 5.2% of the average growth in the estimation sample in average earnings in the post-shock years compared to 2004 (which is 98,300 krone, reported in the final row of Table 3).

Are these changes in real wage income driven by changes in employment or income conditional on employment? Column 1 of Table 4 considers the impact of demand exposure on the number of years between 2005 and 2015 with positive wage income. The point estimate for demand exposure is positive, suggesting workers in jobs that have higher demand exposure experience more years over the 2005–2015 period with positive wage income. However, the estimate is not statistically significant. This may be explained in part by two factors. First, our measure of employment is coarse: we consider a worker to be employed in a given year if their wage income is positive.²⁹ Second, our sample is highly attached to the labor market: the average number of years

²⁸We winsorize real wage changes at the 99th percentile.

²⁹We do not observe hours worked until 2015; otherwise, we only observe part-time and full-time employment status.

Table 4: The Impact of Demand Exposure on Employment and Income Conditional on Employment

	2005-2015 Effect		Placebo	
	Years Emp	Avg Income Emp	Years Emp	Avg Income Emp
	(1)	(2)	(3)	(4)
Demand Exposure	0.12 (0.13)	131.34 (37.60)	0.01 (0.02)	-0.14 (15.09)
Average	10.6	76.9	4.0	-23.2
Observations	299649	298987	299649	299649

Notes: Columns 1 and 3 estimate a version of equation (8) in which the dependent variable is the number years of with positive wage income between 2005 and 2015 (in column 1) and between 2000 and 2004 (in column 3). Columns 2 and 4 estimate a version of equation (8) in which the dependent variable is the difference between average income across years with positive wage income between 2005 and 2015 and wage income in 2004 (in column 2) and average income across years with positive wage income between 2000 and 2003 and wage income in 2004 (in column 4). Average refers to the average of the dependent variable in the corresponding sample. Robust standard errors are clustered by market-sector pair.

between 2005 and 2015 employed by workers in our sample is 10.6 out of a possible 11. Column 2 instead analyzes the impact of demand exposure on the difference between the average income across years between 2005 and 2015 in which the worker's wage income is positive and the worker's income in 2004. The dependent variable for worker j is $(1/T_j) \sum_{t=2005}^{2015} Income_{jt} - Income_{j2004}$, where T_j is the number of years between 2005 and 2015 in which worker j 's wage income is positive; for a worker who has positive wage income in all years, this dependent variable is identical to that used in column 1 of Table 3. We continue to find a large and positive impact of demand exposure, similar to the result in column 1 of Table 3. Columns 3 and 4 focus on the pre-shock period. Column 3 investigates the relationship between demand exposure and the number of years between 2000 and 2004 with positive wage income whereas column 4 investigates the impact of demand exposure on average income across years between 2000 and 2003 in which the worker's wage income is positive and the worker's income in 2004. There are no pre-existing trends, either in employment or income conditional on employment.

Finally, in the Empirical Appendix we investigate the extent to which the impact of demand exposure (and supply exposure) on native worker wage income differs systematically between our full worker sample and distinct (endogenous) subsamples of workers determined by patterns of sectoral and regional reallocation between 2003 and 2015. In Table A5 we show similar results to the full worker sample (i) for the subsample of workers who remain employed in the same sector and live in the same region in 2015, and (ii) for the subsample of workers who remain employed in the same sector but live

Table 5: The Impact of Demand Exposure and Tradability

Panel A: Effect of immigrant-induced demand exposure			
	All sectors	Less tradable sectors	More tradable sectors
	(1)	(2)	(3)
Demand Exposure	115.40 (33.15)	152.48 (44.05)	61.84 (68.17)
Panel B: Placebo effect of immigrant-induced demand exposure			
	All sectors	Less tradable sectors	More tradable sectors
	(1)	(2)	(3)
Demand Exposure	-2.15 (11.20)	-7.85 (15.59)	-6.44 (13.99)
Average in 2003	499.1	510.6	469.7
Observations	299649	215114	84535

Notes: Panel A replicates column 1 of Table 3 on alternative samples. Panel B replicates these exercises using as the dependent variable average real wage income across 2000-2003 minus real wage income in 2004. "Average in 2003" refers to the sample average of real income (denominated in 1,000 krone) in the year 2003.

in a different region in 2015. However, we find no effect of demand exposure for those who work in a different sector but live in the same region in 2015. These results provide suggestive evidence that the positive impacts of demand exposure are experienced only by those who remain in the same sector.

Open economies. Our theoretical framework in Section 2 models each local labor market as a fully closed economy. There are (at least) two important ways in which Norwegian (and other) markets interact.

First, native Norwegians may migrate across markets in response to immigration. Native migration is incorporated explicitly into our theoretical framework; but it is modeled as an exogenous shock rather than an endogenous response to immigration. However, in our empirical implementation we address this issue. We instrument for the change in immigrant-relative-to-native employment, $\Delta \ell_m$, and expenditure, Δx_m , using a plausibly exogenous component of immigration. Hence, we identify the causal effects of immigration and native migration on the evolution of native earnings, in accordance with our theoretical results.

Second, Norwegian labor markets trade both intra- and internationally. Our theory does not directly incorporate goods trade. However, we build on [Burstein et al. \(2020\)](#), which focuses on how tradability shapes labor-market adjustment to immigration (via supply exposure). They show that in more traded sectors, the relevant elasticity of sub-

stitution in consumption across sectors, our η , is higher, all else equal. What are the implications of this for the differential effect of demand exposure? Intuitively, η shapes the elasticity of the relative demand curve for native labor, with a higher value reducing the impact of a shock to the relative native labor demand curve on relative native wages. This suggests that the estimated coefficient on demand exposure should be smaller when estimated within the set of more-traded sectors than when estimated within the set of less-traded sectors, all else equal. We test this hypothesis. We allocate sectors into more and less tradable groups in Section B.4 in the Empirical Appendix.

Panel A of Table 5 displays results of this exercise, using the specification of column 1 of Table 3. The dependent variable is average real wage income between 2005–2015 minus real wage income in 2004. Column 1 replicates the baseline result in column 1 of Table 3, column 2 displays the result estimated on the sample of workers employed in 2003 in the less tradable sectors, and column 3 displays the result estimated on the sample of workers employed in 2003 in the more tradable sectors. Differences in point estimates are consistent with the above intuition. The estimated effect of demand exposure is greater within less tradable sectors than the baseline effect estimated on all sectors, which is in turn greater than the estimated effect within more tradable sectors. Panel B of Table 5 presents placebo results. The dependent variable is average real wage income between 2000 and 2003 minus real wage income in 2004. Point estimates are all insignificantly different from zero and at least an order of magnitude smaller than those estimated in the post-shock period. We conclude that there are no pre-existing trends in our full baseline sample or within less or more tradable sectors.

Alternative samples and treatment heterogeneity. In our baseline specification we consider a sample of males with both college educations and without, we omit workers who initially reside in Oslo, and we omit workers who are initially employed in education. Panel A of Table 6 presents results of estimating equation (8) on alternative samples. The dependent variable is average real wage income between 2005 and 2015 minus real wage income in 2004, which corresponds to the specification in column 1 of Table 3.

Column 1 presents results estimating equation (8) on a sample with equivalent rules for sample inclusion, but restricted to females instead of males. The point estimate remains positive and statistically significant. Normalizing the income gains of moving a female at the 25th percentile of exposure to the 75th percentile by the average 2003 earnings of a female in the sample yields a 0.7% gain, smaller than the corresponding result in the male sample. Column 2 replicates this analysis on a larger sample than in our baseline, including both males and females. The result is an average of the separate estimates obtained in the male and female samples.

Table 6: The Impact of Demand Exposure in Alternative Samples

Panel A: Effect of immigrant-induced demand exposure					
	Female	Female and male	Incl. Education	Incl. Oslo	No mfg.
	(1)	(2)	(3)	(4)	(5)
Demand Exposure	59.52 (23.97)	84.33 (27.31)	82.34 (29.90)	96.74 (44.71)	104.20 (28.32)
Panel B: Placebo effect of immigrant-induced demand exposure					
	Female	Female and male	Incl. Education	Incl. Oslo	No mfg.
	(1)	(2)	(3)	(4)	(5)
Demand Exposure	-6.37 (9.91)	-1.41 (9.29)	0.47 (9.51)	-4.48 (11.27)	5.44 (12.32)
Average in 2003	349.7	433.5	498.0	519.8	482.1
Observations	234261	533910	318272	426647	232409

Notes: Panel A replicates column 1 of Table 3 on alternative samples. Column 1 includes a female sample, column 2 combines the female and male samples, column 3 includes workers employed in the education sector in 2003, column 4 includes residents of Oslo in 2003, and column 5 excludes workers employed in disaggregated 5-digit industries within manufacturing. Panel B replicates this exercise using a dependent variable equal to average real wage income between 2000 and 2003 minus real wage income in 2004. "Average in 2003" refers to the sample average of real income (denominated in 1,000 krone) in the year 2003.

The remaining columns revert to the male sample. Column 3 expands the baseline sample to include workers employed in the education sector in 2003. As discussed above, incomes in the education sector are less responsive to local demand in the education sector; hence, the point estimate is smaller. Column 4 instead expands the sample to include residents of Oslo in 2003. The point estimate remains positive and significant. Finally, column 5 restricts the baseline sample by dropping workers employed in 5-digit industries within manufacturing in the more disaggregated employment data. Results in this subsample are similar to our baseline specification. Panel B shows that there are no pre-existing trends in any of these alternative samples.

Finally, Table 7 presents the impact of demand (and supply) exposure in the full sample and separately in the sample of workers without a college education in 2003 and with a college education in 2003. Here, we focus on the even columns; we turn to the odd columns in Section 5.2. Column 2 replicates the specification in column 1 of Table 3. Columns 4 and 6 display results estimated in the non-college and the college subsamples. Point estimates on demand exposure remain positive and statistically significant for both the non-college-educated and college-educated samples. Normalizing the income gains of moving a non-college worker and, separately, a college worker at the 25th percentile

Table 7: The Impact of Demand and Supply Exposures by Education

Panel A: Effect of immigrant-induced demand and supply exposures						
	All		Non-College		College	
	(1)	(2)	(3)	(4)	(5)	(6)
Supply Exposure	1.92 (29.76)	0.87 (21.54)	-31.26 (18.37)	-31.43 (18.03)	69.55 (50.10)	69.51 (47.91)
Demand Exposure		115.40 (33.15)		67.19 (29.05)		184.20 (50.95)
Panel B: Placebo effect of immigrant-induced demand and supply exposures						
	All		Non-College		College	
	(1)	(2)	(3)	(4)	(5)	(6)
Supply Exposure	-15.29 (7.84)	-15.28 (7.84)	-7.44 (7.66)	-7.48 (7.64)	-34.08 (15.82)	-34.08 (15.68)
Demand Exposure		-2.15 (11.20)		16.12 (12.93)		-34.26 (17.69)
Average in 2003	499.1	499.1	464.6	464.6	604.6	604.6
Observations	299649	299649	225848	225848	73801	73801

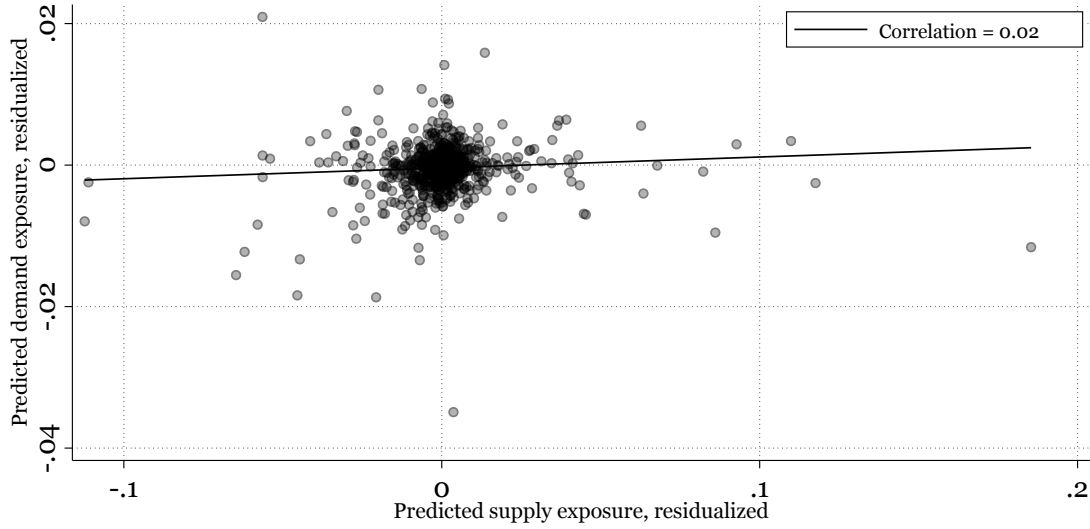
Notes: Even columns in this table replicate the specification reported in column 1 of Table 3, on the baseline sample (column 2), the subsample of workers without college educations, and the subsample of workers with college educations. Unlike Table 3, this table also reports the estimates of β_i^S . The odd columns of this table replicate the even columns, but omit demand exposure from the estimation equation. "Average in 2003" refers to the sample average of real income (denominated in 1,000 krone) in the year 2003.

of exposure to the 75th percentile by the average 2003 earnings within each of these samples yields a 0.6% annual gain for the non-college-educated worker and a 1.3% annual gain for the college-educated worker. Panel B displays no evidence of pre-existing trends for the non-college-educated sample. For college-educated workers, we find evidence of small pre-existing trends pushing in the opposite direction in the pre-shock period than in the post-shock period (e.g., wages were falling slightly between 2000 and 2004 in more demand-exposed jobs before rising substantially following 2004), suggesting a larger break in the trend than evident from the results in panel A alone.

5.2 Supply exposure

Our primary contribution is to introduce and identify the effects of demand exposure. In this section we revisit the extensive literature on supply exposure. Our contribution here is to check whether or to what extent results on supply exposure are robust to controlling

Figure 5: Correlation Between Demand and Supply Exposures



Note: The figure shows a scatter plot of predicted demand and supply exposures (from the first stage), residualized on sector fixed effects, market fixed effects, and the vector of individual controls.

for demand exposure in our particular empirical context.

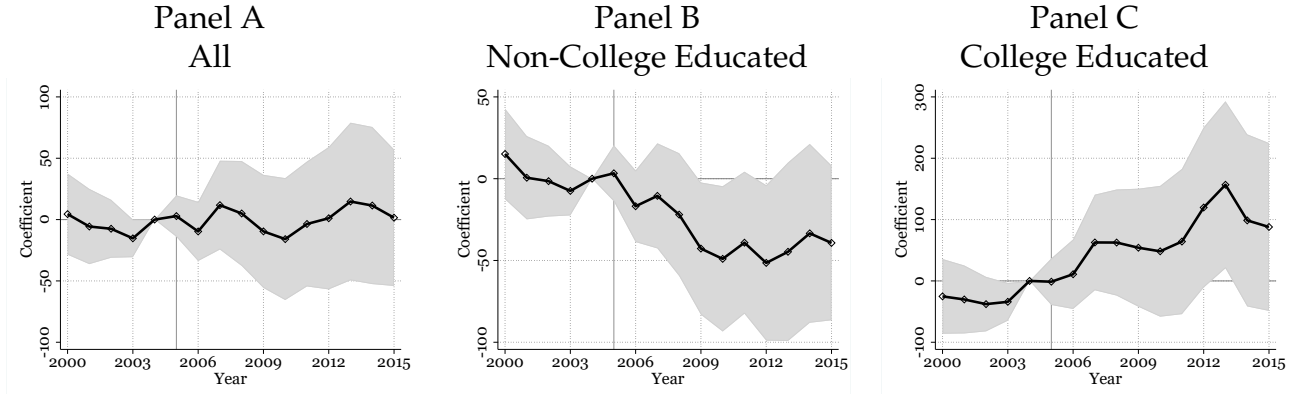
The correlation between demand and supply exposures. The empirical literature on the impact of immigration via (what we refer to as) supply exposure omits demand exposure. Omitting demand exposure when estimating equation (8) would result in a biased estimate of the impact of supply exposure if, conditional on the other controls, predicted demand and supply exposures are correlated. We begin by investigating this correlation.

Figure 5 plots the correlation between predicted demand exposure and predicted supply exposure (from the first stage) after residualizing these of each of the other covariates included in equation (8): sector fixed effects, market fixed effects, and individual controls. This correlation is low (0.02), suggesting that omitting demand exposure will not bias the estimate of supply exposure in our context.

The impact of supply exposure. Given that omitting demand exposure will not bias the estimate of supply exposure in our empirical context, we have little to add to the vast literature studying the impact of supply exposure.

The first row of panel A in Table 7 displays the estimated supply exposure coefficient, β_t^S , in equation (8) when the dependent variable is average real wage income between 2005 and 2015 minus real wage income in 2004. Columns 1 and 2 display the coefficient estimates in our baseline sample, with column 1 omitting demand exposure and column 2 including it. From these results, we reach two conclusions. First, supply exposure has a negligible effect on native real wage income in the full estimation sample. Second, this

Figure 6: The Impact of Supply Exposure on the Evolution of Native Earnings



Note: Each figure replicates Figure 4, but reports the coefficient on supply exposure, β_t^S . The sample varies across panels. Panel A uses the baseline sample. Panel B uses the subsample of workers who are not college educated in 2003. Panel C uses the subsample of workers who are college educated in 2003.

effect is almost identical whether or not we control for demand exposure, consistent with the evidence presented in Figure 5. Panel A of Figure 6 confirms the negligible effect of supply exposure in the baseline sample in the event-study specification.

This zero effect, however, averages across an imprecise positive impact for college-educated natives and an imprecise negative impact for non-college-educated natives, as documented in columns 3 – 6 of Table 7 and panels B and C of Figure 6. This is consistent with our theory if immigrants are relatively better substitutes for less-educated than for more-educated natives (i.e., if ρ is higher between immigrants and low-education natives than between immigrants high-education natives).

6 Conclusions

What is the effect of immigration on native labor-market outcomes? An extensive literature identifies the differential impact of immigration on natives employed in jobs with different supply exposures. But immigrants consume in addition to producing output. Despite this, no literature identifies the impact on natives employed in jobs with different demand exposures.

To make progress on this issue, we present a theoretical framework in which the immigrant intensity of production and the immigrant intensity of consumption may vary across jobs. We solve for the differential effects of immigration on native wages across jobs in a two-sector, non-parametric version of the model and in a many-sector, semi-parametric version of the model. Our theoretical results guide our measurement of supply and demand exposures in the data as well as our empirical strategy to identify their

effects.

Empirically, we focus on the evolution of native Norwegian workers' wage income surrounding a large and rapid inflow of immigrants induced by EU expansions in 2004 and 2007. We combine employer-employee data with a newly collected dataset covering electronic payments for the universe of residents in Norway to measure supply and demand exposures of all native workers to immigration induced by the EU expansions in 2004 and 2007. We find large, positive, and persistent effects of demand exposure to EU expansion on native worker income: natives at the 75th percentile of demand exposure in 2003 experience an increase in annual income of 1.3% relative to natives at the 25th percentile between 2003 and 2015, with this effect being largely stable between 2009 and 2015. We also show that results on immigrant-induced supply shocks are robust to conditioning on demand exposure in our particular empirical context.

References

- ACEMOGLU, D. (2002): "Technical change, inequality, and the labor market," *Journal of economic literature*, 40, 7–72.
- ALBERT, C. AND J. MONRAS (2022): "Immigration and Spatial Equilibrium: The Role of Expenditures in the Country of Origin," *American Economic Review*, 112, 3763–3802.
- ALLEN, T., S. FUCHS, S. GANAPATI, A. GRAZIANO, R. MADERA, AND J. MONTORIOL-GARRIGA (2023): "Is Tourism good for Locals? Evidence from Barcelona," Working papers, Dartmouth University.
- ALMAGRO, M. AND T. DOMÍNGUEZ-IINO (2024): "Location Sorting and Endogenous Amenities: Evidence from Amsterdam," NBER Working Papers 32304, National Bureau of Economic Research, Inc.
- ALTONJI, J. AND D. CARD (1991): *The Effects of Immigration on the Labor Market Outcomes of Less-Skilled Natives*, in John Abowd and Richard Freeman (eds.), *Immigration, Trade, and the Labor Market*, University of Chicago Press.
- AUTOR, D. H., D. DORN, G. H. HANSON, AND J. SONG (2014): "Trade Adjustment: Worker-Level Evidence *," *The Quarterly Journal of Economics*, 129, 1799–1860.
- BADILLA MAROTO, M., B. FABER, A. LEVY, AND M. MUNOZ (2024): "Senior Migration, Local Economic Development and Spatial Inequality," Working papers, Berkeley.
- BHULLER, M. (2009): "Inndeling av Norge i arbeidsmarkedsregioner," *SSB Notater*, 24, 1–30.
- BHULLER, M., K. O. MOENE, M. MOGSTAD, AND O. L. VESTAD (2022): "Facts and Fantasies about Wage Setting and Collective Bargaining," *Journal of Economic Perspectives*, 36, 29–52.
- BORJAS, G. (2017): "The Wage Impact of the Marielitos: A Reappraisal," *Industrial and Labor Relations Review*.
- BORJAS, G., J. T. GROGGER, AND G. HANSON (2012): "Comment: On Estimating Elasticities of Substitution," *Journal of European Economic Association*, 10.
- BORJAS, G. J. (2003): "The Labor Demand Curve is Downward Sloping: Reexamining the Impact of Immigration on the Labor Market," *The Quarterly Journal of Economics*, 118, 1335–1374.
- (2013): "The Analytics of the Wage Effect of Immigration," *IZA Journal of Migration*, 2, 1–25.
- BRATSBERG, B., A. MOXNES, O. RAAUM, AND K. H. ULLTVEIT-MOE (2023): "Opening The Floodgates: Partial And General Equilibrium Adjustments To Labor Immigration," *International Economic Review*, 64, 3–21.
- BRINATTI, A. AND X. GUO (2024): "Third-Country Effects of U.S. Immigration Policy," *University of Michigan Working Paper*.
- BRINATTI, A. AND N. MORALES (2025): "Firm Heterogeneity and the Impact of Immigration: Evidence from German Establishments," *Working paper*.

- BURCHARDI, K. B., T. CHANEY, AND T. A. HASSAN (2019): "Migrants, Ancestors, and Foreign Investments," *The Review of Economic Studies*, 86, 1448–1486.
- BURSTEIN, A., G. HANSON, L. TIAN, AND J. VOGEL (2020): "Tradability and the Labor-Market Impact of Immigration: Theory and Evidence From the United States," *Econometrica*, 88, 1071–1112.
- CARD, D. (1990): "The Impact of the Mariel Boatlift on the Miami Labor Market," *ILR Review*, 43, 245–257.
- (2001): "Immigrant Inflows, Native Outflows, and the Local Labor Market Impacts of Higher Immigration," *Journal of Labor Economics*, 19, 22–64.
- (2009): "Immigration and Inequality," *American Economic Review Papers and Proceedings*, 99(2), 1–21.
- CARON, J., T. FALLY, AND J. R. MARKUSEN (2014): "International Trade Puzzles: A Solution Linking Production and Preferences," *The Quarterly Journal of Economics*, 129, 1501–1552.
- CLEMENS, M. A., E. G. LEWIS, AND H. M. POSTEL (2018): "Immigration Restrictions as Active Labor Market Policy: Evidence from the Mexican Bracero Exclusion," *American Economic Review*, 108, 1468–1487.
- CORTES, P. (2008): "The Effect of Low-Skilled Immigration on U.S. Prices: Evidence from CPI Data," *Journal of Political Economy*, 116, 381–422.
- COSTINOT, A., D. BARTELME, D. DONALDSON, AND A. RODRÍGUEZ CLARE (Forthcoming): "The Textbook Case for Industrial Policy: Theory Meets Data," *Journal of Political Economy*.
- COSTINOT, A. AND J. VOGEL (2010): "Matching and Inequality in the World Economy," *Journal of Political Economy*, 118, 747–786.
- DØLVIK, J. E. AND L. ELDRING (2008): *Mobility of Labour From New EU States to the Nordic Region: Development Trends and Consequences*, Copenhagen: Nordic Council of Ministers.
- DORAN, K., A. GELBER, AND A. ISEN (2022): "The Effects of High-Skill Immigration Policy on Firms: Evidence from Visa Lotteries," *Journal of Political Economy*.
- DUSTMANN, C., U. SCHÖNBERG, AND J. STUHLER (2016): "Labor Supply Shocks, Native Wages, and the Adjustment of Local Employment*," *The Quarterly Journal of Economics*, 132, 435–483.
- EDO, A. (2020): "The Impact of Immigration on Wage Dynamics: Evidence from the Algerian Independence War," *Journal of the European Economic Association*.
- FABER, B. AND C. GAUBERT (2019): "Tourism and Economic Development: Evidence from Mexico's Coastline," *American Economic Review*, 109, 2245–2293.
- FOGED, M. AND G. PERI (2016): "Immigrants and Native Workers: New Analysis Using Longitudinal Employer-Employee Data," *American Economic Journal: Applied Economics*, 8(2), 1–34.
- FRIEDBERG, R. M. (2001): "The Impact of Mass Migration on the Israeli Labor Market," *The Quarterly Journal of Economics*, 116, 1373–1408.

- HUNT, J. (1992): "The Impact of the 1962 Repatriates from Algeria on the French Labor Market," *Industrial and Labor Relations Review*.
- JACOBSON, L. S., R. J. LALONDE, AND D. G. SULLIVAN (1993): "Earnings Losses of Displaced Workers," *American Economic Review*, 83, 685–709.
- KERR, W. R. AND W. F. LINCOLN (2010): "The Supply Side of Innovation: H-1B Visa Reforms and U.S. Ethnic Invention," *Journal of Labor Economics*, 28, 473–508.
- KRUGMAN, P. (1980): "Scale Economies, Product Differentiation, and the Pattern of Trade," *American Economic Review*, 70, 950–959.
- LACH, S. (2007): "Immigration and Prices," *Journal of Political Economy*, 115, 548–587.
- LEWIS, E. (2011): "Immigration, Skill Mix, and Capital Skill Complementarity*," *The Quarterly Journal of Economics*, 126, 1029–1069.
- LLULL, J. (2018): "Immigration, Wages, and Education: A Labor Market Equilibrium Structural Model," *Review of Economic Studies*, 85(3).
- MCCULLY, B., T. JACCARD, AND C. ALBERT (2024): "Immigrants, Imports, and Welfare: Evidence from Household Purchase Data," RF Berlin - CReAM Discussion Paper Series 2417, Rockwool Foundation Berlin (RF Berlin) - Centre for Research and Analysis of Migration (CReAM).
- MONRAS, J. (2020): "Immigration and Wage Dynamics: Evidence from the Mexican Peso Crisis," *Journal of Political Economy*, 128, 3017–3089.
- MUNOZ, M. (2023): "Trading Nontradables: The Implications of Europe's Job-Posting Policy," *The Quarterly Journal of Economics*, 139, 235–304.
- OLNEY, W. W. (2015): "Remittances and the Wage Impact of Immigration," *Journal of Human Resources*, 50, 694–727.
- OTTAVIANO, G. AND G. PERI (2012): "Rethinking the Effect of Immigration on Wages," *Journal of the European Economic Association*, 10, 152–197.
- PETERS, M. (2022): "Market Size and Spatial Growth-Evidence From Germany's Post-War Population Expulsions," *Econometrica*, 2357–2396.
- PIYAPROMDEE, S. (2021): "The Impact of Immigration on Wages, Internal Migration and Welfare," *Review of Economic Studies*, 88, 406–453.
- REPORT (2003): "I første rekke I første rekke – Forsterket kvalitet i en grunnopplæring for alle," Tech. rep., White Paper.
- (2024): "Grunnlaget for inntektsoppgjørene 2024 – Teknisk Beregningsutvalg," Tech. rep., White Paper.
- TERRY, S. J., T. CHANEY, K. B. BURCHARDI, L. TARQUINIO, AND T. A. HASSAN (Forthcoming): "Immigration, Innovation, and Growth," *American Economic Review*.
- YAGAN, D. (2019): "Employment Hysteresis from the Great Recession," *Journal of Political Economy*, 127, 2505–2558.

APPENDIX

A Theoretical appendix

A.1 System in changes

Here we provide a partial characterization of the equilibrium system of equations, in log changes, in response to changes in labor supplies, ℓ^g . The goods-market clearing condition can be expressed as

$$y_s = c_s \quad (10)$$

Constant returns to scale production implies that the change in the production of sector s is given by

$$y_s = \sum_g \theta_s^g \ell_s^g \quad (11)$$

and the zero profit condition in the production of each sector can be expressed as

$$p_s = \sum_g \theta_s^g w_s^g \quad (12)$$

where θ_s^g is the initial share of total costs in the production of sector s that is paid to group g workers, defined for immigrants in equation (1). The change in the consumption of sector s can be expressed in terms of the changes in consumption by each group g as

$$c_s = \sum_g \mu_s^g c_s^g \quad (13)$$

where μ_s^g is the share of total consumption of sector s in the initial equilibrium that is consumed by group g workers, defined for immigrants in equation (2). Finally, the labor-market clearing condition yields

$$\ell^g = \sum_s \Pi_s^g \ell_s^g \quad (14)$$

where $\Pi_s^g \equiv L_s^g / L^g$ is the initial share of g employment within sector s .

A.2 Proofs in the non-parametric, two-sector setting

Deriving equations (6) and (7). Here, we prove results in the non-parametric setting. We start from an initial equilibrium and feed in changes in labor supplies, ℓ^g .

From budget balance, $X^g = \sum_s P_s C_s^g$, we have

$$x^g = \sum_s \zeta_s^g (p_s + c_s^g)$$

where $\zeta_s^g \equiv P_s C_s^g / X^g$ is the share of group g 's spending on sector s . This is equivalent to

$$x^g - p^g = \sum_s \zeta_s^g c_s^g$$

where $p^g \equiv \sum_s \zeta_s^g p_s$ is the local change in group g 's price index. The previous expression, the definition of η in equation (4) imposing $\eta^g = \eta$, and the two-sector assumption yield

$$c_s^g = x^g - p^g + \eta \zeta_{s'g} p_{s'} - \eta \zeta_{s'g} p_s$$

Adding and subtracting $\eta \zeta_s^g p_s$ from the right-hand side yields

$$c_s^g = -\eta p_s + (\eta - 1) p^g + x^g \quad (15)$$

From labor-market clearing and the two-sector assumption, we have

$$\ell^g = \sum_s \Pi_s^g \ell_s^g = \Pi_{s'g} (\ell_{s'}^g - \ell_s^g) + \ell_s^g$$

where $\Pi_s^g \equiv L_s^g / L^g$ denotes the initial share of employment of g in sector s . Substituting in from the definition of κ in equation (5), imposing $\kappa^g = \kappa$, and rearranging yields

$$\ell_s^g = \Pi_{s'g} \kappa (w_s^g - w_{s'}^g) + \ell_s^g$$

Adding and subtracting $\Pi_s^g \kappa w_s^g$ to the right-hand side of the previous expression yields

$$\ell_s^g = \kappa w_s^g - \kappa w^g + \ell_s^g \quad (16)$$

where we define $w^g \equiv \sum_s \Pi_s^g w_s^g$ as the local change in group g 's wage index.

For any sector s , equation (3) and equation (16) yield

$$w_s^n - w_s^i = \frac{\kappa}{\kappa + \rho_s} \Delta \left[\frac{\ell}{\kappa} - w \right] \quad (17)$$

where $\Delta(\ell/\kappa - w) \equiv \ell^i/\kappa + w^n - (\ell^n/\kappa - w^i)$. Equations (10), (11), and (13) yield

$$\ell_s^n - \theta_s^i(\ell_s^n - \ell_s^i) = \sum_g \mu_s^g c_s^g$$

The previous expression and equation (15) yield

$$\eta p_s = \sum_g \mu_s^g [(\eta - 1)p^g + x^g] - [\ell_s^n - \theta_s^i(\ell_s^n - \ell_s^i)] \quad (18)$$

The previous expression, equation (3), and equation (17), yield

$$p_s = \frac{1}{\eta} \sum_g \mu_s^g [(\eta - 1)p^g + x^g] - \frac{\kappa \rho_s}{\eta} \frac{\Delta[\ell/\kappa - w]}{\kappa + \rho_s} \theta_s^i - \frac{1}{\eta} \ell_s^n \quad (19)$$

Equations (12) and (17) yield

$$\begin{aligned} p_s &= \sum_g \theta_s^g w_s^g = (1 - \theta_s^i) w_s^n + \theta_s^i w_s^i = w_s^n - \theta_s^i (w_s^n - w_s^i) \\ &= w_s^n - \frac{1}{\kappa + \rho_s} \theta_s^i \Delta[\ell - \kappa w] \end{aligned}$$

The previous expression and equation (19) yield

$$w_s^n = \frac{1}{\eta + \kappa} \sum_g \mu_s^g [x^g + (\eta - 1)p^g] + \frac{\Delta[\ell - \kappa w]}{\kappa + \rho_s} \frac{\eta - \rho_s}{\eta + \kappa} \theta_s^i - \frac{1}{\eta + \kappa} (\ell_s^n - \kappa w^n)$$

which can be expressed as

$$w_s^n = \alpha + \frac{1}{\eta + \kappa} \left\{ \Delta[x + (\eta - 1)p] \mu_s^i + \frac{\eta - \rho_s}{\kappa + \rho_s} \Delta[\ell - \kappa w] \theta_s^i \right\}$$

where $\Delta[x + (\eta - 1)p] \equiv (x^i + (\eta - 1)p^i) - (x^n + (\eta - 1)p^n)$ and where

$$\alpha \equiv \frac{1}{\eta + \kappa} [x^n + (\eta - 1)p^n - \ell^n + \kappa w^n]$$

This simplifies to equation (6), after imposing $\rho_s = \rho$ and $\eta = 1$. \square

Results in the two-sector, fully general non-parametric setup. Here, we generalize equations (4) and (5) to allow η and κ to vary across groups g and derive a generalization of equation (7).

We denote by η^g group g 's local elasticity of substitution in consumption across sectors,

$$c_s^g - c_{s'}^g = -\eta^g(p_s - p_{s'}) \quad (20)$$

where η^g shapes consumer substitution between sectors—for consumers in group g —in response to a change in sectoral prices. Finally, we denote by κ^g group g 's local elasticity of substitution in labor supply across sectors,

$$\ell_s^g - \ell_{s'}^g = \kappa^g(w_s^g - w_{s'}^g) \quad (21)$$

where κ^g shapes labor allocation between sectors—for workers in group g —in response to a change in their wages.

Following the same steps as in the derivation of equations (15) and (16), we obtain

$$c_s^g = -\eta^g p_s + (\eta^g - 1)p^g + x^g \quad (22)$$

and

$$\ell_s^g = \kappa^g w_s^g - \kappa^g r^g \quad (23)$$

where we define

$$r^g \equiv w^g - \frac{1}{\kappa^g} \ell^g$$

The system of equations is then (3), (10) - (13), (22), and (23).

From equation (23), of which there are four, we can solve for each w_s^g as a function of the corresponding ℓ_s^g ,

$$w_s^g = \frac{1}{\kappa^g} \ell_s^g + r^g \quad (24)$$

Together with the previous expression, equation (12), of which there are two, allows us to solve for each p_s as a function of ℓ_s^n and ℓ_s^i ,

$$p_s = \frac{1}{\kappa^n} \theta_{sn} \ell_s^n + \frac{1}{\kappa^i} \theta_s^i \ell_s^i + \theta_{sn} r^n + \theta_s^i r^i$$

Together with the previous expression, equation (22), of which there are four, yields a solution for each c_s^g as a function of ℓ_s^n and ℓ_s^i ,

$$c_s^g(\ell_s^n, \ell_s^i) = -\eta^g \left(\frac{1}{\kappa^n} \theta_{sn} \ell_s^n + \frac{1}{\kappa^i} \theta_s^i \ell_s^i \right) - \eta^g (\theta_{sn} r^n + \theta_s^i r^i) + (\eta^g - 1)p^g + x^g$$

This leaves us with four unknowns: ℓ_s^g for each sg pair. Equation (3) and the previous

expressions yield

$$\ell_s^i = \ell_s^n + \rho_s \frac{1}{\kappa^n} \ell_s^n - \rho_s \frac{1}{\kappa^i} \ell_s^i + \rho_s (r^n - r^i)$$

and solving for ℓ_s^i , we obtain

$$\ell_s^i = \left(\frac{\kappa^i}{\kappa^i + \rho_s} \right) \left(\frac{\kappa^n + \rho_s}{\kappa^n} \right) \ell_s^n + \left(\frac{\kappa^i \rho_s}{\kappa^i + \rho_s} \right) (r^n - r^i)$$

which leaves us with two unknowns, ℓ_{sn} for each s . Equations (10), (11), and (13), together with the above expressions, yield

$$\ell_s^n = \frac{\kappa^n \kappa^i (\bar{\eta}_s - \rho_s) \Delta \left[\frac{1}{\kappa} \ell - w \right]}{(\kappa^n + \nu_s)(\kappa^i + \rho_s)} \theta_s^i + \frac{\kappa^n \Delta [x + (\eta - 1)p]}{\kappa^n + \nu_s} \mu_s^i + \frac{\kappa^n}{\kappa^n + \nu_s} [x^n + (\eta^n - 1)p^n - \bar{\eta}_s r^n]$$

where

$$\bar{\eta}_s \equiv \mu_s^n \eta^n + \mu_s^i \eta^i \quad (25)$$

is a weighted average of the native, η^n , and immigrant, η^i , elasticities of substitution in consumption, with weights given by the share of expenditure in sector s spent by natives, μ_s^n , and immigrants, μ_s^i , respectively; where

$$\nu_s \equiv \left(\frac{\kappa^i - \kappa^n}{\kappa^i + \rho_s} \theta_s^i \right) \rho_s + \left[1 - \frac{\kappa^i - \kappa^n}{\kappa^i + \rho_s} \theta_s^i \right] \bar{\eta}_s \quad (26)$$

is similarly a weighted average of ρ_s and $\bar{\eta}_s$, with weights given by $\frac{\kappa^i - \kappa^n}{\kappa^i + \rho_s} \theta_s^i$ and $1 - \frac{\kappa^i - \kappa^n}{\kappa^i + \rho_s} \theta_s^i$, respectively; and where

$$\begin{aligned} \Delta \left[\frac{1}{\kappa} \ell - w \right] &= \left(\ell^i / \kappa^i - w^i \right) - \left(\ell^n / \kappa^n - w^n \right) \\ \Delta [x + (\eta - 1)p] &= \left(x^i + (\eta^i - 1)p^i \right) - \left(x^n + (\eta^n - 1)p^n \right) \end{aligned}$$

Substituting back in equation (24), we obtain

$$w_s^n = \alpha_s + \frac{1}{\nu_s + \kappa^n} \left\{ \Delta [x + (\eta - 1)p] \mu_s^i + \frac{\kappa^i (\bar{\eta}_s - \rho_s)}{\kappa^i + \rho_s} \Delta \left[\frac{1}{\kappa} \ell - w \right] \theta_s^i \right\} \quad (27)$$

where

$$\alpha_s \equiv \frac{1}{\nu_s + \kappa^n} [x^n + (\eta^n - 1)p^n + (\kappa^n + \nu_s - \bar{\eta}_s) r^n] \quad (28)$$

Note that in the baseline cases, we had $\eta = \eta^n = \eta^i$. This implies that $\bar{\eta}_s = \eta$ in

equation (25). We also had $\kappa = \kappa^n = \kappa^i$. This implies that $v_s = \bar{\eta}_s$ in equation (26). Together, these restrictions imply $v_s = \bar{\eta}_s = \eta$.

Relaxing the baseline restrictions leaves supply and demand exposures largely unchanged. However, it alters their implications for relative wages both because all elasticities are heterogeneous across sectors and, more importantly, because the term α from equation (7) becomes a sector-specific term α_s in equation (27). In practice, the estimating equation in this case would feature four separate shocks (to immigrant employment and expenditure and to native employment and expenditure) rather than two shocks (combining immigrant and native employments and immigrant and native expenditures).

A.3 Proofs in the semi-parametric, many-sector setting

Deriving versions of equations (6) and (7) with many sectors. The two-sector assumption is used in deriving equations (6) and (7) only in the derivation of equations (15) and (16). The parametric assumptions of CES consumption aggregators and Fréchet distributed amenity draws directly imply these equations in the many-sector parametric setting.

B Empirical appendix

B.1 Adjustments to sector aggregation

Table [A1](#) displays the raw COICOP sectoral aggregation of the Nets expenditure data. We refine the bank payment category (COICOP 13) by excluding payments likely associated with servicing mortgages or other investment-related debt. The remaining bank payments closely track aggregate statistics on credit card payments, indicating that this category captures payments of credit card bills.

In addition, we combine consumption categories 072 (Operation of personal transport equipment) and 073 (Transport service) into one (Other transportation); we combine 092 (Major durables for outdoor recreation), 093 (Other recreational items and equipment, gardens and pets), and 094 (Recreational and cultural services) into one (Recreation). And we combine 124 (Social protection) and 126 (Financial services) into one (Finance). These choices are made to combine small categories or those that are more difficult to allocate from the disaggregated employment data. We omit COICOP 14 (Payments to public institutions) and cash withdrawals.

We additionally omit COICOP 2 (Alcoholic beverages, tobacco and narcotics) because—unlike every other consumption category—its immigrant intensity of consumption measured at the national level is unstable across time, especially in the first years of the data set. See the bold line in Figure [A1](#).

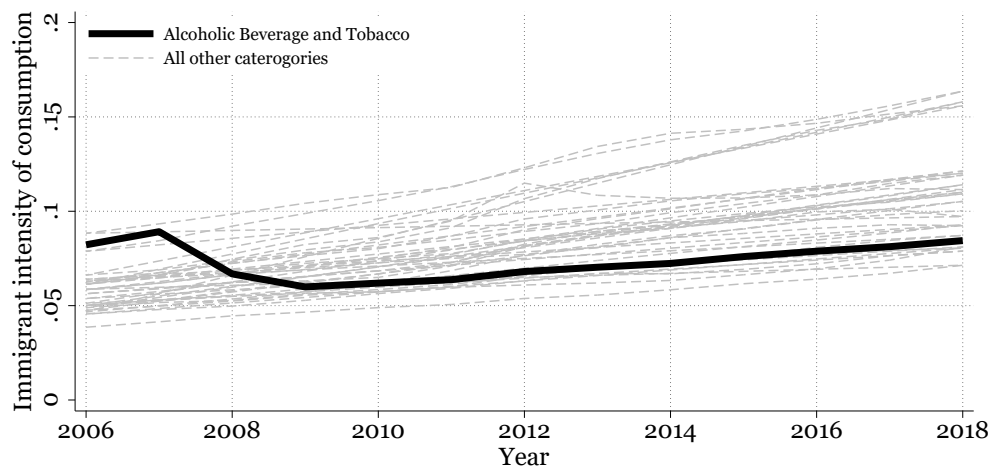
Table [A2](#) provides examples of the concordance between 5-digit industry codes in the employment data and consumption categories. We highlight that the disaggregate employment industries that map into a given aggregate consumption sector include both production of products as well as wholesale and retail sale of these products.

Table A1: Consumption Categories

Category	
01	Food and non-alcoholic beverages
02	Alcoholic beverages, tobacco and narcotics
03	Clothing and footwear
04	Utilities, electricity, gasoline, housing rent
05	Furnishings, household equip. and routine household maintenance
06	Health
07	Transport
071	Purchase of vehicles
072	Operation of personal transport equipment
073	Transport services
08	Communications
09	Recreation and culture
091	Audio-visual, photographic and information processing equipment
092	Major durables for outdoor recreation
093	Other recreational items and equipment, gardens and pets
094	Recreational and cultural services
095	Newspapers, books and stationery
10	Education
11	Restaurants and Hotels
111	Restaurants
112	Hotels
12	Miscellaneous services
121	Personal care
123	Personal effects
124	Social protection
125	Insurance
126	Financial services
127	Other services
13	Payments to banks (credit)
14	Payments to public institutions (public)
cash	cash withdrawal

Notes: Category 13 and 14 applies only to payments via NICS. Cash refers to withdrawals made when making a debit card payment.

Figure A1: Excluded Spending Category: Alcoholic Beverage, Tobacco and Narcotics



Note: The immigrant intensity of consumption of each consumption sector measured at the national level for each year from 2006 to 2018.

Table A2: Examples of Concordance from 5-Digit Industries to Consumption Categories

5-Digit Industry	Consumption Sector
Manuf. of other furniture	Furnishings
Wholesale of furniture	Furnishings
Retail sale of antiques	Furnishings
Manuf. of paper stationery	Newspapers, books, stationery
Wholesale of books, newspapers, magazines	Newspapers, books, stationery
Retail sale of books in specialized stores	Newspapers, books, stationery
Book publishing	Newspapers, books, stationery
Growing of grapes	Food and beverage
Wholesale of fruit + vegetables	Food and beverage
Retail sale of fruit + vegetables in specialized stores	Food and beverage
Taxi operation	Transport
Cableway transport and ski lifts	Transport
Passenger air transport	Transport

B.2 Taste and income heterogeneity

Our theory in section 2 assumes that immigrants and natives have homothetic, but potentially different preferences. In practice, preferences are non-homothetic. Here, we study the extent to which immigrant and native expenditure shares differ in our data because they have different tastes (demand shifters) or because preferences are non-homothetic and they have different incomes.

Let total expenditure on sector s by a household j —who lives in commuting zone m_j and is a member of group g_j —be denoted by x_j . Suppose that

$$\log x_{js} = \mu_{s_j}^{g_j} + \alpha_s \log \text{Income}_j + \varepsilon_{js} \quad (29)$$

Here, Income_j denotes the individual's income and α_s is a sector fixed effect. The product of these controls for sector-specific income elasticities of demand (that are common across groups, g). And μ_s^g is a group \times sector fixed effect that allows for different demand shifters across sectors for natives and immigrants. We estimate the parameters of equation (29) using our individual-level expenditure data for the year 2006.

With the estimated coefficients we can compute total predicted expenditure of each individual on each sector as

$$\log \hat{x}_{js} = \hat{\mu}_{s_j}^{g_j} + \hat{\alpha}_s \log \text{Income}_j$$

Differences in predicted expenditure in a sector across households reflects either preference heterogeneity (differences in $\hat{\mu}_s^g$ across g) or differences in income (differences in $\log \text{Income}_j$). Hence, differences in immigrant intensities of consumption can be decomposed into differences in preferences or differences in the distribution of income across natives and immigrants.

We construct average predicted (log) expenditures of immigrants and natives on each sector s as

$$\log \hat{x}_s^g = \frac{1}{|\mathcal{J}_g|} \sum_{j \in \mathcal{J}_g} \log \hat{x}_{js} = \hat{\mu}_s^g + \hat{\alpha}_s \frac{1}{|\mathcal{J}_g|} \sum_{j \in \mathcal{J}_g} \log \text{Income}_j$$

where \mathcal{J}_g is the set of individuals in group g and $|\mathcal{J}_g|$ is the number of these individuals. We can, therefore, decompose differences in average predicted log expenditures of immigrants and natives on each sector s at the national level into a component associated with taste differences and a component associated with income differences.

$$\log \hat{x}_s^i - \log \hat{x}_s^n = \underbrace{\hat{\mu}_s^i - \hat{\mu}_s^n}_{\text{taste differences}} + \underbrace{\hat{\alpha}_s (\overline{\text{Income}_i} - \overline{\text{Income}_n})}_{\text{income differences}} \quad (30)$$

where $\overline{\text{Income}_g} \equiv \frac{1}{|\mathcal{J}_g|} \sum_{j \in \mathcal{J}_g} \log \text{Income}_j$ is the average log income of group g at the national level. Given the above identity, we can separately project each of the two right-hand-side terms onto the left-hand-side term. This provides an empirical decomposition of differences in $\log \hat{x}_s^i - \log \hat{x}_s^n$ across sectors into the preference-heterogeneity component and the income heterogeneity component.

Table A3: What Accounts for Variation in Immigrant Intensities of Consumption?

Fraction of expenditure differences explained by	
A. Taste Differences	B. Income Differences
0.885	0.115

Notes: Decomposing differences in the predicted average log expenditure of immigrants and natives across sectors into taste differences and income differences by projecting each of the two right-hand-side terms in equation (30) onto the left-hand side.

Table A3 displays results. The vast majority of the variation between predicted immigrant and predicted native expenditure shares across sectors is driven by differences in tastes, rather than by differences in incomes.

B.3 Endogeneity

We conduct the following Monte Carlo simulation to document that even if the distribution of θ_{ms}^i is independent of the distribution of the residual, estimating equation (8) via OLS may lead to a biased estimator. And it may lead to an inconsistent estimator as the number of markets converges to infinity for a given number of sectors S . We focus on supply exposure, although demand exposure is similar.

We consider 100 markets m and S sectors s . For a given value of S , we iterate 500 times. In each iteration, we take the following approach.

We draw $\theta_{ms}^i \sim U[0, 1]$ from a uniform distribution. We also construct the residual as the sum of a sector-specific random component and a market-sector-specific random component $\varepsilon_{ms} \equiv \tilde{\varepsilon}_{ms} + \tilde{\varepsilon}_s$, where $\tilde{\varepsilon}_{ms} \sim U[0, 1]$ and where $\tilde{\varepsilon}_s \sim U[0, 1]$. We then construct $\Delta\ell_m \equiv \varepsilon_m + \text{Cov}_m(\theta_{ms}, \varepsilon_{ms})$, where $\varepsilon_m \sim U[0, 1]$ and where $\text{Cov}_m(\theta_{ms}, \varepsilon_{ms})$ is the realized covariance between the the immigrant intensity of production and the residual within market m .

These specific assumptions are consistent with the more general discussion in Section 3.2. First, the distributions of the residual and immigrant intensity of production are independent. Second, immigrant inflows in market m are particularly large when the realized value of the residual demand shock positively covaries with the realized value of the immigrant intensity of production within market m .

Given these variables, for each of the 500 iterations we measure the correlation between supply exposure and the immigrant intensity of production conditional on the other controls. Specifically, for each iteration we use OLS to estimate

$$\theta_{ms}^i \Delta\ell_m = \alpha_s + \alpha_m + \beta \varepsilon_{ms} + \iota_{ms}$$

and store the estimate $\hat{\beta}_k$ associated with each of the 500 iterations k . Using these 500 values, we test whether the average estimate is significantly different from zero at the 5% level. We do this for a wide range of values of the number of sectors, $S \in \{10, 20, 50, 200, 500\}$. The average value of the estimate across iterations is always positive. Whereas this average falls towards zero as S grows, we reject at the 5% level that it equals zero for each of these values of S .

Finally, note that if we instrument for supply exposure using $\theta_{ms}^i \Delta \widetilde{Pop}_m^i$, where $\Delta \widetilde{Pop}_m^i = \varepsilon_m$, then the 2SLS estimate is consistent and unbiased for any value of S .

B.4 Sector tradability

We manually code each of the 19 sectors used in the empirical analysis as either more or less tradable. Given the sectoral allocation, we acknowledge that there is no way clear best way to do so. We allocate to tradables the following sectors: books + newspapers, clothing, communication, electronics, furnishing, grocery stores, motor vehicles, and transport. We allocate to non-tradables the following sectors: banks, finance, health, hotels, insurance, personal care, personal effects, recreation, restaurants, services, and utilities.

C Additional appendix tables and figures

Table A4: Summary Statistics

	Male	Female	Include Educ.	Include Oslo	Exclude Manuf.
Income:					
Natives	499.08	349.70	497.97	519.79	482.08
Immigrants	473.68	356.65	472.73	478.20	454.85
New accession immigrants	500.73	370.12	491.69	511.28	496.37
Income, college graduates:					
Natives	604.58	402.94	586.03	631.16	574.88
Immigrants	566.05	412.77	553.97	572.03	537.55
New accession immigrants	595.56	420.60	559.17	595.11	583.60
Income, non-college graduates:					
Natives	464.60	322.31	463.61	474.26	448.91
Immigrants	418.85	310.93	417.68	420.25	401.49
New accession immigrants	420.62	317.90	419.71	420.97	418.67
Employment rate:					
Natives	0.97	0.96	0.97	0.97	0.97
Immigrants	0.94	0.95	0.94	0.94	0.94
New accession immigrants	0.96	0.96	0.96	0.96	0.94
Employment rate, college graduates:					
Natives	0.98	0.96	0.98	0.97	0.97
Immigrants	0.95	0.96	0.95	0.95	0.95
New accession immigrants	0.97	0.96	0.97	0.97	0.96
Employment rate, non-college graduates:					
Natives	0.97	0.97	0.97	0.97	0.96
Immigrants	0.93	0.95	0.93	0.93	0.92
New accession immigrants	0.94	0.95	0.95	0.95	0.92
Non-college graduate share:					
Natives	0.75	0.66	0.72	0.71	0.74
Immigrants	0.63	0.55	0.60	0.62	0.61
New accession immigrants	0.54	0.49	0.48	0.48	0.53

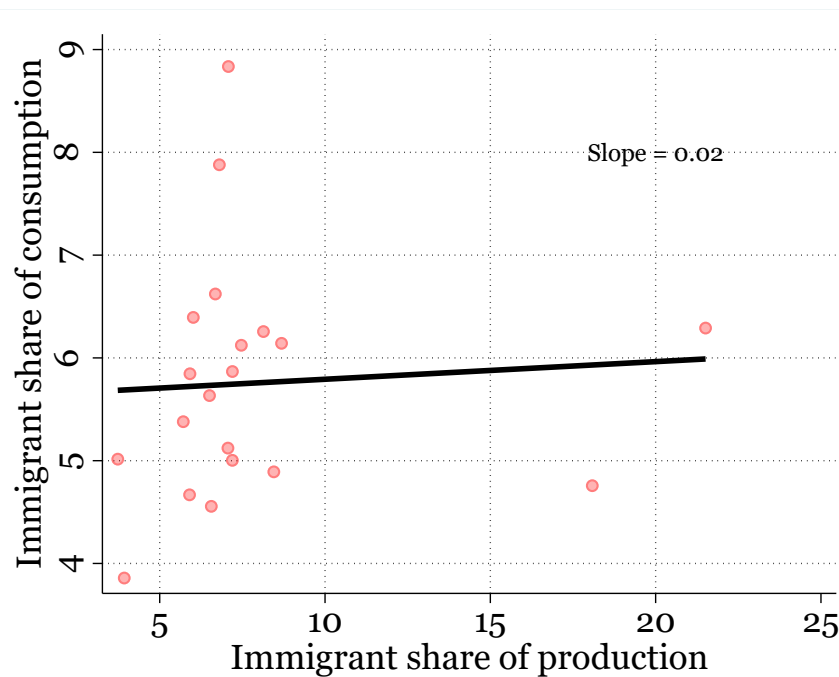
Notes: This table provides summary statistics for income (denominated in thousands of krone) and employment rates by education level for the various samples used in our empirical exercises. Statistics are computed for the year 2003. New accession immigrants are the subset of immigrants from countries joining the EU in 2004 and 2007. The new accession immigrants used to construct this table are those who lived in Norway in 2003, rather than those who enter after accession.

Table A5: Effect of immigrant-induced demand and supply exposure in various samples defined by reallocations

	Baseline	Stayers	Δ Region	Δ Sector
	(1)	(2)	(3)	(4)
Demand Exposure	115.40 (33.15)	158.75 (54.30)	393.46 (101.53)	42.63 (37.78)
Supply Exposure	0.87 (21.54)	41.67 (34.22)	-32.41 (72.70)	-9.07 (22.93)
Average in 2015	98.3	119.8	127.7	71.8
Observations	299649	156040	8875	123963

Notes: This table replicates column 1 of Table 3 (but also reports the coefficient on supply exposure) on various samples. Column 1 is our baseline sample whereas columns 2-4 are selected subsamples: the column 2 sample is the set of workers who are employed in the same sector and living in the same region in 2015 as in 2003, the column 3 sample is the set of workers who are employed in the same sector and living in a different region in 2015 than in 2003, and the column 4 sample is the set of workers who are employed in a different sector (including non-employment) and living in the same region in 2015 as in 2003. Average reports the average value of the dependent variable in the corresponding sample.

Figure A2: Correlation between Immigrant Intensities of Consumption and Production



Note: This figure shows the correlation between the immigrant intensity of consumption (μ_s^i) and production (θ_s^i), both measured at the national level.