

Gmyrek, Paweł et al.

Working Paper

Generative AI and jobs: A refined global index of occupational exposure

ILO Working Paper, No. 140

Provided in Cooperation with:

International Labour Organization (ILO), Geneva

Suggested Citation: Gmyrek, Paweł et al. (2025) : Generative AI and jobs: A refined global index of occupational exposure, ILO Working Paper, No. 140, ISBN 978-92-2-042185-7, International Labour Organization (ILO), Geneva,
<https://doi.org/10.54394/HETP0387>

This Version is available at:

<https://hdl.handle.net/10419/318547>

Standard-Nutzungsbedingungen:

Die Dokumente auf EconStor dürfen zu eigenen wissenschaftlichen Zwecken und zum Privatgebrauch gespeichert und kopiert werden.

Sie dürfen die Dokumente nicht für öffentliche oder kommerzielle Zwecke vervielfältigen, öffentlich ausstellen, öffentlich zugänglich machen, vertreiben oder anderweitig nutzen.

Sofern die Verfasser die Dokumente unter Open-Content-Lizenzen (insbesondere CC-Lizenzen) zur Verfügung gestellt haben sollten, gelten abweichend von diesen Nutzungsbedingungen die in der dort genannten Lizenz gewährten Nutzungsrechte.

Terms of use:

Documents in EconStor may be saved and copied for your personal and scholarly purposes.

You are not to copy documents for public or commercial purposes, to exhibit the documents publicly, to make them publicly available on the internet, or to distribute or otherwise use the documents in public.

If the documents have been made available under an Open Content Licence (especially Creative Commons Licences), you may exercise further usage rights as specified in the indicated licence.



<https://creativecommons.org/licenses/by/4.0/>

► Generative AI and Jobs

A Refined Global Index of Occupational Exposure

Authors / Pawel Gmyrek, Janine Berg, Karol Kamiński, Filip Konopczyński, Agnieszka Ładna, Balint Nafradi, Konrad Rosłaniec, Marek Troszyński





Attribution 4.0 International (CC BY 4.0)

This work is licensed under the Creative Commons Attribution 4.0 International. See: <https://creativecommons.org/licenses/by/4.0/>. The user is allowed to reuse, share (copy and redistribute), adapt (remix, transform and build upon the original work) as detailed in the licence. The user must clearly credit the ILO as the source of the material and indicate if changes were made to the original content. Use of the emblem, name and logo of the ILO is not permitted in connection with translations, adaptations or other derivative works.

Attribution – The user must indicate if changes were made and must cite the work as follows: Gmyrek, P., Berg, J., Kamiński, K., Konopczyński, F., Ładna, A., Nafradi, B., Rosłaniec, K., Troszyński, M. *Generative AI and Jobs: A Refined Global Index of Occupational Exposure*. ILO Working Paper 140. Geneva: International Labour Office, 2025. © ILO.

Translations – In case of a translation of this work, the following disclaimer must be added along with the attribution: *This is a translation of a copyrighted work of the International Labour Organization (ILO). This translation has not been prepared, reviewed or endorsed by the ILO and should not be considered an official ILO translation. The ILO disclaims all responsibility for its content and accuracy. Responsibility rests solely with the author(s) of the translation.*

Adaptations – In case of an adaptation of this work, the following disclaimer must be added along with the attribution: *This is an adaptation of a copyrighted work of the International Labour Organization (ILO). This adaptation has not been prepared, reviewed or endorsed by the ILO and should not be considered an official ILO adaptation. The ILO disclaims all responsibility for its content and accuracy. Responsibility rests solely with the author(s) of the adaptation.*

Third-party materials – This Creative Commons licence does not apply to non-ILO copyright materials included in this publication. If the material is attributed to a third party, the user of such material is solely responsible for clearing the rights with the rights holder and for any claims of infringement.

Any dispute arising under this licence that cannot be settled amicably shall be referred to arbitration in accordance with the Arbitration Rules of the United Nations Commission on International Trade Law (UNCITRAL). The parties shall be bound by any arbitration award rendered as a result of such arbitration as the final adjudication of such a dispute.

For details on rights and licensing, contact: rights@ilo.org. For details on ILO publications and digital products, visit: www.ilo.org/publns.

ISBN 9789220421840 (print), ISBN 9789220421857 (web PDF), ISBN 9789220421864 (epub), ISBN 9789220421871 (html). ISSN 2708-3438 (print), ISSN 2708-3446 (digital)

<https://doi.org/10.54394/HETP0387>

The designations employed in ILO publications, which are in conformity with United Nations practice, and the presentation of material therein do not imply the expression of any opinion

whatsoever on the part of the ILO concerning the legal status of any country, area or territory or of its authorities, or concerning the delimitation of its frontiers or boundaries. See: www.ilo.org/disclaimer.

The opinions and views expressed in this publication are those of the author(s) and do not necessarily reflect the opinions, views or policies of the ILO.

Reference to names of firms and commercial products and processes does not imply their endorsement by the ILO, and any failure to mention a particular firm, commercial product or process is not a sign of disapproval.

Information on ILO publications and digital products can be found at: www.ilo.org/research-and-publications

ILO Working Papers summarize the results of ILO research in progress, and seek to stimulate discussion of a range of issues related to the world of work. Comments on this ILO Working Paper are welcome and can be sent to gmyrek@ilo.org.

Authorization for publication: Caroline Fredrickson, Director, Research Department

ILO Working Papers can be found at: www.ilo.org/global/publications/working-papers

Suggested citation:

Gmyrek, P., Berg, J., Kamiński, K., Konopczyński, F., Ładna, A., Nafradi, B., Rosłaniec, K., Troszyński, M. 2025. *Generative AI and Jobs: A Refined Global Index of Occupational Exposure*, ILO Working Paper 140 (Geneva, ILO). <https://doi.org/10.54394/HETP0387>

Abstract

This study updates the ILO's 2023 Global Index of Occupational Exposure to Generative AI (GenAI), incorporating recent advances in the technology and increasing user familiarity with GenAI tools. Using a representative sample from the 29,753 tasks in the Polish occupational classification system and a survey of 1,640 people employed in each 1-digit ISCO-08 groups, we collect 52,558 data points regarding perceive potential of automation for 2,861 tasks. We then compare this input with a survey and several rounds of Delphi-style discussions among a smaller group of international experts. Based on this process, we create a repository of knowledge about task automation that goes beyond national specificities and use it to develop an AI assistant able to predict scores for tasks in the technical documentation of ISCO-08.

Our 2025 scores are presented in a revised framework of four progressively increasing exposure gradients, with a new set of global estimates of employment shares exposed to GenAI. Clerical occupations continue to have the highest exposure levels. Additionally, some strongly digitized occupations have increased exposure, highlighting the expanding abilities of GenAI regarding specialized tasks in professional and technical roles.

Globally, one in four workers are in an occupation with some GenAI exposure. 3.3% of global employment falls into the highest exposure category, albeit with significant differences between female (4.7%) and male employment (2.4%). These differences increase with countries' income (9.6% female vs 3.5% male in Gradient 4 in HICs), and so does the overall exposure (11% of total employment in LICs vs 34% in HICs). As most occupations consist of tasks that require human input, transformation of jobs is the most likely impact of GenAI. Linking our refined index with national micro data enables precise projections of such transformations, offering a foundation for social dialogue and targeted policy responses to manage the transition.

About the authors

Paweł Gmyrek is a Senior Researcher in the Research Department of the ILO.

Janine Berg is a Senior Economist in the Research Department of the ILO.

Karol Kamiński is a Senior Researcher in the Analysis and Research Department of the NASK-PIB.

Filip Konopczyński is the Director of the Analysis and Research Department of the NASK-PIB.

Agnieszka Ładna is a Manager in the Analysis and Research Department of the NASK-PIB.

Konrad Rosłaniec is a Researcher in the Analysis and Research Department of the NASK-PIB.

Marek Troszyński is an Expert in the Analysis and Research Department of the NASK-PIB and Assistant Professor at the Civitas University, Warsaw.

Table of contents

Abstract	01
About the authors	01
Acronyms	07
<hr/>	
► Introduction	09
<hr/>	
► 1 Task-based approaches to automation in the literature	11
<hr/>	
► 2 Tasks and occupations in the 6-digit system in Poland	12
<hr/>	
► 3 Assessment of tasks' automation potential	14
3.1. Initial Algorithmic predictions	14
3.2. Selection of occupational tasks for human assessment	15
3.3. Survey design and recruitment	17
3.4. Survey design limitations	18
3.5. Survey of Task Automation Potential	19
3.5.1. Sample properties	19
3.5.2. Participants' Exposure to GenAI: Screening Questions	22
3.5.3. Scoring of task automation potential	23

► 4 Expert validation survey	27
► 5 Adjustment of survey sub-sample	30
► 6 Adjustment of all survey scores	34
► 7 Prediction of synthetic task-level scores for all ISCO-08 and 6-digit occupations	35
► 8 Adjusted Global Index of GenAI Exposure	37
► 9 Changes to occupational classifications	40
► 10 Revised global employment estimates	43
► Conclusion	46
Annex	48
1. Exposure by 4-digit ISCO-08 occupation	48
2. Sampling Formula for section 4.2.	61
3. Survey Questionnaire	62
References	68
Acknowledgements	71

List of Figures

Figure 1. Income- and population-based similarities (A) and access to the internet (B) across countries	12
Figure 2. Distribution of synthetic automation scores from 3 LLMs, by ISCO-08 1-digit	14
Figure 3. Age and sex distribution in the survey compared to Labour Force Survey (LFS) data in Poland (employed individuals)	20
Figure 4. Distribution of occupational groups in the survey, compared to LFS in Poland (employed individuals) and to the desired sample (Table 2)	21
Figure 5. Occupation and sex distribution among survey participants compared to LFS in Poland (employed individuals)	21
Figure 6. Frequency of use of GenAI, by 1-digit ISCO-08	22
Figure 7. Expectations of impact on the work area	23
Figure 8. Expectations of impact on individuals' current job – distribution of individual scores	23
Figure 9. Distribution of task-level scores by sex and occupational group (1-digit ISCO-08)	24
Figure 10. Scoring as a function of familiarity with GenAI and the scored task – distribution of individual scores	25
Figure 11. Schema of the scoring stages	27
Figure 12. Example of a dendrogram used for the review of tasks' semantic clustering	28
Figure 13. Task-level scores from the survey and experts, compared to AI-arbitrated scores	30
Figure 14. Comparison of Adjusted Scores: GPT-4o vs Gemini by Occupational Group	31
Figure 15. Survey scores, expert evaluation and final adjustments for 2,861 tasks in the main survey	34
Figure 16. AI Exposure Gradients: ISCO-08 4-digit level occupations	37
Figure 17. AI Exposure: Comparison of 2025 with 2023, ISCO -08 4-digit level occupations	40
Figure 18. Changes to occupational exposure between 2023 and 2025 within Gradient 4	41
Figure 19. 4-digit level occupations (ISCO-08) with largest changes in mean scores between 2023 and 2024	42
Figure 20. Global estimates of occupations potentially exposed to GenAI (% of employment by sex)	43

List of Tables

Table 1. Composition of occupational tasks in the Polish classification system and in ISCO-08	13
Table 2. Survey sample selection	16
Table 3. Core survey questions	17
Table 4. Sample of adjustments and justifications between the survey and expert scores (examples of largest upward and downward revisions)	31
Table 5. GenAI Exposure Gradients: Definition and Interpretation	38
Table A1. ISCO-08 occupations by exposure gradient	48

List of Boxes

Text Box 1. Sample Question for Task Automation Assessment	18
Text Box 2. Introductory prompt for survey respondents	19
Text Box 3. The conceptual structure of the LLM prompt (Python code for GPT-4o)	35

Acronyms

AI	Artificial Intelligence
API	Application Programming Interface
ATMs	Automatic Teller Machines
CAWI	Computer-Assisted Web Interview
CEDLAS	Center for Distributive, Labor and Social Studies
CEE	Central and Eastern European
CEPS	Centre for European Policy Studies
GBB	Gmyrek, Berg and Bescond, 2023. ILO Working Paper 96
GPT-4	Generative Pre-trained Transformer 4
GPT-4o	Generative Pre-trained Transformer 4 Omni
GUS	Główny Urząd Statystyczny (Central Statistical Office, Poland)
HIC	High-Income Countries
ICT	Information and Communication Technology
ILO	International Labour Organization
IMF	International Monetary Fund
ISCO-08	International Standard Classification of Occupations (2008 version)
IT	Information Technology
ITC-ILO	International Training Centre of the ILO (Turin)
LFS	Labour Force Survey (BAEL in Poland)
LICs	Low-Income Countries
LLM	Large Language Model
ML	Machine Learning
MOL	Ministry of Family, Labour and Social Policy in Poland
NASK-PIB	National Research Institute

O*NET	Occupational Information Network (U.S. Department of Labor)
PIE	Polski Instytut Ekonomiczny (Polish Economic Institute)
SD	Standard Deviation
SGH	Szkoła Główna Handlowa (Warsaw School of Economics)
U.S. / US / USA	United States of America
UK	United Kingdom
UNLP	National University of La Plata

► Introduction

In August 2023, the ILO published the first global employment estimates of potential occupational exposure to generative artificial intelligence (GenAI) (Gmyrek et al., 2023). This research was prompted by concerns – that have featured prominently in the media – of the potential for the technology to replace large shares of knowledge work.

Since the release of the 2023 estimates, there have been further technological advances in GenAI, including the introduction of Large Language Models (LLMs) with expanded capabilities in image recognition and audio and video production. Moreover, many new GenAI applications have been developed as a result of the possibility of linking GenAI models with Application Programming Interface (API) tools. Indeed, GenAI has been likened to a general-purpose technology, meaning that it may continue generating new applications and innovations across various sectors, driving long-term economic and societal transformations.

Despite this rapidly developing landscape, it is important for policy makers to develop deeper understanding of how technological advances might impact existing jobs. To address this need, the Research department of the ILO has partnered with NASK, the National Research Institute of the Ministry of Digital Affairs in Poland, to develop a more precise assessment of potential effects of GenAI on employment across countries.

This study builds on the method developed by the ILO (Gmyrek, Berg and Bescond, 2023 - GBB hereafter), which used task descriptions from the 4-digit International Standard Classification of Occupations (ISCO-08) and the GPT-4 model to estimate task-level and occupational scores of exposure to GenAI technology and then derives global employment estimates based on official ILO labour force data. But the study includes several key refinements.

The first step in our analysis is based on Poland's national 6-digit classification of occupations that includes nearly 30,000 tasks. This expands tenfold the number of tasks given in the ISCO-08 structure and enables a fine-grained assessment of tasks' automation potential, based on a more up-to-date set of occupations and tasks than those captured in the ISCO-08 system. As Poland's 6-digit classification is aligned with the 4-digit ISCO-08, the occupational scores can be compiled at the 4-digit level allowing a straightforward comparison and updating of the 2023 estimates of the ILO (GBB). In addition, the study improves the methodological framework of GBB, by drawing on the combined strengths of human and AI abilities, with an additional layer of expert verification.

Specifically, we surveyed 1,640 people currently employed in Poland in each ISCO-08 1-digit group to rank the automation potential of a representative sample of tasks that pertain to their occupational group. As the second step, we asked a mix of national and international experts to conduct a detailed review of a large sample of tasks previously assessed in the survey to validate or adjust the level of automation scores through an iterative process. Since we maintain the hierarchical link to ISCO-08 and focus on technological feasibility rather than specific country context, by combining opinions of local and international experts, we create a system that enables more precise predictions of the potential of automation of individual occupational tasks with GenAI technology, including at the international level. To achieve that, we input the human scores into an AI model, to generate scores reflecting human judgement for nearly 30,000 individual tasks pertaining to 2,500 occupations at 6-digit level in Poland. We then use the same AI predictor to re-generate scores for the tasks in ISCO-08, previously provided by GBB (2023), thereby adjusting the 2023 index of the ILO, which now benefits from both the input of people

employed in each ISCO-08 1-digit group and from expert opinions. As the final step, we provide updated global, regional and income-based estimates of employment that has the potential to be transformed by Gen AI technology.

Our study specifically targets GenAI tools, isolating the effects of this recent family of AI from broader AI applications, such as the use of Machine Learning (ML) algorithms or image recognition in industrial production. There are several considerations that justify such selective focus. First, we respond to the growing need for a research tool that could provide a better picture of GenAI's potential impact on national labour markets, given the growing societal angst concerning this technology and the recent reports about increasing levels of adoption of GenAI at work (Bick et al., 2024; Faverio and Tyson, 2022; Grampp et al., 2023; Maison & Partners and ThinkTank, 2024; Pew Research Center, 2023; Rutgers, 2024). Second, while several indicators of occupational exposure to broader AI technologies are available to researchers (Nurski and Vansteenkiste, 2024), very few tools allow for a more detailed focus on GenAI (Nurski and Ruer, 2024). A new, more precise exposure index enables a closer alignment of the academic work on digital economy and labour with the significant interest in the GenAI technology in the media and in the public debate.¹ Third, the methodological blueprint provided by our research can be quite flexibly expanded to other types of AI in the future or focused more narrowly on specific subsets of digital technologies and sectors of their application.

This paper is the first in a series of upcoming publications based on ILO and NASK cooperation that strive to improve the methodology for assessing employment effects of AI, but also to document in detail the methods used, including the survey, expert verification process and the construction of the AI model used for predictions. Subsequent papers will present an assessment of the potential impact of GenAI on the Polish labour market, based on more detailed occupation and task-level data and using a mix of quantitative and qualitative methods. All publications will include the methodological blueprints and technical details of both the quantitative and qualitative components, including survey questionnaires and interview guidelines. By making these tools openly accessible, we hope to contribute to the development of an improved method for assessing potential impact of GenAI on jobs and to stimulate more detailed national-level studies, including in lower- and middle-income countries.

¹ For example, Felten et al. (2023) provided an updated version of their original exposure index from 2021, adjusting for the abilities of GenAI tools. As shown in their paper, the adjustment does not result in a major shift in occupations exposure and still makes it impossible to assess the abilities of this new technology in a selective manner. See Gmyrek et al. (2024) for a more detailed comparison of these scores.

► 1 Task-based approaches to automation in the literature

Central to the study of technology on work is the insight that jobs are a “bundle of tasks” (Autor, 2015). As such, task automation might, or might not lead to job automation, depending on the importance of a particular task to an occupation. Analyses of employment effects of automation that use the task-based approach, including this study, attempt to capture two central considerations: (i) the ability of a specific technology to automate a given task and (ii) the character of existing occupations in the labour market, based on the detailed tasks performed by these occupations. By modelling the intersection of these two dimensions, one arrives at a range of possible projections of how such technology could interact with occupational tasks, leading either to their full automation through technology-driven substitution, or to a transformation, through partial automation and human-machine complementarity. While the task-based framework certainly has limitations, recent academic literature shows the analytical advantages of this method for modelling employment and labour market impacts (Acemoglu et al., 2024; Nurski and Ruer, 2024).

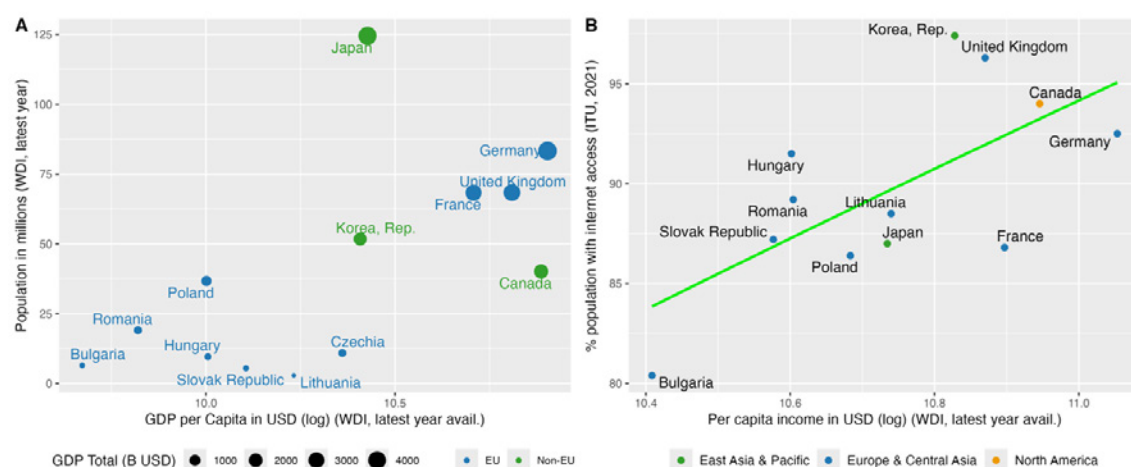
Research on AI and tasks has shown important improvements in methods and scope in recent years, which includes using AI tools for research purposes. In one of the early papers on Machine Learning (ML) and jobs, Frey and Osborne, (2013) fed the opinions of a group of IT technology experts into an ML algorithm to develop occupational-level projections of automation potential for the US job market. The emergence of GenAI APIs has simplified the possibility of combining human expertise and algorithmic capacities for research purposes. Relying on this idea, Eloundou et al. (2023) demonstrated a close alignment of GPT-4 predictions with a survey of 70 AI experts on the potential of automating occupational tasks with LLMs, and subsequently built on this feature to develop synthetic automation scores for the US market.

Most task-based studies are focussed on the US, due to the very detailed nature of the O*NET database, as well as its public accessibility. This typically forces researchers interested in the global picture or other countries and regions to base their analysis on the strong assumption of similarity of local economic and labour effects to those projected in the US context. In reality, occupational tasks can vary significantly among individual countries, which poses a particular challenge in developing countries. As such, working with tasks in the ISCO-08 system offers a useful and simple common denominator for projections across different countries, regions and income groups. Our method combines the strengths of this global framework with a significantly more detailed national classification system in Poland, which provides a detailed list of occupations and tasks, based on the latest labour market data. This helps us establish a starting point for modelling interaction of GenAI’s abilities with up-to-date tasks and occupations in a setting located between the countries with highest incomes and the emerging economies (Figure 1). Using a combination of GenAI tools, we subsequently transfer this knowledge back to the tasks in ISCO-08 system.

► 2 Tasks and occupations in the 6-digit system in Poland

Within Europe, Poland is quite representative of the larger group of Central and Eastern European (CEE) countries, albeit with a significantly larger population (38 million) than most of its peers. Globally, the CEE ranks between the high-income advanced economies and the emerging economies of the Global South. With respect to access to the internet, Poland ranks below UK and Germany, but higher than Japan and France. Thus, for assessing the potential of task automation, it seems reasonable to assume that Poland is representative of the upper threshold of automation potential, due to high availability of digital equipment and widespread internet access.

► Figure 1. Income- and population-based similarities (A) and access to the internet (B) across countries



The Ministry of Family, Labour and Social Policy (MOL) in Poland maintains a system of occupational classifications, with task and job descriptions that are regularly updated.² The system is used by Statistics Poland (GUS) and other state institutions for labor market analysis. At the most detailed, 6-digit level, this framework contains 2541 occupations and 29,753 corresponding tasks (Table 1). Since the system is publicly available online, we initially designed a scraping bot that crawled through individual occupational pages and downloaded job descriptions and corresponding tasks into a structured data frame.³ The extracted content was subsequently cross verified against a tabular occupational classification provided by the Ministry. The Polish classification system is compatible with the hierarchical structure of ISCO-08, which means that we could easily append an additional mapping of occupations from 1 to 4-digit level (Table 1).

² The occupational classification database (KZIS) was first published in 2014 and has been regularly updated, with the latest validation on 1 January 2025. The classification was introduced by the Regulation of the Minister of Labour and Social Policy on the classification of occupations and specializations for labor market purposes and its scope of application, dated 7 August 2014 (Dz.U. z 2018 r. poz. 227, z 2021 r. poz. 2285, z 2022 r. poz. 853, Dz.U. z 2024 r. poz. 1372). Additionally, the Ministry publishes a mapping to ISCO-08. See: <https://psz.praca.gov.pl/rynek-pracy/bazy-danych/klasyfikacja-zawodow-i-specjalnosci>.

³ Web scraping was primarily conducted to demonstrate the potential of acquiring non-traditional data from publicly accessible sources, in contexts where such activity is not restricted by server settings or legal regulations. The process adhered to responsible data collection practices, including appropriate frequency settings to avoid overloading servers.

► Table 1. Composition of occupational tasks in the Polish classification system and in ISCO-08

ISCO-08 occupational classification										Polish 6-digit occupational classification				
ISCO-08 1-digit	Group Name	Count of 2-digits	Share in 2-digits	Count of 3-digits	Share in 3-digits	Count of 4-digits	Share in 4-digits	Count of 6-digits	Share in 6-digits	Count of 6-digits	Share in 6-digits	Count of 6-digits	Share in 6-digits	Count of 6-digits
1	Managers	4	10.0%	11	8.7%	30	7.1%	173	6.8%	2565	8.6%	2565	8.6%	
2	Professionals	6	15.0%	27	21.4%	92	21.7%	721	28.4%	8715	29.3%	8715	29.3%	
3	Technicians and associate professionals	5	12.5%	19	15.1%	80	18.9%	507	20.0%	5956	20.0%	5956	20.0%	
4	Clerical support workers	4	10.0%	8	6.3%	27	6.4%	71	2.8%	768	2.6%	768	2.6%	
5	Service and sales workers	4	10.0%	13	10.3%	40	9.5%	149	5.9%	1730	5.8%	1730	5.8%	
6	Skilled agricultural, forestry and fishery workers	3	7.5%	9	7.1%	17	4.0%	53	2.1%	684	2.3%	684	2.3%	
7	Craft and related trades workers	5	12.5%	14	11.1%	65	15.4%	407	16.0%	4554	15.3%	4554	15.3%	
8	Plant and machine operators, and assemblers	3	7.5%	14	11.1%	40	9.5%	348	13.7%	3769	12.7%	3769	12.7%	
9	Elementary occupations	6	15.0%	11	8.7%	32	7.6%	112	4.4%	1012	3.4%	1012	3.4%	
	Total	40	100%	126	100%	423	100%	2541	100%	29753	100%	29753	100%	

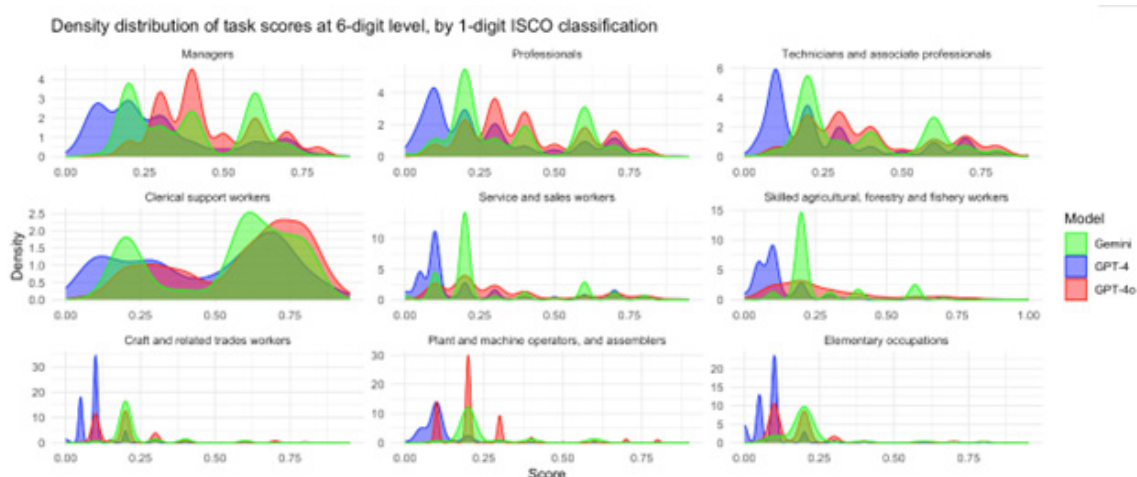
Note: Table 1 illustrates the hierarchical relationship between ISCO-08 and the Polish 6-digit classification of occupations. The "Count of x-digits" columns show the number of occupations at each level, with 423 occupations at the 4-digit ISCO-08 level. The "Count of 6-digits" column represents the number of occupations in the Polish system mapped to ISCO-08's 4-digit level. Armed Forces Occupations have been excluded due to the lack of specific tasks. Shares indicate the percentage of each group at the corresponding level. The table only includes occupations for which detailed tasks are available in the Polish classification; those without tasks have been excluded.

► 3 Assessment of tasks' automation potential

3.1. Initial Algorithmic predictions

As the first step, we conducted a purely algorithmic assessment of potential exposure to automation for each task in the Polish 6-digit system, relying on three advanced LLMs available on the market at the end of 2024: GPT-4, GPT-4o and Gemini Flash 1.5. The method relies on the approach previously used by GBB (2023), with a sequential API call devised to assign a score ranging from 0 to 1 for each individual task, where 0 means the task cannot be automated and 1 means the task could be fully automated with GenAI technology (the task can be conducted without participation of a human operator).⁴ The LLM is provided with information on the occupation to which the task pertains in ISCO-08 and requested to produce a justification for each predicted score.

► **Figure 2. Distribution of synthetic automation scores from 3 LLMs, by ISCO-08 1-digit**



The overall distribution of these synthetic automation scores is generally consistent with scores based on ISCO-08 documentation (GBB, 2023; Gmyrek, Winkler and Garganta, 2024) and O*NET (Elondou, 2023; Felten, 2023): the highest exposure to GenAI is typically observed among groups with the largest share of tasks of cognitive nature and it declines with tasks of physical nature, which are more prominent among occupational groups 4-9 (Figure 2). The largest density of high automation scores is observed among clerical workers and is stable across the three LLMs. In other groups, we observe some important differences in the LLMs' predictions. In particular, Gemini Flash 1.5 seems to provide a bimodal scoring, with most scores falling either below 0.25 or above 0.6. The other two models provide a wider range of scores, but still with important divergences, which makes it difficult to judge which model one should follow.⁵ Therefore, we do not examine these distributions in greater detail but proceed directly to improvements that could enhance coherence and stability of our predictions, regardless of the LLM applied.

⁴ In GBB (2023), the scores and justifications were assessed for consistency and stability of predictions over time, with the written justifications reviewed by humans. Tasks with scores above 0.8 (high possibility of automation) were transformed into embeddings, with a semantic clustering algorithm applied to identify the major groups of such tasks, which are subsequently reviewed by humans.

⁵ A comparison to GBB (2023) scores suggests the closest alignment with GPT-4o synthetic scoring of the Polish tasks' database.

3.2. Selection of occupational tasks for human assessment

To improve the precision of our synthetic predictions, we design a human-based evaluation of the potential for task automation. Since scoring of all 29,753 tasks would be too cumbersome for a survey, we focus on a sub-sample of tasks that are representative of the tasks in each professional group at 1-digit ISCO-08 level (Table 1). We employ the standard formula to calculate sample size (see Appendix 2).

Table 2 presents task sample calculations for each 1-digit category. The minimum number of scorings per question is set to 20, based on the general rule used by ILO Statistics for micro-data analysis, where observations with less than 16 respondents are flagged as unreliable. The number of scorings is set to 35 per respondent, based on our pre-testing of the survey form for potential fatigue effects.

► Table 2. Survey sample selection

ISCO-08 1-digit category	Description (1-digit)	Number of tasks	% of all tasks	Unadjusted Sample Size (Infinite Population)	Adjusted sample size	Sample Proportion	Nr of scorings per task	Total task scorings	Tasks per survey respondent	Nr of Respondents
1	Managers	2'565	8.6%	384	334	11.7%	20	6682	35	191
2	Professionals	8'715	28.6%	384	368	12.9%	20	7357	35	210
3	Technicians And Associate Professionals	5'956	21.1%	384	361	12.6%	20	7216	35	206
4	Clerical Support Workers	768	2.6%	384	256	9.0%	20	5124	35	146
5	Service And Sales Workers	1'730	5.4%	384	314	11.0%	20	6288	35	180
6	Skilled Agricultural, Forestry, And Fishery Workers	684	2.3%	384	246	8.6%	20	4923	35	141
7	Craft And Related Trades Workers	4'554	15.5%	384	354	12.4%	20	7084	35	202
8	Plant And Machine Operators, And Assemblers	3'769	12.6%	384	349	12.2%	20	6972	35	199
9	Elementary Occupations	1'012	3.3%	384	279	9.7%	20	5571	35	159
0	Armed Forces Occupations									
	TOTAL	297'53	100.0%		2861	100%		57218		1635

Within these initial parameters, each respondent is assigned a random set of tasks from the larger sample of tasks for each broad occupational group. The randomization of the tasks' sample selection maintains a general pattern of the distribution of scores similar to the scores initially generated with the LLMs (Section 4.1). However, the respondents are not made aware of these prior distributions, instead they receive a wide range of tasks with respect to their automation potential.

3.3. Survey design and recruitment

We conducted the human survey using the Computer-Assisted Web Interview (CAWI) method, drawing on a large online research platform in Poland, used for both commercial and scientific studies. This also means that some demographic characteristics are already pre-filtered at survey deployment stage, whereas others are captured through a set of core questions at the start of the survey (Table 3). Specifically, we capture respondents' gender, age group, size and place of residence, region of residence, highest level of education and their current profession. The professional classification is further facilitated by providing respondents with a short description of ISCO-08 1-digit classifications, alongside examples of occupations that fit into each category.

In addition to demographic information, subsequent core questions are designed to capture respondents' knowledge and experience with GenAI. These questions help contextualize how familiarity and interaction with GenAI may influence assessments of task automation potential. Specifically, respondents are asked how long they have worked in their current profession (Q4), as more experienced workers may have a deeper understanding of their tasks and offer more cautious or realistic assessments. Additionally, they are queried on their familiarity with AI (Q5), with more knowledgeable respondents potentially providing more informed evaluations. We also capture how often respondents use AI tools in their job (Q6), which provides insight into their practical engagement with AI and its integration into their daily tasks.

Finally, in core questions 7-8, we ask how respondents view the broader impact of AI on jobs in their field, helping us understand their perspectives on automation over the next five years. The final question in this section probes respondents' views on the likelihood that their own job could be partially or fully replaced by AI, which helps assess whether job security concerns might influence their task evaluations. Table 3 below provides a summary of the core questions.

► Table 3. Core survey questions

	Question	Answer Options
1	What is your gender?	Male / Female / Other / Prefer not to say
2	What is your age?	Age ranges (e.g., 18-24, 25-34, 35-44, etc.)
3	What is your highest level of education?	1. High school or equivalent; 2. Bachelor's degree; 3. Master's degree; 4. PhD or higher; 5. Other
4	How many years have you worked in your current profession?	1. Less than 1 year; 2. 1-5 years; 3. 6-10 years; 4. 11-15 years; 5. More than 15 years
5	Have you heard of Generative Artificial Intelligence (GenAI, e.g. ChatGPT)?	1. Yes; 2. No; 3. Hard to say
5a	How would you rate your level of knowledge about Generative Artificial Intelligence (GenAI, e.g. ChatGPT)?	1. Very low; 2. Low; 3. Average; 4. High 5. Very high
6	How often do you use Generative Artificial Intelligence tools (GenAI, e.g. ChatGPT)?	1. Never; 2. Rarely (a few times a year); 3. Occasionally (a few times a month); 4. Frequently (a few times a week); 5. Daily
7	How do you think Generative Artificial Intelligence (GenAI, e.g. ChatGPT) will impact jobs in your field in the next 5 years?	1. No impact at all; 2. Slight impact; 3. Moderate impact; 4. Strong impact; 5. Transformational impact

	Question	Answer Options
8	To what extent can your job be replaced by Generative AI (e.g. ChatGPT) in the next 5 years?	Will not be replaced (0%) -----Slider----- Will be completely replaced (100%); I don't know

In its main section, the survey moves to the assessment of respondents' perception of tasks' automation potential. Each respondent is presented with a random selection of 35 tasks from their occupational group at 1-digit ISCO-08 level, as previously described in the sample selection process (Section 4.2). For each task, respondents are asked to evaluate the susceptibility of the task to automation by generative AI on a scale from 0 to 100, with 0 indicating "not automatable" and 100 indicating "fully automatable".⁶ In addition to scoring tasks for automation potential, respondents are asked to indicate whether they personally perform a similar task in their current job by ticking a box next to each task. This allows for the comparison of GenAI's perceived impact on tasks that are only present in respondents' occupational group, with those directly relevant to the respondents' current work.

► **Text Box 1. Sample Question for Task Automation Assessment**

Below is a list of 35 tasks performed by people in different occupations. Please rate how much you think artificial intelligence can automate each of the tasks. Use the slider to indicate your opinion on a scale from 0 to 100, where **0** means no potential for automation, and **100** means full potential for automation.

Occupation: Actor

Task 1: Developing one's own artistic concept of a role

Slider scale (0-100):

| 0 - No potential for automation using GenAI | ----- Slider ----- | 100 - Full potential for automation using GenAI

| I don't know

Do you perform this or a similar task in your current job?

- Yes
- No

3.4. Survey design limitations

The survey is designed to capture insights from individuals currently employed in various occupational categories of the 1-digit ISCO-08 framework. This means that tasks of managers are assessed by individuals working as managers, tasks of professionals are assessed by professionals, etc. The subsequent data analysis explores the differences among individuals based on their attitudes about technology, knowledge of AI and other parameters that are captured in the core questions (Table A3).

⁶ Respondents could also choose « don't know » as an answer.

The advantage of this approach is that the tasks are assessed by those familiar with the work from their own professional context. On the downside, this survey design means that the sample may not represent the entire working population, and interpretability of opinions on the automation potential is limited to comparisons within each 1-digit group. We also expect an imbalance of understanding and experience with tasks and GenAI across different occupational groups, as managers or professionals are likely to know more about AI than elementary workers, whereas the latter are likely to understand better the nature of elementary workers' tasks, but might have less familiarity with GenAI tools.

We mitigate these negative effects in several ways. First, to equilibrate the level of understanding among participants, a prompt about current abilities of GenAI is shown in the introduction of the second part of the survey (see Text Box 2 and full survey questionnaire in the Appendix). Second, we run a survey among the ILO, NASK and MOL experts on a smaller sample of tasks, drawn from across all ISCO-08 groups, and compare these results to the results of main survey respondents (Section 5). In cases of drastic discrepancies, we consult with the expert group and manually establish what seems to be the most reasonable score.

► **Text Box 2. Introductory prompt for survey respondents**

We have a short piece of information for you about Generative Artificial Intelligence (GenAI). **In our study, we want to distinguish GenAI from artificial intelligence (AI).**

AI allows you to **make decisions based on data** (e.g. what product to offer you next in an online store, recognize car license plates at the entrance to the parking lot and raise the barrier)

GenAI can generate new content, e.g. images, text, speech. The most popular tool is ChatGPT, which can answer questions, write emails, prepare an application to the office, create reports, summarize a specified text (e.g. an article, book).

What can GenAI do?

- **Write a text**, "pretending" to be a specific person, e.g. an official, poet, financial analyst;
- **Prepare translations** between languages, e.g. from Polish to English;
- **Convert written text** into human speech ("read" text in a given language);
- **Program** - change specified tasks into computer language code, e.g. Python, HTML;
- **Generate an image**, e.g. a photo, based on a given description, or recognize and describe an image (e.g. what is in the photo).

3.5. Survey of Task Automation Potential

3.5.1. Sample properties

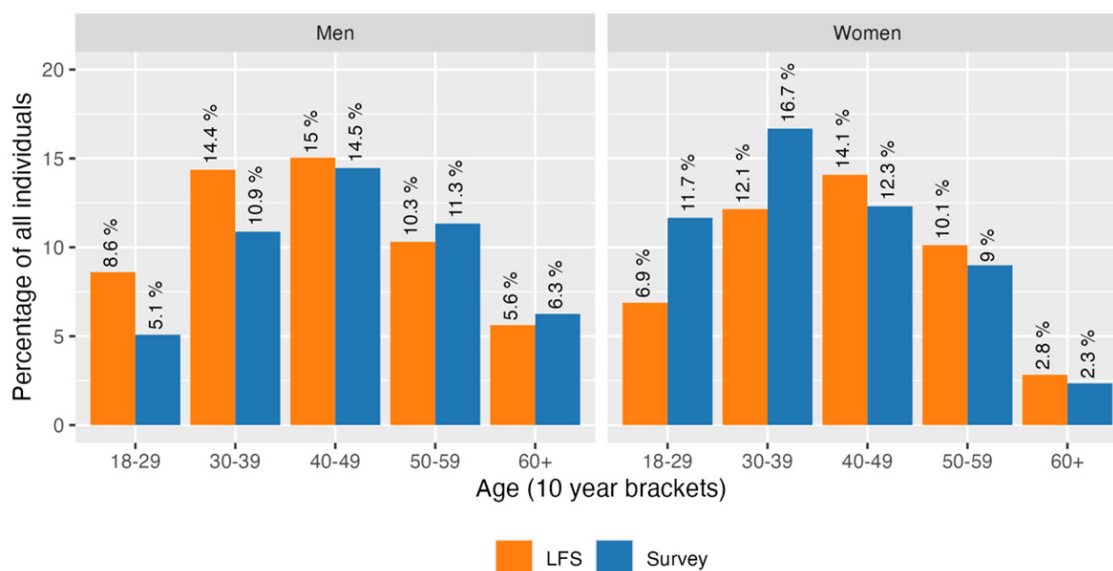
The main survey sample consists of 57,400 observations and 1,640 unique respondents. Among these, 105 participants responded with 'Don't know' to most questions, providing less than 50% of the required task rankings. Due to limited engagement, these participants were removed from the analysis as they were deemed insufficiently credible. The excluded group includes a variety of demographic and occupational profiles, which were carefully reviewed to ensure that their

removal would not introduce significant bias into the results. As the next step, we excluded 1,167 observations where participants responded with 'Don't know' to the ranking of task automation potential. This ensures the analysis focuses only on responses where participants felt equipped to provide meaningful input.

A detailed examination of “don't know” answers showed that they occur twice as frequently in manual or technical fields – particularly among Technicians and Associate Professionals (Group 3), Craft and Related Trades Workers (Group 7), Plant and Machine Operators and Assemblers (Group 8), and Elementary Occupations (Group 9) – than in other occupational groups.⁷ Since the differences in stated exposure and frequency of use of GenAI do not seem to justify this pattern (see section 4.5.2), it suggests that participants may have felt less equipped to assess the automation potential of tasks requiring specialized technical expertise or manual skills. This is illustrated though the three tasks with the largest number of “don't know” responses (7 each): (i) *operating devices (centrifuges and filters) used for separating fermented milk mass into yeast slurry*, (ii) *recording delivered goods and collected coins (tokens)*, and (iii) *organizing and cleaning the workstation*.

Following this exclusion, we retained a substantial sample of 1,535 respondents, contributing a total of 52,558 data points. These data points correspond exclusively to cases where participants provided valid responses to the primary survey question regarding the potential for task automation. Importantly, this filtering process did not reduce the total number of tasks assessed, which remains at the representative sample size of 2,861, as calculated in Table 2.

► **Figure 3. Age and sex distribution in the survey compared to Labour Force Survey (LFS) data in Poland (employed individuals)**



The survey sample is well-balanced in terms of gender, with 51% female and 49% male respondents. The actual gender distribution among the employed population aged 18+ in Poland is more skewed toward men, with 53.9% of employed individuals being male and 46% female. As shown in Figure 3, this results in the survey overrepresenting female opinions in the younger age brackets (18–29 and 30–39).

⁷ On average, some 10% of answers in these technical groups were « don't know » compared to 5% in other groups.

► **Figure 4. Distribution of occupational groups in the survey, compared to LFS in Poland (employed individuals) and to the desired sample (Table 2)**

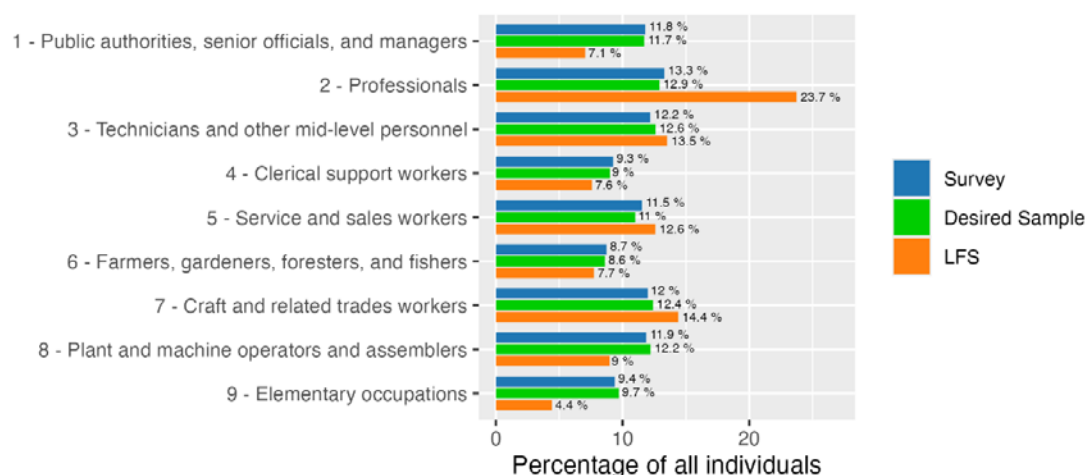
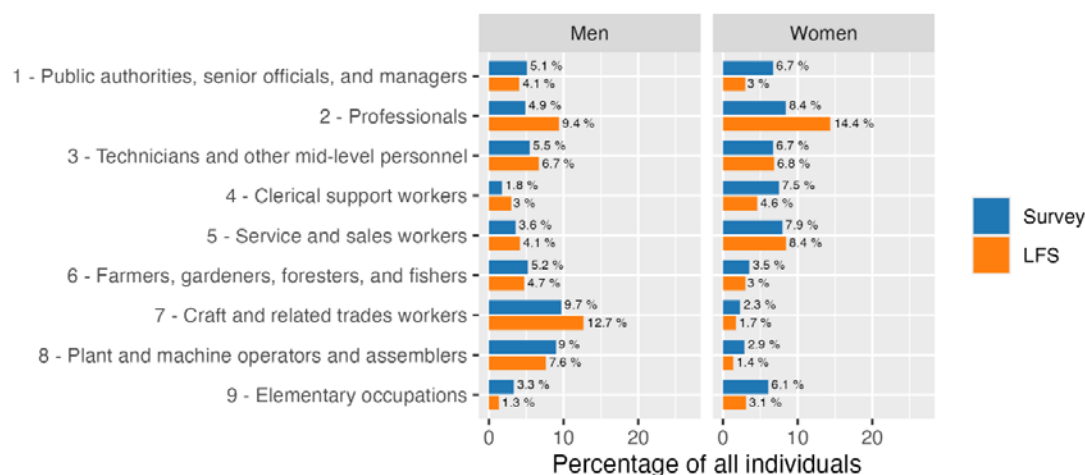


Figure 4 illustrates the broader distribution of the survey sample across ISCO-08 1-digit groups, compared to both the employed population in the LFS and the desired sample (Table 2). Professionals (2) are clearly the most underrepresented group, while groups 1, 8 and 9 are overrepresented in survey responses, compared to the actual employment numbers. Notably, however, the desired sample calculated in Table 2, based on the share of tasks in each 1-digit category, achieves a closer alignment to the LFS structure for certain occupational groups.

► **Figure 5. Occupation and sex distribution among survey participants compared to LFS in Poland (employed individuals)**



In terms of sex-related representation within occupations, largest imbalances occur within occupational groups of public authorities, senior officials and managers (1), clerical workers and elementary occupations (9), which are represented by women in the survey to a visibly higher extent than in the labour market (Figure 5). Men are underrepresented, compared to the LFS, among professionals (1) and craft workers (7). For other occupational groups, the survey pattern is fairly consistent with national labour market trends.

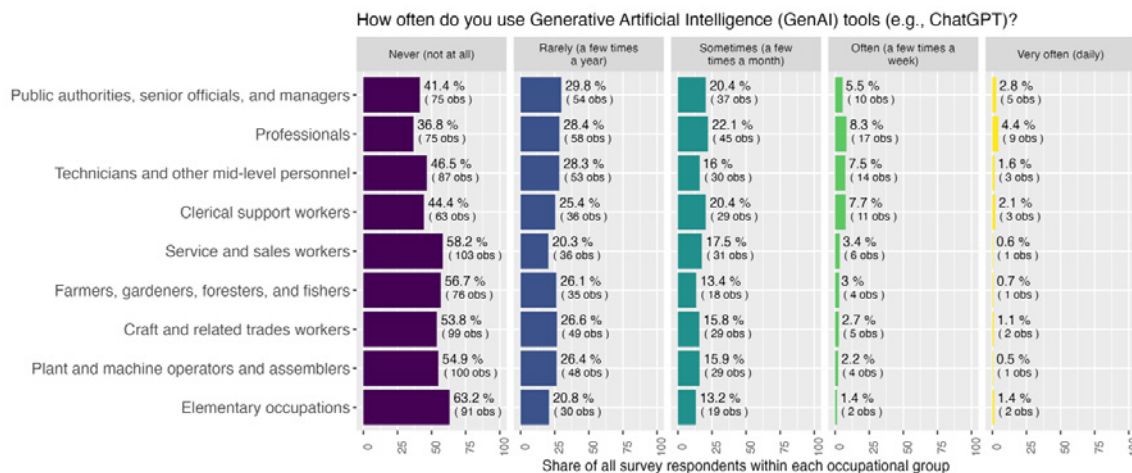
Such discrepancies are important to note but do not affect our strategy, as the primary goal of sampling was to ensure representativeness of tasks at the level of occupational 1-digit groups,

rather than replicating the exact gender and economic structure of the employed population (Table 2). With this objective met, we did not apply additional weight-based adjustments to the survey sample. Instead, the deviations between the survey and LFS are treated as a natural variation inherent to a task-specific character of this study, which follows the imbalances in the total number of tasks across 1-digit groups, as well as other assumptions made in Section 4.2.

3.5.2. Participants' Exposure to GenAI: Screening Questions

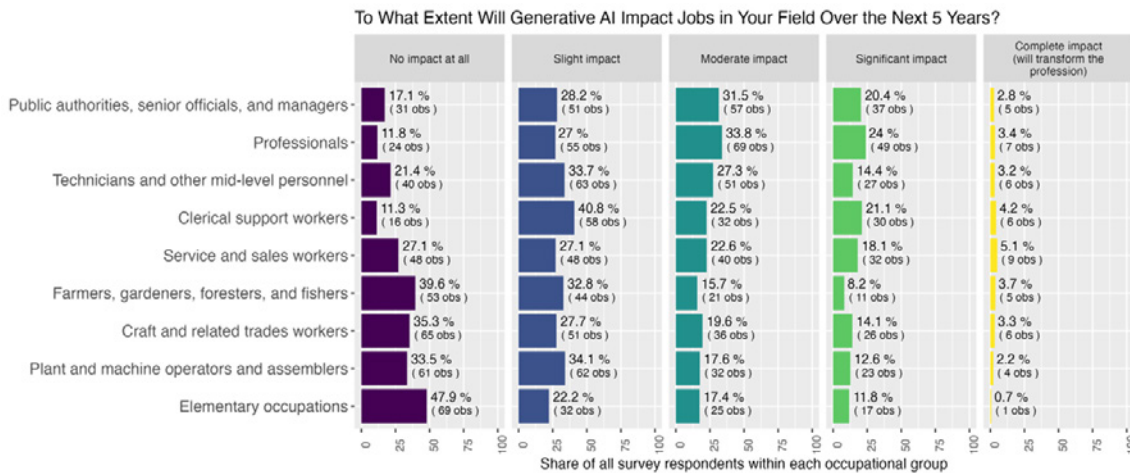
The screening section of the survey tested participants' prior exposure to GenAI. A significant majority of survey participants (71.2%) report having heard about this technology, with relatively small differences between genders and occupational groups. Despite this high level of awareness, the actual use of GenAI is limited, with most respondents reporting they "never" (50.1%) or "rarely" (26%) use it. Sporadic use (few times a month) is reported by 17.4% of all participants, with only 4.8% reporting regular use and less than 2% using it very often. Among the 1-digit occupational groups, professionals, technicians, public authorities, senior officials and managers use these technologies more frequently than the groups with a stronger presence of manual tasks (Figure 6). This seems consistent with recent studies of GenAI adoption, which suggest higher use of GenAI among occupations with a larger share of cognitive work (Bick et al., 2024; Parker et al., 2025).

► Figure 6. Frequency of use of GenAI, by 1-digit ISCO-08



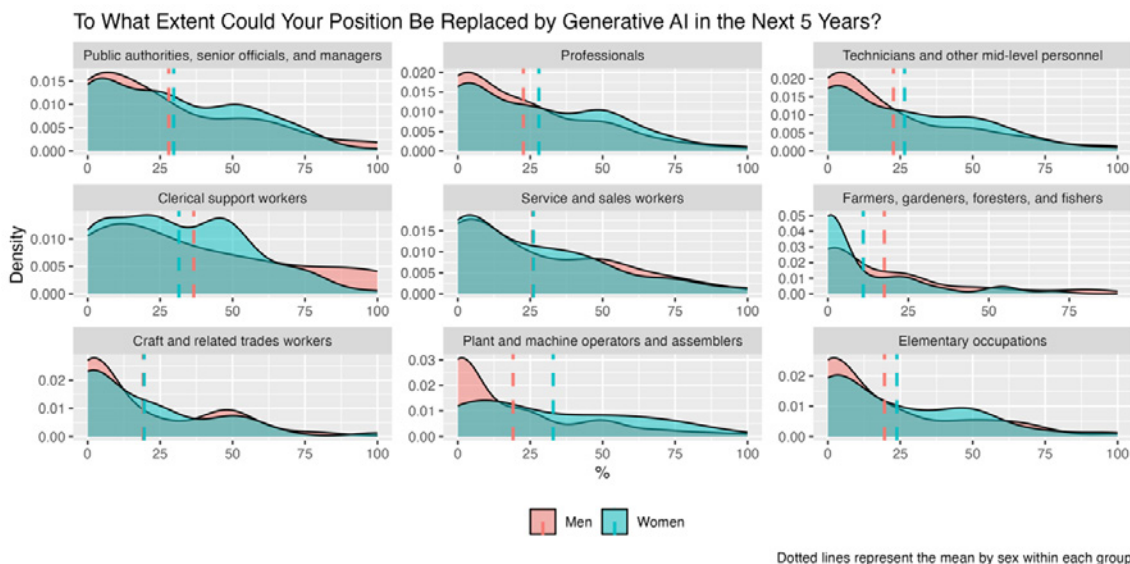
When considering the potential impact of GenAI on jobs within their industries, most respondents expect either no impact (26.5%) or only a slight impact (30.2%). As shown in Figure 7, manual and technical groups have a significantly higher share of such responses. Reports of moderate and significant impact are highest among professionals (33.8% and 20.4%), public authorities, senior official and managers (31.5% and 24%), clerical support workers (22.5 % and 21.1%) and technicians (27.3% for moderate impact), though the latter stand out with notably lower expectations of a significant impact (14.4%). This might be due to the inherent complexity of many tasks in this professional group. In comparison, relatively few respondents predict a complete transformation of their occupations, with the highest share of such responses among service and sales workers (5.1%) and clerical support workers (4.2%), and a small total number of these observations.

► Figure 7. Expectations of impact on the work area



We further examine these trends by asking respondents a more personal question, related to their perceived likelihood of GenAI replacing their current job in the next five years. For most professions, responses are clustered at the lower end of the risk spectrum, suggesting limited concern about replacement by GenAI in the mid-term (Figure 8). However, among clerical support workers, the density of responses representing moderate to high levels of concern is noticeably higher, with women reporting slightly higher risks compared to men, while the converse is observed among plant and machine operators and assemblers.

► Figure 8. Expectations of impact on individuals' current job – distribution of individual scores

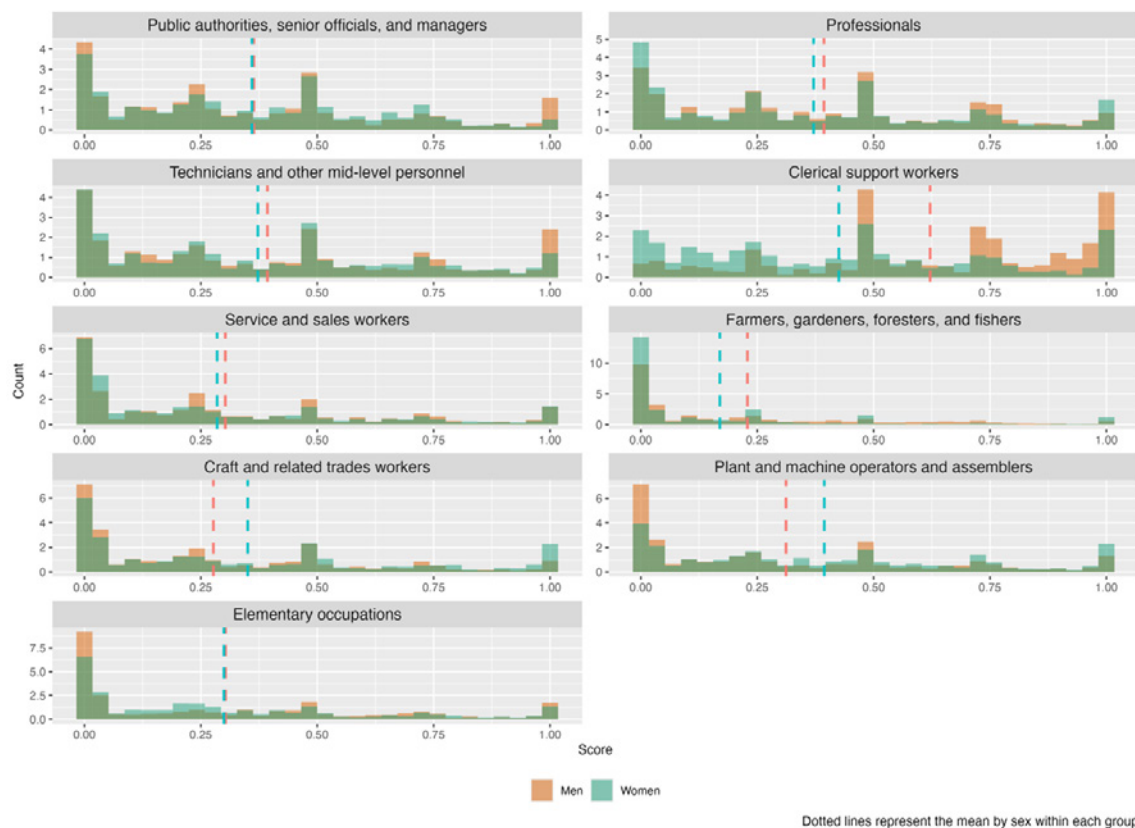


3.5.3. Scoring of task automation potential

The survey asked respondents to evaluate the extent to which GenAI could automate the execution of various tasks (see Text Box 1). As shown in Figure 9, responses reveal gendered scoring that aligns with occupational segregation. For example, the scores provided by clerical support workers are predominantly from women, reflecting the high representation of women in this occupational group. However, men within this occupation tend to assign higher scores, potentially

reflecting a different perception of task automatability or biases regarding clerical work, despite their lower representation in this group. Conversely, men dominate responses in occupations such as craft and trade workers and plant and machine operators, but for the tasks in these occupations, they assign lower scores than women. These differences may be representative of different task composition or even tasks performed by men and women, even when in the same occupational category, which then influence their scoring.

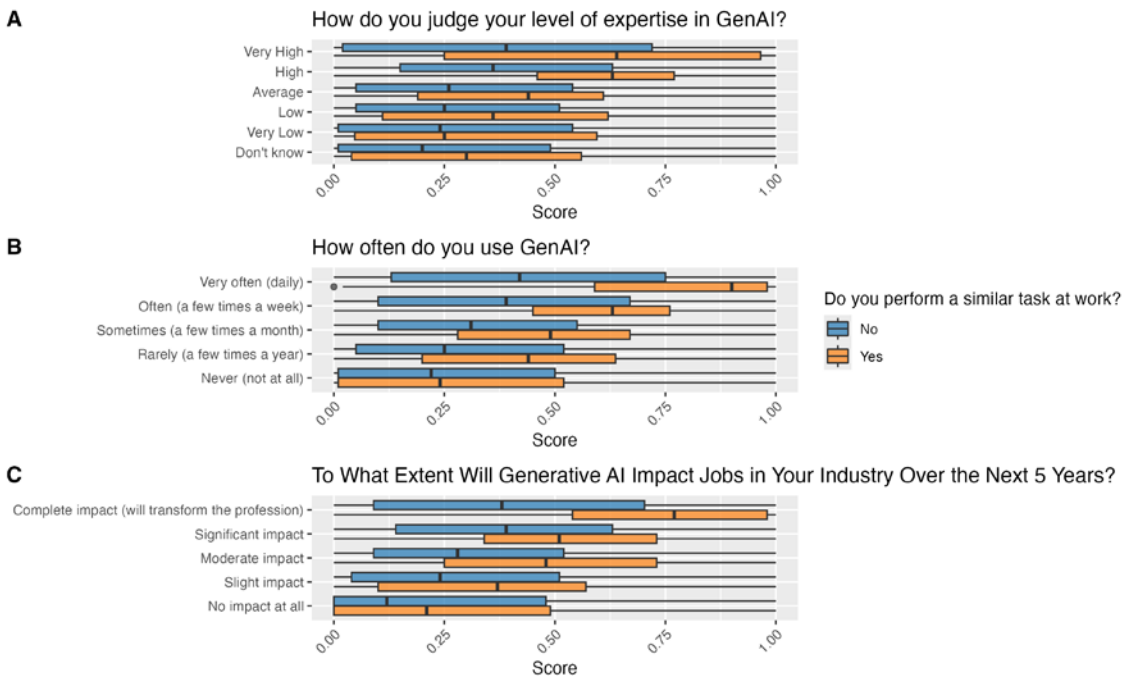
► **Figure 9. Distribution of task-level scores by sex and occupational group (1-digit ISCO-08)**



To better understand the factors associated with higher task automation scores, we conducted a set of exploratory regressions using the main task-level score as the dependent variable and controlling for occupational clustering. Results suggest that across occupations, familiarity with a task is associated with higher scores, and this relationship strengthens with greater reported exposure to GenAI. Respondents who use GenAI frequently – such as on a daily or weekly basis – tend to assign higher scores. Similarly, those who believe GenAI will have a “Complete” or “Significant Impact” on their occupation consistently assign the highest task scores (Figure 10).⁸

⁸ These results are based on exploratory regressions conducted for descriptive purposes. Full model specifications, diagnostics, and robustness checks were beyond the scope of this paper, as the survey serves as a starting point in a multi-layered refinement method. A more comprehensive econometric analysis of scoring behavior, including model selection and treatment of potential confounders, could be the focus of a separate methodological paper.

► **Figure 10. Scoring as a function of familiarity with GenAI and the scored task – distribution of individual scores**



One way to address this variation in scoring would be to apply corrective weights to responses, giving greater influence to respondent profiles likely to have more relevant expertise. For example, one could assign more weight to respondents reporting greater familiarity with GenAI or frequent usage or prioritize scores from individuals who perform similar tasks in their daily work. However, in our sample, this would introduce significant limitations. For 91.5% of the tasks, respondents did not report performing a similar task in their work – even when the task belonged to the same 1-digit occupational group as their current job. This is not surprising. For instance, within the “Professionals” group alone, the representative sample consisted of 368 tasks drawn from a pool of 8,715 tasks (Table 2), making exact task matching unlikely.

Moreover, adjusting for beliefs or usage would require strong theoretical assumptions about what constitutes “credible” scoring. For example, a respondent who believes their profession will be completely transformed by GenAI in the next five years may be highly informed, or may be expressing anxiety, speculation, or dystopian fears. Without richer data to distinguish between these interpretations, applying corrective weights risks introducing new biases.

Given the relatively small size of these specific subgroups in our dataset, we refrain from implementing such adjustments in the current analysis to avoid overfitting or compromising credibility. Instead, we flag this as an important area for future survey design, particularly in capturing respondent expertise and task familiarity more systematically.

For the present study, we treat the survey as a starting point, designed to capture a broad spectrum of perspectives reflecting varying degrees of familiarity with both tasks and GenAI. In many cases, a respondent’s understanding of the task itself may be more influential than their understanding of the technology, especially for concrete physical tasks (e.g. trimming flowers, assembling mechanical parts). Accordingly, we rely on mean scores across all respondents to reflect the collective judgment of a diverse sample grounded in workplace experience. To enhance

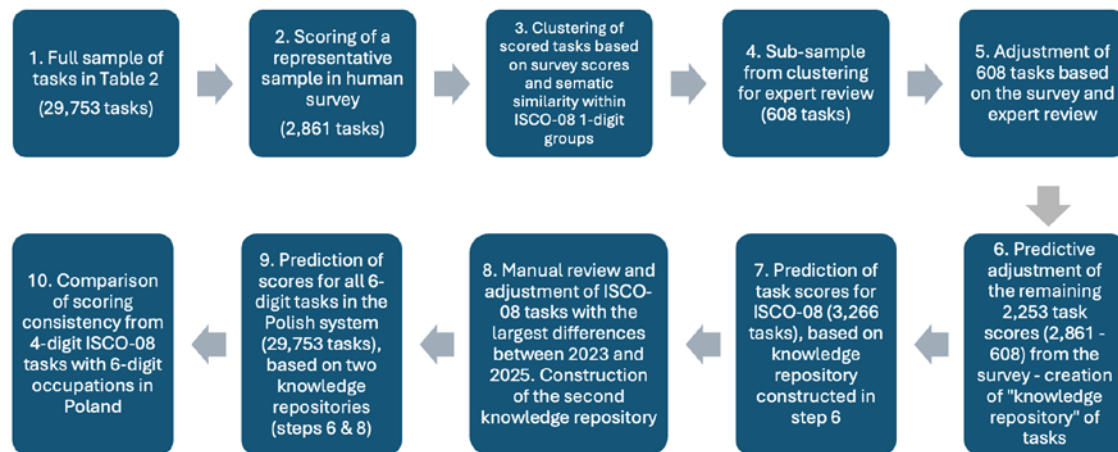
robustness, we supplement this with expert evaluation of a subset of tasks (section 5), ensuring that final scores reflect both practical insights and a realistic appraisal of current GenAI capabilities.

► 4 Expert validation survey

The expert group includes international specialists at the ILO and its partner organizations, NASK and the Polish Ministry of Family, Labour and Social Policy.⁹ The primary criterion for expert selection is their understanding of labour markets, including the complexity of occupations and tasks, and their real-life applications. While the experts are expected to have familiarity with the current family of generative AI technologies and their applications, expertise in AI design or development is not a requirement. This approach ensures that the focus remains on the feasibility and practical implications of automation within existing technological constraints, as technology experts tend to overstate technological capacities and risks when evaluating broader applications, particularly in workplace settings (Karger et al., 2023). This tendency is evident in earlier automation studies, which often assigned high displacement potential to routine tasks or entire occupations, such as garment production. As de Mattos et al. (2020) illustrate, these technological predictions frequently failed to account for the challenges of automating tasks requiring high dexterity or handling complex materials, such as stitching pliable fabrics. Accordingly, the assessment of automation potential in our study prioritizes expertise of task execution and workplace realities over purely technological expertise.

Since the experts cannot review all 2,861 tasks used in the survey, we focus on a representative sub-sample, selected in such a way to subsequently permit adjustments to entire task clusters. The overall scheme of this score adjustment procedure is presented in Figure 11.

► Figure 11. Schema of the scoring stages



First, we cluster the tasks into four fixed intervals, based on the distribution of the mean scores from the survey.¹⁰ We then use hierarchical clustering to group similar tasks within those clusters based on their semantic content. First, we assign embeddings to each task description using the *text-embedding-ada-002* model from OpenAI. Next, for each subgroup – defined by the combination of an occupational group at ISCO-08 1-digit level and a particular survey score cluster – we

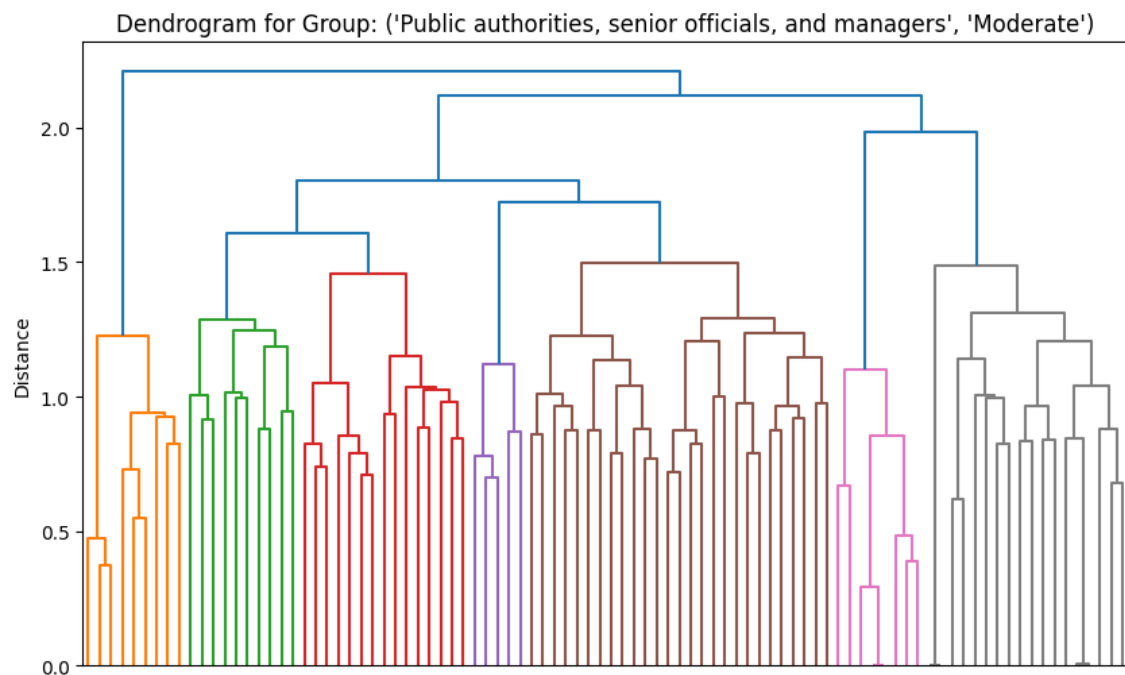
⁹ A full list of contributors is provided in the acknowledgements section.

¹⁰ $\mu \in [0, 0.1] \cup (0.1, 0.3] \cup (0.3, 0.5] \cup (0.5, 1]$

perform Ward’s hierarchical clustering.¹¹ We generate a dendrogram for each subgroup, plotting the tasks along the horizontal axis and the linkage distances (or “heights”) along the vertical axis. Clusters are then formed by “cutting” the dendrogram at a chosen linkage height, such that every branch below this cut line becomes its own cluster (Figure 12).

In our approach, we select the height threshold manually for each subgroup through visual inspection of the dendrogram. This allows us to flexibly accommodate heterogeneity among subgroup’s tasks, so as to ensure that each final cluster contains tasks that are genuinely similar in content. Once the distance threshold is determined, all tasks in the subgroup are assigned to a unique cluster. The process is repeated for each occupation–score–cluster combination. Although our visual inspection introduces an element of subjective judgment, it ensures that spurious or extremely fine-grained splits are avoided, helping to maintain coherent groupings of tasks for the subsequent expert review.

► **Figure 12. Example of a dendrogram used for the review of tasks’ semantic clustering**



Once each task had been assigned to a cluster, based on its 1-digit occupational group, scoring bracket from the survey and the semantic similarity of tasks, we generate the final sample of tasks for expert review. To ensure coverage across all clusters while limiting the total burden on experts, we applied a scaling factor (set to 20%) to determine the approximate fraction of tasks to sample from each group.¹² We then enforced a minimum of one task per cluster (to avoid excluding smaller clusters entirely) and a maximum of five tasks per cluster to keep the workload manageable. Through this procedure, we achieve a balanced, yet compact, sample that captures semantic diversity while preventing over-sampling from any single cluster. We retain the cluster assignment for each task, so that the expert review can be subsequently looped back into adjustments of the scores in the cluster that the sampled task originated from.

¹¹ Ward’s method seeks to minimize the variance within each cluster, making it particularly suitable for tasks with varied textual content.

¹² Specifically, the formula took the size of each cluster relative to the group total, multiplied by the scaling factor.

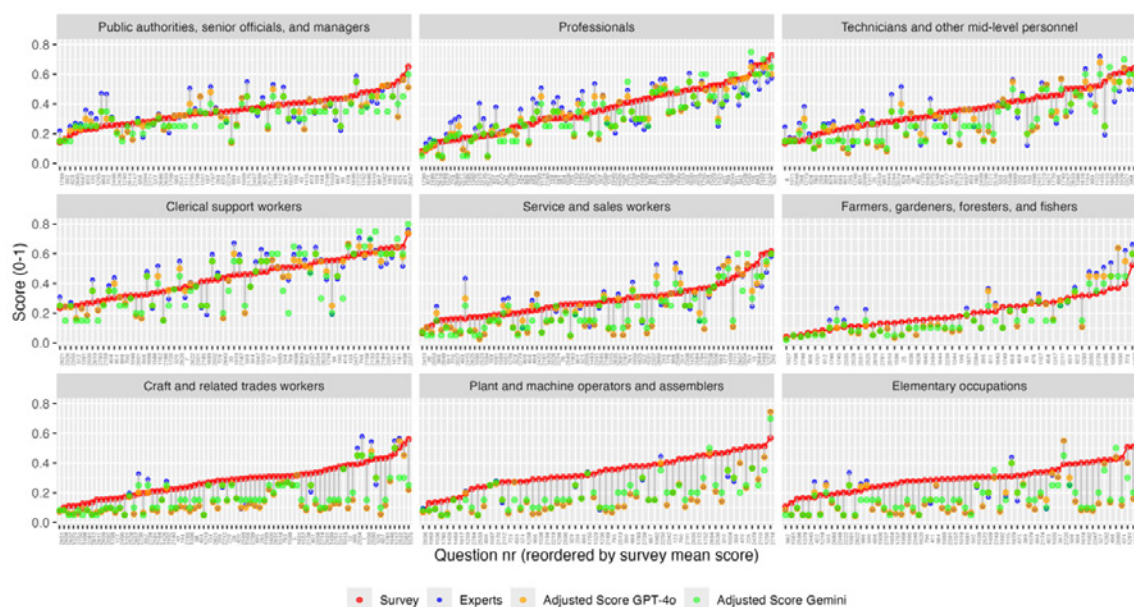
Each of the selected 608 tasks was then presented to a panel of experts. For each task, the experts were shown (i) the occupation and cluster information, (ii) the average survey score (rescaled to 0–1), and (iii) the full task description. If they agreed with the survey score, they left it unchanged; otherwise, they entered a revised expert score (0–1).

In many cases, the differences between the survey and expert scores are non-trivial. They also vary significantly across occupational groups, revealing distinct patterns based on the nature of pertaining tasks (Figure 13). In occupations dominated by manual and physical tasks, such as Craft and Related Trades Workers, Plant and Machine Operators, and Farmers, Gardeners, Foresters, and Fishers, experts consistently assigned lower scores compared to the survey respondents, reflecting the practical limitations of automating tasks that require physical manipulation or manual dexterity. In contrast, occupations involving more cognitive or knowledge-intensive tasks, such as Clerical Support Workers and Professionals, show a much more mixed picture. While some tasks in these groups received lower scores, many others were revised upwards by the expert group, reflecting the greater adaptability of generative AI for structured, data-driven, or communication-focused tasks. For example, Clerical Support Workers display a combination of increases and decreases, suggesting nuanced task-specific assessments where automation potential depends heavily on the nature of individual tasks.

► 5 Adjustment of survey sub-sample

In the next step, we compared the average of expert scores with the original mean survey scores using two independent AI models as impartial arbiters to propose an adjusted score.¹³ The models were informed about the sources of the scores in such a way that would prevent them from automatically siding with the expert group: group one was defined as *“practical knowledge of the work and types of tasks they were presented, since they worked in the same occupational groups from which we selected tasks they scored”*, while the second group was described as *“respondents with more theoretical knowledge of technology and labour markets”*. Rather than simply averaging the two scores, the models were explicitly instructed to focus their analysis on the task characteristics and the current capabilities of generative AI and required to provide justifications for each adjustment and its relative position to the original scores.

► Figure 13. Task-level scores from the survey and experts, compared to AI-arbitrated scores

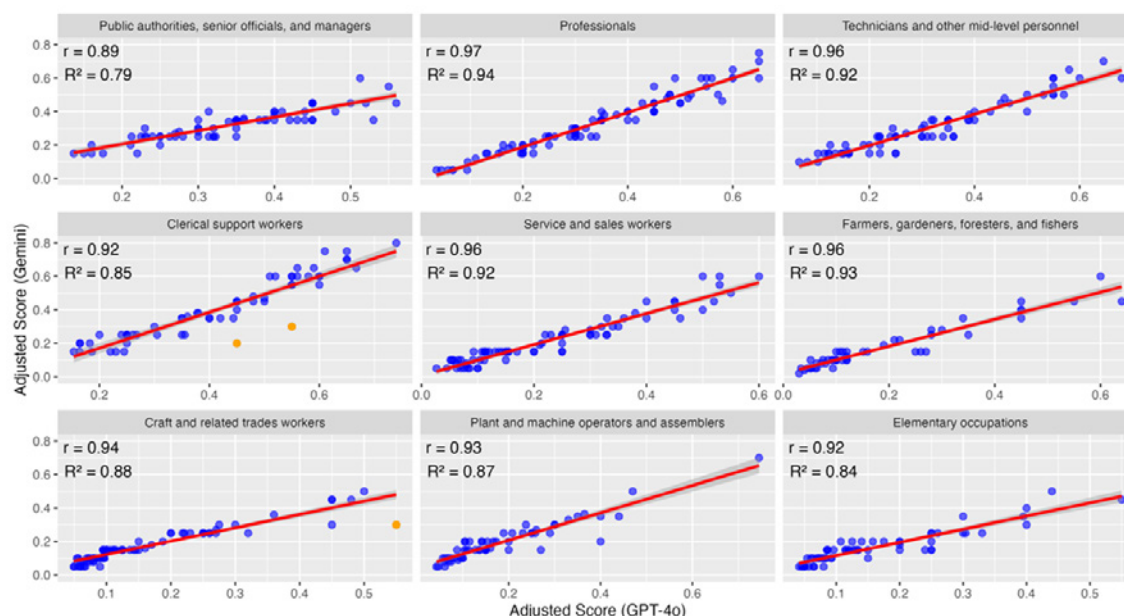


The overall correlation between the adjusted scores produced by the two AI models is 0.96, with correlations within occupational groups exceeding 0.9 in all but one case¹⁴ (Figure 14). This high level of agreement demonstrates that, when provided with sufficient background knowledge in the form of reference ranges of scores, the models converge on remarkably similar predictions. Notably, only three tasks exhibited an absolute difference in scores exceeding 0.2 (orange dots in Figure 13). In these cases, GPT-4o tended to adopt a more optimistic perspective on the feasibility of automation, whereas Gemini emphasized the importance of human judgment as a critical factor.

¹³ We used OpenAI's GPT-4o and Google's Gemini Flash 1.5, which have comparable abilities. We also tested OpenAI o1, which at the time of writing was among the models with strongest capacities of « algorithmic reasoning » and observed very similar results. The process was set up as a cycle of sequential API calls, which loop over each task and capture the response into a data frame.

¹⁴ Public authorities, senior officials and managers in Figure 10.

► Figure 14. Comparison of Adjusted Scores: GPT-4o vs Gemini by Occupational Group



For the final adjustment, we averaged the scores of the two arbitrating models and manually reviewed the justifications, without observing any significant inconsistencies. Table 4 illustrates the result of the adjustment process through examples of tasks where expert scores were significantly higher or lower than the survey averages, with the final adjusted score and GPT-4o justification. For tasks such as “operating injection molding machines” or “performing mechanical processing of silicon”, experts highlighted the limitations of generative AI in handling physical and manual components, leading to significantly reduced adjusted scores compared to the survey. Conversely, for tasks like “maintaining documentation of classes with children” or “performing financial estimates for household budgets”, the experts recognized the structured and analytical nature of these tasks, which generative AI can assist with to a substantial degree.

► Table 4. Sample of adjustments and justifications between the survey and expert scores (examples of largest upward and downward revisions)

Task				Justification
Applying various welding methods and using different types of welding machines and equipment, in accordance with training or qualifications.	0.43	0.05	0.05	The task involves hands-on physical work requiring skill and precision, such as welding using various machines, which is not currently automatable by generative AI technologies like ChatGPT. These technologies excel in tasks involving data processing, language understanding, and information generation but do not possess capabilities for physical task execution, hence aligning closer with the revised score.

Task				Justification
Conducting a card game - checking the condition of cards used for the game in terms of marking, degree of wear and quantity, verifying the correctness of bets, shuffling, dealing and revealing cards, announcing the sum of cards, making payouts according to the rates established in the game rules.	0.55	0.19	0.25	While generative AI can assist with understanding game rules, verifying bets, and conducting some aspects of digital card games, the physical handling of cards, checking their conditions, and ensuring fairness in shuffling and dealing still require a human touch. The theoretical group's lower score reflects the challenge of applying AI to specific physical and interactive elements of the task. Therefore, the lower revised score is more reflective of the practical limitations in automating such work.
Installing and initiating mechanical and electrical robots and peripheral equipment at new workstations	0.55	0.19	0.25	Installing and initiating mechanical and electrical robots and peripheral equipment at new workstations requires hands-on skills, precise calibration, and the ability to interact with physical hardware. While generative AI can assist with planning, documentation, and troubleshooting guides, the physical installation and configuration still require human expertise. Therefore, the lower score of 0.1925 is more reflective of reality, though slightly adjusted upward to 0.25 to acknowledge AI's support role in providing information or instructions during the task.
Organizing thematic activities (recreational, sports, entertainment) for different age groups	0.16	0.38	0.3	While generative AI can suggest ideas and develop thematic activities based on input parameters, organizing such activities requires an understanding of group dynamics, spontaneous decision-making, and the ability to adjust plans based on participant interactions and preferences. AI can assist in planning and offering content ideas, but human oversight remains necessary to ensure engagement and safety, especially when catering to varied age groups. Therefore, a score of 0.3 reflects AI's supportive role rather than full automation capability in this task.
Performing financial estimates to develop a household budget	0.37	0.64	0.64	The task of performing financial estimates to develop a household budget can be significantly automated with generative AI tools like ChatGPT due to the structured and data-driven nature of budget calculations. GenAI can generate budget templates, provide financial advice based on data inputs, and simulate different financial scenarios, which aligns closely with the theoretical group's higher score of 0.64, indicating strong potential for automation with AI's current capabilities.

Task				Justification
Maintaining documentation of classes conducted with children.	0.16	0.43	0.3	Generative AI can assist in maintaining documentation by generating templates, formatting, and summarizing information, which supports automation of routine documentation tasks. However, nuances in class content, individual student progress, and teacher observations require human oversight, limiting full automation potential. My score aligns closer to the higher revised score, acknowledging GenAI's capabilities while recognizing the need for human involvement.

► 6 Adjustment of all survey scores

After adjusting the 608 tasks for which we had both survey scores and expert evaluations, we proceeded to predict adjustments for the remaining 2,253 tasks (2,861 minus 608) scored in the initial survey. Each of these tasks is linked to a reference cluster and semantically similar tasks that were reviewed and adjusted in the earlier steps (see Sections 5 and 6). To ensure consistency, the AI models were provided with the context of already adjusted scores from semantically similar tasks within the same occupational group and scoring bracket. Following the methodology outlined in Section 6, we utilized two independent AI models to generate predictions, achieving a correlation coefficient of 0.95 across all data points. The final predicted scores were determined as the mean of the two model outputs.

► **Figure 15. Survey scores, expert evaluation and final adjustments for 2,861 tasks in the main survey**

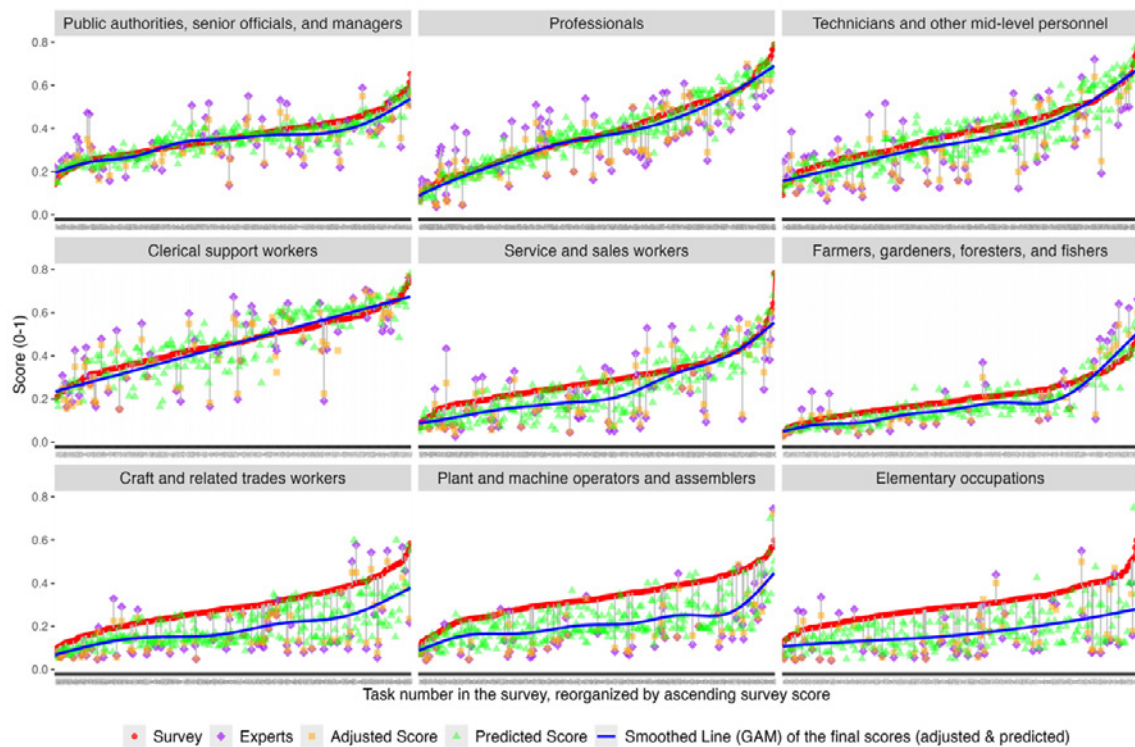


Figure 15 shows all 2,861 tasks scored in the main survey, arranged on the horizontal axis in ascending order of their initial survey scores. Each panel represents a different occupational group. Red points indicate the mean scores derived from survey responses, while purple diamonds represent expert evaluations for tasks where such scores were available. Orange squares show the final adjusted scores, based on the AI-driven reconciliation of survey and expert evaluations for tasks with both inputs, and green triangles represent AI-based predictions for tasks without expert scores, using reference scores from the corresponding cluster as context. The blue lines illustrate the overall trend among the final scores (a mix of adjusted and predicted scores), with a notable lowering of scores for more manual tasks.

► 7 Prediction of synthetic task-level scores for all ISCO-08 and 6-digit occupations

As the final step, we use the adjusted survey scores for 2,861 tasks to develop an AI assistant capable of predicting synthetic scores for new tasks across various classification systems. This combines the strengths of human expertise with generative AI's ability to generate consistent, large-scale responses based on precise instructions.

► Text Box 3. The conceptual structure of the LLM prompt (Python code for GPT-4o)

```
response = {...
    "role": "user",
    "content": (
        f"### TASK DETAILS\n"
        f"Job Task: {Tasks_STATS}\n"
        f"ISCO-08 4-digit code: {ISCO_08}\n"

        # f"### BACKGROUND\n"
        # "- In 2023, tasks were scored on their automation potential with Generative AI technology, by
asking GPT-4 model
        to provide a score."
        # "- The scores had a scale of 0 to 1, where 0 indicates no potential for automation using Generative
AI, and 1
        indicates full potential (no human operator needed).\n"
        # f"The score for this task assigned in the 2023 study was: {score_2023}\n\n"

        "### CONTEXT\n"
        "A large-scale survey was conducted with participants from diverse professional and technological
backgrounds.
        These participants:\n"
        "- Had practical knowledge of the work and tasks being evaluated and a theoretical knowledge of
labour markets.\n"
        "- Scored tasks on a scale of 0 to 1, where 0 indicates no potential for automation using Generative
AI, and 1
        indicates full potential (no human operator needed).\n"
        f"The 50 tasks with lowest scores were: {bottom50_scores_dict}"
        f"The 50 tasks with highest scores were: {top50_scores_dict}"
        f"This particular task was not scored, but 30 tasks with semantic proximity to this task received the
following scores:
        {context_query}"

        f"### YOUR TASK\n"
        "Predict the adjusted score for this task, considering:\n"
        "- The lowest and highest scores in the context you were provided.\n"
        "- Adjusted scores of semantically similar tasks in the context you were provided.\n"
        "- The capabilities of Generative AI to automate the task.\n"
        "- The assumption that the task is performed in a high-income country like Poland, where access to
computers and the
        internet is common.\n\n"

        f"### IMPORTANT INSTRUCTIONS\n"
        "- Do not simply average the scores; analyze the task and adjust accordingly.\n"
        "- Provide only the score in line 1 and your justification in next lines. Do not provide any additional
text or
        commentary.\n"
        "- Do not provide a range; give a single score for the task."))]
```

To develop our predictive model, we evaluated two approaches: (i) fine-tuning a large language model (LLM) with the 2,861-task dataset or (ii) designing an advanced prompting strategy (prompt engineering). Fine-tuning, while promising for learning domain-specific patterns, is

resource-intensive and limited by our relatively small dataset.¹⁵ In contrast, by using a sufficiently large set of example tasks within the prompt, we can provide the model with explicit “demonstrations” of scoring of similar tasks in our main dataset. To ensure a balanced approach, we provide each prompt with a sample of tasks with the highest 50 and lowest 50 scores, alongside the scores of 30 tasks with greatest semantic similarity to the tasks that the model is requested to score. To create the semantic context, we construct a rapid-search vector database with all 2,861 adjusted scores. The database is queried at the start of each API call and extracts tasks with semantic similarity to the task that is being scored. Once the 30 most similar tasks have been retrieved, a set of complete instructions is passed to the model's API, as per the general prompt strategy illustrated in Box 3.

We first validate the predictive model using a sample of tasks from the survey that were adjusted as per sections 5-7, but not included in the semantic context provided to the model.¹⁶ Once the prompt adjustments deliver satisfactory performance, we use the same system to predict automation scores for 3,265 tasks in ISCO-08 (as in Gmyrek et al., 2023).¹⁷ This approach bridges expert-validated human assessments with the scalability of LLM-based predictions, enabling consistent and extensible scoring for tasks across classification systems.

For a further refinement of our scoring system, we filter 364 tasks where the scoring in 2025 changed by more than 25% of the absolute value of 2023 score. We review these tasks manually, using an expert consensus-building method. First, we conduct a mini survey among co-authors, in which each respondent is asked to arbitrate between the diverging scores. For 64 ISCO-08 tasks, where we still observe a divergence of expert opinions, we conduct a detailed group discussion, in order to reach consensus and agree on a justification.

Following the final manual verification process, we establish a second knowledge repository, also stored in a vector database. The main LLM prompt is then updated to incorporate this additional reference by conducting two sequential semantic context retrievals for each prediction, further improving the model's precision in predicting scores for new tasks. Using this approach, we generate predictions for all 29,753 tasks in the Polish classification system (Table 1).

To compare these 6-digit predictions with 4-digit ISCO-08 classifications, we calculate (i) the mean of all task scores aggregated at the 4-digit level and (ii) occupational means at the 6-digit level, subsequently deriving the 4-digit mean from these 6-digit components. In both cases, the correlation between predictions based on ISCO-08 tasks and Polish 6-digit tasks is 0.92, demonstrating exceptional stability of predictions. In other words, while one might question the exact scores assigned to tasks in our knowledge repository – a challenge not unique to our study – once the repository and prompting techniques are in place, the model consistently produces stable predictions based on reference tasks and their scores, and irrespective of the occupational classification system. This approach offers promising possibilities for replication across other occupational classifications, which we intend to explore further. For the remainder of this paper, we focus primarily on revising ISCO-08 scores, leaving a detailed analysis of Poland's 6-digit occupations for a separate study (Gmyrek et al., forthcoming, 2025).

¹⁵ See OpenAI fine-tuning guidelines and developer forum <https://platform.openai.com/docs/guides/fine-tuning>.

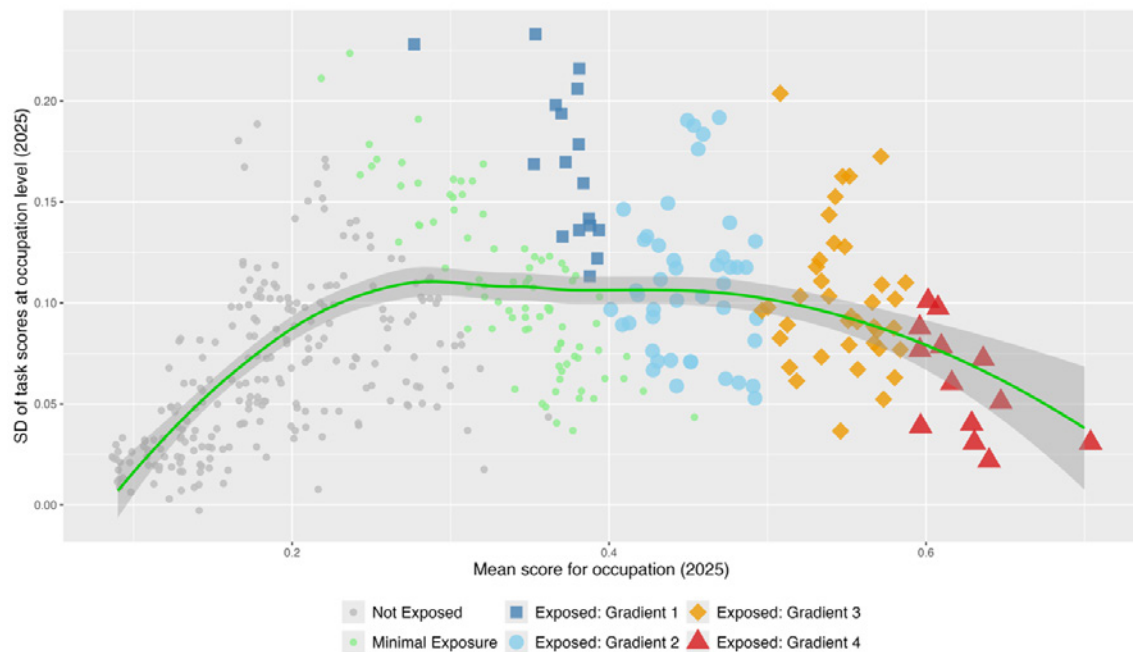
¹⁶ These tasks were split into an 80-20 proportion, with 80% used for training and 20% reserved for validation. Performance was measured using Root Mean Square Error (RMSE) and Mean Absolute Error (MAE), with the adjusted scores showing better agreement (MAE = 0.0494, RMSE = 0.0724) compared to the predicted scores (MAE = 0.0684, RMSE = 0.0963). Correlation analysis further supported this, with adjusted scores exhibiting higher Pearson (0.895) and Spearman (0.884) correlations than predicted scores (Pearson: 0.796, Spearman: 0.776). This is understandable, as the adjusted scores were based on two points of reference (survey score and expert score), making them more stable and easier to predict. In contrast, for the predicted scores, the test involves a repeated prediction process, which amplifies the original error.

¹⁷ There are 3,123 distinct tasks in ISCO-08 and 3,265 tasks in total, as some occupations share the same task.

► 8 Adjusted Global Index of GenAI Exposure

To classify ISCO-08 occupations into varying levels of exposure to Generative AI (GenAI), we update the framework introduced in Gmyrek et al. (2023). Similarly to the original approach, we rely on two moments of distribution: occupational mean and standard deviation (SD) of task-level scores pertaining to a given 4-digit occupation. However, instead of using automation and augmentation potential as two extreme categories with the "big unknown" in between, we now adopt a more nuanced classification scheme that represents a spectrum of exposure, with occupations considered as exposed classified into four increasing gradients (Figure 16 and Table 5).

► Figure 16. AI Exposure Gradients: ISCO-08 4-digit level occupations



Note: Figure 16 presents all ISCO-08 4-digit occupations classified into GenAI exposure categories as per the criteria in Table 5. A detailed list of occupation-level means and SDs is available in the Appendix, Table A1. In addition, task-level scores within the overall hierarchy of ISCO-08 are available here: https://pgmyrek.github.io/2025_GenAI_scores_ISCO08/

Gradient 1 represents occupations with low overall GenAI exposure but significant variability across tasks (Low exposure, high task variability). While some tasks within these roles may have high automation potential, the occupation has many tasks that continue requiring human roles, aligning closely with the notion of augmentation in the old framework. Gradient 2 includes occupations with moderate GenAI exposure and a mix of highly exposed and minimally exposed tasks, resulting in uneven impacts where some tasks may be disrupted while others remain unaffected (Moderate exposure, high task variability). Gradient 3 captures occupations where a significant portion of tasks are consistently exposed to GenAI, signaling growing automation risks and requiring adaptation strategies for workers (Significant exposure, high task variability). Gradient 4 highlights occupations with the highest share of tasks exposed to potential GenAI-driven automation, and with a high consistency of this exposure across tasks (Highest exposure, low task variability). This gradient aligns closely with the notion of automation risk in our earlier classification system (Gmyrek et al., 2023). In addition, among occupations outside these four categories, we introduce a more granular distinction of Minimal Exposure, where some interaction with GenAI

may occur, but without significantly altering the nature of these roles, and the lowest category of Not Exposed occupations, where GenAI currently has no observable potential to automate tasks.

► **Table 5. GenAI Exposure Gradients: Definition and Interpretation**

GenAI Exposure	Definition (Mean & SD of Task Scores)	Interpretation
Exposed: Gradient 4 (Highest exposure, low task variability)	$\mu \geq 0.6$ and $\mu - \sigma \geq 0.5$	High and consistent GenAI exposure across tasks within the occupation. Most current tasks in these jobs have a high potential of automation, with little variability in task-level exposure.
Exposed: Gradient 3 (Significant exposure, high task variability)	$0.5 \leq \mu < 0.6$ and $\mu + \sigma \geq 0.5$	Above-moderate occupational exposure: even though some tasks remain less exposed, the overall potential of automation of the current tasks with GenAI is growing in these occupations.
Exposed: Gradient 2 (Moderate exposure, high task variability)	$0.4 \leq \mu < 0.5$ and $\mu + \sigma \geq 0.5$	Moderate occupational AI exposure, with high task-level variability. These occupations include a mix of some tasks that are exposed to GenAI and others not at risk, making the impact uneven.
Exposed: Gradient 1 (Low exposure, high task variability)	$\mu < 0.4$ and $\mu + \sigma \geq 0.5$	Low overall GenAI exposure at the occupational level, but high variability across tasks. Some tasks within these occupations have an elevated automation potential, even if the occupation as a whole remains strongly reliant on tasks that have a low potential of automation.
Minimal Exposure (Low exposure, moderate task variability)	$\mu < 0.5$ and $\mu + \sigma > 0.4$	Occupations with low GenAI exposure, where some tasks show moderate automation potential, but overall occupational exposure remains limited.
Not Exposed	Occupations that don't meet any of the above conditions.	Occupations where most tasks remain relatively unaffected by GenAI, with low task variability and a stable low mean exposure score.

This revised framework addresses some limitations of the earlier categorization system, particularly the interpretative challenges posed by the category, “the big unknown”. By expanding the exposure categories into a continuous gradient, the updated framework improves the readability and interpretability of results and enables us to stack employment estimates into the overall category of exposed occupations (Figure 17 in Section 10).¹⁸ It also captures in a more nuanced way how GenAI can impact occupations at varying levels of exposure, based on task-level variability and overall occupational risks. Furthermore, the framework's flexibility enhances its applicability to country-specific contexts, allowing policymakers to better understand the distribution of GenAI's potential impact and prioritize interventions for the most affected groups in the national contexts.

¹⁸ One of the limitations of the current approach is that neither ISCO-08 nor the Polish classification system includes information on the relative frequency or importance of tasks within occupations. As a result, all tasks are weighted equally when calculating exposure scores. Future research could refine this by incorporating task-level weights, for instance by mapping to occupational databases such as O*NET or by collecting self-reported data on task relevance directly from workers. A similar refinement could concern mapping the level of skills to individual tasks.

We stress that these classifications merely suggest the general trends and types of occupations at different levels of exposure, since any type of task scoring system carries a degree of subjectivity. While the abilities of GenAI and its derivative technologies evolve rapidly, many additional local factors, not covered in this global study, can either speed up and expand, or limit the impact of these technologies on specific occupations. The advantage of this more detailed categorization of occupations into four progressive gradients is that it will allow for tracking the movement of occupations over time, and for occupational-level comparisons across national classification systems with varying collections of tasks.¹⁹

¹⁹ To address the weakness of missing country-level nuance in this global index, we develop an AI-based predictor described in Section 8, which captures the general scoring structure and relative score differences across 2,861 tasks in our database. We can apply this knowledge repository to predict scores for more specific tasks in national-level classification systems. For demonstrative purposes, we intend to apply this method to the context of 6-digit occupations in Poland (Gmyrek et al., forthcoming in 2025), with the possibility of replicating the method for other countries where detailed occupational descriptions are available.

► 9 Changes to occupational classifications

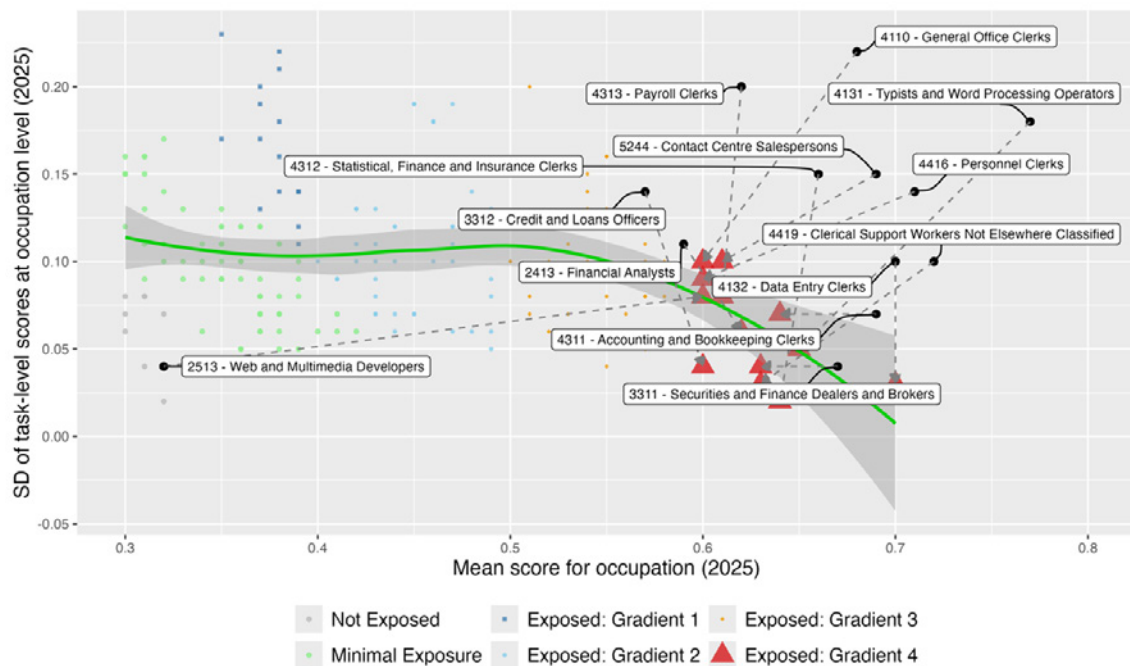
Our 2025 task-level scores are broadly consistent with those of the ILO 2023 study (Gmyrek et al., 2023), although the mean scores at the level of occupations are slightly lower (0.29 in 2025 compared to 0.30 in 2023). However, the score dispersion within occupations is considerably narrower, resulting in a more concentrated overall distribution (Figure 3).

► **Figure 17. AI Exposure: Comparison of 2025 with 2023, ISCO -08 4-digit level occupations**



Similar to our 2023 study, clerical occupations exhibit the highest levels of exposure, though with a decline in their mean scores due to a reassessment of certain task-level evaluations (Figures 18 & 19). This decrease highlights the distinction between the theoretical automation potential of a task and the practical insights gained from two years of experimentation with GenAI tools. While tasks such as taking meeting notes or scheduling appointments can significantly benefit from GenAI support, our 2023 scores for such tasks, which reached 0.9 in some cases, reflected an overly optimistic assessment of full automation potential. In reality, many of these tasks still require substantial human effort. Despite the decline in overall mean scores for these occupations, many still fall within the highest exposure gradient (Level 4), since the final classification does not depend solely on the mean score but is determined through a simultaneous assessment of each occupation's mean and the dispersion of corresponding task-level scores (SD, see Figure 16 and Table 5). Among the 13 occupations classified in gradient 4, the majority represent clerical roles, including data entry clerks, typists and word processing operators, accounting and bookkeeping clerks, and general office clerks.

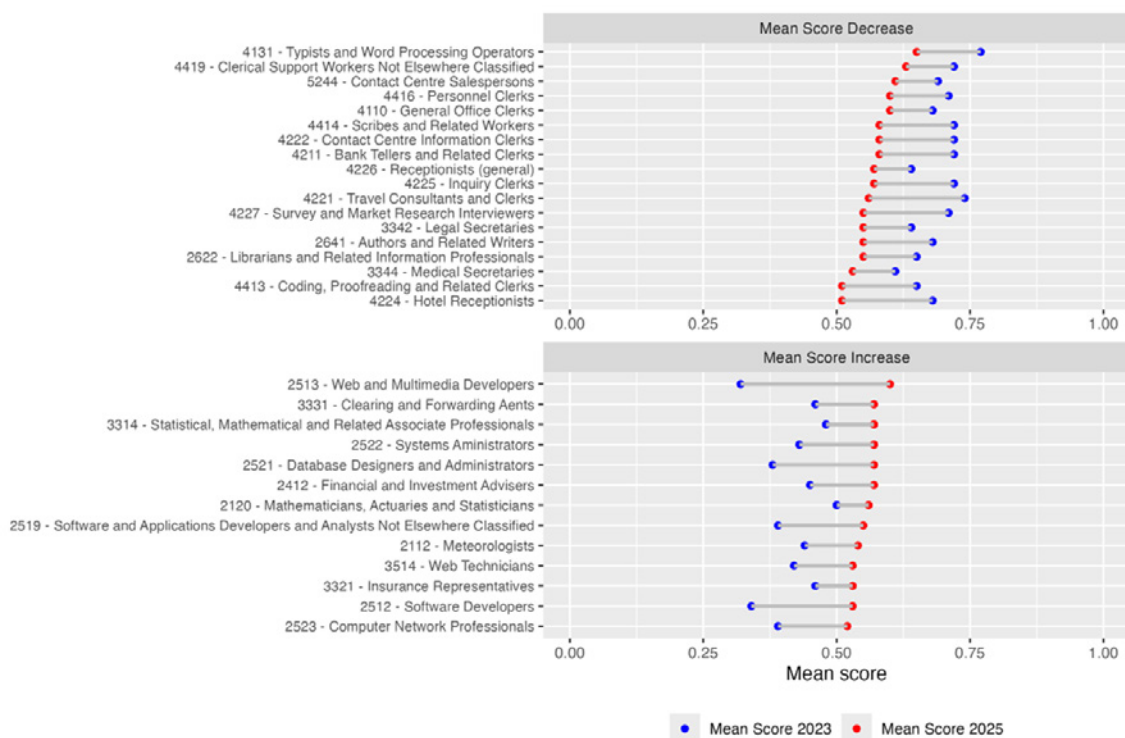
► Figure 18. Changes to occupational exposure between 2023 and 2025 within Gradient 4



On the other hand, several highly digitized occupations have seen an increase in their mean scores. This applies, for example, to web and media developers, statistical and database specialists, as well as financial and software-related occupations (Figure 17). A key factor behind this shift is the rapid expansion of AI capabilities since our previous study in 2023. At that time, large language models (LLMs) were primarily viewed as advanced text generators. Since then, they have acquired multimodal abilities, allowing them to process and generate not only text but also images, audio, and video. Additionally, these models have been gaining some agentic capabilities, allowing them to execute multi-step tasks autonomously, interact with software environments, and make decisions based on contextual inputs. These advancements significantly broaden the scope of tasks that can be at least partially automated using GenAI, with software development and multimedia sectors among some of the leading adopters.

While many of these occupations fall within gradient 3 and 4, one must consider that these roles are deeply intertwined with digital technologies, and indeed, many of these occupations have emerged as a result of technological advancements. The scores reflect the high potential of automation among their current tasks, but these occupations also possess a strong capacity to evolve and develop new tasks through innovative application of GenAI and related digital tools. In previous technological transitions, this type of adaptation was exemplified by the well-known case of bank tellers following the diffusion of automatic teller machines (ATMs) in the 1990s (Bessen, 2016). As ATMs automated routine cash withdrawals, they also lowered operational costs, enabling banks to open more branches and, in turn, increasing the demand for bank tellers in roles that required more complex customer service and advisory tasks. One can therefore expect many tasks in these occupations not to remain static but rather to evolve alongside technological advancements, driven by the expanding capabilities of GenAI. A key question – largely dependent on the policies shaping this evolution – is to what extent these jobs can retrain and retain existing workers, rather than drive labor churn through workforce replacement and the recruitment of typically younger specialists (Ananian et al., 2006).

► Figure 19. 4-digit level occupations (ISCO-08) with largest changes in mean scores between 2023 and 2024



► 10 Revised global employment estimates

Having established a comprehensive list of 4-digit occupations with corresponding GenAI exposure scores (Appendix A, Table A1), we focus on the 112 occupations identified as exposed and estimate the share of employment that these occupations represent at the global, regional, and income-based levels. We apply the same method as in Gmyrek et al. (2023), which relies on the ILO's global estimation model. This model is based on a harmonized microdata collection and a hierarchical imputation process, integrating data throughout the ISCO-08 structure from the most reliable sources at the highest level of detail available.²⁰

► Figure 20. Global estimates of occupations potentially exposed to GenAI (% of employment by sex)



At the global level, about a quarter of all employment falls into one of the four exposure gradients, with significant differences between female and male employment, particularly in the top two exposure gradients (Figure 18). Among male workers, approximately one-fifth of jobs fall within one of the exposure gradients, with 3.1% in gradient 3 and 2.4% in the highest exposure gradient (gradient 4). In contrast, not only is the total share of female employment in potentially exposed occupations notably higher, but the difference is also concentrated in the top two gradients, with 5.7% of female employment in gradient 3 and another 4.7% in gradient 4. These

²⁰ Calculations of employment aggregates were conducted by David Bescond, ILO STATISTICS.

disparities are even more pronounced in High-Income Countries, where 34% of total employment falls within one of the four exposure gradients, with 17.3% in gradients 3 and 4. However, when disaggregated by gender, 28% of male employment is exposed, with only 3.5% in gradient 4, compared to 41% of female employment, with 14.4% in gradient 3 and 9.6% in gradient 4.

Income-based differences in exposure are striking, with High-Income Countries showing the highest share of employment in one of the four exposure gradients (34%). The total share of exposed employment declines significantly as income levels decrease, reaching just 11% in Low-Income Countries (LICs). Lower income levels also reduce gender disparities in exposure, primarily due to the lower concentration of occupations in the highest exposure gradients (gradients 3 and 4). Gender disparities are also more pronounced in wealthier regions, particularly in Europe and Central Asia, where 39% of female employment falls into one of the four exposure gradients compared to 26% for men. These patterns reflect both occupational structures and the extent to which GenAI-exposed roles, such as clerical, financial, and customer service jobs, are concentrated in higher-income countries.

These new estimates are consistent with those given in 2023, but more refined. The previous version attributed 2.3% of global employment to the “automation” category, one percentage point lower than the 3.3% assigned to gradient 4. In addition, the 2023 estimate attributed 13% of employment as subject to “augmentation” and an additional 16.2% of employment in “the big unknown”. The combined employment share for Gradients 1-3 for the world in the current analysis is 20.5%, 9 percentage points lower than combined shares of augmentation and “the big unknown” (29.2%) reported in 2023. The 2023 findings that women are more affected than men, and that the percentage of employment affected increases as countries’ income level increases, still hold.

It is important to stress that these new estimates reflect “exposure” to GenAI and not the actual impact on employment. As in 2023, the 2025 estimates represent the upper threshold of the percentage of employment that could be affected if GenAI technology were fully implemented. Infrastructure constraints (electricity, broadband), insufficient digital skills, the cost of technology, and inherent operational difficulties associated with the technology are just some of the barriers to full adoption. An important aspect also concerns the institutional and societal acceptance of automating tasks and occupations – even when technically feasible. For instance, few consumers may be inclined to watch evening news presented by avatars. Similarly, financial institutions might hesitate to fully delegate decisions such as mortgage approvals or business plan evaluations to AI systems, preferring to retain human judgement, oversight and accountability.

Indeed, the results indicate that few jobs consist of tasks that are fully automatable with current GenAI technology; nearly all occupations have some tasks that require human input. Gradients 1-3 comprise occupations where the automation of specific tasks is limited, and some degree of task variability exists. As such, the “bundle of tasks” that constitutes occupations acts as a buffer against full automation. However, this does not mean that demand for these occupations will remain stable, as the efficiencies gained from introducing technology may mean that fewer workers are needed. If efforts are not made to help such jobs evolve with GenAI and integrate new tasks, even partial automation of existing tasks could lead to a decline in overall job demand in occupations found in higher exposure gradients. In addition, in some cases, the remaining set of non-automated tasks may result in jobs that are no longer humanly sustainable or desirable, thereby limiting the feasibility of adopting imbalanced technological solutions (Tegtmeier et al., 2022).

Finally, the estimates do not account for new jobs that may be created, nor the technological advances that could potentially automate more tasks in the future. In that sense, our estimates present a static snapshot of the exposure of existing occupations to GenAI at the start of 2025.

► Conclusion

In this paper, we have presented the methodology used to develop a new global index of occupational exposure to GenAI, as well as new estimates of the global effects on employment. We build on the approach developed by the ILO in 2023, but with several notable refinements. First, by beginning our analysis with the Polish 6-digit occupational structure, we expand by ten-fold the amount of detailed task information available for the analysis of task automation. In addition, using a representative sample from the 29,753 tasks in the Polish occupational classification system and a survey of 1,640 people in Poland, we captured the opinions of each 1-digit ISCO-08 group on the potential for task automation in the job categories in which they are currently employed (52,558 data points). We then compared this input with an expert survey and conducted subsequent rounds of revisions among a smaller international expert group for the tasks with the highest degree of disagreement. Based on this process, we built a repository of knowledge with adjusted task scores that goes beyond Poland's national specificities and reflects a broader consensus on the task automation potential of current GenAI tools.

We subsequently used this repository to develop an AI assistant that could predict scores for these tasks based on this additional information as well as the technical documentation of ISCO-08. These scores update the original set of scores produced by the ILO in 2023 (Gmyrek et al., 2023). The use of a verified "knowledge base" presents an important methodological improvement, which greatly enhances stability of our predictions across independent LLMs (see Section 6), and which can be used to produce similar score predictions for other occupational classification systems that contain job-specific tasks. In addition, we make all task-level scores publicly available, which also makes it possible for researchers to organize the occupational exposure in different ways than our proposed framework of exposure gradients.

The new global index presented in this paper is generic, due to the nature of ISCO-08 and the structure of tasks associated with occupations in this framework. Its definite strength – similar to ISCO-08 – is that it provides a common global denominator and a direct link to national labour forces surveys held in the ILO harmonized micro data repository, which relies on the same classification of occupational structures. Even though all countries do not use ISCO-08, mappings of the national systems to this common international standard are available. This eliminates the need for crosswalks from other national systems (e.g. O*NET), which involves tenuous assumptions about the similarity of detailed occupations in the technologically advanced context of the USA to other countries, especially non-HICs. The simple and comparable character of our ISCO-08 based index enables direct production of global, regional and income-based employment estimates, based on the same statistical modelling techniques that are used by the ILO for other global figures (see Section 11).

Our 2025 scores are presented in a revised occupational classification system, adopting a framework of four progressively increasing exposure gradients, that better highlights the importance of potential AI exposure and task variability for determining possible outcomes. We produced a new set of global estimates of GenAI exposure based on this revised classification.

The new index maintains many of the headline findings of the 2023 methodology. Clerical occupations continue to have the highest exposure levels, albeit with some important downward revisions to individual tasks scores. Such occupations include data entry clerks, typists, accounting, bookkeeping clerks and administrative secretaries. Additionally, some occupations – such as financial analysts, and web and multimedia developers (gradient 4), as well as bank tellers, translators, applications programmers, investment advisers (gradient 3) – have increased their

levels of exposure, highlighting the expanding abilities of GenAI technology to potentially automate more specialized tasks in professional and technical roles.

Overall, the revised global employment estimates of GenAI exposure are lower than in our 2023 paper, though still, one in four jobs globally (24%) has some degree of exposure, and one in three jobs in high-income countries. What is particularly striking is the continued association of gender with occupations with higher levels of exposure, especially in higher-income countries. Compared to 7.8% of female employment and 2.9% of male employment in high-income countries classified as having high automation potential in 2023, the current study increases these figures to 9.6% for females and 3.5% for males, respectively.

Notwithstanding these findings, we stress that such exposure does not imply the immediate automation of an entire occupation, but rather the potential for a large share of its current tasks to be performed using this technology. Whether this leads to the disappearance of an occupation or workforce replacement is a more complex question – one that will depend on the initial decision to adopt the technology, but also the extent to which individuals in these occupations are given opportunities to learn to work with these technologies and adapt to the evolving nature of their tasks. As argued by numerous economists, the key to unlocking the productivity benefits of GenAI lies not in the search of outright labour savings, but in the extent to which human expertise can be complemented with new technological capacities to reshape occupations and generate additional value-added (Acemoglu, 2024; Autor, 2024).

Ensuring such positive synergies necessitates an approach to technology's adoption at the workplace that is human-centered. With one in four workers across the world in an occupation with some degree of GenAI exposure, there is need to ensure that the transition is managed through social dialogue, both to minimize “technological unemployment” and the hardship associated with it, but also to ensure that for the majority who remain employed, the technology is implemented in a way that supports them in carrying out their jobs. Workers know their jobs best and can play an important role in the design, adaptation and use of the technology at the workplace, to the benefit of both working conditions and productivity.

Annex

1. Exposure by 4-digit ISCO-08 occupation

► Table A1. ISCO-08 occupations by exposure gradient

Exposure	4-digit code	Occupation Name	Mean	SD
Gradient 4	4132	Data Entry Clerks	0.7	0.03
Gradient 4	4131	Typists and Word Processing Operators	0.65	0.05
Gradient 4	4311	Accounting and Bookkeeping Clerks	0.64	0.07
Gradient 4	4312	Statistical, Finance and Insurance Clerks	0.64	0.02
Gradient 4	3311	Securities and Finance Dealers and Brokers	0.63	0.04
Gradient 4	4419	Clerical Support Workers Not Elsewhere Classified	0.63	0.03
Gradient 4	2413	Financial Analysts	0.62	0.06
Gradient 4	4313	Payroll Clerks	0.61	0.08
Gradient 4	5244	Contact Centre Salespersons	0.61	0.1
Gradient 4	2513	Web and Multimedia Developers	0.6	0.08
Gradient 4	3312	Credit and Loans Officers	0.6	0.04
Gradient 4	4110	General Office Clerks	0.6	0.1
Gradient 4	4416	Personnel Clerks	0.6	0.09
Gradient 3	2643	Translators, Interpreters and Other Linguists	0.59	0.11
Gradient 3	4120	Secretaries (general)	0.58	0.1
Gradient 3	4211	Bank Tellers and Related Clerks	0.58	0.09
Gradient 3	4222	Contact Centre Information Clerks	0.58	0.06
Gradient 3	4414	Scribes and Related Workers	0.58	0.08
Gradient 3	2412	Financial and Investment Advisers	0.57	0.11
Gradient 3	2514	Applications Programmers	0.57	0.08
Gradient 3	2521	Database Designers and Administrators	0.57	0.08
Gradient 3	2522	Systems Administrators	0.57	0.05
Gradient 3	3314	Statistical, Mathematical and Related Associate Professionals	0.57	0.1
Gradient 3	3331	Clearing and Forwarding Agents	0.57	0.09
Gradient 3	4225	Inquiry Clerks	0.57	0.09
Gradient 3	4226	Receptionists (general)	0.57	0.17
Gradient 3	2120	Mathematicians, Actuaries and Statisticians	0.56	0.09
Gradient 3	4221	Travel Consultants and Clerks	0.56	0.07
Gradient 3	2431	Advertising and Marketing Professionals	0.55	0.09
Gradient 3	2519	Software and Applications Developers and Analysts Not Elsewhere Classified	0.55	0.16
Gradient 3	2622	Librarians and Related Information Professionals	0.55	0.04

Exposure	4-digit code	Occupation Name	Mean	SD
Gradient 3	2631	Economists	0.55	0.08
Gradient 3	2641	Authors and Related Writers	0.55	0.09
Gradient 3	3342	Legal Secretaries	0.55	0.13
Gradient 3	4227	Survey and Market Research Interviewers	0.55	0.16
Gradient 3	2112	Meteorologists	0.54	0.13
Gradient 3	2642	Journalists	0.54	0.1
Gradient 3	3343	Administrative and Executive Secretaries	0.54	0.14
Gradient 3	4223	Telephone Switchboard Operators	0.54	0.15
Gradient 3	2512	Software Developers	0.53	0.07
Gradient 3	3321	Insurance Representatives	0.53	0.12
Gradient 3	3344	Medical Secretaries	0.53	0.11
Gradient 3	3514	Web Technicians	0.53	0.12
Gradient 3	2523	Computer Network Professionals	0.52	0.06
Gradient 3	3252	Medical Records and Health Information Technicians	0.52	0.1
Gradient 3	2411	Accountants	0.51	0.08
Gradient 3	2434	Information and Communications Technology Sales Professionals	0.51	0.09
Gradient 3	4224	Hotel Receptionists	0.51	0.07
Gradient 3	4413	Coding, Proofreading and Related Clerks	0.51	0.2
Gradient 3	2433	Technical and Medical Sales Professionals (excluding ICT)	0.5	0.1
Gradient 3	4323	Transport Clerks	0.5	0.1
Gradient 2	2166	Graphic and Multimedia Designers	0.49	0.09
Gradient 2	2511	Systems Analysts	0.49	0.05
Gradient 2	2529	Database and Network Professionals Not Elsewhere Classified	0.49	0.06
Gradient 2	3313	Accounting Associate Professionals	0.49	0.13
Gradient 2	3322	Commercial Sales Representatives	0.49	0.08
Gradient 2	3352	Government Tax and Excise Officials	0.49	0.12
Gradient 2	2153	Telecommunications Engineers	0.48	0.12
Gradient 2	2632	Sociologists, Anthropologists and Related Professionals	0.48	0.12
Gradient 2	3332	Conference and Event Planners	0.48	0.14
Gradient 2	4213	Pawnbrokers and Money-lenders	0.48	0.06
Gradient 2	1346	Financial and Insurance Services Branch managers	0.47	0.12
Gradient 2	2356	Information Technology Trainers	0.47	0.1
Gradient 2	2621	Archivists and Curators	0.47	0.11
Gradient 2	2633	Philosophers, Historians and Political Scientists	0.47	0.06
Gradient 2	2656	Announcers on Radio, Television and Other Media	0.47	0.12
Gradient 2	3512	Information and Communications Technology User Support Technicians	0.47	0.19
Gradient 2	2421	Management and Organization Analysts	0.46	0.1
Gradient 2	4411	Library Clerks	0.46	0.18

Exposure	4-digit code	Occupation Name	Mean	SD
Gradient 2	5243	Door-to-door Salespersons	0.46	0.18
Gradient 2	2423	Personnel and Careers Professionals	0.45	0.07
Gradient 2	3315	Valuers and Loss Assessors	0.45	0.19
Gradient 2	3353	Government Social Benefits Officials	0.45	0.07
Gradient 2	4212	Bookmakers, Croupiers and Related Gaming Workers	0.45	0.19
Gradient 2	1330	Information and Communications Technology Service Managers	0.44	0.07
Gradient 2	1420	Retail and Wholesale Trade Managers	0.44	0.15
Gradient 2	2165	Cartographers and Surveyors	0.44	0.12
Gradient 2	3324	Trade Brokers	0.44	0.1
Gradient 2	3339	Business Services Agents Not Elsewhere Classified	0.44	0.12
Gradient 2	4322	Production Clerks	0.44	0.06
Gradient 2	2432	Public Relations Professionals	0.43	0.09
Gradient 2	3341	Office Supervisors	0.43	0.11
Gradient 2	3354	Government Licensing Officials	0.43	0.07
Gradient 2	3511	Information and Communications Technology Operations Technicians	0.43	0.13
Gradient 2	3513	Computer Network and Systems Technicians	0.43	0.08
Gradient 2	4214	Debt Collectors and Related Workers	0.43	0.07
Gradient 2	5221	Shopkeepers	0.43	0.1
Gradient 2	1219	Business Services and Administration Managers Not Elsewhere Classified	0.42	0.1
Gradient 2	2152	Electronics Engineers	0.42	0.13
Gradient 2	4229	Client Information Workers Not Elsewhere Classified	0.42	0.13
Gradient 2	5242	Sales Demonstrators	0.42	0.11
Gradient 2	1221	Sales and Marketing Managers	0.41	0.09
Gradient 2	2424	Training and Staff Development Professionals	0.41	0.09
Gradient 2	4412	Mail Carriers and Sorting Clerks	0.41	0.15
Gradient 2	2131	Biologists, Botanists, Zoologists and Related Professionals	0.4	0.1
Gradient 1	2351	Education Methods Specialists	0.39	0.11
Gradient 1	2634	Psychologists	0.39	0.14
Gradient 1	3411	Legal and Related Associate Professionals	0.39	0.14
Gradient 1	3431	Photographers	0.39	0.12
Gradient 1	5230	Cashiers and Ticket Clerks	0.39	0.14
Gradient 1	2111	Physicists and Astronomers	0.38	0.14
Gradient 1	3141	Life Science Technicians (excluding Medical)	0.38	0.18
Gradient 1	5223	Shop Sales Assistants	0.38	0.16
Gradient 1	7321	Pre-press Technicians	0.38	0.22
Gradient 1	9623	Meter Readers and Vending-machine Collectors	0.38	0.21
Gradient 1	1411	Hotel Managers	0.37	0.13

Exposure	4-digit code	Occupation Name	Mean	SD
Gradient 1	3433	Gallery, Museum and Library Technicians	0.37	0.2
Gradient 1	4415	Filing and Copying Clerks	0.37	0.17
Gradient 1	9621	Messengers, Package Deliverers and Luggage Porters	0.37	0.19
Gradient 1	3256	Medical Assistants	0.35	0.23
Gradient 1	5211	Stall and Market Salespersons	0.35	0.17
Gradient 1	8322	Car, Taxi and Van Drivers	0.28	0.23
Minimal Exposure	3522	Telecommunications Engineering Technicians	0.45	0.04
Minimal Exposure	2422	Policy Administration Professionals	0.42	0.06
Minimal Exposure	2164	Town and Traffic Planners	0.41	0.06
Minimal Exposure	2265	Dieticians and Nutritionists	0.41	0.07
Minimal Exposure	1223	Research and Development Managers	0.4	0.06
Minimal Exposure	1222	Advertising and Public Relations Managers	0.39	0.05
Minimal Exposure	2113	Chemists	0.39	0.1
Minimal Exposure	3323	Buyers	0.39	0.08
Minimal Exposure	3333	Employment agents and contractors	0.39	0.09
Minimal Exposure	1112	Senior Government Officials	0.38	0.08
Minimal Exposure	1120	Managing Directors and Chief Executives	0.38	0.06
Minimal Exposure	1321	Manufacturing Managers	0.38	0.11
Minimal Exposure	1324	Supply, Distribution and Related Managers	0.38	0.05
Minimal Exposure	1349	Professional Services Managers Not Elsewhere Classified	0.38	0.07
Minimal Exposure	2133	Environmental Protection Professionals	0.38	0.04
Minimal Exposure	2143	Environmental Engineers	0.38	0.07
Minimal Exposure	3114	Electronics Engineering Technicians	0.38	0.11
Minimal Exposure	1114	Senior Officials of Special-interest Organizations	0.37	0.06

Exposure	4-digit code	Occupation Name	Mean	SD
Minimal Exposure	1211	Finance Managers	0.37	0.04
Minimal Exposure	1344	Social Welfare Managers	0.37	0.07
Minimal Exposure	2141	Industrial and Production Engineers	0.37	0.07
Minimal Exposure	2161	Building Architects	0.37	0.08
Minimal Exposure	2162	Landscape Architects	0.37	0.08
Minimal Exposure	2310	University and Higher Education Teachers	0.37	0.12
Minimal Exposure	2619	Legal Professionals Not Elsewhere Classified	0.37	0.09
Minimal Exposure	2654	Film, Stage and Related Directors and Producers	0.37	0.07
Minimal Exposure	3422	Sports Coaches, Instructors and Officials	0.37	0.12
Minimal Exposure	3432	Interior Designers and Decorators	0.37	0.08
Minimal Exposure	4321	Stock Clerks	0.37	0.06
Minimal Exposure	1212	Human Resource Managers	0.36	0.05
Minimal Exposure	1342	Health Service Managers	0.36	0.05
Minimal Exposure	1345	Education Managers	0.36	0.1
Minimal Exposure	1412	Restaurant Managers	0.36	0.12
Minimal Exposure	2114	Geologists and geophysicists	0.36	0.1
Minimal Exposure	2611	Lawyers	0.36	0.09
Minimal Exposure	3359	Government Regulatory Associate Professionals Not Elsewhere Classified	0.36	0.1
Minimal Exposure	5222	Shop Supervisors	0.36	0.12
Minimal Exposure	1322	Mining Managers	0.35	0.11
Minimal Exposure	2145	Chemical Engineers	0.35	0.12

Exposure	4-digit code	Occupation Name	Mean	SD
Minimal Exposure	2163	Product and Garment Designers	0.35	0.09
Minimal Exposure	2320	Vocational Education Teachers	0.35	0.12
Minimal Exposure	2354	Other Music Teachers	0.35	0.09
Minimal Exposure	2355	Other Arts Teachers	0.35	0.1
Minimal Exposure	3118	Draughtspersons	0.35	0.11
Minimal Exposure	3122	Manufacturing Supervisors	0.35	0.13
Minimal Exposure	3334	Real Estate Agents and Property Managers	0.35	0.09
Minimal Exposure	3521	Broadcasting and Audio-visual Technicians	0.35	0.11
Minimal Exposure	1323	Construction Managers	0.34	0.06
Minimal Exposure	1343	Aged Care Service Managers	0.34	0.09
Minimal Exposure	2353	Other Language Teachers	0.34	0.11
Minimal Exposure	3155	Air Traffic Safety Electronics Technicians	0.34	0.1
Minimal Exposure	2262	Pharmacists	0.33	0.09
Minimal Exposure	2359	Teaching Professionals Not Elsewhere Classified	0.33	0.1
Minimal Exposure	3412	Social Work Associate Professionals	0.33	0.13
Minimal Exposure	1431	Sports, Recreation and Cultural Centre Managers	0.32	0.1
Minimal Exposure	2230	Traditional and Complementary Medicine Professionals	0.32	0.11
Minimal Exposure	3351	Customs and Border Inspectors	0.32	0.14
Minimal Exposure	5113	Travel Guides	0.32	0.11
Minimal Exposure	8219	Assemblers Not Elsewhere Classified	0.32	0.17
Minimal Exposure	2655	Actors	0.31	0.15

Exposure	4-digit code	Occupation Name	Mean	SD
Minimal Exposure	3135	Metal Production Process Controllers	0.31	0.13
Minimal Exposure	3154	Air Traffic Controllers	0.31	0.09
Minimal Exposure	3212	Medical and Pathology Laboratory Technicians	0.31	0.16
Minimal Exposure	7515	Food and Beverage Tasters and Graders	0.31	0.16
Minimal Exposure	7543	Product Graders and Testers (except Foods and Beverages)	0.31	0.11
Minimal Exposure	1341	Child Care Service Managers	0.3	0.15
Minimal Exposure	2222	Midwifery Professionals	0.3	0.15
Minimal Exposure	3213	Pharmaceutical Technicians and Assistants	0.3	0.12
Minimal Exposure	3259	Health Associate Professionals Not Elsewhere Classified	0.3	0.15
Minimal Exposure	5161	Astrologers, Fortune-tellers and Related Workers	0.3	0.16
Minimal Exposure	9629	Elementary Workers Not Elsewhere Classified	0.29	0.14
Minimal Exposure	2264	Physiotherapists	0.28	0.14
Minimal Exposure	5131	Waiters	0.28	0.16
Minimal Exposure	8171	Pulp and Papermaking Plant Operators	0.28	0.14
Minimal Exposure	8212	Electrical and Electronic Equipment Assemblers	0.28	0.19
Minimal Exposure	1311	Agricultural and Forestry Production Managers	0.27	0.13
Minimal Exposure	5153	Building Caretakers	0.27	0.16
Minimal Exposure	8211	Mechanical Machinery Assemblers	0.27	0.17
Minimal Exposure	5112	Transport Conductors	0.25	0.17
Minimal Exposure	5322	Home-based Personal Care Workers	0.25	0.18
Minimal Exposure	8321	Motorcycle Drivers	0.25	0.17

Exposure	4-digit code	Occupation Name	Mean	SD
Minimal Exposure	5245	Service Station Attendants	0.24	0.16
Minimal Exposure	8332	Heavy Truck and Lorry Drivers	0.24	0.22
Minimal Exposure	3221	Nursing Associate Professionals	0.22	0.21
Not Exposed	1213	Policy and Planning Managers	0.36	0.04
Not Exposed	2144	Mechanical Engineers	0.32	0.07
Not Exposed	3116	Chemical Engineering Technicians	0.32	0.02
Not Exposed	1111	Legislators	0.31	0.04
Not Exposed	2151	Electrical Engineers	0.31	0.08
Not Exposed	2612	Judges	0.31	0.08
Not Exposed	2142	Civil Engineers	0.3	0.06
Not Exposed	2149	Engineering Professionals Not Elsewhere Classified	0.3	0.08
Not Exposed	2330	Secondary Education Teachers	0.3	0.07
Not Exposed	2132	Farming, Forestry and Fisheries Advisers	0.29	0.1
Not Exposed	2146	Mining Engineers, Metallurgists and Related Professionals	0.29	0.05
Not Exposed	2211	Generalist Medical Practitioners	0.29	0.1
Not Exposed	3121	Mining Supervisors	0.29	0.08
Not Exposed	3133	Chemical Processing Plant Controllers	0.29	0.1
Not Exposed	3134	Petroleum and Natural Gas Refining Plant Operators	0.29	0.11
Not Exposed	3152	Ships' Deck Officers and Pilots	0.29	0.11
Not Exposed	2263	Environmental and Occupational Health and Hygiene Professionals	0.28	0.05
Not Exposed	2352	Special Needs Teachers	0.28	0.1
Not Exposed	2635	Social Work and Counselling Professionals	0.28	0.1
Not Exposed	2652	Musicians, Singers and Composers	0.28	0.09
Not Exposed	3112	Civil Engineering Technicians	0.28	0.07
Not Exposed	3117	Mining and metallurgical technicians	0.28	0.06
Not Exposed	3123	Construction Supervisors	0.28	0.06
Not Exposed	3131	Power Production Plant Operators	0.28	0.11
Not Exposed	2212	Specialist Medical Practitioners	0.27	0.12
Not Exposed	3113	Electrical Engineering Technicians	0.27	0.05
Not Exposed	3132	Incinerator and Water Treatment Plant Operators	0.27	0.09
Not Exposed	3153	Aircraft Pilots and Related Associate Professionals	0.27	0.05
Not Exposed	8132	Photographic Products Machine Operators	0.27	0.06
Not Exposed	2341	Primary School Teachers	0.26	0.09
Not Exposed	3111	Chemical and Physical Science Technicians	0.26	0.09
Not Exposed	3115	Mechanical Engineering Technicians	0.26	0.08

Exposure	4-digit code	Occupation Name	Mean	SD
Not Exposed	3119	Physical and Engineering Science Technicians Not Elsewhere Classified	0.26	0.05
Not Exposed	3142	Agricultural Technicians	0.26	0.09
Not Exposed	5132	Bartenders	0.26	0.12
Not Exposed	8121	Metal Processing Plant Operators	0.26	0.1
Not Exposed	2221	Nursing Professionals	0.25	0.13
Not Exposed	3423	Fitness and Recreation Instructors and Programme Leaders	0.25	0.07
Not Exposed	3434	Chefs	0.25	0.06
Not Exposed	5241	Fashion and Other Models	0.25	0.06
Not Exposed	7322	Printers	0.25	0.11
Not Exposed	7421	Electronics Mechanics and Servicers	0.25	0.13
Not Exposed	2266	Audiologists and Speech Therapists	0.24	0.04
Not Exposed	2267	Optometrists and Ophthalmic Opticians	0.24	0.07
Not Exposed	3254	Dispensing Opticians	0.24	0.07
Not Exposed	3257	Environmental and Occupational Health Inspectors and Associates	0.24	0.04
Not Exposed	5246	Food Service Counter Attendants	0.24	0.13
Not Exposed	5312	Teachers' Aides	0.24	0.14
Not Exposed	7422	Information and Communications Technology Installers and Servicers	0.24	0.14
Not Exposed	8131	Chemical Products Plant and Machine Operators	0.24	0.07
Not Exposed	1113	Traditional Chiefs and Heads of Villages	0.23	0.1
Not Exposed	2240	Paramedical Practitioners	0.23	0.13
Not Exposed	3151	Ships' Engineers	0.23	0.05
Not Exposed	3355	Police Inspectors and Detectives	0.23	0.07
Not Exposed	3421	Athletes and Sports Players	0.23	0.11
Not Exposed	8114	Cement, Stone and Other Mineral Products Machine Operators	0.23	0.11
Not Exposed	1312	Aquaculture and Fisheries Production Managers	0.22	0.08
Not Exposed	3211	Medical Imaging and Therapeutic Equipment Technicians	0.22	0.03
Not Exposed	3253	Community Health Workers	0.22	0.08
Not Exposed	3258	Ambulance Workers	0.22	0.17
Not Exposed	5111	Travel Attendants and Travel Stewards	0.22	0.1
Not Exposed	5151	Cleaning and Housekeeping Supervisors in Offices, Hotels and Other Establishments	0.22	0.1
Not Exposed	5162	Companions and Valets	0.22	0.05
Not Exposed	5212	Street Food Salespersons	0.22	0.11
Not Exposed	6123	Apiarists and Sericulturists	0.22	0.11
Not Exposed	6221	Aquaculture Workers	0.22	0.15
Not Exposed	7323	Print Finishing and Binding Workers	0.22	0.09
Not Exposed	7513	Dairy Products Makers	0.22	0.17

Exposure	4-digit code	Occupation Name	Mean	SD
Not Exposed	7521	Wood Treaters	0.22	0.15
Not Exposed	7523	Woodworking Machine Tool Setters and Operators	0.22	0.16
Not Exposed	8183	Packing, Bottling and Labelling Machine Operators	0.22	0.01
Not Exposed	2342	Early Childhood Educators	0.21	0.05
Not Exposed	2651	Visual Artists	0.21	0.04
Not Exposed	3143	Forestry Technicians	0.21	0.07
Not Exposed	5169	Personal Services Workers Not Elsewhere Classified	0.21	0.07
Not Exposed	7127	Air Conditioning and Refrigeration Mechanics	0.21	0.11
Not Exposed	7213	Sheet Metal Workers	0.21	0.09
Not Exposed	7311	Precision-instrument Makers and Repairers	0.21	0.08
Not Exposed	8112	Mineral and Stone Processing Plant Operators	0.21	0.1
Not Exposed	8154	Bleaching, Dyeing and Fabric Cleaning Machine Operators	0.21	0.15
Not Exposed	9331	Hand and Pedal Vehicle Drivers	0.21	0.08
Not Exposed	2269	Health Professionals Not Elsewhere Classified	0.2	0.08
Not Exposed	3222	Midwifery Associate Professionals	0.2	0.07
Not Exposed	5152	Domestic Housekeepers	0.2	0.1
Not Exposed	5165	Driving Instructors	0.2	0.03
Not Exposed	5414	Security Guards	0.2	0.09
Not Exposed	5419	Protective Services Workers Not Elsewhere Classified	0.2	0.05
Not Exposed	6129	Animal Producers Not Elsewhere Classified	0.2	0.14
Not Exposed	7222	Toolmakers and Related Workers	0.2	0.1
Not Exposed	8122	Metal Finishing, Plating and Coating Machine Operators	0.2	0.04
Not Exposed	8182	Steam Engine and Boiler Operators	0.2	0.04
Not Exposed	8311	Locomotive Engine Drivers	0.2	0.08
Not Exposed	8344	Lifting Truck Operators	0.2	0.1
Not Exposed	9321	Hand Packers	0.2	0.05
Not Exposed	9334	Shelf Fillers	0.2	0.1
Not Exposed	9520	Street Vendors (excluding Food)	0.2	0.1
Not Exposed	2653	Dancers and Choreographers	0.19	0.1
Not Exposed	3230	Traditional and Complementary Medicine Associate Professionals	0.19	0.11
Not Exposed	5311	Child Care Workers	0.19	0.09
Not Exposed	6122	Poultry Producers	0.19	0.1
Not Exposed	6130	Mixed Crop and Animal Producers	0.19	0.11
Not Exposed	7232	Aircraft Engine Mechanics and Repairers	0.19	0.07
Not Exposed	7315	Glass Makers, Cutters, Grinders and Finishers	0.19	0.06
Not Exposed	7411	Building and Related Electricians	0.19	0.06
Not Exposed	8113	Well Drillers and Borers and Related Workers	0.19	0.12
Not Exposed	3214	Medical and Dental Prosthetic Technicians	0.18	0.05
Not Exposed	5120	Cooks	0.18	0.06

Exposure	4-digit code	Occupation Name	Mean	SD
Not Exposed	5142	Beauticians and Related Workers	0.18	0.19
Not Exposed	5411	Fire Fighters	0.18	0.1
Not Exposed	6111	Field Crop and Vegetable Growers	0.18	0.12
Not Exposed	6113	Gardeners, Horticultural and Nursery Growers	0.18	0.11
Not Exposed	6223	Deep-sea Fishery Workers	0.18	0.07
Not Exposed	7126	Plumbers and Pipe Fitters	0.18	0.1
Not Exposed	7223	Metal Working Machine Tool Setters and Operators	0.18	0.05
Not Exposed	7231	Motor Vehicle Mechanics and Repairers	0.18	0.04
Not Exposed	7313	Jewellery and Precious Metal Workers	0.18	0.05
Not Exposed	7314	Potters and Related Workers	0.18	0.07
Not Exposed	7316	Sign Writers, Decorative Painters, Engravers and Etchers	0.18	0.08
Not Exposed	7534	Upholsterers and Related Workers	0.18	0.09
Not Exposed	8141	Rubber Products Machine Operators	0.18	0.05
Not Exposed	8143	Paper Products Machine Operators	0.18	0.02
Not Exposed	8331	Bus and Tram Drivers	0.18	0.06
Not Exposed	8343	Crane, hoist and related plant operators	0.18	0.03
Not Exposed	9411	Fast Food Preparers	0.18	0.05
Not Exposed	9510	Street and Related Service Workers	0.18	0.09
Not Exposed	9612	Refuse Sorters	0.18	0.11
Not Exposed	2636	Religious Professionals	0.17	0.12
Not Exposed	3255	Physiotherapy Technicians and Assistants	0.17	0.07
Not Exposed	5141	Hairdressers	0.17	0.18
Not Exposed	5163	Undertakers and Embalmers	0.17	0.17
Not Exposed	6112	Tree and Shrub Crop Growers	0.17	0.11
Not Exposed	6114	Mixed Crop Growers	0.17	0.12
Not Exposed	6121	Livestock and Dairy Producers	0.17	0.1
Not Exposed	6222	Inland and Coastal Waters Fishery Workers	0.17	0.1
Not Exposed	7221	Blacksmiths, Hammersmiths and Forging Press Workers	0.17	0.05
Not Exposed	7224	Metal Polishers, Wheel Grinders and Tool Sharpeners	0.17	0.05
Not Exposed	7233	Agricultural and Industrial Machinery Mechanics and Repairers	0.17	0.04
Not Exposed	7412	Electrical Mechanics and Fitters	0.17	0.05
Not Exposed	7512	Bakers, Pastry-cooks and Confectionery Makers	0.17	0.08
Not Exposed	7532	Garment and Related Patternmakers and Cutters	0.17	0.04
Not Exposed	7536	Shoemakers and Related Workers	0.17	0.06
Not Exposed	8111	Miners and Quarriers	0.17	0.11
Not Exposed	8142	Plastic Products Machine Operators	0.17	0.05
Not Exposed	8181	Glass and Ceramics Plant Operators	0.17	0.06
Not Exposed	8312	Railway Brake, Signal and Switch Operators	0.17	0.04
Not Exposed	3251	Dental Assistants and Therapists	0.16	0.1

Exposure	4-digit code	Occupation Name	Mean	SD
Not Exposed	7522	Cabinet-makers and Related Workers	0.16	0.06
Not Exposed	7541	Underwater Divers	0.16	0.09
Not Exposed	8152	Weaving and Knitting Machine Operators	0.16	0.03
Not Exposed	8156	Shoemaking and Related Machine Operators	0.16	0.02
Not Exposed	8157	Laundry Machine Operators	0.16	0.03
Not Exposed	8159	Textile, Fur and Leather Products Machine Operators Not Elsewhere Classified	0.16	0.01
Not Exposed	2261	Dentists	0.15	0.06
Not Exposed	5329	Personal Care Workers in Health Services Not Elsewhere Classified	0.15	0.03
Not Exposed	7413	Electrical Line Installers and Repairers	0.15	0.08
Not Exposed	7514	Fruit, Vegetable and Related Preservers	0.15	0.04
Not Exposed	7531	Tailors, Dressmakers, Furriers and Hatters	0.15	0.05
Not Exposed	8151	Fibre Preparing, Spinning and Winding Machine Operators	0.15	0.02
Not Exposed	8153	Sewing Machine Operators	0.15	0.03
Not Exposed	8155	Fur and Leather Preparing Machine Operators	0.15	0.02
Not Exposed	8160	Food and Related Products Machine Operators	0.15	0.03
Not Exposed	2250	Veterinarians	0.14	0.05
Not Exposed	3240	Veterinary Technicians and Assistants	0.14	0.02
Not Exposed	5164	Pet Groomers and Animal Care Workers	0.14	0.06
Not Exposed	5321	Health Care Assistants	0.14	0.06
Not Exposed	5412	Police Officers	0.14	0.03
Not Exposed	5413	Prison Guards	0.14	0.04
Not Exposed	7111	House Builders	0.14	0.07
Not Exposed	7125	Glaziers	0.14	0
Not Exposed	7312	Musical Instrument Makers and Tuners	0.14	0.02
Not Exposed	7317	Handicraft Workers in Wood, Basketry and Related Materials	0.14	0.01
Not Exposed	7516	Tobacco Preparers and Tobacco Products Makers	0.14	0.06
Not Exposed	7549	Craft and Related Workers not Elsewhere Classified	0.14	0.01
Not Exposed	8172	Wood Processing Plant Operators	0.14	0.05
Not Exposed	8350	Ships' Deck Crews and Related Workers	0.14	0.02
Not Exposed	9111	Domestic Cleaners and Helpers	0.14	0.08
Not Exposed	9121	Hand Launderers and Pressers	0.14	0.03
Not Exposed	9333	Freight Handlers	0.14	0.03
Not Exposed	2659	Creative and Performing Artists Not Elsewhere Classified	0.13	0.06
Not Exposed	6310	Subsistence Crop Farmers	0.13	0.05
Not Exposed	6320	Subsistence Livestock Farmers	0.13	0.04
Not Exposed	7115	Carpenters and Joiners	0.13	0.02
Not Exposed	7121	Roofers	0.13	0.08

Exposure	4-digit code	Occupation Name	Mean	SD
Not Exposed	7124	Insulation Workers	0.13	0.02
Not Exposed	7131	Painters and Related Workers	0.13	0.04
Not Exposed	7211	Metal Moulders and Coremakers	0.13	0.01
Not Exposed	7212	Welders and Flame Cutters	0.13	0.05
Not Exposed	7215	Riggers and Cable Splicers	0.13	0.03
Not Exposed	7234	Bicycle and Related Repairers	0.13	0.02
Not Exposed	7318	Handicraft Workers in Textile, Leather and Related Materials	0.13	0.03
Not Exposed	7511	Butchers, Fishmongers and Related Food Preparers	0.13	0.03
Not Exposed	7544	Fumigators and Other Pest and Weed Controllers	0.13	0.04
Not Exposed	8342	Earthmoving and Related Plant Operators	0.13	0.02
Not Exposed	9332	Drivers of Animal-drawn Vehicles and Machinery	0.13	0.08
Not Exposed	9412	Kitchen Helpers	0.13	0.02
Not Exposed	3413	Religious Associate Professionals	0.12	0.07
Not Exposed	6210	Forestry and Related Workers	0.12	0.05
Not Exposed	6330	Subsistence Mixed Crop and Livestock Farmers	0.12	0.05
Not Exposed	6340	Subsistence Fishers, Hunters, Trappers and Gatherers	0.12	0.05
Not Exposed	7132	Spray Painters and Varnishers	0.12	0
Not Exposed	7533	Sewing, Embroidery and Related Workers	0.12	0.02
Not Exposed	7542	Shotfirers and Blasters	0.12	0.05
Not Exposed	8341	Mobile Farm and Forestry Plant Operators	0.12	0.03
Not Exposed	9112	Cleaners and Helpers in Offices, Hotels and Other Establishments	0.12	0.02
Not Exposed	9212	Livestock Farm Labourers	0.12	0.03
Not Exposed	9214	Garden and Horticultural Labourers	0.12	0.02
Not Exposed	9329	Manufacturing Labourers Not Elsewhere Classified	0.12	0.02
Not Exposed	7113	Stonemasons, Stone Cutters, Splitters and Carvers	0.11	0.02
Not Exposed	7123	Plasterers	0.11	0.01
Not Exposed	7214	Structural Metal Preparers and Erectors	0.11	0.02
Not Exposed	7535	Pelt Dressers, Tanners and Fellmongers	0.11	0.03
Not Exposed	9123	Window Cleaners	0.11	0.03
Not Exposed	9213	Mixed Crop and Livestock Farm Labourers	0.11	0.03
Not Exposed	9216	Fishery and Aquaculture Labourers	0.11	0.03
Not Exposed	9311	Mining and Quarrying Labourers	0.11	0.02
Not Exposed	9622	Odd Job Persons	0.11	0.03
Not Exposed	7114	Concrete Placers, Concrete Finishers and Related Workers	0.1	0.03
Not Exposed	7122	Floor Layers and Tile Setters	0.1	0.02
Not Exposed	9129	Other Cleaning Workers	0.1	0.01
Not Exposed	6224	Hunters and Trappers	0.09	0.03
Not Exposed	7112	Bricklayers and Related Workers	0.09	0.01

Exposure	4-digit code	Occupation Name	Mean	SD
Not Exposed	7119	Building Frame and Related Trades Workers Not Elsewhere Classified	0.09	0.01
Not Exposed	7133	Building Structure Cleaners	0.09	0.01
Not Exposed	9122	Vehicle Cleaners	0.09	0.01
Not Exposed	9211	Crop Farm Labourers	0.09	0.02
Not Exposed	9215	Forestry Labourers	0.09	0.02
Not Exposed	9312	Civil Engineering Labourers	0.09	0.02
Not Exposed	9313	Building Construction Labourers	0.09	0.02
Not Exposed	9611	Garbage and Recycling Collectors	0.09	0.02
Not Exposed	9613	Sweepers and Related Labourers	0.09	0.03
Not Exposed	9624	Water and Firewood Collectors	0.09	0.03

2. Sampling Formula for section 4.2.

As presented in section 4.2, we apply the standard formula for calculating sample size in order to assign assigning the scoring tasks to the human evaluators.

$$n = \frac{Z^2 \cdot p \cdot (1 - p)}{E^2}$$

Where:

- N is sample size
- Z is the Z-value (1.96 for a 95% confidence level)
- p is the estimated proportion of the population that has a particular characteristic
- E is the margin of error (e.g., standard 0.05)

In this formula, p traditionally refers to the proportion of "successes" in the population, which represents a probability-based assumption about the variability. Since in the selection of a sample of tasks we do not know that variability, we use the most conservative approach of applying p=0.5, which gives the safest (largest) sample size for each group of tasks.²¹ Subsequently, we apply the standard correction formula for a finite population, where N is the number of tasks for each 1-digit category:

$$n_{adjusted} = \frac{n}{1 + \frac{n-1}{N}}$$

²¹ This is because p=0.5 maximizes the product p(1-p). For example, if p=0.5, we get p(1-p)=0.25, for any other value of p (say 0.3 or 0.7), the product p(1-p) would be smaller, resulting in a smaller required sample size.

3. Survey Questionnaire

Welcome Screen:

Dear Participants,

We kindly ask you to complete this survey to share your opinions on new technologies. The survey is anonymous, and the results will be analyzed and presented only in aggregate form.

Survey Questions:

1. What is your gender?

(Please mark one [1] answer with an X)

- a. Female
- b. Male
- c. Other gender
- d. Prefer not to say

2. Enter your year of birth

(Range from 1940 to 2009)

.....

3. Select the size of the locality where you live

(Please mark one [1] answer with an X)

- a. Village
- b. City up to 20,000 inhabitants
- c. City from 20,001 to 50,000 inhabitants
- d. City from 50,001 to 100,000 inhabitants
- e. City from 100,001 to 200,000 inhabitants
- f. City from 200,001 to 500,000 inhabitants
- g. City above 500,000 inhabitants

4. Select the voivodeship (province) where you live.

(Please mark one [1] answer with an X)

- a. Lower Silesian

- b. Kuyavian-Pomeranian
- c. Lublin
- d. Lubusz
- e. Łódź
- f. Lesser Poland
- g. Masovian (excluding Warsaw)
- h. Masovian (Warsaw only)
- i. Opole
- j. Subcarpathian
- k. Podlaskie
- l. Pomeranian
- m. Silesian
- n. Świętokrzyskie
- o. Warmian-Masurian
- p. Greater Poland
- q. West Pomeranian
- r. I live abroad (end the survey)

5. What is your highest level of education?

(Please mark one [1] answer with an X)

- a. Primary
- b. Middle school
- c. Vocational
- d. Secondary
- e. Post-secondary
- f. Bachelor's degree, engineering
- g. Master's degree

h. PhD and higher titles

6. What is your current occupation?

(Type your answer; a list of over 2,900 occupations from the PL classification database will be suggested.)

.....

Question 7 is answered only by those who could not classify their occupation in Question 6 (i.e., if they entered something not in the database).

7. Assign your occupation to one of the following categories:

(Please mark one [1] answer with an X)

a. Public officials, senior officials, and managers (e.g., CEOs, managing directors, senior local government officials, managers in administration and trade)

b. Professionals (e.g., doctors, teachers, engineers)

c. Technicians and associate professionals (e.g., electricians, sales representatives, insurance agents)

d. Clerical support workers (e.g., secretaries, receptionists, HR staff)

e. Service and sales workers (e.g., cooks, hairdressers, security guards)

f. Farmers, gardeners, foresters, and fishers (e.g., orchardists, animal breeders, beekeepers)

g. Industrial and craft workers (e.g., bricklayers, plumbers, printers)

h. Machine operators and assemblers (e.g., electrical equipment assemblers, train drivers, delivery truck drivers)

i. Elementary occupations (e.g., domestic helpers, cleaners, caretakers)

8. How many years have you worked in your current occupation?

(Please mark one [1] answer with an X)

a. Less than 1 year

b. 1–5 years

c. 6–10 years

d. 11–15 years

e. Over 15 years

9. How many people work in your institution (company)? This refers to the branch/division where you work.

(Please mark one [1] answer with an X)

- a. 1–9 people (please enter the exact number; input restricted to values 1–9)
- b. 10–19
- c. 20–49
- d. 50–249
- e. 250 or more
- f. I don't know, but fewer than 10 people
- g. I don't know, but more than 9 people

10. What is the capital ownership of the company where you work?

(Please mark one [1] answer with an X)

- a. Polish (fully Polish company, no foreign capital)
- b. Mixed (company has both Polish and foreign capital)
- c. Foreign (fully foreign company, no Polish capital)
- d. Hard to say

11. Have you heard of Generative Artificial Intelligence (GenAI, e.g., ChatGPT)?

(Please mark one [1] answer with an X)

- a. Yes
- b. No
- c. Hard to say

12. How would you rate your knowledge of Generative Artificial Intelligence (GenAI, e.g., ChatGPT)?

(Please mark one [1] answer with an X)

- a. Very low
- b. Low
- c. Average
- d. High
- e. Very high

Display Text/Info:

Here's a brief explanation of **Generative Artificial Intelligence (GenAI)**. In this study, we distinguish between **GenAI** and **Artificial Intelligence (AI)**.

AI makes decisions based on data (e.g., suggesting the next product in an online store, recognizing license plates at parking lot entrances, and raising the barrier).

GenAI can create new content, such as images, text, or speech. The most popular tool is ChatGPT, which can answer questions, write emails, prepare applications for offices, create reports, summarize texts (e.g., articles, books), and more.

What can GenAI do?

- Write text, "imitating" a specific person, e.g., an official, a poet, a financial analyst;
- Prepare translations between languages, e.g., from Polish to English;
- Convert written text into human speech ("read" text in a given language);
- Program—convert specified tasks into computer code, e.g., Python, HTML;
- Generate images, e.g., photos based on descriptions, or recognize and describe images (e.g., what is in a photo).

13. How often do you use Generative Artificial Intelligence tools (GenAI, e.g., ChatGPT)?

(Please mark one [1] answer with an X)

- a. Never
- b. Rarely (a few times a year)
- c. Sometimes (a few times a month)
- d. Often (a few times a week)
- e. Very often (daily)

14. To what extent do you think Generative Artificial Intelligence (GenAI, e.g., ChatGPT) will impact jobs in your industry over the next 5 years?

(Please mark one [1] answer with an X)

- a. Not at all
- b. Slightly
- c. Moderately
- d. Significantly
- e. Completely (will transform the profession)

15. To what extent could your position be replaced by Generative Artificial Intelligence (e.g., ChatGPT) within the next 5 years?

(Rate by moving the slider on a scale from 0% to 100%, where 0% means "Will not be replaced" and 100% means "Will be completely replaced.")

Will not be replaced (0%) | -----slider----- | Will be completely replaced (100%); I don't know

Slider-type question

Display Text/Info:

The following pages contain tasks performed by representatives of various professions. The tasks you are asked to evaluate in this part of the survey may or may not be performed by you currently or in the past. However, they belong to the set of tasks performed within the group of professions to which you belong. Therefore, we encourage you to evaluate each task, even those you have not encountered, based on both experience and intuition.

Task Evaluation

The respondent is asked to evaluate 15 tasks; each task should be evaluated 20 times; the "I don't know" option is counted as an evaluation. Below is an example of a task description. The profession and task are randomly selected from the database provided to the supplier. Randomization occurs in each stratum (profession according to ISCO-08, 1-digit code).

O1. Evaluate to what extent you believe Generative Artificial Intelligence (GenAI, e.g., ChatGPT) can automate the performance of the following task.

Rate by placing the slider at the appropriate point on a scale from 0 to 100, where 0 means "No automation potential using GenAI" and 100 means "Full automation potential using GenAI for the task performed within the given profession."

Profession: Road Transport Engineer

Task: Participating in the development of new control and traffic measurement devices

0 - No automation potential using GenAI | -----slider----- | 100 - Full automation potential using GenAI

I don't know

O1a. Do you perform this or a similar task at work?

a. Yes

b. No

References

- Acemoglu, D., 2024. The Simple Macroeconomics of AI. Mass. Inst. Technol., Working Paper 32487, <https://www.nber.org/papers/w32487>
- Acemoglu, D., Kong, F., Restrepo, P., 2024. Tasks At Work: Comparative Advantage, Technology and Labor Demand. Working Paper Series. <https://doi.org/10.3386/w32872>
- Acemoglu, D., Restrepo, P., 2022. Tasks, Automation, and the Rise in U.S. Wage Inequality. *Econometrica* 90, 1973–2016. <https://doi.org/10.3982/ECTA19815>
- Ananian, S., Aubert, P., Behaghel, L., 2006. Travailleurs âgés, nouvelles technologies et changements organisationnels : un réexamen à partir de l'enquête « Reponse ». Suivi d'un commentaire de Luc Behaghel : emploi des seniors - Des effets du changement technologique aux recommandations. *Econ. Stat.* 397, 21–49. <https://doi.org/10.3406/estat.2006.7125>
- Autor, D., 2024. Applying AI to Rebuild Middle Class Jobs. NBER Working Paper Series, 32140, <https://doi.org/10.3386/w32140>
- Bessen, J.E., 2016. How Computer Automation Affects Occupations: Technology, Jobs, and Skills. <https://doi.org/10.2139/ssrn.2690435>
- Bick, A., Blandin, A., Deming, D.J., 2024. The Rapid Adoption of Generative AI. Working Paper Series. <https://doi.org/10.3386/w32966>
- Bubeck, S., Chandrasekaran, V., Eldan, R., Gehrke, J., Horvitz, E., Kamar, E., Lee, P., Lee, Y.T., Li, Y., Lundberg, S., Nori, H., Palangi, H., Ribeiro, M.T., Zhang, Y., 2023. Sparks of Artificial General Intelligence: Early experiments with GPT-4.
- Cazzaniga, M., Jaumotte, F., Li, L., Melina, G., Augustus J., P., Carlo, P., Emma J., R., Mendes, M., 2024. Gen-AI: Artificial Intelligence and the Future of Work, IMF, <https://www.imf.org/en/Publications/Staff-Discussion-Notes/Issues/2024/01/14/Gen-AI-Artificial-Intelligence-and-the-Future-of-Work-542379> (accessed 2.19.24).
- Comunale, M., Manera, A., 2024. The Economic Impacts and the Regulation of AI: A Review of the Academic Literature and Policy Actions, IMF, <https://www.imf.org/en/Publications/WP/Issues/2024/03/22/The-Economic-Impacts-and-the-Regulation-of-AI-A-Review-of-the-Academic-Literature-and-546645> (accessed 3.26.24).
- Faverio, M., Tyson, A., 2022. What the data says about Americans' views of artificial intelligence. *Pew Res. Cent.*, <https://www.pewresearch.org/short-reads/2023/11/21/what-the-data-says-about-americans-views-of-artificial-intelligence/> (accessed 3.14.24).
- Felten, E.W., Raj, M., Seamans, R., 2023. Occupational Heterogeneity in Exposure to Generative AI. <https://doi.org/10.2139/ssrn.4414065>
- Frey, C.B., Osborne, M.A., 2017. The future of employment: How susceptible are jobs to computerisation? *Technol. Forecast. Soc. Change* 114, 254–280. <https://doi.org/10.1016/j.techfore.2016.08.019>

Gmyrek, P., Berg, J., Bescond, D., 2023. Generative AI and Jobs: A global analysis of potential effects on job quantity and quality, ILO Working Paper 96, <https://www.ilo.org/publications/generative-ai-and-jobs-global-analysis-potential-effects-job-quantity-and>, DOI: <https://doi.org/10.54394/FHEM8239>

Gmyrek, P., Lutz, C., Newlands, G., 2024. A technological construction of society: Comparing GPT-4 and human respondents for occupational evaluation in the UK. *Br. J. Ind. Relat.* <https://doi.org/10.1111/bjir.12840>

Gmyrek, P., Winkler, H., Garganta, S., 2024. Buffer or bottleneck?: employment exposure to generative AI and the digital divide in Latin America. ILO : World Bank. <https://doi.org/10.54394/TFZY7681>

Grampp, M., Brandes, D., Laude, D., 2023. Generative AI's fast and furious entry into Switzerland (Delloite), <https://www.deloitte.com/ch/en/Industries/technology/research/generative-ai.html>

Karger, E., Rosenberg, J., Jacobs, Z., Hickman, M., Hadshar, R., Gamin, K., Smith, T., Williams, B., McCaslin, T., Tetlock, P.E., 2023. Forecasting Existential Risks: Evidence from a Long-Run Forecasting Tournament, FRI Working Paper #1. Forecasting Research Institute.

Maison & Partners, ThinkTank, 2024. POLACY O AI: codzienność, nadzieje, obawy. Warsaw, 2024, https://panelariadna.pl/raporty/polacy-o-ai?fbclid=IwY2xjawF8cUFlcHRuA2FlbQIxMAABHa4EaPKNEUw30RFJH4Bi75E8xHb1-PZqFmkazhFqXvTBZ-SURof2SkKJeQ_aem_ptS_oYYk_jtfqWoT9Copw

McKinsey & Co., 2023. Economic potential of generative AI, <https://www.mckinsey.com/capabilities/mckinsey-digital/our-insights/the-economic-potential-of-generative-ai-the-next-productivity-frontier>

Nurski, L., Ruer, N., 2024. Exposure to generative AI in the European labour market: distributional implications, Bruegel Working Paper, <https://www.bruegel.org/system/files/2024-03/WP%2006.pdf>

Nurski, L., Vansteenkiste, S., 2024. De impact van technologie op beroepen. Het belang en de bruikbaarheid van impactscores en taakindices voor monitoring, analyses en projecties van de arbeidsmarkt, <https://lirias.kuleuven.be/4176721?limo=0>

Parker, K., Horowitz, J., O'Hanlon, J., 2025. U.S. Workers Are More Worried Than Hopeful About Future AI Use in the Workplace. *Pew Res. Cent.*, <https://www.pewresearch.org/social-trends/2025/02/25/workers-experience-with-ai-chatbots-in-their-jobs/> (accessed 3.7.25).

Pew Research Center, 2023. Americans explain in their own words what makes them either more concerned or more excited about the increased presence of AI in daily life. *Internet Sci. Tech.*, https://www.pewresearch.org/internet/2022/03/17/ai-and-human-enhancement-americans-openness-is-tempered-by-a-range-of-concerns/ps_2022-03-17_ai-he_01-02/ (accessed 3.14.24).

Rutgers, 2024. U.S. Workers Assess the Impacts of Artificial Intelligence on Jobs: Topline Survey Results, Heldrich Center for Workforce Development, https://heldrich.rutgers.edu/wp-content/uploads/2024/02/Work_Trends_February_2024.pdf

Svanberg, M., Li, W., Fleming, M., Goehring, B., Thompson, N., 2024. Beyond AI Exposure: Which Tasks are Cost-Effective to Automate with Computer Vision? <https://doi.org/10.2139/ssrn.4700751>

Tegtmeier, P., Weber, C., Sommer, S., Tisch, A., Wischniewski, S., 2022. Criteria and Guidelines for Human-Centered Work Design in a Digitally Transformed World of Work: Findings from a Formal Consensus Process. *Int. J. Environ. Res. Public. Health* 19, 15506. <https://doi.org/10.3390/ijerph192315506>

Acknowledgements

We thank the many experts who contributed their time, insights, and feedback to the expert validation survey informing this study. While not all were able to participate directly, we gratefully acknowledge the engagement, comments, and support received from the following individuals and institutions:

NASK-PIB

Michał Falkowski, Michał Hałoń, Jarosław Kamiński, Szymon Łukasik

Ministry of Family, Work and Social Policy, Poland:

Jacek Brzeziński, Joanna Fedorczyk, Ewa Flaszyńska, Izabela Kaczmarek-Sawicka, Agnieszka Ołdakowska, Sławomir Sułkowski, Mikołaj Tarasiuk, Marcin Wiatrowski, Anna Wrona

Ministry of Digital Affairs, Poland:

Aneta Zradzińska, Kamil Giera, Pamela Krzykowska, Ewa Świętochowska

International Labour Organization:

David Bescond, ILO STATISTICS – global employment estimates in section 11

William Boschetti (ILO consultant)

Dino Ferrero (ITC-ILO)

Maria Vittoria Franceschelli (ITC-ILO)

Caroline Fredrickson, Director, ILO Research Department

Luis Melero García, Legal Specialist, ILO

Sher Verick, Senior Adviser, Office of the Deputy Director General, ILO

Academic and Research Institutions:

Ignacy Święcicki (PIE), Andrzej Zybala (SGH), Konrad Gawroński

Laura Nurski (Centre for European Policy Studies - CEPS);

The World Bank

Hernan Winkler, Senior Economist, Poverty and Equity Global Practice for Latin America and the Caribbean

We also thank all other respondents who participated in the survey and contributed valuable task assessments.

We are further grateful to the peer reviewers for their constructive comments, which significantly strengthened the quality of this work:

Sergei Soares, Senior Economist, ILO Research Department

Aguinaldo Maciente, Employment and Labour Market Policies Specialist, ILO Office for Brazil (CO-Brasilia)

Jacek Bieliński, Deputy Head of the Department of Sociology, Assistant Professor, Institute of Sociology, Civitas University

Santiago Garganta, Senior Researcher, CEDLAS, IIE-FCE, National University of La Plata (UNLP).

Use of AI tools: We used various AI tools to generate task-level scores, as detailed in the paper. Additionally, we used GPT-4o, Gemini 1.5, and DeepSeek for code debugging in R, Python and JavaScript, suggesting text edits, and for translating tasks, occupational descriptions and the survey form from Polish to English (see Appendix). The writing and calculations are our own – and so are any errors.

► Advancing social justice, promoting decent work

The International Labour Organization is the United Nations agency for the world of work. We bring together governments, employers and workers to improve the working lives of all people, driving a human-centred approach to the future of work through employment creation, rights at work, social protection and social dialogue.

Contact details

Research Department (RESEARCH)

International Labour Organization
Route des Morillons 4
1211 Geneva 22
Switzerland
T +41 22 799 6530
research@ilo.org
www.ilo.org/research



I S B N 9789220421840



9 789220 421840