

Karmaker, Chitra Lekha; Ahmed, Tazim

Article

Modeling performance indicators of resilient pharmaceutical supply chain

Modern Supply Chain Research and Applications

Provided in Cooperation with:

Emerald Publishing Limited

Suggested Citation: Karmaker, Chitra Lekha; Ahmed, Tazim (2020) : Modeling performance indicators of resilient pharmaceutical supply chain, Modern Supply Chain Research and Applications, ISSN 2631-3871, Emerald, Bingley, Vol. 2, Iss. 3, pp. 179-205, <https://doi.org/10.1108/MS CRA-04-2020-0006>

This Version is available at:

<https://hdl.handle.net/10419/314875>

Standard-Nutzungsbedingungen:

Die Dokumente auf EconStor dürfen zu eigenen wissenschaftlichen Zwecken und zum Privatgebrauch gespeichert und kopiert werden.

Sie dürfen die Dokumente nicht für öffentliche oder kommerzielle Zwecke vervielfältigen, öffentlich ausstellen, öffentlich zugänglich machen, vertreiben oder anderweitig nutzen.

Sofern die Verfasser die Dokumente unter Open-Content-Lizenzen (insbesondere CC-Lizenzen) zur Verfügung gestellt haben sollten, gelten abweichend von diesen Nutzungsbedingungen die in der dort genannten Lizenz gewährten Nutzungsrechte.

Terms of use:

Documents in EconStor may be saved and copied for your personal and scholarly purposes.

You are not to copy documents for public or commercial purposes, to exhibit the documents publicly, to make them publicly available on the internet, or to distribute or otherwise use the documents in public.

If the documents have been made available under an Open Content Licence (especially Creative Commons Licences), you may exercise further usage rights as specified in the indicated licence.



<https://creativecommons.org/licenses/by/4.0/>

Modeling performance indicators of resilient pharmaceutical supply chain

Modeling
performance
indicators

Chitra Lekha Karmaker and Tazim Ahmed

Jashore University of Science and Technology, Jashore, Bangladesh

179

Received 23 April 2020

Revised 15 July 2020

19 September 2020

30 October 2020

Accepted 11 November 2020

Abstract

Purpose – In the recent dynamic market, supply chain disruptions are rapidly increasing with varied customer demand, technological changes, uncertain pandemic events etc. To overcome the unexpected disruptions, supply chain of each business should be resilient and pharmaceutical supply chain (PSC) is no exception. Motivated by the challenges and unexpected pandemic disruptions, this paper aims to examine the performance indicators (PIs) of the resilient PSC and to predict the resilience level for a certain time period in the context of Bangladesh.

Design/methodology/approach – The aim of this paper presents a structured framework based on the Delphi method, fuzzy DEMATEL (Decision Making Trial and Evaluation Laboratory) and system dynamics (SD). The proposed methodology was validated using expert's inputs from the relevant field in Bangladesh. This study reveals the influential relationships of indicators and resilience level using fuzzy DEMATEL and SD to improve the resiliency.

Findings – Findings revealed that “Supply chain risk orientation”, “Visibility”, “Flexibility”, “Agility in supply chain” and “Collaboration” are the top five influential performance indicators for resilient PSC. The cause and effect relationship found that “IT capability”, “Flexibility”, “Supply chain network design”, “Resource availability”, “Supply chain risk orientation” and “Velocity” were in cause category which play a vital role for establishing resilient supply chain. SD approach has developed a model for predicting the resilience level of the supply chain.

Originality/value – This work is one of the initial contributions in the literature that has targeted on the identification and analysis of the significant PIs and predicting the resilience level of the PSC.

Keywords Pharmaceutical industry, Supply chain resilience, Performance indicators, Fuzzy DEMATEL, System dynamics model

Paper type Research paper

1. Introduction

Over the past few decades, corporate world has become more turbulent and vulnerable in nature due to rapid globalization, varied customers' interest and demand, technological changes, unexpected pandemic outbreaks etc. Firms are facing enormous pressure to manage and control their supply chains effectively. To secure the market position, business organizations are searching for proper strategies that may enhance their strengths in some key areas of their supply chains and operations. Establishing resilient supply chain is one of the fruitful strategies to overcome the adverse situation tactfully as well as to improve the overall business performance (Rajesh, 2018). Over the past few years, a lot of academicians and industry practitioners have shown much interest for the establishment of resilient supply chain (Chowdhury *et al.*, 2019). Moreover, recently, a novel and wide-ranging disruptive pandemic called COVID-19 outbreak has put resiliency into the spotlight. This pandemic has



© Chitra Lekha Karmaker and Tazim Ahmed. Published in *Modern Supply Chain Research and Applications*. Published by Emerald Publishing Limited. This article is published under the Creative Commons Attribution (CC BY 4.0) license. Anyone may reproduce, distribute, translate and create derivative works of this article (for both commercial and non-commercial purposes), subject to full attribution to the original publication and authors. The full terms of this license may be seen at <http://creativecommons.org/licenses/by/4.0/legalcode>

Modern Supply Chain Research
and Applications
Vol. 2 No. 3, 2020
pp. 179-205
Emerald Publishing Limited
2631-3871

DOI 10.1108/MSCR-04-2020-0006

hit the global supply chains adversely. Amid such turbulence, this outbreak has provided organizations a golden opportunity to revisit the strategy and accelerate their capabilities for the adaption of long-term resiliency in their network for managing future challenges (Ivanov, 2020).

A resilient supply chain can sidestep avoidable risks and has the potentiality to bounce back fast from uncertain occurrences. It is to be noted that more than 80% of global firms are now interested for the adoption of resilient supply chain (Bhatia *et al.*, 2013). However, after establishing resilient supply chain, it is required to monitor and measure the performance of supply chain resilience continuously. It is essential for the business organizations to establish relevant and significant performance indicators (PIs) to measure the resilience of the supply chain (Behzadi *et al.*, 2020). Researchers and industry practitioners have performed many studies to identify the most pertinent PIs for measuring supply chain resilience (Hohenstein *et al.*, 2015; Bai and Satir, 2020). Ali *et al.* (2017) identified some non-financial key performance indicators (KPIs) for measuring supply chain resilience. Stone and Rahimifard (2018) reviewed 137 papers on supply chain from various renowned databases. Their findings also showed that most of the previous literatures were focused only on identification of the PIs of resilient supply chain. However, the companies and supply chain managers require not only the identification but also the understanding of relationships among these PIs to establish better performance evaluation strategy for resilient supply chain. To the best of our knowledge, the resilient supply chain PIs have not been modeled yet to better understand the relationships among them.

As an emerging sector of Bangladesh, pharmaceutical industry has also focused for the proper adoption of resilient supply chain concept. Daily commodity products like rice, oil, electricity etc. have almost simple ad static supply chains. On the other hand, having complex and dynamic structure, PSC face various challenges to establish resilience in the chain. In the context of Bangladesh, this sector plays a vital role providing lifesaving medicines. However, it becomes very difficult to maintain the smooth flow of medicines because huge population of Bangladesh causes the constant fluctuations in customer demand. So, in order to maintain the smooth flow of medicines from producers to customers amid such difficulties, a resilient supply chain is inevitable. There are some significant PIs that, if improved upon, will help the decision makers in making a supply chain more resilient. So, motivated by the current situation, this study proposed a structured framework for modeling the PIs of resilient PSC. However, after reviewing the previous literature and analyzing the research gap, this study raises the following research questions (RQs):

- RQ1. What are the key PIs of resilient supply chain in the context of pharmaceutical industry?
- RQ2. What are the interactions among them?
- RQ3. How can the policy makers predict the resilience level for a certain period?

Based on the above research questions, this study has formulated the following specific research objectives (ROs):

- RO1. To identify the most significant PIs for measuring the performance of resilient PSC in the context of Bangladesh.
- RO2. To understand the causality of relationships among them.
- RO3. To develop a model for predicting the resilience level of the PSC.

To achieve the above objectives, this study has deployed the Delphi based fuzzy DEMATEL approach to identify and analyze the most significant PIs of PSC and developed a SD model for predicting the resilience of the supply chain. The Delphi based fuzzy DEMATEL

approach has the advantages of extracting the research data from the experts based on their prior experiences and developing cause and effect diagram along with prominence rank under fuzzy environment (Abdullah and Zulkifli, 2019). After examining the cause and effect relationships among the indicators, SD model is developed. Therefore, integrating fuzzy DEMATEL with SD helps to construct more robust models.

2. Related studies

This section presents the review of previous literature for building a theoretical foundation of this study.

2.1 Supply chain resilience

Over the last few decades, the researchers and supply chain practitioners are working out to establish resilient supply chain to deal with uncertainty and disruptions (Pettit *et al.*, 2019). This concept of supply chain resilience has gained attention because it deals with designing the supply chain to enhance the capability of retuning to its original state from unexpected events or disruptions (Christopher and Peck, 2004; Ralston and Blackhurst, 2020). According to Fiksel *et al.* (2015), supply chain resilience is an essential proactive approach which helps the companies to reduce traditional risks. Resilient supply chain has the ability to identify the risks, ameliorate the impact and come back rapidly from man-made or natural occurrences (Singh *et al.*, 2019a, b; Lee and Rha, 2016). In today's dynamic market, establishing resilience in the supply chain has become one of the utmost challenges for supply chain specialists and managers.

2.2 Assessment of PSC resilience

PSC is considered to be more complex than the other industries (Zahiri *et al.*, 2017). Nowadays, supply chain resilience has become a widely used area of interest among researchers and supply chain practitioners of pharmaceutical companies. In the supply chain resilience literature, various quantitative approaches have been previously applied by researchers for resilience assessment (Hossain *et al.*, 2019; Yaroson *et al.*, 2019). Pettit *et al.* (2013) proposed a tool for supply chain resilience assessment and management which was called the SCRAM tool. Another assessment in the literature is the fundamentals of the grey systems theory to evaluate and analyze the supply chain resilience (Rajesh, 2020).

In the recent studies, Rajesh (2018) used VIKOR method for assessing supply chain resilience. Aigbogun *et al.* (2018) proposed another quantitative cross sectional design for resilience assessment. Another study was conducted with the integrated method of ANP and DEMATEL by Leksono (2019). Ahmed *et al.* (2020) developed a framework to model the barriers of closed loop supply chain. A logical framework for assessing supply chain resilience based on PIs was provided by Song *et al.* (2019). The proposed framework provided an insight about resilient supply chain by representing linkages between some indicators and a set of performance measures. Banihashemi *et al.* (2019) explored the relationship between reverse logistics and sustainability performance.

2.3 Performance indicators (PIs) in the context of resilient PSC

Many researchers have already identified a number of PIs for resilient supply chain. To find out the PIs in the context of resilient PSC, relevant articles were reviewed from various databases (Google scholar, Scopus etc.) using key words such as “supply chain resilience”, “supply chain resilience performance indicators”, “pharmaceutical supply chain performance indicators” etc. After reviewing the literature, we found 19 most relevant supply chain resilience PIs for further analysis. Table 1 represents these 19 PIs with definition. Many researchers emphasized on supply chain collaboration to be an important PI for supply chain

resilience although it is very difficult to implement (Christopher and Peck, 2004; Papadopoulos *et al.*, 2017). Some researchers have found that supply chain visibility plays a significant role in establishing resilient supply chain (Swift *et al.*, 2019). Hafezalkotob and Zaman (2019) identified sustainability as an important PI for resilient supply chain. Production capacity also determines the performance of a resilient supply chain (Chowdhury and Quaddus, 2016; Jain *et al.*, 2017; Kaur *et al.*, 2020).

2.4 Research gaps and research problem definition

For the past few decades, researchers have contributed a lot in the field of resilient supply chain performance measurement. All the research studies provide resilience supply chain PIs

No	PIs	Definition	Sources
1	Collaboration	It is defined as two or tiers of supply chain working jointly in planning and operations	Papadopoulos <i>et al.</i> (2017)
2	Visibility	Ability of a firm to locate the inventory easily	Swift <i>et al.</i> (2019)
3	Information sharing	Information sharing among the members is important to improve the resilience of a supply chain	Moktadir <i>et al.</i> (2018)
4	Agility	Ability of a firm to manufacture and deliver items with short lead times	Kamalahmadi and Parast (2016), Ali <i>et al.</i> (2017), Christopher and Peck (2004)
5	Flexibility	Ability of a firm to restructure their operations and strategy to respond quickly to customer demands	Pettit <i>et al.</i> (2013)
6	Sustainability	Related to supply chain network in terms of environment and waste costs	Hafezalkotob and Zamani (2019), Yang <i>et al.</i> (2018)
7	Redundancy	A firm must create redundancy in terms of capacity throughout the supply chain to improve the resilience	Ali <i>et al.</i> (2017), Christopher and Peck (2004)
8	Creating robust supply chain	Ability to protect against disruptions and reduce their impact once they occur	Papadopoulos <i>et al.</i> (2017)
9	SC risk orientation	Orientation of supply chain risk factors across the firm	Christopher and Peck (2004)
10	Available resource	Availability of required resources to improve the supply chain resilience	Christopher and Peck (2004), Chowdhury and Quaddus (2016)
11	Velocity	Ability of the firm to complete the supply chain activities as quickly as possible	Christopher and Peck (2004)
12	Production capacity	The maximum volume of products that can be produced by a firm	Chowdhury and Quaddus (2016)
13	Revenue sharing	Revenue sharing among the different tiers of supply chain	Yu <i>et al.</i> (2020)
14	Partnership for risk sharing	Partnership among the different tiers of supply chain for risk sharing	Jain <i>et al.</i> (2017)
15	Adaptability	Ability to adjust the supply chain design when the market demand shifts	Chowdhury and Quaddus (2016), Jain <i>et al.</i> (2017)
16	SC network design	Efficient supply chain design affects the resilience of the supply chain	Moktadir <i>et al.</i> (2018); Tang, 2006
17	Security	Security and privacy of data, information and other activities across the supply chain	Jain <i>et al.</i> (2017)
18	Awareness/sensitiveness	Real time monitoring of each activities within a supply chain	Jain <i>et al.</i> (2017)
19	Market position	Competitive position of a firm in the market	Fiksel <i>et al.</i> (2015)

Table 1.
Relevant PIs of
resilient PSC

for overall organization. However, identification of proper PIs and modeling those indicators to assess supply chain resilience for pharmaceutical industries are still required further investigations. Therefore, the goals of this study are to identify and analyze the appropriate PIs and to develop a model for predicting the resiliency level in the context of Bangladeshi pharmaceutical company. To address these research gaps, the contributions of this study and problem definition are stated as follows:

- (1) Finding the major PIs in the field of pharmaceutical industry supply chains.
- (2) Evaluating the ranking of these indicators according to their influence and identifying the cause and effect relationship.
- (3) Building a SD model for predicting the resiliency level.

3. Methods

In this section, the details of the proposed methodology for analyzing the PIs and assessing the resilience of PSC have been explained. Figure 1 shows the flow diagram of the proposed research framework.

3.1 Performance indicators selection using Delphi method

In this study, the Delphi method has been applied to identify the significant PIs of resilient PSC in two phases after reviewing the previous literature. It is an iterative process of collecting and assessing data from a group of experts through a series of structured questionnaires (Jason and Glenwick, 2016; Lee and Seo, 2016). This tool is extensively used in supply chain, demand forecasting and complex decision making. (Belton *et al.*, 2019; Moktadir *et al.*, 2019).

In phase 1, most relevant indicators of resilient PSC were selected by the industrial experts using primary questionnaire (Appendix 1) and in phase 2, evaluation of comprehensive relationships among these indicators was done by evaluators using the secondary questionnaire (Appendix 2). Using the judgmental sampling technique, 10 pharmaceutical companies of Bangladesh were selected that were trying to identify and evaluate the PIs for improving their performance level. Due to confidentiality, symbolic names were used instead of the real names of these companies. For phase 1, 20 respondents were selected using purposive sampling method (Guarte and Barrios, 2006). The profile of the case pharmaceutical companies and the respondents are represented in Table 2.

Initially, a total of 19 PIs of resilient PSC were identified after reviewing previous literature resources (Table 1). The primary questionnaire (Appendix 1) was sent to the respondents through email to select the most relevant PIs from these 19 PIs. The purpose of the study was communicated with them and they were requested to provide their feedback to check the validity of those PIs for PSC. They were given the chance to add or remove any indicator of resilient PSC. Based on the experts' opinions, a total of 12 PIs were sorted out. Table 3 presents the identified PIs through Delphi method.

3.2 Relationship assessment of PIs using fuzzy DEMATEL

3.2.1 Fuzzy set theory. The fuzzy theory was proposed and introduced by Zadeh (1965). This tool mainly deals with the vagueness problems of linguistic variables in reality. It has the capability of assessing the subjective and imprecise judgments provided by individuals or expert panels. In this study, a widely used and well-established triangular fuzzy number (TFN) has been considered. Before using fuzzy based tools, fuzzy numbers

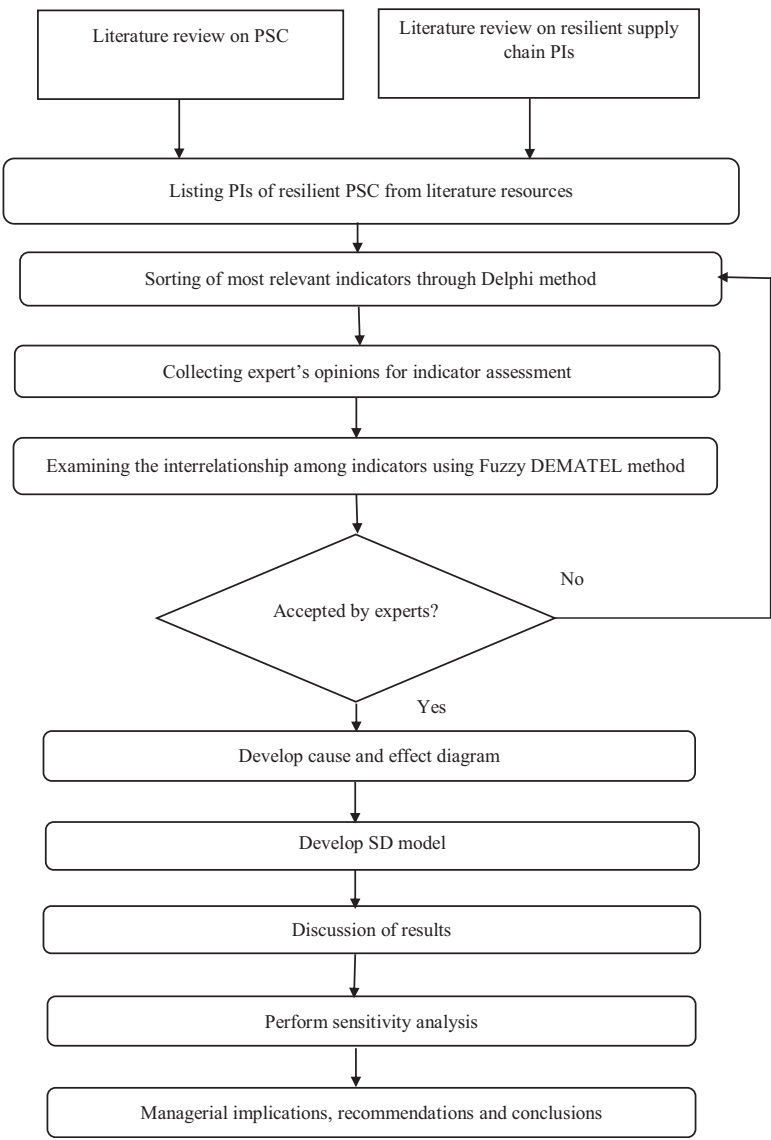


Figure 1.
Flow diagram of the
current research

are required to convert into crisp values (defuzzification). Among various methods, Converting Fuzzy data into the Crisp Scores (CFCS) is extensive in terms of providing better crisp values than other similar methods (Wu and Lee, 2007). According to membership functions, the total score can be found as a weighted average. Let, $A_{ij} = (u_{ij}^n, v_{ij}^n, w_{ij}^n)$, mean the degree of criterion i that affects criterion j and fuzzy questionnaires n ($n = 1, 2, 3, \dots, h$). The crisp value of i th criteria can be obtained by four steps as follows (Opricovic and Tzeng, 2003):

				Modeling performance indicators
Name of company	Respondents	Year of experience	Company size (employees, annual sales turn over)	
“A” Pharmaceutical limited	Supply chain manager	15 years	Employee: 47,000	185
	Logistics manager	12 years	Turnover (2016): USD 544million	
	Production manager	10 years		
“B” Pharmaceutical limited	Logistics manager	11 years	Employee: 32,000	
	Assistant logistics manager	5 years	Turnover (2017): USD 238 million	
	Supply chain executive	3 years		
“C” Pharmaceutical limited	Senior supply chain manager	15 years	Employee: 14,000	
			Turnover (2017): USD 102 million	
	Supply chain manager	12 years		
“D” Pharmaceutical limited	Logistics manager	7 years		
	Production manager	11 years	Employee: 8,000	
	Logistics manager	9 years	Turnover (2018): USD 89 million	
“E” Pharmaceutical limited	Supply chain manager	8 years		
	Production manager	7 years	Employee: 8,000	
	Supply chain manager	8 years	Turnover (2018): USD 89 million	
“F” Pharmaceutical limited	Supply chain manager	10 years	Employee: 5,000	
	Logistics manager	8 years	Turnover (2018): USD 70 million	
	Supply chain manager	8 years	Employee: around 5000\	
“G” Pharmaceutical limited			Turnover (2018): USD 60 million	
	Supply chain executive	4 years	Employee: around 3000	
			Turnover (2018): around USD 50 million	
“T” Pharmaceutical limited	Production executive	3 years	Employee: around 3000	Table 2. Profile of case pharmaceutical companies and respondents
			Turnover (2018): USD 50 million	
	Assistant logistic manager	4 years	Employee: around 3000	
“J” Pharmaceutical limited			Turnover (2018): USD 45 million	

Performance indicators	Code	Table 3. The list of PIs identified through the Delphi method
Collaboration	PI ₁	
SC risk orientation	PI ₂	
SC network design	PI ₃	
Creating robust supply chain	PI ₄	
Velocity	PI ₅	
Sustainability	PI ₆	
Flexibility	PI ₇	
Information sharing	PI ₈	
Visibility	PI ₉	
Adaptability	PI ₁₀	
Available resources	PI ₁₁	
Agility	PI ₁₂	

Step 1. Perform normalization

$$xw_{ij}^n = \left(r_{ij}^n - \min u_{ij}^n \right) / \Delta_{\min}^{\max} \quad (1)$$

$$xv_{ij}^n = \left(v_{ij}^n - \min u_{ij}^n \right) / \Delta_{\min}^{\max} \quad (2)$$

$$xu_{ij}^n = \left(u_{ij}^n - \min u_{ij}^n\right) / \Delta_{\min}^{\max} \tag{3}$$

where $\Delta_{\min}^{\max} = \max u_{ij}^n - \min u_{ij}^n$.
Step 2: Calculate the right (*us*) and left (*us*) normalized values

$$xws_{ij}^n = xu_{ij}^n / \left(1 + xu_{ij}^n - xv_{ij}^n\right) \tag{4}$$

$$xus_{ij}^n = xv_{ij}^n / \left(1 + xv_{ij}^n - xu_{ij}^n\right) \tag{5}$$

Step 3: Estimate total normalized crisp values

$$x_{ij}^n = \left[xus_{ij}^n \left(1 - xus_{ij}^n\right) + xws_{ij}^n \times xws_{ij}^n\right] / \left[1 - xus_{ij}^n + xws_{ij}^n\right] \tag{6}$$

Step 4: Compute crisp values

$$Z_{ij}^n = u_{ij}^n + x_{ij}^n \times \Delta_{\min}^{\max} \tag{7}$$

3.2.2 Fuzzy DEMATEL method. The Decision Making Trial and Evaluation Laboratory (DEMATEL) approach is a simple method for evaluating the relationship among various alternatives based on the pair-wise comparison. This method was first proposed by [Fontela and Gabus \(1974\)](#). It was widely used in analyzing complex structural models of causality between complex factors. Integrating fuzzy systems with DEMATEL enables the decision-makers to evaluate the complex factors easily (which are difficult to quantify and usually expressed with linguistic variables). [Table 4](#) shows the triangular fuzzy linguistic scale for direct relation criteria. The steps of fuzzy-DEMATEL are presented as follows ([Kazancoglu et al., 2018](#)):

- Step 1: Development of the fuzzy initial direct relation matrix *A* by integrating the inputs from experts.
- Step 2: Development of crisp direct relation matrix *Z* using [Eqns \(1\)–\(7\)](#).
- Step 3: Construction of standardized matrix *X* using the following equation

$$X_{ij} = \frac{Z_{ij}}{S} \tag{8}$$

where $S = \max\{\max\sum_{j=1}^n Z_{ij}, \max\sum_{i=1}^n Z_{ij}\}$

Table 4.
The fuzzy
linguistic scale

Linguistic variables	Triangular fuzzy number
No influence (N)	(0, 0, 0.25)
Very low influence (VL)	(0, 0.25, 0.50)
Low influence (L)	(0.25, 0.50, 0.75)
High influence (H)	(0.50, 0.75, 1.0)
Very high influence (VH)	(0.75, 1.0, 1.0)

Step 4: Total relation matrix T construction using the following equation

$$T = X(I - X)^{-1} \quad (9)$$

where I indicates the identity matrix.

Step 5: Then the degree of influential impact (D) and the degree of influenced impact (J) are calculated as follows:

$$D = \sum_{j=1}^n t_{ij} \quad (10)$$

$$J = \sum_{i=1}^n t_{ij} \quad (11)$$

Step 6: In this step, $(D + J)$ and $(D - J)$ are calculated. $(D + J)$ indicates the prominence vector and $(D - J)$ indicates the relation vector.

Step 7: Finally, the causal diagram is developed using the prominence vector and relation vector.

4. An illustrative example

For verifying the proposed methodology, a pharmaceutical company located in Tangail, Bangladesh was selected to analyze the PIs and predict the resilience level of the supply chain. Due to confidentiality, the name of the case company has been kept anonymous. For the assessment of the relationships among the performance indicators using fuzzy DEMATEL for the case company, 5 evaluators were selected. In fuzzy DEMATEL, 4–12 evaluators are suitable for data collection. In this study, five evaluators were selected to keep the calculation simple. They were selected based on their working experience and positions in the relevant department. The profile of these five evaluators has been shown in Table 5. The questionnaire (Table A4) was sent through email after explaining to them the objectives of the study.

4.1 Assessment of resilient PSC performance indicators

At this stage of the study, performance indicators of resilient PSC of the selected pharmaceutical company were assessed using the fuzzy DEMATEL method. The resilience performance indicators represented in Table 3 were selected for the case company. Then, through the secondary questionnaire (Appendix 2), the data were obtained from the five professional evaluators for fuzzy DEMATEL. The linguistic scale shown in Table 4 was used through the one-to-one interview for data collection. The fuzzy DEMATEL method was applied through the following steps.

Evaluator	Experience (Years)	Job title
Evaluator 1	>15	Supply chain manager
Evaluator 2	>10	Supply chain manager
Evaluator 3	>9	Production manager
Evaluator 4	>7	Supply chain manager
Evaluator 5	>8	Assistant manager (logistics)

Table 5.
Profile of the five
evaluators

4.1.1 *Step 1: development of the fuzzy initial direct relation matrix.* At first, the pair wise comparisons among the resilience PSC indicators were constructed by using the fuzzy linguistic variables. The linguistic assessment by the five evaluators is shown in Table A5 in [Appendix 3](#). These linguistic variables were then converted into triangular fuzzy numbers and fuzzy initial direct relation matrix was developed by taking the average of these fuzzy numbers. The fuzzy initial direct relation matrix is shown in Table A6 in [Appendix 3](#).

4.1.2 *Step 2: constructing the crisp direct relation and total relation matrix.* The crisp direct relation matrix from the average fuzzy initial direct relation matrix was computed using [Eqn \(1\)–\(7\)](#). The total relation matrix was derived from the crisp relation matrix using [Eqns \(8\) and \(9\)](#). The total relation matrix is shown in Table A7 in [Appendix 3](#).

4.1.3 *Step 3: deriving the prominence vector and the cause-effect diagram.* The degree of influential impact (D) and the degree of influenced impact (R) were calculated from the total relation matrix using [Eqns \(10\) and \(11\)](#). Finally, the prominence vector and relation vector were obtained. Prominence vector and relation vector along with the ranking were represented in [Tables 6 and 7](#) respectively. To develop the cause and effect diagram, the relation vector was used. All the indicators having positive relation values ($D - R$) were grouped into cause group and indicators with negative relation values were grouped into an effect group.

5. Results and discussion

5.1 Cause and effect relationships among the performance indicators

In this section, the findings from the implementation of fuzzy DEMATEL have been discussed. The ($D + R$) scores indicate the relative importance of the resilient PSC performance indicators. Therefore, a higher score of the indicators represents higher priority

Table 6.
Prominence vector
of PIs

Rank	Indicators	($D + R$)
1	PI ₁	14.474
2	PI ₂	14.452
3	PI ₉	13.269
4	PI ₇	13.196
5	PI ₁₂	12.976
6	PI ₆	12.960
7	PI ₈	12.780
8	PI ₁₁	12.613
9	PI ₁₀	12.598
10	PI ₃	12.578
11	PI ₅	11.996
12	PI ₄	11.294

Table 7.
Relation vector of PIs

Rank	Cause group	($D - R$)	Rank	Effect group	($D - R$)
1	PI ₈	1.333463	1	PI ₆	-1.87736
2	PI ₇	0.933013	2	PI ₁₂	-1.44572
3	PI ₃	0.718546	3	PI ₁	-0.36317
4	PI ₁₁	0.680435	4	PI ₄	-0.19854
5	PI ₂	0.291422	5	PI ₉	-0.09903
6	PI ₅	0.0528242	6	PI ₁₀	-0.03131

in the indicator's ranking system. Table 6 represents the prominence vector of the resilience PIs obtained from the fuzzy DEMATEL. According to the prominence vector, the top five performance indicators are "Collaboration (PI₁)", "SC risk orientation (PI₂)", "Visibility (PI₉)", "Flexibility (PI₇)" and "Agility (PI₁₂)" which were ranked based on $(D + R)$ scores. "Available resource (PI₁₁)", "Adaptability (PI₁₀)", "SC network design (PI₃)", "Velocity (PI₅)" and "Robustness (PI₄)" are the last five PIs in the prominence ranking although they have significant impact on the resilience of PSC.

The cause and effect relationships of these PIs of resilience PSC can be understood from the relation vector (Table 7). The $(D - R)$ score represents the relation characteristics of the indicators. The positive $(D - R)$ score indicates the cause group and negative $(D - R)$ score indicates the effect group. According to the relation vector, "IT capability (PI₈)", "Flexibility (PI₇)", "SC network design (PI₃)", "Available resource (PI₁₁)", "SC risk orientation (PI₂)" and "Velocity (PI₅)" were grouped into cause category since they have positive $(D - R)$ scores. On the other hand, "Sustainability (PI₆)", "Agility (PI₁₂)", "Collaboration (PI₁)", "Creating robust supply chain (PI₄)", "Visibility (PI₉)" and "Adaptability (PI₁₀)" were grouped into effect category. All these six indicators are influenced by other performance indicators. Figure 2 shows the cause and effect relation of the resilient supply chain performance indicators.

"Information sharing (PI₈)" has got the first position in the cause category. This indicator has significant impact on establishing resilient PSC. Lack of proper information sharing causes inefficiency of coordinating action and disruptions in overall supply chain (Yu *et al.*, 2020). It is very important to exchange the right information, for increasing resilience within the supply chain (Faisal *et al.*, 2006). Colicchia *et al.* (2019) also found information sharing as one of the significant performance indicators of supply chain. To maximize resilience in the PSC, it is important to make a community of active partners within the current, complex, indeterminate supply chain environment and proper information should flow between all partners of this particular group (Setak *et al.*, 2018; Tohidi *et al.*, 2017). The top management should take action to concern about their information sharing to build resilient PSC. The second indicator in the causal group is "Flexibility (PI₇)". Lack of flexibility causes fluctuation in lead times and delays in product quality and information (Giannoccaro *et al.*, 2003). The numerous styles of flexibility may boost the resilience of PSC, together with versatile travel, versatile work game plans (Pettit *et al.*, 2013). "SC network design (PI₃)" is another important causal indicator for resilient PSC. Poor network design is responsible for production of short deliveries,

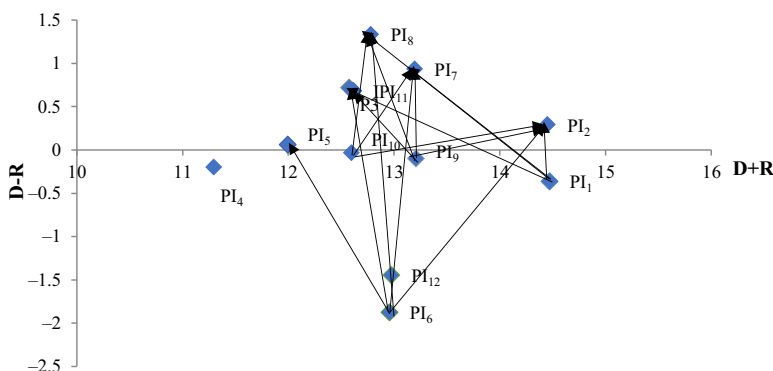


Figure 2.
Cause and effect
diagram of resilient
PSC performance
indicators

poor quality issues and delays. It is important for a proper understanding of the architecture of the supply chain network to make supply chain resilient (Giannoccaro *et al.*, 2018). Rajesh (2019) performed a study on resilient supply chain and showed that network design has a significant influence on the performance of the resilient supply chain. “Available resources (PI₁₁)” is the key to manage the resilience in the supply chain. When resources are available, it makes it easier to mitigate any disruption. “SC risk orientation (PI₁₁)” is another causal indicator in case of PSC. However, risk orientation in the pharmaceutical supply chain is very difficult. An organization should take necessary action to identify and understand supply chain risks and take proper mitigation actions.

The effect category includes six indicators that can be highly affected by the factors in the cause group. “Sustainability (PI₆)”, and “Agility (PI₁₂)” hold the first and second position of the effect group respectively and they are highly interrelated. Lack of information sharing, limited resources, product complexity and environmental uncertainty affect these two factors. Different policies and management strategies should be taken by supply and operations managers to increase SC risk orientation and increase flexibility. Another crucial indicator is supply chain “Visibility (PI₉)”. It can be affected by supply chain network design, flexibility, supply chain adaptability and collaboration in supply chain. “Adaptability (PI₅)” is the last indicator in the effect group. The stability of the supply chain depends on the flexibility of the system to respond to transitory problems and market fluctuations (Chowdhury and Quaddus, 2016). Supply chain and operations managers should formulate strategy to improve the supply chain resilience by setting target for these performance indicators and following proper action plan.

5.2 System dynamics model for measuring resilience of PSC

System dynamics (SD) model has been developed for predicting the PSC resilience after identifying the cause group and effect group from the fuzzy DEMATEL. The system dynamics (SD) model was constructed in two phases. In the first phase, cause group and effect group were translated into partial causal loop diagram (CLD) and stock and flow diagram was developed from the causal loop diagram in the second phase. These phases are described as follows:

5.2.1 Phase 1: causal loop diagram (CLD) development. A causal loop diagram (CLD) of PSC resilience PIs was developed based on the cause and effect group derived from the fuzzy DEMATEL and some other auxiliary variables. These auxiliary variables were selected with the help of experts in Delphi phase. These variable were selected based on their prior experiences. Auxiliary variables are related to the main variables and the values of auxiliary variables are required to predict the values of stocks and flows. The values of auxiliary variables were collected from the case company. The eight most influential resilience PIs from the prominence vector (Table 7) were selected for developing the causal loop diagram. Table 8 presents the list of these resilience PIs and auxiliary variables.

For developing the CLD, Vensim PLE version 32 software has been used. The causal loop diagram is shown in Figure 3.

5.2.2 Phase 2: stock and flow diagram development. At the next step, stock and flow diagram was developed with the information from the CLD. Figure 4 shows the stock and flow diagram for predicting the resilience level of PSC. Here, the “SC Resilience” is the main stock. The other stocks in the model are “SC Agility”, “Sustainability”, “Lack of collaboration” and “Lack of visibility”. Flows and the auxiliary variables have been created according to the information from the CLD.

CLD variables	Description
Product complexity	Complexity in the product technology or manufacturing
Product quality	Ability of the product to fulfill and meet customer requirements
SC agility	Description is given in Table 5
Environmental uncertainty	Changes in the business environment on which the company has little influence
Operational disruption	Disruptions in the production and distribution system
Vague terminology	Usage of imprecise and unclear terms and jargons
Absence of trust	Lack of trust among partners, employers and workers
Motivation	Initiatives taken by the management to increase enthusiasm among the workers
Coordination	The act of making people involved in strategic and operational plan and managing their activities
Management support	Support from the top management by providing adequate resources and empowering the managers
Supply chain network complexity	Degree of complexity in supply chain structure that consist of the supply members-upstream suppliers and downstream customers
Effectiveness of SC network design	Effect of SC network design in increasing the collaboration
SC flexibility	Description is given in Table 3
SC velocity	Description is given in Table 3
Sustainability	Description is given in Table 3
SC risk orientation	Description is given in Table 3
Available resource	Description is given in Table 3
Regulation	Laws or legal issues imposed by the government
Lack of collaboration	Opposite in collaboration which is given in Table 3
Lack of visibility	Opposite in visibility which is given in Table 3

Table 8.
Description of PIs and
auxiliary variables
for CLD



Figure 3.
Causal loop diagram
for resilient PSC
performance

The equation was set for each flow in the model by consulting with the experts. Then, this model was implemented to the case pharmaceutical company for predicting the resilience level of the supply chain. At first, the initial values of each stock were given after consulting with the case pharmaceutical company's top management. Then, the target values of each auxiliary variables were given in the model. This data was given by the supply chain department of the case company and they set the values of each variable ranges between 0 and 1 considering the current condition of each variable. Then, the simulation was run for 100 months for observing the resilience level for the case pharmaceutical company. The equations and initial values used for different variables in the model are given below:

SC velocity = 0.1
 SC flexibility (Rate) = 0.1
 Available resource = 0.2
 SC Agility * Available resource * SC velocity * SC flexibility (rate)
 SC Agility = Initial SC Agility + increase in SC agility – decrease in SC agility
 Initial SC Agility = 0.1
 Decrease in SC Agility = SC Agility * product Complexity * Environment Uncertainly * Regulation
 Regulation = 0.1
 Product complexity = 0.02
 Product quality = 0.1
 SC risk orientation = 0.1
 Increase in sustainability = Sustainability * Product quality * SC risk orientation
 Sustainability = Initial Sustainability + increase in Sustainability – decrease in sustainability
 Initial Sustainability = 0.2
 Decrease in sustainability = Product complexity * Environmental uncertainly * Operational disruption * Sustainability
 Operational Disruption = 0.03
 Environmental uncertainly = 0.02
 SC network complexity = 0.01
 Increase in lack of visibility = Lack of visibility * SC network complexity * Environmental uncertainly * Operational disruption
 Information Sharing = 0.02
 Management Support = 0.2
 Lack of visibility = Initial Lack of visibility + (increase in lack of visibility – decrease in lack of visibility)
 Initial Lack of visibility = 0.3
 Decrease in lack visibility = Lack of visibility * Management support * Information sharing
 Effective team work = 0.03
 Effectiveness of SC network design = 0.05
 Absence of trust = 0.03
 Use of vague terminology = 0.02
 Lack of collaboration = Initial Lack of collaboration + Increase in Lack of collaboration – Decrease in Lack of collaboration
 Initial Lack of collaboration = 0.01
 Increase in Lack of collaboration = Lack of collaboration * Absence of trust * Use of vague terminology
 Decrease in Lack of collaboration = Lack of collaboration * Effectiveness of SC network design * Effective team work
 Increase = SC Resilience * (SC Agility * Sustainability)
 Decrease = SC Resilience * (Lack of collaboration * Lack of visibility)
 SC Resilience = Initial SC Resilience + (increase – decrease)
 Initial SC Resilience = 20

Figure 5 shows the predicted conditions of supply chain agility, sustainability, collaboration and supply chain visibility. It is noted that if the case pharmaceutical company takes action according to their target, then their supply chain sustainability will improve rapidly. However, supply chain agility will improve very slowly. Besides this, lack of collaboration and lack of visibility will be minimized within the next 100 months.

Figure 6 shows the predicted resilience level of the case pharmaceutical company for the next 100 months. At present, the resilience level of the supply chain of the company is 20 which means very low. The curve indicates that the level of supply chain resilience will be improved very quickly after a certain time if the company can maintain their strategy and action plans.

6. Sensitivity analysis

Sensitivity analysis is usually performed to examine the reliability of the decisions made by the evaluators (Tanino, 1999). Sensitivity analysis is conducted by keeping equal weights

Figure 4.
Stock and flow
diagram for measuring
resilience of PSC

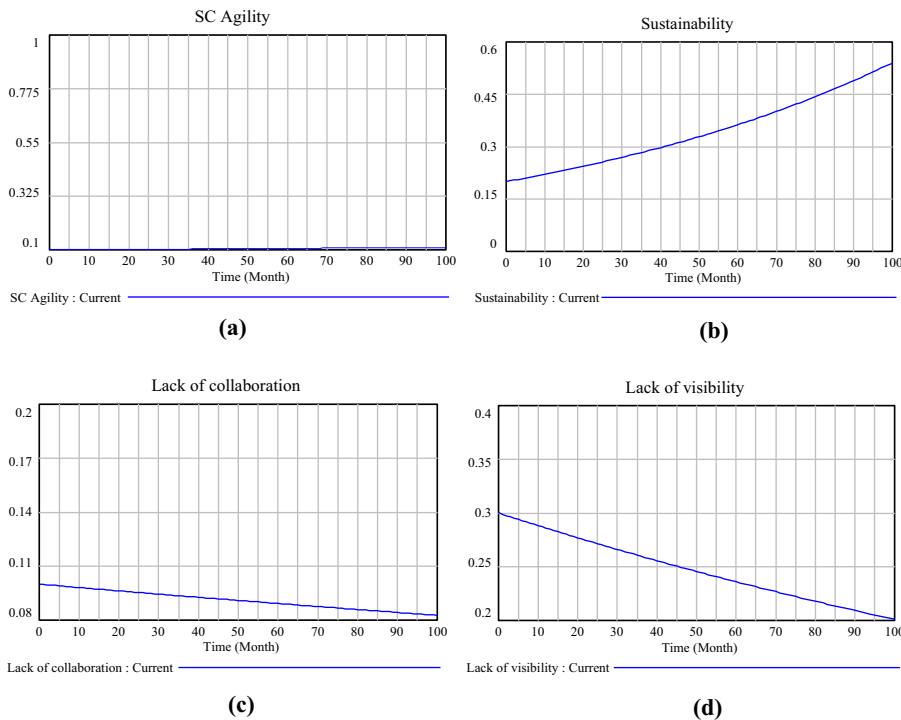
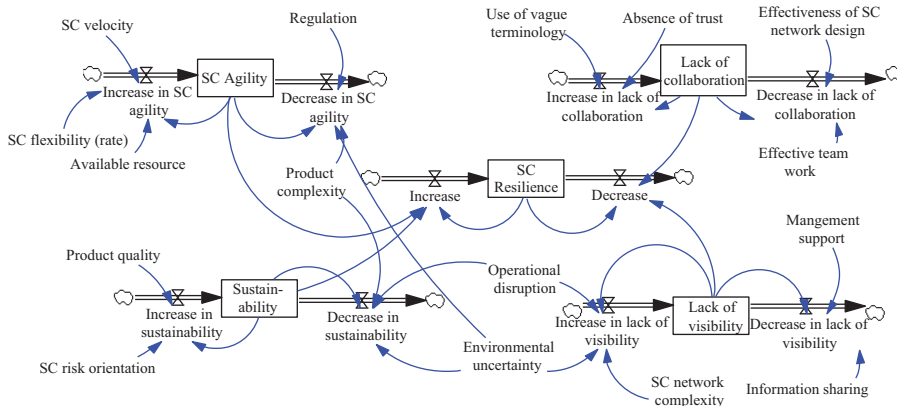


Figure 5.
Prediction of levels of
performance indicators

and adjusts more weights to any evaluator to realize the effects of using various combinations of decision criteria weight (Goodridge, 2016). In this study, the results obtained from fuzzy DEMATEL have been verified by performing sensitivity analysis. Five scenarios were assumed to conduct this sensitivity analysis. Different weights of evaluators were given based on their working experience in different scenarios which is shown in Table 9.

Initially, each evaluator was given equal weight (Scenario-1). After that, the weights of the evaluators were changed based on their working experiences to analyze how much the prominence rank, and the cause and effect relations vary. Since Evaluator 1 and Evaluator 2 were more experienced than all other evaluators, their weights were assigned higher than other evaluators in the next three scenarios. Then the cumulative average initial matrix was derived shown in appendix D4. Then, the fuzzy DEMATEL was applied on the same data in each scenario to observe the reliability of the results. Figure 7 shows the results obtained in different scenarios. Prominence rank of the resilient PSC performance indicators was stable in different scenarios although the weights of the evaluators were varied. Accordingly, the cause and effect relations among the resilient PSC performance indicators were varied a little with insignificant impact in each scenario. Cause group and effect group hold the same members in each scenario. Therefore, it is clear that the obtained results are not much sensitive to the variation of weights among the evaluators which indicates the high reliability of the results of the current research. As a result, the understanding of evaluators about the resilient pharmaceutical supply chain is adequate for this study.

7. Managerial implications

The major contribution of this work is the identification and prioritization of PIs of resilient PSC, which are significant to increase resilience as well as to improve overall performance. Another contribution of this work is a proposed SD model that can be used to measure resilience of PSC by simulating performance level for a certain time. After the recognition of fundamental knowledge and the strengthening of resilient supply chain PIs and the result of simulation, the business manager will be able to enhance resilient supply chain performance

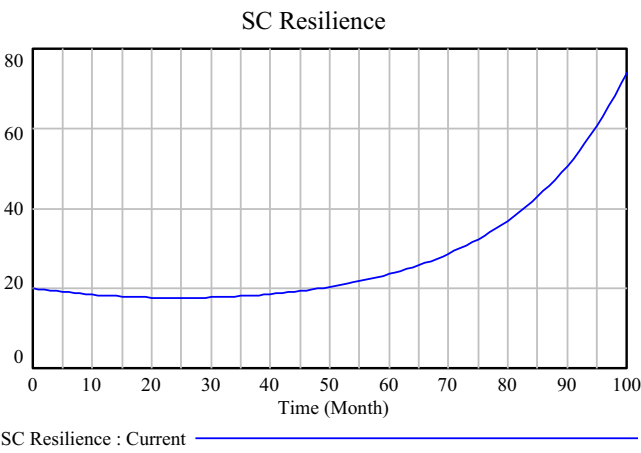


Figure 6.
Prediction of resilience
of PSC

Table 9.
Different importance
weights of evaluators
in sensitivity analysis

Evaluators	Scenario-1	Scenario-2	Scenario-3	Scenario-4	Scenario-5
Evaluator-1	0.2	0.4	0.4	0.3	0.35
Evaluator-2	0.2	0.2	0.3	0.3	0.2
Evaluator-3	0.2	0.2	0.15	0.2	0.2
Evaluator-4	0.2	0.1	0.1	0.1	0.1
Evaluator-5	0.2	0.1	0.05	0.1	0.15

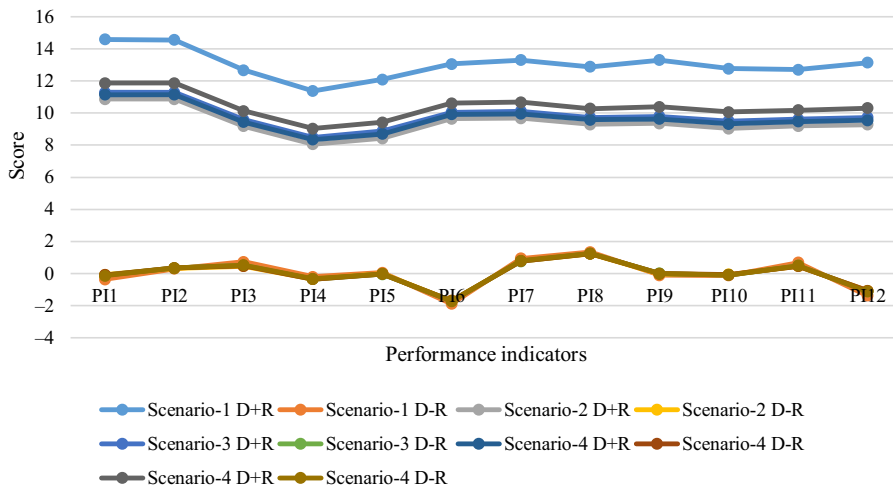


Figure 7.
Prominence rank and
cause-effect relations
from sensitivity
analysis

by introducing constructive supply chain policies. This research will help policymakers to identify the most relevant metrics of success and recommend ways to improve the outcomes in PSC. Some of the policies are also recommended for helping managers to improve PSC resilience, given as below:

- (1) Improving the resilience of a PSC requires understanding and selecting the appropriate PIs of the resilient supply chain to optimize the efforts. This research will be helpful for the supply chain professionals and researchers to select the appropriate indicators and understand the relationships among them to improve the resilience of a supply chain.
- (2) The pharmaceutical sector must formulate an effective strategy to improve the resilience of the supply chain. However, the effectiveness of the strategy must be assessed and the resilience level of the supply chain must be predicted on a regular basis. The fuzzy-DEMAEL part of this study will help the supply chain managers to formulate an effective strategy and the proposed SD model will help to predict the resilience level of the PSC.

8. Conclusions and future research directions

Establishing resilience in the supply chain has become one of the major challenges for the pharmaceutical industries. However, a structured framework is required to identify the PIs for developing resilient PSC successfully. Motivated by the drawbacks of previous research as well as the current pandemic situation, this study presents an integrated approach (Delphi based fuzzy DEMATEL and SD model) for assessing the contextual relationships among the indicators and predicting the resilience level for a certain time period.

There are three major findings in this study. First, from the Delphi method, 12 most relevant PIs for resilient PSC were identified. Second, this study applied Fuzzy DEMATEL to determine the causal relationships among the identified PIs. This study contributes to the existing supply chain literature by exploring the relationships among the PIs of resilient PSC and developing an SD model to predict the resilience level. Here, the values of the elements of the developed SD model were set according to the assumptions of the top management of the

case company. The model can be more robust if the real value for each element of the model is set.

Although this research indicates new insights into resilient PSC indicators, the research inevitably has limitations regarding data collection and validation. As in this research work, only 12 PIs are considered. More indicators can be analyzed to develop the model using fuzzy DEMATEL and system dynamics in further analysis. As the model is developed and verified on the basis of expert's opinions, biases can occur. The results of this study can be compared with other methods such as fuzzy TISM, grey based TISM etc. While the focus of this research is mainly on the PSC of Bangladesh, the proposed model can be applied to other industries, such as beverage, construction, manufacturing, service and so on, for identifying resilient supply chain performance indicators.

References

- Abdullah, L. and Zulkifli, N. (2019), "A new DEMATEL method based on interval type-2 fuzzy sets for developing causal relationship of knowledge management criteria", *Neural Computing and Applications*, Vol. 31 No. 8, pp. 4095-4111, doi: [10.1007/s00521-017-3304-1](https://doi.org/10.1007/s00521-017-3304-1).
- Ahmed, S., Karmaker, C., Doss, D. and Khan, A. (2020), "Modelling the barriers in managing closed loop supply chains of automotive industries in Bangladesh", *International Journal of Supply and Operations Management*, Vol. 7 No. 1, pp. 76-92, doi: [10.22034/ij som.2020.1.5](https://doi.org/10.22034/ij som.2020.1.5).
- Aigbogun, O., Ghazali, Z. and Razali, R. (2018), "Supply chain resilience and measurement dimensions: the case of halal pharmaceuticals in Malaysia", *SHS Web of Conferences*, Vol. 56, EDP Sciences, p. 05001, doi: [10.1051/shsconf/20185605001](https://doi.org/10.1051/shsconf/20185605001).
- Ali, A., Mahfouz, A. and Arisha, A. (2017), "Analysing supply chain resilience: integrating the constructs in a concept mapping framework via a systematic literature review", *Supply Chain Management: An International Journal*, Vol. 22 No. 1, pp. 16-39, doi: [10.1108/scm-06-2016-0197](https://doi.org/10.1108/scm-06-2016-0197).
- Bai, C. and Satir, A. (2020), "Evaluating green supplier satisfaction", *Modern Supply Chain Research and Applications*, Vol. 2 No. 2, pp. 63-81, doi: [10.1108/MSCRA-02-2019-0008](https://doi.org/10.1108/MSCRA-02-2019-0008).
- Banihashemi, T.A., Fei, J. and Chen, P.S.-L. (2019), "Exploring the relationship between reverse logistics and sustainability performance: a literature review", *Modern Supply Chain Research and Applications*, Vol. 1 No. 1, pp. 2-27, doi: [10.1108/MSCRA-03-2019-0009](https://doi.org/10.1108/MSCRA-03-2019-0009).
- Behzadi, G., O'Sullivan, M.J. and Olsen, T.L. (2020), "On metrics for supply chain resilience", *European Journal of Operational Research*, Vol. 287 No. 1, doi: [10.1016/j.ejor.2020.04.040](https://doi.org/10.1016/j.ejor.2020.04.040).
- Belton, I., MacDonald, A., Wright, G. and Hamlin, I. (2019), "Improving the practical application of the Delphi method in group-based judgment: a six-step prescription for a well-founded and defensible process", *Technological Forecasting and Social Change*, Vol. 147, pp. 72-82, doi: [10.1016/j.techfore.2019.07.002](https://doi.org/10.1016/j.techfore.2019.07.002).
- Bhatia, G., Lane, C. and Wain, A. (2013), "Building resilience in supply chains", *World Economic Forum*, pp. 1-44.
- Chowdhury, M.M.H. and Quaddus, M. (2016), "Supply chain readiness, response and recovery for resilience", *Supply Chain Management*, Vol. 21 No. 6, pp. 709-731, doi: [10.1108/SCM-12-2015-0463](https://doi.org/10.1108/SCM-12-2015-0463).
- Chowdhury, N.A., Ali, S.M., Mahtab, Z., Rahman, T., Kabir, G. and Paul, S.K. (2019), "A structural model for investigating the driving and dependence power of supply chain risks in the readymade garment industry", *Journal of Retailing and Consumer Services*, Vol. 51, pp. 102-113, doi: [10.1016/j.jretconser.2019.05.024](https://doi.org/10.1016/j.jretconser.2019.05.024).
- Christopher, M. and Peck, H. (2004), "Building the resilient supply chain", *The International Journal of Logistics Management*, Vol. 15 No. 2, pp. 1-14, doi: [10.1108/09574090410700275](https://doi.org/10.1108/09574090410700275).
- Colicchia, C., Creazza, A., Noè, C. and Strozzi, F. (2019), "Information sharing in supply chains: a review of risks and opportunities using the systematic literature network analysis (SLNA)", *Supply Chain Management: An International Journal*, Vol. 24 No. 1, pp. 5-21.

- Faisal, M.N., Banwet, D.K. and Shankar, R. (2006), "Supply chain risk mitigation: modeling the enablers", *Business Process Management Journal*, Vol. 12 No. 4, pp. 535-552, doi: [10.1108/14637150610678113](https://doi.org/10.1108/14637150610678113).
- Fiksel, J., Polyviou, M., Croxton, K.L. and Pettit, T.J. (2015), "From risk to resilience: learning to deal with disruption", *MIT Sloan Management Review*, Vol. 56 No. 2, pp. 79-86.
- Fontela, E. and Gabus, A. (1974), "DEMATEL: progress achieved", *Futures*, Vol. 6 No. 4, pp. 361-363, doi: [10.1016/0016-3287\(74\)90086-x](https://doi.org/10.1016/0016-3287(74)90086-x).
- Giannoccaro, I., Pontrandolfo, P. and Scozzi, B. (2003), "A fuzzy echelon approach for inventory management in supply chains", *European Journal of Operational Research*, Vol. 149 No. 1, pp. 185-196, doi: [10.1016/s0377-2217\(02\)00441-1](https://doi.org/10.1016/s0377-2217(02)00441-1).
- Giannoccaro, I., Nair, A. and Choi, T. (2018), "The impact of control and complexity on supply network performance: an empirically informed investigation using NK simulation analysis", *Decision Sciences*, Vol. 49 No. 4, pp. 625-659, doi: [10.1111/deci.12293](https://doi.org/10.1111/deci.12293).
- Goodridge, W.S. (2016), "Sensitivity analysis using simple additive weighting method", *International Journal of Intelligent Systems and Applications*, Vol. 8 No. 5, p. 27, doi: [10.5815/ijisa.2016.05.04](https://doi.org/10.5815/ijisa.2016.05.04).
- Guarte, J.M. and Barrios, E.B. (2006), "Estimation under purposive sampling", *Communications in Statistics - Simulation and Computation*, Vol. 35 No. 2, pp. 277-284, doi: [10.1080/03610910600591610](https://doi.org/10.1080/03610910600591610).
- Hafezalkotob, A. and Zamani, S. (2019), "A multi-product green supply chain under government supervision with price and demand uncertainty", *Journal of Industrial Engineering International*, Vol. 15 No. 1, pp. 193-206, doi: [10.1007/s40092-018-0271-9](https://doi.org/10.1007/s40092-018-0271-9).
- Hohenstein, N.O., Feisel, E., Hartmann, E. and Giunipero, L. (2015), "Research on the phenomenon of supply chain resilience", *International Journal of Physical Distribution and Logistics Management*, Vol. 45 Nos 1/2, p. 90, doi: [10.1108/ijpdlm-05-2013-0128](https://doi.org/10.1108/ijpdlm-05-2013-0128).
- Hossain, N.U.I., Jaradat, R., Hosseini, S., Marufuzzaman, M. and Buchanan, R.K. (2019), "A framework for modeling and assessing system resilience using a Bayesian network: a case study of an interdependent electrical infrastructure system", *International Journal of Critical Infrastructure Protection*, Vol. 25, pp. 62-83, doi: [10.1016/j.ijcip.2019.02.002](https://doi.org/10.1016/j.ijcip.2019.02.002), doi: [10.1108/09574090810872596](https://doi.org/10.1108/09574090810872596).
- Ivanov, D. (2020), "Predicting the impacts of epidemic outbreaks on global supply chains: a simulation-based analysis on the coronavirus outbreak (COVID-19/SARS-CoV-2) case", *Transportation Research Part E: Logistics and Transportation Review*, Vol. 136, p. 101922, doi: [10.1016/j.tre.2020.101922](https://doi.org/10.1016/j.tre.2020.101922).
- Jain, V., Kumar, S., Soni, U. and Chandra, C. (2017), "Supply chain resilience: model development and empirical analysis", *International Journal of Production Research*, Vol. 55 No. 22, pp. 6779-6800, doi: [10.1080/00207543.2017.1349947](https://doi.org/10.1080/00207543.2017.1349947).
- Jason, L.A. and Glenwick, D.S. (2016), "Handbook of methodological approaches to community-based research: qualitative, quantitative, and mixed methods", *Journal of Logistics Management*, Vol. 20, pp. 97-123, New York, NY: Oxford University Press, doi: [10.1093/med:psych/9780190243654.001.0001](https://doi.org/10.1093/med:psych/9780190243654.001.0001).
- Kamalahmadi, M. and Parast, M.M. (2016), "A review of the literature on the principles of enterprise and supply chain resilience: major findings and directions for future research", *International Journal of Production Economics*, Vol. 171, pp. 116-133, doi: [10.1016/j.iipe.2015.10.023](https://doi.org/10.1016/j.iipe.2015.10.023).
- Kaur, H., Singh, S.P., Garza-Reyes, J.A. and Mishra, N. (2020), "Sustainable stochastic production and procurement problem for resilient supply chain", *Computers and Industrial Engineering*, Vol. 139, p. 105560.
- Kazancoglu, Y., Kazancoglu, I. and Sagnak, M. (2018), "Fuzzy DEMATEL-based green supply chain management performance: application in cement industry", *Industrial Management and Data Systems*, Vol. 118 No. 2, pp. 412-431, doi: [10.1108/TMDs-03-2017-0121](https://doi.org/10.1108/TMDs-03-2017-0121).
- Lee, S.M. and Rha, J.S. (2016), "Ambidextrous supply chain as a dynamic capability: building a resilient supply chain", *Management Decision*, Vol. 54 No. 1, pp. 2-23, doi: [10.1108/md-12-2014-0674](https://doi.org/10.1108/md-12-2014-0674).

- Lee, S. and Seo, K.K. (2016), "A hybrid multi-criteria decision-making model for a cloud service selection problem using BSC, fuzzy Delphi method and fuzzy AHP", *Wireless Personal Communications*, Vol. 86 No. 1, pp. 57-75, available at: <https://link.springer.com/article/10.1007/s11277-015-2976-z>.
- Leksono, E.B., Suparno, S. and Vanany, I. (2019), "Integration of a balanced scorecard, DEMATEL, and ANP for measuring the performance of a sustainable healthcare supply chain", *Sustainability*, Vol. 11 No. 13, p. 3626, doi: [10.3390/su11133626](https://doi.org/10.3390/su11133626).
- Moktadir, M.A., Ali, S.M., Rajesh, R. and Paul, S.K. (2018), "Modeling the interrelationships among barriers to sustainable supply chain management in leather industry", *Journal of Cleaner Production*, Vol. 181, pp. 631-651, doi: [10.1016/j.jclepro.2018.01.245](https://doi.org/10.1016/j.jclepro.2018.01.245).
- Moktadir, M.A., Ali, S.M., Paul, S.K. and Shukla, N. (2019), "Barriers to big data analytics in manufacturing supply chains: a case study from Bangladesh", *Computers and Industrial Engineering*, Vol. 128, pp. 1063-1075, doi: [10.1016/j.cie.2018.04.013](https://doi.org/10.1016/j.cie.2018.04.013).
- Opricovic, S. and Tzeng, G.H. (2003), "Defuzzification within a multi criteria decision model", *International Journal of Uncertainty, Fuzziness and Knowledge-Based Systems*, Vol. 11 No. 5, pp. 635-652, doi: [10.1142/S0218488503002387](https://doi.org/10.1142/S0218488503002387).
- Papadopoulos, T., Gunasekaran, A., Dubey, R., Altay, N., Childe, S.J. and Fosso-Wamba, S. (2017), "The role of Big Data in explaining disaster resilience in supply chains for sustainability", *Journal of Cleaner Production*, Vol. 142, pp. 1108-1118, doi: [10.1016/j.jclepro.2016.03.059](https://doi.org/10.1016/j.jclepro.2016.03.059).
- Pettit, T.J., Croxton, K.L. and Fiksel, J. (2013), "Ensuring supply chain resilience: development and implementation of an assessment tool", *Journal of Business Logistics*, Vol. 34 No. 1, pp. 46-76, doi: [10.1111/jbl.12009](https://doi.org/10.1111/jbl.12009).
- Pettit, T.J., Croxton, K.L. and Fiksel, J. (2019), "The evolution of resilience in supply chain management: a retrospective on ensuring supply chain resilience", *Journal of Business Logistics*, Vol. 40 No. 1, pp. 56-65.
- Rajesh, R. (2018), "Measuring the barriers to resilience in manufacturing supply chains using Grey Clustering and VIKOR approaches", *Measurement*, Vol. 126, pp. 259-273, doi: [10.1016/j.measurement.2018.05.043](https://doi.org/10.1016/j.measurement.2018.05.043).
- Rajesh, R. (2019), "Network design for resilience in supply chains using novel crazy elitist TLBO", *Neural Computing and Applications*, Vol. 32 No. 11, pp. 7421-7437, doi: [10.1007/s00521-019-04260-3](https://doi.org/10.1007/s00521-019-04260-3).
- Rajesh, R. (2020), "A grey-layered ANP based decision support model for analyzing strategies of resilience in electronic supply chains", *Engineering Applications of Artificial Intelligence*, Vol. 87, p. 103338, doi: [10.1016/j.engappai.2019.103338](https://doi.org/10.1016/j.engappai.2019.103338).
- Ralston, P. and Blackhurst, J. (2020), "Industry 4.0 and resilience in the supply chain: a driver of capability enhancement or capability loss?", *International Journal of Production Research*, Vol. 58 No. 16, pp. 5006-5019, doi: [10.1080/00207543.2020.1736724](https://doi.org/10.1080/00207543.2020.1736724).
- Setak, M., Ahar, H.K. and Alaei, S. (2018), "Incentive mechanism based on cooperative advertising for cost information sharing in a supply chain with competing retailers", *Journal of Industrial Engineering International*, Vol. 14 No. 2, pp. 265-280, doi: [10.1007/s40092-017-0225-7](https://doi.org/10.1007/s40092-017-0225-7).
- Singh, C.S., Soni, G. and Badhotiya, G.K. (2019a), "Performance indicators for supply chain resilience: review and conceptual framework", *Journal of Industrial Engineering International*, Vol. 15 No. 3, pp. 105-117, doi: [10.1007/s40092-019-00322-2](https://doi.org/10.1007/s40092-019-00322-2).
- Singh, R.K., Modgil, S. and Acharya, P. (2019b), "Assessment of supply chain flexibility using system dynamics modeling", *Global Journal of Flexible Systems Management*, Vol. 20 No. 1, pp. 39-63, doi: [10.1007/s40171-019-00224-7](https://doi.org/10.1007/s40171-019-00224-7).
- Song, M., Cui, X. and Wang, S. (2019), "Simulation of land green supply chain based on system dynamics and policy optimization", *International Journal of Production Economics*, Vol. 217, pp. 317-327.
- Stone, J. and Rahimifard, S. (2018), "Resilience in agri-food supply chains: a critical analysis of the literature and synthesis of a novel framework", *Supply Chain Management: An International Journal*, Vol. 23 No. 3, pp. 207-238, doi: [10.1108/scm-06-2017-0201](https://doi.org/10.1108/scm-06-2017-0201).

- Swift, C., Guide, V.D.R. Jr and Muthulingam, S. (2019), "Does supply chain visibility affect operating performance? Evidence from conflict minerals disclosures", *Journal of Operations Management*, Vol. 65 No. 5, pp. 406-429, doi: [10.1002/joom.1021](https://doi.org/10.1002/joom.1021).
- Tanino, T. (1999), "Sensitivity analysis in MCDM", *Multicriteria Decision Making*, Springer, Boston, MA, pp. 173-201, doi: [10.1007/978-1-4615-5025-9_7](https://doi.org/10.1007/978-1-4615-5025-9_7).
- Tohidi, H., Namdari, A., Keyser, T.K. and Drzymalski, J. (2017), "Information sharing systems and teamwork between sub-teams: a mathematical modeling perspective", *Journal of Industrial Engineering International*, Vol. 13 No. 4, pp. 513-520, doi: [10.1007/s40092-017-0199-5](https://doi.org/10.1007/s40092-017-0199-5).
- Wu, W.W. and Lee, Y.T. (2007), "Developing global managers' competencies using the fuzzy DEMATEL method", *Expert Systems with Applications*, Vol. 32 No. 2, pp. 499-507, doi: [10.1016/j.eswa.2005.12.005](https://doi.org/10.1016/j.eswa.2005.12.005).
- Yang, C.C., Lai, P., Li, Y. and Hsu, Y.Y. (2018), "Supply Chain key success factors for organic agricultural products: case study in Taiwan", *International Journal of Supply Chain Management*, Vol. 7 No. 3, pp. 261-270, doi: [10.1111/jscm.12159](https://doi.org/10.1111/jscm.12159).
- Yarason, E.V., Breen, L., Hou, J. and Sowter, J. (2019), *Correction to: Resilience Strategies and the Pharmaceutical Supply Chain: The Role of Agility in Mitigating Drug Shortages*, Springer, Cham, pp. C1-C1, doi: [10.1007/978-3-030-15398-4_19](https://doi.org/10.1007/978-3-030-15398-4_19).
- Yu, B., Wang, J., Lu, X. and Yang, H. (2020), "Collaboration in a low-carbon supply chain with reference emission and cost learning effects: cost sharing versus revenue sharing strategies", *Journal of Cleaner Production*, Vol. 250, p. 119460, doi: [10.1016/j.jclepro.2019.119460](https://doi.org/10.1016/j.jclepro.2019.119460).
- Zadeh, L.A. (1965), "Fuzzy sets", *Information and Control*, Vol. 8 No. 3, pp. 338-353, doi: [10.1016/s0019-9958\(65\)90241-x](https://doi.org/10.1016/s0019-9958(65)90241-x).
- Zahiri, B., Zhuang, J. and Mohammadi, M. (2017), "Toward an integrated sustainable-resilient supply chain: a pharmaceutical case study", *Transportation Research Part E: Logistics and Transportation Review*, Vol. 103, pp. 109-142, doi: [10.1016/j.tre.2017.04.009](https://doi.org/10.1016/j.tre.2017.04.009).

Further reading

- Bababeik, M., Khademi, N., Chen, A. and Nasiri, M.M. (2017), "Vulnerability analysis of railway networks in case of multi-link blockage", *Transportation Research Procedia*, Vol. 22, pp. 275-284, doi: [10.1016/j.trpro.2017.03.034](https://doi.org/10.1016/j.trpro.2017.03.034).
- Barlas, Y. (1996), "Formal aspects of model validity and validation in system dynamics", *System Dynamics Review: The Journal of the System Dynamics Society*, Vol. 12 No. 3, pp. 183-210, doi: [10.1002/\(sici\)1099-1727\(199623\)12:3<183::aid-sdr103>3.0.co;2-4](https://doi.org/10.1002/(sici)1099-1727(199623)12:3<183::aid-sdr103>3.0.co;2-4).
- Brandon-Jones, E., Squire, B., Autry, C.W. and Petersen, K.J. (2014), "A contingent resource-based perspective of supply chain resilience and robustness", *Journal of Supply Chain Management*, Vol. 50 No. 3, pp. 55-73, doi: [10.1111/jscm.12050](https://doi.org/10.1111/jscm.12050).
- Chang, B., Chang, C.W. and Wu, C.H. (2011), "Fuzzy DEMATEL method for developing supplier selection criteria", *Expert Systems with Applications*, Vol. 38 No. 3, pp. 1850-1858, doi: [10.1016/j.eswa.2010.07.114](https://doi.org/10.1016/j.eswa.2010.07.114).
- Demczuk, A. and Padula, A.D. (2017), "Using system dynamics modeling to evaluate the feasibility of ethanol supply chain in Brazil: the role of sugarcane yield, gasoline prices and sales tax rates", *Biomass and Bioenergy*, Vol. 97, pp. 186-211, doi: [10.1016/j.biombioe.2016.12.021](https://doi.org/10.1016/j.biombioe.2016.12.021).
- Di Vaio, A. and Varriale, L. (2020), "Blockchain technology in supply chain management for sustainable performance: evidence from the airport industry", *International Journal of Information Management*, Vol. 52, p. 102014.
- Forrester, J.W. (1994), "System dynamics, systems thinking, and soft OR", *System Dynamics Review*, Vol. 10 Nos 2-3, pp. 245-256.
- Gossler, T., Falagara Sigala, I., Wakolbinger, T. and Buber, R. (2019), "Applying the Delphi method to determine best practices for outsourcing logistics in disaster relief", *Journal of Humanitarian*

- Logistics and Supply Chain Management*, Vol. 9 No. 3, pp. 438-474, doi: [10.1108/JHLSCM-06-2018-0044](https://doi.org/10.1108/JHLSCM-06-2018-0044).
- Govindan, K., Khodaverdi, R. and Vafadarnikjoo, A. (2015), "Intuitionistic fuzzy based DEMATEL method for developing green practices and performances in a green supply chain", *Expert Systems with Applications*, Vol. 42 No. 20, pp. 7207-7220, doi: [10.1016/j.eswa.2015.04.030](https://doi.org/10.1016/j.eswa.2015.04.030).
- Ivanov, D., Dolgui, A. and Sokolov, B. (2019), "The impact of digital technology and Industry 4.0 on the ripple effect and supply chain risk analytics", *International Journal of Production Research*, Vol. 57 No. 3, pp. 829-846.
- Kaviani, M.A., Mobin, M. and Bottani, E. (2016), "Supply chain resilience assessment: a grey systems theory approach", *Proceedings of the International Conference on Industrial Engineering and Operations Management*, pp. 23-25.
- Khorasani, S.T. and Almasifard, M. (2018), "The development of a green supply chain dual-objective facility by considering different levels of uncertainty", *Journal of Industrial Engineering International*, Vol. 14 No. 3, pp. 593-602, doi: [10.1007/s40092-017-0245-3](https://doi.org/10.1007/s40092-017-0245-3).
- Kumar, A., Moktadir, A., Liman, Z.R., Gunasekaran, A., Hegemann, K. and Khan, S.A.R. (2020), "Evaluating sustainable drivers for social responsibility in the context of ready-made garments supply chain", *Journal of Cleaner Production*, Vol. 248, p. 119231, doi: [10.1016/j.jclepro.2019.119231](https://doi.org/10.1016/j.jclepro.2019.119231).
- Langroodi, R.R.P. and Amiri, M. (2016), "A system dynamics modeling approach for a multi-level, multi-product, multi-region supply chain under demand uncertainty", *Expert Systems with Applications*, Vol. 51, pp. 231-244, doi: [10.1016/j.eswa.2015.12.043](https://doi.org/10.1016/j.eswa.2015.12.043).
- Li, L.T., Mills, W.L., Gutierrez, A.M., Herman, L.I., Berger, D.H. and Naik, A.D. (2013), "A patient-centered early warning system to prevent readmission after colorectal surgery: a national consensus using the Delphi method", *Journal of the American College of Surgeons*, Vol. 216 No. 2, pp. 210-216.
- Lin, R.J. (2013), "Using fuzzy DEMATEL to evaluate the green supply chain management practices", *Journal of Cleaner Production*, Vol. 40, pp. 32-39, doi: [10.1016/j.jclepro.2011.06.010](https://doi.org/10.1016/j.jclepro.2011.06.010).
- Lin, K.P., Tseng, M.L. and Pai, P.F. (2018), "Sustainable supply chain management using approximate fuzzy DEMATEL method", *Resources, Conservation and Recycling*, Vol. 128, pp. 134-142, doi: [10.1016/j.resconrec.2016.11.017](https://doi.org/10.1016/j.resconrec.2016.11.017).
- Minegishi, S. and Thiel, D. (2000), "System dynamics modeling and simulation of a particular food supply chain", *Simulation Practice and Theory*, Vol. 8 No. 5, pp. 321-339, doi: [10.1016/S0926-4869\(00\)00026-4](https://doi.org/10.1016/S0926-4869(00)00026-4).
- Ogata, K. (1992), *System Dynamics*, Prentice-Hall, Englewood Cliffs, NJ, Vol. 1078 No. 7, doi: [10.1177/058310248001200605](https://doi.org/10.1177/058310248001200605).
- Özbayrak, M., Papadopoulou, T.C. and Akgun, M. (2007), "Systems dynamics modelling of a manufacturing supply chain system", *Simulation Modelling Practice and Theory*, Vol. 15 No. 10, pp. 1338-1355, doi: [10.1016/j.simpat.2007.09.007](https://doi.org/10.1016/j.simpat.2007.09.007).
- Palsule-Desai, O.D. (2013), "Supply chain coordination using revenue-dependent revenue sharing contracts", *Omega*, Vol. 41 No. 4, pp. 780-796, doi: [10.1016/j.omega.2012.10.001](https://doi.org/10.1016/j.omega.2012.10.001).
- Ponomarov, S.Y. and Holcomb, M.C. (2009), "Understanding the concept of supply chain resilience", *International Journal of Logistics Management*, Vol. 20 No. 1, pp. 124-139, doi: [10.1108/09574090910954873](https://doi.org/10.1108/09574090910954873).
- Rebs, T., Brandenburg, M. and Seuring, S. (2019), "System dynamics modeling for sustainable supply chain management: a literature review and systems thinking approach", *Journal of Cleaner Production*, Vol. 208, pp. 1265-1280, doi: [10.1016/j.jclepro.2018.10.100](https://doi.org/10.1016/j.jclepro.2018.10.100).
- Ryu, I., So, S. and Koo, C. (2009), "The role of partnership in supply chain performance", *Industrial Management and Data Systems*, Vol. 109 No. 4, pp. 496-514, doi: [10.1108/02635570910948632](https://doi.org/10.1108/02635570910948632).
- Scholten, K. and Schilder, S. (2015), "The role of collaboration in supply chain resilience", *Supply Chain Management: An International Journal*, Vol. 20 No. 4, pp. 471-484, doi: [10.1108/SCM-11-2014-0386](https://doi.org/10.1108/SCM-11-2014-0386).
- Tang, C.S. (2006), "Robust strategies for mitigating supply chain disruptions", *International Journal of Logistics Research and Applications*, Vol. 9 No. 1, pp. 33-45, doi: [10.1080/13675560500405584](https://doi.org/10.1080/13675560500405584).

- Wang, T.K., Zhang, Q., Chong, H.Y. and Wang, X. (2017), "Integrated supplier selection framework in a resilient construction supply chain: an approach via analytic hierarchy process (AHP) and grey relational analysis (GRA)", *Sustainability*, Vol. 9 No. 2, p. 289, doi: [10.3390/su9020289](https://doi.org/10.3390/su9020289).
- Wieland, A. and Wallenburg, C.M. (2013), "The influence of relational competencies on supply chain resilience: a relational view", *International Journal of Physical Distribution and Logistics Management*, Vol. 43 No. 4, pp. 300-320, doi: [10.1108/IJPDLM-08-2012-0243](https://doi.org/10.1108/IJPDLM-08-2012-0243).
- Zeng, S., Baležentis, T., Chen, J. and Luo, G. (2013), "A projection method for multiple attribute group decision making with intuitionistic fuzzy information", *Informatica*, Vol. 24 No. 3, pp. 485-503, doi: [10.1109/ccdc.2009.5191817](https://doi.org/10.1109/ccdc.2009.5191817).

Appendix 1

Primary questionnaires:

- (1) Background information of the respondent:
 - (a) Name:
 - (b) Name of the companies:
 - (c) Designation:
 - (d) Years of experience:
 - (e) Major job responsibilities:

The most relevant indicators of resilient PSC were identified with the help of literature resources are following

No	Performance indicators types	Yes/no	5: Highly important and 1: Very weakly important				
			1	2	3	4	5
1	Agility						
2	Flexibility						
3	Creating robust supply chain						
4	Redundancy						
5	Visibility						
6	IT capability/information sharing						
7	Collaboration						
8	Sustainability						
9	Supply chain risk orientation						
10	Velocity						
11	Adaptability						
12	SC network design						
13	Market position						
14	Security						
15	Risk control						
16	Public-private partnership						
17	Awareness						
18	Production capacity						
19	Available resources						

Table A1.
Most relevant
performance indicators
of resilient PSC

The most relevant indicators of resilient PSC were identified with the help of industrial experts using primary questionnaire are following

List of identified performance indicators	Code
Collaboration	PI ₁
SC risk orientation	PI ₂
SC network design	PI ₃
Robustness	PI ₄
Velocity	PI ₅
Sustainability	PI ₆
Flexibility	PI ₇
Information Sharing	PI ₈
Visibility	PI ₉
Adaptability	PI ₁₀
Available resources	PI ₁₁
Agility	PI ₁₂

Linguistic variables	Triangular fuzzy number
No influence (N)	(0, 0, 0.25)
Very Low influence (VL)	(0, 0.25, 0.50)
Low influence (L)	(0.25, 0.50, 0.75)
High influence (H)	(0.50, 0.75, 1.0)
Very high influence (VH)	(0.75, 1.0, 1.0)

Table A4.
Linguistic assessment
of performance
indicators

PI_1	PI_2	PI_3	PI_4	PI_5	PI_6
PI_1	(N,N,N,N,N)	(H,V,H,H,H,H)	(V,H,H,H,H,L)	(V,H,H,L,L,L)	(V,H,H,L,L,L)
PI_2	(H,H,V,H,H,H)	(N,N,N,N,N)	(H,H,H,H,H,L)	(L,L,L,L,L)	(H,H,H,H,H,H)
PI_3	(H,H,H,V,H,H)	(L,L,L,L,L)	(V,H,H,H,H,H)	(V,L,V,L,L,H,L)	(V,L,L,L,L,L)
PI_4	(V,H,V,H,H,V,H)	(H,L,L,H,H)	(N,N,N,N,N)	(N,N,V,L,V,L,V,L)	(L,H,H,H,L)
PI_5	(L,L,L,H,H)	(L,H,H,H,L)	(N,N,N,N,N)	(N,N,N,N,N)	(V,H,V,H,H,H,H)
PI_6	(V,L,V,L,L,L,L)	(V,L,L,L,L)	(V,L,V,L,V,L,V,L)	(L,L,L,L,L)	(N,N,N,N,N)
PI_7	(V,H,H,H,H,H)	(V,L,L,L,L)	(V,L,V,L,V,L,H)	(V,H,V,H,V,H,V,H)	(V,H,H,H,H,H)
PI_8	(V,H,H,V,H,V,H)	(V,L,V,L,V,L,L)	(V,L,V,L,V,L,L)	(N,V,L,L,L,H)	(V,H,V,H,H,H,H)
PI_9	(L,L,L,H,H)	(L,H,H,H,H)	(L,L,L,L,L)	(L,H,H,H,H)	(H,H,H,H,H)
PI_{10}	(V,H,V,H,V,H,V,H)	(L,L,L,L,L)	(V,L,V,L,V,L,L,L)	(L,L,L,L,L)	(V,H,V,H,H,H,H,H)
PI_{11}	(L,L,H,H,H)	(H,H,H,H,H)	(H,H,L,L,H)	(L,L,L,H,H)	(H,H,H,H,H)
PI_{12}	(H,H,L,L,L)	(L,L,L,H,H)	(L,L,H,H,H)	(L,L,L,L,H)	(L,H,H,L,L)
PI_7	PI_8	PI_9	PI_{10}	PI_{11}	PI_{12}
PI_1	(L,H,H,H,H)	(V,H,H,H,H,H)	(H,L,L,L,L)	(L,H,L,L,L)	(L,L,H,H,L)
PI_2	(L,H,L,L,L)	(L,H,H,H,L)	(V,H,H,V,H,V,H,V,H)	(H,L,L,L,L)	(V,H,V,H,H,H,H)
PI_3	(N,N,V,L,V,L,V,L)	(H,V,H,V,H,H,H)	(L,L,L,L,H)	(V,H,V,H,H,H,H)	(H,H,V,H,V,H,V,H)
PI_4	(V,L,V,L,V,L,L)	(V,L,V,L,V,L,L)	(V,L,L,L,L)	(V,L,V,L,L,H,H)	(V,L,V,L,L,L,H)
PI_5	(H,H,H,H,H)	(N,N,V,L,L,L)	(L,L,H,H,H)	(N,V,L,L,L,L)	(L,L,H,V,H,V,H)
PI_6	(L,L,L,L,L)	(L,H,H,H,H)	(L,L,L,H,H)	(H,L,L,L,H)	(V,H,V,H,V,H,H,H)
PI_7	(N,N,N,N,N)	(V,L,L,L,H)	(H,V,H,V,H,H,H)	(H,L,H,L,L)	(V,H,V,H,H,H,H)
PI_8	(V,H,H,H,H,H)	(N,N,N,N,N)	(L,L,L,L,L)	(H,H,H,L,L)	(V,L,V,H,V,H,V,H)
PI_9	(H,H,H,H,L)	(V,L,V,L,V,L,L)	(V,L,L,H,H,H)	(H,H,H,H,H)	(V,L,L,L,H,V,H)
PI_{10}	(L,L,L,H)	(L,L,L,H,H)	(N,N,N,N,N)	(N,V,L,V,L,L,L)	(V,L,V,L,L,L,L)
PI_{11}	(H,H,H,H,H)	(V,L,L,L,L)	(L,L,L,L,L)	(N,N,N,N,N)	(L,L,L,H,H)
PI_{12}	(L,L,L,L,L)	(V,L,V,L,L,L)	(V,L,V,L,L,V,L)	(V,L,V,L,V,L,L)	(N,N,N,N,N)

Table A5.
Linguistic assessment
by the five evaluators

Table A6.
The fuzzy initial direct
relation matrix
(average)

	PI ₁	PI ₂	PI ₃	PI ₄	PI ₅	PI ₆
PI ₁	(0, 0, 0.25)	(0.6, 0.85, 1)	(0.55, 0.8, 1)	(0.5, 0.75, 0.95)	(0.4, 0.65, 0.85)	(0.4, 0.65, 0.85)
PI ₂	(0.6, 0.85, 1)	(0, 0, 0.25)	(0.5, 0.75, 0.95)	(0.5, 0.75, 0.9)	(0.25, 0.5, 0.75)	(0.55, 0.8, 1)
PI ₃	(0.55, 0.8, 1)	(0.25, 0.5, 0.75)	(0, 0, 0.25)	(0.55, 0.8, 1)	(0.2, 0.45, 0.7)	(0.2, 0.45, 0.7)
PI ₄	(0.65, 0.9, 1)	(0.4, 0.65, 0.9)	(0.25, 0.5, 0.75)	(0, 0, 0.25)	(0, 0.15, 0.4)	(0.4, 0.65, 0.9)
PI ₅	(0.35, 0.6, 0.85)	(0.4, 0.65, 0.9)	(0.2, 0.45, 0.7)	(0.05, 0.3, 0.55)	(0, 0, 0.25)	(0.6, 0.85, 1)
PI ₆	(0.15, 0.4, 0.65)	(0.35, 0.6, 0.85)	(0, 0.2, 0.45)	(0.05, 0.2, 0.45)	(0.25, 0.5, 0.75)	(0, 0, 0.25)
PI ₇	(0.55, 0.8, 1)	(0.6, 0.85, 1)	(0.2, 0.45, 0.7)	(0.15, 0.4, 0.65)	(0.75, 1, 1)	(0.55, 0.8, 1)
PI ₈	(0.7, 0.95, 1)	(0.5, 0.75, 0.9)	(0.05, 0.3, 0.55)	(0.2, 0.45, 0.7)	(0.2, 0.4, 0.65)	(0.65, 0.9, 1)
PI ₉	(0.35, 0.6, 0.85)	(0.45, 0.7, 0.95)	(0.4, 0.65, 0.9)	(0.25, 0.5, 0.75)	(0.45, 0.7, 0.95)	(0.55, 0.8, 1)
PI ₁₀	(0.75, 1, 1)	(0.55, 0.8, 1)	(0.25, 0.5, 0.75)	(0.1, 0.35, 0.6)	(0.25, 0.5, 0.75)	(0.6, 0.85, 1)
PI ₁₁	(0.4, 0.65, 0.9)	(0.4, 0.65, 0.9)	(0.45, 0.7, 0.95)	(0.4, 0.65, 0.9)	(0.4, 0.655, 0.9)	(0.5, 0.75, 1)
PI ₁₂	(0.35, 0.6, 0.85)	(0.35, 0.6, 0.85)	(0.45, 0.7, 0.95)	(0.4, 0.65, 0.95)	(0.3, 0.55, 0.85)	(0.35, 0.6, 0.85)

	PI ₇	PI ₈	PI ₉	PI ₁₀	PI ₁₁	PI ₁₂
PI ₁	(0.45, 0.7, 0.95)	(0.55, 0.8, 1)	(0.4, 0.65, 0.85)	(0.3, 0.55, 0.8)	(0.3, 0.55, 0.8)	(0.35, 0.6, 0.85)
PI ₂	(0.3, 0.55, 0.8)	(0.4, 0.65, 0.9)	(0.6, 0.85, 1)	(0.7, 0.95, 1)	(0.3, 0.55, 0.8)	(0.6, 0.85, 1)
PI ₃	(0, 0.15, 0.4)	(0.6, 0.85, 1)	(0.5, 0.75, 1)	(0.3, 0.55, 0.8)	(0.6, 0.85, 1)	(0.65, 0.9, 1)
PI ₄	(0.1, 0.35, 0.6)	(0.35, 0.6, 0.85)	(0.05, 0.3, 0.55)	(0.2, 0.45, 0.7)	(0.25, 0.5, 0.75)	(0.2, 0.45, 0.7)
PI ₅	(0.5, 0.75, 1)	(0.1, 0.3, 0.55)	(0.3, 0.55, 0.8)	(0, 4, 0.65, 0.9)	(0.15, 0.35, 0.6)	(0.5, 0.75, 0.9)
PI ₆	(0.25, 0.5, 0.75)	(0.05, 0.3, 0.55)	(0.45, 0.7, 0.95)	(0.35, 0.6, 0.85)	(0.4, 0.65, 0.9)	(0.65, 0.9, 1)
PI ₇	(0, 0, 0.25)	(0.25, 0.5, 0.75)	(0.25, 0.5, 0.75)	(0.6, 0.85, 1)	(0.35, 0.6, 0.85)	(0.6, 0.85, 1)
PI ₈	(0.55, 0.8, 1)	(0, 0, 0.25)	(0.7, 0.95, 1)	(0.25, 0.5, 0.75)	(0.4, 0.65, 0.9)	(0.65, 0.9, 1)
PI ₉	(0.45, 0.7, 0.95)	(0.05, 0.3, 0.55)	(0, 0, 0.25)	(0.35, 0.6, 0.85)	(0.5, 0.75, 1)	(0.35, 0.6, 0.8)
PI ₁₀	(0.3, 0.55, 0.8)	(0.35, 0.6, 0.85)	(0.35, 0.6, 0.85)	(0, 0, 0.25)	(0.1, 0.3, 0.55)	(0.15, 0.4, 0.65)
PI ₁₁	(0.5, 0.75, 1)	(0.25, 0.6, 0.85)	(0.35, 0.25, 0.5)	(0.25, 0.5, 0.75)	(0, 0, 0.25)	(0.35, 0.6, 0.85)
PI ₁₂	(0.25, 0.5, 0.75)	(0.3, 0.55, 0.8)	(0.15, 0.4, 0.65)	(0.1, 0.35, 0.6)	(0.1, 0.35, 0.6)	(0, 0, 0.25)

	PI ₁	PI ₂	PI ₃	PI ₄	PI ₅	PI ₆	PI ₇	PI ₈	PI ₉	PI ₁₀	PI ₁₁	PI ₁₂	Modeling performance indicators
PI ₁	0.601	0.657	0.561	0.542	0.549	0.665	0.568	0.546	0.605	0.569	0.542	0.646	
PI ₂	0.710	0.599	0.578	0.562	0.557	0.705	0.575	0.552	0.647	0.627	0.562	0.692	
PI ₃	0.646	0.592	0.456	0.523	0.502	0.612	0.489	0.524	0.584	0.537	0.541	0.637	
PI ₄	0.563	0.519	0.433	0.371	0.401	0.539	0.430	0.431	0.460	0.451	0.435	0.508	
PI ₅	0.574	0.557	0.459	0.431	0.418	0.598	0.502	0.431	0.518	0.506	0.453	0.575	
PI ₆	0.514	0.513	0.405	0.392	0.436	0.474	0.446	0.397	0.496	0.466	0.447	0.548	
PI ₇	0.679	0.658	0.529	0.508	0.585	0.681	0.500	0.516	0.592	0.598	0.544	0.668	
PI ₈	0.691	0.648	0.515	0.514	0.530	0.689	0.579	0.464	0.633	0.564	0.551	0.672	
PI ₉	0.618	0.603	0.514	0.486	0.523	0.637	0.533	0.465	0.502	0.539	0.526	0.603	
PI ₁₀	0.634	0.592	0.482	0.454	0.485	0.620	0.501	0.477	0.544	0.459	0.466	0.564	
PI ₁₁	0.631	0.606	0.525	0.506	0.524	0.641	0.544	0.490	0.569	0.535	0.458	0.612	
PI ₁₂	0.553	0.531	0.466	0.450	0.453	0.552	0.459	0.424	0.498	0.458	0.436	0.479	

Table A7.
Total relation matrix

Corresponding author
Chitra Lekha Karmaker can be contacted at: k.chitroleka@just.edu.bd