

Morgan, Marc; de Souza, Pedro Herculano Guimarães Ferreira

**Working Paper**

## Distribution in late development: The political economy of the Kuznets curse in Brazil

WIDER Working Paper, No. 2025/2

**Provided in Cooperation with:**

United Nations University (UNU), World Institute for Development Economics Research (WIDER)

*Suggested Citation:* Morgan, Marc; de Souza, Pedro Herculano Guimarães Ferreira (2025) : Distribution in late development: The political economy of the Kuznets curse in Brazil, WIDER Working Paper, No. 2025/2, ISBN 978-92-9267-559-2, The United Nations University World Institute for Development Economics Research (UNU-WIDER), Helsinki, <https://doi.org/10.35188/UNU-WIDER/2025/559-2>

This Version is available at:

<https://hdl.handle.net/10419/311732>

**Standard-Nutzungsbedingungen:**

Die Dokumente auf EconStor dürfen zu eigenen wissenschaftlichen Zwecken und zum Privatgebrauch gespeichert und kopiert werden.

Sie dürfen die Dokumente nicht für öffentliche oder kommerzielle Zwecke vervielfältigen, öffentlich ausstellen, öffentlich zugänglich machen, vertreiben oder anderweitig nutzen.

Sofern die Verfasser die Dokumente unter Open-Content-Lizenzen (insbesondere CC-Lizenzen) zur Verfügung gestellt haben sollten, gelten abweichend von diesen Nutzungsbedingungen die in der dort genannten Lizenz gewährten Nutzungsrechte.

**Terms of use:**

*Documents in EconStor may be saved and copied for your personal and scholarly purposes.*

*You are not to copy documents for public or commercial purposes, to exhibit the documents publicly, to make them publicly available on the internet, or to distribute or otherwise use the documents in public.*

*If the documents have been made available under an Open Content Licence (especially Creative Commons Licences), you may exercise further usage rights as specified in the indicated licence.*

WIDER Working Paper 2025/2

## **Distribution in late development**

The political economy of the Kuznets curse in Brazil

Marc Morgan<sup>1</sup> and Pedro Souza<sup>2</sup>

February 2025

**Abstract:** This paper proposes a novel assessment of the Kuznets curve for an underdeveloped country engaging in rapid late development. We mobilize new long-run data for Brazil, combining surveys, administrative records, and national accounts statistics, to compute macro-consistent income shares and other distributional indicators since the 1920s. Our estimates show a more nuanced picture for the traditional Kuznets hypothesis than what the existing literature has suggested. The major complication for the standard narrative lies in the period roughly between 1950 and 1964, for which existing estimates are either too infrequent, not disaggregated enough, or incomplete to be able to offer a coherent analysis. Given the political and institutional changes that followed, we argue that this period holds the key to what we term the *Kuznets curse*—the tendency in late-developing countries, according to Kuznets, for endogenous social conflicts linked to rapid structural change to be resolved by authoritarian regimes that ensure adherence to the high-savers accumulation model. We explain the political economy of the Kuznets curse through a narrative approach that combines structuralist development economics with a neorealist approach to institutional change, making use of public discourses and debates among policy-makers and intellectual elites.

**Key words:** distribution, late development, political economy, Kuznets, Brazil

**JEL classification:** D31, D33, E64, J31, N36, O1

**Acknowledgements:** We thank Kunal Sen, Ravi Kanbur, Andy Sumner, and other organisers and participants of the UNU-WIDER symposium 'Kuznets at 70 - Inequality and Structural Transformation' for critical feedback on this draft. For numerous helpful discussions on long-run Brazilian inequality, we thank Facundo Alvaredo, Marcelo Medeiros, Thomas Piketty, Rodrigo Orais, Sérgio Gobetti, Fernando Gaiger, Sergei Soares, as well as other researchers at IPEA and the World Inequality Lab. We also thank Javier Rodriguez Weber, Luis Bértola, Pablo Astorga, and other seminar participants at the CLADHE VI Conference at the Universidad de Santiago in Chile, as well as participants at the XVI AISPE Conference at the University of Bologna, for helpful comments on previous versions. We gratefully acknowledge funding for the early background research of this work from the *Fundación Ramón Areces*, and from the funding partners of the World Inequality Lab (the ERC, Ford Foundation, and INET) and from IPEA.

---

<sup>1</sup> Department of History, Economics and Society, University of Geneva; Paul Bairoch Institute of Economic History, University of Geneva; World Inequality Lab, Paris School of Economics; [marc.morgan@unige.ch](mailto:marc.morgan@unige.ch); <sup>2</sup> Instituto de Pesquisa Econômica Aplicada (IPEA), Brasília; Instituto de Estudos Sociais e Políticos (IESP-UERJ), Rio de Janeiro; [pedro.ferreira@ipea.gov.br](mailto:pedro.ferreira@ipea.gov.br)

This study is published within the UNU-WIDER project [Inequality and structural transformation – Kuznets at 70](#), which is part of the [Reducing inequalities across and within countries research area](#).

Copyright © UNU-WIDER 2025

UNU-WIDER employs a fair use policy for reasonable reproduction of UNU-WIDER copyrighted content—such as the reproduction of a table or a figure, and/or text not exceeding 400 words—with due acknowledgement of the original source, without requiring explicit permission from the copyright holder.

Information and requests: [publications@wider.unu.edu](mailto:publications@wider.unu.edu)

ISSN 1798-7237 ISBN 978-92-9267-559-2

<https://doi.org/10.35188/UNU-WIDER/2025/559-2>

Typescript prepared by Siméon Rapin.

United Nations University World Institute for Development Economics Research provides economic analysis and policy advice with the aim of promoting sustainable and equitable development. The Institute began operations in 1985 in Helsinki, Finland, as the first research and training centre of the United Nations University. Today it is a unique blend of think tank, research institute, and UN agency—providing a range of services from policy advice to governments as well as freely available original research.

The Institute is funded through income from an endowment fund with additional contributions to its work programme from Finland and Sweden, as well as earmarked contributions for specific projects from a variety of donors.

Katajanokanlaituri 6 B, 00160 Helsinki, Finland

The views expressed in this paper are those of the author(s), and do not necessarily reflect the views of the Institute or the United Nations University, nor the programme/project donors.

## 1 Introduction

‘Does inequality in the distribution of income increase or decrease in the course of a country’s economic growth?’ This was the question that occupied Simon Kuznets in his famous article ‘Economic Growth and Income Inequality’ (Kuznets 1955: 1). What became known as the ‘Kuznets curve’ was a crude interpretation of the author’s partial answer to his question: as a country undergoes economic development (structural transformation through industrialization to improve average standards of living), the inequality of income between residents will first increase, before eventually decreasing in an inverted-U shape form. Kuznets deduced this profile from the empirical time-series estimates available for the developed economies of his time, principally the United States, but also Britain and other advanced nations. Despite this curve originating from developed country data, it has permeated subsequent scholarship on underdeveloped economies, albeit with heterogeneous results (Alisjahbana et al. 2022).<sup>1</sup>

We argue that the Kuznets curve as commonly understood misrepresents the challenge facing underdeveloped economies regarding growth and distribution. Their being *under*-developed at any point in time vis-à-vis the advanced economies means that they will be *late*-developers. Kuznets was well aware of the particularly distinct challenge that this simple difference created. Yet it has not received the same attention as his developed-country curve. It is this overlooked side of Kuznets’s argument that we address in this paper.

The fundamental premise guiding Kuznets’s inquiry into the importance of income inequality data was that ‘... living members of society – as producers, consumers, savers, decision-makers on secular problems – react to long-term changes in income levels and shares...’ (Kuznets 1955: 2). And if these reactions are connected to ‘important components of the growth process’ - such as biological reproduction, urban migration, saving and investment out of income, domestic versus foreign consumption, and public intervention in the production process - then the link between growth and inequality is substantiated (Kuznets 1955: 19). Swings in these components would then be essential to explain the general growth-distribution dynamic. Crucially, the concavity of Kuznets’s curve only kicks in with legal and political interventions limiting the concentration of savings and property among a stable group of wealthy individuals. Kuznets refers to taxation, inflation and different forms of government price controls and market interventions. He notes:

---

<sup>1</sup> Kuznets himself attempted to integrate the ‘scanty’ evidence that existed for less developed countries into the analysis, but could only do so with point estimates for India in 1949-50, Ceylon (present day Sri Lanka) in 1950 and Puerto Rico in 1948. Thus, only inferences on the basis of differences in levels with the developed countries could be offered. See Kuznets (1955: 20–21).

‘All these interventions, even when not directly aimed at limiting the effects of accumulation of past savings in the hands of the few, do reflect the view of society on the long-term utility of wide income inequalities. This view is a vital force that would operate in democratic societies even if there were no other counteracting factors. This should be borne in mind in connection with *changes* in this view even in developed countries, which result from the process of growth and constitute a re-evaluation of the need for income inequalities as a source of savings for economic growth. The result of such changes would be an increasing pressure of legal and political decisions on upper-income shares – increasing as a country moves to higher economic levels.’ (Kuznets 1955: 9)

In underdeveloped countries the context is very different due the fact that they are developing ‘late’ compared to their developed-country peers. Kuznets emphasises that these countries lack ample ‘middle’ classes, given the ‘sharp contrast between the preponderant proportion of population whose average income is well below the generally low countrywide average, and a small top group with a very large relative income excess’ (Kuznets 1955: 22). Therefore, distinct conditions are at work in these countries. Kuznets notes two:

- C1 Wider inequality exists at lower levels of average income per capita. This implies two things. First, similar proportional deviations from the average are more painful (materially and psychologically) in underdeveloped countries. Second, given that savings are only possible at much higher relative income levels in underdeveloped countries, the increasing share of savings and capital formation needed for development would tend to increase inequality more as income from the newly created assets would flow to the top of the distribution.
- C2 Wider inequality coexists with a low rate of income per capita growth across generations. This implies that there is less hope for improvement. ‘It was this hope that served as an important and realistic compensation for the wide inequality in income distribution that characterized the presently developed countries during the earlier phases of their growth.’ (Kuznets 1955: 24)

These conditions imply that the stakes are higher in less developing countries for development to succeed. This makes Kuznets pose three key questions on the fate of peripheral countries developing late, which make up what we call the *Kuznets curse*.

- Q1 ‘Is the pattern of the older developed countries likely to be repeated in the sense that in the early phases of industrialization in the underdeveloped countries income inequalities will tend to widen before the leveling forces become strong enough first to stabilize and then reduce income inequalities?’ (Kuznets 1955: 24)

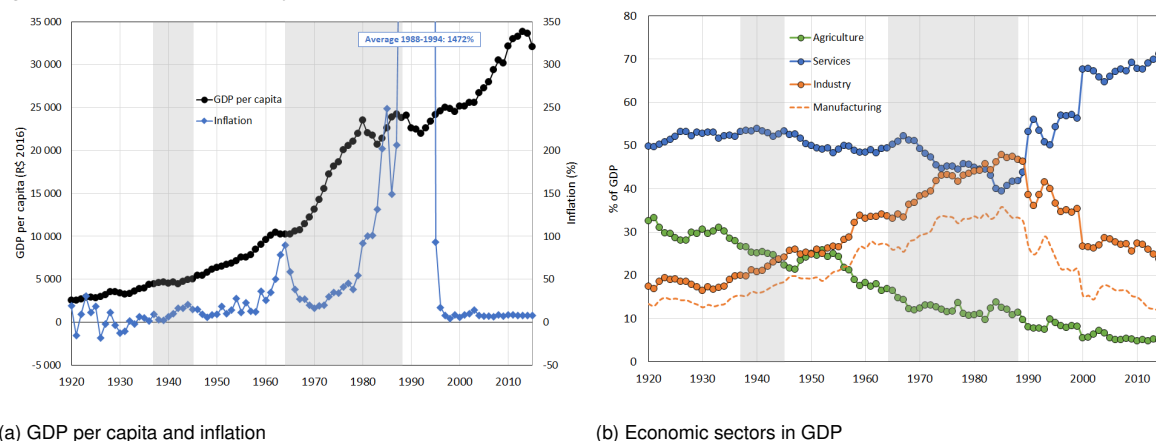
Q2 ‘Can the political framework of the underdeveloped societies withstand the strain which further widening of income inequality is likely to generate?’ (Kuznets 1955: 25)

Q3 ‘How can either the institutional and political framework of the underdeveloped societies or the processes of economic growth and industrialization be modified to favor a sustained rise to higher levels of economic performance and yet avoid the fatally simple remedy of an authoritarian regime that would use the population as cannon-fodder in the fight for economic achievement?’ (ibid)

Here Kuznets is digging at the core of political economy applied to rapid economic development. Looking to the history of developed economies for guidance is unhelpful precisely because of their different conditions at the outset of their industrialization. These countries had relatively higher average income levels and took considerably longer to reduce inequalities than what 20<sup>th</sup> century standards came to expect, often after multiple centuries during which they developed without the constraints of imposed foreign rule (Lindert 1986; Alfani 2024). ‘And yet the stresses of the dislocations incident to early phases of industrialization in the developed countries were sufficiently acute to strain the political and social fabric of society, force major political reforms, and sometimes result in civil war’ (Kuznets 1955: 25). Kuznets recognizes this fallacy of historical analogy when writing: ‘There is danger in simple analogies; in arguing that because an unequal income distribution in Western Europe in the past led to accumulation of savings and financing of basic capital formation, the preservation or accentuation of present income inequalities in the underdeveloped countries is necessary to secure the same result’ (p. 26).

In this paper we use Brazilian economic history as a laboratory to address the Kuznets curse, that is, to examine the connection between the inevitable distributional pressures that arise during late-development and endogenous political change. Brazil is an interesting case study for numerous reasons. First, the context is one of a large land and labour-abundant peripheral country, engaged in late capitalist development, at least from the 1930s. This brings forth qualitatively and quantitatively distinct challenges, compared to those experienced by the advanced ‘center’ of the world economy, as we already alluded to. Moreover, Brazil’s early development is contemporary to the important writings of Kuznets, whose analyses were products of that time and thus highly salient to the case study, as evidence by the significant variation in Brazil’s economic growth and structural transformation in Figures 1a and 1b. Second, Brazil forms part of a region historically characterized by high levels of inequality that has been amply investigated in the literature (see section 2 for a summary).

Figure 1: Macroeconomic dynamics in Brazil, 1920–2015



Note: inflation refers to the annual price change as given by the GDP deflator. Shaded areas highlight periods of dictatorship. Agriculture includes forestry, hunting, and fishing, as well as cultivation of crops and livestock production. Industry includes mineral extraction, manufacturing, construction and public utilities (electricity, water, gas, sewage, waste). Services include wholesale and retail trade, transport, government administration, finance, insurance and real estate services, and personal services.

Source: authors' calculations using data from IBGE (2006, 2017b).

We estimate new income inequality indicators, consistent with distributional national accounts (WIL 2020). The advantage of this framework is that it distributes the full national income of the country (including retained corporate profits), which better equips us to address questions about economic power in society. We combine harmonized household survey data, income tax tabulations and national accounts data to compute income shares for the full adult population and all income flows from 1976 and for top income groups since 1926. Complementing the inter-personal income distribution we also estimate new series of capital and labour shares and other distributional indicators associated to wages. Resulting estimates show a more nuanced picture for the traditional Kuznets hypothesis than what the literature has suggested based almost exclusively on social-tables and household surveys, which tend to underestimate incomes of richer households. Our estimates, in contrast, more accurately account for upper incomes through the integration of tax and national accounts data in the computation of top income shares.

The major complication for the standard narrative lies in the period roughly between 1950 and 1964, for which existing estimates are either too infrequent, not dis-aggregated enough, or incomplete to be able to offer a coherent analysis. This period is critical as it is generally associated to the end of an era that begins with re-democratization and developmentalist policy, after Gétúlio Vargas' authoritarian *Estado Novo* regime, and ends with the military coup of April 1964 on the Labour presidency of João Goulart and subsequent dictatorship. It is also the period with some of the largest political and institutional shifts in the country's modern history, accompanying declining inequality metrics and strong growth and structural change. We argue that this period holds the key to the Kuznets curse, and that later periods postponed the challenges that stakeholders from this earlier period were grappling with.

We complement our quantitative analysis with a qualitative analysis centered on discourses and debates among policymakers and economists on what was termed '*a questão social*' ('the social question'). This sheds light on the distributional challenges of late-development among competing interest groups, or 'social blocs' in the neorealist theory of institutional change (Amable and Palombarini 2009, 2023). Interventions on inclusive growth differed in their approach to the consumption-investment trade-off and inflation constraint—endemic in less developed economies—depending on whether their implicit theory assumed wage-earners or capital-owners to be the drivers of growth and price instability. Or, to use the terminology of Post-Keynesian macroeconomics, depending on whether the economy was thought to be 'wage-led' or 'profit-led' (Nikiforos 2016). In the Brazilian context, this translated into debates over the degree of economic stagnation in the 1960s and its links to income inequality (Furtado 1969; Serra and Tavares 1971), as well as controversies over what caused the rise in inequality over the same decade (Bacha and Taylor 1978; Andrada and Boianovsky 2020).

The remainder of this paper is structured as follows. Section 2 reviews the related literature. Section 3 explains the concepts, data and methods we use for our analysis. Section 4 follows with a reexamination of Kuznets swings in light of our inequality estimates. Section 5 discusses the political economy of the Kuznets curve in Brazil by applying the theoretical framework described in section 3. Section 6 concludes.

## 2 Related literature

The questions posed by Simon Kuznets in his 1955 Presidential Address to the American Economics Association imply a logic that turns his well known hypothesis into a lesser explored curve for late-developing countries trying to industrialize. The scale, speed, and direction of change required in these type of countries result in significant distributional pressures 'that may necessitate drastic changes in social and political organization' (Kuznets 1955: 25). A similar point was reached by Brazilian economist Celso Furtado in his dialectic approach to economic development (Furtado 1964), an approach broadly shared within the structuralist tradition of economic thought. With development being a process of social change set off in motion by technical innovations, a chain of cumulative pressures are unleashed on the productive mode, the social structure and the local culture for them to change in an accommodating manner.

It is for these reasons that, according to development economist Albert Hirschman, 'highly segmented societies will or should eschew strategies of development that are politically feasible elsewhere because of the availability of the tunnel effect'—the temporary tolerance of inequality based on expected future mobility given current mobility of their peers. In these societies standard capitalist development may well 'require' a higher degree of coercion and more cen-



tralized economic planning, which are themselves prone to diminish the tolerance for income disparities, a point that echoes the Kuznets curse (Hirschman and Rothschild 1973: 554).

Our work also speaks to the historical institutionalism literature on economic ideas and conventions. Ideas about *how* a society can accumulate and progress materially get transmitted into institutions that coordinate expectations about the future to ensure economic and social stability (Blyth 2002). Given radical uncertainty about the future, economic agents must rely on certain rules of thumb, which in the theory of John Maynard Keynes, are about ‘*conventional judgment*’ (Keynes 1936: p.214).<sup>2</sup> Conventions in this sense ‘are the shared ideas about how the economy *should* work’ (Blyth 2002: 43). It is these shared ideas that underpin the balance between institutional stability and instability over the long run. Ideas help to construct institutions, which once in place reinforce the ideas that built them through conventions or ‘national narratives’ (ibid). This then gets translated into competitive politics among dominant and dominated interests that either sustain or challenge these institutions with distinct ideologies (Amable and Palombarini 2009, 2023). Different social actors try to impose their understanding of this complex phenomenon through various outlets, but a key point is that knowledge is conflictual and is remedied by expressions of power that interact with empirical ‘facts’ and narratives.

The most influential convention regarding economic development is to direct income to individuals with the highest saving propensities, which are those with the highest incomes, as capital accumulation is thought to be directly sourced from individual saving. Keynesian macroeconomics significantly refined this observation by noting that a surplus can either become a leakage or a re-insertion into the circular flow of income, and that future savings are determined by current re-insertions in the form of investment. The historical legitimacy of such a system depends precisely on capital owners contributing enough of their politically-determined surplus to develop society’s productive forces (Keynes 1919, 1936). While market compulsions may suffice to bring the necessary investment about, endogenous pressures induce necessary transformations in institutional structures for continuous economic development. Indeed, the distribution of income, as Keynes recognized, is psychologically embedded in prevalent institutions.<sup>3</sup>

Kuznets arrives at the same conclusion when stating that public interventions ‘even when not directly aimed at limiting the effects of accumulation of past savings in the hands of the few, do reflect the view of society on the long-term utility of wide income inequalities.’ Specifically,

---

<sup>2</sup> In chapter 12 of his *General Theory*, Keynes’ propositions about ‘animal spirits’ and ‘beauty contests’ depend upon conformed beliefs ‘with the majority or average.’

<sup>3</sup> In the case of the pre-War European order, their persistence relied on ‘unstable psychological conditions’—an accepting labouring class, docile out of persuasion, convention and authority; and a deferring capitalist, motivated by virtue, the immediate power and posterior prestige of investment, and the pleasures of security and anticipation (Keynes 1919: 13).

'changes in this view...constitute a re-evaluation of the need for income inequalities as a source of savings for economic growth' (Kuznets 1955: 9). Arthur Lewis also believed in this mechanism. In his famous 1954 article 'Economic Development with Unlimited Supplies of Labour' he remarked that '[t]he central fact of economic development is that the distribution of incomes is altered in favour of the saving class', which practically speaking are 'people who receive profits or rents' (Lewis 1954: 157). Fundamentally, '[t]he reason why savings are low in an undeveloped economy relatively to national income is not that the people are poor, but that capitalist profits are low relatively to national income. As the capitalist sector expands, profits grow relatively, and an increasing proportion of national income is re-invested' (Lewis 1954: 190). If structural change is premised on capital accumulation in modern high-productivity sectors, then a rise in the profit share of national income should positively correlate with output growth. In the terminology of the distribution-led growth literature in Post-Keynesian macroeconomics, this implies that late-developing economies will be 'profit-led' (Marglin and Bhaduri 1990; Taylor 2004; Nikiforos 2016).

We also contribute to the scholarship on economic inequality in Latin America. An influential strand of this literature tended to ascribe its high levels to its colonial institutions (Engerman and Sokoloff 2012), until Williamson (2015) revisited the evidence to argue for a missed 20<sup>th</sup> century leveling that swept the developed world, following the legal and political interventions that Kuznets specified. The literature has converged in pinpointing the blame on the the military dictatorships that emerged in many countries between the 1960s and 1980s, Brazil included (Frankema 2010; Arroyo Abad and Astorga 2017; Bértola and Williamson 2017; Gómez León 2021; Firpo et al. 2022; Astorga 2024), which among other things prevented the expansion of the middle class (Gómez León 2019).

The failure of Latin American countries to equalize during this period has not prevented a part of the literature from estimating a Kuznets curve in the long history of Brazilian growth and inequality. For example, Gómez León (2021), in combining Gini estimates from social tables for 1850 to 1950 and from household surveys for 1960 to 2010, is the most explicit reference. The estimates seem to depict a Kuznets curve over the threshold years 1920, 1990, and 2010, with the author claiming economic and political forces drove both the upswings (1920–1990) and the downswings (1990–2010). A similar profile is found by Astorga (2024) using dynamic social tables. A weakness of this literature is that surveys tend to underestimate incomes of richer households.<sup>4</sup>

---

<sup>4</sup> Arroyo Abad and Astorga (2017) and Astorga (2024) partially get around this limitation by interpreting the residual between national income from macroeconomic statistics and occupational earnings of the bottom and middle groups from social tables as property income, and assigning it to the highest income group (employers and professionals).

A long list of studies have used household surveys over the years to analyse different dimensions of economic inequality in Brazil. A much more reduced set of studies have used income tax data for the same intentions. This paper is not the first to use tax records to study inequality (see Mortara (1949b, 1949a); Langoni (1973); Medeiros et al. (2015a, 2015b); Morgan (2015, 2017, 2018); Souza (2016, 2018)), nor is it the very first to seek a combination with survey data (see Morgan (2017, 2018); Souza (2018); Medeiros et al. (2015b, 2018)). More recently, De Rosa et al. (2024) have produced similar estimates for Brazil in a regional analysis of Latin American growth and inequality covering ten countries. Our contribution in this paper is to provide a more detailed view on total income inequality across multiple data sources solely for Brazil, and over a longer time horizon, using concepts consistent with the country's macroeconomic accounts to address developmental concerns that were raised by Kuznets and echoed by other scholars.

### 3 Methodology

In order to map out the coevolution of economic distribution and development for a country like Brazil we need to align various types of indicators. Figures 1a and 1b already present us with standard macroeconomic development metrics. What we want is to observe a distribution of the closest related concept. This section explains how we do so in the first three subsections. The final subsection outlines the theoretical framework we employ to give a sense to the empirical trends.

#### 3.1 Income concepts: from GDP to individual national income

Following Kuznets (1955), our variables of interest are flow variables and are expressed at the geographic unit of an entire country. The former implies that the indicators of economic development and distribution must relate to income changes, while the latter implies that income ought to be distributed among the national residents of the country. How to distribute income among national residents, and how does this relate to macroeconomic concepts of development, as summarized in Figures 1a and 1b, are the guiding questions here.

The distribution we estimate is the national income distribution for Brazil. Using publicly available data sources described in section 3.2, we want to represent the distribution of income of all national *residents*. Like most empirical research, our conceptual reach is limited by the available sources to decompose an economic aggregate. The appropriate aggregate for this is the country's national income as reported in the system of national accounts (SNA), which is the final balance of incomes available to residents. Contrary to Gross Domestic Product (GDP), it net outs all income flows repatriated abroad to foreign owners of assets in Brazil and flows repatriated home from Brazilian owners of assets abroad, as well as deducting consumption

of fixed capital for depreciation of property, which is not income for residents. Thus national income is closer to what individuals see on their wage slips and on their profit statements, and hence what they are liable to report to surveyors and tax collectors, than GDP.

What we want to distribute then is national income among residents that participate in the economy as primary producers, earners and consumers.<sup>5</sup> As we are interested in who gets the proceeds from production before tax (either directly from employment or investment, or indirectly from social security), we divide up national income among residents we see participating in employment and investment markets, or benefiting from the social security system (mainly pensioners) in the data. These are predominantly adults, so we take the adult population (aged 20 and over) as our population denominator alongside our income denominator of national income. Our distribution measures (pre-tax) national income at the unit of the adult individual. Figure A1 in Appendix A graphs the evolution of our chosen aggregate—national income per adult—alongside those of GDP per capita and GDP per adult for comparative purposes, all expressed in constant local currency since 1920. Due to high birth rates, growth rates for the per adult series are higher than the per capita series, and due to the smaller population denominator their levels are also greater.

This approach follows the framework of ‘distributional national accounts’ (WIL 2020), which as the name indicates seeks to distribute income reported in the official macroeconomic accounts of a country beyond its institutional sector division (households, corporations, government) and among its resident households. In practice this involves distributing the household aggregate among individuals in that sector, and also allocating the primary income (pre-tax) generated in the corporate and government sectors to these resident individuals. This has the advantage, for example, of accounting for retained profits in corporations as income allocated to their owners, which is an important component of structural economic power in the society, as it ultimately relates to property ownership and concentration of private investment.<sup>6</sup> Doing so allows us to bridge micro and macro income concepts and thus analytically reconcile traditional inequality indicators with growth and development indicators in line with Kuznets’s original ideas (Kuznets 1953). The focus on who gets the proceeds of production means we can track who ultimately benefits from growth and development in the population.

---

<sup>5</sup> Recall that GDP or national income can be equivalently measured by summing the gross value added (revenues minus costs) of all sectors in the economy, by summing all the primary income received – wages, rents, interests, dividends, retained profits – or by summing all the expenditures on goods and services in the country.

<sup>6</sup> The primary income of the government sector is simply scaled proportionally to the income distribution so as to fully normalize the distribution to the national income aggregate. This, by definition, has no impact on the resulting income shares.

### 3.2 Data sources

To construct the indicators we need to assess Kuznets curve and curse, we exploit three main data sources: federal personal income tax declarations, household survey data, and the national accounts. A key ingredient in our estimation is the federal income tax, which was created in 1922. The Brazilian Tax Agency has never granted access to income tax microdata to third-party researchers, but fortunately there are numerous publicly available tabulations for federal personal income tax declarations (DIRPF) from 1926 onwards. We rely on these tabulations, which mostly come from official reports by the national statistics institute (IBGE) in the years up to 1960 and by the tax authority itself after 1960. For some individual years, when data from ‘official’ sources were not available, we exploit tabulations used by independent authors in books or research papers (see Table A.1 in the Online Appendix). In total we use tax data for 72 years over the 1926–2015 period.

A complex feature of the tax statistics is that for numerous years they present tabulations for distinct income concepts to the total ‘fiscal income’ concept that we are interested in. Not only does the concept of reported income change across years, but so does the concept of the ranking income across brackets and the geographical coverage of the tabulation. We explain how we get around these issues in Online Appendix A.5. Another feature of the tax statistics is that the tax unit is defined by law to be either married couples or individuals, with joint-filing being voluntary. Thus, if we assume all declarations are made by individual filers we would over-estimate inequality levels and may distort trends as the demographic structure of the filing population changes over time (as joint filing was more common in earlier decades). We opt to use the information available on the share of single declarations per bracket to split income equally between the spouses in a couple that declare their income together. Further details of this procedure are explained in Online Appendix A.5.

The survey data corresponds to the microfiles of the *Pesquisa Nacional por Amostra de Domicílios* (PNAD), a large multi-purpose nationally representative survey run by the national statistics institute (IBGE). For our income analysis we use the individual-level microfiles available between 1976 and 2015, which we extract directly from the IBGE website.<sup>7</sup> The number of income variables rose over time from 8 in 1976 to 14 from 1992 onwards, but covers all types of incomes liable to be declared as ‘fiscal income’ on tax returns. However, as is common with surveys everywhere, the PNAD underestimates top incomes, especially business and investment incomes (Hoffmann 1988; Souza 2015; Morgan 2017), but it is otherwise known for being a high quality dataset. It has been the IBGE’s flagship household survey for decades and the major source of income data for research on poverty and inequality.

---

<sup>7</sup> <https://www.ibge.gov.br/estatisticas-novoportal/sociais/populacao/9127-pesquisa-nacional-por-amostra-de-domicilios.html?=&t=downloads>.

The survey was conducted annually, except in Census years (1980, 1991, 2000 and 2010) and in 1994 (due to budget cuts).<sup>8</sup> The data are nationally representative from 2004 onwards. Previous years do not include rural areas of six northern states (Rondônia, Acre, Amazonas, Roraima, Pará, and Amapá). Moreover, the data for 1976–1979 also excludes rural areas in center-western states (Mato Grosso, Mato Grosso do Sul, Goiás and Tocantins, which was still part of Goiás). According to the 1980 and 1991 Censuses and the recent PNADs, this amounts to excluding 3–4% of the population in the 1970s and about 2% between 1981 and 1990.

We also make use of national accounts statistics to extract data on a host of macro incomes, including national income and its decomposition into sectors, incomes and expenditures. Brazil has a long history of official national accounting, dating back to the 1940s. Our objective is to link all income aggregates, whenever possible, to the national account aggregates to be able to jointly analyse distributional and developmental outcomes. We use the most up-to-date national account and demographic statistics, which generally come from the IBGE, for most years (IBGE ((2000; 2006, 2017b))), or from the Fundação Getúlio Vargas (FGV) for some selected earlier years, whenever statistics from the IBGE were not available (FGV 1962). We use comprehensive and integrated national accounts up to the year 2015. This data also permit computations of regional inequality indicators such as the inequality between federal states, which have been computed by Bucciferro and Souza (2020).

The above reports by the national statistics institute provide us with information on unionization throughout the 20<sup>th</sup> century (IBGE 2006) and on the division of national income between wages (‘employee compensation’), profits (‘operating surplus’) and self-employed income (‘mixed income’) (IBGE 2017b) over the 21<sup>st</sup> century. We complement the latter with data from Frankema (2010) for the 20<sup>th</sup> century. Finally, we use data on the official statutory minimum wage as defined by the ministry of labour and employment (MTE) from the data repository of the Applied Institute for Economics Research (IPEA).<sup>9</sup> Prior to the unified national wage in 1984, when minimum wages varied by state-district level after being introduced in 1940, this dataset only includes information on the highest minimum wage observed at this level of aggregation. We thus supplement this data with nominal wage data at the state-district level collected by Saboia (1984) for 1940–1983. Figure A2 in Appendix A shows the regional dispersion of minimum wages estimated from this data.

We complement this quantitative dataset, with qualitative data on how political, technocratic and intellectual elites thought about the distributional implications of late development. These

---

<sup>8</sup> The PNAD was discontinued in 2015 as IBGE transitioned to PNAD Contínua (PNADC), a quarterly survey with a rotating panel similar to the United States’s Current Population Survey (CPS). Both the sampling design and the questionnaire were overhauled, so the PNADC results are not directly comparable to the historical PNAD series for most variables, which is why we decide to end our analysis in 2015.

<sup>9</sup> See <http://www.ipeadata.gov.br>.

are primary sources from the archives of public discourses, as well as from written publications. Full references are provided in section 5.

### **3.3 Empirical methodology**

In this section we provide a short summary of our empirical estimation of macro-consistent inequality indicators. The Online Appendix provides more details.

As regular household surveys are only available from 1976, we compute group shares in national income for the entire adult population from this year until 2015. We use methods developed in Blanchet, Fournier, and Piketty (2022) and Blanchet, Flores, and Morgan (2022) to merge information from tax data and household surveys. We then impute missing macro incomes from the household sector and other sectors from national accounts data to the merged tax and survey distribution, thus following closely the methodology of WIL (2020), and reproduced in De Rosa et al. (2024).

For years prior to 1976 we combine the income tax information, which goes back to 1926, with national accounts denominators to estimate a distribution of income for covering the Top 1% of individuals. We then estimate the missing macro incomes from historical national accounts records to impute to this distribution so that the Top 1% in the distribution represents the top percentile of national income (as opposed to taxable income). We then join the series up to the 1976–2015 series for the Top 1%.

### **3.4 Theoretical framework**

To theorize the political economy of the Kuznets curse in Brazil, we propose a framework that develops Kuznets’s intuition using Joseph Schumpeter’s notion of ‘creative destruction’ and Karl Polanyi’s concept of ‘double movement’, alongside Ceslo Furtado’s dialectic theory of economic development, and the neorealist theory of institutional change. The central mechanism that we assess is the reputation of the influential high-savers accumulation model among Brazilian political and intellectual elites. This model has been the most common way to understand the distributional implications of development, with Kuznets and Lewis among its proponents. It posits that economic development is premised on increasing savings for accumulation, which can only come from redistributing income to upper groups who provide the bulk of national savings. The distributional changes along the Kuznets curve turn into a curse when the resulting distributional conflict that violates path-dependent norms in a context of high baseline inequality harvests an authoritarian regime to force a return to prior pay norms. While the pace of structural change and existing levels of inequality may be proximate causes of the Kuznets curse, we argue that its ultimate cause is the conflict between movements to surpass and preserve the high-savers accumulation model’s influence on the ideology, politics and institutions of the country.

Traditional development theory argues that late-developing countries face a structural transformation problem (Nurkse 1953). Structural transformation of the economy, by way of its shifts in technological change, productivity and value-added across sectors and regions, disrupts prevailing patterns of growth and distribution. Pursuing capitalist development, according to Schumpeter, implies accepting the forces of ‘creative destruction’ as a ‘process of industrial mutation that incessantly revolutionizes the economic structure from within, incessantly destroying the old one, incessantly creating a new one’ (Schumpeter 1942: 83). This ‘mutation’ absolves the pre-existing social embeddedness of the productive structure in the pursuit of capital accumulation in modern sectors. Redistribution of savings from old sectors to new sectors involves a double conflict: between old elites and new elites and, once savings have been subsidized and generated in the expansion phase of industrialization, between new elites and workers over the distribution of growth. A ‘double movement’ is liable to occur in these circumstances, according to Polanyi, whereby a reactive movement from a part of society seeks to protect itself from the initial movement of dissolution and commodification that capitalist development sets forth (Polanyi 1944).<sup>10</sup> This swing—reminiscent of Kuznets’s concept—can lead to authoritarian forms of politics, among other more democratic forms. Underdeveloped societies face a greater imperative from modernity to engage in structural change such that Polanyi’s double movement of action and reaction may take a more acute form.

Furtado’s dialectic approach to development and political change accounts for this late-developing context, in which social structures and cultural norms are more rigid (Furtado 1964). The chain of cumulative pressures from structural change in the mode and techniques of production in this context means that the endogenous social conflicts arising out of this process are unlikely to be a source of consensual institutional renovation. Furtado argues, using the experience of Brazil’s own development, that any hope for consensus is co-opted by opposing movements seeking to push through their ideology of development. Either political leaders seek to overcome a dominant class by applying populist techniques in a regime that uses the popular masses to their advantage, or the dominant classes resort to conservative factions in civil society and the military to safeguard their share in the total product.

When the rate of structural change outpaces the capacity of society to adapt through its ideology, politics and institutions, instability ensues and can threaten what the neorealist approach to institutional change calls a ‘dominant social bloc’—a social alliance whose coherence in beliefs and policies (i.e. between expectations and outcomes) dominates the ideology, ruling politics and institutions of the era (Amable and Palombarini 2009, 2023). Institutional change is a strategy to overcome a crisis or to avert a crisis, which can displace the dominant social bloc. Applied to contexts of late development, conflict takes on a more acute form, as political sta-

---

<sup>10</sup> Polanyi referred to the evolution of in the advanced Western countries, not to later independent peripheral countries.



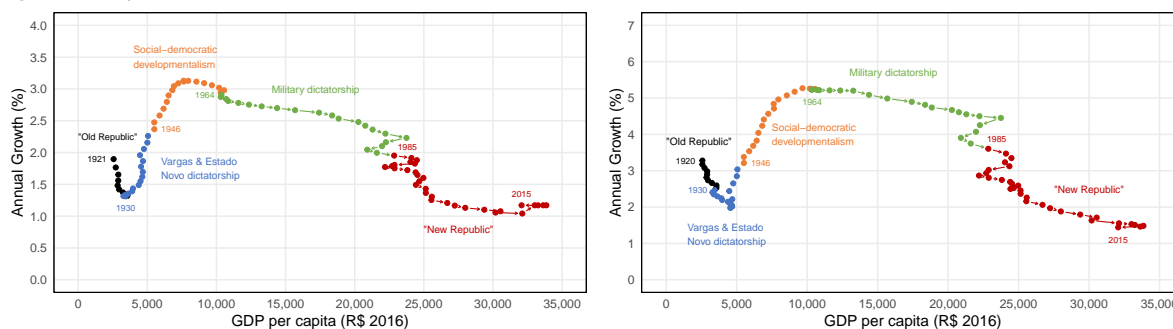
bility is incompatible with a rapid structural transformation program that quickly displaces the inherited social and political hierarchies of the past. In the Brazilian case, we can pinpoint the moments of rupture in the dominant social bloc—counter-movements in the Polanyian sense—which correlate with the observed distributional swings during the development process. The late-1920s, the early-1960s, the early 1980s and the mid-2010s prefigure crisis situations that led to the rupture of the dominant social bloc, and produced counter-movements that sometimes failed (like the counterrevolution of 1932), but more often succeeded (such as the 1964 military coup, 1985 democratic transition, and the 2015 legal impeachment).

#### 4 From Kuznets curve to Kuznets curse in Brazil

The Kuznets curve is a hypothesis based on a ‘conjecture of a long secular swing in income inequality’ as a country undergoes structural change and transitions to higher levels of economic growth. Kuznets relates this swing to ‘the long swing in other important components of the growth process’, such as ‘the rate of growth of population’, ‘the rate of urbanization’, and ‘the proportions of savings or capital formation to total economic product’ (Kuznets 1955: p.19). All of these related swings are markers of a country’s development path. Mortality falls, births increase, cities become larger, and higher average income permits higher savings and investment, which ultimately reach a point of material and political satiation, limiting the concentrations of population and of savings. Their dynamic is concave, similar to the inverted-U curve characterizing inequality in the income structure. Empirical evidence in Kuznets’s time was limited, especially for checking the conjecture in ‘underdeveloped countries’. We begin our analysis by revisiting these claims with the available data we assemble for Brazil over the long run.

Firstly, we find evidence for Kuznets curves in population growth and urbanization. Figure 2 plots the relationship between these two variables and GDP per capita across the five recognized political eras in the Brazilian historiography, from the oligarchic ‘Old Republic’ (up to 1930) to the ‘urban revolution’ of 1930 that brought Getúlio Vargas to power and his *Estado Novo* dictatorship (1937–1945), to the era of social-democratic developmentalism (1945–1964), the military dictatorship (1964–1985), and finally to the era of the democratic ‘New Republic’ (from 1988). For both the total population and the urban population, as the country becomes richer, the emerging pattern of an inverted-U adheres to the logic exposed by Kuznets, with ‘the upward phase represented by acceleration in the rate of growth ... and the downward phase represented by a shrinking in the rate of growth...’ (Kuznets 1955: 19).

Figure 2: Population and urbanization Kuznets curves



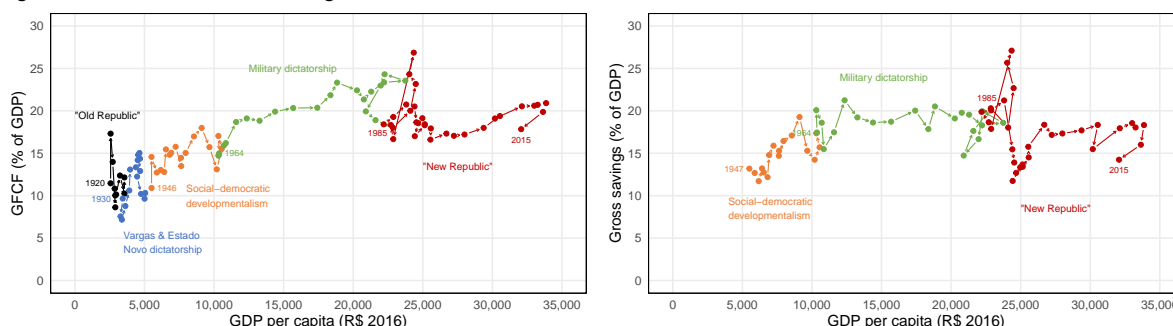
(a) Population growth vs GDP per capita

(b) Urban population growth vs GDP per capita

Source: authors' calculations using data from IBGE (2006, 2017b).

Turning to savings and investment, the evidence for a Kuznetsian long swing is less pronounced, even if it does confirm an acceleration and deceleration dynamic. Figure 3 shows that investment (gross fixed capital formation) increases from 10-15 percent of GDP in the early eras, to 15-20 percent in the crossover between the era of social-democratic development and military dictatorship, to 20-25 percent during the 1970s and 1980s of the regime and also the early 'New Republic', to eventually decline to 15-20 percent at the highest levels of per capita GDP. A similar trend appears for gross savings (with data only available since 1947), with more of a plateau during the military dictatorship. How to read the relation between savings and investment is important, as we elaborate further below. '[I]f the concentration of savings has a cumulative effect' on concentrating 'income-yielding assets in the hands of the upper groups' (Kuznets 1955: 7-8), then barring political interventions that affect the value of accumulated property or the yield on this property, income concentration in upper groups will be a feature of capitalist development. The lack of a stronger downward swing in the data may be explained by the renovation of accumulating assets from older to newer industries in a dynamic late-developing economy yet to reach full industrial maturity.

Figure 3: Investment and savings Kuznets curves



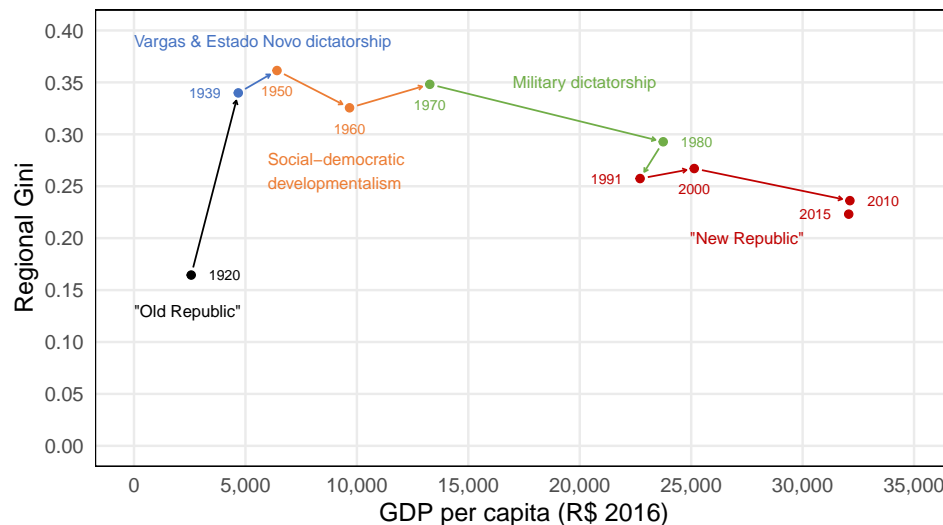
(a) Gross investment vs GDP per capita

(b) Gross savings vs GDP per capita

Source: authors' calculations using data from IBGE (2006, 2017b).

The size of accumulated savings is industry specific and thus regionally specific. This implies that spatial inequality should be affected by the structural change propelled by capitalist development. Spatial inequality plays a part in Kuznets's analysis through the 'well established' fact 'for this country [the United States] by states, and for many other countries' that average income and its dispersion in rural areas are both lower than in urban areas, which concentrate more productive activities operating under economies of scale (Kuznets 1955: 7–8). Hence, the expansion of urban sectors should increase the overall size distribution of income as well as the spatial inequality between regions, unless political factors counteract the tendency. Figure 4 plots the empirical evidence for the latter trend, using available regional inequality estimates among Brazilian federal states. An inverted-U pattern is broadly evident, with rising between-state inequality during the period of industrial expansion—which concentrated production in Southeastern states—followed by relative stability in subsequent decades and a secular decline beginning from the military dictatorship.<sup>11</sup> Interestingly, the sustained fall in spatial inequality occurs during periods of intense industrialization and growth (1970–1980) and de-industrialization (1991–2015), which suggests counteracting forces affecting the cumulative effect of the concentration of growth in richer regions and the relative convergence of poorer, more agricultural regions.

Figure 4: Regional inequality Kuznets curve



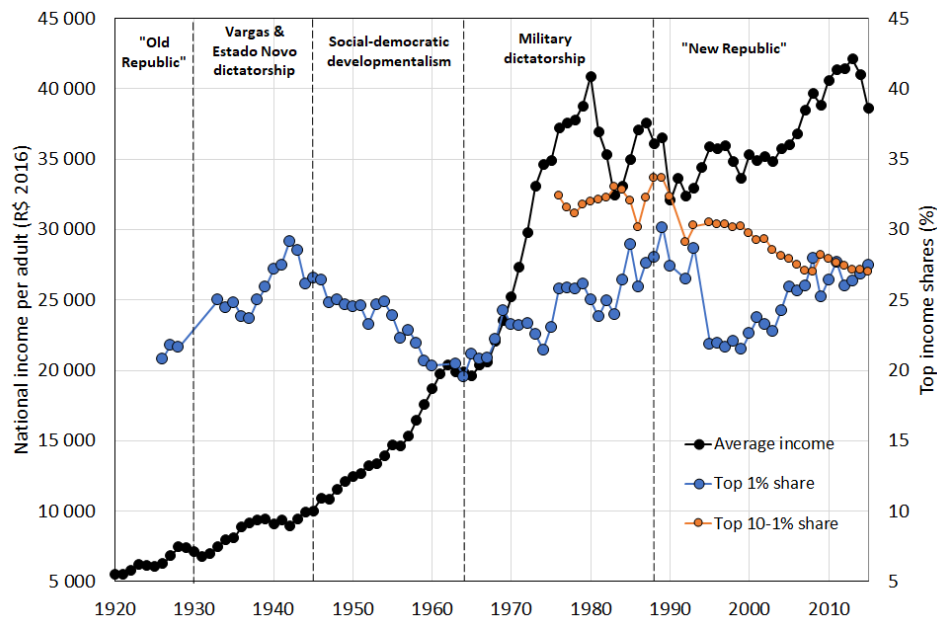
Note: regional Gini corresponds to population-weighted Gini among Brazilian states.  
Source: authors' illustration based on data from Bucciferro and Souza (2020).

Given all these preceding trends, one may expect the individual distribution of income to follow a similar inverted-U evolution. Following Kuznets's approach we compute shares of national income and compare them to the growth of average national income. Figure 5 plots the evo-

<sup>11</sup> This pattern can be approximated by the ratio of per capita GDP in the two most populous and economically contrasting regions—the nine Northeastern states to the four Southeastern states, as Figure A3 in Appendix A shows.

lution of average income and top income shares across the five eras since 1920. Shown are our estimates for the Top 1% income share since 1926 and the Top 10-1% income share since 1976.<sup>12</sup> The share of national income attributed to the richest 1% of the Brazilian population has fluctuated between 20% and 30%, meaning that on average an individual in this top group receives 20-30 times more income than the average person from the proceeds of production. More interestingly, trends in this share seem to correlate with different political eras.<sup>13</sup>

Figure 5: Top income shares and average income



Note: distribution of pre-tax national income among equal-split adults. The unit of observation is the adult individual (20-year-old and over; income of married couples is split equally). Fractiles are defined relative to the total number of adult individuals in the population. Dotted lines mark the time-span of political eras.

Source: authors' calculations (combining survey, tax and national accounts data).

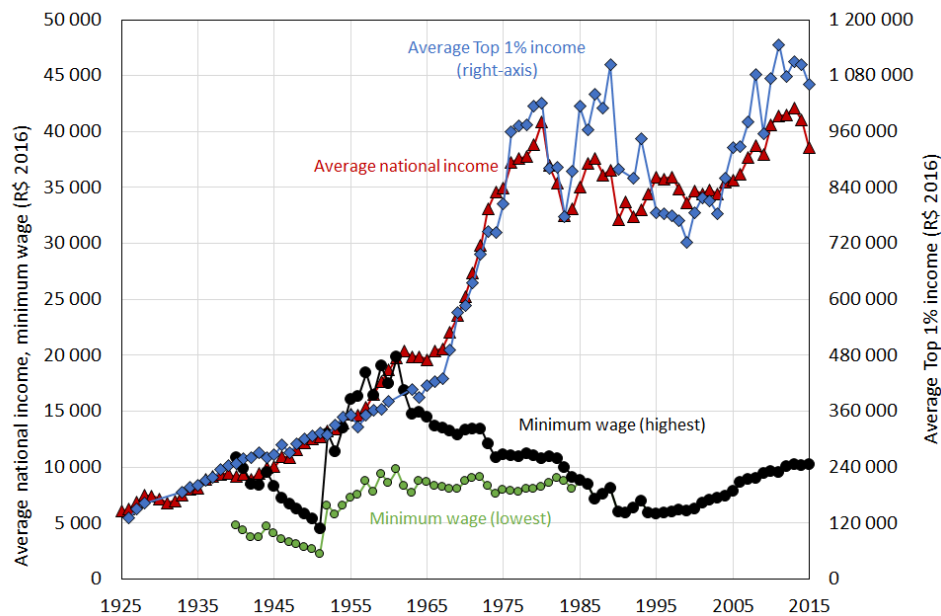
Inequality—measured by this concentration ratio—increased from the ‘Old Republic’ into the 1930 revolution and Vargas government, at the same time as average incomes appear to be falling around the time of the Great Depression. The premature deindustrialization from the mid-1920s is reversed in the Vargas era, which kick-started industrial expansion (see Figure 1b). Concentration increased in a period of slower growth that coincides with Vargas’ self-coup in 1937 that establishes the *Estado Novo* dictatorship. Top shares then fell as growth resumed halfway through the Second World War, and the transition to an electoral democracy paved the way for the era of social-democratic developmentalism—a period seeing growing political participation, social-democratic parties and labour movements, coupled with an active policy of demand-led import-substitution industrialization (ISI). Top shares continued their downward

<sup>12</sup> The addition of both shares by definition result in the Top 10% income share, that is, the share of national income received by the richest decile in the adult population.

<sup>13</sup> A rising share indicates by definition that the average income of the group is growing faster than the average income of the whole population, a falling share indicates the opposite.

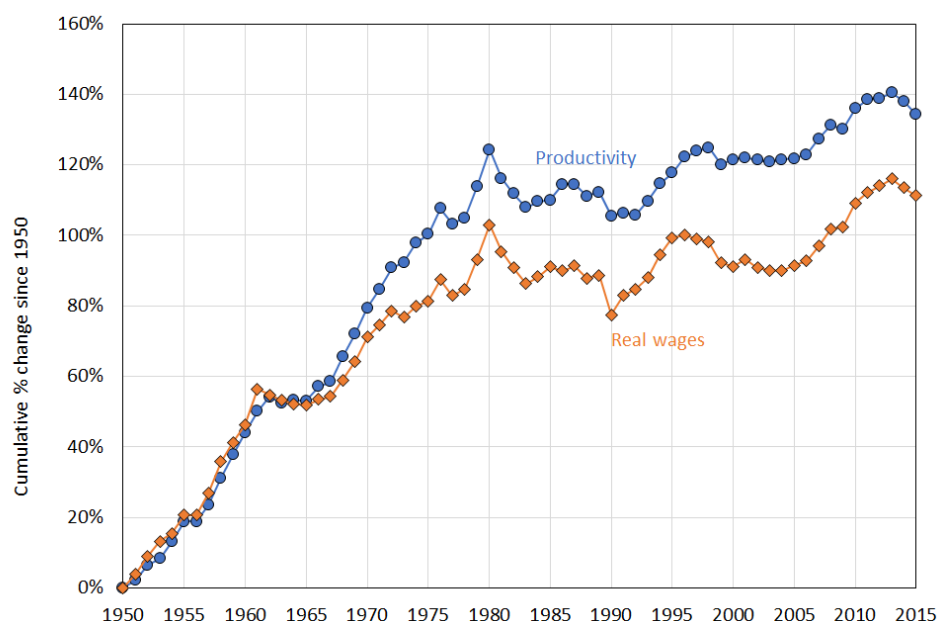
swing, growing slower than average incomes (see Figure 6), particularly during the Juscelino Kubitschek presidency (1956–1961), with industry and manufacturing value added growing at their highest average annual rates (see Figure 1b). Top shares reached their trough the year of the coup that brought the military to power after an intense period of inflation, economic crisis and political tension that marked the labour presidency of João Goulart (1961–1964).

Figure 6: Evolution of average top income, average national income and minimum wages



Note and source: average Top 1% income relates to distribution of pre-tax national among equal-split adults across income concepts. Authors' calculations (combining survey, tax and national accounts data). Average total income corresponds to national income per adult. Minimum wage data is from the Ministry of Labour and Employment (MTE). The first minimum wages were introduced in urban areas at the state-district-level. A minimum wage for rural workers was introduced in 1963. The national minimum wage was introduced in 1984. Before 1984 the series reports the highest state-level minimum wage observed in the country (the Federal District of Rio de Janeiro (city) until 1961, then Rio city and the new Federal District, Brasília, until 1964, then the two alongside São Paulo city until 1984). The lowest minimum wage corresponds to the district average of the state of Maranhão in the Northeast, also the state with the highest land concentration in the country (Hoffmann and Ney 2010: Table 7). All incomes are deflated by the GDP deflator from IBGE.

Figure 7: Evolution of productivity versus real wages



Note and source: the graph shows the cumulative percentage change in productivity and real wages since 1950. Author's computations using various sources. Productivity is defined as GDP per employed worker using data from IBGE (2006, 2017b). Real wages correspond to total labour compensation per worker, using labour income from Figure 10 and employment data from [The Conference Board Total Economy Database](#). All incomes are deflated by the GDP deflator from IBGE.

The ‘economic miracle’ of the dictatorship from 1967 to 1980 coincided with a rising (and volatile), trend in the Top 1% share, which recovered all the gains it had lost in the previous two decades. This was largely facilitated by the government’s wage squeeze policy, which created a permanent wedge between real wages and productivity (Figure 7), validating the institutional hypotheses of Fishlow (1972), Hoffmann and Duarte (1972), and Bacha and Taylor (1978) on the rise in inequality in the 1960s, as opposed to the market hypotheses favoured by intellectuals close to the military government (Langoni 1973; Simonsen 1975). The stagflation and crisis after 1979 fueled the transition to a new democratic settlement, at a time when industry and manufacturing’s share in value added was never higher, at 48% and 34% respectively (Figure 1b). The transition was followed by multiple (failed) stabilization plans to quell the rampant hyperinflation, the side-effect of which was the de-industrialization of the economy, further propelled by the currency crises of the late-1980s and late-1990s. Price stabilization finally came after 1994 with the *Plano Real*, a plan which created the current currency (the Brazilian ‘real’), initially anchored to the US Dollar, and pursued orthodox monetary policy and the complete de-indexation of wage and financial contracts. The effect of this incomes policy is shown in the sharp downward revision of the Top 1% share.<sup>14</sup> Interestingly, following the stabilization, and between the start and the end of the Worker’s Party governments (2003–2015), we find that growth was very unevenly shared among the Top 10%, with the Top 10-1%

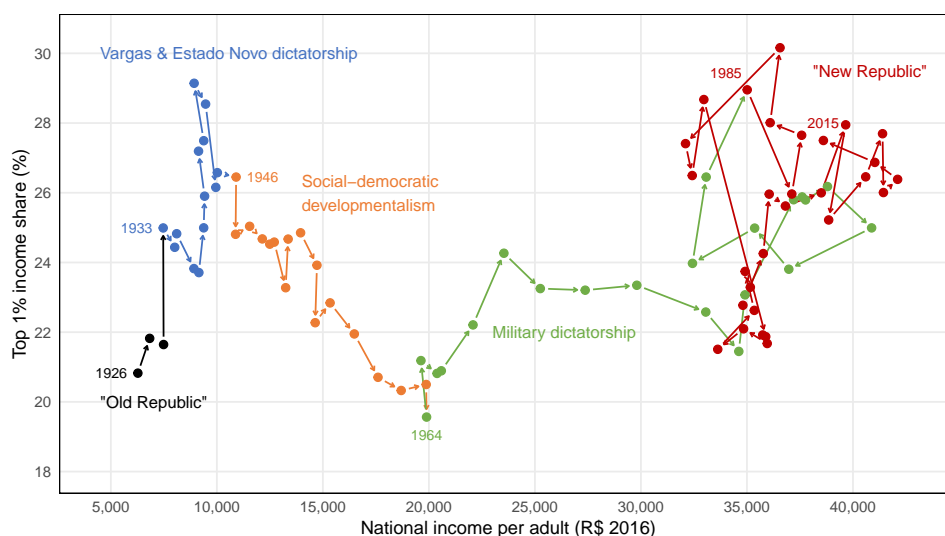
<sup>14</sup> The noise produced during the period of hyperinflation between the late 1980s and early 1990s should be taken with caution, even if there is policy-related evidence for declining concentration, as we explain below.

(the ‘upper-middle class’, that is, the 9% of the population below the Top 1%), experiencing below average growth rates, compared to the above-average growth rate of Top 1% incomes (see Figure 5)

Figure 8 summarizes this history through a Kuznets lens. Over the long-run of Brazilian development, the evidence for an inverted-U curve is mixed, and complicated. However, the advantage of highlighting the different political regimes is that it reveals phases where the Kuznets hypothesis appears to be confirmed. Most clearly is the period of development during which the country quadrupled its average income to reach R\$ 20,000 by the mid-1960s (about a third of US average income at PPP), a pathway that Firpo et al. (2022) identify as ‘upgrading industrialization’ (increasing shares of manufacturing in employment and value-added). The swing around the R\$ 10,000 average income mark is notable for its relatively symmetric trend and its transition between regimes. If the existence of a Kuznets curve is to be argued in Brazil, the period between the Old Republic and the Military dictatorship (i.e. between 1926 and 1964) is the most persuasive candidate. The subsequent phase of Brazilian development is more complicated. The inverted swing during the early years of the military dictatorship is followed by a plateauing until the years of high macroeconomic instability that converges around an average income of R\$ 35,000 (which corresponds to half of US average income around 1980).

In the latter period there is no clear Kuznets curve pattern, nor structural swing between political regimes. The increasing trend of income concentration is not accompanied by strong growth gains, rather its volatility is a product of the inflationary and currency crises that hampered growth during the period. Nor is the premature downward swing during the new constitutional period after 1988 sustained to any significant degree. If anything, the cycle of the latter years of the dictatorship seems to be repeated after stabilization in the mid-1990s, when growth resumes largely to the benefit of the richest 1%. However, these trends accompanied real gains sustained for poorer segments of the population that the new 1988 constitution brought—material conditions related to social spending provisions (Bengtsson and Morgan 2022), and economic rights that were to become effective post-stabilization with the return of minimum wage growth (see Figure 9).

Figure 8: Income concentration Kuznets curve



Source: authors' calculations combining the Top 1% share from and national income per capita from Figure 5.

A crude interpretation of our results would suggest a tainted Kuznets curve hypothesis. But a more refined and honest assessment would qualify the dynamics exactly how Kuznets thought about them; a reading we suggest has received little attention. What our estimates show is that the hypothesis of an inverted-U pattern in the <distribution-development> space over the long run confirms Kuznets's reasoning about underdeveloped societies engaging in late development. The political strain and potential reactionary swings that such rapid capitalist development produces, from structural transformations that compel change in multiple domains of social life, in an already highly unequal setting, defines a 'Kuznets curse'.

In the 'developer's dilemma' framework of Alisjahbana et al. (2022) this curse is an outcome of the 'Kuznetsian tension' between growth-enhancing structural transformation and the unequal distribution of its benefits, which can take multiple forms. We see it in operation before 1945 and again in the 1960s in Brazil, when social conflict endogenous to rapid structural change is resolved in authoritarian regimes that ensure the maintenance of, or the reversion to, the inequality-enhancing accumulation model. Applying the developer's dilemma framework to the Brazilian case Firpo et al. (2022) conclude that the Kuznetsian tension is strong in the earlier years of the military dictatorship (1964–1972), and either weak or ambiguous thereafter, using survey-based inequality data only available from 1964. This suggests that governments from this period prioritized structural change over inclusive growth initially, before reducing the tension over time until its displacement by strong 'secular deindustrialization' (Firpo et al. 2022: 222–24).<sup>15</sup> However, the narrative fails to explain the logic behind the tension, which we attribute to the Kuznets curse. Note that this curse operates distinctly for each of the two authoritarian eras: Vargas' Estado Novo dictatorship is the result of conflict around rising income

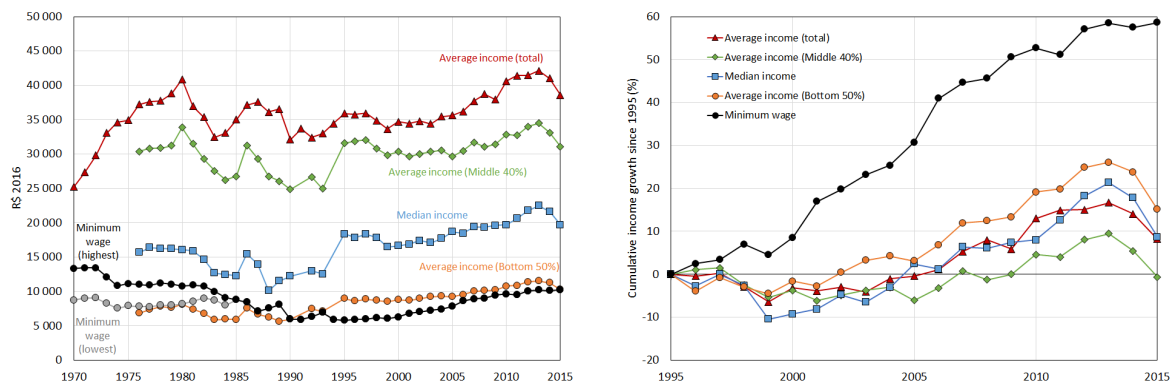
<sup>15</sup> The authors date this deindustrialization from 1964, whereas we identify it after the 1980s (see Figure 1b).



concentration, while the later military dictatorship is the outcome of conflict around declining income concentration. To suggest that the former exemplifies ‘strong Kuznetsian tension’, while the latter ‘weak Kuznetsian tension’, according to the schema of Alisjahbana et al. (2022), unduly downplays the importance of the second type of conflict. As we argue, it holds the key to the Brazilian experience, and quite probably to similar late-developing cases.

Moreover, the dynamics of income inequality presented in Firpo et al. (2022: Figure 10.1) point towards a general Kuznets inverted-U swing, even if the authors’ are not explicit about it. This interpretation is made explicit in Gómez León (2021), who in combining data from social tables and household surveys concludes that ‘[inequality] followed a traditional Kuznets curve’ in Brazil between the nineteenth century and the twenty-first century (p. 39). The use of Gini indices from this type of data, similar to the estimates used by Firpo et al. (2022), mask a precise explanation of the Kuznets curse, as they do not reveal any of the significant swings in inequality occurring prior to the 1970s, and oversimplifies the downward swing of the latter two decades.<sup>16</sup> The Gini is problematic in and of itself: even with more comprehensive macro and micro data, the indicator shows inconclusive Kuznetsian patterns, as Figure A4 in Appendix A shows.

Figure 9: Real income levels and growth rates of income by group



(a) Real income levels since 1970

(b) Income growth since 1995

Note and source: distribution of pre-tax income among equal-split adults across income concepts. The unit is the adult individual (20-year-old and over; income of married couples is split into two). Fractiles are defined relative to the total number of adult individuals in the population. Authors’ calculations (combining survey, tax and national accounts data). Median income corresponds to the income at the 50th percentile. For minimum wage data, see Figure 6.

There are two further analytical weakness brought about by the use and interpretation of this type of data. An example is the claim that high relative inequality in Brazil is *not* rooted in the colonial 19<sup>th</sup> century, but rather is a 20<sup>th</sup> century phenomenon linked to the rise of the urban

<sup>16</sup> Gómez León (2021) acknowledges the limitations with interpreting the level of inequality, given the lack of within-group income dispersion in social tables and the coverage problems of top incomes, which are also present in survey data. Yet, even a focus on trends, which is the correct one in a Kuznetsian sense, does not overcome the limits of the data, as our estimates help to indicate.

middle class in the 1920s (Gómez León 2019), and then more significantly to the effects of active industrial policy after 1945. The early rise in inequality is convincingly associated by the author to the demographic model in Lewis (1954), where the Gini positively correlates with population density, suggesting an elastic supply of labour from rural areas into modern urban sectors where incomes are higher and more dispersed, a point shared by Kuznets (1955: 7–8). The key difference is that for Lewis, urban wages—which are kept low by the ‘reserve army’ of traditional sector workers—do not rise with productivity in the modern sector, allowing the urban employers to capture all of the value-added surplus. Evidence for the emergence of excess labour, especially in the countryside, during the 1930s in Brazil is shown in Figure 2, while the increase of regional inequality is the highest on record (Figure 4). However, Gómez León (2021) rightly adds the ‘authoritarian industrial relations policies’ of the *Estado Novo* regime (1937–1945) as an important institutional feature for the capitalist surplus.<sup>17</sup>

The first critique that can be made is that the use of a single Gini index to represent inequality dynamics fails to properly evaluate these claims, which are internally consistent. When confronted with evidence on other indicators that we have been able to assemble the external validity of the aforementioned analysis is challenged. Figure 10 plots our Top 1% share estimates alongside estimates of factor shares in the same national income. In the Vargas era (1930–1945), concentration of growth among the richest 1% incomes increases by six percentage points, with a notable rise during the Second World War. This is positively correlated to a similar percentage rise in the labour share, which implies that either wages and/or wage earners (including top salaries) were growing faster than profits and/or profit recipients on average during the period. This suggests that between-group inequality was probably more important than within-group inequality to explain overall concentration dynamics. This is confirmed by the grouped-Gini estimates for Brazil from dynamic social tables by Astorga (2024), in which the remuneration of the top occupational group (receiving labour and property income) appears to be pulling away from the rest, as wage dispersion among the bottom three groups is declining.

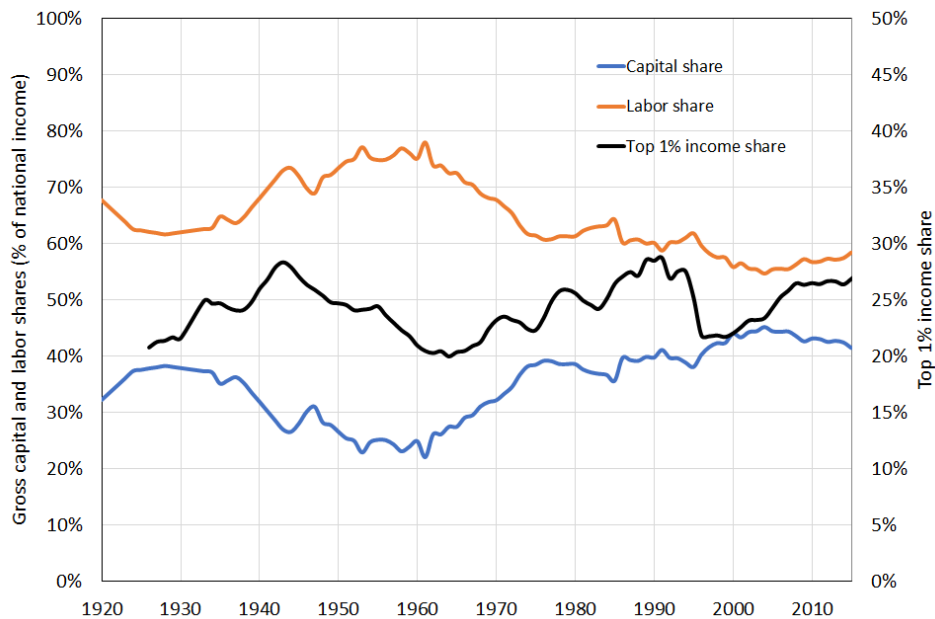
In Kuznets’s model, not only is inequality higher in the capitalist sector than in the traditional sector, but real wages rise with productivity growth in the modern sector for higher-skilled workers and white-collar managers and professionals in high demand (contrary to Lewis’s model), conditional on institutional features facilitating it. From the historical records we know that the urban workforce in Brazil grew by 36% (1.8 million workers) between 1938 and 1953, while the number of urban unionized workers grew by 135%, thus accounting for 30% of the overall growth of urban workers. Moreover, the number of unionized liberal professionals and urban employers more than doubled and trebled, respectively (IBGE 2006, 2017a). Unfor-

---

<sup>17</sup> These comprised of rigid wage discipline and extended working shifts, especially during the war years. See (Paoli 1989) and (Gomes 2005) for further references.

Unfortunately, there is no data for the remainder of the 1930s and the 1940s. Figure 2b, suggests that the urban population growth was stronger in the 1940s than in the 1930s, while Figure 6 suggests that urban minimum wages increased somewhat in real terms between 1942 and 1944, only to rise more significantly after 1951. These facts indicate the Kuznets mechanism of urban wage growth was the dominant feature only in the 1950s, while urban employment growth and prevailing pay norms were more relevant to explain trends during the Vargas era, thus confirming more of Lewis’s intuitions.

Figure 10: Factor shares and Top 1% shares in national income



Note and source: factors shares in national income. Net shares are after deduction of capital depreciation. Authors’ estimates for 2000–2015 using data from IBGE (2017b). We divide mixed income between labour and capital according to a 70–30 split. Pre-2000 estimates are anchored to the annual change in the labour share computed by Frankema (2010) for Brazil. Top 1% shares are 3-year moving averages of the shares shown in Figure 5.

The second limitation of the type of data used by Gómez León (2021) is an under-appreciation of the rooted mechanisms behind the Kuznets curse. By ascribing the ‘origins’ of Brazilian inequality to the 1920s and 1930s, this interpretation underestimates the influence of pre-20<sup>th</sup> century social structures on Kuznetsian dynamics. Rapid industrial expansion on top of pre-modern socio-political foundations arguably create ripe conditions for an acute dual (modern-traditional) economy to emerge with potential structural bottlenecks (Dobb 1963; Furtado 1965). These bottlenecks can affect supply chains between the countryside and cities, the distribution of employment and skills, the size of the domestic consumer goods market, and path-dependent pay norms determining wage ratios between urban and rural sectors. These imbalances can fuel explosive inflation, and were thus identified by the ideology of Brazilian political elites—particularly during the 1950s and 1960s when prices were trending upwards—to be critical to address. We argue that it is in the proposed ways to address these imbalances that the dynamics of the Kuznets curve mutates into a curse for late-developing economies like Brazil’s.

## 5 The political economy of the Kuznets curse in Brazil

The rapid and unprecedented rise of a middle class in Brazil in the 1920s, as documented by Gómez León (2019), set off a sequence of forces that confirms the neorealist account of institutional change. A newly consolidated socio-economic group with proximity among its members in the social structure (commercial, liberal profession and civil service workers with comparable wages) aligned their public policy expectations around a socio-political group by the 1920s. They then became a united social bloc by the end of the decade, pushing institutional changes in the following decade to further transform the socio-economic structure in their expected direction. The 1930 revolution that brought Vargas to power exemplifies this dynamic. Its course was marred by economic difficulties and social instability from the start, with the 1929–1932 global crisis and the backlash of traditional landed elites, specifically interest groups from the coffee sector (the country's main export commodity). That the transition to a new dominant social bloc was frustrated by the continued power of coffee producers is exemplified by the failed counter-revolution attempt in 1932 on Vargas' government (Furtado 1965). Importantly, this threat along with the collapse in commodity trade during the Drepression, led to a macroeconomic policy package centered on coffee price control schemes, a *de facto* basic income for coffee producers (Wickizer 1943).<sup>18</sup>

This policy could have frustrated the aspiring urban social bloc, but instead it kick-started industrialization in their favour. As Furtado (1965: 257) notes: 'Industrialisation in Brazil thus was a by-product of measures taken to favour the traditional agricultural export-economy'. Initially, this arose from the price control schemes of the 1930s depreciating the currency and making important substitution for home consumer goods profitable, and then from the high exchange rate policy of the 1940s and adverse trade balance spurring industrial protection and growth. Critically, 'industrialisation produced important repercussions within those institutions upon which the traditional system of power was based' (ibid).

Merging the dialectic approach in Furtado, Schumpeter and Polanyi with the neorealist theory of institutional change (Amable and Palombarini 2009, 2023), we argue that this form of development contained the seeds of its future instability given that the expectations among socio-economic groups with different interests were becoming less compatible over time, leading to rising conflict among socio-political groups that ultimately manifested itself in the institutional breakdown of 1962–1964. This also implies that between 1946 and 1964 no dominant social

---

<sup>18</sup> Over the decade Brazilian authorities, through newly established *autarquias*, burned between 60 and 80 million bags of coffee, corresponding to 28.5% of national production, and 2.5 years of world consumption, to defend coffee prices. It is not inconceivable that in this environment coffee elites may have shrunk in number, but those that remained benefited from the policies, contributing to both the rising top 1% income share as well as to the fall in the capital share shown in Figure 10.

bloc emerged with sufficient support that could produce stable institutional outcomes, partly explained by the ‘lack of an ideologically inspired and politically active industrial class’ that would have updated the political constitution of the country (Furtado 1965: 259), and by the emergence of ‘a mass society’ and a populist politics that had difficulties devising a program of institutional change favouring national development (p. 263). The political and institutional swing in 1964 marked the end of the only clear Kuznets curve in Brazil’s history, and validates the conceptual salience of the Kuznets curve.

If changes in these social structures during the process of Schumpeterian creative destruction are incomplete, then each rupture to the dominant social bloc sows the seeds of future ruptures in a Polanyian cycle prefiguring the Kuznets curve. In the post-war Brazilian context, the legitimacy of a development policy that questioned the private high-savers accumulation model struggled to consolidate into a new dominant social bloc. This struggle essentially constituted, what Kuznets identified as ‘a re-evaluation of the need for income inequalities as a source of savings for economic growth’ Kuznets (1955: 9). The re-evaluation by an aspiring dominant social bloc was based on the search by for a broadly supported strategy and narrative of how to reach the next stage of development most efficiently and equitably. The 1962–1964 crisis—the succeeding part of a Polanyian double movement—emerged from incompatible and thus highly conflicting interpretations of the distributional implications of development policy.

These interpretations were molded by political discourse and debate. The history of the *questão social* (‘social question’) in Brazilian politics illustrates this conflict of interpretation between competing social blocs. The question revolved around what it meant to achieve inclusive growth, and specifically how the rights and responsibilities of labour (versus capital) were framed. The last president of the uncompromising ‘Old Republic’, Washington Luís (1926–1930) declared in 1920, after multiple years of rising worker mobilizations, that ‘labor unrest is a question that concerns public order more than social order’ (quoted in Magano (1995: 51)), a statement that blatantly ignores Furtado’s warnings about incomplete social changes. The 1930 revolution brought to power a new socio-political group that elevated the ‘social question’ from a public order problem to a social matter of state in line with the Christian philosophy of distributism and the political philosophy of corporatism. In early writings of his multi-volume *A Nova Política do Brasil*, the leader of this bloc, Getúlio Vargas, drawing on fascist ideologies from Europe, referenced the cooperation between capital, labour, and the state as one collective ‘family’, and that contrary to ideas of the previous dominant social bloc, the ‘best way to guarantee [a support and attraction of capital] is to transform the proletariat into an organic force of cooperation with the State and not to leave it, by abandoning the law, at the mercy of the dissolving action of disturbing elements’ (Vargas 1932: 97–98).

According to Oliveira Vianna, the legal scholar responsible for the new labour laws enacted by Vargas in 1943, which quickly followed the passing of minimum wage laws in 1940, the

social question would be addressed with labour legislation promoting ‘harmony and collaboration’ (Vianna 1951: 11). However, faced with intensifying macroeconomic imbalances from trying to appease the primary commodity sector, and inflationary pressures that were eroding real minimum wages and his support base among workers, Vargas became more radical in his pronouncements. Anticipating the end of the war conditions, and also his *Estado Novo* dictatorship, he proclaimed in his 1944 Labour Day speech that ‘liberty, in the strict sense of political franchising, is not enough to solve the complex social question...Supporting workers economically is tantamount to giving them the true sense of freedom and security to express their political opinions. And for this, it is urgent to correct the imbalance between those who find no limits in the profitable exploitation of the means of production and those who toil in a permanent state of necessity, without resources to acquire what is indispensable for survival’ (Vargas 1951: 291).

In 1945 Vargas was removed from power by the military (who feared continued ‘populism’), and in 1946 a new democratic constitution was adopted. In the same year Vargas announced the passing of the ‘old liberal and capitalist democracy’, which was ‘founded on inequality’, and the coming of ‘a socialist democracy, a workers’ democracy’ (quoted in (Skidmore 1976: 107)). This may seem an opportunist declaration from a politician seeking to reinvent himself for the democratic age and who had recently founded two new political parties for this era age—the Social Democratic Party (PSD) and the Brazilian Labour Party (PTB)—which were to command a majority in the congress until 1964 (Bengtsson and Morgan 2022). And yet, it adheres precisely to the dilemma of development policy between alternative modes of production that Dobb (1963) believed faced all underdeveloped countries.

The heritage of this type of political maneuvering during the 1950s was a heavier emphasis on state involvement in economic development to resolve ‘backwardness and maladjustments of the economic infrastructure’, as put by Juscelino Kubitschek, Brazilian (PSD) president from 1956 to 1961 (Kubitschek 1956: 146). Central to these bottlenecks was the latifundist rural property regime and its ‘concentration of productive land’ that characterized the old colonial agricultural economy. ‘Progressive industrialization’ required ‘a solid agricultural base and an expanding internal market’ (Kubitschek 1956: 152), as well as the continued collaboration between labour, capital and the state in a corporatist foil. Workers would be protected from exploitation by legal contract protection, ability to join unions, sectoral wage bargaining, and social security, in exchange for cooperation in wage demands, while capitalists would get subsidized profits from state investment, in exchange for avoiding conspicuous consumption and re-investing their savings into productive outlets. As Kubitschek noted: ‘The austerity of spending or consumption by the most privileged classes is not only an essential condition for capital accumulation and an example for the classes that ascend the social ladder; it is also a *political objective* capable of strengthening the doctrine of freedom and private initiative’

(Kubitschek 1956: 276, emphasis added). The opposite would ‘be a ferment of class struggles when taken to extremes, which are frequent in less developed countries’ (ibid).

In the Kubitschek era the high-savers accumulation model of structural transformation became more obsolete with political and technocratic consensus developing around state-led industrial policies: ‘The cumulative concentration of resources, in the form of reproductive investments, has shown itself, however, to be a slow process and often marked by undeniable social injustices. State intervention, aimed at provoking the acceleration of reproductive investments and creating an austere discipline of consumption, becomes a logical imposition in regions that, like Brazil, are today in the initial phase of the process of economic development’ (Kubitschek 1956: 276). This framing of consumption austerity is consistent with the Post-Keynesian theory of development, whereby under conditions of surplus labour, like those characterizing late-developing countries, ‘what is now involved is principally a redistribution of consumption between different classes of the community and not a reduction in the total’ (Kahn 1958: 155).

There was also the recognition among PSD and PTB governments that under the supply problems of late development, a part of demand coming from consumption should be curtailed to make (real resource) space for investment. The redistribution of income was pushed by structural economists working for the government, such as Furtado himself (Furtado 1969). However, the inflation constraint highlighted the importance of how the squeeze on consumption was to be achieved. Wages could be subject to smaller nominal increases or face cuts, but this is distributively more regressive than curbing conspicuous consumption by upper income groups through increasing taxes and persistent public rhetoric. But the chosen option was to allow for strong wage growth to propel internal demand. Such improvements in material living standards for workers in cities and the countryside was justified as the most effective way to combat communism (Kubitschek 1957: 115–16). The 1950s saw the the strongest growth in real wages, as shown in Figure 6. But as is shown in Figure 7, policymakers were taking this strategy to the limit, which the government duly acknowledged: ‘The most serious of the immediate problems was inflation...There is no doubt about the legitimacy of the reasons that lead to demands for better wage levels. It is worth remembering that granting increases, especially in proportions greater than the possibilities of redistributing the country’s income, constitutes a powerful factor in making life more expensive, both due to the increase in production costs and the general expansion of the demand for goods and services in conditions of inelastic supply’ (Kubitschek 1957: 126–27).

The supply problem was the reason the government focused on its large state investment program (the *Plano de Metas*). Public investment increased by 123% during Kubitschek’s presidency, while manufacturing value-added expanded by 97%, outpacing growth of services and agriculture. Formal employment registers made by the Ministry of Labour and Social Insurance

increased by close to 70% during the 1950s, as the urban share of the population increased from 36% to 45% (IBGE 2017a). In a coordinated effort to promote ‘progressive industrialization’, the government’s policies fomented pressure for institutional changes, which would be the cause of great tension. With the rise of the urban population, associated unionization increased by 77% between 1953 and 1963, with union density reaching 40% of industrial and public sector workers. Wages grew fastest in the more urban-dense regions of the south and southeast (see Figure A2). These regions also concentrated regional union density, with the southeast alone comprising three-quarters of all union members during this period (IBGE 2006).

By the time João Goulart of the Brazilian Labour Party, and Kubitschek’s Vice-President, assumed the presidency during the chaotic year of 1961, inflation had almost trebled from 1958, and average wages were outgrowing average output by 12%. Private investment declined in real terms over 1960 and 1961, and alongside the winding down of the *Plano de Metas* public investment program contributed to the economic recession of 1962–1964. Rather than speaking of redistribution directly, Goulart’s government emphasized structural reforms to address bottlenecks to further development, notably nationalization of oil refineries, strategic land expropriation, rent controls, unionization and a minimum wage for rural workers, and electoral reform (Skidmore 1976). Symptomatic of the rupture of the social alliance of the post-Vargas era, Goulart increasingly politicized the reforms by spurring mass mobilization of workers in an attempt to forge a new dominant social bloc and new constitution. Just a few weeks before the military coup that would depose his government, he claimed that ‘the current Constitution...is an outdated Constitution, because it legalizes a socio-economic structure that has been surpassed’ (Goulart 1964: 82). According to Ceslo Furtado, who was Minister of Planning in Goulart’s government, this socio-economic structure was a product of the electoral system that confronted a political legislature that was more dependent on rural votes and an outdated agricultural economy with a political executive that was biased towards the urban and modern sectors of the economy (Furtado 1965).<sup>19</sup>

A key question that defines the Kuznets curse is how far can state intervention go before social consensus and pay norms break down and economic and political instability ensue? The military dictatorship (1964–1985) addressed the stagflationary crisis with an upwards redistribution of income, reverting to the high-savers accumulation model, as evidenced from Figures 6 and 7. GDP per capita growth averaged 8% per year over the next ten years. The narrative developed by intellectuals, technocrats and politicians of the regime was that there was a choice between ‘concentration or low average income’ (Kingston and Kingston 1972: 255–56). According to

---

<sup>19</sup> While the political executive (the president and state governors) was elected through a majoritarian system by *literate* citizens—who were more concentrated in urban areas—members of the legislature (the congress) were elected through a proportional representation system. With the majority of the population still residing in rural areas during this period, the literacy condition ‘made a given vote in a rural congressional district (sometimes with as little as 10 per cent literacy) much more valuable than in the cities’ (Love 1970: p. 22).



Mario Simonsen, Minister of Finance during the 1974–1979 administration, the positive relationship between concentration and growth resulted from a long-run evolution of the economy, and that the communist mode of production was the only alternative to this dynamic (Simonsen 1972: 56–57). Roberto Campos, Minister of Planning during the first military administration (1964–1967), echoed this point when arguing in an article in one of the main Brazilian newspapers *O Globo* that in a ‘capitalistic model of development...the acceptance of a high level of income concentration [is] the most rational policy for an underdeveloped country, *needy of savings*’ (Campos 1972: 2, emphasis added). These remarks were produced in the context of a publicly debated distributional controversy in 1970s Brazil over whether income inequality had indeed increased and what were the driving factors (Bacha and Taylor 1978; Andrada and Boianovsky 2020).

At the center of this debate was Carlos Langoni, a Brazilian economist with a PhD from the University of Chicago, who published an influential book in 1973 that generalized the Kuznet-sian market dynamic explanation. This allowed him to exempt the regime’s wage policy from having any influence on the distribution. Langoni claimed ‘that the minimum wage has been declining in real terms since 1961, and that the policy of wage contention initiated in 1965 and 1966, was an appendix to the anti-inflationary policy’ (Langoni 1973: 78). Evidence from the data suggests that this was a revisionist account: after 1961 real minimum wages were falling a context of rising inflation, while after 1965 they were falling in a context of falling inflation. The wage policies of 1965 and 1966 not only more directly impacted real wages but allowed for the inflation of profits after the resumption of growth from the expansionary fiscal policy post-1967 (Bacha and Taylor 1978).

In the parlance of the distribution-led growth literature of Post-Keynesian macroeconomics, the Brazilian economy seemed to be mostly ‘wage-led’ until 1961—driven by the positive correlation between GDP growth and the wage share—after which it shifted to being ‘profit-led’ until at least the mid-1970s.<sup>20</sup> As framed by Nikiforos (2016), the pursuit of either wage-led or profit-led growth endogenously arrives at tipping points that shifts the economy to the opposite arrangement. In capitalist economies these changes depend on the private propensities to invest and save out of profits. The tension between aggregate demand and supply factors was known to opinion and policy makers at the time, as alternative interpretations of the 1961–1964 crisis convey, even among those not on the military side of the debate.

The structural thesis of the crisis, most associated to Furtado, posited that economic inequality was a critical bottleneck to further economic development (Furtado 1969). Modernizing the agricultural sector and redistribution incomes would avoid problems of internal demand and excess capacity. The cyclical thesis promoted by Serra and Tavares (1971) argued that

---

<sup>20</sup> See Figure A5 in the Appendix for a breakdown of GDP by income and expenditure components.

the crisis was a classic one of investment, in the traditional Keynesian sense of low profit expectations in the face of inflationary wage policy and the maturity of the 'Plano de Metas' of the Kubitschek government. While both sides of the debate agreed that incomes were still too highly concentrated to best ration consumption-demand, Tavares and Serra argued that the fall in the profit–wage ratio over time constrained investment from the supply-side. Thus, the solution to the crisis lied in one of two paths: increasing the profit–wage ratio by repressing labour costs, so that both falling investment and rising inflation could be tackled; or introducing new large public investment programs alongside strict price controls and/or a strong curtailment of upper-income consumption through higher taxes to control inflation. Ultimately, Tavares and Serra noticed that economic conventions had shifted to being profit-led, and so had the new dominant social bloc that over the course of 1964 united diverse factions of military, business and civil society groups (Skidmore 1976).

## 6 Conclusion

Writing in exile during the first months of the military dictatorship Celso Furtado asked whether 'a system of power designed to preserve the status quo [can] be conditioned to formulate and pursue a policy of development in a country where development depends on the prior completion of changes in the existing social structure?' (Furtado 1965: 267). Years later in a retrospective review of the debates of this period, another Brazilian economist, Edmar Bacha, wrote that '[g]iven the populist ideological underpinnings of their doctrines, structuralist economists did not acknowledge that authoritarian regimes could succeed in substantially reducing inflationary pressures without impairing growth prospects by rigidly controlling wage earners' claims to higher nominal incomes' (Bacha et al. 1980: 24).

In this paper we have attempted to make sense of these cognitive frames of thought, through an examination of income distribution and growth in Brazil, following the intuitions of Kuznets (1955). Overall, we found mixed evidence for Kuznets swings of an inverted-U shape for income, beyond clear patterns for variables like population growth, urbanization, and proportions of savings and investment in total value-added. However, in combining income dynamics with changes in political regimes, we revealed the endogeneity of Kuznets swings to political conflict and institutional change, which are themselves endogenous to the pressures of capitalist modernization. From Kuznets's 1955 article, we have drawn out a 'Kuznets curse', which is the tendency in late-developing countries for endogenous social conflicts linked to rapid structural change to be resolved by authoritarian regimes that ensure adherence to the high-savers accumulation model. This model of understanding the economy was contested at different points in time, most notably during the period of social-democratic developmentalism (1945–1964). We argued that this era holds the key to understanding the Kuznets curse given what followed. Its

political economy was explored from synthesizing primary sources of key political actors with contemporary scholarship on economic development and the more recent neorealist approach to institutional change.

The social bloc that was gaining dominance during the 1950s fell into crisis in the early 1960s due to a rupture between social expectations and policy outcomes. Capitalists were compelled to reinvest their high savings, and thus minimize their conspicuous consumption, in exchange for the boost to profits that state investment was generating. Urban wages grew rapidly as a way to prop up internal demand and spur further private investment in productive capacity, but the redistribution of aggregate demand that was pursued faced a tipping point with rising inflation. Under the supply constraints of late development, how to expand domestic capacity and demand sufficiently in-tandem to avoid producing inflationary spirals was the problem that the dominant social bloc struggled with to their detriment. These were the sort of challenges that developed economies would essentially face two decades later during the stagflationary 1970s (Blyth 2002). But as Kuznets warned, the institutional and political frameworks are so much more polarized in developing countries that the same strain could produce more explosive outcomes.

Kuznets would return to this theme at the end of a 1963 paper when commenting that ‘in evaluating the effects of the size distribution of income on economic growth, the knowledge of the quantitative characteristics of the distribution itself is just a beginning: we need far more knowledge of the economic and social conditions under which the distribution is generated than we now possess. In particular, we need to be aware of the stresses and strains to which income inequalities give rise so that, in concentrating on the purely economic aspects like generation of savings or effective demand, we do not overlook the effects of the cleavages created in the social and political structures that are indispensable for sustained economic growth’ (Kuznets 1963: 69). The present paper is a contribution to the development of such knowledge.

## References

- Alfani, G. (2024). ‘Inequality in history: A long-run view’. *Journal of Economic Surveys*,(): 1-21.
- Alisjahbana, A. S., Sen, K., Sumner, A., and Yusuf, A. A. (eds). (2022). *The developer’s dilemma*. Oxford University Press.
- Amable, B., and Palombarini, S. (2009). ‘A neorealist approach to institutional change and the diversity of capitalism’. *Socio-economic review*, 7(1): 123–143.
- Amable, B., and Palombarini, S. (2023). ‘Multidimensional social conflict and institutional change’. *New Political Economy*, 28(6): 942–957.
- Andrada, A. F., and Boianovsky, M. (2020). ‘The political economy of the income distribution controversy in 1970s Brazil: debating models and data under military rule’. In *Research in the history*

- of economic thought and methodology: Including a Symposium on Economists and Authoritarian Regimes in the 20th Century* (Vol. 38, pp. 75–94).
- Arroyo Abad, L., and Astorga, P. (2017). ‘Latin American earnings inequality in the long run’. *Cliometrica*, 11(3): 349–374. Available at: <https://doi.org/10.1007/s11698-016-0150-9>
- Astorga, P. (2024, October). ‘Revealing the diversity and complexity behind long-term income inequality in Latin America: 1920–2011’. *The Journal of Economic History*,(): . Available at: <https://doi.org/10.1017/S0022050724000275>
- Bacha, E. L., and Taylor, L. (1978). ‘Brazilian income distribution in the 1960s: Tacts’ model results and the controversy’. *The Journal of Development Studies*, 14(3): 271–297.
- Bacha, E. L., Taylor, L., Cardoso, E. A., and Lysy, F. J. (1980). *Models of Growth and Distribution for Brazil*. New York: Published for the World Bank by Oxford University Press.
- Bengtsson, E., and Morgan, M. (2022). ‘Does Democratization Cause Redistribution? Evidence from Sweden and Brazil’. In *Scandinavia and South America—A Tale of Two Capitalisms: Essays on Comparative Developments in Trade, Industrialisation and Inequality since 1850* (pp. 287–323). Springer. Available at: [https://doi.org/10.1007/978-3-031-09198-8\\_9](https://doi.org/10.1007/978-3-031-09198-8_9)
- Bértola, L., and Williamson, J. (2017). *Has Latin American inequality changed direction?: Looking over the long run*. Springer. 10.1007/978-3-319-44621-9
- Blanchet, T., Flores, I., and Morgan, M. (2022). ‘The weight of the rich: Improving surveys using tax data’. *Journal of Income Inequality*, 20(1): 1–32. Available at: <https://doi.org/10.1007/s10888-021-09509-3>
- Blanchet, T., Fournier, J., and Piketty, T. (2022). ‘Generalized Pareto Curves: Theory and Applications’. *Review of Income and Wealth*, 68(1): 263–288. <https://doi.org/10.1111/roiw.12510>
- Blyth, M. (2002). *Great Transformations: Economic Ideas and Institutional Change in the Twentieth Century*. Cambridge University Press. Available at: <https://doi.org/10.1017/CBO9781139087230>
- Bucciferro, J. R., and Souza, P. H. (2020). ‘The evolution of regional income inequality in Brazil, 1872–2015’. *Time and space: Latin american regional development in historical perspective*,(): 131–156. Available at: [https://doi.org/10.1007/978-3-030-47553-6\\_6](https://doi.org/10.1007/978-3-030-47553-6_6)
- Campos, R. (1972). ‘Tempo de balanço ii’. *O Globo*,(): 2.
- De Rosa, M., Flores, I., and Morgan, M. (2024). ‘More unequal or not as rich? revisiting the latin american exception’. *World Development*, 184(): 106737. Available at: <https://www.sciencedirect.com/science/article/pii/S0305750X24002079> <https://doi.org/10.1016/j.worlddev.2024.106737>
- Dobb, M. (1963). *Economic Growth and Underdeveloped Countries*. London: Lawrence and Wishart.
- Engerman, S. L., and Sokoloff, K. L. (2012). *Economic Development in the Americas since 1500: Endowments and Institutions*. Cambridge University Press.
- FGV (1962). *Contas Nacionais do Brasil, 1947/1961*. Rio de Janeiro: Instituto Brasileiro de Geografia e Estatística.
- Firpo, S., Pieri, R., and Nogueira, R. (2022). ‘Inclusive growth without structural transformation? the case of brazil’. In A. S. Alisjahbana, K. Sen, A. Sumner, and A. A. Yusuf (eds), *The developer’s dilemma* (p. 205–226). Oxford University Press. Available at: <https://doi.org/10.1093/oso/9780192855299.003.0010>

- Fishlow, A. (1972, março). 'Brazilian size distribution of income'. *The American Economic Review*, 62(1/2): 391–402.
- Frankema, E. (2010). 'Reconstructing Labor Income Shares in Argentina, Brazil and Mexico, 1870–2000'. *Revista de Historia Económica-Journal of Iberian and Latin American Economic History*, 28(2): 343–374. Available at: <https://doi.org/10.1017/S0212610910000091>
- Furtado, C. (1964). *Dialética do desenvolvimento*. Rio de Janeiro: Fundo de Cultura.
- Furtado, C. (1965). 'Political Obstacles to Economic Growth in Brazil'. *International Affairs*, 41(2): 252–266. Available at: <https://doi.org/10.2307/2610619>
- Furtado, C. (1969). 'Desenvolvimento e estagnação na América Latina: Um enfoque estruturalista'. *América Latina: Ensayos de Interpretación Económica*. Santiago: Ed. Universitária,(): 120–149.
- Gomes, A. C. (2005). *A invenção do trabalhismo* (3ª ed. ed.). Rio de Janeiro: Editora FGV.
- Gómez León, M. (2019). 'The rise of the middle class in Brazil, 1850–1950'. *European Review of Economic History*, 23(4): 482–498. Available at: <https://doi.org/10.1093/ereh/hey021>
- Gómez León, M. (2021). 'The Kuznets Curve in Brazil, 1850–2010'. *Revista de Historia Económica-Journal of Iberian and Latin American Economic History*, 39(1): 37–61. Available at: <https://doi.org/10.1017/S0212610920000166>
- Goulart, J. (1964). 'Discurso do presidente João Goulart na central do Brasil, Rio de Janeiro (RJ), 13 de março 1964'. In W. B. Marcelino (ed.), *Discursos selecionados do presidente João Goulart* (pp. 79–89). Brasília: Fundação Alexandre de Gusmão. Available at: [http://funag.gov.br/loja/download/641-Discursos\\_joao\\_goulart.pdf](http://funag.gov.br/loja/download/641-Discursos_joao_goulart.pdf)
- Hirschman, A. O., and Rothschild, M. (1973). 'The Changing Tolerance for Income Inequality in the Course of Economic Development: With a Mathematical Appendix'. *The Quarterly Journal of Economics*, 87(4): 544–566. Available at: <https://doi.org/10.2307/1882024>
- Hoffmann, R. (1988). 'A Subdeclaração dos Rendimentos'. *Revista São Paulo em Perspectiva*, 2(1): 50–54.
- Hoffmann, R., and Duarte, J. C. (1972). 'A Distribuição da Renda no Brasil'. *Revista de administração de empresas*, 12(2): 46–66. Available at: <https://doi.org/10.1590/S0034-75901972000200005>
- Hoffmann, R., and Ney, M. G. (2010). 'Estrutura fundiária e propriedade agrícola no Brasil, grandes regiões e unidades da federação'. *Brasília: Ministério do Desenvolvimento Agrário*,(): 108.
- IBGE (2000). *Sistema de contas nacionais - Brasil, 1995–1999*. Rio de Janeiro: Instituto Brasileiro de Geografia e Estatística.
- IBGE (2006). *Estatísticas do século XX*. Rio de Janeiro: Instituto Brasileiro de Geografia e Estatística.
- IBGE (2017a). *Anuário Estatístico do Brasil*. Instituto Brasileiro de Geografia e Estatística.
- IBGE (2017b). *Sistema de contas nacionais: Brasil: 2015*. Rio de Janeiro: Instituto Brasileiro de Geografia e Estatística.
- Kahn, R. F. (1958). 'The pace of development'. In *The challenge of development*. Jerusalem: The Eliezer Kaplan School of Economics and Social Sciences, The Hebrew University. (Reprinted in Kahn, 1972, *Selected Essays on Employment and Growth*, Cambridge: Cambridge University Press)
- Keynes, J. M. (1919). *The Economic Consequences of the Peace*. Digireads.com.

- Keynes, J. M. (1936). *The General Theory of Employment, Interest and Money*. Harcourt Brace.
- Kingston, J., and Kingston, L. (1972). 'A Distribuição da Renda no Brasil, 1960-1970'. *Revista Brasileira de Economia*, 26(4): 241–256.
- Kubitschek, J. (1956). *Mensagem ao congresso nacional, parte 1*. Available at: <http://www.biblioteca.presidencia.gov.br/presidencia/ex-presidentes/jk/mensagens-presidenciais/mensagem-ao-congresso-nacional-jk-1956-parte-1.pdf>
- Kubitschek, J. (1957). *Mensagem ao congresso nacional, 1957*. Available at: <http://www.biblioteca.presidencia.gov.br/presidencia/ex-presidentes/jk/mensagens-presidenciais/mensagem-ao-congresso-nacional-jk-1957.pdf>
- Kuznets, S. (1953). *Shares of Upper Income Groups in Income and Savings*. NBER. Available at: <http://www.jstor.org/stable/10.2307/2343040?origin=crossref> 10.2307/2343040
- Kuznets, S. (1955). 'Economic Growth and Income Inequality'. *The American Economic Review*, 45(1): 1–28. Available at: <https://doi.org/10.2307/1811581>
- Kuznets, S. (1963). 'Quantitative Aspects of the Economic Growth of Nations: VIII. Distribution of Income by Size'. *Economic Development and Cultural Change*, 11(2, Part 2): 1–80. Available at: <https://doi.org/10.1086/450006>
- Langoni, C. (1973). *Distribuição da Renda e Desenvolvimento Econômico do Brasil*. Editora Expressão e Cultura.
- Lewis, W. A. (1954). 'Economic Development with Unlimited Supplies of Labour'. *The Manchester School*, 22(2): 139–191. Available at: <https://doi.org/10.1111/j.1467-9957.1954.tb00021.x>
- Lindert, P. H. (1986). 'Unequal english wealth since 1670'. *Journal of Political Economy*, 94(6): 1127–1162.
- Love, J. L. (1970). 'Political Participation in Brazil, 1881-1969'. *Luso-Brazilian Review*, 7(2): 3–24.
- Magano, O. B. (1995). 'Washington Luís e a questão social'. *Revista Da Faculdade De Direito, Universidade De São Paulo*, 90(): 49–65. Available at: <https://doi.org/10.11606/issn.2318-8235.v90i0p49-65>
- Marglin, S., and Bhaduri, A. (1990). 'Profit squeeze and keynesian theory'. In S. Marglin and J. Schor (eds), *The golden age of capitalism: Reinterpreting the postwar experience* (pp. 153–186). Oxford: Clarendon Press. Available at: <https://doi.org/10.1093/acprof:oso/9780198287414.003.0004>
- Medeiros, M., de Castro Galvão, J., and de Azevedo Nazareno, L. (2018). 'Correcting the Underestimation of Top Incomes: Combining Data from Income Tax Reports and the Brazilian 2010 Census'. *Social Indicators Research*, 135(1): 233–244. Available at: <https://doi.org/10.1007/s11205-016-1498-8>
- Medeiros, M., Souza, P. H., and Castro, F. A. (2015a). 'O Topo da Distribuição de Renda no Brasil: Primeiras Estimativas com Dados Tributários e Comparação com Pesquisas Domiciliares (2006-2012)'. *Dados*, 58(1): 7–36. Available at: <https://doi.org/10.1590/00115258201537>
- Medeiros, M., Souza, P. H., and Castro, F. A. (2015b). 'The Stability of Income Inequality in Brazil, 2006-2012: An Estimate Using Income Tax Data and Household Surveys'. *Ciência & Saúde Coletiva*, 20(4): 971–986. Available at: <https://doi.org/10.1590/1413-81232015204.00362014>
- Morgan, M. (2015). *Income concentration in a context of late development: An investigation of top in-*

- comes in brazil using tax records, 1933-2013 (Master's Dissertation). Paris School of Economics, Paris.
- Morgan, M. (2017). 'Extreme and Persistent Inequality: New Evidence for Brazil Combining National Accounts, Surveys and Fiscal Data, 2001-2015'. *WID.world Working Paper 2017/12*,(): .
- Morgan, M. (2018). *Essays on income distribution: Historical, methodological and institutional perspectives* (PhD Dissertation in Economics). Paris School of Economics, Paris.
- Mortara, G. (1949a). 'Dados e Observações Sobre a Distribuição das Rendas das Pessoas Físicas Contribuintes do Imposto de Renda no Brasil'. *Revista Brasileira de Estatística*, 10(38): 197–222.
- Mortara, G. (1949b). 'Representação Analítica das Distribuições dos Contribuintes e das Respetivas Rendas Líquidas Determinadas para a Aplicação do Imposto de Renda, em Função do Valor da Renda Líquida'. *Revista Brasileira de Economia*, 3(2): 7–34.
- Nikiforos, M. (2016). 'Distribution-led growth in the long-run'. *Review of Keynesian Economics*, 4(4): 391–408.
- Nurkse, R. (1953). *Problems of Capital Formation in Underdeveloped Countries*. Oxford: Oxford University Press.
- Paoli, M. C. (1989). 'Trabalhadores e cidadania: experiência do mundo público na história do brasil moderno'. *Estudos Avançados*, 3(7): 40–66.
- Polanyi, K. (1944). *The Great Transformation: The Political and Economic Origins of Our Time*. Boston: Beacon Press.
- Saboia, J. (1984). *Evolução histórica do salário mínimo no Brasil: fixação, valor real e diferenciação regional*. Rio de Janeiro: IPEA, Programa Nacional de Pesquisa Econômica. Available at: <http://www.ipeadata.gov.br/ExibeSerie.aspx?stub=1&serid1739471028=1739471028>
- Schumpeter, A., Joseph. (1942). *Capitalism, socialism and democracy*. 2003 Reprint, New York: Routledge.
- Serra, J., and Tavares, M. d. C. (1971). 'Além da estagnação: Uma discussão sobre o estilo de desenvolvimento recente do brasil'. *En: Cinquenta anos de pensamento na CEPAL-Rio de Janeiro: Record/CEPAL, 2000-v. 2, p. 589-608*,(): .
- Simonsen, M. H. (1972). *Brasil 2002*. Rio de Janeiro: Apec; Edições Bloch.
- Simonsen, M. H. (1975). 'A Política Salarial dos Governos da Revolução'. *Brasília: House of Representatives Committee on Wage Policy, November 18; processed*,(): .
- Skidmore, T. E. (1976). *Brasil: de Getúlio Vargas a Castelo Branco (1930–1964)*. Rio de Janeiro: Paz e Terra.
- Souza, P. H. (2015). 'A Distribuição de Renda nas Pesquisas Domiciliares Brasileiras: Harmonização e Comparação entre Censos, PNADs e POFs'. *Revista Brasileira de Estudos de População*, 32(1): 165–188. Available at: <https://doi.org/10.1590/S0102-30982015000000009>
- Souza, P. H. (2016). *A desigualdade vista do topo: A concentração de renda entre os ricos no brasil, 1926-2013* (PhD Dissertation in Sociology). Universidade de Brasília, Brasília.
- Souza, P. H. (2018). 'A History of Inequality: Top Incomes in Brazil, 1926-2015'. *Research in Social Stratification and Mobility*, 57(): 35–45. Available at: <https://doi.org/10.1016/j.rssm.2018.07.003>



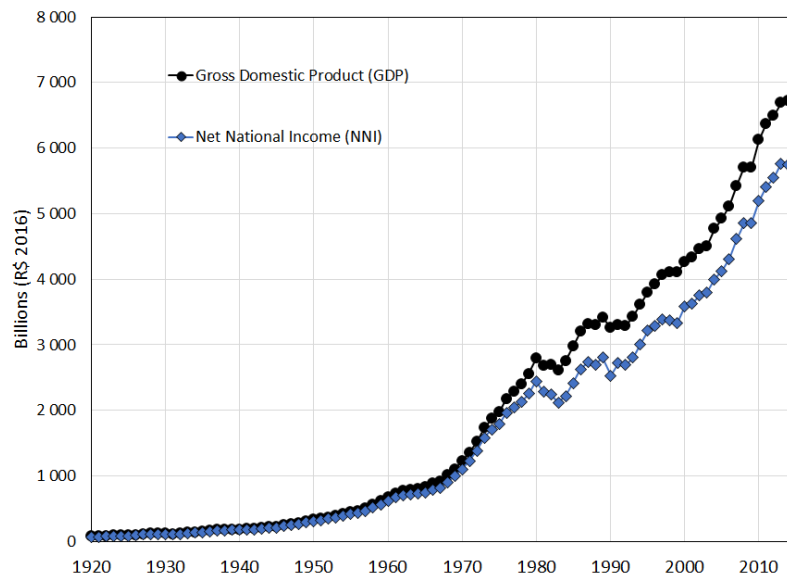
- Taylor, L. (2004). *Reconstructing macroeconomics: Structuralist proposals and critiques of the mainstream*. Cambridge, MA: Harvard University Press.
- Vargas, G. (1932). *A Nova Política do Brasil. Vol. II*. Rio de Janeiro: José Olímpio. Available at: <http://www.biblioteca.presidencia.gov.br/publicacoes-oficiais/catalogo/getulio-vargas/vargas-a-nova-politica-do-brasil-vol-ii/view>
- Vargas, G. (1951). *A Nova Política do Brasil. Vol. X*. Rio de Janeiro: José Olímpio. Available at: <http://www.biblioteca.presidencia.gov.br/publicacoes-oficiais/catalogo/getulio-vargas/vargas-a-nova-politica-do-brasil-vol-x/view>
- Vianna, F. J. d. O. (1951). *Direito do trabalho e democracia social: o problema da incorporação do trabalhador no estado*. Rio de Janeiro: José Olympio.
- Wickizer, V. D. (1943). *The world coffee economy, with special reference to control schemes*. Stanford, CA: Food Research Institute, Stanford University.
- WIL (2020). *Distributional National Accounts Guidelines: Methods and Concepts Used in the World Inequality Database*. Available at: <https://wid.world/document/distributional-national-accounts-guidelines-2020-concepts-and-methods-used-in-the-world-inequality-database/>
- Williamson, J. G. (2015). *Latin American Inequality: Colonial Origins, Commodity Booms or a Missed Twentieth-Century Leveling?* Journal of Human Development and Capabilities. Available at: <https://doi.org/10.1080/19452829.2015.1044821>



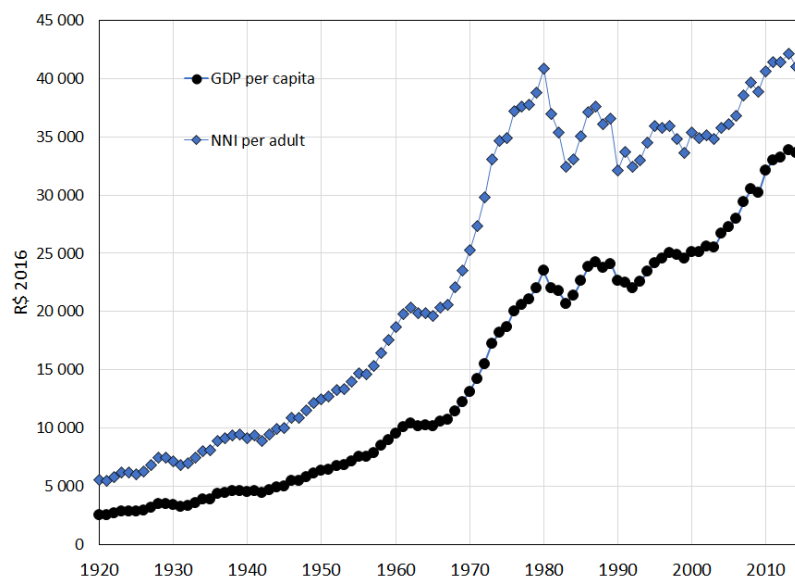
## A Supplementary figures

Figure A1: Gross domestic product vs net national income

(a) GDP vs NNI

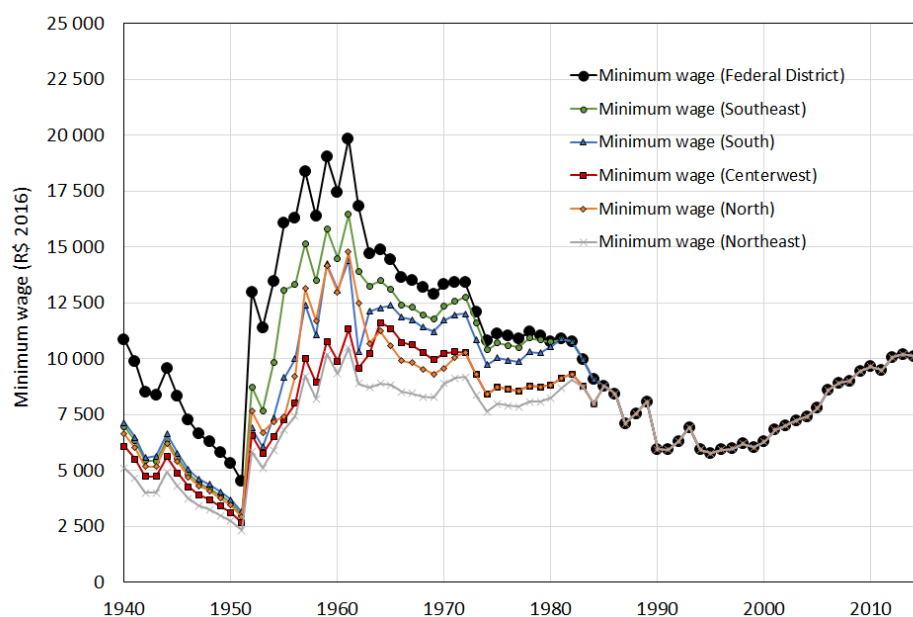


(b) GDP per capita vs NNI per adult



Source: authors' calculations using data from IBGE (2006, 2017b).

Figure A2: Minimum wages by region in Brazil

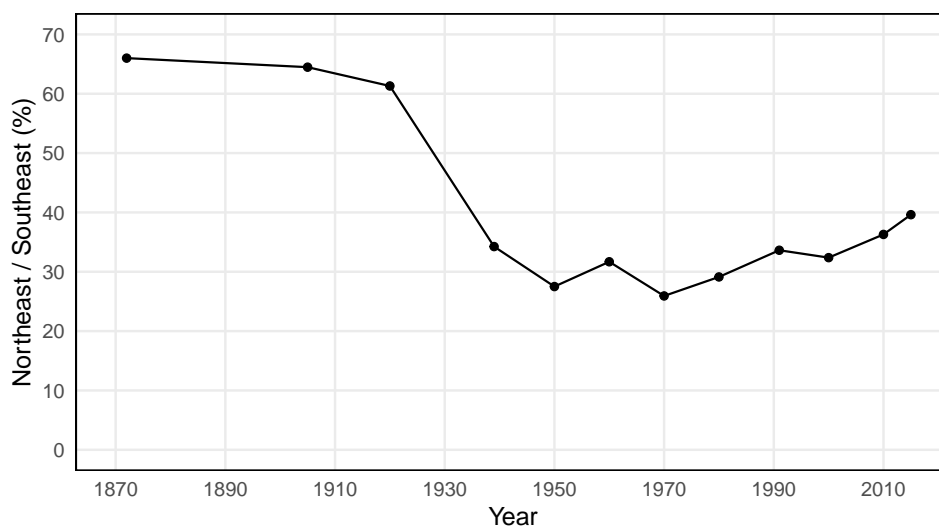


Note: the federal minimum wage was introduced in 1984. Before 1984 minimum wages were defined by law at the state-district level, and only in urban areas before 1963.

The Federal District comprises the city of Rio de Janeiro up to 1960 and Brasilia thereafter. All incomes are deflated by the GDP deflator from IBGE, and annually cumulated by multiplying monthly values by 12.

Source: authors' calculations using nominal wage data from Saboia (1984).

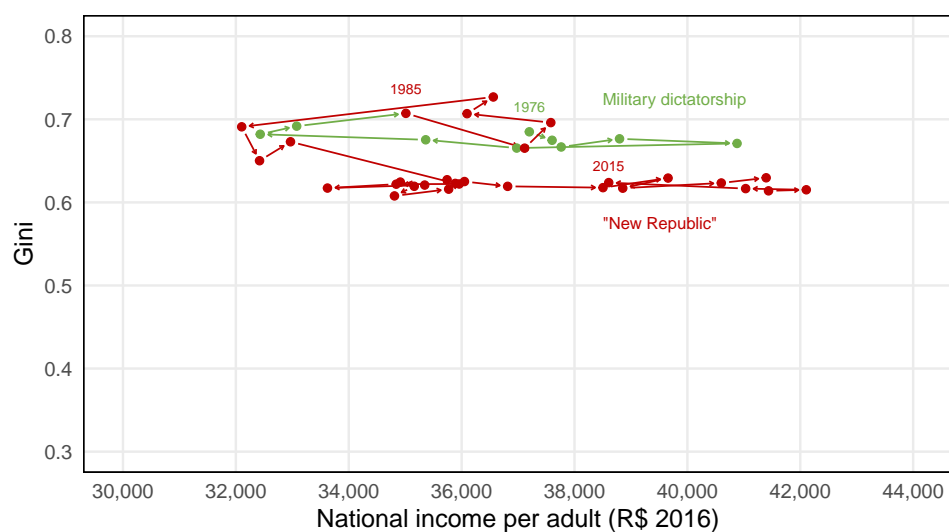
Figure A3: GDP per capita in the Northeast versus the Southeast



Note: estimates of the ratio of (population-weighted) GDP per capita of the nine states in the Northeast to GDP per capita in the four states of the Southeast, 1872–2015.

Source: authors' illustration based on data from Bucciferro and Souza (2020).

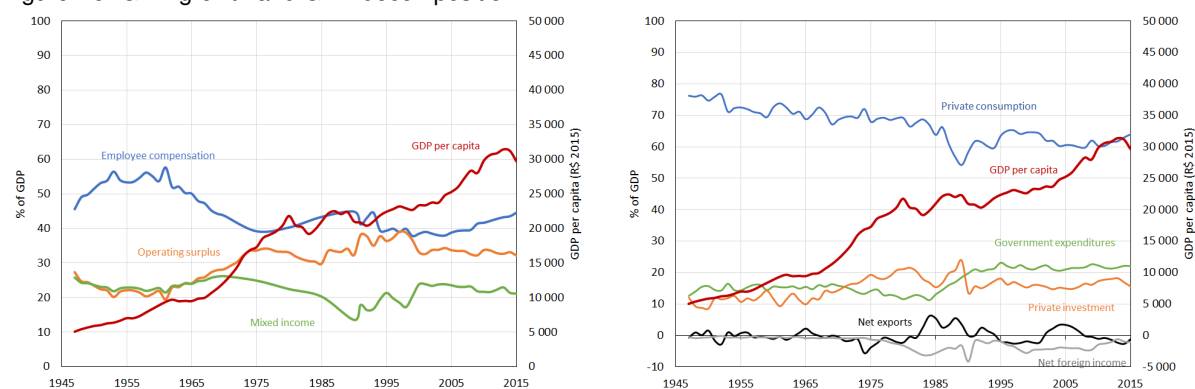
Figure A4: Gini Kuznets curve



Note: distribution of pre-tax national income among equal-split adults. The unit of observation is the adult individual (20-year-old and over; income of married couples is split equally). Fractiles are defined relative to the total number of adult individuals in the population.

Source: authors' calculations (combining survey, tax, and national accounts data).

Figure A5: GDP growth and GDP decomposition



(a) Income decomposition of GDP

(b) Expenditure decomposition of GDP

Note: government consumption expenditures exclude monetary social transfers and benefits, which are included in private consumption.

Source: authors' illustration based on GDP components from IBGE (2006, 2017a).

## **B      Supplementary data**

There is a supplementary online appendix related to this article. It contains more detailed information on data sources used and our estimation methods.