

Casas, Lyle; Bagas, Joy; Ulep, Valerie Gilbert

Working Paper

Tracking nutrition investments: Proposed nutrition budget tagging framework and typology for the national government agencies in the Philippines

PIDS Discussion Paper Series, No. 2024-07

Provided in Cooperation with:

Philippine Institute for Development Studies (PIDS), Philippines

Suggested Citation: Casas, Lyle; Bagas, Joy; Ulep, Valerie Gilbert (2025) : Tracking nutrition investments: Proposed nutrition budget tagging framework and typology for the national government agencies in the Philippines, PIDS Discussion Paper Series, No. 2024-07, Philippine Institute for Development Studies (PIDS), Quezon City, <https://doi.org/10.62986/dp2024.07>

This Version is available at:

<https://hdl.handle.net/10419/311695>

Standard-Nutzungsbedingungen:

Die Dokumente auf EconStor dürfen zu eigenen wissenschaftlichen Zwecken und zum Privatgebrauch gespeichert und kopiert werden.

Sie dürfen die Dokumente nicht für öffentliche oder kommerzielle Zwecke vervielfältigen, öffentlich ausstellen, öffentlich zugänglich machen, vertreiben oder anderweitig nutzen.

Sofern die Verfasser die Dokumente unter Open-Content-Lizenzen (insbesondere CC-Lizenzen) zur Verfügung gestellt haben sollten, gelten abweichend von diesen Nutzungsbedingungen die in der dort genannten Lizenz gewährten Nutzungsrechte.

Terms of use:

Documents in EconStor may be saved and copied for your personal and scholarly purposes.

You are not to copy documents for public or commercial purposes, to exhibit the documents publicly, to make them publicly available on the internet, or to distribute or otherwise use the documents in public.

If the documents have been made available under an Open Content Licence (especially Creative Commons Licences), you may exercise further usage rights as specified in the indicated licence.

Tracking Nutrition Investments: Proposed Nutrition Budget Tagging Framework and Typology for the National Government Agencies in the Philippines

Lyle Daryll D. Casas, Joy Bagas, and Valerie Gilbert T. Ulep



The PIDS Discussion Paper Series constitutes studies that are preliminary and subject to further revisions. They are being circulated in a limited number of copies only for purposes of soliciting comments and suggestions for further refinements. The studies under the Series are unedited and unreviewed. The views and opinions expressed are those of the author(s) and do not necessarily reflect those of the Institute. Not for quotation without permission from the author(s) and the Institute.

This study was carried out with support from the United Nations Children's Fund (UNICEF) for the Department of Health (DOH) and National Nutrition Council (NNC).



CONTACT US:

RESEARCH INFORMATION DEPARTMENT
Philippine Institute for Development Studies

18th Floor, Three Cyberpod Centris - North Tower
EDSA corner Quezon Avenue, Quezon City, Philippines

publications@pids.gov.ph
(+632) 8877-4000

<https://www.pids.gov.ph>

Tracking Nutrition Investments: Proposed Nutrition Budget
Tagging Framework and Typology for the National Government
Agencies in the Philippines

Lyle Daryll D. Casas
Joy Bagas
Valerie Gilbert T. Ulep

PHILIPPINE INSTITUTE FOR DEVELOPMENT STUDIES
UNITED NATIONS CHILDREN'S FUND

August 2024

Acknowledgments: This study is one of the research products of the project supported by UNICEF for the Department of Health (DOH) and National Nutrition Council (NNC). The authors would like to thank the following technical reviewers and contributors from the UNICEF Philippines Country Office (in alphabetical order): Maria Evelyn Carpio, Rene Gerard Galera, Lea Marasigan, and Alice Nkoroi; from the National Nutrition Council (NNC): Ellen Abella, Rita Papey, Jovita Raval, Arlene Reario, and Jasmine Ducusin.



Abstract

This report proposes a framework in tagging nutrition expenditures of national government agencies. The framework was developed through exhaustive literature review and validation sessions with government agencies. It comprised of five levels (5) of classification elements namely: major intervention classification, program domain, program component classification, and specific interventions. Furthermore, it includes three (3) additional markers to group and tag nutrition-relevant line-item expenditures such as: risk factors of malnutrition, nutrition intervention focus area, and population demographic group. The national government could use the framework to assess the adequacy and efficiency of public spending on nutrition. Also, it could be used to determine the alignment of public spending with the Philippine Plan of Action for Nutrition (PPAN) and with reform actions such as Universal Healthcare (UHC) and multi-sectoral and life-course approaches to health and nutrition.

Keywords: budget tagging, expenditure tracking, nutrition, Philippines

Table of Contents

Introduction	1
Methodology.....	2
Crafting the NBT Framework and Typology	2
Guiding frameworks.....	3
Nutrition Budget Tagging Typology	10
NBT Typology Framework	10
NBT Full Typology	14
Weighting criteria to apportion indirect nutrition budget lines	16
Limitations of this typology.....	17
The Budget Tagging Process.....	17
Step 1: Prepare financial data	18
Step 2: Tag budget and expenditure line-items.....	19
Filling-out of the NBT Sheet	19
Typology Tagging	22
Step 3: Analyze the tagged expenditures	23
Step 4: Report Nutrition Expenditure Data.....	23
Process Limitations	23
Considerations moving forward	24
Improving the typology and overall process.....	24
Implementation and institutionalization	25
Bibliography.....	26
Appendices	27

List of Figures

Figure 1. Methodology in crafting the NBT Framework and Typology	2
Figure 2. Philippine Plan of Action for Nutrition 2017-2022 Target Outcomes	7
Figure 3. Conceptual framework for interventions related to child and maternal undernutrition.....	8
Figure 4. Conceptual framework for analyzing determinants of child nutrition	9
Figure 5. SUN Methodology: Steps in Nutrition Budget Analysis	9
Figure 6. The Nutrition Budget Tagging Typology Framework.....	11
Figure 7. NBT Typology Coding Diagram.....	15
Figure 8. Sample table from the Full Typology	15
Figure 9. Overview of the Nutrition Budget Tagging Process	18

List of Tables

Table 1. List of PPAN 2017-2022 Programs, Projects, and Strategies	4
Table 2. List of program domains under each major nutrition intervention classification	12
Table 3. Weight applied using the quadruple system based on the reported mean weight..	16
Table 4. Weights of the Nutrition Budget Tagging Expenditure per Program Domain.....	17
Table 5. Sample filled-out NBT Sheet (Program Data).....	20
Table 6. Sample filled-out NBT Sheet (Tag Data)	21
Table 7. Illustrative example of program weighting.....	24

Annexes

Annex A. NBT Full Typology	27
Annex B. Sample Work and Financial Plans	28
Annex C. Nutrition Budget Tagging Sheet for NGAs	29
Annex D. Concerned Program/Bureau/Operating Units of Relevant National Government Agencies	30
Annex E. Suggested Dummy Tables.....	32
Annex F. Sample Tables.....	36

Tracking Nutrition Investments: Proposed Nutrition Budget Tagging Framework and Typology for the National Government Agencies in the Philippines

*Lyle Daryll D. Casas, Joy Bagas, Valerie Gilbert T. Ulep**

Introduction

Adequate and efficient public spending is vital in addressing the long-standing problem of malnutrition in the Philippines. A systematic and efficient tracking system is needed to obtain regular, reliable data on nutrition spending. The system enables decision-makers to prioritize and allocate resources and promote transparency and accountability among implementing government agencies.

However, monitoring health and nutrition spending remains a challenge in the Philippines. Critical policy questions, such as the adequacy of public spending on nutrition and the efficiency of spending (i.e., whether resources are strategically allocated to cost-effective interventions), are often left unanswered. Uy et al. (2022) noted several issues and challenges in tracking nutrition expenditures in the country. **Table 1** summarizes these challenges in tracking public investments. They also recommend establishing routine tracking and review of nutrition investments. First, information and results needed by policymakers and program managers should be set and identified. Second, program-level financial data should be available and easily relied on for activity-level data compared to lumped P/A/P expenditures. Third, the National Nutrition Council (NNC) should obtain a comprehensive inventory of agencies and their programs contributing to health and nutrition investments to streamline and make expenditure tagging more efficient. Last, and most importantly, institutionalize the integration of an efficient tracking and tagging process with the existing public financial management system.

Table 1. Challenges in tracking nutrition expenditures

Expenditure Review Process	Challenges
Scoping nutrition-related activities (expense items)	Absence of a comprehensive list of agencies and government programs judged to have nutrition-related activities.
	Point persons in NGAs were not easily accessible or entirely knowledgeable about PPAN and nutrition-related programs in their NGAs
Obtaining financial data	Access to granular financial data is dependent on the permission of higher officials and administrative departments who are not familiar with nutrition programs
	Data sharing barriers including privacy issues with detailed line-item data, difficulty obtaining even SAOBD data, and the lack of data on subnational expenses at central offices
Processing financial data	Line items in financial data required post hoc manual tagging using available descriptions for programs or transactions

*LDC is a Research Specialist, JB is a Consultant, and VGU is a Senior Research Fellow at the Philippine Institute for Development Studies, respectively.

	Without granular line-item data, nutrition-specific and enabling interventions can not be extracted as they are hidden under programs that seem nutrition-sensitive
	Lack of weights for nutrition-sensitive interventions to account for the fact that not all spending goes towards addressing malnutrition

Source: Uy et al. 2022

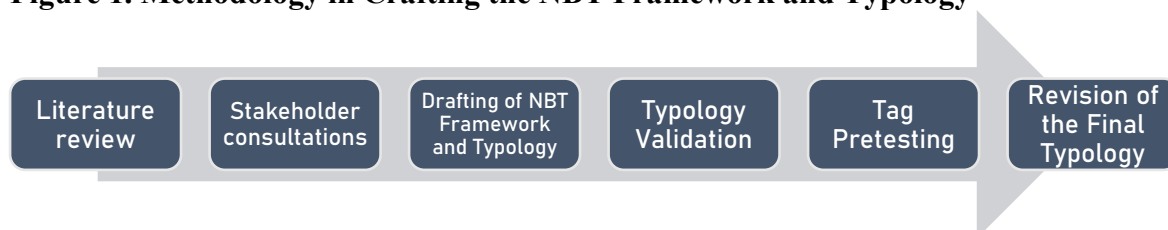
This report proposes a systematic process for tracking public expenditure for nutrition across the national government agencies in the Philippines, including the nutrition budget tagging typology, which will be used to tag nutrition-related line-item expenditures. Once institutionalized, it will regularly track government investments in nutrition in the country. While the budget tagging approach is designed for national government agencies, it is linked to current efforts to track health and nutrition spending at the local government. Also, the typology was designed to align with and identify expenditures based on the Philippine Plan of Action for Nutrition (PPAN) targets and with reform actions such as Universal Healthcare (UHC) and multi-sectoral and life-course approaches to health and nutrition. The subsequent sections describe the methodology for crafting the NBT typology and provide step-by-step guidance for tracking government agency nutrition expenditures.

Methodology

Crafting the NBT Framework and Typology

In this section, the process of crafting the NBT typology is presented. It is composed of six (6) major steps, namely: literature review, stakeholder consultations, framework and typology drafting, typology validation, tag pretesting, and typology revision (See **Figure 1**).

Figure 1. Methodology in Crafting the NBT Framework and Typology



Source: Author's illustration

First, the related literature, including budget tagging guidance notes from other countries and organizations, government financial documents, and public expenditure reviews, was reviewed to familiarize the current landscape of nutrition expenditure tracking in the Philippines and other countries and to gather the different frameworks that would guide the overall nutrition budget tagging framework and typology.

Second, consultations with stakeholders (e.g., UNICEF, NNC) were conducted to discuss and agree on the scope and objectives of the nutrition budget tagging and gather their direct support for its future operationalization.

Third, based on the initial consultations and the review of the related literature, the NBT Framework and Full Typology, or the reference list for the tags/codes for budget/expenditure

line item, was crafted (See **Figure 6** for the typology framework and **Annex A** For the full typology tables).

Fourth, this framework and the full typology were validated with select government agencies to ensure the appropriateness and sufficiency of the listed typology framework and line items. We attempted to validate with nine (9) national government agencies and councils, namely: (1) National Nutrition Council (NNC), (2) Food and Nutrition Research Institute – Department of Science and Technology (FNRI-DOST), (3) Department of Health – Disease Prevention and Control Bureau (DOH-DPCB), (4) Department of Social Welfare and Development (DSWD), (5) Commission on Population and Development (PopCom), (6) Council for the Welfare of Children, (7) Department of Agriculture (DA), (8) Department of Education (DepEd), and (9) ECCD Council. These nine (9) agencies were selected as these are usually the agencies with high spending on nutrition (Uy et al., 2022). Of these agencies, only six (6) accepted our invitation to validate, and three (3) were rejected because of schedule conflicts. However, they sent additional administrative documents to aid typology validation and revisions. The typology underwent revisions, implementing the comments and suggestions from the validation sessions.

Fifth, the typology was pre-tested with the existing documents submitted by NGAs. The Work Financial Plans (WFPs) of the National Nutrition Council, Commission on Population and Development, and Department of Health – DPCB were used to test the nutrition budget tagging the proposed process, tool, and typology. After the line-item expenditures from the agency's WFPs were transferred into the nutrition budget tagging tool (i.e., MS Excel template), they were tagged one by one using the code from the full NBT typology. For other agencies without submitted WFPs, the available Statement of Appropriations, Allotments, Obligations, Disbursements, and Balances (SAAOBDB) was used to review their relevant nutrition programs. In this process, the typology will be assessed to determine if there is an appropriate tagging code for all the relevant line items. Otherwise, the typology will be revised to accommodate the additional codes. In addition, the pretesting process assessed whether the budget tagging process was feasible for implementation at the national government level.

Lastly, the typology was revised and finalized based on the issues encountered from the pre-testing phase. More typology items were added to cover other possible line-item expenditures.

Guiding frameworks

Below are the frameworks that guided crafting the Nutrition Budget Tagging Framework.

1. **The Philippine Plan of Action for Nutrition (PPAN) 2017-2022**—The PPAN is the country's strategic results-based plan developed by the National Nutrition Council to address the malnutrition problem (e.g., wasting, stunting, micronutrient deficiencies, overweight, and obesity) in the Philippines. It was designed to strongly emphasize the First 1000 days of life.

The PPAN categorizes nutrition programs into nutrition-specific, nutrition-sensitive, and enabling management support programs. Nutrition-specific programs are programs that are expected to produce and improve nutritional outcomes. Nutrition-sensitive, on the other hand, are development programs that will be enhanced to produce nutritional outcomes (i.e., targeting vulnerable age groups, households, or geographic areas with high levels of

malnutrition). Enabling management support programs are designed to help enable or support nutrition-specific and sensitive programs (e.g., policy support). (NNC, 2017). As shown in **Table 1**, here is a brief list of nutrition programs under the PPAN. The PPAN nutrition program classification and list guided the initial program domains and framework of the Nutrition Budget Tagging.

Table 2. List of PPAN 2017-2022 Programs, Projects, and Strategies

PPAN Programs	Projects/Strategies
Nutrition Specific	
1. Infant and Young Child Feeding (IYCF)	<ul style="list-style-type: none"> • Health systems support • Community-based health and nutrition support • Maternity protection and improving capacities of workplaces on breastfeeding • Enforcement of the National Code of Marketing of Breastmilk substitutes (EO 51), the Republic Act 10028 (amending RA 7600), and other related issuances
2. Philippine Integrated Management of Acute Malnutrition (PIMAM)	<ul style="list-style-type: none"> • Policy development and implementation • Service delivery for the management of acute malnutrition • Capacity building of local implementers
3. National Dietary Supplementation Program (NDSP)	<ul style="list-style-type: none"> • Dietary supplementation of pregnant and lactating women • Dietary supplementation of infants and young children 6-23 months old • Dietary supplementation of children in Child Development Centers (CDCs) and Supervised Neighborhood Play (SNP) • Dietary supplementation of wasted school children • Support component • Cross-cutting concerns
4. National Nutrition Promotion Program for Behavior Change	<ul style="list-style-type: none"> • Social and Behavior Change Communication (SBCC) Plan • National Nutrition Promotion Resource Center • Organization of National TWG for Nutrition • Promotion Program for SBCC • Nutrition Information Resource Center • National Communication Strategy • SBCC materials • Integration of nutrition in the sectoral policies, programs, and materials • Strengthened partnership with quad media SBCC guidelines • Monitoring and evaluation
5. Micronutrient supplementation	<ul style="list-style-type: none"> • Logistics and system • Procurement, distribution, and availability of supplies • Capacity building • Advocacy and communication plan • Monitoring and evaluation
6. Mandatory Food Fortification	<ul style="list-style-type: none"> • Overall program coordination, monitoring and evaluation

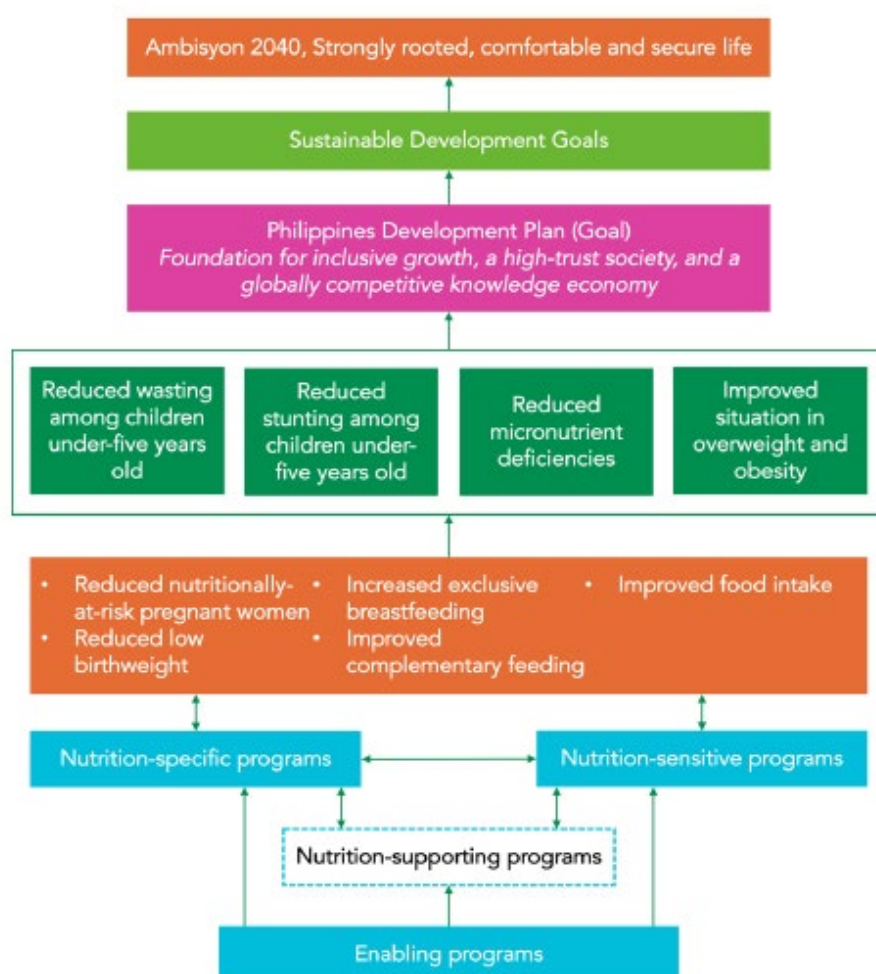
		<ul style="list-style-type: none"> • Strengthened compliance monitoring system • Flour fortification • Rice fortification • Salt iodization
7. Nutrition Emergencies	in	<ul style="list-style-type: none"> • Policy development, updating, and dissemination • Capability development • Prepositioning and resource mobilization • Promotion and communication • Inter- and intra-cluster coordination • Information management
8. Overweight and Obesity Management and Prevention Program		<ul style="list-style-type: none"> • Organization of the OOMP Task Force • National Campaign on Healthy Diet • Landscape Analysis on Childhood Overweight and Obesity • Guidelines on Physical Activity for Filipinos
Nutrition Sensitive		
1. Nutrition Health	in	<ul style="list-style-type: none"> • DILG's WASH Program • PopCom's Adolescent Health and Development (AHD)
2. Nutrition Agriculture	in	<ul style="list-style-type: none"> • Production support/Agricultural services • Research and Development (R&D) support services • Extension support, education, and training services (ESETS) • Agricultural machinery, equipment, facilities • Agricultural insurance • Market development services • Milk feeding program • Food Production in School
3. Nutrition Social Protection	in	<ul style="list-style-type: none"> • Conditional Cash Transfer (CCT) • Compliance verification system on CCT conditionalities • Sustainable Livelihood Program (SLP)
4. Nutrition Education	in	<ul style="list-style-type: none"> • Integrated School Nutrition Model (ISNM) • Expansion of Gulayan sa Paaralan (GP) • Weekly Iron-Folic Acid Supplementation (WIFA) • Deworming • WASH in Schools (WinS) • Accredited Centers using the Standards and Guidelines for Center-based Early Childhood Programs for 0 to 4 Years • Comprehensive Sexuality Education • Infant-Toddler Early Development (ITED) Program • Family Support Program • Parenting Effectiveness Session (PES)
5. Nutrition Trade and Industry	in and	<ul style="list-style-type: none"> • Diskwento Caravan
Enabling management support programs		
1. Mobilization of Local Government	of	<ul style="list-style-type: none"> • Formulation of Local Nutrition Action Plans for 2020-2022 and Integration into local development plans and budgets

Units for Nutritional Outcomes	<ul style="list-style-type: none"> • Advocacy interface with Local Chief Executives (LCEs) on Investing in Nutrition • Sustained Technical Assistance to LGUs by NNC Central and Regional Teams • Capacity Building on Nutrition Program Management and Nutrition Leadership and Governance
2. Policy Development for Food and Nutrition	<ul style="list-style-type: none"> • Securing Policy Support for Improving Nutrition in the Philippines • Public Advocacy for Improved Support for Nutrition in the Philippines
3. Management Strengthening Support to PPAN Effectiveness	<ul style="list-style-type: none"> • Securing Vital Nutrition Infrastructure and Resource Requirements for PPAN • Strengthening Coordination, Monitoring, Evaluation, and Management of PPAN

Source: NNC 2017

These programs work in synergy to achieve the target nutritional outcomes and the country's development goals (See **Figure 2** For the outcomes framework of the PPAN).

Figure 2. Philippine Plan of Action for Nutrition 2017-2022 Target Outcomes



Source: NNC 2017

2. **Intervention framework in addressing undernutrition (Bhutta et al., 2020)** – The updated literature from Bhutta et al. in 2020 proposed a new intervention framework for addressing child and maternal undernutrition (See **Figure 3**). This framework suggested that the nutrition intervention strategies (direct and indirect) done by the health sector should be considered separately from the other sectoral approaches. The direct interventions address the immediate determinants of undernutrition. These correspond to interventions directly addressing stunting and other nutrition outcomes such as wasting and anemia (previously termed “nutrition-specific”). On the other hand, indirect interventions address the more distal and underlying determinants. (Bhutta et al., 2020). The initial program domains of the NBT Framework from the PPAN 2017-2022 were updated using this framework, following the new definition of nutrition-specific and nutrition-sensitive interventions as direct and indirect, respectively.

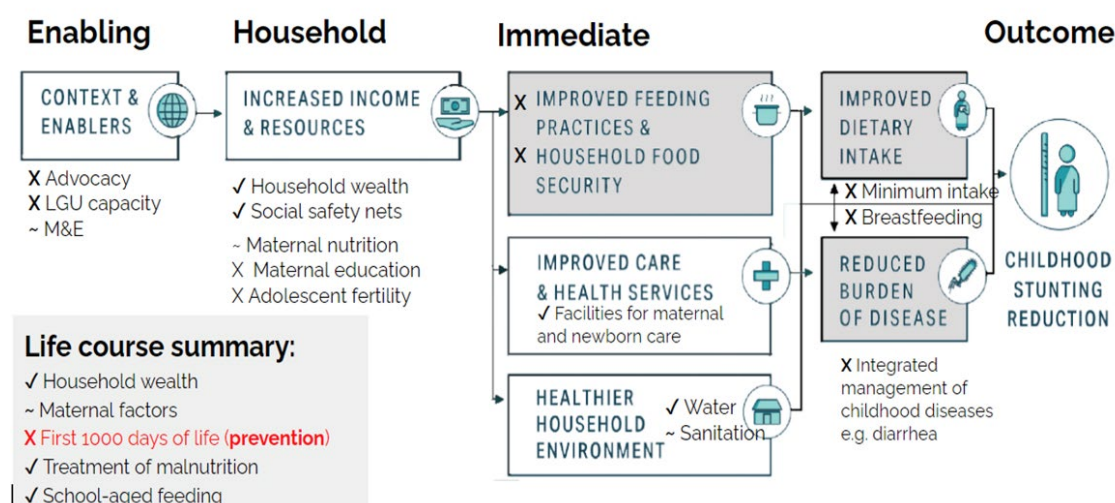
Figure 3. Conceptual framework for interventions related to child and maternal undernutrition.

Health Sector Nutrition Interventions		Other Sectoral Strategies	
DIRECT	INDIRECT	DIRECT	INDIRECT
<ul style="list-style-type: none"> • Promotion of healthy diet and physical activity during childhood, adolescence • Maternal/child food supplementation • Maternal/child micronutrient supplementation, including home fortification • Delayed cord clamping • Support for early immediate breastfeeding initiation • Promotion and support for exclusive and continued breastfeeding • Promotion of age-appropriate complementary feeding practices • Management of MAM • Treatment of SAM • Anemia treatment 	<ul style="list-style-type: none"> • Disease prevention & management strategies esp. diarrhea • Family planning & reproductive health services • Maternal mental health support 	<ul style="list-style-type: none"> • Iodized or other MN fortified salt • Staple food fortification • Biofortification and agronomic fortification • Policies to reduce prices or increase access to nutritious foods and diverse diets • Policies to limit marketing of unhealthy foods and BMS including labeling • Promotion of healthy diets and age-appropriate complementary feeding in social protection programs • Nutrition interventions in schools • Nutrition in emergency programs • Mass and social media on nutrition 	<ul style="list-style-type: none"> • Household food security • Poverty alleviation strategies • Women's empowerment • Child protection & support services • Universal education with a gender focus • Early child stimulation • WASH interventions • Food safety • Sugar-sweetened beverage / sin taxes
Cross-Cutting Strategies: Health system strengthening; data system strengthening; community mobilization; monitoring and evaluation for accountability, delivery and implementation approaches for scale, financing			

Source: Bhutta et al. 2020

3. **Conceptual framework for analyzing determinants of child nutrition (Bhutta et al., 2020)** – This framework from Bhutta et al. (2020) describes the drivers of childhood stunting reduction according to basic (context and enablers), underlying (household), and immediate drivers, leading to improved nutritional outcomes. To map investments in nutrition across the life course and different drivers of undernutrition reduction, this framework served as a guide in creating a classification level where the investments for factors contributing to malnutrition reduction (context/enabler factors, household factors, or immediate factors) can be tagged.

Figure 4. Conceptual framework for analyzing determinants of child nutrition



Source: Adapted from Uy et al. 2022 and Bhutta et al. 2020

4. **Scaling Up Nutrition Movement Budget Analysis Methodology** – The Scaling Up Nutrition (SUN) Movement guidance note on budget analysis proposed seven (7) key steps in tracking nutrition investments. These steps are shown in **Figure 5**. These key steps guided the Nutrition Budget Tagging process, which will be described further in the next sections of this paper.

Figure 5. SUN Methodology: Steps in Nutrition Budget Analysis



Source: (Fracassi et al., 2017)

Validation with the National Nutrition Council Technical Committee

The NBT Framework and Full Typology were validated - and presented before the NNC Technical Committee to solicit comments on the overall tagging framework, process, and full typology. The key comments from the validation meetings and presentations were addressed in the final version of the typology, including but not limited to the following:

1. The code matching system should integrate with other ongoing initiatives for budget tagging at other government levels and disciplines (e.g., children's budget tagging at the local level and SDG tagging at the national level).
2. An age grouping marker was added to track spending on life stages.
3. An exclusion list and tagging notes for budgetary items not to be included in the computation and general reminders in tagging line-item budgets have been added.
4. During implementation and institutionalization, a series of capacity-building activities for the key personnel involved in the process should be conducted, as well as pilot testing of the whole process in these agencies.

Nutrition Budget Tagging Typology

NBT Typology Framework

In the past years, Public Expenditure Reviews for Nutrition required post-hoc manual tagging of budget or financial documents. Each line-item expenditure or P/A/P is tagged as nutrition expenditure (whether nutrition-specific or sensitive), and this is usually done using a manual search of keywords relevant to nutrition interventions. This process is labor-intensive and time-consuming and needs to be more conducive to automation. (Uy et al., 2022). **Figure 6** shows the tagging typology framework to track nutrition investments in the Philippines systematically. This framework was aligned with the other existing expenditure classification and tagging frameworks for the other sectors, incorporating the specific classification typologies for nutrition.

Figure 6. The Nutrition Budget Tagging Typology Framework

[D] NUTRITION SPECIFIC (Direct)	[I] NUTRITION SENSITIVE (Indirect)
1. Micronutrient supplementation 2. Infant and Young Child Feeding 3. Integrated Management of Acute Malnutrition 4. Supplementary feeding 5. Mandatory food fortification 6. Nutrition in emergencies 7. Overweight/Obesity Management and Prevention 8. Nutrition Promotion for Behavior Change	1. Maternal and Neonatal Health 2. Adolescent Health and Development 3. Disease prevention and management 4. Oral health 5. Access to health care services 6. Family planning, reproductive health, and responsible parenting 7. WASH 8. Early Childhood Care and Development 9. Agriculture and Food Systems 10. Gender Empowerment 11. Social safety nets 12. Humanitarian Relief and Emergency Fund 13. Universal education 14. Overarching nutrition policy, monitoring, and evaluation strategies
[1] Policy and Governance [2] Research and Surveillance [3] Human Resource and Capacity Building	[4] Capital Outlay [5] Advocacy and Promotion [6] Service Delivery
SPECIFIC INTERVENTIONS (see full list)	
[C] Context and Enablers [H] Household [M] Immediate	[1] Health and Nutrition [2] Knowledge Building [3] Food Production and Sustainability [4] Social Protection [5] WASH
Age Markers: [A1] All [A2] 0–5 years old (under-five) [A3] 6–10 years old (school-age) [A4] 11–19 years old (adolescent) [A5] 20–59 years old (adult) [A6] > 60 years old (elderly) [A9] Not Applicable	
WRA Marker: [WR] WRA [NA] Not Applicable	

Source: Authors' illustration

The NBT Framework illustrates the classification levels of the typology crafted based on the guiding frameworks, literature, financial documents, and validation sessions from the National Government Agencies. It comprises five levels (5) of classification elements with three (3) additional markers to group and tag nutrition-relevant line-item expenditures according to different domains. The classification levels are described below:

1. **Major nutrition intervention classification.** The major nutrition intervention classifications are *nutrition-specific* and *nutrition-sensitive*. These correspond to direct and indirect interventions, as defined by Bhutta et al. in 2020.
 - a. **Nutrition-specific interventions (direct) – These are the nutrition interventions that address the direct or immediate determinants of malnutrition (Code D-).**
 - b. **Nutrition-sensitive interventions (indirect)—These are the support interventions that address the underlying or enabling determinants of malnutrition (Code I—).**
2. **Program domains.** The major program domain areas identified under each major intervention classification are based on the guiding frameworks and relevant literature (Code X##XXXX-XXX).

Table 3. List of program domains under each major nutrition intervention classification

Program Domains	
Nutrition Specific (Direct)	Nutrition Sensitive (Indirect)
1. Micronutrient supplementation	1. Maternal and Neonatal Health
2. Infant and Young Child Feeding	2. Adolescent Health and Development
3. Integrated Management of Acute Malnutrition	3. Disease prevention and management
4. Supplementary feeding	4. Oral health
5. Mandatory food fortification	5. Access to health care services
6. Nutrition in emergencies	6. Family planning, reproductive health, and responsible parenting
7. Overweight/Obesity Management and Prevention	7. WASH
8. Nutrition Promotion for Behavior Change	8. Early Childhood Care and Development
	9. Agriculture and Food Systems
	10. Gender Empowerment
	11. Social safety nets
	12. Humanitarian Relief and Emergency Fund
	13. Universal Education
	14. Overarching nutrition policy, monitoring, and evaluation strategies

Source: Authors' compilation based on guiding frameworks and relevant literature

3. **Program component classification.** This classification level categorizes the nutrition investments according to the type or nature of the activity. Classifications include policy and governance, research and surveillance, human resource and capacity building, advocacy and promotion, and service delivery. These programs are adopted and consistent with the other component classifications used in other proposed and existing tagging typologies (e.g., Philippine Climate Change Expenditure Tagging Typology (CCET), child-focused budget tagging tool, etc.)

a. **Policy and governance** – Under this classification are activity-level line items relevant to policymaking, management, and governance. This classification includes three major specific activity-level line items:

- i. *Policies, legislation, programs, and national guideline development (Code: XXX0101-C01).* The expenditures for crafting policies, legislation, national guidelines, and program development fall under this category.
- ii. *Coordination, regulation, monitoring, and evaluation activities (Code: XXX0102-C01).* This includes the expenditures for coordination activities, meetings, M&E initiatives, and support for other operating units/offices.
- iii. *Resource mobilization activities (Code: XXX0103-C01).* These include expenditures on activities for the agency's resource generation and mobilization, including its support activities to its operating units/subnational offices.

b. **Research and Surveillance** – Under this classification are activity-level line items relevant to research and surveillance activities on different knowledge areas. These knowledge areas include nutrition surveys and surveillance systems (Code XXX0201-C02), food research and development (Code XXX0202-C02), health systems research (Code XXX0203-C02), clinical

research studies (Code XXX0204-C02), research dissemination activities (Code XXX0205-C02), other research activities (Code XXX0206-C02).

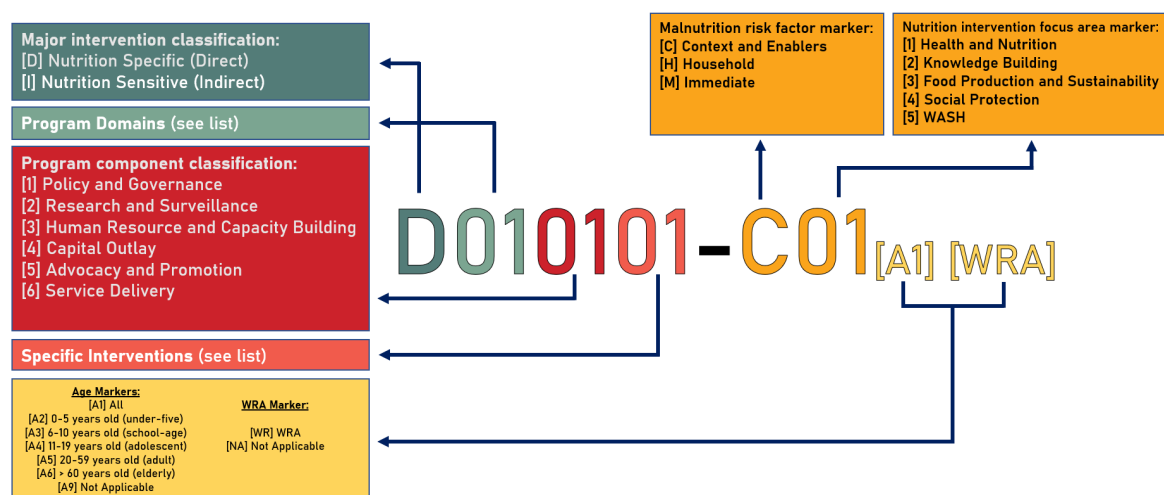
- c. **Human Resource and Capacity Building** – Under this classification are activity-level line items relevant to personnel remuneration (permanent [Code XXX0301-C01], non-permanent [Code XXX0302-C01]) and capacity building (Code XXX0303-C01).
 - d. **Capital Outlay** – Under this classification are activity-level line items relevant to capital investments capital investments, such as fixed assets (e.g., buildings, vehicles, equipment, and land) disaggregated as:
 - i. Construction, repair, and maintenance (Code XXX0401-C01)
 - ii. Machinery and equipment, furniture, and fixtures (Code XXX0402-C01)
 - iii. Site purchase and development (Code XXX0403-C01)
 - iv. Accreditation and licensing of facilities (Code XXX0405-C01)
 - v. Information Technology (IT) systems (Code XXX0405-C01)
 - vi. General Capital Outlay (Code XXX0406-C01)
 - e. **Advocacy and Promotion**—Under this classification are activity-level line items, including the development of IEC materials (Code XXX0501-C01), advocacy and communication activities (Code XXX0502-C01), and health promotion and national communication plans (Code XXX0503-C01).
 - f. **Service Delivery**—Under this classification are activity-level line items relevant to delivering specific interventions to the public and beneficiaries. This includes expenditures on medical commodities, health services, and other service-delivery-oriented programs and interventions (Code XXX06XX-XXX).
4. **Specific interventions.** These are the coded line items of specific nutrition interventions, or P/A/Ps, under the first three classification levels. This will be the basis for the tagging of the line-item expenditures (See **Annex A: Typology Tables for the full list**).
 5. **Other markers.** These are added markers pre-tagged for each of the coded specific line-item interventions. Each of the marker's purpose and definition is described below:
 - **Determinants or risk factors of malnutrition marker.** This marker aims to track spending on the malnutrition risk factors depending on its type, whether it is contributing to solving malnutrition as:
 - **Context or enabling determinant** (Code X-CXX) – This classification includes spending on policymaking, governance, and resource mobilization programs.
 - **Household or underlying determinant** (Code X-HXX): **This classification includes spending on programs to increase** household resources and wealth, social safety nets, and maternal nutrition and health factors.
 - **Immediate determinant** (Code X-MXX) - This classification includes spending on programs directly impacting feeding practices, healthcare services, dietary intake, and reduced burden of disease.

- ***Nutrition intervention focus area marker.*** This marker aims to track spending on key thematic areas of nutrition interventions, such as Health and Nutrition (Code XXXXXX-X01), Knowledge Building (Code XXXXXX-X02), Food Production and Sustainability (Code XXXXXX-X03), Social Protection (Code XXXXXX-X04), and WASH (Code XXXXXXXXXX-X05).
- ***Population demographic group marker (Age group and WRA).*** This marker aims to track spending on interventions targeting specific population groups (i.e., age groups and women of reproductive age). The age group and WRA marker are not pre-tagged with the predetermined list of typology items. This is because some programs or activities vary in specific population group targets, and the person in charge of the expenditure tagging will be able to discern which group the program is targeting.
 - [A1] All
 - [A2] 0-5 years old (under-five)
 - [A3] 6-10 years old (school-age)
 - [A4] 11-19 years old (adolescent)
 - [A5] 20-59 years old (adult)
 - [A6] > 60 years old (elderly)
 - [A9] Not Applicable
 - [AX] Others
- [WR] WRA Marker

NBT Full Typology

The NBT Full Typology is the complete set of tables containing all the typology line items. This follows the tagging typology framework described in **Figure 6**. These tables have the codes of each line item that will be used to tag each nutrition expenditure from the agency's financial document. See **Figure 7** for the typology coding diagram.

Figure 7. NBT Typology Coding Diagram



Source: Authors' illustration

Each digit in the full code corresponds to the code or number assigned to different classification levels and markers shown above. **Figure 8** below is the sample table from the full typology illustrating the list of typology line items with codes and markers. (See **Appendices Annex A** for the full typology tables).

Figure 8. Sample table from the Full Typology

Major intervention level:	Nutrition Specific (Direct)	
Program Domain:	Micronutrient supplementation	
Specific Intervention	Malnutrition risk factor marker	Nutrition intervention focus area marker
[P] Policy and Governance		
D010101-C01. Policies, legislation, program, and national guideline development	Context and Enablers	Health and Nutrition
D010102-C01. Coordination, regulation, monitoring, and evaluation activities	Context and Enablers	Health and Nutrition
D010103-C01. Resource mobilization activities	Context and Enablers	Health and Nutrition
[R] Research and Surveillance		
D010201-C02. Nutrition surveys and surveillance systems	Context and Enablers	Knowledge Building
D010202-C02. Food research and development	Context and Enablers	Knowledge Building
D010203-C02. Health systems research	Context and Enablers	Knowledge Building
D010204-C02. Clinical research studies	Context and Enablers	Knowledge Building
D010205-C02. Research dissemination activities	Context and Enablers	Knowledge Building
D010206-C02. Other research activities	Context and Enablers	Knowledge Building
[HR] Human Resource and Capacity Building		
D010301-C01. Salaries and benefits of personnel	Context and Enablers	Health and Nutrition
D010302-C01. Salaries, allowances, honoraria, for non-permanent personnel and volunteers	Context and Enablers	Health and Nutrition
D010303-C01. Learning and development interventions for service providers	Context and Enablers	Health and Nutrition
[CO] Capital Outlay		
D010401-C01. Construction, Repair, and Maintenance	Context and Enablers	Health and Nutrition
D010402-C01. Machinery, and equipment, furniture, and fixtures	Context and Enablers	Health and Nutrition
D010403-C01. Site purchase and development	Context and Enablers	Health and Nutrition
D010404-C01. Accreditation and licensing of facilities	Context and Enablers	Health and Nutrition
D010405-C01. Information Technology (IT) Systems	Context and Enablers	Health and Nutrition
D010406-C01. General Capital Outlay	Context and Enablers	Health and Nutrition
[A] Advocacy and Promotion		
D010501-C02. Development of IEC Materials	Context and Enablers	Knowledge Building
D010502-C02. Advocacy and communication activities	Context and Enablers	Knowledge Building
D010503-C02. Development of national health promotion and communication plans	Context and Enablers	Knowledge Building
[SD] Service Delivery		
D010601-M01. Procurement and distribution of supplies of iron-folic acid for pregnant	Immediate	Health and Nutrition
D010602-M01. Procurement and distribution of iodized oil capsules for pregnant and	Immediate	Health and Nutrition
D010603-M01. Procurement of Iron drops	Immediate	Health and Nutrition
D010604-M01. Procurement and distribution of iron-folic acid tablets for adolescent	Immediate	Health and Nutrition
D010605-M01. Procurement and distribution of vitamin A capsules	Immediate	Health and Nutrition
D010606-M01. Procurement and distribution of micronutrient powder	Immediate	Health and Nutrition
D010607-M01. Procurement and distribution of Zinc	Immediate	Health and Nutrition
D010608-M01. Procurement and distribution of calcium carbonate	Immediate	Health and Nutrition
D010609-M01. Procurement and distribution of other vitamins and minerals for	Immediate	Health and Nutrition

Source: Authors' compilation

Weighting criteria to apportion indirect nutrition budget lines

Weighting refers to estimating the proportionate amount of a line-item nutrition expense that can be attributed to nutrition outcomes. (Fracassi et al., 2017; UNICEF, 2021). This is usually done on a percentage basis. For the nutrition-specific or direct nutrition interventions, no weight is applied (i.e., 100%) as expenditures for these activities can be attributed directly to nutrition outcomes. However, for indirect nutrition interventions (i.e., nutrition-sensitive interventions), setting a weighting criterion is important as these expenses do not 100% directly contribute to nutrition outcomes.

According to the SUN Guidance Note for Nutrition Budget Analysis, other countries use three different weighting schemes for nutrition-sensitive interventions. (Fracassi et al., 2017):

1. Dual-weighting system based on donor methodology (100% as the highest; 25% as the lowest)
2. Quadruple system (100%, 75%, 50%, 25%)
3. Range (1-100%)

The quadruple system method was applied to each program domain or the second-level classification for this typology. This means all line-item expenditures under the same program domain will have the same weight. The compilation of weights applied to different thematic sectors of nutrition-sensitive interventions by other countries was used as a reference for the weight criterion. (Fracassi et al., 2017) The applied weight was set according to the range of the reported mean weights for each thematic sector stated in the SUN Guidance Note for Budget Analysis. **Table 3** shows the weight applied in this typology using the quadruple system based on the reported mean weight.

Table 4. Weight applied using the quadruple system based on the reported mean weight (Fracassi et al. 2020)

Weight applied using the quadruple method system	Reported mean weight range
100%	76-100%
75%	51-75%
50%	26-50%
25%	1-25%

Note: The table on reported applied weights for nutrition-sensitive interventions according to the thematic sector can be found on SUN Guidance Note for Budget Analysis by Fracassi et al.

Source: Authors' interpretation based on Fracassi et al. (2017)

Given this interpretation, specific weights applied per program domain (level 2 classification) are shown in **Table 4**. No weight was applied to nutrition-specific expenditures, while different weights using the quadruple system were applied to nutrition-sensitive expenditures.

Table 5. Weights of the Nutrition Budget Tagging Expenditure per Program Domain

Program Domain	Weight, (%)
<i>Nutrition specific</i>	100
1. Micronutrient supplementation	100
2. Infant and Young Child Feeding	100
3. Integrated Management of Acute Malnutrition	100
4. Supplementary feeding	100
5. Mandatory food fortification	100
6. Nutrition in emergencies	100
7. Overweight/Obesity Management and Prevention	100
8. Nutrition Promotion for Behavior Change	100
<i>Nutrition sensitive</i>	
1. Maternal and Neonatal Health	50
2. Adolescent Health and Development	25
3. Disease prevention and management	25
<i>Expanded Program on Immunization (EPI)</i>	75
4. Oral health	25
5. Access to health care services	25
6. Family planning, reproductive health, and responsible parenting	75
7. WASH	25
8. Early Childhood Care and Development	25
9. Agriculture and Food Systems	50
10. Gender Empowerment	25
11. Social safety nets	25
12. Humanitarian Relief and Emergency Fund	25
13. Universal Education	50
14. Overarching nutrition policy, monitoring, and evaluation strategies	25

Source: Authors' calculation based on SUN Budget Analysis Guidance Note

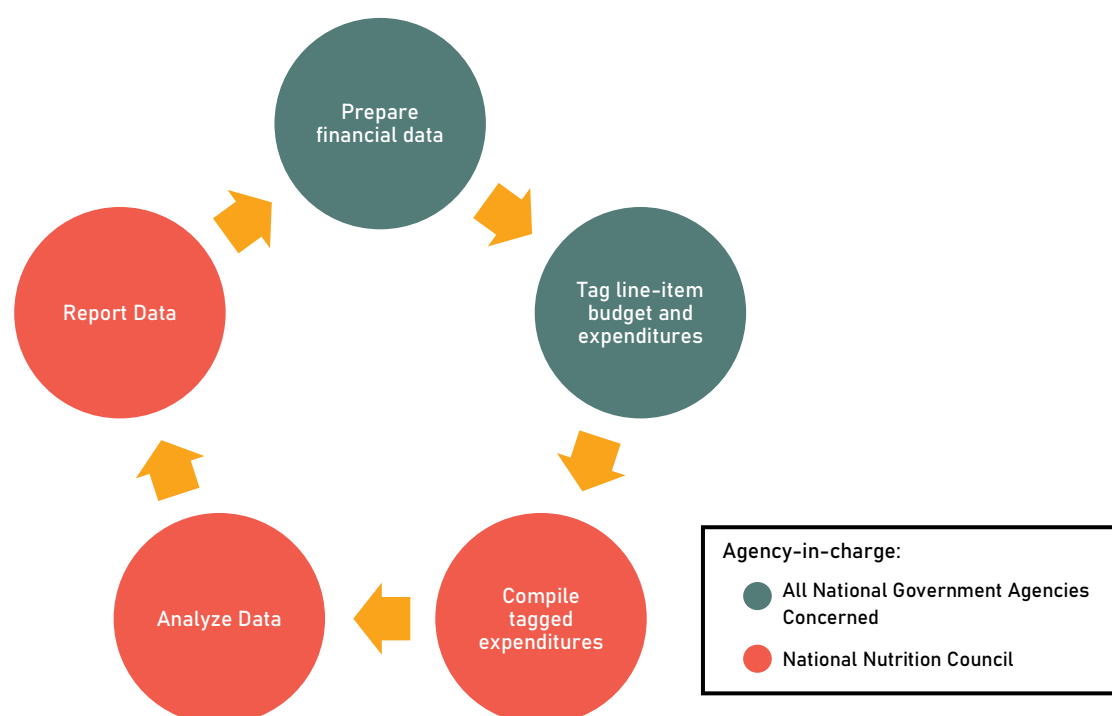
Limitations of this typology

- The complete classification levels in this typology may only be used if the financial document used in the tagging is up to the activity-level expenditures (i.e., program plans). If the expenditures are lumped per program, the tagging may only be done up to Level 1 (Major Nutrition Intervention) or Level 2 (Program Domain) classification.
- On select lumped expenditures, such as support to subnational offices or expenses with cross-cutting expenses, there may be misclassification and overlap of program components. Thus, program managers should choose and tag the expenditure according to the program component where it is best fit or most appropriate.

The Budget Tagging Process

The overall budget tagging process for national government agencies in the Philippines is summarized in **Figure 9**. The process entails five key steps. The concerned national government agencies will take the first two steps. In contrast, the National Nutrition Council, the country's highest governing body in nutrition, will do the last three steps. Detailed step-by-step guidance is expressed below.

Figure 9. Overview of the Nutrition Budget Tagging Process



Source: Authors' illustration

Step 1: Prepare financial data

In-charge:	Program Managers/Staff of the Concerned Bureaus/Divisions/Operating Units of the Relevant National Government Agencies
Documents needed:	Work and Financial Plans or similar document Disbursement Data
Timeline:	Q1 of the following year

The first step is to prepare the financial data for the nutrition budget tagging. The Work and Financial Plans (WFPs) or a similar document is needed to provide activity-level budget line items. Financial plans contain estimated budgetary allocations or obligations for each agency program/project/activity. These financial plans are usually prepared at the start of each fiscal year.

Using the level of disaggregation of line items in the WFPs, the disbursement data or the activity-level expenditure line items should be traced accordingly. These may be gathered from disbursement documents such as disbursement vouchers or in the registry of allotments, obligations, and disbursements (RAOD) form.

The program manager or the relevant national government agencies' assigned staff should organize and collate these documents in the first quarter of the following fiscal year in preparation for the line-by-line tagging (Step 2).

Step 2: Tag budget and expenditure line items

In-charge:	Program Managers/Staff of the Concerned Bureaus/Divisions/Operating Units of the Relevant National Government Agencies
Documents needed:	Nutrition Budget Tagging Sheet for NGAs (MS Excel file)
Timeline:	Q1 of the following year

The tagging of line-item expenditures involves two (2) steps: 1) filling out the NBT sheet and 2) typology tagging. Program managers or staff in charge of the agency will be the point person in conducting these two steps.

Filling-out of the NBT Sheet

For this step, information from the documents gathered in Step 1 will be transferred to the Nutrition Budget Tagging Sheet (See **Annex C**. Nutrition Budget Tagging Sheet for NGAs). This requires manual copying and pasting of the following information from the financial documents:

1. Name of Agency
2. Year
3. Division
4. Unit
5. Project Code (if any)
6. Program (Level 1 P/A/P)
7. Subprogram (Level 2 P/A/P)
8. Activity-level Line-Item Expenditures
9. Expense Class
 - a. Personnel Services (PS) - payment of salaries, wages, and other compensation
 - b. Maintenance and Other Operating Expense (MOOE) - expenses to support operations such as supplies, transportation, utilities (water, power, etc.)
 - c. Capital Outlay (CO) - expense class for purchasing goods and services, the benefits of which extend beyond the fiscal year and add to government assets.
 - d. Financial Expense (FE) - management supervision/trusteeship fees, interest expenses, guarantee fees, bank charges, commitment fees, and other financial charges incurred in owning or borrowing an asset property.
10. Appropriation Type (current, continuing, or unprogrammed)
11. Total Budget – The approved budget reflected in the Work and Financial Plans
12. Total Disbursement – The disbursed amount for each line item gathered from disbursement data sources.

An example is illustrated in the table below (See **Table 5**). These examples are lifted from the Work and Financial Plans of the Department of Health (DPCB) and the National Nutrition Council.

Table 6. Sample filled-out NBT Sheet (Program Data)

Agency	Year	Division	Unit	Project Code*	Program	Subprogram	Activity-level Line-Item	Expense Class	Approp. Type
DOH	2017	DPCB	WMCHDD	-	Proc. of commodities	Therapeutic Food	RUTF for under-five in 16 priority provinces	MOOE	Current
DOH	2017	DPCB	WMCHDD	-	Proc. of commodities	Therapeutic Food	F-75 Therapeutic Diet (SAM children U5)	MOOE	Current
DOH	2017	DPCB	WMCHDD	-	Proc. of commodities	Therapeutic Food	F-100 Therapeutic Diet (SAM children U5)	MOOE	Current
NNC	2019	NIED	-	-	Promotion of good nutrition	Coordination of the National NPBC	Coordination meetings held	MOOE	Current
NNC	2019	NIED	-	-	Promotion of good nutrition	Coordination of the National NPBC	Management of the National Nutrition Promotion Resource Center	MOOE	Current
NNC	2019	NIED	-	-	Promotion of good nutrition	Coordination of the National NPBC	Conduct a Recall Survey of Nutrition Messages	MOOE	Current

*Not all agencies provide project code.

Source: Authors' compilation of administrative documents

Table 7. Sample filled-out NBT Sheet (Tag Data)

Total Budget	Total Disb.	Tagging Code	Age Mar.	WRA Mar.	MI	Prog. Dom.	Prog. Comp.	Risk Factor	Nutr. Int. Focus Area.	Wt	Specific Intervention
		D030601-M01	[A2] 0-5 years old (under-five)		Nutrition Specific (Direct)	Integrated Management of Acute Malnutrition	Service Delivery	Immediate	Health and Nutrition	100	Procurement and distribution of RUTF and RUSF for management of MAM and SAM
		D030601-M01	[A2] 0-5 years old (under-five)		Nutrition Specific (Direct)	Integrated Management of Acute Malnutrition	Service Delivery	Immediate	Health and Nutrition	100	Procurement and distribution of RUTF and RUSF for management of MAM and SAM
		D030601-M01	[A2] 0-5 years old (under-five)		Nutrition Specific (Direct)	Integrated Management of Acute Malnutrition	Service Delivery	Immediate	Health and Nutrition	100	Procurement and distribution of RUTF and RUSF for management of MAM and SAM
		D080102-C01	[A1] All		Nutrition Specific (Direct)	Nutrition Promotion for Behavior Change	Policy and Governance	Context and Enablers	Health and Nutrition	100	Coordination, regulation, monitoring, and evaluation activities
		D080102-C01	[A1] All		Nutrition Specific (Direct)	Nutrition Promotion for Behavior Change	Policy and Governance	Context and Enablers	Health and Nutrition	100	Coordination, regulation, monitoring, and evaluation activities
		D080201-C02	[A1] All		Nutrition Specific (Direct)	Nutrition Promotion for Behavior Change	Research and Surveillance	Context and Enablers	Knowledge Building	100	Nutrition surveys and surveillance systems

Note: Disb. = Disbursement; Mar. = Marker; MI = Major intervention classification; Prog. Dom. = Program domain; Prog. Comp. = Program component; Nutr. Int. = Nutrition intervention; Wt = Weight;

Data under the green columns will come from the user/lifted from the financial documents, while data under the orange columns will be automatically populated based on the code.

Source: Authors' compilation of administrative documents

Typology Tagging

After all the program data has been transferred to the NBT sheet, specific activity-level line items will be tagged according to the typology.

Using the Typology Tables

The person in the tagging must refer to the full typology tables and look for the corresponding typology code for the specific activity line item. In addition,, the **age marker** and **WRA marker** will be filled out depending on the target population group of the activity. An example is illustrated in **Table 6**. The step-by-step process is enumerated below:

1. Based on the description of the line-item expenditure, determine which major intervention classification and program domain it will fall under.
2. According to the nature of the activity, determine the program component classification of the activity and choose among the specific intervention reference list that best matches the line item.
3. Copy the typology code and paste it into the tagging code column of the NBT Sheet. The other columns will automatically be filled out based on the code.
4. Mark the activity using the drop-down menus from the NBT Sheet according to the target population of the activity:
 - a. Age Marker—Choose among the age groupings in the drop-down. If the target population has a different grouping than the groups given, select “Others” and indicate the correct age grouping in the next column.
 - i. If the activity is known to impact all age groups directly, “All” should be the age marker selected. Otherwise, “NA” will be selected.
 - b. WRA Marker – choose “[WR] WRA” if the activity targets women of reproductive age.

Tagging notes and exclusion list:

- The scope of the expenditure tracking is limited to the country’s public expenditures only. Funding from donor agencies or other multilateral organizations is not included.
- The expenses under the General Administration and Support (GAS) should not be included or tagged as nutrition expenses. Given that this is a cross-cutting expense, it is difficult to tease out the intervention classifications for the expense best fit. This is also the case with personnel services (PS) expenses for regular human resources working on cross-cutting or various program domains.
- Subnational costs or support to subnational offices, as this is included as the national/central level expense, should also be included in the tagged expenditures.
- Capital expenditures lumped with other expenses should be separated and tagged accordingly as “Capital Outlay.”

Step 3: Analyze the tagged expenditures

In-charge:	National Nutrition Council
Documents needed:	Accomplished Nutrition Budget Tagging Sheet from NGAs
Timeline:	Q2 of the following year

The accomplished NBT Sheet by the corresponding agency should be submitted to the National Nutrition Council for compilation and analysis. The NNC, as the highest governing body in nutrition, will maintain the whole database of nutrition-relevant line-item expenditures and run routine descriptive analyses with the data. All the accomplished NBT sheets submitted by the agencies should be validated and appended into a large sheet containing all the data from all of the concerned agencies.

Different descriptive tables can be generated with the variables included in the NGA sheet. The output tables from the analysis will depend on the objectives and priorities of the National Nutrition Council. However, listed below are a few of the suggested tables (See **Annex E** for the full dummy tables):

1. Nutrition-related Expenditures (PHP millions), Share of GDP, and Average Per-capita Spending by Year
2. Nutrition-related Expenditures (PHP millions) by Year and Markers
3. Nutrition-related Expenditures (PHP millions) by national agency, 2017-2019
4. Nutrition-related Expenditures (PHP millions) by Intervention Domain and Year
5. Budget Execution Efficiency (% Absorption), by Agency

Descriptive analyses may be performed using a spreadsheet (MS Excel) or other statistical software (e.g., Stata MP, SPSS).

Sample results generated from the pretesting of the tagging process and typology are presented on **Annex F**. These are the sample numbers you can use to conduct this process.

Step 4: Report Nutrition Expenditure Data

In-charge:	National Nutrition Council
Documents needed:	Analysis results from the tagging exercise.
Timeline:	Q2 of the following year

The results from the nutrition expenditure tracking analyses should be reported regularly for the scrutiny of decision-makers and policymakers, stakeholders, and the general public. Ideally, it should be available in an **online dashboard** on the National Nutrition Council's website. Having easy access to statistics on annual expenditures for nutrition-relevant activities will help observe patterns in nutrition spending and critically assess if there needs to be a change in the priorities for nutrition investments.

Process Limitations

- The tagging process is highly dependent on the assigned program managers of the relevant offices, as they will do the first few steps of this process. They should be well-capable of understanding the expenditure objectives and the implementation processes of this exercise to achieve the desired outcomes.

- Due to the unstandardized Work and Financial Plans formats and other disbursements data per agency, agencies may encounter different difficulties in compiling the financial data. Agencies should explore formatting their Work and Financial Plans and Disbursement data to make the documentation of program budgets and expenditures for the tagging easier.

Considerations moving forward

The following are the points to consider in improving the nutrition budget tagging in the future. The two major areas to improve are typology and overall process and implementation and institutionalization.

Improving the typology and overall process

- Robust monitoring and evaluation systems should be in place. As this initiative for nutrition expenditure tracking is still in its early stages, issues may be encountered as the agencies implement the process. Thus, their feedback at this stage is important. In the early stages of the implementation and institutionalization, pilot testing of the full process in the agencies involved should be done.
 - Moreover, through this M&E system, the typology should be periodically updated with possible new additions in the line-item interventions encompassing updates on the nutrition-relevant activities of various agencies. The weights of the program domain for the proportionate amount of expenditure that can be attributed to nutrition outcomes should also be periodically revisited.
- Given the context of the devolution of service delivery activities to local government units under the Mandanas-Garcia ruling, the NBT Typology should also be adjusted to account for the changes in the nutrition activities or expenditures by National Government Agencies.
 - In addition, given that the Department of Health is currently transitioning to implementing integrated programs across the life course because of Universal Health Care, the NBT typology should be made applicable to tag these expenditures.
 - One approach to consider in tagging integrated programs is the computation of weights according to an estimate of the share of each program domain to the overall (integrated) program budget. An example is illustrated in the table below:

Table 8. An illustrative example of program weighting

Overall (integrated) program: Primary Health Care: Maternal and Child Health – PhP 100,000		
<i>Sub-activity</i>	<i>Nutrition Weighting</i>	<i>Estimated budget allocation</i>
Birth Registration	5%	5,000
Immunization	20%	20,000
HIV/AIDS	30%	30,000
Communicable Diseases	10%	10,000
Non-communicable Diseases	15%	15,000
Nutrition	20%	20,000

Source: Guidelines for Developing a Nutrition Budget Brief (UNICEF, 2021)

Implementation and institutionalization

- The **National Nutrition Council**, as the highest governing body in nutrition, should actively push for policies and issuances supporting the implementation of the nutrition budget and expenditure tagging in the national government agencies. Legal bases for the tool's institutionalization should be issued to ensure the agencies will use it. The Council should lead the conduct of capacity-building activities, monitoring, evaluation, and improvement of the processes in place and eventually institutionalize the tool in the public financial management system at the national level.
- Given that the full implementation of the devolution of several service delivery activities at the local government unit level requires the linkage of the budget tagging tools for LGUs with the nutrition budget tagging tool for national government agencies, this linkage should also be reinforced to avoid fragmentation of the system and duplication of initiatives for nutrition budget tagging.

Bibliography

- Bhutta, Z. A., Akseer, N., Keats, E. C., Vaivada, T., Baker, S., Horton, S. E., Katz, J., Menon, P., Piwoz, E., Shekar, M., Victora, C., & Black, R. (2020). How countries can reduce child stunting at scale: Lessons from exemplar countries. *The American Journal of Clinical Nutrition*, 112(Supplement_2), 894S-904S.
<https://doi.org/10.1093/ajcn/nqaa153>
- DBM. (2022). *Public Financial Management Assessment Tool for LGUs*. Department of Budget Management. <https://www.dbm.gov.ph/wp-content/uploads/DBM%20Publications/ePFMAT-for-LGUs.pdf>
- Fracassi, P., Picanyol, C., Knechtel, W., D'Alimonte, M., Gary, A., Pomeroy-Stevens, A., & Watts, R. (2017). *Budget Analysis for Nutrition: Guidance note for countries (update 2017)* (p. 36). Scaling Up Nutrition (SUN) Movement.
- NNC. (2017). *The Philippine Plan of Action 2017-2022: Sa PPAN, Panalo ang Bayan!* National Nutrition Council.
- UNICEF. (2021). *Guidelines for Developing a Nutrition Budget Brief*. UNICEF.
<https://www.unicef.org/esa/media/8811/file/Guidelines-Developing-a-Nutrition-Budget-Brief-April-2021.pdf>
- Uy, J., Lechuga, J., & Ulep, V. G. T. (2022). *A Review of Public Expenditures for Nutrition in National Government Agencies of the Philippines (2017–2019)* (DP 2022–12; Discussion Paper Series, p. 38). Philippine Institute for Development Studies.

Appendices

Annex A. NBT Full Typology

BRIEF TYPOLOGY TABLES

Annex A1.

Nutrition Budget Tagging Typology

BRIEF TYPOLOGY TABLES

Major intervention level:	Nutrition Specific (Direct)				
Program Domain:	Micronutrient supplementation				
[P] Policy and Governance	[R] Research and Surveillance	[HR] Human Resource and	[CO] Capital Outlay	[A] Advocacy and Promotion	[SD] Service Delivery
D010101-C01. Policies, legislation, program, and national guideline development D010102-C01. Coordination, regulation, monitoring, and evaluation activities D010103-C01. Resource mobilization activities	D010201-C02. Nutrition surveys and surveillance systems D010202-C02. Food research and development D010203-C02. Health systems research D010204-C02. Clinical research studies D010205-C02. Research dissemination activities D010206-C02. Other research activities	D010301-C01. Salaries and benefits of personnel D010302-C01. Salaries, allowances, honoraria, for non-permanent personnel and volunteers D010303-C01. Learning and development interventions for service providers	D010401-C01. Construction, Repair, and Maintenance D010402-C01. Machinery, and equipment, furniture, and fixtures D010403-C01. Site purchase and development D010404-C01. Accreditation and licensing of facilities D010405-C01. Information Technology (IT) Systems D010406-C01. General Capital Outlay	D010501-C02. Development of IEC Materials D010502-C02. Advocacy and communication activities D010503-C02. Development of national health promotion and communication plans	D010601-M01. Procurement and distribution of supplies of iron-folic acid for pregnant women D010602-M01. Procurement and distribution of iodized oil capsules for pregnant and lactating women D010603-M01. Procurement of Iron drops D010604-M01. Procurement and distribution of iron-folic acid tablets for adolescent females D010605-M01. Procurement and distribution of vitamin A capsules D010606-M01. Procurement and distribution of micronutrient powder D010607-M01. Procurement and distribution of Zinc D010608-M01. Procurement and distribution of calcium carbonate D010609-M01. Procurement and distribution of other vitamins and minerals for micronutrient supplementation

Major intervention level:	Nutrition Specific (Direct)				
Program Domain:	Infant and Young Child Feeding				
[P] Policy and Governance	[R] Research and Surveillance	[HR] Human Resource and	[CO] Capital Outlay	[A] Advocacy and Promotion	[SD] Service Delivery
D020101-C01. Policies, legislation, program, and national guideline development D020102-C01. Coordination, regulation, monitoring, and evaluation activities D020103-C01. Resource mobilization activities	D020201-C02. Nutrition surveys and surveillance systems D020202-C02. Food research and development D020203-C02. Health systems research D020204-C02. Clinical research studies D020205-C02. Research dissemination activities D020206-C02. Other research activities	D020301-C01. Salaries and benefits of personnel D020302-C01. Salaries, allowances, honoraria, for non-permanent personnel and volunteers D020303-C01. Learning and development interventions for service providers	D020401-C01. Construction, Repair, and Maintenance D020402-C01. Machinery, and equipment, furniture, and fixtures D020403-C01. Site purchase and development D020404-C01. Accreditation and licensing of facilities D020405-C01. Information Technology (IT) Systems D020406-C01. General Capital Outlay	D020501-C02. Development of IEC Materials D020502-C02. Advocacy and communication activities D020503-C02. Development of national health promotion and communication plans	D020601-M01. Public provision of complementary feeding D020602-M01. Provision of diverse diets in young children D020603-M01. Appropriate infant feeding practices and ARV treatment for HIV-exposed infants

Major intervention level:	Nutrition Specific (Direct)				
Program Domain:	Integrated Management of Acute Malnutrition				
[P] Policy and Governance	[R] Research and Surveillance	[HR] Human Resource and	[CO] Capital Outlay	[A] Advocacy and Promotion	[SD] Service Delivery
D030101-C01. Policies, legislation, and program development	D030201-C02. Nutrition surveys and surveillance systems	D030301-C01. Salaries and benefits of personnel	D030401-C01. Construction, Repair, and Maintenance	D030501-C02. Development of IEC Materials	D030601-M01. Procurement and distribution of RUTF and RUSF for management of MAM and SAM
D030102-C01. Coordination, monitoring, and evaluation activities	D030202-C02. Food research and development	D030302-C01. Salaries, allowances, honoraria, for non-permanent personnel and volunteers	D030402-C01. Machinery, and equipment, furniture, and fixtures	D030502-C02. Advocacy and communication activities	D030602-M01. Procurement and distribution of other commodities for IMAM
D030103-C01. Resource mobilization activities	D030203-C02. Health systems research	D030303-C01. Learning and development interventions for service providers	D030403-C01. Site purchase and development	D030503-C02. Development of national health promotion and communication plans	D030603-M01. Bangsamoro umpungan sa nutrisyon (lumped)
	D030204-C02. Clinical research studies		D030404-C01. Accreditation and licensing of facilities		
	D030205-C02. Research dissemination activities		D030405-C01. Information Technology (IT) Systems		
	D030206-C02. Other research activities		D030406-C01. General Capital Outlay		

Major intervention level:	Nutrition Specific (Direct)				
Program Domain:	Supplementary feeding				
[P] Policy and Governance	[R] Research and Surveillance	[HR] Human Resource and	[CO] Capital Outlay	[A] Advocacy and Promotion	[SD] Service Delivery
D040101-C01. Policies, legislation, program, and national guideline development	D040201-C02. Nutrition surveys and surveillance systems	D040301-C01. Salaries and benefits of personnel	D040401-C01. Construction, Repair, and Maintenance	D040501-C02. Development of IEC Materials	D040601-M01. Provision of supplementary feeding for 6-23 months, 24-59 months, and school children
D040102-C01. Coordination, regulation, monitoring, and evaluation activities	D040202-C02. Food research and development	D040302-C01. Salaries, allowances, honoraria, for non-permanent personnel and volunteers	D040402-C01. Machinery, and equipment, furniture, and fixtures	D040502-C02. Advocacy and communication activities	D040602-M01. Provision of grants, subsidies, for food, for targeted population
D040103-C01. Resource mobilization activities	D040203-C02. Health systems research	D040303-C01. Learning and development interventions for service providers	D040403-C01. Site purchase and development	D040503-C02. Development of national health promotion and communication plans	D040603-M01. Provision of milk to children enrolled in ECCD services
	D040204-C02. Clinical research studies		D040404-C01. Accreditation and licensing of facilities		D040604-M01. Procurement and distribution of other commodities for supplementary feeding
	D040205-C02. Research dissemination activities		D040405-C01. Information Technology (IT) Systems		
	D040206-C02. Other research activities		D040406-C01. General Capital Outlay		

Major intervention level:	Nutrition Specific (Direct)				
Program Domain:	Mandatory food fortification				
[P] Policy and Governance	[R] Research and Surveillance	[HR] Human Resource and	[CO] Capital Outlay	[A] Advocacy and Promotion	[SD] Service Delivery
D050101-C01. Policies, legislation, program, and national guideline development D050102-C01. Coordination, regulation, monitoring, and evaluation activities D050103-C01. Resource mobilization activities D050104-C01. Implementation of strategic plan on MFF	D050201-C02. Nutrition surveys and surveillance systems D050202-C02. Food research and development D050203-C02. Health systems research D050204-C02. Clinical research studies D050205-C02. Research dissemination activities D050206-C02. Other research activities	D050301-C01. Salaries and benefits of personnel D050302-C01. Salaries, allowances, honoraria, for non-permanent personnel and volunteers D050303-C01. Learning and development interventions for service providers	D050401-C01. Construction, Repair, and Maintenance D050402-C01. Machinery, and equipment, furniture, and fixtures D050403-C01. Site purchase and development D050404-C01. Accreditation and licensing of facilities D050405-C01. Information Technology (IT) Systems D050406-C01. General Capital Outlay	D050501-C02. Development of IEC Materials D050502-C02. Advocacy and communication activities D050503-C02. Development of national health promotion and communication plans	D050601-M01. Provision of fortified foods D050602-C01. Capacity building on food fortification for beneficiaries

Major intervention level:	Nutrition Specific (Direct)				
Program Domain:	Nutrition in emergencies				
[P] Policy and Governance	[R] Research and Surveillance	[HR] Human Resource and	[CO] Capital Outlay	[A] Advocacy and Promotion	[SD] Service Delivery
D060101-C01. Policies, legislation, program, and national guideline development D060102-C01. Coordination, regulation, monitoring, and evaluation activities D060103-C01. Resource mobilization activities	D060201-C02. Nutrition surveys and surveillance systems D060202-C02. Food research and development D060203-C02. Health systems research D060204-C02. Clinical research studies D060205-C02. Research dissemination activities D060206-C02. Other research activities	D060301-C01. Salaries and benefits of personnel D060302-C01. Salaries, allowances, honoraria, for non-permanent personnel and volunteers D060303-C01. Learning and development interventions for service providers	D060401-C01. Construction, Repair, and Maintenance D060402-C01. Machinery, and equipment, furniture, and fixtures D060403-C01. Site purchase and development D060404-C01. Accreditation and licensing of facilities D060405-C01. Information Technology (IT) Systems D060406-C01. General Capital Outlay	D060501-C02. Development of IEC Materials D060502-C02. Advocacy and communication activities D060503-C02. Development of national health promotion and communication plans D060504-C02. Development, updating, and review of training modules and materials for nutrition in emergencies	D060601-M01. Intervention package for SAM and support for IYCF in emergencies D060602-M01. Supplementary feeding in emergencies D060603-M01. Mobile kitchens

Major intervention level:	Nutrition Specific (Direct)				
Program Domain:	Overweight/Obesity Management and Prevention				
[P] Policy and Governance	[R] Research and Surveillance	[HR] Human Resource and	[CO] Capital Outlay	[A] Advocacy and Promotion	[SD] Service Delivery
D070101-C01. Policies, legislation, program, and national guideline development D070102-C01. Coordination, regulation, monitoring, and evaluation activities D070103-C01. Resource mobilization activities	D070201-C02. Nutrition surveys and surveillance systems D070202-C02. Food research and development D070203-C02. Health systems research D070204-C02. Clinical research studies D070205-C02. Research dissemination activities D070206-C02. Other research activities	D070301-C01. Salaries and benefits of personnel D070302-C01. Salaries, allowances, honoraria, for non-permanent personnel and volunteers D070303-C01. Learning and development interventions for service providers	D070401-C01. Construction, Repair, and Maintenance D070402-C01. Machinery, and equipment, furniture, and fixtures D070403-C01. Site purchase and development D070404-C01. Accreditation and licensing of facilities D070405-C01. Information Technology (IT) Systems D070406-C01. General Capital Outlay	D070501-C02. Development of IEC Materials D070502-C02. Advocacy and communication activities D070503-C02. Development of national health promotion and communication plans	D070601-M01. Provision of direct weight management interventions to beneficiaries D070602-M01. Physical fitness and sports programs

Major intervention level:	Nutrition Specific (Direct)				
Program Domain:	Nutrition Promotion for Behavior Change				
[P] Policy and Governance	[R] Research and Surveillance	[HR] Human Resource and	[CO] Capital Outlay	[A] Advocacy and Promotion	[SD] Service Delivery
D080101-C01. Policies, legislation, program, and national guideline development D080102-C01. Coordination, regulation, monitoring, and evaluation activities D080103-C01. Resource mobilization activities	D080201-C02. Nutrition surveys and surveillance systems D080202-C02. Food research and development D080203-C02. Health systems research D080204-C02. Clinical research studies D080205-C02. Research dissemination activities D080206-C02. Other research activities	D080301-C01. Salaries and benefits of personnel D080302-C01. Salaries, allowances, honoraria, for non-permanent personnel and volunteers D080303-C01. Learning and development interventions for service providers	D080401-C01. Construction, Repair, and Maintenance D080402-C01. Machinery, and equipment, furniture, and fixtures D080403-C01. Site purchase and development D080404-C01. Accreditation and licensing of facilities D080405-C01. Information Technology (IT) Systems D080406-C01. General Capital Outlay	D080501-C02. Development of IEC Materials D080502-C02. Advocacy and communication activities D080503-C02. Development of national health promotion and communication plans	#N/A

Major intervention level:	Nutrition Sensitive (Indirect)				
Program Domain:	Maternal and Neonatal Health				
[P] Policy and Governance	[R] Research and Surveillance	[HR] Human Resource and	[CO] Capital Outlay	[A] Advocacy and Promotion	[SD] Service Delivery
I010101-C01. Policies, legislation, program, and national guideline development	I010201-C02. Nutrition surveys and surveillance systems	I010301-C01. Salaries and benefits of personnel	I010401-C01. Construction, Repair, and Maintenance	I010501-C02. Development of IEC Materials	I010601-M01. Antenatal care (e.g., calcium supplementation, balanced energy protein supplementation)
I010102-C01. Coordination, regulation, monitoring, and evaluation activities	I010202-C02. Food research and development	I010302-C01. Salaries, allowances, honoraria, for non-permanent personnel and volunteers	I010402-C01. Machinery, and equipment, furniture, and fixtures	I010502-C02. Advocacy and communication activities	I010602-M01. Facility-based delivery and skilled-birth attendance
I010103-C01. Resource mobilization activities	I010203-C02. Health systems research	I010303-C01. Learning and development interventions for service providers	I010403-C01. Site purchase and development	I010503-C02. Development of national health promotion and communication plans	I010603-M01. Postnatal care
	I010204-C02. Clinical research studies		I010404-C01. Accreditation and licensing of facilities		I010604-M01. Essential Intrapartum and Newborn care (EINC), Unang Yakap (drying, skin-to-skin, delayed cord clamping)
	I010205-C02. Research dissemination activities		I010405-C01. Information Technology (IT) Systems		I010605-M01. Maternal mental health support
	I010206-C02. Other research activities		I010406-C01. General Capital Outlay		I010606-M01. Maternal medical supplies and other commodities

Major intervention level:	Nutrition Sensitive (Indirect)				
Program Domain:	Adolescent Health and Development				
[P] Policy and Governance	[R] Research and Surveillance	[HR] Human Resource and	[CO] Capital Outlay	[A] Advocacy and Promotion	[SD] Service Delivery
I020101-C01. Policies, legislation, program, and national guideline development	I020201-C02. Nutrition surveys and surveillance systems	I020301-C01. Salaries and benefits of personnel	I020401-C01. Construction, Repair, and Maintenance	I020501-C02. Development of IEC Materials	I020601-M01. Weekly iron-folic acid supplementation for female adolescent learners (Adolescent Reproductive Health)
I020102-C01. Coordination, regulation, monitoring, and evaluation activities	I020202-C02. Food research and development	I020302-C01. Salaries, allowances, honoraria, for non-permanent personnel and volunteers	I020402-C01. Machinery, and equipment, furniture, and fixtures	I020502-C02. Advocacy and communication activities	I020602-M01. Deworming of enrolled learners
I020103-C01. Resource mobilization activities	I020203-C02. Health systems research	I020303-C01. Learning and development interventions for service providers	I020403-C01. Site purchase and development	I020503-C02. Development of national health promotion and communication plans	I020603-M01. Sexuality and reproductive health activities
	I020204-C02. Clinical research studies		I020404-C01. Accreditation and licensing of facilities		I020604-M01. Medical supplies and commodities for adolescent health and development
	I020205-C02. Research dissemination activities		I020405-C01. Information Technology (IT) Systems		
	I020206-C02. Other research activities		I020406-C01. General Capital Outlay		

Major intervention level:	Nutrition Sensitive (Indirect)				
Program Domain:	Disease prevention and management				
[P] Policy and Governance	[R] Research and Surveillance	[HR] Human Resource and	[CO] Capital Outlay	[A] Advocacy and Promotion	[SD] Service Delivery
I030101-C01. Policies, legislation, program, and national guideline development I030102-C01. Coordination, regulation, monitoring, and evaluation activities I030103-C01. Resource mobilization activities	I030201-C02. Nutrition surveys and surveillance systems I030202-C02. Food research and development I030203-C02. Health systems research I030204-C02. Clinical research studies I030205-C02. Research dissemination activities I030206-C02. Other research activities	I030301-C01. Salaries and benefits of personnel I030302-C01. Salaries, allowances, honoraria, for non-permanent personnel and volunteers I030303-C01. Learning and development interventions for service providers	I030401-C01. Construction, Repair, and Maintenance I030402-C01. Machinery, and equipment, furniture, and fixtures I030403-C01. Site purchase and development I030404-C01. Accreditation and licensing of facilities I030405-C01. Information Technology (IT) Systems I030406-C01. General Capital Outlay	I030501-C02. Development of IEC Materials I030502-C02. Advocacy and communication activities I030503-C02. Development of national health promotion and communication plans	I030601-M01. Expanded Program on Immunization I030602-M01. Integrated management of childhood illnesses (including commodities for IMCI) I030603-M01. Non-communicable diseases prevention and management I030604-M01. Diagnostic activities for disease prevention I030605-M01. Medical supplies and other commodities for disease prevention and control

Major intervention level:	Nutrition Sensitive (Indirect)				
Program Domain:	Oral health				
[P] Policy and Governance	[R] Research and Surveillance	[HR] Human Resource and	[CO] Capital Outlay	[A] Advocacy and Promotion	[SD] Service Delivery
I040101-C01. Policies, legislation, program, and national guideline development	I040201-C02. Nutrition surveys and surveillance systems	I040301-C01. Salaries and benefits of personnel	I040401-C01. Construction, Repair, and Maintenance	I040501-C02. Development of IEC Materials	I040601-M01. Provision of oral examination (e.g., prophylaxies, gum treatment, fillings, topical fluoride)
I040102-C01. Coordination, regulation, monitoring, and evaluation activities	I040202-C02. Food research and development	I040302-C01. Salaries, allowances, honoraria, for non-permanent personnel and volunteers	I040402-C01. Machinery, and equipment, furniture, and fixtures	I040502-C02. Advocacy and communication activities	I040602-M01. Provision of dental supplies
I040103-C01. Resource mobilization activities	I040203-C02. Health systems research	I040303-C01. Learning and development interventions for service providers	I040403-C01. Site purchase and development	I040503-C02. Development of national health promotion and communication plans	I040603-M02. Promotion of oral health and hygiene education
	I040204-C02. Clinical research studies		I040404-C01. Accreditation and licensing of facilities		
	I040205-C02. Research dissemination activities		I040405-C01. Information Technology (IT) Systems		
	I040206-C02. Other research activities		I040406-C01. General Capital Outlay		

Major intervention level:	Nutrition Sensitive (Indirect)				
Program Domain:	Access to health care services				
[P] Policy and Governance	[R] Research and Surveillance	[HR] Human Resource and	[CO] Capital Outlay	[A] Advocacy and Promotion	[SD] Service Delivery
I050101-C01. Policies, legislation, program, and national guideline development I050102-C01. Coordination, regulation, monitoring, and evaluation activities I050103-C01. Resource mobilization activities	I050201-C02. Nutrition surveys and surveillance systems I050202-C02. Food research and development I050203-C02. Health systems research I050204-C02. Clinical research studies I050205-C02. Research dissemination activities I050206-C02. Other research activities	I050301-C01. Salaries and benefits of personnel I050302-C01. Salaries, allowances, honoraria, for non-permanent personnel and volunteers I050303-C01. Learning and development interventions for service providers	I050401-C01. Construction, Repair, and Maintenance I050402-C01. Machinery, and equipment, furniture, and fixtures I050403-C01. Site purchase and development I050404-C01. Accreditation and licensing of facilities I050405-C01. Information Technology (IT) Systems I050406-C01. General Capital Outlay	I050501-C02. Development of IEC Materials I050502-C02. Advocacy and communication activities I050503-C02. Development of national health promotion and communication plans	I050601-H01. Social health insurance I050602-H01. IP health program and services

Major intervention level:	Nutrition Sensitive (Indirect)				
Program Domain:	Family planning, reproductive health, and responsible parenting				
[P] Policy and Governance	[R] Research and Surveillance	[HR] Human Resource and	[CO] Capital Outlay	[A] Advocacy and Promotion	[SD] Service Delivery
I060101-C01. Policies, legislation, program, and national guideline development I060102-C01. Coordination, regulation, monitoring, and evaluation activities I060103-C01. Resource mobilization activities	I060201-C02. Nutrition surveys and surveillance systems I060202-C02. Food research and development I060203-C02. Health systems research I060204-C02. Clinical research studies I060205-C02. Research dissemination activities I060206-C02. Other research activities	I060301-C01. Salaries and benefits of personnel I060302-C01. Salaries, allowances, honoraria, for non-permanent personnel and volunteers I060303-C01. Learning and development interventions for service providers	I060401-C01. Construction, Repair, and Maintenance I060402-C01. Machinery, and equipment, furniture, and fixtures I060403-C01. Site purchase and development I060404-C01. Accreditation and licensing of facilities I060405-C01. Information Technology (IT) Systems I060406-C01. General Capital Outlay	I060501-C02. Development of IEC Materials I060502-C02. Advocacy and communication activities I060503-C02. Development of national health promotion and communication plans	I060601-H01. Provision of family planning commodities I060602-H02. Community based demand generation I060603-H01. Provision of FP services

Major intervention level:	Nutrition Sensitive (Indirect)				
Program Domain:	WASH				
[P] Policy and Governance	[R] Research and Surveillance	[HR] Human Resource and	[CO] Capital Outlay	[A] Advocacy and Promotion	[SD] Service Delivery
I070101-C05. Policies, legislation, program, and national guideline development	I070201-C05. Nutrition surveys and surveillance systems	I070301-C05. Salaries and benefits of personnel	I070401-C05. Construction, Repair, and Maintenance	I070501-C05. Development of IEC Materials	I070601-M05. Delivery of interventions aiming to improve access to safe drinking water (e.g., SALINTUBIG)
I070102-C05. Coordination, regulation, monitoring, and evaluation activities	I070202-C05. Food research and development	I070302-C05. Salaries, allowances, honoraria, for non-permanent personnel and volunteers	I070402-C05. Machinery, and equipment, furniture, and fixtures	I070502-C05. Advocacy and communication activities	I070602-M05. Delivery of interventions aiming to improve access to improved sanitation facilities (e.g., no open defecation)
I070103-C05. Resource mobilization activities	I070203-C05. Health systems research	I070303-C05. Learning and development interventions for service providers	I070403-C05. Site purchase and development	I070503-C05. Development of national health promotion and communication plans	I070603-M05. Provision of soap supplies for handwashing and toothbrush and toothpaste for brushing of teeth (WASH in schools)
	I070204-C05. Clinical research studies		I070404-C05. Accreditation and licensing of facilities		I070604-M05. Water resource programs
	I070205-C05. Research dissemination activities		I070405-C05. Information Technology (IT) Systems		I070605-M05. Water supply interventions
	I070206-C05. Other research activities		I070406-C05. General Capital Outlay		I070606-M05. Waste management programs
					I070607-M05. Provision of other WASH commodities

Major intervention level:	Nutrition Sensitive (Indirect)				
Program Domain:	Early Childhood Care and Development				
[P] Policy and Governance	[R] Research and Surveillance	[HR] Human Resource and	[CO] Capital Outlay	[A] Advocacy and Promotion	[SD] Service Delivery
I080101-C01. Policies, legislation, program, and national guideline development I080102-C01. Coordination, regulation, monitoring, and evaluation activities I080103-C01. Resource mobilization activities	I080201-C02. Nutrition surveys and surveillance systems I080202-C02. Food research and development I080203-C02. Health systems research I080204-C02. Clinical research studies I080205-C02. Research dissemination activities I080206-C02. Other research activities	I080301-C01. Salaries and benefits of personnel I080302-C01. Salaries, allowances, honoraria, for non-permanent personnel and volunteers I080303-C01. Learning and development interventions for service providers	I080401-C01. Construction, Repair, and Maintenance I080402-C01. Machinery, and equipment, furniture, and fixtures I080403-C01. Site purchase and development I080404-C01. Accreditation and licensing of facilities I080405-C01. Information Technology (IT) Systems I080406-C01. General Capital Outlay	I080501-C02. Development of IEC Materials I080502-C02. Advocacy and communication activities I080503-C02. Development of national health promotion and communication plans	I080601-M02. Early childhood education and learning (0-3 years old) I080602-M02. Health, nutrition and physical education activities in school I080603-M01. First 1000 Days programs and initiatives I080604-M01. Provision of other commodities for ECCD

Major intervention level:	Nutrition Sensitive (Indirect)				
Program Domain:	Agriculture and Food Systems				
[P] Policy and Governance	[R] Research and Surveillance	[HR] Human Resource and	[CO] Capital Outlay	[A] Advocacy and Promotion	[SD] Service Delivery
INA0101-C01. Policies, legislation, program, and national guideline development INA0102-C01. Coordination, regulation, monitoring, and evaluation activities INA0103-C01. Resource mobilization activities	INA0201-C02. Nutrition surveys and surveillance systems INA0202-C02. Food research and development INA0203-C02. Health systems research INA0204-C02. Clinical research studies INA0205-C02. Research dissemination activities INA0206-C02. Agricultural research INA0207-C02. Other research activities	INA0301-C01. Salaries and benefits of personnel INA0302-C01. Salaries, allowances, honoraria, for non-permanent personnel and volunteers INA0303-C01. Learning and development interventions for service providers	INA0401-C01. Construction, Repair, and Maintenance INA0402-C01. Machinery, and equipment, furniture, and fixtures INA0403-C01. Site purchase and development INA0404-C01. Accreditation and licensing of facilities INA0405-C01. Information Technology (IT) Systems INA0406-C01. General Capital Outlay INA0407-C03. Farm-to-market roads	INA0501-C02. Development of IEC Materials INA0502-C02. Advocacy and communication activities INA0503-C02. Development of national health promotion and communication plans	INA0601-M03. Food production support services (including distribution of agricultural inputs) INA0602-M03. Market development strategies INA0603-M03. Extension support, education, and training services INA0604-M03. Agricultural development programs INA0605-M03. Fisheries programs INA0606-M03. Food security and production programs INA0607-M03. Financial aid, grants, and technical assistance to farmers and fisherfolk INA0608-M03. Agripreneurship and agribusiness programs INA0609-M03. Coconut rehabilitation programs INA0610-M03. School based gardening activities

Major intervention level:	Nutrition Sensitive (Indirect)				
Program Domain:	Gender Empowerment				
[P] Policy and Governance	[R] Research and Surveillance	[HR] Human Resource and	[CO] Capital Outlay	[A] Advocacy and Promotion	[SD] Service Delivery
I100101-C01. Policies, legislation, program, and national guideline development I100102-C01. Coordination, regulation, monitoring, and evaluation activities I100103-C01. Resource mobilization activities	I100201-C02. Nutrition surveys and surveillance systems I100202-C02. Food research and development I100203-C02. Health systems research I100204-C02. Clinical research studies I100205-C02. Research dissemination activities I100206-C02. Other research activities	I100301-C01. Salaries and benefits of personnel I100302-C01. Salaries, allowances, honoraria, for non-permanent personnel and volunteers I100303-C01. Learning and development interventions for service providers	I100401-C01. Construction, Repair, and Maintenance I100402-C01. Machinery, and equipment, furniture, and fixtures I100403-C01. Site purchase and development I100404-C01. Accreditation and licensing of facilities I100405-C01. Information Technology (IT) Systems I100406-C01. General Capital Outlay	I100501-C02. Development of IEC Materials I100502-C02. Advocacy and communication activities I100503-C02. Development of national health promotion and communication plans	I100601-H02. Maternal education (e.g., increased access to primary and secondary education for girls) I100602-H01. Maternity protection in the workplace I100603-H04. Gender discrimination reduction activities I100604-H04. Violence against women and children I100605-H04. Male engagement activities I100606-H04. Provision of other commodities for gender empowerment (e.g., VAWC, men/women empowerment) I100607-H04. Women and child protection programs

Major intervention level:	Nutrition Sensitive (Indirect)				
Program Domain:	Social safety nets				
[P] Policy and Governance	[R] Research and Surveillance	[HR] Human Resource and	[CO] Capital Outlay	[A] Advocacy and Promotion	[SD] Service Delivery
I110101-C01. Policies, legislation, program, and national guideline development I110102-C01. Coordination, regulation, monitoring, and evaluation activities I110103-C01. Resource mobilization activities	I110201-C02. Nutrition surveys and surveillance systems I110202-C02. Food research and development I110203-C02. Health systems research I110204-C02. Clinical research studies I110205-C02. Research dissemination activities I110206-C02. Other research activities	I110301-C01. Salaries and benefits of personnel I110302-C01. Salaries, allowances, honoraria, for non-permanent personnel and volunteers I110303-C01. Learning and development interventions for service providers	I110401-C01. Construction, Repair, and Maintenance I110402-C01. Machinery, and equipment, furniture, and fixtures I110403-C01. Site purchase and development I110404-C01. Accreditation and licensing of facilities I110405-C01. Information Technology (IT) Systems I110406-C01. General Capital Outlay	I110501-C02. Development of IEC Materials I110502-C02. Advocacy and communication activities I110503-C02. Development of national health promotion and communication plans	I110601-H04. Transfers of cash, food, or in-kind (conditional or unconditional) I110602-H04. SLP modalities for microenterprise development I110603-H04. SLP modalities for employment facilitation I110604-H04. Agrarian reform and land distribution program I110605-H04. Provision of subsidies for food and other commodities I110606-H04. Livelihood education I110607-H04. Social protection programs for IP I110608-H04. Poverty alleviation strategies I110609-H04. Employment support services I110610-H04. Workers amelioration and welfare services I110611-H04. KALAH-CIDDS program (lumped) I110612-H04. PAMANA program (lumped) I110613-H04. Other social protective services

Major intervention level:	Nutrition Sensitive (Indirect)				
Program Domain:	Humanitarian Relief and Emergency Fund				
[P] Policy and Governance	[R] Research and Surveillance	[HR] Human Resource and	[CO] Capital Outlay	[A] Advocacy and Promotion	[SD] Service Delivery
I120101-C01. Policies, legislation, program, and national guideline development I120102-C01. Coordination, regulation, monitoring, and evaluation activities I120103-C01. Resource mobilization activities	I120201-C02. Nutrition surveys and surveillance systems I120202-C02. Food research and development I120203-C02. Health systems research I120204-C02. Clinical research studies I120205-C02. Research dissemination activities I120206-C02. Other research activities	I120301-C01. Salaries and benefits of personnel I120302-C01. Salaries, allowances, honoraria, for non-permanent personnel and volunteers I120303-C01. Learning and development interventions for service providers	I120401-C01. Construction, Repair, and Maintenance I120402-C01. Machinery, and equipment, furniture, and fixtures I120403-C01. Site purchase and development I120404-C01. Accreditation and licensing of facilities I120405-C01. Information Technology (IT) Systems I120406-C01. General Capital Outlay	I120501-C02. Development of IEC Materials I120502-C02. Advocacy and communication activities I120503-C02. Development of national health promotion and communication plans	I120601-H04. Quick response and calamity fund (lumped) I120602-H04. Health emergency response (lumped) I120603-H04. Disaster response and rehabilitation (lumped) I120604-H04. Provision of disaster food packs and other commodities during emergencies

Major intervention level:	Nutrition Sensitive (Indirect)				
Program Domain:	Universal education				
[P] Policy and Governance	[R] Research and Surveillance	[HR] Human Resource and	[CO] Capital Outlay	[A] Advocacy and Promotion	[SD] Service Delivery
I130101-C01. Policies, legislation, program, and national guideline development I130102-C01. Coordination, regulation, monitoring, and evaluation activities I130103-C01. Resource mobilization activities	I130201-C02. Nutrition surveys and surveillance systems I130202-C02. Food research and development I130203-C02. Health systems research I130204-C02. Clinical research studies I130205-C02. Research dissemination activities I130206-C02. Other research activities	I130301-C01. Salaries and benefits of personnel I130302-C01. Salaries, allowances, honoraria, for non-permanent personnel and volunteers I130303-C01. Learning and development interventions for service providers	I130401-C01. Construction, Repair, and Maintenance I130402-C01. Machinery, and equipment, furniture, and fixtures I130403-C01. Site purchase and development I130404-C01. Accreditation and licensing of facilities I130405-C01. Information Technology (IT) Systems I130406-C01. General Capital Outlay	I130501-C02. Development of IEC Materials I130502-C02. Advocacy and communication activities I130503-C02. Development of national health promotion and communication plans	I130601-H02. Access to education for all

Major intervention level:	Nutrition Sensitive (Indirect)				
Program Domain:	Overarching nutrition policy, monitoring, and evaluation strategies				
[P] Policy and Governance	[R] Research and Surveillance	[HR] Human Resource and	[CO] Capital Outlay	[A] Advocacy and Promotion	[SD] Service Delivery
INA0101-C01. Policies, legislation, program, and national guideline development INA0102-C01. Coordination, regulation, monitoring, and evaluation activities INA0103-C01. Resource mobilization activities	INA0201-C02. Nutrition surveys and surveillance systems INA0202-C02. Food research and development INA0203-C02. Health systems research INA0204-C02. Clinical research studies INA0205-C02. Research dissemination activities INA0206-C02. Other research activities	INA0301-C01. Salaries and benefits of personnel INA0302-C01. Salaries, allowances, honoraria, for non-permanent personnel and volunteers INA0303-C01. Learning and development interventions for service providers	INA0401-C01. Construction, Repair, and Maintenance INA0402-C01. Machinery, and equipment, furniture, and fixtures INA0403-C01. Site purchase and development INA0404-C01. Accreditation and licensing of facilities INA0405-C01. Information Technology (IT) Systems INA0406-C01. General Capital Outlay	INA0501-C02. Development of IEC Materials INA0502-C02. Advocacy and communication activities	#N/A

Annex A2.

Nutrition Budget Tagging Typology

FULL TYPOLOGY TABLES

Major intervention level:	Nutrition Specific (Direct)	
Program Domain:	Micronutrient supplementation	
	Specific Intervention	Malnutrition risk factor marker
		Nutrition intervention focus area marker
[P] Policy and Governance		
D010101-C01. Policies, legislation, program, and national guideline development	Context and Enablers	Health and Nutrition
D010102-C01. Coordination, regulation, monitoring, and evaluation activities	Context and Enablers	Health and Nutrition
D010103-C01. Resource mobilization activities	Context and Enablers	Health and Nutrition
[R] Research and Surveillance		
D010201-C02. Nutrition surveys and surveillance systems	Context and Enablers	Knowledge Building
D010202-C02. Food research and development	Context and Enablers	Knowledge Building
D010203-C02. Health systems research	Context and Enablers	Knowledge Building
D010204-C02. Clinical research studies	Context and Enablers	Knowledge Building
D010205-C02. Research dissemination activities	Context and Enablers	Knowledge Building
D010206-C02. Other research activities	Context and Enablers	Knowledge Building
[HR] Human Resource and Capacity Building		
D010301-C01. Salaries and benefits of personnel	Context and Enablers	Health and Nutrition
D010302-C01. Salaries, allowances, honoraria, for non-permanent personnel and volunteers	Context and Enablers	Health and Nutrition
D010303-C01. Learning and development interventions for service providers	Context and Enablers	Health and Nutrition
[CO] Capital Outlay		
D010401-C01. Construction, Repair, and Maintenance	Context and Enablers	Health and Nutrition
D010402-C01. Machinery, and equipment, furniture, and fixtures	Context and Enablers	Health and Nutrition
D010403-C01. Site purchase and development	Context and Enablers	Health and Nutrition
D010404-C01. Accreditation and licensing of facilities	Context and Enablers	Health and Nutrition
D010405-C01. Information Technology (IT) Systems	Context and Enablers	Health and Nutrition
D010406-C01. General Capital Outlay	Context and Enablers	Health and Nutrition
[A] Advocacy and Promotion		
D010501-C02. Development of IEC Materials	Context and Enablers	Knowledge Building
D010502-C02. Advocacy and communication activities	Context and Enablers	Knowledge Building
D010503-C02. Development of national health promotion and communication plans	Context and Enablers	Knowledge Building

[SD] Service Delivery		
D010601-M01. Procurement and distribution of supplies of iron-folic acid for pregnant	Immediate	Health and Nutrition
D010602-M01. Procurement and distribution of iodized oil capsules for pregnant and	Immediate	Health and Nutrition
D010603-M01. Procurement of Iron drops	Immediate	Health and Nutrition
D010604-M01. Procurement and distribution of iron-folic acid tables for adolescent	Immediate	Health and Nutrition
D010605-M01. Procurement and distribution of vitamin A capsules	Immediate	Health and Nutrition
D010606-M01. Procurement and distribution of micronutrient powder	Immediate	Health and Nutrition
D010607-M01. Procurement and distribution of Zinc	Immediate	Health and Nutrition
D010608-M01. Procurement and distribution of calcium carbonate	Immediate	Health and Nutrition
D010609-M01. Procurement and distribution of other vitamins and minerals for	Immediate	Health and Nutrition

Major intervention level:	Nutrition Specific (Direct)	
Program Domain:	Infant and Young Child Feeding	
	Specific Intervention	Malnutrition risk factor marker
		Nutrition intervention focus area marker
[P] Policy and Governance		
D020101-C01. Policies, legislation, program, and national guideline development	Context and Enablers	Health and Nutrition
D020102-C01. Coordination, regulation, monitoring, and evaluation activities	Context and Enablers	Health and Nutrition
D020103-C01. Resource mobilization activities	Context and Enablers	Health and Nutrition
[R] Research and Surveillance		
D020201-C02. Nutrition surveys and surveillance systems	Context and Enablers	Knowledge Building
D020202-C02. Food research and development	Context and Enablers	Knowledge Building
D020203-C02. Health systems research	Context and Enablers	Knowledge Building
D020204-C02. Clinical research studies	Context and Enablers	Knowledge Building
D020205-C02. Research dissemination activities	Context and Enablers	Knowledge Building
D020206-C02. Other research activities	Context and Enablers	Knowledge Building
[HR] Human Resource and Capacity Building		
D020301-C01. Salaries and benefits of personnel	Context and Enablers	Health and Nutrition
D020302-C01. Salaries, allowances, honoraria, for non-permanent personnel and volunteers	Context and Enablers	Health and Nutrition
D020303-C01. Learning and development interventions for service providers	Context and Enablers	Health and Nutrition
[CO] Capital Outlay		
D020401-C01. Construction, Repair, and Maintenance	Context and Enablers	Health and Nutrition
D020402-C01. Machinery, and equipment, furniture, and fixtures	Context and Enablers	Health and Nutrition
D020403-C01. Site purchase and development	Context and Enablers	Health and Nutrition
D020404-C01. Accreditation and licensing of facilities	Context and Enablers	Health and Nutrition
D020405-C01. Information Technology (IT) Systems	Context and Enablers	Health and Nutrition
D020406-C01. General Capital Outlay	Context and Enablers	Health and Nutrition
[A] Advocacy and Promotion		
D020501-C02. Development of IEC Materials	Context and Enablers	Knowledge Building
D020502-C02. Advocacy and communication activities	Context and Enablers	Knowledge Building
D020503-C02. Development of national health promotion and communication plans	Context and Enablers	Knowledge Building

[SD] Service Delivery		
D020601-M01. Public provision of complementary feeding	Immediate	Health and Nutrition
D020602-M01. Provision of diverse diets in young children	Immediate	Health and Nutrition
D020603-M01. Appropriate infant feeding practices and ARV treatment for HIV-exposed	Immediate	Health and Nutrition

Major intervention level:	Nutrition Specific (Direct)	
Program Domain:	Integrated Management of Acute Malnutrition	
	Specific Intervention	Malnutrition risk factor marker
		Nutrition intervention focus area marker
[P] Policy and Governance		
D030101-C01. Policies, legislation, and program development	Context and Enablers	Health and Nutrition
D030102-C01. Coordination, monitoring, and evaluation activities	Context and Enablers	Health and Nutrition
D030103-C01. Resource mobilization activities	Context and Enablers	Health and Nutrition
[R] Research and Surveillance		
D030201-C02. Nutrition surveys and surveillance systems	Context and Enablers	Knowledge Building
D030202-C02. Food research and development	Context and Enablers	Knowledge Building
D030203-C02. Health systems research	Context and Enablers	Knowledge Building
D030204-C02. Clinical research studies	Context and Enablers	Knowledge Building
D030205-C02. Research dissemination activities	Context and Enablers	Knowledge Building
D030206-C02. Other research activities	Context and Enablers	Knowledge Building
[HR] Human Resource and Capacity Building		
D030301-C01. Salaries and benefits of personnel	Context and Enablers	Health and Nutrition
D030302-C01. Salaries, allowances, honoraria, for non-permanent personnel and volunteers	Context and Enablers	Health and Nutrition
D030303-C01. Learning and development interventions for service providers	Context and Enablers	Health and Nutrition
[CO] Capital Outlay		
D030401-C01. Construction, Repair, and Maintenance	Context and Enablers	Health and Nutrition
D030402-C01. Machinery, and equipment, furniture, and fixtures	Context and Enablers	Health and Nutrition
D030403-C01. Site purchase and development	Context and Enablers	Health and Nutrition
D030404-C01. Accreditation and licensing of facilities	Context and Enablers	Health and Nutrition
D030405-C01. Information Technology (IT) Systems	Context and Enablers	Health and Nutrition
D030406-C01. General Capital Outlay	Context and Enablers	Health and Nutrition
[A] Advocacy and Promotion		
D030501-C02. Development of IEC Materials	Context and Enablers	Knowledge Building
D030502-C02. Advocacy and communication activities	Context and Enablers	Knowledge Building
D030503-C02. Development of national health promotion and communication plans	Context and Enablers	Knowledge Building

[SD] Service Delivery

D030601-M01. Procurement and distribution of RUTF and RUSF for management of	Immediate	Health and Nutrition
D030602-M01. Procurement and distribution of other commodities for IMAM	Immediate	Health and Nutrition
D030603-M01. Bangsamoro umpungan sa nutrisyon (lumped)	Immediate	Health and Nutrition

Major intervention level:	Nutrition Specific (Direct)	
Program Domain:	Supplementary feeding	
	Malnutrition risk factor marker	Nutrition intervention focus area marker
[P] Policy and Governance		
D040101-C01. Policies, legislation, program, and national guideline development	Context and Enablers	Health and Nutrition
D040102-C01. Coordination, regulation, monitoring, and evaluation activities	Context and Enablers	Health and Nutrition
D040103-C01. Resource mobilization activities	Context and Enablers	Health and Nutrition
[R] Research and Surveillance		
D040201-C02. Nutrition surveys and surveillance systems	Context and Enablers	Knowledge Building
D040202-C02. Food research and development	Context and Enablers	Knowledge Building
D040203-C02. Health systems research	Context and Enablers	Knowledge Building
D040204-C02. Clinical research studies	Context and Enablers	Knowledge Building
D040205-C02. Research dissemination activities	Context and Enablers	Knowledge Building
D040206-C02. Other research activities	Context and Enablers	Knowledge Building
[HR] Human Resource and Capacity Building		
D040301-C01. Salaries and benefits of personnel	Context and Enablers	Health and Nutrition
D040302-C01. Salaries, allowances, honoraria, for non-permanent personnel and volunteers	Context and Enablers	Health and Nutrition
D040303-C01. Learning and development interventions for service providers	Context and Enablers	Health and Nutrition
[CO] Capital Outlay		
D040401-C01. Construction, Repair, and Maintenance	Context and Enablers	Health and Nutrition
D040402-C01. Machinery, and equipment, furniture, and fixtures	Context and Enablers	Health and Nutrition
D040403-C01. Site purchase and development	Context and Enablers	Health and Nutrition
D040404-C01. Accreditation and licensing of facilities	Context and Enablers	Health and Nutrition
D040405-C01. Information Technology (IT) Systems	Context and Enablers	Health and Nutrition
D040406-C01. General Capital Outlay	Context and Enablers	Health and Nutrition
[A] Advocacy and Promotion		
D040501-C02. Development of IEC Materials	Context and Enablers	Knowledge Building
D040502-C02. Advocacy and communication activities	Context and Enablers	Knowledge Building
D040503-C02. Development of national health promotion and communication plans	Context and Enablers	Knowledge Building

[SD] Service Delivery

D040601-M01. Provision of supplementary feeding for 6-23 months, 24-59 months, and	Immediate	Health and Nutrition
D040602-M01. Provision of grants, subsidies, for food, for targeted population	Immediate	Health and Nutrition
D040603-M01. Provision of milk to children enrolled in ECCD services	Immediate	Health and Nutrition
D040604-M01. Procurement and distribution of other commodities for supplementary	Immediate	Health and Nutrition

Major intervention level:	Nutrition Specific (Direct)	
Program Domain:	Mandatory food fortification	
	Specific Intervention	Malnutrition risk factor marker
		Nutrition intervention focus area marker
[P] Policy and Governance		
D050101-C01. Policies, legislation, program, and national guideline development	Context and Enablers	Health and Nutrition
D050102-C01. Coordination, regulation, monitoring, and evaluation activities	Context and Enablers	Health and Nutrition
D050103-C01. Resource mobilization activities	Context and Enablers	Health and Nutrition
D050104-C01. Implementation of strategic plan on MFF	Context and Enablers	Health and Nutrition
[R] Research and Surveillance		
D050201-C02. Nutrition surveys and surveillance systems	Context and Enablers	Knowledge Building
D050202-C02. Food research and development	Context and Enablers	Knowledge Building
D050203-C02. Health systems research	Context and Enablers	Knowledge Building
D050204-C02. Clinical research studies	Context and Enablers	Knowledge Building
D050205-C02. Research dissemination activities	Context and Enablers	Knowledge Building
D050206-C02. Other research activities	Context and Enablers	Knowledge Building
[HR] Human Resource and Capacity Building		
D050301-C01. Salaries and benefits of personnel	Context and Enablers	Health and Nutrition
D050302-C01. Salaries, allowances, honoraria, for non-permanent personnel and volunteers	Context and Enablers	Health and Nutrition
D050303-C01. Learning and development interventions for service providers	Context and Enablers	Health and Nutrition
[CO] Capital Outlay		
D050401-C01. Construction, Repair, and Maintenance	Context and Enablers	Health and Nutrition
D050402-C01. Machinery, and equipment, furniture, and fixtures	Context and Enablers	Health and Nutrition
D050403-C01. Site purchase and development	Context and Enablers	Health and Nutrition
D050404-C01. Accreditation and licensing of facilities	Context and Enablers	Health and Nutrition
D050405-C01. Information Technology (IT) Systems	Context and Enablers	Health and Nutrition
D050406-C01. General Capital Outlay	Context and Enablers	Health and Nutrition
[A] Advocacy and Promotion		
D050501-C02. Development of IEC Materials	Context and Enablers	Knowledge Building
D050502-C02. Advocacy and communication activities	Context and Enablers	Knowledge Building
D050503-C02. Development of national health promotion and communication plans	Context and Enablers	Knowledge Building

[SD] Service Delivery

D050601-M01. Provision of fortified foods	Immediate	Health and Nutrition
D050602-C01. Capacity building on food fortification for beneficiaries	Context and Enablers	Health and Nutrition

Major intervention level:	Nutrition Specific (Direct)	
Program Domain:	Nutrition in emergencies	
	Specific Intervention	Malnutrition risk factor marker
		Nutrition intervention focus area marker
[P] Policy and Governance		
D060101-C01. Policies, legislation, program, and national guideline development	Context and Enablers	Health and Nutrition
D060102-C01. Coordination, regulation, monitoring, and evaluation activities	Context and Enablers	Health and Nutrition
D060103-C01. Resource mobilization activities	Context and Enablers	Health and Nutrition
[R] Research and Surveillance		
D060201-C02. Nutrition surveys and surveillance systems	Context and Enablers	Knowledge Building
D060202-C02. Food research and development	Context and Enablers	Knowledge Building
D060203-C02. Health systems research	Context and Enablers	Knowledge Building
D060204-C02. Clinical research studies	Context and Enablers	Knowledge Building
D060205-C02. Research dissemination activities	Context and Enablers	Knowledge Building
D060206-C02. Other research activities	Context and Enablers	Knowledge Building
[HR] Human Resource and Capacity Building		
D060301-C01. Salaries and benefits of personnel	Context and Enablers	Health and Nutrition
D060302-C01. Salaries, allowances, honoraria, for non-permanent personnel and volunteers	Context and Enablers	Health and Nutrition
D060303-C01. Learning and development interventions for service providers	Context and Enablers	Health and Nutrition
[CO] Capital Outlay		
D060401-C01. Construction, Repair, and Maintenance	Context and Enablers	Health and Nutrition
D060402-C01. Machinery, and equipment, furniture, and fixtures	Context and Enablers	Health and Nutrition
D060403-C01. Site purchase and development	Context and Enablers	Health and Nutrition
D060404-C01. Accreditation and licensing of facilities	Context and Enablers	Health and Nutrition
D060405-C01. Information Technology (IT) Systems	Context and Enablers	Health and Nutrition
D060406-C01. General Capital Outlay	Context and Enablers	Health and Nutrition
[A] Advocacy and Promotion		
D060501-C02. Development of IEC Materials	Context and Enablers	Knowledge Building
D060502-C02. Advocacy and communication activities	Context and Enablers	Knowledge Building
D060503-C02. Development of national health promotion and communication plans	Context and Enablers	Knowledge Building

D060504-C02. Development, updating, and review of training modules and materials for	Context and Enablers	Knowledge Building
--	----------------------	--------------------

[SD] Service Delivery		
------------------------------	--	--

D060601-M01. Intervention package for SAM and support for IYCF in emergencies	Immediate	Health and Nutrition
D060602-M01. Supplementary feeding in emergencies	Immediate	Health and Nutrition
D060603-M01. Mobile kitchens	Immediate	Health and Nutrition

Major intervention level:	Nutrition Specific (Direct)	
Program Domain:	Overweight/Obesity Management and Prevention	
	Specific Intervention	Malnutrition risk factor marker
		Nutrition intervention focus area marker
[P] Policy and Governance		
D070101-C01. Policies, legislation, program, and national guideline development	Context and Enablers	Health and Nutrition
D070102-C01. Coordination, regulation, monitoring, and evaluation activities	Context and Enablers	Health and Nutrition
D070103-C01. Resource mobilization activities	Context and Enablers	Health and Nutrition
[R] Research and Surveillance		
D070201-C02. Nutrition surveys and surveillance systems	Context and Enablers	Knowledge Building
D070202-C02. Food research and development	Context and Enablers	Knowledge Building
D070203-C02. Health systems research	Context and Enablers	Knowledge Building
D070204-C02. Clinical research studies	Context and Enablers	Knowledge Building
D070205-C02. Research dissemination activities	Context and Enablers	Knowledge Building
D070206-C02. Other research activities	Context and Enablers	Knowledge Building
[HR] Human Resource and Capacity Building		
D070301-C01. Salaries and benefits of personnel	Context and Enablers	Health and Nutrition
D070302-C01. Salaries, allowances, honoraria, for non-permanent personnel and volunteers	Context and Enablers	Health and Nutrition
D070303-C01. Learning and development interventions for service providers	Context and Enablers	Health and Nutrition
[CO] Capital Outlay		
D070401-C01. Construction, Repair, and Maintenance	Context and Enablers	Health and Nutrition
D070402-C01. Machinery, and equipment, furniture, and fixtures	Context and Enablers	Health and Nutrition
D070403-C01. Site purchase and development	Context and Enablers	Health and Nutrition
D070404-C01. Accreditation and licensing of facilities	Context and Enablers	Health and Nutrition
D070405-C01. Information Technology (IT) Systems	Context and Enablers	Health and Nutrition
D070406-C01. General Capital Outlay	Context and Enablers	Health and Nutrition
[A] Advocacy and Promotion		
D070501-C02. Development of IEC Materials	Context and Enablers	Knowledge Building
D070502-C02. Advocacy and communication activities	Context and Enablers	Knowledge Building
D070503-C02. Development of national health promotion and communication plans	Context and Enablers	Knowledge Building

[SD] Service Delivery		
D070601-M01. Provision of direct weight management interventions to beneficiaries	Immediate	Health and Nutrition
D070602-M01. Physical fitness and sports programs	Immediate	Health and Nutrition

Major intervention level:	Nutrition Specific (Direct)	
Program Domain:	Nutrition Promotion for Behavior Change	
	Specific Intervention	Malnutrition risk factor marker
		Nutrition intervention focus area marker
[P] Policy and Governance		
D080101-C01. Policies, legislation, program, and national guideline development	Context and Enablers	Health and Nutrition
D080102-C01. Coordination, regulation, monitoring, and evaluation activities	Context and Enablers	Health and Nutrition
D080103-C01. Resource mobilization activities	Context and Enablers	Health and Nutrition
[R] Research and Surveillance		
D080201-C02. Nutrition surveys and surveillance systems	Context and Enablers	Knowledge Building
D080202-C02. Food research and development	Context and Enablers	Knowledge Building
D080203-C02. Health systems research	Context and Enablers	Knowledge Building
D080204-C02. Clinical research studies	Context and Enablers	Knowledge Building
D080205-C02. Research dissemination activities	Context and Enablers	Knowledge Building
D080206-C02. Other research activities	Context and Enablers	Knowledge Building
[HR] Human Resource and Capacity Building		
D080301-C01. Salaries and benefits of personnel	Context and Enablers	Health and Nutrition
D080302-C01. Salaries, allowances, honoraria, for non-permanent personnel and volunteers	Context and Enablers	Health and Nutrition
D080303-C01. Learning and development interventions for service providers	Context and Enablers	Health and Nutrition
[CO] Capital Outlay		
D080401-C01. Construction, Repair, and Maintenance	Context and Enablers	Health and Nutrition
D080402-C01. Machinery, and equipment, furniture, and fixtures	Context and Enablers	Health and Nutrition
D080403-C01. Site purchase and development	Context and Enablers	Health and Nutrition
D080404-C01. Accreditation and licensing of facilities	Context and Enablers	Health and Nutrition
D080405-C01. Information Technology (IT) Systems	Context and Enablers	Health and Nutrition
D080406-C01. General Capital Outlay	Context and Enablers	Health and Nutrition
[A] Advocacy and Promotion		
D080501-C02. Development of IEC Materials	Context and Enablers	Knowledge Building
D080502-C02. Advocacy and communication activities	Context and Enablers	Knowledge Building
D080503-C02. Development of national health promotion and communication plans	Context and Enablers	Knowledge Building

Major intervention level:	Nutrition Sensitive (Indirect)	
Program Domain:	Maternal and Neonatal Health	
	Specific Intervention	Malnutrition risk factor marker
		Nutrition intervention focus area marker
[P] Policy and Governance		
I010101-C01. Policies, legislation, program, and national guideline development	Context and Enablers	Health and Nutrition
I010102-C01. Coordination, regulation, monitoring, and evaluation activities	Context and Enablers	Health and Nutrition
I010103-C01. Resource mobilization activities	Context and Enablers	Health and Nutrition
[R] Research and Surveillance		
I010201-C02. Nutrition surveys and surveillance systems	Context and Enablers	Knowledge Building
I010202-C02. Food research and development	Context and Enablers	Knowledge Building
I010203-C02. Health systems research	Context and Enablers	Knowledge Building
I010204-C02. Clinical research studies	Context and Enablers	Knowledge Building
I010205-C02. Research dissemination activities	Context and Enablers	Knowledge Building
I010206-C02. Other research activities	Context and Enablers	Knowledge Building
[HR] Human Resource and Capacity Building		
I010301-C01. Salaries and benefits of personnel	Context and Enablers	Health and Nutrition
I010302-C01. Salaries, allowances, honoraria, for non-permanent personnel and volunteers	Context and Enablers	Health and Nutrition
I010303-C01. Learning and development interventions for service providers	Context and Enablers	Health and Nutrition
[CO] Capital Outlay		
I010401-C01. Construction, Repair, and Maintenance	Context and Enablers	Health and Nutrition
I010402-C01. Machinery, and equipment, furniture, and fixtures	Context and Enablers	Health and Nutrition
I010403-C01. Site purchase and development	Context and Enablers	Health and Nutrition
I010404-C01. Accreditation and licensing of facilities	Context and Enablers	Health and Nutrition
I010405-C01. Information Technology (IT) Systems	Context and Enablers	Health and Nutrition
I010406-C01. General Capital Outlay	Context and Enablers	Health and Nutrition
[A] Advocacy and Promotion		
I010501-C02. Development of IEC Materials	Context and Enablers	Knowledge Building
I010502-C02. Advocacy and communication activities	Context and Enablers	Knowledge Building
I010503-C02. Development of national health promotion and communication plans	Context and Enablers	Knowledge Building

[SD] Service Delivery		
I010601-M01. Antenatal care (e.g., calcium supplementation, balanced energy protein	Immediate	Health and Nutrition
I010602-M01. Facility-based delivery and skilled-birth attendance	Immediate	Health and Nutrition
I010603-M01. Postnatal care	Immediate	Health and Nutrition
I010604-M01. Essential Intrapartum and Newborn care (EINC), Unang Yakap (drying,	Immediate	Health and Nutrition
I010605-M01. Maternal mental health support	Immediate	Health and Nutrition
I010606-M01. Maternal medical supplies and other commodities	Immediate	Health and Nutrition

Major intervention level:	Nutrition Sensitive (Indirect)	
Program Domain:	Adolescent Health and Development	
	Specific Intervention	Malnutrition risk factor marker
		Nutrition intervention focus area marker
[P] Policy and Governance		
I020101-C01. Policies, legislation, program, and national guideline development	Context and Enablers	Health and Nutrition
I020102-C01. Coordination, regulation, monitoring, and evaluation activities	Context and Enablers	Health and Nutrition
I020103-C01. Resource mobilization activities	Context and Enablers	Health and Nutrition
[R] Research and Surveillance		
I020201-C02. Nutrition surveys and surveillance systems	Context and Enablers	Knowledge Building
I020202-C02. Food research and development	Context and Enablers	Knowledge Building
I020203-C02. Health systems research	Context and Enablers	Knowledge Building
I020204-C02. Clinical research studies	Context and Enablers	Knowledge Building
I020205-C02. Research dissemination activities	Context and Enablers	Knowledge Building
I020206-C02. Other research activities	Context and Enablers	Knowledge Building
[HR] Human Resource and Capacity Building		
I020301-C01. Salaries and benefits of personnel	Context and Enablers	Health and Nutrition
I020302-C01. Salaries, allowances, honoraria, for non-permanent personnel and volunteers	Context and Enablers	Health and Nutrition
I020303-C01. Learning and development interventions for service providers	Context and Enablers	Health and Nutrition
[CO] Capital Outlay		
I020401-C01. Construction, Repair, and Maintenance	Context and Enablers	Health and Nutrition
I020402-C01. Machinery, and equipment, furniture, and fixtures	Context and Enablers	Health and Nutrition
I020403-C01. Site purchase and development	Context and Enablers	Health and Nutrition
I020404-C01. Accreditation and licensing of facilities	Context and Enablers	Health and Nutrition
I020405-C01. Information Technology (IT) Systems	Context and Enablers	Health and Nutrition
I020406-C01. General Capital Outlay	Context and Enablers	Health and Nutrition
[A] Advocacy and Promotion		
I020501-C02. Development of IEC Materials	Context and Enablers	Knowledge Building
I020502-C02. Advocacy and communication activities	Context and Enablers	Knowledge Building
I020503-C02. Development of national health promotion and communication plans	Context and Enablers	Knowledge Building

[SD] Service Delivery		
I020601-M01. Weekly iron-folic acid supplementation for female adolescent learners	Immediate	Health and Nutrition
I020602-M01. Deworming of enrolled learners	Immediate	Health and Nutrition
I020603-M01. Sexuality and reproductive health activities	Immediate	Health and Nutrition
I020604-M01. Medical supplies and commodities for adolescent health and	Immediate	Health and Nutrition

Major intervention level:	Nutrition Sensitive (Indirect)	
Program Domain:	Disease prevention and management	
	Specific Intervention	Malnutrition risk factor marker
		Nutrition intervention focus area marker
[P] Policy and Governance		
I030101-C01. Policies, legislation, program, and national guideline development	Context and Enablers	Health and Nutrition
I030102-C01. Coordination, regulation, monitoring, and evaluation activities	Context and Enablers	Health and Nutrition
I030103-C01. Resource mobilization activities	Context and Enablers	Health and Nutrition
[R] Research and Surveillance		
I030201-C02. Nutrition surveys and surveillance systems	Context and Enablers	Knowledge Building
I030202-C02. Food research and development	Context and Enablers	Knowledge Building
I030203-C02. Health systems research	Context and Enablers	Knowledge Building
I030204-C02. Clinical research studies	Context and Enablers	Knowledge Building
I030205-C02. Research dissemination activities	Context and Enablers	Knowledge Building
I030206-C02. Other research activities	Context and Enablers	Knowledge Building
[HR] Human Resource and Capacity Building		
I030301-C01. Salaries and benefits of personnel	Context and Enablers	Health and Nutrition
I030302-C01. Salaries, allowances, honoraria, for non-permanent personnel and volunteers	Context and Enablers	Health and Nutrition
I030303-C01. Learning and development interventions for service providers	Context and Enablers	Health and Nutrition
[CO] Capital Outlay		
I030401-C01. Construction, Repair, and Maintenance	Context and Enablers	Health and Nutrition
I030402-C01. Machinery, and equipment, furniture, and fixtures	Context and Enablers	Health and Nutrition
I030403-C01. Site purchase and development	Context and Enablers	Health and Nutrition
I030404-C01. Accreditation and licensing of facilities	Context and Enablers	Health and Nutrition
I030405-C01. Information Technology (IT) Systems	Context and Enablers	Health and Nutrition
I030406-C01. General Capital Outlay	Context and Enablers	Health and Nutrition
[A] Advocacy and Promotion		
I030501-C02. Development of IEC Materials	Context and Enablers	Knowledge Building
I030502-C02. Advocacy and communication activities	Context and Enablers	Knowledge Building
I030503-C02. Development of national health promotion and communication plans	Context and Enablers	Knowledge Building

[SD] Service Delivery		
I030601-M01. Expanded Program on Immunization	Immediate	Health and Nutrition
I030602-M01. Integrated management of childhood illnesses (including commodities	Immediate	Health and Nutrition
I030603-M01. Non-communicable diseases prevention and management	Immediate	Health and Nutrition
I030604-M01. Diagnostic activities for disease prevention	Immediate	Health and Nutrition
I030605-M01. Medical supplies and other commodities for disease prevention and	Immediate	Health and Nutrition

Major intervention level:	Nutrition Sensitive (Indirect)	
Program Domain:	Oral health	
	Specific Intervention	Malnutrition risk factor marker
		Nutrition intervention focus area marker
[P] Policy and Governance		
I040101-C01. Policies, legislation, program, and national guideline development	Context and Enablers	Health and Nutrition
I040102-C01. Coordination, regulation, monitoring, and evaluation activities	Context and Enablers	Health and Nutrition
I040103-C01. Resource mobilization activities	Context and Enablers	Health and Nutrition
[R] Research and Surveillance		
I040201-C02. Nutrition surveys and surveillance systems	Context and Enablers	Knowledge Building
I040202-C02. Food research and development	Context and Enablers	Knowledge Building
I040203-C02. Health systems research	Context and Enablers	Knowledge Building
I040204-C02. Clinical research studies	Context and Enablers	Knowledge Building
I040205-C02. Research dissemination activities	Context and Enablers	Knowledge Building
I040206-C02. Other research activities	Context and Enablers	Knowledge Building
[HR] Human Resource and Capacity Building		
I040301-C01. Salaries and benefits of personnel	Context and Enablers	Health and Nutrition
I040302-C01. Salaries, allowances, honoraria, for non-permanent personnel and volunteers	Context and Enablers	Health and Nutrition
I040303-C01. Learning and development interventions for service providers	Context and Enablers	Health and Nutrition
[CO] Capital Outlay		
I040401-C01. Construction, Repair, and Maintenance	Context and Enablers	Health and Nutrition
I040402-C01. Machinery, and equipment, furniture, and fixtures	Context and Enablers	Health and Nutrition
I040403-C01. Site purchase and development	Context and Enablers	Health and Nutrition
I040404-C01. Accreditation and licensing of facilities	Context and Enablers	Health and Nutrition
I040405-C01. Information Technology (IT) Systems	Context and Enablers	Health and Nutrition
I040406-C01. General Capital Outlay	Context and Enablers	Health and Nutrition
[A] Advocacy and Promotion		
I040501-C02. Development of IEC Materials	Context and Enablers	Knowledge Building
I040502-C02. Advocacy and communication activities	Context and Enablers	Knowledge Building
I040503-C02. Development of national health promotion and communication plans	Context and Enablers	Knowledge Building

[SD] Service Delivery		
I040601-M01. Provision of oral examination (e.g., prophylaxies, gum treatment, fillings,	Immediate	Health and Nutrition
I040602-M01. Provision of dental supplies	Immediate	Health and Nutrition
I040603-M02. Promotion of oral health and hygiene education	Immediate	Knowledge Building

Major intervention level:	Nutrition Sensitive (Indirect)	
Program Domain:	Access to health care services	
	Specific Intervention	Malnutrition risk factor marker
		Nutrition intervention focus area marker
[P] Policy and Governance		
I050101-C01. Policies, legislation, program, and national guideline development	Context and Enablers	Health and Nutrition
I050102-C01. Coordination, regulation, monitoring, and evaluation activities	Context and Enablers	Health and Nutrition
I050103-C01. Resource mobilization activities	Context and Enablers	Health and Nutrition
[R] Research and Surveillance		
I050201-C02. Nutrition surveys and surveillance systems	Context and Enablers	Knowledge Building
I050202-C02. Food research and development	Context and Enablers	Knowledge Building
I050203-C02. Health systems research	Context and Enablers	Knowledge Building
I050204-C02. Clinical research studies	Context and Enablers	Knowledge Building
I050205-C02. Research dissemination activities	Context and Enablers	Knowledge Building
I050206-C02. Other research activities	Context and Enablers	Knowledge Building
[HR] Human Resource and Capacity Building		
I050301-C01. Salaries and benefits of personnel	Context and Enablers	Health and Nutrition
I050302-C01. Salaries, allowances, honoraria, for non-permanent personnel and volunteers	Context and Enablers	Health and Nutrition
I050303-C01. Learning and development interventions for service providers	Context and Enablers	Health and Nutrition
[CO] Capital Outlay		
I050401-C01. Construction, Repair, and Maintenance	Context and Enablers	Health and Nutrition
I050402-C01. Machinery, and equipment, furniture, and fixtures	Context and Enablers	Health and Nutrition
I050403-C01. Site purchase and development	Context and Enablers	Health and Nutrition
I050404-C01. Accreditation and licensing of facilities	Context and Enablers	Health and Nutrition
I050405-C01. Information Technology (IT) Systems	Context and Enablers	Health and Nutrition
I050406-C01. General Capital Outlay	Context and Enablers	Health and Nutrition
[A] Advocacy and Promotion		
I050501-C02. Development of IEC Materials	Context and Enablers	Knowledge Building
I050502-C02. Advocacy and communication activities	Context and Enablers	Knowledge Building
I050503-C02. Development of national health promotion and communication plans	Context and Enablers	Knowledge Building

[SD] Service Delivery

I050601-H01. Social health insurance	Household	Health and Nutrition
I050602-H01. IP health program and services	Household	Health and Nutrition

Major intervention level:	Nutrition Sensitive (Indirect)	
Program Domain:	Family planning, reproductive health, and responsible parenting	
	Specific Intervention	Malnutrition risk factor marker
[P] Policy and Governance		
I060101-C01. Policies, legislation, program, and national guideline development	Context and Enablers	Health and Nutrition
I060102-C01. Coordination, regulation, monitoring, and evaluation activities	Context and Enablers	Health and Nutrition
I060103-C01. Resource mobilization activities	Context and Enablers	Health and Nutrition
[R] Research and Surveillance		
I060201-C02. Nutrition surveys and surveillance systems	Context and Enablers	Knowledge Building
I060202-C02. Food research and development	Context and Enablers	Knowledge Building
I060203-C02. Health systems research	Context and Enablers	Knowledge Building
I060204-C02. Clinical research studies	Context and Enablers	Knowledge Building
I060205-C02. Research dissemination activities	Context and Enablers	Knowledge Building
I060206-C02. Other research activities	Context and Enablers	Knowledge Building
[HR] Human Resource and Capacity Building		
I060301-C01. Salaries and benefits of personnel	Context and Enablers	Health and Nutrition
I060302-C01. Salaries, allowances, honoraria, for non-permanent personnel and volunteers	Context and Enablers	Health and Nutrition
I060303-C01. Learning and development interventions for service providers	Context and Enablers	Health and Nutrition
[CO] Capital Outlay		
I060401-C01. Construction, Repair, and Maintenance	Context and Enablers	Health and Nutrition
I060402-C01. Machinery, and equipment, furniture, and fixtures	Context and Enablers	Health and Nutrition
I060403-C01. Site purchase and development	Context and Enablers	Health and Nutrition
I060404-C01. Accreditation and licensing of facilities	Context and Enablers	Health and Nutrition
I060405-C01. Information Technology (IT) Systems	Context and Enablers	Health and Nutrition
I060406-C01. General Capital Outlay	Context and Enablers	Health and Nutrition
[A] Advocacy and Promotion		
I060501-C02. Development of IEC Materials	Context and Enablers	Knowledge Building
I060502-C02. Advocacy and communication activities	Context and Enablers	Knowledge Building
I060503-C02. Development of national health promotion and communication plans	Context and Enablers	Knowledge Building

[SD] Service Delivery		
I060601-H01. Provision of family planning commodities	Household	Health and Nutrition
I060602-H02. Community based demand generation	Household	Knowledge Building
I060603-H01. Provision of FP services	Household	Health and Nutrition

Major intervention level:	Nutrition Sensitive (Indirect)	
Program Domain:	WASH	
	Specific Intervention	Malnutrition risk factor marker
		Nutrition intervention focus area marker
[P] Policy and Governance		
I070101-C05. Policies, legislation, program, and national guideline development	Context and Enablers	WASH
I070102-C05. Coordination, regulation, monitoring, and evaluation activities	Context and Enablers	WASH
I070103-C05. Resource mobilization activities	Context and Enablers	WASH
[R] Research and Surveillance		
I070201-C05. Nutrition surveys and surveillance systems	Context and Enablers	WASH
I070202-C05. Food research and development	Context and Enablers	WASH
I070203-C05. Health systems research	Context and Enablers	WASH
I070204-C05. Clinical research studies	Context and Enablers	WASH
I070205-C05. Research dissemination activities	Context and Enablers	WASH
I070206-C05. Other research activities	Context and Enablers	WASH
[HR] Human Resource and Capacity Building		
I070301-C05. Salaries and benefits of personnel	Context and Enablers	WASH
I070302-C05. Salaries, allowances, honoraria, for non-permanent personnel and volunteers	Context and Enablers	WASH
I070303-C05. Learning and development interventions for service providers	Context and Enablers	WASH
[CO] Capital Outlay		
I070401-C05. Construction, Repair, and Maintenance	Context and Enablers	WASH
I070402-C05. Machinery, and equipment, furniture, and fixtures	Context and Enablers	WASH
I070403-C05. Site purchase and development	Context and Enablers	WASH
I070404-C05. Accreditation and licensing of facilities	Context and Enablers	WASH
I070405-C05. Information Technology (IT) Systems	Context and Enablers	WASH
I070406-C05. General Capital Outlay	Context and Enablers	WASH
[A] Advocacy and Promotion		
I070501-C05. Development of IEC Materials	Context and Enablers	WASH
I070502-C05. Advocacy and communication activities	Context and Enablers	WASH
I070503-C05. Development of national health promotion and communication plans	Context and Enablers	WASH

[SD] Service Delivery		
I070601-M05. Delivery of interventions aiming to improve access to safe drinking water	Immediate	WASH
I070602-M05. Delivery of interventions aiming to improve access to improved	Immediate	WASH
I070603-M05. Provision of soap supplies for handwashing and toothbrush and	Immediate	WASH
I070604-M05. Water resource programs	Immediate	WASH
I070605-M05. Water supply interventions	Immediate	WASH
I070606-M05. Waste management programs	Immediate	WASH
I070607-M05. Provision of other WASH commodities	Immediate	WASH

Major intervention level:	Nutrition Sensitive (Indirect)	
Program Domain:	Early Childhood Care and Development	
	Specific Intervention	Malnutrition risk factor marker
		Nutrition intervention focus area marker
[P] Policy and Governance		
I080101-C01. Policies, legislation, program, and national guideline development	Context and Enablers	Health and Nutrition
I080102-C01. Coordination, regulation, monitoring, and evaluation activities	Context and Enablers	Health and Nutrition
I080103-C01. Resource mobilization activities	Context and Enablers	Health and Nutrition
[R] Research and Surveillance		
I080201-C02. Nutrition surveys and surveillance systems	Context and Enablers	Knowledge Building
I080202-C02. Food research and development	Context and Enablers	Knowledge Building
I080203-C02. Health systems research	Context and Enablers	Knowledge Building
I080204-C02. Clinical research studies	Context and Enablers	Knowledge Building
I080205-C02. Research dissemination activities	Context and Enablers	Knowledge Building
I080206-C02. Other research activities	Context and Enablers	Knowledge Building
[HR] Human Resource and Capacity Building		
I080301-C01. Salaries and benefits of personnel	Context and Enablers	Health and Nutrition
I080302-C01. Salaries, allowances, honoraria, for non-permanent personnel and volunteers	Context and Enablers	Health and Nutrition
I080303-C01. Learning and development interventions for service providers	Context and Enablers	Health and Nutrition
[CO] Capital Outlay		
I080401-C01. Construction, Repair, and Maintenance	Context and Enablers	Health and Nutrition
I080402-C01. Machinery, and equipment, furniture, and fixtures	Context and Enablers	Health and Nutrition
I080403-C01. Site purchase and development	Context and Enablers	Health and Nutrition
I080404-C01. Accreditation and licensing of facilities	Context and Enablers	Health and Nutrition
I080405-C01. Information Technology (IT) Systems	Context and Enablers	Health and Nutrition
I080406-C01. General Capital Outlay	Context and Enablers	Health and Nutrition
[A] Advocacy and Promotion		
I080501-C02. Development of IEC Materials	Context and Enablers	Knowledge Building
I080502-C02. Advocacy and communication activities	Context and Enablers	Knowledge Building
I080503-C02. Development of national health promotion and communication plans	Context and Enablers	Knowledge Building

[SD] Service Delivery		
I080601-M02. Early childhood education and learning (0-3 years old)	Immediate	Knowledge Building
I080602-M02. Health, nutrition and physical education activities in school	Immediate	Knowledge Building
I080603-M01. First 1000 Days programs and initiatives	Immediate	Health and Nutrition
I080604-M01. Provision of other commodities for ECCD	Immediate	Health and Nutrition

Major intervention level:	Nutrition Sensitive (Indirect)	
Program Domain:	Agriculture and Food Systems	
<i>Specific Intervention</i>	<i>Malnutrition risk factor marker</i>	<i>Nutrition intervention focus area marker</i>
[P] Policy and Governance		
INA0101-C01. Policies, legislation, program, and national guideline development	Context and Enablers	Health and Nutrition
INA0102-C01. Coordination, regulation, monitoring, and evaluation activities	Context and Enablers	Health and Nutrition
INA0103-C01. Resource mobilization activities	Context and Enablers	Health and Nutrition
[R] Research and Surveillance		
INA0201-C02. Nutrition surveys and surveillance systems	Context and Enablers	Knowledge Building
INA0202-C02. Food research and development	Context and Enablers	Knowledge Building
INA0203-C02. Health systems research	Context and Enablers	Knowledge Building
INA0204-C02. Clinical research studies	Context and Enablers	Knowledge Building
INA0205-C02. Research dissemination activities	Context and Enablers	Knowledge Building
INA0206-C02. Agricultural research	Context and Enablers	Knowledge Building
INA0207-C02. Other research activities	Context and Enablers	Knowledge Building
[HR] Human Resource and Capacity Building		
INA0301-C01. Salaries and benefits of personnel	Context and Enablers	Health and Nutrition
INA0302-C01. Salaries, allowances, honoraria, for non-permanent personnel and volunteers	Context and Enablers	Health and Nutrition
INA0303-C01. Learning and development interventions for service providers	Context and Enablers	Health and Nutrition
[CO] Capital Outlay		
#REF!	Context and Enablers	Health and Nutrition
	Context and Enablers	Health and Nutrition
	Context and Enablers	Health and Nutrition
	Context and Enablers	Health and Nutrition
	Context and Enablers	Health and Nutrition
	Context and Enablers	Health and Nutrition
[A] Advocacy and Promotion		
INA0501-C02. Development of IEC Materials	Context and Enablers	Food Production and Sustainability
INA0502-C02. Advocacy and communication activities	Context and Enablers	Knowledge Building
INA0503-C02. Development of national health promotion and communication plans	Context and Enablers	Knowledge Building

[SD] Service Delivery		
INA0601-M03. Food production support services (including distribution of agricultural	Immediate	Food Production and Sustainability
INA0602-M03. Market development strategies	Immediate	Food Production and Sustainability
INA0603-M03. Extension support, education, and training services	Immediate	Food Production and Sustainability
INA0604-M03. Agricultural development programs	Immediate	Food Production and Sustainability
INA0605-M03. Fisheries programs	Immediate	Food Production and Sustainability
INA0606-M03. Food security and production programs	Immediate	Food Production and Sustainability
INA0607-M03. Financial aid, grants, and technical assistance to farmers and fisherfolk	Immediate	Food Production and Sustainability
INA0608-M03. Agripreneurship and agribusiness programs	Immediate	Food Production and Sustainability
INA0609-M03. Coconut rehabilitation programs	Immediate	Food Production and Sustainability
INA0610-M03. School based gardening activities	Immediate	Food Production and Sustainability

Major intervention level:	Nutrition Sensitive (Indirect)	
Program Domain:	Gender Empowerment	
	Specific Intervention	Malnutrition risk factor marker
		Nutrition intervention focus area marker
[P] Policy and Governance		
I100101-C01. Policies, legislation, program, and national guideline development	Context and Enablers	Health and Nutrition
I100102-C01. Coordination, regulation, monitoring, and evaluation activities	Context and Enablers	Health and Nutrition
I100103-C01. Resource mobilization activities	Context and Enablers	Health and Nutrition
[R] Research and Surveillance		
I100201-C02. Nutrition surveys and surveillance systems	Context and Enablers	Knowledge Building
I100202-C02. Food research and development	Context and Enablers	Knowledge Building
I100203-C02. Health systems research	Context and Enablers	Knowledge Building
I100204-C02. Clinical research studies	Context and Enablers	Knowledge Building
I100205-C02. Research dissemination activities	Context and Enablers	Knowledge Building
I100206-C02. Other research activities	Context and Enablers	Knowledge Building
[HR] Human Resource and Capacity Building		
I100301-C01. Salaries and benefits of personnel	Context and Enablers	Health and Nutrition
I100302-C01. Salaries, allowances, honoraria, for non-permanent personnel and volunteers	Context and Enablers	Health and Nutrition
I100303-C01. Learning and development interventions for service providers	Context and Enablers	Health and Nutrition
[CO] Capital Outlay		
I100401-C01. Construction, Repair, and Maintenance	Context and Enablers	Health and Nutrition
I100402-C01. Machinery, and equipment, furniture, and fixtures	Context and Enablers	Health and Nutrition
I100403-C01. Site purchase and development	Context and Enablers	Health and Nutrition
I100404-C01. Accreditation and licensing of facilities	Context and Enablers	Health and Nutrition
I100405-C01. Information Technology (IT) Systems	Context and Enablers	Health and Nutrition
I100406-C01. General Capital Outlay	Context and Enablers	Health and Nutrition
[A] Advocacy and Promotion		
I100501-C02. Development of IEC Materials	Context and Enablers	Knowledge Building
I100502-C02. Advocacy and communication activities	Context and Enablers	Knowledge Building
I100503-C02. Development of national health promotion and communication plans	Context and Enablers	Knowledge Building

[SD] Service Delivery		
I100601-H02. Maternal education (e.g., increased access to primary and secondary	Household	Knowledge Building
I100602-H01. Maternity protection in the workplace	Household	Health and Nutrition
I100603-H04. Gender discrimination reduction activities	Household	Social Protection
I100604-H04. Violence against women and children	Household	Social Protection
I100605-H04. Male engagement activities	Household	Social Protection
I100606-H04. Provision of other commodities for gender empowerment (e.g., VAWC,	Household	Social Protection
I100607-H04. Women and child protection programs	Household	Social Protection

Major intervention level:	Nutrition Sensitive (Indirect)	
Program Domain:	Social safety nets	
	Specific Intervention	Malnutrition risk factor marker
		Nutrition intervention focus area marker
[P] Policy and Governance		
I110101-C01. Policies, legislation, program, and national guideline development	Context and Enablers	Health and Nutrition
I110102-C01. Coordination, regulation, monitoring, and evaluation activities	Context and Enablers	Health and Nutrition
I110103-C01. Resource mobilization activities	Context and Enablers	Health and Nutrition
[R] Research and Surveillance		
I110201-C02. Nutrition surveys and surveillance systems	Context and Enablers	Knowledge Building
I110202-C02. Food research and development	Context and Enablers	Knowledge Building
I110203-C02. Health systems research	Context and Enablers	Knowledge Building
I110204-C02. Clinical research studies	Context and Enablers	Knowledge Building
I110205-C02. Research dissemination activities	Context and Enablers	Knowledge Building
I110206-C02. Other research activities	Context and Enablers	Knowledge Building
[HR] Human Resource and Capacity Building		
I110301-C01. Salaries and benefits of personnel	Context and Enablers	Health and Nutrition
I110302-C01. Salaries, allowances, honoraria, for non-permanent personnel and volunteers	Context and Enablers	Health and Nutrition
I110303-C01. Learning and development interventions for service providers	Context and Enablers	Health and Nutrition
[CO] Capital Outlay		
I110401-C01. Construction, Repair, and Maintenance	Context and Enablers	Health and Nutrition
I110402-C01. Machinery, and equipment, furniture, and fixtures	Context and Enablers	Health and Nutrition
I110403-C01. Site purchase and development	Context and Enablers	Health and Nutrition
I110404-C01. Accreditation and licensing of facilities	Context and Enablers	Health and Nutrition
I110405-C01. Information Technology (IT) Systems	Context and Enablers	Health and Nutrition
I110406-C01. General Capital Outlay	Context and Enablers	Health and Nutrition
[A] Advocacy and Promotion		
I110501-C02. Development of IEC Materials	Context and Enablers	Knowledge Building
I110502-C02. Advocacy and communication activities	Context and Enablers	Knowledge Building
I110503-C02. Development of national health promotion and communication plans	Context and Enablers	Knowledge Building

[SD] Service Delivery		
I110601-H04. Transfers of cash, food, or in-kind (conditional or unconditional)	Household	Social Protection
I110602-H04. SLP modalities for microenterprise development	Household	Social Protection
I110603-H04. SLP modalities for employment facilitation	Household	Social Protection
I110604-H04. Agrarian reform and land distribution program	Household	Social Protection
I110605-H04. Provision of subsidies for food and other commodities	Household	Social Protection
I110606-H04. Livelihood education	Household	Social Protection
I110607-H04. Social protection programs for IP	Household	Social Protection
I110608-H04. Poverty alleviation strategies	Household	Social Protection
I110609-H04. Employment support services	Household	Social Protection
I110610-H04. Workers amelioration and welfare services	Household	Social Protection
I110611-H04. KALAH-CIDDS program (lumped)	Household	Social Protection
I110612-H04. PAMANA program (lumped)	Household	Social Protection
I110613-H04. Other social protective services	Household	Social Protection

Major intervention level:	Nutrition Sensitive (Indirect)	
Program Domain:	Humanitarian Relief and Emergency Fund	
	Specific Intervention	Malnutrition risk factor marker
		Nutrition intervention focus area marker
[P] Policy and Governance		
I120101-C01. Policies, legislation, program, and national guideline development	Context and Enablers	Health and Nutrition
I120102-C01. Coordination, regulation, monitoring, and evaluation activities	Context and Enablers	Health and Nutrition
I120103-C01. Resource mobilization activities	Context and Enablers	Health and Nutrition
[R] Research and Surveillance		
I120201-C02. Nutrition surveys and surveillance systems	Context and Enablers	Knowledge Building
I120202-C02. Food research and development	Context and Enablers	Knowledge Building
I120203-C02. Health systems research	Context and Enablers	Knowledge Building
I120204-C02. Clinical research studies	Context and Enablers	Knowledge Building
I120205-C02. Research dissemination activities	Context and Enablers	Knowledge Building
I120206-C02. Other research activities	Context and Enablers	Knowledge Building
[HR] Human Resource and Capacity Building		
I120301-C01. Salaries and benefits of personnel	Context and Enablers	Health and Nutrition
I120302-C01. Salaries, allowances, honoraria, for non-permanent personnel and volunteers	Context and Enablers	Health and Nutrition
I120303-C01. Learning and development interventions for service providers	Context and Enablers	Health and Nutrition
[CO] Capital Outlay		
I120401-C01. Construction, Repair, and Maintenance	Context and Enablers	Health and Nutrition
I120402-C01. Machinery, and equipment, furniture, and fixtures	Context and Enablers	Health and Nutrition
I120403-C01. Site purchase and development	Context and Enablers	Health and Nutrition
I120404-C01. Accreditation and licensing of facilities	Context and Enablers	Health and Nutrition
I120405-C01. Information Technology (IT) Systems	Context and Enablers	Health and Nutrition
I120406-C01. General Capital Outlay	Context and Enablers	Health and Nutrition
[A] Advocacy and Promotion		
I120501-C02. Development of IEC Materials	Context and Enablers	Knowledge Building
I120502-C02. Advocacy and communication activities	Context and Enablers	Knowledge Building
I120503-C02. Development of national health promotion and communication plans	Context and Enablers	Knowledge Building

[SD] Service Delivery		
I120601-H04. Quick response and calamity fund (lumped)	Household	Social Protection
I120602-H04. Health emergency response (lumped)	Household	Social Protection
I120603-H04. Disaster response and rehabilitation (lumped)	Household	Social Protection
I120604-H04. Provision of disaster food packs and other commodities during	Household	Social Protection

Major intervention level:	Nutrition Sensitive (Indirect)	
Program Domain:	Universal education	
	Specific Intervention	Malnutrition risk factor marker
		Nutrition intervention focus area marker
[P] Policy and Governance		
I130101-C01. Policies, legislation, program, and national guideline development	Context and Enablers	Health and Nutrition
I130102-C01. Coordination, regulation, monitoring, and evaluation activities	Context and Enablers	Health and Nutrition
I130103-C01. Resource mobilization activities	Context and Enablers	Health and Nutrition
[R] Research and Surveillance		
I130201-C02. Nutrition surveys and surveillance systems	Context and Enablers	Knowledge Building
I130202-C02. Food research and development	Context and Enablers	Knowledge Building
I130203-C02. Health systems research	Context and Enablers	Knowledge Building
I130204-C02. Clinical research studies	Context and Enablers	Knowledge Building
I130205-C02. Research dissemination activities	Context and Enablers	Knowledge Building
I130206-C02. Other research activities	Context and Enablers	Knowledge Building
[HR] Human Resource and Capacity Building		
I130301-C01. Salaries and benefits of personnel	Context and Enablers	Health and Nutrition
I130302-C01. Salaries, allowances, honoraria, for non-permanent personnel and volunteers	Context and Enablers	Health and Nutrition
I130303-C01. Learning and development interventions for service providers	Context and Enablers	Health and Nutrition
[CO] Capital Outlay		
I130401-C01. Construction, Repair, and Maintenance	Context and Enablers	Health and Nutrition
I130402-C01. Machinery, and equipment, furniture, and fixtures	Context and Enablers	Health and Nutrition
I130403-C01. Site purchase and development	Context and Enablers	Health and Nutrition
I130404-C01. Accreditation and licensing of facilities	Context and Enablers	Health and Nutrition
I130405-C01. Information Technology (IT) Systems	Context and Enablers	Health and Nutrition
I130406-C01. General Capital Outlay	Context and Enablers	Health and Nutrition
[A] Advocacy and Promotion		
I130501-C02. Development of IEC Materials	Context and Enablers	Knowledge Building
I130502-C02. Advocacy and communication activities	Context and Enablers	Knowledge Building
I130503-C02. Development of national health promotion and communication plans	Context and Enablers	Knowledge Building

[SD] Service Delivery

I130601-H02. Access to education for all

Household

Knowledge Building

Major intervention level:	Nutrition Sensitive (Indirect)	
Program Domain:	Overarching nutrition policy, monitoring, and evaluation strategies	
	Specific Intervention	Malnutrition risk factor marker
		Nutrition intervention focus area marker
[P] Policy and Governance		
INA0101-C01. Policies, legislation, program, and national guideline development	Context and Enablers	Health and Nutrition
INA0102-C01. Coordination, regulation, monitoring, and evaluation activities	Context and Enablers	Health and Nutrition
INA0103-C01. Resource mobilization activities	Context and Enablers	Health and Nutrition
[R] Research and Surveillance		
INA0201-C02. Nutrition surveys and surveillance systems	Context and Enablers	Knowledge Building
INA0202-C02. Food research and development	Context and Enablers	Knowledge Building
INA0203-C02. Health systems research	Context and Enablers	Knowledge Building
INA0204-C02. Clinical research studies	Context and Enablers	Knowledge Building
INA0205-C02. Research dissemination activities	Context and Enablers	Knowledge Building
INA0206-C02. Other research activities	Context and Enablers	Knowledge Building
[HR] Human Resource and Capacity Building		
INA0301-C01. Salaries and benefits of personnel	Context and Enablers	Health and Nutrition
INA0302-C01. Salaries, allowances, honoraria, for non-permanent personnel and volunteers	Context and Enablers	Health and Nutrition
INA0303-C01. Learning and development interventions for service providers	Context and Enablers	Health and Nutrition
[CO] Capital Outlay		
INA0401-C01. Construction, Repair, and Maintenance	Context and Enablers	Health and Nutrition
INA0402-C01. Machinery, and equipment, furniture, and fixtures	Context and Enablers	Health and Nutrition
INA0403-C01. Site purchase and development	Context and Enablers	Health and Nutrition
INA0404-C01. Accreditation and licensing of facilities	Context and Enablers	Health and Nutrition
INA0405-C01. Information Technology (IT) Systems	Context and Enablers	Health and Nutrition
INA0406-C01. General Capital Outlay	Context and Enablers	Health and Nutrition
[A] Advocacy and Promotion		
INA0501-C02. Development of IEC Materials	Context and Enablers	Knowledge Building
INA0502-C02. Advocacy and communication activities	Context and Enablers	Knowledge Building

Annex B. Sample Work and Financial Plans

DEPARTMENT OF HEALTH	CHD/BUREAU/OFFICE: DISEASE PREVENTION AND CONTROL BUREAU - WOMEN AND MEN'S HEALTH DEVELOPMENT DIVISION AND CHILDREN'S HEALTH DEVELOPMENT DIVISION	PROGRAM: PUBLIC HEALTH MANAGEMENT FUND									
Output Functions/ Deliverables	ACTIVITIES	TIMEFRAME				RESOURCE REQUIREMENTS		RESPONSIBLE PERSON			
		Q1	Q2	Q3	Q4	COST	SOURCE OF FUNDS				
A. Strategic Functions											
Operationalize an integrated comprehensive essential Service Package (continuum of care)	Workshop on the Development of Integrated Family Health Packages		1			450,000.00	PHM	Dir. Constantino/Dr. Gavino/Calibo			
	Sub-total					450,000.00					
B. Core Functions											
Policy Formulation	Clinical Practice Guidelines (CPG) and Protocol Development:										
	Intrapartum care for Positive Childbirth			1		280,000.00	PHM	Ms. Z. Recidoro			
	FP Strategic Planning			1			c/o POPCOM	Dr. J. Llevado/Ms. O. de Guzman			
	Policy/ Guideline Updates										
	Workshop on Revision of National AHDP Strategic Framework and Costed Implementation Plan	1	1			410,400.00	PHM	D. Elfa			
	Consultative Men's RH Program Framework Development			1	1			D. Danila			
Training/Technical Assistance	Universal Newborn Hearing Screening Program Review to CHDs and Program Managers			1		395,000.00	PHM	Ms. L. Orbillo			
	Framework Development										
	Triple Elimination of Mother to Child Transmission			1		280,000.00	PHM	Ms. Z. Recidoro			
	Results Mapping Workshop for Strengthening Leadership Capacities for DOH CHD and the NNC for the PPLAN			1		444,000.00	PHM	Ms. L. Tagunicar			
	Training of Trainers on Philippine Integrated Management of Acute Malnutrition			1		468,800.00	PHM	Ms. L. Tagunicar/Mr. J. Catbagan			
	Training of Trainers on the Use of the Integrated Training Modules on Maternal Nutrition, Infant, and Young Child Feeding (MINIYCF) for Peer Counselors				2		c/o UNICEF	Dr. Calibo/Ms. Tagunicar			
	Competency Based Training on Adolescent Health for Primary Care Service Providers		1	1		630,000.00	PHM	Ms. D. Elfa			
	Maternal Death and Surveillance Response Coaching for LGUs (per request)	1				144,000.00		Ms. Z. Recidoro			
	Comprehensive Geriatric Training in 27 DOH Retained Hospitals to be Geriatric Centers		1			288,000.00		Dr. M. Vinluan			
	Orientation Workshop on Healthy Aging Program and the use of Blended Geriatric Module		1			201,600.00		Dr. M. Vinluan			
	Pilot Testing on the Module for Older Persons (4 areas)	4				485,000.00		Dr. M. Vinluan			
	Program Strategy Review of Senior Citizen Immunization Program and Dementia Consultative Workshop			1		270,000.00		Dr. M. Vinluan			
	Conceptualization and Building Workshop on the Manual of Operations for Republic Act 11148			1			c/o UNICEF	Dr. A. Calibo			
	Health and Wellness Program for Senior Citizen	1				48,000.00	PHM	Dr. M. Vinluan			
	Meeting on RMNCHN Framework		1					Ms. Z. Recidoro			
	Meeting on BEmONC Assessment		1					Ms. Z. Recidoro			

WFP-PMED EXPENDITURE TRACKING As of December 31, 2021

	Project Code	P/A/P	BUDGET	TRANSFERRED TO REGIONS	ADJUSTED BUDGET	1ST QTR.	2ND QTR.	3RD QTR.	OCT.	Nov.	Dec.	4TH QTR.	TOTAL EXPENDITURES	BALANCE	%
A.II.a Coordination and Development of Population Policy and Programs															
1. Coordination of PMMP Strategies	PMED-21-01	A.II.a	1,062,181.10		1,062,181.10	405,490.80	-	556,880.70	900.00	900.00		1,800.00	1,054,171.50	8,009.60	99%
2. Review and Formulation of PMMP (DP for 2022-2028)	PMED-21-02	A.II.a					-								80%/01
3. Regional PMMP Program and Operational	PMED-21-03	A.II.a	21,677.15		21,677.15	-	-	21,677.15					21,677.15	-	100%
4. Monitoring and evaluation of PMMP Strategies at the national and regional levels	PMED-21-04	A.II.a	-		-	-	-	-					-	-	80%/01
5. Resource Generation and Mobilization for PMMP	PMED-21-05	A.II.a	-		-	-	-	-					-	-	80%/01
6. Coordinative workshops/meeting with NGAs on the Implementation of the Plan of Action on Attaining Demographic Dividend	PMED-21-06	A.II.a	-		-	-	-	-					-	-	80%/01
7. Other Coordinative activities for program planning, coordination, monitoring and evaluation of population management strategies	PMED-21-07	A.II.a	88,550.00		88,550.00	14,250.00	18,600.00	16,200.00	5,000.00	5,000.00	7,660.00	17,660.00	86,710.00	1,840.00	98%
16. Development of Social Protection Program for Teenaged Mothers and their Children	PMED-21-16	A.II.a	300.00		300.00		300.00	-					300.00	-	100%
23. Coordination and Participation in the conduct of the 8th Population, Health and Environment (PHE) Conference	PMED-21-23	A.II.a	43,500.00		43,500.00			-	43,500.00	5,900.00	7,660.00	43,500.00	43,500.00	-	100%
TOTALS			1,216,208.25	-	1,216,208.25	529,740.80	18,900.00	594,757.85	49,400.00	5,900.00	7,660.00	62,960.00	1,206,258.65	9,849.60	99%
A.II.b Support to the Implementation of Approved National, regional and local population plans and program															
8. Support to the Implementation of RPH Law through the National Implementation Team (NIT)	PMED-21-08	A.II.b			-	-	-	-					-	-	80%/01
9. Provision of technical inputs on POPDEV Integration in development planning	PMED-21-09	A.II.b	15,649.89		15,649.89	-	-	15,649.89					15,649.89	-	100%
17. Statistics/Demographer to provide technical assistance in the development of various population-related researches and activities of POPCOM	PMED-21-17	A.II.b	140,000.00		140,000.00	140,000.00	-	-					140,000.00	-	100%
TOTALS			156,649.89	-	156,649.89	140,000.00	-	15,649.89	-	-	-	-	156,649.89	-	100%
A.II.c Provision of Grants, subsidies and contributions in Support of Population Programs															
10. POPDEV Integration South-South Technical Cooperation (SSTC) on FP and AHD with Indonesia	PMED-21-10	A.II.c			-	-	-	-					-	-	80%/01
11. Search of Kaunlarang Pentas (KOPPEP) Award	PMED-21-11	A.II.c			-	-	-	-					-	-	
12. Demographic Vulnerability Tool	PMED-21-12	A.II.c	4,785.25		4,785.25	-	-	4,785.25					4,785.25	-	100%
13. Development and Cascading of tools to support PMMP localization and institutionalization strategies	PMED-21-13	A.II.c			-	-	-	-					-	-	80%/01
14. Hiring of Contract of Support Services (CoSS) for technical assistant to the Planning and Implementation of Population Strategies	PMED-21-14	A.II.c	248,754.89		248,754.89	171,914.48	-	163,787.73		(85,957.20)		(85,957.20)	248,754.89	-	100%
15. Individual Consultant/Writer cum Editor for the Development of the RPH Law 7th Hiring of Contract of Support Services	PMED-21-15	A.II.c	250,000.00		250,000.00	250,000.00	-	-					250,000.00	-	100%
18. Hiring of Individual or Institutional Consultant for the Conduct of Rapid Appraisal for the Development of Social Protection Program for Teenaged Mothers and their Children	PMED-21-18	A.II.c	220,000.00		220,000.00		220,000.00	-					220,000.00	-	100%
19. Review fee for the Researches with government funding conducted by the Philippine Social Science-Social Science Ethics Review Board (PSSC-SSEBR) for the conduct of Rapid Appraisal for the Development of Social Protection Program for Teenaged Mothers and their Children	PMED-21-19	A.II.c	20,000.00		20,000.00		20,000.00	-					20,000.00	-	100%
20. Conduct of Rapid Appraisal for the Development of Social Protection Program for Teenaged Mothers and their Children	PMED-21-20	A.II.c	514,500.00	513,900.00	600.00								-	600.00	0%
21. Hiring of Consultant to update the data on the Population Density of Barangays in the Philippines	PMED-21-21	A.II.c	140,000.00		140,000.00				140,000.00				140,000.00	-	100%
22. Hiring of Consultant for the Conduct of research and analysis on the Population and Development Situational in the Philippines	PMED-21-22	A.II.c	195,000.00		195,000.00				195,000.00				195,000.00	-	100%
24. Workshop for the Formulation of PPDP PoA 2022-2028	PMED-21-24	A.II.c	90,957.20		90,957.20							32,844.98	32,844.98	58,112.22	36%
Sub-Total			1,683,997.38	513,900.00	1,170,097.38	421,914.48	240,000.00	167,582.98	335,000.00	(85,957.20)	32,844.98	281,887.78	1,111,385.16	58,712.22	95%
CONAP 2020															
24. Workshop for the Formulation of PPDP PoA 2022-2028	PMED-21-24	A.II.c	100,000.00		100,000.00					119,000.00	19,140.00	138,140.00	138,140.00	(38,140.00)	138%
TOTALS			100,000.00		100,000.00	-	-	-	-	119,000.00	19,140.00	138,140.00	138,140.00	(38,140.00)	138%
GRAND TOTAL			3,156,855.52	513,900.00	2,642,955.52	1,091,655.20	258,900.00	778,990.72	384,400.00	(80,057.20)	40,504.98	344,847.78	2,474,393.70	30,421.82	94%

Source: Department of Health (DOH) and Commission on Population and Development (PopCom) administrative data

Annex C. Nutrition Budget Tagging Sheet for NGAs

Figure C1. Blank NBT Sheet

Figure C2. Sample filled NBT Sheet

AGE No	YEAR	DIVISION	UNIT	PROJECT CODE	PROGRAM (LEVEL 1 ACTIVITY)	SUBPROGRAM (LEVEL 2 ACTIVITY, P/IA)	LINE ITEM EXPENDITURES (VFP ACTIVITY LEVEL)	TOTAL BUDGET	TOTAL DIS	EXPENSE CLASS	APPROP TYPE	TAGGING CODE	Age Mark	Others - Age Group	VRA Mark	MI Code	Program Domain	Program Component	Risk Factor	Thematic Classification	Vt	Specific Intervention Reference
PopCo	2017	PMED	PMED	PMED-17-01E	A.III.a Coordination and Development of Populati	1.CY 2017 Nat'l Mtg Mtg		2,171,000	2,042,227	Maintenance and C Current		060101-C01	[A9] Not Applicable		[VRA] WFS Nutrition Sensitive [Indirect	Family planning, reproductive hea	Policy and Governance Context and Enablers	Health and Nutrition		50	060101-C1	
PopCo	2017	PMED	PMED	PMED-17-02I	A.III.a Coordination and Development of Populati	2. Coord & Consultation Meeting		930,200	952,091	Maintenance and C Current		060102-C01	[A9] Not Applicable		[VRA] WFS Nutrition Sensitive [Indirect	Family planning, reproductive hea	Policy and Governance Context and Enablers	Health and Nutrition		50	060102-C1	
PopCo	2017	PMED	PMED	PMED-17-03I	A.III.a Coordination and Development of Populati	3. Monitoring & Evaluation System		416,000	370,656	Maintenance and C Current		060102-C01	[A9] Not Applicable		[VRA] WFS Nutrition Sensitive [Indirect	Family planning, reproductive hea	Policy and Governance Context and Enablers	Health and Nutrition		50	060102-C1	
PopCo	2017	PMED	PMED	PMED-17-04I	A.III.a Coordination and Development of Populati	4. VAFS Study Feed Further Studies		250,000	204,759	Maintenance and C Current		060101-C01	[A9] Not Applicable		[VRA] WFS Nutrition Sensitive [Indirect	Family planning, reproductive hea	Policy and Governance Context and Enablers	Health and Nutrition		50	060101-C1	
PopCo	2017	PMED	PMED	PMED-17-04A	A.III.b Support to the Implementation of Approved	1.PFMP - DP 2017-2022		2,180	2,179	Maintenance and C Current		060101-C01	[A9] Not Applicable		[VRA] WFS Nutrition Sensitive [Indirect	Family planning, reproductive hea	Policy and Governance Context and Enablers	Health and Nutrition		50	060101-C1	
PopCo	2017	PMED	PMED	PMED-17-12	A.III.b Support to the Implementation of Approved	2. Conduct of Program Implementation Review (PIR) in all Regions		745,000	724,912	Maintenance and C Current		060102-C01	[A9] Not Applicable		[VRA] WFS Nutrition Sensitive [Indirect	Family planning, reproductive hea	Policy and Governance Context and Enablers	Health and Nutrition		50	060102-C1	
PopCo	2017	PMED	PMED	PMED-17-13	A.III.b Support to the Implementation of Approved	3. PMD Training Workshop		550,000	554,536	Maintenance and C Current		060103-C01	[A9] Not Applicable		[VRA] WFS Nutrition Sensitive [Indirect	Family planning, reproductive hea	Human Resource and Context and Enablers	Health and Nutrition		50	060103-C1	
PopCo	2017	PMED	PMED	PMED-17-14	A.III.b Support to the Implementation of Approved	4. Project Concepts Dev't for the PFMP Implementation		290,000	278,009	Maintenance and C Current		060101-C01	[A9] Not Applicable		[VRA] WFS Nutrition Sensitive [Indirect	Family planning, reproductive hea	Policy and Governance Context and Enablers	Health and Nutrition		50	060101-C1	
PopCo	2017	PMED	PMED	PMED-17-05	A.III.b Provision of Grants, subsidies and contribut	1. UNFPA Cont to Popdev Prog		1,650,000	1,650,000	Maintenance and C Current		060101-C01	[A9] Not Applicable		[VRA] WFS Nutrition Sensitive [Indirect	Family planning, reproductive hea	Policy and Governance Context and Enablers	Health and Nutrition		50	060101-C1	
PopCo	2017	PMED	PMED	PMED-17-06I	A.III.b Provision of Grants, subsidies and contribut	2. Coord & Monitoring RFPF Impl		1,590,000	1,082,322	Maintenance and C Current		060101-C01	[A9] Not Applicable		[VRA] WFS Nutrition Sensitive [Indirect	Family planning, reproductive hea	Policy and Governance Context and Enablers	Health and Nutrition		50	060101-C1	
PopCo	2017	PMED	PMED	PMED-17-07I	A.III.b Provision of Grants, subsidies and contribut	3. Harnessing Capacity of LDP		838,400	937,860	Maintenance and C Current		060101-C01	[A9] Not Applicable		[VRA] WFS Nutrition Sensitive [Indirect	Family planning, reproductive hea	Policy and Governance Context and Enablers	Health and Nutrition		50	060101-C1	
PopCo	2017	PMED	PMED	PMED-17-08	A.III.b Provision of Grants, subsidies and contribut	4. South-South Cooperation (SSC)		1,037,700	880,897	Maintenance and C Current		060101-C01	[A9] Not Applicable		[VRA] WFS Nutrition Sensitive [Indirect	Family planning, reproductive hea	Policy and Governance Context and Enablers	Health and Nutrition		50	060101-C1	
PopCo	2017	PMED	PMED	PMED-17-10I	A.III.b Provision of Grants, subsidies and contribut	6. Support to Reg'l Operations		397,690	1,000,000	Maintenance and C Current		060101-C01	[A9] Not Applicable		[VRA] WFS Nutrition Sensitive [Indirect	Family planning, reproductive hea	Policy and Governance Context and Enablers	Health and Nutrition		50	060101-C1	
PopCo	2017	PADD	PADD	PADD-17-01	A.III.a Coordination and Development of Populati	1. Conduct of Coordinative Meetings		1,739,590	1,941,042	Maintenance and C Current		060102-C01	[A9] Not Applicable		[VRA] WFS Nutrition Sensitive [Indirect	Family planning, reproductive hea	Policy and Governance Context and Enablers	Health and Nutrition		50	060102-C1	
PopCo	2017	PADD	PADD	PADD-17-02	A.III.b Support to the Implementation of Approved	1. Development of a Tech. paper (SPFPI)		1,185,000	1,182,491	Maintenance and C Current		060101-C01	[A9] Not Applicable		[VRA] WFS Nutrition Sensitive [Indirect	Family planning, reproductive hea	Policy and Governance Context and Enablers	Health and Nutrition		50	060101-C1	
PopCo	2017	PADD	PADD	PADD-17-03	A.III.b Support to the Implementation of Approved	2. Strengthening a Conducive Policy		628,000	617,075	Maintenance and C Current		060101-C01	[A9] Not Applicable		[VRA] WFS Nutrition Sensitive [Indirect	Family planning, reproductive hea	Policy and Governance Context and Enablers	Health and Nutrition		50	060101-C1	
PopCo	2017	PADD	PADD	PADD-17-04	A.III.b Provision of Grants, subsidies and contribut	1. Strengthening the Leadership Capacity of Local Population Managers PopDi		19,020	101,452	Maintenance and C Current		060101-C01	[A9] Not Applicable		[VRA] WFS Nutrition Sensitive [Indirect	Family planning, reproductive hea	Policy and Governance Context and Enablers	Health and Nutrition		50	060101-C1	
PopCo	2017	PADD	PADD	PADD-17-05	A.III.b Provision of Grants, subsidies and contribut	2. Conduct of Policy Monitoring Activities		605,000	605,722	Maintenance and C Current		060102-C01	[A9] Not Applicable		[VRA] WFS Nutrition Sensitive [Indirect	Family planning, reproductive hea	Policy and Governance Context and Enablers	Health and Nutrition		50	060102-C1	
PopCo	2017	PADD	PADD	PADD-17-06	A.III.b Provision of Grants, subsidies and contribut	3. Conduct of Policy Advocacy Activities / Strategies		2,387,000	2,386,719	Maintenance and C Current		060102-C02	[A9] Not Applicable		[VRA] WFS Nutrition Sensitive [Indirect	Family planning, reproductive hea	Policy and Governance Context and Enablers	Health and Nutrition		50	060102-C1	
PopCo	2017	PADD	PADD	PADD-17-07	A.III.b Provision of Grants, subsidies and contribut	4. Establishment of Migration Information Centers (MICs)		1,412,280	1,412,270	Maintenance and C Current		060102-C01	[A9] Not Applicable		[VRA] WFS Nutrition Sensitive [Indirect	Family planning, reproductive hea	Policy and Governance Context and Enablers	Health and Nutrition		50	060102-C1	
PopCo	2017	IMCD	IMCD	IMCD-17-01	A.III.a Coordination and Development of Populati	1. Knowledge Management for the PFMP		953,599	936,740	Maintenance and C Current		060102-C01	[A9] Not Applicable		[VRA] WFS Nutrition Sensitive [Indirect	Family planning, reproductive hea	Policy and Governance Context and Enablers	Health and Nutrition		50	060102-C1	
PopCo	2017	IMCD	IMCD	IMCD-17-02	A.III.b Support to the Implementation of Approved	2. Support to Phil. Pop. Mtg's Prog.		1,087,047	827,235	Maintenance and C Current		060102-C01	[A9] Not Applicable		[VRA] WFS Nutrition Sensitive [Indirect	Family planning, reproductive hea	Policy and Governance Context and Enablers	Health and Nutrition		50	060102-C1	
PopCo	2017	IMCD	IMCD	IMCD-17-03	A.III.b Support to the Implementation of Approved	1. Phil. Population Inf. Center (PPIC)		564,028	674,957	Maintenance and C Current		060101-C01	[A9] Not Applicable		[VRA] WFS Nutrition Sensitive [Indirect	Family planning, reproductive hea	Policy and Governance Context and Enablers	Health and Nutrition		50	060101-C1	
PopCo	2017	IMCD	IMCD	IMCD-17-04	A.III.b Support to the Implementation of Approved	2. Conduct of Nat'l Population Quiz		53,771	52,561	Maintenance and C Current		060102-C02	[A9] Not Applicable		[VRA] WFS Nutrition Sensitive [Indirect	Family planning, reproductive hea	Policy and Governance Context and Enablers	Health and Nutrition		50	060102-C1	
PopCo	2017	IMCD	IMCD	IMCD-17-05	A.III.b Support to the Implementation of Approved	3. Promotion of Adolescent (AHC)		367,000	281,074	Maintenance and C Current		020502-C02	[A4] 11-18 years old [adoles		[VRA] WFS Nutrition Sensitive [Indirect	Adolescent Health and Developo	Advocacy and Promot	Context and Enablers	Knowledge Building		25	020502-C1
PopCo	2017	IMCD	IMCD	IMCD-17-06	A.III.b Support to the Implementation of Approved	4. Nat'l launch & Printing of SHAPE		1,889,600	489,487	Maintenance and C Current		020502-C02	[A4] 11-18 years old [adoles		[VRA] WFS Nutrition Sensitive [Indirect	Adolescent Health and Developo	Advocacy and Promot	Context and Enablers	Knowledge Building		25	020502-C1
PopCo	2017	IMCD	IMCD	IMCD-17-08	A.III.b Support to the Implementation of Approved	5. Training Workshop on Comm. Pos.		800,000	748,346	Maintenance and C Current		060103-C01	[A9] Not Applicable		[VRA] WFS Nutrition Sensitive [Indirect	Family planning, reproductive hea	Human Resource and Context and Enablers	Health and Nutrition		50	060103-C1	
PopCo	2017	IMCD	IMCD	IMCD-17-09	A.III.b Provision of Grants, subsidies and contribut	1. Dev't & printing of PFMP Advocacy and IEC Materials		1,624,525	1,592,564	Maintenance and C Current		060101-C02	[A9] Not Applicable		[VRA] WFS Nutrition Sensitive [Indirect	Family planning, reproductive hea	Advocacy and Promot	Context and Enablers	Knowledge Building		50	060101-C1
PopCo	2017	IMCD	IMCD	IMCD-17-10	A.III.b Provision of Grants, subsidies and contribut	2. Implementation of Communication Strategies		935,000	1,295,842	Maintenance and C Current		060102-C02	[A9] Not Applicable		[VRA] WFS Nutrition Sensitive [Indirect	Family planning, reproductive hea	Advocacy and Promot	Context and Enablers	Knowledge Building		50	060102-C1
PopCo	2017	IMCD	IMCD	IMCD-17-11	A.III.b Provision of Grants, subsidies and contribut	3. Support to 2017 National Family Planning Conference		728,000	647,291	Maintenance and C Current		060102-C02	[A9] Not Applicable		[VRA] WFS Nutrition Sensitive [Indirect	Family planning, reproductive hea	Advocacy and Promot	Context and Enablers	Knowledge Building		50	060102-C1
PopCo	2017	IMCD	IMCD	IMCD-17-12	A.III.b Provision of Grants, subsidies and contribut	4. Parent Train-Upselling the Parent Education on Adolescent Health and Dev		395,530	495,099	Maintenance and C Current		020502-C02	[A4] 11-18 years old [adoles		[VRA] WFS Nutrition Sensitive [Indirect	Adolescent Health and Developo	Advocacy and Promot	Context and Enablers	Knowledge Building		25	020502-C1
PopCo	2017	OED	OED	OED-17-01D	A.III.a Coordination and Development of Populati	1. Coordinate Meetings Monitoring Communication & Advocacy (OED)		1,463,315	1,454,016	Maintenance and C Current		060102-C01	[A9] Not Applicable		[VRA] WFS Nutrition Sensitive [Indirect	Family planning, reproductive hea	Policy and Governance Context and Enablers	Health and Nutrition		50	060102-C1	
PopCo	2017	OED	OED	OED-17-02A	A.III.a Coordination and Development of Populati	2. Technical Assistance to various ICT concerns		195,300	177,036	Maintenance and C Current		060102-C01	[A9] Not Applicable		[VRA] WFS Nutrition Sensitive [Indirect	Family planning, reproductive hea	Policy and Governance Context and Enablers	Health and Nutrition		50	060102-C1	
PopCo	2017	OED	OED	OED-17-03A	A.III.a Coordination and Development of Populati	3. Capability Building/Skills Enhancement Program		24,070	24,070	Maintenance and C Current		060103-C01	[A9] Not Applicable		[VRA] WFS Nutrition Sensitive [Indirect	Family planning, reproductive hea	Human Resource and Context and Enablers	Health and Nutrition		50	060103-C1	
PopCo	2017	OED	OED	OED-17-04	A.III.b Provision of Grants, subsidies and contribut	3. Implementation of the Phil. Pop Mtg Program (PFMP) in MIMAROPA		215,514	215,514	Maintenance and C Current		060101-C01	[A9] Not Applicable		[VRA] WFS Nutrition Sensitive [Indirect	Family planning, reproductive hea	Policy and Governance Context and Enablers	Health and Nutrition		50	060101-C1	
PopCo	2017	OED	OED	OED-17-05C	A.III.b Provision of Grants, subsidies and contribut	4. Maintenance of Family Farming (FF) Logistics Hotline		1,038,621	805,632	Maintenance and C Current		060102-C02	[A9] Not Applicable		[VRA] WFS Nutrition Sensitive [Indirect	Family planning, reproductive hea	Advocacy and Promot	Context and Enablers	Knowledge Building		50	060102-C1
PopCo	2017	OED	OED	OED-17-10B	A.III.b Provision of Grants, subsidies and contribut	5. Hiring of IT/Legal Assistance		195,890	191,606	Maintenance and C Current		060102-C01	[A9] Not Applicable		[VRA] WFS Nutrition Sensitive [Indirect	Family planning, reproductive hea	Human Resource and Context and Enablers	Health and Nutrition		50	060102-C1	
PopCo	2017	OED	OED	OED-17-05B	GAS	Infrastructure for IT		447,749	447,749	Capital Outlay	Current	060405-C01	[A9] Not Applicable		[VRA] WFS Nutrition Sensitive [Indirect	Family planning, reproductive hea	Capital Outlay	Context and Enablers	Health and Nutrition		50	060405-C1
PopCo	2017	OED	OED	OED-17-11B	CO	Purchase of ICT equipment		2,893,000	2,781,722	Capital Outlay	Current	060402-C01	[A9] Not Applicable		[VRA] WFS Nutrition Sensitive [Indirect	Family planning, reproductive hea	Capital Outlay	Context and Enablers	Health and Nutrition		50	060402-C1
PopCo	2017	OED	OED	CO	CO	Procurement of CCTV		33,700	29,700	Capital Outlay	Continuing	060402-C01	[A9] Not Applicable		[VRA] WFS Nutrition Sensitive [Indirect	Family planning, reproductive hea	Capital Outlay	Context and Enablers	Health and Nutrition		50	060402-C1

Annex D. Concerned Program/Bureau/Operating Units of Relevant National Government Agencies

Agency	Program/Bureau/Operating Units
Department of Health (DOH)	<p>Health Policy and Systems Development Team</p> <ul style="list-style-type: none"> • Health Policy and Development Planning Bureau • Health Human Resource Development Bureau • Philippine Health Insurance Corporation <p>Public Health Services Team</p> <ul style="list-style-type: none"> • Disease Prevention and Control Bureau • Epidemiology Bureau • Health Promotion and Communication Service • Health Emergency Management Service • National Nutrition Council • Population Commission <p>Health Facilities and Infrastructure Development</p> <ul style="list-style-type: none"> • Health Facilities and Enhancement Program
Food and Nutrition Research Institute (FNRI)	<ul style="list-style-type: none"> • National Assessment and Monitoring Division • Nutrition and Food Research Division
Philippine Council for Health Research and Development (PCHRD)	<ul style="list-style-type: none"> • Research and Development Management Division • Research Information, Communication, and Utilization Division
ECCD Council	<ul style="list-style-type: none"> • Senior Program Officer
Council for the Welfare of Children	<ul style="list-style-type: none"> • Policy and Planning Division • Localization and Institutionalization Division
Philippine Statistics Authority (PSA)	<ul style="list-style-type: none"> • Planning and Management Service • Social Sector Statistics Service
Department of Agriculture (DA)	<ul style="list-style-type: none"> • Planning and Monitoring Service • Bureau of Fisheries and Aquatic Resources (BFAR)
Department of Agrarian Reform (DAR)	<ul style="list-style-type: none"> • Policy and Planning Service
National Food Authority (NFA)	<ul style="list-style-type: none"> • NFA
Department of Social Welfare and Development (DSWD)	<ul style="list-style-type: none"> • Program Management Bureau • Office of the Asst. Sec. for Specialized Programs • Disaster Management Group
National Anti-Poverty Commission (NAPC)	<ul style="list-style-type: none"> • Policy and Planning Service

National Commission on Indigenous Peoples (NCIP)	<ul style="list-style-type: none"> • IP Education and Advocacy Services Program • IP Health Program and Services
Department of Education (DepEd)	<ul style="list-style-type: none"> • Bureau of Learner Support Services • Project Management Service
Department of Environment and Natural Resources (DENR)	<ul style="list-style-type: none"> • Policy and Planning Service
Department of Labor and Employment (DOLE)	<ul style="list-style-type: none"> • Financial and Management Service • Planning Service
National Economic and Development Authority (NEDA)	Financial, Planning, and Management Staff Social Development Staff <ul style="list-style-type: none"> • Health, Nutrition, and Population Division
Department of the Interior and Local Government (DILG)	<ul style="list-style-type: none"> • Planning Service
Department of Trade and Industry (DTI)	<ul style="list-style-type: none"> • Planning and Management Service
Department of Budget Management (DBM)	<ul style="list-style-type: none"> • Corporate Planning and Management Service

Annex E. Suggested Dummy Tables

Table X. National Government Expenditures for Nutrition-related Activities, Share of GDP, and Average Per-capita Spending Year

	Expenditure (PHP Billions)	Share of GDP*	Average Annual Per Capita (PHP)**
Total Nutrition			
Specific			
Sensitive			

* Sum of nutrition expenditures over the sum of Philippine GDP

**Nutrition expenditures over the Philippine population

Table X. Nutrition-related Expenditures (PHP millions) by Year and Markers

	Year X		Year Y	
	Expenses	% of Total	Expenses	% of Total
By Program Component Classification				
Advocacy and Promotion				
Capital Outlay				
Human Resource and Capacity Building				
Policy and Governance				
Research and Surveillance				
Service Delivery				
By Nutrition Intervention Focus				
Area Marker				
Health and Nutrition				
Knowledge Building				
Food Production and Sustainability				
Social Protection				
WASH				
By Malnutrition Risk Factor				
Context/Enabling Factors				
Household Factors				
Immediate Factors				

Table X. Nutrition-related Expenditures (PHP millions) by national agency, *Year*

			NGA	Share to
	Specific	Sensitive	Total	Total
Total Nutrition				
Health Sector				
Department of Health (DOH)				
Philippine Health Insurance Corporation (PhilHealth)				
National Nutrition Council (NNC)				
Food and Nutrition Research Institute (FNRI)				
Phil. Council for Health Research and Development (PCHRD)				
Commission on Population (PopCom)				
Non-health Sector				
Philippine Statistics Authority (PSA)				
Department of Agriculture (DA)				
Department of Agrarian Reform (DAR)				
Bureau of Fisheries and Aquatic Resources (BFAR)				
National Food Authority (NFA)				
Department of Social Welfare and Development (DSWD)				
National Anti-Poverty Commission (NAPC)				
National Commission on Indigenous Peoples (NCIP)				
Department of Education (DepEd)				
Department of Environment and Natural Resources (DENR)				
Department of Labor and Employment (DOLE)				
National Economic Development Authority (NEDA)				
Department of Interior and Local Government (DILG)				

Table X. Nutrition-related Expenditures (PHP millions), Budget Execution Efficiency by national agency, 2017-2019

	Total Budget	Total Disbursed	BEE , (%)
Health Sector			
Department of Health (DOH)			
Philippine Health Insurance Corporation (PhilHealth)			
National Nutrition Council (NNC)			
Food and Nutrition Research Institute (FNRI)			
Phil. Council for Health Research and Development (PCHRD)			
Commission on Population (PopCom)			
Non-health Sector			
Philippine Statistics Authority (PSA)			
Department of Agriculture (DA)			
Department of Agrarian Reform (DAR)			
Bureau of Fisheries and Aquatic Resources (BFAR)			
National Food Authority (NFA)			
Department of Social Welfare and Development (DSWD)			
National Anti-Poverty Commission (NAPC)			
National Commission on Indigenous Peoples (NCIP)			
Department of Education (DepEd)			
Department of Environment and Natural Resources (DENR)			
Department of Labor and Employment (DOLE)			
National Economic Development Authority (NEDA)			
Department of Interior and Local Government (DILG)			

Table X. Nutrition-related Expenditures (PHP millions) by Intervention Domain and Year

Domains	Year X	Year Y	Year Z
Total Nutrition			
A. Nutrition Specific			
Micronutrient supplementation			
Infant and Young Child Feeding			
Integrated Management of Acute Malnutrition			
Supplementary feeding			
Mandatory food fortification			
Nutrition in emergencies			
Overweight/Obesity Management and Prevention			
Nutrition Promotion for Behavior Change			
B. Nutrition Sensitive			
Maternal and Neonatal Health			
Adolescent Health and Development			
Disease prevention and management			
Oral health			
Access to health care services			
Family planning, reproductive health, and responsible parenting			
WASH			
Early Childhood Care and Development			
Food Security and Sustainability			
Gender Empowerment			
Social safety nets			
Humanitarian Relief and Emergency Fund			
Universal education			
Monitoring and evaluation			

Annex F. Sample Tables

These tables are generated from the results of the pre-testing of the nutrition budget tagging process. Data came from the Work and Financial Plans of the Disease Prevention and Control Bureau – Department of Health. Please note that only the **actual line-item budget** is tagged and **weighted** and not the **actual total expenditures** (i.e., disbursement) due to the limited available financial data. In actual implementation, the sample tables may generate both the total budget and disbursement given that the program managers or officers who will implement the tagging process will have direct access to these financial data.

Table 1. Department of Health – Disease Prevention and Control Bureau Weighted Budget for Nutrition-related Activities, Share of GDP, and Average Per-capita Spending, 2017-2018

	Expenditure (PHP Millions)	Share of GDP*	Average Annual Per Capita (PHP)**
Total Nutrition	2,766.5		
Specific	2,014.30		
Sensitive	752.2		

* Sum of nutrition expenditures over the sum of Philippine GDP

**Nutrition expenditures over the Philippine population

Table 2. DOH-DPCB Nutrition-related Weighted Budget (PHP Millions) by Markers, 2017 & 2018

	2017		2018	
	Budget	% of Total	Budget	% of Total
By Program Component Classification	2,638.9		127.6	
Advocacy and Promotion	68.5	2.60%	51.9	40.68%
Capital Outlay	0.1	0.00%	-	-
Human Resource and Capacity Building	11.3	0.43%	5.7	4.50%
Policy and Governance	14.0	0.53%	42.6	33.40%
Research and Surveillance	25.8	0.98%	26.8	21.02%
Service Delivery	2,519.2	95.46%	0.5	0.39%
By Nutrition Intervention Focus				
Area Marker				
Health and Nutrition	2,541.4	96.31%	48.9	38.30%
Knowledge Building	94.3	3.57%	78.7	61.70%
Food Production and Sustainability	-	-	-	-
Social Protection	3.2	0.12%	-	-
WASH	-	-	-	-
By Malnutrition Risk Factor				
Context/Enabling Factors	119.7	4.54%	127.1	99.61%
Household Factors	85.9	3.25%	-	-
Immediate Factors	2,433.3	92.21%	0.5	0.39%
By Age Group				
All Ages	95.4	-	48.6	-
Under-five Children (0-5 years old)	743.6	-	9.3	-
School-age Children (6-10 years old)	-	-	21.6	-
Adolescent (11-19 years old)	2.5	-	4.6	-
Adult (20-59 years old)	162.5	-	-	-
Elderly (>60 years old)	782.9	-	-	-
Not Applicable	401.3	-	11.1	-
<i>Other classifications</i>				
➤ 0-14 years old	0.7	-	7.8	-
➤ 5-9 years old	384.8	-	-	-
➤ 7-11 years old	23.2	-	0.9	-
➤ 15-49 years old	384.8	-	23.7	-

Table 3. DOH-DPCB Nutrition-related Weighted Budget (PHP millions) by Intervention Domain and Year

Domains	2017	2018
Total Nutrition	2,638.9	127.6
A. Nutrition Specific	2,009.5	4.8
Micronutrient supplementation	1,784.7	-
Infant and Young Child Feeding	33.7	3.2
Integrated Management of Acute Malnutrition	191.1	1.7
Supplementary feeding	-	-
Mandatory food fortification	-	-
Nutrition in emergencies	-	-
Overweight/Obesity Management and Prevention	-	-
Nutrition Promotion for Behavior Change	-	-
B. Nutrition Sensitive	629.4	122.8
Maternal and Neonatal Health	143.0	3.2
Adolescent Health and Development	2.5	4.6
Disease prevention and management	228.0	95.6
Oral Health	154.4	-
Access to health care services	-	-
Family planning, reproductive health, and responsible parenting	94.2	18.0
WASH	-	-
Early Childhood Care and Development	4.0	1.4
Food Security and Sustainability	-	-
Gender Empowerment	0.3	-
Social safety nets	-	-
Humanitarian Relief and Emergency Fund	3.2	-
Universal education	-	-
Overarching nutrition policy, monitoring, and evaluation strategies	-	-