

Guo, Audrey; Wallskog, Melanie

**Working Paper**

## New employer payroll taxes and entrepreneurship

Upjohn Institute Working Paper, No. 24-410

**Provided in Cooperation with:**

W. E. Upjohn Institute for Employment Research, Kalamazoo, Mich.

*Suggested Citation:* Guo, Audrey; Wallskog, Melanie (2024) : New employer payroll taxes and entrepreneurship, Upjohn Institute Working Paper, No. 24-410, W.E. Upjohn Institute for Employment Research, Kalamazoo, MI, <https://doi.org/10.17848/wp24-410>

This Version is available at:

<https://hdl.handle.net/10419/309182>

**Standard-Nutzungsbedingungen:**

Die Dokumente auf EconStor dürfen zu eigenen wissenschaftlichen Zwecken und zum Privatgebrauch gespeichert und kopiert werden.

Sie dürfen die Dokumente nicht für öffentliche oder kommerzielle Zwecke vervielfältigen, öffentlich ausstellen, öffentlich zugänglich machen, vertreiben oder anderweitig nutzen.

Sofern die Verfasser die Dokumente unter Open-Content-Lizenzen (insbesondere CC-Lizenzen) zur Verfügung gestellt haben sollten, gelten abweichend von diesen Nutzungsbedingungen die in der dort genannten Lizenz gewährten Nutzungsrechte.

**Terms of use:**

*Documents in EconStor may be saved and copied for your personal and scholarly purposes.*

*You are not to copy documents for public or commercial purposes, to exhibit the documents publicly, to make them publicly available on the internet, or to distribute or otherwise use the documents in public.*

*If the documents have been made available under an Open Content Licence (especially Creative Commons Licences), you may exercise further usage rights as specified in the indicated licence.*

12-12-2024

## New Employer Payroll Taxes and Entrepreneurship

Audrey Guo

*Santa Clara University*, [aguo@scu.edu](mailto:aguo@scu.edu)

Melanie Wallskog

*Duke University*, [melanie.wallskog@duke.edu](mailto:melanie.wallskog@duke.edu)

Upjohn Institute working paper ; 24-410

---

### Citation

Guo, Audrey and Melanie Wallskog. 2024. "New Employer Payroll Taxes and Entrepreneurship." Upjohn Institute Working Paper 24-410. Kalamazoo, MI: W.E. Upjohn Institute for Employment Research.  
<https://doi.org/10.17848/wp24-410>

This title is brought to you by the Upjohn Institute. For more information, please contact [repository@upjohn.org](mailto:repository@upjohn.org).

## New Employer Payroll Taxes and Entrepreneurship

Upjohn Institute Working Paper 24-410

Audrey Guo  
Santa Clara University  
Email: [aguo@scu.edu](mailto:aguo@scu.edu)

Melanie Wallskog  
Duke University  
Email: [melanie.wallskog@duke.edu](mailto:melanie.wallskog@duke.edu)

November 2024

### ABSTRACT

How costly are taxes for young firms? In this paper, we demonstrate that even small payroll taxes significantly distort entry, growth, and hiring decisions. First, leveraging cross-sectional variation in the taxes faced by new employers, we find that higher taxes discourage new firms from hiring their first workers, with an elasticity of the number of new employers to taxes of  $-0.1$ . Second, studying changes in taxes after entry, we find that higher taxes lead more firms to exit, while also reducing employment for those who survive and leading some firms to avoid taxes by using non-taxable contract labor.

**JEL Classification Codes:** H25, H71, L26, M13

**Key Words:** firm entry, young firms, labor costs, unemployment insurance

**Acknowledgments:** Guo is grateful for financial support from the W.E. Upjohn Institute for Employment Research. Any views expressed are those of the authors and not those of the U.S. Census Bureau. The Census Bureau has reviewed this data product to ensure appropriate access, use, and disclosure avoidance protection of the confidential source data used to produce this product. This research was performed at a Federal Statistical Research Data Center under FSRDC Project Number 1632. (CBDRB-FY24-P1632-R10928 and CBDRB-FY25-P1632-R11876.) This research uses data from the Census Bureau's Longitudinal Employer Household Dynamics Program, which was partially supported by the following National Science Foundation Grants SES-9978093, SES-0339191 and ITR-0427889; National Institute on Aging Grant AG018854; and grants from the Alfred P. Sloan Foundation.

*Upjohn Institute working papers are meant to stimulate discussion and criticism among the policy research community. Content and opinions are the sole responsibility of the author.*

# 1 Introduction

Over the past several decades, there has been a striking decline in business dynamism in the United States, characterized by declining firm entry and a shift of employment toward older and larger firms (Decker et al. (2014)). Since the 1970s, firm entry rates have fallen from 13 percent to a low of 7.2 percent in 2010, before stabilizing around 8 percent after 2016 (Figure A.1). Given that young businesses are important contributors to both aggregate employment growth (Haltiwanger et al. (2013)) and innovation (Klenow and Li (2021)), it is important to understand factors that may contribute to this declining business dynamism.

A crucial potential barrier for new firm entry and growth is the cost of running a business: starting and growing a new firm is expensive. Not only are start-up capital requirements large—Adelino et al. (2015) estimate a median start-up capital need of \$215,000—but many firms face large expenses that curtail their profitability. Robb and Robinson (2014) estimate that more than 50 percent of new firms report losses, with nearly 60 percent of new firms having more than \$10,000 in expenses.<sup>1</sup> When firms start to employ workers, they face costs beyond simply salaries: with workers come employee benefits and—as we study in this paper—payroll taxes. Piled atop all the other costs firms face, these employment costs may be too much for an entrepreneur to afford.

In this paper, we study how sensitive cash-constrained young firms are to relatively small employment costs. We do this by studying new employer payroll taxes, which help finance state unemployment insurance (UI) benefits. When firms start employing workers, they face an annual per-worker payroll tax that depends on their state and sector; this tax ranges widely, but most firms face a tax between \$200 and \$400 per worker per year. These taxes are effectively a surcharge on employment, and—unlike income taxes—firms face these tax burdens even if they are not profitable. This means that cash-constrained young firms may see these taxes as significant barriers to hiring workers and growing their businesses.

---

<sup>1</sup>Adelino et al. (2015) use 2007 Survey of Business Owners microdata. Robb and Robinson (2014) use 2004–2007 microdata from the Kauffman Firm Survey.

Using administrative microdata from the U.S. Census Bureau, we estimate how payroll taxes for new employers affect entry decisions and outcomes conditional on entry, where we consider entry to be when a firm starts to employ workers. Our research design leverages both cross-sectional and time variation in new employer taxes to analyze whether higher tax rates discourage firm entry and growth. While tax policy is not randomly determined, we exploit exogenous variation in the tax regimes established by historic state policies and control for concurrent economic conditions. We find that higher tax costs deter firm entry, particularly for sectors in which these costs are relatively more expensive due to high labor usage and turnover. On average, a doubling of the per-worker tax burden for new employers predicts 10 percent fewer new entrants in a given state and sector. In sectors like construction, where seasonality and high worker turnover imply higher tax payments, this number nearly doubles. In robustness analyses, we follow Dube et al. (2010) and compare firm entry in neighboring counties at state borders that likely face similar economic conditions except for taxes. Additionally, we present a case study of the Great Recession, in which historical policy rules generated larger tax increases in some states than others, despite facing similar economic conditions. In an event study analysis of this case study, we find results consistent with our main findings: higher tax costs predict lower firm entry.

Even after entry, these taxes prove costly for firms: we find that young firms operating in higher tax regimes are less likely to survive and tend to stay small conditional on survival. For example, a one standard deviation increase in the maximum per-worker payroll tax faced by a five-year-old firm predicts a 6 percent higher likelihood of exit by the end of the year, relative to the mean. Among firms that survive for five or more years, a one standard deviation in the new employer tax predicts 1–1.5 percent lower employment in the first few years the firms operate. Throughout these results, we consistently see a greater role for payroll taxes compared to corporate or personal income taxes. This is intuitive, as many of the new and young firms we study are still working toward profitability; while they are not liable for income taxes if they are making losses, they *are* still liable for payroll taxes.

Finally, some firms adapt to higher taxes by changing their production inputs. While many sectors in this paper are sufficiently labor-intensive such that new firms cannot simply substitute to capital, some firms can switch to a type of labor that is *not* subject to these payroll taxes: contract labor. Since contract laborers are not technically on a firm’s payroll, firms employing these workers do not directly owe payroll taxes on them. We find evidence of this tax “avoidance” in the construction sector, where young construction firms in higher tax regimes are significantly more likely to hire temporary contract labor: a one standard deviation increase in taxes predicts a 23 percent increase in the likelihood of using this non-taxed labor, relative to the mean. Taken together, these results provide evidence that taxes on new employers can significantly influence how firms enter and grow.

This paper contributes to three main strands of literature. First, our work relates to the literature on how government policy affects entrepreneurship. Numerous papers document that entrepreneurship can be a costly endeavor, and many new firms are not profitable (see, e.g., Adelino et al. (2015) and Robb and Robinson (2014)). For example, Brown and Earle (2017) and Hackney (2022) argue that the Small Business Administration loan program helps alleviate small firms’ constraints to growing their firms, and in France a reform that allowed entrepreneurs to claim UI benefits in the case of business failure resulted in more firm creation (Hombert et al. (2020)). Taxes can also distort firm entry and incorporation through income shifting: several papers have studied how tax regimes may influence individuals to start firms or incorporate businesses in order to shift income toward lower tax sources (see, e.g., DeBacker et al. (2019) and Tazhitdinova (2020)).<sup>2</sup> Additionally, Benzarti et al. (2020) find that when mandated social insurance contributions are relaxed, entrepreneurs reduce their contributions in order to channel more cash into their firms. We contribute to this literature by studying relatively small payroll taxes, which we find to still have a role in

---

<sup>2</sup>More broadly, tax policies—including tax subsidies, deduction allowances, and structures that allow for pass-through of business income taxes to individual income taxes—have been argued to potentially increase or decrease firm entry (or have no effect). Furthermore, the relative taxation of labor and business income may matter; for example, Cullen and Gordon (2007) and Gersbach et al. (2019) argue that higher taxes on labor earnings and lower taxes on firm profits combine to generate more entrepreneurship. See Bruce et al. (2020) for a survey of the literature on taxes and entrepreneurship.

detering entry and growth of new firms.

Second, a complementary literature studies how corporate income taxation and place-based policies affect the location decisions of firms. Globally, Djankov et al. (2010) find that countries with larger effective corporate tax rates have lower aggregate investment and entrepreneurial activity. Within the United States, Giroud and Rauh (2019)) show that increases in state corporate taxes drive multi-state firms to reallocate production to lower-tax states.<sup>3</sup> Meanwhile, Mast (2020) and Slattery (Forthcoming) show that local governments' awards of business subsidies bestow rents on firms without meaningful changes in business location. We contribute to this literature by studying a new employer tax that affects small and large firms alike, regardless of profitability, and thus affects a broader population than just preexisting firms and high-tech entrepreneurs.

Finally, our work adds directly to the literature studying the impacts of payroll taxes that finance unemployment insurance. Work by Anderson (1993), Anderson and Meyer (1997), Johnston (2021), and Guo (2024), among others, provides evidence for significant labor demand responses when UI tax rates rise for mature firms. Guo (2023) shows that firms are also more likely to exit from high-tax states, leading to the question of whether tax costs also impact the location decision on the entry margin. Relative to this literature, we turn to the entry and growth behavior of young firms, which are both understudied in this context and potentially subject to different effects, as the taxes paid by new employers differ from those faced by mature employers, as detailed below.

The remainder of this paper is organized as follows. Section 2 describes how UI taxes are administered and presents a conceptual framework on how these payroll taxes may affect young firm behavior. Section 3 discusses our data on UI tax schedules and firm outcomes; in this section, we discuss the key sources of variation for this paper; namely, how UI taxes vary across states, industries, and firm ages. Sections 4 and 5 present our empirical analyses,

---

<sup>3</sup>See also Bartik (1985), Carlton (1983), Papke (1991), Suárez Serrato and Zidar (2016), van der List (2024). In a related vein, Moretti and Wilson (2017) study how personal income taxation affects the location decisions of star scientists.

and Section 6 concludes.

## 2 Background and Conceptual Framework

Payroll taxes on employers are widely used to fund social insurance programs. In the United States, these taxes include Social Security, Medicare, and UI taxes.<sup>4</sup> While other payroll tax rates are uniform across employers, UI tax rates are employer-specific and experience-rated: if firms lay off workers who then claim UI benefits, they are charged a higher future tax rate—up to a maximum. However, when firms first start employing workers, they have no experience upon which tax rates can be based; consequently, they are assigned a statutory “new employer” rate specific to their state and sector.

States determine their own new employer rules in line with federal regulations. These require a minimum of one year and a maximum of three years of new employer rates before experience rating begins, and that new employer rates cannot be lower than 1 percent. Because UI is administered at the state rather than federal level, there is considerable variation in new employer tax costs across states for otherwise similar firms. There are a variety of reasons why new employer taxes may vary across states and change over time. We describe these reasons and our identification strategy in Section 3.

How should new and young firms respond to these new employer payroll taxes? Like all taxes, UI taxes represent a cost for firms and so may deter entry or encourage exit, especially if they cannot pass costs through to the consumer or input suppliers (e.g., workers).<sup>5</sup> Yet,

---

<sup>4</sup>While Social Security and Medicare taxes also have an *employee* component that appears on workers’ pay stubs and are deducted from workers’ pay, UI taxes are employer-only taxes and are not deducted from workers’ pay. In this way, firms do not immediately pass through the cost of taxes to workers. Nevertheless, employer payroll taxes, including UI taxes, are a business expense that firms can deduct on their corporate or personal income taxes. While there are both federal and state UI taxes, we focus on state UI taxes in this paper. All employers receive a credit for the federal tax upon payment of state taxes, so net federal UI taxes only amount to \$42 per worker (0.06 percent of \$7,000).

<sup>5</sup>With the new employer tax being a firm-specific rather than market-level tax, we assume no pass-through of these tax costs to worker wages. The previous literature on UI tax incidence has found no evidence of firm-specific UI taxes impacting wages (Anderson and Meyer (2000), Johnston (2021), Guo (2024)). Alternatively, if firms were able to pass through UI tax costs to workers, the firm would demand a set level of labor (not influenced by UI taxes) but pay workers less than they would in the absence of UI taxes.



there are several key characteristics of new employer taxes that are unlike other tax costs. First, these taxes are owed regardless of profitability or sales. While firms only pay income taxes if they are profitable, firms are liable for UI taxes on each worker they employ.<sup>6</sup> With the majority of new firms reporting losses (Robb and Robinson (2014)), these UI taxes could be particularly burdensome for new firms that are still working to generate positive cash flows.

Second, while other payroll taxes typically scale proportionally with worker earnings, UI taxes are charged on abnormally low taxable wage bases (i.e., the amount of each workers' pay on which tax is paid)—the median tax base during our study period was only \$10,500 annually. Taxable wages are set at the state level, and new firms are charged the fixed new employer rate only up to the tax base, such that new employer taxes are closer to an annual per-capita tax than a true payroll tax. Thus, a firm  $j$  operating in state  $s$  and sector  $n$  employing  $N_{j,t}$  workers in year  $t$  will pay the following UI tax:

$$\text{UI Tax}_{j,t} = \sum_{i=1}^{N_{j,t}} \min(w_{i,j,t}, \text{base}_{t,s}) \tau_{j,t,s,n}^u, \quad (1)$$

where worker  $i$  earns  $w_{i,j,t}$ , the tax base is  $\text{base}_{t,s}$ , and the firm faces UI tax rate  $\tau_{j,t,s,n}^u$ .

These abnormally low tax bases effectively make low-earning workers disproportionately expensive. Consequently, UI taxes may be particularly costly when a firm employs many low-earning workers, whether due to low hourly wages, high part-time rates, or high worker turnover.

Third, since firms' UI tax rates evolve to become based on their layoff experience after the first few years, UI taxes generate dynamic considerations: firms expanding their workforce face the risk of higher future taxes if they subsequently lay off workers who are likely to claim UI benefits. This means that these taxes inherently amplify the risk of uncertain investments that involve expanding employment.

---

<sup>6</sup>Federal regulations make employers liable for UI tax if they either pay at least \$1,500 in wages in any quarter or have at least one employee in each of at least 20 weeks of a year. In this paper, we assume that any firm employing at least one worker satisfies these requirements.

Finally, all three of the characteristics described above amplify firms’ incentives to substitute away from labor toward non-taxed inputs: if firms can produce the same output with alternative inputs, they save on UI taxes. While switching to capital is likely infeasible for many of the labor-intensive industries studied in this paper, the structure of U.S. payroll taxes contains a nuance that may allow some firms to avoid taxes by substituting toward non-taxed labor. Payroll taxes, including UI, are only assessed on payroll employees—that is, workers receiving W-2 income. Effectively, firms are only taxed on workers who could potentially claim UI benefits after losing their job at the firm. Notably, contract labor is not part of this group, so firms may be able to hire contract workers in lieu of regular employees in order to avoid UI taxes.<sup>7</sup>

Given these characteristics, we have several predictions for how UI taxes may affect firms, which we test in this paper. First, higher taxes should deter entry, reduce optimal labor demand, and encourage exit. Second, these patterns should be stronger if a firm’s optimal labor demand is large (e.g., high labor shares), if they hire relatively more part-time or low-wage workers (who generate higher costs due to the per-capita nature of the taxes), and if they have higher turnover of workers (e.g., due to seasonality of product demand). Firms with these higher expected costs should react more strongly to higher new employer taxes. Lastly, higher taxes give firms an incentive to substitute toward temporary or contract workers who are not W-2 employees, as these classifications of workers are not charged new employer taxes (because they are not on payroll), and as a result are also not eligible for UI benefits.

### 3 Data

We combine state-level UI tax data with administrative data on firms and their workers. Appendix Section A.I provides additional details.

---

<sup>7</sup>The extent of this substitution toward contract labor is limited by federal regulation that dictates which workers can be classified as contract workers. For example, contract workers must have some independence from the firm.

### 3.1 UI Tax Data and Identification

We collect industry-specific new employer tax information from all U.S. states and Washington, D.C., using a combination of annual reports from the Department of Labor, state UI websites, and correspondence with program administrators. Further details of the data's construction are described in Appendix Section A.I.1. Additional UI tax variables include taxable wage bases and maximum UI tax rates.

As stated in Equation (1), a new employer  $j$  operating in state  $s$  and sector  $n$  employing  $N_{j,t}$  workers in year  $t$  will pay the following UI tax:

$$\text{UI Tax}_{j,t} = \sum_{i=1}^{N_{j,t}} \min(w_{i,j,t}, \text{base}_{t,s}) \tau_{j,t,s,n}^u, \quad (2)$$

where worker  $i$  earns  $w_{i,j,t}$ , the tax base is  $\text{base}_{t,s}$ , and the firm faces UI tax rate  $\tau_{j,t,s,n}^u$ . We proxy this tax payment by assuming that all workers earn above the tax base, such that the tax is a per-capita cost. This is a reasonable assumption as the UI tax bases tend to be low, with the median tax base in our study being only \$10,500 annually; we test this assumption in robustness analyses below.<sup>8</sup> Specifically, we assume that new employer  $j$  will pay the UI tax:

$$\text{UI Tax}_{j,t} \approx \sum_{i=1}^{N_{j,t}} \text{base}_{t,s} \tau_{j,t,s,n}^u. \quad (3)$$

In our analyses, we focus on the per-capita cost; that is,

$$\text{Per-capita UI Tax}_{j,t} \approx \text{base}_{t,s} \tau_{j,t,s,n}^u. \quad (4)$$

In other words, this is the tax cost that we expect a new employer to pay for each worker they hire.

---

<sup>8</sup>Note that we need to make this assumption because (a) we do not know the hypothetical wages a potential new employer may hire, and (b) we do not directly observe worker-specific wages for firms with workers.

Based on this per-capita cost, we leverage two broad sources of UI tax variation for identification: state taxable wage bases and new employer tax rates. Although state UI tax laws are not randomly determined, we believe UI tax regimes (characterized in Table A.1) are plausibly exogenous to current economic conditions. This is because annual new employer rates and tax bases are automatically determined in accordance with tax policies that were established in the 1980s or earlier.<sup>9</sup> The first-order variation in state tax bases comes from whether states have adopted flexible tax bases indexed to wage growth. While the majority of states do not index their tax bases, a total of 17 states calculate their annual tax base as a percentage of average wages in their state; as a result, these states have significantly higher tax bases on average, and the base automatically increases every year with no need for additional legislation.<sup>10</sup> Among states without automatic indexing, some periodically update their schedules to keep up with inflation, but the majority rarely legislate tax increases. A decomposition of the variance in UI tax costs shows that over our sample period from 2003 to 2014, two-thirds of the variance occurs between states, primarily driven by state tax bases.<sup>11</sup>

However, there also exists variation in new employer rates within states, over time. The primary variation in new employer tax rates arises from whether states elect to assign rates based on the average rates of existing employers. The large majority of states charge a uniform new employer rate to all new businesses (the modal new employer rate is 2.7 percent), but 8 states assign sector-specific rates equal to the average tax rate within the state’s sector (paid by mature firms); the exception is the construction sector, where roughly half of states assign a higher sector-specific new employer rate. The secondary variation in

---

<sup>9</sup>Although legislated policy changes are rare, the largest number of state policy changes occurred right after the Great Recession in response to financing needs. In a robustness check, we restrict our sample to years prior to the Great Recession.

<sup>10</sup>With the exception of Rhode Island, which abandoned indexing in 1999 and then re-adopted it in 2012, all states have been indexed since the 1980s, with Oklahoma being the last state to adopt indexing in 1987. Colorado also recently adopted indexing but was not an indexed state during our period of analysis.

<sup>11</sup>We decompose the variation in UI taxes (i.e., variance of  $\log(\text{average new tax rate} \times \text{tax base})$ ) into within-state variation (variance of  $\log(\text{average new tax rate} \times \text{tax base})$  demeaned at the state level) and between-state variation (variance of state-level mean  $\log(\text{tax rate} \times \text{tax base})$ ). For 2003–2014, we find a variance of UI taxes of 0.355; 30 percent of this (i.e., 0.108) is within-state variation and 70 percent (i.e., 0.247) is between-state variation. (Note: this decomposition is commonly used in labor economics to study between- vs. within-firm pay inequality; see, for example, Equation (2) of Sorkin and Wallskog (2023).)

new employer rates stems from whether rates are held constant over time or are a function of the state’s UI trust fund. In either scenario, no active legislation is needed—updated rates are simply calculated using existing formulas. As a consequence, new employer taxes may increase more in one state than another, even if they are facing similar economic conditions.

In the case of uniform rates, UI taxes can end up significantly lower or higher than the industry average, depending on the industry’s layoff risk; for example, construction firms—which are likely to lay off many workers—may implicitly receive a tax discount under uniform new employer rates compared to retail trade firms who are less likely to lay off many workers. It is precisely because of this disparity that many states designate higher construction-specific new employer rates to reflect the greater propensity for UI claims in the construction sector. To illustrate this, Figure 1 plots new employer rates over time for construction versus retail trade for nine states with the largest annual variance. Construction rates are generally more cyclical than other industries, although there are some states where the two move in lockstep. Figure A.2 shows that there is significantly more variation in construction rates than other industries.

Multiplying the new employer rate by the taxable wage base, new employer tax costs range from \$77 to \$2,726 per worker and may constitute a significant share of payroll for low-earning and/or part-time workers. Figure 2 plots the distribution of average per-capita new employer tax costs by state, where tax costs are defined as the new employer rate multiplied by the state’s tax base. Hawaii, Oregon, Alaska, and New Jersey have the highest average new employer taxes because they have large taxable wage bases. Meanwhile, South Dakota, Louisiana, Vermont, and Arizona charge the lowest new employer taxes. Figure 3 plots the distribution of state new employer taxes over time.

In our analyses below, we leverage variation in per worker taxes (i.e., the product of the new employer rate and the tax base). For additional controls and comparison, we also collect information about relevant taxes and policies that vary at the state level. These include corporate and personal income tax rates (provided by Suárez Serrato and Zidar

(2016)), maximum weekly UI benefits, minimum wages, and state unemployment rates. All values are nominal. Table 1 reports summary statistics for these state policy variables.<sup>12</sup> The median firm faces a new employer tax cost of \$243 per worker.

Below, we isolate the effect of taxes net of economic conditions by flexibly controlling for the local unemployment rate and maximum unemployment benefits available in our empirical analyses, and by presenting several robustness checks related to economic conditions. This is important, as there is a positive correlation between state UI tax costs and benefit generosity. However, the impact of benefit generosity on firm entry is theoretically ambiguous. On the one hand, higher benefits could deter firm entry because unemployed would-be entrepreneurs choose to claim benefits instead of starting a firm (Xu (2022)). On the other hand, the presence of more generous unemployment insurance could make it easier for new start-up firms to attract workers who may feel more protected in the case of the start-up failing.

### 3.2 Census Bureau Data

We combine state UI tax schedules with several administrative datasets from the U.S. Census Bureau on firms and their workers. We study firm entry, size, and survival using the Longitudinal Business Database (LBD) and its public-use version, the Business Dynamics Statistics (BDS). We additionally study use of temporary contract labor using the Census of Construction Industries (CCN). See Appendix subsection A.I.2 for details.

The LBD covers the universe of U.S. establishments that employ workers and includes annual measures of employment and NAICS industry. Because the LBD contains longitudinal identifiers for firms and establishments, we are able to identify when new firms enter based on the entry year of their earliest entering establishment; we date a firm’s age as the difference between the current year and the firm’s entry year.<sup>13</sup> For firm entry and survival

---

<sup>12</sup>We present both unweighted and weighted-by-total firm count summary statistics, estimated at the NAICS sector-state-year level. The former describes the variables for the average sector-state-year cell, while the latter captures variables for the average firm in the economy.

<sup>13</sup>In our main LBD analysis, we focus on firms’ behavior from age 1 to 5. Many age “0” firms are missing information on employment due to the measurement timing, and so we omit age 0 when studying

analyses, we use the BDS, which aggregates outcomes at the state, year, 2-digit NAICS sector, and firm age level. Since new employer UI tax rates only vary at the level of state and NAICS sector, this level of data in the BDS is sufficient for studying firm entry by using the number of firms of age 0 in each state-year-sector cell. As shown in Table 1, the median state-year-sector cell sees 252 new entrants, reflecting an 8.3 percent entry rate.

We use the LBD’s firm-level microdata for analyses involving more detailed firm-level information; namely, employment as of the payroll period that includes March 12 each year. When studying LBD outcomes, we bundle all establishments of a firm in the same sector (2-digit NAICS) and state—we call this bundle a firm.<sup>14</sup> Bundling in this way mimics the firm unit at which UI taxes are collected, known as the State Employer Identification Number, which generally consists of all establishments belonging to the same firm within a given sector in the given state. For both the BDS and LBD, we use data from 2003 through 2014 for all 50 states plus Washington, D.C.

We use the CCN to study the use of temporary contract labor in response to higher taxes. The CCN is a partial census of construction establishments that is collected as part of the quinquennial Economic Census. The CCN consists of a survey with many questions on production and other firm behavior.<sup>15</sup> We use the 2007 and 2012 waves of the CCN, which collect information on expenditures on temporary staff and leased employees. In Section 5.3 we use this information to study how UI taxes predict the use of these types of workers, for whom a firm *does not* pay UI taxes.

---

employment. However, we use age 0 measures for studying entry.

<sup>14</sup>Note that in our LBD analyses, our sector measure is based on the first 2 digits of the 6-digit NAICS variable. Meanwhile, in our BDS analyses, our sector measure captures the 2-digit NAICS “sector” measure, which bundles a handful of sectors as we define in the LBD: namely, in the BDS, the manufacturing sector pools 2-digit NAICS 31, 32, and 33; the retail trade sector pools 44 and 45; and the transportation and warehousing sector pools 48 and 49 (this is the level at which the data is available). In our LBD analyses, we choose to separate these groups in order to control for sector (marginally) more flexibly. We do not expect this difference to generate meaningful bias in our results.

<sup>15</sup>See Calabria (2000) for details on the CCN and its sampling.

## 4 New Firm Entry

We begin by assessing to what degree higher UI taxes deter firm entry, which is measured as when firms employ their first worker. We leverage cross-sectional variation in new employer tax costs: states set taxes that are either uniform for all new employers within the state or are industry-specific, creating significant variation in new employer taxes for otherwise similar firms, solely due to their location and year of entry. We first test whether fewer new firms enter when new employer taxes are higher in our baseline specifications, and then present several robustness tests.

### 4.1 Baseline Results

To measure new entrants in the public-use BDS data, we use the count of age 0 firms in each state, 2-digit NAICS sector, and year cell. Our two outcome variables of interest are the log number of new entrants and the entry rate (dividing the count by the total number of firms in the state-sector pair in the previous year).<sup>16</sup> To study whether current new employer taxes affect entry, we estimate the following regression for observations at the state  $s$ , 2-digit NAICS sector  $n$ , and year  $t$  level:

$$\begin{aligned} \text{Firm entry}_{snt} = & \beta \text{Log}(\text{new employer tax rate} \times \text{tax base})_{snt} \\ & + X'_{st} \delta + \alpha_{sn} + \gamma_{nt} + \epsilon_{snt}. \end{aligned} \tag{5}$$

We control for state-by-sector ( $\alpha_{sn}$ ) and sector-by-year fixed effects ( $\gamma_{nt}$ ); the latter accounts for the fact that in states where new employer taxes are based on industry averages, UI tax rates will mechanically be higher in years following economic downturns. Consequently, we identify the role of deviations from expected UI tax rates in deterring firm entry.<sup>17</sup> We

---

<sup>16</sup>Strictly speaking, the first measure is log of the number of new entrants plus 1; we do this to maintain the same sample between the different entry measures (i.e., there are 105 observations with zero entrants, out of 9,162). If we do not add 1, and consequently drop the 105 observations, the estimates negligibly change.

<sup>17</sup>We perform a basic check of this linear specification by also estimating a binned version of model



also control for a vector  $X'_{st}$  of time-varying state characteristics that likely also affect or correlate with firms' decisions to enter, including corporate and personal income tax rates, the log of maximum weekly UI benefits, the minimum wage, and the state unemployment rate, as well as fixed effects for ventiles of the unemployment rate distribution and deciles of the unemployment benefit distribution.<sup>18</sup> The identifying assumption is that after controlling for these fixed effects and state characteristics, UI taxes are uncorrelated with any unobservables that could affect entry; we address potential violations of this assumption below after presenting our main sample results. Because our aim is to measure how the average firm's entry decision may depend on taxes, we estimate model (5) with weights on observations corresponding to the total number of firms of all ages in the state-sector-year cell; doing this avoids implicitly overweighting very small state-sector pairs. Standard errors are clustered at the state-sector level.

Since taxes represent a cost to firms (see Section 2), we expect higher tax burdens to deter firm entry and consequently a negative estimate for  $\beta$  in model (5). Indeed, this is what we find: new cohorts of firms that enter higher UI tax regimes are relatively smaller, as shown in Table 2. In both a baseline specification with only state-by-sector and sector-by-year fixed effects (column (1)) and one in which we add time-varying state characteristics (column (2)), we estimate a statistically significant  $\beta$  of  $-0.10$ . This coefficient implies that a one standard deviation (0.57 log points) increase in the expected per-worker UI tax cost (i.e., the product of the new employer tax rate and the tax base)—akin to comparing taxes faced by retail trade firms in 2004 in Colorado (\$250 per capita) vs. New Mexico (\$454 per capita)—is associated with a 5.7 percent decline in the number of new firms.

Importantly, the role of UI taxes is stark in comparison to the role of other taxes: neither corporate nor personal income taxes meaningfully predicts fewer entrants, conditional on UI

---

(5), where we discretize the tax measure. Figure A.3 shows that the relationship between firm entry and UI taxes is approximately linear.

<sup>18</sup>We discretize the unemployment rate and benefits in this way in order to more flexibly control for the state of the unemployment system and local economic conditions. These fixed effects capture much of the variation in the unemployment rates and benefits: the median unemployment rate ventile spans 0.3 percentage points, while the median unemployment benefit decile spans \$28.

taxes. This contrasts with the existing literature (Moretti and Wilson (2017), Giroud and Rauh (2019)) that has found evidence of mature businesses (that are likely more profitable than new firms) responding to state-level differences in corporate and personal income tax costs. The distinct role of UI taxes likely arises due to the nature of the taxes: unlike income taxes, firms are charged UI taxes *regardless* of whether they are profitable. For young firms only starting to generate cash flows, income taxes may not bite, but payroll taxes will.

Furthermore, both the tax rate and the tax base matter for firm entry: in column (3), we consider the two components separately. Both of the UI tax terms have statistically significant negative estimated coefficients. In other words, regardless of whether higher UI tax costs comes from a higher rate or a higher tax base, both lead to fewer entrants. Thus, for the remainder of the paper, we focus on the parsimonious tax measure of the product of rate and base,  $\log(\text{new rate} \times \text{base})$ .<sup>19</sup>

In columns (4)–(6) we turn to our second measure of firm entry: the entry rate, measured as the ratio of the number of new firms entering and the total number of firms in the state and sector in the previous year (multiplied by 100 for readability). We see very similar patterns: regardless of controls, higher UI taxes are associated with lower entry rates. In our preferred specification with full controls in column (5), we estimate that a one standard deviation increase in UI tax costs implies a 43 basis point decline in the entry rate, or 4.6 percent of the mean entry rate.

## 4.2 Heterogeneity

In Section 2, we argued that new employer taxes should be *particularly* relevant and costly for firms with higher labor demand, more part-time or low-wage workers, and higher worker turnover, as all of these features generate higher expected taxes. We test this argument by exploring heterogeneity in our baseline results across sectors, given that some

---

<sup>19</sup>Some states have large enough tax bases such that this approximation may be incorrect; at the extreme, Washington’s tax base in 2014 was \$41,300. In Table A.2 we show that our main entry results are robust to splitting the sample on the tax base; in fact, consistent with our product measure being a better approximate for the cost for firms facing lower tax bases, we find stronger results for states with below-median bases.

sectors are more likely to have these features.

We estimate a version of model (5) in which we estimate separate coefficients on the UI taxes by 2-digit NAICS sector. Figure 4 presents these results. The industries where firm entry decreases the most when UI taxes are higher exhibit characteristics we posit make UI taxes more costly, and thus salient; real estate, construction, transportation and warehousing, and accommodation/food are labor-intensive industries that hire many workers, many of whom only work part-time/seasonally or turn over quickly. On the other hand, the only industry where higher UI taxes (statistically insignificantly) predict a *higher* firm entry rate is health care, an industry with other barriers to entry that may dominate the effect of UI tax costs. Manufacturing falls in the middle of the distribution of coefficients, suggesting that tradability is not a driving determinant of the entry effects.

### 4.3 Event Study Evidence

Much of the variation underlying our entry results so far reflects the interaction of changing tax bases and changing tax rates in a way that generates fluctuating gaps in taxes across states and sectors, and consequently does not lend itself to event study analyses. However, there is one context in which we can study *persistent* differences in taxes in an event study framework: the Great Recession.

When UI benefit claims peaked in 2009 due to the recession, some states' historically determined tax schedules automatically adjusted tax rates without any intentional legislation. These states' variable rate mechanisms meant that, starting in 2010, new firms could face *mechanically* higher tax rates than entrants in other states, despite facing similar economic conditions. We analyze this predictable tax gap in an event study framework in which we compare states with mechanical tax rate increases to states with stable tax rates during the 2010–2013 period.

Because most variable rate states also index their tax bases to wage growth, we first restrict our analysis to the 17 states that index their tax bases. This ensures that our

treatment and control states are more comparable in terms of tax base (the other component of the new employer tax cost) and benefit generosity. Among these 17 states, 11 are defined as treatment states (i.e., states with variable rate mechanisms) with the remaining 6 assigned as control states.<sup>20</sup>

Figure 5 shows that starting in 2010, treatment states experienced an average 60 percent increase in per-capita new employer tax costs due to the mechanical rate increases, while control states faced mostly flat taxes. Meanwhile, there was no differential change to UI benefit generosity (as measured by maximum weekly benefit levels) or in unemployment rates, suggesting that both treatment and control states faced similar economic conditions during the recession. The fact that treatment states had slightly lower unemployment after the Great Recession also reassures us that the treatment states did not raise taxes because they were hit harder by the recession.

We estimate the following regression for observations at the state  $s$ , 2-digit NAICS sector  $n$ , and year  $t$  level:

$$\text{Firm entry}_{snt} = \sum_{k=2005, k \neq 2008}^{2013} \beta_k \text{Treat}_s(t = k) + X'_{st} \delta + \alpha_{sn} + \gamma_{nt} + \epsilon_{snt}, \quad (6)$$

where controls are defined as in model (5). The  $\beta_k$  coefficients capture the relative gap in firm entry between treated and control states, relative to 2008. We posit that, because treated states exhibited a mechanical increase in new employer tax costs in 2010, we should see a relative reduction in firm entry in treated states, relative to control states, following the recession, as would-be entrepreneurs respond to the higher taxes by not entering.

Figure 6 plots the coefficient estimates from model (6). In the years before the Great Recession, treatment and control states do not have statistically significantly different firm entry trends (relative to any differences in 2008); after the recession, when treatment states

---

<sup>20</sup>Treatment states include Alaska, Hawaii, Idaho, Iowa, Minnesota, Montana, Oregon, Rhode Island, Utah, Washington, and Wyoming. Control states include Nevada, New Jersey, New Mexico, North Carolina, North Dakota, and Oklahoma.

see a mechanical increase in taxes, a gap emerges. As predicted, we see relatively fewer entrants in treated states following the recession. Dividing the estimated coefficients for  $\log(\text{number of new firms})$  by the average increase in new employer taxes across treatment and control states, we estimate an entry elasticity of  $-0.07$  in 2010 that grows to  $-0.17$  by 2012. These magnitudes are consistent with the average elasticity of  $-0.1$  estimated in column (2) of Table 2.

## 4.4 Robustness

We present several robustness checks related to our measurement of firm entry and potential endogeneity concerns.

First, we measure firm entry based on when firms first hire employees. It is possible that would-be firms respond to higher UI taxes by still entering *without* employees, in which case we would not capture their entry in our data. We show in Table A.3 that business applications (which capture both firms with and firms without employees) at the state level respond similarly to UI taxes as our firm entry measure. While we had estimated an elasticity of the number of new employers to taxes of  $-0.10$ , in Table A.3 we estimate an elasticity of  $-0.06$  for the number of new firm applications and an elasticity of  $-0.07$  for the number of applicants that the Census Bureau predicts will eventually employ workers.<sup>21</sup>

Second, we argue that much of the variation in state tax policies derives from historical decisions and consequently can be thought of as exogenous to current economic conditions; indeed, as Table 2 shows, controlling flexibly for economic conditions like the state unemployment rate does not result in attenuated entry results. While we show above that the Great Recession had a large impact on new employer taxes, it is not the only driver of new employer tax variation. In Table A.4 we show that our main entry results are robust to restricting to years prior to the Great Recession, during which we estimate an elasticity of new entrants to tax increases of  $-0.08$ .

---

<sup>21</sup>The Census Bureau classifies applicants as likely to eventually employ workers using criteria including legal formation, plans for employees, and sector.

Beyond concerns related to the Great Recession, there remains the possibility that states raise tax rates during local economic downturns, leading to endogeneity. We test this possibility by analyzing county-level entry data and comparing entry in neighboring counties located at state borders. We follow, for example, Dube et al. (2010) and argue that comparing neighboring counties allows us to control for local economic conditions: we assume that neighboring counties across state borders experience similar local conditions, such that any differences in entry may be attributed to differential taxation. To implement this analysis, we turn to a version of the BDS data that reports the number of firms by age within each county; we identify counties at state borders and their cross-border county neighbors using the Census Bureau’s County Adjacency File and estimate county-level entry regressions with the inclusion of county pair fixed effects. We consequently estimate an average treatment effect of taxes on entry, within county pairs.<sup>22</sup> Due to power concerns, this analysis is estimated at the county level, pooling all sectors within a county. As new employer tax rates can vary substantially across sectors within a state, we focus on the tax base, which is uniform within a state, as our measure of UI taxes in this analysis.

Table 3 presents results for both the number of new firms and the entry rate.<sup>23</sup> Within the sample of border counties, we estimate that higher taxes predict lower firm entry; for example, in column (1) we estimate an elasticity of new firms to the tax base of  $-0.1$ . This effect is robust to controlling for local economic conditions common within neighboring counties, as captured by year-county pair fixed effects in column (2): on average, a county facing double the taxes its neighbor faces can expect 8.7 percent fewer entrants, relative to

---

<sup>22</sup>A single county may share a border with several other counties. In these cases, we follow Dube et al. (2010) and duplicate county observations. Because this generates unequal numbers of observations for different counties, we weight observations by approximately the number of firms “in” a particular county pair. Specifically, if county  $i$  and county  $j$  are neighbors and have (all ages) firm counts  $w_i$  and  $w_j$  in a given year, respectively, there are two observations for this pair (one for county  $i$  and one for county  $j$ ). For both observations, we assign a weight equal to  $(w_i \frac{w_j}{\sum_{j'} w_{j'}} + w_j \frac{w_i}{\sum_{i'} w_{i'}})$ , where  $j'$  denotes *all* counties that  $i$  neighbors and  $i'$  all counties that  $j$  neighbors. Intuitively, if county  $i$  has many cross-state neighbors, we include a smaller fraction of their total firm count into the weight for any given observation. Placing an equal weight on both counties in a pair ensures that our estimates reflect the average difference in outcomes within county pairs.

<sup>23</sup>Table A.5 presents estimates for firm entry at the county level in general (i.e., without pairing neighboring counties), showing that higher tax bases also predict lower firm entry at the county level.

its neighbor. In other words, higher UI taxes predict lower firm entry, even in markets facing similar local conditions. In terms of entry rates, a county facing double the tax base its neighbor faces can expect a 0.8 percentage point lower entry rate than its neighbor (column (4)).

Taken together, these results demonstrate that higher UI taxes robustly predict lower firm entry. Recall that these taxes are nominally small—many firms are only paying a few hundred dollars per worker. Yet, even small per-worker costs can be prohibitively costly to nascent firms. Next, we explore firms’ responses to these taxes in the first years after entry.

## 5 Survival and Growth

After firms hire their first employees, are they still affected by the burden of payroll taxes? On the one hand, the relative costs of these taxes may decrease for firms as they grow and increase their revenues; on the other hand, each additional hire adds to their total tax costs, as the tax is effectively a surcharge on employment. Furthermore, inexperienced entrepreneurs may learn about these taxes as they gain experience paying them; in this way, the taxes may become more salient as a firm ages, such that the firm may respond more strongly to increases in taxes over time.

We investigate the impact of UI taxes on firms’ post-entry outcomes, including firm survival, growth, and labor demand across the first few years of firms’ lives. To do this, we consider the relevant taxes a firm faces as it ages: in the first few years, the firm faces the new employer tax rates that we studied for entry and initial hiring. After that, the firm transitions to a firm-specific tax rate that depends on their layoff history and is capped at a state-specific maximum tax rate; as we do not observe these firm-specific rates, we focus on maximum rates, multiplied by the tax base, as a proxy for tax costs. Below, we find that higher UI taxes predict higher exit rates, lower employment among survivors, and a shift in labor demand toward non-taxed contract labor.

## 5.1 Exit Rates

We first study firm survival by estimating how exit rates vary with taxes. To measure exit rates, we return to the BDS data and define the exit rate at each age from 1 to 5 as the number of firm deaths divided by the total number of firms, in a given age group, state, sector, and year cell. To study how UI taxes affect the survival of new firms from age 1 to 5, we estimate the following regression for observations at the age  $a$ , state  $s$ , 2-digit NAICS sector  $n$ , and year  $t$  level:

$$\begin{aligned} \text{Exit Rate}_{asnt} = & \alpha_a + \sum_{a=1}^5 \beta_a \log(\text{new rate*base})_{snt} \\ & + \sum_{a=1}^5 \gamma_a \log(\text{max rate*base})_{st} + X'_{st}\delta + \mu_{sn} + \nu_{nt} + \epsilon_{snta}. \end{aligned} \quad (7)$$

$\beta_a$  and  $\gamma_a$  are the coefficients of interest and distinguish between the impact of new employer rates (which only apply for ages one and two) and maximum UI rates (which come into play starting at age two or three, depending on the state and quarter in which a firm entered). The vector of controls  $X'_{st}$  includes additional time-varying state level policies such as corporate and personal income tax rates, log maximum weekly UI benefits, minimum wage, and state unemployment rate as well as fixed effects for ventiles of the unemployment rate distribution and deciles of the unemployment benefit distribution, as in model (5). We also include either entry year fixed effects or state-sector-entry year cohort fixed effects, depending on the specification. Given our significant findings on the entry margin, the cohort fixed effects serve as a way to control for the initial tax regime at entry, which could impact a firm's likelihood of survival irrespective of subsequent tax rates.

Figure 7 plots the  $\beta_k$  and  $\gamma_k$  coefficients estimated from model (7); for ease of interpretation, we report the coefficients scaled to reflect the predicted increase in exit from a one standard deviation increase in the new or maximum per-capita tax. Panel A reports estimates without cohort fixed effects, and Panel B reports estimates including state-sector-



entry year fixed effects. For ease of comparison, all tax measures are normalized so that the estimated coefficients measure the impact of a one standard deviation increase of the respective tax measure.

We find three striking results. First, we see evidence that the initial tax regime at entry also affects survival rates, as controlling for cohort fixed effects significantly reduces the magnitudes of our estimates (Panel B vs. Panel A). This result can be further investigated by augmenting model (7) with an additional interaction of firm age and the entry-year  $\log(\text{new rate} \times \text{base})$ . These estimates are plotted in Figure 8, and the negative coefficients on entry-year UI taxes suggest that higher taxes at entry create positive selection for the firms that enter, as they face higher chances of survival at later ages.<sup>24</sup>

Second, greater concurrent UI taxes predict higher firm exit rates, regardless of age. After controlling for cohort fixed effects in Panel B of Figure 7, a one standard deviation increase in the log new employer tax at age 1 increases the likelihood of exit by 0.63 percentage points (an increase of 2.7 percent relative to the mean exit age 1 rate of 23.6 percent). Recall that this is also when all firms are still charged new employer rates.

Third, the tax measure (new versus maximum) that predicts higher exit at each age is precisely the tax measure that *should* matter at each age—young firms' survival is predicted by the new employer taxes they face, while relatively older firms' survival depends on the maximum taxes they may pay at their age. Starting in age 2, the new employer tax coefficient is close to zero and no longer statistically significant, because firms will have either graduated into experience rating already, or will be graduating in the next year. Instead, it is a measure of current tax costs—the maximum potential UI tax—that significantly predicts firm survival.

As firms age, a one standard deviation increase in the log maximum tax increases the likelihood of exit by 0.37, 0.47, 0.54, and 0.67 percentage points from ages 2 to 5, respectively.

---

<sup>24</sup>Because we only have new employer tax rates for 2003–2014, we estimate the regression on a subsample of our main analysis sample, dropping cells for which the firm's year of entry was before 2003. As a result, our subsample does not include all year-by-age combinations in the years prior to 2008. Our previous estimates of concurrent UI taxes are also robust to this subsample restriction.

Because mean exit rates also decline with age (16.2 percent of firms exit at age 2, but only 10.9 percent do so by age 5), the relative effect of UI taxes grows stronger with age. The age 5 effect accounts for a 6 percent increase in the likelihood of exit, relative to the mean likelihood at that age. The growing impact of the maximum tax as firms age also reflects the fact that struggling firms may take a few years to reach the maximum tax rate, since the maximum rate requires a sufficient number of workers to be laid off.<sup>25</sup> As a robustness check, Figure A.4 plots separate estimates for the subgroup of states in which firms graduate to experience rated taxes earlier (less than two years) versus later (after two years or more). Consistent with our proposed mechanism, new employer taxes affect exit more strongly than maximum UI taxes precisely for the subset of states whose new employer rates last longer.

In order to benchmark the impacts of UI taxes with the impact of other state-level policies that could affect firm survival, we include additional interaction terms of, for example, corporate income tax rate-by-age and personal income tax rate-by-age. Figure 9 plots estimates from regressions that add more policy variable interactions. Panel A includes additional age interactions with the state corporate income tax rate and state personal income tax rate. Unlike the UI tax measures, these income tax measures do not have a statistically significant effect on exit rates, with the exception of the corporate income tax rate at age 5. This may be because most new firms are unprofitable in their early years and consequently do not pay income taxes, whereas payroll tax liabilities are always present. We take these results as evidence that payroll taxes for young firms can matter significantly more than income taxes—the taxes traditionally studied for older firms in the literature.

Panel B of Figure 9 includes additional age interactions with the state minimum wage and state unemployment rate. This analysis shows that exit rates are strongly correlated with unemployment rates, which is unsurprising given that unemployment is a key measure of economic conditions. Nevertheless, our UI tax coefficients remain consistent even with the inclusion of age interactions with this measure of the labor market. Minimum wages also

---

<sup>25</sup>The precise equation by which UI claimants translate into a firm’s experience tax rate varies by state.

increase the likelihood of exit, with similar magnitudes as UI taxes in ages 1 through 3, and the effect waning by age 5. Collectively, we take these patterns as evidence that UI taxes have meaningful effects on firm survival.

## 5.2 Employment Growth

We have just seen that higher UI taxes predict higher exit rates — but what happens to the firms that survive? Now we turn to study how surviving firms grow in terms of employment as they age, in the face of changing UI taxes.

To do this, we restrict to a balanced sample of firms aged 1 through 5; that is, those who have at least one worker at all five ages. This sample consists of arguably more successful firms, as they have not exited soon after entering. For this sample, we estimate a similar regression to model (7) to study how firm-level employment in the LBD varies across ages 1 through 5 as a function of the new employer and maximum UI tax costs. We additionally include firm fixed effects in order to study relative employment patterns *within* a firm.

Figure 10 presents the results. Within a firm, new employer taxes predict lower employment for the first five years. At age 1, a one standard deviation increase in UI taxes predicts 1.5 percent lower employment. The relatively small magnitude of the average treatment effect suggests there is still a substantial portion of young firms that do not respond to new employer taxes on this margin, as the average size of age 1 firms is only 7.7 employees. If all new firms would have had 8 employees in the absence of tax responses, but 12 percent of employers respond to the one standard deviation higher taxes by reducing their employment to 7 (a 13 percent decline), this would be consistent with our estimated average treatment effect of  $12\% \times (-13\%) + (1 - 12\%) \times 0 = -1.5\%$ . This effect attenuates as a firm ages, consistent with the new employer rate no longer reflecting the actual cost for the firm.

Unlike in the survival results, however, here new employer taxes appear to matter beyond when they are strictly relevant, and maximum UI taxes do not predict lower employment. This is not wholly surprising, given that we are studying a sample of relatively successful

firms who likely are not laying off many workers. Due to experience rating, the maximum tax rate is only relevant to firms whose workers have claimed UI benefits; for this sample of relatively successful firms, the maximum rate may not bite. Instead, the actual tax costs they experience are likely closer to the new employer tax, consistent with the new employer tax predicting lower employment in the years after firms technically graduate beyond the new employer status.

These employment results, coupled with the survival results, are reflective of UI taxes proving costly for firms. Even among the firms that are able to survive, higher UI taxes may stunt employment growth for many years.

### 5.3 Substituting with Non-Taxed Workers

In the face of high payroll taxes, some firms may have options beyond exiting or staying small. For example, an alternative way employers can adjust employment in response to payroll tax costs is through the use of temporary or leased workers, who are non-W-2 employees for whom firms do not pay payroll taxes. For short-run or seasonal jumps in labor demand, firms can avoid paying additional UI taxes by hiring workers as independent contractors or through staffing agencies and temporary help firms. We hypothesize that firms' incentive to substitute regular employment with temporary or leased workers is greater when UI taxes are higher.

To test this hypothesis, we leverage Census Bureau data on contract labor usage by construction firms, as measured in the 2007 and 2012 snapshots of the CCN. To study new employers, we keep establishments that entered within two years of the census year. For example, firms in 2007 will be considered new if they entered in 2005 or 2006. Because each establishment is only identified as new once, this is a cross-sectional rather than panel regression. We estimate the following:

$$\text{Has Any Temporary or Contract Labor}_{ist} = \beta \log(\text{new rate*base})_{st} + X'_{ist}\gamma + \epsilon_{ist}, \quad (8)$$

where we study whether establishment  $i$  in state  $s$  and year  $y$  has any temporary or contract labor; the outcome is an indicator variable equal to 1 if the establishment reports any expenses for temporary or leased workers, and 0 otherwise.  $\beta$  is the coefficient of interest, and the vector of controls  $X'_{ist}$  includes additional employer characteristics such as log payroll and log employment; state-level policy, including corporate and personal income tax rates, the log of maximum weekly UI benefits, the minimum wage, and the state unemployment rate as well as fixed effects for ventiles of the unemployment rate distribution and deciles of the unemployment benefit distribution; and fixed effects for 3-digit NAICS-by-state and 3-digit NAICS-by-year.<sup>26</sup> To account for differential sampling rates by establishment size, we also estimate regressions weighted by either employment or employment and match rates from the LBD.<sup>27</sup>

Table 4 presents the estimates under two different weighting schemes. Columns (1) and (3) present pooled effects of UI taxes on contract labor use for 2007 and 2012, while columns (2) and (4) estimate separate, but similar, coefficients for 2007 and 2012. All specifications reveal the same result: young-construction firms operating in higher UI tax regimes are disproportionately likely to use temporary contract labor, which may allow them to operate at larger scales by avoiding some UI tax costs.<sup>28</sup> When we account for sampling by weighting by both employment and match rates in column (3), we see that a one standard deviation (0.66 log point) increase in UI taxes predicts a 3.2 percentage point higher likelihood of using contract labor, a 23 percent increase relative to the mean (14 percent have any contract labor usage). If we focus more on larger firms that are more likely to use contract labor (mean

---

<sup>26</sup>In previous analyses, we focused on sectoral differences and so included 2-digit NAICS. Here, we consider 3-digit NAICS in order to contrast different industries within the construction sector (2-digit NAICS 23).

<sup>27</sup>Despite its name, the Census of Construction only has universal coverage of large establishments. Smaller establishments are sampled at varying rates based on annual payroll thresholds. To account for this differential likelihood of being sampled, we can place greater weight on observations based on their empirical match rates to the LBD. We assign establishments to 10 bins of annual payroll and calculate the match rate to the LBD to generate the weights. These bins range from 0–50k, 50–100k, 100–250k, 250–500k, 500–1m, 1–1.5m, 1.5–2m, 2–3m, 3–5m, and over 5m.

<sup>28</sup>Note that if the contract labor is employed at another firm, that other firm *does* pay UI taxes for them and thus could pass through some of these costs to the construction firm. However, if the contract firm is older or housed in another industry, it likely faces lower UI tax rates than the construction firm.

rate of 20 percent, column (1)), we see a larger effect, with a one standard deviation (0.65 log point) increase in UI taxes predicting an 8 percentage point higher likelihood of using contract labor (a 40 percent increase relative to the mean).

Regardless of specification, this analysis demonstrates that some firms may be able to partially circumvent UI taxes by hiring labor for whom they do not have to pay UI taxes directly. To the extent to which contract labor may turn over more quickly or be less productive, this could still prove costly for firms. Nonetheless, we conclude that at least some firms internalize these UI tax costs in ways that may distort their production processes.

## 6 Conclusion

New firm entry, particularly entrepreneurship, is frequently viewed as an important source of economic growth. While the existing literature on business taxation has primarily focused on the labor demand and location decisions of mature firms, we provide evidence that new employer tax costs can also significantly impact the entry and growth prospects of nationally new businesses. In the context of state UI taxes, we estimate that more expensive UI tax regimes deter both firm entry and impact short-run survival and growth after entry. These taxes are particularly costly to firms for which labor plays a larger role in the production process, as well as for firms in sectors with higher labor turnover.

Taken together, our results highlight how state UI policies for new employers may have unintentional consequences for firm entry and outcomes. Thus, policymakers face a trade-off. On the one hand, new firms *should* potentially pay high taxes, since their high rates of exit and likelihood for layoffs can subsequently lead to large outlays from the UI system. From an actuarial perspective, new firms are costly to state UI programs, and so it is understandable that they may be charged more. Yet, on the other hand, we have shown in this paper that higher taxes for new firms can actually lead to substantial economic costs for states, too, in the form of lower entry, higher exit, and lower employment growth.

# References

- Adelino, M., Schoar, A. and Severino, F. (2015), House prices, collateral, and self-employment, *Journal of Financial Economics* **117**(2), 288–306.
- Anderson, P. M. (1993), Linear adjustment costs and seasonal labor demand: Evidence from retail trade firms, *Quarterly Journal of Economics* **108**(4), 1015–1042.
- Anderson, P. M. and Meyer, B. D. (1997), The effects of firm specific taxes and government mandates with an application to the U.S. unemployment insurance program, *Journal of Public Economics* **65**(2), 119–145.
- Anderson, P. M. and Meyer, B. D. (2000), The effects of the unemployment insurance payroll tax on wages, employment, claims and denials, *Journal of Public Economics* **78**(1), 81–106.
- Bartik, T. J. (1985), Business location decisions in the United States: Estimates of the effects of unionization, taxes, and other characteristics of states, *Journal of Business Economic Statistics* **3**(1), 14–22.
- Benzarti, Y., Harju, J. and Matikka, T. (2020), Does mandating social insurance affect entrepreneurial activity?, *American Economic Review: Insights* **2**(2), 255–68.
- Brown, J. D. and Earle, J. S. (2017), Finance and growth at the firm level: Evidence from SBA loans, *Journal of Finance* **72**(3), 1039–1080.
- Bruce, D., Gurley-Calvez, T. J., Norwood, A. et al. (2020), Taxes and entrepreneurship: A literature review and research agenda, *Foundations and Trends® in Entrepreneurship* **16**(5), 393–443.
- Calabria, M. (2000), The census of construction industries database, *Journal of Real Estate Literature* **8**(2), 161–173.
- Carlton, D. W. (1983), The location and employment choices of new firms: An econometric model with discrete and continuous endogenous variables, *Review of Economics and Statistics* **65**(3), 440–449.
- Cullen, J. B. and Gordon, R. H. (2007), Taxes and entrepreneurial risk-taking: Theory and evidence for the U.S., *Journal of Public Economics* **91**(7), 1479–1505.
- DeBacker, J., Heim, B. T., Ramnath, S. P. and Ross, J. M. (2019), The impact of state taxes on pass-through businesses: Evidence from the 2012 Kansas income tax reform, *Journal of Public Economics* **174**, 53–75.
- Decker, R., Haltiwanger, J., Jarmin, R. and Miranda, J. (2014), The role of entrepreneurship in U.S. job creation and economic dynamism, *Journal of Economic Perspectives* **28**(3), 3–24.
- Djankov, S., Ganser, T., McLiesh, C., Ramalho, R. and Shleifer, A. (2010), The effect of corporate taxes on investment and entrepreneurship, *American Economic Journal: Macroeconomics* **2**(3), 31–64.
- Dube, A., Lester, T. W. and Reich, M. (2010), Minimum wage effects across state borders: Estimates using contiguous counties, *Review of Economics and Statistics* **92**(4), 945–964.
- Gersbach, H., Schetter, U. and Schneider, M. T. (2019), Taxation, innovation and entrepreneurship, *The Economic Journal* **129**(620), 1731–1781.
- Giroud, X. and Rauh, J. (2019), State taxation and the reallocation of business activity: Evidence from establishment-level data, *Journal of Political Economy* **127**(3), 1262–1316.
- Guo, A. (2023), The effects of state business taxes on plant closures: Evidence from unemployment insurance taxation and multiestablishment firms, *Review of Economics and Statistics* **105**(3), 580–595.

- Guo, A. (2024), Payroll tax incidence: Evidence from unemployment insurance, *Journal of Public Economics* **239**, 105209.  
**URL:** <https://www.sciencedirect.com/science/article/pii/S0047272724001452>
- Hackney, J. (2022), Small business lending in financial crises: The role of government-guaranteed loans, *Review of Finance* **27**(1), 247–287.
- Haltiwanger, J., Jarmin, R. S. and Miranda, J. (2013), Who creates jobs? Small versus large versus young, *Review of Economics and Statistics* **95**(2), 347–361.
- Hombert, J., Schoar, A., Sraer, D. and Thesmar, D. (2020), Can unemployment insurance spur entrepreneurial activity? Evidence from France, *Journal of Finance* **75**(3), 1247–1285.
- Johnston, A. C. (2021), Unemployment insurance taxes and labor demand: Quasi-experimental evidence from administrative data, *American Economic Journal: Economic Policy* **13**(1), 266–93.
- Klenow, P. J. and Li, H. (2021), Innovative growth accounting, *NBER Macroeconomics Annual* **35**(1), 245–295.
- Mast, E. (2020), Race to the bottom? Local tax break competition and business location, *American Economic Journal: Applied Economics* **12**(1), 288–317.
- Moretti, E. and Wilson, D. J. (2017), The effect of state taxes on the geographical location of top earners: Evidence from star scientists, *American Economic Review* **107**(7), 1858–1903.
- Papke, L. E. (1991), Interstate business tax differentials and new firm location: Evidence from panel data, *Journal of Public Economics* **45**(1), 47–68.
- Robb, A. M. and Robinson, D. T. (2014), The capital structure decisions of new firms, *Review of Financial Studies* **27**(1), 153–179.
- Slattery, C. (Forthcoming), Bidding for firms: Subsidy competition in the U.S., *Journal of Political Economy*.
- Sorkin, I. and Wallskog, M. (2023), The slow diffusion of earnings inequality, *Journal of Labor Economics* **41**(S1), S95–S127.
- Suárez Serrato, J. C. and Zidar, O. (2016), Who benefits from state corporate tax cuts? A local labor markets approach with heterogeneous firms, *American Economic Review* **106**(9), 2582–2624.
- Tazhitdinova, A. (2020), Are changes of organizational form costly? Income shifting and business entry responses to taxes, *Journal of Public Economics* **186**, 104187.
- van der List, C. (2024), How do establishments choose their location? Taxes, monopsony, and productivity, Working paper.
- Xu, W. (2022), Social insurance and entrepreneurship: The effect of unemployment benefits on new-business formation, *Strategic Entrepreneurship Journal* **16**(3), 522–551.



Table 1: Summary Statistics

	Unweighted			Weighted			(7)	(8)
	(1) Mean	(2) Std Dev	(3) Median	(4) Mean	(5) Std Dev	(6) Median		
Number of new firms	581	952	252	1,869	1,958	1,126	0.00	11,052
Log(number of new firms)	5.44	1.52	5.53	6.97	1.16	7.03	0.00	9.31
Entry rate	8.52	2.88	8.26	7.98	3.45	7.62	0.00	100
New rate*base	372.61	264.27	259.20	347.04	236.14	243.00	76.51	2,726
Log(new rate*base)	5.74	0.57	5.56	5.71	0.49	5.49	4.34	7.91
Log(base)	9.45	0.52	9.26	9.27	0.47	9.10	8.85	10.63
New rate	2.66	1.09	2.70	3.02	1.14	2.70	1.00	9.88
Base (\$)	14,637	8,517	10,500	12,098	7,388	9,000	7,000	41,300
Personal inc. tax rate	5.25	3.01	5.90	5.47	3.62	5.83	0.00	14.10
Corporate tax rate	6.52	2.88	7.00	6.47	2.91	7.10	0.00	12.00
Log(UI benefits) (\$)	5.92	0.25	5.92	5.96	0.24	5.99	5.32	6.52
Minimum wage (\$)	6.64	1.07	7.15	6.73	1.08	7.15	5.15	9.50
State unemp. rate	6.27	2.09	5.90	6.71	2.14	6.30	2.60	13.70

NOTE: N = 9,162. This table presents summary statistics of the key variables in this paper, based on BDS data. These include the number of new firms, the firm entry rate, measures of nominal UI taxes (the level and log new rate times base, the log base, and the new rate), and other state characteristics (including the personal income and corporate tax rates, the level of UI benefits and minimum wage, and the state unemployment rate). All rates variables are scaled to lie between 0 and 100. The level of observation is a NAICS sector-state-year cell. For means, standard deviations, and medians, observations are either unweighted (columns (1)–(3)) or weighted (columns (4)–(6)) by a measure of the “size” of each cell: the total number of firms (all ages) in the sector-state-year.

Table 2: Higher UI Taxes Predict Lower Firm Entry

	Log(Number of New Firms)			Entry Rate		
	(1)	(2)	(3)	(4)	(5)	(6)
Log(new rate*base)	-0.105*** (0.013)	-0.100*** (0.010)		-0.432*** (0.111)	-0.426*** (0.090)	
Log(base)			-0.146*** (0.023)			-0.816*** (0.174)
New rate			-0.029*** (0.005)			-0.071 (0.044)
Personal inc. tax rate		0.007** (0.003)	0.006** (0.003)		0.067*** (0.025)	0.056** (0.025)
Corporate tax rate		0.006*** (0.002)	0.006*** (0.002)		-0.006 (0.019)	-0.002 (0.018)
Log(UI benefits) (\$)		-0.213*** (0.066)	-0.199*** (0.065)		0.350 (0.575)	0.422 (0.564)
Minimum wage (\$)		-0.028*** (0.005)	-0.026*** (0.005)		-0.279*** (0.057)	-0.267*** (0.058)
State unemp. rate		-0.022*** (0.006)	-0.022*** (0.006)		-0.227*** (0.062)	-0.230*** (0.062)
R <sup>2</sup>	0.994	0.995	0.995	0.914	0.922	0.922
Mean Outcome	6.972	6.972	6.972	8.521	8.521	8.521
Sector-Year FEs	X	X	X	X	X	X
Sector-State FEs	X	X	X	X	X	X
Unemp. and Benefit Bin FEs		X	X		X	X
Firm Weights	X	X	X	X	X	X
N	9,162	9,162	9,162	9,162	9,162	9,162

NOTE: This table presents regressions of how the level of firm entry in a sector-state pair varies with the UI tax regime. Columns (1)–(3) regress the log number of new (age 0) firms (plus 1) on UI taxes and controls; columns (4)–(6) present similar regressions for the firm entry rate, given by the number of new firms divided by the total number of firms (all ages) in the sector-state pair in the previous year (multiplied by 100). The main independent variable is the log(new rate \* base), which captures the log of the product of the new employer UI tax rate and the UI tax base. Starting in columns (2) and (5), we add additional controls (including the personal income and corporate tax rates, the level of UI benefits and minimum wage, and the state unemployment rate as well as fixed effects for unemployment rate ventiles and benefit deciles); columns (3) and (6) consider the roles of the UI tax rate and tax base separately. All columns additionally include sector-year and sector-state fixed effects. All rates variables are scaled to lie between 0 and 100. In all columns, the level of observation is a NAICS sector-state-year cell; in all columns, observations are weighted by a measure of the “size” of each cell: the total number of firms (all ages) in the sector-state-year. Standard errors are clustered at the sector-state level. \*  $p < 0.10$ , \*\*  $p < 0.05$ , \*\*\*  $p < 0.01$ .

Table 3: Higher UI Taxes Predict Lower Firm Entry, across State Borders

	Log(Number of New Firms)		Entry Rate	
	(1)	(2)	(3)	(4)
Log(base)	-0.101*** (0.039)	-0.086** (0.039)	-0.810*** (0.282)	-0.752*** (0.256)
R <sup>2</sup>	0.993	0.997	0.803	0.915
Mean Outcome	5.866	5.866	7.416	7.416
Year FEs	X		X	
County FEs	X	X	X	X
Unemp. and Benefit Bin FEs	X	X	X	X
Year-County Pair FEs		X		X
N	31,250	31,250	31,250	31,250

NOTE: This table presents regressions of how the level of firm entry in a county varies with the UI tax regime, as compared to neighboring counties across state borders. The sample consists of counties that sit at state borders, paired to one or more neighboring counties across the border. In the case a county pairs to more than one other county, they appear in the data multiple times; the observation level is a county-year-county neighbor pair. In this analysis we focus on the tax base, as the tax rate can vary across sectors, which are pooled in the county-level data.

Columns (1) and (2) regress the log number of new (age 0) firms (plus 1) on the UI tax base and controls; Columns (3) and (4) present similar regressions for the firm entry rate, given by the number of new firms divided by the total number of firms (all ages) in the sector-state pair in the previous year (multiplied by 100). All regressions include controls listed in the footer as well as economic controls, which include the personal income and corporate tax rates, the level of UI benefits and minimum wage, and the state unemployment rate as well as fixed effects for unemployment rate ventiles and benefit deciles. All rates variables are scaled to lie between 0 and 100. Standard errors are clustered at the county level.

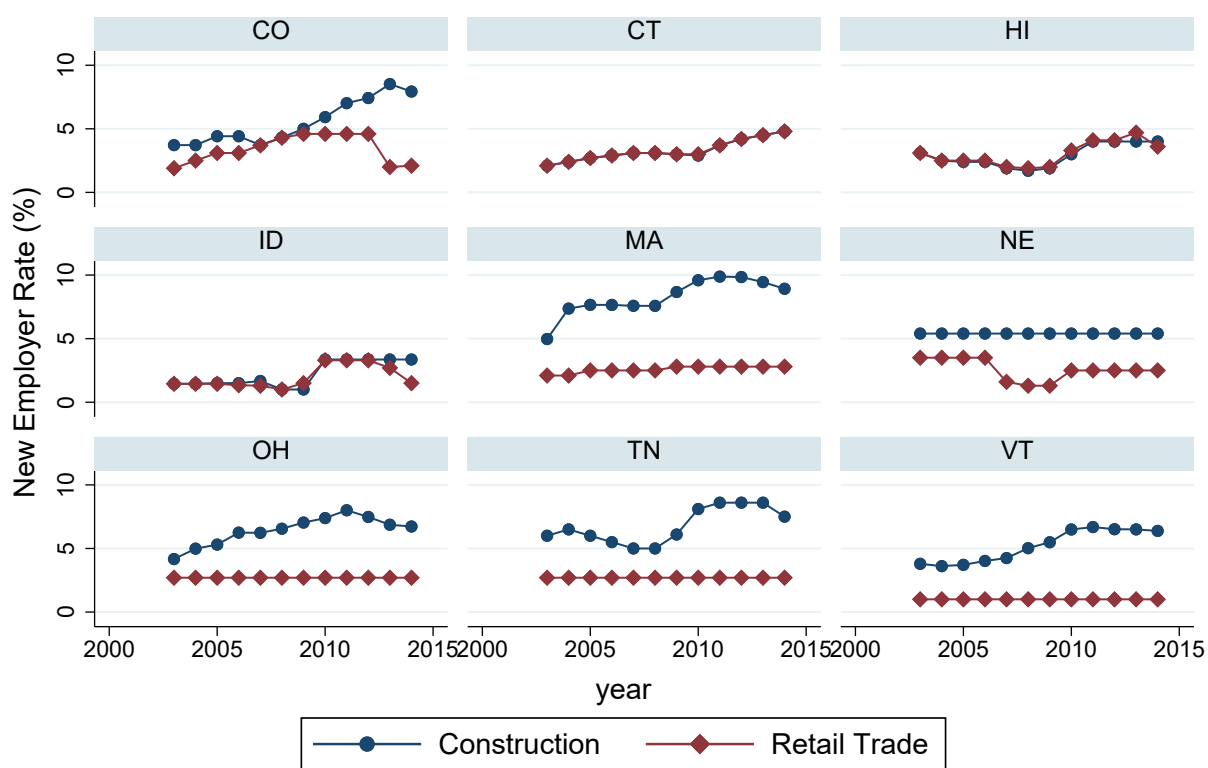
Odd columns include year and county fixed effects, while even columns add year-by-county neighbor pair fixed effects. Because counties can appear multiple times, if they have multiple cross-border neighbors, we use weights that are adjusted to (a) be equivalent across counties within a pair and (b) approximate the number of firms within the county pair. If county  $i$  and county  $j$  are neighbors and have (all ages) firm counts  $w_i$  and  $w_j$  in a given year, respectively, there are two observations for this pair (one for county  $i$  and one for county  $j$ ). For both observations, we assign a weight equal to  $(w_i \frac{w_j}{\sum_{j'} w_{j'}} + w_j \frac{w_i}{\sum_{i'} w_{i'}})$ , where  $j'$  denotes all counties that  $i$  neighbors and  $i'$  all counties that  $j$  neighbors. \*  $p < 0.10$ , \*\*  $p < 0.05$ , \*\*\*  $p < 0.01$ .

Table 4: Higher UI Taxes Predict Usage of Contract Labor in Construction

	Has Any Temporary or Contract Labor			
	(1)	(2)	(3)	(4)
Log(new rate*base)	12.30*** (3.650)		4.902*** (1.662)	
Log(new rate*base) × 2007		13.29*** (4.488)		6.287*** (1.887)
Log(new rate*base) × 2012		12.70*** (3.751)		5.469*** (1.569)
Mean Outcome	19.96	19.96	14.17	14.17
NAICS3-Year FEs	X	X	X	X
NAICS3-State FEs	X	X	X	X
Economic controls	X	X	X	X
Log(payload)	X	X	X	X
Weighting	Emp	Emp	Emp + Match	Emp + Match
N	24,000	24,000	24,000	24,000

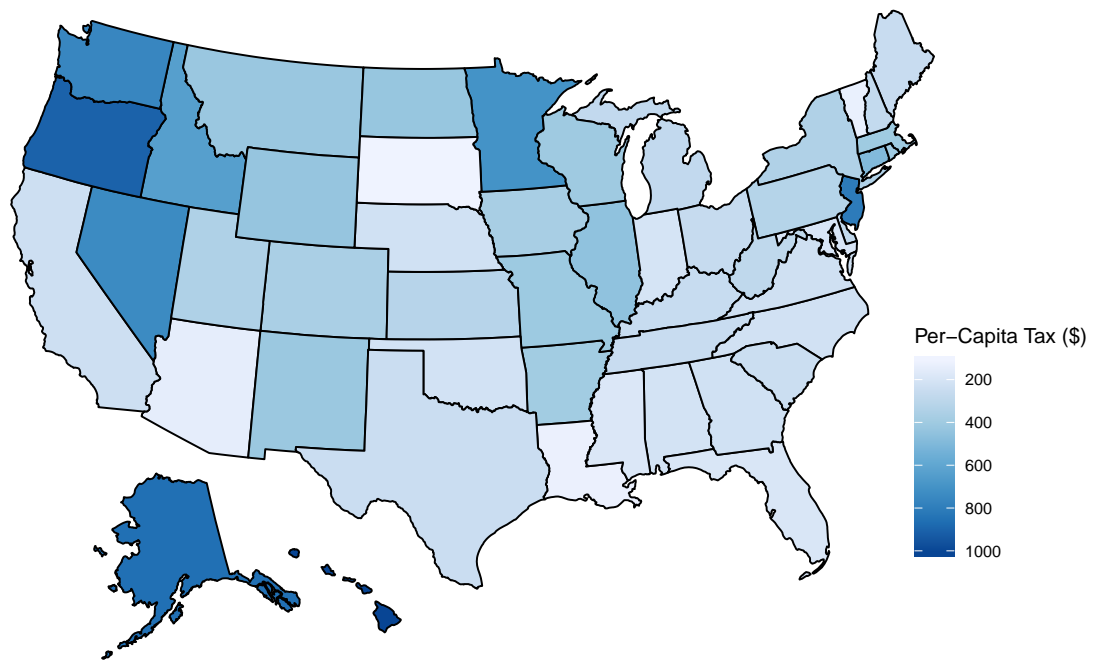
NOTE: This table presents regressions of how firm contract labor usage at entry varies with the UI tax regime, for young Construction sector firms covered by the 2007 and 2012 Census of Construction Industries (CCN). The sample is constructed by matching young firms in the LBD to firms in the CCN; for the 2007 CCN we take firms that entered in 2005 or 2006, while for the 2012 CCN we take firms that entered in 2010 or 2011. The dependent variable is an indicator equal to 100 if the firm employs any temporary labor, and 0 otherwise. In all columns, the level of observation is a firm-sector-state-year cell. In columns (1) and (2), observations are weighted by employment in order to capture how taxes affect contract labor usage at larger employers (who are more likely to use contract labor). In columns (3) and (4), we additionally weight by the match rate for firms of different sizes, since the CCN has better coverage for larger firms; in practice, this weighting “down-weights” larger employers who are more likely to be matched to the CCN. Standard errors are clustered at the sector-state level. \*  $p < 0.10$ , \*\*  $p < 0.05$ , \*\*\*  $p < 0.01$ .

Figure 1: Sectoral Variation in New Employer Rates over Time (2003–2014)



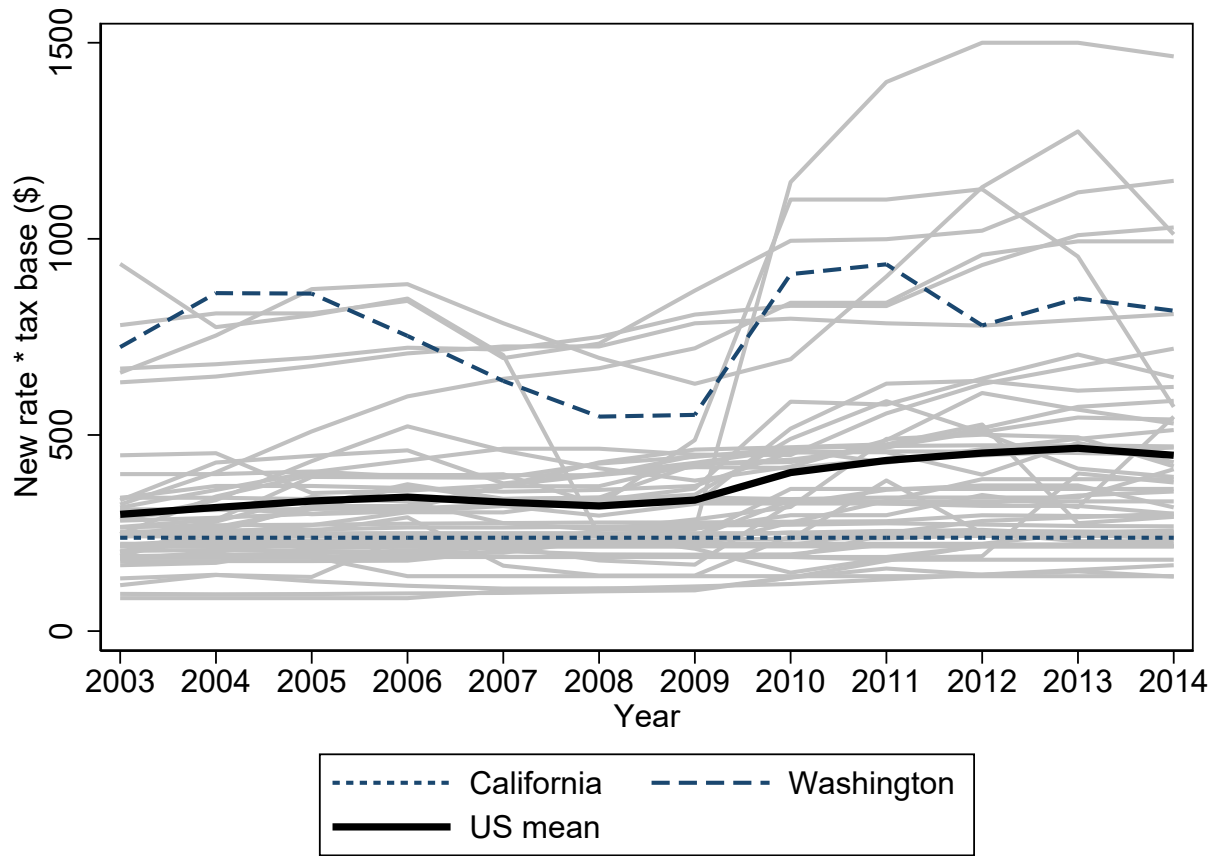
NOTE: This figure demonstrates time, sectoral, and state variation in new employer rates by plotting how new employer rates evolve for Construction and Retail Trade firms in a selection of states.

Figure 2: Average New Employer Tax Costs by State



NOTE: This figure plots each state's average per-capita new employer tax cost from 2003 to 2014. The tax is calculated by multiplying each state's taxable wage base by the mean of new employer rates across all sectors and years. Values are top-coded at \$1,000.

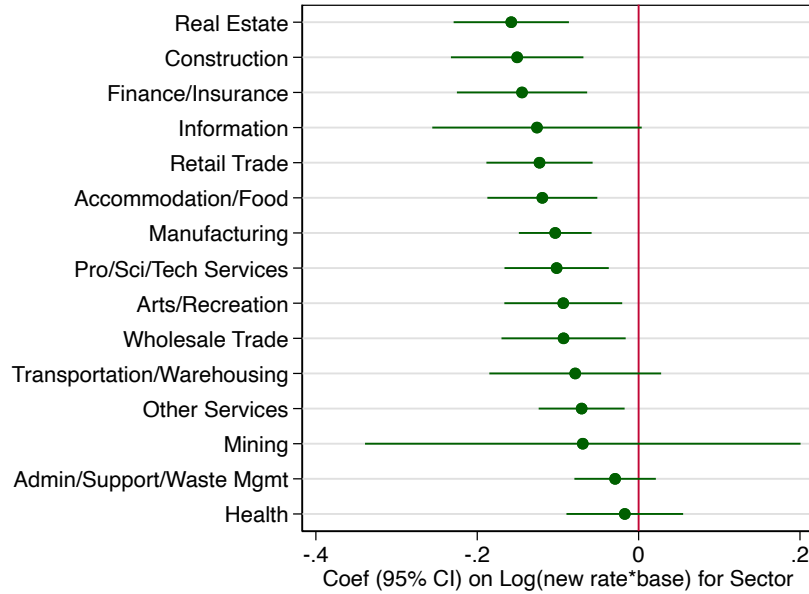
Figure 3: State Per-Capita New Employer Taxes over Time (2003–2014)



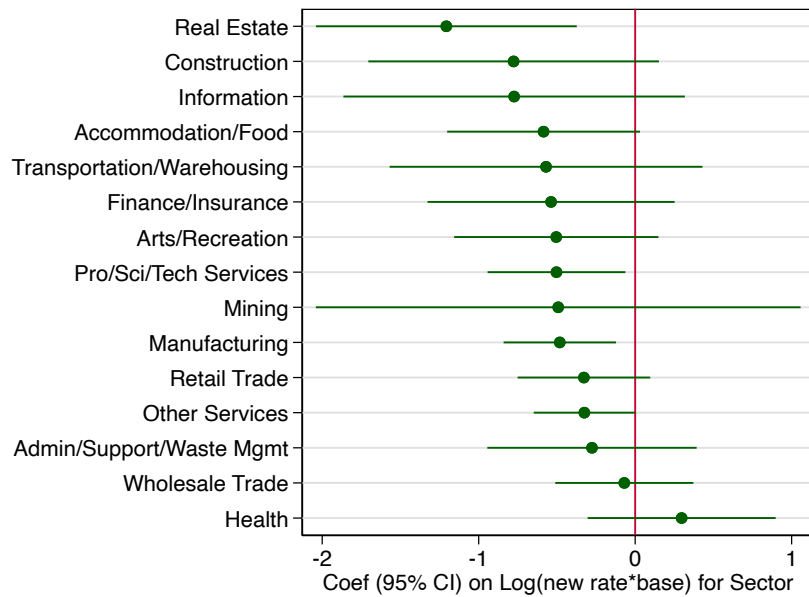
NOTE: This figure plots the taxable wage base multiplied by the average new employer rate for each state in the United States. Values are in nominal dollars, and top-coded at \$1,500. Highlighted in bold is the unweighted national average.

Figure 4: Effect of UI Taxes on Firm Entry Varies by Sector

(A) Effect of UI tax on log(number of new firms) by sector



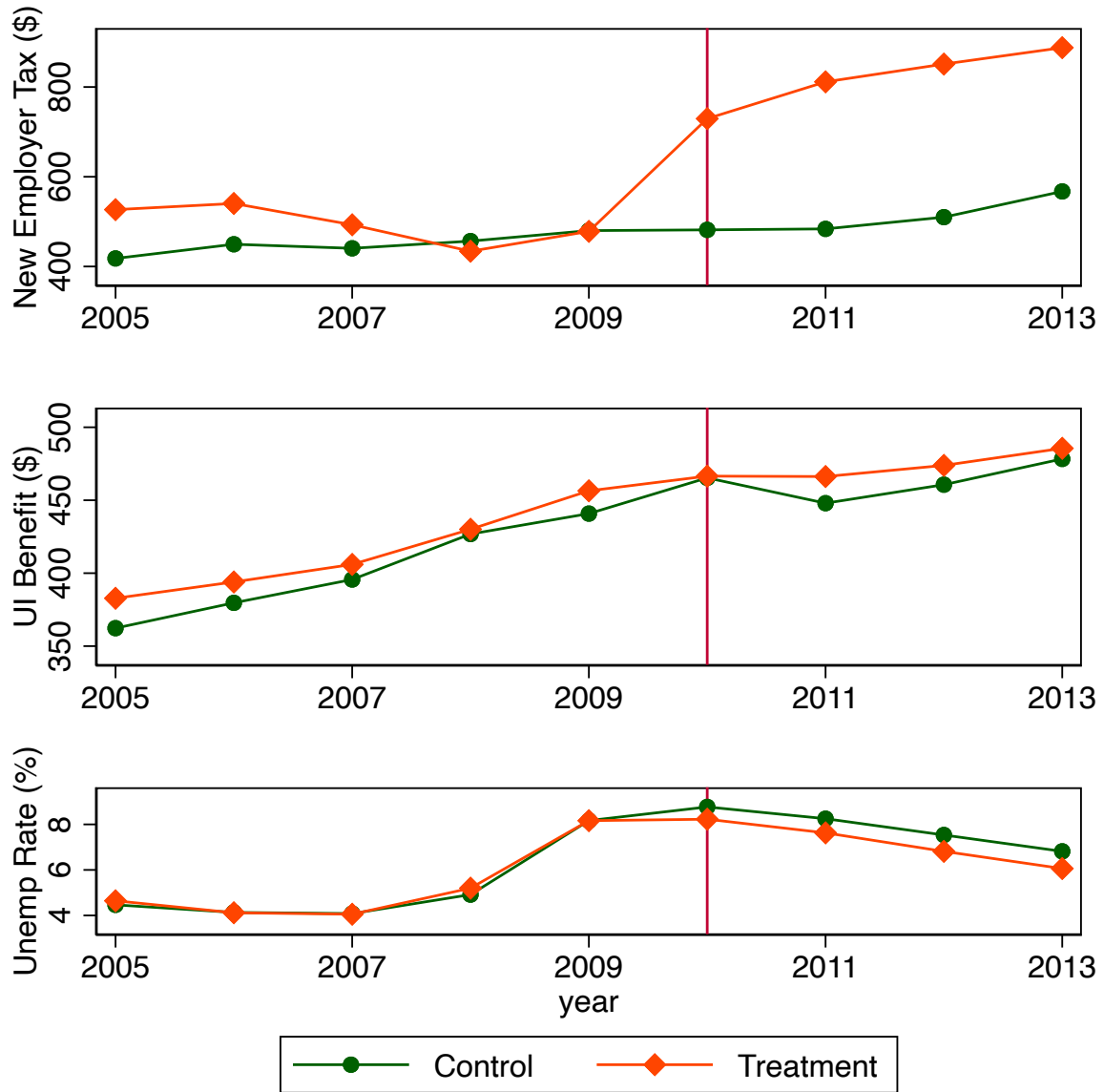
(B) Effect of UI tax on entry rate by sector



NOTE:  $N = 9,162$ . This figure presents separate coefficient estimates on UI tax by sector, for the log number of new firms (Panel A) and the entry rate (Panel B). The specification is based on column (5) of Table 2.

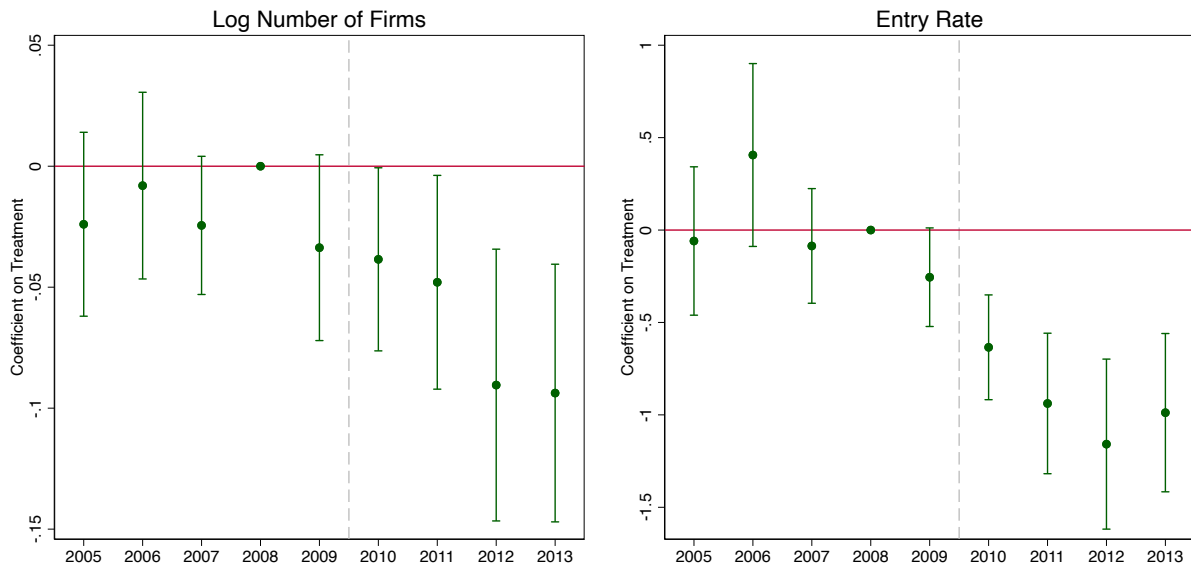


Figure 5: State Policy Variables over Time (2005–2013)



NOTE: This figure plots the mean across treatment and control states for three state-level variables: New employer tax, UI maximum weekly benefit, and unemployment rate. Treatment states: AZ, HI, ID, IA, MN, MT, OR, RI, UT, WA, WY. Control states: NV, NJ, NM, NC, ND, OK.

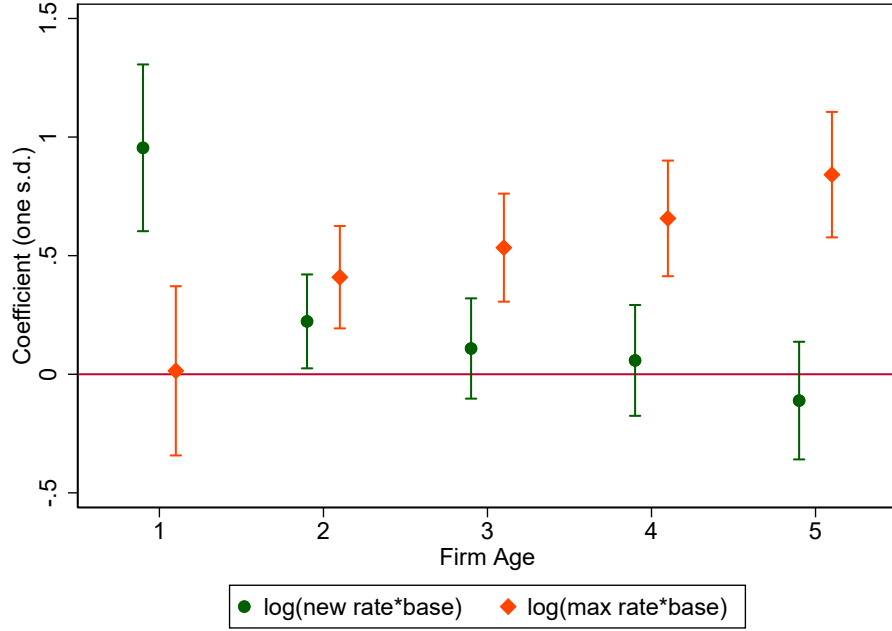
Figure 6: Great Recession Event Study of Firm Entry (2005–2013)



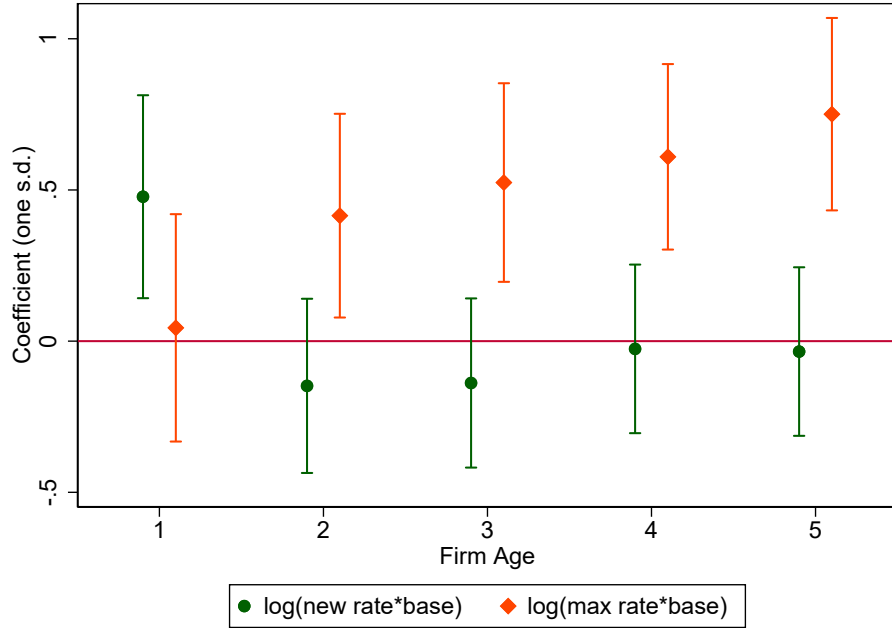
NOTE:  $N = 2,293$ . This figure presents regression estimates at the state-sector-year level of how firm entry varies over time for eleven treatment states with variable new employer tax rates, relative to six control states whose tax rates are fixed. Regressions are weighted by the total number of firms (all ages) in the sector-state-year, and additional controls include corporate and personal income tax, UI benefit, minimum wage, and state unemployment rate. Also included are fixed effects for: unemployment rate ventiles, UI benefit deciles, sector-year, and sector-state. Error bars denote 95% confidence intervals for robust standard errors clustered at the sector-state level. The mean log number of new firms in this sample is equal to 6.3, and the mean entry rate is equal to 8.3.

Figure 7: Higher UI Taxes Increase Likelihood of Exit for Young Firms

(A) Includes entry year fixed effects

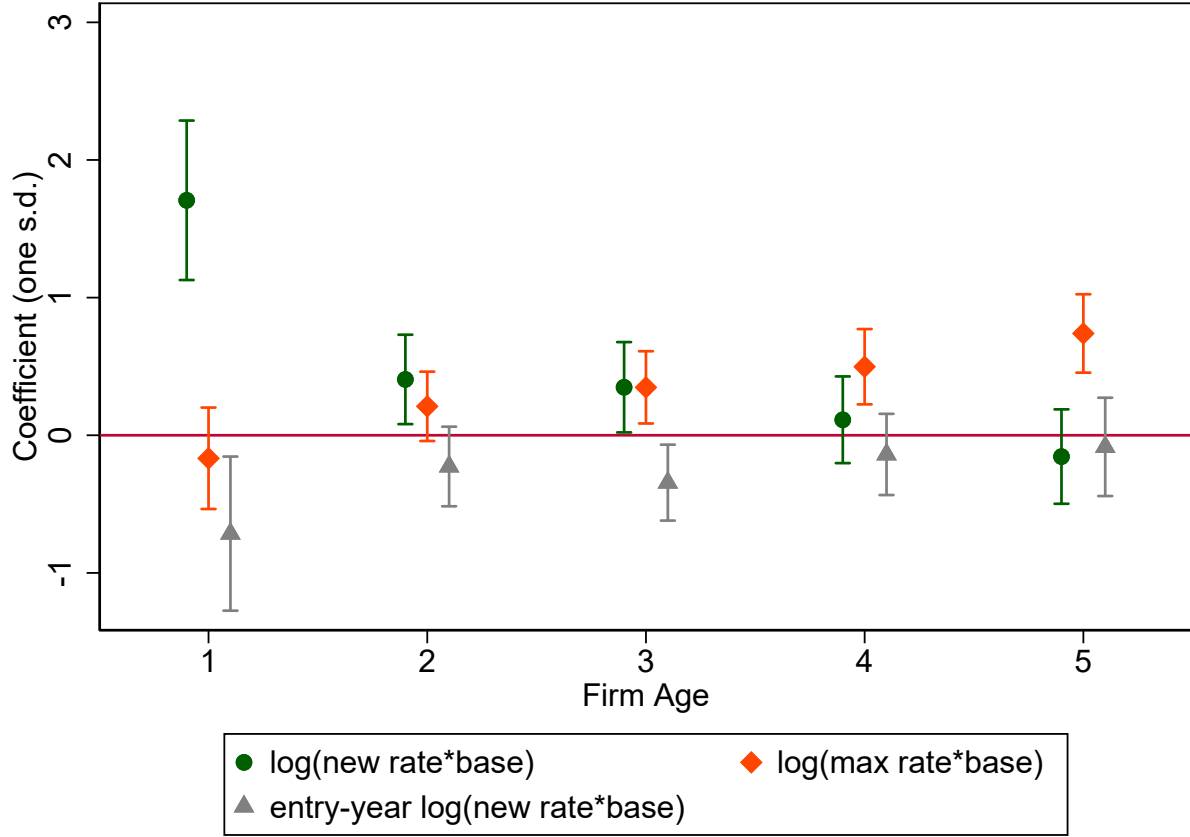


(B) Includes state-sector-entry year cohort fixed effects



NOTE:  $N = 40,309$ . This figure presents regression estimates at the age-state-sector-year level of how exit rates vary by age with the UI tax regime. Each panel plots coefficients from a single regression of firms aged 1-5, of  $\log(\text{new rate} \times \text{base})$  interacted with firm age and  $\log(\text{max rate} \times \text{base})$  interacted with firm age. Both UI tax measures are normalized to have a standard deviation of one. Regressions are weighted by the total number of firms (all ages) in the sector-state-year, and additional controls include corporate and personal income tax, UI benefit, minimum wage, and state unemployment rate as well as fixed effects for unemployment rate ventiles and benefit deciles. Panel A includes age, sector-year, sector-state, and entry year fixed effects. Panel B additionally includes state-sector-entry year cohort fixed effects, to control for entry cohort. Error bars denote 95% confidence intervals for robust standard errors clustered at the sector-state level. Mean exit rates at each age are 23.6, 16.2, 13.6, 11.9, and 10.9, respectively.

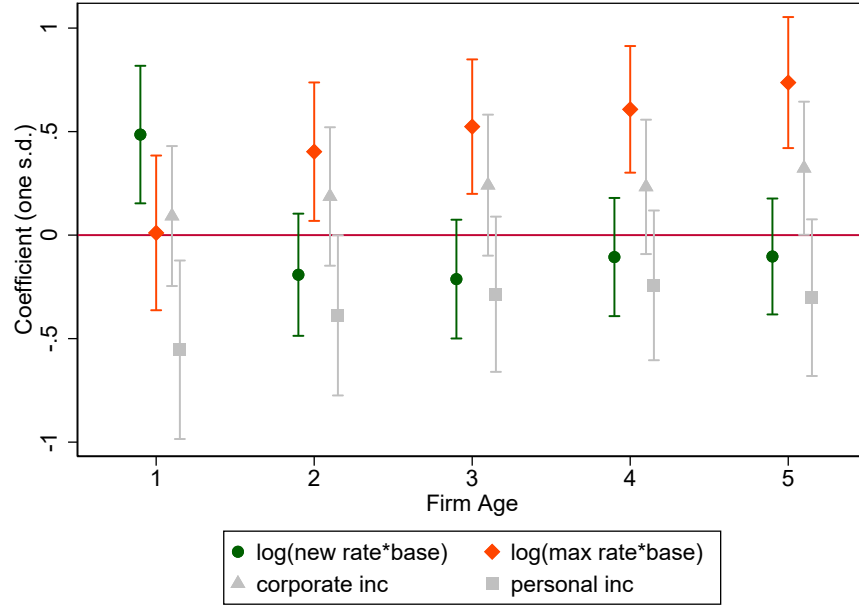
Figure 8: Initial UI Taxes in the Year of Entry Generate Potential Selection



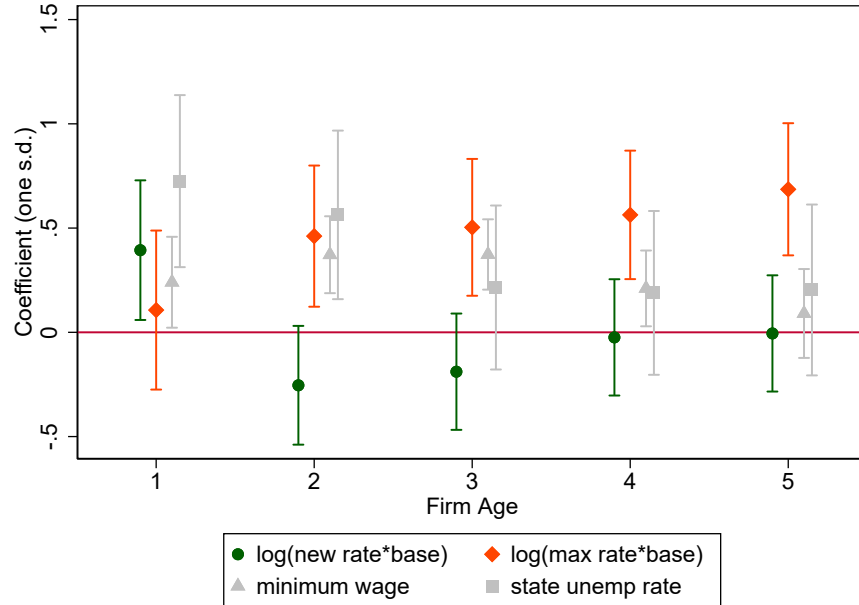
NOTE:  $N = 31,670$ . This figure presents regression estimates at the age-state-sector-year level of how exit rates vary by age with the initial UI tax regime in the year of entry. Plots coefficients from a single regression of firms aged 1-5 of  $\log(\text{new rate} \cdot \text{base})$  interacted with firm age;  $\log(\text{max rate} \cdot \text{base})$  interacted with firm age; and  $\log(\text{new rate} \cdot \text{base})$  in the year of entry interacted with firm age. All UI tax measures are normalized to have a standard deviation of one. Regressions are weighted by the total number of firms (all ages) in the sector-state-year, and additional controls include corporate and personal income tax, UI benefit, minimum wage, and state unemployment rate as well as fixed effects for unemployment rate ventiles and benefit deciles as well as age, sector-year, sector-state, and entry year fixed effects. Error bars denote 95% confidence intervals for robust standard errors clustered at the sector-state level. Mean exit rates at each age are 23.7, 16.4, 13.8, 12.1, and 11.0, respectively.

Figure 9: Benchmarking to Other State Variables

(A) State income taxes have no impact on exit rates

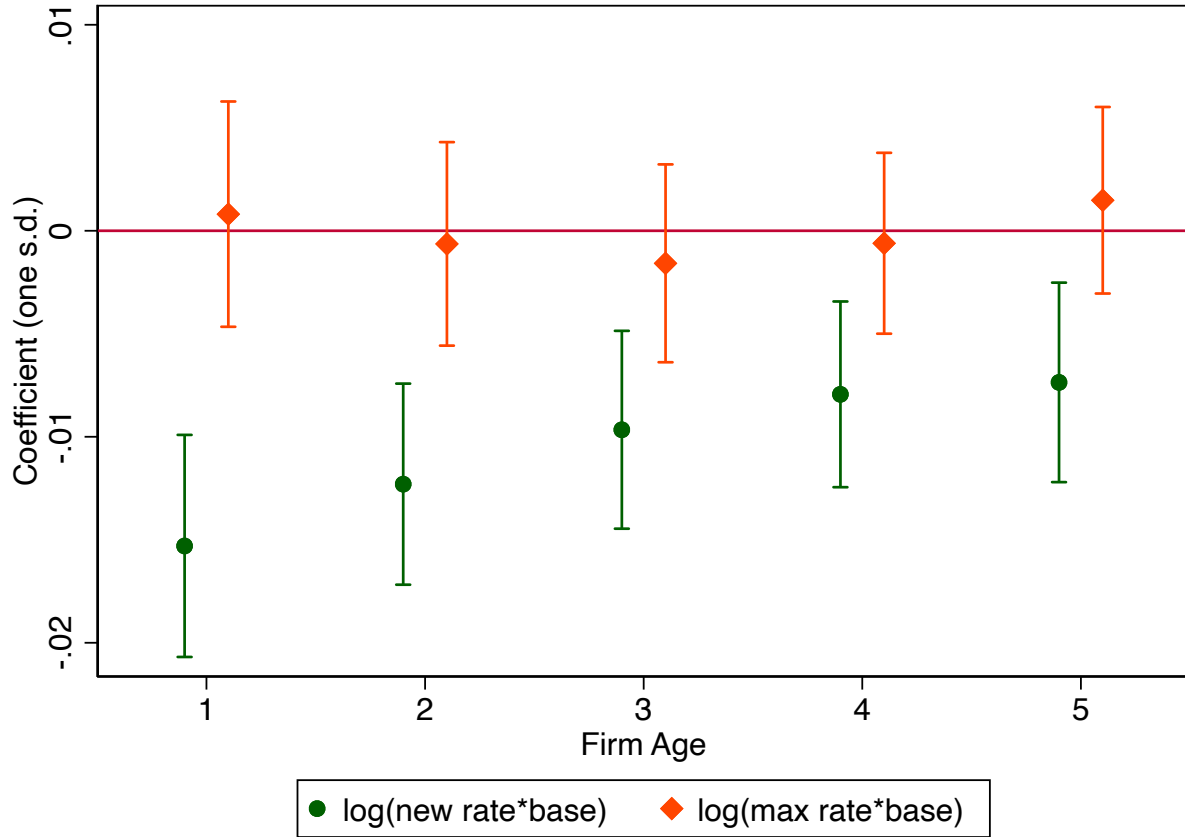


(B) UI taxes matter even with inclusion of minimum wage and unemployment rates



NOTE:  $N = 40,309$ . This figure presents regression estimates at the age-state-sector-year level of how exit rates vary by age with various state variables. Panel (a) plots coefficients from a single regression of the following variables interacted with firm age:  $\log(\text{new rate} \cdot \text{base})$ ;  $\log(\text{max rate} \cdot \text{base})$ ; state corporate income tax rate; and state personal income tax rate. Panel (b) plots coefficients from a single regression of the following interacted with firm age:  $\log(\text{new rate} \cdot \text{base})$ ;  $\log(\text{max rate} \cdot \text{base})$ ; state minimum wage; and state unemployment rate. All state measures are normalized to have a standard deviation of one. Regressions are weighted by the total number of firms (all ages) in the sector-state-year, and additional controls include corporate and personal income tax, UI benefit, minimum wage, and state unemployment rate as well as fixed effects for unemployment rate ventiles and benefit deciles. Regressions also include sector-by-year, sector-by-state, age, and entry year fixed effects. Error bars denote 95% confidence intervals for robust standard errors clustered at the sector-state level. Mean exit rates at each age are 23.6, 16.2, 13.6, 11.9, and 10.9, respectively.

Figure 10: Higher UI Taxes Predict Lower Employment at Young Ages



NOTE:  $N = 7,284,000$ . This figure presents regression estimates at the firm-age level of how employment varies by age with the UI tax regime. Plots coefficients of  $\log(\text{new rate} \cdot \text{base})$  interacted with firm age and  $\log(\text{max rate} \cdot \text{base})$  interacted with firm age, from a single regression on a balanced sample of firms aged 1-5 where the dependent variable is log employment. Both UI tax measures are normalized to have a standard deviation of one. Regression also includes controls for corporate and personal income tax, UI benefit, minimum wage, state unemployment rate as well as fixed effects for unemployment rate ventiles and benefit deciles, and fixed effects for firm, NAICS2-year, NAICS2-state, age, and entry year. Error bars denote 95% confidence intervals for robust standard errors clustered at the sector-state level. Mean employment at each age equals 7.7, 8.3, 8.7, 9.0, and 9.2.

# Supplemental Appendix

## A.I Data Appendix

### A.I.1 New Employer Tax Dataset

We construct a dataset of new employer tax rates at the state, year, and 2-digit NAICS level, summarized in Table A.1. Statutory new employer rates are summarized in the Department of Labor’s annual reports of *Significant Measures of State UI Tax Systems*. While the majority of states assign all new employers a uniform rate, 8 states assign industry-specific new employer rates for higher experience industries, and an additional 18 states assign higher rates specifically for employers in the construction sector. Some states publish their industry-specific new employer rates, and we use these published rates whenever available. For states without industry rate information, we impute the industry average using empirical tax rates calculated from the Quarterly Census of Employment and Wages.

Some states have time-varying new employer rates, which are often calculated based on average employer costs, or the solvency of the UI trust fund. In these states, we supplement with ETA 204 Experience Rating Reports that states submit to the Department of Labor. Within these reports, states reveal the average rate charged to all employers who are ineligible for experience rating. There will sometimes be a discrepancy between new employer rates reported in the Significant Figures reports and the ETA 204 reports, and we resolve discrepancies in favor of ETA 204.

## **A.I.2 U.S. Census Bureau Data**

### **A.I.2.1 Longitudinal Business Database (LBD) and Business Dynamics Statistics (BDS)**

The LBD tracks all U.S. business establishments and firms with paid employees, starting in 1976. For each establishment, the LBD provides information on March 12th employment, annual payroll, and location (state) and industry (NAICS6). The BDS summarizes this data for public use, and we use the BDS to measure firm entry counts at the state, NAICS sector, and year level; in appendix results, we additionally use a version of the BDS that captures firm entry at the county and year level. We assign zeroes for cells that are suppressed due to disclosure risk, as the smallest count that is publicly disclosed is a count of three.

In addition to firm outcomes, we use the LBD to identify new firms entering the economy. To do this, we use Census-provided measures of the first year each establishment employs workers. To find the age of a given firm, we follow Haltiwanger et al. (2013) and take the earliest first year, among all establishments belonging to the firm nationally.

### **A.I.2.2 County Adjacency File**

The Census Bureau provides public datasets that identify all pairs of neighboring counties. We use the 2010 version and focus on pairs located in different states.<sup>29</sup>

### **A.I.2.3 Census of Construction (CCN)**

The CCN is compiled every five years as part of the Census Bureau’s Economic Census, and we use data from the 2007 and 2012 censuses for our analysis. Importantly, the CCN requires firms to report the annual amount of money spent on hiring temporary staff and leased workers,<sup>30</sup> and this value is our outcome of interest. In 2002 and prior, the form asks

---

<sup>29</sup>The dataset is accessible at <https://www.census.gov/geographies/reference-files/time-series/geo/county-adjacency.html>.

<sup>30</sup>See Section 16 of <https://www2.census.gov/programs-surveys/economic-census/2012/questionnaires/forms/cc23601.pdf>.



about leased workers but not temporary workers, resulting in reported values that are not consistent with 2007 and 2012 amounts.

### **A.I.3 Industry Characteristics**

We identify sectors (NAICS2) where we expect the cost of UI taxes to be higher and/or more salient, as discussed in Section 2. We focus on three relevant measures at the industry level calculated in 2005: turnover rate, part-time share, and labor share. The turnover rate is defined as the share of workers hired or separated within the quarter, and is measured from the Quarterly Workforce Indicators (QWI). The part-time share is defined as the share of workers with usual weekly hours below 35, and is measured from the Current Population Survey (CPS). The labor share is defined as labor compensation divided by output, and is taken from the Bureau of Labor Statistics (BLS). Sectors with above median turnover are: construction (23), retail trade (44–45), real estate (53), professional, scientific, and technical services (54), admin/support services (56), arts and recreation (71), accommodation and food (72), and other services (81). Sectors with above median part-time work include all of the above except construction and professional, scientific, and technical services, with the addition of health care (62). Sectors with above median labor share include all of the high turnover sectors except real estate and other services, with the addition of transportation and warehousing (48–49).

## A.II Appendix Tables and Figures

Table A.1: State New Employer Taxes (2003–2014)

State	Tax Formula	Mean Tax Base	New Rate	Construction
Alabama	Benefit Ratio	\$8,000	2.7%	
Alaska	Payroll Variation	\$31,900*	Industry Avg (IA)	IA
Arizona	Reserve Ratio	\$7,000	2-2.7%	
Arkansas	Reserve Ratio	\$10,800	3.3-4%†	
California	Reserve Ratio	\$7,000	3.4%	
Colorado	Reserve Ratio	\$10,300	2-4.6%†	IA
Connecticut	Benefit Ratio	\$15,000	2.1-4.8%†	
Delaware	Benefit Wage	\$10,300	2.1-2.6%†	IA
DC	Reserve Ratio	\$9,000	2.7%	
Florida	Benefit Ratio	\$7,250	2.7%	
Georgia	Reserve Ratio	\$8,700	2.62%	
Hawaii	Reserve Ratio	\$31,400*	1.9-4.7%†	
Idaho	Reserve Ratio	\$31,600*	1-3.3%†	
Illinois	Benefit Ratio	\$11,700	higher 3.1% or IA	IA
Indiana	Reserve Ratio	\$7,800	2.5-2.7%	lesser 4% or IA
Iowa	Benefit Ratio	\$23,000*	1-1.9%†	7.5-9%
Kansas	Reserve Ratio	\$8,000	3-4%†	6%
Kentucky	Reserve Ratio	\$8,300	2.7%	Max
Louisiana	Reserve Ratio	\$7,300	IA	IA
Maine	Reserve Ratio	\$12,000	1.4-3.1%†	
Maryland	Benefit Ratio	\$8,500	2.1-2.6%†	
Massachusetts	Reserve Ratio	\$13,700	2.1-2.8%†	IA
Michigan	Benefit Ratio	\$9,000	2.7%	IA
Minnesota	Benefit Ratio	\$25,500*	1-3%†	8%
Mississippi	Benefit Ratio	\$9,300	1.2-2.7%	
Missouri	Reserve Ratio	\$11,500	3.5%	IA
Montana	Reserve Ratio	\$24,200*	IA	IA
Nebraska	Reserve Ratio	\$8,400	1.3-3.5%†	Max
Nevada	Reserve Ratio	\$25,000*	2.95%	
New Hampshire	Reserve Ratio	\$10,000	2.7%	
New Jersey	Reserve Ratio	\$27,800*	2.8-3.3%†	
New Mexico	Benefit Ratio	\$19,900*	2-2.7%	
New York	Reserve Ratio	\$8,650	4%	
North Carolina	Reserve Ratio	\$18,700*	1.2%	
North Dakota	Reserve Ratio	\$23,900*	1.2-2.1%†	IA
Ohio	Reserve Ratio	\$9,000	2.7%	IA
Oklahoma	Benefit Wage	\$15,500*	1-2%†	
Oregon	Benefit Ratio	\$30,400*	2.4-3.3%†	
Pennsylvania	Both RR and BR	\$8,100	3.5-3.8%†	9%
Rhode Island	Reserve Ratio	\$16,900*	1.6-2.8%†	
South Carolina	Benefit Ratio	\$8,500	2-3.9%†	
South Dakota	Reserve Ratio	\$9,600	1.2%	
Tennessee	Reserve Ratio	\$7,800	higher 2.7% or IA	IA
Texas	Benefit Ratio	\$9,000	2.7%	IA
Utah	Benefit Ratio	\$26,500*	IA	IA
Vermont	Benefit Ratio	\$10,600	1%	IA
Virginia	Benefit Ratio	\$8,000	2.5-3.2%†	
Washington	Benefit Ratio	\$34,400*	IA	IA
West Virginia	Reserve Ratio	\$9,700	2.7%	7.5%
Wisconsin	Reserve Ratio	\$11,750	2.7-3.6%	6.6%
Wyoming	Benefit Ratio	\$20,100*	IA	IA

NOTE: Source: U.S. Dept of Labor *Significant Provisions of State Unemployment Insurance Laws*.

\*Indicates tax base that is indexed to state average wages. † Indicates new employer rates that are determined annually (based on state average, or trust fund solvency).

Table A.2: Higher UI Taxes Predict Lower Firm Entry, for Both Low- and High-Base States

Sample	Log(Number of New Firms)		Entry Rate	
	Low Base ( $\leq \$10,500$ )	High Base ( $> \$10,500$ )	Low Base ( $\leq \$10,500$ )	High Base ( $> \$10,500$ )
	(1)	(2)	(3)	(4)
Log(new rate*base)	-0.098*** (0.015)	-0.090*** (0.022)	-0.709*** (0.151)	-0.177 (0.211)
Personal inc. tax rate	0.005 (0.005)	0.004 (0.003)	0.131*** (0.042)	0.014 (0.027)
Corporate tax rate	-0.003 (0.007)	0.005** (0.002)	-0.042 (0.055)	-0.012 (0.021)
Log(UI benefits) (\$)	0.039 (0.118)	-0.340*** (0.090)	1.027 (1.238)	0.207 (0.907)
Minimum wage (\$)	-0.002 (0.007)	-0.044*** (0.007)	-0.261*** (0.060)	-0.371*** (0.082)
State unemp. rate	-0.020** (0.010)	-0.026*** (0.007)	-0.336*** (0.087)	-0.184** (0.079)
R <sup>2</sup>	0.991	0.996	0.901	0.939
Mean Outcome	6.323	7.270	7.946	8.784
Sector-Year FEs	X	X	X	X
Sector-State FEs	X	X	X	X
Unemp. and Benefit Bin FEs	X	X	X	X
Firm Weights	X	X	X	X
N	4,450	4,697	4,450	4,697

NOTE: This table presents regressions of how the level of firm entry in a sector-state pair varies with the UI tax regime, with the sample split into two bins based on the median nominal tax base (\$10,500). Columns (1)–(2) regress the log number of new (age 0) firms on UI taxes and controls; columns (3)–(4) present similar regressions for the firm entry rate, given by the number of new firms divided by the total number of firms (all ages) in the sector-state pair in the previous year (multiplied by 100). The main independent variable is the log(new rate\*base), which captures the log of the product of the new employer UI tax rate and the UI tax base. All columns include controls for the personal income and corporate tax rates, the level of UI benefits and minimum wage, and the state unemployment rate, as well as sector-year and sector-state fixed effects and fixed effects for unemployment rate ventiles and benefit deciles. All rates variables are scaled to lie between 0 and 100. In all columns, the level of observation is an NAICS sector-state-year cell; in all columns, observations are weighted by a measure of the “size” of each cell: the total number of firms (all ages) in the sector-state-year. Robust standard errors in parentheses. \*  $p < 0.10$ , \*\*  $p < 0.05$ , \*\*\*  $p < 0.01$ .

Table A.3: Higher UI Taxes Also Predict Fewer Business Registrations

	Log(Number of New Firms)	Log(Number of Applications)	Log(Number of Applications Likely to Become Firms)
	(1)	(2)	(3)
Log(new rate*base)	-0.115*** (0.018)	-0.058*** (0.014)	-0.067*** (0.017)
Personal inc. tax rate	-0.000 (0.005)	-0.004 (0.004)	0.008 (0.006)
Corporate tax rate	0.008*** (0.003)	-0.004 (0.002)	0.001 (0.003)
Log(UI benefits) (\$)	-0.115 (0.092)	-0.159** (0.071)	-0.074 (0.097)
Minimum wage (\$)	-0.033*** (0.009)	-0.007 (0.007)	-0.032*** (0.010)
State unemp. rate	-0.017* (0.010)	-0.001 (0.011)	-0.014 (0.013)
R <sup>2</sup>	0.998	0.999	0.999
Mean Outcome	9.236	11.219	10.486
Year FEs	X	X	X
State FEs	X	X	X
Unemp. and Benefit Bin FEs	X	X	X
N	510	510	510

NOTE: This table presents regressions of how the level of firm entry and business applications in a state varies with the UI tax regime. Column (1) regresses our main measure of firm entry (from BDS which captures firms with employees, pooling across all sectors with a state in a given year) on UI taxes (i.e., the product of the unweighted average new employer rate in the state and the base) and controls. Columns (2) and (3) consider alternative measures of firm entry in the form of business applications (from the Business Formation Statistics (BFS) data from the Census Bureau; see <https://www.census.gov/econ/bfs/index.html> for details); these measures capture annual business application counts, including firms with and without employees. Column (2) considers all new business applications. Meanwhile, column (3) restricts to business applications that the Census Bureau classifies as likely to become firms with employees (i.e., firms we would see in BDS); these include business applications (a) from corporations, (b) that indicate having or planning to have employees, or (c) operating in high-employment rate sectors (i.e., accommodation and food services and parts of construction, manufacturing, retail, professional/science/technical services, education, and health care). In all columns, we include state controls (including the personal income and corporate tax rates, the level of UI benefits and minimum wage, and the state unemployment rate as well as fixed effects for unemployment rate ventiles and benefit deciles) as well as state and year fixed effects. All columns restrict to 2005–2014 (because the BFS data begins in 2005). In all columns, the level of observation is a state-year cell; observations are weighted by a measure of the “size” of each cell in the BDS: the total number of firms (all ages) in the state-year. Standard errors are clustered at the state level. \*  $p < 0.10$ , \*\*  $p < 0.05$ , \*\*\*  $p < 0.01$ .

Table A.4: Higher UI Taxes Predict Lower Firm Entry, Even before the Great Recession

Sample:	Log(Number of New Firms)		Entry Rate	
	Pre GR	Post GR	Pre GR	Post GR
	(1)	(2)	(3)	(4)
Log(new rate*base)	-0.077*** (0.020)	-0.081*** (0.012)	-0.821*** (0.203)	-0.499*** (0.096)
Personal inc. tax rate	0.007 (0.006)	0.007*** (0.002)	0.030 (0.068)	0.051** (0.023)
Corporate tax rate	-0.015* (0.008)	0.003 (0.002)	-0.147** (0.069)	0.043** (0.018)
Log(UI benefits) (\$)	0.112 (0.105)	-0.167** (0.072)	1.420 (1.175)	-0.506 (0.577)
Minimum wage (\$)	-0.004 (0.007)	-0.033*** (0.007)	-0.133 (0.102)	-0.335*** (0.054)
State unemp. rate	-0.029 (0.025)	-0.014** (0.006)	-0.473 (0.352)	-0.169*** (0.049)
R <sup>2</sup>	0.998	0.996	0.961	0.934
Mean Outcome	7.089	6.913	9.712	7.922
Sector-Year FEs	X	X	X	X
Sector-State FEs	X	X	X	X
Unemp. and Benefit Bin FEs	X	X	X	X
Firm Weights	X	X	X	X
N	3,057	6,105	3,057	6,105

NOTE: This table presents regressions of how the level of firm entry in a sector-state pair varies with the UI tax regime, with the sample split into two windows: before the Great Recession (i.e., 2003–2006) and during and after the Great Recession (i.e., 2007–2014). Columns (1)–(2) regress the log number of new (age 0) firms on UI taxes and controls; columns (3)–(4) present similar regressions for the firm entry rate, given by the number of new firms divided by the total number of firms (all ages) in the sector-state pair in the previous year (multiplied by 100). The main independent variable is the log(new rate \* base), which captures the log of the product of the new employer UI tax rate and the UI tax base. All columns include controls for the personal income and corporate tax rates, the level of UI benefits and minimum wage, and the state unemployment rate as well as fixed effects for unemployment rate ventiles and benefit deciles, as well as sector-year and sector-state fixed effects. All rates variables are scaled to lie between 0 and 100. In all columns, the level of observation is an NAICS sector-state-year cell; in all columns, observations are weighted by a measure of the “size” of each cell: the total number of firms (all ages) in the sector-state-year. Robust standard errors in parentheses. \*  $p < 0.10$ , \*\*  $p < 0.05$ , \*\*\*  $p < 0.01$ .

Table A.5: Higher UI Taxes Predict Lower Firm Entry: County-Level

Sample:	Log(Number of New Firms)		Entry Rate	
	All Counties	Border Counties	All Counties	Border Counties
	(1)	(2)	(3)	(4)
Log(base)	-0.130*** (0.024)	-0.125*** (0.038)	-0.740*** (0.185)	-0.784*** (0.292)
R <sup>2</sup>	0.995	0.994	0.861	0.831
Mean Outcome	6.287	6.182	7.911	7.617
Year FEs	X	X	X	X
Unemp. and Benefit Bin FEs	X	X	X	X
County FEs	37,645	14,178	37,645	14,178

NOTE: This table presents regressions of how the level of firm entry in a county varies with the UI tax regime. The sample consists of either all counties (columns (1) and (3)) or counties that sit at state borders (columns (2) and (4)). The observation level is a county-year pair. In this analysis we focus on the tax base, as the tax rate can vary across sectors, which are pooled in the county-level data.

Columns (1) and (2) regress the log number of new (age 0) firms (plus 1) on the UI tax base and controls; columns (3) and (4) present similar regressions for the firm entry rate, given by the number of new firms divided by the total number of firms (all ages) in the sector-state pair in the previous year (multiplied by 100). All regressions include controls listed in the footer as well as economic controls, which include the personal income and corporate tax rates, the level of UI benefits and minimum wage, and the state unemployment rate as well as fixed effects for unemployment rate ventiles and benefit deciles. All rates variables are scaled to lie between 0 and 100. Observations are weighted by a measure of the “size” of each cell: the total number of firms (all ages) in the county-year. Standard errors are clustered at the county level. \*  $p < 0.10$ , \*\*  $p < 0.05$ , \*\*\*  $p < 0.01$ .

Table A.6: Higher UI Taxes Predict Especially Low Employment When Taxes Likely Matter More

	Age 1 Employment < 5							
	(1)	(2)	(3)	(4)	(5)	(6)	(7)	(8)
Log(new rate*base)	0.023 (0.148)	-0.128 (0.284)	-0.348* (0.210)	-0.252 (0.230)	-0.199 (0.196)	-0.347 (0.219)	-0.321* (0.171)	-0.321* (0.171)
High turnover × Log(new rate*base)		0.209 (0.328)						
High part-time × Log(new rate*base)			0.657** (0.287)					
High labor share × Log(new rate*base)				0.449 (0.294)				
High turnover and part-time × Log(new rate*base)					0.471 (0.289)			
High turnover and labor share × Log(new rate*base)						0.646** (0.290)		
High part-time and labor share × Log(new rate*base)							1.081*** (0.323)	
High turnover, part-time, and labor share × Log(new rate*base)								1.081*** (0.323)
Mean Outcome	70.4	70.4	70.4	70.4	70.4	70.4	70.4	70.4
NAICS2-Year FEs	X	X	X	X	X	X	X	X
NAICS2-State FEs	X	X	X	X	X	X	X	X
Economic controls	X	X	X	X	X	X	X	X
N	4,793,000							

NOTE: This table presents regressions of how firm size at entry varies with the UI tax regime, based on whether the taxes should be relatively costly and/or salient to firms. The dependent variable is an indicator equal to 100 if the firm employs fewer than five workers in its first year, and 0 otherwise. All columns replicate column (10) of Table 2 but add in interactions between the UI taxes and indicators for whether the sector is above median in terms of worker turnover rates, part-time rates, and labor share, relative to other sectors. Above-median turnover industries: construction, retail trade, real estate, professional/science/technical services, admin/support services, arts and entertainment, accommodations and food, and other services. Above-median part-time industries: retail trade, real estate, admin/support services, health, arts and entertainment, accommodations and food, and other services. Above-median labor share: construction, retail trade, transportation and warehousing, professional/science/technical services, admin/support services, arts and entertainment, and accommodations and food. In all columns, the level of observation is a firm-NAICS2-state-year cell. Robust standard errors in parentheses. \*  $p < 0.10$ , \*\*  $p < 0.05$ , \*\*\*  $p < 0.01$ .



Table A.7: Higher UI Taxes Predict Lower Firm Entry Counts When Taxes Likely Matter More

	Log(Number of New Firms)							
	(1)	(2)	(3)	(4)	(5)	(6)	(7)	(8)
Log(new rate*base)	-0.100*** (0.010)	-0.078*** (0.018)	-0.117*** (0.017)	-0.084*** (0.014)	-0.100*** (0.016)	-0.084*** (0.014)	-0.099*** (0.013)	-0.099*** (0.013)
High turnover $\times$ Log(new rate*base)		-0.032 (0.023)						
High part-time $\times$ Log(new rate*base)			0.033 (0.022)					
High labor share $\times$ Log(new rate*base)				-0.028 (0.022)				
High turnover and part-time $\times$ Log(new rate*base)					-0.000 (0.022)			
High turnover and labor share $\times$ Log(new rate*base)						-0.030 (0.022)		
High part-time and labor share $\times$ Log(new rate*base)							-0.003 (0.023)	
High turnover, part-time, and labor share $\times$ Log(new rate*base)								-0.003 (0.023)
R <sup>2</sup>	0.995	0.995	0.995	0.995	0.995	0.995	0.995	0.995
Mean Outcome	6.972	6.972	6.972	6.972	6.972	6.972	6.972	6.972
Sector-Year FEs	X	X	X	X	X	X	X	X
Sector-State FEs	X	X	X	X	X	X	X	X
Unemp. and Benefit Bin FEs	X	X	X	X	X	X	X	X
Firm Weights	X	X	X	X	X	X	X	X
N	9,162	9,162	9,162	9,162	9,162	9,162	9,162	9,162

NOTE: This table presents regressions of how the level of firm entry in a sector-state pair varies with the UI tax regime, based on whether the taxes should be relatively costly and/or salient to firms. All columns replicate column (5) of Table 2 but add in interactions between the UI taxes and indicators for whether the sector is above median in terms of worker turnover rates, part-time rates, and labor share, relative to other sectors. Above-median turnover industries: construction, retail trade, real estate, management, health, arts and entertainment, accommodations and food, and other services. Above-median part-time industries: retail trade, real estate, management, health, arts and entertainment, accommodations and food, and other services. Above-median labor share: construction, retail trade, transportation and warehousing, professional/science/technical services, management, arts and entertainment, and accommodations and food. In all columns, the level of observation is an NAICS sector-state-year cell, and observations are weighted by a measure of the “size” of each cell: the total number of firms (all ages) in the sector-state-year. Robust standard errors in parentheses. \*  $p < 0.10$ , \*\*  $p < 0.05$ , \*\*\*  $p < 0.01$ .

Table A.8: Entry Rate Patterns Vary by Indexing Policies

Sample:	Non-Indexed States				Indexed States			
	(1)	(2)	(3)	(4)	(5)	(6)	(7)	(8)
Panel A: Dependent variable: Log(Number of New Firms)								
Log(new rate*base)	-0.105*** (0.016)	-0.065** (0.032)	-0.116*** (0.023)	-0.076*** (0.025)	-0.083*** (0.016)	-0.075*** (0.023)	-0.122*** (0.027)	-0.076*** (0.018)
High turnover $\times$ Log(new rate*base)		-0.057 (0.039)				-0.011 (0.028)		
High part-time $\times$ Log(new rate*base)			0.023 (0.034)				0.069** (0.028)	
High labor share $\times$ Log(new rate*base)				-0.050 (0.035)				-0.013 (0.027)
Panel B: Dependent variable: Entry Rate								
Log(new rate*base)	-0.225* (0.130)	0.201 (0.244)	-0.301 (0.208)	0.028 (0.186)	-0.492*** (0.138)	-0.366** (0.159)	-0.834*** (0.223)	-0.343*** (0.121)
High turnover $\times$ Log(new rate*base)		-0.613* (0.312)				-0.186 (0.218)		
High part-time $\times$ Log(new rate*base)			0.154 (0.280)				0.612*** (0.235)	
High labor share $\times$ Log(new rate*base)				-0.439 (0.279)				-0.270 (0.218)
Sector-Year FEs	X	X	X	X	X	X	X	X
Sector-State FEs	X	X	X	X	X	X	X	X
Firm Weights	X	X	X	X	X	X	X	X

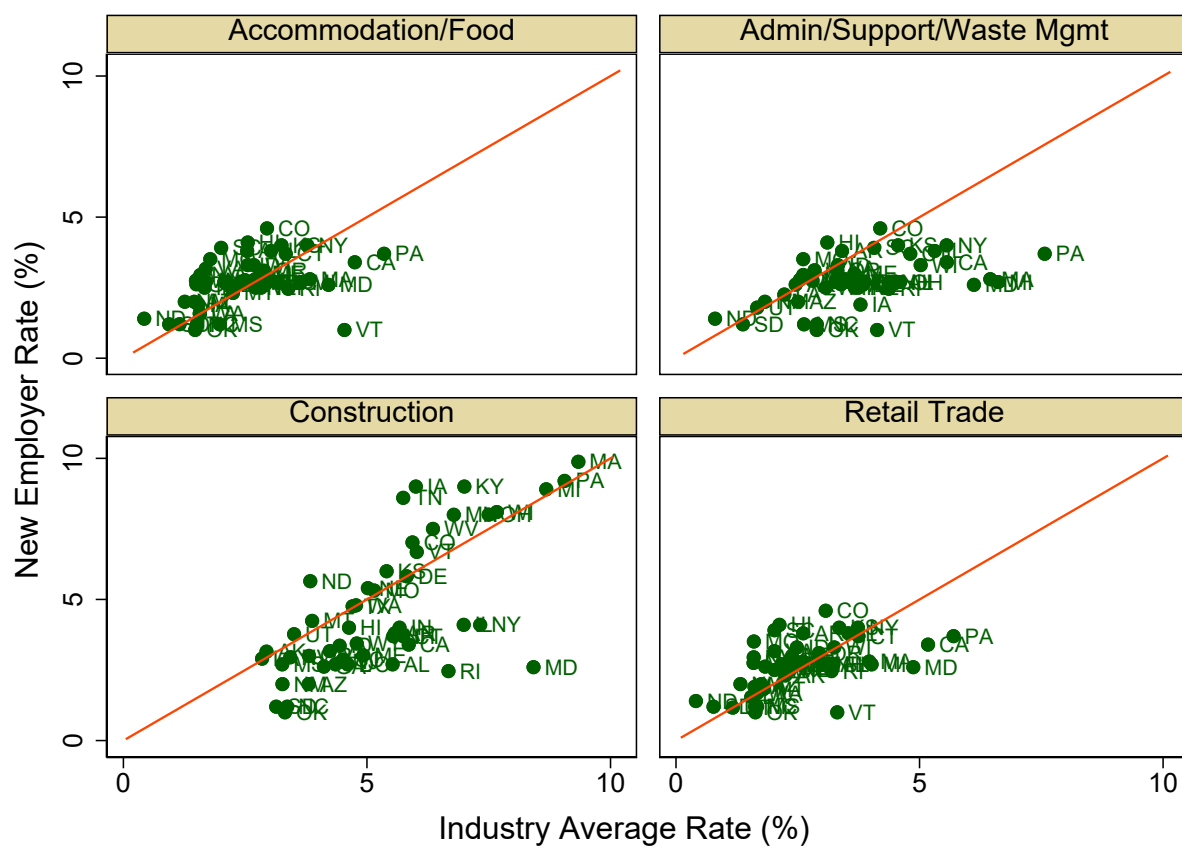
NOTE: This table presents regressions of how the level of firm entry in a sector-state pair varies with the UI tax regime and industry characteristics, split by whether the state uses an indexing policy. Columns (1)–(4) study non-indexed states, while (5)–(8) study indexed states (Alaska, Hawaii, Idaho, Iowa, Minnesota, Montana, Nevada, New Jersey, New Mexico, North Carolina, North Dakota, Oklahoma, Oregon, Rhode Island, Utah, Washington, and Wyoming). All columns replicate column (5) of Table 2, within the given sample, augmented with the interactions shown. All rates variables are scaled to lie between 0 and 100. In all columns, the level of observation is an NAICS sector-state-year cell and the observations are weighted by a measure of the “size” of each cell: the total number of firms (all ages) in the sector-state-year. Robust standard errors in parentheses. \*  $p < 0.10$ , \*\*  $p < 0.05$ , \*\*\*  $p < 0.01$ . Non-indexed states: N=6,107; mean log number of new firms=7.138; mean entry rate=8.547. Indexed-states: N=3,055; mean log number of new firms=6.285; mean entry rate=8.412.

Figure A.1: Entry Rate of Age 0 Firms (1978–2020)



NOTE: This figure plots the ratio of age 0 firms divided by the total number of firms, source from the Business Dynamics Statistics.

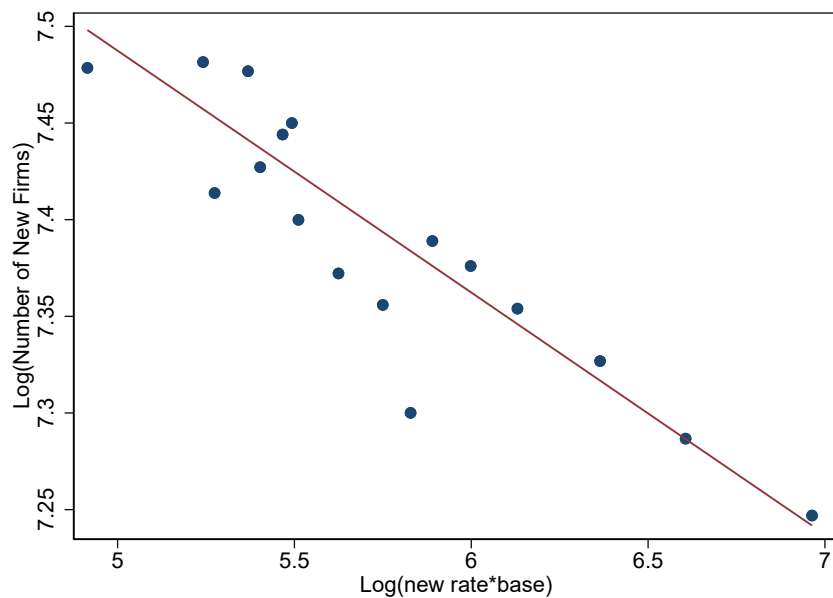
Figure A.2: Comparison of New Employer Rates and Industry Averages (2011)



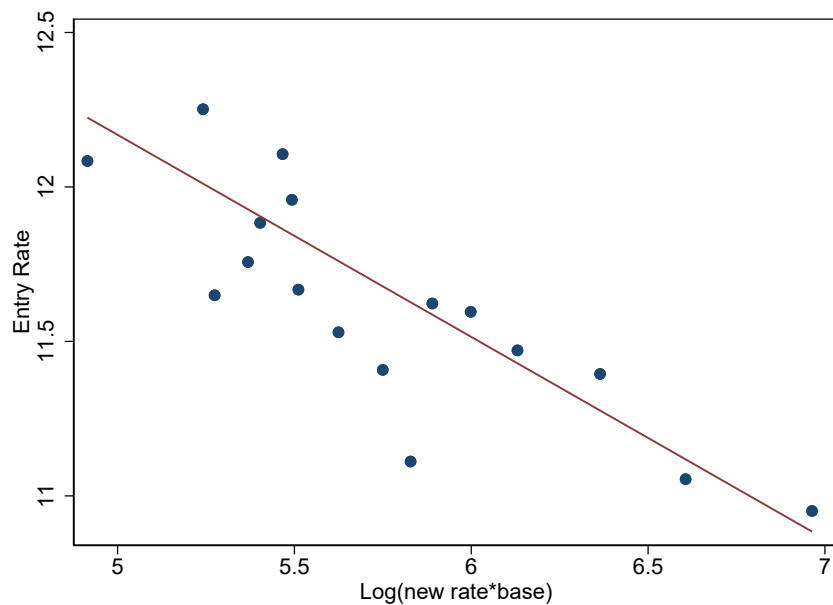
NOTE: This figure plots the four sectors with the highest share of taxable wages. Average industry rates calculated from the Quarterly Census of Employment and Wages, and equal to UI contributions divided by total taxable wages.

Figure A.3: Effect of UI Taxes on Firm Entry across Tax Level

(A) Effect of UI tax on log(number of new firms) by tax level



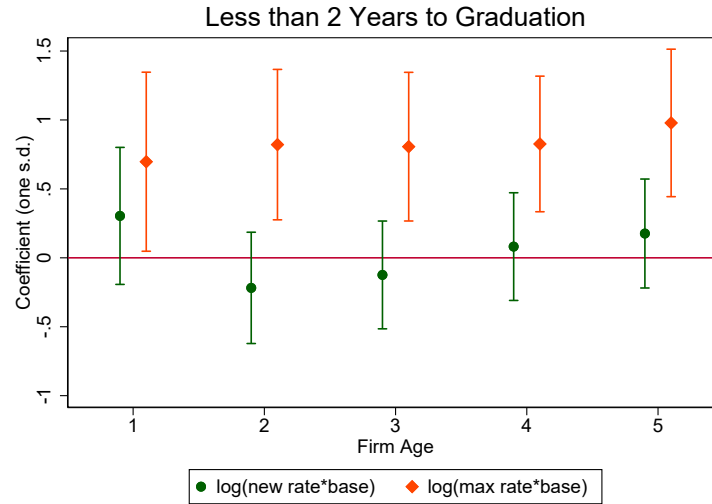
(B) Effect of UI tax on entry rate by tax level



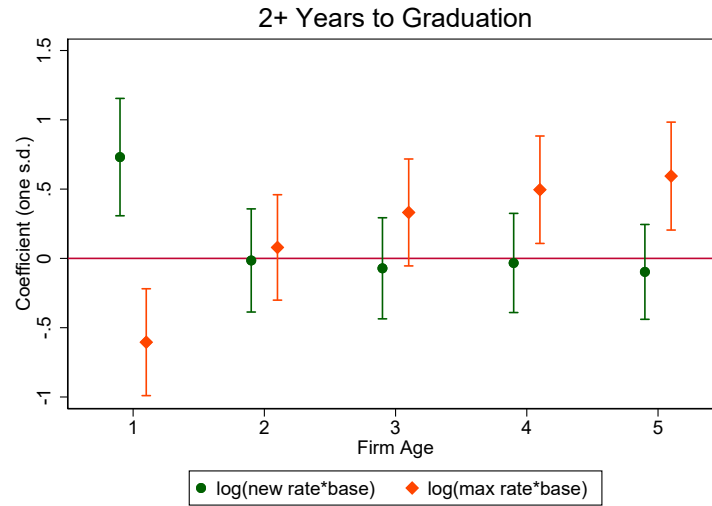
NOTE: This figure presents binned regressions of firm entry on UI taxes, for the log number of new firms (Panel A) and the entry rate (Panel B). Specifications are based on columns (2) and (5) of Table 2.

Figure A.4: Effect of UI Taxes on Firm Exit, by Age and Time to Graduation

(A) Graduate to experience-rated tax rates within 2 years



(B) Graduate to experience-rated tax rates after 2+ years



NOTE:  $N = 18,992$  (Panel A) and  $N = 21,317$  (Panel B). This figure presents regression evidence that taxes calculated using new employer rates disproportionately predict lower survival *when* they are the relevant tax rates, while taxes calculated using maximum rates disproportionately predict lower survival when the new rates are no longer relevant. Each panel plots coefficients of tax measures interacted with firm age, for either the sample of states that graduate firms to experience-rated tax rates before age 2 (Panel A) or the sample that graduate after age 2 (Panel B). Regressions are weighted by firm count, and additional controls include corporate and personal income tax, UI benefit, minimum wage, state unemployment rate, as well as fixed effects for unemployment rate ventiles and benefit deciles and sector-by-year, sector-by-state, entry-year, and age fixed effects.