

Loyalka, Prashant; Mistree, Dinsha; Fairlie, Robert W.; Khanna, Saurabh

**Working Paper**

## Job Training, English Language Skills, and Employability: Evidence from an Experiment in Urban India

IZA Discussion Papers, No. 17469

**Provided in Cooperation with:**

IZA – Institute of Labor Economics

*Suggested Citation:* Loyalka, Prashant; Mistree, Dinsha; Fairlie, Robert W.; Khanna, Saurabh (2024) : Job Training, English Language Skills, and Employability: Evidence from an Experiment in Urban India, IZA Discussion Papers, No. 17469, Institute of Labor Economics (IZA), Bonn

This Version is available at:

<https://hdl.handle.net/10419/308328>

**Standard-Nutzungsbedingungen:**

Die Dokumente auf EconStor dürfen zu eigenen wissenschaftlichen Zwecken und zum Privatgebrauch gespeichert und kopiert werden.

Sie dürfen die Dokumente nicht für öffentliche oder kommerzielle Zwecke vervielfältigen, öffentlich ausstellen, öffentlich zugänglich machen, vertreiben oder anderweitig nutzen.

Sofern die Verfasser die Dokumente unter Open-Content-Lizenzen (insbesondere CC-Lizenzen) zur Verfügung gestellt haben sollten, gelten abweichend von diesen Nutzungsbedingungen die in der dort genannten Lizenz gewährten Nutzungsrechte.

**Terms of use:**

*Documents in EconStor may be saved and copied for your personal and scholarly purposes.*

*You are not to copy documents for public or commercial purposes, to exhibit the documents publicly, to make them publicly available on the internet, or to distribute or otherwise use the documents in public.*

*If the documents have been made available under an Open Content Licence (especially Creative Commons Licences), you may exercise further usage rights as specified in the indicated licence.*

DISCUSSION PAPER SERIES

IZA DP No. 17469

**Job Training, English Language Skills,  
and Employability: Evidence from an  
Experiment in Urban India**

Prashant Loyalka  
Dinsha Mistree  
Robert Fairlie  
Saurabh Khanna

NOVEMBER 2024

## DISCUSSION PAPER SERIES

IZA DP No. 17469

# Job Training, English Language Skills, and Employability: Evidence from an Experiment in Urban India

**Prashant Loyalka**  
*Stanford University*

**Dinsha Mistree**  
*Stanford University*

**Robert Fairlie**  
*UCLA, NBER and IZA*

**Saurabh Khanna**  
*Stanford University*

NOVEMBER 2024

Any opinions expressed in this paper are those of the author(s) and not those of IZA. Research published in this series may include views on policy, but IZA takes no institutional policy positions. The IZA research network is committed to the IZA Guiding Principles of Research Integrity.

The IZA Institute of Labor Economics is an independent economic research institute that conducts research in labor economics and offers evidence-based policy advice on labor market issues. Supported by the Deutsche Post Foundation, IZA runs the world's largest network of economists, whose research aims to provide answers to the global labor market challenges of our time. Our key objective is to build bridges between academic research, policymakers and society.

IZA Discussion Papers often represent preliminary work and are circulated to encourage discussion. Citation of such a paper should account for its provisional character. A revised version may be available directly from the author.

ISSN: 2365-9793

**IZA – Institute of Labor Economics**

Schaumburg-Lippe-Straße 5–9  
53113 Bonn, Germany

Phone: +49-228-3894-0  
Email: [publications@iza.org](mailto:publications@iza.org)

[www.iza.org](http://www.iza.org)

## ABSTRACT

---

# Job Training, English Language Skills, and Employability: Evidence from an Experiment in Urban India

Low-income individuals in developing countries are often inadequately prepared for employment because they lack key labor market skills. We explore how employability and wage outcomes are related to English language skills in a novel, large-scale randomized field experiment conducted in Delhi, India involving 1,260 low-income individuals. Experimental estimates indicate that a job training program that emphasizes English language skills training substantially increases English language skills as well as employability and estimated wages (as assessed by hiring managers through interviews) for regular jobs and employability for jobs that specifically require English language skills. Program effects hold regardless of gender, social class, or prior employment. We furthermore find that participants enjoy improved employability and estimated wage outcomes because the program improves their English language skills. Taken together, our results suggest that English language skills training, which is surprisingly underutilized in developing countries, may provide considerable economic opportunities for individuals from low-income backgrounds.

**JEL Classification:** C93, I25, I26, J24, O15

**Keywords:** English, employability, opportunities, poverty reduction, field experiment

**Corresponding author:**

Robert W. Fairlie  
University of California, Los Angeles  
Los Angeles  
California 90095  
USA  
E-mail: rfairlie@ucla.edu

# Job Training, English Language Skills, and Employability: Evidence from an Experiment in Urban India

## 1. Introduction

Individuals from low-income backgrounds often lack in-demand skills that can help them obtain employment, realize higher earnings, and experience upward economic mobility.

Governments and development organizations have sought to respond to this gap by introducing a range of job training programs (Fox and Kaul 2017, Card, Kluve, and Weber 2010 and 2018, World Bank 2018). These programs typically focus on vocational training as well as general science and math skills (De Grip and Sauermann 2012, Hanushek, et al. 2017, Kluve, et al. 2019).

A potentially important set of skills that low-income individuals in developing countries frequently lack is English language skills. Such skills are often required for work in emerging service sectors such as tourism, data entry, call centers, and business process outsourcing (Jensen 2012). English is used to carry out trade and commerce in and across linguistically diverse countries (Egger and Lassman 2012, Fenske and Kala 2021). Beyond the value of English language skills for enhancing human capital, the ability to communicate in English may also help workers signal their ability levels to prospective employers (Spence 1976, Heckman, Stixrud, and Urzua 2006, Piopiunik, et al. 2020). Surprisingly, there has been little emphasis on job training programs that focus on providing English language skills and essentially no rigorous evidence on the effectiveness of these programs, especially among low-income individuals in developing countries.

The purpose of this study is to provide new evidence on the economic value of learning English language skills in a developing country context. We examine whether participating in a

training program that primarily focuses on English language skills increases the likelihood of employability and higher wages (as assessed or estimated by hiring managers through interviews). We also provide results on heterogeneous treatment effects, using these interactions to shed light on the empirical importance of rationales for providing training subsidies. We further examine whether improved English language skills are a mediating factor in explaining the effects of such a program on employability and estimated wages.

To fulfill these objectives, we conduct the first large-scale, randomized field experiment evaluating English language skills training. We focus on India, a developing country where only about eleven percent of the population speaks English (Indian Census 2011). There are half a billion workers in India for whom many could potentially benefit from English language skill training. Furthermore, as India expands its services sector and further integrates with the global economy, linguistic barriers may exacerbate existing social and economic inequalities. In the experiment, 1,260 low-income youth in India were randomly assigned at the individual-level to receive either an employability training program that emphasizes English language skills or were deferred to enter the program twelve months later. Treated individuals were enrolled for 100-minute sessions, six days a week for one year.

Because the randomized evaluation was interrupted by the COVID-19 pandemic and a national lockdown, we used innovative means to assess employability outcomes and English language skills. To measure employability outcomes, individuals from both the treatment and control groups participated in online, automated job interviews in which their responses were video recorded using software designed by one of the largest employability screening firms in the country. A team of third-party hiring managers then watched the videos and assessed the employability of the participants, with each individual assessed independently by multiple hiring

managers.<sup>5</sup> To assess English language skills, we conducted an over-the-phone assessment developed by the employability screening firm to measure participants' ability to speak and understand English. Beyond enabling us to assess treatment and control group participants during a pandemic and stringent lockdown, our measures of employability are distinct in that they enable us to obtain objective measures of employability and estimated wages for a large number of study participants in a developing country context with relatively high uptake and low cost.

We report four sets of results from the experimental analysis. First, the job training program increases employability and estimated wages for regular jobs and employability for jobs that require English language skills. Second, the program substantially increases English-language (speaking and listening) skills. Third, we find that the program is effective for a range of groups delineated by gender, social class, or prior employment. Fourth, individuals participating in the training program enjoy an increased likelihood of employability and higher starting wages by having enhanced English-language skills. Even though our results are robust, our methodological approach likely undercounts the labor market impacts of learning English because of potential additional effects on exam-based opportunities such as the likelihood of completing a higher level of education or improving the chances of qualifying for a government job. Taken together, our results indicate that English language training has broad-based effects on the employability outcomes of individuals from low-income backgrounds.

This paper contributes to two main strands of literature. First, the findings advance the literature on the effectiveness of job training programs. Prior scholarship finds that job search

---

<sup>5</sup> The hiring managers in this study were selected from industries that students indicate are target private sector opportunities. In discussions with hiring managers as well as job-seekers we learned that much of the hiring for entry level jobs in these sectors takes place through formal processes rather than referral.

assistance programs are highly effective, although skilling programs generally show more mixed results (Card, Kluve, and Weber 2010, 2018). The evidence is the least clear for evaluations of skilling programs in developing countries such as India, however, showing decidedly mixed results (Prillaman, et al. 2017). Many of these programs do not prepare participants well for the job market. These programs, however, do not specialize on English which might be the most important skill for many jobs in certain developing countries, especially with the growth in services-based economies. Perhaps job training that focuses on English language skills is key? We provide the first experimental evidence on this question.

Second, the findings contribute to our understanding of the broader question of how valuable English skills might be in the labor market of a developing country. Our paper builds on the few studies that examine the value of English language skills. Using survey data on employment and income from Mumbai, Munshi and Rosenzweig estimate considerably higher returns for English skills over schooling (2006). Along the same lines, Azam, Chin, and Prakash (2013) estimate the association between English-language skills and wages, finding that that hourly wages are on average 34 percent higher for men who speak fluent English and 13 percent higher for men who speak a little English relative to men who do not speak English. In a smaller study in West Bengal, Chakraborty and Bakshi (2016) find that a 10 percent lower probability of learning English is associated with declines in weekly wages on the order of 8 percent. These results are in line with similar studies conducted in Turkey (Di Paolo and Tansel 2015), in China (Asadullah and Xiao 2019), and among Hispanics entering the labor pool in the United States (Gonzalez 2005). We provide the first experiment-based evidence on the value of English-language skills.



## **2. Experiment and Data**

### *2.1 Description of the Job Training Program*

Freedom Employability Academy (FEA), formerly Freedom English Academy, provides a free, in-person employability training program for individuals 15 or older. Individuals, mostly from low-income and lower middle-income households sign up for 100-minute sessions for six days a week for one year. In contrast to other job training programs that tend to focus on providing skills for low-end jobs, FEA's curriculum focuses on providing skills that the organization believes will lead to professional jobs. The curriculum primarily focuses on English language training but also teaches computer skills, exposure to different kinds of professional opportunities, and the development of personal qualities such as the value of perseverance and hard work.

FEA operates branches across urban areas in northern India, with a concentration of branches in Delhi, the location of this study. At the beginning of the study in July 2019, FEA operated 54 branches in the metropolitan area, with each branch capable of supporting two concurrent sessions of 20 students, with 8 sessions scheduled per day (320 available slots at a single branch). FEA starts new sessions and enrolls students throughout the year. Instead of a program-wide start date like what one might find in a typical school system, FEA sessions start following a 7-day observation period with a full set of students. Since the training is free and the program is well-regarded, most branches and sessions maintain long waitlists of individuals who want to join the program.

### *2.2 Experimental Design and Data Collection*

The randomized controlled trial was designed as follows. Whenever a new session in Delhi was opened between July 12 and August 28, 2019, all potential students from the branch's waitlist were notified; additionally, FEA posted its normal advertising in the neighborhood. Potential students came to the branch for seven days of observation. At the start of this observation period, individuals took a baseline survey in which they provided background information, indicated whether they were currently employed, and what their expected wages would be after participating in the job training program. On Day 6, individuals were randomized to treatment (acceptance into the FEA program) and control conditions (deferral from the FEA program) within each session. On Day 7, individuals were informed whether they had been accepted into the FEA program or whether they had been deferred from the program.<sup>6</sup>

Altogether, 1,260 individuals were included in the study, with 648 individuals randomized to the treatment group and 612 individuals randomized to the control group.<sup>7</sup> Appendix Table 1 presents tests for balance on baseline observables across the treatment and control conditions. The table presents the results from a total of 8 tests comparing average baseline variable values between the treatment group and the control group.<sup>8</sup> Out of the 8 tests, only one is statistically significant, and at the 5% level. As such, the results suggest that balance was achieved across the treatment and control conditions.

After the baseline stage, individuals in the treatment group attended the program. While the program is normally for a full year, it was interrupted by the Covid-19 pandemic. A national

---

<sup>6</sup> Individuals were included in the study if they were 18 years or older, if they indicated that they planned to attend the course for a full year, and if they agreed to participate in the study. Individuals in the control group were deferred from the program until the conclusion of the study, at which time they were given preferential access for enrolling.

<sup>7</sup> Only 11 out of 648 students assigned to the treatment group did not enroll in the program. None of the students assigned to the control group enrolled in the program during the study period. Compliance of the control group was assured through administrative procedures that FEA put into place to ensure that participants from the control group could not enroll during the period of study at any FEA branch.

<sup>8</sup> Heteroskedastic-robust standard errors are estimated and reported.

lockdown was implemented in India on March 25, 2020, preventing any further in-person instruction. FEA initially encouraged instructors to keep in touch with students every few days over WhatsApp, but no further instructional material was provided. As it became clear that the COVID-19 pandemic would bring long-term disruptions to operations, the decision was made to conduct endline assessments from mid-June to mid-August 2020.

### *2.3 Outcome Measures*

Two novel assessment tools, designed to measure the employability outcomes and English language skills, were administered to treatment and control participants. The two assessment tools were provided by one of India's leading employability assessment firms.<sup>9</sup> The first was an over-the-phone assessment to measure English language (listening and speaking skills). The second was an online, automated job interview assessment that video-recorded participant responses to a set of interview questions: first, five questions in Hindi, and then a different five questions in English.<sup>10</sup>

Once the endline information was collected from all of the study participants, we recruited a team of twenty hiring managers to assess the employability of the participants. The twenty hiring managers were selected based on their levels of experience and generally came from the sectors that participants had initially expressed interest in joining. Because they mostly

---

<sup>9</sup> As of 2019, more than 5,000 companies used this firm's assessments to assist with their hiring decisions.

<sup>10</sup> According to both the assessment firm and the hiring managers that we included, resume screening and interviews are generally regarded as the most important aspect for making hiring decisions. We chose not to include resume screening in our simulated hiring assessment as non-skill-based factors like religion, caste, and educational history would have improperly influenced the assessment. Also, hiring managers were asked how much weightage various parts of a job application factored in decision-making. They indicated that interviews are about twice as important in making hiring decisions than resumes (23.9% average weightage given to resumes versus 37.3% average weightage given to interviews).

worked at large companies, the hiring managers had experience in hiring across a variety of entry-level jobs.

For each study participant, three hiring managers were randomly selected and, blind to the participant's treatment condition, were asked to watch the participant's recorded interview. A hiring manager was asked to rate the likelihood that he or she would hire the participant on a 0 to 100 scale, along with the expected starting monthly salary if an individual were likely to join that organization. The likelihood of employability and the starting salary was averaged across the three hiring managers for each participant.

This simulated employability assessment has several benefits. Perhaps most importantly, it enables us to obtain objective measures of employability and potential wages. Objective measures are extremely difficult to obtain in developing countries such as India in which universal income tax data is lacking and researchers must instead rely on survey responses. Survey responses on immediate employability and expected wages can be inaccurate. Additionally, the control group received the treatment the following year and any labor market outcomes measured beyond one year of the study might not be helpful. Employability and estimated wages at endline avoid this timing problem.<sup>11</sup>

We furthermore are able to obtain these objective measures for a large number of study participants with relatively high take-up and low cost. Experiments that evaluate job training programs in either developed or developing countries typically have a difficult time tracking participants, especially when they are from disadvantaged backgrounds. In our case, it would

---

<sup>11</sup> The program itself could theoretically impact employability outcomes through a signaling effect in the market or by providing participants with information about the labor market, but in the experiment hiring managers (who were drawn from the real world) were asked to estimate students' employability based on their recorded interview and were blind to whether the student had participated in the FEA program or not. The lack of positive signaling and labor market information effects would indicate that our experimental estimates are likely lower bound estimates of the effects of the program.

have been extremely difficult to track low-income, urban youth with high rates of mobility and constantly changing contact information into their first post-program jobs. In addition, because our assessments were conducted through an online phone-based application, we were able to reach a large number of study participants and achieve a relatively high follow-up rate, even with the extreme challenge of a stringently enforced national lockdown (see subsection 3.5). All of these advantages might prove useful in settings beyond the constraints imposed by COVID.

Relying on a simulated employability assessment came with several benefits, but likely undervalues the true effect sizes of the FEA program. This undervaluation is likely for two reasons. First, a core objective of the program is to expose students to career paths that they would not have otherwise considered to be viable. It is likely that those that attended FEA choose to apply for higher earning jobs compared to those that did not attend FEA. Second, the skills that FEA develops are important for getting accepted into higher education programs. The FEA program also helps their students apply for higher studies. University degrees and other higher education certificates are highly valuable on the job market, as many professional-level jobs require them. Our simulated employability assessment cannot account for changes in individuals' career aspirations or enhanced abilities to pursue further studies which might have increased long-term employability and earnings.

## *2.4 Statistical Analysis*

Our general approach for estimating treatment effects is to regress outcomes measured at follow-up on a dummy variable indicating treatment assignment, baseline controls and strata (sessions) using the following model:

$$Y_i = \alpha_0 + \alpha_1 T_i + X_i \beta + \tau_j + \varepsilon_i$$

where  $Y_i$  is the outcome of interest measured at endline for individual  $i$ ;  $T_i$  is a dummy variable indicating the treatment assignment of individual  $i$ ;  $X_i$  is a vector of baseline control variables and  $\tau_j$  are strata fixed effects. We estimate treatment effects with and without the baseline controls  $X_i$ . The baseline controls include gender, age, whether the individual attended or attends college, whether each parent attended high school or not, a wealth index (z-score) based on household asset ownership, whether the individual is currently employed, and expected monthly wages post-training (in rupees). We estimate and present robust standard errors.

### 3. Results

#### *3.1 Main Impacts of Job Training on Employability and Estimated Wages*

Individuals assigned to the job training program have higher levels of employability and estimated wages than individuals not assigned to the program (Table 1). According to the objective and blinded evaluations of third-party hiring managers, individuals assigned to the program—even with the shortened program that resulted in an average attendance of 4 out of 12 months—are approximately 4.2 percentage points more likely to obtain employability in an entry level job.<sup>12</sup> The result is statistically significant at the 1% level. According to the hiring managers, individuals assigned to the program also earn an average of 568 rupees per month more in starting salaries than individuals not assigned to the program (statistically significant at the 5% level).<sup>13</sup> The results are similar when we control for additional baseline covariates (even columns) or not (odd columns).

---

<sup>12</sup> The pandemic not only resulted in partial or full closures of FEA training centers for periods of time but also resulted in much more inconsistent attendance than in periods before or after the pandemic. Because FEA keeps strict attendance records, we were able to observe attendance each day. On average, a student attended the program for 104 days between the above-mentioned dates. Assuming a month has 30 days and students do not attend for four of those days per month (as Sundays are a holiday), students effectively attended the program for 4 months.

<sup>13</sup> The average highest monthly estimated starting salary for the control group was 12,324 rupees per month.

Turning to instrumental variable (IV), local average treatment effect (LATE), estimates which examine the dosage effects of actually attending the program, as well as a simple extrapolation of the effects of increased dosage, we find large impacts of the job training program on employability and wages. According to Table 2, attending one day of the program increases the likelihood of employability in an entry-level job by approximately 0.04% (statistically significant at the 1% level—see Column 1). Attending one day of the program also increases an individual’s monthly salary in that entry-level job by approximately 5.2 rupees (statistically significant at the 5% level—see Column 2). Extrapolating these results, we find that attending 75% of the full program (or 9 out of 12 months) increases individuals’ likelihood of obtaining employment in an entry level job by 9.1 percentage points. Attending 75% of the full program also increases individuals’ monthly salary by 1,223 rupees per month. By completing 9 months of FEA, an individual should expect a starting salary that is approximately 10% higher than if they had not enrolled in the program. Assuming individuals work for approximately 45 years (from the age of 21 to 65) and that they receive annual salary increments of 7 percent, those who complete 75% of the job training program make approximately 4,500,600 rupees more on average (in nominal terms) over their careers than those who do not attend the program.<sup>14</sup>

These estimates may well be lower-bound estimates as they only consider the direct effect of attending the program on how well individuals would, at present, fare in finding an

---

<sup>14</sup> We adopt a conservative 7% annual salary increment. Indian firms are routinely surveyed on salary increments. [Aon Consulting](#) has been surveying Indian firms for 26 years. Since 2007, the average salary increment has been 10.225%. [Wilson Towers Watson](#) also conducts salary increment surveys. Their data covers 2018-2021 and their annual increments are in line with Aon’s estimates. They suggest that the average salary increases 8.85%, although the COVID-19 pandemic hampered increments. It should be noted that these increments—as well as our projected career earnings—do not take inflation into account. For a full cost-benefit analysis that accounts for direct and indirect costs of the program as well as skill obsolescence and inflation in the estimation of lifetime wage benefits, see Appendix B.

entry-level job. They do not account for other ways in which the program might affect employability outcomes. For example, by increasing their skill levels through the program, individuals might be better positioned to complete further education (including college). We turn to the effects of the program on English language skills next.

### *3.2 Direct Effects on English Language Skills and English Communicating Jobs*

One of the main foci of the job training program is on improving English language skills, but does the program have a notable effect on these skills? We measure these skills by administering an oral English language test which captures both listening and speaking ability at baseline. The experimental results show that after attending the program for approximately 4 months on average, the English language skills of treated individuals increased by approximately 0.2 SDs (see Table 3, Columns 1 and 2). The results are statistically significant at the 1% level.

We also measure the expected likelihood of participants being hired for jobs requiring English communication skills (Table 3, Columns 3 and 4). Here we find that individuals assigned to the program are approximately 4.5 percentage points more likely in expectations to obtain employment in an entry level job that requires English communication skills. The results are again statistically significant at the 1% level.

Similar to the LATE estimates on employability and assessed wage outcomes in general, the LATE estimates of the effects of the program on English language skill related outcomes are substantial in magnitude (Table 4). Attending the program for 75% of the time increases English listening and speaking language skills by 0.45 SDs. Attending 75% of the program also increases the likelihood that individuals are expected to obtain employment in an entry level job that requires English language skills by 9.2 percentage points.



### *3.3. Heterogeneous Effects*

In addition to finding substantial impacts of the job training program on the employability and wage outcomes of the average participant, we find positive effects for participants from different backgrounds. With the possible exception of wages per month in a general entry level job (for which females earn more than males, statistically significant at the 10% level, and only for the specification with additional controls), we find no evidence that the effects of the program are different by gender (Table 5). Similarly, we do not find that the effects of the program on any of the employability outcomes differ by mother's education level (attended high school or not—Table 6) or current employment status (Table 7). Taken together, these heterogeneous effects results show broad-based effects of the program on individuals from different backgrounds.

Labor market discrimination is an often-used rationale for training subsidies. Another rationale for offering training subsidies is credit constraints: if training is valuable but potential low-income recipients lack the liquidity to pay for it, offering low-cost or free training may be a cost-effective way to improve access. The heterogeneity results shed light on the empirical importance of these rationales for providing subsidized or free training (Fairlie, Karlan and Zinman 2015). If for example, women face discrimination from employers, then subsidizing training may be a way of helping women overcome initial barriers to getting hired. However, we do not find evidence that women benefit more from the program. Additionally, program effects do not appear to be stronger for participants with lower family income or less prior work experience which might be related to credit constraints limiting access to job training. Again, we do not find evidence of stronger effects for groups that are likely to be more constrained along

these lines suggesting that English Language skills might be the key constraint addressed by the program.<sup>15</sup>

### *3.4 Average Causal Mediation Effects: The Role of English Language Related Skills in Affecting Employability and Wage Outcomes*

Next, we examine the mediating role that an improvement in English language skills from the program plays in increasing overall employability and wages. In doing so, we apply the potential outcomes framework to estimate the average causal mediation effect of the increase in English language skills from the program on employability and estimated wage outcomes. The potential outcomes framework is used to define the causal mediation effect as the difference in potential outcomes when the mediator takes on different values, holding treatment status remains constant (see Imai et al. 2011). The assumption of “sequential ignorability” in which (a) the treatment is assumed to be ignorable or unconfounded (reasonable in our case because of random assignment); and (b) the mediator is assumed to be conditionally independent of potential outcomes given the treatment and observed covariates, enables the decomposition of the total effect into causal components that can be identified from the data. In practice, we used the “mediate” command in Stata to simulate the counterfactual outcomes and estimate the causal mediation effect.

Regarding the likelihood of obtaining an entry-level job, we find a statistically significant average causal mediation effect with English language skills explaining 22% of the effect.

Regarding wages, we find a statistically significant average causal mediation effect with English

---

<sup>15</sup> We also provide quantile treatment effects estimates (see Appendix Figures 1A and 1B). We do not find a clear pattern of differences in effects across different quantiles of wages per month (as assessed by hiring manager’s through interviews). Effects do appear somewhat larger around the middle quantiles of English score.

language skills (listening and speaking) explaining 30% of the effect. The results thus suggest that English listening and speaking skills taught in the program have an important positive impact on employability and estimated wages.

### *3.5 Attrition – Sensitivity Analyses*

In this subsection, we assess the sensitivity of our results to attrition. Because of difficulties associated with following up with study participants during and after the national lockdown, our endline survey and assessment experienced an attrition rate of approximately 24%. According to Appendix Table 2, however, there was no significant difference between the treatment and control in the observable baseline characteristics of non-attriting participants. As with the original balance table (Appendix Table 1), the same one out of eight variables is statistically different between the treatment and control groups at the 5% level. As such, the results indicate that balance was maintained, at least in baseline observable characteristics, across the treatment and control conditions.

Appendix Tables 3 and 4 further test the sensitivity of the main impact results to dropping sessions in which attrition levels were fairly high. We are able to drop sessions without affecting the internal validity of the estimates since study participants were randomized at the individual-level within sessions that are strata or blocks (King et al. 2007). According to Appendix Table 3, the impacts of being assigned to the job training program on the likelihood of obtaining an entry-level job and wages are similar in magnitude and largely still statistically significant after dropping sessions with more than 25% attrition (Columns 1 and 2), 20% attrition (Columns 3 and 4), and 15% attrition (Columns 5 and 6). Similarly, according to Appendix Table 4, the impacts on English language skills and the probability of obtaining an English

language skills related job are slightly larger in magnitude (and maintain their statistical significance) even after dropping sessions with more than 25% attrition (Columns 1 and 2), 20% attrition (Columns 3 and 4), and 15% attrition (Columns 5 and 6).

#### **4. Conclusion**

An important barrier to earning more than subsistence levels and moving up the economic ladder in developing countries is having in-demand skills. In many low-income countries, tourism, multinational corporations, foreign direct investment and international trade create demand for English language skills, even among less-educated workers. In these countries, however, there is often a skills mismatch with too few low-income workers who possess adequate English language skills. Furthermore, businesses valuing English language skills might not be willing to invest in training new hires in these skills because English is a general skill, not a firm-specific skill, and thus could be transferred easily to another employer.

We provide evidence on a previously untested potential solution to the skills mismatch: job training programs that focus on English language skills. Evidence from our field experiment in which low-income youth in India are randomly assigned to an employability training program that emphasizes English language skills indicates that receiving intensive English-language job training increases employability and estimated wages. The effect sizes are large: attending 75% of the full program (or 9 out of 12 months) increases individuals' likelihood of obtaining employment in an entry level job by 8.8 percentage points off a base of 47.3 percent. Estimated monthly wages also increase by 1,176 rupees per month which represents 9.6 percent of the control group mean.

We then examine the importance of English language skills as a component of this training. Does the program increase English language directly, and do English skills represent a mediating factor in explaining effects on employability and wages? We find that the job training program substantially increases English-language (speaking and listening) skills. Additionally, we examine whether training increases the likelihood of being hired at jobs specifically requiring English communication and find even larger effects on employability and estimated wages for jobs that require English language skills. Using mediation analysis, we find that individuals participating in the training program enjoy an increased likelihood of employability and higher starting wages by having enhanced English-language skills (explaining 22 percent of the effect). Taken together, our results indicate that English language training has broad-based effects on the expected employability and wage outcomes of disadvantaged youth.

The findings from our field experiment also contribute to our understanding of the broader question of whether and how valuable English skills are in the labor market of developing countries. They also build on the few previous studies of the value of English language skills in developing country labor markets. These studies generally find large positive estimates of labor market returns to English-language skills (e.g. Azam, Chin and Prakash 2013; Munshi and Rosenzweig 2006; Di Paolo and Tansel 2015; Asadullah and Xiao 2019). The evidence of positive effects driven by the exogenous variation in English language skills generated by our experiment is consistent with the findings from these previous observational studies. However, more evidence is needed on this important question. The scope of the potential benefits of improving English language skills in countries such as India with a labor force of roughly 500 million is immense.

## **Acknowledgements**

Data are provided through Dataverse at <https://doi.org/10.7910/DVN/APVIVQ>

## References

- Asadullah, Niaz, and Saizi Xiao. "Labor Market Returns to Education and English Language Skills in the People's Republic of China: An Update." *Asian Development Review* 36, no. 1 (2019): 80-111.
- Azam, Mehtabul, Aimee Chin, and Nishith Prakash. "The Returns to English-Language Skills in India." *Economic Development and Cultural Change* 61, no. 2 (2013): 335-367.
- Card, David, Pablo Ibararán, Ferdinando Regalia, David Rosas-Shady, and Yuri Soares. "The Labor Market Impacts of Youth Training in the Dominican Republic." *Journal of Labor Economics* 29, no. 2 (2011): 267-300.
- Card, David, Jochen Kluve, and Andrea Weber. "Active Labour Market Policy Evaluations: A Meta-Analysis." *The Economic Journal* 120, no. 548 (2010): F452-F477.
- Card, David, Jochen Kluve, and Andrea Weber. "What Works? A Meta Analysis of Recent Active Labor Market Program Evaluations." *Journal of the European Economic Association* 16, no. 3 (2018): 894-931.
- Chakraborty, Tanika, and Shilpi Kapur Bakshi. "English Language Premium: Evidence from a Policy Experiment in India." *Economics of Education Review*. 50 (2015): 1-16.
- De Grip, Andries, and Jan Sauermann. "The Effects of Training on Own and Co-worker Productivity: Evidence from a Field Experiment." *Economic Journal* 122, no. 560 (2012): 376–99.
- Di Paolo, Antonio, and Aysit Tansel. "Returns to Foreign Language Skills in a Developing Country: The Case of Turkey." *Journal of Development Studies* 51, no. 4 (2015): 407-421.
- Egger, Peter, and Andrea Lassmann. "The Language Effect in International Trade: A Meta-Analysis." *Economics Letters* 116, no. 2 (2012): 221-224.
- Fairlie, Robert W., Dean Karlan, and Jonathan Zinman. 2015. "Behind the GATE Experiment: Evidence on Effects of and Rationales for Subsidized Entrepreneurship Training." *American Economic Journal: Economic Policy*, 7, no. 2: 125-61.
- Fenske, James, and Namrata Kala. "Linguistic Distance and Market Differentiation in India." *Journal of Economic History* 81 no. 1 (2021): 1-39.
- Fox, Louise, and Upasna Kaul. "What Works for Youth Unemployment in Low-income Countries?" USAID (2017).
- Hanushek, Eric A. "Economic Growth in Developing Countries: The Role of Human Capital," *Economics of Education Review* 2013: 204-212.

Hanushek, Eric, Guido Schwerdt, Ludger Woessmann, and Lei Zhang. "General Education, Vocational Education, and Labor-Market Outcomes over the Life-Cycle." *Journal of Human Resources* 52, no. 1 (2017): 48–87.

Heckman, James, Jora Stixrud, and Sergio Urzua. "The Effects of Cognitive and Noncognitive Abilities on Labor Market Outcomes and Social Behavior." *Journal of Labor Economics* 24, no. 3 (2006): 411-482.

Imai, Kosuke, Luke Keele, Dustin Tingley, and Teppei Yamamoto. "Unpacking the Black Box of Causality: Learning About Causal Mechanisms from Experimental and Observational Studies." *American Political Science Review* 105 no. 4 (2011): 765-789.

Jensen, Robert. "Do Labor Market Opportunities Affect Young Women's Work and Family Decisions? Experimental Evidence from India." *Quarterly Journal of Economics* 127, no. 2 (2012): 753-792.

King, Gary, Emmanuela Gakidou, Nirmala Ravishankar, Ryan T. Moore, Jason Lakin, Manett Vargas, Martha María Téllez-Rojo, Juan Eugenio Hernández Ávila, Mauricio Hernández Ávila, and Héctor Hernández Llamas. "A "politically robust" experimental design for public policy evaluation, with application to the Mexican universal health insurance program." *Journal of Policy Analysis and Management* 26, no. 3 (2007): 479-506.

Kluve, Jochen, Susana Puerto, David Robalino, Jose Romero, Friederike Rother, Jonathan Stoterau, Felix Weidenkaff, and Marc Witte. "Do Youth Employment Programs Improve Labor Market Outcomes? A Quantitative Review." *World Development* 114 (2019): 237-253.

Munshi, Kaivan, and Mark Rosenzweig. "Traditional Institutions Meet the Modern World: Caste, Gender, and Schooling Choice in a Globalizing Economy." *American Economic Review* 96, no. 4 (2006): 1225-1252.

Piopiunik, Marc, Guido Schwerdt, Lisa Simon, and Ludger Woessmann. "Skills, Signals, and Employability: An Experimental Investigation." *European Economic Review* 123 (2020): 103374.

Prillaman, Soledad, Rohini Pande, Vartika Singh, and Charity Troyer Moore, "What Constrains Young Indian Women's Labor Force Participation? Evidence from a Survey of Vocational Trainees,"

Shastri, Gauri Kartini. "Human capital response to globalization education and information technology in india." *Journal of Human Resources* 47, no. 2 (2012): 287-330.

World Bank. "Learning to Realize Education's Promise," *World Development Report* (2018).

Wang, Haining, Russell Smyth, and Zhiming Cheng. "The economic returns to proficiency in English in China." *China Economic Review* 43 (2017): 91-104.



## Appendix A

### A.1 Description of the Freedom Employability Academy (FEA) Curriculum:

At the time of the study, the curriculum primarily focused on English language training. Indeed, the FEA program was marketed as an opportunity to learn English, and the entirety of the curriculum was in English. Secondary objectives of the curriculum were to develop basic computer skills, exposure to different kinds of professional opportunities, and personal qualities such as the value of perseverance and hard work. The curriculum, at the time of the study, can be found at this link:

<https://drive.google.com/file/d/1VEQ5BuTNfA5NFAy8zbnu39wYz2ntl6E1/view?usp=sharing>.

### A.2: Questions Asked in the Video-Recorded Interviews

*Instructions: Hiring managers were instructed to rate the candidate based on responses to the following eleven questions (one question was asked in both Hindi and in English). Respondents were allowed to respond in whichever language they preferred.*

Questions
Hello! Please tell me a little about yourself. What are your likes and dislikes? Do you have any hobbies? (Hindi)
Describe a situation when you helped someone. What was the situation? What did you do to help? (Hindi)
After a long time, you finally have a free evening with no work. How would you spend this time? (Hindi)
You recently got a new job. But first you need to attend a training for it. The training is in a different city, and you will have to travel there. You will have to make your own travel and hotel reservations and the company will reimburse you later. How would you prepare for this trip? Which tasks would you address first? (Hindi)
Describe a time when you made a mistake or when you did not put enough effort in a task or project. What feedback did you receive? How did you change your approach as a result of this feedback? (Hindi)
After a long time, you finally have a free evening with no work. How would you spend this time? (English)

Describe a time when you made a mistake or when you did not put enough effort in a task or project. What feedback did you receive? How did you change your approach as a result of this feedback? (English)
You and a friend are discussing whether technology does more harm than good for humanity. You want to convince your friend to agree with your own viewpoint. Choose one side of the debate and then argue your case. (English)
Describe a time in your work or studies when you experienced stress. What about the situation gave you stress? How did you deal with it? (English)
What are your strengths? Describe a weakness that you have recently overcome. How did this weakness impact your work? What did you do to overcome it? (English)
It is your last day of school. You are with a group of friends and you decide that each person should give a short farewell speech. Each person should recount their school experience, fondest memories, regrets, and how they feel these years are going to influence their future life. Make a short conversational speech, as if you are talking to your friends. (English)

*Based on the videos, hiring managers were asked to rate candidates on the following dimensions, with each candidate rated by three hiring managers:*

1. What is the percent likelihood that you would hire the candidate for an entry-level office or services job (specifically nursing, cabin crew, accountant, management, or analytics/data)? 0-100% \_\_\_\_\_%
2. If the candidate were on the job market, what is the highest monthly salary (including bonuses) that you would expect the candidate to be offered? Please give as precise and realistic a figure as possible: \_\_\_\_\_ Rupees / mo. (sliding scale)
3. What is the percentage likelihood that you would hire the candidate for a job requiring English communication skills? \_\_\_\_% (sliding scale)
4. If the candidate had a stronger command of English and all else was equal, what would you expect the candidate's monthly salary (including bonuses)? \_\_\_\_\_ Rupees / mo. (sliding scale)

## Appendix B: Cost-Benefit Analysis of the FEA Program

A cost-benefit analysis of attending the FEA program is presented below. We present details for the estimation of the direct cost per student (\$77.50), then estimate that opportunity cost from attending the full 12-month program, and finally estimate the discounted lifetime benefit in increased wages from attending the program (after appropriately accounting for skill obsolescence).

Item	Approximate Cost Per Branch Per Year	Notes
Facilitators (teachers)	\$13,600	Branches have four facilitators that together cost approximately 85,000 INR per month.
Facilities Rent	\$3,200	Estimated rent costs include utilities.
Training and Supervision	\$4,800	Facilitator training and managers.
Computers	\$1,600	Laptops are 24,000 INR, each classroom has 20 laptops, and they need to be replaced every 4 years.
Materials and Miscellaneous	\$1,600	
<b>Total</b>	<b>\$24,800</b>	

*Note: Costs were converted to USD per year assuming 75 INR = 1 USD.*

As each branch accommodates 320 students per year, the direct cost per student was approximately \$77.50 or 5812.50 rupees.

In regard to the opportunity costs incurred from attending the FEA program, we took the average of the highest monthly salary that hiring managers said control group students could earn (12295.06 rupees), divided it by 4 (the FEA program is 100 minutes/day or roughly 2 hours and that is one-fourth of an 8 hour workday), and multiplied it by 12 (months). The total cost of attending the program per student is thus  $5812.50 + 36885.18 = 42697.68$  rupees (USD \$569.30).

To estimate the benefits of the program, we start by linearly extrapolating the instrumental variable effects of increased FEA attendance on wages (see Table 2). In doing so, we conservatively abstain from the hiring manager's assessment that the program students would also be more likely to find a job. Assuming that the average student (age 20.7 in our sample) would work for 45 more years (just past the age of 65), that all employees receive annual wage increases of 7 percent, that skills are forgotten and are less valued over time (which we operationalize by reducing the annual wage increase by 1 percentage point every ten years), and a discount rate of 3%, students who complete the full 12 months of FEA training earn 1,075,451.88 rupees more than students who do not attend the program. The benefit to cost ratio from attending FEA for twelve months is thus  $1,075,451.88/42697.68 = 25.19$ . In other words, the return to attending the FEA program is more than 2,500%.

**Table 1. Effects of Assignment to Training Program on Employability Outcomes (as Assessed by Hiring Managers through Interviews), Average Treatment Effect (Intent-to-Treat) Estimates**

	(1)	(2)	(3)	(4)
	Hiring managers' assessment of interviewee getting an entry-level job (%)		Hiring managers' assessment of interviewee's wages per month (rupees)	
Treated (1 = yes)	4.127*** (1.129)	4.238*** (1.131)	535.909** (231.225)	568.389** (232.561)
Control group mean	47.29		12295.06	
Covariates	NO	YES	NO	YES
Observations	940	940	940	940

*Notes:* (1) Heteroscedasticity-robust standard errors in parentheses; (2) All regressions control for block (session)-fixed effects; (3) Covariates (even columns) include: female (1/0), age (years), attending or attended college (1/0), father's education (some general high school or college = 1, otherwise 0), mother's education (some general high school or college = 1, otherwise 0), wealth asset index (z-score), currently employed (1/0), expected monthly wages post-training(rupees); (4) \*\*\* p<0.01, \*\* p<0.05, \* p<0.1.

**Table 2: Effects of Attending the Training Program (in Days) on Employability Outcomes (as Assessed by Hiring Managers through Interviews), Local Average Treatment Effect (Treatment on the Treated, Instrumental Variable or IV) Estimates**

	(1)	(2)
	Hiring managers' assessment of interviewee getting an entry-level job (%)	Hiring managers' assessment of interviewee's wages per month (rupees)
Days attended	0.039*** (0.010)	5.225** (2.066)
N	940	940
R-squared	0.102	0.125

*Notes:* (1) Heteroscedasticity-robust standard errors in parentheses; (2) All regressions include block (session)-fixed effects and the following covariates: female (1/0), age (years), attending or attended college (1/0), father's education (some general high school or college = 1, otherwise 0), mother's education (some general high school or college = 1, otherwise 0), wealth asset index (z-score), currently employed (1/0), expected monthly wages post-FEA training (rupees); (3) \*\*\* p<0.01, \*\* p<0.05, \* p<0.1.

**Table 3. Effects of Assignment to Training Program on English Skill Related Outcomes, Average Treatment Effects (Intent-to-Treat Effects)**

	(1)	(2)	(3)	(4)
	Oral English score (z-score)		Hiring managers' assessment of interviewee getting an English-skills related job (%)	
Treated (1 = yes)	0.189*** (0.064)	0.205*** (0.064)	4.347*** (1.145)	4.462*** (1.150)
Control group mean	-.096		37.50	
Covariates	NO	YES	NO	YES
Observations	952	952	940	940

*Notes:* (1) Heteroscedasticity-robust standard errors in parentheses; (2) All regressions control for block (session)-fixed effects; (3) Covariates (even columns) include: female (1/0), age (years), attending or attended college (1/0), father's education (some general high school or college = 1, otherwise 0), mother's education (some general high school or college = 1, otherwise 0), wealth asset index (z-score), currently employed (1/0), expected monthly wages post-FEA training (rupees); (4) \*\*\* p<0.01, \*\* p<0.05, \* p<0.1.

**Table 4: Effects of Attending the Training Program (in Days) on English Skill Related Outcomes, Local Average Treatment Effect (Treatment on the Treated, IV) Estimates**

	(1)	(2)
	Oral English score (z-score)	Hiring managers' assessment of interviewee getting an English-skills related job (%)
Days attended	0.002*** (0.001)	0.041*** (0.010)
N	952	940
R-squared	0.140	0.134

*Notes:* (1) Heteroscedasticity-robust standard errors in parentheses; (2) All regressions include block (session)-fixed effects and the following covariates: female (1/0), age (years), attending or attended college (1/0), father's education (some general high school or college = 1, otherwise 0), mother's education (some general high school or college = 1, otherwise 0), wealth asset index (z-score), currently employed (1/0), expected monthly wages post-FEA training (rupees); (3) \*\*\* p<0.01, \*\* p<0.05, \* p<0.1.

**Table 5: Effects of Assignment to Training Program by Gender (Female Y/N)**

	(1)	(2)	(3)	(4)	(5)	(6)	(7)	(8)
	Hiring managers' assessment of interviewee getting an entry-level job (%)		Hiring managers' assessment of interviewee's wages per month (rupees)		Oral English score (z-score)		Hiring managers' assessment of interviewee getting an English-skills related job (%)	
Treated (1/0)	3.654** (1.487)	3.533** (1.491)	246.393 (302.411)	213.772 (305.091)	0.213** (0.087)	0.202** (0.086)	4.584*** (1.515)	4.499*** (1.517)
Female (1/0)	-2.122 (1.816)	-2.247 (1.840)	-647.492* (370.620)	-725.547* (374.568)	-0.148 (0.099)	-0.184* (0.100)	0.005 (1.854)	-0.168 (1.889)
Treated X Female	1.168 (2.318)	1.585 (2.323)	665.942 (474.319)	797.350* (477.568)	-0.039 (0.127)	0.008 (0.128)	-0.504 (2.369)	-0.084 (2.392)
N	940	940	940	940	952	952	940	940

*Notes:* (1) Heteroscedasticity-robust standard errors in parentheses; (2) All regressions control for block (session)-fixed effects; (3) Covariates (even columns) include: age (years), attending or attended college (1/0), father's education (some general high school or college = 1, otherwise 0), mother's education (some general high school or college = 1, otherwise 0), wealth asset index (z-score), currently employed (1/0), expected monthly wages post-FEA training (rupees); (4) \*\*\* p<0.01, \*\* p<0.05, \* p<0.1.



**Table 6: Effects of Assignment to Training Program by Social Class (Mother's Education High School or Above Y/N)**

	(1)	(2)	(3)	(4)	(5)	(6)	(7)	(8)
	Hiring managers' assessment of interviewee getting an entry-level job (%)		Hiring managers' assessment of interviewee's wages per month (rupees)		Oral English score (z-score)		Hiring managers' assessment of interviewee getting an English-skills related job (%)	
Treated (1/0)	3.865*** (1.412)	4.062*** (1.412)	491.014* (286.975)	539.544* (288.198)	0.127* (0.077)	0.153** (0.077)	3.905*** (1.414)	4.055*** (1.425)
Mom HS or Above (1/0)	1.681 (1.818)	2.027 (1.861)	217.548 (392.699)	162.079 (399.464)	0.060 (0.104)	0.025 (0.107)	1.676 (1.864)	2.206 (1.933)
Treated X Mom HS+	0.781 (2.392)	0.551 (2.400)	135.449 (513.655)	90.402 (516.529)	0.192 (0.141)	0.163 (0.142)	1.343 (2.517)	1.276 (2.526)
N	940	940	940	940	952	952	940	940

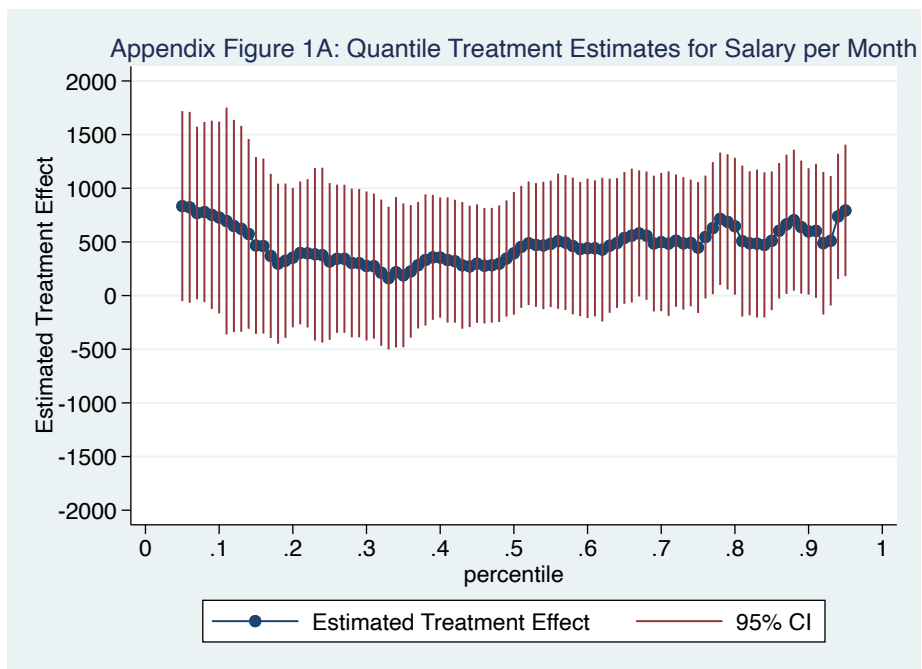
*Notes:* (1) Heteroscedasticity-robust standard errors in parentheses; (2) All regressions control for block (session)-fixed effects; (3) Covariates (even columns) include: female (1/0), age (years), attending or attended college (1/0), father's education (some general high school or college = 1, otherwise 0), wealth asset index (z-score), currently employed (1/0), expected monthly wages post-FEA training (rupees); (4) \*\*\* p<0.01, \*\* p<0.05, \* p<0.1.

**Table 7: Effects of Assignment to Training Program by Employment Status (Y/N)**

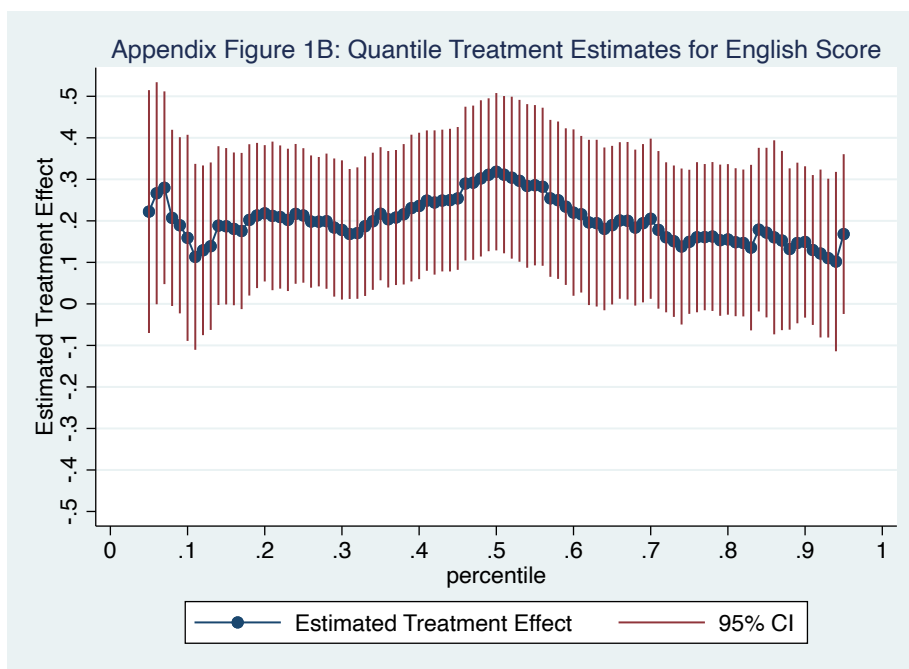
	(1)	(2)	(3)	(4)	(5)	(6)	(7)	(8)
	Hiring managers' assessment of interviewee getting an entry-level job (%)		Hiring managers' assessment of interviewee's wages per month (rupees)		Oral English score (z-score)		Hiring managers' assessment of interviewee getting an English-skills related job (%)	
Treated (1/0)	4.032*** (1.245)	4.195*** (1.250)	668.622*** (253.004)	702.569*** (254.668)	0.201*** (0.070)	0.215*** (0.070)	4.466*** (1.263)	4.648*** (1.268)
Employed (1/0)	2.890 (2.290)	3.297 (2.360)	874.280* (502.148)	826.252 (521.458)	-0.085 (0.129)	-0.093 (0.132)	2.086 (2.397)	2.595 (2.455)
Treated X Employed	0.536 (2.850)	0.268 (2.872)	-834.297 (619.401)	-836.611 (625.316)	-0.077 (0.169)	-0.062 (0.166)	-0.768 (3.014)	-1.162 (3.023)
N	940	940	940	940	952	952	940	940

*Notes:* (1) Heteroscedasticity-robust standard errors in parentheses; (2) All regressions control for block (session)-fixed effects; (3) Covariates (even columns) include: female (1/0), age (years), attending or attended college (1/0), father's education (some general high school or college = 1, otherwise 0), mother's education (some general high school or college = 1, otherwise 0), wealth asset index (z-score), expected monthly wages post-FEA training (rupees); (4) \*\*\* p<0.01, \*\* p<0.05, \* p<0.1; (5) Joint F-test of all baseline covariates reveals no significant difference between the treatment and control groups (p-value > 0.10)

## Appendix Figures 1A and 1B



Note: In Appendix Figure 1A, “Salary per month” refers to the hiring managers’ assessment of interviewee’s wages per month (rupees)



**Appendix Table 1. Balance between Treatment and Control Arms**

	(1) Female (1=yes)	(2) Age (years)	(3) College (1=yes)	(4) Dad Edu (1=yes)	(5) Mom Edu (1=yes)	(6) Wealth Index (z-score)	(7) Employed (1=yes)	(8) Expected Monthly Wages (rupees)
Treated (1 = yes)	0.004 (0.027)	-0.111 (0.182)	-0.054** (0.023)	0.037 (0.027)	0.009 (0.025)	-0.082 (0.059)	-0.002 (0.021)	6,838.137 (6,701.212)
Mean	0.475	20.680	0.231	0.480	0.305	-0.001	0.164	39,318.3

*Notes:* (1) Heteroscedasticity-robust standard errors in parentheses; (2) All regressions include block (session)-fixed effects; (3) Explanation of covariates: female (1/0), age (years), attending or attended college (1/0), father's education (some general high school or college = 1, otherwise 0), mother's education (some general high school or college = 1, otherwise 0), wealth asset index (z-score), currently employed (1/0), expected monthly wages post-FEA training (rupees); (4) \*\*\* p<0.01, \*\* p<0.05, \* p<0.1.

**Appendix Table 2: Balance between Treatment and Control Groups after Attrition**

	(1) Female (1=yes)	(2) Age (years)	(3) College (1=yes)	(4) Dad Edu (1=yes)	(5) Mom Edu (1=yes)	(6) Wealth Index (z-score)	(7) Employed (1=yes)	(8) Expected Monthly Wages (rupees)
Treated (1=yes)	0.035 (0.031)	-0.230 (0.216)	-0.060** (0.027)	0.046 (0.032)	0.008 (0.029)	-0.093 (0.069)	0.002 (0.024)	7,777.678 (9,376.816)
Attrition (1=yes)	0.109** (0.043)	-0.176 (0.287)	-0.003 (0.037)	-0.031 (0.043)	-0.064* (0.038)	0.028 (0.094)	0.039 (0.033)	-7,176.272 (6,192.354)
Treated X Attrition	-0.097 (0.062)	0.493 (0.466)	0.028 (0.055)	-0.063 (0.065)	-0.029 (0.057)	0.068 (0.142)	-0.001 (0.050)	-8,155.247 (17,247.054)
Constant	0.439*** (0.023)	20.791*** (0.164)	0.260*** (0.020)	0.471*** (0.024)	0.320*** (0.022)	0.033 (0.051)	0.153*** (0.017)	38,001.698*** (3,762.410)
N	1,260	1,260	1,260	1,260	1,260	1,260	1,260	1,260

*Notes:* (1) Heteroscedasticity-robust standard errors in parentheses; (2) All regressions include block (session)-fixed effects; (3) Explanation of covariates: female (1/0), age (years), attending or attended college (1/0), father's education (some general high school or college = 1, otherwise 0), mother's education (some general high school or college = 1, otherwise 0), wealth asset index (z-score), currently employed (1/0), expected monthly wages post-FEA training (rupees); (4) \*\*\* p<0.01, \*\* p<0.05, \* p<0.1.

**Appendix Table 3: Robustness Check of Effects of Assignment to FEA on Employability and Wage Outcomes**

	(1)	(2)	(3)	(4)	(5)	(6)
	<i>Drop sessions (blocks) with 25+% attrition</i>	<i>Drop sessions (blocks) with 20+% attrition</i>	<i>Drop sessions (blocks) with 20+% attrition</i>	<i>Drop sessions (blocks) with 20+% attrition</i>	<i>Drop sessions (blocks) with 15+% attrition</i>	<i>Drop sessions (blocks) with 15+% attrition</i>
	Hiring managers', assessment of interviewee getting an entry-level job (%)	Hiring managers', assessment of interviewee's wages per month (rupees)	Hiring managers', assessment of interviewee getting an entry-level job (%)	Hiring managers', assessment of interviewee's wages per month (rupees)	Hiring managers', assessment of interviewee getting an entry-level job (%)	Hiring managers', assessment of interviewee's wages per month (rupees)
Treated (1 = yes)	4.609*** (1.426)	572.139** (286.981)	4.674*** (1.668)	558.359* (335.262)	3.805* (1.940)	209.518 (386.122)
N	596	596	461	461	332	332

Notes: (1) Heteroscedasticity-robust standard errors in parentheses; (2) All regressions include block (session)-fixed effects and no other controls; (3) \*\*\* p<0.01, \*\* p<0.05, \* p<0.1.

**Appendix Table 4: Robustness Check of Effects of Assignment to FEA on English Skill Related Outcomes**

	(1)	(2)	(3)	(4)	(5)	(6)
	<i>Drop sessions (blocks) with 25+% attrition</i>	<i>Drop sessions (blocks) with 20+% attrition</i>	<i>Drop sessions (blocks) with 20+% attrition</i>	<i>Drop sessions (blocks) with 20+% attrition</i>	<i>Drop sessions (blocks) with 15+% attrition</i>	<i>Drop sessions (blocks) with 15+% attrition</i>
	Oral English score (z-score)	Hiring managers' assessment of interviewee getting an English-skills job (%)	Oral English score (z-score)	Hiring managers' assessment of interviewee getting an English-skills job (%)	Oral English score (z-score)	Hiring managers' assessment of interviewee getting an English- skills job (%)
Treated (1 = yes)	0.257*** (0.079)	5.609*** (1.443)	0.264*** (0.089)	6.095*** (1.683)	0.287*** (0.103)	4.993** (1.938)
N	603	596	468	461	338	332

Notes: (1) Heteroscedasticity-robust standard errors in parentheses; (2) All regressions include block (session)-fixed effects and no other controls; (3) \*\*\* p<0.01, \*\* p<0.05, \* p<0.1.