

Boone, Jan; van Ours, Jan C.

Working Paper

Why is there a spike in the job finding rate at benefit exhaustion?

CESifo Working Paper, No. 2840

Provided in Cooperation with:

Ifo Institute – Leibniz Institute for Economic Research at the University of Munich

Suggested Citation: Boone, Jan; van Ours, Jan C. (2009) : Why is there a spike in the job finding rate at benefit exhaustion?, CESifo Working Paper, No. 2840, Center for Economic Studies and ifo Institute (CESifo), Munich

This Version is available at:

<https://hdl.handle.net/10419/30627>

Standard-Nutzungsbedingungen:

Die Dokumente auf EconStor dürfen zu eigenen wissenschaftlichen Zwecken und zum Privatgebrauch gespeichert und kopiert werden.

Sie dürfen die Dokumente nicht für öffentliche oder kommerzielle Zwecke vervielfältigen, öffentlich ausstellen, öffentlich zugänglich machen, vertreiben oder anderweitig nutzen.

Sofern die Verfasser die Dokumente unter Open-Content-Lizenzen (insbesondere CC-Lizenzen) zur Verfügung gestellt haben sollten, gelten abweichend von diesen Nutzungsbedingungen die in der dort genannten Lizenz gewährten Nutzungsrechte.

Terms of use:

Documents in EconStor may be saved and copied for your personal and scholarly purposes.

You are not to copy documents for public or commercial purposes, to exhibit the documents publicly, to make them publicly available on the internet, or to distribute or otherwise use the documents in public.

If the documents have been made available under an Open Content Licence (especially Creative Commons Licences), you may exercise further usage rights as specified in the indicated licence.

Why is there a Spike in the Job Finding Rate at Benefit Exhaustion?

Jan Boone
Jan C. van Ours

CESIFO WORKING PAPER NO. 2840
CATEGORY 4: LABOUR MARKETS
OCTOBER 2009

An electronic version of the paper may be downloaded

- *from the SSRN website:* www.SSRN.com
- *from the RePEc website:* www.RePEc.org
- *from the CESifo website:* www.CESifo-group.org/wp

Why is there a Spike in the Job Finding Rate at Benefit Exhaustion?

Abstract

Putting a limit on the duration of unemployment benefits tends to introduce a “spike” in the job finding rate shortly before benefits are exhausted. Current theories explain this spike from workers’ behavior. We present a theoretical model in which also the nature of the job matters. End-of-benefit spikes in job finding rates are related to optimizing behavior of unemployed workers who rationally assume that employers will accept delays in the starting date of a new job, especially if these jobs are permanent. We use a dataset on Slovenian unemployment spells to test this prediction and find supporting evidence. We conclude that the spike in the job finding rate suggests that workers exploit unemployment insurance benefits for subsidized leisure.

JEL Code: J22, I31, J16.

Keywords: unemployment benefits, spikes.

Jan Boone
Department of Economics
Tilec, CentER
Tilburg University
The Netherlands - Tilburg
j.boone@uvt.nl

Jan C. van Ours
Department of Economics
CentER
Tilburg University
The Netherlands - Tilburg
vanours@uvt.nl

October 22, 2009

This paper has benefitted from comments of participants in workshops and seminars at Bocconi University (Milano), Melbourne University (Department of Economics), QUT (Brisbane), Australian National University (RSSS) and Tilburg University (Department of Economics), Universität Zürich (IEW), Munich (CES), Linz.

1 Introduction

In theory, unemployment benefits provide a disincentive to benefit recipients. The greater the level of benefits relative to the expected wage, the less costly the period of the job search, so workers tend to search for jobs less intensely and tend to remain unemployed longer. Putting a limit on the duration of benefits tends to speed up the job search. As the date approaches when benefits will expire, unemployed workers may increase the intensity of their job search and thereby the rate of job-finding. Moreover, many empirical studies find that the exhaustion of benefits creates a “spike” in the exit rate from unemployment. Usually, these spikes are found as a “by-product” of an analysis focusing on the relationship between potential benefit duration (PBD) and exit rates from unemployment.

Moffitt (1985) is an example of an early US study finding benefit exhaustion spikes. He analyzes administrative unemployment insurance records from the Continuous Wage and Benefit History (CWBH) database. As Moffitt indicates the main advantage of administrative data is the high accuracy, while the main disadvantage is that the variable of interest, the duration of UI benefits is truncated at the point of maximum benefits. Most individuals in his data have a maximum benefit duration of 26 weeks but some individuals are entitled to extended benefits up to 13 weeks. Moffitt finds that the unemployment exit rate at 26 weeks is 3 times the exit rate one month before benefit expiration. At 39 weeks there is a spike in the exit rate which is about 2 times the regular exit rate. Meyer (1990) analyzes the same CWBH data as Moffitt using a more extensive statistical model finding similar results: the exit rate in the week before benefit exhaustion is about twice the size of the usual exit rate. Katz and Meyer (1990a) use two datasets, the CWBH dataset and data from the Panel Study of Income Dynamics. The results concerning the spike at benefit exhaustion using the CWBH data are similar to previous studies: in the week of benefit expiration the exit rate is about 80% higher. The survey data allow for a distinction between transitions to jobs at the previous employer (recalls) and transitions to new jobs. In both cases there is a substantial increase in the job finding rate close to benefit exhaustion.¹ Katz and Meyer (1990b) use CWBH data supplemented with telephone interviews to provide additional information. They

¹ Katz and Meyer also show that such spikes are not present for UI non-recipients.

find spikes in the job finding rates in the exhaustion week which are 2.2-2.3 times the usual job finding rate, both for recalls and new jobs. Card and Levine (2000) analyze administrative data from the New Jersey Extended Benefit Program. They find that the exit rate in the week of benefit exhaustion is about twice as large as the regular exit rate.

There are also quite a few European studies that find spikes near benefit exhaustion. Carling, Edin, Harkman and Holmlund (1996) analyze Swedish data and find a big increase in the outflow from unemployment to labor market programs whereas the increase in the exit rate to employment is substantially smaller. Roed and Zhang (2003) find for Norwegian unemployed that the exit rate out of unemployment increases sharply in the months just prior to benefit exhaustion with the effect being larger for females than for males. Adamchik (1999) finds a strong increase in re-employment probabilities around benefit expiration in Poland. Lalive et al. (2006) analyze Austrian social security data finding large spikes in the exit rate out of unemployment at benefit exhaustion. Van Ours and Vodopivec (2006) studying PBD reductions in Slovenia find both strong effects on the exit rate out of unemployment and substantial spikes around benefit exhaustion; the spikes in the job finding rate in the month prior to benefit exhaustion are 2.2-2.5 times as high as the usual job finding rate. In a recent study that focuses exclusively on the end-of-benefit spike phenomenon Card et al. (2007) find that the unemployment exit rate increases much more than the re-employment hazard rate does. Their main conclusion is that the spike in unemployment-exit rates is to a large extent due to measurement error. Researchers mistake leaving the unemployment register for job finding.

Part of the criticism by Card et al. (2007) on previous studies may be valid as some studies are based on unemployment exits up to point of benefit exhaustion only. But, there are also studies that focus on job finding rates and find benefit exhaustion spikes. This indicates that the benefit exhaustion spike is more than a statistical artefact. As we discuss in more detail in the next section theoretical work based on non-stationary search theory explains the increase in the job finding rate towards benefit exhaustion (Mortensen (1977) and Van den Berg (1990)). However, these studies do not explain why it falls again after expiration, which is needed to

get a spike.²

Our contribution to the literature is twofold. First, we provide a theoretical explanation for the existence of benefit exhaustion spikes, which are caused by delays in job acceptance. Our theoretical model suggests that spikes in job finding rates are more likely to occur for permanent jobs than for temporary jobs. Second, we use a dataset on Slovenian unemployment spells to test this prediction. The existence of end-of-benefit spikes per se in Slovenia has been shown before but this was a by-product of an analysis on the impact of changes in potential benefit duration on job finding rates (Van Ours and Vodopivec (2006)). Here, we focus on the nature of the benefit exhaustion spikes. We show that indeed these spikes are more important in transitions from unemployment to permanent jobs than they are in transitions from unemployment to temporary jobs.

This paper is set-up as follows. In section 2 we present our theoretical model in which individuals optimize the delay in job acceptance. In a stationary labor market the job finding rate equals the job offer arrival rate, but initially, because of the delay period no jobs are accepted. When an individual approaches benefit expiration the delay is reduced as no individual will want to accept a job offer beyond the point of benefit expiration. This delay behavior causes a spike at the point of benefit expiration. Delays in accepting job offers will not always occur. In case of temporary jobs delaying the start will not be acceptable to firms. Therefore, in the transition rate to temporary jobs an end of benefit spike is less likely to occur. In section 3 we discuss our data and present some stylized facts. Using data from the Slovenian unemployment register we present “eyeball” evidence supporting our delay theory. Section 4 presents the results of our empirical analysis. We investigate whether job finding spikes at benefit exhaustion are smaller for temporary jobs. We find that this is indeed the case. Section 5 concludes.

² Suggested explanations for the benefit spike include the strategic timing of job starting dates and implicit contracts between unemployed workers and their previous employers, in which the employers rehire the workers at about the time their benefits expire (Card and Levine, 2000). However, these are notions rather than formalized theories. Also, the explanation provided by Card and Levine (2000) is very much related to the US labor market as in almost all European labor markets temporary layoffs do not occur.

2 Optimal delay in job acceptance – theory

We aim to explain the spike in the outflow from unemployment around the time the unemployment benefit expires. Therefore, we cannot use stationary models where unemployment benefits are paid irrespective of unemployment duration (or where the benefit entitlement is lost with a constant probability per period). We assume that for a duration T the unemployed worker is entitled to unemployment benefits $b > 0$. After expiration the benefits drop to a level normalized to zero.

Two well known papers on nonstationarity in job search theory are Mortensen (1977) and Van den Berg (1990). In this setting, Van den Berg (1990) implies that the job acceptance probability increases with duration, jumps up at time T and stays (that) high thereafter. Intuitively, if the benefit has dropped (to zero) the value of unemployment becomes so low that almost any job becomes acceptable. This reduces the reservation wage and hence increases the job acceptance rate. Thus, this analysis does not explain a spike in exit rates at T as the exit rate does not fall after T .

Mortensen's (1977) model can explain a spike if one is willing to assume that income and leisure are substitutes. In that case, acceptance rates increase with duration and drop (discontinuously) at T to a lower level. As the benefit drops to zero, leisure substitutes for income thereby reducing search effort (which takes up leisure time). In the case where leisure and income are complements (leisure is more enjoyable if there is more money to spend), the acceptance probability jumps up at T and stays high thereafter. We find the assumption that income and leisure are complements more convincing since this is in line with all literature on the effects of the level of benefits on the job finding rate.³ Moreover, even in the case of substitutes, it is not clear why these effects would differ for different type of jobs.

There are also studies that use a static labor supply theory to motivate the existence of an end-of-benefit spike. Then, it is assumed that a new job can be found at any time (Meyer (1990) and Moffitt and Nicholson (1982)). At the time a worker loses his job he decides on consumption and the duration of unemployment

³ Note that the case of income and leisure being substitutes would imply that an increase in unemployment benefits increases the job finding rate. A prediction that is clearly at odds with empirical research (see for example Atkinson and Micklewright (1991)).

subject to a budget constraint. At the expiration date T the budget constraint is kinked and hence many indifference curves are tangent at the kink. Therefore, many individuals choose to leave unemployment at benefit expiration, which explains the spike in the outflow rate at T . However, this static model is less suitable as a framework to study benefit exhaustion spikes because it does not explain why the size of the spike depends on the type of job. As we show below in our empirical analysis benefit exhaustion spikes are larger for permanent than for temporary jobs. In fact, one can argue that in the Meyer (1990) and Moffitt and Nicholson (1982) framework to the extent that temporary jobs are easier to find than permanent jobs, this theory would predict a larger spike for temporary jobs.⁴

We propose a model where firms and workers are matched and then decide on the wage and the starting date of the job. We first describe the firm side of the story and then move on to the worker. Then we show how a delay in the starting date generates a spike in the outflow rate.

2.1 Delay

Consider a firm that has found a worker with productivity q . This worker yields a surplus to the firm equal to $s(q)$ with $s'(q) > 0$. Typically, $s(q)$ will be of the form $q - w(q)$ where the wage increases with q but $w'(q) < 1$.

Let l denote the length of the contract that the firm offers the worker and τ the period for which the worker would like to postpone actually starting to work. Then the discounted value for the firm of accepting this worker can be written as

$$V(q, \tau) = \int_0^\tau 0e^{-\rho t} dt + \int_\tau^{\tau+l} s(q)e^{-\rho t} dt = \frac{s(q)}{\rho} e^{-\rho\tau} (1 - e^{-\rho l}) \quad (1)$$

where ρ denotes the discount rate. We assume here that the firm has work for a period l independent of when this is done.⁵

⁴ Note that the story in Meyer (1990) and Moffitt and Nicholson (1982) is not necessarily dynamically consistent. When a worker loses his job, a “holiday” of T periods looks nice enough, but a week before T he might like to re-optimize and extend his holiday. With such re-optimization it is not clear that many workers return to work at the kink in the budget constraint. In other words, how can the worker commit to starting a job at time T ? Note also that in our model, the worker commits by signing a contract that specifies his starting date on the job.

⁵ Alternatively, we can assume that the job involves seasonal work, that needs to be finished

Suppose the worker insists on a delay of τ periods, then this is only acceptable to the firm if $V(q, \tau)$ exceeds the outside option O for the firm. One way to think of the outside option is that the firm can draw a new job applicant at cost c . This will yield $O = -c + E(V(\tilde{q}, \tilde{\tau}))$ where the expectation is over the quality and required delay of the next worker. It turns out that we do not need to know much about the outside option O to derive our results. Hence we do not introduce specific assumptions on how search for a new match takes place if negotiations with the currently matched employee break down.

For concreteness, we assume that the worker makes a take-it-or-leave-it offer to the firm about the starting date for the job.⁶ Further we assume that the wage cannot be varied with τ . This can be justified in two ways. First, the wage may be given to the firm by an agreement with the labor unions. Second, if the wage is determined by bilateral bargaining between firm and employee, the employee may not be able to commit to a wage before starting the job. That is, if the worker agrees to a low wage (in return for a high τ), he will renegotiate the wage once he starts the job. Hence the firm assumes that it will pay the employee this (renegotiated) wage anyway, independent of τ . For our purposes we do not need to specify how the wage is determined exactly. We only assume $w \in \langle b, q \rangle$ where b denotes the unemployment benefit level. Nash bargaining between worker and firm will give this result.

Further, we assume that the worker when asking for a delay of τ periods does not know q .⁷ Hence the probability that the firm rejects τ is given by

$$\begin{aligned} G(\tau, l) &= \text{Prob}(V(q, \tau) < O) \\ &= \text{Prob}\left(\frac{s(q)}{\rho} e^{-\rho\tau} (1 - e^{-\rho l}) < O\right) \\ &= H\left(\frac{\rho O}{1 - e^{-\rho l}} e^{\rho\tau}\right) \end{aligned}$$

before a certain date l , say the end of the summer. In that case, the second integral is from τ to l . One can verify that similar results hold in this case. Clearly, also in this case $V'_\tau < 0$: delaying the start of the job reduces the firm's profits as production and profit opportunities are destroyed.

⁶ Clearly, other assumptions would work here as well. The important point is that in negotiation with the firm the worker feels some restriction in delaying the start of the job out of fear that $V(q, \tau) < O$. See footnote 11 below.

⁷ Alternatively, we can assume that the worker knows his own productivity q but not the outside option O of the firm.

where $H(\cdot)$ denotes the distribution function of $s(q)$.

Hence we find⁸

$$\begin{aligned} G'_\tau(\tau, l) &= h \left(\frac{\rho O}{1 - e^{-\rho l}} e^{\rho\tau} \right) \frac{\rho^2 O}{1 - e^{-\rho l}} e^{\rho\tau} > 0 \\ G'_l(\tau, l) &= -h \left(\left(\frac{\rho O}{1 - e^{-\rho l}} e^{\rho\tau} \right) \frac{\rho^2 O}{(1 - e^{-\rho l})^2} e^{\rho\tau} \right) < 0 \end{aligned}$$

Delaying the starting date of the job makes it more likely that the firm will look for another worker. Longer contracts make it more likely that a firm accepts a given delay τ . Assuming that $s(q)$ is uniformly distributed with a constant density h , we further find

$$\begin{aligned} G''_{\tau l} &= -h \frac{\rho^3 O}{(1 - e^{-\rho l})^2} e^{\rho\tau} < 0 \\ G''_{\tau\tau} &= h \frac{\rho^3 O}{1 - e^{-\rho l}} e^{\rho\tau} > 0 \end{aligned}$$

Now consider a worker who is matched with a firm. The worker's wage in this firm is given by w .⁹ The worker proposes to delay the starting date by τ periods. Delay τ is given by the solution to

$$\max_t (1 - G(t, l)) V_e(t, l, \sigma) + G(t, l) V_u(\sigma) \quad (2)$$

where V_e denotes the value of having a job with the starting date postponed t periods. We focus on the case where (temporary and permanent) job opportunities satisfy $V_e(t, l, \sigma) > V_u(\sigma)$. Hence the solution to equation (2) does not imply $G(\tau, l) = 1$. The value V_e satisfies

$$\rho V_e(t, l, \sigma) = \int_0^t b e^{-\rho s} ds + \int_t^{l+t} w e^{-\rho s} ds + e^{-\rho(l+t)} \rho V_u(\sigma) + v(t, \sigma) \quad (3)$$

where the utility (in terms of leisure or home production) of delay is given by

⁸ To ease notation, we do not assume that the outside option depends on l . In fact, we could make this assumption. As long as the signs on the derivatives of G below are unchanged, this has no effect on our analysis.

⁹ If the wage will be determined by (re)negotiation after the worker has actually started to work, the worker does not know w exactly as he does not know q . In this case, w denotes the expected wage.

$v(t, \sigma)$.¹⁰ We assume $v'_t, v'_\sigma > 0$ and $v''_{tt} < 0, v''_{t\sigma} > 0, v'''_{tt\sigma} < 0$. In words, σ determines the preference for delay. The higher σ the higher the utility and marginal utility of delay. Finally, $v''_{t\sigma}$ falls with t . We refer to σ as the value of leisure or home production.

After $l+t$ periods, the worker loses his job and is unemployed again (which gives him an expected discounted value $\rho V_u(\sigma)$). We assume that these discounted effects are rather small in the following sense:

$$\rho V'_{el} = \rho e^{-\rho(l+t)} \left(\frac{w}{\rho} - \rho V_u(\sigma) \right) > 0 \text{ is close to zero} \quad (4)$$

$$\rho V''_{e\sigma l} = -e^{-\rho(l+t)} \rho^2 V'_u(\sigma) < 0 \text{ is close to zero} \quad (5)$$

$$\rho V''_{elt} = -\rho^2 e^{-\rho(l+t)} \left(\frac{w}{\rho} - \rho V_u(\sigma) \right) < 0 \text{ is close to zero} \quad (6)$$

$$\rho V''_{e\sigma t} = -\rho^2 e^{-\rho(l+t)} V'_u(\sigma) + v''_{t\sigma} > 0 \quad (7)$$

$$\rho V''_{e\sigma tt} = \rho^3 e^{-\rho(l+t)} V'_u(\sigma) + v'''_{tt\sigma} < 0 \quad (8)$$

In words, the effects over $t+l$ periods are small and dominated by the direct effects of $v(t, \sigma)$.

The trade off described in equation (2) is between increasing the utility V_e if the firm accepts the delay (which happens with probability $1-G$) and increasing the probability of being rejected in which case the worker continues to be unemployed with expected discounted value V_u . We assume that $d(V_e(t, l, \sigma) - V_u(\sigma))/d\sigma < 0$. In words, the higher the value of leisure or home production, the smaller the value of employment compared to unemployment. A search and matching framework will give this intuitive result. However, again, we do not need much structure on V_u and V_e and hence do not specify how they are determined exactly by the working of the labor market.

The first order condition for (an interior solution for the) optimal delay τ can be written as follows.

$$G'_\tau(V_u - V_e) + (1-G)V'_{e\tau} = 0 \quad (9)$$

¹⁰ We assume that the worker signs a labor contract stipulating a starting day for the job. Hence we do not allow the worker to use the delay period to search for a better job. Allowing this would increase the size of the spike for the following two reasons. First, delay periods then become cumulative. Second, delay becomes more valuable for the worker giving a higher incentive to bargain for delays.

where $V'_{e\tau} = e^{-\rho\tau}(b-w) + (w - \rho V_u(\sigma))e^{-\rho(l+\tau)} + v'_\tau$. Note that $G'_\tau, V_e - V_u, (1-G) > 0$ imply that $V'_{e\tau} > 0$. Because delaying the starting date increases the risk of being rejected for the job, the worker asks for less than optimal delay in the sense that at the margin an increase in τ (still) raises V_e .¹¹

We can now derive the following result.

Proposition 1: Assume the optimization problem given by (2) has an interior solution τ . Then we find that

$$\begin{aligned} \frac{d\tau}{d\sigma} &> 0 \\ \frac{d\tau}{dl} &> 0 \end{aligned}$$

Proof of proposition 1 For an interior solution, the second order condition implies that

$$|soc| = -soc = -G''_{\tau\tau}(V_u - V_e) + 2G'_\tau V'_{e\tau} - (1-G)V''_{e\tau\tau} > 0$$

The result then follows from the implicit function theorem:

$$|soc| \frac{d\tau}{d\sigma} = -G'_\tau \frac{d(V_e - V_u)}{d\sigma} + (1-G)V''_{e\tau\sigma} > 0 \quad (10)$$

$$|soc| \frac{d\tau}{dl} = -G'_\tau V'_{e\ell} - G''_{\tau l}(V_e - V_u) - G'_l V'_{e\tau} + (1-G)V''_{e\tau l} > 0 \quad (11)$$

where the first inequality follows from $G'_\tau > 0, d(V_e - V_u)/d\sigma < 0$ and assumption (7). The second inequality follows from $G''_{\tau l}, G'_l < 0, V'_{e\tau} > 0$ and assumptions (4) and (6). *Q.E.D.*

Hence workers with a higher σ postpone the starting date for a longer period. This happens for two reasons. First, they get a higher utility from delaying the starting date. Second, even if their proposal is rejected and they lose the job, this is not too bad for them as the loss $V_e - V_u$ is decreasing in σ .

Jobs with a longer tenure period lead to longer delays in starting the job. This happens for two related reasons. First, higher l makes it more likely that the firm

¹¹ This also explains why we need to introduce a firm side to our story. If the employee could choose the delay τ without any restriction, he would choose τ such that $V'_{e\tau} = 0$. The solution to this equation only varies with l because of the effect at $l + \tau$. Because of discounting, this effect is likely to be close to zero.

accepts the delay (that is, $G'_l < 0$). Second, increasing τ increases the probability that the firm rejects the employee's offer, but at a lower rate as l increases ($G''_{\tau l} < 0$). There are two effects going in the opposite direction. First, higher l implies that the job is worth more, as the drop in income from w to the value of unemployment ρV_u happens further away in the future. This increases the loss if the employee's offer of τ is rejected ($V'_{el} > 0$) and may reduce τ . Second, higher l reduces the benefit of postponing the start of the job ($V''_{e\tau l} < 0$). This is again due to the effect at $\tau + l$. However, since these are effects in the future, discounting reduces the size of these effects. If the effects are small enough, they are dominated by the first two effects.

Finally, we can show the following.

Proposition 2: If $V''_{e\tau\sigma}, V'''_{e\tau l\sigma}, G''_{\tau\tau} d(V_e - V_u)/d\sigma$ are close to zero then

$$\frac{d^2\tau}{d\sigma dl} < 0$$

Proof of proposition 2 A sufficient condition for $\frac{d^2\tau}{d\sigma dl} < 0$ is that $d(-G'_\tau V'_{el} - G''_{\tau l}(V_e - V_u) - G'_l V'_{e\tau} + (1 - G)V''_{e\tau l})/d\sigma < 0$ while $d|soc|/d\sigma > 0$. Let us consider each condition in turn. First,

$$-G'_\tau V''_{el\sigma} + G''_{\tau l} \frac{d(V_u - V_e)}{d\sigma} - G'_l V''_{e\tau\sigma} + (1 - G)V'''_{e\tau l\sigma} < 0$$

because of assumptions (5) and $V''_{e\tau\sigma}, V'''_{e\tau l\sigma}$ close to zero together with $G''_{\tau l} < 0, d(V_u - V_e)/d\sigma > 0$. Further,

$$G''_{\tau\tau} \frac{d(V_e - V_u)}{d\sigma} + 2G'_\tau V''_{e\tau\sigma} - (1 - G)V'''_{e\tau\tau\sigma} > 0$$

as $G''_{\tau\tau} \frac{d(V_e - V_u)}{d\sigma}$ is assumed to be small, $G'_\tau > 0$ and assumptions (7) and (8). *Q.E.D.*

Hence we see that higher σ employees delay more (for each l). And for higher σ the effect of l on τ becomes smaller. If it is correct to assume that women have a higher value of home production (*e.g.* because they are not breadwinner), this result explains the findings below that women postpone more jobs (both temporary and permanent) and the differential effect between temporary and permanent jobs is smaller in terms of delay.

The conditions in the proposition are sufficient and not necessary. Although, the conditions are rather technical, they have the following interpretation. We know that

$d\tau/dl > 0$ and we want to understand when this derivative is smaller as σ goes up. There are three effects going against this. First, $V''_{e\tau\sigma} > 0$: higher σ leads to a higher marginal value of delay. This tends to raise $d\tau/dl$ as higher l decreases the probability that the match is dissolved. Second $V'''_{e\tau l\sigma} > 0$: longer term contracts are more valuable to postpone as σ goes up (that is, $V''_{e\tau l} < 0$ increases with σ). This tends to raise $d\tau/dl$ as well. Third, if $G''_{\tau\tau} > 0$ (which is the case above if the worker does not know q and H is uniform), an increase in σ makes the problem less concave, as the loss $V_e - V_u$ falls with σ . This makes the agent's problem more elastic and tends to blow up $d\tau/dl$ as σ increases. Hence we need to assume that these effects are relatively small.

2.2 Spikes

The delay in starting a job, described above, can lead to spikes in the unemployment outflow rate. Let α_l denote the arrival rate of jobs with duration l for an unemployed worker searching for a job.

Proposition 3: If $v'_t(0, \sigma) < w$ then the outflow to l -jobs at T is given by

$$\int_{T-\tau_l}^T \alpha_l e^{-\sum_j \alpha_j t} dt$$

where τ_l denotes the solution to equation (9).

Proof of proposition 3 First, note that $v'_t(0, \sigma) < w$ implies that for $t > T$ (when the benefit level b is reduced to 0), the starting date of a job is not delayed at all. In that case, $V'_{et} = -w + v'_t(0, \sigma) < 0$ and hence $\tau = 0$. Further, with the assumption made above that $v''_{tt} < 0$ we also find that jobs found at time $t < T$ are never postponed past T because $v'_t(T-t, \sigma) < v'_t(0, \sigma) < w$.

Hence the outflow at time T is the “sum” (actually “integral”) of workers matched with l -jobs from time $T - \tau_l$ till T . The stock of “free” workers at time t that can be matched with an l -job is given by workers who up till then have not been matched with any job at all: $e^{-\sum_j \alpha_j t}$. *Q.E.D.*

The assumptions imply that a worker who has found a job, never delays the start of the job beyond the expiration date T . Moreover, if a worker finds a job at date

$t > T$ he does not postpone at all. Although we do not need such a strong result, it simplifies the exposition. We only need that a group with positive mass do not go beyond T . This result is reminiscent of the Meyer (1990) and Moffitt and Nicholson (1982) kinked budget constraint result.

We get a spike because people matched over the interval $[T - \tau_l, T]$ all flow out of unemployment at the same time T . For given α_l , this outflow is bigger, the longer the delay τ_l . If the delay τ is zero for a certain type of job, there is – in principle – no spike.

By way of illustration we did some numerical simulations. The simulations concern a labor market with temporary jobs that last 12 months and “permanent” jobs that last 32 months. The monthly job offer arrival rates are 0.08 for temporary jobs and 0.02 for permanent jobs. Under some additional assumptions, which are presented and discussed in more detail in Appendix A we find that with a permanent job the worker delays the start of the job by 3 months, while a worker with a temporary job does not delay at all. Figure 1 shows in the case where the maximum benefit duration is 9 months the evolution of the outflow rates to temporary and permanent jobs. Comparing the outflow rate at the spike with the average outflow at non-spike periods is one way to measure the size of the spike. This we call the relative size of the spike. In the example in the appendix, we find that a delay of three months leads to a relative spike equal to 4.35.

Summarizing, the theory above leads to the following testable predictions. First, spikes are higher for permanent than for temporary jobs. If women have a higher value of home production (σ) than men, we find that women delay the starting date longer than men (for both temporary and permanent jobs). Finally, the difference in spike between permanent and temporary jobs is smaller for women than for men.

3 Data and stylized facts

3.1 Data

The empirical analysis is based on administrative records of unemployment spells, combined with selected information on formal employment spells.¹² Included are

¹² The data are described in more detail in Van Ours and Vodopivec (2007, 2008).

all spells of unemployment benefit recipients which started between August 1, 1997 and July 31, 1998 and in the calendar year 1999 (with censoring on December 31, 2001). For each spell, the database contains starting and ending date of registered unemployment spell, destination of exit, and the information on the receipt of unemployment insurance benefits (starting and ending date of the eligibility and actual ending date of the receipt). Personal and family characteristics of recipients are also included. To improve the information about the end of unemployment spells, a separate source, work history data set for formal sector workers, was utilized. So, in our dataset the end of the unemployment spell is defined as the date at which an individual started working or left the unemployment register for other reasons. The destination “job” is defined by administrative records as exit to private or public employment, including self-employment. Other destinations include exits to active labor market programs, voluntary and involuntary removal from registration, and a miscellaneous category that includes maternity leave, military service and death. Here, we are only interested in job finding rates. If individuals left unemployment for other reasons their durations of unemployment are considered to be right-censored. The data we use are suitable to explore the existence of end of benefit spikes since our data do not only cover the period when workers were covered by unemployment benefits but also the period of transition from unemployment to employment after benefits expired. The date at which individuals started working on a job is not dependent on self-reporting of the unemployed workers but comes from employers. A unique feature of the Slovenian data is that at the start of the post-unemployment job its nature – temporary or permanent – is registered. Furthermore, we observe how long people stay in their jobs.

In our analysis we focus on individuals that were entitled to benefits for a maximum duration of 6, 9 or 12 months. For every unemployed worker after 3 months the replacement rate was reduced from 70% of the previous wage to 60% (subject to a minimum and maximum). Because the end of benefits effects for some workers coincides with a drop in the replacement rate for all workers, we ignore individuals with a potential benefit duration of 3 months. Slovenia reformed its unemployment benefits in 1998; the reform shortened the potential duration of benefits for most groups of workers. We use data from before and after the reform. Appendix B provides more information about the data.

3.2 Stylized facts

To illustrate the end of benefits effects, figures 2 and 3 show the relationship between job finding rates and months to benefit expiration for men and women, distinguished by potential benefit duration.¹³ There are clear spikes at benefit expiration for each of the three groups of workers. It is also clear that for temporary jobs there is a spike at benefit expiration, but in relative terms – compared to the job finding rates 2 or 3 months before benefit expiration – the spikes are considerably smaller than for the transition rate to permanent jobs.

To get a first impression whether indeed temporary jobs are less likely to generate benefit expiration spikes in the transition rate than permanent jobs, we did some simple calculations. For each group of workers with the same potential benefit duration we divided the permanent job finding rate in the month of benefit expiration by this rate in the month prior to that. We did the same for the temporary job finding rate. The first two columns of Table 1 show the outcomes of these calculations. Indeed, whereas for males the average relative spike for permanent jobs is 3.37, it is only 1.43 for temporary jobs. For females the average relative spike for permanent jobs is 3.91, while for temporary jobs it is 1.64.

The top part of Figure 4 shows job separation rates for men, distinguished between temporary jobs and permanent jobs. As was to be expected, the job separation rates from temporary jobs are much higher as the job separation rates from permanent jobs. There is a large spike in the job separation rate for temporary jobs at 9 months indicating the importance of fixed-term contracts of that particular duration. Similarly there are also spikes at 3, 6 and 12 months. The bottom part of Figure 4 shows the job separation rates for women which are very similar to those of men. Clearly, individuals on permanent jobs do not leave their jobs quickly; 12 months after starting on a permanent job 94% the men and 95% of the women are still employed. From the workers on temporary jobs after 1 year 59% of the men and 66% of the women is still employed.

¹³ The job finding rates are calculated on a monthly basis taking right-censored durations into account. The same holds for the job separation rates in figure 4. Note that we can identify the spikes because they occur at different unemployment durations for different groups of workers. Otherwise, we could not distinguish the spike from the effect of duration dependence.

4 Empirical analysis

4.1 Job finding rates

The use of hazard rate models and the data with individuals facing different potential benefit durations allow us to identify the end-of-benefit spikes. We distinguish between transition rates to permanent and to temporary jobs and start with a set-up that is in line with our theoretical model. The rate at which individuals find a permanent or a temporary job at unemployment duration t conditional on observed characteristics x and unobserved characteristics u is assumed to have the following specification

$$\theta_i(t | x, u_i) = \lambda_i(t) \exp(x' \beta_i + u_i) \quad \text{for } i = p, n \quad (12)$$

where i indicates the type of job (p =permanent, n =temporary), β is a vector of parameters and λ represents individual duration dependence, which is modeled in a flexible way by using step functions:

$$\lambda_i(t) = \exp(\sum_k \mu_{i,k} I_k(t) + \delta_i I_s(t)) \quad \text{for } i = p, n \quad (13)$$

where k ($= 1, \dots, 4$) is a subscript for duration interval. We distinguish four intervals, monthly for the first three months, and the fourth interval larger than three months. For reasons of normalization we impose $\mu_{i,4}=0$. If a period of delay exists, in the job finding rate concerning permanent jobs at least the initial μ -parameters should be smaller than zero. For temporary jobs this should not be the case. Furthermore, I_s is an indicator for the month of benefit expiration ($s = 6, 9, 12$). The μ -parameters measure the pattern of duration dependence, and δ indicates the size of the spike in the month of benefit expiration. If the period of delay exists we expect a spike to be present in the job finding rate for permanent jobs, while such a spike should be less important in the job finding rate for temporary jobs.

The conditional density function of the completed unemployment duration t_i that ended in a transition towards a job of type i can be written as

$$f(t_i | x, u_i) = \theta_i(t_i | x, u_i) \exp\left(-\int_0^{t_i} (\theta_p(s | x, u_p) + \theta_n(s | x, u_n)) ds\right) \quad \text{for } i = p, n \quad (14)$$

We assume that the unobservables in both job finding rates are from discrete distributions with two points of support, which we assume to be perfectly correlated. Then, the joint distribution also has two points of support, p_1 and p_2

$$Pr(u_p = u_{p,a}, u_n = u_{n,a}) = p_1 \quad Pr(u_p = u_{p,b}, u_n = u_{n,b}) = p_2 \quad (15)$$

Because the hazard rates also contain constant terms, we normalize $u_{p,a} = u_{n,a} = 0$. The discrete distribution is supposed to have a logit specification with $p_1 = \frac{\exp(\alpha)}{1+\exp(\alpha)}$ and $p_2 = \frac{1}{1+\exp(\alpha)}$. We remove the unobserved components by taking expectations:

$$f(t_p, t_n | x) = E_{u_p} E_{u_n} [f_p(t_p | x, u_p) \cdot f_n(t_n | x, u_n)] \quad (16)$$

The parameters are estimated with the method of maximum likelihood, taking into account that some durations are right-censored.

The analyses are done separately for males and females to account for possible differences in labor market behavior. In addition to this distinction by gender the effect of the following personal characteristics are taken into account: age, education, family situation, health, and calendar period of inflow into unemployment (see the appendix for details).

Panel *a* of table 2 shows the parameter estimates for the baseline model. Age has a negative effect on all job findings rates. Education has a positive effect on the job finding rate concerning permanent jobs but has no effect on the rate by which individuals find temporary jobs; with the exception of higher educated males who have a smaller transition rate to temporary jobs. Family conditions do not affect the transition rate to temporary jobs, but the effect for permanent jobs differs for males and females. Concerning permanent jobs, males who have dependent family members have a higher job finding rate than males who do not, but females with dependent family members have a lower job finding rate than other females. Bad health reduces all job finding rates substantially.

There is also evidence of unobservables affecting the job finding rates. Conditional on the observable characteristics and the elapsed duration of unemployment there is a group of 87% of the males that has a high job finding rate both to permanent and temporary jobs, while the remaining 13% has substantially lower job finding rates. For women these percentages are 83 for the group with high job finding

rates and 17 for the group with low job finding rates.¹⁴

The pattern of duration dependence is different for permanent jobs and temporary jobs. For permanent jobs the job finding rate is low in the first months of the unemployment spell, which is support for the existence of a delay period. The transition rate to temporary jobs in the first months is higher than later on.

The most important parameter estimates refer to the spike in job findings rates at benefit exhaustion. This spike is identified by comparing the job finding rate in the month of benefit expiration for some groups of workers with the identical non-expiration month for other groups of workers. It appears that there are substantial spikes. The job finding rate concerning permanent jobs in a month of benefit expiration is about 3 times as high for men and 3.7 times as high for women as in the same month without benefit expiration. Also in the transition rates to temporary jobs we find spikes, which are about 50% (men) to 75% (women) higher than regular job finding rates. The difference between the spikes in the job finding rates between permanent and temporary jobs supports our theoretical model. Apparently for temporary jobs delaying acceptance is more difficult. Hence the spike is smaller.

Panel *b* of table 2 shows the parameter estimates for the spike if we impose that there is no duration dependence. There is a clear drop in the log-likelihood value from which we conclude that we cannot reject the pattern of duration dependence found in panel *a*.

Panel *c* of table 2 shows the parameter estimates for the spike if we introduce a very flexible specification of duration dependence with monthly intervals for the first six months, and after that the intervals 6-9, 10-12, 13-18 months and 18+ months. Furthermore, we introduce an indicator for benefit expiration because individuals may increase their search intensity after benefits have expired.¹⁵ As shown the spike in the job finding rate for permanent jobs is substantially larger than for temporary jobs. However, as in the baseline estimates we cannot ignore the existence of a benefit spike in the exits to temporary jobs.

¹⁴ We investigated whether it was possible to estimate an extended distribution of unobserved heterogeneity but we were not able to identify a third mass-point.

¹⁵ Note also that we can still identify δ because the spike occurs at different unemployment durations. If not, we could not distinguish the spike from the effect of duration dependence.

4.2 Job separation rates

The type of post-unemployment jobs is registered as being permanent or fixed-term, which we interpret as being temporary. The nature of the job is labeled at the start, but permanent jobs may not last long and temporary contracts may be extended so that temporary jobs may last quite some time.

To investigate the determinants of job separations we estimate a proportional hazard model where the job separation rate from jobs of type i at employment duration t conditional on observed variables x and unobserved characteristics v

$$\theta_i^s(t | x) = \lambda_i^s(t) \exp(x' \beta_i^s + z' \gamma_i^s + v_i) \quad \text{for } i = p, n \quad (17)$$

where z is a vector of variables that indicate when the unemployed left unemployment - the month of unemployment and whether or not it was the last month of benefits before expiration. Furthermore, β^s and γ^s are vectors of parameters, and λ^s represents individual duration dependence, which is again modeled in a flexible way by using step functions:

$$\lambda_i^s(t) = \exp(\sum_k \mu_{i,k}^s I_k(t)) \quad (18)$$

where k ($= 1, \dots, 10$) is a subscript for duration interval and we consider the following ten intervals: 1, 2, 3, 4, 5, 6, 7-9, 10-12, 13-18, 18+. For reasons of normalization we impose $\mu_{i,1}^s = 0$. The conditional density function of completed job durations and the likelihood function are set-up as before. As with the job finding rates also for the job separation rates we assume that the unobservables are from discrete distributions with two points of support, which we assume to be perfectly correlated.

The parameter estimates are presented in Table 3. The duration of permanent jobs for males is affected by their age, education and health. Older, lower educated males with bad health have a higher job separation rates than their counterparts. For females the separation rate from permanent jobs is not affected by any personal characteristic. The duration of temporary jobs is only affected by age and family situation. Older individuals are more likely to lose their temporary job quickly. The effect of family situation differs for males and females. Whereas males with 1 dependent family member are more likely to lose their temporary job, females with 2 or more dependent family members are less likely to lose their job.

Remarkably, for permanent jobs the duration doesn't depend on the previous unemployment spell. It doesn't matter whether an unemployed worker finds a permanent job early on in the unemployment spell or much later, the job separation rate is equally high. It's also irrelevant whether or not the unemployed worker finds a permanent job in the month of benefit expiration. Apparently, it is not just the "strong" worker that postpones his or her start until the moment at which benefits expire. This is support for our hypothesis that it is the delay in acceptance which is driving the benefit spike. For temporary jobs the previous unemployment spell has some importance. Especially workers that find a temporary job in the first month of their unemployment spell are more likely to lose this job quickly. Males that find a temporary job in the month of benefit expiration are less likely to lose this job quickly. This could point at reverse causality. Males that have the opportunity to start on a long term temporary job are more likely to postpone this start until the month of benefit expiration. Again, this would be support for our delay theory.

Concerning unobserved heterogeneity the results are different for permanent jobs and temporary jobs. Whereas for permanent jobs we found no indication of unobserved heterogeneity, for temporary jobs we do find that unobserved heterogeneity affects the separation rate. Most temporary jobs exist only shortly but there are also temporary jobs which last very long.¹⁶ Conditional on the observed characteristics, the unemployment history and the duration of the employment spell there is a group of temporary jobs of 82% for males (80% for females) that last short, while the complementary 18% (20% for females) lasts very long.

4.3 Temporary jobs

4.3.1 Finding and separating

The relationship between the benefit expiration spike and the duration of the first job may be affected by correlation between unobservables in the job finding rate and the job separation rate. To investigate this we estimate a bivariate duration model with correlated error terms. We do the estimates for temporary jobs, separately for males and females.

¹⁶ In the estimates one of the mass points turned out to be very small, converging to minus infinity.

In both the job finding rate for temporary jobs and the job separation rate from temporary jobs we introduce unobserved heterogeneity. Both rates are now specified as

$$\theta_n(t | x, u_n) = \lambda(t) \exp(x' \beta_n + u_n) \quad (19)$$

$$\theta_n^s(t | x, u_n^s) = \lambda^s(t) \exp(x' \beta_n^s + z' \gamma^s + u_n^s) \quad (20)$$

where u_n and u_n^s represent unobserved heterogeneity. As before, we assume that the unobservables in both the job finding rate and the job separation rate are from discrete distributions with two points of support which are integrated out of the likelihood specification.

The main parameter estimates are summarized in Table 4. As shown the second mass points are negative for the job finding rate and positive for the job separation rate. Conditional on the observed characteristics and the elapsed durations of the unemployment and employment spells individuals that have a low job finding rate also have a high job separation rate. If it takes a long time to find a job, the job found doesn't last very long. However, the size of the benefit exhaustion spikes are not influenced by the introduction of unobserved heterogeneity. They are almost identical to the ones presented in Table 2.

4.3.2 The duration of temporary jobs reconsidered

Our theory predicts that there is a positive correlation between the expected duration of a job and the size of the benefit expiration spike. We showed that indeed for permanent jobs there is a larger spike in the job finding rate than for temporary jobs. However, there is a large variation in the duration of temporary jobs. Some ex ante temporary jobs turn out to be ex post long employment spells. Our theory also predicts that the benefit expiration spike should be bigger for long temporary jobs.

To investigate a first impression whether indeed shorter temporary jobs are less likely to generate benefit expiration spikes in the transition rate to these jobs, as before we calculated the relative spike as the job finding rate in the month of benefit expiration divided by the job finding rate in the month previous to that.¹⁷ The

¹⁷ Note that some job durations were right censored with a duration less than 1 year. This causes a bias in the calculations for jobs that lasted less than 1 year.

results of these calculations are shown in columns (3) and (4) of Table 1. For males with a potential benefit duration of 6 months the relative spike for short-term temporary jobs is 0.79, i.e. there is no spike at all. For the same category of workers the relative spike for long-term temporary jobs equals 1.76. On average there is no relative spike for short-term jobs while the relative spike for long-term jobs is 1.82. These findings confirm our theoretical model. For females the results are less clear. On average there are spikes for short-term temporary jobs and for long-term temporary jobs. The last type of spike is larger than the first type but the differences are small. This is consistent with our results (in propositions 1 and 2) that for workers with higher value of home production (assuming this is the case for women) both types of jobs are postponed and the difference in delay is smaller (compared to workers with lower σ)

4.4 The Slovenian labor market reconsidered

An important issue that may arise when analyzing the Slovenian labor market is the interpretation of behavior of workers in relation to the informal sector. Vodopivec (1995) indicates that in the early 1990s unemployed workers in Slovenia might have collected unemployment compensation and work at the same time under informal employment. Vodopivec claims that during 1990-92 there was a tendency among the recipients of unemployment benefits in Slovenia to stay unemployed until their benefits expired before taking a job. If so, benefit exhaustion spikes wouldn't have much to do with delay behavior as we claim. Instead, they would simply reflect the end of a waiting for benefits to expire period. Nevertheless, Slovenian legislators in 1993 and 1994 enacted several laws to prevent this type of waiting behavior from happening. In 1998, there was a major reform of unemployment benefits drastically reducing the potential benefit duration, roughly by half for most groups of recipients. As indicated by Van Ours and Vodopivec (2006), the 1998 reform also called for several measures aimed at speeding up benefit recipients' reemployment, including improvement in employment services, the obligatory preparation of a reemployment plan for each benefit recipient, and more frequent contact between counselors and recipients. Furthermore, reform called for stricter monitoring of eligibility. Benefit recipients had to make themselves available to employment office counselors several

hours a day. For the first time, inspectors (a special arm of employment offices) would check to see if benefit recipients were in fact unemployed (inter alia, by paying home visits to benefit recipients) and actively searching for a job. To the extent that collecting benefits and working in the informal sector until benefits expire was an issue, this should have been more prevalent before the 1998 reform. Tougher monitoring of the unemployment status should have ruled out a lot of this type of abuse. Nevertheless, to investigate this issue in more detail we performed separate estimates on data collected before and after the reform. Table 5 shows the relevant parameter estimates. Clearly there is no tendency for exhaustion spikes in the job finding rates to be smaller after the reform. And, the difference in the size of the spikes between permanent jobs and temporary jobs is present as much after the reform as it was before the reform. From this we conclude that although we cannot rule out some influence of the informal sector, this doesn't seem to be an important explanation for the existence of the end-of-benefit spikes.

5 Conclusions

Putting a limit on the duration of unemployment benefits tends to introduce a “spike” in the job finding rate just before benefit exhaustion. Previous studies refer to two alternative explanation for the existence of such a spike. First, a static labor supply model in which a kink in the budget constraint causes many individuals to choose the same benefit duration. Second, a non-stationary search model in which the job finding rate is slowly increasing due to increasing search intensity and falling reservation wages. In neither of the two models the nature of the job is important. Our study presents a theoretical model in which the nature of the job affect the size of the end-of-benefit spike. In our model spikes in the job finding rates are caused by delays between job finding and the start of the job. Workers prefer to delay and make an offer to the firm about the starting date for the job. The firm will only accept a delay if the value of the job including delay is larger than the value of searching for a new worker, who may (also) have a preference for delay. When workers decide about their offer to the firm they take into account that the firm might reject the offer if the delay is too long. They also take into account that long-lasting jobs have more value to the firm so for these jobs employers are more likely

to accept longer delays. From our theoretical model we derive that delays are more likely to occur for permanent jobs than for temporary jobs. Our model assumes that workers who have found a job will never delay the start of the job beyond the expiration date of their benefits, since that would be too costly. This causes many unemployed to leave unemployment at benefit exhaustion thus causing a spike in the job finding rate. Since the delay period is longer the size of the end-of-benefit spike will be larger for permanent jobs than for temporary jobs. We investigate the validity of our model using Slovenian unemployment data which have the unique feature that the temporary or permanent nature of the post-unemployment job is registered. Indeed, we find that spikes are more likely to occur in transitions from unemployment to permanent jobs.

All in all, we conclude that end-of-benefit spikes in job finding rates are related to optimizing behavior of unemployed workers who rationally assume that employers will accept delays in starting date of a new job. Thus the spikes in the job finding rate suggests that workers exploit unemployment insurance benefits for subsidized leisure.

6 References

- Adamchik, V. (1999) The Effect of Unemployment Benefits on the Probability of Re-employment in Poland, *Oxford Bulletin of Economics and Statistics*, 61, 95-108.
- Atkinson, A. and J. Micklewright (1991) Unemployment Compensation and Labor Market Transitions: A Critical Review, *Journal of Economic Literature*, 29, 1697-1727.
- Carling, K., Holmlund, B. and A. Vejsiu (2001) Do Benefit Cuts Boost Job Findings? Swedish Evidence from the 1990s, *Economic Journal*, 111, 766-790.
- Card, D.E. and P.B. Levine (2000) Extended Benefits and the Duration of UI Spells: Evidence from the New Jersey Extended Benefit Program, *Journal of Public Economics*, 78, 107-138.
- Card, D.E., R. Chetty and A. Weber (2007) The Spike at Benefit Exhaustion: Leaving the Unemployment System or Starting a New Job? *American Economic Review*, 97, 113-118.
- Card, D.E., R. Chetty and A. Weber (2007) The Spike at Benefit Exhaustion: Leaving the Unemployment System or Starting a New Job? *Discussion Paper*, IZA, No. 2590.
- Katz, L.F. and B.D. Meyer (1990a) The Impact of the Potential Duration of Unemployment Benefits on the Duration of Unemployment, *Journal of Public Economics*, 41, 45-72.
- Katz, L.F. and B.D. Meyer (1990b) Unemployment Insurance, Recall Expectations, and Unemployment Outcomes, *Quarterly Journal of Economics*, 105, 973-1002.
- Lalive, R., J.C. van Ours and J. Zweimüller (2006) How Changes in Financial Incentives Affect the Duration of Unemployment, *Review of Economic Studies*, 73, 1009-1038.

-
- Meyer, B.D. (1990) Unemployment Insurance and Unemployment Spells, *Econometrica*, 58, 757-782.
 - Moffitt, R. (1985) Unemployment Insurance and the Distribution of Unemployment Spells, *Journal of Econometrics*, 28, 85-101.
 - Moffitt, R., W. Nicholson (1982) The effect of unemployment insurance on unemployment: The case of Federal Supplemental Benefits, *The Review of Economics and Statistics*, 64, 1-11.
 - Mortensen, D.T. (1977) Unemployment Insurance and Job Search Decisions, *Industrial and Labor Relations Review*, 30, 505-517.
 - Roed, K. and T. Zhang (2003) Does Unemployment Compensation Affect Unemployment Duration? *Economic Journal*, 113, 190-206.
 - Van den Berg, G.J. (1990) Nonstationarity in Job Search Theory, *Review of Economic Studies*, 57, 255-277.
 - Van Ours, J.C. and M. Vodopivec (2006) How Shortening the Potential Duration of Unemployment Benefits Affects the Duration of Unemployment: Evidence from a Natural Experiment, *Journal of Labour Economics*, 24, 351-378.
 - Van Ours, J.C. and M. Vodopivec (2008) Does Reducing Unemployment Insurance Generosity Reduce Job Match Quality? *Journal of Public Economics*, 92, 684-695.
 - Vodopivec, M. (1995) Unemployment Insurance and Duration of Unemployment; Evidence from Slovenia's Transition, *Policy Research Working Paper* 1552, World Bank.

7 Appendices

Appendix A: Numerical simulations on delay period and spike

To illustrate the relationship between the delay period and the spike, we consider two types of job: temporary ($l = 12$ months) and “permanent” ($l = 32$ months). Job arrival rates per month for these jobs equal $\alpha_{12} = 0.08, \alpha_{32} = 0.02$ resp. We normalize the wage at $w = 1$ and assume $b = 0.6$. The discount rate equals $\rho = 0.1/12$ per month, that is 10% on a yearly basis. Instead of specifying, the uncertainty of the worker over q and the firm’s outside option O , we directly specify $G(t, l) = \frac{t}{t_u(1+l(t_u-t))}$ with $t_u = 6$ months. The interpretation of this function is as follows. No firm accepts a delay of longer than 6 months (*i.e.* $G(t_u, t_u) = 1$). Further, higher l reduces the probability that an offer $t < t_u$ is rejected. We specify the value V_e as in equation (3) with the value of losing the job in $l + t$ periods time equal to $b + \sigma$.¹⁸ Finally, we do not model the precise search and matching on the labor market. We simply assume that the loss of being rejected by the firm equals $V_e - V_u = 0.1(1 - \sigma)V_e$. That is, for an agent with $\sigma = 0$, the loss of losing this job equals 10% of the value of the job. This is not a big loss. Intuitively, the worker receives unemployment benefits b (till period T) and will be matched with other jobs in the future. The loss falls with σ and when $\sigma = w = 1$ (home production is as productive as an outside job) there is no loss at all. As above, the worker chooses τ to maximize $W = V_e - G * (V_e - V_u)$. Table A1 summarizes the outcomes for two values of σ . With $\sigma = 0.5$, a worker who finds a temporary job does not delay at all. This is roughly consistent with what we see in the data for men.¹⁹ With a permanent job, this worker delays the start of the job by 3 months. A worker with higher value of leisure, $\sigma = 0.8$, delays the start of both jobs. Note however, that the difference in delay is smaller for $\sigma = 0.8$ than it is for $\sigma = 0.5$ (as $3 - 0 > 5 - 3.5$). This is consistent with proposition 2.

To get an idea what determines the size of a spike, we go back to the example

¹⁸ That is, for simplicity we do not model the probability of finding another job again after losing this one in $l + t$ months.

¹⁹ The column labeled $\frac{\text{spike}_l}{\alpha_l}$ will be discussed below.

Table A1: Simulation results of delay in months and spike at time T

σ	l	τ	$\frac{\text{spike}_l}{\alpha_l}$
0.5	12	0.0	0.90
0.5	32	3.0	4.35
0.8	12	3.5	3.72
0.8	32	5.0	5.39

with $\sigma = 0.5$. The stock of “free people” at time t looking for a job is given by

$$s(t) = e^{-(\alpha_{32} + \alpha_{12})t} \quad (21)$$

However, this stock is not observed. The observed stock of unemployed at t evolves as follows. For $t < \tau_{32}$ we have

$$s'_o(t) = -\alpha_{12}s(t)$$

only people matched with a temporary job leave the observed stock of unemployed.

Then for $t \in [\tau_{32}, T)$, we have

$$s'_o(t) = -\alpha_{12}s(t) - \alpha_{32}s(t - \tau_{32})$$

In addition to people leaving for temporary jobs, we have people leaving for permanent jobs who were matched with these permanent jobs τ_{32} periods ago.

At $t = T$ we have

$$s'_o(T) = -\alpha_{12}s(T) - \alpha_{32} \int_{d=0}^{\tau_{32}} s(T - d)$$

Finally, for $t > T$ all jobs are accepted immediately and observed and actual stocks are the same:

$$s_o(t) = s(t) = e^{-(\alpha_{32} + \alpha_{12})t}$$

In Figure 1 the outflow rates are defined with the observed stock $s_o(t)$ in the denominator. The figure shows us the following. The spike for permanent jobs is 4.35 times (see Table A1) the average outflow rate to a permanent job before and after the spike (*i.e.* over the interval $[0, t]$ for $t > T$). This average outflow rate is approximated by α_{32} .²⁰ Further note that the outflow rate to permanent jobs just

²⁰ Indeed from time 0 to any $t > T$ the average outflow rate equals α_{32} as the delay effect is averaged out after the spike.

before T is higher than after T . This is due to the fact that before T , the observed outflow equals $\alpha_{32}s(t - \tau_{32})$. That is, it is determined by a delayed stock which is higher (as the stock falls over time) than the current stock. After T the outflow is given by $\alpha_{32}s(t)$ and hence the outflow rate is equal to $\alpha_{32} = 0.02$. Note that the spike with “relative size” 4.35 is generated by a three month delay in accepting permanent jobs. That is, the spike itself does not directly give us the delay in months.

Now consider the temporary outflow rate. For months before T this rate is below $\alpha_{12} = 0.08$. This is because the stock of “free” agents that would accept a temporary job right away is smaller than the observed stock of unemployed which includes workers that have accepted permanent jobs but have not started yet due to the delay τ_{32} . This causes the entry for the spike in table A1 to be smaller than one ($\frac{\text{spike}_{12}}{\alpha_{12}} = 0.9$).²¹

As can be seen in table A1, with $s = 0.8$ we get spikes (bigger than 1) for both types of jobs. But the difference in spikes is smaller than for $s = 0.5$ (as $5.39 - 3.72 < 4.35 - 0.9$).

Appendix B: Variables used in the analysis

In the analysis we use the following variables:

- Age: continuous variable
- Education: dummy variables, Education2 = elementary school, Education3 = vocational school, Education4 = high school or more, reference group = unfinished elementary school
- Family situation: dummy variables, Family1 = 1 dependent family member, Family2 = more than 1 dependent family member, reference group = no dependent family members
- Ill health: Dummy variable derived from information obtained by employment office councilors from interviews with benefit recipients

²¹ The simulations calculate outflows per day. The sum of these outflows over the days of the months is divided by the average stock in that month. This approximation of the outflow rate per month also causes small deviations from the true α 's.

- Potential Benefit Duration (PBD) and time of entrance into unemployment (before or after the policy change): 5 dummy variables, Group 2 = PBD of 9 months, entrance before, Group 3 = PBD of 6 months, entrance after, Group 4 = PBD of 12 months, entrance before, Group 5 = PBD of 6 months, entrance after, Group 6 = PBD of 9 months, entrance after; reference group = PBD of 6 months, entrance before.

The characteristics of our dataset are presented in Table B1:

Table B1: Means of variables

	Males	Females		Males	Females
Age/10	3.24	3.16	Group 2	0.19	0.18
Educ2	0.27	0.23	Group 3	0.16	0.18
Educ3	0.42	0.32	Group 4	0.23	0.20
Educ4	0.26	0.41	Group 5	0.18	0.18
Reference	0.05	0.04	Group 6	0.17	0.17
			Reference	0.07	0.09
Family1	0.20	0.26			
Family2	0.28	0.42	Permanent job		
Reference	0.52	0.32	Completed duration	0.35	0.36
			Incomplete duration	0.65	0.64
Bad health	0.08	0.06			
Reference	0.92	0.94	Temporary job		
			Completed duration	0.66	0.60
Temporary job	0.54	0.51	Incomplete duration	0.34	0.40
Permanent job	0.18	0.14			
Incomplete spell	0.28	0.34	Observations	5583	6478

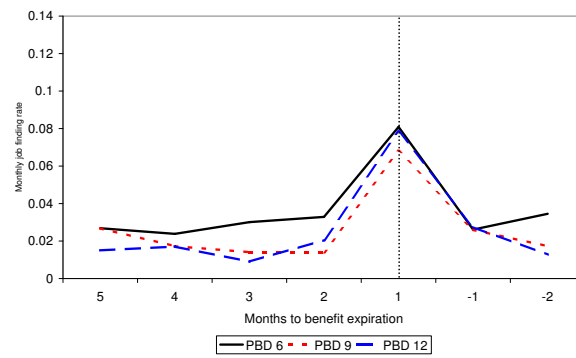
8 Graphs and tables

Fig. 1: Monthly exit rates to permanent and temporary jobs; numerical simulations



Fig. 2: Job finding rates close to benefit expiration – men

a. Permanent jobs



b. Temporary jobs

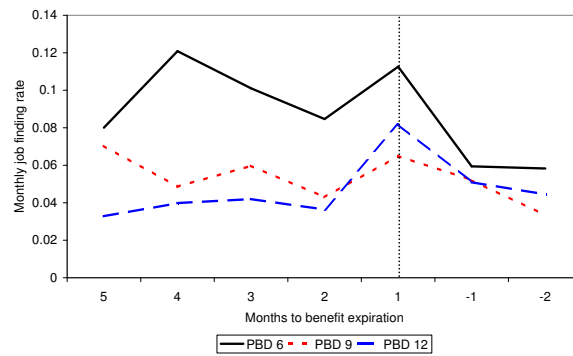
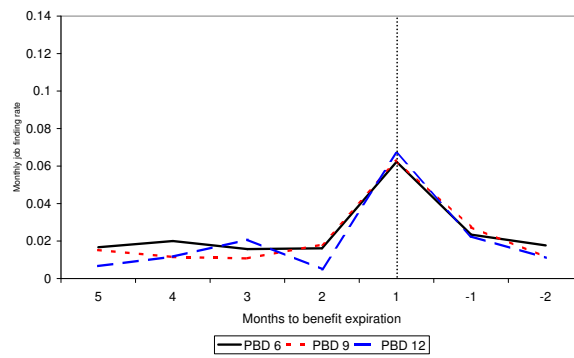


Fig. 3: Job finding rates close to benefit expiration – women

a. Permanent jobs



b. Temporary jobs

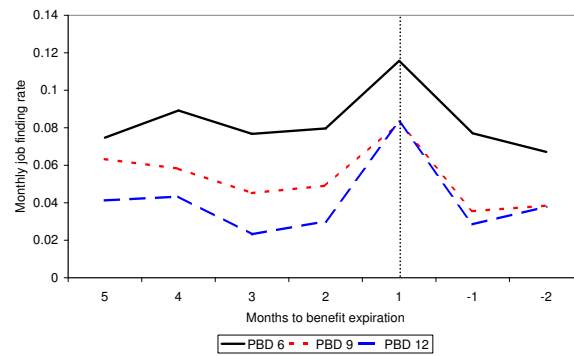
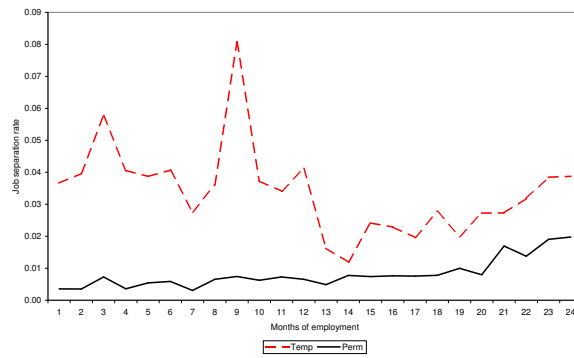
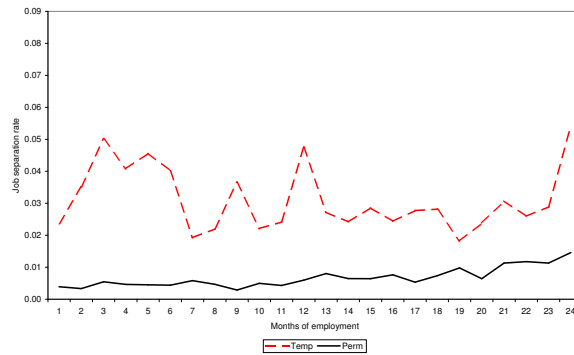


Fig. 4: Job separation rates – men and women

a. Men



b. Women



Tab. 1: Spikes by potential benefit duration

	Permanent jobs (1)	Temporary jobs Total (2)	<1 year (3)	≥ 1 year (4)
Males				
6 months	2.68	1.31	0.79	1.76
9 months	7.14	1.58	1.39	1.75
12 months	2.88	1.80	1.18	2.36
Average	3.37	1.43	0.98	1.82
Females				
6 months	3.78	1.39	1.27	1.47
9 months	2.83	1.71	1.59	1.76
12 months	10.15	3.18	3.54	3.04
Average	3.91	1.64	1.50	1.71

Note that the average relative spike is calculated as the job finding rate in the month of benefit expiration divided by the job finding rate in the month previous to that. Also note that the distinction between the duration of temporary jobs is based on ex post information.

Tab. 2: Parameter estimates job finding rates – baseline model

	Males		Females	
	Permanent job	Temporary job	Permanent job	Temporary job
a. Baseline model				
Age/10	-0.53 (5.3)**	-0.46 (7.9)**	-0.35 (3.3)**	-0.50 (8.9)**
Educ2	0.11 (0.5)	-0.03 (0.3)	1.19 (2.5)**	-0.02 (0.2)
Educ3	0.55 (2.7)**	-0.13 (1.4)	1.64 (3.5)**	-0.15 (1.3)
Educ4	0.87 (4.2)**	-0.44 (4.5)**	2.13 (4.6)**	-0.13 (1.2)
Family1	0.12 (1.4)	-0.00 (0.0)	-0.26 (2.8)**	0.06 (1.0)
Family2	0.16 (2.0)*	0.01 (0.2)	-0.24 (2.8)**	0.01 (0.3)
Bad health	-2.25 (12.5)**	-1.81 (21.7)**	-2.21 (8.8)**	-2.09 (19.0)**
Group 2	0.05 (0.4)	0.15 (1.7)*	0.26 (2.0)**	0.03 (0.3)
Group 3	0.19 (1.3)	0.27 (2.9)**	0.17 (1.2)	0.24 (2.8)**
Group 4	0.09 (0.6)	0.23 (2.4)**	0.26 (1.7)*	0.08 (0.8)
Group 5	0.54 (3.3)**	0.42 (4.2)**	0.29 (1.8)*	0.47 (5.1)**
Group 6	0.71 (3.8)**	0.56 (4.8)**	0.51 (2.6)**	0.73 (6.6)**
Constant	-6.00 (17.6)**	-4.46 (22.8)**	-8.15 (14.8)**	-4.62 (23.0)**
First months				
Month 1	-0.63 (5.0)**	0.17 (2.9)**	-0.21 (1.7)*	0.32 (5.8)**
Month 2	-0.39 (3.2)**	0.12 (2.0)**	-0.12 (1.0)	0.08 (1.2)
Month 3	-0.29 (2.4)**	0.45 (8.0)**	-0.07 (0.6)	0.21 (3.6)**
Spike	1.09 (11.8)**	0.42 (5.5)**	1.32 (14.6)**	0.55 (8.4)**
Unobs. heterogeneity				
Masspoint 2	-7.66 (17.3)**	-9.91 (2.4)**	-9.99 (15.2)**	$-\infty$
α	1.89 (12.9)**		1.61 (19.1)**	
-Loglikelihood	29,289.0		32,148.1	
b. No initial drop				
Spike	1.30 (14.7)**	0.35 (4.6)**	1.39 (16.0)**	0.47 (7.3)**
-Loglikelihood	29,331.9		32,168.1	
c. Extended model				
Spike	1.63 (11.3)**	0.59 (6.1)**	1.60 (11.6)**	0.66 (7.8)**
-Loglikelihood	29,216.3		32,140.3	
Observations	5583		6478	

Absolute t-statistics in parentheses; a ** (*) indicates significance at a 95% (90%) level.

Tab. 3: Parameter estimates job separation rates – baseline model

	Males		Females	
	Permanent job	Temporary job	Permanent job	Temporary job
Age/10	0.48 (3.4)**	0.36 (4.3)**	0.15 (0.9)	0.31 (3.9)**
Educ2	-0.41 (1.4)	0.23 (1.9)*	-0.44 (0.5)	-0.13 (0.8)
Educ3	-0.72 (2.6)**	0.04 (0.3)	-0.60 (0.7)	-0.10 (0.7)
Educ4	-0.96 (3.3)**	0.01 (0.1)	-0.75 (0.9)	-0.22 (1.3)
Family1	-0.15 (1.0)	0.25 (3.3)**	0.13 (0.9)	-0.02 (0.2)
Family2	-0.08 (0.6)	0.01 (0.1)	-0.13 (0.9)	-0.11 (1.7)*
Bad health	0.56 (2.0)**	0.19 (1.6)	0.58 (1.6)	0.17 (0.9)
Month 2	0.01 (0.0)	0.12 (1.0)	-0.49 (1.1)	0.23 (1.8)*
Month 3	0.50 (1.4)	0.52 (4.7)**	0.34 (1.0)	0.64 (5.1)**
Month 4	-0.38 (0.8)	0.10 (0.8)	-0.45 (1.0)	0.51 (3.9)**
Month 5	-0.03 (0.1)	0.21 (1.7)*	-0.59 (1.3)	0.88 (7.2)**
Month 6	-0.18 (0.4)	0.25 (2.0)**	-0.09 (0.2)	0.44 (3.2)**
Month 7-9	0.14 (0.4)	0.41 (3.9)**	-0.06 (0.2)	0.07 (0.6)
Month 10-12	0.15 (0.5)	0.29 (2.6)**	-0.13 (0.4)	0.31 (2.4)**
Month 13-18	-0.09 (0.3)	-0.36 (3.0)**	0.02 (0.1)	0.02 (1.2)
Month 18+	-0.05 (0.2)	-0.39 (3.0)**	-0.21 (0.7)	-0.19 (1.3)
After expiration	-0.10 (0.3)	-0.09 (0.6)	-0.08 (0.3)	0.32 (2.1)**
Left unemployment				
Month 2	0.06 (0.2)	-0.67 (6.8)**	-0.07 (0.3)	-0.47 (4.3)**
Month 3	0.19 (0.8)	-0.53 (5.3)**	0.12 (0.4)	-0.24 (2.1)**
Month 4	0.09 (0.4)	-0.67 (6.0)**	0.06 (0.2)	-0.39 (3.2)**
Month 5	0.05 (0.2)	-0.43 (3.7)**	0.32 (1.1)	-0.27 (2.1)**
Month 6	-0.42 (1.3)	-0.76 (5.0)**	-0.07 (0.2)	-0.52 (3.6)**
Month 7-9	-0.26 (0.9)	-0.62 (4.9)**	0.18 (0.6)	-0.59 (4.5)**
Month 10-12	-0.06 (0.2)	-0.61 (3.6)**	-0.02 (0.1)	-0.72 (4.1)**
Month 13-18	0.07 (0.2)	-0.58 (2.8)**	0.07 (0.2)	-0.56 (2.9)**
Month 18+	-0.11 (0.2)	-0.47 (2.0)**	0.39 (0.9)	-0.59 (2.9)**
In “spike” month	-0.35 (2.3)**	-0.26 (2.0)**	0.08 (0.3)	0.01 (0.1)
Constant	-7.87 (13.5)**	-7.05 (24.8)**	-7.03 (6.8)**	-6.95 (24.2)**
Masspoint 2	–	–∞	–	–∞
α	–	1.50 (11.4)**	–	1.41 (6.9)**
Observations	1027	2973	939	3307

Not reported are the parameter estimates related dummy variables for each of the 6 groups of unemployed; absolute t-statistics in parentheses; a ** (*) indicates significance at a 95% (90%) level.

Tab. 4: Parameter estimates job finding and separation rates – temporary jobs

	Males	Females
2 nd masspoint		
Job finding	-0.76 (2.9)**	-0.95 (2.3)**
Job separation	2.56 (14.6)**	2.47 (4.7)**
Spike	0.56 (6.0)**	0.67 (7.7)**
α	-1.02 (4.5)**	-1.39 (2.5)**
N	5529	6433

Note that the number of observations is smaller than in the estimates of Table 2 because for males (females) 54 (45) the duration at the job (either completed or incomplete) is missing are therefore these individuals are removed from the sample. Not reported are the other parameter estimates; absolute t-statistics in parentheses; a ** (*) indicates significance at a 95% (90%) level.

Tab. 5: Parameter estimates spikes – before and after the 1998 reform

Males	Permanent jobs	Temporary jobs	Observations
Before	1.51 (8.4)**	0.58 (4.5)**	2741
After	1.89 (6.6)**	0.51 (2.9)**	2842
Total	1.63 (11.3)**	0.59 (6.1)**	5583
Females			
Before	1.56 (9.4)**	0.72 (6.4)**	3119
After	1.61 (5.2)**	0.61 (4.0)**	3359
Total	1.60 (11.6)**	0.66 (7.8)**	6478

The “total” estimates are the same as those reported in Table 2 panel c; absolute t-statistics in parentheses; a ** (*) indicates significance at a 95% (90%) level.

CESifo Working Paper Series

for full list see www.cesifo-group.org/wp

(address: Poschingerstr. 5, 81679 Munich, Germany, office@cesifo.de)

- 2777 Joel Slemrod, Old George Orwell Got it Backward: Some Thoughts on Behavioral Tax Economics, September 2009
- 2778 Cagri Seda Kumru and Athanasios C. Thanopoulos, Social Security Reform and Temptation, September 2009
- 2779 Alessandro Buccioli and Roel M. W. J. Beetsma, Inter- and Intra-generational Consequences of Pension Buffer Policy under Demographic, Financial and Economic Shocks, September 2009
- 2780 Eduardo Strube and Marcelo Resende, Complementarity of Innovation Policies in the Brazilian Industry: An Econometric Study, September 2009
- 2781 Henry Tulkens and Vincent van Steenberghe, “Mitigation, Adaptation, Suffering”: In Search of the Right Mix in the Face of Climate Change, September 2009
- 2782 Maria L. Loureiro, Anna Sanz-de-Galdeano and Daniela Vuri, Smoking Habits: Like Father, Like Son, Like Mother, Like Daughter, September 2009
- 2783 Momi Dahan, Tehila Kogut and Moshe Shalem, Do Economic Policymakers Practice what they Preach? The Case of Pension Decisions, September 2009
- 2784 Eytan Sheshinski, Uncertain Longevity and Investment in Education, September 2009
- 2785 Nannette Lindenberg and Frank Westermann, How Strong is the Case for Dollarization in Costa Rica? A Note on the Business Cycle Comovements with the United States, September 2009
- 2786 Leif Danziger, Noncompliance and the Effects of the Minimum Wage on Hours and Welfare in Competitive Labor Markets, September 2009
- 2787 Gerlinde Fellner, Rupert Sausgruber and Christian Traxler, Testing Enforcement Strategies in the Field: Legal Threat, Moral Appeal and Social Information, September 2009
- 2788 Gabriel J. Felbermayr, Mario Larch and Wolfgang Lechthaler, Unemployment in an Interdependent World, September 2009
- 2789 Sebastian G. Kessing, Federalism and Accountability with Distorted Election Choices, September 2009
- 2790 Daniel Gros, Global Welfare Implications of Carbon Border Taxes, September 2009
- 2791 Louis N. Christofides, Michael Hoy and Ling Yang, The Gender Imbalance in Participation in Canadian Universities (1977-2005), September 2009

- 2792 Jan K. Brueckner and Robert W. Helsley, Sprawl and Blight, September 2009
- 2793 Vidar Christiansen and Stephen Smith, Externality-correcting Taxes and Regulation, September 2009
- 2794 John Beirne, Guglielmo Maria Caporale, Marianne Schulze-Ghattas and Nicola Spagnolo, Global and Regional Spillovers in Emerging Stock Markets: A Multivariate GARCH-in-mean Analysis, September 2009
- 2795 Rüdiger Pethig and Frieder Kolleß, Asymmetric Capital-Tax Competition, Unemployment and Losses from Capital Market Integration, September 2009
- 2796 Ngo Van Long, Horst Raff and Frank Stähler, Innovation and Trade with Heterogeneous Firms, September 2009
- 2797 Margit Osterloh and Bruno S. Frey, Research Governance in Academia: Are there Alternatives to Academic Rankings?, September 2009
- 2798 Thiess Buettner and Clemens Fuest, The Role of the Corporate Income Tax as an Automatic Stabilizer, September 2009
- 2799 Annette Alstadsæter, Measuring the Consumption Value of Higher Education, September 2009
- 2800 Peter Friedrich, Chang Woon Nam and Janno Reiljan, Local Fiscal Equalization in Estonia: Is a Reform Necessary?, September 2009
- 2801 Evžen Kočenda and Jan Hanousek, State Ownership and Control in the Czech Republic, September 2009
- 2802 Michael Stimmelmayer, Wage Inequality in Germany: Disentangling Demand and Supply Effects, September 2009
- 2803 Biswa N. Bhattacharyay, Towards a Macroprudential Surveillance and Remedial Policy Formulation System for Monitoring Financial Crisis, September 2009
- 2804 Margarita Katsimi, Sarantis Kalyvitis and Thomas Moutos, “Unwarranted” Wage Changes and the Return on Capital, September 2009
- 2805 Christian Lessmann and Gunther Markwardt, Aid, Growth and Devolution, September 2009
- 2806 Bas Jacobs and Dirk Schindler, On the Desirability of Taxing Capital Income to Reduce Moral Hazard in Social Insurance, September 2009
- 2807 Hans Gersbach and Noemi Hummel, Climate Policy and Development, September 2009
- 2808 David E. Wildasin, Fiscal Competition for Imperfectly-Mobile Labor and Capital: A Comparative Dynamic Analysis, September 2009

- 2809 Johan Eyckmans and Cathrine Hagem, The European Union's Potential for Strategic Emissions Trading through Minimal Permit Sale Contracts, September 2009
- 2810 Ruediger Bachmann and Christian Bayer, The Cross-section of Firms over the Business Cycle: New Facts and a DSGE Exploration, October 2009
- 2811 Slobodan Djajić and Michael S. Michael, Temporary Migration Policies and Welfare of the Host and Source Countries: A Game-Theoretic Approach, October 2009
- 2812 Devis Geron, Social Security Incidence under Uncertainty Assessing Italian Reforms, October 2009
- 2813 Max-Stephan Schulze and Nikolaus Wolf, Economic Nationalism and Economic Integration: The Austro-Hungarian Empire in the Late Nineteenth Century, October 2009
- 2814 Emilia Simeonova, Out of Sight, Out of Mind? The Impact of Natural Disasters on Pregnancy Outcomes, October 2009
- 2815 Dan Kovenock and Brian Roberson, Non-Partisan 'Get-Out-the-Vote' Efforts and Policy Outcomes, October 2009
- 2816 Sascha O. Becker, Erik Hornung and Ludger Woessmann, Catch Me If You Can: Education and Catch-up in the Industrial Revolution, October 2009
- 2817 Horst Raff and Nicolas Schmitt, Imports, Pass-Through, and the Structure of Retail Markets, October 2009
- 2818 Paul De Grauwe and Daniel Gros, A New Two-Pillar Strategy for the ECB, October 2009
- 2819 Guglielmo Maria Caporale, Thouraya Hadj Amor and Christophe Rault, International Financial Integration and Real Exchange Rate Long-Run Dynamics in Emerging Countries: Some Panel Evidence, October 2009
- 2820 Saša Žiković and Randall K. Filer, Hybrid Historical Simulation VaR and ES: Performance in Developed and Emerging Markets, October 2009
- 2821 Panu Poutvaara and Andreas Wagener, The Political Economy of Conscription, October 2009
- 2822 Steinar Holden and Åsa Rosén, Discrimination and Employment Protection, October 2009
- 2823 David G. Mayes, Banking Crisis Resolution Policy – Lessons from Recent Experience – Which elements are needed for robust and efficient crisis resolution?, October 2009
- 2824 Christoph A. Schaltegger, Frank Somogyi and Jan-Egbert Sturm, Tax Competition and Income Sorting: Evidence from the Zurich Metropolitan Area, October 2009

- 2825 Natasa Bilkic, Thomas Gries and Margarethe Pilichowski, Stay in School or Start Working? – The Human Capital Investment Decision under Uncertainty and Irreversibility, October 2009
- 2826 Hartmut Egger and Udo Kreickemeier, Worker-Specific Effects of Globalisation, October 2009
- 2827 Alexander Fink and Thomas Stratmann, Institutionalized Bailouts and Fiscal Policy: The Consequences of Soft Budget Constraints, October 2009
- 2828 Wolfgang Ochel and Anja Rohwer, Reduction of Employment Protection in Europe: A Comparative Fuzzy-Set Analysis, October 2009
- 2829 Rainald Borck and Martin Wimbersky, Political Economics of Higher Education Finance, October 2009
- 2830 Torfinn Harding and Frederick van der Ploeg, Is Norway's Bird-in-Hand Stabilization Fund Prudent Enough? Fiscal Reactions to Hydrocarbon Windfalls and Graying Populations, October 2009
- 2831 Klaus Wälde, Production Technologies in Stochastic Continuous Time Models, October 2009
- 2832 Biswa Bhattacharyay, Dennis Dlugosch, Benedikt Kolb, Kajal Lahiri, Irshat Mukhametov and Gernot Nerb, Early Warning System for Economic and Financial Risks in Kazakhstan, October 2009
- 2833 Jean-Claude Trichet, The ECB's Enhanced Credit Support, October 2009
- 2834 Hans Gersbach, Campaigns, Political Mobility, and Communication, October 2009
- 2835 Ansgar Belke, Gunther Schnabl and Holger Zemanek, Real Convergence, Capital Flows, and Competitiveness in Central and Eastern Europe, October 2009
- 2836 Bruno S. Frey, Simon Luechinger and Alois Stutzer, The Life Satisfaction Approach to Environmental Valuation, October 2009
- 2837 Christoph Böhringer and Knut Einar Rosendahl, Green Serves the Dirtiest: On the Interaction between Black and Green Quotas, October 2009
- 2838 Katarina Keller, Panu Poutvaara and Andreas Wagener, Does Military Draft Discourage Enrollment in Higher Education? Evidence from OECD Countries, October 2009
- 2839 Giovanni Cespa and Xavier Vives, Dynamic Trading and Asset Prices: Keynes vs. Hayek, October 2009
- 2840 Jan Boone and Jan C. van Ours, Why is there a Spike in the Job Finding Rate at Benefit Exhaustion?, October 2009