

Carraro, Carlo; Cian, Enrica de; Tavoni, Massimo

Working Paper

Human capital formation and global warming mitigation: evidence from an integrated assessment model

CESifo Working Paper, No. 2874

Provided in Cooperation with:

Ifo Institute – Leibniz Institute for Economic Research at the University of Munich

Suggested Citation: Carraro, Carlo; Cian, Enrica de; Tavoni, Massimo (2009) : Human capital formation and global warming mitigation: evidence from an integrated assessment model, CESifo Working Paper, No. 2874, Center for Economic Studies and ifo Institute (CESifo), Munich

This Version is available at:

<https://hdl.handle.net/10419/30546>

Standard-Nutzungsbedingungen:

Die Dokumente auf EconStor dürfen zu eigenen wissenschaftlichen Zwecken und zum Privatgebrauch gespeichert und kopiert werden.

Sie dürfen die Dokumente nicht für öffentliche oder kommerzielle Zwecke vervielfältigen, öffentlich ausstellen, öffentlich zugänglich machen, vertreiben oder anderweitig nutzen.

Sofern die Verfasser die Dokumente unter Open-Content-Lizenzen (insbesondere CC-Lizenzen) zur Verfügung gestellt haben sollten, gelten abweichend von diesen Nutzungsbedingungen die in der dort genannten Lizenz gewährten Nutzungsrechte.

Terms of use:

Documents in EconStor may be saved and copied for your personal and scholarly purposes.

You are not to copy documents for public or commercial purposes, to exhibit the documents publicly, to make them publicly available on the internet, or to distribute or otherwise use the documents in public.

If the documents have been made available under an Open Content Licence (especially Creative Commons Licences), you may exercise further usage rights as specified in the indicated licence.

Human Capital Formation and Global Warming Mitigation: Evidence from an Integrated Assessment Model

Carlo Carraro
Enrica De Cian
Massimo Tavoni

CESIFO WORKING PAPER NO. 2874
CATEGORY 10: ENERGY AND CLIMATE ECONOMICS
DECEMBER 2009

PRESENTED AT CESIFO VENICE SUMMER INSTITUTE, JULY 2009

An electronic version of the paper may be downloaded

- *from the SSRN website:* www.SSRN.com
- *from the RePEc website:* www.RePEc.org
- *from the CESifo website:* www.CESifo-group.org/wp

Human Capital Formation and Global Warming Mitigation: Evidence from an Integrated Assessment Model

Abstract

Based on recent empirical evidence, this paper includes human capital and knowledge in an integrated assessment model and it assesses the interplay between innovation, human capital, climate change, and education policies. Results indicate that climate policy stimulates a dedicated form of energy-knowledge without reducing generic R&D investments. Since advancements in labour productivity have a negative impact on the environment because labour is assumed to be complement to energy, climate policy reduces education investments, on which human capital is built. However, a policy mix combining climate and education targets shows that education and climate goals can be coupled incurring in small additional economic penalties.

JEL Code: O33, O41, Q43.

Keywords: climate policy, innovation, human capital.

Carlo Carraro
Fondazione Eni Enrico Mattei
Italy - Venice
carlo.carraro@feem.it

Enrica De Cian
Fondazione Eni Enrico Mattei
Campo S. Maria Formosa, Castello 5252
Italy - 30122 Venice
enrica.decian@feem.it

Massimo Tavoni
Fondazione Eni Enrico Mattei
Italy - Venice
massimo.tavoni@feem.it

1. Introduction

Innovation, technology development and deployment are topics that increasingly interest policy makers dealing with climate change. Researchers have developed a range of tools to conceptualise these issues and to provide indications on cost-effective solutions to the climate-technology challenge. Our understanding of the role of technological change has improved over the last decades. However, what is the most appropriate way of modelling technical change is still a debated issue.

Most climate-economy models focus on the evolution of technical change in the energy sector. The majority of Integrated Assessment Models (IAMs) now includes modules that describe energy-related technical change as an endogenous process driven by either innovation or experience. In most cases, other forms of technical change that are either capital- or labour-augmenting are either omitted or approximated with exogenous trends. As a consequence, mitigation policies can only influence energy-saving technology and what happens to the overall rate of technical change is not specified.

Recent empirical evidence suggests that technical change is both energy-saving and energy-using¹ and that the productivity of production factors increases at different rates (van der Werf 2008, Carraro and De Cian 2009). Rising energy prices and more stringent environmental policies stimulate innovation in the energy field (Jaffe and Palmer 1997, Popp 2002). Still other forms of innovation (e.g. labour- or capital-saving) will continue to occur. In the literature there is a gap between empirical results and the frameworks adopted by modellers to characterise the dynamics of technical change. To date, only few models parameterise these relationship based on empirical data².

Whether technical change is good or bad for the environment depends on the direction it takes and the substitution possibilities among inputs. If pollution-saving technical change dominates pollution-using technical change, such as total factor productivity, sustainable growth is attainable (Bovenberg and Smulders 1995, Brock and Taylor 2005, Lopez 1994). If technical change increases

¹ Technical change is *input-saving* if the input cost share decreases at constant factor prices. It is *input-using* if the input cost share increases at constant factor prices. It is *input-augmenting* if it increases input productivity.

² The gap between the empirical and modelling literature has been extensively analysed in the Special Issue on Technology and Environment, *Energy Economics* 30, 2008.

the productivity of inputs that are a gross complement to emissions, it may eventually increase pollution (Lopez 1994). For example, if energy is gross complement to labour and capital, capital- or labour-augmenting technical change would increase emissions.

To date, only few IAMs feature pollution-using and endogenous technical change (Goulder and Schneider 1999, Gerlagh 2008, Carraro et al. 2009). These models assume that technological advancements in both energy- and non-energy sectors are driven by a specific stock of knowledge. Climate policy can induce a reallocation of R&D investments from the non-energy to the energy sector.

Goulder and Schneider (1999) introduced sector-specific, neutral innovation in a dynamic general equilibrium model. Climate policy stimulates innovation in alternative energy industries, but it discourages R&D in non-energy sectors. This decline causes a contraction of total output, reducing the economy-wide rate of technical progress. Gerlagh (2008) developed a model with three forms of R&D-driven innovation. A first stock of knowledge increases the productivity of carbon-energy production. A second stock is carbon-energy saving and a third stock is neutral. He found that climate policy shifts resources from energy production to energy-saving technical change. If a sufficient amount of investments go to energy-saving technical change, then there might be a research dividend and overall research levels may increase. On the contrary, Carraro et al. (2009) found that a climate policy re-direct technical change towards the energy sector, reducing the overall rate of technical change. This effect is not due to crowding-out between energy and non-energy R&D investments, but it is caused by contraction of the overall economic activity.

Following mainstream growth theory, climate-economy models describe technical change as a process driven by the accumulation of knowledge and /or experience. Another important source of technical progress is human capital (Lucas 1998, Blankenau and Simpson 2004). The theoretical literature has investigated the interaction between human capital, innovation and the environment, but not specifically with climate policy (Gradus and Smulders 1993, Hettich 1998, Pautrel 2008, Grimaud and Tournemaine 2007, Ikazaki 2006).

This literature highlights how the relationship between environmental, human capital formation and economic growth hinges on the way human capital and education come into the model. Whether education is included in the utility function or treated as a production input affects the results. What is the source of pollution, either output or inputs such as physical capital, also plays a

role. When pollution is linked to final output, an environmental tax reduces the returns on both capital and labour, reducing the incentive for human capital formation (Hettich 1998, Gradus and Smulder 1993). Instead, when pollution depends on physical capital, an environmental tax increases wages relative to capital returns, stimulating education investments. Grimaud and Tournemaine (2007) developed a model with pollution-saving R&D and with education. Education enters in the utility function together with the consumption of the polluting good. In that framework, environmental policy can promote economic growth because a tax on pollution shifts consumption toward the less costly good, namely education.

Blankenau and Simpson (2004) developed a growth model to study the relationship between public education expenditure and growth. Education spending can increase growth, but general equilibrium effects may crowd out other sources of growth, such as investments in physical capital and private human capital. The magnitude of crowding-out depends on the size of the public sector and how education expenditure is financed. When financed with consumption taxes, education has a positive effect on growth.

Despite these theoretical contributions, the applied climate-economy literature has overlooked the role of human capital as source of economic growth. The role of education in climate policy has been acknowledged since the Third Assessment Report of the IPCC, which has identified education and the stock of human capital among the determinants of adaptive capacity. According to Yohe (2001) human capital not only affects the ability to respond to climate variability and change, but it is also a determinant of mitigative capacity. In the real world, climate policy concurs with other policy goals. For example, the Millennium Development Goals define eight objectives subscribed by nearly all countries in the world, to be achieved simultaneously by 2015. They include universal primary education and sustainable development.

Regarding human capital and climate policies, there are several questions that could interest policy makers. What is the effect of human capital on emissions? What is the impact of climate policy on human capital formation? Is there substitution between investments for innovation and human capital? Can education and climate objectives be pursued together? At what costs?

This paper addresses some of these issues using an Integrated Assessment Model. This approach is meant to advance the current status of climate change economics research and to clarify some of the

connections between climate change and economic development. To our knowledge, this is a first modelling assessment of the interplay between two important determinants of economic growth, innovation and human capital, in the context of climate policy.

This paper also attempts at closing the gap between empirical and applied literature. The framework that describes the relationship between innovation, human capital and productivity growth is based on the empirical results described in Carraro and De Cian (2009). The model features not only endogenous energy-saving technical change, but it also includes human capital as a source of labour productivity and generic innovation as a source of both energy and capital productivity.

Our results indicate that climate policy stimulates a dedicated form of energy knowledge without reducing total R&D investments. Climate policy, which favours cost-effective mitigation options, penalises the formation of human capital. What drives this result is the pollution-using effect of human capital and the gross complementarity between the labour and energy input. With a slightly different set-up, Carraro et al. (2009) also conclude that the degree of substitution between energy and non-energy inputs determine the final effect of technical change. We find that innovation and human capital are complements rather than substitutes because education policy stimulates both energy and generic innovation. The crowding-out of human capital induced by climate policy is lessened when education contributes to knowledge formation.

The rest of the paper is organised as follows. Section 2 describes the WITCH model and the new structure of production. Section 3 briefly illustrates the calibration process and the baseline scenario. It also examines the model sensitivity to human capital. Policy scenarios are described in Section 4. Section 5 provides a preliminary assessment of the interactions between innovation and human. Section 6 concludes.

2. Factor-augmenting technical change in the WITCH model

2.1 Short model description

The WITCH model (Bosetti et al. 2006, Bosetti et al. 2007) is a hard-linked, energy-economy-climate model designed to deal with the main features of climate change. It is a global model and the world economy is disaggregated into twelve macro regions. The model considers the non-cooperative nature of international relationships. Regions interact with each other because of the presence of economic and environmental global externalities. It is a forward-looking model and

each regional social planner maximises her own intertemporal welfare taking as given the behaviour of other regions.

The model proposes a bottom-up characterisation of the energy sector. Seven different energy-generating technologies are modelled: coal, oil, gas, wind & solar, nuclear, electricity, and biofuels. The model includes two breakthrough technologies whose penetration rate is driven by innovation. It distinguishes dedicated R&D investments for enhancing energy efficiency from investments aimed at facilitating the competitiveness of innovative low carbon technologies in both the electric and non-electric sectors (backstops). R&D processes are subject to stand on shoulders as well on neighbouring effects. Specifically, international spillovers of knowledge are accounted to mimic the flow of ideas and knowledge across countries. Finally, experience processes through Learning-by-Doing are accounted for in the development of niche technologies such as renewable energy (Wind&Solar) and the backstops.

Through the optimisation process regions choose the optimal dynamic path of different investments, namely in physical capital, in R&D and energy technologies. Recently, the WITCH model has been updated with more recent data. It has revised estimates for future projection of the main exogenous drivers. Socio-economic, energy and environmental variables have been re-calibrated to the year 2005 (Bosetti et al. 2009). The model described in this study has been developed starting from the re-calibrated version of WITCH.

Carraro et al. (2009) proposed an alternative version which adds non-energy innovation. A stock of knowledge improves the productivity of the capita-labour nest. This modification makes it possible to study the impact of climate policies on the direction of technical change. However, the source of technical progress remains the accumulation of knowledge capital.

In a similar way, we add a generic form of knowledge that affects not only energy, but also capital productivity. We go a step further and we also include another source of technical progress, namely human capital. Next section describes in detail the structure of production and of endogenous technical change.

2.2 Production structure and input endogenous technical change

Regional production is described by a Constant Elasticity of Substitution (CES) technology. This technology combines capital (K), labour (L), and energy (E) to produce a final good that can be used for consumption or investment. Factors of production are expressed in efficiency units. The multiplicative coefficients (A_i) represent the productivity of production factors, which improves over time endogenously. This formulation is also referred to as endogenous factor-augmenting technical change. Overall productivity is described by the parameter (H), which instead evolves exogenously. It is a scale factor accounting for the efficiency with which total output is produced. This component has a neutral effect because it does not modify the ratio of marginal productivities (Hicks neutral). We adopt a non-nested specification, as estimated in Carraro and De Cian (2009). The empirical evidence on different nesting structure and on the proper value of the elasticity of substitution is mixed. A robust finding is that capital, labour, and energy are gross complements and thus the elasticity of substitution between these factors is less than one³. Equation 1 summarises the new features of production:

$$Y(n,t) = H(n,t) \frac{(AK(n,t)K(n,t)^{\rho_Y} + AL(n,t)L(n,t)^{\rho_Y} + AEN(n,t)EN(n,t)^{\rho_Y})^{\frac{1}{\rho_Y}}}{\Omega(n;t)} \quad (1)$$

where Ω is the climate change damage function which expresses a reduced-form relationship between output and temperature increase above pre-industrial levels.

The dynamic path that characterises the evolution of factor productivities has been modelled following Carraro and De Cian (2009). The empirical evidence on the direction and the sources of factor-augmenting technical change is still very scarce. Most studies analysed the determinants of neutral technical change, conventionally measured as total factor productivity. Only recently the possible sources of factor-augmenting technical change have also been studied. Carraro and De Cian (2009) identified potential technology drivers that lead to factor improvements. They assumed that factor-augmenting technical change consists of two components. An exogenous term that captures the autonomous time evolution of technical change and an endogenous term (χ_i) that links factor productivity to other economic variables. Empirical results suggest that capital and energy productivities improve with the stock of total R&D, whereas the stock of education feeds labour

³ Reviews of the estimates of substitution elasticity are provided in Carraro et al. (2009), Markandya et al. (2007) and Acemoglu (2003).

productivity. Estimated elasticities with respect to the stock of R&D and education are reported in Table 1.

Table 1. Factor elasticities to endogenous technology drivers

$\chi_L (EDU_s)$	0.17
$\chi_E (R\&D_s)$	0.60
$\chi_K (R\&D_s)$	0.26

Results in Table 1 are used to calibrate the endogenous path of factor productivities in the WITCH model. Their dynamics are described by the following equations:

$$\begin{aligned}
 AK(n,t) &= AK0(n,t) \left(\frac{R \& D_s(n,t)}{R \& D_s(n,0)} \right)^{\chi_K} \\
 AE(n,t) &= AE0(n,t) \left(\frac{R \& D_s(n,t)}{R \& D_s(n,0)} \right)^{\chi_E} \\
 AL(n,t) &= AL0(n,t) \left(\frac{EDU_s(n,t)}{EDU_s(n,0)} \right)^{\chi_L}
 \end{aligned} \tag{2}$$

Capital and energy productivities depend on an indicator of knowledge (the stock of total R&D) normalised to the base year, $R\&D_s(n,0)$. Labour productivity is instead related to an indicator of human capital (the stock of total education expenditure). The parameters $Ai0$ represent the autonomous component of factor productivities, which evolve exogenously.

The production of both human capital and knowledge is characterised by intertemporal spillovers, as the stock available in the economy at each point in time contributes to the creation of the future stock. Knowledge spillovers from the past are essential for the production of new knowledge. Following state-of-the-art literature (Romer 1990, Jones 1995, Popp 2002, Glomm and Ravikumar 1997, Blankenau and Simpson 2004) we assume that human capital (Z_{EDU}) is produced using a Cobb Douglas combination between the existing stock of human capital (EDU_s) and current expenditure in education (I_{EDU}). In a similar way, the available knowledge stock ($R\&D_s$) and current R&D investments ($I_{R\&D}$) are combined to produce knowledge capital ($Z_{R\&D}$). The sum of the exponents is less than one to account for diminishing returns on education and R&D:

$$\begin{aligned}
Z_{EDU}(n, t) &= \alpha_{EDU} I_{EDU}^{\beta_{EDU}} EDU_S^{\varphi_{EDU}} \\
Z_{R\&D}(n, t) &= \alpha_{R\&D} I_{R\&D}^{\beta_{R\&D}} R \& D_S^{\varphi_{R\&D}}
\end{aligned}$$

where

$$\begin{aligned}
\beta_{EDU} + \varphi_{EDU} &< 1 \\
\beta_{R\&D} + \varphi_{R\&D} &< 1
\end{aligned}$$

The stock of both knowledge and human capital depreciate over time. Following Jorgenson and Fraumeni (1992), the depreciation rate of human capital (δ_{EDU}) is lower than the depreciation rate of knowledge ($\delta_{R\&D}$) (2% and 5% per year respectively). The final laws of accumulation read as follows:

$$\begin{aligned}
EDU_S(n, t+1) &= EDU_S(n, t)(1 - \delta_{EDU}) + Z_{EDU}(n, t) \\
R \& D_S(n, t+1) &= R \& D_S(n, t)(1 - \delta_{R\&D}) + Z_{R\&D}(n, t)
\end{aligned}$$

Investments in R&D that build up the stock in equation (4) represent the total innovative activity of the economy, without sectoral distinctions. Therefore, we also refer to it as generic innovation. As mentioned before, resources can also be allocated to dedicated investments in energy R&D. Investments in energy R&D ($I_{ER\&D}$) build up the formation of a stock of dedicated knowledge ($Z_{ER\&D}$):

$$Z_{ER\&D}(n, t) = \alpha_{ER\&D} I_{ER\&D}^{\beta_{ER\&D}} ER \& D_S^{\varphi_{ER\&D}}$$

where

$$\beta_{ER\&D} + \varphi_{ER\&D} < 1$$

with the standard accumulation equation:

$$ER \& D_S(n, t+1) = ER \& D_S(n, t)(1 - \delta_{ER\&D}) + Z_{ER\&D}(n, t)$$

Investments in energy R&D add to the effect of generic R&D and they both contribute the final improvement of energy productivity⁴:

⁴ We implicitly assumed that energy R&D and generic R&D have the same effect on energy productivity. We did not have any empirical information to distinguish between the two stocks of knowledge.

$$AE(n,t) = AE0(n,t) \left(\frac{R \& Ds(n,t) + ER \& Ds(n,t)}{R \& Ds(n,0) + ER \& Ds(n,0)} \right)^{\chi_E} \quad (7)$$

Investments in generic R&D, energy R&D and expenditure on education reduce resources available for consumption and other investment opportunities, according to the standard budget constraint:

$$C(n,t) = Y(n,t) - \sum_i I_i(n,t) - I_{R\&D}(n,t) - I_{ER\&D}(n,t) - I_{EDU}(n,t) - I_C(n,t) \quad (8)$$

3. Calibration and baseline scenario

3.1 Baseline scenario

The present version of the WITCH model has been calibrated on the updated version of the base model (Bosetti et al. 2009)⁵. In the present version, the endogenous dynamic of factor productivities is an important driver of economic growth. Factor productivities grow endogenously with human capital and knowledge. The average growth rates of factor productivities are reported in Table 2, together with the average growth rate of neutral technical change.

Table 2. Factor-augmenting technical change: average growth rates

	USA	WEURO	EEURO	KOSAU	CAJAZ	TE	MENA	SSA	SASIA	CHINA	EASIA	LACA
<i>H</i>	0.44%	0.75%	1.63%	1.05%	0.76%	1.60%	1.47%	2.34%	2.46%	2.33%	1.41%	1.69%
<i>AE</i>	0.81%	0.50%	0.66%	0.50%	0.59%	0.45%	0.77%	1.24%	1.21%	0.99%	1.85%	0.70%
<i>AK</i>	0.55%	0.32%	0.27%	0.23%	0.31%	0.25%	0.42%	0.27%	0.59%	0.62%	0.91%	0.19%
<i>AL</i>	0.65%	0.50%	0.82%	0.38%	0.31%	0.63%	0.70%	0.34%	0.80%	0.97%	0.87%	0.82%

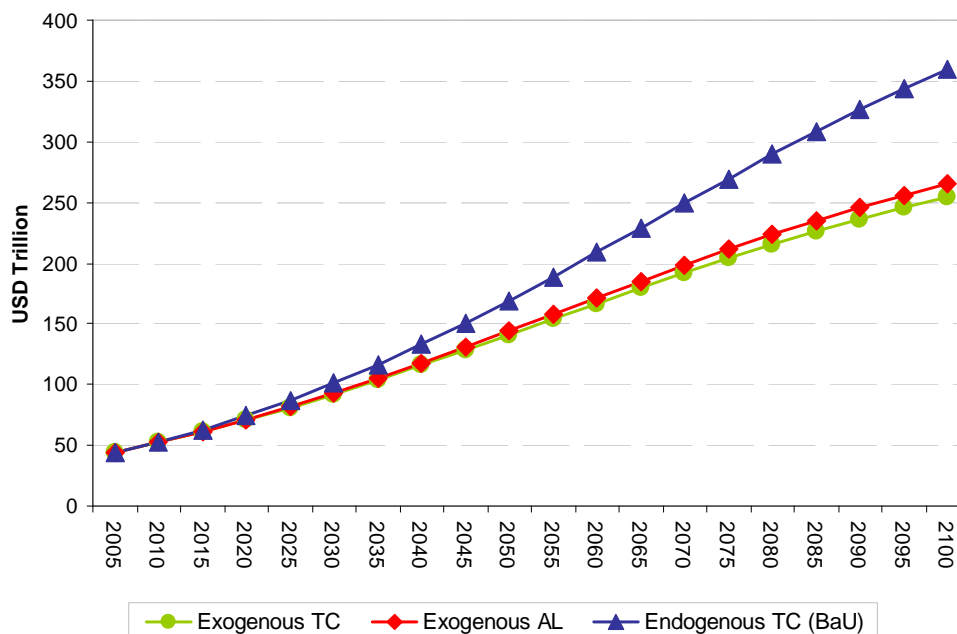
In non-OECD countries and Eastern Europe, the productivity of all factors grows faster than OECD countries, driving the convergence process that characterises the baseline. It should be pointed out that, despite the endogenous characterisation of factor productivities, neutral technical change, which is exogenous, still plays a large role⁶.

⁵ Major modifications are the inclusion of non-CO2 GHGs, the representation of two breakthrough technologies and the updating of the base year to 2005.

⁶ As mentioned in the previous section, factor productivities consist of two components, an exogenous trend and an endogenous part. Carraro and De Cian (2009) find that the exogenous component is statistically equal across inputs. Therefore, we calibrated the exogenous component of capital and energy productivity equal to the trend of labour productivity. Labour productivity exogenous trends and neutral technical change have been calibrated to reproduce carbon emissions and regional GDP of the updated WITCH baseline (Bosetti et al. 2009).

Figure 1 highlights the contribution of endogenous technical change to economic growth. It shows Gross World Product (GWP) in the Baseline scenario (BaU), when all factor productivities are endogenous, together with other two scenarios. The red line (Exogenous AL) is the path of Gross World Product when the endogenous component of labour productivity is switched off, e.g. only capital and energy productivities are endogenous. The green line (Exogenous TC) is the path of Gross World Product when all productivities are assumed to be exogenous. Endogenous technical change contributes to 30% of economic growth in 2100. The graph shows that the main endogenous engine of economic growth is human capital, with a contribution of 26% at the end of the century.

Figure 1. Gross World Product under different technology assumptions



Education and R&D investments have been calibrated on historical regional shares over GDP. World expenditure on generic R&D in 2005 is 2.13% of GWP, global education expenditure 4.52%. As shown in Table 3, OECD countries have the largest share in both education and R&D expenditure. Whereas non-OECD countries tend to catch up over time in terms of education expenditure, most R&D expenditure remains concentrated in OECD countries. At the end of the century, they still detain almost 70% of world R&D.

Table 3. R&D investments and Education expenditure. Historical data and calibration results (% GDP)

Historical data - 2005	Energy R&D (IEA)	R&D (WDI)	EDUCATION (WDI)
WORLD	0.033%	2.17%	4.34%
OECD	0.033%	2.49%	4.55%
NON-OECD	n.a.	0.93%	3.62%
WITCH – 2005	Energy R&D	R&D	EDUCATION
WORLD	0.026%	2.13%	4.52%
OECD	0.028%	2.44%	4.68%
NON-OECD	0.018%	1.03%	3.93%

IEA: International Energy Agency

WDI: World Development Indicators

The size of the elasticity of substitution between factors plays a crucial role in shaping the direction of technical change (Acemoglu, 2009). Inputs are gross complements because the elasticity of substitution is less than one⁷. If inputs are gross complements they can be substituted with each other, but with some rigidities. When an input becomes more productive and there is full employment of resources, additional productivity leads to additional output. This scale effect puts an upward pressure on the demand for other inputs and also energy. As a consequence, carbon emissions increase. This argument neglects the distinction between skilled and unskilled labour, which would make the discussion more complicated. A relationship of complementarity between labour and other inputs (capital) is typically found when skilled labour is considered. Instead, empirical studies found that capital tend to be a substitute for unskilled labour.

In the present model, the stock of human capital drives a form of technical progress that is energy-using because labour and energy are gross complements. The net effect of generic innovation is energy-saving because it improves energy productivity more than capital.

3. 2 Model sensitivity to human capital dynamics

Before analysing climate and education policies, this section illustrates the macroeconomic effects of education expenditure. We consider an exogenous increase in education expenditure to the level of 5% of regional GDP and we compute the elasticity of selected variables to education.

⁷ Carraro and De Cian (2009) estimated the elasticity of substitution between capital, labour and energy and found a value equal to 0.3. In the model however, a higher value equal of 0.7 is chosen, mainly for two reasons. First, the model time step is of five years. The elasticity of substitution over five years is higher than the elasticity over one year, as discussed in Pessoa et al. (2007).

The elasticity of final output to education ($\Delta Y\%/\Delta EDU\%$) is larger than zero, indicating a positive relationship between education expenditure and output growth. This result is intuitive but not obvious. As discussed in Blankenau and Simpson (2003), it depends on how education expenditure is financed. If it is financed with consumption taxes, the effect is positive. This is what occurs in the WITCH model as education expenditure is financed out of the budget constraint. Additional education expenditure comes at the costs of lower consumption in the short-term. However, already after 2025, the growth effect increases also consumption possibilities.

The expansion of economic activity has two additional effects. Emissions increase because economic growth puts an upward pressure on energy demand. At the same time, economic growth increases the amount of resources available for all forms of innovation, indicating a relationship of complementarity between knowledge and human capital. Both generic and dedicated energy R&D increase. The energy-saving effect of R&D explains why, despite the increasing elasticity of output, the elasticity of emissions declines after 2030. In the long-run, the presence of diminishing returns mitigates the effect of education on all variables.

Table 4. Elasticities to education investments when these are increased as shown in the last column.

	$\Delta Y\%/\Delta EDU\%$	$\Delta C\%/\Delta EDU\%$	$\Delta EMI\%/\Delta EDU\%$	$\Delta R\&D\%/\Delta EDU\%$	$\Delta \text{energy-R\&D}\%/\Delta EDU\%$	$\Delta EDU\%$
2015	0.02	-0.04	0.01	-0.02	-0.03	7.2%
2030	0.07	0.02	0.06	0.04	0.03	5.1%
2050	0.08	0.02	0.04	0.06	0.03	5.4%
2100	0.04	-0.01	0.02	0.04	0.01	22.9%

This simple exercise has shown that investing in human capital formation has important effects not only on economic growth and consumption, but also on innovation and emissions. In light of these results, what can we anticipate on the expected effects of climate policy? On the one hand, human capital is pollution-using and therefore it may make the achievement of a stabilisation target more difficult. On the other hand, the positive effect education has on output and overall economic growth may partially compensate the economic loss due to a climate policy. Which effect prevails is an empirical question that is addressed in the next section.

4. Policy exercises

4.1 Climate Policy

This section analyses the interplay between output, consumption, innovation and human capital in the presence of climate policy. We assume that all regions agree to cooperate on the stabilisation of GHG concentrations at 550 CO₂-eq by 2100. An international cap-and-trade system allows regions

to buy and sell permits on the world market so as to achieve the target in the most cost-effective way, equalising marginal costs of abatement across regions⁸. This exercise makes it possible to investigate how climate policy affects the accumulation of knowledge and human capital and ultimately the direction of technical change.

When facing a climate policy constraint, each region reshapes the optimal mix of investments to meet the constraint at the minimum cost. The carbon price signal reallocates resources towards low carbon technologies (nuclear, CCS and renewable energy), energy-saving R&D, innovation and deployment of breakthrough technologies.

Results reported in Figure 2 show that climate policy stimulates a dedicated form of energy-knowledge without reducing investments in generic R&D. Climate policy stimulates not only energy R&D, but also the generic one and the two types of knowledge are found to be complementary. In percentage terms, climate policy reallocates relatively more resources to energy R&D because it is more effective at augmenting energy efficiency. In addition, energy R&D reduces the costs of breakthrough technologies. Generic R&D raises the productivity of capital, which is complement to energy; however, it also raises the productivity of energy, and this latter effect dominates the other.

Climate policy induces some crowding-out on education expenditure, by at most 10% at mid century, though it declines afterwards. Human capital is labour-augmenting. Given the complementarity between energy and labour, any form of technical progress that increases the productivity of capital and labour is energy-using and therefore has negative implications on the environment. As a consequence, an increase in human capital tends to have a pollution-using effect. This implies that a cost-effective response to climate policy reallocates investments from education towards pollution-saving options such as R&D and low carbon technologies.

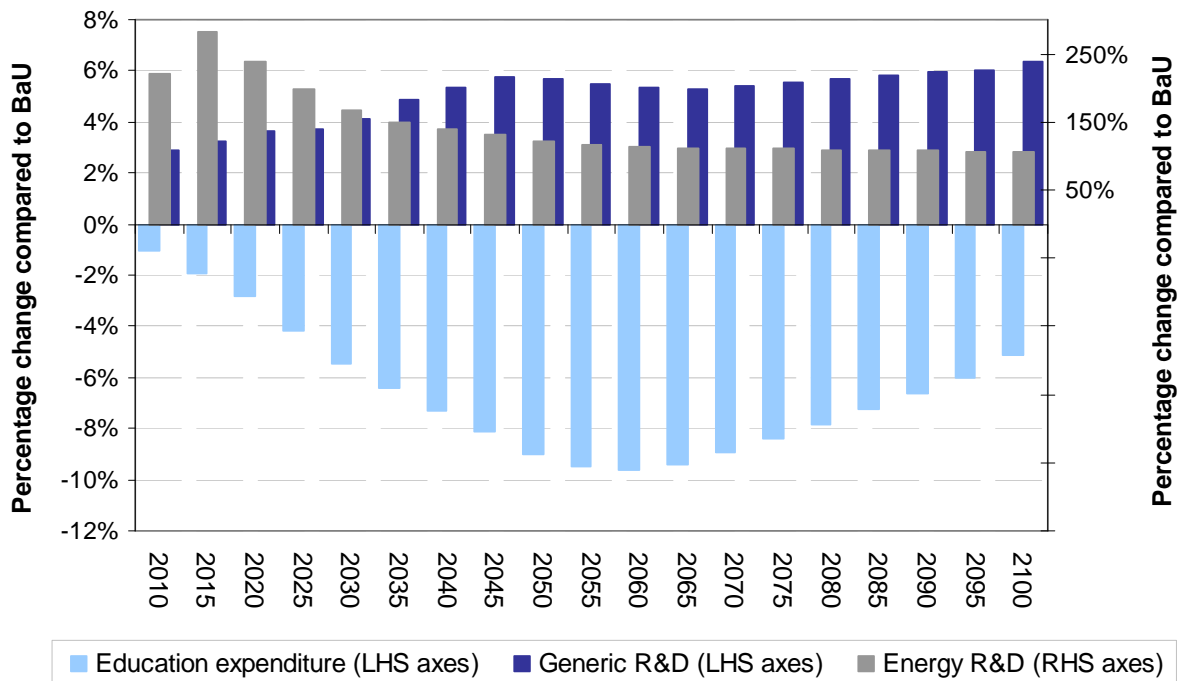
This result is driven by how pollution is modelled. As already pointed out by Hettich (1998), when pollution is linked to final output, as it is the case in the WITCH model, a pollution tax reduces the returns of both capital and labour, diminishing the incentive to invest in education. The abstraction from any distinction between skilled and unskilled labour force and the assumption of full employment are additional drivers of this result. In the case of generic R&D, as explained above,

⁸ Permits are allocated on an equal per capita basis. This allocation schemes tend to favour developing countries. However, the goal is not to provide a comprehensive evaluation of different policy architectures, but rather to emphasise the trade-off and/or the synergies between different policy goals at the global level.

the positive effect on energy efficiency more than compensates the lower incentive to raise the productivity of capital.

Figure 2 shows the reallocation of productive resources between education, generic R&D, and energy R&D induced by climate policy. Energy R&D increases the most in percentage terms, reaching a peak of 0.12% of GWP between 2015 and 2020. Energy R&D as a share of GDP has been declining since 1980 when it reached a level equal to 0.08% of GWP. The increase in energy R&D is more pronounced in the short-run because innovation is needed to make breakthrough technologies competitive. However, the additional billions invested are a small amount, on average equal to US\$ 60 Billion. Although the percentage variations of generic R&D and education are smaller, they move a larger amount of resources. Over the century, generic R&D investments increase on average by US\$ 145 Billion, whereas education expenditure is reduced by US\$ 600 Billion.

Figure 2. Human capital and knowledge in the stabilisation scenario (550 CO₂-eq)



The macroeconomic effects of the stabilisation policy are summarised in Table 5. The first three columns report the percentage changes of selected variables with respect to the baseline scenario in

2030, 2050 and 2100 respectively. The last column reports the Net Present Value (NPV), using a 3% discount rate.

Table 5. Global macroeconomic effects of a 550CO₂-eq stabilisation policy

(Percentage changes w.r.t. BaU)

	2030	2050	2100	NPV (3% discounting)
GROSS WORLD PRODUCT (GWP)	-1.30%	-2.36%	0.03%	-1.36%
CONSUMPTION	-0.98%	-1.58%	0.39%	-0.94%
EDUCATION	-5.47%	-9.01%	-5.15%	-6.20%
GENERIC R&D	4.12%	5.66%	6.37%	4.59%
ENERGY R&D	167.17%	122.70%	106.28%	149.73%

Macroeconomic costs are within the range of exiting literature (IPCC, 2007), though the climate stabilisation objective considered here is not very ambitious compared to the one of 2 degree Celsius. The RECIPE model intercomparison analysed the economics of a comparable climate policy and it found that stabilisation costs range between 1.4% and 0.1% of global discounted consumption (Luderer et al. 2009). Low costs are also due to the assumption of immediate participation and full flexibility among greenhouse gases abatement options. Departure from any of these assumptions increases costs substantially. For example, Bosetti et al. (2009) found that limited availability of mitigation technologies would impose an additional penalty of roughly 70% whereas a 20-year delay in global action would increase costs by 160%.

Although this formulation of endogenous technical change has only a minor influence on climate policy costs, the effects on knowledge and human capital formation points at important interactions between different policies. Stabilisation alone induces some crowding-out on education expenditure, but governments may have policies explicitly directed at education. What happens when education and climate goals concurs is discussed in the next section.

4.2 Coupling climate and education policies

This section analyses the macroeconomic effects of climate policy in the presence of a constraint on education expenditure. We assume that governments cannot freely reallocate resources away from education because they have policy targets on education as well. This is actually the case in the 189 countries that have committed to achieve the eight Millennium Development Goals by 2015. Universal primary education and sustainable development are two of the eight Goals. In addition, the Fourth Assessment Report (IPCC, 2007) has stressed the role of capacity building and

socio-economic development for effective climate policy. Enhancing each of the determinants of mitigative capacity is a policy objective itself (Yohe, 2001) and education is one of these determinants.

Primary education is almost universal in all developed countries and many developing countries are on the right track to achieve the Millennium Development Goals (*on-track* countries). Achieving universal primary education is particularly challenging in poor countries such as South Asia (SASIA) and Sub-Saharan Africa (SSA). As a consequence, most countries do not need to invest additional resources on education, but to maintain current levels of expenditure. South Asia and Sub-Saharan Africa instead need to increase investments significantly.

Against this background, we design the following education policy. SSA and SASIA will increase education investments so that the fraction of population currently *off-track* will be *on-track* from 2015 onwards⁹. Other regions will maintain the baseline path of education expenditure, as current spending is already consistent with the achievement of the goal. In order to compute the additional spending on education in SSA and SASIA we combined the percentage of population *off-track*¹⁰ from Glewwe et al. (2006) with population projections from the WITCH model. We also used the estimates of average spending per student provided by Glewwe et al. (2006), which amounts to US\$ 46 Billion in SASIA and US\$ 68 Billion in SSA.

Between 2010 and 2015, Sub-Saharan Africa and South Asia increase education expenditure by US\$ 100 Billion a year, which is comparable to current spending on Official Development Assistance¹¹. The effect on global education investments is very tiny, as SSA-SASIA education expenditure represents a very small fraction of world education investments.

The macroeconomic effects of combining education and climate policy are shown in Table 6. Adding the education policy stimulates further innovation, of both types, confirming the complementarity between human capital and innovation. Human capital has a growth effect that ultimately increases the amount of resources available for productive investments, including innovation. The increase in education expenditure puts an upward pressure on emissions as well.

⁹ Countries or population are classified *on-track* in achieving universal primary education if continuing on linear trends between 1990 and 2002 will result in a completion rate above 95% by 2015. *Off-track* means that the completion rate is projected to be below 50% in 2015 (seriously off track) or below 95% (moderately off track).

¹⁰ The implicit assumption is that average spending and the percentage of population *off-track* remain constant between 2000 and 2015.

¹¹ After 2015 SSA and SASIA continue spending at least the average amount required to have all population *on-track*.

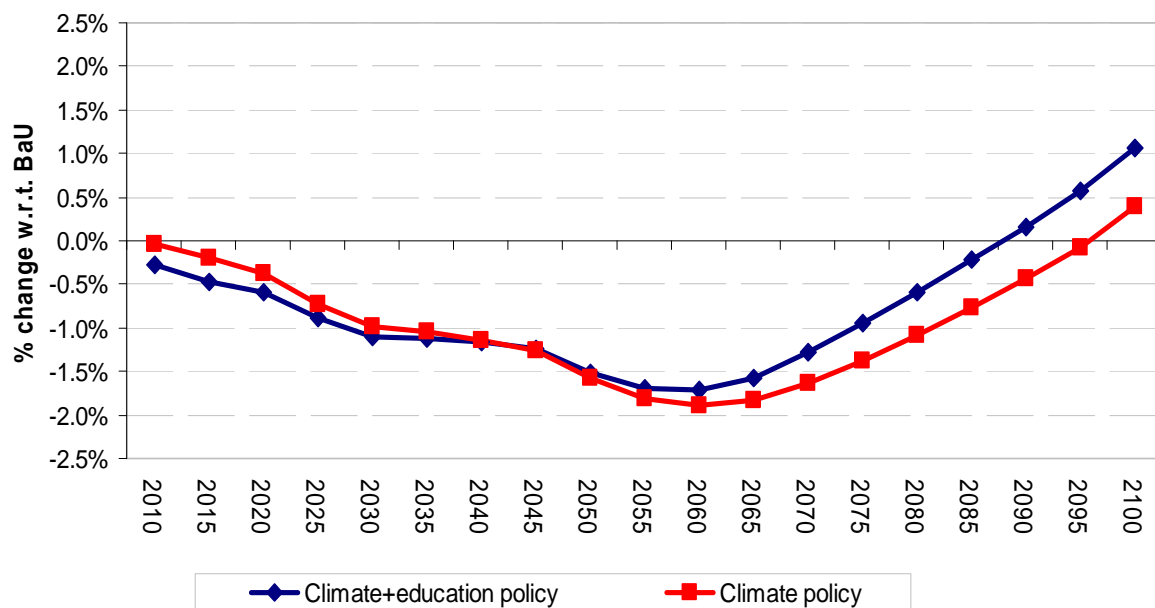
However, the impact on the carbon market and the energy mix is very moderate. The price of carbon is only slightly higher, on average 1%. Investments in carbon-free energy technologies and in energy R&D slightly increase.

Table 6. Global macroeconomic effects of climate and education policy
(Percentage changes w.r.t. climate policy case)

	2030	2050	2100	NPV (3% discounting)
GROSS WORLD PRODUCT (GWP)	0.29%	0.60%	0.86%	0.49%
CONSUMPTION	-0.12%	0.06%	0.67%	0.11%
EDUCATION	6.67%	9.98%	5.43%	7.42%
GENERIC R&D	0.39%	0.53%	0.79%	0.46%
ENERGY R&D	0.20%	0.15%	0.60%	0.23%

Combining climate and education policy together suggests that the crowding-out effect of climate policy on education can be corrected at low welfare costs. Net present value results point at a consumption and output gain, but these aggregate figures hide a trade-off between short-term and long-term consumption, which is analysed in Figure 3. In the short-term, education policy absorbs additional resources, reducing consumption possibilities. Short-term, additional education expenditure pays off in the long-term, when it increases overall economic growth, and ultimately consumption.

Figure 3. Consumption path in the two policy scenarios. Percentage changes w.r.t. BaU



One limitation of the modelling approach proposed in this paper is the lack of interactions between knowledge and human capital. Enhanced human capital can be expected to ease knowledge formation. This is a very fruitful area for future research especially on the empirical side. To date, there are no studies that quantify the relationship between knowledge and human capital that can guide us in choice of the model specification. The next section provides a first exercise that illustrates what are the implications of omitting this interaction. This exercise should be considered a preliminary investigation of this issue, and a motivation for additional empirical work .

5. Knowledge Stimulating Education: a preliminary analysis

In this section, we assume that the stock of human capital is an essential input for the formation of knowledge¹². It can be reasonably assumed that investments in R&D can be productive only if there are educated people that can work as researchers. Equation (12) describes the production of new knowledge, which depends not only on R&D investments, but also on the stock of education expenditure:

$$Z_{RD}(n, t) = \alpha_{R\&D} I_{R\&D}^{\beta_{R\&D}} R \& D_S^{\varphi_{R\&D}} EDU_S^{\varphi_{R\&D} / \gamma}$$

where (12)

$$\beta_{R\&D} + \varphi_{R\&D} + \varphi_{R\&D} / \gamma < 1$$

With this specification, expenditure in education have an additional effect. It has an indirect impact on energy and capital productivity. To our knowledge¹³, there is no empirical evidence on the effect of education on knowledge formation. Therefore, the contribution of education has been chosen in relation to the one of R&D. We have chosen an elasticity equal to one tenth the effect of R&D (i.e. in equation 12 $\gamma = 10$).¹⁴

¹² Most previous models assumed that labour (Jones, 1995; Aghion and Howitt, 1992) rather than educated people or human capital is used in the production of R&D. Here the approach of Romer(1990) and of Ikazaki (2006) is followed.

¹³ To date, only empirical studies considers the joint effect of human capital and innovation on total factor productivity growth (Engelbrecht, 1997), which is however different from the relationship between human capital and innovation formation. That paper finds that the productivity effect of human capital is larger than the effect of R&D.

¹⁴ It is reasonable to expect the education effect on knowledge to be lower than the effect of both R&D investments and capital stock. The size of this parameter is also constrained by the value of the other parameters and the restriction that the sum cannot exceed 1.

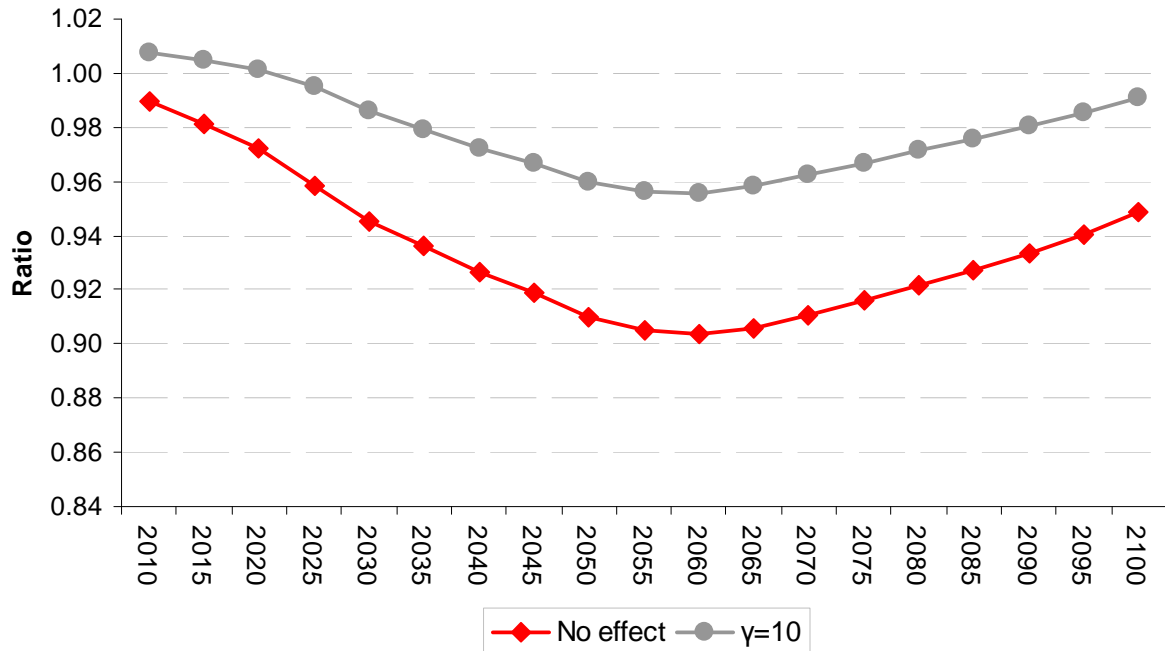
Table 7 shows that when education contributes to knowledge formation, output and consumption losses are reduced. In fact, the crowding-out effect induced by climate policy is lower and therefore overall education investments are larger (Figure 4). As already explained in Section 3.2, education expenditure increases output and also mid- and long-term consumption.

Table 7. Effects of education on knowledge formation: sensitivity analysis

	No effect	$\gamma = 10$
GWP (NPV 3% discounting)	-1.36%	-0.70%
Consumption (NPV 3% discounting)	-0.94%	-0.56%

When education helps to build up knowledge, climate policy induces a lower reduction in education investments because education has also an indirect effect on energy productivity. By augmenting the efficiency in knowledge production, education ultimately has an energy-saving effect. However, the direct, energy-using effect on labour productivity, prevails for this specific parameterization.

Figure 4. Human capital (education expenditure)



The figure plots the ratio of education investments in the stabilisation scenario over the baseline scenario

6. Conclusions

Most of the climate-economy literature has assessed climate policies in isolation from other policy targets. However, there is an increasing awareness that the attainment of climate targets is

conditional on solid economic development, good institutions and capacity, and therefore it concurs with other policy targets.

This paper contributes to this debate by analysing the linkages between human capital and climate policy. An integrated assessment model is equipped with an empirical estimated representation of knowledge and human capital accumulation. The model features several forms of endogenous technical change, both in the energy sector and at the macroeconomic level. Knowledge, driven by a generic form of R&D, increases the productivity of capital and energy. Human capital drives labour productivity growth. Dedicated innovation specifically addresses energy efficiency and the competitiveness of low carbon technologies. Using this framework, we analyse how climate policy affect innovation in the energy sector, generic innovation and human capital formation.

Results indicate that climate policy stimulates a dedicated form of energy-knowledge without reducing generic R&D investments because the effect of generic R&D on energy productivity outweighs the pollution using capital one. This result indicates the presence of complementarity between different types of knowledge.

However, advancements in labour productivity have a negative impact on the environment because labour is a complement to energy. Education investments, on which human capital is built, decrease by at most 10% because of the capital-skill complementarity. However, inspection of a policy mix shows that education and climate goals can be coupled incurring in small additional economic penalties.

Finally, we provides a first exploratory investigation of how the interdependence between R&D and education can affect modelling results. The negative effect of climate policy on human capital formation is lessened when the contribution of education to the formation of innovation is sufficiently large. That exercise is a preliminary analysis meant to suggest the importance of additional empirical work in this area.

A further channel of interactions that could be considered in future works is the interdependence between domestic R&D, education, and foreign knowledge. The inclusion of education investments as an endogenous variable offers the possibility to enrich the specification of absorptive capacity and to account for the role of both innovation and human capital.

7. References

Acemoglu, D., P. Aghion, L. Bursztyn and D. Hemous (2009). "The Environment and Directed Technical Change," NBER Working Paper No. 15451, Oct 2009

Acemoglu, D. (2003). "Labor- and Capital-Augmenting Technical Change," *Journal of European Economic Association* **1**, 1-37

Blankenau W. and N. Simpson (2004). "Public education expenditure and growth," *Journal of Development Economics* **73**, (2), 583-605

Bosetti, V., C. Carraro, M. Galeotti, E. Massetti and M. Tavoni (2006). "WITCH: A World Induced Technical Change Hybrid Model," *The Energy Journal*, Special Issue Hybrid Modelling of Energy Environment Policies: Reconciling Bottom-up and Top-down, 13-38

Bosetti, V. E. Massetti, M. Tavoni, (2007). "The WITCH Model. Structure, Baseline, Solutions," Fondazione ENI Enrico Mattei, Nota di Lavoro 10-2007, Milan

Bosetti V., E. De Cian, A. Sgobbi and M. Tavoni (2009). "The 2008 WITCH Model: New Model Features and Baseline," FEEM Working Paper 85-2009, Milan

Bosetti, V., C. Carraro and M. Tavoni (2009). "Climate Policy After 2012. Technology, Timing, Participation," *CESifo Economic Studies* **55**(2), 235-254

Bovenberg, A.L. and Smulders, S., (1995). "Environmental quality and pollution augmentation technological change in a two sector endogenous growth model," *Journal of Public Economics* **57**, 369-391

Brock, William A. & Taylor, M. Scott, 2005. "Economic Growth and the Environment: A Review of Theory and Empirics," in: Philippe Aghion & Steven Durlauf (ed.), *Handbook of Economic Growth*, edition 1, volume 1, chapter 28, pages 1749-1821 Elsevier

Carraro, C. and De Cian, E. (2009). "Factor-augmenting technical change: an empirical assessment," DSE Working Paper, No. 29/09, Department of Economics, University of Venice

Carraro, C., E. Massetti and L. Nicita (2009). "How Does Climate Policy Affect Technical Change? An Analysis of the Direction and Pace of Technical Progress in a Climate-Economy Model" Fondazione ENI Enrico Mattei, Nota di Lavoro 08-2009, Milan

De La Gradville, O. (2007). "The 1956 contribution to economic growth theory by Robert Solow: a major landmark and some of its undiscovered riches," *Oxford Review of Economic Policy* **23** (1), 15-24

Engelbrecht (1997). "International R&D spillovers, human capital and productivity in OECD economies: An empirical investigation," *European Economic Review* **41**, 1479-1488

Gerlagh, R. (2008). "A climate-change policy induced shift from innovations in carbon-energy production to carbon-energy saving," *Energy Economics* **30**, 425-448

Glomm G. and B. Ravikumar (1992). "Public versus private investment in human capital: endogenous growth and income inequality," *Journal of Political Economy* **100**, 818-834

Goulder, L.H. and S. Schneider (1999). "Induced Technological Change and the Attractiveness of CO2 Abatement Policies," *Resource and Energy Economics* **21**, 211-253

Gradus, R. and Smulders, S. (1993). "The trade-off between environmental care and long-term growth-pollution in three prototype growth models," *Journal of Economics* **58** (1), 25-51

Grimaud, A. and Tournemaine, F. (2007). "Why can environmental policy tax promote growth through the channel of education?," *Ecological Economics* **62** (1), 27-36

Hettich, F. (1998). "Growth effects of a revenue-neutral environmental tax reform," *Journal of Economics* **67** (3), 287-316.

Ikazaki, D. (2006). "R&D, human capital and environmental externality in an endogenous growth model," *International Journal of Global Environmental Issues* **6** (1), 29-46

IPCC, (2007). *Climate Change 2007: Mitigation. Contribution of Working Group III to the Fourth Assessment Report of the Intergovernmental Panel on Climate Change* [B. Metz, O.R. Davidson, P.R. Bosch, R. Dave, L.A. Meyer (eds)], Cambridge University Press, Cambridge, United Kingdom and New York, NY, USA., XXX pp.

Jaffe, A.B. and Palmer, K, (1997). "Environmental regulation and innovation: a panel data study," *Review of Economics and Statistics* **79**, 610-619

Jones, C.I (1995). "R&D - Based Models of Economic Growth," *Journal of Political Economy* **103** (4), 759-784

Jorgenson D. and B. Fraumeni, (1992). "Investment in education and U.S. economic growth," *Scandinavian Journal of Economics* **94**, S51-S70

Lucas R. E. (1988). "On the mechanics of economic development," *Journal of Monetary Economics* **22**, 3-42

Lopez, R. (1994). "The environment as a factor of production: the effects of economic growth and trade liberalization," *Journal of Environmental Economics and Management* **27**, 163-184

Luderer, G., V. Bosetti, J. Steckel, H. Waisman, N. Bauer, E. De Cian, M. Leimbach, O. Sassi, M. Tavoni (2009): *The Economics of Decarbonization – Results from the RECIPE model intercomparison*. RECIPE Working paper, available online at <http://www.pik-potsdam.de/recipe>

Pautrel, X. (2008). "Environmental policy, education and growth: A reappraisal when lifetime is finite," *Fondazione ENI Enrico Mattei, Nota di Lavoro 57-2008*, Milan

Pessoa, S. de Abreu, S.M Pessoa and R. Rob, (2005). "Elasticity of Substitution Between Capital and labour and its Applications to growth and Development," *PIER Working Paper 05-012*, University of Pennsylvania

Popp, D. (2002). "Induced innovation and energy prices," *American Economic Review* **1**, 160-180

Romer, Paul M. (1990). "Endogenous technological change," *Journal of Political Economy* **98**, 71-102

Smulders, S. and M. de Nooij, (2003). "The impact of energy conservation on technology and economic growth," *Resource and Energy Economics* **25**, 59-59

van der Werf, E. (2008). Production functions for climate policy modelling: an empirical analysis, *Energy Economics*, **30** (6), 2964-2979.

Yohe, G. (2001). "Mitigative capacity: the mirror image of adaptive capacity on the emissions side," *Climatic Change* **49**, 247-262

CESifo Working Paper Series

for full list see www.cesifo-group.org/wp

(address: Poschingerstr. 5, 81679 Munich, Germany, office@cesifo.de)

- 2813 Max-Stephan Schulze and Nikolaus Wolf, Economic Nationalism and Economic Integration: The Austro-Hungarian Empire in the Late Nineteenth Century, October 2009
- 2814 Emilia Simeonova, Out of Sight, Out of Mind? The Impact of Natural Disasters on Pregnancy Outcomes, October 2009
- 2815 Dan Kovenock and Brian Roberson, Non-Partisan ‘Get-Out-the-Vote’ Efforts and Policy Outcomes, October 2009
- 2816 Sascha O. Becker, Erik Hornung and Ludger Woessmann, Catch Me If You Can: Education and Catch-up in the Industrial Revolution, October 2009
- 2817 Horst Raff and Nicolas Schmitt, Imports, Pass-Through, and the Structure of Retail Markets, October 2009
- 2818 Paul De Grauwe and Daniel Gros, A New Two-Pillar Strategy for the ECB, October 2009
- 2819 Guglielmo Maria Caporale, Thouraya Hadj Amor and Christophe Rault, International Financial Integration and Real Exchange Rate Long-Run Dynamics in Emerging Countries: Some Panel Evidence, October 2009
- 2820 Saša Žiković and Randall K. Filer, Hybrid Historical Simulation VaR and ES: Performance in Developed and Emerging Markets, October 2009
- 2821 Panu Poutvaara and Andreas Wagener, The Political Economy of Conscription, October 2009
- 2822 Steinar Holden and Åsa Rosén, Discrimination and Employment Protection, October 2009
- 2823 David G. Mayes, Banking Crisis Resolution Policy – Lessons from Recent Experience – Which elements are needed for robust and efficient crisis resolution?, October 2009
- 2824 Christoph A. Schaltegger, Frank Somogyi and Jan-Egbert Sturm, Tax Competition and Income Sorting: Evidence from the Zurich Metropolitan Area, October 2009
- 2825 Natasa Bilkic, Thomas Gries and Margarethe Pilichowski, Stay in School or Start Working? – The Human Capital Investment Decision under Uncertainty and Irreversibility, October 2009
- 2826 Hartmut Egger and Udo Kreickemeier, Worker-Specific Effects of Globalisation, October 2009

- 2827 Alexander Fink and Thomas Stratmann, Institutionalized Bailouts and Fiscal Policy: The Consequences of Soft Budget Constraints, October 2009
- 2828 Wolfgang Ochel and Anja Rohwer, Reduction of Employment Protection in Europe: A Comparative Fuzzy-Set Analysis, October 2009
- 2829 Rainald Borck and Martin Wimbersky, Political Economics of Higher Education Finance, October 2009
- 2830 Torfinn Harding and Frederick van der Ploeg, Is Norway's Bird-in-Hand Stabilization Fund Prudent Enough? Fiscal Reactions to Hydrocarbon Windfalls and Graying Populations, October 2009
- 2831 Klaus Wälde, Production Technologies in Stochastic Continuous Time Models, October 2009
- 2832 Biswa Bhattacharyay, Dennis Dlugosch, Benedikt Kolb, Kajal Lahiri, Irshat Mukhametov and Gernot Nerb, Early Warning System for Economic and Financial Risks in Kazakhstan, October 2009
- 2833 Jean-Claude Trichet, The ECB's Enhanced Credit Support, October 2009
- 2834 Hans Gersbach, Campaigns, Political Mobility, and Communication, October 2009
- 2835 Ansgar Belke, Gunther Schnabl and Holger Zemanek, Real Convergence, Capital Flows, and Competitiveness in Central and Eastern Europe, October 2009
- 2836 Bruno S. Frey, Simon Luechinger and Alois Stutzer, The Life Satisfaction Approach to Environmental Valuation, October 2009
- 2837 Christoph Böhringer and Knut Einar Rosendahl, Green Serves the Dirtiest: On the Interaction between Black and Green Quotas, October 2009
- 2838 Katarina Keller, Panu Poutvaara and Andreas Wagener, Does Military Draft Discourage Enrollment in Higher Education? Evidence from OECD Countries, October 2009
- 2839 Giovanni Cespa and Xavier Vives, Dynamic Trading and Asset Prices: Keynes vs. Hayek, October 2009
- 2840 Jan Boone and Jan C. van Ours, Why is there a Spike in the Job Finding Rate at Benefit Exhaustion?, October 2009
- 2841 Andreas Knabe, Steffen Rätzl and Stephan L. Thomsen, Right-Wing Extremism and the Well-Being of Immigrants, October 2009
- 2842 Andrea Weber and Christine Zulehner, Competition and Gender Prejudice: Are Discriminatory Employers Doomed to Fail?, November 2009
- 2843 Hadi Salehi Esfahani, Kamiar Mohaddes and M. Hashem Pesaran, Oil Exports and the Iranian Economy, November 2009

- 2844 Ruediger Bachmann and Christian Bayer, Firm-Specific Productivity Risk over the Business Cycle: Facts and Aggregate Implications, November 2009
- 2845 Guglielmo Maria Caporale, Burcu Erdogan and Vladimir Kuzin, Testing for Convergence in Stock Markets: A Non-Linear Factor Approach, November 2009
- 2846 Michèle Belot and Jan Fidrmuc, Anthropometry of Love – Height and Gender Asymmetries in Interethnic Marriages, November 2009
- 2847 Volker Nitsch and Nikolaus Wolf, Tear Down this Wall: On the Persistence of Borders in Trade, November 2009
- 2848 Jan K. Brueckner and Stef Proost, Carve-Outs Under Airline Antitrust Immunity, November 2009
- 2849 Margarita Katsimi and Vassilis Sarantides, The Impact of Fiscal Policy on Profits, November 2009
- 2850 Scott Alan Carson, The Relationship between Stature and Insolation: Evidence from Soldiers and Prisoners, November 2009
- 2851 Horst Raff and Joachim Wagner, Intra-Industry Adjustment to Import Competition: Theory and Application to the German Clothing Industry, November 2009
- 2852 Erkki Koskela, Impacts of Labor Taxation with Perfectly and Imperfectly Competitive Labor Markets under Flexible Outsourcing, November 2009
- 2853 Cletus C. Coughlin and Dennis Novy, Is the International Border Effect Larger than the Domestic Border Effect? Evidence from U.S. Trade, November 2009
- 2854 Johannes Becker and Clemens Fuest, Source versus Residence Based Taxation with International Mergers and Acquisitions, November 2009
- 2855 Andreas Hoffmann and Gunther Schnabl, A Vicious Cycle of Manias, Crashes and Asymmetric Policy Responses – An Overinvestment View, November 2009
- 2856 Xavier Vives, Strategic Supply Function Competition with Private Information, November 2009
- 2857 M. Hashem Pesaran and Paolo Zaffaroni, Optimality and Diversifiability of Mean Variance and Arbitrage Pricing Portfolios, November 2009
- 2858 Davide Sala, Philipp J.H. Schröder and Erdal Yalcin, Market Access through Bound Tariffs, November 2009
- 2859 Ben J. Heijdra and Pim Heijnen, Environmental Policy and the Macroeconomy under Shallow-Lake Dynamics, November 2009
- 2860 Enrico Spolaore, National Borders, Conflict and Peace, November 2009

- 2861 Nina Czernich, Oliver Falck, Tobias Kretschmer and Ludger Woessmann, Broadband Infrastructure and Economic Growth, December 2009
- 2862 Evžen Kočenda and Martin Vojtek, Default Predictors and Credit Scoring Models for Retail Banking, December 2009
- 2863 Christian Gollier and Martin L. Weitzman, How Should the Distant Future be Discounted when Discount Rates are Uncertain?, December 2009
- 2864 Tiberiu Dragu and Mattias Polborn, Terrorism Prevention and Electoral Accountability, December 2009
- 2865 Torfinn Harding and Beata Smarzynska Javorcik, A Touch of Sophistication: FDI and Unit Values of Exports, December 2009
- 2866 Matthias Dischinger and Nadine Riedel, There's no Place like Home: The Profitability Gap between Headquarters and their Foreign Subsidiaries, December 2009
- 2867 Andreas Haufler and Frank Stähler, Tax Competition in a Simple Model with Heterogeneous Firms: How Larger Markets Reduce Profit Taxes, December 2009
- 2868 Steinar Holden, Do Choices Affect Preferences? Some Doubts and New Evidence, December 2009
- 2869 Alberto Asquer, On the many Ways Europeanization Matters: The Implementation of the Water Reform in Italy (1994-2006), December 2009
- 2870 Choudhry Tanveer Shehzad and Jakob De Haan, Financial Reform and Banking Crises, December 2009
- 2871 Annette Alstadsæter and Hans Henrik Sievertsen, The Consumption Value of Higher Education, December 2009
- 2872 Chris van Klaveren, Bernard van Praag and Henriette Maassen van den Brink, Collective Labor Supply of Native Dutch and Immigrant Households in the Netherlands, December 2009
- 2873 Burkhard Heer and Alfred Maußner, Computation of Business-Cycle Models with the Generalized Schur Method, December 2009
- 2874 Carlo Carraro, Enrica De Cian and Massimo Tavoni, Human Capital Formation and Global Warming Mitigation: Evidence from an Integrated Assessment Model, December 2009