

Hassel, Anke

**Working Paper**

## The paradox of liberalization – Understanding dualism and the recovery of the German political economy

LEQS Paper, No. 42

**Provided in Cooperation with:**

London School of Economics and Political Science (LSE), European Institute

*Suggested Citation:* Hassel, Anke (2011) : The paradox of liberalization – Understanding dualism and the recovery of the German political economy, LEQS Paper, No. 42, London School of Economics and Political Science (LSE), European Institute, London

This Version is available at:

<https://hdl.handle.net/10419/303325>

**Standard-Nutzungsbedingungen:**

Die Dokumente auf EconStor dürfen zu eigenen wissenschaftlichen Zwecken und zum Privatgebrauch gespeichert und kopiert werden.

Sie dürfen die Dokumente nicht für öffentliche oder kommerzielle Zwecke vervielfältigen, öffentlich ausstellen, öffentlich zugänglich machen, vertreiben oder anderweitig nutzen.

Sofern die Verfasser die Dokumente unter Open-Content-Lizenzen (insbesondere CC-Lizenzen) zur Verfügung gestellt haben sollten, gelten abweichend von diesen Nutzungsbedingungen die in der dort genannten Lizenz gewährten Nutzungsrechte.

**Terms of use:**

*Documents in EconStor may be saved and copied for your personal and scholarly purposes.*

*You are not to copy documents for public or commercial purposes, to exhibit the documents publicly, to make them publicly available on the internet, or to distribute or otherwise use the documents in public.*

*If the documents have been made available under an Open Content Licence (especially Creative Commons Licences), you may exercise further usage rights as specified in the indicated licence.*



THE LONDON SCHOOL  
OF ECONOMICS AND  
POLITICAL SCIENCE ■



LSE 'Europe in Question' Discussion Paper Series

# **The paradox of liberalization – Understanding dualism and the recovery of the German political economy**

Anke Hassel



LEQS Paper No. 42/2011

September 2011



## Editorial Board

Dr. Joan Costa-i-Font

Dr. Mareike Kleine

Dr. Jonathan White

Ms. Katjana Gattermann

All views expressed in this paper are those of the author and do not necessarily represent the views of the editors or the LSE.

© Anke Hassel



# The paradox of liberalization – Understanding dualism and the recovery of the German political economy

Anke Hassel\*

## Abstract

What do the recent trends in German economic development convey about the trajectory of change? Has liberalization prepared the German economy to deal with new challenges? What effects will liberalization have on the coordinating capacities of economic institutions? This paper argues that coordination and liberalization are two sides of the same coin in the process of corporate restructuring in the face of economic shocks. Firms seek labour cooperation in the face of tighter competitive pressures and exploit institutional advantages of coordination. However, tighter cooperation with core workers sharpened insider-outsider divisions and were built upon service sector cost cutting through liberalization. The combination of plant-level restructuring and social policy change forms a trajectory of institutional adjustment of forming complementary economic segments which work under different rules. The process is driven by producer coalitions of export-oriented firms and core workers' representatives rather than by firms per se.

**Keywords:** Varieties of Capitalism, institutional change, labour market, industrial relations

---

\* **Hertie School of Governance, Berlin, and European Institute, LSE**

Address: Friedrichstrasse 180, Berlin, 10117, Germany

Email: [hassel@hertie-school.org](mailto:hassel@hertie-school.org) , [a.hassel@lse.ac.uk](mailto:a.hassel@lse.ac.uk)

# Table of Contents

|   |           |
|---|-----------|
| <b>1. Introduction</b>  | <b>1</b>  |
| <b>2. Convergence and divergence in VoC, sources of liberalization and policy preferences</b> | <b>4</b>  |
| <b>3. Plant-level competitiveness and the road towards dualism</b>                            | <b>10</b> |
| <b>4. What dualization? The transformation of the German labour market</b>                    | <b>15</b> |
| <b>5. The effects of dualization and the challenge of the service economy</b>                 | <b>22</b> |
| <b>6. Germany's recovery in the financial crisis</b>  | <b>26</b> |
| <b>7. Conclusion</b>  | <b>30</b> |

# **The paradox of liberalization – Understanding dualism and the recovery of the German political economy**

## **1. Introduction**

Since the rapid changes in non-liberal market economies of the mid-1990s doubts have emerged about the distinctiveness of the Varieties of Capitalism literature (VoC) as a useful conceptual paradigm (Streeck and Thelen, 2005). There were those who assumed that globalization – in the sense of market expansion, technological diffusion and closer integration – would sooner or later lead to a convergence of political economies. Institutional distinctions were merely seen as relicts from previous stages of economic development which were to be discarded in due course.

Among the more fine-tuned observers, globalization was seen as having an ambivalent effect on coordinated market economies. On the one hand, further opening national economies to international trade reinforces economic specialization, thereby making countries more dependent on their comparative economic advantages, and leads to further protection of institutional advantages by firms and economic interest organizations (Franzese and Mosher, 2001; Hassel, 2007; Thelen and van Wijnbergen, 2003; Wood, 2001). On the other hand, increasing financial internationalization might lead to the opposite effect. The rise of global investors and impatient

## The paradox of liberalization

capital even in countries with protected corporate finance would eventually lead to higher performance expectations and an increase in shareholder value expectations in firms of coordinated market economies (Hall and Soskice, 2001; Höpner, 2001).

In addition, challenges to non-liberal institutions came from other sources. First, policy changes related to the liberalization of product and labour markets during privatization of public utilities and activation of the long-term unemployed might undermine existing patterns of coordination. Second, structural changes to post-industrial economies also have repercussions on institutional reproduction. Third, service sector employees and the increase of female labour market participation rates in non-liberal economies might give rise to a different demand for redistribution and social security.

At the same time there is disagreement in the literature on the interpretation of the empirical evidence. What accounts for a major institutional break? What share of a national political economy must be covered by an institutional pattern in order to classify it as distinct from other economies? Is the decline of membership in trade unions and employers' associations a sign of decline in coordination? Are service sector skills more likely to be general skills? Is redistribution an indicator for coordination? Is micro-level coordination a functional equivalent to macro-level coordination?

Cross-country comparisons show that coordinated market economies today are less egalitarian than before, increasingly divergent, and their institutions less encompassing. They remain different from liberal market economies in the following ways: capital markets remain underdeveloped, labour markets are more regulated, pay setting is still coordinated, trade unions remain much stronger and social spending generally higher. Recent discussions about the 'commonalities' of capitalism rather than differences focussing on dynamic

trends across all market economies, indicate a departure from the all-pervasive theoretical assumptions of the comparative capitalism literature (Streeck, 2010).

This paper investigates the current avenues of VoC theorizing using the case of institutional change and economic performance in Germany. It questions the kind of contribution recent patterns of liberalization have had on economic institutions and performance and what processes of liberalization alter the configuration of economic institutions.

An analysis of the German political economy's transformation since reunification shows economic shocks have driven plant-level actors to pursue radical cost cutting and productivity increases by exploiting existing patterns of plant-level cooperation. Intensified plant-level cooperation led to employment guarantees for core workers which insulated them from previous demands for strong social security provisions. In turn, persistent outsourcing to low cost countries and low cost service sectors has added to liberalization in other parts of the economy, particularly through the use of fringe workers. Manufacturing firms, with the tacit support of their works councils, supported firms in service industries that lobbied for more liberal employment rules for non-core segments of the workforce. When the German government pursued activation strategies on the labour market, core firms and core workers did not veto the proposed measure of liberalization.

Thus, sustained economic coordination has facilitated, and to some extent required, liberalization in some areas for cost containment, more flexible corporate finance and numerical flexibility of the workforce. As a consequence of the benefits of coordination, firms actively pursued a strategy of separation of the workforce, which divided employees into core and fringe workers. Liberalization did not occur despite strong resistance by key



beneficiaries of social policy, but rather was accepted and supported as a precondition for sustained coordination.

Moreover, this paper points out that the recent comeback of the German economy owes more to the institutional foundations of the 'old' German model than to the liberalizing policies of the early 2000s. Policy tools and firms' strategies to overcome the crisis were built upon patterns of plant-level cooperation that German firms have pursued for the last two decades. It therefore turns out that coordination and liberalization are not opposites or mutually exclusive processes but complementary.<sup>1</sup>

## 2. Convergence and divergence in VoC, sources of liberalization and policy preferences

There was a period of convergence in theorizing and researching the various strands of the VoC literature that took place during a phase of relative stability and continuity in advanced industrialized countries between the mid to late 1980s and the late 2000s (Amable, 2003; Crouch and Streeck, 1997; Hall and Soskice, 2001). Many scholars' analyses of institutional configurations in national political economies strongly emphasised the interdependence between the mode of corporate finance and the innovation and usage of human resources within firms competing in international markets. They concluded non-liberal forms of market economies displayed a number of starkly contrasting features to liberal Anglo-American countries, such as concentrated ownership of firms through block-holding, bank-finance, plant-level cooperation between workers and managers, higher levels and more

---

<sup>1</sup> See also Herrigel (2010) with a related argument.

specific skills in core industries and pathways of specialization in different technologies and industries.

Some level of disagreement on the foundations and origins of diverse economic institutions has always prevailed. Different perspectives emphasised micro versus macro level approaches, the use of rational choice assumptions and large n-comparisons with few historical case studies. In particular, approaches focusing on the firm's role as a micro-level actor espousing rationally based preferences and assuming institutional equilibria were in contrast to macro-level studies of institutions emphasizing power resource (PR) approaches in historically unique settings over long periods of time. PR approaches perceived non-liberal economic institutions as a result of the rise of left of centre political parties in cooperation with strong trade unions. These coalitions pushed for economic institutions at distinct historical turning points when business was bound (Korpi, 2006). In contrast, VoC approaches in a rational choice tradition (VoC-RC) see the evolution of economic institutions as a self-reinforcing process of firms' quest for conquering market niches, innovation and productivity. All the while, the commonalities in the discussions tended to be greater than the criticism of their assumptions.

However, since the mid-1990s, advanced political economies have started to display rather strong evidence of institutional change, particularly in continental European non-liberal market economies. Most countries' governments have implemented reforms of labour market policy (Bonoli, 2010), unemployment insurance (Clegg, 2007) and pensions (Häusermann, 2010), altering the patterns, if not scale, of social spending and the social security position of workers. Labour market regulation was weakened for labour market outsiders by facilitating temporary work, while many regulations were kept for labour market insiders. VoC literature has

## The paradox of liberalization

underlined how the protection of specific skills, inherent to the generous and far reaching status-securing unemployment benefit systems and strong employment protection, helped workers to invest in specific skills (Estevez-Abe *et al.*, 2001). Government tended to dismantle these provisions when they started to address low labour market participation rates and rising long-term unemployment.

Capital markets and corporate governance regulations have been the subject of intense reform pressure. Beginning in the mid-1990s, many governments liberalized capital markets towards liberal market economies (Culpepper, 2010). In some cases, reform was radical and far-reaching, while in others, reform steps were less radical and incremental. Corporate finance shifted slightly towards equity finance, and some large national champions defined themselves as shareholder value firms similar to their Anglo-American counterparts.

Structural changes to the labour market towards deindustrialization and labour market deregulation also weakened the position of trade unions. Union membership figures declined substantially across almost all industrialized countries. Employers' associations lost members, collective bargaining coverage declined, and collective bargaining practices changed. While centralized collective bargaining survived in most places, the contents of collective agreements were less regulated than before and delegated more decision making rights to a lower level.

Plant-based vocational training, another prominent feature of non-liberal capitalism, declined and a steady trend towards higher and tertiary education lured school leavers away from mid-level specific skills. In other words, the fundamental institutions non-liberal market economies were meant to rest

changed profoundly in the direction of increasing liberalization and deregulation (Streeck, 2009).

The literature provides different approaches to the causes, mechanisms and effects of these changes. Earlier contributions pointed out the effects of globalization as a liberalizing force because it increases the likelihood of concession bargaining through firms' better exit alternatives. However, as Thelen and van Wijnbergen (2005) have demonstrated, though globalization increases the vulnerability of export oriented firms, their dependence on labour has grown rather than decreased. The effects of capital market liberalization and the rise of shareholder value on the behaviour of large firms has indicated a trend towards more liberal practices, in particular off-shoring and outsourcing (Beyer and Hassel, 2002).

On the whole, the discussion moved towards previously unresolved issues, such as the role of the state in modern market economies (Rhodes and Molinas, 2007), the role of political power relations and the economic and political preferences of firms towards constraining regulations. These factors became increasingly important for explaining institutional change (Hancke *et al.*, 2007).

As the transformation of CMEs accelerated, the underlying conflict in the literature between PR approaches and VoC-RC approaches reappeared. PR perspectives would see a shift towards liberalization as a strategy pursued by business as a matter of principle to diminish the effects of constraining regulation and trade union demands for redistribution and restricted practices. Liberalization would be made possible by shifts in partisanship of governments and coalitions between business and governing parties at the expense of labour.

## The paradox of liberalization

In contrast, authors using the VoC-RC approach would expect trends towards liberalization arising from conflicting preferences within the business community, such as financial market actors versus manufacturing firms. Financial market actors in non-liberal systems seeking new sources of corporate finance would pressure management for more short-term profits and therefore faster turn-over of staff and production cycles. They would expect much less drive towards liberalization within non-liberal market economies, as long as business interests were well served by existing institutions (Wood, 2001).

Both types of approaches, VoC-RC and PR, would acknowledge changes to market constraining institutions in non-liberal market economies can occur in spheres linked to production regimes, but dominated by different political preferences. They would acknowledge policy changes can be driven by actors other than those dominating a production regime. Moreover, there are a number of authors writing about institutional change in VoC who are agnostic between the two. They share the criticism that rational choice based VoC literature tends to be functionalist, non-historical and lacking a notion of power without subscribing to the full theoretical repertoire of the PR perspective (Hall and Thelen, 2008). Taking a micro-level perspective and aggregating micro-preferences to the level of collectively organized interest representation, these authors recognize the importance of political conflict and power relations in a historical context.<sup>2</sup>

Their explanatory approach model can be depicted as a third alternative focusing on producer coalitions (VoC-PC) comprised of firms and workers ready to pursue their interests at the expense of other groups in the market (Carlin and Soskice, 2009; Iversen and Soskice, 2009; Palier and Thelen, 2008).

---

<sup>2</sup> Streeck 2009 and 2010 argues that market expansion is an inherent tendency of market societies and is largely disconnected from immediate business preferences.

The analytical difference between the approaches is key to understanding institutional change, because it gives an indication of actors' intentions as well as the intended extent and possible effects of liberalization. From a VoC perspective, liberalization will remain patchy and -- largely due to 'liberal' influences -- stem from capital markets. From a PR view, business will push for liberalization, even if it comes at the expense of benefits deriving from constraining institutions. A VoC-PC approach would assume that insiders would use their power positions to exploit cost advantages, but would also accommodate liberalizing policy change if it serves their interests.

The claim that producer coalitions are particularly well placed to shape policies in coordinated market economies is backed by other research. Producer coalitions (firms and their core workers) have had privileged access to policy making arenas in coordinated market economies through the self-administration of social insurance schemes, in which unions and employers organisations are represented. Members of parliamentary committees for work, welfare and employment were traditionally affiliated to either unions or employers' organisations (Trampusch, 2005).

Moreover, as Chang et al. (2010) have argued, in countries with proportional representation electoral systems policies are less likely to favour consumers and more likely to favour producers, since the competition for the median voter is diminished. The more majoritarian the system is the more pro-consumer the policies are (p. 40).

There is some evidence for the role of producer coalitions in institutional and policy change in the German case. Carlin and Soskice (2009, p. 93) state that works councils representing skilled workers colluded with management on liberalizing reforms and supported flexible low-level service labour markets for two main reasons: (1) it implied cheaper services and therefore increased

the real income of their members and (2) it implied that their members would bear less of the cost of prolonged unemployment. Similarly, Palier and Thelen (2008, p. 51) point out the dualizing nature of reforms which have protected the status and privileges of labour market insiders relatively well and at the same time provided enough flexibility to stabilize the core.

As a general argument, one might assume that dominant producer groups in coordinated political economies are not in favour of upsetting institutions that have served as stabilizing investments in specific skills. Rather, they have utilized proposals for liberal policy changes in accordance with their own preferences and to the disadvantage of other producer groups. Producer coalitions are therefore the best theoretical frame for allowing continued coordination and increasing liberalization taking place simultaneously.

In the following, I will use an analysis of the transformation of the German political economy over the last two decades as an illustration and evidence for the importance of the notion of producer coalitions as driving and shaping policy and institutional change.

### 3. Plant-level competitiveness and the road towards dualism

When unification hit the German political economy in the early 1990s, firms were already under competitive pressure from Japan and East Asia, as well as from an overvalued exchange rate in the EMS. An extraordinary pay hike added to their problems in the aftermath of the unification boom. The subsequent recession in 1992/93 was the worst since WWII and saw a loss of half a million jobs in the manufacturing sector. Between 1994 and 2009, the

German economy devalued its real unit labour costs in relation to its European competitors by 20 percent (Marin, 2010a).

Throughout the 2000s, real unit labour costs rose slower than Germany's major competitors, including the Eurozone as a whole (Graph 1). Cost cutting was achieved through a combination of plant-level restructuring and policy change, which helped to reduce costs and increase productivity without hurting the skill base and flexibility of the manufacturing workforce.

Off-shoring, particularly to Eastern Europe, took off in the second half of the 1990s (Jürgens and Krzywdzinski, 2009). Some observers suggested organizing production by slicing up the value chain "has been more important for Germany's lower unit labour costs than German workers' wage restraint" (Marin, 2010b). According to estimates, German off-shoring to Eastern Europe boosted both the productivity of its subsidiaries in Eastern Europe almost threefold compared to local firms and increased the productivity of German based parent companies by more than 20 percent.<sup>3</sup>

In any case relocating production to Eastern Europe made globally competing German firms leaner and more efficient helping them to win market shares in a growingly competitive world market. The efficiency gains from reorganising production were particularly pronounced after 2004 leading to a sharp fall in Germany's relative unit labour costs from 2004 to 2008 (Marin, 2010b).

---

<sup>3</sup> See for the general argument OECD (2007).



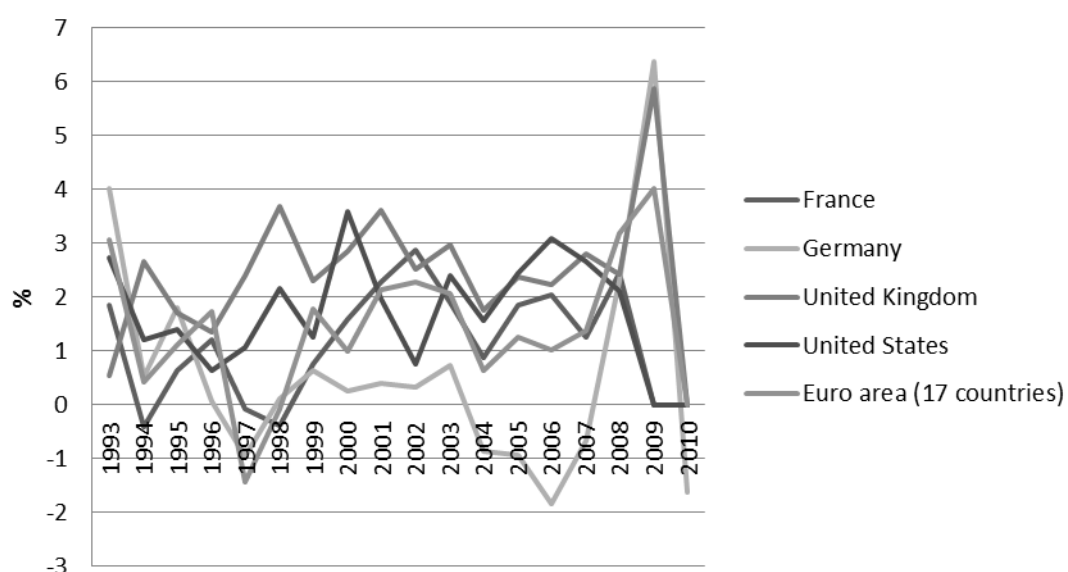
## The paradox of liberalization

Marin suggests that off-shoring to Eastern Europe has also led to lower wages for skilled workers in Germany:

German firms off-shored the skill intensive part of the value chain to exploit the low cost skilled labour available in Eastern Europe. As a result, the demand for this type of labour in Germany was lower, putting downward pressure on skilled wages in Germany. Hence, off-shoring improved Germany's competitiveness by increasing German firms' productivity and by lowering its skilled wages (Marin, 2010b).

In order to restructure manufacturing plants without facing trade union opposition, management and works councils used the plant-level concession bargaining tool, often coined 'employment pacts', introduced by Daimler-Benz in the late 1980s. They settled agreements aimed at improving the competitiveness of plant, which led to more secure jobs. Both sides compromised: workers accepted pay cuts, longer working time and more flexible working patterns, while management guaranteed investments and promised not to resort to mass redundancies (Hassel and Rehder, 1999; Massa-Wirth and Seifert, 2004; Rehder, 2003; Seifert, 2002).

**Graph 1: Unit labour costs, annual change**



Source: OECD

In comparison to concession bargaining in the US, these agreements were broader and less one-sided. They included measures to improve the infrastructure, training, costs and productivity as well as technology. The workforces of particular plants were rated in benchmarking comparisons and collaborated with local management to make the most profitable bid for investments. Promises by management were not legally binding, but had a reputation for day to day relations with works councils.

One important component of concession bargaining was the increasing gap between core and peripheral workers through the out-sourcing process. Collective agreements were adjusted accordingly, in particular by transferring service components into other collective agreements and lower pay. Canteens, security and other service components were removed from manufacturing collective agreements and passed on to service sector trade unions and their collective agreements. Terms and conditions for workers in the service components of manufacturing firms drastically worsened, because their pay scales shifted from metal or chemical sector pay to service sector pay.

In the late 1990s, plant-level agreements were reached in one-third of private sector companies. These agreements provide terms and conditions which deviate from the industry-wide collective agreement. Another 15 percent of companies simply violate the agreements, according to a survey by the union-based Institute of Economic and Social Research (WSI) (Bispinck and Schulten, 2003). After 2004, plant-level bargaining was officially recognized and regulated by an innovative collective agreement in the metal sector (Pforzheim Agreement). In 2006, one in ten firms in the metal sector negotiated an official derogation from the relevant agreement (Lehndorff, 2010).

## The paradox of liberalization

However, the price companies paid for plant-level agreements were tightened rules on dismissal protection for the existing workforce, rather than a more flexible regime of hiring and firing. In plant-level agreements firms pledged to refrain from any collective dismissal for core workers for a period of several years. The flexibility firms gained from concession bargaining was internal cooperation rather than external adjustments. Unions and employers adjusted collective agreements to allow for plant-level deals. They introduced 'opening clauses' that allow for local bargaining, provided the business situation is bad. Pay grades became more differentiated and lower pay grades were introduced. Even the trademark 35-hour work week of German trade unionism has been effectively abolished.

Together with their works councils, many companies designed new work arrangements at the plant-level. It is virtually impossible for unions to monitor and police violations of collective agreements at the plant-level. Very few employees were prepared to sue a company for breaking an agreement, and unions do not have the staffing capacity to enforce or negotiate agreements in small and medium sized companies. Rather, firms hoped that competitive pressure, stubborn high unemployment and weaker trade unions would allow them to change the agreements, which would provide them internal flexibility to reduce labour costs and regain competitiveness.

This strategy worked with union cooperation. Unions rarely blocked workplace deals aimed at providing job security and competitiveness, and did not often talk about the deals to avoid other firms from following suit. Protection for the workforce core and the instability for fringe workers (the insider-outsider problem) were complementary to each other. Firms argued the only way to protect core workers was to look for other ways to lower labour costs – at the expense of other parts of the workforce. Flexibility was therefore achieved in an uneven pattern.

Union weakness was expressed in rapidly falling union membership rates (Hassel, 2008) and the failure to rally enough support for industrial action. While the manufacturing unions, particularly IG Metall, were capable of forcing firms to accept union demands until the mid to late 1990s (Bavaria strike in 1995), the strike weapon was seriously impaired by the 2003 Saxony strike when the union badly lost.

The strengthening of employment protection for permanent employees has been further reinforced by collective agreements in the manufacturing sector which over time included clauses protecting long-term employees from dismissal. Repeated rounds of plant-level concession bargaining, as outlined above, led to higher levels of employment security, at least for some groups of core workers (See also Zagelmeyer, 2010). For example, in September 2010 the electronics firm Siemens agreed to a deal with its works council giving unlimited employment guarantees for almost its entire workforce of more than 120,000 employees (Spiegelonline, 22 September 2010).

#### 4. What dualization? The transformation of the German labour market

Increasing segmentation between core and peripheral employment is partly initiated, partly reinforced by policy changes in employment protection and labour market policies. Employment protection for permanent employees has remained strong, while employment protection for 'irregular' contracts (fixed-term, agency and marginal work) has diminished. Over the years, three main types of irregular employment spread in the labour market: fixed-term contracts, temping agencies, and low-level part-time employment. Firms tended to push for these alternatives as flexibility buffers to protect

permanent employment. The move towards opening an irregular employment segment already started during the 1980s, but was greatly intensified during the 1990s and 2000s.

Until 2003, marginal employment had been confined to workers putting in fewer than 15 hours per week and earning less than a low threshold of income as being exempted from social security contributions. Marginal employment status was introduced in the 1960s, when labour markets were tight and employers tried to entice pensioners, housewives and students to take up a few hours of employment without paying contributions. These groups of workers were covered by social insurance through their primary status (as pensioners, spouses or students). Over time, as contribution rates soared, employers increasingly used marginal employment to avoid paying contributions for low paid jobs. Regulatory changes aimed to increase employers' tax on marginal employment in order to avoid abuse while retaining the concept of subsidizing marginal employment.<sup>4</sup>

Both marginal employment and fixed-term contracts are overwhelmingly used by employers in service industries. Only about 10 percent of marginal employment is in manufacturing, while more than 80 percent are service sector jobs (Minijobzentrale, 2010). The prevalence of fix-term contracts varies across sectors with more than 20 percent in the service sector and less than 7 percent in manufacturing (Statistisches Bundesamt, 2010). This reflects the demand for non-standard employment in different industries. While manufacturing industries also benefited from the change in policy, service industries depended on them. In particular, part-time and marginal employment was a key policy instrument used to cut service costs.

---

<sup>4</sup> With regard to further regulatory changes, the regulation of fixed term employment has been loosened drastically. Using the OECD scale of 0 to 4, regulatory tightness of fixed term employment was relaxed from 3.5 in 1990 to 0.75 in 2008. Similarly, agency work underwent massive deregulation from 4.0 to 1.75. At the same time, permanent employment was more strictly regulated from 2.58 to 3.0.

However, the main catalyst for cost cutting was the change in labour market policy in 2003. While initially driven by the need to curb public spending, activation policies turned out to be a major programme for subsidizing low skilled employment. Fiscal constraints were the key facilitators for policy change (Hassel and Schiller, 2009, 2010). German unification saw unemployment benefits and spending on active labour market measures in the East explode. Contribution rates for unemployment insurance doubled and subsidies by the federal budget to the labour agency rocketed. Social expenditure as part of total government spending stood at 22 percent in 1990 and increased to 57 percent in 2000 (OECD, 2009).

When the dotcom boom collapsed in the early 2000s, public finance problems accumulated on several frontiers: unemployment rose again in both eastern and western Germany, long-term unemployment accounted for an increasingly higher share of the unemployed, reunification costs rapidly increased, the Stability and Growth Pact started to kick in, and tax reforms (the Eichel tax reform) reduced tax revenue, particularly for local authorities.<sup>5</sup> All these developments put enormous pressure on the government to restructure social spending.

The Hartz IV welfare reforms cut the maximum duration of unemployment benefits and limited earnings related transfers to the first year of unemployment (18 months for those over 55). The new long-term unemployed benefit (exceeding 12 months of unemployment) was a means-tested flat rate payment and set at what was universally seen as a low level of social assistance (it can be topped up temporarily if a claimant previously received considerably higher unemployment benefits). The reform further

---

<sup>5</sup> Their revenue from income tax declined from 21.3 to 19.8 bn; revenue local business tax declined from 19.3bn to 15.2 bn Euro between 2000 and 2003. In 2003, 90 percent of all local authorities in the state of North Rhine-Westphalia were unable to cover their expenditures. See Hassel and Schiller (2010: 181).

introduced major in-work benefits for part-time and low paid employees. Since all transfer recipients are required to take any job offered to them to prove their willingness to work, and since no statutory minimum wage has been set, wages can be set at extremely low levels and be topped up by transfer payments. About 28 percent of long-term unemployed benefit recipients are employed in work and receive benefits at the same time. In June 2010 this group amounted to 1.4 million employees.<sup>6</sup>

At the same time, benefit system reforms have not altered the high-tax wedge that burdens low skilled low paid work, an obstacle towards a more employment friendly system. Germany remains the OECD country with the highest marginal tax rate for low paid employment. Social security contributions are set at a proportional rate and kick in at a comparatively low threshold. The reason for non-progressive social security rates is primarily due to the insurance-based welfare state, which draws on employers and employee contributions equally. This is also partly the reason for the high number of marginal jobs described above. While marginal employment is exempted from contributions, full-time employment for low paid workers is taxed at a rate of 36 percent (Immervoll, 2007). The strong pressure on unemployed to take up low paid employment and a new system of topping up income with partial benefits create strong incentives for low skilled workers to take up part-time employment for very low wages and simultaneously draw social security benefits.

As a result of policy change, the trend of declining male employment rates, particularly elderly men, reversed beginning in 2003. Both overall employment rates and the absolute number of people in employment have increased. A study commissioned by the Bertelsmann Foundation in 2010

---

<sup>6</sup> Datensammlung Erwerbstätigkeit und Leistungsbezug nach dem SGB II, 2007 - 2010, Sozialpolitik aktuell, Universität Duisburg-Essen.

summarizes: “Germany reached a historical high point of employment in 2009 and exceeded other countries’ employment rates. At the same time, levels of inactivity have declined” (Eichhorst *et al.* 2009, p. 4). Labour market participation of women and elderly workers increased. The employment rate increased by 4 percentage points between 2004 and 2008 and unemployment levels are below average (which is mainly due to short-term working and the effects of the financial crisis). Inactivity is no longer a problem of the German labour market.

However, the structure of the German labour market has dramatically changed in the process. The number of full-time jobs has decreased by 20 percent, while the number of part-time and marginal employment has drastically increased. The rate of part-time employment doubled between 1991 and 2007 and the number of marginal employment rocketed.

The economic upswing after 2005 showed a different trend. From 2006 on, unemployment decreased faster than any other time in post-war German history, from 4.8 million unemployed on average in 2005 to 3.2 million in 2008, the lowest level since 1992. This is more remarkable, because the German definition of the unemployed and ‘able to work’ includes all benefit seekers capable of working more than three hours per day. This is more than 90 percent of all those who claimed social assistance in 2005.

890,000 new jobs, 210,000 full-time and 590,000 part-time, were created during the most recent economic upswing in 2006/2007. In contrast to earlier periods, the share of full-time jobs has increased again. The share of ‘proper jobs’ compared to marginal employment are significantly higher than in previous economic upswings (Koch *et al.*, 2009, p. 236). Long-term unemployment also decreased faster than in previous periods of economic recovery (Gartner and Klinger, 2008, p. 442). 1.7 percent of economic growth was needed in 1999 to



## The paradox of liberalization

create additional employment; this threshold now stands at 1.3 percent (Gartner and Klinger, 2008, p. 445).

However, many full-time positions are now offered as temporary jobs or agency work. Between 2006 and 2007, agency work increased by 64 percent. The initial pay rate for agency work is 7 Euro and therefore below the rate unions want to see as a minimum wage (Vanselow, 2009, p. 3).

Survey data show that the unemployed are increasingly willing to take jobs below their skill levels, for lower pay and with worse terms and conditions. Those employed are also more willing to accept concessions in exchange for job security (Kettner and Rebien 2009, pp. 6- 7).

The downside of the labour market activation is the rapid increase of low pay. Since the mid-1990s, low pay has been constantly rising. Between 1998 and 2007, the share of low paid among all workers shot up from 14.2 percent to 21.5 percent (Kalina and Weinkopf, 2009, pp. 3). In European comparison, Germany and the Netherlands were the only countries in which the share of low paid jobs increased between 1995 und 2000. In 2000, only the UK (19.4 percent), Ireland (18.7 percent) and the Netherlands (16.6 percent) had higher shares of low pay employment than Germany (Bosch and Kalina, 2007, p. 27). The share of low paid has since increased and was only topped in 2005 by the US (Carlin and Soskice, 2009, p. 77). Low pay is not confined to the unskilled; the share of low paid skilled workers rose from 58.5 percent in 1995 to 70.8 percent in 2007 (Kalina and Weinkopf 2009, p. 6). Low pay is gradually diffusing into the core of the labour market; whereas it used to be concentrated in atypical work, it is now found in full and part-time employment and standard jobs. The majority of those low paid are women, though the share of men is rising. In terms of quantity, marginal employment has been the most important form of irregular employment. In 2007, marginal

employment accounted for 7 million employees, with the highest concentration in retail (Minijobzentrale, 2010).

Fixed term employment has increased significantly over the last two decades. In 2008, about 2.7 million of the 30.07 million employees were on a fixed term contract, which accounted for a share of 5.7 percent (Statistisches Bundesamt, 2009). This number excludes trainees and students. Temping agency work also increased rapidly. In 2009, 1.6 percent of all employees worked for temping agencies, an increase of 53 percent over 2 years (Eichhorst, 2010). In total, however, fixed term employment and workers employed by temping agencies still account for less than 10 percent of the workforce (Eichhorst and Marx, 2009, p. 14).

The increase of irregular and marginal employment must be seen in the context of firms' attempts to increase or maintain job security for core workers. As in many southern and eastern European countries, governments, employers and unions jointly preferred the deregulation of the peripheral labour market over the deregulation/liberalization of employment protection for the core workforce. As a consequence, the dualism of insiders and outsiders on the labour market has deepened, regarding both the number of workers affected and the degree of regulatory differences.

Overall, the experience is therefore mixed. More employment is combined with low pay and insecure employment. Studies have shown that low paid employment does not usually serve as a path to better paid work. In a survey of 30,000 low paid full-time workers in 1998/99, only 13 percent managed to find better work by 2005 (Koch *et al.*, 2009, pp. 249-250).

Activating the long-term unemployed has therefore not solved the structural problems of the German labour market. Germany still has the highest unemployment rate among the unskilled in the western world. The labour

market is increasingly segmented into core and periphery. Underemployment has emerged and women with children work very few hours compared to mothers in other countries. The Hartz-IV reforms have thereby introduced a form of negative income tax (or in-work benefits) in which low paid employment is topped up by benefits. In absence of a statutory minimum wage, these forms of combined income further drive down wages already at the bottom end of the labour market.<sup>7</sup>

### 5. The effects of dualization and the challenge of the service economy

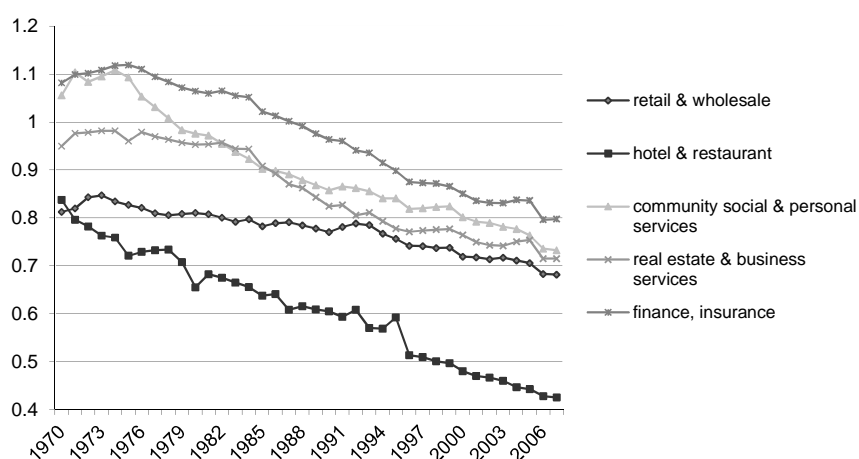
So far, I have argued that firms reacted to economic shocks by fostering cooperation and off-shoring non-core parts of the production either abroad or by subcontracting to cheaper service suppliers. Government policy has liberalized employment legislation and social policy for non-core workers. Liberalization and coordination can therefore go hand in hand, leading to a segmented and dualist political economy. In this section, I will argue that dualism between different segments of the economy is also complementary and mutually dependent. In other words, Germany's competitiveness in manufacturing sectors does not only depend on collaboration with works councils at the plant-level but also on liberalization of the service economy. Moreover, the same institutional set up which protects exporting industries helps to liberalize the service sector.

---

<sup>7</sup> About 57% of Western and 41% of East German employees are covered by collective agreements which contain a minimum wage. For those not covered by collective agreements, minimum wages exist for specific sectors such as construction and cleaning via the extension of sectoral collective agreements. In other sectors (in particular postal services) the extension of collective agreements has been legally challenged. A minimum wage for temping agencies was introduced in May 2011.

The development of wages in the service economy is one example of how dualization feeds directly into the cost cutting of manufacturing firms. In contrast to other European countries, manufacturing cost cutting in Germany was helped rather than counteracted by service sector pay setting. In many other countries of the Eurozone, pay restraint was achieved in the exposed sectors, but not in the sheltered sectors. Therefore, pay rises in services outstripped the manufacturing sectors.

**Graph 2:** Hourly wage in services as share of manufacturing wages



Source: Klems database.

In Germany and Austria, cost cutting in manufacturing was accompanied by an even fiercer cost cutting in services (Johnston, 2009). Over time, service wages fell relatively to manufacturing wages, even though these sectors were sheltered sectors not under international competition. Graph 4 shows the development of service sector wages in relation to manufacturing wages. In all parts of the service sector, wages fell below manufacturing wages. The graph illustrates how hourly pay in finance, insurance and real estate was higher than manufacturing pay, right up until the late 1980s. Since the late 1980s, hourly wages in services have grown even less than in manufacturing

## The paradox of liberalization

despite the persisting pay restraint in manufacturing. In the hotel and restaurant sectors particularly, wages today are less than half than what they are in manufacturing industries. During the 1970s they were at 80 percent of manufacturing pay.

The origins of this particularly severe wage restraint in the service sectors are not obvious. Johnston (2009, p. 26) attributes it to the pattern bargaining of Germany's wage bargaining system:

A similar constraint on sheltered sector wage setters might also exist in countries where inter-industry coordination of wage bargaining remains strong. Austria and Germany provide notable examples: both have pattern bargaining systems where wage-setters in all sectors shadow the metalworking sector. The metalworking sector (IG Metall in Germany and GMT in Austria), leads negotiations, setting wage increases equal to the increase in the national aggregate labour productivity rate. All other sectoral unions then shadow these increases, using them as a target, but rarely reaching them unless their sectoral productivity levels permit it.

In addition to pattern bargaining, which prevents service sectors from catching up with wage developments in manufacturing, liberalization policies themselves have contributed to a wage decline in services. Atypical employment, such as temping or part-time work are concentrated in the service economy and heavily oversubscribed by women workers. High labour costs have driven retail and restaurant firms to staff predominantly female part-time workers, who work in small workplaces with no union representation. Wages have stagnated or even fallen behind as a consequence of fierce competition in services, low unionization and outsider staffing.

Three more reasons can account for weak service sector pay. First, in the wake of reunification, collective agreements were hastily transferred to the Eastern states. In manufacturing, trade unions ensured that wage levels were at an

appropriate level, compared with the West. In many services sectors where unionization was weak, unions settled for very low wages in order to reach an agreement, since many employers were rather reluctant to enter collective bargaining. They thereby established a low wage floor for service sector pay. Second, the absence of a national minimum wage, which prevents wages from falling to incredibly low levels, has contributed to a downward wage drift. Third, a range of subsidies for low wages encouraged service sector workers to accept low wages in exchange for additional transfers. Activation policies, intended to increase labour market participation, came at the price of low wages concentrated in services.

As a consequence, manufacturing and low skilled service sector firms now work under different institutional regimes. Manufacturing is organized around a body of skilled high productivity core workers which is protected against economic insecurity. Low skilled services operate under conditions that are similar to labour markets in liberal market economies.<sup>8</sup>

The capacity of service sector unions, primarily Verdi, to protect and raise wages by campaigning for a national minimum wage, for instance, is thus severely limited by the opposition of manufacturing unions. The same is true for limits on wage subsidies and the creation of social security exemptions for low skilled jobs. Both are accepted and even encouraged by manufacturing unions, whose members benefit from low cost services.

Finally, the wage restraint in manufacturing and wage decline in services are directly linked to weak domestic demand and explain the export dependency of the German economy. The incremental but increasing institutional

---

<sup>8</sup> This is reemphasized by the fact that employment protection is annulled for minimal offences against employers. A string of court decisions in unfair dismissal cases have held up the view that a shop worker with 30 years tenure can be fired for taking food or minimal amounts of money from the till.

specialization into a two sector dual economy has led to a development trap of an export dependent equilibrium.

This in turn creates several problems for the domestic economy. One problem is the training of young school graduates. Low pay in services has reduced the incentives for school leavers to enter three year apprenticeships in the service sector, especially if the pay for trained workers barely exceeds pay for the unskilled. It also undermines coordination in services, as workers do not trust employment security or skill based employment in services. As the economy deindustrializes<sup>9</sup>, this schism will either be reinforced into a dual economy or turn into a major source of conflict due to the service industries' different skill and pay structure needs. Combined with different types of demand for social security and redistribution by service sector employees (particularly part-time women) with higher turnover, this might turn into the biggest challenge.

## 6. Germany's recovery in the financial crisis

When regarding the trends of the last two decades, it becomes clear how the German economy owes its recovery to the process of fostered coordination in a context of service sector liberalization outlined in the preceding sections.

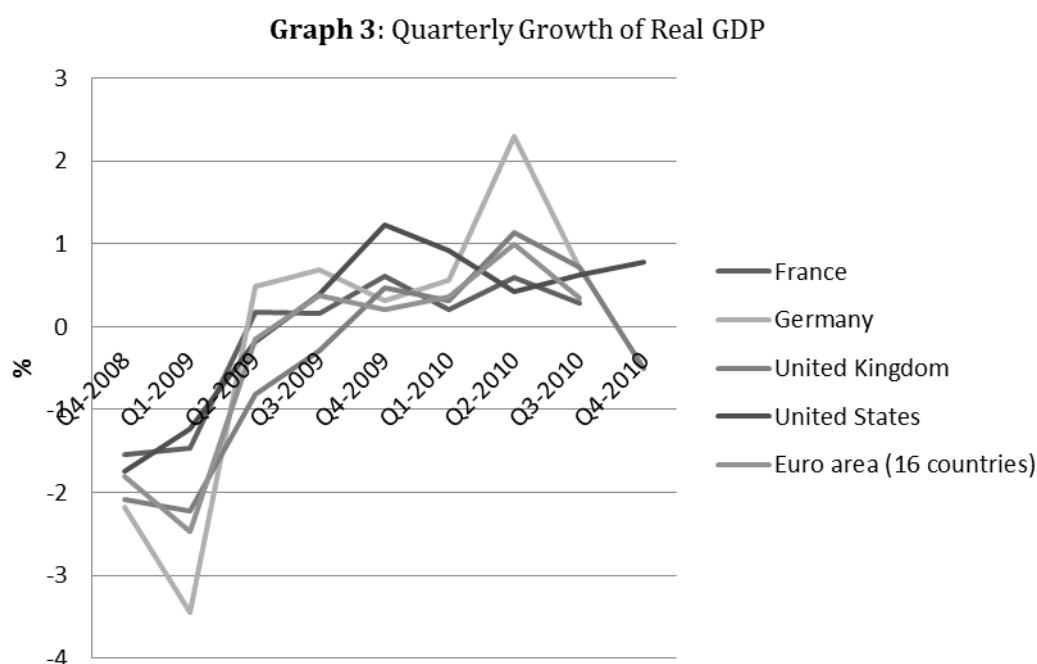
The German economy was hit comparatively late by the financial crisis. The outlook for the German economy was relatively optimistic until the fall of 2008. The Council of Economic Advisors forecasted 1.8 percent growth for 2008 (SVR, 2008.). This supported the government's view that the crisis would be confined to the US and other financial centres. However, the German

---

<sup>9</sup> According to the STAN database of the OECD the share of manufacturing employment in Germany declined drastically from 28.3% to 20.7% between 1990 and 2000 and then slightly to 18.5% in 2009 (OECD; <http://stats.oecd.org/index.aspx>; data extracted on 12 July 2011).

economy began to shrink in the last quarter of 2008. In early 2009, exports and manufacturing collapsed. By the second quarter of 2009, the German economy had shrunk by more than 6 percent in comparison to the second quarter of 2008, which registered a more disastrous performance than the countries which had 'caused' the crisis (Bodegan *et al.*, 2010).

Since then, the German economy has seen an extraordinary development. It had the steepest decline, followed by the fastest recovery, among all OECD countries (Graph 3). The effects have been most dramatic in the manufacturing sector, given the extreme dependency on the export of manufactured goods.



Source: OECD.

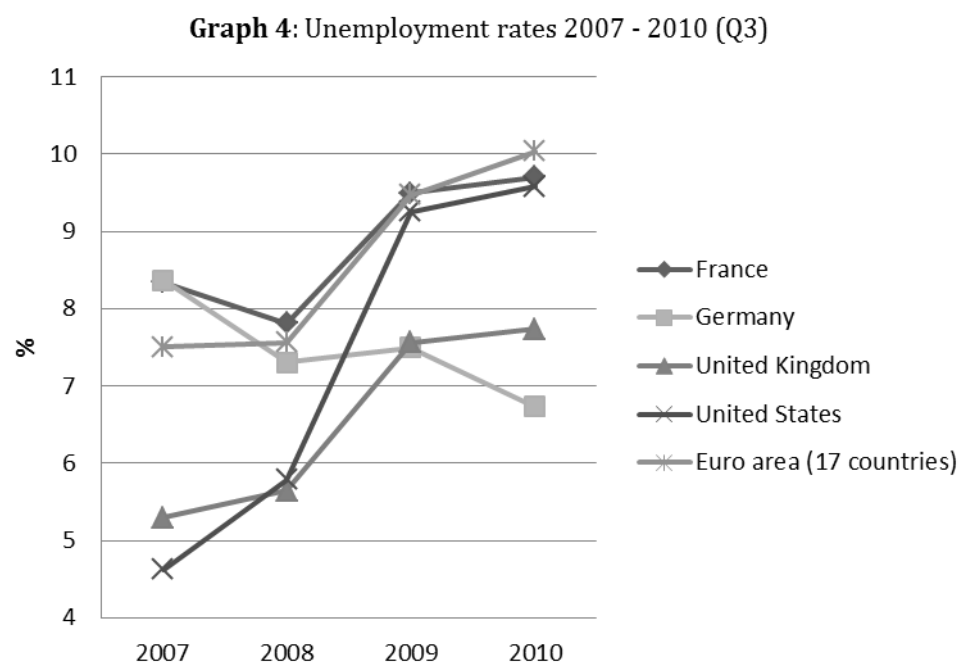
The recovery has been helped by the contribution of the German welfare system's automatic stabilizers and the two stimulus packages, November 5, 2008 in the amount of 11.8 billion Euro and on January 27, 2009 of approximately 50 billion Euro. In total, the German contribution to global demand stood slightly above the OECD average (Hassel and Lütz, 2010). Of



## The paradox of liberalization

these, the German equivalent of the 'Cash for Clunkers' programme (amounting to 5 billion Euros) subsidized car manufacturers worldwide. In particular, the cash for clunkers programme protected core skilled workers in export oriented industries.

At the same time, the labour market was relatively protected from the slump's fall-out. The elasticity of employment relative to the gross domestic product (GDP) was the second lowest among the EU (European Commission, 2010), meaning the GDP loss did not translate into job losses. As a result, Germany was the only major country which emerged from the crisis with lower unemployment levels than before the crisis (Graph 4).



Source: OECD; note: 2010 refers to Q3.

As the OECD points out, the single most important explanation for the gap between the business slump and employment outcomes is the reduction of working hours (Lehndorff, 2010; OECD, 2010). Manufacturing firms hoarded their permanent staff by employing various measures: they cut back on overtime, used deposits on working-time accounts, reduced working-time

and used the public short-time provisions, which were extended as part of the stimulus package. In total, these measures were used by about a fifth of all firms. According to a plant-level survey by WSI, 30 percent of all firms used working time accounts in order to avoid dismissals. This was by far the most important adjustment mechanism. Other mechanisms were job rotation (14 percent), extra holidays (13 percent) and pay cuts (11 percent) (Bodegan *et al.*, 2009).

Labour hoarding enabled German firms to rebuild capacity quickly, as demand on world markets picked up. Unlike in liberal market economies, where downswings are immediately translated into redundancy, labour hoarding stabilized demand and protected the skills of the workers concerned. This was also reflected in the change of unit labour costs. While hoarding labour first pushed up unit labour costs in 2009, it decreased in 2010. Labour hoarding and the use of working time accounts was only possible due to the plant-level agreements German firms had negotiated with their core workforce beginning in the late 1980s.

In the midst of the financial crisis, the German economy reported a remarkable recovery of the competitive position of German firms, higher than average growth and the highest employment levels ever (Möller, 2010). We can therefore recognize the two components which contributed to this remarkable development: first, German firms used flexible adjustment tools which they had developed over the two decades since the post-unification crisis. Second, public policy, particularly the specific measure of short term working, contributed to employment stabilization during the crisis.

However, analysis of the recovery only briefly mentions the extent to which wage subsidies for the low skilled, the lack of a minimum wage and wage decline in the service sector have served as a cost containing environment,

## The paradox of liberalization

allowing export-oriented firms to contain their wages and unit labour costs. The increasingly dualist nature of the German economy has created an export-oriented high skill industry which depends on a domestic environment of low cost services to control labour costs. This model, which is questionable in its social and economic long-run effects, is specific to the interactions of wage bargaining institutions, social and employment policies and training institutions.

## 7. Conclusion

Maintaining and regaining competitiveness for manufacturing firms has been a driving force in restructuring the German political economy. Firms have responded to economic shocks by restructuring; while public policy has aimed to accommodate and support manufacturing competitiveness with social policy liberalization which has helped to contain costs in the service economy. Both have contributed to deepening dualism.

Thus, the adjustment trajectory of the German political economy entails continued coordination and liberalization. These are not opposites; rather, they are complementary. Sustained coordination requires increasing liberalization for the labour market fringe. The result is an increasing inner core of predominantly manufacturing firms who hire a mix and match of core and fringe employees for their plants.

The combination of the two is the most important underlying factor for Germany's recent recovery following the financial crisis. The competitiveness of German firms hinges not only on wage restraint and plant-level cost cutting exercises in the manufacturing sectors, but also on cost cutting service supplies that facilitate wage restraint.

Analysing the complementary workings of coordination and liberalization helps understanding the apparent contradictory accounts of the transformation of German capitalism. Moreover, it points to the drivers of change. Both features of the German political economy - continued coordination and liberalization of services – are best explained by highlighting the role of producer coalitions in policy and institutional change.

On the whole, the business community has not pressed for wholesale deregulation of labour market regulation as the power resource approach would expect. At the same time, some segments of the business community, representing the core of manufacturing industries, pursued strategies to regain competitiveness at the local level. Management allied with core workers in its quest for productivity increases. Policy changes accommodated these strategies and enabled cost containment in the service sector.

The preceding interpretation of the German case as an emerging dualism of coordination and liberalization based on producer coalition preferences implies that this development might be a typical if not stable pattern of adjustment of a coordinated market economy to a series of economic shocks. It therefore allows a more nuanced perspective on institutional change in advanced political economies and provides a fruitful starting point for further analysis.

## References

- Amable, B. (2003). *The Diversity of Modern Capitalism*. Oxford: Oxford University Press
- Bispinck, R and T. Schulten (2003). 'Verbetrieblung der Tarifpolitik? – Aktuelle Tendenzen und Einschätzungen'. WSI-Mitteilungen, pp. 157-166.
- Bogedan, C., W. Brehmer and A. Herzog-Stein (2009). *Betriebliche Beschäftigungssicherung in der Krise. Düsseldorf, Eine Kurzauswertung der WSI-Betriebsrätebefragung*
- Bonoli, G. (2010) 'The political economy of active labour market policy'. *Politics and Society* 38 (4), pp. 435-457.
- Bosch, G. and T. Kalina (2007). 'Niedriglöhne in Deutschland - Zahlen, Fakten, Ursachen'. In G. Bosch and C. Weinkopf (eds.) *Arbeiten für wenig Geld. Niedriglohnbeschäftigung in Deutschland*. Frankfurt: Campus
- Carlin, W. and D. Soskice (2009). 'German Economic Performance: Disentangling the Role of Supply-side Reforms, Macroeconomic Policy and Coordinated Economic Institutions.' *Socio-Economic Review* 7, pp. 67-99.
- Chang, E.C.C, Kayser, M.A., Linzer, D.A. and R. Rogowski (2010). *Electoral Systems and the Balance of Consumer-Producer Power*. Cambridge: Cambridge University Press.
- Clegg, D. (2007). 'Continental Drift: On Unemployment Policy Change in Bismarckian Welfare States'. *Social Policy and Administration* 41(6), pp. 597-617.
- Crouch, C. and W. Streeck (eds.) (1997). *Political Economy of Modern Capitalism*. London: Francis Pinter
- Culpepper, P. (2011). *Quiet Politics and Business Power: Corporate Control in Europe and Japan*. Cambridge: Cambridge University Press
- Eichhorst, W. and P. Marx (2010). *Whatever Works: Dualisation and the Service Economy in Bismarckian Welfare States*. (IZA) Discussion Paper, No. 5035, Bonn, Forschungsinstitut zur Zukunft der Arbeit
- Eichhorst, W. and P. Marx (2009). *Reforming German Labor Market Institutions: A Dual Path to Flexibility*. IZA Discussion Paper 4100, Bonn, Forschungsinstitut zur Zukunft der Arbeit.
- Estevez-Abe, M., T. Iversen. and D. Soskice (2001). 'Social Protection and the Formation of Skills: A Reinterpretation of the Welfare State'. in P. A. Hall and D. Soskice (eds.) *Varieties of Capitalism: The Institutional Foundations of Comparative Advantage*. Oxford: Oxford University Press
- European Commission (2010). *Employment in Europe 2010*. Brussels: European Commission
- Franzese, R. and J. Mosher (2002). 'Comparative Institutional Advantage: The Scope for Divergence within European Economic Integration.' *European Union Politics* 3(2), pp.177-204.
- Hall, P. A. and D. Soskice (2001). 'An Introduction to Varieties of Capitalism'. in P. A. Hall and D. Soskice, D. (eds.) *Varieties of Capitalism: The Institutional Foundations of Comparative Advantage*. Oxford: Oxford University Press
- Hall, P. A. and K. Thelen (2009). 'Institutional Change in Varieties of Capitalism'. *Socio-Economic Review* 7, pp.7-34.

- Hancke, B., M. Rhodes and M. Thatcher (eds.) (2007). *Beyond Varieties of Capitalism: Conflict, Contradictions, and Complementarities in the European Economy*. Oxford: Oxford University Press
- Hassel, A. (2007). 'What Does Business Want? Labour Market Reforms in CMEs and Its Problems' In Hancké, B., M. Rhodes and M. Thatcher. (eds.) *Beyond Varieties of Capitalism: Conflict, Contradictions, and Complementarities in the European Economy*. Oxford: Oxford University Press
- Hassel, A. (2007). 'The Curse of Institutional Stability The Curse of Institutional Security - The Erosion of German Trade Unionism'. *Industrielle Beziehungen* 14 (2), pp. 176 – 191.
- Hassel, A. and B. Rehder (2001). *Institutional Change in the German Wage Bargaining System – The Role of Big Companies*, MPIfG Working Paper 01/9, December. Köln, Max-Planck-Institut für Gesellschaftsforschung.
- Hassel, A. and C. Schiller (2009). 'Bringing the state back in – the role of fiscal federalism in welfare restructuring', paper prepared for the 21st annual meeting of the Society for the Advancement of Socio-Economics, Sciences-Po, Paris, France, July 16-18, 2009.
- Hassel, A. and C. Schiller (2010). *Der Fall Hartz IV. Wie es zur Agenda 2010 kam und wie es weiter gehen wird*. Frankfurt: Campus
- Hassel, A. and S. Lütz (2011). *Balancing Competition and Cooperation. The State's New Power in Crisis Management*. Berlin-London: Mimeo
- Herrigel, G. (2010). *Manufacturing Possibilities: Creative Action and Industrial Recomposition in the United States, Germany and Japan*. Oxford: Oxford University Press
- Höpner, M. (2001). *Corporate Governance in Transition: Ten Empirical Findings on Shareholder Value and Industrial Relations in Germany*, MPIfG Discussion Paper 01/5. Köln: Max-Planck-Institut für Gesellschaftsforschung.
- Immervoll, H. (2007). *Minimum Wages, Minimum Labour Costs and the Tax Treatment of Low-wage Employment*, OECD Social Employment and Migration, Working Papers, no. 46. Paris, Organisation for Economic Co-operation and Development.
- Iversen, T. and Soskice D. (2009). 'Dualism and political coalitions: Inclusionary versus exclusionary reforms in an age of rising inequality' Paper prepared for presentation at the Annual Meeting of the American Political Science Association, Toronto, September 3-6, 2009.
- Johnston, A. (2009). 'Labour Unions, Wage Restraint and European Monetary Union: The Rise of Sectoral Divergence' Paper for the Ph.D. Conference, "Emerging Research in Political Economy and Public Policy" European Institute, London School of Economics, London, March 11, 2009.
- Jürgens, U. and M. Krzywdzinski (2009) *Changing East-West Division of Labour in the European Automotive Industry*. *European Urban and Regional Studies* 16, p. 27
- Kettner, A. and M. Rebien. (2009). *Job safety first? Zur Veränderung der Konzessionsbereitschaft von arbeitslosen Bewerbern und Beschäftigten aus betrieblicher Perspektive. Ordnungspolitische Diskurse*. Diskurs 2009-7
- Kalina, T. and C. Weinkopf. (2009). *Niedriglohnbeschäftigung 2007 weiter gestiegen - zunehmende Bedeutung von Niedrigstlöhnen* IAQ-Report 2009-05, Bonn, Forschungsinstitut zur Zukunft der Arbeit.
- Koch, S., P. Kupka and J. Steinke. (2009). *Aktivierung, Erwerbstätigkeit und Teilhabe. Vier Jahre Grundsicherung für Arbeitssuchende*. (eds) IAB, IAB-Bibliothek. Nürnberg: IAB.

## The paradox of liberalization

- Korpi, W. (2006). 'Power Resources and Employer-Centered Approaches in Explanations of Welfare States and Varieties of Capitalism: Protagonists, Consenters, and Antagonists'. *World Politics* 58, pp.167-206.
- Lehndorff, S. (2010). Before the crisis, in the crisis, and beyond: The upheaval of collective bargaining in Germany. Duisburg-Essen: Mimeo.
- Mares, I. (2003). *The Politics of Social Risk: Business and Welfare State Development*. Cambridge: Cambridge University Press
- Marin, D. (2010a). 'The Opening Up of Eastern Europe at 20: Jobs, Skills, and "Reverse Maquiladoras" in Austria and Germany', Munich Discussion Paper 2010-14, Munich, University of Munich.
- Marin, D. (2010b). Germany's super competitiveness: A helping hand from Eastern Europe. VoxEU.org (available at <http://www.voxeu.org/index.php?q=node/5212> accessed on February 15, 2011 ).
- Minijobzentrale (2010) Aktuelle Entwicklungen im Bereich der geringfügigen Beschäftigung. Quartalsbericht 1. Essen.
- Molina, O. and M. Rhodes. (2007). 'The Political Economy of Adjustment in Mixed Market Economies: A Study of Spain and Italy.' In B. Hancké, M. Rhodes and M. Thatcher (eds.) (2007) *Beyond Varieties of Capitalism: Conflict, Contradictions, and Complementarities in the European Economy*. Oxford: Oxford University Press, pp. 223-52.
- Möller, J. (2010) The German labor market response in the world recession – de-mystifying a miracle. *Zeitschrift für Arbeitsmarktforschung* 42, pp. 325–36
- OECD (2007). *Offshoring and Employment: Trends and Impacts*. Paris: OECD.
- OECD (2010). *Employment Outlook*. Paris: OECD.
- Palier, B. and K. Thelen (2010). 'Institutionalizing Dualism: Complementarities and Change in France and Germany'. *Politics & Society* 38, pp. 119-48.
- Rehder, B. (2003). *Betriebliche Bündnisse für Arbeit in Deutschland. Mitbestimmung und Flächentarif im Wandel*, Schriftenreihe des MPI für Gesellschaftsforschung Band 48, Köln: Max-Planck-Institut für Gesellschaftsforschung.
- Sachverständigenrat zur Begutachtung der gesamtwirtschaftlichen Entwicklung (SVR)(2008): Jahresgutachten 2008/09. Deutscher Bundestag Drucksache 16/10985.
- Seifert, H. (ed.) (2002). *Betriebliche Bündnisse für Arbeit. Rahmenbedingungen – Praxiserfahrungen – Zukunftsperspektiven*. Berlin: Simon
- Sinn, H.-W. (2006). 'The Pathological Export Boom and the Bazar Effect. How to solve the German Puzzle' CESifo Working Paper No. 1708, Munich, Institut für Wirtschaftsforschung.
- Statistisches Bundesamt (2010) 'Befristete Beschäftigung: Jeder elfte Vertrag hat ein Verfallsdatum'. Destatis, 16. March 2010.
- Streeck, W. (1997). 'German capitalism: Does it exist? Can it survive?'. *New Political Economy* 2(2), pp. 237-56
- Streeck, W. (2009). *Re-Forming Capitalism: Institutional Change in the German Political Economy*, Oxford: Oxford University Press

- Streeck, W. (2010). *E Pluribus Unum? Varieties and Commonalities of Capitalism*. MPIfG Discussion Paper, 10. Köln: Max-Planck-Institut für Gesellschaftsforschung.
- Streeck, W. and K. Thelen (eds.) (2005). *Beyond Continuity*. Oxford: Oxford University Press
- Swenson, P. A. (2002) *Capitalists against Markets: The Making of Labor Markets and Welfare States in the United States and Sweden*. Oxford: Oxford University Press
- Thelen, K. and C. Van Wijnbergen (2003) *The Paradox of Globalization: Labor Relations in Germany and Beyond*. *Comparative Political Studies* 36, pp. 859-80.
- Wood, S. (2001). *Business, Government and Patterns for Labor Market Policy in Britain and the Federal Republic of Germany*. In P. Hall and D. Soskice (eds.) *Varieties of Capitalism*. Oxford: Oxford University Press, pp. 247-74.
- Vanselow, Achim. (2009). *Entfesseln oder einhegen? Zeitarbeit in der Krise*. IAQ-Report 2009-06. Duisberg-Essen, Instituts Arbeit und Qualifikation.
- Zagelmeyer, S. (2010). 'Company-level employment relations during the globalfinancial crisis: Five illustrative cases from Germany'. Paper submitted to the, *Industrial Relations in Europe Conference (IREC) 2010*, Fafo, Oslo, Norway, September 8-10, 2010.



## The paradox of liberalization

## Recent LEQS papers

- Hancké**, Bob. 'Endogenous Coordination: Multinational Companies and the Production of Collective Goods in Central and Eastern Europe' LEQS Paper No. 41, August 2011
- Crescenzi**, Riccardo, **De Filippis**, Fabrizio & **Pierangeli**, Fabio. 'In tandem for cohesion? Synergies and conflicts between regional and agricultural policies of the European Union' LEQS Paper No. 40, July 2011
- Somek**, Alexander. 'The Social Question in a Transnational Context' LEQS Paper No. 39, June 2011
- Mabbett**, Deborah. 'A Rights Revolution in Europe? Regulatory and judicial approaches to nondiscrimination in insurance' LEQS Paper No. 38, May 2011
- Karaman**, K. Kıvanç & **Pamuk**, Şevket. 'Different Paths to the Modern State in Europe: The interaction between domestic political economy and interstate competition.' LEQS Paper No. 37, May 2011
- Scharpf**, Fritz W.. 'Monetary Union, Fiscal Crisis and the Preemption of Democracy.' Paper presented at the LEQS Annual Lecture 'Saving the Euro – at the expense of democracy in Europe?' on 12 May 2011 at the London School of Economics, LEQS Paper No. 36, May 2011
- Zigante**, Valentina. 'Assessing Welfare Effects of the European Choice Agenda: The case of health care in the United Kingdom.' LEQS Paper No. 35, May 2011
- Hobolth**, Mogens. 'European visa cooperation: interest politics and regional imagined communities.' LEQS Paper No. 34, May 2011
- Monastiriotis**, Vassilis. 'Regional Growth Dynamics in Central and Eastern Europe.' LEQS Paper No. 33, April 2011
- Johnston**, Alison. 'The Revenge of Baumol's Cost Disease?: Monetary Union and the Rise of Public Sector Wage Inflation.' LEQS Paper No. 32, March 2011
- Glendinning**, Simon. 'Europe, for example.' LEQS Paper No. 31, March 2011
- Winkler**, Heinrich August. 'Greatness and Limits of the West. The History of an Unfinished Project.' LEQS Paper No. 30, February 2011
- Dani**, Marco. 'Assembling the fractured European consumer.' LEQS Paper No. 29, January 2011
- Joerges**, Christian. 'Unity in Diversity as Europe's Vocation and Conflict's Law as Europe's Constitutional Form.' LEQS Paper No. 28, December 2010
- Kylstad**, Ingrid. 'Turkey and the EU: A 'new' European identity in the making?' LEQS Paper No. 27, November 2010
- Costa-i-Font**, Joan. 'Regional Single Currency Effects on Bilateral Trade with the European Union.' LEQS Paper No. 26, October 2010
- Erkan**, Ozgur. 'Spain's Referendum on the European Constitutional Treaty: A Quantitative Analysis Within the Conceptual Framework of First and Second Order Elections.' LEQS Paper No. 25, June 2010
- White**, Jonathan. 'Left, Right and Beyond: The Pragmatics of Political Mapping.' LEQS Paper No. 24, June 2010

## **LEQS**

European Institute  
London School of Economics  
Houghton Street  
WC2A 2AE London  
Email: [euroinst.LEQS@lse.ac.uk](mailto:euroinst.LEQS@lse.ac.uk)

<http://www2.lse.ac.uk/europeanInstitute/LEQS/Home.aspx>

