

Braun, Sebastian Till; Stuhler, Jan

**Working Paper**

## The Economic Consequences of Being Widowed by War: A Life-Cycle Perspective

IZA Discussion Papers, No. 16973

**Provided in Cooperation with:**

IZA – Institute of Labor Economics

*Suggested Citation:* Braun, Sebastian Till; Stuhler, Jan (2024) : The Economic Consequences of Being Widowed by War: A Life-Cycle Perspective, IZA Discussion Papers, No. 16973, Institute of Labor Economics (IZA), Bonn

This Version is available at:

<https://hdl.handle.net/10419/299901>

**Standard-Nutzungsbedingungen:**

Die Dokumente auf EconStor dürfen zu eigenen wissenschaftlichen Zwecken und zum Privatgebrauch gespeichert und kopiert werden.

Sie dürfen die Dokumente nicht für öffentliche oder kommerzielle Zwecke vervielfältigen, öffentlich ausstellen, öffentlich zugänglich machen, vertreiben oder anderweitig nutzen.

Sofern die Verfasser die Dokumente unter Open-Content-Lizenzen (insbesondere CC-Lizenzen) zur Verfügung gestellt haben sollten, gelten abweichend von diesen Nutzungsbedingungen die in der dort genannten Lizenz gewährten Nutzungsrechte.

**Terms of use:**

*Documents in EconStor may be saved and copied for your personal and scholarly purposes.*

*You are not to copy documents for public or commercial purposes, to exhibit the documents publicly, to make them publicly available on the internet, or to distribute or otherwise use the documents in public.*

*If the documents have been made available under an Open Content Licence (especially Creative Commons Licences), you may exercise further usage rights as specified in the indicated licence.*

DISCUSSION PAPER SERIES

IZA DP No. 16973

**The Economic Consequences of Being  
Widowed by War:  
A Life-Cycle Perspective**

Sebastian T. Braun  
Jan Stuhler

MAY 2024

## DISCUSSION PAPER SERIES

IZA DP No. 16973

# The Economic Consequences of Being Widowed by War: A Life-Cycle Perspective

**Sebastian T. Braun**

*University of Bayreuth, CReAM and IZA*

**Jan Stuhler**

*Universidad Carlos III de Madrid, CReAM and IZA*

MAY 2024

Any opinions expressed in this paper are those of the author(s) and not those of IZA. Research published in this series may include views on policy, but IZA takes no institutional policy positions. The IZA research network is committed to the IZA Guiding Principles of Research Integrity.

The IZA Institute of Labor Economics is an independent economic research institute that conducts research in labor economics and offers evidence-based policy advice on labor market issues. Supported by the Deutsche Post Foundation, IZA runs the world's largest network of economists, whose research aims to provide answers to the global labor market challenges of our time. Our key objective is to build bridges between academic research, policymakers and society.

IZA Discussion Papers often represent preliminary work and are circulated to encourage discussion. Citation of such a paper should account for its provisional character. A revised version may be available directly from the author.

ISSN: 2365-9793

**IZA – Institute of Labor Economics**

Schaumburg-Lippe-Straße 5–9  
53113 Bonn, Germany

Phone: +49-228-3894-0  
Email: [publications@iza.org](mailto:publications@iza.org)

[www.iza.org](http://www.iza.org)

## ABSTRACT

---

# The Economic Consequences of Being Widowed by War: A Life-Cycle Perspective\*

Despite millions of war widows worldwide, little is known about the economic consequences of being widowed by war. We use life history data from West Germany to show that war widowhood increased women's employment immediately after World War II but led to lower employment rates later in life. War widows, therefore, carried a double burden of employment and childcare while their children were young but left the workforce when their children reached adulthood. We discuss the mechanisms contributing to this counterintuitive life-cycle pattern and examine potential spillovers to the next generation.

**JEL Classification:** J16, J20, N34

**Keywords:** war widows, labor market careers, female labor force participation, World War II

**Corresponding author:**

Sebastian Till Braun  
University of Bayreuth  
Faculty of Law, Business and Economics  
95440 Bayreuth  
Germany  
E-mail: [sebastian.braun@uni-bayreuth.de](mailto:sebastian.braun@uni-bayreuth.de)

---

\* We would like to thank seminar and workshop participants at the 2024 annual conference of the Economic History Society, IZA, the IZA workshop on Labor Markets and Innovation during Times of War and Reconstruction, Trinity College Dublin, and the University of Bayreuth for their helpful comments and suggestions. John Tyler Ellis, Bastian Prinz, Charlotte Rehling, and Luis Schröder provided excellent research assistance. Any remaining errors are our own.

# 1 Introduction

War widows constitute a large proportion of the population in many postwar societies. For example, World War I (WWI) resulted in 3-4 million war widows (Bette, 2015), the Rwandan genocide in 500,000 (United Nations, 2001), and one to two million war widows lived in Afghanistan in the mid-2000s (IRB, 2007; Chandran, 2020). Despite these staggering numbers, we lack evidence on the economic impact of war widowhood (Brück and Schindler, 2009; Brounéus et al., 2023). While earlier work has examined the consequences of losing a spouse (e.g., Burkhauser et al., 2005; Fadlon and Nielsen, 2021), war widows face unique challenges due to the sudden and violent nature of their spouse’s death, their often young age, and limited childcare and financial support in postwar societies.

This paper provides first quantitative evidence on the individual economic effects of being widowed by war. We focus on World War II (WWII), the deadliest conflict in history. Although more than 20 million soldiers died, the literature on the individual effects of WWII (e.g., Ichino and Winter-Ebmer, 2004; Bauer et al., 2013; Kesternich et al., 2014; Akbulut-Yuksel et al., 2022) has not yet examined the economic plight of surviving widows. Drawing on rich life course data for West Germany, our analysis focuses on labor market effects over the life cycle. In particular, we test the hypothesis that war widows increased their labor supply due to the adverse income shock of losing their husbands (Boehnke and Gay, 2022). In addition, we examine whether the daughters of widows held more progressive norms about female employment and increased their labor supply accordingly (Fernández et al., 2004; Gay, 2023).

We indeed find that war widowhood significantly increased employment in the immediate postwar period. In 1950, war widows born between 1906 and 1914 were 13.8 percentage points (pp) or 67% more likely to be in market work than otherwise comparable women who did not lose their husbands in the war. However, this positive employment effect gradually declines, and by 1971 war widows were 1.9 pp *less* likely to work (and 2.5 times more likely to rely on welfare) than their peers. This finding is especially surprising given that most war widows remained unmarried (they were 73% less likely to be married in 1971) and labor force participation rates were higher for unmarried than married women at the time.

The children of war widows left school and entered the labor force earlier than their peers, presumably due to financial hardship in the postwar period. This educational penalty is particularly pronounced for boys, who lose a full year of education. However, we find no long-run

effects of widowhood on children’s employment rates. Overall, widowhood leaves a clear mark on the employment trajectories and socioeconomic outcomes of the 1.0-1.2 million war widows living in West Germany after 1945 (Niehuss, 2002), but did not have a lasting effect on women’s labor force participation.

We derive these results by comparing war widows, which we can directly identify in our data, with other women who had comparable prewar socioeconomic characteristics. Several observations support a causal interpretation of our estimates. First, the normalized differences in prewar characteristics between widows and non-widows are small and explain only about 1% of the variation in widowhood status. Second, adding control variables leaves our estimates unchanged while improving model fit, making it unlikely that omitted variables drive our results. Third, war widowhood is uncorrelated with spousal or parental characteristics either. These findings are consistent with the fact that the women in our sample were married to men whose cohorts were largely or entirely conscripted for the war, minimizing selection into war service and death (Braun and Stuhler, 2023).

The widow’s counterintuitive labor supply trajectories are likely explained by the design of the compensation system. Initially, financial support for war widows was limited, forcing many into employment. With Germany’s economic boom in the 1950s and 1960s, compensation became more generous, especially its means-tested component, which created disincentives to work through standard substitution effects. This pattern is typical: compensation for war widows is often inadequate in war-torn societies, while more generous policies become feasible as the economy recovers and the number of widows eligible for compensation diminishes. Boehnke and Gay (2022) documents that pension payments to French war widows after WWI were initially low but increased in the 1930s. Similarly, Skocpol (1993) documents how benefits to US Civil War veterans and their dependents expanded massively over time. We find that such back-loaded compensation schemes force widows to bear the double burden of employment and child care while they are young, but incentivize their withdrawal from the labor market later in life.

Moreover, we show that war-induced labor market entry does not necessarily increase women’s labor force participation in the long run. The work experiences of war widows were often negative: working widows were accused of neglecting their childcare responsibilities, and many widows struggled to balance work and household responsibilities in the face of social stigma and a lack of childcare (Niehuss, 2002; Schnädelbach, 2007). Likely as a consequence, war widows did not hold more progressive views on the compatibility of family and work, as we show using

survey data on attitudes and gender norms. They also did not place a higher value on work than non-widows, likely contributing to their withdrawal from the labor market later in life. In fact, daughters of war widows were more likely to agree with the statement that women with young children should *not* work.

**Literature.** Our paper is the first to provide representative individual-level evidence on the effects of war widowhood on labor market outcomes.<sup>1</sup> We contribute to a growing literature that examines the effects of war mobilization and military fatalities on female labor force participation (FLFP).<sup>2</sup> Much of this literature has focused on the case of WWII in the US, suggesting that the mobilization of men drew women into the labor force (Goldin, 1991; Acemoglu et al., 2004; Goldin and Olivetti, 2013; Jaworski, 2014; Doepke et al., 2015). However, recent evidence cautions that the war decreased female opportunities in white-collar jobs (Bellou and Cardia, 2016) and suggests that the wartime surge in FLFP was primarily due to the exigencies of war production rather than mobilization (Rose, 2018).

While the extant literature emphasizes shifts in aggregate labor demand, we examine how the individual experience of being widowed by war affects women’s labor supply over the life cycle. Especially in countries with high military casualty rates, such as Japan, Germany, or the Soviet Union, the experience of war widows is indispensable for understanding the overall impact of WWII on FLFP. Related to our study, Boehnke and Gay (2022) note that the negative income shock of losing one’s spouse may have led war widows to enter the labor force after WWI. Using variation across French regions, they show that higher military deaths increased FLFP and estimate that widowed women accounted for nearly half of this effect. However, they do not study individual labor market careers, as we do here.

Our paper also relates to studies that analyze the intergenerational persistence of war shocks on FLFP.<sup>3</sup> Fernández et al. (2004) use variation in WWII mobilization rates across US states to document intergenerational spillovers in women’s labor supply. Fernández (2013) develops a learning model of cultural change, in which WWII mobilization increases FLFP in the next generation, as women drawn into the labor force during the war learn the “true” cost of working.

---

<sup>1</sup>Salisbury (2017) studies the impact of pension payments on the remarriage rates of Union Army widows whose husbands died in the US Civil War.

<sup>2</sup>A second literature strand explores the effect of war-related scarcity of men on the marriage market and fertility (Abramitzky et al., 2011; Bethmann and Kvasnicka, 2013; Brainerd, 2017; Kesternich et al., 2020; Battistin et al., 2022). Brodeur and Kattan (2022) connects the two strands of literature.

<sup>3</sup>Relatedly, Dupraz and Ferrara (2023) show that sons whose fathers died in the US Civil War had lower incomes later in life, but do not examine the effect on the spouses of fallen soldiers.

And Gay (2023) finds that women born in French counties that experienced higher military death rates in WWI were more likely to work decades after the war ended. While these studies also capture intergenerational spillovers from demand-driven shifts in women’s employment (due to war mobilization), we focus on spillovers from individual-level shifts in labor supply (due to the loss of one’s spouse).

## 2 Institutional Background

The total number of German military dead and missing was over five million, and a similar number of soldiers were injured (Overmans, 1999; Müller, 2016). The fate of surviving family members and the war-disabled was thus a pressing social problem in postwar Germany. After the Allied occupying powers had dismantled the old war disability system, the *Bundesversorgungsgesetz* (BVG) of October 1950 reorganized and improved welfare for the German *Kriegsopfer* (victims of WWII). The BVG aimed at the physical and vocational rehabilitation of victims and their families, and paid social assistance to those for whom rehabilitation was not, or only partially, possible (Diehl, 1985).

However, the difficult financial situation at the time limited the generosity of the compensation payments. War widows initially received an unconditional basic pension (*Grundrente*) of DM 40 as well as a means-tested compensatory pension (*Ausgleichsrente*) of up to DM 50 per month. The latter was not paid to women under age 50 unless they had children to care for or were unable to work. The maximum pension of 90 DM represented roughly 30% of the average gross labor income at the time. Children under age 18 received additional orphan’s pensions.

Pension levels were successively increased in the 1950s and 1960s, as Germany’s strong growth rates led to higher government revenues. By 1960, the maximum amount of basic and compensatory pensions totaled DM 250, or about 49% of average labor income. In addition, the conditions for receiving a compensatory pension were lowered and the age limit decreased from 50 to 45 years. The second revision of the BVG in 1964 introduced additional damage compensation (*Schadensausgleich*) for widows whose income was less than half of what the husband would have earned, further increasing the maximum pension to almost 60% of average labor income in 1970. Appendix A describes how maximum pension payments increased since the mid-1950s, both in real terms and as a share of gross labor income.

Two features of the BVG are worth highlighting. First, the compensatory pension was re-



duced in proportion to the earned income above a basic allowance. This reduced the incentive to take up formal employment (Niehuss, 2002). The means-tested part of the widow’s pension gained importance from the mid-1950s onwards, especially with the introduction of the likewise means-tested damage compensation (see Appendix A). Second, women were not entitled to a compensatory pension until later in life, unless they were unable to work or had to care for children.

War widows frequently faced a dilemma in their labor market participation (Schnädelbach, 2007). Women’s employment was still controversial in the early 1950s, and the employment of war widows was considered particularly undesirable due to concerns they would neglect the care of their children. Institutional childcare was hardly available at the time, and working mothers frequently had to rely on relatives to take care of their children (Niehuss, 2002). On the other hand, gainful employment was often essential for financial reasons, given the initially low compensation payments.

### 3 Data and Empirical Strategy

#### 3.1 Data

**Microcensus 1971 (MZU71).** The main data source for our analysis is the MZU71 (*Mikrozensus-Zusatzerhebung*, 1971). This representative and mandatory survey provides detailed information on changes in the social and occupational structure of the West German population between 1939 and 1971. Covering 1% of the population aged 15 and over with German citizenship, the survey contains information on 456,000 individuals.

The survey asked respondents in 1971 about their employment status and occupation in 1939, 1950, 1960, and 1971. It also recorded whether respondents owned a house in 1939 and 1971, their education level, their main source of income, and their net monthly income in 1971. The latter is recorded in seven categories and is missing for farmers. The survey also contains the place of residence in 1939, which allows us to identify persons displaced from Eastern Europe in the wake of WWII and refugees from the GDR.

Importantly for our purposes, the survey specifically asked women whether they “were or had been war widows”. This allows us to identify war widows even if they have remarried. Our treatment group consists of all women who were married at the time of WWII and whose husbands were killed in the war, died in captivity, or were missing in action. We focus on women

born in 1906-14 who were between 25 and 65 years old during our observation period (1939-71). Women of the same birth cohort who were married by 1945 but did not lose their spouses in the war form our control group. We drop women who never married or who married only after 1945, as they were not 'at risk' of losing their spouse in the war.<sup>4</sup>

Table 1 reports means and standard deviations of the available prewar covariates for war widows (Columns (1) and (2)) and non-widows (Columns (3) and (4)) in our sample. Column (5) reports t-statistics for testing the null of no differences in covariate means between the two groups. However, given the large sample size of 30,351, even small differences will be statistically significant. We thus also report normalized differences in Column (6), which scale differences in means by the square root of the sum of the variances to assess overlap in the covariate distribution (Imbens and Wooldridge, 2009).

All normalized differences in prewar covariates between the treatment and control groups are smaller than 0.10, except for two: age and displacement status. War widows tend to be slightly older than non-widows; as earlier cohorts were more likely to be married before the war started, they were more likely to lose their husband. War widows were also somewhat more likely to be displaced than non-widows, presumably because of the elevated death rates of soldiers from Germany's former eastern territories (Overmans, 1999). However, even these differences are small so that they can be (robustly) controlled for in standard linear regressions (Imbens and Wooldridge, 2009).

**German Life History Study (GHS).** For more detailed life-cycle analysis, we use the GHS, a retrospective survey of eight West German birth cohorts. We draw on the second wave (GHS-2, conducted in 1985-88), which surveyed 1,412 respondents born in 1919-21, of whom 853 are women (Mayer, 1995, 2018a). While the sample size is much smaller, the GHS contains the respondents' complete marriage, education, employment, and occupational history.<sup>5</sup> We can thus study war widows' labor market outcomes over the entire life cycle until retirement. We classify women in the GHS whose husbands died in or before 1945 ( $N = 95$ ) as war widows. The control group are women from the same 1919-21 birth cohort who also married in or before 1945 but did not lose their husbands during the war ( $N = 428$ ).

---

<sup>4</sup>The MZU71 reports only the year of the last marriage for those married in 1971. Appendix B discuss potential problems arising from this shortcoming and presents robustness checks that confirm our main findings for alternative control groups. Moreover, we show that our results also hold in the German Life History Study, where we observe complete marriage histories.

<sup>5</sup>We use the Standard International Occupational Scale (Treiman, 1977) to study occupational success, with scores ranging from 18 (unskilled laborers) to 78 (medical professionals, professors).

Table 1: Prewar differences between later war widows and non-widows

	War widows (N=5,129)		Non-widows (N=25,222)		Differences	
	mean	st.d.	mean	st.d.	t-stat	norm.
	(1)	(2)	(3)	(4)	(5)	(6)
<i>Socio-demographic characteristics:</i>						
Birth year	1910.331	2.479	1909.889	2.556	11.349	0.176
House ownership (0/1)	0.488	0.500	0.466	0.499	2.877	0.044
Years of education	8.944	1.580	9.046	1.655	4.039	0.063
Years of schooling	8.356	1.065	8.408	1.148	3.044	0.048
Siblings	4.807	2.731	4.674	2.724	3.182	0.049
<i>Place of residence:</i>						
Eastern Europe (incl. eastern territories)	0.208	0.406	0.155	0.362	9.293	0.137
Soviet occupation zone	0.047	0.212	0.052	0.221	1.319	0.020
<i>Employment and occupational status (%):</i>						
Employed	0.419	0.494	0.388	0.487	4.233	0.065
Market employment	0.331	0.471	0.289	0.453	6.064	0.092
Self employed <sup>1</sup>	0.025	0.157	0.022	0.146	1.421	0.021
Farmer <sup>2</sup>	0.023	0.151	0.012	0.111	5.894	0.081
Civil servant	0.003	0.056	0.003	0.058	0.240	0.004
White collar	0.082	0.274	0.091	0.288	2.119	0.033
Blue collar	0.197	0.398	0.159	0.366	6.651	0.099
Apprentices	0.001	0.031	0.001	0.030	0.135	0.002
Helping family	0.088	0.284	0.099	0.298	2.364	0.037
In education	0.002	0.044	0.003	0.052	1.007	0.016
Unemployed	0.001	0.024	0.001	0.026	0.227	0.004
Out of the labor force	0.578	0.494	0.609	0.488	4.110	0.063
<i>Sector of employment (%):</i>						
Agriculture	0.121	0.326	0.099	0.299	4.707	0.070
Industry	0.143	0.350	0.123	0.329	3.918	0.059
Construction	0.002	0.039	0.003	0.054	1.689	0.028
Trade	0.073	0.261	0.079	0.270	1.427	0.022
Finance	0.013	0.114	0.016	0.127	1.714	0.027
Services	0.066	0.249	0.065	0.247	0.302	0.005
Not employed or unknown	0.581	0.493	0.614	0.487	4.353	0.066

*Notes:* Sample means and standard deviations of prewar covariates for war widows and non-widows in our baseline sample (after dropping observations with missing prewar characteristics). All data refer to 1939 except for education, schooling, and the number of siblings, which are measured in 1971. <sup>1</sup> Self-employed outside agriculture. <sup>2</sup> Farmer with own land. The t-statistic in Column (5) refers to a two-sided mean difference t-test. Normalized differences in Column (6) are calculated as  $|\bar{X}_1 - \bar{X}_0|/\sqrt{(S_1)^2 + (S_0)^2}$  where  $\bar{X}_1$  and  $\bar{X}_0$  are the sample means and  $(S_1)^2$  and  $(S_0)^2$  the sample variances of war widows and non-widows, respectively.

**ALLBUS.** For complementary evidence on work attitudes and gender norms, we consider ALLBUS, a survey of the attitudes, behavior, and social structure of the German population that has been conducted biannually since 1980. The data allow us to examine the work attitudes of war widows and their children. Appendix D describes the data in detail.

### 3.2 Empirical Strategy

To examine whether widows and non-widows who were comparable before the war fared differently after 1945, we estimate OLS regression models of the following type:

$$y_{it} = \alpha + \mathbf{x}_{i,39}\boldsymbol{\beta} + \delta D_i + \epsilon_{it}, \quad (1)$$

where  $y_{it}$  is a particular postwar outcome of person  $i$  at time  $t$ ,  $D_i$  is a dummy variable identifying war widows,  $\mathbf{x}_{i,39}$  is a row vector of prewar control variables, and  $\epsilon_{it}$  is an error term. Our main parameter,  $\delta$ , measures the “widowhood effect,” i.e., the average difference in a given outcome between war widows and otherwise (as of 1939) comparable women in the control group.<sup>6</sup> We report robust standard errors, clustered at selection districts (*Auswahlbezirke*).<sup>7</sup> We also compare the OLS estimates to estimates based on inverse probability weighting (IPW).<sup>8</sup>

Identification requires that conditional on  $\mathbf{x}_{i,39}$ , widowhood status  $D_i$  is uncorrelated with unobserved prewar differences that still affect economic outcomes in postwar West Germany. This assumption would be violated if women with better unobserved labor market skills married high-skilled men who were less likely to die in WWII. Non-widows then had better labor market prospects on average, which would explain why we do not find any lasting impact of widowhood on employment. Several pieces of evidence speak against this concern.

First, women in our sample were predominantly married to men whose cohorts were largely or entirely conscripted for the war. This is important because differences in conscription rates, rather than unequal survival rates, are the main explanation for why mortality rates differed between birth cohorts (Overmans, 1999).<sup>9</sup> Importantly, our results also apply to younger women born 1915-21 (see Appendix B), almost all of whom were married to men born 1910-25. Their cohorts were fully conscripted during the war, so that selection into military service played a negligible role. At the same time, these cohorts were far too young for middle and higher officer

---

<sup>6</sup>The large number of widows may have affected the economy as a whole and thus also the control group. Our regression does not capture such general equilibrium effects. However, from a policy perspective, the relative economic fortunes of war widows are of primary interest, not the situation that would have prevailed in their absence.

<sup>7</sup>The survey drew a sample of districts and then interviewed all persons of the selected districts. The average size of a district is 100 people (Tegtmeyer, 1979).

<sup>8</sup>IPW does not specify a model of the outcome variable but instead focuses on modelling widowhood, the treatment (see, e.g., Imbens and Wooldridge, 2009, for details). IPW estimates the widowhood effect by comparing *weighted* outcome means of widows and non-widows. Observations in the control group that, given their prewar covariates, had a high probability of losing their husbands receive higher weights.

<sup>9</sup>While skilled workers in the armaments industry were initially spared military service (Müller, 2016), more than 80 percent of German military deaths occurred after 1942 (Overmans, 1999), when all reserves were mobilized for the *Wehrmacht*.

ranks, which might have promised better survival prospects. Consistent with these arguments, [Braun and Stuhler \(2023\)](#) show for a sample of war survivors born 1919-21 that socioeconomic background does not predict war service or injuries.

Second, Table 1 documents only small prewar differences between widows and non-widows for our main MZU71 sample (explaining merely 1% of the variation in widowhood status, see Appendix Table E1). Third, Appendix Table E2 shows for the GHS auxiliary sample that war widowhood is not only uncorrelated with women’s own prewar characteristics,<sup>10</sup> but also with their spouse’s and parents’ characteristics. Fourth, we show below that adding the extensive set of prewar covariates listed in Table 1 has virtually no effect on our estimates, while helping to explain variation in the outcome variables. It is thus unlikely that omitted variables drive our results.

## 4 Socioeconomic Effects of WWII Widowhood

### 4.1 Sociodemographic Outcomes

We begin with studying the effect of war widowhood on sociodemographic outcomes in the MZU71, a quarter century after the war’s end. The women in our sample were 56-65 years old at that time. Table 2 reports our results. Column (2) presents estimates from a parsimonious OLS model, controlling only for age. Column (3) adds control variables for house ownership in 1939, indicators for expellees from Eastern Europe and refugees from the GDR, the number of siblings, and a full set of education dummies. The full-fledged specification in Column (4) additionally accounts for the sectoral and occupation affiliation in 1939. Finally, Column (5) presents IPW estimates using the full set of controls to predict treatment status. In what follows, we discuss the point estimates from the IPW model, but the estimates hardly change across specifications. This lends credibility to the unconfoundness assumption we invoke for identification.

Panel A. of Table 2 shows that widowhood during the war had striking long-term demographic consequences. By 1971, war widows have a 48.6 pp lower probability of being married (from a baseline probability of 66.4%, see Column (1)). Finding a new partner often proved elusive, as the war led to an acute shortage of men. War widows were also more than twice as

---

<sup>10</sup>Widowhood does correlate with the marriage year, as women who marry earlier in the war are exposed for a longer time to the risk of losing their spouse. We therefore control for marriage year in all regressions in the GHS. While we cannot control for the marriage year in the MZU71, we restrict this sample to women who were well above the average age of first marriage in 1945.

Table 2: The impact of WWII widowhood on demography, labor market status, income, and wealth in 1971

	Control mean (1)	OLS (2) (3)		IPW (4) (5)	
<i>A. Demographic outcomes:</i>					
Married (0/1)	0.664	-0.488 (0.007)	-0.489 (0.007)	-0.485 (0.007)	-0.486 (0.007)
Living alone (0/1)	0.246	0.335 (0.008)	0.338 (0.008)	0.335 (0.008)	0.335 (0.008)
Number of children	2.130	-0.253 (0.025)	-0.287 (0.025)	-0.278 (0.024)	-0.282 (0.024)
<i>B. Labor market status:</i>					
Market employment	0.162	-0.018 (0.006)	-0.014 (0.006)	-0.018 (0.006)	-0.019 (0.006)
Helping family member	0.061	-0.033 (0.003)	-0.033 (0.003)	-0.031 (0.003)	-0.031 (0.003)
Out of the labor force	0.776	0.052 (0.006)	0.048 (0.006)	0.050 (0.006)	0.051 (0.006)
<i>C. Income:</i>					
Personal income (unconditional)	241.018	243.295 (5.768)	250.198 (5.459)	248.311 (5.435)	246.919 (5.423)
Personal income (conditional on market work)	676.935	118.043 (18.325)	98.186 (16.083)	104.075 (15.690)	105.252 (15.882)
Welfare support as main income	0.297	0.454 (0.007)	0.451 (0.007)	0.448 (0.007)	0.449 (0.007)
Household income, square-root scale <sup>a</sup>	765.377	-64.782 (6.881)	-50.846 (6.587)	-45.984 (6.515)	-46.630 (6.485)
<i>D. Wealth:</i>					
House ownership	0.406	-0.096 (0.008)	-0.095 (0.007)	-0.095 (0.007)	-0.095 (0.007)
Sociodemographic controls		no	yes	yes	yes
Labor market controls		no	no	yes	yes

*Notes:* Means of the control group and estimates for war widowhood. Each estimate stems from a separate regression. Estimates in Columns (2)-(4) are by OLS, estimates in Column (5) by IPW. Regressions include the following prewar covariates: (2) full set of age dummies, (2) = (1) plus an indicator for house ownership in 1939, indicators for expellees from Eastern Europe and refugees from GDR, number of siblings, full set of education dummies, (3)/(4) = (2) plus seven categories for the sector of employment in 1939 (agriculture, industry, construction, trade/transport, finance, public and private services, unknown) and seven categories for the occupational or employment status in 1939 (self-employed, farmer, civil servant, white-collar worker, blue-collar worker, helping family member, out of the labor force including apprentices, in education, and unemployed). Robust standard errors clustered at selection districts (*Auswahlbezirke*) are reported in parentheses. <sup>a</sup> The square-root scale divides total household income by the square root of household size. We do not observe younger household members born 1956 or later in the MZU71.

likely to live alone,<sup>11</sup> but had only slightly fewer children (as women in our sample often had children before 1945).

The top panels of Figure 1 illustrate these demographic consequences over the life cycle,

<sup>11</sup>We find little evidence to support the widespread belief that war widows often cohabited without marrying to keep their pension rights. Although war widows were twice as likely as non-widows to live with a non-family member, the overall probability was low, about 2%.

based on the GHS and a pooled OLS regression in which we interact a full set of age indicators with the indicator for war widows. Figure 1(a) shows that war widows were 80 pp less likely to be married by the war’s end. This gap then shrinks as some widows remarry in their late 20s or 30s, but stabilizes at around 40 pp when they reach their late 30s. The gap starts shrinking again in their late 50s, when widowhood becomes more common also in the control group. Figure 1(b) illustrates that war widows had similar numbers of children until the later years of the war, but fewer children after the war ended.

## 4.2 Labor Market Outcomes

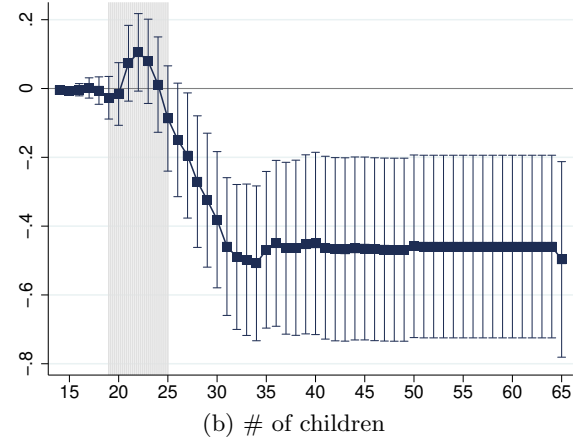
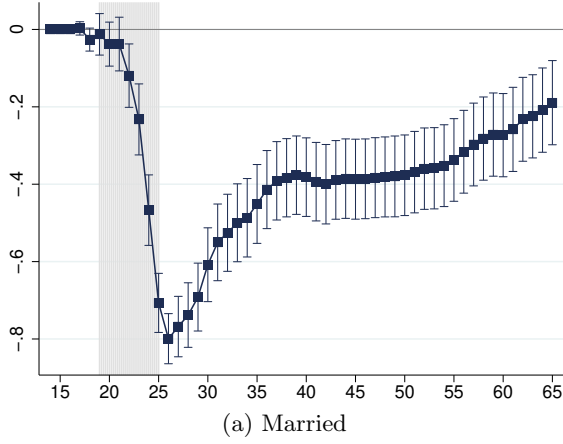
Panel B. of Table 2 shows that in the MZU71, war widows were *less* likely to be employed in 1971, having a 1.9 pp lower probability to be in market employment, a 3.1 pp lower probability to be a helping family member, and thus a 5.1 pp higher probability to be out of the labor force than non-widows. This finding is surprising, as most war widows remained unmarried, and unmarried women had considerably higher participation rates at the time.

To better understand these patterns, Table 3 reports the effect of war widowhood on employment and occupational status in 1950, 1960, and 1971. We focus on IPW estimates with the full set of controls. Panel A. shows that war widowhood significantly increased market work shortly after the war. In 1950, war widows were 13.8 pp more likely to perform market work than non-widows with similar prewar characteristics (from a baseline probability of 20.5%). However, the difference shrinks to 4.7 pp by 1960, and by 1971 war widows were less likely to work. This negative long-term effect on labor force participation is reinforced by the fact that, in all years, war widows were only half as likely as non-widows to work as helping family members. Most of the helping family members supported their husband on the family farm. After their husband’s death, many war widows had to give up the family business, although some continued as farmers.

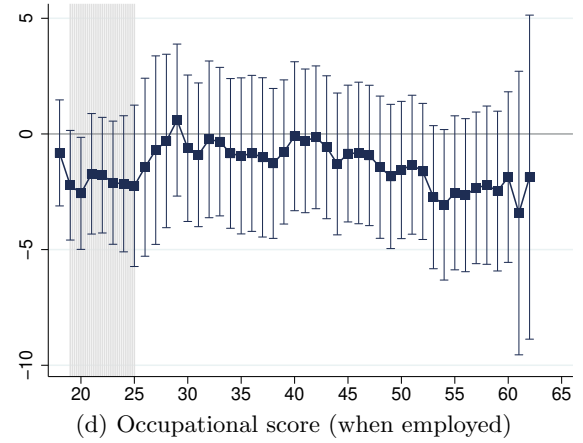
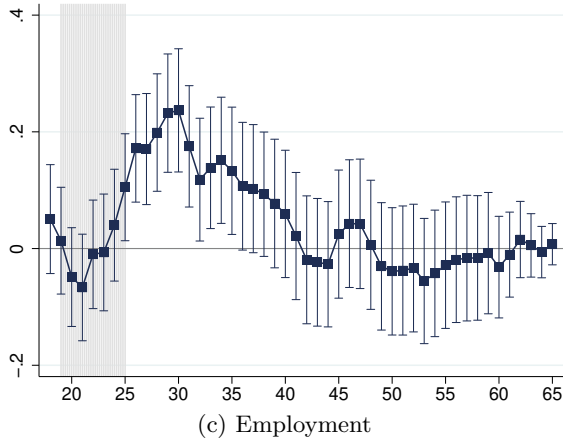
Appendix C highlights that women who were not in market work before the war were particularly drawn into the labor force in 1950. Among those who were helping family members, war widows were 26.1 pp (or nearly 300%) more likely to be in market employment in 1950. But even for this group, the positive employment effect eventually disappears. Moreover, highly educated women were much more likely to enter employment after the death of their spouse than low-educated women. For them, a modest positive employment effect persists into old age. This aligns with earlier findings for the US indicating that WWII mobilization increased employment only among highly educated women (Goldin and Olivetti, 2013). The negative employment effect

Figure 1: Life-cycle effects of war widowhood (GHS)

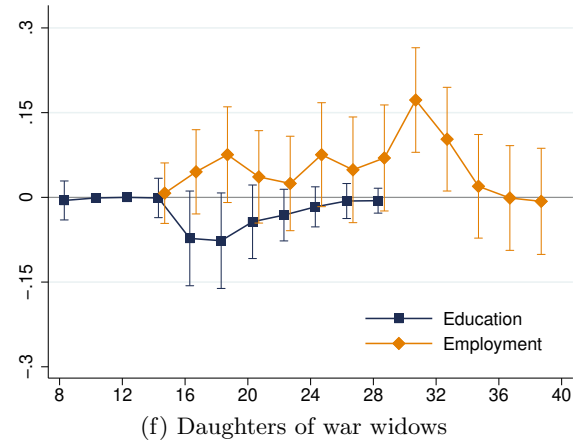
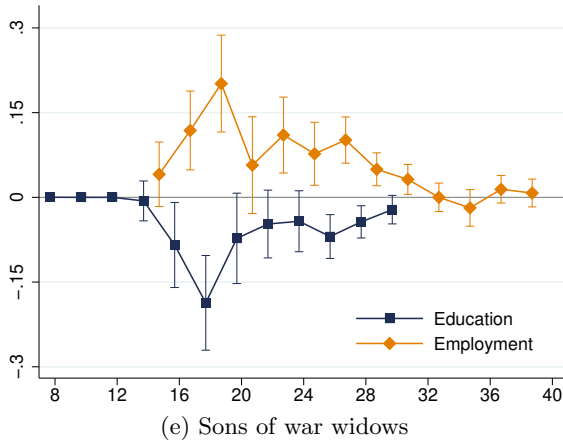
*Socio-demographic characteristics*



*Employment and career outcomes*



*Intergenerational spillovers*



*Notes:* GHS, estimated effect of war widowhood over the life cycle for women born 1919-21. Estimates are from a pooled OLS regression, interacting indicators for war widows (panels (a)-(d)) or their children (panels (e)-(f)) and birth year with a full set of age indicators. Panels (a)-(d) also control for the year of marriage. Point estimates are marked by a dot. The vertical bands indicate the 95% confidence interval of each estimate. The shaded area indicates the duration of WWII.



at old age is driven by women with children (see again Appendix C).

Figure 1(c) confirms these life-cycle patterns in the GHS, showing higher employment among war widows relative to non-widows in the postwar period, but similar or lower employment rates by the time the widows reach their mid-40s and into retirement. Despite their higher employment rates at early age, war widows reported similar average occupational prestige scores than non-widows (see Figure 1(d)).

Table 3: The impact of war widowhood on labor market outcomes in 1950-1971

	1950		1960		1971	
	Control mean (1)	IPW (2)	Control Mean (3)	IPW (4)	Control mean (5)	IPW (6)
<i>A. Labor market status:</i>						
Market employment	0.205	0.138 (0.007)	0.238	0.047 (0.007)	0.162	-0.019 (0.006)
Helping family	0.089	-0.045 (0.003)	0.084	-0.044 (0.003)	0.061	-0.031 (0.003)
Unemployed	0.004	0.000 (0.001)	0.000	0.000 (0.001)	0.001	-0.001 (0.000)
Out of the labor force	0.703	-0.093 (0.007)	0.677	-0.003 (0.007)	0.776	0.051 (0.006)
<i>B. Occupational status (conditional on market work):</i>						
Self employed	0.135	-0.023 (0.007)	0.128	-0.013 (0.008)	0.132	-0.012 (0.012)
Farmer	0.055	0.017 (0.006)	0.045	0.017 (0.006)	0.039	0.014 (0.008)
Civil servant	0.009	0.005 (0.002)	0.010	0.010 (0.003)	0.010	0.018 (0.005)
White collar	0.249	0.012 (0.010)	0.265	0.022 (0.011)	0.302	0.031 (0.016)
Blue collar	0.552	-0.013 (0.011)	0.551	-0.036 (0.011)	0.517	-0.050 (0.016)

*Notes:* Means of the control group and IPW estimates for war widowhood. Each estimate stems from a separate regression. Regression include as controls a full set of age dummies, an indicator for house ownership in 1939, indicators for expellees from Eastern Europe and refugees from GDR, the number of siblings, a full set of education dummies, indicators for the sector of employment in 1939 (agriculture, industry, construction, trade/transport, finance, public and private services, unknown) and the occupational or employment status in 1939 (self-employed, farmer, civil servant, white-collar worker, blue-collar worker, helping family member, out of the labor force including apprentices, in education, and unemployed). Robust standard errors clustered at selection districts (*Auswahlbezirke*) are reported in parentheses.

Panel B. of Table 3 shows evidence on the occupational status from our larger main sample. Conditional on market work, war widows were less likely to work as blue-collar workers, with the difference increasing over time. By 1971, war widows were 5.0 pp less likely to be blue-collar workers (relative to a control mean of 51.7%). Instead, war widows were overrepresented in white-collar occupations. They were also more than 2.5 times as likely to be employed as civil

servants (albeit from a baseline of only 1.0%), likely as a result of policies that favored war widows for civil service employment.

Panel C. of Table 2 shows that the personal net income of war widows was about twice that of non-widows, largely due to higher support by the state: war widows were 2.5 times more likely to report welfare support (*Unterstützung*) as their main income source (from a baseline probability of 29.7%). If we focus on women in market work, war widows have only about DM 105 more than non-widows (baseline: DM 677). This is considerably less than the unconditional basic pension of DM 198 paid to war widows at the time. Panel C. also shows that household income, measured at the square root equivalence scale, is about 6% lower for war widows than for non-widows.

Finally, Panel D. reports the effect of war widowhood on the probability of house ownership in 1971 as a proxy for wealth. War widowhood reduced house ownership rates by 9.5 pp, a decline of 23.4% relative to baseline.

### 4.3 Mechanisms

Despite an initial increase in employment, war widows ended up with lower employment rates than non-widows. War widows thus shouldered a double burden of employment and childcare in their 20s and 30s, when most had young children and no partner to rely on. However, war widows became less likely to work than non-widows in their 40s and 50s, after their children had left the household. We discuss here the mechanisms that might have contributed to this counterintuitive life-cycle pattern.

To fix ideas, we consider a simple static model of labor supply in which mothers choose consumption  $c$ , hours of work  $h$ , leisure time  $l$  and child-care time  $t$  to maximize the utility function

$$\max_{l,t} U(c(l,t), l, q(t); \theta),$$

subject to a “disutility of work”  $\theta$ , which might vary with age or social norms, and constraints for time  $l_0 = h + l + t$ , child “quality”  $q = q(t)$  with  $q' > 0$  and  $q'' < 0$ , and the budget,

$$c = w(\underbrace{l_0 - l - t}_{=h}) + R_0,$$

where  $w$  is the hourly wage rate and  $R_0$  are other sources of household income. The optimal choices of leisure and work time are characterized by the slopes of the indifference curves between consumption and leisure and between consumption and child “quality”, and the budget constraint (see Appendix F for details).

While simple, the model can rationalize the peculiar life-cycle trajectory of labor supply among war widows, as observed in our data. Similar to Boehnke and Gay (2022), we interpret the loss of a spouse as a negative income shock, i.e., a decrease in  $R_0$ . Assuming that leisure is a normal good, such income loss decreases leisure and time spent on childcare, and increases hours worked (*income effect*). Figure F1a in the Appendix provides an illustration.

War widows also received compensation (see Section 2). But, since this offsets only part of the decline in  $R_0$  (household income decreases, as shown in Table 2), this would not yet explain why war widows were *less* likely to work at older ages. However, as the widow pensions were partially means-tested, they also decrease the effective take-home wage, which further reduces work incentives (*substitution effect*).

Crucially, the compensatory pension payments increased substantially over time, outpacing the growth in labor income; by 1970, means-tested forms of compensation accounted for 72% of the total pension (see Appendix Figure A1). The budget curve of war widows with respect to hours worked therefore became flatter over time, disincentivizing their participation in the labor force. The implied (negative) substitution effect on hours worked can dominate the (positive) income effect from a reduction in total income, as illustrated in Appendix Figure F1b.

The compensation scheme thus created “perverse” life-cycle incentives for war widows. Low compensation in earlier years forced war widows to enter the labor force, despite the lack of formal childcare and the stigma that society placed on working single mothers. Once their children reached adulthood, war widows had more time available, but the increasingly means-tested compensation scheme discouraged their participation in the labor market. An alternative compensation scheme with less aggressive means-testing could have preserved participation and reduced public expenditures, while providing an equivalent level of utility to war widows (as illustrated in Appendix Figure F1b).

The negative work experience of the 1950s, with the “double burden” of work and childcare in an environment hostile to working mothers, may also explain why war widows did not hold more progressive gender norms than non-widows. As we show in Appendix D, about nine in ten war widows, the same as among non-widows, disapproved of women working outside the home

when there are small children at home. War widows also did not place more importance on work in their lives. This probably contributed to their withdrawal from the labor market, as did the physical exhaustion from the double burden of work and childcare at a younger age.<sup>12</sup>

## 5 Intergenerational Spillovers

We can also examine the intergenerational spillovers of war widowhood, as the first wave of the GHS (GHS-1) interviewed children born shortly before (cohorts 1929-31) and during (cohorts 1939-41) the war (Mayer, 2018b). We define the treatment group as those whose father (but not mother) died during WWII. As we do not observe direct information on war deployment, we define the control group as children in the same cohorts whose fathers were absent for at least one year during the war. When studying educational outcomes, we can also include the respondent's siblings, as the GHS-1 provides basic educational information for close family members.

We use this information to estimate a variant of equation (1),

$$y_{it} = \alpha + \mathbf{x}_{i,39}\beta + \delta_m D_i + \delta_{gap} D_i 1(i = \text{female}) + \epsilon_{it}, \quad (2)$$

where  $D_i$  is a dummy variable indicating whether the father of individual  $i$  died in the war,  $\delta_m$  measures the intergenerational spillover on the male children of war widows, and  $\delta_{gap}$  the differential impact on daughters relative to sons. The controls  $\mathbf{x}_{i,39}$  include the mother's birth year and interactions between indicators of the child's birth year and gender.

Table 4 reports our estimates. Column (1) shows that the sons of war widows had half a year less schooling. Tertiary schooling (university or vocational training) is even 30% lower in the treatment group (Column (2)). Overall, educational attainment declines by one year (Column (3)). In contrast, there is little decline in the educational attainment among the daughters of war widows; the estimated effect on the gender gap  $\delta_{gap}$  is of the opposite sign and almost as large as the main effect  $\delta_m$  in Columns (1)-(3).

With less time spent in education, the children of war widows instead enter the labor force earlier, presumably because of the financial hardship they faced after the war. As shown in Column (4), the sons of war widows spent nearly 1.3 years more in employment during age 16-29 than comparable sons who did not lose their fathers during the war. Figure 1(e) and (f)

---

<sup>12</sup>Consistent with this interpretation, war widows report higher levels of illness than the control group, and this gap increases with age; see Appendix Figure E1.

Table 4: Intergenerational spillovers on the children of war widows

	Schooling	Tertiary schooling	Schooling w/ tertiary	Employment (years)	
	(1)	(2)	(3)	age 16-29	age 30-39
	(1)	(2)	(3)	(4)	(5)
Father's death	-0.478 (0.127)	-0.524 (0.156)	-1.005 (0.217)	1.337 (0.399)	0.080 (0.118)
Father's death x daughter	0.347 (0.187)	0.476 (0.193)	0.828 (0.296)	-0.451 (0.665)	0.260 (0.594)
Control mean	8.744	1.722	10.468	8.597	6.839
N	1,722	1,718	1,718	615	615

*Notes:* Estimates of the effect of war widowhood on educational attainment or employment (in years) of their children. Each estimate stems from a separate OLS regression including the mother's birth year and interactions between indicators of the child's birth year and gender as control variables. GHS birth cohorts 1929-31 and 1939-41 (including siblings in Columns (1)-(3)). Robust standard errors clustered at the household level are reported in parentheses.

confirm that the decline in educational attainment is mirrored by a corresponding increase in employment. Despite the lower educational attainment of male children, we find no spillovers on their employment later in life (Table 4, Column (5) and Figure 1(e)). A likely explanation is the low unemployment that Germany experienced in the 1960s and early 1970s.

Most importantly, we find no persistent employment effect for the daughters of war widows. While they are more likely to work in their 20s, this gap disappears by their mid-30s (see Table 4 and Figure 1(f)). We do not find any positive spillovers on work attitudes either: if anything, the daughters of war widows held *less* progressive views on the compatibility of women's work and childcare responsibilities (see Appendix D).

Our results complement previous work on the long-term effects of the two world wars on women's employment. While war-induced increases in women's employment can transform work and gender norms and trigger intergenerational spillovers (Fernández et al., 2004; Fernández, 2013; Gay, 2023), we find no such effects in our treatment group: War widows did not have more positive attitudes toward women's work, and did not transmit more progressive attitudes to their children—likely reflecting the challenging conditions they endured when working as single mothers in the postwar period.<sup>13</sup> Employment spells born of necessity (such as for war widows) thus appear to have less lasting effects than those resulting from aggregate shifts in labor demand (due to men's wartime mobilization).

<sup>13</sup>Bastiaans (2023) propose a similar interpretation to explain why in the Netherlands, a policy-induced increase in labor supply among women with low labor force attachment decreased their daughter's labor supply.

## 6 Conclusion

Millions of women around the world have lost their husbands in violent conflicts. However, we still know little about the economic consequences for widows and their children. This is true even for WWII, which, as the most devastating conflict in history, has received much attention in the economics literature. This paper presents first evidence on the complex effects of war widowhood, drawing on rich life course data from postwar West Germany.

War widowhood had dramatic long-term consequences for family formation, with most widows remaining unmarried after 1945. Despite the persistent negative shock on household income, war widows were more likely to work only in their young and middle years. Over the life cycle, the positive employment effect gradually diminished, and by 1971 war widows were less likely to work than their peers and 2.5 times more likely to rely on welfare.

These findings underscore the importance of public policy in shaping widows' economic outcomes. Low compensation and inadequate child care in the immediate postwar period created a dilemma for war widows with young children who needed earned income but faced accusations of neglecting their children if they worked. Compensation then became more generous and increasingly means-tested over time, creating disincentives to work long after the war ended. The poor work experiences of war widows in the 1950s may also explain why their war-induced labor market entry did not have spillover effects on the participation of the next generation. While we provide first evidence here, more work is needed to compare the economic outcomes of war widows across settings and to inform policies to alleviate their plight.

## References

- Abramitzky, R., Delavande, A., and Vasconcelos, L. (2011). Marrying up: The role of sex ratio in assortative matching. *American Economic Journal: Applied Economics*, 3(3):124–157.
- Acemoglu, D., Autor, D. H., and Lyle, D. (2004). Women, war, and wages: The effect of female labor supply on the wage structure at midcentury. *Journal of Political Economy*, 112(3):497–551.
- Akbulut-Yuksel, M., Tekin, E., and Turan, B. (2022). World War II blues: The long-lasting mental health effect of childhood trauma. NBER Working Paper 30284.
- Alwin, D. F., Braun, M., and Scott, J. (1992). The separation of work and the family: Attitudes towards women's labour-force participation in Germany, Great Britain, and the United States. *European Sociological Review*, 8(1):13–37.
- Bastiaans, M. (2023). Female labor supply and intergenerational spillovers: Evidence from a tax reform. Working paper, Erasmus University Rotterdam.
- Battistin, E., Becker, S. O., and Nunziata, L. (2022). More choice for men? Marriage patterns after World War II in Italy. *Journal of Demographic Economics*, 88(3):447–472.

- Bauer, T. K., Braun, S., and Kvasnicka, M. (2013). The economic integration of forced migrants: Evidence for post-war Germany. *The Economic Journal*, 123(571):998–1024.
- Bellou, A. and Cardia, E. (2016). Occupations after WWII: The legacy of Rosie the Riveter. *Explorations in Economic History*, 62:124–142.
- Bethmann, D. and Kvasnicka, M. (2013). World War II, missing men and out of wedlock childbearing. *The Economic Journal*, 123(567):162–194.
- Bette, P. (2015). War widows. *1914-1918-Online International Encyclopedia of the First World War*.
- Boehnke, J. and Gay, V. (2022). The missing men: World War I and female labor force participation. *Journal of Human Resources*, 57(4):1209–1241.
- Brainerd, E. (2017). The lasting effect of sex ratio imbalance on marriage and family: Evidence from World War II in Russia. *The Review of Economics and Statistics*, 99(2):229–242.
- Braun, S. T. and Stuhler, J. (2023). Exposure to war and its labor market consequences over the life cycle. Kiel Working Paper 2241, Kiel Institute for the World Economy.
- Brodeur, A. and Kattan, L. (2022). World War II, the baby boom, and employment: County-level evidence. *Journal of Labor Economics*, 40(2):437–471.
- Brounéus, K., Forsberg, E., Höglund, K., and Lonergan, K. (2023). The burden of war widows: Gendered consequences of war and peace-building in Sri Lanka. *Third World Quarterly*, forthcoming.
- Brück, T. and Schindler, K. (2009). The impact of violent conflicts on households: What do we know and what should we know about war widows? *Oxford Development Studies*, 37(3):289–309.
- Bundesamt für Justiz und BMJV (2020). Durchschnittliches Bruttoarbeitseinkommen der vollzeitbeschäftigten Arbeitnehmer in der Bundesrepublik Deutschland in den Jahren 1949 bis 1989 (in Deutsche Mark). Statista.
- Burkhauser, R. V., Giles, P., Lillard, D. R., and Schwarze, J. (2005). Until death do us part: An analysis of the economic well-being of widows in four countries. *The Journals of Gerontology Series B: Psychological Sciences and Social Sciences*, 60(5):S238–S246.
- Chandran, R. (2020). After four decades of war, Afghan widows battle for homes. *Reuters*. visited on 2022-12-14.
- Diehl, J. M. (1985). Change and continuity in the treatment of German Kriegsopfer. *Central European History*, 18(2):170–187.
- Doepke, M., Hazan, M., and Maoz, Y. D. (2015). The baby boom and World War II: A macroeconomic analysis. *The Review of Economic Studies*, 82(3):1031–1073.
- Dupraz, Y. and Ferrara, A. (2023). Fatherless: The long-term effects of losing a father in the U.S. Civil War. *Journal of Human Resources*, forthcoming.
- Fadlon, I. and Nielsen, T. H. (2021). Family labor supply responses to severe health shocks: Evidence from Danish administrative records. *American Economic Journal: Applied Economics*, 13(3):1–30.
- Fernández, R. (2013). Cultural change as learning: The evolution of female labor force participation over a century. *American Economic Review*, 103(1):472–500.
- Fernández, R., Fogli, A., and Olivetti, C. (2004). Mothers and sons: Preference formation and female labor force dynamics. *The Quarterly Journal of Economics*, 119(4):1249–1299.
- Gay, V. (2023). The intergenerational transmission of World War I on female labour. *The Economic Journal*, 133(654):2303–2333.
- GESIS - Leibniz-Institut für Sozialwissenschaften (2002a). Allgemeine Bevölkerungsumfrage der Sozialwissenschaften ALLBUS 1988. GESIS Datenarchiv, Köln. ZA1670 Datenfile Version 1.0.0, <https://doi.org/10.4232/1.1670>.

- GESIS - Leibniz-Institut für Sozialwissenschaften (2002b). Allgemeine Bevölkerungsumfrage der Sozialwissenschaften ALLBUS Kumulierter Datensatz 1980-1986. GESIS Datenarchiv, Köln. ZA1335 Datenfile Version 1.0.0, <https://doi.org/10.4232/1.1335>.
- Goldin, C. and Olivetti, C. (2013). Shocking labor supply: A reassessment of the role of World War II on women's labor supply. *The American Economic Review*, 103(3):257–262.
- Goldin, C. D. (1991). The role of World War II in the rise of women's employment. *American Economic Review*, 81(4):741–756.
- Ichino, A. and Winter-Ebmer, R. (2004). The long-run educational cost of World War II. *Journal of Labor Economics*, 22(1):57–87.
- Imbens, G. W. and Wooldridge, J. M. (2009). Recent developments in the econometrics of program evaluation. *Journal of Economic Literature*, 47(1):5–86.
- IRB (2007). Afghanistan: Acquisition of widowstatus, both social and legal, when husband is missing or presumed dead; impact on a woman's status if a husband reappears after she has remarried; ability to divorce a firsthusband who has been missing for years (2003-2006). AFG101116.E.
- Jaworski, T. (2014). "You're in the army now:" The impact of World War II on women's education, work, and family. *The Journal of Economic History*, 74(1):169–195.
- Kesternich, I., Siflinger, B., Smith, J. P., and Steckenleiter, C. (2020). Unbalanced sex ratios in Germany caused by World War II and their effect on fertility: A life cycle perspective. *European Economic Review*, 130:103581.
- Kesternich, I., Siflinger, B., Smith, J. P., and Winter, J. K. (2014). The effects of World War II on economic and health outcomes across Europe. *The Review of Economics and Statistics*, 96(1):103–118.
- Matysiak, A. and Steinmetz, S. (2008). Finding their way? female employment patterns in West Germany, East Germany, and Poland. *European Sociological Review*, 24(3):331–345.
- Mayer, K. U. (1995). Lebensverläufe und gesellschaftlicher Wandel: Die Zwischenkriegskohorte im Übergang zum Ruhestand (Lebensverlaufsstudie LV-West II T - Telefonische Befragung). GESIS Datenarchiv, Köln. ZA2647 Datenfile Version 1.0.0, <https://doi.org/10.4232/1.2647>.
- Mayer, K. U. (2018a). Lebensverläufe und gesellschaftlicher Wandel: Die Zwischenkriegskohorte im Übergang zum Ruhestand (Lebensverlaufsstudie LV-West II A - Persönliche Befragung). GESIS Datenarchiv, Köln. ZA2646 Datenfile Version 1.1.0, <https://doi.org/10.4232/1.13194>.
- Mayer, K. U. (2018b). Lebensverläufe und gesellschaftlicher Wandel: Lebensverläufe und Wohlfahrt-entwicklung (Lebensverlaufsstudie LV-West I). GESIS Datenarchiv, Köln. ZA2645 Datenfile Version 1.1.0, <https://doi.org/10.4232/1.13193>.
- Mikrozensus-Zusatzerhebung (1971). *Berufliche und soziale Umschichtung der Bevölkerung*. GESIS-Datenfile.
- Müller, R.-D. (2016). *Hitler's Wehrmacht, 1935–1945*. University Press of Kentucky.
- Niehuss, M. (2002). *Familie, Frau und Gesellschaft. Studien zur Strukturgeschichte der Familie in Westdeutschland 1945-1960*. Vandenhoeck & Ruprecht, Göttingen.
- Overmans, R. (1999). *Deutsche militärische Verluste im Zweiten Weltkrieg*. R. Oldenbourg, Munich.
- Rose, E. K. (2018). The rise and fall of female labor force participation during World War II in the United States. *The Journal of Economic History*, 78(3):673–711.
- Salisbury, L. (2017). Women's income and marriage markets in the United States: Evidence from the Civil War pension. *The Journal of Economic History*, 77(1):1–38.
- Schnädelbach, A. (2007). *Kriegerwitwen. Lebensbewältigung zwischen Arbeit und Familie in Westdeutschland nach 1945*. Campus-Verlag, Frankfurt/New York.



- Skocpol, T. (1993). America's first social security system: The expansion of benefits for civil war veterans. *Political Science Quarterly*, 108(1):85–116.
- Statistisches Bundesamt (2023). *Preise. Verbraucherpreisindizes für Deutschland. Lange Reihen ab 1948*. Statistisches Bundesamt, Wiesbaden.
- Tegtmeyer, H. (1979). *Soziale Strukturen und individuelle Mobilität. Beiträge zur sozio-demographischen Analyse der Bundesrepublik Deutschland*, chapter Berufliche und soziale Umschichtung der Bevölkerung: Methodische Anmerkungen zur Planung, Durchführung und Aufbereitung der Befragung, pages 17–47. Schriftenreihe des Bundesinstituts für Bevölkerungsforschung. Boppard: Boldt.
- United Nations (2001). *Widowhood: Invisible women, secluded or excluded*. United Nations, New York.

## Online Appendix

### A Compensation for War Widows, 1951-1975

Figure A1 documents the evolution of the maximum attainable war widow’s pension from 1951 to 1975. Panel A1(a) shows the increase in maximum compensation since the mid-1950s, both when measured relative to gross labor income (black solid line) and when considering the real increase since 1951 (gray dashed line). Relative to labor income, compensation nearly doubled from about 30% in the early 1950s to between 50% and 60% after the second revision of the BVG in 1964.<sup>14</sup> At the same time, the maximum attainable war widow’s pension increased fivefold in real terms between 1951 and 1970. The increase began in the second half of the 1950s. It continued relatively evenly after that, with a notable spike in 1964 when significant “damage compensation” (*Schadensausgleich*) was introduced for widows whose income was less than half their deceased husband’s expected income.

Figure A1(b) shows how the three different types of compensation—non-means-tested basic pension, means-tested compensatory pension, and means-tested damage compensation—have contributed to the increase in the ratio of war widows’ pensions to average gross labor income. As can be seen, the basic pension was relatively stable over time, fluctuating between 13% and 17% of average labor income. The increase in the war widow’s pension was initially largely due to the fact that the compensatory pension payments outpaced the growth in labor income. Later, the introduction of damage compensation spurred the increase in the maximum war widow’s pension. By 1970, means-tested forms of compensation accounted for 72% of the total pension.

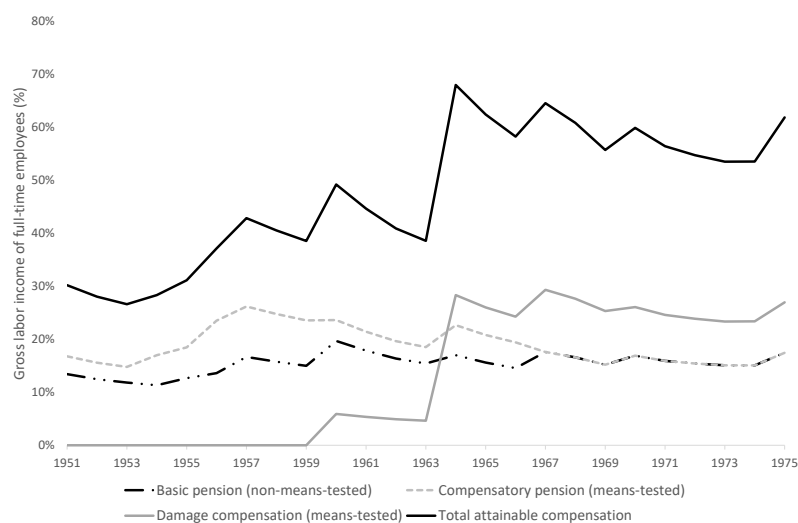
---

<sup>14</sup>The occasional declines are due to the fact that compensation payments were not increased in some years, while labor income generally rose rapidly during Germany’s economic boom.

Figure A1: Maximal compensation for war widows, 1951-1975



(a) Relative to gross labor income and real compensation index



(b) Composition of compensation (relative to gross labor income)

*Notes:* The figure shows the maximum compensation for war widows between 1951 and 1975. Panel (a) shows total compensation relative to the gross labor income of full-time workers (black solid line) and the real increase in maximum compensation since 1951 (gray dashed line; the 1951 value is normalized to 100). Panel (b) decomposes total compensation relative to gross labor income (black solid line) into the part due to basic pension (non-means-tested; black dashed-dotted line), compensatory pension (means-tested; gray dashed line), and damage compensation (means-tested; gray solid line). See the description in Section 2 and Appendix A for further details.

*Source:* Author's calculations based on the *Bundesversorgungsgesetz* (in its various versions). Data on average gross labor income are taken from [Bundesamt für Justiz and BMJV \(2020\)](#); the price index (standard of living of a 4-person household with medium income) is taken from [Statistisches Bundesamt \(2023\)](#).

## B Alternative Definitions of the Control Group

Unfortunately, the MZU71 does not contain the respondents' entire marriage history, but only the year of the last marriage for those married in 1971. This poses two problems for the definition of our control group. First, we cannot exclude the possibility that divorced or widowed women in our control group married only after 1945. We consider this to be a minor problem because women in our sample were well above the average age at first marriage of 25.4 years in 1945. Second, married women who married after 1945, whom we exclude from the analysis, could in principle have been in an earlier marriage during the war (as we only observe their last year of marriage). Again, we consider this a minor problem, as less than 4% of the married women in our sample married after 1945. Importantly, we show in the main text that our results hold in a second survey, the German Life History Study, where we observe women's complete marriage histories.

Nevertheless, in additional robustness checks, we drop widowed and divorced women from the control group and keep all married women in the control group. Table B1 reports the results for our main results on labor force participation in 1950, 1960, and 1971. The results are virtually unchanged when we keep women who were married in 1971 in the control group, even if their last marriage was after 1945. This is to be expected since few women in our sample married after 1945. The differences are somewhat larger when we drop widowed and divorced women from the control group. This is to be expected since only married women remain in the control group—and these tend to have relatively low employment rates at the time. As a result, the initial employment gain from war widowhood is somewhat larger relative to baseline. But even compared to this control group, we find that war widows are more likely to be out of the labor force in 1971. However, this effect is entirely driven by the negative impact on the probability of being a helping family member.

Table B1 also shows that the counterintuitive effect of widowhood on labor force participation over the life cycle—elevated in 1950, but depressed in 1971—extends to younger cohorts born in 1915-21 and 1919-21. Almost all of these women were married to men born 1910-25 whose cohorts were fully conscripted during the war, so that selection into military service was negligible.

## C Effect Heterogeneity

The main result of Section 4 is that war widowhood increased the probability of market employment only immediately after the war. In the longer run, war widowhood actually decreased market employment. Here, we document that the negative long-term effect on participation is strongest for less educated women with children.

Table C1 presents estimates of the effect of widowhood on market employment in 1950, 1960, and 1971 separately for the subgroups indicated on the left. In the first row, we replicate our baseline results for ease of comparison. We first distinguish between women who have children and those who do not. Not surprisingly, women without children have much higher employment rates in middle age. For example, the control mean in 1950 is twice as high for those without children as for those with children (35.9% versus 18.3%). However, the pattern of the widowhood effect over time—large and positive in 1950 and then declining—is similar for both groups. As we can see, the negative long-term effect is only visible for women with children. For them, war widowhood reduced market employment by 2.4 pp in 1971.

Second, we show that high-educated women were much more likely than low-educated women to take up market employment after the death of their spouse in WWII. Moreover, for them, the positive effect persists, albeit muted, until late in life. We find that for highly educated women, war widowhood increased the probability of market employment by 21.9, 13.7, and 4.8 pp in 1950, 1960, and 1971, respectively. In contrast, the effect sizes are 12.2, 2.9, and -3.3 percentage points for women with low education. This differential effect is consistent with previous findings

Table B1: Robustness: The impact of war widowhood on market work in 1950-1971 across samples

	1950		1960		1971	
	Control mean (1)	IPW (2)	Control Mean (3)	IPW (4)	Control mean (5)	IPW (6)
<i>A. Market employment:</i>						
Baseline sample	0.205	0.138 (0.007)	0.238	0.058 (0.007)	0.162	-0.019 (0.006)
Control group: Married women <sup>1</sup> (married 1945 or earlier)	0.156	0.176 (0.007)	0.174	0.102 (0.007)	0.114	0.028 (0.006)
Control group: Ever married women <sup>2</sup>	0.225	0.125 (0.007)	0.248	0.044 (0.007)	0.166	-0.017 (0.005)
Cohorts born 1915-21	0.227	0.149 (0.011)	0.293	0.048 (0.011)	0.334	-0.024 (0.010)
Cohorts born 1919-21	0.241	0.127 (0.016)	0.311	0.013 (0.016)	0.366	-0.044 (0.016)
<i>B. Out of the labor force:</i>						
Baseline sample	0.703	-0.093 (0.007)	0.677	-0.003 (0.007)	0.776	0.051 (0.006)
Control group: Married women <sup>1</sup> (married 1945 or earlier)	0.734	-0.127 (0.008)	0.720	-0.044 (0.008)	0.802	0.020 (0.006)
Control group: Ever married women <sup>2</sup>	0.680	-0.079 (0.007)	0.665	0.001 (0.007)	0.769	0.051 (0.006)
Cohort: Born 1915-21	0.696	-0.127 (0.011)	0.631	-0.018 (0.011)	0.604	0.048 (0.011)
Cohort: Born 1919-21	0.683	-0.109 (0.016)	0.616	0.015 (0.016)	0.571	0.064 (0.016)

*Notes:* Means of the control group and IPW estimates for war widowhood across different samples of the 1971 Microcensus. The samples differ by the birth years of cohorts considered and the definition of the control group. Each estimate stems from a separate regression. Regression include as controls a full set of age dummies, an indicator for house ownership in 1939, indicators for expellees from Eastern Europe and refugees from GDR, the number of siblings, a full set of education dummies, indicators for the sector of employment in 1939 (agriculture, industry, construction, trade/transport, finance, public and private services, unknown) and the occupational or employment status in 1939 (self-employed, farmer, civil servant, white-collar worker, blue-collar worker, helping family member, out of the labor force including apprentices, in education, and unemployed). Robust standard errors clustered at selection districts (*Auswahlbezirke*) are reported in parentheses. <sup>1</sup>The control group consists only of women who were married in 1971 and whose marriage year was 1945 or earlier. Compared to the baseline sample, widowed and divorced women in the control group (as of 1971) are dropped. <sup>2</sup>The control group includes all women who were ever married. Compared to the baseline sample, the control group also includes women who were married in 1971 but whose last marriage was after 1945.

for the US that WWII mobilization increased female labor supply only among highly educated women (Goldin and Olivetti, 2013).

Finally, Table C1 also examines the effect of widowhood by occupational status in 1939, distinguishing between women who were in market employment, who worked as helping family members, or who were out of the labor force before the war. There are notable differences among these groups in 1950 and 1960, but not in 1971. In 1950, the widowhood effect is largest for those who worked as family helpers in 1939, increasing their probability of market work in 1950 by 26.1 percentage points (or 300% compared to the control group's probability of 8.8%). The increase is also substantial for women who did not work before the war, and more modest for those who were already in the labor force in 1939. The widowhood effect declines between 1950 and 1960 for all three groups, and it disappears by 1960 for those in market employment in 1939. This

group also experienced the largest negative effect in 1971, at 3.6 percentage points.

Table C1: Heterogeneity in the impact of war widowhood on market employment in 1950, 1960, 1971

	1950		1960		1971	
	Control mean (1)	IPW (2)	Control Mean (3)	IPW (4)	Control mean (5)	IPW (6)
Baseline	0.205	0.138 (0.007)	0.238	0.058 (0.007)	0.162	-0.019 (0.006)
<i>Children:</i>						
With kids	0.183	0.133 (0.008)	0.222	0.041 (0.007)	0.157	-0.024 (0.006)
Without kids	0.359	0.159 (0.020)	0.350	0.080 (0.021)	0.198	0.009 (0.018)
<i>Education:</i>						
High (>10 years)	0.283	0.219 (0.019)	0.336	0.137 (0.019)	0.244	0.048 (0.018)
Low ( $\leq 10$ years)	0.188	0.122 (0.008)	0.217	0.029 (0.008)	0.144	-0.033 (0.006)
<i>Occupational status 1939:</i>						
Market employment	0.461	0.104 (0.014)	0.446	-0.000 (0.014)	0.253	-0.036 (0.012)
Helping family	0.088	0.261 (0.025)	0.142	0.125 (0.025)	0.136	-0.008 (0.019)
Out of the labor force	0.104	0.137 (0.009)	0.156	0.061 (0.009)	0.123	-0.012 (0.007)

*Notes:* Means of the control group and IPW estimates for war widowhood. Each estimate stems from a separate regression for the subgroup indicated on the left. Regression include as controls a full set of age dummies, an indicator for house ownership in 1939, indicators for expellees from Eastern Europe and refugees from GDR, the number of siblings, a full set of education dummies, indicators for the sector of employment in 1939 (agriculture, industry, construction, trade/transport, finance, public and private services, unknown) and the occupational or employment status in 1939 (self-employed, farmer, civil servant, white-collar worker, blue-collar worker, helping family member, out of the labor force including apprentices, in education, and unemployed). Robust standard errors clustered at selection districts (*Auswahlbezirke*) are reported in parentheses.

## D Evidence on Attitudes towards Work and Gender Norms

This section summarizes evidence of the impact of war widowhood on attitudes towards work and gender norms. We first describe the data source and then discuss findings separately for war widows and their children.

### D.1 Data Description

The ALLBUS is a survey that has been collecting data on the attitudes, behavior, and social structure of the German population every two years since 1980. We use data from five waves: 1980, 1982, 1984, 1986, 1988 ([GESIS - Leibniz-Institut für Sozialwissenschaften, 2002b,a](#)). Each wave interviewed a random sample of about 3000 West German citizens over the age of 18 (foreigners were excluded). The exact questions vary, so our outcome variables of interest are typically available only for a subset of waves.

Table D1: Impact of war widowhood on the importance of different life areas

	Importance of different life areas (1-7):						
	Family & children	Job & work	Leisure & recreation	Friends	Relatives	Religion & church	Politics
	(1)	(2)	(3)	(4)	(5)	(6)	(7)
War widow	-0.364 (0.144)	-0.076 (0.202)	-0.026 (0.149)	0.026 (0.146)	-0.142 (0.160)	-0.157 (0.185)	0.034 (0.174)
Control mean	6.404	4.493	5.110	5.364	5.323	4.978	3.749
N	831	832	832	831	833	833	833

*Notes:* Control means and estimates of the effect of war widowhood on the importance of different domains of life. The sample consists of women born in 1906-21 in the 1980, 1982, and 1986 ALLBUS waves. The outcome variables are measured on a scale from 1 (unimportant) to 7 (very important). Each estimate comes from a separate OLS regression, controlling for a full set of dummies for year of birth and year of first marriage, year of interview, and years of schooling of the respondent and her father. Robust standard errors are shown in parentheses.

All five waves contain information on the complete marital history of the respondents. This allows us to identify women who lost their spouse between 1939 and 1945 (our treatment group). We compare them with women who married before 1945 but did not lose their spouse (control group). We restrict the sample to women born in 1906-21 in order to look at similar cohorts as in the main analysis. Our regressions control for a full set of dummies for the year of birth and year of first marriage, year of interview, and the years of schooling of the respondent and her father.

In addition, the 1988 wave includes the year of death of the respondent's father and mother. Thus, for this wave, we can also examine the children of war widows by comparing respondents whose fathers died in World War II and those whose fathers did not. We focus on cohorts born in 1929-45 and drop respondents whose mothers died before 1945. The regressions control for respondents' year of birth and their fathers' years of schooling.

## D.2 Work Attitudes and Gender Norms of War Widows

The ALLBUS waves of 1980, 1982, and 1986 asked respondents about the importance of different domains in life, including family, job, leisure, friends, relatives, religion, and politics, as measured on a scale from 1 (unimportant) to 7 (very important). Table D1 shows that war widows placed a, on average, 0.36 lower value on the importance of family and children in life (relative to a control mean of 6.40).<sup>15</sup> For all other domains of life, the differences between war widows and the control group are small. In particular, we find no evidence that war widows attach greater importance to job and work in life. If anything, the impact is negative (but small and statistically insignificant).

The ALLBUS waves of 1982 and 1988 asked several questions about women's roles in family and work. Unfortunately, most questions changed between waves and are thus not directly comparable. We summarize respondents' attitudes towards gender roles by measuring the proportion of progressive statements with which respondents agreed.<sup>16</sup> Column (1) of table D2 shows that this "progressive gender role index" is 7.3 pp higher among war widows, albeit from a comparatively low baseline of 24.6%. In other words, war widows tend to have more progressive gender roles but still disagree with most progressive statements (or agree with traditional statements).

<sup>15</sup>We find similar results for an alternative question that asked respondents in 1980, 1984, and 1984 whether they believed that one needs a family to be truly happy. War widows are 9.1 pp less likely to agree (relative to a baseline of 80.8%).

<sup>16</sup>We count the negation of traditional gender roles as a progressive statement.

Table D2: Impact of war widowhood on work-related gender norms

	Progressive gender roles index	Do small kids suffer if mother works?	Should women not work if they have		
	(0-1)	(0/1)	no kids?	small kids?	school kids?
	(1)	(2)	(0/1)	(0/1)	(0/1)
	(1)	(2)	(3)	(4)	(5)
War widow	0.073 (0.030)	-0.042 (0.042)	-0.109 (0.067)	0.027 (0.054)	0.037 (0.101)
Control mean	0.246	0.897	0.183	0.878	0.730
N	512	503	174	176	176
Waves	82, 88	82, 88	88	88	88

*Notes:* Control means and estimates of the effect of war widowhood on work-related gender norms. The sample consists of women born in 1906-21 in the 1982 and 1988 ALLBUS waves. The outcome variable in Column (1) summarizes the responses to six and nine statements about work-related gender norms asked in the 1982 and 1988 waves, respectively. The indicator measures the proportion of progressive statements with which respondents agreed (including the negation of traditional statements). The outcome variables in Columns (2) through (5) are indicator variables indicating whether respondents agreed with the question in the table header. Each estimate comes from a separate OLS regression, controlling for a full set of dummies for year of birth and year of first marriage, year of interview, and years of schooling of the respondent and her father. Robust standard errors are shown in parentheses.

Of particular importance for women’s labor supply decisions is the compatibility of work and child-care responsibilities. In West Germany, the birth of a child often led previously employed women to give up work altogether in favor of the family, or to interrupt their careers for many years (e.g. [Matysiak and Steinmetz, 2008](#)). Previous research based on the 1988 ALLBUS wave has shown that West Germans strongly disapproved of women working outside the home when there are preschool children at home, even more so than respondents in the UK and US ([Alwin et al., 1992](#)).

The results in Columns (2) to (5) indicate that war widows were not an exception, as they were not more supportive of women with young children working. Column (2) shows that war widows were only slightly less likely to agree with the statement that young children suffer when the mother works, a statement with which nearly 90% of control group respondents agreed. And while war widows were more likely to approve of women working in situations where childcare is not an issue (Column (3)), they were even slightly more likely to disapprove of women working when they have children (Columns (4) and (5)).

### D.3 Attitudes and Gender Norms of War Widows’ Children

Table D3 shows that also the children of war widows did not hold more progressive gender norms than their peers. Neither the progressive gender role index (Column (1)) nor agreement with the statement that young children suffer when mothers work (Column (2)) differs statistically significantly between the two groups. The same applies to the approval of women’s work in Columns (3) to (5), with one exception: Daughters of war widows have a 13.8 pp higher probability of agreeing with the statement that women with young children should *not* work (from a baseline probability of 78.5 pp). Thus, if anything, we find evidence that the experience of growing up without a father has made daughters of war widows less supportive of the compatibility of women’s work and caring for young children, potentially because they experienced the challenges faced by their mothers in the postwar period. In any case, even among respondents born in 1929-45, most disapproved of women working outside the home when preschool children



Table D3: Intergenerational spillovers on work-related gender norms

	Progressive gender roles index	Do small kids suffer if mother works?	Should women not work if they have		
			no kids?	small kids?	school kids?
	(0-1)	(0/1)	(0/1)	(0/1)	(0/1)
	(1)	(2)	(3)	(4)	(5)
<i>A. Daughters:</i>					
Father's death	0.028 (0.039)	-0.045 (0.079)	0.007 (0.049)	0.138 (0.072)	0.001 (0.092)
Control mean	0.474	0.730	0.072	0.785	0.506
N	375	361	340	345	338
<i>B. Sons:</i>					
Father's death	0.017 (0.046)	0.019 (0.068)	0.090 (0.068)	-0.048 (0.078)	0.008 (0.088)
Control mean	0.434	0.812	0.072	0.843	0.570
N	312	304	287	291	288

*Notes:* Control means and estimates of the effect of war widowhood on work-related gender norms of their children. The sample consists of respondents born in 1929-45 in the 1988 ALLBUS who did not lose their mother before 1945. Panel A. restricts the sample to women (daughters), Panel B. restricts the sample to men (sons). The outcome variable in Column (1) summarizes the responses to nine statements about work-related gender norms asked in the 1988 wave. The indicator measures the proportion of progressive statements with which respondents agreed (including the negation of traditional statements). The outcome variables in Columns (2) through (5) are indicator variables indicating whether respondents agreed with the question in the table header. Each estimate comes from a separate OLS regression, controlling for a respondents' year of birth and their fathers' years of schooling. Robust standard errors are shown in parentheses.

are at home.

## E Additional Tables and Figures

Table E1: Predicting war widowhood status in the Microcensus 1971

	Dependent variable: War widow (0/1)			
	(1)	(2)	(3)	(4)
R2	0.005	0.009	0.011	0.012
Birth year	yes	yes	yes	yes
Socio-demographic characteristics	no	yes	yes	yes
Employment & occupational status in 1939	no	no	no	yes
Sector of employment in 1939	yes	yes	yes	yes

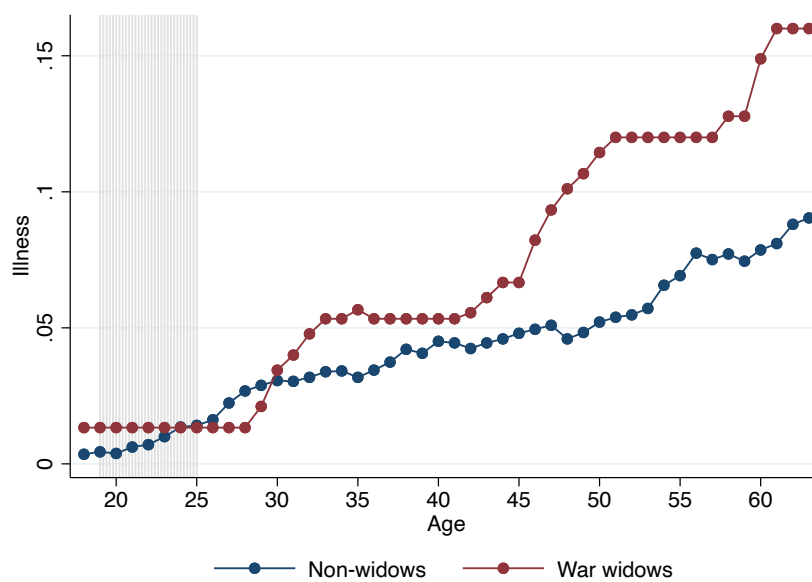
*Notes:* The table reports the R2 from regressions relating war widowhood status in the German Microcensus 1971 to an increasing number of covariates. Regressions include the following prewar covariates: (1) full set of age dummies, (2) = (1) plus an indicator for house ownership in 1939, indicators for expellees from Eastern Europe and refugees from GDR, number of siblings, full set of education dummies, (3) = (2) plus eight categories for the occupational or employment status in 1939 (self-employed, farmer, civil servant, white-collar worker, blue-collar worker, apprentice, helping family member, out of the labor force, in education, and unemployed). (4) = (3) plus six categories for the sector of employment in 1939 (agriculture, industry, construction, trade/transport, finance, public and private services).

Table E2: Exogeneity of war widowhood in GHS

	mean (std. dev.)	Dependent variable: War widow (0/1)			
		(1)	(2)	(3)	(4)
Birth year	1920.06 (0.81)	0.008 (0.021)	-0.006 (0.021)	0.012 (0.021)	0.018 (0.024)
# siblings	2.80 (2.49)	-0.006 (0.007)	-0.010* (0.006)	-0.007 (0.006)	-0.002 (0.007)
Years of schooling	8.64 (1.26)	-0.011 (0.013)	-0.018 (0.014)	-0.018 (0.014)	-0.019 (0.016)
Spouse's schooling (years)	9.27 (1.93)		-0.004 (0.003)	-0.001 (0.004)	0.000 (0.004)
Spouse's birth year	1914.58 (4.07)		0.004 (0.011)	0.007 (0.010)	0.008 (0.012)
Marriage year	1941.55 (1.94)			-0.032*** (0.008)	-0.038*** (0.010)
Father's schooling (years)	8.62 (1.95)				-0.013 (0.009)
Mother's schooling	8.24 (0.94)				-0.014 (0.013)
Father's occupational score	40.82 (11.05)				0.002 (0.002)
R2		0.002	0.013	0.043	0.056
N	523	521	411	411	340

*Notes:* The table reports coefficient estimates from a regression of war widowhood status on a set of prewar individual, spousal, and parental characteristics for women born 1919-21. Robust standard errors in parentheses.

Figure E1: Illness over the life-cycle



*Notes:* The figure shows the share of respondents reporting ill health over the life-cycle in the GHS, separately for war widows and non-widows with children born in or before 1945.

## F A Static Model of Labor Supply

We consider a simple static model of labor supply in which mothers choose consumption  $c$ , hours of work  $h$ , leisure time  $l$  and child-care time  $t$  to maximize utility subject to a production function for child “quality”  $q = q(t)$ , with  $q' > 0$  and  $q'' < 0$ , and constraints for time  $l_0 = h + l + t$  and the budget,  $c = wh + R_0$ , where  $w$  is the hourly wage rate and  $R_0$  are other sources of household income (including labor income of the woman’s spouse).

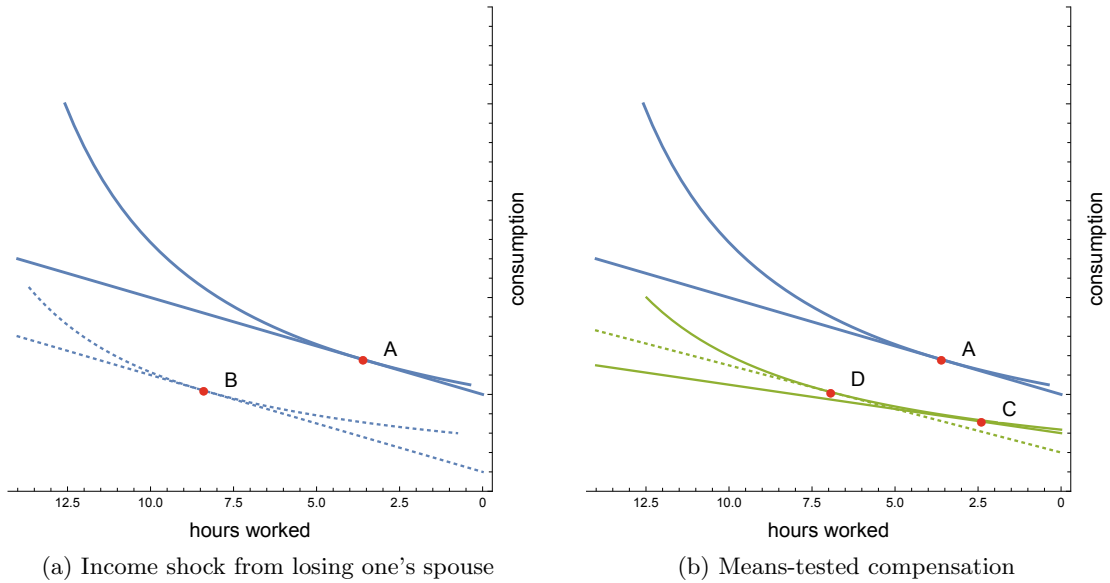
Given the constraints for the budget and time, we can express consumption and hours worked as a function of leisure and child-care time (i.e.,  $h = l_0 - l - t$ ), such that the individual’s maximization problem simplifies to

$$\max_{l,t} U(c(l,t), l, q(t); \theta).$$

The parameter  $\theta$  of the utility function represents the “disutility of work”, which may vary with age or social norms, i.e. the “stigma” that society might place on working single mothers.<sup>17</sup>

Taking first-order conditions with respect to  $l$  and  $t$ , the optimal choices of leisure and child-care time are characterized by  $\frac{U_l}{U_c} = w$ , i.e., the marginal rate of substitution between consumption and leisure is equal to the wage, and  $U_q/U_c = w/q'(t)$ , i.e., the marginal rate of substitution between consumption and child quality is equal to the ratio between the wage and the marginal effect of child-care time on child quality. The optimal choices of hours worked and consumption follow from the time and budget constraints.

Figure F1: Labor supply of war widows



Notes: Budget constraints and indifference curves in a static model of labor supply with  $U = c^{1/2}l^{1/2}q(t)^{1/2}$  and  $q(t) = t^{1/2}$ . Sub-figure (a) illustrates the income effect from losing one’s spouse, modeled as a reduction in the non-labor income  $R_0$ . Hours worked increase from point A to B. Sub-figure (b) illustrates the effect from a means-tested compensation scheme that partially offsets the reduction in  $R_0$  but also reduces the effective take-home wage from work (decreasing hours worked from A to C, solid line), and an alternative policy in which compensation is less means-tested (increasing hours from A to D, dotted line).

Figure F1 provides an illustration how the loss of a spouse (sub-figure (a)) and means-tested compensation schemes (sub-figure (b)) affect hours worked  $h$  and consumption  $c$ . For this illustration, we assume a Cobb-Douglas utility function with  $U = l^{1/2}c^{1/2}q(t)^{1/2}$ ,  $q(t) = t^{1/2}$  and

<sup>17</sup>It might also vary with past work experience, either because of physical exhaustion or because working mothers accumulate experience that improves their attachment to the labor market.

no stigma. In sub-figure (a) we interpret the loss of a spouse as a negative income shock (i.e., a decrease in  $R_0$ ).<sup>18</sup> The budget curve decreases accordingly (dashed line). Assuming leisure is a normal good, such income loss decreases leisure, decreases time spent on childcare, increases participation, and increases working hours conditional on participation (*income effect*). In the illustration, hours worked increase from point A to B.

In sub-figure (b) we illustrate the effect of a compensation scheme that is partially means-tested. Because the income from additional hours of work crowds out compensation, the effective budget curve is flatter (green solid line) than the corresponding budget curve without compensation (blue line). This reduction in the effective wage rate disincentives labor supply (*substitution effect*); in the example, compensation payments decrease hours worked from point A to C.

Sub-figure (b) also plots an alternative compensation policy that is characterized by lower unconditional payment (i.e., the budget curve has a higher intercept at  $h = 0$ ), which are however less rapidly withdrawn with labor income. Income therefore increases more rapidly with hours worked (dashed green line). As a consequence, the income effect dominates the substitution effect, and hours worked increase from point A to D.

---

<sup>18</sup>Given the traditional gender norms at the time, the loss of a husband represents a greater shock to a household's income than time spent on childcare.