

Colombo, Valentina; Paccagnini, Alessia

Working Paper

Uncertainty and the Federal Reserve's balance sheet monetary policy

Working Paper, No. 131

Provided in Cooperation with:

Università Cattolica del Sacro Cuore, Dipartimento di Economia e Finanza (DISCE)

Suggested Citation: Colombo, Valentina; Paccagnini, Alessia (2024) : Uncertainty and the Federal Reserve's balance sheet monetary policy, Working Paper, No. 131, Università Cattolica del Sacro Cuore, Dipartimento di Economia e Finanza (DISCE), Milano

This Version is available at:

<https://hdl.handle.net/10419/298368>

Standard-Nutzungsbedingungen:

Die Dokumente auf EconStor dürfen zu eigenen wissenschaftlichen Zwecken und zum Privatgebrauch gespeichert und kopiert werden.

Sie dürfen die Dokumente nicht für öffentliche oder kommerzielle Zwecke vervielfältigen, öffentlich ausstellen, öffentlich zugänglich machen, vertreiben oder anderweitig nutzen.

Sofern die Verfasser die Dokumente unter Open-Content-Lizenzen (insbesondere CC-Lizenzen) zur Verfügung gestellt haben sollten, gelten abweichend von diesen Nutzungsbedingungen die in der dort genannten Lizenz gewährten Nutzungsrechte.

Terms of use:

Documents in EconStor may be saved and copied for your personal and scholarly purposes.

You are not to copy documents for public or commercial purposes, to exhibit the documents publicly, to make them publicly available on the internet, or to distribute or otherwise use the documents in public.

If the documents have been made available under an Open Content Licence (especially Creative Commons Licences), you may exercise further usage rights as specified in the indicated licence.

UNIVERSITÀ CATTOLICA DEL SACRO CUORE
Dipartimento di Economia e Finanza

Working Paper Series

**Uncertainty and the Federal Reserve's
Balance Sheet Monetary Policy**

Valentina Colombo, Alessia Paccagnini

Working Paper n. 131

February 2024



UNIVERSITÀ
CATTOLICA
del Sacro Cuore

Uncertainty and the Federal Reserve's Balance Sheet Monetary Policy

Valentina Colombo

Università Cattolica del Sacro Cuore

Alessia Paccagnini

University College Dublin

Working Paper n. 131
February 2024

Dipartimento di Economia e Finanza
Università Cattolica del Sacro Cuore
Largo Gemelli 1 - 20123 Milano – Italy
tel: +39.02.7234.2976 - fax: +39.02.7234.2781
e-mail: dip.economiaefinanza@unicatt.it

The Working Paper Series promotes the circulation of research results produced by the members and affiliates of the Dipartimento di Economia e Finanza, with the aim of encouraging their dissemination and discussion. Results may be in a preliminary or advanced stage. The Dipartimento di Economia e Finanza is part of the Dipartimenti e Istituti di Scienze Economiche (DISCE) of the Università Cattolica del Sacro Cuore.

Uncertainty and the Federal Reserve's Balance Sheet Monetary Policy

Valentina Colombo*

Alessia Paccagnini[†]

Abstract

This study assesses the impact of financial uncertainty shocks in the US and explores the influence of monetary policy. Using a nonlinear Vector Autoregressive model, incorporating short-term interest rates and the Federal Reserve's balance sheet policy, we find that the reaction of the monetary policy is asymmetric across the business cycle. The state-dependent responses in consumption and investment significantly influence GDP fluctuations. A counterfactual analysis reveals that balance sheet-related monetary policy helps reduce both the duration and severity of the recessionary impacts caused by these shocks.

JEL classification: C50, E32, E52

Keywords: Uncertainty, Smooth Transition VAR, Nonlinearities, Monetary Policy

*Department of Economics and Finance, Università Cattolica del Sacro Cuore, and Center for Applied Macroeconomic Analysis. Email: valentina.colombo@unicatt.it.

[†]Michael Smurfit Business Graduate Business School, University College Dublin, and Center for Applied Macroeconomic Analysis. Email: alessia.paccagnini@ucd.ie.

1 Introduction

During periods of economic and financial turmoil, uncertainty has become crucial to comprehending the influence of uncertainty on the business cycle in order to develop effective policy responses. As emphasized by Bloom (2009), it is crucial to understand the impacts and transmission mechanisms of uncertainty on macroeconomic fluctuations, especially in the aftermath of the Great Financial Crisis. Furthermore, the current COVID-19 outbreak and the Russian invasion of Ukraine have led to a substantial rise in uncertainty, which is crucial to explaining the business cycle. As depicted in the theoretical literature, an increase in uncertainty can have an impact on the economy through the “real-option effects” (Bernanke, 1983; Dixit and Pindyck, 1994), precautionary savings (Basu and Bundick, 2017), or increasing financing costs (Pastor and Veronesi, 2013; Gilchrist et al., 2014).

On one side, the empirical literature provides evidence of the recessionary effects of uncertainty shocks; see Bloom (2009) and Castelnuevo (2023) for a survey. In the main, this evidence has been produced relying on linear Vector Autoregressive (VAR) models (Bloom, 2009; Jurado et al., 2015; Rossi and Sekhposyan, 2015; Baker et al., 2016; Leduc and Liu, 2016, among many others).

On the other side, several empirical studies highlight the state-contingent and time-varying influence of uncertainty on the business cycle (Caggiano et al., 2014; Alessandri and Muntaz, 2019; Muntaz and Konstantinos, 2020; Muntaz and Musso, 2021, among many others). As discussed in Angelini et al. (2019), nonlinear models provide evidence of a more powerful propagation mechanism for shocks in extreme conditions. In particular, the unprecedented economic volatility witnessed in the wake of the COVID-19 outbreak has intensified the urgency to understand the magnitude of uncertainty and its impacts by relying on nonlinear models (see Carriero et al., 2022; Cross et al., 2023).

This study answers two main research questions: *How does the uncertainty*

propagate into the economy across the business cycle? Does the balance sheet-related monetary policy tackle the recessionary effects of uncertainty shocks?

We address these questions by estimating a Smooth Transition VAR to study whether US uncertainty shocks have asymmetric effects across the business cycle (recessions *versus* normal times). The uncertainty shock is proxied by using the financial indicator introduced by Ludvigson et al. (2019). This research enhances existing literature by assessing the role of monetary policy as a crucial transmission channel for uncertainty shocks. We focus on the asymmetric propagation mechanism of uncertainty, including, in addition to the key macroeconomic variables, the short-term and long-term interest rates and the Federal Reserve’s balance sheet as monetary policy tools.

A few papers investigate the nonlinear relationship between monetary policy and uncertainty shocks (among others, Aastveit et al., 2017; Caggiano et al., 2017; Jackson et al., 2019; Caggiano et al., 2021; Pellegrino, 2021). While existing contributions predominantly concentrate on the impact of short-term interest rates, our research shifts the focus to balance sheet-related monetary policy. The growing understanding that balance sheet maneuvers might play a significant role in the Federal Reserve’s monetary toolkit is what motivated this decision. Our study aims to provide a deeper understanding of how these balance sheet strategies function and their potential significance in shaping future monetary policy directions in supporting the business cycle (Dell’Ariccia et al., 2018). We corroborate the empirical literature by finding systematic asymmetries across the business cycle in response to uncertainty shocks. Furthermore, we show that the shock triggers demand-type dynamics in recessions but not in normal times. In this analysis, we provide evidence of an important reaction by the Federal Reserve that is in line with the inflation-targeting strategy that monetary policymakers pursue during recessions.

As main contributions, during recessionary phases, we document how the (Generalised) impulse responses predict a reaction of the Federal Reserve via an increase

in the total assets of the Federal Reserve balance sheet of more than 5% with respect to the pre-shock level. The importance of the role of the balance sheet is also documented in the analysis of the propagation channels, which show how consumption and investments are driving the GDP fluctuation. In details, in normal times the GDP reduction is mainly driven by the fall in consumption. Meanwhile, in recessions, the GDP fluctuation also depends on a contraction in investments. Looking at the disaggregated components of consumption and investments, we document an important difference in the reaction of durable consumption and residential investments across the business cycle, with the latter showing an "overshooting" behavior in recessions.

The forecast error also supports this result about the disaggregated components. In particular, the variance of macroeconomic variables (GDP, consumption, investments, and unemployment) explained by the shock is three to five times larger in recessions than in normal times.

In conclusion, a counterfactual exercise shows how monetary policies related to balance sheets can help reduce the changes in the economy caused by uncertainty shocks. In the absence of balance sheet-related monetary policies, the effects of the financial uncertainty shock would become more persistent and larger (in absolute values) than the effects estimated in the baseline.

The remainder of the paper is organized as follows. Section 2 reviews the literature, while Section 3 describes the data and the empirical analysis. Section 4 presents the results. Section 5 illustrates the propagation channels and the Generalized Forecast Error Variance Decomposition. Section 6 describes the counterfactual experiment, and Section 7 presents the conclusions.

2 Related Literature

This research makes two important contributions to the current literature.

The first one is the asymmetric behavior of the financial uncertainty shock on macroeconomic fluctuations, providing novel evidence that includes the most recent COVID-19 and Ukraine invasion crises. This study is connected to the empirical literature, which investigates the impact of uncertainty on macroeconomic variables (Bloom, 2009; Jurado et al., 2015; Rossi and Sekhposyan, 2015; Baker et al., 2016; Ludvigson et al., 2019, among others). In more detail, our research fits within the burgeoning literature illustrating that uncertainty shocks have regime-dependent effects. Both a theoretical and an empirical point of view are driving this model choice. Cacciatore and Ravenna (2018) show that when matching frictions in the labor market happen along with a downward wage rigidity that cannot be broken, it leads to uncertainty shocks that are amplified depending on the state. Several contributions state the importance of an empirical non-linearity framework to study the transmission channels on the macroeconomic indicators of uncertainty (Caggiano et al., 2014; Lhuissier and Tripier, 2016; Popp and Zhang, 2016; Alessandri and Muntaz, 2019; Muntaz and Konstantinos, 2020; Muntaz and Musso, 2021, among others). Our focus on financial uncertainty is justified both theoretically and empirically. While from a theoretical standpoint Basu and Bundick (2017) show that financial uncertainty is an important driver of the business cycle in a microfounded macroeconomic framework, empirical studies provide evidence of the exogeneity of financial shocks to the business cycle (see Caldara et al., 2016; Carriero et al., 2018; Angelini et al., 2019; Ludvigson et al., 2019; Alessandri et al., 2023). Furthermore, our analysis is connected with the current research about the macroeconomic effects of COVID-19-induced financial uncertainty (among others, Baker et al., 2020; Caggiano et al., 2020; Leduc and Liu, 2020; Miescu and Rossi, 2021).

The second contribution is the investigation of the role of monetary policy in

sustaining the economy during recessionary and normal times. Our analysis corroborates previous papers on the nonlinear relationship between uncertainty and the stance of monetary policy, providing novel evidence about the role of Central Banks in recessions and normal times. Aastveit et al. (2017) and Caggiano et al. (2017) estimate an Interacted VAR model to investigate the asymmetric effects of uncertainty on the business cycle. Specifically, Aastveit et al. (2017) show how the short-term interest rate is less effective when uncertainty is high. At the same time, Caggiano et al. (2017) document that uncertainty shocks trigger a deeper recession during the Zero Lower Bound (ZLB) period than in normal times. Caggiano et al. (2021), relying on a Smooth Transition VAR, quantify the effects of a VXO shock in good and bad times. They find that systematic monetary policy is more effective in good times than in bad times. Jackson et al. (2019), estimating a time-varying Threshold VAR, find asymmetric effects of economic policy uncertainty shocks under high and low uncertainty regimes. They find that systematic monetary policy plays an important role in offsetting the adverse effects of the uncertainty shock.

However, these papers scrutinize the stance of monetary policy based on the short-term interest rate. Differently from them, our study relies on balance sheet-related monetary policy in addition to short- and long-term interest rates as monetary policy instruments. We contribute to the current literature by proposing a novel empirical analysis of the asymmetric effects of uncertainty, focusing on the role of the Federal Reserve’s balance sheet.

For this reason, our study is also connected to the literature on the Central Bank’s balance sheet going back to the seminal research of Bernanke and Gertler (1989), Kiyotaki and Moore (1997), and B. Bernanke et al. (1999). In particular, we contribute to the recent strand of empirical literature that discusses the relevance of the monetary policy tools related to the Central Bank’s balance sheet (Curdia and Woodford, 2011).

We include the balance sheet-related monetary policy instrument inspired by

Bernanke (2012) that points out that the Federal Reserve’s balance sheet has been used by the Fed as a tool for achieving its mandated objectives of maximum employment and price stability.¹ As discussed by Bernanke (2020), while the effects of quantitative easing on longer-term yields are object of disagreement, several studies support how these effects are both economically significant and persistent (see Ihrig et al., 2018; Eser et al., 2019; Altavilla et al., 2021). As highlighted by Bernanke (2020), the current empirical evidence, particularly, disregards the concept that quantitative easing is only beneficial during times of financial turmoil. Instead, after market participants’ expectations are taken into account, the impact of new purchase programs appears to have been more or less constant throughout time, regardless of market functioning, rate level, or central bank balance sheet size.

Our decision is also supported by the contributions of Gambacorta et al. (2014) and Dahlhaus et al. (2018). Gambacorta et al. (2014) estimate a panel VAR including the total assets of the Fed balance sheet as the main policy instrument for many advanced economies, such as the Euro Area and the US. They document how an expansionary monetary policy shock leads to a significant rise in macroeconomic variables. Another contribution, Dahlhaus et al. (2018), provides novel evidence that relies on a factor-augmented vector autoregression and investigates the effects of the US Federal Reserve quantitative program on the Canadian economy. They find that the Fed’s balance sheet has an important effect on Canadian GDP. Their decision on the choice of this monetary policy tool is motivated by the fact that the balance sheet holdings contain information on quantitative easing (QE) and are unaffected by closely related non-QE policies, such as forward guidance. This aspect is relevant since the Fed has often announced information on multiple unconventional monetary policies at the same time. Additionally, changes in the balance

¹“In using the Federal Reserve’s balance sheet as a tool for achieving its mandated objectives of maximum employment and price stability, the FOMC has focused on the acquisition of longer-term securities, specifically Treasury and agency securities, which are the principal types of securities that the Federal Reserve is permitted to buy under the Federal Reserve Act” (Bernanke, 2012).

sheet holdings of long-term assets through the signaling and portfolio rebalancing channels of transmission can capture the effects of a QE program. In contrast with Gambacorta et al. (2014) and Dahlhaus et al. (2018) who identify a monetary policy shock, we consider the total assets of the Fed balance sheet as a transmission mechanism through which a financial uncertainty shock affects the business cycle. Moreover, these researchers estimate linear models focusing on the ZLB regime. Conversely, our nonlinear estimation allows us to consider a longer sample and to randomize over histories (i.e., during recessions and normal times).

In our analysis, the balance sheet-related monetary policy becomes crucial to mitigate the negative effect of uncertainty shocks, differing from Tenreiro and Thwaites (2016) and Caggiano et al. (2021) which show how the monetary policy, represented by only interest rates, is less effective during recessionary periods.

3 Data and Methodology

In this Section, we describe the data and introduce the Smooth Transition VAR model.

3.1 Data

We study the effects of uncertainty shocks in the US across the business cycle by using quarterly data spanning from 1960Q3 to 2023Q3. The series are transformed to induce stationarity. The main measures of real activity are the first difference of the log real GDP (GDP) and the unemployment rate (Unempl). Inflation (Infl) is measured by the first difference of the log personal consumption expenditures chain price index. We use the effective federal funds rate (FFR) as a measure of the short-term interest rate. To proxy the balance sheet-related monetary policy, we rely on the first difference of log total assets of the Fed balance sheet (BS), as

in Gambacorta et al. (2014).² Since such a measure is only downloadable from the Federal Reserve of St. Louis from 2002, we collect monthly data of the total assets of the Fed’s BS for the previous periods (1960-2001) retrieving the information from the monthly *Federal Bulletins*. Then, we convert monthly data into quarterly observations via quarterly averaging. In addition, we include the 10-year Treasury bond long-term interest rates (10-y TB). This long-term interest rate is important in the transmission mechanism of BS-related monetary policy on macroeconomic variables (Kiley, 2018). Moreover, including the long-term interest rate allows us to consider the impact of forward guidance (Bundick et al., 2024).³

Summing up, the FFR is modeled to capture monetary policy in normal times; while the 10-y TB is modeled to capture unconventional policy moves having effects on the term-structure of interest rate (for instance, forward guidance). In addition, the QE is modeled to focus on balance sheet policies, particularly those relevant during and after the Great Financial Crisis.

We proxy the financial uncertainty using the recent measure proposed by Ludvigson et al. (2019). This factor model-based indicator provides proxies for uncertainty computed for h-step-ahead forecast errors. Since our analysis relies on quarterly data, we rely on the uncertainty measure (Unc) with a forecast horizon of 3-months, converting it to quarterly figures by taking the average value in each quarter. Figure 1 plots the uncertainty measures versus the National Bureau of Economic Research (NBER) turning points (shaded area). It can be observed that

²The Federal Reserve faced the Great Recession by adopting an extraordinarily expansionary monetary policy stance, lowering policy rates to stimulate the economy. However, with monetary policy rates close to the ZLB, when further stimulus was needed, Central Banks turned to non-interest rates or non-standard policy measures. Meaning and Zhu (2011) use the Federal Reserve balance sheet information to proxy the unconventional monetary policy tools. Peersman (2011) studies the (linear) macroeconomic effects of unconventional monetary policy in the Euro Area relying on the size of European Central Bank (ECB)’s BS. Also, Gambacorta et al. (2014) focus on the total assets of the Central Bank’s BS to proxy unconventional monetary policies.

³Gürkaynak et al. (2005) show that the Federal Reserve has relied on communication to affect agents’ expectations over future policy moves to influence long-term rates. Adrian et al. (2013) argue that after the Federal Open Market Committee (FOMC) of August 9, 2011, in which the Committee announced “exceptionally low levels for the federal funds rate at least through mid-2013”, the term premia in longer-horizon TB declined significantly.

financial uncertainty spikes occur during recessionary periods. From our perspective, this indicator has two main advantages. First, as argued by Ludvigson et al. (2019), it captures changes in financial market uncertainty that are a source of economic fluctuations rather than being an endogenous response to fundamentals. Angelini et al. (2019) confirm, empirically, such exogeneity of the financial uncertainty indicator. Second, this index is more suitable than the VIX, which is widely used for proxying uncertainty. Indeed, as Bekaert et al. (2013) stressed, this indicator might be more indicative of countercyclical risk aversion than uncertainty. The above reasons make the Ludvigson et al. (2019) indicator more appealing for our analysis, especially in identifying the shock.⁴

In Section 5 we investigate the channels through which uncertainty propagates. In doing so, we augment the baseline specification by the first difference of log real gross private domestic investment (Inv) and of real personal consumption expenditures (Cons). Then, we disaggregate consumption (services, non-durables, and durables goods), and investment series (inventories, residential, and non residential investments).

The choice of the quarterly frequency is justified by our interest in the response of (among other variables) GDP and investment, which are not available at a monthly frequency. The start date of our sample is restricted by the availability of the uncertainty indicator.

The financial uncertainty indicator of Ludvigson et al., 2019 can be downloaded from <https://www.sydneyludvigson.com/data-and-appendixes>. The data are seasonally adjusted and retrieved from the Federal Reserve Bank of St. Louis, unless indicated otherwise.

⁴Appendix D shows the robustness of our results using the VXO as an alternative measure of uncertainty (Bloom, 2009).

3.2 Methodology: A Smooth Transition VAR

The estimated Smooth-Transition VAR model (STVAR) is defined as follows:

$$X_t = F(z_t)\Pi_R(L)X_t + (1 - F(z_t))\Pi_{NT}(L)X_t + \varepsilon_t, \quad (1)$$

$$\varepsilon_t \sim N(0, \Omega_t), \quad (2)$$

$$\Omega_t = F(z_t)\Omega_R + (1 - F(z_t))\Omega_{NT}, \quad (3)$$

$$F(z_t) = \exp(-\gamma z_t) / (1 + \exp(-\gamma z_t)), \gamma > 0, z_t \sim N(0, 1). \quad (4)$$

where X_t is a set of endogenous variables, $\Pi(L)_R$ and $\Pi(L)_{NT}$ are the polynomial matrices in the lag operator L capturing the dynamics of the system during recessions and normal times, respectively. The vector of reduced-form residuals (ε_t) has a zero-mean and heteroskedastic, state-contingent variance-covariance matrix Ω_t , where Ω_R and Ω_{NT} refer to the covariance structure of the residuals in recessions and normal times, respectively. $F(z_t)$ is a logistic and continuous function bounded between zero and one which depends on the state variable z_t . The slope parameter γ dictates how smooth the transition is from one regime to another, i.e. from recessions to normal times and *vice versa*. If $\gamma \rightarrow \infty$ in (4), then the transition from one state of economy to the other is abrupt. Conversely, a small value of γ implies that such a transition is smooth.

Our vector is $X_t = [Infl, GDP, Unempl, FFR, BS, 10 - yTB, Unc]'$. The uncertainty shock is identified via the Cholesky decomposition, with the sample assumptions provided by Christiano et al. (2005) and widely adopted in the monetary policy literature. In other words, the slow-moving variables (Infl, GDP, and Unempl) are ordered first, whereas the fast moving variables (monetary policy tools) are ordered last. This ordering implies that monetary policies depend on the real activities. In setting the monetary policy tools, we place the total assets of the Fed BS after the effective federal fund rate (FFR) and before the 10-year Treasury

bond (10-y TB). This reflects the idea that the primary monetary policy tool is the short-term interest rate. The uncertainty measure is set last in vector X_t . This means that we "purge" our uncertainty indicator from the contemporaneous movements of our macroeconomic variables, therefore sharpening the identification of uncertainty shocks. This identification implies that macroeconomic variables react to uncertainty shocks with a lag.⁵

The transition variable z_t and the calibration of the smoothing parameter γ are justified as follows. As in Auerbach and Gorodnichenko (2012) and Caggiano et al. (2015), we employ a standardized backward-looking moving average of the output growth rate, involving eight realizations of the quarter-on-quarter real GDP growth rate.⁶ We calibrate the smoothness parameter γ to match the probability of being in recessions as identified by the NBER business cycle dates (15% in our sample). The recessionary phase is defined as a period in which $\Pr(F(z_t) \geq 0.85) \approx 15\%$. This means that the economy spends about 15% of the time in recessions and 85% in normal times. This implies setting $\gamma = 2.1$. The choice is consistent with the threshold value $\bar{z} = -1.2\%$ discriminating between recessions and normal times. In details, if the realizations of the standardized transition variable z_t is lower (higher) than the threshold value \bar{z} , it will be associated to recessions (normal times). Figure 2 plots the transition function $F(z_t)$ versus the NBER turning points and shows that high values of $F(z_t)$ tend to be associated with NBER recessions.

Given the high nonlinearity of the model, we estimate the STVAR in (1) relying on the Markov-Chain Monte Carlo simulation of Chernozhukov and Hong (2003) (see Appendix B for details). To model the endogeneity of the transition from one

⁵The main results are not affected when the uncertainty index is set as the first variable in the vector X_t . The results are reported in Appendix D.

⁶The transition variable z_t has been standardized to be comparable to those employed in the literature. To choose the transition variable we follow the heuristic rule suggested by Teräsvirta (1988). We perform the linearity test relying on different potential transition variables, such as the lagged (t-1) standardized backward looking moving average (MA) over (j) quarter(s) of the output growth rate with $j \in J = 2, \dots, 12$ and we choose the transition variable for which the p-value is minimized. This is because whether there is a correct transition variable among the different alternatives, the power of the test is maximized against it. Moreover, our results are robust using a moving average over six quarters. See Appendix D for details.

state to another after an uncertainty shock occurs, we compute the Generalized Impulse Response Functions (GIRFs) proposed by Koop et al. (1996). Since the GIRFs depend on the initial condition, we study the evolution of the GIRFs over histories (i.e., during recessions and normal times). We estimate a nonlinear VAR including two lags, as suggested by the Akaike information criterion. Our model includes a constant.

Before estimating the STVAR in (1), we perform a linearity test. Linearity is tested by replacing the transition variable (z_t) by the first and the third order Taylor series approximation around $\gamma = 0$, as suggested by Teräsvirta and Yang (2014). We perform an LM test that suggests a strong rejection of the linearity for the system as a whole in favor of a STVAR (details in Appendix A).

4 Results

Figure 3 plots the Generalised IRFs (GIRFs) of the modeled variables to a one-standard deviation unexpected increase in uncertainty in recessions (first column) and in normal times (second column). As in Colombo and Paccagnini (2020), such an increase is constant across regimes, given that we aim to highlight differences in dynamics conditional on the same size of the shock.⁷ Shaded bands denote confidence intervals at 68% levels. The log difference transformed variables have been accumulated (inflation, GDP, and total assets of the Fed balance sheet). The horizontal axis identifies quarters, whereas the vertical axis is expressed in percentage points.

Uncertainty shocks exhibit asymmetric effects throughout the business cycle. The occurrence of uncertainty shocks during the phase of the business cycle signif-

⁷The unexpected increase in uncertainty is calibrated with the one-standard deviation uncertainty shock estimated in recessions. Our results are materially the same if we use the one-standard deviation uncertainty shock estimated in normal times. Moreover, our results are qualitatively similar when we include a regime-specific covariance matrix (eq. (3)), thus allowing for changes in the size of the shocks (as well as the transmission mechanisms) between normal times and recessions. Results are available upon request.

icantly impacts the magnitude of the response of macroeconomic indicators. Recessions are characterized by negative macroeconomic fluctuations, whereas normal times do not experience such shocks.

In normal times, an exogenous increase in uncertainty negatively affects the GDP and inflation. However, the reactions are not as statistically significant as those of the Federal Reserve. The response to unemployment is qualitatively similar to the GDP, even though its reaction is relatively more enduring. The reaction of the long-term interest rate to the shock is negative, statistically significant, albeit small.

In recessions, uncertainty shocks increase the unemployment rate (0.4%) by reducing aggregate demand (−0.5%). Since uncertainty depresses aggregate demand, it also has a long-lasting deflationary effect. In line with their inflation-targeting strategy, monetary policymakers lower the nominal interest rate to alleviate the recessionary effects of uncertainty. Interestingly, the generalized impulse responses also predict a reaction of the Federal Reserve via an increase in the total assets of the Fed balance sheet (5%). Financial uncertainty has a negative and statistically significant impact not only on short-term but also on long-term interest rates, with a double impact on the latter. The expansionary monetary policy that our findings predict is consistent with those in the literature, (i.e., Bekaert et al., 2013; Caggiano et al., 2014; Caggiano et al., 2017; Jackson et al., 2019).

The reaction of the 10-year TB to a financial shock is also found in Castelnovo (2022) who, analyzing a linear framework, highlights the stronger reaction of the short end of the term structure concerning the long one. Conversely, we find the opposite results: after an uncertainty shock, the response of the long-term interest rate (10-year TB) is stronger than the short-term one (FFR). Such a result holds both in recessions and in normal times, although in recessions it is magnified. Our findings may depend on two mechanisms that increase the demand for bonds. Firstly, an increase in uncertainty in both states of the economy may in-

duce households to reduce consumption and increase precautionary savings. The increase in the demand for bonds pushes up the bond prices and depresses the bond yields. Secondly, uncertainty shock has recessionary effects on macroeconomic activity. In recessions, the Fed reacts by cutting the FFR and buying long-term TBs that increase the total assets held in the Fed's BS (as shown in row 5 of Figure 3). This further increase in demand for bonds depresses government yields even more. We think that in recessions both channels are present and this explains the reason why financial uncertainty shocks have (in absolute value) stronger effects on the long-term interest rate than on the short-term rate.

Our results corroborate those reported in previous contributions on the "demand" type of effects triggered by uncertainty shocks in the US economy, associated with a fall in output and prices at the same time (i.e., Bloom, 2009; Baker et al., 2016; Leduc and Liu, 2016; Colombo, 2013; Alessandri and Muntaz, 2019). The empirical evidence is supported by theoretical research (i.e., Basu and Bundick, 2016) that demonstrates how a Real Business Cycle (RBC) model may reproduce the recessionary consequences of an uncertainty shock when the price adjusts gradually to evolving economic conditions. Furthermore, our work is also backed by the empirical analysis in which uncertainty shocks are found to trigger asymmetric effects across the business cycle (i.e., Nodari, 2014; Caggiano et al., 2017; Jackson et al., 2019), and in particular on unemployment (Caggiano et al., 2014).

Statistical evidence in favor of asymmetries across regimes. *Are the reactions of macroeconomic variables to uncertainty shocks statistically significant different across regimes?* The third column of Figure 3 reports the empirical density of the difference between the reactions of macroeconomic variables across regimes. The empirical density is based on 500 realizations of such differences for each horizon h . If the zero lines are not included in the confidence bands, then there will be evidence of state-dependent reactions. Our findings confirm that quantitatively the responses are different across regimes from a statistical point of view.

Appendix D shows the robustness of our findings against several perturbations of the baseline STVAR model. As displayed in Figure D.1 and Figure D.2, we focus on alternative i) calibration of smoothness parameters; ii) transition variable; iii) measures of uncertainty; iv) sample size; and v) specifications. In particular, Figure D.2 documents how the results are robust when we substitute the monetary policy tools with the shadow short rate à la Lombardi and Zhu (2018) and when we include additional variables such as the S&P 500 stock price index and a synthetic macro-finance factor. For more details, see Appendix D.

5 Propagation Channels

This Section examines the propagation channels through which uncertainty shocks affect GDP. We add consumption or investment, one at a time, into the baseline model. In both specifications, consumption and investments are adequately transformed in the first difference log and placed after GDP in the set of endogenous variables (X_t). This investigation is useful for understanding how the uncertainty shock can be transmitted to the business cycle and how the propagation mechanism works differently in the two states of the economy (recessions and normal times). Our decision to include these variables relies on several studies that propose models and theoretical frameworks, including consumption and/or investments, to explain how uncertainty shocks could affect macroeconomic variables (see for instance, Bernanke, 1983; Dixit and Pindyck, 1994; Pastor and Veronesi, 2013; Gilchrist et al., 2014; Leduc and Liu, 2016; Basu and Bundick, 2017). Figure 4 and 5 report the responses to the uncertainty shock for consumption and investments, respectively. In the first and the second columns, we show the reaction in recessions and in normal times, while we report their difference in the third column.

An increase in the uncertainty shock is followed by a downturn in the short- and medium-run of 0.35% for the aggregate consumption in recessions, as pictured in

the first line of Figure 4. Meanwhile, in normal times, consumption decreases slowly and reaches a downturn, but such a reaction is not statistically significant. After this, we investigate how uncertainty propagates through disaggregated measures of consumption, including spending on services, non-durables, and durable consumption components, as shown in the second, third, and fourth lines of Figure 4. During recessions, the decline in consumption is mostly caused by a decrease in all three components. Specifically, the durable consumption fall is around -0.7% before the fourth quarter. In normal times, results confirm that the response to consumption is mild for services and non-durables. However, in the case of durable consumption, we do not report a statistically significant response to the shock. This evidence of a severe impact of uncertainty during recessionary periods, in particular for durables, is also confirmed by the difference reported in the third column of Figure 4. Our results corroborate the findings of a larger magnitude and more persistent contraction in durable consumption documented by Jackson et al. (2019). We can also report that GDP and consumption spending have a similar reaction to the uncertainty. After the shock hits, we document a fall in both variables, which increase slowly after four quarters. This evidence is in line with the behavior of households to reduce precautionary spending, in particular on durable goods. These findings confirm that uncertainty shock is a demand shock that reduces aggregate output via precautionary savings (for reference, see Bloom et al., 2018).

The aggregate investments experience a severe fall and subsequent quick increase in recessions. However, in normal times, the impact of the uncertainty shock is weaker and not statistically significant, except for non-residential investment. The first line of Figure 5 shows how the response to an uncertainty shock falls by 2% in the short run. After two years, the response rapidly increases to become positive. Hence, we investigate how uncertainty propagates through disaggregated measures of investments, including inventories, non-residential, and residential components, as shown in the second, third, and fourth lines of Figure 5. The response

of aggregate investments is confirmed by the disaggregate components, with the same statistically significant pattern only in recessions, apart from non-residential investments, which have a statistically significant response for four quarters in normal times. It is interesting to note how residential investments recover to a steady state with a quick increase, which suggests an "overshooting effect" that also drives the dynamic of investment (first row). This evidence of a severe impact of uncertainty during recessionary periods, in particular for residential and non-residential components, is also confirmed by the difference reported in the third column of Figure 5. The sharp decline following the impact of the uncertainty shock is mostly attributed to the high volatility of investment, which is the most unstable element of the GDP. As uncertainty rises, firms cease their economic operations and investments decline. During economic downturns, the decline in consumption is mostly caused by a decrease in all three components. As documented in the baseline model, after an increase in uncertainty shock, GDP decreases as well as consumption and investments. If consumption increases at the same rate as the GDP growth rate, investment quickly changes to an increased pattern, showing the overshooting effect. For investments, we can report a behavior known as "wait-and-see" (see for reference Bloom et al., 2007; Bloom, 2009; Stokey, 2016). In the first four-eight quarters, investments reach their minimum, and after that, when the temporary uncertainty is solved and the economic situation appears brighter, investments quickly increase. As discussed in Bloom (2009) and in Ferrara et al. (2018), we can motivate the overshooting pattern looking at the massive comeback of the allocation of labor and capital injected in investment projects that were previously suspended, as happened during the Great Recession. These results provide evidence of how business activities are quicker to adapt to an uncertain framework than consumption. We can also document how the increase in production is slower than the pattern illustrated by investments, which are the first to react, in particular the residential component, after the temporary fall due to the uncertainty shock. Our results

are different from those of Jackson et al. (2019), who do not document the same overshooting pattern, even if the responses of investment components are increasing after eight quarters and most probably the overshooting effects are only lagged in their exercise.

The increasing responses of GDP components are also supported by the large asset purchase announcements by the Federal Reserve. As discussed in Weale and Wieladek (2016), thanks to the monetary injections operated by the monetary institution, households and firms are more confident about the role of the Federal Reserve to support the economy in both recessions and normal times. For this reason, the perceived volatility of future inflation and GDP will decline. Besides, both the BS movements and the reduction of financial uncertainty can have one of two effects: a decline in consumers' uncertainty about durable consumption or a higher risk-taking by investors. These two channels can support the aggregate output by increasing consumption and reducing premia on risky lending.

Generalised Forecast Error Variance Decomposition. *How important is the uncertainty in driving economic dynamics?* To assess the importance of uncertainty shocks, we calculate the Generalised Forecast Error Variance Decomposition (GFEVD) for a one-standard deviation regime-dependent shock to all variables using the Lanne and Nyberg (2016) 's algorithm. Table 1 displays the state-dependent 12-quarters ahead GFEVD due to uncertainty shocks: 1) the financial uncertainty index estimated by the Ludvigson et al. (2019) indicator (in the upper panel of the table) and (2) the VXO (in the lower panel of the table). We report the contribution of uncertainty shocks across regimes (normal times *versus* recessions) for each variable multiplied by 100. The variables indicated in the first column are (from top to bottom): the inflation rate (Infl), the output growth (GDP), the consumption (Cons), the investments (Inv), the unemployment rate (Unempl), the federal fund rate (FFR), the total assets of the Fed balance sheet (BS), the 10-year Treasury Bond (10-y TB), and the uncertainty. We compute the GFEVD for two alternative

models: column “with Cons” reports the GFEVD of the specification augmented by consumption, and column “with Inv” reports those with the specification augmented by investments. In the case of the financial uncertainty index (FU), we note how the reaction of variables to uncertainty shocks is magnified in both alternative models during recessions. Specifically, as shown in Table 1, the contribution of financial uncertainty is from three to five times larger for macroeconomic variables (GDP, consumption, investments, and unemployment) and around eight times larger for inflation during recessionary periods with respect to normal times. It is interesting to note how the contribution of financial uncertainty to the monetary variables (FFR, BS, 10-year TB) is about six times larger in recessions than in normal times. However, in both regimes, its own shock largely explains the forecast error variance of the uncertainty. These findings are robust when we substitute the financial uncertainty indicator à la Ludvigson et al. (2019) with the VXO. This is not surprising, since the high correlation between the two proxies (0.79).

These findings are in line with the predictions highlighted by the theoretical framework in Basu and Bundick (2017) which show that the co-movements among output, consumption, and investments are one of the main features of the economy’s response to an uncertainty shock. There is evidence for investments that comes from earlier research that shows how much uncertainty affects the value of investment opportunities when the investments can’t be taken back (i.e. Bernanke, 1983; Bloom, 2009; Bloom et al., 2018)

6 Counterfactual Experiments

How effective are balance sheet-related monetary policies to offset uncertainty shocks?

The answer to this question is important for understanding the role played by BS-related monetary policy in tackling the contractionary effects of an uncertainty shock.

Following Caggiano et al. (2021), we run a counterfactual exercise in which we shut down the reaction of our variable of interest to the shock. This means that we zero out the coefficients of the BS equation in our Smooth Transition VAR. In doing so, we allow the Federal Reserve to react to a financial uncertainty shock through only the short-term interest rate.⁸ In this Section, we report results only for recessions since the baseline model provides evidence of a reaction of the total assets of the Fed BS only during recessionary periods.

The median of the GIRFs for our main macroeconomic variables from the baseline specification with extra spending (first column) or investments (second column) is displayed in Figure 6. This is compared to the counterfactual exercise. The solid and dotted lines refer to the GIRFs for the baseline and counterfactual scenarios, respectively. The difference between the reaction of macroeconomic variables from the baseline (augmented by consumption/investment) and from the counterfactual scenario represents the implementation of BS-related monetary policy measures.

We can note that the baseline and counterfactual scenarios produce similar reactions to financial shocks for the first few quarters after the shock occurs. This result is due to the relevance of initial conditions, which dominate during the first

⁸We run counterfactual simulations by zeroing out the coefficients of the BS equation in our VAR as done for the federal funds rate coefficient in Sims and Zha (2006) and Caggiano et al. (2021). Another way to run the counterfactual is to create a fictitious shock to keep the balance sheet fixed to its pre-shock level. We follow the former strategy. We run this exercise, fixing the path of the 10-year TB. The long-term interest rate captures the expectation of future monetary policy, and fixing its path allows us to capture its role in transmitting the effects of uncertainty shocks. Relying on a VAR model such as the Smooth Transition VAR, our counterfactual is subjected to Lucas (1976)'critique. In the VAR framework, we should adjust the coefficients of both policy and non-policy equations to changes in policy. However, in the empirical VAR literature, there are several experiments which investigate different policy rules by "zeroing-out" the response of policy variables to shocks (B. S. Bernanke et al., 1997; Sims and Zha, 2006; Kilian and Lewis, 2011; Bachmann and Sims, 2012, among others). As discussed by Caggiano et al. (2021), there could be a trade-off between how the counterfactual experiment is informative and how it satisfies the Lucas critique. For example, Rudebusch (2005) shows how the reduced-form VAR coefficients are relatively insensitive to changes in the VAR monetary policy rule. Meanwhile, Canova and Gambetti (2010) show how the properties of different measures of inflation expectations in the US are not influenced by breaks in monetary policy. In addition, they document similar reduced-form characteristics in the VAR models with and without expectations. These two examples support the possibility that a VAR analysis (like our counterfactual experiment) could be an indicative approximation about the ability of monetary policy, in particular of the balance sheet, to tackle and stabilize the business cycle in recessions and normal times.

quarters. However, as time goes by, different policies start to exert a different impact on the evolution of the economic system. After four quarters, the BS-related monetary policies reduce the impact of the shock on GDP, consumption, and inflation by 0.1%. However, when we look at the investment's reaction, it seems that BS policies have delayed the investment's recovery. Inflation displays the worst path when the BS is fixed. After twelve quarters, the macroeconomic variables are still below their pre-shock level. Two results stand out for inflation, GDP, consumption and unemployment: 1) when the FED does not rely on the BS-related monetary policy, the effects of financial shocks become more persistent and 2) the macroeconomic effects of uncertainty become larger (in absolute value) than those derived from the baseline. We can conclude that in recessions the BS-related monetary policy tool is a powerful tool to mitigate economic downturns due to financial uncertainty shock.

There are numerous channels through which BS-related monetary policy can affect the economy (see Bernanke, 2012). Weale and Wieladek (2016) highlight that when the balancing portfolio is the main channel, the reduction in long-term TB yields will be larger with respect to the short-term yields. From our results reported in Figure 3, uncertainty shocks have a greater impact on long-term than short-term rates. Therefore, we believe that BS-related monetary policies are transmitted to the economy through the portfolio's balance channel. This mechanism works via the acquisition of long-term TB (an activity of the Central Bank budget). Whether financial markets are segmented, for instance, because agents may have preferred habitat for a given maturity in the government bond market, then the assets are not perfect substitutes in investors' portfolios. In this case, reducing government bond offerings, the Central Bank purchases increase bonds prices and reduce the return on those bonds (i.e., Gertler and Karadi, 2019; Chen et al., 2012). To achieve an effect beyond the government bond markets, such segmentation cannot be strong. If agents that sell government bonds to the Central Bank rebalance their

investment portfolios by purchasing other securities (i.e, corporate bonds, shares, or securities guaranteed), then the prices for these assets will increase. This channel might lead to wealth effects from higher asset prices (that raise consumption) and lower borrowing costs (that increase investments). Thus, such a monetary policy reaction to an uncertainty shock will increase GDP.

7 Conclusion

A novel empirical contribution is given by estimating a Smooth Transition VAR including macroeconomic variables, monetary policy tools, and financial uncertainty proxy for the US economy. We investigate the impact of the uncertainty shock, scrutinizing the monetary policy stance. The nonlinearities allow us to disentangle the behavior of the macroeconomic variables into two periods: recessions and normal times. Uncertainty shocks are found to trigger negative macroeconomic fluctuations across the business cycle. The empirical evidence shows how balance sheet-related monetary policy has an important role in supporting the economy and mitigating the negative contractionary effects of the uncertainty shock during recessionary periods. The empirical evidence obtained in this study emphasizes the essential role of balance-sheet related monetary policy. The use of this monetary instrument not only functions as a crucial mechanism for providing economic support but also plays a pivotal role in mitigating the intensity of adverse shocks. During times of economic recession, when conventional monetary policies such as interest rates are limited, balance-sheet policies become crucial in reducing the negative effects on the economy. This result holds an important role for policymakers who are seeking tools to mitigate the negative effects of uncertainty in the business cycle in a state-dependent framework.

References

- Aastveit, K.A., G.J. Natvik, and S. Sola (2017). “Economic Uncertainty and the Influence of Monetary Policy”. *Journal of International Money and Finance* 76, pp. 50–67.
- Adrian, T., R.K. Crump, and E. Moench (2013). “Pricing the Term Structure with Linear Regressions”. *Journal of Financial Economics* 110, pp. 110–138.
- Alessandri, P., A. Gazzani, and A. Viccondoa (2023). “Are the effects of uncertainty shocks big or small?” *European Economic Review* 158, p. 104525.
- Alessandri, P. and H. Muntaz (2019). “Financial Regimes and Uncertainty Shocks”. *Journal of Monetary Economics* 101(C), pp. 31–46.
- Altavilla, C., G. Carboni, R. Motto, et al. (2021). “Asset purchase programmes and financial markets: lessons from the euro area”. *International Journal of Central Banking* 17.4, pp. 1–48.
- Angelini, G., E. Bachiocchi, G. Caggiano, and L. Fanelli (2019). “Uncertainty across volatility regimes”. *Journal of Applied Econometrics* 34(3), pp. 437–455.
- Auerbach, A. and Y. Gorodnichenko (2012). “Measuring the Output Responses to Fiscal Policy”. *American Economic Journal: Economic Policy* 4(2), pp. 1–27.
- Bachmann, R. and E.R. Sims (2012). “Confidence and the transmission of government spending shocks”. *Journal of Monetary Economics* (59), pp. 235–249.
- Baker, S., N. Bloom, and S.J. Davis (2016). “Measuring Economic Policy Uncertainty”. *Quarterly Journal of Economics*.
- Baker, S.R., N. Bloom, S. J. Davis, K. Kost, M. Sammon, and T. Viratyosin (2020). “The unprecedented stock market reaction to COVID-19”. *The review of asset pricing studies* 10.4, pp. 742–758.
- Basu, S. and B. Bundick (2016). “Endogenous volatility at the Zero Lower Bound: Implications for Stabilization Policy”. NBER Working Paper No. w21838.

- Basu, S. and B. Bundick (2017). “Uncertainty Shocks in a Model of Effective Demand”. *Econometrica* 85.3, pp. 937–958.
- Bekaert, G., M. Hoerova, and M. Lo Duca (2013). “Risk, Uncertainty and Monetary Policy”. *Journal of Monetary Economics* 60, pp. 771–788.
- Bernanke, B. (2020). “The New Tools of Monetary Policy”. *American Economic Review* 110.(4), pp. 943–83.
- Bernanke, B., M. Gertler, and S. Gilchrist (1999). *The Financial Accelerator in a Quantitative Business Cycle Framework*.
- Bernanke, B. S. (2012). “Monetary Policy since the Onset of the Crisis”. *Federal Reserve Bank of Kansas City Economic Symposium, Jackson Hole*.
- Bernanke, B. S., M. Gertler, and M. Watson (1997). “Systematic monetary policy and the effects of oil price shocks”. *Brookings papers on economic activity*, pp. 91–157.
- Bernanke, B.S. (1983). “Irreversibility, Uncertainty, and Cyclical Investment”. *The Quarterly Journal of Economics* 98(41), pp. 85–106.
- Bernanke, B.S. and M. Gertler (1989). “Agency Costs, NetWorth, and Business Fluctuations”. *American Economic Review* 79(1), pp. 14–31.
- Bloom, N. (2009). “The Impact of Uncertainty Shocks”. *Econometrica*, 77(3), pp. 623–685.
- Bloom, N., S. Bond, and J. Van Reenen (2007). “Uncertainty and Investment Dynamics”. *The Review of Economic Studies* 74(2), pp. 391–415.
- Bloom, N., M. Floetotto, N. Jaimovich, I. Saporta-Eksten, and S.J. Terry (2018). “Really Uncertain Business Cycles”. *Econometrica* 86(3), pp. 1031–1065.
- Bundick, B., T. Herriford, and A.L. Smith (2024). “The Term Structure of Monetary Policy Uncertainty”. *Journal of Economic Dynamics and Control* 160, pp. 437–455.
- Cacciatore, M. and F. Ravenna (2018). “Uncertainty, Wages, and the Business Cycle”. *Economic Journal* 131(639), pp. 2792–2823.

- Caggiano, G., E. Castelnuovo, V. Colombo, and G. Nodari (2015). “Estimating Fiscal Multipliers: News From a Nonlinear World”. *The Economic Journal* 125(584), pp. 746–776.
- Caggiano, G., E. Castelnuovo, and N. Groshenny (2014). “Uncertainty Shocks and Unemployment Dynamics: An Analysis of Post-WWII U.S. Recessions”. *Journal of Monetary Economics* 67, pp. 78–92.
- Caggiano, G., E. Castelnuovo, and R. Kima (2020). “The global effects of Covid-19-induced uncertainty”. *Economics Letters* 194, p. 109392.
- Caggiano, G., E. Castelnuovo, and G. Nodari (2021). “Uncertainty and Monetary Policy in Good and Bad Times: A Replication of the VAR investigation by Bloom (2009)”. *Journal of Applied Econometrics*, pp. 210–217.
- Caggiano, G., E. Castelnuovo, and G. Pellegrino (2017). “Estimating the real effects of uncertainty shocks at the Zero Lower Bound”. *European Economic Review* 100, pp. 257–272.
- Caldara, D., C. Fuentes-Albero, S. Gilchrist, and E. Zakrajšek (2016). “The macroeconomic impact of financial and uncertainty shocks”. *European Economic Review* 88, pp. 185–207.
- Canova, F. and L. Gambetti (2010). “Do Expectations Matter? The Great Moderation Revisited”. *American Economic Journal: Macroeconomics* 2(3), pp. 183–205.
- Carriero, A., T. Clark, M. Marcellino, and E. Mertens (2022). “Addressing COVID-19 Outliers in BVARs with Stochastic Volatility”. *The Review of Economics and Statistics*, pp. 1–38.
- Carriero, A., T. E. Clark, and M. Marcellino (2018). “Measuring Uncertainty and Its Impact on the Economy”. *Review of Economics and Statistics* 100(5), pp. 799–815.
- Castelnuovo, E. (2022). “Yield Curve and Financial Uncertainty: Evidence Based on US Data”. *Journal of Economic Surveys*.

- Castelnuovo, E. (2023). “Uncertainty Before and During COVID-19: A Survey”. *Journal of Economic Survey* 37(3), pp. 821–864.
- Chen, H., V. Cúrdia, and A. Ferrero (2012). “The Macroeconomic Effects of Large-Scale Asset Purchase Programmes”. *Economic Journal* 122(564), pp. 289–315.
- Chernozhukov, V. and H. Hong (2003). “An MCMC Approach to Classical Estimation”. *Journal of Econometrics* 115(2), pp. 293–346.
- Christiano, L.J., M. Eichenbaum, and C.L. Evans (2005). “Nominal Rigidities and the Dynamic eEffects of a Shock to Monetary Policies”. *Journal of Political Economy* 113(1), pp. 1–45.
- Colombo, V. (2013). “Economic Policy Uncertainty in the U.S.: Does it matter for the Euro area?” *Economics Letters* 121(1), pp. 39–42.
- Colombo, V. and A. Paccagnini (2020). “Does the credit supply shock have asymmetric effects on macroeconomic variable?” *Economics Letters* 188, p. 108958.
- Cross, J. L., C. Hou, G. Koop, and A. Poon (2023). “Large stochastic volatility in mean VARs”. *Journal of Econometrics* 236.1, p. 105469.
- Curdia, V. and M. Woodford (2011). “The central-bank balance sheet as an instrument of monetary policy”. *Journal of Monetary Economics* 58(1), pp. 54–79.
- Dahlhaus, T., K. Hess, and A. Reza (2018). “International Transmission Channels of U.S. Quantitative Easing: Evidence from Canada”. *Journal of Money, Credit and Banking* 50(2), pp. 545–563.
- Dell’Ariccia, G., P. Rabanal, and D. Sandri (2018). “Unconventional Monetary Policies in the Euro Area, Japan, and the United Kingdom”. *Journal of Economic Perspectives* 32(4), pp. 147–172.
- Dixit, A. K. and R. S. Pindyck (1994). “Investment Under Uncertainty”. *Princeton University Press*.

- Eser, F., W. Lemke, K. Nyholm, S. Radde, and A. Vladu (2019). “Tracing the impact of the ECB’s asset purchase programme on the yield curve”. *ECB working paper* 2293.
- Ferrara, L., S. Lhuissier, and F. Tripier (2018). “Uncertainty Fluctuations: Measures, Effects and Macroeconomic Policy Challenges”. *International Macroeconomics in the Wake of the Global Financial Crisis*, pp. 159–181.
- Gambacorta, L., B. Hofmann, and G. Peersman (2014). “The Effectiveness of Unconventional Monetary Policy at the Zero Lower Bound: A Cross-Country Analysis”. *Journal of Money, Credit and Banking* 46(4), pp. 615–642.
- Gertler, M. and P. Karadi (2019). “A Model of Unconventional Monetary Policy”. *Journal of Monetary Economics* 58(1), pp. 17–34.
- Gilchrist, S., J. W. Sim, and E. Zakrajsek (2014). “Uncertainty, Financial Frictions, and Investment Dynamics”. *National Bureau of Economic Research WP 20038*.
- Gürkaynak, R. S., B. Sack, and E. Swanson (2005). “The Sensitivity of Long Term Interest Rates to Economic News: Evidence and Implications for Macroeconomic Models”. *American Economic Review* 95(1), pp. 425–436.
- Ihrig, J., E. Klee, C. Li, M. Wei, and J. Kachovec (2018). “Expectations about the federal reserve’s balance sheet and the term structure of interest rates”. *International Journal of Central Banking*.
- Jackson, L.E., K.L. Kliesen, and M.T. Owyang (2019). “The Nonlinear Effects of Uncertainty Shocks”. *Studies in Nonlinear Dynamics and Econometrics* 14(4), 20190024.
- Jurado, K., S. C. Ludvigson, and S. Ng (2015). “Measuring Uncertainty”. *American Economic Review*, 105(3), pp. 1177–1216.
- Kiley, M.T. (2018). “Quantitative Easing and the "New Normal" in Monetary Policy”. *Manchester School, University of Manchester* 86(S1), pp. 21–49.
- Kilian, L. and L.T. Lewis (2011). “Does the Fed respond to oil price shocks?” *The Economic Journal* 121, pp. 1047–1072.

- Kiyotaki, N. and J. Moore (1997). “Credit Cycles”. *Journal of Political Economy* 105, pp. 211–248.
- Koop, G., M. Pesaran, and S. Potter (1996). “Impulse Response Analysis in Non-linear Multivariate Models”. *Journal of Econometrics* 74(1), pp. 119–148.
- Lanne, M. and H. Nyberg (2016). “Generalized Forecast Error Variance Decomposition for Linear and Nonlinear Multivariate Models”. *Oxford Bulletin of Economics and Statistics* 78(4), pp. 595–603.
- Leduc, S. and Z. Liu (2016). “Uncertainty shocks are aggregate demand shocks”. *Journal of Monetary Economics* 82(C), pp. 20–35.
- Leduc, S. and Z. Liu (2020). “The uncertainty channel of the coronavirus”. *FRBSF Economic Letter* 7, pp. 1–05.
- Lhuissier, S. and F. Tripier (2016). *Do Uncertainty Shocks Always Matter for Business Cycles?* Working Papers 2016-19. CEPII research center.
- Lombardi, M.J. and F. Zhu (2018). “A Shadow Policy Rate to Calibrate U.S. Monetary Policy at the Zero Lower Bound”. *International Journal of Central Banking* 14(5), pp. 305–346.
- Lucas, R. E. (1976). “Econometric policy evaluation: A critique”. in *Carnegie-Rochester conference series on public policy*, Elsevier 1, pp. 19–46.
- Ludvigson, S. C., S. Ma, and S. Ng (2019). “Uncertainty and Business Cycles: Exogenous Impulse or Endogenous Response?” *American Economic Journal: Macroeconomics*, 13(4), pp. 369–410.
- Meaning, J. and F. Zhu (2011). “The Impact of Recent Central Bank Asset Purchase Programmes”. *Bis Quarterly Review* 1, pp. 73–83.
- Miescu, M. and R. Rossi (2021). “COVID-19-induced shocks and uncertainty”. *European Economic Review* 139, p. 103893.
- Muntaz, H. and T. Konstantinos (2020). “Dynamic effects of monetary policy shocks on macroeconomic volatility”. *Journal of Monetary Economics* 114, pp. 262–282.

- Muntaz, H. and A. Musso (2021). “The Evolving Impact of Global, Region-Specific, and Country-Specific Uncertainty”. *Journal of Business & Economic Statistics* 39.2, pp. 466–481.
- Nodari, G. (2014). “Financial Regulation Policy Uncertainty and Credit Spreads in the U.S.” *Journal of Macroeconomics* 41, pp. 122–132.
- Pastor, L. and P. Veronesi (2013). “Political uncertainty and risk premia”. *Journal of Financial Economics* 110(3), pp. 520–545.
- Peersman, G. (2011). “Macroeconomic Effects of Unconventional Monetary Policy in the Euro Area”. *ECB Working Paper No. 1397*.
- Pellegrino, G. (2021). “Uncertainty and monetary policy in the US: A journey into nonlinear territory”. *Economic Inquiry* 59.3, pp. 1106–1128.
- Popp, A. and F. Zhang (2016). “The macroeconomic effects of uncertainty shocks: The role of the financial channel”. *Journal of Economic Dynamics and Control* 69, pp. 319–349.
- Rossi, B. and T. Sekhposyan (2015). “Macroeconomic Uncertainty Indices Based on Nowcast and Forecast Error Distributions”. *American Economic Review Papers and Proceedings*, 105(5), pp. 650–655.
- Rudebusch, G. D. (2005). “Assessing the Lucas Critique in Monetary Policy Models”. *Journal of Money, Credit and Banking* 37(2), pp. 245–272.
- Sims, C.A. and T. Zha (2006). “Were there Regime Switches in U.S. Monetary Policy?” *American Economic Review* 96(1), pp. 54–81.
- Stokey, N.L. (2016). “Wait-and-see: Investment options under policy uncertainty”. *Review of Economic Dynamics* 21, pp. 246–265.
- Tenreyro, Silvana and Gregory Thwaites (2016). “Pushing on a String: US Monetary Policy Is Less Powerful in Recessions”. *American Economic Journal: Macroeconomics* 8.4, pp. 43–74.

- Teräsvirta, T. (1988). “Modelling Economic Relationships with Smooth Transition Regressions”. In: *Giles, D., Ullah, A., C. (Eds.), Handbook of Applied Economic Statistics, Dekker.*
- Teräsvirta, T. and Y. Yang (2014). “Linearity and Misspecification Tests for Vector Smooth Transition Regression Models”. CREATES, Aarhus University, mimeo.
- Weale, M. and T. Wieladek (2016). “What are the macroeconomic effects of asset purchases?” *Journal of Monetary Economics* 79, pp. 81–93.

Tables

Table 1: Generalized Forecast Error Variance Decomposition: contribution of uncertainty shocks across regimes

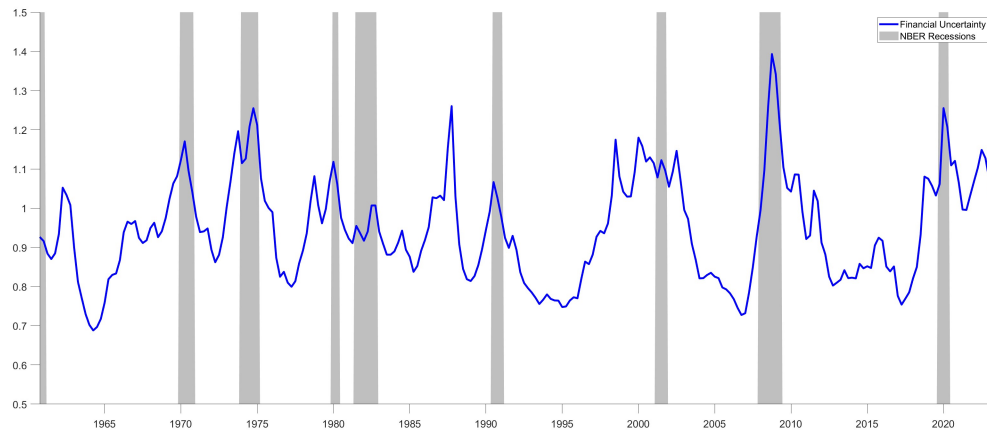
	FU			
	normal times		Recession	
	with Cons	with Inv	with Cons	with Inv
Infl	0.79	1.06	7.65	8.83
GDP	2.90	4.68	10.76	14.91
Cons	1.75	—	9.02	—
Inv	—	6.73	—	16.90
Unempl	6.34	8.80	31.08	36.48
FFR	2.93	3.78	15.71	18.62
BS	1.06	3.71	18.40	19.19
10-y TB	1.82	3.04	7.46	10.28
Uncertainty	92.81	93.49	98.00	98.41

	VXO			
	normal times		Recession	
	with Cons	with Inv	with Cons	with Inv
Infl	0.33	0.14	2.33	2.23
GDP	4.80	2.81	13.27	13.76
Cons	5.91	—	15.22	—
Inv	—	0.15	—	1.43
Unempl	12.76	5.97	31.23	31.50
FFR	2.40	1.48	7.63	7.33
BS	1.53	0.35	5.89	5.92
10-y TB	0.63	0.47	1.39	1.35
Uncertainty	57.04	55.96	57.09	61.08

Notes: The table reports the Generalized Forecast Error Variance Decomposition (GFEVD) at 12 quarters for uncertainty shocks proxied by: 1) the financial uncertainty indicator (FU) proposed by Ludvigson et al. (2019); and 2) by the VXO. The FEVD is estimated for 2 alternative models: column “with Cons” reports the GFEVD when the baseline specification is augmented by the consumption; column “with Inv” reports the ones when the baseline is augmented by the investments. The GFEVD is computed according to Lanne and Nyberg’s (2016) algorithm for a state-dependent 1-standard deviation shock to all variables. Each entry refers to the contribution of uncertainty shocks across regimes (normal times *versus* recessions) and for each endogenous variable, multiplied by 100. The variables indicated in the first column are (from the top to the bottom): the inflation rate (Infl), the output growth (GDP), the consumption (Cons), the investments (Inv), the unemployment rate (Unempl), the federal fund rate (FFR), the total assets of the Fed balance sheet (BS), the 10-year treasury bill (10y-TB) and the uncertainty.

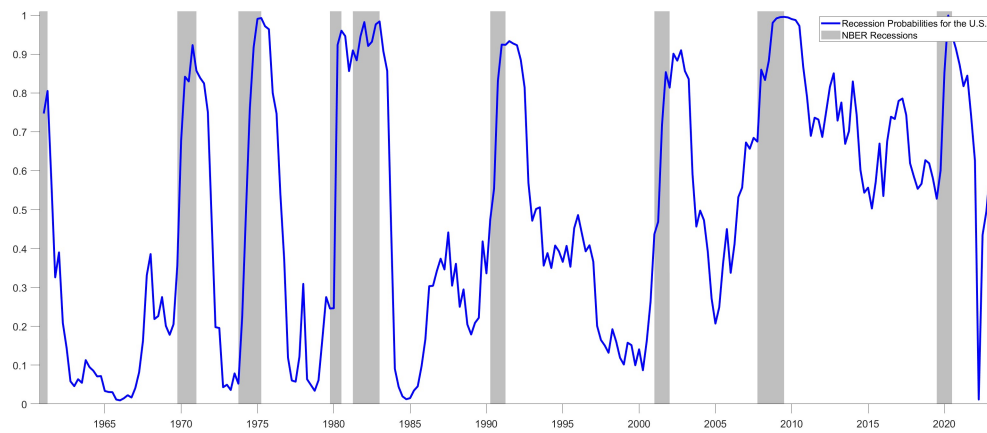
Figures

Figure 1: Uncertainty measures vs Business cycle



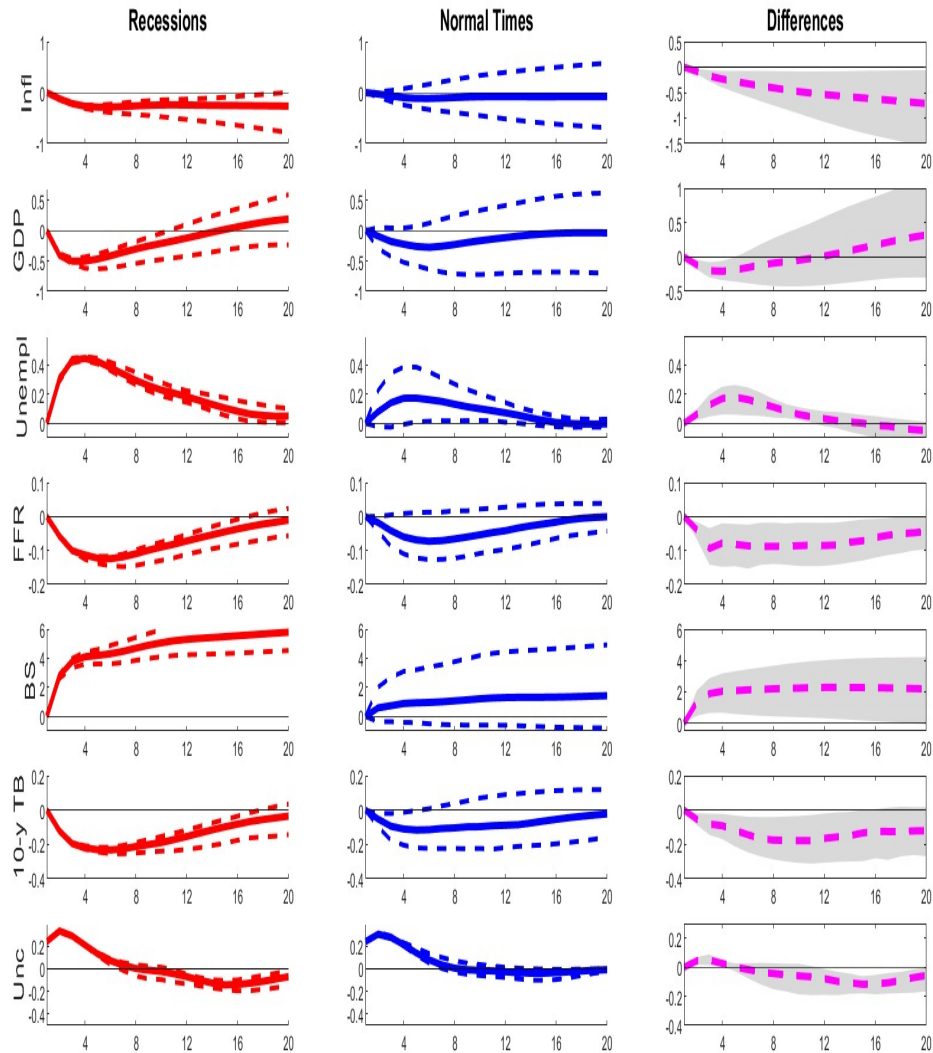
Notes: The shaded area indicate the U.S. recessionary phases (1960Q3-2023Q3), whereas the blue line refers to the uncertainty measure proposed by Ludvigson et al. (2019).

Figure 2: Transition function vs Business cycle



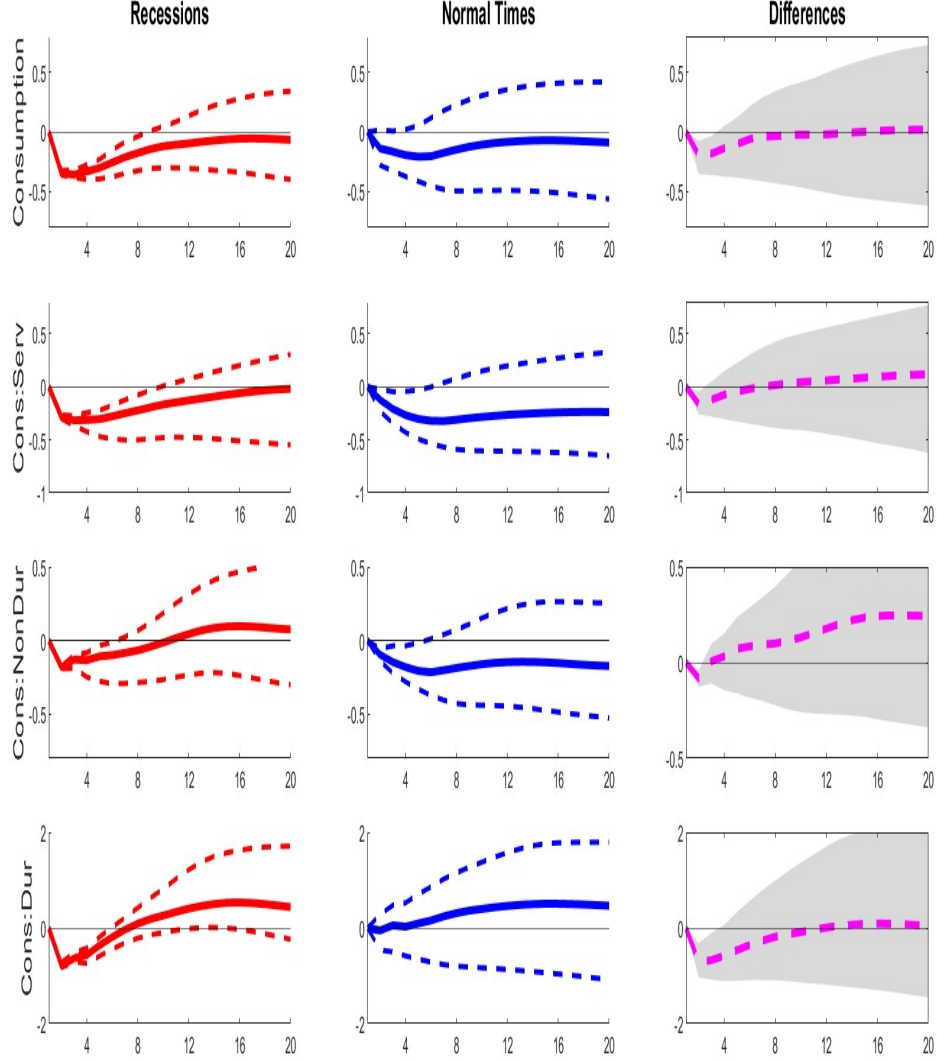
Notes: The shaded area indicate the U.S. recessionary phases (1960Q3-2023Q3), whereas the blue line refers to the backward looking 8-quarters moving average of GDP growth.

Figure 3: Generalized impulse responses (GIRFs) to financial uncertainty shocks



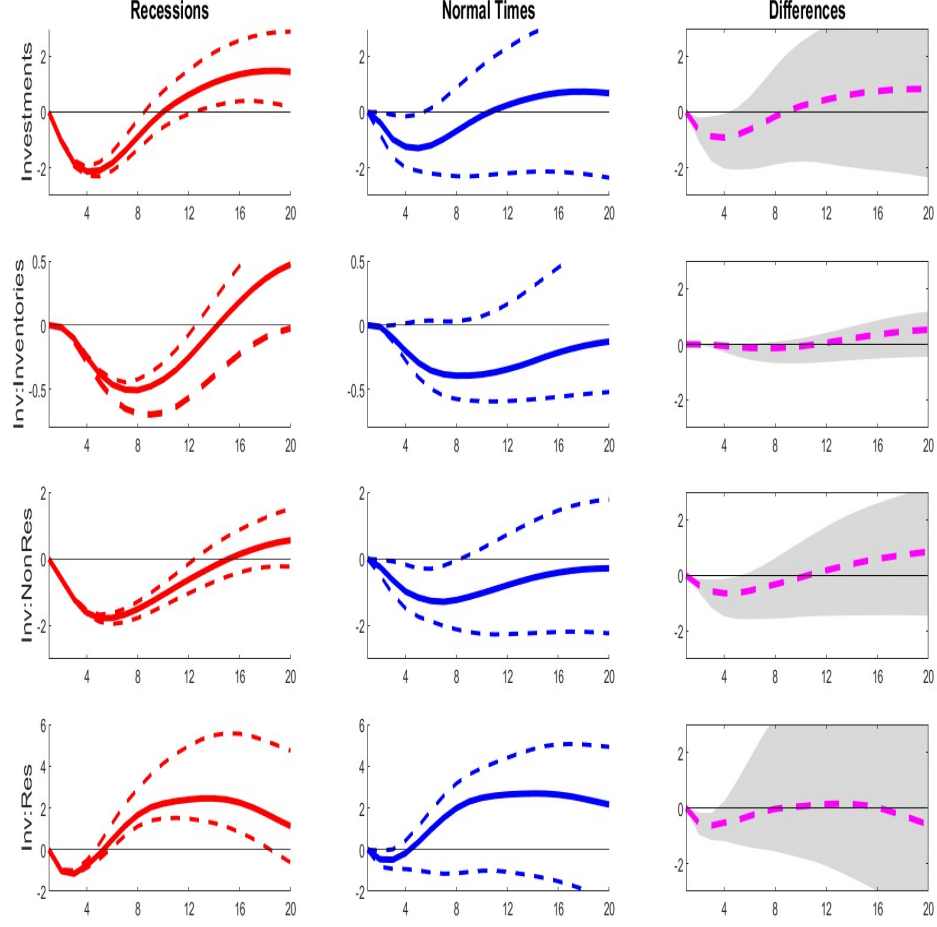
Notes: The figure reports the generalized impulse responses (GIRFs) to an unanticipated U.S. financial uncertainty shock in recessions (first column), in normal times (second columns), and the median realizations of the differences between generalized impulse responses in recessions and normal times (third column). Uncertainty proxied by the Ludvigson et al. (2019). The red and blue lines denote the median GIRFs in recessions and in normal times, respectively. The magenta lines refer to the median of the difference realizations between the two states of the world. Shaded bands denote confidence intervals at 68% levels. The variables are expressed in percent deviations with respect to their steady-state. The horizontal axis identifies quarters.

Figure 4: Transmission mechanism: Consumption



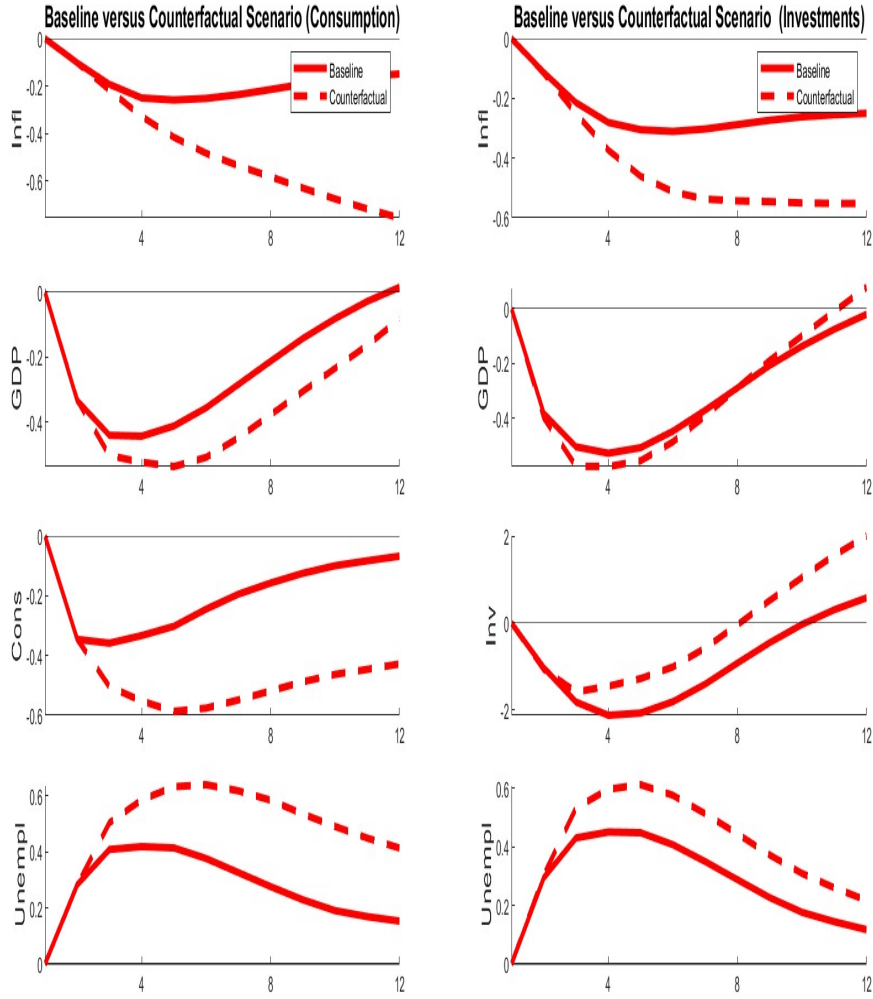
Notes: The figure reports the generalized impulse responses (GIRFs) to an unanticipated U.S. financial uncertainty shock for consumption (row 1) and some of its sub-components: consumption spending on services (row 2), non-durables (row 3), and durables (row 4). Uncertainty proxied by the Ludvigson et al. (2019)'s indicator. The red and blue lines denote the median GIRFs in recessions (first column) and in normal times (second column). The third column reports the median realizations of the differences between generalized impulse responses in recessions and normal times and the magenta lines refer to the median of the difference realizations between the two states of the world. Shaded bands denote confidence intervals at 68% levels. The variables are expressed in percent deviations with respect to their steady state. The horizontal axis identifies quarters.

Figure 5: Transmission mechanism: Investments



Notes: The figure reports the generalized impulse responses (GIRFs) to an unanticipated U.S. financial uncertainty shock for investments (row 1) and some of its sub-components: inventories (row 2), non-residential (row 3), and residential investment (row 4). Uncertainty proxied by the Ludvigson et al. (2019)'s indicator. The red and blue lines denote the median GIRFs in recessions (first column) and in normal times (second column). The third column reports the median realizations of the differences between generalized impulse responses in recessions and normal times and the magenta lines refer to the median of the difference realizations between the two states of the world. Shaded bands denote confidence intervals at 68% levels. The variables are expressed in percent deviations with respect to their steady state. The horizontal axis identifies quarters.

Figure 6: Generalized Impulse Responses between with/without balance sheet channel



Notes: Both columns report the Generalised IRFs (median) in recessions from two scenarios: from our baseline specification (the red lines) and from the counterfactual one in which the total assets of the Fed BS channel is shut down (the red dotted lines). The left column reports the Girs when the baseline specification is augmented by consumption, while the right column when the baseline specification is augmented by investments. Each row reports the results for inflation, GDP, consumption, investments, and unemployment. Uncertainty proxied by the Ludvigson et al. (2019) measure. The variables are expressed in percent deviations with respect to their steady-state. The horizontal axis identifies quarters.

Appendix

This Appendix reports the estimation of the nonlinear VARs, the statistical evidence in favor of a nonlinear relationship between the endogenous variables included in the STVAR, and the computation of the Generalised Impulse Responses. In addition, we report the description of Robustness Checks implemented to assess the baseline results.

A Linearity Test

We test linearity versus nonlinearity applying the Teräsvirta and Yang (2014) test for Smooth Transition Vector AutoRegression (STVAR) with a single transition variable as in our framework. According to this test, we assume linearity under the null hypothesis versus a nonlinear model with a logistic smooth transition component under the alternative hypothesis. Let us assume a p-dimensional 2-regime approximate logistic STVAR model:

$$\mathbf{X}_t = \boldsymbol{\Theta}'_o Y_t + \sum_{i=1}^n \boldsymbol{\Theta}'_i \mathbf{Y}_t z_t^i + \varepsilon_t, \quad (5)$$

where \mathbf{X}_t is the $(p \times 1)$ vector of endogenous variables, $\mathbf{Y}_t = [\mathbf{X}_{t-1} \mid \dots \mid \mathbf{X}_{t-k}]$ is the $(k \times p+q)$ vector of exogenous variables which includes lagged variables (k) and a vector of constants. The transition variable is z_t , while $\boldsymbol{\Theta}_0$ and $\boldsymbol{\Theta}_i$ are matrices of parameters. In our empirical assessment, we have $p=9$ as the number of endogenous variables, $q=1$ as a number of exogenous variables, and $k=5$ as a number of lags. Under the null hypothesis of linearity, we assume $\mathbf{H}_o : \boldsymbol{\Theta}_i = 0 \forall i$. The Teräsvirta and Yang (2014) test features the following four steps:

- 1) We estimate the restricted model $(\mathbf{H}_o : \boldsymbol{\Theta}_i = 0 \forall i)$ by regressing \mathbf{X}_t on \mathbf{Y}_t . We collect the residual $\tilde{\mathbf{E}}$ calculating the matrix for the residual sum of squares $RSS_0 = \tilde{\mathbf{E}}' \tilde{\mathbf{E}}$.
- 2) We run an auxiliary regression of $\tilde{\mathbf{E}}$ on $(\mathbf{Y}_t, \mathbf{Z}_n)$ where the subscript n indicates

the n -order Taylor expansion of the transition function. We save the residuals $\tilde{\mathbf{\Xi}}$ computing the matrix for the residual sum of squares $RSS_1 = \tilde{\mathbf{\Xi}}' \tilde{\mathbf{\Xi}}$.

3) We compute the test-statistic:

$$LM = Ttr[RS S_0^{-1}(RS S_0 - RSS_1)] = T[p - tr(RS S_0^{-1} RSS_1)]. \quad (6)$$

Under the null hypothesis, the test statistic is distributed as a χ^2 with a number of degree of freedoms equals the number of restrictions, $p(kp+q)$. We compute two LM-type linearity tests fixing the value of the n -order of the Taylor expansion equal to $n = 1$ and $n = 3$ (as proposed by Lukkonen, Saikkonen, and Teräsvirta, 1988). In our estimation, LM=174 and LM=414 when $n = 1$ and $n = 3$, respectively. The corresponding p-value in both tests is zero. In other words, our model presents nonlinear dynamics.

B Estimation of the Non-linear VARs

Our STVAR model (1)-(4) is estimated via maximum likelihood. The log - likelihood function is as follows:

$$\log L = \text{const} - \frac{1}{2} \sum_{t=1}^T \log |\mathbf{\Omega}_t| - \frac{1}{2} \sum_{t=1}^T \varepsilon_t' \mathbf{\Omega}_t^{-1} \varepsilon_t, \quad (\text{B.1})$$

where the vector of residuals $\varepsilon_t = X_t - (1 - F(z_t))\Pi_{NT}X_{t-1} - F(z_t)\Pi_R X_{t-1}$. Our purpose is to estimate the parameters $\Psi = \{\Omega_R, \Omega_{NT}, \Pi_R(L), \Pi_{NT}(L)\}$, where $\Pi_j(L) = [\Pi_{j,1}, \dots, \Pi_{j,p}]$, $j \in \{R, NT\}$.

Due to the high nonlinearity of the model, its estimation is problematic using standard optimization procedures. Hence, as in Auerbach and Gorodnichenko (2012), we employ the procedure as described as follows.

Conditional on γ , Ω_R , Ω_{NT} , where γ is the slope parameter calibrated as described in Section 3, the model is linear in Π_R , Π_{NT} . Hence, for a given guess on γ , Ω_R , Ω_{NT} ,

the coefficients Π_R, Π_{NT} can be estimated by minimizing $\frac{1}{2} \sum_{t=1}^T \varepsilon_t' \Omega^{-1} \varepsilon_t$. Hence, we can re-write the regressors as below.

Let $\mathbf{W}_t = [F(z_t)\mathbf{X}_{t-1}(1 - F(z_t))\mathbf{X}_{t-1} \dots F(z_t)\mathbf{X}_{t-p}(1 - F(z_t))\mathbf{X}_{t-p}]$ be the extended vector of regressors, and $\mathbf{\Pi} = [\mathbf{\Pi}_R(L)\mathbf{\Pi}_{NT}(L)]$. Consequently, we can write $\varepsilon_t = \mathbf{X}_t - \mathbf{\Pi}\mathbf{W}_t'$. In this case, the objective function becomes:

$$\frac{1}{2} \sum_{t=1}^T (\mathbf{X}_t - \mathbf{\Pi}\mathbf{W}_t')' \Omega_t^{-1} (\mathbf{X}_t - \mathbf{\Pi}\mathbf{W}_t'). \quad (\text{B.2})$$

We can show that the first order condition with respect to $\mathbf{\Pi}$ is given by:

$$vec \mathbf{\Pi}' = \left(\sum_{t=1}^T [\Omega_t^{-1} \otimes \mathbf{W}_t' \mathbf{W}_t] \right)^{-1} vec \left(\sum_{t=1}^T \mathbf{W}_t' \mathbf{X}_t \Omega_t^{-1} \right). \quad (\text{B.3})$$

We iterate this procedure over different sets of values for $\{\Omega_R, \Omega_{NT}\}$ (conditional on a given value for γ). For each set of values, $\mathbf{\Pi}$ is obtained and the $logL$ (B.1) is calculated.

Due to the high nonlinearity of the model in its parameters, we might get several local optima. Then, it is recommended to try different starting values of γ . To guarantee positive definiteness of the matrices Ω_R and Ω_{NT} , we focus on the alternative vector of parameters $\Psi = \{\text{chol}(\Omega_R), \text{chol}(\Omega_{NT}), \mathbf{\Pi}_R(L), \mathbf{\Pi}_{NT}(L)\}$, where *chol* means the Cholesky decomposition.

We compute the confidence intervals using a Markov Chain Monte Carlo (MCMC) algorithm developed by Chernozhukov and Hong (2003) (CH hereafter). This methodology gives us both a global optimum and densities for the parameter estimates.

We implement the CH estimation via a Metropolis-Hastings algorithm. Given a starting value Ψ^0 , the procedure constructs chains of length N of the parameters of the estimated model following two steps:

Step 1: Draw a candidate vector of parameter values $\Theta^{(n)} = \Psi^{(n)} + \psi^{(n)}$ for the chain's $n + 1$ state, where $\Psi^{(n)}$ is the current state and $\psi^{(n)}$ is a vector of i.i.d.

shocks drawn from $N(0, \mathbf{\Omega}_{\Psi})$, and $\mathbf{\Omega}_{\Psi}$ is a diagonal matrix.

Step 2: Set the $n + 1$ state of the chain $\Psi^{(n+1)} = \Theta^{(n)}$ with

$\min\{1, L(\Theta^{(n)})/L(\Psi^{(n)})\}$, where $L(\Theta^{(n)})$ is the value of the likelihood function conditional on the candidate vector of parameter values, and $L(\Psi^{(n)})$ is the value of the likelihood function conditional on the current state of the chain. Otherwise, set $\Psi^{(n+1)} = \Psi^{(n)}$.

The starting value $\Theta^{(0)}$ is calculated using the second-order Taylor approximation of the model described from (1) to (4) in the Section 3, hence the model can be written as regressing \mathbf{X}_t , $\mathbf{X}_t z_t$, and $\mathbf{X}_t z_t^2$. We employ the residuals from this regression to fit the expression for the reduced-form time-varying variance-covariance matrix of the VAR (as explained in the main text) using maximum likelihood to estimate $\mathbf{\Omega}_R$ and $\mathbf{\Omega}_{NT}$.

We can construct $\mathbf{\Omega}_t$, conditional on these estimates and given the calibration for γ . Conditional on $\mathbf{\Omega}_t$, we can compute the starting values for $\mathbf{\Pi}_R(L)$ and $\mathbf{\Pi}_{NT}(L)$ using equation (B.3).

Given the calibration for the initial (diagonal matrix) $\mathbf{\Omega}_{\Psi}$, a scale factor is adjusted to generate an acceptance rate close to 0.3, the typical value for these computational methods as pointed out by Canova (2007). The estimation accounts for $N = 50,000$ draws and we use the last 20% for inference.

As described by CH, $\Psi^* = \frac{1}{N} \sum_{t=1}^T \Psi^{(n)}$ is consistent estimate of Ψ under standard regularity assumptions on maximum likelihood estimators. The covariance matrix of Ψ is given by $V = \frac{1}{N} \sum_{t=1}^T (\Psi^{(n)} - \Psi^*)^2 = \text{var}(\Psi^{(n)})$, which is the variance of the estimates in the generated chain.

C Generalized Impulse Response Functions

The Impulse Response Functions for the STVAR model are computed following the approach introduced by Koop et al. (1996) which propose an algorithm to calculate the Generalized Impulse Response Functions (GIRFs). The implementation of their procedure is composed of the following steps.

- 1) We construct the set of all possible histories $\mathbf{\Lambda}$ of length $p = 12 : \{\lambda_i \in \mathbf{\Lambda}\}$, where $\mathbf{\Lambda}$ contain $T - p + 1$ histories λ_i and T is the sample size ($T=312$).
- 2) We separate the set of all recessionary histories from that of all normal time histories. We calculate the transition variable z_{λ_i} for each λ_i . If $z_{\lambda_i} \leq z^* = -0.9\%$, then $\lambda_i \in \mathbf{\Lambda}^R$, where $\mathbf{\Lambda}^R$ refers to all recessionary histories; if $z_{\lambda_i} > z^* = -0.9\%$, then $\lambda_i \in \mathbf{\Lambda}^{NT}$, where $\mathbf{\Lambda}^{NT}$ refers to all normal time histories.
- 3) We select at random one history λ_i from the set $\mathbf{\Lambda}^R$, taking $\hat{\mathbf{\Omega}}_{\lambda_i}$ obtained as follows:

$$\hat{\mathbf{\Omega}}_{\lambda_i} = F(z_{\lambda_i})\hat{\mathbf{\Omega}}_R + (1 - F(z_{\lambda_i}))\hat{\mathbf{\Omega}}_{NT}, \quad (\text{C.1})$$

where z_{λ_i} is the transition variable computed for the selected history λ_i . $\hat{\mathbf{\Omega}}_R$ and $\hat{\mathbf{\Omega}}_{NT}$ are calculated from the generated MCMC chain of the parameter values during the estimation step. As in Koop et al. (1996), we consider the distribution of parameters rather than their mean values to allow for parameter uncertainty.

- 4) We estimate the variance-covariance matrix $\hat{\mathbf{\Omega}}_{\lambda_i}$ using the Cholesky-decomposition:

$$\hat{\mathbf{\Omega}}_{\lambda_i} = \hat{\mathbf{C}}_{\lambda_i} \hat{\mathbf{C}}_{\lambda_i}', \quad (\text{C.2})$$

we orthogonalize the estimated residuals to get the structural shocks as:

$$\mathbf{e}_{\lambda_i}^{(j)} = \hat{\mathbf{C}}_{\lambda_i}^{-1} \hat{\varepsilon}. \quad (\text{C.3})$$

5) From \mathbf{e}_{λ_i} draw with replacement h nine-dimensional shocks and get the vector of bootstrapped shocks

$$\mathbf{e}_{\lambda_i}^{(j)*} = \{\mathbf{e}_{\lambda_{i,t}}^*, \mathbf{e}_{\lambda_{i,t+1}}^*, \dots, \mathbf{e}_{\lambda_{i,t+h}}^*\}, \quad (\text{C.4})$$

where h is the number of horizons for the IRFs we compute.

6) We form another set of bootstrapped shocks which are equal to (C.4) except for the k_{th} shock in $\mathbf{e}_{\lambda_i}^{(j)*}$ which is the shock we perturb by a δ amount. We call the vector of bootstrapped perturbed shocks as $\mathbf{e}_{\lambda_i}^{(j)\delta}$.

7) We transform back $\mathbf{e}_{\lambda_i}^{(j)*}$ and $\mathbf{e}_{\lambda_i}^{(j)\delta}$ as follows:

$$\hat{\varepsilon}_{\lambda_i}^{(j)*} = \hat{\mathbf{C}}_{\lambda_i} \mathbf{e}_{\lambda_i}^{(j)*}, \quad (\text{C.5})$$

and

$$\hat{\varepsilon}_{\lambda_i}^{(j)\delta} = \hat{\mathbf{C}}_{\lambda_i} \mathbf{e}_{\lambda_i}^{(j)\delta}. \quad (\text{C.6})$$

8) We use (C.5) and (C.6) to simulate the evolution of $\mathbf{X}_{\lambda_i}^{(j)*}$ and $\mathbf{X}_{\lambda_i}^{(j)\delta}$ and we construct the $GIRF^{(j)}(h, \delta, \lambda_i)$ as $\mathbf{X}_{\lambda_i}^{(j)*} - \mathbf{X}_{\lambda_i}^{(j)\delta}$.

9) Conditional on history λ_i , repeat for $j=1, \dots, B$ vectors of bootstrapped residuals and get $GIRF^1(h, \delta, \lambda_i)$, $GIRF^2(h, \delta, \lambda_i)$, ..., $GIRF^B(h, \delta, \lambda_i)$. We set $B=500$.

10) We calculate the GIRF conditional on history λ_i as:

$$\hat{GIRF}^{(i)}(h, \delta, \lambda_i) = B^{-1} \sum_{j=1}^B GIRF^{(i,j)}(h, \delta, \lambda_i). \quad (\text{C.7})$$

11) We repeat all previous steps for $i=1, \dots, 500$ histories belonging to the set of recessionary histories, $\lambda_i \in \Lambda^R$, and we get $\hat{GIRF}^{(1,R)}(h, \delta, \lambda_{1,R})$, $\hat{GIRF}^{(2,R)}(h, \delta, \lambda_{2,R})$, ..., $\hat{GIRF}^{(500,R)}(h, \delta, \lambda_{500,R})$ where the subscript R means that we are conditioning upon recessionary histories.

12) We take the average and we get $G\hat{IRF}^{(R)}(h, \delta, \Lambda_R)$, which is the average GIRF under recessions.

13) We repeat all the previous steps from 3 to 12 for 500 histories belonging to the set of all normal times and we get $G\hat{IRF}^{(NT)}(h, \delta, \Lambda_{NT})$.

14) We compute the 68% confidence bands for the IR by picking up for each horizon of each state, the 16th and 84th percentile of the densities $G\hat{IRF}^{([1:500], R)}$ and $G\hat{IRF}^{([1:500], NT)}$.

D Robustness checks

We check the robustness of our findings against several perturbations of the baseline STVAR model. In particular, we focus on alternative i) calibration of smoothness parameters; ii) transition variable; iii) measures of uncertainty; iv) sample size; and v) specifications. Figure D.1 reports the median realizations of the differences between generalized impulse responses in recessions and normal times to an unanticipated financial uncertainty shock for inflation, GDP, and unemployment. Each row refers to an alternative specification of our baseline. For each specification, the figure shows the median of the difference from robustness checks (magenta lines) and its confidence intervals at 68% levels (shaded bands) against the median realizations of the differences from the baseline specification (cyan lines).

Smoothness parameters and transition variable. We calibrate the smoothness parameter to match the frequencies of the U.S. recessions obtained as identified by the NBER business cycle dates (15% in our sample). To check the sensitivity of our results to alternative calibrations of the smoothness parameter, we (re)calibrate γ to include in our sample a number of recessions ranging from 10% to 20%. The probability of 10% refers to the minimum amount of observations each regime should contain (Hansen, 1999). The calibration implies a value of $\gamma = 1.8$ or $\gamma = 2.6$ to

capture the probability of being in recessions equal to 10% and to 20%, respectively. Figure D.1 plots the results when the probability of being in recessions is equal to 20% (row 1) and 10% (row 2).

Furthermore, we rely on a transition function z_t defined as a standardized backward-looking eight moving average growth rate of GDP. We modify this specification choice by relying on a state indicator, z_t , which includes the six-term moving average of the quarterly growth rate of GDP. To do so, we re-calibrate the slope parameter $\gamma = 1.8$ and $\bar{z} = -0.9\%$ to match the 15% frequency of recessions in the sample as classified by the NBER.

Our estimated results from the above exercises turn out to be very similar to those obtained from the baseline.

Alternative measures of financial uncertainty. Our baseline VAR models the financial uncertainty indicator proposed by Ludvigson et al. (2019) as a measure of uncertainty. As already pointed out in Section 3, Ludvigson et al. (2019) construct the financial uncertainty indicator exploiting the different h-step ahead forecast errors. We re-estimate our baseline STVAR replacing the uncertainty proxy relied on forecasting horizon equals to 4 quarters (FU4q) instead of 1 quarter. The second row of Figure D.1 plots the robustness results for the recessionary and normal phases, respectively. The results show that qualitatively our baseline results are not affected by the horizon change. However, the forecast horizon of uncertainty measures quantitatively affects the macroeconomic effects of such shocks. Those results are in line with Ludvigson et al. (2019). They point out that when the forecast horizons of their measures increase, the macroeconomic effects of financial uncertainty increase too.

Another way of modeling uncertainty in the literature is through the VXO index, a forward-looking measure of implied volatility (i.e., Bloom, 2009; Caggiano et al., 2014; Leduc and Liu, 2016). In our sample, the correlation between the financial

uncertainty index (FU) and the VXO is 0.79.⁹ We replace the financial uncertainty with the VXO and re-run our estimates to check the robustness of our impulse responses. The magenta lines of Figure D.1 (row 3) refer to the GIRFs when the proxy for uncertainty is the VXO. The reaction of macroeconomic variables is short-lived and smaller than those found relying on the Ludvigson et al. (2019) index. Jurado et al. (2015) provide evidence that the effects of uncertainty shocks might depend on the source of the shock and its duration. Moreover, they point out that the duration of a financial uncertainty shock is more persistent than that of the VXO. Our findings are qualitatively in line with Ludvigson et al. (2019).

Sample size and Great Recession. The baseline STVAR model is estimated on the sample from 1960Q3 to 2023Q3. The results concerning the asymmetric effects of financial shocks conditional on the state of the economy may be too heavily driven by the inclusion of the Great Recession period in our sample. We investigate this issue by repeating our analysis on a sample excluding the Great Recession, 1960Q3 to 2007Q3. Our findings are qualitatively in line with those from our baseline specification. Of course, the reaction of the macroeconomic aggregates is weaker, but it confirms the nonlinearity effects of uncertainty shock on macroeconomic variables. Even excluding the Great Recession from the sample, the Fed reacts to the shock relying on a balance-sheet related monetary policy. Indeed, the total assets held in the Fed’s BS increase (0.5%), and such reaction is statistically significant.¹⁰ The reaction of the FFR is in line with Evans et al. (2015) who find that uncertainty is important in studying the monetary policy pattern in the pre-ZLB period. Comparing the GIRFs from this exercise and that of the baseline (Figure D.2-row 1) an interesting picture emerges. Indeed, as in Basu and Bundick (2016), the presence of the Great Recession magnifies the effects of uncertainty

⁹The VXO is employed instead of the VIX since the VIX is available from 1990. The VXO is from 1985:I, the standard deviation of stock market returns as in Bloom (2009). From 1986:I the VXO is from the Chicago Board of Options Exchange (CBOE).

¹⁰For the sake of brevity, we do not report the results in Figure D.2, but they are available upon request).

shocks on macroeconomic variables.

Monetary policy indicators. In our baseline we proxy the monetary policy reaction relying on the FFR, the total assets of the Fed BS, and the long-term interest rate.¹¹ Another way to take into account the overall stance of monetary policy is relying on a shadow short rate (SSR), which tracks the effective federal funds rate very closely before the crisis, but can take a negative value once the ZLB is at work. Lombardi and Zhu (2018) constructs an SSR measure based on the dynamic-factor model. They extract factors explain co-movements of several variables linked to conventional and unconventional monetary policy tools (interest rate, monetary policy aggregates, assets, and liabilities of the Central Bank balance sheet) employed by the Fed, as proxies for the overall monetary policy stance. Such shadow rates describe the interest rate that may be observed in the absence of a ZLB environment. We run an exercise in which we replaced in X_t the monetary policy indicators (FFR, BS, and 10-year TB) with the SSR provided by Lombardi and Zhu (2018). We estimate the sample from 1970Q1 to 2016Q2, depending on the availability of the SSR time series.¹² Row 7 of Figure D.2 plots the results that are qualitatively in line with the baseline.

Furthermore, Gertler and Karadi (2015) finds that the one-year TB maturity is quite sensitive to monetary surprises and accounts for the term structure effects (i.e., forward guidance). Following Gertler and Karadi (2015), we proxy the short-term interest rate (FFR) with the one-year TB. Our baseline results remain unaffected by such exercise.

¹¹From December 2008, the interest rate hits the ZLB and the Federal Reserve starts to rely on unconventional monetary policy tools (i.e., large-scale asset purchases and forward guidance) to offset negative macroeconomic dynamics. An unconventional monetary policy is likely to affect the long-term interest rate. To take into account a such a monetary policy mechanism and to disentangle the effects of uncertainty shock on monetary policy tools, our specification includes proxies for standard and non-standard monetary policy, in addition to the long-term interest rate. Moreover, forward guidance affects the 10-year TB. For instance, Bernanke (2013) states: "Forward rate guidance affects longer-term interest rates primarily by influencing investors' expectations of future short-term interest rates." Since we include the 10-year TB in our specification, it should allow us accounting for quantitative easing and forward guidance.

¹²We thank Marco Lombardi and Feng Zhu for sharing the SSR series.

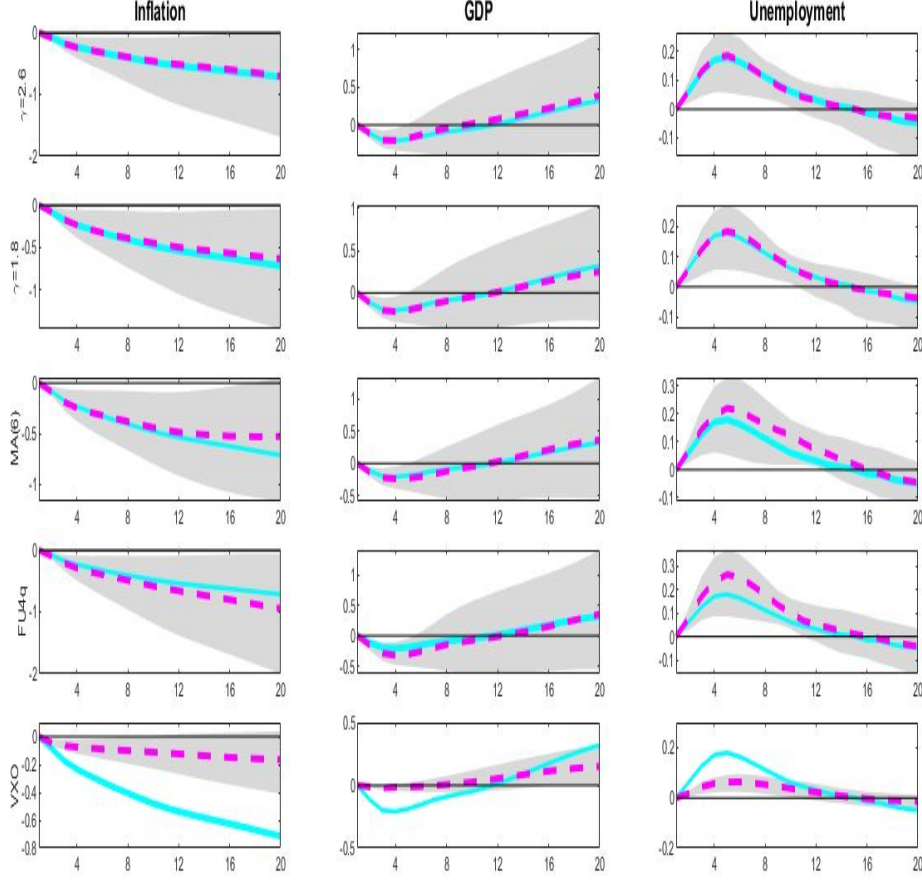
Factor STVAR. We identify the uncertainty shock relying on the factor model structure. As illustrated by Bernanke et al. (2005), we augment the Smooth Transition VAR, adding one factor that has the primary role of summarizing missing macro and financial variables in the baseline. The Factor Augmented Smooth Transition VAR (Factor STVAR) is estimated in a two-step procedure. In the first step, we extract one factor from the large macro and financial dataset (composed by 132 monthly time series) maintained by the Federal Reserve of St. Louis and introduced by McCracken and Ng (2016). Accordingly to the criterion of Bai and Ng (2002) and using the Principal Component Analysis (PCA), we extract seven common factors that maximize the explained variance of such time series (for technical details and data transformation, see Bernanke et al., 2005; McCracken and Ng, 2016). We employ the first factor which explains around 70% of the variability of the 10 most important macro and financial series. This factor is also highly correlated with the Chicago FED National Activity Index proposed by Stock and Watson (1999). In the second step, we include the factor in the set of endogenous variables in the first position to purge possible bias due to lack of information when we estimate the uncertainty shock as discussed in Bernanke et al. (2005) and in Caggiano et al. (2014) for the Factor Augmented STVAR model. As shown in Figure D.2 (row 4), our baseline results are unaffected.

Cholesky ordering. The identification of uncertainty shocks is achieved via the Cholesky assumption ordering last the uncertainty indicator in the vector X_t . On the one hand, in doing so we “purge” the uncertainty indicator in our VAR from the contemporaneous movements of our macroeconomic indicators, thereby sharpening the identification of uncertainty shocks. On the other hand, the macroeconomic variables are forced to have a zero non-impact reaction to uncertainty shocks. To check the extent to which our Cholesky identification assumption may affect the results, we re-estimate an alternative specification in which the uncertainty indicator is ordered first. This specification implies that the financial uncertainty shock is

predetermined to the other US macroeconomic variables. Figure D.2 (row 5) shows that our findings are robust when we change the order of the shock.

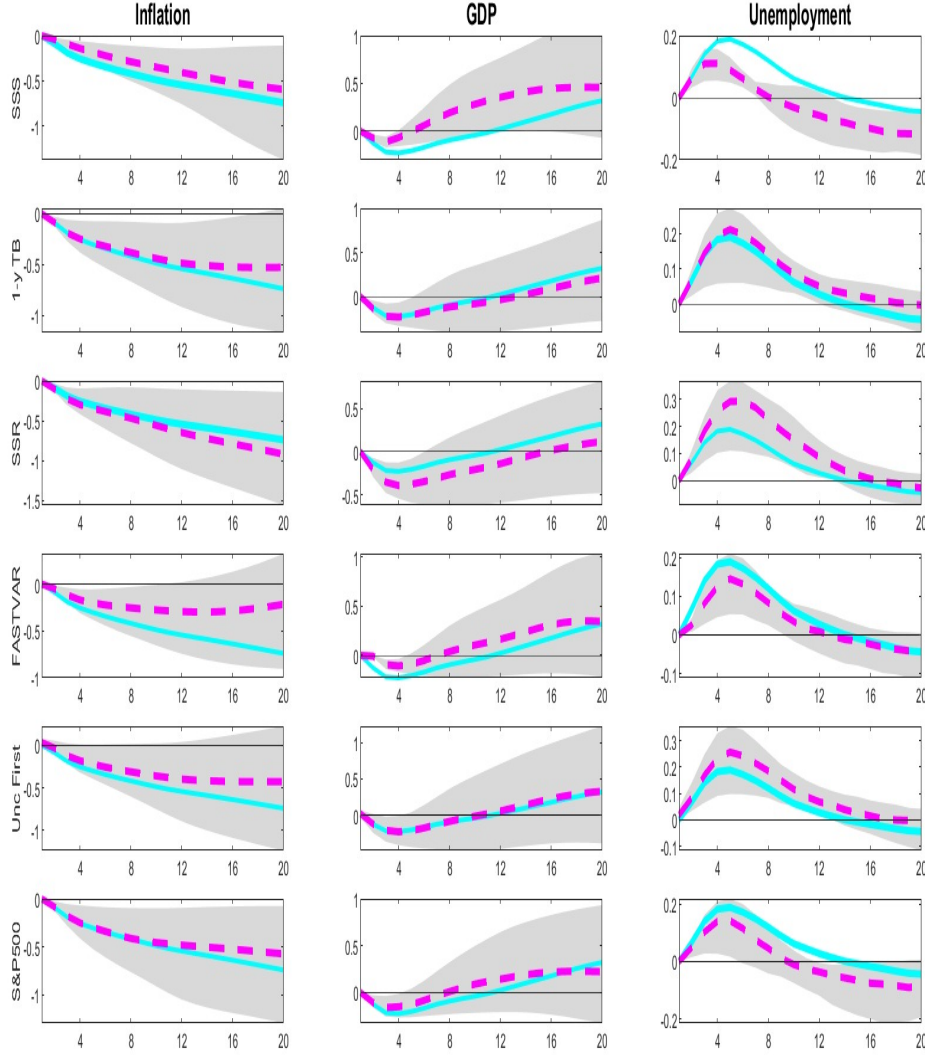
S&P 500. The baseline specification relies on the assumption that our VAR contains enough information to isolate a second-moment financial shock. To control for first-moment financial shocks, we add a stock market index (S&P500) to our vector of endogenous variables ordering it before the uncertainty indicator. According to Figure D.2 (row 6), our results are robust in this exercise.

Figure D.1: Robustness analysis



Notes: The figure reports the median realizations of the differences between generalized impulse responses in recessions and normal times to an uncertainty shock for inflation, GDP, and unemployment. Each row refers to an alternative specification of our baseline. For each specification the figure shows the median of the difference from the alternative specification (magenta lines) and its confidence intervals at 68% levels (shaded bands) against the median realizations of the differences from the baseline specification (cyan lines). From the top to the bottom: $\gamma = 2.6$ and $\gamma = 1.8$ refer to the probability of being in recessions equal to 20% and 10%, respectively (rows 1 and 2); row 3 reports the estimation when we rely on six realizations of the quarter-on-quarter GDP growth rate; alternative indicators of uncertainty shock such as quarterly version of the 12-step ahead forecast uncertainty index constructed by Ludvigson et al. (2019) (FU4q in row 4), and the VXO (row 5).

Figure D.2: Robustness analysis (cont'd)



Notes: The figure reports the median realizations of the differences between generalized impulse responses in recessions and normal times to an uncertainty shock for inflation, GDP, and unemployment. Each row refers to an alternative specification of our baseline. For each specification the figure shows the median of the difference from the alternative specification (magenta lines) and its confidence intervals at 68% levels (shaded bands) against the median realizations of the differences from the baseline specification (cyan lines). From the top to the bottom: in row 1 we focus on a small sample size excluding from our sample the Great Recession (1970Q3 – 2007Q3); row 2 plots the results when we substitute the FFR with the 1 year Treasury bond; SSR refers to the inclusion of the Shadow short rate (Lombardi and Zhu, 2018); in row 4 we include a factor in the vector X_t to improve the identification of the shock; row 5 reports when we order uncertainty first in the vector X_t , whereas row 6 when the S&P500 is added to X_t to exclude a first moment financial shock.

References

- Bai, J. and S. Ng (2002). “Determining the Number of Factors in Approximate Factor Models”. *Econometrica* 70.1, pp. 191–221.
- Basu, S. and B. Bundick (2016). “Endogenous volatility at the Zero Lower Bound: Implications for Stabilization Policy”. NBER Working Paper No. w21838.
- Bernanke, B.S. (2013). “Communication and Monetary Policy”. *Speech on November 19*.
- Bernanke, B.S., J. Boivin, and P. Elias (2005). “Measuring the Effects of Monetary Policy: A Factor-Augmented Vector Autoregressive (FAVAR) Approach”. *The Quarterly Journal of Economics* 120.1, pp. 387–422.
- Bloom, N. (2009). “The Impact of Uncertainty Shocks”. *Econometrica*, 77(3), pp. 623–685.
- Caggiano, G., E. Castelnuovo, and N. Groshenny (2014). “Uncertainty Shocks and Unemployment Dynamics: An Analysis of Post-WWII U.S. Recessions”. *Journal of Monetary Economics* 67, pp. 78–92.
- Evans, C., D.M. Fisher, F. Gourio, and S. Krane (2015). “Risk Management for Monetary Policy Near the Zero Lower Bound”. Federal Reserve, Bank of Chicago, WP 15-03.
- Gertler, M. and P. Karadi (2015). “Monetary Policy Surprises, Credit Costs, and Economic Activity”. *American Economic Journal: Macroeconomics* 7(1), pp. 44–76.
- Hansen, B. (1999). “Testing for Linearity”. *Journal of Economic Surveys* 13(5), pp. 551–576.
- Jurado, K., S. C. Ludvigson, and S. Ng (2015). “Measuring Uncertainty”. *American Economic Review*, 105(3), pp. 1177–1216.
- Leduc, S. and Z. Liu (2016). “Uncertainty shocks are aggregate demand shocks”. *Journal of Monetary Economics* 82(C), pp. 20–35.

- Lombardi, M.J. and F. Zhu (2018). “A Shadow Policy Rate to Calibrate U.S. Monetary Policy at the Zero Lower Bound”. *International Journal of Central Banking* 14(5), pp. 305–346.
- Ludvigson, S. C., S. Ma, and S. Ng (2019). “Uncertainty and Business Cycles: Exogenous Impulse or Endogenous Response?” *American Economic Journal: Macroeconomics*, 13(4), pp. 369–410.
- McCracken, M.W. and S. Ng (2016). “Fred-MD: A Monthly Database for Macroeconomic research”. *Journal of Business and Economic Statistics* 34(4), pp. 574–589.
- Stock, J. and M. Watson (1999). “Forecasting inflation”. *Journal of Monetary Economics* 44.2, pp. 293–335.

1. L. Colombo, H. Dawid, *Strategic Location Choice under Dynamic Oligopolistic Competition and Spillovers*, novembre 2013.
2. M. Bordignon, M. Gamalerio, G. Turati, *Decentralization, Vertical Fiscal Imbalance, and Political Selection*, novembre 2013.
3. M. Guerini, *Is the Friedman Rule Stabilizing? Some Unpleasant Results in a Heterogeneous Expectations Framework*, novembre 2013.
4. E. Brenna, C. Di Novi, *Is caring for elderly parents detrimental to women's mental health? The influence of the European North-South gradient*, novembre 2013.
5. F. Sobbrío, *Citizen-Editors' Endogenous Information Acquisition and News Accuracy*, novembre 2013.
6. P. Bingley, L. Cappellari, *Correlation of Brothers Earnings and Intergenerational Transmission*, novembre 2013.
7. T. Assenza, W. A. Brock, C. H. Hommes, *Animal Spirits, Heterogeneous Expectations and the Emergence of Booms and Busts*, dicembre 2013.
8. D. Parisi, *Is There Room for 'Fear' as a Human Passion in the Work by Adam Smith?*, gennaio 2014.
9. E. Brenna, F. Spandonaro, *Does federalism induce patients' mobility across regions? Evidence from the Italian experience*, febbraio 2014.
10. A. Monticini, F. Ravazzolo, *Forecasting the intraday market price of money*, febbraio 2014.
11. Tiziana Assenza, Jakob Grazzini, Cars Hommes, Domenico Massaro, *PQ Strategies in Monopolistic Competition: Some Insights from the Lab*, marzo 2014.
12. R. Davidson, A. Monticini, *Heteroskedasticity-and-Autocorrelation-Consistent Bootstrapping*, marzo 2014.
13. C. Lucifora, S. Moriconi, *Policy Myopia and Labour Market Institutions*, giugno 2014.
14. N. Pecora, A. Spelta, *Shareholding Network in the Euro Area Banking Market*, giugno 2014.
15. G. Mazzolini, *The economic consequences of accidents at work*, giugno 2014.
16. M. Ambrosanio, P. Balduzzi, M. Bordignon, *Economic crisis and fiscal federalism in Italy*, settembre 2014.
17. P. Bingley, L. Cappellari, K. Tatsiramos, *Family, Community and Long-Term Earnings Inequality*, ottobre 2014.
18. S. Frazzoni, M. L. Mancusi, Z. Rotondi, M. Sobrero, A. Vezzulli, *Innovation and export in SMEs: the role of relationship banking*, novembre 2014.
19. H. Gnutzmann, *Price Discrimination in Asymmetric Industries: Implications for Competition and Welfare*, novembre 2014.
20. A. Baglioni, A. Boitani, M. Bordignon, *Labor mobility and fiscal policy in a currency union*, novembre 2014.
21. C. Nielsen, *Rational Overconfidence and Social Security*, dicembre 2014.
22. M. Kurz, M. Motolese, G. Piccillo, H. Wu, *Monetary Policy with Diverse Private Expectations*, febbraio 2015.
23. S. Piccolo, P. Tedeschi, G. Ursino, *How Limiting Deceptive Practices Harms Consumers*, maggio 2015.
24. A.K.S. Chand, S. Currarini, G. Ursino, *Cheap Talk with Correlated Signals*, maggio 2015.
25. S. Piccolo, P. Tedeschi, G. Ursino, *Deceptive Advertising with Rational Buyers*, giugno 2015.

26. S. Piccolo, E. Tarantino, G. Ursino, *The Value of Transparency in Multidivisional Firms*, giugno 2015.
27. G. Ursino, *Supply Chain Control: a Theory of Vertical Integration*, giugno 2015.
28. I. Aldasoro, D. Delli Gatti, E. Faia, *Bank Networks: Contagion, Systemic Risk and Prudential Policy*, luglio 2015.
29. S. Moriconi, G. Peri, *Country-Specific Preferences and Employment Rates in Europe*, settembre 2015.
30. R. Crinò, L. Ogliari, *Financial Frictions, Product Quality, and International Trade*, settembre 2015.
31. J. Grazzini, A. Spelta, *An empirical analysis of the global input-output network and its evolution*, ottobre 2015.
32. L. Cappellari, A. Di Paolo, *Bilingual Schooling and Earnings: Evidence from a Language-in-Education Reform*, novembre 2015.
33. A. Litina, S. Moriconi, S. Zanjaj, *The Cultural Transmission of Environmental Preferences: Evidence from International Migration*, novembre 2015.
34. S. Moriconi, P. M. Picard, S. Zanjaj, *Commodity Taxation and Regulatory Competition*, novembre 2015.
35. M. Bordignon, V. Grembi, S. Piazza, *Who do you blame in local finance? An analysis of municipal financing in Italy*, dicembre 2015.
36. A. Spelta, *A unified view of systemic risk: detecting SIFIs and forecasting the financial cycle via EWSs*, gennaio 2016.
37. N. Pecora, A. Spelta, *Discovering SIFIs in interbank communities*, febbraio 2016.
38. M. Botta, L. Colombo, *Macroeconomic and Institutional Determinants of Capital Structure Decisions*, aprile 2016.
39. A. Gamba, G. Immordino, S. Piccolo, *Organized Crime and the Bright Side of Subversion of Law*, maggio 2016.
40. L. Corno, N. Hildebrandt, A. Voena, *Weather Shocks, Age of Marriage and the Direction of Marriage Payments*, maggio 2016.
41. A. Spelta, *Stock prices prediction via tensor decomposition and links forecast*, maggio 2016.
42. T. Assenza, D. Delli Gatti, J. Grazzini, G. Ricchiuti, *Heterogeneous Firms and International Trade: The role of productivity and financial fragility*, giugno 2016.
43. S. Moriconi, *Taxation, industry integration and production efficiency*, giugno 2016.
44. L. Fiorito, C. Orsi, *Survival Value and a Robust, Practical, Joyless Individualism: Thomas Nixon Carver, Social Justice, and Eugenics*, luglio 2016.
45. E. Cottini, P. Ghinetti, *Employment insecurity and employees' health in Denmark*, settembre 2016.
46. G. Cecere, N. Corrocher, M. L. Mancusi, *Financial constraints and public funding for eco-innovation: Empirical evidence on European SMEs*, settembre 2016.
47. E. Brenna, L. Gitto, *Financing elderly care in Italy and Europe. Is there a common vision?*, settembre 2016.
48. D. G. C. Britto, *Unemployment Insurance and the Duration of Employment: Theory and Evidence from a Regression Kink Design*, settembre 2016.
49. E. Caroli, C. Lucifora, D. Vigani, *Is there a Retirement-Health Care utilization puzzle? Evidence from SHARE data in Europe*, ottobre 2016.
50. G. Femminis, *From simple growth to numerical simulations: A primer in dynamic programming*, ottobre 2016.
51. C. Lucifora, M. Tonello, *Monitoring and sanctioning cheating at school: What works? Evidence from a national evaluation program*, ottobre 2016.

52. A. Baglioni, M. Esposito, *Modigliani-Miller Doesn't Hold in a "Bailinable" World: A New Capital Structure to Reduce the Banks' Funding Cost*, novembre 2016.
53. L. Cappellari, P. Castelnovo, D. Checchi, M. Leonardi, *Skilled or educated? Educational reforms, human capital and earnings*, novembre 2016.
54. D. Britto, S. Fiorin, *Corruption and Legislature Size: Evidence from Brazil*, dicembre 2016.
55. F. Andreoli, E. Peluso, *So close yet so unequal: Reconsidering spatial inequality in U.S. cities*, febbraio 2017.
56. E. Cottini, P. Ghinetti, *Is it the way you live or the job you have? Health effects of lifestyles and working conditions*, marzo 2017.
57. A. Albanese, L. Cappellari, M. Leonardi, *The Effects of Youth Labor Market Reforms: Evidence from Italian Apprenticeships*, maggio 2017.
58. S. Perdichizzi, *Estimating Fiscal multipliers in the Eurozone. A Nonlinear Panel Data Approach*, maggio 2017.
59. S. Perdichizzi, *The impact of ECBs conventional and unconventional monetary policies on European banking indexes returns*, maggio 2017.
60. E. Brenna, *Healthcare tax credits: financial help to taxpayers or support to higher income and better educated patients? Evidence from Italy*, giugno 2017.
61. G. Gokmen, T. Nannicini, M. G. Onorato, C. Papageorgiou, *Policies in Hard Times: Assessing the Impact of Financial Crises on Structural Reforms*, settembre 2017.
62. M. Tettamanzi, *E Many Pluribus Unum: A Behavioural Macro-Economic Agent Based Model*, novembre 2017.
63. A. Boitani, C. Punzo, *Banks' leverage behaviour in a two-agent New Keynesian model*, gennaio 2018.
64. M. Bertoni, G. Brunello, L. Cappellari, *Parents, Siblings and Schoolmates. The Effects of Family-School Interactions on Educational Achievement and Long-term Labor Market Outcomes*, gennaio 2018.
65. G. P. Barbetta, G. Sorrenti, G. Turati, *Multigrading and Child Achievement*, gennaio 2018.
66. S. Gagliarducci, M. G. Onorato, F. Sobbrío, G. Tabellini, *War of the Waves: Radio and Resistance During World War II*, febbraio 2018.
67. P. Bingley, L. Cappellari, *Workers, Firms and Life-Cycle Wage Dynamics*, marzo 2018.
68. A. Boitani, S. Perdichizzi, *Public Expenditure Multipliers in recessions. Evidence from the Eurozone*, marzo 2018.
69. M. Le Moglie, G. Turati, *Electoral Cycle Bias in the Media Coverage of Corruption News*, aprile 2018.
70. R. Davidson, A. Monticini, *Improvements in Bootstrap Inference*, aprile 2018.
71. R. Crinò, G. Immordino, S. Piccolo, *Fighting Mobile Crime*, giugno 2018.
72. R. Caminal, L. Cappellari, A. Di Paolo, *Linguistic skills and the intergenerational transmission of language*, agosto 2018.
73. E. Brenna, L. Gitto, *Adult education, the use of Information and Communication Technologies and the impact on quality of life: a case study*, settembre 2018.
74. M. Bordignon, Y. Deng, J. Huang, J. Yang, *Plunging into the Sea: Ideological Change, Institutional Environments and Private Entrepreneurship in China*, settembre 2018.
75. M. Bordignon, D. Xiang, L. Zhan, *Predicting the Effects of a Sugar Sweetened Beverage Tax in a Household Production Model*, settembre 2018.
76. C. Punzo, L. Rossi, *The Redistributive Effects of a Money-Financed Fiscal Stimulus*, gennaio 2019.
77. A. Baglioni, L. Colombo, P. Rossi, *Debt restructuring with multiple bank relationships*, gennaio 2019.

78. E. Cottini, P. Ghinetti, S. Moriconi, *Higher Education Supply, Neighbourhood effects and Economic Welfare*, febbraio 2019.
79. S. Della Lena, F. Panebianco, *Cultural Transmission with Incomplete Information: Parental Perceived Efficacy and Group Misrepresentation*, marzo 2019.
80. T. Colussi, Ingo E. Isphording, Nico Pestel, *Minority Salience and Political Extremism*, marzo 2019.
81. G. P. Barbetta, P. Canino, S. Cima, *Let's tweet again? The impact of social networks on literature achievement in high school students: Evidence from a randomized controlled trial*, maggio 2019.
82. Y. Brilli, C. Lucifora, A. Russo, M. Tonello, *Vaccination take-up and health: evidence from a flu vaccination program for the elderly*, giugno 2019.
83. C. Di Novi, M. Piacenza, S. Robone, G. Turati, *Does fiscal decentralization affect regional disparities in health? Quasi-experimental evidence from Italy*, luglio 2019.
84. L. Abrardi, L. Colombo, P. Tedeschi, *The Gains of Ignoring Risk: Insurance with Better Informed Principals*, luglio 2019.
85. A. Garnero, C. Lucifora, *Turning a Blind Eye? Compliance to Minimum Wages and Employment*, gennaio 2020.
86. M. Bordignon, M. Gamalerio, E. Slerca, G. Turati, *Stop invasion! The electoral tipping point in anti-immigrant voting*, marzo 2020.
87. D. Vigani, C. Lucifora, *Losing control? Unions' Representativeness, "Pirate" Collective Agreements and Wages*, marzo 2020.
88. S. L. Comi, E. Cottini, C. Lucifora, *The effect of retirement on social relationships: new evidence from SHARE*, maggio 2020.
89. A. Boitani, S. Perdichizzi, C. Punzo, *Nonlinearities and expenditure multipliers in the Eurozone*, giugno 2020.
90. R. A. Ramos, F. Bassi, D. Lang, *Bet against the trend and cash in profits*, ottobre 2020.
91. F. Bassi, *Chronic Excess Capacity and Unemployment Hysteresis in EU Countries. A Structural Approach*, ottobre 2020.
92. M. Bordignon, T. Colussi, *Dancing with the Populist. New Parties, Electoral Rules and Italian Municipal Elections*, ottobre 2020.
93. E. Cottini, C. Lucifora, G. Turati, D. Vigani, *Children Use of Emergency Care: Differences Between Natives and Migrants in Italy*, ottobre 2020.
94. B. Fanfani, *Tastes for Discrimination in Monopsonistic Labour Markets*, ottobre 2020.
95. B. Fanfani, *The Employment Effects of Collective Bargaining*, ottobre 2020.
96. O. Giuntella, J. Lonsky, F. Mazzonna, L. Stella, *Immigration Policy and Immigrants' Sleep. Evidence from DACA*, dicembre 2020.
97. E. Cottini, P. Ghinetti, E. Iossa, P. Sacco, *Stress and Incentives at Work*, gennaio 2021.
98. L. Pieroni, M. R. Roig, L. Salmasi, *Italy: immigration and the evolution of populism*, gennaio 2021.
99. L. Corno, E. La Ferrara, A. Voena, *Female Genital Cutting and the Slave Trade*, febbraio 2021.
100. O. Giuntella, L. Rotunno, L. Stella, *Trade Shocks, Fertility, and Marital Behavior*, marzo 2021.
101. P. Bingley, L. Cappellari, K. Tatsiramos, *Parental Assortative Mating and the Intergenerational Transmission of Human Capital*, aprile 2021.
102. F. Devicienti, B. Fanfani, *Firms' Margins of Adjustment to Wage Growth. The Case of Italian Collective Bargaining*, aprile 2021.
103. C. Lucifora, A. Russo, D. Vigani, *Does prescribing appropriateness reduce health expenditures? Main effects and unintended outcomes*, maggio 2021.

104. T. Colussi, *The Political Effects of Threats to the Nation: Evidence from the Cuban Missile Crisis*, giugno 2021.
105. M. Bordignon, N. Gatti, M. G. Onorato, *Getting closer or falling apart? Euro countries after the Euro crisis*, giugno 2021.
106. E. Battistin, M. Ovidi, *Rising Stars*, giugno 2021.
107. D. Checchi, A. Fenizia, C. Lucifora, *PUBLIC SECTOR JOBS: Working in the public sector in Europe and the US*, giugno 2021.
108. K. Aktas, G. Argentin, G. P. Barbetta, G. Barbieri, L. V. A. Colombo, *High School Choices by Immigrant Students in Italy: Evidence from Administrative Data*, luglio 2021.
109. B. Fanfani, C. Lucifora, D. Vigani, *Employer Association in Italy. Trends and Economic Outcomes*, luglio 2021.
110. F. Bassi, A. Boitani, *Monetary and macroprudential policy: The multiplier effects of cooperation*, settembre 2021.
111. S. Basiglio, A. Foresta, G. Turati, *Impatience and crime. Evidence from the NLSY97*, settembre 2021.
112. A. Baglioni, A. Monticini, D. Peel, *The Impact of the ECB Banking Supervision Announcements on the EU Stock Market*, novembre 2021.
113. E. Facchetti, L. Neri, M. Ovidi, *Should you Meet The Parents? The impact of information on non-test score attributes on school choice*, dicembre 2021.
114. M. Bratti, E. Cottini, P. Ghinetti, *Education, health and health-related behaviors: Evidence from higher education expansion*, febbraio 2022.
115. A. Boitani, C. Dragomirescu-Gaina, *News and narratives: A cointegration analysis of Russian economic policy uncertainty*, aprile 2022.
116. D. Delli Gatti, J. Grazzini, D. Massaro, F. Panebianco, *The Impact of Growth on the Transmission of Patience*, luglio 2022.
117. I. Torrini, C. Lucifora, A. Russo, *The Long-Term Effects of Hospitalization on Health Care Expenditures: An Empirical Analysis for the Young-Old Population*, luglio 2022.
118. T. Colussi, M. Romagnoli, E. Villar, *The Intended and Unintended Consequences of Taxing Waste*, settembre 2022.
119. D. Delli Gatti, G. Iannotta, *Behavioural credit cycles*, settembre 2022.
120. C. Punzo, G. Rivolta, *Money versus debt financed regime: Evidence from an estimated DSGE model*, novembre 2022.
121. M. Ovidi, *Parents Know Better: Sorting on Match Effects in Primary School*, novembre 2022.
122. L. Cappellari, D. Checchi, M. Ovidi, *The effects of schooling on cognitive skills: evidence from education expansions*, dicembre 2022.
123. M. Bertoni, G. Brunello, L. Cappellari, M. De Paola, *The long-run earnings effects of winning a mayoral election*, gennaio 2023.
124. M. Bordignon, F. Franzoni, M. Gamalerio, *Is Populism reversible? Evidence from Italian local elections during the pandemic*, gennaio 2023.
125. L. Colombo, G. Femminis, A. Pavan, *Subsidies to Technology Adoption when Firms' Information is Endogenous*, gennaio 2023.
126. L. Pieroni, M. Rosselló Roig, L. Salmasi, G. Turati, *Legal status and voluntary abortions by immigrants*, gennaio 2023.
127. F. Di Pace, G. Mangiante, R. Masolo, *Do firm expectations respond to Monetary Policy announcements?*, febbraio 2023.
128. R. Masolo, *Heterogeneity and the Equitable Rate of Interest*, febbraio 2023.
129. D. Delli Gatti, R. Terranova, E. M. Turco, *Mind the knowledge gap! The origins of declining business dynamism in a macro agent-based model*, ottobre 2023.

130. R. Davidson, A. Monticini, *Bootstrap Performance with Heteroskedasticity*, novembre 2023.
131. V. Colombo, A. Paccagnini, *Uncertainty and the Federal Reserve's Balance Sheet Monetary Policy*, febbraio 2024.