

Laurence, James; Sprong, Stefanie; McGinnity, Frances; Russell, Helen; Hingre, Garance

Research Report

Changing social and political attitudes in Ireland and Northern Ireland

Research Series, No. 170

Provided in Cooperation with:

The Economic and Social Research Institute (ESRI), Dublin

Suggested Citation: Laurence, James; Sprong, Stefanie; McGinnity, Frances; Russell, Helen; Hingre, Garance (2023) : Changing social and political attitudes in Ireland and Northern Ireland, Research Series, No. 170, The Economic and Social Research Institute (ESRI), Dublin, <https://doi.org/10.26504/rs170>

This Version is available at:

<https://hdl.handle.net/10419/298357>

Standard-Nutzungsbedingungen:

Die Dokumente auf EconStor dürfen zu eigenen wissenschaftlichen Zwecken und zum Privatgebrauch gespeichert und kopiert werden.

Sie dürfen die Dokumente nicht für öffentliche oder kommerzielle Zwecke vervielfältigen, öffentlich ausstellen, öffentlich zugänglich machen, vertreiben oder anderweitig nutzen.

Sofern die Verfasser die Dokumente unter Open-Content-Lizenzen (insbesondere CC-Lizenzen) zur Verfügung gestellt haben sollten, gelten abweichend von diesen Nutzungsbedingungen die in der dort genannten Lizenz gewährten Nutzungsrechte.

Terms of use:

Documents in EconStor may be saved and copied for your personal and scholarly purposes.

You are not to copy documents for public or commercial purposes, to exhibit the documents publicly, to make them publicly available on the internet, or to distribute or otherwise use the documents in public.

If the documents have been made available under an Open Content Licence (especially Creative Commons Licences), you may exercise further usage rights as specified in the indicated licence.



<https://creativecommons.org/licenses/by/4.0/>

SUPPLEMENTARY ONLINE APPENDIX

CHANGING SOCIAL AND POLITICAL ATTITUDES IN IRELAND AND NORTHERN IRELAND

James Laurence

Stefanie Sprong

Fran McGinnity

Helen Russell

Garance Hingre

November 2023

RESEARCH SERIES

NUMBER 170

Available to download from www.esri.ie

© The Economic and Social Research Institute
Whitaker Square, Sir John Rogerson's Quay, Dublin 2

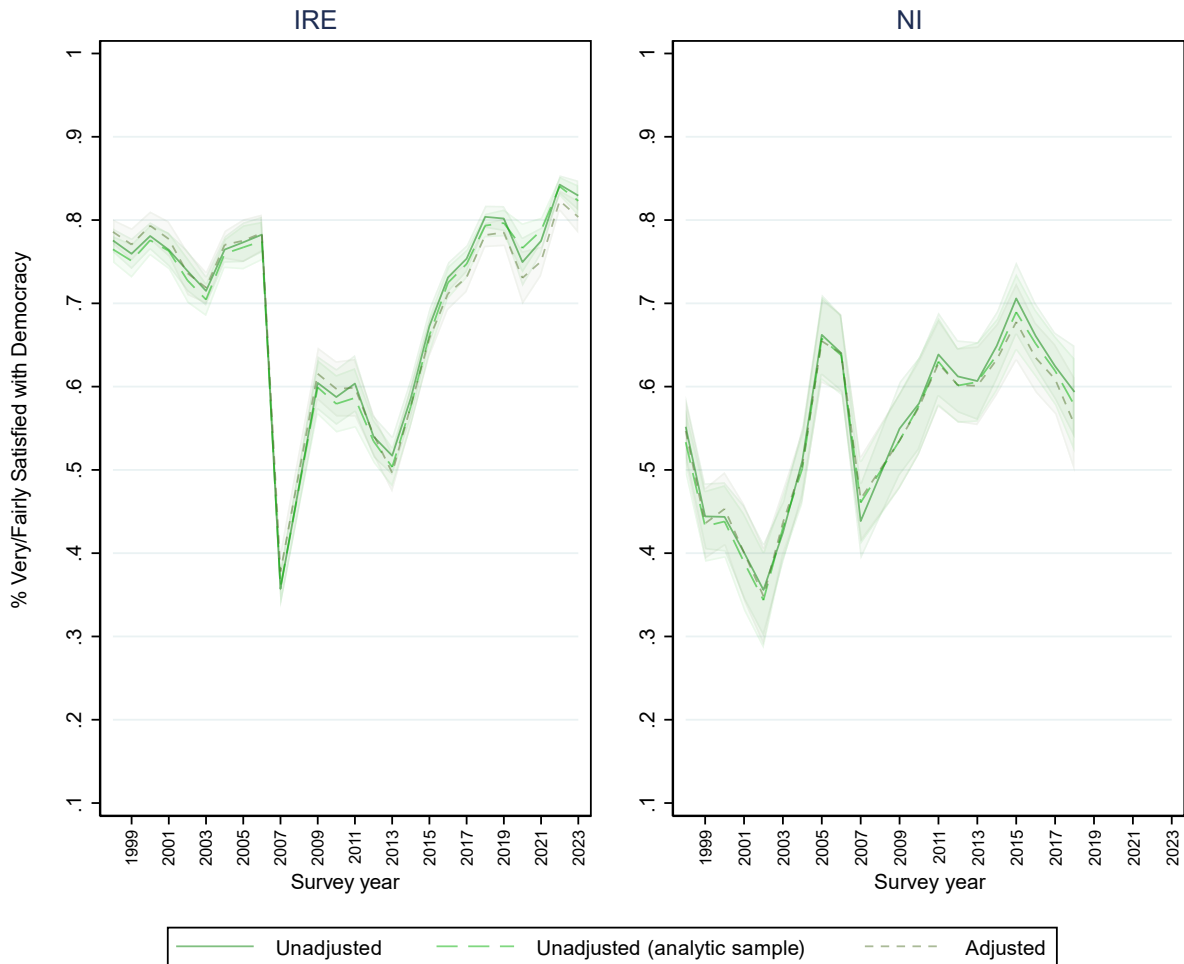
<https://doi.org/10.26504/rs170>



This Open Access work is licensed under a Creative Commons Attribution 4.0 International License (<https://creativecommons.org/licenses/by/4.0/>), which permits unrestricted use, distribution, and reproduction in any medium, provided the original work is properly credited.

SUPPLEMENTARY ONLINE APPENDIX FOR CHAPTER 3

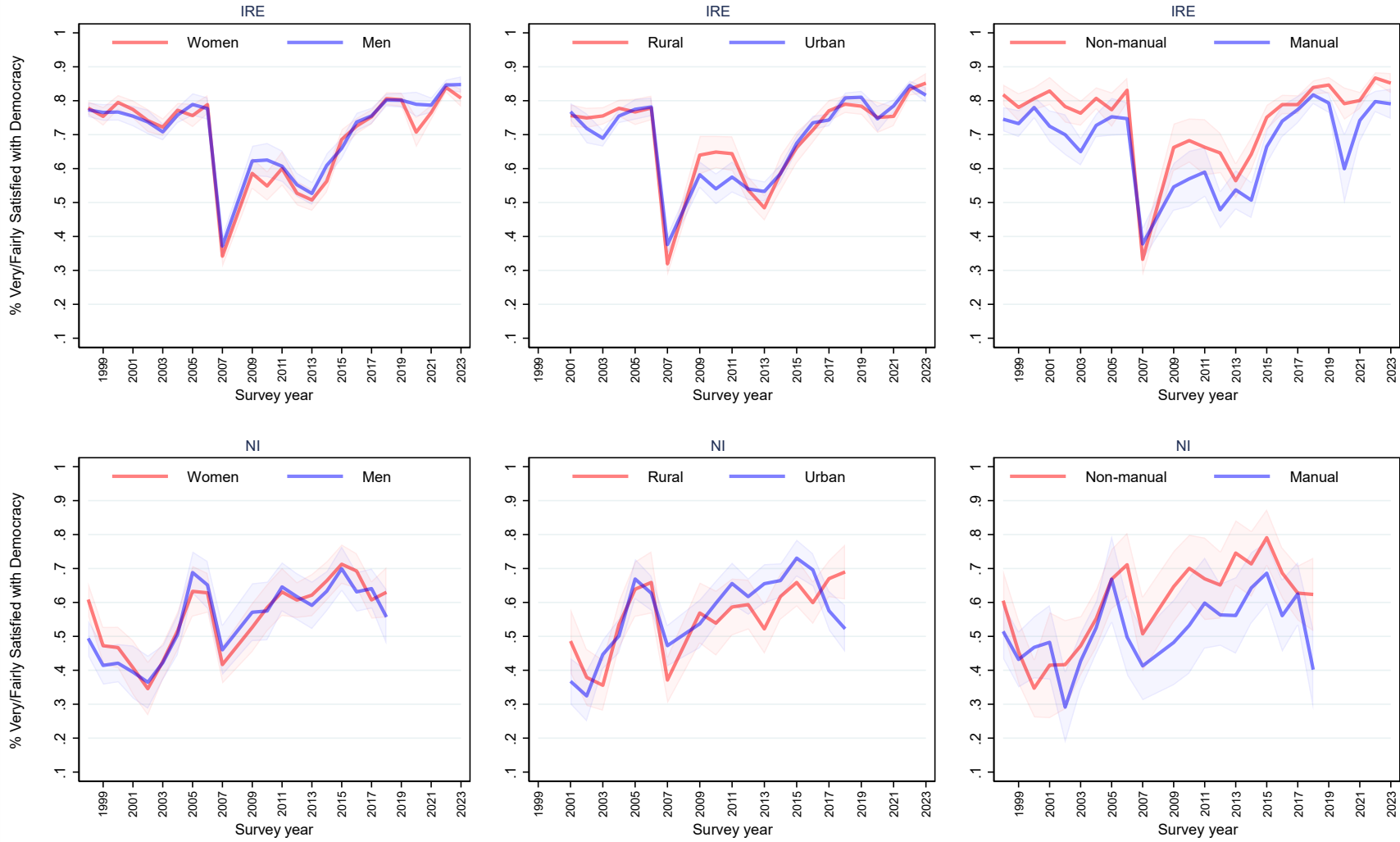
FIGURE S3.1 UNADJUSTED TREND, UNADJUSTED TREND RESTRICTED TO SAMPLE WITH NO MISSING, ADJUSTED TREND – SATISFACTION WITH DEMOCRACY



Data source: Eurobarometer

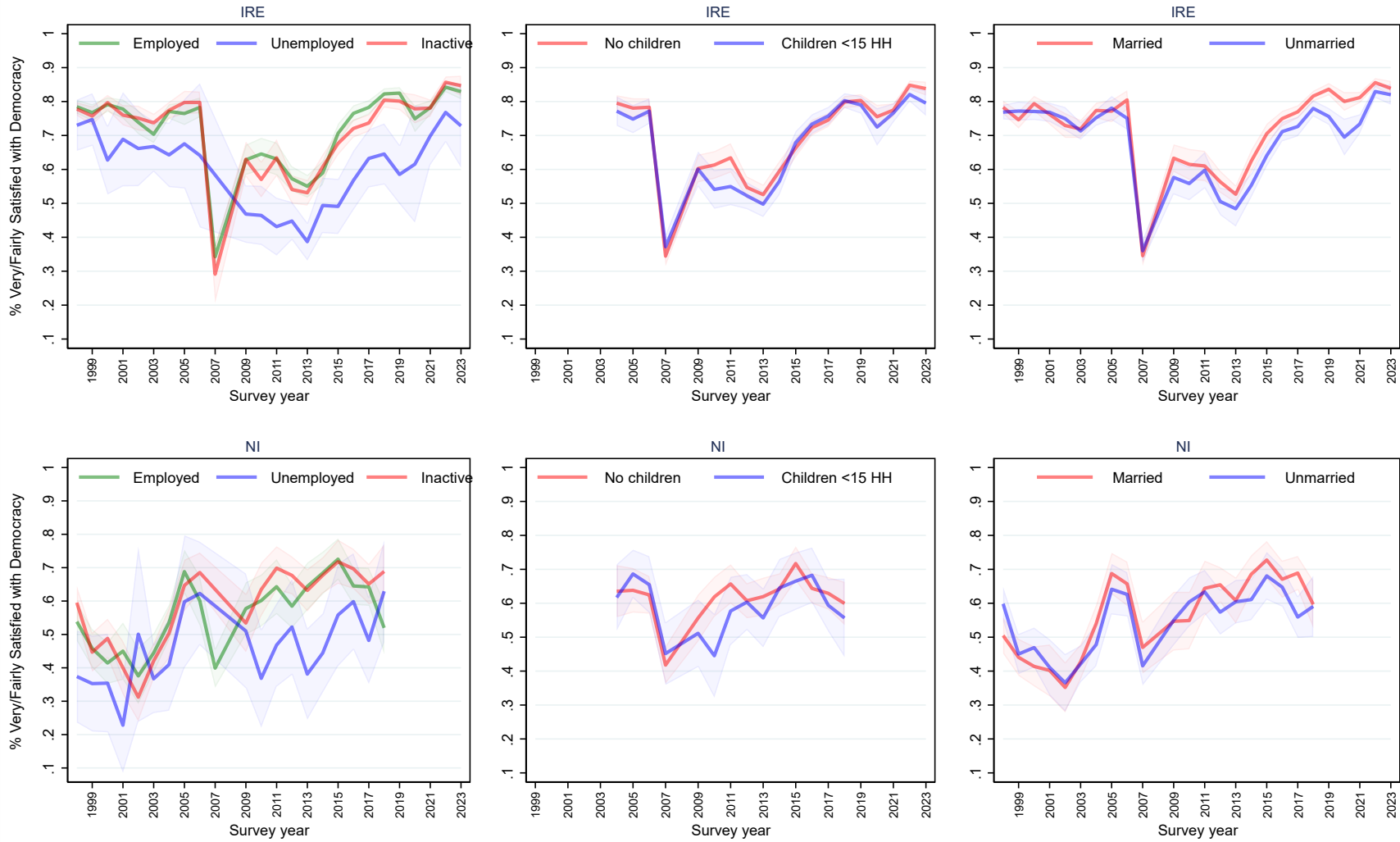
Notes: controlling for age, gender, marital status, occupational status, employment status, education

FIGURE S3.2 TRENDS IN SATISFACTION WITH DEMOCRACY BY: (A) GENDER, (B) URBAN/RURAL, (C) OCCUPATION



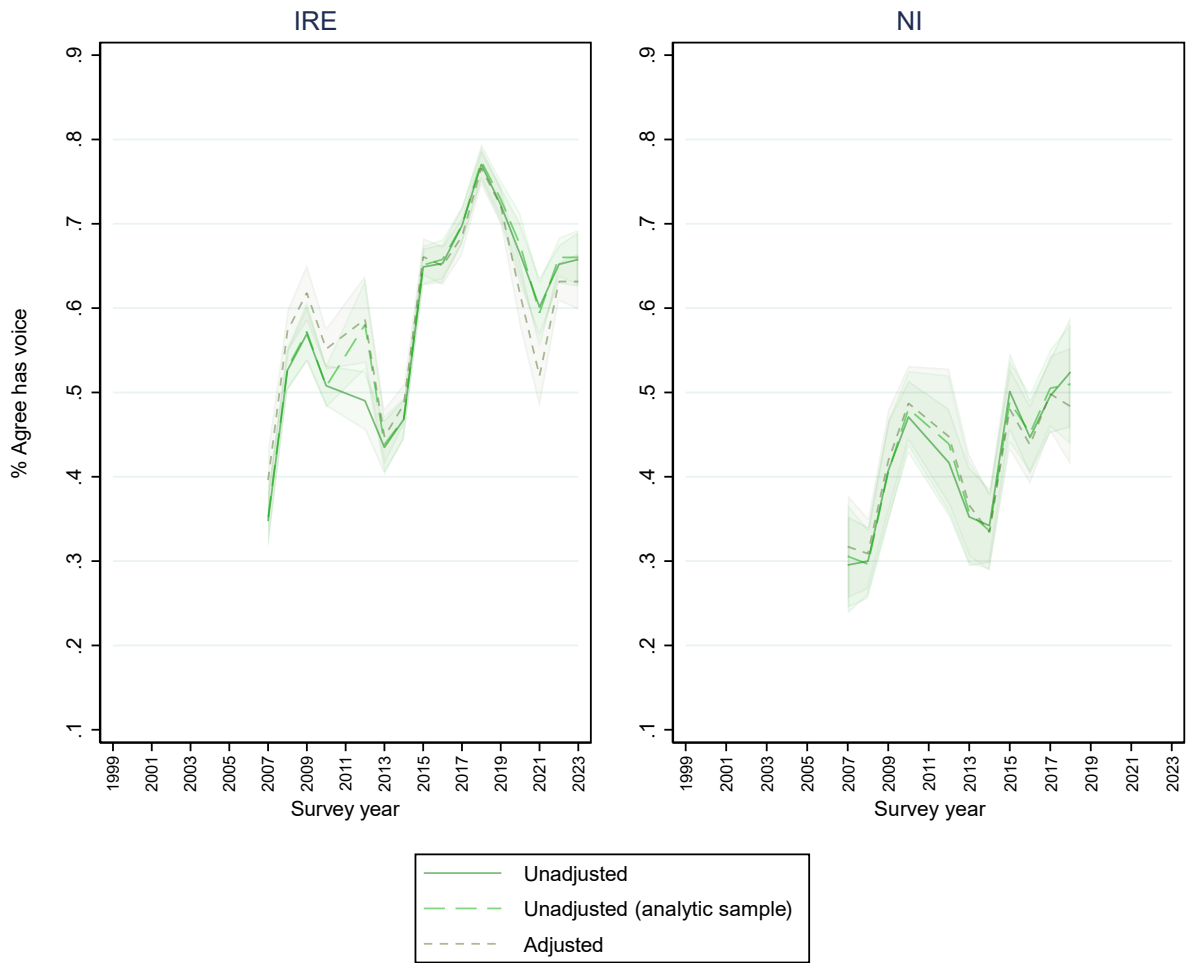
Data source: Eurobarometer

FIGURE S3.3 TRENDS IN SATISFACTION WITH DEMOCRACY BY: (A) EMPLOYMENT STATUS, (B) CHILDREN IN HH, (C) MARITAL STATUS



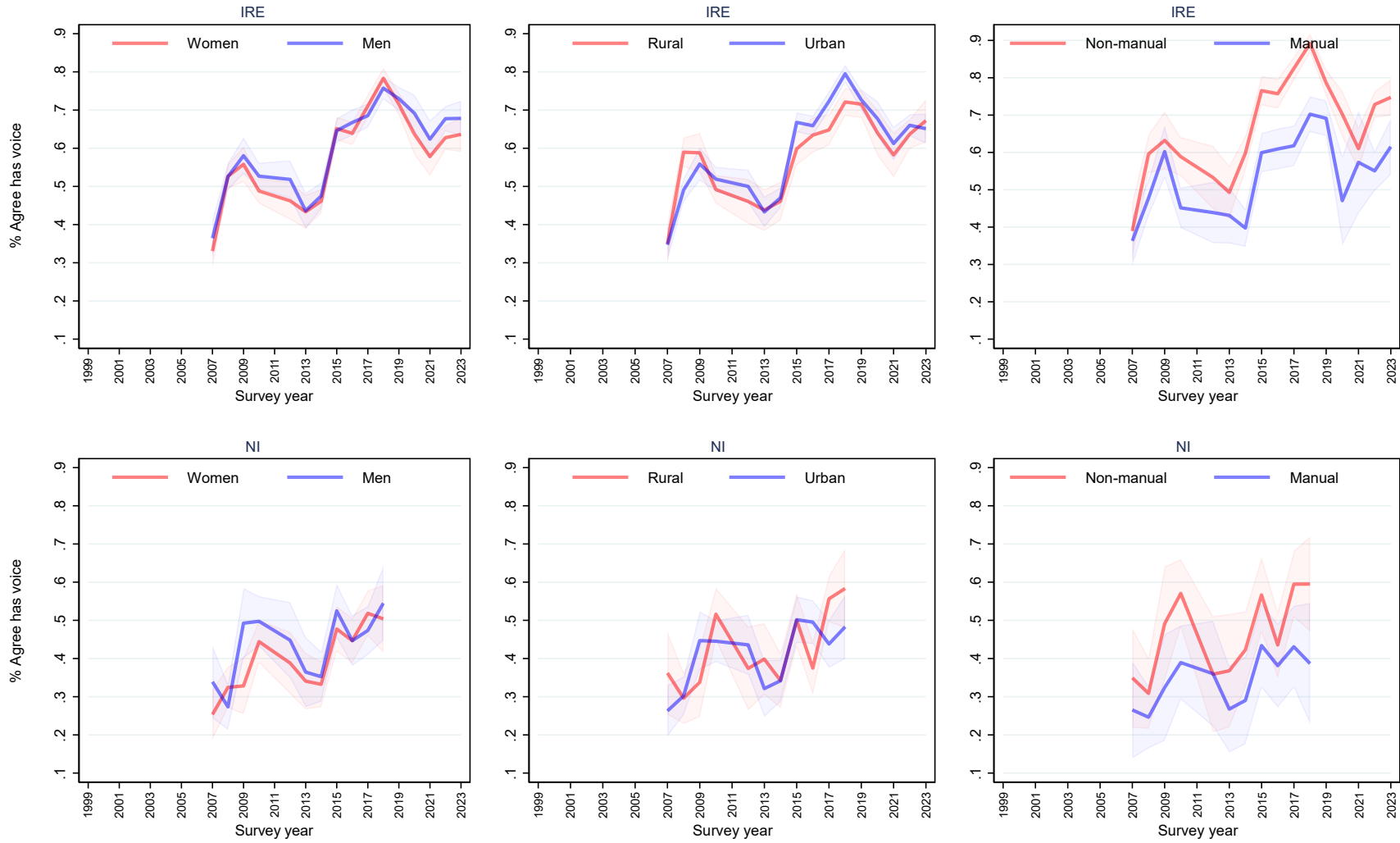
Data source: Eurobarometer

FIGURE S3.4 UNADJUSTED TREND, UNADJUSTED TREND RESTRICTED TO SAMPLE WITH NO MISSING, ADJUSTED TREND – POLITICAL EFFICACY



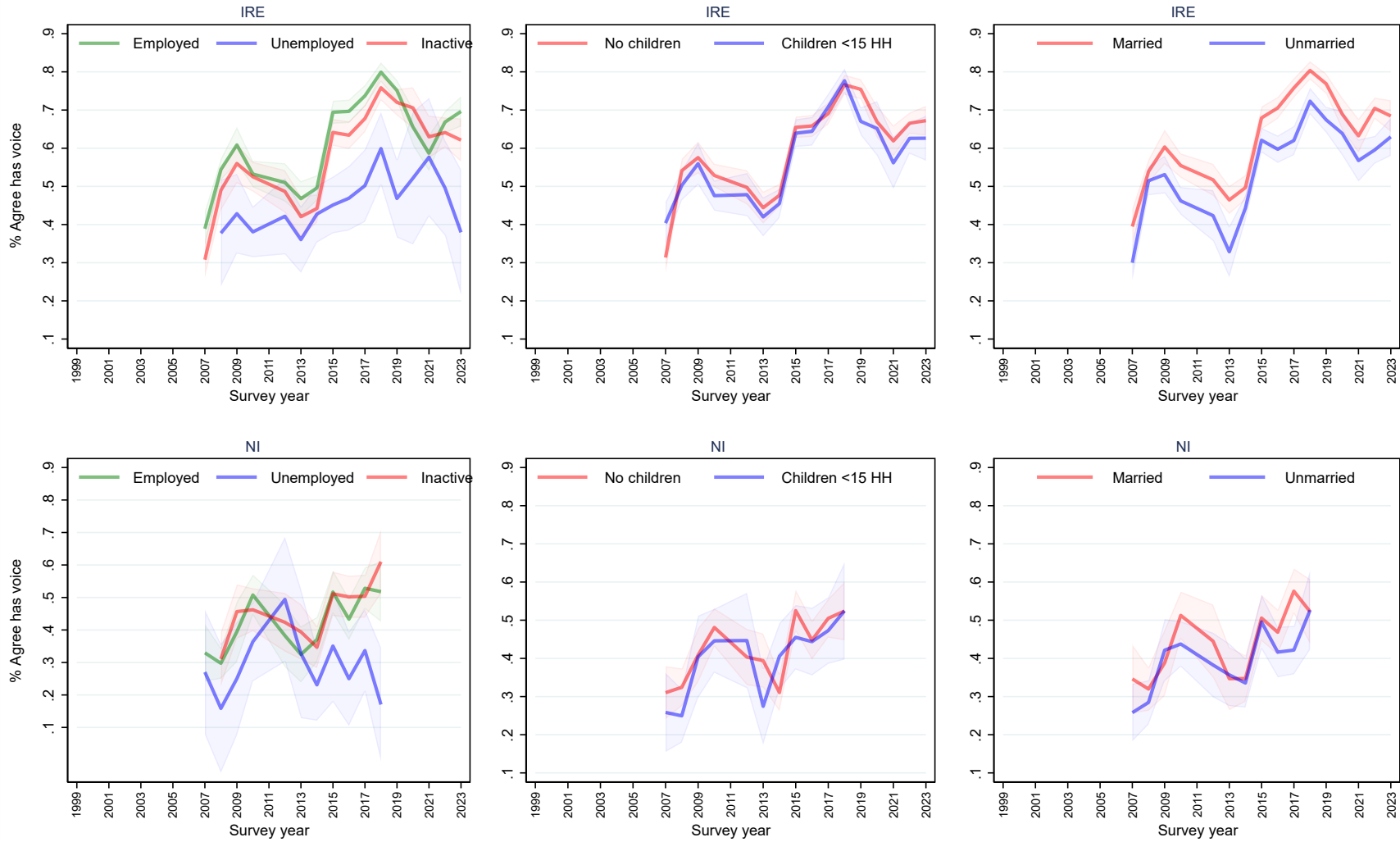
Data source: Eurobarometer

FIGURE S3.5 TRENDS IN POLITICAL EFFICACY BY: (A) GENDER, (B) URBAN/RURAL, (C) OCCUPATION



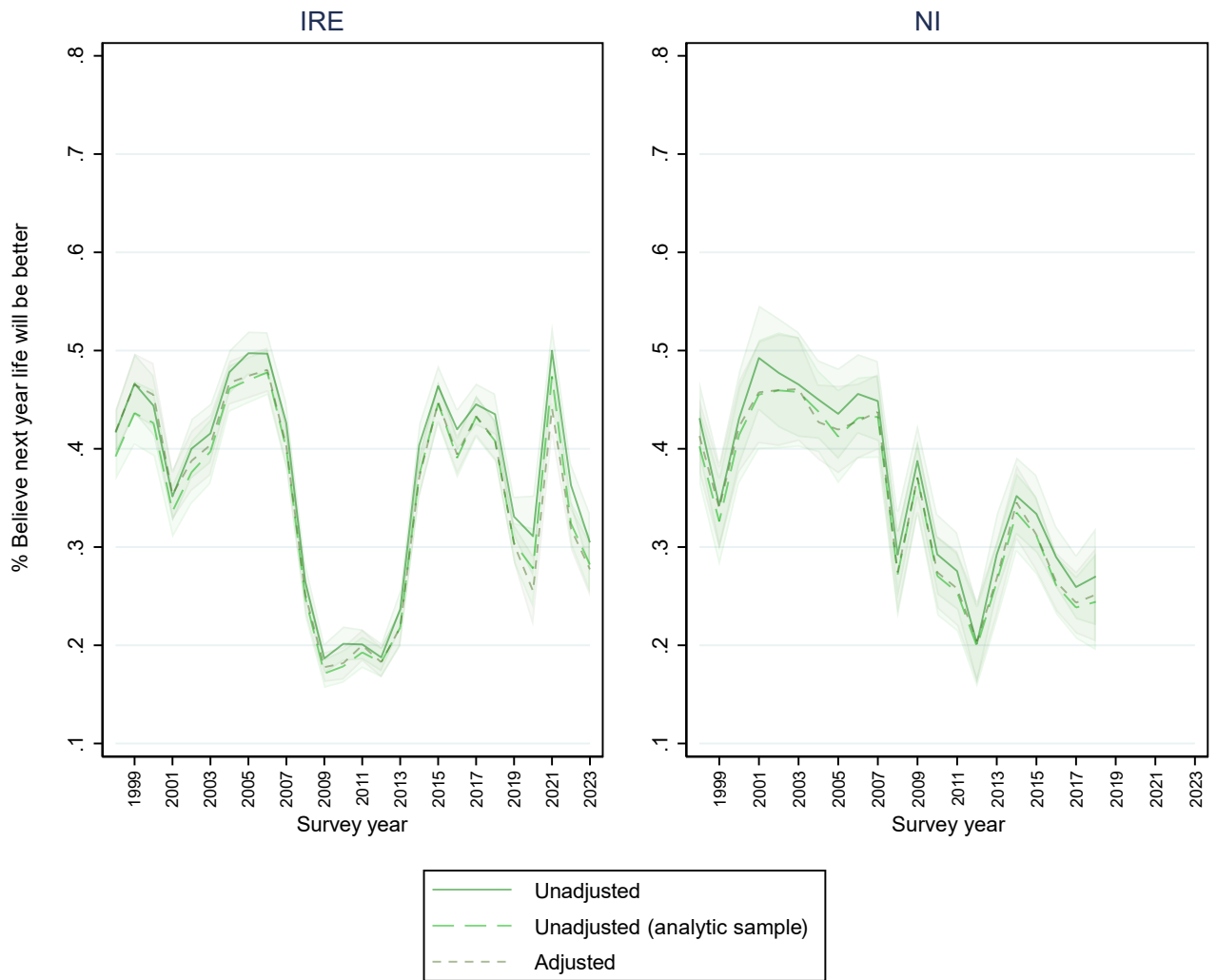
Data source: Eurobarometer

FIGURE S3.6 TRENDS IN POLITICAL EFFICACY BY: (A) EMPLOYMENT STATUS, (B) CHILDREN IN HH, (C) MARITAL STATUS



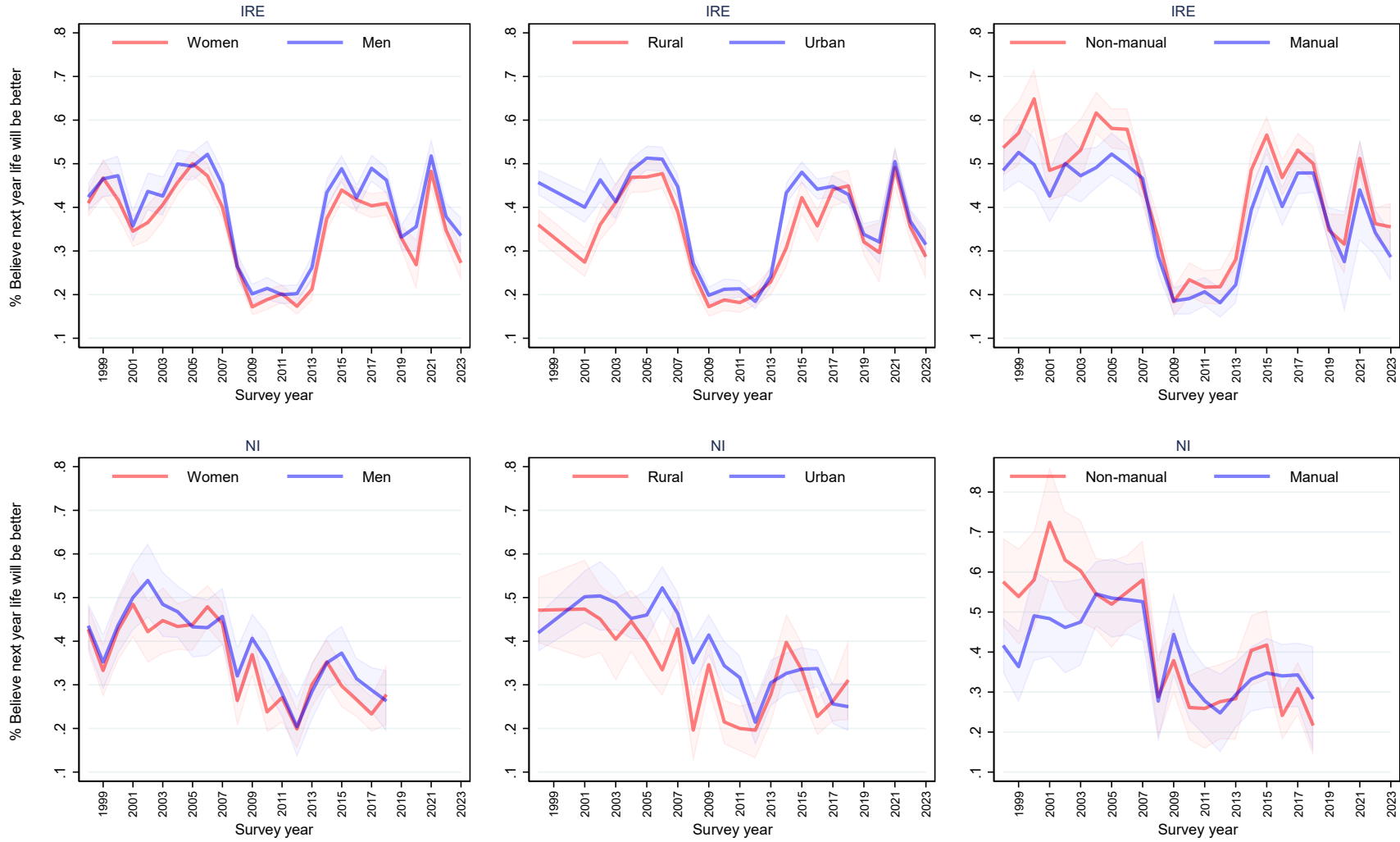
Data source: Eurobarometer

FIGURE S3.7 UNADJUSTED TREND, UNADJUSTED TREND RESTRICTED TO SAMPLE WITH NO MISSING, ADJUSTED TREND – EXPECTATIONS FOR THE FUTURE



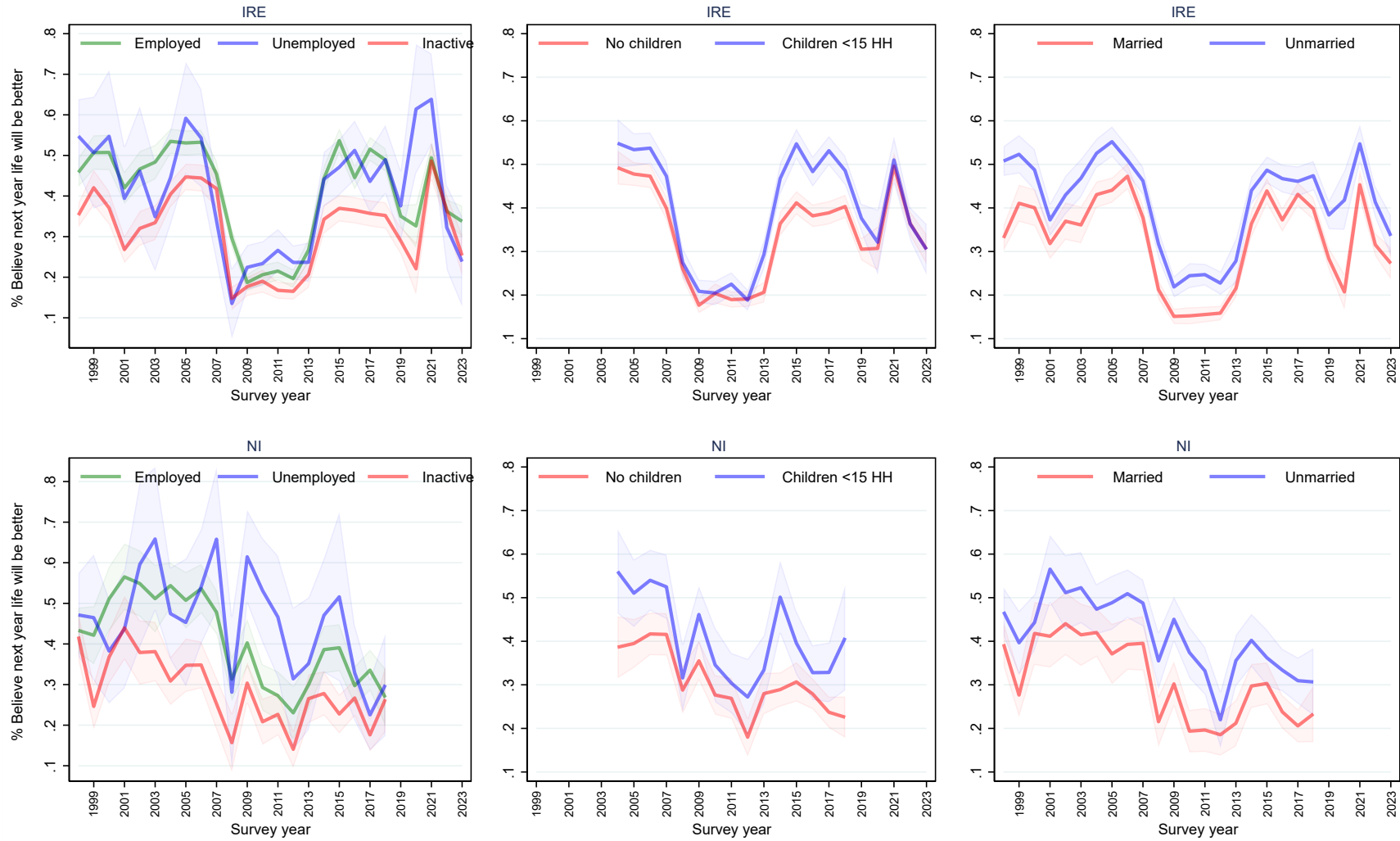
Data source: Eurobarometer

FIGURE S3.8 TRENDS IN EXPECTATIONS FOR THE FUTURE BY: (A) GENDER, (B) URBAN/RURAL, (C) OCCUPATION



Data source: Eurobarometer

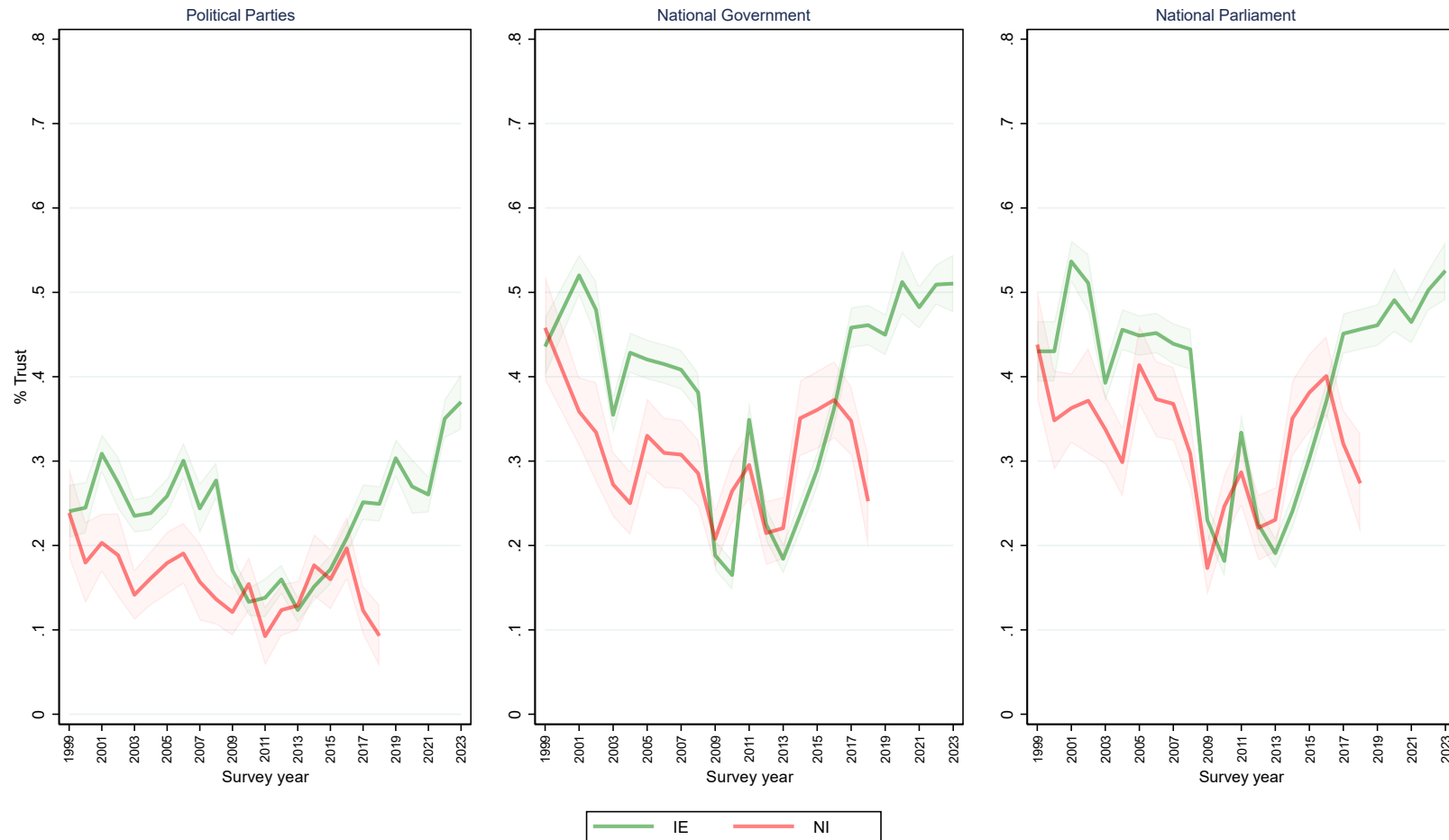
FIGURE S3.9 TRENDS IN EXPECTATIONS FOR THE FUTURE BY: (A) EMPLOYMENT STATUS, (B) CHILDREN IN HH, (C) MARITAL STATUS



Data source: Eurobarometer

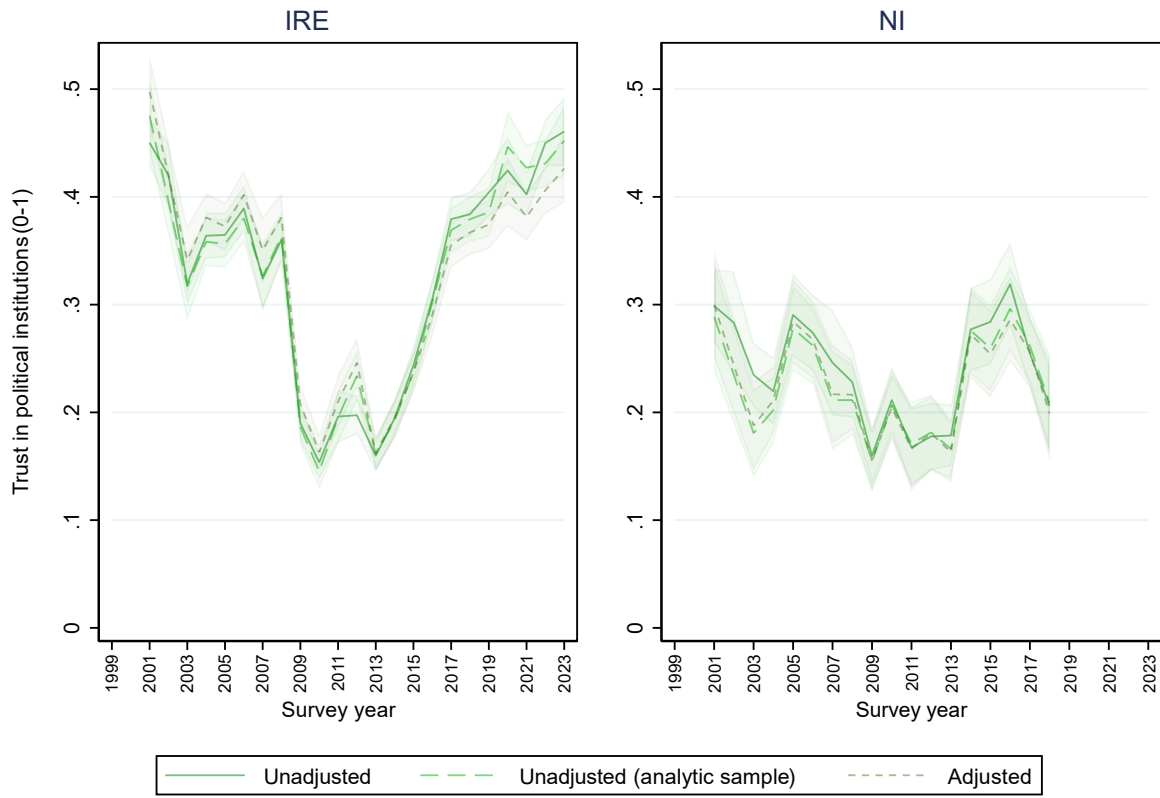
SUPPLEMENTARY ONLINE APPENDIX FOR CHAPTER 4

FIGURE S4.1 TRENDS IN TRUST IN POLITICAL PARTIES, NATIONAL GOVERNMENT, NATIONAL PARLIAMENT



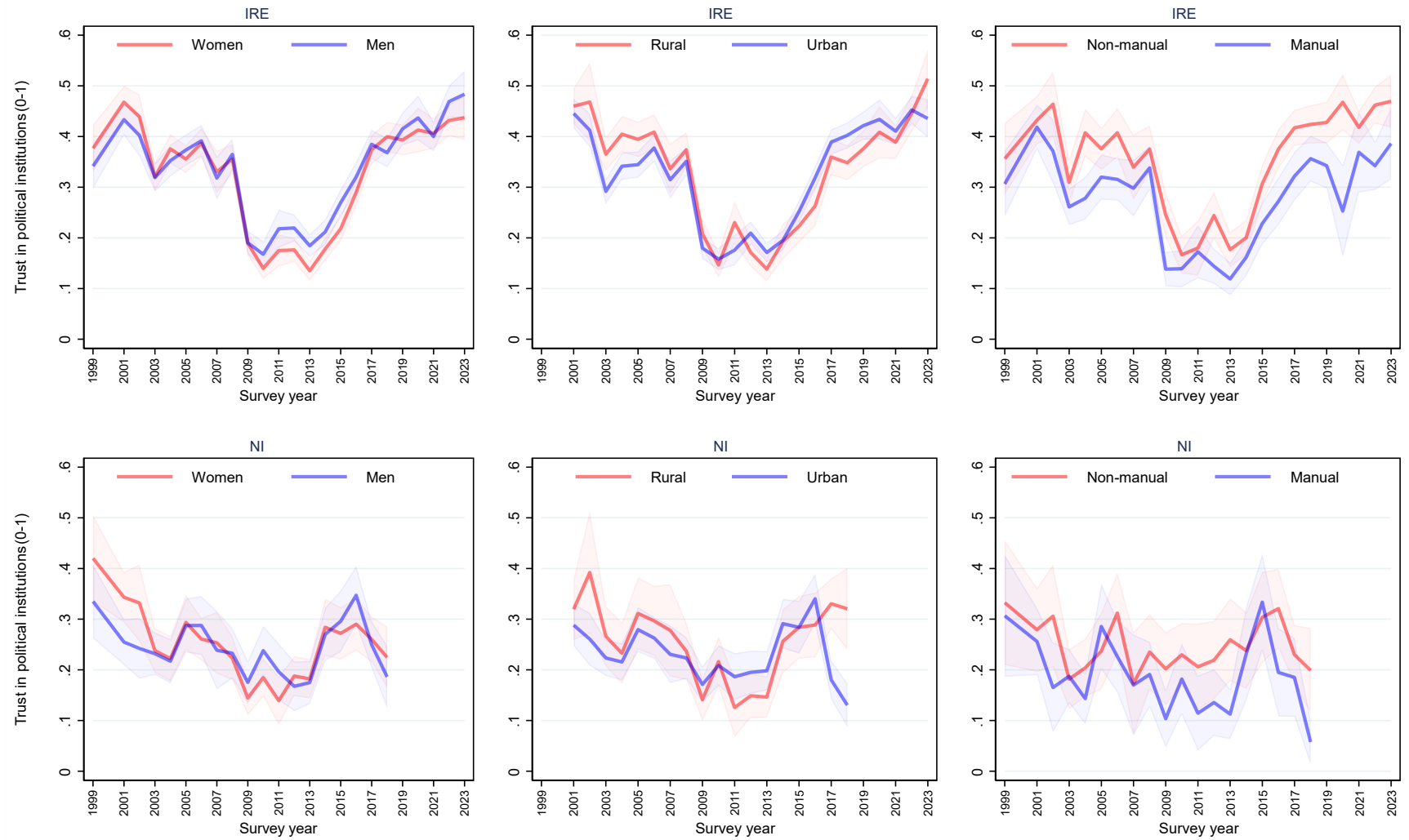
Data source: Eurobarometer

FIGURE S4.2 UNADJUSTED TREND, UNADJUSTED TREND RESTRICTED TO SAMPLE WITH NO MISSING, ADJUSTED TREND – TRUST IN POLITICAL INSTITUTIONS



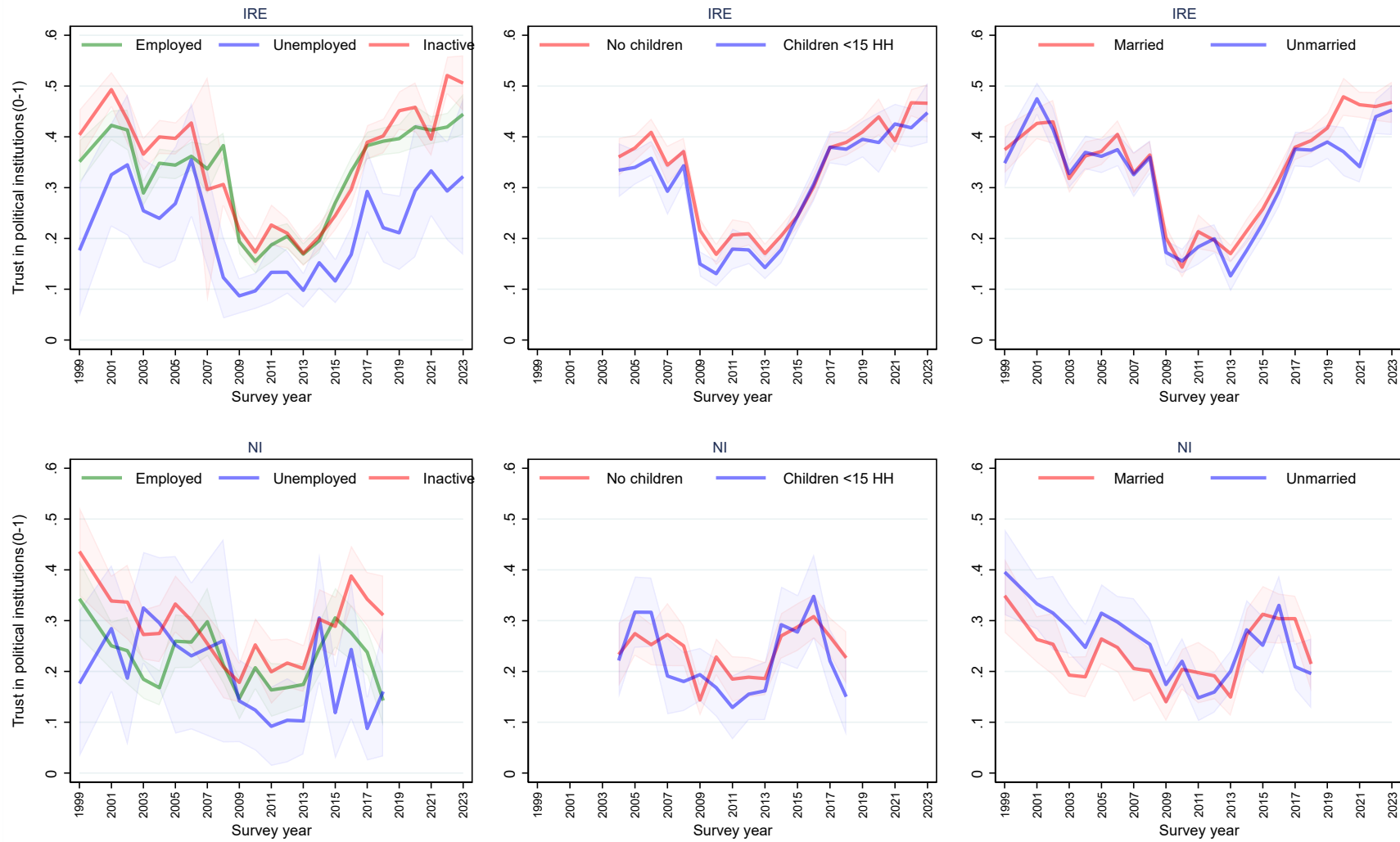
Data source: Eurobarometer
 Outcome: Mean Trust in political parties, national government, national parliament

FIGURE S4.3 TRENDS IN TRUST IN POLITICAL INSTITUTIONS BY: (A) GENDER, (B) URBAN/RURAL, (C) OCCUPATION



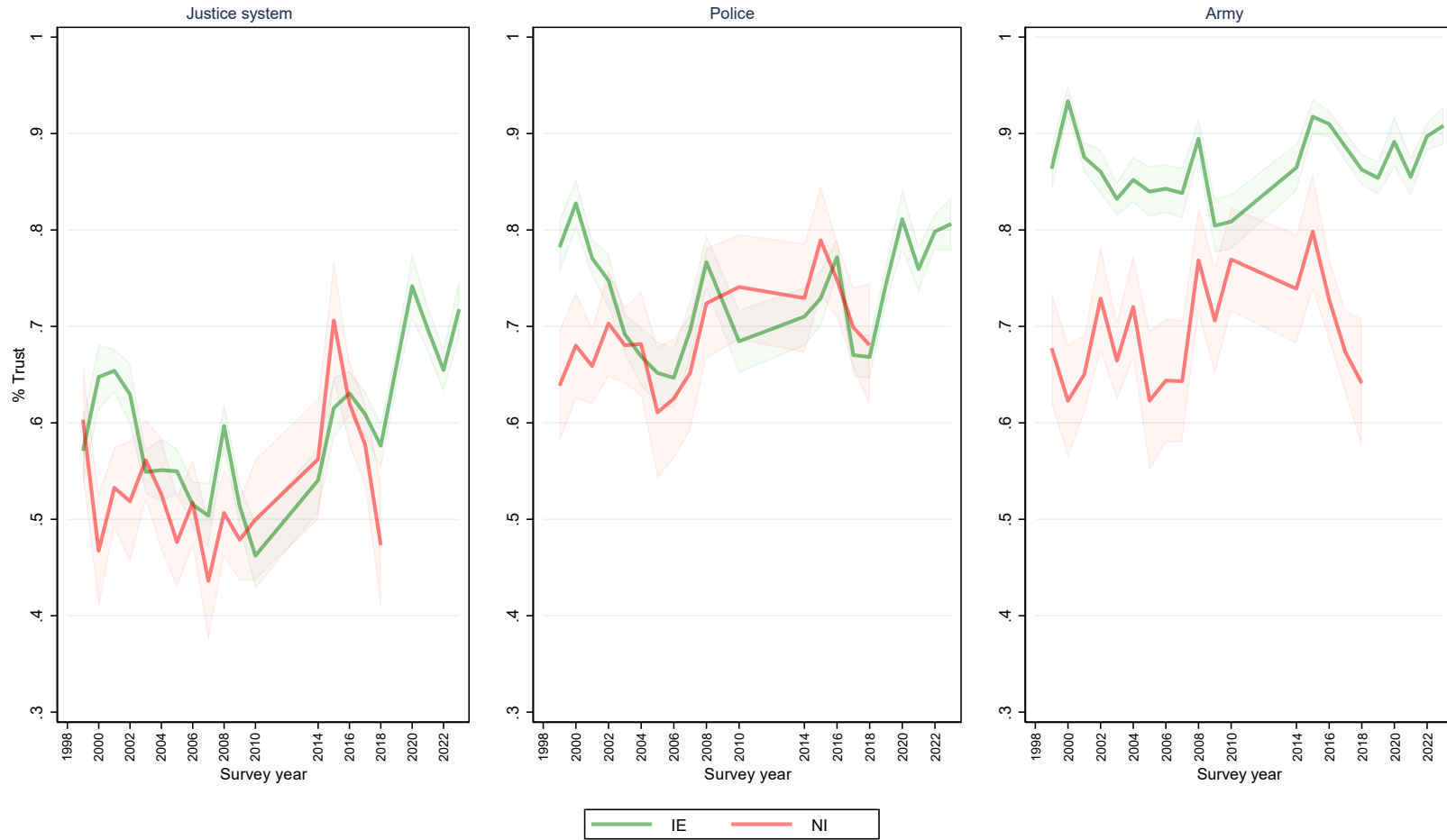
Data source: Eurobarometer

FIGURE S4.4 TRENDS IN TRUST IN POLITICAL INSTITUTIONS BY: (A) EMPLOYMENT STATUS, (B) CHILDREN IN HH, (C) MARITAL STATUS



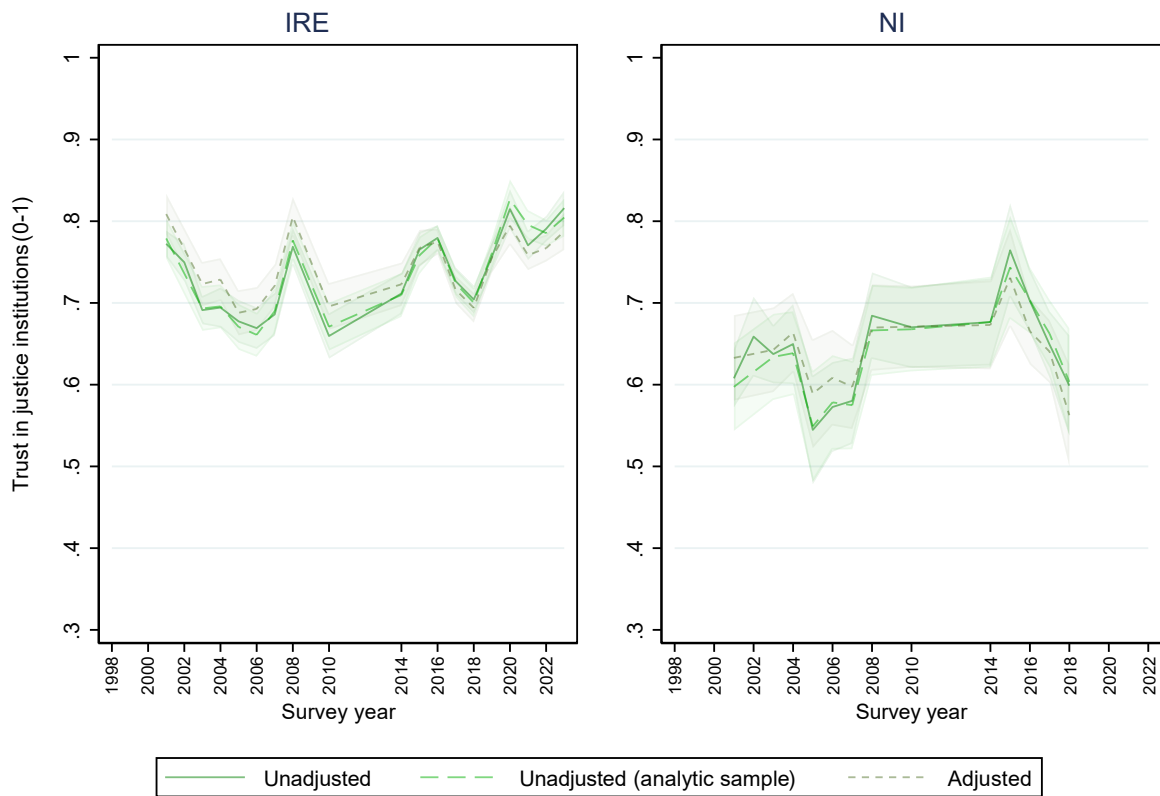
Data source: Eurobarometer

FIGURE S4.5 TRENDS IN TRUST IN ARMY, POLICE, LEGAL SYSTEM



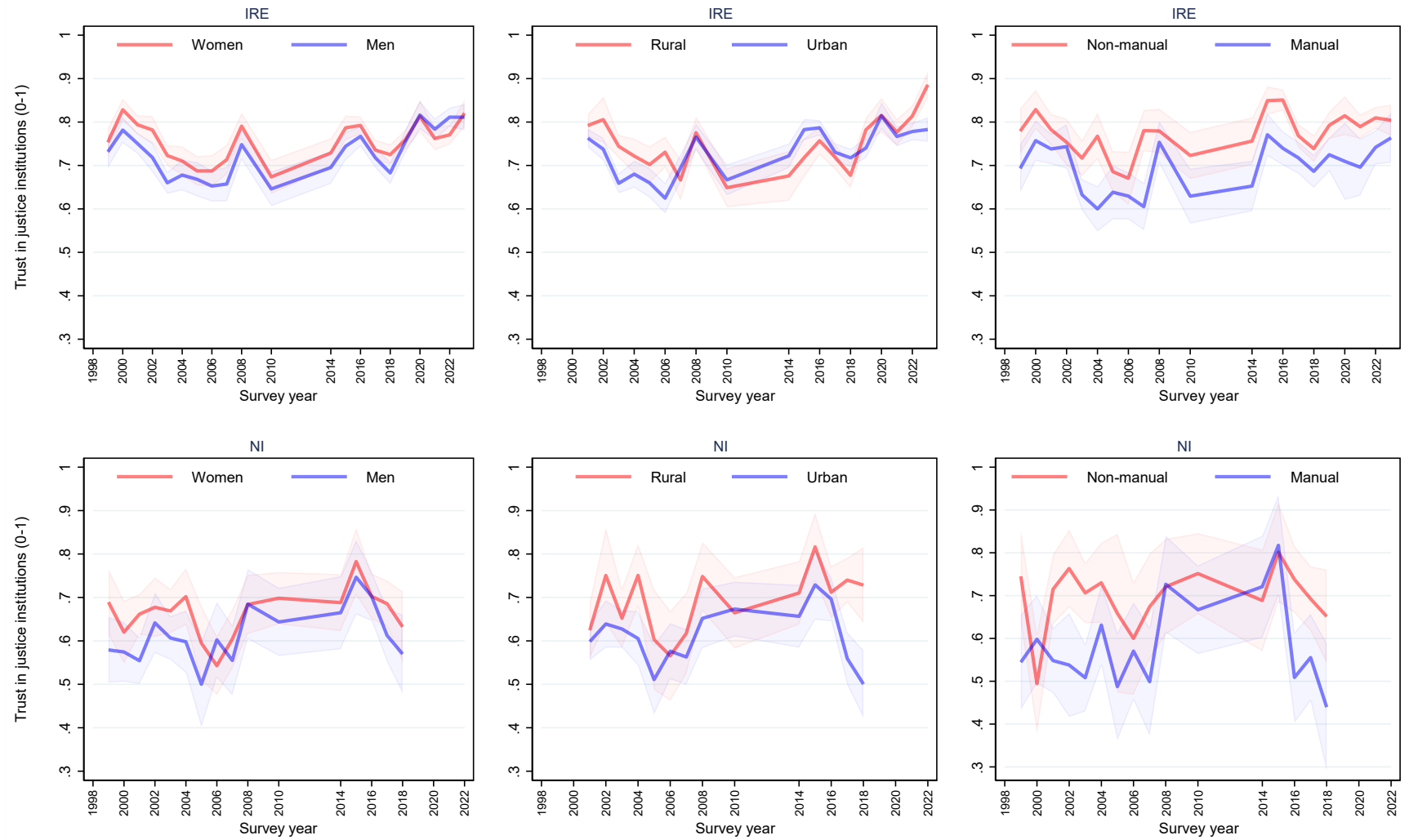
Data source: Eurobarometer

FIGURE S4.6 UNADJUSTED TREND, UNADJUSTED TREND RESTRICTED TO SAMPLE WITH NO MISSING, ADJUSTED TREND – TRUST IN JUDICIAL INSTITUTIONS



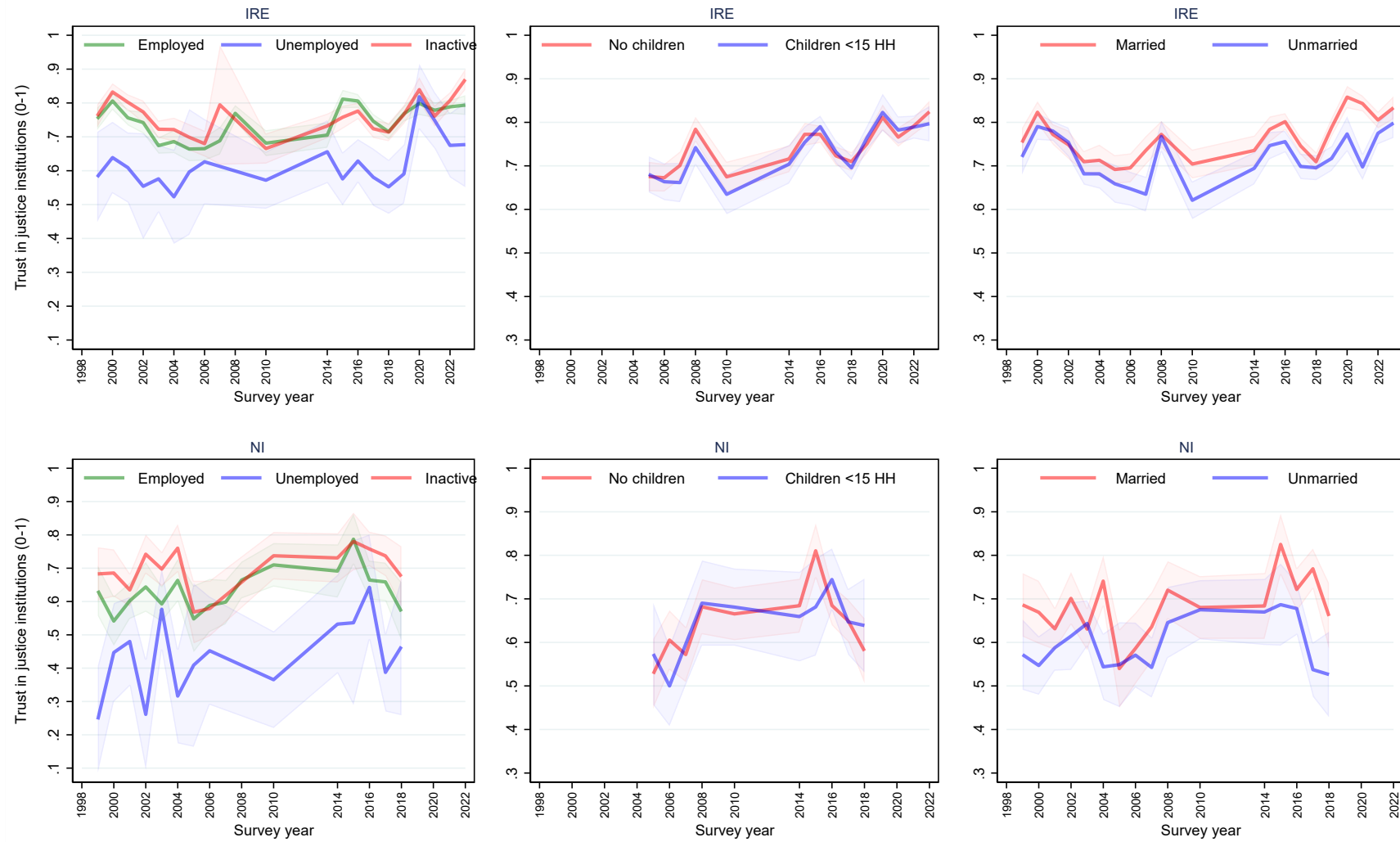
Data source: Eurobarometer
 Outcome: Mean Trust in army, police, legal system

FIGURE S4.7 TRENDS IN TRUST IN JUDICIARY INSTITUTIONS BY: (A) GENDER, (B) URBAN/RURAL, (C) OCCUPATION



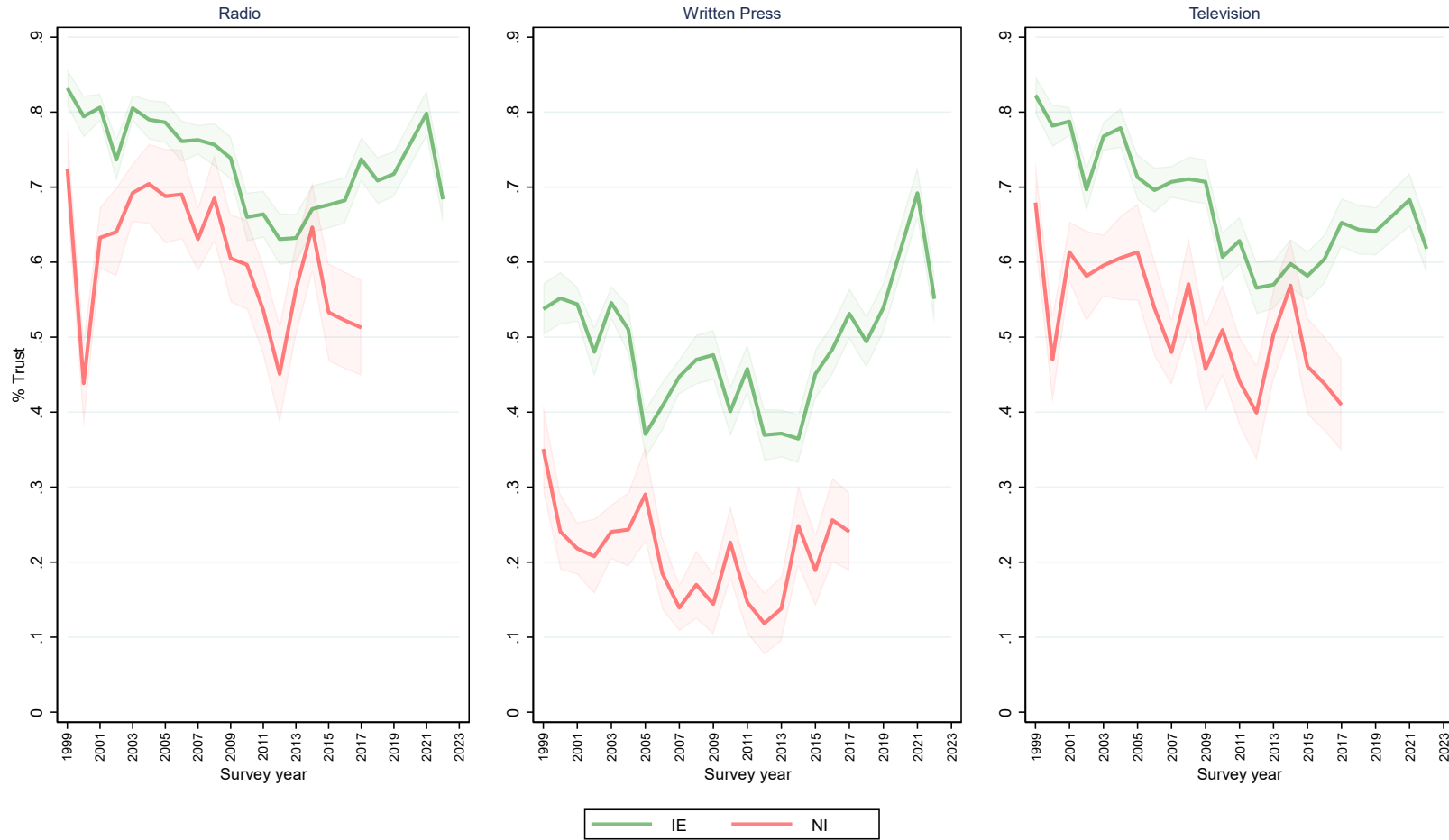
Data source: Eurobarometer

FIGURE S4.8 TRENDS IN TRUST IN JUDICIARY INSTITUTIONS BY: (A) EMPLOYMENT STATUS, (B) CHILDREN IN HH, (C) MARITAL STATUS



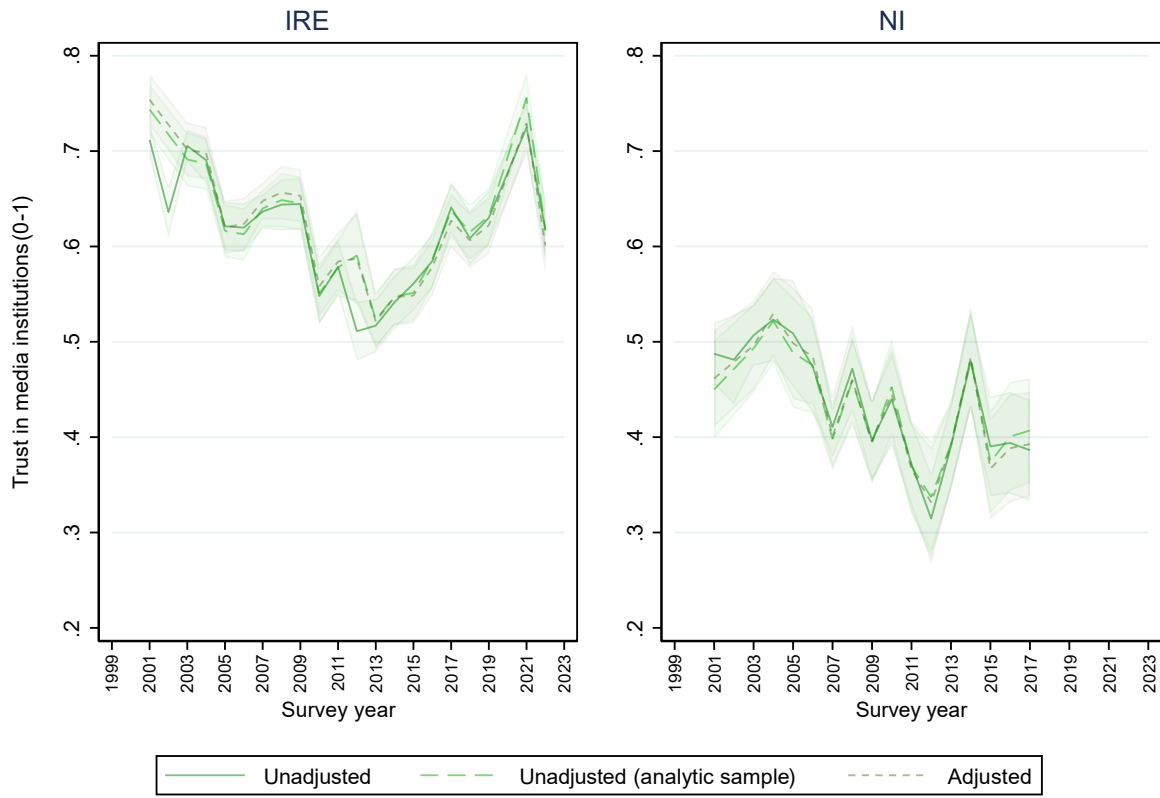
Data source: Eurobarometer

FIGURE S4.9 TRENDS IN TRUST IN RADIO, TV, WRITTEN PRESS



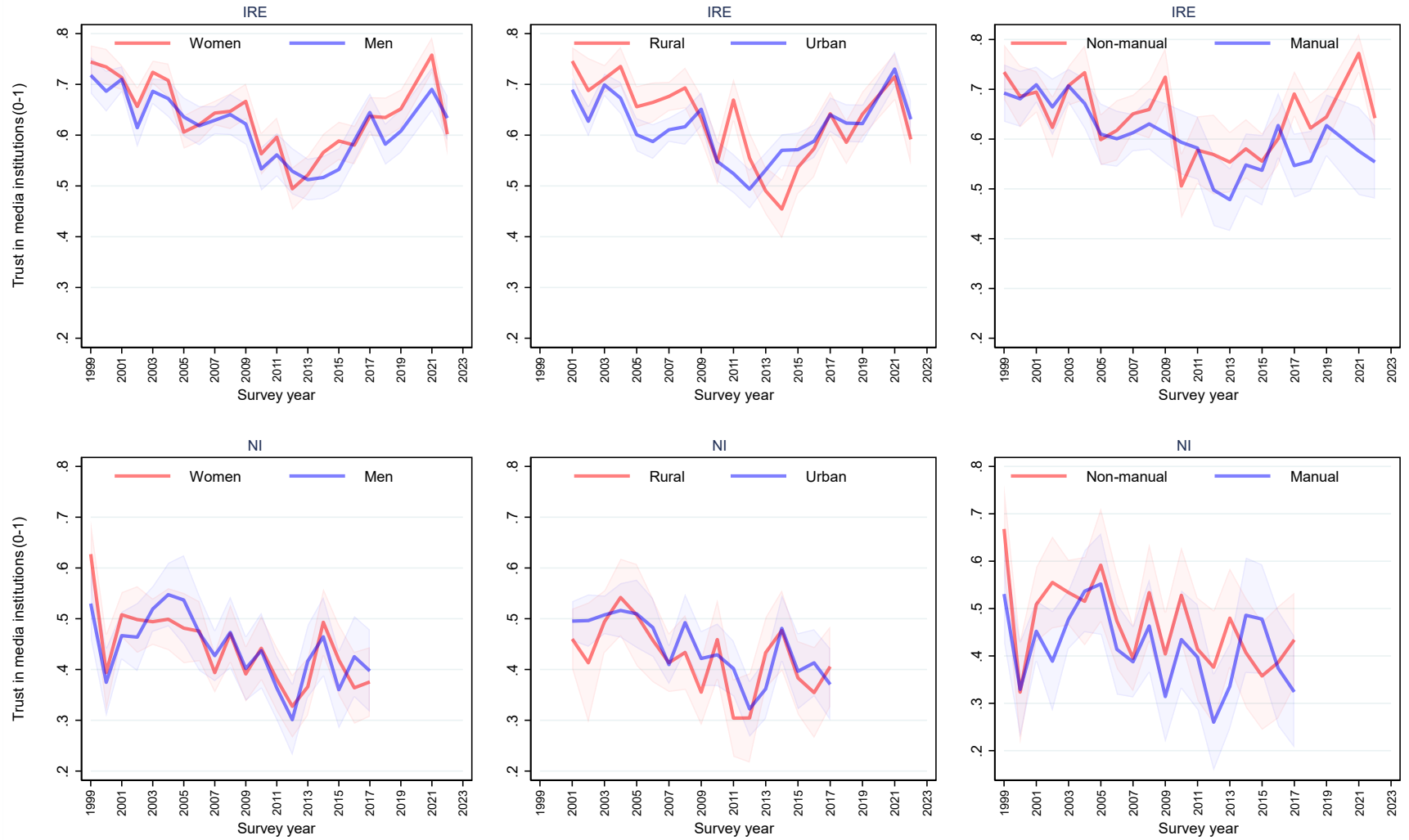
Data source: Eurobarometer

FIGURE S4.10 UNADJUSTED TREND, UNADJUSTED TREND RESTRICTED TO SAMPLE WITH NO MISSING, ADJUSTED TREND – TRUST IN MEDIA INSTITUTIONS



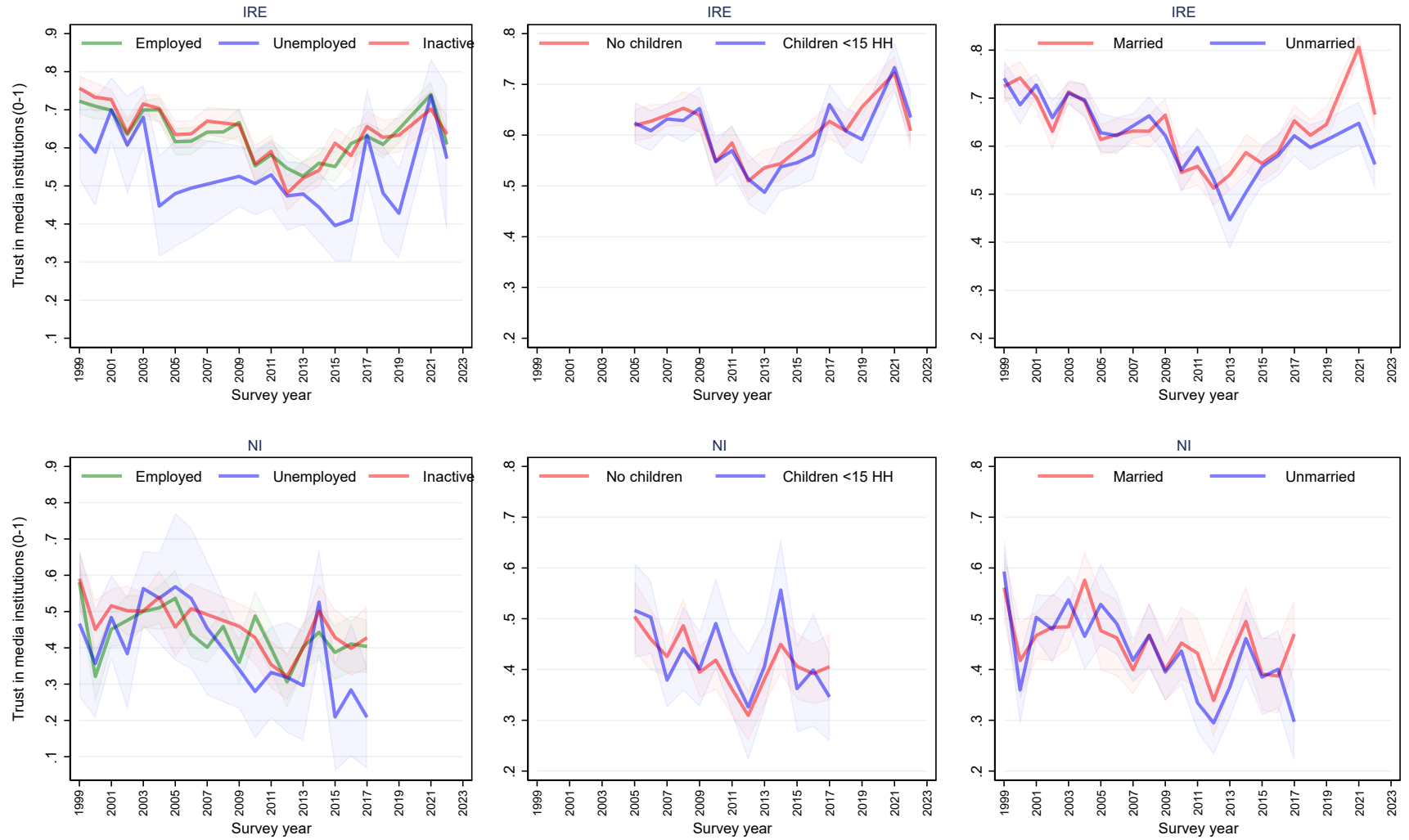
Data source: Eurobarometer
 Outcome: Mean Trust in radio, tv, written press

FIGURE S4.11 TRENDS IN TRUST IN MEDIA INSTITUTIONS BY: (A) GENDER, (B) URBAN/RURAL, (C) OCCUPATION



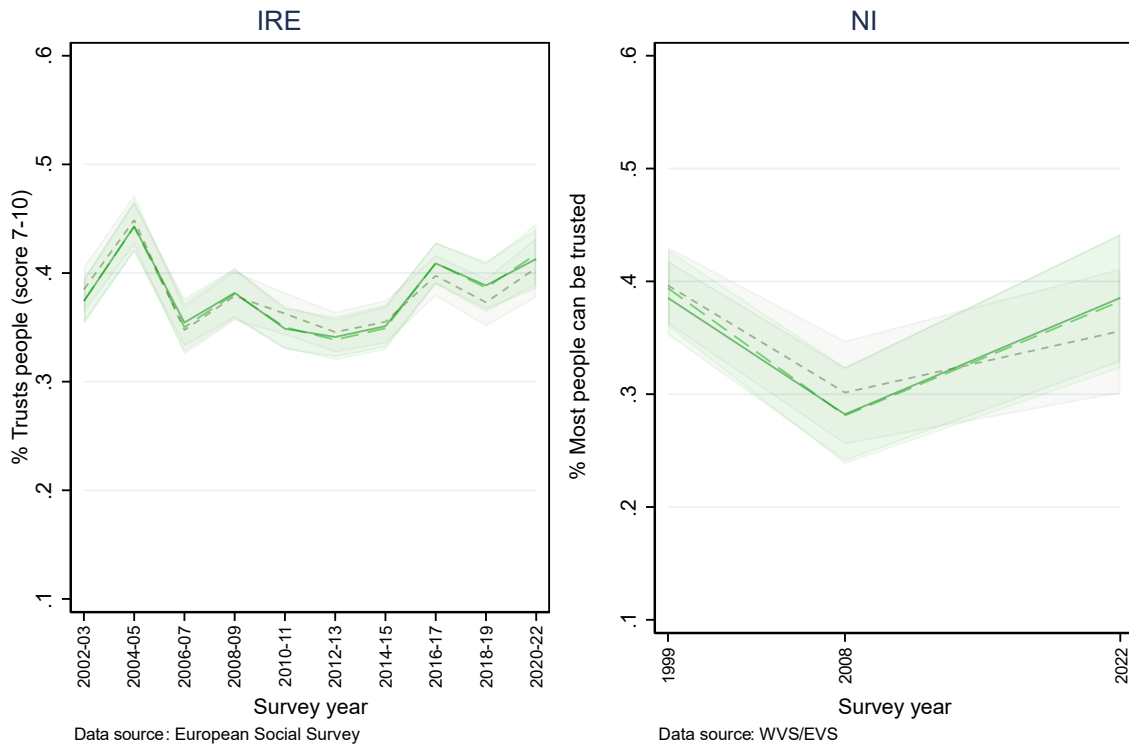
Data source: Eurobarometer

FIGURE S4.12 TRENDS IN TRUST IN MEDIA INSTITUTIONS BY: (A) EMPLOYMENT STATUS, (B) CHILDREN IN HH, (C) MARITAL STATUS



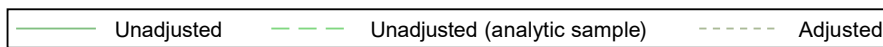
Data source: Eurobarometer

FIGURE S4.13 UNADJUSTED TREND, UNADJUSTED TREND RESTRICTED TO SAMPLE WITH NO MISSING, ADJUSTED TREND – SOCIAL TRUST



Data source: European Social Survey

Data source: WVS/EVS



Data source: Eurobarometer

FIGURE S4.14 TRENDS IN SOCIAL TRUST: (A) GENDER, (B) URBAN/RURAL

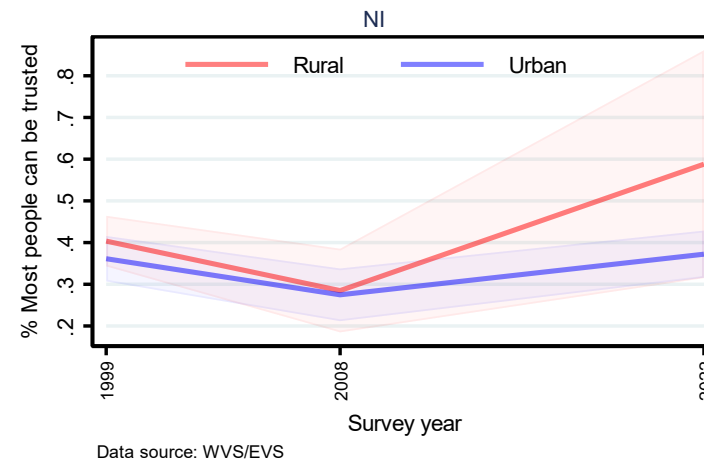
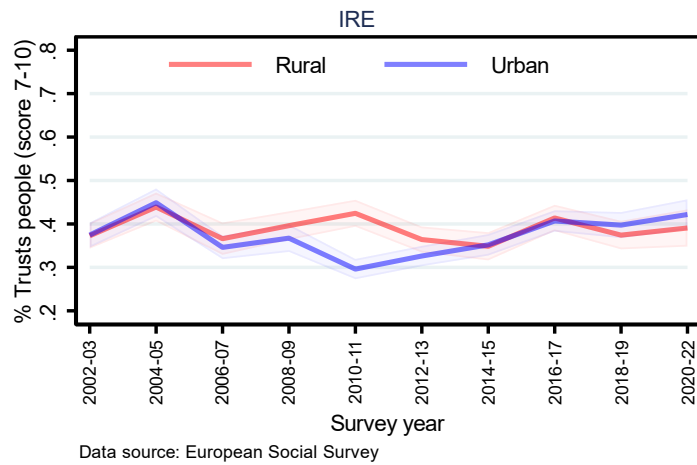
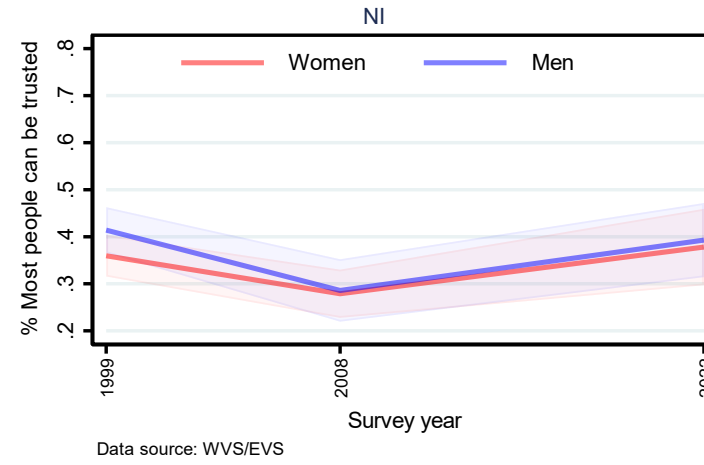
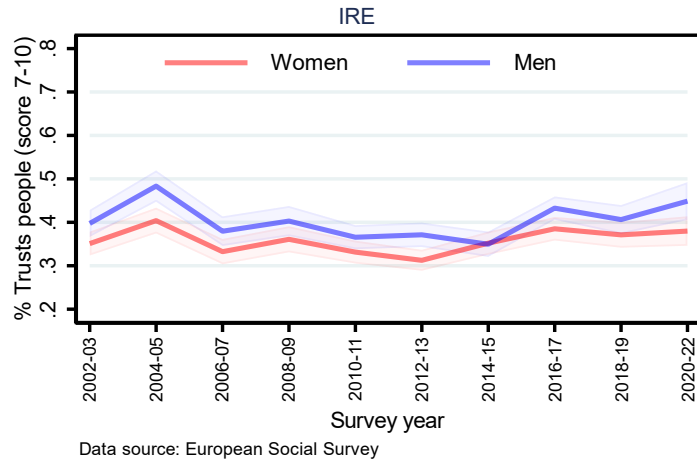
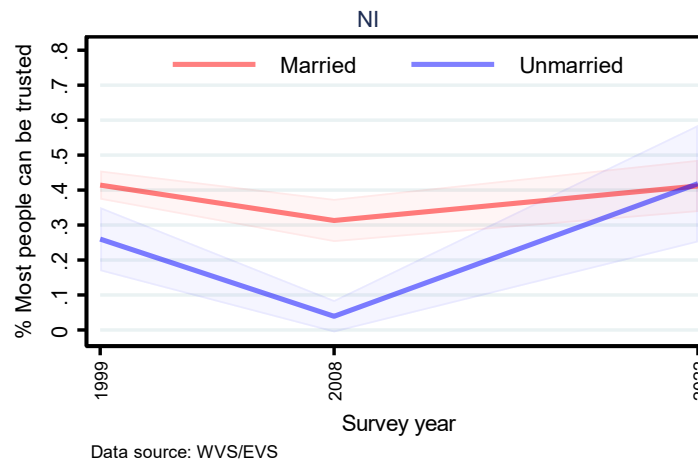
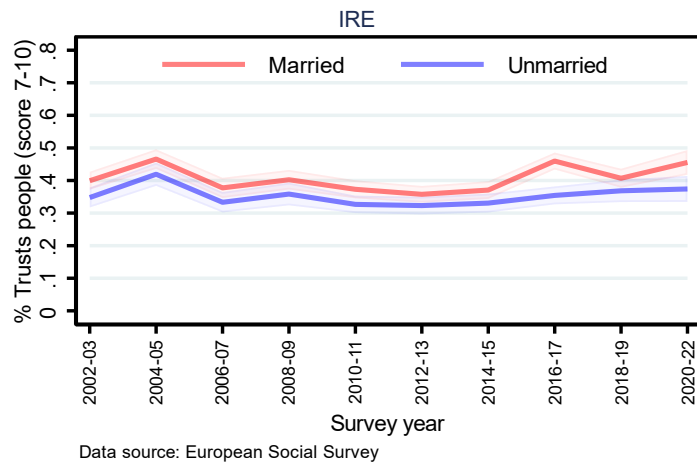
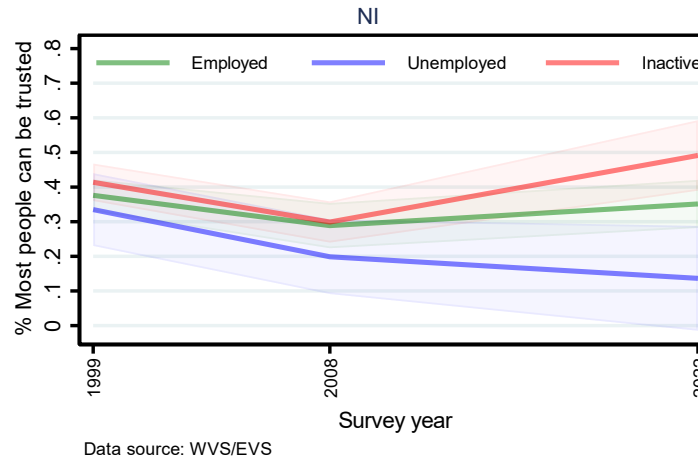
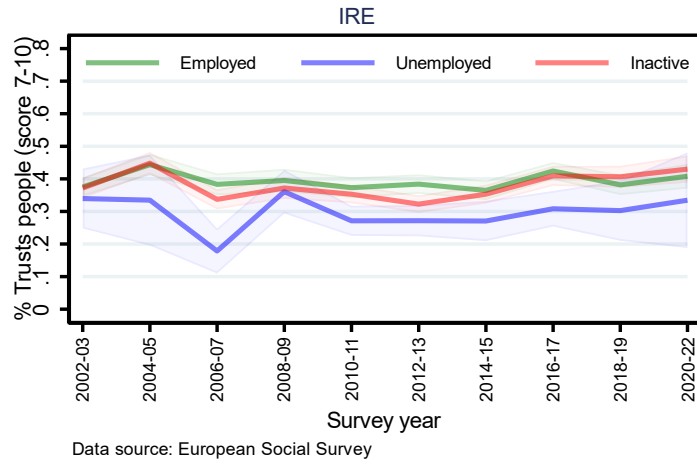


FIGURE S4.15 TRENDS IN SOCIAL TRUST: (A) GENDER, (B) URBAN/RURAL



SUPPLEMENTARY ONLINE APPENDIX FOR CHAPTER 5

FIGURE S5.1 UNADJUSTED TREND, UNADJUSTED TREND RESTRICTED TO SAMPLE WITH NO MISSING, ADJUSTED TREND – ATTITUDES TOWARDS INEQUALITY

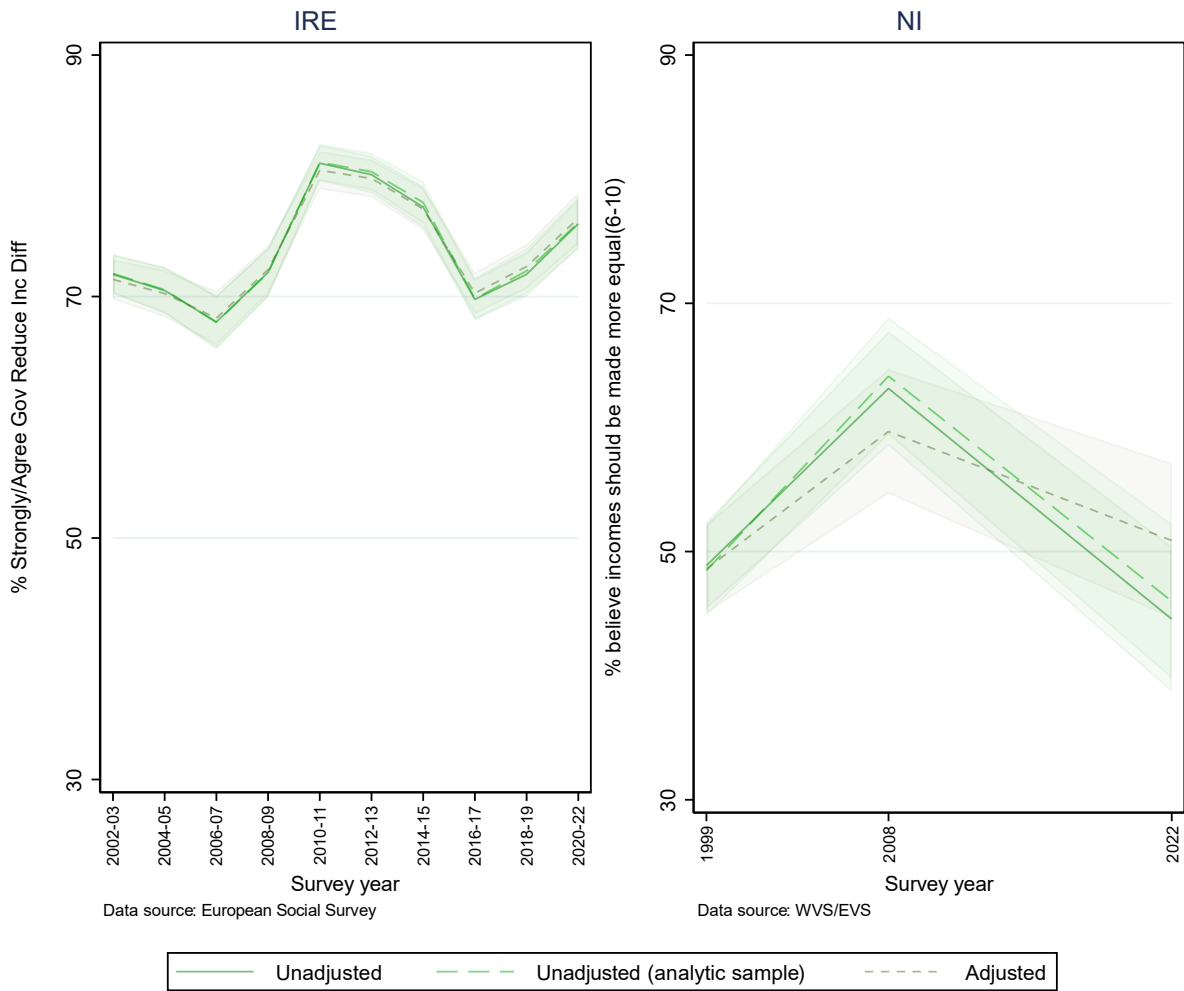


FIGURE S5.2 TRENDS IN ATTITUDES TOWARDS INEQUALITY BY: (A) GENDER, (B) URBAN/RURAL

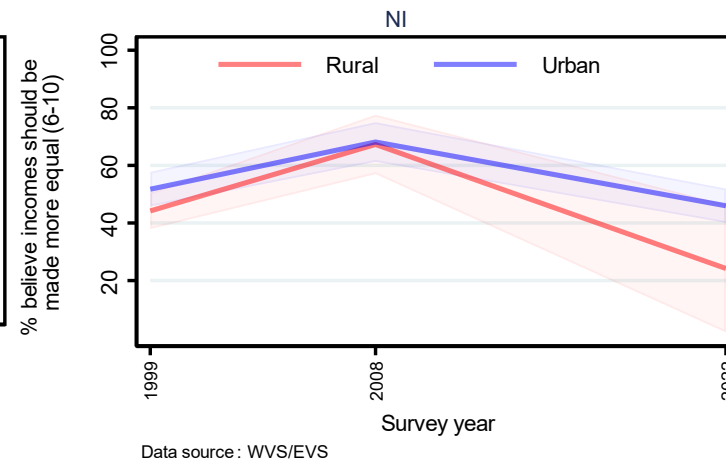
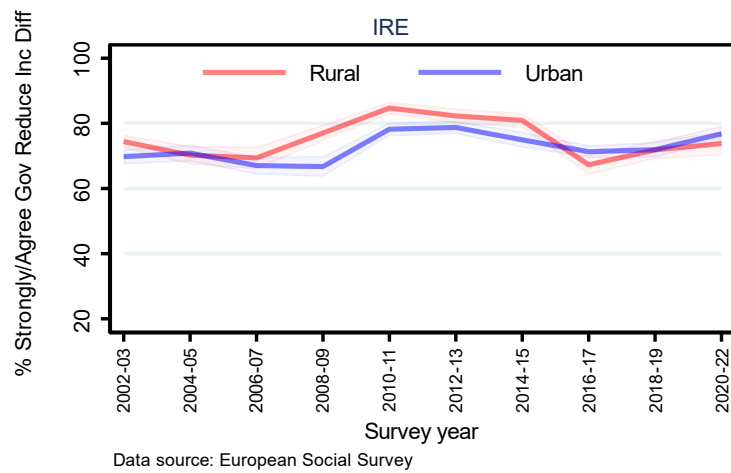
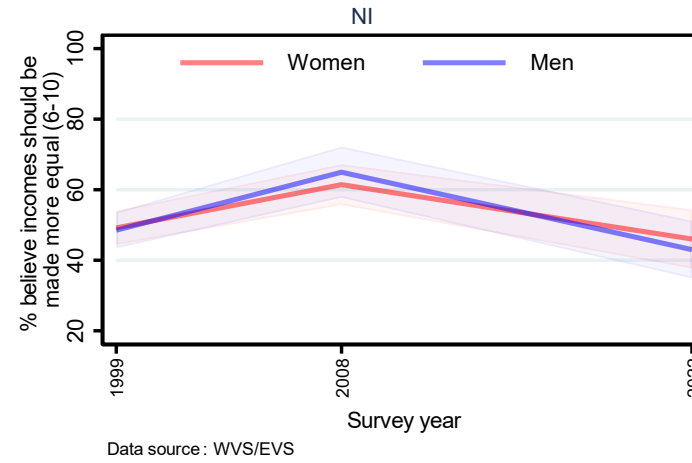
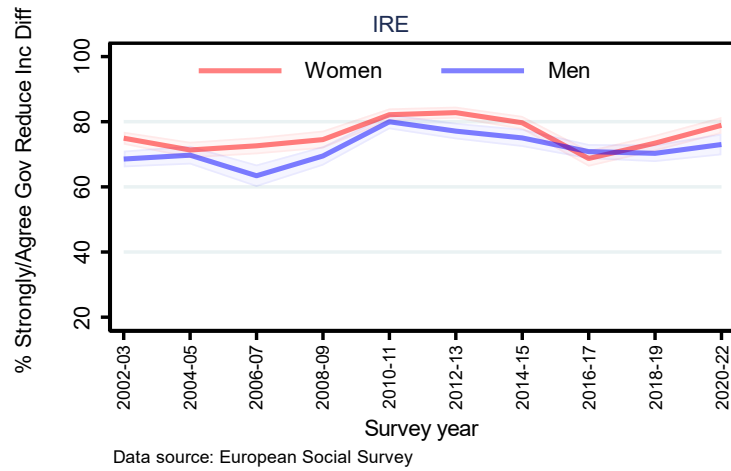


FIGURE S5.3 TRENDS IN ATTITUDES TOWARDS INEQUALITY BY: (A) EMPLOYMENT STATUS, (B) MARITAL STATUS

