

Renzhi, Nuobu; Beirne, John

**Working Paper**

## Global shocks and monetary policy transmission in emerging markets

ADB Economics Working Paper Series, No. 726

**Provided in Cooperation with:**

Asian Development Bank (ADB), Manila

*Suggested Citation:* Renzhi, Nuobu; Beirne, John (2024) : Global shocks and monetary policy transmission in emerging markets, ADB Economics Working Paper Series, No. 726, Asian Development Bank (ADB), Manila,  
<https://doi.org/10.22617/WPS240272-2>

This Version is available at:

<https://hdl.handle.net/10419/298172>

**Standard-Nutzungsbedingungen:**

Die Dokumente auf EconStor dürfen zu eigenen wissenschaftlichen Zwecken und zum Privatgebrauch gespeichert und kopiert werden.

Sie dürfen die Dokumente nicht für öffentliche oder kommerzielle Zwecke vervielfältigen, öffentlich ausstellen, öffentlich zugänglich machen, vertreiben oder anderweitig nutzen.

Sofern die Verfasser die Dokumente unter Open-Content-Lizenzen (insbesondere CC-Lizenzen) zur Verfügung gestellt haben sollten, gelten abweichend von diesen Nutzungsbedingungen die in der dort genannten Lizenz gewährten Nutzungsrechte.

**Terms of use:**

*Documents in EconStor may be saved and copied for your personal and scholarly purposes.*

*You are not to copy documents for public or commercial purposes, to exhibit the documents publicly, to make them publicly available on the internet, or to distribute or otherwise use the documents in public.*

*If the documents have been made available under an Open Content Licence (especially Creative Commons Licences), you may exercise further usage rights as specified in the indicated licence.*



<https://creativecommons.org/licenses/by/3.0/igo/>

# GLOBAL SHOCKS AND MONETARY POLICY TRANSMISSION IN EMERGING MARKETS

*Nuobu Renzhi and John Beirne*

**NO. 726**

May 2024

**ADB ECONOMICS  
WORKING PAPER SERIES**

ADB Economics Working Paper Series

# Global Shocks and Monetary Policy Transmission in Emerging Markets

Nuobu Renzhi and John Beirne

No. 726 | May 2024

Nuobu Renzhi ([renzhinuobu@gmail.com](mailto:renzhinuobu@gmail.com)) is an assistant professor at the School of Economics, Capital University of Economics and Business. John Beirne ([jbeirne@adb.org](mailto:jbeirne@adb.org)) is a principal economist at the Economic Research and Development Impact Department, Asian Development Bank.

The *ADB Economics Working Paper Series* presents research in progress to elicit comments and encourage debate on development issues in Asia and the Pacific. The views expressed are those of the authors and do not necessarily reflect the views and policies of ADB or its Board of Governors or the governments they represent.



Creative Commons Attribution 3.0 IGO license (CC BY 3.0 IGO)

© 2024 Asian Development Bank  
6 ADB Avenue, Mandaluyong City, 1550 Metro Manila, Philippines  
Tel +63 2 8632 4444; Fax +63 2 8636 2444  
[www.adb.org](http://www.adb.org)

Some rights reserved. Published in 2024.

ISSN 2313-6537 (print), 2313-6545 (PDF)  
Publication Stock No. WPS240272-2  
DOI: <http://dx.doi.org/10.22617/WPS240272-2>

The views expressed in this publication are those of the authors and do not necessarily reflect the views and policies of the Asian Development Bank (ADB) or its Board of Governors or the governments they represent.

ADB does not guarantee the accuracy of the data included in this publication and accepts no responsibility for any consequence of their use. The mention of specific companies or products of manufacturers does not imply that they are endorsed or recommended by ADB in preference to others of a similar nature that are not mentioned.

By making any designation of or reference to a particular territory or geographic area in this document, ADB does not intend to make any judgments as to the legal or other status of any territory or area.

This publication is available under the Creative Commons Attribution 3.0 IGO license (CC BY 3.0 IGO) <https://creativecommons.org/licenses/by/3.0/igo/>. By using the content of this publication, you agree to be bound by the terms of this license. For attribution, translations, adaptations, and permissions, please read the provisions and terms of use at <https://www.adb.org/terms-use#openaccess>.

This CC license does not apply to non-ADB copyright materials in this publication. If the material is attributed to another source, please contact the copyright owner or publisher of that source for permission to reproduce it. ADB cannot be held liable for any claims that arise as a result of your use of the material.

Please contact [pubsmarketing@adb.org](mailto:pubsmarketing@adb.org) if you have questions or comments with respect to content, or if you wish to obtain copyright permission for your intended use that does not fall within these terms, or for permission to use the ADB logo.

Corrigenda to ADB publications may be found at <http://www.adb.org/publications/corrigenda>.

## **ABSTRACT**

This paper empirically examines the impact of global shocks on monetary policy transmission in 24 emerging market economies (EMEs), using panel local projections over the period 2000 to 2022. The estimated results show that adverse global shocks, namely a tighter United States monetary policy stance, higher global financial market uncertainty, and global climate change, could dampen the transmission of monetary policy in EMEs. Specifically, the overall responses of industrial production and inflation to monetary policy shocks are more muted compared to the case where the impacts of global factors are isolated. We also study whether economy-specific characteristics across EMEs affect the monetary policy transmission impacts of global shocks. The results suggest that a higher level of financial development can partially offset the dampening effects of global shocks, while a higher degree of capital account openness and trade openness further amplify the impact of global shocks.

**Keywords:** global shocks, monetary policy transmission, emerging market economies

**JEL codes:** E52, F4

## 1. Introduction

There is growing evidence that emerging market economies (EMEs) have become more synchronized with global factors over the last 2 decades, as they are increasingly integrated into the global economy through real and financial linkages (e.g., De Leo, Gopinath, and Kalemli-Ozcan 2022, Miranda-Agrippino and Rey 2022). A natural question that arises then is to what extent has the effectiveness of monetary policy in EMEs been affected by these global factors?

Despite the literature paying a great deal of attention to the international transmission of external shocks, less is discussed on the role of global shocks in the monetary policy transmission of EMEs. A few but growing recent studies examine whether an economy's exposure to the global financial cycle allows for effective monetary independence (e.g., Miranda-Agrippino and Rey 2020), indicating that a tightening United States (US) monetary policy shock may lead to adverse economic outcomes in other economies, which challenges the degree of monetary policy sovereignty of open economies. However, there is less direct empirical evidence on this issue, particularly from the perspective of EMEs. This paper aims to fill this gap in the literature by employing panel local projections as in Jordà (2005) to estimate impulse responses of key macroeconomic variables to monetary policy shocks in 24 EMEs, conditioning on a set of global factors, including the US monetary policy stance, global financial market uncertainty, and global climate change.

To overcome potential endogeneity concerns, we estimate a series of identified monetary policy shocks for each of the 24 EMEs. Using a set of structural vector autoregressive (VAR) models, we orthogonalize short-term interest rate changes against the central bank's responses to current and past macroeconomic conditions by assuming a Taylor-type rule to extract the exogenous component. The estimated residuals therefore can be regarded as exogenous monetary policy shocks, and the basis for the impulse response function analysis. We estimate the responses of key macroeconomic variables to the identified monetary policy shocks and find that industrial production and inflation rate decrease after a monetary policy

tightening. These textbook results suggest the validity of our monetary policy shock identification.

To investigate whether adverse global shocks have a dampening effect on the transmission of monetary policy in EMEs, we estimate impulse responses to monetary policy shocks, conditioning on these global factors. The estimated results show that adverse global shocks, namely a tighter US monetary policy stance, higher global financial market uncertainty, and global climate change, could dampen the transmission of monetary policy in EMEs. Specifically, the overall responses of industrial production and inflation to the monetary policy shocks are more muted compared to the case where the impacts of global factors are isolated. These results are robust to a set of sensitivity checks, including alternative monetary policy measures.

We also study whether economy-specific characteristics across EMEs could affect monetary policy transmission against the impact of global shocks. The results suggest that a higher level of financial development can partially offset the dampening effects of global shocks while a higher degree of capital account openness and trade openness may further amplify the impact of global shocks.

Overall, the estimated impulse responses of monetary policy shocks suggest that adverse global shocks impair the effectiveness of monetary policy transmission in EMEs and the magnitude of these adverse impacts can vary across different economy-specific characteristics. Therefore, policymakers need to be aware that global shocks can make monetary policies less effective and need to ensure that global and external factors are adequately taken into account in monetary policy decision making. Policymakers could also strengthen macroprudential regulations aimed at buttressing financial stability, which would also help to mitigate the impact of global financial shocks on economic activity in EMEs.

This paper contributes to several strands of the literature. First, it is related to recent studies on the effectiveness of monetary policy transmission in developing and emerging market

economies. Several studies have highlighted the role of financial development and monetary regimes in the effectiveness of monetary policy transmission (e.g., Mishra, Montiel, and Spilimbergo 2012; Bulir and Vlcek 2021). Some studies highlight the increasing prominence of the exchange rate channel in monetary policy transmission (e.g., Eklou 2023; Brandão-Marques et al. 2020; Gadanecz, Miyajima, and Urban 2014). Other studies argue that the monetary policy transmission in EMEs could be impaired through a disconnect between policy rates and short-term market rates (e.g., De Leo, Gopinath, and Kalemli-Ozcan 2022).

Second, this paper complements a few but growing studies on the role of global factors in monetary policy transmission. By investigating the relationship between global forces and key macroeconomic variables over the 1984–2005 period, Boivin and Giannoni (2008) find no evidence of a change in the US monetary policy transmission due to global forces. However, Ha et al. (2020) find that movements in global factors play a major role in explaining domestic business cycles in G-7 countries. De Leo, Gopinath, and Kalemli-Ozcan (2022) show that global financial conditions could cause a disconnect between policy rates and short-term market rates in emerging economies. Some studies show that the transmission of global shocks depends on individual economies' macroeconomic policies and the degree of global trade and financial integration (e.g., Bräuning and Sheremirov 2023, Ehrmann and Fratzscher 2009). Eklou (2023) finds that global monetary policy tightening could complement domestic efforts to achieve price stability by inducing global disinflation. Ramos-Francia and Garcia-Verdu (2014) find mixed evidence on the role of global factors that the possibility of structural change in the policy rate, exchange rate, and long-term interest rate channels generally depends on the EME in question. Gadanecz, Miyajima, and Urban (2014) argue that easy monetary conditions in advanced economies have played an important role in determining domestic monetary conditions in EMEs.

The remainder of this paper is structured as follows. Section 2 describes the data and outlines the empirical methodology. Section 3 presents the empirical results with robustness checks and extensions. Section 5 concludes.



## 2. Data and Empirical Methodology

In this section, we first describe the data source of variables we use in the empirical analysis. We then discuss the identification of the monetary policy shocks. Finally, we present our econometric framework used to produce the empirical results.

### 2.1 Data

We use available monthly data with an unbalanced panel for 24 EMEs spanning from 2000:M1 to 2022:M12.<sup>1</sup> To analyze the monetary policy transmission in EMEs, we consider the following variables to reflect a standard theoretical setup. We collect data on the real industrial production index as a domestic output measure, the year-on-year change of the consumer price index as a measure of the inflation rate, the real effective exchange rate as the exchange rate measure, and the 3-month interbank rate as the short-term rate measure.<sup>2</sup> The data are all from the International Financial Statistics of the International Monetary Fund (IMF) and the Bank for International Settlements (BIS) database.

For global factor variables, we use data from a variety of sources. We use the shadow policy rate proposed by Wu and Xia (2016) as a measure of the US monetary policy stance, which reasonably reflects both conventional and unconventional monetary policy regimes. We use the VIX index that stands for the Chicago Board Options Exchange (CBOE) Volatility Index, as a measure of global financial market uncertainty. To measure global climate change, we use the year-on-year growth rate of monthly atmospheric carbon dioxide concentrations, obtained from the National Oceanic and Atmospheric Association Global Monitoring Laboratory.

---

<sup>1</sup> The selected EMEs include Argentina; Brazil; Chile; Colombia; Czech Republic; Egypt; Hong Kong, China; Hungary; Indonesia; India; Israel; Mexico; Malaysia; the People's Republic of China; Peru; the Philippines; Poland; the Republic of Korea; Romania; the Russian Federation; Singapore; Thailand; Türkiye; and South Africa. The data starting year for a specific variable varies across economies due to the data availability and reliability.

<sup>2</sup> As most central banks are aiming with their open market operations to closely align a specific short-term interest rate with their monetary policy stance.

As structural economy characteristics may be important for the effectiveness of monetary policy transmission in EMEs, we also include the following variables in our empirical analysis. First, to measure the level of financial development, we use the Financial Development Index from the IMF, which summarizes how developed financial institutions and financial markets are in terms of their depth, access, and efficiency. Next, we calculate trade openness as the sum of an economy's exports and imports relative to its gross domestic product (GDP), obtained from the IMF's World Economic Outlook. Finally, we use the Chinn-Ito index as a measure of an economy's degree of capital account openness (Chinn and Ito 2006). Table 1 presents the summary statistics of the main variables used in the empirical analysis.

**Table 1: Summary Statistics**

<b>Variable</b>	<b>Mean</b>	<b>SD</b>	<b>Min</b>	<b>Max</b>
Real GDP (log)	4.6	0.3	2.0	5.6
Inflation (%)	1.2	1.5	-6.0	21.7
Real effective exchange rate (log)	4.6	0.5	1.6	6.2
Short-term interest rate (%)	6.1	6.7	-0.1	91.1
US shadow policy rate (%)	1.1	2.4	-3.0	6.6
VIX (log)	2.9	0.4	2.3	4.1
Global climate change (%)	0.6	0.2	0.1	1.1
Financial development (index)	0.4	0.1	0.2	0.7
Trade openness (%)	96.2	89.4	27.3	361.8
Capital account openness (index)	0.01	1.0	-1.3	2.3

GDP = gross domestic product, IMF = International Monetary Fund, US = United States, VIX = Chicago Board Options Exchange Volatility Index.

Notes: The table shows summary statistics for the main variables used in the empirical analysis. Global climate change is measured by the year-on-year growth rate of monthly atmospheric carbon dioxide concentrations, obtained from the National Oceanic and Atmospheric Association Global Monitoring Laborator. Trade openness is measured as the sum of an economy's exports and imports relative to its GDP, obtained from the IMF's World Economic Outlook. Capital account openness is measured by the Chinn-Ito index (Chinn and Ito 2006).

Source: Authors' calculations.

## 2.2 Identification of Monetary Policy Shocks

As most of the variation in the central bank's policy rates usually reflects the economic conditions, it is therefore necessary to orthogonalize short-term rate changes against the current or past economic performances. Following the standard literature, we assume a Taylor-type rule to identify the exogenous part of monetary policy variations. A standard approach is to extract the residuals from a three-variable structural VAR (SVAR), where the short-term interest rate is ordered last after output and inflation using a Cholesky decomposition (Christiano, Eichenbaum, and Evans 1999). The estimated residuals serve as a measure of monetary policy shocks. Moreover, to highlight the importance of the exchange rate channel of the monetary policy transmission in emerging economies, we incorporate the real effective exchange rate in our identification setup. Specifically, a 4-variable SVAR framework is used to estimate the monetary policy shocks for a given emerging economy, which can be denoted as follows:

$$Y_t = A(L)Y_{t-1} + \mu_t \quad (1)$$

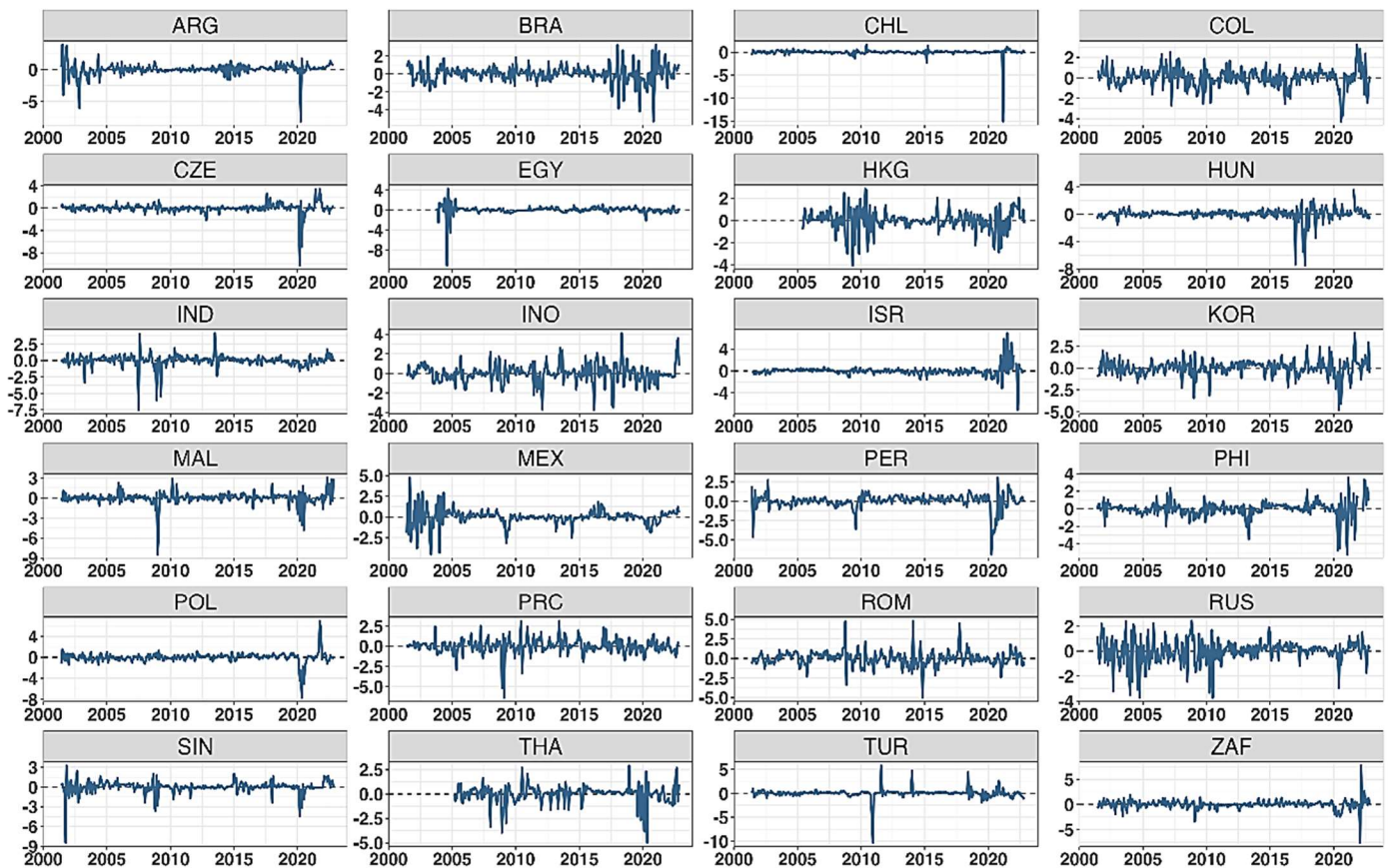
where  $Y_t$  refers to a vector of our selected endogenous variables, including the log of real GDP, inflation rate, the log of real effective exchange rate, and the short-term rate;  $A(L)$  is a matrix of polynomials in the lag operator  $L$ ; and  $\mu_t$  is a vector of disturbances. The SVAR includes four lags, which are selected using the Schwarz information criterion (SIC). The identification strategy is based on a block recursive restriction, which results in the following matrix  $A$  to fit a just-identified model:

$$A = \begin{bmatrix} a_{1,1} & 0 & \dots & 0 \\ a_{2,1} & a_{2,2} & \dots & 0 \\ \vdots & \vdots & \ddots & \vdots \\ a_{m,1} & a_{m,2} & \dots & a_{m,n} \end{bmatrix} \quad (2)$$

The ordering of the variables imposed in the recursive form implies that the variables at the top will not be affected by the contemporaneous shocks to the lower variables while the lower

variables will be affected by the contemporaneous shocks to the upper variables. We then place real GDP at the top in the ordering, which implies that it will only be affected by contemporaneous shocks to itself. Following real GDP, we place the inflation rate, which implies that the inflation will be affected by real GDP and itself, but not by contemporaneous shocks to the policy rate. Finally, we place the exchange rate before the short-term rate in the ordering, which is based on the assumption that the central bank's monetary policy will reflect wider economic conditions. Figure 1 plots the estimated monetary policy shock series.

**Figure 1: Monetary Policy Shock Series**



ARG = Argentina; BRA = Brazil; CHL = Chile; COL = Colombia; CZE = Czech Republic; EGY = Egypt; HKG = Hong Kong, China; HUN = Hungary; IND = India; INO = Indonesia; ISR = Israel; KOR = Republic of Korea; MAL = Malaysia; MEX = Mexico; PER = Peru; PHI = Philippines; POL = Poland; PRC = People's Republic of China; ROM = Romania; RUS = Russian Federation; SIN = Singapore; THA = Thailand; TUR = Türkiye; ZAF = South Africa.

Note: The figure plots the monetary policy shock series for the sample of emerging market economies.

Source: Authors' calculations.

## 2.3 Econometric Methodology

Following the framework proposed by Jordà (2005), we use the panel local projection (LP) to estimate the model and calculate impulse responses to exogenous monetary policy shocks. The baseline model can be given as follows:

$$y_{i,t+h} = \alpha_{i,h} + \lambda_t + \sum_{l=0}^L \delta_{h,l} z_{i,t-l} + \beta_h shock_{i,t} + \varepsilon_{i,t+h}, \quad h = 0, 1, 2, \dots, \quad (3)$$

where  $i = 1, \dots, N$  refers to the specific economy in the sample,  $y$  is the variable of interest (e.g., industrial production or inflation),  $shock_t$  is the series of identified monetary policy shocks,  $z$  is a vector of control variables including lagged values for  $y$  and  $shock_t$  as well as other control variables, and  $\delta_{h,l}$  is a vector of coefficients associated with the lags of  $z$ . Specifically, we set  $L = 3$ , therefore we include three months of lagged values of  $z$ . The coefficient  $\beta_h$  gives the response of  $y$  at time  $t + h$  to the shock at time  $t$ . Thus, one constructs the impulse responses as a sequence of the  $\beta_h$  estimated in a series of separate regressions for each horizon  $h$ .  $\alpha_i$  denotes economy-specific fixed effects, controlling for the time-invariant characteristics of the economy.  $\lambda_t$  represents the time fixed effects.<sup>3</sup> Finally,  $\varepsilon_{i,t+h}$  denotes disturbances. One particular complication associated with the LP method is the serial correlation in the error terms induced by the successive leading of the dependent variable. Thus, we use the Newey-West correction for our standard errors (Newey and West 1987).

We can further adapt the LP framework to allow for nonlinearities in the specification that are associated with global shocks. We therefore make the response of output or inflation to a monetary policy shock also dependent on the contemporaneous change in global factors by interacting the interest rate shock with the change in global factors. The specification is as follows:

---

<sup>3</sup> The time fixed effects also control for structural breaks due to the coronavirus disease (COVID-19) pandemic.

$$y_{i,t+h} = \alpha_{i,h} + \lambda_t + \sum_{l=0}^L \delta_{h,l} z_{i,t-l} + \beta_h shock_{i,t} + \theta_h GF_t \times shock_{i,t} + \sigma_h GF_t + \varepsilon_{i,t+h},$$

$$h = 0, 1, 2, \dots, \quad (4)$$

where  $GF_t$  is a variable representing our key global factor, including the US monetary policy stance (measured as the US shadow policy rate), global financial market uncertainty (measured as the VIX index), and global climate change (measured as the growth rate of monthly atmospheric carbon dioxide concentrations). Therefore,  $\beta_h$  measures the response of output or inflation to the monetary policy shock at each horizon (month)  $h$  when the global shocks are isolated, and  $\beta_h + \sigma_h$  represents the total effects of monetary policy shocks when we consider the impact of global shocks.

To investigate whether economy-specific characteristics matter for monetary policy transmission, we divide EMEs into groups according to their levels of financial development, trade openness, and capital account openness and estimate separate impulse responses for each group. Regarding the estimation of local projections, we incorporate a dummy variable  $I$  that takes a value of 1 for EMEs whereby their level of economy-specific characteristic (e.g., financial development, trade openness, or capital account openness) falls within a certain level  $m \in M$  of their economy-specific characteristic distributions. Following Cloyne et al. (2023), we extend the local projection as follows:

$$y_{i,t+h} = \alpha_{i,h} + \lambda_t + \sum_{m \in M} I \left[ \sum_{l=0}^L \delta_{h,l}^m z_{i,t-l} + \beta_h^m shock_{i,t} + \theta_h^m GF_t \times shock_{i,t} + \sigma_h^m GF_t \right] + \varepsilon_{i,t+h},$$

$$h = 0, 1, 2, \dots, \quad (5)$$

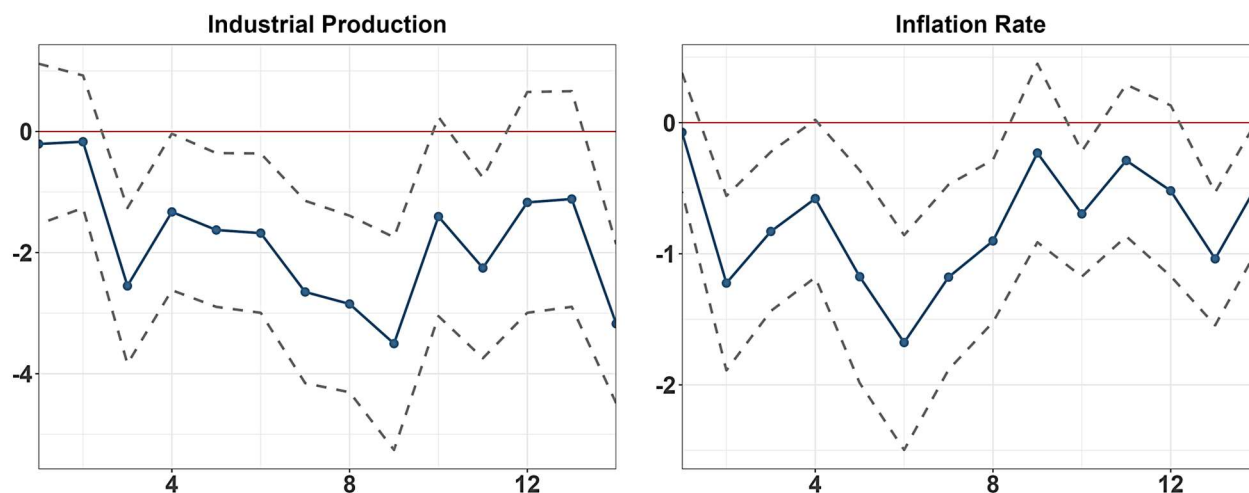
where the notation is as in Eq. (4).

### 3. Empirical Results

#### 3.1 Macroeconomic Effects of Monetary Policy Shocks

Before showing the estimation results for the impacts of global factors on the monetary policy transmission, we first present the responses of key macroeconomic variables, namely industrial production and inflation, to the estimated monetary policy shocks by assuming that the spillovers of global factors are isolated. This is not only to reassure the validity of our identification strategy but also to provide a benchmark against which we can evaluate the impact of different global shocks. Figure 2 shows the estimated impulse responses based on the linear model of Eq. (3). The solid line in each graph represents the estimated impulse responses in percentage points over the following 14 months to a contractionary monetary policy shock. We normalized the scale of the monetary policy shock such that it increases the short-term interest rate by 100 basis points (bps). The dotted lines represent 95% confidence bands based on robust standard errors by Newey and West (1987).

**Figure 2: Impulse Responses of Macroeconomic Variables to a Contractionary Monetary Policy Shock**



Notes: The figure plots the impulse responses of industrial production and inflation rate to a 100-bps contractionary monetary policy shock. 95% confidence bands in dashed lines are reported. The vertical axis unit is 1 percentage point, and the unit of the horizontal axis refers to 1 month.

Source: Authors' calculations.

The impulse responses of macroeconomic variables are consistent with the prediction of standard macroeconomic theory, indicating the soundness of our monetary policy shock series. Following a contractionary monetary policy shock, industrial production decreases persistently with a maximum impact of around 3.5 bps. The inflation rate also shows a dampening and statistically significant effect after the shock. A 100-bps contractionary monetary policy shock is associated with a 1.7-bps decline in inflation at peak after 5 months. Our results also empirically support the findings of other studies that many emerging economies have succeeded in implementing countercyclical monetary policy (Gadanecz, Miyajima, and Urban 2014; Takats 2012).

### **3.2 Impulse Responses Conditioning on Global Factors**

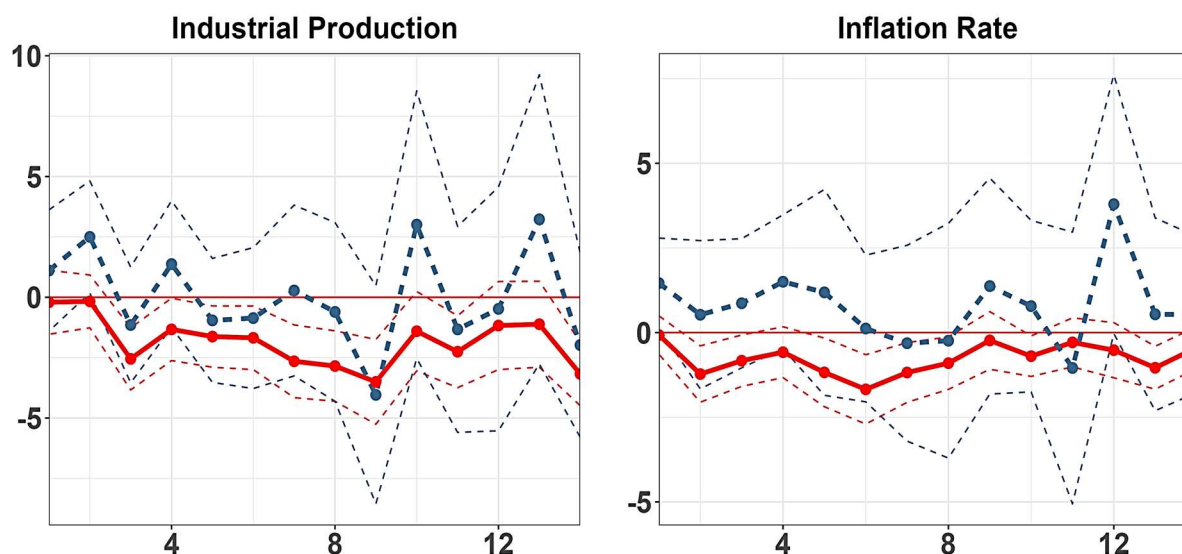
In this part of the analysis, we allow the responses of industrial production and inflation to monetary policy shocks to condition on global factors, namely the US monetary policy stance, the global financial market uncertainty, and the global climate change.

**United States monetary policy stance.** Figure 3 shows the impulse responses of industrial production and inflation to contractionary monetary policy shocks depending on the stance of US monetary policy. The dashed blue line in each graph represents the estimated impulse responses in percentage points over the following 14 months to a contractionary monetary policy shock interacted with US shadow policy rates. By comparing to the baseline estimates that isolate the impacts of global factors (red solid line), the shocks due to the US shadow policy rate seem to matter a great deal for the monetary policy transmission of EMEs. The response of industrial production is muted and not significantly different from zero. The inflation rate also exhibits little response after the monetary policy shocks, which is contrary to the expected outcome of a tightening monetary policy. This can be explained as a surprise rise in the US interest rate that leads to a weaker local currency and a slower US aggregate demand, resulting in a mixed impact on EMEs' domestic output and pushing up the domestic inflation rate (Magud and Pienknagura 2023). Moreover, as the US monetary policy stance can be an indicator



of global financial conditions, a higher US shadow policy rate may lead to a decrease in the EMEs' domestic credits (Miranda-Agrippino and Rey 2022). These potential channels reveal that spillovers of US monetary policy shocks weaken the effectiveness of EMEs' monetary policy transmission.

**Figure 3: Impulse Responses to a Contractionary Monetary Policy Shock:  
US Shadow Policy Rates**



**Baseline** **with US Shadow Rate Shocks**

US = United States.

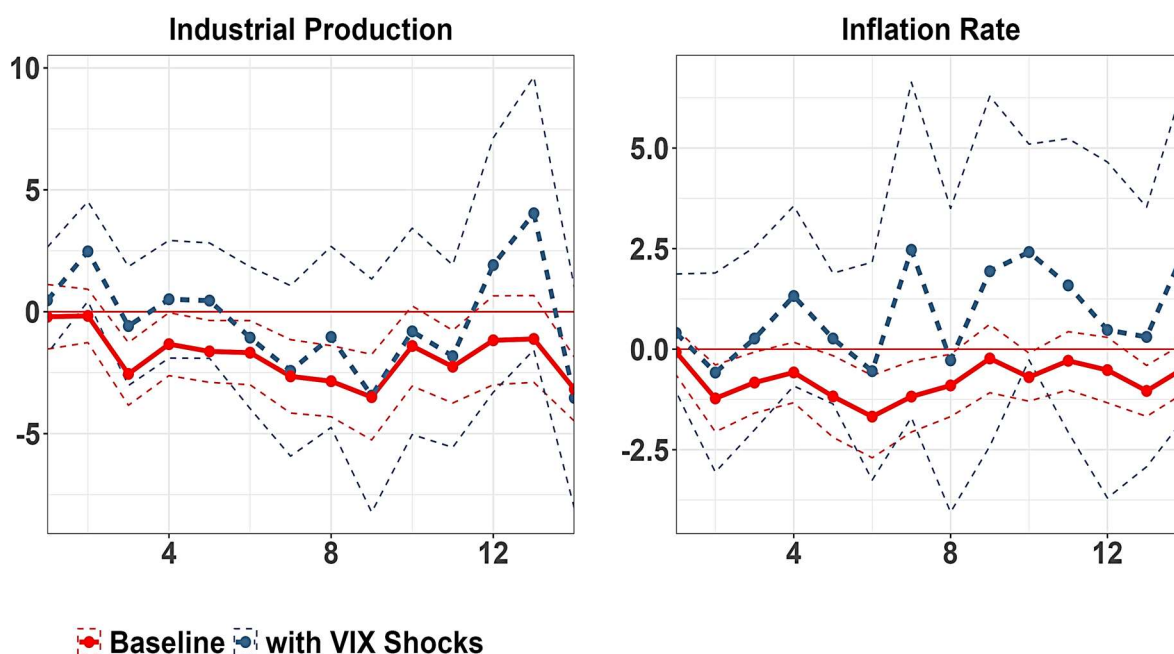
Notes: The figure plots the impulse responses of industrial production and inflation rate to a 100-bps contractionary monetary policy shock, conditioning on US shadow policy rates. 95% confidence bands in dashed lines are reported. The vertical axis unit is 1 percentage point, and the unit of the horizontal axis refers to 1 month.

Source: Authors' calculations.

**Global financial market uncertainty.** Figure 4 shows the impulse responses of industrial production and inflation to contractionary monetary policy shocks depending on the global financial market uncertainty, as measured by the VIX index. The dashed blue line in each graph represents the estimated impulse responses in percentage points over the following 14 months to a contractionary monetary policy shock interacted with the VIX. Similar to US monetary policy, rising global financial market uncertainty also impairs the monetary policy transmission of EMEs,

although the dampening effect, especially on inflation, is smaller. Industrial production responds little to monetary policy shocks compared to the baseline estimates. The response of inflation is also muted and not significantly different from zero for most horizons. The findings are consistent with the existing literature that global financial market volatilities may increase investors' risk aversion and uncertainty about future economic performances, as well as interest rates, leading to a rise in the term premium, which dampens the effectiveness of monetary policy transmission in EMEs (Kumar et al. 2023).

**Figure 4: Impulse Responses to a Contractionary Monetary Policy Shock:  
VIX Index**



VIX = Chicago Board Options Exchange Volatility Index.

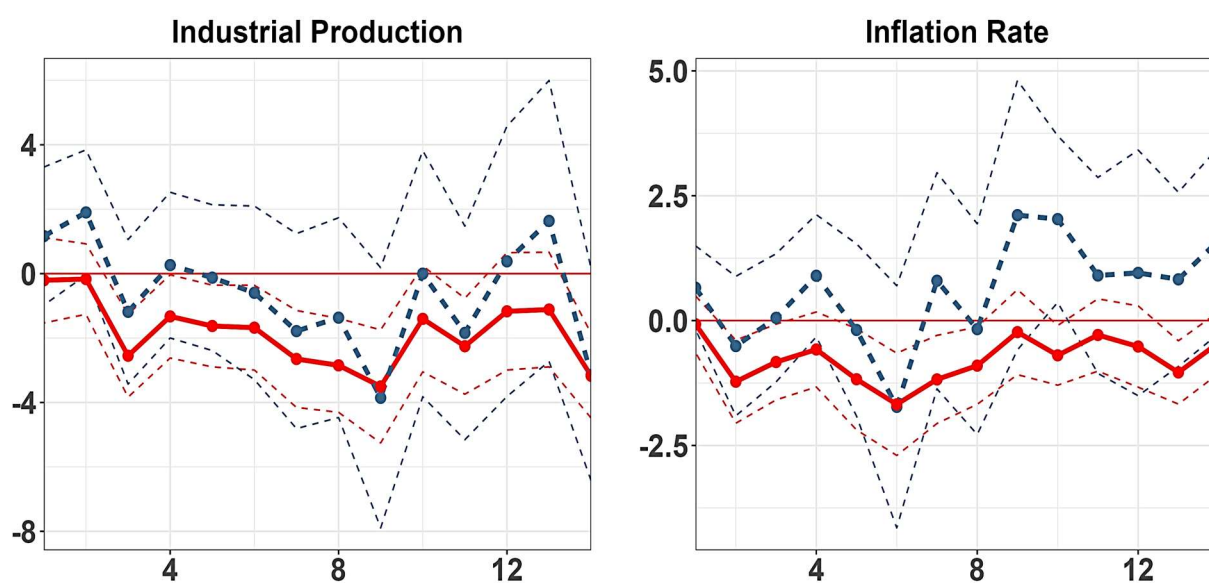
Notes: The figure plots the impulse responses of industrial production and inflation rate to a 100-bps contractionary monetary policy shock, conditioning on the VIX. 95% confidence bands in dashed lines are reported. The vertical axis unit is 1 percentage point, and the unit of the horizontal axis refers to 1 month.

Source: Authors' calculations.

**Global climate change.** Figure 5 shows the impulse responses of industrial production and inflation rate to contractionary monetary policy shocks depending on global climate change, as measured by the growth rate of monthly atmospheric carbon dioxide concentrations. The

dashed blue line in each graph represents the estimated impulse responses in percentage points over the following 14 months to a contractionary monetary policy shock interacted with a global climate change factor. Our results show that global climate change has important impacts on EMEs' monetary policy transmission while the magnitude of such impacts is somewhat smaller than that of US monetary policy and global financial market uncertainties. The impulse responses of industrial production are muted and not significantly different from zero. Regarding inflation, the overall responses to a contractionary monetary policy shock are more muted compared to the baseline. Our finding provides empirical support for the recent debate that climate change could impair monetary policy transmission as climate-related risks could lead to adverse demand and supply shocks, resulting in dampened macroeconomic outcomes (Batten, Sowerbutts, and Tanaka 2020; McKibbin et al. 2017).

**Figure 5: Impulse Responses to a Contractionary Monetary Policy Shock: Climate Change**



 **Baseline**  **with Climate Change Shocks**

Notes: The figure plots the impulse responses of industrial production and inflation rate to a 100-bps contractionary monetary policy shock, conditioning on climate change. 95% confidence bands in dashed lines are reported. The vertical axis unit is 1 percentage point, and the unit of the horizontal axis refers to 1 month.

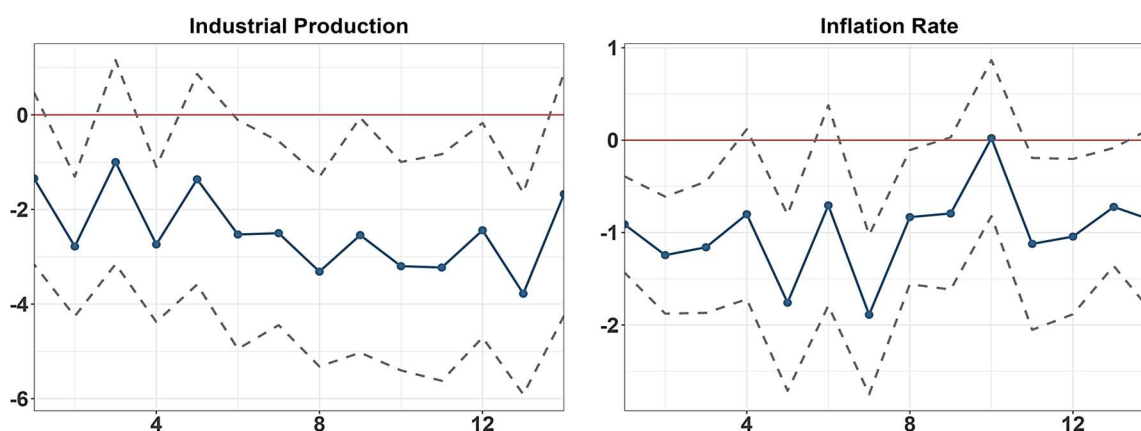
Source: Authors' calculations.

## 4. Robustness and Extensions

### 4.1 Alternative Measure of Monetary Policy Shocks

Thus far, we have followed the standard empirical literature using the short-term interest rate as the policy instrument to identify monetary policy shocks. On the other hand, one may be concerned that short-term policy rates are not an appropriate measure of the monetary policy stance, particularly for some EMEs (e.g., De Leo, Gopinath, and Kalemli-Ozcan 2022). For this reason, we now adopt an alternative monetary policy measure, namely, the long-term rate, to further substantiate our baseline estimates. The long-term interest rate can be a useful instrument as a number of studies have shown that monetary policies could affect the economy through long-term rates (e.g., Caballero and Gadanecz 2023; Krishnamurthy and Vissing-Jorgensen 2011; McGough, Rudebusch, and Williams 2005). Consistent with the benchmark approach shown in Section 2, we estimate the long-term rate shock series by adopting a Taylor type rule and a recursively identified SVAR. We obtain the monthly long-term rate series, namely, 10-year government bond yields, from the IMF.

**Figure 6: Impulse Responses to a Contractionary Monetary Policy Shock: Long-Term Rate**



Notes: The figure plots the impulse responses of industrial production and inflation rate to a 100-bps contractionary long-term rate shock. 95% confidence bands in dashed lines are reported. The vertical axis unit is 1 percentage point, and the unit of the horizontal axis refers to 1 month.

Source: Authors' calculations.

Figure 6 reports the estimated impulse responses of industrial production and inflation rate to a 100-bps contractionary long-term rate shock. We normalize the scale of the long-term rate shock such that it increases the long-term rate by 100 bps. Consistent with the baseline estimates, both industrial production and inflation show dampening and statistically significant effects following a contractionary monetary policy shock, indicating the robustness of our results.

## **4.2 Impulse Responses Conditioning on Economy-Specific Characteristics**

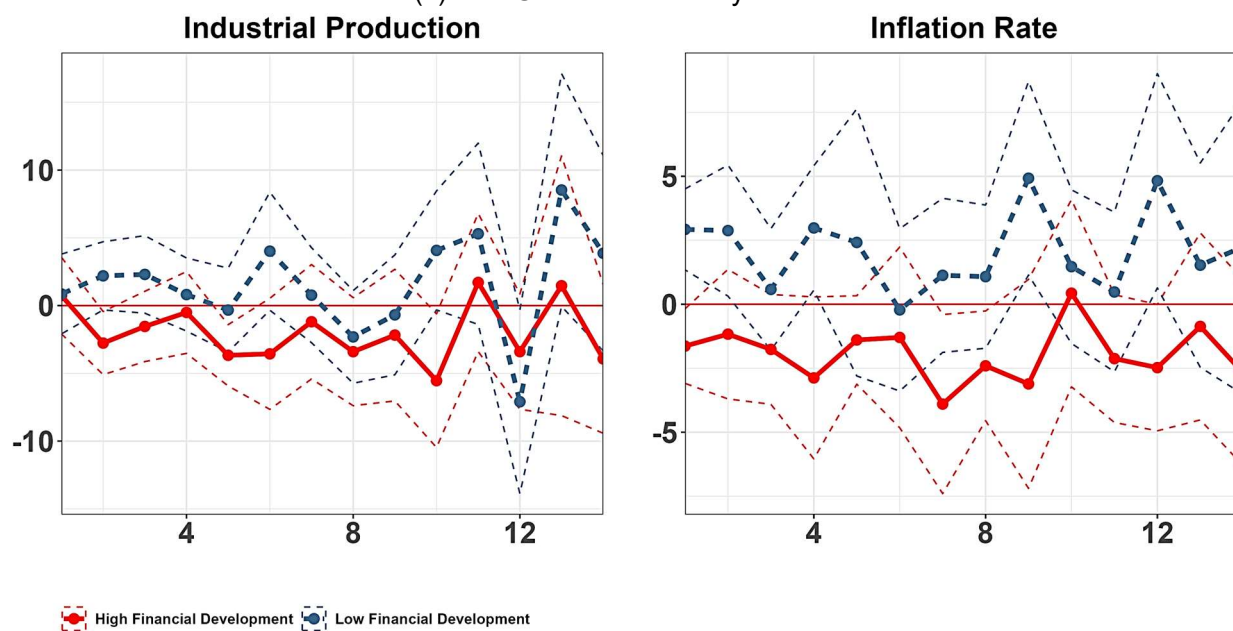
We further examine whether economy-specific characteristics across EMEs affect the monetary policy transmission against the impact of global factors, based on Eq. (5).

### **4.2.1 Impulse Responses Conditioning on Financial Development**

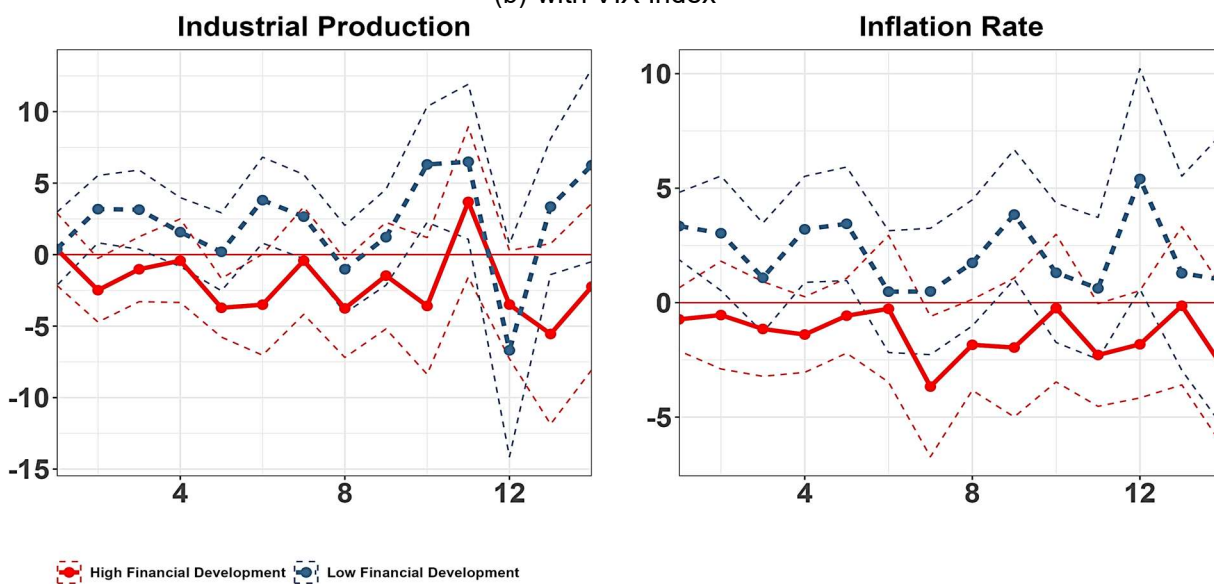
Figure 7 shows the impulse responses of industrial production and inflation rate to contractionary monetary policy shocks interacted with global factors, depending on the level of financial development. Specifically, we focus on the sample EMEs of which are classified as high financial development (top 25th percentile of the financial development distribution) and low financial development (bottom 25th percentile of the financial development distribution). To mitigate endogeneity concerns stemming from the fact that financial development might respond to monetary policy shocks, we use for each economy its (time-invariant) average level of financial development over the entire sample period. The results provide clear evidence for financial development mitigating the contribution of global factors in monetary policy transmission. For those EMEs with a higher level of financial development, the negative responses of industrial production and inflation are close to the baseline estimates. Regarding EMEs with a lower level of financial development, the dampening effects of global shocks on monetary policy transmission are further amplified. Our findings are in line with the literature that financial development could improve resilience to adverse external shocks, i.e., financial or climate shocks (Beirne, Renzhi, and Volz 2021, Kalemli-Ozcan and Unsal 2023).

**Figure 7: Impulse Responses to a Contractionary Monetary Policy Shock by Financial Development**

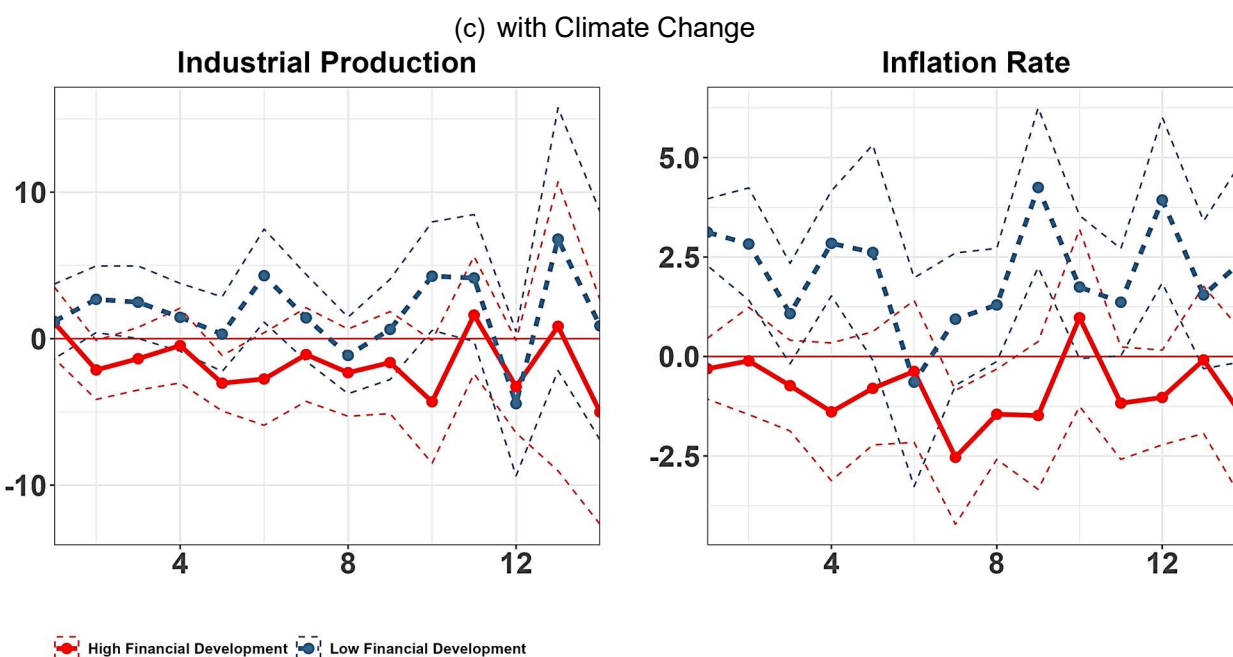
(a) with US Shadow Policy Rate



(b) with VIX Index



*Continued on the next page*



US = United States; VIX = Chicago Board Options Exchange Volatility Index.

Notes: The figure plots the impulse responses of industrial production and inflation rate to a 100-bps contractionary monetary policy shock. 95% confidence bands in dashed lines are reported. The vertical axis unit is 1 percentage point, and the unit of the horizontal axis refers to 1 month.

Source: Authors' calculations.

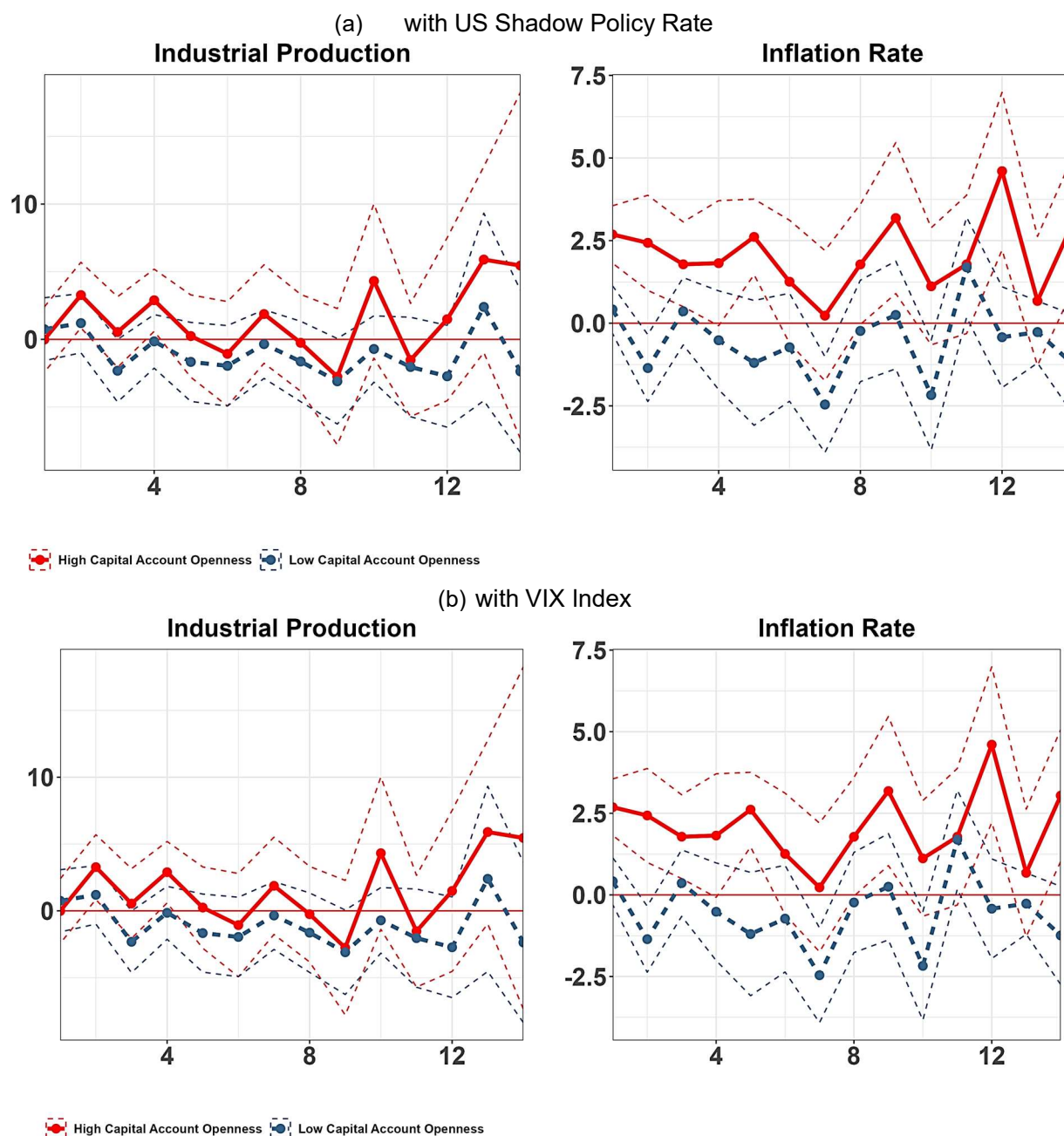
#### 4.2.2 Impulse Responses Conditioning on Capital Account Openness

Figure 8 reports the impulse responses of industrial production and inflation to contractionary monetary policy shocks interacted with global factors, depending on the degree of capital account openness. Specifically, we split the sample depending on whether an economy is of high capital account openness (top 25th percentile of the capital account openness distribution) or low capital account openness (bottom 25th percentile of the capital account openness distribution), based on each economy its sample average degree of capital account openness. In contrast to our results concerning financial development, the estimates show that higher capital account openness amplifies the adverse impacts of global factors on monetary policy transmission. For those EMEs with higher capital account openness, the dampening effects of global factors on monetary policy transmission become stronger. This is in line with findings that an economy with a higher degree of global financial integration is more likely exposed to external shocks through



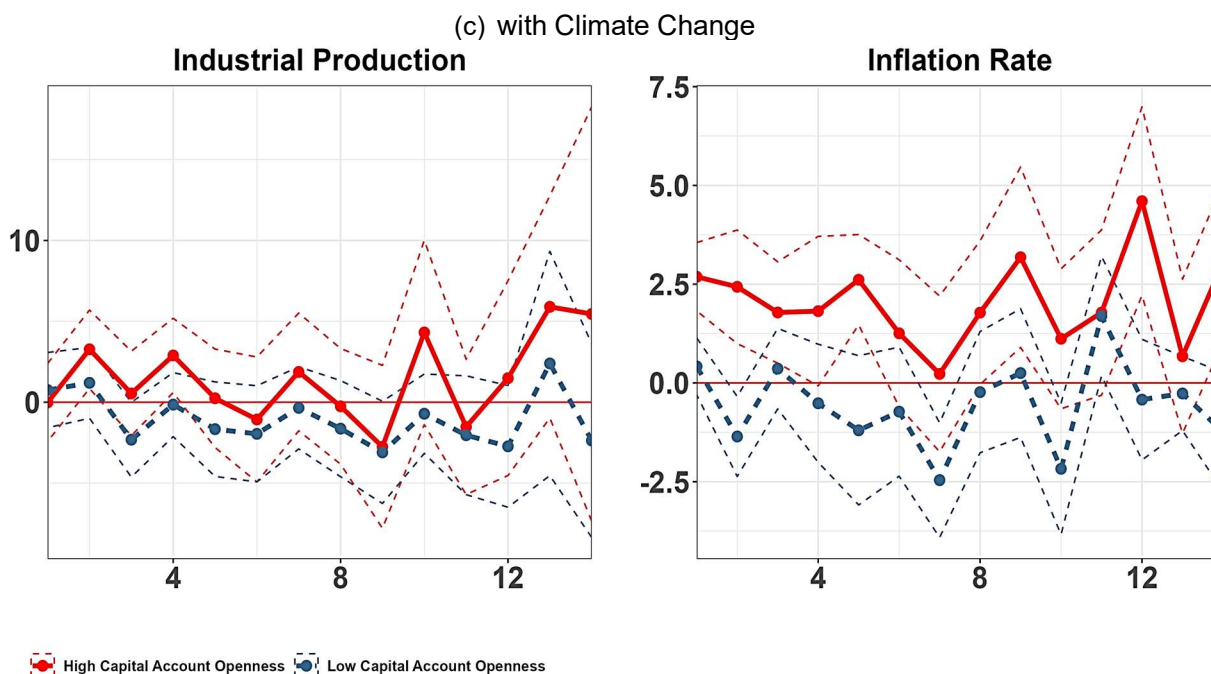
temporary swings in capital flows, resulting in adverse macroeconomic outcomes (e.g., Magud and Pienknagura 2023). However, we fail to find that lower capital account openness can fully mitigate the adverse impacts of global factors on monetary policy transmission, at least for the short term.

**Figure 8: Impulse Responses to a Contractionary Monetary Policy Shock by Capital Account Openness**



*Continued on the next page*





US = United States; VIX = Chicago Board Options Exchange Volatility Index.

Notes: The figure plots the impulse responses of industrial production and inflation rate to a 100-bps contractionary monetary policy shock. 95% confidence bands in dashed lines are reported. The vertical axis unit is 1 percentage point, and the unit of the horizontal axis refers to 1 month.

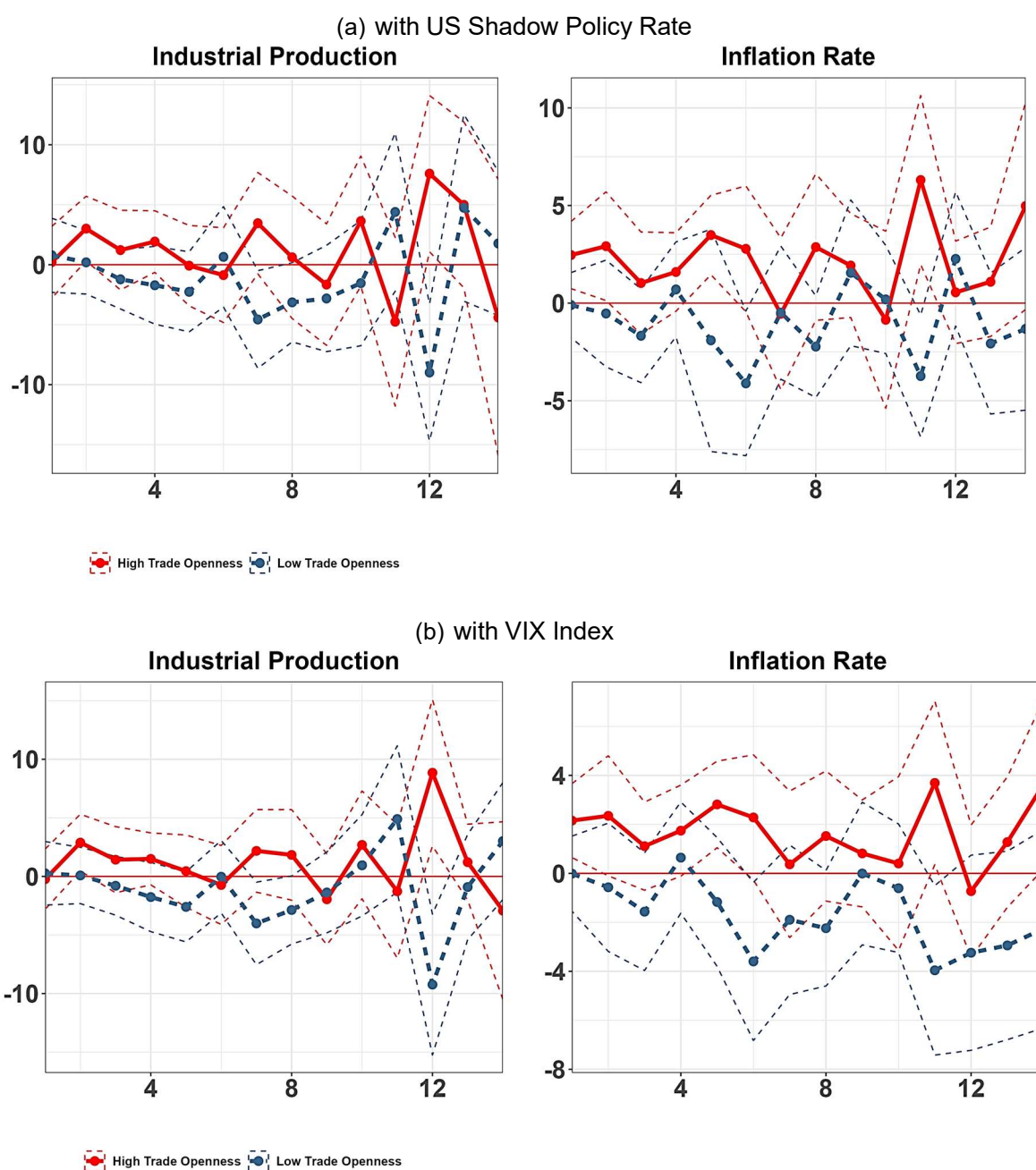
Source: Authors' calculations.

#### 4.2.3 Impulse Responses Conditioning on Trade Openness

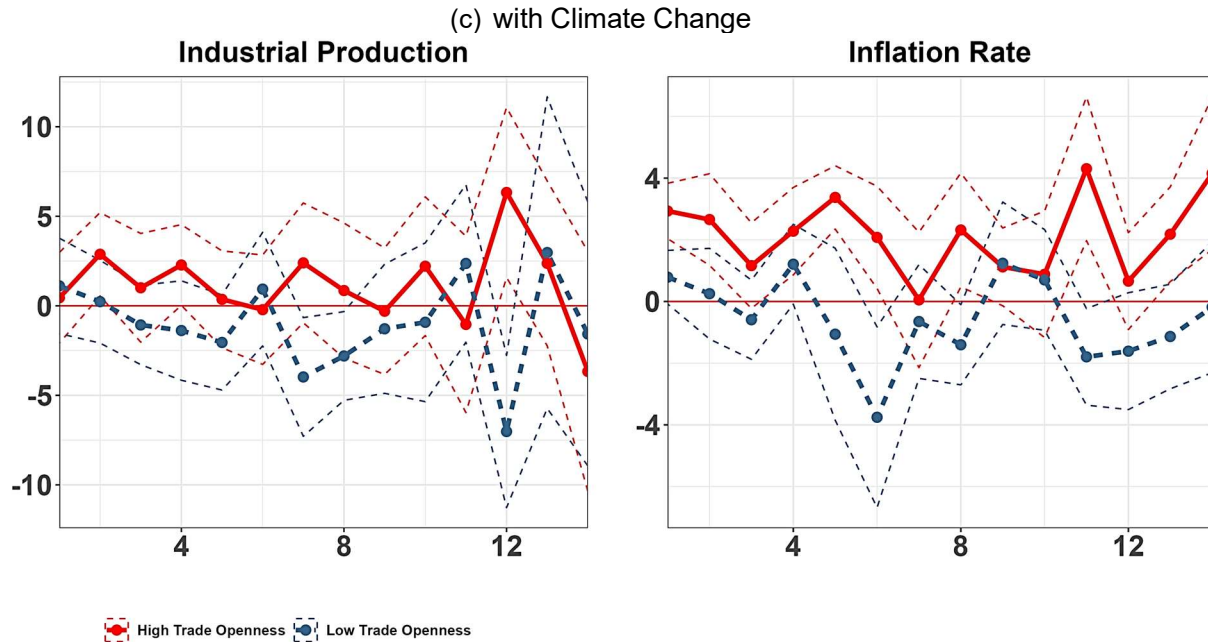
Figure 9 shows the impulse responses of industrial production and inflation to contractionary monetary policy shocks interacted with global factors, depending on the degree of trade openness. Specifically, we focus on the sample EMEs which are of high trade openness (top 25th percentile of the trade openness distribution) and low trade openness (bottom 25th percentile of the trade openness distribution), based on each economy its sample average degree of trade openness. Similar to the case of capital account openness, our results also show that higher trade openness amplifies the adverse impacts of global factors on monetary policy transmission. For those EMEs with a high level of trade openness, the dampening effects of global shocks on monetary policy transmission become stronger, in line with the literature on the “destabilizing effects” of trade openness that emphasize the role of trade openness as a key determinant of aggregate volatility

in EMEs (e.g., di Giovanni and Levchenko 2009). On the other hand, we do not observe that lower trade openness can fully mitigate the dampening effects of global factors on monetary policy transmission, which can be explained, as a low degree of trade openness could impair economic outcomes (e.g., Winters 2004).

**Figure 9: Impulse Responses to a Contractionary Monetary Policy Shock by Trade Openness**



*Continued on the next page*



US = United States; VIX = Chicago Board Options Exchange Volatility Index.

Notes: The figure plots the impulse responses of industrial production and inflation rate to a 100-bps contractionary monetary policy shock. 95% confidence bands in dashed lines are reported. The vertical axis unit is 1 percentage point, and the unit of the horizontal axis refers to 1 month.

Source: Authors' calculations.

## 5. Conclusions

In this paper, we examine the impacts of global factors on monetary policy transmission in EMEs using panel local projections. The estimated results show that adverse global shocks, namely tighter US monetary policy stance, higher global financial market uncertainty, and global climate change, could dampen the transmission of monetary policy in EMEs. Specifically, the overall responses of industrial production and inflation to the monetary policy shocks are more muted compared to the case where the impacts of global factors are isolated. We also study whether economy-specific characteristics across EMEs could affect the monetary policy transmission against the impact of global factors. The results suggest that a higher level of financial development can partially offset the dampening effects of global factors while a higher degree of capital account openness and trade openness further amplify the impact of global factors. Enhanced levels of financial development can imply greater shock-absorbing capacity due to

greater local market liquidity and financial intermediation efficiency. On the other hand, an economy with a higher degree of global financial integration is more likely exposed to external shocks through temporary swings in capital flows, resulting in adverse macroeconomic outcomes.

Our results have implications for monetary policy and central banks in emerging markets. Building a sufficiently robust and flexible monetary policy operational framework that enables more resilience to external shocks may be an important consideration. This can include bolstering the traditional monetary policy toolkit, such as through targeted quantitative easing mechanisms. Through an extended toolkit in exceptional circumstances, the mandate of the central bank can be safeguarded while also limiting disruptions to the transmission of traditional monetary policy. Related to this, our findings also provide a rationale for policymakers' use of other policy instruments in mitigating the adverse impact of external shocks. This would include building up ample foreign exchange reserves, enabling the central bank to intervene to mitigate the potential negative effects of global shocks on exchange rates and capital flows. In addition, policies such as macroprudential regulations by involving a broad range of measures aimed at buttressing financial stability could help to dampen the impact of global financial shocks on economic activity in EMEs. Moreover, greater efforts on enhancing the coordination of monetary and macroprudential policy, as well as fiscal policy, would be important overarching concerns.

## REFERENCES

- Batten, Sandra, Rhiannon Sowerbutts, and Misa Tanaka. 2020. "Climate Change: Macroeconomic Impact and Implications for Monetary Policy." In *Ecological, Societal, and Technological Risks and the Financial Sector* edited by Thomas Walker, Dieter Gramlich, Mohammad Bitar, and Pedram Fardnia, 13–38.
- Beirne, John, Nuobu Renzhi, and Ulrich Volz. 2021. "Feeling the Heat: Climate Risks and the Cost of Sovereign Borrowing." *International Review of Economics & Finance*, 76: 920–936.
- Boivin, Jean, and Marc P. Giannoni. 2008. "Global Forces and Monetary Policy Effectiveness." NBER Working Paper No. 13736. National Bureau of Economic Research (NBER), Cambridge, MA.
- Brandão-Marques, Luis, Gaston Gelos, Thomas Harjes, Ratna Sahay, and Yi Xue. 2020. "Monetary Policy Transmission in Emerging Markets and Developing Economies." IMF Working Papers No. 2020/035.
- Bräuning, Falk, and Viacheslav Sheremirov. 2023. "The Transmission Mechanisms of International Business Cycles: International Trade and the Foreign Effects of US Monetary Policy." *IMF Economic Review*, 71 (1): 300–25.
- Bulir, Ales, and Jan Vlcek. 2021. "Monetary Transmission: Are Emerging Market and Low-Income Countries Different?" *Journal of Policy Modeling*, 43 (1): 95–108.
- Caballero, Julián, and Blaise Gadanecz. 2023. "Did Interest Rate Guidance in Emerging Markets Work?" BIS Working Papers No. 1080.
- Caldara, Dario, and Matteo Iacoviello. 2022. "Measuring Geopolitical Risk." *American Economic Review*, 112 (4): 1194–225.
- Chinn, Menzie D., and Hiro Ito. 2006. "What Matters for Financial Development? Capital Controls, Institutions, and Interactions." *Journal of Development Economics*, 81 (1): 163–92.
- Christiano, Lawrence J., Martin Eichenbaum, and Charles L. Evans. 1999. "Monetary Policy Shocks: What Have We Learned and to What End?" *Handbook of Macroeconomics*, 1: 65–148.
- Cloyne, James, Clodomiro Ferreira, Maren Froemel, and Paolo Surico. 2023. "Monetary Policy, Corporate Finance, and Investment." *Journal of the European Economic Association*, 21 (6): 2586–634.
- De Leo, Pierre, Gita Gopinath, and Sebnem Kalemli-Ozcan. 2022. "Monetary Policy Cyclicity in Emerging Economies." NBER Working Paper No. 30458. NBER, Cambridge, MA.
- di Giovanni, Julian, and Andrei A. Levchenko. 2009. "Trade Openness and Volatility." *The Review of Economics and Statistics*, 91 (3): 558–85.
- Ehrmann, Michael, and Marcel Fratzscher. 2009. "Global Financial Transmission of Monetary Policy Shocks." *Oxford Bulletin of Economics and Statistics*, 71 (6): 739–59.

- Eklou, Kodjovi M. 2023. "The Anatomy of Monetary Policy Transmission in an Emerging Market." IMF Working Papers No. 2023/146. International Monetary Fund (IMF).
- Gadanecz, Blaise, Ken Miyajima, and Jörg Urban. 2014. "How Might EME Central Banks Respond to the Influence of Global Monetary Factors?" BIS Papers No. 78.
- Gertler, Mark, and Peter Karadi. 2015. "Monetary Policy Surprises, Credit Costs, and Economic Activity." *American Economic Journal: Macroeconomics*, 7 (1): 44–76.
- Ha, Jongrim, M. Ayhan Kose, Christopher Otrok, and Eswar S. Prasad. 2020. Global Macro-Financial Cycles and Spillovers." NBER Working Paper No. 26798. NBER, Cambridge, MA.
- Jordà, Oscar. 2005. "Estimation and Inference of Impulse Responses by Local Projections." *American Economic Review*, 95 (1): 161–82.
- Kalemli-Ozcan, Sebnem, and Filiz Unsal. 2023. "Global Transmission of Fed Hikes: The Role of Policy Credibility and Balance Sheets." Brookings Papers on Economic Activity.
- Krishnamurthy, Arvind, and Annette Vissing-Jorgensen. 2011. "The Effects of Quantitative Easing on Interest Rates: Channels and Implications for Policy." NBER Working Paper No. 17555. NBER, Cambridge, MA.
- Kumar, Abhishek, Sushanta Mallick, Madhusudan Mohanty, and Fabrizio Zampolli. 2023. "Market Volatility, Monetary Policy and the Term Premium." *Oxford Bulletin of Economics and Statistics*, 85 (1): 208– 37.
- Magud, Nicolas E., and Samuel Pienknagura. 2023. "External Shocks, Policies, and Tail-Shifts in Real Exchange Rates." IMF Working Papers No. 2023/129. IMF
- McGough, Bruce, Glenn D. Rudebusch, and John C. Williams. 2005. "Using a Long-Term Interest Rate as the Monetary Policy Instrument." *Journal of Monetary Economics*, 52 (5): 855–79.
- McKibbin, Warwick J., Adele Morris, Augustus J. Panton, and Peter J. Wilcoxon. 2017. "Climate Change and Monetary Policy: Dealing with Disruption." Brookings Papers on Economic Activity.
- Miranda-Agrippino, Silvia, and Hélène Rey. 2022. "The Global Financial Cycle." *Handbook of International Economics*, 6: 1–43. Elsevier.
- Miranda-Agrippino, S., & Rey, H. 2020. "US Monetary Policy and the Global Financial Cycle." *The Review of Economic Studies*, 87 (6): 2754–76.
- Mishra, Prachi, Peter J. Montiel, and Antonio Spilimbergo. 2012. "Monetary Transmission in Low-Income Countries: Effectiveness and Policy Implications." *IMF Economic Review*, 60 (2): 270–302.
- Newey, Whitney K., and Kenneth D. West. 1987. "Hypothesis Testing with Efficient Method of Moments Estimation." *International Economic Review*, 28 (3): 777–87.

- Ramos-Francia, Manuel, and Santiago Garcia-Verdu. 2014. "The Transmission of US Monetary Policy Shocks to Emes: An Empirical Analysis." BIS Working Papers No. 78, 363.
- Stock, James H., and Mark W. Watson. 2018. "Identification and Estimation of Dynamic Causal Effects in Macroeconomics Using External Instruments." *The Economic Journal*, 128 (610): 917–48.
- Takats, Előd. 2012. "Countercyclical Policies in Emerging Markets." BIS Quarterly Review, 25.
- Turner, Philip. 2014. "The Global Long-Term Interest Rate, Financial Risks and Policy Choices in EMEs." BIS Working Papers No. 441.
- Winters, L. Alan. 2004. "Trade Liberalisation and Economic Performance: An Overview." *The Economic Journal*, 114 (493): F4–F21.
- Wu, Jing C., and Fan Dora Xia. 2016. "Measuring the Macroeconomic Impact of Monetary Policy at the Zero Lower Bound." *Journal of Money, Credit and Banking*, 48 (2–3): 253–91.

## **Global Shocks and Monetary Policy Transmission in Emerging Markets**

This paper examines the impact of global shocks on monetary policy transmission in 24 emerging market economies. Using panel local projections over the period 2000 to 2022, the results show that tighter United States monetary policy, higher global financial market uncertainty, and worsening global climate change impair the transmission of monetary policy to inflation and output. Higher financial development in emerging market economies can partially offset the disruption, while more open capital accounts and trade can amplify the impact of global shocks.

### **About the Asian Development Bank**

ADB is committed to achieving a prosperous, inclusive, resilient, and sustainable Asia and the Pacific, while sustaining its efforts to eradicate extreme poverty. Established in 1966, it is owned by 68 members—49 from the region. Its main instruments for helping its developing member countries are policy dialogue, loans, equity investments, guarantees, grants, and technical assistance.



**ASIAN DEVELOPMENT BANK**

6 ADB Avenue, Mandaluyong City

1550 Metro Manila, Philippines

[www.adb.org](http://www.adb.org)