

Nybom, Martin; Plug, Erik J. S.; van der Klaauw, Bas; Ziegler, Lennart

**Working Paper**

## Skills, parental sorting, and child inequality

Working Paper, No. 2023:12

**Provided in Cooperation with:**

IFAU - Institute for Evaluation of Labour Market and Education Policy, Uppsala

*Suggested Citation:* Nybom, Martin; Plug, Erik J. S.; van der Klaauw, Bas; Ziegler, Lennart (2023) : Skills, parental sorting, and child inequality, Working Paper, No. 2023:12, Institute for Evaluation of Labour Market and Education Policy (IFAU), Uppsala

This Version is available at:

<https://hdl.handle.net/10419/296963>

**Standard-Nutzungsbedingungen:**

Die Dokumente auf EconStor dürfen zu eigenen wissenschaftlichen Zwecken und zum Privatgebrauch gespeichert und kopiert werden.

Sie dürfen die Dokumente nicht für öffentliche oder kommerzielle Zwecke vervielfältigen, öffentlich ausstellen, öffentlich zugänglich machen, vertreiben oder anderweitig nutzen.

Sofern die Verfasser die Dokumente unter Open-Content-Lizenzen (insbesondere CC-Lizenzen) zur Verfügung gestellt haben sollten, gelten abweichend von diesen Nutzungsbedingungen die in der dort genannten Lizenz gewährten Nutzungsrechte.

**Terms of use:**

*Documents in EconStor may be saved and copied for your personal and scholarly purposes.*

*You are not to copy documents for public or commercial purposes, to exhibit the documents publicly, to make them publicly available on the internet, or to distribute or otherwise use the documents in public.*

*If the documents have been made available under an Open Content Licence (especially Creative Commons Licences), you may exercise further usage rights as specified in the indicated licence.*

# Skills, parental sorting, and child inequality

Martin Nybom

Erik Plug

Bas van der Klaauw

Lennart Ziegler

The Institute for Evaluation of Labour Market and Education Policy (IFAU) is a research institute under the Swedish Ministry of Employment, situated in Uppsala.

IFAU's objective is to promote, support and carry out scientific evaluations. The assignment includes: the effects of labour market and educational policies, studies of the functioning of the labour market and the labour market effects of social insurance policies. IFAU shall also disseminate its results so that they become accessible to different interested parties in Sweden and abroad.

Papers published in the Working Paper Series should, according to the IFAU policy, have been discussed at seminars held at IFAU and at least one other academic forum, and have been read by one external and one internal referee. They need not, however, have undergone the standard scrutiny for publication in a scientific journal. The purpose of the Working Paper Series is to provide a factual basis for public policy and the public policy discussion.

More information about IFAU and the institute's publications can be found on the website [www.ifau.se](http://www.ifau.se)

ISSN 1651-1166

# Skills, parental sorting, and child inequality<sup>a</sup>

Martin Nybom<sup>b</sup>

Erik Plug<sup>c</sup>

Bas van der Klaauw<sup>d</sup>

Lennart Ziegler<sup>e</sup>

May 2023

## Abstract

This paper formulates a simple skill and education model to illustrate how better access to higher education can lead to stronger assortative mating on skills of parents and more polarized skill and earnings distributions of children. Swedish data show that in the second half of the 20th century more skilled students increasingly enrolled in college and ended up with more skilled partners and more skilled children. Exploiting college expansions, we find that better college access increases both skill sorting in couples and skill and earnings inequality among their children. All findings support the notion that increased skill inequality contributes to rising earnings inequality.

**Keywords:** Assortative mating, intergenerational mobility, education, earnings inequality

**JEL Classification Numbers:** J62, I24, J12, J11

---

<sup>a</sup>We thank Mattias Engdahl and Tuomo Suhonnen, as well as seminar and conference participants in Amsterdam, Bath, Helsinki, Izmir, Luxembourg (LISER), Mannheim, Montreal, Rotterdam, Uppsala (IFAU), Umeå, and Washington who provided many valuable comments.

<sup>b</sup>IFAU, UCLS, IZA. Email: martin.nybom@ifau.uu.se

<sup>c</sup>University of Amsterdam, Tinbergen Institute, UCLS, IZA. Email: E.J.S.Plug@uva.nl

<sup>d</sup>VU University Amsterdam, Tinbergen Institute, CEPR, IZA. Email: b.vander.klaauw@vu.nl

<sup>e</sup>University of Vienna (Corresponding author). Email: lennart.ziegler@univie.ac.at.

# 1 Introduction

Two postwar trends have fundamentally changed labor markets throughout the Western world: a rising supply of college graduates, followed by rising earnings inequality. The leading explanation that reconciles the inequality surge with expanding college rates is skill-biased technical change. According to this explanation, rising inequality is demand driven; that is, new production technologies (encouraged by the increased supply of college-educated workers) shift relative demand in favor of skilled workers, which in turn leads to a higher skill premium and a more polarized earnings distribution. While skill-biased technical change, with ample empirical support (Katz and Autor, 1999; Goldin and Katz, 2009; Acemoglu and Autor, 2011), is a plausible explanation for increased inequality, the existing evidence is certainly not ironclad and allows for alternative explanations (Card and DiNardo, 2002).

In this paper, we consider a supply-side explanation for the rise in inequality. We connect expanding college rates to rising inequality through reinforced skill sorting in the marriage market and intergenerational skill transmission. The idea is quite simple: we treat the rise in college attendance as an expanding marriage market for skilled men and women. If improved access to college increases the number of skilled men and women going to college, we should see stronger skill sorting among marriage partners because skilled men and women can more easily meet each other. In the context of intergenerational skill transfers, reinforced sorting on skills (enhanced by higher college attendance rates) should then also widen the skill distribution of individuals in the next generation, leading to a more dispersed earnings distribution. The link between sorting among parents and inequality among children is not new, and has been laid out by Becker (1973, 1974) and later Kremer (1997) and Fernández and Rogerson (2001). What makes this study different is our ability to express the impact of rising college attendance on sorting, transmission and inequality in terms of underlying *cognitive skills* rather than educational attainment (or income).

To evaluate this supply-side explanation, we explore how educational expansion observed in Sweden in the 1960s, 70s, and 80s affected skill sorting of spouses and the skill and earnings distribution of their children. We first present a simple framework to explain (in the clearest fashion) how improved access to higher education can lead to stronger skill sorting of partners and consequently can cause a more polarized skill and earnings distribution of their children. We then use this framework and its main predictions to organize our empirical analysis. With Swedish registry data on cognitive

skills and education, we show that more skilled students increasingly enrolled in college and ended up with more skilled partners and more skilled children. Finally, our study provides causal evidence on the impact of rising college attendance on skill sorting of parents and intergenerational skill transmission. In particular, we exploit college openings and expansions as exogenous source of spatial variation in college access and show that improved college access increases both skill sorting in couples and skill and earnings inequality among their children. These findings suggest that rising inequality is, at least in part, supply driven due to rising skill inequality.

Our paper connects three related literatures. A first, steadily growing, literature focuses on positive assortative mating. Several empirical papers document that partners strongly sort on education outcomes (see e.g., Mare, 1991; Schwartz and Mare, 2005; Eika et al., 2019; Gihleb and Lang, 2020).<sup>1</sup> Our paper takes a marriage market perspective and argues that positive assortative mating can partially be explained by colleges acting as matching platforms. If college students are more likely to meet each other, college attendance itself can lead to positive assortative mating. Recent empirical studies confirm, like we do, the importance of colleges as marriage markets.<sup>2</sup>

The second literature focuses on the intergenerational effects of parental education. Related papers center around different instrumental variables to capture variation in parental education that is unrelated to the preferences and abilities of parents. While most papers exploit compulsory schooling reforms to identify parental effects (Chevalier, 2004; Black et al., 2005; Oreopoulos et al., 2006; Holmlund et al., 2011), fewer papers consider intergenerational transfers among higher educated parents. Two intergenerational studies are particularly relevant to our paper (Kaufmann et al., 2015; Suhonen and Karhunen, 2019). Using elite college admission thresholds in Chile, Kaufmann et al. (2015) show that attending elite colleges raises partner and child quality (as measured by test score outcomes). Suhonen and Karhunen (2019) use college openings and expansions in Finland as instrument and find that college graduates marry

---

<sup>1</sup>While earlier papers conclude that assortative mating is increasing, recent contributions (Eika et al., 2019; Gihleb and Lang, 2020) call a general rise into question and show that overall sorting has remained fairly constant over time.

<sup>2</sup>Artmann et al. (2021) estimate how field-of-study choices impact partner choices using admission lotteries for four oversubscribed fields of study in the Netherlands. They find that lottery winners are much more likely to marry someone from the same field and conclude that fields of study operate as marriage markets. Kirkebøen et al. (2021) reach the same conclusion using admission thresholds into different institutions and fields of study in Norway; that is, institutions and fields of study significantly matter for partner choices.

better educated partners and have better educated children.<sup>3</sup> This is in line with what we find. None of these studies examines how increased college access among parents impacts *inequality* in children’s skills and earnings, however.

The last literature we connect to links assortative mating to earnings inequality.<sup>4</sup> While most of the related papers study the impact of higher assortative mating on inequality within the same generation (Fernández et al., 2005; Greenwood et al., 2014; Eika et al., 2019), only a few studies take an intergenerational perspective and examine how educational sorting in one generation affects earnings inequality in the next generation (Kremer, 1997; Fernández and Rogerson, 2001; Ermisch et al., 2006; Bratsberg et al., 2023). The results of these studies are divided. Kremer (1997) argues, like we do, that sorting likely improves the economic prospects for children in rich families while worsening them for children in poor families. Exploring US data up to the late 1980s, however, he does not find much evidence that stronger educational sorting among parents leads to greater earnings inequality among children. Kremer (1997) concludes that, as long as parental characteristics are only moderately heritable (such as education), changes in sorting are unlikely to impact inequality in future generations in a meaningful way. Fernández and Rogerson (2001) provide an extended model where inequality among children depends on the extent to which parents sort on college education, as well as on the extent to which college-educated parents have fewer children, and face fewer borrowing constraints. When they calibrate their model to US data, they find that increased parental sorting significantly increases earnings inequality of children. In a recent study, Lee and Seshadri (2019) demonstrate how borrowing constraints that limit parental investment in early childhood can also contribute to persistent intergenerational inequalities.

Building upon the theoretical foundations of these studies, we explicitly study parental sorting on skills and intergenerational transmission of skills as drivers of economic disparities. Exploring skill measures from the mandatory military enlistment in Sweden, we can provide both descriptive and causal evidence for these mechanisms.

---

<sup>3</sup>Other empirical studies on the intergenerational effects of college education are Maurin and McNally (2008) and Carneiro et al. (2013). With instruments that are very different (year-by-year variation in the quality of entry exams in French universities versus county-by-year variation in tuition fees and college location in the United States), these studies find that parental college education matters in lowering repetition probabilities of children in high school.

<sup>4</sup>A related literature examines how sorting in the child generation affects intergenerational income transmission (between the parent and child generations). The papers on this topic essentially find that higher similarity between partners amplifies intergenerational income associations between parents and their children’s partners (Chadwick and Solon, 2002; Ermisch et al., 2006; Holmlund, 2022).

The study closest to ours is that of Bratsberg et al. (2023), who examine how assortative mating by social background (as measured by grandparental income ranks) affected inequality in children’s skills and earnings in Norway. When they look at families with children, they find, like we do, that over time assortative mating by social background rose and led to more inequality in child skills and earnings. But when they look at all families (including those without children), they find somewhat surprisingly that over time fewer children were born in low social background families, which reduced overall inequality in child skills and earnings. The latter could be due to specifics of the Norwegian context; for example, the Norwegian oil shock in the 1970s had large, redistributive effects on grandparental income but only small impacts on parental skills and education (Løken, 2010). Our paper differs from the Norwegian study in several ways. We explicitly focus on skills (which are arguably more heritable than education and income), treat college as a marriage market for skilled men and women and as one of the underlying mechanisms for rising child inequality, and test whether exogenous college openings and expansions indeed led to stronger skill sorting among parents and more skill and earnings inequality among children.

The remainder of this paper proceeds as follows. Section 2 motivates the relevance of our model by illustrating long-run trends in education, assortative mating and earnings for the US and Sweden. Section 3 outlines the theoretical framework and discusses its assumptions and implications. Section 4 describes the data which we use in our analysis, presents our main results on postwar trends in education, skills, and earnings, and estimates the key parameters of our model. Section 5 backs up our previous findings with estimates on the causal effect of improved college access on marital sorting and intergenerational transmission. Finally, Section 6 concludes.

## 2 Descriptive evidence

The three key macroeconomic trends central to this study are educational expansion, persistent assortative mating, and rising earnings inequality. Before we discuss the underlying mechanisms, we first document these trends for Sweden and the United States. For trends in Sweden, we use administrative records which are available for the full population. For the United States, we use nationally representative survey data from the Panel Study of Income Dynamics (PSID).<sup>5</sup>

---

<sup>5</sup>Observations are weighted using household sample weights to account for sample attrition over time.



Figure 1a plots long-term trends in college attendance for men and women born between 1900 and 1980. In Sweden, we see a huge rise in attendance rates starting from 5 percent to 50 percent for the most recent cohorts. Initially fewer women attend college than men, but this pattern reverses over time. For the United States, we find similar trends but also some differences. Compared to Sweden, college attendance rates are somewhat higher, and female students begin to outnumber male students about ten years later.

Figure 1b plots trends in assortative mating of spouses measured as the share of spouses who both attended college (by cohort of men). We compare the observed shares to the expected shares under random matching of spouses, where the latter corresponds to the product of the college attendance rates of women and men. In both countries, spouses match much more often on college education than random matching predicts. The ratio of observed to random matches declines over time but still amounts to about 1.5 for the youngest cohorts.

Figure 1c plots trends in earnings inequality. Observations are restricted to men aged 35 to 55. Inequality is measured in terms of percentile ratios. The ratios for Sweden are calculated based on real annual total earnings before taxes.<sup>6</sup> Percentile ratios for the United States are based on real hourly earnings before taxes. As shown in the graphs, we see a steady increase in earnings dispersion in both Sweden and the United States. Again, there are also some differences. Compared to Sweden, overall percentile ratios are much higher and trends are steeper in the US, indicating that there is much more inequality, which also grows at a faster rate.

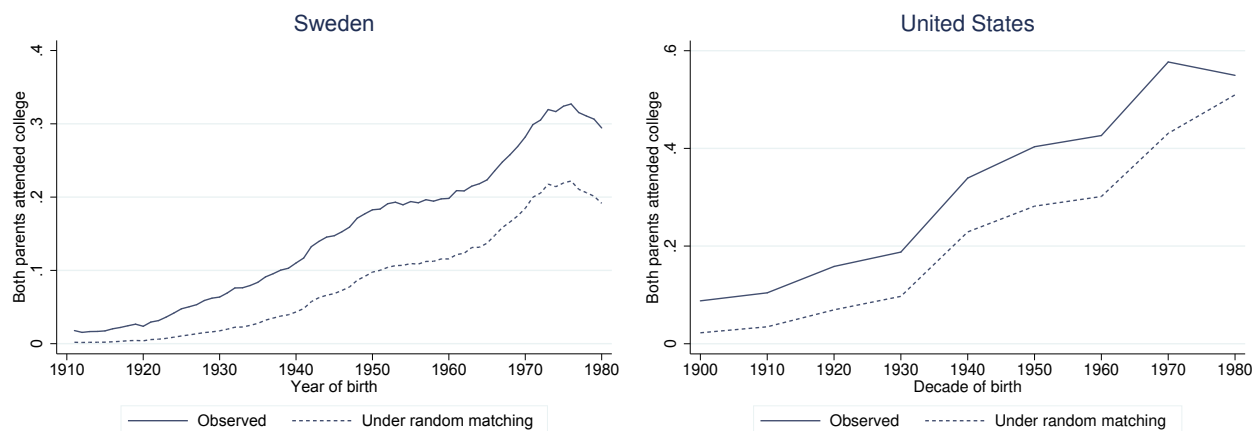
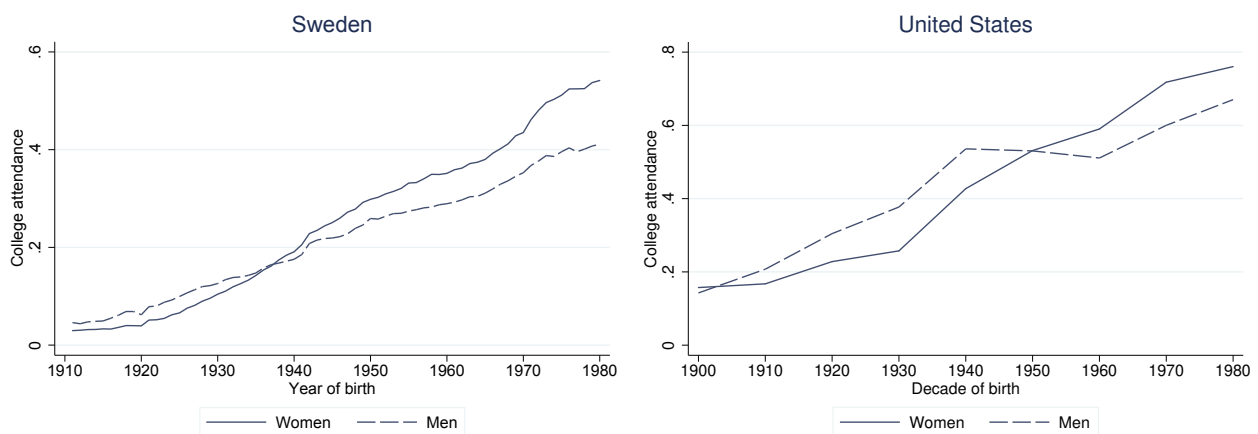
Sweden and the United States are very different countries in terms of education (educational costs) and labor market institutions (tax incentives, returns to education and skills). Trends in higher education, marriage sorting and earnings inequality, however, are remarkably similar. We therefore think that the results of our study may also apply to other developed countries.

---

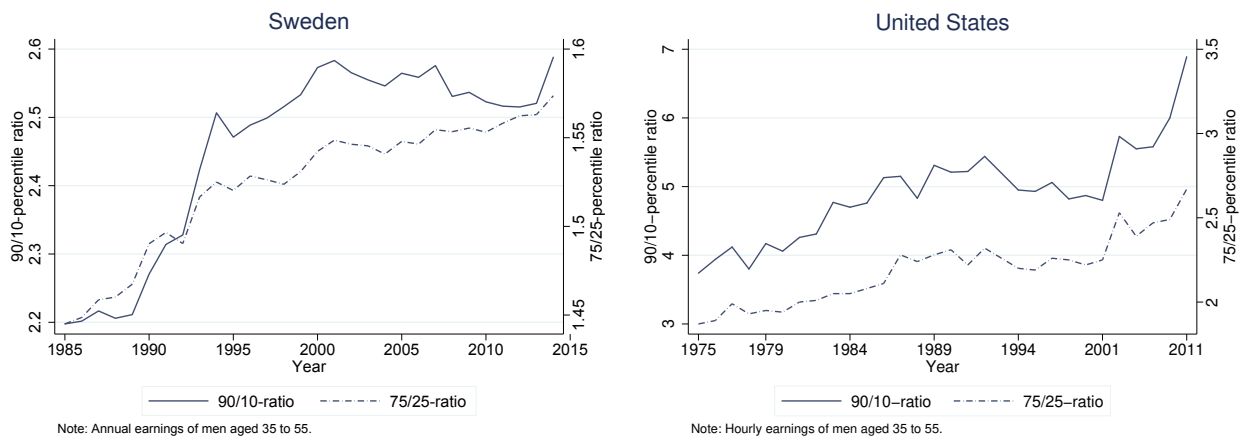
<sup>6</sup>All earnings are adjusted to 2014 prices. We exclude observations with very low income who presumably did not work throughout the entire year.

Figure 1: Trends in college education, marriage sorting, and earnings inequality in Sweden (left) and the US (right)

(a) College attendance by gender



(b) Match in college attendance of spouses



(c) Earnings dispersion

### 3 A simple model

#### 3.1 Skills, education and earnings

In this section we present a simple model, which links skills to college attendance, to describe the intergenerational effects of educational expansion on earnings inequality. For ease of exposition, we consider a two generations model. The goal of the model is to derive theoretical predictions that can be tested in the empirical part of the paper and to guide the specification of the empirical model in Section 5.

Skills of women and their (male) spouses are denoted by  $a_f$  and  $a_m$ , respectively. Both are drawn from a skill distribution  $F(\cdot)$  with mean  $\mu$  and variance  $\sigma^2$ . Assuming that skill transfers from the mother and the father are equally important, we define the skills of children  $a_c$  as a linear combination of the parents' skills and a random skill component  $\epsilon$ :

$$a_c = \eta \frac{a_f + a_m}{2} + (1 - \eta)\epsilon.$$

Parameter  $\eta$  measures the extent to which skills are linked across generations. The random component  $\epsilon$  has expected value  $\mu$  to ensure that the expected skill level is the same across generations. It follows that the variance of  $a_c$  is

$$\text{var}(a_c) = \frac{\eta^2}{4}[\text{var}(a_f) + \text{var}(a_m) + 2\text{cov}(a_f, a_m)] + (1 - \eta)^2\text{var}(\epsilon).$$

The variance of the skill distribution of children thus increases if positive assortative mating on skills of parents ( $\text{cov}(a_f, a_m) > 0$ ) becomes stronger.<sup>7</sup>

Next, we focus on parents and discuss how changes in college attendance can cause stronger assortative mating on skills. Variable  $e$  takes value one if an individual attends college and value zero otherwise. Individuals have sufficient skills to go to college as long as their skill level  $a$  is above some threshold  $\bar{a}$ . The latter is determined by academic requirements of college education, which we assume to remain unchanged over time. Not all individuals with sufficient skills ( $a \geq \bar{a}$ ) actually attend college because there are other factors that influence the decision to attend college. We call these external factors education frictions, which may vary over time. Education frictions impose that only fractions  $p_f$ ,  $p_m$  and  $p_c$  of women, their spouses and their children also attend college if they qualify. In our model, parameters  $p_f$  and  $p_m$  are the key policy parameters linking

---

<sup>7</sup>If mating of parents is random ( $\text{cov}(a_f, a_m) = 0$ ), the skill distribution remains stable over generations and the variance of the random component becomes  $\text{var}(\epsilon) = (1 - \eta^2/2)/(1 - \eta^2)\sigma^2$ .

reduced frictions to the rise in college attendance, as documented in the previous section. We assume that education frictions decline for reasons unrelated to skills; among these are changing cultural norms in favor of college education, expanding colleges and new college openings.<sup>8</sup> Without loss of generality, we write  $p_m = p$  and  $p_f = \alpha p$ , where  $0 < p < 1$  and  $0 < \alpha < \frac{1}{p}$ . If  $p$  increases, education frictions decline for both women and their spouses, while if  $\alpha$  increases, education frictions only reduce for women. For women and their spouses, the share of college attendees is given by  $q_f = \alpha p[1 - F(\bar{a})]$  and  $q_m = p[1 - F(\bar{a})]$ .

Skills and college education jointly determine earnings on the labor market. We define earnings as

$$y = (1 + \pi e)wa,$$

where labor market parameters  $w$  and  $\pi$  represent a uniform wage rate and a college premium. We assume that wage rate and college premium are the same for women and men, and the same for both generations. This earnings specification allows for complementarities between college education and skills; that is, the earnings differential between workers with and without college education is increasing in skills.

### 3.2 Assortative mating

We are particularly interested in how a reduction in education frictions of parents affects earnings inequality of children. Because earnings depend to a large extent on skills, the skill correlation between parents is crucial in explaining skill and earnings dispersion. To model skill matching of parents, we consider a relatively simple matching function of men and women in which college attendance plays an important role as a marriage market. The marriage match parameter  $\lambda$  characterizes the relative likelihood that a college-educated man meets a college-educated woman.  $\lambda$  is defined between 0 and 1: if  $\lambda = 1$ , a college-educated man only meets college-educated women; if  $\lambda = 0$ , he only meets women without college education; and if  $\lambda = 1/2$ , he is equally likely to meet a woman with and without college education, which describes the case of random

---

<sup>8</sup>Such frictions are extensively discussed in the sociology literature, where increasing levels of schooling are partly attributed to changing attitudes towards education and better access to educational institutions (Schofer and Meyer, 2005). Because higher education used to be the privilege of a small elite in the past, many potential students did not consider college as a feasible career choice but rather followed role models in their social environment. When in the course of the 20th century new social norms promoted educational equality to foster economic success independent of social origin, these attitudes changed steadily and contributed to the increase in enrollment rates. Concurrently, the expansion of colleges and new college openings led to better access to educational institutions.

matching in the marriage market.<sup>9</sup> The marriage match parameter may represent marriage market frictions, marriage preferences, or both. A college-educated man then meets  $\lambda q_f + (1 - \lambda)(1 - q_f)$  women, from whom he randomly chooses one to become his partner. As a result, the probability that a college-educated man matches with a college-educated woman is

$$\frac{\lambda q_f}{\lambda q_f + (1 - \lambda)(1 - q_f)}.$$

Multiplying this term by the share of college-educated men leads to the fraction of couples where both partners are college educated:

$$\pi_{11} = q_m \frac{\lambda q_f}{\lambda q_f + (1 - \lambda)(1 - q_f)}.$$

Due to supply constraints,  $\pi_{11}$  is bounded between  $\max(0, q_m - (1 - q_f))$  and  $\min(q_f, q_m)$ , meaning that  $\lambda$  is bounded between  $\max(0, \frac{q_m - (1 - q_f)}{q_f + q_m - (1 - q_f)})$  and  $\min(1, \frac{(1 - q_f)}{(q_m - q_f) + (1 - q_f)})$ . Most likely  $\lambda$  is larger than  $1/2$ , which implies positive assortative mating on college education. This is consistent with the empirical evidence of Artmann et al. (2021) and Kirkebøen et al. (2021), who find that colleges act as marriage markets.

All individuals in the marriage market eventually match.<sup>10</sup> College-educated men who do not match with a college-educated woman consequently match with a woman without college education. The corresponding fraction is given by  $\pi_{01} = q_f \frac{(1 - \lambda)(1 - q_f)}{\lambda q_f + (1 - \lambda)(1 - q_f)}$ . Then the fraction of couples where only women attended college is  $\pi_{10} = q_f - q_m \frac{\lambda q_f}{\lambda q_f + (1 - \lambda)(1 - q_f)}$ . The remaining fraction,  $\pi_{00} = 1 - q_m - q_f + q_m \frac{\lambda q_f}{\lambda q_f + (1 - \lambda)(1 - q_f)}$ , is the share of couples where none of the spouses went to college.

### 3.3 Predictions

We use the marriage market matching probabilities to derive the covariance of skills between women and their spouses, which is given by

$$\text{cov}(a_f, a_m) = \frac{((\mu_1 - \mu_0)F(\bar{a}))^2}{(1 - q_m)} \frac{(2\lambda - 1)q_f q_m}{\lambda q_f + (1 - \lambda)(1 - q_f)},$$

---

<sup>9</sup>Random matching implies that the fraction of college-educated women that a college-educated man meets is proportional to the share of college-educated women among all women.

<sup>10</sup>Alternatively, we can introduce a second marriage match parameter describing how women meet men. If resulting matching shares do not align, some individuals remain single. This would cause more assortative mating on education among the matched couples.

where  $\mu_0 = E[a_j|a_j \leq \bar{a}]$  and  $\mu_1 = E[a_j|a_j > \bar{a}]$  for  $j = f, m$ . This expression allows us to analyze the determinants of assortative mating in skills.

**Proposition 1.** (a) If  $\lambda$  increases, then  $\text{cov}(a_f, a_m)$  increases. (b) If  $\lambda > \frac{1}{2}$ , then  $\text{cov}(a_f, a_m)$  increases in  $p$  and  $\alpha$ .

The proposition shows two results.<sup>11</sup> First, if the relative rate at which college-educated men meet college-educated women (compared to women without college education) increases, assortative mating as measured by the covariance of skills between partners becomes stronger. Second, if education frictions decline, there is a higher degree of assortative mating. Above we showed that the skill distribution widens over generations if there is positive assortative mating of parents. Together with Proposition 1, this implies that diminishing education frictions of parents increase dispersion in the children's skill distribution.

Our theoretical model is illustrated in Figures 2 and 3. Figure 2 plots the share of couples where both partners attended college as a function of friction parameter  $p$ . The solid line shows the case of random matching in the marriage market ( $\lambda = 1/2$ ), while the other two lines are associated with positive assortative mating. The share of couples with two college-educated partners increases monotonically in both  $\lambda$  and  $p$ , showing that reduced education frictions lead to more matches between college-educated individuals.

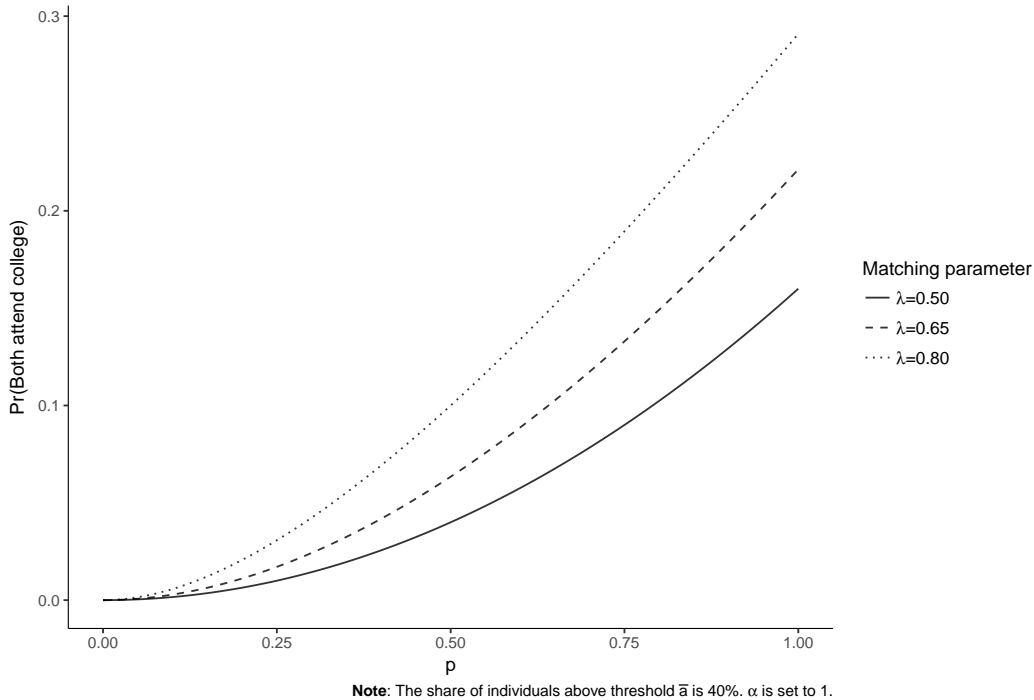
Figure 3 illustrates for different values of  $\lambda$  how the variance of children's earnings changes when education frictions diminish for their parents. If matching in the marriage market is random ( $\lambda = 1/2$ ), the earnings distribution of children is unaffected by changes in education frictions of their parents' generation. However, if there is assortative mating on education, rising college attendance of parents due to lower frictions increases earnings inequality of children. For larger values of  $\lambda$ , the impact on earnings inequality of the next generation becomes stronger.

Our theoretical model makes a few assumptions on the determinants of higher education and matching in the marriage market. We assume that rising college attendance rates for younger birth cohorts are the consequence of reduced education frictions, while entry thresholds on skills remain constant. We test this empirically in Section 4, where we also test whether the marriage market parameter  $\lambda$  implies positive assortative mating on college education ( $\lambda > 1/2$ ) and remains constant over time.

---

<sup>11</sup>The derivation of the covariance and the proofs of the proposition are shown in the Appendix.

Figure 2: Education frictions and assortative mating of spouses



Furthermore, we provide empirical evidence on skill sorting of partners and the intergenerational transmission of skills. Our model predicts that women who attend college due to reduced education frictions are more likely to marry a high-skilled spouse and have therefore higher skilled children. We test these predictions using data on cognitive skills and exploiting exogenous variation in college attendance.

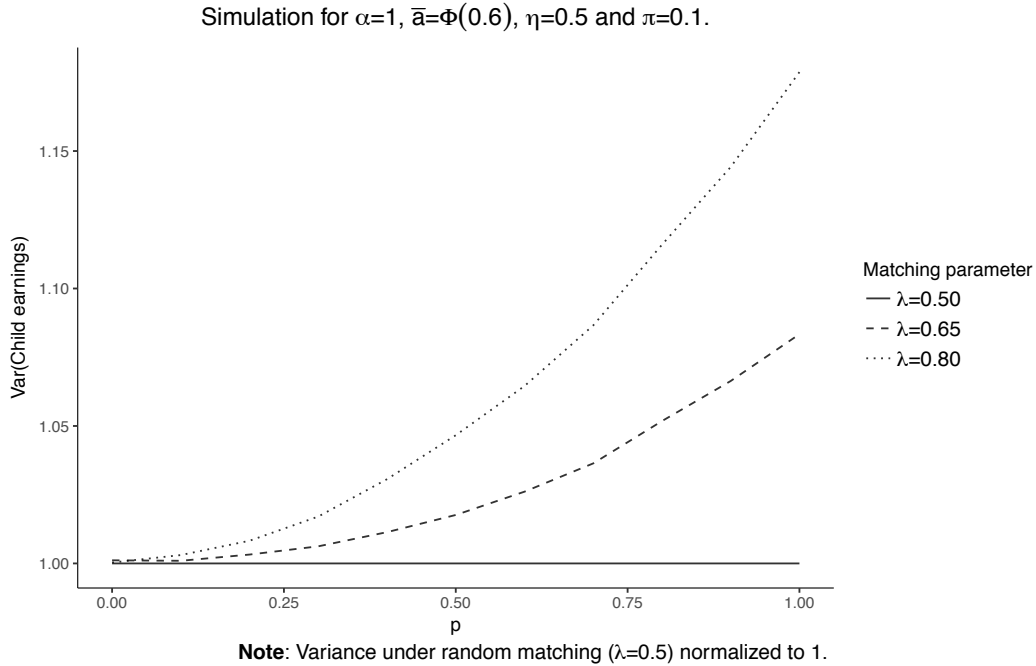
## 4 Empirical analysis

### 4.1 Data

Our empirical analysis requires data on skills, education, and earnings for women, their spouses, and their sons, covering multiple decades. For this purpose, we combine various administrative registers in Sweden. We use the military enlistment register for skill records, the education and tax registers for education and earnings records, and the population register for partner and children records, complemented with municipality-of-birth records.

Our primary measure of cognitive skills comes from military enlistments, which

Figure 3: Education frictions and earnings dispersion of children



were compulsory for all Swedish men until 2010. Enlistment tests are taken at age 18 and are available for about 90 percent of all males. The total cognitive skill score represents an aggregated score from several subtests that measure verbal, logical, spatial and technical skills. Importantly, this cognitive skill score has been shown to strongly predict future labor market outcomes, such as wages, earnings and unemployment, in previous research (e.g., Lindqvist and Vestman, 2011; Edin et al., 2021).

Data on the raw scores (in points) on the cognitive test are available for the years 1969 to 1994. In 1980, the test procedure underwent some minor revisions (see Grönqvist et al., 2017, for more details). We therefore both adjust for test type and convert the adjusted test scores into cohort-specific percentile ranks (divided by 100), which gives us a measure that is more robust over time. Since ranks are scale-invariant, we only have to assume that the relative position in a cohort did not change because of the revision. This follows the recent practice of using rank measures in intergenerational transmission studies (see, for instance, Dahl and DeLeire, 2008; Chetty et al., 2014).

There are two limitations of our skill measure. First, skill scores are not available for females. Instead we proxy the skills of women by the skill measure of their brothers. This reduces the sample to spouses who have at least one tested brother during the



period of observation, which corresponds to about 40 percent of all families. Because skills of siblings are not perfectly correlated, estimates of skill sorting (skill correlations between spouses) and intergenerational skill transmission (skill correlations between mothers and sons) based on the proxied skill measure are biased downward in our subsequent analysis. To assess the size of the bias, we use the skill rank correlation between brothers. Assuming similar skill rank correlations among same-sex and different-sex siblings, we conclude that the actual skill correlations between spouses, and mothers and sons are probably twice the size of the correlations that we estimate.<sup>12</sup>

The second limitation is that the skill rank measure is not informative about skill inequality. Rank distributions remain by construction the same over time. Instead we detect changes in skill inequality through changes in skill rank correlations. In line with the predictions of our model, we infer a greater inequality in absolute skills of children whenever the skill rank correlations between mothers, fathers, and sons are positive. If skills of both parents are transmitted across generations, positive assortative mating in ranks improves the skills of children whose parents are higher ranked while worsening the skills of those whose parents are lower ranked.

The test score data are matched to education and earnings records, which are available for the full sample. We define college attendance as having at least some post-secondary education. Earnings are gross annual earnings from work including self-employment and sickness benefits at age 35.

---

<sup>12</sup>Appendix Figure A.1 shows that the rank of one brother closely maps the rank of the other brother with a correlation of about 0.46. Moreover, we do not observe large changes over time; between the first and last cohorts in our sample, the correlation only slightly increases by approximately 2 percent (not shown).

Table 1: Descriptive statistics

	Mean	SD	Observations
<b>Women</b>			
Year of birth	1956.44	14.14	3,403,472
Highest level of education	0.34	0.47	3,403,472
College attendance	3.63	1.70	3,403,472
Skill rank (proxied)	0.48	0.29	845,874
<b>Spouses</b>			
Year of birth	1952.80	14.75	2,820,141
Highest level of education	3.50	1.70	2,820,141
College attendance	0.29	0.45	2,820,141
Skill rank	0.51	0.29	962,334
<b>Sons</b>			
Year of birth	1969.02	8.00	1,489,821
Highest level of education	3.90	1.42	1,489,821
College attendance	0.33	0.47	1,489,821
Log(earnings)	12.48	0.82	1,265,717
Skill rank	0.50	0.29	880,081

NOTE – The sample consists of all women born between 1930 and 1980. Education is classified into seven levels ranging from primary school (1) to post-graduate education (7). Skill rank indicates the cognitive skills percentile rank (1-100) within a cohort divided by 100. Skills of women are proxied by their closest brothers. Earnings are annual figures measured at age 35.

Our primary data source includes all women who were born between 1930 and 1980. Table 1 provides descriptive statistics of these women, their spouses, and sons.<sup>13</sup> We then draw the appropriate sample to test the three main predictions of our model. First, education expansion is largely driven by diminishing education frictions. Second, the expansion leads to stronger positive assortative mating in skills. Third, higher skill sorting of parents induces a widening of the children’s skill distribution and in turn increases earnings inequality. The different tests rely on different subsamples depending on the available skill, education, and earnings information on women, spouses, and

<sup>13</sup>Spouses are matched based on common parenthood and marital records. In some cases, multiple spouses are recorded in the data. We then first match spouses on their first born son, or if they have no sons, on their first born daughter. If a person does not have any children, we use the first match recorded in the marital register.

sons. For each subsample, we report the corresponding outcome means and standard deviations at the bottom of the estimation tables.

## 4.2 Frictions, skills, and college education

To examine the role of education frictions as determinant of the secular rise in college attendance, we first look at the skill composition of college attendees. If rising attendance rates are due to diminishing education frictions, there should be an increasing number of college attendees among higher skilled individuals. If, on the other hand, rising attendance rates are due to lower skill requirements, the number of low-skilled college attendees should increase. Figure 4 plots attendance rates by cognitive skill ranks for the different cohorts of the women’s spouses in our sample for which we observe the skill measure (1951-1975). It shows that college attendance rates tend to increase over time for most ranks. When we compare attendance rates between the first four and last four cohorts, we see that increasing attendance rates are much more driven by the higher skilled than by those with lower skills. Figure A.2 in the Appendix shows comparable trends in college attendance by proxied skill rank for women.

Table 2 reports corresponding estimates from regressions that link college attendance to skill rank, while controlling for cohort years (measured either by indicators or a linear trend). The coefficients confirm that cognitive skills are a strong predictor for college attendance. As shown in column (4), being 10 percentage points higher in the cognitive skill distribution raises the likelihood of attending college by about eight percentage points in the sample of spouses. When we interact skill rank with cohort years, we estimate a positive coefficient, suggesting that over time the skill gap by college attendance grows. These patterns are comparable for women although the estimates are much smaller because we proxy their skills with the skill rank of their brothers. Together these results are most consistent with an education friction story.

Figure 4: College attendance by skill rank and cohort

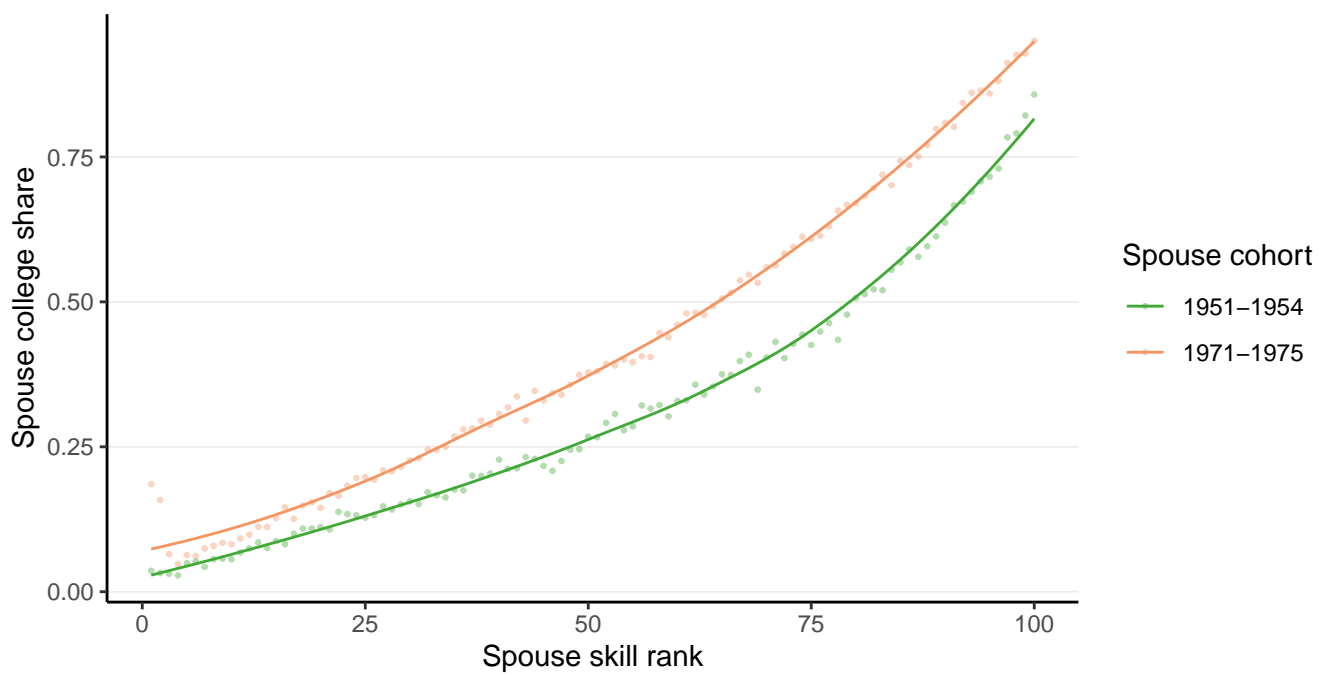


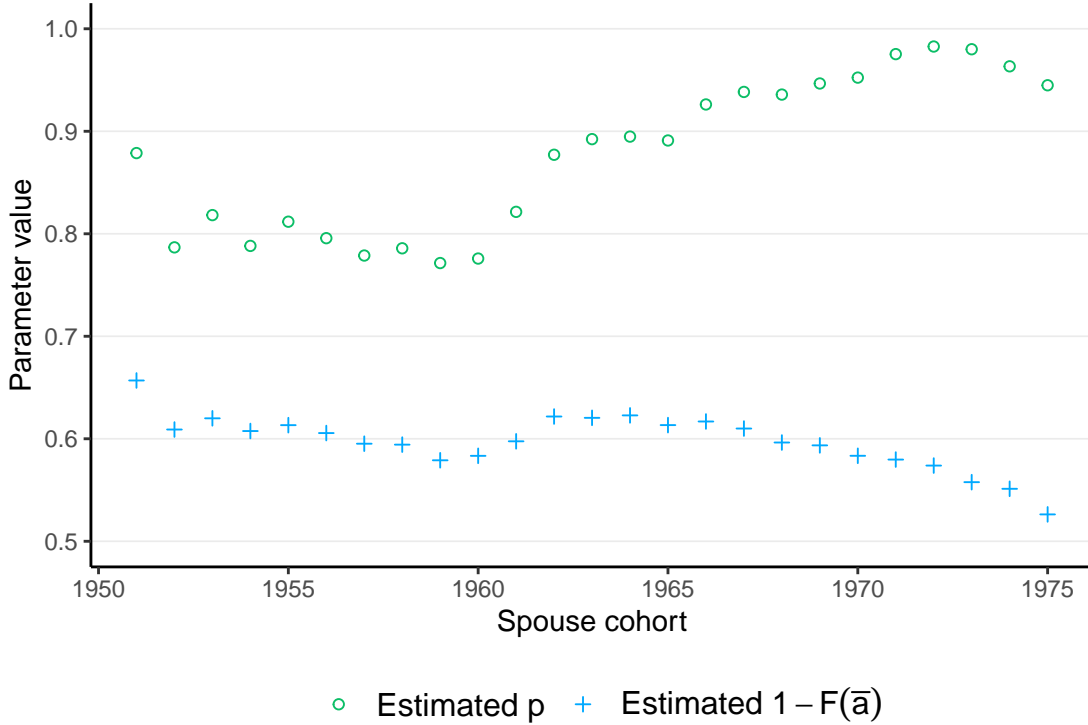
Table 2: The link between cognitive skills and college attendance

	Women college attendance			Spouses college attendance		
	(1)	(2)	(3)	(4)	(5)	(6)
Skill rank	0.463*** (0.002)	0.464*** (0.002)	0.365*** (0.012)	0.806*** (0.001)	0.808*** (0.001)	0.600*** (0.007)
Skill rank $\times$ Birth year			0.003*** (0.000)			0.006*** (0.000)
Birth year (1930=0)		0.007*** (0.000)	0.006*** (0.000)		0.004*** (0.000)	0.001*** (0.000)
Cohort dummies	Yes	No	No	Yes	No	No
Mean (SD)	0.433 (0.496)			0.351 (0.477)		
$N$	519,130			962,334		

NOTE – The sample consists of all women born between 1930 and 1980 with spouses born between 1951 and 1975 for whom skill data are available. The dependent variable is a college attendance indicator. Skill rank indicates the cohort-specific cognitive skills percentile rank (divided by 100). Skills of women are proxied by the skills of their closest brother. Standard errors are reported in parentheses. \* significant at 10% level, \*\* significant at 5% level, and \*\*\* significant at 1% level.

The data on college attendance by skill rank and birth year allow us to estimate the fraction of individuals who qualify for college ( $1 - F(\bar{a})$ ) and the education friction parameter ( $p$ ), for each cohort of spouses. Figure 5 plots these two model parameters. The estimated qualification shares fluctuate around 0.6 for most cohorts, implying that the upper 60 percent of the skill distribution meet the qualifications to go to college. The friction estimates indicate that for cohorts born before 1960, about 20 percent of all individuals with sufficient skills did not go to college. For cohorts born after 1960, the education friction steadily decreases to zero. This suggests that higher attendance rates are mainly driven by disappearing frictions whereas relative skill requirements for college remained similar over time.

Figure 5: Estimated college attendance parameters  $p$  and  $1 - F(\bar{a})$



### 4.3 Assortative mating on skills and college education

We next analyze how partners sort on college education and skills. According to our model predictions, the rise in college rates should reinforce partner sorting on skills as long as partners sort on college education. To test this, we run regressions of women's college education on their spouses' college education, as well as women's skills on spouses' skills, while controlling for cohort effects. Table 3 reports these assortative mating estimates. When we examine sorting on college, we find that college-educated men are 39 percentage points more likely to match with college-educated women. The interaction term (in column 3) further indicates a small increase of 0.1 percentage points per cohort. Based on observed matches and overall college attendance rates of spouses, we can also estimate the marriage match parameter  $\lambda$  for each cohort. Figure 6 shows that the parameter estimates fluctuate around 0.75, suggesting that men who went to college are three times  $(\frac{0.75}{1-0.75})$  more likely to meet women who attended college as well. When we examine sorting on skills, we observe, consistent with our model predictions, positive assortative mating.

Table 3: Assortative mating in college attendance and skill ranks

	Women college attendance			Women skill rank		
	(1)	(2)	(3)	(4)	(5)	(6)
Spouse col. attendance	0.388*** (0.001)	0.388*** (0.001)	0.351*** (0.004)			
Spouse col. attendance $\times$ birth year			0.001*** (0.000)			
Spouse skill rank				0.207*** (0.002)	0.207*** (0.002)	0.147*** (0.008)
Spouse skill rank $\times$ birth year						0.002*** (0.000)
Spouse birth year		0.007*** (0.000)	0.007*** (0.000)		0.001*** (0.000)	0.000 (0.000)
Spouse birth year dummies	Yes	No	No	Yes	No	No
Mean (SD)	0.433 (0.496)			0.485 (0.289)		
<i>N</i>	1,378,980			425,465		

NOTE – The sample consists of all women born between 1930 and 1980 with spouses born between 1951 and 1975 for whom skill data are available. The dependent variables are the women's college attendance (in columns 1, 2, and 3) and skill rank (in columns 4, 5, and 6). Skill rank is the cohort-specific cognitive skills percentile rank (divided by 100). Skills of women are proxied by the skills of their closest brother. Standard errors are reported in parentheses. \* significant at 10% level, \*\* significant at 5% level, and \*\*\* significant at 1% level.

Figure 6: Estimated marriage match parameter  $\lambda$

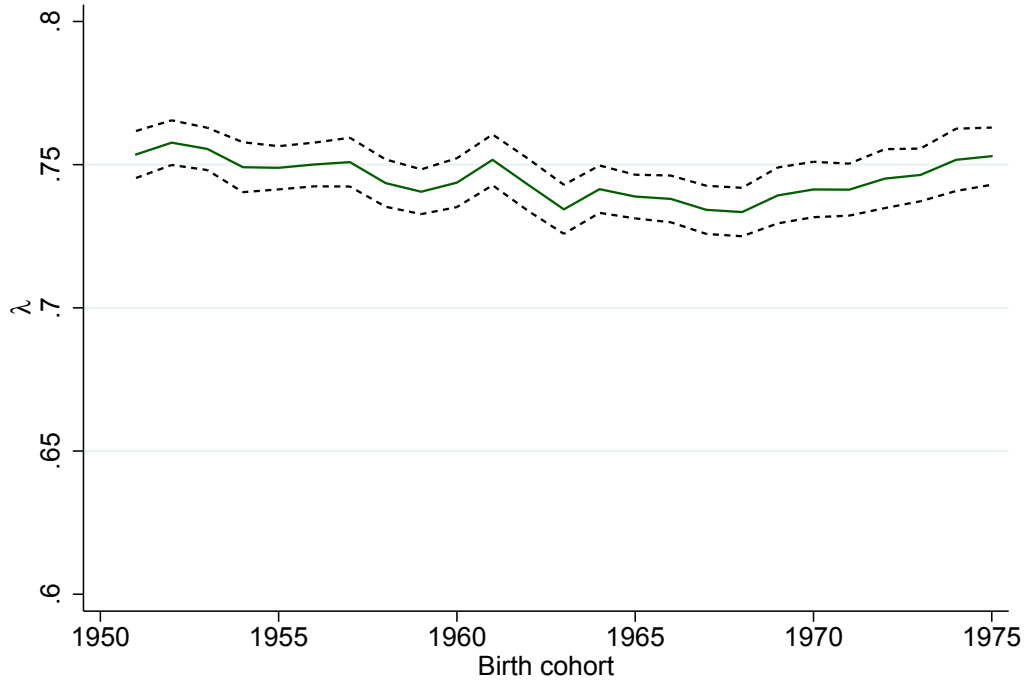
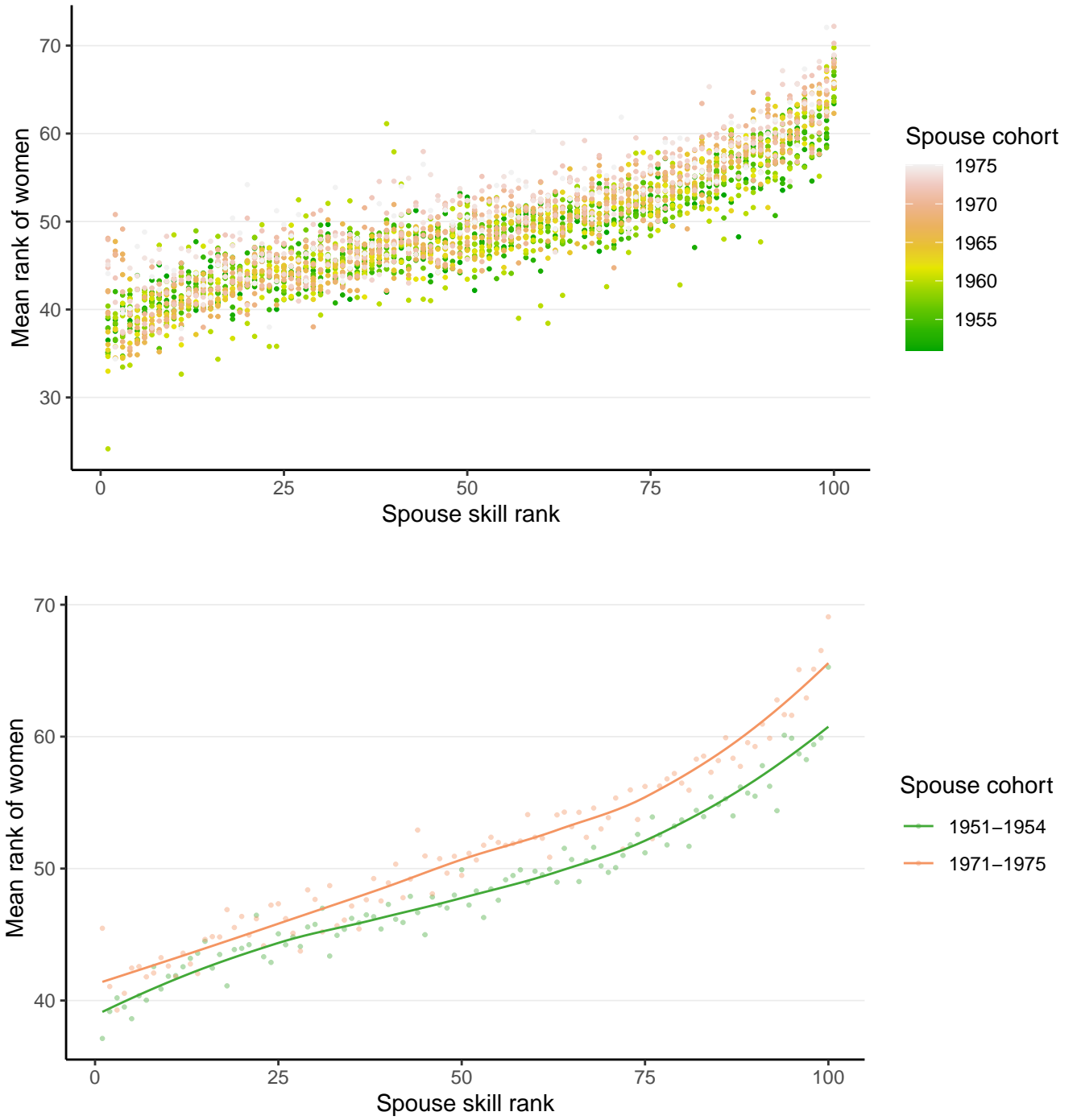


Figure 7: Assortative mating in skill ranks of spouses





As shown in columns (4) to (6) of Table 3, men who are 10 percentile ranks higher in the skill distribution are married to women who are on average two percentile ranks higher. The positive interaction between skill rank and cohort year suggests that sorting on skills gets slightly stronger over the years. Figure 7, which plots the mean skill rank of women by the skill rank of their spouse for each cohort, illustrates this trend.

## 4.4 Intergenerational transmission

To examine the impact of these changes on children, we next focus on the intergenerational transmission of skills.<sup>14</sup> Regression results in Table 4 indicate that skilled parents have more skilled sons (e.g., Grönqvist et al., 2017). For fathers, the estimates are large, positive, and statistically significant: a 10 percentage point increase in the father skill rank is associated with a three to four percentage point increase in the skill rank of sons. For mothers, the estimates are also positive and statistically significant but, as we discussed above, biased downward and therefore smaller than the estimates for fathers. Importantly, both estimates do not change much when we additionally control for the other parent’s skills. This emphasizes the relevance of assortative mating, suggesting that stronger sorting on skills of parents leads to a more dispersed skill distribution of children.

Table 4: Intergenerational mobility of skills

	Son skills rank			Son college attendance			Son log(earnings)		
	(1)	(2)	(3)	(4)	(5)	(6)	(7)	(8)	(9)
Mother skill rank	0.203*** (0.011)		0.175*** (0.011)	0.244*** (0.007)		0.195*** (0.007)	0.094*** (0.011)		0.071*** (0.011)
Father skill rank		0.340*** (0.011)	0.324*** (0.011)		0.385*** (0.007)	0.357*** (0.007)		0.179*** (0.011)	0.169*** (0.011)
Mean (SD)	0.428 (0.275)			0.312 (0.463)			12.64 (0.695)		
N	7,538			59,220			52,438		

NOTE – The sample consists of all sons of women born between 1930 and 1980 for whom skill data on both parents are available. The dependent variables are skills (in columns 1, 2, and 3), college attendance (in columns 4, 5, and 6) and the logarithm of earnings (in columns 7, 8 and 9). Skills represent cohort-specific cognitive skills percentile rank (divided by 100). Skills of women are proxied by the skills of their closest brother. Earnings are annual figures measured at age 35. All regressions include mother cohort dummies. Standard errors are reported in parentheses.

\* significant at 10% level, \*\* significant at 5% level, \*\*\* significant at 1% level.

<sup>14</sup>Because skill data on both parents and sons are not available for all families, the sample size is smaller compared to previous regressions. Fertility patterns differ somewhat by skill rank but we do not observe any meaningful cohort trends in the correlation between skills and fertility. Comparing the first to the last cohorts in our sample, the likelihood to have any children decreases to a similar extent for most skill groups (see Appendix Figure A.4). This does not coincide with Bratsberg et al. (forthcoming) who find that fertility falls faster among individuals with lower socioeconomic backgrounds. However, their sampling and studied time period differ slightly from ours.

## 5 Causal evidence from university openings and expansions

Above we argued that the expansion in college attendance is due to reduced education frictions, and we showed how this expansion is associated to skill sorting in the marriage market and intergenerational skill transmission. In this section we exploit the opening of new universities and the expansion of existing universities in Sweden as natural experiment to provide causal evidence for the effects of increased college attendance on skill and earnings inequality of the next generation. We argue that education frictions reduce exogenously for individuals who live near a location where either a new university is opened or an existing university has expanded its capacity.

Currently there are 16 universities located in 12 different municipalities in Sweden. There are also a number of more field-specific and/or regional colleges, covering an additional 15 municipalities. Figure 8 shows the location and size (in terms of student numbers) of these institutions over the course of the second half of the 20th century.<sup>15</sup> Sweden has four old universities (Gothenburg, Lund, Uppsala and Stockholm) that opened before our analysis window, while most of the other institutions opened in some form between the mid-1960s and the mid-1980s. We exploit that university openings and expansions affect the decision for university education of individuals living in the municipality of either a new or expanding university.<sup>16</sup>

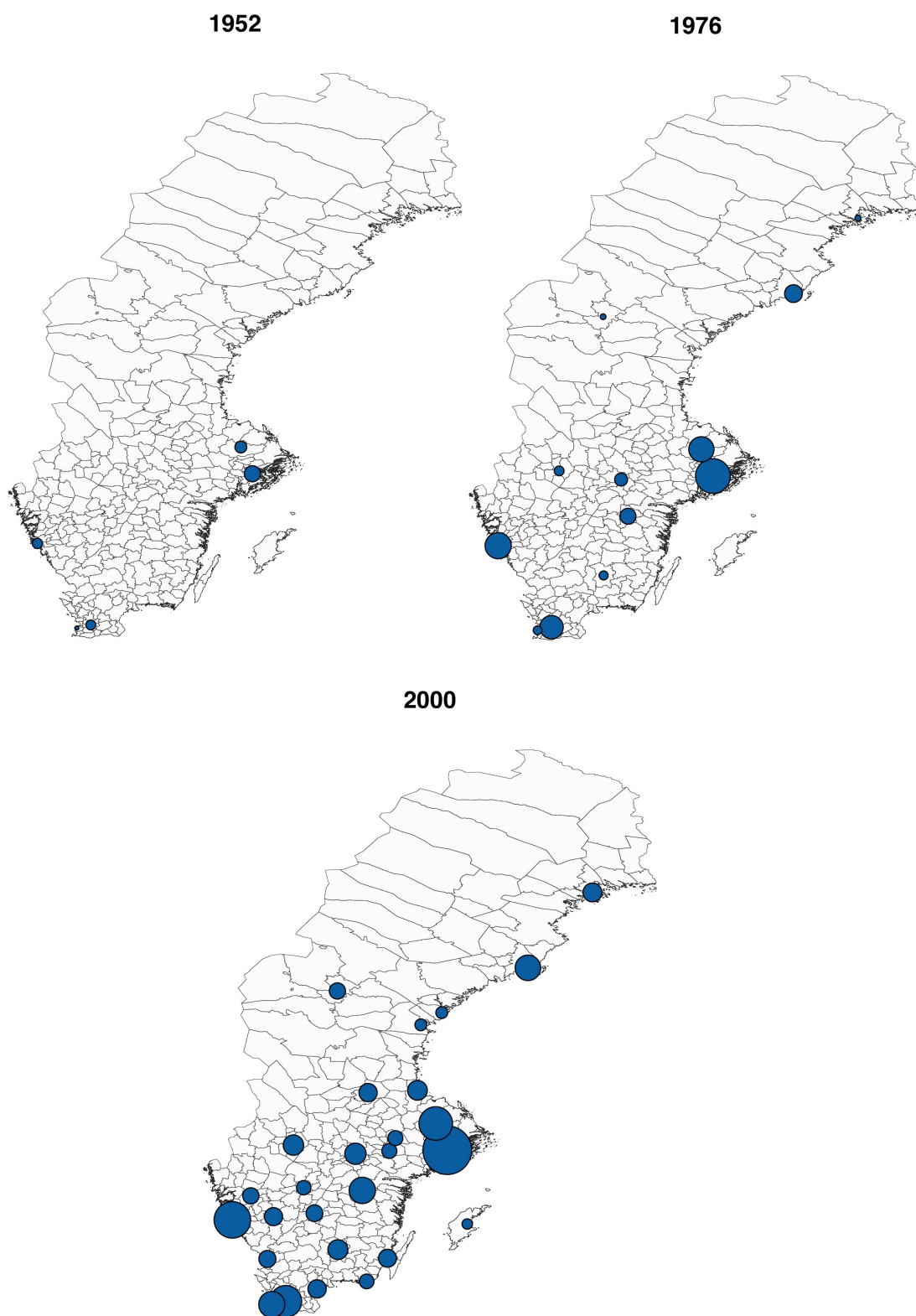
Our model predicts that skill sorting in the marriage market increases whenever education frictions decline, which also implies an increasing skill gap between partners of college and non-college educated women. The same holds for the (expected) skill gap between children of college and non-college educated women, as well as for the difference in their (expected) earnings.

---

<sup>15</sup>Institutions in Sweden are typically separated into universities and colleges, where the former are more research oriented and have a general right to award doctorate degrees. We do not differentiate between these types of institutions in our analysis, and use the terms university and college interchangeably. Information on student numbers (registered first-year students) for the years 1952-1979 and 1984-1985 is obtained from official printed publications from Statistics Sweden (SCB, 1959b; 1959a; 1960; 1974; 1977; 1979; 1995); information starting from 1986 is obtained electronically through Statistics Sweden's website (SCB, 2020). We lack information for 1980-1983 and interpolate these years linearly.

<sup>16</sup>Figure A.5 in the appendix illustrates trends in college attendance of women. While attendance is always lower in municipalities without college access (*Never*-municipalities), we observe that the attendance rate in municipalities which have experienced an opening (*Opening*-municipalities) converges towards the level in municipalities which have always had a university (*Always*-municipalities).

Figure 8: Growth of first-year college student numbers in Sweden



To empirically link rising inequality to reduced education frictions, we focus on the difference in skills between partners of women with and without college education. For woman  $i$ , the skill level of her partner can be expressed as

$$a_i^m = a^{m0*}(1 - e_i^f) + a^{m1*}e_i^f + v_i = a^{m0*} + (a^{m1*} - a^{m0*})e_i^f + v_i,$$

where  $v_i$  is an error term, and  $a^{m1*}$  and  $a^{m0*}$  denote the partner's average skills of women with and without college education. The key prediction of our model is that the average partner skill gap,  $a^{m1*} - a^{m0*}$ , should rise whenever education frictions fall. If we treat university openings and expansions as a reduction in education frictions that increased university access in different regions at different times, the average skill gap between partners in region  $r$  at time period  $t$  can be written as

$$a_{rt}^{m1*} - a_{rt}^{m0*} = \eta_r + \gamma_t + \delta Z_{rt} + u_{rt},$$

where  $Z_{rt}$  is our measure for increased university access,  $\eta_r$  and  $\gamma_t$  are region and time fixed effects, and  $u_{rt}$  is an error term. The parameter  $\delta$  captures the effect of education frictions. Similarly we can write the partner's average skills of non-college educated women as  $a_{rt}^{m0*} = \theta_r + \lambda_t + \phi Z_{rt} + w_{rt}$ , where  $\theta_r$  and  $\lambda_t$  are again region and time fixed effects, and  $w_{rt}$  is an error term. When we substitute the expressions for  $a_{rt}^{m1*} - a_{rt}^{m0*}$  and  $a_{rt}^{m0*}$  in the equation of  $a_i^m$ , we can express the skill level of partners as

$$\begin{aligned} a_{rti}^m &= \theta_r + \lambda_t + \phi Z_{rt} + w_{rt} + (\eta_r + \gamma_t + \delta Z_{rt} + u_{rt})e_{rti}^f + v_{rti} \\ &= \theta_r + \lambda_t + \phi Z_{rt} + \eta_r e_{rti}^f + \gamma_t e_{rti}^f + \delta Z_{rt} e_{rti}^f + (w_{rt} + u_{rt} e_{rti}^f + v_{rti}). \end{aligned}$$

Our target of estimation is parameter  $\delta$ , which directly measures how education frictions impact partner skill inequality. There are two points to note about this regression model. First, consistent estimation of  $\delta$  requires that conditional on the parameters capturing time and region fixed effects, our measure of university access  $Z_{rt}$  is uncorrelated with the sum of error terms  $(w_{rt} + u_{rt} e_{rti}^f + v_{rti})$ . One reason for such a correlation might be that location choices of university openings and expansion choices of existing universities are not random but relate to population characteristics and potential demand for university education, which are not captured by the year and region fixed effects. We consider this less problematic for our model because we are not interested in estimating the effect of women having higher education. Our focus is instead on the

interaction effect for which the identifying condition is fulfilled as long as university openings and expansions are not the response to recent shocks in the average skills of partners. Second, we measure the skills of partners before they enter university, which means that any impact of improved university access must come from women changing their choice of partner. In this case a positive estimate of  $\delta$  indicates that reduced education frictions raise inequality in partner skills through enhanced skill sorting in the marriage market.

Because reduced education frictions experienced by women should translate into higher skill inequality in the next generation, we also expect a positive estimate of  $\delta$  when we use the skill measure of their children as outcome variable. In this case, however, children of university educated women acquire more skills than children of women without university education for two distinct reasons. First, they benefit more because their mothers are more likely to marry a more skilled father. Second, they benefit more because their mothers are more likely to marry a university graduate, which may bring human capital and labor market skills on their own. The intergenerational transmission of these complementary gains is widening the skill gap between children of university and non-university educated women, creating even more inequality.

Building upon the equation derived above, we estimate the regression model

$$Y_{icr} = \theta_r + \lambda_c + \phi Acc_{cr} + \eta_r Col_{icr} + \gamma_c Col_{icr} + \delta Acc_{cr} \times Col_{icr} + u_{icr},$$

where  $Y_{icr}$  is an outcome of the partner or the son of woman  $i$  in cohort  $c$  born in municipality  $r$ ,  $Acc_{cr}$  is a measure for college access, and  $Col_{icr}$  is an indicator for the woman's college attendance. We consider several outcomes, including the skill rank and education level of partners, and the skill rank, education level, and earnings of sons. For all outcomes, the coefficient of interest  $\delta$  describes how increased college access affects outcomes of college and non-college educated mothers differently. We are thus interested in the interaction effect, which takes into account that increased college access also changes who will be college educated. If better access increases sorting but does not directly affect the outcome variable, we also expect the coefficient on the access measure  $\phi$  to be negative. In case college-educated women are indeed more likely to find a high-skilled partner, leaving non-college educated women with fewer high-skilled partners to choose from, we expect that women who did not go to college are less likely to find a high-skilled partner (in the absence of direct effects). We should stress again that we are not interested in the causal effect of college education per se but instead

in how increased college access diverges the outcomes of women (and men) with and without college access. Following our theoretical model, we take into account that increased college access changes education decisions of women (and men), which has also effects in the marriage market.

We consider four different measures of improved college access. The first measure is whether or not there exists a college or university in the municipality when women are 20 years old.<sup>17</sup> The second measure is the number of first-year students attending a college located in the municipality in that year. For the third measure, we divide the number of first-year students by the number of high school graduates who belong to the same cohort and are born in the same municipality. Our final measure is the gravity measure introduced by Suhonen and Karhunen (2019), which represents a distance-weighted average of the student density around the municipality.<sup>18</sup>

Table 5 reports parameter estimates of  $\phi$  and  $\delta$  for the different outcomes. We first consider effects on the outcome of partners. For all four measures of college access, coefficients on the interaction term ( $\delta$ ) are positive and in most cases statistically significant, showing that reduced education frictions increase skill sorting in the marriage market.<sup>19</sup>

---

<sup>17</sup>We choose age 20 because Swedish students leave high school at age 19 (at the earliest), gap years between high school and college are common, and the median age of first college enrollment is above 20.

<sup>18</sup>Here we provide a short motivation for the four college access measures. We make a distinction between college access measured at the extensive and intensive margin. The first measure is based on college openings. It is highly intuitive and captures the extensive access margin. The other measures capture the intensive access margin (in different ways). The second measure reflects on college capacity; because higher education in Sweden follows a numerus clausus principle, we believe that the number of first-year students entering a college in the municipality is an accurate proxy for college capacity. The third measure reflects on possible college capacity constraints; because most first-year students enter college within at most a couple of years after they graduate from high school, the ratio between the number of first-year students and high school graduates (who belong to the same cohort and are born in the same municipality) is informative about the college's ability to take in their potential students. Low ratios, in this case, hint at restrictive college capacity (or selective college enrollment). The gravity measure also takes account of potential students (high school graduates) who live further away from the college municipalities. For municipality  $m$  in year  $t$ , it is defined as  $Acc_{m,t} = \sum_{k=1}^K \frac{S_{k,t}}{C_{k,t} d_{km}^{\frac{1}{2}}}$ , where  $S_{k,t}$  denotes supply and  $C_{k,t}$  denotes demand in municipality  $k$ .  $d_{km}$  is the kilometer distance between municipalities  $k$  and  $m$ . As measure for supply  $S_{k,t}$ , we use again the number of first-year students. Demand  $C_{k,t}$  is given by  $\sum_{l=1}^L \frac{N_{l,t}}{d_{kl}^{\frac{1}{2}}}$ , where  $N_{l,t}$  refers to the number of high school graduates who were born 20 years before  $t$  in municipality  $l$ .

<sup>19</sup>The least significant estimates are obtained when we consider having a college or university in the municipality as a measure for reduced education frictions. This is not entirely surprising if we believe that the impact of a university opening requires some time or a large enough student population before it effectively impacts skill sorting among partners (and skill inequality among children).

Table 5: Impact of college openings and expansions

	Spouses		Sons		
	Skill rank	Highest edu. level	Skill rank	Highest edu. level	log(Earnings)
(1) Any college in mun. ( <i>Mean</i> : 0.309, <i>SD</i> : 0.462)	-0.007** (0.004)	-0.021** (0.009)	-0.000 (0.004)	-0.029** (0.014)	-0.020*** (0.007)
× College	0.007 (0.005)	0.004 (0.012)	0.016** (0.008)	0.033 (0.026)	0.023 (0.016)
(2) Students ( $\times 10^{-3}$ ) in mun. ( <i>Mean</i> : 1.776, <i>SD</i> : 3.910)	-0.002*** (0.000)	-0.037*** (0.002)	-0.005*** (0.001)	-0.024*** (0.002)	-0.004*** (0.001)
× College	0.002*** (0.001)	0.021*** (0.002)	0.004*** (0.001)	0.020*** (0.003)	0.004*** (0.001)
(3) Rel. students in mun. ( <i>Mean</i> : 0.541, <i>SD</i> : 1.186)	-0.003*** (0.001)	-0.037*** (0.005)	-0.007*** (0.001)	-0.023*** (0.006)	-0.006*** (0.002)
× College	0.003** (0.001)	0.027*** (0.004)	0.007*** (0.002)	0.018** (0.008)	0.001 (0.004)
(4) Gravity-model measure ( <i>Mean</i> : 11.480, <i>SD</i> : 9.700)	-0.001*** (0.000)	-0.021*** (0.001)	-0.004*** (0.000)	-0.017*** (0.002)	-0.004*** (0.001)
× College	0.001*** (0.000)	0.011*** (0.001)	0.003*** (0.001)	0.012*** (0.002)	0.002 (0.001)
Observations	852,583	2,109,207	700,779	1,122,731	996,796

NOTE – The table reports estimates for coefficients  $\phi$  and  $\delta$ . The sample consists of all women born between 1932 (the first cohort for whom student numbers are available at age 20) and 1980. Education is classified into seven levels ranging from primary school (1) to post-graduate education (7). Skill rank indicates the cognitive skills percentile rank (1-100) within a cohort divided by 100. Earnings are annual figures measured at age 35. Students refer to first-year college students. For every cohort of women  $c$ , 'Rel. students' are defined as the number of first-year students in a municipality in year  $c+20$  divided by the number of high school graduates of this cohort born in this municipality. The definition of the gravity-model measure is provided in the text. Standard errors reported in parentheses are clustered by women's municipality  $\times$  birth year. \* significant at 10% level, \*\* significant at 5% level, \*\*\* significant at 1% level.

Individuals who attend college meet a different pool of potential partners and are therefore more likely to marry someone with higher skills and more education. Moreover, we estimate negative coefficients for  $\phi$ , implying that women without college education find less skilled and lower educated partners as a result of better college access. We next consider the child outcomes and examine whether improved access for mothers also leads to more inequality in skills, education, and earnings (measured at the age of 35) of their children. We find that the intergenerational estimates are also positive for  $\delta$ , negative for  $\phi$ , and, by and large, statistically significant, regardless of how we measure college access. These results are again in line with the theoretical prediction that, due to reduced education frictions, the skill and earnings distribution gets more dispersed over generations. We therefore conclude that we can support our

descriptive estimates from the previous section with causal evidence on how improved college access increased skill sorting in couples, and skill and earnings inequality among their children.

## 6 Conclusion

Contributing to the growing literature on earnings inequality, this paper examines the intergenerational effects of rising college attendance. In a simple toy model, we demonstrate that higher college attendance rates can lead to increased marital sorting on skills which contributes to polarization of the next generation’s income distribution.

The idea behind this mechanism is straightforward. If educational expansion is driven by better access to colleges, more students with sufficiently high skills attend college. Because improved college access operates as an expanding marriage market for skilled individuals, changes in the supply of college-educated individuals will impact the degree of assortative mating on skills. Even under very general assumptions on the intergenerational skill transmission, stronger assortative mating of parents then leads to a more dispersed skill and earnings distribution of their children. The access-based educational expansion we consider could, for example, arise through changes in norms towards higher education or through geographic (e.g., college openings) or socioeconomic-related (e.g., tuition policy or subsidies) expansion coupled with meritocratic admission standards. Importantly, such changes have been common features of higher education in many countries in the last half-century.

Using unique data on cognitive skills, which span multiple birth decades in Sweden, we test the predictions of our model on the composition of college attendees, assortative mating and intergenerational mobility. The observed trends are largely consistent with our model implications. Despite rising attendance rates, cognitive skills are a consistently strong predictor of college education. Moreover, we exploit sibling data to proxy skill levels of women and document an increasing degree of positive assortative mating in cognitive skills. Because the skills of both parents clearly have a positive impact on child earnings, our estimates suggest a further polarization of earnings in the future.

Exploiting exogenous variation in access to college education, we further provide causal evidence on the impact of educational expansion. Consistent with our previous findings, we estimate that improved college access leads to an increase in skill sorting in couples and an increase in skill and earnings inequality among their children.



Our model makes a few simplifying assumptions. First, we abstract from borrowing constraints and assume that education is independent of parental income. Extending the model accordingly increases education inequality and the expected college premium but does not affect the assortative mating mechanism. Second, we impose that every individual is matched on the marriage market. Empirical evidence shows, however, that the number of singles has been increasing in recent decades (see e.g., Stevenson and Wolfers, 2007, for the US). It is possible that fewer matches reflect a change in marital preferences which may also contribute to stronger assortative mating.

In their seminal analysis of relative wage changes, Katz and Murphy (1992) identify the rapid growth of demand for higher skilled workers as an important determinant of rising wage inequality. While they argue that educational expansion can countervail this upsurge in inequality in the short run, we show that it may also come with repercussions in the long run. In fact, we argue that it is crucial to recognize that the educational expansion enforces sorting on the marriage market with substantial intergenerational consequences for inequality in the long run. To countervail such a polarization, it is not sufficient to adjust study programs to the needs of a changing labor market. Policy makers should also focus on the support of children from lower-educated households, who might be increasingly worse off compared to their peers from higher-educated households.

## References

- Acemoglu, D. and Autor, D. (2011). Skills, tasks and technologies: Implications for employment and earnings. *Handbook of Labor Economics*, 4:1043–1171.
- Artmann, E., Ketel, N., Oosterbeek, H., and Van der Klaauw, B. (2021). Field of study and partner choice. *Economics of Education Review*, 84:102149.
- Becker, G. S. (1973). A theory of marriage: Part I. *Journal of Political Economy*, 81(4):813–846.
- Becker, G. S. (1974). A theory of marriage: Part II. *Journal of Political Economy*, 82(2, Part 2):S11–S26.
- Black, S. E., Devereux, P. J., and Salvanes, K. G. (2005). Why the apple doesn’t fall far: Understanding intergenerational transmission of human capital. *American Economic Review*, 95(1):437.
- Bratsberg, B., Markussen, S., Raaum, O., Røed, K., and Røgeberg, O. (2023). Trends in assortative mating and offspring outcomes. *Economic Journal*, 133(651):928–950.
- Card, D. and DiNardo, J. E. (2002). Skill-biased technological change and rising wage inequality: Some problems and puzzles. *Journal of Labor Economics*, 20(4):733–783.
- Carneiro, P., Meghir, C., and Parey, M. (2013). Maternal education, home environments, and the development of children and adolescents. *Journal of the European Economic Association*, 11(1):123–160.
- Chadwick, L. and Solon, G. (2002). Intergenerational income mobility among daughters. *American Economic Review*, 92(1):335–344.
- Chetty, R., Hendren, N., Kline, P., and Saez, E. (2014). Where is the land of opportunity? the geography of intergenerational mobility in the United States. *Quarterly Journal of Economics*, 129(4):1553–1623.
- Chevalier, A. (2004). Parental education and child’s education: A natural experiment. IZA Discussion Paper No. 1153.
- Dahl, M. W. and DeLeire, T. (2008). *The association between children’s earnings and fathers’ lifetime earnings: Estimates using administrative data*. University of Wisconsin-Madison, Institute for Research on Poverty.

- Edin, P.-A., Fredriksson, P., Nybom, M., and Öckert, B. (2021). The rising return to non-cognitive skill. *American Economic Journal: Applied Economics*. Advance online publication.
- Eika, L., Mogstad, M., and Zafar, B. (2019). Educational assortative mating and household income inequality. *Journal of Political Economy*, 127(6):2795–2835.
- Ermisch, J., Francesconi, M., and Siedler, T. (2006). Intergenerational mobility and marital sorting. *Economic Journal*, 116(513):659–679.
- Fernández, R., Guner, N., and Knowles, J. (2005). Love and money: A theoretical and empirical analysis of household sorting and inequality. *Quarterly Journal of Economics*, 120(1):273–344.
- Fernández, R. and Rogerson, R. (2001). Sorting and long-run inequality. *Quarterly Journal of Economics*, 116(4):1305–1341.
- Gihleb, R. and Lang, K. (2020). Educational homogamy and assortative mating have not increased. In *Change at Home, in the Labor Market, and On the Job*. Emerald Publishing Limited.
- Goldin, C. D. and Katz, L. F. (2009). *The race between education and technology*. Harvard University Press.
- Greenwood, J., Guner, N., Kocharkov, G., and Santos, C. (2014). Marry your like: Assortative mating and income inequality. *American Economic Review*, 104(5):348–53.
- Grönqvist, E., Öckert, B., and Vlachos, J. (2017). The intergenerational transmission of cognitive and non-cognitive abilities. *Journal of Human Resources*, 52(4):887–918.
- Holmlund, H. (2022). How much does marital sorting contribute to intergenerational socioeconomic persistence? *Journal of Human Resources*, 57(2):372–399.
- Holmlund, H., Lindahl, M., and Plug, E. (2011). The causal effect of parents’ schooling on children’s schooling: A comparison of estimation methods. *Journal of Economic Literature*, 49(3):615–651.
- Katz, L. F. and Autor, D. H. (1999). Changes in the wage structure and earnings inequality. *Handbook of Labor Economics*, 3:1463–1555.

- Katz, L. F. and Murphy, K. M. (1992). Changes in relative wages, 1963–1987: Supply and demand factors. *Quarterly Journal of Economics*, 107(1):35–78.
- Kaufmann, K. M., Messner, M., and Solis, A. (2015). Elite higher education, the marriage market and the intergenerational transmission of human capital. Working Paper.
- Kirkebøen, L., Leuven, E., and Mogstad, M. (2021). College as a marriage market. NBER Working Paper No. WP28688.
- Kremer, M. (1997). How much does sorting increase inequality? *Quarterly Journal of Economics*, 112(1):115–139.
- Lee, S. Y. and Seshadri, A. (2019). On the intergenerational transmission of economic status. *Journal of Political Economy*, 127(2):855–921.
- Lindqvist, E. and Vestman, R. (2011). The labor market returns to cognitive and noncognitive ability: Evidence from the swedish enlistment. *American Economic Journal: Applied Economics*, 3(1):101–28.
- Løken, K. (2010). Family income and children’s education: Using the norwegian oil boom as a natural experiment. *Labour Economics*, 17(1):118–129.
- Mare, R. D. (1991). Five decades of educational assortative mating. *American Sociological Review*, 56(1):15–32.
- Maurin, E. and McNally, S. (2008). Vive la révolution! Long-term educational returns of 1968 to the angry students. *Journal of Labor Economics*, 26(1):1–33.
- Oreopoulos, P., Page, M. E., and Stevens, A. H. (2006). The intergenerational effects of compulsory schooling. *Journal of Labor Economics*, 24(4):729–760.
- SCB (1959a). SCB stencilerade publikationer 1959. Technical report, Statistics Sweden (SCB).
- SCB (1959b). Sveriges officiella statistik, Högre studier 1957/58-1958/59. Technical report, Statistics Sweden (SCB).
- SCB (1960). Sveriges officiella statistik, Högre studier 1959/60. Technical report, Statistics Sweden (SCB).

- SCB (1974). PM SCB 1974:3. Technical report, Statistics Sweden (SCB).
- SCB (1977). PM SCB 1977:5. Technical report, Statistics Sweden (SCB).
- SCB (1979). Utbildningsstatistisk årsbok 1979. Technical report, Statistics Sweden (SCB).
- SCB (1995). Utbildningsstatistisk årsbok 1995. Technical report, Statistics Sweden (SCB).
- SCB (2020). [www.scb.se/UF0205](http://www.scb.se/UF0205). Technical report, Statistics Sweden (SCB).
- Schofer, E. and Meyer, J. W. (2005). The worldwide expansion of higher education in the twentieth century. *American Sociological Review*, 70(6):898–920.
- Schwartz, C. R. and Mare, R. D. (2005). Trends in educational assortative marriage from 1940 to 2003. *Demography*, 42(4):621–646.
- Stevenson, B. and Wolfers, J. (2007). Marriage and divorce: Changes and their driving forces. *Journal of Economic Perspectives*, 21(2):27–52.
- Suhonen, T. and Karhunen, H. (2019). The intergenerational effects of parental higher education: Evidence from changes in university accessibility. *Journal of Public Economics*, 176:195–217.

## Appendix

Figure A.1: Skill rank correlation of spouses' brothers

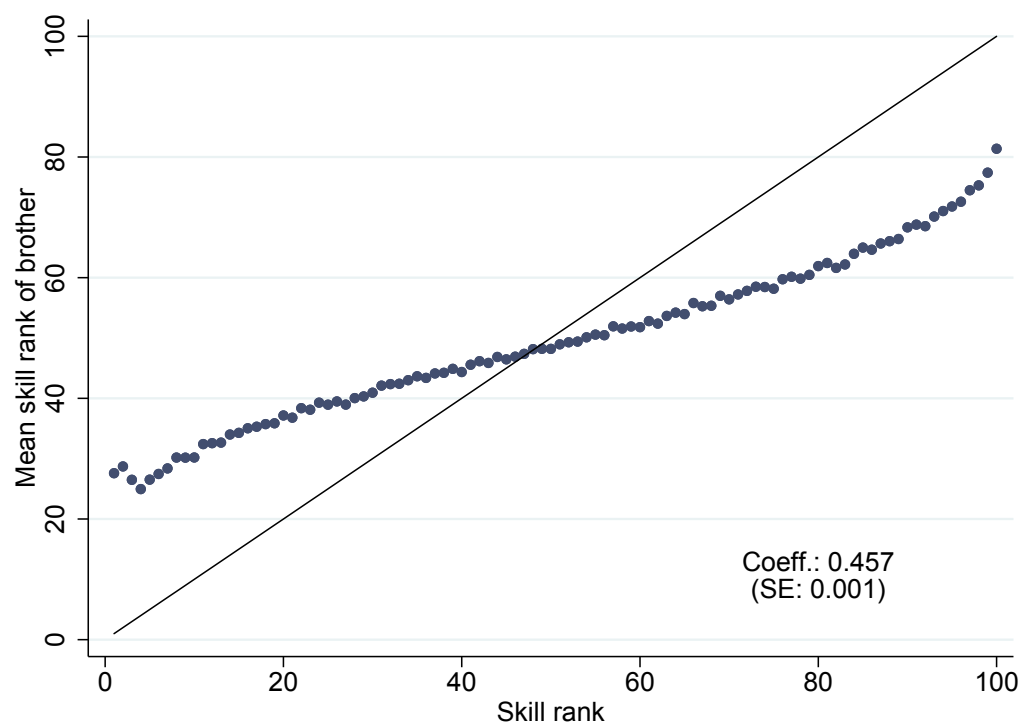


Figure A.2: College attendance by ability rank and cohort of women

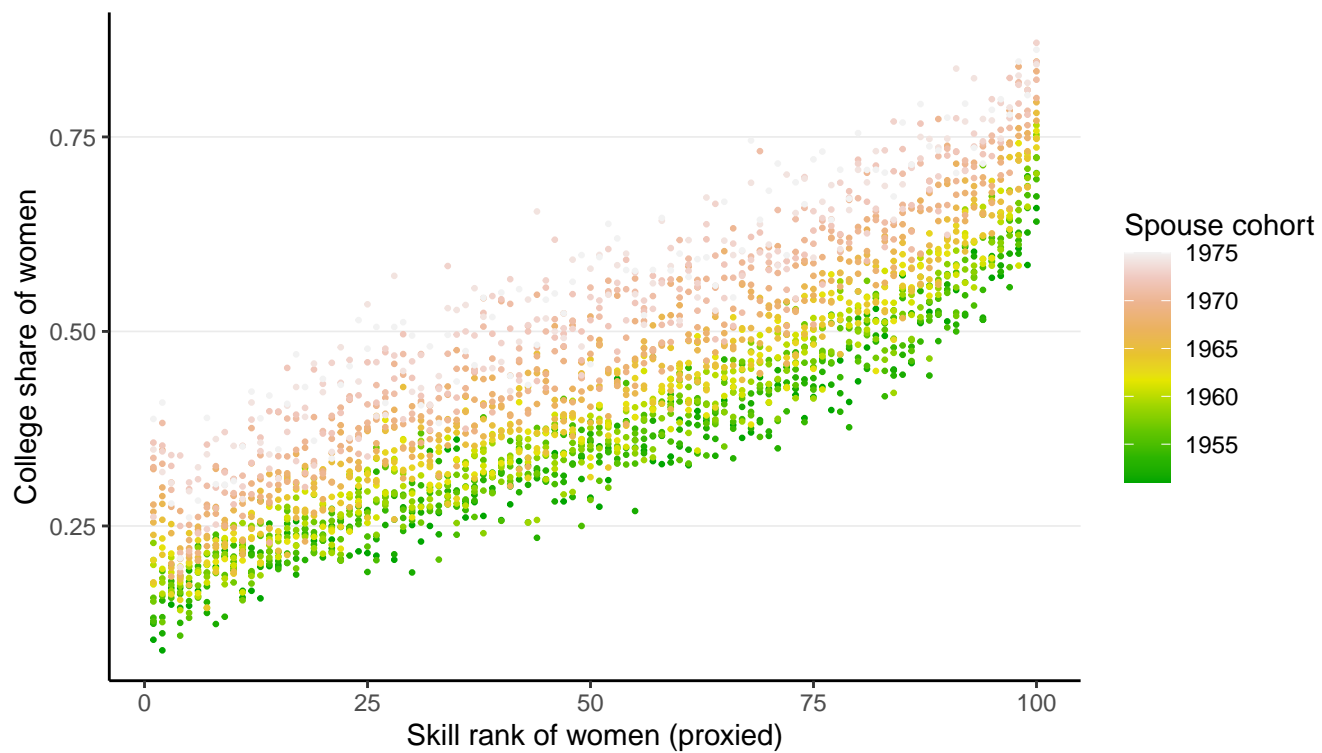


Figure A.3: Mean rank of child by rank of parents

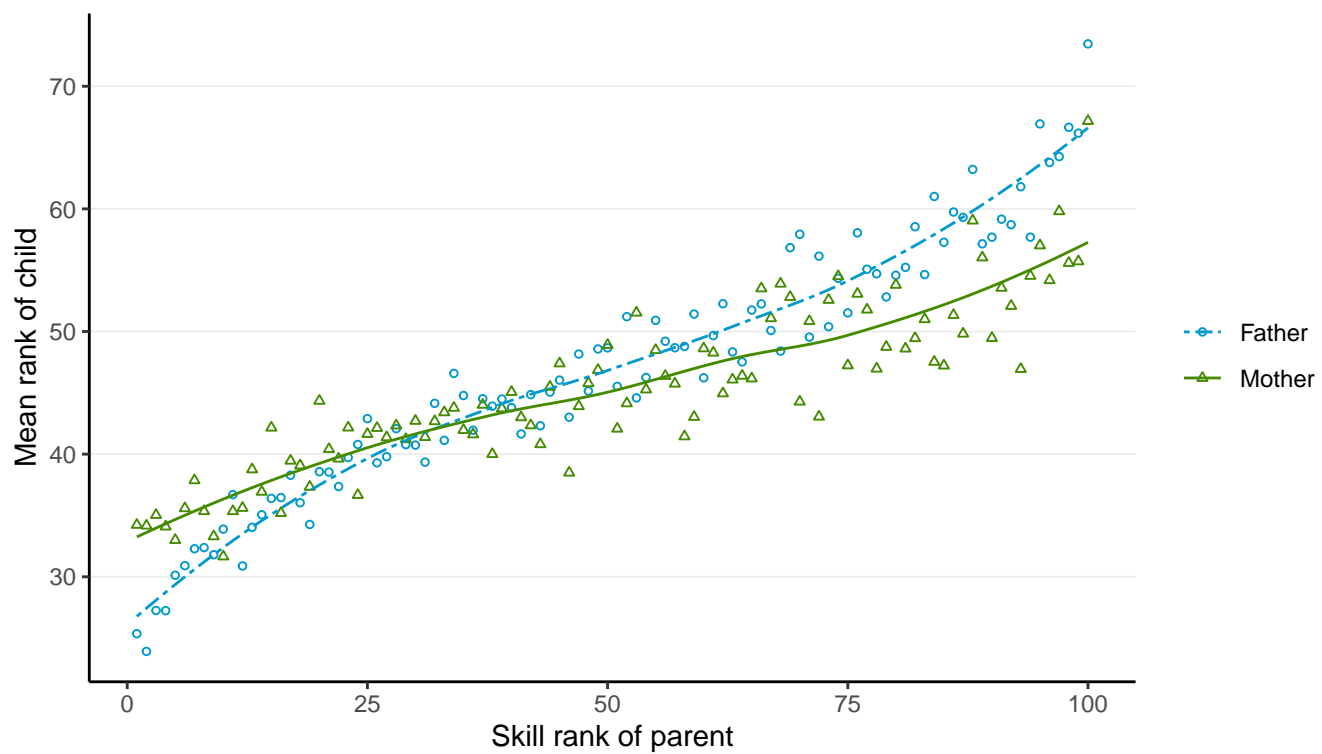
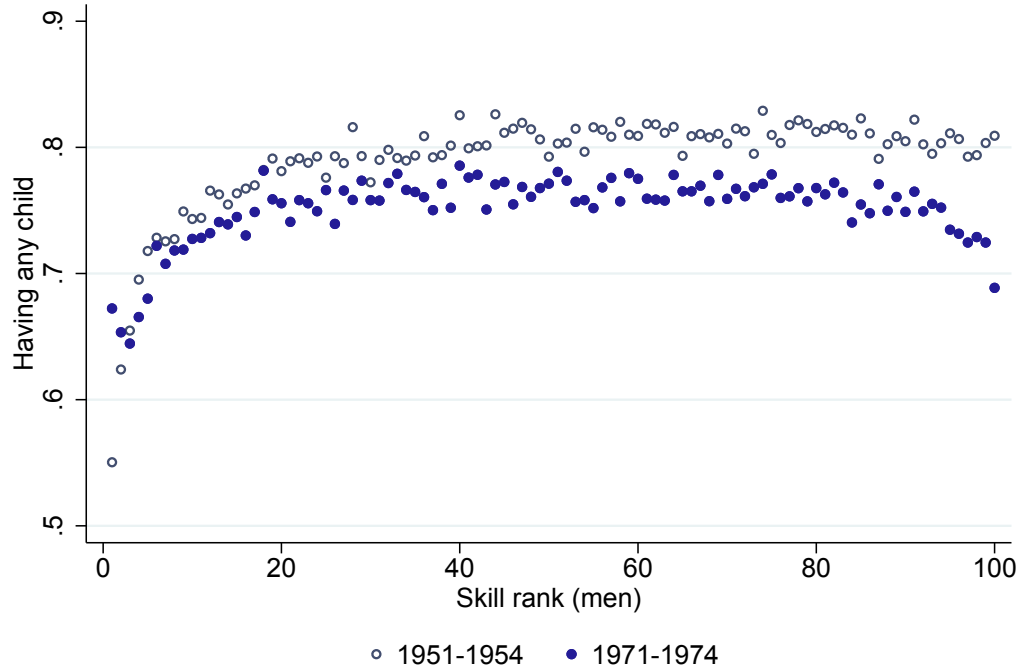


Figure A.4: Fertility by skill rank of men



Note: The sample is restricted to men born between 1951 and 1974.

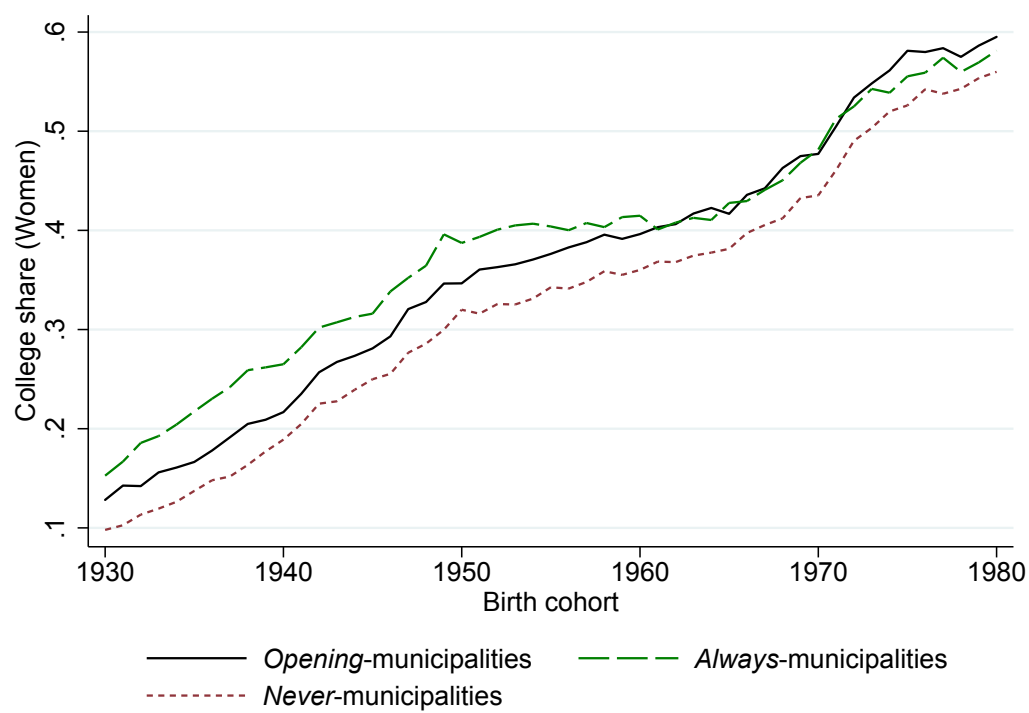
Table A.1: Earnings regressions with cognitive skills and college attendance

	log(earnings)			
	(1)	(2)	(3)	(4)
College attendance	0.151*** (0.012)		0.047*** (0.014)	-0.006 (0.030)
Skill rank		0.419*** (0.020)	0.386*** (0.022)	0.359*** (0.026)
College attendance $\times$ skill rank				0.096** (0.049)
$N$	20,487			

NOTE – Effects are estimated for all sons in our estimation sample. Earnings are annual figures measured at age 35. Skill rank indicates the cognitive skills percentile rank (1-100) within a cohort divided by 100. Standard errors are reported in parentheses. \* significant at 10% level, \*\* significant at 5% level, \*\*\* significant at 1% level.



Figure A.5: College attendance of women by cohort and college access



### Derivation of ability covariance $\text{cov}(a_f, a_m)$

We first define  $\theta_{ij} = E[a_j | e = i]$  for  $j = 0, 1$  and  $i = f, m$ , which denote expected ability levels of women ( $f$ ) and their spouses ( $m$ ) who did ( $e = 1$ ) and did not ( $e = 0$ ) attend college. Because, conditional on education, matching of spouses is random, the covariance of ability is given by

$$\text{cov}(a_f, a_m) = \theta_{0f}\theta_{0m}\pi_{00} + \theta_{1f}\theta_{0m}\pi_{10} + \theta_{0f}\theta_{1m}\pi_{01} + \theta_{1f}\theta_{1m}\pi_{11} - \mu^2.$$

Substituting the shares of couple types ( $\pi$ ) into this equation gives

$$\begin{aligned} \text{cov}(a_f, a_m) = & \theta_{0f}\theta_{0m} + \theta_{0m}(\theta_{1f} - \theta_{0f})q_f + \theta_{0f}(\theta_{1m} - \theta_{0m})q_m \\ & + (\theta_{1f} - \theta_{0f})(\theta_{1m} - \theta_{0m})\frac{\lambda q_f q_m}{\lambda q_f + (1 - \lambda)(1 - q_f)} - \mu^2. \end{aligned}$$

The average skill level can be written as  $\mu = \theta_{i0} + (\theta_{1i} - \theta_{0i})q_i$ , which yields

$$\text{cov}(a_f, a_m) = (\theta_{1f} - \theta_{0f})(\theta_{1m} - \theta_{0m})\frac{(2\lambda - 1)q_m q_f (1 - q_f)}{\lambda q_f + (1 - \lambda)(1 - q_f)}.$$

We next define  $\mu_0 = E[a_j | a_j \leq \bar{a}]$  and  $\mu_1 = E[a_j | a_j > \bar{a}]$ . It follows that  $\theta_{1j} = \mu_1$  and  $\theta_{0j} = \frac{\mu_0 F(\bar{a}) + \mu_1 p_j (1 - F(\bar{a}))}{F(\bar{a}) + p_j (1 - F(\bar{a}))}$  for  $j = f, m$ . Substituting this into the equation for the covariance and using that  $F(\bar{a}) + p_j (1 - F(\bar{a})) = 1 - q_j$  gives

$$\text{cov}(a_f, a_m) = \frac{((\mu_1 - \mu_0)F(\bar{a}))^2}{(1 - q_m)} \frac{(2\lambda - 1)q_f q_m}{\lambda q_f + (1 - \lambda)(1 - q_f)}.$$

### Proof of proposition 1

(a) Using the above expression for the ability covariance, the first derivative with respect to  $\lambda$  equals

$$\frac{\partial \text{cov}(a_f, a_m)}{\partial \lambda} = \frac{((\mu_1 - \mu_0)F(\bar{a}))^2}{(1 - q_m)} \frac{q_f q_m}{(\lambda q_f + (1 - \lambda)(1 - q_f))^2}.$$

Because all terms in this derivative are positive, higher values of  $\lambda$  increase the ability covariance.

(b) First, we consider the first derivative of the covariance with respect to  $\alpha$ . Recall that  $\alpha$  only shows up multiplicatively in  $q_f$ , in particular  $q_f = \alpha q_m$ . Therefore, the

derivative simplifies to

$$\frac{\partial \text{cov}(a_f, a_m)}{\partial \alpha} = \frac{((\mu_1 - \mu_0)F(\bar{a}))^2}{(1 - q_m)} \frac{(2\lambda - 1)(1 - \lambda)q_m^2}{(\lambda q_f + (1 - \lambda)(1 - q_f))^2}.$$

Next, we calculate the first derivative with respect to  $p$ , which yields

$$\frac{\partial \text{cov}(a_f, a_m)}{\partial p} = \frac{((\mu_1 - \mu_0)F(\bar{a}))^2}{(1 - q_m)^2} \frac{(2\lambda - 1)((1 - \lambda)(2 - q_f - q_m) + \lambda q_f)(1 - F(\bar{a}))q_f}{(\lambda q_f + (1 - \lambda)(1 - q_f))^2}.$$

Both derivatives are positive for  $\lambda > \frac{1}{2}$  and negative for  $\lambda < \frac{1}{2}$ .