

Ó Gráda, Cormac; Li, Chihua; Lumey, L. H.

Working Paper

How much schizophrenia do famines cause?

UCD Centre for Economic Research Working Paper Series, No. WP23/28

Provided in Cooperation with:

UCD School of Economics, University College Dublin (UCD)

Suggested Citation: Ó Gráda, Cormac; Li, Chihua; Lumey, L. H. (2023) : How much schizophrenia do famines cause?, UCD Centre for Economic Research Working Paper Series, No. WP23/28, University College Dublin, UCD School of Economics, Dublin

This Version is available at:

<https://hdl.handle.net/10419/296702>

Standard-Nutzungsbedingungen:

Die Dokumente auf EconStor dürfen zu eigenen wissenschaftlichen Zwecken und zum Privatgebrauch gespeichert und kopiert werden.

Sie dürfen die Dokumente nicht für öffentliche oder kommerzielle Zwecke vervielfältigen, öffentlich ausstellen, öffentlich zugänglich machen, vertreiben oder anderweitig nutzen.

Sofern die Verfasser die Dokumente unter Open-Content-Lizenzen (insbesondere CC-Lizenzen) zur Verfügung gestellt haben sollten, gelten abweichend von diesen Nutzungsbedingungen die in der dort genannten Lizenz gewährten Nutzungsrechte.

Terms of use:

Documents in EconStor may be saved and copied for your personal and scholarly purposes.

You are not to copy documents for public or commercial purposes, to exhibit the documents publicly, to make them publicly available on the internet, or to distribute or otherwise use the documents in public.

If the documents have been made available under an Open Content Licence (especially Creative Commons Licences), you may exercise further usage rights as specified in the indicated licence.

UCD CENTRE FOR ECONOMIC RESEARCH

WORKING PAPER SERIES

2023

HOW MUCH SCHIZOPHRENIA DO FAMINES CAUSE?

Cormac Ó Gráda
University College Dublin

Chihua Li
Institute for Social Research
University of Michigan, Ann Arbor

L. H. Lumey,
Department of Epidemiology
Mailman School of Public Health,
Columbia University, New York

WP23/28

December 2023

**UCD SCHOOL OF ECONOMICS
UNIVERSITY COLLEGE DUBLIN
BELFIELD
DUBLIN 4**

HOW MUCH SCHIZOPHRENIA DO FAMINES CAUSE?

Cormac Ó Gráda, University College Dublin *

Chihua Li, Institute for Social Research, University of Michigan, Ann Arbor

L. H. Lumey, Department of Epidemiology, Mailman School of Public Health,

Columbia University, New York

ABSTRACT: Since the 1970s, famines have been widely invoked as natural experiments in research into the long-term impact of foetal exposure to nutritional shocks. That research has produced compelling evidence for a robust link between foetal exposure and the odds of developing schizophrenia. However, the implications of that research for the human cost of famines in the longer run has not been investigated. We address the connection between foetal origins and schizophrenia with that question in mind. The impact turns out to be very modest – much less than one per cent of the associated famine death tolls – across a selection of case studies.

Keywords: famine, schizophrenia, foetal origins

JEL codes: I1, N10, Q54

ACKNOWLEDGMENTS: We are grateful to Dylan Connor, Brendan Kelly, Joel Mokyr, Natalya Naumenko, and Peter Solar for useful comments on an earlier version of this paper.

INTRODUCTION

Several academic studies have linked the current type 2 diabetes (T2D) epidemic in China to the Great Leap Forward famine of the 1950s (Li *et al.* 2019; Li and Lumey 2022; Zimmet 2017; Zimmet *et al.* 2018, 2019.). In Ireland, a rise in the prevalence of mental illness—and schizophrenia, in particular—in the second half of the nineteenth century has similarly been blamed on the Great Irish Famine (Tracey 2008; Walsh 2016). Much in the same vein, historian and geographer Jared Diamond (2000: 22) has claimed that we ignore the lessons of the Dutch Hunger Winter of 1944–45 “only at our children’s, and our grandchildren’s, expense”. Further afield, drought and famine in the Horn of Africa in the recent past have been tied to “a potential scenario of new ‘hot spots’ for type 2 diabetes” (Zimmet 2017). Beyond academia, such claims have a broad appeal. They have prompted advice to women not to try to lose weight during pregnancy, and warnings such as that famines may “accelerate brain ageing”, “boost cancer risk”¹, and or “make future generations fat”².

All these claims are prompted by research that use famines as natural experiments, in order to test versions of the hypothesis that “chronic, degenerative conditions of adult health ... may be triggered by circumstance decades earlier, *in utero* nutrition in particular” (Almond and Currie 2011: 153). Unintentionally, they have

¹ Erica Goldman, ‘Brief Famine May Boost Cancer Risk: Winter-long starvation during World War II tied to breast cancer in Dutch women’, *Science News* (<https://www.science.org/content/article/brief-famine-may-boost-cancer-risk>).

² *The Daily Beast*, 12 July 2017 (<https://www.thedailybeast.com/how-famines-make-future-generations-fat>); compare ‘Birthweight link to lifelong health’: <https://www.bbc.com/news/health-14576961>.

created an impression that the post-famine footprint of foetal exposure was substantial. Is that really the case? This paper focuses on the odds of developing schizophrenia in adulthood following foetal exposure as a means of answering this question. On the basis of several well-known case studies, it compares the size of the what might be called ‘the foetal origins effect’ to the short-run cost of famine in terms of lives lost.

Since the pioneering work of Stein *et al.* (1976) on the Dutch Hunger Winter of 1944-45, famines have often been invoked as natural experiments to test versions of the hypothesis that foetal exposure exacts a cost in terms of adverse health outcomes in later life. Since the 1990s, especially, the role of famines as human laboratories to study biomedical mechanisms has been widely recognized. Furthermore, as interest has grown in the broader long-term consequences of foetal exposure for economic and social wellbeing, the influence of this research has expanded beyond epidemiology into the social sciences. For economic and demographic historians, this research is a reminder that famines had an afterlife; they inflicted physical and mental damage in adulthood on the health of some of those born during them or in their immediate wake. In this study, we will use the number of schizophrenia cases attributable to *in-utero* famine exposure as a measure of long-term cost of famine.

SCHIZOPHRENIA, FOETAL ORIGINS, AND FAMINE

Schizophrenia is a severe and chronic mental illness. Notwithstanding significant advances in treatment, it remains a major public health issue. It is the cause of significant psychiatric morbidity, and exacts a big penalty in terms of reduced

life expectancy, with a recent meta-analysis putting the average number of years of life lost at 15 (Heinrichs 2003; Vita *et al.* 2016; Lally and MacCabe 2015; Hjorthøj *et al.* 2017; WHO 2022; He *et al.* 2017). While schizophrenia has an important genetic component, its triggers may include disparate factors such drug use, malnutrition, stress, and early-in-life trauma. Yet although research on the link between exposure to large-scale natural disasters and wars, on the one hand, and psychiatric illness, on the other, is abundant, that literature has not focused so far on the onset of schizophrenia specifically (e.g. Priebe *et al.* 2010; Brandt *et al.* 2019).

We focus on schizophrenia here because one of the most robust findings of the foetal origins literature is that exposure in early gestation roughly doubles the odds of schizophrenia in adulthood among both males and females. This finding first emerged from research using the Dutch Hunger Winter as a case study (Susser and Lin 1992; Susser *et al.* 1996; Brown *et al.* 2000; see too Hoek, Brown, and Susser 1998). It was soon replicated in a 2005 study using data from severely-affected Chinese province of Anhui during the Great Leap Forward famine of 1959-61 (St. Clair *et al.* 2005). Subsequent research on China corroborates (Xu *et al.* 2009; Ping *et al.* 2018). The outcomes are given in Table 1, where *CI* refers to a 95% confidence interval³. In what follows we assume that foetal exposure during famines doubled the odds of developing schizophrenia.

³ See too Song *et al.* 2009; Wang and Zhang 2017. Note that latter reports a smaller OR for the post-famine cohort.

Table 1. Foetal Origins and the Odds of Schizophrenia		
<i>Study</i>	<i>Country and Date</i>	<i>Odds Ratio</i>
Susser <i>et al.</i> 1996	Netherlands 1944-45	2.0 (95% CI: 1.2-3.4)
St. Clair <i>et al.</i> 2005	China 1959-61	2.30 (95%CI: 1.99-2.65) (births in 1960) 1.93 (95%CI: 1.68-2.23) (births in 1961)
Xu <i>et al.</i> 2009	China 1959-61	1.68 (95%CI: 1.48-1.92) (births in 1960) 2.25 (95%CI: 2.00-2.52) (births in 1961)
Ping <i>et al.</i> 2018	China 1959-61	1.82 (95%CI: 1.11-2.98)
Note: the odds ratio is the ratio of an event occurring in a treatment group to the odds of an event occurring in a control group.		

Knowing the prevalence of schizophrenia in the population at large (p) is also essential for assessing the impact of foetal exposure during famines. According to the World Health Organisation (WHO) schizophrenia today affects “approximately 24 million people or 1 in 300 people (0.32 per cent) worldwide” (WHO 2022), the prevalence rate being 0.45 per cent among adults. The WHO data imply that prevalence is related to country income; in 1990, in high income countries it was 0.38 per cent, whereas in low-income countries it was only 0.16 per cent. In 2019 the percentages were 0.41 and 0.17, respectively. To what extent the differences reflect the quality of recording, diagnosis, and institutionalisation is unclear; other evidence seems to suggest that poverty is a strong predictor of schizophrenia (e.g. Hakulinen *et al.* 2020). However, the data imply that the prevalence of schizophrenia has been relatively stable in recent decades (Figure 1). This contrasts with the prevalence of some other disease outcomes, such as obesity and Type 2 diabetes, which have become much more common. Age-standardised prevalence data are available globally only since 1990 (most conveniently at *Our World in Data*), later than the years covered

in this study. For that reason, and also in order to err on the side of generosity (for a reason explained below), we work with an assumed p of 0.5 per cent (Figure 1).

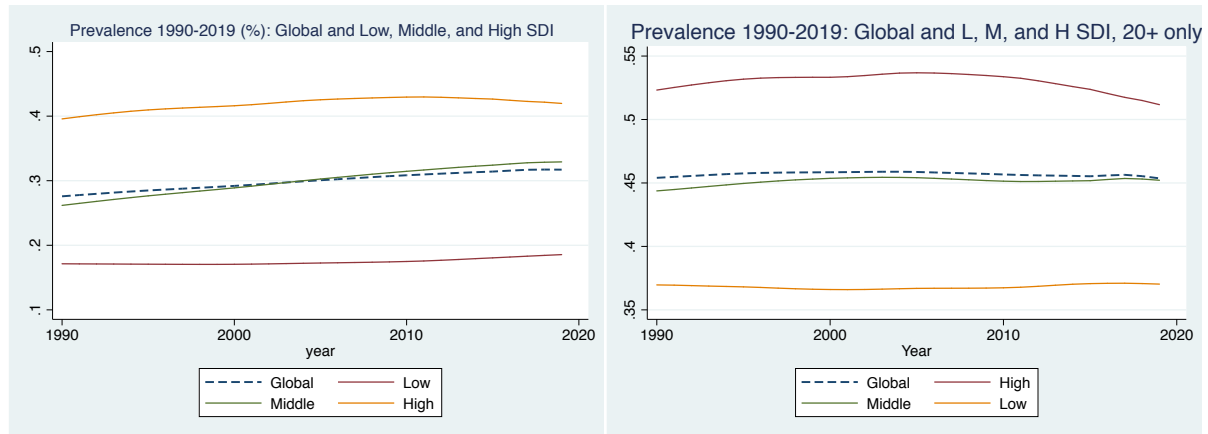


Figure 1. Prevalence of Schizophrenia 1990-2019

Source: *Our World in Data* (<https://ourworldindata.org/grapher/schizophrenia-prevalence>)

Calculating the impact of a famine on the number of additional schizophrenia cases in adulthood requires estimates of the increase in the odds of developing the disease (d), the prevalence of the disease in normal times (p), and the number of births at risk due to foetal exposure (B). Given the availability of data on d , p , and B , producing an initial upper-bound estimate of the cost of exposure during a famine as $B.d.p$ is straightforward. The estimate is upper-bound because it makes no allowances for deaths in childhood and adolescence to the cohorts at risk (Ó Gráda 2009: 102-108). We return to this issue below. In order to contextualise and to provide an informal metric for the resultant welfare loss, we compare it to the total number of lives lost in the famine in question.

METHOD: FIVE FAMINE SETTINGS

This section briefly describes five well-known famines, focusing on estimates of excess mortality and live births prenatally exposed to famine. These famines, which differed substantially in severity, duration, and magnitude, are: the Dutch Hunger Winter of 1944-45; the Leningrad Blockade Famine of 1941-43; the Great Ukraine Famine of 1932-33; the Great Irish Famine of 1845-1850; and the Chinese Great Leap Forward Famine of 1959-61. The impact of famine on deaths and births in each of these cases is discussed in reverse chronological order.

China 1951-61: The Chinese Great Leap Forward famine of 1959-61 lasted for around three years. While estimates of excess mortality are still contested, a figure of about 30 million is the most often mentioned (e.g. Yang 2012). During the famine, the birth rate declined from 35 per 1,000 to 20 per 1,000; population censuses conducted during the 1980s imply that births exposed to famine in utero were 35 to 40 million. We accordingly assume $B = 40$ million.

The Netherlands 1944-45: The heavily urbanised western Netherlands endured a short but sharp famine during the final months of WW2, resulting in about 20,000 deaths (Ekamper *et al.* 2017; de Zwart 2020: 1-2). The Dutch Hunger Winter remains the most important setting for famine-based research on foetal scarring. The births at risk were conceived in the six months between November 1944 and May 1945. Conceptions in the famine-affected area as defined by Stein *et al.* (1976: 238) plummeted; the number of births nine months later (i.e. between August 1945 and

January 1946) totalled 12,804, compared to 23,891 between August 1944 and January 1945.

Leningrad 1941-43: No firm estimate exists of famine-related excess mortality in Leningrad during the German blockade of 1941-44 (Salisbury 1969). The number chosen here, 0.7 million, is almost certainly on the low side (Barber and Dzeniskevich 2005: 1). The famine was at its most intense in late 1941 and early 1942. The recorded number of live births in Leningrad plummeted from 79,411 in 1939 and 66,604 in 1940 to 12,987 in 1942 (Cherepinina 2005a: 16; 2005b: 61). The nadir was reached in October (62 births) and November (63 births). We put the number of births at risk in 1942-44 at 100,000, against an expected 240,000 in the absence of famine.

Ukraine 1932-33: The number of deaths caused by the Great Ukrainian Famine of 1932-33 is also disputed.⁴ The difference between the of demographers Meslé *et al.* (2008) and Rudnytskyi *et al.* (2015) – 2.6 million and 3.9 million, respectively – derives largely from their estimates of emigration. In light of measures taken by the Soviet regime in early 1933 to force migrants back to their villages and to halt future migration, Meslé *et al.* (2008: 220) assume that *voluntary* emigration in 1933 was “almost nil”, though in reality some people managed to escape from Ukraine

⁴ Conquest (1986) put excess mortality at 5.1 million, while former Ukrainian president Viktor Yushchenko (2007) described “a state-organized program of mass starvation that in 1932-33 killed an estimated seven million to ten million Ukrainians, including up to a third of the nation's children”. Well-known accounts of the famine from a range of disciplinary perspectives include Conquest (1986), Davies and Wheatcroft (2004), Applebaum (2017), and Naumenko (2020).

(Humennyi 2019). Data on the stock of labour camp inmates from Ukraine at the beginning of 1934 suggests that *forced* out-migration in 1933, even allowing for mortality from hunger and disease in transit or in the camps, was probably closer to 0.1 million than 0.2 million (Getty *et al.* 1993: 1028, 1039; compare Snyder 2010: 48). In the absence of hard data, we propose an arbitrary compromise toll of 3.6 million excess deaths.

Both estimates broadly agree on famine births, with Rudnytskyi *et al.* (2015: 70-1) providing the important added detail that nine-tenths of excess deaths occurred between March and August 1933.⁵ The number at risk from scarring was probably less than the 0.6 million born in 1934; still, erring on the side of caution, we assume $B = 0.6$ million, or 0.25 million fewer than in a non-famine setting.

Ireland 1845-50: The question addressed here has a particular resonance for Ireland, given the widespread but poorly substantiated perception that the Great Famine of the 1840s – or “the cumulative effects of British colonialization, the Great Famine, and various 20th century development schemes” (Scheper-Hughes 2000: 123) – led to a significant rise in the prevalence of mental illness and, in particular, schizophrenia.⁶

⁵ This is corroborated by data on grain consumption per adult equivalent in the Kiev region: 230 grams in Jan-July 1933, 472 grams in August-September 1933 (Davies and Wheatcroft 2004: 416).

⁶ Compare Walsh 2016; Marese McDonagh, ‘Impact of Great Famine on mental health examined at Science Week’, *Irish Times*, 13 November 2013; Andrew Moore, ‘Great Famine responsible for gene defect still causing mental illness’, *Ireland Calling*, 16 June 2014; Michelle K. Smith, ‘Did the Irish Famine trigger mental illness in the Irish?’, *Irish*

The death toll exacted by the famine was about one million. The birth rate of the eve of the famine was about 39 per thousand, implying 280,000 births in 1845-46. Allowing for a decline in population from 8.6 to 6.6 million and a birth rate of 25 per thousand during the famine would entail about 0.9 million exposed births (Mokyr 1985: 34; Ó Gráda 1999: 86-7).

METHOD: CALCULATING THE COST

Our estimates of the extra cases of schizophrenia due to foetal exposure are described in Table 2. Two versions (Case_A and Case_B) are given. The first is based on calculating *B.d.p* for the five events described. The outcomes range from 65 extra cases for the Dutch Hunger Winter to about 0.2 million for the Chinese Great Leap famine. The numbers for the Netherlands are strikingly small, those for China ‘big’. But even the 0.2 million is modest compared to the contemporaneous death toll of 30 million in China.

As noted, in using *B.d.p*, we don’t make allowance for the impact of deaths in childhood and adolescence to the cohorts at risk. For example, how many of the 13,000 conceived during the Dutch Hunger Winter or the 900,000 conceived during the Great Irish Famine would have passed away before developing schizophrenia? Since schizophrenia occurs rarely before the age of fifteen, the answer hinges on the proportion of these cohorts dying before reaching that age. In the case of the

Central, 12 October 2017. The hard evidence for such an increase is lacking, however. On the lack of evidence, Ní Nualláin *et al.* 1987; Walsh 2012; Kelly 2019.

Netherlands, a life table for 1938-1942⁷ suggests that the proportion was small – about 7 per cent. Such tables are unavailable for the other countries discussed here but a sense of the cumulative mortality in Ireland in the 1840s may be obtained from the English life-table for 1841 (also available at the *HLD*), where two-fifths disappear by age fifteen. The 1841 period life table for England may not be a bad approximation for China in 1960 in a period perspective, i.e. during the famine itself, but the very rapid improvement in life expectancy thereafter suggests that we should be thinking in cohort, rather than period terms. And Banister and Hill's life tables for China in 1964-1982 suggest that the proportion dying before the age of 15 in that period was only 12 per cent (Banister and Hill 2004: 71, Table A3). We accordingly opt for a loss rate of 20% for China. Analogous data are lacking for Ukraine and Leningrad, but those for England and the Netherlands offer upper and lower bounds. Accordingly, in Table 2, Case_B assumes loss rates of 5 per cent for the Netherlands, 20 per cent for China, Ukraine, Leningrad, and one-third for Ireland. The resulting numbers in Table 2 should be seen as necessarily imprecise estimates that err on the side of caution.

How big was big? The final columns of Table 2 report the ratios of estimated schizophrenia cases to excess famine mortality. They are intended to give a better sense of the cost of exposure *in utero* relative to the broader demographic cost of our five famines. The higher ratios for the Great Leap famine and the Great Irish Famine are explained by their longer duration. The low ratio for Leningrad is due to the drastic impact of the siege on fertility. Overall, however, contemporaneous costs in terms of the number of deaths dwarfed long run costs in terms of the number of

⁷ Available at the *Human Life-Table Database (HLD)*.

schizophrenia cases. This can be explained by the facts that prevalence in normal times was modest and that only people born during a limited period were exposed to the famine.

DISCUSSION

Added perspective is gained by comparing the number of extra schizophrenia cases to the total number of schizophrenia cases in each of these countries. Data on the prevalence of schizophrenia in China before 1990 are sparse, but the Global Burden of Disease study reckoned that in 1990 3,551,298 people were suffering from schizophrenia in China, compared to 5,498,737 in 2019 (Ma et al. 2020; Chan *et al.* 2015; compare Long *et al.* 2014). Assuming all cases of excess schizophrenia in the exposed cohorts manifest at age 15 (the 160,000 Case_B estimates in Table 2) were still alive in 1990, they would have accounted for less than 5% (i.e. $160,000/3,551,298$) of all cases in 1990, and a dwindling proportion thereafter (less than 3% in 2019 on the assumption that nine-tenths of those born c. 1960 were still alive then). In Ireland, the 3,000 famine-induced cases would have accounted for one-tenth of the assumed 29,000 cases in 1861.⁸ Presumably the ratio was generally lower in other famine settings covered by this study, due to their shorter durations. Calculating the outcomes for several different famines also highlights how the importance of foetal origins depends on the exact circumstances of a famine in terms of the birth rate, averted births, and duration.

⁸ That is, assuming a prevalence rate of 0.5% in a population of 5.8 million.

In sum, a growing literature has highlighted the link between foetal exposure to malnutrition and adverse health in later life. Studies that use famines as natural experiments have advanced biomedical research substantially in this area. This research draws attention to a previously neglected welfare cost of famines. However, a misreading of its findings (as indicated by references both in the press and in academic outlets; see the introduction above) has prompted greatly exaggerated claims regarding the long run impact of foetal exposure during famines. How big was the impact relative to the contemporaneous costs of famine? Using schizophrenia as a case study, this paper has shown that the data required to provide a rough answer to this question are available and that the impact was modest. Yet our results should not be construed as a claim that prenatal exposure is unimportant. Far from it; their point is simply that the resultant impacts are only small a part of the devastation caused by famine.

Table 2. Excess Famine Mortality and Cases of Schizophrenia (in reverse chronological order)							
Country	Period	Death Toll (million)	Births at Risk (1,000s)	Case_A	Case_B	Ratio_A (%)	Ratio_B (%)
China	1959-61	30	40,000	200,000	160,000	0.67	0.53
Netherlands	1944-45	0.02	13	65	62	0.33	0.31
Leningrad	1941-43	0.7	100	500	400	0.07	0.06
Ukraine	1932-33	3.6	600	3,000	2,400	0.08	0.07
Ireland	1846-50	1	900	4,500	3,000	0.45	0.30
Note: Ratio = Schizophrenia cases as percentage of excess deaths toll							

DATA AVAILABILITY

All the data used are in the public domain.

Works Cited:

Almond, D. & Currie, J. 2011. 'Killing Me Softly: The Fetal Origins Hypothesis', *Journal of Economic Literature*, 25(3): 153-72.

Applebaum, A. 2017. *Red Famine: Stalin's War on Ukraine*. London: Allen Lane.

Banister, J. & Hill, K. 2004. 'Mortality in China 1964-2000', *Population Studies*, 58(1): 55-75.

Barber, J. & Djeniskevich, A. 2005. Eds. *Life and Death in Besieged Leningrad, 1941-44*. London: Palgrave Macmillan.

- Brown, A. S., van Os, J, Driessens, C, Hoek, H. W. & Susser, E. S. 2000. Further evidence of relation between prenatal famine and major affective disorder. *American Journal of Psychiatry*. 157: 190–95.
- Chan, K. Y., Zhao, F. F., Meng, S, Demaio. A. R. et al. 2015. Prevalence of schizophrenia in China between 1990 and 2010. *Journal of Global Health*. 5(1):010410. doi: 10.7189/jogh.05.010410.
- Cherepenina, N. 2005a. The demographic situation and healthcare on the eve of war, in Barber and Djeniskevich, *Life and Death*, pp. 13-27.
- Cherepenina, N. 2005b. Assessing the scale of famine and death in the besieged city, in Barber and Djeniskevich, *Life and Death*, pp. 28-70.
- Davies. R. W. & Wheatcroft, S. G. 2004. *The Years of Hunger: Soviet Agriculture, 1931–1933*. Basingstoke: Palgrave Macmillan.
- De Zwarte, I. 2020. *The Hunger Winter: Fighting Famine in the Occupied Netherlands, 1944-1945*. Cambridge: Cambridge University Press.
- Diamond, Jared. 2000. ‘War babies’, in Stephen J. Ceci and Wendy M. Williams, eds. *The Nature-Nurture Debate: The Essential Readings*. New York: WileyBlackwell, pp. 14-22.
- Ekamper, P., Bijwaard, G., van Poppel. F., & Lumey, L. H. 2017. War-related excess mortality in The Netherlands, 1944-45: new estimates of famine- and non-famine-related deaths from national death records, *Historical Methods*, 50(2): 113-128.
- Getty J. A., Rittersporn, G. T., & Zemskov, V. N. 1993. ‘Victims of the Soviet Penal System in the Pre-War Years: A First Approach on the Basis of Archival Evidence’, *American Historical Review* 98(4): 1017-1049.
- Hakulinen, C., Webb, R. T., Pedersen, C. B., Agerbo, E. & Mok, P. L. H. 2020. Association Between Parental Income During Childhood and Risk of Schizophrenia Later in Life. *JAMA Psychiatry*. 77(1): 17-24.

He, H., Liu, Q., Li, N., Guo, L. et al. 2020. 'Trends in the incidence and DALYs of schizophrenia at the global, regional and national levels: results from the Global Burden of Disease Study 2017'. *Epidemiology and Psychiatric Sciences* 29(e91): 1–11.

He, P., Chen, G., Guo, C. et al. 2018. Long-term effect of prenatal exposure to malnutrition on risk of schizophrenia in adulthood: Evidence from the Chinese famine of 1959–1961', *European Psychiatry*, 51: 42-47.

Heinrichs, R. W. 2003. Historical origins of schizophrenia: Two early madmen and their illness. *The History of the Behavioral Sciences*, 39[4]: 349-363.

Hjorthøj, C. Stürup, A. E., McGrath, J. J. & Nordentoft, M. 2017. Years of potential life lost and life expectancy in schizophrenia: a systematic review and meta-analysis. *Lancet Psychiatry* 4(4): 295-301.

Hoek, H. W., Brown, A. S. & Susser, E. 1998. The Dutch Famine and Schizophrenia Spectrum Disorders. *Social Psychiatry and Psychiatric Epidemiology*, 33(8): 373–79.

Human Life-Table Database (<https://www.lifetable.de/Home/Index>) (e.g. 'Life Tables of Netherlands 1936-1940', available at: <https://www.lifetable.de/Country/Country?cntr=NLD>)

Humennyi, S. 2019. Нелегальні міграції на кордоні між Республікою Польща та УРСР напередні до та під час Голодомору 1932-1933 (Illegal migration at the border between the Republic of Poland and the USSR before and during the Holodomor of 1932-33). *Ictopia (History)* Issue 140: 18-23.

Kelly, B. D. 2019. The Great Irish Famine (1845-52) and the Irish asylum system: remembering, forgetting, and remembering again. *Irish Journal of Medical Science*, 188(3): 953-958.

Lally, J. and MacCabe, J. H. 2015. Antipsychotic medication in schizophrenia: a review. *British Medical Bulletin* 114, 169-179.

Li, C., Tobi, E. W., Heijmans, B. T., and Lumey, L. H. 2019. The effect of the Chinese Famine on type 2 diabetes mellitus epidemics. *Nature Reviews Endocrinology*. 15, 313–314.

Li, C., Lumey, L. H. 2022. Early-Life Exposure to the Chinese Famine of 1959–1961 and Type 2 Diabetes in Adulthood: A Systematic Review and Meta-Analysis, *Nutrients*, 14, 2855. <https://doi.org/10.3390/nu14142855>

Long, J., Huang, G., Liang, W., Liang, B. et al. 2014. ‘The prevalence of schizophrenia in mainland China: evidence from epidemiological surveys’, *Acta Psychiatrica Scandinavica*, 130: 244–256.

Lumey L. H., Stein A.D. & Susser, E. 2011. Prenatal Famine and Adult Health. *Annual Reviews of Public Health*. 32: 250-251.

Ma, C., Yu, S., Huang, Y., Liu, Z., et al. 2020. Burden of Mental and Substance Use Disorders -- China, 1990–2019, *China CDC Weekly*, 2(41): 804-9.

McDonagh, M. 2013. Impact of Great Famine on mental health examined at Science Week’, *Irish Times*, 13 November.

Meslé F., Vallin, J. & Andreev, E. 2008. Demographic Consequences of the Great Famine: Then and Now, *Harvard Ukrainian Studies*, 30[1/4]: 217-241.

Mokyr, J. *Why Ireland Starved: A Quantitative and Analytical History of the Irish Economy, 1800-1850*, 2nd ed. London: Allen and Unwin.

Moore, A. 2014. ‘Great Famine responsible for gene defect still causing mental illness’, *Ireland Calling*, 16 June.

National Bureau of Statistics of China. 2011. *China Statistical Yearbook 2011* [<http://www.stats.gov.cn/tjsj/ndsj/2011/indexeh.htm>]

Naumenko, N. 2021. The Political Economy of Famine: The Ukrainian Famine of 1933. *Journal of Economic History*, 81[1]: 156-197.

Ní Nualláin, M, O'Hare, A. & Walsh, D. 1987. Incidence of schizophrenia in Ireland. *Psychological Medicine* 17[4]: 943-948.

Ó Gráda, C. 1999. *Black '47 and Beyond: The Great Irish Famine, History, Economy, and Memory*. Princeton: Princeton University Press.

Ó Gráda, C. 2009. *Famine: A Short History*. Princeton: Princeton University Press.

Our World in Data. 'Schizophrenia prevalence, by age, 1990-2019'
(<https://ourworldindata.org/grapher/schizophrenia-prevalence-by-age>).

Priebe, S., Bogic, M., Ajdukovic, D., Franciskovic, T. et al. Mental Disorders following war in the Balkans. *Archives of General Psychiatry*. 67(5): 518-28.

Rudnytskyi, O.P., Levchuk, N., Wolowyna, O., Shevchuk, P. & Kovbasiuk, A. 2015. Demography of a man-made human catastrophe: The case of massive famine in Ukraine 1932-1933. *Canadian Studies in Population* 42[1-2]: 53-80.

Saha, S., Chant, D., Welham, J. & McGrath, J. 2005. A Systematic Review of the Prevalence of Schizophrenia. *PLoS Med* 2[5]: e141.
<https://doi.org/10.1371/journal.pmed.0020141>

Scheper-Hughes, Nancy. 2000. Ire in Ireland. *Ethnography* 1(1): 117-140.

St. Clair, D., Zu, M., Wang, P. et al. 2005. Rates of Adult Schizophrenia Following Prenatal Exposure to the Chinese Famine of 1959-1961. *Journal of the American Medical Association*. 294[5]: 557-562.

Salisbury, H. 1969. *The 900 Days: The Siege of Leningrad*. London: Secker & Warburg.

Smith, M. K. 2017. 'Did the Irish Famine trigger mental illness in the Irish?', *Irish Central*, 12 October.

Snyder, T. 2010. *Bloodlands: Europe Between Hitler and Stalin*. New York: Basic Books.

Song, S., Wang, W. & and Hu, P. 2009. Famine, death, and madness: schizophrenia in early adulthood after prenatal exposure to the Chinese Great Leap Forward Famine. *Social Science & Medicine* 68(7): 1315-1321.

Stein, Z., Susser, M., Saenger, G. & Marolla, F. 1975. *Famine and Human Development: The Dutch Hunger Winter of 1944/45*. Oxford: Oxford University Press.

Susser, E. S. & Lin, S. P. 1992. Schizophrenia after prenatal exposure to the Dutch Hunger Winter of 1944-1945. *Archives of general psychiatry* 49(12): 983-988.

Susser, E. P., Neugebauer, R. Hoek, H. W. et al. 1996. 'Schizophrenia After Prenatal Famine: Further Evidence', *Arch Gen Psychiatry*. 53: 25-31.

Torrey, E. F. 1987. Prevalence studies in schizophrenia. *British Journal of Psychiatry*, 150: 598-608.

Tracey, P. 2008. *Stalking Irish Madness: Searching for the Roots of My Family's Schizophrenia*. New York: Bantam.

Vita A., Barlati, S., De Peri, L., Deste, G. & and Sacchetti, E. 2016. Schizophrenia. *Lancet* 388, 1280.

Walsh, D. 2012. Did the Great Irish Famine increase schizophrenia? *Irish Journal of Psychological Medicine*, 29(1): 7-15.

Walsh, O. 2016. 'An invisible but inescapable trauma': epigenetics and the Irish Famine. In Kinealy, C. King, J. & Reilly, C. eds. *Women and the Great Hunger*, Cork: Cork University Press, pp. 173-183.

Wang, C. & Zhang, Y. 2017. Schizophrenia in mid-adulthood after prenatal exposure to the Chinese famine of 1959–1961." *Schizophrenia Research* 184: 21-25.

WHO. 2022. Schizophrenia: Key Facts. 10 January (<https://www.who.int/news-room/fact-sheets/detail/schizophrenia>).

Yang, J. 2012. *Tombstone: The Great Chinese Famine 1958-1962*. NY: FSG.

Yushchenko, V. 2007. Holodomor. *Wall Street Journal*, 27 November.

Xu, M., Sun, W., Liu, B., *et al.* 2009. Prenatal malnutrition and adult schizophrenia: further evidence from the 1959-1961 Chinese famine. *Schizophrenia Bulletin*, 35(3): 568-76.

Zimmet, P. Z. 2017. Diabetes and its drivers: the largest epidemic in human history? *Clinical Diabetes and Endocrinology*, 3:1.

Zimmet, P., Shi, Z., El-Osta, A., and Ji, L 2018. Epidemic T2DM, early development and epigenetics: implications of the Chinese Famine. *Nature Reviews Endocrinology*. 14: 738–746.

Zimmet, P., Shi, Z., El-Osta, A., and Ji, L. 2019. Chinese famine and the diabetes mellitus epidemic. *Nature Reviews Endocrinology*. [https:// doi.org/10.1038/s41574-019-0300-9](https://doi.org/10.1038/s41574-019-0300-9).

UCD CENTRE FOR ECONOMIC RESEARCH – RECENT WORKING PAPERS

- [WP23/03](#) Xidong Guo: 'Hospital Efficiency and Consultants' Private Practices: Analysing the Impact of a Voluntary Reform' February 2023
- [WP23/04](#) Tadgh Hegarty, Karl Whelan: 'Calculating The Bookmaker's Margin: Why Bets Lose More On Average Than You Are Warned' February 2023
- [WP23/05](#) Tadgh Hegarty, Karl Whelan: 'Forecasting Soccer Matches With Betting Odds: A Tale of Two Markets' February 2023
- [WP23/06](#) Karl Whelan: 'How Do Prediction Market Fees Affect Prices and Participants?' March 2023
- [WP23/07](#) Kevin Devereux, Zuzanna Studnicka: 'Local Labour Market Concentration and Wages in Ireland' March 2023
- [WP23/08](#) Kevin Devereux, Zuzanna Studnicka: 'When and Where do Minimum Wage Hikes Increase Hours? Evidence from Ireland' April 2023
- [WP23/09](#) Karl Whelan: 'Fortune's Formula or the Road to Ruin? The Generalized Kelly Criterion With Multiple Outcomes' April 2023
- [WP23/10](#) Manuel E. Lago: '#MeToo...or not? Do salient shocks affect gender social norms?' April 2023
- [WP23/11](#) Cormac Ó Gráda, Tyler Anbinder, Simone A. Wegge: 'Gaming the System: The Not-So-Poor and Savings Banks in Antebellum New York' April 2023
- [WP23/12](#) Tadgh Hegarty, Karl Whelan: 'Disagreement and Market Structure in Betting Markets: Theory and Evidence from European Soccer' May 2023
- [WP23/13](#) Tadgh Hegarty, Karl Whelan: 'Do Gamblers Understand Complex Bets? Evidence From Asian Handicap Betting on Soccer' May 2023
- [WP23/14](#) Matthew Amalitinga Abagna: 'Special Economic Zones and Local Economic Activities in Ethiopia.' May 2023
- [WP23/15](#) Gregory Corcos, Stefanie Haller: 'Importer Dynamics: Do Peers Matter?' July 2023
- [WP23/16](#) Karl Whelan: 'How Does Inside Information Affect Sports Betting Odds?' July 2023
- [WP23/17](#) Michele Gubello: 'Social Trust and the Support for Universal Basic Income' July 2023
- [WP23/18](#) Constantin Bürgi, Zuzanna Studnicka: 'Online Interactions, Trade And The Gravity Model' August 2023
- [WP23/19](#) Juan S. Morales, Margaret Samahita: 'Can Social Pressure Stifle Free Speech?' August 2023
- [WP23/20](#) Fabrice Kämpfen, Xavier Gómez-Olivé, Owen O'Donnell, Carlos Riumallo Herl: 'Effectiveness of Population-Based Hypertension Screening: A Multidimensional Regression Discontinuity Design' August 2023
- [WP23/21](#) Annette Alstadsæter, Ronald Davies, Mathieu Parenti, Farid Toubal: 'The Real Effects of Tax Havens' October 2023
- [WP23/22](#) Ronald B. Davies, Dieter F. Kogler, Guohao Yang: 'Construction of a Global Knowledge Input-Output Table' October 2023
- [WP23/23](#) Taipeng Li, Lorenzo Trimachi, Rui Xie, Guohao Yang: 'The Unintended Consequences of Trade Protection on the Environment' October 2023
- [WP23/24](#) Constantin Bürgi, Mengdi Song: 'Do Professional Forecasters Believe in Uncovered Interest Rate Parity?' November 2023
- [WP23/25](#) Morgan Kelly, Kevin Hjortshøj O'Rourke: 'Industrial policy on the frontier: lessons from the first two industrial revolutions' November 2023
- [WP23/26](#) Morgan Kelly, Kevin Hjortshøj O'Rourke: 'Industrial policy on the frontier: lessons from the first two industrial revolutions' November 2023
- [WP23/27](#) Constantin Bürgi, Prachi Srivastava, Karl Whelan: 'Oil Prices and Inflation Forecasts' November 2023