

Tsai, Yi-Chan; Yang, C. C.; Yu, Hsin-Jung

Article

Rising skill premium and the dynamics of optimal capital and labor taxation

Quantitative Economics

Provided in Cooperation with:

The Econometric Society

Suggested Citation: Tsai, Yi-Chan; Yang, C. C.; Yu, Hsin-Jung (2022) : Rising skill premium and the dynamics of optimal capital and labor taxation, Quantitative Economics, ISSN 1759-7331, The Econometric Society, New Haven, CT, Vol. 13, Iss. 3, pp. 1061-1099, <https://doi.org/10.3982/QE1326>

This Version is available at:

<https://hdl.handle.net/10419/296295>

Standard-Nutzungsbedingungen:

Die Dokumente auf EconStor dürfen zu eigenen wissenschaftlichen Zwecken und zum Privatgebrauch gespeichert und kopiert werden.

Sie dürfen die Dokumente nicht für öffentliche oder kommerzielle Zwecke vervielfältigen, öffentlich ausstellen, öffentlich zugänglich machen, vertreiben oder anderweitig nutzen.

Sofern die Verfasser die Dokumente unter Open-Content-Lizenzen (insbesondere CC-Lizenzen) zur Verfügung gestellt haben sollten, gelten abweichend von diesen Nutzungsbedingungen die in der dort genannten Lizenz gewährten Nutzungsrechte.

Terms of use:

Documents in EconStor may be saved and copied for your personal and scholarly purposes.

You are not to copy documents for public or commercial purposes, to exhibit the documents publicly, to make them publicly available on the internet, or to distribute or otherwise use the documents in public.

If the documents have been made available under an Open Content Licence (especially Creative Commons Licences), you may exercise further usage rights as specified in the indicated licence.



<https://creativecommons.org/licenses/by-nc/4.0/>

Supplement to “Rising skill premium and the dynamics of optimal capital and labor taxation”

(*Quantitative Economics*, Vol. 13, No. 3, July 2022, 1061–1099)

YI-CHAN TSAI

Department of Economics and Center for Research in Econometric Theory and Applications, National Taiwan University

C. C. YANG

Institute of Economics, Academia Sinica, Department of Public Finance, National Chengchi University, and Department of Public Finance, Fengchia University

HSIN-JUNG YU

Department of Economic Research, Central Bank

In this Online Appendix, we first describe our computation method. Then we develop and resolve simplified versions of our Ramsey and Mirrlees tax problems, respectively. Finally, we report the decomposition of the skill premium based on the capital-skill complementary effect and the relative quantity effect in the model.

APPENDIX A: COMPUTATION METHOD

We compute the transitional dynamics of optimal taxation by using the following procedure:

1. Given the sequence $\{q_t\}$ with $q_0 = 1$, we compute the steady state of the optimal allocation for the Ramsey problem and that of the constrained efficient allocation for the Mirrlees problem at each q_t . We then use these steady-state allocations as an initial guess for computing the transitional dynamics.
2. In the case of the Ramsey problem, we solve for the system of nonlinear equations (21)–(26) plus the implementability conditions (18), the resource constraints (13), the restriction (20), and the FOC with respect to φ . In the case of the Mirrlees problem, we solve for the system of nonlinear equations (41)–(45) plus the equality of the IC constraint (39) and the resource constraints (13). We substitute the resulting allocations into the IC constraints (39) and (40) to make sure that the incentive compatibility constraints for skilled and unskilled households are not violated.

Yi-Chan Tsai: yichantsai@ntu.edu.tw

C. C. Yang: ccyang@econ.sinica.edu.tw

Hsin-Jung Yu: hjyu@mail.cbc.gov.tw

APPENDIX B: SIMPLIFIED MODELS

B.1 Ramsey problem

The Lagrangian for the Ramsey problem is as follows:

$$\max_{\{c_{it}, N_{st}, N_{ut}, K_{et+1}\}} \sum_{t=0}^{\infty} \beta^t \sum_{i \in \{s, u\}} \psi^i \left[c_{it} - \chi \frac{N_{it}^2}{2} \right]$$

subject to the implementability conditions

$$\begin{aligned} & + \Psi^s \sum_{t=0}^{\infty} \beta^t \left[c_{st} - \chi N_{st}^2 - (A_{s0} + T) \right], \\ & + \Psi^u \sum_{t=0}^{\infty} \beta^t \left[c_{ut} - \chi N_{ut}^2 - (A_{u0} + T) \right], \end{aligned}$$

the resource constraints

$$+ \sum_{t=0}^{\infty} \beta^t \Gamma_t \left[\mu N_{ut} + (1 - \mu) K_{et}^\lambda N_{st}^{1-\lambda} + \frac{K_{et}}{q_t} - \frac{K_{et+1}}{q_t} - C_t - G_t \right],$$

and the restriction that all households face the same labor marginal tax rate at any point in time

$$+ \sum_{t=0}^{\infty} \beta^t \Upsilon_t [N_{st} - N_{ut} \xi_t],$$

where we have used the FOCs of households to derive the implementability conditions and the last constraint invokes (31).¹

The resulting FOCs are:

$$\psi^i + \Psi^i = \Gamma_t, \quad i = \{s, u\}, \quad (\text{B.1})$$

$$\Psi^s + \Psi^u = 0, \quad (\text{B.2})$$

$$\chi(\psi^u + 2\Psi^u)N_{ut} = \Gamma_t \mu - \Upsilon_t \xi_t, \quad (\text{B.3})$$

$$\chi(\psi^s + 2\Psi^s)N_{st} = \Gamma_t \mu \xi_t + \Upsilon_t \left[1 - N_{ut} \frac{\partial \xi_t}{\partial N_{st}} \right], \quad (\text{B.4})$$

$$\frac{\Gamma_t}{q_t} = \beta \left[\Gamma_{t+1} \left(\frac{1}{q_{t+1}} + r_{et+1} \right) - \Upsilon_{t+1} N_{ut+1} \frac{\partial \xi_{t+1}}{\partial K_{et+1}} \right], \quad (\text{B.5})$$

where we have used (29) in the derivation of (B.4).

We obtain from (B.1)–(B.2):

$$\Psi^s = \frac{\psi^u - \psi^s}{2}; \quad \Psi^u = \frac{\psi^s - \psi^u}{2}; \quad \Gamma_t = \frac{\psi^s + \psi^u}{2} \equiv \Gamma. \quad (\text{B.6})$$

¹We do not use the “market” weights $\{\varphi^i\}_{i=\{s,u\}}$ here because the utility function takes the quasilinear form.

We also obtain²

$$Y_t = \frac{\mu \xi_t}{1 + \lambda} [\psi^u (1 - \tau_{L_t}) - \Gamma], \quad (\text{B.7})$$

$$Y_t = \frac{\mu}{\xi_t} [\Gamma - \psi^s (1 - \tau_{L_t})]. \quad (\text{B.8})$$

Putting (B.7) and (B.8) together yields equation (33).

Using (30), (31), (B.6), (B.7), and (33), we have from (B.5),

$$r_{et+1} = \frac{1}{\beta q_t} - \frac{1}{q_{t+1}} + \left(\frac{N_{st+1}}{K_{et+1}} \right) \frac{\lambda \mu \xi_{t+1}}{1 + \lambda} \left[\frac{\psi^u - \psi^s}{\psi^s + \frac{\xi_{t+1}^2}{1 + \lambda} \psi^u} \right].$$

Substituting the above r_{et+1} in (32) and using (30) gives equation (34).

B.2 Mirrlees problem

The Lagrangian for the Mirrlees problem is as follows:

$$\max_{\{c_{it}, N_{st}, N_{ut}, K_{et+1}\}} \sum_{t=0}^{\infty} \beta^t \sum_{i \in \{s, u\}} \psi^i \left[c_{it} - \chi \frac{N_{it}^2}{2} \right]$$

subject to the IC constraint

$$+ \Lambda \sum_{t=0}^{\infty} \beta^t \left[c_{st} - \chi \frac{N_{st}^2}{2} - c_{ut} + \chi \frac{1}{2} \left(\frac{N_{ut}}{\xi_t} \right)^2 \right],$$

and the resource constraints

$$+ \sum_{t=0}^{\infty} \beta^t \Gamma_t \left[\mu N_{ut} + (1 - \mu) K_{et}^\lambda N_{st}^{1-\lambda} + \frac{K_{et}}{q_t} - \frac{K_{et+1}}{q_t} - C_t - G_t \right].$$

The resulting FOCs are

$$\psi^s + \Lambda = \Gamma_t; \quad (\text{B.9})$$

$$\psi^u - \Lambda = \Gamma_t,$$

$$-\psi^s \chi N_{st} + \Gamma_t w_{st} - \Lambda \left[\chi N_{st} + \chi \frac{N_{ut}^2}{\xi_t^3} \frac{\partial \xi_t}{\partial N_{st}} \right] = 0, \quad (\text{B.10})$$

²Using (29), (30), and (B.6), we have from (B.4),

$$\psi^u \chi N_{st} = \Gamma w_{st} + Y_t \left[1 + \lambda \frac{N_{ut}}{N_{st}} \xi_t \right],$$

which by (31) and (29) gives (B.7). Using (B.6), we have from (B.3),

$$\psi^s \chi N_{ut} = \Gamma \mu - Y_t \xi_t,$$

which by (31) and (28) gives (B.8).

$$-\psi^u \chi N_{ut} + \Gamma_t w_{ut} + \Lambda \chi \frac{N_{ut}}{\xi_t^2} = 0, \quad (\text{B.11})$$

$$\begin{aligned} \frac{\Gamma_t}{q_t} &= \beta \left[\Gamma_{t+1} \left(\frac{1}{q_{t+1}} + r_{et+1} \right) \right. \\ &\quad \left. - \Lambda \chi \frac{N_{ut+1}^2}{\xi_{t+1}^3} \frac{\partial \xi_{t+1}}{\partial K_{et+1}} \right]. \end{aligned} \quad (\text{B.12})$$

From (B.9), we have

$$\Lambda = \frac{\psi^u - \psi^s}{2}; \quad \Gamma_t = \frac{\psi^u + \psi^s}{2} \equiv \Gamma. \quad (\text{B.13})$$

Using (46) and (B.13), we have equation (47) from (B.11). Using (30), (46), and (B.13), we have from (B.10),

$$1 - \tau_s(t) = \frac{\Gamma}{\psi^s + \Lambda} + \frac{\Lambda \lambda (1 - \tau_u(t)) w_{ut} (N_{ut}/N_{st})}{(\psi^s + \Lambda) \xi_t^2 w_{st}} = 1 + \frac{(\psi^u - \psi^s) \lambda (1 - \tau_u(t)) N_{ut}}{(\psi^u + \psi^s) \xi_t^3 N_{st}},$$

which implies $\tau_s(t) < 0$. From (46), we have $\frac{N_{ut}}{N_{st}} = \frac{(1 - \tau_u(t))}{(1 - \tau_s(t))} \frac{1}{\xi_t}$. Substituting this result in the above equation leads to

$$[1 - \tau_s(t)]^2 - [1 - \tau_s(t)] - \frac{(\psi^u - \psi^s) \lambda (1 - \tau_u(t))^2}{(\psi^u + \psi^s) \xi_t^4} = 0,$$

which in turn leads to equation (48).³

Using (30) and (B.13), we have from (B.12),

$$r_{et+1} = \frac{1}{\beta q_t} - \frac{1}{q_{t+1}} + \frac{\lambda \chi (\psi^u - \psi^s)}{(\psi^u + \psi^s)} \frac{1}{\xi_{t+1}^2} \frac{N_{ut+1}^2}{N_{st+1}} \frac{N_{st+1}}{K_{et+1}}.$$

Substituting the above r_{et+1} in (32) and using (28), (30), (46), and (47) gives equation (49).

APPENDIX C: EVOLUTION OF SKILL PREMIUM

In the face of increasing q_t (ESTP), we report how $\ln \xi$ in (11) evolves over time under optimal taxation.

C.1 Ramsey taxation

The right-hand panel of Figure C.1 reports the evolution of K_e/N_s and N_u/N_s over time in the face of an increasing q_t . According to (11), while K_e/N_s is the sole allocation that determines the capital-skill complementarity effect of the skill premium, N_u/N_s is the sole allocation that determines the relative quantity effect of the skill premium. The evolutions of K_e/N_s and of N_u/N_s shown in the right-hand panel of Figure C.1 explain why the skill premium shown in the left-hand panel of Figure C.1 is on the rise. Simply put, the capital-skill complementarity effect dominates the relative quantity effect.

³The other root of the quadratic equation is ruled out since it implies that $\tau_s(t) \geq 0$.

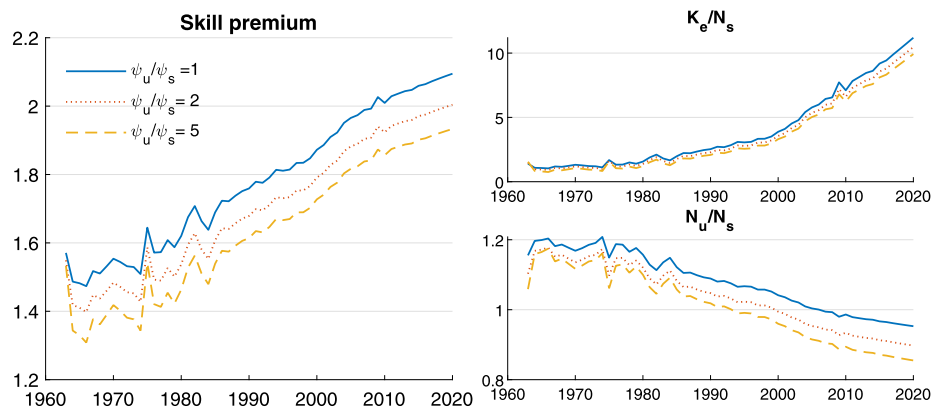


FIGURE C.1. Log skill premium and allocations.

C.2 *Mirrleesian taxation*

The figure for Mirrleesian taxation resembles Figure C.1 for Ramsey taxation.

Co-editor Kjetil Storesletten handled this manuscript.

Manuscript received 12 April, 2019; final version accepted 8 October, 2021; available online 3 December, 2021.