

Seiler, Volker; Rudolf, Markus

## Article

# Customer Satisfaction in Private Banking

Credit and Capital Markets – Kredit und Kapital

## Provided in Cooperation with:

Duncker & Humblot, Berlin

*Suggested Citation:* Seiler, Volker; Rudolf, Markus (2014) : Customer Satisfaction in Private Banking, Credit and Capital Markets – Kredit und Kapital, ISSN 2199-1235, Duncker & Humblot, Berlin, Vol. 47, Iss. 3, pp. 485-520,  
<https://doi.org/10.3790/ccm.47.3.485>

This Version is available at:

<https://hdl.handle.net/10419/293741>

### Standard-Nutzungsbedingungen:

Die Dokumente auf EconStor dürfen zu eigenen wissenschaftlichen Zwecken und zum Privatgebrauch gespeichert und kopiert werden.

Sie dürfen die Dokumente nicht für öffentliche oder kommerzielle Zwecke vervielfältigen, öffentlich ausstellen, öffentlich zugänglich machen, vertreiben oder anderweitig nutzen.

Sofern die Verfasser die Dokumente unter Open-Content-Lizenzen (insbesondere CC-Lizenzen) zur Verfügung gestellt haben sollten, gelten abweichend von diesen Nutzungsbedingungen die in der dort genannten Lizenz gewährten Nutzungsrechte.

### Terms of use:

*Documents in EconStor may be saved and copied for your personal and scholarly purposes.*

*You are not to copy documents for public or commercial purposes, to exhibit the documents publicly, to make them publicly available on the internet, or to distribute or otherwise use the documents in public.*

*If the documents have been made available under an Open Content Licence (especially Creative Commons Licences), you may exercise further usage rights as specified in the indicated licence.*



<https://creativecommons.org/licenses/by/4.0/>

## Customer Satisfaction in Private Banking

Volker Seiler and Markus Rudolf\*

### Abstract

The paper at hand presents a customer satisfaction model for the private banking industry. We empirically assess the postulated model with the help of partial least squares (PLS) and use formative measurement models for the predictors of customer satisfaction and customer loyalty. The results of the structural model show good quality of the overall model. Customer satisfaction in the private banking industry is mainly determined by service value and the relationship manager. In addition, the relationship manager is an essential predictor of customer loyalty and relationship quality.

## Kundenzufriedenheit im Private Banking

### Zusammenfassung

Die vorliegende Arbeit postuliert ein Modell zur Kundenzufriedenheit im Private Banking. Im Rahmen der empirischen Studie wird das Modell mit Hilfe von Partial Least Squares (PLS) geschätzt. Methodisch begeht die Arbeit insofern Neuland, als dass die Treiber der Kundenzufriedenheit und -bindung als formative Konstrukte modelliert werden. Die Ergebnisse der Analyse des Strukturmodells zeigen eine gute Gesamtmodellgüte. Hinsichtlich der Determinanten der Kundenzufriedenheit fällt auf, dass diese im Wesentlichen durch das Preis-Leistungs-Verhältnis sowie den Berater determiniert wird. Auch für die Kundenbindung und Beziehungsqualität kommt den Beratern im Private Banking eine entscheidende Bedeutung zu.

*Keywords:* Private Banking, Private Wealth Management, Customer Satisfaction, Partial Least Squares

*JEL Classification:* G21, M31, C3

---

\* Dr. Volker Seiler, University of Paderborn, Chair of International Economics & Macroeconomics, Warburger Str. 100, 33098 Paderborn, and Prof. Dr. Markus Rudolf, WHU – Otto Beisheim School of Management, Allianz Endowed Chair of Finance, Burgplatz 2, 56179 Vallendar. This paper is derived from the first author's doctoral dissertation in finance completed at the Center of Private Banking, WHU – Otto Beisheim School of Management, Vallendar. We thank Jessica Köhler, an anonymous reviewer, and the editors of Credit and Capital Markets for their helpful suggestions.

## I. Introduction

The paper at hand studies the influence various predictor variables exhibit on customer satisfaction and customer loyalty in the private banking industry. Private banking is a service that receives limited attention in the academic literature, especially with regard to the measurement of customer satisfaction. Customer satisfaction-focused literature is mainly concerned with consumer goods and retailing.<sup>1</sup> Papers on customer satisfaction in the financial services industry generally focus on retail banking,<sup>2</sup> a low-involvement setting. Involvement is the perceived importance and relevance.<sup>3</sup> In contrast to low-involvement contexts, high-involvement settings are characterized by complex information processing and decision processes.<sup>4</sup> Given this definition, retail banking (mainly deposit business, money transfers and credit business) can be classified as a low-involvement context whereas private banking, i.e. investment advisory services and portfolio management for high net worth individuals (HNWIs), constitutes a high-involvement setting. This raises the question of whether the insights concerning the predictors of customer satisfaction and loyalty gained in low-involvement settings can be transferred to high-involvement contexts, and specifically to the private banking industry.

Customer satisfaction and customer loyalty are not ends in themselves; rather, they have direct economic consequences such as a larger market share and higher profitability.<sup>5</sup> Companies that generate the majority of their revenues with their existing customers are more profitable than companies that heavily rely on generating business with new customers, as the acquisition of new customers is generally costly.<sup>6</sup> *Reichheld/Sasser* (1990) for example argue that service companies are able to nearly double their revenues by keeping an additional 5 % of their clients.<sup>7</sup> The private banking industry is not different in that respect. On the one hand, it is more expensive to win new customers than to retain existing ones.<sup>8</sup>

<sup>1</sup> See for example *Oliver* (1981); *Swan/Trawick* (1981).

<sup>2</sup> Cf. *Caruana* (2002); *Chan et al.* (2003).

<sup>3</sup> Cf. *Greenwald/Leavitt* (1984); *Zaichkowsky* (1985); *Mittal/Lee* (1989); *Mittal* (1995).

<sup>4</sup> Cf. *Muncy/Hunt* (1984).

<sup>5</sup> Cf. *Anderson/Sullivan* (1993); *Anderson et al.* (1994).

<sup>6</sup> Cf. *Anderson/Fornell* (1994); *Mittal/Lassar* (1998); *Johnson/Gustafsson* (2000).

<sup>7</sup> Cf. *Heskett et al.* (1994) as well.

<sup>8</sup> Cf. *Wöhle* (1999); *Datamonitor* (2006).

*Schulz/Krönert* (2006) gauge that a private banking service provider needs to attract seven new customers to counterbalance the lost revenues from the churn of a single existing client. On the other hand, private banking service providers depend on a satisfied and loyal clientele, as customer recommendations are the main source for attracting new clients.<sup>9</sup> However, many clients make use of several private banking service providers; this enhances comparability and facilitates the wealth transfer to another wealth manager.<sup>10</sup> A recent survey by *Capgemini/Merrill Lynch* (2009) comes to the conclusion that more than 25 % of HNWIs are dissatisfied with their private banking service provider. However, only a minority of wealth managers systematically track the satisfaction and loyalty of its client base.<sup>11</sup>

Given this background, the current paper contributes to the academic literature and has implications for practitioners alike. The proposed model extends existing customer satisfaction models for a specific context. As the private banking industry provides the research setting, this paper adds to the relatively scant literature on customer satisfaction and loyalty in the financial services industry. Furthermore, a formative operationalization of the measurement models for the predictor variables is used. The proposed model may serve as a tool for practitioners to assess customer satisfaction and loyalty and to compare the results with the competition. Moreover, the results of the model may be used for decision making concerning the allocation of resources: Management should channel resources into those areas that have a high impact on customer satisfaction and customer loyalty but are perceived to be below average by private banking customers.

The paper is structured as follows: Chapter II. presents an overview of current private banking and customer satisfaction literature. Chapter III. provides the model and the hypotheses to be tested. Chapter IV. summarizes the methodology and gives an overview of the sample used for the empirical estimation. The results of the empirical analysis are presented in chapter V. Chapter VI. presents the conclusion.

---

<sup>9</sup> Cf. *Datamonitor* (2006).

<sup>10</sup> Cf. *Schütte/Höfle* (1998); *PricewaterhouseCoopers* (2004); *IBM Corporation* (2005).

<sup>11</sup> Cf. *Mercer Oliver Wyman* (2005).

## II. Literature Review

Customer satisfaction is a central predictor of customer loyalty and can be regarded as a holistic evaluation of a product or service after its purchase.<sup>12</sup> According to the C/D-paradigm (Confirmation/Disconfirmation-paradigm, also called CS/D-paradigm, i.e. Customer Satisfaction/Dissatisfaction-paradigm), customer satisfaction results from comparing the expected performance with the actually perceived performance. If the perceived performance is equal to expected performance (confirmation) or exceeds expected performance (positive disconfirmation), the customer is satisfied. Negative disconfirmation and thus dissatisfaction result when the perceived performance falls short of expectations.<sup>13</sup>

A relatively new approach is the application of customer satisfaction index models. Instead of evaluating a single transaction, such models focus on a cumulative evaluation of customer satisfaction.<sup>14</sup> The idea is that in order to analyse the general link between customer satisfaction and customer loyalty, previous experiences with a certain product or service have to be taken into account, as satisfaction with a single transaction can hardly be expected to lead to customer loyalty.<sup>15</sup> *Bruhn* (1999), *Anderson/Fornell* (2000a), *Anderson/Fornell* (2000b), *Johnson et al.* (2001) und *Bruhn* (2003) provide an overview of customer satisfaction indices. With regard to the application of customer satisfaction indices, different industries have been analyzed. *Bruhn/Grund* (2000), for example, study 20 industries (retail banks, among others), *Hackl et al.* (2000) analyze customer satisfaction in the food retailing business, *Kristensen et al.* (2000) study satisfaction with post delivery in Denmark and *Martensen et al.* (2000) apply a customer satisfaction index model in 30 companies from 8 industries (retail banks, among others). Further examples of customer satisfaction indices are provided by *Martensen/Grønholdt* (2003), *Johnson et al.* (2001), *Chan et al.* (2003) and *Eskildsen et al.* (2004).

These customer satisfaction indices are generally designed to be universally applicable to a wide variety of industries and services. Hence,

<sup>12</sup> Cf. *Fornell* (1992), p. 11.

<sup>13</sup> Cf. *Oliver* (1980), p. 460 f.; *Oliver* (1981), p. 35; *Swan/Trawick* (1981), S. 49 ff.; *Churchill/Surprenant* (1982), p. 491 ff.; *Woodruff et al.* (1983), p. 296; *Cadotte et al.* (1987), p. 305; *Halstead et al.* (1994), p. 114; *Homburg et al.* (2005), p. 96 f.

<sup>14</sup> Cf. *Bruhn* (1999), p. 386; *Anderson/Fornell* (2000a), p. 256.

<sup>15</sup> Cf. *Hermann/Johnson* (1999), p. 582 f.; *Homburg/Giering* (2001), p. 45.

*Table 1*  
**Overview of Customer Satisfaction Indices**

Author(s)	Index	Exogenous constructs	Endogenous constructs
<i>Bruhn</i> (1999); <i>Anderson/Fornell</i> (2000a); <i>Bruhn/Grund</i> (2000); <i>Bruhn</i> (2003)	ACSI	Expectations, quality	Complaints, customer satisfaction, customer loyalty, value
<i>Bruhn</i> (1999); <i>Bruhn/Grund</i> (2000)	SWICS	Expectations, quality, customer orientation	Customer value, customer satisfaction, customer dialogue, customer loyalty
<i>Bruhn/Grund</i> (2000); <i>Grønholdt et al.</i> (2000); <i>Kristensen et al.</i> (2000); <i>Martensen et al.</i> (2000); <i>Bruhn</i> (2003); <i>Eskildsen et al.</i> (2004)	ECSI/ EPSI	Image, product quality, service quality, expectations	Value, customer satisfaction, customer loyalty
<i>Chan et al.</i> (2003)	HKCSI	Demographic characteristics, expectations	Performance, complaints, customer satisfaction, customer loyalty, value

ACSI: American customer satisfaction index; ECSI: European customer satisfaction index; EPSI: European performance satisfaction index; HKCSI: Hong Kong consumer satisfaction index; SWICS: Swiss index of customer satisfaction.

the focus is on general constructs such as service quality rather than on industry-specific predictors of customer satisfaction and loyalty. The recommendation of a specific course of action for single industries is not the main focus, however. Table 1 gives an overview of different customer satisfaction indices.

Customer loyalty consists of attitudinal and behavioural constituents.<sup>16</sup> *Oliver* (1997, p. 392) and *Oliver* (1999, p. 34) define customer loyalty as “a deeply held commitment to rebuy or repatronize a preferred product/service consistently in the future, thereby causing repetitive same-brand or same brand-set purchasing, despite situational influences and marketing efforts having the potential to cause switching behaviour.”

<sup>16</sup> Cf. *Fornell* (1992), p. 7 ff.; *Dick/Basu* (1994), p. 100 ff.; *Jones/Sasser* (1995), p. 90; *Bendapudi/Berry* (1997), p. 26 f.; *Drake et al.* (1998), p. 288.

So far, no specific analysis concerning customer satisfaction in the private banking industry has been conducted. Publications with a greater focus on marketing and private banking emphasize topics such as brand management,<sup>17</sup> product strategy,<sup>18</sup> value added services (vas),<sup>19</sup> price acceptance,<sup>20</sup> customer value,<sup>21</sup> customer relationship management,<sup>22</sup> service quality<sup>23</sup> and communication quality.<sup>24</sup> *Seiler/Rudolf/Krume* (2013) use analysis of variance (ANOVA) to examine the influence of socio-demographic variables on perceived value, customer satisfaction and loyalty in a private banking setting. However, they do not explicitly model the drivers of customer satisfaction and customer loyalty. Moreover, the vast majority of publications focus on Swiss private banking and do not consider other markets.<sup>25</sup> As the previous publications on customer satisfaction indices have a very broad scope, these models have to be adapted and complemented to be suitable for the private banking industry.

### III. Model

Customer satisfaction results from the evaluation of the different attributes of a product.<sup>26</sup> Hence, it is necessary to determine the predictors of customer satisfaction in the private banking industry. However, this is complicated by the fact that private banking is a service rather than a product and is characterized by intangibility, heterogeneity, the inseparability of production and consumption as well as the impossibility of storage.<sup>27</sup> When assessing products or services, one can generally distinguish between the search, experience and credence qualities of goods. The differentiation between search and experience qualities of goods was put forth by *Nelson* (1970): Search qualities can be assessed ex ante, before the purchase of a good, whereas experience qualities can only by

---

<sup>17</sup> Cf. *Walbert* (2006); *Zenz-Spitzweg* (2007).

<sup>18</sup> Cf. *Prinz* (2001).

<sup>19</sup> Cf. *Giesecke* (2009).

<sup>20</sup> Cf. *Degen* (2010).

<sup>21</sup> Cf. *Wöhle* (1999); *Zenker* (2006).

<sup>22</sup> Cf. *Galasso* (1999); *Stapfer* (2005).

<sup>23</sup> Cf. *Lassar et al.* (2000); *Horn/Rudolf* (2011).

<sup>24</sup> Cf. *Bruhn et al.* (2010).

<sup>25</sup> Cf. *Schäli* (1998); *Galasso* (1999); *Wöhle* (1999); *Walbert* (2006).

<sup>26</sup> Cf. *Churchill/Surprenant* (1982), p. 493.

<sup>27</sup> Cf. *Shostack* (1977), p. 73; *Zeithaml et al.* (1985), p. 35 ff.; *Singh* (1991), p. 227; *Grönroos* (1998), p. 322.

evaluated *ex post*, when using the product. *Darby/Karni* (1973) extend this approach by adding credence qualities, aspects of a product that the consumer is unable to assess at any time.

In order to identify the determinants of customer satisfaction and customer loyalty in the private banking industry, we conducted an extensive review of the literature. To confirm that the constructs distilled from the literature review are indeed those that are relevant for private banking customers (*Johnson/Gustafsson* (2000, p. 5–6) speak of the “lens of the customer”) we conducted a preliminary survey in cooperation with an Austrian wealth manager in the period 1 October, 2007 to 31 January, 2008. This survey gave customers the possibility to specify additional aspects they find relevant when evaluating their private banking service provider.

### 1. *Structural Model of the Private Banking Customer Satisfaction Index*

One of the essential success factors in the private banking industry is accessibility.<sup>28</sup> This includes the geographical coverage of the branch network as well as accessibility in terms of banking hours.

As private banking is a service, its tangible aspects are limited to the servicescape, i.e., the physical surroundings, interior décor and furnishing, and the employees.<sup>29</sup> Beyond the service conducted, the interior of the bank is tangible and is essential for service delivery as production and consumption of services take place simultaneously.<sup>30</sup> Thus, the service delivery is inseparable from the servicescape.<sup>31</sup> *Crane/Clarke* (1988), *Mihelis et al.* (2001) and *Reimer/Kuehn* (2005) emphasize the importance of the servicescape in retail banking settings.

Another important performance parameter in private banking is the range of products available for structuring the portfolios. High net worth individuals (HNWIs) expect objective advice and an unbiased selection of products from the investment opportunity set. A broad product range is therefore a must-have for private banking service providers.<sup>32</sup> *Loh-*

<sup>28</sup> Cf. *Klöppelt* (1996), p. 206. *Schäli* (1998), p. 131 and *Galasso* (1999), p. 179.

<sup>29</sup> Cf. *Parasuraman et al.* (1985), p. 42; *Johnson et al.* (1995), p. 9.

<sup>30</sup> Cf. *Grönroos* (1984), p. 37; *Rosen et al.* (2003), p. 5.

<sup>31</sup> Cf. *Shostack* (1977), p. 78.

<sup>32</sup> Cf. *Klöppelt* (1996), p. 206.



*mann* (1997) explicitly considers the product range to be a determinant of customer satisfaction in retail banking.

Besides a broad product range, the investment proposal itself represents the written translation of customer needs into a specific asset allocation and hence forms one of the determinants of customer satisfaction. Customers that took part in the preliminary survey mentioned this aspect to be important when evaluating the service provided by their wealth manager. So far, however, the investment proposal as a predictor of customer satisfaction has not been studied in the academic literature.

Furthermore, the way in which wealth managers document and report the investments to their clients is of importance for HNWIs. Investment reports offer tangible artifacts of the intangible investment activity. They allow clients to trace and oversee the investments being undertaken by the wealth manager;<sup>33</sup> hence, clear and effective reporting is regarded as a success factor in the private banking industry.<sup>34</sup>

Investment performance, i. e., the result of the investments being undertaken by the private banking service provider, is considered a critical success factor, as investment performance is the overall goal when using the services of a wealth manager.<sup>35</sup> Without an appropriate level of performance, private banking clients will not be satisfied.

Next to “hard” criteria, the proposed model also considers “soft” components such as relationship quality to be essential constituents. Generally, customers reflect on their relationship with the service provider when assessing their satisfaction with a service.<sup>36</sup> As private banking requires extensive counselling and a substantial amount of explanatory support, relationship quality can be considered a key predictor of customer satisfaction.<sup>37</sup>

Another soft but essential predictor of customer satisfaction with a service is the person actually conducting the service.<sup>38</sup> This is due to the fact that a service is by definition inseparably associated with the person

<sup>33</sup> Cf. *Viebahn* (2005), p. 1 f.

<sup>34</sup> Cf. *Klöppelt* (1996), p. 206; *Viebahn* (2005), p. 174 f.

<sup>35</sup> Cf. *Klöppelt* (1996), p. 206.

<sup>36</sup> Cf. *Crosby* et al. (1990), p. 68; *Johnson/Zinkhan* (1991), p. 5. *Lehtinen/Lehtinen* (1991) refer to this as interactive quality.

<sup>37</sup> Cf. *Galasso* (1999), p. 179; *Ehlerding/Lumma* (2006), p. 46; *Volz/Reitinger* (2008), p. 32. For affluent customers see *Surtani* (1992), p. 38; for retail banking see *Levesque/McDougall* (1996), p. 18; *Lohmann* (1997), p. 150.

<sup>38</sup> Cf. *Shostack* (1977), p. 79; *Solomon* et al. (1985), p. 99 f.

providing it.<sup>39</sup> Hence, the relationship manager, as the customer interface, is of particular importance.<sup>40</sup> The relationship manager has direct contact to clients and is responsible for ongoing dialogue and for obtaining a thorough understanding of the clients' needs.

A further general predictor of customer satisfaction is value for money.<sup>41</sup> The private banking industry is no exception in this respect.<sup>42</sup>

As loyal customers are the main driver of profits and corporate growth,<sup>43</sup> customer satisfaction and customer loyalty are the focal constructs of the proposed model, in which customer satisfaction is the antecedent to customer loyalty.<sup>44</sup> This has been well documented for the retail banking industry by *Bloemer et al.* (1998) and *Caruana* (2002).

Based on the literature, we formulate the following hypotheses:

- H1: Accessibility has a positive effect on customer satisfaction.
- H2: The servicescape has a positive effect on customer satisfaction.
- H3a: The range of products has a positive effect on customer satisfaction.
- H3b: The range of products has a positive effect on value for money.
- H4a: The investment proposal has a positive effect on customer satisfaction.
- H4b: The investment proposal has a positive effect on value for money.
- H5: Reporting has a positive effect on customer satisfaction.
- H6a: Performance has a positive effect on customer satisfaction.
- H6b: Performance has a positive effect on customer loyalty.
- H6c: Performance has a positive effect on value for money.
- H6d: Performance has a positive effect on relationship quality.
- H7a: Relationship quality has a positive effect on customer satisfaction.

---

<sup>39</sup> Cf. *Crane/Clarke* (1988), p. 58; *Crosby et al.* (1990), p. 68; *Johnson/Zinkhan* (1991), p. 5; *Bitner* (1992), p. 58. For retail banking see *Lohmann* (1997), p. 27; *Mihelis et al.* (2001), p. 350.

<sup>40</sup> Cf. *Zeltner* (2006), p. 96.

<sup>41</sup> Cf. *Rust/Oliver* (1994), p. 10; *Cronin et al.* (2000).

<sup>42</sup> Cf. *Wöhle* (1999), p. 130 ff.; *Degen* (2010).

<sup>43</sup> Cf. *Heskett et al.* (1994), p. 164 f.; *Jones/Sasser* (1995), p. 89.

<sup>44</sup> Cf. *Swan/Trawick* (1981), p. 61; *Szymanski/Henard* (2001), p. 25; *Bruhn* (2003), p. 181.

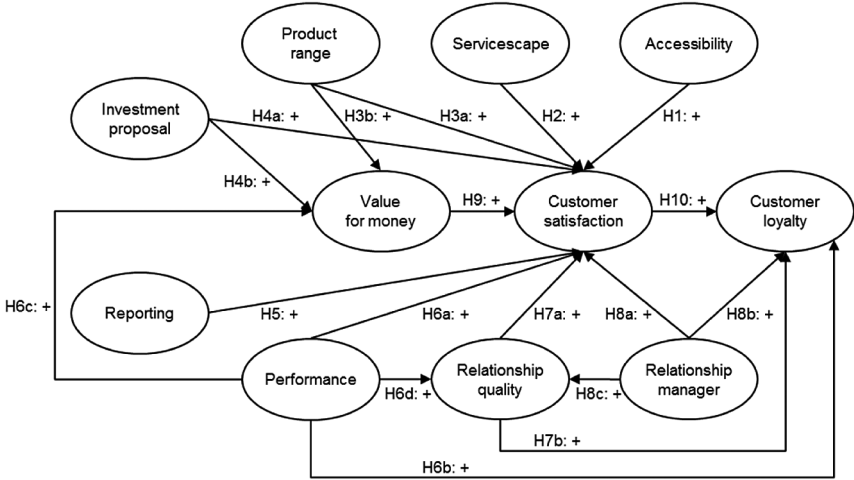


Figure 1: Structural Model of Customer Satisfaction in the Private Banking Industry

- H7b: Relationship quality has a positive effect on customer loyalty.
- H8a: The relationship manager has a positive effect on customer satisfaction.
- H8b: The relationship manager has a positive effect on customer loyalty.
- H8c: The relationship manager has a positive effect on relationship quality.
- H9: Value for money has a positive effect on customer satisfaction.
- H10: Customer satisfaction has a positive effect on customer loyalty.

Figure 1 summarizes the model and the hypotheses.

2. Operationalization of the Measurement Models

In the measurement models, value for money, customer satisfaction and customer loyalty are operationalized as reflective measurement models, whereas for the predictor variables a formative specification is considered more appropriate.<sup>45</sup> Established scales for the reflective measurement models are used. Value for money is operationalized using items

<sup>45</sup> Cf. Bollen (1989) p. 66; Jarvis et al. (2003), p. 203; Diller (2004), p. 177; MacKenzie et al. (2005), p. 726; Fassott (2006), p. 71.

*Table 2*  
**Operationalization of the Reflective Measurement Models:  
 Constructs and Indicators**

Construct		Item
Value for money	VAL01	Value for money is excellent
	VAL02	Private banking service provider is worth it
	VAL03	Fee is adequate for service provided
	VAL04	Fee is too high for service provided (r)
Customer satisfaction	SAT01	Overall satisfaction
	SAT02	Confirmation of expectations
	SAT03	Comparison with ideal service provider
	SAT04	Comparison with alternative service provider (r)
Customer loyalty	LOY01	Willingness to recommend service provider
	LOY02	Willingness to place more funds with the service provider
	LOY03	Desire to change service provider (r)
	LOY04	Would do it once again
	LOY05	Willingness to stay with service provider

(r): Reverse coded item

that refer to the appropriateness of the fees for the service delivered.<sup>46</sup> Customer satisfaction is measured in terms of general satisfaction, satisfaction in comparison to the client's ideal<sup>47</sup> and satisfaction in comparison to the client's expectations.<sup>48</sup> Customer loyalty is operationalized by indicators reflecting the intention to recommend the service provider, the intention to place additional funds with the wealth manager and the intention to switch.<sup>49</sup> Table 2 gives an overview of the reflective scale items.

However, it is not possible to make use of existing scales for the formative measurement models.<sup>50</sup> *Rossiter* (2002) emphasizes the importance of covering all facets of the objects and attributes being measured. Hence, the indicators of the formative measurement models were deduced from

<sup>46</sup> Cf. *Fornell* (1992); *Fornell et al.* (1996); *Johnson et al.* (2001); *Chan et al.* (2003).

<sup>47</sup> Cf. *Fornell* (1992); *Fornell et al.* (1996); *Johnson et al.* (2001); *Chan et al.* (2003).

<sup>48</sup> Cf. *Swan/Trawick* (1981).

<sup>49</sup> Cf. *Heskett et al.* (1994); *Jones/Sasser* (1995); *Drake et al.* (1998).

<sup>50</sup> Cf. *Lohmann* (1997), p. 111.

Table 3  
**Operationalization of the Formative Measurement Models:  
Constructs and Indicators**

Construct	Items
Accessibility	ACC01, ..., ACC06
Servicescape	SER01, ..., SER05
Relationship manager	RMA01, ..., RMA07
Investment proposal	INV01, ..., INV07
Product range	PRO01, ..., PRO05
Performance	PER01, ..., PER06
Reporting	REP01, ..., REP07
Relationship quality	RQU01, ..., RQU06

the literature.<sup>51</sup> Moreover, it is important to consider only those aspects deemed relevant by the customers.<sup>52</sup> We therefore integrate the findings from the preliminary survey, which gave customers the opportunity to identify aspects they deem important for satisfaction with their private banking service provider. Table 3 shows the number of items per construct.<sup>53</sup>

IV. Methodology and Data

1. Data Collection and Sample Compilation

Data was collected by questionnaire in the period 12 May 2009 to 12 September 2009. To make sure that the indicators for each construct were adequate and comprehensive, each construct also included a text field where participants could indicate further aspects, not included in the provided set of items, they considered important.<sup>54</sup> The questionnaire

<sup>51</sup> Cf. *Bruhn/Georgi* (2010), p. 420; *Bruhn et al.* (2010), p. 18 ff.  
<sup>52</sup> Cf. *Johnson/Gustafsson* (2000), p. 5 ff.  
<sup>53</sup> We refrain from presenting the full text of each item due to a lack of space. The questionnaire with all items is available from the authors upon request.  
<sup>54</sup> Inspection of the text fields revealed that all important facets were already covered by the given indicators.

starts with the items for the measurement models. In order to be able to validate the measurement models using MIMIC models (multiple indicators and multiple causes), each block of items for the formative measurement models contains two reflective indicators that assess overall satisfaction with the respective construct.<sup>55</sup> The second part of the questionnaire includes questions concerning socio-demographic variables such as age, sex, number of service providers used to conduct private banking services and the size of liquid assets. Responses were measured on a five-point scale.<sup>56</sup>

We used different sources to generate our sample. One Austrian private bank agreed to take part and to forward the questionnaire to their clients. Furthermore, we used private contacts that we screened for eligibility, i.e., individuals we knew were most likely private banking clients. Moreover, we used the database of Fuchsbriefer who publish a mystery shopping-based rating/ranking in the private banking and wealth management industry. In order to attract further participants, we cooperated with Gruner + Jahr, a German publishing house, who advertised the survey in their publications *Capital*, *Börse Online* and *Manager Magazin*. In addition, we used two social networks to attract participants. Participants could choose to either use the paper and pencil or the online version of the survey.

We were able to collect 395 responses during the survey period. We then checked the data for unit non-response<sup>57</sup> and item non-response. Furthermore, we analysed the type of missingness, i.e., whether missing values are missing completely at random (MCAR).<sup>58</sup> We aggregated all data in such a way that no more than 5 % of variables of the structural model per participant are missing; altogether, we were left with 268 usable questionnaires.<sup>59</sup> We replaced missing values of the variables of the structural model with their means.<sup>60</sup> Missing values of socio-demographic variables were replaced with the help of multiple imputation using

---

<sup>55</sup> Cf. *Hauser/Goldberger* (1971), p. 95 ff.; *Jöreskog/Goldberger* (1975); *Diamantopoulos/Winklhofer* (2001), p. 272.

<sup>56</sup> The scale points were labeled as follows: 1 strongly disagree, 2 disagree, 3 neither agree nor disagree/neutral, 4 agree, 5 strongly agree.

<sup>57</sup> Cf. *Armstrong/Overton* (1977), p. 397.

<sup>58</sup> Cf. *Little* (1992), p. 1229; *King et al.* (2001), p. 50; *Sinharay et al.* (2001), p. 318; *Little/Rubin* (2002), p. 12; *Schafer/Graham* (2002), p. 151.

<sup>59</sup> If we consolidated our data in a way so that the maximum number of missing values is 10 %, we would get a sample size of 271.

<sup>60</sup> Cf. *Roth* (1994), p. 551.

Table 4  
Descriptive Statistics

	Max	Min	Mean	Std. dev.	Median	Modus
Age of customer (years)	85.00	20.00	49.29	12.46	47.00	45.00
Length of relationship (years)	55.00	1.00	11.98	10.71	9.00	10.00
Share of assets placed with main service provider (in %)	100.00	2.00	65.20	22.10	69.30	50.00
Number of service providers	5.00	1.00	2.04	0.69	2.00	2.00

NORM.<sup>61</sup> To get reasonable start values, we first ran the expectation maximization (EM) algorithm,<sup>62</sup> which converged after 56 iterations. For the imputation we ran 1,000 iterations of the data augmentation algorithm with imputation at every 200<sup>th</sup> run ( $i = 200$ ) so that we imputed  $m = 5$  complete datasets.

Our sample consists of 44 (16.42 %) female and 224 (83.58 %) male participants. The mean age of the participants is 49.29 years; the youngest is 19 and the oldest 85. The mean length of the customer-service provider relationship is 11.98 years; participants use on average 2 service providers to conduct their private banking services. The share of liquid assets managed with the main service provider is on average 65.20 %.

We classify the service providers into seven groups: Large banks with a separate private banking unit, classic private banks/wealth managers, independent asset managers, cooperative banks, savings banks, Landesbanken (federal state banks), and direct banks/online brokers. 36.19 % of respondents use a large bank that has a separate private banking unit as their main service provider, whereas 29.85 % make use of a classic private bank/wealth manager.

Participants could group themselves into different wealth brackets based on the size of their liquid assets. If one assumes that the mean of

<sup>61</sup> Cf. *Schafer/Olsen* (1998); *Graham/Schafer* (1999). Mean replacement is not useful for socio-demographic variables such as “sex”.

<sup>62</sup> Cf. *Dempster et al.* (1977); *Schafer* (1997), p. 37 ff.; *Little/Rubin* (2002), p. 165 ff.

*Table 5*  
**Composition of Sample According to Type  
of Private Banking Service Provider**

Classification	N	%
Large banks with private banking unit	97	36.19
Private banks/wealth managers	80	29.85
Independent asset managers	26	9.70
Cooperative banks	27	10.07
Savings banks	26	9.70
Landesbanken (federal state banks)	3	1.12
Direct banks/online brokers	9	3.36

each class best represents the size of liquid assets, customers possess liquid wealth of EUR 1,812,686.57 on average. Taking the minimum (maximum) of each class, the average customer in our sample has liquid assets of EUR 727,238.81 (EUR 2,989,124.33). Accordingly, the sample seems to be representative for private banking/wealth management customers.

*Table 6*  
**Composition of Sample According to Size of Liquid Wealth**

Size of liquid wealth			N	%
		below EUR 100,000	47	17.54
EUR 100,000	–	below EUR 500,000	104	38.81
EUR 500,000	–	below EUR 1 million	55	20.52
EUR 1 million	–	below EUR 5 million	47	17.54
EUR 5 million	–	below EUR 10 million	8	2.99
EUR 10 million	–	below EUR 50 million	7	2.61



## 2. Methodology

We use smartPLS,<sup>63</sup> a partial least squares (PLS)-software, to estimate the proposed model. This type of variance-based structural equation modelling has the advantage of being able to work with small samples and data that is not multivariate normal distributed.<sup>64</sup> Furthermore, PLS is the preferred method for estimating customer satisfaction indices.<sup>65</sup> Other than covariance-based procedures such as LISREL, PLS does not optimize a global goodness-of-fit criterion. Rather, the reliability and validity of the structural model – which reflect the theoretical relationships between the constructs – and of the measurement models that operationalize these constructs have to be evaluated separately.<sup>66</sup>

## V. Empirical Assessment of the Model

### 1. Reliability and Validity of the Reflective Measurement Models

We first check the reflective measurement models for unidimensionality.<sup>67</sup> For each construct exactly 1 factor can be extracted, as only the first eigenvalue is  $> 1$ . Total variance explained ranges from 75.73 % for customer satisfaction to 79.02 % for value for money; for all 3 constructs the Kaiser-Meyer-Olkin criterion is  $> 0.80$  and can be considered meritorious/marvellous.<sup>68</sup>

All item loadings are  $> 0.7$  and statistically significant; hence the threshold of 0.5 for indicator reliability is exceeded for the three reflective measurement models.<sup>69</sup> Furthermore, all corrected item-to-total correlations exceed 0.5. The lowest value of Cronbach's alpha<sup>70</sup> can be ob-

<sup>63</sup> Cf. Ringle et al. (2005).

<sup>64</sup> Cf. Fornell/Bookstein (1982), p. 442; Jöreskog/Wold (1982), p. 266 ff.; Chin (1998), p. 295.

<sup>65</sup> Cf. Fornell et al. (1996), p. 11; Esposito Vinzi et al. (2010), p. 4.

<sup>66</sup> Cf. Lohmöller (1989), p. 52; Herrmann et al. (2006), p. 44 f.

<sup>67</sup> Cf. Bollen (1984), p. 378; Danes/Mann (1984), p. 349; Anderson/Gerbing (1988), p. 414; Gerbing/Anderson (1988), p. 186.

<sup>68</sup> Cf. Kaiser/Rice (1974), p. 112.

<sup>69</sup> Cf. Fornell/Larcker (1981), p. 45; Homburg/Giering (1996), p. 10 ff.; Henseler et al. (2009), p. 229.

<sup>70</sup> Cf. Cronbach (1951), p. 320 ff.; Carmines/Zeller (1979), p. 44; Churchill (1979), p. 70; Cortina (1993), p. 100; Homburg/Giering (1996), p. 8; Tenenhaus et al. (2005), p. 164.

*Table 7*  
**Inter-item-correlations and Descriptive Statistics  
of the Reflective Measurement Models**

	VAL01	VAL02	VAL03	VAL04		Mean	Std. dev.
VAL01	1.00					2.81	1.18
VAL02	0.80	1.00				2.97	1.29
VAL03	0.82	0.87	1.00			2.98	1.19
VAL04	0.58	0.59	0.62	1.00		3.12	1.31
	SAT01	SAT02	SAT03	SAT04		Mean	Std. dev.
SAT01	1.00					3.21	1.26
SAT02	0.77	1.00				2.79	1.26
SAT03	0.85	0.77	1.00			2.87	1.30
SAT04	0.56	0.48	0.57	1.00		3.15	1.25
	LOY01	LOY02	LOY03	LOY04	LOY05	Mean	Std. dev.
LOY01	1.00					3.04	1.42
LOY02	0.68	1.00				2.54	1.33
LOY03	0.77	0.55	1.00			3.39	1.55
LOY04	0.84	0.67	0.76	1.00		3.04	1.43
LOY05	0.83	0.60	0.72	0.79	1.00	3.23	1.34

served for customer satisfaction ( $\alpha = 0.89$ ); for all constructs Jöreskog's  $\rho^{71}$  exceeds 0.90. In summary, the 3 reflective measurement models exhibit a satisfactory degree of reliability.

In order to check for an adequate degree of criterion validity we examine the construct correlations between predictor and criterion variables.<sup>72</sup> The correlation of the latent variable (LV)-scores is 0.83 for value for money and customer satisfaction and 0.91 for customer satisfaction and customer loyalty.

All three reflective measurement models meet the threshold of 0.70 for average variance extracted (AVE); hence, convergent validity has proved satisfactory.<sup>73</sup> Furthermore, we use the item cross-loadings and

<sup>71</sup> Cf. *Werts et al. (1974), Fornell/Larcker (1981), p. 45; Henseler et al. (2009), p. 299.*

<sup>72</sup> Cf. *Carmines/Zeller (1979), p. 17 f.*

<sup>73</sup> Cf. *Fornell/Larcker (1981), p. 46; Chin (1998), p. 321.*

Table 8  
Construct Correlations and  
Fornell-Larcker Criterion

	VAL	SAT	LOY
VAL	0.89		
SAT	0.83	0.87	
LOY	0.81	0.91	0.88

the Fornell-Larcker criterion to assess discriminant validity.<sup>74</sup> All indicators show higher loadings for their respective construct than for all other constructs. For value for money, the square root of the AVE is larger than the correlations of the latent variable scores. However, for customer satisfaction, the Fornell-Larcker criterion is not met as the correlation between customer loyalty and customer satisfaction is larger than the square root of the average variance extracted of customer satisfaction. We make use of the methodology proposed by *Anderson/Gerbing* (1988) as an alternative to the Fornell-Larcker criterion: if the confidence interval of  $\pm 2$  standard errors around the correlation between customer satisfaction and customer loyalty does not contain the value 1, a satisfactory degree of discriminant validity is given. The bootstrapping<sup>75</sup> procedure provides a standard error of 0.04. Accordingly, the lower bound of the confidence interval around the correlation of 0.91 is 0.83 and the upper bound is 0.99. Although the Fornell-Larcker criterion is not met in every case, discriminant validity nevertheless is given.

We use Stone-Geisser’s  $Q^2$  to assess the degree of predictive validity.<sup>76</sup> For all three reflective constructs  $Q^2 > 0.70$ ; hence, the reflective measurement models exhibit an adequate degree of reliability and validity.

<sup>74</sup> Cf. *Fornell/Larcker* (1981), p. 46.  
<sup>75</sup> Cf. *Efron/Gong* (1983); *Efron/Tibshirani* (1993); *Chin* (1998), p. 320; *Tenenhaus et al.* (2005), S. 176 p.; *Henseler et al.* (2009), p. 305.  
<sup>76</sup> Cf. *Geisser* (1974), *Stone* (1974); *Geisser* (1975); *Fornell/Bookstein* (1982), p. 449f.; *Wold* (1982), p. 30ff.; *Chin* (1998), p. 318; *Henseler et al.* (2009), p. 305.

*Table 9*  
**Cross Loadings of the Reflective  
 Measurement Models**

	VAL	SAT	LOY
VAL01	0.91	0.71	0.70
VAL02	0.94	0.86	0.84
VAL03	0.95	0.77	0.76
VAL04	0.75	0.55	0.55
SAT01	0.82	0.94	0.89
SAT02	0.71	0.88	0.76
SAT03	0.78	0.93	0.88
SAT04	0.53	0.72	0.62
LOY01	0.79	0.92	0.94
LOY02	0.59	0.64	0.78
LOY03	0.69	0.76	0.86
LOY04	0.78	0.85	0.92
LOY05	0.73	0.84	0.90

## *2. Reliability and Validity of the Formative Measurement Models*

For the assessment of the formative measurement models we consider the significance of the indicators as well as the degree of multicollinearity. Moreover, we employ a MIMIC model to analyse the suitability of the formative measurement model specifications. More precisely, in addition to the formative indicators, each of the formative constructs is covered by two reflective items. This allows us to analyse the magnitude and significance between the formative and reflective specification of the same construct.<sup>77</sup>

Concerning the significance of the indicators, 4 of the 7 indicators of reporting are statistically significant. For all remaining formative constructs, the number of statistically significant items is larger. The items used to measure the performance exhibit the maximum degree of multicollinearity with a variance inflation factor (VIF) of 8.26; however, all

<sup>77</sup> Cf. Hauser/Goldberger (1971), p. 95 ff.; Jöreskog/Goldberger (1975); Diamantopoulos/Winklhofer (2001), p. 272.

Table 10  
Assessment of the Reflective Measurement Models

Item	Loading	t-value	Item reliability	Corrected item-to-total correlation	$\alpha$	$\rho$	AVE	$Q^2$
VAL01	0.91	62.91	0.83	0.82	0.91	0.94	0.79	0.79
VAL02	0.94	114.45	0.88	0.85				
VAL03	0.95	138.46	0.89	0.88				
VAL04	0.75	14.38	0.56	0.63				
SAT01	0.94	142.88	0.87	0.85	0.89	0.93	0.76	0.76
SAT02	0.88	45.88	0.77	0.77				
SAT03	0.93	114.18	0.87	0.85				
SAT04	0.72	14.52	0.52	0.58				
LOY01	0.94	126.72	0.88	0.89	0.93	0.95	0.78	0.78
LOY02	0.78	21.42	0.60	0.68				
LOY03	0.86	34.28	0.75	0.78				
LOY04	0.92	75.85	0.85	0.87				
LOY05	0.90	56.19	0.81	0.83				

VIFs are well below the critical threshold of 10:<sup>78</sup> With the exception of the measurement models of reporting and performance, all VIFs are even below 5. All path coefficients of the MIMIC models are highly significant and well above 0.75.

All construct correlations of the latent variable scores of the formative constructs are below the critical threshold of 0.9;<sup>79</sup> the correlations range from 0.33 for the correlation between performance and servicescape to 0.83 for the correlation between the relationship manager and relationship quality. Accordingly, the overall goodness of the formative measurement models is satisfactory.

<sup>78</sup> Cf. *Marquardt* (1970), p. 610; *Cohen et al.* (2003), p. 423.

<sup>79</sup> Cf. *Huber et al.* (2007), p. 39.

*Table 11*  
**Assessment of the Formative Measurement Models**

Construct	Formative Indicators	Maximum VIF	MIMIC-model	
			Path coefficient	t-value
Accessibility	5/6 significant	3.47 (ACC02)	0.88	48.36
Servicescape	4/5 significant	2.96 (SER03)	0.85	44.52
Product range	5/5 significant	2.45 (PRO04)	0.77	21.86
Investment proposal	6/7 significant	4.59 (INV05)	0.89	59.23
Reporting	4/7 significant	5.13 (REP03)	0.88	49.56
Performance	6/6 significant	8.26 (PER05)	0.86	50.11
Relationship quality	4/6 significant	2.53 (RQU01)	0.88	56.69
Relationship manager	5/7 significant	4.35 (RMA02)	0.90	58.27

*Table 12*  
**Construct Correlations of the Formative Measurement Models**

	ACC	SER	PRO	INV	REP	PER	RQU	RMA
ACC	1.00							
SER	0.46	1.00						
PRO	0.54	0.41	1.00					
INV	0.60	0.43	0.68	1.00				
REP	0.55	0.47	0.64	0.69	1.00			
PER	0.49	0.33	0.53	0.65	0.54	1.00		
RQU	0.67	0.48	0.66	0.79	0.66	0.62	1.00	
RMA	0.64	0.50	0.64	0.81	0.62	0.68	0.83	1.00

3. Assessment of the Structural Model

In order to evaluate the endogenous constructs we consider the coefficient of determination  $R^2$  and Stone-Geisser's  $Q^2$ .<sup>80</sup> As can be seen in table 13, the degree of variance explained by customer satisfaction ( $R^2 = 0.82$ ) and customer loyalty ( $R^2 = 0.87$ ) is substantial.<sup>81</sup> The same applies for relationship quality; the degree of variance explained by value for money is moderate. Stone-Geisser's  $Q^2$  ranges from 0.40 for relationship quality to 0.68 for customer loyalty. We therefore conclude that predictive validity of the model is given.

Table 13  
Assessment of the Endogenous Constructs

Construct	$R^2$	$Q^2$
Relationship quality	0.69	0.40
Value for money	0.60	0.47
Customer satisfaction	0.82	0.61
Customer loyalty	0.87	0.68

Figure 2 shows the path coefficients and their statistical significance. Seven of the nine direct relationships for customer satisfaction are significant. Value for money exhibits the largest impact on customer satisfaction (path coefficient: 0.35), followed by the relationship manager (path coefficient: 0.19). Both path coefficients are statistically significant at the 1 %-level; hence hypotheses H9 and H8a cannot be rejected. Table 14 shows that value for money has a moderate effect size of  $f^2 = 0.237$  whereas the relationship manager only exhibits a weak influence on customer satisfaction ( $f^2 = 0.042$ ).<sup>82</sup> The influence of the relationship quality is significant on the 1 %-level as well (path coefficient: 0.17). However, due to the low effect size ( $f^2 = 0.027$ ), relationship quality contributes only weakly to explaining the variance of customer satisfaction. The impact of performance is significant at the 5 %-level (path coefficient: 0.09); the effect size ( $f^2 = 0.022$ ) is small.

With regard to customer loyalty, three path coefficients are statistically significant. Customer satisfaction has the largest impact on customer

<sup>80</sup> Cf. Chin (1998), p. 318 ff.; Tenenhaus et al. (2005), p. 173.  
<sup>81</sup> Cf. Chin (1998), p. 323.  
<sup>82</sup> Cf. Chin (1998), p. 316 f.

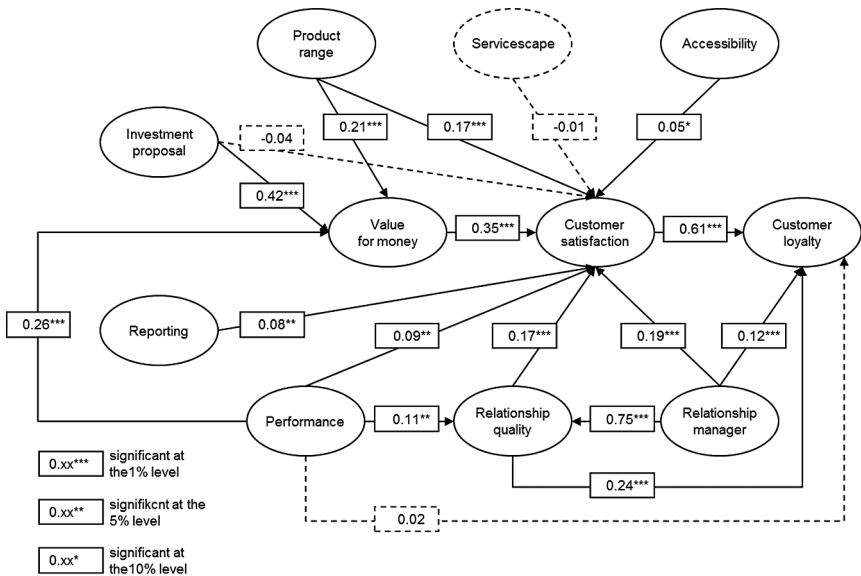


Figure 2: Empirical Assessment of the Structural Model

loyalty; the path coefficient of 0.61 is statistically significant at the 1 %-level. The effect size of  $f^2 = 0.821$  is substantial; hence, hypothesis H10 cannot be rejected. Relationship quality and the relationship manager show the second- and third-largest impact (path coefficients: 0.24 and 0.12, respectively). Both path coefficients are statistically significant at the 1 %-level. The effect sizes are small, however (0.122 and 0.035, respectively). Only the performance does not exhibit a direct impact on customer loyalty; hence, we have to reject hypothesis H6b.

The investment proposal exhibits the strongest impact on value for money (path coefficient: 0.42, significant at the 1 %-level). As the effect size of  $f^2 = 0.194$  is moderate, we cannot reject hypothesis H4b. The performance and the product range exhibit the second and third largest influence on value for money (path coefficients: 0.26 and 0.21, respectively). Both path coefficients are statistically significant at the 1 %-level. The effect sizes are small ( $f^2$  of 0.069 and 0.054, respectively). Accordingly, we cannot reject hypotheses H6c and H3b.

Concerning the relationship quality, the relationship manager exhibits a much stronger influence (path coefficient: 0.75) than the performance (path coefficient: 0.11). This is corroborated by the effect size, which is



substantial for the relationship manager ( $f^2 = 0.972$ ) but small for the performance ( $f^2 = 0.020$ ). Hence, hypotheses H8c and H6d cannot be rejected. In summary, 15 of the 18 hypotheses, i.e., 83.33 % of the postulated relationships, cannot be rejected. Consequently, the model shows an adequate degree of nomological validity.

The variance inflation factors (VIFs) of the structural model range from 1.47 to 4.55 for customer satisfaction and from 2.05 to 4.08 for customer loyalty, i.e., the critical threshold of 10 is not exceeded for any of the exogenous constructs. The same holds true for value for money and for the relationship quality.

#### 4. Sensitivity Analysis

In order to exclude the possibility that our results are due to an incorrectly specified model or flaws in our data, we performed several robustness checks. Concerning data collection and the compilation of our sample, we repeated the analysis using multiple imputation instead of mean replacement for variables of the structural model showing missing values. The results show that the basic findings concerning the path coefficients do not depend on the method used for imputation of missing values.

Furthermore, we validated the proposed model with a new dataset. We collected an additional 300 usable questionnaires in the period February 2011 to August 2011. The analysis of the postulated model with the fresh dataset did not show any serious differences. In addition, we analysed several alternative specifications of the measurement models. Though all variance inflation factors (VIFs) of the formative measurement models are below the critical threshold of 10, biased estimates due to multicollinearity of the indicators is still possible. In addition to using a reflective specification for these constructs we use the arithmetic mean to generate an index<sup>83</sup> of the formative measurement models as well as the first principal component to rule out potential biases due to misspecified measurement models. As shown in table 15, the different measurement model specifications only marginally change the overall results of the model.

---

<sup>83</sup> Cf. *Albers/Hildebrandt* (2006), p. 13 ff.

*Table 14*  
**Empirical Assessment of the Structural Model**

	Path		Path coefficient	t-value	VIF	f <sup>2</sup>
ACC	→	SAT	0.05	1.39	2.00	0.008
SER	→	SAT	-0.01	0.65	1.47	0.001
PRO	→	SAT	0.17	3.74	2.23	0.065
INV	→	SAT	-0.04	0.89	4.05	0.001
REP	→	SAT	0.08	1.98	2.36	0.016
PER	→	SAT	0.09	2.19	2.09	0.022
RQU	→	SAT	0.17	2.75	4.31	0.027
RMA	→	SAT	0.19	2.69	4.55	0.042
VAL	→	SAT	0.35	7.06	2.72	0.237
SAT	→	LOY	0.61	14.55	3.66	0.821
PER	→	LOY	0.02	0.90	2.05	0.001
RQU	→	LOY	0.24	5.70	3.79	0.122
RMA	→	LOY	0.12	2.90	4.08	0.035
PRO	→	VAL	0.21	3.17	1.91	0.054
INV	→	VAL	0.42	6.55	2.34	0.194
PER	→	VAL	0.26	4.33	1.76	0.096
PER	→	RQU	0.11	1.94	1.86	0.020
RMA	→	RQU	0.75	16.90	1.86	0.972

*Table 15*  
**Assessment of the Endogenous Constructs Given  
Alternative Measurement Model Specifications**

	Formative		Reflective		Arithmetic mean		Principal component	
Konstrukt	R <sup>2</sup>	Q <sup>2</sup>	R <sup>2</sup>	Q <sup>2</sup>	R <sup>2</sup>	Q <sup>2</sup>	R <sup>2</sup>	Q <sup>2</sup>
Relationship quality	0.69	0.40	0.63	0.39	0.64	0.64	0.61	0.11
Value for money	0.60	0.47	0.60	0.47	0.58	0.45	0.60	0.30
Customer satisfaction	0.82	0.61	0.81	0.61	0.81	0.61	0.81	0.22
Customer loyalty	0.87	0.68	0.86	0.67	0.87	0.67	0.86	0.18

Besides alternative specifications of the measurement models, we examined alternative specifications of the structural model. First, we eliminated insignificant paths from the model. By eliminating the servicescape and the insignificant path from the investment proposal to customer satisfaction, the impact of reporting on customer satisfaction decreases from 0.08 to 0.07 and the impact of relationship quality on customer satisfaction decreases from 0.17 to 0.16. Similarly, the impact of the relationship manager on customer satisfaction decreases from 0.19 to 0.18. In total, the elimination of insignificant paths from the model does not lead to major adjustments concerning the path coefficients. The second alternative specification of the structural model we consider is to include only the direct paths, i.e., eliminate all indirect effects. This leads to a decrease of the impact of value for money from 0.35 to 0.33; in contrast, the impact of performance and relationship quality increases from 0.09 to 0.10 and from 0.17 to 0.20, respectively. The overall model assessment yields a coefficient of determination of  $R^2 = 0.83$  and Stone-Geisser's  $Q^2 = 0.62$  for customer satisfaction and  $R^2 = 0.84$  and  $Q^2 = 0.65$  for customer loyalty, which fall in the range of the originally postulated model.

## VI. Conclusion

The paper at hand proposes a model to measure customer satisfaction in the private banking industry. We estimate the model parameters with the help of partial least squares (PLS) and contribute to the scant literature explicitly focused on private banking. From a methodological point of view, we use formative measurement models for the predictors of customer satisfaction and customer loyalty. The results of the analysis of the structural model show a reasonable goodness of fit. Concerning the determinants of customer satisfaction it can be seen that customer satisfaction is mainly driven by value for money, the relationship manager and relationship quality, i.e., experience and credence qualities. Search qualities such as accessibility and the servicescape play a minor role. The other experience qualities that are significant are the product range and investment reporting.

Moreover, investment performance as a “hard” criterion is not a driver of customer loyalty in private banking. Rather, it is experience qualities such as customer satisfaction, relationship quality and the relationship manager that form important predictors of customer loyalty. In this respect our results confirm the results of *Levesque/McDougall* (1996), who

found that relationship quality has by far the largest impact on customer satisfaction and intention to recommend in a retail banking setting. We conclude that the relationship manager is pivotal to private banking. The relationship manager is more important to relationship quality, customer satisfaction and customer loyalty than the performance. Hence, the human resource development of relationship managers should be taken seriously. Only when private banking service providers are able to retain qualified relationship managers can long-lasting and profitable relationships with customers be sustained.

One limitation of the paper at hand is the composition of our sample, which did not allow for calculation of a response rate. On the other hand, the use of several sources has the advantage of counteracting biases due to preselection of participants: Complete reliance on banks willing to forward the questionnaire to their customers would have resulted in a sample pre-selected by the banks themselves and, hence, in potential biases.

## References

- Albers, S./Hildebrandt, L. (2006):* Methodische Probleme bei der Erfolgsfaktorenforschung – Messfehler, formative versus reflektive Indikatoren und die Wahl des Strukturgleichungs-Modells, in: Zeitschrift für betriebswirtschaftliche Forschung, 58. Jg., Nr. 1, S. 2–33.
- Anderson, E. W./Fornell, C. (1994):* A Customer Satisfaction Research Prospectus, in: Rust, R. T./Oliver, R. L. (Hrsg.): Service Quality. New Directions in Theory and Practice, Thousand Oaks/London/New Delhi, S. 241–268.
- (2000a): Foundations of the American Customer Satisfaction Index, in: Total Quality Management, Vol. 11, No. 7, S. 869–882.
  - (2000b): The Customer Satisfaction Index as a Leading Indicator, in: Swartz, T. A./Iacobucci, D. (Hrsg.): Handbook of Services Marketing & Management, Thousand Oaks/London/New Delhi, S. 255–267.
- Anderson, E. W./Fornell, C./Lehmann, D. R. (1994):* Customer Satisfaction, Market Share, and Profitability: Findings from Sweden, in: Journal of Marketing, Vol. 58, No. 3, S. 53–66.
- Anderson, E. W./Sullivan, M. W. (1993):* The Antecedents and Consequences of Customer Satisfaction for Firms, in: Marketing Science, Vol. 12, No. 2, S. 125–143.
- Anderson, J. C./Gerbing, D. W. (1988):* Structural Equation Modeling in Practice: A Review and Recommended Two-Step Approach, in: Psychological Bulletin, Vol. 103, No. 3, S. 411–423.
- Armstrong, S. J./Overton, T. S. (1977):* Estimating Nonresponse Bias in Mail Surveys, in: Journal of Marketing Research, Vol. 14, S. 396–402.

- Baker, J./Berry, L. L./Parasuraman, A.* (1988): The Marketing Impact of Branch Facility Design, in: *Journal of Retail Banking*, Vol. 10, No. 2, S. 22–23.
- Bendapudi, N./Berry, L. L.* (1997): Customers' Motivations for Maintaining Relationships with Service providers, in: *Journal of Retailing*, Vol. 73, No. 1, S. 15–37.
- Bitner, M. J.* (1992): Servicescapes: The Impact of Physical Surroundings on Customers and Employees, in: *Journal of Marketing*, Vol. 56, No. 2, S. 57–71.
- Bloemer, J./de Ruyter, K./Peeters, P.* (1998): Investigating drivers of bank loyalty: the complex relationship between image, service quality and satisfaction, in: *International Journal of Bank Marketing*, Vol. 16, No. 7, S. 276–286.
- Bollen, K. A.* (1984): Multiple Indicators: Internal Consistency or No Necessary Relationship? In: *Quality and Quantity*, Vol. 18, No. 4, S. 377–385.
- (1989): *Structural Equations with Latent Variables*, New York et al.
- Bruhn, M.* (1999): Messung von Kundenzufriedenheit im Rahmen Nationaler Kundenbarometer: Konzeptionen und Nutzungspotentiale unterschiedlicher Customer Satisfaction Indizes, in: Töpfer, A. (Hrsg.): *Kundenzufriedenheit messen und steigern*, 2. Aufl., Neuwied/Kriftel, S. 385–407.
- (2003): Nationale Kundenzufriedenheitsindizes, in: Homburg, C. (Hrsg.): *Kundenzufriedenheit. Konzepte – Methoden – Erfahrungen*, 5. Aufl., Wiesbaden, S. 179–204.
- Bruhn, M./Georgi, D.* (2010): Eine integrative Analyse der Treiber der Kundenbindung bei Banken – Systematisierung und empirische Befunde, in: *Kredit und Kapital*, 43. Jg., Nr. 3, S. 407–436.
- Bruhn, M./Grund, M. A.* (2000): Theory, development and implementation of national customer satisfaction indices: the Swiss Index of Customer Satisfaction SWICS, in: *Total Quality Management*, Vol. 11, No. 7, S. 1017–1028.
- Bruhn, M./Hadwich, K./Frommeyer, A.* (2010): Kommunikationsqualität in Kundeninteraktionen – Bestandsaufnahme, Operationalisierung und empirische Befunde im Private Banking, in: *Kredit und Kapital*, 43. Jg., Nr. 1, S. 3–37.
- Cadotte, E. R./Woodruff, R. B./Jenkins, R. L.* (1987): Expectations and Norms in Models of Consumer Satisfaction, in: *Journal of Marketing Research*, Vol. 24, No. 3, S. 305–314.
- Cappgemini/Merrill Lynch* (2009): *World Wealth Report 2009*.
- Carmines, E. G./Zeller, R. A.* (1979): *Reliability and Validity Assessment*, Newbury Park/London/New Delhi.
- Caruana, A.* (2002): Service loyalty: The effects of service quality and the mediating role of customer satisfaction, in: *European Journal of Marketing*, Vol. 36, No. 7/8, S. 811–828.
- Chan, L. K./Hui, Y. V./Lo, H. P./Tse, S. K./Tso, G. K. F./Wu, M. L.* (2003): Customer satisfaction index: new practice and findings, in: *European Journal of Marketing*, Vol. 37, No. 5/6, S. 872–909.
- Chin, W. W.* (1998): The Partial Least Squares Approach to Structural Equation Modeling, in: Marcoulides, G. A. (Hrsg.): *Modern Methods for Business Research*, Mahwah, S. 295–336.

- Churchill, G. A. Jr. (1979): A Paradigm for Developing Better Measures of Marketing Constructs, in: *Journal of Marketing Research*, Vol. 16, No. 1, S. 64–73.
- Churchill, G.A Jr./Surprenant, C. (1982): An Investigation Into the Determinants of Customer Satisfaction, in: *Journal of Marketing Research*, Vol. 19, No. 4, S. 491–504.
- Cohen, J./Cohen, P./West, S. G./Aiken, L. S. (2003): *Applied Multiple Regression/Correlation Analysis for the Behavioral Sciences*, Mahwah/London.
- Cortina, J. M. (1993): What is Coefficient Alpha? An Examination of Theory and Applications, in: *Journal of Applied Psychology*, Vol. 78, No. 1, S. 98–104.
- Crane, F. G./Clarke, T. K. (1988): The Identification Of Evaluative Criteria And Cues Used In Selecting Services, in: *Journal of Services Marketing*, Vol. 2, No. 2, S. 53–59.
- Cronbach, L. J. (1951): Coefficient Alpha and the Internal Structure of Tests, in: *Psychometrika*, Vol. 16, No. 3, S. 297–334.
- Cronin, J. J./Brady, M. K./Hult, G. T. M. (2000): Assessing the Effects of Quality, Value, and Customer Satisfaction on Consumer Behavioral Intentions in Service Environments, in: *Journal of Retailing*, Vol. 76, No. 2, S. 193–218.
- Crosby, L. A./Evans, K. R./Cowles, D. (1990): Relationship Quality in Services Selling: An Interpersonal Influence Perspective, in: *Journal of Marketing*, Vol. 54, No. 3, S. 68–81.
- Danes, J./Mann, O. K. (1984): Unidimensional Measurement and Structural Equation Models with Latent Variables, in: *Journal of Business Research*, Vol. 12, S. 337–352.
- Darby, M. R./Karni, E. (1973): Free Competition and the Optimal Amount of Fraud, in: *Journal of Law and Economics*, Vol. 16, No. 1, S. 67–88.
- Datamonitor (2006): Customer acquisition and retention in European wealth management 2006.
- Degen, R. (2010): Preisakzeptanz im Private Banking, Bamberg.
- Dempster, A. P./Laird, N. M./Rubin, D. B. (1977): Maximum Likelihood from Incomplete Data via the EM Algorithm, in: *Journal of the Royal Statistical Society*, Vol. 39, No. 1, S. 1–38.
- Diamantopoulos, A./Winklhofer, H.M. (2001): Index Construction with Formative Indicators: An Alternative to Scale Development, in: *Journal of Marketing Research*, Vol. 38, No. 2, S. 269–277.
- Dick, A. S./Basu, K. (1994): Customer Loyalty: Toward an Integrated Conceptual Framework, in: *Journal of the Academy of Marketing Science*, Vol. 22, No. 2, S. 99–113.
- Diller, H. (2004): Das süße Gift der Kausalanalyse, in: *Marketing Zeitschrift für Forschung und Praxis*, 26. Jg., Nr. 3, S. 177.
- Drake, C./Gwynne, A./Waite, N. (1998): Barclays Life customer satisfaction and loyalty tracking survey: a demonstration of customer loyalty research in practice, in: *International Journal of Bank Marketing*, Vol. 16, No. 7, S. 287–292.

- Efron, B./Gong, G. (1983): A Leisurely Look at the Bootstrap, the Jackknife, and Cross-Validation, in: *The American Statistician*, Vol. 37, No. 1, S. 36–48.
- Efron, B./Tibshirani, R. J. (1993): *An Introduction to the Bootstrap*, New York/London.
- Ehlerding, A./Lumma, K. (2006): Private Banking in Deutschland – Chancen und Erfolgsfaktoren in einem Wachstumsmarkt, in: Brost, H./Faust, M. (Hrsg.): *Private Banking und Wealth Management*, Frankfurt am Main, S. 29–53.
- Esildsen, J./Kristensen, K./Juhl, H. J./Østergaard, P. (2004): The Drivers of Customer Satisfaction and Loyalty. The Case of Denmark 2000–2002, in: *Total Quality Management*, Vol. 15, No. 5/6, S. 859–868.
- Esposito Vinzi, V./Chin, W. W./Henseler, J./Wang, H. (2010): Editorial: Perspectives on Partial Least Squares, in: Esposito Vinzi, V./Chin, W. W./Henseler, J./Wang, H. (Hrsg.): *Handbook of Partial Least Squares. Concepts, Methods and Application*, Berlin/Heidelberg, S. 1–20.
- Fassott, G. (2006): Operationalisierung latenter Variablen in Strukturgleichungsmodellen: Eine Standortbestimmung, in: *Zeitschrift für betriebswirtschaftliche Forschung*, 58. Jg., Nr. 1, S. 67–88.
- Fornell, C. (1992): A National Customer Satisfaction Barometer: The Swedish Experience, in: *Journal of Marketing*, Vol. 56, No. 1, S. 6–21.
- Fornell, C./Bookstein, F. L. (1982): Two Structural Equation Models: LISREL and PLS Applied to Consumer Exit-Voice Theory, in: *Journal of Marketing Research*, Vol. 19, No. 4, S. 440–452.
- Fornell, C./Johnson, M. D./Anderson, E. W./Cha, J./Bryant, B. (1996): The American Customer Satisfaction Index: Nature, Purpose, and Findings, in: *Journal of Marketing*, Vol. 60, No. 4, S. 7–18.
- Fornell, C./Larcker, D. F. (1981): Evaluating Structural Equation Models with Unobservable Variables and Measurement Error, in: *Journal of Marketing Research*, Vol. 18, No. 1, S. 39–50.
- Galasso, G. (1999): Retention Marketing im Private Banking: Theoretische und empirische Analyse des Kundenbindungsmarketing im schweizerischen Private Banking, Bern/Stuttgart/Wien.
- Geisser, S. (1974): A predictive approach to the random effect model, in: *Biometrika*, Vol. 61, No. 1, S. 101–107.
- (1975): The Predictive Sample Reuse Method with Applications, in: *Journal of the American Statistical Association*, Vol. 70, No. 350, S. 320–328.
- Gerbing, D. W./Anderson, J. C. (1988): An Updated Paradigm for Scale Development Incorporating Unidimensionality and Its Assessment, in: *Journal of Marketing Research*, Vol. 25, No. 2, S. 186–192.
- Giesecke, T. (2009): *Value Added Services im Private Banking*, Frankfurt am Main.
- Graham, J. W./Schafer, J. L. (1999): On the Performance of Multiple Imputation for Multivariate Data With Small Sample Size, in: Hoyle, R. H. (Hrsg.): *Statistical Strategies for Small Sample Research*, Thousand Oaks/London/New Delhi, S. 1–29.

- Greenwald, A. G./Leavitt, C.* (1984): Audience Involvement in Advertising: Four Levels, in: *Journal of Consumer Research*, Vol. 11, No. 1, S. 581–592.
- Grønholdt, L./Martensen, A./Kristensen, K.* (2000): The relationship between customer satisfaction and loyalty: cross-industry differences, in: *Total Quality Management*, Vol. 11, No. 4/5/6, S. 509–514.
- Grönroos, C.* (1984): A Service Quality Model and its Marketing Implications, in: *European Journal of Marketing*, Vol. 18, No. 4, S. 36–44.
- (1998): Marketing services: the case of a missing product, in: *Journal of Business and Industrial Marketing*, Vol. 13, No. 4/5, S. 322–338.
- Hackl, P./Scharitzer, D./Zuba, R.* (2000): Customer satisfaction in the Austrian food retail market, in: *Total Quality Management*, Vol. 11, No. 7, S. 999–1006.
- Halstead, D./Hartman, D./Schmidt, S. L.* (1994): Multisource Effects on the Satisfaction Formation Process, in: *Journal of the Academy of Marketing Science*, Vol. 22, S. 114–129.
- Hauser, R. M./Goldberger, A. S.* (1971): The Treatment Of Unobservable Variables In Path Analysis, in: *Sociological Methodology*, Vol. 3, S. 81–117.
- Henseler, J./Ringle, C. M./Sinkovics, R. R.* (2009): The Use of Partial Least Squares Path Modeling in International Marketing, in: *Sinkovics, R. R./Ghauri, P. N.* (Hrsg.): *New Challenges to International Marketing*, Bingley, S. 277–319.
- Herrmann, A./Huber, F./Kressmann, F.* (2006): Varianz- und kovarianzbasierte Strukturgleichungsmodelle – Ein Leitfaden zu deren Spezifikation, Schätzung und Beurteilung, in: *Zeitschrift für betriebswirtschaftliche Forschung*, 58. Jg., Nr. 1, S. 34–66.
- Herrmann, A./Johnson, M.* (1999): Die Kundenzufriedenheit als Bestimmungsfaktor der Kundenbindung, in: *Zeitschrift für betriebswirtschaftliche Forschung*, 51. Jg., Nr. 1, S. 579–598.
- Heskett, J. L./Jones, T. O./Loveman, G. W./Sasser, W. E. Jr./Schlesinger, L. A.* (1994): Putting the Service-Profit Chain to Work, in: *Harvard Business Review*, Vol. 72, No. 2, S. 164–170.
- Homburg, C./Becker, A./Hentschel, F.* (2005): Der Zusammenhang zwischen Kundenzufriedenheit und Kundenbindung, in: *Bruhn, M./Homburg, C.* (Hrsg.): *Handbuch Kundenbindungsmanagement. Strategien für ein erfolgreiches CRM*, Wiesbaden, S. 93–123.
- Homburg, C./Giering, A.* (1996): Konzeptualisierung und Operationalisierung komplexer Konstrukte. Ein Leitfaden für die Marketingforschung, in: *Marketing Zeitschrift für Forschung und Praxis*, 18. Jg., Nr. 1, S. 5–24.
- (2001): Personal Characteristics as Moderators of the Relationship Between Customer Satisfaction and Loyalty – An Empirical Analysis, in: *Psychology & Marketing*, Vol. 18, No. 1, S. 43–66.
- Horn, C./Rudolf, M.* (2011): Service quality in the private banking business, in: *Financial Markets and Portfolio Management*, Vol. 25, No. 2, S. 173–195.



- Huber, F./Herrmann, A./Meyer, F./Vogel, J./Vollhardt, K. (2007): Kausalmodellierung mit Partial Least Squares. Eine anwendungsorientierte Einführung, Wiesbaden.
- IBM Corporation (2005): European Wealth and Private Banking Industry Survey 2005.
- Jarvis, C. B./MacKenzie, S./Podsakoff, P. (2003): A Critical Review of Construct Indicators and Measurement Model Misspecification in Marketing and Consumer Research, in: Journal of Consumer Research, Vol. 30, No. 2, S. 199–218.
- Johnson, M./Zinkhan, G. M. (1991): Emotional Responses to a Professional Service Encounter, in: Journal of Services Marketing, Vol. 5, No. 2, S. 5–16.
- Johnson, M. D./Gustafsson, A. (2000): Improving Customer Satisfaction, Loyalty, and Profit: An Integrated Measurement and Management System, San Francisco.
- Johnson, M. D./Gustafsson, A./Andreassen, T. W./Lervik, L./Cha, J. (2001): The evolution and future of national customer satisfaction index models, in: Journal of Economic Psychology, Vol. 22, No. 2, S. 217–245.
- Johnson, R. L./Tsiros, M./Lancioni, R. A. (1995): Measuring service quality: a systems approach, in: Journal of Services Marketing, Vol. 9, No. 5, S. 6–19.
- Jones, T. O./Sasser, W. E. Jr. (1995): Why Satisfied Customers Defect, in: Harvard Business Review, Vol. 73, No. 6, S. 88–99.
- Jöreskog, K. G./Goldberger, A. S. (1975): Estimation of a Model with Multiple Indicators and Multiple Causes of a Single Latent Variable, in: Journal of the American Statistical Association, Vol. 70, No. 351, S. 631–639.
- Jöreskog, K. G./Wold, H. (1982): The ML and PLS Techniques for Modeling with Latent Variables: Historical and Comparative Aspects, in: Jöreskog, K. G./Wold, H. (Hrsg.): Systems Under Indirect Observation. Causality – Structure – Prediction, Vol. 1, Amsterdam/New York/Oxford, S. 263–270.
- Kaiser, H. F./Rice, J. (1974): Little Jiffy, Mark IV, in: Educational and Psychological Measurement, Vol. 34, No. 1, S. 111–117.
- King, G./Honaker, J./Joseph, A./Scheve, K. (2001): Analyzing Incomplete Political Science Data: An Alternative Algorithm for Multiple Imputation, in: American Political Science Review, Vol. 95, No. 1, S. 49–69.
- Klöppelt, H. (1996): International Private Banking – ein Markt für Anspruchsvolle, in: Die Bank, 32. Jg., Nr. 4, S. 201–207.
- Kristensen, K./Martensen, A./Grønholdt, L. (2000): Customer satisfaction measurement at Post Denmark: Results of application of the European Customer Satisfaction Index Methodology, in: Total Quality Management, Vol. 11, No. 7, S. 1007–1015.
- Lassar, W. M./Manolis, C./Winsor, R. D. (2000): Service quality perspectives and satisfaction in private banking, in: International Journal of Bank Marketing, Vol. 18, No. 4, S. 181–199.
- Lehtinen, U./Lehtinen, J. R. (1991): Two Approaches to Service Quality Dimensions, in: Service Industries Journal, Vol. 11, No. 3, S. 287–303.

- Levesque, T./McDougall, G. H. G.* (1996): Determinants of customer satisfaction in retail banking, in: *International Journal of Bank Marketing*, Vol. 14, No. 7, S. 12–20.
- Little, R. J. A.* (1992): Regression With Missing X's: A Review, in: *Journal of the American Statistical Association*, Vol. 87, No. 420, S. 1227–1237.
- Little, R. J. A./Rubin, D. B.* (2002): *Statistical Analysis with Missing Data*, Hoboken (New Jersey).
- Lohmann, F.* (1997): *Loyalität von Bankkunden: Bestimmungsgrößen und Gestaltungsmöglichkeiten*, Wiesbaden.
- Lohmöller, J.-B.* (1989): *Latent Variable Path Modelling with Partial Least Squares*, Heidelberg.
- MacKenzie, S./Podsakoff, P./Jarvis, C. B.* (2005): The Problem of Measurement Model Misspecification in Behavioral and Organizational Research and Some Recommended Solutions, in: *Journal of Applied Psychology*, Vol. 90, No. 4, S. 710–730.
- Marquardt, D. W.* (1970): Generalized Inverses, Ridge Regression, Biased Linear Estimation, and Nonlinear Estimation, in: *Technometrics*, Vol. 12, No. 3, S. 591–612.
- Martensen, A./Grønholdt, L.* (2003): Improving Library Users' Perceived Quality, Satisfaction and Loyalty: An Integrated Measurement and Management System, in: *Journal of Academic Librarianship*, Vol. 29, No. 3, S. 140–147.
- Martensen, A./Grønholdt, L./Kristensen, K.* (2000): The drivers of customer satisfaction and loyalty: cross-industry findings from Denmark, in: *Total Quality Management*, Vol. 11, No. 4/5/6, S. 544–553.
- Mercer Oliver Wyman* (2005): *Wealth Management Strategies for Success*, London.
- Mihelis, G./Grigoroudis, E./Siskos, Y./Politis, Y./Malandrakis, Y.* (2001): Customer satisfaction measurement in the private banking sector, in: *European Journal of Operational Research*, Vol. 130, No. 2, S. 347–360.
- Mittal, B.* (1995): A Comparative Analysis of Four Scales of Consumer Involvement, in: *Psychology & Marketing*, Vol. 12, No. 7, S. 663–682.
- Mittal, B./Lassar, W. M.* (1998): Why do customers switch? The dynamics of satisfaction versus loyalty, in: *Journal of Services Marketing*, Vol. 12, No. 3, S. 177–194.
- Mittal, B./Lee, M.-S.* (1989): A Causal Model of Consumer Involvement, in: *Journal of Economic Psychology*, Vol. 10, No. 3, S. 363–389.
- Muncy, J. A./Hunt, S. D.* (1984): Consumer Involvement: Definitional Issues and Research Directions, in: *Advances in Consumer Research*, Vol. 11, No. 1, S. 193–196.
- Nelson, P.* (1970): Information and Consumer Behavior, in: *Journal of Political Economy*, Vol. 78, No. 2, S. 311–329.
- Oliver, R. L.* (1980): A Cognitive Model of the Antecedents and Consequences of Satisfaction Decisions, in: *Journal of Marketing Research*, Vol. 17, No. 4, S. 460–469.

- (1981): Measurement and Evaluation of Satisfaction Processes in Retail Settings, in: *Journal of Retailing*, Vol. 57, No. 3, S. 25–48.
- (1997): Satisfaction: A Behavioral Perspective on the Consumer, New York et al.
- (1999): Whence Consumer Loyalty? In: *Journal of Marketing*, Vol. 63, No. 4, S. 33–44.

*Parasuraman, A./Zeithaml, V. A./Berry, L. L.* (1985): A Conceptual Model of Service Quality and Its Implications for Future Research, in: *Journal of Marketing*, Vol. 49, No. 4, S. 41–50.

*PricewaterhouseCoopers* (2004): Competing for Clients.

*Prinz, P.* (2001): Strategische Angebotsgestaltung im Private Banking. Eine systemorientierte Betrachtung der Private Banking-Marktleistung, Bamberg.

*Reichheld, F. F./Sasser, W. E. Jr.* (1990): Zero Defections: Quality Comes to Services, in: *Harvard Business Review*, Vol. 68, No. 5, S. 105–111.

*Reimer, A./Kuehn, R.* (2005): The impact of servicescape on quality perception, in: *European Journal of Marketing*, Vol. 39, No. 7/8, S. 785–808.

*Ringle, C. M./Wende, S./Will, A.* (2005): SmartPLS.

*Rosen, L. D./Karwan, K. R./Scribner, L. L.* (2003): Service quality measurement and the disconfirmation model: taking care in interpretation, in: *Total Quality Management*, Vol. 14, No. 1, S. 3–14.

*Rossiter, J. R.* (2002): The C-OAR-SE procedure for scale development in marketing, in: *International Journal of Research in Marketing*, Vol. 19, No. 4, S. 305–335.

*Roth, P. L.* (1994): Missing Data: A Conceptual Review for Applied Psychologists, in: *Personnel Psychology*, Vol. 47, No. 3, S. 537–560.

*Rust, R. T./Oliver, R. L.* (1994): Service Quality – Insights and Managerial Implications from the Frontier, in: *Rust, R. T./Oliver, R. L. (Hrsg.): Service Quality: New Directions in Theory and Practice*, Thousand Oaks/London/New Delhi, S. 1–22.

*Schafer, J. L.* (1997): *Analysis of Incomplete Multivariate Data*, Boca Raton/London/New York/Washington.

*Schafer, J. L./Graham, J. W.* (2002): Missing Data: Our view of the State of the Art, in: *Psychological Methods*, Vol. 7, No. 2, S. 147–177.

*Schafer, J. L./Olsen, M. K.* (1998): Multiple Imputation for Multivariate Missing-Data Problems: A Data Analyst's Perspective, in: *Multivariate Behavioral Research*, Vol. 33, No. 4, S. 545–571.

*Schäli, S. D.* (1998): Kernkompetenzen im Private Banking aus der Perspektive großer Bankinstitute in der Schweiz, Bern/Stuttgart/Wien.

*Schulz, F./Krönert, U.* (2006): Die Umsetzung der Private Banking-Strategie PPS im genossenschaftlichen Finanzberbund, in: *Brost, H./Faust, M. (Hrsg.): Private Banking und Wealth Management*, Frankfurt am Main, S. 163–178.

- Schütte, M./Höfle, Klaus* (1998): Anforderungsprofil und Qualifikationsentwicklung von Privatkundenbetreuern, in: Süchting, J./Heitmüller, H.-M. (Hrsg.): Handbuch des Bankmarketing, 3. Aufl., Wiesbaden, S. 217–240.
- Seiler, V./Rudolf, M./Krume, T.* (2013): The Influence of Socio-Demographic Variables on Customer Satisfaction and Loyalty in the Private Banking Industry, in: International Journal of Bank Marketing, Vol. 31, No. 4, S. 235–258.
- Shostack, G. L.* (1977): Breaking Free from Product Marketing, in: Journal of Marketing, Vol. 41, No. 2, S. 73–90.
- Singh, J.*, (1991): Understanding the Structure of Consumers' Satisfaction Evaluations of Service Delivery, in: Journal of the Academy of Marketing Science, Vol. 19, No. 3, S. 223–244.
- Sinharay, S./Stern, H. S./Russel, D.* (2001): The Use of Multiple Imputation for the Analysis of Missing Data, in: Psychological Methods, Vol. 6, No. 4, S. 317–329.
- Solomon, M. R./Surprenant, C./Czepiel, J. A./Gutman, E. G.* (1985): A Role Theory Perspective on Dyadic Interactions: The Service Encounter, in: Journal of Marketing, Vol. 49, No. 1, S. 99–111.
- Stapfer, P.* (2005): Anreizsysteme in der Private Banking-Kundenbeziehung, Bern/Stuttgart/Wien.
- Stone, M.* (1974): Cross-validators Choice and Assessment of Statistical Predictions, in: Journal of the Royal Statistical Society, Vol. 36, No. 2, S. 111–147.
- Surtani, J. B.* (1991): Marketing of Private Banking Services in Hong Kong, in: International Journal of Bank Marketing, Vol. 9, No. 5, S. 35–40.
- Swan, J. E./Trawick, I. F.* (1981): Disconfirmation of Expectations and Satisfaction with a Retail Store, in: Journal of Retailing, Vol. 57, No. 3, S. 49–67.
- Szymanski, D. M./Henard, D. H.* (2001): Customer Satisfaction: A Meta-Analysis of the Empirical Evidence, in: Journal of the Academy of Marketing Science, Vol. 29, No. 1, S. 16–35.
- Tenenhaus, M./Esposito Vinzi, V./Chatelin, Y.-M./Lauro, C.* (2005): PLS path modeling, in: Computational Statistics and Data Analysis, Vol. 48, No. 1, S. 159–205.
- Viebahn, M.* (2005): Vermögensreporting im Private Banking. Informationsbedarf, -bereitstellung und -nachfrage im Berichtswesen der privaten Vermögensverwaltung, Berlin.
- Volz, G./Reitinger, W.* (2008): Die Wünsche der Wohlhabenden, in: Die Bank, 48. Jg., Nr. 2, S. 30–34.
- Walbert, G.* (2006): Der Erfolgsfaktor Marke im Private Banking aus Sicht des Markeninhabers – Eine auf theoretischen Grundlagen basierende sowie empirische Analyse des Private Banking Geschäfts der in der Schweiz ansässigen Institute, Zürich.
- Werts, C. E./Linn, R. L./Jöreskog, K. G.* (1974): Intraclass Reliability Estimates: Testing Structural Assumptions, in: Educational and Psychological Measurement, Vol. 34, No. 1, S. 25–33.

- Wöhle, C. B. (1999): Private Banking in der Schweiz: geschäftspolitische Ansätze zur kunden- und ertragsorientierten Steuerung, Bern/Stuttgart/Wien.
- Wold, H. (1982): Soft Modeling. The Basic Design and Some Extensions, in: Jöreskog, K. G./Wold, H. (Hrsg.): Systems Under Indirect Observation. Causality – Structure – Prediction, Vol. 2, Amsterdam/New York/Oxford, S. 1–45.
- Woodruff, R. B./Cadotte, E. R./Jenkins, R. L. (1983): Modeling Consumer Satisfaction Processes using Experience-Based Norms, in: Journal of Marketing Research, Vol. 20, No. 3, S. 296–304.
- Zaichkowsky, J. L. (1985): Measuring the Involvement Construct, in: Journal of Consumer Research, Vol. 12, No. 3, S. 341–352.
- Zeithaml, V. A./Parasuraman, A./Berry, L. L. (1985): Problems and Strategies in Services Marketing, in: Journal of Marketing, Vol. 49, No. 2, S. 33–46.
- Zeltner, J. (2006): Strategische Erfolgsfaktoren für das Wealth Management, in: Brost, H./Faust, M. (Hrsg.): Private Banking und Wealth Management, Frankfurt am Main, S. 91–123.
- Zenker, C. A. (2006): Relationship Equity im Private Banking, Schaan.
- Zenz-Spitzweg, P. (2007): Die Wahl des Anbieters im Private Banking. Eine Analyse der Wirkung der Determinanten von Premiummarken im Hinblick auf den Kaufentscheid im deutschen Private Banking, München/Mering.