

Arteaga, Felipe; Elacqua, Gregory; Krussig, Thomas; Méndez, Carolina;
Neilson, Christopher A.

Working Paper

Can information on school attributes and placement probabilities direct search and choice? Evidence from choice platforms in Ecuador and Peru

IDB Working Paper Series, No. IDB-WP-01421

Provided in Cooperation with:

Inter-American Development Bank (IDB), Washington, DC

Suggested Citation: Arteaga, Felipe; Elacqua, Gregory; Krussig, Thomas; Méndez, Carolina; Neilson, Christopher A. (2022) : Can information on school attributes and placement probabilities direct search and choice? Evidence from choice platforms in Ecuador and Peru, IDB Working Paper Series, No. IDB-WP-01421, Inter-American Development Bank (IDB), Washington, DC,
<https://doi.org/10.18235/0004672>

This Version is available at:

<https://hdl.handle.net/10419/289995>

Standard-Nutzungsbedingungen:

Die Dokumente auf EconStor dürfen zu eigenen wissenschaftlichen Zwecken und zum Privatgebrauch gespeichert und kopiert werden.

Sie dürfen die Dokumente nicht für öffentliche oder kommerzielle Zwecke vervielfältigen, öffentlich ausstellen, öffentlich zugänglich machen, vertreiben oder anderweitig nutzen.

Sofern die Verfasser die Dokumente unter Open-Content-Lizenzen (insbesondere CC-Lizenzen) zur Verfügung gestellt haben sollten, gelten abweichend von diesen Nutzungsbedingungen die in der dort genannten Lizenz gewährten Nutzungsrechte.

Terms of use:

Documents in EconStor may be saved and copied for your personal and scholarly purposes.

You are not to copy documents for public or commercial purposes, to exhibit the documents publicly, to make them publicly available on the internet, or to distribute or otherwise use the documents in public.

If the documents have been made available under an Open Content Licence (especially Creative Commons Licences), you may exercise further usage rights as specified in the indicated licence.



<https://creativecommons.org/licenses/by-nc-nd/3.0/igo/legalcode>

IDB WORKING PAPER SERIES N° IDB-WP-01421

Can Information on School Attributes and Placement Probabilities Direct Search and Choice? Evidence from Choice Platforms in Ecuador and Peru

Felipe Arteaga
Gregory Elacqua
Thomas Krussig
Carolina Méndez
Christopher A. Neilson

Inter-American Development Bank
Education Division

November 2022

Can Information on School Attributes and Placement Probabilities Direct Search and Choice? Evidence from Choice Platforms in Ecuador and Peru

Felipe Arteaga
Gregory Elacqua
Thomas Krussig
Carolina Méndez
Christopher A. Neilson

Cataloging-in-Publication data provided by the
Inter-American Development Bank

Felipe Herrera Library

Can information on school attributes and placement probabilities direct search and choice?: evidence from choice platforms in Ecuador and Peru / Felipe Arteaga, Gregory Elacqua, Thomas Krussig, Carolina Méndez, Christopher A. Neilson.

p. cm. — (IDB Working Paper Series; 1421)

Includes bibliographic references.

1. School choice-Decision making-Ecuador. 2. School choice-Decision making-Peru. 3. Education-Effect of technological innovations on-Ecuador. 4. Education-Effect of technological innovations on-Peru. I. Arteaga, Felipe. II. Elacqua, Gregory M., 1972- III. Krussig, Thomas. IV. Méndez, Carolina. V. Neilson, Christopher. VI. Inter-American Development Bank. Education Division. VII. Series.

IDB-WP-1421

JEL Codes: I20, I21, I22

Keywords: school information, school attributes, direct search, direct choice, choice platforms, Ecuador, Peru

<http://www.iadb.org>

Copyright © 2022 Inter-American Development Bank. This work is licensed under a Creative Commons IGO 3.0 Attribution-NonCommercial-NoDerivatives (CC-IGO BY-NC-ND 3.0 IGO) license (<http://creativecommons.org/licenses/by-nc-nd/3.0/igo/legalcode>) and may be reproduced with attribution to the IDB and for any non-commercial purpose, as provided below. No derivative work is allowed.

Any dispute related to the use of the works of the IDB that cannot be settled amicably shall be submitted to arbitration pursuant to the UNCITRAL rules. The use of the IDB's name for any purpose other than for attribution, and the use of IDB's logo shall be subject to a separate written license agreement between the IDB and the user and is not authorized as part of this CC-IGO license.

Following a peer review process, and with previous written consent by the Inter-American Development Bank (IDB), a revised version of this work may also be reproduced in any academic journal, including those indexed by the American Economic Association's EconLit, provided that the IDB is credited and that the author(s) receive no income from the publication. Therefore, the restriction to receive income from such publication shall only extend to the publication's author(s). With regard to such restriction, in case of any inconsistency between the Creative Commons IGO 3.0 Attribution-NonCommercial-NoDerivatives license and these statements, the latter shall prevail.

Note that link provided above includes additional terms and conditions of the license.

The opinions expressed in this publication are those of the authors and do not necessarily reflect the views of the Inter-American Development Bank, its Board of Directors, or the countries they represent.



Can Information on School Attributes and Placement Probabilities Direct Search and Choice? Evidence from Choice Platforms in Ecuador and Peru[†]

Felipe Arteaga, *UC Berkeley*

Gregory Elacqua, *Inter-American Development Bank*

Thomas Krussig, *UC Berkeley*

Carolina Méndez, *Inter-American Development Bank*

Christopher A. Neilson, *Yale University*

November 17, 2022

Abstract

This paper evaluates how new information influences families' applications and assignment outcomes in elementary school choice settings. Specifically, using a multi-country RCT based in Tacna, Peru and Manta, Ecuador, we examine the effect of providing personalized information on schooling alternatives and placement risk. We find that applicants who received feedback on placement risk and a suggestion of new schools add more schools to their applications and were more likely to include recommended schools than other alternatives available. Interestingly, the project implemented in Manta, Ecuador had only marginal effects for all outcomes. The main difference across implementations was the inclusion of outreach and information provision through an additional WhatsApp "warning" in Peru, which was not realized in Ecuador. A lower school density seems to have also been a contributing factor to the results observed in the Ecuadorian context.

[†] We thank [JPAL-LAC](#) and the implementation team of data scientists and developers at [ConsiliumBots](#) for their help throughout the project. Our gratitude also goes to the government partners that made this study possible, in particular Daniel Arivarte and Jadira Sanchez in Peru and Doris Guaman and Eduardo Moreno in Ecuador. Arteaga: fharteaga@berkeley.edu. Elacqua: regorye@iadb.org. Krussig: tkrussig@consiliumbots.com. Méndez: caroliname@iadb.org. Neilson: cneilson@yale.edu.

1 Introduction

Platforms that allow users to search through and select from a variety of options are common tools for commercial goods, but are also used for services like health and education. Just as Google and Amazon carefully manage the information provided to users and generate value for consumers and sellers, school choice platforms provide these services for parents, students, and educational communities. In fact, centralized school choice and assignment platforms facilitate access to educational opportunities for students and families in over 50 countries worldwide (Neilson, 2019). Despite their popularity, little research has investigated how their design and the information they provide on options or the application itself affects the ensuing matches made by the centralized system.

Recent studies show that many users interact with these search and choice platforms with limited information and biased beliefs, which leads to inefficiencies and, in some cases, inequities in the resulting placements.¹ Arteaga et al. (2022), for example, provide evidence that the search for schools is costly, and that applicants exhibit biased beliefs on placement probabilities and list too few options as a result. They also show that correcting these beliefs by providing additional information leads applicants to expand their list of schools, suggesting that users made additional efforts to search for more schools. Still, there is no evidence on how giving information about available options might affect the school choice process in this centralized choice context.

This paper studies the role of information about available options on school applications in a centralized school choice platform. We partnered with the Ministries of Education (MoE) in Ecuador and Peru to send “report cards” to applicants during the pilot phase of centralized school choice and assignment platforms.² These report cards were given to a randomly selected group and included

¹Kapor et al. (2020) document that users have heterogeneous assumptions about assignment probabilities that can drive decision-making behavior, noting that many families engage in strategic behavior based on biased beliefs. Allende et al. (2019) provides evidence of limited awareness of the set of potential options and finds that giving information on the existence and characteristics of nearby choices can result in changes to users’ applications and assignments. Their experiment shifted students’ decisions toward schools farther from their homes with higher average test scores, higher added value, and higher prices.

²The Inter-American Development Bank (IADB) and the NGO ConsiliumBots provided technical support for the information interventions, as well as for the design and implementation of

a list of suggested schools. We study the effect of this intervention on the users' subsequent application and enrollment decisions. We also collected survey data to evaluate the effect of our intervention on subjective measures.

The intervention proposed is based on previous work revealing that giving information can improve the application process. Based on a model of the costly search for schools, [Arteaga et al. \(2022\)](#) show that over-optimism about placement chances can lead to insufficient searching for options, potentially reducing the probability of finding a placement. Furthermore, the authors provide survey evidence that applicants have biased beliefs about their chances of finding a placement, incomplete information about their options, and a belief that searching for schools is costly. Their model motivates our intervention through the theoretical channel of lowering application costs.

The information we gathered on parent beliefs shows that the biases studied in [Arteaga et al. \(2022\)](#) are present in our two contexts. The online survey distributed to the chosen participants echoed their results in three respects. First, applicants have limited information about their options, and learning about new schools is costly. Second, their beliefs on their chances of admission inform their application strategy, and those beliefs are overly optimistic when we compare them with actual placement probability. Third, non-placement is much less desirable than being placed in their lowest-ranked (or any) option, which suggests large welfare stakes at play.

We tested the effects of information about the available options and replicated the feedback mechanism developed in [Arteaga et al. \(2022\)](#), who document how providing applicants in Chile and New Haven with feedback on their chances of admission helped them to search more effectively and ultimately increased their placement chances. We also provided the treatment group with additional information on schooling options.

We designed three report cards to test the effect of different levels of detail. The first report card only included the current application, a warning about the placement risk, and a general recommendation to add more schools. On the second report card, we added a personalized list of 10 schools that the student did not consider in their initial portfolio. The third report card differed between the centralized school choice and assignment pilots.

the 2021 and 2022 implementations: in 2021, we included a personalized list of 10 schools plus information about the popularity and congestion of each school, the most comprehensive report card we delivered. In 2022, this report card only included three schools with no extra information on popularity or congestion. In trying more than one version, we aim to examine the trade-off between more information and too much information, an issue that has received little attention in the literature (Gabaix, 2019).

We randomly assigned applicants to one of the three treatment arms. Between 4 and 7 days before the last day of the application process, we identified the students with a positive non-placement probability —i.e., risky applicants— and sent them a link to the report card by email and through WhatsApp. In Peru, we implemented the intervention during the 2021 and 2022 intake years, and applicants also received an additional WhatsApp message with a non-placement warning. In Ecuador, the intervention was conducted only during the 2021 admission process, and we did not send the non-placement warning via WhatsApp.

Our results show that applicants that received the treatment with school suggestions were more likely to add those schools compared to applicants who received the report card with no suggestion list. They were also more likely to add *more* schools to the list. All report cards included a non-placement warning but varied in the suggestions and the extra information on popularity and congestion. The RCT design thus allowed us to estimate the causal effect of the additional information, since we generated a list of suggested schools for every applicant, but did not show it to students who received the basic report card. In Peru, the proportion of students that add a school from the suggestion list increases between 52% and 120%, depending on the year and treatment. Meanwhile, adding additional information on popularity and congestion does not affect the probability of adding a school. For the Ecuadorian context, we cannot rule out a zero effect on the shifting of preferences.

Our study contributes to the literature on information provision policies in educational markets (Allende et al., 2019; Hastings and Weinstein, 2008; Andrabi et al., 2017) by integrating information within the centralized school choice process, and testing new channels that can potentially help to distribute the information at scale. We also build on an emerging strand of empirical market design work

focused on educational markets³ (Arteaga et al., 2022; Kapor et al., 2020; Ajayi and Sidibe, 2020) by assessing how new information can affect search in a context with incomplete information about all the options.

The remainder of the paper is organized as follows. Section 2 describes the Ecuadorian and Peruvian schooling context and provides details on the intervention, sample, and survey design. Section 3 discusses the results of the post-application survey. In Section 5, we present the findings from the information intervention on choice behavior and beliefs. Finally, Section 6 concludes.

2 Setting

We study the effect of information provision in the regions of Manta, Ecuador and Tacna, Peru, both of which were implementing a centralized school choice system for the first time. These pilots offered a unique opportunity to test the same policy design in different contexts. In both pilots, parents applied to schools using an online platform, and the educational authorities then assigned students to schools using a deferred acceptance (DA) assignment mechanism. We applied similar information treatments in both pilots.

We were granted access to the applications and enrollment outcomes, and complemented our dataset with a parent-participant survey. We can therefore observe the universe of applicants, the history of their applications, and information related to the options available on the platform as well as off-platform alternatives. We also have information on the family’s final enrollment decision for the 2021 academic year.

The IADB supported the pilots in both countries, but their origins were quite different. In Ecuador, the government wanted to introduce parental choice to improve efficiency and equity in school access. The country had previously used a centralized system that assigned students to schools based on the applicant’s location, which parents reported through their electricity account code (CUEN). This process was costly and time-consuming as it required considerable effort to ensure that the assignment results were consistent with existing transportation options, and that routes to school were not blocked by hills, rivers, or other geographic

³See Agarwal and Budish (2021) for a recent review.

barriers. The reporting system also created incentives to obtain electricity bills from areas near the most selective schools. These challenges reduced the overall transparency and predictability of the assignment system.⁴

In Peru, the government’s objective in introducing centralized assignments was instead to improve the transparency of the school system. There were many reported cases of parents paying fees or bribes to ensure their children received admission to certain oversubscribed schools. Parents also often waited in long lines for days to apply for a vacancy in a selective school (Elacqua et al., 2022b).

2.1 Ecuador

As mentioned above, families in Ecuador have historically been assigned to the closest public school based on household location as reported through the family’s electricity bill code, a process that was costly, inefficient, and inequitable. In an effort to improve the system, the government partnered with IADB and ConsiliumBots to introduce parental choice through a centralized process. The region of Manta was chosen for the pilot, where local authorities supported the policy change.⁵

For the 2021 admission, the Ministry of Education (MoE) collected applications to national public preschools (ages 3-5) in Manta through the new centralized online platform. Based on families’ submitted rank-order lists (ROL), students were assigned to one of their options using the deferred acceptance algorithm (also employed in Peru). The system covered three districts (namely, Manta, Jaramijó, and Montecristo) or area representing 2.5% of the national school enrollment.

The application process consisted of a single round. The online platform opened at the beginning of February 2021 and families had three weeks to complete their applications, with no limits on the number of schools they could include on their lists. They could furthermore modify their rank-order list multiple times.

Applicants could also apply to three types of institutions providing preschool education that were not listed on the online platform. These were municipal public

⁴See Elacqua et al. (2022a) for details on the distance-centric algorithm used in Ecuador and qualitative evidence for distortions in the electricity bill registration process.

⁵See Elacqua et al. (2022b) for further information on the Ministry of Education’s rationale for choosing the region of Manta.

schools, subsidized private schools, and private schools, with different ownership and management characteristics. Schools outside the national public network represented 45% of the possible options, and defined their own application processes.

The universe of applicants assessed here consists of around 4,000 children aged 3-5, with a balanced number of boys and girls. Column 1 of Table 1 shows that 3,984 applicants submitted a rank-order list for the 2021 admission process. The average length of the final portfolios was 1.9 schools, and around 66% of the families applied to schools in Manta, the largest district. Forty-three percent of the applicants requested a place in “pre-pre-kindergarten” (three-year-olds), and 43% in “pre-kindergarten” (four-year-olds). If we count the schooling options within 2 kilometers of each household, we observe that, on average, there are slightly more off-platform options (municipal public schools, subsidized private schools, and private schools) than on-platform options (national public ones).

Table 1: Descriptive statistics for applicants

| | (1) | (2) Ecuador 2021 | | (3) | (4) Perú 2021 | | | (5) | (6) Perú 2022 | | (7) | (8) | (9) |
|--------------------------------|-------|------------------|-----------------------------|-------|---------------|-----------------------------|-------|------------|-----------------------------|-------|------------|-----------------------------|-----|
| | All | RCT Sample | Pre Placement Sample Survey | All | RCT Sample | Pre Placement Sample Survey | All | RCT Sample | Pre Placement Sample Survey | All | RCT Sample | Pre Placement Sample Survey | |
| Female | 0.49 | 0.50 | 0.50 | 0.49 | 0.48 | 0.50 | 0.50 | 0.54 | 0.50 | 0.50 | 0.54 | 0.50 | |
| From largest district | 0.66 | 0.71 | 0.70 | 0.43 | 0.58 | 0.49 | 0.40 | 0.65 | 0.44 | 0.66 | 0.71 | 0.65 | |
| Length pre-treatment portfolio | 1.83 | 1.79 | 1.96 | 3.14 | 2.97 | 3.24 | 3.16 | 2.85 | 3.30 | 1.83 | 1.79 | 1.96 | |
| Length final portfolio | 1.90 | 1.91 | 2.05 | 3.34 | 3.81 | 3.50 | 3.22 | 3.09 | 3.39 | 1.90 | 1.91 | 2.05 | |
| In-platform opts in 2km radio | 11.32 | 13.10 | 12.46 | 16.33 | 18.55 | 17.01 | 16.66 | 19.90 | 17.46 | 11.32 | 13.10 | 12.46 | |
| Off-platform opts in 2km radio | 12.11 | 13.94 | 13.37 | 19.28 | 27.98 | 21.05 | 20.30 | 29.58 | 22.26 | 12.11 | 13.94 | 13.37 | |
| <i>Grade</i> | | | | | | | | | | | | | |
| PPK (3 yrs old) | 0.43 | 0.43 | 0.43 | 0.35 | 0.37 | 0.38 | 0.35 | 0.28 | 0.37 | 0.43 | 0.43 | 0.43 | |
| PK (4 yrs old) | 0.43 | 0.45 | 0.44 | 0.10 | 0.00 | 0.09 | 0.12 | 0.11 | 0.11 | 0.43 | 0.45 | 0.44 | |
| K (5 yrs old) | 0.14 | 0.12 | 0.13 | 0.06 | 0.00 | 0.06 | 0.04 | 0.03 | 0.04 | 0.14 | 0.12 | 0.13 | |
| 1st (6 yrs old) | 0.00 | 0.00 | 0.00 | 0.49 | 0.63 | 0.48 | 0.49 | 0.58 | 0.48 | 0.00 | 0.00 | 0.00 | |
| N | 3,984 | 2,021 | 1,872 | 6,876 | 1,708 | 1,721 | 4,856 | 1,140 | 1,501 | 3,984 | 2,021 | 1,872 | |

Notes. All statistics are means in the population defined by the column header. Largest district is Manta for Ecuador and Tacna for Perú.

2.2 Peru

In Peru, families have historically applied directly to each school. In 2021 and 2022, in an effort to improve transparency and efficiency in student assignment,

the government worked with IADB and ConsiliumBots to introduce a centralized student assignment pilot in the region of Tacna—one of the objectives being to eventually scale this reform up to more regions.⁶ The government chose Tacna because it was a small region with a significant concentration of schooling options. Additionally, the local government was a strong proponent of the reform.⁷ For the 2021 and 2022 admission processes, all applications to public schools in Tacna were submitted on the new centralized online platform using a rank-order list (ROL), following which families potentially received a placement offer from the Ministry of Education (MoE).

The system covered 10 districts,⁸ representing close to 1% of the national school enrollment, and was specific to placement in preschool through grade 1 (ages 3-6). As in Ecuador, students were assigned to one of their options using the deferred acceptance algorithm. The application process consisted of three rounds. We focus on the first round, as that is when our information intervention was implemented. Specifically, the online platform opened at the beginning of December in both study years. Families then had seven weeks to complete their application, with no limits on the number of schools they could include on their lists. For the 2021 intake, applicants had only one chance to submit their rank-order list, and were not permitted to modify the latter unless the system authorized additional access. This restriction was relaxed in 2022, allowing applicants to adjust their application multiple times.

Applicants could also apply to private schools that were not listed on the online platform. In Peru, private schools compete in the provision of PK-11 education,⁹ and interested families can apply directly to each school, following a decentralized process that is not coordinated with the public school choice process. In Tacna, the largest district participating in the pilot, private schools represent 40% of the available options. These schools charge tuition fees, do not receive funding from the government, and since a reform in 2012, are not allowed to engage in active

⁶This process has been delayed due to the Covid-19 pandemic. In 2023, the government will begin introducing the reform in two additional regions: Arequipa and Madre de Dios.

⁷See [Elacqua et al. \(2022b\)](#) for more details on the government’s rationale for choosing the region of Tacna.

⁸Namely, Alto de la Alianza, Calana, Ciudad Nueva, Gregorio Albarracín, Inclán, La Yarada los Palos, Pachía, Pocollay, Sama, and Tacna.

⁹Ages 3-17; see [Allende \(2019\)](#) for an in-depth discussion of the Peruvian school system.

selection or discrimination of students.¹⁰

The universe of assessed applicants in Peru for both years includes around 11,700 families with children aged 3-6, with a balanced gender ratio. Columns 4 and 7 of Table 1 show that 6,876 applicants submitted an ROL in the 2021 intake, while 4,856 applicants did so in 2022. The average length of the ROLs submitted was 3.3 schools, and around 40% of the families applied to schools in the largest district. Forty-nine percent of applications were for a grade 1 seat and 35% for "pre-pre-kindergarten" (three-year olds). If we count the schooling options within 2 kilometers of each household, we observe that, on average, there are more private options (off-platform), than public ones (on-platform).

2.3 Differences between Manta and Tacna

The regions in Ecuador and Peru where the pilots were implemented differently in several observed aspects. Consideration of these differences is important for understanding potential disparities in the behavioral response to our intervention. Specifically, local cultural attitudes toward school admissions, the availability of on-platform options, and rurality could all affect the application strategies and placement results.

In Ecuador, families had not been able to choose schools prior to the pilot, while a decentralized choice system already existed in Peru. As described above, applicants in Ecuador were assigned to the closest schools using the address on their electricity bill as a proxy of home location. Peru meanwhile had a decentralized system in which families applied directly to individual schools, with no coordination between institutions. This difference in school choice culture could help explain, for example, the number of schools included on each list. While the average length of the ROLs on the initial applications (pre-intervention) was 3.15 schools in Peru, it was only 1.83 in Ecuador (see Table 1). The market's underlying characteristics may partly explain why the ROLs were 65% longer in Peru.

¹⁰For details, refer to *Directiva N 014-2012-MINEDU/VMGP "Normas y Orientaciones para el Desarrollo de Año Escolar 2013 en la Educación Básica."* However, recent evidence shows that private schools continue to use different instruments to screen students and families, including cognitive tests and interviews (Balarin et al., 2019).

Second, the density of schools is lower in the Ecuadorian context. Table 1 shows that an average applicant from Peru had 19 off-platform options and 16 on-platform ones. In Ecuador, in contrast, families had an average of 12 off-platform and 11 on-platform options. Furthermore, Figure A1 in Appendix A provides an example of the market concentration for both Manta and Tacna, the largest districts in each region. We see that a student who lives in the city center of Tacna has a larger potential choice set than her peers in Manta.

Finally, the interventions were not exactly identical in both countries—arguably the likely cause of most of the differences in the outcomes. In Ecuador, the warning related to placement risk was not sent as a separate message via WhatsApp; it was only included on the report card. Applicants in Peru received a specific WhatsApp warning message, which was also included in the report card. We provide further details on the intervention in Section 4.

3 Survey

We conducted an online survey to elicit participants’ beliefs about placement probabilities, their level of knowledge about schooling options, and the difficulty of the application process. The MoEs distributed the surveys once the application processes had been closed, but before the placement results were made public. The evidence shows limited awareness and biased beliefs, suggesting that information interventions such as ours may prove beneficial.

3.1 Survey design and implementation

Our questionnaire aims to gain a better understanding of participants’ knowledge and beliefs relating to the application process.¹¹ We included novel questions on parents’ understanding of the mechanism, interpretation of school popularity, and awareness of private (off-platform) options. We distributed links to the survey (on the Qualtrics platform) through WhatsApp messages. Thirty-two percent of families completed the survey. They are more likely to come from the largest urban areas and are representative in terms of grades and gender.

¹¹The content of the survey is based on the questionnaire of [Arteaga et al. \(2022\)](#).

The survey covered five aspects of the application process and was personalized for each applicant, taking into account the ROL submitted and the family’s home location. Specifically, questions were asked about the (1) perception of the application platform, (2) application strategy, (3) level of awareness of ranked and non-ranked schooling options, including on- and off-platform alternatives in the applicant’s neighborhood, (4) beliefs on assignment probabilities, and (5) satisfaction relative to hypothetical placement alternatives.

As mentioned, the online survey was implemented just after the application process and before the results were made public, to avoid potential changes in beliefs based on placements. Parents with two or more applicants were surveyed only once, choosing randomly between the associated students. The survey was not incentivized in any way, though we did send a reminder to parents who did not answer on the first day.

Survey completion rates were higher in Ecuador than in Peru, and the populations in the largest districts were more likely to answer. Columns 3, 6, and 9 of Table 1 show that the completion rate in Peru was respectively 25% and 39% in the two years of the study, and 47% in Ecuador. Families that responded to the survey tended to reside in zones with a slightly higher density of schools and, on average, applied to more schools.

3.2 Survey results

Our survey results show that applicants are overly optimistic in terms of placement probabilities and that their awareness of the available options is very limited. We also observe that families have a strong desire to be placed, and that finding out more about a given school is hard.¹² Generally, respondents have an imperfect notion of the optimal strategy and the signal of popularity does not correlate with school quality for everybody.

Applicants with a positive probability of non-placement hold a belief about their admission chances that is around 30pp higher than the actual probability, i.e., a considerable optimism bias. In Ecuador, an average applicant thinks that her child’s chances of being placed in at least one of the options in her ROL

¹²Our survey results are consistent with the main survey findings of [Arteaga et al. \(2022\)](#).

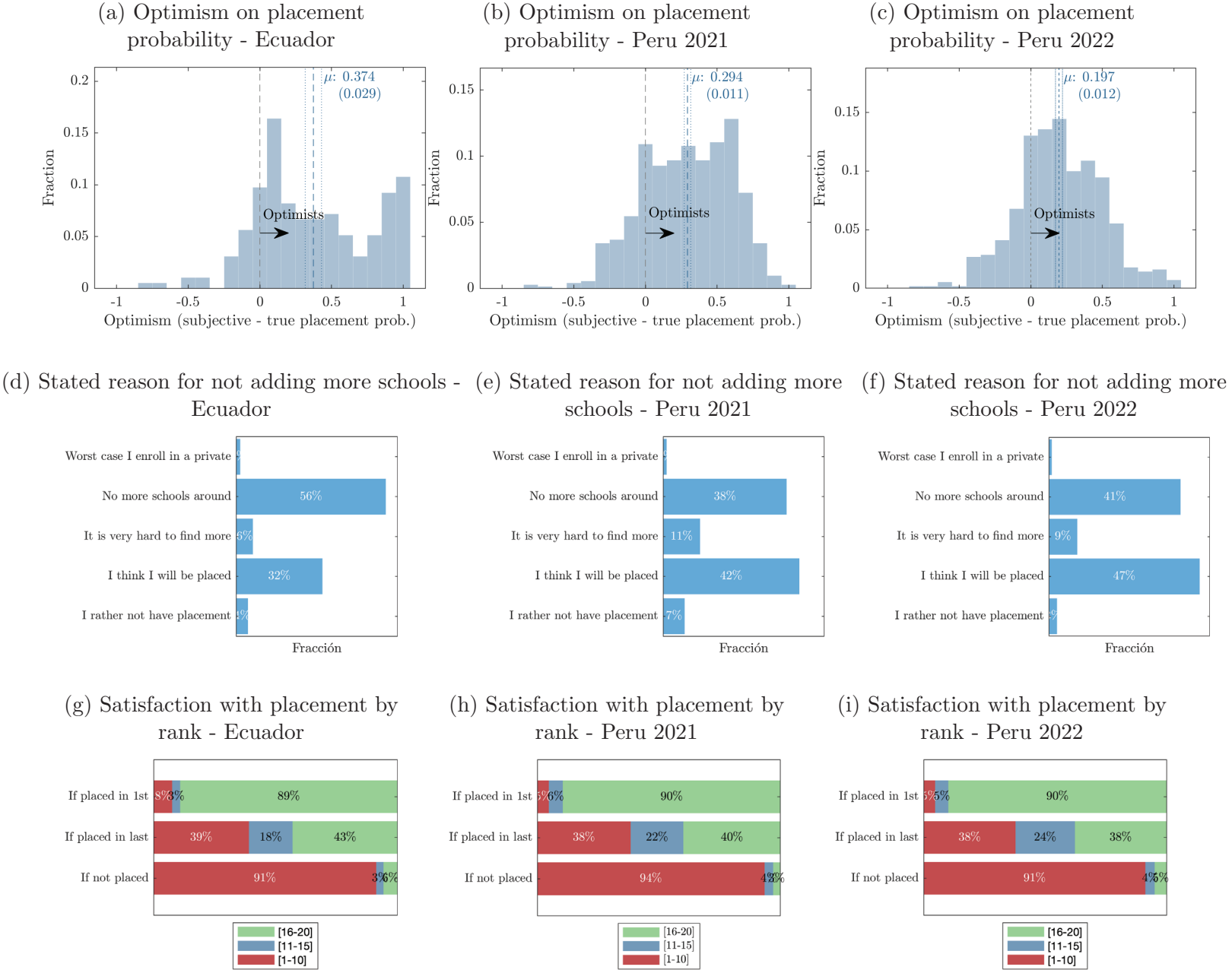
are 37pp higher than the true likelihood (Panel 1a). In Peru, this optimism is 29pp and 20pp in 2021 and 2022, respectively (Panels 1b and 1c). In Panel 1a we observe that a significant number of applicants in Ecuador have virtually no chance of being assigned to one of their options while simultaneously indicating their complete confidence that they are going to be placed: around 20% of Ecuadorians at high risk of non-placement have an optimism bias of over 80%. In contrast, in Peru, this group represents less than 2% of the risky applicants.¹³

Biased beliefs on admission chances affect application strategies. Panels 1d, 1e, and 1f show that the two most common reasons why applicants did not add more schools are optimism and a lack of options. Respondents from the two countries differ in terms of the modal reason. In Ecuador, the most common reason is the availability of schools, which makes sense given the lower density of education establishments. Meanwhile in Peru, optimism bias appears to be the most common reason for not adding more schools to the application.

The responses to a satisfaction question concerning different placement scenarios suggest that a non-assignment outcome has relevant welfare implications for participants. Panels 1g and 1h indicate that “not being placed” is a scenario that most families dislike. More than 90% of families give a failing grade to the scenario of non-placement, while 90% give an excellent grade to placement in first preference. There is also a considerable decline in satisfaction in the hypothetical scenario where a participant is moved from their first to their last option.

¹³This is likely related to the context. In Peru, families were used to a competitive school admission process, albeit a decentralized one. In Ecuador, the previous admission system assigned students to the closest school, a less useful experience for forming beliefs on centralized admissions processes.

Figure 1: Main survey evidence



Notes: Panels (a), (b), and (c) show the differences between the subjective and true placement probabilities for the subset of applicants with placement risk > 0.01 . The subjective placement probability comes from the question “On a scale from 0 to 100, with what probability do you think that [applicant name] will obtain a spot in at least one of the [number of schools in ranking] schools in the ranking?” Panels (d), (e) and (f) represent the answer to the question “Why didn’t you add more schools to your application? (select the main reason)” for applicants with placement risk > 0.01 . Panels (g), (h), and (i) asked about the level of satisfaction for three scenarios: placed in first choice, last choice, and no placement (“If [applicant name] gets a spot in the following schools, from 1 to 20, how satisfied would you be?”). See Appendix Section D for details on the survey questions.

We added three survey components geared toward understanding the results of the information intervention. The first provides a sense of applicants' sophistication in a setting with a strategy-proof mechanism. Panels 2a to 2c show the proportion of respondents who answered correctly from the perspective of a user who knows how deferred acceptance works and reports his ranking truthfully. The first question asks "Imagine that you find a school that you like very much, even more than your first preference, but it has 100 applicants and 30 seats. What would you do?" The correct answer is to rank the school in first place, but most families (73% in Ecuador and 78% in Peru) answered they would add it below the current first preference or would not include it on their list. The second and third questions relate to the effect of adding more schools to the list. Seventy-nine percent and 75% of the applicants in Peru and Ecuador mistakenly said that this will decrease the chance of being placed in their first preference, while 55% and 54% answered correctly that it reduces overall placement risk.

A second novel insight comes from the (declared) inference that families make from schools that are popular. It seems that there is no consensus on the signal that generates high demand. We asked "If you find out that there is a school that many other families are applying to, but that you have not added to your list, you would say that:" Panels 2d to 2f show that Ecuadorian parents are more likely to answer "I don't know," and that in both cases, the proportion of parents who chose another option increases with the mother's education. Less than a third of respondents said that a popular school is probably a good school, while a similar proportion answered that its popularity provides no insights into the quality of the school.

Finally, the survey reveals that families are not well informed about the private options in their neighborhood. Panels 2h and 2g show that close to 40% of applicants have never heard of the largest private school within a radius of 3km of their home address. This proportion is around 60% when we asked about the closest private school. A random school in the area is less known than either of the latter two, as expected. Our benchmark of a high level of awareness is provided by the same respondents. Figure A2 shows that only 4% and 9% of the applicants have no knowledge of the first option on their ROL in Peru and Ecuador, while 9% and 30% have no knowledge of the third school. We also asked about a fake

school, to check the quality of the responses. Around 90% of applicants stated that they did not know about the school, and only 1% declared themselves to be familiar with it.

Families have an imperfect understanding of the deferred acceptance assignment mechanism. This is reflected in their declared strategies, which neither benefit their application nor the stated effects on their beliefs from hypothetical strategies. This is unsurprising given that 2021 was the first year in which the centralized mechanism was implemented. Applicants do not necessarily infer that a popular school is a good school, and have very limited knowledge about private options.

Figure 2: New Survey Evidence



Notes: Panels (a), (b), and (c) show the answers to three questions related to the understanding of the mechanism. The first bar (from top to bottom) represents the answer “I add it to my list in 1st preference” to the question “Imagine that you find a school that you like very much, even more than your first preference, but it has 100 applicants and 30 seats. What would you do?”. The second bar represents the answer “No” to “If you add more schools to your application, do you think the possibility of being assigned to your first preference decreases?”. The third bar represents the answer “Yes” to “If you add more schools to your application, do you think the non-placement probability decreases?”. Panels (d), (e), and (f) represent the answer to the question “If you found out that there is a school that many other families are applying to, but you haven’t added it to your list, what would you say about its quality that...”. Panels (g), (h), and (i) asked about the level of familiarity with four private schools (not available on the platform) located within 3km of their home address. See Appendix Section D for details on the survey questions.

4 Intervention design

The survey evidence suggests that there is scope for helping parents to form more accurate beliefs about their children’s chances of admission, and to become informed about neighborhood schooling options.¹⁴ We designed an information intervention that included feedback on admission chances following [Arteaga et al. \(2022\)](#), to which we also added a suggested list of schools that was tailored to each applicant based on their current application, grade, and geographic location.

Our intervention included a warning to applicants with a positive chance of non-assignment along with a list of suggested schools that parents could potentially add to the application. The implementation team drew best practices from past experiences in order to maximize the probability of success of the process. One relevant aspect was the need to tackle the optimism bias over placement chances. The process of warning families about the risk of non-placement created a communication channel where we could innovate. Based on the same costly search framework in [Arteaga et al. \(2022\)](#), we complemented the warning with information about alternatives that were not considered in the families’ initial ranking. This new information was intended to lower the search cost, potentially affecting the conformation of the final portfolio.

In practical terms, our research team worked with the MoE in both countries to identify applicants with a predicted probability of non-placement higher than 1% in 2021 for Ecuador and Peru, and 30% or higher for Peru in 2022. Before the end of the application process, we sent a communication—or what we call a warning—to these parents about the chance that their child might not being assigned to any of their choices.¹⁵ In addition to the warning, we randomly assigned one of three different report cards that contained the following information:

T_1 : Only warning

T_2 : Warning + list with 10 suggestions

¹⁴Survey evidence also shows the need to educate applicants on the consequences of a strategy-proof mechanism. Though beyond the scope of our intervention, future research might explore this topic.

¹⁵In Tacna, the warning was given four days before the end of the process, while in Manta, it was sent six days beforehand.

T_{3-2021} : Warning + list with 10 suggestions + information on popularity and congestion

T_{3-2022} : Warning + list with 3 suggestions

In theory, providing information about the available options (T_2 and both T_3) would reduce the application cost, inducing marginal applicants to add schools to their lists. Survey evidence shows that gathering information about a school is costly. Panels (a) to (c) of Appendix Figure A3 document that at least 84% of the respondents value information about a school’s academic performance, extracurricular activities, and infrastructure. Close to two-thirds also value references from other people about the schools, interviews with staff, and information on the school’s website or Facebook page. We also asked participants about how important they feel it is to have information on the families that attend the school. Around 45% of Peruvian and 60% of Ecuadorian respondents agreed that it is important.

Our intervention does not eliminate search costs entirely, but rather aims to facilitate the search process for families that marginally stopped looking for alternatives. The additional information in T_{3-2021} works in at least two potential ways. The popularity was designed to signal what other families like, which could potentially focus the search, or simply be used as an additional school attribute to consider. Congestion information could be employed as a tool to evaluate which schools would be safer to apply to, but also as a proxy for popularity. Since we did not randomize the allocation of popularity or congestion information, we are not able to differentiate their particular effects.

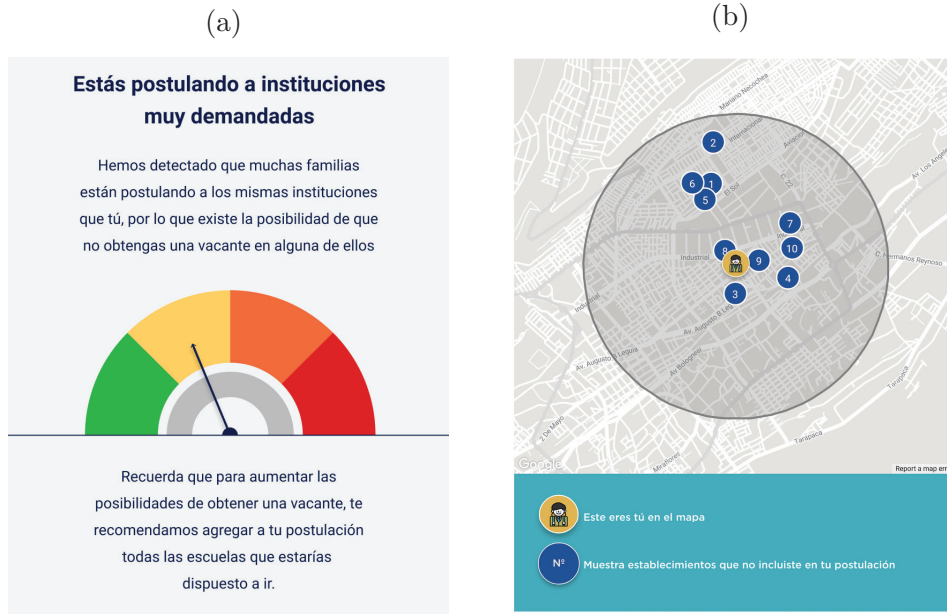
4.1 Details on inputs and construction

For the warning, we used the same message as [Arteaga et al. \(2022\)](#), adding a “fire rating” symbol to show the level of risk. Figure 3a shows the warning included in the report card. It displayed the following message (all treatment arms):

We have detected that many families are applying to the same schools as you, so there is the possibility that you will not be granted a spot in any of them.

Remember that to increase the chances of obtaining a spot, we recommend adding all the schools that you would be willing to attend to your application.

Figure 3: Report card extracts



Notes: Both panels are extracts from a report card sent to applicants with positive placement risk that were assigned to T_2 (warning + suggestion list). Panel (a) represents the non-placement warning while panel (b) shows the map of the 10 suggested schools that the applicant did not include in her ranking. The full report card is presented in Figure A4 in Appendix A.

The school suggestions for T_2 and T_{3-2021} consisted of a list of 10 schools that the student did not include in her initial ROL, while T_{3-2022} included only three schools. We built each personalized list by adding alternatives located as far as 3km from the declared home address. The 10 schools sent in T_{3-2021} included at least one popular *undersubscribed* school, one popular *oversubscribed* school, two non-popular *undersubscribed* schools with at least 5 applicants, and two non-popular *oversubscribed* schools with at least 5 applicants. To round out the 10 schools, we added random schools from the student’s neighborhood.

To create proxies of popularity, we used the applications collected at the time of the intervention. We classified schools according to the number of applications.

The minimum number to be considered “popular” was the number of applications received by the most demanded school with some available seats. This definition allowed us to classify at least one school as *undersubscribed* within the set of popular schools and, potentially, many oversubscribed schools.¹⁶ The process was conducted at a district level, meaning that only applicants from the district were considered for the definition of popularity within each specific geographic zone.

The information provided to families who received lists of suggested schools included the school’s name, the distance from the applicant’s address on the application form, and the levels of education offered.¹⁷ The Peruvian report card also included whether the school was single-sex or co-ed.

The information on popularity and congestion provided in T_{3-2021} incorporates two additional pieces of information for each of the 10 schools on the personalized suggestions list. The first was a discrete category called “popular,” which was based on the number of applications from the same district, as explained above. We displayed this on the report card as “High” or “Low” demand. The second additional component was the number of applicants and open seats available.¹⁸ Extracts of the report cards are shown in Figures 3a and 3b. The full report card is presented in Figure A4 in Appendix A.

4.1.1 Sample

Four days before the end of the process in Peru and six days in Ecuador, we used the total sample of filed applications accumulated up to that time to estimate the probability of non-placement for each participant. We randomly assigned applicants with a predicted non-placement probability of higher than 1% (in 2021) or

¹⁶We define a school as “oversubscribed” if the probability of a regular applicant being placed there is less than 100%, which is equivalent to having more demand than seats. A school is “undersubscribed” if every potential applicant to the school can be placed there. We follow the same procedure as in [Arteaga et al. \(2022\)](#) to obtain the placement probabilities for each school.

¹⁷For Ecuador, the report card explicitly showed which educational levels were offered at the school (Inicial, EGB, and Bachillerato, which correspond to preschool, elementary, and high school, respectively). For Peru, this information was limited to whether or not the school was classified as integrated (integrado), meaning that it offered both preschool and some higher levels of education (e.g., preschool + elementary or preschool + elementary + high school).

¹⁸The number of applicants corresponds to the mean of the number of admitted plus waitlisted students from 500 simulations of the assignment based on the current demand. In this case, we did not differentiate from the applicant’s geographic origin, we included all applicants.

30% (in 2022) to one of the three treatments. We then sent a message through the WhatsApp mobile application that included a link to the report card containing the warning and, for T_2 and T_{3-2021} , the list of suggested schools.¹⁹ In Peru 2021 and 2022, we also sent a separate WhatsApp message related only to the warning right before the link to the report card.

In Peru in 2021, the online platform allowed only one submission attempt per applicant. The authorities provided families assigned to the treatment group with additional access to log in and modify their applications.

Columns 2, 5, and 8 of Table 1 describe the RCT sample population for Ecuador and Peru, with all choice participants exhibiting some level of placement risk. We intended to treat 51% of the applicants in Ecuador, 25% in 2021 Peru and 39% in 2022 Peru, reflecting a more congested pre-intervention scenario in the first setting. The lower proportion of intended recipients of the treatment in Peru in 2021 vs. 2022 is partially explained by the fact that in 2021 we treated only students applying to PPK and grade 1.²⁰ Compared to the average student, applicants assigned to the treatment group filed shorter pre-intervention portfolios and were likelier to belong to the largest districts, namely Tacna in Peru and Manta in Ecuador.

4.2 Delivery of information and treatment take-up

We used the WhatsApp messaging app to distribute the links to the report cards with the information for each treatment arm.²¹ In our first message, we told parents that we had information about the application to share with them, and asked if they were interested. For those that answered positively, in Peru, we sent a warning about the chances of non-placement followed by a link to the personalized report card. In Ecuador, we only sent the link.²²

¹⁹In Ecuador 2021 and Peru 2021, we also sent the link to the report card by email. A full description of outreach strategies is presented in Table A1 in Appendix B.

²⁰PK and K both had low congestion levels in Peru across both years. Since the number of potentially treated applicants was small, we decided not to implement the intervention in those grades.

²¹In both countries in 2021, we also sent the information by email. Table A1 contains a summary of the interventions and channels.

²²The warning message was included in the report card in both countries. The difference was that in Peru, we also sent it as a separate WhatsApp message. For more details on the messages,

Table 2 presents the main statistics on the intention to treat and messaging reception. Panel B shows that WhatsApp messaging was more effective in Peru. We sent an introductory message to 100% of the applicants assigned to the treatment, and 89% of them read it in the 2021 version and 92% in the 2022 version.²³ In Ecuador, we sent WhatsApp messages to only 22% of the targeted population, and 90% read them.²⁴

All applicants who replied to the initial message were sent a link to the report card (panel D), which was preceded by an initial warning message in the case of Peru (panel C). Panels B and C of Table 2 reveals that 69% and 86% of the 2021 and 2022 Peruvian applicants assigned to the treatment received the warning message and a link to the report card, while only 19% of Ecuadorian applicants received the message with the link. The proportion of parents who read the message related to the report card is very similar to the sent rate since this group had already replied to our introductory message.

In the 2021 Peru and Ecuador admission processes, we also sent the link to the report card by email (panel A), a strategy that we did not use in Peru in 2022. The last row of Panel D in Table 2 shows that the proportion of the population that viewed the report card was 43, 63, and 53% for 2021 Ecuador, 2021 Peru, and 2022 Peru, respectively. In the case of Ecuador, this outreach would not have been possible without the outreach by email, as clearly seen in the second row of Panel D in Table 2, which shows the mean proportion of applicants who did not receive the WhatsApp message but still opened the report card: 36% and 46% in 2021 Ecuador and Peru and just 5% in 2022 Peru.

5 Choice behavior and choice outcomes

Survey evidence shows that applicants have imperfect knowledge about the options around them, and are overly optimistic about their admission chances. An information intervention could therefore play a potentially relevant role in this

the original text, and translations to English, see Appendix C

²³A particular feature of the WhatsApp messaging app is that it provides insights into message status since it distinguishes between messages that have been sent, delivered, and read.

²⁴The low rate of messaging in the Ecuadorian context was not by design but rather the result of implementation difficulties.

Table 2: Take-up of WhatsApp Messages and Report Card

| | (1) | (2) | (3) | (4) | (5) | (6) | (7) | (8) | (9) | (10) | (11) | (12) | |
|---|--------------|-----------|-------|-------|-----------|-----------|-------|-------|-----------|-----------|-------|-------|---|
| | Ecuador 2021 | | | | Peru 2021 | | | | Peru 2022 | | | | |
| | In RCT | Treatment | | | In RCT | Treatment | | | In RCT | Treatment | | | |
| | | T_1 | T_2 | T_3 | | T_1 | T_2 | T_3 | | T_1 | T_2 | T_3 | |
| <i>A. Email with link to report card</i> | | | | | | | | | | | | | |
| Sent | | 1 | 1 | 1 | 1 | 1 | 1 | 1 | 1 | 0 | 0 | 0 | 0 |
| <i>B. WhatsApp introduction</i> | | | | | | | | | | | | | |
| Sent | 0.22 | 0.21 | 0.21 | 0.25 | 1.00 | 1.00 | 1.00 | 1.00 | 1.00 | 1.00 | 1.00 | 1.00 | |
| Delivered | 0.21 | 0.20 | 0.19 | 0.25 | 0.92 | 0.94 | 0.93 | 0.91 | 0.96 | 0.96 | 0.96 | 0.96 | |
| Read | 0.20 | 0.19 | 0.18 | 0.23 | 0.89 | 0.90 | 0.88 | 0.88 | 0.92 | 0.92 | 0.92 | 0.92 | |
| <i>C. WhatsApp warning</i> | | | | | | | | | | | | | |
| Sent | 0.00 | 0.00 | 0.00 | 0.00 | 0.69 | 0.68 | 0.72 | 0.67 | 0.86 | 0.85 | 0.88 | 0.86 | |
| Delivered | 0.00 | 0.00 | 0.00 | 0.00 | 0.69 | 0.68 | 0.72 | 0.67 | 0.86 | 0.85 | 0.88 | 0.86 | |
| Read | 0.00 | 0.00 | 0.00 | 0.00 | 0.66 | 0.66 | 0.68 | 0.65 | 0.83 | 0.83 | 0.84 | 0.81 | |
| <i>D. WhatsApp with link to report card</i> | | | | | | | | | | | | | |
| Sent | 0.19 | 0.18 | 0.16 | 0.22 | 0.69 | 0.68 | 0.72 | 0.67 | 0.86 | 0.85 | 0.88 | 0.86 | |
| Delivered | 0.19 | 0.18 | 0.16 | 0.22 | 0.69 | 0.68 | 0.72 | 0.67 | 0.86 | 0.85 | 0.88 | 0.86 | |
| Read | 0.17 | 0.17 | 0.14 | 0.19 | 0.66 | 0.66 | 0.68 | 0.65 | 0.83 | 0.83 | 0.84 | 0.81 | |
| <i>E. Opened link of report card (Google Analytics)</i> | | | | | | | | | | | | | |
| Obs. with link sent by WhatsApp | 0.76 | 0.73 | 0.79 | 0.77 | 0.71 | 0.66 | 0.72 | 0.75 | 0.53 | 0.56 | 0.48 | 0.53 | |
| Obs. without link sent by WhatsApp | 0.36 | 0.32 | 0.35 | 0.41 | 0.46 | 0.48 | 0.44 | 0.46 | 0.05 | 0.04 | 0.04 | 0.07 | |
| All | 0.43 | 0.39 | 0.42 | 0.49 | 0.63 | 0.60 | 0.64 | 0.65 | 0.46 | 0.48 | 0.43 | 0.47 | |
| N | 2,021 | 676 | 673 | 672 | 1,708 | 568 | 572 | 568 | 1,140 | 377 | 380 | 383 | |

Notes. All statistics are proportion in the population defined by the column header. Panels A to C show the mean of the status for the three WhatsApp messages. “Sent” means that we tried to reach the applicant, “delivered” that the applicant received the message on his app, while “read” that the applicant saw de message. Every message that is read is also delivered and sent, and every message that is delivered is also sent. “WhatsApp introduction” (Panel A) is the first message we sent to families, asking if they want to receive information about the application. “Whatsapp introduction” is the message in which we invited the families to recieve more information about their application. We sent additional messages only to applicants who answered positively to the initial message. “WhatsApp warning” (Panel B) is the message that contained the alert about the placement risk and a recommendation to add more schools. “WhatsApp with link to the report card” (Panel C) was sent after the previous one, and had the hyperlink to the personalized information treatment. Panel D shows the proportion of students that opened the link. The first row (“Link sent by WhatsApp”) is conditional on the report card link being delivered through WhatsApp, the second on not being delivered, while the third row is unconditional. The link was also sent by email in Ecuador 2021 and Peru 2022, but we do not have data on reception status.

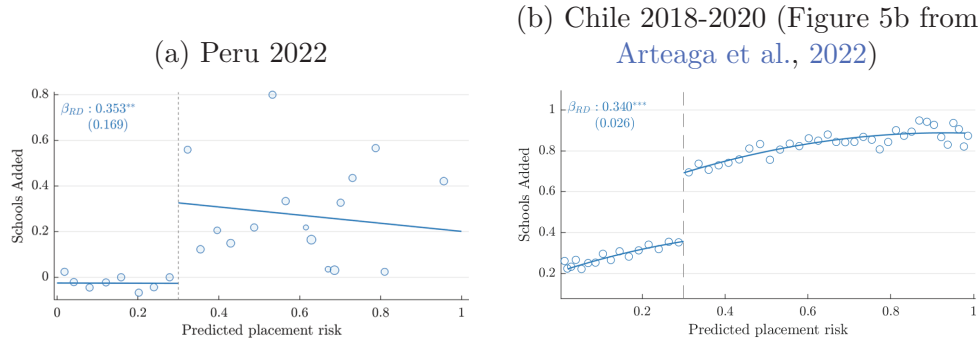
setting. In theory, a non-placement warning reduces the under-search behavior by correcting the biased beliefs on admission probabilities. Meanwhile, providing alternative options reduces the search cost. Both interventions should affect the construction of the rank-ordered list. In this section, we present the results from warning messages and the randomly assigned information intervention (T_2 and T_{3-2021} and T_{3-2022}), compared to the basic report card (T_1), which does not contain the suggestion list.

Our survey evidence also suggests a channel that can potentially reduce the response to our intervention. A meaningful proportion of families have incorrect beliefs about the impact of adding a new school on the placement probabilities of alternatives they have already considered, which could lead to them not adding more schools to the list. Furthermore, many families do not make inferences regarding a school’s quality based on its popularity, potentially making the information provided in T_{3-2021} less useful.

First, we document that the warning affects parent behavior. Figure 4 shows the regression discontinuity plots for 2022 Peru and for ? Chilean pooled sample from 2018 to 2020 (Figure 5b in their paper). The horizontal axis represents the predicted placement risk (probability of non-placement), the metric used to assign the warning message in both contexts. Only applicants with a risk level higher than 30% received a warning. We observe a discontinuous behavior, reflected in applicants to the right of the threshold adding more schools.²⁵

²⁵There are differences between the two studies in terms of the channel used to deliver the non-placement warning. The plot from [Arteaga et al. \(2022\)](#) represents a message shown in a pop-up on the application platform, displayed as families prepared to submit their applications, while in the case of 2022 Peru, the warning took the form of a WhatsApp message. The levels of precision in Figure 4 also obviously differ. Figure 5b from [Arteaga et al. \(2022\)](#) was built using considerably more observations.

Figure 4: Schools added RD



Notes: Binned means and global fits of schools added after the information campaign by predicted risk for the pre-campaign application. The non-placement warning was assigned only to applicants with a predicted risk higher than 0.3 (30%), as indicated by the vertical dashed line.

Second, we test the causal effect of providing school suggestions on a sample that is restricted in two ways with respect to the universe of applicants. First, the sample includes only applicants with elevated placement risk,²⁶ and therefore all treated applicants received a report card with a non-placement warning. Second, we limit our sample analysis to applicants who opened the report card. We define this group as the compliers to the information campaign. This was possible as all applicants received a link to a report card, regardless of whether or not they were assigned to the additional treatment that included a suggestion list. We do not find different selection into the analysis sample between T_1 –our “control”– and the other treatments.

First, we focus our analysis on the differential behavioral response between applicants who received the suggestion list of ten schools (T_2) and those who did not see such a list on the report card (T_1). Since we implemented T_2 on all three contexts, we can pool the individual samples to calculate aggregate results. In column 1 of Table 3 we compare the pre-treatment and post-treatment ROLs for the sub-sample to which we assigned the basic version of the report card with no suggested schools (T_1).²⁷ Column 2 reports the differential effect of the

²⁶That is, applicants with predicted placement risk > 0 for the 2021 school choice processes and applicants with predicted risk > 0.3 for the 2022 Peru admission process.

²⁷This is not an estimated causal effect of the warning. We maintain, however, that our

information added in treatment T_2 (suggestion of 10 schools) on the changes in the pre- and post-intervention ROLs compared to T_1 .

We observe a marginally significant effect on the number of schools added. Applicants that receive the lists add, on average, 23% more schools to their list. Students assigned to T_2 are more likely to include schools from the list. When we don't show the list, 12% of the families add a school from what could have been their list. When we show it, 19% of the applicants add at least one suggestion. We can't rule out a null effect on the type of school added. Despite our point estimates for "Add popular" school or "Add congested" school are positive, they are imprecise.

Now we look at the results by implementation country/year. In this analysis, we consider the effect of treatments T_3 that are specific to each implementation year. In columns 1, 4, and 7 of Table 4 we compare the pre-treatment and post-treatment ROLs for the sub-sample to which we assigned the basic version of the report card with no suggested schools (T_1). Columns 2, 3, 5, 6, 8, and 9 report the differential effect of the information added in treatments T_2 and $T_{3,2021}$ and $T_{3,2022}$ on the changes in the pre- and post-intervention ROLs compared to T_1 .

Columns 1 to 3 show the effect on Ecuador. The first column indicates that 10% of the applicants who opened a report card with a non-placement warning added at least one school to their list. On average, these families extended their portfolios by 2.4 schools. Columns 2 and 3 show that there is no statistically significant effect of providing school suggestions in the context of Ecuador.²⁸

Columns 4 to 6 report the response in the Peruvian 2021 context. One-third of the families that opened our link added a school to their application. In this case, we observe a statistically significant differential effect between applicants assigned to treatments T_1 and treatments with suggestion lists. Applicants who received the school suggestion list (T_2 and T_{3-2021}) were more likely to add a school from

contribution comes from the marginal effect of the list of suggested schools. We are interested in comparing subgroups that were *all* exposed to the warning, but to which we randomly assigned differing levels of information (T_2 and T_3). See [Arteaga et al. \(2022\)](#) for experimental and quasi-experimental evidence on the effect of the warning.

²⁸There are two marginally statistically significant results. First, applicants assigned to T_{3-2021} added fewer schools, which could imply a negative effect of providing too much information. Second, the same population is more likely to not add schools that are not on the list.

Table 3: RCT Results: Effect of Suggestions on Application Outcomes.

| Country | (1) | (2) |
|---------------------------------|------------------|---------------------|
| | Combined | |
| Intervention | T_1 | T_2 |
| | Warning | + list (10) |
| | (base) | (diff.) |
| <i>A. Choice behavior</i> | | |
| Add any school | 0.207 (0.014) | 0.028 (0.020) |
| Number of schools added | 0.540 (0.045) | 0.124* (0.075) |
| Add popular | 0.153 (0.012) | 0.026 (0.018) |
| Add congested | 0.192 (0.014) | 0.017 (0.019) |
| <i>B. Add schools from list</i> | | |
| Add from list (10) | 0.117 (0.011) | 0.069*** (0.017) |
| Add outside list (10) | 0.180 (0.013) | -0.028 (0.018) |
| Add popular from list (10) | 0.094 (0.013) | 0.028** (0.014) |
| Add congested from list (10) | 0.169 (0.015) | 0.045** (0.019) |
| Placed in list (10) | 0.127 (0.015) | 0.005 (0.019) |
| Enrolled in list (10) | 0.234 (0.019) | -0.003 (0.023) |

Notes. This table shows the aggregate effect of the information intervention on the applicants. Column 1 compares the portfolios before and after treatment for all applicants that were assigned to T_1 : warning message but no suggestion's list. Column 2 shows estimates of the differential effect of showing a list of 10 suggested schools in addition to the warning (T_2) compared to only showing the warning (T_1). "list (10)" is the list of 10 suggestions. The sample considers only applicants that opened the link to the report card.

Table 4: RCT Results: Effect of Suggestions on Application Outcomes by implementation country/year.

| Country | (1) | (2) | (3) | (4) | (5) | (6) | (7) | (8) | (9) |
|--|------------------|-------------------|----------------------------|------------------|---------------------|----------------------------|------------------|-------------------|---------------------|
| | Ecuador 2021 | | | Peru 2021 | | | Peru 2022 | | |
| | T_1 | T_2 | T_{3-2021} | T_1 | T_2 | T_{3-2021} | T_1 | T_2 | T_{3-2022} |
| Intervention | Warning | + list (10) | + list (10) | Warning | + list (10) | + list (10) | Warning | + list (10) | + list (3) |
| | (base) | (diff.) | + info pop/cong (diff.) | (base) | (diff.) | + info pop/cong (diff.) | (base) | (diff.) | (diff.) |
| <i>A. Choice behavior</i> | | | | | | | | | |
| Add any school | 0.097 (0.018) | 0.005 (0.025) | -0.011 (0.023) | 0.337 (0.026) | 0.048 (0.036) | 0.034 (0.036) | 0.134 (0.025) | 0.011 (0.038) | 0.066* (0.038) |
| Number of schools added | 0.242 (0.053) | 0.109 (0.117) | -0.112* (0.062) | 0.896 (0.087) | 0.123 (0.126) | 0.004 (0.118) | 0.330 (0.079) | 0.119 (0.144) | 0.163 (0.171) |
| Add popular | 0.052 (0.013) | -0.001 (0.019) | -0.023 (0.016) | 0.253 (0.024) | 0.057* (0.034) | -0.020 (0.033) | 0.121 (0.024) | -0.008 (0.035) | 0.037 (0.036) |
| Add congested | 0.086 (0.017) | -0.006 (0.023) | -0.021 (0.022) | 0.311 (0.025) | 0.034 (0.035) | 0.014 (0.035) | 0.134 (0.025) | 0.004 (0.037) | 0.049 (0.038) |
| <i>B. Add schools from list</i> | | | | | | | | | |
| Add from list (10) | 0.082 (0.017) | 0.005 (0.024) | -0.009 (0.022) | 0.186 (0.021) | 0.126*** (0.032) | 0.095*** (0.032) | 0.039 (0.015) | 0.047* (0.026) | |
| Add from list (3) | | | | | | | 0.011 (0.008) | | 0.050*** (0.019) |
| Add outside list (10) | 0.064 (0.015) | -0.012 (0.020) | -0.036** (0.017) | 0.303 (0.025) | -0.050 (0.034) | -0.069** (0.033) | 0.127 (0.024) | -0.022 (0.035) | |
| Add popular from list (10) | 0.033 (0.011) | 0.005 (0.016) | -0.011 (0.014) | 0.071 (0.014) | 0.031 (0.021) | 0.005 (0.020) | 0.018 (0.010) | 0.038* (0.020) | |
| Add congested from list (10) | 0.071 (0.016) | -0.022 (0.020) | -0.021 (0.020) | 0.145 (0.019) | 0.085*** (0.029) | 0.070** (0.029) | 0.034 (0.014) | 0.039 (0.024) | |
| <i>C. Assignment and Enrollment Outcomes</i> | | | | | | | | | |
| Placed in list (10) | 0.241 (0.026) | -0.018 (0.035) | -0.018 (0.034) | 0.055 (0.013) | 0.030 (0.019) | 0.010 (0.018) | | | |
| Enrolled in list (10) | 0.376 (0.028) | -0.044 (0.040) | -0.046 (0.037) | 0.138 (0.019) | 0.031 (0.027) | 0.012 (0.027) | | | |

Notes. This table shows the effect of the information intervention on the applicants of Ecuador 2021 (columns 1 to 3) and Peru (columns 4 to 9). Columns 1, 4 and 7 compare the portfolios before and after treatment for all applicants that were assigned to T_1 : warning message but no suggestion's list. Columns 2, 5 and 8 show estimates of the differential effect of showing a list of 10 suggested schools in addition to the warning (T_2) compared to only showing the warning (T_1). Columns 3 and 6 show estimates of the differential effect of showing a list of suggested schools with information on popularity and congestion in addition to the warning (T_{3-2021}) compared to only showing the warning (T_1). Column 9 show estimates of the differential effect of showing a list of 3 suggested schools in addition to the warning (T_{3-2022}) compared to only showing the warning (T_1). "list (10)" is the list of 10 suggestions, while "list (3)" is the list of 3 suggestions. "info pop/cong" refers to the additional information on popularity and congestion showed for each school in the list. The sample considers only applicants that opened the link to the report card.

the list. Columns 5 and 6 suggest that the list of schools also shifted preferences toward the suggested options. The proportion of applicants who added schools from the list was 68% (13 pp) higher in T_2 , and 51% (or 10pp) higher in T_3 .

If we examine the type of school families add, we observe no significant differential effect between T_2 and T_{3-2021} for 2021 Peru.²⁹ This suggests that either the extra information on congestion and popularity is not a relevant input for families, or that they are already aware of these characteristics and thus the information is not new to them.

If we look at the effect one year later (2022 Peru, columns 8 and 9), we observe that families who did not receive suggestion lists added fewer schools than families with the list, but our estimates are not precise to reject zero effect. This result can be partially explained by the fact that they did not receive the warning message on the report card (see Table A1). We observe that suggestion lists of varying lengths (3 or 10 schools) have a similar effect on the proportion of applicants that add a school from the suggestion list: T_2 increased the proportion of families that added schools from the list by 120% (or 5pp), the same absolute magnitude as the effect of T_{3-2022} . We also observe a marginally significant effect of the short suggestion list on the proportion of families that add at least one school. The proportion of applicants that added a new school to their portfolio increased by 49% (or 7pp) when they were assigned to the list of three suggestions compared to when they did not receive a list of suggestions.³⁰

Panel C of Table 4 shows that applicants who received suggestion lists are no more likely to be placed or enrolled in one of the schools on the list.

Although the treatments affect search, we find no significant differences in the observable characteristics of the assigned schools across different treatments. One hypothesis is that applicants who did not receive the suggestions could find schools as easily as their peers who did receive them. If this is the case, the intervention may still help treated applicants to decrease the search costs faced by families at almost zero marginal cost.

²⁹Table A2 in Appendix B show the estimates for the differential effect of T_3 versus T_2 .

³⁰Treatments T_{3-2022} and T_1 also differ in that the former included the warning message in the report card, while the latter did not (see Table A1 for details).

5.1 Discussion

Despite being relatively similar interventions, the results from the three contexts (2021 Ecuador and Peru and 2022 Peru) somewhat differ. Four factors may help to understand these differences. First, the implementation of the information campaigns and the application systems were not identical. Second, the availability of options may have also played a role. Third, the underlying cultural differences between Peru and Ecuador could shape the behavioral response, as noted in Section 2. Finally, a minor change was made to the school choice process in Peru between 2021 and 2022.

Our intervention in Ecuador differed in two key respects. First, the WhatsApp conversation did not include a separate warning on the placement risk (see Table 2). While the warning message was included in the report card in every context, it was arguably more salient to families who received it as a separate WhatsApp message, as was the case for both years in Peru. The report card contained information about the current application, the warning, and the suggested list, which may have been an overload of information for many applicants.³¹ Second, implementation issues meant that we were only able to reach around 22% of families on WhatsApp, which may have affected the precision of our estimates.

Another difference between the two countries that may have shaped the results is the density of schooling options. As discussed in Section 2, Ecuadorian applicants had a lower density of local schooling options to choose from (see Table 1 or Figure 3b). Thus, information about all available local options may have been easier to collect. Table 4 shows that, of the participants who added a school and were *not assigned* the suggestion list (T_1), 86% of the Ecuadorian applicants added a school from our list, a figure that was 55% and 33% for 2021 and 2022 Peru. Since Ecuadorian applicants were already choosing schools from the list without us revealing this information to them, the potential effect of showing the list was constrained to a much smaller population than in Peru.

There are also significant differences in the choice culture in Ecuador and Peru. Families in Ecuador have historically had no choice as to where their children go to

³¹There is an emerging literature on people’s limited capacity to pay attention to all the potential attributes in the choice process, and efforts have been made to incorporate this into economic models. See [Gabaix \(2019\)](#) for a review.

school. Rather, the latter are centrally assigned to the nearest establishment. We do observe baseline differences in application behavior. The first portfolio that families submitted (i.e., before our intervention) was 42% shorter in Ecuador. In contrast, Peru has historically had a decentralized choice system in which families need to apply directly to schools, such that they are already accustomed to searching for schools. In our model, this could be interpreted as the population has a lower search cost, which would make them more likely to react to changes in their beliefs.

Lastly, one detail may help to understand the differences between years in Peru. The application process changed subtly between 2021 and 2022: in the first year, applicants could only apply once, with no opportunity to modify their application. When we sent our report cards, the platform granted special access to the families we reached with our intervention. In the 2022 version, all applicants could return to the platform and modify their respective lists of schools.

5.2 Survey results

We evaluated whether the additional suggestion lists (in T_2 , T_{3-2021} and T_{3-2022}) and the information on popularity and congestion (T_{3-2021}) impacted subjective measures captured by our survey of applicants. We find evidence related to the perception of the application process: applicants that received suggestion lists in 2021 Peru were less likely to say that it was hard to search for schools. In 2022 Peru, students assigned to T_2 or T_{3-2022} were more likely to declare that they received the warning message. This is consistent with the implementation, since families in T_1 only received the warning through WhatsApp, and not in the report card.³²

Another statistically significant result (at the 1% level) indicates that applicants in Ecuador assigned to T_2 rated the quality of the “Information about schools available on the application platform” lower than other groups. We interpret this result with caution. First, the treatment is not directly related to the information available on the platform. Second, the result does not hold for T_{3-2021} . Third, we are testing 16 hypotheses in Table A3, meaning there are high chances of a type

³²See Table A1 for details on the contents of each treatment.

I error.

The treatments had no effect on the declared satisfaction with hypothetical placement results (Panel B). Our intervention did not aim to promote changes in the first preference, but we did expect to have an effect on the preference vis-à-vis the lowest-ranked option, since the invitation was to “add more schools to the list.” Applicants that received the suggestion lists did not declare a lower level of satisfaction with the schools chosen at the bottom of the rank-order list.

Our treatment affected participants’ level of knowledge of the schools. We asked them to rate their knowledge of five schools out of the ten listed in the report card. Peruvian applicants in 2021 who did not receive the list (T_1) declared that they were aware of 36% of the schools. For students assigned to T_2 , this proportion increases by 14pp, equivalent to being aware of 0.7 more schools listed on the report card. There is an opposite effect in Ecuador, but with half the magnitude: students assigned to T_2 are less likely to declare that they are aware of the schools.³³

6 Conclusions

This paper builds on [Arteaga et al. \(2022\)](#) and shows that inaccurate beliefs about admission probabilities extend to the contexts of Manta, Ecuador and Tacna, Peru. Motivated by their framework, in which searching for schooling options is costly and choice participants hold biased beliefs, we implemented a warning strategy and designed a new information intervention that included school suggestions tailored to applicants with positive non-placement probabilities. We find that the new information has a causal effect on search, increasing the number of schools added to the list, and shifting preferences towards the suggested schools.

The goal of the information intervention was to test the effect of providing personalized school suggestions together with a non-placement warning message. The theoretical framework suggests that lowering the cost of searching for new alternatives should affect choice behavior. The main implications of providing a list of suggested schools are two. First, they can reduce search costs, increasing the number of schools added. Second, it can shift preferences, increasing the

³³For further details, see Panel C of Table [A3](#).

likelihood of adding the suggested schools, and potentially inducing changes in the search process. An additional implication is that this result is both context- and implementation-dependent. We test the effect of the suggestions in different regions of Ecuador and Peru, observing a shift in preferences only in the Peruvian context.

These findings shed light on the need to help applicants understand centralized choice before and during the application process with better information. Our survey evidence showed a clear misunderstanding of the rules of the assignment mechanism, reflected in sub-optimal declared strategies and incomplete knowledge about the available options.

The interventions also provide additional insights: communication channels and content matters. Where it was possible to communicate through WhatsApp, the messages were more effective than by email. Furthermore, the 2022 Peru implementation reveals that it is better to provide information using more than one channel. Applicants that received an additional warning message on the report card were more likely to respond than the families that received it only via WhatsApp.

We conclude that understanding the local context together with effectively designing platforms and carefully selecting the information they contain can shift search and choice behavior and should be seen as important aspects in the creation of centralized choice policy.

References

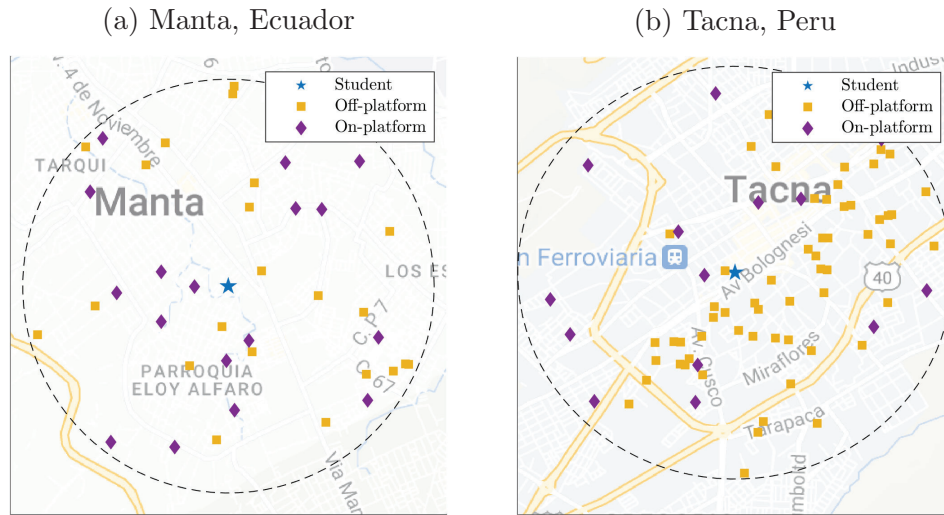
- Agarwal, Nikhil and Eric Budish**, “Market Design,” Working Paper 29367, National Bureau of Economic Research October 2021.
- Ajayi, Kehinde and Modibo Sidibe**, “School Choice Under Imperfect Information,” *SSRN Electronic Journal*, 2020.
- Allende, Claudia**, “Competition Under Social Interactions and the Design of Education Policies,” Job Market Paper 2019.

- , **Christopher Neilson**, and **Francisco A. Gallego**, “Approximating the Equilibrium Effects of Informed School Choice,” Technical Report 628 2019.
- Andrabi, Tahir, Jishnu Das, and Asim Ijaz Khwaja**, “Report Cards: The Impact of Providing School and Child Test Scores on Educational Markets,” *American Economic Review*, June 2017, 107 (6), 1535–1563.
- Arteaga, Felipe, Adam J Kapor, Christopher A Neilson, and Seth D Zimmerman**, “Smart Matching Platforms and Heterogeneous Beliefs in Centralized School Choice,” *The Quarterly Journal of Economics*, August 2022, 137 (3), 1791–1848.
- Balarin, María, Clara Fontdevila, Paola Marius, and María Fernanda Rodríguez**, “Educating on a Budget: The Subsistence Model of Low-Fee Private Schooling in Peru,” *Education Policy Analysis Archives*, October 2019, 27, 132–132.
- Elacqua, Gregory, Isabel Jacas, Thomas Krussig, Carolina Méndez, and Christopher Neilson**, “What They Want or Where They Live: A Welfare Comparison of Coordinated Assignments Focused on Location vs Choice in the Case of Ecuador,” Technical Report 2022.
- , – , – , – , – , **Alonso Roman, and Sammara Soares**, “Centralized Student Assignment Systems: Implementation Guide.,” Technical Report, Inter-American Development Bank 2022.
- Gabaix, Xavier**, “Behavioral Inattention,” in “Handbook of Behavioral Economics: Applications and Foundations 1,” Vol. 2, Elsevier, 2019, pp. 261–343.
- Hastings, Justine S. and Jeffrey M. Weinstein**, “Information, School Choice, and Academic Achievement: Evidence from Two Experiments,” *The Quarterly Journal of Economics*, November 2008, 123 (4), 1373–1414.
- Kapor, Adam J., Christopher A. Neilson, and Seth D. Zimmerman**, “Heterogeneous Beliefs and School Choice Mechanisms,” *American Economic Review*, 2020.

Neilson, Christopher, “The Rise of Centralized Choice and Assignment Mechanisms in Education Markets Around the World,” Technical Report, Princeton Economics 2019.

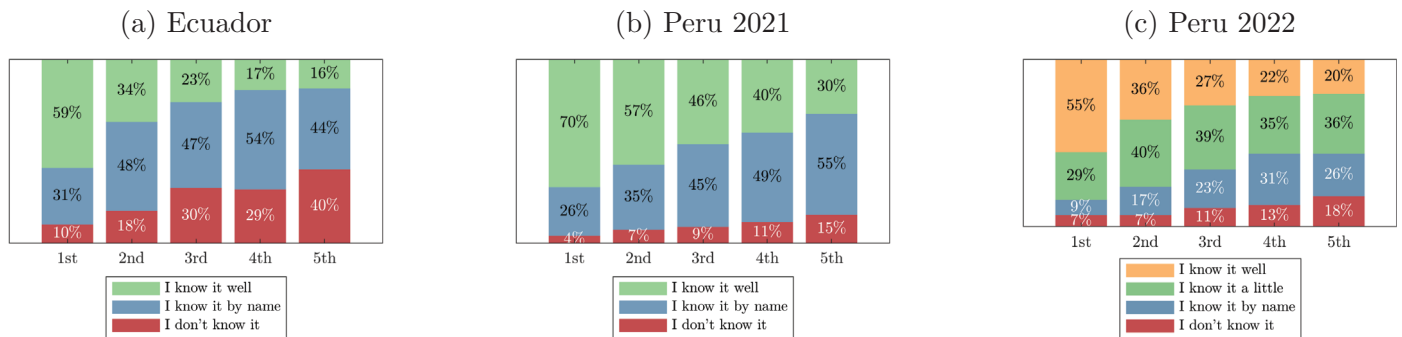
A Additional Figures

Figure A1: Schooling options in a 2km radius from the city center



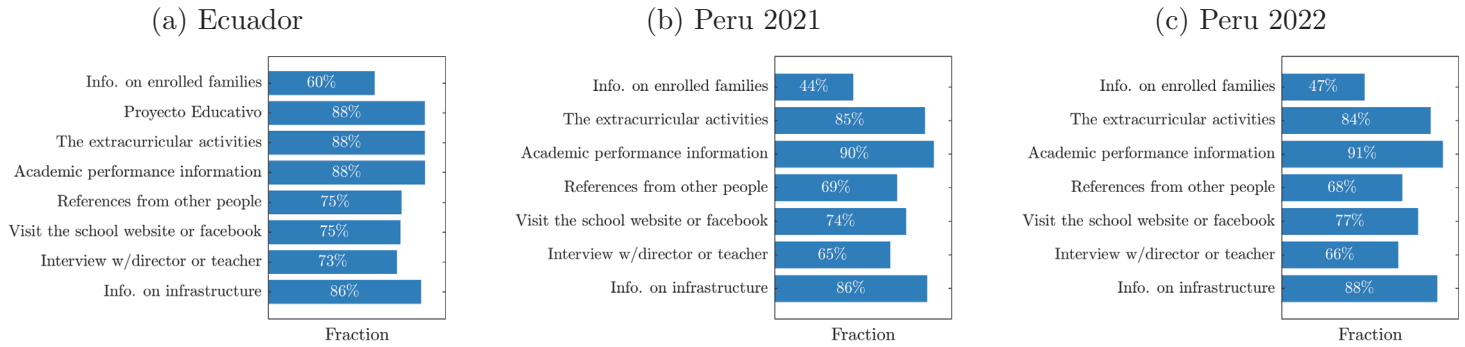
Notes: The star in Panels (a) and (b) reflect the location of the median student, around which the 2 km radius is drawn. The squares and diamonds represent the on-platform and off-platform schooling options within that radius.

Figure A2: Knowledge About Options in Application



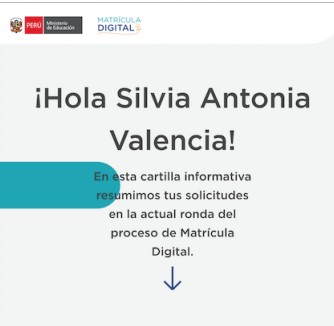
Notes: Panels (a) to (c) show the level of knowledge of the schools in the application (question 6 in appendix D.)

Figure A3: Necessary Steps for Learning about a School



Notes: Panels (a) to (c) show the answer to the question of the necessary steps for learning about a school (question 4 in appendix D.)

Figure A4: Report card example of T_2 for Peru 2022



iHola Silvia Antonia Valencia!

En esta cartilla informativa resumimos tus solicitudes en la actual ronda del proceso de Matrícula Digital.

↓

HECTOR DANIEL

Resumen de tu postulación

2 son los colegios que postulaste | 1 colegio postulados están a menos de 2 km de tu casa | 0 de los colegios postulados son integrados

Estos son los establecimientos a los que postulaste


| NOMBRE DE ESCUELA | DISTANCIA | INTEGRADA | GÉNERO |
|--|-----------|--------------------------|--------|
| 1. I.E. 43001 Hermanos Barreto Calle Alto De Lima 1221 Tacna | 1.2 km | <input type="checkbox"/> | MIXTO |
| 2. I.E. 42011 Republica Argentina Calle Chiclayo 310 Tacna | 2.5 km | <input type="checkbox"/> | MIXTO |

INTEGRADA *
Una escuela se considera integrada si ofrece más de un nivel educativo, es decir una escuela que ofrezca: educación inicial y primaria, educación primaria y secundaria o educación inicial, primaria y secundaria.

Has elegido colegios muy demandados

Hemos detectado que muchas familias han elegido los mismos colegios que tú.

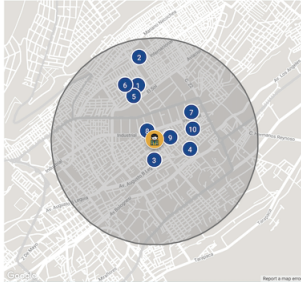
Estos colegios no cuentan con vacantes suficientes para todos. Por lo tanto, existe la posibilidad de que no obtengas una vacante en ellos.



Para aumentar las posibilidades de obtener una vacante, agrega a tu solicitud a todos los colegios a los que estarías dispuesto a ir.

Hemos encontrado algunos colegios que podrían interesarte

En el siguiente mapa puedes ver la ubicación de los colegios en tu zona.



Este eres tu en el mapa

Muestra establecimientos que no incluye en tu postulación

Compara algunas alternativas de escuelas que podrías agregar a tu lista

| NOMBRE DE ESCUELA | DISTANCIA | INTEGRADA | GÉNERO |
|--|-----------|-------------------------------------|--------|
| 1. I.E. 42198 Victor Raul Haya De La Torre Avenida Aviacion S/N Alto de La Alianza | 1 km | <input type="checkbox"/> | MIXTO |
| 2. I.E. 42218 Mariscal Cáceres Avenida Internacional 1249 Ciudad Nueva | 1.5 km | <input checked="" type="checkbox"/> | MIXTO |
| 3. I.E. 42005 Jose Rosa Ara Jose Rosa Ara 1840 Tacna | 0.5 km | <input type="checkbox"/> | MIXTO |
| 4. I.E. 42012 Rebeca Martínez De Sanchez Avenida Celestino Vargas 2330 Tacna | 0.7 km | <input type="checkbox"/> | MIXTO |
| 5. I.E. Guillermo Auzá Anco Avenida El Sol S/N Alto de La Alianza | 0.8 km | <input checked="" type="checkbox"/> | MIXTO |
| 6. I.E. 42088 Doce Jose De San Martín Avenida Juan Moore 312 Alto de La Alianza | 1.1 km | <input type="checkbox"/> | MIXTO |
| 7. I.E. Federico Barreto Avenida Industrial 2710 Pocollay | 0.8 km | <input type="checkbox"/> | MIXTO |
| 8. I.E. 42020 Almirante Miguel Grau Calle Prolongacion Olga Gochimans S/N Tacna | 0.1 km | <input type="checkbox"/> | MIXTO |
| 9. I.E. 43007 Luis Banchero Rossi Avenida Mariscal Castilla 2015 Tacna | 0.3 km | <input type="checkbox"/> | MIXTO |
| 10. I.E. 43004 Justo Arías Arizquez Calle Cahulide 400 Pocollay | 0.7 km | <input type="checkbox"/> | MIXTO |

Notes: The panels illustrate a report card sent to an applicant in the 2022 Peru application process who was assigned to T_2 (warning + suggestion list) based on their positive placement risk.

Figure A5: Information on the Number of Schools Nearby (Ecuador/Peru)



Figure A6: Treatments for Classifying Schools (Ecuador)



B Additional Tables

Table A1: Summary of Information Interventions.

| | Ecuador 2021 | | | Peru 2021 | | | Peru 2022 | | |
|---|--|-------|--------------|--|-------|--------------|---|-------|--------------|
| | T_1 | T_2 | T_{3-2021} | T_1 | T_2 | T_{3-2021} | T_1 | T_2 | T_{3-2022} |
| Target population | Applicants with predicted placement risk greater than 0% | | | Applicants with predicted placement risk greater than 0% | | | Applicants with predicted placement risk greater than 30% | | |
| <i>A. Sent by email</i> | | | | | | | | | |
| Link to report card | x | x | x | x | x | x | | | |
| <i>B. Sent by WhatsApp</i> | | | | | | | | | |
| Link to report card | x | x | x | x | x | x | x | x | x |
| Non-placement warning | | | | x | x | x | x | x | x |
| <i>C. Included on the report card</i> | | | | | | | | | |
| Non-placement warning | x | x | x | x | x | x | | x | x |
| Suggestion list of 10 schools | | x | | | x | | | x | |
| Suggestion list of 10 schools w/info on popularity and congestion | | | x | | | x | | | |
| Suggestion list of 3 schools | | | | | | | | | x |

Notes. This table shows the target populations and different contents of our information intervention depending on the context. “Placement risk” is equivalent to non-placement probability.

Table A2: RCT Results: Differences Between Treatment 2 and 3.

| Country | (1) Ecuador 2021 | (2) Peru 2021 | (3) Peru 2022 |
|--|--|--|---|
| Intervention difference | $T_{3-2021} - T_2$ info pop/cong (diff.) | $T_{3-2021} - T_2$ info pop/cong (diff.) | $T_{3-2022} - T_2$ less schools (diff.) |
| <i>A. Choice behavior</i> | | | |
| Add any school | -0.018 (0.023) | -0.012 (0.035) | 0.045 (0.041) |
| Number of schools added | -0.225** (0.112) | -0.116 (0.121) | 0.023 (0.184) |
| Add popular | -0.023 (0.016) | -0.076** (0.033) | 0.037 (0.037) |
| Add congested | -0.017 (0.021) | -0.018 (0.035) | 0.037 (0.039) |
| <i>B. Add schools from list</i> | | | |
| Add from list (10) | -0.016 (0.022) | -0.028 (0.033) | -0.027 (0.028) |
| Add outside list (10) | -0.025 (0.016) | -0.019 (0.032) | |
| Add popular from list (10) | -0.017 (0.014) | -0.026 (0.021) | |
| Add congested from list (10) | -0.001 (0.017) | -0.014 (0.031) | |
| <i>C. Assignment and Enrollment Outcomes</i> | | | |
| Placed in list (10) | -0.003 (0.032) | -0.020 (0.019) | |
| Enrolled in list (10) | -0.005 (0.037) | -0.017 (0.026) | |

Notes. *** $p < 0.01$, ** $p < 0.05$, * $p < 0.1$. This table shows the differential effect of treatments T_3 versus T_2 of Ecuador 2021 (columns 1) and Peru (columns 2 and 3). For Ecuador 2021 and Peru 2021 (columns 1 and 2) the difference between T_{3-2021} and T_2 is that the former included information in popularity and congestion for each school in the list. (“info pop/cong”). For Peru 2022 the difference between T_{3-2022} and T_2 is that the former included 3 schools and the latter 10 schools. The sample considers only applicants that opened the link to the report card.

Table A3: RCT Results: Effect of Suggestions on Subjective Outcomes.

| Country | (1) | (2) | (3) | (4) | (5) | (6) | (7) | (8) | (9) |
|--|-------------------|----------------------|----------------------------|-------------------|---------------------|----------------------------|-------------------|--------------------|--------------------|
| | Ecuador 2021 | | | Peru 2021 | | | Peru 2022 | | |
| | T_1 | T_2 | T_3 | T_1 | T_2 | T_3 | T_1 | T_2 | T_3 |
| Intervention | Warning | + list (10) | + list (10) | Warning | + list (10) | + list (10) | Warning | + list (10) | + list (3) |
| | (base) | (diff.) | + info pop/cong (diff.) | (base) | (diff.) | + info pop/cong (diff.) | (base) | (diff.) | (diff.) |
| <i>A. Application process</i> | | | | | | | | | |
| Was it difficult to search for schools? | 0.279 (0.041) | -0.056 (0.056) | -0.003 (0.054) | 0.408 (0.057) | -0.155** (0.076) | -0.182** (0.073) | 0.353 (0.067) | -0.031 (0.091) | 0.001 (0.090) |
| Evaluation of school info on platform [1 to 20] | 17.913 (0.277) | -1.292*** (0.496) | -0.059 (0.381) | 13.277 (0.560) | 0.944 (0.726) | 0.930 (0.801) | 14.556 (0.631) | 0.401 (0.827) | 0.376 (0.862) |
| General evaluation of process [1 to 20] | 18.396 (0.239) | -0.534 (0.417) | -0.217 (0.351) | 13.584 (0.542) | -0.336 (0.756) | 0.199 (0.774) | 14.143 (0.658) | 0.973 (0.837) | -0.198 (0.905) |
| Received warning | 0.567 (0.044) | 0.100 (0.061) | 0.057 (0.059) | 0.808 (0.045) | 0.053 (0.060) | -0.008 (0.063) | 0.451 (0.070) | 0.216** (0.093) | 0.231** (0.091) |
| Do not plan to apply to private | 0.548 (0.043) | 0.040 (0.061) | 0.045 (0.057) | 0.772 (0.047) | 0.009 (0.065) | 0.001 (0.065) | 0.745 (0.062) | -0.078 (0.087) | 0.103 (0.076) |
| <i>B. Satisfaction</i> | | | | | | | | | |
| Satisfaction if placed in 1st [1 to 20] | 19.524 (0.194) | -0.260 (0.315) | -0.287 (0.297) | 19.224 (0.187) | 0.013 (0.340) | -0.306 (0.379) | 19.137 (0.320) | -0.239 (0.445) | -0.106 (0.462) |
| Satisfaction if placed in last [1 to 20] | 13.729 (0.706) | -1.244 (1.086) | 0.298 (0.952) | 12.882 (0.713) | -0.763 (0.980) | 0.142 (0.981) | 14.000 (0.784) | -0.610 (1.041) | -1.431 (1.050) |
| Satisfaction if no placement [1 to 20] | 4.008 (0.449) | -0.438 (0.579) | 0.479 (0.604) | 2.053 (0.276) | 0.816 (0.559) | 0.289 (0.469) | 3.137 (0.602) | -0.578 (0.754) | -0.953 (0.695) |
| <i>C. Knowledge and beliefs</i> | | | | | | | | | |
| Proportion of schools from list (10) that know | 0.355 (0.024) | -0.074** (0.032) | -0.044 (0.031) | 0.361 (0.041) | 0.143** (0.056) | 0.075 (0.057) | 0.208 (0.035) | 0.022 (0.048) | |
| Proportion of schools from list (3) card that know | | | | | | | 0.270 (0.051) | | 0.079 (0.074) |
| Private schools that don't know (out of 5) | 2.762 (0.145) | 0.152 (0.207) | 0.222 (0.193) | 2.082 (0.187) | 0.062 (0.260) | 0.137 (0.263) | 2.406 (0.237) | 0.234 (0.329) | 0.421 (0.311) |
| Subjective risk | 0.081 (0.018) | -0.010 (0.023) | 0.010 (0.023) | 0.120 (0.016) | -0.010 (0.022) | 0.007 (0.025) | 0.107 (0.020) | 0.006 (0.028) | 0.001 (0.029) |

Notes. *** $p < 0.01$, ** $p < 0.05$, * $p < 0.1$. This table shows the effect of the information intervention on the applicants of Ecuador 2021 (columns 1 to 3) and Peru (columns 4 to 9). Columns 1, 4 and 7 compare the portfolios before and after treatment for all applicants that were assigned to T_1 : warning message but no suggestion's list. Columns 2, 5 and 8 show estimates of the differential effect of showing a list of 10 suggested schools in addition to the warning (T_2) compared to only showing the warning (T_1). Columns 3 and 6 show estimates of the differential effect of showing a list of suggested schools with information on popularity and congestion in addition to the warning (T_{3-2021}) compared to only showing the warning (T_1). Column 9 show estimates of the differential effect of showing a list of 3 suggested schools in addition to the warning (T_{3-2022}) compared to only showing the warning (T_1). "list (10)" is the list of 10 suggestions, while "list (3)" is the list of 3 suggestions. "info pop/cong" refers to the additional information on popularity and congestion showed for each school in the list. The sample considers only applicants that opened the link to the report card.

C Outreach and Treatment Details

The main channel of communication with families was through the messaging app WhatsApp. We used the cellphone numbers reported by the applicants in the registration process.

The messages we sent through the WhatsApp messaging app differed between the two contexts. In Peru, we sent a warning message about the possibility of not being assigned (WhatsApp warning), while in Ecuador we did not. In both settings, we sent reminders to check the link with the report card. An example of the messages we sent is displayed in Table [A4](#).

Table A4: Example of WhatsApp Conversation from Peru 2022 - Translation to English

| # | Name | Content |
|---|-----------------------------------|---|
| 1 | WhatsApp introduction | Hello [guardian name], we are writing to you since you are registered in the 2022 Digital School Enrollment System. We would like to share information with you regarding your application. Answer "Yes" to review it. |
| 2 | Whatsapp disclaimer | The answers you give us in this conversation are confidential and will not affect your application. Our aim is to help you to have more information so that you can submit a good application |
| 3 | WhatsApp warning | We have detected that many families have chosen the same schools as you! Many families are applying to the same schools as you, so there is a chance that you may not be placed at those schools. To increase your chances of being placed, add all the schools you would be willing to attend to your application. |
| 4 | WhatsApp with link to report card | In the following link, you will find important information regarding your application. [link to report card] |
| 5 | WhatsApp reminder | Remember that you can make changes to your application until December 26 at [link to application platform] The last application you send will be the valid application. If you change your mind, feel free to reflect this in your application. |
| 6 | WhatsApp closing | See you soon [guardian name], have a nice day |

Notes. This table shows an example of the messages sent to applicants with an elevated placement risk. Messages 2 to 6 were sent only if the guardian answered positively to the first message (WhatsApp introduction). Applicants without an elevated placement risk received the same messages but no WhatsApp warning (message 2).

Table A5: Example of WhatsApp Conversation from Peru 2022 - Original Spanish

| # | Name | Content |
|---|-----------------------------------|--|
| 1 | WhatsApp introduction | Hola [nombre apoderado], te escribimos dado que estás registrado en el Sistema de Matrícula Escolar Digital 2022. Quisiéramos compartir contigo información respecto a tu postulación. Contesta "Sí" para revisarla. |
| 2 | Whatsapp disclaimer | Las respuestas que nos entregues en esta conversación son confidenciales y no afectarán tu postulación. Buscamos ayudarte a que tengas más información para que realices una buena postulación |
| 3 | WhatsApp warning | Hemos detectado que muchas familias han elegido los mismos colegios que tú! Muchas familias están postulando a los mismos colegios que tu, por lo que existe la posibilidad de que no obtengas una vacante en ellos. Para aumentar las posibilidades de obtener una vacante, agrega a tu postulación todos los colegios a los que estarías dispuesto a ir. |
| 4 | WhatsApp with link to report card | En el siguiente enlace encontrarás información importante respecto a tu postulación. [link a cartilla] |
| 5 | WhatsApp reminder | Recuerda que puedes hacer cambios a tu postulación hasta el 26 de diciembre en [link plataforma de postulación] La última postulación que envíes será la postulación válida. Si cambias de opinión, no dudes en reflejarlo en tu postulación. |
| 6 | WhatsApp closing | Hasta pronto[nombre apoderado], que tengas un buen día |

Notes. This table shows an example of the messages sent to applicants with an elevated placement risk. Messages 2 to 6 were sent only if the guardian answered positively to the first message (WhatsApp introduction). Applicants without an elevated placement risk received the same messages but no WhatsApp warning (message 3).

D Survey Details

We distributed the survey by WhatsApp, but before families knew their placement results and after the application process was over. The WhatsApp message included a link to the Qualtrics platform. Each survey was personalized with information about the applicant that included their name, the rank-order list, and schools in the neighborhood that were not included in the application.

The landing page of the survey is shown in Figure X. The original survey and a translation are provided below.

Survey's translation

1. Which score would you give the following aspects of the application process?
[Slider 1 to 20]
 - (a) Information about schools available on the platform
 - (b) Information on the online application process (relevant dates, application's steps-, etc).
 - (c) Ease to use the online application platform
 - (d) In general, which score would you give the online application process?

2. How did you get information about the school choice process? Select all those that correspond
[Select multiple]
 - (a) Through the UGEL
 - (b) Through the Municipality
 - (c) Through the current school (or the initial)
 - (d) Through the newspaper or radio
 - (e) Through social networks (Facebook, Instagram, Twitter, YouTube)
 - (f) Through friends or family
 - (g) Through the Minedu website
 - (h) I did not use any of the above

3. Through which social network?
[Select multiple]
 - (a) Facebook
 - (b) Twitter
 - (c) Instagram
 - (d) Youtube
 - (e) Snapchat

- (f) Tiktok
4. In the process of creating your school preferences list. Which steps do you consider necessary in order to get to know a school well before adding it?
[*Select multiple*]
- (a) The infrastructure
 - (b) Interview with the director or a teacher
 - (c) Visit the school website or facebook
 - (d) Obtain references from other people
 - (e) Obtain academic performance information
 - (f) The extracurricular activities that it offers
 - (g) The set of prioritized values
 - (h) The Institutional Educational Project (PEI)
 - (i) Know the families that go to the school
5. Is there any other relevant step for you that we have not included in the previous question?
[*Open text*]
6. How well do you know the schools you chose on the online platform? [One question for each school ranked]
[*Select one*]
- (a) I know it well
 - (b) I know it a little (this option was only available in Perú 2022)
 - (c) I do not know it
 - (d) I know it by name
7. We notice that during the process you added schools to your initial list. Did you know these schools the application process began?
[*Select one*]
- (a) I knew it well before applying

- (b) I knew it by name only before applying
 - (c) I didn't even know it by name before applying.
8. To convince yourself to add these additional schools, Did you look for more information? [One question for each school that added]
[*Select one*]
- (a) It was not necessary to look for more information
 - (b) Yes it was necessary to find out more about them
9. You chose the school [first preference] as the first preference for [applicant name]: on a scale from 0 to 100, with what probability do you think you will get a seat in that option?
[*Slider 0 to 100*]
10. Imagine that he would have selected your second option ([Second Colegio Preference]) as the first preference. On a scale from 0 to 100, with what probability do you think would get a seat in that option?
[*Slider 0 to 100*]
11. Imagine that you would have selected your third option [Third Preference] as the first preference. On a scale from 0 to 100, with what probability do you think would get a seat in that option?
[*Slider 0 to 100*]
12. Some families fail to obtain a seat in any of the options they chose because there are not enough vacancies. Using the same range from 0 to 100, with what probability do you think that [applicant name] will not obtain a seat in any of the [number of schools in ranking] schools in the ranking?
[*Slider 0 to 100*]
13. Why didn't you add more schools to your application? (select the main reason)
[*Select one*]
- (a) I know the other schools well and I prefer to finish without a vacancy before adding those alternatives

- (b) I think I will get a vacancy for sure in one of the schools I chose
 - (c) It is very difficult to find more schools
 - (d) There are no more public schools close enough
 - (e) If I don't get a vacancy I enroll in a private school
14. If you add more schools to your application, do you think any of these two things (or both) would happen?
[*Yes or No*]
- (a) Decreases the overall probability of not being assigned to a school
 - (b) Decrease the possibility of obtaining a seat in my first preferences
15. Next we show you 5 public schools to which you did not apply. How well do you think you know these schools? [One question for each school]
[*Select one*]
- (a) I know it well
 - (b) I know it a little (this option was only available in Perú 2022)
 - (c) I do not know it
 - (d) I know it by name
16. Here are 5 private schools. How well do you think you know these schools?
[One question for each school]
[*Select one*]
- (a) I know it well
 - (b) I know it a little (this option was only available in Perú 2022)
 - (c) I do not know it
 - (d) I know it by name
17. Did you apply or plan to apply to private schools?
[*Select one*]
- (a) No

- (b) I haven't decided
 - (c) Yes
18. Imagine that the platform also had private schools, how many private schools you know would have added to your list?
[*Select one*]
- (a) 1
 - (b) 2
 - (c) 3 or more
 - (d) I don't know any private school
19. What would be the first private school that would add to your list?
[*Open text*]
20. What would be the second private school that would add to your list?
[*Open text*]
21. What would be the third private school that would add to your list?
[*Open text*]
22. We present below the list of public schools that you included in the application and the other schools you mentioned. Please order them by reflecting your preferences: above the most preferred and below the least preferred. (Drag schools to modify or confirm order)
[*Rank alternatives*]
23. During the application process, did you receive any recommendation about adding more schools to your list?
[*Select one*]
- (a) No
 - (b) Yes
24. Through which channel did you receive the recommendation to add more schools?(Select all those who apply)
[*Select multiple*]

- (a) SMS
 - (b) WhatsApp
 - (c) Email
 - (d) Web page
 - (e) Phone call
 - (f) Other
25. If you find out that there is a school that many other families are applying to, but that you have not added it to your list, you would say that:
[*Select one*]
- (a) Doesn't tell me anything about the quality of the school
 - (b) I don't know
 - (c) It must be a good school.
 - (d) I would have to know it more, but I think it's good
26. Imagine that you are still looking for schools and find a new one that you like it a lot, even more than your first preference, but it has 100 applicants and 30 vacancies, what would you do?
[*Select one*]
- (a) I add it to my list in 1st preference
 - (b) I add it to my list but a preference lower than the 1st
 - (c) I don't add it and I keep looking
 - (d) I don't know
27. If [applicant name] gets a seat in the following schools, from 1 to 20, how satisfied would you be?
[*Slider 1 to 20*]
- (a) First preference: [first preference name]
 - (b) Last preference: [last name preference]
 - (c) If you don't get a seat at any school

28. Would you like to have had the following information about the schools that you did not have at the time of applying?

[Select multiple]

- (a) Information about your probability of obtaining a seat
- (b) Academic performance
- (c) Number of applicants
- (d) Seats available
- (e) Shift of the school

29. Select the contact channels that you have used to communicate with the MINEDU during the application process

[Select multiple]

- (a) SMS
- (b) Email
- (c) WhatsApp
- (d) Telephone
- (e) In-person
- (f) Other

30. Which channel do you prefer?

[Select one]

- (a) In-person
- (b) Email
- (c) Other
- (d) SMS
- (e) Telephone
- (f) WhatsApp

31. What steps of the application process were difficult? (You can select more than one option)

[*Select multiple*]

- (a) Creation of account
- (b) Filling guardian's personal information
- (c) Filling student's personal information
- (d) Search for schools
- (e) Registering siblings
- (f) Registration of special education certificate
- (g) Choice of schools for preferences
- (h) Postulation type selection
- (i) Filing the application
- (j) None

32. Only for registration purposes, what is the highest educational level attained by the mother of the applicant?

[*Select one*]

- (a) Complete non-university tertiary education
- (b) Incomplete non-university tertiary education
- (c) I did not study
- (d) Postgraduate (master's or doctorate)
- (e) Complete primary education
- (f) Incomplete primary education
- (g) Completed secondary education
- (h) Incomplete secondary education
- (i) Complete non-university tertiary education
- (j) Incomplete non-university tertiary education
- (k) Complete university tertiary education

(1) Incomplete university tertiary education

33. Do you have any other comment, claim or suggestion?

[*Open text*]

Original survey

1. ¿Qué nota le pondría a los siguientes aspectos del proceso de postulación?
[Slider 1 to 20]
 - (a) Información sobre los colegios disponibles en la plataforma
 - (b) Información sobre el proceso de Matrícula Digital (fechas relevantes, pasos para postular, etc).
 - (c) Facilidad para usar la plataforma de Matrícula Digital
 - (d) En general, ¿qué nota le pondría al proceso de Matrícula Digital a través de la plataforma de matrícula digital?

2. ¿Cómo se informó sobre el proceso de Matrícula Digital? Selecciona todas las que correspondan
[Select multiple]
 - (a) A través de la UGEL
 - (b) A través de la Municipalidad
 - (c) A través del colegio actual (o la inicial)
 - (d) A través del periódico o radio
 - (e) A través de redes sociales (Facebook, Instagram, Twitter, Youtube)
 - (f) A través de amigos o familiares
 - (g) A través del sitio web del Minedu
 - (h) No utilicé ninguna de las anteriores

3. ¿A través de qué red social se informó respecto de Matrícula Digital?
[Select multiple]
 - (a) Facebook
 - (b) Twitter
 - (c) Instagram
 - (d) Youtube

- (e) Snapchat
 - (f) TikTok
4. A la hora de armar su lista de preferencias de colegios en la plataforma de Matrícula Digital ¿Qué pasos considera necesarios para conocer bien un colegio antes de agregarlo?
[*Select multiple*]
- (a) Conocer su infraestructura
 - (b) Entrevistarte con el director o algún profesor
 - (c) Visitar la página web o facebook del colegio
 - (d) Obtener referencias de algún conocido
 - (e) Obtener información de rendimiento académico
 - (f) Conocer las actividades extracurriculares que ofrece
 - (g) Conocer el conjunto de valores priorizados
 - (h) Conocer el proyecto educativo institucional (PEI)
 - (i) Conocer sobre las familias que van al colegio
5. ¿Hay algún otro paso relevante para usted que no hayamos incluido en la pregunta anterior?
[*Open text*]
6. ¿Qué tan bien conoce a los colegios que eligió en la plataforma de Matrícula Digital? [Una pregunta por cada colegio del ranking]
[*Select one*]
- (a) Lo conozco bien
 - (b) Lo conozco un poco
 - (c) No lo conozco
 - (d) Solo de nombre

7. Notamos que durante el proceso de Matrícula Digital agregó colegios a su listado inicial ¿Conocía estos colegios desde antes de que comenzara el proceso de matrícula?
[*Select one*]
- (a) Lo conocía bien de antes de postular
 - (b) Lo conocía sólo de nombre antes de postular
 - (c) No lo conocía ni de nombre antes de postular
8. ¿Para convencerse a agregar estos colegios adicionales tuvo que buscar más información? [Una pregunta por cada colegio que agregó]
[*Select one*]
- (a) No fue necesario buscar más información
 - (b) Sí fue necesario averiguar más de ellos
9. Usted eligió al colegio [colegio primera preferencia] en primera preferencia para [nombre postulante]: En una escala del 0 a 100, ¿con qué probabilidad o seguridad cree que va a obtener una vacante en esa opción?
[*Slider 0 to 100*]
10. Imagine que hubiese puesto su segunda opción ([colegio segunda preferencia]) en su primera preferencia: En una escala del 0 a 100, ¿con qué probabilidad o seguridad cree que obtendría una vacante en esa opción?
[*Slider 0 to 100*]
11. Imagine que hubiese puesto su tercera opción [colegio tercera preferencia]) en su primera preferencia: En una escala del 0 a 100, ¿con qué probabilidad o seguridad cree que obtendría una vacante en esa opción?
[*Slider 0 to 100*]
12. Algunas familias no logran obtener una vacante en ninguna de las opciones que eligieron debido a que no hay vacantes suficientes. Usando el mismo rango de 0 a 100, ¿con qué probabilidad o seguridad cree que [nombre postulante] NO va a obtener una vacante en ninguno de los [numero de

colegios en ranking] colegios a los que postuló?

[*Slider 0 to 100*]

13. ¿Por qué no agregó más colegios a su postulación?(Marque la razón principal)

[*Select one*]

- (a) Conozco bien los otros colegios y prefiero terminar sin vacante antes de agregar esas alternativas
- (b) Creo que voy a obtener una vacante con toda seguridad en alguno de los colegios que elegí
- (c) Es muy difícil encontrar más colegios
- (d) No hay más colegios públicos lo suficientemente cerca
- (e) Si no obtengo una vacante me matriculo en un colegio privado

14. Disminuye la posibilidad de quedarme sin vacante

[*Select one*]

- (a) No
- (b) Sí

15. Disminuya la posibilidad de obtener una vacante en mis primeras preferencias

[*Select one*]

- (a) No
- (b) Sí

16. A continuación le mostramos 5 colegios públicos a los que no postuló. ¿Qué tan bien cree que conoce a estos colegios? [Una pregunta por cada colegio que le preguntamos]

[*Select one*]

- (a) Lo conozco bien
- (b) Lo conozco un poco

- (c) No lo conozco
 - (d) Solo de nombre
17. A continuación le mostramos 5 colegios privados. ¿Qué tan bien cree que conoce a estos colegios? [Una pregunta por cada colegio que le preguntamos]
[*Select one*]
- (a) Lo conozco bien
 - (b) Lo conozco un poco
 - (c) No lo conozco
 - (d) Solo de nombre
18. ¿Postuló o tiene pensado postular a colegios privados?
[*Select one*]
- (a) No
 - (b) No lo he decidido
 - (c) Sí
19. Imagine que la plataforma tuviera también colegios privados, ¿cuántos colegios privados que conoce hubiera agregado a su lista?
[*Select one*]
- (a) 1
 - (b) 2
 - (c) 3 o más
 - (d) No conozco ningún colegio privado
20. ¿Cuál sería el primer colegio privado que agregaría a su lista en la plataforma de Matrícula Digital?
[*Open text*]
21. ¿Cuál sería el segundo colegio privado que agregaría a su lista en la plataforma de Matrícula Digital?
[*Open text*]

22. ¿Cuál sería el tercer colegio privado que agregaría a su lista en la plataforma de Matrícula Digital?
[*Open text*]
23. Le presentamos a continuación la lista de colegios públicos que registró en su postulación y los privados que nos mencionó. Por favor ordénelos reflejando su preferencia: arriba el más preferido y abajo el menos preferido.(Arrastre los colegios para modificar o confirmar el orden)
[*Rank alternatives*]
24. Durante el proceso de postulación, ¿recibió alguna recomendación sobre agregar más colegios a su lista por parte del Minedu?
[*Select one*]
- (a) No
 - (b) Sí
25. ¿A través de qué medio recibió la recomendación de agregar más colegios?(Seleccione todos los que apliquen) - Selected Choice
[*Select multiple*]
- (a) SMS
 - (b) Whatsapp
 - (c) Correo Electrónico
 - (d) Pagina web
 - (e) Llamada telefónica
 - (f) Otro
26. Si se enterara que hay un colegio al que muchas otras familias están postulando, pero que usted no lo ha agregado a su lista, diría que:
[*Select one*]
- (a) No me dice nada sobre la calidad del colegio
 - (b) No sé

- (c) Seguramente es un buen colegio
 - (d) Tendría que conocerlo más, pero creo que es bueno
27. Imagine que sigue buscando colegios y encuentra uno nuevo que le gusta mucho, incluso más que su primera preferencia, pero tiene 100 postulantes y 30 vacantes, ¿qué haría?
- [*Select one*]
- (a) Lo agrego a mi lista en 1ra preferencia
 - (b) Lo agrego a mi lista pero una preferencia menor a la 1ra
 - (c) No lo agrego y sigo buscando
 - (d) No sé
28. Si [nombre postulante] obtiene una vacante en los siguientes colegios, del 1 al 20, ¿qué tan satisfecho(a) estaría?
- [*Slider 1 to 20*]
- (a) Primera preferencia: [nombre primera preferencia]
 - (b) Última Preferencia: [nombre última preferencia]
 - (c) Si no obtiene una vacante en ningún colegio
29. ¿Le gustaría haber tenido la siguiente información sobre los colegios que NO tuvo al momento de postular?
- [*Select multiple*]
- (a) Información sobre tu probabilidad de obtener una vacante
 - (b) Rendimiento académico
 - (c) Cantidad de postulantes
 - (d) Vacantes disponibles
 - (e) Turno
30. Marque los medios de contacto ha utilizado para comunicarse con el Minedu durante el proceso de postulación: - Selected Choice
- [*Select multiple*]

- (a) SMS
- (b) Correo electrónico
- (c) Whatsapp
- (d) Teléfono
- (e) Atención presencial
- (f) Otro

31. Selected Choice

[*Select one*]

- (a) Atención presencial
- (b) Correo electrónico
- (c) Otro
- (d) SMS
- (e) Teléfono
- (f) Whatsapp

32. ¿Qué pasos del proceso de postulación le resultaron difíciles de realizar?

(Puede marcar más de una opción)

[*Select multiple*]

- (a) Creación de cuenta
- (b) Registro de datos de apoderado
- (c) Registro de datos del postulante
- (d) Búsqueda de colegios
- (e) Registro de datos de hermano
- (f) Registro de NEE
- (g) Elección de colegios para lista de preferencias
- (h) Selección de tipo de postulación
- (i) Envío de ficha de postulación

(j) Ninguno

33. Solo con fines de registro, ¿hasta qué nivel educativo llegó la madre (o apoderada) del postulante?

[*Select one*]

(a) Educación ocupacional completa

(b) Educación ocupacional incompleta

(c) No estudió

(d) Posgrado (maestría o doctorado)

(e) Primaria Completa

(f) Primaria Incompleta

(g) Secundaria Completa

(h) Secundaria Incompleta

(i) Superior no universitaria completa

(j) Superior no universitaria incompleta

(k) Superior universitaria completa

(l) Superior universitaria incompleta

34. ¿Tienes algún otro comentario, reclamo o sugerencia que nos quieras hacer?

[*Open text*]