

Tähtinen, Tuuli

**Working Paper**

## When Facebook is the internet: The role of social media in ethnic conflict

ifo Working Paper, No. 408

**Provided in Cooperation with:**

Ifo Institute – Leibniz Institute for Economic Research at the University of Munich

*Suggested Citation:* Tähtinen, Tuuli (2024) : When Facebook is the internet: The role of social media in ethnic conflict, ifo Working Paper, No. 408, ifo Institute - Leibniz Institute for Economic Research at the University of Munich, Munich

This Version is available at:

<https://hdl.handle.net/10419/289874>

**Standard-Nutzungsbedingungen:**

Die Dokumente auf EconStor dürfen zu eigenen wissenschaftlichen Zwecken und zum Privatgebrauch gespeichert und kopiert werden.

Sie dürfen die Dokumente nicht für öffentliche oder kommerzielle Zwecke vervielfältigen, öffentlich ausstellen, öffentlich zugänglich machen, vertreiben oder anderweitig nutzen.

Sofern die Verfasser die Dokumente unter Open-Content-Lizenzen (insbesondere CC-Lizenzen) zur Verfügung gestellt haben sollten, gelten abweichend von diesen Nutzungsbedingungen die in der dort genannten Lizenz gewährten Nutzungsrechte.

**Terms of use:**

*Documents in EconStor may be saved and copied for your personal and scholarly purposes.*

*You are not to copy documents for public or commercial purposes, to exhibit the documents publicly, to make them publicly available on the internet, or to distribute or otherwise use the documents in public.*

*If the documents have been made available under an Open Content Licence (especially Creative Commons Licences), you may exercise further usage rights as specified in the indicated licence.*

# When Facebook Is the Internet: The Role of Social Media in Ethnic Conflict

*Tuuli Tähtinen*

Imprint:

ifo Working Papers

Publisher and distributor: ifo Institute – Leibniz Institute for Economic Research at the University of Munich

Poschingerstr. 5, 81679 Munich, Germany

Telephone + 49(0)89 9224 0, Telefax +49(0)89 985369, email [ifo@ifo.de](mailto:ifo@ifo.de)

[www.ifo.de](http://www.ifo.de)

An electronic version of the paper may be downloaded from the ifo website

[www.ifo.de](http://www.ifo.de)

# When Facebook Is the Internet: The Role of Social Media in Ethnic Conflict\*

Tuuli Tähtinen<sup>†</sup>

April, 2024

*This paper has been accepted for publication in World Development*

## Abstract

This paper investigates whether social media access is associated with increased probability or intensity of ethnic conflict in Myanmar. In this context most people use mobile phones, and particularly the Facebook app, to access the internet. To distinguish the effects of social media from those of the broader internet, I exploit geographic variation in mobile phone coverage as a proxy for Facebook availability. Despite evidence of a hate-campaign utilizing Facebook to reach wide audiences, I do not find that social media access is associated with increased probability or intensity of conflict. The only exception to the null result is variation related to the Rohingya crisis: in this regional setting suggestive evidence points to Facebook availability being associated with slightly higher probability of conflict.

**JEL codes:** D74, O33

**Keywords:** internet, social media, conflict, propaganda, Myanmar, Rohingya

---

\*I would like to thank the four anonymous referees for their insightful comments and suggestions. I also thank Michèle Belot, Enrico Cantoni, Thomas Crossley, Andrea Ichino, Andrea Mattozzi, Niklas Potrafke, Arthur Schram, Alessandro Spiganti, Nicole Stoelinga, Roope Uusitalo, and seminar participants at the EUI and UNU-WIDER for useful comments. I am grateful for the hospitality of Aalto University School of Business and Helsinki Graduate School of Economics.

<sup>†</sup>ifo Institute and University of Munich. Poschingerstraße 5, 81679 Munich, Germany. E-mail: taehhtinen@ifo.de



# 1 Introduction

Social media provides a platform for sharing content with an unprecedented freedom and ease. They help individuals to find friends and job opportunities and firms to advertise and build business networks. The other side of the coin, however, is that social media facilitates sharing of simplistic, false, and inflammatory messages, and increasing anecdotal evidence suggests that online outrage may lead to violence offline. This paper investigates how access to social media relates to conflict. This question has accompanied the world wide rise of social media, especially with respect to Facebook. I examine this question in the context of Myanmar in 2016–2017.

Myanmar is an important setting for several reasons. The military regime in Myanmar has remained among the longest uninterrupted dictatorships, which faces strong democratizing pressure from inside as well as outside, and for which violent conflicts are almost a pivotal pillar of its existence. Hence conflicts are common across different parts of Myanmar. Myanmar is also a setting to examine whether economic and technological development could deliver political rights, or at least reduce violence and repression. It is important as a case that may well shed light on other non-democratic regimes across the world.

The case of Facebook in Myanmar combines several aspects that are helpful to disentangle the effects of social media access from those of the broader internet. First, most people use mobile phones to access internet. In 2018, 79 % of all internet traffic in Myanmar was consumed by mobile phones (We Are Social, n.d.). Second, Facebook introduced a package for mobile phone users that bundled a limited internet access with Facebook access for free over a significant period of time. Third, Facebook’s package is tied to the main mobile network operator, MPT. Other service providers are not associated primarily with Facebook and their coverage can be used as a control for mobile phone access.

An important driver of increased internet penetration in many developing countries has been the emergence of such “zero-rated” apps. Zero rating means that a mobile network operator waives data charges associated with a particular app. As the cost of internet remains prohibitive for many people, zero-rated content may be the only

justifiable way to access internet (Eisenach, 2015). The rapid spread of Facebook in the developing world has strengthened its dominant positions and led to situations in which internet is primarily accessed via Facebook, making Facebook effectively the internet. Several reports describe Facebook as being so prominent that it is considered synonymous to the wider internet (see e.g., PRI, 2017; Regan, 2019).

My empirical strategy is to use mobile phone coverage by MPT as a determinant of social media availability. I use a model of electromagnetic signal propagation to estimate topography-corrected coverage (following Olken, 2009). Mobile phone signal strength is primarily determined by distance to a cell tower and the terrain between a location and a cell tower and reduced by objects such as hills or dense foliage. Thus, the aim is to compare townships that are similar in terms of socio-economic and geographical characteristics but have different mobile phone coverage due to terrain differences between the location and nearest cell towers.

Information on cell phone towers is obtained from OpenCelliD, a crowdsourced project to collect cell phone tower locations. To measure the outcome, I use comprehensive georeferenced data on conflict events, which comes from GDELT Project (2019). It uses natural language and data mining algorithms to extract information on conflict events from different language news media.

The results do not show that access to zero-rated Facebook in 2016–2017, as proxied by mobile phone coverage, is associated with increased probability or intensity of conflict. Examining different types of conflict and different types of actors involved does not reveal any significant relationship. The null result is robust to different model specifications, estimation strategies, heterogeneous local characteristics, and using a different, manually compiled data on conflict, Armed Conflict Location & Event Data (ACLED, 2019a).

The only exception to the null result is regional variation related to the Rohingya crisis. When I focus on Rakhine State, a region which is central in the military’s crackdown on the Rohingya people (a predominantly Muslim ethnic minority), the results suggest that availability of zero-rated Facebook is associated with a small increase in probability of conflict during the year in which the campaign was active. However, the estimates are only

marginally statistically significant. Increased conflict would be consistent with previous literature, which shows that propaganda can be highly effective at influencing beliefs and behavior, particularly when there are pre-existing prejudices (e.g., Adena et al., 2015; Voigtländer & Voth, 2015; Yanagizawa-Drott, 2014). Since the Rohingya have been a particular target of hate speech, it is possible that in this context Facebook access may have amplified conflict.

My paper contributes to the empirical literature on how the media and communication technologies influence conflict.<sup>1</sup> Related studies portray the nuanced relationship between mass media, misinformation, and conflict escalation across the world. Much of the literature has studied the impact of traditional mass media as a tool for inciting violence. For example, radio has been used to disseminate propaganda, which has been an effective tool of persuasion in varying context, such as escalating killings during the Rwandan genocide (Yanagizawa-Drott, 2014) and fostering anti-Semitic beliefs in Nazi Germany (Adena et al., 2015; Voigtländer & Voth, 2015). The effects are particularly pronounced in areas with pre-existing prejudices. The emerging literature focusing on social media yields similar findings: Social media has been shown to increase ethnic hate crimes, especially in regions characterized by pre-existing high levels of nationalism (Bursztyn et al., 2019; Müller & Schwarz, 2021, 2023).

There is also evidence indicating the effectiveness of information-based interventions. For instance, during the democratic period in pre-war Germany, pro-government political news had a moderating influence on support for the Nazi party (Adena et al., 2015). In another historical context, during the Lord’s Resistance Army insurgency in Uganda, the government broadcasted messages encouraging defection to mitigate the conflict. This policy significantly decreased the number of attacks and fatalities and increased the number of returnees (Armand et al., 2020). I add to this literature by examining how social media access is related to ethnic conflict in a context where traditional media is state controlled and social media is used to spread anti-Muslim content.

My paper is also related to the literature examining the role of communication tech-

---

<sup>1</sup>For a review of the literature, see Weidmann and Rød (2019) and Zhuravskaya et al. (2020).

nologies in conflict settings. On the one hand, the new technologies—mobile phones, internet, social media—are expected to promote political mobilization by facilitating uncensored communication (see e.g., Diamond, 2010). Related research underscores the influence of mobile phones (Guriev et al., 2021; Manacorda & Tesei, 2020) and social media (Enikolopov et al., 2020; Fergusson & Molina, 2021) in amplifying protest movements. On the other hand, authoritarian regimes can use these tools for propaganda and repression (Frantz et al., 2020; Rød & Weidmann, 2015). Qin et al. (2017), for example, demonstrate the power of social media as an effective instrument for detecting protests and monitoring citizens. The empirical findings relating to violent conflict are also mixed: improved ability to communicate and coordinate can improve rebel groups’ ability to organize attacks (Gagliarducci et al., 2020; Pierskalla & Hollenbach, 2013), but enhanced communication technology can also benefit counter-insurgents, for example by making it easier to covertly inform security forces of local militia activity, by decreasing rebels’ ability to punish informants (Shapiro & Siegel, 2015; Shapiro & Weidmann, 2015), and by improving government’s surveillance capability (Shapiro & Weidmann, 2015). I add to this literature by investigating how social media access is related to different forms of violence in a non-democratic regime with frequent conflicts.

The remainder of the paper is organized as follows. Section 2 describes the context, Section 3 provides a description of the data, Section 4 describes the empirical strategy, and Section 5 presents the results. Section 6 concludes.

## 2 Context

### 2.1 Ethnic Conflict in Myanmar

Myanmar has been under military rule for most of its independence since 1948. The state has supported the domination of the Buddhist majority, while many of the country’s numerous ethnic groups have been subjected to discrimination. According to the Human Rights Council (2018), the state’s systematic marginalization of many ethnic groups has been deliberate in motivating the military’s powerful position in politics. The citizenship

law from 1982 is an important source of ethnic conflict. It granted citizenship only to the so called “national races”, and effectively defined who belongs to Myanmar and who does not. Several minority groups, including the Rohingya, do not have a national race status, and are instead seen as immigrants.<sup>2</sup> As a consequence, most have not been granted citizenship, and have been rendered de facto stateless (Human Rights Council, 2018).

During the past decade, Buddhist nationalism, anti-Muslim rhetoric and violence between Buddhists and Muslims has intensified. According to the Human Rights Council (2018), the violence is related to an anti-Muslim and anti-Rohingya campaign led by radical Buddhist organizations and the military officials. The campaign has sought to spread fear and hate, calling Muslims and Rohingya illegal immigrants, criminals, and terrorists. A database on online influence operations similarly identifies a coordinated campaign by the state which produced news websites, Facebook pages, and other online content to promote propaganda and disinformation, designed to incite violence against the Rohingya (Martin et al., 2022). Violence in Rakhine State—home region of the Rohingya minority—flared up in 2012 and the Rohingya crisis has since remained ongoing, with significant peaks in violence during the “clearance operations” against the Rohingya in 2016 and 2017. Violent conflicts between the military and ethnic armed groups continue also in several other regions of Myanmar, including Chin, Kachin and Shan states.

The UN Human Rights Council has accused the government of human rights violations and war crimes due to its unlawful and disproportionate security operations against ethnic and religious minorities. A case against Myanmar has been brought to the International Court of Justice, accusing the government of genocide against the Rohingya. According to a UN Human Rights Council report (Human Rights Council, 2018), the security operations have been characterized by attacks against civilians and indiscriminate attacks, arbitrary arrests, torture, sexual violence, looting and destruction of property. One of the motivations for the operations seems to be dissuading civilians from getting involved in the ethnic armed organizations.

---

<sup>2</sup>For example, the government refers to the Rohingya as “Bengali”, claiming that they are immigrants from Bangladesh.

## 2.2 Zero-Rated Facebook and Social Media Use

I focus on the role of Facebook, which is the dominant social media platform in Myanmar. According to StatCounter, during 2011–2018, Facebook constituted on average almost 95 % of all social media use in Myanmar.<sup>3</sup> I focus on the zero-rated bundle of websites and apps called “Free Basics”, a Facebook campaign to gain users in the developing world.<sup>4</sup> The zero-rated content is optimized for mobile browsing and limited bandwidth, and does not contain data heavy resources like video. Free Basics is provided in participation with local mobile network operators, who waive the data charges associated with use of the platform. It can only be accessed in the given countries and with a SIM card from one of the participating mobile network operators. The operators offering Free Basics are not paid by Facebook (Eisenach, 2015). In the study period, Free Basics was available in Myanmar only through the state-owned Myanma Posts and Telecommunications (MPT). Because I do not have information on individuals’ mobile phone or internet use, I use mobile phone coverage by MPT as a proxy for availability of zero-rated Facebook. The campaign was launched in Myanmar in June 2016 and discontinued in September 2017 (Singh, 2018).

The number of Facebook users is estimated to have increased substantially—with estimates as large as from 2 million users in 2014 to 30 million in 2017 (Singh, 2018). In a country where access to broadband internet is extremely limited, cost of mobile data is high, but mobile phones are ubiquitous, availability of zero-rated content represents a significant availability shock on internet access. According to GSM Association (2018), in Myanmar the cost of medium basket (mobile plan with 1 GB of data) was almost 20 % of income for lowest 40 % of earners, and 8 % of average income. In 2018, 79 % of all internet traffic in Myanmar was consumed by mobile phones (We Are Social, n.d.). During the past decade, internet use has increased rapidly: from an estimated 1 % of population in 2010, to 8 % in 2013, and 31 % in 2017 (ITU, n.d.).

Facebook is used widely as a source of news, it is used by the government and military officials for public communication, but also for coordinated propaganda and disinforma-

---

<sup>3</sup>StatCounter’s statistics are based on tracking page visits to particular sites.

<sup>4</sup>The platform was originally called Internet.org, and rebranded as “Free Basics by Facebook” in 2015.

tion campaigns seeking to stoke fear and violence against ethnic minorities, especially the Rohingya, and attack posts that are critical of the military (Martin et al., 2022; PRI, 2017; Regan, 2019). For example, there is evidence of a state-orchestrated disinformation campaign, which involved creation of fabricated Buddhist Facebook pages that falsely warned of impending “jihad attacks” by Rohingya Muslims (Martin et al., 2022). Reuters’ investigative reporting also found “more than 1,000 examples of posts, comments and pornographic images attacking the Rohingya and other Muslims on Facebook” (Stecklow, 2018).

The prevalence of Facebook was also noted by the UN investigation on Myanmar (Human Rights Council, 2018), which stated that social media and Facebook had been instrumental in spreading anti-Muslim hate speech. The chairman of the Mission said that social media had “substantively contributed to the level of acrimony and dissension and conflict . . . As far as the Myanmar situation is concerned, social media is Facebook, and Facebook is social media” (Miles, 2018). The CEO of Facebook was called to testify before the U.S. Congress about Facebook’s role in ethnic violence in Myanmar (The Washington Post, 2018), and the platform has faced criticism for not preventing the spread of hate speech on the platform (Mozur, 2018).

## 3 Description of Data

### 3.1 Conflict Data

I use two dependent variables: a binary measure of conflict in a township, and the number of conflict events in a township. The conflict data comes from the GDELT 2.0 Event Database (GDELT Project, 2019). It is based on a project that uses language and data mining algorithms to monitor print, broadcast, and online news media in several languages across every country in the world. The algorithms are used to find detailed descriptions of events, including time, location, and actors involved. Due to the automated data collection, the GDELT database contains significantly more events than other georeferenced conflict data. I conduct robustness tests with the Armed Conflict Location

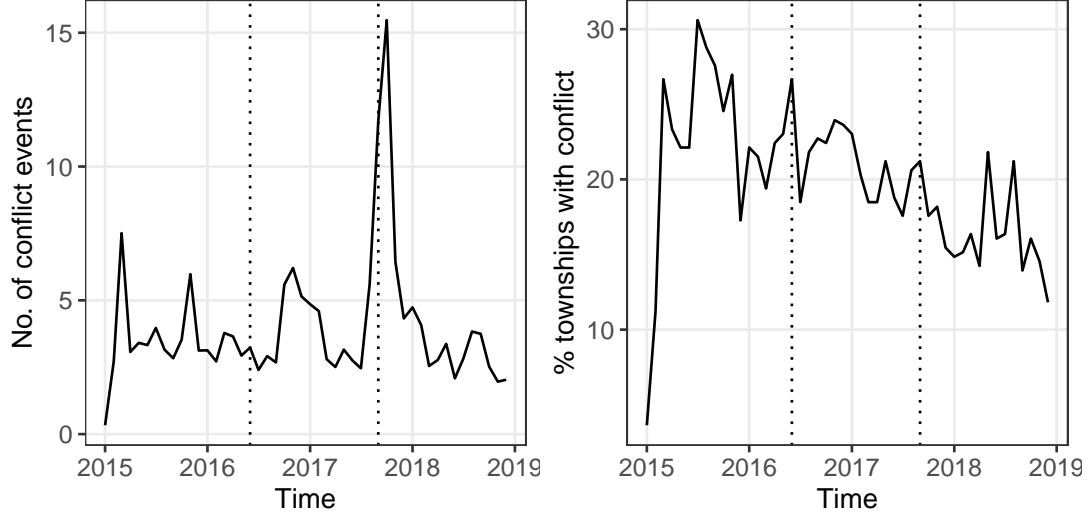


Figure 1: Average monthly number of violent events across townships (left) and share of townships with violent events (right). The vertical dotted lines show the beginning (June 2016) and end (September 2017) of the Facebook campaign. Data source: GDELT

& Event Data (ACLED, 2019a).

I consider conflict events in the CAMEO event categories *coerce*, *assault*, *fight*, and *use conventional mass violence*. Coercion includes, for example, arrests, detentions, seizing and damaging property, and imposing restrictions on rights of civilians. Fight includes all uses of military force, fighting and killings, which usually take place between organized groups. Assault includes less organized forms of violence, such as physical assaults, abductions, assassinations, and use of explosive devices. Mass violence includes mass expulsions, mass killings, and ethnic cleansing.<sup>5</sup>

Figure 1 shows the monthly average number of conflict events across townships in 2015–2018. There are 62,874 events of violent conflict between January 1, 2015, and December 31, 2018.<sup>6</sup> The increased activity in late 2017 marks the timing of the first attacks by the Arakan Rohingya Salvation Army (ARSA) on military posts in northern Rakhine, and the military’s following anti-Rohingya “clearance operation” in Rakhine state (Human Rights Council, 2018). The right panel shows the monthly share of townships with conflict events. On average 19 % of townships experience conflict each month, but the

<sup>5</sup>For a more details on the event types, see Event Data Project (2012).

<sup>6</sup>GDELT 2.0 has full coverage of conflict records only from mid February. The records from GDELT 1.0 from January-February 2015 which are not included in GDELT 2.0 are added to the data. I limit the data to events that are geolocated at city or landmark level.



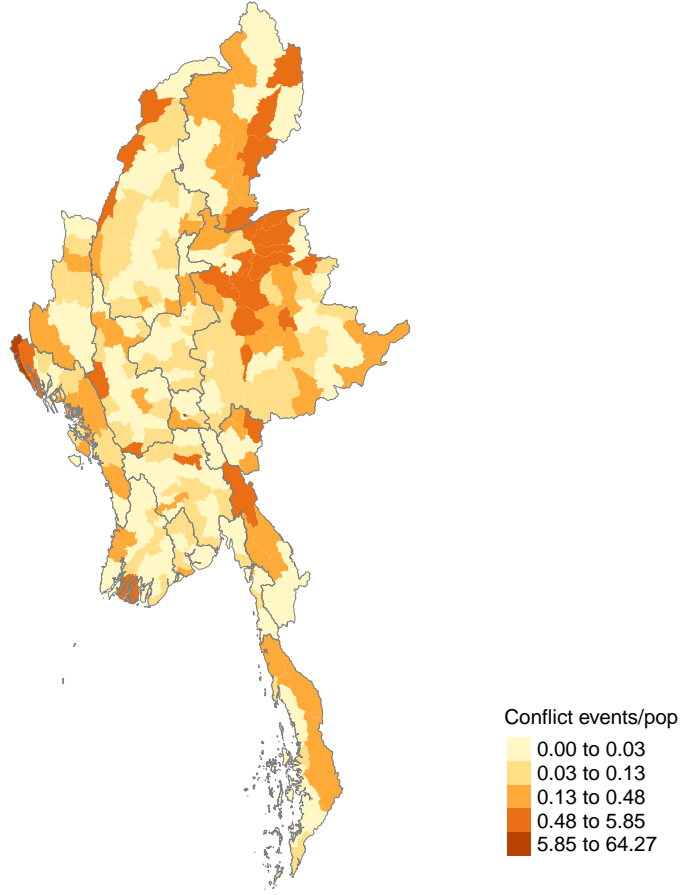


Figure 2: Number of conflict events scaled by population (in 1000) by township between June 2016 and August 2017. Gray lines depict state borders. Data source: GDELT.

trend is decreasing. Although the number of conflict events spiked in late 2017, the events were geographically very concentrated. Appendix Figure E.1 shows the frequency of different types of violent events. Figure 2 maps the population weighted number of conflict events during the Facebook campaign between June 2016 and August 2017. Conflict events are more frequent in the peripheral areas, and particularly in Rakhine state (Western Myanmar), Shan state (North-Eastern Myanmar) and Kachin state (Northern Myanmar).

### 3.2 Mobile Phone Coverage

Information on the locations of cell phone towers comes from OpenCellID, the largest open database of cell towers in the world. The data is mostly generated by crowdsourcing, i.e.,

by individual smartphone users who use apps that collect data for the OpenCellID. Cell phone tower IDs and locations are collected by devices that utilize the wireless network provided by those cell towers, as well as from databases of other apps and contributions from GSM network operators.

In addition to cell tower locations, the data includes an identifier for the mobile network operator (MNO), the network technology (GSM, LTE, etc.), and the date when the location was first recorded. By the end of 2018, 33,125 cell tower locations were included in the data set for Myanmar. MPT is associated with 14,342 cell phone tower locations, and other MNOs combined with 18,783 tower locations. Appendix Figure E.3 shows the number of cell towers by MNO and recording date. One tower can be fitted with several antennas from different MNOs. Appendix Figure E.2 shows the locations of MPT's cell towers and the expansion of the network during 2015–2017. Most of the network is located in the populous area in central Myanmar, stretching between the three largest cities, Yangon, Nay Pyi Taw, and Mandalay.

Most of the cell towers were recorded to the database in 2015 and 2016, which marks the period of rapid expansion of the telecommunication sector. The telecommunications market was opened for foreign competition in 2014, prior to which the state-owned MPT was a monopoly. As new firms entered the market in 2014, also MPT had to expand its network to remain competitive. Appendix Figure E.3 shows that the network expansion of MPT and other service providers has been closely aligned. When constructing the predicted mobile phone coverage, I only use cell phone towers that were recorded in the database before September 2017. Since the date when a cell tower location was recorded in the database may be later than when the tower started operating, the time information is not used further so as not to introduce bias.

I use a radio propagation model to predict where the signal is strong enough for mobile phone reception. The signal strength in a location is primarily determined by distance to the cell tower and whether the receiver (i.e., mobile phone) is in line of sight of the cell tower. Obstructions, such as hills, buildings, or dense foliage, reduce the signal. I use the irregular terrain model (ITM) to calculate the predicted network coverage area.

The model calculates predicted signal loss due to topography and distance between a transmitter and a receiver. Validation studies have found that the ITM yields highly accurate predictions, and the model has been widely used in professional radio planning (Crabtree & Kern, 2018). It was used in the seminal paper by Olken (2009) to study the impact of television on social capital, and has since been used in a number of papers studying the impacts of radio and television (see e.g., Adena et al., 2015; Bursztyn & Cantoni, 2016; DellaVigna et al., 2014; Enikolopov et al., 2011; Peisakhin & Rozenas, 2018; Yanagizawa-Drott, 2014).

Due to the lack of comprehensive technical details on the cell towers, the coverage estimation can be viewed as using a fixed radius around a cell tower and correcting it by topographic features that influence radio propagation. The predictions are calculated for grid cells with a 200m resolution.<sup>7</sup> The predictions are aggregated using population weights to obtain township-level mobile phone coverage. The calculations are done separately for MPT and for the combined coverage area of all other service providers. The population-weighted share of township with coverage from MPT is the main independent variable. Figure 3 shows the predicted MPT mobile phone coverage, based on cell tower locations recorded by the end of August 2017. The predicted coverage is uneven: while central regions have fairly comprehensive coverage, large peripheral areas experience notably weak mobile phone reception.

Because the data is crowdsourced, it is likely that not all cell towers are included. I also need to approximate several technical parameters when conducting the coverage prediction. Measurement error in the independent variable may therefore bias the estimates towards zero. In any event, I use the OpenCellID data instead of the GSM coverage maps from Collins Bartholomew, because with the Collins Bartholomew data it is not possible to differentiate coverage by service provider, which is crucial for the empirical strategy. In fact, when Collins Bartholomew does not have data directly from service providers, their GSM maps are also based on data from OpenCellID.

Measures of terrain elevation are obtained from NASA’s Shuttle Radar Topography

---

<sup>7</sup>See Appendix B for a more detailed description of the coverage calculation.

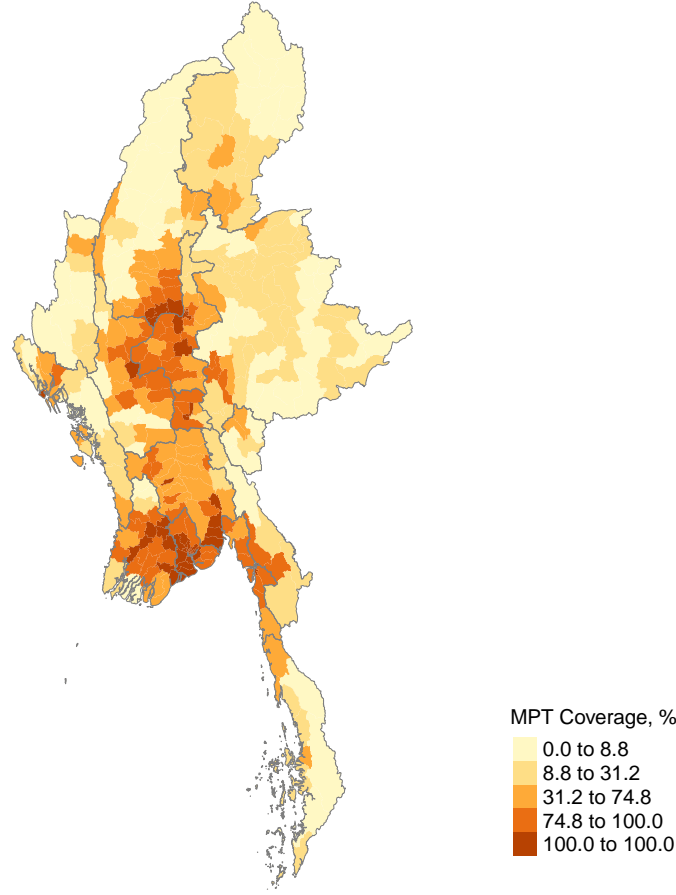


Figure 3: Share of township with MPT mobile phone reception, weighted by population

Mission (SRTM), which has generated publicly available high resolution topographic data of the world (Jarvis et al., 2008). I use the one arc second resolution (approximately 30 meters at the equator) in the mobile phone coverage calculation. The signal propagation model also takes into account how land use—e.g., water, forest, cropland—affects propagation.

### 3.3 Local Level Characteristics

Information on population characteristics comes from the Myanmar 2014 Census. The main analysis is conducted at the township level.<sup>8</sup> Summary statistics for the townships are presented in the Appendix Table A.1. Because information on the ethnic composition of the population is not available at a disaggregated level, I use information on identity

---

<sup>8</sup>Myanmar consists of 18 states and regions, which are broken into 76 districts, that are divided into 330 townships, and 14,165 wards or village tracts.

cards as a proxy for presence of discriminated minorities.<sup>9</sup> According to the Census, more than a quarter of the population does not have any identity card.

Because the census data is only available for township level and only for one year, I obtain additional information on population from WorldPop (2018). I use the population counts at 100 m spatial resolution that have been adjusted to match the corresponding United Nations population estimates. I aggregate the cells to village tract and township level to obtain estimates of village tract population as well as time series information.<sup>10</sup>

I also use georeferenced data from several sources to control for local characteristics. These include nighttime luminosity (Elvidge et al., 2021) to proxy for local economic development (Henderson et al., 2011; Weidmann & Schutte, 2017), locations of diamond and gemstone deposits (Gilmore et al., 2005; Lujala, 2009), as well as oil and gas fields (Lujala et al., 2007) to control for natural resources, land cover classifications (ESA, 2017), and weather conditions, particularly droughts (Vicente-Serrano, Beguería, & López-Moreno, 2010).

I use geospatial data provided by the Myanmar Information Management Unit (2019) to obtain administrative boundaries, locations of towns, railway, and road networks. I measure distances from the township centroid to the nearest major city (capital, state/region capital or district town), railway, major road, cell phone tower by MPT, and cell phone tower by any other MNO. Finally, I use the SRTM elevation data (Jarvis et al., 2008) to complement the data with topographic characteristics, including elevation, slope, and terrain ruggedness. Descriptions of the data are provided in Table A.2, and summary statistics are presented in Table A.1.

---

<sup>9</sup>Ethnicity information is only available at state level and may be misleading. According to the Census Observation Mission, most of the observed respondents who self-identified as Rohingya were either not enumerated in the census or their ethnicity information was skipped.

<sup>10</sup>Appendix Figure E.5 maps the geographic distribution of population.

## 4 Empirical Strategy

I estimate the following cross-sectional regression:

$$Y_i = \beta CoverageFB_i + \delta Coverage_i + X_i'\gamma + \lambda_d + \varepsilon_i \quad (1)$$

where  $Y_i$  is the conflict outcome in township  $i$ ,  $CoverageFB_i$  is the predicted mobile phone coverage by MPT, weighted by population, and  $\beta$  is the main parameter of interest. To distinguish Facebook access from mobile phone coverage, I control for mobile phone coverage from other wireless service providers, denoted by  $Coverage_i$ . It is constructed based on the combined coverage area of all providers other than MPT.  $X_i$  is a set of township level controls,  $\lambda_d$  is a district fixed effect, and  $\varepsilon_i$  is the error term.

I use mobile phone coverage by the mobile network operator MPT offering the zero-rated plan as a proxy for social media access. This approach is essentially an encouragement design (Duflo et al., 2007): with no information on individuals' social media usage, I take advantage of the fact that if there is mobile phone coverage, it is possible to use mobile internet, and if there is coverage from MPT, it is possible to use zero-rated Facebook without data charges. Intuitively, better coverage from an MNO is associated with more mobile phone usage and subscriptions to the provider. Availability of zero-rated Facebook constitutes a negative price shock and is expected to increase Facebook use. Figure 4 demonstrates the correlation between the predicted mobile phone coverage by MPT,  $CoverageFB$ , and number of mobile phone users by state or region in 2016. The right panel shows that during the Facebook campaign, there was a sharp increase in Google searches for "MPT". It is worth noting that since the zero-rated Facebook is a stripped down data-lite version, those who took advantage of the campaign were potentially exposed to a lower intensity treatment compared to full Facebook access.

The aim is to compare otherwise similar locations that had differences in mobile phone coverage by MPT and hence differences in Facebook access. The source of plausibly exogenous variation comes from terrain differences between locations and cell towers. Because the topography-corrected mobile phone coverage is quite coarsely estimated, to

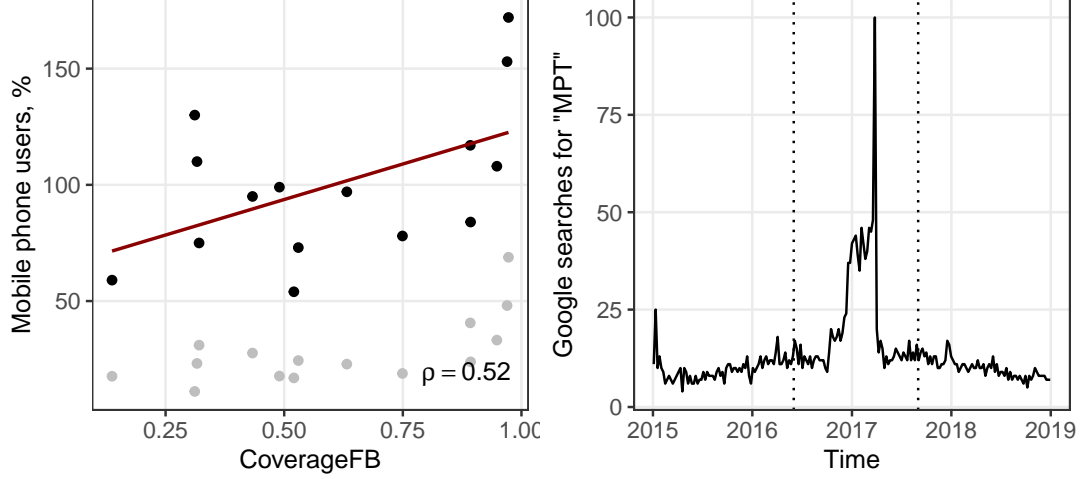


Figure 4: Number of mobile phone users per 100 people in 2016 against MPT mobile phone coverage (left) and relative volume of Google searches for “MPT” in Myanmar. Grey dots in left panel represent share of households with a mobile phone according to the 2014 census,  $\rho$  is the correlation coefficient. Data sources: Myanmar Statistical Information Service and Google Trends.

minimize potential endogeneity bias, I include many controls for confounding factors that may influence both conflict and mobile phone coverage.

Because cell phone towers are likely located so as to maximize the covered population, I control for demand factors by nighttime luminosity as a proxy for income, area covered by agriculture land, area covered by urban settlements, log population, log population density, a dummy for below median urban rate, share of working age population, share of population with no ID, share of households with electricity as their main source of lightning, share of households with a mobile phone, share of households with a landline phone, and share of households with internet at home. I control for weather conditions, particularly droughts, as they are correlated with topographic features and also influence agricultural outputs and thus the opportunity cost of fighting (Miguel et al., 2004). I also control for the presence of gemstone deposits and oil and gas fields, as they have been associated with more severe conflict (Christensen et al., 2019; Lujala, 2009), and may also lead to better mobile phone coverage to accommodate mining companies.

As terrain features and distance to road and rail network can influence armed groups’ ability to operate as well as the cost of providing mobile phone coverage, I include second order polynomials of distance to major road, distance to railway, and distance to major

town. I also include the area of the administrative unit and length of roads to further control for remoteness. Additional controls for terrain features include second order polynomials of elevation, slope, and terrain ruggedness. I include district fixed effects to control for broader geographical trends, and I cluster standard errors at the district level to account for possible contemporaneous correlation between neighboring areas.<sup>11</sup>

Both the outcome and the independent variable may be measured with some error. First, because the data collection in GDELT is automated, there may be duplicate reporting. Therefore, in majority of the analysis, I use a dummy variable as the dependent variable. The incidence of conflict events in an area is much less affected by duplicated reporting, or reporting bias, than event counts. When examining event counts, I use the logged form as it is less sensitive to duplication.

Second, reporting bias may be present because the conflict data is based on monitoring the news. Measurement error can bias the results if it is correlated with the treatment, i.e., mobile phone coverage from MPT (conditional on observables). The main concern is that better mobile phone coverage and Facebook access may lead to higher reporting of conflict events. In that case, the coefficient of *CoverageFB* could be overestimated. To address this concern, I conduct a sensitivity analysis to investigate the extent to which the association between Facebook availability and conflict depends on potential reporting bias.

To address this concern, I conduct a sensitivity analysis to investigate the extent to which the association between Facebook availability and conflict depends on potential reporting bias. Intuitively, more severe conflict events, for example those involving more casualties, are more likely to be reported in the media regardless of how good local mobile phone coverage is. This means that the dependence of conflict reporting on mobile phone coverage should be stronger with *less severe* events. Without mobile phone coverage, less severe events are more likely to go unreported. The sensitivity analysis is presented in Appendix D. In short, I do not find a dependence between the effect of Facebook availability on conflict and severity of the events.

---

<sup>11</sup>District is one administrative level higher than township, and there are 76 districts.



Table 1: Facebook availability and probability and intensity of conflict

	Conflict dummy			log(Conflict events)		
	(1)	(2)	(3)	(4)	(5)	(6)
CoverageFB	-0.047 (0.085)	-0.123 (0.111)	-0.119 (0.105)	-0.078 (0.308)	0.085 (0.406)	0.098 (0.408)
N	330	330	329	330	330	329
R <sup>2</sup>	0.250	0.365	0.443	0.275	0.357	0.448
District dummies	✓	✓	✓	✓	✓	✓
Spatial controls		✓	✓		✓	✓
Additional controls			✓			✓

\*p<0.1; \*\*p<0.05; \*\*\*p<0.01. Robust standard errors clustered at district level are reported in parentheses. The dependent variable in columns (1)–(3) is an indicator for conflict in a township between June 1, 2016, and August 31, 2017, and in columns (4)–(6) log number of conflict events+1. *CoverageFB* is standardized. Spatial controls: 2nd order polynomials of distance to major town, distance to major road, distance to railway, distance to MPT transmitter, distance to other transmitter, mean elevation, mean slope, mean ruggedness, length of roads, and township area. Additional controls: share of agriculture land, share of forests, share of urban settlements, nighttime luminosity, presence of gemstones, share of oil fields, drought, log population, log population density, dummy for below median urban rate, share of working age population, share of population with no ID, share of households with electricity, mobile phone, landline phone, and internet at home.

## 5 Results

### 5.1 Facebook availability and probability and intensity of conflict

Table 1 presents the OLS estimates of model (1). The dependent variable in columns (1)–(3) is an indicator for any conflict events in the township in the treatment period, i.e. when Free Basics was available (between June 2016 and end of August 2017), and in columns (4)–(6) the logged number of conflict events.<sup>12</sup> Overall, the parameter estimates of availability of zero-rated Facebook lack statistical significance.

If expansion of mobile phone coverage was affected by conflict, the estimates could be confounded by reverse causality. To test the exogeneity of the topography-corrected MPT mobile phone coverage, I conduct a placebo test, in which I estimate the same cross-sectional model using conflict data only from the pre-treatment period (January 1, 2015–May 30, 2016). If past conflict had driven lower mobile phone coverage, *CoverageFB* should be associated with less conflict in the pre-treatment period. The placebo test shows

<sup>12</sup>One event is added to all observations because the logarithm is not defined at zero. Table presents estimates using the inverse hyperbolic sine transformation.

that *CoverageFB* is not associated with conflict before the treatment period (Table C.1).<sup>13</sup> As a further robustness test, I estimate a negative binomial model for the count outcome. The estimates are similar to the OLS model (see Appendix Table C.4).

Since availability of social media could be differently related to different forms of conflict, I explore heterogeneity in types of conflict and actors involved in the conflict events (Table 2). The dependent variables in columns (1)–(4) are indicators for different types of conflict events, and in columns (5)–(8) for conflict events involving different types of actors.<sup>14</sup> Despite numerous reports that Facebook was used by the government and extremist Buddhist organizations to spread anti-Muslim propaganda, the estimates do not suggest that availability of zero-rated Facebook in June 2016–August 2017 was related to probability of organized violence such as fighting between organized groups during the campaign period. Nor is Facebook availability related to non-organized violence or individuals’ participation in violence in this period: it is not related to probability on conflict events involving civilians, coercion, which includes repression and violence against civilians or their rights or properties, or assaults, which include abductions, different types of physical assaults, and use of explosive devices.

Previous studies have also documented that expansion of new communication technologies can reduce conflict (Shapiro & Weidmann, 2015). The Myanmar government has used several methods to monitor its citizens online, for instance, Freedom House (2017) reports that the military appears to use interceptions for domestic surveillance. Similarly, OpenNet Initiative (2012) reports that the regime has engaged in pervasive internet filtering, internet shutdowns, surveillance, as well as cyberattacks on opposition groups. Despite this, the estimates in columns (5)–(8) do not suggest that availability of zero-rated Facebook was associated with organized groups’ ability to carry out attacks in the treatment period in June 2016–August 2017.

---

<sup>13</sup>Table C.1 also presents estimates on post-treatment outcomes, i.e., using conflict data from after the Free Basics campaign (September 1, 2017–December 31, 2018), which similarly suggest no association.

<sup>14</sup>Actors can be either perpetrators or victims or violent events. *State* refers to state forces, i.e., police forces, government, or military. *Insurgents* includes insurgents (rebels who attempt to overthrow their national government) and separatist rebels, whereas *Rebels* refers to armed and violent opposition groups and individuals (Event Data Project, 2012).

Table 2: Facebook availability and probability of conflict: by conflict and actor type

	Conflict types				Actor types			
	Coerce (1)	Assault (2)	Fight (3)	Mass violence (4)	State (5)	Insurgents (6)	Rebels (7)	Civilians (8)
CoverageFB	-0.025 (0.134)	0.032 (0.135)	-0.158 (0.111)	-0.063 (0.051)	-0.014 (0.133)	-0.056 (0.057)	-0.098 (0.061)	-0.073 (0.145)
N	329	329	329	329	329	329	329	329
R <sup>2</sup>	0.394	0.436	0.477	0.401	0.441	0.453	0.479	0.381
Mean(Y)	0.509	0.321	0.533	0.061	0.515	0.058	0.1	0.388
Controls	✓	✓	✓	✓	✓	✓	✓	✓

\*p<0.1; \*\*p<0.05; \*\*\*p<0.01. Robust standard errors clustered at district level are reported in parentheses. The dependent variable in column (1) is an indicator for conflict of particular type in a township between June 1, 2016, and August 31, 2017, and in column (2) log number of conflict events+1. *CoverageFB* is standardized. All regressions include the full set of controls: district dummies, 2nd order polynomials of distance to major town, distance to major road, distance to railway, distance to MPT transmitter, distance to other transmitter, mean elevation, mean slope, mean ruggedness, length of roads, and township area, share of agriculture land, share of forests, share of urban settlements, presence of gemstones, nighttime luminosity, share of oil fields, drought, log population, log population density, dummy for below median urban rate, share of working age (15–64 y.o.) population, share of population with no ID, share of households with electricity, mobile phone, landline phone, and internet at home.

## 5.2 The Rohingya Crisis

The analysis so far has examined how social media access is associated with probability or intensity of conflict across Myanmar. Given that conflicts occur in various parts of the country, often involving different ethnic groups, the estimates may be confounded by different regional dynamics. Previous literature has demonstrated that the effects of media and communication technologies on conflict are context specific.

Many ethnic groups in Myanmar have long been marginalized and subject to racism and discrimination, but the Rohingya have been subject to particular hostility and an intense anti-Muslim campaign. They are frequently referred to for instance as “illegal immigrants”, “fleas”, “savages”, “bullies and rapists” (Selth, 2018). Nationalist Buddhist monks, who are revered in Myanmar, have been key figures in the anti-Muslim campaign, actively spreading conspiracy theories about Muslims being terrorists backed by international Islamist groups and planning to turn Myanmar into an Islamist state (Fisher, 2013; Hodal, 2013). Numerous accounts show that Facebook has been used to disseminate these messages (Fink, 2018; Martin et al., 2022). Facebook availability could have therefore uniquely affected the Rohingya conflict.

To that end, I focus on the Rakhine state, home for most of the Rohingya in Myan-

Table 3: Facebook availability and conflict in Rakhine State

	Conflict dummy (1)	log(events) (2)	Coerce (3)	Assault (4)	Fight (5)	Mass violence (6)
CoverageFB	0.022* (0.013)	0.035 (0.038)	0.013 (0.011)	0.005 (0.009)	0.023* (0.012)	0.001 (0.007)
N	1058	1058	1058	1058	1058	1058
R <sup>2</sup>	0.091	0.081	0.066	0.043	0.082	0.061
Mean(Y)	0.036	0.082	0.024	0.015	0.028	0.006
Bootstrap p-values	0.1	0.19	0.116	0.481	0.079	0.465
Controls	✓	✓	✓	✓	✓	✓

\*p<0.1; \*\*p<0.05; \*\*\*p<0.01. Robust standard errors are reported in parentheses. The table also reports p-values for wild cluster bootstrap standard errors. The dependent variable in column (1) is an indicator for conflict event, in column (2) logged number of conflict events+1, and in columns (3)-(6) a dummy for particular type of conflict event. *CoverageFB* is standardized. All regressions include the full set of controls: district dummies, 2nd order polynomials of distance to major town, distance to major road, distance to railway, distance to MPT transmitter, distance to other transmitter, mean elevation, mean slope, mean ruggedness, length of roads, and township area, share of agriculture land, share of forests, share of urban settlements, presence of gemstones, lagged nighttime luminosity, share of oil fields, drought, lagged log population, lagged log population density, dummy for below median urban rate, share of working age population, share of population with no ID, share of households with electricity, mobile phone, landline phone, and internet at home.

mar. Drawing on the previous literature on propaganda (e.g., Adena et al., 2015; Müller & Schwarz, 2023; Yanagizawa-Drott, 2014), the hypothesis is that anti-Muslim content on social media could persuade individuals to believe that the Rohingya are dangerous terrorist who do not belong to Myanmar. Stoking fear and dehumanizing the victims could increase acceptance of violence and push some people to assaults, destruction of property, or to take part in attacks. Historical grievances between the two largest ethnic groups in Rakhine state, the Rakhine Buddhists and the Rohingya (Human Rights Council, 2018), could make people predisposed to anti-Rohingya messaging.

Because Rakhine consists of only 17 townships, I conduct the analysis at village level to retain enough observations. The population characteristics, apart from population counts and density that are derived from WorldPop, correspond to the township level measures. I report robust standard errors and p-values for wild cluster bootstrap standard errors at the township level (Cameron et al., 2008). Table 3 presents the estimates. In contrast to the previous results, in Rakhine villages availability of zero-rated Facebook is associated with a small increase in conflict in the treatment period. Although the estimates are imprecise, they are in stark contrast with the estimates for the whole country and are suggestive of important regional heterogeneity.

I complement the event data with satellite-detected fires and destroyed villages in northern Rakhine.<sup>15</sup> Although the data has a very limited geographic scope, the benefit is that it is not subject to potential reporting bias. The point estimates are positive but imprecise, providing suggestive evidence in support of the interpretation that mobile phone coverage, through increased Facebook access, may have contributed to increased violence in the Rakhine state (see Table F.4 in the Appendix).

### 5.3 Difference-in-Differences

To further address potential non-random assignment of mobile phone coverage, and to take advantage of the time variation in availability of zero-rated Facebook, I conduct a difference-in-differences analysis. The analysis uses only within township variation to examine how Facebook access is associated with probability and intensity of conflict.

Table 4 presents the estimates from the following model:

$$Y_{it} = \beta(CoverageFB_i \cdot Treat_t) + \tau_t + \lambda_i + X'_{it}\gamma + \varepsilon_{it} \quad (2)$$

where  $Y_{it}$  is the conflict outcome in township  $i$  in time  $t$ , and  $CoverageFB_i$  is the predicted mobile phone coverage by MPT, weighted by population, and it represents the treatment intensity. It is time invariant and based on cell phone towers recorded in the data before September 2017.  $Treat_t$  is a dummy that takes value one after the Facebook campaign started in June 2016. The time effect  $\tau_t$  captures time trends that are common to all townships, and the township fixed effect  $\lambda_i$  captures township specific time invariant characteristics.  $X_{it}$  is a set of township level controls and  $\varepsilon_i$  is the error term.

The dependent variable in Table 4 in column (1) is an indicator for conflict in township  $i$  in time  $t$ , and in column (2) logged number of conflict events. The estimates are consistent with the cross-sectional results: point estimates have a negative sign but do not suggest that availability of zero-rated Facebook is associated with probability or intensity of conflict. Unlike in the cross-sectional regressions that limit the analysis to

---

<sup>15</sup>The fire detection was conducted from August, 25 to November, 25 2017, and detection of destroyed or damaged settlements from August 2017 to March 2018.

Table 4: Facebook availability and conflict: Difference-in-differences estimates

	Conflict dummy (1)	log(no. conflict events) (2)
CoverageFB·Treat	-0.029 (0.021)	-0.076 (0.057)
N	15792	15792
R <sup>2</sup>	0.398	0.641
Controls	✓	✓
Township FE	✓	✓
Quarter FE	✓	✓

\*p<0.1; \*\*p<0.05; \*\*\*p<0.01. Robust standard errors clustered at township level are reported in parentheses. Unit of observation is township-month. The dependent variable in column (1) is an indicator for conflict in a township, and in column (2) logged number of conflict events+1. In columns (3)–(10) the dependent variable is an indicator for conflict of particular type. *CoverageFB* is standardized. All regressions include time varying controls lagged log population, lagged nighttime luminosity, and drought, and an interaction between a linear time trend and time invariant controls: 2nd order polynomials of distance to major town, distance to major road, distance to railway, distance to MPT transmitter, distance to other transmitter, mean elevation, mean slope, mean ruggedness, length of roads, and township area, share of agriculture land, share of forests, share of urban settlements, presence of gemstones, share of oil fields, dummy for below median urban rate, share of working age population, share of population with no ID, share of households with electricity, mobile phone, landline phone, and internet at home.

the treatment period, now the whole period after the zero-rated Facebook campaign is considered as treated to detect potential association between Facebook availability and conflict that would take longer to appear. Examining different conflict types and actors similarly suggests that Facebook access is not systematically associated with changes in probability or intensity of conflict (Table F.1).

I estimate placebo regressions to assess the parallel trends assumption. These regressions use placebo treatment dates and data limited only to the pre-treatment period (January 2015–May 2016). All placebo treatment effects are zero, indicating that there are no differential changes in conflict trends associated with different levels of mobile phone coverage before the treatment period (Table C.2). It is worth noting that the standard parallel trends assumption is about potential outcomes in the absence of treatment. It cannot rule out selection bias arising from units that are treated with different intensities. Selection to specific intensity of treatment would mean that units treated

with different intensities could potentially have different treatment effects if they had the same treatment intensity (Callaway et al., 2024). However, both empirical strategies lead to the same finding of no significant association between availability of zero-rated Facebook and conflict.

## 5.4 Heterogeneity Analysis

To further explore whether the association between availability of zero-rated Facebook and conflict is masked by regional differences, I explore heterogeneity to local characteristics. First, I explore heterogeneity to the presence of minorities, proxied by share of paperless. Second, I examine proxies for the number of potential social media users: share of households with mobile phone, and households with electricity as their main source of lighting.<sup>16</sup> Third, I explore heterogeneity in terms of remoteness: distance from major cities, distance from the road network, and share of households with landline phone. Fourth, I examine factors that affect the opportunity cost of fighting: economic development, proxied by nighttime luminosity in 2015, and drought, as it impacts agricultural output. I estimate a model in which *CoverageFB* is interacted with a dummy for above median value of the characteristic of interest. The estimates do not suggest any significant heterogeneity along these dimensions (Table F.2). Finally, a potential confounding factor is the influence of mobile phone coverage and social media access on economic development, leading to higher opportunity cost of conflict. I estimate the effect of mobile phone coverage on subsequent local development, proxied by nighttime luminosity and population. The estimates do not suggest that mobile phone coverage is related to income or population growth (see Table F.3).

## 6 Conclusions

This paper has studied how availability of zero-rated Facebook is related to conflict. I exploit geographic variation in mobile phone coverage together with time variation in

---

<sup>16</sup>These variables are based on the 2014 census and reflect the pre-treatment levels.

availability of zero-rated Facebook to estimate whether Facebook access is associated with changes in probability or intensity of conflict. Despite evidence of a hate-campaign against Muslims in general and the Rohingya in particular, which utilized Facebook to reach wide audiences, I find no systematic evidence that the increase in Facebook access was associated with higher probability or intensity of conflict during the year in which the campaign was active. The null result is robust to different model specifications and estimators, and heterogeneity in terms of conflict types and local characteristics.

The only exception to a robust null is the analysis of the specific regional context of Rakhine state. I find suggestive evidence that Facebook availability is associated with higher probability of conflict. In this setting, tensions between the majority ethnic groups and the Rohingya are high, and the Rohingya have been a particular target of hate speech.

It is important to stress that the results should be interpreted with caution. What this paper shows is that there is no significant association between better mobile phone coverage—which arguably provided better access to Facebook—and probability of conflict. The results indicate that a large and significant average effect caused by differential mobile phone coverage is unlikely. Due to the data limitations the analysis relies on many approximations and assumptions, and therefore a more subtle influence of social media cannot be ruled out.

For one, other media sources, such as state-run newspapers, were also utilized to disseminate anti-Rohingya sentiment. Anti-Rohingya propaganda is not a new phenomenon in Myanmar brought by social media, although it may have amplified its fervor and reach. It is possible that the intense prejudice against the Rohingya was already so wide spread in the population, that differential exposure to the particular content on Facebook, facilitated by mobile phone coverage, played a more nuanced role, not picked up by the research design. It is worth noting that since the zero-rated Facebook is a data-lite version of the site, those who took advantage of the campaign were potentially exposed to a lower intensity treatment compared to full Facebook access. Importantly, this paper exclusively examines the availability of Facebook, not Facebook usage. Therefore, it is not correct to conclude that social media had no impact on ethnic conflict in Myan-



mar. Future research both on Myanmar, and on the impacts of social media in different circumstances, is needed.

## References

- ACLED. (2019a). *Armed Conflict Location & Event Data Project (ACLED)*. <https://doi.org/10.1177/0022343310378914>
- ACLED. (2019b). *Armed Conflict Location & Event Data Project (ACLED) Codebook, 2019*.
- Adena, M., Enikolopov, R., Petrova, M., Santarosa, V., & Zhuravskaya, E. (2015). Radio and the Rise of the Nazis in Prewar Germany. *The Quarterly Journal of Economics*, 130(4), 1885–1939.
- Armand, A., Atwell, P., & Gomes, J. F. (2020). The Reach of Radio: Ending Civil Conflict Through Rebel Demobilization. *American Economic Review*, 110(5), 1395–1429.
- Bursztyn, L., & Cantoni, D. (2016). A Tear in the Iron Curtain: The Impact of Western Television on Consumption Behavior. *Review of Economics and Statistics*, 98(1), 25–41.
- Bursztyn, L., Egorov, G., Enikolopov, R., & Petrova, M. (2019). *Social Media and Xenophobia: Evidence from Russia* (No. w26567). National Bureau of Economic Research.
- Callaway, B., Goodman-Bacon, A., & Sant’Anna, P. H. (2024). *Difference-in-differences with a continuous treatment* (No. w32117). National Bureau of Economic Research.
- Cameron, A. C., Gelbach, J. B., & Miller, D. L. (2008). Bootstrap-Based Improvements for Inference with Clustered Errors. *The Review of Economics and Statistics*, 90(3), 414–427.
- Christensen, D., Nguyen, M., & Sexton, R. (2019). Strategic Violence during Democratization: Evidence from Myanmar. *World Politics*, 71(2), 332–366.

- Crabtree, C., & Kern, H. L. (2018). Using Electromagnetic Signal Propagation Models for Radio and Television Broadcasts: An Introduction. *Political Analysis*, 26(3), 348–355.
- Dafoe, A., & Lyall, J. (2015). Communication Technologies and Political Conflict: Insights from New Data, Designs, and Questions. *Journal of Peace Research*, 52(3), 401–13.
- DellaVigna, S., Enikolopov, R., Mironova, V., Petrova, M., & Zhuravskaya, E. (2014). Cross-Border Media and Nationalism: Evidence from Serbian Radio in Croatia. *American Economic Journal: Applied Economics*, 6(3), 103–32.
- Diamond, L. (2010). Liberation Technology. *Journal of Democracy*, 21(3), 69–83.
- Duflo, E., Glennerster, R., & Kremer, M. (2007). Using Randomization in Development Economics Research: A Toolkit. *Handbook of Development Economics*, 4, 3895–3962.
- Eisenach, J. A. (2015). The Economics of Zero Rating. *NERA Economic Consulting*, March.
- Elvidge, C. D., Zhizhin, M., Ghosh, T., Hsu, F.-C., & Taneja, J. (2021). *Annual Time Series of Global VIIRS Nighttime Lights Derived from Monthly Averages: 2012 to 2019* (No. 5). MDPI. <https://doi.org/10.3390/rs13050922>
- Enikolopov, R., Makarin, A., & Petrova, M. (2020). Social Media and Protest Participation: Evidence from Russia. *Econometrica*, 88(4), 1479–1514.
- Enikolopov, R., Petrova, M., & Zhuravskaya, E. (2011). Media and Political Persuasion: Evidence from Russia. *American Economic Review*, 101(7), 3253–85.
- ESA. (2017). *Land Cover CCI Product User Guide Version 2*. [maps.elie.ucl.ac.be/CCI/viewer/download/ESACCI-LC-Ph2-PUGv2\\_2.0.pdf](https://maps.elie.ucl.ac.be/CCI/viewer/download/ESACCI-LC-Ph2-PUGv2_2.0.pdf)
- Event Data Project. (2012). CAMEO Conflict and Mediation Event Observations Event and Actor Codebook. <https://www.gdeltproject.org/>
- Fergusson, L., & Molina, C. (2021). *Facebook Causes Protests*. Universidad de los Andes-CEDE.

- Fink, C. (2018). Dangerous Speech, Anti-Muslim Violence, and Facebook in Myanmar. *Journal of International Affairs*, 71(1.5), 43–52.
- Fisher, J. (2013, August 29). Anti-Muslim Monk Stokes Burmese Religious Tensions. *BBC News*. <https://www.bbc.com/news/world-asia-23846632>
- Frantz, E., Kendall-Taylor, A., & Wright, J. (2020). Digital Repression in Autocracies. *V-Dem Institute at the University of Gothenburg*.
- Freedom House. (2017). *Freedom on the Net 2017: Myanmar*. <https://freedomhouse.org/country/myanmar/freedom-net/2017>
- Gagliarducci, S., Onorato, M. G., Sobbrío, F., & Tabellini, G. (2020). War of the Waves: Radio and Resistance during World War II. *American Economic Journal: Applied Economics*, 12(4), 1–38.
- Garcia, C. N. (2018). UNOSAT Analysis of Destruction and Other Developments in Rakhine State, Myanmar Contents. [https://www.ohchr.org/sites/default/files/Documents/HRBodies/HRCouncil/FFM-Myanmar/UNOSATReportMyanmar\\_20180912.pdf](https://www.ohchr.org/sites/default/files/Documents/HRBodies/HRCouncil/FFM-Myanmar/UNOSATReportMyanmar_20180912.pdf)
- GDELT Project. (2019). *Global Database of Events, Language, and Tone (GDELT)*. <https://www.gdeltproject.org/>
- Gilmore, E., Gleditsch, N. P., Lujala, P., & Ketil Rod, J. (2005). Conflict Diamonds: A New Dataset. *Conflict Management and Peace Science*, 22(3), 257–272.
- GSM Association. (2018). Taxing Mobile Connectivity in Asia Pacific: A Review of Mobile Sector Taxation and its Impact on Digital Inclusion.
- Guriev, S., Melnikov, N., & Zhuravskaya, E. (2021). 3G Internet and Confidence in Government. *The Quarterly Journal of Economics*, 136(4), 2533–2613.
- Hammond, J., & Weidmann, N. B. (2014). Using Machine-Coded Event Data for the Micro-Level Study of Political Violence. *Research & Politics*, 1(2).
- Henderson, V., Storeygard, A., & Weil, D. N. (2011). A Bright Idea for Measuring Economic Growth. *American Economic Review*, 101(3), 194–199.

- Hodal, K. (2013, April 18). Buddhist Monk Uses Racism and Rumours to Spread Hatred in Burma. *The Guardian*. <https://www.theguardian.com/world/2013/apr/18/buddhist-monk-spreads-hatred-burma>
- Human Rights Council. (2018). *Report of the Independent International Fact-Finding Mission on Myanmar*. [https://www.ohchr.org/Documents/HRBodies/HRCouncil/FFM-Myanmar/A\\_HRC\\_39\\_64.pdf](https://www.ohchr.org/Documents/HRBodies/HRCouncil/FFM-Myanmar/A_HRC_39_64.pdf)
- ITU. (n.d.). *Percentage of Individuals Using the Internet*. International Telecommunication Union. <https://www.itu.int/en/ITU-D/Statistics/Pages/stat/default.aspx>
- Jarvis, A., Reuter, H. I., Nelson, A., & Guevara, E. (2008). *Hole-Filled Seamless SRTM Data V4*, International Centre for Tropical Agriculture (CIAT). <https://srtm.cgiar.org>
- Lujala, P. (2009). Deadly Combat over Natural Resources: Gems, Petroleum, Drugs, and the Severity of Armed Civil Conflict. *Journal of Conflict Resolution*, 53(1), 50–71.
- Lujala, P., Rød, J. K., & Thieme, N. (2007). Fighting over Oil: Introducing a New Dataset. *Conflict Management and Peace Science*, 24(3), 239–256.
- Manacorda, M., & Tesei, A. (2020). Liberation Technology: Mobile Phones and Political Mobilization in Africa. *Econometrica*, 88(2), 533–567.
- Martin, D. A., Shapiro, J. N., & Ilhardt, J. G. (2022). Introducing the Online Political Influence Efforts Dataset. *Journal of Peace Research*, 60(5).
- Miguel, E., Satyanath, S., & Sergenti, E. (2004). Economic Shocks and Civil Conflict: An Instrumental Variables Approach. *Journal of Political Economy*, 112(4), 725–753.
- Miles, T. (2018, March 12). U.N. Investigators Cite Facebook Role in Myanmar Crisis. *Reuters*. <https://www.reuters.com/article/us-myanmar-rohingya-facebook/u-n-investigators-cite-facebook-role-in-myanmar-crisis-idUSKCN1GO2PN>
- Mozur, P. (2018, April 5). Groups in Myanmar Fire Back at Zuckerberg. *The New York Times*. <https://www.nytimes.com/2018/04/05/technology/zuckerberg-facebook-myanmar.html?module=inline>

- Müller, K., & Schwarz, C. (2021). Fanning the Flames of Hate: Social Media and Hate Crime. *Journal of the European Economic Association*, 19(4), 2131–2167.
- Müller, K., & Schwarz, C. (2023). From Hashtag to Hate Crime: Twitter and Anti-Minority Sentiment. *American Economic Journal: Applied Economics*, 15(3), 270–312.
- Myanmar Information Management Unit. (2019). *MIMU Geospatial Data*. <http://themimu.info/>
- Olken, B. A. (2009). Do Television and Radio Destroy Social Capital? Evidence from Indonesian Villages. *American Economic Journal: Applied Economics*, 1(4), 1–33.
- OpenNet Initiative. (2012). *Burma (Myanmar)*. Retrieved March 6, 2023, from <https://opennet.net/research/profiles/myanmar-burma>
- Parsons, J. D. (2000). *The Mobile Radio Propagation Channel*. Wiley Online Library.
- Peisakhin, L., & Rozenas, A. (2018). Electoral Effects of Biased Media: Russian Television in Ukraine. *American Journal of Political Science*, 62(3), 535–550.
- Pierskalla, J. H., & Hollenbach, F. M. (2013). Technology and Collective Action: The Effect of Cell Phone Coverage on Political Violence in Africa. *American Political Science Review*, 107(2), 207–224.
- PRI. (2017, November 1). In Myanmar, Fake News Spread on Facebook Stokes Ethnic Violence. *PRI's The World*. <https://www.pri.org/stories/2017-11-01/myanmar-fake-news-spread-facebook-stokes-ethnic-violence>
- Qin, B., Strömberg, D., & Wu, Y. (2017). Why Does China Allow Freer Social Media? Protests versus Surveillance and Propaganda. *Journal of Economic Perspectives*, 31(1), 117–140.
- Raleigh, C., Linke, A., Hegre, H., & Karlsen, J. (2010). Introducing ACLED-Armed Conflict Location and Event Data. *Journal of Peace Research*, 47(5), 651–660.
- Regan, H. (2019, February 9). Facebook Wades into World's Longest Civil War, but Does It Know What It's Doing? *CNN*. <https://edition.cnn.com/2019/02/08/asia/facebook-bans-myanmar-ethnic-groups-intl/index.html>

- Rød, E. G., & Weidmann, N. B. (2015). Empowering Activists or Autocrats? The Internet in Authoritarian Regimes. *Journal of Peace Research*, 52(3), 338–351.
- Selth, A. (2018). *Myanmar's Armed Forces and the Rohingya Crisis*. United States Institute of Peace.
- Shapiro, J. N., & Siegel, D. A. (2015). Coordination and Security: How Mobile Communications Affect Insurgency. *Journal of Peace Research*, 52(3), 312–322.
- Shapiro, J. N., & Weidmann, N. B. (2015). Is the Phone Mightier than the Sword? Cellphones and Insurgent Violence in Iraq. *International Organization*, 69(2), 247–274.
- Singh, M. (2018, May 1). After Harsh Criticism, Facebook Quietly Pulls Services from Developing Countries. *The Outline*. <https://theoutline.com/post/4383/facebook-quietly-ended-free-basics-in-myanmar-and-other-countries?zd=1&%20zi=buaaj62ap>
- Stecklow, S. (2018, August 15). Why Facebook is Losing the War on Hate Speech in Myanmar. *Reuters*. <https://www.reuters.com/investigates/special-report/myanmar-facebook-hate/>
- The Washington Post. (2018, April 10). Transcript of Mark Zuckerberg's Senate Hearing. *The Washington Post*. [https://www.washingtonpost.com/news/the-switch/wp/2018/04/10/transcript-of-mark-zuckerbergs-senate-hearing/?utm\\_term=.b5a32ee4ec81](https://www.washingtonpost.com/news/the-switch/wp/2018/04/10/transcript-of-mark-zuckerbergs-senate-hearing/?utm_term=.b5a32ee4ec81)
- Vicente-Serrano, S. M., Beguería, S., & López-Moreno, J. I. (2010). A Multiscalar Drought Index Sensitive to Global Warming: The Standardized Precipitation Evapotranspiration Index. *Journal of Climate*, 23(7), 1696–1718.
- Vicente-Serrano, S. M., Beguería, S., López-Moreno, J. I., Angulo, M., & El Kenawy, A. (2010). A New Global 0.5° Gridded dataset (1901–2006) of a Multiscalar Drought Index: Comparison with Current Drought Index Datasets Based on the Palmer Drought Severity Index. *Journal of Hydrometeorology*, 11(4), 1033–1043.

- Voigtländer, N., & Voth, H.-J. (2015). Nazi Indoctrination and Anti-Semitic Beliefs in Germany. *Proceedings of the National Academy of Sciences*, 112(26), 7931–7936.
- Wang, W., Kennedy, R., Lazer, D., & Ramakrishnan, N. (2016). Growing Pains for Global Monitoring of Societal Events. *Science*, 353(6307), 1502–1503.
- We Are Social. (n.d.). *Distribution of Internet Traffic in Myanmar as of January 2018, by Device*. In Statista - The Statistics Portal. <https://www-statista-com.ezproxy.eui.eu/statistics/804014/share-of-internet-traffic-by-device-myanmar/>
- Weidmann, N. B. (2016). A Closer Look at Reporting Bias in Conflict Event Data. *American Journal of Political Science*, 60(1), 206–218.
- Weidmann, N. B., & Rød, E. G. (2019). *The Internet and Political Protest in Autocracies*. Oxford University Press.
- Weidmann, N. B., & Schutte, S. (2017). Using Night Light Emissions for the Prediction of Local Wealth. *Journal of Peace Research*, 54(2), 125–140.
- WorldPop (www.worldpop.org - School of Geography and Environmental Science, University of Southampton; Department of Geography and Geosciences, University of Louisville; Departement de Geographie, Universite de Namur) and Center for International Earth Science Information Network (CIESIN), Columbia University (2018). (2018). *Global High Resolution Population Denominators Project - Funded by The Bill and Melinda Gates Foundation (OPP1134076)*. <https://doi.org/10.5258/SOTON/WP00660>
- Yanagizawa-Drott, D. (2014). Propaganda and Conflict: Evidence from the Rwandan Genocide. *The Quarterly Journal of Economics*, 129(4), 1947–1994.
- Zhuravskaya, E., Petrova, M., & Enikolopov, R. (2020). Political Effects of the Internet and Social Media. *Annual Review of Economics*, 12, 415–438.

# A Data Sources and Summary Statistics

Table A.1: Township summary statistics

	N	Mean	Std.Dev.
Conflict dummy, GDELT	330	0.65	0.48
Conflict events, per 1000, GDELT	330	0.61	4.60
Conflict events, GDELT	330	56.89	382.74
Cell phone coverage, MPT, %	330	63.04	37.82
Cell phone coverage, other, %	330	63.25	40.35
Cell tower density, per 1000 pop, MPT	330	0.35	1.07
Cell tower density, per 1000 pop, other providers	330	0.43	1.22
Population in 2014	330	152363.33	95347.49
Population density, 2014	330	2079.82	7140.20
Population, urban, %	330	28.10	29.03
Population aged 15-64, %	330	64.99	5.14
Population with no ID, %	330	27.29	12.85
Electricity, %	330	31.31	27.49
Landline phone, %	330	5.47	6.90
Mobile phone, %	330	31.62	22.87
Internet at home, %	330	6.31	10.58
Distance to major road, km	330	12.52	16.88
Distance to railway, km	330	51.25	66.46
Distance to nearest city, km	330	37.96	27.83
Distance to nearest cell tower, MPT, km	330	21.39	29.47
Distance to nearest cell tower, other, km	330	27.23	41.11
Area, sqkm	330	2025.95	1864.31
Roads, km	330	115.27	104.35
Mean elevation, m	330	389.58	461.06
Slope, degrees	330	88.49	5.17
Ruggedness	330	32.43	29.31
Agriculture coverage, %	330	47.01	34.31
Forest coverage, %	330	31.78	30.15
Urban coverage, %	330	9.06	26.26
Diamonds, dummy	330	0.11	0.31
Oil fields, %	330	12.37	27.49
Drought, %, 2016	329	2.71	4.02
Nightlight, 2015	330	2.47	7.84

The conflict dummy take value one if a conflict event was recorded in the township during June 1, 2016, and August 31, 2017. Number of conflict events refers to the same time period. Mobile phone coverage is the population weighted township area with sufficient signal for mobile phone reception. Distances are measured from township centroid. City refers to capital, state/region capital or district town (usually district capital). There are 330 townships.



Table A.2: Description of variables and data sources

Variable	Source	Description
Conflict events	GDELT, ACLED	Number of violent events, obtained from GDELT 2.0 (GDELT Project, 2019) and Armed Conflict Location & Event Data Project (ACLED, 2019a). From GDELT, events in the CAMEO event categories coerce, assault, fight, and use conventional mass violence, are used. From ACLED, events categorized as violent events are used.
Cell phone towers	OpenCellID	Data on cell phone towers is obtained from OpenCellID, available from <a href="https://www.opencellid.org">https://www.opencellid.org</a> . The data includes cell tower coordinates, network type, mobile network code, timestamp for when the measure was added to the database.
Population	Myanmar census 2014, WorldPop	Cross-sectional specifications use population data from the Myanmar census. The panel specifications use gridded population data from WorldPop (2018). I use the unconstrained individual countries UN adjusted 100m resolution population counts for Myanmar in 2015-2018. From the census, I calculate a dummy for below median share of urban population, share of working age (15-64) population, share of population (10 years and over) with no identity card, share of households with electricity as their source of lighting, and share of households with a mobile phone, with a landline phone, and with internet at home.
Topography	NASA	Measures of terrain elevation are obtained from NASA's Shuttle Radar Topography Mission (SRTM). I use the 1 arc second resolution data provided by CGIAR-CSI GeoPortal (Jarvis et al., 2008). Mean elevation, slope, and ruggedness for each township or village tract are computed with GQIS.
Distances	Myanmar Information Management Unit	Myanmar town points, road network, railway network as geospatial data (Myanmar Information Management Unit, 2019). I calculate the distance from township (or village tract) centroid to the nearest point of the feature. I also calculate road length in each administrative unit.
Drought	SPEI	Drought is measured with the Standardized Precipitation-Evapotranspiration Index (SPEI) (Vicente-Serrano, Beguería, & López-Moreno, 2010; Vicente-Serrano, Beguería, López-Moreno, et al., 2010). I use the SPEIbase v2.7, available from <a href="https://spei.csic.es/database.html">https://spei.csic.es/database.html</a> . The data is available at 0.5 degree resolution. For each area I calculate share of year it experiences drought ( $SPEI \leq -1.5$ ), and I use mean for 2016 in the cross-sectional models.
Nightlight	EOG	Average annual night light intensity from the Visible and Infrared Imaging Suite (VIIRS) Day Night Band (DNB). Data is downloaded from Earth Observation Group (EOG) as Annual VNL v2.1 (Elvidge et al., 2021), and it is available at 15 arc second resolution.
Land use	ESA CCI-LC	Global land cover maps at 300 m resolution for 2015, produced by the European Space Agency (ESA) Climate Change Initiative (CCI) (ESA, 2017). I follow the IPCC classes and aggregate to the categories "forests" (classes 50,60,70,80,90,100,160,170), "agriculture" (classes 10, 20, 30, 40), and "urban" (class 190). The values indicate the percentage of the area covered by the land cover category.
Gemstones	DIADATA, GEMDATA	Dummy for diamond or gemstone site. The variable is constructed by combining data sets on gemstone (Lujala, 2009) and diamond deposits (Gilmore et al., 2005).
Oil	PETRODATA	Share of the administrative unit covered by oil or gas fields, data set version 1.2. I use information on onshore oil and gas deposits (Lujala et al., 2007).
Destroyed settlements	UNITAR - UNOSAT	Satellite-detected fires and destroyed or otherwise damaged settlements in Buthidaung, Maungdaw, and Rathedaung Townships in Northern Rakhine State in Myanmar, provided by UNITAR - UNOSAT & United Nations Institute for Training and Research - Operational Satellite Applications Program (Garcia, 2018).

## B Estimation of Mobile Phone Coverage

As mobile phone signals are ultra-high frequency radio signals, it is possible to use an electromagnetic signal propagation model to calculate predicted coverage. Mobile phone signals' primary propagation mode is direct wave, and the signal strength decreases proportionally with the inverse of squared distance. The signal strength can also be greatly reduced by objects, such as hills, buildings, or dense foliage, lying on the line of sight. Even if an object does not block the line of sight but lies in the Fresnel zone, it can reduce the signal (Parsons, 2000). Therefore, for a given cell tower height and transmission strength, the signal strength in a given location is primarily determined by distance to the tower and whether the receiver (i.e., mobile phone) is in line of sight of the tower.

Because I do not have access to the technical details of the cell phone towers, I approximate the parameters needed for the calculation. The result can therefore be considered as an augmented line of sight analysis, where the ITM is used to define a potential coverage area, as determined by the cell tower locations and plausible parameter values. Intuitively, I consider whether a given point is within the maximum range to receive a signal, and whether there exists a line of sight between that point and a cell tower.

I apply the irregular terrain model (ITM), also known as Longley-Rice model, to calculate the predicted coverage area. To apply the ITM, I use a freely available software for RF propagation simulation, called Radio Mobile.<sup>17</sup> I start by defining the maximum allowed path loss. Maximum allowed path loss is defined as: Transmitter power (dBm) – Transmitter attenuation (dB) + Antenna gains (dBi) – Receiver line loss (dB) – Receiver sensitivity (dB). If the free space path loss (i.e., path loss due to distance) and the propagation loss due to topography are less than the maximum allowed path loss, the signal is sufficiently strong for reception. The prediction is then calculated for 200m resolution grid cells.

I approximate the cell phone tower parameters to mimic transmission in a rural area. Antenna height is assumed to be 35 meters, and antennas are assumed to be omnidirec-

---

<sup>17</sup>Radio Mobile is copyright of Roger Coudé VE2DBE.

tional. In reality, antennas are usually directional, with several antennas in a cell tower covering different segments around the tower. The tower heights vary a lot, and 30–40 meter towers can be considered high. I limit the maximum free space range of the signal to 25 km. Due to timing advance, the theoretical maximum range for a standard GSM equipment is 35 kilometers, but because of limitations of network architecture and poor performance of mobile phone antennas, in practice the range is much lower.

Both the free space loss and loss due to obstacles also depend on the signal frequency, with higher frequencies more affected by obstacles. Typically, the spectrum is divided into bands that are allocated for different service providers by a national regulator. To approximate the frequency, I use the frequency bands that the mobile network operators have reported in the Mobile World Live website. UMTS technology, which was used for 3G signals in Myanmar, uses 900 and 2100 frequency bands. I use the same parameter values for all cell towers. In reality, the parameters are likely to vary depending on the propagation environment (e.g., urban vs rural) and the MNO (Parsons, 2000).

## C Robustness Checks

### C.1 Placebo Test

Table C.1 presents results from a placebo regression, in which the cross-sectional model is estimated using data before the treatment period, January 2015–May 2016. The table also shows the baseline estimate for comparison (columns (3) and (4)), as well as estimates for the post-treatment period, September 2017–December 2018 (columns (5) and (6)). Table C.2 presents difference-in-differences estimates from placebo treatments. In this analysis the data is limited to the time before the actual treatment (January 2015 – May 2016).

Table C.1: Cross-sectional estimates on probability of conflict: by time period

	Pre-treatment		Treatment period		Post-treatment	
	dummy	count	dummy	count	dummy	count
	(1)	(2)	(3)	(4)	(5)	(6)
CoverageFB	0.052 (0.098)	0.182 (0.314)	-0.119 (0.105)	0.098 (0.408)	0.004 (0.139)	-0.065 (0.345)
N	329	329	329	329	329	329
R <sup>2</sup>	0.427	0.475	0.443	0.448	0.418	0.476
Controls	✓	✓	✓	✓	✓	✓

\*p<0.1; \*\*p<0.05; \*\*\*p<0.01. Robust standard errors clustered at district level are reported in parentheses. The dependent variable in columns (1)–(2) is an indicator for conflict in a township in January 2015–May 2016; in columns (3)–(4) in June 2016–August 2017; and in columns (5)–(6) in September 2017–December 2018. *CoverageFB* is standardized. All regressions include the full set of controls: district dummies, 2nd order polynomials of distance to major town, distance to major road, distance to railway, distance to MPT transmitter, distance to other transmitter, mean elevation, mean slope, mean ruggedness, length of roads, and township area, share of agriculture land, share of forests, share of urban settlements, presence of gemstones, lagged nighttime luminosity, share of oil fields, drought, lagged log population, lagged log population density, dummy for below median urban rate, share of working age population, share of population with no ID, share of households with electricity, mobile phone, landline phone, and internet at home.

Table C.2: Difference-in-differences estimates: placebo treatments

	Dummy (1)	log(count) (2)	Dummy (3)	log(count) (4)	Dummy (5)	log(count) (6)	Dummy (7)	log(count) (8)	Dummy (9)	log(count) (10)
CoverageFB·Treat <sub>2015Q2</sub>	0.039 (0.037)	0.016 (0.065)								
CoverageFB·Treat <sub>2015Q3</sub>			0.008 (0.033)	-0.032 (0.061)						
CoverageFB·Treat <sub>2015Q4</sub>					0.030 (0.033)	-0.028 (0.064)				
CoverageFB·Treat <sub>2016Q1</sub>							0.027 (0.036)	0.013 (0.059)		
CoverageFB·Treat <sub>2016Q2</sub>									0.032 (0.050)	0.039 (0.082)
N	5593	5593	5593	5593	5593	5593	5593	5593	5593	5593
R <sup>2</sup>	0.453	0.654	0.452	0.654	0.453	0.654	0.453	0.654	0.453	0.654
Township FE	✓	✓	✓	✓	✓	✓	✓	✓	✓	✓
Quarter FE	✓	✓	✓	✓	✓	✓	✓	✓	✓	✓

\*p<0.1; \*\*p<0.05; \*\*\*p<0.01. Robust standard errors clustered at township level are reported in parentheses. Unit of observation is township-month. Time period is limited to January 2015–May 2016. Each row present estimates from a model where the placebo treatment starts in the quarter indicated by the *Treat* subscript. *CoverageFB* is standardized. All regressions include time varying controls lagged log population, lagged nighttime luminosity, and drought, and an interaction between a linear time trend and time invariant controls: 2nd order polynomials of distance to major town, distance to major road, distance to railway, distance to MPT transmitter, distance to other transmitter, mean elevation, mean slope, mean ruggedness, length of roads, and township area, share of agriculture land, share of forests, share of urban settlements, presence of gemstones, share of oil fields, dummy for below median urban rate, share of working age population, share of population with no ID, share of households with electricity, mobile phone, landline phone, and internet at home.

## C.2 Event counts

**Inverse hyperbolic sine transformation** The main analysis employs the logged transformation when examining event counts. Since the data includes zero values, as a robustness test, I also use the inverse hyperbolic sine transformation. The estimates are reported in Table C.3. Columns (1)–(3) report township level estimates for the full sample, and column (4) reports the estimate for Rakhine villages.

Table C.3: Facebook availability and intensity of conflict: IHS transformation

	Full sample			Rakhine
	(1)	(2)	(3)	(4)
CoverageFB	-0.097 (0.357)	0.067 (0.473)	0.080 (0.477)	0.048 (0.045)
N	330	330	329	1058
R <sup>2</sup>	0.271	0.354	0.446	0.080
Bootstrap p-values				0.171
District dummies	✓	✓	✓	✓
Controls	✓	✓	✓	✓

\*p<0.1; \*\*p<0.05; \*\*\*p<0.01. Standard errors in columns (1)–(3) are adjusted for clustering at the district level. Column (4) reports robust standard errors in parenthesis, and p-values for wild cluster bootstrap standard errors. The dependent variable is inverse hyperbolic sine of conflict events. *CoverageFB* is standardized. All regressions include the full set of controls: district dummies, 2nd order polynomials of distance to major town, distance to major road, distance to railway, distance to MPT transmitter, distance to other transmitter, mean elevation, mean slope, mean ruggedness, length of roads, and township area, share of agriculture land, share of forests, share of urban settlements, presence of gemstones, lagged nighttime luminosity, share of oil fields, drought, lagged log population, lagged log population density, dummy for below median urban rate, share of working age population, share of population with no ID, share of households with electricity, mobile phone, landline phone, and internet at home.

**Count model** Although log transforming the data already smooths the distribution of number of conflict events, the data still has a positive skew. Therefore, I also estimate a negative binomial model. The estimates are presented in Table C.4. The estimated coefficients are similar to the OLS estimates in Table 1.

Table C.4: Facebook availability and intensity of conflict: negative binomial model

	(1)	(2)	(3)
CoverageFB	0.021 (0.216)	-0.030 (0.359)	-0.101 (0.430)
N	330	330	329
District dummies	✓	✓	✓
Spatial controls		✓	✓
Additional controls			✓

\*p<0.1; \*\*p<0.05; \*\*\*p<0.01. Robust standard errors clustered at district level are reported in parentheses. The dependent variable is number of conflict events between June 1, 2016, and August 31, 2017. The number of events is capped at the 97th percentile to facilitate convergence. *CoverageFB* is standardized. Spatial controls: 2nd order polynomials of distance to major town, distance to major road, distance to railway, distance to MPT transmitter, distance to other transmitter, mean elevation, mean slope, mean ruggedness, length of roads, and township area. Additional controls: share of agriculture land, share of forests, share of urban settlements, nighttime luminosity, presence of gemstones, share of oil fields, drought, log population, log population density, dummy for below median urban rate, share of working age population, share of population with no ID, share of households with electricity, mobile phone, landline phone, and internet at home.

### C.3 Alternative Conflict Data

Because the automated data collection of GDELT raises concerns about misreporting and duplicated data (Hammond & Weidmann, 2014; Wang et al., 2016), I conduct robustness tests with the Armed Conflict Location & Event Data Project (ACLED, 2019a; Raleigh et al., 2010).<sup>18</sup> The data is collected by researchers, and it contains considerably less events than GDELT: 0.03 violent events per 1000 population during the Facebook campaign, compared to 0.54 based on GDELT. Figure E.6 maps the geographic distribution of conflict events in ACLED. The events are much more geographically concentrated on the northern and eastern parts of the country than events in GDELT.

Table C.5 presents cross-sectional results with ACLED data. The event and actor classifications are somewhat different than in GDELT, but similarly to the main results, the estimates do not suggest that Facebook availability was related to conflict.

Table C.6 presents the difference-in-differences estimates with ACLED data. Again,

<sup>18</sup>Armed Conflict Location & Event Data Project (ACLED); <https://acleddata.com>

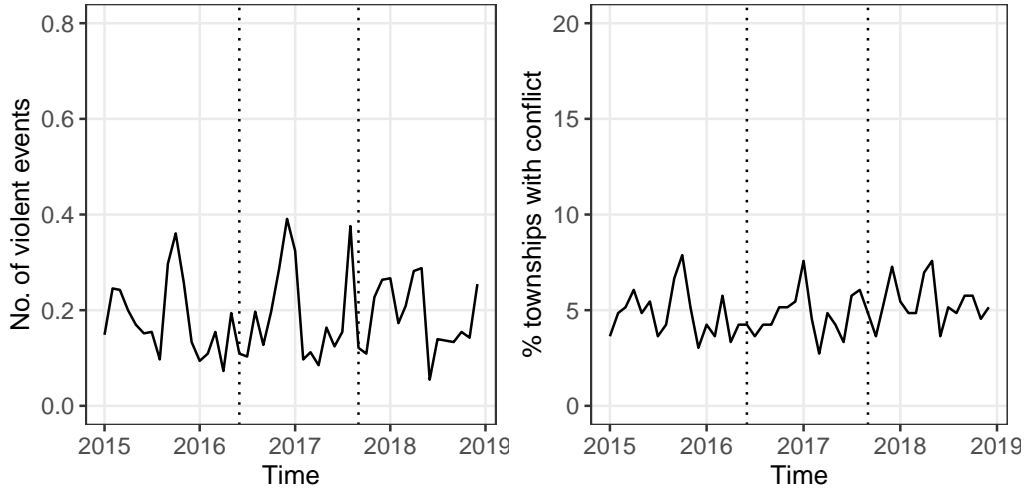


Figure C.1: Average monthly number of violent events across townships. The vertical dotted lines indicate the beginning (June 2016) and end (September 2017) of the Facebook campaign. Data source: ACLED

the estimates do not suggest that availability of zero-rated Facebook was related to increased probability or intensity of conflict in the treatment period. The violent events in ACLED are categorized slightly differently as *battles*, *explosions/remote violence*, and *violence against civilians*. Most similar categories are fights in GDELT and battles in ACLED, which both involve higher levels of organization and use of conventional military force. ACLED defines battles as exclusively taking place between organized armed groups, including state and non-state actors, whereas the GDELT definition also includes attacks against civilians. In ACLED, actor only refers to the perpetrator, and civilians are always victims of violent acts (ACLED, 2019b).



Table C.5: Cross-sectional estimates on probability and intensity of conflict: ACLED data

	ACLED dummy (1)	log(events) (2)	Battle (3)	Civilians (4)	Explosion (5)	State (6)	Militias (7)	Rebels (8)
CoverageFB	0.030 (0.055)	-0.084 (0.150)	-0.015 (0.054)	-0.029 (0.065)	-0.006 (0.022)	0.027 (0.052)	-0.008 (0.056)	-0.003 (0.054)
N	329	329	329	329	329	329	329	329
R <sup>2</sup>	0.668	0.804	0.736	0.594	0.751	0.738	0.574	0.745
Mean(Y)	0.17	0.329	0.139	0.085	0.094	0.139	0.097	0.133
Controls	✓	✓	✓	✓	✓	✓	✓	✓

\*p<0.1; \*\*p<0.05; \*\*\*p<0.01. Robust standard errors clustered at district level are reported in parentheses. The dependent variable in column (1) is an indicator for conflict, in column (2) logged number of conflict events+1, and in columns (3)–(8) an indicator for conflict of particular type of conflict in a township in June 2016–August 2017. *CoverageFB* is standardized. All regressions include the full set of controls: district dummies, 2nd order polynomials of distance to major town, distance to major road, distance to railway, distance to MPT transmitter, distance to other transmitter, mean elevation, mean slope, mean ruggedness, length of roads, and township area, share of agriculture land, share of forests, share of urban settlements, presence of gemstones, nighttime luminosity, share of oil fields, drought, log population, log population density, dummy for below median urban rate, share of working age (15–64 y.o.) population, share of population with no ID, share of households with electricity, mobile phone, landline phone, and internet at home.

Table C.6: Difference-in-differences estimates using ACLED data

	ACLED dummy (1)	log(events) (2)	Battle (3)	Civilians (4)	Explosion (5)	State (6)	Militias (7)	Rebels (8)
CoverageFB·Treat	0.016 (0.017)	0.012 (0.026)	0.008 (0.013)	0.002 (0.008)	0.006 (0.009)	0.016 (0.017)	0.007 (0.009)	0.013 (0.012)
N	15792	15792	15792	15792	15792	15792	15792	15792
R <sup>2</sup>	0.442	0.469	0.423	0.199	0.276	0.422	0.159	0.438
Township FE	✓	✓	✓	✓	✓	✓	✓	✓
Quarter FE	✓	✓	✓	✓	✓	✓	✓	✓

\*p<0.1; \*\*p<0.05; \*\*\*p<0.01. Robust standard errors clustered at township level are reported in parentheses. Unit of observation is township-month. The dependent variable in column (1) is an indicator for conflict, in column (2) logged number of conflict events+1, and in columns (3)–(8) an indicator for particular type of conflict in a township. *CoverageFB* is standardized. All regressions include time varying controls lagged log population, lagged nighttime luminosity, and drought, and an interaction between a linear time trend and time invariant controls: 2nd order polynomials of distance to major town, distance to major road, distance to railway, distance to MPT transmitter, distance to other transmitter, mean elevation, mean slope, mean ruggedness, length of roads, and township area, share of agriculture land, share of forests, share of urban settlements, presence of gemstones, share of oil fields, dummy for below median urban rate, share of working age population, share of population with no ID, share of households with electricity, mobile phone, landline phone, and internet at home.

## D Measurement Error in Conflict Data

Because the information on conflict events is largely based on news reporting, it may be subject to reporting bias. Weidmann (2016) distinguishes different forms of selective reporting. First, reporting bias in which some conflict events that happened are failed to be reported leads to classical measurement error. If it is uncorrelated with the independent variable, it does not bias the results, but decreases precision of the estimates.

Second, reporting of conflict events could be correlated with the independent variable, which would bias the estimates. Weidmann (2016) demonstrates that in that case both the proportion of reported violence and how strongly reporting depends on mobile phone coverage affect the resulting bias. Mobile phone coverage is likely associated with whether conflict events are reported in the media or not. An alleviating factor is that I estimate the effect of coverage from one provider, MPT, while controlling for coverage from other providers. However, it is still possible that by providing Facebook access, coverage from MPT could influence conflict reporting, even conditional on other coverage.

To get a sense of how dependent the effect of MPT mobile phone coverage is on possible reporting bias, I conduct a sensitivity analysis following Weidmann (2016) and Dafoe and Lyall (2015). The idea is that more severe conflict events, for example those involving more casualties, are more likely to be reported in the media regardless of how good local mobile phone coverage is. Therefore, the dependence of conflict reporting on mobile phone coverage should be stronger with *less severe* events. Without mobile phone coverage, less severe events are more likely not reported. The estimated effect of mobile phone coverage on conflict should therefore be more positive (or less negative) for less severe events.

Since the GDELT does not have information on casualties, I use another measure of severity. The GDELT reports the average tone of all documents mentioning the event, which can be used to assess the importance of the event (GDELT Project, 2019). Average tone ranges between  $-100$  (extremely negative) and  $+100$  (extremely positive), with common values between  $-10$  and  $+10$ . Negative tone is measured as the percentage of all words in an article that have a negative emotional connotation, and vice versa

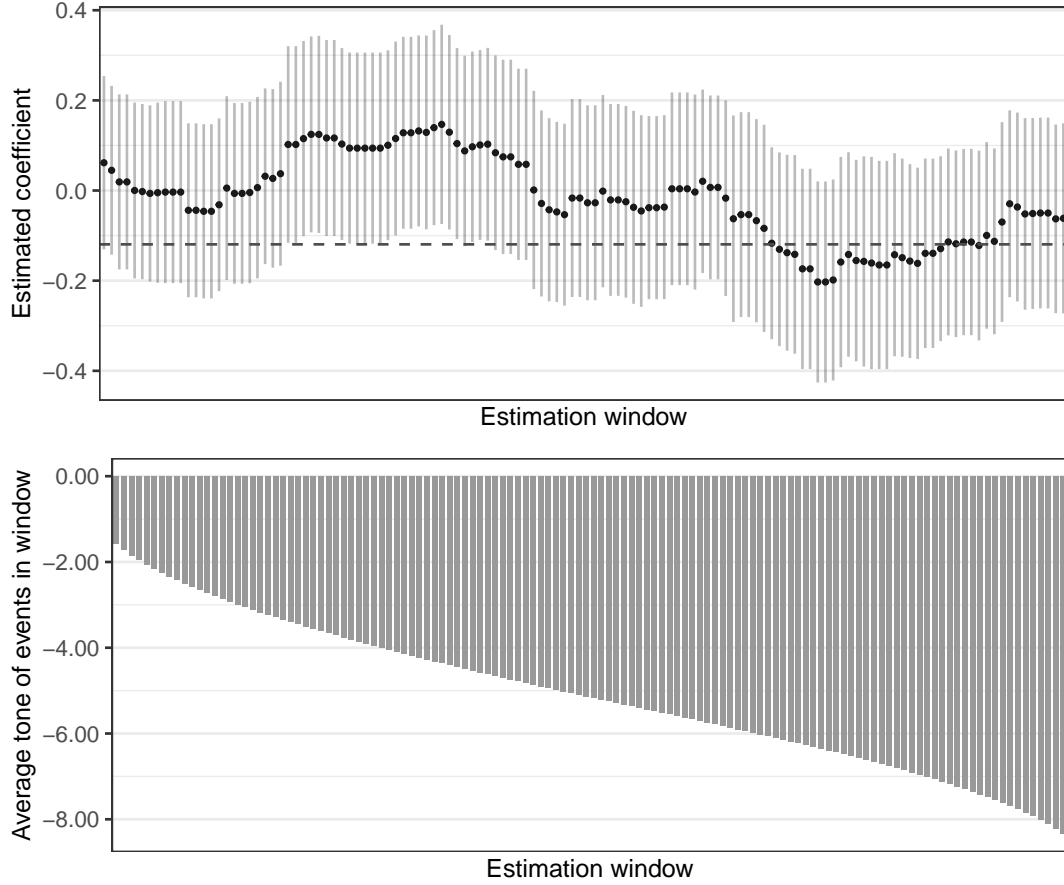


Figure D.1: Sliding window analysis for GDELT events.

The top graph shows estimated coefficients of *CoverageFB* from the cross-sectional model with full set of controls and 95 % confidence intervals. The dashed vertical line indicates the full sample estimate. The bars in the bottom graph represent the average tone of events in each window. Each window contains 6,274 events, and the window is moved in steps of 100 events.

for positive tone. Events with more negative tone should be more likely to be reported regardless of mobile phone coverage, which means that if reporting bias affected the results, there should be a more positive effect on events with more negative tone. I order the events by average tone, and estimate the effect of MPT mobile phone coverage on a conflict dummy in subsamples with increasing event severity.

Figure D.1 presents the sensitivity analysis. In this analysis, the data is first organized based on average tone. I then take a subsample of one third of the events ( $N = 6,274$ ) which have the least negative tone and estimate the cross-sectional model on that subsample. For the next subsample, the “window” is moved by 100 events such that the average tone in the subsample slightly decreases. The sliding window analysis continues

in this manner in steps of 100 events, so that the average tone in each window becomes more negative. The estimates do not exhibit any clear dependence on severity. Therefore, the analysis does not indicate that the estimates of zero-rated Facebook access are confounded by reporting bias.

Figure D.2 presents the same sensitivity analysis for ACLED data. I use data on the events that take place in the treatment period, I order them by number of fatalities, and I estimate the effect of MPT mobile phone coverage on a conflict dummy in a subsample, or sliding window, containing about one third of the violent events ( $N = 310$ ). The window is moved in steps of 15 events so that the average number of casualties in each subsample is slowly increasing. The top panel presents the point estimates and the bottom panel shows the average number of casualties in the corresponding window. Note that most of the events are not associated with any fatalities. The estimates do not exhibit any clear dependence on severity.

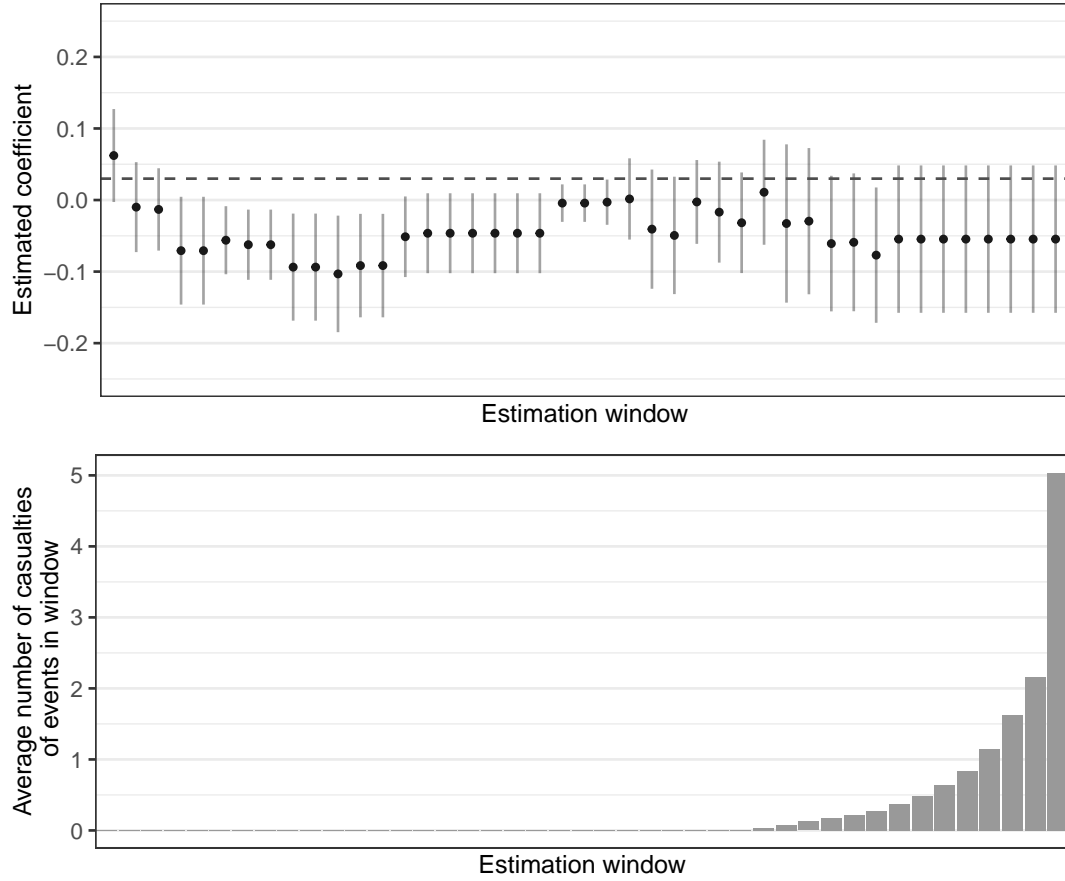


Figure D.2: Sliding window analysis for ACLED events.

Note: The top graph shows estimated coefficients of *CoverageFB* from the cross-sectional model with full set of controls and 95 % confidence intervals. The dashed vertical line indicates the full sample estimate. The bars in the bottom graph represent the average number of casualties in each window. Each window contains 310 events, and the window is moved in steps of 15 events.

## E Additional Figures

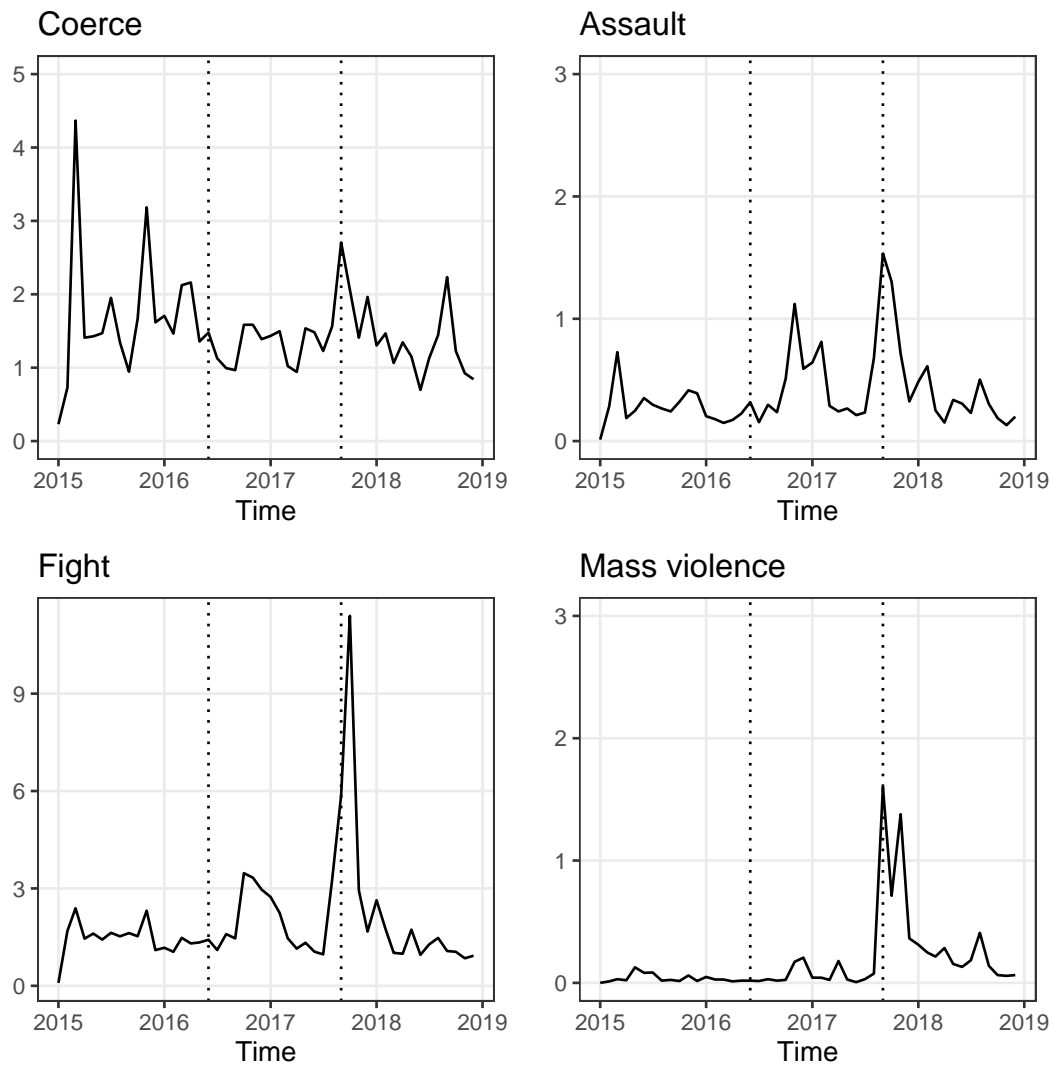


Figure E.1: Monthly number of violent events across townships. The vertical dotted lines show the beginning and end of the Facebook campaign. Data source: GDELT

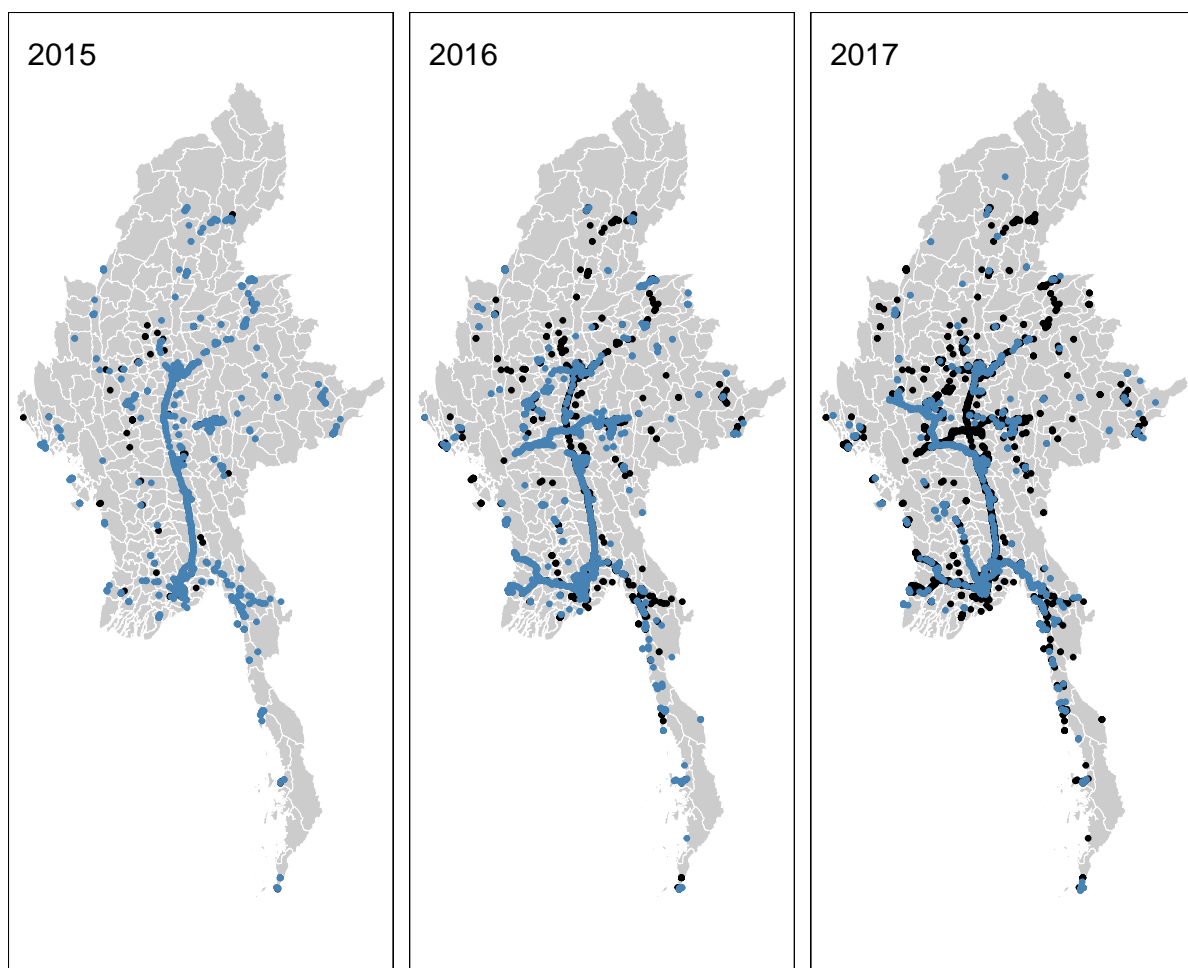


Figure E.2: Expansion of the cell tower network of MPT. The blue dots represent locations of cell phone towers that are added to the data that year, and the black dots represent locations of pre-existing cell phone towers.

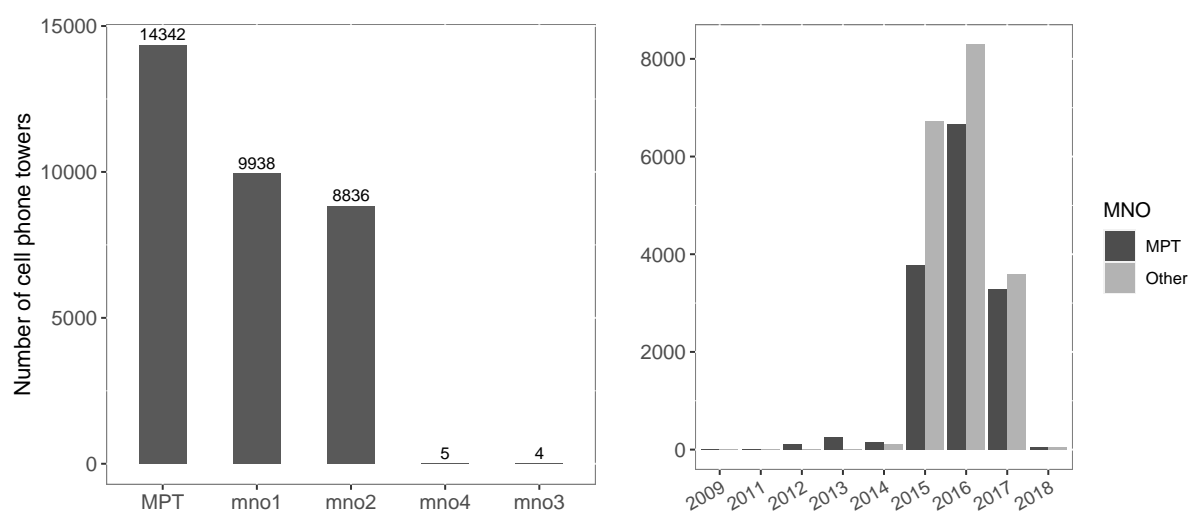


Figure E.3: Total number of cell phone towers by mobile network operator (left) and number of cell towers recorded in the OpenCellID data by year and MNO (right).

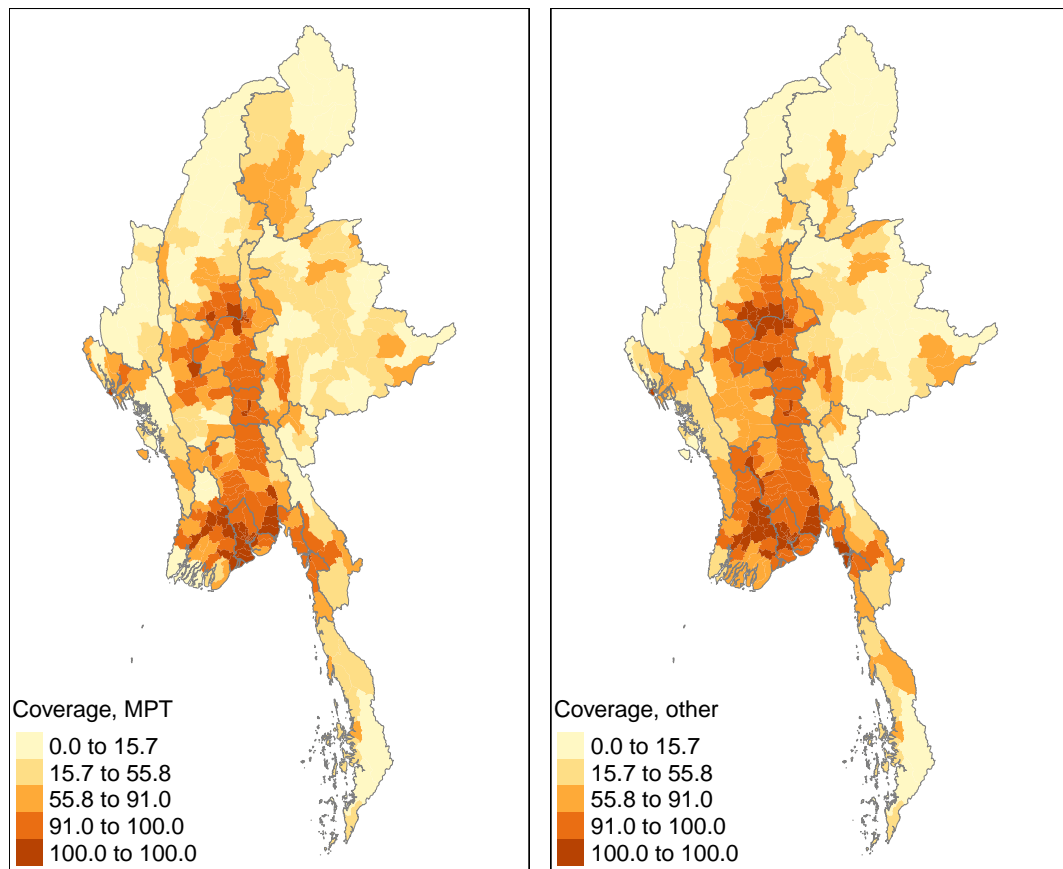


Figure E.4: Share of township with mobile phone reception from MPT (left) and by other mobile network operators (right), weighted by population.



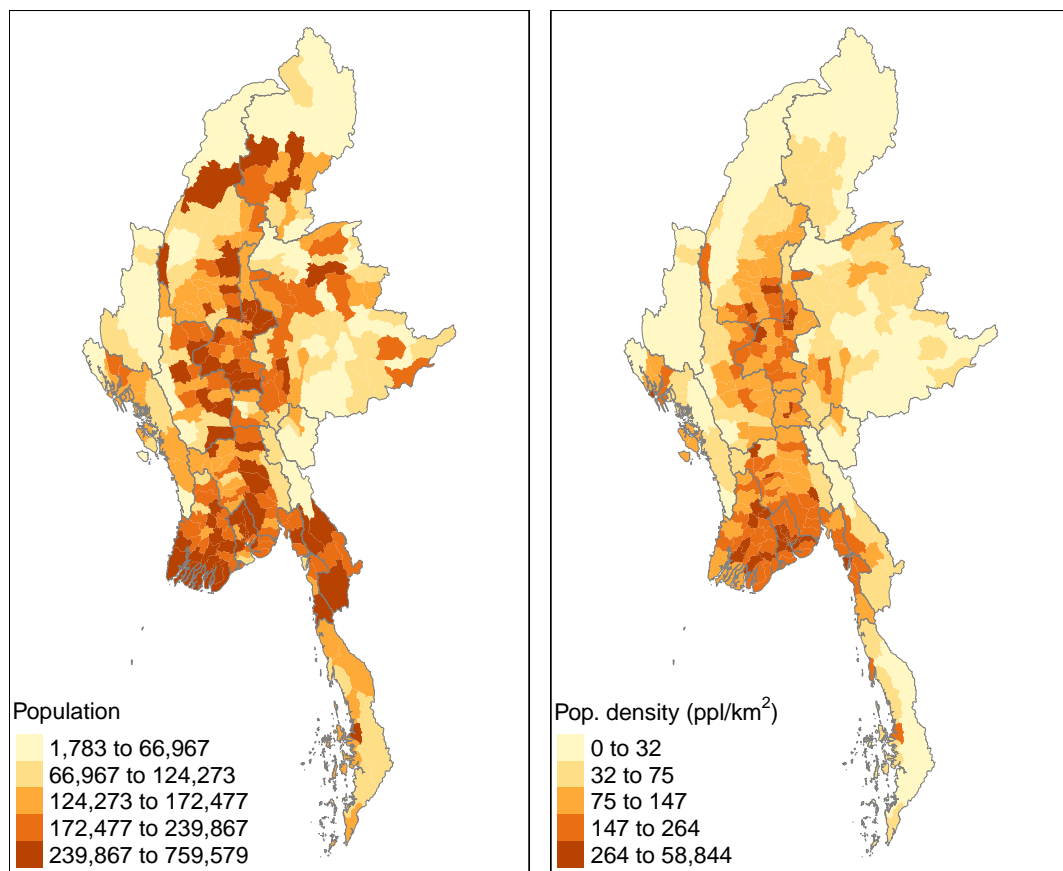


Figure E.5: Township population (left) and population density (right). Calculated from WorldPop data for 2016.

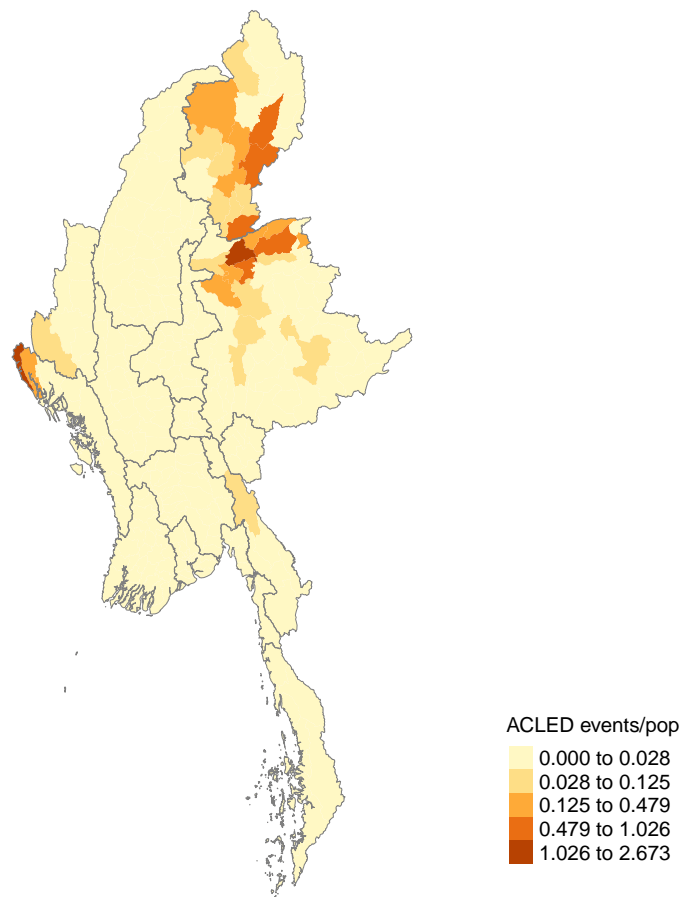


Figure E.6: Number of conflict events scaled by population (in 1000) by township between June 1, 2016, and August 31, 2017. Data source: ACLED.

## F Additional Tables

Table F.1: Difference-in-differences estimates on different conflict and actor types

	Conflict types				Actor types			
	Coerce (1)	Assault (2)	Fight (3)	Mass violence (4)	State (5)	Insurgents (6)	Rebels (7)	Civilians (8)
CoverageFB·Treat	-0.028 (0.019)	-0.028 (0.017)	-0.017 (0.020)	-0.010 (0.016)	-0.018 (0.021)	-0.002 (0.003)	0.005 (0.013)	-0.009 (0.014)
N	15792	15792	15792	15792	15792	15792	15792	15792
R <sup>2</sup>	0.384	0.375	0.385	0.474	0.391	0.297	0.432	0.366
Township FE	✓	✓	✓	✓	✓	✓	✓	✓
Quarter FE	✓	✓	✓	✓	✓	✓	✓	✓

\*p<0.1; \*\*p<0.05; \*\*\*p<0.01. Robust standard errors clustered at township level are reported in parentheses. Unit of observation is township-month. *CoverageFB* is standardized. All regressions include time varying controls lagged log population, lagged nighttime luminosity, and drought, and an interaction between a linear time trend and time invariant controls: 2nd order polynomials of distance to major town, distance to major road, distance to railway, distance to MPT transmitter, distance to other transmitter, mean elevation, mean slope, mean ruggedness, length of roads, and township area, share of agriculture land, share of forests, share of urban settlements, presence of gemstones, share of oil fields, dummy for below median urban rate, share of working age population, share of population with no ID, share of households with electricity, mobile phone, landline phone, and internet at home.

Table F.2: Facebook availability and probability of conflict: heterogeneity analysis

	Electricity (1)	Cellphone (2)	Paperless (3)	Landline (4)	City (5)	Road (6)	Nightlight (7)	Drought (8)
CoverageFB	-0.153 (0.111)	-0.140 (0.107)	-0.200* (0.115)	-0.134 (0.111)	-0.035 (0.133)	-0.051 (0.110)	-0.113 (0.108)	-0.078 (0.096)
CoverageFB-Electricity	0.117 (0.080)							
CoverageFB-Cellphone		0.096 (0.081)						
CoverageFB-Paperless			0.140 (0.087)					
CoverageFB-Landline				0.023 (0.068)				
CoverageFB-City dist					-0.116 (0.085)			
CoverageFB-Road dist						-0.098 (0.083)		
CoverageFB-Nightlight							-0.010 (0.099)	
CoverageFB-Drought								-0.070 (0.107)
N	329	329	329	329	329	329	329	329
R <sup>2</sup>	0.450	0.448	0.451	0.445	0.449	0.457	0.444	0.447
Controls	✓	✓	✓	✓	✓	✓	✓	✓

\*p<0.1; \*\*p<0.05; \*\*\*p<0.01. Robust standard errors clustered at district level are reported in parentheses. The dependent variable is an indicator for conflict event in a township in June 2016–August 2017. *CoverageFB* is standardized. The second variable in the interaction term is an indicator for above median value of that variable, except for Drought, which indicates strictly positive values. All regressions include the full set of controls: district dummies, 2nd order polynomials of distance to major town, distance to major road, distance to railway, distance to MPT transmitter, distance to other transmitter, mean elevation, mean slope, mean ruggedness, length of roads, and township area, share of agriculture land, share of forests, share of urban settlements, presence of gemstones, lagged nighttime luminosity, share of oil fields, drought, lagged log population, lagged log population density, dummy for below median urban rate, share of working age population, share of population with no ID, share of households with electricity, mobile phone, landline phone, and internet at home.

Table F.3: Mobile phone coverage and local development

	ΔNightlight (1)	ΔPopulation (2)	Nightlight 2018 (3)	Population 2018 (4)	Nightlight 2017 (5)	Population 2017 (6)
CoverageFB	0.002 (0.013)	0.000 (0.000)	-0.174 (0.233)	0.020 (0.017)		
Coverage	0.008 (0.018)	0.000 (0.000)	0.537 (0.359)	-0.011 (0.018)		
CoverageFB <sub>2016</sub>					0.032 (0.065)	-0.009 (0.007)
Coverage <sub>2016</sub>					0.228 (0.167)	0.000 (0.014)
N	329	329	329	329	329	329
R <sup>2</sup>	0.801	0.999	0.960	0.997	0.975	0.997
District dummies	✓	✓	✓	✓	✓	✓
Controls	✓	✓	✓	✓	✓	✓

\*p<0.1; \*\*p<0.05; \*\*\*p<0.01. Robust standard errors clustered at district level are reported in parentheses. The dependent variable in column (1) is change in nighttime luminosity between 2018 and 2017, in column (2) change in population between 2018 and 2017, in column (3) is average nighttime luminosity in 2018, in column (4) population in 2018, in column (5) average nighttime luminosity in 2017, and in column (6) population in 2017. *CoverageFB<sub>2016</sub>* and *Coverage<sub>2016</sub>* are share of township with mobile phone coverage from MPT and other service providers, respectively, calculated using only cell phone towers recorded in the OpenCellID data before June 2016. The measures of cell phone coverage are standardized. All regressions include the full set of controls: district dummies, 2nd order polynomials of distance to major town, distance to major road, distance to railway, distance to MPT transmitter, distance to other transmitter, mean elevation, mean slope, mean ruggedness, length of roads, and township area, share of agriculture land, share of forests, share of urban settlements, presence of gemstones, nighttime luminosity, share of oil fields, drought, log population, log population density, dummy for below median urban rate, share of working age (15–64 y.o.) population, share of population with no ID, share of households with electricity, mobile phone, landline phone, and internet at home.

Table F.4: Facebook availability and destroyed villages in Rakhine State

	Affected villages (1)	Damaged settlements (2)	Fires detected (3)
CoverageFB	0.002 (0.014)	0.068 (0.153)	0.025 (0.110)
N	266	266	266
R <sup>2</sup>	0.616	0.469	0.214
Mean(Y)	0.511	1.474	0.165
Controls	✓	✓	✓

\*p<0.1; \*\*p<0.05; \*\*\*p<0.01. Bootstrap standard errors clustered at township level are reported in parentheses. The unit of observation is village tract. The sample is restricted to the Buthidaung, Maungdaw and Rathedaung townships that were included in the satellite-image analysis. The dependent variable in column (1) is a dummy for any damaged settlements or fires detected in the village tract, in column (2) number of damaged settlements, and in column (3) number of fires detected in the village tract. *CoverageFB* is standardized. All regressions include the following controls: 2nd order polynomials of distance to major town, distance to major road, distance to railway, distance to MPT transmitter, distance to other transmitter, mean elevation, mean slope, mean ruggedness, length of roads, and township area, share of agriculture land, share of forests, share of urban settlements, lagged nighttime luminosity, lagged log population, lagged log population density, dummy for below median urban rate, and share of working age population.