

Gopane, Thabo J.

Article

Economic integration and stock market linkages: Evidence from South Africa and BRIC

Journal of Economics, Finance and Administrative Science

Provided in Cooperation with:

Universidad ESAN, Lima

Suggested Citation: Gopane, Thabo J. (2023) : Economic integration and stock market linkages: Evidence from South Africa and BRIC, Journal of Economics, Finance and Administrative Science, ISSN 2218-0648, Emerald Publishing Limited, Bingley, Vol. 28, Iss. 56, pp. 237-256, <https://doi.org/10.1108/JEFAS-11-2021-0232>

This Version is available at:

<https://hdl.handle.net/10419/289681>

Standard-Nutzungsbedingungen:

Die Dokumente auf EconStor dürfen zu eigenen wissenschaftlichen Zwecken und zum Privatgebrauch gespeichert und kopiert werden.

Sie dürfen die Dokumente nicht für öffentliche oder kommerzielle Zwecke vervielfältigen, öffentlich ausstellen, öffentlich zugänglich machen, vertreiben oder anderweitig nutzen.

Sofern die Verfasser die Dokumente unter Open-Content-Lizenzen (insbesondere CC-Lizenzen) zur Verfügung gestellt haben sollten, gelten abweichend von diesen Nutzungsbedingungen die in der dort genannten Lizenz gewährten Nutzungsrechte.

Terms of use:

Documents in EconStor may be saved and copied for your personal and scholarly purposes.

You are not to copy documents for public or commercial purposes, to exhibit the documents publicly, to make them publicly available on the internet, or to distribute or otherwise use the documents in public.

If the documents have been made available under an Open Content Licence (especially Creative Commons Licences), you may exercise further usage rights as specified in the indicated licence.



<https://creativecommons.org/licenses/by/4.0/>

Economic integration and stock market linkages: evidence from South Africa and BRIC

Thabo J. Gopane

Department of Finance and Investment Management, University of Johannesburg, Johannesburg, South Africa

Economic
integration and
stock market
linkage

237

Received 1 November 2021

Revised 22 February 2023

11 April 2023

Accepted 24 May 2023

Abstract

Purpose – This study examines the impact of regional economic integration (REI) on stock market linkages in the BRICS (Brazil, Russia, India, China and South Africa) economic bloc. In this type of study, the BRICS framework is an appealing empirical case, given its uncommon characteristics. For example, BRICS member states come from remote geographic locations (Africa, Asia, Europe and South America) and have contrasting socioeconomic profiles.

Design/methodology/approach – An empirical design is framed from the perspective of bilateral trade between South Africa and BRIC. The author accepts trade intensity as a proxy of regional economic integration and then examines the resulting effect on the stock market co-movement within BRIC. The study applies a two-step econometric procedure of the BEKK-MGARCH and panel data models.

Findings – Overall, bilateral trade, as a proxy of economic integration, is associated with an increase in stock market integration. This positive relationship is particularly observed during episodes of surplus trade, and more interestingly, was initiated three years after BRICS' existence and continues to grow at an increasing rate.

Practical implications – The study outcome should benefit international trade practitioners and global investors interested in portfolio diversification or concerned with risk spillovers.

Originality/value – First, notwithstanding South Africa's significant economic presence in the African continent, to the best of the author's knowledge, this is the first study to empirically evaluate the BRICS economic integration on their stock market linkages from the perspective of South Africa. The value of this contribution is that further work may investigate the bidirectional spillover impact conveyed by South Africa's trade interactions within the juxtaposition of Africa and BRICS economies. Second, given that research on REI and stock market integration has historically concentrated on mature regional blocs of Europe, Asia, South and North America, the current study advances knowledge while correcting the prevailing literature imbalance.

Keywords BRICS, Bilateral trade, Economic integration, Stock market integration

Paper type Research paper

1. Introduction

History and economic rationale suggest that there are general benefits derived from regional economic blocs like the European Union, North American Free Trade Agreement, Community of Sahel–Saharan States and Southern African Development Community (SADC), to mention a few. Similarly, countries have long observed the socioeconomic advantages of global trade cooperation, such as the General Agreement on Tariffs and Trade, which was replaced by the World Trade Organization in 1995. An inclusive empirical assessment is imperative to understand the nature and extent of beneficiation towards financial markets flowing from regional economic integration (REI). A textbook explanation says that the essence of economic integration is to create a conducive environment for

JEL Classification — F14, F15, F36, G15

© Thabo J. Gopane. Published in *Journal of Economics, Finance and Administrative Science*. Published by Emerald Publishing Limited. This article is published under the Creative Commons Attribution (CC BY 4.0) licence. Anyone may reproduce, distribute, translate and create derivative works of this article (for both commercial and non-commercial purposes), subject to full attribution to the original publication and authors. The full terms of this licence maybe seen at <http://creativecommons.org/licenses/by/4.0/legalcode>



cooperating countries to benefit from increased international trade, minimised tariffs, synergy for monetary policy and favourable markets' regulatory regimes (Carbaugh, 2018). A developing research stream that flows from this concerns the trade-alliance-induced economic integration with financial markets, which is the focus of the current study. Extant literature shows that economic integration and financial market linkages vary across economies based on integration structure (Kim *et al.*, 2018) and financial development (Lahrech and Sylwester, 2013). Also, the effect of REI on financial markets differs according to emerging markets (Guesmi and Nguyen, 2011), economic aggregation of the national, industry, and the firm level (Fazio, 2007; Garcia-Herrero *et al.*, 2009; Karim and Majid, 2010). Further, some economic blocs show a tendency of member states to trade outside their regions or display misaligned trade behaviours (García-Herrero *et al.*, 2009; Lombana *et al.*, 2021). These studies reveal insightful characterisation of REI and financial integration.

Unfortunately, the REI and financial integration nexus research tends to concentrate on economies with long histories of regional economic blocs like Asia, Europe, South America and North America. Another literature skewness is evident in the recent reviews that show separate or parallel research on economic integration (Upalat, 2022) and financial integration (Patel *et al.*, 2022), with few exceptions (like Paramati *et al.*, 2016; Song *et al.*, 2021). The current study corrects the indicated research weaknesses by extending the empirical examination to the unique setting of economic integration in the BRICS regional bloc. In particular, the present study takes South Africa, located in the farthest south of the African continent, as a target market and investigates whether South Africa's bilateral trade with BRIC impacts the economic bloc's stock market co-movement. BRIC (Brazil, Russia, India and China) was formed in 2006 and was later joined by South Africa in 2010 to form BRICS.

Unlike the set-up of many economic blocs, the member states of BRICS are situated in distant geographic areas (Africa, Asia, Europe and South America). This dispersed REI framework introduces a critical empirical case with a bearing on the stylised literature finding that countries' geographical proximity impacts stock market linkages (Asgharian *et al.*, 2013; Fazio, 2007; Karim and Majid, 2010; Paramati *et al.*, 2016). The author is unaware of a study with the same empirical objective as the current research. The rest of the paper is organised as follows: Section 2 reviews related literature. Section 3 explains the research methodology. Section 4 presents and interprets the results. Section 5 discusses the results, and Section 6 concludes the study.

2. Literature review

2.1 *The BRICS regional economic bloc*

The need to understand the economic experience of South Africa in BRICS, coupled with ongoing innovation of the domestic stock market, the Johannesburg Stock Exchange (JSE), inspires the current research topic. Many innovative advancement emerged in the JSE in recent decades (the late 1990s to the 2020s). The JSE launched a significant acquisition programme that resulted in the takeover of the South African Futures Exchange (SAFEX) in 2001, followed by the Bond Exchange of South Africa (BESA) in 2009. Just before South Africa became a member of BRICS, the JSE installed an electronic clearing and settlement technology known as, Shares Transactions Totally Electronic (Strate) in 1997. Another innovation includes the collaboration of the JSE with the London Stock Exchange (LSE) to introduce a series of joint indices labelled FTSE/JSE since 2002. In 2003, the JSE introduced a stock-listing board exclusively for small and medium-sized firms called Alternative Exchange (AltX) and a special board for currency and interest rate markets, the Yield X. Although some of the changes occurred before BRICS, this fact is appropriately controlled in the empirical design and explained under the methodology section.

Unlike many regional blocs, BRICS integrates with Africa's prominent economy of South Africa. In this context, South Africa has a distinct and influential position in relation to the economies of the African continent. South Africa is a dual member of the Southern African Customs Union (SACU) and of a sixteen-country economic bloc, SADC, among other influential African organisations. Furthermore, in Africa, South Africa's JSE (founded in 1887) is the largest and the second oldest after Egypt's Stock Exchange (established in 1883). Given this background, it is probably not surprising that the literature (Agyei-Ampomah, 2011; Boamah, 2016) observes that African economies are segmented, with the exception of South Africa. Due to their geographic proximity and shared socioeconomic characteristics, studies on traditional blocs may be constrained to trace the unexplained variations in co-membership trade behaviour. Therefore, unconventional case studies such as BRICS should provide a different perspective from the data.

2.2 International trade, economic integration and stock market linkages

Economists have long known the benefits of international trade. The James Steuart Mercantilism theory (Steuart, 1767) was a protectionist economic system that favoured trade surplus, in contrast with the free trade emphasis of Adam Smith's proposition of an absolute advantage (Smith, 1776), in which a country was expected to maximise trade benefits by specialising in a product it is good at. Later, David Ricardo suggested a modification of the comparative advantage (Ricardo, 1817). Followed by the Swedish economists Eli Heckscher and Bertil Ohlin, who recommended the Factor Proportions theory (Ohlin, 1933), which contends that a country should be better off by producing and exporting products in which it has an abundance of production factors. The above theoretical paths show that the trade theory continues to evolve, but with a common question: How can a country maximise its benefits from international trade? The principle of regional economic integration has much value-add in this regard (Balassa, 2012) and much more than just decreasing tariff barriers. Different variations of regional economic integration include free trade areas, customs unions, common markets, economic unions, monetary unions and fiscal unions, inter alia. The benefits of REI manifest in a feedback recurrence at the industry level through favourable product prices and macroeconomic growth paths.

2.3 Hypothesis development

H1. The hypothesis says that there exists an association between economic integration and stock market linkages within BRICS.

The economic theory shows that international trade has an impact on domestic economies via knock-on effects that cascade from the firm level to the stock market. One of the objectives of capital budgeting theory in corporate finance is to determine the value of a firm using a stream of future cash flows, such as Gordon's growth model (Gordon, 1959; Gordon and Shapiro, 1956). Specific case studies of stock market correlations with economic variables at the firm level (like, Huy *et al.*, 2020) do not address the same problem as the literature stream of financial market integration but are informative. In the stock price valuation, the Gordon model measures the value of a firm by examining the expected dividends payable by a stock-exchange listed company. The link between economic integration and the stock market is elaborated further in Soydemir (2000) and Asgharian *et al.* (2013) on how bilateral trade encourages synchronisation in business and its consequent impact on stock markets.

H2. The hypothesis says that there is stock market integration between South Africa and BRICS.

The empirical design of the current study is to evaluate stock market integration within BRICS from the perspective of the South African trade relationship. In line with the economic theory discussed above, it is intuitive to expect an economic knock-on effect among bilateral trade, the aggregate economy and stock market activity. Consistent with prior works (Forbes and Chinn, 2004; Paramati *et al.*, 2016; Song *et al.*, 2021), the current study accepts bilateral trade as a proxy for economic integration. While the economic rationale provides the foundation for the link between REI and the stock market, the actual nature or behaviour of this relationship is subject to empirical examination.

3. Method

Similar to Paramati *et al.* (2016) and Song *et al.* (2021), the study uses a two-stage econometric procedure. First, we use a multivariate BEKK–MGARCH model to estimate interlinked time-varying correlations between the South African stock market and each of the four BRIC countries, concurrently. From this, we save four sets of correlation series. In the second stage, the retrieved correlation time series is employed as a response variable in the next modelling stage. In the second stage, the panel data model is used to determine the effect of REI on stock market linkages. The benefit of using the BEKK–MGARCH system to compute dynamic correlations is to capture the potential spillovers in the BRICS-wide stock markets, which is valuable in measuring the extent of linkage. Mishra *et al.* (2022) employ the same model in a related application.

3.1 BEKK–MGARCH model

The first of the two econometric models to be estimated is the BEKK–MGARCH (Engle and Kroner, 1995). In this study, our preference is the BEKK over the DCC version of the MGARCH model, even though the two models are assumed to be equally competent at lower dimensions. Nevertheless, some researchers insist that there are unanswered questions regarding the asymptotic theory of the DCC model. For instance, after reviewing the relevant literature, Caporin and McAleer (2012, p. 746) concluded that “. . . the proofs [of consistency and asymptotic normality] for DCC have typically been based on unstated regularity conditions. When the regularity conditions have been stated, they are unstable or irrelevant for the stated purposes”. We proceed with system (1) of vector-autoregressive, VAR(p) and BEKK–MGARCH (p, q) models in Equations (1a) and (1b):

$$y_t = \Pi y_{t-1} + \varepsilon_t \tag{1a}$$

$$H_t = CC' + A\varepsilon_{t-1}\varepsilon'_{t-1}A' + BH_{t-1}B' \tag{1b}$$

In the VAR(p) system (1a), y_t is a $k \times 1$ vector of stock returns from the stock market indices of BRICS, while Π is a $k \times k$ matrix of parameters to be estimated. In Equation (1b), C is $k \times k$ lower triangular matrix, while A and B are $k \times k$ coefficient matrices to be computed. The disturbance term is assumed to be $\varepsilon_t \sim N(0, \Sigma_t)$, where Σ_t is the covariance matrix.

3.2 Panel data model

The second and main econometric procedure of the study employs the panel data model, as presented in Equation (2). The objective of this model is to examine the core empirical question of whether REI has an impact on stock market linkages.

$$\rho_{it} = \alpha + \beta x_{it} + \delta z_{it} + \gamma t + \mu_i + \epsilon_{it}, \epsilon_{it} \sim iid(0, \sigma^2) \tag{2}$$

$$\forall i = 1, 2, 3, \dots, N; \text{ and } t = 1, 2, 3, \dots, T$$

The dimensions of the panel data model, N and T, are four (BRIC countries) and 300 (months), respectively. The definition of variables is as follows: ρ is the response variable of dynamic correlations between South Africa and each of the BRIC countries. That is, country i at time t . The vector, z , contains variables that proxy for REI of which trade intensity (trade) is key. The covariate trade is generally assumed to have a positive effect on stock market integration (Bracker *et al.*, 1999; Paramati *et al.*, 2016) due to possible national economic interaction and firm-level beneficitation. The variable trade is quantified in Equation (3) as:

$$trade_{it} = \frac{g_{it}}{\sum_i^4 g_{it}} \quad \forall i = 1, 2, 3, 4; \quad (3)$$

where g_{it} is South Africa's total trade (imports plus exports) from BRIC country i at time t . This means that the denominator in Equation (3) represents South Africa's aggregate trade with the four BRIC countries. The other two variables are: a dummy variable, BRICS_{sexit}, which takes the value of zero before BRICS' existence and one otherwise, while the second variable, BRICS_{sexp}, captures the accumulation of BRICS experience measured as weighted age (or duration) of BRICS in years. The variable is also applied as an interaction of itself (squared). We use the weighting to capture the idea of relative influence in the South African-BRIC bilateral relationships. For this we conjecture that the ratio of each country's distance (d_{it}) from South Africa divided by the average distance of BRIC $\left(\frac{1}{n} \sum_i^n d_{it}\right)$ away from South Africa should be appropriate and quantified in Equation (4) as:

$$BRICSexp_{it} = \frac{d_{it}}{\frac{1}{n} \sum_i^n d_{it}} \times age_{it} \quad (4)$$

Distance on its own is known to negatively impact market integration owing to cost implications (Hooy and Goh, 2008). Therefore, this weighting has a moderating effect on the proxy for BRIC integration experience (BRICS_{sexp}). Considered together, the two variables, BRICS_{sexp} and its square, should answer the question of how the continued existence (or experience accumulation) of BRICS affects their stock market integration. In Equation (2), x is a set of control variables, namely, interest rate differential, volatility index (VIX) and geopolitical risk, which are summarised in Table A1 (in Appendix). The variable, interest rate differential (rate), is a common inclusion in market integration studies. It measures interest rate parity between markets with a potential impact on capital flow and should influence a firm's profitability leading to positive effects on stock markets' co-movements (Bracker *et al.*, 1999), assuming capital mobility and other things are constant.

Dedicated studies on risk integration in global stock markets (Marfatia, 2017) and BRICS-specific works (Mroua and Trabelsi, 2020; Yildirim *et al.*, 2022) have shown that risk spillover prevails in both short and long frequencies. In financial markets, VIX is a well-known measure of market risk based on the S&P500 option index and it gauges financial uncertainty, fear and/or stress. History has shown that "... emerging stock markets have become less segmented from world stock markets" (De Jong and De Roon, 2005, p. 583). In this regard, we use VIX as an attribute of global financial market risk and the literature (Carrieri *et al.*, 2007) shows that the direction of the effect is not pre-defined.

The regressor geopolitics is included to control for uncertainties emanating from changes in geographic political environments. This measure of political risk is a practical index that tracks the country political climate over time, based on newspaper reports (Caldara and Iacoviello, 2019). Higher and extreme sentiments of domestic political risk should have a

lower contribution to stock market co-movement. Therefore, a negative association is expected. The coefficients, $\alpha, \beta, \delta, \gamma$ are model parameters to be estimated. The terms, γ_t and μ_i are period and panel-fixed effects, respectively.

3.3 Data description

The BRICS stock market indices used in the current study are Brazil’s Bolsa de Valores de São Paulo (BOVESPA), Russian Trading System (RTS), National Stock Exchange of India (NSE), China’s Shanghai Stock Exchange (SSE Composite) and the JSE’s All Share Index. The time horizon for the sample range was restricted by the shortest time series available, namely Russia’s Stock Market Index, which is only obtainable from 1995. Therefore, the datasets used in MGARCH and panel data models are monthly time series for the period October 1995 to September 2020 from several sources, which are summarised in Table A1 (in Appendix).

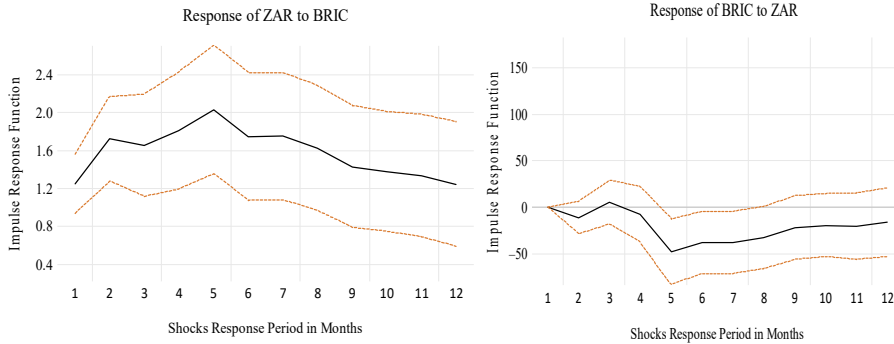
Prior to estimating the econometric models of the study (Equations 1 and 2), it is important to preview the summary descriptive statistics of the regression time series. Therefore, it is useful to observe whether there is a preliminary discernible co-movement between the South African stock market and those of the BRIC countries. Figure 1 shows a historical graph of stock market price indices for South Africa against each of its BRICS counterparts. Overall, there is prima facie evidence of stock market correlation within BRICS. Also, apart from the gradual upward trend, the graphed series reflects a common response to significant structural changes such as the global financial crisis (2008–2009), European financial crisis (2012–2015) as well as COVID-19 (2019–2020).

Figure 2 shows the impulse response function for the South African stock market (All Share Index) in relation to the aggregate stock market of BRIC countries (MSCI BRIC Index). The latter is published by Morgan Stanley Capital International (MSCI), and the index has 85% capitalisation of free-floating constituents in each country. The two graphs in Figure 2



Figure 1.
The historical trend line of BRICS stock market price indices

Source(s): Own elaboration
Author’s graphics



Source(s): Own elaboration
Author's graphics

Figure 2. The shock response for South Africa and aggregate BRIC stock markets

show that there is a two-way shock response between South Africa and BRIC. Although the two graphs are not able to reveal the origin of the shocks, the information is suggestive enough that there is a bi-directional effect between the markets. However, it is interesting to observe from these graphs that shocks trigger market reactions in opposite directions. The response of the South African market is positive, while that of the BRIC is negative. In all cases, the full effect is maximised on the fifth month after the shock. Figures A1 and A2 (in Appendix) detail South African and BRIC response functions at country levels. In all cases, there is a bi-directional shock effect.

3.4 Pre-modelling and data-validation tests

In this study, panel data unit root tests are used to confirm whether the time series is stationary, which will help avoid spurious and misleading regression results. There are several alternative test procedures that researchers may apply to assess stationarity. To select an appropriate panel unit root test, we consider what different test procedures say about four factors of the econometric theory: whether we have balanced panels, the relative magnitudes of N and T , the speed at which N and T approach infinity as well as the extent to which N and T are fixed. The asymptotic conditions of available test procedures include $\{T \rightarrow \infty, N \text{ finite}\}$ based on the test suggested by Choi (2001), or $\{T, N \rightarrow \text{seq } \infty\}$ by Breitung (2000), Breitung and Das (2005) and Hadri (2000) or $\{\sqrt{N/T} \rightarrow 0, \text{ or } N/T \rightarrow 0\}$ by Levin *et al.* (2002), or $\{N \rightarrow \infty, T \text{ fixed}\}$ by Harris and Tzavalis (1999) and Im *et al.* (2003). The nature of our dataset is closer to the first two tests. The reason is that the size of the panel in our study is a fixed N of four BRIC countries, while T , the study horizon, is readily extendable considerably faster than BRIC membership. The relevant unit root test equation is given in Equation (5):

$$\Delta S_{it} = \phi_i S_{it-1} + \gamma_i w_{it} + \sum_{j=1}^p \theta_{ij} \Delta S_{it-j} + v_{it} \quad (5)$$

$$\forall i = 1, 2, 3 \dots N \text{ and } t = 1, 2, 3 \dots T$$

In Equation (5), S_{it} is the series to be tested, ΔS_{it-j} captures a set of augmented lags, while v_{it} is the regression error term which is assumed to be stationary. The variable, w_{it} , represents the panel means time-trend, and it takes the value of zero if none is included in the regression. The null hypothesis of the unit root test is $H_0 : \phi_i = 0$ for all i against the alternative, $H_1 < 0$. The test results of stationarity are presented in Table A2 (in Appendix) and explained next.

3.5 Panel data model validation

Prior to results' interpretation, it is important to address the model validation necessities. In this regard, a battery of tests is applied to confirm the model selection (among, pool vs fixed effects, fixed vs random effects and time effects), as well as to validate post-estimation model assumptions, which entails tests on heteroscedasticity, autocorrelation and cross-sectional dependence.

Fixed vs random effects: The Hausman test (Hausman, 1978) is employed to choose the appropriate model between fixed- and random effect models. The null hypothesis (H_0) of the test is that the random effect model is preferred. The test output in Table A3 (row 2) confirms a rejection of H_0 at less than 1% level of significance in favour of the fixed effects model.

Period effects: The purpose of this test is to verify whether the time-fixed effects should be included in the chosen fixed effect model. This test uses the F -statistical test. The null hypothesis is that all time effects are not relevant. The test results in Table A3 (row 3) reject H_0 leading to the conclusion that period effects are necessary in the panel data model.

Cross-sectional dependence: Countries within a formalised regional economic bloc are expected to have some form of interdependence in the real world. Two tests by Breusch and Pagan (1979) and Persaran (2004) are used to examine whether there is cross-sectional dependence among the panels (the BRIC countries). The null hypothesis for both tests says that there is no cross-sectional dependence. Based on the test results in Table A3 (rows 4 and 5), we reject H_0 under both tests and conclude that the cross-sectional dependence is prevalent in this panel data model.

Heteroscedasticity: A test of heteroscedasticity is well explained in mainstream econometrics textbooks (like Greene, 2000), and it is applied to inspect the assumption of homoscedasticity indicated in $iid \sim (0, \sigma^2)$. The null hypothesis says that the assumption of homoscedasticity is not violated. According to the test results in Table A3 (row 6), we reject H_0 and conclude that heteroscedasticity is present in the panel data model.

Autocorrelation test: To assess whether the econometric assumption of serial correlation is satisfied, we use the test designed by Born and Breitung (2016). The null hypothesis of the test is that there is no serial correlation in the panel regression model. In the light of test results in Table A3 (row 7), we reject H_0 and conclude that the assumption of no autocorrelation is violated.

Residual normality: To investigate whether the model assumption of residual normality is sustained, we apply two tests (Shapiro and Wilk, 1965; Shapiro and Francia, 1972). The null hypothesis in both cases is that residuals are normal. Based on tests results reported in Table A3 (rows 8 and 9), we fail to reject H_0 in both tests at 1 and 5%, respectively. This means that the model residuals are fairly normal, and this fact is confirmed by the graphical illustration in Figures A3, and A4 (in Appendix).

The overall finding of the post-estimation validation is that normality treatment is not indicated, whereas the same panel data model is afflicted with problems of heteroscedasticity, serial correlation and cross-sectional dependence. To address these issues collectively, we apply the Driscoll and Kraay (1998) robust standard errors using the xtsc program by Hoechle (2007, p. 282), who confirms that the Driscoll–Kraay “covariance matrix estimator ... produces heteroskedasticity- and autocorrelation-consistent standard errors that are robust to general forms of spatial and temporal dependence”. Therefore, Table 1 presents the original OLS results in Model 1, while Model 2 is estimated with the Driscoll–Kraay robust standard errors. The choice of the Driscoll–Kraay robust model over alternatives is based on two factors. First, the conventional solutions include Newey and West (1994) and cluster (Rogers, 1994) robust errors. While these traditional robust methods provide a successful control for both heteroscedasticity and autocorrelation simultaneously, they fall short in addressing the cross-sectional dependence problem, necessitating using the Driscoll–Kraay method to solve all problems. Secondly, in the current study, the number of panels is very limited (only four BRIC countries), making the choice of Rogers' cluster robust errors less effective. After using the Driscoll–Kraay robust standard errors, the results are indeed robust because the variables maintain their statistical significance.

Variables dependent: corr (ZAR, BRIC)	Model 1 (ordinary least squares)		Model 2 (Driscoll and Kraay, 1998)	
	Coeff	Std errors	Coeff	Robust std errors
Trade intensity (trade)	-2.1413 [-6.7700]	0.3164 (0.0000***)	-2.1413 [-3.8800]	0.5519 (0.0000***)
BRICSexist	-0.1703 [-4.500]	0.0379 (0.0000***)	-0.1703 [-7.1900]	0.0237 (0.0000***)
Trade x BRICSexist	1.6435 [6.2900]	0.2612 (0.0000***)	1.6435 [3.900]	0.4210 (0.0000***)
Trade x surplus-deficit	0.5258 [2.5500]	0.2061 (0.0110***)	0.5258 [2.3600]	0.2230 (0.0190***)
BRICS experience	-0.3359 [-2.7600]	0.1219 (0.0060***)	-0.3359 [-2.1100]	0.1595 (0.0360***)
BRICS experience (sq)	0.2519 [2.7400]	0.0920 (0.0060***)	0.2519 2.3100	0.1091 (0.0220***)
Leadership changes (freq)	-0.0387 [-2.5900]	0.0150 (0.0100***)	-0.0387 [-1.9100]	0.0203 (0.0570*)
Interest rate differential	0.5466 [4.5300]	0.1206 (0.0000***)	0.5466 [5.0000]	0.1092 (0.0000***)
VIX	0.2391 [5.8800]	0.0407 (0.0000***)	0.2391 [2.3300]	0.1028 (0.0210***)
Geo-political risk	-0.1519 [0-4.0700]	0.0373 (0.0000***)	-0.1519 [-2.3200]	0.0655 (0.0210***)
Intercept	0.2987 [3.3200]	0.0900 (0.0010***)	0.2987 [1.7200]	0.1736 (0.0860*)
Period effects	yes	yes	yes	yes
Overall model, <i>F</i> -statistic	F(35,1156)	23.0700 (0.0000***)	F(35, 298)	27.6100 (0.0000***)
Common effects, <i>F</i> -statistic	F(3, 1157)	19.1200 (0.0000***)		
Sigma, (u, e): (0.97, 0.12)		Rho: 0.2656		
Corr(u _i , xb)		-0.4700		
Observ.: (Group, Period)		(4, 1196)		(4, 1196)
Within R_squared		0.4110		0.4100

Note(s): The legend for statistical significance is: *** 1%, **5% and *10%, respectively. Under the column for coefficients, the numbers without brackets are coefficients. The numbers right below the coefficients in square brackets are test statistics. Under the column labelled std errors, the numbers without brackets are standard errors. The numbers below standard errors in round brackets are *p* values

Source(s): Authors' computations

Table 1.
Main empirical results
– panel data model

4. Results

4.1 Stock market correlation between South Africa and BRIC

The MGARCH model in Equation (1) was used to generate dynamic correlation time series graphed in Figure 3. A visual inspection of the graphs shows that in the period prior to BRIC establishment (June 2006), the stock market correlation between South Africa and the BRIC countries had a steady downward trend. This period of steady correlation decline was concurrent with the Asian financial crisis (from middle to late 1990s) and dot.com technology shocks (in the early 2000s). The correlation of all the country pairs of South Africa and individual BRIC countries experienced a significant upward spike during the global financial crisis of 2008–2009, which was later followed by a steep decline (2010–2015). Overall, the correlation time series appears to oscillate between zero and 40%, with a few occasions of pronounced negative deepening such as in the early 2000s and around the period of the

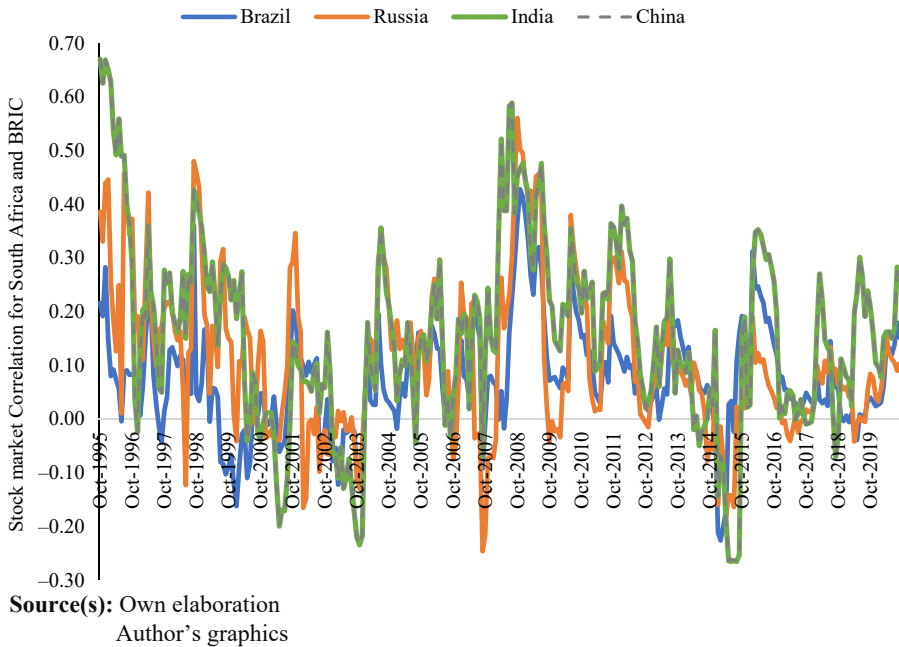
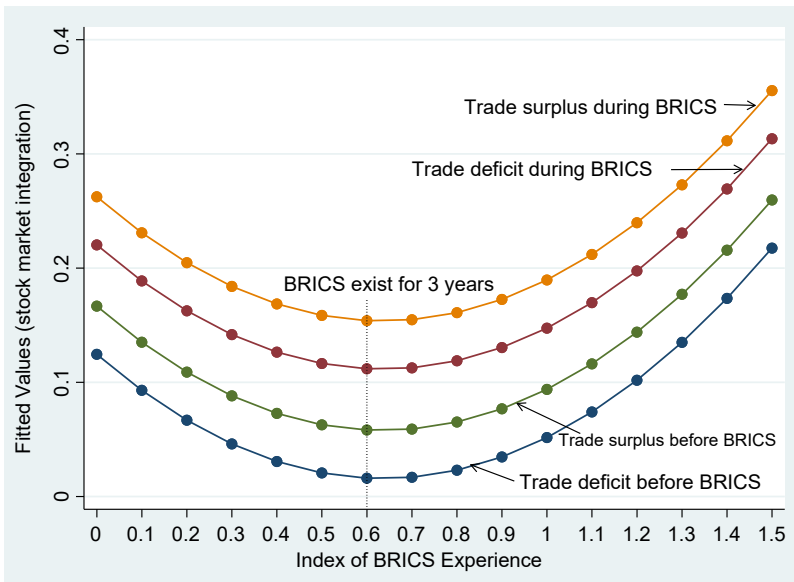


Figure 3.
Dynamic correlation
between the South
Africa and BRIC stock
markets

European crisis (middle of the 2010 decade). Therefore, a general observation suggests that the dynamic correlation between South Africa and BRIC is susceptible to significant financial crises, but the corresponding shock responses vary unpredictably per different episodes of crises.

4.2 Panel data results interpretation

The panel data model was employed in this study to investigate the relationship between BRIC regional economic integration proxied with bilateral trade and stock market linkages quantified as dynamic correlation of South Africa against individual BRIC countries. The results are presented in Table 1 and Figure 4. The results of the panel data model, presented in Table 1, provide answers to and evidence on whether BRIC economic integration has an impact on their stock market integration. Stock market integration (dependent variable) is measured as a dynamic correlation of stock market indices between South Africa and each of the BRIC countries. Economic integration is proxied primarily with trade intensity (trade). The regression output shows a strong negative coefficient for trade, which is statistically significant at less than 1% level. At first sight, the result looks counterintuitive since basic economic reasoning hints at a positive association between trade activity and stock market due to economic rationale. Also, the dummy variable (BRICsexist) of “before and after” BRIC establishment is negative, suggesting that economic integration encourages stock market segmentation. However, a comprehensive inspection of all proxy variables for economic integration reveals the opposite, and this is in line with expected economic intuition. First, the frequency of leadership changes along with the interaction term of trade with each of BRICsexist as well as an indicator of trade surplus or deficit (surplus-deficit), says that bilateral trade surplus (as opposed to deficit) after BRIC establishment has a positive impact on stock market co-movement. Second, a positive coefficient on the proxy for BRIC experience and a negative coefficient on its square provide



Source(s): Own elaboration
Author's graphics

Figure 4. The predictive margins of South Africa's bilateral trade with BRIC

further clarity. Prior to BRICS' existence and its early years of integration, trade from BRIC countries was related to equity market segmentation, but this changed to a positive association with market integration after three years of BRICS' existence.

The rest of the variables in Table 1 control for other factors regarding the stock market fundamentals and show both statistical and economic significance. The increase in the interest rate differential may signal positive investment opportunities, which are captured by a positive effect that signals stock market integration. A positive coefficient of financial market risk (VIX) may indicate that the individual BRICS stock markets have a similar shock response to global risk. The negative coefficient for geopolitical risk may reflect incompatibilities in socio-political and cultural differences among the BRICS countries which support stock market segmentation. The literature (Hooy and Goh, 2008) indicates that market segmentation may also arise because of institutional inefficiencies and differences.

Graphical results interpretation: Figure 4 provides further clarity on the relationship between bilateral trade intensity and stock market integration. The graph presents the predictive margins of South Africa–BRIC bilateral trade on stock market integration. On the x-axis we have an index of BRICS experience (BRICSexp) proxied with log of distance-weighted BRIC age (see Equation 4), while on the vertical axis we capture the predicted values of BRIC integration as measured by dynamic stock market correlation. The minimum turning point of *BRICSexp* corresponds to three years of BRICS' existence. Each of the four lines is a measure of the u-shaped BRICS experience. Comparing the bottom pair of lines (before BRICS' existence) with the top pair (after BRICS), the graph shows that the effect of surplus bilateral trade intensity on stock market integration always exceeds deficit and that the overall impact is highest after BRICS' existence and slopes upwards after three years of entrenchment. Therefore, taken together, Table 1 and Figure 4 show that surplus bilateral trade between South Africa and BRIC manifests a positive association with BRICS' economic integration and that this relationship will continue to strengthen as the years of BRICS'

existence increase, other things being constant. To summarise, the results provide an overall support and confirmation for the study hypothesis.

5. Discussion

Other things being equal, “. . . capital should automatically flow from capital-abundant to capital-scarce countries” thereby encouraging market integration. On the contrary, “Asia’s considerable net savings tend to flow to capital-abundant countries rather than to capital-scarce ones as the theory would predict” (Park, 2013, p. 1). This narration confirms that in practice, market integration is more an empirical question than a solely economic theory, which calls for diverse testing before styled facts may be deduced.

The current study is closest to that of Paramati *et al.* (2016) and Song *et al.* (2021). These two papers studied market integration in Asia, focusing on the same countries (Australia, China, India, Japan and Thailand). Paramati *et al.* (2016) investigated market integration in Australia–Asia bilateral trade, while Song *et al.* (2021) focused on China–Asia bilateral trade. In the current study, we adopt the same framework and investigate market integration in the BRICS economic bloc from the perspective of South Africa and BRIC bilateral trade. While there is significant variation in the methodological procedures and proxy variables of economic integration, overall, the results concur. Other supportive studies that confirm a positive relationship between REI and stock market integration include those of Fazio (2007) and Karim and Majid (2010). The current study provides a different perspective from the BRICS studies that found partial stock market integration (Chittedi, 2010) or insignificant stock market inter-linkages (Sharma *et al.*, 2013). More importantly, the current study prompts an interesting further study in the sense that if South Africa manifests trade-linked stock market integration with BRICS, how much of this integration is conveyed (or spills over) to other African regional blocs with which South Africa is observed to be integrated (Ekpo and Chuku, 2017; Piesse and Hearn, 2002), such as SACU or SADC economic regions.

5.1 Theoretical implications

The BRICS economic bloc is over 10 years old, and it is now due for performance scrutiny. Chatterjee and Naka (2022, p. 3) have examined BRICS’s life from commencement to date and concluded that “Academic scholarship on the implications of BRICS as an entity – the power of its pooling together of economic resources or its political valence as a discursive formation – is relatively underdeveloped.” The outcome of the current research contributes to the needed performance diagnosis of the BRICS configuration. Going forward, the positive results of the trade-inspired financial integration are subject to the extent to which the BRICS member countries respond to economic crises and whether the group cohesion is deepened and sustained.

5.2 Policy and business implications

The research outcomes of the current study have policy and practical implications with respect to government economic administrators, regulation agencies, multinational firms, export financiers, global investors as well as stock market institutional practitioners. Conceivably, the economic policymakers who are involved in international trade promotion need to be aware of the feedback effect emanating from the stock market regulatory process due to the association between financial market integration and economic integration. Multinational firms and the international export financing agencies should benefit from knowing the potential effect of trade liberalisation policy on stock market performance, which should influence the timing of their financing plans. Global investors need to have wide

knowledge of stock market drivers (including economic integration). Therefore, this type of research cautions analysts that if their global risk modelling excludes the economic integration issues, then such price determination models may be incomplete.

5.3 Limitations and future research agenda

Even though the results of the study are insightful, the empirical work was restricted by data availability. Therefore, a similar study could be extended to other regional economic blocs where data access is more generous. The emergence of unique economic blocs like the BRICS, the ongoing economic transformations and the economic disruptors of technological progress continue to make the subject of economic integration and financial market integration topical and essential research. Further studies may probe the association from the perspective of each BRICS country and to identify the source and destination of the dominant impacts.

6. Conclusion

This study has shown that prior to the BRICS' existence and including its early years of installation (prior to three years), there were signs of market segmentation when observed from the perspective of South African bilateral trade with BRIC countries. However, this changed three years after the inception of the BRICS economic bloc (indicative of experience accumulation and/or entrenchment), when the results show unambiguous evidence of market integration, particularly during the surplus bilateral trade episodes. The findings of the study allow us to conclude that there is a positive association between regional economic integration and dynamic stock market linkages. Overall, the results of a study of this nature are beneficial to policymakers and global financial investors, where diversification considerations are essential.

References

- Agyei-Ampomah, S. (2011), "Stock market integration in Africa", *Managerial Finance*, Vol. 37 No. 3, pp. 242-256, doi: [10.1108/03074351111113306](https://doi.org/10.1108/03074351111113306).
- Asgharian, H., Hess, W. and Liu, L. (2013), "A spatial analysis of international stock market linkages", *Journal of Banking and Finance*, Vol. 37 No. 12, pp. 4378-4754, doi: [10.1016/j.jbankfin.2013.08.015](https://doi.org/10.1016/j.jbankfin.2013.08.015).
- Balassa, B.A. (2012), *The Theory of Economic Integration*, Routledge, London.
- Boamah, N.A. (2016), "Regional and global market integration of African financial markets", *African Review of Economics and Finance*, Vol. 8 No. 2, pp. 234-268.
- Born, B. and Breitung, J. (2016), "Testing for serial correlation in fixed-effects panel data models", *Econometric Reviews*, Vol. 35 No. 7, pp. 1290-1316, doi: [10.1080/07474938.2014.976524](https://doi.org/10.1080/07474938.2014.976524).
- Bracker, K., Docking, D.S. and Koch, P.D. (1999), "Economic determinants of evolution in international stock market integration", *Journal of Empirical Finance*, Vol. 6 No. 1, pp. 1-27, doi: [10.1016/S0927-5398\(98\)00007-3](https://doi.org/10.1016/S0927-5398(98)00007-3).
- Breitung, J. (2000), "The local power of some unit root tests for panel data", in Baltagi, B.H. (Ed.), *Advances in Econometrics, Vol. 15: Nonstationary Panels, Panel Cointegration, and Dynamic Panels*, JAI Press, Amsterdam, pp. 161-178.
- Breitung, J. and Das, S. (2005), "Panel unit root tests under cross-sectional dependence", *Statistica Neerlandica*, Vol. 59 No. 4, pp. 414-433, doi: [10.1111/j.1467-9574.2005.00299.x](https://doi.org/10.1111/j.1467-9574.2005.00299.x).
- Breusch, T.S. and Pagan, A.R. (1979), "A simple test for heteroscedasticity and random coefficient variation", *Econometrica*, Vol. 47 No. 5, pp. 1287-1294.
- Caldara, D. and Iacoviello, M. (2019), "Measuring geopolitical risk", International Finance Discussion Papers No. 1222, Board of Governors of the Federal Reserve System, 10 December.

- Caporin, M. and McAleer, M. (2012), "Do we really need both BEKK and DCC? A tale of two multivariate GARCH models", *Journal of Economic Surveys*, Vol. 26 No. 4, pp. 736-751, doi: [10.1111/j.1467-6419.2011.00683.x](https://doi.org/10.1111/j.1467-6419.2011.00683.x).
- Carbaugh, R. (2018), *International Economics*, Cengage Learning, Mason, OH.
- Carriero, F., Errunza, V. and Hogan, K. (2007), "Characterizing world market integration through time", *Journal of Financial and Quantitative Analysis*, Vol. 42 No. 4, pp. 915-940, doi: [10.1017/S0022109000003446](https://doi.org/10.1017/S0022109000003446).
- Chatterjee, M. and Naka, I. (2022), "Twenty years of BRICS: political and economic transformations through the lens of land", *Oxford Development Studies*, Vol. 50 No. 1, pp. 2-13, doi: [10.1080/13600818.2022.2033191](https://doi.org/10.1080/13600818.2022.2033191).
- Chittedi, K.R. (2010), "Global stock markets development and integration: with special reference to BRIC countries", *International Review of Applied Financial Issues and Economics*, Vol. 2 No. 1, pp. 18-36.
- Choi, I. (2001), "Unit root tests for panel data", *Journal of International Money and Finance*, Vol. 20 No. 2, pp. 249-272, doi: [10.1016/S0261-5606\(00\)00048-6](https://doi.org/10.1016/S0261-5606(00)00048-6).
- De Jong, F. and De Roon, F.A. (2005), "Time-varying market integration and expected returns in emerging markets", *Journal of Financial Economics*, Vol. 78 No. 3, pp. 583-613, doi: [10.1016/j.jfineco.2004.10.010](https://doi.org/10.1016/j.jfineco.2004.10.010).
- Driscoll, J.C. and Kraay, A.C. (1998), "Consistent covariance matrix estimation with spatially dependent panel data", *The Review of Economics and Statistics*, Vol. 80 No. 4, pp. 549-560, doi: [10.1162/003465398557825](https://doi.org/10.1162/003465398557825).
- Ekpo, A. and Chuku, C. (2017), "Regional financial integration and economic activity in Africa", *Journal of African Economies*, Vol. 26 No. Suppl 2, pp. 40-75.
- Engle, R.F. and Kroner, K.F. (1995), "Multivariate simultaneous generalized ARCH", *Econometric Theory*, Vol. 11 No. 1, pp. 122-150, doi: [10.1017/S0266466600009063](https://doi.org/10.1017/S0266466600009063).
- Fazio, G. (2007), "Extreme interdependence and extreme contagion between emerging markets", *Journal of International Money and Finance*, Vol. 26 No. 8, pp. 1261-1291.
- Forbes, K.J. and Chinn, M.D. (2004), "A decomposition of global linkages in financial markets over time", *Review of Economics and Statistics*, Vol. 86 No. 3, pp. 705-722.
- García-Herrero, A., Wooldridge, P. and Yang, D.Y. (2009), "Why don't Asians invest in Asia? The determinants of cross-border portfolio holdings", *Asian Economic Papers*, Vol. 8 No. 3, pp. 228-246, doi: [10.1162/asep.2009.8.3.228](https://doi.org/10.1162/asep.2009.8.3.228).
- Gordon, M.J. (1959), "Dividends, earnings, and stock prices", *Review of Economics and Statistics*, Vol. 41 No. 2, pp. 99-105.
- Gordon, M.J. and Shapiro, E. (1956), "Capital equipment analysis: the required rate of profit", *Management Science*, Vol. 3 No. 1, pp. 102-110, doi: [10.1287/mnsc.3.1.102](https://doi.org/10.1287/mnsc.3.1.102).
- Greene, W.H. (2000), *Econometric Analysis*, 4th ed., Prentice Hall, Upper Saddle River, NJ.
- Guesmi, K. and Nguyen, D.K. (2011), "How strong is the global integration of emerging market regions? An empirical assessment", *Economic Modelling*, Vol. 28 No. 6, pp. 2517-2527, doi: [10.1016/j.econmod.2011.07.006](https://doi.org/10.1016/j.econmod.2011.07.006).
- Hadri, K. (2000), "Testing for stationarity in heterogeneous panel data", *Econometrics Journal*, Vol. 3 No. 2, pp. 148-161, doi: [10.1111/1368-423X.00043](https://doi.org/10.1111/1368-423X.00043).
- Harris, R.D.F. and Tzavalis, E. (1999), "Inference for unit roots in dynamic panels where the time dimension is fixed", *Journal of Econometrics*, Vol. 91 No. 2, pp. 201-226, doi: [10.1016/S0304-4076\(98\)00076-1](https://doi.org/10.1016/S0304-4076(98)00076-1).
- Hausman, J.A. (1978), "Specification tests in econometrics", *Econometrica*, Vol. 46 No. 6, pp. 1251-1271.
- Hoechle, D. (2007), "Robust standard errors for panel regressions with cross-sectional dependence", *The Stata Journal*, Vol. 7 No. 3, pp. 281-312, doi: [10.1177/1536867X0700700301](https://doi.org/10.1177/1536867X0700700301).

- Hooy, C.W. and Goh, K.L. (2008), "Stock market integration across national boundaries: causes and impediments", *Capital Markets Review*, Vol. 16 No. 1, pp. 13-26.
- Huy, D.T., Loan, B.T. and Anh, P.T. (2020), "Impact of selected factors on stock price: a case study of Vietcombank in Vietnam", *Entrepreneurship and Sustainability Issues*, Vol. 7 No. 4, pp. 2715-2730, doi: [10.9770/jesi.2020.7.4\(10\)](https://doi.org/10.9770/jesi.2020.7.4(10)).
- Im, K.S., Pesaran, M.H. and Shin, Y. (2003), "Testing for unit roots in heterogeneous panels", *Journal of Econometrics*, Vol. 115 No. 1, pp. 53-74, doi: [10.1016/S0304-4076\(03\)00092-7](https://doi.org/10.1016/S0304-4076(03)00092-7).
- Karim, B.A. and Majid, M.S.A. (2010), "Does trade matter for stock market integration?", *Studies in Economics and Finance*, Vol. 27 No. 1, pp. 47-66, doi: [10.1108/10867371011022975](https://doi.org/10.1108/10867371011022975).
- Kim, S.J., Moshirian, F. and Wu, E. (2018), "Dynamic stock market integration driven by the European monetary union: an empirical analysis", in *In Information Spillovers and Market Integration in International Finance*, pp. 305-368, doi: [10.1142/9789813223585_0010](https://doi.org/10.1142/9789813223585_0010).
- Lahrech, A. and Sylwester, K. (2013), "The impact of NAFTA on North American stock market linkages", *North American Journal of Economics and Finance*, Vol. 25, pp. 94-108, doi: [10.1016/j.najef.2013.04.001](https://doi.org/10.1016/j.najef.2013.04.001).
- Levin, A., Lin, C.F. and Chu, C.S.J. (2002), "Unit root tests in panel data: asymptotic and finite-sample properties", *Journal of Econometrics*, Vol. 108 No. 1, pp. 1-24, doi: [10.1016/S0304-4076\(01\)00098-7](https://doi.org/10.1016/S0304-4076(01)00098-7).
- Lombana, J., Palacios-Chacón, L.A., Salcedo, N.U. and Cabello-Cerna, A. (2021), "Pacific alliance facing crises: a trade perspective (1990–2020)", in Coşkun Özer, A. (Ed.), *Impact of Global Issues on International Trade*, IGI Global, pp. 37-65, doi: [10.4018/978-1-7998-8314-2.ch003](https://doi.org/10.4018/978-1-7998-8314-2.ch003).
- Marfatia, H.A. (2017), "A fresh look at the integration of risks in the international stock markets: a wavelet approach", *Review of Financial Economics*, Vol. 34 No. 1, pp. 33-49, doi: [10.1016/j.rfe.2017.07.003](https://doi.org/10.1016/j.rfe.2017.07.003).
- Mishra, A.K., Agrawal, S. and Patwa, J.A. (2022), "Return and volatility spillover between India and leading Asian and global equity markets: an empirical analysis", *Journal of Economics, Finance and Administrative Science*, Vol. 27 No. 54, pp. 294-312, doi: [10.1108/JEFAS-06-2021-0082](https://doi.org/10.1108/JEFAS-06-2021-0082).
- Mroua, M. and Trabelsi, L. (2020), "Causality and dynamic relationships between exchange rate and stock market indices in BRICS countries", *Journal of Economics, Finance and Administrative Science*, Vol. 25 No. 50, doi: [10.1108/JEFAS-04-2019-0054](https://doi.org/10.1108/JEFAS-04-2019-0054).
- Newey, W.K. and West, K.D. (1994), "Automatic lag selection in covariance matrix estimation", *Review of Economic Studies*, Vol. 61 No. 4, pp. 631-653, doi: [10.2307/2297912](https://doi.org/10.2307/2297912).
- Ohlin, B. (1933), *Interregional and International Trade*, Harvard University Press, Cambridge, MA.
- Paramati, S.R., Roca, E. and Gupta, R. (2016), "Economic integration and stock market dynamic linkages: evidence in the context of Australia and Asia", *Applied Economics*, Vol. 48 No. 44, pp. 4210-4226, doi: [10.1080/00036846.2016.1153794](https://doi.org/10.1080/00036846.2016.1153794).
- Park, C.Y. (2013), "Asian capital market integration: theory and evidence", ADB Economics Working Paper Series No. 351, Asian Development Bank, Manila, June.
- Patel, R., Goodell, J.W., Oriani, M.E., Paltrinieri, A. and Yarovaya, L. (2022), "A bibliometric review of financial market integration literature", *International Review of Financial Analysis*, Vol. 80, doi: [10.1016/j.irfa.2022.102035](https://doi.org/10.1016/j.irfa.2022.102035).
- Pesaran, M.H. (2004), "General diagnostic tests for cross-section dependence in panels", Cambridge Working Papers in Economics, No. 0435, Faculty of Economics, University of Cambridge.
- Piesse, J. and Hearn, B. (2002), "Equity market integration versus segmentation in three dominant markets of the Southern African Customs Union: cointegration and causality tests", *Applied Economics*, Vol. 34 No. 14, pp. 1711-1722.
- Ricardo, D. (1817), *On the Principles of Political Economy and Taxation*, 2nd ed., John Murray, London.
- Rogers, W.H. (1994), "Regression standard errors in clustered samples", *Stata Technical Bulletin*, Vol. 13, pp. 19-23, *Stata Technical Bulletin Reprints*, Vol. 3, pp. 88-94. Stata Press, College Station, TX.

-
- Shapiro, S.S. and Francia, R.S. (1972), "An approximate analysis of variance test for normality", *Journal of the American Statistical Association*, Vol. 67 No. 337, pp. 215-216.
- Shapiro, S.S. and Wilk, M.B. (1965), "An analysis of variance test for normality (complete samples)", *Biometrika*, Vol. 52 Nos 3-4, pp. 591-611, doi: [10.1093/biomet/52.3-4.591](https://doi.org/10.1093/biomet/52.3-4.591).
- Sharma, G.D., Mahendru, M. and Singh, S. (2013), "Are the stock exchanges of emerging economies inter-linked? Evidence from BRICS", *Indian Journal of Finance*, Vol. 7 No. 1, pp. 1-25.
- Smith, A. (1776), *An Inquiry into the Nature and Causes of the Wealth of Nations*, Strahan and Cadell, London.
- Song, Y., Huang, R., Paramati, S.R. and Zakari, A. (2021), "Does economic integration lead to financial market integration in the Asian region?", *Economic Analysis and Policy*, Vol. 69, pp. 366-377, doi: [10.1016/j.eap.2020.12.003](https://doi.org/10.1016/j.eap.2020.12.003).
- Soydemir, G. (2000), "International transmission mechanism of stock market movements: evidence from emerging equity markets", *Journal of Forecasting*, Vol. 19 No. 3, pp. 149-176, doi: [10.1002/\(SICI\)1099-131X\(200004\)19:33.0.CO;2-C](https://doi.org/10.1002/(SICI)1099-131X(200004)19:33.0.CO;2-C).
- Steuart, J. (1767), *An Inquiry into the Principles of Political Economy: Being an Essay on the Science of Domestic Policy in Free Nations*, Millar, London.
- Upalat, K. (2022), "Revisiting Asian economic integration: challenges and prospects", *Journal of the Asia Pacific Economy*, Vol. 27 No. 2, pp. 199-222, doi: [10.1080/13547860.2020.1840493](https://doi.org/10.1080/13547860.2020.1840493).
- Yildirim, H., Akdag, S. and Alola, A.A. (2022), "Is there a price bubble in the exchange rates of the developing countries? The case of BRICS and Turkey", *Journal of Economics, Finance and Administrative Science*, Vol. 27 No. 54, pp. 247-261, doi: [10.1108/JEFAS-04-2021-0025](https://doi.org/10.1108/JEFAS-04-2021-0025).

Appendix

Variable	Code	Computation or type	Explanation	Source
ρ	Correlation	MGARCH, Equation (1)	The correlation of the log returns for South Africa and each of the BRIC countries (Brazil, Russia, India and China)	Stock indices sourced from the OECD online database
z	Trade	Equation (2)	The extent of trade intensity between South Africa and each of the BRIC countries	The Quantec database
	Surplus-deficit	Dummy	An indicator of trade surplus or deficit. Takes value 1 if at month t trade is surplus and zero if deficit	The Quantec database
	BRICSexp	Equation (4)	BRIC age since establishment (or duration) weighted by South Africa-BRIC distance	BRIC website
	BRIClead	Scale	The number of times that each country changed leaders in the past	BRIC annual meetings – BRIC website
	BRICSexist	Dummy	Indicator variable taking a value of zero for the period before BRIC existence, and 1 from the establishment date onwards	The BRIC website
x	Rate	Scale	Short-term interest rate differential between South Africa and each of the BRIC countries	Federal Reserve Bank of St. Louis
	VIX	Scale	Volatility index based on the S&P500 option index	Finance.yahoo.com
	Geopolitics	Scale	An index to measure country-specific political risk based on newspaper-published events	Caldara and Iacoviello (2019)

Source(s): Author's compilation

Table A1. Variables description

No	Variable	Breitung (2000) $\phi_i = \phi$	Levin <i>et al.</i> (2002) $\phi_i = \phi$	Im <i>et al.</i> (2003) $\phi_i \neq \phi$
1	Residuals	-11.6964 (0.0000***)	-12.5961 (0.0000***)	-12.7310 (0.0000***)
2	Trade intensity	-2.3765 (0.0087***)	-2.982 (0.0014***)	-7.5406 (0.0000***)
3	Interest rate differential	-0.9032 (0.1832)	-5.0316 (0.0000***)	-7.9342 (0.0000***)
4	VIX	-3.5622 (0.0002***)	-5.6630 (0.0002***)	-8.0845 (0.0000***)
5	Geopolitical risk	-13.6369 (0.0000***)	-9.6705 (0.0000***)	-14.6616 (0.0000***)

Note(s): ***1%, statistical significance. Equation (5) refers: $\phi_i = \phi$ means that a common autoregressive coefficient for all panels is assumed while $\phi_i \neq \phi$ means panel-specific autoregressive coefficients are assumed
Source(s): Author's computations

Table A2. Stationarity model validation tests, H_0 : panels contain unit roots

No	Null hypothesis	Test procedure	Distribution	T-stat	p-value	Results
1	$H_0: u_i = 0$, Common effects (pool)	Panel regression	$F_test(k - 1, n - 1)$	52.07	0.0000***	Reject H_0
2	H_0 : Random effects model	Hausman (1978)	$\chi^2(k)$	54.79	0.0000***	Reject H_0
3	H_0 : Period effects are jointly zero	Testparm	$F_test(k - 1, n - 1)$	732.34	0.0000***	Reject H_0
4	H_0 : No cross-sectional dependence	xttest2, Breusch and Pagan (1979)	$\chi^2(k)$	322.27	0.0000***	Reject H_0
5	H_0 : No cross-sectional dependence	xcsd, Pesaran (2004)		11.84	0.0000***	Reject H_0
6	H_0 : Homoscedasticity	xttest3, Greene (2000)	$\chi^2(k)$	48.12	0.0000***	Reject H_0
7	H_0 : No serial correlation up to order p	Born and Breitung (2016)	$\chi^2(p)$	131.75	0.0000***	Reject H_0
8	H_0 : residuals are normal	Shapiro and Wilk (1965)	W_test	0.9974	0.0508**	Fail to reject H_0 at 1%
9	H_0 : residuals are normal	Shapiro and Francia (1972)	W'_test	0.9973	0.0822*	Fail to reject H_0 at 5%

Table A3.
Post-estimation model validation tests

Note(s): *** 1%, ** 5% and *10%
Source(s): Author's computations

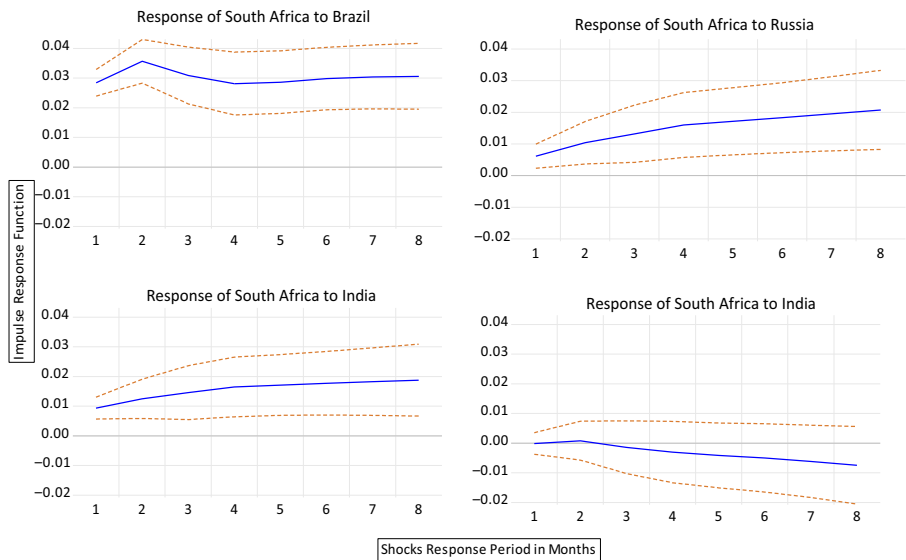
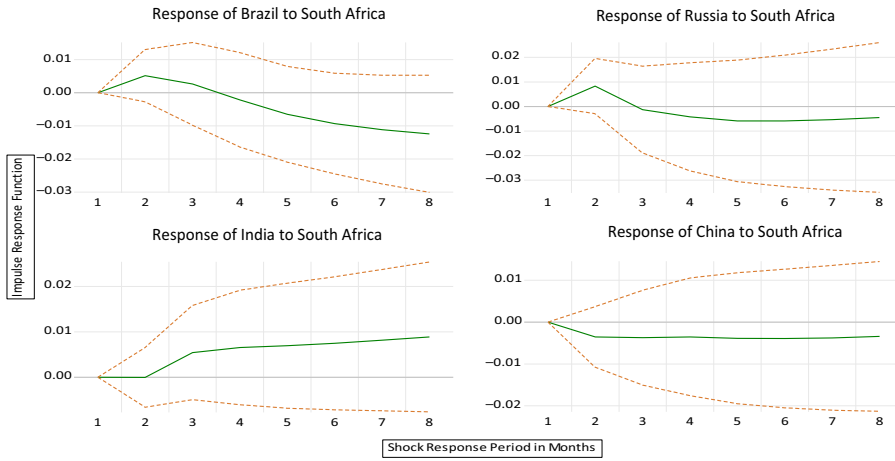


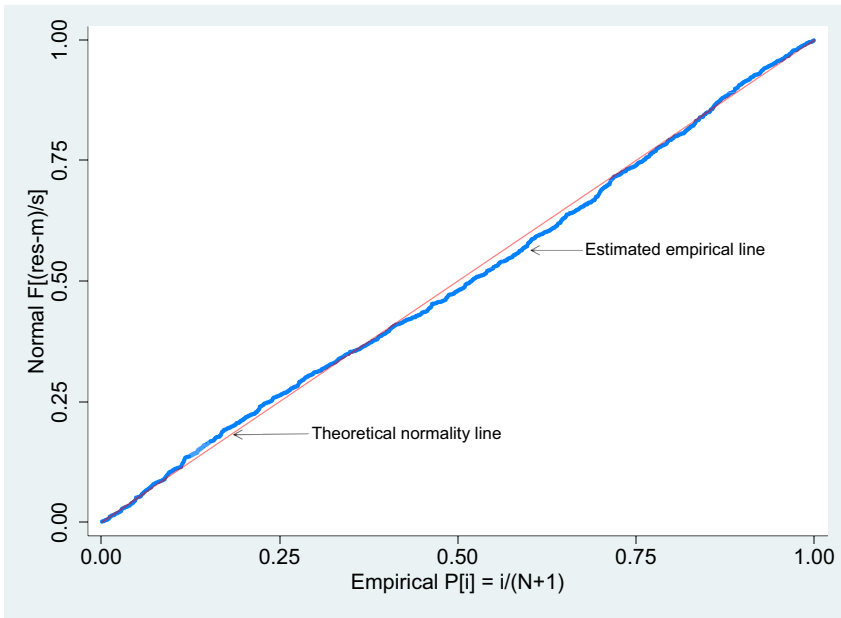
Figure A1.
Shock responses of South Africa to one standard deviation innovations from individual BRIC countries

Source(s): Author's graphics



Source(s): Author's graphics

Figure A2. Shock responses of individual BRIC countries to one standard deviation innovations from South Africa



Source(s): Author's graphics

Figure A3. The Q-Q graph to assess normality of residuals series from the panel data model

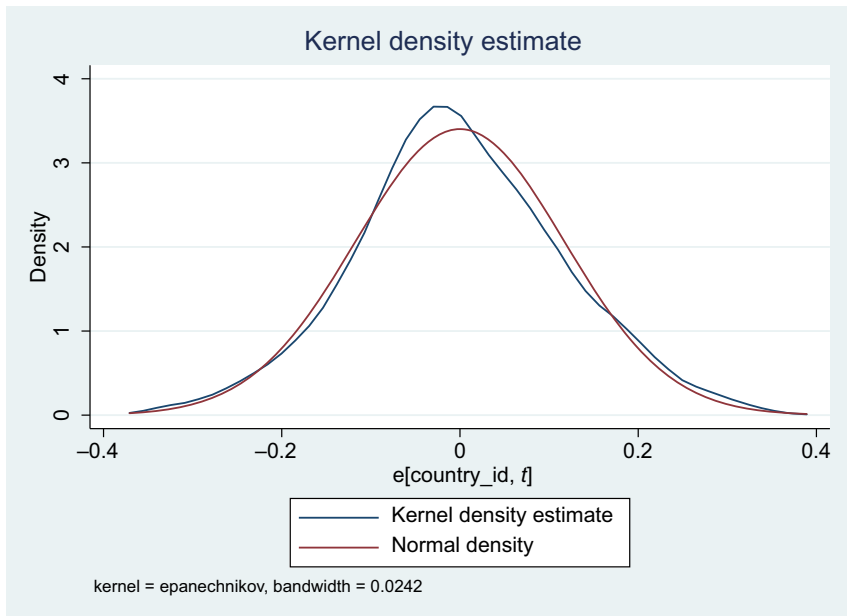


Figure A4.
A bell-shaped graph to inspect normality in the residual series of the panel model

Source(s): Author's graphics

Corresponding author

Thabo J. Gopane can be contacted at: tjgopane@uj.ac.za