

Kartal, Burcu; Sert, Mehmet Fatih; Kutlu, Melih

## Article

# Determination of the world stock indices' co-movements by association rule mining

Journal of Economics, Finance and Administrative Science

## Provided in Cooperation with:

Universidad ESAN, Lima

*Suggested Citation:* Kartal, Burcu; Sert, Mehmet Fatih; Kutlu, Melih (2022) : Determination of the world stock indices' co-movements by association rule mining, Journal of Economics, Finance and Administrative Science, ISSN 2218-0648, Emerald Publishing Limited, Bingley, Vol. 27, Iss. 54, pp. 231-246,  
<https://doi.org/10.1108/JEFAS-04-2020-0150>

This Version is available at:

<https://hdl.handle.net/10419/289636>

## Standard-Nutzungsbedingungen:

Die Dokumente auf EconStor dürfen zu eigenen wissenschaftlichen Zwecken und zum Privatgebrauch gespeichert und kopiert werden.

Sie dürfen die Dokumente nicht für öffentliche oder kommerzielle Zwecke vervielfältigen, öffentlich ausstellen, öffentlich zugänglich machen, vertreiben oder anderweitig nutzen.

Sofern die Verfasser die Dokumente unter Open-Content-Lizenzen (insbesondere CC-Lizenzen) zur Verfügung gestellt haben sollten, gelten abweichend von diesen Nutzungsbedingungen die in der dort genannten Lizenz gewährten Nutzungsrechte.

## Terms of use:

*Documents in EconStor may be saved and copied for your personal and scholarly purposes.*

*You are not to copy documents for public or commercial purposes, to exhibit the documents publicly, to make them publicly available on the internet, or to distribute or otherwise use the documents in public.*

*If the documents have been made available under an Open Content Licence (especially Creative Commons Licences), you may exercise further usage rights as specified in the indicated licence.*



<https://creativecommons.org/licenses/by/4.0/>

# Determination of the world stock indices' co-movements by association rule mining

World stock  
indices' co-  
movements

Burcu Kartal and Mehmet Fatih Sert

*Department of Business Administration, Recep Tayyip Erdogan Universitesi,  
Rize, Turkey, and*

Melih Kutlu

*Department of International Trade and Business, Samsun University,  
Samsun, Turkey*

231

Received 23 April 2020  
Revised 4 August 2021  
Accepted 21 October 2021

## Abstract

**Purpose** – This study aims to provide preliminary information to the investor by determining which indices co-movement, with the data mining method.

**Design/methodology/approach** – In this context, data sets containing daily opening and closing prices between 2001 and 2019 have been created for 11 stock market indexes in the world. The association rule algorithm, one of the data mining techniques, is used in the analysis of the data.

**Findings** – It is observed that the US stock market indices take part in the highest confidence levels between association rules. The XU100 stock index co-movement with both the European stock market indices and the US stock indices. In addition, the Hang Seng Index (HSI) (Hong Kong) takes part in the association rules of all stock market indices.

**Originality/value** – The important issue for data sets is that the opening/closing values of the same day or the previous day are taken into account according to the open or closed status of other stock market indices by taking the opening time of the stock exchange index to be created. Therefore, data sets are arranged for each stock market index, separately. As a result of this data set arranging process, it is possible to find out co-movements of the stock market indexes. It is proof that the world stock indices have co-movement, and this continues as a cycle.

**Keywords** Data mining, Association rules, Stock market index, Global financial markets

**Paper type** Research paper

## 1. Introduction

Financial deepening and financial integration process that the world stock markets experienced increases the co-movement of world stock indexes. Investors need to foresee which direction other stock exchanges will move after the fall or rise of any stock market. This information will help investors take quick and efficient decisions. Ghosh *et al.* (1999) found that Hong Kong, India and Korea have a long-term relationship with the US market, while Indonesia, the Philippines and Singapore have long-term relationships with Japan. Johnson and Soenen (2009) found a significant association between the German and European Union stock markets. Kasibhatla *et al.* (2006) detected a long-run relationship between London (FTSE100), Frankfurt (DAX30) and Paris (CAC40) indices. Madaleno and Pinho (2012) investigated the long-term relationship between FTSE 100, Dow Jones 30, Nikkei

**JEL Classification** — C6, C8, G15

© Burcu Kartal, Mehmet Fatih Sert and Melih Kutlu. Published in *Journal of Economics, Finance and Administrative Science*. Published by Emerald Publishing Limited. This article is published under the Creative Commons Attribution (CC BY 4.0) licence. Anyone may reproduce, distribute, translate and create derivative works of this article (for both commercial and non-commercial purposes), subject to full attribution to the original publication and authors. The full terms of this licence maybe seen at <http://creativecommons.org/licenses/by/4.0/legalcode>.



Journal of Economics, Finance and  
Administrative Science  
Vol. 27 No. 54, 2022  
pp. 231-246  
Emerald Publishing Limited  
e-ISSN: 2218-0648  
p-ISSN: 2077-1886  
DOI 10.1108/JEFAS-04-2020-0150

225 and Bovespa, and concluded that the relationship is strong but not homogeneous. [Vuran \(2010\)](#) concluded that the Borsa İstanbul (XU100) Index is related to the FTSE 100, DAX, BOVESPA, Merval and IPC indices in the long term.

[Chan et al. \(1997\)](#) concluded that international diversification is important because stock markets do not co-movements in the long run. [Caporale et al. \(2016\)](#) could not determine the cointegration relationship between the US and European stock indices. [Fu and Pagani \(2012\)](#) state that there is a cointegration between international stock indices, but the evidence is weak. [Dimpfl \(2014\)](#) concluded that it would not be appropriate to investigate the relations and integration between financial markets through cointegration analysis, and cointegration is a coincidence. Can co-movement between stock markets, which cannot be determined by cointegration analysis, be analysed by another method? The association rule can answer this question. The association rule is a pattern of frequently used items appearing together. It reflects behaviours in which the same behaviour often occurs. With globalization, the potential of stock markets to exhibit common behaviours is increasing. In particular, return and volatility spillovers are frequently studied topics in the finance literature. These studies are also included in the literature part of this study. It is possible to show common behaviours with algorithms within the framework of association rule. In this study, the apriori algorithm, which is frequently used in the literature, is used. Also, Eclat and FP- Growth algorithms, which are other association rule algorithms, were used for the robustness of the results.

This study aims to consider the basic research question: Are the co-movement of stock indices present by the association rule? In this study, we investigate the co-movement of daily price changes of other stock market index values in the world for each of the index values of 11 world exchanges with the association rule algorithm. Association rule algorithm, one of the data mining techniques, is used to reveal this information. This method, also known as market-basket analysis, can help investors create investment plans using preliminary information. It is aimed to determine how the change in the opening/closing values of each stock market index is affected by the fluctuations in foreign markets and which international indices co-movement. Briefly, this study aims to provide preliminary information to the investor by determining which indices co-movement, with the data mining method. Details about the association rule give in the method section.

To be able to fill the gap in the literature and to guide the potential investors about alternative investment opportunities, this study aims to analyse world stock indices' co-movements by association rule mining selected samples in economies. To identify the gap in the literature, a literature review is presented in the second section. Then, the data set is presented in the third section. The methods and findings are indicated in the fourth and fifth sections, respectively.

## 2. Literature review

Studies on the co-movement and integration of stock markets focus on returns and volatility spillovers. Emerging markets, both in the long run and in the short run, are more affected by their own past shocks than developed markets ([Li and Giles, 2015](#); [Vo and Tran, 2020](#); [Jung and Maderitsch, 2014](#)). [Wang and Wang \(2010\)](#) stated that volatility spillovers are greater than price spillovers between China, Japan and US markets. This effect decreases with the openness of the markets and increases with the geographical distance. [Yang et al. \(2020\)](#) identified risk spillovers between Hong Kong and Shanghai. The study of [Zhou et al. \(2012\)](#) revealed that the volatility spillover between China, Japan and India markets is greater than the volatility spillover between China, the USA and the UK. These findings support the findings of [Wang and Wang \(2010\)](#) regarding geographical distance. [Zhou and Liu \(2021\)](#) identified volatility spillovers between China and Singapore, Thailand, Indonesia, Malaysia and the Philippines. According to [Hung \(2019\)](#), China seriously affects Vietnam, Thailand, Singapore and Malaysia in terms of volatility spillover. There is mutual causality in the mean between

Colombia, Indonesia, Vietnam, Egypt, Turkey and South Africa (Korkmaz *et al.*, 2012). Majdoub and Mansour (2014) found that the conditional correlation estimates between the USA, Turkey, Indonesia, Pakistan, Qatar and Malaysia are insufficient. Volatility spillover from European markets to the US market is greater than that from the US to the European market (Savva *et al.*, 2009). Correlations between the BRICS countries and the markets of developed countries such as the USA, Europe and Japan that change over time (Mensi *et al.*, 2017; McIver and Kang, 2020) found bidirectional volatility and return spillover between BRICS and US stock markets. There is a one-way return spillover from the US markets to the Latin markets (Yousaf *et al.*, 2020). Farther of the closing hours between the stock exchanges affects the size of the volatility spillover (Baumohl *et al.*, 2018). When co-movement of financial data is evaluated with the use of the association rule algorithm, it is observed that the fluctuation movements of the stocks, indexes and exchange rates in various countries' financial markets are examined. Liao *et al.* (2008) investigated the problems that arise in stock market investments in Taiwan using the two-stage data mining method, and they applied the association rule and then used the k-means clustering method with 19 international indices. As a result of the analysis, Nikkei 225, Hang Seng and KOSPI stock indexes' co-movement with various stocks traded on the Taiwan Stock Exchange in the 60–75% confidence level. Hoon Na and Sohn (2011) used the association analysis, and they stated that the Korean Stock Exchange index moved in the same direction with the US and European stock exchange indices. Argiddi and Apte (2012) used the association rule for the exchange of stocks in the India Information Technology index. In addition, it is tried to find solutions with two different methods in the study. They created the data set from the opening prices of the relevant stocks for the last three years. The rules of association that emerged as a result of the analysis are interpreted. Liao and Chou (2013) examined the changes in Taiwan and China stock indexes in the stock market using the association rule method and cluster analysis between June 2008 and March 2011, strong co-movement between the electronics, finance, and insurance and semiconductors index and Taiwan Stock Index (TAIEX) in Taiwan Stock Exchange.

Arafah and Mukhlash (2015) studied the exchange of shares of 10 companies in Indonesia studied using the fuzzy association rules method. The data set is created by obtaining the closing prices of the relevant company stocks between January 2010 and December 2014. As a result of the analysis, they established rules at a minimum support level of 0.1, 0.07 and 0.06 and found that the increase in certain stocks caused increases and decreases over other stocks. Masum (2019) has examined the co-movement of the stocks of 36 companies listed on the Tehran stock market index. In total, 249,061 records are tested by association analysis. Many association rules and recommendations have been developed. The association rules with over 81% confidence value, over 1% support value and over two lift values are detected in three and four items.

When the above return and volatility spillover literature review is examined, it is found that stock markets affect each other in terms of return and volatility, and causal relationships are established. However, these studies do not reveal any findings concerning the up and down of other markets. In the studies conducted on the concept of association rule algorithm, it has been determined that the association rule is frequently used in the analysis of index co-movements. It is seen that the studies are mostly done on the indices in the Far East countries, and the focus is on the changes in the domestic markets. Globally, there is no study involving a total analysis of the movement of countries' stock indexes with other country stock indexes. For this reason, a research gap has been identified in this area.

### 3. Method

#### 3.1 Data

In this study, data from 4,924 trading days between January 2001 and November 2019, which included 11 world stock market indices, are used. The resulting data set is Brazil (BVSP), USA

(S&P 500, DJI, IXIC), France (FCHI), Germany (GDAXI), UK (FTSE), China (SSEC), Hong Kong (HSI), Japan (N225) and Turkey (XU100) consists of opening and closing prices of the stock market. According to each stock market index, a total of 11 different data sets are created. The opening/closing values of the same day or the previous day are taken into account according to the open or closed status of other stock market indices by taking the opening time of the stock exchange index to be created. The opening/closing situations of the stock market indexes for each data set are shown in Table 1.

Since the association analysis used in the research can process categorical data due to its structure, the values in the data set have been converted to the form of “binary verbal expression”. In this context, the values in the data set are coded as “Down” if the value of an index is in decrease compared to the previous day and “Up” in the increase. A sample of the data set (XU100 data set) is given in Table 2. The data are analysed using the “apriori” package in the R-Studio program. It has been tested with a variety of support and confidence values.

3.2 Procedure

The use of an association rule algorithm that determines this relationship has increased by researchers in recent years. Using this method in studies with the same purpose has ensured that the results are reliable and valid. The results of the study are thought to develop a suggestion system for individuals or institutions that will decide to invest in international stock market indices. In addition, as a result of the analysis of the data set customized according to each world index, it will be revealed how the world markets move in harmony with each other. Thus, a general map of the co-movement of the stock market index in the world will be created. Agrawal *et al.* (1993) stated that finding association rules is one of the important issues of data mining. The main use of the association rule algorithms is to reveal concurrent relationships by analysing random data. The data obtained can be used as reference information in the decision-making phase.

The association rule is defined as follows (Wang *et al.*, 2004, p. 428):

$I = \{i_1, i_2, \dots, i_m\}$  shows each item from a particular community. The items in each  $T$  transaction are kept in the  $D$  database and are  $T \subseteq I$ . Each set of items  $T$  is a non-empty subset of items. This criterion, called support value for each  $X \subset I$  item set, is calculated to determine the statistical significance of  $D$ . *Support* ( $X, D$ ) shows the purchase rate of product  $X$  in the database  $D$ . If  $X, Y \subset I$  and  $X \cap Y = \emptyset$ , the association rule is written as  $X \rightarrow Y$ . This rule indicates that if product  $X$  is purchased, product  $Y$  can also be bought. The confidence value is calculated for each rule. This value is calculated by the formula

| Index<br>data set | GSPC        | DJI         | IXIC        | BVSP        | FTSE        | GDAXI       | FCHI        | XU100       | SSEC        | HSI         | N225        |
|-------------------|-------------|-------------|-------------|-------------|-------------|-------------|-------------|-------------|-------------|-------------|-------------|
| GSPC              | <i>O(t)</i> | C(t-1)      | C(t-1)      | O(t)        | O(t)        | O(t)        | O(t)        | O(t)        | C(t)        | C(t)        | C(t)        |
| DJI               | C(t-1)      | <i>O(t)</i> | C(t-1)      | O(t)        | O(t)        | O(t)        | O(t)        | O(t)        | C(t)        | C(t)        | C(t)        |
| IXIC              | C(t-1)      | C(t-1)      | <i>O(t)</i> | O(t)        | O(t)        | O(t)        | O(t)        | O(t)        | C(t)        | C(t)        | C(t)        |
| BVSP              | C(t-1)      | C(t-1)      | C(t-1)      | <i>O(t)</i> | O(t)        | O(t)        | O(t)        | O(t)        | C(t)        | C(t)        | C(t)        |
| FTSE              | C(t-1)      | C(t-1)      | C(t-1)      | C(t-1)      | <i>O(t)</i> | C(t-1)      | C(t-1)      | O(t)        | C(t)        | C(t)        | C(t)        |
| GDAXI             | C(t-1)      | C(t-1)      | C(t-1)      | C(t-1)      | C(t-1)      | <i>O(t)</i> | C(t-1)      | O(t)        | C(t)        | C(t)        | C(t)        |
| FCHI              | C(t-1)      | C(t-1)      | C(t-1)      | C(t-1)      | C(t-1)      | C(t-1)      | <i>O(t)</i> | O(t)        | C(t)        | C(t)        | C(t)        |
| XU100             | C(t-1)      | C(t-1)      | C(t-1)      | C(t-1)      | C(t-1)      | C(t-1)      | C(t-1)      | <i>O(t)</i> | O(t)        | O(t)        | C(t)        |
| SSEC              | C(t-1)      | C(t-1)      | C(t-1)      | C(t-1)      | C(t-1)      | C(t-1)      | C(t-1)      | C(t-1)      | <i>O(t)</i> | C(t-1)      | O(t)        |
| HSI               | C(t-1)      | C(t-1)      | C(t-1)      | C(t-1)      | C(t-1)      | C(t-1)      | C(t-1)      | C(t-1)      | C(t-1)      | <i>O(t)</i> | O(t)        |
| N225              | C(t-1)      | C(t-1)      | C(t-1)      | C(t-1)      | C(t-1)      | C(t-1)      | C(t-1)      | C(t-1)      | C(t-1)      | C(t-1)      | <i>O(t)</i> |

**Table 1.**  
Opening/closing  
situations of stock  
market indices in  
data sets

**Note(s):** O: Opening, C: Closing  
**Source(s):** Own elaboration

| Day                        | GSPC<br>Closing(t-1) | DJI<br>Closing(t-1) | IXIC<br>Closing(t-1) | BVSP<br>Closing(t-1) | FTSE<br>Closing(t-1) | GDAXI<br>Closing(t-1) | FSHI<br>Closing(t-1) | XU100<br>Opening(t) | SSEC<br>Opening(t) | DHSI<br>Opening(t) | N225<br>Closing(t) |
|----------------------------|----------------------|---------------------|----------------------|----------------------|----------------------|-----------------------|----------------------|---------------------|--------------------|--------------------|--------------------|
| 1                          | Up                   | Up                  | Up                   | Up                   | Up                   | Up                    | Up                   | Up                  | Up                 | Up                 | Down               |
| 2                          | Up                   | Up                  | Up                   | Down                 | Up                   | Up                    | Up                   | Up                  | Up                 | Up                 | Up                 |
| 3                          | Up                   | Down                | Down                 | Up                   | Down                 | Down                  | Down                 | Up                  | Up                 | Up                 | Up                 |
| -                          | -                    | -                   | -                    | -                    | -                    | -                     | -                    | -                   | -                  | -                  | -                  |
| 4,923                      | Down                 | Down                | Down                 | Down                 | Down                 | Down                  | Down                 | Up                  | Up                 | Down               | Down               |
| 4,924                      | Up                   | Up                  | Up                   | Up                   | Up                   | Up                    | Up                   | Down                | Down               | Up                 | Up                 |
| Source(s): Own elaboration |                      |                     |                      |                      |                      |                       |                      |                     |                    |                    |                    |

Table 2.  
Sample data  
set (XU100)

of  $Confidence(X \rightarrow Y) = Support(X \cup Y, D) / Support(X, D)$ .  $Confidence(X \rightarrow Y)$  means that in the case of product  $X$ , it is high to purchase product  $Y$  too. While creating the association rule, large item sets are determined in the first stage, and then rules are created according to these elements. Minimum confidence and minimum support values are determined by the user, and the rules that meet the following two conditions are presented to the decision-maker: (1)  $Support(X \cup Y, D) \geq support$ , (2)  $Confidence(X \rightarrow Y) \geq confidence$ .

The easiest way to reduce the prejudices that may arise in the use of these measures is using a criterion with a lift value. Lift value is calculated by  $Lift = Confidence(X \rightarrow Y) / Support(Y)$  formula (Wang *et al.*, 2004, p. 429; Liao and Chou, 2013, p. 1547). Apriori algorithm is frequently used in research (Agrawal *et al.*, 1993). This method is also used in this study. This method is first used in marketing, but today it is used in many fields such as medicine, telecommunications and finance. The method is used to reveal a large set of items. The algorithm calculates the support level for each subset and compares it to the minimum support level specified by the user. The algorithm continues until subsets exceed the specified support level (Han and Kamber, 2006, p. 235).

#### 4. Results

The results of the association analysis of 11 different data sets, arranged according to each stock market index, are selected, and filtered as the related index. More precisely, each data set is arranged according to the relevant stock market index. The number of rules that appear at the level of different support values as a result of the association rule analysis is shown in Table 3 and Figure 1. As a result of the results obtained, it is seen that the stock index with the highest number of rules at all support levels is the Dow Jones Index (DJI). In addition, the confidence values of all these rules seem to be greater than 0.9. If we evaluate according to each stock market index, GSPC, DJI and BVSP stock exchange indexes reach the highest association rule numbers at 0.1, 0.2 and 0.3 support levels in the 0.9–1.0 confidence value range in Table 3. IXIC and XU100 stock indices reach the highest association rule numbers at the support levels of 0.1, 0.2 and 0.3, in the confidence value range 0.8–0.89.

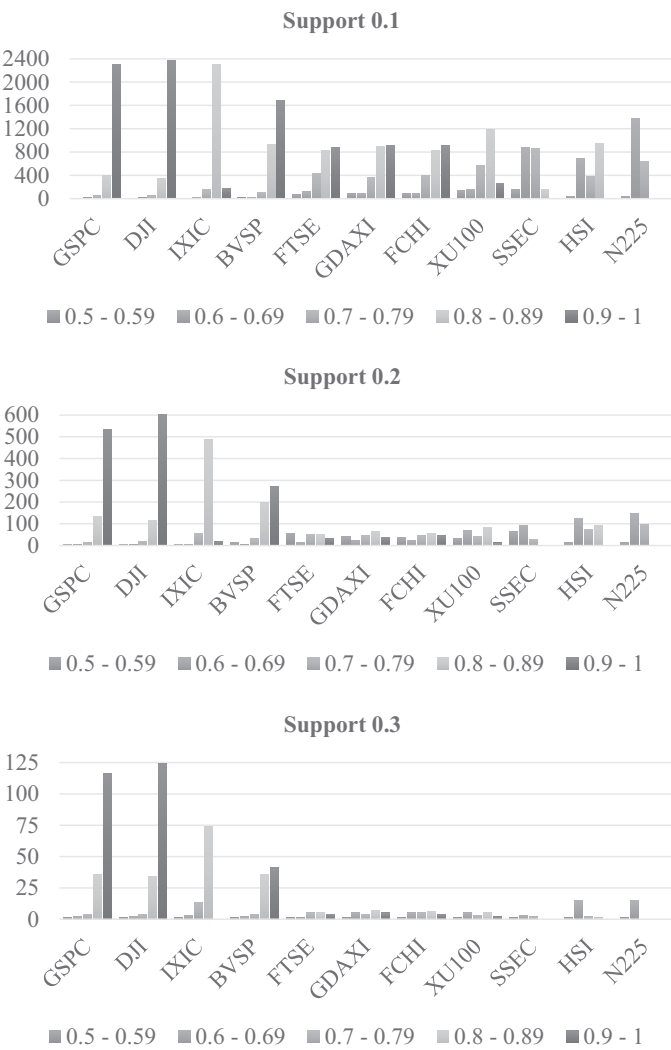
In Table 3, the FTSE stock index reached the highest number of association rules in the 0.9–1.0 confidence value range at 0.1 support level, 0.5–0.59 confidence value range at 0.2 support level, and 0.8–0.89 confidence value range at 0.3 support level. GDAXI and FCHI stock indexes have reached the highest number of association rules in the confidence value range of 0.9–1.0 at 0.1 support level and 0.8–0.89 confidence value range at 0.2 and 0.3 support levels. SSEC and N225 stock indexes reached the highest number of association rules at support levels of 0.1, 0.2 and 0.3 in the confidence value range of 0.6–0.69. HSI stock index has reached the highest number of association rules in the confidence value range of 0.8–0.89 at 0.1 support level and 0.6–0.69 confidence level at 0.2 and 0.3 support levels. It is seen that rules are formed at high support levels in all support values. The comments on the rules will be disclosed under separate headings for each stock market index based on the highest support value (0.3).

GSPC (SandP500) results are shown in Table 4. It is seen that the GSPC Stock Index moves with BVSP, FCHI, FTSE, GDAXI, HSI, XU100 stock indices with a confidence value of over 95%. As an example, if the BVSP, FCHI, FTSE, GDAXI stock indices are opened with an increase in  $t$  time and the HSI stock index is closed with an increase in  $t$  time, it can be said that the GSPC stock index will increase with a probability of 96.1%. Likewise, if BVSP, FCHI, FTSE, GDAXI, XU100 stock indices are opened with a decrease in time, the GSPC stock index will be opened with a decrease in time with a probability of 95.5%. If the BVSP, FTSE, GDAXI stock indices are opened with an increase in time  $t$ , and the HSI stock index is closed with an increase in time, the GSPC stock index will be opened with an increase with a probability of 95.7%. In addition, if the XU100 stock index is opened with an

| Support                    | Confidence | GSPC  | DJI   | IXIC  | BVSP  | FTSE | GDAXI | FCHI | XU100 | SSEC | HSI | N225  |
|----------------------------|------------|-------|-------|-------|-------|------|-------|------|-------|------|-----|-------|
| 0.1                        | 0.5-0.59   | 7     | 7     | 7     | 15    | 68   | 87    | 90   | 136   | 163  | 43  | 42    |
|                            | 0.6-0.69   | 13    | 14    | 26    | 28    | 121  | 90    | 88   | 160   | 879  | 686 | 1,383 |
|                            | 0.7-0.79   | 53    | 49    | 155   | 109   | 438  | 370   | 401  | 577   | 864  | 374 | 639   |
|                            | 0.8-0.89   | 403   | 355   | 2,310 | 935   | 821  | 893   | 833  | 1,185 | 157  | 955 | 0     |
|                            | 0.9-1      | 2,296 | 2,369 | 182   | 1,693 | 871  | 915   | 914  | 265   | 0    | 0   | 0     |
| 0.2                        | 0.5-0.59   | 7     | 7     | 7     | 15    | 57   | 40    | 38   | 32    | 63   | 14  | 13    |
|                            | 0.6-0.69   | 4     | 3     | 5     | 3     | 15   | 23    | 23   | 67    | 93   | 126 | 147   |
|                            | 0.7-0.79   | 14    | 19    | 56    | 31    | 53   | 45    | 46   | 41    | 30   | 76  | 95    |
|                            | 0.8-0.89   | 135   | 115   | 487   | 199   | 52   | 64    | 56   | 84    | 0    | 94  | 0     |
|                            | 0.9-1      | 535   | 608   | 17    | 270   | 33   | 39    | 44   | 12    | 0    | 0   | 0     |
| 0.3                        | 0.5-0.59   | 1     | 1     | 1     | 1     | 1    | 1     | 1    | 1     | 1    | 1   | 1     |
|                            | 0.6-0.69   | 2     | 2     | 3     | 2     | 1    | 5     | 5    | 5     | 3    | 15  | 15    |
|                            | 0.7-0.79   | 4     | 4     | 13    | 4     | 5    | 4     | 5    | 3     | 2    | 2   | 0     |
|                            | 0.8-0.89   | 36    | 34    | 74    | 36    | 5    | 7     | 6    | 5     | 0    | 1   | 0     |
|                            | 0.9-1      | 116   | 124   | 0     | 41    | 4    | 5     | 4    | 2     | 0    | 0   | 0     |
| Source(s): Own elaboration |            |       |       |       |       |      |       |      |       |      |     |       |

**Table 3.**  
Number of rules  
emerging according to  
different support and  
confidence values





**Figure 1.**  
Number of rules  
emerging according to  
different support and  
confidence values

increase in time  $t$ , the probability of the GSPC stock index to open with an increase will be 95.9%.

DJI stock index moves with high probability values of BVSP, FCHI, FTSE, GDAXI, XU100, HSI stock indexes are shown in [Table 5](#). As an example of this situation, if the BVSP, FCHI, FTSE, GDAXI, XU100 stock indices are opened with an increase in time  $t$  and the HSI stock index is closed with an increase in time  $t$ , it can be said that the DJI stock index will be opened with an increase in time with a probability of 97.4%. According to another rule, if the BVSP, FCHI, FTSE, GDAXI stock indices are opened with an increase in  $t$  time and the HSI stock index is closed with an increase in  $t$  time, the DJI stock index will be opened with an increase of  $t$  in 97.2% probability. The opening of the DJI stock index with a probability of 97.1% with a decrease in time will occur when BVSP, FCHI, FTSE, GDAXI, XU100 stock indices are opened with a decrease in time.

It can be said that the IXIC stock index moves at 88% probability levels with BVSP, GDAXI, FTSE, FCHI, XU100, HSI stock indexes shown in Table 6. As an example of this situation, if the BVSP and GDAXI stock indices are opened with an increase in  $t$  time and the HSI stock index is closed with an increase in  $t$  time, the IXIC stock index will be opened with an increase in  $t$  time with a probability of 88.3%. The same situation arises by evaluating the FTSE stock index value instead of the BVSP stock index. In addition, it is determined that the IXIC stock index did not start the day with a decrease in the first five rules.

BVSP results are shown in Table 7. It is seen that the co-movement between the BVSP stock index and the FCHI, FTSE, GDAXI, XU100, HSI stock indices is approximately 95%. To exemplify, if the FCHI, FTSE, GDAXI, XU100 stock indices are opened with an increase in time  $t$  and the HSI stock index is closed with an increase in time  $t$ , the BVSP stock index will be opened with an increase in time with a probability of 94.9%. However, if the HSI stock index is not considered, the probability that the BVSP stock index will be opened with an increase in time decreases to 94.8%. In addition, among the first five rules, it is determined that the BVSP stock index did not start the day with a decrease.

It is determined that the FTSE stock index moves with the probability of 88.7–93.9%, together with the XU100, HSI, SSEC, N225 stock indexes as shown in Table 8. If the XU100 stock index is opened with a decrease in time  $t$  and the HSI stock index is closed with a decrease in time  $t$ , the FTSE stock index will be opened with a decrease in time with a probability of 93.9%. On the contrary, the XU100 stock index opens with an increase in time  $t$  and the HSI stock index is closed with an increase in time  $t$ , the FTSE stock index will be opened with an increase in time with a probability of 88.7%. Also, if the XU100 stock index is opened with a decrease in  $t$  time, it can be said that the FTSE stock index will be opened with a decrease in  $t$  time with a probability of 91.3%, but the opposite is not a rule.

It is determined that the GDAXI stock index moves with XU100, HSI, SSEC, N225 stock indexes with probabilities higher than 90% as shown in Table 9. If the XU100 stock index is opened with a decrease in  $t$  time and the HSI stock index is closed with a decrease in  $t$  time, it can be said that the GDAXI stock index will be opened with a decrease in 92.2% probability and vice versa. In addition, if the XU100 stock index is opened with a decrease in  $t$  time and the N225 stock index is closed with a decrease in  $t$  time, the GDAXI stock index will be opened with a with a probability of 92.2% and vice versa.

| Antecedent   | Consequent | Confidence | Lift  |
|--|------------|------------|-------|
| BVSP = ↑, FCHI = ↑, FTSE = ↑, GDAXI = ↑, HSI = ↑   | GSPC = ↑   | 0.961      | 1,884 |
| BVSP = ↑, FTSE = ↑, GDAXI = ↑, XU100 = ↑, HSI = ↑  | GSPC = ↑   | 0.959      | 1,880 |
| BVSP = ↑, FTSE = ↑, GDAXI = ↑, HSI = ↑             | GSPC = ↑   | 0.957      | 1,877 |
| BVSP = ↑, FCHI = ↑, GDAXI = ↑, XU100 = ↑, HSI = ↑  | GSPC = ↑   | 0.957      | 1,876 |
| BVSP = ↓, FCHI = ↓, FTSE = ↓, GDAXI = ↓, XU100 = ↓ | GSPC = ↓   | 0.955      | 1,951 |

Source(s): Own elaboration

**Table 4.**  
Top 5 association rule  
with the highest  
confidence value  
in GSPC

| Antecedent  | Consequent | Confidence | Lift  |
|---|------------|------------|-------|
| BVSP = ↑, FCHI = ↑, FTSE = ↑, GDAXI = ↑, XU100 = ↑, HSI = ↑ | DJI = ↑    | 0.974      | 1,904 |
| BVSP = ↑, FCHI = ↑, FTSE = ↑, GDAXI = ↑, HSI = ↑            | DJI = ↑    | 0.972      | 1,901 |
| BVSP = ↑, FTSE = ↑, GDAXI = ↑, XU100 = ↑, HSI = ↑           | DJI = ↑    | 0.972      | 1,901 |
| BVSP = ↓, FCHI = ↓, FTSE = ↓, GDAXI = ↓, XU100 = ↓          | DJI = ↓    | 0.971      | 1,987 |
| BVSP = ↑, FCHI = ↑, FTSE = ↑, XU100 = ↑, HSI = ↑            | DJI = ↑    | 0.971      | 1,898 |

Source(s): Own elaboration

**Table 5.**  
Top 5 association rule  
with the highest  
confidence value in DJI

FCHI results are displayed in Table 10. It is determined that the FCHI stock index moves with XU100, HSI, SSEC, N225 stock indexes with probabilities higher than 89%. If the XU100 stock index is opened with a decrease in time  $t$  and the HSI stock index is closed with a decrease in time  $t$ , it can be said that the FCHI stock index will be opened with a probability decrease of 92% in time and vice versa. In addition, if the XU100 stock index is opened with a decrease in  $t$  time and the N225 stock index is closed with a decrease in  $t$  time, the FCHI stock index will be opened with a probability of 91.9% with a decrease in time and vice versa.

XU100 stock index moves with SSEC, N225, HSI stock indexes with a probability of over 84% as shown in Table 11. If the SSEC stock market index is opened with an increase in time  $t$  and the N225 stock index is closed with an increase in time  $t$  the XU100 stock index will be opened with a probability of 91.1% with an increase in time. In addition, if the SSEC and HSI stock indices are opened with an increase in time, the XU100 stock index will be opened with a 91% probability, while the opposite will be opened with a decrease with an 84.9% probability. In the rule where single unity is formed, if the SSEC stock index is opened with an increase in  $t$  time, the XU100 stock index will be opened with an increase with an 85.9% probability.

SSEC results are indicated in Table 12. It is determined that the SSEC stock market index moves with N225, BVSP, GSPC, DJI stock market indices with 61–77% probabilities. If the N225 stock index is opened with a decrease in  $t$  time, the SSEC stock index will be opened with a probability of 76.6% with a decrease in time and vice versa. If the BVSP stock index is closed with a decrease in  $t-1$  time, the SSEC stock index will be opened with a decrease with a

**Table 6.**  
Top 5 association rule  
with the highest  
confidence value  
in IXIC

| Antecedent                   | Consequent | Confidence | Lift  |
|------------------------------|------------|------------|-------|
| BVSP = ↑, GDAXI = ↑, HSI = ↑ | IXIC = ↑   | 0.883      | 1,694 |
| FTSE = ↑, GDAXI = ↑, HSI = ↑ | IXIC = ↑   | 0.883      | 1,693 |
| FCHI = ↑, FTSE = ↑, HSI = ↑  | IXIC = ↑   | 0.875      | 1,679 |
| BVSP = ↑, FTSE = ↑, HSI = ↑  | IXIC = ↑   | 0.875      | 1,678 |
| BVSP = ↑, XU100 = ↑, HSI = ↑ | IXIC = ↑   | 0.872      | 1,673 |

**Source(s):** Own elaboration

**Table 7.**  
Top 5 association rule  
with the highest  
confidence value  
in BVSP

| Antecedent  | Consequent | Confidence | Lift  |
|---|------------|------------|-------|
| FCHI = ↑, FTSE = ↑, GDAXI = ↑, XU100 = ↑, HSI = ↑ | BVSP = ↑   | 0.949      | 1,853 |
| FCHI = ↑, FTSE = ↑, GDAXI = ↑, XU100 = ↑          | BVSP = ↑   | 0.948      | 1,853 |
| FTSE = ↑, GDAXI = ↑, XU100 = ↑                    | BVSP = ↑   | 0.947      | 1,850 |
| FTSE = ↑, GDAXI = ↑, XU100 = ↑, HSI = ↑           | BVSP = ↑   | 0.946      | 1,849 |
| FCHI = ↑, FTSE = ↑, GDAXI = ↑, HSI = ↑            | BVSP = ↑   | 0.945      | 1,846 |

**Source(s):** Own elaboration

**Table 8.**  
Top 5 association rule  
with the highest  
confidence value  
in FTSE

| Antecedent          | Consequent | Confidence | Lift  |
|---------------------|------------|------------|-------|
| XU100 = ↓, HSI = ↓  | FTSE = ↓   | 0.939      | 1,872 |
| XU100 = ↓, SSEC = ↓ | FTSE = ↓   | 0.937      | 1,868 |
| XU100 = ↓, N225 = ↓ | FTSE = ↓   | 0.931      | 1,856 |
| XU100 = ↓           | FTSE = ↓   | 0.913      | 1,819 |
| XU100 = ↑, HSI = ↑  | FTSE = ↑   | 0.887      | 1,780 |

**Source(s):** Own elaboration

62.2% probability. If the GSPC stock index is closed with a decrease in  $t-1$  time, the SSEC stock index will be opened with a decrease with a probability of 61.8%. If the DJI stock index is closed with a decrease in  $t-1$  time, the SSEC stock market index will be opened with a decrease with a probability of 61.1%.

It is determined that the HSI stock market index moves with N225, GSPC, DJI, IXIC stock market indices with a probability of 69–82% as shown in Table 13. If the N225 stock index is opened with an increase in  $t$  time, it is found that the HSI stock index will be opened with a probability of an 81.3% increase in  $t$  and vice versa. In addition, if the US stock market indices are closed with an increase in  $t-1$  time, it can be said that the HSI stock index will be opened with an increase in  $t$  time with a probability of 70.1%. If the IXIC and DJI stock index is closed with an increase in  $t-1$  time, the HSI stock index is increased with a probability of 69.7% in time  $t$ , and if the IXIC and GSPC stock index is closed with an increase in  $t-1$  time, it can be predicted that the HSI stock index will be opened with an increase in  $t$  time with a probability of 69.3%.

It can be said that the N225 stock index moves between 67 and 70% probabilities with US stock indexes, as shown in Table 14. It can be said that if the US stock market indices are closed with an increase in  $t-1$  time, the N225 stock index will be opened with an increase in  $t$  time with a probability of 69.9%. In addition, if the GSPC stock index is closed with an increase in  $t-1$  time, it can be said that the N225 stock index will be opened with an increase in  $t$  time with a probability of 67.6%. Apart from these rules, bilateral relations with US stock indexes are also determined. In addition, it is determined that the N225 stock index did not start the day with a decrease in the first five rules.

| Antecedent          | Consequent | Confidence | Lift  |
|---------------------|------------|------------|-------|
| XU100 = ↓, HSI = ↓  | GDAXI = ↓  | 0.922      | 1,935 |
| XU100 = ↓, N225 = ↓ | GDAXI = ↓  | 0.922      | 1,935 |
| XU100 = ↑, HSI = ↑  | GDAXI = ↑  | 0.913      | 1,744 |
| XU100 = ↓, SSEC = ↓ | GDAXI = ↓  | 0.905      | 1,899 |
| XU100 = ↑, N225 = ↑ | GDAXI = ↑  | 0.901      | 1,721 |

**Source(s):** Own elaboration

**Table 9.**  
Top 5 association rule  
with the highest  
confidence value  
in GDAXI

| Antecedent          | Consequent | Confidence | Lift  |
|---------------------|------------|------------|-------|
| XU100 = ↓, HSI = ↓  | FCHI = ↓   | 0.920      | 1,908 |
| XU100 = ↓, N225 = ↓ | FCHI = ↓   | 0.919      | 1,905 |
| XU100 = ↑, HSI = ↑  | FCHI = ↑   | 0.907      | 1,752 |
| XU100 = ↓, SSEC = ↓ | FCHI = ↓   | 0.905      | 1,877 |
| XU100 = ↑, N225 = ↑ | FCHI = ↑   | 0.893      | 1,724 |

**Source(s):** Own elaboration

**Table 10.**  
Top 5 association rule  
with the highest  
confidence value  
in FCHI

| Antecedent         | Consequent | Confidence | Lift  |
|--------------------|------------|------------|-------|
| SSEC = ↑, N225 = ↑ | XU100 = ↑  | 0.911      | 1,660 |
| SSEC = ↑, HSI = ↑  | XU100 = ↑  | 0.910      | 1,657 |
| HSI = ↑, N225 = ↑  | XU100 = ↑  | 0.873      | 1,590 |
| SSEC = ↑           | XU100 = ↑  | 0.859      | 1,564 |
| SSEC = ↓, HSI = ↓  | XU100 = ↓  | 0.849      | 1,882 |

**Source(s):** Own elaboration

**Table 11.**  
Top 5 association rule  
with the highest  
confidence value  
in XU100

**Table 12.**  
Top 5 association rule  
with the highest  
confidence value  
in SSEC

*4.1 Robustness checks*

The results given in the findings section were revealed by the apriori algorithm, one of the association rule methods. For the robustness of the results, it is important to re-evaluate the data set with other methods used to reveal co-movement. While many methods are suggested for association rules, it can be said that these methods are generally variants and extensions of Agrawal *et al.* (1993), FP-Growth (Han *et al.*, 2000), and Eclat (Zaki, 2000) algorithms (Yu and Wang, 2014, p. 2116). For this reason, the basic FP- Growth and Eclat algorithms were used in the study, apart from the apriori algorithm. Since the main purpose of the study is to find out the co-movements in the price changes of the world stock markets, the study focused on the similarity of the results obtained, in other words, the robustness of the results, rather than the performances of the algorithms.

The characteristics of the algorithms used in the study are different. Apriori algorithm, which is the first algorithm used in the discovery of frequent patterns, is used in horizontal layout-based databases. Based on Boolean association rules, the algorithm finds candidate solutions by breadth-first search. The apriori algorithm uses the property that states “any non-empty subset of a frequent itemset is also frequent.” Detailed information about the algorithm is given in the procedure section. The FP-Growth algorithm, which can be applied to projected type data sets, is a tree-based algorithm that uses the divide and conquer method. The algorithm first generates a list of common item sets and sorts them according to their support values from largest to smallest. The resulting lists are represented as nodes. All nodes except the root node contain item name, support value and node-link signal information which is

| Antecedent | Consequent | Confidence | Lift  |
|------------|------------|------------|-------|
| N225 = ↓   | SSEC = ↓   | 0.766      | 1,468 |
| N225 = ↑   | SSEC = ↑   | 0.703      | 1,471 |
| BVSP = ↓   | SSEC = ↓   | 0.622      | 1,192 |
| GSPC = ↓   | SSEC = ↓   | 0.618      | 1,184 |
| DJI = ↓    | SSEC = ↓   | 0.611      | 1,172 |

**Source(s):** Own elaboration

**Table 13.**  
Top 5 association rule  
with the highest  
confidence value in HSI

| Antecedent                  | Consequent | Confidence | Lift  |
|-----------------------------|------------|------------|-------|
| N225 = ↑                    | HSI = ↑    | 0.813      | 1,528 |
| N225 = ↓                    | HSI = ↓    | 0.773      | 1,651 |
| GSPC = ↑, DJI = ↑, IXIC = ↑ | HSI = ↑    | 0.701      | 1,318 |
| DJI = ↑, IXIC = ↑           | HSI = ↑    | 0.697      | 1,312 |
| GSPC = ↑, IXIC = ↑          | HSI = ↑    | 0.693      | 1,303 |

**Source(s):** Own elaboration

**Table 14.**  
Top 5 association rule  
with the highest  
confidence value  
in N225

| Antecedent                  | Consequent | Confidence | Lift  |
|-----------------------------|------------|------------|-------|
| GSPC = ↑, DJI = ↑, IXIC = ↑ | N225 = ↑   | 0.699      | 1,342 |
| DJI = ↑, IXIC = ↑           | N225 = ↑   | 0.696      | 1,338 |
| GSPC = ↑, IXIC = ↑          | N225 = ↑   | 0.691      | 1,328 |
| GSPC = ↑, DJI = ↑           | N225 = ↑   | 0.683      | 1,312 |
| GSPC = ↑                    | N225 = ↑   | 0.676      | 1,299 |

**Source(s):** Own elaboration

linked on the FP tree and has the same item name. FP tree is created with these nodes. Starting from the leaf node, frequent patterns are revealed towards the root node. The algorithm, which uses less memory due to its projected layout feature, is also efficient in terms of storage. Eclat, a vertical database layout algorithm, uses the depth-first search method. The data which Eclat encodes as a bit matrix is represented by 0 or 1, depending on whether it is purchased or not. In the first step of the algorithm, it is necessary to create a prefix tree. The prefix tree is created using the intersection of the relevant line between the next lines. Frequent items are found with the depth-first search algorithm over the created prefix tree.

The rules and confidence values of the three algorithms are shown in Table 15. It has been observed that all three algorithms find the same rules with the same confidence value. Finding the same rules by algorithms with different search strategies shows the robustness and efficiency of the results. This situation can be interpreted as that the results are robust and that the emerging rules represent the real situation.

Eclat algorithm examines the whole data set at the beginning of the algorithm and then performs its operations over the prefix tree. For this reason, it is an important algorithm in terms of memory and efficiency (Garg and Kumar, 2013, pp. 29–30). The algorithms used in the study were run with a support value of 0.3 and a confidence value of 0.5, and the results were obtained.

## 5. Discussion and conclusions

Investors use alternative investments before making an investment. They consider both the risk and return. They make an investment decision based on risk and return. Portfolio management has become important even more with globalization. Thus, there is an increase in the number of alternatives in terms of financial instruments and markets for investors. This situation causes a higher level of interactions between the markets compared to the past.

Within this study, association rules according to 11 stock market indexes are found, and co-movements in the financial markets around the world are determined. Analyses are made by using the apriori algorithm, which is one of the association rule methods. Association rules for different support levels are simplified by filtering each stock market index as a consequence. Because of the results, it has been determined that the association rules with the highest confidence level are with the US stock indexes. It is observed that confidence levels decreased in Asian stock indexes. As a result, it can be said that the Asian stock indices are associated with the US stock indices, the European stock indices are associated with the Asian stock indices, and the US stock indices are associated with the European stock indices co-movement, and this continues as a cycle. Events that live in one-time-period affect the next period and lose their effect. When all association rules are analysed, it is observed that the XU100 stock index co-moves with both European stock market indexes and US stock indexes. HSI stock index is found to be in the association rules of all stock market indices. In this sense, perhaps the HSI stock index is more integrated with the world stock markets compared to other Far East stock indexes since the Hong Kong stock exchange is the international financial centre. Especially for investors, it can be said that the XU100 stock index is an important indicator of the Asian–European line. In addition, these results revealed investors should make an investment decision by considering the co-movement of the exchanges, as well as analysing a single stock index. According to the findings, there is an association between the Asian indices and the US indices, between the European indices and the Asian indices, and between the Brazilian and the US indices and the European indices. This turns into a constantly recurring cycle.

Estimation of stock price volatility is critical for investors to make the right investment decision. Accurate estimation of volatility is vital, especially in high volatility markets. This becomes even more important in global-scale financial events, such as the global financial crisis. However, the volatility estimates do not completely indicate the co-movement of stock

**Table 15.**  
Comparison of the  
algorithm results

| Antecedent   | Consequent | Confidence |               |       |
|--|------------|------------|---------------|-------|
|  |            | Apriori    | FP-<br>Growth | Eclat |
| SSEC = ↑, N225 = ↑   | XU100 = ↑  | 0.911      | 0.911         | 0.911 |
| SSEC = ↑, DHSI = ↑   | XU100 = ↑  | 0.910      | 0.910         | 0.910 |
| DHSI = ↑, N225 = ↑   | XU100 = ↑  | 0.873      | 0.873         | 0.873 |
| FCHI = ↑, FTSE = ↑, GDAXI = ↑, XU100 = ↑, DHSI = ↑           | BVSP = ↑   | 0.949      | 0.949         | 0.949 |
| FCHI = ↑, FTSE = ↑, GDAXI = ↑, XU100 = ↑                     | BVSP = ↑   | 0.948      | 0.948         | 0.948 |
| FTSE = ↑, GDAXI = ↑, XU100 = ↑                               | BVSP = ↑   | 0.947      | 0.947         | 0.947 |
| BVSP = ↑, FCHI = ↑, FTSE = ↑, GDAXI = ↑, DHSI = ↑            | GSPC = ↑   | 0.961      | 0.961         | 0.961 |
| BVSP = ↑, FTSE = ↑, GDAXI = ↑, XU100 = ↑, DHSI = ↑           | GSPC = ↑   | 0.959      | 0.959         | 0.959 |
| BVSP = ↑, FTSE = ↑, GDAXI = ↑, DHSI = ↑                      | GSPC = ↑   | 0.958      | 0.958         | 0.958 |
| BVSP = ↑, GDAXI = ↑, DHSI = ↑                                | IXIC = ↑   | 0.883      | 0.883         | 0.883 |
| FTSE = ↑, GDAXI = ↑, DHSI = ↑                                | IXIC = ↑   | 0.883      | 0.883         | 0.883 |
| FCHI = ↑, FTSE = ↑, DHSI = ↑                                 | IXIC = ↑   | 0.875      | 0.875         | 0.875 |
| BVSP = ↑, FCHI = ↑, FTSE = ↑, GDAXI = ↑, XU100 = ↑, DHSI = ↑ | DJI = ↑    | 0.974      | 0.974         | 0.974 |
| BVSP = ↑, FCHI = ↑, FTSE = ↑, GDAXI = ↑, DHSI = ↑            | DJI = ↑    | 0.972      | 0.972         | 0.972 |
| BVSP = ↑, FTSE = ↑, GDAXI = ↑, XU100 = ↑, DHSI = ↑           | DJI = ↑    | 0.972      | 0.972         | 0.972 |
| XU100 = ↓, DHSI = ↓  | FTSE = ↓   | 0.939      | 0.939         | 0.939 |
| XU100 = ↓, SSEC = ↓  | FTSE = ↓   | 0.937      | 0.937         | 0.937 |
| XU100 = ↓, N225 = ↓  | FTSE = ↓   | 0.931      | 0.931         | 0.931 |
| XU100 = ↓, DHSI = ↓  | GDAXI = ↓  | 0.922      | 0.922         | 0.922 |
| XU100 = ↓, N225 = ↓  | GDAXI = ↓  | 0.922      | 0.922         | 0.922 |
| XU100 = ↑, DHSI = ↑  | GDAXI = ↑  | 0.913      | 0.913         | 0.913 |
| XU100 = ↓, DHSI = ↓  | FCHI = ↓   | 0.920      | 0.920         | 0.920 |
| XU100 = ↓, N225 = ↓  | FCHI = ↓   | 0.919      | 0.919         | 0.919 |
| XU100 = ↑, DHSI = ↑  | FCHI = ↑   | 0.907      | 0.907         | 0.907 |
| GSPC = ↑, DJI = ↑, IXIC = ↑                                  | N225 = ↑   | 0.699      | 0.699         | 0.699 |
| DJI = ↑, IXIC = ↑  | N225 = ↑   | 0.696      | 0.696         | 0.696 |
| GSPC = ↑, IXIC = ↑   | N225 = ↑   | 0.691      | 0.691         | 0.691 |
| N225 = ↑   | DHSI = ↑   | 0.813      | 0.813         | 0.813 |
| N225 = ↓   | DHSI = ↓   | 0.773      | 0.773         | 0.773 |
| GSPC = ↑, DJI = ↑, IXIC = ↑                                  | DHSI = ↑   | 0.701      | 0.701         | 0.701 |
| N225 = ↓   | SSEC = ↓   | 0.766      | 0.766         | 0.766 |
| N225 = ↑   | SSEC = ↑   | 0.703      | 0.703         | 0.703 |
| BVSP = ↓   | SSEC = ↓   | 0.622      | 0.622         | 0.622 |

**Source(s):** Own elaboration

markets. With the increase of globalization and capital movements, the importance of the mobility of financial markets is increasing. In this process, the mobility of these markets should be considered to form financial markets that are resistant to economic shocks. It is possible for investors to be competitive with the analysis of co-movement.

In future studies, co-movements and opening/closing direction information can be obtained by using a similar method for other stock market indices other than the sample. In this way, the interaction map between world stock indices is drawn. On the other hand, the analysis can be repeated by including the effects of determinants and breaks such as the global economic crisis. In addition, the co-movements obtained in this study can be analysed in terms of inter-exchange returns and volatility spillovers.

**References**

Agrawal, R., Imilienski, T. and Swami, A. (1993), "Mining association rules between sets of items in large databases", *Proceedings of the 1993 ACM SIGMOD International Conference on Management of Data*, pp. 207-216.

- Arafah, A.A. and Mukhlashi, I. (2015), "The application of fuzzy association rule on co-movement analyze of Indonesian stock price", *Procedia Computer Science*, Vol. 59, pp. 235-243.
- Argiddi, R. and Apte, S.S. (2012), "Future trend prediction of Indian it stock market using association rule mining of transaction data", *International Journal of Computer Applications*, Vol. 39 No. 10, pp. 30-34.
- Baumöhl, E., Kocenda, E., Lyocsa, S. and Vyrost, T. (2018), "Networks of volatility spillovers among stock markets", *Physica A*, Vol. 490, pp. 1555-1574.
- Caporale, G.M., Gil-Alan, L.A. and Orlando, J.C. (2016), "Linkages between the US and European stock markets: a fractional cointegration approach", *International Journal of Finance and Economics*, Vol. 21, pp. 143-153.
- Chan, K.C., Gup, B.E. and Pan, M.-S. (1997), "International stock market efficiency and integration: a study of eighteen nations", *Journal of Business Finance and Accounting*, Vol. 24 No. 6, pp. 803-813.
- Dimplf, T. (2014), "A note on cointegration of international stock market indices", *International Review of Financial Analysis*, Vol. 33, pp. 10-16.
- Fu, R. and Pagani, M. (2012), "On the cointegration of international stock indices", *Journal of Economics and Finance*, Vol. 36, pp. 463-480.
- Garg, K. and Kumar, D. (2013), "Comparing the performance of frequent pattern mining algorithms", *International Journal of Computer Applications*, Vol. 69 No. 25, pp. 29-32.
- Ghosh, A., Saidi, R. and Johnson, K.H. (1999), "Who moves the Asia-Pacific Stock Markets-US or Japan? Empirical evidence based on the theory of cointegration", *The Financial Review*, Vol. 34, pp. 159-170.
- Han, J. and Kamber, M. (2006), *Data Mining Concepts and Techniques*, 2nd ed., Morgan Kaufman Publishers, Academic Press, San Francisco, CA.
- Han, J., Pei, J. and Yin, Y. (2000), "Mining frequent patterns without candidate generation", *ACM Sigmod Record*, Vol. 29 No. 2, pp. 1-12.
- Hoon Na, S. and Sohn, So Y. (2011), "Forecasting changes in Korea composite stock price index (KOSPI) using association rules", *Expert Systems with Applications*, Vol. 38, pp. 9046-9049.
- Hung, N.T. (2019), "Return and volatility spillover across equity markets between China and Southeast Asian countries", *Journal of Economics, Finance and Administrative Science*, Vol. 24 No. 47, pp. 66-81.
- Johnson, R. and Soenen, L. (2009), "European economic integration and stock market co-movement with Germany", *The Multinational Business Review*, Vol. 17 No. 3, pp. 205-227.
- Jung, R.C. and Maderitsch, R. (2014), "Structural breaks in volatility spillovers between international financial markets: contagion or mere interdependence?", *Journal of Banking and Finance*, Vol. 47, pp. 331-342.
- Kasibhatla, K.M., Stewart, D., Sen, S. and Malindretos, J. (2006), "Are daily stock price indices in the major European equity markets cointegrated? tests and evidence", *The US Economist*, Vol. 50 No. 2, pp. 47-57.
- Korkmaz, T., Çevik, E. and Atukeren, E. (2012), "Return and volatility spillovers among CIVETS stock markets", *Emerging Markets Review*, Vol. 13, pp. 230-252.
- Li, Y. and Giles, D.E. (2015), "Modelling volatility spillover effects between developed stock markets and Asian emerging stock markets", *International Journal of Finance and Economics*, Vol. 20, pp. 155-177.
- Liao, S. and Chou, S. (2013), "Data mining investigation of co-movements on Taiwan and China stock markets for future investment portfolio", *Expert Systems with Applications*, Vol. 40, pp. 1542-1554.
- Liao, S., Ho, H. and Lin, H. (2008), "Mining stock category association and cluster on Taiwan stock market", *Expert Systems with Applications*, Vol. 35, pp. 19-29.



- Madaleno, M. and Pinho, C. (2012), "International stock market indices co-movements: a new look", *International Journal of Finance and Economics*, Vol. 17, pp. 89-102.
- Majdoub, J. and Mansour, W. (2014), "Islamic equity market integration and volatility spillover between emerging and US stock markets", *North American Journal of Economics and Finance*, Vol. 29, pp. 452-470.
- Masum, Z.H. (2019), "Mining stock category association on Tehran stock market", *Soft Computing*, Vol. 23, pp. 1165-1177.
- McIver, R.P. and Kang, S.H. (2020), "Financial crises and the dynamics of the spillovers between the U.S. and BRICS stock markets", *Research in International Business and Finance*, Vol. 54, pp. 1-17.
- Mensi, W., Hammoudeh, S. and Kang, S.H. (2017), "Risk spillovers and portfolio management between developed and BRICS stock markets", *North American Journal of Economics and Finance*, Vol. 41, pp. 133-155.
- Savva, C.S., Osborn, D.R. and Gill, L. (2009), "Spillovers and correlations between US and major European stock markets: the role of the Euro", *Applied Financial Economics*, Vol. 19 No. 19, pp. 1595-1604.
- Vo, X.V. and Tran, T.T.A. (2020), "Modelling volatility spillovers from the US equity market to ASIAN stock markets", *Pacific-Basin Finance Journal*, Vol. 59, pp. 1-8.
- Vuran, B. (2010), "The determination of long-run relationship between ISE 100 and international equity indices using cointegration analysis", *Istanbul University Journal of the School of Business Administration*, Vol. 39 No. 1, pp. 154-168.
- Wang, P. and Wang, P. (2010), "Price and volatility spillovers between the Greater China markets and the developed markets of US and Japan", *Global Finance Journal*, Vol. 21, pp. 304-317.
- Wang, Y.F., Chuang, Y.L., Hsu, M.H. and Keh, H.C. (2004), "A personalized recommender system for the cosmetic business", *Expert Systems with Applications*, Vol. 26 No. 3, pp. 427-434.
- Yang, K., Wei, Y., Li, S. and He, J. (2020), "Asymmetric risk spillovers between Shanghai and Hong Kong stock markets under China's capital account liberalization", *North American Journal of Economics and Finance*, Vol. 51, pp. 1-12.
- Yousaf, I., Ali, S. and Wong, W.K. (2020), "Return and volatility transmission between World-Leading and Latin American stock markets: portfolio implications", *Journal of Risk Financial Management*, Vol. 13, p. 148.
- Yu, X. and Wang, H. (2014), "Improvement of Eclat algorithm based on support in frequent itemset mining", *Journal of Computers*, Vol. 9 No. 9, pp. 2116-2123, doi: [10.4304/jcp.9.9.2116-2123](https://doi.org/10.4304/jcp.9.9.2116-2123).
- Zaki, M.J. (2000), "Scalable algorithms for association mining", *IEEE Transactions on Knowledge and Data Engineering*, Vol. 3, pp. 372-390, doi: [10.1109/69.846291](https://doi.org/10.1109/69.846291).
- Zhou, X., Zhang, W. and Zhang, J. (2012), "Volatility spillovers between the Chinese and world equity markets", *Pacific-Basin Finance Journal*, Vol. 20, pp. 247-270.
- Zhoung, Y. and Liu, J. (2021), "Correlations and volatility spillovers between China and Southeast Asian stock markets", *The Quarterly Review of Economics and Finance*, Vol. 81, pp. 57-69.

# Corresponding author

Burcu Kartal can be contacted at: [burcu.kartal@erdogan.edu.tr](mailto:burcu.kartal@erdogan.edu.tr)

For instructions on how to order reprints of this article, please visit our website:

[www.emeraldgroupublishing.com/licensing/reprints.htm](http://www.emeraldgroupublishing.com/licensing/reprints.htm)

Or contact us for further details: [permissions@emeraldinsight.com](mailto:permissions@emeraldinsight.com)