

Du, Jun; Girma, Sourafel; Görg, Holger; Stepanok, Ignat

Article — Published Version

Who wins and who loses from state subsidies?

Canadian Journal of Economics/Revue canadienne d'économique

Provided in Cooperation with:

John Wiley & Sons

Suggested Citation: Du, Jun; Girma, Sourafel; Görg, Holger; Stepanok, Ignat (2023) : Who wins and who loses from state subsidies?, Canadian Journal of Economics/Revue canadienne d'économique, ISSN 1540-5982, Wiley, Hoboken, NJ, Vol. 56, Iss. 3, pp. 1007-1031, <https://doi.org/10.1111/caje.12644>

This Version is available at:

<https://hdl.handle.net/10419/288128>

Standard-Nutzungsbedingungen:

Die Dokumente auf EconStor dürfen zu eigenen wissenschaftlichen Zwecken und zum Privatgebrauch gespeichert und kopiert werden.

Sie dürfen die Dokumente nicht für öffentliche oder kommerzielle Zwecke vervielfältigen, öffentlich ausstellen, öffentlich zugänglich machen, vertreiben oder anderweitig nutzen.

Sofern die Verfasser die Dokumente unter Open-Content-Lizenzen (insbesondere CC-Lizenzen) zur Verfügung gestellt haben sollten, gelten abweichend von diesen Nutzungsbedingungen die in der dort genannten Lizenz gewährten Nutzungsrechte.

Terms of use:

Documents in EconStor may be saved and copied for your personal and scholarly purposes.

You are not to copy documents for public or commercial purposes, to exhibit the documents publicly, to make them publicly available on the internet, or to distribute or otherwise use the documents in public.

If the documents have been made available under an Open Content Licence (especially Creative Commons Licences), you may exercise further usage rights as specified in the indicated licence.



<http://creativecommons.org/licenses/by-nc-nd/4.0/>

Who wins and who loses from state subsidies?

Jun Du

Aston Business School

Sourafel Girma

University of Nottingham

Holger Görg 

*Kiel Centre for Globalization at the Kiel Institute for the World Economy;
University of Kiel*

Ignat Stepanok 

Institute for Employment Research (IAB), Nuremberg

Abstract. China is perceived to rely on subsidizing firms in targeted industries to improve their performance and stay competitive. We implement an approach that allows for the joint estimation of direct and indirect effects of subsidies on subsidized and non-subsidized firms. We find that firms that receive subsidies experience a boost in productivity. However, our approach highlights the importance of indirect effects, which are generally neglected in the literature. We find that, in general but not always, non-subsidized firms experience reductions in their productivity growth if they operate in a cluster where other firms are subsidized. These negative externalities depend on the share of firms that receive subsidies in the cluster. Aggregating direct and indirect effects into a (weighted) total effect shows that this negative indirect effect tends to dominate. We interpret our results in light of a simple heterogeneous firm model, which highlights that subsidization in a competitive environment of firms may potentially harm non-subsidized firms.

Résumé. La Chine est perçue comme comptant sur les subventions aux entreprises dans des industries ciblées pour améliorer leurs performances et rester compétitives. Nous mettons en œuvre une approche qui permet l'estimation conjointe des effets directs et indirects des subventions sur les entreprises subventionnées et non subventionnées. Nous constatons que les entreprises qui reçoivent des subventions voient leur productivité augmenter. Cependant, notre approche souligne l'importance des effets indirects, qui sont généralement négligés dans la littérature. Nous constatons qu'en général, mais pas toujours, les entreprises non subventionnées voient la croissance de leur productivité diminuer si elles opèrent dans un cluster où d'autres entreprises sont subventionnées. Ces externalités négatives dépendent de la part des entreprises qui reçoivent des subventions dans le cluster. L'agrégation des effets directs et indirects en un effet total (pondéré) montre que cet effet indirect négatif tend à dominer. Nous interprétons nos résultats à la lumière d'un modèle simple d'entreprise hétérogène, qui souligne que les subventions, dans un environnement concurrentiel d'entreprises, peuvent potentiellement nuire aux entreprises non subventionnées.

JEL classification: H25, H32, L25

Corresponding author: Holger Görg, holger.goerg@ifw-kiel.de

Ignat Stepanok was at the Kiel Institute for the World Economy when the paper was started. Jun Du gratefully acknowledges financial support from the Leverhulme Trust through a research fellowship (grant number RF-2016-661). Open Access funding enabled and organized by Projekt DEAL.

Canadian Journal of Economics / *Revue canadienne d'économie* 2023 56(3)
August 2023. / *Août 2023*.

23 / pp. 1007–1031 / DOI: 10.1111/caje.12644

© The Authors. Canadian Journal of Economics/Revue canadienne d'économie published by Wiley Periodicals LLC on behalf of Canadian Economics Association.

This is an open access article under the terms of the [Creative Commons Attribution-NonCommercial-NoDerivs](https://creativecommons.org/licenses/by-nc-nd/4.0/) License, which permits use and distribution in any medium, provided the original work is properly cited, the use is non-commercial and no modifications or adaptations are made.

1. Introduction

CHINA IS FREQUENTLY noted for its policy of subsidizing firms in targeted industries. Some recent examples include electric cars, steel and solar panels, all of which were discussed as controversial in the media.¹ Indeed, as commonly expressed in public, the use of state intervention may be one of the reasons for the recent US trade dispute with China, as it is perceived as unfair competition in China's trade practices. Underlying this policy of strong and targeted government support is, presumably, the assumption on the part of Chinese policy makers that subsidies help Chinese firms improve performance and thus competitiveness.² Yet, neither the theoretical nor empirical base for such an assumption is clear-cut (see Haley and Haley 2013a, and references therein).

This paper provides fresh evidence on this issue using data on subsidy receipts from a large-scale firm-level panel dataset for the Chinese manufacturing sector. We estimate the effect of subsidization on firm-level productivity, paying particular attention to the fact that, while *subsidized firms* may benefit, *non-subsidized firms* may be harmed by such a policy as a consequence. Specifically, we adapt an estimation approach (developed by Girma et al. 2015a) that provides a unified framework for the estimation of direct effects (on subsidized firms) and indirect effects (on non-subsidized firms) of subsidization. Uniquely, this framework allows us to estimate these effects depending (possibly non-linearly) on the level of subsidization in a local cluster.³

Importantly, our identification strategy recognizes that there are two levels of selection. The first issue, as is well recognized in other studies, is that the selection of subsidized firms is unlikely to be random. Further, there is a second selection problem that previous work has overlooked. When modelling the levels of subsidization in a cluster, say, as the number or share of treated firms within a province or industry, the distribution of treated firms across such clusters is also unlikely to be random. There may, for example, be deliberate government policy towards attracting certain types of firms to certain provinces or sectors, which also provide subsidies. Or there may be other non-random factors determining the location of subsidized firms. This selection problem has generally not been recognized in the literature thus far. The approach implemented here allows us to deal with both selection problems using generalized propensity score techniques at the two levels.⁴

1 See, for example, the Financial Times, at www.ft.com/cms/s/0/a55e7d36-db8a-11e5-a72f-1e7744c66818.html#axzz4BeAlJ6Ax and www.ft.com/intl/cms/s/0/6d4e6408-5e68-11e2-b3cb-00144feab49a.html#axzz4BeAlJ6Ax, and Haley and Haley (2013b).

2 Of course, the Chinese subsidization policy may be expected to have beggar-thy-neighbour implications for its trade partners. Indeed, this is frequently cited as one of the reasons for the US–China trade dispute, or misgivings in EU–China relations (see www.theguardian.com/us-news/2019/aug/23/trump-china-economic-war-why-reasons; Bickenbach and Liu 2021). While this is undoubtedly an important and relevant issue, we cannot address it in this paper because this would necessitate information about detailed trade relationships, which is well beyond the scope of this paper.

3 In Girma et al. (2015a), the estimation approach is developed studying the effect of foreign ownership on firm-level productivity.

4 Using propensity score techniques for selection on observables is well established in the literature on the evaluation of subsidies, e.g., Görg et al. (2008), Girma et al. (2009), Howell (2017). It is also used in related fields of economics, e.g., looking at firm-level impact of domestic and international mergers and acquisitions (e.g., Geurts and Van Biesebroeck 2019, Girma et al. 2015b, Guadalupe et al. 2012).

Our empirical analysis, which distinguishes private owned, state-owned and foreign-owned enterprises, identifies a positive direct effect: Chinese state subsidies have evidently benefited recipients by enhancing their productivity, irrespective of their ownership. Importantly, the magnitude of this positive direct effect depends on how many firms received subsidies in a cluster. However, the direct effects of subsidies do not tell the whole story. The estimation of indirect effects of subsidies reveals mainly negative effects on unsubsidized firms. Aggregating direct and indirect effects into a (weighted) total effect shows that this negative indirect effect tends to dominate the overall effects. For all three firm types, subsidies have an overall negative effect, especially in clusters with fairly high shares of subsidized firms.

In order to make sense of our empirical results, we build a simple theoretical model with heterogeneous firms, which fits most of the observed patterns. In a related paper, Pflüger and Suedekum (2013) also have a heterogeneous firm model and show that giving subsidies to firms increases competitive pressures and allows in equilibrium only more productive firms to enter a market, thus leading to higher average productivity of operating firms. Our empirical results however show a more nuanced picture, where spillover effects from subsidies can lead to deteriorating average productivity of entering firms. We propose some simple extensions of the heterogeneous firm model that can generate those results and provide a good fit between theory and data. Specifically, our model shows how the direct effect on subsidized firms and the spillover effect on non-subsidized firms depend on how many firms receive subsidies in the clusters. Subsidies change the competitive environment, so the total amount of subsidies received affects firm selection into market entry. That way subsidies affect average productivity of entering firms in a cluster, without making any additional assumptions about individual firm investment in productivity or innovation for instance.

There are several empirical papers related to our study, that seek to evaluate the direct impact of public subventions on the subsidy-receiving firms' performance in a number of countries (see inter alia Bernini and Pellegrini 2011, Cerqua and Pellegrini 2014, Howell 2017, Girma et al. 2009, Görg et al. 2008). However, subsidies, importantly, have a broader impact than just the direct impact on recipients alone. Subsidies may inflict positive or negative externalities (spillovers) on non-subsidized firms (Rotemberg 2019, Blonigen 2016). Externalities may arise as subsidized firms change the competitive environment, which are likely to affect the strategy, conduct and performance of non-subsidized firms. Most empirical studies (including those cited above) on the effect of subsidies do not allow for such spillovers to firms that do not receive subsidies. Notable exceptions are De Mel et al. (2008), who look at the impact on returns to capital of small cash grants to microenterprises in Sri Lanka, Cerqua and Pellegrini (2017), who examine a policy targeted at small and medium sized firms in Italy, and Rotemberg (2019), who analyzes firms eligible for small firm subsidies in India.⁵

Our paper also relates to the broader literature on so-called place-based policies - a governmental tool used to enhance the economic performance of a particular area. This literature, as summarized by Neumark and Simpson (2015) is also concerned with

5 De Mel et al. (2008) adopt a field experiment approach where a small number of grant recipient firms were randomly chosen to avoid the problem of selectivity in subsidy receipt, before going on to estimating the direct effects of receiving the subsidy by comparing recipient and control group firms. Spillovers are taken into account by controlling for the number of treated firms within a limited geographic radius (i.e., a co-location). Cerqua and Pellegrini (2017) use selection-on-observables in a coarsened exact matching framework. Rotemberg (2019) uses changes in the eligibility criteria for his identification strategy.

estimating effects on economic actors within the targeted zone and those in the vicinity, i.e., direct and indirect effects in our parlance. We contribute to this literature by proposing a novel estimation approach for identifying direct and indirect effects of a policy intervention.

Another issue that is generally not considered in the literature on the evaluation of subsidies is that the strength of externalities generated by subsidization may in turn impact on the relative magnitudes of the direct or indirect effects of the subsidy. For example, the more subsidized firms we have in a particular geographic area, the lower may be the gain for the treated firm from receiving a subsidy, or the stronger may be the negative externality on the non-subsidized firms.⁶

The novel estimation approach employed in this paper allows us to tackle these issues and, hence, address an important gap in the literature that debates on the role of the state through subsidizing businesses. In contrast to De Mel et al. (2008) and Rotemberg (2019), our identification strategy does not rely on a small-scale field experiment or idiosyncratic changes in government policy but uses observational data and methods based on selection on observable pre-treatment characteristics to deal with selection problems. Hence, our approach can be easily applied by other researchers using similar data for other countries, and through this, external validity can be established.

Our paper also contributes to the literature on the impact of subsidies on firm performance in China. For example, Aghion et al. (2015) investigate the implications of subsidies (as one aspect of industrial policy) for firm-level productivity in China. Using similar data to ours, they find that in the industry-city cells where the correlation between subsidy receipt and the level of competition is higher also see firms on average experiencing higher productivity growth. Also, a greater dispersion of subsidies within an industry-city combination is associated with higher firm-level productivity growth. They control for subsidy receipt at the level of the individual firm, which is positively correlated with productivity growth. While our results are not strictly comparable given the different approach used, our findings on the direct effects are in line with their earlier finding. However, they do not look at indirect effects, nor do they allow the effects to vary with the strength of subsidization. In contrast to Aghion et al. (2015), Howell (2017) finds negative direct effects when looking at the relationship between subsidies and productivity growth for Chinese firm-level data using propensity score matching. However, he also does not allow for externalities.

The rest of the paper is structured as follows. The next section discusses some of the institutional background to the policy of using subsidies in China. This is followed by a brief description of our data set in section 3. Section 4 sets out the econometric methodology, and sections 5 and 6 present and discuss empirical results and extensions. Section 7 then discusses a theoretical framework that fits many aspects of the empirical results. Section 8 concludes.

6 The existence of indirect spillover effects, or the dependence of the effects on the strength of the externality, is usually ruled out in the microeconomic evaluation approaches commonly employed in the literature by assumption: they implicitly assume no interactions between firms, or in the parlance of the econometric literature, the stable unit treatment value assumption (SUTVA). This assumption essentially posits that an individual outcome does not depend on the treatment status of others. Hence, the estimation of the spillover effects described above are ruled out by assumption—an assumption that is unlikely to hold in practice given the very plausible arguments and arising evidence as to why one may expect subsidies to have externalities on non-subsidized firms.

2. Institutional background

The institutional foundation that governs China's economic dynamics can be described as a regionally decentralized authoritarian system in which the central government incentivizes local officials to promote regional economic growth (Xu 2011). This has resulted in regional economic decentralization where local governments actively engage in shaping the business and economic landscape of their respective regions and directly intervene in relation to businesses' investment and operational decisions.

A distinguishing feature of Chinese state capitalism is the use of capital controls by the government, through soft budget constraints (Kornai et al. 2003), influencing local banks (Lin et al. 2008), or easy access to land and other economic resources to politically protected firms (Du and Girma 2010). Perhaps one of the most controversial practices is the use of outright subsidies.

While government subsidies are by no means exclusive to China, the reason that the latter's case is attracting great interest stems from the fact that subsidies are spread over a large spectrum of firms and a broad range of sectors (Haley and Haley 2013a). Shao and Bao (2011) find that, over the years 2000–2006, about 13% to 19% of all firms in China reported in the Industrial Census receive subsidies and the percentage has increased over time. Girma et al. (2009) report that, over the period 1998 to 2004, government production subsidies to manufacturing firms amounted to more than US\$100 billion. In a more recent study, Haley and Haley (2013a) combine official statistics with information from industry analysts and policy documents, and they estimate that China may have spent well over US\$300 billion on its largest SOEs between 1985 and 2005.

As in Howell (2017) and Girma et al. (2009), we use data on production-related subsidies that are allocated to firms. There are generally several reasons why governments subsidize enterprises: industrial development, export promotion, supporting firms to innovate and securing a national advantage in leading industries (WTO 2006). An additional specific motivation for the Chinese government to subsidize SOEs is to avoid a worsening of unemployment rates and social riots due to possible bankruptcies of SOEs (Luo and Golembiewski 1996).

Having experienced a prolonged economic boom, China now faces the growing concerns of unsustainable high investment rates and soaring production costs. Despite increasing R&D spending, the country's rate of productivity growth remains relatively low, and China appears to be heading towards the "middle income trap" (Woo et al. 2012). Recent evidence suggests that resource misallocation problems both within and between firms can partly explain the slow aggregate productivity performance (Hsieh and Klenow 2009, Du et al. 2014). As Hsieh and Klenow (2009) point out, government policies may well have a role to play in leading to such misallocation. We, therefore, investigate the link between government intervention through subsidies and firm productivity, considering both the direct impact of receiving a subsidy on the firm's own performance as well as the indirect spillover effects on other firms.

3. Data and exploratory analysis

3.1. Data

We draw on firm-level data from the Chinese manufacturing industry. The dataset is based on the Annual Reports of Industrial Enterprise Statistics, compiled by the China National Bureau of Statistics. The enterprises covered by this dataset account for an estimated 85%

TABLE 1

Definition of variables used in the analysis

Variables	Definition
Pre-treatment covariates	
Past subsidy	Dummy variable indication whether the firm received subsidy in the past two years.
Employment	Log of number of employees employment.
Age	Log of firm age.
Loss	Dummy variable indicating whether the firms was a loss making one in the past two years.
TFP	Total factor productivity calculated using Akerberg et al. (2015) correction, with the amount of subsidies included in the production function as a state variable. Production functions are estimated by sector.
TFP trend	Firms TFP growth relative to industry median trend.
Debt	Total liability of total assets.
POL	Dummy variable indicating whether the firm enjoys political affiliation with local and central governments.
Dummy variables with private firms, low tech used as base groups	
Foreign	Dummy variable indicating whether a firm is foreign owned.
SOE	Dummy variable indicating whether a firm is a state-owned enterprise.
Medium low tech	Dummy variable indicating whether a firm operates in a medium low tech industry, using OECD classification scheme. See www.oecd.org/sti/ind/48350231.pdf).
Medium high tech	Dummy variable indicating whether a firm operates in a medium high tech industry.
High tech	Dummy variable indicating whether a firm operates in a high tech industry.
Outcome variable	
TFP change	TFP change after receipt of subsidy relative to the pre-treatment period. Baseline regressions conducted with respect to changes one year after the treatment period. This approach allows for a difference-in-differences type approach to control for time-invariant unobservables.
Treatment variables	
Subsidy	Dummy variable indicating whether the firm received subsidy in the current period.
Indirect effects capturing variable	
Cluster level subsidy	Proportion of subsidized firms per cluster.

to 90% of total output in most industries.⁷ Hence the data are well placed to study the wider economic impact of firm subsidies. For the purpose of this analysis, we have more than 300,000 firms over the period 1998 to 2007. The precise definition of the variables used in the analysis is given in table 1.

⁷ This data are the largest Chinese firm-level data set available for research to date. Its advantage also lies in the accumulated knowledge and experience of using the data among researchers through exploiting its potentials and mitigating its pitfalls (see for example Du and Girma 2008, Nie et al. 2012, Brandt et al. 2012). We follow Brandt et al. (2012) and Du et al. (2014) to construct industrial concordances to account for industrial specification changes. We also clean the data thoroughly and carefully check the consistencies and completion of the information of firm identification and ownership registration over the period, and of the firm identification, industrial concordances and ownership classification as well as the measurement issues of output and capital stock of production function. Further, to ensure rigorous estimation of TFP, we also adopt the previous work by Jefferson et al. (1996) and Brandt et al. (2012), which developed a procedure to construct firm's original capital stock at birth year (up to 1978) and firm's incremental net fixed capital of each year using calculated industrial historical capital stock annual growth rate by province and two-digit level industry based on the 1993 annual enterprise survey for the period of 1993 to 1998, and the calculated growth rates based on the NBS data since 1998. A more detailed account of the data issues was provided in our previous work (Du et al. 2014).

Table 2 shows the value of total subsidies and the number of subsidized firms by ownership category, distinguishing private firms, foreign invested firms and state-owned enterprises (SOEs). It is noticeable that all categories of firms received substantial amounts of subsidies. For example, in 2007, more than US\$23 billion was paid to 25,673 private firms, and just 4,077 state-owned enterprises (SOEs) received US\$6.7 billion worth of production subsidies. Figure 1 reveals that the proportion of firms receiving subsidies has been increasing steadily from 1998 to the middle of the 2000s. Also, time series plots of the average amount of subsidy amongst subsidized firms given in figure 2 show that, not surprisingly, SOEs enjoyed the largest number of subventions over the study period.

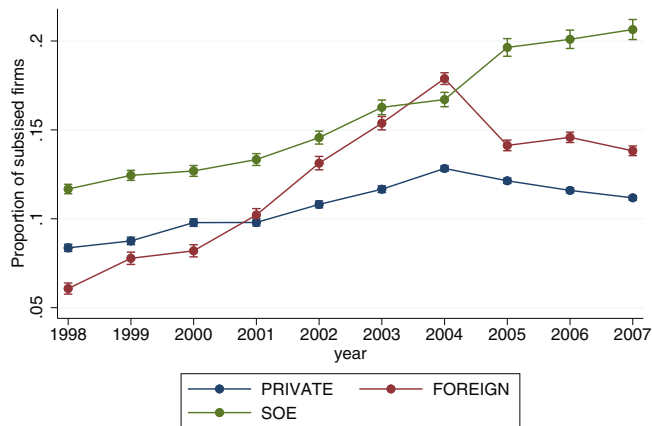
Table 3 gives some summary statistics on variables of interest by subsidy status. The most noteworthy difference is that firms that are subsidized in year t are about 10 times more likely to have received a subsidy also in $t-1$ and $t-2$. This suggests that subsidy receipt tends to be path-dependent.

TABLE 2

Total subsidies in billions of USD and the number of subsidized firms by ownership

Year	Private firms		Foreign firms		SOEs	
	Subsidy	No. of firms	Subsidy	No. of firms	Subsidy	No. of firms
1998	3.618	5,897	1.070	1,369	6.118	6,588
1999	4.482	6,244	1.099	1,805	6.311	6,514
2000	5.666	7,509	1.093	2,038	6.291	5,878
2001	7.314	8,654	1.458	2,836	6.118	5,384
2002	9.562	10,751	1.896	4,064	6.458	5,259
2003	11.617	13,364	2.541	5,419	6.250	5,015
2004	17.073	22,229	3.698	9,421	6.671	5,457
2005	17.413	21,049	3.892	7,354	6.779	4,833
2006	20.776	22,994	4.815	8,240	6.952	4,635
2007	23.662	25,673	5.887	8,565	6.727	4,077

NOTES: Table 2 (and figures 1 and 2) are based on the master file containing all available firms in the database. The econometric analysis is based on a subset of this file that satisfies various data availability conditions (e.g., at least three years per firm and full availability of the conditioning and outcome variables).

**FIGURE 1** The dynamics of share of subsidized firms, by ownership

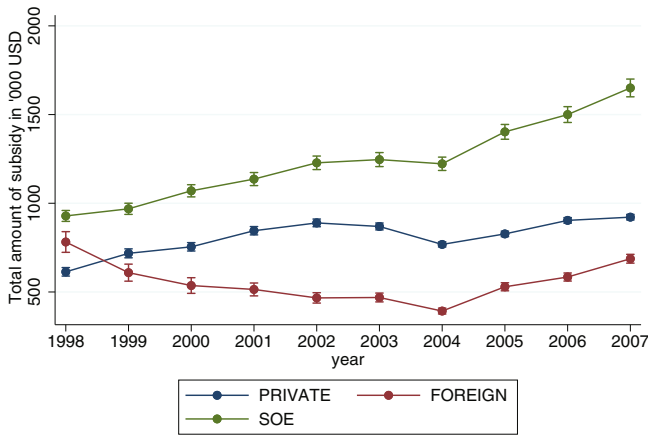


FIGURE 2 Average amount of subsidy amongst subsidized firms

TABLE 3

Summary statistics by subsidy status

	Non-subsidized mean	Std. dev.	Subsidized mean	Std. dev.
TFP growth	0.0139	0.423	0.00563	0.359
Past Subsidy	0.0644	0.245	0.619	0.486
Employment	4.881	1.077	5.312	1.186
Age	2.187	0.772	2.272	0.800
Loss	0.209	0.406	0.279	0.448
TFP	0.826	0.472	0.834	0.480
Debt	0.0566	0.140	0.0598	0.125
POL	0.478	0.500	0.528	0.499
Private firms	0.609	0.488	0.561	0.496
Foreign firms	0.221	0.415	0.225	0.418
SOEs	0.170	0.376	0.214	0.410
Low tech	0.362	0.481	0.314	0.464
Medium low tech	0.325	0.468	0.332	0.471
Medium tech	0.215	0.411	0.243	0.429
High tech	0.0976	0.297	0.111	0.314
Observations	799,805		144,610	

3.2. Selection into subsidy

Given the above statistical observations, in order to better understand the pattern of subsidy distribution, we estimate the determinants of subsidy receipt amongst Chinese firms over the period 1998 to 2007, conditional on variables that are all measured in the period prior to subsidy receipt. Drawing on the literature of firm subsidies discussed in the previous sections (Bernini and Pellegrini 2011, Cerqua and Pellegrini 2014, Howell 2017, Görg et al. 2008), the regression model includes the following pre-subsidy firm-level characteristics: past history of subsidy receipt, firm size (level of employment), TFP, TFP growth trend, firm age and debt (a proxy for access to formal financing channels). We also include important firm characteristics that have been identified specifically in the Chinese context (Girma et al. 2009, Du and Mickiewicz 2016): established political connections, history of loss-making and ownership type (private being the baseline group). These variables capture the selective nature of subsidy receipt.

TABLE 4

The determinants of subsidy: Some exploratory regressions

	Firm-level logistic regression		Firm-level logistic regression with additional cluster-level variables	
	Log odds ratio	Robust standard errors	Average marginal effects	Robust standard errors
Past subsidy	21.92***	(0.159)	18.39***	(0.137)
Employment	1.270***	(0.00419)	1.336***	(0.00461)
Age	0.947***	(0.00472)	0.945***	(0.00482)
Loss making	1.093***	(0.00923)	1.153***	(0.00995)
TFP	1.013	(0.00808)	1.067***	(0.00873)
TFP growth trend	1.000	(0.0000175)	1.000	(0.0000185)
Debt	0.907***	(0.0238)	1.060*	(0.0273)
Political connection	1.119***	(0.00966)	1.203***	(0.0111)
Foreign	0.955***	(0.00893)	0.991	(0.00972)
SOE	1.022*	(0.0106)	1.121***	(0.0120)
Medium low tech industries	1.149***	(0.00989)	1.203***	(0.0106)
Medium high tech industries	1.199***	(0.0119)	1.157***	(0.0117)
High tech industries	1.203***	(0.0151)	1.216***	(0.0154)
<i>With additional cluster level variables</i>				
Share of subsidized firms			59.83***	(3.308)
Average employment			0.661***	(0.0143)
Average age			0.997	(0.0387)
Share of loss-making firms			0.942	(0.0572)
Average TFP			0.473***	(0.0290)
Average growth trend			1.000	(0.000606)
Average debt			0.200***	(0.0476)
Share of politically connected firms			0.764***	(0.0276)
Observations	944,415		944,415	
Pseudo R-squared	0.2849		0.3007	

NOTES: All conditioning variables are lagged by one year (prior to the treatment period). In the firm-level regressions, private firms and low-tech industries form their respective base group. All regressions include year effects. * $p < 0.05$, ** $p < 0.01$, *** $p < 0.001$.

Moreover, taking into account the regionally decentralized nature of China's policy making milieu, we include a second group of conditioning variables that are the cluster-level averages of the firm-level variables, excluding the firm's own value. For the purpose of our empirical implementation, geographic clusters are based on three-digit administrative division codes which roughly identify prefectures. The manufacturing enterprises in our dataset are located in 74 such geographic clusters which we henceforth simply refer to as town-clusters.⁸ These are designed to capture the spatial dependence amongst firms given that subsidies in China are largely administered by local government authorities. The model is estimated using a logistic regression which also includes time, ownership and industry dummies.

The log odds ratios from the logistic regression are reported in table 4. The strongest predictor of subsidy both at the firm and spatial levels is subsidy receipt in the past, as also

⁸ The empirical construction of clusters is not an exact science. Ideally, clusters should be constructed in such a way as to maximize the potential of intra-cluster spillovers, while at the same time minimize possible inter-cluster externalities. In doing so, one would need to strike a balance between having a large enough number of clusters and sufficient observations per cluster. With this in mind, we defined local clusters at the three-digit regional code level, which is in between the two-digit (province) and four-digit level (county).

suggested in the simple summary statistics in table 3. Interestingly, young and larger firms are more likely to receive subsidies all else equal, as are loss-making and politically connected ones. Moreover, state-owned enterprises are significantly more likely to receive subsidies than private or foreign firms. Overall, the results from this exploratory regression show that the decision to allocate subsidies amongst firms is not a random process, but rather one that is systematically correlated with firm and cluster level variables. This observation motivates our empirical strategy which we discuss in detail below.

4. Estimating the effects of subsidy

The aim of the empirical exercise is to estimate direct and indirect treatment effects at cluster level of subsidy receipt on productivity. As noted in the descriptive analysis in section 3, firm's selection into subsidy is unlikely to be random. Hence, controlling for selection at firm **and** cluster level is essential. In this section, we set out our basic identification strategy.

In order to deal with the two levels of selection, our empirical approach proceeds in two steps (see Girma et al. 2015a for a more detailed description). To tackle selection at the firm level, we firstly estimate the firm-level relationship between subsidy receipt and productivity separately **for each town-cluster**, using data at the firm level. In a second step, to allow for selection at the cluster level, we take the share of subsidized firms in a cluster as treatment, using data at the cluster level.

4.1. First step estimation: Firm-level selection

We define a firm-level binary treatment variable $d_{irt} = 1$ if firm i in cluster r receives a subsidy in year t , and $d_{irt} = 0$ if not. This treatment variable is then used as independent variable in a productivity regression using the firm-level data for a given cluster. In order to take into account selection at the firm level, we estimate the outcome equation using inverse propensity score-weighted regression, controlling for the pre-treatment covariates (Bang and Robins 2005, Hirano et al. 2003). Note that the outcome variable, firm-level productivity is defined as the change relative to $t-1$, akin to using a difference-in-differences strategy combined with propensity score weighting.⁹

Implementing this approach involves in the first step generating firm-specific propensity-scores of being treated in each cluster. These are estimated via logistic regressions with subsidy status as dependent variable and a rich list of pre-treatment covariates. These covariates are the same as those used in table 4 above.^{10,11} The difference

9 This estimation strategy provides two opportunities to adjust for selection on observables by combining inverse probability reweighting with regression covariates adjustment. The identifying assumption is selection on observables. To the extent that there are unobservables that are correlated with both the treatment conditional on observables and the change in productivity, our results would potentially be biased. To guard against extreme propensity scores exerting undue influence on our calculations, the weights are winsorized.

10 Recall that in this estimation we, among other things, control for the past experience of subsidy receipt to reduce unobservable characteristics in driving the subsidy selection. Subsidies have a tendency to persist, but it is not unusual to gain or lose a subsidy. From our data, we observe that over 1998–2008, about one-third of firms that received subsidies did not have any subsidy in the previous year. There are also 29% of firms that tend to lose a subsidy in the subsequent.

11 One may perhaps be concerned about the inclusion of lagged TFP levels and growth in this model, as TFP is the main outcome variable of our overall analysis. However, in this step here

here is that the estimations are carried out separately for each cluster (as this is important for modelling selection into clusters in the second step) and that we carefully check balancing conditions (covariate balancing tests results are summarized in table A1).

Using the estimated propensity scores we then, secondly, generate the average potential outcomes (under subsidy and no subsidy) for each ownership type (private, foreign and state-owned) separately.¹² This is done by running the following regression (separately for each cluster-ownership type):

$$y_{ir} = \alpha + \beta d_{ir} + F(X; \delta) + \text{error}; \quad i = 1 \dots N, \quad (1)$$

where y is the change in firm-level productivity and $F(\cdot)$ is a function of the pre-treatment covariates vector X with coefficient vector δ . From these regressions we can then calculate the cluster specific average potential outcomes for each firm type,

$$\bar{y}_r^1 = \frac{1}{N} \sum_{i=1}^N \hat{\alpha} + \hat{\beta} + F(X; \delta) \quad \text{and} \quad \bar{y}_r^0 = \frac{1}{N} \sum_{i=1}^N \hat{\alpha} + F(X; \delta). \quad (2)$$

4.2. Second step estimation: Cluster-level selection

In the second step, the cluster and firm type level average potential outcomes, \bar{y}_r^1 and \bar{y}_r^0 estimated in the first step are treated as the “outcome” variables. The proportion of subsidized firms in the cluster, s_r is taken to be the continuous “treatment” variable. Since the treatment dosage s_r is again unlikely to be randomly distributed (e.g., due to endogenous difference between local governments when it comes to the extent of subsidy usage), we employ the causal inference approach for continuous treatments (Hirano and Imbens 2004, Imai and van Dye 2004). A key result from this literature is that causal inference can be conducted by conditioning on the generalized propensity score (GPS), which is nothing but the conditional density of the treatment given some pre-treatment covariates.

It is clear that our treatment dosage variable s_r is continuous and bounded between 0 and 1. Accordingly we generate the GPS conditional on pre-treatment cluster level covariates using the fractional logit model due to Papke and Wooldridge (1996). In the empirical implementation, the vector of observable pre-treatment characteristics consists of cluster-specific averages of the firm-level covariates discussed in section 3.2 above.

Defining \mathbf{Z} to be the vector of cluster level pre-treatment covariates, $\hat{\lambda}$ the vector of estimated coefficients from the fractional logit model and $\omega_i \equiv Z_i' \hat{\lambda}$, for a given level of treatment intensity s , the GPS conditional on \mathbf{Z} can be obtained as

$$\hat{G}_r = \left[\frac{e^{\omega_i}}{1 + e^{\omega_i}} \right]^{s_r} \left[\frac{1}{1 + e^{\omega_i}} \right]^{1-s_r}. \quad (3)$$

The expected values of each of the two cluster and firm type level potential outcomes (\bar{y}_r^d , $d = 0, 1$) conditional on \hat{G}_r and s_r can then be obtained using quadratic approximation

we model the selection into subsidization (and not the level of current TFP) where lagged firm performance is an important predictor and needs to be taken into account.

12 The outcomes are generated separately for the three firm types as previous research shows clearly that there is substantial heterogeneity in performance and behaviour across those three types. Note, however, that the propensity scores are not estimated separately for firm types, hence, our assumption is that all three firm types compete equally for subsidies, but that the outcome of receipt may be different.

(Hirano and Imbens 2004) as

$$E \left[y_r^d | \widehat{G}_r, s_r \right] = \beta_0 + \beta_1 \widehat{G}_r + \beta_2 s_r + \beta_3 \widehat{G}_r^2 + \beta_4 s_r^2 + \beta_5 \widehat{G}_r s_r. \quad (4)$$

The above polynomial regression is based on r (number of clusters that are on the common support of the GPS) observations, and the sample average potential outcomes are obtained as follows:¹³

$$\bar{y}_r^d = \frac{1}{R} \sum_{r=1}^R \widehat{\beta}_0 + \widehat{\beta}_1 \widehat{G}_r + \widehat{\beta}_2 s_r + \widehat{\beta}_3 \widehat{G}_r^2 + \widehat{\beta}_4 s_r^2 + \widehat{\beta}_5 \widehat{G}_r s_r. \quad (5)$$

Subsequently, we calculate the predicted values \bar{y}_r^d for the two firm-level treatments d and the continuous cluster-level treatment s .

4.3. Calculating treatment effects

Using these predicted values as potential outcomes, we can then calculate treatment effects, using insights from the recent statistical literature (e.g., Hudgens and Halloran 2008). Firstly, we can calculate a *direct treatment effect* $\bar{\gamma}_{ss}^{10} = \bar{y}_s^1 - \bar{y}_s^0$ as the difference in productivity between subsidized (1) and non-subsidized (0) firms for a given level of the proportion of subsidized firms s in a cluster-firm type group.

Secondly, the *indirect treatment effect* is defined as $\bar{\gamma}_{s0}^{00} = \bar{y}_s^0 - \bar{y}_0^0$, hence, the difference in productivity between non-subsidized firms (0) in a cluster with proportion of subsidized firms s and in a cluster without any subsidies.

Based on these two treatment effects we calculate an overall or total treatment effect, described in more detail below, as a weighted sum of the direct and indirect effects.

5. Main findings

We firstly estimate separately the direct and indirect effects for any level of subsidization s in a cluster as described above. Given that s is between 0 and 100 per cent, the presentation of all treatment effects in a single table is not practical. Instead, we plot all estimated direct and indirect effects among private, state-owned and foreign-owned firms along with their 95% confidence intervals in figures 3 and 4. An immediate observation from these plots is that the share of subsidized firms in a cluster matters significantly for the magnitude of both the direct and indirect effects among all types of firms, both statistically and economically.^{14,15}

13 In practice we use outlier robust averages.

14 Note that s in all graphs is calculated for all firms (private, SOE, foreign), so s reflects in all cases the share of all subsidized firms relative to all firms in a cluster.

15 An anonymous referee raised the concern that our results might be driven by the fact that we have included firm-specific past subsidy status and productivity trends in the first-stage propensity score estimations. This is well intended, as omitting such an important variable from the set of the propensity score conditioning covariates will be a source of selection-on-unobservable bias. Nonetheless, we experimented with model specifications where firm-specific values of these covariates are replaced by the corresponding cluster specific averages that leave out the specific firm's values in the first stage estimations. The results from these experiments are reported in the online appendix, figures A1 and A2, respectively. As can be seen, the results in figure A2 (without firm specific productivity trends) are qualitatively similar to our main findings discussed in this section, with one exception: direct effects are much stronger in

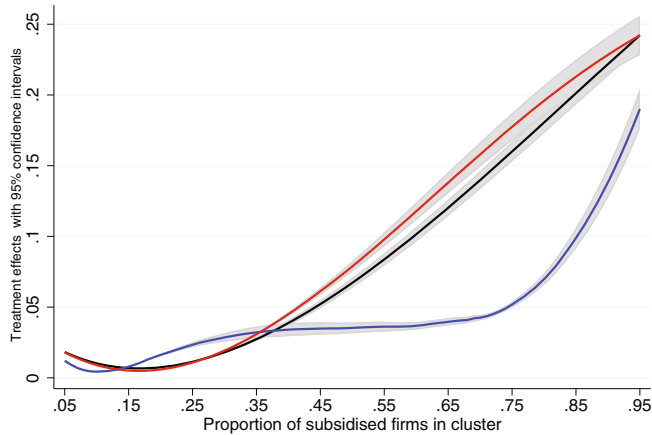


FIGURE 3 Direct effects of subsidies on TFP growth, by firm ownership

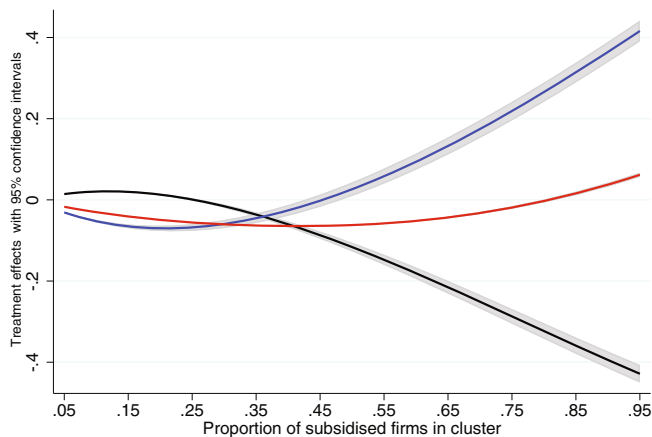


FIGURE 4 Indirect effects of subsidies on TFP growth, by firm ownership

5.1. Direct effects: The more, the merrier

We first focus on the direct effects of subsidies. As shown in figure 3, there is a positive direct effect for all levels of s for all firms. This suggests that subsidized firms have higher productivity as a result of receiving a subsidy, which is in line with the idea that subsidies reduce a recipient's marginal cost of production.

Importantly, the strength of the direct effect depends on the level of subsidization in a cluster, and the relationship between the productivity-enhancing effects and the proportion of firms that receive subsidies is nonlinear. Our estimates suggest a positive direct effect of subsidies that for the most part increases in s .

magnitude for private than for SOEs. Leaving out the firm specific past subsidy status does, however, change results for SOEs who now show negative direct as well as indirect effects. The estimated effects for private and foreign firms are, however, similar to those found before. These small differences in results should perhaps not be surprising because we (deliberately) omitted potentially crucial observable covariates from the analysis.

The relationship between s and the productivity effect appears fairly similar for private domestic and state-owned firms. For these firms, in a cluster with 5% share of subsidized firms, firms that receive a subsidy on average enjoy a productivity increase by 2%. In a cluster with 50% share of subsidized firms, the direct effect is stronger at around 6% for private firms and 8% for SOEs, respectively. The direct effect, while always positive, firstly decreases in s and then turns to increasing in s from around $s = 17\%$.

It is noticeable that the graph for foreign firms is quite different. While these are generally privately owned, they are different from domestic firms in that they are affiliates of foreign-owned multinationals and as such may be expected to behave differently than domestic firms (e.g., Bellak 2004). There seems to be only limited additional productivity gain for foreign firms from securing government subsidies for levels of s lower than about 75%. This is not surprising, given that foreign invested firms in China are mostly resource-rich and likely to have received other forms of preferential treatments such as tax reductions or exemptions of utility bills (Klitgaard and Rasmussen 1983).

5.2. Indirect effects: The unintended losers of subsidies

Turning to the indirect effects of subsidy-giving, it is clear that the signs depend on s , the proportion of firms that are subsidized in a town-cluster and firm ownership. As shown in figure 4, unsubsidized SOEs also experience productivity reductions due to the state subsidies. The negative effect deteriorates initially but then improves until four fifths of all firms are subsidized. Then, the indirect effects turn positive towards the end of the distribution.

A similar picture emerges for foreign-owned firms. The indirect effects of subsidies for foreign firms are negative initially, suggesting that subsidies harm unsubsidized firms' productivity. In fact, there is a worsening productivity-reducing effect for unsubsidized foreign firms as more subsidized firms populate, and then it starts to improve as more than 20% of all firms are subsidized. With higher levels of subsidization in a cluster, these turn less negative and eventually positive when 45% or more of all firms are subsidized, similar to the case of indirect effects for SOEs.

However, a very different picture emerges with domestic private firms. The indirect effect on unsubsidized private firms starts being positive. However, this decreases sharply with s , until the level of the coverage reaches around 25% of subsidized firms, when the indirect effect of subsidies becomes negative.

5.3. Overall effects

The presence of both winners and losers of the state subsidies makes the overall economic impact and interpretation ambiguous. Next, we adopt some "back-of-the-envelope" calculations on the overall effect of subsidies on productivity among treated and non-treated firms. To do this, we follow the standard approach to define a "total treatment effect" as the sum of the direct and indirect treatment effect (Hudgens and Halloran 2008). As shown above, the strength of the overall effect depends on the relative number of subsidized and non-subsidized firms, i.e., what share of firms experiences the direct and how many the indirect effect. Hence, we calculate an overall effect as a weighted average of the direct and indirect effect, weighted by the relative share of the two groups of firms. These calculations are shown in table 5.

Keeping in mind that the direct effect is always positive, the overall effect will certainly be positive as long as the indirect effect is also positive. For private firms, as we can see from figure 3, this is the case up to a level of $s = 25\%$. After this point, the overall effect calculated as a weighted sum of direct and indirect effect is always negative. For example,

TABLE 5

Direct, indirect and (weighted) total treatment effects

Private firms	Direct effects	Indirect effects	Weighted total effects
Share of subsidized			
0.05	0.018	0.014	0.014
0.10	0.010	0.021	0.020
0.15	0.007	0.020	0.018
0.20	0.007	0.013	0.012
0.25	0.011	0.001	0.004
0.30	0.018	-0.016	-0.006
0.35	0.027	-0.036	-0.014
0.40	0.039	-0.060	-0.020
0.45	0.052	-0.087	-0.024
0.50	0.067	-0.116	-0.025
SOEs	Direct effects	Indirect effects	Weighted total effects
Share of subsidized			
0.05	0.018	-0.017	-0.015
0.10	0.009	-0.030	-0.026
0.15	0.005	-0.041	-0.034
0.20	0.006	-0.049	-0.038
0.25	0.011	-0.056	-0.039
0.30	0.019	-0.060	-0.036
0.35	0.031	-0.063	-0.030
0.40	0.045	-0.065	-0.021
0.45	0.061	-0.064	-0.008
0.50	0.079	-0.062	0.009
Foreign firms	Direct effects	Indirect effects	Weighted total effects
Share of subsidized			
0.05	0.012	-0.031	-0.029
0.10	0.004	-0.052	-0.046
0.15	0.008	-0.065	-0.054
0.20	0.016	-0.070	-0.053
0.25	0.024	-0.068	-0.045
0.30	0.029	-0.060	-0.033
0.35	0.032	-0.045	-0.018
0.40	0.034	-0.026	-0.002
0.45	0.035	-0.002	0.015
0.50	0.035	0.026	0.031

at $s = 30\%$ (where 70% of firms do not receive a subsidy), the overall effect is $0.018 \times 0.3 + (-0.016) \times 0.7 = -0.0058$. At $s = 50\%$ (i.e., the groups of subsidized and non-subsidized firms are equally large), the direct effect is 0.067, while the indirect effect is around -0.116. Hence, the overall negative spillover effect outweighs the positive direct effect, reaching an overall effect of -0.025. In sum, some subsidies benefit private firms irrespective of whether they are subsidized or not, but more than a quarter of firms being subsidized in the market hurts them.

For SOEs and foreign firms, the overall negative spillover effects on unsubsidized firms outweigh the positive direct effects on subsidized firms, for as long as no more than 45% to 50% of all firms are subsidized. That gives a largely negative overall weighted total effect for SOEs and foreign firms.

In our data, the mean value of subsidized firms in a cluster is around 15%, while the 75th percentile is 24%. Hence, for the majority of clusters in our data, the total effect for private firms is still positive, while that for SOEs and foreign firms is negative, which may be contrary to what subsidies were intended for.

6. Sensitivity and extensions

6.1. Direct and indirect effects on output and factor inputs

Although the main focus of our empirical analysis and, indeed, the theoretical modelling in the next section is on the direct and indirect effects of subsidy receipt on productivity, we also present here additional analysis using output and individual factor inputs as outcome variables, following the suggestion of an anonymous referee.

The model estimates are depicted in figures 5 to 8. Overall, the estimated direct and indirect effects look fairly similar in these figures, with one important exception. While the direct effects on output, materials and employment are all positive for all firm types, the direct effect on capital stock is negative for foreign owned firms (while positive for private and SOE firms).

The direct effects are also fairly similar to the productivity effects in figure 3. However, we now find the strongest positive effects throughout for private owned firms in all clusters. Estimated indirect effects provide a more versatile picture than in figure 4, with a combination of positive and negative effects depending on the firm type and the share of subsidized firms in the cluster. Note, however, that these results are difficult to interpret, however, as our analysis—and its theoretical interpretation—relies on the measure of productivity, rather than its individual components, namely output and factor inputs.

6.2. Exploring treatment heterogeneity

Our estimations thus far are based on a binary treatment, i.e., subsidy receipt or not. This can be handled by the approach as described in Section 4. An extension to a continuous treatment (amount of subsidy receipt) is far from trivial in this context and would

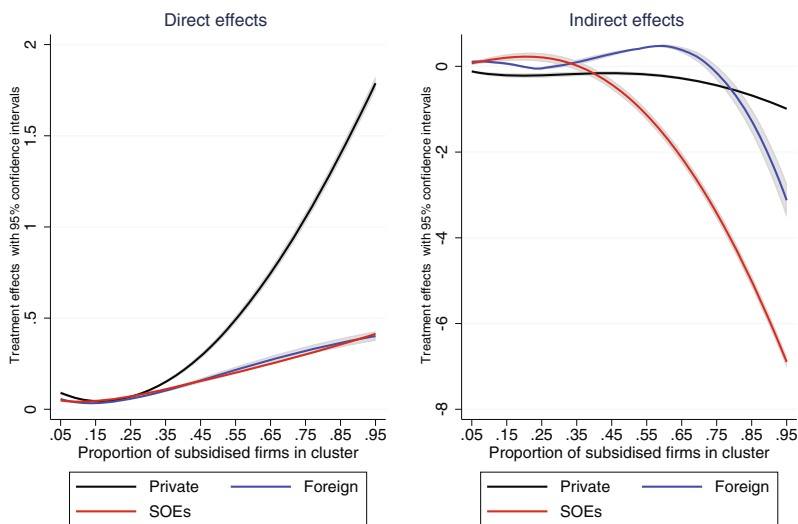


FIGURE 5 Causal effects of subsidy on output

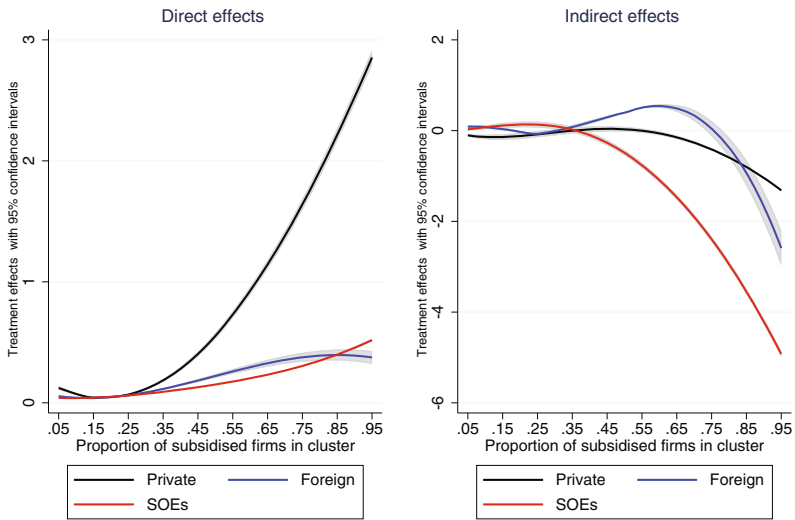


FIGURE 6 Causal effects of subsidy on material input

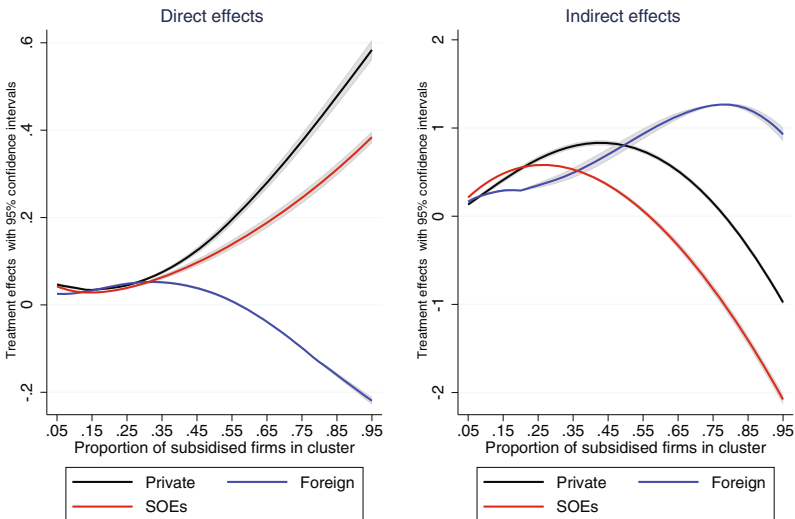


FIGURE 7 Causal effects of subsidy on capital input

need a modified approach. However, we modified the estimation strategy used in this paper to carry out an exploratory analysis as to whether the level of the subsidy matters as far as the direct and indirect treatment effect estimates are concerned. In particular, we dichotomize subsidized firms into those receiving below and above average (median) subsidies per worker and then estimate the first stage propensity scores using cluster-specific ordered logit models. The results from this exploratory analysis are summarized in figure 9. These would appear to suggest that the positive direct effects are observed for both groups (with the exception of SOEs receiving below average subsidies), while increasing and positive indirect effects are only observed among the group of firms receiving above average subsidies.

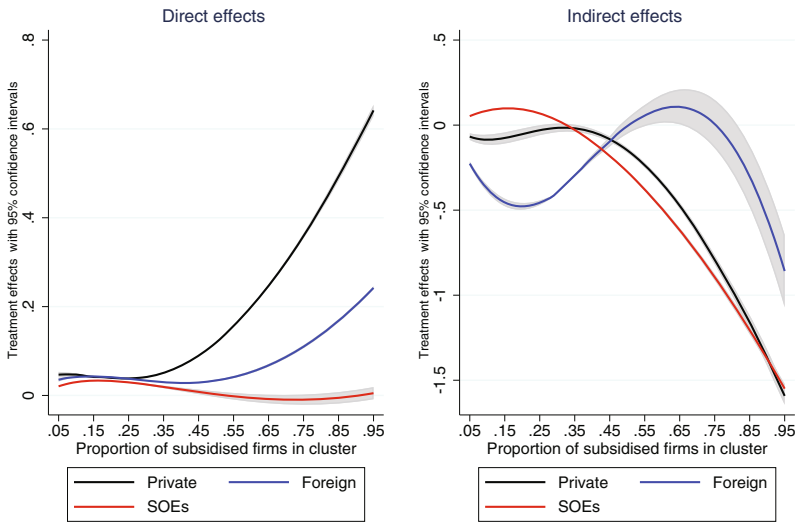


FIGURE 8 Causal effects of subsidy on employment

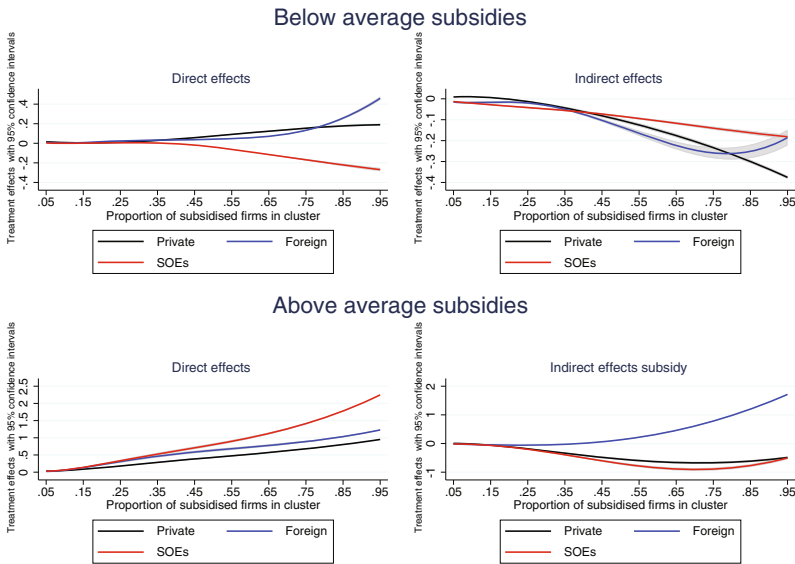


FIGURE 9 The causal effects of subsidy on productivity, by the level of subsidy

7. Theoretical interpretation

In order to make sense of the main results reported in figures 3 and 4, we propose a theoretical framework, where we extend a simple heterogeneous firm type model and show that the treatment effects indeed depend on the proportion of treated firms, i.e., firms that receive a subsidy. The aim is to give some theoretical foundation for why both direct and indirect (spillover) effects may depend on the level of subsidization in a particular cluster. The theoretical predictions on the direct and indirect productivity effects largely match the empirical results.

We utilize a closed economy heterogeneous firm model a la Melitz (2003), where a government subsidizes firms by reducing their marginal cost of production. We make the additional assumption that in clusters with a higher share of subsidized firms, the size of the per-unit subsidy received by a given firm is lower.¹⁶ The subsidy is financed through a lump sum tax and is given to firms randomly after they have entered the local market. We choose this set-up not because we think it is the most realistic—in fact, it is well known that governments are likely to select firms to be subsidized on the basis of observables, as we also show in our empirical analysis—but because it is most consistent with our empirical identification strategy, which relies on the standard conditional independence assumption of the treatment evaluation literature.¹⁷

There is an exogenous number of L workers, there is no unemployment and workers supply their time to firms in exchange for a wage, which is normalized to one. Utility of the individual is represented by a CES utility function

$$U \equiv \left(\int_0^m D(\omega)^\varepsilon d\omega \right)^{\frac{1}{\varepsilon}},$$

where $D(\omega)$ denotes demand for product ω and the elasticity of substitution $\sigma \equiv 1/(1-\varepsilon) > 1$ is determined by the parameter $0 < \varepsilon < 1$. There are infinitely many products varieties ω , their total amount is denoted by m and m is endogenous. Demand for a product equals

$$D(\omega) = \frac{p(\omega)^{-\sigma}}{P^{1-\sigma}} C,$$

where $p(\omega)$ is the price of the product, C is aggregate consumption expenditure and P is the aggregate price index, defined as

$$P \equiv \left(\int_0^m p(\omega)^{1-\sigma} d\omega \right)^{\frac{1}{1-\sigma}}.$$

Firms develop new products, but in order to do that, each firm has to pay a fixed cost F . The firm then draws marginal cost a from a Pareto distribution with a probability density function $g(a)$ with support $[0, \bar{a}]$ and a cumulative density function

$$G(a) \equiv \int_0^a g(a) da = \left(\frac{a}{\bar{a}} \right)^k.$$

A lump sum tax is given by the government as a subsidy to the marginal cost of randomly chosen firms from the set of entering firms. Suppose the share of subsidized firms is $0 < s < 1$ and the marginal cost of those firms becomes $\kappa_s a$, where $0 < \kappa_s < 1$ determines the size of the per-unit subsidy. We assume that κ_s increases in s , with this assumption the per-unit

16 A simple regression of the number of subsidized firms in a cluster on the average subsidy per firm, in our data returns a negative and statistically significant coefficient. It should be noted that total subsidy per cluster is nevertheless positively correlated with the share of subsidized firms. Results are available upon request.

17 In fact, we use a weaker form of this assumption in that our econometric approach only requires that *conditional* on observable firm characteristics and time invariant unobservables (since we use panel data), subsidy receipt is as good as random. Nonetheless it is fairly straightforward to write down a model with selection of either the highest or lowest productivity firms receiving subsidies, which would also illustrate the existence of indirect effects.

subsidy received by a given firm decreases in s . A non-subsidized firm stays with marginal cost a .

The effective marginal cost determines how many labor units the firm needs in order to produce one unit of output. In order to enter the market, each firm also needs to pay a fixed cost F_L . This setup creates a marginal cost threshold a_L for entering the local market, which separates firms that enter from those that are not productive enough and do not enter. The profit of a non-subsidized firm at a point in time can be written as $\pi(a) = (p(\omega) - a(\omega)) d(\omega)$. Firms optimize profits and given their marginal cost set the price at $p(\omega) = a(\omega)/\alpha$. Profits therefore equal $\pi(a) = \theta(a/P)^{1-\sigma} C$, where for brevity we write $\theta \equiv (\sigma - 1)^{\sigma-1} \sigma^{-\sigma}$.

Firms face an exogenous exit probability γ^{18} . The government gives a subsidy only to firms that are able to enter profitably on their own¹⁹. The expected benefit of entry for the threshold firm should therefore equal the fixed cost $\pi(a_L)/\gamma = F_L$. In equilibrium the expected gains from product development, which amount to expected firm value net of the fixed cost of market entry, have to equal the cost of product development F . This equality is expressed in the free entry condition:

$$F = s \int_0^{a_L} \left(\frac{\pi(\kappa_s a)}{\gamma} - F_L \right) g(a) da + (1 - s) \int_0^{a_L} \left(\frac{\pi(a)}{\gamma} - F_L \right) g(a) da.$$

We obtain an expression for the marginal cost entry threshold:

$$a_L = \bar{a} \left(\frac{F}{F_L \left(S^{\frac{k}{k-\sigma+1}} - 1 \right)} \right)^{\frac{1}{k}},$$

where $S \equiv s\kappa_s^{1-\sigma} + 1 - s$ and $\frac{\partial S}{\partial s} = \kappa_s^{1-\sigma} + (1 - \sigma)\kappa_s^{-\sigma} \frac{\partial \kappa_s}{\partial s} s - 1$. We have already stated our assumption that $\frac{\partial \kappa_s}{\partial s} > 0$, additionally we assume that for low levels of s the derivative $\frac{\partial \kappa_s}{\partial s}$ has a high value and decreases in s , meaning that the second derivative is negative.

Suppose that there is an s' for which in the range $s \in [0, s')$ the derivative $\frac{\partial \kappa_s}{\partial s}$ is large enough so that $\frac{\partial S}{\partial s} < 0$ and for $s \in [s', 1]$ we would have $\frac{\partial S}{\partial s} > 0$. This implies that in the low range of s between zero and s' , increasing the share of subsidized firms $s \uparrow$ would lead to an increase in the marginal cost threshold $a_L \uparrow$ and a decrease in the average productivity of entering firms (before any potential subsidy) in the cluster. More subsidies allow the entry of less productive firms and thus makes the market less competitive. In the high range of s however the opposite happens, the average productivity of entering firms in the cluster increases. More details and the solution to the complete model are provided in the online appendix.

We use this model to examine two effects of subsidies, namely, a direct and an indirect effect. As outlined in section 4, we define the direct effect as the difference, for a given cluster with share s , between the average outcome of the subsidized compared to the non-subsidized

18 Here we follow Melitz (2003). It is important to note that despite an exit rate, which is exogenous and independent of an individual firm's properties, the productivity of operating firms in equilibrium is endogenous. This happens through the endogenous firm entry rate, which leads to a selection of firms based on productivity. Firms with a productivity below a certain threshold do not enter. Naturally, the model can be extended along the lines of the more complex firm exit rate as in Hopenhayn (1992).

19 This assumption should not be seen as contradictory to the finding that the government frequently subsidizes loss-making firms. Negative profits are a development in time, that does not imply that the firm was started as a loss-making enterprise.

firm ($\bar{\gamma}_{ss}^{10} = \bar{y}_s^1 - \bar{y}_s^0$). The indirect treatment effect, ($\bar{\gamma}_{s0}^{00} = \bar{y}_s^0 - \bar{y}_0^0$) is the difference between the outcome of the average non-subsidized firm in a cluster with share of treated firms s compared to the average in a cluster with no subsidized firms. We look at productivity of firms to illustrate these effects within the context of our model.

In order to keep the theory as close as possible to the data we will calculate average productivity of firms based on their effective marginal cost $\kappa_s a$ for subsidized firms and a for non-subsidized firms.²⁰

The direct effect where productivity is the outcome variable can be written as

$$\bar{\gamma}_{ss}^{10} = \int_0^{a_L} (\kappa_s a)^{1-\sigma} \frac{g(a)}{G(a_L)} da - \int_0^{a_L} a^{1-\sigma} \frac{g(a)}{G(a_L)} da.$$

The parameter k of the Pareto distribution has to be larger than $\sigma-1$ to make sure that the above integrals converge. The direct effect is positive since $\kappa_s^{1-\sigma} > 1$. From the fact that an increase in the share of subsidized firms in the cluster s first increases the threshold a_L follows that the average productivity of firms entering the market (before any potential subsidy assignment) $\int_0^{a_L} a^{1-\sigma} \frac{g(a)}{G(a_L)}$ will decrease in s . At the same time κ_s increases in s and $\kappa_s^{1-\sigma}$ decreases. The direct effect is positive and decreasing in s . For a large share of subsidized firms in the cluster however the threshold a_L decreases, which leads to an average productivity of firms entering the market increasing in s . To summarize:

The direct productivity effect of a subsidy on the subsidy receiving firm is positive and decreasing in s for $s \in [0, s']$ and positive and increasing in s for $s \in [s', 1]$.

This result corresponds to our empirical results on the direct TFP effect on private firms and SOEs to an increase in the share of subsidization in a cluster. Before moving on, let us spell out the intuition for this a bit more clearly. In the model the non-monotonic response of the positive direct effect to the increase in the share of subsidized firms in the cluster is the result of two forces acting in opposite directions. First, there is the assumption that the size of the per-unit-of-production subsidy, and therefore the size of the subsidy given to a firm, decreases with the share of subsidized firms in the cluster. This means that a higher share of subsidized firms decreases the size of the positive direct effect. The lower the subsidy, the lower the positive effect.

Once the subsidy size starts to be less responsive to the share of subsidized firms in a cluster however, a competition effect starts to take over. Subsidizing more firms makes entry of new firms more difficult. The competition effect implies that with more subsidies entering firms are on average more productive (as in Pflüger and Suedekum 2013) given a sufficiently high number of subsidized firms in a cluster. This in turn implies that the positive direct effect increases in the number of subsidized firms.²¹

The indirect effect, where we compare the average productivity of non-treated firms from a cluster with a share of subsidized firms s versus a cluster without any subsidized firms

20 We should point out that the productivity measure we employ in the empirical analysis is based on observed firm output. If one were to measure productivity in the same way in our theoretical model, output of a subsidized firm would be higher than the one of a non-subsidized firm with the same marginal cost a . The subsidized firm would, hence, appear to have higher productivity.

21 The competition effect is conditional on the subsidy size not changing too strongly in the share of subsidized firms, namely $\frac{\partial \kappa_s}{\partial s} > 0$, but sufficiently small. Otherwise, the competition effect is reversed and less productive firms can enter the cluster.

($s = 0$), can be expressed as

$$\bar{\gamma}_{s0}^{00} = \int_0^{a_L} a^{1-\sigma} \frac{g(a)}{G(a_L)} da - \int_0^{a_{nL}} a^{1-\sigma} \frac{g(a)}{G(a_{nL})} da.$$

The threshold a_{nL} is the marginal cost threshold in a cluster where no firms receive subsidies. The indirect effect is first negative, because entering firms in a subsidized cluster are on average less productive ($a_L > a_{nL}$). Since a_L is increasing in s and a_{nL} remains constant it is easy to show that $\bar{\gamma}_{s0}^{10}$ is first decreasing in s . For the high range of s we have $a_L < a_{nL}$ leading to a positive and increasing indirect effect. The indirect effect in this setup depends mainly on the presence of the already mentioned competition effect above. To summarize:

The indirect productivity effect is negative and decreasing in s for $s \in [0, s')$ and positive and increasing in s for $s \in [s', 1]$.

This matches our empirical results for foreign firms and SOEs in the range of high and low shares of subsidization. The theory does not match the part with the middle range of subsidization, where the indirect effect is negative and increasing. Those are results in steady state and the increasing or decreasing TFP effect comes from small changes in s around a steady state level of subsidization. The negative and increasing indirect effect can generate in transitional dynamics however. Suppose we are in a steady state with $s_{old} \in [0, s')$, this implies $a_{L,old} > a_{nL}$. Jumping to $s_{new} \in [s', 1]$, or following a gradual increase in subsidization with values of $s_{new} > s'$, would result in a gradual decrease in a_L eventually surpassing and becoming lower than a_{nL} for sufficiently high values of s_{new} . This would lead to a negative and increasing and for high values of s_{new} positive and increasing indirect effect.

Turning to private firms, in the empirical results the indirect effect for them is a mirror image to the one for foreign firms and SOEs. A heterogeneous firm model where the average per-firm subsidy decreases slowly for low values of s and then rapidly for high values of s would generate this result. A strong competition effect within the low range of s , where only more productive firms on average are able to enter a market, would ensure the initial positive and increasing indirect effect. For a high range of s the competition effect wanes off and on average less productive firms enter a cluster, then the indirect effect would turn negative and decreasing.

In a standard heterogeneous firm model with subsidies as in Pflüger and Suedekum (2013), the average firm productivity in a cluster increases as a result of subsidization. In the data clearly the indirect effect is in many if not most instances negative. For a theory to correspond to this result it needs to be based on a model where subsidization can lead to lower average productivity of entering firms in a cluster. We make in our model the assumption that the size of the per-unit subsidy decreases with the number of subsidized firms. There are also other theoretical approaches that can generate this result. In a model with soft budget constraints for instance a firm's expectation to receive subsidies may reduce its managerial effort to maximize profits, reduce costs or invest in innovation, hence leading to a worsening of firm performance relative to a firm that does not expect to be subsidized (see Kornai et al. 2003). A similar argument could be made in a model with x-inefficiency among firms (e.g., Leibenstein and Maital 1994).

We extend the current model and check the results also for an open economy version as in Helpman et al. (2004). All domestic firms in the model would correspond to the private firms in the data. The affiliates of foreign FDI firms would correspond to the foreign firms in the data. Subsidization in the model is bilateral and symmetric and we again assume that the per-unit subsidy decreases in the share of subsidized firms s .

Since the subsidy is randomly assigned, no group of firms (domestic, exporters or FDI) has an advantage over another group. The marginal cost cut-offs separating the firm types move in the same direction as a result of subsidization. The direct effect is positive and decreasing for low levels of subsidization and positive and increasing for high levels of s . The indirect effect is also the same as in the closed economy, first negative and decreasing and then positive and increasing. The results hold for both private and foreign FDI firms, the detailed open economy model is available in the online appendix.

8. Conclusion

In this paper, we implement an approach that allows for the joint estimation of direct and indirect effects of subsidies on subsidized and non-subsidized firms. In line with much of the existing literature, we find that firms that receive subsidies experience a boost to productivity. Looking at it from this angle would then suggest that such a policy “works.” However, our approach highlights the importance of indirect effects, which are generally not considered in the literature. We find that, in general but not always, non-subsidized firms experience reductions in their productivity growth if they operate in a cluster where other firms are subsidized. These negative externalities, and also the positive direct effects, depend on the share of firms that receive subsidies in a cluster. We interpret our results with a simple heterogeneous firm type model, which highlights the implications of subsidization for the competitive environment of firms. Subsidies may potentially harm non-subsidized firms.

Our paper demonstrates the importance of considering indirect effects in evaluation studies. Not only from a technical perspective (as this improves upon the accuracy of the results) but, importantly, also from a policy perspective. Taking the effects on non-subsidized firms into account may significantly change the conclusion as to whether or not the subsidization policy was beneficial, in terms of improving overall productivity growth in a local economy. Specifically, our findings, contrasting with advocates of state capitalism, provide empirical evidence that highlights the potential cost of state intervention through subsidization, in terms of negative externalities. Overall, our estimation approach allows us to provide a much richer analysis on the relationship between subsidies and firm performance than the literature thus far.

Of course, the use of subsidization (or industrial policy more generally) by the domestic economy—in our case China—may also have implications for other countries. In particular, Chinese subsidization policy may be expected to have beggar-thy-neighbour implications for its trade partners. While this is undoubtedly an important and relevant issue, it has to be left for future research because this would necessitate information about detailed trade relationships, which is well beyond the scope of this paper.

Supporting information

Supplementary material accompanies this article. The data and code that support the findings of this study are available in the Canadian Journal of Economics Dataverse at <https://doi.org/10.5683/SP3/FKURVQ>.

References

- Akerberg, D.A., K. Caves, and Frazer, G. (2015) “Identification properties of recent production function estimators,” *Econometrica* 83(6), 2411–51

- Aghion, P., J. Cai, M. Dewatripont, L. Du, A. Harrison, and P. Legros (2015) "Industrial policy and competition," *American Economic Journal: Macroeconomics* 7(4), 1–32
- Bang, H., and J. M. Robins (2005) "Doubly robust estimation in missing data and causal inference models," *Biometrics* 61(4), 962–72
- Bellak, C. (2004) "How domestic and foreign firms differ and why does it matter?," *Journal of Economic Surveys* 18(4), 483–514
- Bernini, C., and G. Pellegrini (2011) "How are growth and productivity in private firms affected by public subsidy? Evidence from a regional policy," *Regional Science and Urban Economics, Elsevier* 41(3), 253–65
- Bickenbach, F., and W.-H. Liu (2021) "The EU–China Investment Agreement as seen from Europe: Achievements with shortfalls," *Kiel Focus* 02/2021
- Blonigen, B. (2016) "Industrial policy and downstream export performance," *Economic Journal* 126(595), 1635–59
- Brandt, L., J. Van Biesebroeck, and Y. Zhang (2012) "Creative accounting or creative destruction? Firm level productivity growth in Chinese manufacturing," *Journal of Development Economics* 97(2), 339–51
- Cerqua, A., and G. Pellegrini (2014) "Do subsidies to private capital boost firms' growth? A multiple regression discontinuity design approach," *Journal of Public Economics* 109(C) 114–26
- (2017) "Industrial policy evaluation in the presence of spillovers" *Small Business Economics* 49(3), 671–86
- Chang, S.-J., and S. Y. Jin (2016) "The performance of state owned enterprises in China: An empirical analysis of ownership control through SASACs," Centre for Governance, Institutions & Organisations, NUS Business School, National University of Singapore. Available at <https://bschool.nus.edu.sg/cgs/wp-content/uploads/sites/7/2018/10/SOE-Performance-of-SOE-in-China-2016.pdf>
- De Mel, S., D. McKenzie, and C. Woodruff (2008) "Returns to capital in microenterprises: Evidence from a field experiment," *Quarterly Journal of Economics* 123(4), 1329–72
- Du, J., and S. Girma (2010) "Red capitalists: Political connections and firm performance in China," *Kyklos* 63(4), 530–45
- Du, J., X. Liu, and Y. Zhou (2014) "State advances and private retreats? Evidence of aggregate productivity decomposition in China," *China Economic Review*, 31, 459–74
- Du, J., and T. Mickiewicz (2016) "Subsidies, rent seeking and performance: Being young, small or private in China," *Journal of Business Venturing* 31(1), 22–38
- Geurts, K., and J. Van Biesebroeck (2019) "Employment growth following takeovers," *RAND Journal of Economics* 50(4), 916–50
- Girma, S., Y. Gong, H. Görg, and S. Lancheros (2015a) "Estimating direct and indirect effects of foreign direct investment on firm productivity in the presence of interactions between firms," *Journal of International Economics* 95(1), 157–69
- (2015b) "Investment liberalisation, technology take-off and export market entry: Does ownership structure matter?," *Journal of Economic Behavior & Organization* 116, 254–69
- Girma, S., Y. Gong, H. Görg, and Z. Yu (2009) "Can production subsidies explain China's export performance? Evidence from firm-level data," *Scandinavian Journal of Economics* 111(4), 863–91
- Görg, H., M. Henry, and E. Strobl (2008) "Grant support and exporting activity," *Review of Economics and Statistics* 90(1), 168–74
- Guadalupe M., O. Kuzmina, and C. Thomas (2012) "Innovation and foreign ownership," *American Economic Review* 102(7), 3594–627
- Haley, U., and G. Haley (2013a) *Subsidies to Chinese Industry*. Oxford, UK: Oxford University Press.
- (2013b) "How Chinese subsidies changed the world," *Harvard Business Review*, April 2013. Available at <https://hbr.org/2013/04/how-chinese-subsidies-changed>
- Helpman, E., M. Melitz, and S. R. Yeaple (2014) "Export versus FDI with heterogeneous firms," *American Economic Review* 94(1), 300–16

- Hirano, K., and G. W. Imbens (2004) "The propensity score with continuous treatments." In A. Gelman and X-L. Meng, eds., *Applied Bayesian Modeling and Causal Inference from Incomplete-Data Perspectives*, pp. 73–84. Wiley
- Hirano, K., G. Imbens, and G. Ridder (2003) "Efficient estimation of average treatment effects using the estimated propensity score," *Econometrica* 71, 1161–89
- Hopenhayn, H. (1992) "Entry, exit and firm dynamics in long run equilibrium," *Econometrica* 60(5), 1127–50
- Howell, A. (2017) "Picking 'winners' in China: Do subsidies matter for indigenous innovation and firm productivity?," *China Economic Review* 44, 154–65
- Hsieh, C.-T., and P. J. Klenow (2009) "Misallocation and manufacturing TFP in China and India," *Quarterly Journal of Economics* 124(4), 1403–48
- Hudgens, M.G., and M. E. Halloran (2008) "Toward causal inference with interference," *Journal of the American Statistical Association* 103(482), 832–42
- Imai K., and D. A. van Dyk (2004) "Causal inference with general treatment regimes: Generalizing the propensity score," *Journal of the American Statistical Association* 99(467), 854–66
- Jefferson, G., T. Rawski, and Y. Zheng (1996) "Chinese industrial productivity: Trends, measurement issues, and recent developments," *Journal of Comparative Economics* 23(2), 146–80
- Klitgaard, T.J., and M. Rasmussen (1983) "Preferential treatment for foreign investment in the People's Republic of China: Special economic zones and industrial development districts," *Hastings International and Comparative Law Review* 7(2), 377–412
- Kornai, J., E. Maskin, and G. Roland (2003) "Understanding the soft budget constraint," *Journal of Economic Literature* 41(4), 1095–136
- Leibenstein, H., and S. Maital (1994) "The organizational foundations of X-inefficiency: A game-theoretic interpretation of Argyris' model of organizational learning," *Journal of Economic Behavior & Organization* 23(3), 251–68
- Lin, J.Y., and Z. Li (2008) "Policy burden, privatization and the soft budget constraint," *Journal of Comparative Economics* 36(1), 90–102
- Luo, H., and T. R. Golembiewski (1996) "Budget deficits in China: Calculations, causes, and impacts," *Journal of Public Budgeting, Accounting & Financial Management* 8(4), 305–33
- Melitz, M. (2003) "The impact of trade on intra-industry reallocations and aggregate industry productivity," *Econometrica* 71(6), 1695–725
- Neumark, D., and H. Simpson (2015) "Place-based policies." In G. Duranton, J. V. Henderson, and W. C. Strange, eds., *Handbook of Regional and Urban Economics*, vol. 5B, pp. 1197–287. Elsevier.
- Nie, H., T. Jiang, and R. Yang (2012) "A review and reflection on the use of abuse of Chinese industrial enterprise database," *World Economy* 5, 142–58 (in Chinese)
- Papke, L.E., and J. M. Wooldridge (1996) "Econometric methods for fractional response variables with an application to 401(k) plan participation rates," *Journal of Applied Econometrics* 11(6), 619–32
- Pflüger, M., and J. Suedekum (2013) "Subsidizing firm entry in open economies," *Journal of Public Economics* 97, 258–71
- Rotemberg, M. (2019) "Equilibrium effects of firm subsidies," *American Economic Review* 109(10), 3475–513
- Shao M., and B. Qun (2011) "Analysis of government subsidy: Support the strong or protect the weak?" *World Economic Papers* 1(February), 56–72 (in Chinese).
- Woo, W.T., M. Lu, J. D. Sachs, and Z. Chen (2012) *A New Economic Growth Engine for China: Escaping the Middle-Income Trap by not Doing More of the Same*. Singapore: World Scientific Publishing Company
- World Trade Organization (2006) *World Trade Report: Exploring the Links Between Subsidies, Trade and the WTO*. WTO
- Xu, C. (2011) "The fundamental institutions of China's reforms and development," *Journal of Economic Literature* 49(4), 1076–151