

Liu, Huiqin; Wang, Ying; He, Qi

## Article

Cost-effectiveness analysis of sintilimab plus pemetrexed and platinum versus chemotherapy alone as first-line treatment in metastatic non-squamous non-small cell lung cancer in China

Health Economics Review

**Provided in Cooperation with:**

Springer Nature

*Suggested Citation:* Liu, Huiqin; Wang, Ying; He, Qi (2022) : Cost-effectiveness analysis of sintilimab plus pemetrexed and platinum versus chemotherapy alone as first-line treatment in metastatic non-squamous non-small cell lung cancer in China, Health Economics Review, ISSN 2191-1991, Springer, Heidelberg, Vol. 12, Iss. 1, pp. 1-10,  
<https://doi.org/10.1186/s13561-022-00410-x>

This Version is available at:

<https://hdl.handle.net/10419/285302>

### Standard-Nutzungsbedingungen:

Die Dokumente auf EconStor dürfen zu eigenen wissenschaftlichen Zwecken und zum Privatgebrauch gespeichert und kopiert werden.

Sie dürfen die Dokumente nicht für öffentliche oder kommerzielle Zwecke vervielfältigen, öffentlich ausstellen, öffentlich zugänglich machen, vertreiben oder anderweitig nutzen.

Sofern die Verfasser die Dokumente unter Open-Content-Lizenzen (insbesondere CC-Lizenzen) zur Verfügung gestellt haben sollten, gelten abweichend von diesen Nutzungsbedingungen die in der dort genannten Lizenz gewährten Nutzungsrechte.

### Terms of use:

*Documents in EconStor may be saved and copied for your personal and scholarly purposes.*

*You are not to copy documents for public or commercial purposes, to exhibit the documents publicly, to make them publicly available on the internet, or to distribute or otherwise use the documents in public.*

*If the documents have been made available under an Open Content Licence (especially Creative Commons Licences), you may exercise further usage rights as specified in the indicated licence.*



<https://creativecommons.org/licenses/by/4.0/>

RESEARCH

Open Access



# Cost-effectiveness analysis of sintilimab plus pemetrexed and platinum versus chemotherapy alone as first-line treatment in metastatic non-squamous non-small cell lung cancer in China

Huiqin Liu<sup>1</sup> , Ying Wang<sup>2</sup> and Qi He<sup>1\*</sup>

## Abstract

**Objective** In first-line treatment of advanced or metastatic nonsquamous non-small-cell lung cancer (NSCLC), the ORIENT-11 study demonstrated a significant progression-free survival and overall survival for sintilimab plus chemotherapy in comparison with chemotherapy alone. But the cost-effectiveness of the two treatment schemes is unclear in China. The objective of the current study was to evaluate the cost effectiveness of sintilimab plus chemotherapy versus Platinum-based chemotherapy for locally advanced or metastatic squamous NSCLC in China.

**Methods** We performed an economic evaluation from the perspective of the Chinese healthcare system using a partitioned survival model with three mutually exclusive health states: progression free, post-progression, and death. The circulation cycle of the model was 3 weeks and the study time limit was 10 years. Efficacy data were obtained from the ORIENT-11 clinical trial. Cost and utility values were derived from published studies and online price databases. The primary outcomes of the model were quality-adjusted life-years (QALYs), costs, and incremental cost-effectiveness ratios (ICERs). One-way sensitivity analysis and probability sensitivity analysis were used to verify the robustness of the base-case analysis results.

**Results** Sintilimab plus chemotherapy provided an additional 0.6 QALYs. The total cost per patient was CNY¥413,273.16 for sintilimab plus chemotherapy and CNY¥280,695.23 for Platinum-based chemotherapy. The ICER for sintilimab plus chemotherapy was CNY¥220,963.22/QALY. Sensitivity analyses found the results to be most sensitive to the cost of pemetrexed and utilities of PF state. In the probabilistic sensitivity analysis, sintilimab was cost-effective in 78.6% of the simulations, assuming a willingness-to-pay threshold (WTP) of CNY¥242,928 per QALY.

**Conclusion** Compared with chemotherapy alone, the sintilimab plus chemotherapy is likely to be a cost-effective option as the first-line treatment for locally advanced or metastatic nonsquamous NSCLC in China.

**Keywords** Non-small cell lung cancer, Sintilimab, Cost-effectiveness analysis, Partitioned survival model

\*Correspondence:

Qi He

632161336@qq.com

<sup>1</sup> Department of Medical Insurance, Cancer Prevention and Treatment Institute of Chengdu, Chengdu Fifth People's Hospital (The Second Clinical Medical College, Affiliated Fifth People's Hospital of Chengdu University of Traditional Chinese Medicine), Chengdu, China

<sup>2</sup> Department of Oncology, Cancer Prevention and Treatment Institute of Chengdu, Chengdu Fifth People's Hospital (The Second Clinical Medical College, Affiliated Fifth People's Hospital of Chengdu University of Traditional Chinese Medicine), Chengdu, China



© The Author(s) 2022, corrected publication 2023. **Open Access** This article is licensed under a Creative Commons Attribution 4.0 International License, which permits use, sharing, adaptation, distribution and reproduction in any medium or format, as long as you give appropriate credit to the original author(s) and the source, provide a link to the Creative Commons licence, and indicate if changes were made. The images or other third party material in this article are included in the article's Creative Commons licence, unless indicated otherwise in a credit line to the material. If material is not included in the article's Creative Commons licence and your intended use is not permitted by statutory regulation or exceeds the permitted use, you will need to obtain permission directly from the copyright holder. To view a copy of this licence, visit <http://creativecommons.org/licenses/by/4.0/>. The Creative Commons Public Domain Dedication waiver (<http://creativecommons.org/publicdomain/zero/1.0/>) applies to the data made available in this article, unless otherwise stated in a credit line to the data.

## Background

Lung cancer is one of the most commonly diagnosed cancers worldwide. In 2020, there were about 19,292,789 new cancer cases worldwide, with a crude incidence rate of 247.5/100,000 and ASIRW of 201.0/100,000. Among them, there were 2,206,771 new cases of lung cancer and 1,796,144 deaths, accounting for 11.4% and 18.0% of the total new cancer cases and deaths, respectively. In China, the number of new cases and deaths of lung cancer ranked first in 2020. In 2020, there were 3 million cancer deaths in China, and 710,000 lung cancer deaths, accounting for 23.8% of cancer deaths [1]. Non-small cell lung cancer (NSCLC) accounts for 80%–85% of lung cancers, mainly occurring in the bronchial mucosa, bronchial glands and alveolar epithelium, and 70% of patients are diagnosed at an advanced stage.

NSCLC imposes a significant burden to patients and health care systems in China. According to the data from the China Health Statistics Yearbook 2021 [2], the average hospitalization cost of lung cancer inpatients in China was ¥23,871.48, the average hospital stay was 11.6 days in 2020. Sintilimab is a selective anti-PD-1 antibody that inhibits interactions between PD-1 and its ligand, PD-L1. The recent phase III ORIENT-11 trial showed that in patients with EGFR and ALK mutation-negative advanced or metastatic nonsquamous NSCLC, the addition of sintilimab to standard chemotherapy with pemetrexed and platinum, significantly prolonged PFS compared (8.9 mo versus 5.0 mo, HR, 0.482,  $p < 0.00001$ ) [3]. Given the new efficacy evidence for sintilimab, there are two possible treatment strategies available for this patient population: standard chemotherapy using pemetrexed and first-line use of sintilimab. Comparative cost-effectiveness evidence between these treatments is required to inform coverage decision making. In addition, sintilimab plus chemotherapy was included in the National Medical Insurance Drug List in the 2021 China Medical Insurance Negotiations in December 2021. And it has prompted the second drop of the sintilimab price since sintilimab entered the medical insurance catalog in 2020, with a decrease of 62.0%. Therefore, our objective was to compare cost-effectiveness of these two treatment strategies for patients with advanced NSCLC without sensitizing EGFR or ALK mutations.

## Materials and methods

### Patient material and clinical data

This study was based on a randomized, double-blind, placebo-controlled phase 3 clinical trial study (ORIENT-11). In ORIENT-11, a total of 397 eligible patients were randomized (2:1 ratio) to receive either sintilimab 200 mg or placebo plus pemetrexed and platinum once every 3 weeks for four cycles, followed by sintilimab or

placebo plus pemetrexed therapy. Eligible patients were aged 18 to 75 years old with histologically or cytologically confirmed stage IIIB to IV nonsquamous NSCLC who were ineligible for radical surgery or radiotherapy, had no sensitive EGFR mutations or anaplastic lymphoma kinase rearrangements. Crossover or treatment beyond disease progression was allowed.

### Model structure

A partitioned survival model (PSM) was developed to estimate the costs and outcomes of patients from a Chinese healthcare system perspective. According to the development of NSCLC, the disease was divided into three health states: Progressed Free Survival (PFS), Post Progression (PP), and Death [4]. We assumed that all patients in the model entered the model in the PF health state. The cycle length was set as 3 weeks (21 days), which was aligned with the administration cycle of the drugs in the ORIENT-11, and the time horizon was 10 years. The main outcomes of the model output were total cost, quality-adjusted life-years (QALYs), and incremental cost-effectiveness ratio (ICER). According to the *China Guidelines for Pharmacoeconomic Evaluations 2020*, all costs and health outcomes were calculated based on a discount rate of 5%, and 3 times GDP per capita in China was considered as a willingness-to-pay threshold for the cost-effective analysis. It was assumed that costs were incurred at the beginning of each treatment cycle, so no half-cycle correction for costs were required, and health outcome data were subjected to half-cycle correction.

The survival analysis of this study was completed in R4.1.1, and the Partitioned Survival Model (PSM) and cost-effectiveness analysis were completed in Microsoft Excel 2019.

### Survival analysis

The proportion of patients in different health states during the trial period was directly obtained from the OS and PFS curves of the ORIENT-11 study using GetDataGraphDigitizer software. The proportion of patients in progression-free state was directly provided by the PFS curve, and the proportion of patients in death state was obtained from (1-overall survival rate), the proportion of persons in progressive status was the difference between the OS and PFS curve survival rates. Survival data beyond the follow-up period were extrapolated by survival curve fitting. Firstly, use the GetDataGraph-Digitizer software to extract the data points from the OS and PFS Kaplan–Meier curves of the experimental group and control group respectively. Based on the OS and PFS data, the survHE package of R (V4.1.1) was used to fit and extrapolate the PFS and OS curves [5], and the reconstructed OS/PFS curve and exploration and fitting

of OS/PFS are shown in Figs. 1 and 2. Maximum Likelihood Estimation (mle) and Hamiltonian Monte Carlo (HMC) were adopted to parameter estimate respectively. Secondly, according to the values of Akaike information criterion (AIC), Bayesian Information Criterion (BIC) and Deviance Information Criterion (DIC) combined with visual inspection, the survival parameter values of the optimum fitting distribution were obtained. The AIC, BIC and DIC values of different KM curve fitting distributions are shown in Tables 1 and 2, and the optimum fitting distribution and distribution parameters of different KM curves are shown in Table 3.

### Treatment costs

This analysis adopted a health care perspective in China, only direct medical cost was calculated, which included patient drug costs, drug management costs, disease management costs, adverse events (AEs) costs.

### Drug cost

Drug costs included the cost of sintilimab, pemetrexed, chemotherapy drugs, and subsequent treatments. After disease progression, patients in the control group were crossed over to receive sintilimab monotherapy. ORIENT-11 did not provide detailed instructions on the drug use after progression in the trial group, according to the *third edition of the non-small cell lung cancer guidelines* published by America National Comprehensive Cancer Network(NCCN) in 2021, it was assumed that after disease progression in the experimental group, immune checkpoint inhibitors were no longer used and chemotherapy regimens were adopted, that is, docetaxel was selected for follow-up treatment, and patients who had not progressed after 24 months of maintenance treatment were treated with the best supportive care, see Table 4. The drug costs of treatment were based on the median price of the winning bid product derived from the China Drug Bidding Database (shuju.menet.com.cn)

and published articles [6–8]. To estimate the dosages of pemetrexed in the sintilimab arm and the placebo arm, we assumed that the mean body surface area was 1.74 m<sup>2</sup>.

### Adverse events

AEs with an incidence  $\geq 5\%$  and grade  $\geq 3$  in the ORIENT-11 studies were included in our study, including anemia, decreased white blood cell count, decreased platelet, and decreased neutrophil count. The total incidence of other AEs decreased to below 5% in the experimental group and below 10% in the control group. The incidence of AEs were derived from ORIENT-11. The costs related to AEs were calculated by multiplying the incidence of the serious AEs by the costs of managing the serious AEs per event. In clinical practice, physicians may make a decision to discontinue or change the drug if adverse events  $\geq$  grade 3 occur. Therefore, the model assumed that the treatment of adverse events was a one-time cost. AEs costs were based on the data from previously published studies [6, 10, 11].

### Disease management costs and drug management costs

Drug management costs incurred by patients during treatment include diagnostic fees, intravenous injection fees, nursing fees and bed fees. Disease management costs include contrast-enhanced CT of the chest, blood routine, urine routine, and blood biochemistry. The unit costs of disease management and drug management were from the healthcare documents and expert opinion [6, 8, 9].

### Utility estimates

Utility was applied to measure patient's preference for living at a particular health state, where 0 stood for the worst health and 1 for the best. It reflected the impact of the disease-related health states. We used utilities of 0.815 and 0.321, according to a health utility study in Chinese NSCLC patients by Nafees [12].

**Table 1** AIC and BIC of OS curve and PFS curve in the Sintilimab group and chemotherapy group (mle)

group	exponential		gamma		genf		gengamma	
	AIC	BIC	AIC	BIC	AIC	BIC	AIC	BIC
OS curve(sintilimab-combination group)	496.88	500.46	487.56	494.73	491.22	505.55	489.22	499.97
OS curve(placebo-combination group)	333.26	336.14	328.12	333.87	329.21	340.71	327.21	335.84
PFS curve(sintilimab-combination group)	823.26	826.84	807.58	814.74	809.64	823.97	807.64	818.39
PFS curve(placebo-combination group)	513.02	515.89	489.20	494.95	491.40	502.90	489.40	498.03
group	weibull		weibullPH		loglogistic		lognormal	
	AIC	BIC	AIC	BIC	AIC	BIC	AIC	BIC
OS curve(sintilimab-combination group)	487.83	494.99	487.83	494.99	487.73	494.90	487.30	494.47
OS curve(placebo-combination group)	328.95	334.70	328.95	334.70	327.80	333.55	325.84	331.59
PFS curve(sintilimab-combination group)	808.83	816.00	808.83	816.00	807.72	814.89	805.67	812.84
PFS curve(placebo-combination group)	491.88	497.63	491.88	497.63	488.61	494.36	487.54	493.29

**Table 2** AIC BIC and DIC of OS curve and PFS curve in the Sintilimab group and chemotherapy group (HMC)

group	exponential			gamma			genf			gengamma		
	AIC	BIC	DIC	AIC	BIC	DIC	AIC	BIC	DIC	AIC	BIC	DIC
OS curve(sintilimab-combination group)	498.88	506.05	496.86	489.63	500.38	487.39	493.82	511.74	489.17	492.81	507.14	480.77
OS curve(placebo-combination group)	335.27	341.02	333.32	330.15	338.77	328.25	331.91	346.28	327.53	329.40	340.90	327.08
PFS curve(sintilimab-combination group)	825.26	832.42	823.31	809.58	820.33	807.48	813.72	831.63	809.41	809.66	823.99	807.76
PFS curve(placebo-combination group)	515.02	520.77	512.99	491.22	499.85	489.31	494.54	508.92	490.56	491.43	502.93	489.34
group	weibull			weibullPH			loglogistic			lognormal		
	AIC	BIC	DIC	AIC	BIC	DIC	AIC	BIC	DIC	AIC	BIC	DIC
OS curve(sintilimab-combination group)	489.86	500.61	487.96	489.86	500.61	487.76	489.77	500.52	487.92	489.43	500.18	487.35
OS curve(placebo-combination group)	331.00	339.63	329.10	370.16	378.79	751.00	329.83	338.46	327.99	327.90	336.52	325.86
PFS curve(sintilimab-combination group)	810.84	821.59	808.83	810.83	821.58	808.76	809.74	820.49	807.58	807.72	818.47	805.72
PFS curve(placebo-combination group)	493.89	502.52	491.92	493.90	502.52	491.83	490.62	499.25	489.02	489.60	498.23	487.54

**Table 3** KM curve optimum fitting distribution and parameters

	Optimum fitting distribution	Survival function	Fitting parameters	
			$\mu$	$\sigma$
OS curve(sintilimab-combination group)	lognormal	$S(t) = 1 - \Phi \left[ \frac{(\log t - \mu)}{\sigma} \right]$	3.2277	1.1832
OS curve(placebo-combination group)	lognormal		2.7519	1.1003
PFS curve(sintilimab-combination group)	lognormal		2.2309	1.0708
PFS curve(placebo-combination group)	lognormal		1.6359	0.8141

**Table 4** Basic values and variation ranges of model parameters

Parameter	Baseline value(¥)	Usage and dosage	Range(DSA)	Distribution(PSA)	Reference
Sintilimab	2160/200 mg	200 mg/3 week	5686–1512	log-normal	MENET
Carboplatin	1.12/mg	511.87 mg/3 week	± 30%	log-normal	[6]
Cisplatin	1.35/mg	130.5 mg/3 week	± 30%	log-normal	[7]
Pemetrexed	2142/100 mg	870 mg/3 week	± 30%	log-normal	[6]
Docetaxel	1300/200 mg	104.4 mg/3 week	± 30%	log-normal	[8]
Best supportive care	2336		± 30%	log-normal	[6]
Drug management costs(sintilimab-combination group)	56.25		± 30%	log-normal	[8]
Drug management costs(placebo-combination group)	315.25		± 30%	log-normal	[6]
Disease management costs(sintilimab-combination group)	372.42		± 30%	log-normal	[6]
Disease management costs(placebo-combination group)	401.42		± 30%	log-normal	[6, 9]
Adverse event					
Anemia	1.17	S: 15.0% P: 19.1%			[6]
Decreased neutrophil count	2877.4	S: 36.5% P: 30.5%			[10]
Decreased white blood count	7845	S: 14.7% P: 15.3%			[6]
Decreased platelet	23,086.04	S: 12.0% P: 12.2%			[11]
Cost of managing adverse event(sintilimab-combination group)	4973.97		± 30%		
Cost of managing adverse event(placebo-combination group)	4894.61		± 30%		
Effectiveness					
PF state	0.815		15%	Beta	[12]
PD state	0.321		15%	Beta	[12]
Death state	0				
Discount rate	5%		3%-8%		

## Results

### Base case results

The result of the base-case analysis is presented in Table 5. In the base-case analysis, the average cost-effectiveness ratios (ACER) of patients in the Sintilimab group and placebo group were ¥271,890.23/QALY, ¥305,103.51/QALY, respectively. Patients in the Sintilimab group obtained an additional 0.6 QALYs, but needed to pay an extra ¥132,577.93. The incremental cost-effectiveness ratio was ¥220,963.22 /QALY. According to the guidelines of World Health Organization for cost-effective analysis, the threshold of willingness to pay (WTP) was evaluated at CNY¥242,928/QALY, three times of the Gross

Domestic Product per Capita (GDP) of China in 2021. The ICER values were less than 3 times GDP per capita and the results demonstrate that Sintilimab plus chemotherapy is cost-effective compared with placebo plus chemotherapy.

### Deterministic sensitivity analysis

One-way sensitivity analyses were conducted to test the robustness of the base-case ICER, the results of which were shown as a tornado diagram to identify key factors (Fig. 3). A 30% change range was assumed for the parameters of drug price, medical service cost, and

**Table 5** Summary of the cost and health outcomes results

	Sintilimab plus chemotherapy	Placebo plus chemotherapy
QALYs	1.52	0.92
PF QALYs	1.00	0.47
PP QALYs	0.52	0.45
Total costs	¥413,273.16	¥280,695.23
Drug costs	¥368,860.32	¥200,158.20
Administration costs	¥2753.56	¥13,762.61
Disease management and monitoring costs	¥18,230.80	¥10,808.29
AE costs	¥4973.97	¥4894.61
Subsequent therapy costs	¥18,454.51	¥51,071.52
Average cost-effectiveness ratios (ACER)	¥271,890.23/QALY	¥305,103.51/QALY
Incremental costs	¥132,577.93	
Incremental QALYs	0.60	
ICER	¥220,963.22/QALY	

follow-up cost. A 15% change range was assumed for the parameters of PFS and PD utility. The base-case ICER was most sensitive ( $>15\%$  difference) to changes in the cost of Sintilimab, the cost of Pemetrexed, and utilities of PF state. The ICER was least sensitive to changes in the cost of Cisplatin and Carboplatin ( $\leq 0.1\%$  difference). Under the price of sintilimab before the medical insurance price adjustment in January 2022 (¥5686), the

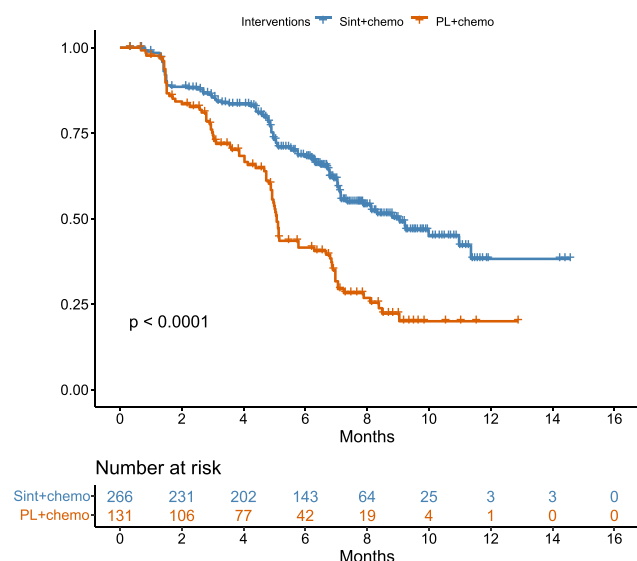
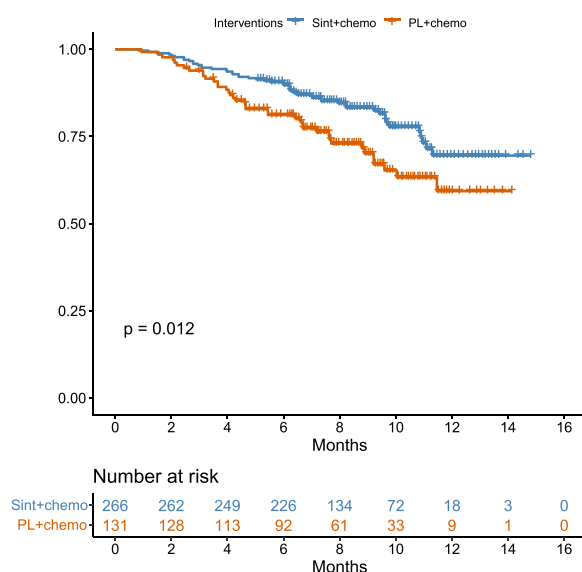
cost-effectiveness analysis results have been economically reversed.

### Probabilistic sensitivity analysis

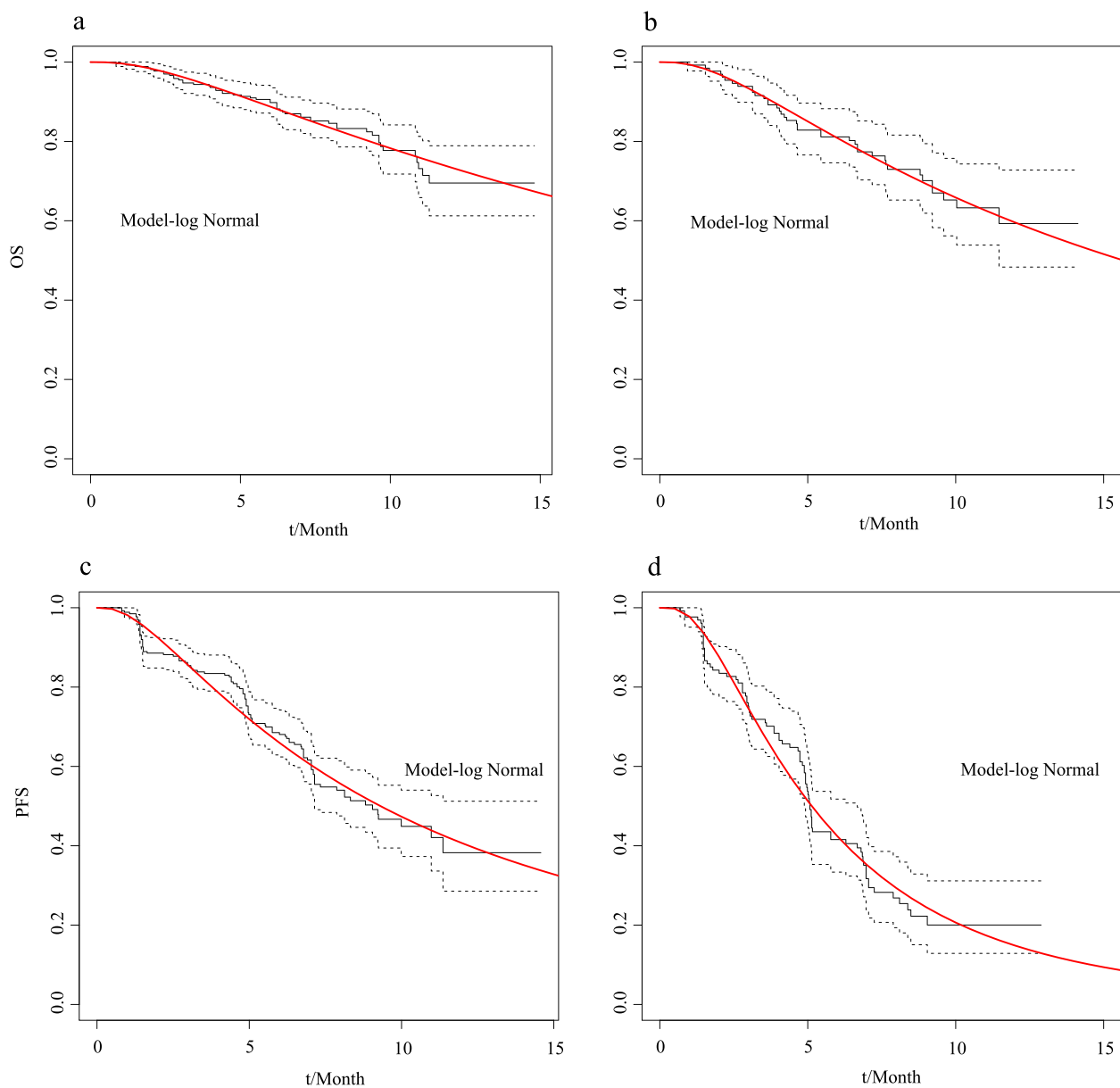
The probabilistic sensitivity analysis was performed to estimate the probability of Sintilimab treatment being cost-effective compared to chemotherapy treatment. 1000 Monte Carlo simulations were conducted by inputting values drawn from their statistical distributions which were showed in Table 4. PSA results were presented using cost-effectiveness acceptability curves and the ICER scatterplot (Figs. 4 and 5) that show the Sintilimab to be cost-effective in 78.6% of the simulations, assuming a willingness-to-pay threshold (WTP) threshold of CNY¥242,928 per unit of QALY.

### Discussion

Sintilimab, as a selective anti-PD-1 antibody, by inhibiting the interaction between PD-1 and its ligand PD-L1, effectively relieve the immunosuppressive effect of the body, and enhance the activity of T cells, thereby greatly enhancing the killing ability and immune surveillance ability of T cells on tumors, and inhibiting the proliferation of tumor cells [13]. Some studies have evaluated the cost-effectiveness of immunotherapy in NSCLC from the perspective of payers in China [8, 14–18]. These published economic evaluations of advanced NSCLC in China mainly compared pembrolizumab or camrelizumab with chemotherapy and almost all studies have shown that immunotherapy is unlikely to

**Fig. 1** Reconstructed OS curve and PFS curve





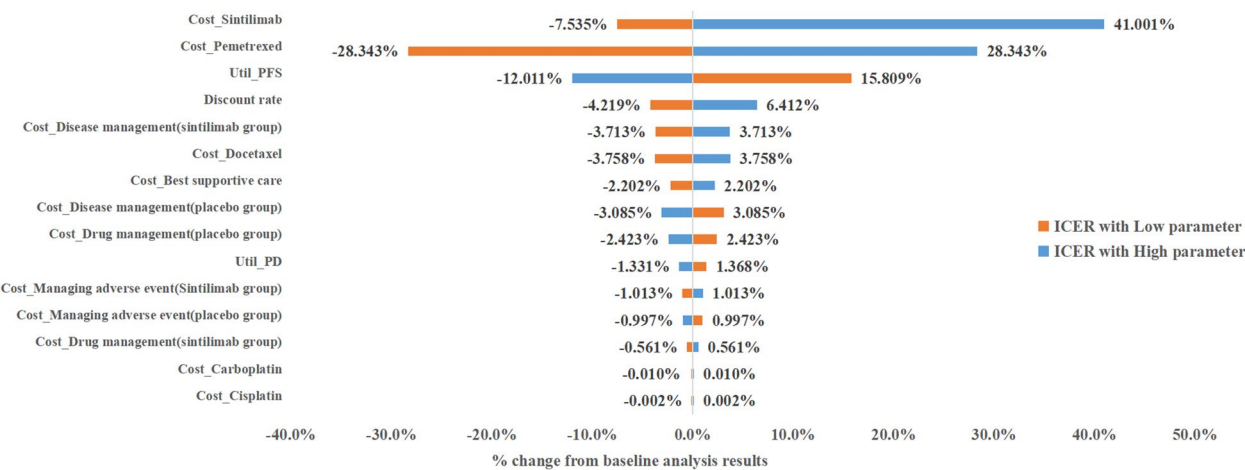
**Fig. 2** OS curve and PFS curve fitting in the experimental group and control group (a, c-experimental group; b, d-control group)

be a cost-effective option compared to chemotherapy alone, although the ICERs reported by these studies vary. Recently, Sintilimab, a domestic PD-1 inhibitors, which has good cost performance, has provided more medication options for Chinese NSCLC patients. In addition, Sintilimab plus pemetrexed and platinum as the first-line treatment for patients with EGFR and ALK mutation-negative advanced or metastatic nonsquamous NSCLC was included in the National Medical Insurance Drug List in the China Medical Insurance Negotiations in December 2021. But there is a lack of economic evidence focused on domestic PD-1

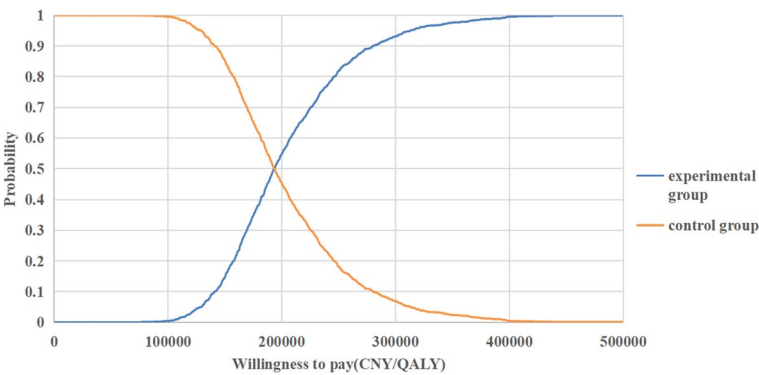
inhibitors like Sintilimab. To the best of our knowledge, this is the first study to compare the cost-effectiveness of sintilimab plus chemotherapy vs chemotherapy for NSCLC.

The results showed that the significant price cuts of Sintilimab reducing the economic burden of patients. With the threshold of 3 times per capita GDP, sintilimab combined with chemotherapy drugs is cost-effective. However, the prices of combination drugs are still high, which also increases the medication cost for patients. The results of the sensitivity analysis indicated that the price of pemetrexed has a great

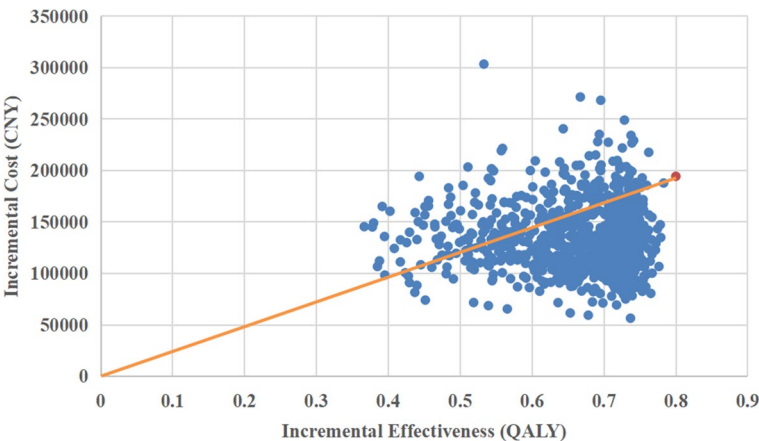




**Fig. 3** Deterministic sensitivity analysis of cost-effectiveness comparison of experimental group and control group



**Fig. 4** Cost-effectiveness acceptability curve



**Fig. 5** ICER scatterplot from probabilistic sensitivity analysis

impact on the ICER, and lowering its price will significantly reduce the ICER value, which suggests that companies should conduct more in-depth exploration of the monotherapy of immunotherapy drugs in the first-line treatment of lung cancer. In addition, in China where the coverage of social medical insurance system exceeds 95%, enter the medical insurance catalogue through price cuts may be an important pathway to gain more market share in the fierce competition, which could reduce the transaction costs for transnational pharmaceutical companies, such as finding transaction partners (hospital, etc.), promoting, establishing contract relationships, and fulfilling contracts. Meanwhile, administrative departments need to further improve the relevant health industry innovation policies such as how to create a free environment for the highly regulated medical and health industry and how to make the basic elements required for innovation have liquidity, to ameliorate the situation that China's innovative drugs and patented drugs rely heavily on imports [19]. And government also should adopt more aggressive health care regulatory policies to avoid wasting health care resources [20]. It is also suggested to accelerate the development of commercial health insurance by promoting Internet usage and increasing financial knowledge, and form a joint force with social medical insurance to meet the diversified health security needs of the masses [21, 22]. Moreover, in the ORIENT-11 trial, allowing patients in the control group to cross over to use sintilimab after disease progression, which have a positive effect on prolonging the patient's life, but also reduce the difference in QALY value between the trail group and the control group. And the economic advantage of sintilimab plus chemotherapy in the first-line treatment may be underestimated.

There are several limitations to this study. First, this study is inherently dependent on the validity and extrapolation of the clinical trial, and any bias in the trial will be reflected in this study. Second, we did not have access to individual patient data from the ORIENT-11 trials, therefore, digitalization of the reported survival curves was used to replicate the survival data. Using the reconstructed survival data, a range of parametric distributions were fitted to the curves to estimate long term PFS and OS. Although several steps were taken to ensure the choice of parametric distribution for extrapolating the data is plausible, it increases the uncertainty of the model output. Third, the costs in the model did not include grade 1/2 adverse events cost, although these adverse effects were relatively minor and had a small impact on cost. Fourth, this

study evaluates the economy of drugs based on the Mathematical Model Method and makes assumptions about drugs usage. However, in the real world, the clinical treatment of patients will be more diversified based on the patient's physical characteristics and disease status. Therefore, it is necessary to further evaluate the cost-effectiveness of sintilimab in the treatment of lung cancer with real-world data.

## Conclusion

After the implementation of the China new medical insurance catalogue in January 2022, sintilimab plus chemotherapy is more cost-effective compared with chemotherapy alone in China as the first-line treatment for locally advanced or metastatic squamous NSCLC patients.

## Acknowledgements

The authors acknowledge support by the Fifth People's Hospital of Chengdu City.

## Authors' contributions

Qi H developed the idea for this paper, Huiqin L led the development of this health economic analysis and initiated the manuscript draft. Ying W gave important and significant methodological and technical input. All authors contributed to the study design and methodology, interpretation of the results and development and writing of the draft manuscript and approved the final version. The author(s) read and approved the final manuscript.

## Funding

Not applicable.

## Availability of data and materials

The data that support the findings of this study are available from the corresponding author upon reasonable request.

## Declarations

## Ethics approval and consent to participate

This economic analysis was based on a literature review and modeling techniques; this study did not require approval from an institutional research ethics board.

## Consent for publication

Not applicable.

## Competing interests

The authors declare that they have no competing interests.

Received: 4 July 2022 Accepted: 30 November 2022

Published online: 30 December 2022

## References

1. Liu Z, Li Z, et al. Interpretation on the report of Global Cancer Statistics 2020 [J]. *Journal of Multidisciplinary Cancer Management*. 2021;7(02):1–14.
2. The National Health Commission. China Health Statistics Yearbook [M]. Beijing: Beijing Union Medical College Press; 2021:146.
3. Yang Y, Wang Z, Fang J, Yu Q, Han B, Cang S, Chen G, Mei X, Yang Z, Ma R, Bi M. Efficacy and safety of sintilimab plus pemetrexed and platinum as first-line treatment for locally advanced or metastatic nonsquamous

- NSCLC: a randomized, double-blind, phase 3 study (Oncology pRogram by InnovENT anti-PD-1-11). *J Thoracic Oncol.* 2020;15(10):1636–46.
4. LIU Xinyi, TAN Chongqing, ZENG Xiaohuib, PENG Liubao, WAN Xiaomin. Introduction of Partitioned Survival Model in Pharmacoeconomics Evaluation and Case Analysis[J]. *Chin J Mod Appl Pharm*, 2019;36(24):3090–3093. DOI: <https://doi.org/10.13748/j.cnki.issn1007-7693.2019.24.018>.
  5. Fenghao S, Ye S, Mingjun R, Aixia Ma. Application of survHE package of R in health economics evaluation [J]. *China HealthEcon.* 2020;39(09):9–14.
  6. Xu H, Ma AX. Cost-effectiveness analysis of pembrolizumab versus chemotherapy as first-line treatment in non-small cell lung cancer with different PD-L1 expression levels based on partitioned survival model[J]. *Chin J Hosp Pharm.* 2020;40(23):2468–73.
  7. CHEN Hao, CHEN Hao, CHENG Ying. Cost-effectiveness of lobaplatin-etoposide versus cisplatin-etoposide as the first-line therapy for patients with extensive stage small cell lung cancer in China[J]. *Chinese Clinical Oncology*, 2019;24(10):908–913.
  8. Xu H, Ma AX. Cost-effectiveness analysis of pembrolizumab versus chemotherapy as first-line treatment in non-small cell lung cancer in China based on Markov model[J]. *Chin J Mod Appl Pharm.* 2021;38(4):473–9.
  9. Chinese Association for Clinical Oncologists; Medical Oncology Branch of Chinese International Exchange And Promotion Association for Medical And Healthcare. Clinical Practice Guideline for Stage IV Primary Lung Cancer in China (2021 Version)[J]. *Chin J Oncol*, 2021, 43(1): 39–59.
  10. Shi FH, Meng R, Wang ZJ, et al. Cost-effectiveness analysis of applying camrelizumab as second-line therapy for the treatment of advanced hepatocellular carcinoma[J]. *Chin Heal Econ.* 2021;40(2):62–5.
  11. Wu B, Ye M, Chen H, et al. Costs of trastuzumab in combination with chemotherapy for HER2-positive advanced gastric or gastroesophageal junction cancer: An economic evaluation in the Chinese context[J]. *Clin Ther.* 2012;34(2):468–79.
  12. Nafees B, Lloyd AJ, Dewilde S, et al. Health state utilities in non-small cell lung cancer: an international study[J]. *Asia Pac J Clin Oncol.* 2017;13(5):e195–203.
  13. Wang J, Fei K, Jing H, et al. Durable blockade of PD-1 signaling links preclinical efficacy of sintilimab to its clinical benefit. *mAbs.* 2019;11:1443–51.
  14. Xinyi L, Wen C. Pharmacoeconomic evaluation of osimertinib in the first-line treatment of locally advanced or metastatic NSCLC with an EGFR mutation[J]. *World Clinical Drugs.* 2021;42(02):135–42. <https://doi.org/10.13683/j.wph.2021.02.010>.
  15. Cai Yuanyi, Hui Wen, Gao Zhixiang, Zhu Min, Wu Huazhang. Cost-effectiveness of Camrelizumab Plus Carboplatin and Pemetrexed in the First-line Treatment of Patients with Advanced Non-squamous Non-small-cell Lung Cancer[J]. *Chin J Mod Appl Pharm*, 2021;38(23):3015–3020. DOI: <https://doi.org/10.13748/j.cnki.issn1007-7693.2021.23.016>.
  16. Zhou Kexun, Jiang Chenlu, Li Qiu. Cost-effectiveness analysis of pembrolizumab monotherapy and chemotherapy in the non-small-cell lung cancer with different PD-L1 tumor proportion scores.[J]. *Lung cancer (Amsterdam, Netherlands)*, 2019, 136:.
  17. Liao W, Huang J, Hutton D, Li Q. Cost-effectiveness analysis of first-line pembrolizumab treatment for PD-L1 positive, non-small cell lung cancer in China. *J Med Econ.* 2019;22:344–9.
  18. Jiang Y, Wang XW. Cost-Effectiveness Analysis of Pembrolizumab Plus Standard Chemotherapy Versus Chemotherapy Alone for First-Line Treatment of Metastatic Non-Squamous Non-Small-Cell Lung Cancer in China. *Eur J Hosp Pharm* (2020) 0:1–6. doi: <https://doi.org/10.1136/ejphpharm-2020-002208>
  19. YUAN Xuedan, WANG Xi, MAO Zongfu, MAO Zhenhua. Research on the linkage between national health and economic growth under the healthy China strategy: from the perspective of human capital, technology, and industry[J]. *East China Economic Management*, 2022;05:89–95.
  20. Su CW, Huang SW, Tao R, Haris M. Does economic overheating provide positive feedback on population health? evidence from BRICS and ASEAN Countries[J]. *Front Public Health.* 2021;9: 661279. <https://doi.org/10.3389/fpubh.2021.661279>.
  21. Dragos SL, Dragos CM, Muresan GM. From intention to decision in purchasing life insurance and private pensions: different effects of knowledge and behavioural factors[J]. *Behav Exp Econ.* 2020;87: 101555. <https://doi.org/10.1016/j.socrec.2020.101555>.
  22. Xu BC, Xu XN, Zhao JC, Zhang M. Influence of internet use on commercial health insurance of Chinese residents[J]. *Front Public Health.* 2022;10: 907124. <https://doi.org/10.3389/fpubh.2022.907124>.

## Publisher's Note

Springer Nature remains neutral with regard to jurisdictional claims in published maps and institutional affiliations.

**Ready to submit your research? Choose BMC and benefit from:**

- fast, convenient online submission
- thorough peer review by experienced researchers in your field
- rapid publication on acceptance
- support for research data, including large and complex data types
- gold Open Access which fosters wider collaboration and increased citations
- maximum visibility for your research: over 100M website views per year

**At BMC, research is always in progress.**

Learn more [biomedcentral.com/submissions](https://biomedcentral.com/submissions)

