

Braun, Alexander; Kurzmann, Paulina; Höfler, Margit; Haber, Gottfried; Auer, Stefanie

## Article

Cost of care for persons with dementia: Using a discrete-time Markov chain approach with administrative and clinical data from the dementia service Centres in Austria

Health Economics Review

## Provided in Cooperation with:

Springer Nature

*Suggested Citation:* Braun, Alexander; Kurzmann, Paulina; Höfler, Margit; Haber, Gottfried; Auer, Stefanie (2020) : Cost of care for persons with dementia: Using a discrete-time Markov chain approach with administrative and clinical data from the dementia service Centres in Austria, Health Economics Review, ISSN 2191-1991, Springer, Heidelberg, Vol. 10, Iss. 29, pp. 1-9,  
<https://doi.org/10.1186/s13561-020-00285-w>

This Version is available at:

<https://hdl.handle.net/10419/285178>

### Standard-Nutzungsbedingungen:

Die Dokumente auf EconStor dürfen zu eigenen wissenschaftlichen Zwecken und zum Privatgebrauch gespeichert und kopiert werden.

Sie dürfen die Dokumente nicht für öffentliche oder kommerzielle Zwecke vervielfältigen, öffentlich ausstellen, öffentlich zugänglich machen, vertreiben oder anderweitig nutzen.

Sofern die Verfasser die Dokumente unter Open-Content-Lizenzen (insbesondere CC-Lizenzen) zur Verfügung gestellt haben sollten, gelten abweichend von diesen Nutzungsbedingungen die in der dort genannten Lizenz gewährten Nutzungsrechte.

### Terms of use:

*Documents in EconStor may be saved and copied for your personal and scholarly purposes.*

*You are not to copy documents for public or commercial purposes, to exhibit the documents publicly, to make them publicly available on the internet, or to distribute or otherwise use the documents in public.*

*If the documents have been made available under an Open Content Licence (especially Creative Commons Licences), you may exercise further usage rights as specified in the indicated licence.*



<https://creativecommons.org/licenses/by/4.0/>

RESEARCH

Open Access



# Cost of care for persons with dementia: using a discrete-time Markov chain approach with administrative and clinical data from the dementia service Centres in Austria

Alexander Braun<sup>1,2\*</sup> , Paulina Kurzmann<sup>3</sup>, Margit Höfler<sup>3</sup> , Gottfried Haber<sup>2,4</sup> and Stefanie Auer<sup>3</sup> 

## Abstract

**Background:** There is growing evidence that the cost for dementia care will increase rapidly in the coming years. Therefore, the objective of this paper was to determine the economic impact of treating clients with dementia in outpatient Dementia Service Centres (DSCs) and simulate the cost progression with real clinical and cost data.

**Methods:** To estimate the cost for dementia care, real administrative and clinical data from 1341 clients of the DSCs were used to approximate the total cost of non-pharmaceutical treatment and simulate the cost progression with a discrete-time Markov chain (DTMC) model. The economic simulation model takes severity and progression of dementia into account to display the cost development over a period of up to ten years.

**Results:** Based on the administrative data, the total cost for treating these 1341 clients of the DSCs came to 67,294, 910 EUR in the first year. From these costs, 74% occurred as indirect costs. Within a five-year period, these costs will increase by 7.1-fold (16.2-fold over 10 years). Further, the DTMC shows that the greatest share of the cost increase derives from the sharp increase of people with severe dementia and that the cost of severe dementia prevails the cost in later periods.

**Conclusion:** The DTMC model has shown that the cost increase of dementia care is mostly driven by the indirect cost and the increase of severity of dementia within any given year. The DTMC reveals also that the cost for mild dementia will decrease steadily over the time period of the simulation, whereas the cost for severe dementia increases sharply after running the simulation for 3 years.

**Keywords:** Cost and cost analysis, Dementia, Discrete-time Markov chain, Administrative data, Cost simulation

**JEL Classification:** H42, I11, I18, J14.

\* Correspondence: [alexander.braun@fh-krems.ac.at](mailto:alexander.braun@fh-krems.ac.at)

<sup>1</sup>Institute for Health Care Management, University of Applied Sciences Krems, Piaristengasse 1, AT-3500 Krems, Austria

<sup>2</sup>Department for Economy and Health, Danube University Krems, Dr.-Karl-Dorrek-Straße 30, AT-3500 Krems, Austria

Full list of author information is available at the end of the article



© The Author(s). 2020 **Open Access** This article is licensed under a Creative Commons Attribution 4.0 International License, which permits use, sharing, adaptation, distribution and reproduction in any medium or format, as long as you give appropriate credit to the original author(s) and the source, provide a link to the Creative Commons licence, and indicate if changes were made. The images or other third party material in this article are included in the article's Creative Commons licence, unless indicated otherwise in a credit line to the material. If material is not included in the article's Creative Commons licence and your intended use is not permitted by statutory regulation or exceeds the permitted use, you will need to obtain permission directly from the copyright holder. To view a copy of this licence, visit <http://creativecommons.org/licenses/by/4.0/>. The Creative Commons Public Domain Dedication waiver (<http://creativecommons.org/publicdomain/zero/1.0/>) applies to the data made available in this article, unless otherwise stated in a credit line to the data.

## Introduction

In Austria, 145,431 persons are currently living with dementia [1]. Following the trend of demographic change, the number of affected persons will double every twenty years [2]. The costs of illness for dementia in Austria were estimated in the year 2009 at 2.9bn EUR [3, 4]. There is overwhelming evidence that in ageing societies the cost for dementia care will increase rapidly [4–8]. However, especially in German speaking countries, little information about stage-specific cost of care is currently available. Even less information on the cost of community care settings is available and none of the studies take into account the fact of the progressive nature of dementia [9, 10].

A recent study by Schwarzkopf et al. estimates the cost for dementia care by using administrative data from the German statutory insurance, coming to the result that the average annual cost for care for a person with dementia is approximately 47,561 EUR, of which more than 80% are informal costs from care provided by relatives [11]. Also, Schulenburg et al. showed that the cost of Alzheimer's dementia are varying significantly between mild and severe dementia [12]. These findings highlight that the stage of dementia is one of the main cost drivers [10, 13]. Overall, it seems to be clear that especially the increase of assistive services due to the severity of dementia is a leading cause of increasing cost [13–16]. Schaller et al. state that the care setting and the cost perspective combined with the progressive nature of dementia are relevant drivers for the cost of care, while Jones et al. showed that the developing functional limitations due to dementia result in the societal cost increase per dementia patient of more than 800 EUR per month [13, 15]. Scuvee-Moreau et al. argue that the cost of dementia care does not increase in a linear manner from stages of mild to severe dementia but they describe a parabolic relationship [17]. This means that the cost of treating persons with mild and severe dementia are higher than for persons in the moderate stage of dementia. In order to optimally plan the provision of stage-appropriate services, it is crucial to estimate the cost of care over the entire spectrum of dementia severity. Concluding from these findings, we can foresee that healthcare system cost will increase enormously over the coming decades, especially since no cure for dementia is to be expected in the near future. By stressing the three cost drivers—severity level, cost of informal care, and progression of dementia—the cost of ambulant dementia care could be estimated in order to provide a good basis for care provision planning [18]. Furthermore, the progressive nature of dementia has to be taken into consideration to estimate the prospective total cost of care [9, 15, 19–21].

As the methodological literature recommends, economic evaluations of dementia care should take the cognitive function as a crucial part for the cost approximation into account. Also, the variability of cost in different severity levels should be considered in economic evaluations. Markov-based instruments are highly indicated because they combine both aspects. Hence, the most studies were retrospective studies, that raise the cost by a cross-section. Markov-based models could prospect the cost by using longitudinal data [9, 20, 22, 23].

In this study, we estimate the time a patient remains or deteriorates in their disease severity level over a discrete period of 1 year. The best approximation to cope with this problem seems to be the model of discrete time series with a discrete-time Markov chain (DTMC) [15, 19, 21, 24–26]. For a health economic analysis, the combination of clinical assessment and administrative cost data from the DSCs brings new insights. Our analysis focuses on the following issues: (1) raising the stage specific cost of care in a sample of home dwelling persons living with dementia, (2) the progression of dementia as observed under the influence of longitudinal treatment with non-pharmacological methods, and (3) using the clinical progression as basis for a Markov-based simulation framework to simulate the cost development of DSC services in Austria.

## Methods

### Study sample selection and database

Data were collected within the model of the DSC in Upper Austria, a federal state in Austria with approximately 1.5 million inhabitants and having Linz as the capital city. A DSC is defined as a multicomponent, low threshold, 'one-stop shop' psychosocial support model, addressing the needs of persons with dementia and their family carers and support providers [27]. The main goals of the DSC care model are early detection of dementia, delaying the institutionalization of persons with dementia and reducing the burden of support providers, by providing psychological screening for symptoms of dementia and dementia severity. Persons are assessed at baseline and every year thereafter. For the clinical assessment, the internationally used Global Deterioration Scale (GDS) is utilized [28]. The GDS is a 7-point scale with satisfactory validity ( $r = .86$ ) and reliability ( $r = .92$ ). Within the GDS, each stage is numbered (1–7), so that stages 1–2 represent pre-dementia and stages 3–7 full-blown dementia.

### Description of data

Data from the longitudinal DSC database (DEMDATA) were used. The data are stored in a secure open source technology database. Cognitive test data and medical data are entered by clinical psychologists performing the

tests. As persons move into a resident home or die, the follow-up from the DSC ends.

In total, baseline data on 4817 clients (3174 females) were available for analysis. At baseline, the average age of the clients was 77.9 years ( $SD = 9.7$ ). Most of the participants (48.9%,  $n = 2354$ ) had completed compulsory school or an apprenticeship (28.3%,  $n = 1361$ ). A further 11.2% ( $n = 539$ ) had no compulsory education, while 5.7% ( $n = 274$ ) had completed some tertiary education. For 6.0% ( $n = 289$ ) of the clients, no information on their educational level was available. The average score of all the clients on the GDS was 4.1 ( $SD = 1.2$ ). At the time of baseline testing, most of the clients (60.9%,  $n = 2931$ ) were not receiving any long-term care benefit, while only 8.5% ( $n = 407$ ) reported to be receiving care benefit. From the remaining 30.7% ( $n = 1479$ ) of clients, no information about care level was available. As not all persons were assessed using the GDS in a follow-up measurement in a year, the sample size for running the simulation is 1341 (Fig. 1). For descriptive statistics and special inferences, we used the statistical program SPSS (IBM, version 25). The statistical simulation was done with the ‘markovchain’-package from the open source statistics program R (Vienna: version: 3.5.1).

**Cost assessment**

**Direct cost**

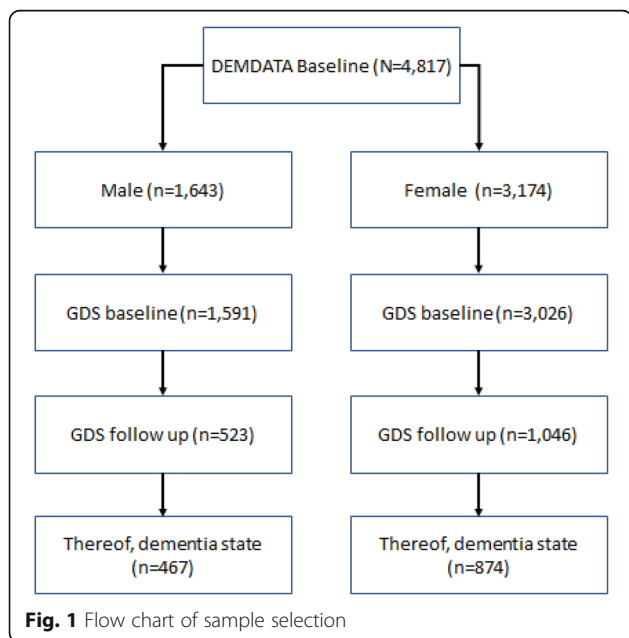
As direct costs of treatment, we identified two main cost sources: (1) the treatment costs that are incurred from the DSC itself, and (2) the costs that are reallocated by statutory long-term care benefit (*Bundespflegegeld*) from the government. Hence, the cost for diseases without an effective pharmacological treatment is mostly deriving from

time of (self) care, as methodological costing frame, the patient time cost approach is applied [29, 30]. The direct average treatment costs that were raised by the accounting reporting system from the DSC were 3533.74 EUR per client in 2018, irrespective of the level of dementia severity. In Austria, the long-term care benefit is a non-means-tested service and is based on the hours of care needed—formal, social, and informal—for the patients and should cover parts of the informal costs. Basic to this assessment is the time needed for carers, with the minimum time requirement being strictly defined by a seven-stage scheme. When the caring needs exceed 180 h per month and exceptional tasks are needed, a higher level of the allowance scheme is applied. Due to the ascertained care need, the nursing care allowance distributes their benefits in an upwelling payment scheme. Using this scheme as the costing basis, we had a chance to determine the hours that were needed for taking care of a person with dementia and could infer the direct cost that the Austrian government allocates for people with dementia.

The empirical results show a weak correlation between the stage of GDS and the level of long-term care benefit (Spearman’s rho: .207;  $p$ -value:  $< .05$ ), and we are thus using this correlation as basic. Hence, we operationalized the model as follows: clients at GDS stage 3 or 4 received an average of 564.70 EUR per month, clients at GDS 5 got 920.30 EUR, and those at GDS 6–7 got 1487.50 EUR per month (long-term care benefit scheme in the payment year 2018).

**Indirect cost**

Calculating indirect cost is quite a struggle for older patients [31–34]. The indirect costs are defined as those that came up with the care by decreasing productivity (either clients or relatives). As most clients are retired, the indirect costs are mostly derived for informal care costs. Two different methodological approaches are known for raising this kind of indirect cost: the human-capital approach and the friction cost method [35]. As far as Austria is concerned, care for patients with dementia is mostly done by relatives of around the same age, and a strong rationale exists for raising the cost of informal care by the human-capital-approach [32, 36]. But as the long-term care benefit covers a part of all costs for long-term care—even the informal care—we avoid double costing in that manner and subtract the direct costs of the long-term care benefit from the higher estimated cost for informal care and take the difference as indirect cost. Nevertheless, the problem of the opportunity cost in dementia care is that older people are not active in the labor market anymore and have therefore no real income loss. The economic methodology favors the opportunity costs method, which arise due to an income loss of the caregiver because of caring tasks and take the loss of free time due to caregiving as its



**Fig. 1** Flow chart of sample selection

economic base [29, 30, 33]. In this respect, the opportunity costs were calculated as the hours of care multiplied by the average gross market wage.

Another approach would be to take the replacement cost for a professional caregiver into account [6, 32, 34, 37]. The methodology of replacement costs argues moreover that the average labor costs could underestimate the real cost and the valuation of working hours should be undertaken by the price of professional caregiving and would therefore be much higher than the opportunity cost valuation.

Considering these assumptions, we calculated the indirect cost as the labor cost, including the income added-cost where the employer’s taxes, and other costs such as vacation days (25 days), public holidays (11.2 days), average sickness leave (6.3 days), and social security contributions of the employer (22.51% of the gross income) are added onto the gross income. These cost adaptations are based on the income statistics from 2017 [38]. Thus, the official statistics could be used by taking a closer look at the mean gross income, which has to be adapted to the employers on-cost (opportunity-cost-valuation: 23.77 EUR/h) [38]. To compare this cost approximation with the replacement cost, we also calculated the costs for professional caregiving in Upper Austria. As the supply of outpatient dementia care in Upper Austria is based on few providers, it makes sense to calculate the replacement costs by using collective bargaining agreements from the largest suppliers of ambulant dementia care and labor unions in Upper Austria as basic (Caritas, Diakonie, Red Cross, charity and private suppliers). Since there is quite a high penetration of collective agreements for nurses in Austria, the calculation could also be done with the average income of a registered nurse as basic (replacement-costs-valuation: 32.29 EUR/h). Hence, we are using the hours given by the long-term care benefit scheme as the basis for needed hours of care. To cope with the difference of valuing the hourly wages with replacement or opportunity cost, we undertake a one-way-sensitivity-analysis.

Thus, we calculate these indirect costs on the basis of the level of the detected long-term care benefit and multiply the needed hours for care by 140 h per month for mild dementia and 180 h per months for moderate

dementia. As the long-term care benefit scheme defines higher levels of care needs specific to extraordinary tasks, we used as the calculation basis 180 h per month where formal care of a registered nurse is obligated for severe dementia and used therefore the replacement-cost-valuation as basic. As the fundament for the simulation model in mild and moderate forms we used the opportunity-cost-valuation. This means that we used the higher hourly labor cost only as basic to estimate the indirect cost for patients with severe dementia.

As can be seen in Table 1, the total cost differs between 33,157.20 EUR per year for mild dementia, 40,299,60 EUR per year for moderate dementia, and 51,896.40 EUR per year for severe dementia. To discount future preferences, we used a discount rate of 5% [39].

**Markov chain**

To assess the decline of cognitive functions due to dementia, we have taken into consideration that the level of dementia is getting worse over time. Therefore, a DTMC will be coping with that special issue of this disease. In this respect, the DTMC is defined as:

$$\Pr(X_{n+1} = x_{n+1} | X_1 = x_1, X_2 = x_2, \dots, X_n = x_n) = \Pr(X_{n+1} = x_{n+1} | X_n = x_n) \tag{1}$$

The Markov process is working with transitions from a property state  $X_n$  and examines how this state will change in a time period ( $X_{n+1}$ ), whereas, a set of states  $S = (s_1, s_2, \dots, s_3)$  are defined by the GDS classification and show how the dementia severity is progressing within a given year. We operationalize this as follows: mild dementia: GDS 3–4, moderate dementia: GDS 5, and severe dementia: GDS 6–7. By using the empirical data from the dataset of the DSC, we calculate the transition probabilities  $p_{ij}$  to move from state  $s_i$  to state  $s_j$  in one step is named transition probability. This transition probability is calculated within the different severity level:

$$p_{ij} = \Pr(X_1 = s_j | X_0 = s_i) \tag{2}$$

The margin of the transition probabilities was estimated with the maximum likelihood method and was conducted with the assessments of the patients at their first visit and a follow-up measurement after a year. The

**Table 1** Cost Basics

Type of cost	Mild	Moderate	Severe
(1). Treatment cost <sup>a</sup>	3533.74 EUR	3533.74 EUR	3533.74 EUR
(2). Long-term care benefit ( <i>Bundespflegegeld</i> ) <sup>b</sup>	6776.40 EUR	11,043.60 EUR	17,850.00 EUR
(3). Informal Care Costs <sup>c</sup>	39,933.60 EUR	51,343.20 EUR	69,746.40 EUR
(4). Indirect Costs (3)–(2)	33,157.20 EUR	40,299.40 EUR	51,896.40 EUR

Sources: own calculations based on <sup>a</sup>administrative data from the DSC, <sup>b</sup>the long-term benefit scheme (*Bundespflegegeld*) <sup>c</sup>income statistics from the statistic board Austria (Statistik Austria), long-term benefit scheme (*Bundespflegegeld*) and collective bargaining agreements for professional caregivers

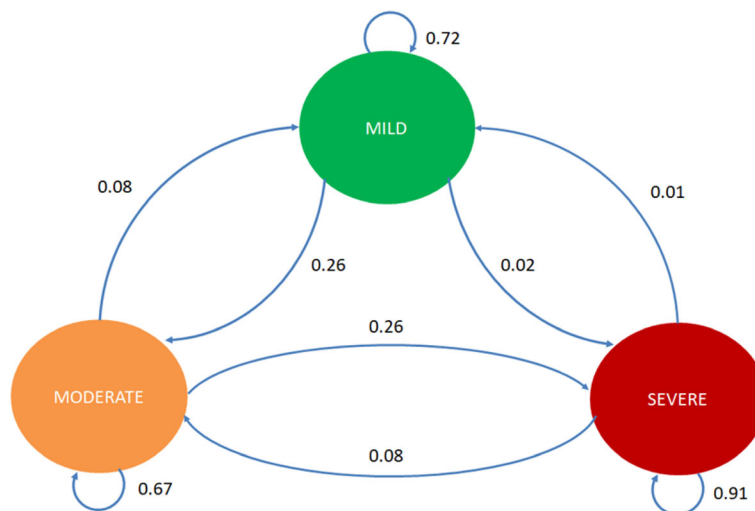


Fig. 2 Markov Chain Model

Markov property states are defined as the distribution of the forthcoming level of dementia (t + 1) in relation to the current state  $X_n$ . Figure 2 shows the following transitions within these three states. Hence, by using micro-data, we could estimate the DTMC model with the lower and upper endpoint from the 95%-confidence interval (95%-CI) via maximum-likelihood (Table 2 in Appendix).

For running the DTMC simulation, we used the cohorts of the DSC: 784 clients with mild dementia, 413 clients with moderate dementia, and 144 clients with severe dementia. Overall, we ran 10 iterations, which show how many people stay and move over a period of ten years in each level of severity. Our computation shows that there is no absorbing and steady state within our transition matrix. How the patients progress over this period is shown in Fig. 3.

**Results**

The costing simulation shows that in the first years the costs are mostly derived from a mild stage of dementia. As we see in Fig. 4, nearly 50% of the total costs per year are costs for treating mild forms of dementia.

Over time, this proportion is constantly decreasing and the moderate and severe dementia cases are taking over. After 3 years, the cost of severe dementia treatment is increasing sharply and is going to take one-fourth of all costs. Nevertheless, we also see that the costs for the moderate level are stagnating around 30.0 to 38.9% of the total cost. In total, it is clear that the costs are increasing steadily from 67,294,910 EUR per year in period one up to 139,324,193 EUR per year in a ten-year period (Fig. 5). There is evidence that the cost proportion of severe dementia to the total cost increases from 15.7% at the beginning to 35.8% after 5 years and

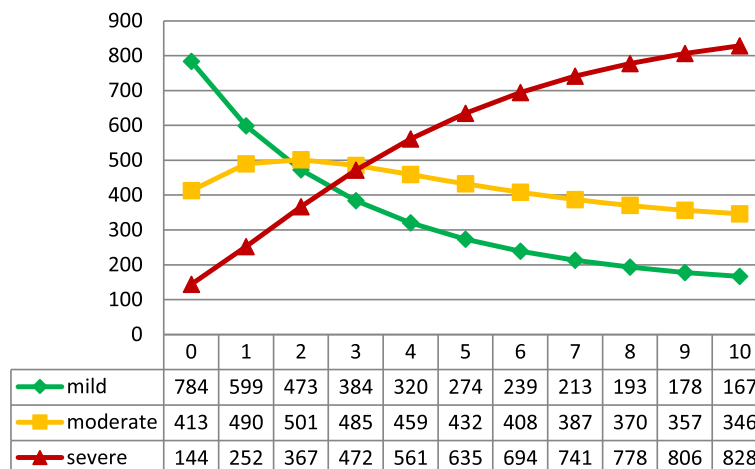
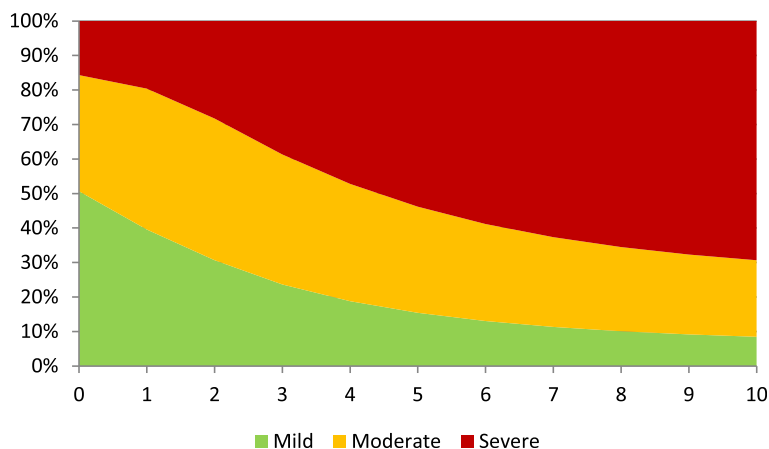


Fig. 3 Patient transitions over time in severity levels



**Fig. 4** Percentage of cost share over years in GDS level

goes up to 52.5% after 10 years, while the proportion of mild dementia declines from 50.6% to 18.0% within the same time period. Another alarming result of our simulation is that the summarized cost for dementia care will increase by 7.1-fold within just 5 years and will climb to a 16.2-fold increase after 10 years.

**Sensitivity analysis**

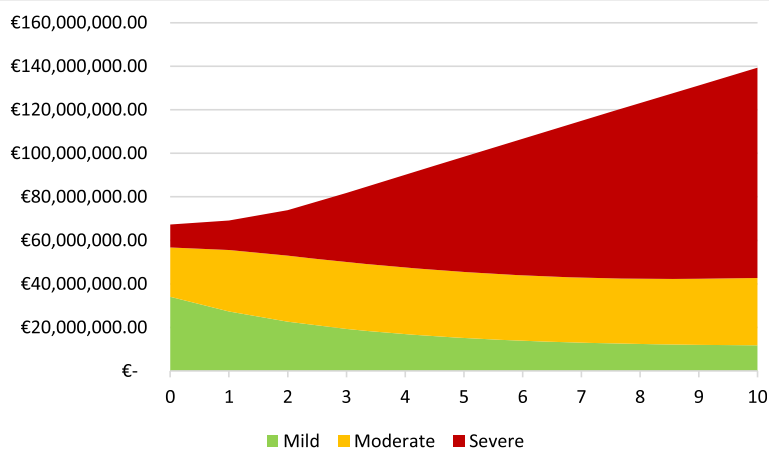
After the discussion as to which costing method should be applied for raising the indirect cost for dementia care patients, we undertook a one-way sensitivity-analysis to cope with the uncertainty of the costing issues. As a basis, we vary the direct and indirect cost by ±50%. All variations are shown in a tornado diagram (Fig. 6).

As mentioned before, most of the uncertainty and variance are based on the indirect cost. This could be easily explained by the high share of indirect cost on the total costs. A highlighted result of the sensitivity-analysis is that the variation of the long-term care benefit by ± 50% has more effect than the treatment cost of the DSC.

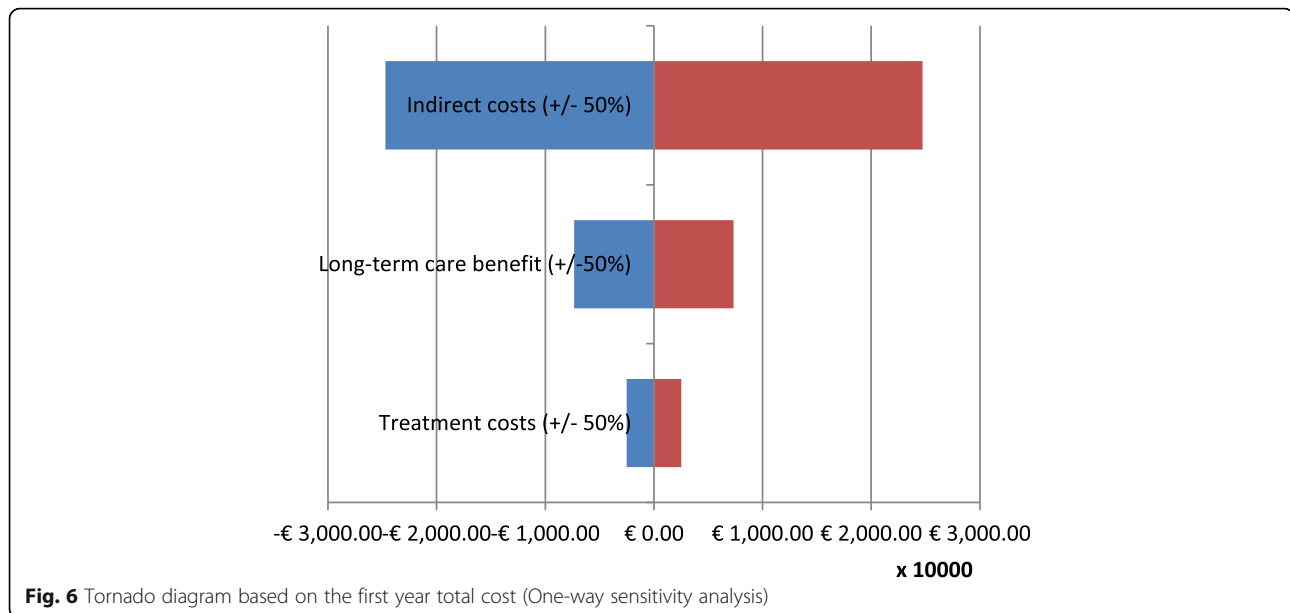
**Discussion**

The rationale of this study was to calculate the cost of outpatient dementia care over the severity level. As the research aims also stated, we wanted to estimate the cost progression in parallel with the transition of the severity levels of dementia. We could show that the cost increases rapidly just by the normal progression of dementia and beyond this informal care is the main cost driver within the cost share.

The results of our economic simulation are quite similar to those of other studies [6, 8, 10, 11, 22, 40]. Overall, we came to the same result on the issue of how the disease severity affects the cost of treatment. In agreement with other studies, we also had a proportion of direct cost of around 25%. We also found that the cost of treating severe dementia is nearly twice as high as the cost of treatment for a mild form [6]. It is also evident that the cost variation is mostly influenced by the time that is needed for informal care, and the direct cost tends to be a quite small fragment of the total cost for dementia care



**Fig. 5** Total cost development in mio. EUR within year



**Fig. 6** Tornado diagram based on the first year total cost (One-way sensitivity analysis)

[6, 10, 11, 40]. In addition, our study showed that the progression in terms of the severity has a big impact on the cost. Similar to Neumann et al. and Spackman et al., the Markov chain simulation brought good insights into the question of the prospect cost distribution [21, 25]. As we have shown, this increase is mostly driven by the fast worsening of the dementia. Moreover, our findings also suggest that there is a slight movement from mild to moderate dementia and vice versa, but we did not find large possibilities to improve cost performance when the GDS indicates a severe level.

### Conclusion

Just taking the result of the progression of dementia into account, it is quite alarming for policy makers, because the current simulation leads to the assumption that the cost for dementia care will increase quite rapidly once dementia is initially diagnosed. We also want to remind the reader that this cost simulation is limited to outpatient treatment and could not make any assumptions on the issue of resident care patients, nor could we argue whether the care of DSC would save money for the society because their special care could retard the progression of dementia. Hence, further research is planned. With the proportion from informal to direct cost of our study showing 82.8%, our result is quite similar to the results of Schaller et al. [13]. This could be explained by the issue that our study did not involve costs from hospital stay and non-medical care. In this respect, we face quite high differences in direct cost to other studies. Nonetheless, it is obvious that the high share of informal costs will be an economic burden for families and other care persons [13].

### Strengths and limitations

One strength of this study is the large number of participants that were assessed twice using the GDS, so that we could calculate the transition probabilities with relative reliability. But we also have concerns about the generalizability of our results because of two reasons: (1) The DSCs are organized as healthcare centers, which are free of charge for the patients. Due to this aim, we could not infer how strong the external validity of our study sample is. Hence, we did not infer the external costs like hospitalization, emergency visit or drug use. (2) Any randomization or control group was prohibited due to ethical and political issues and merging our data with data from statutory health insurances was not possible. Nonetheless, the treatment in the DSC is focused on the social support of clients and their relatives, a patient time cost approach could overcome these limitations by using patient time costs as a basis. Nonetheless, we can confidently stress that the description of our study sample has a high similarity with other comparable study settings, which suggests a fair external validity [11, 12, 21, 23, 25]. From the costing side, we had to deal with a high variation, especially for the labor cost, and as Schaller et al. and Deb et al. stated, there is yet no homogeneous methodology established [13, 41]. We tried to overcome this issue by moderating the cost valuation in the model and using a sensitivity analysis to cope with this uncertainty. In this respect our study reveals also the problem of deciding whether gross or net-cost should be taken into consideration. Hence, our perspective was focused on the cost from a society perspective, so we decided to take direct associated gross cost with the DSC into consideration. In Austria, as well as in



## Appendix

**Table 2** Transition probabilities for the DTMC model

	Mild (t + 1)	Moderate (t + 1)	Severe (t + 1)
Mild	72.2% [67.2–77.2%]	26.0% [23.0–29.0%]	1.8% [1.0–3.0%]
Moderate	7.5% [5.3–9.7%]	66.6% [60.0–73.2%]	25.9% [21.8–30.0%]
Severe	1.4% [0.0–3.0%]	7.7% [3.9–11.4%]	90.9% [77.9–100.0%]

values in parentheses are the lower and upper endpoint of the estimated 95%-CI

other federally oriented care systems, we are facing a fragmentation of dementia care over the federal policy system and, therefore, a solid database is missing. Nevertheless, subsequent research should try to consider this issue. We also stress that a combination of this prevalence-based model with an incidence-based cost of illness approach could bring up a dynamic cost approximation and could infer the costs to a broad extent, and allows statements on a population-level [41].

Nonetheless, it was not possible to identify the immediate link from direct cost to the DSC needs, except from the cost of the long-term care benefit per patient. This leads to a fuzzy cost approximation, which is concrete on the issue of non-medical cost. Another limitation that occurs due to missing information is about the death of the patients. We suffer from a lack of knowing how long the patients live after the first examination or even if the patients drop out when they go into residency in long-term care. This restricts the explanatory power of the long-term effects because some studies have shown that the mortality of patients with dementia is quite high and after 8.5 years more than 50% of the patients have died [21]. But it is also possible, that we are underestimating the results, especially due to the assumption that in late time periods the end-of-life costs are increasing rapidly [41]. In this respect, we must state that missing information about the reason for dropouts could have biased our cost simulation [26]. Whether this leads to be an over- or underestimation depends on the survival rate, the hospitalization rate and the end-of-life cost and must be answered in following studies. After all, we could also not show whether the DSC decreases the transition probabilities and will for this reason be cost-effective to the standard care. Further research projects are planned to close this gap. This will be part of a further research project and yield new insights into the health economic evaluation of the DSC.

### Abbreviations

DEM DATA: Longitudinal dataset from the Dementia Service Centres; DSC: Dementia Service Centres; DTMC: Discrete-time Markov chain;

EUR: Euro; EUR/h: Euro per hour; GDS: Global Deterioration Scale; 95%-CI: 95% confidence interval

### Acknowledgments

We thank AÖ and LR for giving comments on our paper and the methodology.

### Authors' contributions

AB developed the economic model and has undertaken the statistical and cost analysis. PK was responsible for the database management and verified the statistical methods. MH, as a senior researcher, was responsible for the descriptive analysis of the study sample and supervised the statistical analysis of the study. GH was giving comments and critical appraisals on the economic model. SA is the developer of the DSC model of care and scientific head of the MAS *Alzheimerhilfe* and was responsible for the dementia care-specific definitions of the model. She was project leader of this study. The authors read and approved the final manuscript.

### Funding

The project was funded by an interfaculty grant from the rector of the Danube University Krems and was part of the project 'Does continuing education prevent cognitive Decline and Dementia? – CoCoDe'.

### Availability of data and materials

The datasets used and analyzed during the current study are available from the corresponding author upon reasonable request.

### Ethics approval and consent to participate

Not applicable.

### Consent for publication

Not applicable.

### Competing interests

The authors PK, MH and SA are involved in different projects to the DSC. SA is scientific head of the DSC in Upper Austria. To avoid a conflict of interest, the economic assessment and development of the simulation was undertaken by the members of the research group not affiliated to DSC (AB & GH). AB and GH declare no conflict of interest and their complete independence from any kind of interest involving the DSC.

### Author details

<sup>1</sup>Institute for Health Care Management, University of Applied Sciences Krems, Piaristengasse 1, AT-3500 Krems, Austria. <sup>2</sup>Department for Economy and Health, Danube University Krems, Dr.-Karl-Dorrek-Straße 30, AT-3500 Krems, Austria. <sup>3</sup>Department for Neurosciences and Preventive Medicine, Danube University Krems, Dr.-Karl-Dorrek-Straße 30, AT-3500 Krems, Austria. <sup>4</sup>Oesterreichische Nationalbank, Josefplatz 1, AT-1015 Vienna, Austria.

Received: 20 May 2020 Accepted: 10 August 2020

Published online: 14 September 2020

### References

1. Alzheimer Europe. Dementia in Europe yearbook 2013. Brussels; 2013.
2. Alzheimer's Disease International. World Alzheimer report. London; 2009.
3. BMASK. Österreichischer Demenzbericht [Austrian report of dementia]. Vienna; 2014.
4. Wimo A, Winblad B, Jönsson L. The worldwide societal costs of dementia: estimates for 2009. *Alzheimers Dement*. 2010;6:98–103.
5. Prince M, Bryce R, Albanese E, Wimo A, Ribeiro W, Ferri CP. The global prevalence of dementia: a systematic review and metaanalysis. *Alzheimers Dement*. 2013;9:63–75.e2.
6. Quentin W, Riedel-Heller SG, Lupp A, Rudolph A, König H-H. Cost-of-illness studies of dementia: a systematic review focusing on stage dependency of costs. *Acta Psychiatr Scand*. 2010;121:243–59.
7. Reese JP, Heßmann P, Seeborg G, Henkel D, Hirzmann P, Rieke J, et al. Cost and Care of Patients with Alzheimer's disease: clinical predictors in German health care settings. *JAD*. 2011;27:723–36.
8. Michalowsky B, Kaczynski A, Hoffmann W. Ökonomische und gesellschaftliche Herausforderungen der Demenz in Deutschland – Eine

- Metaanalyse [economical and social challenges of dementia in Germany - a meta analysis]. *Bundesgesundheitsbl.* 2019;62:981–92.
9. Green C, Shearer J, Ritchie CW, Zajicek JP. Model-based economic evaluation in Alzheimer's disease: a review of the methods available to model Alzheimer's disease progression. *Value Health.* 2011;14:621–30.
  10. Leicht H, König H-H. Krankheitskosten bei Demenz aus gesellschaftlicher Perspektive: Eine Übersicht. *Bundesgesundheitsbl.* 2012;55:677–84.
  11. Schwarzkopf L, Menn P, Kunz S, Holle R, Lauterberg J, Marx P, et al. Costs of Care for Dementia Patients in community setting: an analysis for mild and moderate disease stage. *Value Health.* 2011;14:827–35.
  12. Schulenburg J, Schulenburg J, Horn R, Möller H-J, Bernhardt T, Grass A, et al. Cost of treatment and care of Alzheimer's disease in Germany. In: Wimo A, Jönsson B, Karlsson G, Winblad B, editors. *Health economics of dementia*. Chichester: Wiley; 1998. p. 217–30.
  13. Schaller S, Mausekopf J, Kriza C, Wahlster P, Kolominsky-Rabas PL. The main cost drivers in dementia: a systematic review: systematic review of COI studies in dementia focusing on care settings. *Int J Geriatr Psychiatry.* 2014;30:111–29.
  14. ELN-AIP-901 Investigator Group, Lacey LA, Niecko T, Leibman C, Liu E, Grundman M. Association between illness progression measures and total cost in Alzheimer's disease. *J Nutr Health Aging.* 2013;17:745–50.
  15. Jones RW, Lebec J, Kahle-Wroblewski K, Dell'Agnello G, Bruno G, Vellas B, et al. Disease progression in mild dementia due to Alzheimer disease in an 18-month observational study (GERAS): the impact on costs and caregiver outcomes. *Dement Geriatr Cogn Disord Extra.* 2017;7:87–100.
  16. Wolstenholme JL, Fenn P, Gray AM, Keene J, Jacoby R, Hope T. Estimating the relationship between disease progression and cost of care in dementia. *Br J Psychiatry.* 2002;181:36–42.
  17. Scuvée-Moreau J, Kurz X, Desse A. The economic impact of dementia in Belgium: results of the National Dementia Economic Study (NADES). *Acta Neurol Belg.* 2002;102:104–113.
  18. Connolly S. Economics of dementia: A review of methods. *Dementia.* 2018; 19:1426–40.
  19. Handels R, Wimo A. Challenges and recommendations for the health-economic evaluation of primary prevention programmes for dementia. *Aging Ment Health.* 2019;23:53–9.
  20. Sonnenberg F, Leventhal E. Modeling disease progression with Markov models. In: Wimo A, Jönsson B, Karlsson G, Winblad B, editors. *Health economics of dementia*. Chichester: Wiley; 1998. p. 171–95.
  21. Spackman D, Kadiyala S, J. Neumann P, Veenstra L, Sullivan D. Measuring Alzheimer disease progression with transition probabilities: Estimates from NACC-UDS. *CAR.* 2012;9:1050–8.
  22. Leicht H, Heinrich S, Heider D, Bachmann C, Bickel H, van den Bussche H, et al. Net costs of dementia by disease stage: net costs of dementia by disease stage. *Acta Psychiatr Scand.* 2011;124:384–95.
  23. Jönsson L, Wimo A. The cost of dementia in Europe: a review of the evidence, and methodological considerations. *Pharmacoeconomics.* 2009;27:391–403.
  24. Andersen C, Lauridsen J, Andersen K, Kragh-Sørensen P. Cost of dementia: impact of disease progression estimated in longitudinal data. *Scand J Public Health.* 2003;31:119–25.
  25. Neumann PJ, Araki SS, Arcelus A, Longo A, Papadopoulos G, Kosik KS, et al. Measuring Alzheimer's disease progression with transition probabilities: estimates from CERAD. *Neurology.* 2001;57:957–64.
  26. Yu L, Griffith WS, Tyas SL, Snowden DA, Kryscio RJ. A nonstationary Markov transition model for computing the relative risk of dementia before death. *Stat Med.* 2010;29:639–48.
  27. Auer S, Gamsjäger M, Donabauer Y, Span E. Stadienspezifisches retrogenetisches training für Personen mit Demenz: Wichtigkeit der psychologischen Merkmale der einzelnen Stadien [stage specific retrogenetic training for persons with dementia: importance of psychological features in the different disease stages]. In: Schloffer H, Prang E, Frick A, editors. *Gedächtnistraining: Theoretische und praktische Grundlagen*. Berlin: Springer; 2015. p. 181–7.
  28. Reisberg B, Ferris S, de Leon M, Crook T. The global Deterioration scale for assessment of primary degenerative dementia. *Am J Psychiatry.* 1982;1136–9.
  29. Gold MR, Siegel JE, Russel LB, Weinstein MC, editors. *Cost-effectiveness in health and medicine*. New York: Oxford University Press; 1996.
  30. Icks A, Haastert B, Arend W, Konein J, Thorand B, Holle R, et al. Patient time costs due to self-management in diabetes may be as high as direct medical costs: results from the population-based KORA survey FF4 in Germany. *Diabet Med.* 2020;37:895–7.
  31. Karlsson G, Jönsson B, Wimo A, Winblad B. Methodological issue in health economic studies of dementia. In: Wimo A, Jönsson B, Karlsson G, Winblad B, editors. *Health economics of dementia*. Chichester: Wiley; 1998. p. 161–9.
  32. Koopmanschap MA, van Exel JNA, van den Berg B, Brouwer WBF. An overview of methods and applications to value informal Care in Economic Evaluations of healthcare. *Pharmacoeconomics.* 2008;26:269–80.
  33. McDaid D. Estimating the costs of informal care for people with Alzheimer's disease: methodological and practical challenges. *Int J Geriatr Psychiatry.* 2001;16:400–5.
  34. Schneider U, Kleindienst J. Monetising the provision of informal long-term care by elderly people: estimates for European out-of-home caregivers based on the well-being valuation method. *Health Soc Care Community.* 2016;24:e81–91.
  35. Drummond MF, Sculpher MJ, Claxton K, Stoddart GL, Torrance GW. *Methods for the economic evaluation of health care Programmes*. 4th ed. Oxford; 2015.
  36. Riedel M, Kraus M, Mayer S. Organization and supply of long-term Care Services for the Elderly: a Bird's-eye view of old and new EU member states: organization and supply of long-term Care Services for the Elderly: a Bird's-eye view of old and new EU member states. *Social Policy Admin.* 2016;50: 824–45.
  37. Koopmanschap M, Brouwer B. Indirect costs and costing informal care. In: Wimo A, Jönsson B, Karlsson G, Winblad B, editors. *Health economics of dementia*. Chichester: Wiley; 1998. p. 245–56.
  38. Statistik Austria: *Income Statistics of Austria*. Vienna: Statistik Austria; 2018.
  39. von der Schulenburg J-M G, Greiner W, Jost F, Klusen N, Kubin M, Leidl R, et al. *Deutsche Empfehlungen zur gesundheitsökonomischen evaluation - dritte und aktualisierte Fassung des Hannoveraner Konsens [German recommendations on health economic evaluation - third and updated version of the Hanover consensus]*. *Gesundh ökon Qual Manag.* 2007;12: 285–90.
  40. Wimo A, Guerchet M, Gemma-Claire A, Wu Y-T, Prina A, Winblad B, et al. The worldwide costs of dementia 2015 and comparisons with 2010. *Alzheimers Dement.* 2017;1.
  41. Deb A, Thornton JD, Sambamoorthi U, Innes K. Direct and indirect cost of managing alzheimer's disease and related dementias in the United States. *Expert Rev Pharmacoecon Outcomes Res.* 2017;17:189–202.

## Publisher's Note

Springer Nature remains neutral with regard to jurisdictional claims in published maps and institutional affiliations.

**Ready to submit your research? Choose BMC and benefit from:**

- fast, convenient online submission
- thorough peer review by experienced researchers in your field
- rapid publication on acceptance
- support for research data, including large and complex data types
- gold Open Access which fosters wider collaboration and increased citations
- maximum visibility for your research: over 100M website views per year

**At BMC, research is always in progress.**

Learn more [biomedcentral.com/submissions](https://biomedcentral.com/submissions)

